

Historic, Archive Document

Do not assume content reflects current scientific knowledge, policies, or practices.

62,39

1915

Catalog and Price List, 1915 THE NORTHBORO DAHLIA AND GLADIOLUS GARDENS

J. L. MOORE, PROP.

Box 223

NORTHBORO, MASS.



1915 CATALOG AND PRICE LIST

Northboro Dahlia and Gladiolus Gardens

J. L. MOORE, PROP. BOX
223 NORTHBORO, MASS.



ORDERS for Dahlias at catalogue prices sent prepaid, either by Express or Parcel Post, to best advantage, distance, expense, etc., considered. **☪** If buyer wants extra large bulbs and will pay transportation charges, please designate when ordering. **☪** We aim to please our patrons. **☪** Order any time for future delivery. **☪** Order early as demand always exceeds the supply of the most desirable varieties.

TERMS CASH WITH ORDER



PLANTING AND CARE OF DAHLIAS

General cultural notes and directions apply one year as well as another to the ever changing condition of weather and location of different buyers and planters.

A light, sandy soil is preferable for the best results; also a sunny exposure. Stir soil 8' or 10 inches deep; a foot will be better. Apply stable manure the fall previous to the spring you plant and work thoroughly into the soil to get best results.

Separate Dahlias to one or two bulbs; plant deep, laying flat and be sure to cover six inches deep. Don't stand on end with crown out. Give it a chance to root and get a firm hold below any chance of disturbance in cultivation. Keep the ground thoroughly stirred until they begin to bloom.

Apply water freely. If work in field is done with horse plant 3 to 4 feet apart in rows and 15 inches to 2 feet in the row, closer if grown only for the bulbs. If for cut flowers 2 feet and over give more flowers and larger ones.

To avoid staking or breaking down, after two sets of leaves show, pinch off the main stalk and they will branch and need no support; but this retards the bloom, which will be ten days to two weeks later.

HARVESTING DAHLIAS

After frost has killed foliage, let them stand a few days before commencing. Loosen with plow, spade or fork. Cut off top below where frosted if possible, as a frozen stalk is liable to

decay and mould to the injury of the roots, where the hard unfrosted stalk will dry and cure.

Let them lie and dry off, as you would potatoes.

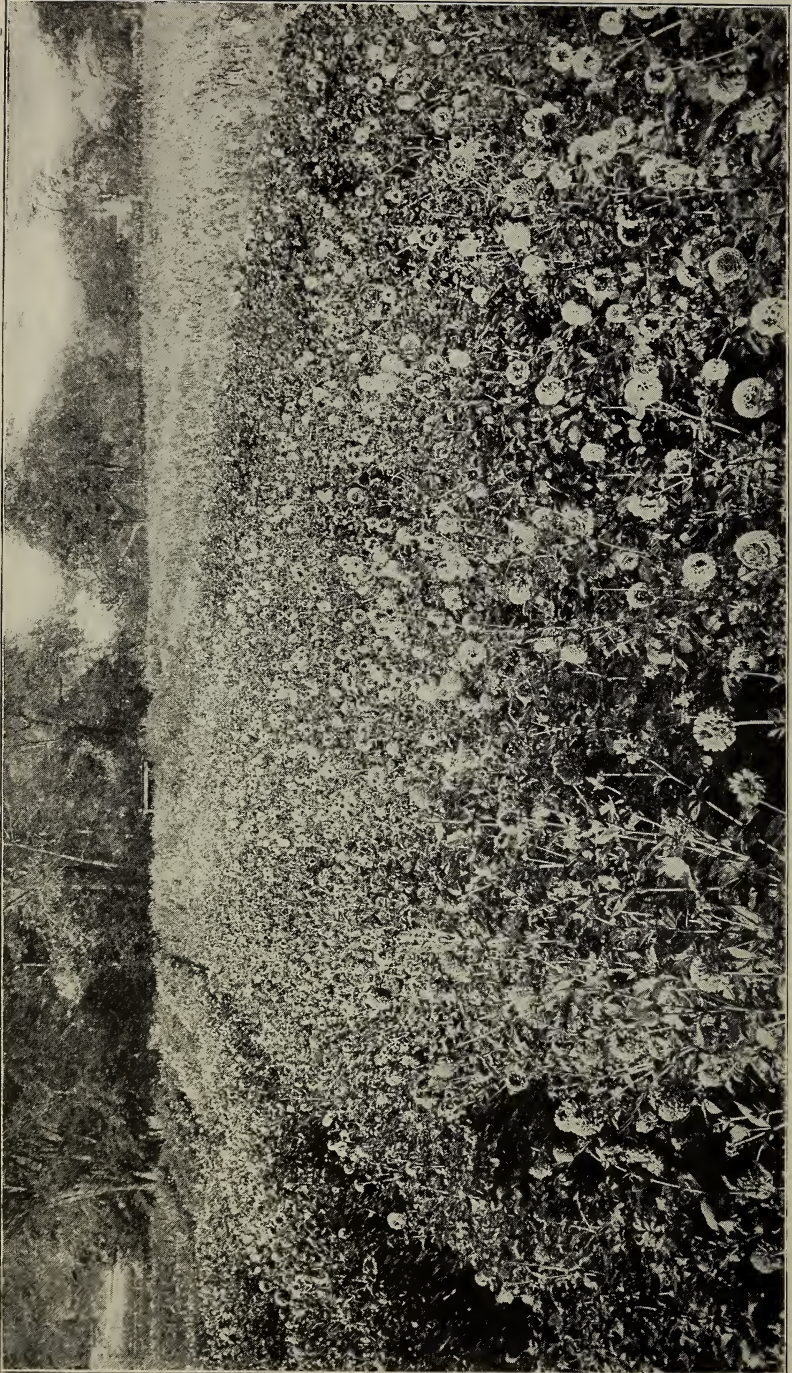
Store at once where they are to stay during the winter, in cellars not under 40—50 to 60° F. is better.

If in cellar where there is furnace keep as far from it as possible.

It is impossible to give definite directions that would apply to all conditions.

Avoid changes from one extreme of temperature to another, give plenty of ventilation, avoid chilling and too much moisture, or the other extreme, too much furnace heat to shrivel and dry them, and they should keep all right.





Show and Fancy Dahlias. Gladiolus at right.

Show and Fancy Dahlias

The Show Dahlias include the large, round flowers with solid colors and those having a light ground color with a darker tip. The fancy Dahlias are the large, round striped varieties and those having a dark ground color with a distinct lighter tip.

	Price per bulb, cts.
<i>A. M. BERNIE.</i> Dark orange, yellow toward centre.....	10
<i>ACQUISITION.</i> Large lilac, long stems, fine	25
<i>A. D. LAVONI, or ETHEL VICK.</i> Soft pink, fine	10
<i>ADELAIDE.</i> Creamy white, edged lavender	10
<i>AMERICA.</i> Light slate, striped deep crimson, sometimes solid color	10
<i>ANNE BOLEYN.</i> White, veined lavender	10
<i>APPLE BLOSSOM.</i> Containing all the colors of the apple blossom.....	10
<i>ARIAN.</i> Crimson scarlet	10
<i>ARABELLA.</i> Sulphur, tipped pink	10
<i>ALICE EMILY.</i> Buff yellow, large and fine	10
<i>BRIDE.</i> Blush, edged rose, large	10
<i>DR. J. P. KIRKLAND, OR CUBAN GIANT.</i> Dark crimson, large	10
<i>ELEGANS.</i> Rose purple, tipped white	10
<i>ERIC FISHER.</i> Buff, striped scarlet	15
<i>EMILY.</i> Lavender, suffused white	15
<i>FASCINATION.</i> Rose pink, sometimes striped white, fine	10
<i>FRANK SMITH.</i> Dark maroon, tipped pinkish white...	20
<i>FREDERICK SMITH.</i> Lilac striped purple	10
<i>FLORENCE.</i> Bright yellow, good	15
<i>GAIETY.</i> Yellow, striped red, tipped white.....	10
<i>GEM OF THE BEAUTY.</i> Flesh, tipped darker	10
<i>GEO. BARNES.</i> Fancy lilac, striped crimson	15
<i>GLORIE DE LYON.</i> White, large, fine	15
<i>GOLDEN BALL.</i> Pure yellow, fine.....	10
<i>GOLD MEDAL.</i> Canary yellow, flaked and striped red, one of the best.....	25
<i>GOLDSMITH.</i> Yellow, striped and tipped crimson	20

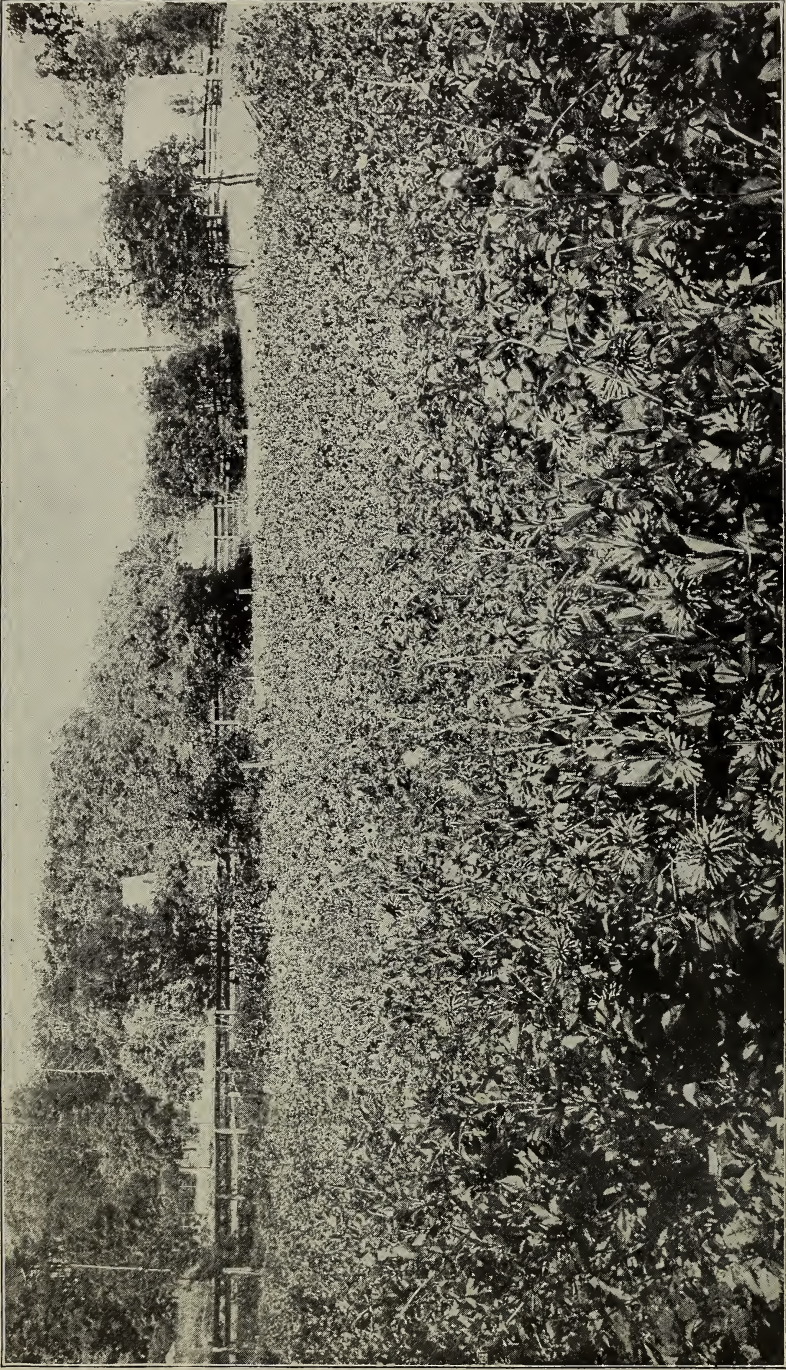
	Price per bulb, cts.
<i>GOLDEN AGE</i> . Pure sulphur yellow	10
<i>GEN. GRANT</i> . Deep orange, striped chocolate, sometimes solid chocolate flower.....	15
<i>GRAND DUCHESS MARIE</i> . Giant Show. Rich buff, over- laid orange, reverse side petals pink.....	50
<i>GOV. DAVIS</i> . Salmon, large and full; long stems.....	10
<i>HARBINGER</i> . Peach color.....	10
<i>HECTOR</i> . Light orange	10
<i>HENRY GLASSCOCK</i> . Buff, striped and spotted crimson	10
<i>HENRY PATRICK</i> . Pure white, extra fine.....	10
<i>HERBERT TURNER</i> . White, edged lavender	10
<i>IMPERIAL</i> . Deep purplish maroon, extra fine	10
<i>JAMES VICK</i> . Purple.....	10
<i>JOHN BENNETT</i> . Yellow, edged scarlet	10
<i>JOHN THORP</i> . White base, edged pink.....	10
<i>JAMES SERVICE</i> . Crimson maroon	10
<i>KEYSTONE</i> . Purple lilac, striped crimson, large.....	10
<i>LUCY FAUCETT</i> . Pale yellow, striped magenta	10
<i>MARINER</i> . Yellow, crimson edge, dark center	10
<i>MERLIN</i> . Bright orange scarlet, very free.....	15
<i>METEOR</i> . Bright red, very large	10
<i>MARGARET BELL</i> . Deep pink or light magenta.....	10
<i>MAID OF ATHENS</i> . Dark magenta	10
<i>MRS. BRADFORD</i> . Lavender color	10
“ <i>LANGTRY</i> . Yellow at base, edged crimson.....	10
“ <i>DEXTER</i> . Salmon, full	10
“ <i>J. LAING</i> . French white, free, good form	10
“ <i>KENDALL</i> . White, heavily edged purple	15
“ <i>STANCOMB</i> . Salmon and pink	10
“ <i>W. SLACK</i> . Blush, edged purple	15
<i>MISS MILLER</i> . Pale lemon	10
<i>NUGGET</i> . Orange, tipped scarlet, always good	20
<i>NORMA</i> . Bright orange, free and large	10
<i>ORATOR</i> . Salmon buff (large)	10
<i>PRINCE BISMARCK</i> . Deep purple.....	25
<i>PURITAN</i> . White, striped maroon	10
<i>PURPLE GEM</i> . Deep purple, distinct.....	10
<i>PEARL</i> . White, deeply edged rose; large	10
<i>PINK MAGENTA</i> . Extra free bloomer.....	10
<i>QUEEN OF YELLOWS</i> . Dark yellow.....	10
<i>QUEEN VICTORIA, OR MARY D. HALLOCK</i> . Canary yellow	10
<i>QUEEN'S MESSENGER</i> . Purple.....	10
<i>QUAKER LADY</i> . Shade brown, tipped white	10

	Price per bulb, cts.
<i>RUBY QUEEN.</i> Ruby red, richly shaded	10
<i>ROBERT WARNER.</i> Deep crimson, very large.	10
<i>ROBIN ADAIR.</i> Terra cotta.	10
<i>ROBINI.</i> Amber.	15
<i>ROBERT BROOMFIELD.</i> Pure white	10
<i>REV. J. B. McCAMM.</i> Pure yellow, striped crimson.	10
<i>STRADELLA.</i> Deep purple crimson, long stems, fine.	25
<i>STATESMAN.</i> Deep crimson	10
<i>STARTLER.</i> Magenta, tipped white	10
<i>S. SICKMON.</i> Dark maroon, tipped white	10
<i>STANDARD.</i> Dark chocolate, very large	20
<i>STORM KING.</i> Pure white, extra fine	10
<i>STRIPED BANNER.</i> Deep red, striped white	10
<i>THOS. AUSTISS.</i> Purple lilac, fine form.	10
<i>WILLIE AUSTIN</i> or <i>DAWN OF DAY.</i> Fawn, large	10
<i>WHITE BEDDER.</i> White, fine for borders and lawns.	10
<i>WHITE QUEEN.</i> Pure white, free, strong grower.	10
<i>WHITE SWAN.</i> Pearly white	10
<i>WM. NEATS.</i> Soft reddish fawn	10
<i>WM. GARRETT.</i> Cardinal red	10
<i>W. P. LAIRD.</i> Lilac, veined lighter.	10

Cactus Dahlias

In form this class differs from any other. Flowers loosely arranged and irregular. Petals long, twisted and pointed.

	Price per bulb, cts.
<i>AMOS PERRY.</i> Scarlet, fine.	10
<i>ANTELOPE.</i> Deep rich yellow, suffused with bronze; very attractive.	10
<i>AIGER.</i> Bright red	10
<i>ARAB.</i> Rich velvety maroon	10
<i>AUNT CHLOE.</i> Very dark maroon, fine	10
<i>BLANCH KEITH.</i> Yellow, long closely quilled petals.	10
<i>BRITANNIA.</i> Soft salmon pink, very large.	15
<i>BORNEMAN'S LEIBLING.</i> Delicate soft rose pink.	15
<i>BRUNHILDA.</i> Rich plum color.	15
<i>CHAS. WOODBRIDGE.</i> Bright crimson, fine	15
<i>COUNTESS OF LONSDALE.</i> Deep salmon red, one of the best grown	15
<i>CLINCHER.</i> Heliotrope.	25
<i>CORNUCOPIA.</i> Deep reddish salmon, fine	10



Cactus Dahlias

	Price per bulb, cts.
<i>CLARA G. STEDWICK.</i> Clear bright salmon, shaded yellow at the base, long petals, very large and fine.....	15
<i>CANNELL'S GEM.</i> Deep orange, free; fine	10
<i>CAPSTAN.</i> Soft red, tinted apricot; fine	10
<i>DELIGHT.</i> Pale pink, yellow center, large	15
<i>DR. JAMESON.</i> Deep crimson, free	10
<i>DAINTY.</i> Lemon yellow, tips of petals golden; base rose pink. Should be in every collection	10
<i>EMPEROR.</i> Pure plum yellow at base	10
<i>ERNEST GLASSE.</i> Purple magenta	10
<i>ETHEL.</i> Sulphur yellow, free and very fine	15
<i>EARL OF PEMBROKE.</i> Bright plum, large	10
<i>EXQUISITE.</i> Reddish cinnamon, free and fine	15
<i>ETNA.</i> Lilac, veined violet.....	25
<i>EVA.</i> Pure white, strong grower; one of the best.....	25
<i>F. H. CHAPMAN.</i> Yellow, overlaid orange.....	20
<i>FLORADORA.</i> Wine crimson	15
<i>FLAMINGO.</i> Clear flame color, large	15
<i>FRED COBBOLD.</i> Bright crimson, large and free	15
<i>FUSILEER.</i> Deep salmon, good	10
<i>GEN. BULLER.</i> Rich velvety crimson, nearly black at base of petals; white tips	10
<i>GENISTA.</i> Amber, shaded to golden yellow	10
<i>GLORY OF WILTZ.</i> Yellow.....	25
<i>GREEN'S WHITE.</i> Pure white	10
<i>HARBOR LIGHT.</i> Vivid orange red overlaid flame color	10
<i>HARMONY.</i> Reddish bronze	10
<i>ISLAN QUEEN.</i> Mauve.....	10
<i>IDA.</i> Deep clear yellow, very early; large	15
<i>ICEBERG.</i> Ivory white, petals long and narrow	15
<i>INNOVATION.</i> Crimson, tip white.....	10
<i>J. H. JACKSON.</i> Black maroon	15
<i>J. WIER FIFE.</i> Very dark maroon	10
<i>JOHN ROACH.</i> Soft yellow	10
<i>KEYNES WHITE.</i> Pure white; fine	10
<i>KREIMHILDA.</i> Pleasing shade of pink, center almost white	10
<i>LADY FAIR.</i> Primrose, tinted soft pink, a novelty	25
<i>LAVERSTOCK BEAUTY.</i> Soft red	10
<i>LIBELLE.</i> Clear magenta, an extra fine variety	10
<i>LORD OF THE MANOR.</i> Fiery scarlet, greenish yellow center	10
<i>LORD ROBERTS.</i> White.....	15
<i>MANXMAN.</i> Rich orange center shading to soft pink, purple tips	15

	Price per bulb, cts.
<i>MRS. JOWETT.</i> Deep salmon	10
“ <i>J. H. LUSCOMB.</i> Rose mauve, light center, fine . .	10
“ <i>JOHN P. MACE.</i> Delicate blush pink	20
“ <i>H. J. JONES.</i> Scarlet, edged cream, tipped white .	15
“ <i>DeLUCCA.</i> Golden yellow, tipped orange	15
“ <i>MURRAY IND.</i> Bright rose	10
“ <i>MONTFORIE.</i> Rich crimson and scarlet	10
“ <i>M. A. HOLBROOK.</i> Velvet crimson	10
“ <i>E. MAULEY.</i> Clear, light yellow	15
“ <i>F. GRINSTED.</i> Deep rich crimson	15
“ <i>W. H. RABY.</i> Cream color, extra fine form	10
“ <i>SUSAN WILSON.</i> Yellow, overlaid red	20
“ <i>BENNETT.</i> Soft crimson	10
“ <i>CHAS. TURNER.</i> Clear soft yellow, extra fine large flower	10
<i>MARY SERVICE.</i> Pinkish apricot	15
<i>NIGHT.</i> Almost black	10
<i>OCTOPUS.</i> Nearly white, showing a tinge of lavender .	10
<i>OPHIR.</i> Soft apricot, tinted lighter in center	10
<i>PORCUPINE.</i> Scarlet maroon	10
<i>PRINCESS MARY.</i> Pale terra-cotta	15
<i>P. W. TULLOCK.</i> Salmon and red, tinted purple	10
<i>PRINCE OF YELLOWS.</i> Soft shade of yellow, good . . .	10
<i>PRIMROSE DAME.</i> A clear yellow, fine	10
<i>QUEEN ALEXANDER.</i> Deep orange, distinct; fine . . .	15
<i>SPITFIRE.</i> Scarlet, back of petals deep orange	10
<i>SIR A. LAMB.</i> Crimson tinged purple	10
<i>STERNS.</i> Yellow	10
<i>STRAHLEIN KRONE.</i> Intense cardinal red, free	15
<i>STANDARD BEARER.</i> Fiery scarlet, fine form, free . . .	15
<i>ST. CATHERINE.</i> Deep yellow, shaded red	10
<i>SWEET NELL.</i> Pink	15
<i>T. A. HAVEMEYER.</i> Clear yellow at base deepening to bronze	10
<i>UNCLE TOM.</i> Improvement over Night, almost black . .	10
<i>VESUVIUS.</i> Clear yellow, striped crimson	10
<i>VOLKER.</i> Lemon yellow	15
<i>WM. TRESEDER.</i> White, shaded pink	15



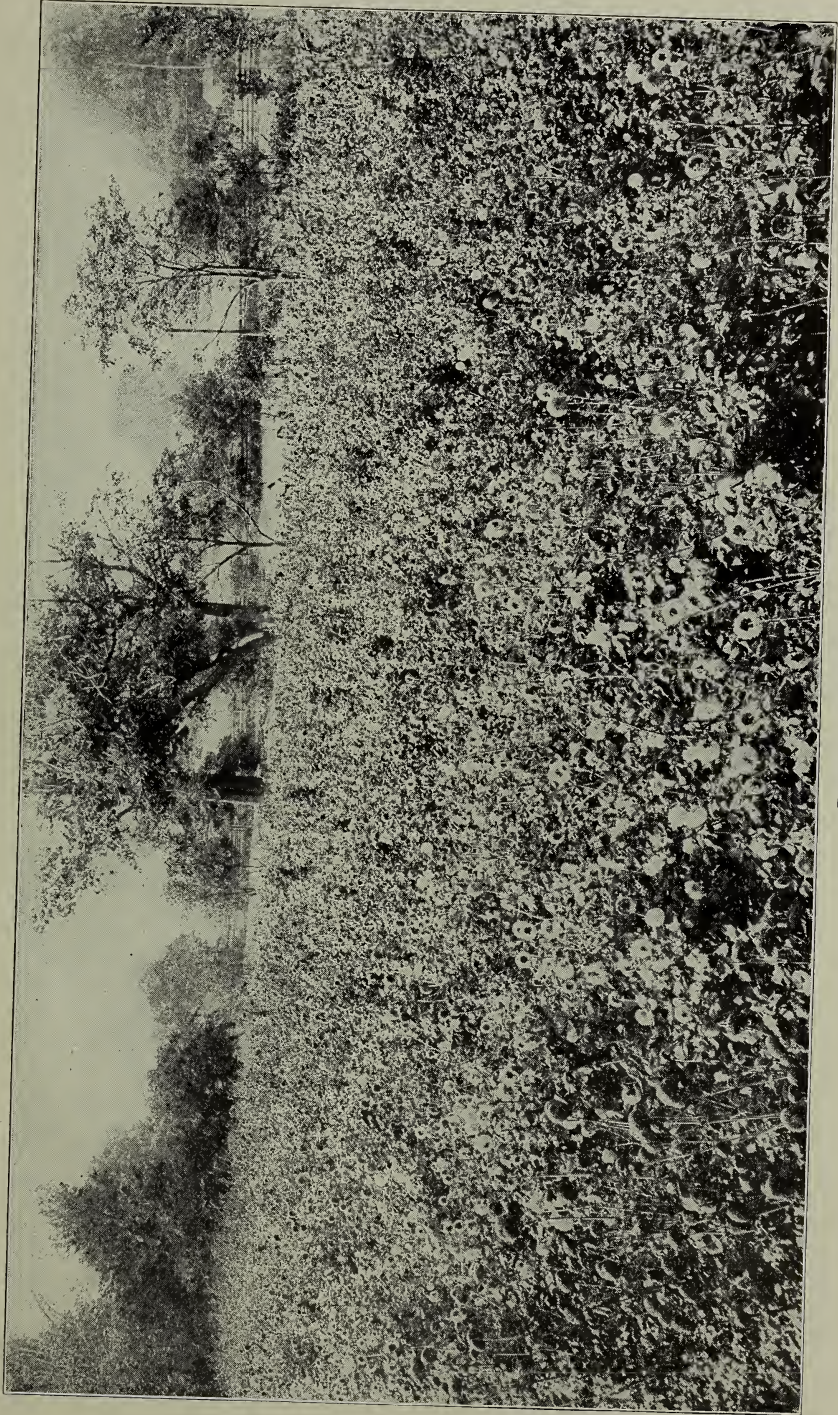


Decorative Dahlias

Decorative Dahlias

Decorative Dahlias should not be classed with the Cactus varieties. The flowers are large with long flat petals, and also irregular.

	Price per bulb, cts.
<i>BEAUTY OF BRENTWOOD.</i> Plum, striped maroon	10
<i>BLACK DECORATIVE.</i> Almost black	10
<i>BLACK PRINCE.</i> Velvet maroon	10
<i>BRONZE BEAUTY.</i> Bronze, tip white, very large	10
<i>CATHERINE DUER.</i> A beautiful glowing red	10
<i>CENTENNIAL.</i> Dark red, black shadings	10
<i>CLIFFORD W. BRUTON.</i> Bright yellow, large	10
<i>CLARABEL.</i> Purple	10
<i>COUNTESS OF PEMBROKE.</i> Light lavender	10
<i>CORA GLEASON.</i> Deep purple	10
<i>DANTHE.</i>	10
<i>DEACON.</i> Crimson scarlet	10
<i>DOLLY, OR SYLVIA.</i> Flesh color, tipped darker	10
<i>EMILY HAPGOOD.</i> White	10
<i>EMPRESS OF INDIA.</i> Crimson maroon	10
<i>FREDA.</i> Waxy white	10
<i>FRANK BASSETT.</i> Royal purple, profuse bloomer	10
<i>GERTIE.</i> Lavender	10
<i>GIGANTEA.</i> Very large, yellowish white	15
<i>GRAND DUKE ALEXIS.</i> Pure white, edged lavender, large	15
<i>HELENE CHAVET.</i> Large, waxy white	15
<i>HIMMILSCHE.</i> Light purple lavender	10
<i>HOFFT GARTNER GLEET.</i> White, very large, fine	25
<i>JACK ROSE.</i> Very dark crimson	10
<i>JEANNE CHARMET.</i> Pink, lilac edge, white center, yellow margin, long stem	15
<i>J. P. LAIRD.</i> Dark maroon	10
<i>LADY CLEVE.</i> Lilac and white	25
<i>LADY EDITH THORNHILL.</i> Rose pink	25
<i>LADY OF SEVILLE.</i> Lavender and pink	25
<i>LA FAVORITE.</i> White	10
<i>LES ALLES.</i> Pinkish white, striped rose and purple	10
<i>LOCKENKOFF.</i> Yellow	10
<i>LYNDHURST.</i> Bright scarlet, very free bloomer	10



Pompon Dahlias]

	Price per bulb, cts.
<i>MADAME MOREAU.</i> Maroon.....	15
<i>MRS. A. PEART.</i> Pure white.....	10
<i>MRS. HARTONG.</i> Deep orange, tipped pink.....	10
<i>MRS. GEO. REED.</i> White, deeply edged rose.....	10
<i>MRS. WINTERS.</i> Pure white, very large.....	10
<i>MME. VAN DEN DEAL.</i> White, deeply edged lively pink.....	10
<i>MME. VICTOR VASSIER.</i> Clear sulphur yellow.....	15
<i>MORNING RAY.</i> Deep bronze, long stems.....	15
<i>MAHALA SHERIFF.</i> Pure white.....	10
<i>MARY HILLIER.</i> Deep salmon.....	10
<i>MINOS.</i> Almost black, fine.....	15
<i>NYMPHAEA.</i> Shrimp pink, tinted lighter.....	10
<i>OBAN.</i> Mauve, fine.....	10
<i>PAPA TREVE.</i> Deep orange red, tinted scarlet.....	15
<i>POND LILY.</i> White, shaded pink.....	10
<i>PRINCESS LOUISA VICTORIA.</i> Purple.....	10
<i>PROGRESS.</i> Lavender striped and blotched crimson, free bloomer.....	25
<i>RAYON D'OR.</i> Orange, striped white.....	10
<i>REGGIE.</i> Cherry red, veined orange, very large.....	25
<i>SOUVENIR DE GUSTAVE DOUZON.</i> Orange red, largest flower grown.....	10
<i>SYLVIA.</i> White, tip red.....	10
<i>WM. AGNEW.</i> Large bright red.....	10
<i>WM. MILLER.</i> Brilliant purple, large.....	10
<i>ZULU.</i> Very dark maroon.....	10

Pompon Dahlias

These are fine for cut flowers as they bloom freely, more so than any other variety. Price 10 cents each.

ACHILLES. Base of petals flesh, tipped pink.

ALEWINE. Delicate pink, tinted lilac.

BOBBY. Deep plum color, extra fine.

BRUNETTE. Crimson, blotched white

BELLE OF SPRINGFIELD. Dark scarlet.

CATHERINE. Bright yellow, full and fine.

- CLARA HARSH.* Yellow, tipped crimson.
DARKNESS. Very dark maroon.
DARKEST OF ALL. Nearly black.
FASHION. Bright orange.
FASCINATION. Pink and lavender, sometimes a blotch of white.
FAIRY QUEEN. Sulphur, edged pink.
GOLD SPHERE. Crimson, gold back.
GRUS AM WEIN. Crushed strawberry.
HARRY. Light yellow.
HENRIETTA. Yellow, tipped crimson, fine.
HILDA SEARLE. Orange scarlet.
IOLANTHE. Orange, shaded buff.
ISABELLA. Scarlet.
JARCOSKY. Yellow and white.
LITTLE PRINCE. Crimson, tip white.
LITTLE BESSIE. Creamy white, extra fine.
LITTLE JENNIE. Primrose yellow.
MABEL. Salmon pink.
MAY CLIFT. Light maroon.
MADELINE. Primrose, edged rose purple.
MARGUERITE. Deep lilac.
MARS. Scarlet.
PHOEBE. Orange, tip crimson.
PRINCE CHARMING. Cream, tipped purple.
PURITY. Fine (pure) white.
PURE LOVE. Pure lilac.
RED INDIAN. Deep coral red.
ROSALIE. Yellow and red.
SAPPHO. Maroon and white.
SNOW CLAD. Small, white, free.
SUNBEAM. Crimson scarlet, extra fine.
SALMON COLOR.
VIRIDA FLORA. The Green Dahlia.
WINFRED. White, tipped lavender.

Single Dahlias

The 20th Century, White Century, Pink Century,
Pink and White, Red, Lavender and White. . . . 10 cents each.

Mixed Stock

In handling, tags and marks will get lost or destroyed. All unknown dahlia stock is put together and sold regardless of value at a very low price; always have a few thousand. Price for such, \$2.00 per 100, buyer to pay transportation charges.

GLADIOLUS

The people's flower. Easily grown, very popular and attractive both for home gardens or for florists' trade. Growing more so every year. Growers are unable to keep pace with the demand.

We offer a few of the leading and popular varieties. Also mixture as grown or made up to suit.

AMERICA. Very large flower, flesh pink, almost white, spikes two to three feet long. The leading florist flower.

\$1.00 per dozen; \$2.00 per 100; \$15.00 per 1000

AUGUSTA. Pure white with blue anthers. One of the best florist flowers.

50 cents per dozen; \$2.00 per 100; \$12.00 per 1000

BRENCHLEYENSIS. Vermilion scarlet. Very attractive, brilliant flower, opens nearly all together, fine shipper, as it can be cut as soon as color shows, packs closely without injuring either bud or flower.

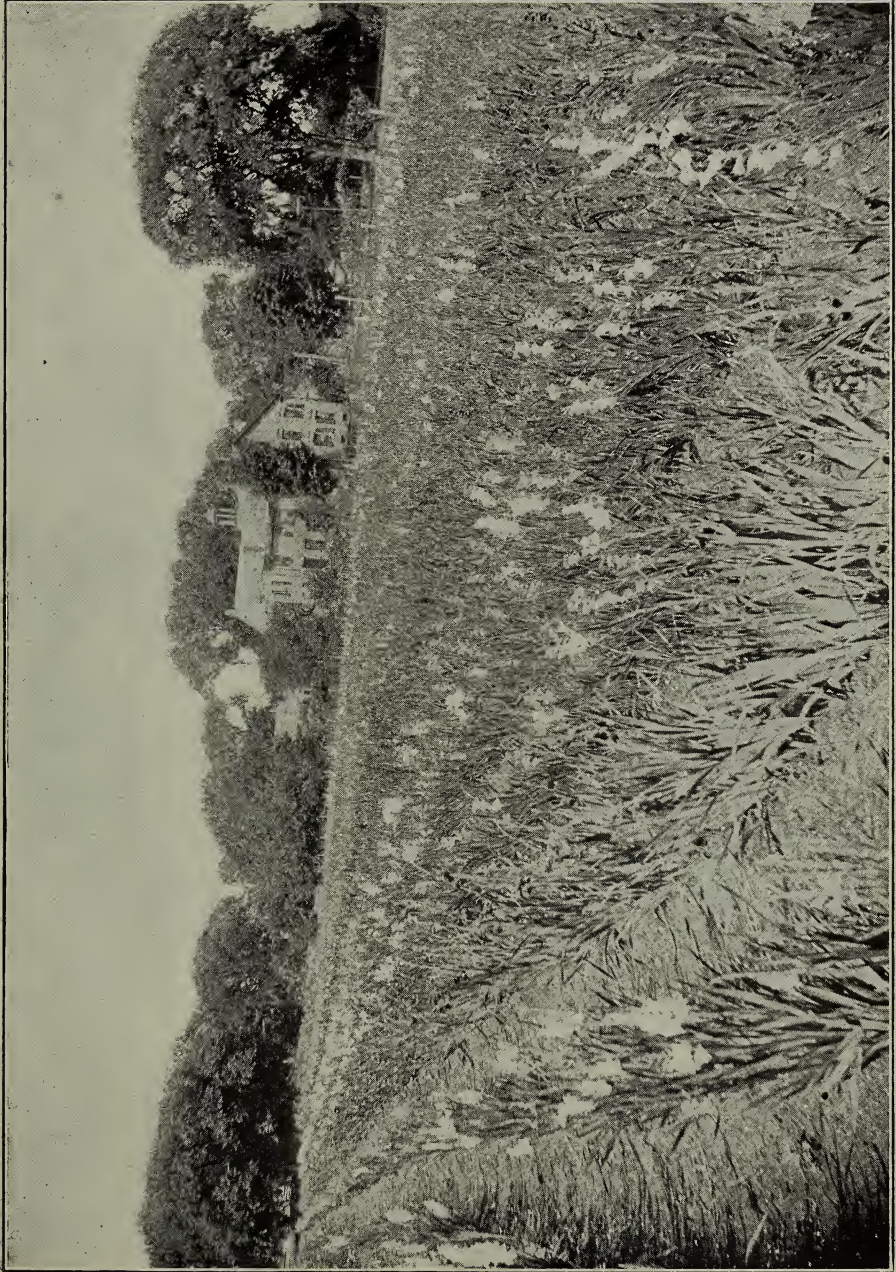
50 cents per dozen; \$1.00 per 100; \$10.00 per 1000

CANARY. Yellow, growing lighter when fully open.

\$1.00 per dozen; \$5.00 per 100

F. BERGMAN. Large orange pink with carmine stain. Very strong grower of large flowers, profuse bloomer.

50 cents per dozen; \$1.00 per 100; \$12.00 per 1000



Gladiolus

- FLORIDA.* Dark red with white throat, very showy.
50 cents per dozen; \$1.00 per 100; \$12.00 per 1000
- GIANT PINK.* Very large dark pink, brilliant throat markings. Very tall, strong spike.
\$1.00 per dozen; \$5.00 per 100
- INDEPENDENCE.* Light scarlet. Flowers very large, long spike; very attractive.
\$1.00 per dozen; \$2.00 per 100; \$15.00 per 1000
- JOHN BULL.* White, tinted sulphur.
\$1.00 per dozen; \$2.00 per 100
- KLONDIKE.* Clear primrose yellow, blotched crimson maroon; round flower, well open, an ideal for florist work; early bloomer.
\$1.00 per dozen; \$2.00 per 100; \$20.00 per 1000
- MRS. FRANCIS KING.* Beautiful flame pink, immense flowers on tall spike four feet and over high. Six to eight open at once; often twenty flowers on a spike, very attractive.
\$1.00 per dozen; \$2.00 per 100; \$15.00 per 1000
- MADAME MONNORET.* Delicate rose. Very popular; late bloomer.
\$1.50 per dozen; \$3.00 per 100
- MAY.* One of the best white varieties, flaked with crimson; fine for forcing.
50 cents per dozen; \$2.50 per 100; \$20.00 per 1000
- PRINCEPS.* Rich crimson, with broad white blotches across the lower petals.
\$2.00 per dozen; \$12.00 per 100
- SANDERSONI.* One of the finest waxy whites grown. Center penciled lightly crimson.
\$1.00 per dozen; \$2.00 per 100; \$15.00 per 1000
- SHAKESPEARE.* Pure white, flaked and blotched rose. Extra for forcing.
\$1.50 per dozen; \$5.00 per 100
- TACONIC.* Bright lively pink, flaked and striped with shades of the same color on the lower petals. Markings deep crimson. Very strong vigorous grower, large flower.
\$2.00 per dozen; \$10.00 per 100
- THE KING.* Dark heliotrope, white throat. Very large, often six and seven inches across flower; fine when massed together for effective decoration.
\$1.00 per dozen; \$5.00 per 100; \$30.00 per 1000
- WHITE CLOUD.* White with lavender markings.
\$1.00 per dozen; \$2.00 per 100

GROFF HYBRIDS MIXTURE

		Doz.	100	1000
Number 1	\$0.40	\$1.00	\$8.00
" 2	5.55	.75	6.00
" 355	.50	4.00
" 455	.25	2.00

FANCY MIXTURE

		Doz.	100	1000
Number 1	\$0.75	\$2.00	\$15.00
" 250	1.50	12.00
" 325	1.00	8.00
" 4			3.00

FIELD MIXTURE

		Doz.	100	1000
Number 1	\$0.75	\$1.50	\$10.00
" 250	1.00	8.00
" 325	.75	6.00
" 4			3.00

All of blooming age, comprising colors and combinations of stripe and blotch, from all types and of the best the market affords. Hundreds of varieties, just as grown all from premium stock. Dozen rate prepaid. By 100 or 1000, charges collect.

CANNAS

Best foliage out-door plants. Plant in clumps. Grown mainly for foliage. Price 5 cents each, 40 cents per dozen, \$2.00 per 100.

LILY OF THE VALLEY

Strong roots, price 2 cents each, 20 cents per dozen, \$1.00 per hundred.

GOLDEN GLOW

One of the hardiest perennial plants. Grows anywhere. Bright golden yellow; free bloomer. 5 to 8 feet high. 5 cents each, 25 cents per dozen, \$1.50 per 100.

IRIS

Purple King. 50 cents per dozen, \$2.00 per 100.

Special Offer for 1915

Orders for Dahlias at catalogue prices for \$1.00 or over, accompanied by cash, give purchasers the privilege of selecting as a premium 20 cents worth for every dollar enclosed. This applies to Dahlias only. All other bulbs are net catalogue prices.

ALSO TAKE NOTICE

Please designate in ordering whether you want large sized bulbs and will pay transportation charges, or the mail order size sent prepaid.

Where the selections are left to me, and purchasers desire quantity regardless of quality, I will send 25 different varieties for \$1.00—small sizes prepaid, large express collect. Be sure to designate which you want when ordering. 50 for \$2.00, 75 for \$3.00, 100 for \$4.00, and 100 Dahlias and 100 mixed Gladiolus for \$5.00.



