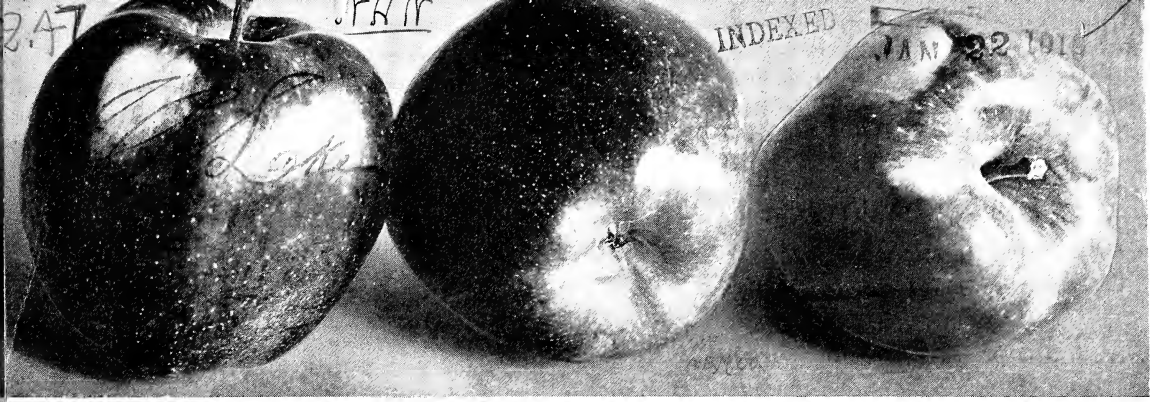


Historic, Archive Document

Do not assume content reflects current scientific knowledge, policies, or practices.





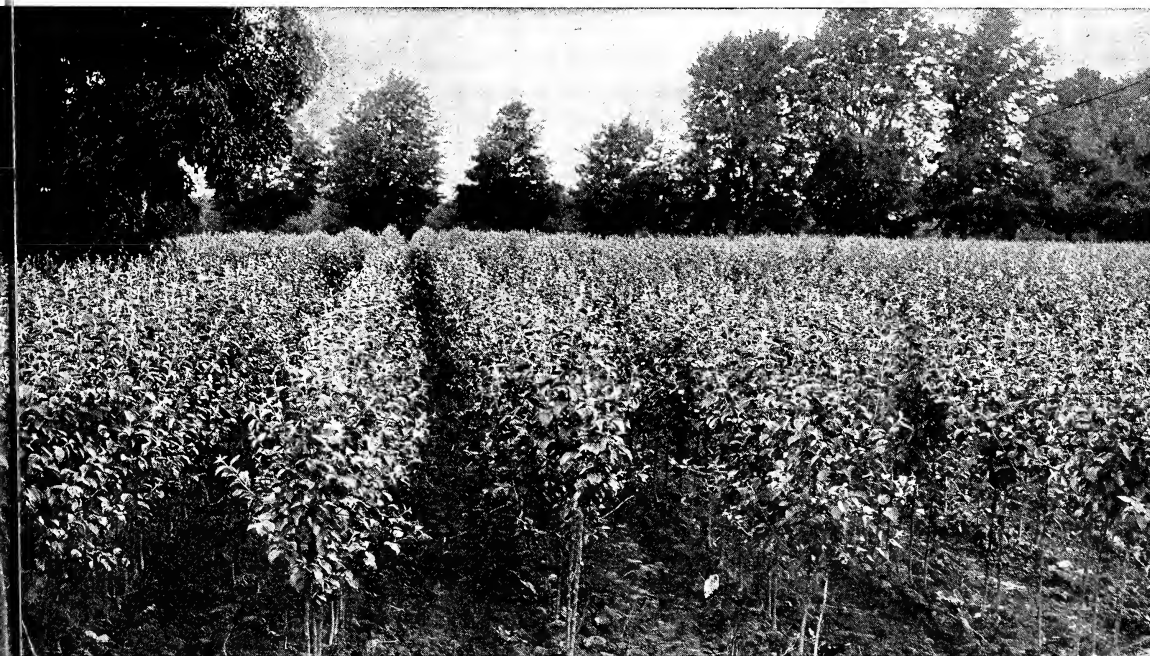
Catalog for Nineteen Hundred Fifteen

New Haven Nurseries

Bagby Grown Fruit Trees

On the Market for Over Forty Years

J. Bagby & Sons Company, New Haven, Missouri



The Way We Do Business With You

Terms Invariably cash, unless otherwise agreed upon. All orders to be sent C. O. D. must be accompanied with one-fourth the amount in cash. Remit by Money Order, Registered Letter or Bank Draft.

Order Early It is important that you order early. For the benefit of customers who wish to order early, but do not care to spare all of the money when the order is sent, we will accept such early orders if 10 per cent of the amount is sent with order. We will reserve the stock for you. Balance to be sent when you order the stock shipped.

Directions for Ordering Write name and address plainly. Always state distinctly the sizes and grades of stock ordered as per the grades given in this list. When named varieties cannot be furnished, we reserve the right to substitute such varieties as will fill the season as near as possible, unless prohibited in the order. Persons unacquainted with the different varieties will generally get a much better selection by leaving the assortment to us. Keep a correct copy of the order, so that when the stock arrives you will know exactly whether you get what you have ordered. If we make mistakes, they are accidental, and we wish to right them.

Free Freight or Express On all orders of over \$10.00, accompanied by full remittance, we will prepay the Freight or Express to your R. R. Station, if east of Denver, Colo., and El Paso, Texas. Will prepay \$1.15 per 100 pounds to all points west of Denver and El Paso.

On orders amounting to \$25.00 or more at single, 10 or 100 rates, will pay freight to any point in the United States.

Prices The prices are for the quantities named, but five, fifty and five hundred will be supplied at ten, hundred and thousand rates, respectively—i. e., five at half the price of ten; fifty at half the price of one hundred, and so on.

Packing All goods are packed free. Notwithstanding this fact, we use the utmost care and pack according to the distance and our customers' best interest. Everything is correctly labeled.

Our Guarantee The fact that nurserymen, planters and fruit growers of the country have ordered of us year after year, is as good a guarantee as can be given by any other nursery of over forty years' standing. But if any mistakes occur we will cheerfully rectify them.

True to Name We use the greatest care possible to have our stock true to name, and should any not prove true, we stand ready to replace it free of charge, or to refund the purchase money, but do not hold ourselves liable for any greater amount than the first cost of stock that may prove not true.

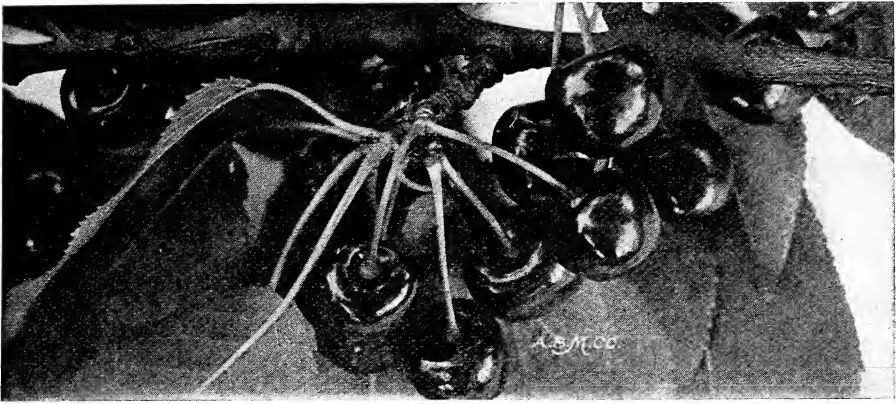
All shipments of trees will be accompanied by Certificate of Inspection of the State or Government Entomologist. Good stock, true to name, sold direct to the planter at reasonable prices is our aim.

Our Location Our location is the very best for producing well ripened stock with splendid roots. Our facilities for prompt shipments are first-class and we have special low Express Rates.

Remember that we pay the Freight or Express charges on all orders amounting to \$10.00 as above, and guarantee safe arrival of shipments.

We solicit correspondence and personal inspection of our stock, confident that it will compare favorably with the best.

NEW HAVEN NURSERIES
(J. Bagby & Sons Co.) New Haven, Missouri



“What Shall I Plant?”

We wish to say that the small-size trees are strictly first-class and well rooted, and by many will be preferred to the larger sizes.

So many ask, “What should I plant in my locality?” that we will here name a few of the popular and profitable sorts for general planting.

Apples

Jonathan, Mammoth Black Twig, Gano, York Imperial, Winter Banana, Stayman’s Winesap, Rome Beauty, Winesap, Grimes’ Golden, Maiden Blush, Yellow Transparent and Wealthy. This is our Commercial List. Others would add, perhaps, **Ben Davis, Arkansas Black, Missouri Pippin, Duchess of Oldenberg, Spitzenberg** etc. All of the above are good, profitable sorts, both for home use and market.

Peaches

If you want to market your fruit, avoid planting too many early sorts. **Elberta, Salway, Carman, Captain Ede, Crosby, Heath Cling, Chair’s Choice, Gold Dust, Foster and Crawford** are all profitable for market. Should early sorts be desired, **Mayflower, Greensboro, Alexander and Sneed** are what you should plant. If for home use, plant general assortment, including above, for a succession. The peach tree should have shoots and branches shortened every year or two. The land should be kept in a high state of cultivation.

Pears

The fact is more and more apparent that **Kieffer and Garber** will stay in the lead for profit in the Mississippi Valley States. **Duchess, Bartlett, Winter Nelis and Anjou** can be profitably planted further west. **Koonce** is the best early pear.

Cherries

Early Richmond, Dyehouse, Montmorency, Wragg (Sour), Governor Wood, Elton and Magann (Sweet), do very well and are profitable. For general planting we do not recommend the **English Morello.**

Plums

Wild Goose (Native), Common Damson, Shrop Damson, German Prune (European), Abundance, Wickson and Burbank (Japanese), are all good bearers and profitable. We consider the **Abundance, Wickson and Burbank** the best of the well-known Japanese sorts. Try some **Black Beauty, the best new Japan sort.**

Thinning Fruit

When the trees are heavily laden, the fruit should be thinned when about one-third grown, else the fruit will be poor and the trees injured. The necessity for thinning was fully demonstrated during the dry summer of 1913.

Whole Root Trees

All our Apple, Pear, Peach, Plum and Cherry trees are grown on “whole roots.” Our Apples are grafted and planted so that the scion also roots. Don’t pay extra prices for “trade marks.” We give our customers the very best, and we don’t ask two prices. A trial order will convince you. In planting our trees you set the best that experienced and skilled labor can produce.

Our Shipments

Our shipments for Fall, 1913 and Spring, 1914, consisted of over one million fruit trees, which went to thirty-seven states and territories. A total of about fifty furniture car loads. We are now growing on our premises over two million fruit trees, all clean and healthy; nothing over two years from bud or graft. We do not claim you should plant “Bagby grown or none at all,” but we do want to impress on you the fact that there are **NONE BETTER.**

ON CLUB ORDERS amounting to over \$25.00, at single, ten, or hundred rate, 10 per cent additional in stock will be allowed.



A. E. M. CO.

Yellow Transparent Apples

Apples

Our apples are all grown on Missouri River upland, on well branched whole roots, smooth, clean and well grown in every respect. No better trees can be found anywhere.

	Each	10	100	1000
1-year, 3 to 4 feet, select.....	\$0.15	\$1.40	\$12.00	\$100.00
2-year, 4 to 5 feet, well branched, first-class.....	.20	1.75	14.00	100.00
2-year, 5 to 6 feet, well branched, select.....	.30	2.50	18.00	150.00

Summer Apples

BENONI—One of the best of summer sorts.

CAROLINA RED JUNE (Red June)—Medium size; red, flesh white. Last of June.

DUCHESS OF OLDENBERG (Russian)—Medium to large size; skin yellow, streaked with red, somewhat blushed. Productive. August.

EARLY HARVEST—Medium to large, bright straw color; flesh white. Tree moderately vigorous and productive; one of the best. First of July.

LIVELAND RASPBERRY—One of the best early sorts.

RED ASTRACHAN—Large, crimson, handsome; rather acid, but good and crisp; profitable. Early.

YELLOW TRANSPARENT—This valuable apple is said to be of Russian origin. However, we find it to be a very valuable addition to our list. Fruit medium to large; nearly white.

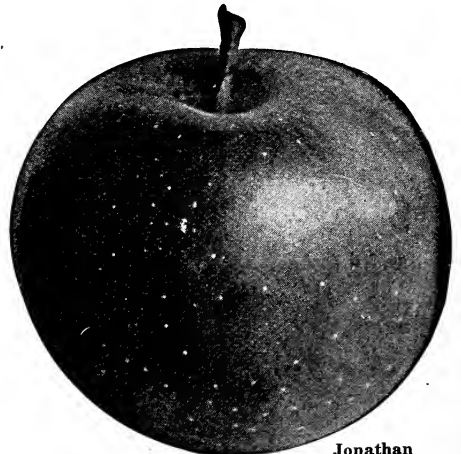
Fall Apples

MAIDEN'S BLUSH—Rather large, evenly shaded red cheek or blush on a clear pale yellow ground; bears large crops. August and September.

RAMBO—Medium; streaked with dull red and somewhat dotted, productive and vigorous. September to November.

ROME BEAUTY—Large, yellow shaded with red; tender, juicy, sub-acid. October to February.

WEALTHY—An apple of fine appearance and quality, an early and profuse bearer; a good market apple of its season. Tree hardy; in size and beauty its equals Baldwin, and is a better desert apple. Ripens here in August. Winter apple north.



Jonathan

We pay the freight on all orders amounting to over \$10.00. Get your neighbors to join with you in an order.



Block of Two-Year Apples, New Haven Nurseries

Winter Apples

ARKANSAS BLACK—Origin, Bentonville, Arkansas. The tree is a beautiful, upright grower, young wood very dark. Fruit medium to large; fine flavor; beautiful dark color, almost black; flesh yellowish, slightly sub-acid, crisp. One of the best cooking apples; vigorous. January to May.

BEN DAVIS—Fruit medium to large, flesh white; an excellent variety. Tree very hardy; a free grower, coming into bearing early and very productive; very popular. December to March.

BLACK BEN DAVIS—Ben Davis type. Dark red color.

DELICIOUS. A remarkably popular variety in the West. Fruit large, nearly covered with dull dark red; fine grained, crisp, juicy; quality best; a splendid keeper and shipper; vigorous grower.

GRAVENSTEIN—Red color; an old-time favorite.

GRIMES' GOLDEN—Medium to large; rich golden yellow; flesh tender, mild, sub-acid. Should be gathered before turning yellow and put in a cool place, and often keeps until February. For canning purposes it nearly equals the pear. Tree hardy, vigorous; an early and abundant bearer. November to January.

HUNTSMAN'S FAVORITE—Originated in Johnson County, Missouri. Very large; golden yellow, with bright red cheek; nearly sweet, fine flavor, very aromatic. One of the best and highest selling market apples; tree very healthy and moderately productive. November to January.

BALDWIN—Large, rounded; deep bright red over yellow ground, few russet dots, very productive. A great market variety. One of the best and most popular winter apples. November to February.

GANO—This apple was introduced to the public in 1886. Tree very hardy; it bears very young. Fruit bright red on yellow ground, no stripes; large, oblong, tapering to the eye; surface smooth, takes a very high polish, making it valuable as a stand fruit; flesh white. An annual, early and prolific bearer.

INGRAM—A seedling of the old Janet. Originated near Springfield, Mo. Its habits are similar to the Janet, but the tree is a more upright grower and the apple is not subject to crack. Size medium; striped bright red in the sun; flesh greenish yellow, agreeable, sub-acid flavor; a good keeper. Tree hardy, late bloomer and very productive.

JANET (Rawles' Janet) — Medium, roundish, greenish yellow, striped with red; rich and juicy, one of the best and longest keepers in the south and southwest; valuable for its high quality and its late blooming; moderate grower. January to March.

KING OF TOMPKINS COUNTY—Showy; good quality. Not productive in all sections. Very large, round, oblate, yellow striped and clouded.

JONATHAN—Fruit medium, roundish; skin yellow, nearly covered with dark or lively red; moderate grower. One of the best apples for home use or market, as it is a delicious dessert apple that always commands highest market prices. October to January.



Starting to Bud a Block of Stocks

WINTER APPLES—Continued.

MAMMOTH BLACK TWIG—Supposed to be a seedling of the Winesap, but tree a better grower in the nursery and fruit much larger; or, in other words, an improved Winesap. Tree a fine, upright, spreading grower.

MISSOURI PIPPIN — Large, oblong, bright red, with numerous gray dots; very handsome, fair quality, an early and very abundant bearer, and very profitable. December to March.

NEWTON PIPPIN — An old variety. Our stock is from the best bearing orchards in Oregon. Identical with Albermarle Pippin.

NORTHWESTERN GREENING—A Wisconsin seedling of great promise, having taken first prize at their state societies. Tree a good grower and hardy. Fruit yellow, smooth, rich, of good size, resembling Grimes' Golden in shape and color. Good quality. November to December.

STAYMAN WINESAP—Not quite so well colored as Winesap, but larger; a good keeper. Valuable for market or home use. A vigorous grower and adapts itself readily to different soils and conditions.

SPITZENBERG—A popular sort in some sections. Our stock is from bearing orchards in the Northwest.

VANDEVERE—An old variety, not much grown, but for home orchards advise a few trees for excellent quality of fruit.

WINESAP—Medium, dark red; a favorite market variety in the west. November and December.

WOLF RIVER—Very large and handsome; flesh whitish, sub-acid, a good bearer. Very handsome and showy. November and December.

WINTER BANANA—Fancy market fruit; large, pale yellow, pink blush. Tree a strong grower.

YORK IMPERIAL—This apple has been gaining favor, and is being planted largely in the West as a commercial sort. Large, smooth, yellow, shaded red, with indistinct red stripes.

Crab Apples

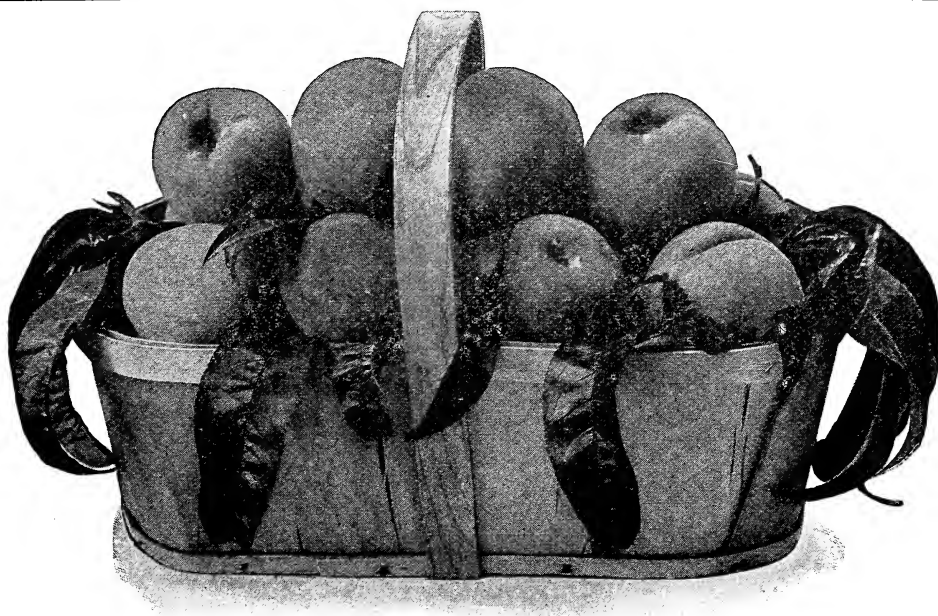
HYSLOP—Almost as large as Early Strawberry Apple; deep crimson; very poplar on account of its large size, beauty and hardness. Keeps well into the winter.

TRANSCENDENT—Remarkably vigorous, growing to a good size, and immensely productive. Bears a little the second year from planting, and every year after, and produces good crops by the fourth year. The best of its class for cooking and eating; juicy and crisp. Skin yellow, striped with red. September to October.

WHITNEY—Large, averaging 1½ to 2 inches in diameter; skin smooth, glossy green, splashed with carmine; flesh firm, juicy and rich. Said to be a great bearer and very hardy. Vigorous, handsome.

Prices for Crab Apples are the same as for other Apples.

Write for special quotations on Jonathan, Stayman, Rome Beauty, Maiden's Blush, Yellow Transparent in quantities, 300 or more.



Elberta Peaches

Peaches

We Set Over One Million Buds, Summer 1914.

We are the largest growers of Peach Trees in the West, and can supply in any quantity—the best up-to-date market sorts. Our peaches are stocky, nicely headed, smooth, straight bodies, well rooted, on healthy peach stocks and free from any disease. Remember this in comparing prices with other establishments. **Freight paid to your station**, on conditions mentioned. Over 250,000 sold and shipped to other nurserymen in 1912.

	Each	10	100	1000
2 to 3 feet, well rooted, 1 year from bud.....	\$0.10	\$0.90	\$ 7.00	\$ 50.00
Medium, 3 to 4 feet, nice, well branched.....	.15	1.10	9.00	65.00
First class, 4 to 5 feet, nicely headed.....	.20	1.50	12.00	90.00
Extra select, 4½ to 6 feet.....	.25	1.75	14.00	110.00

ALEXANDER—Large size, handsome and regular in form, with deep maroon shade; adheres to stone; should remain on the tree until fully ripe. White flesh. Last of June.

CARMAN—White flesh, large, with beautifully mottled red cheek. A valuable home or market sort. Season about ten days later than Alexander and about two weeks earlier than Elberta. Our stock came from the originator, and is true to name.

CHAMPION—Originated at Nokomis, Illinois. Fruit large, beautiful in appearance; flavor delicious, sweet, rich and juicy; skin creamy white, with red cheek; free-stone. August 15th.

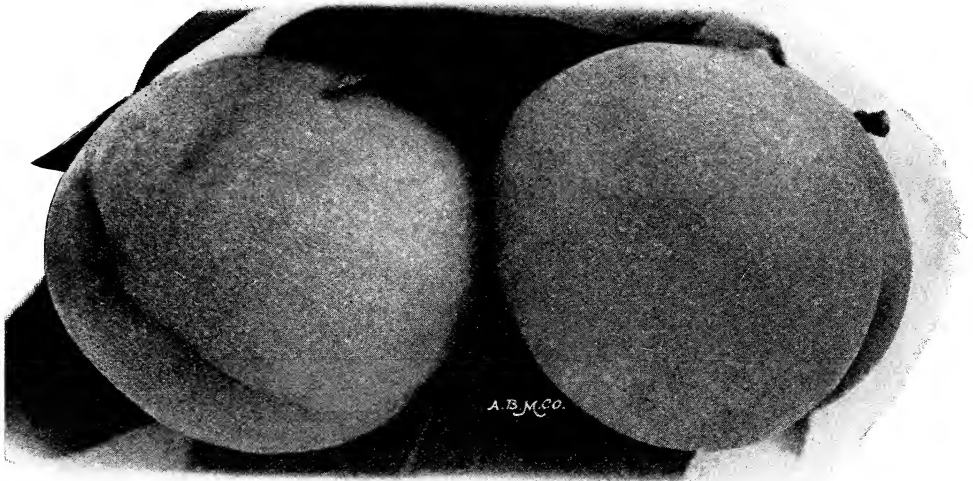
CHINESE CLING—The most popular southern peach; shape is oblong. has creamy skin, with faint flashes of red. August.

CRAWFORD'S EARLY—This beautiful yellow peach is highly esteemed for market purposes. Fruit very large, oblong, skin yellow, with fine red cheek; flesh yellow, juicy, sweet and excellent; free. Last of July. Would not advise planting this sort north of Central Missouri.

CRAWFORD'S LATE—Fruit of the largest size; skin yellow, or greenish yellow, with dull red cheek; flesh yellow; productive; one of the best free-stones. August and September.

CHAIR'S CHOICE—Large, late, yellow. One of the best for home or market planting.

Over 250,000 Elberta Peach Trees from our nursery are in bearing in Western Colorado.

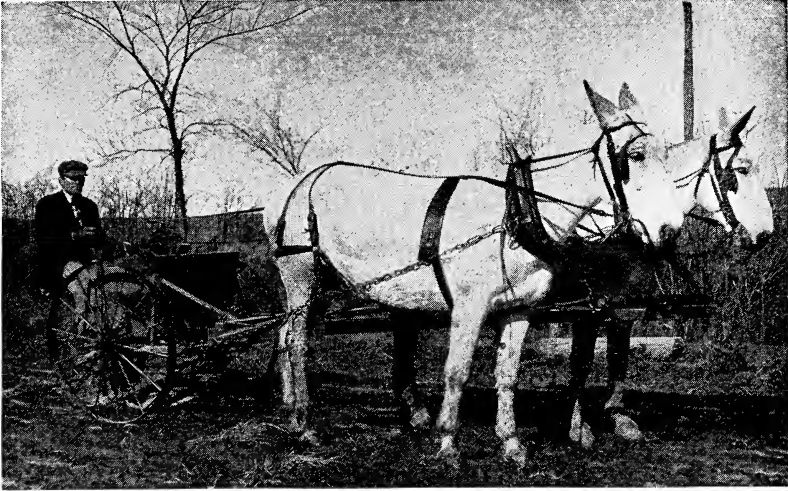


Carman

PEACHES—Continued.

- CROSBY**—If you want peaches every year, try some Crosby. It is medium size, rich orange yellow, splashed with red, and of the best quality. Mid-season.
- CAPTAIN EDE**—Originated on farm of Capt. Ede in Illinois. Is a splendid yellow free-stone variety. In appearance Captain Ede is very much like Elberta, which it equals in every way, except not quite so large, and is better quality.
- ELBERTA**—A Georgia cross between Crawford and Chinese Cling; very large; well colored all things considered; the finest yellow free-stone in cultivation; no one can go amiss by planting it; the fruit is perfectly free from rot, and is one of the most successful shipping varieties. August and September.
- EMMA**—A popular new sort of southern origin.
- FAMILY FAVORITE**—Free, seedling of Chinese Cling, of better color; large, clear, waxen complexion, with blush; prolific, firm, valuable for shipping, canning or drying. Last of July.
- FOSTER**—Same season as Crawford's Early; much more productive; yellow, with red cheek; quality best; good size.
- FITZGERALD**—Of Crawford type. A seedling found at Oakville, Ont., where it stands the winter perfectly; is about as hardy as Elberta; quality first-class; yellow free-stone, and we recommend it.
- GOLD DUST** — If you want the very best canning variety, this is the peach. Large yellow cling-stone; juicy, productive and of best quality. Season, September 1st to 10th.
- GREENSBORO**—Large, oblong, greenish yellow shaded red, flesh creamy; among the best; tree vigorous, prolific; grown largely in Georgia and the south for northern markets. Ripe June 1st to 10th.
- HENRIETTA (Levy)**—Magnificent yellow cling, large size, slightly covered with bright crimson, hardy, productive, always commands fancy prices. September 25th.
- HEATH CLING**—Large, oblong, creamy white, slightly tinged with red in the sun; very tender, juicy, melting; very rich and luscious. September 15th.
- MOUNTAIN ROSE**—Large, red; flesh white, rich, juicy, excellent. Season, August 1st to 10th.
- MILLER CLING PEACH**—An extra large cling-stone. Hardy, productive, and of best quality. Earlier than Heath Cling, but larger and better color.
- MATTHEWS BEAUTY**—Originated in Georgia. A late yellow free-stone. Fully as large as Elberta; two weeks later.
- MAYFLOWER** — A beautiful "red-all over" peach; handsome and of splendid quality. Extremely early. Tree hardy and healthy.

We promise you Extra Quality—not "Extra Count." Send your order in early.



Peach Seed Planter in Operation, Planting 30 to 40 Bushels, 3 to 4 Acres per Day

MUIR—A medium yellow free-stone. Hardy; productive. September.

OLD MIXON CLING—Large, with red cheek; juicy, rich and high flavored; one of the best cling-stone peaches. White flesh. August 15th.

OLD MIXON FREE—Large, white flesh, with deep red cheek; rich and good; one of the best. August.

PHILLIPS CLING—A fine, medium sized yellow cling. Exceedingly rich. Very popular in California. Small pit.

RINGGOLD CLING—Much larger than Heath, in every way an improvement on that popular kind. September.

SALWAY—Fruit large, yellow, with red cheek; flesh yellow, a late showy market sort. Free-stone. September 15. Hardy.

SMOCK FREE—Fruit large, skin orange yellow, mottled with red; a good market sort. September 15th. Hardy.

SNEED—Ripens earlier than Alexander, and belongs to an entirely different type; it is very distinct in tree and fruit, belonging to the Chinese Cling type; size medium; hardy.

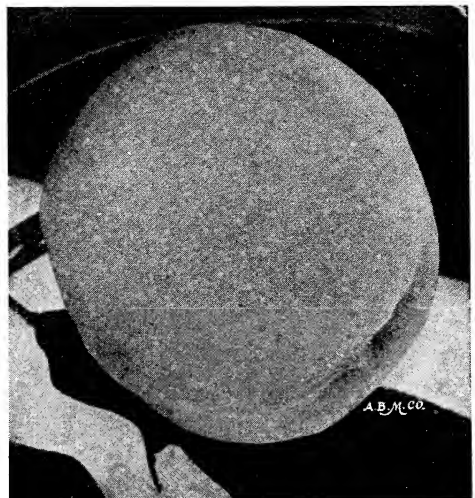
STUMP THE WORLD—Very large; roundish; skin white, with a bright red cheek; flesh white; free-stone. End of August.

THURBER—A seedling of the Chinese Cling, which it resembles in size and color; skin white, with light crimson mottlings; free-stone. August.

TRIUMPH—The earliest yellow peach known; productive, hardy and profitable for market. Originated in Georgia. Hardy.

WONDERFUL—Color rich yellow; flesh yellow, highly flavored; firm. Ripens in September. Very similar to the Smock.

WHEATLAND—Large, roundish, skin golden yellow, shaded with crimson on the sunny side; flesh is yellow and of fine quality; tree vigorous grower. August. Season is just ahead of Elberta.



Champion

Over 600,000 Peach Trees from our nurseries are in full bearing in the State of California.



Showing Tree Digger in Operation, Digging 25,000 Trees per Day

Plum Trees

	Each	10	100	1000
First class trees, 5 to 6 feet.....	\$0.40	\$3.50	\$25.00	\$200.00
First class trees, 4 to 5 feet.....	.35	3.00	20.00	180.00
First class trees, 3 to 4 feet.....	.25	2.00	16.00	140.00

ABUNDANCE — A hardy, productive Japanese sort. Large, purplish red; quality very best. Season, early in July.

BLACK BEAUTY (New)—The best Japan sort we have ever grown. Large, very dark purple, almost black. Persimmon shape. Quality and size of Abundance. 4 to 6 ft. trees, 50 cents each, \$4.00 per 10.

BURBANK—Large, varying less in size than the other Japanese plums; it is nearly globular; clear, cherry red, with a thin lilac bloom; flesh deep yellow, firm and meaty; tree vigorous and productive.

COMMON DAMSON—Well-known and very productive. Season, September.

GERMAN PRUNE—Very profitable, and will succeed wherever Common Damson can be grown. Very large. We consider it the best of European sorts. August and September.

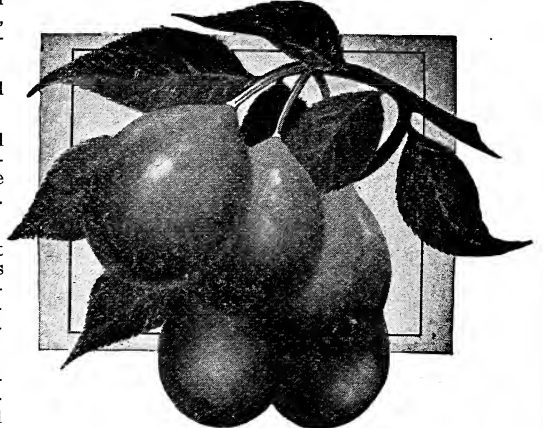
LOMBARD—Medium, round, oval, violet red; juicy, pleasant and good; adheres to the stone. Tree vigorous and productive. It is a valuable market variety; one of the most hardy and popular. July.

RED JUNE—One of the largest Japanese varieties, ripening before Abundance. Tree upright, vigorous and hardy.

SHOPSHIRE DAMSON—A plum of fine quality, sprightly. In market it has commanded nearly double the price of the common Damson, enormously productive. Last of September.

WILD GOOSE—Large, rich, crimson, beautiful flesh, soft, melting, delicious, with a full, fruity flavor. Tree a strong grower, prolific.

WICKSON—We regard this as one of the best of the late ripening Japan sorts. Readily parts from the seed. Extra large. Season August.



German Prune Plum



Block of One-Year Pear, New Haven Nurseries

Pear Trees

Our Pears are especially clean, smooth and well rooted, grown on XX French imported stocks.

	Each	10	100	1000
Leading sorts, first-class, 5 to 7 feet, 2-years.....	\$0.40	\$3.50	\$25.00	\$225.00
Leading sorts, 4 to 6 feet, 2-years.....	.35	3.00	20.00	180.00
Leading sorts, 4 to 5 feet, 2-years.....	.30	2.50	17.00	160.00
Leading sorts, 3 to 4 feet, 1-year.....	.25	2.00	17.00	160.00

For Kieffer and Garber in quantities of 300 or more, write us for special low prices.

Summer Pears

KOONCE—The handsomest, best and most valuable; very early pear; tree vigorous, upright grower, free from blight; magnificent foliage, which it retains late in the season; fruit medium to large; skin yellow, does not rot at the core, juicy, spicy, sweet and of a delicious quality. Is an excellent shipper.

BARTLETT—Large, skin very thin, clear lemon-yellow, with soft blush on the sunny side; flesh white, buttery, very juicy and highly flavored. The best summer pear in existence for quality.

CLAPP'S FAVORITE—Large, pale lemon-yellow, marbled with crimson on the sunny side and thickly sprinkled with brown dots; flesh finely grained and melting with a rich, vinous flavor. August.

ANJOU—One of the most delicious late fall pears; juicy and of excellent quality.

Autumn Pears

DUCHESS D'ANGOULEME—Very large, greenish yellow; sometimes a little russeted; makes a beautiful tree. One of the best. October and November.

GARBER—Originated in Pennsylvania 24 years ago, is large and beautiful, bright yellow, with red; juicy and good; delicious canned. Ready to pick with Le Conte, or a few days later, and much better, not only in fruit, but in hardiness and health of trees.

FLEMISH BEAUTY—Large, beautiful juicy, melting, rich and fine; strong grower and good bearer; hardy everywhere. September and October.

KIEFFER'S HYBRID—Tree a remarkable grower, with so vigorous a constitution that it rarely blights. Fruit of fine size, rich color and good quality. Brings high prices in competition with other varieties. Best when picked at maturity and house-ripened. October and November.

Yellowstone Co., Montana.
Received my trees and shrubs in fine shape.
J. A. MILLER.

Delta Co., Colo.
I received the trees and they stood the inspection all right.
STEPHEN CONROY.



Early Richmond Sour Cherries

Cherry Trees

There are few more desirable fruits than Cherries, and they can be grown for the market with great profit. Along the street or avenue as ornamentals, especially the Heart and Bigarreau varieties are strong, vigorous growers, with large, glossy leaves and open, spreading heads, making a fine shade. Cherries thrive in almost any well drained soil. The fruit is equally delicious whether eaten from the tree or preserved, and it will always find a ready market at profitable prices.

Our Cherry trees are all budded on Imported French Mahaleb and Mazzard stock. They have fine roots and nice heads. All well rooted and will be graded full size indicated, and up.

	Each	10	100	1000
Leading sorts, extra select, 2-year, 4 to 6 feet....	\$0.40	\$3.50	\$24.00	\$200.00
Leading sorts, first class, 2-year, 4 to 5 feet.....	.30	2.50	20.00	170.00
Leading sorts first class, 1-year, 3 to 4 feet.....	.25	2.00	16.00	140.00

DYEHOUSE—Very early and sure bearer; ripens before Early Richmond; but not quite as productive. May.

ENGLISH MORELLO—Medium to large; blackish red; acid; juicy. Very productive. Short lived. July.

EARLY RICHMOND — (Kentish Virginian or Early May)—Medium size, red; melting, juicy, sprightly, acid flavor. This is one of the most valuable and popular of the acid cherries, and is exceedingly productive. First of June.

GOV. WOOD—One of the best sweet cherries; very large, light red, juicy, rich and delicious. Tree healthy and a great bearer. May and June.

LATE DUKE—Fruit similar to May Duke, but later and not so sweet.

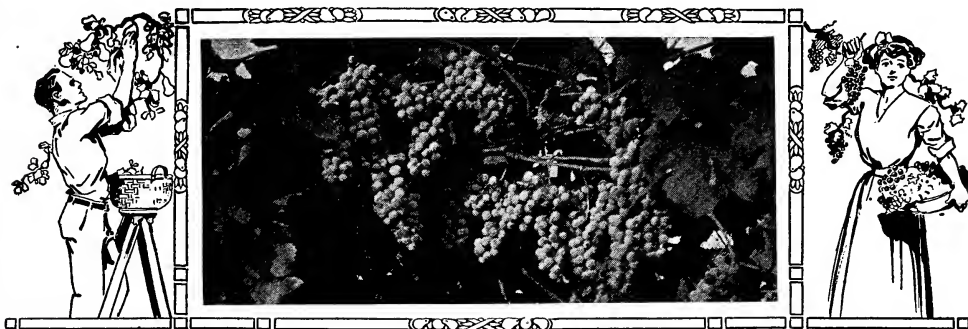
MONTMORENCY—No doubt one of the finest acid cherries; tree very hardy and an immense bearer; commences to fruit while young and is loaded annually thereafter with fine crops; fruit of good size, fine flavor, and of bright, clear, shining red; valuable everywhere, especially for northern latitudes; larger than Early Richmond, and fully ten days later. Season, end of June.

MAGANN CHERRY—A new sweet cherry. Fruit large, almost black when fully ripe, growing in large clusters. It will pay you to include some of these in your order for other stock.

OSTHEIMER—Largest size; very dark, flesh tender, juicy. Late June.

WRAGG—Originated in Iowa. Medium to large in size, long stem, dark purple when fully ripe. A variety well adapted for the high altitude and prairie regions of the northwest.

Over 100,000 Montmorency Cherry from our nurseries are in full bearing in commercial orchards.



Price List of Fruits and Ornamentals

Apricots

	Each	10	100
Leading sorts, 4 to 6 feet, extra select.....	\$0.40	\$2.50	\$20.00
Leading sorts, 3 to 4 feet, first class.....	.25	2.00	16.00
Leading sorts, 2 to 3 feet, nice trees.....	.20	1.50	12.00
English—Early Golden, Peach, Moorpark, Royal.			
Russian—Superb.			

Quinces

Leading sorts, 3 to 4 feet, 2-years, extra select.....	.40	3.50	25.00
Leading sorts, 2 to 3 feet, 2-years, first class.....	.30	2.50	20.00
Champion, Rea's Mammoth, Orange.			

Mulberries

New Everbearing (best)50	4.00
Downing, 4 to 5 feet40	3.50	35.00
Russian, 4 to 6 feet30	2.50	20.00
Tea's Weeping—Nothing better for lawn, 2-year heads....	.75	6.50

Nut Trees

	Each	10	100
Butternuts, 4 to 5 feet	\$0.35	\$3.00
Chestnuts—American Sweet, 4 to 6 feet.....	.40	3.00
Pecans—2 feet, 2-years, from selected seed.....	.30	2.50
Pecans—1 to 2 feet, 2-years, from selected seed.....	.25	2.00

Grape Vines

	Each	10	100	1000
Brighton, 2-years, No. 1, Red, rich sweet.....	\$0.10	\$0.75	\$5.00	\$40.00
Catawba, 2-years, No. 1 Late Red.....	.10	.75	5.00	40.00
Concord, 1-year, No. 1, Black.....	.10	.50	4.00	25.00
Delaware, 1-year, No. 1, Red.....	.10	.90	6.00	40.00
Empire State, 2-year, No. 1, White.....	.15	1.00	7.00
Gotho, 1-year, No. 1, Yellow Green.....	.10	.75	6.00	50.00
Hartford, 1-year, No. 1, Black.....	.10	.70	4.00	30.00
Ives' Seedling, 1-year, No. 1, Black.....	.10	.70	4.00	30.00
Moore's Early, 2-years, No. 1, Black.....	.10	.75	6.00	50.00
Niagara, 2-years, No. 1, White.....	.10	.75	6.00	40.00
Norton's Virginia, 2-years, No. 1, Black.....	.25	1.50	10.00	75.00
Pocklington, 1-year, No. 1, White Yellow.....	.15	1.00	5.00	40.00
Worden, 2-years, No. 1, Black.....	.10	.75	5.00	35.00

THE NEW HAVEN NURSERIES, NEW HAVEN, MISSOURI

Currants

	Each	10	100
Red Dutch, 2-years	\$0.10	\$0.75	\$6.00
White Dutch, 2-years10	.75	6.00
Versailles, 2-years10	.75	6.00
Black Naples, 2-years10	.75	6.00
Fay's Prolific, 2-years10	.75	6.00

Blackberries

		10	100
snyder	\$0.50	\$2.50	\$2.50
Early Harvest50	2.50	2.50
Kittatinny50	2.50	2.50
Freed50	2.50	2.50
Lucretia, Dewberry50	2.50	2.50

Raspberries

	10	100	1000
Gregg, Black; Souhegan, Red.....	\$0.50	\$2.00
Mammoth Cluster, Kansas, Black.....	.50	2.00
Shaffer's Colossal, Red.....	.50	2.00
✓ Marlboro, Miller, Red.....	.50	2.00
Ohio Hopkins, Black.....	.50	2.00
Cumberland, Black	2.00	16.00

Gooseberries

	Each	10	100
Downing, 2-years, No. 1.....	\$0.20	\$1.50	\$11.00
Houghton, 2-years, No. 1.....	.20	1.50	10.00
Industry, 2-years, No. 1.....	.30	2.50	15.00

Roses

Hybrid Perpetuals and Teas, 2-years, extra.....	.30	2.50	20.00
Climbing, 2-years, extra, Dorothy Perkins.....	.30	2.50	20.00
Climbing, 2-years, extra, Crimson Rambler.....	.30	2.50	20.00
Moss, 2-years and extra 1-year.....	.30	2.50	18.00

Ornamentals

California Privet—2-yr., No. 1, 3 to 4 ft., first class.....	.10	.80	7.00
California Privet—1-yr., No. 1, 2 to 3 ft., first class.....	.06	.50	4.00
Calycanthus—2 to 3 feet, first class.....	.30	2.50	15.00
Catalpa—6 to 8 feet.....	.50	4.00	25.00
Honeysuckles30	2.50
Hydrangea—2 to 3 feet, first class.....	.30	2.50
Snowballs—3 to 4 feet30	2.50
Spirea—Assorted, 2 to 3 feet.....	.30	2.50
Tulip Trees—5 to 6 feet.....	.50	4.00
Norway Maple—6 to 8 feet.....	.60	5.00
Box Elder—6 to 8 feet.....	.50	4.00
American Elegra50	4.00
Weeping Willow—Kilmarnock, New American.....	.50	4.00
Rhubarb—Victoria10	.75	6.00



NURSERY STOCK IN BARGAIN LOTS

The following bargain lots should be ordered by number. We Pay Freight to any R.R. Station in the U. S. and Guarantee Satisfaction and arrival in good condition. NO DISCOUNTS or additional stock on these BARGAIN OFFERS. Order as many lots as may be desired. All nice, clean stock, true to name and free from disease. Your money back if not pleased. These lots can be included with your regular order.

Lot 1. \$22.00

200 Peach, extra-select, 4-6 ft.
100 Elberta, 100 Carman or 100 Champion.

Lot 2. \$18.00

50 Kieffer Pear, 5-6 ft, select 2 yr.
50 Montmorency cherry, select 1 yr. 4-5 ft.

Lot 3. \$16.00

200 Apple, 2 yr, 4-5 ft.
100 Jonathan 20 Stayman
20 Delicious 40 Rome Beauty
20 Grimes Golden

Lot 4. \$10.00

100 Apple, 4-6 ft, first-class
50 Jonathan 10 Grimes Golden
20 Rome Beauty 10 Stayman Winesap
5 Maiden's B. 5 Y. Transparent
10 Montmorency cherry, one year 3-4 ft.

Lot 5. \$22.00

100 Kieffer pear, 2 yr. 5-7 ft.
100 Elberta or 100 Champion peach,
4-6 ft. select.

Lot 6, \$20.00

100 Kieffer Pear, 5-6 ft. 2 yr.
50 Montmorency cherry, 3-4 ft. 1 yr.

Lot 7, \$20.00

200 Apple 2yr. 4-6 ft. first-class
100 Stayman Winesap or 100 Ingram
100 Jonathan or 100 Rome Beauty
20 Montmorency Cherry, 4-5 ft.

Lot 8, \$25.00

200 Apple, 5-6 ft. select
Best Commercial Standard Sorts.
50 Stayman Winesap
50 Rome Beauty or 50 Ingram
50 Jonathan
50 Baldwin or 50 Gano

Lot 9. \$5.00

For Home Orchards. Our selection
of varieties, from early to late
10 Apple, select, 4-6 ft.
10 Peach " "
4 Cherry " "
4 Plum " "
2 Apricot " 4-5 ft.

Lot 11. \$15.00

120 Peach, first-class, 4-5 ft.
5 Speed 20 Carman
10 Capt. El 10 Heath Cling
10 H. Crawford 20 Champion
5 Matthe's B. 40 Elberta
10 Kieffer pear, 4-6 ft.
10 Plum, 4-6 ft.
5 Wickson 5 Burbank
10 Cherry, 4-6 ft.
5 Ev. Richmond 5 Montmorency
20 Early Harvest Blackberry
10 Concord Grape, 2 yr., No. 1
10 Niagara " " "

Lot 12, \$25.00

Your selection of varieties,
not less than five of a sort.
100 Apple 2yr, 4-5 ft.
100 Peach 4-5 ft.
10 Black Beauty Plum, 4-5 ft.
10 Kieffer Pear, 5-6 ft.
10 Cherry, 1 yr. 4-5 ft.

Lot 13, \$5.00

Small Fruits and Grape Vines
20 Kansas Raspberry
10 Cumberland Raspberry
10 North Star Currant
10 Houghton Gooseberry
5 Downing Gooseberry
10 Moore's Early Grape
10 Niagara Grape
10 Concord Grape
20 Snyder Blackberry

Address all orders to



Hydrangea (See price list, page 12)

About Agents

We are not employing traveling salesmen to solicit orders, but we shall be pleased to have you get up a club among your neighbors, and on club orders amounting to \$25.00 or more, at single, ten or hundred rates, we allow you 10 per cent additional in stock. We put up each order in a separate package, so that upon receipt of the goods you have only to hand out the different lots as ordered. Many of our best customers buy in large quantities at the lowest rates and distribute in lots as ordered by their neighbors.

We also desire to sell to nurserymen and dealers who buy to sell again, and special prices will be made on carloads or larger quantities than indicated in this list.

References

Some of our correspondents have asked us to give them bank references, and we hereby comply, and refer to local banks and to the commercial agencies. We do our local business with Farmers' Savings Bank, New Haven, Mo.

Distances for Planting

Standard Apples	30 feet apart each way
Standard Pears and Strong-growing Cherries	20 feet apart each way
Duke and Morello Cherries	18 feet apart each way
Standard Plums, Apricots	18 to 20 feet apart each way
Peaches, Nectarines	18 to 20 feet apart each way
Dwarf Pears	10 to 12 feet apart each way
Grapes.....	rows 10 to 16 feet apart, 7 to 16 feet in rows
Currants and Gooseberries	3 to 4 feet apart
Raspberries and Blackberries	3 to 4 by 5 to 7 feet apart
Strawberries for field culture	1 to 1½ by 3 to 4 feet apart
Strawberries for garden culture	1 to 2 feet apart

Number of Trees on an Acre

30 feet apart each way	50
25 feet apart each way	70
20 feet apart each way	110
18 feet apart each way	135
15 feet apart each way	205

Rule—Multiply the distance in feet between the rows by the distance the plants are apart in the rows, and the product will be the number of square feet for each plant or hill; which, divided into the number of square feet in an acre (43,560) will give the number of plants or trees to the acre.



A Fine Dish of Cumberland Raspberries (See Price List, page 12).

Cumberland. The business Blackcap. It is of wonderful productiveness, producing regularly and uniformly very large crops. In size the fruit is simply enormous, far surpassing any other variety. The berries run seven-eighths and fifteen-sixteenths of an inch in diameter. In quantity it is similar and fully equal to the Gregg. It is unusually firm and is well adapted for long shipments. It is an unusually strong grower, throwing up stout, stocky canes, well adapted for supporting their loads of large fruit.

A Few Words from our Customers

Benton County, Arkansas.

The 10,000 peach trees arrived a week ago. All in good condition and a very fine lot of little trees. The entire 10,000 all go to one man, all set in one orchard, and I had to give him my guarantee that they are Elberta, and this is the reason I ordered them from you. I could have bought them a little cheaper, but I thought I'd run no risk if I bought from Bagby & Son.

J. J. Britt.

Lawrence County, Mo., March 13, 1914.

Enclosed find check to pay my bill of March 2nd. The goods came in the 10th., and in fine shape. I have planted trees from your nursery for several years, and my dealings with you have always been satisfactory. I never fail to recommend you to my friends when talking about nursery stock.

R. D. Lenhart.

Morgan County, Ill.

I received the trees ordered of you in due time, and was well pleased with them. They are certainly a nice lot of stock, had nice roots, and all of them are growing as nicely as one could wish.

Henry Sorrill.

Rensselaer County, N. Y., 4-23-14.

I received the order of trees and am well pleased. If I need any stock in the future, will order of you.

Peter Lemue.

Alexandria, La.

I am writing to let you know our trees have arrived and look to be in good condition. I never saw trees packed so nice and as fine a bunch of trees for the money. My dozen pear trees are worth one-half the money the whole bill cost. Thanks for the gratis trees.

Mancie Bollar.

Johnson Co., Mo., 5-13-13.

The trees came in splendid shape. The students said this to be the finest sample of trees they ever examined. We took great care in putting them out, and I think we are going to get a hundred per cent growth, for they have all started in good shape. We greatly appreciate this order, and the trees shall receive the best of attention.

B. A. Pratt.
Director of the State Normal Farm.

Craig Co., Okla., 4-14-13.

I received my order of trees O. K. They arrived in good shape, and all first-class trees and vines. Will say when I am in need of more trees or vines, will send my order to you, as you certainly treat your customers right.

C. W. Windle.

Jefferson Co., Pa., 5-2-13.

I received the nursery stock on the 24th of April. The stock was in fine condition, the trees were large with very shapely heads, and the amount of free goods was liberal. You will certainly receive my further orders for stock as needed.

John Smith.

Montezuma Colo.,

Trees received in good shape. We were held up some time for inspection, but everything is O. K. No loss from inspection. Mr. McMullen wishes me to say his trees are fine, and already planted.

Chas. K. Davis.

Appanoose Co., Iowa.

The shipment that you forwarded me by freight on March 26th was received by me in splendid order on April third. The trees are as fine as I ever saw, and I have sold trees for twelve years.

G. C. Teater.

Crawford Co., Kans., 4-1-13.

The trees you shipped me were received in good shape, and will say that I am much pleased with them. They are simply fine. Will remember you next fall, and will speak a good word for you. No more middlemen to sell me trees.

James Gore.

Cowley County, Kans.

Your trees are here and we unpacked same Saturday. I will say to you people that in handling trees I have never unpacked a finer lot of trees than the trees you sent me. The trees are fine, and all up to the grade ordered, and no skinned trees. They are first-class in every respect, and I want to thank you for the good packing and fine trees. You can count on me for a regular customer from now on.

M. C. Brown.

Stockton, Calif., 6-12-14.

I would like to have you send me a list of fruit trees that you will have to offer to the trade this coming winter. I want to get my orders in early so that you can be sure and fill them. Your trees still give the best satisfaction of any peach trees that I ever handled. I have been getting stock from you for about seven years and have the first complaint to have from any one who has gotten any of your trees.

T. J. Stephens.

Alexander County, N. C. April 8, 1914.

Enclosed find . . . for the Niagara grapes that you sent me with the apple trees. They all came in fine shape and are much more dormant than they would be from our nurseries here at this season. Was in northern Missouri a year ago and tasted some Jonathan apple and so good were they that I wanted some in my mountain orchard. Maybe next year, we can do some more business.

T. D. Clendenning.

Nauvoo, Ill., April 13, 1914.

I am enclosing Chicago exchange for . . . for settlement in full of your bill. The trees were received in good order, and are entirely satisfactory.

Emil J. Baxter.

Vice-President, Ill. State Hort. Society.

Muskegon County, Mich., May 1, 1914.

I received the 100 Montmorency the 30th. They were here two days before I knew it, but they were fresh and in good shape. Thank you for prompt delivery.

John W. Dodson.



A Cluster of White Dutch Currants (See page 12).

University of Missouri
AGRICULTURAL EXPERIMENT STATION

Certificate of Nursery Inspection

Columbia, Missouri, July 29, 1914.

This is to Certify, That in accordance with the Nursery Inspection Act passed by the Forty-Seventh General Assembly, the nursery stock of the NEW HAVEN NURSERIES, Nursery, grown at New Haven, Franklin County, Missouri, was inspected on July 24, 1914, by a duly authorized inspector and found apparently free from dangerously injurious insects or plant diseases.

Valid until July 1, 1915, unless sooner revoked.

LEONARD HASEMAN,
Entomologist and Chief Inspector.

We Grow Our Own Stock

WE mail this condensed list of prices to our friends and customers, and will ask that they favor us with their orders as early as practicable. *The prices are for the goods at your station, if your order amounts to \$10 or more.* We have now growing in our nurseries over two million fruit trees by actual count. All clean and healthy. *Entomologist's certificate with each shipment.* No San Jose Scale, Yellows or Rosette has been found in this county.

Shipments to Pacific Coast and Southern States from our frost-proof storage during winter months via Southern Routes.

We are growers of what we sell, having over 500 acres devoted exclusively to the nursery business. Many nurserymen are simply jobbers in the trade, and cannot sell stock with the same certainty of being true to name and free from disease.

NEW HAVEN NURSERIES

New Haven, Missouri

You order the Trees—we do the rest. We pay the freight on small orders clubbed together for shipment to one point, if the amount is \$10.00 or more.



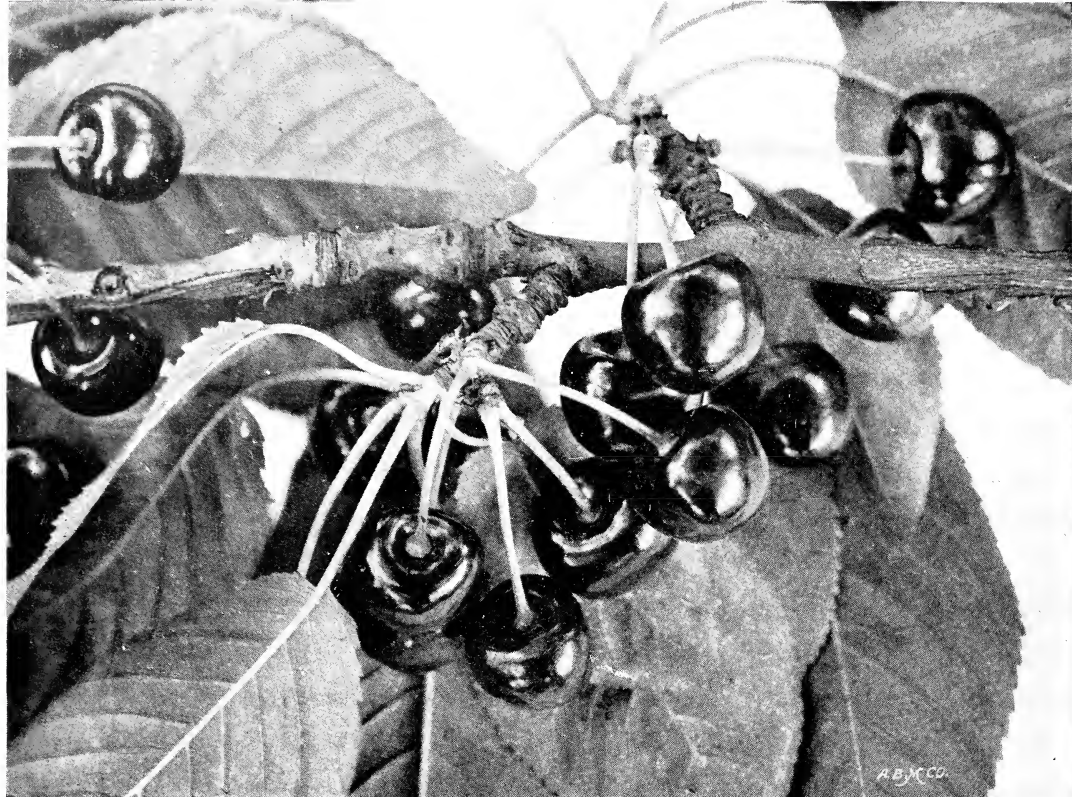
Montmorency Cherry

The Montmorency is one of the very best and most popular of the acid varieties. It is larger and finer than Early Richmond, and one of the very best flavored Cherries in its class. The strong, hardy tree makes rapid growth and bears enormous crops. This Cherry is especially valuable for canning and preserving.

The Fruit Grower's Guide Book

A book of 285 pages, by Prof. E. H. Favor. Fruit Growers and Farmers have felt the need of such a book as this, and it will be found of much assistance in paving the way for more profitable orchards and better homes.

This book will be given free to all customers requesting it, whose orders amount to \$10.00 or more. By Mail POSTPAID to anyone, for 50c.



WHEN YOU BUY FRUIT TREES, you want the best that can be produced. Bagby grown trees have been on the market for over forty years. When you buy them you are setting the best money can purchase and you know what the crop will be. Our modest success has been achieved without any "pedigreed" hot air or "selling dope" of the patent medicine order to scare you into buying. Our varieties are correct, our grades full and all culls go on the brush pile. High quality and absolute satisfaction guaranteed, with a record of over forty years square dealing to back the guarantee.

New Haven Nurseries ∴ ∴ New Haven, Missouri
(J. Bagby & Sons Company)

