

Historic, Archive Document

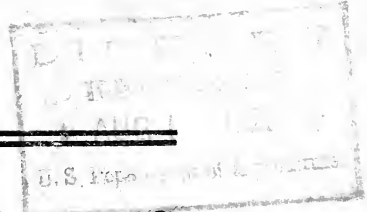
Do not assume content reflects current scientific knowledge, policies, or practices.



62.35

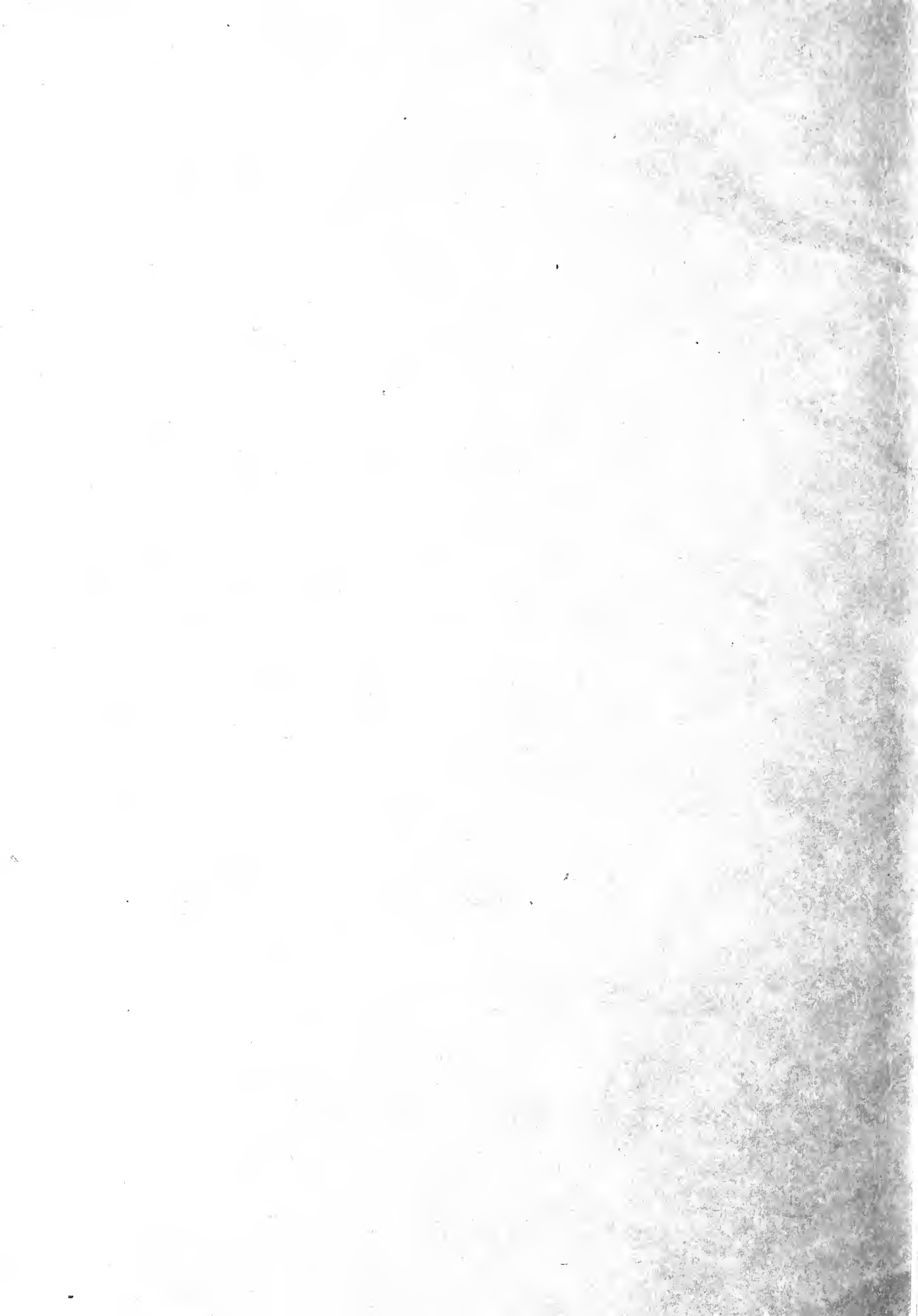
LIBRARY

1915



MT. DESERT NURSERIES

BAR HARBOR, MAINE





Trees, Shrubs, Vines, Fruits and Herbaceous Plants for Northern Planting

1915

We take pleasure in offering this short list of Plants, selected for their hardiness and vigor and especially adapted for planting in this locality. Our full collection of Herbaceous Plants contains many kinds not given here. These will be listed in a more complete catalogue which will soon be ready for distribution.

Mt. Desert Nurseries
Bar Harbor, Maine

INDEX

Alpine Plants	- - - - -	3
Herbaceous Plants—General List	- - -	8
Bulbs	- - - - -	24
Aquatic and Bog Plants	- - - - -	26
Deciduous Trees	- - - - -	30
Evergreen Trees	- - - - -	32
Deciduous Shrubs	- - - - -	34
Roses	- - - - -	40
Vines and Climbers	- - - - -	44
Fruits	- - - - -	45

ALPINE LIST

ALYSSUM. Madwort.

saxatile var. compactum. A splendid variety producing dwarf masses of bright yellow flowers.

Price: \$.25 ea., \$2. per 10.

ARABIS. Rock Cress. Few plants produce a more effective display of blossom in the Spring, and the pale glaucous foliage is always good.

alpina. Masses of the purest white flowers. 9 in. May and June.

plena. A double form of the above.

Price: \$.25 ea., \$2. per 10.

ARENARIA. Sandwort.

caespitosa. This variety has small flowers and is, perhaps, the best for producing a verdant covering.

Price: \$.25 ea., \$2. per 10.

AUBRIETIA. Purple Rock Cress. One of the most beautiful classes of rock plants soon covering considerable space and producing masses of richly colored flowers. Very dwarf, hardy, and of easy culture.

graeca. Lilac flowers in abundance.

purpurea. Purple.

Price: \$.25 ea., \$2. per 10.

CAMPANULA. Bellflower. All the perennial varieties of Campanulas are beautiful garden plants, and the Alpine forms are among the most charming. They increase quickly and never fail to produce a wealth of blossoms.

carpatica. Large, pale blue, bell-shaped flowers.

carpatica alba. A very pure white form.

glomerata. Very effective. Purple.

glomerata Dahurica. One of the best, with large heads of deep purple flowers on stems one foot high.

punctata. Enormous rich purple flowers. 1 1-2 ft.

rotundifolia. Scotch Harebell. A light and graceful plant, with nodding deep blue flowers. 9 in. Flowers from Spring till Fall.

Price: \$.25 ea., \$2. per 10.

CERASTIUM. Mouse-ear Chickweed.

tomentosum. Silver or white foliage, and masses of pure white flowers in June and July.

Price: \$.25 ea., \$2. per 10.

DIANTHUS.

plumarius. Garden Pink. Great diversity in form and coloring. Effective in quantity. Fine for clothing old walls. June to August.

Price: \$.25 ea., \$2. per 10.

DICENTRA EXIMIA. One of the prettiest of rock or dwarf border plants, with much lacinated foliage and graceful stems carrying quantities of pendulous pink blossoms. In flower longer than any other plant.

Price: \$.25 ea., \$2. per 10.

GERANIUM. Crane's Bill.

armenum. Rich crimson flowers on stems 1 1-2 feet high.

grandiflorum. Very large, showy blue flowers. 1 foot.

sanguineum. Dwarf spreading habit; deep reddish-purple flowers.

Price: \$.25 ea., \$2. per 10.

GEUM.

Heldreichi splendens. Large flowers, glowing orange-scarlet in color.

Price: \$.25 ea., \$2. per 10.

HEUCHERA.

brizoides. A beautiful plant, with many spikes of pink flowers.

brizoides gracillima. One of the best, and produces a vivid mass of color.

sanguinea. Numerous spikes of bright red, bell-shaped flowers.

Price: \$.25 ea., \$2. per 10.

HIERACIUM VILLOSUM. Shaggy Hawkweed. A singularly beautiful plant, with an abundance of light silvery leaves, and quantities of showy, bright yellow flowers.

Price: \$ 25 ea., \$2. per 10.

IBERIS. Perennial Candytuft. These are among the most charming and satisfactory of all Alpine Plants.

sempervirens. Dark, glossy, evergreen foliage, and numerous heads of the purest white flowers.

Price: \$.25 ea., \$2. per 10.

LYSIMACHIA NUMMULARIA. One of the most useful of dwarf plants for any position. Long trailing shoots, covered with innumerable yellow flowers.

Price: \$.15 ea., \$1.25 per 10.

MYOSOTIS. Forget-Me-Not.

palustris var. semperflorens. Very effective in a damp position. Pale blue.

Price: \$.25 ea., \$2. per 10.

OENOTHERA MISSOURIENSIS. A beautiful plant, especially in a dry position. It has ample foliage, long shoots, and enormous yellow flowers.

Price: \$.25 ea., \$2. per 10.

OROBUS VERNUS. Produces a pretty effect in a rock garden pocket, with its numerous stems of purple, pea-shaped flowers.

Price: \$.25 ea., \$2. per 10.

PHLOX. Few plants are more beautiful than the Alpine Phlox. The *subulata* forms make dense carpets of ever-green foliage, and produce, during June and July, perfect masses of flowers. We cannot recommend these too strongly.

Amoena. Very distinct, with deep rose-colored flowers.

divaricata Laphami. Improved form, with blue flowers

subulata. Deep rose.

subulata alba. Pure white.

subulata Brightness. Large rosy pink; carmine center.

subulata Madeline Rouge. Rosy lavender.

subulata Morgenstern. A beautiful rosy lavender.

subulata nivalis. A very pretty, pure white, starry form.

subulata Seraph. A fine pale blue.

subulata Sprite. Rosy pink, with deep red center.

Price: \$.15 ea., \$1.25 per 10.

SAXIFRAGA. The large Saxifraga family contains many of the most beautiful Alpine plants, and no rock garden should be without them.

cordifolia. Very large foliage, and heads of purple flowers.

cordifolia purpurea. A richly colored form.

pyramidalis. Silvery rosettes of foliage, and tall spikes of white flowers spotted with red. This and the next variety are two of the handsomest plants in our collection.

McNabiana. Rosettes of very silvery foliage, and spikes of pure white flowers. Each branching stem carries hundreds of flowers.

palmata. White flowers, and carpets of dark green foliage.

Rhei. Forms a pleasing dwarf carpet and has pretty pink flowers.

Price: \$.25 ea., \$2. per 10.

SEDUM. Stonecrop. These are typical rock plants, and will succeed under various conditions, a sunny position being the best. Foliage ornamental, and flower very attractive.

acre. Very dwarf. Useful as a ground cover. Flowers yellow.

aizoon. Greyish-green leaves, and pale yellow flowers.

album. Very close growing, with a profusion of white flowers.

anglicum. Glauous foliage and sheets of white flowers.

kamtschaticum. Fleshy leaves and numerous heads of yellow flowers.

spectabile. A strong growing plant with large fleshy leaves, and immense heads of pink flowers on stems 1 1-2 feet high.

spectabile Brilliant. A rich colored variety.

Price: \$.15 ea., \$1.25 per 10.

STACHYS BETONICA VAR. SUPERBA. A pleasing perennial with spikes one foot high of pink flowers.

Price: \$.25 ea., \$2. per 10.

THYMUS. These are all delightful plants which make a dense ground cover and in the early Summer have sheets of flowers. All are pleasantly scented.

lanuginosus. Soft grey leaves and pale pink flowers.

serphyllum. Green foliage and bright rose flowers.

serphyllum album. Pure white.

Price: \$.20 ea., \$1.50 per 10.

VERONICA. Speedwell.

incana. Grey foliage, in striking contrast to the rich blue flowers.

repens. White flowers in quantity, on prostrate stems.

Price: \$.25 ea., \$2.00 per 10.

VIOLA. Horned Violet. *Viola Cornuta* and its white variety are two of the best and most beautiful plants for the rock garden or herbaceous border, and make splendid masses of pale blue and white all summer.

Price: \$.20 ea., \$1.50 per 10.

HARDY HERBACEOUS PLANTS

ACONITUM. Monkshood. Aconitums are among the most stately and ornamental plants for the perennial garden, and the following varieties are selected for this list as being distinct. All of them make fine displays during the summer and autumn months.

acutum. A handsome variety with rich violet flowers. The numerous side branches help greatly to make a superb display.

cammarum. A slender growing variety with violet flowers, lacinated foliage and compact spikes.

Fischeri. A very late variety, 3 1-2 feet high, with short spikes of large pale blue flowers. Valuable for massing.

napellus. Tall spikes of striking deep blue flowers. One of the best. 5 feet.

napellus var. bicolor. A distinct and beautiful form with blue and white flowers. 5 to 6 feet.

Price: \$.25 ea., \$2.00 per 10.

ANCHUSA. The two varieties we grow are two of the best and most beautiful plants in existence, and produce masses of flowers from July to September.

italica Dropmore. Very deep gentian blue. 3 to 5 feet.

italica Opal. Pale sky blue. 3 to 5 feet.

Price: \$.25 ea., \$2.00 per 10.

AQUILEGIA. Columbine.

Long Spurred Hybrids. Mixed colors, containing white, blue, yellow, deep red, and exquisite shades of pink.

coerulea. A fine pale blue variety, with white center.

canadensis. A beautiful native plant. Fine under cultivation. Scarlet and yellow.

chrysantha. A pleasing golden yellow.

Price: \$.25 ea., \$2.00 per 10.

ASTER. Michaelmas Daisy. Starwort.

Climax. The finest large flowered Aster in cultivation.

A fine clear blue, with beautiful golden center. 5 feet.
Price: \$.50 each.

ericoides. A delicate white flowered variety; fine for grouping.

Price: \$.20 ea., \$1.50 per 10.

Golden Spray. Very distinct and effective. Masses of white flowers with conspicuous golden centers. 3 feet.

Price: \$.50 each.

novae angliae. This section is one of the most popular, and produces a magnificent display of blossom. All have very large flowers and grow about 5 feet tall.

Brilliant. A fine reddish crimson.

Lil Fardel. Bright pink.; a beautiful variety.

Melpomene. Rich violet.

Price: \$.20 ea., \$1.50 per 10.

St. Egwin. A dwarf growing variety, with large rosy lavender flowers. One of the best for grouping.

Price: \$.50 each.

Sensation. A very striking variety. White flowers with golden center, produced so freely that a dense mass of bloom is made. 3 feet.

Price: \$.50 each.

Star Shower. Creamy white flowers on very graceful stems. A grand variety for decorating.

Price: \$.50 each.

ASTILBE. Spiraea.

Arendsi. The following Arendsi varieties are among the most beautiful of hardy plants, and deserve inclusion in all gardens. 3 feet.

Ceres. A beautiful light rose; branching spikes.

Juno. Richly colored rosy violet.

Rose Perle. A particularly charming variety, having white petals overlaid with a delicate silvery sheen.

Silver White. Handsome foliage and graceful spikes of white flowers lightly shaded rose.

Venus. Deep rose, on tall branching spikes.

Vesta. Very light rose.

Price: \$.50 each, \$4.00 per 10.

Davidi. A very striking plant, with bold foliage and numerous branching stems of reddish violet flowers.

Price: \$.25 ea., \$2.00 per 10.

hybrid Peach Blossom. Numerous spikes of pretty pink flowers; about 2 feet in height.

Price: \$.25 ea., \$2.00 per 10.

hybrid Queen Alexandra. Deep pink flowers on stems 3 feet tall.

Price: \$.25 ea., \$2.00 per 10.

Lemoinei. The Lemoinei hybrids are distinct from other Astilbes, and are equally as beautiful as the Arendsi section. The following are two of the best varieties.

Gerbe d'Argent. White petals, with rosy reverse. 2 1-2 feet.

Nuee Rose. Delicate rose color. A great favorite with all.

Price: \$.25 ea., \$2.00 per 10.

BOLTONIA. False Chamomile.

latisquama. Pink shaded lavender.

Price: \$.25 ea., \$2.00 per 10.

CAMPANULA.

medium. (Canterbury Bells). Colors: pink, white and blue; single, semi-double and double.

persicifolia grandiflora. Tall growing, with large flowers.

persicifolia grandiflora alba. White form of the above.

persicifolia Moerheimi. Perhaps the finest of all, with large, double white flowers.

Price: \$.25 ea., \$2.00 per 10.

CHRYSANTHEMUM.

maximum King Edward. A very fine Daisy, with deep green foliage and immense pure white flowers on stems two feet high. Blossoms in June and July, and is splendid for cutting.

uliginosum. Will grow six feet high in moist ground. White and yellow.

Price: \$.25 ea., \$2.00 per 10.

CIMICIFUGA.

racemosa. A pleasing variety, with drooping racemes.

simplex. Not so tall as the above, but more beautiful.

The foliage is handsome and the pendulous spikes of pure white flowers are produced very freely.

Price: \$.25 ea., \$2.00 per 10.

CLEMATIS.

erecta. Single white flowers on slender stems four feet high.

Price: \$.25 ea., \$2.00 per 10.

DELPHINIUM. No plants excel the tall growing perennial Larkspurs in stately beauty, and planted in the mixed border or as separate groups they produce grand effects. The two named varieties we offer are among the most attractive hardy plants. Named varieties of the taller sorts can be supplied, and we also offer a splendid assortment of double and single strong flowering plants.

Mixed: \$.25 ea., \$2.00 per 10.

Belladonna. 3 ft. Branching stems, producing quantities of pale blue flowers from early summer till fall.

Price: \$.35 ea., \$2.50 per 10.

Formosum. Similar to the preceding in habit, but with rich dark blue flowers and white center.

Price: \$.25 ea., \$2.00 per 10.

Formosum coelestinum. A beautiful pale blue variety.

Price: \$.25 ea., \$2.00 per 10.

DIGITALIS. Foxgloves.

gloxinaeflora. Colors varied; pure white, rose, purple and spotted.

Price: \$.25 ea., \$2.00 per 10.

DORONICUM. The Doronicums are all early flowering, and during May and June make a brilliant mass of flowers similar to large single daisies, and are much prized for cutting.

Miss Mason. Bright yellow.

plantagineum excelsum. Rich orange yellow flowers on stems three feet tall.

Price: \$.25 ea., \$2.00 per 10.

EREMURUS. The Eremurus are a remarkable and stately class of plants, unlike anything else in the garden, and during June produce a striking effect. They should be planted in good loamy soil in an open sunny position, and when established should be left undisturbed. Our collection of these has been awarded the gold medal of the Massachusetts Horticultural Society.

Price: We can furnish plants from \$.75 to \$1.50 each, according to size and age. Extra large specimens from \$2.00 to \$3.00 each.

ERYNGIUM. Sea Holly.

planum. 3 ft. Globular heads of pale blue flowers, blooming all summer.

Price: \$.25 ea., \$2.00 per 10.

FUNKIA. Valuable for many positions, either in sun or shade, and particularly fine for edging walks.

lancifolia alba marginata. Purple flowers, and leaves margined with white.

Sieboldiana. A tall variety, with very handsome foliage.
subcordata grandiflora. Vigorous. Handsome stems of white flowers.

Price: \$.25 ea., \$2.00 per 10.

GYPSOPHILA. Baby's Breath.

paniculata. An abundance of small white flowers.

Price: \$.25 ea., \$2.00 per 10.

paniculata flore pleno. Double.

Price: \$.50 each.

HELENIUM.

autumnale pumilum magnificum. 3 ft. With branching heads of yellow flowers.

autumnale superbum. Large heads of yellow flowers on 6 ft. stems.

Price: \$.20 ea., \$1.50 per 10.

HELIANTHUS. Sunflower.

orgyalis. A very graceful variety, especially for grouping by the waterside. 6 ft.

rigidus Miss Mellish. Large semi-double flowers on tall stems.

strumosus. Large clear yellow flowers on 5 ft. stems.

Price: \$.20 ea., \$1.50 per 10.

HEMEROCALLIS. Day Lily.

flava. Flowers clear yellow. 3 ft.

fulva. Common Day Lily. Flowers orange and coppery red.

Thunbergi. Pale yellow flowers. Late.

Price: \$.25 ea., \$2.00 per 10.

HOLLYHOCKS. We grow a collection of the best in separate colors in both single and double varieties, and supply only strong, healthy flowering plants. Spring delivery.

Price: \$.25 ea., \$2.00 per 10; \$15.00 per 100.

INCARVILLEA.

Delavayi. Large, glossy divided foliage; stems 2 ft. high. Large trumpet shaped flowers, rosy crimson in color, with a handsome throat. July and August.

Price: \$.25 ea., \$2.00 per 10.

IRIS GERMANICA. Fleur de Lis. The German Irises should be planted in a well drained and sunny position. They are among the most desirable of hardy plants, and in this section bloom in early June.

No. 153. Asiatica. The finest dark blue variety.

No. 155. Aurea. A beautiful pale buttercup yellow.

No. 158. Celeste. A beautiful shade of pale lavender blue.

No. 160. Flavescens. Pale lemon yellow; very attractive, and one of the most satisfactory.

No. 168. Innocence. A beautiful, pure white, with very pale violet and yellow reticulations.

No. 175. Mme. Chereau. One of the best. White, broadly margined bluish violet.

No. 181. Mrs. H. Darwin. A very popular variety. White, reticulated violet.

Pallida var. Dalmatica. Tall and free flowering; flowers rich lavender blue.

Pallida var. Khedive. Pale blue, with deeper shading on the falls.

Pallida var. racemosa. A richly colored form of the preceding.

Pallida var. speciosa. A fine form, having the effect of rosy purple coloring.

Pallida var. Tinea. A really magnificent flower. Lavender blue, with pale violet shading.

Price: Any of the above, \$.20 ea., \$1.50 per 10; \$10.00 per 100.

IRIS KAEMPFERI. Japanese Iris. This group of Irises is, without doubt, the most popular. Their flowers are enormous, and have a wide range of color. They are moisture loving plants, and while they are forming their flower buds, as during their growing season, should be well supplied with water. The varieties listed below are those which we have found to be the best:

No. 1. Gekka-no-nami. A magnificent pure white, tall; early flowering. Double.

No. 2. Shishi-odori. Violet, shading to deep violet on the edges. Veined white; tall and opening early. Double.

No. 6. Geisho-ui. Reddish purple; of medium height. Double.

No. 8. Mana-dsuru. White, penciled with bluish violet. Center blue. Double.

No. 10. Yomo-no-umi. Light blue, penciled with claret; center dark purple. Double.

No. 18. Kumo-no-isho. A rich purple, with dark violet center. Double.

No. 33. Kaku-jaku-ro. Light blue and purple; veined white. Single.

No. 36. Yedo-Kagami. Deep claret. Very large. Double.

No. 48. Tora-odori. Pale parma violet, shaded and mottled violet. Double.

No. 54. Light bluish violet, with deeper colored veins. Double.

No. 55. Heliotrope, shaded and mottled violet. Double.

No. 58. Very pale lavender, with blue veins. Double.

No. 59. Parma violet, with beautiful shadings of violet. Double.

No. 60. White, lightly shaded bluish violet; extra large petals. Single.

No. 61. Deep purple, lightly shaded and veined white. Single.

Price: Any of the above, \$.25 ea., \$2.00 per 10; \$18.00 per 100.

LIATRIS. Blazing Star.

pycnostachya. Late summer flowering, with tall rosy purple spikes.

Price: \$.25 ea., \$2.00 per 10.

LUPINUS.

polyphyllus. Deep blue. 3 to 4 ft.

polyphyllus roseus. Rose pink.

Price: \$.25 ea., \$2.00 per 10.

LYSIMACHIA.

clethroides. 18 in. high, with an abundance of beautiful pendulous spikes of white flowers.

punctata. Upright variety. Pale yellow flowers.

Price: \$.20 ea., \$1.50 per 10.

MONARDA. Bergamot.

didyma Cambridge Scarlet. Improved form, with bright scarlet flowers.

Price: \$.20 ea., \$1.50 per 10.

OENOTHERA.

Youngi. A shrubby growing plant, about 2 ft. high; clothed all summer with large bright yellow flowers.
Price: \$.25 ea., \$2.00 per 10.

PEONIES. Double Herbaceous.

No. 18. Alba Sulphurea. White petals, lemon yellow center; strong growing, pleasantly scented; tall and early.

Price: \$.50 ea., \$4. per 10.

No. 19. Armandine Mechin. Pure mauve; large fairly compact flowers; fragrant, tall; midseason.

Price: \$.50 ea., \$4.00 per 10.

No. 22. Couronne d'Or. White, suffused with yellow, large and late. One of the best.

Price: \$.75 ea., \$5.00 per 10.

No. 24. Duchesse de Nemours. White petals, pale sulphur yellow center; fragrant, tall. Grand variety.

Price: \$.75 ea., \$5.00 per 10.

No. 25. Duchesse d'Orleans. A beautiful, rich pink, deeper in the center; free blooming, fragrant, tall; midseason.

Price: \$.50 ea., \$4.00 per 10.

No. 29. Eden. Rosy magenta, with violet rose tips; very full; free bloomer; fragrant; dwarf; midseason.

Price: \$.75 ea., \$5. per 10.

No. 32. Festiva Maxima. Magificent large white flower, with carmine center. Great favorite.

Price: \$.50 ea., \$4.00 per 10.

No. 36. Jeromus. Violet rose; very full flower, and fine form; fragrant; tall; late. A superb variety.

Price: \$1.00 ea., \$7.50 per 10.

No. 43. La Coquette. An extremely fine variety; bright rose color, with creamy pink center; tall; midseason.

Price: \$.75 ea., \$5.00 per 10.

No. 45. Lord Rosebery. Crimson variety; fragrant; medium height.

Price: \$.75 ea., \$5.00 per 10.

No. 48. Mme. Chaumy. Reddish violet; full loose flower; medium height; midseason.

Price: \$1.00 ea., \$7.50 per 10.

PAPAVER. Poppy.

nudicaule. Iceland Poppy. White, yellow, and deep orange, mixed.

Price: \$.15 ea., \$1.00 per 10.

Large: .25 ea., 2.00 per 10.

PENTSTEMON.

barbatus Torreyi. Glaucous foliage, and salmon scarlet flowers.

barbatus Torreyi pink. Pale pink.

Price: \$.25 ea., \$2.00 per 10.

PHLOX. These are among the plants to which we have given special attention. Phloxes do well in any garden soil; but for the best results the ground should be thoroughly trenched and well manured. They are perfectly hardy, yet a light covering of straw to prevent alternate thawing and freezing is beneficial.

No. 7. Cigale. Pure rose color. A dwarf variety, seldom exceeding 18 in. in height.

No. 65. Elizabeth Campbell. Bright salmon pink, with white eye; center very slightly marked crimson.

No. 64. Frau Dr. Kraiss. Soft salmon rose; medium height.

No. 10. Fraulein Von Lassberg. Magnificent pure white.

No. 16. Gen. Van Heutz. Tall growing; salmon pink, with large white ray in the center.

- No. 100. Geo. B. Dorr.** Pure mauve, with small white center; large and branching panicle; foliage excellent.
- No. 48. Gruppenkonigin.** A beautiful variety, with large trusses of pale rose flowers. One of the best in our collection.
- No. 26. Katinka Beeli.** A very deep crimson carmine; large flowers and panicle.
- No. 29. Louis Abbema.** A dwarf pure white, with very large flowers.
- No. 18. Mme. Paul Dutrie.** Bright rose, with white eye; flowers very large, and borne in large trusses.
- No. 42. Miss Lingard.** An early flowering variety; pure white, with rosy center. Profuse bloomer.
- No. 80. Ornament.** Bright carmine rose, with darker center. Profuse bloomer, and one of the best of the older varieties.
- No. 46. R. P. Struthers.** Deep rosy pink, with red center. Free bloomer.
- No. 54. Sylphide.** Pure white; medium height. Free bloomer, and one of the best white Phloxes yet offered.
- NOTE:—For other varieties of Phlox, see Alpine Plants.
 Price: Any of the above, \$.25 ea., \$2.00 per 10.

PHYSOSTEGIA.

- virginiana.** Rosy purple. 3 to 4 ft.
- virginiana alba.** Pure white.
- Price: \$.20 ea., \$1.50 per 10.

PLATYCODON. Japanese Bellflower.

- grandiflorum.** Large blue flowers on slender stems.
- grandiflorum album.** White, with delicate blue tints.
- Mariesi.** A fine form, with deep blue flowers.
- Price: \$.25 ea., \$2.00 per 10.

POLEMONIUM. Jacob's Ladder.

coeruleum grandiflorum. Has deep blue bell shaped flowers throughout the summer, and is well suited for the Alpine garden. 1 ft.

Price: \$.25 ea., \$2.00 per 10.

POLYGONATUM. Solomon's Seal.

japonicum. Similar to the common variety, but much stronger in growth.

multiflorum. The common Solomon's Seal.

Price: \$.20 ea., \$1.50 per 10.

POTENTILLA. Dense growing plants, about two feet high, with glaucous foliage and innumerable flowers resembling strawberry blossoms. We have a collection of about fifteen varieties.

Price: \$.25 ea., \$2.00 per 10.

RUDBECKIA. Cone Flower.

hirta. Branching stems 3 ft. high, with quantities of orange yellow flowers.

laciniata plena. Golden Glow. Double.

nitida. Autumn Glory. Single, yellow, 6 ft.

Price: \$.20 ea., \$1.50 per 10.

SENECIO.

Clivorum. Recently received from China. Ample foliage, and large heads of rich yellow flowers.

Price: \$.25 ea., \$2.00 per 10.

SOLIDAGO. Golden Rod.

plumosa. Dwarf Golden Rod, with drooping stems of yellow flowers.

sempervirens. The common Golden Rod.

Price: \$.20 ea., \$1.50 per 10; \$10.00 per 100.

SPIRAEA. Meadow Sweet.

filipendula. A dwarf growing plant, with very pretty fern like foliage, and heads of creamy white flowers. June to August.

Kamtschatica. 6 ft. Bold foliage, and large heads of white flowers.

ulmaria plena. Double Meadow Sweet.

lobata. Crimson flowers on 4 ft. stems.

Price: \$.25 ea., \$2.00 per 10.

STATICE. As isolated plants in the Rock Garden, or for grouping in the flower border, the Sea Lavenders are well suited, and make fine masses of color.

altaica. Small blue flowers in great numbers, on very branching stems. 1 ft. Midsummer.

latifolia. Strong variety, 2 ft. tall. Flowers blue.

tatarica. Rosy lavender flowers. 1 ft.

Price: \$.25 ea., \$2.00 per 10.

SWEET WILLIAM. Dianthus Barbatus.

We grow a representative collection of these popular early flowering plants, and can supply strong flowering clumps of the various colors.

Price: \$.25 ea., \$2.00 per 10.

THALICTRUM. Meadow Rue. For their handsome foliage alone the Meadow Rues are valuable and the strong growing sorts are well adapted for semi-wild gardening.

aquilegifolium. Large fine foliage, and feathery heads of white flowers. 5 ft.

Delavayi. A new Chinese introduction. 4 ft. Branching heads of drooping bell shaped flowers.

glaucum. Strong variety, with handsome glaucous foliage and creamy white flowers. 5 ft.

polygamum. Pale green foliage, and white flowers.
4 ft.

Price: \$.25 ea., \$2.00 per 10.

THERMOPSIS.

caroliniana. Tall spikes of yellow flowers.

Prices: \$.25 ea., \$2.00 per 10.

TROLLIUS. Globe Flower. These are the brightest of early summer perennials, and succeed admirably in almost any position; especially a damp one.

asiaticus. Bright orange colored flowers, medium size.

caucasicus. Orange Globe. Handsome variety with large orange flowers, on tall stems.

europaeus. Pale lemon colored flowers produced with greater freedom and for a longer period than any other variety.

hybridus Gibsoni. Rich orange color.

Price: \$.25 ea., \$2.00 per 10.

VERONICA.

longifolia subsessilis. Long branching spikes of rich blue flowers.

repens. See Alpine Plants.

spicata. A neat growing plant, with slender stems of blue flowers.

Price: \$.25 ea., \$2.00 per 10.

BULB LIST

GALTONIA CANDICANS. *Hyacinthus candicans.* A handsome summer flowering bulb with spikes three feet tall, carrying many drooping bell-shaped flowers of pure white.

Price: \$.50 per 10; \$3.00 per 100.

IRIS.

xiphioides. English Iris. Very popular flower with wide range of color. 18 to 20 inches high. Flower about two weeks later than Spanish Iris.

Price: \$1.75 per 100.

xiphium. Spanish Iris. Even more popular than English Iris. Fine for cut flowers. Should be planted in large groups.

Price: \$1.00 per 100.

LILIUM.

	ea.	10	100
auratum	.40	3.00	20.00
canadense	.15	1.25	9.00
candidum	.20	1.50	12.00
elegans atrosanguineum	.20	1.50	12.00
Hansoni	.40	3.00	25.00
Henryi	.60	5.00	
Mammoth bulbs	.75		
Speciosum album	.35	2.50	
" roseum	.25	2.00	
" rubrum	.25	2.00	
" magnificum	.25	2.00	
superbum	.20	1.50	
tigrinum splendens	.10	.75	

MONTBRETIA. A magnificent class of bulbs of the greatest value for producing a fine display of blossom from July till October. Splendid for cutting, and of very easy culture.

America. Rich orange-yellow with dark red center. Very free flowering.

Price: \$.25 per 10, \$2.25 per 100

California. Fine pure yellow.

\$.25 per 10; \$2.25 per 100.

Ernest Davison. Rich orange, suffused with carmine.

\$.50 per 10; \$4.00 per 100.

Geo. Davison. Beautiful orange yellow. Flowers large and well open. Long stems.

\$.50 per 10; \$3.50 per 100.

Gerbe d'Or. Yellow.

\$.25 per 10; \$2.25 per 100.

Germania. Large orange-scarlet flowers.

\$.25 per 10; \$2.25 per 100.

King Edmund. Strong variety with strong branching spikes of golden yellow flowers.

\$3.00 per 10; \$15.00 per 100.

Lady Hamilton. Yellow with rose shading in center.

\$2.00 per 10; \$10.00 per 100.

Prometheus. Rich orange with crimson spots at base of petals.

\$4.00 per 10; \$20.00 per 100.

Rosea. Small rose colored flowers freely produced on slender stems.

\$.25 per 10; \$2.25 per 100.

Sunbeam. Rich dark yellow, with conspicuous chocolate center.

\$.25 per 10; \$2.25 per 100.

Sunset. Yellow, shaded red.

\$.25 per 10; \$2.25 per 100.

Vesuve. Rich crimson.
\$2.00 per 10; \$10.00 per 100.

NARCISSUS.	10	100
Emperor,	.40	3.00
Golden Spur	.40	3.00
Maximus	.30	2.00
Barri Conspicuus	.20	1.50
Sir Watkin	.40	3.00
Poeticus, Extra large.	.20	1.50
Van Sion	.40	3.00

SNOWDROPS. The earliest spring flowers. Admired
by all.

Elwes' Giant	\$1.00	per 100
Single	1.00	per 100
Double	1.50	per 100

TULIPS. We can supply any varieties at market prices.
For planting outside we strongly recommend the Darwin
or May-flowering section.

AQUATICS AND BOG PLANTS

ACORUS.

Calamus. Sweet Flag. A very ornamental plant for
the edge of the water, with deep green Iris like foliage
which emits an aromatic odor when broken.

Price: \$.25 ea., \$2.00 per 10.

Calamus variegatus. Very showy foliage variegated
with broad yellow markings changing to white with
age. Both of these are fine for grouping.

Price: \$.25 ea., \$2.00 per 10.

APONOGETON.

distachyon. Cape Pondweed. One of the prettiest Acquatics for shallow water, with pure white flowers deliciously scented. Flowers freely all summer.
Price: \$.50 ea., \$4.00 per 10.

ASTILBE. The Astilbes all thrive best is a moderately damp situation, and produce beautiful effects by the water. For varieties see general list of herbaceous plants.

CALTHA.

palustris. Marsh Marigold. A native plant, and one of the prettiest in spring. It revels in marshy ground, and has brilliant yellow flowers.
palustris flore pleno. A very showy double variety flowering for a long time.
Price: \$.25 ea., \$2.00 per 10.

IRIS. No plants are more beautiful or better suited for the margins of streams or ponds. All the undermentioned are particularly good in damp positions.

Kaempferi. The handsome Japanese Iris should be planted where water does not cover the crowns in winter. For varieties, see general list.

pseudacorus. The common marsh Iris of England. A tall, vigorous grower, with rich yellow flowers; a fine plant for semi-wild gardening.
Price: \$.20 ea., \$1.50 per 10.

Sibirica. All the Siberian Iris are specially adapted for planting at the edge of the water, where they attain their full vigor and beauty. This specie has long narrow foliage and very pretty blue flowers, reticulated white and yellow, on stems 4 ft. high.

alba. A pure white counterpart.

maxima. A very large growing form.

orientalis. Not quite as tall as the type; flowers larger and a rich blue color.

orientalis Snow Queen. One of the most admired of all Iris, with snow white flowers in profusion.

Price: \$.20 ea., \$1.50 per 100.

LOBELIA cardinalis. One of the most beautiful of all herbaceous plants for a moist situation, where it will grow fully four feet high. Spikes of bright scarlet flowers.

Price: \$.15 ea., \$1.25 per 10.

LYTHRUM roseum. Spiked or Purple Loose-strife. Few plants can be used with such good advantage in any part of the garden; but to be seen at its best it should be planted in the Bog Garden or by the edge of the water where it quickly becomes naturalized and is always an object of admiration.

Price: \$.25 ea., \$2.00 per 10.

NYMPHAEA. Water Lilies.

MARLIACEA. For those who are interested in Water Lilies, and have not the space for growing an extensive collection, we strongly recommend the following varieties. These all have large flowers, good foliage and strong constitutions, and are always very satisfactory. 18 inches to two feet of water suits them well, and each plant should have sufficient space to develop.

albida. Large flowers of purest white, with golden center. Very fragrant and produced continuously throughout the summer.

Price: \$.50 each.

carnea. Beautiful soft flesh color, a little deeper at the base.

Price: \$.75 each.

chromatella. One of the very best. Pale yellow flowers, produced continuously.

Price: \$.75 each.

igneae. Fine rich deep carmine, with lighter stamens. Leaves bronzy red when young.

roseae. A grand lily with rosy pink flowers.

Price: \$1.00 each.

rubra punctata. A strong growing variety, redish purple in color, with orange stamens.

Price: \$2.50 each.

odorata. The common white fragrant lily.

Price: \$.20 each.

odorata gigantea. A vigorous growing pure white lily.

odorata sulphurea. A very pretty fragrant lily with sulphur yellow flowers which stand above the water. The leaves are heavily blotched with red.

Price: \$.50 each.

pygmaea. A miniature species with white flowers; very free flowering, and pretty for growing in tubs.

Price: \$.75 each.

SAGITTARIA.

japonica flore pleno. One of the finest of acquatics, with handsome spikes of double white flowers.

Price: \$.50 each.

sagittaefolia. Fine foliage, and large spikes of white flowers with yellow centers. Should be planted in about 1 ft. of water.

Price: \$.20 each.

SENECIO. Clivorum. An uncommon herbaceous plant which succeeds well in a moist position. Handsome foliage, and tall spikes of bright yellow flowers.

Price: \$.25 each.

VERNONIA altissima. Iron Weed. A fine bold plant, especially for a moist position. Bold foliage and large heads of rich purple flowers in summer.

Price: \$.25 each, \$2.00 per 10.

DECIDUOUS TREES

ACER palmatum, var. atropurpureum. Japanese Maple. 2 1-2 ft.

Price: \$3.50 ea., \$30.00 per 10.

platanoides. Norway Maple. 8—10 ft.

Price: \$1.50 ea., \$12.50 per 10.

platanoides, var. Schwedleri. Schwedleri's Purple Leaved Maple. 6—8 ft.

Price: \$2. ea., \$15.00 per 10.

rubrum. Red Maple. 3—4 ft.

Price: \$.50 ea., \$3.50 per 10.

saccharum. Sugar Maple. 8—10 ft.

Price: \$1.50 ea., \$12.50 per 10.

spicatum. Mountain Maple. 2—3 ft.

Price: \$.35 ea., \$3.00 per 10.

BETULA lutea. Yellow Birch. 6—8 ft.

Price: \$1.25 ea., \$10.00 per 10.

papyrifera. Canoe or Paper Birch. 6—8 ft.

Price: \$1.00 ea., \$7.50 per 10.

CRATAEGUS coccinea. Scarlet Thorn. 4—5 ft.

Price: \$1.00 ea., \$7.50 per 10.

macracantha. 5—6 ft.

Price: \$1.50 ea., \$12.50 per 10.

oxyacantha. English Hawthorn. 4—5 ft.

Price: \$.50 ea., \$4.00 per 10.

FAGUS sylvatica var. purpurea. Purple leaved Beech.

5—6 ft.

Price: \$2.50 each.

FRAXINUS americana. White Ash. 8—10 ft.

Price: \$1.25 ea., \$10.00 per 10.

POPULUS deltoides var. carolinensis. Carolina Poplar.

8—10 ft.

Price: \$1.00 ea., \$8.00 per 10.

nigra var. italica. Lombardy Poplar. 8—10 ft.

Price: \$1.25 ea., \$10.00 per 10.

QUERCUS rubra. Red Oak. 6—8 ft.

Price: \$1.50 ea., \$12.50 per 10.

SALIX pentandra. Laurel-leaved Willow.

3—4 ft., \$.35 ea., \$3.00 per 10.

4—5 ft., \$.50 ea., \$4.50 per 10.

5—6 ft., \$.75 ea., \$6.00 per 10.

rosmarinifolia. Rosemary-leaved Willow.

4—5 ft., \$1.00 ea., \$8.00 per 10.

5—6 ft., \$1.50 ea., \$12.50 per 10.

vitellina. Yellow-barked Willow.

5—6 ft., \$.75 ea., \$6.00 per 10.

vitellina var. Britzensis. Red-barked Willow.

5—6 ft., \$.75 ea., \$6.00 per 10.

SORBUS americana. American Mountain Ash.

3—4 ft., \$.35 ea., \$3.00 per 10.

aucuparia. European Mountain Ash.

6—8 ft., \$1.00 ea., \$8.00 per 10.

EVERGREEN TREES AND SHRUBS

ABIES concolor. Colorado Fir.

3 1-2—4 ft., \$5.00 each.

ARCTOSTAPHYLOS Uva-ursi. Bearberry. Pot grown plants.

Price: \$.50 ea., \$4.00 per 10.

CALLUNA vulgaris. Heather.

6—12 in. \$.35 ea., \$2.50 per 10.

JUNIPERUS communis. Ground Juniper.

6—12 in., \$.50 ea., \$4.00 per 10.

procumbens. Prostrate Juniper.

12—18 in., \$1.00 ea., \$7.50 per 10.

18—24 in., \$1.50 ea., \$12.50 per 10.

PICEA alba. White Spruce.

12—18 in., \$.50 ea., \$4.00 per 10.

2—3 ft., \$1.00 ea., \$7.50 per 10.

3—4 ft., \$1.50 ea., \$12.50 per 10.

excelsa. Norway Spruce.

3—4 ft., \$1.50 ea., \$12.50 per 10.

pungens. Colorado Spruce.

4-5 ft., \$3.00 each.

5-6 ft., \$4.00 each.

pungens var. glauca. Blue Colorado Spruce.

3-4 ft., \$3.50 each.

4-5 ft., \$4.00 each.

5-6 ft., \$6.00 each.

PINUS austriaca. Austrian Pine.

2-3 ft., \$1.50 ea., \$12.50 per 10.

3-4 ft., \$2.50 each.

cembra. Swiss Stone Pine.

2-3 ft., \$1.50 each.

montana var. mughus. Dwarf Mountain Pine.

1-2 ft., \$1.00 ea., \$7.50 per 10.

parviflora glauca elegans.

3-4 ft., \$6.00 each.

PINUS strobus. White Pine

2-3 ft., \$1.25 ea., \$10.00 per 10.

3-4 ft., \$2.00 each.

4-5 ft., \$3.00 each.

sylvestris. Scotch Pine.

2-3 ft., \$1.00 ea., \$7.50 per 10.

RETINOSPORA filifera. Japanese Cypress.

1 1-2 ft., \$1.50 ea., \$12.50 per 10.

2-2 1-2 ft., \$2.50 each.

plumosa.

2-2 1-2 ft., \$1.50 ea., \$12.50 per 10.

plumosa var. aurea.

2-2 1-2 ft., \$1.50 ea., \$12.50 per 10.

THUYA occidentalis. American Arbor Vitae.

2-3 ft., \$.75 ea., \$5.00 per 10.

3-4 ft., \$1.00 ea., \$7.50 per 10.

4-5 ft., \$1.50 ea., \$12.50 per 10.

5-6 ft., \$2.50 each.

occidentalis var. compacta.

2 ft., \$2.00 each.

3 ft., \$3.00 each.

occidentalis var. Ellwangeriana.

2 ft., \$1.25 ea., \$10.00 per 10.

3 ft., \$1.75 each.

occidentalis var. globosa.

18 in., \$1.25 ea., \$10.00 per 10.

24 in., \$2.00 ea., \$17.50 per 10.

occidentalis var. Hoveyi.

2-3 ft., \$1.50 ea., \$12.50 per 10.

3-4 ft., \$2.50 ea., \$20.00 per 10.

occidentalis var. pyramidalis.

2-3 ft., \$1.50 ea., \$12.50 per 10.

4-5 ft., \$4.00 ea., \$35.00 per 10.

DECIDUOUS SHRUBS

AMELANCHIER botryapium. Shad Bush.

3-4 ft., \$1.00 ea., \$8.00 per 10.

ARALIA pentaphylla.

3-4 ft., \$.75 ea., \$6.00 per 10.

BERBERIS ilicifolia. Holley leaved Barberry.

2-2 1-2 ft., \$1.00 ea., \$8.00 per 10.

Thunbergi. Thunberg's Barberry.

12-18 in., \$.25 ea., \$2.00 per 10.

18-24 in., \$.35 ea., \$3.00 per 10.

24-30 in., \$.50 ea., \$4.00 per 10.

vulgaris. European Barberry.

2-2 1-2 ft., \$.50 ea., \$4.00 per 10.

vulgaris var. purpurea. Purple leaved Barberry.

2-2 1-2 ft., \$.50 ea., \$4.00 per 10.

CORNUS. alba var. sibirica. Siberian Red-twigged Dogwood.

3-4 ft., \$.50 ea., \$4.00 per 10.

Amomum. Silky Dogwood.

3-4 ft., \$.50 ea., \$4.00 per 10.

circinata. Round leaved Dogwood.

2-3 ft., \$.50 ea., \$4.00 per 10.

paniculata. Panicked Dogwood.

2-3 ft., \$.50 ea., \$2.50 per 10.

4-5 ft., \$1.50 each.

stolonifera. Red Osier Dogwood.

3-4 ft., \$.40 ea., \$3.50 per 10.

stolonifera var. flaviramea.

2-3 ft., \$.50 ea., \$4.00 per 10.

CYDONIA japonica. Japanese Quince.

2-3 ft., \$.50 ea., \$4.00 per 10.

DEUTZIA Lemoinei.

1-2 ft., \$.35 ea., \$3.00 per 10.

2-3 ft., \$.50 ea., \$4.00 per 10.

scabra var. candidissima.

2-3 ft., \$.35 ea., \$3.00 per 10.

scabra var. crenata.

2-3 ft., \$.35 ea., \$3.00 per 10.

scabra var. Pride of Rochester.

2-3 ft., \$.35 ea., \$3.00 per 10.

scabra var. Watereri.

2-3 \$.35 ea., \$3.00 per 10.

DIERVILLA florida. Weigela rosea.

4-5 ft., \$1.00 ea., \$7.50 per 10.

florida var. candida.

3-4 ft., \$.75 ea., \$6.00 per 10.

florida var. Kosteriana variegata.

4-5 ft., \$1.00 ea., \$8.00 per 10.

hybrida Eva Rathke.

2-3 ft., \$.50 ea., \$4.00 per 10.

hybrida Groenwegeni.

2-3 ft., \$.35 ea., \$3.00 per 10.

trifida. Native Bush Honeysuckle.

1-2 ft., \$.25 ea., \$2.00 per 10.

2-3 ft., \$.50 ea., \$4.00 per 10.

EUONYMOUS Sieboldianus. Spindle Tree.

3-4 ft., \$.75 ea., \$6.00 per 10.

4-5 ft., \$1.00 ea., \$7.50 per 10.

FORSYTHIA intermedia. Golden Bell.

3-4 ft., \$.50 ea., \$4.00 per 10.

suspensa. Drooping Golden Bell.

3-4 ft., \$.50 ea., \$4.00 per 10.

suspensa var. Fortunei.

3-4 ft., \$.50 ea., \$4.00 per 10.

HYDRANGEA arborescens grandiflora alba.

2-2 1-2 ft., \$.50 ea., \$4.00 per 10.

paniculata.

2-3 ft., \$.50 ea., \$4.00 per 10.

paniculata grandiflora.

2-3 ft., \$.50 ea., \$3.50 per 10.

HYPERICUM aureum.

2-3 ft., \$.75 ea., \$6.00 per 10.

ILEX verticillata. Black Alder.

2-3 ft., \$.50 ea., \$4.00 per 10.

3-4 ft., \$1.00 ea., \$7.50 per 10.

LIGUSTRUM ibota. Japanese Privet.

2-3 ft., \$.35 ea., \$2.00 per 10.

vulgare. Common Privet.

2-3 ft., \$.35 ea., \$2.00 per 10.

3-4 ft., \$.50 ea., \$4.00 per 10.

LONICERA bella. Bush Honeysuckle.

2-3 ft., \$.35 ea., \$3.00 per 10.

Morrowi.

3-4 ft., \$.50 ea., \$4.00 per 10.

tatarica var. grandiflora.

2-3 ft., \$.35 ea., \$3.00 per 10.

xylosteum.

3-4 ft., \$.50 ea., \$4.00 per 10.

MYRICA cerifera, Barberry or Wax Myrtle.

1-1 1-2 ft., \$.35 ea., \$3.00 per 10.

PHILADELPHUS coronarius.

. 3-4 ft., \$.50 ea., \$4.00 per 10.

4-5 ft., \$.75 ea., \$6.00 per 10.

grandiflorus.

3-4 ft., \$.50 ea., \$4.00 per 10.

4-5 ft., \$.75 ea., \$6.00 per 10.

Lemoinei.

2-3 ft., \$.50 ea., \$4.00 per 10.

Lemoinei Avalanche.

2-3 ft., \$.50 ea., \$4.00 per 10.

pekinensis.

2-3 ft., \$.50 ea., \$4.00 per 10.

PHYSOCARPUS opulifolius. Nine bark.

3-4 ft., \$.50 ea., \$4.00 per 10.

RHUS cotinus. Smoke Bush.

2-3 ft., \$.75 ea., \$6.00 per 10.

typhina. Staghorn Sumach.

3-4 ft., \$.50 ea., \$4.00 per 10.

4-5 ft., \$.75 ea., \$6.00 per 10.

typhina laciniata.

3 ft., \$.50 ea., \$4.00 per 10.

RIBES americanum. American Black Currant.

3-4 ft., \$.50 ea., \$4.00 per 10.

aureum. Yellow-flowering Currant.

3-4 ft., \$.50 ea., \$4.00 per 10.

cereum.

2-3 ft., \$.50 ea., \$4.00 per 10.

RUBUS deliciosus. Rocky Mountain Flowering Raspberry.

3-4 ft., \$.75 ea., \$6.00 per 10.

SAMBUCUS canadensis. Common American Elder.

3-4 ft., \$.50 ea., \$4.00 per 10.

racemosa. Red-berried Elder.

2-3 ft., \$.50 ea., \$4.00 per 10.

SORBUS arbutifolia. Choke Cherry.

3-4 ft., \$.75 ea., \$6.00 per 10.

melanocarpa. Black Choke Cherry.

3-4 ft., \$.75 ea., \$6.00 per 10.

SPIRAEA arguta.

3-4 ft., \$.75 ea., \$6.00 per 10.

bracteata.

3-4 ft., \$.75 ea., \$6.00 per 10.

Bumalda var. alba.

18-24 in., \$.50 ea., \$4.00 per 10.

salicifolia. Meadow Sweet.

3-4 ft., \$.50 ea., \$4.00 per 10.

Thunbergi.

2-2 1-2 ft., \$.50 ea., \$4.00 per 10.

tomentosa. Hardhack. Steeplebush.

2-3 ft., \$.25 ea., \$2.00 per 10.

Van Houttei. Bridal Wreath.

2-3 ft., \$.50 ea., \$4.00 per 10.

3-4 ft., \$.75 ea., \$6.00 per 10.

SYMPHORICARPUS racemosus. Snowberry.

3-4 ft., \$.75 ea., \$6.00 per 10.

SYRINGA chinensis.

3-4 ft., \$1.00 ea., \$7.50 per 10.

japonica.

3-4 ft., \$1.00 ea., \$7.50 per 10.

pekinensis. Chinese Lilac.

3-4 ft., \$.75 ea., \$6.00 per 10.

villosa.

2-3 ft., \$.50 ea., \$4.00 per 10.

vulgaris. Common Lilac.

2-3 ft., \$.35 ea., \$3.00 per 10.

3-4 ft., \$.50 ea., \$4.00 per 10.

4-5 ft., \$1.00 ea., \$7.50 per 10.

vulgaris var. alba.

2-3 ft., \$.50 ea., \$4.00 per 10.

3-4 ft., \$1.00 ea., \$7.50 per 10.

VIBURNUM cassinoides. Withe Rod.

2-3 ft., \$.50 ea., \$4.00 per 10.

3-4 ft., \$1.00 ea., \$7.50 per 10.

dentatum. Arrow Wood.

2-3 ft., \$.35 ea., \$3.00 per 10.

3-4 ft., \$.75 ea., \$6.00 per 10.

lantana. Wafaring Tree.

3-4 ft., \$.50 ea., \$4.00 per 10.

lentago. Sheep Berry.

3-4 ft., \$.75 ea., \$6.00 per 10.

opulus. High Bush Cranberry.

2-3 ft., \$.50 ea., \$4.00 per 10.

3-4 ft., \$.75 ea., \$6.00 per 10.

opulus var. sterilis. Snowball.

3-4 ft., \$.50 ea., \$4.00 per 10.

tomentosum. Japanese Snowball.

2-3 ft., \$.50 ea., \$4.00 per 10.

3-4 ft., \$.75 ea., \$6.00 per 10.

ROSES

ROSA blanda.

2-3 ft., \$.50 ea., \$4.00 per 10.

carolina. Wild Swamp Rose.

1-2 ft., \$.25 ea., \$2.00 per 10.

lucida. Wild Rose. Glossy Rose.

1-2 ft., \$.25 ea., \$2.00 per 10.

multiflora.

2-3 ft., \$.35 ea., \$3.00 per 10.

rubiginosa. Sweetbrier. Eglantine.

3-4 ft., \$.50 ea., \$4.00 per 10.

rubrifolia. Red-leaved Rose.

3-4 ft., \$.75 ea., \$6.00 per 10.

rugosa. Japanese Rose.

2-3 ft., \$.35 ea., \$3.00 per 10.

rugosa var. alba.

2-3 ft., \$.50 ea., \$4.00 per 10.

rugosa hybrids in the following varieties: **Belle Poitevine**, **Blanc de Coubert**, **Conrad F. Meyer**, **Mrs. A. Waterer**, and **Repens alba.**

2-3 ft., \$.50 ea., \$4.00 per 10.

HYBRID PERPETUAL ROSES

Baroness Rothschild. A beautiful light pink; very large and of fine form.

Clio. Flesh color, shaded in the center rosy pink. Vigorous grower and free bloomer.

Duke of Edinburgh. Brilliant vermilion. A distinct and splendid variety.

Frau Karl Druschki. Pure white. Very large buds, opening to large, full flowers. Finest white rose in cultivation.

General Jacqueminot. Brilliant scarlet crimson; large and full.

Hugh Dickson. Brilliant crimson, shaded scarlet. A grand rose and a very strong grower.

Madam Gabriel Luizet. Light silvery pink; very free bloomer. A superb rose of vigorous growth.

Margaret Dickson. White with pale flesh center.

Mrs. John Laing. Soft pink color; very large and of fine form.

Paul Neyron. Deep rose. Flowers large. Foliage and growth good.

Ulrich Brunner. Cherry red; of immense size, full form, and most effective. One of the first to flower, and lasts well throughout the season. A superb rose of vigorous growth, and should be in every garden.

Price: Any of the above, \$.40 ea., \$3.50 per 10; \$30.00 per 100.

TEA AND HYBRID TEA ROSES

Bessie Brown. Creamy white; of immense size and substance; very highly perfumed. Extra strong grower.

Caroline Testout. Satin rose with brighter center. Large full flower and a very free bloomer. One of the very best.

Dorothy Page Roberts. Coppery pink, suffused with apricot yellow. A very strong grower.

Etoile de France. Velvety crimson; large and full. Strong grower. A superb rose in every way.

Gruss an Teplitz. Bright scarlet crimson; free flowering.

Kaiserin Augusta Victoria. Pearly white, tinted with lemon in the center. Beautifully formed flowers on long stems.

Killarney. A sparkling, brilliant pink. Flowers are large and buds long and pointed. A strong and vigorous plant.

Madam Abel Chatenay. Carmine rose, shaded with salmon. Very free flowering.

Maman Cochet. Deep rose pink; inside of petals silvery rose.

Maman Cochet White. A white form of the above.

Price: Any of the above, \$.50 ea., \$4.00 per 10; \$35.00 per 100.

NOTE: The following varieties, **Frau Karl Druschki**, **Ulrich Brunner**, **Caroline Testout**, **Etoile de France**, **Gruss an Teplitz**, **Killarney**, **Madam Abel Chatenay**, can be supplied in extra strong one-year-old pot grown plants at \$.25 ea., \$2.00 per 10.

CLIMBING AND TRAILING PLANTS

An extremely beautiful and useful class of roses, well adapted for many different positions, such as clothing pergolas, fences, buildings, covering banks, etc. In the colder parts of the country the majority need slight protection in winter, but **Fairy Cup** and **Setigera** are perfectly hardy and very valuable.

Crimson Rambler

Dorothy Perkins White

Hiawatha

Setigera

Dawson

Fairy Cup

Strong plants,

Extra strong plants,

Specimens,

Lady Gay

Tausendschon

Dorothy Perkins

Farquhar

Prairie Queen

Wichuraiana

\$.50 ea., \$4.00 per 10.

.75 ea., 6.00 per 10.

1.00 to 2.00 each.

VINES AND CLIMBERS

ACTINIDIA arguta.

2-3 ft., \$.50 ea., \$4.00 per 10.

AKEBIA quinata.

3-4 ft., \$.50 ea., \$4.00 per 10.

AMPELOPSIS quinquefolia. Virginia Creeper.

2-3 ft., \$.25 ea., \$2.00 per 10.

3-4 ft., \$.50 ea., \$4.00 per 10.

quinquefolia var. Engelmanni.

2-3 ft., \$.35 ea., \$3.00 per 10.

3-4 ft., \$.50 ea., \$4.00 per 10.

Veitchi. Boston Ivy.

Heavy, \$.35 ea., \$3.00 per 10.

ARISTOLOCHIA macrophylla. Dutchman's Pipe.

Strong plants, \$.75 ea., \$6.00 per 10.

Heavy plants, 1.00 ea., 7.50 per 10.

CELASTRUS scandens. Bitter Sweet. Wax Work.

2-3 ft., \$.25 ea., \$2.00 per 10.

3-4 ft., \$.50 ea., \$4.00 per 10.

CLEMATIS paniculata. Japanese White Clematis.

Strong, \$.35 ea., \$3.00 per 10.

Extra large, .50 ea., 4.00 per 10.

virginiana. Native White Clematis.

Strong, \$.25 ea., \$2.00 per 10.

Extra large, 35 ea., 3.00 per 10.

LONICERA Belgica. Dutch Honeysuckle. Monthly Fragrant Honeysuckle.

Strong, \$.75 ea., \$6.00 per 10.

flava. Yellow flowering Honeysuckle.

Strong, \$.75 ea., \$6.00 per 10.

sempervirens. Trumpet Honeysuckle.

Strong, \$.75 ea., \$6.00 per 10.

VITIS coignetiae. Crimson Glory Vine.

2-3 ft., \$.35 ea., \$3.00 per 10.

FRUITS

APPLES.

Summer varieties:

Early Harvest, Red Astrachan.

Autumn varieties:

Fameuse, Gravenstein.

Winter varieties:

Baldwin, Jonathan, King, McIntosh Red, Northern Spy, R. I. Greening, Wolf River.

Price: 2-year-old trees, \$.50 ea., \$4.00 per 10. Larger sizes from \$1.00 to \$3.00 each.

CRAB APPLES. Hyslop and Whitney.

Price: 2-year old trees, \$.50 ea., \$4.00 per 10.

PEARS.

Summer varieties:

Bartlett, Clapp's Favorite, Doyenne, Tyson and Wilder Early.

Autumn varieties:

Belle Lucrative, Bosc, Seckel and Sheldon.

Price: 2-year old trees, \$.50 ea., \$4.00 per 10. Larger sizes from \$1.00 to \$3.00 each.

BLACKBERRIES Agawam.

Price: \$.50 to \$.75 per 10; \$3.00 to \$5.00 per 100, according to size.

CURRENTS.

Red varieties:

Fay's Prolific, North Star, Red Cross and Victoria.

White varieties:

White Grape.

Black varieties:

Black Naples and Lee's Prolific.

Price: \$.15 ea., \$1.25 per 10. Extra large sizes at advanced rates.

GOOSEBERRIES. Columbus, Downing, Industry, Pearl, Smith, Triumph.

Price: \$.25 ea., \$2.00 per 10.

Extra large sizes at advanced rates.

RASPBERRIES. Cuthbert and Golden Queen.

Price: \$.50 per 10; \$3.00 per 100.

Extra strong, \$.75 per 10; \$5.00 per 100.

STRAWBERRIES. The leading varieties.

Price: \$.75 per 10; \$5.00 per 100.

RHUBARB. Linnaeus and Victoria.

Price: \$.35 ea., \$2.50 per 10.

Clumps, .50 ea., 4.00 per 10.

ASPARAGUS. Columbian Mammoth and Conover's Colossal.

Price: \$1.50 per 100.

TARRAGON.

Price: \$.25 ea., \$2.00 per 10.

MINT. True Spearmint.

Price: \$.25 ea., \$2.00 per 10.

DIRECTIONS TO CORRESPONDENTS

SHIPPING SEASON. Our shipping season opens in the Spring, about the 15th of April, closing in early June according to the season. And in the Fall it extends from the end of August to the beginning of December.

FALL PLANTING. With a few exceptions, Fall planting is as successful as Spring, and many of the early flowering plants should be planted in the Fall when possible, in preference to Spring.

SELECTED STOCK. Stock selected by customers at the Nurseries, or specially selected stock ordered by mail or otherwise, will be charged at advanced rates according to the value of the stock selected.

QUANTITY. Five of one kind and size will be furnished at the ten rate.

PACKING. Packing will be done in the most careful manner for shipment to any part of the world. We have made a special study of good packing, and our most distant shipments have rarely failed to reach their destination in the best condition. The packing of Trees and Shrubs will be charged for at actual cost to us. Herbaceous Plants of all kinds will be packed without extra cost.

DELIVERY. All goods are delivered f. o. b. Bar Harbor. Local orders will be delivered free to any part of the village.

SHIPPING. We can ship either by the Maine Central Railroad, or by steamers which connect directly with the steamers for New York and Boston, or by American Express. Customers are requested to state the mode

of shipment; otherwise we shall forward according to our best judgment. After delivery to the forwarding agents all goods are at the risk of the purchaser.

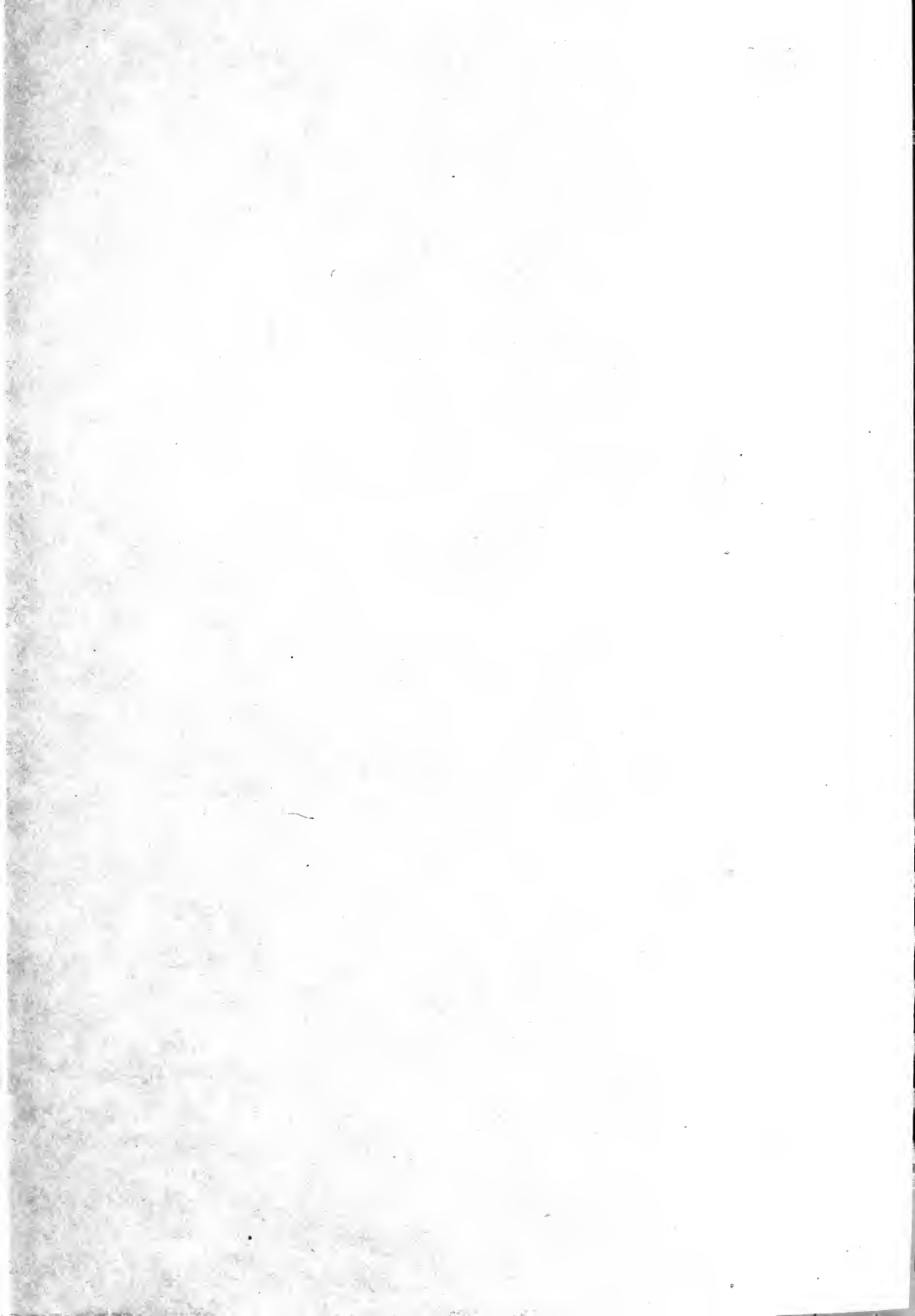
INSPECTION. A certificate of inspection will be sent with each shipment.

ERRORS. Customers will confer a great favor if they will notify us promptly of any errors that may have been made in filling their orders, to enable us to immediately correct the same.

CLAIMS. Claims, to receive consideration, must be made immediately upon receipt of goods.

NON-WARRANTY. While we use the utmost care to have our nursery stock, plants, bulbs and seeds true to name and will replace any that may prove untrue, no sale by us carries a warranty, express or implied, as to description, quality, productiveness, or other character, of any nursery stock, bulbs, plants or seeds we send out; nor will we be in any way responsible for the crop; and for any error we shall not be held liable for more than the purchase price. Every purchase from us is made on these terms.

**THE MOUNT DESERT NURSERIES,
Bar Harbor, Maine.**



Sherman, Printer, Bar Harbor