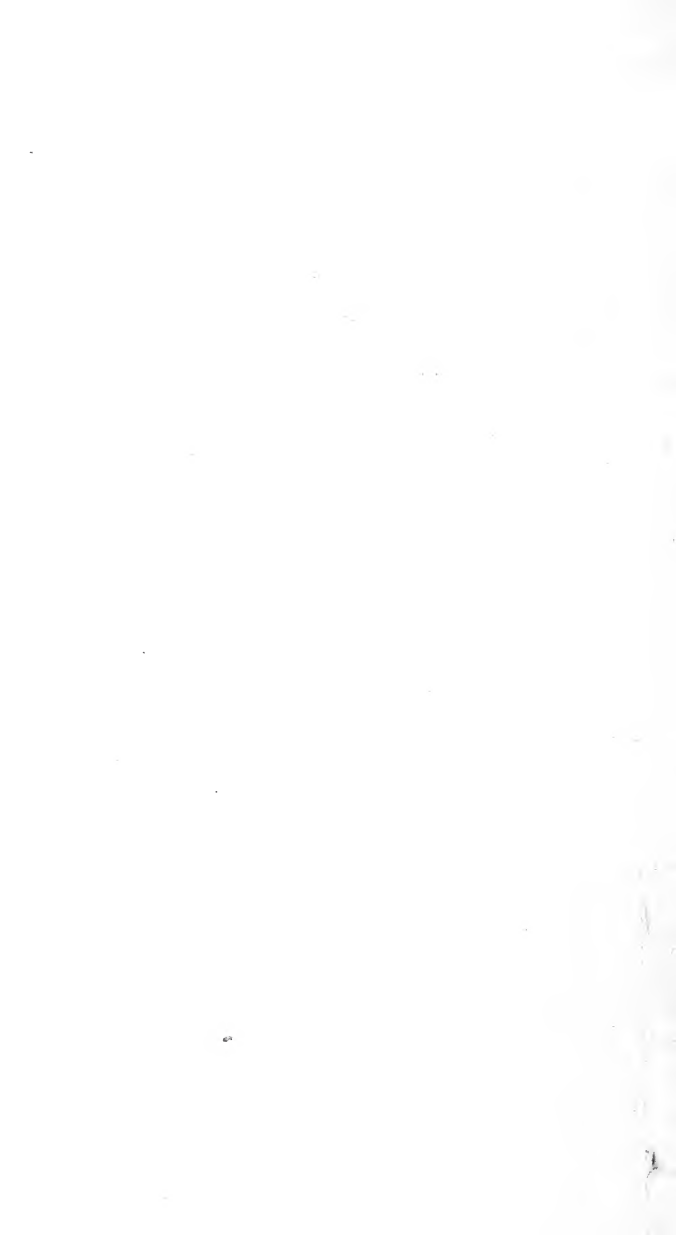


Historic, Archive Document

Do not assume content reflects current scientific knowledge, policies, or practices.



62,43

D. D. Simmons Company

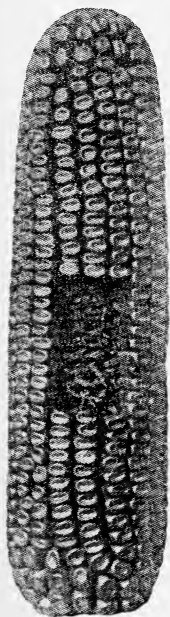
The Moorhead Seed House

Moorhead,

Minnesota

Red River Valley Seed Potatoes

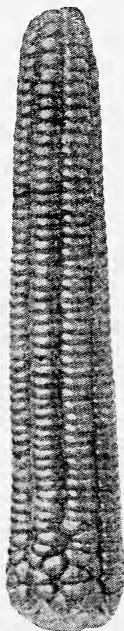
NORTHERN MINNESOTA AND
NORTH DAKOTA GROWN



Minnesota
Number 13

EAR
SEED
CORN

1915
SEED
Catalog



North Dakota
White Flint

Ear Tested Seed Corn

On the Cob, at Moderate Cost, Direct from the Grower

For December and January shipment we offer to replace free of charge all ears returned to us by the purchaser of our **SELECTED EAR CORN SEED** at \$3.00 per bushel of 70 lb.

This corn has been carefully selected on the ear. Our growing tests show practically a perfect germination for the shelled seed. We know that your selected ear tests for germination will show the same result.

The term "DIRECT FROM THE GROWER" is not a catch word. To us it means economy. To you it insures Strictly Northern Grown Seed Corn at moderate price. On the opposite page we show a modern drier on the farm of our largest grower, H. Biel, at Fairmount, N. D.

Our arrangement with Mr. Biel permits us to,

1. Select our own stock seed for the spring planting.
2. Inspect the growing crops during the summer.
3. Sort and select the seed and cure it in a modern plant on the farm early in the fall at moderate cost.

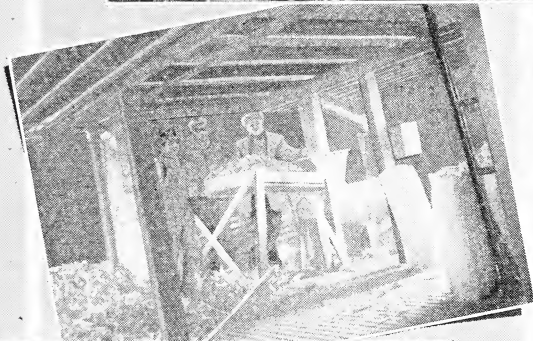
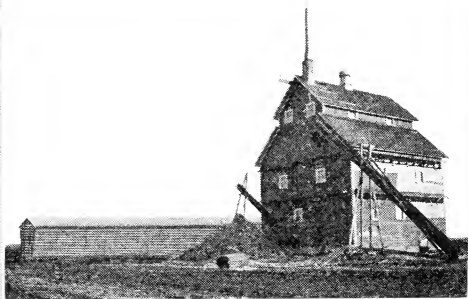
4. Make our December and January shipments, either shelled and graded or on the ear, direct to our customers from Fairmount, N. D.

We have other lots of seed corn from other growers of special selected strains from different varieties. These will be shipped from Moorhead. Efforts of northern corn growers in recent years have been concerned largely with securing varieties that would ripen in this section. We should now turn attention more largely towards securing greater yields from these same tried varieties.

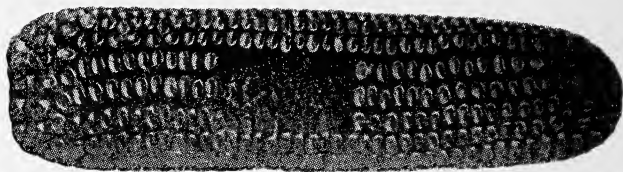
BUY SELECTED EAR CORN FOR SEED.

EAR TEST for a perfect stand and larger yield.

We Cure Our Corn in This Modern Plant



On the Farm of H. Biel, Fairmount, N. D.



Minnesota No. 13 Corn

Early Yellow Dent

Certain types of corn are now well established and have proved successful in this territory. We believe that corn growers should now begin to select seed that will increase the yield but not lessen the early maturity of the product. Our Minnesota No. 13 is such a corn.

Our stock seed came from the Minnesota University years ago and has been grown in North Dakota long enough to be thoroughly acclimated.

Planted on good soil and with careful cultivation our seed will thoroughly mature in 90 to 95 days as far north as the Canadian boundary.

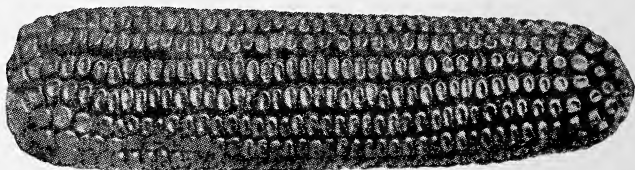
An average of two ears, eight inches in length, are borne high enough to cut easily with a corn binder, on leafy stalks that grow to a height of seven feet. The kernels are bright yellow, smooth tipped, grown on a red cob in compact form, and make a splendid looking ear. We earnestly recommend our Minnesota No. 13 for—

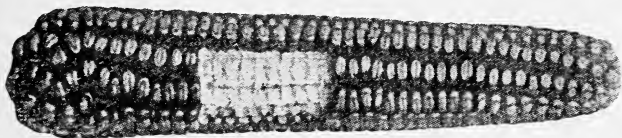
1. Early maturing.
2. Thoroughly acclimated,
3. Heavy yielding **SEED CORN.**

Prices of Minnesota No. 13 for December and January shipment. Ears: Bu. \$3.00; Burlap bags included. Shelled: Bu. \$1.75, Seamless bags extra 22c each.

Write for special price on large lots.

RED LETTER PRICE LIST will be issued later in season as markets change.





Northwestern Dent

EXTRA EARLY WHITE CAPPED RED HALF DENT.

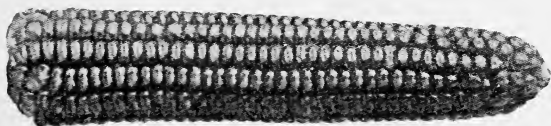
This standard variety will mature in 85 to 90 days in any part of North Dakota, Northern Minnesota, Montana or Canada, where corn is grown.

Being a hybrid, it retains the hardy prolific quality of the flint with the better feeding quality of the dent. Its foliage is leafy. Stalks do not grow as tall as the Minnesota No. 13, but ears are borne high enough to cut with a corn binder. It is generally seeded in drill rows and is no doubt the best silo corn.

On account of its popularity in North Dakota and Northern Minnesota this variety is grown for seed purposes very largely in Southern Minnesota and South Dakota. Our seed was grown in North Dakota and Northern Minnesota and is thoroughly acclimated.

Prices for Northwestern Dent for December or January shipment. Ears: Bu., \$3.00, Burlap bags included. Shelled, Bu., \$1.75. Seamless sacks extra 22c each.

Write for special price on large lots.
RED LETTER PRICE LIST will be issued later in season as markets change.



Rustler White Dent Corn

This early white dent corn has been grown in North Dakota for many years. It is as early as Northwestern Dent and is preferred by many on account of its color.

Prices. Ears: Bu., \$3.00, Burlap bags included. Shelled, Bu., \$1.75, Seamless sacks extra 22c each.

Write for special price on large lots.

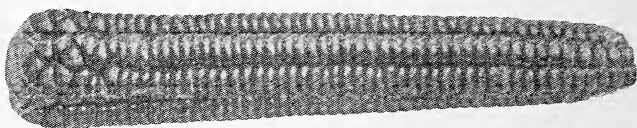
RED LETTER PRICE LIST will be issued later in season as markets change.

Minnesota No. 23

A pale yellow dent; white capped kernels on a slender red cob; extremely early and will mature anywhere that corn is grown.

Prices. Shelled only, Bu., \$2.00, Seamless sacks extra 22c each.

North Dakota White Flint



Grown on the Missouri slope. The best yielding flint. From Crookston, Minnesota, to the Canadian line this corn is as sure as a crop of wheat and yields more money to the acre.

Price. Shelled only: Bu., \$2.25, Seamless sacks extra 22c each.

Write for special price on large lots.

RED LETTER PRICE LIST will be issued later in season as markets change.

North Dakota Golden Dent

The earliest dent corn grown. This extra early yellow dent yields heavily to shelled corn in proportion to cob. Two to three ears are borne on a stalk.

Prices. Ears: Bu., \$3.00, Burlap bags included.
Shelled: Bu., \$1.75, Seamless sacks extra 22c each.

Write for special price on large lots.

RED LETTER PRICE LIST will be issued later in season as markets change.

Gehu Flint

The earliest flint corn grown. A prolific yielder and largely used as fall pasture for hogs.

Prices. Ears: Bu., \$3.00, Burlap bags included.
Shelled: Bu., \$1.75, Seamless sacks extra 22c each.

Mercer Flint

Very early yellow flint; stalks a little taller than the Gehu.

Price. Shelled only: Bu., \$2.00, Seamless sacks extra 22c each.

King Phillip Flint

Tall growing red flint; very leafy and useful for fodder purposes.

Prices. Ears: Bu., \$3.00, Burlap bags included.
Shelled: Bu., \$2.00, Seamless sacks extra 22c each.

Fodder Corn

Per Bu.

| | |
|---|--------|
| Early Dent Fodder Corn—Northern Grown | \$1.50 |
| Early Flint Fodder Corn—Northern Grown | 1.50 |
| Medium Yellow Dent Fodder Corn—Southern Grown | 1.00 |
| Late White Dent Fodder Corn—Red Cob | 1.25 |

Seamless sacks extra 22c each.

Seed Grain

Prices named here are for special selected lots, grown, graded and saved for seed and now ready for prompt shipment. Write for samples and special prices on large lots. RED LETTER PRICE LISTS issued during the season as markets change will give prices on lower commercial grades.

Per Bu.

| | |
|--|-----|
| White Russian Oats | .75 |
| Sixty Day Oats | .80 |
| Swedish Select Oats—Montana Grown | .70 |
| Oderbrucker Barley | .75 |
| Manshury 6 Row Barley | .70 |
| Marquis Wheat—Price based on Minneapolis market. | |

Write for sample and price.

Velvet Chaff Wheat—Price based on Minneapolis market.

Write for sample and price.

Durum Wheat—Price based on Minneapolis market. Write for sample and price.

Grass Seed

| | Per Bu. |
|--|---------|
| North Dakota Grown Brome Grass | \$2.00 |
| North Dakota Grown Rye Grass | 2.00 |
| Minnesota Grown Timothy | 2.75 |
| Missouri Grown Blue Grass—best quality | 2.25 |

Alfalfa—Kansas Grown

Medium Red Clover—Minnesota Grown

Alsike Clover—Minnesota Grown

Dwarf Essex Rape—Imported

German Millet—Southern Grown

Siberian, Hungarian and Broom

Corn Millets—Northern Grown

}

Write for Samples
and Prices

We Want to Buy Timothy, Bromus, Millet, Grass Seed and Seed Grain

Send samples. Get our bid on carlots of barley and all grains before shipping elsewhere. We are represented at Minneapolis by one of the leading grain firms.

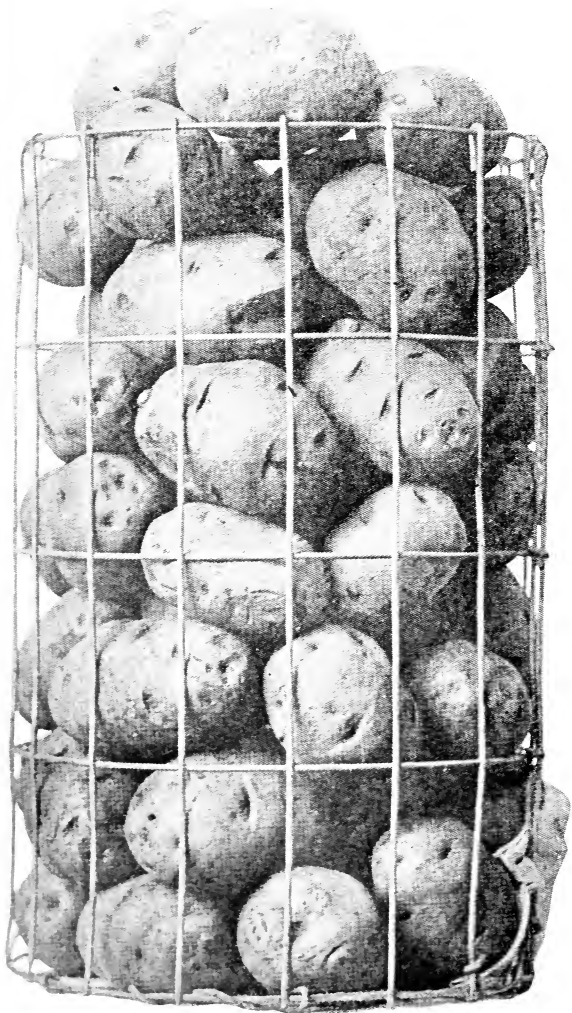
Red River Early Ohio Seed Potatoes

We Are Specialists in
Seed Potatoes

Situated in the heart of the Red River Valley, we have an exceptional opportunity to supply small lots or carlots of genuine Red River Grown Seed Potatoes at reasonable prices. Examine carefully the photograph of Early Ohio Seed Potatoes on opposite page. This is well selected seed. Compare with seed you have been getting from other sections. Our growers raise no other varieties and ship thousands of cars of pure unmixed seed to all parts of the country every year. Write us for prices on carlots of Ohios delivered your station for March and February shipment.

Prices of Red River Early Ohios, Burlap bags included.
Bu., 90c; 10 Bu., @ 80c; 50 Bu. @ 75c; 100 Bu. @ 70c.
Special price delivered your station in carlots.

Red River Early Ohios



Red River Irish Cobblers

Irish Cobblers have been grown in the Red River Valley for only a few years and in a limited way. They have not attained the reputation of being as true to type as the Early Ohios, but are much sought after in the South, where an early white potato is wanted. The Cobbler is a round, creamy white, deep eyed potato and will outyield either the Ohios or Triumphs. We have several cars to offer for shipment in carlots and will be glad to name delivered prices on request.

Prices. Bu., 90c; 10 Bu., @ 80c; 50 Bu., @ 75c; 100 Bu., @ 70c.

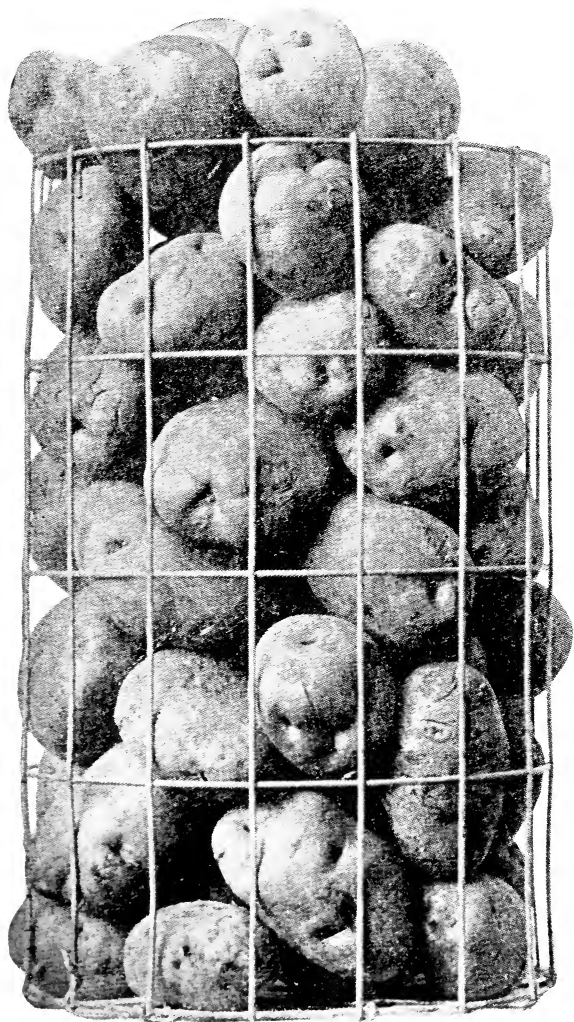
Bliss Triumphs

Red River Grown

The standard extra early red potato. From Kansas and south to Texas our Triumphs are in demand and Red River Triumphs are known to be ten days in advance of those from any other section in maturity.

Prices of Red River Bliss Triumphs: Bu., 90c; 10 Bu., @ 80s; 50 Bu., @ 75c; 100 Bu., at 70c. Special price delivered your station in carlots.

Red River Irish Cobblers



Remarks

Guarantee

We guarantee all seed to be as represented. If not satisfactory they must be returned. We will refill the order or refund the money. We accept no further responsibility. Very little trouble will be found with the growth of corn this year. The germination is high and the corn very dry. However, we urge our customers to test seed themselves before planting.

Announcement

As manager and one-third owner of N. J. Olsen Co., Moorhead, since the establishment of that business here six years ago, I have enjoyed the full share of confidence reposed in me by our patrons.

I now solicit a continuance of that confidence in me personally, as I continue the seed, grain and potato business at Moorhead in my own name.

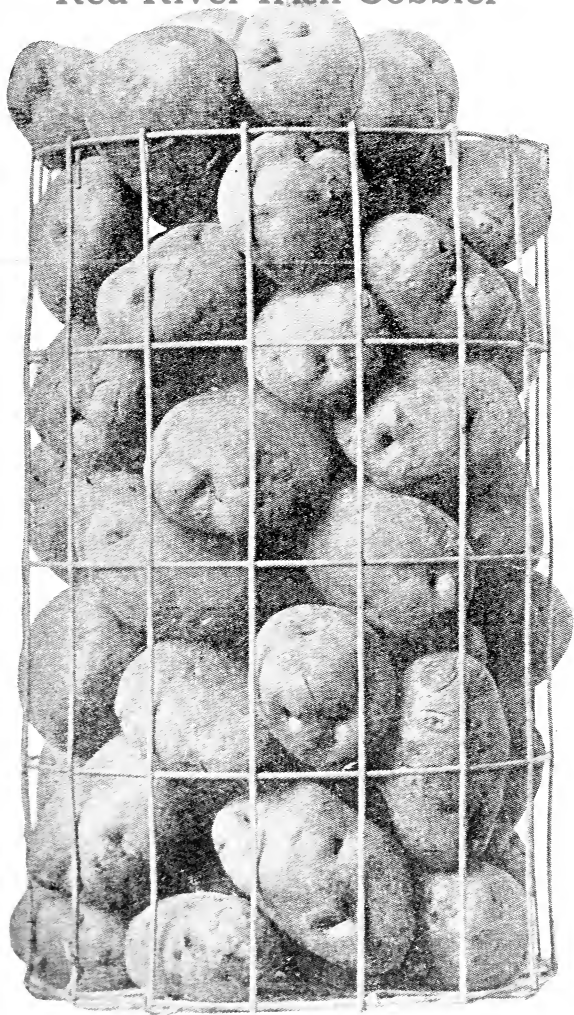
Respectfully,

D. D. SIMMONS.

NOTE:

We want to buy: Timothy, Bromus, Millet, Grass Seed and Seed Grain. Send Samples. Get our bid on carlots of barley and all grain before shipping elsewhere. We are represented at Minneapolis by one of the leading grain firms.

Red River Irish Cobbler



THE EARLIEST WHITE POTATO

Red River Grown Seed Potatoes are Famous the World
Over for Early Maturity and Good Quality

NORTH DAKOTA GROWN



Red River Valley Potatoes

Our Speciality

