

## **Historic, Archive Document**

Do not assume content reflects current scientific knowledge, policies, or practices.



62.13

1915

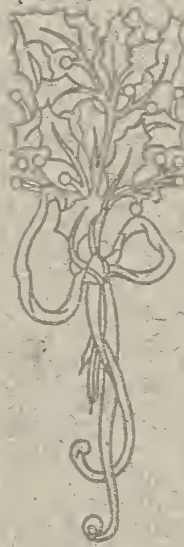
LIBRARY

★ JUN 8 1920 ★

U. S. Department of Agriculture

# FALL PLANTING LIST

1915



A. N. PIERSON, Inc.

**Cromwell Gardens**

CROMWELL, CONN.

The following simple rules will be of assistance to us and eventually to our customers

**ORDER EARLY.**

It will enable us to better prepare for the Fall trade if we have your order on file.

**CASH WITH ORDER.**

Kindly send money sufficient to cover the entire bill. We do not make shipments C. O. D. unless remittance has been made on account to guarantee acceptance.

**REMITTANCES.**

Remittances should be made by Post-Office Money Order or by New York drafts. If money is sent, the letter should be registered. All prices quoted in this list are strictly net. All cheques must be payable to A. N. Pierson, Inc.

**CREDIT.**

If credit is desired, give references and allow us time to look them up.

**SHIPPING INSTRUCTIONS.**

Give your name, post-office, county and state, and the name of your nearest express office to which shipment is to be made.

**EXPRESS COMPANIES.**

We have only the Adams Express Company from Cromwell.

**ERRORS.**

Keep a copy of your order. We aim to have our orders correctly filled. Where we are at fault we shall make satisfactory correction.

**QUANTITIES.**

Three of a variety will be sold at the dozen rate; 25 of a variety will be sold at the 100 rate; 250 of a variety will be sold at the 1000 rate.

**NON-WARRANTY.**

We aim to give the best possible service and to ship stock that will be up to our high standard of excellence. We endeavor to keep varieties true to name, but do not guarantee this, nor do we in any way guarantee the success of the grower purchasing the stock in this catalogue.

A. N. PIERSON, Inc.

**CROMWELL GARDENS**  
CROMWELL, CONN.

## Cromwell Gardens.

Forty-two years ago Mr. A. N. Pierson began the cultivation of flowers and flowering plants and laid the foundation upon which the business which bears his name, and of which he is the president, was built. To tell you the story of these forty-two years in the introduction of our catalog is impossible, but a visit to Cromwell would convince you that the years have been well spent and that honesty of purpose and upright business methods have been rewarded by business success. A visit to Cromwell Gardens would convince you of the reliability of the firm and the completeness of its equipment.

Cromwell is one of the old towns of New England and is situated on the west bank of the Connecticut River, three miles above Middletown and twelve miles below Hartford. The chief industry of the village is Cromwell Gardens where a yearly average of five hundred employes is engaged in producing flowers and plants.

The culture of roses has always been the leading feature at Cromwell Gardens, one-half of the twenty acres of greenhouses being devoted to growing roses for cut flowers, and these cut blooms supply many of the leading stores of the eastern part of the United States. The hardy plant department and the nursery are new, but by the selection of men trained to these branches, both departments have been successful from the start.

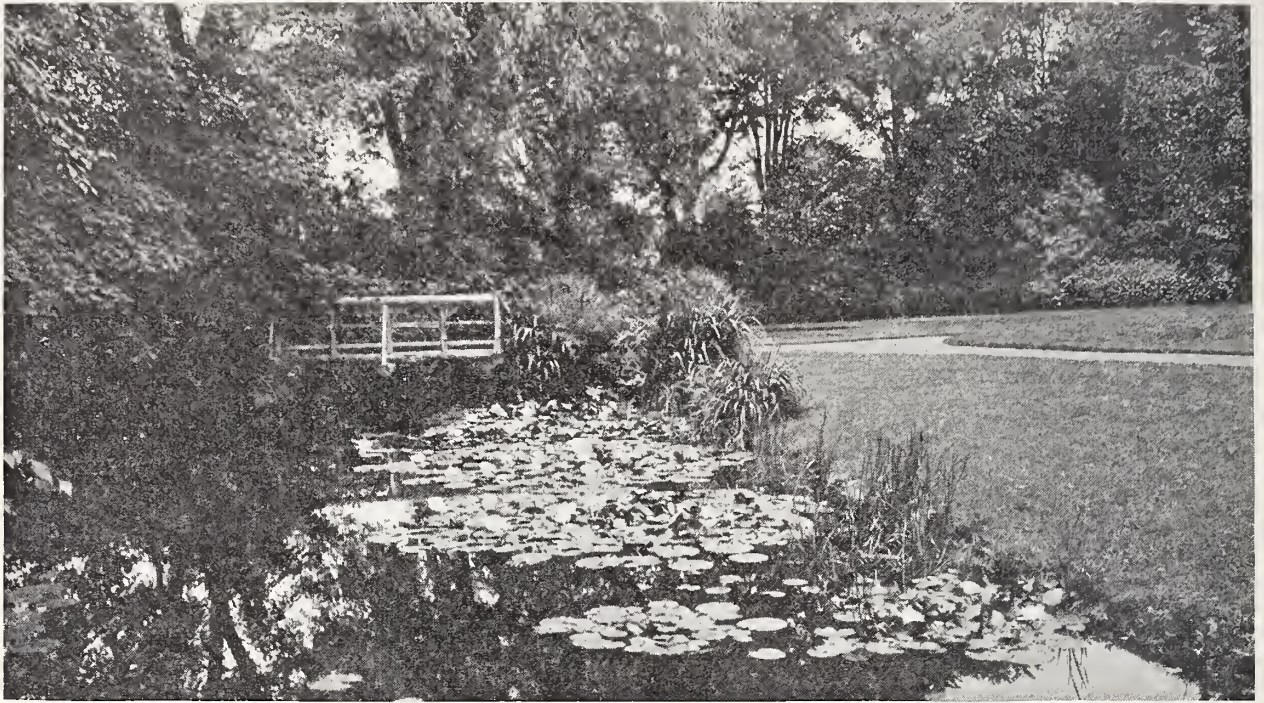
An added attraction is "Cromwell Gardens Park" which every visitor will wish to inspect. It is located in the valley above the greenhouses and is becoming one of the beauty spots of the country. A rose garden of 4,000 plants and the largest Alpine garden in this country are important features. Surrounding these the evergreen nursery makes an attractive background and a beautiful contrast with the small artificial lakes that have been added. Ornamental shrubs and rhododendrons add to its attractiveness. The Park completed stands as a model of the capability of our landscape gardeners and the ability of the firm to carry through a large planting to a successful completion.

We invite you to Cromwell Gardens, believing that the visit will be interesting to you and it will be a source of gratification to us.



A glimpse of our Rose Garden Display. Awarded **FIRST PRIZE**, International Flower Show, Grand Central Palace, New York

# Landscape Gardening.



Landscape gardening is an art employed in the conception, designing and ornamentation of grounds, be they small parcels of land adjacent to dwellings, large private estates or public parks; preserving the natural growth of trees, shrubs and plants and assisting Nature in developing a pleasing effect; a setting for residences, a pleasant retreat during the summer months or the creation of a panoramic picture, ever changing from day to day, from season to season—always something of interest to admire. Landscape gardening is also employed in the selection of locations for buildings and their elevation, the proper and practical layout of drives, roads and paths, together with the selection of proper material and methods of construction and the establishment of a practical system of drainage.

Landscape gardening involves not only the ornamental but the useful as well, and this part of the garden plan must not be neglected. Ample provision for vegetables and fruit must be made, so that the grounds will yield all the advantages that can be produced. Study the adaptability of the grounds and their surroundings and find out which of the special features of gardening is best adapted and could best be introduced to harmonize with the developed or undeveloped surroundings so that nothing will look out of place, but will add beauty, attractiveness and utility to the landscape.

Landscape gardening further implies a profound knowledge of trees, shrubs and plants, their names, habits and habitat, their requirements and care and the study of combinations, always bearing in mind the ultimate results. The landscape gardener devotes his attention to the study of Nature and the effects produced, unaided by the hand of man, and, while there are such rural sections that the skill of the landscape artist cannot improve, it might be said that his mission is to help Nature to harmonize and combine effectiveness in a formal style of gardening, thus rendering limited spaces as attractive as possible with a moderate outlay of money. And let us say right here that this outlay of money should not be classed as an expense but as an investment, for, while buildings deteriorate from year to year, choice trees and shrubs, judiciously selected and planted, will be a most remunerative investment, for with little care they will increase in size and beauty in a short time to a hundredfold value of the original cost. In other words, it might be said that the grounds which surround buildings, if judiciously

planted with the proper material, will increase the value of the property in the same ratio that the buildings will deteriorate and become less valuable as time goes on. Therefore, planting must be regarded as an investment and not as an expense.

It is well conceded that to build a house it is not alone the builder that is necessary, but an architect is first needed to conceive, design and formulate specifications. So it is just as important when building a garden to employ a landscape architect to prepare the proper plans and specifications. If this is done by guesswork only, it will naturally result in disappointment and will have to be done over again, with double expense besides the loss of years in fruitless waiting.

## SPECIAL FEATURES OF GARDENING.

The growing of roses has long been a feature of this firm and the excellence of this particular plant has justly made the name of PIERSON and CROMWELL GARDENS famous, not only here but throughout the whole horticultural world. Naturally, then, the building of rose gardens should be a special feature with us. When out of door rose growing is attempted, on a large or small scale, it is advisable to plant them together, so that they can be given the proper cultivation and care, guarding them against insects, and creating the effect which is lost when they are scattered promiscuously.

The old-fashioned gardens and borders are also a feature of gardening, perhaps one of the most fascinating. Such gardens can be arranged either in natural or formal style and the material which can be used comprises a large number of plants, including the old time favorites which take care of themselves and increase in size and beauty from year to year. With the proper selection of material, they will form a most interesting feature from earliest Spring until late Fall. The bulb border or bulb garden is also a feature of great interest. Where the grounds contain either running or still water, water and bulb gardens are highly recommended.

Another feature of gardening which is now receiving a great deal of attention and study in this country is the rock and Alpine gardens. These are very interesting and there are few places that do not have some nook or corner which could be enhanced by some little bit of rock gardening. The landscape gardener divides his material into the following classes:

Deciduous or shade trees,	Climbing vines and creepers,
Street trees,	Tub plants,
Flowering trees,	Fruit trees and small fruit,
Flowering shrubs,	Hardy perennials and herbaceous plants,
Colored foliage shrubs,	Alpine and rock plants,
Coniferous evergreens,	Aquatics, Bulbous Plants,
Broad-leaved evergreens,	Roses Bedding plants.

Cromwell Gardens are growing the finest varieties of these plants and can furnish anything FROM A PLANT TO A PLANTING, with our lifelong experience behind it. Prices of specimens, or plants not listed in this catalog will be cheerfully given on application. We have on our staff landscape architects and engineers of long, practical experience, having made a life study of this particular work. Therefore, we respectfully solicit your patronage and stand ready to assure you of desired results.

# Evergreens.

## ABIES

### Spruces and Firs

**Excelsa** (Norway Spruce). Used extensively for screens, windbreaks and hedges on account of its rapid growth. Splendid as isolated specimen. Fine plants from \$1.50—\$5.00.

**Excelsa pyramidalis** (Pyramidal Norway Spruce). Pyramidal form of above, making a well-shaped conical tree, valuable on limited space. Six foot trees, \$3.50 each.

**Excelsa inverta** (Weeping Spruce). Interesting as a specimen. Five to six feet, \$5.00 each.

**Concolor** (White Fir). A rival to the Colorado Blue Spruce, making symmetrical specimens under adverse conditions. No evergreen planting complete without this variety. Four feet, \$7.50 to \$10.00 each.

**Douglasii.** (Douglas Fir). A rapid growing evergreen of excellent habit, doing well in New England. \$1.50 to \$5.00 each.

**Nordmanniana** (Nordman Silver Fir). One of the noblest evergreens in existence. Dark eaons of foliage, silver underneath. Three to four feet, \$5.00 each.

**Pungens glauca** (Colorado Blue Spruce). Attractive rich blue foliage, sturdy and hardy and will succeed where many evergreens fail. Two to three feet at \$3.50 to \$5.00 each.

**Pungens glauca Kosterii** (Koster's Blue Spruce). An improvement on the preceding variety in point of color, which is a more intense blue. One of the grandest evergreens. \$2.50 to \$5.00 each.

**Fraseri** (Southern Balsam). This resembles the Balsam Fir, but has a deeper color and succeeds here, thus becoming a substitute for the Balsam Fir. Three feet, \$2.00.



**Abies pungens glauca Kosterii**

**Orientalis** (Oriental Spruce). One of the most satisfactory evergreens, making well shaped specimens of a pleasing color. \$2.50 to \$3.00 each.

**Veitchii** (Veitch's Silver Fir). Resembles the Nordman Fir, though the silvery tinge is more pronounced. Hardy and makes grand specimens. Three to four feet, \$4.00 each.

## CRYPTOMERIA

**Japonica** (Japan Cedar). This is a very large, pyramidal growing tree with bluish green foliage bearing brownish red cones. \$2.50 to \$3.50 each.

*All Evergreens are shipped carefully balled and burlapped.*



## JUNIPERUS

**Communis** (Common Juniper). Light glaucous foliage, flat, spready habit, a splendid hillside plant. 50c. to \$1.50 each.

**Communis aurea** (Golden Juniper). Golden form of above, giving splendid color to the evergreen group. \$1.00 to \$2.50 each.

**Virginiana** (Red Cedar). A native variety with rich green foliage; splendid for column effect. Smaller plants, \$1.50; Specimen plants up to twenty feet high, price on application.

**Elegantissima Lee**. A desirable new variety with golden tipped foliage. \$2.50 to \$3.50 each.

**Glauca** (Silvery Red Cedar). Foliage distinctly silvery gray, very conspicuous and hardy. \$2.50 to \$7.50 each.

**Schottii**. Drooping habit, hardy. \$2.00 to \$3.50.

**Hibernica** (Irish Juniper). Dense, pillar-like growth, glaucous foliage. \$1.50 to \$2.50 each.

**Pfitzeriana**. A comparatively new evergreen of excellent habit and usefulness. Extremely hardy. \$2.50 to \$5.00 each.

**Sabina** (Savin Juniper). Sombre green foliage, spreading branches. Useful for hillside and rock plantings. \$2.50 to \$3.50 each.

**Chinensis** (Chinese Juniper). Foliage light green, especially rich in winter. \$2.50 to \$3.50 each.

**Chinensis aurea** (Golden Chinese Juniper). A golden form of above, extremely hardy. \$2.50 to \$3.50 each.

**Chinensis albo-spica** (White tipped Chinese Juniper). Bluish gray foliage, dispersed with silvery white. One of the best Junipers in growth and appearance. \$2.50 to \$3.50 each.

**Japonica** (Japanese Juniper). Very hardy and a splendid variety. \$2.50 to \$3.50 each.

**Japonica aurea** (Golden Japanese Juniper). A splendid golden form of above. \$2.50 to \$5.00 each.

## LARIX

**Kaempferi** (Japanese Larch). Rapid grower, hardy yellow branches. Tight foliage. \$2.50 each.

## PINUS

**Excelsa** (Bothan Pine). A very graceful, rapid-growing pine, long silvery needles. \$1.50 each.

## PINUS (Continued)

**Austriaca** (Austrian Pine). Well known and much planted, robust growth, dark green stiff needles. Does especially well at the seashore. Three to four feet, \$2.50 each.

**Mugho** (Dwarf Mugho Pine). Dwarf and compact growth; adapted to rock planting. \$2.00 to \$2.50 each.

**Montana** (Swiss Mountain Pine). Stronger grower than above. Otherwise, resembles same. \$2.00 to \$2.50 each.

**Sylvestris** (Scotch Pine). Hardy and very desirable for shelter planting. Four feet, \$2.00 each.

**Strobus** (White Pine). The most valuable of all evergreens for timber planting and timber purposes. One of the most ornamental. Four to five feet, \$1.50 each.

**Cembra** (Swiss Stone Pine). Dense, regular growth, foliage resembling the white pine. Quite silvery. This species can no longer be imported from Europe and is, consequently, becoming rare. Two and one-half feet, \$2.50 to \$3.50 each.

## TAXUS

**Cuspidata brevifolia** (Japanese Yew). A rare and beautiful dwarf growing evergreen, retaining its deep green color throughout the entire winter; requires a sheltered position. \$1.50 to \$2.00 each.

**Washingtoniensis**. The best of the golden yews. Handsome and rare. \$2.50 to \$5.00 each.

## THUYA

**Occidentalis** (American Arborvitae). Conical form and rapid growth; used extensively for hedges and screens. Three to four feet, \$2.50; four to five feet, \$4.00.

**Occidentalis Warreana**. A fine pyramidal evergreen with deep green foliage. Extremely useful for forming screens, massing or planting individually. \$2.50.

**Occidentalis lutea** (Var. Geo. Peabody). A dense growing golden variety, holding its color all summer. \$2.50 to \$3.50 each.

**Standishii**—Makes a medium sized tree of very graceful habit. \$2.50 to \$3.50 each.

**Globosa** (Globe-headed Arborvitae). A deep green variety of compact globular form. \$2.50 each.

**Hoveyi**. A slow growing form with golden green foliage. \$3.50 each.

**THUYA (Continued)**

**Magnifica.** A large growing variety. Robust habit and desirable. \$2.50 to \$3.75 each.

**Reedii.** A globular shaped arborvitae of great merit. \$3.50 each.

**TSUGA**

**Canadensis** (Hemlock). A graceful tree with loose open growth, which lends itself to shearing. The Hemlock is undoubtedly one of the finest native evergreens and should be used extensively as individual specimens for moss planting and for hedges. Two feet, \$1.00 each.

**RETINISPORA**

**Filifera.** Slender bright green foliage, drooping in long filaments, graceful habit. \$2.50 to \$3.75 each.

**Filifera aurea.** A lovely bright golden form of the preceding, one of the brightest evergreens and should be more extensively used. Small plants, \$3.50. Specimens from \$15.00 to \$25.00 each.

**Obtusa.** Dark green, flat foliage; neat and regular habit. \$2.50 to \$3.50 each.

**Obtusa gracilis.** Resembling the above. Slightly stronger and of a more graceful growth. \$2.50 to \$3.50 each.

**Pisifera.** A fine pyramidal formed evergreen of a very rapid growth, distinct and graceful. 2½ to 3 feet, \$2.50.

3 to 4 feet, 5.00.  
5 to 6 feet, 7.50 to \$10.00.

**Pisifera aurea.** A beautiful, bright golden form of the preceding. One of the most attractive golden leaved evergreens.

2½ to 3 feet, \$2.50.  
3½ to 4 feet, 5.00.  
5 to 6 feet, 7.50 to \$10.00 each.

**Plumosa**—Dense, feathery light green foliage. Very hardy.

2½ to 3 feet, \$2.50.  
3½ to 4 feet, 5.00.  
4 to 5 feet, 7.50.  
6 to 7 feet, 10.00.

**Plumosa aurea.** A strikingly fine form of the above, brilliant golden throughout the season.

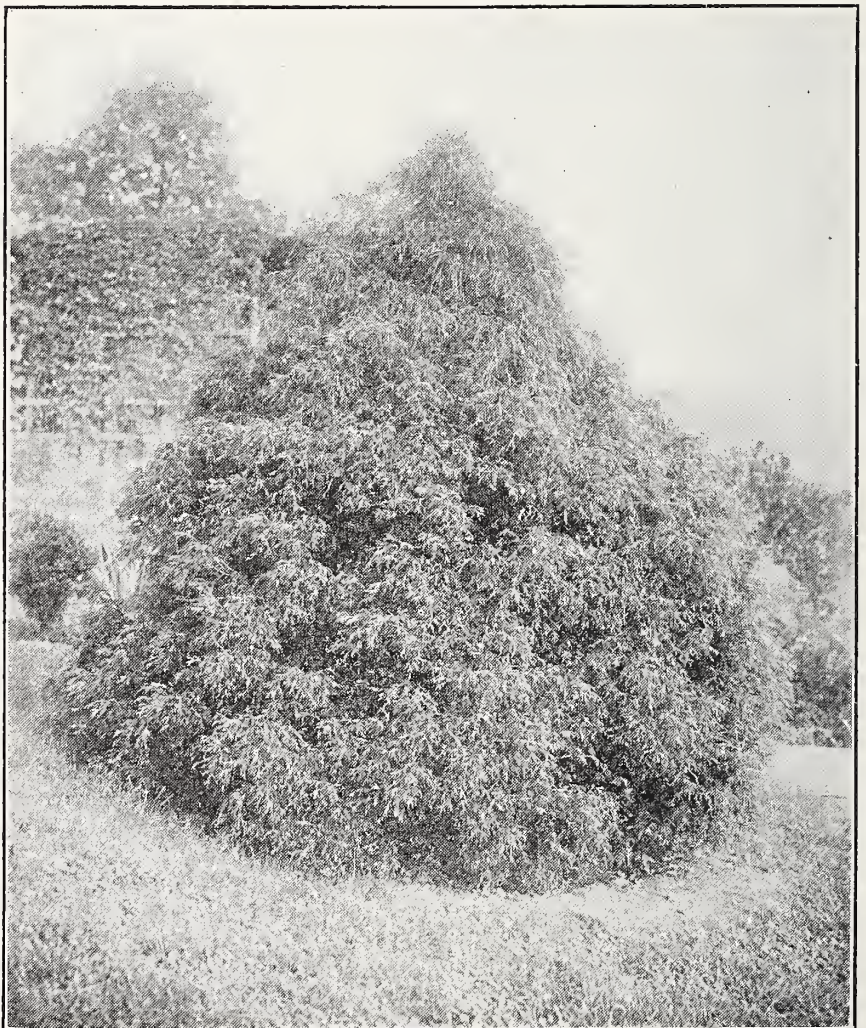
2½ to 3 feet, \$2.50.  
3½ to 4 feet, 5.00.  
4½ to 5 feet, 7.50.  
5 to 6 feet, 10.00.

**Plumosa argentea.** Deep green, tipped with showy white; of a compact growth. \$2.50 to \$3.50 each.

**Plumosa sulphurea.** Same as above, but tipped sulphur yellow. \$2.50 to \$3.50 each.

**Squarrosa.** Dense in growth with steel-colored foliage; makes a splendid specimen. \$2.50 to \$3.75 each.

**Veitchii.** A compact feathery growth of a bluish green color. A charming variety. \$2.50 to \$5.00 each.



**Retinispora filifera**

*Evergreens are, if anything, more attractive in Winter than in Summer.*

## Select Hardy Shrubs.

### ANDROMEDA

**Arborea** (*Oxydendrum arboreum*). Glossy foliage with prominent veins. Very attractive white flowers. Useful in ornamentation of grounds. 75c. to \$1.50 each.

**Floribunda**. Drooping waxy white flowers dwarf growth, evergreen. \$1.50 to \$2.50 each.

**Japonica**. Dark evergreen foliage, showy white blossoms. \$1.50 to \$2.50 each.

### ALTHÆA

#### Rose of Sharon

Attractive shrubs, flowering during the late months—August to November—when there are but few shrubs in bloom. Very desirable for ornamental planting.

**Banner**. Flowers white, richly marked crimson and pink, not unlike a Pelargonium.

**Jeanne d'Arc**. Double, pure white; three to four inches across, resembling the rose blossom. Very fine.

**Rosea**. Large flowers. A beautiful shade of rose pink.

**Red** (Double). Large, well formed, ruby-red flowers. 25c. each, \$2.50 per doz. Extra large size: 50c. each, \$5.00 per doz.

### HARDY AZALEAS

**Azalea mollis**. Handsome, hardy flowering shrubs in various colors, the yellow and orange predominating, the flowers completely covering the plants. Assorted varieties, \$1.00 to \$2.00 each, \$10.00 to \$20.00 per doz.

**Azalea pontica** (Ghent Azalea). Interesting, free flowering shrubs, very fragrant. Easy growth and splendid type for naturalizing. Colors range from white to pink, red and yellow. \$1.00 to \$2.00, each, \$10.00 to \$20.00 per doz.

#### AZALEAS (Various Types)

These are classed among the hardy, broad-leaved evergreens, and, on account



**Althæa (Rose of Sharon)**

of their profusion of bright flowers and attractive foliage, they are indispensable to the broad-leaved evergreen group. Equally useful for massing.

**Amœna**. A charming little evergreen kind, producing an abundance of rich, wine-colored flowers, completely enveloping the plant when in flower. Foliage always attractive. Perfectly hardy. \$1.00 to \$2.00 each, \$10.00 to \$20.00 per doz.

**Yodogawa**. A strong-growing variety, completely covered in May with semi-double flowers of a distinct and attractive lavender-pink shade. Very fine. Strong plants, \$1.25 to \$2.50 each, \$12.00 to \$24.00 per doz.

**Hinodegiri**. Bright double red flowers, very free. A beautiful and attractive variety. \$1.25 each, \$12.00 per doz.

### BERBERIS. Japanese Barberry

**Thunbergii**. Handsome, shiny foliage, changing to coppery-red in Autumn. Bright red berry, remaining throughout

*Order Azaleas now for Spring planting.*

**BERBERIS (Continued)**

the Winter. Dwarf habit. Excellent for hedges. Specimen shrubs, 35c. each. Hedge plants, 18 to 24 inches, \$2.00 per doz., \$15.00 per 100. Specimens from 35c. to 50c.

**Vulgaris** (Common Barberry). Erect growth, green foliage, showy red fruit. 35c. each, \$3.50 doz. \$25.00 per 100.

**Vulgaris purpurea** (Purple leaved Barberry), Splendid form of above with handsome purple foliage bearing small yellow flowers in May, followed by bright red fruit. 50c. each, \$5.00 per doz.

**BUDDLEIA. Butterfly Bush**

The greatly improved varieties offered here are genuine acquisitions among shrubs. Although they really belong in the shrub grouping, they are of equal value in the perennial border where they enhance the display from early July until frost by their profusion of fragrant violet-colored racemes, and where they prove a great attraction to bees and butterflies—hence the popular name. While they attain a growth of five or six feet and are quite hardy, the wood dies back near the the ground, the new growth appearing from the base. During Winter the plants should be protected with soil or coarse manure to a height of 18 inches from the ground.

**Variabilis magnifica.** Violet-purple flowers produced in endless profusion throughout the season. The growths terminate in long racemes and may be cut freely, inducing additional growths to continue the display. As a cut flower, it is of great decorative value.

**Variabilis Veitchii.** Clusters of fragrant violet-mauve flowers. An excellent companion to the above. Strong plants, 25c. each, \$2.50 per doz. Extra large size, 50c. each, \$5.00 per doz.

**CORNUS.**

**Floridus alba. Flowering Dogwood.** The white flowering native is one of the very best medium-sized ornamental trees. It is effectively used as a specimen tree mixed in the border with other shrubs and trees, but perhaps appears to best advantage skirting the woodland border. Two and one-half to three feet, \$1.00 each, \$10.00 per doz.

**Floridus rubra.** A magnificent rosy red flowering variety that is still hard to obtain. Contrasts effectively with alba. Two and one-half to three feet, \$1.50 each, \$15.00 per doz.

**Sericea.** Tall growing, greenish bark, light blue fruit, 35c. each, \$3.50 per doz.

**CORNUS (Continued)**

**Stolonifera** (Redbarked Dogwood). Dark blood-red branches, 35c. each, \$3.50 per doz.

**Stolonifera aurea.** Variety of above with yellow bark.

**Sanguinea.** Dark red bark, 35c. each, \$3.50 per doz.

**Sibirica fol. var.** Variegated foliage, 50c. each, \$5.00 per doz.

**Spathi.** Variety of above with yellow variegation, 50c. each, \$5.00 per doz.

**Paniculata.** Free flowering, very handsome while in bloom. White fruit on red peduncles. 50c. each.

**CORCHORUS. Kerria**

**Japonica.** A handsome shrub bearing single yellow flowers throughout the Summer. The green wood forms a decided contrast among other shrubs during Winter.

**Japonica fl. pl.** A very double, deep yellow form of the above. 35c. each, \$3.50 per doz.

**Japonica variegata.** The dwarf habit and cleanly, variegated foliage of this variety makes it especially valuable for edging shrub groups or low massing where a touch of color is desired. Two to three feet, 50c. each, \$5.00 per doz.

**COTONEASTER**

**Horizontalis.** A dwarf trailing, nearly evergreen shrub, carrying attractive fruit. 75c. each, \$7.50 per doz.

**CALYCANTHUS****Sweet Shrub or Strawberry Shrub**

**Floridus.** An old favorite. Chocolate colored flowers, very spicy and fragrant. 35c. each, \$3.50 per doz.

**CERCIS****Red Bud or Judas Tree**

**Canadensis.** Showy tall shrub or near tree, branches and twigs completely covered with flowers before foliage appears. 75c. to \$1.50 each.

**CHIONANTHUS. White Fringe**

**Virginica.** Tall shrub or low tree, flowering in loose panicles in June. 75c. to \$1.50 each.

*The Butterfly Bush will provide cut flowers from July until frost.*



**Deutzia Lemoinei**

**CORYLUS. European Hazelnut**

**Avellana.** 35c. each, \$3.50 per doz.

**Avellana atropurpurea.** Form of above with handsome purple foliage. 50c. each, \$5.00 per doz.

**CRATÆGUS. Hawthorne**

Varieties and prices on application.

**DAPHNE. Garland Flower**

**Cneorum.** A pretty dwarf spreading shrub, 8 to 10 inches high. Very fragrant flowers. Useful as a rock plant. 75c. each, \$7.50 per doz.

**DESMODIUM. Sweet Pea Shrub**

**Penduliflorum.** A handsome shrub, the wood of which dies down each Winter to reappear again in season. A good subject for the perennial border. Rosy purple flowers, Pea-shaped. Three to four feet. Autumn. 2 years old: 35c. each, \$3.50 per doz.

**DEUTZIA**

**Crenata fl. pl.** An extremely hardy and free-flowering shrub of upright, branching growth, luxuriant foliage and handsome, double, pure white flowers in erect panicles. Three feet. June. 35c. each, \$3.50 per doz.

**DEUTZIA (Continued)**

**Crenata rosea fl. pl.** Rosy pink; similar to the above, but perhaps more showy.

**Gracilis.** A dwarf-growing variety, with slender branches completely covered with sweetly-scented, pure white flowers during May and June. 35c. each, \$3.50 per doz.

**Gracilis rosea.** A lovely, rose-colored form of the preceding. 35c. each, \$3.50 per doz.

**Gracilis Lemoinei.** A decided improvement on *Deutzia gracilis*, with larger and more numerous, pure white flowers. Two feet. 50c. each, \$5.00 per doz.

**Pride of Rochester.** A tall-growing variety that completely obscures the plant with quantities of pure white, double flowers. Very beautiful as an individual

specimen, and one of the most effective flowering shrubs for grouping, or massing heavily in the shrub border. June. Three feet: 35c. each, \$3.50 per doz. Four feet: 50c. each, \$5.00 per doz.

**Scabra.** Very vigorous. Single, bell-shaped flowers. White. Two to three feet. June. 35c. each, \$3.50 per doz.

**ELEAGNUS**

**Longipes** (Japanese Oleaster). Shrub about six feet. Reddish brown branches, light foliage on underside. Orange colored fruit. 50c. each, \$5.00 per doz.

**Angustifolia.** (Oleaster or Buffalo Berry). Taller than above. 50c. each, \$5.00 per doz.

**EXOCHORDA. Pearl Bush**

**Grandiflora** (Pearl Bush). White flowers on slender racemes in early Spring. 50c. each, \$5.00 per doz.

**FORSYTHIA. Golden Bell**

One of the very first of the shrubs to flower in Spring, producing masses of deep golden blossoms in early April, a time when flowers of any kind are particularly desirable; the vivid color contrasting effectively with the flora of Spring, enhancing the surroundings greatly, pending the arrival of the foliage of Summer.

**FORSYTHIA (Continued)**

This is one of the few flowering shrubs that should not be pruned during Winter. After flowering, the strong growths can be cut back and pruned sufficiently hard to produce a well-balanced growth for the succeeding season's flowers.

**Fortunei.** Blooms in dense masses of golden yellow flowers. April and May. Two to three feet. 35c. each, \$3.50 per doz.

**Intermedia.** A strong-growing variety of more erect growth, flowering a little later. Three to four feet: 35c. each, \$3.50 per doz. Five to six feet: 50c. each, \$5.00 per doz.

**Suspensa** (Weeping Golden Bell). A fine, early-flowering kind of pendulous habit, covered with yellow, drooping flowers. Strong plants, 35c. each, \$3.50 per doz. Four to five feet, 50c. each, \$5.00 per doz.

**Viridissima.** Bright yellow, bell-shaped flowers, appearing early before the foliage develops. Three to four feet. 35c. each, \$3.50 per doz.

**FAGUS. Purple Beech**

**Sylvatica purpurea Riversii.** This is the fine, deep, purple-leaved variety that one occasionally meets, noting its rich color distinct from the common variety. One of our best ornamental specimen trees. Strong plants, Three to four feet high, \$2.50 each.

**HYDRANGEA**

**Arborescens grandiflora alba.** This magnificent, new Snowball Hydrangea is one of the finest of the hardy American shrubs. The flowers are pure white, very large, and similar to the tender Otaska in form; produced in quantity from June until August. It is at its best in a somewhat moist location and is absolutely hardy, producing its flowers from the new wood from year to year. As an ornamental shrub it is the greatest acquisition of recent years and is of great value for cutting purposes. Strong plants, 50c. each, \$5.00 per doz. Extra heavy clumps, \$1.00 each, \$10.00 per doz.

**Paniculata** (Type). Flower trusses carried erect on rigid stems. Splendid for landscape effect.

**Paniculata grandiflora.** Undoubtedly the most popular shrub grown, bearing immense heads of creamy white flowers, which later assume attractive rose shades remaining in excellent condition for

**HYDRANGEA (Continued)**

many weeks. One of the best shrubs for massing or planting individually. Strong plants, 35c. each, \$2.50 per doz. Extra heavy plants, 50c. each, \$5.00 per doz. Tree form, \$1.00 each, \$10.00 per doz.

**HEDGE PLANTS**

**Berberis Thunbergii.** (Japanese Barberry). Where a low, dense hedge is desired, this Barberry is in a class by itself. Its spreading habit and dense growth, filling out solidly from the ground up, soon form a symmetrical and attractive hedge. During the early Winter the plants are covered with bright red berries. Absolutely hardy anywhere. Plants should be spaced about one foot apart. Strong plants, eighteen to twenty-four inches high, \$2.00 per doz., \$15.00 per 100.

**California Privet.** As a free-growing, ornamental hedge plant the California Privet cannot be equaled. The foliage is a dark, rich, glossy green, and remains on the plant until midwinter. The growth is vigorous, producing rapidly a hedge of good height. The plants should be pruned back hard when first planted to build up a good bottom growth or foundation, afterward trimming them as frequently as necessary to keep in good form. The method of planting zig-zag or alternating the plants in a double row usually results in a heavy hedge lacking in proportion; we recommend planting in a single row, one-year size, nine inches apart; two-year size, 12 inches apart. One-year size, eighteen to twenty-four inches, \$3.00 per 100, \$25.00 per 1000. Two-year size, twenty-four to thirty-six inches, \$6.00 per 100, \$60.00 per 1000. Three-year size, \$18.00 per 100, \$80.00 per 1000.

**ILEX**

**Crenata** (Japanese Holly). Dwarf evergreen shrub, not unlike boxwood, glossy dark foliage. Undoubtedly one of the coming hedge plants. \$1.00 to \$2.50 each.

**Glabra** (Tukberry). Much branched upright shrub with attractive glossy foliage, red fruit. 75c. to \$1.50 each.

**Verticillata** (Winterberry). One of the best shrubs with ornamental fruit of the brightest red, remaining on the plants until midwinter. 50c. each, \$5.00 per doz.

**ITEA**

**Virginica.** A pretty dwarf native shrub, fragrant pure white flowers in handsome racemes. 50c. each, \$5.00 per doz.

**LIGUSTRUM, or PRIVET**

**Ibota** (Chinese Privet). An exceptionally hardy shrub of almost evergreen character; growth slightly drooping. Used extensively in planting public places on account of its hardiness and indifference to abuse. Useful for hedging. Fragrant, white flowers. Strong plants, 35c. each, \$3.50 per doz., \$17.50 per 100.

**Ovalifolium** (California Privet). Glossy, dark green foliage, retaining its foliage until late in Winter. Specimens, 35c. each, \$3.50 per doz.

**Ovalifolium aureum** (Golden Privet). A golden form of the California privet. Dense growth, splendid golden color. Excellent for planting among Japanese Maples and formal edgings. A fine decorative pot plant that can be used as a substitute for Crotons. Twelve to fifteen inches, \$1.00 per doz., \$8.00 per 100, \$70.00 per 1000.

**LONICERA, or SHRUB HONEYSUCKLE**

**Fragrantissima alba** (Fragrant Upright Honeysuckle). A handsome shrub of strong growth and almost evergreen character. Fragrant white flowers in early Spring. Two to two and one-half feet.

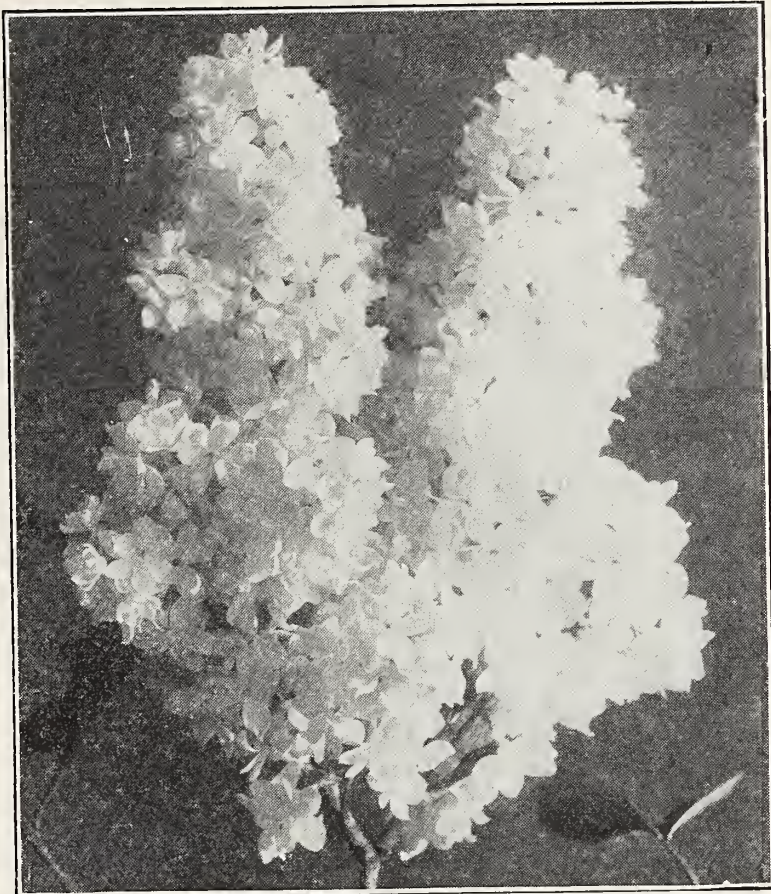
**Morrowi.** White flowers in May, followed by numerous bright red fruits until late Fall. A handsome decorative variety. Three feet. Extra large, 50c. each, \$5.00 per doz.

**Tatarica** (Grandiflora). Bright pink flowers, contrasting nicely with the foliage. Two and one-half feet.

**Tatarica alba.** Creamy, white flowers; vigorous growth. Two and one-half feet. (35c. each, \$3.50 per doz. except where noted).

**LILAC. Syringa**

The lilac is one of the old garden favorites that will ever be popular. Hardiness, attractive growth, and an abundance of sweet-scented panicles of bloom are quali-



Lilac Mad Lemoine

**LILAC (Continued)**

ties that have established it as an inseparable part of the hardy shrub, border or doorway planting. The common Lilacs are vigorous in growth, attaining a height of eight or ten feet; newer named varieties are more dwarf in habit.

**Common Purple.** The well-known purple Lilac of grandmother's garden. One of the best. 35c. each.

**Common White.** The popular white variety, fragrant and beautiful. 35c. each.

**Charles X.** Magnificent clusters of dark reddish flowers, produced in loose trusses. Good foliage and vigorous growth.

**Ludwig Spæth.** Large clusters of splendid, dark purple red flowers. One of the darkest.

**La Tour de Auvergne.** Violet purple. A fine double flowering kind.

**Madame Cas. Perier.** Very large, creamy white double flowers.

**Madame Lemoine.** Pure white; double.

**Marie Legraye.** Creamy white.

**President Grevy.** Splendid panicles of large, double, soft-blue flowers. Strong plants, 75c. each except where noted.

*The newer Lilacs offered on this page are great improvements on the type.*

**KALMIA**

**Latifolia** (Mountain Laurel). Our native laurel, a valuable evergreen shrub, beautiful pinkish white flowers during May and June. \$1.00 to \$2.50 each. Carload lots, price on application.

**MAGNOLIA. Yulan**

**Conspicua.** A rare and beautiful variety, bearing large, pure white flowers in the greatest profusion during April. Very hardy. Strong, well-budded plants, \$3.00 each.

**Soulangeana.** A fine hybrid variety that is entirely hardy and will in time attain a tree-like growth, producing large, cup-shaped flowers; white, flushed purple on outside of petals. Showy and beautiful. Strong, heavy plants, well-budded, \$3.00 each.

**JAPANESE MAPLES**

These dwarf Maples are exceedingly beautiful, whether grouped or planted as specimens; the handsomely colored foliage contrasts nicely with Nature's surrounding colors, particularly in early Spring when the leaves commence unfurling.

**Aureum.** Golden yellow; of upright growth. \$1.00 each.

**Dissectum atropurpureum.** A beautiful, cut-leaved variety, the foliage opening an attractive rose color, becoming deep blood red as the leaves expand; daintily cut foliage, drooping gracefully to the ground. Strong, pot-grown plants, \$2.50 each.

**Polymorphum.** Green, \$1.00 each.

**MAHONIA**

**Aquifolia** (Holly Barberry). Broad, thorny leaves resembling the Holly. 50c. and 75c. each.

**Japonica.** Form of above. 50c. and 75c. each.

**MYRICA**

**Cerifera** (Sweet Bay Berry or Gale). A splendid small dense shrub for sunny, sandy soil. Fragrant glossy foliage. Fruit very spicy. 35c. to \$1.50 each.

**SPIRÆA**

**Anthony Waterer.** An attractive and distinct variety of dwarf habit, flowering throughout the entire Summer. Color bright crimson.

**Callosa alba.** A dwarf and more compact white-flowering variety of the preceding; free and very neat.

**SPIRÆA (Continued)**

**Multiflora arguta.** An early-flowering kind of compact but graceful habit; its slender branches become covered with a multitude of pure white flowers in May.

**Prunifolia fl. pl.** (Bridal Wreath). Double white flowers in profusion. Erect growth. Three to four feet.

**Thunbergii.** A charming variety, flowering in masses of tiny white blossoms in early Spring; growth somewhat pendulous, densely covered with fine, narrow leaves. Always attractive.

**Van Houttei.** This variety is generally regarded as the finest of the Spiræa family. It forms an erect bush, with gracefully arching branches, covered completely with white clusters of flowers in long racemes. A very hardy and attractive shrub. Strong plants, 35c. each, \$3.50 per doz., except where noted.

**SYMPHORICARPOS**

**Racemosus** (Snowberry). A useful and ornamental shrub of compact growth, growing to a height of five feet. Small pink flowers in Summer followed by large, oval, waxy-white berries which cling to the branches well into the Winter. Three feet.

**Vulgaris** (Coral Berry). Compact growth attaining a height of three feet. Pink flowers followed by clusters of small purplish-red berries. Very useful. Two to three feet. Strong plants, 35c. each, \$3.50 per doz.

**STYRAX**

**Japonica.** Shrub or small tree, slender spreading branches. Glossy foliage, tinged purple early in the season. Flowers white in drooping clusters. 75c. to \$1.50 each.

**STUARTIA**

**Pentagyna.** Leaves oblong. Cup-shaped flowers with white stamens and orange yellow anthers. 75c. to \$1.50 each.

**VIBURNUM. High Bush Cranberry**

**Opulus.** A very ornamental variety. White flowers in June, followed by bright scarlet berries. Three feet. 35c. each, \$3.50 per doz.

**Opulus sterilis.** A popular, tall-growing Snowball of erect growth, bearing large, globular, pure white flowers in May. 35c. each, \$3.50 per doz.



**VIBURNUM (Continued)**

**Plicatum** (Japan Snowball). A great improvement on the common Snowball, displaying a profusion of pure white, ball-shaped flowers in May; fine, dark, healthy foliage. One of the finest ornamental shrubs grown. 75c. each, \$7.50 per doz.

**Acerifolium**. Slender upright branches, creamy white, grows well in dry places. 50c. each, \$5.00 per doz.

**Dentatum** (Arrow wood). Upright growth, attaining 15 feet. Bluish black fruit. 50c. each, \$5.00 per doz.

**Tomentosum**. Strong growing shrub with spreading branches. Fruit red changing to black. 50c. each, \$5.00 per doz.

**Sargentæ**. Form of *Opulis*, leaves of thick texture, glossy. Bright red fruit. 75c. each, \$7.50 per doz.

**Sieboldii**. Handsome shrub attaining ten feet in height. White flowers in panicles. Fruit changing from pink to bluish black. 75c. each, \$7.50 per doz.

**Cassinoides** (White Rod). Upright shrub averaging six feet. Thick, dull green glossy foliage. Creamy white flowers, handsome fruit. 50c. each, \$5.00 per doz.

**Lentago** (Sheep-berry). Shrub or small tree attaining three feet. Handsome foliage and fruit. 50c. each, \$5.00 per doz.

**PHILADELPHUS. Mock Orange**

**Avalanche**. Slender arching branches of graceful habit. Snowy white flowers. Two and one-half to three feet.

**Coronarius**. This is the well-known, fragrant Garland Syringa and undoubtedly one of the best shrubs we have. It grows to a height of 10 to 15 feet and is absolutely hardy; an exquisite variety for massing or planting individually.

**Grandiflora**. Large flowering Mock Orange. A more robust-growing form of the preceding, with larger, conspicuous flowers.

35c. each, \$3.50 per doz., except where noted.

Extra large, 50c. each, \$5.00 per doz.

**PYRUS**

**Arbutifolia** (Red Chokeberry). Dwarf native shrub of upright habit. Handsome glossy foliage and bright red fruit. 35c. each, \$3.50 per doz.

**HARDY RHODODENDRONS**

Rhododendrons are most effective when grouped in quantity. They give best results in a light soil, moderately enriched with fibrous turfy sod, well decayed leaf mold, and thoroughly rotted cow manure. A heavy mulch of leaves will provide ample protection through the Winter.

**Maximum**. \$1.75 to \$5.00 each. Carload lots, price on application.

**Catawbiense**. \$2.50 to \$5.00. Carload lots, price on application.

Named hardy varieties in best colors, \$2.50 to \$3.50 each. Standards, \$3.00 to \$7.50 each.

**RHODOTYPUS (White Kerria)**

A fine, ornamental shrub of dense, bushy habit and attractive deep green foliage. Snowwhite, single flowers, appearing late in Summer. 35c. each, \$3.50 per doz.

**RHUS**

**Cotinus** (Smoke Tree). A low shrubby tree, covered with feathery flowers resembling a cloud of smoke. 75c. to \$1.50 each.

**Typhina laciniata** (Cut Leaf Stag Horn Sumac). Fern-like foliage, scarlet fruit in Autumn. 50c. to \$1.50 each.

**Copallina**. Attractive bright green leaves. Good habit. 50c. to \$1.50 each.

**WEIGELA. Diervilla**

**Candida**. The best white variety, flowering profusely in June and continuing more or less throughout the Summer. Four feet.

**Eva Rathke**. An extremely showy variety, bearing large, bright ruby carmine flowers throughout the Summer and Autumn. Very distinct; the best Weigela. Three feet.

**Rosea**. A fine variety of compact growth, producing a mass of rosy pink flowers in June. Four feet. 35c. each, \$3.50 per doz. Extra large, 50c. each, \$5.00 per doz.

**Rosea variegata**. Variegated form of above.

(50c. each, \$5.00 per doz., except where noted.)

**XANTHORHIZA**

**Apiifolia** (Shrubby Yellow Root). Yellow roots sending up suckers in Spring, splendid for either sunny or shady positions. 35c. each, \$3.50 per doz.

# Hardy Vines and Climbing Plants

## AMPELOPSIS. Boston Ivy

**Engelmanni.** An improved form of the Virginia Creeper. Glossy green foliage changing to a scarlet crimson in the Autumn. A good cover for rough stone or woodwork. 35c. each, \$3.50 per doz., \$25.00 per 100.

**Veitchii.** This is undoubtedly the most desirable and useful vine for covering walls, stonework, wood structures, trees, etc. When once established, it grows rapidly and is extremely tenacious, clinging to the smoothest surface. During the summer the foliage is a rich, bright green, changing toward Fall to shades of crimson and red. Absolutely hardy. Prune close to the ground when planting. 25c. each, \$2.50 per doz., \$18.00 per 100.

**Quinquifolia** (True Virginia Creeper). 25c. each, \$2.50 per doz., \$18.00 per 100.

## AKEBIA

**Quinata** (Akebia Vine.) One of our most graceful hardy climbers. Numberless violet brown flowers in early Spring. Spicy cinnamon odor. 50c. each, \$5.00 per doz.

## ARISTOLOCHIA

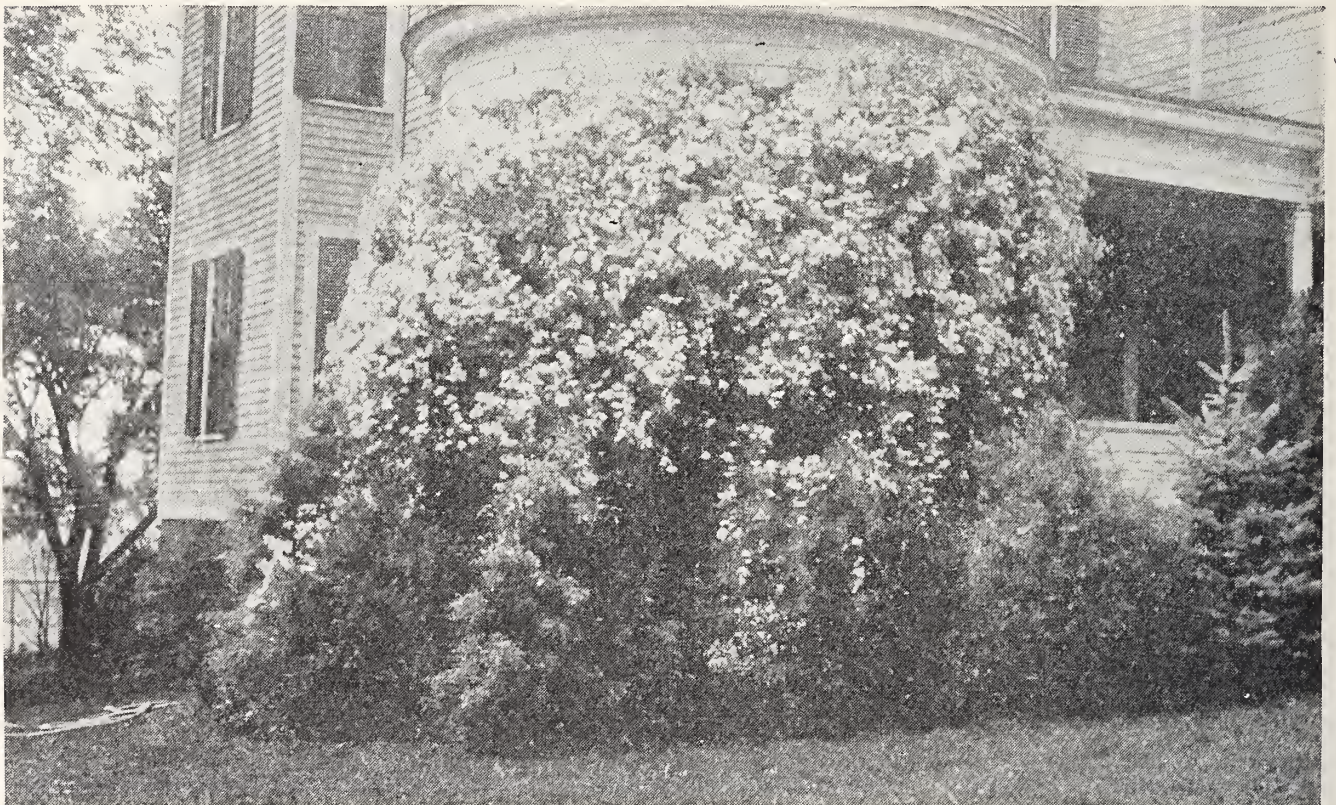
**Sipho** (Dutchman's Pipe). An extremely rapid growing climber, bearing odd, brownish-colored flowers not unlike a pipe. 50c. each, \$5.00 per doz.

## BIGNONIA, or TECOMA. Trumpet Vine

**Grandiflora.** An extremely rapid-growing and showy vine. Useful for covering unsightly stumps and walls where a quick cover is desired; also for training over porches, etc. Large, attractive, orange-red flowers. 35c. each, \$3.50 per doz.

**Radicans.** Vivid orange scarlet flowers, a splendid rapid growing vine. 35c. each, \$3.50 per doz.

**Sanguinea Praecox.** An early and continuous flowering variety. A desirable acquisition where the winters are not too severe. While the tops are apt to winter kill in this latitude, the new growth appears early in the season. 50c. each, \$5.00 per doz.



**Clematis Paniculata**

*We ship the majority of Climbing Plants out of pots.*

**CLEMATIS**

**Henryi.** Pure white, broad-petaled flowers; free and continuous bloomer.

**Jackmanni.** Large, deep, violet purple; broad-petaled flowers, produced in great profusion.

Above varieties, 50c. each, \$5.00 per doz.

**Paniculata** (Virgin's Bower). This handsome variety is one of the most beautiful and prominent of the climbing vines. Its rapid growth, perfect hardiness and deliciously fragrant flowers, which appear in August, establish it at once as one of the most desirable climbers. It can be grown as a porch screen or in any upright position, and is equally useful for covering rockwork, walls, tree stumps, or as a ground cover. Strong plants, 25c. each, \$2.50 per doz., \$15.00 per 100. Other named varieties on application.

**CELASTRUS**

**Scandens** (Bitter Sweet). A native climbing plant of rapid growth, doing well in sun or shade. Attractive yellow flowers in June, followed with bright orange fruit which remains on the plants nearly all winter. 35c. each, \$3.50 per doz.

**EUONYMUS**

**Kewensis.** A neat variety of recent introduction, with very small dark green leaves; of great value as a rock plant or ground cover. 20c. each, \$2.00 per doz.

**Radicans.** A Japanese trailing vine, with dense glossy green foliage; excellent for covering low walls, or it may be trimmed and used as permanent low edging similar to the old-fashioned Boxwood. 10c. each, \$1.00 per doz., \$6.00 per 100.

**Radicans variegata.** An attractive green and white variegated form of the preceding. Now used extensively for formal bedding. Small plants for edging, 10c. each, \$1.00 per doz., \$6.00 per 100.

**Arborescens** (Vegetus). A splendid broad-leaved evergreen form that makes an excellent shrub for dry embankments or may be used as a climber to cover stone walls, etc. 35c. to 50c. each. Price of quantity on application.

**Arborescens fol. var.** (Vegetus fol. var). White and green foliage. Very desirable. 50c. each.

**LONICERA**

**Halleana** (Hall's Honeysuckle). Flowers pure white, changing to yellow. Almost evergreen. 25c. each, \$2.50 per doz.

**Aurea reticulata** (Variegated). Beautifully variegated yellow and green. 25c. each, \$2.50 per doz.

**HEDERA.**

**Helix** (Hardy English Ivy). This well-known, popular evergreen vine is invaluable for covering walls, etc., and makes an excellent ground cover in shady places where grass will not grow. Very desirable for covering graves. Strong plants, 25c. each, \$2.50 per doz., \$18.00 per 100.

**PUERARIA (Kudzu Vine).**

A remarkably rapid-growing vine, attaining a growth of from forty to fifty feet in a season under good culture. The leaves are deep green in color and of a soft, woolly texture; pretty pea-shaped, rosy-purple blossoms in miniature racemes in late Autumn. 25c. each, \$2.50 per doz.

**WISTARIA (Chinese Wistaria).**

A strong, rapid-growing vine, with nearly evergreen foliage. The attractive pea-shaped flowers are borne in long, drooping racemes before the foliage appears and make a splendid showing. One of the finest hardy vines.

**Sinensis.** Delicate violet blue; very floriferous and fragrant.

**Sinensis alba.** A pure white form. Extra strong plants, 75c. each, \$7.50 per doz.

**Brachybotrys** (Short Clustered Wistaria). Japanese species, distinguished from all others by its slow growth. Desirable for bushy specimens. Showy purple flowers and silky racemes. \$1.00 each, \$10.00 per doz.

**Multijuga** (Japanese Wistaria). Distinguished from *Chinensis* by larger and looser racemes, containing sometimes as many as 100 flowers. \$1.00 each, \$10.00 per doz.

*Euonymus radicans* makes a splendid edging for formal beds and borders.

## Garden Roses for Fall Planting.

Roses planted at this season immediately develop a strong growth of new roots and are, therefore, well established when the growing season again commences, producing a greater number of flowers and a more vigorous growth than spring planted stock could be expected to do.

Ample protection can be provided by drawing the soil around each plant to a height of twelve to fifteen inches. This should be top-dressed with a generous covering of leaves or litter, but not until after the soil has become thoroughly frozen; the object being to keep the soil frozen rather than to exclude frost.

Climbing roses may be readily protected by laying the growths on the ground and covering as above. Tree roses should be carefully bent over until the top can be covered on the ground and staked in this position. The stem, being entirely hardy, requires no covering.

For the convenience of our patrons, we have departed from the usual alphabetical arrangement of varieties, which necessitated the perusal of the entire list in ordering a desired color, and, as far as possible, we have segregated the distinct colors.

The varieties offered are, with few exceptions, strong two-year plants now established in five, six or seven inch pots and can be transplanted without suffering the slightest check. Many varieties not listed here can be supplied for spring planting.

**Heavy two-year plants from pots, ready for immediate planting, 50c. each, \$5.00 per dozen, \$35.00 per 100, except where noted.**



**Hadley**

*Let us submit plans, estimates and specifications for your rose garden.*

# Select Ever-Blooming Hybrid Tea Roses.

## Pink and Blended Shades

**Antoine Rivoire.** Soft, rosy flesh on a yellow ground; large, full and very free.

**Caroline Testout.** Bright satiny pink; large, full flowers; free and always reliable.

**Dean Hole.** Silvery carmine, shaded salmon; large flowers of excellent form.

**Jonkheer J. L. Mock.** Carmine, changing to imperial pink; large fragrant blooms and splendid growth.

**Killarney.** Bright sparkling pink, shading to white; long pointed buds of exquisite form, very fragrant.

**Killarney Queen.** Brilliant cerise, shading to light pink at the base of petals. An improved and more vigorous form of Killarney.

**Konigin Carola.** Satiny rose, reverse shaded silvery white; a very large, full rose.

**Maman Cochet (Tea).** Beautiful rose pink intermingled with bright rose; a splendid garden rose.

**Mme. Abel Chatenay.** Carmine rose shaded salmon; very free.

**Mme. Jules Grolez.** Bright china rose; large, full and very free.

**Mme. Paul Euler.** Vermilion silvery pink; well-formed, large blooms; fragrant.

**Miss Cynthia Forde.** Deep brilliant rose pink, with lighter shadings. Large, sweetly perfumed flowers of excellent form; very free.

**My Maryland.** Clear pink; a fragrant, free-flowering garden rose.

**Nerissa.** Creamy yellow, shaded with white; centre tinted peach.

**Souvenir de President Carnot.** Flesh, shaded white; large, full, and free.

**Viscountess Folkstone.** Creamy pink, centre shaded salmon.

**Willowmere (New).** Rich shrimp pink toning to carmine pink; beautiful oral red buds. A free-flowering rose of splendid growth resembling, and entirely superseding, the popular Lyon rose. Price, 75c. each, \$7.50 per doz.

**Wm. R. Smith (Tea).** Creamy white, suffused with bright rosy pink; a splendid, free-flowering garden rose of easy culture.

## White

**British Queen (New).** Pure white, tinged pink in the bud stage, opening color white; very fragrant. Price, 75c. each, \$7.50 per doz.

**White Killarney.** A pure white sport of Killarney, showing a slight trace of pink during the hot Midsummer days. Strong in growth, free flowering, and very fragrant.

**Mrs. Andrew Carnegie.** White, occasionally tinted lemon; very large, well-formed flowers.

## Yellow, Orange, and Salmon Shades

**Duchess of Wellington.** Intense saffron yellow, stained rich crimson, and changing to deep coppery yellow; fragrant and very free.

**Lady Cromwell.** A distinct cream-colored sport of My Maryland, shading to salmon.

**Lady Pirrie.** Coppery reddish salmon, mingled with apricot yellow and fawn; a splendid bedding rose.

**Mme. Chas. Lutaud.** Chrome yellow center, slightly tinted rosy scarlet on the outer petals. Beautiful, well-built flowers on good stems.

**Mme. Edouard Herriot (Daily Mail Rose).** A recent introduction of a unique and entirely new color among garden Roses. Vivid coral red, shaded with yellow in the bud form and changing to deep terra cotta or reddish copper as the flower opens. Deep glossy foliage, very free. Price, \$1.00 each, \$9.00 per doz.

**Mme. Leon Paine.** Silvery salmon, centre shading from yellow to orange; large, full flowers produced in profusion.

**Mme. Melanie Soupert.** Salmon yellow, suffused carmine; large, well-formed flowers.

**Mrs. Aaron Ward.** Deep Indian yellow, shading to primrose yellow, occasionally washed salmon pink in the open flower.

**Mrs. Charles E. Pearson (New).** Orange, flushed red, apricot, fawn and yellow; very free and fragrant.

Price, \$1.00 each, \$10.00 per doz.

**Mrs. F. W. Vanderbilt (New).** Deep orange red, shaded bronze apricot red; large flowers, free, and vigorous growth. Price, \$1.00 each, \$10.00 per doz.

**Old Gold (New).** Reddish orange with coppery yellow shadings. Semi-double flowers freely produced; foliage and growth vigorous and healthy. Price, 75c. each, \$7.50 per doz.

**Rayon d'Or.** Yellow carmine, toning to sunflower yellow; large full flowers.

**Sunburst.** Superb cadmium yellow with yellow orange centre; splendid form.

## SELECT EVER-BLOOMING HYBRID TEA ROSES (Continued)

### Red and Crimson

**Cardinal.** Rich cardinal red; large, full, and very free.

**Defiance.** Deep velvety crimson, shaded maroon; very free and fragrant.

**Ecarlate.** Intense brilliant scarlet; very floriferous; flowers semi-double. A splendid rose for massing.

**Edward Mawley.** A splendid bedding Rose; color beautiful, rich crimson, shaded velvety maroon. The flowers are of good substance and produced freely. Strong, vigorous growth.

**Geo. C. Waud.** Vermilion, shaded orange; free, fragrant, and of splendid form.

**Gruss an Teplitz.** Brilliant scarlet crimson; fiery red centre; always in bloom.

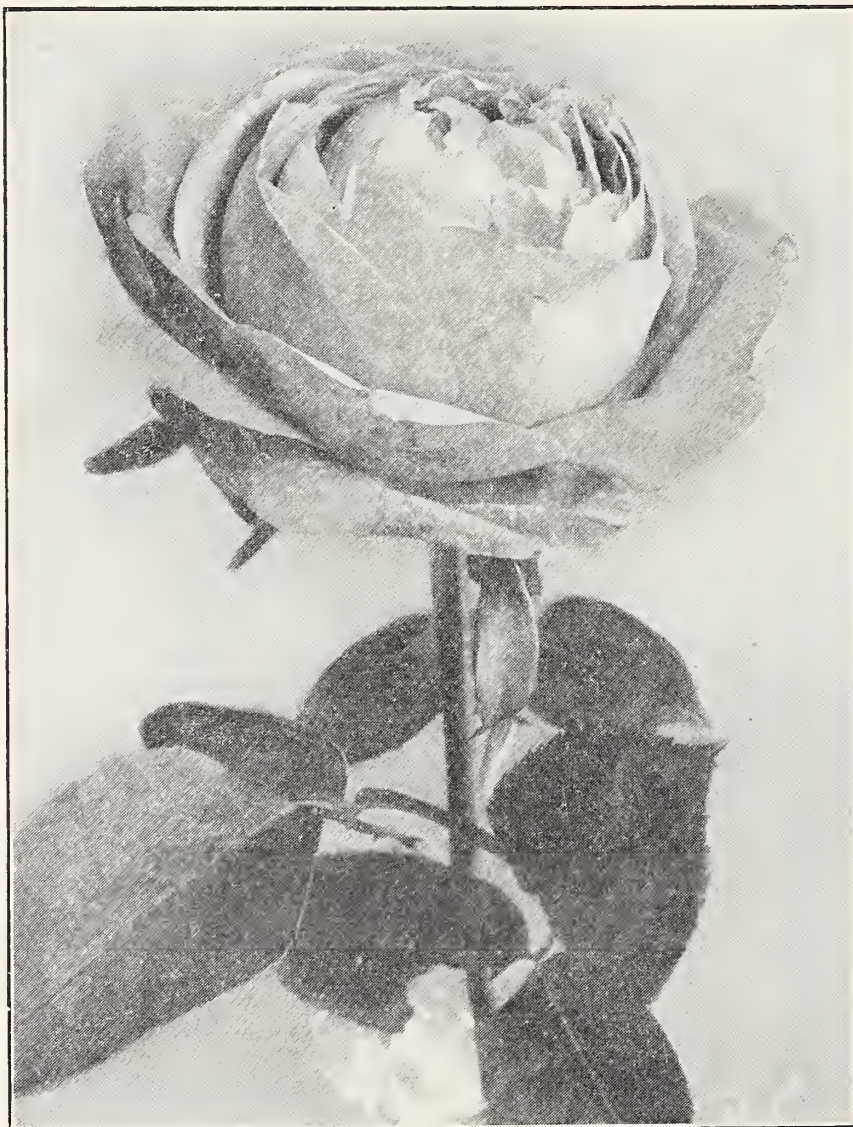
**Hadley (New).** Rich crimson varying to deep velvety crimson; very fragrant and free. A splendid new rose for garden ornamentation and cut flower purposes.

Price, 75c. each, \$7.50 per doz.

**Luise Lilia.** A charming semi-double rose of an intense blood red color; free, very fragrant.

## Hardy Remontant or Hybrid Perpetual Roses.

The varieties of this type are quite hardy and, while they require little attention when once established, they are benefited by a slight winter protection. A number of the varieties will produce splendid flowers during the Autumn and fall months. Price, 50c. each, \$5.00 per doz., \$35.00 per 100 except where noted.



Paul Neyron

### Pink

**Anne de Diesbach.** Clear, bright carmine rose; large fragrant flowers; autumn flowering.

**Baroness Rothschild.** Pale flesh; large, full superb flowers.

**Clio.** Delicate flesh, shaded pale pink; very showy.

**George Arends.** Delicate rose pink; large, full and fragrant; very free.

**Mme. Gabriel Luizet.** Light silvery pink; large, full flowers.

**Magna Charta.** Bright pink, suffused carmine; very hardy.

**Mrs. R. G. Sharman Crawford.** Clear, rosy pink shading to pale flesh; free and continuous.

**Oscar Cordel.** Brilliant rose pink varying to cherry; large, cupshaped flowers; autumn flowering.

**Paul Neyron.** Bright, shining pink, very large flowers; quite hardy and continuous in flowering.

**Suzanne Marie Rodocanachi.** Transparent rose pink; a distinct and attractive rose.

## HARDY REMONTANT OR HYBRID PERPETUAL ROSES (Continued)

### White

**Gloire Lyonnaise.** White, shading to pale lemon; large, full flowers.

**Frau Karl Druschki.** Pure white in color; perfect form, free and continuous. The best white garden rose.

**Madame Plantier.** Flowers pure white; very hardy. A popular rose for cemetery planting or massing among shrubs.

### Red and Crimson

**Alfred Colomb.** Bright cherry red, shaded crimson; fragrant and of firm globular form.

**Baron De Bonstetten.** Velvety blackish crimson; large and full.

**Captain Hayward.** Bright carmine crimson; large petals, fragrant and free.

**Fisher Holmes.** Rich crimson, shaded scarlet; one of the best in this color.

**General Jacqueminot.** This magnificent variety, known for over half a century as the Jack Rose, is still one of the best and most popular of the bedding Roses, and entirely too well known to require description. Flaming scarlet crimson.

**George Dickson (New).** Velvety black, shaded crimson, veined crimson maroon; fragrant and of splendid substance and form. A grand addition to this class. Price, 75c. each, \$7.50 per doz.

**Gloire de Chedane Guinoisseau.** Brilliant vermilion red, shaded velvety red; large, well-formed flowers.

**Hugh Dickson.** Brilliant crimson, shaded scarlet; splendid form.

**Prince Camille de Rohan.** Deep velvety crimson; full, fine form.

**Ulrich Brunner.** Cherry red; flowers large, full, and of globular form. A hardy and free-flowering garden rose of innumerable good qualities.

### Yellow or Shades of Yellow

**Soliel d'Or (Sun of Gold).** Orange yellow, varying to Nasturtium-red and reddish gold; large, full flowers. Very hardy.

**Juliet.** Large, full flowers of novel and distinct coloring. Outside of petals old gold, interior rich, rosy red, changing to deep rose as the flower opens. Fragrant and beautiful when well established.

## ROSA RUGOSA HYBRIDS

Exceedingly hardy roses of strong growth, useful for massing among shrubbery, forming hedges, or for cemetery or seashore planting. They flower well during the summer and are furnished with attractive glossy foliage. Price, 40c. each, \$4.00 per doz.

**Amelia Gravereaux.** Semi-double flowers of deep red color; vigorous growth.

**Blanc Double de Coubert.** Large, white, showy double flowers.

**Conrad F. Meyer.** Clear, silvery pink resembling La France rose; very vigorous growth; fragrant.

## MOSS ROSES

**Blanche Moreau.** Pure white; large, full, and fragrant.

**Crested Moss.** Beautiful rose pink, buds nicely mossed.

**Red Moss.** Scarlet crimson; very full.

Strong two-year plants from pots. 50c. each, \$5.00 per doz.

## BABY RAMBLERS AND DWARF TYPES

Strong two-year plants from 5-inch pots. Price, 40c. each, \$4.00 per dozen, \$30.00 per 100.

**Annchen Muller.** Brilliant rose pink; large flowers in clusters.



Baby Rambler

*We produce annually more rose plants than any firm in the country.*

**BABY RAMBLERS AND DWARF TYPES (Continued)**

**Bordure.** Attractive pink flowers in large clusters, very free; growth dwarf.  
**Cecile Brunner.** Bright rose, shaded pale pink; small double flowers of exquisite form.  
**Clothilde Soupert** (Tea Polyantha). Outer petals pure white, shading to a delicate pink centre; very free and hardy.  
**Ellen Poulsen.** Brilliant rose pink; large, full, fragrant flowers, in heavy clusters; very free.  
**Erna Teschendorf.** Brilliant carmine; very free.  
**Hermosa** (China). Large, double, fragrant flowers; very hardy.  
**Jessie.** Bright cherry red, clear white eye.

**Katharine Zeimet.** The white Baby Rambler.  
**Marie Pavic.** White, centre flushed rose; one of the best.  
**Mme. Norbert Levavasseur.** Rosy crimson; the original Baby Rambler.  
**Mrs. Wm. H. Cutbush.** Attractive shade of pale pink; large trusses, very hardy.  
**Orleans.** Bright cerise; distinct white eye; a fine variety.  
**Phyllis.** Carmine pink flowers produced continuously; one of the best.  
**Triomphe Orleanais.** Large, individual bright cherry red flowers in splendid trusses; a great improvement on the Baby Rambler.

**Hardy Climbing Roses.**

Price, 50c. each, \$5.00 per doz., \$35.00 per 100, except where noted.

**American Pillar.** Very large, single flowers produced in huge clusters. Clear pink with distinct white eye and bright yellow stamens.  
**Baltimore Belle.** Pale blush, passing to white; large clusters.  
**Christine Wright.** A splendid new Wichuriana Hybrid bearing large, double flowers of a most attractive wild-rose

pink color, both singly and in clusters, and remaining in flower for a long period. Growth strong and rugged.  
 Price, 75c. each, \$7.50 per dozen.

**Climbing American Beauty.** Rosy crimson flowers produced freely in June and occasionally throughout the season; growth vigorous. A splendid new rose. Price, 75c. each; \$7.50 per doz.



**Hiawatha, an attractive variety**

*Mask that unsightly spot with climbing roses.*



## HARDY CLIMBING ROSES (Continued)

**Crimson Rambler.** Heavy trusses of brilliant double crimson flowers.

**Dr. Van Fleet.** Flesh pink deepening to rosy flesh in the centre; large, full, double flowers carried on long stems resembling the popular Souvenir de President Carnot. Price, 75c. each, \$7.50 per doz.

**Dorothy Perkins.** Soft light pink flowers carried in beautiful clusters; strong vigorous growth and glossy healthy foliage; very hardy. A splendid variety.

**Excelsa** (Red Dorothy Perkins). Intense scarlet crimson; flowers very double and produced in immense trusses. The best red climber.

**Hiawatha.** Brilliant scarlet, clear white eye, flowering in large clusters; a brilliant and effective variety.

**Lady Gay.** Deep pink shading to soft pink in the open flower; similar to Dorothy Perkins.

**Leuchstern.** Bright rose, large white eye; splendid keeping qualities.

**Minnehaha.** Deep rose; very double flowers.

**Miss G. Messman.** A vigorous climbing form of the Baby Rambler, flowering profusely in June and more or less during the Autumn.

**Newport Fairy.** Deep pink, single flowers, shading lighter towards the centre; clusters large and profuse.

**Sodenia.** Brilliant carmine, shaded scarlet; large trusses and splendid keeping qualities.

**Tausendschon.** Large individual flowers of splendid form carried in trusses, varying in color from light to bright pink and rosy carmine; a charming climbing rose.

**White Dorothy Perkins.** A white counterpart of the lovely Dorothy Perkins and one of the best white climbing roses.

**Wich-Moss.** A climbing rose with daintily mossed buds; color pink with dark pink reverse; very fragrant.

**Wichuraiana.** The true Memorial rose. A splendid trailing species with pure white single flowers and showy yellow anthers; a good ground cover.

## Hardy Roses for 1916 Planting

**New Roses.** Each season brings its quota of new roses and their dissemination is eagerly anticipated by the more enthusiastic rosarians. We therefore present a few of the new roses that have already created favorable attention and which will be offered for Spring delivery in two sizes—large two-year field-grown plants and strong one-year plants, blooming size, from three and four inch pots, the former at the usual introductory prices, the latter at a price sufficiently low to bring the newer roses within the reach of all rose buyers. As new roses are necessarily carried in limited quantity, we list these sterling novelties in advance, thus enabling our patrons to order early and avoid possible disappointment in failing to secure much-desired varieties. Prices on application.

**Constance.** Good yellow roses are all too rare. Constance is a splendid addition to this color, and will be universally planted when sufficient stock is available, for it has the reputation of being the best yellow rose extant.

In the bud stage it is a delightful orange yellow mingled with crimson, opening into a large, full, globular-formed golden yellow flower. Very free and perpetual in flowering.

**Admiral Ward.** A splendid velvety crimson rose with fiery red shadings. Velvety black in the bud stage. Large, full globular flowers, and splendid erect habit.

**Primrose.** Large full flowers of splendid form and delicious fragrance. Color, deep melon yellow, intensified towards Autumn with apricot shadings. A grand garden and exhibition rose of erect, vigorous growth.

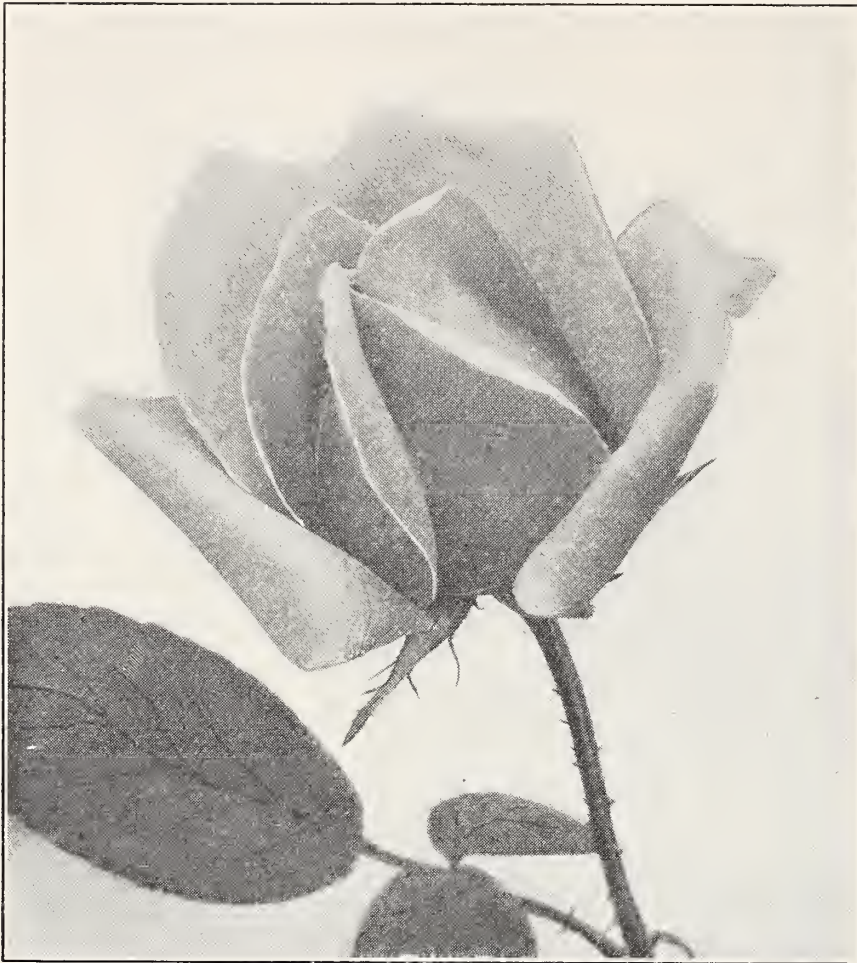
**National Emblem.** The introducers, Samuel McGredy & Sons, who have already given us so many splendid roses, state

that no rose yet introduced can compare with this novelty for beauty, usefulness and effect, it being as near perfection as can be attained in all-around qualities. Color, beautiful dark crimson, overlaid velvety crimson with vermilion shadings. Delightfully fragrant and absolutely mildew proof.

**Cheerful.** Color, pure orange flame, the flame overspreading the petal which, with a distinct orange yellow base, creates the color effect of a shaded electric light. In general form and character it surpasses Caroline Testout—one of the finest garden roses bred—with exactly the same habit of growth and size of bloom.

**Mrs. Ambrosia Riccardo.** A delightfully fragrant rose, varying from a deep, honey yellow, with a soft but glowing rosy suffusion, to a soft saffron-yellow. A magnificent free-flowering garden rose in every respect.

## HARDY ROSES FOR 1916 PLANTING (Continued)



**Primrose**

### **Madame Edouard Herriot.**

The Daily Mail Rose. This magnificent rose described more fully in our 1914 and 1915 General Catalogues, has, if anything, exceeded our fondest expectation in living up to its reputation as the most striking and distinct variety ever sent out. As it will, in our opinion, be planted by the thousands next season, we have secured a tremendous stock for early Spring delivery, but can supply strong plants for immediate delivery in limited quantity, as offered on page 17.

**Gorgeous.** The most charming color yet introduced. Deep orange yellow, flushed copper yellow, heavily veined with reddish copper. A bedding rose of excellent habit and an exhibition rose of the first magnitude.

**Louise Crette** (Hybrid Perpetual). This new rose has the reputation of being the largest and finest white rose yet introduced. Color, pure snowy white with creamy center. Free flowering and a splendid garden rose. Awarded numerous medals in France where it has been exhibited extensively.

**Madame Colette Martinet.** Golden yellow, changing to old gold shaded with orange yellow in the open flower. Long, well-formed buds, opening into medium-sized globular flowers. A free flowering garden and bedding rose.

In issuing our 1916 General Catalogue, we will offer a complete assortment of strong two-year old field-grown roses in dormant condition for delivery in April or as early as local planting conditions will permit. Many experienced planters have splendid success with dormant stock and prefer it to the easier handled plant established in pots, hence this departure.

Roses from pots—The same excellent quality that we have been sending out for planting from May onwards has given entire satisfaction and will be offered as usual.

---

*Inasmuch as these varieties are European productions which we are importing, we must reserve publishing prices until the publication of our Annual Catalog which is issued in mid-winter. Unsettled shipping makes this necessary.*

# Hardy Perennials.

## ACHILLEA, Milfoil or Yarrow

**Perry's White** (New). A splendid improvement on all other varieties, the individual flowers being twice as large and completely double, entirely concealing the center of the flower. The clear white sprays are excellent for cutting. A most useful plant for the border. Price 25c. each, \$2.50 per dozen.

**Ptarmica fl. pl. "Boule de Neige."** A more desirable and compact form of "The Pearl."

**Ptarmica fl. pl. "The Pearl."** Pure double white flowers; flowering freely during the Summer. Two feet.

### Millefolium roseum.

Price 15c. each, \$1.50 per doz., \$10.00 per 100, except where noted.

## ADENOPHORA. Gland Bell Flower

**Potanini.** Pale blue flowers on branching stems, resembling Campanulas. July and August. Eighteen to twenty-four inches. Price, 15c. each, \$1.50 per doz.

## AEGOPODIUM. Bishop's Weed

**Podograria variegata.** A rapid-growing perennial, with pretty green and white foliage; a good edging plant. One foot. Price 15c. each, \$1.50 per doz., \$10.00 per 100.

## AGROSTEMMA. Rose Campion

**Coronaria.** (Mullein Pink.) Bright crimson flowers, attractive silvery foliage.

**Coronaria Alba.** A showy white form of the preceding.

**Hybrida Walkeri.** Deep rosy crimson; distinct and desirable.

Price 15c. each, \$1.50 per doz., \$10.00 per 100.

## AJUGA. Bugle

**Reptans.** An excellent rapid-growing creeper for covering rough places. Does well in half shade. Blue flowers. May and June. Price, 10c. each, \$1.00 per doz., \$8.00 per 100.

**Hybrida Tottenhami.** A new hybrid variety, flowering more or less continuously. Attractive violet purple flowers. Price 20c. each, \$2.00 per doz.

## ALYSSUM. Madwort

**Argenteum.** Attractive silvery foliage; flowers bright yellow. May and July.

**Rostratum.** Bright golden yellow; somewhat shrubby in growth. Very desirable. Eighteen to twenty-four inches.

**Saxatile compactum.** (Gold Dust.) Yellow. An indispensable rockery or border plant, producing attractive, broad, flat heads of flowers in early Summer; fragrant. One foot.

Price 15c. each, \$1.50 per doz., \$10.00 per 100.

## ANCHUSA ITALICA. Alkanet

Handsome robust plants, with strong spikes completely covered with flowers of various shades of blue from June on. At home in a sunny position in the rear of the hardy border, or forming bold groups.

**Angustifolia.** Handsome heads of deep blue flowers. June to September. Price 15c. each, \$1.50 per doz.



Achillea Perry's White

**ANCHUSA ITALICA (Continued)**

- Dropmore Variety.** Deep sky blue, carried on fine pyramidal stems, growing to a height of five feet or more. June and July.
- Barrelieri.** Pretty, yellow-throated blue flowers. 15c. each, \$1.50 per doz.
- Myosotidiflora.** A handsome new species from the Caucasus, producing a myriad of rich blue Forget-me-not like flowers, during April and May. 35c. each, \$3.50 per doz.
- Opal.** A beautiful lustrous blue variety of the above. One of the finest herbaceous plants in this color.
- Perry's Variety.** Rich deep blue. Very effective.  
25c. each, \$2.50 per doz., except where noted.

**ANTHEMIS. Marguerite**

Free-flowering, showy, border and rock garden plants, thriving in the poorest of soils and flowering from June until September. Excellent for cutting.

- Nobilis.** Yellow disc, white rays. 12 inches.
- Tinctoria.** Large, golden yellow, daisy-like flowers; rugged, bushy growth. Fifteen to eighteen inches.
- Tinctoria Kelwayi.** A deep-colored form of the preceding.  
15c. each, \$1.50 per doz., \$10.00 per doz.

**ANEMONE. Wind-Flower**

The Japanese Anemones are undoubtedly the most prominent among the late Fall flowers and are unexcelled for cutting. We suggest early September planting, later planting being risky, and will supply strong plants from pots at that time.

- Japonica alba.** Immaculate, snowy white flowers.
- Rosea Superba.** Delicate silvery rose, medium large flowers.
- Alice.** Clear silvery rose, quite large flowers.
- Geante des Blanches.** Enormous pure white flowers, handsome glossy foliage. The best white. 25c. each, \$2.50 per doz.
- Queen Charlotte.** La France pink, good substance and form.
- Rubra.** Beautiful rosy red, bright yellow stamens.
- Whirlwind.** Large, semi-double, pure white foliage.  
15c. each, \$1.50 per doz. \$10.00 per 100, except where noted.

**AQUILEGIA. Columbine**

A popular subject, flowering during late Spring and early Summer. Quite hardy.

- Canadensis.** The native red and yellow variety. Splendid for the rockery.
- Californica hybrida.** Scarlet and yellow. Prominent spurs.
- Coerulea.** Bright blue, tinted lilac and white; long spurred.
- Chrysantha.** "Sutton's Long Spurred." A splendid strain with well developed spurs and beautifully blended colors.
- Nivea grandiflora.** Pure white; beautiful.
- Rosea nana plena.** Rose pink double flowers, dwarf habit.  
15c. each, \$1.50 per doz., \$10.00 per 100. Mixed varieties, \$1.00 per doz., \$7.50 per 100.

**ARABIS. Rock-Cress**

- Arabis alpina.** One of the finest plants for the border, rockery, or for edging; pure white flowers completely obscuring the foliage. April and May.
- Alpina fl. pl.** Sprays of pure white double flowers, produced abundantly. Very fragrant. 25c. each, \$2.50 per doz., \$15.00 per 100.
- Alpina nana compacta.** A compact form of *Arabis Alpina*.  
15c. each, \$1.50 per doz., \$10.00 per 100, except where otherwise noted.

**ARENARIA. Sand-Wort**

- Montana.** A splendid rock plant of the easiest culture, forming low cushions of large, snow-white flowers in June. 15c. each, \$1.50 per doz., \$10.00 per 100.

**ARRHENATHERUM**

- Bulbosum variegata.** A pretty dwarf decorative grass with green and white foliage. Eight inches. 15c. each, \$1.50 per doz.

**ARMERIA. Thrift**

Very pretty and useful plants for the rock garden or hardy border, producing quantities of flowers on wiry stems from six to nine inches in height.

- Formosa.** Light pink, large heads.
- Formosa alba.** An attractive white form.  
15c. each, \$1.50 per doz., \$10.00 per 100.

*The improved Hardy Asters are indispensable in the wild garden.*

**ARTEMISIA.**

**Lactiflora.** A new and distinct variety, producing stately spikes of fragrant Spiræa-like flowers from Autumn to October. Valuable. Four to five feet. 20c. each, \$2.00 per doz., \$15.00 per 100.

**Stelleriana** (Old Woman). Deeply cut silvery white foliage. Used extensively for foliage effects. Two feet. 15c. each. \$1.50 doz. \$10.00 per 100.

**ASPHODELUS. King's Spear**

An interesting border plant, with light grassy foliage, producing flowers in well-arranged spikes.

**Luteus.** Strong spikes of yellow flowers growing to a height of four feet. June and August. 15c. each, \$1.50 per doz., \$10.00 per 100.

**HARDY ASTER. Michaelmas Daisy**

**Abendrote** (Evening Glow). Bright, rosy red; very free. September and October. Two and one-half feet. 25c. each, \$2.50 per doz.

**Acris.** Violet blue, starry flowers, compact habit. August to September. Two and one-half feet.

**Bessarabicus.** Purplish blue, large flowers. August and September. Two feet.

**Beauty of Colwall**—Ageratum blue, double flowers on stout, erect stems. Distinct. Three to four feet. August. 20c. each, \$2.00 per doz.

**Colwall Pink.** A splendid new semi-double variety, clear pink in color. 25c. each, \$2.50 per doz.

**Lil. Fardel.** Bright mauve, very showy. September and October. Four feet.

**Mrs. F. W. Raynor.** Deep crimson, large flowers. September and October. Four feet.

**Spectabilis Nenco** (new). Deep lavender, flowers fully two inches across. Very fine. September. Two and one-half feet. 25c. each, \$2.50 per doz.

**St. Egwin.** Large, pure pink flat flowers, densely branched. Fine. September and October. Three feet. 25c. each, \$2.50 per doz.

**Thirza.** Pale blue, suffused pink, semi-double. September and October. Four to five feet.

**Thos. Ware.** Attractive rosy lilac, large flowers. One of the best. Three and one-half feet. 20c. each, \$2.50 per doz.

**HARDY ASTER (Continued)**

**Top Sawyer.** Parma violet, very effective. Well shaped flowers. September and October. Four feet.

15c. each, \$1.50 per doz., \$10.00 per 100, except where noted.

**BAPTISIA. False Indigo**

**Australis.** Dark blue, pea-shaped flowers in racemes and attractive foliage. A desirable specimen plant for the border or wild garden. 15c. each, \$1.50 per doz.

**BOLTONIA. False Chamomile**

**Asteroides.** One of the most effective late-flowering Perennials, producing Aster-like flowers in quantity. Very showy. Five to seven feet.

**Latisquama.** Pink, faintly tinged lavender. Five to six feet.

**Latisquama nana.** A dwarf form of Latisquama. Four feet.

15c. each, \$1.50 per doz., \$10.00 per 100.

**CAMPANULA. Bell Flower**

A splendid group of old garden favorites, some of which, however, give best results from Spring planting. We offer only the varieties that may be successfully planted during Fall.

**Carpatica.** Bright porcelain-blue flowers, compact dwarf growth. A good rock plant.

**Carpatica alba.** Pure white.

**Latifolia Macrantha.** Deep purple, large flowers. July and August. Two and one-half feet.

**Punctata.** White, spotted rose, May and June. Fifteen inches.

**Persicifolia** (Beach Bells). Erect slender stems, blue cup-shaped flowers. A splendid variety for the garden and most desirable for cutting. Two feet. June and July.

**Persicifolia alba grandiflora.** A pure white form of the preceding, and an improvement on the old white. June and July. Two feet.

**Persicifolia** (Late-blooming Hybrids). A new strain of splendid, vigorous habit, flowering later than Persicifolia. Blue and white. Two and one-half to three feet.

25c. each, \$2.50 per doz., extra large clumps, 35c. each, \$3.50 per doz.

**Rotundifolia** (Blue Bell of Scotland). Blue flowers on erect stems. Two and one-half feet. June and July.

15c. each, \$1.50 per doz., \$10.00 per 100, except where otherwise noted.

**CATANACHE. Greek Love Plant**

**Coerulea.** Attractive blue flowers. Two feet. June to August.

**Coerulea bi-color.** White, suffused purple. 15c. each, \$1.50 per doz., \$10.00 per 100.

**CENTAUREA. Perennial Cornflower**

**Dealbata.** Rose-purple flowers throughout summer. One and one-half to two feet.

**Macrocephala.** Large heads of golden-yellow thistle-like flowers. Four to five feet.

**Ruthenica.** Light yellow flowers and handsome foliage. Three to four feet. July and August.

**Montana.** Large violet blue flowers splendid for cutting. July and August. Two feet.

**Montana alba.** A good white form of the above. 15c. each, \$1.50 per doz., \$10.00 per 100.

**CERASTIUM. Snow in Summer**

**Biebersteinii.** Snowy white flowers in masses. Bright silvery foliage. An excellent border or rock garden plant.

**Tomentosum.** Rather smaller in leaf and flower than the preceding, and more compact. Pure white. 15c. each, \$1.50 per doz., \$10.00 per 100.



**Shasta Daisy Alaska**

**SHASTA DAISY. Chrysanthemum Maximum**

A most useful and effective group of plants, flowering from early July on. Splendid for massing and cutting purposes.

**Alaska.** A strong but compact-growing variety; flowers pure, glistening white, four to five inches in diameter; very free flowering.

**King Edward VII.** Enormous cup-shaped flowers, carried on strong stems. Pure, snowy white. Three to four feet. 15c. each, \$1.50 per doz., \$10.00 per 100.

**Mrs. C. Lowthian Bell.** A splendid variety with extra large flowers on strong stems, flowering throughout summer. 25c. each, \$2.50 per doz.

**Mrs. J. Tersteeg.** Large graceful flowers freely produced. One of the tallest varieties. Three to four feet. 20c. each, \$2.00 per doz.

**Westralia.** Large, semi-double, creamy-white flowers, borne in great profusion. Branching habit. 15c. each, \$1.50 doz., \$10.00 per 100, except where noted.

**CHRYSANTHEMUM. Arctic Daisy**

**Articum.** A splendid variety from Arctic Alaska, flowering from September on in great profusion. Height, fifteen inches. 20c. each, \$2.00 per doz.

**DELPHINIUM. Hardy Larkspur**

A noble subject for grouping in the hardy border. The strong spikes of large flowers vary from pale to deep indigo blue, and now include the much desired pure white. Perfectly hardy and readily established.

**Belladonna.** Lovely sky blue; distinct and very free; branching habit. Three feet. 25c. each, \$2.50 per doz.

**Belladonna Hybrids.** Varying from light to dark blue, containing many beautiful shades.

**Chinense.** A very attractive dwarf, blue-flowering variety, with fine-cut, feathery foliage. Eighteen inches.

**Chinense alba.** A pure white form of the above. Very free and desirable.

**Chinense (Blue Butterfly).** An excellent bright blue variety of dwarf habit. Very free.

**DELPHINIUM (Continued)**

**Chinense grandiflora alba.** A more vigorous and erect form of alba.

**Kelway's Exhibition Hybrids.** Undoubtedly the finest strain of mixed Hybrids obtainable. Plants strong and vigorous, the flower spikes averaging two feet or over. Colors ranging from deep to light blue.

15c. each, \$1.50 per doz., \$10.00 per 100, except where noted.

**DIANTHUS BARBATUS. Sweet William**

There is a vast difference in the improved strains of this old-fashioned favorite, and those usually found in gardens. The enormous trusses, with their rich coloring, are unequaled among hardy garden plants, and their unusual effectiveness would warrant their more extensive use for bedding and grouping. The best results are obtained from Fall planting, when a light mulch of strawy manure should be provided. We offer a selection that cannot be surpassed.

**Pink Beauty.** A beautiful salmon shade of pink; distinct.

**Scarlet.** Intense glowing scarlet; very effective.

**Giant White.** Enormous trusses of purest white.

**Harlequin.** Individual flowers made up of various bright shades; excellent for massing.

**Pheasant's Eye.** Large heads of rich crimson flowers, each showing a distinct white eye.



**Sweet William**



**Delphinium Chinensis**

**DIANTHUS BARBATUS (Continued)**

**Deep Crimson.** Deep, rich crimson; enormous flower trusses; one of the most striking colors when massed.

15c. each, \$1.50 per doz., \$8.00 per 100.

**DIANTHUS. Hardy Pinks**

**Deltoides** (Maiden Pink). Prostrate growth; pretty pink flowers in masses.

**Alba.** A pretty pure white form.

**Deltoides Brilliant.** A new variety, showing a decided improvement on Deltoides in depth of color. 25c. each, \$2.50 per doz.

**Latifolius atrococcineus fl. pl.** An excellent ever-blooming variety producing quantities of brilliant, crimson double flowers. A most useful bedding or border subject.

**Plumarius** (Garden Pinks). A choice selection of mixed colors; spicy fragrance. Excellent for bordering and massing.

**Plumarius nana fl. pl.** (Double-flowering Spice Pinks). A new strain containing beautiful colors and markings, and a large percentage of double, beautifully fringed flowers. Very fragrant.

15c. each, \$1.50 per doz., \$8.00 per 100, except where noted.

**DIELYTRA. Bleeding Heart**

(See Bulbs)

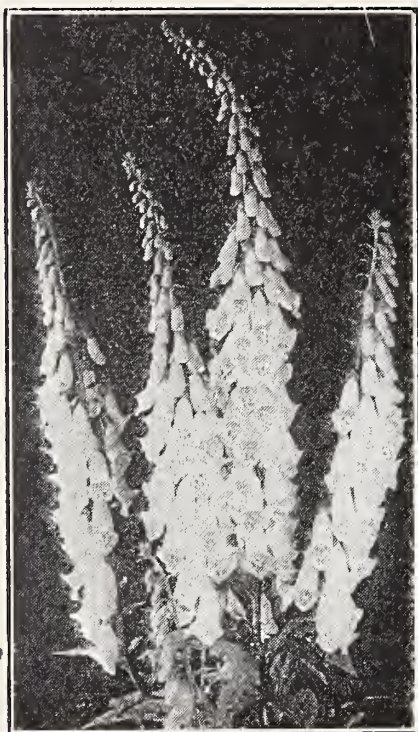
**DIGITALIS. Foxglove**

**Gloxiniæflora.** A beautiful strain of finely spotted flowers. White, purple, rose, or mixed colors.

**Grandiflora (Ambigua).** Pale yellow flowers, brown veinings; showy.

**Monstrosa (Mammoth-flowered).** Strong, well-flowered spikes terminating in one large flower. Mixed colors.

15c. each, \$1.50 per doz., \$10.00 per 100.



Fox Glove

**ECHINOPS. Globe Thistle**

**Bannaticus.** Deep blue flowers; strong, branching growth. Five feet.

**Humilis.** A dwarf species; heads of bright blue flowers. Two feet.

**Ritro.** Interesting globular flowers in deep blue, solid heads. Three feet.  
25c. each, \$2.50 per doz.

**EREMURUS**

**Robustus.** Peach color. Six to nine feet. June and July. A very rare and interesting plant. It requires rich and well-drained soil and must be protected during the Winter. Each \$1.00.

**ERIGERON. Flea Bane**

Low-growing, Aster-like plants of easiest culture; very effective for massing in the border or rockery.

**Coulteri.** Strong, compact plants, completely covered with white, Daisy-like flowers, from June to August. Twelve to eighteen inches.

**Grandiflora elatior.** A handsome distinct form, with large, lavender-colored flowers. Eighteen inches.

15c. each, \$1.50 per doz.

**ERYNGIUM. Sea Holly**

Interesting border plants of bold, rugged outline, flowering from July to September. Effective for mass planting, intermingling with Shrubs, or for wild garden effects. Very useful for cutting purposes.

**Pandanifolium.** An interesting border plant of rugged character, attaining a height of five feet. Resembling a Pandanus somewhat. 15c. each, \$1.50 per doz.

**EUPATORIUM**

**Ageratoides.** Pure white flowers, produced freely in heads. An excellent plant for the border or wild planting. Vigorous growth. Four feet. August to September.

**Coelestinum.** Similar to the above; light blue flowers in quantity. Two and one-half feet. August to October. 15c. each, \$1.50 per doz., \$10.00 per 100.

**FUNKIA. Plantain Lily**

Broad, heavy-leaved plants, producing massive clumps of foliage that are attractive when grouped in the border or used for edging, succeeding equally well in shade or full sun. Interesting Lily-like flowers.

**Coerulea.** Broad, handsome, green leaves; light blue flowers.

**Robusta elegans variegata.** The most robust and attractive of the variegated leaved kinds; large, green foliage, variegated white.

25c. each, \$2.50 per doz., \$15.00 per 100.

**Subcordata grandiflora.** Handsome spikes of large, pure white, fragrant blossoms. Broad, glossy, light green leaves.

**Undulata media picta.** Foliage variegated green and white; flowers purple, very attractive.

15c. each, \$1.50 per doz., \$10.00 per 100, except where otherwise noted.

*Shady, barren locations, usually difficult to treat, make ideal spots for rock planting.*



**GAILLARDIA. Blanket Flower**

**Grandiflora.** An exceptionally hardy and showy plant. The brilliant coloring of the flowers and its free-flowering qualities in any location or soil make it invaluable for massing or bordering.

**Grandiflora maxima.** Large petals, variably marked with crimson, orange and vermilion, surrounding a dark brown center.

**Kelway's Exhibition strain.** A selection from exhibition varieties only, obtained direct from the grower. Admittedly the best strain in existence.

15c. each, \$1.50 per doz., \$10.00 per 100.

**GALEGA. Goat's Rue**

Erect branching plants, with spikes of Pea-shaped flowers. Excellent for border planting.

**Bicolor Hartlandii.** Attractive heads of light blue flowers, lips shaded lavender. Four feet. July and September.

**Officinalis.** Lilac flowers carried on branching stems. Four feet.

**Officinalis alba.** A pure white form of the preceding.

15c. each, \$1.50 per doz., \$10.00 per 100.

**GEUM. Avens**

**Atrosanguineum fl. pl.** A useful and attractive plant for the hardy border or rock garden. Showy, blood-red flowers, produced in graceful profusion. Two feet.

**Coccineum** (Mrs. W. J. Bradshaw) (New). Brilliant, double crimson flowers. A great improvement. 25c. each, \$2.50 per doz.

**Heldreichii splendens.** Large, deep, orange-colored flowers, produced freely from May to October. Twelve inches. 15c. each, \$1.50 per doz., \$10.00 per 100 except where otherwise noted.

**GLOBULARIA. Globe Daisy**

**Trichosantha.** A pretty compact growing plant, suitable for rock garden planting or bordering. Blue Daisy-like flowers and attractive green foliage. 15c. each, \$1.50 per doz., \$10.00 per 100.



Gaillardia

**GYPSOPHILA. Baby's Breath**

The Gypsophilas are plants of the easiest possible culture, preferring an open, rather dry location. Flowering in masses of graceful, misty-like blossoms, they are very desirable for border plantings. The flowers when cut are excellent for making up garden bouquets. The new *Paniculata fl. pl.* if cut and dried, will retain its beauty for several months.

**Paniculata.** Flowers in masses of minute, pure white blossoms. A fine, decorative or cut flower subject. 15c. each, \$1.50 per doz.

**Paniculata fl. pl.** A beautiful, double flowering form; pretty little rosette-like blossoms in heavy panicles. 25c. each, \$2.50 per doz.

**Repens.** A very pretty trailing plant for the rockery. Small white flowers in quantity during July and August. 20c. each, \$2.00 per doz.

**HELIOPSIS. Orange Sunflower**

**Pitcheriana.** Deep, golden yellow, Sunflower-like blossoms from July to September. Three feet. 15c. each, \$1.50 per doz., \$10.00 per 100.

**Scabra Zinniflora.** A new double-flowering form, somewhat resembling a Zinnia; golden yellow flowers during July and August. Height two feet. 20c. each, \$2.00 per doz.

*The Giant Flowering Marshmallow forms a splendid screen planting.*

**HEMEROCALLIS. Day Lily**

☐ Beautiful, hardy, border plants, belonging to the Lily family; handsome fragrant flowers, produced in abundance. Very hardy and of the easiest culture.

**Fulva.** Large, orange-bronze, trumpet-like flowers. Three feet. June and July.

**Fulva fl. pl.** A good, double-flowering form of the preceding variety. June and July.

**Gold Dust.** Bright Indian-yellow color; buds and reverse of petals bronzy gold. Very free flowering. Two and one-half feet. May and June.

**Thunbergii.** Rich buttercup-yellow; attractive, funnel-shaped flowers. One of the latest to flower. Four feet.

**Aurantiaca major.** A fine Japanese introduction of vigorous habit. Large, deep orange-colored flowers freely produced. Two feet. June and July.

25c. each, \$2.50 per doz.

**Apricot.** Rich, golden-yellow blossoms; deliciously fragrant. A lovely new variety. Two and one-half feet. June

25c. each, \$2.50 per doz.

15c. each, \$1.50 per doz., except where otherwise noted.

**HEUCHERA. Alum Root**

Dwarf border or rockery subjects, with graceful, long-stemmed flowers produced in airy panicles from June to September. An excellent cut flower.

**Gracillima.** Panicles of pretty rose-tinted flowers on slender stems.

**Sanguinea alba.** Loose, graceful spikes of pure white.

**Sanguinea splendens.** Bright attractive crimson.

15c. each, \$1.50 per doz., \$10.00 per 100.

**HOLLYHOCK. Althaea Rosea**

Like the Fox-glove or Canterbury Bell, the majestic spikes of the Hollyhock are essentially a part of the old-fashioned garden. The vigorous growth and noble aspect make it a desirable plant for any location, be it in the hardy garden, mixed border, or planted in bold groups on the lawn. They require a deep, rich soil, and are particularly at home in a sunny corner. An occasional spraying of Bordeaux Mixture should be applied if rust appears on the foliage, and a sprinkling of lime added to the soil when cultivated.

**HOLLYHOCK (Continued)**

**Double Varieties.** In separate colors, as follows: White, Rose, Yellow, Red, Maroon, and in mixed colors.

**Single Flowering.** The single varieties are more vigorous, free-flowering, and more artistic in petal arrangement. Mixed, all colors.

**Alleghany.** Mammoth flowers of loose petal arrangement. The colors vary from the palest shrimp pink to deep red, and appear as if made from the finest China silk. The plants are of vigorous growth and bear gigantic spikes.

15c. each, \$1.50 per doz., \$12.00 per 100.

**HIBISCUS. Giant Flowering Marshmallow**

A greatly improved form of the native marshmallow with large flowers averaging ten to twelve inches in diameter and of gorgeous coloring. The growth will attain a height of from six to seven feet. Flowers from June to late autumn and is quite hardy and useful for planting in any location. A splendid water edge plant. Colors red, pink, or white. Strong three-year old roots, 50c. each, \$5.00 per doz.; extra large four-year old roots, \$1.00 each, \$9.00 per doz.

**IBERIS. Hardy Candytuft**

The densely clustered flower heads completely obscure the evergreen foliage in Spring; an excellent plant for bordering and massing in the garden or rockery.

**Gibraltarica.** Large, showy, white flower heads, slightly tinged with lilac.

**Sempervirens.** Spreading habit of growth, flowers pure white and produced in profusion.

**Sempervirens.** (Little Gem.) Dwarf, compact plant, flowering freely. Pure white.

15c. each, \$1.50 per doz., \$10.00 per 100.

**INULA**

**Ensifolia.** An extremely free-flowering dwarf plant, bearing quantities of bright yellow flowers. Nine inches. July and August. 15c. each, \$1.50 per doz.



Japanese Iris

**IRIS KAEMPFERI. Japanese Iris**

These gorgeous Irises are the most delicately beautiful of all our Summer flowering plants. They commence flowering late in June, a time when hardy flowers are most welcome. They thrive in any garden soil, but respond generously to a rich soil and plenty of water. Beds of Japanese Iris are easiest to handle if slightly countersunk. The following list comprises the most attractive varieties.

**Gekka-no-nami** (Waves Under Moonlight). Earliest to bloom, and the choicest white. Very free. Glistening white, with creamy-white stigmas.

**Momi-yi-no-taki** (Maple Waterfall). A choice, double, variegated variety; bright crimson purple, beautifully feathered in white. Petaloid stigmas white, purple crested.

**Purple and Gold.** Enormous double flowers, often ten inches across; early and free blooming; one of the very best varieties. Color rich violet purple with white petaloids tipped violet. The conspicuous golden throat extending outward in sharp bluish-white rays strongly suggests a bearded wheat head.

**Gold Bound.** A fine, double, pure white, with gold-banded center.

**Hanna-no-Nishiki** (Flower Embroidery). Six to eight petals in conical arrangement, with well-developed petaloids, make this sort the most fully double in the collection. Color a distinct claret pink, with fine, white veins.

**Eclipse.** Velvety claret red, shaded violet, with prominent throat markings in pure gold. Flowers extremely large, with six wide petals, and petaloid stigmas so fully developed as to make an extra row at the center. Special.

**Mahogany.** Large, double flowers: the latest to bloom. Purple, mahogany red; the erect petaloids prettily crested. 25c. each, \$2.50 per doz., \$15.00 per 100.

**IRIS GERMANICA. German Iris**

The German Irises are not only exceedingly beautiful and decorative, but are of the easiest possible culture, thriving in any reasonably good soil. A mulch of well-rotted manure should be applied in Winter. We list only the more select varieties. The best results are obtained from Fall planting.

**Aurea.** Standards and falls clear rich yellow; very beautiful.

**Florentina alba.** Standards and falls soft gray, shading to white; very free flowering.

*We carry a large assortment of German Iris, in addition to those above.*

### IRIS GERMANICA (Continued)

**Honorabilis.** Standards golden yellow; falls mahogany brown.

**Kharput.** Standards light blue, falls dark violet blue. Very large and fragrant. 20c. each, \$2.00 per doz.

**Pallida** (Queen of May). Lovely soft rosy lilac, almost pink. Strong in growth. 20c. each, \$2.00 per doz.

**King of Iris** (New). Standards clear yellow; falls very large, deep satiny brown, with a broad border of golden yellow. A very desirable novelty. 35c. each, \$3.50 per doz.

**Lohengrin.** Lilac rose, almost pink. An improved Queen of May. 35c. each, \$3.50 per doz.

**Maori King.** Standards golden yellow, falls deep velvety crimson. A neat dwarf growing variety.

**Pallida Dalmatica.** One of the finest of the German Irises. Strong, vigorous habit; exceptionally large, fragrant flowers; standards lavender, falls lavender, tinged purple. A variety of unusual merit. 25c. each, \$2.50 per doz.

**Pallida Dalmatica variegata.** This rare variety is a cleanly marked form of the preceding. The foliage is beautifully variegated, white and golden yellow, and is extremely attractive at all times. Growth vigorous and very decorative in character. 35c. each, \$3.50 per doz.

**Princess Victoria Louise.** A fine new variety. Standards sulphur yellow; falls violet red. 35c. each, \$3.50 per doz.

**Spectabilis.** Light and deep violet purple; free and early blooming. 15c. each, \$1.50 per doz., \$10.00 per 100, except where otherwise noted.

### IRIS. Other Types

**Orientalis** (Snow Queen). An exquisite new Iris; similar to but flowering earlier than the German Iris. Pure snow-white; graceful foliage. 25c. each, \$2.50 per doz.

**Ochroleuca gigantea.** A handsome species, growing to a height of five feet. Excellent for naturalizing near the water's edge. Strong foliage. Flowers, white, 25c. each, \$2.50 per doz.

**Pseudacorus** (Water Flag). A semi-aquatic variety, useful for marsh or water edge planting. Yellow, shaded orange. Three feet. May and June. 15c. each, \$1.50 per doz.

### LAMIUM. Variegated Nettle

**Maculatum.** A low-growing, very hardy plant useful as a cover for barren locations. Purple flowers and variegated foliage. 15c. each, \$1.50 per doz., \$10.00 per 100.



German Iris

*The Kansas Gay Feather (Liatris pycnostachya) is as unique as it is attractive.*

### LIATRIS. Gay Feather or Blazing Star

An attractive and interesting border subject, producing large, showy spikes on which the flowers commence opening from the top instead of from the base, as is usual in spike-bearing varieties.

**Pycnostachya.** Flower spikes densely clothed with light, rosy purple flowers. Four to five feet. August and September. 15c. each, \$1.50 per doz.

**Graminifolia dubia** (new). Light, grassy foliage, rosy purple flowers. Two feet. August to September. 35c. each, \$3.50 per doz.

### LINUM. Flax

**Arboreum.** A compact, miniature evergreen shrub, with clean, shiny foliage; bright yellow flowers. Twelve inches. June to September.

**Flavum.** Bright yellow flowers in mid-summer. A showy border or rock plant. Twelve inches.

15c. each, \$1.50 per doz.

### PERENNIAL LOBELIAS

Very showy subjects, doing well under usual garden conditions, but preferring a deep, moist location. Invaluable for naturalizing along the water's edge or for moist spots in the wild garden.

**Cardinalis.** Fiery cardinal-red flower spikes, produced in great profusion. One and one-half to two feet. August to September.

**Syphilitica coerulea.** Attractive blue flowers carried on branching, leafy stems. Two feet. July to September.

15c. each, \$1.50 per doz., \$10.00 per 100.

### LUPINUS. Lupines

Stately plants, producing long spikes of Pea-like flowers in wonderful profusion. An excellent border subject.

**Arboreus** (Snowflake). Masses of pure white flowers from July to September. Three to four feet.

**Polyphyllus roseus.** Strong spikes of soft rose pink flowers; very good. Three and one-half feet.

**Polyphyllus alba.** Showy white spikes. An excellent border plant. Five and one-half feet. August to September.

**Moerheimi.** Light and dark shades of pink. Immense spikes.

25c. each, \$2.50 per doz.



**Lyclime Haageana fulgens**

### LYTHRUM. Loosestrife

**Roseum superbum.** Vigorous-growing plant. At home in almost any location; suitable for moist locations. Showy spikes of rosy purple flowers. Three feet. July to September. 15c. each, \$1.50 per doz., \$10.00 per 100.

### LYCHNIS. Campion

Useful border plants of the easiest culture; attractive, showy flowers.

**Chalcedonica** (Single Scarlet Lychnis). Large heads of bright scarlet flowers, produced from July to September. Two to three feet.

**Haageana fulgens.** Dwarf growth. Showy, scarlet flowers throughout the season.

**Haageana hybrida.** A strain of the above, embracing numerous desirable colors.

**Viscaria fl. pl.** Double flowers of a bright, dark rose; neat habit. An excellent border or rock plant. Twelve inches.

15c. each, \$1.50 per doz., \$10.00 per 100.

### LYSIMACHIA. Loosestrife

**Clethroides.** Racemes of fragrant, recurving, white flowers; handsome foliage. A good border subject. July to September. Three feet. 15c. each, \$1.50 per doz.

### MONARDA. Oswego Tea

**Didyma Cambridge Scarlet.** A decided improvement on the type. Vivid scarlet crimson; foliage highly scented. One of the most showy border plants during July and August. Three feet. 15c. each, \$1.50 per doz., \$10.00 per 100.

*Oriental Poppies are most successfully planted in early fall.*

**OENOTHERA. Evening Primrose**

Showy plants of the easiest possible culture, doing well in any exposed location in the border or rockery, and flowering almost throughout the season.

**Fraseri.** Large, golden-yellow flowers and attractive foliage. Two feet.

**Missouriensis (Macrocarpa).** Dwarf, trailing variety, producing large, golden-yellow flowers. Nine to twelve inches.

**Pilgrimi.** Clusters of pale yellow flowers; erect stems. One foot.

**Pusilla.** Small, yellow flowers in large clusters. One foot.

**Speciosa.** A new variety of light, graceful habit; satiny white flowers in lovely sprays.

**Speciosa rosea.** A showy, bright rose-colored form of the preceding variety. 25c. each, \$2.50 per doz.

**Eldorado.** Pure golden-yellow, attractive and very free.

15c. each, \$1.50 per doz., \$10.00 per 100 except where otherwise noted.

**PACHYSANDRA**

**Terminalis.** An attractive trailing plant with handsome glossy dark green foliage which remains on the plant throughout the winter. Does well under seemingly impossible conditions—full sun, shade or dry location. Easily the most desirable subject for bordering or forming a dense, low-growing ground cover.

15c. each, \$1.50 per doz., \$12.00 per 100.

**PAPAVER NUDICAULE. Iceland Poppy**

A neat, compact Arctic plant; delicate fern-like foliage; cup-shaped flowers, appearing throughout the season in a charming and delicate range of colors. Excellent for the border or rockery.

**Nudicaule.** Neat habit, forming a tuft of bright green, Fern-like foliage; cup-shaped flowers in white, yellow and orange throughout the season.

**Nudicaule coccineum fl. pl.** A semi-double form of the preceding; orange scarlet.

15c. each, \$1.50 per doz., \$8.00 per 100.

**PAPAVER ORIENTALE  
Oriental Poppy**

The most gorgeous and dazzling of all our perennial plants. The enormous flowers, so rich and brilliant in coloring, are unequalled for either garden or interior decorating. They are of the easiest possible culture and do well under the most adverse conditions, but are at their best in a deep, rich soil. The plants die back after flowering and reappear in late September, during which period they should remain undisturbed.

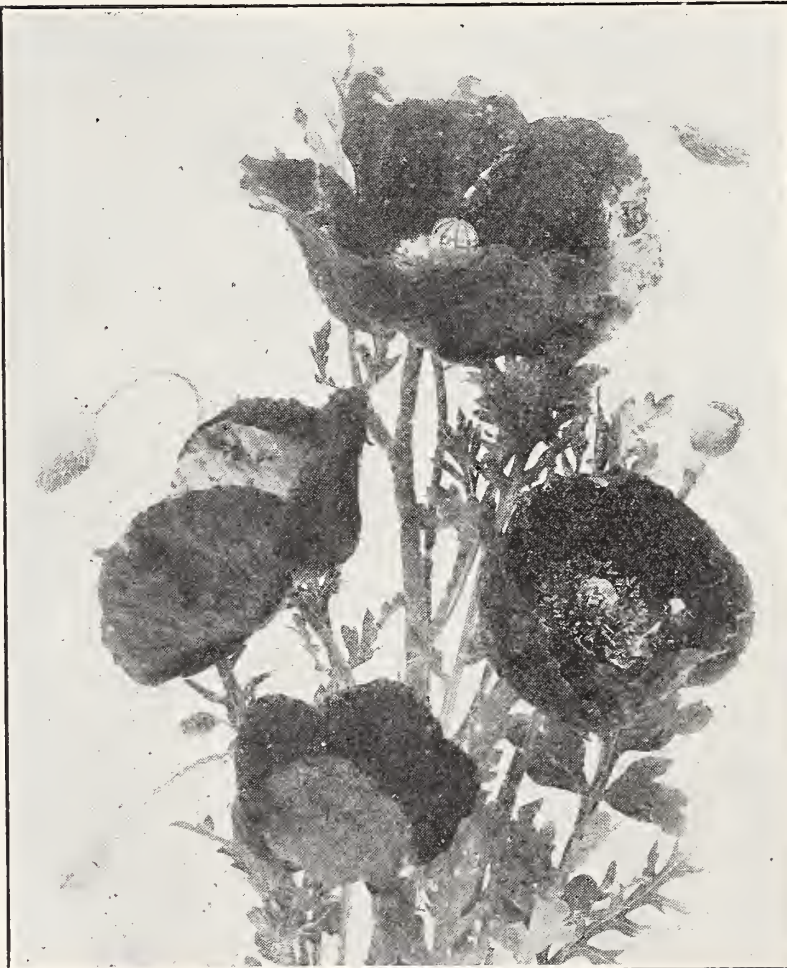
**Goliath.** The largest and most showy Poppy grown. Brilliant, fiery scarlet.

**Mahony.** Dark, crimson maroon, shaded mahogany.

**Mrs. Perry.** A delightful shade of salmon rose; the best in this color.

**Choice Mixed Varieties.** 15c. each, \$1.50 per doz., \$10.00 per 100.

25c. each, \$2.50 per doz., except where otherwise noted.



**Oriental Poppy Goliath**

# Cromwell Gardens Choice Paeonies

The double Chinese Pæony, the undisputed "Queen of all Spring Flowers," is undoubtedly one of the easiest and most satisfactory subjects for garden decoration. Once planted, they can remain undisturbed for years, each season increasing in size and wealth of bloom. They are entirely hardy and, while preferring an open location, give excellent results in partial shade. In planting, a rich, well-manured soil should be used and the crown should be near the surface, not more than an inch of covering being required. Deep planting is usually the cause of Pæonies not flowering. The varieties offered are selected from the hundreds now in commerce and are entirely reliable Pæonies should be planted during September and early October.

**Asa Gray.** Attractive pale lilac, sprinkled with minute dots of deeper lilac. Very distinct and valuable. 50c. each, \$5.00 per doz.

**Marguerite Gerard.** Pale hydrangea pink, shading to white, center minutely flecked dark carmine. Free. Late bloomer. Extra fine, \$1.50 each, \$15.00 per doz.

**Achille.** Beautiful soft mauve rose, shading to white. 25c. each, \$2.50 per doz. Extra large, 50c. each, \$5.00 per doz.

**Mme. de Verneville.** Blush centre opening pure white; flowers beautifully formed; fragrant and free. 50c. each, \$5.00 per doz.

**Couronne d'Or.** Pure white, one of the finest late-flowering varieties. 50c. each, \$5.00 per doz. Extra large, \$1.00 each, \$10.00 per doz.

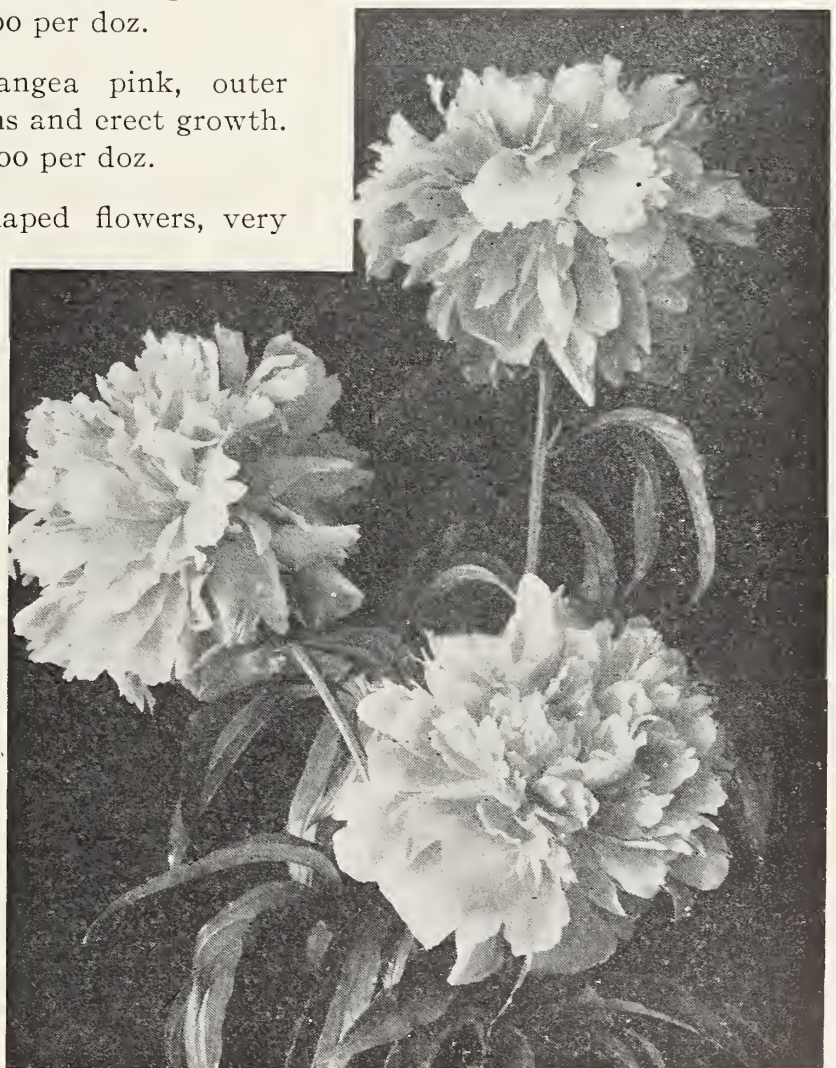
**Eugene Verdier.** Pale, hydrangea pink, outer petals lilac white; strong stems and erect growth. Very free. \$1.00 each, \$10.00 per doz.

**Felix Crousse.** Large ball-shaped flowers, very bright red. One of the best in this color. 50c. each, \$5.00 per doz. Extra large, \$1.00 each, \$10.00 per doz.

**Festiva Maxima.** Immense flowers, pure white center, flecked crimson. Very free. One of the finest early varieties. 50c. each, \$5.00 per doz. Extra large, \$1.00 each, \$10.00 per doz.

**Humei.** Beautiful rose pink; large, compact flower. Late. 25c. each, \$2.50 per doz. Extra large, 50c. each, \$5.00 per doz.

**Louis Van Houtte.** Bright crimson maroon flower of good size. 25c. each, \$2.50 per doz. Extra large, 50c. each, \$5.00 per doz.



Pæonies

*The improved Sweet Williams are magnificent for early Summer mass effect.*

**PÆONIES (Continued)**

**Mme. Jules Elie.** Silvery pink, large fragrant flower. A splendid variety. 75c. each, \$7.50 per doz.

**Marie Lemoine.** A late-flowering, ivory white, occasionally showing carmine tracings on the petal edges. Enormous flowers are borne on heavy, erect stems, standing well above the foliage. Excellent in every respect. 75c. each, \$7.50 per doz. Extra large, \$1.25 each, \$12.00 doz.

**Prince Imperial.** Amaranth red to Tyrian rose. Very large flower. 50c. each, \$5.00 per doz.

**Queen Victoria.** Large, full, compact bloom, with broad guard petals, opening flesh white to pure white. Early. 25c. each, \$2.50 per doz., Extra large, 50c. each, \$5.00 per doz.

**PÆONY. Officinalis**

This old-fashioned type is desirable on account of its early-flowering, coming into bloom some two weeks before the above varieties. The flowers are large, full, very fragrant, and decidedly attractive in the garden of old-fashioned border.

**Alba.** Blush white.

**Rosea.** Soft, bright rose.

**Rubra.** Deep, dark crimson.

30c. each, \$3.00 per doz.

Extra large, 50c. each, \$5.00 per doz.

**PENTSTEMON. Beard Tongue**

Graceful and showy perennials for the border or rockery.

**Barbatus Torreyi.** Tall spikes of brilliant scarlet flowers. A charming and effective border plant.

**Digitalis.** Large spikes of pure white flowers; throat spotted. Two to three feet. June to July.

**Heterophyllus.** Beautiful azure blue; dwarf habit.

15c. each, \$1.50 per doz., \$10.00 per 100.



**Pentstemon Barbatus Torreyi**

**PHALARIS. Variegated Ribbon Grass**

**Arundinacea variegata.** Clean, variegated foliage; excellent for bordering. One and one-half to two feet. 15c. each, \$1.50 per doz.

**PHYSOSTEGIA. False Dragon Head**

A beautiful border subject, flowering in midsummer, forming robust plants. Four to five feet high. Attractive foliage.

**Speciosa.** Very delicate pink in dense panicles.

**Speciosa alba.** A splendid pure white form.

**Speciosa Carnea.** Deep rosy pink.

15c. each, \$1.50 per doz., \$10.00 per 100.



## Hardy Perennial Phloxes

The Phlox is undoubtedly one of the most popular and satisfactory of our present-day garden or border plants. Not many years back there were few varieties worth considering and these were grown in a limited way. Decided improvement in the size of flower, habit of growth, and the addition of practically every desirable color has placed the Phlox in a prominent position among perennials, and today they are commercially grown by the acre. While there are hundreds of varieties in commerce, we have, by a most rigid selection, eliminated every kind that is not entirely distinct and desirable, keeping only the best in their respective colors. We offer a select assortment that includes the very cream of the Phlox family. Price, 15c. each, \$1.50 per doz., \$10.00 per 100, except where otherwise noted.

### Cromwell Gardens Best Twelve Hardy Phloxes

Each of the Phloxes offered by us is well worthy of a permanent place in every garden. Many planters, however, prefer a limited collection of good and distinct kinds. We, therefore, offer this selection of twelve superb varieties, standard kinds that have made good in every respect, any one of which will prove desirable as an individual specimen and sufficiently pleasing in color to mass by the hundred.

**Asia.** Beautiful shade of delicate mauve, distinct carmine crimson eye. A splendid variety.

**B. Comte.** Brilliant, rich, French purple, very effective.

**Elizabeth Campbell.** Light salmon pink, with lighter shadings and dark red eye. One of the finest phloxes for massing.

**Europa.** Pure snowy white, crimson carmine eye; large individual flowers in immense trusses.

**Frau Anton Buchner.** Pure snowy white, large individual flowers in gigantic trusses, strong hold habit. Undoubtedly the finest pure white Phlox yet sent out.

**Frau G. Von Lassburg.** Pure white flowers in immense panicles, flowering later than Frau Anton Buchner.

**Goliath.** A distinct new variety of splendid appearance and robust growth, attaining under good culture a height of five to six feet, yet a refined variety in every way. The flowers are carried in unusually large, well-built panicles and are of a most attractive bright carmine crimson color with deeper carmine red eye.

**Peachblow.** Delicate pink, deep rose center, rather dwarf habit. Splendid trusses.



Phlox Europa

**Rynstrom.** Carmine rose color, not unlike that of the Paul Neyron rose; considered a decided improvement on the popular Phlox Pantheon. Splendid for massing.

**Selma.** Delicate rose pink, with distinct cherry red eye. Very pretty.

**Siebold.** Bright vermilion red, overlaid orange scarlet; crimson-red eye. An improvement on Coquelicot.

**Sir Edwin Landseer.** Very bright crimson, large trusses and vigorous healthy growth.

20c. each, \$2.00 per doz., \$15.00 per 100.

Above set of 12 varieties, \$2.00.

*The Hardy Phlox, Miss Lingard, is everblooming. Try it with Delphinium Bella Donna.*

**HARDY PHLOXES. Select Varieties**

**Bridesmaid.** Pure white, with bold crimson eye; very attractive.

**Baron Von Dedem.** Intense scarlet red. Similar to Coquelicot, but the trusses and individual flowers are much larger. 25c. each, \$ .50 per doz.

**Champs Elysees.** Bright rosy magenta; the most attractive variety in this color; fine.

**Coquelicot.** A fine, pure scarlet, with crimson eye.

**Eiffel Tower.** Immense cherry-pink flowers, tinted salmon. A tall-growing variety of exceptional merit. 25c. each, \$2.50 per doz.

**Gen. Von Hentz.** Brilliant salmon red with distinct white center. A splendid color. Large flowers and enormous trusses. 20c. each, \$2.00 per doz.

**Geo. A Strohlein.** Bright scarlet with deeper eye. A very large and attractive flower. 20c. each, \$2.00 per doz.

**Gruppenkonigin.** Flesh rose with carmine eye. Individual flowers, large; immense trusses. One of the best. 25c. each, \$2.50 per doz.

**Hermine.** A distinct variety of dwarf, compact growth, rarely exceeding 10 inches in height. Pure white flowers of good size. Useful for bordering.

**Jeanne d'Arc.** A fine, late-flowering white.

**Le Mahdi** Deep reddish violet, with deeper eye; one of the darkest.

**Mme. Paul Dutrie.** Soft pink, suffused white. 20c. each, \$2.00 per doz.

**Pantheon.** Salmon rose, large flowers.

**Sunset.** Dark, rosy pink.

**Vesuvius.** Pure red, with bright purple eye. A dazzling color.

Price, 15c. each, \$1.50 per doz., \$10.00 per 100, except where noted.

**PHLOX SUFFRUTICOSA**

**Miss Lingard.** A distinct variety, with large, glossy foliage, and immense pure white trusses, flowering earlier than the above varieties and continuing throughout the season if the old flower heads are removed. One of the very best for massing and cutting. 20c. each, \$2.00 per doz., \$15.00 per 100.

**PHLOX SUBULATA. Moss Pink**

A dwarf, low-growing type, flowering in early Spring and completely covering the ground. Splendid for the Alpine or Rock garden or for carpeting bulb beds, cemetery plots, etc.

**PHLOX SUBULATA (Continued)**

**Alba.** Pure white flowers in masses.

**Lilacina.** Attractive clear lilac.

**Rosea.** Bright rose pink, very effective.

We can offer this variety in immense clumps at 20c. each, \$2.00 per doz., \$15.00 per 100.

Price 10c. each, \$1.00 per doz., \$6.00 per 100, except where noted.

**PHLOX OF OTHER TYPES**

**Amœna.** Very free flowering. An excellent dwarf ground cover. Bright pink. Six inches. April and May. 10c. each, \$1.00 per doz., \$8.00 per 100.

**Divaricata Laphami.** A great improvement on the type; attractive lavender-blue flowers; strong growth. May. 20c. each, \$2.00 per doz.

**PLATYCODON. Chinese Bell-flower**

Hardy and very handsome perennial. Large, bell-shaped flowers, not unlike the Campanulas.

**Macranthum.** A dwarf variety with large, deep violet flowers. 9 inches. July and September.

**Mariesi.** Deep blue, bell-shaped flowers, nearly three inches across. A valuable variety of the Giant Bell flowers. One foot. July and September.

**Mariesi album.** A pure white form of the above. One foot. July and September.

**Grandiflorum.** Handsome, large flowers; deep blue. Two feet. July and September.

**Grandiflorum album.** A white form of the above. Two feet. July and September.

15c. each, \$1.50 per doz., \$10.00 per 100.

**PLUMBAGO. Leadwort**

**Larpenæ.** A pretty Autumn flowering border plant, producing numerous rich blue flowers on wiry stems from August to October. A fine rock garden plant. 20c. each, \$2.00 per doz.

**POTENTILLA. Cinquefoil**

Excellent for plants for the rockery or hardy border, with foliage resembling that of the Strawberry.

**Formosa.** Bright cherry flowers with carmine eye. Branching habit. Two feet. June to September.



A New England Rock Garden

**POTENTILLA (Continued)**

**Grandiflora.** Bright yellow flowers produced in quantity during Summer. Two feet.

**Miss Willmott.** Low, spready growth; flowers bright cerise, flowering continuously from July on. Nine inches.

**Wm. Rollison.** Brilliant scarlet, shaded orange yellow; very double flower. Eighteen inches.

15c. each, \$1.50 per doz., \$10.00 per 100.

**POLEMONIUM. Jacob's Ladder**

Handsome, strong growing border plants, with attractive pinnate foliage and handsome flower spikes.

**Cœruleum grandiflorum.** A robust-growing variety with large, deep blue flowers. Two and one-half feet. June and July.

**Cœruleum grandiflorum album.** A white flowering form of the above.

**Cœruleum Richardsoni.** Sky-blue flowers; golden anthers.

15c. each, \$1.50 per doz., \$10.00 per 100.

**PRIMULA. Hardy Primrose**

In the hardy Primroses, we have a most charming and useful Spring flowering subject. The Primroses are best suited to the rock garden, but are quite at home grouped in protected nooks in the hardy garden or edging shady borders. A rich soil and a light mulch during the Summer are recommended.

**Acaulis alba.** A charming pure white primrose of great value for massing or rock planting. Perfectly hardy.

**PRIMULA (Continued)**

**Acaulis Dean's Hybrids.** An excellent large flowering strain, including a wide range of handsome colors varying from pure white to bright crimson. A group of these is sure to contain some surprises when opening.

Extra large clumps, 20c. each, \$2.00 per doz., \$15.00 per 100.

**Auricula.** A lovely, fleshy-leaved Alpine species, flowering in large heads of many richly shaded blossoms. Excellent for the rockery or cool, semi-shaded locations. Although quite hardy, they require a light covering in Winter. 25c. each, \$2.50 per doz., \$15.00 per 100.

**Beesiana (New).** A rare variety of a distinct velvety purple color, good growth. 50c. each, \$5.00 per doz.

**Bulleyana.** A fine hardy species from China; color orange, with buff and apricot shades; is entirely new among Primroses. A much desired acquisition to this popular family. Prefers a moist location. 50c. each, \$5.00 per doz.

**Cashmeriana.** Large, leathery-tufted foliage; pretty pale lilac or purple flower heads in early Spring.

**Cashmeriana alba.** Pure white heads. Very desirable.

**Cashmeriana Rubin.** Neat flower heads of a rosy lavender shade.

**Cockburniana.** A rare and unique Chinese species of neat compact growth, the flower scapes bearing from three to six whorls of vivid orange colored flowers. 50c. each, \$5.00 per dozen.

**PRIMULA (Continued)**

**Japonica** (Giant Japanese Primrose). One of the loveliest of the entire group. Pyramids of rich colored flowers on stately stems. Eighteen to twenty-four inches during late Spring and early Summer. This type likes a moist, semi-shaded location. Excellent for naturalizing among Ferns and woodland plants. We offer white, red or mixed colors. 20c. each, \$2.00 per doz., \$15.00 per 100.

**Polyanthus** (Munsted Improved). Magnificent English strain of Bunch Primroses; immense size, but without a suggestion of coarseness. Beautiful shades of yellow, orange and bronze, also pure white with primrose or yellow eye. Grand for massing or Spring bedding. 20c. each, \$2.00 per doz., \$15.00 per 100.

**Veitchii**. A remarkably free-flowering variety resembling Sieboldi, but more robust in foliage; the flowers, varying from light to rose-pink, are produced in loose, graceful umbels on slender stems. 50c. each, \$5.00 per doz.

15c. each, \$1.50 per doz., \$10.00 per 100, except where noted.

**PRUNELLA. Self-heal**

Low-growing plants, useful for carpeting semi-shaded spots in the rockery or border.

**Grandiflora**. Rich violet-purple, Salvia-like flowers. Nine inches. June to September.

**Webbiana**. Bright rosy-purple flower spikes. A showy useful variety.

15c. each, \$1.50 per doz., \$10.00 per 100.

**PYRETHRUM. Persian Daisy**

Beautifully colored border plants of the easiest culture, doing well under ordinary conditions; flowering almost continuously. Excellent for cutting.

**Hybridum**. Single. (Colored Daisy.) Kelway's exhibition strain. The finest selection in existence, including a mixture of the choicest and brightest colors.

**Tchihatchewi**. Forming a dense mass of spreading foliage. Pretty single white flowers. An excellent ground cover and rock plant.

**Uligosum** (Giant Daisy.) A handsome easy-growing variety, attaining a height of five feet; covered with attractive daisy-like flowers from July to September.

15c. each, \$1.50 doz., \$10.00 per 100.

**RANUNCULUS. Buttercup**

**Acris. fl. pl.** (Bachelor's Button). A pretty, double-flowering, bright yellow variety; excellent for cutting. Two to three feet. 15c. each, \$1.50 per doz., \$10.00 per 100.

**RUDBECKIA. Coneflower**

**Golden Glow**. A popular, showy plant that will thrive under any conditions, producing attractive, golden-yellow flowers in the greatest profusion.

**Newmanni**. Dark, orange-yellow flowers, with deep purple cone, carried on rigid, wiry stems; flowers from July to October. Three feet.

**Purpurea (Echinacea)** (Giant Purple Coneflower). A strong, rigid-growing variety, bearing showy, reddish-purple flowers, with a prominent cone-shaped center of brown.

**Subtomentosa**. Bright yellow, with a deep brown disc, carried on erect stems; growth densely pyramidal. Very free and continuous. Three feet.

15c. each, \$1.50 per doz., \$10.00 per 100.



**Rudbeckia Purpurea**

*The Sedum makes a splendid ground cover for dry and barren places.*

**RHEUM. Ornamental Rhubarb**

**Palmatum.** A noble plant with massive ornamental foliage having fine-lobed leaves. White flower spikes. Eight feet. 35c. each, \$3.50 per doz.

**SAPONARIA. Soapwort**

**Ocymoides.** A pretty trailing variety, with small leaves, completely covered with rosy pink flowers. May and July. 15c. each, \$1.50 per doz., \$10.00 per 100.

**SALVIA. Meadow Sage**

**Argentea.** Handsome silvery-white foliage; branching heads of pinkish-white flowers.

**Azurea grandiflora.** Tall spikes of lovely light blue flowers. Shrubby habit. Two feet. June and July.

**Pratensis.** Deep violet-blue flowers; very showy. Two to three feet. June to September.

15c. each, \$1.50 per doz., \$10.00 per 100.

**SANTOLINA. Lavender Cotton**

**Incana.** A dwarf, dense-foliage Perennial, with silvery-gray foliage. A useful rock or border plant. Should be slightly protected. 10c. each, \$1.00 per doz., \$8.00 per 100.

**SAXIFRAGA. Megasea**

Handsome, broad-leaved plants, growing about one foot in height, making excellent specimen plants or forming bold groups planted in quantity. Attractive flowers in early Spring. Distinct colors: White, Pink, Rose and Crimson. 25c. each, \$2.50 per doz.

**SCABIOSA. Pincushion Flower**

**Japonica.** A handsome new border plant, bearing heads of lovely clear blue flowers; two to three inches across. Long stems. Excellent for cutting. Three feet. June to September. 15c. each, \$1.50 per doz., \$10.00 per 100.

**SCUTELLARIA. Skull-Cap**

**Macrantha.** An attractive trailing plant for the rock garden or border, pretty light blue flowers during June and July. 20c. each, \$2.00 per doz.

**SEDUM. Stonecrop**

An interesting and pretty group of succulent plants of varied character. The dwarf varieties are invaluable for covering stonework, filling in crevices; they also make an excellent ground cover for dry situations. The taller varieties are excellent for border planting.

**Acre (Wall Pepper).** Attractive light-green foliage. Yellow flowers, produced in masses during June and July. Three inches.

**Album.** White; creeping habit. Six inches. June and July.

**Kamtschaticum.** Clusters of yellow flowers; deep green foliage. Six inches. July to September.

**Maximowiczii.** Bright green foliage; heads of golden yellow flowers. One foot. July to August.

**Spurium Coccineum.** A pretty variety with showy crimson flowers and dark foliage.

**Sieboldi.** A Japanese variety of semi-erect growth. Handsome round glaucous foliage. Bright pink flowers. Nine inches. August to September.

**Spectabile atropurpureum.** Dark, coppery, purple foliage. Rosy red flowers. One foot. July to August. 20c. each, \$2.00 per doz.

15c. each, \$1.25 per doz., \$8.00 per 100, except where otherwise noted.

**SEMPERVIVUM. House Leek**

An interesting dwarf succulent evergreen plant for the Rock Garden; growing easily in a fully exposed situation; reddish brown leaves in compact rosettes. Bright red flowers. July. 15c. each, \$1.50 per doz.

**SENECIO. Groundsel**

Bold foliage plants with branching stems and attractive composite flowers. Useful for grouping in moist and sub-aquatic situations.

**Clivorum.** A new Chinese species, with large heads of orange-yellow flowers. Handsome, shiny-green foliage. Four feet. July to September. 15c. each, \$1.50 per doz., \$10.00 per 100.

**SIDALCEA. Greek Mallow**

A group of graceful border plants flowering on showy spikes, growing well under almost any conditions.

**Candida.** Pure white flowers about one inch across, on large spikes. Three feet. July and August.

**Rosy Gem.** Graceful spikes of beautiful rose-pink flowers. Four feet. July to September.

15c. each, \$1.50 per doz., \$10.00 per 100.

**SILENE. Catchfly. Campion**

**Asterias grandiflora.** A pretty border or rock plant that is yet somewhat rare. Compact, globular heads of deep red flowers. Twelve inches. June and July. 20c. each, \$2.00 per doz.

**Silene Orientalis Rosea.** A splendid free flowering form of the above. 20c. each, \$2.00 per doz.

**SPERGULA. Sandwort**

**Pilifera.** A dense carpeting plant of delicate-textured foliage; useful for filling fissures between rocks, or as a compact-growing ground cover. 15c. each, \$1.50 per doz., \$8.00 per 100.

**SPIRÆA, or ASTILBE  
Meadow Sweet**

**Aruncus.** A noble plant, producing long, feathery panicles of white blossoms. A grand border subject. Five feet. June and July.

**Aruncus gigantea rosea.** A light pink form of the above.

**Filipendula fl. pl.** Graceful, fern-like foliage and numerous corymbs of double white flowers.

**Palmata alba.** A fine Japanese type, with handsome foliage. Snow-white, spready plumes. Three feet. June to August.

**Palmata elegans.** A similar variety, having silvery-pink flowers.

**Palmata elegans rubra.** A light red-flowering form.

15c. each, \$1.50 per doz., \$10.00 per 100, except where otherwise noted.

**SPIRÆA. Arendsi**

A new type introduced by the well-known hybridist, Arends, of Germany, resulting from crossing *A. Davidii* with *A. Japonica* and others. These are robust-growing varieties of branching habit, producing graceful, feathered heads of flowers.

**Ceres.** Delicate lilac rose, with attractive silvery sheen.

**Juno.** Handsome deep violet-rose plumes. Strong, erect growth.

**Kriemhilde.** Salmon-pink; very beautiful.

**Rose Perle.** Dense pyramidal trusses of soft rose; early flowering.

30c. each, \$3.00 per doz.

**STACHYS. Woundwort**

**Lanata.** White, woolly leaves, useful for edging; light purple flowers. 15c. each, \$1.50 per doz.

**Stokesia Cyanea****STOKESIA. Cornflower Aster**

**Cyanea.** A beautiful native perennial resembling the China Aster. Large, bright lavender-blue flowers, four to five inches across. From June to September. Splendid for massing. 15c. each, \$1.50 per doz., \$10.00 per 100.

**STATICE. Sea Lavender**

Undoubtedly one of the most useful genus of plants for either the rockery or border cultivation; the flowers are produced in light airy panicles and appear to best advantage when grouped separately or when used as individual plants in the rockery. If cut and dried before fully expanded the flowers will last a long time and are most acceptable for bouquet work when other flowers are less available.

**Eximea.** A distinct variety, producing panicles of pretty lilac-rose flowers. One to two feet. August.

**Gmelini.** Large, branchy heads of dark blue flowers. One and one-half feet. July and August.

**Latifolia** (Giant Sea Lavender). Immense heads of dark blue flowers. Valuable when cut and dried. This variety is worthy of more extensive culture; prefers a deep rich soil.

15c. each, \$1.50 per doz.

**SILPHIUM**

Robust-growing perennial plants; useful as specimen plants or for foliage effects.

**Laciniatum** (Compass Plant). A handsome decorative variety the large leaves of which are said to face either North or South. Yellow flowers in racemes.

**Perfoliatum** (Cup Plant). Handsome leaves and large, bright, yellow flowers. 25c. each, \$2.50 per doz.

**THALICTRUM. Meadow Rue**

**Minus.** Light feathery foliage, not unlike the Maidenhair Fern. Panicles of drooping yellow flowers. More dwarf and an improvement on the Meadow Rue of our New England meadows. June and July. Two feet. 15c. each, \$1.50 per doz. \$10.00 per 100.

**THERMOPSIS. False Lupine**

**Caroliniana** Pretty yellow pea-shaped flowers produced on long spikes during June and July and succeeding in almost any location. Five to six feet. 25c. each, \$2.50 per doz.

**TIARELLA. Foam Flower**

**Cordifolia.** Creamy white flowers in erect racemes, carried well above the foliage. Prefers cool semi-shade and moist soil. Six to twelve inches. May. 20c. each, \$2.00 per doz.

**TRADESCANTIA. Spider-wort**

**Virginica.** Violet-blue flowers produced all summer. Useful for cutting. Two feet. 15c. each, \$1.50 per doz.

**TROLLIUS. Globe Flower**

Showy, free-flowering dwarf plants of easy culture; suitable for rock, garden or border planting and useful for cutting.

**Caucasicus.** "Orange Globe." Large globular deep orange flowers, free and striking. 25c. each, \$2.50 per doz.

**Europæus.** Large, clear, lemon-yellow flowers. 15 inches. May and June.

**Pumilus** (New). An interesting dwarf variety with large light-yellow flowers.

**Hybridus.** "Fire Globe." A new variety with large semi-double flowers of an intense orange shade. 25c. each, \$2.50 per doz.

20c. each, \$2.00 per doz., \$12.50 per 100, except where noted.

**TUNICA. Coat Flower**

**Saxifraga.** A pretty, low-growing, tufted plant with light pink flowers in early Spring. A splendid rockery plant.

**Alba.** An attractive white form. 15c. each, \$1.50 per doz.

**VALERIANA**

**Coccinea.** Showy heads of reddish flowers; June to October; Two feet.

**VALERIANA (Continued)**

**Coccinea alba.** A white-flowered form.

**Officinalis** (Hardy Garden Heliotrope). Rose-tinted white flowers during June and July. Strong heliotrope odor; Three to Four feet.

15c. each, \$1.50 per doz., \$10.00 per 100.

**VERBASCUM. Mullein**

A desirable robust-growing subject for the wild garden or for planting among shrubbery.

**Pannosum.** Silvery white, ornamental foliage and showy clear yellow flowers. Six feet. July and August. 15c. each, \$1.50 per doz., \$10.00 per 100.

**VERONICA. Speedwell**

**Incana.** Bright, silvery foliage, with spikes of amethyst-blue; a good rockery or border plant.

**Longifolia.** A tall, robust-growing variety; blue flowers; effective for massing.

**Longifolia subsessilis.** The best of all the Veronicas and the most desirable blue-flowering hardy plant. The attractive spikes appear in late July, continuing for a long period, and are unexcelled for garden decoration and cutting purposes 25c. each, \$2.50 per doz.

**Prenja.** A pretty dwarf variety; light blue flowers. A good rock plant.

**Repens.** Attractive foliage, forming bright green tufts; pale blue flowers in early Spring. A useful carpet or rock plant.

**Saxatalis** (Rock-Speedwell). A rather rare and pretty variety bearing large blue flowers close to the ground.

**Spicata.** Long spikes of bright blue flowers. Two and one-half feet, July to September.

**Spicata alba.** A pure white form, growing to a height of one and one-half feet.

**Virginica** (Great Virginian Speedwell). A handsome border plant, bearing strong willow-like stems, covered with attractive blue flowers. Four feet. July to September.

15c. each, \$1.50 per doz., \$10.00 per 100, except where otherwise noted.

**VINCA. Periwinkle, or Trailing Myrtle**

**Minor.** A useful trailing vine for ground covering underneath trees, steep banks, or rock planting. Dark blue flowers. 10c. each, \$1.00 per doz., \$8.00 per 100.

**Minor aurea.** A very attractive new golden variegated form of the preceding variety. Beautiful. Strong plants, 25c. each, \$2.50 per doz.

## VIOLA. Tufted Pansies

Planted in a partially shaded location, the tufted Pansies will flower continuously if the seed-pods are removed. The small Pansy-like blossoms are produced so profusely that they are most welcome additions to the hardy gardens. Excellent for edging and massing.

**Cornuta Papilio.** Violet, with dark eye. Very free and continuous.

**Sensation.** Dark, velvety-purple; very effective.

**White Perfection.** Pure white, very fragrant and very free flowering, the best white.

10c. each, \$1.00 per doz., \$6.00 per 100.

## Delphiniums. Named Hybrid Varieties.

Among garden flowers, the Delphinium of to-day is unquestionably the most beautiful and, at the same time, one of the easiest in culture. The majestic spikes range in color from pure white to imperial purple—the tenderest sky blue to the deepest violet—a range of color capable of innumerable effects in the garden.

It is one of the few hardy plants which flower throughout the season, doing well in any reasonably good soil or location, and which is equally good for garden decoration or cutting purposes.

The Hybrid strains offered are grown from seed and, although they include numerous and beautiful shades, they cannot be depended on and fall short where a certain color effect is desired. Named varieties are increased by division—a much slower process—but can be depended upon as being true to description.



Delphinium

### DELPHINIUM. Named Varieties

**Attraction.** Bright, lavender blue, rosy shaded inside, distinct white eye. Very attractive and free.

**Belladonna Grandiflora.** Large flowers of a beautiful transparent sky blue, larger than the popular variety Belladonna. Splendid for massing and cutting.

**Duke of Connaught.** Bright, velvety blue, inner petals of rosy lavender; large black eye which gives the flower a distinct appearance. Tall, well-formed spikes. One of the handsomest varieties.

**King of Delphiniums.** This variety is a remarkably strong grower and one of the most distinct yet introduced. Large individual flowers carried on immense spikes. Deep violet blue with distinct white eye. Magnificent in every respect.

**Lamartine.** Rich Gentian blue, with conspicuous white center. Flowers single. Very free flowering and one of the best for cutting. Similar in growth to Belladonna.

**Lizzie.** Beautiful azure blue single flowers of largest size, with distinct yellow eye. An attractive variety of excellent habit.

**Lilacina.** Lovely mauve pink. Free and of splendid habit.

**Moerheimi.** This recent introduction is undoubtedly the best pure white Delphinium yet introduced and should be in every collection. Splendid habit and one of the most continuous in flowering.

**Persimmon.** A splendid variety of the popular Belladonna type, but of a more robust growing habit and with larger flowers. Fine branching habit. Color, pure light blue with very pretty bluish white eye.

*Inasmuch as these varieties are European productions which we are importing, we must reserve publishing prices until the publication of our Annual Catalog which is issued in mid-winter. Unsettled shipping makes this necessary.*



## DELPHINIUMS (Continued)

**Rev. E. Lascelles.** One of the finest new varieties. Color, deep purple blue with clear white eye. Gigantic spikes attaining a height of six feet. Furnished with elegantly arranged side branches.

**True Blue.** One of the finest single Delphiniums ever sent out; the color of the

sepals is the purest possible true blue—a brilliant color emphasized by the deeper eye. A splendidly effective variety for massing.

**Willy O'Brien.** Beautiful porcelain blue, with rosy shadings. A distinct and desirable variety.

Inasmuch as these varieties are European productions, and subject to import conditions, we must reserve publishing prices until the issue of our Annual Catalogue in mid-winter. Present unsettled shipping conditions make this necessary.

## Hardy Garden Lilies and Other Bulbs.

Lillies are equally at home among the perennials of the old-fashioned border, planted among the shrubbery, or grouped alone. They prefer a rich, light soil, but will do well under ordinary soil conditions. The bulbs should be planted six inches deep; Japanese varieties at least ten inches, and a layer of sand placed under and around the bulb to prevent decay. Many of the more expensive varieties require replacing at frequent intervals. We, therefore, include only the most reliable garden kinds. The varieties Superbum, Canadense and Tigrinum are the best for heavy soils.

**Auratum** (Golden-banded Lily of Japan). Enormous flowers, six to eight inches across; pure white, spotted crimson with a wide band of gold running throughout the center of each petal. July to September. Three to five feet. Mammoth Bulbs, 25c. each, \$2.50 per doz., \$15.00 per 100.

**Candidum** (Madonna Lily). Pure, snowy white and very fragrant. Flowers borne on erect, long stems, flowering in June. This is one of the most satisfactory Lillies for the garden. September planting gives best results. Extra large bulbs, 15c. each, \$1.50 per doz., \$10.00 per 100. Mammoth bulbs, 20c. each, \$2.00 per doz., \$15.00 per 100.

**Elegans.** An assortment of beautiful mixed colors varying from rich yellow to a deep red. One to two feet. July. 10c. each, \$1.00 per doz., \$7.50 per 100.

**Elegans sanguineum.** Deep rich crimson, with dark spots. 15c. each, \$1.50 per doz., \$10.00 per 100.

**Golden Gleam.** The golden-yellow seedling of the Siberian Lily. 30c. each, \$3.00 per doz.

**Henry** (New). A splendid garden variety of the Speciosum type, often called the "yellow Speciosum." Distinct, orange-yellow; flowers in great profusion; perfectly hardy and easy to grow. Large bulbs, 75c. each, \$7.50 per doz.



**Lilium Tenuifolium**

*We cannot catalog our entire list of bulbs. Write for particulars.*

## HARDY GARDEN LILIES

(Continued)

**Speciosum album.** Undoubtedly the best of the late-flowering garden Lilies and of the easiest culture. Large white flowers of great substance, with a light green band running through the center of the petal. Three feet. August. 9-10 bulbs, 30c. each, \$3.00 per doz., \$20.00 per 100.

**Speciosum magnificum** (Improved Rubrum). White, heavily spotted rich crimson. The most beautiful of all the Speciosum varieties and one of the best for garden decoration. 9-10 bulbs, 25c. each, \$2.50 per doz., \$18.00 per 100.

**Superbum.** A handsome native variety; bright reddish-orange. Three to six feet. August. Large bulbs, 15c. each, \$1.50 per doz., \$10.00 per 100.

**Tenuifolium.** The coral Lily of Siberia. Very choice; growth dwarf. 15c. each, \$1.50 per doz., \$10.00 per 100.

**Tigrinum splendens.** Improved Tiger Lily; orange blossoms, spotted maroon; large clusters of from four to ten individual flowers. Two to five feet. 15c. each, \$1.50 per doz., \$12.00 per 100.

**Tigrinum splendens fl. pl.** A double-flowering form of the above. 15c. each, \$1.50 per doz., \$12.00 per 100.

## LILIES FOR FORCING

**Formosum** (Formosa Easter Lily). One of the best for early forcing, resembling the Giganteum Lily, but flowering earlier and growing taller. 7-9 bulbs, 15c. each, \$1.25 per doz., \$7.50 per 100.

We find the above size gives best results for all purposes.

**Giganteum.** Undoubtedly the most satisfactory forcing variety; producing strong, erect stems and large waxy-white flowers. 7-9 bulbs, 20c. each, \$2.00 per doz., \$12.00 per 100. 8-10 bulbs, 30c. each, \$3.00 per doz., \$17.00 per 100.

## MISCELLANEOUS BULBS

**Convallaria majalis** (Lily of the Valley). Flowers pure white, bell-shaped; gracefully arching racemes. It is one of the shade-loving favorites, and should be mulched each Winter with well-decayed manure to give best results. Strong, home-grown clumps, 25c. each, \$2.50 per doz.

## DIELYTRA. Bleeding Heart

**Spectabilis.** Heart-shaped flowers in graceful, drooping racemes. An old-fashioned favorite. 15c. each, \$1.50 per doz.

## TULIPS

For convenience we have numbered the varieties in order of their blooming, also stating their heights so that varieties may be selected to flower together if desired.

### Single Tulips

	Per 100	Per 1000			
<b>Artus</b> (2). Brilliant scarlet, 10 inches.....	\$1.50	\$10.00	<b>Duchesse De Parma</b> (2). Orange scarlet; yellow edge; forcing. 10 inches.....	1.75	12.00
<b>Belle Alliance</b> (2). Vermilion scarlet; for forcing or bedding. 10 inches.....	2.00	15.00	<b>L'Immaculee</b> (2). Pure white. 8 inches.....	1.25	10.00
<b>Cardinals Hat</b> (2). Deep brownish red. 9 inches...	1.50	12.00	<b>Pink Beauty</b> (2). Superb pink. 10 inches.....	5.00	35.00
<b>Couleur Cardinal</b> (3). Deep bronze scarlet. 10 inches..	3.00	25.00	<b>Pottebakker Yellow</b> (2). 12 inches.....	2.50	20.00
<b>Duc Van Tholl</b> (2). Scarlet. 7 inches.....	1.75	15.00	<b>Pottebakker White</b> (2). 12 inches.....	2.50	20.00
<b>Duc Van Tholl</b> (2). White. 7 inches.....	1.50	12.00	<b>Pottebakker Scarlet</b> (2). 12 inches.....	2.50	20.00
<b>Maes</b> (2). Scarlet. 12 inches	2.75	25.00	<b>Thomas Moore</b> (2). Apricot orange; forcing. 14 inches.	1.50	12.00
<b>La Reine</b> (2). White. 10 inches.....	1.50	10.00	<b>Kaiser kroon</b> (2). Scarlet, edged golden yellow. 15 inches.....	2.50	20.00
<b>Cottage Maid</b> (2). Pink and white; fine for forcing. 8 inches.....	1.50	10.00	<b>Wouwerman</b> (2). Purple. 10 inches.....	4.50	40.00
<b>Chrysolora</b> (2). Pure yellow; forcing. 10 inches.....	1.75	12.00	<b>Yellow Prince</b> (2). Yellow; fine for forcing. 10 inches.	1.50	10.00

*We cannot catalog our entire list of bulbs. Write for particulars.*

**Double Tulips**

	Per 100	Per 1000
<b>La Candeur</b> (3). White; fine for forcing. 11 inches.....	1.75	12.50
<b>Couronne d'Or</b> (3). Rich yellow; fine for forcing. 10 inches.....	3.00	25.00
<b>El Toreador</b> (3). Rich orange; fine for forcing. 8 inches..	5.00	40.00
<b>Murillo</b> (3). Pale Rose; fine for forcing. 7 inches.....	1.50	12.00
<b>Rose Blanche</b> (3). Pure white; fine for forcing. 8 inches..	1.50	12.00
<b>Rubra Maxima</b> (3). Dazzling scarlet; fine for forcing. 8 inches.....	2.00	15.00
<b>Tearose</b> (3). Fine salmon-yellow; fine for forcing. 8 inches.....	5.00	40.00
<b>William III</b> (3). Bright red; fine bedder. 10 inches....	2.25	20.00

**Darwin Tulips**

	Per doz.	Per 100
<b>Barrone De La Tonnaye</b> . Vivid rose. 24 inches.....	\$ .50	\$ 3.00
<b>Clara Butt</b> . Soft salmon rose. 19 inches.....	.50	3.00
<b>Europe</b> . Brilliant red, white center. 22 inches.....	.50	3.00
<b>Farncombe Sanders</b> . Vivid rosy red. 28 inches.....	.85	5.00
<b>Gretchen</b> . Blush pink, deeper shadings. 24 inches.....	.35	2.50
<b>Nauticas</b> . Purplish rose. 28 inches.....	.60	4.50
<b>Pride of Haarlem</b> . Carmine rose. 26 inches.....	.75	4.50
<b>La Tulipe Noire</b> . The black tulip. 24 inches.....	2.50	18.00
<b>Leonard Da Vinci</b> . Blackish maroon. 24 inches.....	.75	5.00
<b>The Sultan</b> . Rich maroon black. 22 inches.....	.50	3.00
<b>White Queen</b> . The only pure white. 22 inches.....	.60	4.00
<b>Inglescoombe</b> . Bright yellow. 16 inches.....	.75	5.00
<b>Gesneriana</b> . Yellow. 24 inches	.50	3.00
<b>Gesneriana</b> . Scarlet. 24 inches	.50	3.00

**HYACINTHS FOR BEDDING**

**(First Size)**

Single Hyacinths are more effective than the double ones. Double varieties are marked with an asterisk (\*). We offer only the very best varieties.

**Red and Rose**

- General Pelissier**. Deep carmine; very effective.
- Grandeur a'Merveille**. Blush; one of the best.
- Cardinal Wiseman**. Dark pink; splendid compact spike.
- \***Grootvorst**. Rosy blush; handsome spike
- \***Bouquet Royal**. Rosy salmon, red center.
- Robert Steyger**. Deep crimson red.

**White**

- La Grandesse**. Pure waxy white. \$1.50 per doz., \$10.00 per 100.
- \***La Tour D'Auvergne**. Pure white; very early.
- L'Innocence**. Pure white; extra good.

**Yellow**

- King of the Yellows**. Best deep yellow.
- La Pluie d'Or**. Light yellow.

**Blue and Purple**

- Baron Van Thuyll**. Dark blue; fine truss.
  - Czar Peter**. Light porcelain blue; fine. Price, \$1.50 per doz., \$10.00 per 100.
  - \***Garrick**. Dark blue; very early.
  - King of the Blues**. Rich, dark blue. Price except where noted: \$1.00 per doz., \$7.00 per 100.
- Hyacinths in mixture, splendid assortment in all colors: 75c. per doz., \$5.00 per 100.

Narcissus and other bulbs not cataloged. Prices on application.

*We cheerfully assist patrons in all questions pertaining to horticulture.*

## Flowering Plants in Pots



Glory of Cincinnati

### BUDDLEIA ASIATICA

A splendid cool greenhouse and conservatory plant, producing pure white fragrant flower spikes of splendid keeping quality during November and December.

- 3-inch pots, 20c. each, \$2.00 per doz., \$15.00 per 100.
- 4-inch pots, 25c. each, \$2.50 per doz., \$20.00 per 100.
- 5-inch pots, 35c. each, \$3.50 per doz., \$30.00 per 100.

### CYCLAMEN

The Cyclamen is one of our finest conservatory or house plants, but must be kept clean to insure success. We offer a splendid strain in separate color.

- 4-inch pots, 50c. each, \$5.00 per doz., \$40.00 per 100.
- 5-inch pots, 75c. each, \$7.50 per doz., in bud and bloom.
- 6-inch pots, \$1.00 to \$1.50 each, \$9.00 to \$15.00 per doz., in bud and bloom.
- Seedlings for growing on, \$5.00 per 100.

### AGATHEA

**Felicia coelestis.** Pretty blue daisy-like flowers in late Winter. A splendid pot plant.

- 3-inch pots, 15c. each, \$1.50 per doz.
- 4-inch pots, 25c. each, \$2.50 per doz.

### BEGONIAS

**Florence Davenport.** A new Begonia of the Lorraine type, more compact in habit of growth than Glory of Cincinnati, with smaller leaves, and of a brighter shade of pink.

- 4-inch pots, \$1.00 each, \$10.00 per doz.
- 5-inch pots, \$1.50 each, in bud and bloom.

6-inch pots, \$2.00 each, in bud and bloom.

**Gloire de Lorraine.** Beautiful clear pink, similar to Cincinnati but more profuse. Smaller in foliage and flower.

4-inch pots, 50c. each, \$6.00 per doz.

5-inch pots, \$1.00 to \$1.25 each, in bud and bloom.

**Glory of Cincinnati.** This variety is a robust grower with large heavy foliage. Its flowers are a beautiful shade of pink and are carried well above the foliage.

4-inch pots, 50c. each, \$6.00 per doz.

5-inch pots, \$1.00 to \$1.50, in bud and bloom.

6-inch pots, \$1.50 to \$2.00, in bud and bloom.

**Melior.** A new variety of the Lorraine type, but a distinct improvement in habit of growth and more profuse in flowering.

4-inch pots, \$1.00 each.

5-inch pots, \$1.50 to \$2.00 each.

**Gloire de Chatelaine.** A comparatively new variety which, although belonging properly to the bedding type, makes a splendid pot plant. Attractive shade of pink.

3-inch pots, 15c. each, \$1.50 per doz., \$12.00 per 100.

4-inch pots, 25c. each, \$2.50 per doz., \$20.00 per 100.

### BOUVARDIA

**Humboldtii Corymbiflora.** Beautiful star-shaped, fragrant, Jasmine-like flowers produced during the late Fall and early Winter.

4-inch pots, 25c. each, \$2.50 per doz., \$22.50 per 100.

5-inch pots, 35c. each, \$3.50 per doz., \$30.00 per 100.

*We invite you to inspect our flowering plants in season. Immense stock.*

## GENISTA CANARIENSIS

A showy early Spring-flowering subject for the cool greenhouse, flowering in bright golden yellow racemes.

4-inch pots, 25c. each, \$2.50 per doz.

5-inch pots, 35c. each, \$3.50 per doz.

Large specimens, 75c. each to \$2.00 each.

## GARDENIAS

**Veitchii.** Our stock of this, the most satisfactory forcing variety, has been selected for year after year with increased production and healthy constitution as the end in view. We offer clean, healthy stock for immediate delivery.

3-inch pots, 25c. each, \$2.50 per doz., \$17.50 per 100.

4-inch pots, 50c. each, \$5.00 per doz., \$30.00 per 100.

We have larger than 4-inch pots in stock occasionally. If in need of them, write us. If in stock, we shall be pleased to quote on them.

## HYDRANGEA HORTENSIS

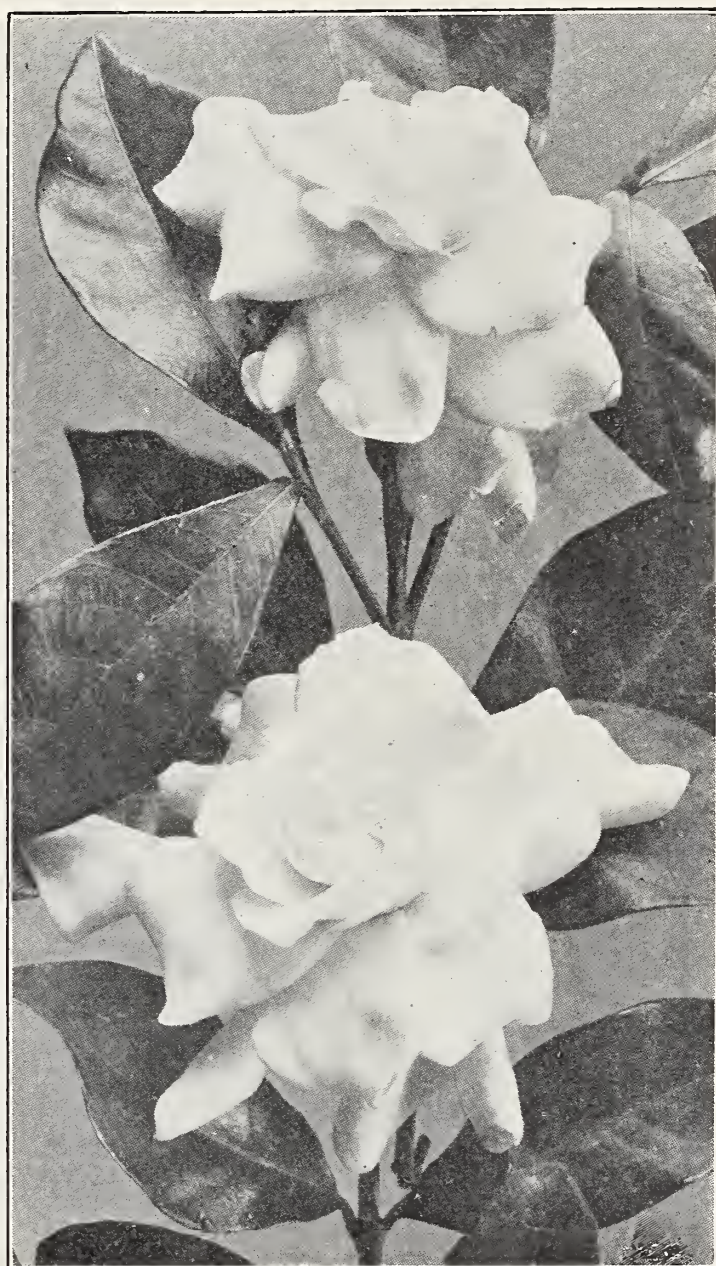
Strong, field-grown plants for potting or for flowering purposes. Ready in October and November.

**Otaksa.** The well-known and popular tub or forcing variety.

**New French Hybrids.** In best named varieties.

50c. each, \$4.00 per doz.

Extra large specimens, 75c. to \$3.00 each.



**Gardenia Veitchii**

## Poinsettias.

The Poinsettia does not properly come under flowering plants. The gorgeous coloring during December is due to the maturity of the bracts and gives the appearance of a flower in reality. These plants, so ornamental for the holidays, are propagated during July and August, and the growing of this young stock is one of our specialties. We ship all our Poinsettias in paper pots. We are certain they will please you.

2¼-inch pots, \$1.50 per doz., \$10.00 per 100.

3-inch pots, \$2.00 per doz., \$15.00 per 100.

*The fame of our Poinsettias, in young plants, is country-wide.*

## Palms.

**Kentia Belmoreana.** One of the hardiest Palms in cultivation. Its foliage is hard and is less affected by the dry atmosphere in a dwelling than many other varieties. It is admirably suited for house culture.

### Single Plants.

5-inch pots, 6 leaves, 22 inches high, \$1.25 each.

6-inch pots, 6 to 7 leaves, 22 to 24 inches high, \$1.50 to \$1.75 each.

7-inch pots, 6 to 7 leaves, 26 to 28 inches high, \$3.00 to \$3.50 each.

7-inch pots, 6 to 7 leaves, 32 to 36 inches high, \$3.50 to \$4.00 each.

8-inch pots, 6 to 7 leaves, 38 to 42 inches high, \$5.00 to \$6.00 each.

8-inch pots, 6 to 7 leaves, 48 to 52 inches high, \$7.50 to \$9.00 each.

9-inch pots, 6 to 7 leaves, 56 to 60 inches high, \$10.00 to \$12.00 each.

### Made-up Plants.

7-inch pots, 28 to 32 inches high, \$3.00 each.

8-inch pots, 32 to 36 inches high, \$5.00 each.

9-inch pots, 44 to 48 inches high, \$7.50 to \$9.00 each.

**Kentia Forsteriana.** Similar in formation to Belmoreana but more erect and rapid growing.

### Single Plants.

5-inch pots, 24 to 28 inches high, \$1.25 each.

6-inch pots, 30 to 34 inches high, \$1.50 to \$2.00 each.

7-inch pots, 36 to 40 inches high, \$3.00 to \$3.50 each.

### Made-up Plants.

7-inch pots, 36 to 38 inches high, \$3.50 each.

8-inch pots, 40 to 42 inches high, \$5.00 to \$6.00 each.

Tubs, 42 to 48 inches high, \$6.00 to \$7.00 each.



**Kentia Forsteriana**

Made-up Plant

**Areca Lutescens.** One of the most graceful palms in cultivation. The foliage is of a bright glossy green with golden yellow stems. 6-inch pots, \$1.25 to \$1.50 each.

**Cocos Weddeliana.** The most elegant and graceful of all the smaller palms. Its slender, erect stems are freely furnished with gracefully arching leaves of a rich, green color. Admirably suited as centers for fern dishes. 3-inch pots, 25c. each, \$3.00 per doz.

**Latania Borbonica.** One of the most useful of the Palms, having broad fan-shaped leaves. 6-inch pots, \$1.25 to \$1.50 each.

**Livistonia Rotundifolia.** A small, round, fan-shaped leaf of great value. 5-inch pots, \$1.50 each.

**Phoenix Roebelenii.** The best of all the Phoenix family and a palm that is very popular for room decoration. It is of vigorous growth and its gracefully recurving leaves with narrow dark green pinnae give it a tightness and airiness not surpassed by any palm. It is very hardy and a splendid house plant. 9 to 10-inch tubs, 30 to 36 inches high, \$7.00 to \$8.00 each.

## Boxwood

Each season this favorite increases in popularity, which is well deserved, for its uses are almost innumerable. As a tub or pot plant, there is no broad-leaved evergreen to compare with it. It is unquestionably the most attractive and permanent hedge plant. There are some famous hedges here in old New England linking us with the past centuries, their years running well into the hundreds.

As an isolated specimen in the formal garden, punctuating admirably chosen points, it is extremely effective for topiary gardens. As an edging for outlining walks and beds in the formal or old-fashioned gardens, there is no substitute.

The larger cities demand Boxwood more and more each year for outside window decoration and embellishment of entrances. As pot or tub plants, they are equally desirable whether in standard, pyramidal or natural bush form. Our annual importation of these plants in all forms and sizes will be offered in our 1916 General Catalog for delivery in the Spring. Limited sizes for Fall delivery on application.



**Boxwood in the formal garden**

*Let us plan your Boxwood and Winter garden.*

## Decorative and Foliage Plants



**Ardisia**

### **ARAUCARIA (Norfolk Island Pine)**

The Araucaria is a plant of remarkable symmetry. As it increases in height, it makes successive tiers of branches, producing a very striking effect.

#### **Excelsa.**

4-inch pots, 75c. each.  
5-inch pots, \$1.00 each.  
6-inch pots, \$1.50 each.

#### **Glauca.**

5-inch pots, \$1.50 each.  
6-inch pots, \$2.00 each.

#### **Robusta compacta.**

5-inch pots, \$1.50 each.  
6-inch pots, \$2.00 each.

#### **Plumosa.**

4-inch pots, \$1.00 each.  
5-inch pots, \$1.25 each.  
6-inch pots, \$1.75 each.

### **ARDISIA CRENULATA**

The Christmas ornamental plant, valued for its glossy foliage and red berries.

3-inch pots for growing on, \$2.50 per doz., \$20.00 per 100.

4-inch pots for growing on, \$4.00 per doz., \$30.00 per 100.

5-inch pots with berries, \$1.00 each, \$12.00 per doz.

5-inch pots, extra selected, \$1.25 each, \$15.00 per doz.

6-inch pots, single, \$1.50 each, \$18.00 per doz.

6-inch, 3 plants in pot, \$2.50 each, \$30.00 per doz.

Large specimen plants, price on application.

*Among berried plants the Ardisia is without peer.*



**AUCUBA JAPONICA.**

**Variiegated.** A splendid decorative plant with rich glossy green leaves of heavy texture, beautifully spotted yellow. Splendid for hall, hotel and porch decoration. 50c. to \$1.00 each.

**Greenleaved.** A fine grassy green form of the above bearing showy red fruit. 50c. to \$1.00.

**CRYPTANTHUS**

**Cupreata.** A low growing colored foliage plant of value for the conservatory.

2½-inch, 25c. each.

3-inch, 35c. each.

**CROTONS**

In fancy varieties in all sizes.

3-inch, 25c. each.

4-inch, 50c. each.

5-inch, 75c. each.

6-inch, \$1.50 each.

Specimen plants, price on application.

**ALLAMANDA**

**Williamsii.** A handsome greenhouse or conservatory climber or pot plant, with attractive foliage and large, rich yellow, bell-shaped flowers.

35c. to 50c. each.

**FANCY LEAVED CALADIUM**

In variety these are the most showy fancy foliage plants of easy culture and can be had in perfection from early Spring to late Fall.

Strong bulbs, \$1.00 each. Extra selected, \$1.50 each.

**EUONYMUS JAPONICA.**

**Green.** Rich glossy green foliage, making splendid specimens. Almost hardy. Indispensable for hall, hotel and veranda decoration. Large plants, \$1.50 to \$2.00 each.

**Silvery Green.** A silvery species of above. Large plants, \$1.50 to \$2.00 each.

**FICUS**

**Elastica.** The well-known rubber plants, for Fall delivery.

5-inch pots, 75c. each, \$7.50 per doz.

6-inch pots, \$1.00 each, \$12.00 per doz.

**Utilis.** A valuable acquisition to the rubber plants. Light green leaves and light colored tendril.

5-inch, \$2.00 each.

6-inch, \$2.50 each.

Specimen plants \$5.00 and up.

**Ficus Repens.** A small-leaved trailing vine, used for covering walls and as a basket and hamper plant. Deserves general cultivation.

3-inch, 25c. each, \$2.50 per doz.

**Ficus Pandurata** (Fiddle-backed rubber plant). A serviceable and desirable decorative plant. Large specimens, price on application.

**FITTONIA**

**Argyroneura** A pretty trailing plant with vivid green foliage traced with a network of pure white veins.

3-inch, 25c. each.

4-inch, 35c. each.

6-inch, 75c. each.

**Verschaffeltii.** Similar to the preceding, only leaves are traced with a network of vivid red.

3-inch, 25c. each.

4-inch, 35c. each.

5-inch, 50c. each.

**LAURUS CERASUS. English Laurel**

Splendid evergreen tub plant, rivaling the Bay tree for decorative purposes. bushy plants, \$1.50 to \$2.00 each.

**PANDANUS VEITCHII**

One of the best decorative plants for the house. The leaves are light green, beautifully striped with pure white.

4-inch, 75c. each.

5-inch, \$1.25 each.

6-inch, \$1.50 each.

7-inch, \$3.50 each.

Larger specimens, prices on application.

**PEPEROMIA ARGYREA**

A small growing plant, fleshy-leaved, light green streaked with silvery white.

**STEPHANOTIS FLORIBUNDA**

A desirable greenhouse climber, with handsome, deep green, flossy foliage; produces fragrant, pure white, waxy flowers in clusters.

Strong plants, 50c. to \$1.00 each.

3-inch, 25c. each.

4-inch, 50c. each.

**TRADESCANTIA FUSCADA**

Useful conservatory plant, brownish and gray, hairy leaves.

50c. each.

## Ferns

**Adiantum Farleyense.** The choicest of the Maidenhair ferns, but one that requires greenhouse cultivation.

5-inch, \$1.00 each, \$12.00 per doz.

6-inch, \$1.50 each, \$18.00 per doz.

6-inch selected, \$2.25 each, \$27.00 per doz.

6-inch specimen plants, \$3.00 each, \$36.00 per doz.

**Adiantum Glory of Mordrecht** (Gloriosa Fern). An easy growing form of Farleyense. Has a stonger constitution, harder fronds and stems, and does well with the ordinary Maidenhair ferns.

3-inch, 25c. each, \$3.00 per doz.

4-inch, 50c. each, \$6.00 per doz.

5-inch, \$1.00 each, \$12.00 per doz.

**Adiantum Croweanum.** The hardiest of the Maidenhair ferns and very suitable for home culture.

3-inch, 15c. each, \$1.50 per doz., \$12.00 per 100.

4-inch, 30c. each, \$3.00 per doz., \$20.00 per 100.

5-inch, 50c. each, \$6.00 per doz., \$45.00 per 100.

**Cibotium Schiedei.** One of the finest ferns for decorating purposes. Long, light green, graceful fronds of good substance and durability.

7-inch pots, \$3.00 each.

8-inch pots, \$5.00—\$7.50 each.

9-inch pots, \$7.50—\$10.00 each.

Larger specimens, prices on application.

**Cyrtomium falcatum.** The well known Holly fern. Dark green shiny fronds resembling a holly leaf. Hardy and of easy culture.

4-inch pots, 35c. each, \$3.75 per doz.

5-inch pots, 50c. each, \$6.00 per doz.

6-inch pots, 75c. each, \$9.00 per doz.

**Cyrtomium Rochfordianum.** The new crested Holly Fern. It is very useful for department decoration. Rich, glossy, dark green color and beautifully formed.

4-inch pots, 50c. each, \$6.00 per doz.

5-inch pots, 75c. each, \$9.00 per doz.

6-inch pots, \$1.00 each, \$12.00 per doz.

**Asplenium nidus avis** (Bird's Nest Fern). An odd looking fern of decorative value, having broad heavy fronds arranged in a whorl, giving it the name Bird's Nest Fern.

3-inch, 30c. each, \$3.00 per doz.

4-inch, 50c. each, \$6.00 per doz.

5-inch, \$1.25 each, \$15.00 per doz.

**Nephrolepis exaltata Bostoniensis** (Boston Fern). The most popular house plant and very widely used for interior decoration and porch work in summer, as it does well in partial shade.

7-inch pans, \$1.25 each, \$15.00 per doz.

8-inch pans, \$1.50 each, \$18.00 per doz.

Larger specimen plants, prices on application.

**Whitmanni.** One of the plumed varieties that has given satisfaction as a commercial variety.

5-inch, 50c. each, \$6.00 per doz.

6-inch, 75c. each, \$9.00 per doz.

**Scholzeli.** This is an ideal crested fern, holding the same relation to all other crested varieties that the Scotti holds to the old Boston.

5-inch, 50c. each, \$6.00 per doz.

6-inch, 75c. each, \$9.00 per doz.

**Scotti.** An old time favorite of the greatest merit.

5-inch, 50c. each, \$6.00 per doz.

6-inch, 75c. each, \$9.00 per doz.

**Teddy Junior.** A fern for every household. Dwarf, compact and sturdy.

5-inch, 50c. each, \$6.00 per doz.

6-inch, 75c. each, \$9.00 per doz.

**Tuberosa Plumosa.** A new crested variety of the Japanese tuberosa. Interesting and well worth growing.

5-inch, 50c. each, \$6.00 per doz.

6-inch, 75c. each, \$9.00 per doz.

**Small Table Ferns.** We carry a complete selection of small ferns for Fern dishes, comprising such varieties as:

**Aspidium Tsussimense.**

**Cyrtomium falcatum.**

**Cyrtomium Rochfordianum.**

**Lastrea Chrysoloba.**

**Pteris Cerrulata Cristata.**

**Pteris cretica albo-lineata.**

**Pteris Mayii.** **Pteris Victoria.**

**Pteris Wilsonii.** **Pteris Wimsettii.**

75c. per doz., \$5.00 per 100.



**Cibotium Schiedei**

## Asparagus and Smilax

**Asparagus Lutzi.** A cross between plumosus nanus and deflexus scandens. Excellent for cutting. Upright growing, making shoots five to six feet in length. It is a big producer and can be grown at a cooler temperature than plumosus nanus. 3-inch 60c. each, \$6.00 per doz., \$45.00 per 100.

**Asparagus Plumosus Nanus.** An excellent plant for table decoration or for green to mix with cut flowers.

Seedlings, \$1.50 per 100, \$12.00 per 1000.

2¼-inch, 10c. each, 75c. per doz., \$5.00 per 100.

3-inch, 15c. each, \$1.50 per doz., \$10.00 per 100.

4-inch, 20c. each, \$2.00 per doz., \$15.00 per 100.

**Asparagus Sprengeri.** Excellent for hanging baskets or for cutting. One of the best plants for window box use. (Prices next page.)

Seedlings, \$1.00 per 100, \$8.00 per 1000.

2½-inch, 10c. each, 75c. per doz., \$5.00 per 100.

3-inch, 15c. each, \$1.50 per doz., \$10.00 per 100.

4-inch, 20c. each, \$2.00 per doz., \$15.00 per 100.

**Smilax.** A popular greenhouse climber with dark shiny foliage. Useful for decorative purposes. 2¼-inch, 60c. per doz., \$4.50 per 100.

## Orchids



**Cypripedium Insigne**

We offer the following brief list of these choice plants, having an excellent stock from which to select your order. Our plants are in fine condition, and at the prices quoted our customers will receive full value. These prices are for average sized plants that will bloom. If larger plants are desired, we will make a selection that will please. Prices on specimen plants or on varieties not found in this catalog will be cheerfully given on application.

*If you are a beginner in orchid growing, let us advise you.*

## ORCHIDS (Continued)



Cattleya Trianae

## CATTLEYAS

- C. Gaskelliana.** June and July. Purple lip, petals and sepals rose flushed. \$2.50 to \$5.00 each.
- C. Gigas (Sanderiana.)** June and July. Flowers large. Petals and sepals dark rose color. Lip magenta purple. \$3.50 to \$5.00 each.
- C. Gigas (Hardyana.)** July and August. The later flowering gigas. \$3.50 to \$5.00 each.
- C. Mendelii.** May. Flowers varying in color from white to light pink. Lip crimson purple. \$2.50 to \$5.00 each.
- C. Mossiae.** April and May. Flowers large and varying in color. \$2.50 to \$5.00 each.
- C. Labiata.** October and November. Very full flowering and one of the most popular varieties for cut flowers. \$2.50 to \$5.00 each.
- C. Schroderae.** March and April. Flowers resemble Trianae in form, but are light colored with yellow throat. Sweet scented. \$2.50 to \$5.00 each.
- C. Trianae.** December and January. The most widely grown of the Cattleya family and the best known. \$2.50 to \$5.00 each.
- C. Dowiana aurea.** September and October. Sepals and petals primrose yellow, devoid of the crimson flush. Lip with more yellow. \$5.00 to \$10.00 each.

## CATTLEYAS (Continued)

- C. Percivaliana.** November and December. Flowers are of a deep rose color, rich colored lip of deep crimson and purple. \$2.50 to \$5.00.
- C. Skinnerii.** March and April. Flowers in clusters of a rose purple color. \$2.50 to \$5.00.

## CALANTHE

Terrestrial Orchid of vigorous growth and easy culture, especially recommended to beginners. It thrives in any ordinary greenhouse and bears handsome flowers in midwinter when flowers of this class are more esteemed.

- C. Veitchii**, \$1.50 to \$2.00.  
**C. Veitchii compacta**, \$1.50 to \$2.00.  
**C. Orpeticana**, \$2.50 to \$3.00.  
**C. Mac Williamii**, \$2.50 to \$3.00.  
**C. White Seedling**, \$3.00 to \$4.00.  
**C. Sandhurstiana**, \$3.00 to \$4.00.  
**C. Lasilliana**, \$2.50 to \$3.00.  
**C. Orange Throat**, \$1.50 to \$2.00.

## CYPRIPIEDIUM INSIGNE

Our stock of this popular Orchid is in very fine condition. The price quoted is for plants after flowering. In the Fall months when plants are in bud or flower, the value of these must be added. 5-6 inch pans, after flowering, \$1.50 to \$2.00 each. In bud and bloom, \$3.00 to \$4.00 each.

**DENDROBIUM**

Belongs to very large genus of epiphytal orchids, widely distributed and varying greatly in character and habit. With a few exceptions, they require plenty of heat and moisture.

**D. nobile.** Winter and Spring. Very popular. Flowers vary from rose to purple. \$3.50 to \$7.50 each.

**D. thyrsoflorum.** Flowers in large drooping clusters, sepals and petals white, often pink flushed, lip golden orange. \$3.00 to \$5.00 each.

**D. formosum giganteum.** Flowers in clusters, large, pure white; lip stained orange yellow. \$2.50 to \$5.00 each.

**D. phalænopsis Schroderianum.** One of the finest for cutting. Flowers in long terminal spikes, color from blush to purple. \$2.00 to \$4.00.

**LÆLIA**

Closely allied to Cattleyas, having the same range of exquisite coloring. Requires the same conditions of growing as the Cattleyas.

**L. anceps.** From two to six flowers on scape; sepals and petals rose; lip crimson purple. \$2.00 to \$4.00 each.

**MILTONIA**

**M. vexillaria.** Most popular species, varying from lilac to dark rose. Lip usually darker than other segments. Very handsome. \$3.50 to \$10.00 each.

**M. Roczlii.** Flowers flat, 4 inches across. White with a purple blotch at the base of each petal and orange yellow disc at the base of the lip. \$2.50 to \$5.00 each.

**M. phalænopsis.** A gem, of easy culture. Sepals and petals white. Sapes 3 to 5 flowered. Lip blotched and streaked with purple. \$2.00 to \$4.00 each.

**ODONTOGLOSSUM**

This genus requires an even, cool temperature throughout the year. The flowers are fairly bewildering in their beauty, and their unlimited variation in colors and markings.

**O. crispum.** Flowers large, white, often tinged with rose and more or less blotched; come on many flowered spikes. \$2.00 to \$3.50 each.

**ONCIDIUM**

Epiphytal orchid or rare beauty from Mexico, Peru and West Indies. Grows best in a temperature of from 50 to 55 degrees.

**O. varicosum.** One of the finest and most useful of this family, having long branched spikes with an abundance of large yellow flowers. Very fine for decorative purposes. \$1.50 to \$3.00 each.

## Bedding Plant Specialties

Our bedding plant department devotes particular attention to the production of a superior grade of stock in smaller sizes, and offers a select assortment at such attractive prices that large estates find it real economy to place bedding plant orders rather than propagate with limited facilities. Stock offered here for delivery up to late February. Larger sizes will be offered in our 1916 Annual.

### NEW GOLDEN VARIEGATED FLOWERING ABUTILON

**Abutilon Seyboldi.** Beautifully variegated golden yellow and green, not unlike the varieties Eclipse and Megapotamcium, but with a splendid upright growth that makes it equally desirable for foliage effects in the garden or as a decorative pot plant for the conservatory or dwelling house. It also differs from other variegated Abutilons inasmuch as it is exceptionally free, producing an abundance of flowers of a unique bronzy color, or old gold shade. 2¼-inch pots, 50c. each, \$5.00 per doz.

### BEDDING PLANTS

**Abutilon** (Variegated Flowering Maple).

La Reine.

Savitzi.

2¼-inch pots, 75c. per doz., \$6.00 per 100.

**Acalypha.**

Macaefeana.

Marginata.

Musaica.

2¼-inch pots, 75c. per doz., \$6.00 per 100.

**BEDDING PLANTS (Continued)****Achyranthes**

Biemulleri. Brilliantissima.  
Lindeni. Panache de Bailey.  
Formosa.  
Rooted cuttings, \$2.00 per 100, \$15.00 per 1,000.

2¼-inch, 75c. per doz., \$4.50 per 100.

**Ageratum Fraseri** (New) This splendid new variety flowers freely, when other kinds merely, produce foliage. Undoubtedly the best variety for bedding. Color, bright blue.

2¼-inch pots, \$1.00 per doz., \$8.00 per 100.

**Ageratum** (Floss Flower)

Perfection. Princess Pauline.  
Stella Gurney.

Rooted cuttings, \$1.25 per 100, \$10.00 per 1,000.

2¼-inch, 75c. per doz., \$4.00 per 100, except where noted.

**Alternanthera**

Aurea Nana. Brilliantissima.  
Jewel. Paronychoides.  
Versicolor.

Rooted cuttings, \$1.50 per 100, \$12.00 per 1,000.

**COLEUS**

Each season we ship approximately one million Coleus in rooted cuttings alone, and have increased our facilities to meet the ever-growing demand. The varieties offered are the best for bedding purposes. Anna Pfister and John Pfister are veritable gems for dwarf borders or for carpet bedding, the growth being compact so that trimming is unnecessary.

**COLEUS. Bedding Varieties**

Anna Pfister, Golden Bedder,  
John Pfister, Golden Queen,  
Beckwith's Gem, Lord Alverstone,  
Cecil Brown, Lord Palmerston,  
Duneira, Queen Victoria,  
Firebrand, Verschaffeltii.

**FANCY VARIETIES**

American Beauty, Hurricane,  
Blizzard, Saboni,  
Prince Edward, Messey,  
Brilliancy, Neptune,

Rooted cuttings, \$1.25 per 100, \$10.00 per 1,000.

2¼-inch, 50c. per doz., \$4.00 per 100.

**FUCHSIA**

Cote d'Azur, Minnesota,  
Goettingen, Lord Byron,  
Tenner, Little Beauty,  
Mme. VanderStraus, Patrie,  
Graffe Witte, White Beauty,

Rooted cuttings, 50c. per doz., \$3.00 per 100.

2¼-inch, 75c. per doz., \$4.00 per 100.

**CUPHEA PLATYCENTRA. Cigar Plant**

Rooted cuttings, 35c. per doz., \$2.00 per 100.

2¼-inch, 75c. per doz., \$4.00 per 100.

**GERANIUMS. Newer Varieties**

**Maryland.** A splendid bedder. 2¼-inch pots, \$1.00 per doz., \$8.00 per 100.

**American Beauty, Helen Michell,  
Paul Crampel, Scarlet Bedder,**  
2¼-inch, 75c. doz., \$6.00 per 100.

**STANDARD VARIETIES OF GERANIUMS. In a Select Assortment**

2¼-inch pots, 60c. per doz., \$4.50 per 100.

**IVY-LEAVED**

White, Lavender,  
Pink, Crimson,

2¼-inch, 75c. per doz., \$6.00 per 100.

**VARIEGATED. Mountain of Snow**

**Mme. Salleri, Mrs. Pollock,  
Mountain of Snow,**

2¼-inch pots, 75c. per doz., \$5.00 per 100.

**GERMAN IVY**

Rooted cuttings, \$1.00 per 100.  
2¼-inch, \$4.00 per 100.

**HELIOTROPE**

Centefleur, Lorne,  
La Duse, Madam Lederle,  
2¼-inch, 75c. per doz., \$5.00 per 100.

**LANTANAS**

Crusalis, Rene Poitevine,  
Eole, Snow Queen,  
Radiation, Ultima,  
2¼-inch, 75c. per doz., \$6.00 per 100.

**MARGUERITE. Paris Daisy**

Single White, Mrs. F. Sander,  
2¼-inch, 75c. per doz., \$6.00 per 100.

*Let us quote you on Bedding Plants in large quantities.*

**YELLOW MARGUERITE. Yellow**  
**Boston Daisy**

2¼-inch, \$1.50 per doz., \$10.00 per 100.

**PETUNIAS**

Double White, Single unassorted,  
 Assorted Double,

Rooted cuttings, \$1.25 per 100.

2¼-inch pots, 75c. per doz., \$5.00 per 100.

**SALVIA. Scarlet Sage**

Zurich nana. Splendid dwarf bedder. 2¼-inch, 75c. per doz., \$6.00 per 100.

Bonfire, Splendens,  
 King of the Carpet, Zurich,

Rooted cuttings, \$1.25 per 100, \$10.00 per 1,000.

2¼-inch, 50c. per doz., \$4.00 per 100.

**VINCA. Trailing**

Green, Variegated,

Rooted cuttings, \$1.25 per 100, \$10.00 per 1,000.

2¼-inch, made up, 75c. per doz., \$5.00 per 100.

## Roses for Greenhouse Growing.

The superiority of the roses supplied by Cromwell Gardens for greenhouse growing is acknowledged, and roses for growing under glass have been shipped by us to every section of America. We handle these plants in quantity and can fill orders of any size if placed early in the season. We have made the supplying of roses in larger sizes than 2¼-inch pots, which is the usual commercial shipping size, a

specialty to the private trade and the hundreds of repeat orders year after year are ample testimony that our stock meets general approval.

We do not aim to sell every new rose that is offered the buying public. We do not offer varieties that we have not tested unless they are of excellent promise. We offer almost without exception plants of our own growing and can guarantee satisfaction to the purchaser. We advise grafted plants from 3-inch pots for the private estate, this size having a top growth nearly equal the 4-inch and a root system in proportion. It will save dollars on the purchase, save breakage, and lighten express charges. It is the best size for the good of the plant, for the good of the customer, and for us.

Our rose list for 1916 we present in brief form.



**Ophelia**

*Cromwell Gardens Young Rose Stock will help you, as it has us, to capture prizes at the big exhibitions.*

## ROSES FOR GREENHOUSE GROWING

**Mrs. Wm. R. Hearst.** A sport of My Maryland which has the same productive habit of growth and freedom of flowering. The color is a decided improvement on the parent. Mrs. Hearst is a clear, dark pink, a shade that resembles more the old favorite "Bridesmaid."

2¼-inch, 30c. each, \$3.00 per doz.,  
\$25.00 per 100.

3-inch, 40c. each, \$4.00 per doz., \$30.00  
per 100.

4-inch, 50c. each, \$5.00 per doz., \$35.00  
per 100.

Either grafted or own root plants at the above prices.

**Red Radiance.** We have decided to disseminate this coming Spring our red sport of Radiance. This sport will be a welcome addition to the lovers of good bedding roses. It will mean one more rose of a desirable color that has the good qualities possessed by its parent. We do not class this as a crimson and do not wish any one to purchase it with the idea of getting a rose of the color of Hoosier Beauty or Hadley. Red Radiance describes the variety. It is a clear shade of red, too dark to be classed as a cerise and not dark enough for crimson. We reserve the right to designate this rose by another name in our mid-winter catalog, and are reserving registration waiting for consent to use the name we have selected.

2¼-inch, 30c. each, \$3.00 per doz.,  
\$25.00 per 100.

3-inch, 40c. each, \$4.00 per doz., \$30.00  
per 100.

4-inch, 50c. each, \$5.00 per doz., \$35.00  
per 100.

Either grafted or own root plants at the above prices.

**Hoosier Beauty.** This crimson rose of last season's introduction has shown wonderful growth and possibilities. We have faith that this new variety will meet with well deserved popularity. It is of excellent color and good form. It is free flowering and an easy grower.

### Grafted

2¼-inch, 30c. each, \$3.00 per doz.,  
\$22.50 per 100.

3-inch, 40c. each, \$4.00 per doz., \$27.50  
per 100.

4-inch, 50c. each, \$5.00 per doz., \$35.00  
per 100.

### Own Root

2¼-inch, 20c. each, \$2.00 per doz.,  
\$15.00 per 100.

3-inch, 30c. each, \$3.00 per doz., \$20.00  
per 100.

4-inch, 40c. each, \$4.00 per doz., \$25.00  
per 100.

**Sunburst.** This popular rose is not an easy variety to propagate. It is slow in starting but a very fine rose and easy to handle when well established. In color it is an orange-copper or golden-yellow; very intense. Offered on its own roots only.

2¼-inch, 20c. each, \$2.00 per doz.,  
\$15.00 per 100.

3-inch, 30c. each, \$3.00 per doz., \$22.50  
per 100.

4-inch, 40c. each, \$4.00 per doz., \$30.00  
per 100.

**American Beauty.** This variety needs no description. It has been the favorite rose of America for more than forty years. Own root plants only.

2¼-inch, 15c. each, \$1.50 per doz.,  
\$12.00 per 100.

3-inch, 20c. each, \$2.25 per doz., \$18.00  
per 100.

4-inch, 30c. each, \$3.00 per doz., \$25.00  
per 100.

**Mrs. Charles Russell.** The bud is fully as large as American Beauty but longer and pointed, and opens into a flower of unusual beauty. The color is a bright rose pink, deeper toward the center. Is a remarkable keeper and shipper. We do not offer own root plants of this variety.

### Grafted

2¼-inch, 30c. each, \$3.00 per doz.,  
\$20.00 per 100.

3-inch, 40c. each, \$4.00 per doz., \$25.00  
per 100.

4-inch, 50c. each, \$5.00 per doz., \$30.00  
per 100.

**My Maryland.** Pink in color with long, pointed buds. One of the finest of the summer flowering varieties and wonderfully productive.

### Grafted

2¼-inch, 25c. each, \$2.25 per doz.,  
\$17.50 per 100.

3-inch, 30c. each, \$3.00 per doz., \$22.50  
per 100.

4-inch, 40c. each, \$4.00 per doz., \$30.00  
per 100.

### Own Root

2¼-inch, 15c. each, \$1.50 per doz.,  
\$12.00 per 100.

3-inch, 25c. each, \$2.50 per doz., \$18.00  
per 100.

4-inch, 30c. each, \$3.00 per doz., \$25.00  
per 100.



## A New Bedding Rose.

**Panama** (Cook). This new rose has proved its merits as a garden rose of the highest quality. It is one more of the seedlings which John Cook has given the rose lovers of America and is an added proof that for American conditions roses of American origin are superior. This rose is in the Trial Garden of the American Rose Society at Elizabeth Park, Hartford, Conn., and has received the Silver Medal for merit. Panama, Radiance, and Cook's seedling No. 411, of which we have purchased part of the stock but which as yet Mr. Cook has not named, are three of the finest varieties in existence, for bedding.

Panama is a delicate, rosy, flesh pink in color; very fragrant and very free-flowering. It is a rose that everyone who propagates roses for sale should purchase. For 1916 we offer Panama grafted on seedling briar.

### Grafted

2¼-inch, 30c. each, \$3.00 per doz.,  
\$22.50 per 100.

3-inch, 40c. each, \$4.00 per doz.,  
\$27.50 per 100.

4-inch, 50c. each, \$5.00 per doz.,  
\$35.00 per 100.

### Own Root

2¼-inch, 25c. each, \$2.25 per doz.,  
\$17.50 per 100.

3-inch, 30c. each, \$3.00 per doz.,  
\$22.50 per 100.

4-inch, 40c. each, \$4.00 per doz.,  
\$30.00 per 100.

### OUR GENERAL LIST OF ROSES FOR THE GREENHOUSE

**Bon Silene** (Grafted only).  
**Bride** (Grafted only).  
**Bridesmaid** (Grafted only).  
\***Cecile Brunner**.  
\***Double White Killarney**.  
**Francis Scott Key**.  
**George Elgar**.  
\***Hadley**.  
**Irish Fire Flame** (Own Root only).  
**Jonkheer J. L. Mock**.  
**Kaiserin Augusta Victoria**.  
**Killarney**.  
\***Killarney Brilliant**.  
**Killarney Queen**.  
**Lady Alice Stanley**.  
**Lady Hillingdon**.  
**Milady**.  
\***Mrs. Aaron Ward**.  
\***Mrs. George Shawyer**.  
**Mrs. J. P. Morgan** (Grafted only).  
**Mrs. Taft**.  
\***Ophelia**.  
**Prince Arenberg**.  
**Radiance**.  
**Richmond**.  
**White Killarney**.

The varieties marked (\*) are our choice for general growing.

### Grafted

2¼-inch, 25c. each, \$2.25 per doz.,  
\$17.50 per 100.

3-inch, 30c. each, \$3.00 per doz.,  
\$22.50 per 100.

4-inch, 40c. each, \$4.00 per doz.,  
\$30.00 per 100.

### Own Root

2¼-inch, 15c. each, \$1.50 per doz.,  
\$10.00 per 100.

3-inch, 20c. each, \$2.00 per doz.,  
\$15.00 per 100.

4-inch, 30c. each, \$3.00 per doz.,  
\$20.00 per 100.

*We invite you to visit our new Hardy Rose Garden.*

# Carnations.

## New Carnations of Exceptional Merit

**Miss Theo.** From the new carnations that are offered for 1916 we have selected the variety Miss Theo to offer to our customers in the belief that it is the best novelty of the year. In Miss Theo are found those qualities which make a variety a success. It is a clean, easy grower. Makes a shapely, well-balanced plant and is a rapid grower. It makes a plant that carries a big number of flowering shoots and it matures early. The flower is of good size, well-formed, with stems that are ample to support the bloom and that are wiry and graceful.

The color is a true rose pink and this is the most desirable shade. It is a color which existing varieties have been lacking. It is a flower of great keeping quality, and combining this with the pleasing color, large production, and easy growth, we have in Miss Theo a carnation that will be profitable to the commercial grower and a satisfactory variety for the private place. We are growing Miss Theo in Cromwell and the young stock offered is of our own growing.

Rooted Cuttings, \$2.25 per doz.,  
\$16.00 per 100.

Plants from 2¼-inch pots, \$3.00 per  
doz., \$20.00 per 100.

**Alice.** Freedom of flowering, excellent growth, and a pleasing shade of shell pink make Alice a carnation for general planting. We have 10,000 planted of this novelty of last season.

Rooted cuttings, \$1.00 per doz., \$8.00  
per 100.

Plants from 2¼-inch pots, \$1.50 per  
doz., \$12.00 per 100.

The plants on this page are for 1916 delivery.

If field grown plants for delivery this fall are required, we invite your correspondence.

**Good Cheer.** The flowers are rose pink in color, of medium size and perfect form. The plant makes no surplus growth and may be planted closer in the bench than other varieties. This novelty of last season promises at this time to be one of the best varieties in commerce. We have 8000 Good Cheer growing at Cromwell.

Rooted Cuttings, \$1.00 per doz.,  
\$8.00 per 100.

Plants from 2¼-inch pots, \$1.50 per  
doz., \$12.00 per 100.

**Sensation.** This variety has big heavy flowers, light pink in color; an exhibition bloom of the best quality. Not so free growing as smaller flowered varieties. One of last season's novelties.

Rooted cuttings, \$1.00 per doz., \$8.00  
per 100.

Plants from 2¼-inch pots, \$1.50 per  
doz., \$12.00 per 100.

## OUR GENERAL LIST OF CARNATIONS

**Beacon.**

**Benora.**

**Champion.**

**Enchantress Supreme.**

**Eureka.**

**Mrs. C. W. Ward.**

**Matchless.**

**Philadelphia.**

**Princess Dagmar.**

**Rosette.**

**White Enchantress.**

**White Wonder.**

Rooted cuttings, 75c. per doz., \$4.00  
per 100.

Plants from 2¼-inch pots, \$1.00 per  
doz., \$7.50 per 100.

*We ship Carnation Cuttings in any quantity. Satisfaction guaranteed.*

## Chrysanthemums.

IN GREENHOUSE AND GARDEN PLANTS, our annual publication which will be mailed in mid-winter, our chrysanthemums will be fully described and illustrated. There are a few choice novelties of 1916 to which we wish to call attention at this time. These are the novelties of 1915 which we have planted extensively and which will be found worthy of close investigation. We make Chrysanthemums an important item in our business. We planted 200,000 this season for cut flowers and over 20,000 of the hardy early flowering type are in the nursery to enable us to offer clumps instead of small plants for outside planting. In addition, all our exhibition varieties for stock plants are being field grown to insure health and constitutional vigor. Visit us in the fall and see the chrysanthemums.

### NOVELTIES FOR 1916

**Golden Gleam.** This new variety we are offering for Spring delivery. It is a seedling of Golden Age and Scalarandis and after thorough trial we are convinced that Golden Gleam merits all the praise bestowed upon it. It is reflexed in form and of medium size. Its color we consider the best of any yellow variety ever offered. It is clear, bright yellow, being an improvement on Golden Age, and combines with this glorious color a strong stiff stem carrying foliage up to the flower. The keeping quality, whether on the plant or cut, is remarkable. It was exhibited last season in October and other flowers matured at the same time were shown at Baltimore the middle of November. It is compact in growth from June first plantings, making about three foot stems. The best bud is the second crown about August 20th. 2¼-inch, 30c. each, \$3.00 per doz., \$20.00 per 100.

**Margaret Waite.** This new Single is a deep pink sport of the well-known late pink Single, Mrs. E. D. Godfrey, differing from the parent in having extra petals and a much deeper and more pleasing color. The value to the private gardener

of the very late varieties is to extend the flowering season of the chrysanthemum until the coming of the early bulbs. Margaret Waite can be had in December and with Miss Isabelle, the bronze sport of Mrs. E. D. Godfrey which we disseminated last season, December flowers for vase and table work can be had without unusual difficulties. We shall disseminate Margaret Waite in the Spring of 1916. 2¼-inch, 30c. each, \$3.00 per doz., \$20.00 per 100.

**Peace.** It is seldom that the C. S. A. cup for the best seedling of the year is awarded to a Pompon and we are fortunate to be able to offer our customers the winner of last season's cup under the name "Peace." It is a strong growing variety producing an abundance of flowering shoots. The color is white, showing however, a tinge of pink in the bud stage. It matures about November 10th. It is distinct from any other variety and we believe it to be the best variety in its color ever offered. We included Peace in our 1915 catalog but owing to the heavy demand and the fact that a limited stock would enable us to fill only a small percentage of the orders, we withdrew the variety and now with ample stock are offering it for 1916. 2¼-inch, 30c. each, \$3.00 per doz., \$20.00 per 100.

## Our Novelties for 1915

**Harvest Moon.** A worthy companion to the varieties sent out by us last season. It is a clear golden yellow in color, maturing October 20th to 25th. It is of the button type; flowers of medium size. The plant is very prolific, making an immense quantity of flowering shoots. It is, we believe, the finest yellow Pompon in existence for cutting the last week of October. Awarded the bronze medal of the Oyster Bay Horticultural Society and a Certificate of Merit by the Horticultural Society of New York.

**Miss Isabelle.** To the lovers of the single varieties we offer this novelty which is a sport of the popular late pink variety, Mrs. E. D. Godfrey. In color it is pure bronze with a silvery reverse. It matures about Thanksgiving Day and is a charming variety for table work.

2¼-inch, 15c. each, \$1.25 per doz., \$7.50 per 100.

Three of a variety at the dozen rate; 25 of a variety at the 100 rate.

### EXHIBITION VARIETIES Novelties of 1915

Price for 1916:

50c. each, \$5.00 per doz., \$35.00 per 100.



**Silver King**

Three of a variety at the dozen rate; 25 of a variety at the 100 rate.

**Adele Griswold**  
**Algonac**  
**Antigone**  
**A. S. Baldwin**  
**Calumet**  
**Silver King**

**Earl Kitchener**  
**Kewanee**  
**Mankato**  
**Mrs. J. Surry**  
**Mrs. J. P. Mitchell**

### GENERAL PURPOSE VARIETIES. Novelties of 1915

Price for 1916:

Rooted cuttings, 15c. each, \$1.50 per doz., \$10.00 per 100.

2¼-inch, 20c. each, \$2.00 per doz., \$15.00 per 100.

Three of a variety at the dozen rate; 25 of a variety at the 100 rate.

\***Crystal Gem**  
**Early Frost**  
\***Golden Queen**  
\***Marigold**

**Modello**  
**Mount Greenwood**  
**Tekonsha**

The varieties marked (\*) are, according to last year's test and present indications, the three commercials that should be generally grown.

### HARDY CHRYSANTHEMUMS

The early flowering kind has developed rapidly during recent years, and is now of the greatest value for garden decoration or for cut flower purposes. The flowers are larger than the Pompons, embrace a wide range of splendid colors, and flower before severe frosts occur.

While we do not recommend fall planting—excellent results being obtained from planting during spring—we can supply an assortment of the best kinds in heavy clumps for planting during October.

We recommend the following kinds without hesitation for the hardy garden. These are fully described in our 1915 Annual Catalogue.

<b>Chaldon</b>	<b>Eden</b>
<b>Goacher's Crimson</b>	
<b>Maduse</b>	<b>Mignon</b>
<b>Mme. August Nonin</b>	
<b>Perle Chatillonnaise</b>	<b>Provence</b>
<b>Red Riding Hood</b>	<b>Rosie</b>

Large, field-grown clumps, 20c. each, \$2.00 per dozen.

*Watch for the above 1915 novelties at the flower shows. You will want these.*

# ORDER SHEET

## A. N. PIERSON, INC.

CROMWELL GARDENS

CROMWELL, CONN.

*Ship to* .....  
*name*

*Street*.....

*Ordered by* .....

*Express office* .....

*Post office* ..... *State* .....

*Forward by* .....

*Amount enclosed Cash*..... *Money order*.....

*Check*..... *Postage stamps*.....

Quantity			



# INDEX

Page	Page	Page	Page
Abies..... 4	Compass Plant..... 43	Juniper..... 5	Primula..... 39, 40
Abutilon..... 57	Coneflower..... 40	Juniperus..... 5	Privet, California..... 10
Acalypha..... 57	Convallaria..... 57		Privet..... 11
Achillea..... 23	Coral Berry..... 12	Kalmia..... 12	Prunella..... 40
Achyranthes..... 58	Corchorus..... 8	Kentia..... 50	Pueraria..... 15
Adenophora..... 23	Cornflower..... 26	Kerria..... 8, 13	Pyrethrum..... 40
Adiantum..... 54	Cornus..... 8	King's Spear..... 25	Pyrus..... 13
Ægopodium..... 23	Coryllus..... 9	Kudzu Vine..... 15	
Agathe..... 48	Cotoneaster..... 8		Ranunculus..... 40
Ageratum..... 58	Cranberry, High Bush..... 12	Lamium..... 32	Retinospora..... 6
Agrostemma..... 23	Cratægus..... 9	Larix..... 5	Rheum..... 41
Ajuga..... 23	Crotons..... 53	Lantanas..... 58	Rhododendrons, Hardy..... 13
Akebia..... 14	Cryptanthus..... 53	Larkspur, Hardy..... 26, 27	Rhodotypus..... 13
Alkanet..... 23	Cryptomeria..... 4	Latania..... 50	Rhubarb, Ornamental..... 41
Allamanda..... 53	Crytomium..... 54	Lauras Cerasus..... 53	Rhus..... 13
Alternanthera..... 58	Cuphea..... 58	Laurel, English..... 53	Ribbon Grass..... 36
Althea..... 7, 30	Cup Plant..... 43	Laurel, Mountain..... 12	Rock-Cress..... 24
Alum Root..... 30	Cyclamen..... 48	Lavender Cotton..... 41	Rose of Sharon..... 7
Alyssum..... 23		Leadwort..... 38	Roses..... 17-22, 59, 61
Ampelopsis..... 14	Daphne..... 9	Liatrix..... 33	Rudbeckia..... 46
Anchusa..... 23	Daisy..... 25, 26, 40, 58, 59	Ligustrum..... 11	
Andromeda..... 7	Delphinium..... 26, 27, 44, 45	Lilac..... 11	Sage..... 41, 59
Anemone..... 24	Desmodium..... 9	Lilium..... 11	Salvia..... 41, 59
Anthemis..... 24	Deutzia..... 9	Lilium..... 45, 46	Sand-Wort..... 24, 42
Aquilegia..... 24	Dianthus..... 27	Lily, Day..... 30	Santolina..... 41
Arabis..... 24	Dielytra..... 46	Lilies for forcing..... 46	Saponaria..... 41
Araucaria..... 52	Diervilla..... 13	Lilies, Hardy..... 45, 46	Saxifraga..... 41
Arboryvitæ..... 5	Digitalis..... 28	Lily of the Valley..... 46	Scabiosa..... 41
Ardisia..... 52	Dogwood..... 8	Lily, Plantain..... 28	Scutellaria..... 41
Areca..... 50	Dragon's Head False..... 36	Linum..... 33	Sea Holly..... 28
Arenaria..... 24		Livistonia..... 50	Sea Lavender..... 42
Arensi..... 42	Echinops..... 28	Lobelias..... 33	Sedum..... 41
Armeria..... 24	Eleagnus..... 9	Lonicera..... 11, 15	Self-heal..... 40
Arrhenatherum..... 24	Eremerus..... 28	Loosestrife..... 33	Sempervivum..... 41
Artemisia..... 25	Erigeron..... 28	Love Plant, Greek..... 26	Senecio..... 41
Aristolochia..... 14	Eryngium..... 28	Lupines..... 33, 43	Sidalcea..... 41
Asparagus..... 55	Euonymus..... 15, 53	Lupinus..... 33	Silene..... 42
Asphodelus..... 25	Eupatorium..... 28	Lychnis..... 33	Silphium..... 43
Asplenium..... 54	European Hazelnut..... 9	Lysimachia..... 33	Skull Cap..... 41
Asters..... 25, 42	Evergreens, Coniferous..... 4-6	Lythrum..... 33	Shrubs, Hardy..... 7-13
Astilbe..... 42			Small Ferns..... 54
Aucuba..... 53	Exochorda..... 9	Madwort..... 23	Smilax..... 55
Auricula (Primrose)..... 39		Magnolia..... 12	Snowberry..... 12
Avens..... 29	Fagus..... 10	Mahonia..... 12	Snow in Summer..... 26
Azalea..... 7	Ferns..... 54	Malow..... 41	Soapwort..... 41
	Ficus..... 53	Maple..... 12, 57	Speedwell..... 43
Baby's Breath..... 29	Firs..... 4	Marshmallow..... 30	Spergula..... 42
Baptisia..... 25	Fittonia..... 53	Marguerite..... 24, 58, 59	Spiderwort..... 43
Barberry..... 7, 10	Flax..... 33	Meadow Rue..... 43	Spiræa..... 12, 42
Beard Tongue..... 36	Flea Bane..... 28	Meadow Sweet..... 42	Spruce..... 4
Bedding Plants..... 57-59	Foam Flower..... 43	Megasea..... 41	Stephanotis..... 53
Beech..... 10	Forsythia..... 9	Milfoil..... 23	Stachys..... 42
Begonias..... 48	Foxglove..... 28	Mock Orange..... 13	Statice..... 42
Bell Flower..... 23, 25, 38	Fuchsia..... 57	Monarda..... 33	Stokesia..... 42
Berberis..... 7, 10	Funkia..... 28	Mullein..... 43	Stoncrop..... 41
Bignonia..... 14		Myrica..... 12	Strawberry Shrub..... 8
Bird's Nest Fern..... 54	Gaillardia..... 29	Myrtle, Trailing..... 43	Styrax..... 12
Bishop's Weed..... 23	Galega..... 29		Stuartia..... 12
Blanket Flower..... 29	Gardenias..... 49	Narcissus..... 47	Sunflower..... 29
Blazing Star..... 33	Garland Flower..... 9	Nephrolepis..... 54	Sweet Pea Shrub..... 9
Bleeding Heart..... 46	Genista..... 49	Nettle, variegated..... 52	Sweet Shrub..... 8
Blue Bells..... 25	Geraniums..... 58		Sweet William..... 27
Boltonia..... 25	Geum..... 29	Oenothera..... 34	Symphoricarpos..... 12
Boston Fern..... 54	Globe Daisy..... 29	Onopordon..... 34	Syringa..... 11
Bouvardia..... 48	Globe Flower..... 43	Orchids..... 55, 57	
Boxwood..... 51	Globularia..... 29	Ornamental Plants..... 52, 53	Taxus..... 5
Buddleia..... 8, 48	Goat's Rue..... 29	Oswego Tea..... 33	Tecoma..... 14
Bugle..... 23	Golden Bell..... 9		Thalictrum..... 43
Buttercup..... 40	Greenhouse Flowering Plants..... 48, 49	Pachysandra..... 34	Thermopsis..... 43
Butterfly Bush..... 8	Groundsel..... 41	Pæonia..... 35, 36	Thistle..... 28, 34
	Gypsophila..... 29	Palms..... 50	Thrift..... 24
Caladium..... 53		Pandanus..... 53	Thuya..... 5
Calycanthus..... 8	Hawthorne..... 9	Pansy..... 44	Tiarella..... 43
Campanula..... 25	Hedera..... 15	Papaver..... 34	Tradescantia..... 43, 53
Campion..... 23, 33, 42	Hedge Plants..... 10	Pearl Bush..... 9	Trollius..... 43
Candytuft..... 30	Heliopsis..... 29	Pentstemon..... 36	Trumpet Vine..... 14
Carnations..... 62	Heliotrope..... 58	Peony..... 35, 36	Tulips..... 46, 47
Catananche..... 26	Hemlock..... 6	Peperomia..... 53	Tsuga..... 6
Catchfly..... 42	Hemerocallis..... 30	Periwinkle..... 43	Tunica..... 43
Cattleyas..... 56, 57	Heuchera..... 30	Perennials..... 22-45	
Cedar..... 4	Hibiscus..... 30	Petunias..... 59	Valeriana..... 43
Centaurea..... 26	Hollyhock..... 30	Phalaris..... 36	Verbasum..... 43
Celastrus..... 15	Honeysuckle..... 11, 15	Philadelphus..... 13	Veronica..... 43
Cerastium..... 26	House Leek..... 41	Phlox..... 37, 38	Viburnum..... 12
Cercis..... 8	Hyacinths..... 47	Phoenix..... 50	Vinca..... 43, 59
Chamomile, False..... 25	Hydrangea..... 10, 49	Physostegia..... 36	Vines, Hardy..... 14, 15
Chionanthus..... 8		Pincushion Flower..... 41	Viola..... 44
Chrysanthemums..... 26, 63, 64	Iberis..... 30	Pinus..... 5	Virgin's Bower..... 15
Cibotium..... 54	Ilex..... 10	Pines..... 5	Weigela..... 13
Cigar Plant..... 58	Indigo, False..... 25	Pinks, Hardy..... 27	White Fringe..... 8
Cinquefoil..... 38	Inula..... 30	Platycodon..... 39	Wind Flower..... 24
Clematis..... 15	Iris..... 31, 32	Plumbago..... 38	Wistaria..... 15
Climbing Plants..... 14, 15	Itea..... 11	Poinsettias..... 49	Woundwort..... 42
Coat Flower..... 43	Ivy..... 14, 15-58	Polemonium..... 39	Xanthorhiza..... 13
Cocos..... 50	Jacob's Ladder..... 39	Poppy..... 34	Yarrow..... 23
Coleus..... 58	Judas Tree..... 8	Potentilla..... 38, 39	Yew..... 5
Columbine..... 24		Primrose..... 34, 39, 40	Yulan..... 12

