

Historic, Archive Document

Do not assume content reflects current scientific knowledge, policies, or practices.

THE DOLLAR BULLETIN

MARCH, 1915

THE VAN DUSEN NURSERIES W. L. McKAY, Prop., Geneva, N. Y.



DON'T FORGET THIS LITTLE CHAP AND HIS DWARF APPLES! He has 120 different varieties of Dwarf Fruit Trees to sell you—you need them all! For **DWARF FRUIT TREES**, see our large catalogue. : : : : : :



TREE ROSES

There is no more beautiful plant than a rose in bloom, and when the plant happens to be a tree rose, four or five feet tall and loaded with blossoms, it is doubly beautiful. We offer three varieties, probably as choice representatives of the three colors they represent, as any three roses we could select.

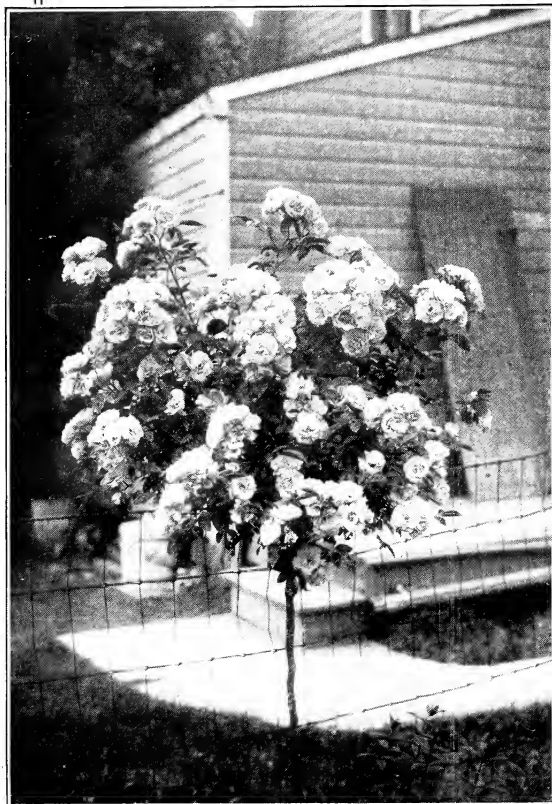
For the white variety we have the **Frau Karl Druschki** or "**Snow Queen**." I would place the blooms of this variety at the very head of all white roses for beauty; they are extremely large, but their slight tendency to be less double than most varieties relieves the bloom from anything like coarseness. A most beautiful bud; when fully opened is nearly as large as a Camelia, which it somewhat resembles. Blooms at intervals all summer.

For a red variety we have chosen the **Gruss an Teplitz**, which we consider perhaps the best adapted of all for lawn decoration, as the **Teplitz** blooms literally from June till late fall. It has a most wonderful color—call it red if you please, but better still, call it "**Gruss an Teplitz**" color; for there is no other color like it and it baffles all attempts at description. It has long, pointed buds like the **Frau Karl**, but not so large.

For a pink variety we offer **Mrs. John Laing** which we regard as one of the best of this color. It is a free bloomer, continuing through the summer.

Prices, \$1.00 each, \$9.00 per dozen. One of each of above three kinds, \$2.25.

Should we sell out of any of these varieties, we will send the nearest in color possible unless you indicate otherwise.



TREE ROSE

DOLLAR BUNDLES

All sales cash with order

In every block of mature apple and pear trees there are the four grades of first-class trees as shown in the accompanying cut—"A" which is the cream of the block, is the grade that constitutes our "Extra" size trees listed in our catalogue. If you are planting only a few trees of different varieties, this is the grade that will give you the best satisfaction—you want a good, big handsome tree, and here you get it. For this reason it is only in this grade of trees that we list them at single rates.

This leaves the sizes marked "B," "C" and "D." While the extra size takes the majority of a good block, there are too many in these perfectly good smaller sizes to throw away. Therefore, they go into our "Dollar Bulletin" and are offered in the different sizes as listed on pages 3 and 4, by the bundle.

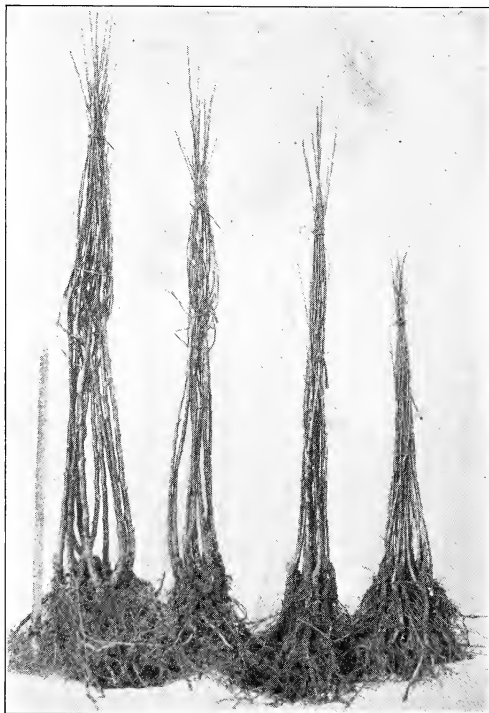
This enables us to maintain the very highest grading for our "Extra" size and at the same time provides an outlet for these smaller sizes at prices which enables the orchard planter to buy trees at half price or less, which, planted in orchard, will serve his purpose and make very little difference in the time of coming into bearing. Not that we advise these in preference to the "Extras" for orchard planting—there is no better stock than our extra size for any purpose, but for the man who wants to plant say a thousand trees and can only afford to buy 500 of the extra size this year, it will pay him instead to buy the thousand of the lighter grade at the cost of the 500 extras and have them all started together.

So this year we are putting our trees up in "dollar" bundles, which are offered under the following conditions:

(1) All sales from this Bulletin are under the same guaranty and provisions for substituting as stated on the inside of the front cover of our large catalogue which has been sent you. Be sure, therefore, to state whether, if out of either the size or the variety you order, you wish us to substitute either in size or variety. If you wish no change whatever in your order and we cannot fill it as specified, your money will be returned. I would suggest first a substitution of sizes of the same variety, and then, if entirely out of that variety, a change to some other as near like it as possible.

(2) At these prices, bundles will not be broken—please do not ask it as it will only cause delay, and, if insisted on, the return of your money; **except that if your order is for one hundred trees of one kind of fruit, we will then divide your order as desired.**

(3) Orders will be filled only when accompanied by the cash—either money order, draft, or your own personal check.



2 year old
Apple trees
extra size

A

2 year old
Apple trees
4-5 ft.

B

2 year old
Apple trees
3-4 ft.

C

1 year old
Apple trees
mostly whips

D

STANDARD APPLE TREES

Grade "B," 4-5 feet, \$1.00 per bundle of 10 trees

Many of these trees might well go into Grade "A," except that the "A" trees must be kept to a grade beyond criticism, and the very best that money will buy in any market. These Grade "B" trees are a great bargain for the orchard planter at the price offered.

40 Bailey Sweet	90 King	300 Stayman Winesap
1000 Baldwin	10 Lady Sweet	200 Scarlet Beauty
60 Ben Davis	700 McIntosh	100 Stearns
130 Black Ben Davis	300 Northern Spy	30 Tolman Sweet
30 Boiken	50 Pewaukee	100 Twenty Ounce
40 Constantine	40 Pound Sweet	20 Wagener
120 Duchess	50 Red Astrachan	200 Wealthy
20 Fameuse	400 R. I. Greening	150 Winter Banana
10 Hendrick Sweet	70 Rome Beauty	150 Wolf River
30 Hubbardston	70 Spitzenburg	50 Yellow Transparent
70 Jonathan	300 Stark	

Grade "C," 3-4 feet, \$1.00 per bundle of 15 trees

These are fine little trees, well rooted, branched, and as strictly first-class as any—the only difference is one of size.

40 Bailey Sweet	20 Jonathan	300 Stayman Winesap
800 Baldwin	60 King	70 Scarlet Beauty
50 Ben Davis	500 McIntosh	170 Stearns
50 Black Ben Davis	200 Northern Spy	30 Tolman Sweet
30 Boiken	10 Pound Sweet	100 Twenty Ounce
20 Constantine	70 Red Astrachan	20 Wagener
150 Duchess	300 R. I. Greening	150 Wealthy
50 Fameuse	70 Rome Beauty	60 Winter Banana
20 Grimes' Golden	70 Seek-no-Further	50 Wolf River
20 Hendrick Sweet	100 Spitzenburg	20 Yellow Belleflower
50 Hubbardston	300 Stark	70 Yellow Transparent

Grade "D," mostly one year old whips, about 3 feet, \$1.00 per bundle of 15 trees

20 Bailey Sweet	10 Red Astrachan	20 Stearns
270 Baldwin	110 R. I. Greening	10 Tolman Sweet
60 Duchess	30 Spitz	90 Wealthy
20 King	10 Stark	10 Wolf River
70 Northern Spy	40 Stayman Winesap	30 Yellow Transparent

STANDARD PEAR TREES

Grade "B," 4-5 feet, \$1.00 per bundle of 6 trees, except Bosc

18 Anjou	129 Bosc (bundle, 2 trees)	12 Flemish
878 Bartlett	165 Clapp	18 Kieffer

Grade "C," 3-4 feet, \$1.00 per bundle of 9 trees, except Bosc

9 Anjou	214 Clapp	63 Lawrence
1125 Bartlett	18 Kieffer	189 Seckel
100 Bosc (bundle, 3 trees)		

Grade "D," mostly 1 year whips, about 3 feet, \$1.00 per bundle of 9 trees

200 Bartlett

See our "BOSC SPECIAL" offer, Catalogue page 14; 40c each by mail, \$25.00 per 100 by express.

STANDARD PLUM TREES

GRADE "B," 4-6 feet, \$1.00 per bundle of 6 trees

- | | | |
|-------------|------------------|-----------------------|
| 30 Bradshaw | 225 Fellenburg | 122 Shropshire Damson |
| 150 Burbank | 172 German Prune | |

These plums will include many trees up to our extra size, but which are not quite as smooth as we require for our best grade. They are an unusually good bargain.

STANDARD CHERRY TREES

Grade "B," about 3½-5 feet, \$1.00 per bundle of 4 trees

- | | |
|---------------------|-----------------|
| 180 English Morello | 600 Montmorency |
|---------------------|-----------------|

Grade "C," about 3 feet, \$1.00 per bundle of 6 trees

- 300 Montmorency

Grade "D," one year old, 2-3 feet, extra nice stock, \$1.00 per bundle of 6 trees

- 460 Montmorency

STANDARD PEACH TREES

In peach trees we have but few varieties to offer other than at our catalogue list rates, but we offer a few to make the bundle offer complete. The size marked "A" in the cut is our best, extra size trees, and we offer below a few kinds in sizes "B" and "C".

Grade "B," about 3-4 feet, \$1.00 per bundle of 10 trees

- | | | |
|--------------|----------------------|-------------|
| 500 Carman | 300 Crawford's Early | 500 Elberta |
| 500 Champion | 100 Crawford's Late | 100 Niagara |

Grade "C," 2-3 feet, \$1.00 per bundle of 15 trees

- | | | |
|----------------------|--------------|-------------|
| 100 Belle of Georgia | 600 Champion | 100 Niagara |
| 600 Carman | 500 Elberta | 100 Stevens |

A FEW DWARF BARGAINS

3 DWARF APPLES FOR \$1.00

Your choice of these four kinds

- | | |
|----------|----------------|
| McIntosh | Northern Spy |
| Baldwin | R. I. Greening |

We want you to become acquainted with dwarf trees and get first hand experience with them for yourself. We want to GET THEM INTO YOUR HANDS, with instructions how to manage them, so you may learn for yourself the possibilities of dwarf fruit trees.

DWARF MCINTOSH COLLECTION

- | | |
|------------------------|--------|
| 1 Dwf. McIntosh Apple, | \$.50 |
| 1 Dwf. Seckel Pear | .40 |
| 1 Dwf. Damson Plum | .60 |
| 1 Dwf. Montmorency | |
| Cherry | .60 |
| 1 Dwf. Sand Cherry | .25 |
| 1 Dwf. Elberta Peach | .30 |

DWARF WILLET PEACH COLLECTION

- | | |
|--------------------|--------|
| 1 Dwf. Willet, | \$.50 |
| 1 Dwf. E. Crawford | |
| ford | .30 |
| 1 Dwf. Elberta | .30 |
| 1 Dwf. Carman | .30 |
| 1 Dwf. Fitzgerald | .30 |
| 1 Dwf. Niagara | .30 |

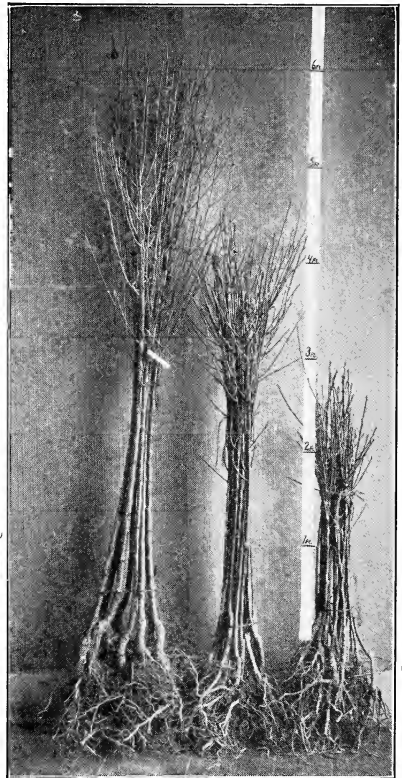
List Price	\$2.65	List Price	\$2.00
COLLECTION PRICE	\$2.00	COL. PRICE	\$1.40

COLOR COLLECTION OF DWARF PEACHES

- Champion, white without blush.
- Crimson Beauty, solid dark crimson.
- Fitzgerald, golden yellow.
- Niagara, orange red on yellow.
- Belle of Georgia, white with pink blush.
- McKay's Late, pale yellow.

List price	\$2.00
COLLECTION PRICE	\$1.50

In this collection, if we are later sold out of a variety, we will substitute a suitable variety correctly labeled.



A B C
Our Three Sizes of Peach Trees

GREGG



TWO SMALL FRUIT COLLECTIONS

“JUNIOR” AND “SENIOR”

Our orders this spring are running mostly to trees—we are offering these two collections as an inducement for our customers to acquire the small fruit habit, and incidentally, we add a dwarf tree or two—just enough to give you a taste for them! Pinch them back as directed on page 7 of the catalogue, and make them give you fruit in 1916.

In ordering these collections, do not list them on the order—just say “Junior Collection” or “Senior Collection.”

JUNIOR COLLECTION—\$3.00

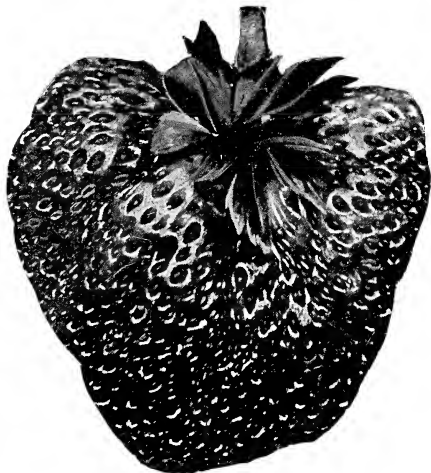
The choicest, high priced varieties are printed in black face type

- | | |
|---|-------------------------------|
| 12 Strawberries, Everbearing | 6 Ancient Briton Blackberries |
| 6 St. Regis Raspberries, Red, Everbearing | 6 Snyder Blackberries |
| 6 Cuthbert, Raspberries Red | 3 Rhubarb, McKay's Mammoth |
| 6 Columbian Raspberries, Purple | 1 Agawam Grape, Red |
| 6 Gregg, Raspberries, Black | 1 Concord Grape, Black |
| 1 Cherry Currant, Red | 1 Moore Early Grape, Black |
| 1 Fay Currant, Red | 1 Niagara Grape, White |
| 1 White Grape Currant | 3 Houghton Gooseberries, Red |
| 1 Dwarf Baldwin Apple Tree | 25 McKay's Giant Asparagus |

SENIOR COLLECTION—\$5.00

The choicest, high priced varieties are printed in black face type

- | | |
|---|---------------------------------|
| 25 Strawberries, Everbearing | 1 Dwarf Baldwin Apple Tree |
| 6 St. Regis Raspberries, Red, Everbearing | 1 Dwarf Northern Spy Apple Tree |
| 6 June Raspberries, Red | 1 Dwarf Elberta Peach Tree |
| 6 Herbert Raspberries, Red | 6 Blowers Blackberries |
| 6 Golden Queen Raspberries, Yellow | 6 Taylor Blackberries |
| 6 Royal Purple Raspberries, Purple | 6 Mersereau Blackberries |
| 6 Plum Farmer Raspberries, Black | 1 Concord Grape, Black |
| 6 Rhubarb, McKay's Mammoth | 1 Delaware Grape, Red |
| 50 Asparagus, McKay's Giant | 1 Diamond Grape, White |
| | 1 Worden Grape, Black |
| | 6 Houghton Gooseberries, Red |
| | 1 Currant, Black Champion |
| | 3 Cherry Currants, Red |
| | 1 Perfection Currant, Red |
| | 1 White Grape Currant |



Everbearing Strawberries

We think very highly of some varieties of the Everbearing Strawberries. See our catalogue page 44 for proper method of handling them. We would like to get them into the hands of as many of our customers as possible. To introduce it more widely we will mail you 12 Everbearing Strawberry plants and 6 of any variety of Raspberry you may select, for \$1.00—POST PAID.

Lakeside Collection

\$1.75 POST PAID

These Twelve Grape Vines, POST PAID for only \$1.75. See Catalogue page 40 for full description of varieties.

BLACK VARIETIES

Campbell Early	Moore Early
Concord	Worden

RED VARIETIES

Agawam	Catawba
Brighton	Delaware

WHITE VARIETIES

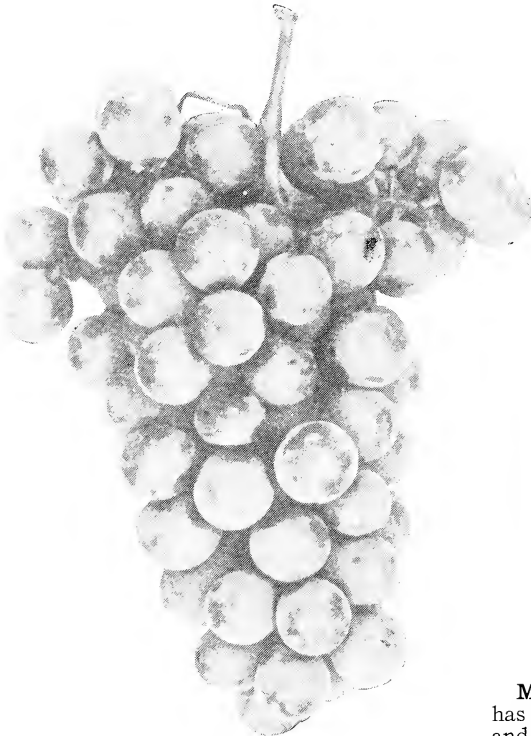
Diamond	Niagara
Empire State	Winchell

Arbor Collection

\$1.10 POST PAID

These Grapes are shown in colors on the outside of back cover of catalogue, \$1.10 POST PAID.

Catawba, Red	Niagara, White
Campbell, Black	Moore Early, Black
Delaware, Red	Winchell, White



DIAMOND



McKAY'S MAMMOTH RHUBARB

Rhubarb

POST PAID

McKAY'S MAMMOTH—A very strong growing, tender, delicious variety. Every garden should have a row of Rhubarb.

25c each, \$2.50 per doz.



McKAY'S GIANT ASPARAGUS

Asparagus

POST PAID

McKAY'S GIANT—A new variety, which has proven to be a most delicious variety and a great cropper. 50c per 25, \$1.25 per 100.

SHADE TREE COLLECTION, 50c. POST PAID

Shade trees cost more than any other class of nursery stock, owing to their size and the larger expense of packing and transportation.

Here are some little fellows, however, for almost nothing. They are about a foot in height, some probably running close to two feet.

1 Russian Mulberry
1 Catalpa Speciosa

1 European White Birch

1 Norway Maple
1 Black Walnut

These little trees, in from one to three years, according to variety, will grow to a size which would cost you about \$5.00, including expressage. They are listed in order of the rapidity of their growth.

5 CAROLINA POPLAR, 2-3 ft., only 50c, POST PAID

The same trees, not less than 50, \$5.00 per 100 by express

6 BEST FLOWERING SHRUBS FOR 50c. Post Paid

These are a great bargain. They will be full grown shrubs the size we usually ship in a year or two. About 6 to 12 inches. They will be selected from such shrubs as Barberries, Forsythias, Honeysuckles, Fringes, Lilacs, Spireas, Syringas, Weigelas, etc., entirely our selection of varieties.

The **JAPANESE BARBERRY** is without doubt the most valuable ornamental shrub that has ever been introduced. There is no other so perfectly adapted to the three great uses of shrubs in landscape architecture—for massing, for hedging, and for individual, specimen plants. It seems to me to stand first of all shrubs for each of these three purposes.

If the residences on an entire street used no other shrub than this one, it would not impress one as monotonous or unusual—the lack of other shrubs would hardly be noticed; what other shrub is there that could stand such a test?

Having no conspicuous bloom, there is perhaps no particular time when it is at its best—it is **always at its best!** It is distinctly a shrub of the seasons—a different shrub for each season; the new spring foliage is a light, almost grayish green, changing to a strong, dark, glossy green for its summer foliage; with the coming of fall it again changes to all the different shades and combinations of reds, yellows and greens imaginable, and during winter it remains a mass of bright red berries.

In the engraving the Barberry is shown in the circling hedge at the left.

The Japanese Barberry is included in our above offer of six shrubs by mail. Strong plants about 2 feet high, 25c. For hedging, in lots of 50 plants or over, \$15.00 per 100.



JAPANESE BARBERRY HEDGE.



You Gussed Just Right! It's an Auction!!

In digging trees for our spring sales, we have to "guess" at the number of each variety likely to be wanted. If we make a close guess, we dignify it by calling it an "estimate," but all the same, in plain English, its just "guessing."

There are many kinds of which we are short and shall have to dig still more, but from sales to date it would seem that we are long on varieties listed below, and to about the number stated—which is also "guessing" some more! At any rate the number of each variety entered below will be sold to the highest bidders, till they are all sold.

- (1) When the number offered of each variety is sold all further bids will be declined.
- (2) No bids will be accepted for a greater number than listed.
- (3) No cash need accompany bids, but the amount bid becomes due immediately on receipt of notice of the acceptance of a bid.
- (4) If at any time the number still unsold is taken by two or more bids, the first one received will have prior right of acceptance. If two or more such bids are received in the same day, the first one opened will be entitled to acceptance.
- (5) No bids will be considered on less than 20 trees of a variety, **except**, that if a bid is made for **100 trees or more, for one kind of fruit**, as for example apples, the bidder may select his 100 apple trees in such numbers of each as he desires, but only from the 9 kinds here offered. If his bid is for 100 pears, he may bid 90 Bartlett, 5 Seckel and 5 Kieffer; no bid, however, will be considered such as, for example, 15 Baldwin, 15 Spy, 15 Greening, 15 Bartlett, 15 German Prune, 15 Montmorency and 10 Elberta, whereas the same kind of a bid for 20 of each variety would be accepted.
- (6) The trees offered below are not the same grades as those offered by the bundle, but are the **extra size standard trees offered in our catalogue—the highest grade, and every tree selected with the greatest care.**
- (7) We would suggest that you use the order blank in making your bids, and if not accepted we will return same to you.

The closest estimate we can make at this date warrants us in offering only the following list; it may be that later, in our April Bulletin, we will find we have other varieties that we may be able to offer, or possibly more of some of these same varieties.

STANDARD APPLE TREES, Extra Size, 5-7 ft. Listed in Catalogue \$20.00 per 100

500 Baldwin	250 Northern Spy	200 Stark
75 King	300 R. I. Greening	100 Stayman
200 McIntosh	100 Rome Beauty	100 Winter Banana

STANDARD PEAR TREES, Extra Size, 5-7 ft. Listed in Catalogue \$25.00 per 100

400 Bartlett	50 Clapp Favorite	100 Kieffer
--------------	-------------------	-------------

STANDARD PLUM TREES, Extra Size, 5-7 ft. Listed in Catalogue \$30.00 per 100

200 Burbank	150 German Prune	100 Shropshire Damson
150 Felleberg		

STANDARD CHERRY TREES, Extra Size, 5-7 ft. Listed in Catalogue \$30.00 per 100

150 Montmorency

STANDARD PEACH TREES, Extra Size, about 4-5 ft. Listed in Catalogue \$12.00 per 100

200 Champion	100 Crawford Early	400 Elberta
200 Carman		