

Historic, Archive Document

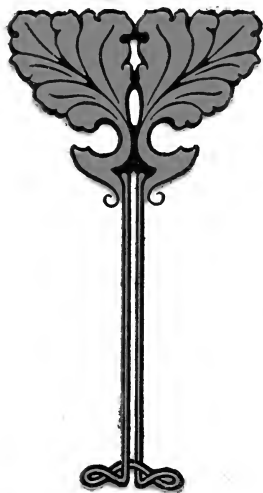
Do not assume content reflects current scientific knowledge, policies, or practices.



ROBERTSON NURSERIES

FULLERTON . . Orange County . . CALIFORNIA

T. D. ROBERTSON



INSTRUCTIONS TO PLANTERS.

Order your trees early. Those who order first will be served first. If you delay your order until late in the season, you may not get what you want.

Deciduous trees should be planted as soon as possible after the leaves have fallen, and the ground can be worked into good condition.

Open the bundle or box as soon as received and "heel in" in good, moist soil.

In planting, be sure and dig holes deep enough and large enough to admit all the roots without bending or crowding. Fill in around the roots with well pulverized surface soil, packing firmly, except on top. Always settle the dirt around the trees with water after planting even if it has rained just a few days before planting.

If the condition of the soil is such as to require the use of water at the time of planting, if the ground cannot be irrigated, the water should be poured into the hole after it is partly filled with earth. Allow the water to soak away, and then fill in with loose earth without packing.

Those who desire further instructions in regard to planting and care of plants, we would recommend to purchase a copy of Prof. E. J. Wickson's book "California Fruits and How to Grow Them." We can furnish this book at \$3.50 per copy.

Those contemplating making purchases will find it to their advantage to see our stock before buying.

Visitors are always welcome.

TERMS AND CONDITIONS.

First—Parties unknown to us must accompany their orders with cash or satisfactory reference.

Second—Special prices will be given on large specified orders.

Third—We pack in the best possible manner, either by covering with burlap or completely boxed, thus making a saving of one-third in freight charges. A nominal charge, to cover actual cost of packing, will be made.

Fourth—REMITTANCE. Remittances should be sent by check, postoffice order, express money order, or bank draft.

Fifth—In ordering, state whether substitution will be allowed or not. It frequently happens in the latter part of the season that we are out of certain varieties. If not specially requested not to substitute, we reserve the privilege of doing so, when it can be done without disadvantage to the purchaser. In fact, purchasers of stock for a home orchard or home grounds, if not specially conversant with varieties, will do well to leave the entire selection to us, as we will send only such varieties as are suited to the locality.

Sixth—Cut flowers and all kinds of floral work by express. These orders must be accompanied by cash. We guarantee satisfaction in all our floral work.

Seventh—We all make mistakes. We will cheerfully rectify any that are brought to our notice if complaint is promptly made.

NOTE—While we exercise the greatest care to have all Trees and Plants true to label, and hold ourselves prepared, on proper proof, to replace any that may prove otherwise, we do not give a warranty, expressed or implied, and in case of error on our part, it is mutually agreed between the purchaser and ourselves that we shall not at any time be responsible for a greater amount than was paid for them.



Robertson Nurseries

T. D. ROBERTSON

ROSES, ORNAMENTAL TREES, SHRUBS AND PLANTS

VINES, PALMS AND FRUITS

FULLERTON, CALIFORNIA

ORANGE COUNTY



IN this, our latest catalogue, you will find listed only our leading specialties and varieties, but we can supply everything for the garden, ornamental grounds or orchard. Having been in the nursery business in Fullerton for the past fifteen years, we can give you the advantage of our long experience and solicit inquiry about any variety of trees, shrubs or plants and shall be glad to give special quotations for quantities and sizes as may be desired.

SPECIAL SELECTIONS FOR THE HOME GARDEN AND ORCHARD

No. 1, FOR THE HOME ORCHARD.

Selection of citrus trees are from our own grown seedlings, budded from selected trees.

1 Washington Navel Orange, 1 Valencia Late, 1 Tangerine, 1 Eureka Lemon, 1 Grape Fruit or Pomelo. Price, \$5.00, packed and shipped but not prepaid.

No. 2, FOR THE GENERAL FRUIT ORCHARD.

Selection of deciduous fruit trees are carefully selected from the best stock, are suitable for the average private orchard, and a bargain you cannot miss at the price offered.

1 Walnut, 2 Peaches, 2 Apricots, 2 Plums, 1 Apple, 1 Quince, 1 Nectarine, 1 Feijoa, 1 Loquat, 6 Grapes and 24 Berries. This selection of the most popular varieties complete, packed and shipped but not prepaid at \$5.00.

No. 3, FOR THE ROSE GARDEN.

Roses are selected from the best of our field grown stock, and will be found very satisfactory for the average private rose garden.

1 American Beauty, 1 Duchess de Brabant, 1 Catherine Mermet, 1 General McArthur, 1 White Maman Cochet, 1 Pink Maman Cochet, 1 Kaiserin Augusta Victoria, 1 La Detroit, 1 Marie Van Houtte, 1 Madam Abel Chateney 1 Etoile de Lyon and 1 Safrano. Price \$2.50 packed and shipped but not prepaid.



The Rose: Queen of Flowers

The Rose is well called the Queen of Flowers and it is a well known fact that in no place does it obtain so robust a growth as under our sunny skies in California. All our Roses are grown in the open field, on their own root, where under proper cultivation they gain that root development impossible to get in pot grown stock. Price \$2.50 per doz., or 25c each.

To customers not familiar with the many varieties of Roses we would suggest that they state whether they are to be used for garden ornamentation or cut flowers and leave the selection of varieties to us, in which case we will send only the best.

T. after the name denote that they belong to the **Tea** family, a popular class of Roses of fine form, delicate fragrance, persistent foliage, free blooming qualities and thriving best in light soil, well drained.

H. T. after the name denotes **Hybrid Tea** family, a class of Roses with the same everblooming qualities of the Tea roses but hardier.

H. P. after the name denotes **Hybrid Perpetual**, the hardiest class of Roses.

Noi. after the name denotes **Noiseites**, a strong and rapid growing class of Roses with bright green foliage, blooms inclined to grow in clusters and possesses a delicate aroma.

Pol. after the name denotes **Polyantha**. This class has clusters of small bloom and are known as baby roses.

B. denotes **Bourbon**, hardy continuous bloomers.

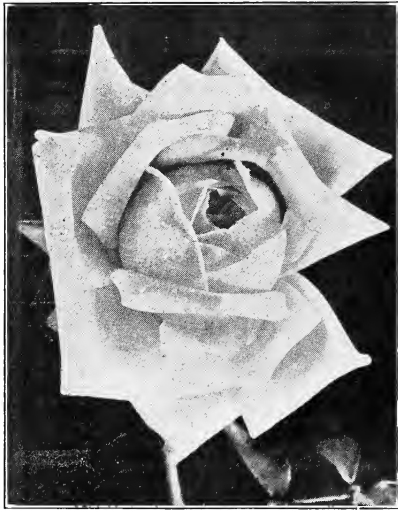
Our list is not a long one but contains all the most popular varieties and to this we are constantly adding new varieties, so if you do not see what you want listed ask us about them.

The Bush Varieties

Agrippina B. An old variety, profuse bloomer, rich scarlet lasting and fragrant.

American Beauty H. P. Rich rosy crimson, beauty and fragrance unsurpassed, flowers large deep and double.

Antoine Rivoire H. T. Double and fragrant, rose flesh on yellow ground shaded with border of carmine.



Kaiserin Augusta Victoria

Bessie Brown H. T. A strong vigorous grower of erect branching habit, creamy white, immense size, free bloomer, sweet scented.

Black Prince H. Splendid dark crimson shaded deeply almost to black, full and globular.

Bridesmaid T. Grand pink rose, large in size, regular form, delightfully tea scented, free bloomer.

Catherine Mermet T. Clear shading pink center shaded with amber, recommended as one of the best.

Catherine Zemit Pol. Sometimes known as white baby Rose, color pure white.

Dean Hole H. T. Intense salmon pink, long buds, good substance.

Duchess of Albany H. T. Similar to La France but several shades deeper in color, a lovely shade of deep rose or pink.

Duchess de Brabant T. The rose combining exquisite perfume, beautiful coloring and matchless profusion of bloom. A soft light rose with heavy shading of amber-salmon.

Etoile de France H. T. A new rose, and one of the finest french varieties introduced. A lovely shade of dark crimson, flowers borne on long stiff stems, fragrant and lasting.

Etoile de Lyon, T. A fine yellow rose recommended for bedding.

Frau Karl Druschki, or White American Beauty, H. P. Flowers pure white, perfect in form, good bloomer, fine foliage, good for cut flowers.

General Jacqueminot, H. P. An old and popular variety, dark crimson, full and fragrant.



Bessie Brown

General McArthur, H. T. One of the best red Roses and particularly adapted to the Pacific Coast region, sweet scented, blooms borne on long stems.

Gruss an Teplitz H. T. Bright scarlet shading to crimson, fine bedding rose, strong grower, free bloomer, fine foliage.

Johanne Wessenhoff H. T. An upright and symmetrical growing rose. A clear lustrous yellow, a persistent bloomer.

Kaiserin Augusta Victoria H. T. One of the very best hybrid tea roses, strong in growth, free and perfect in bloom, splendid in bud and flower; pure white.

Helen Gould H. T. An old favorite, fine rosy crimson, full and large bloom and a free grower.

Killarney H. T. The great Irish rose, very hardy, robust grower, bright foliage, free bloomer, flowers large, buds long and pointed, color satiny pink shading to pale pink.

La Detroit H. T. A beautiful rose, flowers large and double, long pointed bud, color shell pink shading to soft rose.

La France H. T. A superb rose, frequently called the Queen of all roses, beautiful bright silvery pink with pale lilac shadings on the whole flower a satiny sheen, large full and perfect bloom.

Madame Abel Chatney H. T. A strong growing rose with rich bright foliage, flowers large and full petals recurved and of a beautiful creamy rose shaded with rose vermilion and tinged with salmon, good for cut flowers.

Madame Caroline Testout H. T. This charming rose is very popular, bright satiny rose with brighter center, full and globular, free bloomer and fragrant.

Madame Leon Pain H. T. A beautiful rose, perfect in outline and form, salmon pink overlaid with silvery white, center yellow and orange.

Madame Segond Weber H. T. One of the grandest of the late introductions, a beautiful flesh pink, buds long and pointed, opening into enormous blooms which deepen in color until fully expanded.

Mademoiselle Cecile Bruner Pol. The finest of the fairy or baby type. Rosy pink perfectly double and delightfully fragrant, nearly always in bloom and fine for cut flowers.

Mademoiselle Franzisca Kruger T. One of the favorites, deep golden yellow with copper shading.

Magna Charta H. P. A very large rose of good form and fragrant, clear rose red and very hardy.

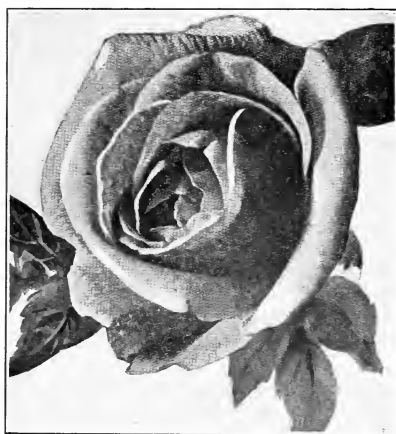
Maman Cochet T. One of the very best flowers light pink, double and very large, fine for cut flowers.

Marie Van Houtte T. Straw yellow with the outer petals washed and outlined with a bright rose crimson, good grower, free bloomer, sweet scented.

Mrs. Arthur Robert Wadell H. T. A good decorative rose, rosy scarlet, buds opening out reddish salmon, reverse of petals rosy scarlet.

Papa Gontier T. A fine forcing rose with beautiful buds and flowers dark carmine flushed crimson.

Paul Neyron H. P. Flowers of immense size, claimed to be the largest rose grown, deep shining pink, a strong grower, almost thornless.



Magna Charta

Perle des Jardines T. A good variety of tea rose for cut flowers, deep golden yellow.

Prince Camille de Rohan H. P. A rose of full and perfect form one of the best hardy dark roses, deep velvety crimson maroon.

Rainbow T. A rose with good shaped bud and fine petals, free flowering, pink striped and splashed with bright carmine.

Sunset T. A remarkable shade of rich golden amber tinged dark ruddy copper, intensely beautiful.

Ulrich Bruner H. P. An effective rose of fine form, bright cerise red.

White Maman Cochet T. A beautiful rose of enormous size, well formed, snowy white shading to pink on the outer petals, fragrant, fine for cut flowers.

The Climbing Varieties

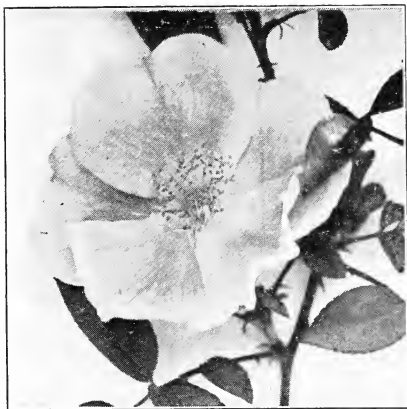
No garden is complete without a few climbing roses, either on the porches, fences, pergolas or on trellises built specially for single specimens. They not only give blooms but in some cases a wealth of foliage which is unsurpassed by many other vines. Prices 25c each, or \$2.50 per doz.

Climbing Bridesmaid T. The flowers are identical with Bridesmaid; clear dark pink; one of the best climbing Tea roses.

Climbing Cecil Bruner Pol. The flowers are identical with the bush variety, but of strong climbing habit.

Climbing American Beauty H. P. Same color, size and fragrance as American Beauty with a strong climbing habit.

Climbing Papa Gontier T. Rich red, same as the bush constant bloomer; and a splendid addition to the climbing roses.



Pink Cherokee

Crimson Rambler Noi. A very vigorous grower often attaining 15 to 20 feet in a single season; color bright crimson good for walls fences, etc.

Climbing Caroline Testout H. T. Cerise pink identical with the bush Testout; blooms large and fragrant.

Climbing Devonensis Noi. A fine climber; rose of distinct form; creamy white with blush center and fragrant.

Climbing Kaiserin H. T. This is the grandest of all white climbers; a strong and rapid grower, flowers large, buds long and pointed, borne on long stiff stems.

Dorothy Perkins Noi. A vigorous grower flowering in large clusters of shell pink, fine for fences, pergolas, etc.

Jas. Sprunt Noi. A strong free grower dark red: sweet scented.

Gold of Ophir Noi. One of the most beautiful of the climbing roses: color bright yellow suffused with coppery red.

La Marque T. Another good white climber, flowers in clusters and very sweet scented.

Madam Alfred Carrier. A very strong and rampant climber, flowers double white slightly flesh color sweet scented and always in bloom.

Marechal Niel T. Beautiful deep sulphur yellow, full and fragrant, when thoroughly established it yields enormous quantities of flowers.

Pink Cherokee. A beautiful climber with large flowers of lovely salmon rose with center of golden stamens, foliage a beautiful dark green; fine for fences.

Reine Marie Henrietta H. T. A free growing climber, bright red flowers fine in bud.

Climbing White Cochet T. Same as the white cochet bush, huge white flowers tinged pink on the outer petals.

Reve d' Or T. A strong climber with beautiful foliage as well as flowers; orange yellow to deep saffron.

Climbing La France H. T. Beautiful bright silvery pink same as the bush with large full and perfect blooms.

White Cherokee Single. This is a favorite climber for covering fences, pergolas, etc., foliage attractive shining green, flowers white and very profuse in the spring time.

Climbing Wooton. A strong growing red climber blooming in great profusion.

Yellow Banksia. A very vigorous climber with small sulphur yellow flowers produced in clusters making an attractive rose for covering trellis, trees, etc.



Flowering Plants

In this section of our Catalogue, we have listed choice varieties of the principal Ornamental Herbaceous and flowering plants, here you will find what you require for Flowering beds and borders, cut flowers, Indoor decorative plants, etc.

Abelia Grandiflora. Very graceful, tufted habits, leaves shining, flowers white, almost everblooming, fine for garden shrub. Price 4 in. pots 25c each.

Achyranthus. Two varieties, bright red and variegated green and yellow. These plants are very effective for bedding in masses or borders. Price 10c each; \$1.00 per doz.

Agave. A most attractive and valuable plant that can be used for tropical gardens, lawn vases, verandas, etc. Price 5 in. pots, 25c each.

Aralia. Papyrifera. Chinese paper plant. A very ornamental plant with dark green shining foliage, unsurpassed for half shaded corners, pure white flowers.

Aspidistra, Japan. A very decorative foliage plant, leaves broad, green and variegated. A plant of very slow growth but does well if planted in a shady corner with ferns. It also makes a good porch plant and will thrive for months in a room with very little light. Price 5 in. pots, \$1.00 each.

Asters. We always carry choice varieties of the various types of Asters for spring planting. Colors, red, pink, white and lavender. Price 35c per doz.

Banana Abyssinian (*Musa ensata*). Non fruiting, fine decorative plants with large green leaves, the leaves having bright crimson stout midribs, suitable for tubs or pots or for planting outside in protected places. Price 5 in. pots 50c.

Musa Sapientum. Fruit bearing variety. Forms clumps of many stalks which grow from 12 to 16 ft. tall. In sheltered locations they are very ornamental. Price in gal. cans 50c each; in 5 gal. cans, \$1.00

Begonias, (Fibrous rooted varieties). Madam de Lesseps, Dewdrop Coralline Lucerne, Argentea Guttata, Pres. Garnot and Vernon. Price 4 in. pots 15 to 25c each. For tuberous rooted varieties see Bulbous plants.

Caladium (Elephant Ear). A very attractive plant with large tropical leaves, thrives best near water pools and in shady corners. Price 5 in. pots 25c each; 7 in. pots 50c each.

California Holly (*Heteromales arbutifolia*.) A decorative shrub which grows and thrives in the hills in California. Bears a profusion of bright red berries. Price 4 in. pots 25c.



Shasta Daisy

Carnations. Considered by a great many people the finest flower that grows on account of their rich color and delicious fragrance. We grow varieties that have proved to be the best for outdoor culture in Southern California.

Los Angeles. The best white.

Fairmaid. A beautiful soft pink.

Enchantress. Rose pink.

Harlowarden. Very deep crimson.

Dr. Choate. The best bright red.

Eldorado. Yellow.

Price 2½ in. pots 5c each; 50c per doz.

Cinerarias (*Hybrida Grandiflora*). Flowers are very showy, makes a splendid house plant during the winter season, can be grown in pots or set out in open beds. Good for cut flowers. Price 10c each; \$1.00 per doz.

Coleus. Plants with very showy foliage, some times called foliage plants, suitable for pot culture or bedding. Price 3 in. pots 15c; 5 in. pots 50c.

Chrysanthemums. More and more attention is being paid to these mammoth flowering plants, and each year decided advances are made in size, color and form. We carry the newer varieties and the choicest of the older sorts. Price 10c each; \$1.00 per doz.

Shasta Daisy (Alaska variety). This is the best of the shasta daisies and is used both for borders and bedding. Fine for cut flowers. Price 5c each; 50c per doz.

Marguerites (Paris daisy). Attractive for borders on account of its profusion of flowers which look like banks of snow. Price 5c each; 50c per doz.

Marguerite (Mrs. F. Sander). This is a new variety, flowers double and snowy white to the center. Price 10c each; \$1.00 per doz.

Snowball Daisy. A choice little plant bearing white flowers and blooming nearly all the time. Suitable for borders. Price 25c per doz.; \$1.50 per 100.

English Daisy. A charming little plant same as above only bearing flowers of white, pink, red and variegated. Price 25c doz.; \$1.50 per 100.

Geranium. One of the best flowering plants for California, it grows with very little care or attention and blooms throughout the entire season. We can supply in all the leading colors also the lvs which are used for window boxes, parkings, etc. Price 5c each; 50c doz.

Pelargonium (Lady Washington Geraniums). We offer choice varieties of these very attractive geraniums for bedding out or pot culture. Price 20c each; \$2.00 per doz.



Romneya Coulteri

Lavender. These old fashioned plants are very fragrant and much prized, the dried flowers having a lasting scent. Price 4 in. pots 25c each.

Romneya coulteri (Matilija Poppy). A shrub or large bush of silvery hue. Flowers immense size, petals pure white and center rich yellow. Plants bloom all summer and the flowers are lasting. Price 75c each.

Heliotrope. Every garden should have one of these plants; prized for their sweetness of bloom, colors light, dark purple, white. Price 4 in. pots, 25c each.

Oleander. Evergreen, everblooming plants or shrubs which make splendid specimens for lawns, very showy. Three varieties; pink, red and white. Price 4 in. pots 25c; 6 in. pots 50c each.



Oleander

Pansies. We offer the finest strain of mixed flowered types procurable. Price 50c doz; \$3.00 per 100.

Pampus Grass (*Gynerium argenteum*). Grows in clumps producing long white plumes which are very attractive. Price 50c each.

Papyrus Grass (Egyptian Paper Plant). A plant very easy to grow if given the proper location, they love moist places and make an immense growth in a single season producing long graceful plumes of very feathery appearance. Price 6 in. pots 50c each.

Crimson Fountain Grass. The foliage and stems are a deep bronzy red with a long tassel like inflorescence of rich crimson. Gives a beautiful effect either in bloom or out of bloom. Price 4 in. pots 25c each.

Petunias. Beautiful flowering plants in double and single varieties, colors run in red, white and blue through all the shades. They bloom for the greater part of the year. Price 10c each; \$1.00 per doz.

Pincenectitia (Desert Plant). Belonging to the Yucca family. A plant with long and graceful recurved leaves which make a very attractive appearance. Will live with very little water and makes a suitable plant for tubs for verandas, etc. Price 5 in. pots 50c each.

Primula. One of the most attractive of hardy flowering plants which bloom in the winter and early spring. Price 4 in. pots 25c each; 5 in. pots 50c.

Salvia (Scarlet Sage). Very effective for bedding or borders; heavy blooms of scarlet blossoms, very showy. Price 10c each; \$1.00 per doz.

Scabiosa or Mourning Bride. Flowers double clear to the center, covering a thimble shape cone, fine for cut flowers. Mixed colors, price 25c doz; \$1.50 per 100.

Sweet Sultana (Sultana Patens). A small herbaceous plant with glossy leaves and pink flowers; always in bloom, suitable for bedding or pot culture. Price 10c each; \$1.00 per doz.

Verbenas. Plants which are very suitable for bedding purposes, producing a bright and lasting mass of flowers throughout the entire season. Price 50c per doz.

Veronica (*Veronica maritima*). A small herbaceous plant producing deep blue flowers on long stems. Price 4 in. pots 25c each.

Violets. An old favorite flowering plant too well known in California to need description, prized for its sweet smelling blossoms. Varieties:

Princess of Wales. A large single blue noted for its very long stems.

California. Large single blue flowers very sweet scented.

Marie Louise. Large double blue flowers, very fragrant.

Russian Violet. A very dark purple.

Swanley White. A double pure white, very fragrant. Price 35c doz.



Bulbous Flowering Plants

The proper time to plant most bulbs is from October 1st to January 1st. A great many people do not think of planting until they see the flowers. There is no class prized more than those produced from bulbs. They require only the simplest culture to develop them into plants of unsurpassed beauty and produce flowers in early spring when other flowers are scarce.

Agapanthus (Blue lily of the Nile). A very popular lily on account of its continuous blooming qualities and the unusual color of its flowers. It repeatedly sends up long stalks bearing large bunches of dainty blue flowers. Price 50c each.

Allium (Flowering Onion). Flowers early, sending up clusters of white flowers something like the eastern May flower. Price 25c per doz.

Amaryllis Belladonna. Blooms in August and September, sending up a naked stem bearing at the top a cluster of beautiful light pink lillies. Price 15c each.

Amaryllis Johnsonii. Similar to the above but produces white flowers. Price 15c each.

Amaryllis Formosissima. Similar to the above but with intensely deep rich crimson flowers. Price 25c each.

Begonias (Tuberous rooted). Plants grow from these bulbs produce conspicuous waxy flowers in various colors. Price 4 in. pots 25c each.

Calla Lily (The lily of the Nile). California is noted for its Calla lilies, which grow to immense size in almost any location, producing large white flowers. Suitable for bedding or borders. Price 5c each; 50c per doz.

Cannas. A fine plant for sub-tropical or landscape effect, easy to grow if given proper care and they produce a profusion of bright colored flowers which with their beautiful foliage gives a magnificent appearance.

Canna, Stenckoff. A bright dwarf red variety producing flowers abundantly throughout the summer. Price 50c doz.

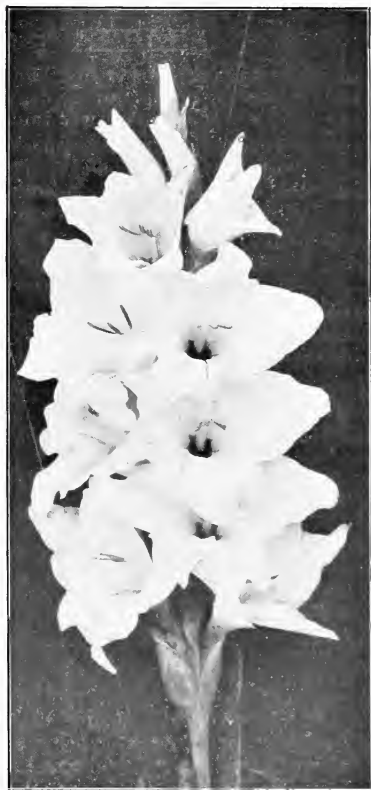
Canna, King Humbert. A magnificent variety with enormous foliage of the deepest shade of purple bronze; flowers red and of immense size. Price 10c each; \$1.00 per doz.

Canna, Buttercup. Deep golden yellow, extra fine. Price 50c per doz.

Canna, Gustave Gumper. Green foliage, flowers good size, color yellow, the lower petals slightly spotted with red. Price 35c each; \$3.50 per doz.

Canna, Queen of Yellows. Flowers of the purest yellow forming splendid spikes. 10c each; \$1.00 per doz.

Canna, Hungaria. Very compact, almost dwarf, very luxuriant dark green foliage; flowers large with broad petals. Price 35c each; \$3.50 per doz.



Gladiolus America

Chinese Sacred Lily. Grows in soil or in water, flowers similar to Narcissus but with cream or yellow center. Price 10c each; \$1.00 per doz.

Cyclamen (Persian Violet). Very fine for pot culture, flowers all winter producing attractive flowers in pink, white, red and variegated. Price 4 in. pots, 25c each; 5 in. pots, 50c each.

Dahlias. Popular summer and autumn flowering plants which we offer in all colors. Price 10c each; \$1.00 per doz.

Easter Lily (Lilium Candidum). Very hardy garden lily with snow white fragrant blossoms. 15c each; \$1.25 per doz.

Harrissii (Bermuda Lily). Flowers large trumpet shaped, pure white and very fragrant. Very hardy and of easy culture. Price 15c each; \$1.50 per doz.

Gladiolus America. One of the most beautiful of the gladiolus family, used largely for cut flowers. Should be planted in the fall and blooms in June, but if planted in succession will give blooms all summer; color soft pink. First size, price 10c each; \$1.00 per doz. Second size, price 5c each; 50c per doz.

Gladiolus Francis King. Bright scarlet, large and good shape. First size, 10c each; \$1.00 per doz. Second size, 5c each; 50c per doz.

Hyacinths. One of the most popular bulbs we have; free flowering, very fragrant, fine for cut flowers, white, pink, red and violet. Price 10c each; \$1.00 per doz.

Iris Germanica. Commonly called flags and much prized* for their delicate shadings, fine colors and sure and early flowers. Price 10c each; \$1.00 per doz.

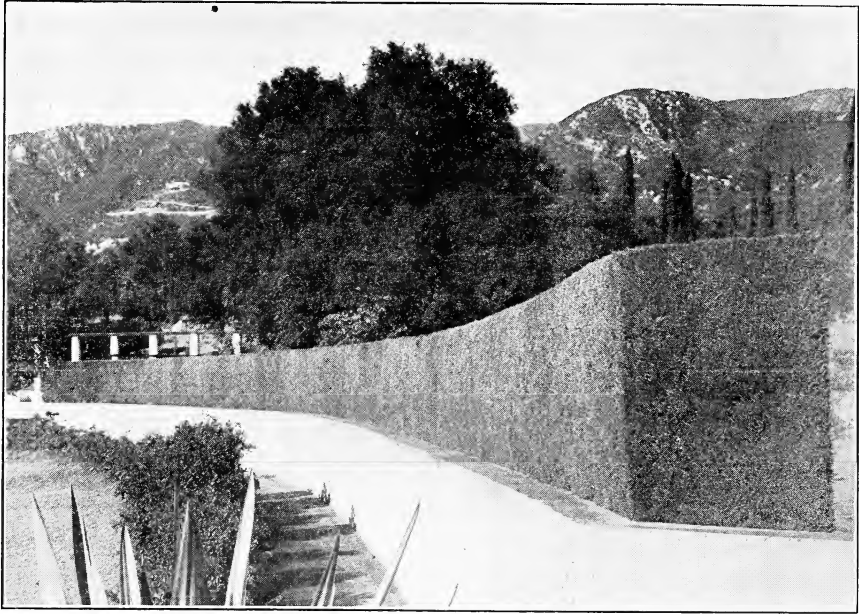
Iris Kaempferi (Japanese Iris). Universally given first place as the finest flowers we have among the Iris. Comes in various tints of blue, lavender, crimson, rose and lilac. The bulbs are perfectly hardy, the blossoms are borne on long stems and bloom profusely. Price 10c each; \$1.00 per doz.

Narcissus (Single or double). Beautiful snowy white blossoms with large petals, deliciously fragrant. Price 5c each; 50c doz.

Tulips. We offer the Gesneriana type in red and yellow, specially suited for California gardens. Price 10c each; 75c per doz.

Daffodils (Narcissus Emperor). One of the grandest daffodils in cultivation. The perianth is broad and overlapping. Both perianth and trumpet a bright yellow. The stems are long and fine for cutting. The finest of all the daffodils, strong grower, tall and perfectly hardy. Price 10c each; \$1.00 per doz.

Freesias (Purity). A greatly improved strain, flowers white inside as well as out, largest size profusely borne on stiff stems. They are greatly prized for their delightful fragrance and when cut remain in good condition for a long time in water. Price 15c doz.; \$1.00 per 100.



Hedge and Border Plants

For most grounds or gardens a hedge or border is sure to be required and can be obtained easily with suitable plants. Severe pruning is necessary with a good many of the hedge plants to obtain a strong bottom growth. Border plants are preferred to stone or wood edges for path or driveway.

Berberis (Barberry). One of the best of all berried plants and in season is covered with pretty orange colored flowers; foliage rich dark glossy green, dense and spreading. Price 25c each.

Buxus sempervirens. Bright green foliage, popular and very suitable for hedges. Price 10c each; \$1.00 per doz.

Privet (California). One of the best and most popular plants for hedges where a medium sized hedge is required. Small oval shaped leaves and in the spring if allowed to grow without trimming, covered with spikes of small fragrant flowers. Price, in flats, \$2.50 per 100; in pots, 10c each.

Dusty Miller (*Centurea Gymnocarpa*). Beautiful silvery foliage suitable for borders, edging, etc. Price 2½ in. 5c each; 50c per doz.

Euonymus Japonica. Grows 8 to 10 feet high if left undisturbed, but can be trimmed to make a very fine hedge. Leaves thick and glossy green. Price, in flats, \$2.50 per 100; balled, 50c each.

Euonymus Pulchellus. Same family as above but leaves are smaller and darker green. Suitable for hedges or borders along driveways or walks but too dwarf for street planting. Price, in flats, \$2.50 per 100; balled, 25c each.

Euonymus Silver (Variegated). Same family as above but leaves are of a silvery color. Price in pots 25c each; balled 50c each.

Euonymus Golden (Variegated). Same as above but leaves striped and edged golden. Price in pots 25c each; balled, 50c each.

Myrtle (*Myrtus communis*). Green and aromatic foliage; white flowers. Price, 3 in. pots, 10c each; per 100 in flats, \$5.00.

Santolene (Lavender Cotton). Quick growing silvery colored border plant. Easy growth; must be kept trimmed to make a good border. Price, \$2.50 per 100.

Laurustinus. An excellent hedge plant, covered in spring with masses of white flowers. Can be trimmed into any desired shape or if planted alone and left untrimmed makes a splendid specimen plant. Price 4 in. pots 25c; balled, 50c; small plants, per 100, \$10.00.



Lawn and Grass Seeds

Nothing is so important to the home or public garden as to have a well kept and attractive lawn. This is only obtainable by securing seeds of superior and guaranteed quality. We plant and lay out lawns and are constantly testing our seed, therefore we carry only the best. As the market on seed fluctuates from time to time, we are obliged to ask you to write for prices in bulk. As a guide sow one pound Kentucky Bluegrass to 150 square feet.

(See page 38 about your Lawn Fertilizer)

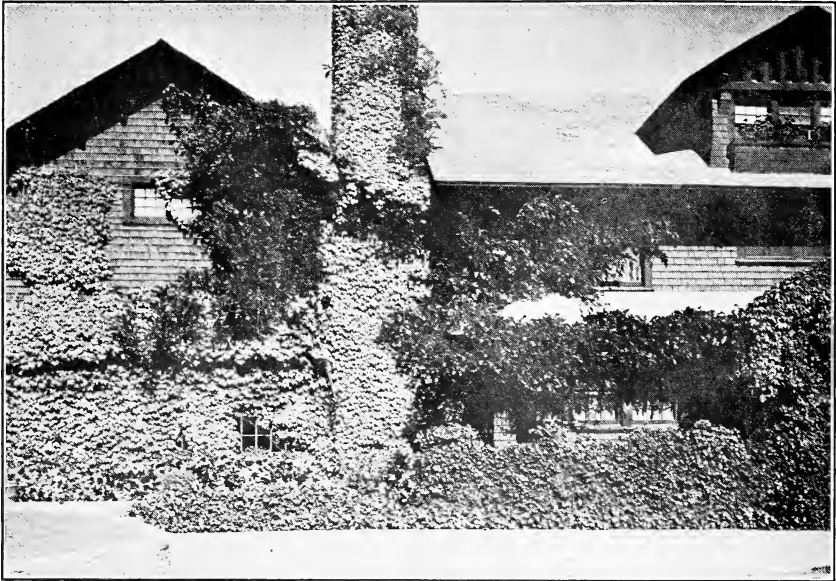
Australian Rye Grass. Used in some localities quite extensively on account of its hardness, particularly in arid localities. Price, per lb., 25c.

Kentucky Blue Grass. Finest imported, pure and free from weed seed. 50c per lb.

White Clover. Excellent for lawns, either sown alone or with blue grass. Price, 50c per lb.

Golden Gate Mixture. In 1-lb. packages, 25c package.

Lippia repens. For lawns in many localities where water is rather scarce, nothing is more suitable or will give better satisfaction than Lippia. The young roots are set in the ground from 12 to 18 inches apart each way and this soon forms a thick mass covering the entire surface of the ground. Price in flats, 50c.



Climbers and Trailers

Most vines make a very rapid growth in California, and if properly placed about the house, verandah, pergola or trellis add considerable to the beauty of the garden.

Australian Pea Vine. A rapid growing vine with small leaves which forms a perfect screen; flowers pink and white. Price 2½ in. pots 10c each.

Bignonia Grandiflora (Trumpet flower). A deciduous vine, fast growing and bearing clusters of large red and orange colored flowers. A very popular and desirable vine. Price 50c each.

Bignonia Cherere. A splendid evergreen variety, bearing fine red flowers. Price 50c.

Bignonia Venusta. One of the best of the Bignonia family, blooms all winter and displays great clusters of long, tubular, rich orange red flowers. Price 50c.

Bignonia Tweediana. A small leaved species of clinging habit and very useful for covering walls, stone pillars, etc. It bears quantities of canary yellow blossom in the spring. Price 20c each.

Bignonia Australis. A beautiful vine with elegant thick shining foliage, bearing creamy white flowers in great profusion. Very rampant growers. Price 50c each.

Bougainvillea Braziliensis. A very attractive and popular vine for porches, pergolas, etc. Flowers large and of a most brilliant hue. Blooms very profusely and makes a fine show with its delightful shade of red flowers when in full bloom. Price 4 in. pots 50c.

Bougainvillea sanderiana. One of the most popular and attractive vines in cultivation. It blooms nearly all the time and the gorgeous display of flowers is magnificent. Their beauty lies in the showy bracts which envelope the small greenish flowers. Price, 4 in pots, 25c; gal. cans, 50c.

Bougainvillea spectabilis. Very similar to the above variety except that the leaves are larger and the petals of the flowers are brighter in color. Price \$1.00 each.

Clematis paniculata (Virgins Bower). One of the most popular varieties of the clematis, bears small white flowers produced in great profusion. Price 4 in. pots 25c.

Ficus repens (Fig Vine). The best evergreen vine for covering buildings, walls, etc., where a close clinging vine is required. Small deep green foliage. Price 4 in. pots 25c each.

Hedera Helix (English Ivy). Too well known to need much description; dark glossy, green leaves, hardy and attractive. Price, 3 in. pots, 10c; 4 in. pots, 25c.

Honeysuckle (Chinese). Evergreen climber, flowers rich cream to yellow. Price 4 in. pots 25c each.

Honeysuckle (Hall's Japan). Evergreen vigorous climber with flowers pure white changing to yellow. Price 25c each.

Jasmine revolutum. Flowers bright yellow in open clusters. Price 4 in. pots 25c each.

Lotus Vine. A fine little vine with silvery foliage and scarlet flowers, suitable for hanging baskets. Price, 2 in. 10c, each.

Mandevilla Vine (Chilean Jasmine). A deciduous vine with attractive large white fragrant flowers. Price 35c each.

Moonflower (Moon Vine). A fast growing evergreen vine bearing bell shaped flowers in great profusion. White and blue. Price 4 in. pots 25c.

Wire Vine (Muehlenbeckia Complexa). A graceful vine with minute round leaves like those of a coffee fern, fine for covering posts, pergolas, etc. Price, 3 in. pots, 15c; gal. cans, 50c.

Passiflora (Passion Vine). An attractive and rapid climber, covering a large area in a short time and bearing exquisitely formed flowers throughout the summer and fall; color red. Price 25c each.

Plumbago capensis (Plumbago Vine). An evergreen vine with bright green foliage and bearing clusters of blue flowers. Price 35c each.

Smilax. This vine is grown principally for decorative purposes. Small bright green ovate leaves on long wiry stems. Does well planted on the north side of the house. Price 4 in. pots 15c each.

Solanum wendlandii. Foliage immense, when in bloom the entire plant covered with gigantic trusses of pale blue flowers. It does best in warm sunny locations, with plenty of water. Under such conditions it makes an enormous growth in one season. Price, 4 in. pots, 25c each; gal. cans 50c.

Vinca (Perwinkle Vine). Two varieties, green leaf and variegated, both having blue flowers. Splendid for covering rockeries or is sometimes used for hanging baskets. Price 15c each.



Passiflora

Vitis capensis (Evergreen Grape). A true evergreen grape vine of very rank, heavy growth, making an immense vine in a short time. Leaves large, entire, very dark green except when young, when they are shining bronze. Back of leaves and stem covered with soft downy hairs of a bronze color. Grapes black, two or three in a cluster, edible, but of no particular flavor.

Wisteria (Chinensis alba). Long racemes of pure white flowers. Price 25c.

Wistaria (Chinensis blue). Same as preceding only blue flowers. Price 25c each.

Wistaria Multijuga. The finest of all wistarias. The plants are carefully grafted on the commoner varieties. The racemes attain great length and are produced in great profusion. Price \$1.00 each.



Ferns for Shady Places

For shady or sheltered corners in the garden or around the house, no other class of plants will take the place of ferns or give the same effect. For Rockeries, Conservatories or house plants, they are among the best and always attractive.

Adiantum Cuneatum Roenbecki (Maiden Hair Fern). This variety is particularly good for a pot plant and also for the fronds. Price 50c each.

Asparagus Fern. This makes a decorative plant for house porch or conservatory, also useful in hanging baskets and as cut fronds. Price 25c each.

Varieties: **Asparagus Plumosus**, **Asparagus Sprengeri** and **Asparagus Robustus**.

Cyrtomium Falcatum (Holly Fern). An elegant hardy variety with broad leaves of a deep glossy green color. It grows well in pots or may be planted outside in a well shaded fernery. Price 25c each.

Nephrolepis Bostoniensis (Boston Fern). In the vicinity of Boston or in fact all over the country, no other fern is so popular. This is due probably to its having long graceful fronds, which arch and droop, making it a splendid fern for pedestal or table. It can also be planted in the fernery outside with good success. Price, 4 in. pots, 25c; 5 in. pots, 50c.

Nephrolepis Roosevelt. In general characteristics it resembles the world famous Boston, but it produces more fronds than the Boston, thus it makes a bushier plant. The pinnae are beautifully undulated, giving the fern a pronounced wavy effect, and as the plant ages this becomes more distinct. Price, 4 in. 50c each; 6 in. pots \$1.00.

Sword Fern. Similar to Boston, but the fronds very much narrower, more upright grower and one of the best ferns for outside planting. Price, 4 in. pots 25c each.

Superbissima. This variety known as "fluffy ruffles" fern. Fronds very irregular, odd and attractive; good keeper. Price, 5 in. pots 75c each.

Whitmanii or Ostrich Plume Fern. A variety that appeals to every one. The fronds are beautifully fringed, which gives it a very feathery appearance. Price, 4 in. pots, 25c; 5 in. pots, 50c.

Woodwardia or Brake Fern. Fronds very large and broad, fine for background in ferneries. Price 50c each.



Palms and Dracaenas

The Palm, the most highly ornamental of plant life, is particularly adapted to California, owing to the semi-tropical climate and give splendid tropical effect. All varieties thrive well and when once established, their culture is very easy. No garden is quite complete without a few of the different varieties.

Chamaerops Excelsa (Windmill Palm). This palm is slow growing but while growing and when developed is very attractive, owing to its tropical effect. It should be planted more than it is. Leaves are deeply cut and remain green far down the stem, which is covered with fibrous material, giving the plant a peculiar appearance. Balled plants from 50c to \$5.

Cocos Australis (Pindo palm). The best hardy ornamental palm, stands sun and freezing, stands without irrigation, stands extra water, beautiful when small, magnificent when large; graceful form, quiet blue gray in color, fine for lawns, parkways or extensive grounds. Price, 5 in. pots, \$1.00 each; balled, \$3.00 to \$5.00.

Cocos Plumosa. A very attractive graceful palm, with tall slender stem, suitable for avenue or driveway. Price \$2.00 to \$5.00 each.

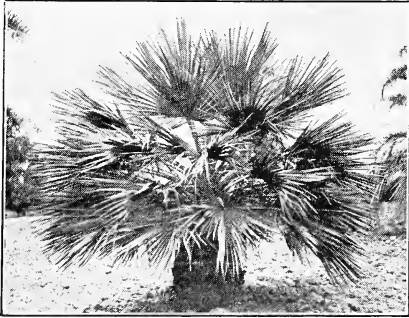
Cycas Revoluta (Sago Palm). A very decorative palm, dwarf in habit, leaves green and feathery. Very hardy. Price, 20c per leaf. Plants usually have from 10 to 25 leaves.

Dracaena Australis. The best of this species of palm, leaves are broad, graceful and drooping, makes fine tub plant or suitable for single specimen in lawns or planted on highways. 5 in. pot plants, 25c; balled, \$1.00 to \$5.00 each.

Dracaena Indivisa. Similar to the above variety, but the leaves are only about one-half as wide. Price, 5 in. pots, 25c each; balled, \$1.00 to \$5.00.

Erythea Edulis (Guadalupe Palm). This is one of the very best of the fan palms. The leaves are large and retain their color. Suitable for street or park planting. Price, 4 in. pots, 25c each; balled, 50c to \$3.00.

Kentia Fosteriana. When you want something fine and graceful in the way of a palm for living room or conservatory order Kentia Palms, narrow pinnae and gracefully arched and recurved stems. Not hardy for outside planting except in partially protected places from sun, wind and frost. Price, 5 in. pots, 75c; balled, \$1.00 to \$25.00.



Erythea Edulis

Latania Bourbonica. Beautiful long fan shaped leaves, very attractive for pot culture in the house. Price, 5 in. pots, 50c each.

Phoenix Canariensis. The most popular of all the palms for out of door planting, grows rapidly, is very graceful, makes a splendid tub plant, also fine for lawns. Price, 5 in pots, 25c each; balled plants, 50c to \$5.00 each.

Phoenix Roebelenii. Similar to Canariensis but very much finer, very graceful. Leaves are recurving and narrow, dark green in color. Very decorative and satisfactory for house culture. Price, 6 in. pots, \$2.50 each.

Rhapis Flabelliformis (Umbrella Palm). A cane-like plant which succors freely from the root and suitable for conservatories. Price, \$2.50 each.

Seaforthia Elegans. A fine ornamental variety suitable for tubs or for planting outside in very protected places. Price, 5 in. pots, 25c each; tubs, \$2.50 each.



Phoenix Canariensis

Washingtonia Filifera (California Fan Palm). A rapid growing fan palm, trunks attain a diameter of three feet, the dead leaves droop down and rest against the trunk, forming a shaggy collar, making them striking and picturesque. Price, balled, 50c to \$2.00 each.

Washingtonia Robusta (Mexican Fan Palm). Leaves are shorter than in the foregoing variety, holds its leaves much farther down the stem and retain their green color; tall growth and robust habit. Price, 4 in. pots, 25c; balled, 50c to \$2.00.

Cut Flowers and Hanging Baskets

Cut Flowers. We can always take care of orders for cut flowers, designs, weddings, entertainments, etc., but it is impossible for us to quote prices here as the price of cut flowers varies with the seasons. We wish to state, however, that any orders placed with us will receive

our careful attention and we feel sure will give satisfaction at reasonable prices.

Hanging Baskets. We make a specialty of these for the Porch, Veranda or Pergola and always carry an assortment of different varieties of ferns suitable for baskets. Price, 75c to \$3.50 each.



Ornamental Trees and Shrubs

DECIDUOUS ORNAMENTAL TREES

Time to plant January 1 to April 1. The proper arrangement of these trees should constitute the basis for all other planting. Here in California they provide the necessary shade in summer, while in winter they permit the sun to shine through, to the benefit of the surrounding ground.

Ash (white) *Fraxinus Americana*. A tall, graceful tree 100 to 120 feet high, suitable for an avenue tree, where a deciduous tree is desired. The Ash also produces a high grade wood for manufacturing. Price, 4 to 6 ft., 25c.

Carolina Poplar. Grows upright and of shapely form, rapid grower and suitable for roadside planting. Price, 8 to 10 ft., 25c each.

Lombardy Poplar. An upright growing tree, branches pointing uniformly upward. Attractive for country roadside. Price, 8 to 10 ft., 25c each.

Elm (American white) *Ulmus Americana*. A graceful and rapid grower. Grows to a large size, suitable for street planting. Price, 6 to 8 ft., 25c each.

Locust (Honey Locust) *Three Thorned Acacia*. Valuable as a street tree. Price, 4 to 6 ft., 25c.

Locust (Black). Good grower, suitable for posts, fuel and lumber. Price, 6 to 8 ft., 25c each.

Maple (White or Silver) *Acer Dasy-carpum*. A rapid growing tree which thrives well in California. Price, 4 to 6 ft., 25c.

Mulberry (Everbearing) *Morus Rubra*. A spreading ornamental tree producing fine foliage and fruit. Price, 6 to 8 ft., 50c.

Mulberry (English) *Morus Nigra*. A strong robust tree producing the finest of fruit. Price, 6 to 8 ft., 50c each.

Mulberry (Weeping) *Morus pendula*. Very ornamental, drooping and graceful, suitable for lawn or garden. Price, \$1.00.

Umbrella (Texas). Rapid grower with dense leaves and umbrella shaped form, very graceful. Price, 3 to 4 ft., 35c; 4 to 6 ft., 50c; 5 to 6 ft. branched, \$1.00 each.

Purple-leaved Plum (*Prunus pissardi*). The leaves are a rich purple, and it forms a very attractive tree in the home garden. Price, 4 to 6 ft., 50c each.

Sycamore (Plane tree). Foliage bright green. Very thrifty, suitable for parks or avenue. Price, 6 to 8 ft., 75c.

EVERGREEN TREES

Owing to the varied climatic conditions prevailing on the Pacific coast almost all of the evergreens can be grown successfully. They make splendid specimen plants as well as fine screens, windbreaks and hedges.

Acacia Baileyana. One of the most beautiful of the Acacia family. Foliage of a fine fern-like appearance, blue green in color; blossoms light yellow produced in long sprays, which cover the entire plant in spring time. Price, 4 in. pots, 25c; 4 to 6 ft. in gal. cans, \$1.00 each; 6 ft. up in 5 gal. cans, \$1.50.



Acacia Melanoxylon

A. Armata (Kangaroo Thorn). A very shrubby variety of Acacia; grows 8 to 10 ft. 4-in. pots, 25c.

A. Cultriformis. A shrub with small triangular shaped leaves, which have a decided silvery color. It blooms in great profusion in early spring, producing lemon-yellow flowers. 4-in. pots, 50c.

A. Floribunda. Rapid growing, with spreading habits. Somewhat willowy. Produces great quantities of yellow blossoms. 4 in pots, 25c; gal. cans, 50c.

A. Dealbata (Silver Wattle). A very symmetrical tree with fine foliage of a silver gray cast. A very showy tree especially in the spring when covered with its yellow flowers. 4 in. pots, 25c; gal. cans, 50c.

A. Decurrens (Green Wattle). Flowers are of a whitish yellow. Sometimes mistaken for the preceding variety, as it is also for the *Mollissima*. Makes a fine tree for ornamental planting. 4 in. pots, 25c; gal. cans, 50c; 5 gal. cans, \$1.00.

A. Longifolia. A very floriferous variety of Acacia; grows 30 ft. high, thrives remarkably well near the ocean. 4 in. pots, 25c.

A. Melanoxylon (The Black Wood of Australia). This is one of the most commonly used in California for street and roadway plantings. It has a symmetrical, upright growth, which makes it very popular for street planting. 4 in. pots, 25c; gal. cans, 50c to \$1.00; 5 gal. cans, \$1.50 to \$2.50.

A. Mollissima (Black Wattle). This is an excellent rapid growing tree of fine feathery foliage. Makes a fine single specimen in an ornamental garden or suitable for park planting. 4 in pots, 50c.

Arizona Cypress (*Cupressus Arizona*). This variety will live and thrive absolutely without any irrigation after once being established, therefore very suitable for extra dry situations. Forms fine specimen plants, grows pyramidal in shape, blue green foliage, height 40 to 70 ft. Price in small pots, 10c; gal. cans, 2 to 3 ft., 50c.

Cryptomeria Elegans. Grows in pyramidal form, beautiful foliage which turns golden brown in winter. Price, 3 to 4 ft., in gal. cans, \$1.00 each.

Camphor (*Camphora Officinalis*). A very symmetrical tree of good form and bright foliage, very suitable for parkways, also for private grounds and parks. It is from this tree that the camphor of commerce is obtained, principally in Japan and China. Price, 4 in. pots, 25c each; larger sizes, 50c to \$2.00.

Cedrus Atlantica (Mt. Atlas Cedar). Grows in pyramid form, silvery green foliage, fine for lawns or parks. Price, 5 in. pots, 50c; balled, \$1.50 to \$5.00.

Cedrus Deodora (Himalaya Cedar). A beautiful tree having a lighter silvery green foliage than the above variety, branches droop gracefully. One of the best of the cedar family, suitable for streets, parks or private grounds. Price, 5 in. pots, 75c; balled, \$1.50 to \$5.00 each.



Italian Pillar Cypress

Cypress Monterey (*Cupressus Macrocarpa*). This is the variety that is universally used for wind-breaks in orchards, etc. It grows to a height of 60 to 70 feet, can be trimmed to any desired shape. Price, in flats, \$1.50 per 100, or \$12.00 per 1000; in pots, 1 to 2 ft., \$5.00 per 100; 2 to 3 ft., \$10.00 per 100.

Lauris Nobilis (Sweet bay tree). One of the most attractive evergreen trees.

Can be grown in the open ground and attains a height of 40 to 60 feet, but is usually grown in tubs as a standard plant for ornamental purposes; leaves very fragrant. Price \$15 to \$30 per pair for Standard. Small plants, 50c to \$1.00 each.



Cedrus Deodara

Beefwood or She-Oak (*Casuarina Stricta*). A quick growing Australian tree, useful for street planting or for private grounds. Price, 3 to 4 ft., 50c.

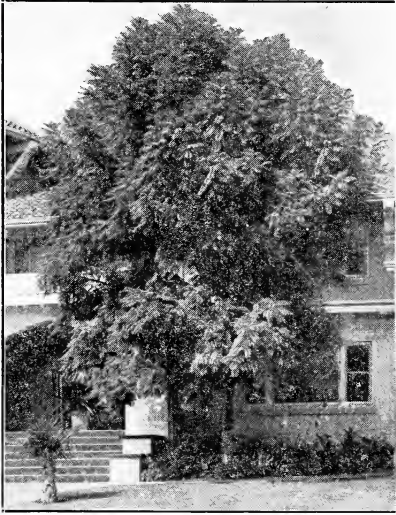
Italian Pillar Cypress (*Cupressus Sempervirens Fastigiata*). A very attractive variety growing in erect columnar form, suitable for gateways, drives, borders, windbreaks, etc. Price, 4 in. pots, 25c; balled, 50c to \$5.00.

Blue Cypress (*Cupressus Guadalupensis*). A beautiful erect growing variety with silvery green foliage. Price, small pots, 10c; 2 to 3 ft. gal cans, 50c each.

Thuja. (*Arbor Vitae*). Grows in conical form, very dense and regular, specially suitable for parks, cemeteries, etc. Price, 4 in. pots, 25c each; balled, \$1.00 to \$2.00.

Thuja Elegantissima. Grows in pyramid form, foliage golden tint, dwarf in habit. Price, \$1.00 to \$2.00 each.

Jacaranda Mimosifolia. This tree comes from Brazil and has a very striking appearance. Has fine fern-like leaves and in the spring of the year bears large clusters of showy blue flowers. Very popular for a yard tree and in some places used as a street tree. Price, 4 in. pots, 25c; gal. cans, 2 to 3 ft., 50c.



Jacaranda Mimosifolia

Juniperus hibernica ("Irish Juniper"). An erect, dense, columnar tree with foliage glaucous green. A handsome specimen for the formal garden. Balled, 2 to 3 ft., \$1.00.

Juniperus japonica ("Japan Juniper"). A shrub or tree of dwarf growth and pyramidal habit; foliage grayish-green, hardy and easily grown. Balled, 3 to 4 ft., \$1.50.

Lagunaria Patersonii. A small growing tree that thrives extra well near the coast. As so many trees and shrubs do not stand the salt air of the beaches, we consider this small ornamental tree a decided acquisition for coast planting. Leaves are bright green above and ashy gray underneath; has rather showy pink flowers similar to hibiscus. Price, in gal. cans, 50c.

Macadamia Ternifolia. An Australian nut tree, attaining a height of 60 feet. The tree has dense shining foliage and bears nuts about one inch thick, flavored like filberts. Price, 3 in. pots, 25c; 5 in. pots, \$1.50.

Magnolia Grandiflora. One of the most highly prized of flowering evergreens. Produces large, fragrant white flowers; these taken with large, glossy green leaves, make it a very showy and a very desirable tree. Attains a height of 80 feet. Price, in gal. cans, 50c; 5 gal. cans, \$1.00 to \$5.00.

Live Oak (*Quercus agrifolia*). A very beautiful and imposing tree, leaves small, edges spiny toothed but tree large and spreading. Sometimes considered a slow grower but with proper cultivation and water grows fairly rapid. Price, 4 in. pots, 25c; balled, 50c to \$1.50.

Australian Silk Oak (*Grevillea Robusta*). A graceful fern leaved tree, used largely for street planting, in summer is covered with conspicuous yellow flowers. Price, 4 in. pots, 25c; 3 ft., 50c; 4 ft., 75c.



Pittosporum Undulatum

Pepper tree (*Schinus Molle*). A favorite in California for street and avenue planting. Large spreading tree, drooping branches with clusters of red berries. Price, 1 to 2 ft., 25c; larger sizes to \$1.50.

Pittosporum Undulatum. This tree grows to be 25 feet or more in height and very shapely. It is used in ornamental planting and for street trees. It is also grown as a hedge, for which it is very well adapted. Price, 4 in. pots, 25c.

Pinus Canariensis (Blue Pine). When young the foliage is of a decided blue color, which it loses as the tree grows older. Leaves are long, giving the tree a massive appearance. Price, 25c to 50c.

P. Rhombifolium. A first-class ornamental tree well suited for avenue planting, symmetrical, pyramidal shape with fragrant flowers. Price, 4 in pots, 25c.

P. Insignis (Monterey Pine). This is a rapid growing pine with long green needle-like leaves used a great deal for ornamental planting, avenues and wind breaks. The most rapid growing pine we have. Price, qt. cans, 15c; balled, \$1.00 to \$3.00.

P. Maritima (Seaside Pine). The leaves are stiffer, coarser and darker than the preceding. Price, 3 to 4 ft 25c.



Sterculia Diversifolia

Sequoia Sempervirens (California Redwood). The great lumber producing tree of California. Attains a height of 400 feet. Makes a tall, graceful tree for ornamental planting. Gal. cans, \$1.00; balled, \$1.50 to \$5.00.

Australian Rubber tree (*Ficus Australis*). Tree grows to a considerable size, fine form, leaves deep green. Tree will stand considerable frost. Price, 1 to 2 ft., 30c; 4 to 5 ft., \$1.50.

Araucaria Bidwilli. An Australian tree with branches coming out in whorls around the stem. Very fine for parks and lawns. Price, 5 in. pots \$1.00; in Jap. tubs, \$2.50 to \$10.00.

A. Excelsa (Norfolk Island Pine). The most common of the Araucarias and one of the most attractive of trees for single specimens for the lawn. By some it is called the star pine on account of the regular manner in which the leaves come out around the stem. \$1.00 per ft.

A. Excelsa Compacta Robusta. In general appearance like the preceding, but with much heavier branches. The branches are broader and the tree has a more robust and compact appearance than the common one. 18 in. high, \$2.50.

A. Excelsa Glauca. This variety is a little more compact than the common Excelsa, the foliage has a bluish or glaucous appearance. 18 in. high, in pots, \$2.00.

Indian Rubber (*Ficus Elastica*). Immense glossy green leaves, much used for house plant in its small stages. Price \$1.00 each.

Saint John's Bread (*Ceratonia Seliqua*). Bright glossy green leaves, makes a spreading tree, stands drought well, very desirable for street planting. Price, 4 in. pots, 50c; larger sizes, \$1.50.

Sterculia Acerifolia. Pyramidal habit; leaves large, light green, deeply lobed like a maple; produces flower in a mass of scarlet color well above the leaves. Should not be planted in a frosty location. Price, 50c to \$1.50.

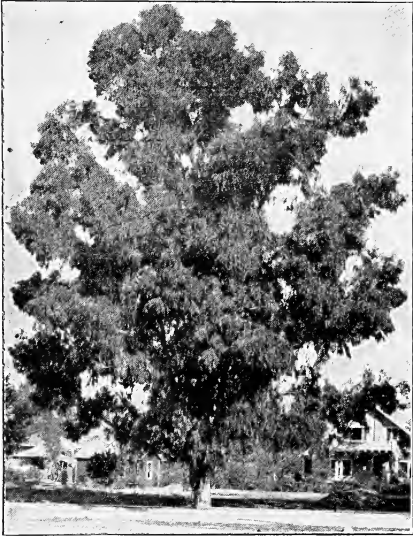
Sterculia diversifolia (Australian plane or Bottle tree). Grows symmetrical, tall and tapering. Useful for street planting. Price 25c to \$1.50 each.

English Yew (*Taxus baccata*). A densely branched tree of somber hue. Foliage dark green with lighter bark; can be trimmed to any form. Price, 4 to 5 ft., \$2.50.

Irish Yew (*Taxus hibernica*). Stout crowded upright branches. Foliage glossy green, very compact. Price, 2 to 3 ft., \$1.50 each.

EUCALYPTUS

Eucalyptus Citriodora (Lemon Scented Gum). A fast growing tree, usually very straight and slender with branches only at the top. It thrives in a frostless coast region but is not suited to the dry interior. Its profuse bloom makes it valuable for bee pasture. Is used for ornamental planting on account of the odor of the foliage, which resembles that of a lemon. 2 to 3 ft., 20c; 3 to 4 ft., 25c.



Eucalyptus Globulus

E. Corynocalyx (Sugar Gum). This is one of the most commonly grown eucalyptus of California. Grows to a height of 100 ft. and is particularly adapted to the hills of California and the interior valleys where the water supply is not abundant. Naturally it will grow much faster with plenty of moisture, but it will grow in arid situations where many other varieties fail. It will not stand very heavy freezing. Price, 2 to 3 ft. in cans, 10c; 3 to 4 ft. in cans, 15c; in flats, \$1.50 per 100 or \$12.50 per 1000.

E. Ficifolia (Scarlet Flowering Gum). This variety is grown in California strictly as an ornamental tree. The tree is of slow growing, spreading habit and produces bright flowers ranging from pink to scarlet that grow in large clusters, making the tree very conspicuous. Price, 1 to 2 ft., 50c.

E. Globulus (Blue Gum). This is the tree that has made eucalyptus wood famous in California. It is the most rapid growing, though not the largest, of the Eucalyptus. It thrives in the coast regions and in many of the interior valleys, but to do its best must have a good supply of water. On account of its quick growth it is useful for windbreaks and for shade, especially in a new country. Price, in cans, 2 to 3 ft., 5c; 3 to 4 ft., 10c; in flats, \$1.50 per 100 or \$12.50 per 1000.

E. Polyanthema (Red Box). This tree is of medium size and generally of a spreading habit. The leaves are round or broadly ovate. The timber is very hard, strong and durable. Price, in cans, 1 to 2 ft., 10c; 3 to 4 ft., 15c.

E. Rostrata (Red Gum). This variety is commonly reported in Australia as growing to a height of 100 feet, but under favorable conditions grows to double that height, with a trunk diameter of 6 to 12 feet. The red gum grows under a great variety of conditions. While it prefers moist bottom lands with an equable climate, it will endure much heat, severe frost and considerable drouth, also withstands considerable alkali. When grown in large acreage in groves it grows fairly straight. Price, in cans, 3 to 4 ft., 10c; 4 to 5 ft., 15c; price in flats, \$1.50 per 100 or \$12.50 per 1000.

E. Rudis (Desert Gum). Very highly thought of for hot, dry places, as the interior valleys of California. It has withstood a maximum temperature of 118 degrees F., and a minimum of 15 degrees F. Equally adapted to the coast regions. It makes a good quick growing shade tree and where the better known varieties will not thrive; should be planted for wood, windbreaks and other purposes where a quick growing tree is desired. Price, in cans, 2 to 3 ft., 10c; 3 to 4 ft., 15c; in flats, \$1.50 per 100, or \$12.50 per 1000.

E. Tereticornis. (Also called Red Gum in Australia.) This tree attains to a good size under favorable conditions and grows straighter and makes a more merchantable tree than the common Red Gum, the Eucalyptus Rostrata. The species thrives near the coast and in the interior valleys, enduring drouth well. Price, 2 to 3 ft., 10c; 3 to 4 ft., 15c; in flats, \$1.50 per 100 or \$12.50 per 1000.

DECIDUOUS SHRUBS

There are a few principles that should be observed in artistic arrangement of these beautiful ornaments. The aim of the gardener should always be to have the taller shrubs act as a background, thus producing a gradual slope to the foreground. Irregular groups along fences or against buildings and along walks and drives are very effective.

Spirea Prunifolia (Bridal Wreath). A low, bushy shrub with a great profusion of double white flowers. Very desirable on account of its early blooming. Price, 4 in. pots, 25c; gal. cans, 50c.



Spirea Van Houtte

Spirea Van Houtte (Bridal Wreath). Same as Prunifolia, only flowers are single and bush a stronger grower. Field grown, 25c; gal. cans, 50c.

Snowball (*Viburnum Opulus*). The common Snowball. A hardy shrub that makes a large, bushy plant. In the early spring it is covered with flower heads that resemble balls of snow by their whiteness and symmetry. Price, 4 in. or field grown, 25c.

Lilac (Purple). The common lilac of the Eastern garden. A slow growing shrub, blooming very early spring. One of the most fragrant of all flowers. Price in gal. cans, 25c; 5 gal. cans, \$1.00.

Lilac (White). Like the above only the flowers are white. Price, in qt. cans, or bare roots, field grown, 25c.

Lemon Verbena. A rapid growing shrub with pinkish white flowers. The leaves are very fragrant, having a strong lemon odor. Price, gal. cans, 25c.

Crape Myrtle (*Lagerstroemia Indica*). One of our best deciduous shrubs. If desired, it can be trimmed to a single stem and made to grow into a shapely little tree. Is a very striking shrub on account of the great profusion of bloom. Pink and red. Pink in quart cans, 25c; red in 5 gal cans, \$1.00.



Snowball

Poinsettia Pulcherrima. Christmas flower of Mexico; unsurpassed for the splendor of its brilliant scarlet flower bracts. Very showy and much admired. Requires a sunny location. Price, 4 in. pots, 25c; gal. cans, 50c; 5-gal., \$1.00.

EVERGREEN SHRUBS

There is a wide range of this class of plants to select from and here in California especially, no garden would be complete without a good selection of these hardy and beautiful shrubs.

Abutilon (Flowering Maple). A large shrub or small open tree with leaves the same shape as the maple tree and bearing showy bell shaped flowers red and yellow. Price, 4 in. pots, 25c each.

Camellia. A beautiful shrub with glossy green leaves and showy waxy flowers. Plant suitable for house culture or as a shrub in the garden. Colors pink, red, white and variegated. Price, 5 in. pots, 75c to \$1.50.



Camellia

Cocoloba (Sea Grape). An erect shrubby plant with flat green rib-like branches, grows full and bushy, makes a splendid showy shrub in the garden. Price, 25c to 50c each.

Fuchsia Black Prince. A misnomer as far as name is concerned, being a bright waxy carmine; tube and sepals large and broad with pale green tips, large open pale pink corolla. A wonderful grower and symmetrical habit. Price, 15c to 25c.

Fuchsia Lustre. White tube and sepals, with bright crimson scarlet corolla. Good strong grower. Price 15c to 25c.

Fuchsia Earl of Baconfield. Red tube and sepals, single crimson corolla, good strong grower. Price 15c to 25c.

Fuchsia Mrs. E. G. Hill. Sepals and tube red and a purple double white corolla. Price, 25c to 50c.

Fuchsia White Phenomenal. Largest Fuchsia we have yet seen, flowers pure white with one vein of crimson in each petal. Price 25c to 50c.

Grevillea Thelemanniana. A wide-spreading shrub with fine feathery leaves and bright red flowers. A very fine and attractive plant where a large shrub is desired. Thrives best in a dry situation. Price, 4 in. pots, 25c; gal. cans, 50c.

Hibiscus, Double Crimson. This is a very desirable large double variety. In localities subject to heavy frosts the hibiscus will freeze down for the first few winters, but each time will send up an increased number of stalks which will bloom profusely. As the plant gets older it withstands the frost better. Price, in qt. cans, 25c; in gal. cans, 50c.

H. Single Crimson. Much the same in growth as the double crimson. Some growers think the single variety superior to the double. Price, 4 in. pots, 25c.

H. Peachblow. This is a semi-double, light pink variety; very popular; bush is similar to the two preceding ones in growth and appearance. Price, 3 in. pots, 25c; in 5-gal. cans, \$1.50 each.

Hydrangea Otaksa. A large, pink flowering variety with bright green foliage. Grows best on the north or east side of the house or other buildings where it is protected from the afternoon sun. When properly grown the bushes are six to eight feet across and covered with large heads of pink flowers. Price, 4 in. pots, 25c; gal. cans, 50c; 5-gal., \$1.00.

Laurustinus. A very common and well-known ornamental and hedge plant. Has very dark green foliage and bears clusters of small, white, waxy flowers. One of our best hedge plants. Price, 4 in. pots, 25c; balled, 50c to \$1.50.

Lantana. This is a shrubby half climber. A very profuse blooming plant and makes a dense round top shrub. Will often make a mass of shrubbery ten feet across in a single season. It is of various colors, red, yellow, pink and white with variations. Price, in qt. cans, 15c to 25c.



The Fruit Department

The Orange, the Lemon and the Pomelo have come to occupy a very exalted place in the fruit industry of the state and brings into the pockets of growers many million dollars in profits annually. It is planted over a wide territory extending from San Diego county to Butte county. California ships more carloads of oranges than any other fruit.

Citrus and Tropical Fruits

THE ORANGE

The Washington Navel. This is the variety that has to a large degree given California its reputation as an orange producing state. In quality and general appearance it has no equal. The tree grows to medium size and is an early and abundant bearer. If a family can have but one orange tree in their garden it should be a Washington Navel. It is seedless; large size, sweet and juicy. Price, \$1.00 each.

Valencia Late. This variety comes second in importance of our oranges. It is a late variety, ripening after other varieties are off the market and consequently, usually brings very high prices.

It seems best adapted to the coast valleys of Southern California, where it reaches a high state of perfection and hangs on the trees till late fall, the last shipments usually going out in early November. Almost seedless, medium to large; excellent quality. Price \$1.00 each.

Dancy Tangerine. This is one of the small, "kid glove" oranges. Is of deep orange color, quite tart and ripens just following the Navel. Desirable for home use and "fancy" trade, but not extensively planted for market. Price \$1.50 each.

Satsuma (Unshui Oonshui). Tangerine variety, fruit deep yellow flesh, very tender, juicy and entirely seedless. Ripens October to December. Price \$1.50 each.

ORANGE SEED

Each year, at the proper season, which is from March 1 to June 1, we are prepared to handle orders for Orange Seed. Prices fluctuate, depending on the quantity of seedling oranges to be obtained at that time. We are also prepared to quote and furnish seedling orange trees, both sweet and sour, but as prices on these also fluctuate from time to time, we are unable to give prices here.

THE POMELO

Grape Fruit (Pomelo), Marsh's Seedless. The best and most popular variety. Fine flavor, sweet and juicy. Price, $\frac{5}{8}$ in. up, \$1.00 each.

THE LEMON

Eureka Lemon. This is the favorite variety for Southern California, good even size, splendid quality. Tree a good grower and almost thornless. Price, $\frac{5}{8}$ up, \$1.00 each.

THE LIME

Mexican Lime. Medium and compact growing tree. Thorny, often cultivated as a hedge plant. Fruit rather small, oblong, lemon yellow, flesh grayish-green in color, juice abundant and translucent. Price \$1.50 each.

For large quantities of any of the above varieties ask for special quotation.

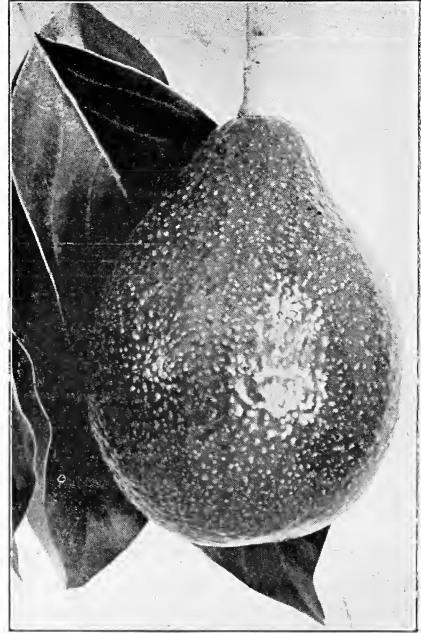
THE AVOCADO

The Avocado is a fruit fast becoming of commercial importance in Southern California and seems destined in the near future to rival the Orange. The promise of importance for this fruit lies in the price that it brings in the market, which might be lowered considerable and still leave a good profit to the grower. Trees obtain large size when fully developed, fast grower, good for ornamental purposes as well as the fruit. Will stand the same temperature as the Orange. Budded trees bear in from 3 to 4 years.

Harmon. Fruit light green with purple tint, weighs 8 to 12 ounces, pear shaped, thin skinned, flavor rich and good quality. Ripens October to January. Price, budded trees, 3 ft. up, \$3.00 each.

Northrup. Fruit purple in color, skin thin, weight about 8 ounces; flavor and quality good. Ripens October to June. Price \$3.50 each.

Ganter. Fruit greenish in color, thin skin, flavor and quality excellent. Ripens October to December. 3 ft. up, \$3.00 each.



Avocado

Taft. Fruit large, weight 1 lb., thick skin, greenish color, flesh fine quality, rich and nutty. Ripens May to August. Price \$3.50 each.

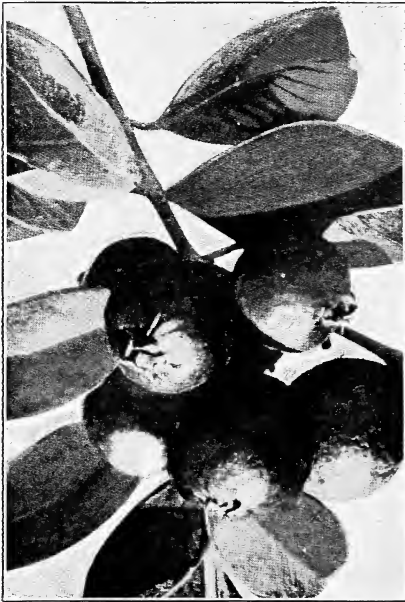
Seedling Avocado. A great many people prefer to buy seedling Avocados and experiment with budding themselves, also some want to plant for ornamental purposes only, not caring much about the fruit. For those who wish to do that we offer seedings: One ft. at 25c; 2 ft., 50c; 3 ft., 75c; 4 ft., \$1.00.

THE CHERIMOYA

Cherimoya (Custard Apple). Tree grows to a good height with spreading branches. Fruit should be picked when green and kept until it turns brown. The pulp is custard-like and of delicious flavor. Price 50c each.

THE FEIJOA

Feijoa sellowiana. This fruit is becoming very popular in California. In some respects it is similar to the Guava but very much superior. The fruit is about 1½ inches in diameter and 2 inches in length, the pulp is delicious, combining the flavor pineapple and banana; good shipper. The fruit has a lasting and pleasing fragrance. The bush grows to a height of about 8 feet. Flowers large and showy, silvery white in color with crimson stamens and golden yellow anthers, making the whole bush very attractive as an ornamental shrub. Price, field-grown bushes, balled, 50c to \$1.00 each.



Strawberry Guava

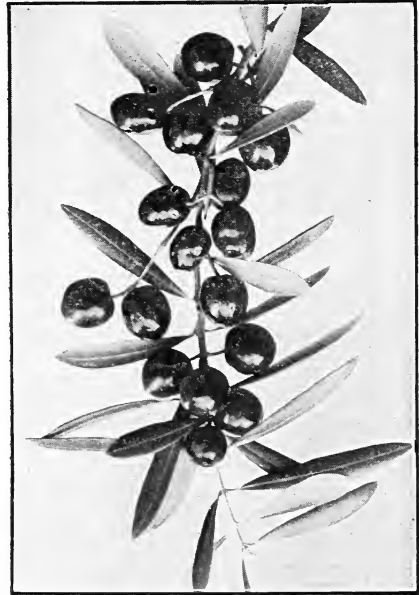
THE GUAVA

Strawberry Guava (*psidium cattleianum*). Without question the best fruit in existence for jelly. A fine glossy leaved shrub or small tree, produces in abundance, a luscious fruit about the size of a small plum, round and when fully ripe a deep reddish color. Price, potted plants, 25c; balled, 50c to \$1.00.

Lemon Guava (*psidium guajava*). Fruit large and pear shaped, of yellowish color, of fine flavor and quality. Price 50c each.

THE LOQUAT

Advance. One of the best budded varieties, fruit pear shaped, borne in large clusters; color orange yellow; flavor a distinct and delightful sub-acid; ripens in May. Price, balled, 4 to 5 ft., \$2.00; 3 to 4 ft., \$1.50; 2 to 3 ft., \$1.00 each.



Mission Olives

Seedling. Grown from selected seed, makes a larger tree than the budded varieties. Fruit is smaller and the tree is longer coming into bearing. Price, 3 to 4 ft., 75c; 2 to 3 ft., 50c each.

THE OLIVE

Manzanillo. The Queen olive of Spain. Fruit large, shape regular and the pits small. Ripens earlier than other varieties. Price, 3 to 4 ft., 50c each.

Mission. The tree is a handsome upright grower; fruit medium to large; makes a richly flavored pickle and a good quality of oil. Price, 3 to 4 ft., 50c.

THE SAPOTA

White (*Casimiroa Edulis*). Native of Mexico. Grows to good size, very ornamental. Fruit round, about the size of a small orange, smooth yellow skin; the pulp is white, pleasing taste. \$1.00 each.

Deciduous Fruits

There are no gardens too small for a few fruit trees, and nothing gives better satisfaction than to have fresh fruit in your own garden. In California many of the deciduous fruits often bear good crops the second year. Deciduous fruit trees require very little care and apricots do well in many sections without water.

APPLES

The apple will thrive in most parts of California and in many parts yield a really superior product.

In choosing varieties for any given locality the purchaser should be governed by observations on local conditions and varieties doing best in the locality.

Trees as a rule should be headed low in order to shade the trunk of the tree from the sun.

No home orchard is complete without a few well selected apple trees for cooking and dessert purposes.

1 yr. old—		Per	Per
½ to ⅝ in.,	Each	10	100
4 to 6 ft.....	\$.25	\$2.00	\$18.00



Jonathan Apple

Early Harvest. This is one of the earliest apples we have and is an old family favorite; flattened, light yellow, good for cooking.

Gravenstein. A beautiful large yellow apple, splashed with red. A very popular variety. Roundish oblong, aromatic flavor, juicy, fine for eating, good shipper, good keeper, good bearer.

Maiden's Blush. One of the very best apples for home use. Medium size, somewhat flattened, beautiful yellow apple with a distinct red cheek. Good for table, cooking and market, but should be picked before quite ripe, as it becomes mealy.

Red Astrachan. A well known summer apple of decided merit. Medium to large; red; sub-acid flavor. Good for cooking and market. Early, right after Red June.

Red June. Small to medium. An excellent table apple. Deep red and attractive in appearance. Flavor sprightly and aromatic. June to September.

Fall Pippin. Large, green, sub-acid, quality best. Popular where known. Early fall, keeps well, heavy bearer.

Jonathan. Fruit medium, roundish; skin yellow, nearly covered with dark or lively red; moderate grower. One of the best apples for home use or market. Tender, fine grained, splendid flavor; fair keeper; moderately productive. Late.

Arkansas Beauty. Large, green splashed with red; quality best; very productive. Late fall or early winter.

Arkansas Black. Fruit medium to large; fine flavor; beautiful dark color; flesh yellowish; slightly sub-acid; crisp. One of the best cooking apples; fair keeper. Late fall or winter.

Delicious. A fine red apple, resembling Bellflower in shape; quality best.

Rome Beauty. Large, yellow, shaded with red; tender, juicy, sub-acid. Good appearance. October to February.

Banana. Large, pale yellow with red on one side. Tender flesh and excellent quality. The best apple grown in Southern California; flavor good; splendid for cooking; regular bearer, never misers. August 15 to October 1.

Winesap. Medium, dark red, a favorite market variety in the West. Fine for eating. Excellent flavor and very juicy.

White Winter Pearmain. Medium; skin light yellowish green with a brownish cheek. Flesh tender, fine grained, mild, sub-acid, rich, aromatic flavor; very juicy. Late.

Yellow Bellflower. Large; yellow with a blush in the sun; very tender, juicy, sub-acid; a beautiful and excellent apple; fine for eating; good for cooking. Medium to late.

Yellow Newtown Pippin (Albermarle Pippin). Medium to large, roundish; yellow, very firm, crisp, juicy, with a highly delicious sub-acid flavor. One of the most famous American apples. Fine for eating; moderately productive. A very late and good keeper.

Crab Apples

Price same as apples.

Florence. A young and prolific bearer and one of the best crab apples; medium, striped red, acid, good for canning and jelly.

Red Siberian. Fruit large; yellow with scarlet cheek, beautiful; sub-acid, good for eating and canning; early, productive.

Transcendent. Vigorous, productive. Leaves out early; medium large; round; yellow, striped with red; good keeper; fairly tart.

APRICOTS

Apricots do well in almost all sections of Southern California. They will grow better without water than any other fruit except Grapes and Almonds. The Apricots are good money makers, as they have three markets, canning, drying and shipping.

	Each	10	100
4 to 6 ft.....	\$.35	\$3.00	\$25.00
3 to 4 ft.....	.25	2.25	20.00

Moorpark. Large, roundish; skin orange, with red cheek in the sun, marked with numerous dark specks and dots; flesh firm, bright orange, parting freely from the stone; juicy, with a rich and luscious flavor; fruit good for canning and drying, but bears irregularly.

Royal. A French variety; above medium, roundish oval, slightly compressed; skin dull yellow, with orange cheek; flesh pale orange, firm and juicy, with a rich vinous flavor; fruit ripens evenly and bears regularly; a favorite sort for canning and drying. Ninety per cent of all Apricots planted are Royal.

Tilton Apricot. New; fruit medium size; rich apricot color, with flavor of the highest quality. Late.

PEARS

The cultivation of the Pear extends to all parts of the state and adjacent territory.

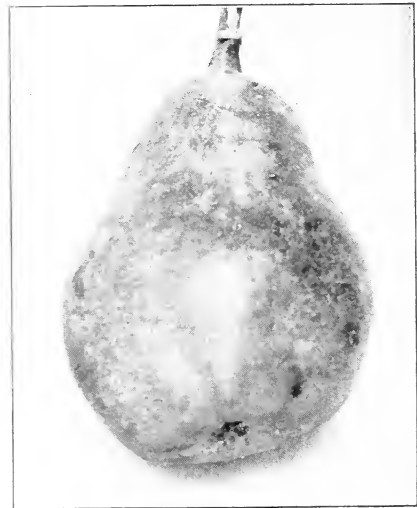
Thrives best on a heavy soil and does well in soils containing considerable all'ali.

Unlike most fruits, pears should be gathered before fully ripening and placed in a cool, dark place to complete the ripening process.

The pear is extensively grown both commercially and for home use.

	Each	10	100
4 to 6 ft.....	\$.35	\$3.00	\$25.00

Winter Bartlett 5c extra.



Bartlett Pear

Bartlett. Large; buttery, juicy, high flavored; great bearer. One of the most popular of all the Summer varieties. August to September. Good for canning.

Clapp's Favorite. Fruit large; skin thin, pale yellow; flesh white, fine grained, juicy, buttery, melting, rich, sweet, vinous; a little perfumed; very good quality; fair bearer. Ripens two weeks earlier than Bartlett.

Flemish Beauty. Hardy and bears early and abundantly; fruit large, pale yellow, becoming reddish-brown at maturity on the sunny side; flesh coarse grained, melting and juicy; good for market and shipping.

Kieffer Hybrid. Called by many the "Queen of Pears." Fruit large to very large; skin yellow, with a brilliant vermilion cheek; flesh coarse and brittle, very juicy, with a marked musky aroma; high flavor. Tree very vigorous and very prolific. Good shipper.

Winter Nellis. Tree hardy and thrifty; a very delicious winter pear of medium size; fruit bright russet brown; flesh yellowish-white, fine grained, buttery and very melting, abounding with juice and a rich, aromatic flavor; good to very good; shy bearer; poor grower, often crooked. December to February.

Seckle. Of exquisite flavor; perhaps the standard of quality in pears; flesh spicy, melting; high flavor; fine for eating. Tree a stout, slow grower. August.

Winter Bartlett. Fruit large, closely resembling the Bartlett in shape and appearance; perfectly smooth; flesh tender, coarser than the Bartlett, juicy and melting; flavor similar to the Winter Nellis, but season a little later, and as good as can be desired. In every way a grand pear. Good shipper; heavy bearer. Early winter.

QUINCES

	Each	10
3 to 4 ft.....	\$.25	\$2.00

Van Dieman. Largest and best; almost round; clear light yellowish green; good quality; good grower. Late.

Apple or Orange. Small to medium; almost round; golden yellow; very productive. Early.

NECTARINES

The Nectarine is a smooth-skinned peach. It is very fine either as a dried fruit or preserved. Requires the same conditions and should be handled the same as the peach.

4 to 6 ft.....	50c each
----------------	----------

New White. Large; pure white; flesh tender, juicy, vinous; very good; early; free. 4 to 6 ft., 50c.

PEACHES

The Peach is one of the fruits that has made California famous as a fruit producing state.

The large, fine and luscious peaches grown in California are enough to make any one enthusiastic over fruit culture. The trees do best on a well drained, sandy loam, rather than on land inclined to be moist. Twenty-four feet apart is a good average distance to set peach trees. When too many fruits have set, the only remedy is to thin them out. Thinning is done before the pit has formed. Trees often bear the second year.

1 Year Old—	Each	Per	Per
		10	100
4 to 6 ft.....	\$.35	\$3.00	\$20.00
3 to 4 ft.....	.25	2.00

Freestone Varieties

Alexander. Large size, handsome and regular in form, with deep maroon shade; adheres to the stone. White flesh.

Australian Saucer. Fruit rather small and very flat; skin a pale greenish white. Is of good quality when allowed to hang on the tree till fully ripe.

Brigg's Red May. Medium size, very highly colored; flesh greenish white, very juicy, vinous, and of very good quality; adheres somewhat to the stone; of firm texture; tree very prolific.

Champion. Very large peach; highly flavored and beautifully colored; flesh white and skin white with red cheek; small pit and thick flesh. One of the best peaches.

Crawford's Early. This beautiful yellow peach is highly esteemed for market purposes. Fruit very large, oblong, skin yellow, with fine red cheek; flesh yellow, juicy, sweet and excellent; free. Inclined to be a shy bearer.

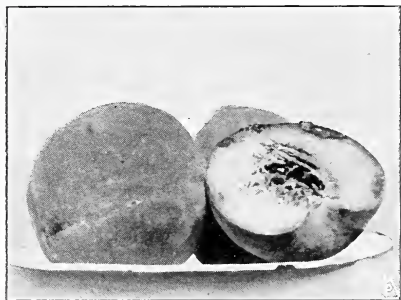
Crawford's Late. Fruit of the largest size; yellow, with dull red cheek; free.

Elberta. Very large, well colored; all things considered, the finest yellow freestone in cultivation; no one can go amiss by planting it.

George the Fourth. Large, flesh white, red cheek; productive; a good free-stone.

Honey. The sweetest of all peaches we have, and about the best bearer. Late frosts have never killed the young fruit in Southern California.

Lovell. A California seedling, large, almost perfectly round; flesh yellow to the pit, firm and of excellent quality; a superb canning and drying peach and more in demand by the canners in recent years, and commanding a much higher price than any other variety of freestone peach. Worthy of extensive cultivation; ripens a few days after Muir.



Early Crawford Peach

Mayflower. A new variety from North Carolina; very highly recommended by the originator; one week earlier than Sneed; fruit round and entirely covered with red; blooms late; very hardy; not fruited as yet with us.

Muir. Large; skin yellow. Flesh firm; good drying and canning peach; freestone.

Salway. Fruit large; yellow, with red cheek; flesh yellow; a late showy market sort; freestone.

Strawberry Peach. A fair sized white peach, changing to red near the pit. Has a rich, delicious flavor. Very productive.

Wheatland. Large, roundish; skin golden yellow, shaded with crimson on the sunny side; flesh yellow and of fine quality; tree vigorous.

Cling-stone Varieties

Cling-stone peaches are much sought after by canners on account of their richness and firmness. High prices are realized for cling-stone.

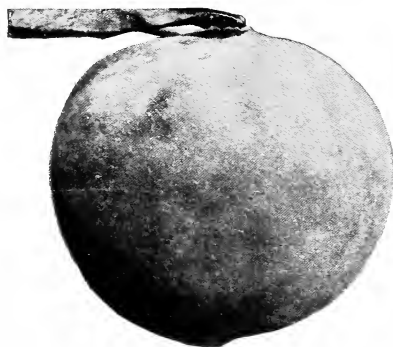
Chinese Cling. Most popular Southern peach; oblong; creamy skin, with faint flashes of red.

Henrietta (Levy). Magnificent yellow cling; large size. Mostly covered with bright crimson; hardy; productive. Late.

Heath Cling. Large; oblong; creamy white, slightly tinged with red in the sun; tender, juicy, melting; rich and luscious.

Lemon Cling. Large; oblong, having a swollen point, similar to a lemon; skin yellow with red cheek. Flesh yellow, firm, juicy and sweet.

Phillip's Cling. Fine, large, yellow; flesh firm, clear, yellow to the pit, which is very small. Preferred by canners to any other variety of cling; its firmness, fine texture of flesh and lateness, not ripening until September, when other clings are practically harvested, makes a demand for the variety far beyond the supply.



Phillip's Cling Peach

Tuscan Cling. A very large yellow cling; the earliest fine cling; flesh juicy and of fine flavor and clear yellow to the stone. A good shipping and canning peach; desirable on account of its earliness, ripening with the Early Crawford.

PLUMS

This fruit grows well in all parts of the state.

The Japanese varieties and their crosses occupy a large place in the plum culture of California.

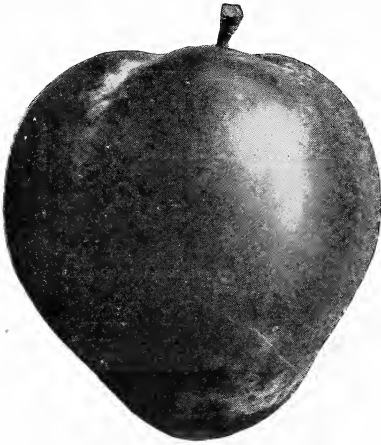
The European varieties are also held in considerable favor, especially for canning purposes.

The American varieties are planted but little.

	Each	Per 10	Per 100
4 to 6 ft.....	\$.35	\$3.00	\$25.00
3 to 4 ft.....	.25	2.25	20.00

Blue Damson. Medium; skin dark blue with light blue bloom; flesh yellowish green, juicy, sweet, fine flavor. Late.

Burbank. Japanese, named after the introducer of this and most of the other good plums. The best bearing variety we have. When fully ripe, the fruit is deliciously sweet. Ripens mid-summer.



Wickson Plum

Hale. Tree good grower; fruit very large, beautifully colored; of best quality.

Imperial Gage. Large; oval, golden green, juicy, rich; first quality.

Kelsey's Japan. Vigorous; greenish yellow; very large; excellent; prolific; sweetest of all plums; early bloomer.

Satsuma. A very large and well flavored plum with blood-red flesh.

Wickson. Japanese. Tree grows in vase form, sturdy and upright. The fruit is evenly distributed all over the tree. Small stone, the flesh is of fine texture, firm, sugary and delicious.

Yellow Egg. Very large, egg-shaped; excellent for cooking.

French Prune. Medium to small; skin reddish purple with a blue bloom. Flesh fine, juicy, sugary; used very extensively for drying in California.

Sugar Prune. Fruit large, skin tender, dark purple, flesh yellow and sugary.

POMEGRANATE

Wonderful. Large highly colored and attractive, pulp a rich garnet. Makes a fine ornamental shrub as well as a profitable fruit. Valuable for shipping to eastern market. Price 25c each.

FIGS

There probably is no fruit that repays its owner so well as a few trees of figs.

The trees require sufficient moisture to keep them constantly growing during the summer months in order to fruit well.

4 to 6 ft.....	35c each
3 to 4 ft.....	25c each
2 to 3 ft.....	20c each

Black Mission or California Black. Is probably the most common black fig grown in California. Is of fair size and dark purple, almost black, in color. A good grower and a good bearer.

Black Spanish or Black San Pedro. Not so dark in color as the Black Mission, but a much larger and better fig, in fact we consider it the best black fig we have. Good grower and an excellent bearer.



Black Mission Fig

Kadota. This is one of the very best of the white figs. Of medium size and but slightly elongated. Thought by some to be identical with the White Pacific, which it very much resembles. Very sweet and delicious. White inside and out.

White Pacific. Similar if not identical with above variety. It is very much prized for home use and for selling fresh on the market.

White Adriatic. This is one of the most common sorts grown in Southern California. It is rather above medium size with greenish white skin and pink flesh. Is productive.

LOQUATS

This is a fine evergreen tree that is useful as well as ornamental. The fruit is yellow to orange in color and the size of large plums but somewhat longer. It is a very desirable fruit especially the budded varieties, coming as it does in the late winter and early spring when fruit is scarce. Trees are easily grown and fruit abundantly.

Advance. This one seems the best for general culture. It is much larger and better than the common seedling and a more abundant bearer. The fruit ripens early and sells readily.

4 to 5 ft.....	\$2.00 each
3 to 4 ft.....	\$1.50 each
2 to 3 ft.....	\$1.00 each

Seedlings. We also have a few seedlings, which until a few years ago were the only thing grown. The seedling trees grow larger than the budded stock and are longer coming into bearing.

4 to 5 ft.....	75c each
----------------	----------

PERSIMMONS

This is a valuable acquisition to our fruits. The trees are quite hardy and will thrive where the thermometer does not drop below zero. Is a valuable market fruit.

3 to 4 ft.....	30c each
----------------	----------

Hachiya. This is acknowledged to be one of the best. Oblong and somewhat pointed towards the apex. Skin deep orange or red, with dark blotches near the apex.

GRAPE VINES

The grape is very widely distributed in California and is divided into three distinct classes—the raisin grape, the wine grape and the table or market grape.

Each	\$.10
Per 10.....	.75
Per 100.....	5.00
Per 1000.....	35.00

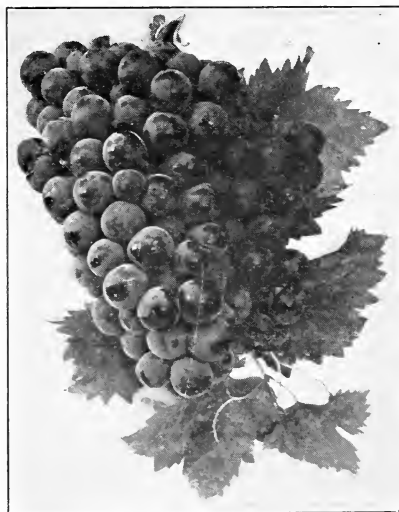
Black Hamburg. Large bunches with large, round berries. Acknowledged as standard in quality for foreign table grapes.

Black Mission. This is the grape originally grown by the Mission Fathers. Used both for a table grape and for wine. Berries are of medium size and good quality.

Cornichon (Black). Bunches large but loose; berries tapering to both ends; is of good quality and desirable for table and market; ripens late.

Flame Tokay. Very extensively planted for table and market. Bunch is large and moderately compact. Berry firm and sweet. Very popular.

Malaga. This variety thrives well under varying conditions. Bunches are very large. Popular as a market grape.



Black Hamburg Grape

Red Emperor. A late variety of strong growth and a heavy bearer. Berries are large, oblong and covered with bloom. A favorite market variety on account of its lateness and good keeping qualities.

Thompson's Seedless. Vine is a very rapid grower. It is, as the name indicates, seedless. It is pre-eminently a raisin grape but is also extensively used as a table grape.

White Muscat. Extensively planted throughout the state. The berry is sometimes round and sometimes oblong, large and greenish yellow in color.

Concord. This is the best known and most extensively grown of any of the American varieties. As grown in California the berries are large and dark purple. The bunch is rather loose. Vine a strong grower and an abundant bearer. Highly prized as a table grape, especially by people recently from the East.



The Small Fruits

Almost every garden, no matter how small, has a small plot that can be utilized for Strawberries and the Blackberry, Raspberry, Loganberry, etc., can be planted along fences and in waste places that could not be used for other purposes. They are a source of pleasure as well as profit.

Mammoth Blackberry. The largest and best blackberry cultivated, is a heavy producer, rampant grower and bears early. Price, per 10, \$1.00; per 100; \$5.00.

Crandall's Early Blackberry. One of the earliest to ripen, has a long fruiting season; strong grower, hardy and productive. Berries good form, good flavor, good size, black in color. 10c each, \$1.00 per dozen.

Phenomenal. Berry. .. Cross between dewberry and raspberry. Color bright crimson, very large berries growing in clusters. Price 10c each, \$1.00 per doz.

Gardena Dewberry. A standard variety suitable for this section; early, productive and large berries. Price 10c each, \$1.00 per doz.

Loganberry. Very distinct and delicious flavor, dark red in color, prolific and large size. 10c each, \$1.00 per doz.

Raspberry, California Surprise. This really is a surprise, because it bears two crops a year and the berries are of very fine flavor, resembling in flavor the wild raspberry of the eastern states. Berries

bright crimson, good form, very prolific. Price, 50c per 10, \$3.00 per 100.

Raspberry, Cuthbert. The best known of the red raspberries; large, conical, deep crimson, firm and of fine flavor. Price, 50c per 10; \$2.00 per 100.

Strawberry, Brandywine. Probably more extensively grown in California than any other variety. Berries a handsome dark red, splendid quality, good producer and hardy. Price, 25c per 10; 75c per 100; \$4.50 per 1000.

Strawberry, Klondyke. This variety is running the Brandywine a close race for popularity, for it is a better grower and more productive and stands the dry weather better. Price 75c per 100, \$4.50 per 1000.

Currants, Fay's Prolific. The leading market variety. Extra large stems and berries; uniform in size and easy to pick. Price 25c each, \$2.00 per 10.

Gooseberries, Oregon Champion. A new variety. Fruit large and round, bush a prolific bearer. Price 25c each, \$2.00 per 10.

The Nut Fruits

The Soft shell or what are known as English Walnut are the favorite Nut grown in Southern California. Our trees are grown from selected trees bearing extra fine nuts.

WALNUTS

Placentia Perfection, Budded. Nuts are very smooth, regular in size, thin but strong shell. Price, 4 to 6 ft., 60c; 6 to 8 ft., 80c each.

Chase: Budded: Trees grow to very large size, bark smooth and free from blight; tree a heavy producer, nuts large and of fine quality. Price, 6 to 8 ft., \$1.00; 8 to 10 ft., \$1.25 each.

The Vegetable Garden

Asparagus Palmetto. Produces early, good size and flavor. 50c doz., \$3.00 per 100.

Giant Asparagus. Grows to large size, splendid flavor. 50c doz., \$3.00 per 100.

Cabbage, Early Winnigstadt. One of the best varieties. Price, 10c doz., \$1.00 per 100.

Horseradish (Malmer Kren). The best and most pungent variety. 5c each, 50c doz.

Rhubarb (Crimson Winter). This variety, one of Burbank's productions, seems to be well suited to Southern California as well as the northern part. Grows very quickly, needs but little care and produces abundantly. Stems red and sauce red after rhubarb is cooked. Our field size will produce marketable stalks in six months from planting. Price, field size, 10c each; \$1.00 per doz. Extra large roots all ready to bear, 25c each.

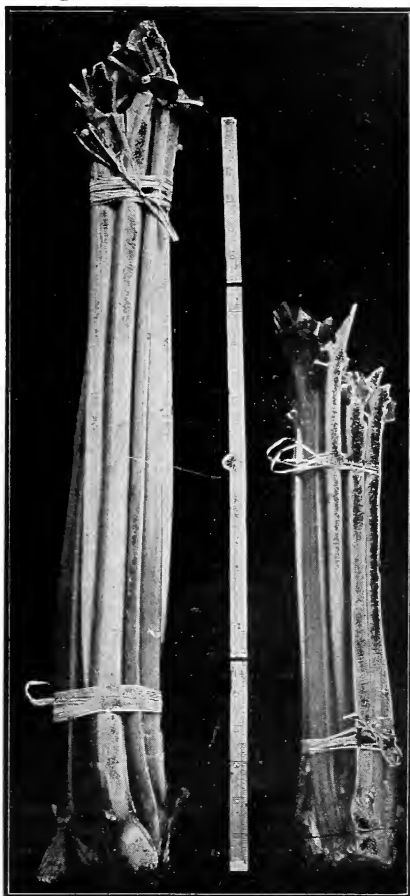
Sweet Potatoes (Yellow Nansmond). This is the standard variety for Southern California. Planted from March to May. Price, 50c per 100; \$2.50 per 1000.

TOMATOES

Earliana. Very early, fruit smooth, bright scarlet, fine quality.

Ponderosa (Beefsteak). Fruit very large, irregular, solid, dark carmine color.

New Stone. One of the best for canning purposes, good form, smooth, bright scarlet. Price, 10c doz.; 50c per 100; \$2.50 per 1000.



Crimson Winter Rhubarb

Common Victoria

HAVE you ever stopped to think how much a green lawn, luxuriant flowers, shrubbery and trees add to the value of your property?

LAWN FERTILIZER. After your lawn is well rooted and started, a liberal application of fertilizer should be applied twice a year. We can supply an extra fine grade of lawn fertilizer at five cents per pound, or three dollars per sack of one hundred pounds.



USUAL DISTANCES FOR PLANTING FRUIT TREES AND VINES.

(In planting trees, the greater distance should be given on the richer soils.)

Apples	20 to 30 feet	each way
Pears (Standard)	25 "	" "
Pears (Dwarf)	12 "	15 " "
Quinces	15 "	" "
Peaches	18 "	24 " "
Plums	15 "	20 " "
Cherries	15 "	20 " "
Figs	12 "	15 " "
Japan Persimmons	15 "	20 " "
Mulberries	20 "	25 " "
Oranges (Sweet)	20 "	25 " "
Oranges (Japanese)	12 "	15 " "
Blackberries	6	by 4 feet
Raspberries	6	" 3 "
Currants	5	" 3 "
Gooseberries	5	" 3 "
Strawberries (Hills)	36 x 18	inches
Strawberries (Matted rows)	48 x 12	" "
Grapes	8 x 8 to 10 x 12	feet

TOPICAL INDEX

THE ROSE

Bush Varieties	4-5
Climbing Varieties	6

FLOWERING PLANTS

Abelia Grandiflora	7
Achyranthus	7
Agave	7
Aralia	7
Aspidistra	7
Aster	7
Banana Abyssinian	7
Musa Lapiantum	7
Begonia	7
Caladium	7
California Holly	8
Carnations	8
Cinerarias	8
Coleus	8
Chrysanthemum	8
Daisies	8
Geranium	8
Pelargonium	8
Lavender	8
Romneyi Coulteri	8
Heliotrope	9
Oleander	9
Pansies	9
Pampus Grass	9
Papyrus Grass	9
Fountain Grass	9
Petunia	9
Pincenectita	9
Primula	9
Salvia	9
Scabiosa	9
Sweet Sultana	9
Verbenas	9
Veronica	9
Violets	9

BULBOUS FLOWERING PLANTS

Agapanthus	10
Allium	10
Amaryllis	10
Begonias	10
Calla Lily	10
Cannas	10-11
Chinese Lily	11
Cyclamen	11
Dahlias	11
Easter Lily	11
Harrissii	11
Gladiolus	11
Hyacinths	11

Iris	11
Narcissus	11
Tulips	11
Daffodils	11
Freesias	11

HEDGE AND BORDER PLANTS

Berberis	12
Buxus	12
Privet	12
Dusty Miller	12
Euonymus	12
Myrtle	13
Santolene	13
Lauristinus	13

LAWN AND GRASS SEEDS

Australian Rye Grass.....	13
Kentucky Blue Grass.....	13
White Clover	13
Golden State Mixture.....	13
Fertilizer for Lawn.....	38
Lippia Repens	13

CLIMBERS AND TRAILERS

Australian Pea Vine.....	14
Bignonia	14
Bougainvillea	14-15
Clematis	15
Ficus Repens	15
Hedera Helix	15
Honeysuckle	15
Jasmine	15
Lotus Vine	15
Mandevilla Vine	15
Moonflower	15
Wire Vine	15
Passiflora	15
Plumbago	15
Smilax	15
Solanum	15
Vinca	15
Vitis Capensis	15
Wistaria	15

FERNS

Adiantum	16
Asparagus	16
Cryptomium	16
Nephrolepis	16
Sword Fern	16
Superbissima	16
Whitmanii	16
Woodwardia	16

TOPICAL INDEX (Continued)

PALMS AND DRACAENAS

Chamaerops	17
Cocos	17
Cycas Revoluta	17
Dracaena	17
Erythea Edulis	17
Kentia	18
Latania Bourbonica	18
Phoenix	18
Rhapis Flabelliformis	18
Seaforthia Elegans	18
Washingtonia	18

CUT FLOWERS AND HANGING BASKETS

Varieties	18
-----------------	----

ORNAMENTAL TREES AND SHRUBS

Deciduous Trees

Ash	19
Poplar	19
Elm	19
Locust	19
Maple	19
Mulberry	19-20
Umbrella	20
Purple Leaved Plum.....	20
Sycamore	20

Evergreen Trees

Acacia	20
Arizona Cypress	20
Cryptomeria Elegans	20
Camphor	21
Cedrus	21
Cypress	21
Lauris Nobilis	21
Thuja	21
Jacaranda	22
Juniperus	22
Lagunaria	22
Macadamia Ternifolia	22
Magnolia	22
Live Oak	22
Australian Silk Oak.....	22
Pepper Tree	22
Pittosporum undulatum	22
Pinus	23
Sequoia Sempervirens	23
Australian Rubber Tree.....	23
Araucaria	23
Indian Rubber	23
St. Johns Bread Fruit.....	23
Sterculia	23
Yew	23
Eucalyptus varieties	24

Deciduous Shrubs

Spirea	25
Snowball	25
Lilac	25
Lemon Verbena	25
Crape Myrtle	25
Poinsettia	25

Evergreen Shrubs

Abutilon	26
Camellia	26
Cocolaba	26
Fuchsia	26
Grevillea Thelemanniana	26
Hibiscus	26
Hydrangea	26
Lauritsinus	26
Lantana	26

THE FRUIT DEPARTMENT

Citrus and Tropical Fruit

Orange	27-28
Pomelo	28
Lemon	28
Avocado	28
Cherimoya	28
Feijoa	29
Guava	29
Loquat	29
Sapota	29
Olive	29

Deciduous Fruits

Apples	30-31
Apricots	31
Pears	31-32
Quinces	32
Nectarines	32
Peaches	32-33
Plums	33-34
Pomegranite	34
Figs	34
Loquats	35
Persimmons	35
Grapes	35

The Small Fruits

Varieties	36
-----------------	----

The Nut Fruits

Varieties	37
-----------------	----

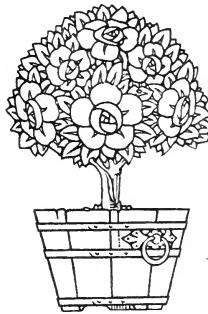
The Vegetable Garden

Varieties	37
-----------------	----

BEST TIME TO PLANT

Citrus Trees January to June
 Olive Trees March to June
 Avocado Trees February to May
 Berry Plants January to March
 Deciduous Fruit Trees.. Jan. to March
 Deciduous Shade Trees.. Jan. to March

Deciduous Shrubs .. January to March
 Evergreen Trees January to June
 Evergreen Shrubs... January to June
 Roses—Dormant... January to March
 Roses—Potted September to June
 Palms..... January to July



PLANTS TO AN ACRE AT GIVEN DISTANCES APART

Distance apart	No. of Plants	Distance apart	No. of Plants
1 foot by 1 foot	43,560	8 feet by 8 feet	680
2 feet by 1 foot	21,780	10 feet by 10 feet	435
2 feet by 2 feet	10,890	12 feet by 12 feet	302
3 feet by 1 foot	14,520	14 feet by 14 feet	222
3 feet by 2 feet	7,260	15 feet by 15 feet	193
3 feet by 3 feet	4,840	16 feet by 16 feet	170
4 feet by 1 foot	10,890	18 feet by 18 feet	134
4 feet by 2 feet	5,445	19 feet by 19 feet	120
4 feet by 3 feet	3,630	20 feet by 20 feet	108
4 feet by 4 feet	2,722	22 feet by 22 feet	90
5 feet by 1 foot	8,712	25 feet by 25 feet	69
5 feet by 2 feet	4,356	30 feet by 30 feet	48
5 feet by 3 feet	2,904	33 feet by 33 feet	40
5 feet by 4 feet	2,178	40 feet by 40 feet	27
5 feet by 5 feet	1,742	50 feet by 50 feet	17
6 feet by 6 feet	1,200	60 feet by 60 feet	12

