

Historic, archived document

Do not assume content reflects current scientific knowledge, policies, or practices.

62,47
[Handwritten signature]

NOV 20 1915

1915

LIBRARY
RECEIVED
★ SEP 27 1920 ★
U. S. Department of Agriculture.

SARCOXIE NURSERIES PEONY FIELDS

WILD BROS. NURSERY COMPANY
Sarcoxie, Missouri



Dear Sir:--

Take advantage of this special sale and have flowers blooming next spring and summer -- large, showy daisies, graceful spurred Columbines, brilliant Phloxes, iridescent Irises, gorgeous Mallows, bright yellow Chrysanthemum-like Rudbeckias, Foxgloves, and in late autumn the hardy Chrysanthemums. These are not tiny mail package plants but good strong ones that bloom the first summer -- hardy flowers that thrive year after year. The bulbs on the third inside page must be planted in the fall, and will come up and bloom early next spring when outdoor flowers are rare. And for growing in the house Narcissus Paper White Grandiflora is unrivalled.

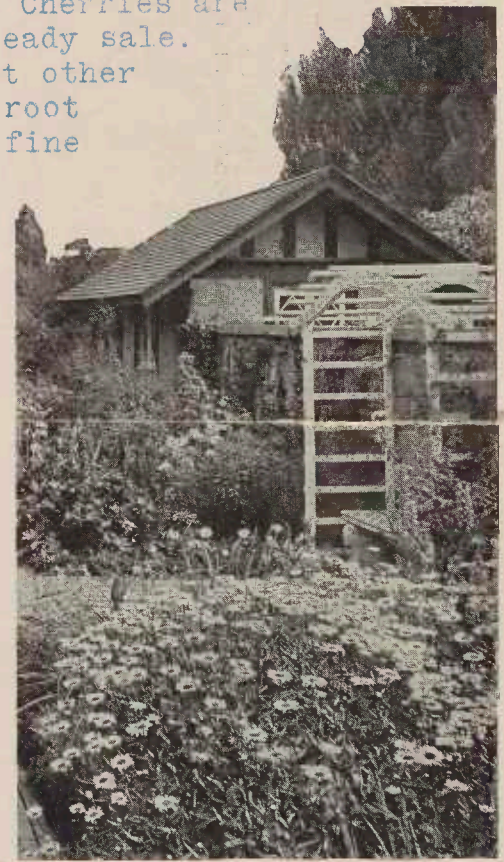
Now is a good time to complete the assortment of fruits for the home orchard. Are there not some Apples you want to fill out the list from early summer to late winter? Cherries are always wanted for home use and the surplus finds a ready sale. Peaches begin bearing the third year, Grapes and most other small fruits the second year. Please note the fine root system of the root cutting Blackberry. Rhubarb are fine too.

Experiments have shown that for almost all ordinary hardy deciduous trees and plants there are advantages in fall planting. The soil absorbs and stores up heat during the warm part of the year, continuing until cold weather actually begins, and in autumn has acquired its greatest heat to greatest depth. During late autumn and early winter this heat in passing out seems to warm the roots and stimulate root growth similar to the mild bottom heat of a hot bed. Observations have shown that this growth continues into early winter, until the ground actually freezes below the roots. This growth prepares it to start out vigorously in early spring and make a rapid top growth.

This special sale is to encourage fall planting. Take advantage of it by mailing your order now, secure your selection while the assortment is complete and have the work out of the way before the spring rush.

Yours truly,

Wild Bros. Nursery Co.,



Ten weeks of Shasta Daisies

Shasta Daisy Special

Daisy, Shasta--The large, showy daisies, white with a golden center, on long stems, are borne in profusion during summer and autumn. Strong, vigorous, and one of the most easily grown plants. Very attractive in the hardy border or garden and excellent as a cut flower, keeping a long time in water. A flower that everyone can grow. 3 for 25c, 90c doz.



The graceful spurred flowers of the Columbine

Columbine Special

Columbine (Aquilegia)—One of the most beautiful and elegant hardy plants. "The plants are of semi-round compact growth, over which the strong, upright flower spikes extend almost two feet. Many dainty small branches bear the ornamental, long-spurred flowers in great profusion."—*Adolph Kruhm, Garden Magazine*. They work in well to the north of a house where the morning and evening sun reaches them. Mixed colors. Special: 2 for 25c, 6 for 65c, 12 for \$1.25.



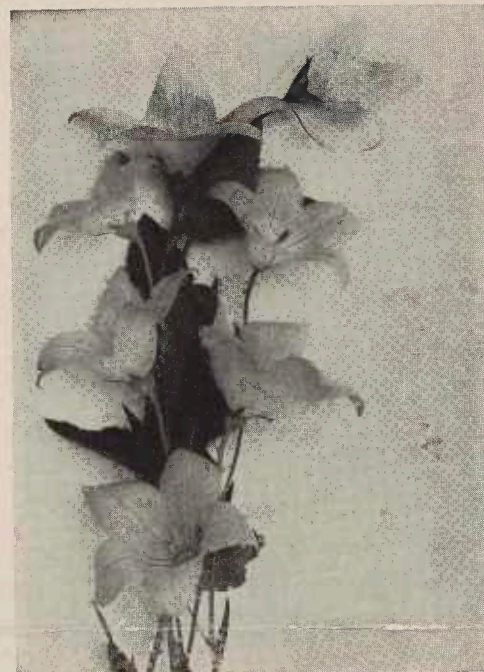
Marvelous Mallow Special

Marvelous Mallows—Immense flowers, 6 to 10 inches in diameter, in brilliant shades of red, beautiful pinks, blush and white, their great beauty cannot be described. In brilliancy and profusion of bloom they surpass all other summer blooming perennials. Beginning in July, the flowers appear in profusion for six to ten weeks, frequently almost until October's frosts. They grow and bloom during hot, dry weather better than almost any other flower, making bushes 4 to 6, sometimes 8, feet high in a season, according to age. If only two to four stalks are allowed to grow from a plant they will give larger flowers. Perfectly hardy. The one-year plants bloom the first summer, the two and three-year give a grand display.

3-year size.....40c each, \$3.50 per 10
 2-year size.....30c each, 2.50 per 10
 1-year size.....20c each, 1.70 per 10

Special Value Peony Offer

25c each, 3 for 65c, 12 for \$2.50, assorted pink, white and red, our selection of varieties. This will be mostly higher priced varieties of which we have a surplus or where we wish to finish digging out a row. Your selection of varieties at prices named in our fall catalog.



Japanese Bell Flower (Platycodon)

Bell Flower Special

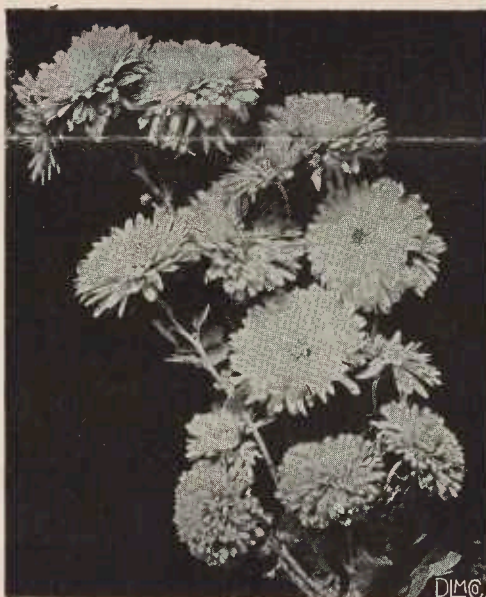
Bell Flower, Japanese (Platycodon)—Beautiful large, broad, bell-shaped flowers; very effective for rocky and border; white and blue. The buds are inflated, from which it is sometimes called Balloon Flower. 2 for 25c, \$1.40 per doz.



The chrysanthemum-like flowers of Rudbeckia Golden Glow are showy in late summer

Rudbeckia Special

Rudbeckia Golden Glow (Summer Chrysanthemum)—Very showy in late summer with its great masses of double yellow chrysanthemum-like flowers on stems 4 to 6 feet tall; of most robust growth and succeeds everywhere, withstanding heat, cold and drought. Special: 3 for 20c, 70c per doz.



Chrysanthemums bloom profusely in late fall when out-door flowers are scarce, and are easily grown.

Chrysanthemum Special

When the selection is left to us we will furnish 3 hardy chrysanthemums all different for 40c, 6 all different for 65c, or 12 in 5 to 6 varieties for \$1.20. Regular price 15c each, \$1.50 per doz. Your selection of varieties at catalog prices.



In the early summer Foxglove is one of the most striking flowers in the garden

Foxglove Special

Foxglove (Digitalis)—When in bloom in early summer their profusion of bell-shaped flowers drooping on tall spikes are one of the most striking things in the flower garden; of easy culture and thrive in partial shade. Fine strong plants to bloom the first summer. White, rose and purple, usually spotted. Special: 2 for 25c, 6 for 65c, 12 for \$1.20.

Special Sale for This Month. Mention This Offer to Secure the Special Prices Quoted

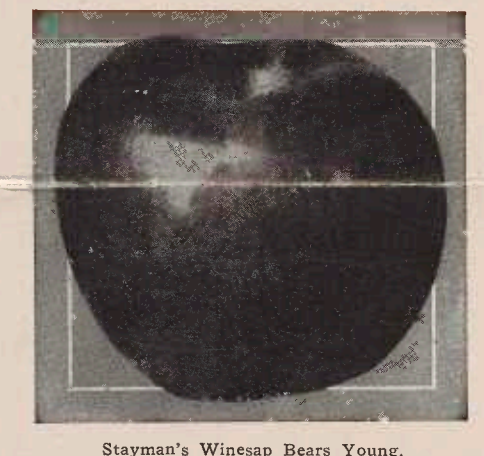
Apples

Price of Two Year Apple:

	Each	Per 10	Per 100
XX size about 4 1/2 ft. and up, 1/2 in. cal. and up, branched.....	\$0.25	\$2.25	\$20.00
Extra size, about 4 to 5 ft., 3/8 in. cal. and up, branched.....	.20	1.75	16.00
Standard size, about 3 1/2 to 4 1/2 ft., 1/2 to 3/8 in. cal., branched.....	.15	1.40	12.50
Medium size, 3 to 4 ft., more or less branched.....	.12	1.00	7.50
Light size, 2 to 3 ft., little if any branched.....	.10	.50	4.50

Five of a variety at 10 rate, less at each rate; 50, not less than 10 of a variety, at 100 rate.

SPECIAL: 10% discount from above prices on Livland Raspberry, Grimes Golden, Ingram, Jonathan, Stayman Winesap and York Imperial only for this month.



Stayman's Winesap Bears Young.

Summer Apples

Benoni—Fine quality; deep red on rich yellow; juicy, pleasant mild subacid; bears freely; early to mid-July.

Duchess of Oldenburg—Good size; yellow with red stripes; firm, crisp, juicy, rather acid; July 15-August; a young reliable bearer; very hardy.

Early Harvest—Bright straw; crisp, juicy, rich sub-acid; good; very early, June 20-July; productive.

Livland Raspberry—Waxy white striped light crimson; juicy, mild subacid, almost sweet; fine quality; medium size; a young, abundant bearer, very hardy; about with or a little later than Yellow Transparent.

Red June—A young, abundant bearer; very red; juicy, brisk subacid; good; later June-July.

Yellow Transparent—Yellowish-white; fine grained, crisp, juicy, slightly subacid; a good eating and excellent cooking apple; mid-June, some earlier than Early Harvest; hardy; a very young bearer.

Autumn Apples

Maiden Blush—Large, clear yellow, crimson cheek; very juicy; mid-autumn; hardy, productive.

Oliver—Good size; yellow, almost covered with red; crisp, juicy, slightly subacid; bears young; Oct.-Dec.; sold under the name of Senator by some.

Peaches

Price of Peach (Indian Cling 5c each higher):

	Each	Per 10	Per 100
XX size, 1 1/2 in. cal. and up, about 4 1/2 ft. and up.....	\$0.25	\$2.00	\$16.00
Extra size, 1-year, 1 1/4 to 1 1/2 in. cal., about 4 to 5 ft.....	.20	1.75	14.00
Standard size, 1 1/2 to 1 3/4 in. cal., about 3 1/2 to 4 1/2 ft.....	.15	1.40	12.50
Medium size, 3 to 4 ft.....	.13	1.00	7.00

Five of a kind at 10 rate, less at each rate; 50, not less than 10 of a kind, at 100 rate.

The following list is arranged approximately in order of ripening. The dates named are approximate average season in this section:

Mayflower—The earliest; good size, red all over, firm; semi-cling; good shipper; hardy; productive.

Greenboro—Large, white crimson cheek; flesh white, very juicy; excellent; semi-cling; mid-June; hardy; a profuse bearer.

Carman—Large, creamy white splashed red; flesh white, juicy, rich, sweet; nearly free; hardy.

Champion—Large, white, red cheek; flesh white, sweet, juicy, rich, delicious; freestone; early August; quite hardy; productive; bears young; profitable.

Belle of Georgia—Very large, white with red cheek; flesh white, firm, juicy, high quality; free; early August; hardy; very productive; excellent shipper.

Crawford Early—Very large, yellow, red cheek; flesh yellow, rich, slightly subacid; freestone; early Aug.

Eberta—Very large, golden yellow, crimson cheek; flesh yellow, firm, juicy, good; freestone; mid-August; excellent shipper; productive, profitable.

Winter Apples

Delicious—Roundish conic, medium to large, pale yellow mostly covered with red, splashed and striped dark carmine; moderately fine grained; juicy, mild subacid; good.

	Each	Per 10	Per 100
XX size, 2-year.....	\$0.30	\$2.80	\$25.00
Extra size, 2-year.....	.25	2.00	20.00
Standard size, 2-year.....	.20	1.75	15.00
Medium size, 2-year.....	.15	1.50	10.00
Light size, 2-year.....	.10	.80	7.50

Above prices apply to Delicious only; all other varieties of apple quoted above.

Grimes Golden—Of best quality; beautiful golden yellow; flesh yellow, firm, tender, crisp, rich subacid, aromatic; a fine dessert apple, good for cooking even before it is ripe, and especially fine canned; October-December; blooms late; hardy, bears young.

Ingram—A very late keeping apple; yellow almost covered with bright red stripes; firm, juicy, very mild subacid, good; blooms late; bears young and heavily; good size if not allowed to overbear.

Jonathan—Lively deep red; highly flavored, excellent for dessert, cooking and market; medium size, yellow, regularly and abundantly; profitable; of the Ben Davis type and season but more highly colored.

Mammoth Black Twig—A late keeping apple, greenish largely overspread dull deep red; flesh very firm, rather tender, moderately juicy, subacid, good.

Northern Spy—A large, yellow covered with purple red; crisp, juicy, fine flavor; Oct.-Dec.

Reagan—Also known as Black Ben Davis. Large, attractive rich red to maroon, rarely striped; firm, juicy, mild subacid; ships well, keeps well, bears young, regularly and abundantly; profitable; of the Ben Davis type and season but more highly colored.

Stayman Winesap—Large; greenish-yellow splashed and striped, often nearly covered with dark red; flesh firm, crisp, very juicy, aromatic, slightly pleasant subacid, very good; keeps late, bears regularly and young. Adapted to a wider range of soil and climate than the old Winesap.

York Imperial—Large, attractive greenish-yellow shaded red and crimson; firm, crisp, juicy, subacid becoming mild; Dec.; bears heavily and rather young.

Crab Apples

Florence—Yellowish, striped bright red; large, juicy, brisk subacid, good; bears young; early Aug.

Martha—Large, creamy yellow overspread light red; crisp, juicy, brisk subacid; very good; bears young.

Transcendent—Large, golden yellow, rich crimson cheek; crisp, juicy, subacid; productive; Aug.-Sept.

Red Siberian—About 3/4 to 1 inch in diameter; much used for preserving whole; subacid.

Cherries

Dyehouse—A few days before Early Richmond; a productive, reliable bearer; May.

Early Richmond (May Cherry)—Medium size, round, bright red, darker when fully ripe; very juicy, sprightly acid; hangs long on the tree; later May-June; hardy, very productive; profitable; succeeds everywhere.

Montmorency—Rather large, dark rich red; juicy, pleasant acid; excellent; a week later than Early Richmond; vigorous, hardy, productive; successful everywhere.

Royal Duke—A half-sweet Cherry; very large, dark red, juicy, rich; mid to latter June; the nearest sweet that succeeds here.

English Morello—Large, dark red, nearly black; flesh dark purplish crimson; juicy; rich acid; prolific; latter June-July; dwarfish.

Cherries

Price of Cherry:

	Each	Per 10	Per 100
XXX size, 2-yr., 3/4-in. caliper up, 5 to 6 ft., branched.....	\$0.50	\$4.50	\$40.00
XX size, 2-yr., 4 ft. and up, 3/8-in. caliper, branched.....	.40	3.30	28.00
Extra size, 2-yr., 3 to 4 ft., 1/2 to 3/8-in. caliper, branched.....	.30	2.50	22.00

Five of a kind at 10 rate; less at each rate; 50, not less than 10 of a kind, at 100 rate.

Arranged in order of ripening. Dates named are approximate average here.

Gooseberry Special

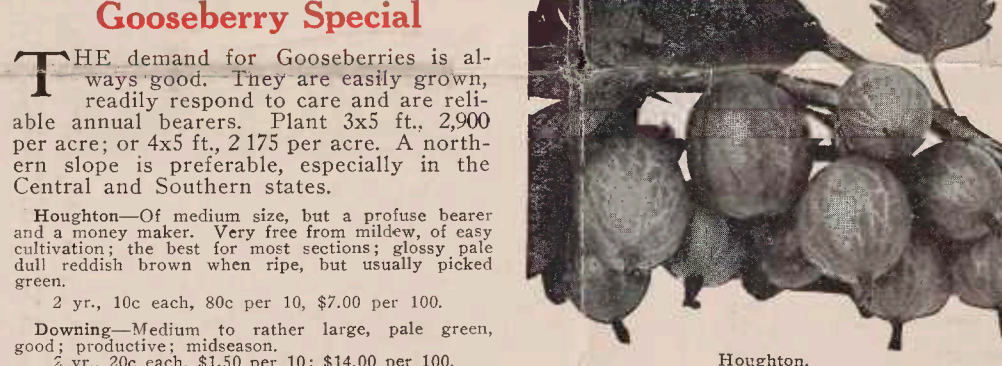
THE demand for Gooseberries is always good. They are easily grown, readily respond to care and are reliable annual bearers. Plant 3x5 ft., 2,900 per acre; or 4x5 ft., 2,175 per acre. A northern slope is preferable, especially in the Central and Southern states.

Houghton—Of medium size, but a profuse bearer and a money maker. Very free from mildew, of easy cultivation; the best for most sections; glossy pale dull reddish brown when ripe, but usually picked green.

2 yr., 10c each, 80c per 10, \$7.00 per 100.

Downing—Medium to rather large, pale green, good; productive; midseason.

2 yr., 20c each, \$1.50 per 10; \$14.00 per 100.



Houghton.

Pears

Price of Pear (Bartlett 5c each higher):

	Each	Per 10	Per 100
XX size, 3/8 to 3/4 inch caliper, 4 to 6 feet.....	\$0.30	\$2.50	\$22.00
Extra size, 1/2 to 3/4 inch caliper, 4 to 5 feet.....	.25	2.00	18.00

Five of a kind at 10 rate, less at each rate; 50, not less than 10 of a kind, at 100 rate.

Anjou—Garber
Bartlett—Clapp's Fav.
Duchess—Seckel
Kieffer

Plums

Prices of Plum:

	Each	Per 10	Per 100
Extra size, 3/8 to 3/4 in. cal., about 4 1/2 ft. and up, branched.....	\$0.30	\$2.50	\$22.00
Standard size, 1/2 to 3/4 in. cal., about 3 1/2 to 4 1/2 ft., branched.....	.25	2.00	18.00

Five of a kind at 10 rate, less at each rate; 50, not less than 10 of a kind, at 100 rate.

Red June—Japan. Dark copper red; flesh yellow, juicy, sweet; semi-cling; early; hardy, productive.

Burlank—Japan. Large to very large, bright dark red on yellow; flesh yellow, firm, juicy, rich, sugary; cling; winter July; bears profusely, requires thinning.

Shippert's Pride—European. Large, dark purple or blue; flesh firm, good quality; early September.

Shropshire Damson—Large for a Damson; dark blue; cling; latter September; vigorous.

Wickson—Japan. Large, heart shaped; dark red, thick bluish bloom; flesh yellow, sweet, good; cling; July; vigorous, hardy, very productive; bears young.

Grapes

Agawam—One of the best red grapes; large; flesh tender, juicy, rich; ripens after Concord.

Campbell's Early—Large, black; sweet; adheres strongly to the stem and a fine shipping grape; very early; bears profusely.

Concord—The most popular; large, black with rich bloom; juicy, sweet; vigorous, very hardy, healthy, productive; mid to late August here.

Ives—Black; colors before Concord but not mature till after; sweet when ripe; vigorous, hardy, productive; very resistant to rot.

Moore's Diamond—Large, yellowish-green; juicy, good; ripens a little before Concord.

Moore's Early—Black; about two weeks before Concord; desirable for home and market for its size, season, hardness and productiveness.

Niagara—Large, greenish-white to pale yellow;

Lucretia Dewberries

Lucretia—Large, often 1 1/2 inches long; sweet and luscious throughout; for size and quality is unexcelled by any of the Blackberries; ripens at the close of the strawberry season, before Early Harvest; the variety most extensively grown for market. Fine tip plants, 25c per 10, 35c per 25, \$1.00 per 100, \$8.00 per 1,000.

Blackberry Special

These are nursery grown plants from root cuttings and far superior to the sucker or patch plants commonly dug and sold.



See the fine root system of these root-cutting Blackberries

Strawberries

FOR quick returns Strawberries are unexcelled, and they have paid for many a farm and country home. Planted one spring, they will give a full crop the next season. And it is seldom, indeed, there is a total failure of the crop. Late frosts may kill part but almost never kill all the blooms, and often these short crops net as much as the heavy yields.

Finely Rooted Plants—The plant illustrated shows the superior root system. The Sarcoxie soil and climate is well adapted to growing Strawberries, and our plants are particularly good. They are handled in the best possible manner, cleaned from one to three leaves left on the plant according to season and variety, neatly tied in bunches labeled and carefully packed. Order early. They can then be reserved for you and shipped any time you wish.

Aroma—A heavy yielder of very large, conical, deep red, glossy berries that show up well in the box; firm, ships well; begins bearing midseason and continues late; quality good; in this section it is planted much more than any other variety; it thrives on almost all soils; perfect flowered. Truly heads the list as a money-making market berry.

Haverland—A large, long berry, full and round at the stem and tapering to a blunt point; bright crimson on the sunny side, shading to light red, and very attractive in the box; a heavy bearer that succeeds almost everywhere; midseason to late; imperfect flowered; Senator Dunlap is a good pollinizer.

Lady Cornelle—The introducer says it is a superior variety; large, rich glossy red, good quality, prolific; midseason; perfect flowered; not yet fruited here.

Michel—Very early, rich crimson; not very large, but very productive, sweet, rich and of good flavor, hence an excellent table berry; ships well; perfect flowered.

Senator Dunlap—Dark glossy red, resembling Warfield, and of same season; rich, juicy; a good, firm, medium large, midseason variety; ships well, bears heavily and succeeds almost everywhere and in almost all soils; perfect flowered.

Texas—Large, early; glossy crimson; almost round; rich, juicy; prolific; thrives on a good shipper; succeeds in almost any soil; perfect flowered.

Prices of Strawberries

	Per 25	Per 100	Per 500
Aroma.....	\$0.20	\$0.50	\$3.00
Haverland.....	.20	.50	4.00
Lady Cornelle.....	.20	.60	3.50
Michel.....	.20	.50	2.75
Senator Dunlap.....	.20	.50	3.00
Texas.....	.20	.60	3.50

50 of a kind at 100 rate; 500 of a kind at 1,000 rate. Not less than 25 of a kind sold.



Our Strawberry Plants have a good root system.

Rhubarb or Pie Plant Special

COMING in so early, Rhubarb finds a ready market, being relished by everyone. The city garden should have a dozen or two, and every farm can add to its income from Rhubarb. It is easily produced in a commercial way, yields immensely, can be shipped almost any distance, and is easily gathered and packed.

The secret of success is well drained soil. Prepare it well, set 2 1/2 by 4 feet, covering the crown with 2 inches.

Myatt's Linnaeus—Early, just before Asparagus; immense stalks, tender, delicately flavored; productive and continues long in use; the best variety for general use.

Nice large roots.

	Each Doz.	Per 100
2-year XXX size.....	\$0.15	\$1.00
2-year size.....	.10	.50
1-year size.....	.10	.40



One and Two-Year Rhubarb.

Asparagus Special

The earliest of vegetables, excepting rhubarb, and indispensable for early table delicacies. Plant 10 inches apart, rows 4 feet apart, covering the crowns 3 inches. Sale Price, fine strong 1 year plants, 25 for 20c, 100 for 50c, 1,000 for \$3.50.

Shade Trees

For other varieties and sizes see catalog.

Elm, American White—A large and stately tree with long, graceful, drooping branches. Leaves oblong, dark green, turning pale yellow in autumn. One of the best trees for street, lawn and landscape planting. Perhaps the most valuable tree in the north of the hard wooded trees and easily transplanted. It has a picturesque beauty all its own in early spring when the entire tree is covered with its golden yellow flowers.

Maple, Sugar, Rock or Hard—A very stately tree, thriving in almost any soil. Its dense symmetrical crown and beautiful foliage at once pronounce it the best of its class for lawn, street, or avenue planting. It has a picturesque beauty all its own in early spring when the entire tree is covered with its golden yellow flowers.

Plane Tree, American (American Sycamore)—A very large and lofty tree with massive branches forming a round head. An excellent street and park tree.

	Each	Per 10	Per 100
1 1/2 to 2 in. cal.....	.75c	\$6.00	\$60.00
2 to 3 in. cal.....	.75c	\$6.00	\$60.00
3 to 4 in. cal.....	.75c	\$6.00	\$60.00

Holly

Holly, American (Ilex opaca)—A very handsome evergreen tree, familiarly known as Christmas Holly. Among its spiny green leaves are borne clusters of bright red berries. Very desirable. Should be planted in groups to produce berries. Most of the leaves should be removed from Hollies and Magnolias when transplanting.

	Each	Per 10	Per 100
4 to 6 feet.....	1.00	9.00	90.00
6 to 8 feet.....	.60	6.00	60.00

Flowering Shrubs

For other varieties see catalog.

Althea; Rose of Sharon—Valuable as single plants and for screens, hedges, etc., particularly in sections where soil and arid climate do not permit the use of other shrubs. Somewhat bell-shaped flowers in late summer when few shrubs are in bloom. An excellent assortment of single white, pink and lilac and double white, pink, lilac, red and pink and white in one.

	Each	Per 10	Per 100
3 to 4 feet.....	.30c	\$2.50	\$25.00
4 to 5 feet.....	.35c	\$3.00	\$30.00
5 to 6 feet.....	.40c	\$3.50	\$35.00

Deutzia Pride of Rochester—A vigorous, tall, upright shrub bearing in early spring a profusion of dainty double, bell shaped flowers in racemes 4 to 6 inches long; white outer petals tinted rose; of easy culture, thriving in almost any soil not too wet.

	Each	Per 10	Per 100
3 to 4 feet.....	.20c	\$1.75	\$17.50
4 to 5 feet.....	.35c	\$3.00	\$30.00
5 to 6 feet.....	.40c	\$3.50	\$35.00

Golden Bell, Weeping (Forsythia suspensa)—A very graceful drooping form, very free flowering and highly effective planted on banks or retaining walls where the branches droop naturally.

	Each	Per 10	Per 100
4 to 5 feet.....	\$0.35	\$2.50	\$22.50
3 to 4 feet.....	.25	2.00	16.00

Hydrangea Hills of Snow, or American Everblooming—This hydrangea becomes a good sized shrub to which the name Hills of Snow may well be applied—a profusion of large, snow-white flowers, turning green instead of bronze as do other hydrangeas. Easily grown in ordinary garden soil and thrives in partial shade but does best in full sun; blooms from June until August. Strong field grown plants, 40c each, \$3.00 per 10.

Hydrangea paniculata Grandiflora—A good variety to follow the above, blooming freely in August and September when few other shrubs are in bloom; flowers in great pyramidal panicles, white on opening, assuming rose and bronze tints on the exposed sides; attains a height of 7 to 10 feet.

	Each	Per 10	Per 100
2 to 3 feet.....	.25c	\$2.25	\$22.50
1 1/2 to 2 feet.....	.20c	\$1.80	\$18.00

Lilac, Persian—An abundance of pale lilac flowers in broad panicles in late spring.

	Each	Per 10	Per 100
3 to 4 feet.....	.30c	\$2.50	\$25.00
2 to 3 feet.....	.25c	\$2.00	\$20.00

Mock Orange (Philadelphus)—The name is almost a sufficient description. Its flowers appear in profusion in late spring or early summer, adding grace

Special Value Phlox Offer



Phlox give brilliant summer effects

We are oversupplied on some varieties of Phlox and where the assortment is left to us will furnish one dozen in four to six good varieties for \$1.25, regular price \$1.50. Your selection of varieties at our catalog prices.

Special Value German Iris Offer

Our selection of varieties, six all different for 60c, 12 all different for \$1.00, 25 in 6 to 12 varieties for \$1.75. Regular price 15c each, \$1.50 per dozen.

Japan Iris Special

Choice mixed colors during this month at 25 per cent off of regular prices. 15c each, \$1.50 per doz.

Plant Bulbs in the Fall for Early Spring Flowers

Single Early Tulip Special

Easily grown and will reward you with a blaze of color in early spring. Planted 5 inches apart, rows 5 inches apart, will require 91 bulbs for a circular bed 4 feet across—1 for center, 6 for first row, 12 for next, and so on.

Price: Picked bulbs, strictly first sizes, 3c each, 25c per dozen, 2 dozen for 40c, \$1.60 per 100, except Keizerskroon.

Arbus—Bright deep scarlet; very showy.

Chrysolite—Fine deep golden yellow.

Cottage Maid—A charming pink and white.

La Reine—Pure white tinted rose; fine.

Keizerskroon—Bright red with a distinct wide golden border; grand, large, very showy. 3c each, 30c per doz., \$2.00 per 100.

Thomas Moore—Apricot-orange; fragrant.

The Best Double Tulips

Couronne d'Or—Beautiful rich golden yellow; a splendid bedder. 5c each, 50c doz.

La Candeur—Large white wax-like flowers. 3c each, 20c doz.

Murillo—Delicate light pink; large graceful flowers; one of the best. 3c each, 25c doz.

Rubra Maxima—Dazzling scarlet and a splendid bedding variety. 3c each, 30c doz.

Hyacinths

These Hyacinths are strictly selected first size and will give massive spikes of waxen flowers of delicious fragrance next spring.

Price: 12c each, \$1.20 per doz., \$10.00 per 100.

Albertaine—Large early white.

Gertrude—Tall, with heavy spikes of extra large rose pink flowers.

Gigantea—Thick spikes and large bells of a beautiful light pink.

King of the Blues—Extra fine deep blue.

Queen of the Blues—Beautiful light blue.

Narcissus

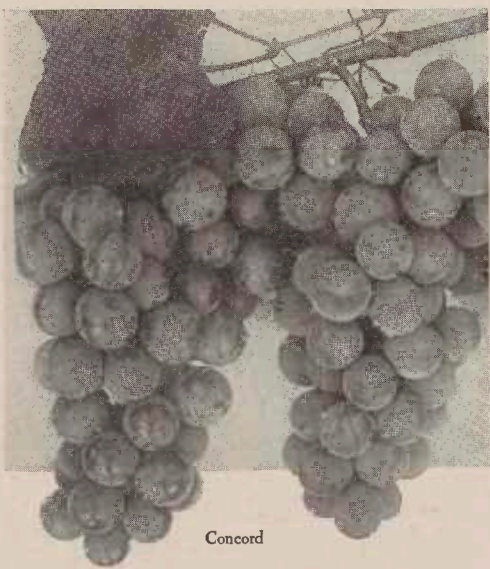
Twelve hardy Narcissus, assorted choice named varieties, for only 40c.



Narcissus Paer White Grandiflora, grows in water, make a charming display

Plant by middle of November for Christmas Gift.

Paper White Grandiflora—Of beautiful star-like form, nearly white and deliciously fragrant, with tall spikes of 6 to 20 flowers each. Not suitable for outdoor planting without protection, but one of the most popular for growing indoors. A half dozen or dozen bulbs in a bowl of water, held in place by pebbles, will make a charming show of flowers in a few weeks. By keeping extra bulbs in a warm, dry place deep planting at different times, you can have flowers all winter. Mammoth bulbs, specially selected for pot or water culture, 5c each, 30c doz., \$2.25 per 100.



Concord

Special Price Sale of Fruits, Trees, Flowers

Mr. E. R. Lake,

Bureau Plant Industry,

Washington, D. C.



15