

## **Historic, Archive Document**

Do not assume content reflects current scientific knowledge, policies, or practices.



62,29



# *Descriptive Catalog*

*AND PRICE LIST*

—of—

*Hardy Fruits*

*and Flowers*

*Evergreens*

*and Ornamentals*

*For*

*Kansas*

*Planters*

---

*Blue Valley Nurseries*

*E. F. NEVINS & SON*

*Blue Rapids*

*Kansas*

*Spring of 1916*





# *E. F. Nevins & Son*

*Blue Rapids, Kan.*

*Spring 1916*

In submitting this list it is our aim to offer only such stock as is of well known hardiness and productiveness, and adapted to our Kansas soil and climate. We believe every item in this list is well worthy of every planter's consideration.

Our stock is all strong, vigorous and well rooted and will give you satisfaction not only at planting time, but also at harvest time.

Prices in this list are for stock at Blue Rapids. Purchaser to pay the freight on all orders amounting to less than \$10.00. On orders for \$10.00 or more, we will pay the freight to points not exceeding 100 miles.

Packing will be done in first class manner and we guarantee stock to reach you in first-class condition.

Our packing grounds are located one block north and three blocks east of public square.

This is a picture of the old home place three miles east of town, where the senior member of this firm started the nursery business nearly 30 years ago. There are a grand lot of Eevrgreen and Ornamental trees around this place. Study the picture carefully and imagine how it would look with all the trees removed, then look your own place over and see what an improvement a few trees would make.



# Apple Trees

Two year, 5 to 6 feet, No. 1. This grade consists of the strongest and choicest trees selected from 2 year stock.

## Price

1 to 10 trees	10 to 50 trees	50 to 100 trees
25c each	20c each	18c each

Two year, 4 to 5 feet, No. 1. This grade consists of strictly choice trees, second to above in size only.

## Price

1 to 10 trees	10 to 50 trees	50 to 100 trees
20c each	17c each	15c each

## Varieties

### EARLY APPLES

Red June, Sweet June, Yellow Transparent, Early Harvest.

### FALL APPLES

Maiden Blush, Grimes Golden, King David, Whitney Crab.

### WINTER APPLES

Jonathan, Rome Beauty, Missouri Pippin, Gano, Ben Davis, Black Ben, Huntsman Favorite, Ingram, Winesap, Stayman Winesap.

SPECIAL APPLE—Delicious, 2 year, 4 to 6 feet - 35c each

## Descriptive

Delicious.—This apple commands the highest price in the markets of any apple in the country. Considered the finest eating apple grown. Color, a brilliant red changing to a golden yellow at blossom end. A good keeper, fine grained, crisp and juicy.

King David.—A large dark red apple of excellent quality, considered by many as superior to Jonathan.

Stayman Winesap.—Fruit of fine quality, larger than old Winesap and sells much higher on the market. Tree strong and vigorous, resists drouth and will thrive on the poorest soils.

Yellow Transparent.—One of the most valuable early apples grown. Fruit medium size with clear transparent skin. Ripens in August and lasts for a period of three or four weeks.

## *Peach Trees*

One year, 4 to 5 feet, No. 1 choice.

### *Price*

1 to 10 trees	10 to 50 trees	50 to 100 trees
25c each	20c each	18c each

One year, 3 to 4 feet; perfect little trees.

### *Price*

1 to 10 trees	10 to 50 trees	50 to 100 trees
20c each	17c each	15c each

### *Varieties*

- TRIUMPH—Very early yellow freestone, with red cheek.  
Very hardy and heavy bearer.
- ALEXANDER—A very early cling. White flesh, red cheek.
- CHAMPION—Large, early free stone, juicy and very sweet.  
White flesh, hardy. One of the very best.
- CROSBY—(Yellow Freestone.) Tree one of the hardiest; fruit  
medium size, of bright orange color. Very small pit,  
splendid quality, ripens in September.
- CRAWFORD LATE—(Freestone.) A large yellow peach, of  
good quality. Highly colored.
- ELBERTA—A yellow peach of large size, flesh very firm.  
(Freestone.) A great market peach.
- SALWAY—One of the latest yellow peaches. Flesh firm, a  
hardy market variety.
- HEATH CLING—Fruit very large, creamy white. Juicy and  
sweet. A fine canning peach. (Very late.)

## *Plum Trees*

- WILD GOOSE—Two years, 4 to 6 feet, No. 1, each.....40c  
Fruit of medium size. Color a bright red.
- BURBANK—Two years, 4 to 6 feet, No. 1, each.....40c  
Comes into bearing very young, fruit very large, color  
a yellowish red. Fine quality.

## *Russian Apricots*

- SUPERB—One year, 4 to 5 feet.....35c  
This is the best of all the apricots and also the hardiest.  
Ripening as it does between the cherries and peaches,  
the apricot is a most welcome fruit.



# Pear Trees

KEIFFER—2 years, No. 1, 5 to 6 feet.

## Price

1 to 10 trees	10 to 50 trees	50 to 100 trees
40c each	35c each	30c each

The fact that the Keiffer Pear orchards withstood the great drouth of 1913 and 1914 with practically no loss of trees, and bore an immense crop of pears in 1915 (while apple orchards were almost entirely wiped out) should convince everyone of the great value of this fruit.

We believe they are one of the Best Orchard Propositions for this country. Come into bearing very young. We can show you trees in Blue Rapids that were planted in 1907 that have produced over 8 bushels of pears per tree to date.

	each
OTHER VARIETIES	
DUCHESS—2 years, 4 to 5 feet.....	45c
GARBER—2 years, 4 to 5 feet.....	45c
KOONCE—2 years, 4 to 5 feet.....	45c

# Cherry Trees

Two years, 5 to 6 feet, No. 1. Choice.

## Price

1 to 10 trees	10 to 50 trees	50 to 100 trees
50c each	45c each	40c each

Two years, 4 to 5 feet, No. 1.

## Price

1 to 10 trees	10 to 50 trees	50 to 100 trees
45c each	40c each	35c each

## Varieties

### EARLY RICHMOND AND MONTMORENCY

We have fruited fourteen different varieties of cherries here in Kansas, and found the above two kinds to be of far more value than all the others combined.

# *Grapes*

	Each
CONCORD—black, 2 years, No. 1.....	7c
MOORE'S EARLY—black, 2 years, No. 1.....	10c
WORDEN—black, 2 years, No. 1.....	10c
NIAGARA—white, 2 years, No. 1.....	10c
LINDLEY—red, 2 years, No. 1.....	10c
MOORE'S DIAMOND—white, two years, No. 1.....	20c

(1c per vine discount in lots of 50 or more.)

## *Descriptive.*

- CONCORD—A well known black grape of good quality. Very hardy and productive.
- WORDEN—A hardy, strong and productive variety resembling Concord. Ripens about one week earlier and is a sweeter, finer flavored grape.
- MOORE'S EARLY—Hardy and productive black variety, ripening two weeks ahead of Concord, large bunches of very large berries. Quality good.
- NIAGARA—One of the best white varieties, clusters long. About the size of Concord, good quality.
- MOORE'S DIAMOND—One of the newer varieties. A good hardy, strong growing, greenish white grape. Very sweet.
- LINDLEY—A splendid red grape, very strong growing canes; fairly hardy.

# *Blackberries*

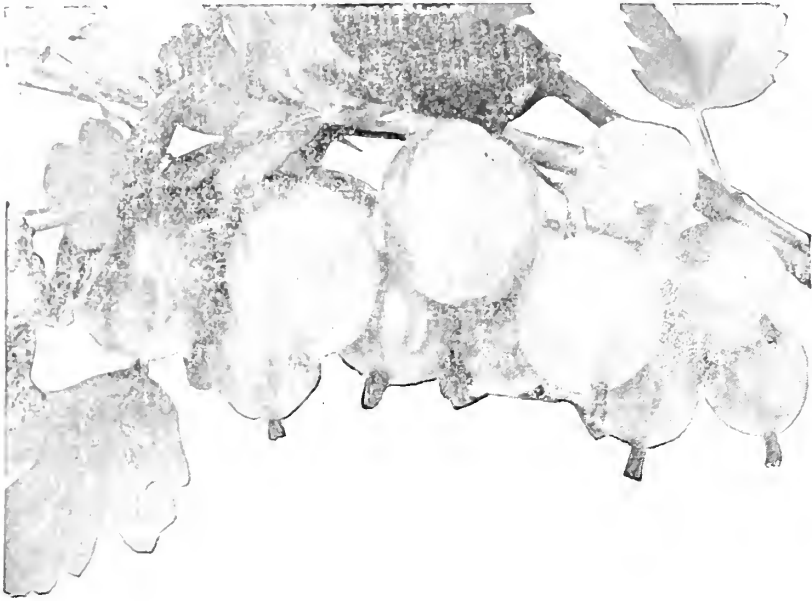
Our blackberry and dewberry plants are propagated from root cuttings and have a mass of fibrous roots, making them sure to grow. Don't buy sucker plants because they are cheaper, for they seldom give satisfaction.

THE MERSEREAU BLACKBERRY— is extremely hardy with strong, upright growing canes. Yields large crops of large, sweet, juicy berries. This berry is quite free from the hard core and the many seeds found in some berries. Price 60c per dozen; \$4.00 per 100.

THE SNYDER BLACKBERRY—A standard market variety, very hardy and productive. Price 60c per dozen; \$3.00 per 100.

LUCRETIA DEWBERRY—The canes of this berry grow very long and slender, trailing over the ground. The fruit is larger and sweeter than the blackberry, hardy and productive. Price 60c per dozen; \$4.00 per 100.

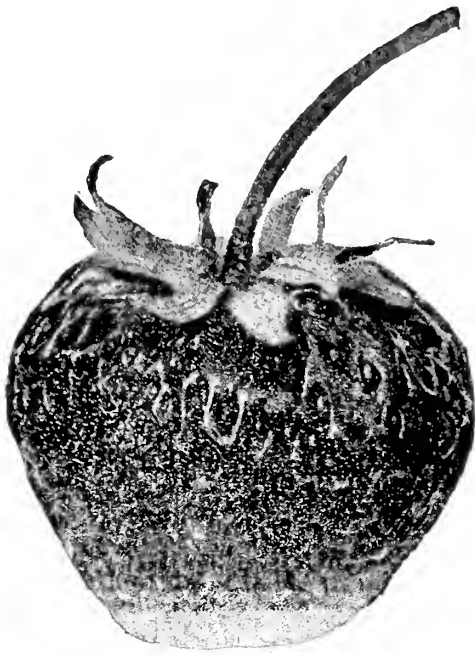
# Gooseberries and Currants



HOUGHTON.—2 years, No. 1.....	each 15c
Fruit medium size, very productive. The best market berry. Easy to pick, being quite free from thorns.	
DOWNING.—2 years, No. 1.....	15c
Bush upright grower. Berries large size and lots of them. One of the most popular varieties.	
RED JACKET.—2 years, No. 1.....	20c
We especially recommend this berry for family use on account of its superior quality. A good bearer of very large berries and we know of no other berry with one-half so fine a flavor.	
RED DUTCH CURRANT.—2 years, No. 1.....	15c
While this is a very old variety, we have found nothing quite so good for this climate.	

## Raspberries.

- CARDINAL—Makes a strong, heavy, cane growth and produces fruit over a long season. The berries are extra large, reddish purple and of fine flavor. Hardy. Price 60c per dozen; \$4.00 per 100.
- CUMBERLAND—This is called the business black cap. It is good as the best and better than most of them. Price 60c per dozen; \$3.00 per 100.



## *Strawberries*

Our strawberry beds made an immense growth last season. We have a large stock of big, strong, heavy rooted plants and you can get them fresh dug right from our beds.

### *Price*

100 Plants	250 Plants	500 Plants	1000 Plants
\$1.00	\$2 00	\$3.00	\$5.00

### *Varieties*

SENATOR DUNLAP.—We can not say too much for this variety. It will thrive on any soil and produce the most berries of any kind we know. It is a perfect blooming sort.

GLEN MARY.—This is a splendid berry, fruit very large and firm. One of the real good ones. Rather late.

HAVERLAND.—An imperfect variety and must have a perfect sort planted with them. Produces good crops of large long berries. Quality not extra, but stands shipping well.

## *Everbearing Strawberries*

*Ripe Strawberries Every Day for Nearly Three Months*

SUPERB.—Everbearing Strawberry.

We have had but one season's experience with this berry, but they have certainly been a wonder. Plants set out about May 1st, 1915, began bearing about July 15th and continued until the frost of Oct. 8th, after which we had about four weeks of warm weather and these plants got right on the job again, came out in full bloom and loaded with berries,

and if warm weather could have continued a little longer, there would have been gallons of berries, and as it was, we picked two quarts of ripe berries on Nov. 10th and had them on exhibition at the Farmers' Institute. Perhaps you saw them? The berries are of medium size, very firm, and of the finest flavor. Price of plants, 25 for \$1.00 or \$3.00 per 100.

## *Peonies*

A giant in hardiness, the queen of beauty among flowers; our stock consists of some of the finest productions.

COURONNE D. OR—Immense ball shape bloom, snow white; fragrant.....	each 75c
FELIX CROUSE—Brilliant red. Late.....	75c
FESTIVA MAXIMA—The standard of perfection. Early white.....	50c
FRANCOIS ORTEGAT—Large purplish crimson.....	50c
CHARLEMANGE—Lilac white, blush center. Late.....	50c
FRAGRANS—Bright pink.....	35c
QUEEN VICTORIA—Large white.....	35c
OFFICINALLIS RUBRA—Deep crimson. Very early.....	35c
FLORAL TREASURE—Pink.....	25c

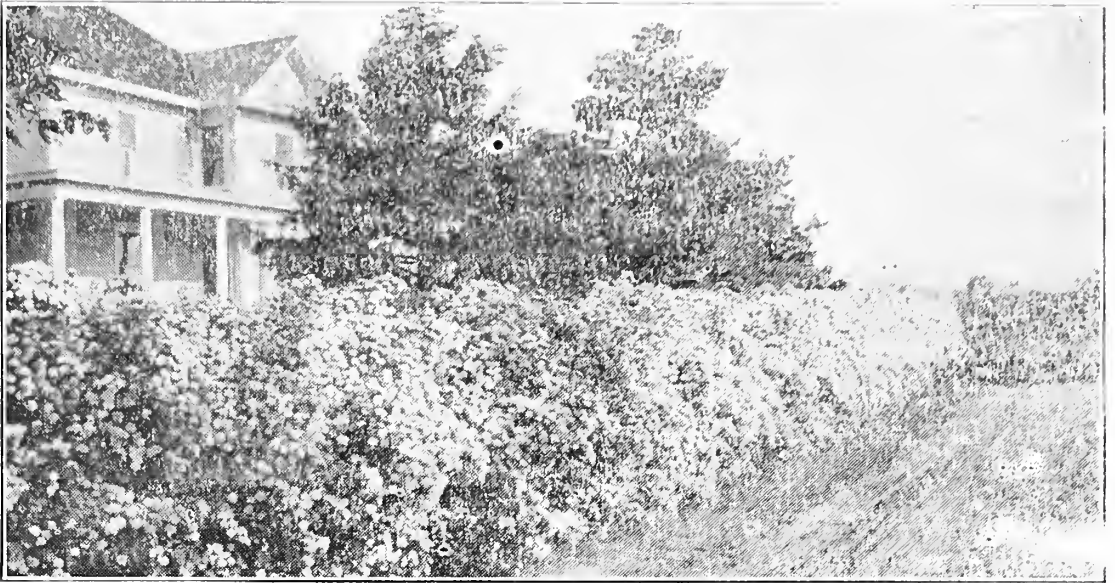
## *Fancy Imported Grafted Lilacs*

In the past few years some wonderful varieties have been introduced; covering a wide range of colors. We imported some of the choicest of these last season and now have them to offer for the first time. each

PRES. GREVY—Very large flower of a beautiful shade of blue.....	50c
M. LE GRAYE—Large panicles of pure white, very fragrant.....	50c
LUDWIG SPAETH—Long panicles of single, dark red flowers.....	50c
LILACS—old fashioned, common white and common purple	25c

## *Miscellaneous Ornamentals*

CATALPA BUNGEII—6-foot stems, 2 year heads.....	each \$1.25
CLEMATIS PANICULATA—(White.) Fine for porch or trellis.....	.35
YUCCA—(Spanish Bayonet) Evergreen plant bearing long spikes of waxy white, bell shaped flowers.....	.25
JAPANESE HONEYSUCKLE—White flowers, changing to yellow; exquisitely fragrant.....	.25



## *Ornamental Shrubs*

*All heavy, field grown plants, blooming size.*

**SPIREA VAN HOUTII**—For beauty there is nothing to compare with a hedge of this hardy shrub along the side of a lawn or driveway. The above picture partially shows a hedge of this kind in bloom along our driveway. Perhaps you have seen it in bloom? Flowers in May. Price of 2-year bushes 25c; 10 for 1.75; \$12.50 per 100.

**SPIREA ANTHONY WATERER**—A handsome crimson flowering variety, blooming nearly the entire summer. Grows to a height of 2 to 2½ feet; makes a beautiful border around foundations, walks, or drives. Profuse bloomer. Each 50c, 10 for \$3.50; \$25.00 per 100.

**SPIREA DOUGLASSI**—A strong, upright grower, bears spikes of deep rose colored flowers in July and August. Price 30c each; \$2.50 per 10.

**HYDRANGEA PANICULATA GRANDIFLORA**—This beautiful shrub produces great pyramidal clusters of flowers often a foot in length. The flowers are white, changing to pink; lasting for a period of six weeks. August and September. 35c each; \$3.00 per 10.

**SYRINGA**—(Mock Orange.) A hardy, free blooming shrub, growing to a height of 8 feet. Flowers—petals pure white, center golden yellow, large and very fragrant. 35c each; \$3.00 per 10.

**WEIGELIA ROSEA**—This beautiful shrub grows to a height of 5 to 6 feet, producing bright pink flowers in such profusion as to almost hide the foliage; blooms in June and July. These shrubs are fine for borders or grouping, also as specimen plant for the lawn. Price 35c each; \$3.00 per 10.

**SNOWBALL**—A well known shrub, bearing large, round clusters of white flowers in great profusion. 35c each; \$3.00 per 10.

**ALTHEA'S** (Rose of Sharon.) A very free blooming shrub, producing great quantities of flowers from August 1st until frost. We have them in three colors, red, white and purple. Each 35c; \$3.00 per 10.

## *Hardy Roses*

Our roses are all strong, field grown plants; 2 and 3 years old, heavy blooming size.

<b>FRAU KARL DRUSCHKI</b> —The grandest white rose	each
grown; a constant bloomer and perfectly hardy	...50c
<b>MAD. PLANTIERE</b> —White cemetery rose; very hardy	...35c
<b>PAUL NEYRON</b> —Very large, clear pink, great bloomer	...50c
<b>JOHN HOPPER</b> —Fine bright pink	.....40c
<b>HUGH DICKSON</b> —A large, beautiful, crimson rose	...40c
<b>GRUSS AN TEPLITZ</b> —Producing a mass of gorgeous	
blooms of dazzling, fiery, crimson. Perfectly	
hardy	.....50c
<b>CRIMSON RAMBLER</b> —A very popular, hardy, strong	
growing climber, producing great masses of crim-	
son flowers in clusters	.....40c
<b>DOROTHY PERKINS</b> —A hardy, strong, growing climber.	
Produces great masses of beautiful shell-pink	
flowers	.....40c
<b>CLIMBING AMERICAN BEAUTY</b> —A true climbing	
form of the celebrated American Beauty Rose,	
producing by the hundreds the same grand, deep	
red flowers of exquisite fragrance	.....75

## *Tree Protectors*

These should be used on all trees when planted. They are made of wood veneer 10 inches wide by 20 inches long and form a hollow tube about 3 inches in diameter around the body of the tree. Fastened on with fine wire they will last until the tree fills the tube and are the best insurance against rabbits, sun-scald and borers. \$1.50 per 100.

# Hardy Phlox

No class of hardy plants is more desirable than the Perennial Phlox. They will thrive in any position and last for years; fine for planting along borders or beds on the lawn. Fine for cut flowers and the more you cut them the more they bloom. August until frost. Plants 25c each; 5 for \$1.00. BRIDESMAID—Pure white with large crimson eye. FRAU G. VON LASSBURG—Immense panicles of pure white. LE MAHDI—Deep velvety purple, large spikes. LOTHAIR—Salmon with crimson eye.

## Evergreens

### Special Prices on Evergreens.

There is nothing that will add so much to the value, comfort and beauty of your farm as some well placed belts of evergreen wind-brakes. The high prices usually asked for these trees has prevented many from planting, but we have removed that trouble. Every farmer can afford to plant them by the hundred at these prices.

These trees are all growing on our own grounds and have been one or more times transplanted, thereby insuring a good root system. Each order will be dug and packed the day of shipment, and we guarantee them to reach you in perfect condition.

	each	per 10	per 100
AUSTRIAN PINE— 12 to 15 inches	25c	\$2.00	\$15.00
SCOTCH PINE— 12 to 15 inches	25c	2.00	15.00
SCOTCH PINE— 15 to 20 inches	30c	2.50	
JACK PINE— 12 to 15 inches	20c	1.50	12.00
JACK PINE— 15 to 20 inches	25c	2.00	
NORWAY SPRUCE—10 to 12 inches		1.50	10.00
NORWAY SPRUCE—15 to 18 inches	25c	2.00	
CHINESE ARBOR VITAE—24 to 30 inches	50c	4.00	
COLORADO BLUE SPRUCE—15 inches	\$1.00		

## Garden Roots

RHUBARB OR PIE PLANT—Strong 2 year roots. 10c each; \$1.00 per dozen.  
ASPARAGUS—Strong 2 year roots. 25c per dozen; \$1.50 per 100.  
HORSE RADISH—Large, fine crowns. 50c per dozen.





