

Historic, Archive Document

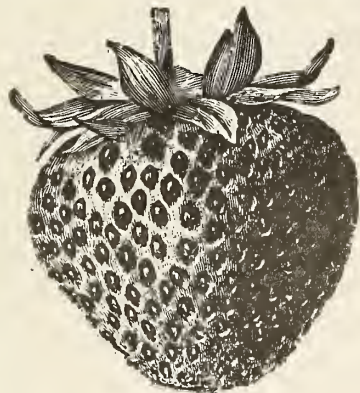
Do not assume content reflects current scientific knowledge, policies, or practices.



2,15

RETURN TO POMOLOGY
SECTION OF ROYAL SOCIETY

FEB 14 1916



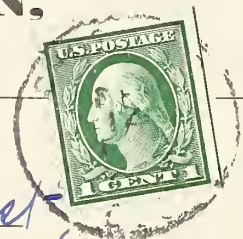
Mascot

1916 PRICE LIST

Millions of Strawberry and Tomato Plants

"Romance" Seed, Plant and Truck Farms
CALEB BOGGS & SON,
Cheswold, Delaware

Phone 724-5 Dover



Prompt Shipments
Carefully Packed

Call, Write, or Wire Your
Orders Early

E. P. Lake, Pomologist
U. S. Dept. Agric.
Washington,
D. C.

CABBAGE PLANTS

We will have no real early or wintered over Cabbage plants to offer this spring, although we will have thousands of nice early cabbage plants not wintered over. They will be ready May 1st.

CHARLESTON WAKEFIELD—Much larger than Early Jersey Wakefield, but one week to ten days later. A fine market variety. We assure you that our cabbage plants are free from lice and they will be nice strong, stocky plants.

Price, April 25th to May 20th, \$1.25 per 1,000.

EARLY WINNINGSTADT (Early).

For Late Varieties

DANISH BALL HEAD, FLAT DUTCH, SUREHEAD and DRUM-HEAD; also **COPENHAGEN MARKET**.

We can furnish these plants from May 15th to September at \$1.00 per 1,000, by express. \$1.50 per 1,000 by mail, postpaid.

Special prices given on lots of 10,000 or more. No order too small or too large.

We also furnish Cabbage Seed of these varieties at \$2.00 per lb., postpaid.

CELERY PLANTS

We always have plenty of Celery plants. Our Golden Self-Blanching seed cost us \$22.50 per lb. at wholesale. We always try to get the best seed of this kind, as it is one of the best and the leading kind. We expect to have a fine lot of celery plants ready by June 20th of the following varieties: **White Plume**, **Golden Self-Blanching**, for early; **Winter Queen** and **Giant Pascal**, for late.

Price, \$1.50 per 1,000, by express. \$2.25 per 1,000, by mail, postpaid.

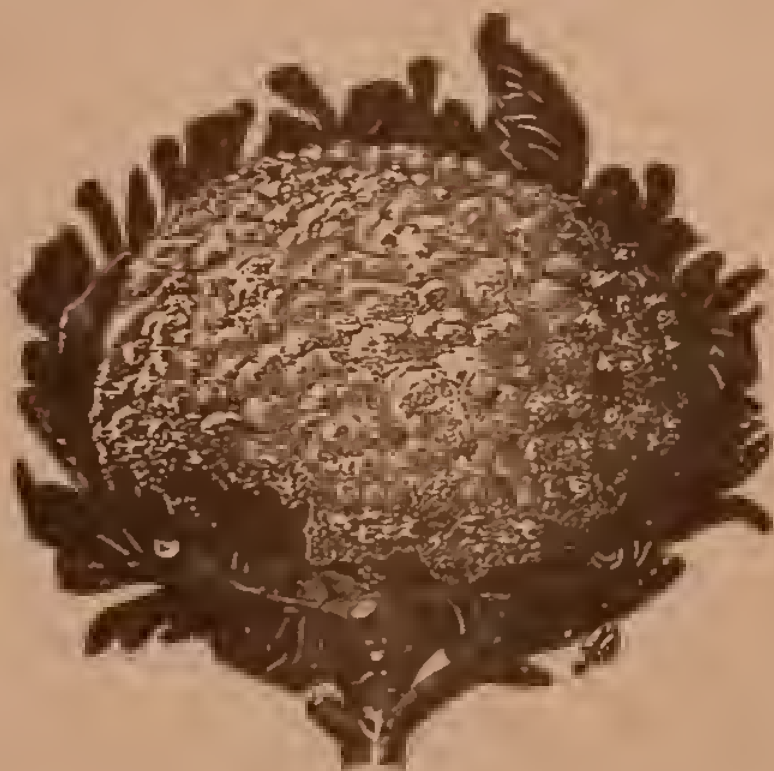


EARLY SNOWBALL—Fine early, large white head. We think this is the best early cauliflower. Ready June 1st.

AUTUMN GIANT—A very strong-growing late variety, with large leaves of a bluish cast. Produces very large and solid white heads late in the fall. We have a large trade on these plants, and always have plenty of them.

Price, \$2.50 per 1,000, by express. 40c per 100; \$3.25 per 1,000, by mail, postpaid.

CAULIFLOWER PLANTS



CERTIFICATE OF INSPECTION

To Whom It May Concern:—This certifies that I have this day examined the nursery stock and premises of Caleb Boggs & Son, at Cheswold, Del., and that said nursery stock is apparently free from crown gall, peach yellows, black rosette, the San Jose scale, and all other plant diseases and insects of a seriously dangerous nature.

WESLEY WEBB, Inspector.

TOMATO PLANTS

We will have no early tomato plants to offer this spring.

TOMATO PLANTS FOR LATE CROP—Ready May 25

NEW STONE—We desire to say that the tomato plants we offer for field setting or for the cannery are plants grown from carefully selected seed. We have expended much time and expense to get the very best seed. The first step, and the most important, towards a big crop of tomatoes, is good seed. To obtain our stock seed we had our men go over the tomato patches and pick the very best tomatoes, choosing only those of the right size and shape, ripe well to the stem, and without cracks or specks. Every tomato had to be just right to warrant us in saving the seed.



Price, \$1.00 per 1,000; 5,000 or more, 90c per 1,000; \$1.50 per 1,000, by mail, postpaid.

We are taking big contracts now for tomato plants; if you wish us to grow you plants, place your order now. Special price on 100,000 or more.

We always have thousands of tomato plants each year, as we have acres planted in tomato plants alone. Any one wishing 50,000 or 100,000 can obtain them if they will give us the order early. We pack from 2,000 to 3,000 in a crate we make ourselves for tomato plants, using plenty of nice green moss, so they will reach any one in fine shape. We will take contracts for tomato plants from February to April 1st, at a special price on large lots. If the spring is early we try to have them ready by May 25th, sometimes sooner.

TOMATO SEED

IMPROVED NEW STONE—This seed was saved from tomatoes not smaller than two inches, and we call them extra fine selected stock. We will furnish them at \$1.50 per lb., postpaid, as long as they last.

Matchless, Paragon, Perfection and Favorite, at \$1.50 per lb., postpaid.

PEPPER PLANTS—Ready Early in May

RUBY KING—We have this variety in its purity. Besides growing several acres each year we supply thousands of plants to our customers. It grows to an enormous size. The fruit is bright red, and remarkably mild and pleasant in flavor, having no fiery taste. We have only the Ruby King, because it is the best of all peppers. Having the one pepper we have no trouble in keeping it pure. It is better to have one and have it pure than to have several kinds and have them mixed.

Price, 10c per 15; 50c per 100, by mail, postpaid. \$3.00 per 1,000, by express.



"Romance" Seed, Plant & Truck Farm

Cheswold, Delaware

E. J. BOGGS, Proprietor

Strawberry, Asparagus, Sweet Potato, Tomato, Celery,
Pepper and Cabbage Plants in Season

Tomato, "Ruby King" Pepper and
Cabbage Seed a Specialty

ROCKY FORD CANTALOUPE SEED

We have a limited supply of this seed to offer our trade, and what we have were cut from the finest, well-netted melons we had. Extra care was taken to cut nothing but what was the right shape and size, netted up good and also sweet.

Price, \$1.25 per lb., postpaid.



Rocky Ford

ASPARAGUS ROOTS

Have 50,000 two-year-old Asparagus roots, at \$4.00 per 1,000.

Again we are able to offer 500,000 Palmetto roots, one year old, and a fine lot. The one-year-old asparagus roots we have to offer this spring are the largest and best we have ever had; and we ask you not to pay four or five dollars a thousand to some one who has to buy them, but get the same roots right from us at half the price he would ask you.



Palmetto

PALMETTO—The greatest leading kind, the kind that everybody seems to want. There is no question that this old variety is still the best. More of it put out each year than all the other kinds put together. It is early, large, comparatively free from rust and makes a heavy yield. We are offering only the one kind.

PRICE OF ASPARAGUS ROOTS:

Express or Freight, \$2.25 per 1,000. By mail, postpaid, 40c per 100.

STRAWBERRY PLANTS

Our berry plants are grown for plants only. We take up the entire bed each year. We have men working for us who have been with us for years, who see that our plants are well handled and properly packed in cool, damp moss, enabling them to carry safely to any point in the United States by express. You will notice in our little catalogue that we do not advertise a hundred varieties. We advertise only what has been proven on our own trial grounds to be good, discrediting all others. Our berry plants are pure and not mixed up with a dozen different varieties.

It is better to have a few kinds of strawberry plants and have them pure and of the very best varieties than it is to have a hundred varieties and be obliged to buy most of them, and then sell something that is mixed with a dozen other varieties. Those who buy what we advertise are sure to get the best and purest.

BUBACH—This is the old reliable. It is the great commercial berry of the United States, and is the standard by which all others are measured or compared. For the last twenty-five years it has been the great money maker of the country, especially on this peninsula. We claim to have this old variety as good as it was years ago. In our opinion, the Bubach to-day is still the best of all. The Bubach is not a perfect blossom, but the Tennessee is a runner with which to fertilize it.



Bubach

Price \$3.00 per 1,000, by express. 50c per 100, by mail, postpaid.



Myers No. 1

MYERS No. 1—This variety is coming to the front each year, and berry growers have learned that it is also one of the best shippers. It bears more berries than any other variety we have listed, is not a perfect blossom, but fertilized with the Success or Tennessee it is a fine one and a money maker. We could have sold a hundred thousand more of them last spring if we had had them. As yet our supply is limited, and any one wishing a few of this variety is advised to order early.

Price, \$3.00 per 1,000, by express. 50c per 100, postpaid.

GANDY—Another old variety that is always sure to bring the price, and is one of the best late varieties. The Gandy has been here as long as the Bubach, and still remains. This berry is a fine berry to eat, a fine shipper, and has a perfect blossom. The Gandy does not bear as many berries as some of the other varieties, but always demands a good price in the market.

Price, \$2.50 per 1,000, by express. 40c per 100, by mail, postpaid.



Gandy

CHIPMAN—We have found this variety to be the best early berry. Not quite so early as some, but only lacking a few days. This is another variety with a perfect blossom, and a fine one to put out with Bubach or any other variety that has not a perfect blossom. The fruit is very large, with large green caps of even size. The plants are large, strong and healthy, showing no signs of rust or any other plant disease. Color dark red, bright and glossy. Very firm, good shipper, good quality and retains its bright color a long time after being shipped. A big cropper; ripens a little ahead of the rush. For an early berry this one can not be surpassed.

Price, \$2.00 per 1,000, by express. 40c per 100, postpaid.

SUCCESS—We find we still have to hold on to this grand good berry, as it gives us lots of big berries, makes lots of plants, and the berries always bring a good price. The Success is one of the best, if not the best, to fertilize the Bubach Myers No. 1, Fendall, or any other variety that has not a perfect blossom. We know of men who put out their entire patch in Success, and who say it pays them more money than any other berry they can grow. We think it is the best for a good family berry. It has a perfect blossom, nice large berries, is a good shipper and a very heavy cropper. It does well in all kinds of land. We cannot say too much for the Success, as every berry grower knows just what it is, and it is known everywhere to be one of the best.

Price, \$2.50 per 1,000, by express. 40c per 100, by mail, postpaid.

TENNESSEE—This is a fine healthy berry, and is known to be a good one by all berry growers. It has a perfect blossom and is a heavy cropper. It is one of the best to fertilize Bubach, Fendall or Myers No. 1, or any other berry that has not a perfect blossom. No need to look around for a new one when the Tennessee can be obtained. The berries are large, it is a good shipper, an old variety, and all berry growers know it bears as many berries as any other in the market.

Price, \$2.25 per 1,000, by express. 40c per 100, by mail, postpaid.

JOE JOHNSON—If you want one as good as the Bubach in every way you have it when you get the Joe Johnson. This berry has a perfect blossom and sure is a fine large berry. The average size of Joe is about 24 to 30 to the quart, but I have seen quart baskets that were filled piling full with nine berries. The quality of the fruit is very fine, and moderately firm and, in fact, is the best shipping berry of its size I have yet seen. It is a well known fact that extra large berries do not carry as well as the smaller size in most cases. We have made our price very low and consider that we could get a larger profit for the fruit than we will get for the plants, at our low price, but we are growing the plants for our customers, not for fruit, and ask you to take advantage of the same by sending in your order as early as possible. Last season the orders had to be returned unfilled by the wholesale. We will sell our entire stock at prices quoted, but should we have to go out and buy will have to charge market price.

Price, \$3.00 per 1,000. 50c per 100, by mail, postpaid.



Chesapeake

CHESAPEAKE—We have given this variety a good test in high and in low land, and must say that this and the Mascot are the best late varieties on the market. The Chesapeake is a fine berry to eat, also a good shipper and commands the highest prices in the market. Has a large, perfect blossom; the plants are strong, holding the berries up from the ground.

Price, by express, \$3.00 per 1,000. By mail, postpaid, each variety, 40c per 100 plants.

FENDALL—Mr. Fendall, the originator says: "The plant is a strong and vigorous grower, and its foliage is a beautiful light green. The berries are as large if not larger than any other variety grown, and have a delicious flavor. In the length of season it is certainly remarkable. In 1906 we picked berries from it on the 25th of May and the last on the 4th of July. With the same care and under like conditions, it produced twice as many berries as the Senator Dunlap, Corsican, Nick Ohmer, Climax or Glen Mary, and three times as many as the Gandy. It throws out a great many runners, which root splendidly in a very short time. The berries are perfect beauties, rich in color, smooth and glossy, with long stems and a very large and strong cap. It is the best all-round berry grown to-day, and both the plant and fruit are bound to command attention wherever seen." If we were berry growers we would have one-third of our patch Fendall, another third Success, and the other third Mascot or Chesapeake.

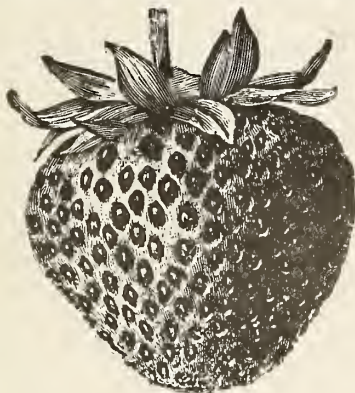
Price, \$3.00 per 1,000. 50c per 100, postpaid.



2, 15

RETURN TO POMOLOGY
SECTION OF ROYAL AGRICULTURE

FEB 14 1916



Mascot

1916 PRICE LIST

Millions of Strawberry and Tomato Plants

“Romance” Seed, Plant and Truck Farms
CALEB BOGGS & SON,
Cheswold, Delaware

Phone 724-5 Dover



Prompt Shipments
Carefully Packed

Call, Write, or Wire Your
Orders Early

*E. R. Lake, Pomologist,
U. S. Dept. Agric.,
Washington,
D. C.*

RECEIVED

SWEET POTATO PLANTS

YELLOW NANSEMON or JERSEY YELLOW—This is the grand old standard kind. It is of a rich yellow when fully ripe, of fine quality and one of the very best keepers.

Price, \$1.50 per 1,000, by express. 25c per 100; \$2.25 per 1,000, by mail, post paid.

PURE BIG STEM JERSEY

Price, \$2.00 per 1,000, by express. 25c per 100; \$2.50 per 1,000, by mail, postpaid.

If you live at a distance, you need not hesitate to order your plants from us, as we take extra care to pack them in nice, cool, damp moss, so they will reach you nice and fresh and in the best condition. Let us have your orders early, so that we may look ahead and have your plants the right size at the date you wish them shipped.

READ CAREFULLY BEFORE ORDERING

Write your name, post office, county and State as plainly as possible. In ordering use the order sheet and return envelope which you will find with each catalogue.

CASH is required with all orders. Remittance may be made by Post Office Money Order, Registered Letter or Check. One and two-cent stamps will be accepted for amounts less than \$1.00.

ERRORS—We very rarely have any complaints made on this line, as all possible precautions are taken on our part to avoid their occurrence. Notify us at once if your order is not filled as it should be, and we will promptly make necessary corrections.

OUR CUSTOMERS

Again we extend to our readers and customers, old and new, our most hearty greeting and good wishes. We wish to thank our many friends for their continued liberal patronage.

We hope that you will not forget that the berry plants we offer have all been tried. They are **not** something new that we are trying to sell to you at a big price, but they are just a few of the good old varieties that the berry growers are holding on to. We urge you to hold on to a good old variety until you find a new one that you know for yourself is a good one.

BY EXPRESS—We have the same express rates for shipping as other nurserymen and plant growers. Our plants are packed in nice, cool moss and our crates and boxes are made as light as possible. We ship by express when not otherwise ordered. We ship big lots in early spring by freight when it is cool with entire satisfaction.

“SQUARE DEAL TO ALL” IS OUR MOTTO

Our old customers know that is what we give them every time—good count, nice plants, packed to reach you in good shape. If they do not, we send your money back. You must be pleased when you buy from us.

Thanking all our patrons for past favors, we are,

Very truly yours,

CALEB BOGGS & SON,
Cheswold, Del.