

Historic, Archive Document

Do not assume content reflects current scientific knowledge, policies, or practices.

RETURN TO POMOLOGY
S. CHERRY ST. CLATARE.

APR 24 1916

INDEXED

SPECIAL CUT PRICES FOR THE SPRING OF 1916

CORINTH NURSERIES

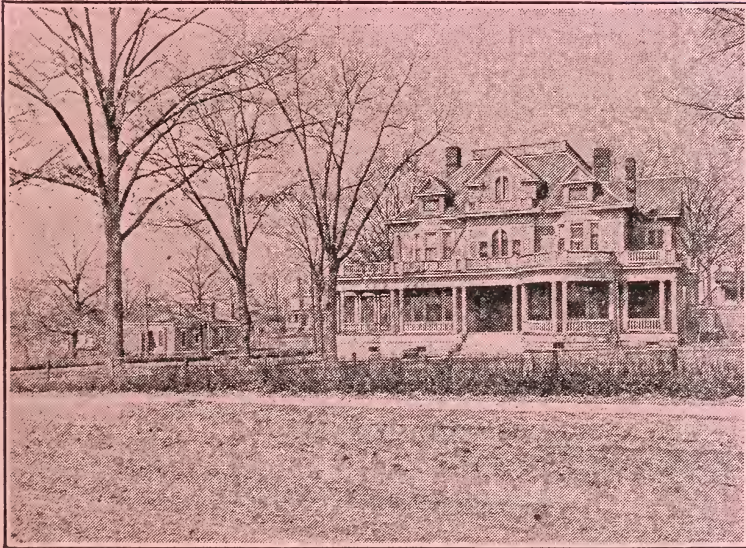
G. W. STRICKLAND, Proprietor
GROWER OF

General Nursery Stock
CORINTH, MISS.

LIB

REC'D

AUG 7 0 1920



THE ABOVE PICTURE is to prove to you that the Amoor River Privet is an ever green in the South. I planted this hedge April 1st to 10th, 1913, and this picture was taken the following March, nine months after the hedge was planted. The above picture is the residence of G. A. Hazard, of this city. Mr. Hazard is vice-president of the First National Bank and I will refer you to him for reference.

No. 50.—State of Mississippi,

CERTIFICATE OF INSPECTION OF NURSERY STOCK

This is to certify that the stock in the nursery of Corinth Nurseries (G. W. Strickland, Prop.), of Corinth, county of Alcorn, State of Mississippi, was inspected on August 25, 1915, in accordance with the provisions of the Nursery and Orchard Inspection Law of the State of Mississippi and has been found apparently free from San Jose Scale and other dangerously injurious insect pests and plant diseases. This certificate expires August 31, 1916.

Dated, Agricultural College, Miss., October 2, 1915.

R. W. HARNED, Entomologist, Miss. Agr. Expt. Station.

APPLES.

Prices—2 to 3 feet, 7½c; 3 to 4 feet, 10c; 4 to 5 feet, 15c

In order to enlarge my business, I am going to cut the prices 5c a tree, on all peach, apple and pear trees this season. I have the nicest lot of one-year old apple trees that I have ever grown. All of them are the very best Southern variety that can be grown.

Yellow Transparent or Yellow May.—Very fine.

Early Harvest.—A very large and fine flavored apple, light yellow; a fine grower.

Red June.—This is a well known apple, very red and long in shape. Is sometimes called Summer Red.

Red Astrachan.—A very fine red Summer Apple.

Summer Rambo—A very fine early summer apple. Red striped.

Horse—A large yellow apple, ripens in July and August. For two years I have been short on this apple, but have a fine lot this season.

Rogers.—This is a fine Fall and Winter Apple. If I was going to pick my best tree I would say "Rogers." I am the only one that has this apple for sale. It originated in this county; is blight-proof and the best apple on the list.

Kinnard's Choice—Good size, dark red, Winter keeper. Fine flavor

Staymon's Wine Sap.—This is a big improvement over the old-fashioned Wine Sap. A fine flavor and good keeper.

Yates.—This is a small, flat, juicy apple and has been kept in this county until the 1st of May. The best Winter keeper known.

Southern Beauty.—Very much like the Yates, but is much larger. It has been kept in this county until April 1st. This apple originated in this county and I am the only one that has it for sale.

Arkansas Black.—Is a very fine Fall and Winter Apple for the South. A very dark red.

Delicious—This is a fine Fall Apple for the South and is a good Winter keeper for the North. Its flavor is unsurpassed, and is sold by some nursery men at 50c and \$1.00 each.

I have a fine lot of this apple this season.

PEACHES

Prices—2 to 3 feet, 8c; 3 to 4 feet, 12c; 4 to 5 feet, 16c.

Mayflower—25th to last of May; best of all May Peaches.

Alexander—1st to 10th of June.

Greensboro—June 10th to 15th; large and fine.

Early Bell—15th to 25th of June; fine.

Carman—25th of June to July. Fine for home use and a very fine market peach; red; a freestone when full ripe.

Belle of Georgia—July. Fine, white, freestone; fine for market.

Elberta—July and August. Very large, yellow, freestone.

Chinese Cling—July and August. Very large, white cling. Will rot some if planted in rich land; plant them in hilly land.

Indian—Very large and red to the seed; clingstone.

APR 24 1916

PEACHES—Continued

Heath Cling—White cling, ripens last of August. Fine for canning
Crawford's Early—Ripens two weeks before the Elberta.

Crawford's Late—This is a very fine yellow free stone peach. A
better flavor than the Elberta, but not quite so large. Ripens
in August.

Krummels Oct.—Very fine, late peach.

A Few Special Varieties of Peach and Apple Trees

Prices—2 to 3 feet, 10c; 3 to 4 feet, 15c; 4 to 5 feet, 20c.

I have the finest lot of one year old apple trees this season,
that I have ever grown.

APPLES

Garrett—This is a very fine summer apple; very large, and red
striped. Ripens about the same time as the Horse, and is a much
better apple. This apple was brought by Mr. J. E. Garrett from
Alabama, and everyone that sees it wants trees. Ripens in Aug.

Conn—This is a very fine winter keeper. This apple was found in
Prentiss county and was first grafted by Mr. Belcher, an old
Confederate soldier, who died a few years ago in the Old Sol-
diers' Home. This was his special winter apple..

PEACH

Mitchell—I have been growing this peach for 3 years. It ripens
about one week after Elberta and is as large, or larger. Is a
cling stone; a very bright yellow and the flavor is unsurpassed.
This peach is a cross between the old Indian and Elberta. Ri-
pens in August.

PEARS

Prices—3 to 4 feet, 15c; 3½ to 5 feet, 20c; 4 to 5 feet, 25c.

Seekles—Or better known as the Small Sugar Pear. One of the
best flavored pears that grows.

Wilder—This pear ripens about the last of June and is one of the
best pears we can get for that season.

Garber—This pear got all the blue ribbons at our County Fair.
Ripens from August to October.

Keiffer—Very large and a fine keeper. Ripens in Sept. and Oct.

JAPANESE PLUMS

Prices—2 to 3 feet, 20c; 3 to 4 feet, 25c; 4 to 5 feet, 30c.

Variety	Time of Ripening	Variety	Time of Ripening
Red JuneJune 10	Wild Goose, redJuly
AbundanceJune 15	Shropshire Damson, blue.	Aug.
BurbankJune 20 to July

CHERRIES

Prices—2 to 3 feet, 20c; 3 to 4 feet, 25c.

Early Richmond—A fine, early and good size black cherry.

Large Montmorency—Largest and best bearer of all cherries.
Black in color.

English Morello—A very fine late black cherry.

Terry—Very early.

Mulberries

Ever bearing, 4 to 5 ft. only 30c

Black English

Abundance

Pecans—Paper Shell—Budded

2 to 3 ft. 40c 3 to 4 ft. 60c

4 to 5 ft. 75c.

Stuart Delmas

Schley Pabst

Apricots

Moore's Park, 3 to 4 ft. . . . 15c

Wilson's Early Golden

English Walnuts

2 to 3 feet 30c

Japan Walnuts

2 to 3 ft. 25c. 3 to 4 ft. 30c

Japan Mammoth Chestnuts

2 to 3 feet 30c

Figs

Celestial, 18 to 24 inches. .20c

Asparagus

Each 2c

QUINCES

Orange—3 to 4 feet, 20c each.

Meech—3 to 4 feet, 20c each.

Champion—3 to 4 feet, 20c each.

NECTARINES

This is known as a peach without the "fuzz." They are almost as slick and smooth as an apple, but are not so large as a large sized peach. Two varieties: Red Roman and New White. Price: 4 to 5 feet, 20c each.

STRAWBERRIES

Klondyke—\$3.25 per 1,000; 35c per 100. This is the very finest berry ever introduced in this country for home or market use.

Lady Thompson—This is a fine berry for home use.

A lot of my customers have asked me about the Ever-bearing Strawberry. Now I don't think that they are worth the prices asked, but if any of my customers want them I will get them for you at as reasonable price as you can get them from any one, but will say that I would not advise planting very many.

GOOSEBERRIES

Houghton—No. 1, fine; 1 year old plants, 10c each.

BLACKBERRIES

Taylor, Ohmer and Early Harvest, 5c each; 1 dozen assorted 50c; 100 assorted \$3.00.

CURRANTS

Wilder—No. 1, 2 year old plants, 10c each.

ORDER BLANK
TO THE
Corinth Nurseries

G. W. STRICKLAND, Prop.

Grower of General Nursery Stock

CORINTH, MISSISSIPPI

DEAR SIR:

Please ship me by

To

Name

Address

articles listed on reverse side.

(Write Name and Address Very Plain.)

INFORMATION CONCERNING PLANTING, ETC.

Average distance for planting apple trees 22 to 25 feet; peach trees 18 to 25 feet; pear trees 18 to 25 feet; plums 16 to 20 feet; cherries 16 to 20 feet; pecan trees 40 to 60 feet; grapes 6 to 8 feet; blackberries 4 to 6 feet; raspberries 4 to 6 feet.

Different people have different ideas of the distance for planting trees, but the above is an average, although trees can be planted much closer than this in small lots where they have vacant lots on the outside.

Holes should all be dug deep and large enough so as to not crook or cramp roots. Use clay, soil or sand in the holes, fertilize on top of the ground. In order to make long life trees I think it a good idea to start the top low to the ground, this can be done by topping your tree back to 18 to 30 inches and allowing about four to six branches near the top to remain, keeping all of the other rubbed off through spring and summer. As to time for planting trees I find that trees can be successfully planted in the South any time from November to the middle of April.

My trees are all packed with damp moss and sawdust, wrapped with heavy paper and sewed tight with burlap.

Please note my very low cut prices on Paper Shell Grafted and Budded Pecan trees. They are as good as money can buy.

(OVER)

SHRUBBERY

- Magnolia, nice, 3 to 4 foot trees75c
Hydrangea—Paniculata Graniflora, 3 year old, 2 to 3 feet, 25c;
1½ to 2 feet, 20c. An ever-bloomer and the best Hydrangea
that grows.
Snowballs—American, 1½ to 2 feet, 25c; 2 to 3 feet, 35c.
Umbrella China Trees—2 year old, 3 to 4 ft., good heads, 30c each.
Lilac—White, 2 to 3 feet, 30c.
Lilac—Purple, 2 to 3 feet, 25c.

SHADE TREES

- Silver Maple—6 to 8 feet, 30c; 8 to 10 feet, 40c.
Wier's Cut Leaf Maple—5 to 6 feet, 30c; 6 to 8 feet, 40c.
Caradine Poplar—6 to 8 feet, 30c; 8 to 10 feet, 40c.
Lobardi Poplar—6 to 8 feet, 30c; 8 to 10 feet, 40c.

HEDGE PLANTS

- California Privet—2 to 3 feet, nicely branched, 6c each or \$5.00
per 100; 1½ to 2 feet, 5c each or \$4.00 per 100; 12 to 18 inch,
4c each or \$3.00 per 100.
Amor River Privet—Evergreen anywhere in the South. 2 to 3
feet, well branched, 7c each or \$6.00 per 100; 18 to 24 inch, 6c
each or \$5.00 per 100.

GRAPES

Prices—2 year old vines, 15c each.

- Moore's Early—Large early, black.
Concord—The old reliable; a good black grape.
Lutie—A very fine sweet pink grape.
Moore's Diamond—White.
Niagara—A very fine sweet white grape.
White Scuppernon—The best of all. 2 year old vines 25c.

RASPBERRIES

- Kansas Black—Cuthbert Red, each 5c; 1 dozen assorted 50c;
100 for \$3.00.

INFORMATION

Plant all trees and shrubbery just a little deeper than they stood in the nursery: dig holes large enough, so as not to cramp the roots. Prune small trees and roses in April. Prune large trees in February and March. Do not use manure in the holes when planting. Use it on top after the plant is set. Cultivate peach and apple trees as long as they live, if you want fine fruit. Pear trees do not need any cultivation after the second year. Pear and plum trees do well in yard. Plant your young peach and apple orchard in cotton and fertilize well with commercial fertilizer, and see your trees grow. Plant peach, pear and plum trees 18 to 24 feet apart; apples about 25 feet; pecans 40 to 60 feet.

NOTICE—HEALTH CERTIFICATE ON FRONT PAGE.

ROSES

If you were to send to some Northern Nursery for prices on Roses, they would send you a list of about 75 to 150 varieties, and unless you know all about roses, you would not know what to buy. There is only about 10 to 15 per cent of them good for our climate. I only have a small list of the very best that can be had. Every rose on this list will bloom first year—from early Spring to November, if they are well cultivated. Roses should be well cultivated all spring and summer. Fertilize well with well rotted lot manure on top of the ground.

BUSH ROSES

All Field Grown, 18 to 24 inches, well branched. Price 25c.

Freiherr von Marshall—Deep carmine red, long well shaped buds and large, full flowers.

Helen Gould, or Balduin—An incessant grower and bloomer; hardy everywhere. Long, beautiful buds, and full double flowers of warm, rosy crimson.

Maman Cochet—Rich rosy pink, shaded silvery rose on outer petals; exquisite in color and graceful in form from bud to bloom, and delightfully fragrant; beautiful, healthy foliage, and long, stiff stems.

Marie Van Houtte—Rich creamy white, faintly tinted with rose; extra large, very double, full and deliciously scented flowers; a good grower and free bloomer out of doors.

Mrs. Cant—Bright, clear rose-pink; a free grower and bloomer.

Papa Gontier—Dark crimson, passing to glowing crimson; large buds and deep, open semi-double flowers; constant bloomer and vigorous grower.

White Cochet—Very large and beautifully formed in bud and bloom; white with pink flush, vigorous, and produces abundantly for cutting.

Wm. R. Smith—Creamy white with shadings of pink, beautiful in form and color; long, stiff stems.

Antoine Rivoire—Creamy white, delicately tinted with pink; extra large petals; full and double flowers.

Bessie Brown—White, flushed with pink, growing deeper toward center; extra large petals; erect stems.

Etoile de France—A brilliant shade of red-crimson velvet; large flowers on long stiff stems.

K. A. Victoria—Pure white; does not pink when planted out; a most sturdy grower and bloomer.

Mme. C. Testout—Brilliant, satiny rose, deepening at center; bordered with silvery rose.

Meteor—Intense velvety crimson, buds and blooms large; elegantly formed on long, stiff stems.

Climbing Roses

All Field Grown, 18 to 24 inches, well branched. Price 30c.

Marechal Neil—Beautiful golden buds and blooms in rich profusion; the finest of all yellow climbers.

Mrs. Robt. Peary—Ivory-white; identical with K. A. Victoria, except strong climbing habit.