

## **Historic, Archive Document**

Do not assume content reflects current scientific knowledge, policies, or practices.



62.37

RETURN TO POMOLOGY  
SECTION OF NOMENCLATURE.

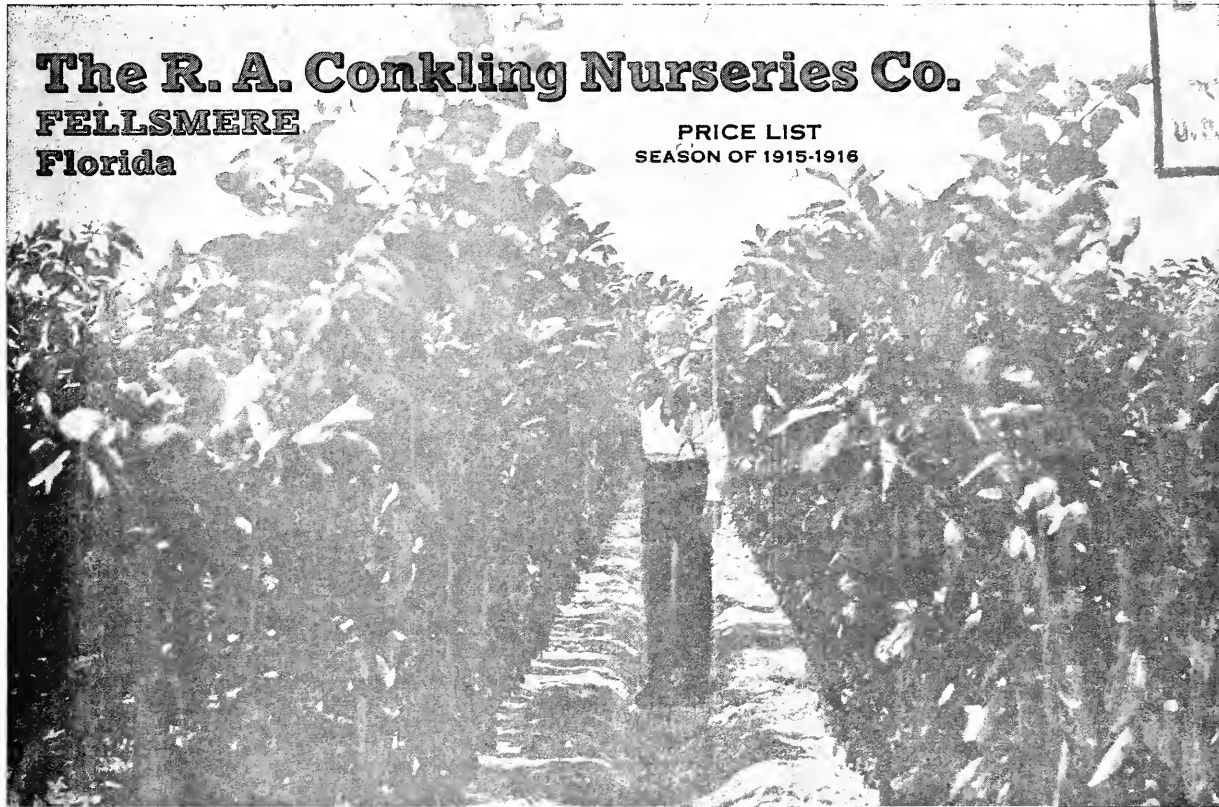
MAY 2 - 1916

INDEXED

# The R. A. Conkling Nurseries Co.

FELLSMERE  
Florida

PRICE LIST  
SEASON OF 1915-1916



RECORDED  
MAY 7 0 1916  
U.S. DEPT. OF AGRICULTURE



# THE R. A. CONKLING NURSERIES CO.

## FELLSMERE, FLORIDA

---

### FOREWORD

In setting out a citrus grove bear this admonition in mind: Get the best stock obtainable. To do this you must deal with a reliable nurseryman.

The experimental stage of the R. A. Conkling Nurseries Company is past, and it is now an admitted fact that the trees and plants, especially the orange and grape-fruit stock, produced by our company are first class in every particular.

Our nurseries are under the personal supervision of Mr. R. A. Conkling, well and favorably known to nearly every fruit grower and agriculturist in the state of Florida. We are now entering upon our second year and we are receiving the most flattering reports from those who bought of us last season. Not one of our customers has offered an adverse criticism.

The leading nurseries of Florida have made an enviable reputation both for fine stock and fair dealing, and it has been our ambition from the start to be classed among the best nursery companies in the state. Every care has been taken to secure this end, and we are proud to say that our efforts have been crowned with success.

The Conkling Nurseries are located at Fellsmere, ten miles west of Sebastian, directly in the famous Indian River citrus section of the East Coast of Florida. The company has a large acreage of just the right sort of soil for the growth of choice citrus stock. Climate and careful supervision do the rest.

In addition to their favored location the Conkling Nurseries are ten miles away from any possible infection, in virgin soil far removed from the white fly or any other pest or disease.

The management takes pleasure in showing visitors through the nurseries, and the gratifying comment, "This is

---

**This Nursery is FREE from Citrus CANKER and so far removed from danger that it is practically immune.**

the finest, cleanest and thriftiest nursery stock I have everseen," is generally expressed by those who really know what they are talking about.

The stock available for this season is fully up to the standard of that sold last season. The root system of our trees is perfect, leaving nothing to be desired. Our buds have been obtained in the main from bearing trees of well known growers of true and tried varieties. The Conkling Nurseries Company are offering to the trade only the best varieties of the standard sorts, and which are of proven commercial value, and in presenting this price-list the company feels that they are giving fruit growers the very best of its kind.

The stock of the Conkling Nurseries Company will be increased from year to year, and another season a much more elaborate catalog and price-list will be issued.

Our faith in the future of citrus culture is as strong as ever. We are planting extensively ourselves, and will continue to enlarge our own groves, both as individuals and as a company. We are planting liberally in grove form the Persian lime, and have great faith in the future of this fruit, confidently expecting it to supersede in a great measure the foreign grown lemon.

The citrus industry of Florida has never been so prosperous as it is at present. The superiority of Florida fruit is well established everywhere. The Florida Citrus Exchange are busily perfecting their organization. The East Coast is falling in line with them and our markets will be greatly enlarged by their efforts. And so we feel that the occasional cry of "overproduction" has no foundation in facts, and that the citrus growing industry in Florida is only in its infancy.

Since issuing our 1914-1915 price-list we have materially enlarged our nurseries. We are not offering a long list of citrus trees, we have cataloged no novelties, but will gladly supply you with anything you may wish, only asking a few days notice. We will procure them for you from the most reliable growers at popular prices, charging nothing for our services. The lists we offer are the money makers, are true to name, guaranteed in every particular. Our nurseries are far from any infected district, either canker, white fly or cottony cushion scale. We are very proud of our record. We have a fine body of satisfied customers. We are presenting a few photographs of one and two year groves, set out and cared for by our company. These are all on flat wood lands. The trees we are offering are budded on three to five year old roots, are one to two year buds on sour orange stock. Our buds were taken from bearing trees of known varieties. We procured a large part of them from the Oklawaha Nurseries, O. W. Connor, Pro-

RETURN TO POMOLOGY  
SECTION OF NOMENCLATURE.

MAY 2 - 1916  
INDEXED.



ONE YEAR OLD, FELLSMERE, FLORIDA.

prietor, who guarantees them from his famous pedigreed trees. We have a large amount budded from trees in the famous Glen St. Mary Nurseries Groves. Our own grove has been set from selected trees and is just coming into bearing, having only been set three years. So while we make no claim to having grown our own bud wood, we have used only bud wood from those who have a good reputation and who are too careful of it to risk blasting it by sending out anything that will reflect on their good name, and you may be sure that we can not afford to deceive you. As fast as the groves we have under our care, and our own groves, come into bearing, we will use only such as may prove their individual worth.

We believe in the frank open way. We take our customers into our confidence and will render any assistance in our power, cheerfully and with alacrity.

We invite the closest inspection and welcome any and all visitors, whether they wish to purchase from us or elsewhere. Our competitors as a rule are a fine body of men and we are proud to be associated with them.

## **A WORD ABOUT STOCKS**

Sour orange stock is the only **SAFE** stock on ninety per cent of the grove land on the east coast. With some nursery men lemon stock has become a fad. The reason is very plain. For thin, white ridge land almost devoid of humus it is the best, as no matter how wet the season it will not be subject to foot rot. Such land is not desirable citrus soil. While good groves can be and have been made on such land it is much more expensive than the flat wood or hammock land. The flat wood land is abundant and economical, and the prairie and muck land can be planted with safety if you use sour stock—**IT NEVER HAS FOOT ROT.**

If a part of the root system has been destroyed by flooding for too long a period, it sloughs off and puts out new roots and does not effect the trunk or materially reduce the vitality of the tree, only for a brief period. This can not be said of lemon. If the root system is over paralyzed you had best remove it. The same is true of the sweet seedling.

Grape fruit stock is proving good, and while it has not been tried so extensively it bids fair to rival the sour stock, but our advice is to use sour stock on flat woods, prairie and muck if you are planting for commercial pur-

---

**This Nursery is FREE from Citrus CANKER and so far removed from danger that it is practically immune.**





CONKLING TREES, FELLSMERE, FLORIDA.

poses, as it insures regular crops, holds best on the trees, and the fruit colors better, especially if it is late varieties. The fruit will be heavier, sweeter and carry better, both in the car and on the tree. We stake our reputation on this and you may be sure we value our reputation. By using lemon stock we can put trees on the market sooner, thus reducing the cost of production, and, while we do not favor lemon stock, we can supply those of our customers who desire it.

## **PREPARE YOUR LAND THOROUGHLY**

If you have high rolling land, remove all stumps and roots, and break and harrow it until it is in condition for a crop of any kind. Neutralize all acid, especially in the hills, and set trees on the level, being sure they will not be lower when the ground settles than they were in the nursery. Always use a bucket of water to the hill to thoroughly settle dirt around the roots and be sure there are no air spaces left.

If you have level flat woods, drain it well, thoroughly plow and harrow and be sure to remove all roots and stumps. Neutralize acid by using one ton of hardwood ashes or the same amount of lime, or three tons of ground lime stone (agricultural lime) to the acre. The land should then be plowed into beds, twenty-five feet from center to center, using care to get them straight. Then stake it off crosswise, twenty-five feet apart. Use enough ashes or lime in the cross to be sure you have the land perfectly sweet. Make into hills four or five feet in diameter, five or six inches higher than the ridge and set your trees in the hill. Plant a cover crop. Beggar weed, cow peas, velvet beans, are all fine. When these are ready, which will be when they begin to ripen, disc them up and plow under, plowing with a good two horse turning plow and throwing the dirt toward the trees. This can be done twice a year until the ridge is as high as the hills; then cease plowing but continue the cover crop, mowing it as often as it begins to ripen, and leaving it to decay, which adds nitrogen and humus to the soil. It is only necessary then to add potash and phosphorus in right proportions, when you will have a grove at five years old that will pay a big dividend on a thousand dollar valuation per acre—if you have done your duty by the young trees.

---

**This Nursery is FREE from Citrus CANCER and so far removed from danger that it is practically immune.**



TWO YEARS GRAPE-FRUIT, FELLSMERE, FLORIDA.

## CARE OF YOUNG TREES

As soon as they have adjusted themselves, started new roots and perhaps new growth, or in about a week or ten days at most, spread one pound of some good brand of fertilizer, analyzing 5% ammonia, 8% phosphorus and 2% or 3% potash around the trees, and work it in. Repeat again in six weeks or two months. This should be discontinued by the middle of October or November 1st, beginning again about the middle of February or first of March, depending largely on the weather.

Second year use as above two pounds to the tree in same periods, increasing each year as the wants of the tree demand. This is not a hard and fast rule. Quality and natural fertility will modify your actions. Do not overfeed, but be sure you feed enough. If you have a grove, be good to it. A good farmer will feed and water his team regularly and see that it has comfortable surroundings, will not overfeed lest he founder or impair its digestion, and will not starve or underfeed lest it will not be able to stand up to its work. Be as good to your grove. The team will die in a few years at best; the grove, if treated sensibly, will not only make you a comfortable living, but will be a legacy that will make your grand children remember you with gratitude.

### SIZE OF TREES TO SET

There is no economy in setting small trees. It may not be good business to set over two years old; a great many claim it is not. Our advice is to set one to two year old trees. You save money by setting two years trees. It will cost you more than the difference in purchase price to care for the one year old trees until they are two years old. The nursery man can do it cheaper than you—let him bear the expense.

SET AND CARED FOR BY CONKLING NURSERIES COMPANY



TWO-YEAR FELLSMERE GROVE  
G. H. BASS, WILTON, MAINE, PROPRIETOR.

## TERMS AND METHODS

**Terms**—Cash with order if for immediate shipment. If for future delivery one-quarter advance payment with booking of order, and balance when trees are shipped.

**Shipping Season**—We prefer to wait until the trees are dormant, which is usually from November until March. We can ship earlier or later, but there is an element of risk that the purchaser must take. As the dormant season is the time for shipping we take all risk.

**Our Liability**—We exercise great care to have all trees and plants true to label and hold ourselves ready, on proof, to replace all that may prove otherwise. In case of error on our part it is agreed that we shall not be held responsible for a greater amount than the purchase price.

**Substitution**—In ordering state whether we may substitute some similar variety in case those ordered are not in stock.

**Claims**—We use great precaution against errors and agree to correct them as soon as discovered. Claims must be made within ten days after receipt of trees.

**Making Orders**—Give postoffice address in full, county and state included. If postoffice and shipping addresses are different, be sure to say so. Give preference, if any, of route, and also if by express or freight.

---

### CONNER'S PROLIFIC GRAPE FRUIT

This is a new variety propagated and introduced by Mr. O. W. Conner, of the Ocklawaha Nurseries, of Tanglepine, Florida, of whom we obtain all our buds. He says in his catalog of 1915 "Its season is the earliest and we know of nothing that shows the same fine color, the same tenderness and edible qualities so early in the season as Conner's Prolific. When other varieties are sour and absolutely unpalatable and containing little juice the Conner Prolific shows well developed segments, full cells, extremely juicy and all that could be desired as an edible fruit, and for that reason we feel that we can safely claim that this is the earliest grape fruit in existence. Not only this

---

This Nursery is FREE from Citrus CANKER and so far removed from danger that it is practically immune.



TWO YEARS OLD, FELLSMERE, FLORIDA.

to commend it but the Conner Prolific grape fruit also has an extremely wide range of season. Regardless of weather conditions it may be held on the tree until late in the spring and shipped with the latest type known in perfect condition and at no appreciable sacrifice as to quality—a beautiful, silvery yellow in color, nearly always bright and glossy, skin smooth and even and no depressions over large glands. Well rounded but slightly flattened in shape. The trees are the largest we have ever seen for their age. It seldom—if ever bears more than one fruit on a stem. Therefore, it is distinct in that respect, as grape fruit bearing three and four specimens or more of fruit that hangs close together usually mar themselves or form a harbor for scale insects where any amount of spraying would never get to them, and considered from any standpoint or any angle we feel that we cannot pass the subject without a recommendation to every planter of a grapefruit grove to use the Conner Prolific if he wants to make the most money out of his investment.”

**Duncan**—This is a variety of grapefruit that has stood the test and is perhaps the most popular among the horticulturists of today. It is a good bearer and strong grower, and the fruit is fine in flavor. Our stock of this variety is exceptionally good, and we strongly recommend it.

**Marsh Seedless**—This fruit is of large size and is popular because it is nearly seedless. The flesh is juicy and of good flavor.

**The Standard, or Florida Common**—The sweetness of this variety is one of its chief features, and it is not excessively full of seeds. It is a thrifty grower and exceedingly reliable. Our stock of this variety is in excellent form, and we recommend it strongly.

**Hall's Silver Cluster**—This variety of grapefruit derives its name from its shiny, silvery appearance, and is popular by reason of its excellent growth and heavy fruiting. The meat is of fine quality and is becoming more popular every year.

**Walter's**—Is a strong tree, heavy bearer, and one of its attractions is that the fruit hangs singly, thereby distributing the weight evenly through the tree. A very late variety.

**Gillett's Late**—The chief recommendation for this variety is that it is not ready for market until February and will keep well on the trees until June. It is perhaps more hardy than any other variety, and the trees grow to large size and begin to bear young and are very prolific.





**SPLENDID ROOT SYSTEM**

**McCarty**—One of the best of the Indian River varieties. The large, beautiful, fine-flavored fruit hangs singly instead of in clusters. A vigorous, healthy bearer.

## LIMES

The Persian or seedless limes are of large size, skin smooth and thin, and juice of the very best quality. The demand for limes is constantly on the increase and no citrus grove is complete without them. The lime begins bearing when quite young—two years old—and is very prolific.

## ORANGES

**The Pineapple**—For an all round orange we look upon this variety as one of the most reliable and prolific. This fruit is very uniform in size, and the color is deep orange, the flesh being of delicate flavor. It colors early and hangs well and is at all times an excellent shipper. We strongly recommend this variety, especially for the East Coast section.

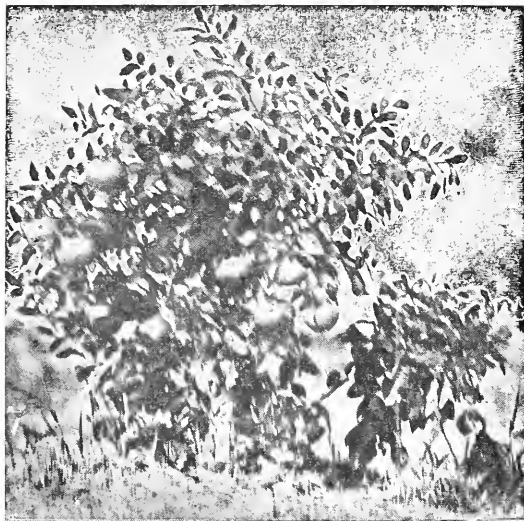
**Parson Brown**—This is a very old Florida variety that is recommended for early shipment. It is a fine round fruit, and is very juicy.

**Valencia Late**—In sections of the state where fruit can be kept upon the trees without fear of damage by frost this variety is perhaps the most popular of the late varieties. The tree is a strong grower and the fruit is of delicious flavor and very juicy. We strongly recommend this variety for Fellsmere and other southern East Coast districts.

**Hart's Late**—The characteristics of this variety are similar to those of the Valencia Late. The flavor is fine and it has but few seeds. It ripens in April and will keep on the trees in good condition until the middle of June.

**Satsuma**—An extremely hardy, early ripening, and very sweet variety of Mandarin. The tree is low and thornless, and the fruit without seed.

**Dancy's Tangerine**—This, we believe, is about the only tangerine that is worth while, and no fruit grower should be without a few acres of this variety in his grove. The skin is easily removed, and for this reason it is frequently called, or nick-named, the kid glove orange. The flesh is deep red and the flavor is rich and delightful to the palate.



# PRICE LIST

## GRAPEFRUIT, ORANGES, LIMES AND TANGERINES

|                        | Each   | 10     | 100     | 1000     |
|------------------------|--------|--------|---------|----------|
| Two to three feet..... | \$ .45 | \$4.00 | \$35.00 | \$320.00 |
| Three to four feet ... | .55    | 5.00   | 45.00   | 420.00   |
| Four to five feet .... | .75    | 6.50   | 60.00   | 550.00   |
| Five to seven feet.... | .85    | 7.50   | 70.00   | 650.00   |
| Two year old buds....  | 1.50   | 12.50  | 100.00  |          |
| 1½ inch caliper.....   | 1.50   | 12.50  | 100.00  |          |

### BANANA

|      |        |     |         |
|------|--------|-----|---------|
| Each | \$ .15 | 100 | \$12.50 |
|------|--------|-----|---------|

### GUAVA

|                       | Each   | 10     | 100     | 1000     |
|-----------------------|--------|--------|---------|----------|
| One year old .....    | \$ .25 | \$1.50 | \$12.50 | \$100.00 |
| One to two years..... | .50    | 3.50   | 30.00   |          |

### AVOCADO

|                                    |             |
|------------------------------------|-------------|
| Budded trees in 5x6x16 boxes.....  | \$1.50 each |
| Special prices on large quantities |             |

### SPROUTED COCOANUT PALMS

|      |        |     |         |
|------|--------|-----|---------|
| Each | \$ .35 | 100 | \$25.00 |
|------|--------|-----|---------|

### COCUS PLUMOSUS (Palm)

|                          |                     |
|--------------------------|---------------------|
| In pots .....            | .35c to \$1.50 each |
| In half barrel tubs..... | \$5.00 each         |

## MANGOES

### One Year Old Buds in 6 to 7 Inch Pots

|                 | Each   | Doz.    | 100      |
|-----------------|--------|---------|----------|
|                 | \$1.50 | \$15.00 | \$100.00 |
| Two years ..... | 2.00   | 20.00   | 150.00   |

NOTE—Stock not catalogued will be supplied from associated nurseries at catalogue prices and with our guarantee.

### WASHINGTONIA (Palm)

|                                 |        |
|---------------------------------|--------|
| Large size, in pot, each.....   | \$5.00 |
| Medium size, in pot, each ..... | 3.00   |

### CAMPHOR

|                       | Each | 10   | 100     | 1000     |
|-----------------------|------|------|---------|----------|
| 8 to 12 inches .....  | \$   | \$   | \$ 6.50 | \$ 45.00 |
| 12 to 18 inches.....  |      |      | 8.00    | 60.00    |
| 18 to 24 inches ..... | .20  | 1.30 | 11.00   | 80.00    |
| 2 to 3 feet .....     | .35  | 2.70 | 21.00   | 160.00   |
| 3 to 4 feet .....     | .50  | 4.50 | 35.00   |          |



