

## **Historic, Archive Document**

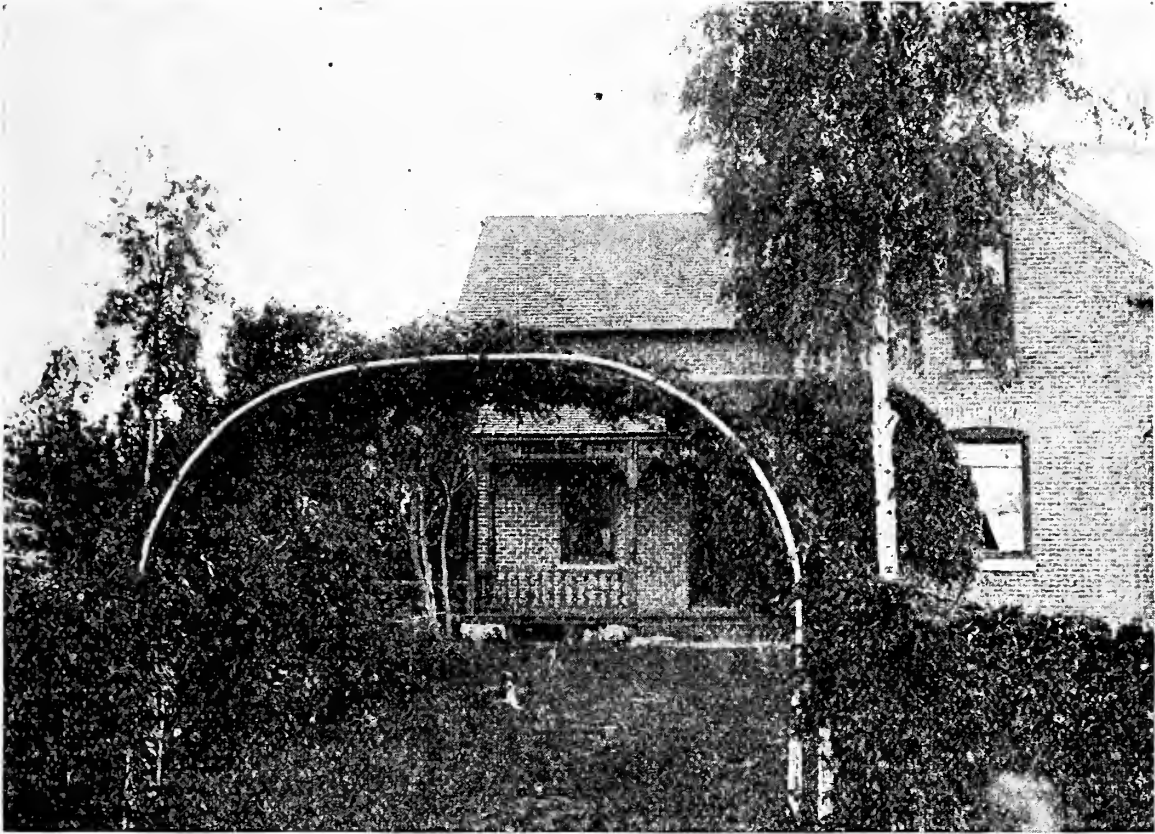
Do not assume content reflects current scientific knowledge, policies, or practices.



MAY 18 1916

# DUNSMORE NURSERY

OLIVIA, MINN.



Before you place an order for nursery stock **THINK**. Few people think when they are approached by the tree shark. In fact some think it is hardly necessary as he is usually able to do all of the talking and most of the thinking. Some only think they **THINK** and quite a number only think they think they **THINK**. But after the smooth tongued gent has clinched their order and fled, they begin to **THINK** of the glorious fruit and flower garden they will be cultivating during the summer. But as the season advances it begins to dawn on them that instead of cultivating a fruit or flower garden, they have begun to cultivate the profane habit. Don't you do it.

Think that trees and plants grown in good rich soil and produced by the best and most desirable methods of propagation will give better satisfaction than those produced chiefly by the Lithograph process.

## DUNSMORE'S NURSERY

---

|  | Each | Per 100 |
|--|------|---------|
| APPLE                                  |      |         |
| 5 to 7 feet                            | 40c  | \$40.00 |
| PLUM                                   |      |         |
| 5 to 6 feet                            | 50c  | \$50.00 |
| COMPASS CHERRY                         |      |         |
| 5 to 6 feet                            | 50c  | \$50.00 |
| JAPANESE HYBRID<br>PLUM                |      |         |
| 5 to 6 feet                            | 75c  |         |
| CURRANTS                               | 20c  |         |
| GOOSEBERRY                             | 25c  |         |
| BUCKTHORN<br>For Hedges                |      |         |
| 12 to 18 inches                        |      | \$10.00 |
| SNOWBALL<br>HYDRANGEA<br>Bridal Wreath |      |         |
| 2 to 3 feet                            | 50c  |         |
| STRAWBERRY                             |      | \$ 1.00 |

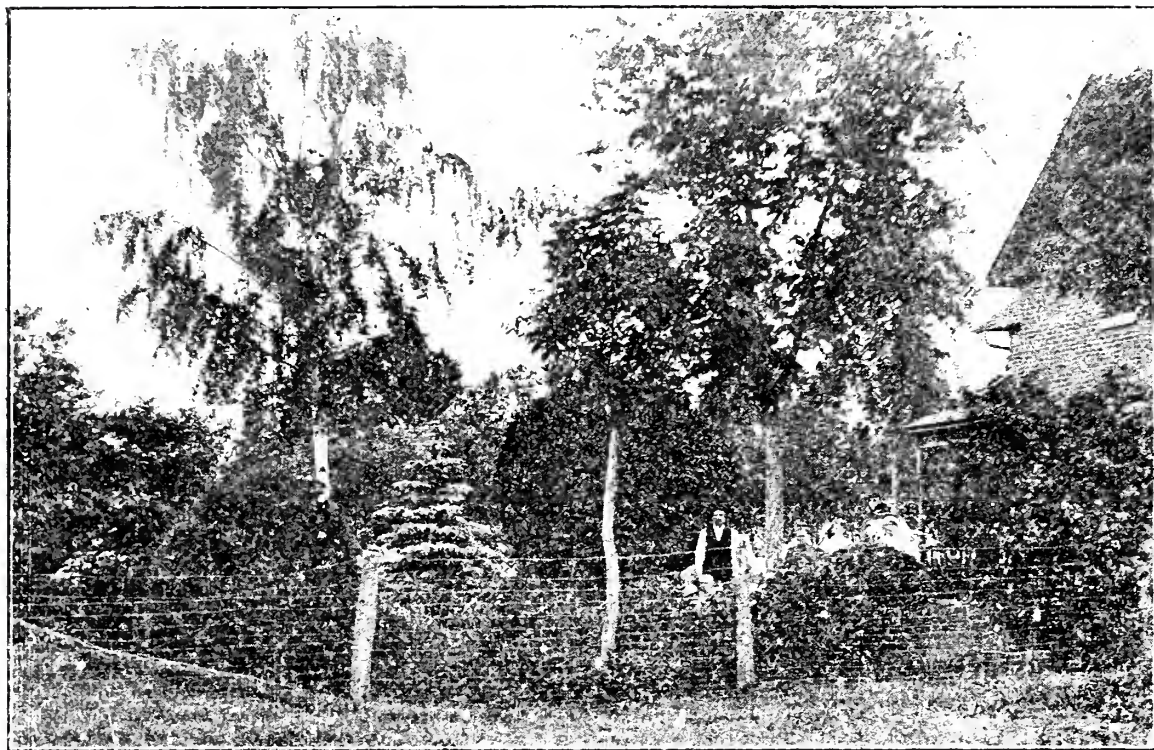
---

|             |                 |
|-------------|-----------------|
| PEONIES     | 25c to 50c each |
| IRIS        | 20c each        |
| PHLOX       | 20c each        |
| COLUMBINES  | 20c each        |
| LARKSPAR    | 20c each        |
| GOLDEN GLOW | 10c each        |

**Prices Quoted on Evergreens or Any-  
thing in the Nursery Line.**



MAY 18 1916



WE USE OUR OWN ILLUSTRATIONS







**Home Grounds, Dunsinore Nursery**