

Historic, Archive Document

Do not assume content reflects current scientific knowledge, policies, or practices.



23

RETURN TO POMOLOGY
SECTION OF NOMENCLATURE

1916

MAR 16 1916
INDEXED.

The Perennial Garden

JOHN FREEMAN
PROPRIETOR

LIBRARY RECEIVED
MAR 24 1916
Department of Agriculture

Nurseryman and Landscape-Gardener



===== MY SPECIALTY =====

**HARDY FLOWERING PLANTS
SHADE AND ORNAMENTAL
TREES :: FRUIT TREES AND
SMALL FRUIT BUSHES AND
LANDSCAPE WORK**

**818 Noyes Street Near the N. W. Elevated Station
EVANSTON, ILL.**

TELEPHONE 1106

OFFICE AT THE GARDEN

OUR MOTTO:

*"Confidence is Better
than Capital"*

After twenty years of experience with two of the largest nurseries in the East, we started in business for ourselves and established

THE PERENNIAL GARDEN IN 1907

Our customers have been our advertisers. They not only continue to come to us each season, but they bring their friends with them. This we highly appreciate, not only because of the increase in business, but for the interest and confidence shown.

We do not care to have a business so large that we cannot give every detail of it our personal attention and meet our customers face to face.

In this catalogue we have listed only the varieties that we have personally proved to be suitable to this climate, and we cordially invite you to come and see for yourself that we have the kind of stock that will give you satisfaction.

We lay out grounds, make landscape plans and give estimates, and plant all varieties of trees and shrubs, including large native trees, up to 15 inches in diameter with balls of earth.

HARDY HERBACEOUS PERENNIALS

The following list at 15 cents each, except where noted:

ACHILLEA, THE PEARL

Terminal heads of small very double white flowers good for cutting. Blooms in midsummer.

AGROSTEMMA CORONARIA

Broad silvery foliage and single red flowers during July and August. Easy to grow.

ANCHUSA ITALICA, THE DROPMORE VARIETY

Coarse, dark green foliage and small blue flowers like forget-me-not, on tall stems 4 to 5 feet high during July and August. 25 cents each.

ANEMONIE JAPONICA

Large, white, waxy looking single flowers, on slender straight stems, 2 feet high. A splendid cut flower for late fall. Blooms in September and October.

AQULEGIA (COLUMBINE)

One of the very hardiest of all perennials and one that makes a fine show in the garden, coming into bloom the first of June and continuing until the middle of July, in a great variety of colors, blue, purple, pink, garnet, and white. Coerulea, Rocky Mountain columbine, blue with white center. Chrysantha, longspurred golden yellow, Canadensis, Canadian, red with yellow center. We can supply them in all the separate colors.

ARABIS ALPINA (ROCK CRESS)

Small white flowers in early spring. Especially good for rock work and for low borders, 6 to 8 inches.

ARMERIA (THRIFT)

Very narrow evergreen foliage in compact tufts sending up clean wiry stems with terminal heads of globular pink flowers all summer.

BLEEDING HEART (DIELYTRA SPECTABILIS)

Too well known to need describing; beautiful foliage and heart shaped pink flowers in May and June.

BOCCONIA (PLUME POPPY)

Very handsome, deeply cut foliage with creamy white flowers during July and August. Good for a single specimen or a mixed border.

BOLTONIA ASTEROIDES (FALSE CHAMOMILE)

Grows to a height of 5 to 6 feet and is literally covered during the latter part of August and September with small white Aster like flowers. Good cut flower, splendid to plant in open spaces among shrubs.

CANTERBURY BELLS (CAMPANULA)

Very showy biennials, growing 3 feet high and hanging full of bell shaped flowers, blue, pink or white. Blooms during mid-summer, and if cut down and not allowed to go to seed will bloom a second time.

CAMPANULA, PEACH BELLS

Small narrow foliage and blue bell shaped flowers, splendid for cutting. Hardy perennial and worthy of a place in every garden.

CHRYSANTHEMUMS, HARDY VARIETIES

These brighten up the garden after all other flowers are out of bloom. A bouquet of them can be picked after there has been a light snow storm as a moderately sharp frost does not seem to hurt them. We can supply them in pink, white, lavender, yellow and bronze.

CLEMATIS SHRUB (DAVIDIANA)

Grows in bush form about 3 feet high, with blue flowers at each joint of the stem. Very fragrant and perfectly hardy. 50 cents each.

CLEMATIS RECTA

Grows similar to above, but has clusters of white star shaped flowers. 50 cents each.

COREOPSIS

Golden yellow daisy-like flowers on clean wiry stems 3 feet high. In great demand as a cut flower and easy to grow. Blooms in July and August, and if cut down will bloom again.

DAISY SHASTA, BURBANK'S IMPROVED

Without doubt this takes the lead as a garden cut flower, large, pure white flower with yellow center, on stems 2 feet high. If given rich soil and good treatment it will bloom practically all summer.

DELPHINIUM (ENGLISH LARKSPUR)

These are the pride of the garden, sending up their tall spikes of flowers in various shades of blue. Beginning to bloom early in the season and, if cut down and not allowed to go to seed, will continue to bloom throughout the entire summer. Perfectly hardy to stand the coldest winter, and will grow in almost any kind of soil, but appreciates a sunny situation, plenty of water and a liberal supply of rotted manure.

DELPHINIUM CHINENSIS (CHINESE LARKSPUR)

Does not grow so tall as the English variety, but is a most persistent bloomer and equally hardy. We can supply this in deep sky blue and pure white.

DICLAMNUS (GASS PLANT)

Evergreen fragrant foliage, and curious pink flowers in June and July, giving off in hot weather a volatile oil which ignites when a match is applied to it.

DIGITALIS (FOX GLOVE)

Broad foliage and tall spikes of flowers shaped like the finger of a glove. Pink, white, yellow or purple. Blooms in June and July. Biennial needs a light protection during our cold winters.

ECHNOPS HUMILIS CYANE (GLOBE THISTLE)

Broad foliage and showy globular flowers of pale blue, good for winter bouquets.

FERNS. Hardy in variety.

FORGET-ME-NOT (MYOSOTOS)

The true forget-me-not, creeping low on the ground and covered during spring and greater part of the summer with minute blue flowers.

FUNKIA (PLANTAIN LILY)

Luxuriant over-lapping glossy green foliage and blue flowers on stems 3 feet high. Will do equally well in the shade or sun. Just the thing to cover up the bare ground under the edge of shrubs where the grass will not grow, or a dark corner by the porch.

FUNKIA SUBCORDATE (WHITE DAY LILY)

Broad overlapping light green foliage and lily-like white flowers in whorls during August. Fragrant.

FUNKIA VARIGATA (VARIEGATED DAY LILY)

Foliage variegated and flowers light blue.

GAILLARDIA GRANDIFLORA (BLANKET FLOWER)

Will grow in any poor soil and almost entirely without water, yet responds to good treatment. Flowers similar to a daisy with crimson brown center shading out into orange at the outer tips of the petals. Good for bouquets. Blooms most of the summer.

GYPSOPHILA (BABY BREATH)

Makes a bushy plant 3 to 4 feet in diameter and 3 feet high covered with white flowers in June and July, splendid to fill in a bouquet.

HELIANTHUS (HARDY SUNFLOWER)

Makes a fine background for lower growing plants 4 to 5 feet high and very bushy. Blooms from last of June to first of October.

HEMEROCALLIS (LEMON LILY)

Sweetly fragrant lemon lilies, during June on stems 2 feet high, grass like foliage, does well in shady places and equally well in the sun.

HEMEROCALLIS FULVA (ORANGE DAY LILY)

Grows 4 to 5 feet. Flowers a neutral orange color with darker shadings. Blooms in July and August.

HIBISCUS (MALLOW)

Makes a large bush 5 to 6 feet high, covered during August and September with flowers like a single hollyhock. Makes fine single specimens. Flowers 5 to 6 inches in diameter.

Crimson Eye, white with deep crimson eye, pink, solid pink, pink.

HOLLYHOCKS

Double pink.	Double red.	Single pink.
Double white.	Double yellow.	Single white.
	Single red.	

IRIS GERMAN FLEUR-DE-LIS

Large showy flowers well above the broad grass like foliage. Blooms in June and is easy to grow requiring little attention. Fine as a border to shrubbery or in bold groups on the lawn. We have them in a variety of colors.

Deep blue.	White with blue edge.
Light blue.	Purple and gold variegated.
Lavender.	Purple and grayish yellow.
Creamy white.	Clear yellow.

JAPANESE IRIS

Blooms later than the German, and sends up tall straight stems, the flowers are very large and in a great variety of colors from pure white to dark velvety purple, but the majority of the flowers are delicately variegated with lighter or darker shadings and markings.

IRIS PUMILA (ORIENTAL IRIS)

A welcome flower in early spring, blooming as soon as the frost is out of the ground, very dwarf, only 6 inches high, covered with deep blue flowers. Of neat habit, fine for bordering walks, flower beds, etc.

LINUM PERENNE (PERENNIAL FLAX)

Grows 1½ feet high, light graceful foliage and blue flowers. Blooms all summer, fine for a rockery, and also good for the border.

LOBELIA CARDINALIS (CARDINAL FLOWER)

Tall spikes of cardinal red flowers in July and August, flower stalks 4 feet high, one of the most showy, needs some light protection during winter.

LUPINUS POLYPHYLLUS (LUPINE)

Very effective plant producing large spikes of blue flowers about 3 feet high in June, perfectly hardy and easy to grow. During dry weather it should have a liberal supply of watering late in the afternoon.

LYCHNIS CHALCEDONICA (CAMPION)

Grows 3 feet high with terminal heads of bright red flowers during July and August. Of easy culture and is worthy of a place in every hardy border.

LYCHNIS HAAGEANA

Grows only 1 foot high, with brilliant orange red flowers. Very showy in the front of the border.

MONARDA DIDYMA (OSWEGO TEA)

Grows 2 to 3 feet high and has fragrant foliage and bright scarlet flowers in July and August. Good for bouquets.

PEONIES

We have these in a great variety of colors and both single and double, pink, white, red and various other shades. 50 cents each, \$5.00 per dozen. Large selected clumps up to \$2.00 each.

HARDY PHLOX

Miss Lingard, the best early white.

Jeanne d'Arc, late pure white.

Pantheon, salmon pink.

Lothair, light rosy red with dark red eye.

R. P. Struthers, rosy carmen with scarlet red eye.

Kossuth, very dark crimson purple.

Eclairer, rosy-magenta, with large light halo.

Eugene Danzenvillier, lavender.



THE PERENNIAL GARDEN AS VIEWED FROM THE NORTHWESTERN ELEVATED ROAD

PHLOX AMOENA

Low creeping phlox, 4 inches high, covered with pink flowers in early spring. Fine for creeping over graves or rock work. Good for a low border.

PLATYCODON (JAPANESE HAIR-BELL)

These grow 2 to 3 feet high and bloom during July and August, the flowers are cupped, star-shaped and either blue or white. We have them in either color.

POLYGONUM CYMOSUM (KNOT WEED)

This makes a large bush 5 to 6 feet high. Covered in August and September with clusters of white flowers.

ORIENTAL POPPY (PAPAVER ORIENTAL)

For a gorgeous display nothing equals them. Brilliant scarlet flowers as large as a coffee cup, on stems 2 to 3 feet. Blooms in June. 25 cents each.

ICELAND POPPIES (NUDICAULE)

Yellow flowers all summer and fern-like foliage. They grow 1 foot high and begin to bloom in May.

PYRETHRUM ROSEUM

They grow 2 feet high and look like daisies, blooming in May and June and again in September. Good cut flower. Red, pink and white.

PHYSOSTEGIA (FALS DRAGON HEAD)

Grows very erect 3 to 4 feet, forming dense compact bushes, and covered with delicate pink or pure white flowers during July, August and September. A splendid cut flower and ought to be in every hardy border. We have them in both pink and white.

PINKS HARDY (CLOVE OR GRASS PINKS)

No garden is complete without a few clumps of them, the spicy clove fragrance and varied shades of color make them indispensable as a cut flower. Our grandmothers used to have them.

RUDBECKIA (GOLDEN GLOW)

Cactus Dahlia-like flowers on stems 5 to 6 feet high. A good cut flower and a strong robust grower.

RUDBECKIA NUMANN

Yellow flowers with dark brown center on stems 3 feet high. Blooms in July, August and September.

SAPONARIA (SOAP WORT)

Creeps low on the ground and is covered in early spring and summer with pink flowers. Very showy rock plant.

SCABIOSA CAUCASICA (BLUE BONNET)

Unsurpassed as a cut flower. Stems long and wiry. Flowers blue and about 2 inches in diameter. Blooms all summer if not allowed to go to seed.

SEDUM (STONE-CROP)

The first thing to make a green spot in the garden, throwing up vigorous growth as soon as the snow is off the ground. Compact bushes 2 feet high, covered with pink flowers in August and September. Will grow in either shade or sun. Good to fill up a dark corner.

SPIREA JAPONICA (MEADOW SWEET)

Grows 2 feet high and sends up large panicles of white flowers in June.

SOLIDAGO (GOLDEN ROD)

Our national flower, too well known to need further mention.

STATICE LATIFOLIA (SEA LAVENDER)

Valuable for border or rockery. Leathery foliage and stiff hard stems, growing 18 inches high and covered with panicles of minute blue flowers. Begins to bloom in July and the flowers make beautiful winter bouquets, as they dry up and retain their beauty throughout the entire winter. 25 cents each.

SWEET WILLIAM (DIANTHUS BARBATUS)

Old favorites, which remind us of childhood days. Blooming in June in a variety of colors, most of them variegated with pink, red and white. We have them in pure white, violet on white ground, and red; the finest of all it blooms all summer.

TRADESCANTIA (SPIDER WORT)

Narrow long foliage and blue flowers in June and July. We also have a dwarf pink variety.

TRITOMA (RED-HOT POKER)

Tall spikes of orange red flowers from July to September. Fine either in the mixed border or in a group on the lawn. Needs protection for the winter.

VERONICA (SPEEDWELL)

A very showy border plant with long spikes of blue flowers, which are a good cut flower.

HARDY VIOLETS

We have the Russian or English violets in a variety.

YUCCA (ADAM'S NEEDLE)

Broad sword like foliage and tall branched spikes of creamy white fragrant flowers in June and July. These make a fine show if planted out in groups in the open lawn or as single specimen plants. Perfectly hardy, needs no protection.

Clumps, 25 cents; extra large clumps, 50 cents.

THE PERENNIAL GARDEN is a good place to get your spring bedding plans. Prices of these vary according to size and variety.

ASTERS SALVIA SNAP DRAGON PANSIES
PLUMED COCKS COMB AND VERBENAS

HEDGING PLANTS

The varieties that did not freeze down during the past severe winter.

BUSH HONEYSUCKLE RUSSIAN MULBERRY
JAPANESE BERBERRY PRIVET, NORTHERN AMURENSIS

CLIMBING VINES

AKEBIA—Most beautiful foliage and clusters of chocolate colored, fragrant flowers in June. 50 cents each.

CHINESE TRUMPET VINE—A fast grower, and sticks to a solid surface like ivy. Long trumpet-shaped flowers, of a brilliant red, with yellow stripes. 35 cents each.

CHINESE MATRIMONY VINE—Rough woody branches, covered with small blue flowers in June and July and red berries during the winter. 35 cents each.

WISTARIA—A rampant grower. Sometimes climbing 20 feet in a season. Glossy foliage, hanging full of large clusters of blue flowers during May and June. Perfectly hardy. 50 cents.

AMPELOPSIS ENGELMANNI

A greatly improved variety of the Virginia Creeper with dense foliage of a glossy light-green in summer, changing to a brilliant crimson in the autumn. On a rough stone surface it will cling without support in the same way as the Japanese Ivy. 35c each.

AMPELOPSIS VEITCHI

(Boston Ivy, or Japan Ivy)

The most popular and desirable climbing plant for covering brick, stone, or wooden walls, trees, etc.; when it becomes established at the root it is of very rapid growth, and clings to the smoothest surface with the tenacity of ivy; the foliage is of a rich olive green during the summer, changing to various shades of bright crimson and scarlet in the fall. In planting Ampelopsis of all kinds, the plants, if still in a dormant condition, should be cut down to within 6 inches of the ground, so that the new growth may cling to the wall or tree from the bottom up. If planted out when 2 or 3 feet high, they would only cling from where the young growth started, leaving the base loose. 35 cents each.

AMPELOPSIS QUINQUIFOLIA

(Virginia Creeper, or American Ivy)

This well-known climber is one of the best and quickest growing varieties for covering trees, trellises, arbors, etc.; its large, deep green foliage assumes brilliant shades of yellow, crimson and scarlet in the fall.

Clematis

CLEMATIS COCCINEA—Handsome bell-shaped flowers of a bright coral-red color from June until frost. 50 cents.

CLEMATIS CRISPA—Bears an abundance of pretty bell-shaped, fragrant, lavender flowers, with white centre, from June until frost. 50 cents.

CLEMATIS JACKMANII—Large purple flowers. 50 cents each.

CLEMATIS HENRYII—Large white flowers. 50 cents each.

CLEMATIS PANICULATA

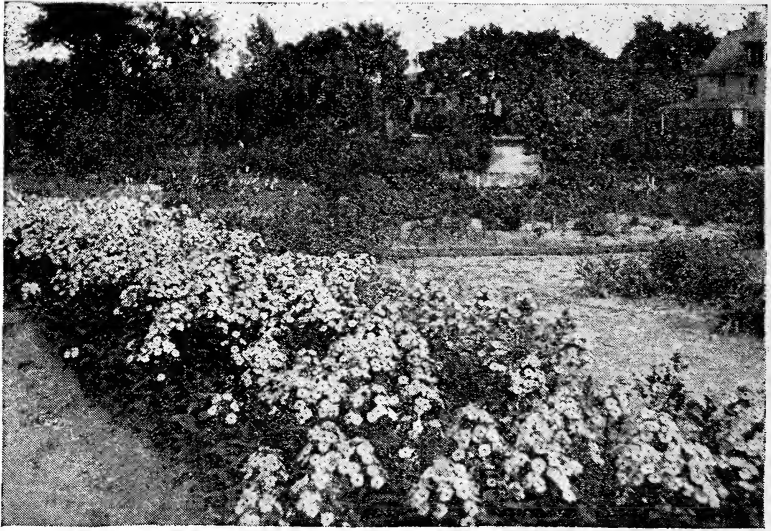
CLEMATIS PANICULATA (Sweet-scented Japan Clematis)—The flowers are of medium size, fragrant pure white, borne in immense sheets in September, when very few other vines are in bloom. One year plants. 35c each.

LONICERA (Honeysuckle)—Their vining qualities are all that can be desired, but the delightful fragrance of their flowers makes their strongest bid for favor. The Honeysuckle perfume is remembered and loved throughout the world.

TERMS

All orders of 50 or more plants will be planted without extra charge in Evanston, Rogers Park, Edgewater, Wilmette, Kenilworth and Winnetka providing the ground is prepared. All other orders will be shipped by express at purchaser's expense.

Parties out of town and unknown to us kindly send remittance with the order or satisfactory reference. Herbaceous perennials can successfully be planted any time between the first of May and the fifteenth of November.



A VIEW IN THE PERENNIAL GARDEN, SHOWING BED OF HARDY PHLOX
IN THE FOREGROUND