

## **Historic, Archive Document**

Do not assume content reflects current scientific knowledge, policies, or practices.



62. 45

1916

1916

# PLANTS

## FOR LAWN AND GARDEN PLANTING



# Holm & Olson

INCORPORATED

*The Home of Flowers*

20-22-24 West Fifth St.

Saint Paul, Minn.

Economic and Systematic Botany

Rec'd JUN 19 1916

Answered



**T**HERE IS NOTHING in the whole line of plants, trees or shrubs of greater value for ornamental effect in summer than the plants which we offer herein. No home grounds are complete without a bed or border of blooming or foliage plants. They embellish the grounds of the largest mansion and beautify the surroundings of the modest cottage. They are easily planted and grow quickly, require but little care and attention, which are repaid a thousand fold by the wealth of bloom and beauty which they produce. **The plants which we offer** have been grown in our own greenhouses for our retail customers, have been given plenty of room, have been transplanted frequently, and are strong, bushy, well rooted stock that will transplant readily to the open ground without check to their growth.

**These plants** should not be confused with the small, inferior, poorly grown plants offered by catalog seed houses, as they bear no comparison to ours.

### BOXING AND PACKING

At the prices quoted we ship all orders for \$1.00 or more without extra charge. Orders for less than \$1.00 are not solicited, as the expense of packing same is too great. Unless requested otherwise, all bedding plants will be taken out of pots to reduce the weight, and securely wrapped in paper for shipping. If customers wish to ship bedding plants in pots we can pack and ship them in light paper pots, but on account of the extra expense of packing, are obliged to charge 10% additional for packing in that manner. They will carry in paper pots better than in earthen pots, because there will be no breakage, they will pack closer, and will weigh much less. All decorative and specimen plants will be shipped in pots unless ordered otherwise.

### HOW TO SHIP

Large shipments can be safely sent by freight where the distance is not too great. We would not advise freight shipments where the time in transit is longer than three days. Freight rates are usually one-third as much as express rates. We would suggest that all decorative and specimen plants in pots be shipped by express; also the small shipments of bedding plants, amounting to \$5.00 or under.

**In ordering** please advise how you wish goods shipped; whether by express or freight. When not so advised we will use our best judgment.

All plants ready for shipment from May 10th to 15th.

### ON SUNDAYS AND HOLIDAYS

we have no mail delivery. Parties sending mail orders to reach us those days should attach "Special Delivery Stamps" to their letters and thus avoid disappointment and delay. If there is any doubt about your letter reaching us in time, you had better telegraph or telephone.

### Other Price Lists We Issue

#### "CREATING YOUR LANDSCAPE."

A beautifully illustrated descriptive catalogue of hardy trees, plants, etc.

#### "A GUIDE FOR THE PROPER SELECTION OF WEDDING FLOWERS."

A richly illustrated catalogue of wedding flowers.

#### "THE ESSENTIAL PRINCIPLES OF LAWN MAKING."

A booklet on the making, care and perpetuation of lawns.

#### MONTHLY PRICE LIST OF CUT FLOWERS.

#### SPECIAL PRICE LISTS FOR CHRISTMAS AND EASTER.

Any of the above mailed on request.

## Holm & Olson, Inc.

SAINT PAUL, MINN.

TRI-STATE PHONES:  
24 381—Night Call 4379

N. W. PHONES:  
Cedar 6083—Night { Dale 2739  
Cedar 5359

# Boxwood

These are largely used for decorating porches, piazzas or hall entrances in formal gardens, as individual specimens on the lawn, for window boxes, and in many other places where a formal effect is desired.

The bush plants are used in filling window and porch boxes, vases, urns, etc.

We offer them in several different styles adapted to different locations, as the taste of the buyer may select.

## PYRAMID SHAPE (Sold only in pairs)

Planted in red cedar tubs painted green. Price includes tubs.

Height above tub	Price Per pair
2½ feet.....	\$ 8.00
3 feet.....	10.00
3½ feet.....	12.00
4 feet.....	15.00
4½ feet.....	18.00
5 feet.....	25.00

## ROUND OR BALL HEADS (Sold only in pairs)

Planted in red cedar tubs painted green.

Price includes tubs.

Diameter of head	Price per pair
12 inches.....	\$10.00
15 inches.....	15.00
18 inches.....	18.00
21 inches.....	22.50
24 inches.....	25.00



## BUSH FORM (In pots)

Height	Each	Per doz.
18 inches.....	\$1.00	\$12.00
24 inches.....	2.00	24.00
30 inches.....	3.50	.....

If wanted in tubs add 35 cts. each for the smaller size and 50 cts. each for the larger sizes.

## CYPRESS TUBS

These are made of best quality cypress, are used for all kinds of plants, and are everlasting. \$1 to \$5 each, according to size.

## BAY TREES

For decorative purposes these tall and stately trees cannot be excelled. For porch and lawn entrances, for flanking gateways, drives, walks, and for many other locations in lawns, halls, pergolas, promenades, gardens, etc., their beauty and fitness can not be supplied by any other plant. We have them in a great many sizes. Prices on application.



Ball Head Box



Bush-form Box



The Baby  
Rambler

## Roses

The plants which we offer are extra strong, two-year old field grown and have been cut back, potted and grown cool in our greenhouses. These can be transplanted at any time, will receive no check but keep right on growing, making bud and bloom this summer. They are not to be compared with dormant plants usually quoted by nurserymen.

### RAMBLER ROSES

These are pot grown, strong, healthy plants in bud or bloom at time of shipment and will remain in bloom the entire season.

**Dorothy Perkins**—The Perfect Pink Rambler. Without question one of the finest pink climbers in existence. The flowers are a soft shell pink, flowering profusely in large clusters, very fragrant and last a long time. It is perfectly hardy, with slight protection, in many locations and is a grand rose in every particular. \$3.00 to \$5.00 each.

**Tausendschon**—The Queen of Ramblers. The most distinct rose in cultivation and the most beautiful. The individual flowers are very large, some of them measuring 3 inches across and of a most elegant and graceful form. In color it is a most delightful shade of shell pink when first opening, changing to carmine on the reverse of petals when fully expanded. These are produced in trusses of ten to fifteen flowers, each truss a bouquet in itself. \$3.00 to \$5.00 each.

**Baby Rambler**—This is the most popular dwarf rose grown. 75c, \$1.00 and \$1.50 each.

**Clothilde Soupert**—An excellent free blooming variety, unexcelled for bedding.

This produces in clusters, very double pure white, shading to silvery pink in center. 50c each, \$5.00 per dozen.

**Ellen Paulson**—A very fine dark brilliant pink, large full sweet scented blooms. Vigorous in growth. Prolific bloomer. \$1.00 and \$1.50 each.

**Jessie**—Of the same hardy growth as the Baby Rambler, foliage bright glossy green. Flowers bright cherry crimson. 75c, \$1.00 and \$1.50.

**Mrs. Cutbush**—A very prolific bloomer, light pink, resembling Dorothy Perkins. \$1.00 and \$1.50 each.



Erna Teschendorf (See description top of page 5)

**RAMBLER ROSES—Cont.**

**Erna Teschendorf**—Large, deep carmine blossoms, double. The color does not bleach out in the hot sun. 75c, \$1.00 and \$1.50.

**Excelsa**—The new crimson climber; harder than the old Crimson Rambler; the flowers hold their color better, and the plants are free from mildew. 75c to \$4.00 each.

**Orleans**—Bright red and pink, center slightly shaded white. Foliage a beautiful bright green. \$1.00 to \$1.50.

**HARY HYBRID PER-PETUALS**

Strong Pot Grown Plants 75c each, \$7.20 per dozen.

**Alfred Colomb**—Large cherry red flowers, free blooming.

**Anna de Diesbach**—Brilliant crimson, one of the hardiest and best.

**Baron de Bonstetten**—Rich dark red, passing to deep velvety maroon. Very fragrant.

**Clio**—Flesh color, shaded in the center with rosy pink. Vigorous in growth.

**Fisher Holmes**—Deep crimson, a free bloomer and fragrant.

**Frau Karl Druschki**—Long buds, pure white for bedding and cutting. The finest of this class.

**General Jacqueminot**—Brilliant crimson, large and very fine. A universal favorite.

**Madame Gabrielle Luizet**—Very large pink, resembling the La France, a pleasing fragrance.

**Magna Charta**—Bright pink suffused with crimson. Free blooming and fragrant.

**Marshall P. Wilder**—Bright crimson red, large full flowers.

**Mrs. John Laing**—Large delicate pink. The flowers borne on long stems.

**Paul Neyron**—Very large blooming, deep rose color.

**Prince Camille de Rohan**—Deep velvety crimson, large, full and handsome.

**Ulrich Bruenner**—Cherry crimson, large fine form. A very strong grower and hardy.

**HYBRID TEA VARIETIES**

Strong Pot Grown Plants 75c each, \$7.20 per dozen.

**Caroline Testout**—Large full flowers. Bright satiny rose with brighter center, free blooming and fragrant.

**Gruss an Teplitz**—Brilliant scarlet. A profuse and continuous bloomer.



Dorothy Perkins  
(See page 4)



Clothilde Soupert

**Hermosa**—Clear bright pink blossoms, grown in large clusters, very double and one of the best.

**La France**—Delicate silvery rose, changing to silvery pink, very large and full.

**Kaiserin Augusta Victoria**—Very large full flowers, creamy white and fragrant. A continuous bloomer.

**Killarney**—Flesh color, shaded white suffused with pale pink. An excellent bedding variety.

**Madame Cochet**—Deep rose pink, a strong grower and a profuse bloomer.

**Madame Jennie Gillemot**—Soft delicate yellow suffused with carmine. A most pleasing color combination.

**Mrs. Aaron Ward**—Deep coppery orange, changing to golden orange in the center, while the edges of the petals are creamy white, but exquisite form.

**Richmond**—Rich velvety crimson, borne on long stiff stems, very fragrant.

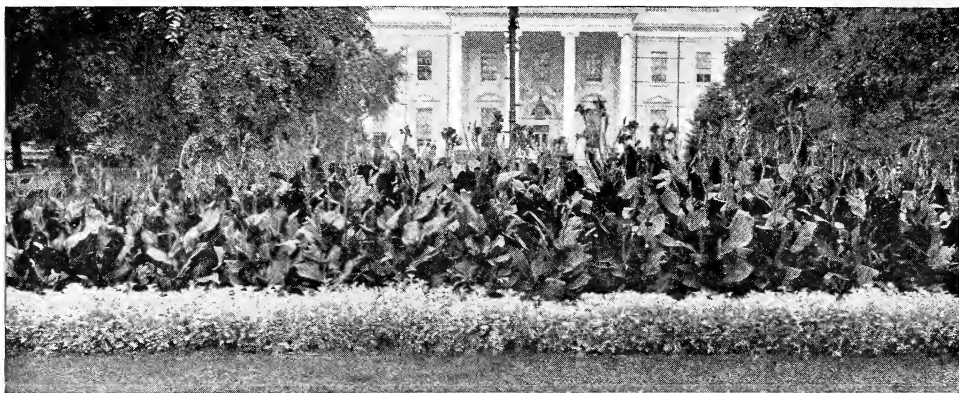
**Souvenir de Catherine Guillot**—Coppery carmine shaded with yellow.

**NEW HYBRID TEA ROSES**

These are the latest introductions in this class and are well worthy a trial by all rose lovers. Price \$1.00 each.

**Mme. Edouard Herriott**—The Daily Mail rose winner of the Gold Cup offered by the London Daily Mail at the International Horticultural Exhibition held in May, 1912. Flowers semi-double, a superb coral red shaded with yellow and bright rosy scarlet.

**George C. Waud**—A glowing vermilion with orange red suffusion. Flowers large, full, of perfect form and highly scented.



A Long Bed Bordered with Dusty Miller

## Large Flowering Cannas

These stand pre-eminently at the head of bedding plants for this climate. They succeed well in any and all positions, in any kind of soil or location and respond most liberally to good treatment, giving an abundance of foliage and a wealth of bloom not equaled by any other bedding plant. Our stock consists of the choicest and best varieties, the old true and tried sorts, and the cream of the most recent introductions. They have been grown with special care and attention and are the best and finest plants ever seen in the Northwest.

All plants grown in 4-inch pots, 12 to 18 inches in height, strong and sturdy.

For best results the beds should be spaded two feet deep and a liberal amount of well decayed manure thoroughly mixed in it. They should be watered freely at all times.

For best effect plant in large masses of one color, setting the plants 18 to 24 inches apart. To find the number of plants required for any bed, see table, page 9.

All plants have green foliage unless otherwise noted.

Price, unless otherwise noted, 30c each, \$3.00 per dozen.

### PLANTING.

Place a stake in the center of the bed and with a radius of 18 inches mark the first row of Cannas. Set the plants 18 inches apart in the row. Increase the radius by 18 inches for each successive row. Plants other than Cannas require different distances.

**Allemania**—4 to 5 feet. Orchid flowering, bright scarlet with a broad yellow border, the inside beautifully mottled and variegated.

**Austria**—4 to 5 feet. Orchid flowering, pure golden yellow.

**Beacon**—3½ to 4 feet. Rich cardinal.

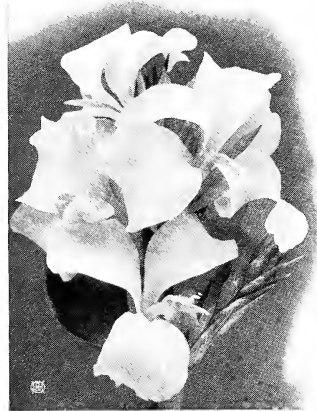
**Black Beauty**—4 to 5 feet. The leaves are enormous, of a rich, deep bronze purple and very effective. Blossoms red.

**Brilliant**—3½ to 4 feet. Pure golden yellow with two curling petals of fiery red.

**Buttercup**—3 feet. Flowers pure buttercup yellow.

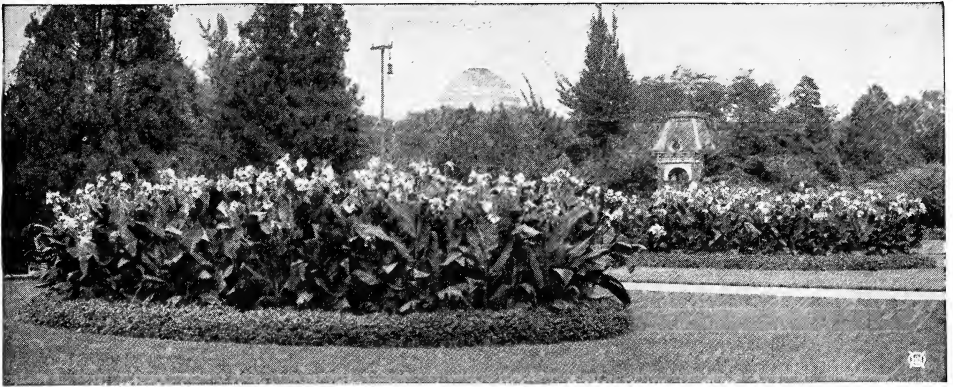
**Feuermeeer**—3½ to 4 feet. A brilliant fiery scarlet, of medium size. Exceptionally free-flowering and very effective for massing.

**Firebird**—3 to 4 feet. A remarkable variety, producing perfect flowers 7 to 8 inches in diameter of a brilliant cardinal red. The foliage is of heavy leathery texture. It requires rich soil for its best development. 50c each, \$5.00 per dozen.



Buttercup





Golden Yellow Cannas Bordered with Coleus.

## Large Flowering Cannas—Cont.

**Florence Vaughan**—3 to 4 feet. Rich golden yellow, thickly spotted bright red.

**General Merkel**—3½ to 4 feet. A brilliant scarlet suffused with orange, the base and the edge of the petals marbled golden yellow.

**Gladiator**—4 feet. Intense yellow spotted with bright red.

**Gustav Gumper**—3 to 4 feet. Ideal rich yellow bedding Canna. Fine trusses of large flowers held well above the foliage.

**Hungaria**—3 to 3½ feet. La France pink with satiny sheen. 40c each, \$4.00 dozen.

**J. D. Eisele**—3 to 3½ feet. Bright vermilion scarlet overlaid with orange.

**Meteor**—4 to 5 feet. Rich glowing crimson. A magnificent bedding variety of strong robust growth. 40c each, \$4.00 per dozen.

**Pennsylvania**—4 to 5 feet. Orchid flowering; intense vermilion scarlet overlaid with an orange sheen.

**Philadelphia**—3 feet. Brilliant glowing red, very rich and velvety.

**Prince Wied**—3 feet. Fiery, velvety blood red. One of the best.

**Venus**—3½ to 4 feet. Soft rosy pink with a pretty mottled border of creamy yellow.

**Wyoming**—5 feet. Purple foliage, orange color; true orchid shape.

**Wabash**—3½ to 4 feet. Beautiful large carmine rose blooms, freely produced; bronze foliage. Pleasing and unusual effects.

**King Humbert**—3½ to 4 feet. Bronze foliage; bright orange scarlet streaked with crimson.

**Koros**—4 feet. Bronze foliage. An attractive shade of orange scarlet streaked and dotted with carmine.

**Louis Reverchon**—4 to 4½ feet. Very dark foliage. Blooms of immense size and cochineal red color. Very effective.

**Loveliness**—3 feet. Bright ruby carmine in large trusses.

**Mad Crozy**—3½ feet. The popular golden edged scarlet.

**Maros**—3 to 3½ feet. One of the best white flowering sorts. Its flowers of creamy white are produced very freely.



General Merkel



## Geraniums

For general effect in any and all locations and under all conditions there is nothing to equal these old time favorites. They thrive best in bright sunny situations and produce an abundance of bloom throughout the entire season. Price, unless otherwise noted, 20c each; \$2.00 per dozen.

**Alphonse Ricard**—Semi double flowers, bright scarlet and a general favorite.

**Beaute Poitevine**—Semi dwarf in growth, robust and branching habit, color light salmon pink.

**Berthe de Presilly**—A most beautiful shade of silver rose pink, shading to an almost white center; large semi double flowers profusely produced.

**Dagata**—A most distinct and handsome pink. Gigantic trusses produced in greatest profusion.

**Dryden**—Single. Coral white center shading through delicate lilac to crimson on the edges. Flowers and trusses of large size.

**Helen Michell**—A recent introduction, blooms early and continuously, retaining its bright color in the hottest weather; semi-double blooms, clear scarlet, growth compact, semi-dwarf. 30c each, \$3.00 dozen.

**Jean Viaud**—Dwarf compact habit of growth. Large trusses. Bright rose pink blooms.



Mrs. E. G. Hill

**S. A. Nutt**—The standard dark red. Blossoms double. Growth compact. More largely used for bedding than any other variety.

**Ivy Leaf**—These are of drooping habit and are desirable for porch and window boxes, hanging baskets, etc. We have a fine assortment of varieties. 25c each, \$2.50 per doz.

**Nutmeg**—Of dwarf growth. Foliage has a distinct nutmeg fragrance.

**Rose**—The standard Rose scented variety. Very fragrant and popular.

**Skeleton Leaf**—Another old time favorite with highly scented foliage.

**Silver Leaf (Mme. Salleroi)**—Light silvery foliage, very effective for borders, edgings, etc. 10c each, \$1.00 per dozen, \$8.00 per hundred.

**Lafavorite**—Enormous pure white double blooms.

**Thos. Meehan**—Very deep pink; heavy double flowers; very strong grower.

**Madam Buchner**—Snow white double flowers produced in large trusses. A strong vigorous grower.

**Madam Chauveur**—Darkest pink, large full truss held well above the foliage on long stiff stems.

**Marquis de Castellane**—Flowers very large, perfect form borne in large trusses profusely produced on long rigid stems. Color beautiful soft crimson varying to tomato red.

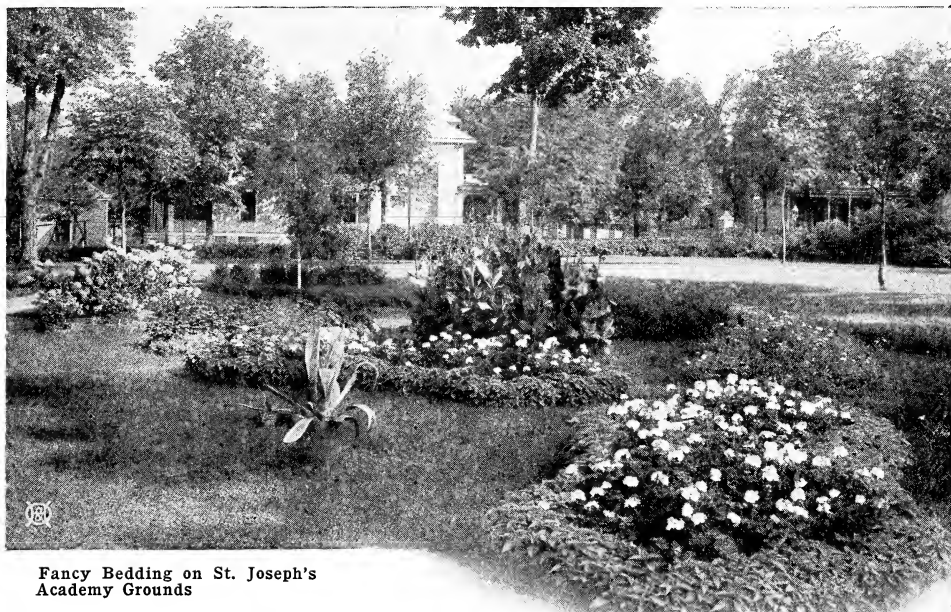
**Miss Frances Perkins**—Deep rose pink with a distinct white throat. Flowers double, borne in large trusses well above the foliage.

**Mrs. E. G. Hill**—Single blooms of immense size of soft light salmon color. Semi dwarf in growth.

**Queen of the West**—An old time favorite and one of the best. Color light vermilion, blossoms single.



Ivy Leaf Geranium



Fancy Bedding on St. Joseph's Academy Grounds

## Planting Table

The table below shows the number of plants required to fill a circular bed of the dimensions given. In planting begin outside row—where 6 inches apart, 3 inches from edge of bed; where 12 inches apart, 6 inches from edge of bed. It is customary among professionals in planting a bed to set the plants somewhat closer together in the two outer rows, giving more space between each plant towards the center of the bed.

Diameter of Bed	6 in. Apart	9 in. Apart	12 in. Apart	15 in. Apart	18 in. Apart	24 in. Apart
3 feet.....	28	12	7	..	..	..
4 feet.....	48	22	12	7	6	..
5 feet.....	80	33	20	11	8	..
6 feet.....	112	48	28	15	13	7
7 feet.....	152	65	38	21	17	9
8 feet.....	200	85	50	28	23	12
9 feet.....	256	108	64	36	28	16
10 feet.....	320	133	80	45	36	20
11 feet.....	380	161	95	54	42	24
12 feet.....	452	192	113	63	50	28

A square bed will take about the same number of plants. For an oval bed, add length and breadth and divide by 2. For example, an oval 7 feet long by 5 feet wide will require same number of plants as a circular bed 6 feet in diameter.

## General List of Bedding Plants

Varieties marked with a star (\*) are especially adapted for bedding purposes.

Those marked with two stars (\*\*) are best for borders.

Those marked with a dash (—) will be in bud and bloom at time of shipping.

**Abelia Grandiflora**—A choice small shrubby plant of graceful habit, producing throughout the entire summer and fall months white flowers tinted lilac. 25c each, \$2.50 per dozen.

\*\***Achyranthus**—Two varieties, red leaf and greenish yellow. Plant 6 inches apart. 10c each, 75c per dozen, \$6.00 per hundred.

\*\***Ageratum, New Perfection**—Flowers bright blue with purplish shading; of bushy growth. Fine for beds, also for borders. Plant 6 to 8 inches apart. 10c each, \$1.00 per dozen, \$8.00 per hundred.

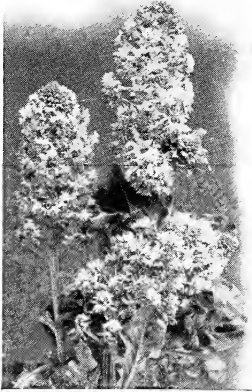
\*\***Ageratum, Dwarf Blue**—Fine for borders. Plant 6 inches apart. 10c each, \$1.00 per dozen, \$8.00 per hundred.

\*\***Ageratum, Blue Star**—Of exceedingly dwarf and even growth. The tiny bushes, not over 4 to 5 inches high, are densely covered with bright blue flowers. 10c each, \$1.00 per dozen, \$8.00 per hundred.



Ageratum New Perfection

General List of Bedding Plants—Cont.



Giant Mignonette

\*Mignonette—Giant flowering, sweetly scented. Plant 10 in. apart. 10c ea., \$1.00 dz.

**Amaranthus, Sunrise**—A mammoth foliage plant growing 3 to 4 feet high. Fine for centers of beds or in borders of tall plants. The foliage is bronzy crimson, each branch terminating in a tuft of bright scarlet-carmine leaves. Transplanted seedlings 50c per dozen, \$4.00 per hundred.

\*Asters—These have been grown from the best selected named varieties of choice seed, and are strong, transplanted seedlings, in separate colors. Plant about 12 inches apart. 25c per dozen, \$2.00 per hundred.

\*Astermums—A new race of Asters with flowers nearly as large as chrysanthemums. Strong transplanted seedlings, in separate colors. 50c per dozen, \$4.00 per hundred.

\*Begonia, Rex—These well known favorites are equally fine for bedding purposes or for house culture. We have several choice, handsome varieties. Plant 8 to 10 inches apart. 20c each, \$2.00 per dozen.

\*\*Begonia, Gloire de Chatelaine—This new and rare variety is of compact habit, strong vigorous growth, carrying its silvery pink flowers well above the foliage. The best Begonia ever introduced. Plant 6 inches apart. 15c each, \$1.50 per dozen.

\*Begonia Gracilis—A magnificent bedding variety. A profuse and continuous bloomer. Color, rose pink. 15c each, \$1.50 per dozen.

\*Begonia, Lumonisa—A beautiful compact grower with red foliage and bright scarlet flowers. Plant 6 inches apart. 10c each, \$1.00 per dozen, \$8.00 per hundred.

\*\*Begonia, Vernon—Beautiful deep rose flowers blooming profusely the entire summer. Very fine for bedding and extra nice for borders. Foliage reddish pink. Very attractive. Plant 6 inches apart. 10c each, \$1.00 per dozen, \$8.00 per hundred.

\*Begonia, Tuberous Rooted—The handsomest of all summer-flowering plants. Many of the flowers measure 3 to 5 inches across. Colors range from pure white through the delicate tints of pink, yellow and orange to the most intense scarlet and deepest crimson. Bulbs can be taken up in the fall and replanted another season. They do best in a half shaded, moist situation and are excellent for pot culture. 40c each, \$4.00 per dozen.

Double Varieties—50c each, \$5.00 per dozen.

\*\*Bellis (English Daisy)—These are the improved double flowering white, tinted pink, and are very popular. 75c per dozen, \$6.00 per hundred.

\*Browallia—A profuse blooming bedding plant covered with rich, beautiful violet-like flowers, during the entire summer and autumn months. Color, an intense blue. A free bloomer. Suitable also for house culture. Plant 6 to 8 inches apart. 10c each, \$1.00 per dozen.

\*\*Balsams—Old time favorite garden flowers producing gorgeous masses of brilliant colored double flowers in the greatest profusion. They like hot sun, rich soil and plenty of water. For best results plant 18 inches apart. Pot grown plants 75c per dozen, \$6.00 per hundred.

**Buddleia Variabilis (Butterfly Shrub)**—The flowers, resembling lilacs, are of a pleasing shade of violet mauve borne in dense spikes throughout the summer until killed by frost. 25c each, \$2.50 per dozen.

\*Caladium (Elephant's Ear)—A rapid growing, sub-tropical plant, producing immense shield shaped leaves. Used for centers of beds; also with cannas and for screening walls. Plant 18 to 24 inches apart. 35c each, \$4.00 per dozen.

(We can supply dry bulbs until May 25th at 25c each.)

\*Caladium, Fancy Leaf—The most handsome variegated leaf foliage plant. Thrives best in a semi-shady location, as the direct sun is apt to burn the leaves. Showy and handsome. Plant 10 to 12 inches apart. 50c each, \$5.00 per dozen.

\*Calendula, Orange King (Pot Marigold)—A very free flowering hardy annual; blooms freely the entire season. Color, glowing orange. Suitable also for pot culture. Plant 8 to 10 inches apart. Strong seedlings 50c per dozen, \$4.00 per hundred.

**Calliopsis (Crown of Gold)**—An abundant and continuous bloomer, producing pure golden yellow blossoms 2 to 3 inches across on long wiry stems. Transplanted seedlings 50c per dozen, \$4.00 per hundred.

\*Cannas—See General List on pages 6 and 7.

\*\*Candytuft, Snowflake—Invaluable for borders. Blooms profusely the entire season. Fine for cutting. Pure white. Plant 6 inches apart. 10c each, \$1.00 per dozen.

\*\*Candytuft, Giant Hyacinth Flowered—A grand border plant, bearing very large bold spikes of snowy white flowers. Habit sturdy and compact. 10c each, \$1.00 per dozen.

**Canterbury Bells (Cup and Saucer)**—Very effective in the garden. In separate colors—rose, pink and blue. 10c each, \$1.00 per dozen.

**General List of Bedding Plants—Cont.**

\***Carnations**—Sweet scented, choice pot grown plants in three separate colors—red, pink and white. These should bloom in the open ground from the end of July until killed by the frost. Plant 10 inches apart. 10c each, \$1.00 per dozen, \$8.00 per hundred.

\***Castor Bean (Ricinus)**—Stately, strong growing plants with very large ornamental foliage. Well adapted as center plants for groups of cannas, dahlias, etc. Two varieties, dark and light green. 25c each, \$2.50 per dozen.

\***Celosia, Plumosa (Plume Coxcomb)**—Very stately ornamental plants forming pyramidal bushes which branch out in candelabra-like shape of massive plume-like flowers, resembling ostrich feathers, which wave gracefully above the foliage. Yellow, crimson and mixed colors. 50c per dozen, \$4.00 per hundred.

\***Centaurea Cyanus (Bachelor Buttons)**—Double blue. Known also as Ragged Sailor or Corn Flower. Old time favorites that thrive in any and all locations and produce an abundance of dark blue blossoms throughout the season. Strong, transplanted seedlings. 50c per dozen, \$4.00 per hundred.

**Centaurea Americana, Star Thistle**—A splendid variety, growing 3 feet high and bearing immense thistle-like blooms of a rosy lavender color. Very showy in the mixed border and splendid for cutting. Pot grown plants 50c per dozen, \$4.00 per hundred.

**Chrysanthemum Maximum, King Edward VII.**—Moon-penny Daisy. Hardy perennial, very large flowers of purest white, perfect form and very free flowering. 10c each, \$1.00 per dozen.

**Chrysanthemum**—Golden yellow. 50c per dozen, \$4.00 per hundred.

**Chrysanthemum**—Yellow with dark brown disk. 50c per dozen, \$4.00 per hundred.

**Chrysanthemum**—Choice named varieties for fall blooming. Our list has been selected from the very best named varieties. 10c each, \$1.00 per dozen, \$8.00 per hundred.

\***Clarkia**—Popular summer annuals, easily grown and produce a great profusion of bright attractive flowers throughout the entire season. 10c each, 75c per dozen, \$6.00 per hundred.

\*\***Coleus**—Indispensable for borders, and equally fine for carpet bedding and for massing. We have them in all colors and all varieties. Plant 4 to 6 inches apart. 75c per dozen, \$6.00 per hundred.

\***Coleus, Fancy Mammoth Leaf**—The handsomest foliage plant we grow, producing immense leaves 8 to 10 inches in length, heart shape, and handsomely crimped, toothed and frilled. Their color combination is remarkably rich. Plant 8 to 10 inches apart. 10c each, \$1.00 per dozen, \$8.00 per hundred.

\***Coreopsis**—Large orange yellow flowers, prized for cutting. Perfectly hardy, blooming from mid-summer until killed by severe frost. Strong transplanted seedlings 10c each, \$1.00 per dozen.

\*\***Cosmos**—Extra early flowering, pink and white. Invaluable for cutting. Plant 15 to 18 inches apart. 10c each, \$1.00 per dozen, \$8.00 per hundred.

**Cosmos, Lady Lenox**—Flowers of extraordinary size and beauty borne on long, stiff, wiry stems. We offer these in both pink and white. 10c each, \$1.00 per dozen, \$8.00 per hundred.

\***Dianthus (Garden Pinks)**—Brilliant flowers, producing blossoms freely in mid-summer until killed by the frost. The stripes and spots make the clusters stand out distinctly. Strong, transplanted seedlings. 50c per dozen, \$4.00 per hundred.

\***Digitalis (Foxglove)**—Stately favorite for the garden and for shrubbery borders. 10c each, \$1.00 per doz.

\***Dimorphotheca (African Daisy)**—A very rare and showy novelty from South Africa, having glossy salmon-orange blossoms, with black central ring. Very choice. Strong, transplanted seedlings. 50c per dozen, \$4.00 per hundred.

**Dracaena Indivisa**—Long, narrow green leaves, desirable for center of vases, beds, window boxes, etc. \$1.00 to \$3.00 each.

**\*\*DUSTY MILLER**

75c per dozen, \$6.00 per hundred

Fine for borders, vases, hanging baskets and pots. Particularly desirable for borders of dark leaf cannas or salvia. Plant 6 inches apart.

(**Centaurea Candidissima**)—Silvery white leaf, broad and well cut.

(**Centaurea Gmynnocarpa**)—Very finely cut, silvery foliage.

(**Cineraria Maritima**)—Highly prized for its beautiful downy, silvery foliage.

\*\***Echeveria (Hen and Chickens)**—Very desirable for carpet bedding. Grayish foliage. 10c each, \$1.00 per dozen, \$8.00 per hundred.

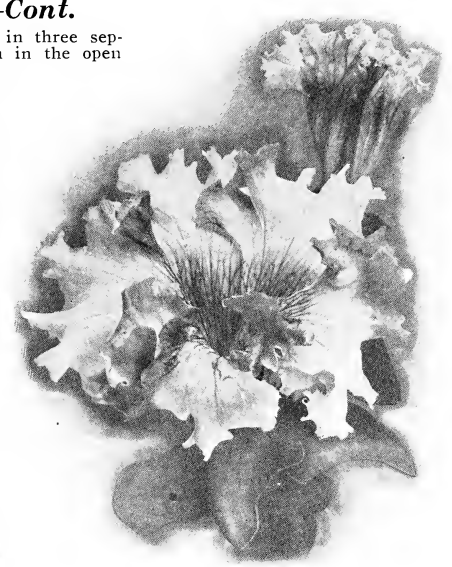
—\***Feverfew**—A bushy plant bearing a profusion of double white daisy-like flowers. Very desirable for window boxes. 30c each, \$3.00 per dozen.

\*\***Forget-Me-Nots**—True Alpine variety. Desirable for borders and beds. Highly prized for cutting at all times. 10c each, \$1.00 per dozen.

—**Fuchsias**—For window pot plants or shady spots in the garden these plants are held in high esteem. We have choice named varieties, both double and single. 35c each, \$3.50 per dozen, for first size; 20c each, \$2.00 per dozen, for second size.

\***Gaillardia (Blanket Flower)**—A showy, hardy plant with large flowers of orange and reddish brown. Strong transplanted seedlings 10c each, \$1.00 per dozen.

—\***Geraniums**—See page 8.



**Petunia Ruffled Giants**  
(See prices top of page 13)

**General List of Bedding Plants—Cont.**

**Gloxinias**—Beautiful, tuberous rooted plant, dwarf habit. Flowers trumpet shape, borne erect and well above the foliage. Exceedingly rich coloring, ranging from pure white to the deepest red. 75c each.

—\***Heliotrope**—Popular old time favorite on account of their fragrant blooms, which are produced freely throughout the entire season. Fine for beds or for pot culture. Color deepest blue. 15c each, \$1.50 per dozen.

**Hibiscus**—Well known evergreen tender shrubs, suitable for pot culture and for planting in the open ground in summer. 25c, 40c and 75c each.

\***Hollyhocks**—Single and Double. Grown from choicest seed. Strong transplanted seedlings, in separate colors, \$1.00 per dozen, \$8.00 per hundred.

—**HYDRANGEAS**

These are the best new French varieties, and are most beautiful, far surpassing the old Otaksa in form and coloring. They range from pure white through the various shades of pink to dark lavender. Hydrangeas require an abundance of water during the blooming season and should not be allowed to dry out. Prices, \$1.00, \$1.50 and \$2.00 each. In tubs for porches, \$3.00 to \$10.00 each.

**Ice Plant (Mesembryanthemum)**—Ornamental foliage covered with ice-like globules. Valuable for dry sunny situations, such as banks, rockwork, old walls, etc. 10c each, \$1.00 per dozen.

\***Impatiens Sultani (Zanzibar Balsam)**—A very pretty plant for pot culture; also for out-of-door planting in half-shaded locations. Rosy scarlet flowers with glossy green foliage. 10c each, \$1.00 per dozen.

**Hydrangea**

locations. Remarkable for its long duration of bloom. 10c each, \$1.00 per dozen.

\***Lantana**—Blooms continuously throughout the summer. Verbena-like heads of orange blooms. Tall and dwarf. 10c each, \$1.00 per dozen, \$8.00 per hundred.

**Larkspur**—Annual, mixed colors. Very effective in borders and amongst shrubs. Transplanted seedlings. 50c per dozen, \$4.00 per 100.

**Larkspur, Perennial**—Mixed colors. 10c each, 75c per dozen.

**Lemon Verbena**—An old time favorite with fragrant evergreen leaves, highly scented foliage. 15c each.

\***LILIES**

These were potted in the fall and have been grown along slowly in our greenhouses and are ready to bud and bloom. They should not be planted outside until the end of May. Price 50c each.

**Auratum (Gold Banded)**—The most beautiful of all the Lily family.

**Rubrum**—White, spotted and rayed rosy red.

\***Lobelia**—Erect grower. Forms compact little bushes about 4 to 6 inches high, covered with bright blue blooms throughout the entire season. Very desirable for borders as well as for pot culture. Plant 6 inches apart. 10c each, \$1.00 per dozen, \$8.00 per hundred.

**Lobelia, Trailing**—These are very effective in hanging baskets and window boxes, as their bright blue flowers contrast very nicely with the lighter colors and foliage. 10c each, \$1.00 per dozen, \$8.00 per hundred.

**Lonicera (French Honeysuckle)**—A very desirable trailing plant for window boxes, vases, etc. Foliage light creamy green, heavily mottled darker green. 25c each, \$3.00 per dozen.

**Lupinus**—Free flowering with long graceful spikes of rich and various colored pea-shaped flowers. Fine for borders, beds and for cutting. 50c per dozen, \$4.00 per hundred.

\***Margaret Carnations**—Flowers large size in all the shades of white, pink, crimson and striped. Strong transplanted seedlings. 50c per dozen, \$4.00 per hundred.

—\***MARGUERITES (PARIS DAISY)**

Valuable for massing in beds and for cutting. Can also be grown as pot plants. Plant 12 inches apart.

—**Boston Market**—The new yellow flowering daisy. A new distinct free flowering true yellow Marguerite. 25c each, \$2.50 per dozen.

—**Common White**—The old time favorite, with yellow center. 20c each, \$2.00 per dozen.

—**Mrs. F. Sander**—Pure white, double. Especially fine for pot culture and very choice for cutting. Plant 15 inches apart. 25c each, \$2.50 per dozen.

\***Etoile de Or**—True, large flowering yellow variety, very desirable. Plant 12 inches apart. 20c each, \$2.00 per dozen.

\***Marigold, Double African**—Large self colored flowers on tall plants. 50c per dozen, \$4.00 per hundred.

**Marigold, Dwarf French**—With beautiful colorings and markings. 50c per dozen, \$4.00 per hundred.

**Marigold, Legion of Honor**—Dwarf growing; flowers rich golden yellow marked with velvety brown. Fine for edging. 50c per dozen, \$4.00 per hundred.

**Myrtle, Common**—Sweet scented, suitable for pot culture; pretty white flowers. 30c each, \$3.00 dozen.

**Myrtle, Grave (Vinca Minor)**—A hardy evergreen trailing vine much used for cemetery work, or under trees and other places where other plants will not grow. 20c each, \$2.00 per dozen.

\***Nasturtium, Tall and Dwarf**—Scarlet orange blooms, especially fine for borders. Plant 6 to 8 inches apart. 10c each, \$1.00 per dozen, \$8.00 per hundred.

\***Nicotiana Affinis (Sweet Scented Tobacco)**—Produces an abundance of pure white flowers of delicious fragrance. If taken up in fall, cut back and potted, they will bloom all winter. 10c each, \$1.00 per dozen.

\***Nicotiana Sanderæ**—Of branching habit, producing large quantities of beautiful rosy carmine flowers from early summer till frost. 10c each, \$1.00 per dozen.

—\***Pansies**—Our plants have been grown from the choicest seeds, twice transplanted, and are in bloom at time of shipment and should continue in bloom throughout the entire season if planted promptly on arrival. Plant 6 inches apart. Separate colors—black, white, bright yellow, purple, blue, etc.—in baskets containing one dozen, 75c per basket. Mixed colors 50c per basket or \$3.50 per crate of ten baskets.

—**PELARGONIUMS**

This class of new blooming pelargoniums will become very popular as soon as their good qualities become known. They begin to bloom early and produce a great abundance of flowers throughout the entire season. First size, 20c each, \$2.00 per dozen; second size, 30c each, \$3.00 per dozen.

**Easter Greeting**—Flowers of large size, bright amaranth red, each petal marked with large black blotch.

**Eastern Star**—Bright rosy pink with dark markings similar to the Easter Greeting.

**Schwabian Maid**—Reddish carmine with dark blotch.

**Wurtembergia**—Bright carmine with distinct blotch on petal.

**General List of Bedding Plants—Cont.**

—\***Petunia, Single Mixed**—Grown from choice seed, presenting a wide range of color. 15c each, \$1.50 doz.

—\***Petunia, Ruffled Giants**—See cut, page 11. This is an extra fine strain of all large flowering French sorts. Blooms profusely throughout the entire season. 20c each, \$2.00 per dozen.

—\***Petunia, Double**—In this selection of double flowering varieties we have secured the best sorts to be had in this country. 35c each, \$3.50 per dozen.

**Petunia, Rheingold**—A large pure white flower with a yellow throat. 15c each, \$1.50 per dozen.

**Petunia, Rosy Morn**—Dwarf compact plants; blossoms produced throughout the season—a pleasing clear pink with a broad white throat. Fine for porch boxes, pots and beds. 10c each, \$1.00 per dozen.

**Petunia, Howards Star**—Regular white star-like stripes on old rose background. 10c each, \$1.00 dozen.

\***Pentstemon**—As a bedding plant this takes rank with the Petunia, Phlox, etc. It grows about 2 ft. high, every branch bearing a spike of large Gloxinia-like flowers in a wide range of colors. 15c each, \$1.50 doz.

\***Pilea (Artillery Plant)**—Dwarf growing plants with fine cut foliage, suitable for borders. 10c ea., \$1.00 doz.

\***Phlox Drummond**—Fine for beds and borders; also desirable for cut flowers. Bloom profusely throughout the entire season. Very beautiful. In separate colors. 50c per dozen, \$4.00 per hundred.

**Iceland Poppy**—Elegant free flowering plants producing an abundance of flowers throughout the summer. 10c each, \$1.00 per dozen.

**Oriental Poppy**—For gorgeous coloring and magnificent blossoms they have but few rivals in the floral world. 10c each, \$1.00 per dozen.

\***Pyrethrum Aurereum (Golden Feather)**—Very handsome yellow foliage, largely used for borders and carpet bedding. Plants grow quite stocky. 10c each, \$1.00 per dozen, \$8.00 per hundred.

Roses—See General List on pages Nos. 4 and 5.

\***Salpiglossis (Painted Lady)**—Blooms somewhat tube shape, similar to the petunia, but surpassing it in brilliancy of color. Strong transplanted seedlings. 50c per dozen, \$4.00 per hundred.

**\*SALVIA (SCARLET SAGE)**

A splendid bedding plant, producing its scarlet crimson blooms late in the season. Particularly desirable for large beds or for screening walls, etc. The varieties which we offer are the best named sorts, which after a thorough trial have proved to be meritorious.

**Bonfire**—Grows compact and bushy, about two feet in height. Very effective and gorgeous. 15c each, \$1.50 per dozen.

**Scarlet Globe**—Somewhat taller than the Bonfire and comes into bloom a little earlier. Blossoms a bright glowing scarlet. 20c each, \$2.00 per dozen.

**Zurich**—A splendid dwarf variety that comes into bloom the earliest of all. Grows 18 to 20 inches in height. 15c each, \$1.50 per dozen.

**Shasta Daisy**—Large snowy white flowers. 15c each, \$1.50 per dozen.

\***Santolina**—Small greyish leaves, particularly desirable for edgings. 75c per dozen, \$6.00 per hundred.

\***Sanvitalia**—A most excellent edging plant. Small double yellow flowers. 10c each, 75c per dozen.

**Schizanthus (Butterfly Flower)**—Neat pyramidal bushes covered with a multitude of small butterfly-like flowers of the most brilliant and striking colors. 50c per dozen, \$4.00 per hundred.

\***Scabiosa (Mourning Bride)**—This is sometimes called "Pin Cushion Plant" owing to its outer petals making a ruffle around the center, giving it the appearance of pins in a cushion. The flower stems are long and keep well in water, making it desirable for cutting; strong transplanted seedlings 50c doz., \$4.00 hundred.

**Snappdragons**—These are grown from the best seeds of the large flowering type and are far superior to the ordinary type. Pot grown plants in separate colors. 50c per dozen, \$4.00 per hundred.

\***Spider Plant (Cleome)**—A showy garden annual, producing very large heads of bright rose colored flowers with long stamens, particularly desirable for hedges or for borders of shrubberies. One of the most attractive flowers grown, attaining a height of about four feet. 75c per dozen, \$6.00 per hundred.

**Stocks**—Flowers on long stiff stalks, like small rosettes. Embracing a wide range of colors and exceedingly fragrant. Very desirable for cut flowers, 10c each, \$1.00 per dozen, \$8.00 per hundred.

\***Torenia, Fournieri**—A bushy globular plant, covered with richly colored sky-blue flowers, resembling the Snappdragon. Excellent for beds, pots or hanging baskets. Strong, transplanted seedlings. 50c per dozen, \$4.00 per hundred.

**Tradescantia (Wandering Jew)**—Valuable for hanging baskets. 15c each, \$1.50 per dozen.

\***Verbenas**—Like geraniums, these are now considered indispensable for beds, borders, etc., on the lawn. They are likewise very desirable for mounds, vases, window boxes, etc. Bloom very profusely from June until killed by hard frosts. Assorted colors. 10c each, \$1.00 per dozen, \$8.00 per hundred.

\***Verbena Venosa**—This is largely used for bedding purposes. It is a strong thrifty grower about 12 in. high and is covered from early summer until frost with bright purplish-heliotrope flowers. 10c each, \$1.00 per dozen, \$8.00 per hundred.

**Vinca Rosea (Periwinkle)**—Ornamental free blooming plants with dark laurel-like foliage and handsome pink and white flowers. 15c each, \$1.50 per dozen.

**Vinca Major**—Almost indispensable for vases, window boxes, etc. Green and variegated. 25c ea., \$3.00 doz.

**Zea Japonica**—A charming grass with leaves striped in yellow, green, rose and dark red. 50c per dozen.

\***Zinnias, Giant Flowering**—Of all the plants grown on the lawn or in the garden, none are more showy or decorative than these. The ones which we offer are grown from the best selected giant flowering varieties, producing a wide range of flowers from creamy white to the darkest crimson. Flowers are extra large, of fine form and great brilliancy of colors. Strong transplanted seedlings. 50c dozen, \$4.00 hundred.



Large Flowering Verbenas

## Window and Porch Boxes

These should be filled with blooming plants and vines that harmonize in color and produce flowers throughout the season. We generally use Alyssum Coleus, Feverfew, Geraniums, Lobelia (Trailing), Marguerites, Fuschias and Vincas. Where bloom is not essential or not wanted, Box Wood makes a very desirable plant for porch and window boxes. For this purpose the smaller sizes are used.

Where the selection is left to us, we can supply plants and vines for \$1.00 per running foot. This price does not include the box. In ordering state the width and length of the box, and we will send plenty of plants to give an immediate effect.

They should not be planted before the last of May, or until danger from frost is past.

### PLANTS FOR URNS, CEMETERY VASES, ETC.

These should consist of suitable blooming plants and trailing vines that keep well throughout the season. We supply them in various size collections at prices ranging from \$2.50 to \$10.00 each. In ordering state diameter of vase and depth. We generally use Dracena and Cannas for centers, Feverfew, Geraniums, Marguerites, Vincas, Lobelia, etc.

### CARPET BEDDING AND LETTERING

On Terraces and Slopes, along driveways and in many other locations where one's fancy may dictate, carpet bedding and lettering can be employed to good advantage.

The plants generally used for this class of work are Achyranthus, Alternantheras (red and green), and Echeveria, sometimes called "Hen and Chickens."

In Carpet Bedding care should be taken to use varieties that harmonize in colors and are of dwarf even growth. In lettering the effect is often lost by making the letters too small, or in locating them where they are not readily seen by persons walking or riding by.

### SUMMER FLOWERING BULBS

**Cinnamon Vine**—Well known hardy climber; a quick grower with beautiful glossy heart shaped leaves and sweet scented flowers. Vines run from 20 to 40 feet. 10c each, \$1.00 per dozen.

**Madeira Vine**—One of the best and most popular climbers. The leaves are small dark green and very dense. Vine of slender growth, succeeding best in a sunny sheltered position. Tubers should be taken up in fall as it is not hardy. 5c each, 50c per dozen.

**Caladium (Elephant's Ear)**—Large dormant bulbs at 25c each.

**Tuberose**—One of the best known and most easily grown summer flowering bulbs. 50c per dozen.

**Montbretia**—One of the brightest and best of summer flowering bulbs. They greatly resemble gladiolus in growth and produce beautiful spikes of star shaped flowers in various shades of orange, yellow and red. 35c per dozen, \$2.50 per hundred.



## Vegetable Plants

These have been grown with the idea of having choice, well rooted plants that will transplant readily and give entire satisfaction to our customers. We grow only the best varieties that are adapted for garden use, and we feel sure our customers will be well satisfied with the plants we send out.

**Cabbage**—Early and late varieties, transplants. 25c per dozen, \$1.50 per hundred.

**Cauliflower**—Early Snowball, transplants, 35c per dozen.

**Celery**—Ready in June. 25c per dozen, \$1.50 per hundred, \$10.00 per thousand.

**Egg Plants**—Grown in 2½-inch pots. Strong and sturdy. 50c per dozen.

**Sweet Peppers**—From 2½-inch pots. 50c per dozen.

**Tomatoes**—Strong, stocky plants grown in pots with a mass of fibrous roots. Will transplant without any check. 50c per dozen, \$4.00 per hundred.

The following choice varieties:

**Beauty**—Large red—midseason.

**Bonny Best**—Large red—second early.

**Chalk Early Jewel**—Medium red—early.

**Crimson Cushion**—Very large; fine flavor.

**Dwarf Champion**—Dwarf upright; growth early.

**Earlianna**—Extra early red.

**John Baer**—A wonderful new variety of last year's introduction. The earliest in cultivation; fruit of good size and excellent quality.

**New Globe**—Good size, smooth flesh, firm.

**Ponderosa**—Of giant size and excellent quality.

**Yellow Plum**—Fine for preserves.

Transplanted seedlings of the above varieties, except John Baer, 30c per dozen, \$2.00 per hundred.

**Mint Plants**—Very choice strain. Clumps 15c, \$1.50 per dozen.

### TOMATO OR PEONY SUPPORTS

Made of heavy galvanized wire; are adjustable to any height from 18 to 30 inches. 25c each, \$2.50 per dozen.



# Formal Beds on the Lawns

Nothing enhances the beauty of well kept grounds more than formal beds of summer blooming plants. We offer a few suggestions here simply to give an idea of what can be done in this line and to suggest other combinations and designs to suit the individual cases.



English Ivy



Vinca Variegated

## A ROUND BED 6 FEET IN DIAMETER

For this we suggest:

30 Geraniums.....	\$5.00
27 Border Plants.....	1.69
<hr/>	
We will supply these for \$6.25.	\$6.69

If so desired we can substitute 3 bronze Cannas for center in place of 6 Geraniums.  
When ordering state color of Geraniums wanted.

## A ROUND BED 8 FEET IN DIAMETER

For this we suggest:

60 Geraniums.....	\$10.00
36 Border Plants.....	2.25
<hr/>	
We will supply these for \$11.50.	\$12.25

If Cannas are wanted for center plants, we can substitute 6 Cannas for 9 Geraniums at same price.  
When ordering state colors of Geraniums wanted.

## A ROUND BED 10 FEET IN DIAMETER

For this we suggest:

72 Geraniums.....	\$12.00
6 Cannas.....	1.50
45 Border Plants.....	2.81
<hr/>	
Will supply for \$15.50.	\$16.31

When ordering state colors of Geraniums wanted.

## A ROUND BED 12 FEET IN DIAMETER

For this we suggest:

72 Cannas.....	\$18.00
54 Border Plants.....	3.38
<hr/>	
We will supply for \$20.00.	\$21.38

If Geraniums are used, it will require 150 at a cost of \$24.00, making the total cost of the bed \$27.38, which we will supply for \$25.50. A 12-foot bed of solid Salvia without border will take 6 dozen plants, costing \$9.00. If a border is used it will take 4½ dozen Salvia and 4½ dozen border plants, which we will supply for \$10.00.

## A FIVE POINTED STAR—EIGHT FEET

1 Dracena for center.....	\$0.75
250 Coleus.....	15.00
<hr/>	
Will supply for \$15.00.	\$15.75

If alternantheras are used, it will require about 400 plants at a total cost of \$16.00.

# Tender Climbing and Trailing Vines

**Cobea Scandens**—A very rapid grower, attaining a height of 30 to 50 feet during the season. Large bell shape blooms of purplish-lilac color. Valuable for covering trellises, arbors, etc. 20c each, \$2.00 per dozen.

**Cardinal Climber**—Most beautiful and brilliant annual climber ever introduced. Strong rapid grower, attaining a height of 30 feet or more in one season if planted early. Beautiful fern-like foliage literally covered with cardinal red flowers from mid-summer until the frost. The plants which we offer are strong, well rooted, that will not be checked when transplanted. They should not be put out until about the first of June or until the weather is warm or settled, when they will make a wonderful growth. 25c each, \$2.50 per dozen.

**English Ivy**—A beautiful evergreen vine, desirable for hanging baskets, window boxes, or for indoor culture on trellises.

First size 25c each, \$3.00 per dozen.  
Extra strong 75c to \$1.50 each.

**German Ivy**—Also desirable for hanging baskets, window boxes as well as for indoor culture. The leaves are lighter and of more rapid growth than the English Ivy. 20c each, \$2.00 per dozen.

**Lonicera**—French Honeysuckle. 25c each.

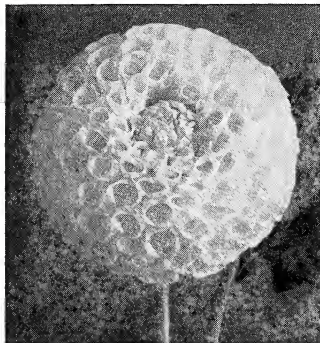
**Minneapolis Vine**—One of the most rapid grower climbers we have seen, with small, round, rather heavy foliage and minute star-like blossoms. Particularly desirable for porches, trellises, etc., and makes a wonderful growth during the hot weather. 20c each, \$2.00 per dozen.

**Moon Flower**—Foliage large and very dense, flowers of large size, opening when the sun goes down and closing when it rises. We have them in blue, pink and white, separate colors. They are most attractive for screening porches, arbors, etc.; very desirable for that purpose. Strong plants 25c each, \$2.50 per dozen.

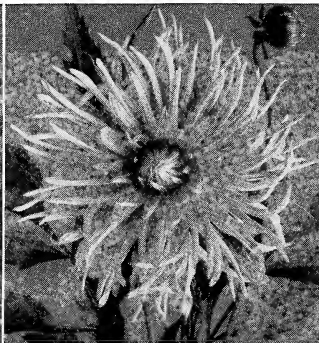
**Nasturtium, Tall**—10c each, \$1.00 per dozen.

**Vinca Major**—Fine for window boxes and hanging baskets. 25c each, \$3.00 per dozen.

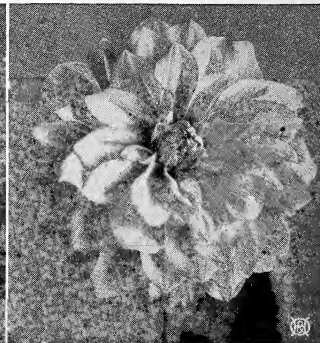
**Wandering Jew**—For boxes and baskets. 15c each, \$1.50 per dozen.



Show Dahlia



Cactus Dahlia



Decorative Dahlia

## Dahlias

By careful selection and several years of experimenting, we offer our customers this collection, believing they combine all the best qualities found in these ever popular flowers as well as the best colors. Our list is not as extensive as some, but is intended to embrace enough good varieties to satisfy the tastes of the average amateur who cultivates them for the pleasure there is in it.

The plants we offer are all well rooted, pot grown, and if planted out at the beginning of summer will produce an abundance of flowers during the season. In this climate we do not recommend planting Dahlias before the end of May or fore part of June, after all danger from frost and cold winds is past.

### CACTUS VARIETIES

Price, unless otherwise noted, 30c each, \$3.00 per dozen.

**Aurora**—A beautiful, reddish apricot suffused with flesh pink, shading lighter to the tips.

**Countess of Lonsdale**—A peculiar blending of salmon pink and amber. Blooms very freely under all conditions.

**Dainty**—Lemon yellow at center, daintily tipped, sweetest rose pink.

**Flora**—An ideal white, large flower produced on stout, stiff stems.

**Floradora**—A remarkably free flowering, bright blood red.

**Flamingo**—Vermilion-crimson.

**Forbes Robertson**—Beautiful reddish orange. Flowers have long, straight, star-shaped petals and in addition a profusion of smaller, narrow thread-like petals intermingling with the main florets.

**Kalif**—A mammoth pure scarlet flower, specimens measuring over 9 inches in diameter. 75c each.

**Kreimhilde**—A brilliant pink gradually shading to white at the center.

**Lady Colin Campbell**—Golden yellow at base of florets, tipped with deep orange.

**Mars**—Deep orange-scarlet; free flowering; fine form.

**Mme. Henri Cayeux**—One of the newest French varieties. Flowers of the largest size, incurving gracefully, forming a bloom of magnificent form. The color is most charming. A beautiful rich pink, daintily tipped white. 35c each, \$3.50 per dozen.

**Marguerite Bouchon**—One of the most beautiful Cactus Dahlias ever introduced. It is absolutely perfect in form, color a charming shade of brilliant yet soft rose with a very large white center and distinctly defined white tips. 50c each, \$5.00 per dozen.

**Master Carle**—A splendid variety. Very large, bright saffron yellow.

**Mrs. H. J. Jones**—Very large, perfect rich bright scarlet with cream colored edge.

**Mrs. Henry R. Wirth**—A splendid companion to Countess of Lonsdale and the earliest cactus variety to bloom. Blossoms fiery scarlet, produced continuously until the end of the season.

**Rev. T. H. Jamieson**—Yellow shading to lilac.

**Rheinkoenig**—Flowers are pure white, of splendid form, over five inches in diameter, borne on long,

stiff stems and are of great substance, lasting well when cut. 40c each, \$4.00 per dozen.

**Spitfire**—Bright scarlet, reverse of petals deep orange, very free flowering.

**Strahlen Krone**—Intense cardinal red—rich and glowing.

**Wacht am Rhein**—A most gracefully formed flower of large size, on splendid stems for cutting, and an ideal soft, rosy-pink color, suffused with white.

**Success**—A beautiful incurved pure yellow with long twisted petals.

**Sunset**—Yellow at base, shading to bright apricot.

### DECORATIVE VARIETIES

The blossoms of the Decorative Dahlias are large, flat but beautiful in shape and full to the center. They are especially fine for cut flower purposes. Price, unless otherwise noted, 25c each, \$2.50 per dozen.

**Clifford W. Bruton**—A fine bright yellow.

**Hortulanus Fiet**—A colossal flowered variety from Holland. Blooms over eight inches in diameter, of the most delicate shade of shrimp pink, the tip of each petal barely touched with gold. 75c each.

**Jack Rose**—Brilliant crimson red, similar in color to the "Jack" Rose. Perfect for cutting.

**Kaiserin Augusta Victoria**—The first of the decorative sorts to come into flower. Blooms of good form, medium size and purest white. 35c each, \$3.50 per dozen.

**Minnie Burgie**—A rich luminous dark scarlet, on long stiff stems. Splendid both for cutting and garden decoration. A very free flowering sort. 50c each, \$5.00 dozen.

**Mount Blanc**—An early, free, continuous flowering creamy white on good stiff stems.

**Princess Juliana**—A splendid new variety from Holland. It is a perfect exhibition flower, ideal for garden decorations and unsurpassed for cutting. Purest white. 35c each, \$3.50 per dozen.

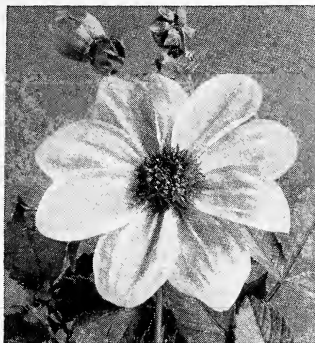
**Sylvia**—Soft, pleasing mauve pink gradually changing to white in the center.

**Souv. de Gustave Doazon**—Pure red blossoms of largest size. Of free growth and remarkably profuse flowering.

**Wm. Agnew**—Rich, dazzling carmine red, a standard cut flower variety.

**Yellow Colosse**—Flowers of very large size, perfect form and pure, primrose yellow.

**Prince of Orange**—A novel and pleasing combination of orange and yellow shades.



Single Flowering 20th Century Type



Pompon



Peony Flowered

## Dahlias—Cont.

### NEW CENTURY SINGLE FLOWERING SORTS

These are all of free branching habit, flowering early, profusely and continuously and are most excellent for cutting. Price, unless otherwise noted, 15c each, \$1.50 per dozen.

**Fringed Century**—Intense rosy crimson with lighter markings, fringed or cleft petals.

**Scarlet Century**—Brilliant scarlet, golden disc.

**Twentieth Century**—Early in the season an intense rosy crimson shading gradually to almost white on the edges. As the season advances the flowers become lighter changing to almost pure white suffused with soft pink.

### PAEONY FLOWERED VARIETIES

Price, unless otherwise noted, 25c each, \$2.50 dozen.

**Bertha Von Suttner**—A very beautiful shade of salmon-pink, delicately overlaid yellow.

**Germania**—Bright, glowing crimson. A very artistic flower. 35c each, \$3.50 per dozen.

**Hortulanus Budde**—Very free flowering. Rich, rosy-scarlet.

**King Leopold**—A dainty lemon yellow, shading lighter at the edges. Well formed flowers produced on long wiry stems. 35c each, \$3.50 per dozen.

**Merry Widow**—Plants dwarf and bushy, literally covered with brilliant deep scarlet blossoms throughout the season.

**Queen Wilhelmina**—The largest and finest of the pure white sorts. An immense fluffy flower of pure glistening white, showing its beautiful golden yellow center very prominently.

**Snow Queen**—A very novel white variety. Blossoms very unique, petals being curiously quilled and twisted and very narrow.

**Sunrise**—An exquisite, clear lively pink, with golden yellow center.

**White Swan**—Good, free flowering white.

### SHOW VARIETIES

These are the old fashioned densely double varieties, free, early and continuous bloomers and splendid for cutting. Price, unless otherwise noted, 25c each, \$2.50 per dozen.

**A. D. Livoni**—A splendid clear pink, beautifully quilled, of perfect form and very free flowering.

**Dorothy Peacock**—Large, perfect shaped flowers of a bright seashell pink color; very early, free and continuous bloomer. 50c each, \$5.00 per dozen.

**Dreers White**—A pure glistening white of large size and ideal form. 50c each, \$5.00 per dozen.

**Dreers Yellow**—Pure yellow, largest size, borne on strong stems. An ideal flower.

**Geisha**—A rich and effective combination of scarlet and gold. Flowers original in form, consisting of

peculiar twisted and curled petals. 50c each, \$5.00 per dozen.

**Fascination**—Rose pink—sometimes striped white. Extra fine.

**Grand Duke Alexis**—Large, massive flowers, ivory white with a faint tinge of rose at the ends of the petals.

**Merlin**—A beautiful orange scarlet. Free flowering and good for cut flower purposes.

**Norma**—Flowers large, perfectly quilled, of a most exquisite shade of live bright orange.

**Queen Victoria**—Bright canary yellow.

**Red Hussar**—Pure cardinal red.

**Rose**—Blossom very large of an exceptionally deep rose shade; unusually full and round.

**Storm King**—A reliable free flowering pure white variety, 50c each, \$5.00 per dozen.

**W. W. Rawson**—An exceptionally fine shaped large double flower, pure white, delicately overlaid with mauve.

### POMPON VARIETIES

The flowers are small, compact and full to the center, produced on long wiry stems. Price, unless otherwise noted, 15c each, \$1.50 per dozen.

**Ariel**—Orange buff.

**Bobby**—Plum color—one of the best.

**Fairy Queen**—Sulphur yellow, edged pink.

**Fascination**—Pink and lavender, blotched white.

**Hilda Searl**—Orange scarlet—fine.

**Madeline**—Pale primrose edged with rose purple.

**Prince Charming**—Cream, very heavily tipped purple.

**Vivid**—Bright scarlet—fine.

### COLLARETTES

A wonderful new type from France. Flowers single with an additional row of short petals around the disc forming a frill or collar usually of a different color from the rest of the flower. Price, unless otherwise noted, 20c each, \$2.00 per dozen.

**Directeur Rene Gerard**—Petals of a beautiful violet purple, shaded and tipped white—collarette white.

**Exposition de Lyon**—Petals a bright garnet tipped yellow. Collar white, daintily suffused with lavender and crimson.

**Mme. E. Poirier**—A beautiful deep purple suffused lighter. Collar a waxy white.

**Maurice Rivorie**—A gorgeous rich crimson, with pure white collar, arranged around a rich golden yellow center.

**Pres. Viger**—Reddish carmine with a collar of pure white.

**Souvenir de Chabanne**—Petals lemon yellow with coral red markings. Collar lemon yellow tipped white.



Flowers From Our Gold Medal Collection No. 2

## Gladioli

The Gladiolus is a flower of easy culture and does well in any soil, but should be planted in full exposure to the sun. Deep planting is to be preferred, as the new bulbs, which throw the flower spikes, form on the top of the old one, and if not planted at a depth of 4 to 6 inches, the new bulb is too near the surface, so that the flower spike will easily drop over and break down. It does well planted in the hardy border, in clumps in front of shrubbery, or massed in beds. Many of the best varieties produce small bulbs—the larger bulbs do not always give the best results. It is essential that the bulb should be of blooming age rather than of large size. Our list of varieties of this popular flower includes the cream of old time tried sorts, as well as the meritorious sorts of recent introduction. After a very careful selection of all the varieties on the market, we list these, feeling confident this is the best selection for amateur growers that could be had.

**America**—Too much cannot be said of this beautiful dainty pink. The flowers are of immense size and of wax-like texture, borne on a very strong spike. 40c per dozen, \$2.50 per hundred.

**Attraction**—One of the most pleasing of the throat-ed varieties. Deep rose with white throat. 75c per dozen, \$5.00 per hundred.

**Augusta**—A beautiful white variety with lavender anthers. Strong spike often having two or three branches. 40c per dozen, \$2.50 per hundred.

**Baron Hulot**—One of the finest blue Gladioli. A deep violet blue with well-opened flowers. 75c per dozen, \$5.00 per hundred.

**Brenchleyensis**—Brilliant vermilion-scarlet. Though inexpensive, one of the finest for the garden and for massing, 35c per dozen, \$2.50 per hundred.

**Canary Bird**—Clear canary yellow. 15c each, \$1.25 per dozen.

**Chicago White**—White with lavender marking in throat. 10c each, 75c per dozen.

**Dawn**—Beautiful shell pink. 25c each, \$2.50 dozen.

**Electra**—Orange red. A beautiful color. Flowers large and spike tall. An exceptionally fine variety. 15c each, \$1.50 per dozen.

**Europa**—Pure snow-white, large spikes. Considered by many to be the best white introduced. 30c each, \$3.00 per dozen.

**Empress of India**—A rich dark red—a rare and beautiful color. One of the best of recent novelties. Certificates of merit from Haarlem and London in 1912. 30c each, \$3.00 per dozen.

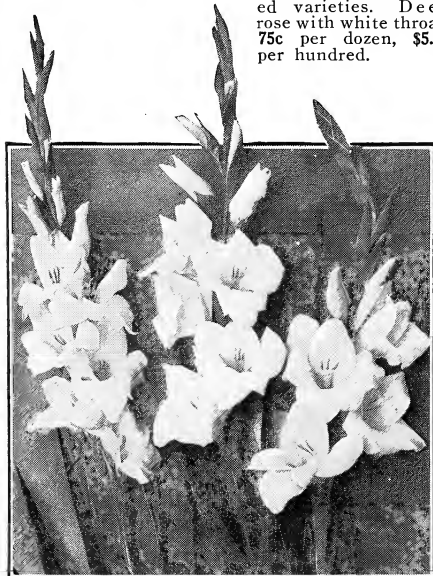
**Glory of Holland**—A new white with slight tinting of pale pink and anthers of delicate lavender. Blossoms large and gracefully set on tall spike. One of the finest whites. 20c each, \$2.00 per dozen.

**Halley**—A most attractive early-blooming sort with large well-opened flowers of delicate salmon pink. Flowers well placed on long graceful spike. Similar in type to the popular Mrs. Frances King. 75c per dozen, \$5.00 per hundred.

**Jessie**—Rich velvety red. 10c each, 75c per dozen.

**Klondyke**—Clear primrose yellow with crimson blotch. Flowers round on a strong spike. Early bloomer and of dwarf habit. 75c dozen, \$5.00 hundred.

**Liebesfeuer**—A new red of Brenchleyensis shade, but much larger flower, with soft salmon blotch in throat. A great novelty. 50c each, \$5.00 per dozen.



America—the Best Light Pink



**Our Rainbow Collection**

**Lily Lehman**—No white Gladiolus equals this variety. A lily in both name and form, of a pure glistening white, with just a tint of pink on tips of petals. Matchless in form and coloring. 15c each, \$1.25 per dozen.

**Minnesota**—Fine salmon pink, large blossom, early. 10c each, \$1.00 per dozen.

**Mrs. Frances King**—(The original.) A most beautiful "Besnard shade" flame pink. Immense flowers on spike growing four feet high with from eighteen to twenty flowers, six to eight open at one time. A magnificent variety. 40c per dozen, \$2.50 per hundred.

**Niagara**—A light crocus yellow, throat shaded deeper. Large open flowers on a strong spike. For color, texture and keeping qualities this Gladiolus is one of the very best. 15c each, \$1.25 per dozen.

**Panama**—The new pink that has created such a sensation on account of its large wide open wax-like flowers of glowing mauve rose. 15c each, \$1.50 dozen.

**Peace**—Very large white flowers with pale violet feathering on lower petals. 15c each, \$1.50 per dozen.

**Pink Beauty**—Rose pink with dark crimson blotch. 50c per dozen, \$4.00 per hundred.

**Princes**—(Known as the Thousand Dollar Gladiolus.) Amaryllis-like flowers of a rich dark scarlet marked with white on the lower petals. The foliage of a beautiful dark green and very attractive. \$1.00 per dozen, \$6.00 per hundred.

**Queen of the Yellows**—A recent introduction from Holland; large clear yellow. The best of its color. 20c each, \$2.00 per dozen.

**Wm. Falconer**—A grand pink variety with extra large blossoms. Very large spikes. 50c per dozen, \$2.50 per hundred.

**Willy Wigman**—Large, wide open flower. Bloom of a beautiful blush tint, with long bright tulip blotch on lower petals. One of the most attractive Gladioli on the market. Spike of very graceful habit, and the effect of the crimson on the cream petals is most pleasing. 15c each, \$1.50 per dozen.

**MIXTURES**

These mixtures contain all the best named varieties as well as many of the new hybrids, and give the most striking results.

**Gold Medal Mixture No. 1**—All the rich shades of scarlet, blood-red, amaranth and similar shades. 50c per dozen, \$4.00 per hundred.

**Gold Medal Mixture No. 2**—Contains all the delicate shades of pink, rose, etc. Especially good for cutting. 50c per dozen, \$4.00 per hundred.

**Gold Medal Mixture No. 3**—This contains all the different shades of Numbers 1 and 2, as well as blue, heliotrope, lilac and similar tints. 50c per dozen, \$4.00 per hundred.

**Club Mixture**—Contains good varieties of all colors. Will give general satisfaction. 35c per dozen, \$2.00 per hundred.

**EXTRA SPECIAL COLLECTION**

This collection includes twelve varieties of recent introduction and great merit, Empress of India, Europa, Glory of Holland, Lily Lehman, Panama, Niagara, Willy Wigman, and other choice sorts. Some of these have never been offered before and if bought separately would cost at least \$3.00. Our price for this collection of twelve varieties, \$1.00.

**RAINBOW COLLECTION**

For those who do not care for as rare varieties as the Special Collection, we have put up this collection, which consists of every color and shade in Gladiolus, including the following choice varieties: America, Baron Hulot, Halley, Bronze King, Queen of the Yellows, etc. This collection, if bought separately, would cost at least \$1.00. Our price, 60c.



Halley Willy Wigman Lily Lehman

## Decorative Plants

Our assortment of these is one of the largest in the country. Our annual exhibits at the State Fair are the delight of thousands who see them, and give some idea of the extent and variety of our stock. Private parties who contemplate stocking their conservatories should confer with us, as we have many rare specimens. We list only a few of the best and hardiest varieties for general cultivation.

### ARAUCARIA (NORFOLK PINE)

Very beautiful, tender evergreens for house culture. Our stock has been well grown and is clean and healthy. Prices \$1.50, \$2.00 and \$3.00 each.

### ASPARAGUS PLUMOSUS (LACE FERN)

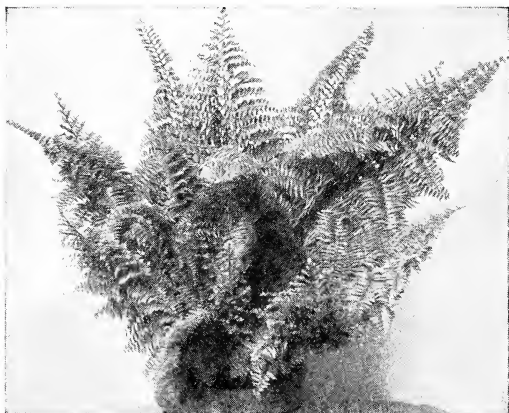
Well known and extensively grown for house culture, for which it is admirably suited. Prices 75c and \$1.00 each.

### ASPARAGUS SPRENGERI

These are stocky, bushy plants of a drooping habit and particularly desirable for hanging baskets. 50c and 75c each.



Araucaria



Whitmani Fern

### ASSORTED TABLE FERNS

These are grown for filling fern dishes and are short, stocky plants in assorted varieties. We have them in several sizes:

Small, 15c each, \$1.50 per dozen.

Medium, 25c each, \$2.50 per dozen.

Specimen plants in 5-inch pots, 50c and 75c each.

### BOSTON FERNS

Our stock of these old time favorites is very choice and we are sure will give entire satisfaction. The plants are well developed, clean and healthy and should thrive nicely in private homes. Prices \$1.50, \$2.00 and \$3.00 each.

**Bird's Nest Fern**—A very interesting variety with straight, upright foliage. 75c to \$3.00 each.

**Whitmani Fern** (Ostrich Plume Fern). One of the finest and best of the Boston type. Fronds are finely cut, resembling a plume; of very easy culture. \$2.00 and \$3.00 each.



Asparagus Sprengeri



Table Fern

# Palms

Our stock of these is very large and complete, but we are listing only a few of the standard varieties that are of the easiest cultivation and will do well with ordinary care and attention. We have many other choice and rare varieties. Will be pleased to send prices and descriptions on application.

**Cocos**—The small sizes in these are used chiefly for centers of fern dishes. They are very hardy and last a long time. The larger sizes make most beautiful specimen plants and are of easy growth and culture. Prices 35c, 75c and \$3.00 each.

**Kentia Belmoreana**—This is a standard variety for house culture, having long graceful drooping leaves. We have a very fine stock of this grand variety, which is clean and healthy.

Prices: Each  
 First size.....\$1.00  
 Second size..... 2.50  
 Third size..... 5.00  
 Larger plants.....\$10.00 to 25.00

**Phoenix Roebellini**—This is the latest introduction in palms, is the hardiest and handsomest variety in cultivation. It is unsurpassed for grace and beauty and is very decorative either for home or for the office. We have the largest and finest stock in America and offer it at extremely low prices.

Prices: Each  
 Small plants.....\$1.50  
 Medium plants.....\$6.00 and \$8.00  
 Larger plants.....\$15.00 to \$25.00

The one shown in this picture is a \$25.00 plant and stands about 35 inches high above the tub.

**Adiantum Croweanum or Maiden Hair Fern**—Thin, wiry stems; broad, green foliage. 25c to \$3.00 each.

**Crested Holly Fern**—One of the most satisfactory for house culture. Its foliage is rich, glossy dark green, wavy on the edges and deeply cut. 50c to \$1.00 each.



Phoenix Roebellini



Boston Fern



Kentia Palm

**Rubber Plant**—The well known and appreciated "rubber." Of easy culture, with clean, glossy foliage at all times. 75c to \$3.00 each.

**Hanging Baskets**—Wire frames lined with moss and filled with appropriate flowering plants and vines. Suitable for porches and for outdoor use. \$2.00, \$2.50 and \$3.00 each.

**Fern Baskets**, for porch or indoor use; nicely filled with Boston ferns, at \$2.50 to \$10.00 each.

## RUSTIC HANGING BASKETS

12 inch.....	\$1.50	Filled.....	\$3.50
16 inch.....	2.50	Filled.....	6.00
20 inch.....	3.50	Filled.....	8.00

Chains attached for hanging.

## RUSTIC VASES

20 in. diam., 40 in. high...\$7 Filled...\$12

## Galloway Terra-Cotta

The Galloway Potteries have the reputation of making the best product for garden material, and their designs are the very latest the market affords. We are their representatives in the Northwest, and we will be pleased to send a fully illustrated catalogue on request.



No. 583



No. 376

		Height inches	Width inches	Breadth inches	Each	
No. 376.	Fruit-Border Vase.....	11	18	10	\$5.00	
No. 378.	Fruit-Border Vase.....	15	24	13	16.00	
No. 583.	Lanti Vase.....	21	31	16½	27.00	
No. 557.	Flower-Box.....	9	10	**34	12.00	
No. 191.	Palmetto Bench.....	Top, 17x54			19	30.00
No. 547.	Bird Font.....	36	27	*12¾	35.00	
No. 571.	Bird Font.....	15	24	*12¾	13.50	
No. 508.	Gazing Globe.....	52		12	45.00	

\*Base. \*\*Length.

### WICKER WINDOW OR PORCH BOXES No. 83

They are very strong and durable, zinc-lined, and with proper care will last for years. They are of ample depth for all practical purposes and are much neater and more useful than wooden boxes.

		Without Handles	With Handles
24-inch size.	Each.....	\$3.50	\$4.00
30-inch size.	Each.....	4.50	5.00
36-inch size.	Each.....	6.50	7.00
42-inch size.	Each.....	7.50	8.00
48-inch size.	Each.....	8.50	9.00
60-inch size.	Each.....	10.50	11.00

### GREEN WICKER PORCH STANDS No. 85

24 inches long, height 30 inches.	Each.....	\$8.00
30 inches long, height 30 inches.	Each.....	9.50
36 inches long, height 30 inches.	Each.....	11.00

### POTTERY PORCH POTS

10-inch.....	\$1.50	16-inch.....	\$2.50
12-inch.....	2.00	20-inch.....	3.00

### FIBRE SAUCERS FOR PLANTS

	6-in.	8-in.	9-in.	10-in.	11-in.
Each.....	20c	22c	24c	26c	30c

### LAWN ROLLERS

Rolling will eliminate 50 per cent of your lawn troubles. Rolling will eradicate weeds, keep grass from drying and promote even growth.

**No. 10 Water-Weighted, Dunham Roller Bearing**—This roller is weighted with water to the desired weight. The roller bearings make it extremely easy running. With counterbalancing weights attached to handle. This is absolutely the most practical roller on the market.

	Diam. ins.	Length ins.	Weight lbs.	Weight Filled with		Each
				Water lbs.	Sand lbs.	
No. 10, HW2.....	14	20	120	260	360	\$12.50
No. 10, HW 4.....	18	24	135	360	560	14.50
No. 10, HW 6.....	24	24	185	560	860	18.50

Wicker Porch Box, with Ferns—No. 85

### LAWN HOSE

**No. 44, Electric**—The best non-kinkable; ¾-inch. The construction of this hose is entirely different from that of any other. There is made a seamless tube of high grade rubber, over which is braided one or more jackets of tightly twisted and cabled cotton yarn. Between each fabric and on the outside is a layer of rubber. The hose is then vulcanized in a mold under heavy pressure, which drives



Wicker Porch Box No. 83



**LAWN HOSE—Cont.**

the rubber through the cotton yarn, from tube to cover, making a homogeneous body. We furnish Clincher Couplings with all lengths of 25 feet and over, without extra charge.

- 25 feet, with couplings..... \$5.50
- 50 feet, with couplings..... 10.00
- 100 feet, with couplings..... 20.00

**Kineo**—A good grade of hose for all uses; ¾-inch. We supply it with Clincher Couplings.

- 50 feet, with couplings..... \$7.50
- 100 feet, with couplings..... 15.00

We also furnish other qualities of ¾-inch and ½-inch hose, and will be pleased to quote prices.

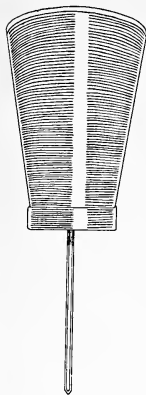
**CEMETERY VASES**

**No. 160—Glass**

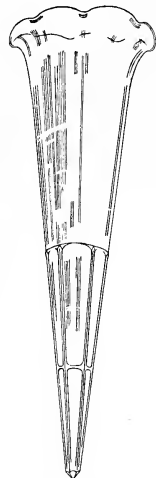
- 10 inches long.....\$0.25    11 inches long.....\$0.35

**No. 87—Metal, Painted Green**

- 10 inches long.....\$0.30    11 inches long.....\$0.40



No. 87



No. 160

**IDEAL VACUUM PORCH BOXES—No. 91**

An ideal self-watering porch and window box. This box is constructed on new principles, having double walls with an air space between them. This keeps the inner wall cool so the soil will not dry out and bake. It makes an ideal box for outside in summer and inside in winter. On account of its construction you cannot over-water, and surplus water will not run out on the floor. Moreover, it is self-watering and only needs attention once or twice a week. All boxes are 8¼ inches wide, 6½ inches deep.

- 24 inches long.....\$1.75    42 inches long.....\$2.60
- 30 inches long..... 2.00    48 inches long..... 3.00
- 36 inches long..... 2.25    60 inches long..... 4.50

If these are wanted filled, we will fill them nicely with appropriate flowering plants and vines at \$1.00 per foot.

**LABEL YOUR SEEDS AND PLANTS**

- |   |  |          |         |
|---|--|----------|---------|
| 8 inch smooth wooden labels.....          |  | Per Doz. | Per 100 |
| 3½ inch copper wired wooden labels.....   |  | \$0.15   | \$1.00  |
| 3½ inch indestructible copper labels..... |  | .25      | 2.00    |

**GARDEN STAKES**

**Light Bamboo Canes Dyed Green—Very Strong**

- |                |        |        |                |        |        |
|----------------|--------|--------|----------------|--------|--------|
| Length         | Doz.   | 100    | Length         | Doz.   | 100    |
| 12 inches..... | \$0.15 | \$0.75 | 24 inches..... | \$0.20 | \$1.15 |
| 18 inches..... | .18    | 1.00   | 36 inches..... | .25    | 1.50   |

**Light Bamboo Canes—Natural**

- |             |        |        |                  |        |        |
|-------------|--------|--------|------------------|--------|--------|
| Length      | Doz.   | 100    | Length           | Doz.   | 100    |
| 3 feet..... | \$0.20 | \$1.25 | 5 to 6 feet..... | \$0.50 | \$2.50 |

**Heavy Bamboo Canes—Natural**

- |                  |        |         |
|------------------|--------|---------|
| Length           | Doz.   | 100     |
| 6 to 8 feet..... | \$1.25 | \$10.00 |

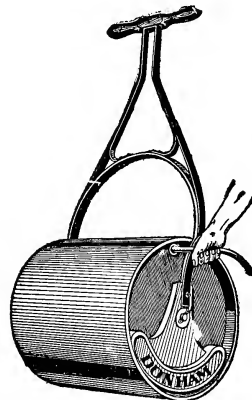
**Garden Sticks**—With fancy wood, metal and pottery birds in various colors. The latest fad in garden ornaments. Very pretty and attractive. Will last for years. \$1.00 to \$5.00 each.

**Garden Work Baskets**—Containing a complete set of small tools—trowels, weeders, labels, raffia, shears, etc. Every lady gardener should have one. \$3.00 to \$10.00 each.

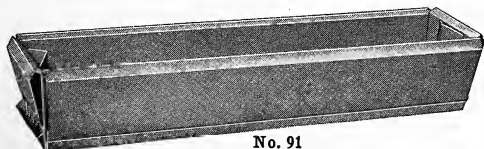
**Paecy, Dahlia and Tomato Supports**—Adjustable wire frames easily put together or taken apart. 25c each, \$2.50 doz.

We carry a very complete line of all garden supplies and requisites and can ship on short notice any tool or device for garden work.

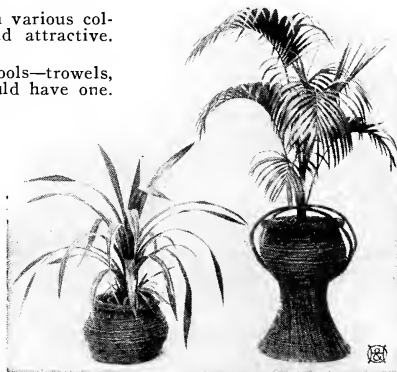
**A Full Line of Iron Vases**—Catalog and prices on request.



Lawn Roller



No. 91



Wicker Porch Baskets

# Insecticides and Fungicides

**Arsenate of Lead**—Sure death to all living insects. Will not wash off, nor in any way burn the foliage. Pound can 30c.

**Bordeaux Mixture (Dry)**—For mildew, blight, leaf-curl, scab and fungus diseases. Pound can 25c.

**Bordeaux Mixture (Paste)**—Use one pint to six gallons of water. Pint can 25c, quart can 45c.

**Bordeaux Mixture and Paris Green Compound**—This is cheaper than paris green. Pound can 35c.

**Bug and Blight Dust**—Ready for use. Destroys bugs and prevents blight. Two-pound box 50c.

**Carbon Disulphide**—A very effective ant exterminator. Pint can 50c.

**Fish-Oil Soap**—An excellent wash for trees and plants where insects affect the bark. Pound box 25c.

**Hellebore (Powdered White)**—For currant worms. ¼-lb. 10c, ½-lb. 20c, lb. 35c.

**Kerosene Emulsion**—For fleas, beetles, aphid, green fly and mealy bug. Pint can 20c, quart can 35c.

**Lime-Sulphur**—For San Jose Scale. It is also an excellent summer spray. Pint can 20c.

**Nicotinide**—For aphid and green fly. The strongest solution of nicotine. Recommended for large gardens, where a great deal of spraying is necessary. 1-oz. bottle 25c, 2-oz. bottle 50c, ½-pint can \$1.25, 4-oz. can 70c.

**Nictone**—A powerful insect and parasite destroyer. Kills aphides and other insects on flowers, plants, fruits, vegetables, animals, etc., without injury or discoloring. Small size 25c, large size 50c.

**Tobacco Soap**—The best insecticide for house-plants during the winter. ½-lb. 20c.

**Slug-Shot**—Destroys potato bugs and those on tomato and eggplants, currant worms, cabbage lice and worms. 3 pounds 25c, 10 pounds 75c.

**Mole and Gopher Exterminator**—A cartridge of slow action. Two cartridges should be used. The fumes will quickly kill. 10c each, \$1.00 for 10.

**Knoxweed, Dandelion and Weed Eradicator**—The Chemical Triumph of the Age. Kills dandelions, devil grass, Bermuda grass, rib grass, burdock, plantain, thistles, buckthorn and all other noxious weeds, and does not injure grass if properly applied. Can, with dropper, containing enough to treat a medium-sized lawn 50c, ½-gal. can \$1.50, gal. can \$2.50.

**Erado**—A 30-inch brass covered tube with knife for cutting dandelions and weeds and directly applying Knoxweed to the roots. 75c each.

**Green Raffia**—For tying plants, 5c per bunch, 85c per pound.

Also a complete line of the following colors in 40 different shades: Black, orange, blue, pink, brown, red, yellow. 5c per bunch, 85c per pound. Natural color: 5c per bunch, 40c per pound.

Raffia Needles 10c per dozen.

Small Book on Basket Making, 25c.

**Sprayers**—When you get the insecticides you will want a sprayer to apply them.

**Autospray No. 125**—Works by compressed air. Brass tank holds about 6 quarts of liquid—the best sprayer made \$7.75 each. Other sprayers at 90c to \$3.00 each.

## LAWN SEED

After a careful study of soils and seeds for several years, we have made our mixtures, using only those varieties which combine to produce perfect lawns.

**Velvet Sod Mixture**—Absolutely the best mixture ever offered by any firm.

Per pound.....	\$0.30
Per 5 pounds.....	1.50
Per 10 pounds.....	2.75
Per 20 pounds (bushel).....	5.00

**Capital City Mixture**—An excellent mixture for all purposes and will give entire satisfaction.

Per pound.....	\$0.25
Per 5 pounds.....	1.25
Per 10 pounds.....	2.25
Per 20 pounds (bushel).....	4.00

**Shady Side Mixture**—For sowing under trees and in shady places where it is difficult to secure a good sod.

Per pound.....	\$0.31
Per 5 pounds.....	1.50
Per 10 pounds.....	3.00

## FERTILIZERS

Special for lawns, apply one pound to forty (40) square feet.

Per 5 pounds.....	\$0.30
Per 10 pounds.....	.53
Per 25 pounds.....	1.01
Per 100 pounds.....	3.00

**Bone Meal**—Apply one pound to fifty (50) square feet of lawn.

Per 5 pounds.....	\$0.25
Per 30 pounds.....	1.75
Per 100 pounds.....	3.00

**Evergreen**—A highly concentrated, reliable fertilizer for all house and bedding plants, grass, etc. Very reliable, promoting a quick and vigorous growth.

½ pound can.....	\$0.25
5 pounds.....	1.00
12 pounds.....	2.00

## Nitrate of Soda.

5 pounds.....	\$0.50
25 pounds.....	2.00
100 pounds.....	7.50

**Sheep Manure**—This has been subjected to heat to kill all weed seeds and is finely pulverized. An excellent all around fertilizer.

50 pounds.....	\$1.25
100 pounds.....	2.00