

Historic, Archive Document

Do not assume content reflects current scientific knowledge, policies, or practices.



62,01 1916

MAY 2 - 1916

INDEXED

Irvington Nurseries

A. H. DAVES, Proprietor

IRVINGTON, ALABAMA

RETURN TO POMOLOGY
SECTION OF NOMENCLATURE
LOCATION: IRVINGTON

Eighteen miles South of
Mobile on Louisville &
Nashville Railroad.

Long distance telephone
and Western Union tele-
graph through Irvington.

GROWERS OF HIGH GRADE
CITRUS FRUITS AND
NURSERY STOCK

OLDEST NURSERY AND LARGEST
BEARING ORCHARD IN THIS
PART OF THE STATE

Prices on Satsumas, Kumquat

ON TRIFOLI

Number	Height Before Pruning	Caliper above the Bud	Each
1	1 to 2 ft.	$\frac{1}{4}$ to $\frac{3}{8}$ in.	\$.)
2	2 to 3 ft.	$\frac{3}{8}$ to $\frac{1}{2}$ in.	.)
3	3 to 4 ft.	$\frac{1}{2}$ to $\frac{5}{8}$ in.	.)
4	4 to 5 ft.	$\frac{5}{8}$ to $\frac{3}{4}$ in.	.)
5	5 ft. and up	$\frac{3}{4}$ to 1 in.	\$1.)

TERMS: CASH

MAY 2 1918

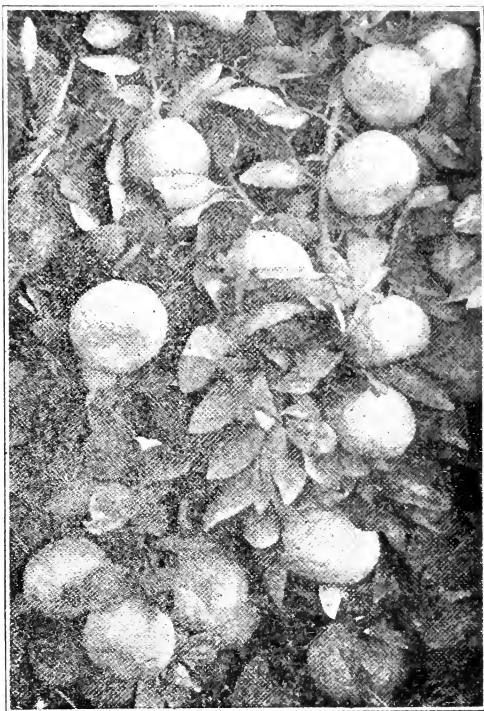
ts, Grape Fruit and Lemons

ATA ROOTS

10	100	1000
\$2.50	\$22.00	\$200.00
3.50	32.00	300.00
4.50	42.00	400.00
6 50	62.00	600.00
1.00	90.00	

WITH ORDER

THE MOST PROFITABLE CROP
AND SUREST INVESTMENT
IN THE SOUTH



SATSUMA ORANGES GROWN FROM
THE STOCK OF A. H. DAVES
IRVINGTON, ALA.