

## **Historic, Archive Document**

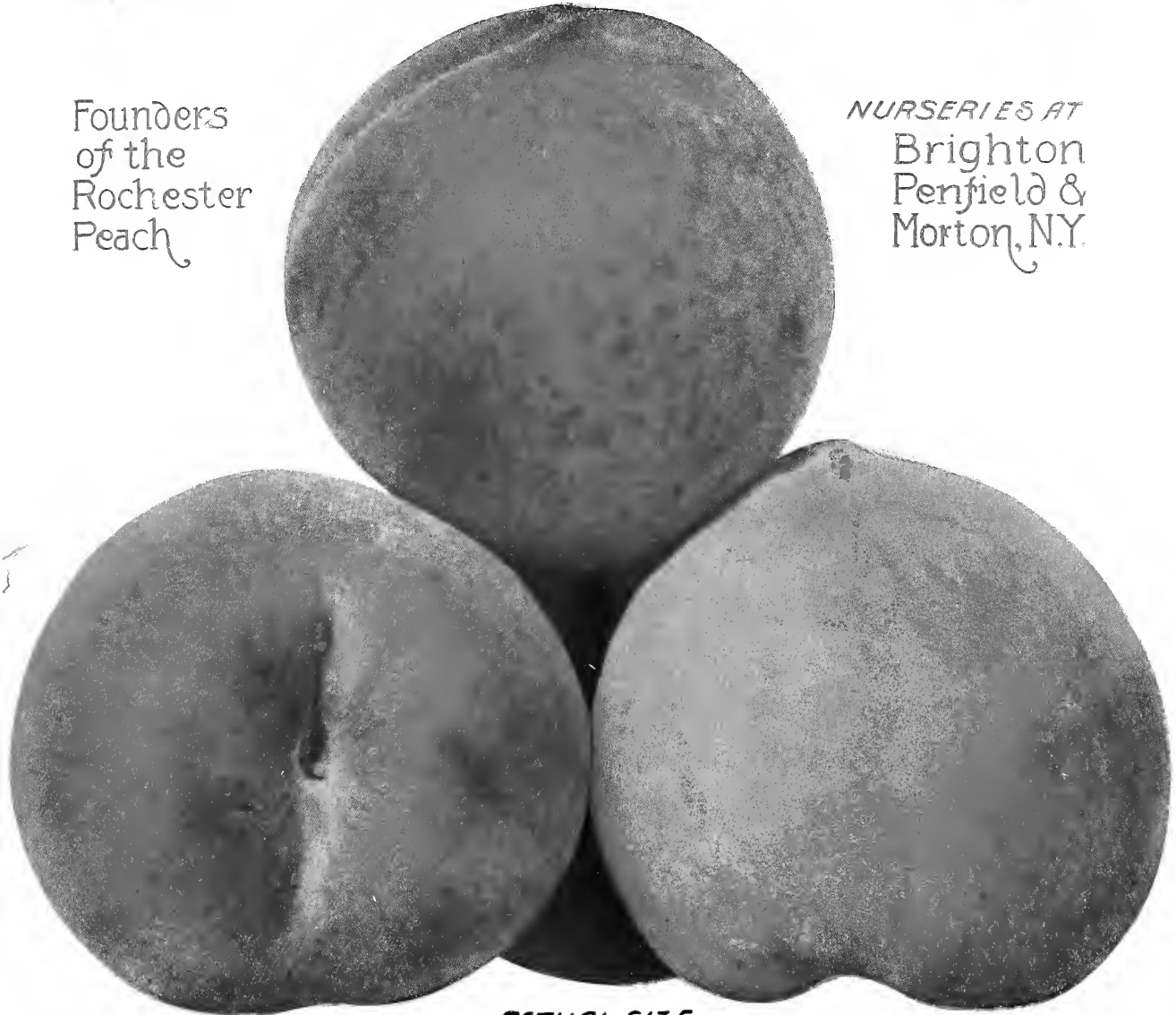
Do not assume content reflects current scientific knowledge, policies, or practices.



# Heberle Brothers Nurseries

Founders  
of the  
Rochester  
Peach

NURSERIES AT  
Brighton  
Penfield &  
Morton, N.Y.



ACTUAL SIZE

Rochester Peach

**READ** what our friends say of the new

# Rochester Peach

*Curtice Bros. Canning Co., and Clark Canning Co. said one of the chief reasons why they prefer canning the Rochester Peach was that it came before pears and tomatoes, and at a time when they were not very busy.*

**CURTICE BROS. CANNING CO.**  
Rochester, N. Y.

Mr. Alfred H. Heberle, City.  
Dear Sir:

December 27, 1912

We have just examined the sample of your Rochester Peach, which we preserved for you last season, and are pleased to report that it is of excellent quality and flavor. We believe that on account of its very early maturity, it should be profitable to the grower, and if he will use the necessary precaution to thin the fruit on the trees, so that they can produce good size, it will be very desirable from a canner's standpoint.

Yours truly,

Curtice Brothers Co.

(One of the largest canning factories in the country.)

**MICHIGAN AGRICULTURAL COLLEGE**  
East Lansing, Mich.

August 18th, 1913

Messrs. Heberle Brothers Nurseries, Brighton, N. Y.  
Gentlemen:

It was very kind of you to send us some specimens of the Rochester Peach which arrived in splendid condition and which appears to be an excellent variety. The fruit is very large and the flavor excellent and a freestone, all of which are highly desirable for a variety that will ripen at the time that this one does.

We think that you have a valuable addition to your list of good varieties of peaches.

Very truly yours,

H. J. Eustace.

**THE J. H. HALE COMPANY**  
Growers of Peaches and Apples of Quality

South Glastonbury, Conn., Oct. 12, 1915

Heberle Brothers, Brighton, N. Y.  
Gentlemen:

Replying to your letter of the 7th I consider the flavor and eating quality of the Rochester Peach among the highest class of the yellow fleshed varieties.

Personally I prefer a white fleshed peach for eating purposes. In the Rochester you have richness and sweetness and coming so much earlier in the season than the other standard varieties of yellow peaches you have something that will be very acceptable to all consumers of yellow peaches. It is large size for its season of the year which also adds to its market value.

The only criticism I have to make about it is the dull fuzzy appearance of the skin, but it has so many good qualities, both for commercial and amateur purposes that you are to be congratulated upon its dissemination.

I want to plant a few of them myself and wish you would make me a price on 500 of the various sizes you have to offer.

Yours very truly,

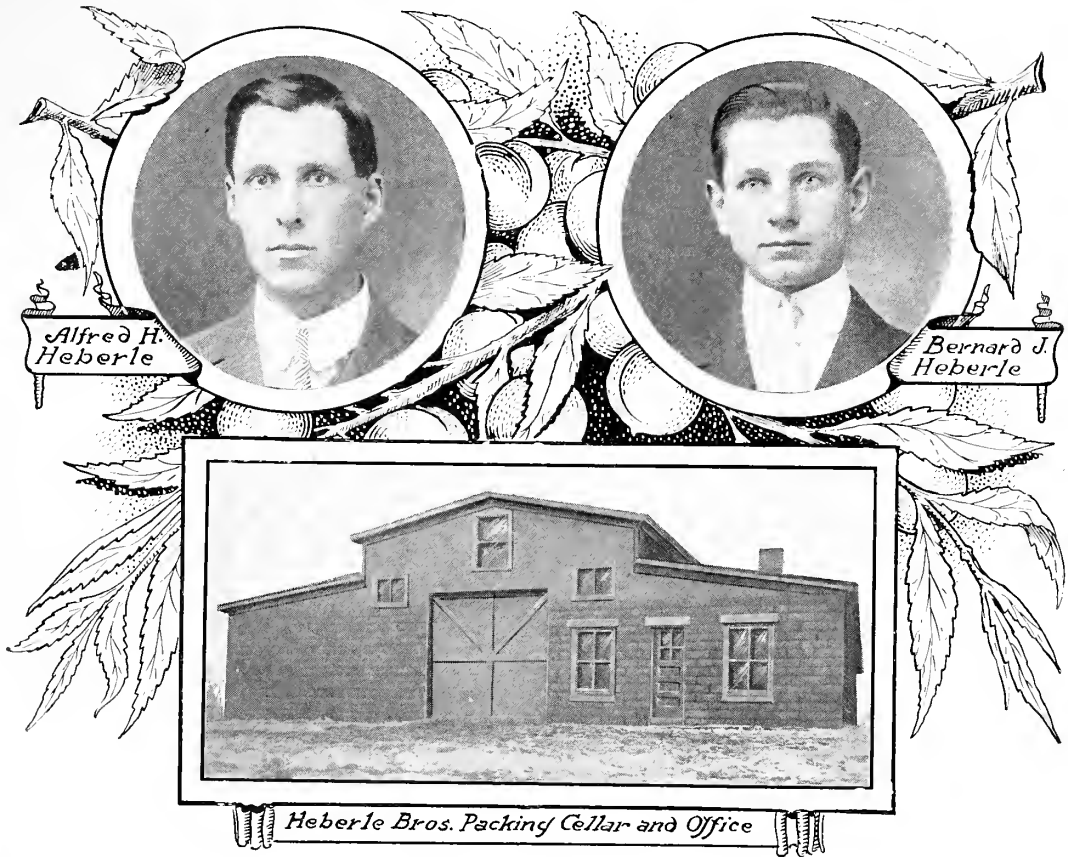
J. H. Hale.

(Since this letter was written Mr. Hale has ordered this 500, and 500 additional.)

**From an Experimental Station in New York State**

Heberle Brothers Nurseries, Brighton, N. Y.  
Dear Sirs:

The specimens of the Rochester Peach that you sent us were received in good condition, and would say that they are certainly fine looking peaches for this early in the season. If all the specimens are as large as those sent in, there is no reason why they should not succeed.



## Foreword

We specialize in propagating vigorous, healthy trees for the planter. Our business is to grow the best trees that can be propagated and sell them at the lowest possible price. We are located in one of the largest nursery centers in the world, near Lake Ontario, where the soil is especially adapted for growing strong vigorous trees and plants. Our nurseries are located at Brighton, Penfield and Morton, N. Y.

We believe that in order to be a first-class nurseryman you must have knowledge of orchard methods, varieties, and markets. We grow considerable orchard ourselves and are located in the best orchard country, we see what the people are planting, what varieties do the best, what varieties bring in the most money, and in that way are able to offer suggestions in regard to planting.

We grow our own stock, propagated from the finest strain of fruit, accurately labeled, properly grown, and carefully handled.

The trees will all be fresh dug, with the exception of the peach, which are dug in the fall, heeled in sand in our packing cellar over winter and when taken out in the spring are as fresh as if they were left out over winter, and you run no chance of having frozen peaches in the spring.

You want the healthiest, heartiest and most vigorous trees at a reasonable cost. We have, and will deliver, just what you want and the way you want it, at the proper time.

# The New Rochester Peach

FOUNDED BY ALFRED H. HEBERLE

**L**ARGE, yellow and red; free stone; flesh yellow, very highly flavored; to eat out of hand or canned it cannot be equalled as a table delicacy. Stone very small and will ship as good as an Elberta.

The peach comes into ripening when there is no other yellow and red free stone with quality on the market, you can readily see that this peach will command the highest price coming in as it does, middle of August. A few years of experimenting has brought this peach to the front, and fruit growers of today are recognizing it as the famous Rochester Peach.

This peach was originated in Rochester, N. Y., by Mr. Wallen, who planted, as an experiment, a few peach seeds. One tree produced large yellow and red free stone peaches, the balance just natural fruit.

During an interview with Mr. Wallen, the trees

and fruit were shown to Mr. Alfred H. Heberle for criticism, and altho he was favorably impressed no real opinion could be given, as the fruit was ripe three weeks prior to the Crawford Early, and already in the cans. Thru the courtesy of Mr. Wallen, Mr. Heberle was allowed to cut some scions from the tree, and these he budded with the intention of seeing the fruit on the trees. The next season the Wallen place changed hands and the tree was



2-YEAR TREE

Mr. Alfred H. Heberle, Founder

This is one of 200 trees planted in 1913—averaging 1 bushel each in 1915.  
Sold on Rochester market at 75 cents per 11-qt. basket.



*Founders of the Rochester Peach*

cut down, so the only thing left for Mr. Heberle to do was to plant what trees he had budded and wait to see the results, which came the second year after planting. Then he saw he had a large yellow and red, free stones of the highest quality and flavor, which would not have been known of had he not taken the buds at that time.

The original orchard has born its sixth annual crop this season, being the finest quality the trees have ever produced, some specimens measuring twelve inches in circumference and weighing twelve ounces. The fruit sold at the orchard and to local grocers at One dollar per 11-quart basket.

The tree is a strong upright grower, hardy as an oak. Has stood 16 degrees below zero and produced a full crop, while Elberta and Crawford, under the same condition in the same orchard produced no blossoms and consequently no fruit. The tree comes into bearing when very young. The accompanying picture is an illustration of one of 500 trees planted by Mr. Yarker, Greece, N. Y., in the spring of 1914, which produced 17 peaches in the month of August, 1915. Mr. Rudman, of Irondequoit, N. Y., informs us he had one of the same age in his orchard of 3500 Rochester bearing 27 peaches.

It is seldom known to fruit growers of young trees planted a little over a year to bear fruit. The New Rochester Peach solves the problem for you.



Mr. Alfred H. Heberle, Founder

**1-YEAR TREE**

Planted in 1914—bearing 17 peaches in 1915

**PRICES**

	Each	Per 10	Per 100
First Class, largest size, No. 1	\$ .75	\$5.00	\$25.00
First Class, medium size, No. 2	.50	3.00	20.00
First Class, smaller size, No. 3	.35	2.00	15.00

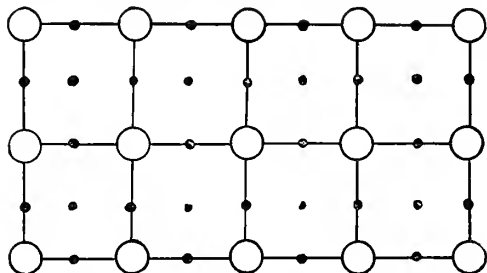
## Apples

The apple rightfully commands first place among our orchard fruits, unlike other fruits, its season of ripening is such that we can have apples nearly the year around.

Have you started an apple orchard? If not we want you to ask yourself why. Observe what your neighbor is reaping from the orchard set a few years ago.

Select an elevated site for any kind of orchard in preference to low ground, unless the low ground is located near a large body of water, which protects it from frost. In planting an apple or other orchard the best method is to mark out the land with an ordinary corn marker, the same as for planting corn; then locate the trees in every fifth row, if that is the distance you desire. In this way your trees will form rows from every point of view, without any trouble in sighting or sticking stakes.

There are different ways to lay out an orchard. The plan shown here is one that is adopted by



most planters. The open circles represent the Standard varieties, 40 feet each way, and the dots the fillers, 20 feet each way. Under this system you can plant 28 standards and 82 fillers per acre. The standard varieties will not require the full space until the 15th or 18th year, consequently you can see that fillers are a very profitable investment.

The varieties we recommend for Standards: Baldwin, King, Greening, and Spy.

Fillers: Duchess, Ben Davis, McIntosh, Nonsuch, Jonathan, Wealthy, Wagner, and Gano.

### Two-Year Apple Trees.

Prices of General Varieties:

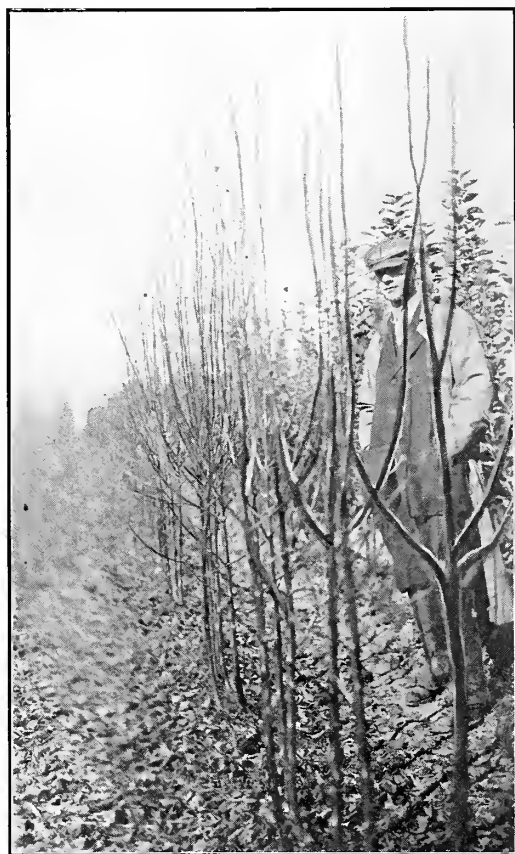
	Each	10	100	1000
First Class, largest size.....No. 1	\$0.40	\$2.00	\$15.00	\$14.00
First Class, medium size.....No. 2	.25	1.50	10.00	.....
First Class, smaller size, branched.....No. 3	.15	1.00	6.00	.....

**Alexander.**—Of Russian origin. Large; deep red or crimson; flesh yellowish white, crisp, tender. Poor quality. Tree very hardy. October.

**Fall Pippin.**—The old favorite, large, light colored fall variety without which no home orchard is complete.

**Golden Sweet.**—Large, pale yellow, tree a good grower and very productive. August to September.

**Duchess of Oldenburg.**—A large, beautiful, hardy apple; roundish, streaked red and yellow;



A View of One of Our Two-Year Apple Blocks

tender, juicy, pleasant; a kitchen apple of best quality, esteemed by many for dessert. Tree a vigorous, fine grower, and an early and abundant bearer. September. Succeeds well in east and northwest. The hardiest good fall apple. Free from blight, a sure cropper, hardy as an oak.

**Fameuse (Snow Apple).**—Medium size; deep crimson; flesh snowy white, melting and delicious, one of the finest dessert fruits and valuable for market; a good baking apple. This variety succeeds over a very wide range of territory; tree hardy and vigorous; an annual cropper. October to December.



## Apples

**Gravenstein.**—Large; greenish yellow to orange yellow, with stripes of light and dark red; flesh yellowish, firm, moderately fine, crisp, moderately tender, juicy, sub-acid, aromatic; very good to best. Late September to early November.

**Maiden's Blush.**—Medium size, flat, quite smooth and fair; pale yellow with beautiful red cheek; tender, sprightly, pleasant acid flavor. Good grower and good bearer. September and October.

**Red Astrachan.**—A reliable cropper that comes into bearing young. Fruit medium size, crisp, tender, juicy, sub-acid. Skin pale yellow striped with deep crimson, covered with a distinct bluish

bloom. Tree medium size, vigorous and hardy. Season July to September.

**Twenty Ounce.**—It is highly esteemed for home use. Fruit very large, coarse, tender, juicy, sub-acid. Skin becoming rather yellow, mottled and splashed with bright red on dark red with carmine stripes. Tree vigorous. Season late September to early winter.

**Yellow Transparent.**—A Russian variety. Tree an upright grower and a very early and abundant bearer. Fruit of good size; skin clear white, turning to a pale yellow; flavor acid and very good. Ripens from ten days to two weeks earlier than Early Harvest.

## Winter Apples

**Baldwin.**—One of the best storage apples for export trade. Thousands of barrels of this fruit are exported to England annually. Baldwin is planted extensively and succeeds wonderfully well in all states east of the Mississippi. No variety yields larger crops, bears shipment better or is more attractive in color, size and shape. It is highly esteemed for an eating and cooking apple. Fruit large, bright red, crisp, juicy and rich. Trees vigorous, upright and productive. For a commercial orchard, it can be relied upon. If ever in doubt what kind of apples to plant, select Baldwin. December to March.

**Ben Davis.**—The great market apple of the West and South, largely planted also in the East. One of the best for profit. Very early bearer and yields an immense crop of large, sub-acid, bright red, fine shaped fruit. The apple is of poor quality, but its attractive color, size and shape make it sell. It is a splendid keeper and fine for cooking. December to April.

**McIntosh Red.**—An exceedingly valuable, hardy, attractive apple; good size, nearly covered with red. Flesh white, fine, very tender, juicy and refreshing. Tree hardy, vigorous, a good annual bearer—comes into fruiting early, yielding large crops. We recommend this variety to our patrons as one of the best used as a filler. The hardiness of both trees and fruit and its great early bearing qualities, coupled with its elegant color and splendid flavor, makes it a most valuable apple. October to January.

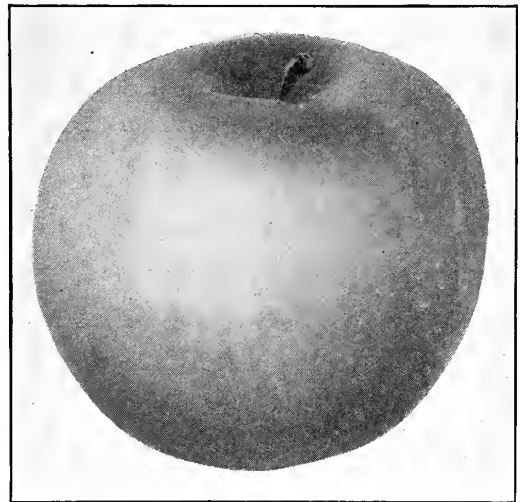
**Golden Russet.**—Of medium size, round-ovate; clear golden russet, with slight blush; tender, crisp, juicy and high-flavored. Tree robust and hardy; bearing large crops. November to April.

**Gano.**—Form conical, good size and smooth; deep red, shaded on sunny side to mahogany; very attractive; flesh pale yellow, fine grained, tender, pleasant, mild, sub-acid; is a good shipper and keeper. Tree healthy, vigorous and hardy. An annual and prolific bearer. February to May.

**King.**—Its size and beautiful red color make it well adapted for marketing in fancy packages and it usually sells at an advance over general varieties. Fruit very large, rather coarse, crisp, tender, juicy, sub-acid. Skin fine yellow, mottled

and washed with orange red and lively bright red, striped and splashed with bright carmine. Tree vigorous and hardy. Season October to January or later.

**Rhode Island Greening.**—A greenish-yellow apple, valuable in the East, especially in New



R. I. Greening

York, where in some sections it is more widely planted than Baldwin. Here it is juicy and good. In the West it is a fall apple and not hardy. A good cooker and has satisfactory dessert quality. Tree is late coming into bearing.

**Hubbardston Nonesuch.**—This large red apple is an early bearer, in fact, one of the earliest bearers we have, and can be planted with profit as a filler. It is best adapted to relatively light soils in the New England and New York district. Our strain is one of the best.

**Canada Red (Steele Red).**—Fine deep red, indistinctly striped with deeper red; rich, fine quality. Of the Baldwin-Spitzenburg-Jonathan group.

## Winter Apples

**Delicious.**—Large, the surface almost covered with dark red, blending to golden yellow at the blossom end. November to December.

**Grimes' Golden.**—Medium to large size; skin golden yellow, sprinkled with gray dots; flesh crisp, tender, juicy, sprightly, very good to best. Grown in the South and Southwest. January to April.

**Northern Spy.**—This variety ranks next to Baldwin in importance. It is a fine apple for culinary uses and its exceptionally fine flavor makes it invaluable as a dessert apple. Fruit very large, rather firm, very tender, crisp, very juicy, sub-acid. Skin pale yellow, nearly concealed with bright pinkish red and mottled with carmine. Tree large, vigorous and hardy. Season November to April.

**Northwestern Greening.**—Fruit large and greenish yellow, good quality. It is claimed to keep well into June. Tree is quite hardy, and will probably succeed nearly as far north as the Wealthy. Very promising.

**Pound Sweet (Pumpkin Sweet).**—Fruit very large, crisp, decidedly sweet with a peculiar flavor. Skin clear yellow marbled with greenish-yellow. Tree large, vigorous and hardy. Season October to January.

**Jonathan.**—This is a decidedly attractive apple, being predominately of a bright red color, great apple of the West and Northwestern States. Succeeds everywhere. Fruit firm, tender and very crisp, very juicy, mild sub-acid, of good quality. Skin smooth and glossy, whitish yellow over-spread with bright red and splashed with deep carmine. Tree vigorous. Season November to April.

**Roxbury Russet.**—The most popular russet apple. Fruit large, firm, moderately tender, juicy, sprightly, sub-acid, good. Skin almost smooth, but usually covered with greenish to yellowish brown russet. Highly colored specimens develop a bronze blush. Tree medium to large, vigorous and hardy. Season December to May.

**Rome Beauty.**—A very fine market variety for the Northern and Western States. Fruit very large, skin yellow, mottled with bright red; in highly colored specimens almost solid red on exposed cheek, striped with bright carmine. Flesh crisp, juicy, agreeable, mild, sub-acid. Season November to April or May.

**Spitzenburg (Esopus).**—A well known variety of the Baldwin class; handsome red. Medium to large. Crisp, juicy, tender, sub-acid. November to February.

**Stayman Winesap.**—Tree vigorous, hardy, spreading. An early bearer and very productive; fruit medium size, round, approaching conic; skin smooth, greenish yellow, splashed and striped with red and purple; flesh yellow, firm, tender, juicy, rich, sub-acid, aromatic, quality best. Splendid late keeper. December to May.

**Sutton Beauty Apple.**—Medium to large, roundish; waxen yellow, striped with deep carmine; flesh white, sub-acid; tender, juicy, good. A long keeper. January to February.

**Wealthy.**—A large, very smooth, handsome apple. Brilliant red all over, distinctly marked



Wealthy

with narrow stripes and splashes of deeper red; no apple is more handsome. Splendid quality—a good keeper and is popular on the markets; for those who prefer a rich sub-acid apple. The variety is valuable for cold climates, because of its extreme hardiness; largely planted in Michigan, Minnesota, Wisconsin, Maine and all New England and in Montana where McIntosh is king it is one of the most profitable sorts.

**Stark.**—Esteemed as a long keeper and valuable market fruit. Fruit large, roundish; skin greenish yellow, much shaded with light and dark red, and sparkled with brown spots; flesh yellowish, juicy, mild sub-acid. January to May.

**Tolman Sweet.**—An attractive yellow sweet apple, much esteemed for culinary purposes as pickling, boiling and baking. Fruit medium size, moderately juicy and decidedly sweet. Skin color pale yellow, sometimes blushed. Tree vigorous, long lived and hardy. Season November to April.

**Wagener (Red Winter Apple).**—Wagener is a beautiful winter apple. It is supposed to be a seedling of the Northern Spy. It is of the highest quality, the flesh being crisp, tender and aromatic. All successful fruit growers desire such an apple as the Wagener, not only for their own eating, but as an attractive fruit to market at home and abroad. Medium to large; deep red in the sun; flesh firm, sub-acid and excellent. Tree a vigorous, handsome upright grower, and very productive; an excellent variety.

## Winter Apples

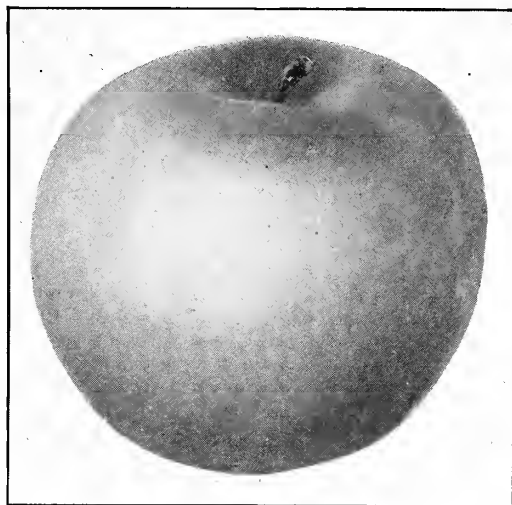
**Winesap.**—Large, roundish, oblong; deep red color, with a few streaks and a little yellow ground appearing on the shady side; flesh yellow, firm, crisp, with a rich, high flavor; quality very good. December to May.

**Winter Banana.**—Hardy and will succeed in very cold climates; its wonderful productiveness will bring quicker and larger returns than any other apple in the orchard. The fruit has a richness of flavor that cannot be described. Flavor very rich, spicy and aromatic. Flesh golden yellow, fine grained, firm and juicy. Tree a very strong grower and will grow to be a tree of immense size, very suitable for lawn or shade, the leaf being nearly double the size of other apple sorts.

**Wolf River.**—Skin greenish-yellow, shaded with crimson; flesh white, juicy, tender, with a peculiar, pleasant, mild, sub-acid flavor. Tree a strong, stout grower, a great bearer, and very hardy. January and February.

**Yellow Belleflower.**—Tree a strong grower and abundant bearer; fruit medium to large; flesh white, fine grained, tender, juicy, sub-acid. November to February.

**York Imperial.**—Of medium size, truncated, oval, angular; skin greenish-yellow, flesh tender, crisp, aromatic. Highly esteemed in Pennsylvania, where it originated. December to February.



**Crimson Beauty**

**Early Crimson Beauty.**—A large, beautiful, hardy apple which resembles the Wealthy very much, but is earlier than the Red Astrachan Tree. A strong, upright grower, bears young, and a heavy bearer. It has been planted in Maine with great success where other varieties have failed. No orchard should be without them. July and August.

## Crab Apples

**Hyslop.**—Almost as large as Early Strawberry apple; deep crimson; popular on account of its large size, beauty and hardiness. Keeps well into the winter.

**Transcendent.**—Medium to large; roundish, oblong; golden yellow with a rich crimson cheek,

covered with a delicate white bloom; flesh yellow; crisp, and when fully ripe, pleasant and agreeable; perfectly hardy; young and abundant bearer. September and October.

**Large Red Siberian.**—About twice the size of common Siberian; very good. September and October.

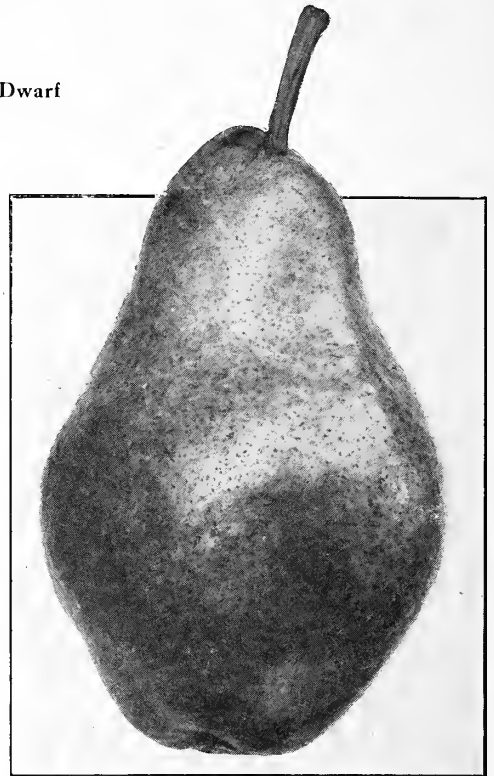
## Pears

Both Standard and Dwarf

The cultivation of this fruit is rapidly extending as its value is appreciated and the demand is increasing every year, making pears one of the most profitable to plant. The range of varieties is such that, like apples, they can be had in good eating condition from August until early spring. The melting, juicy texture, the refined flavor and the delicate aroma of the pear gives it rank above all other fruits, excepting the grape.

The pear is a highly profitable fruit, and especially so in markets that pay for quality as well as looks. It is easily grown, being nearly free from insects and fungous diseases. Plant pears for profit, and in the garden for home use. It is our most luscious fruit.

Standard Pear Trees are budded on pear roots and attain a greater height than dwarf pears. They are supposed to be longer lived and are better adapted to large permanent orchards. They thrive best on a strong loam with clay subsoil, but will succeed in any garden soil. Our blocks this year are the largest and as fine as any we have ever grown. Trees are all budded on imported French Whole Roots, which insures finest root system.



Bartlett

### STANDARD PEAR TREES

Two and Three Year Old

Prices of General Varieties:

	Each	10	100
First Class, largest size.....No. 1	\$0.40	\$2.50	\$20.00
First Class, medium size.....No. 2	.25	2.00	15.00
First Class, smaller size, branched.....No. 3	.20	1.50	10.00

**Bartlett.**—Large; yellow, tinged with red; buttery and melting, with a rich, musky flavor. Bears young and abundantly. Tree vigorous and erect grower; excellent for garden or commercial orchard planting. Is the leader among canning pears, and when well grown is a universal favorite and commands top prices. Will begin to bear in three years, and in about seven years will produce a bushel of fruit per tree. Season, September.

**Beurre D' Anjou.**—This is one of the best known, most popular and profitable late pear. The tree is a vigorous grower, hardy and prolific. The pears are of large size, green in color, but often yellowing when thoroughly ripe. October to January.

**Beurre Bosc.**—Large yellow Russet, flesh white, melting, high flavored and excellent. A regular bearer, always perfect, good for export. September and October.

We propagate double, worked on Flemish Beauty and Seekel trees, which makes the best

tree. Price, each, 50c.; per 10, \$4.00; per 100, \$35.00.

**Clairgeau.**—The fine size and exceeding beauty of this pear render it most valuable for market. The smooth yellow skin is shaded with orange, and scarlet; the flesh is yellow, juicy, aromatic, and somewhat granular. The tree bears early and abundantly. October and November.

**Clapp's Favorite Pear.**—A profitable early variety; a prolific and early bearer. Season, August; earlier than Bartlett. This is without doubt the most productive pear in cultivation. Brings big money.

**Duchess D' Angouleme.**—A most dependable cropper. Fruit large, frequently weighing a pound. A dull greenish yellow, spotted russet, flesh white, rich and good quality. An all around profitable market pear. October and November.

**Kieffer.**—Large, rich golden yellow, sometimes tinted red on the sun-exposed side; fair quality, excellent for canning. It has become a profitable market variety on account of its good shipping



## Pears

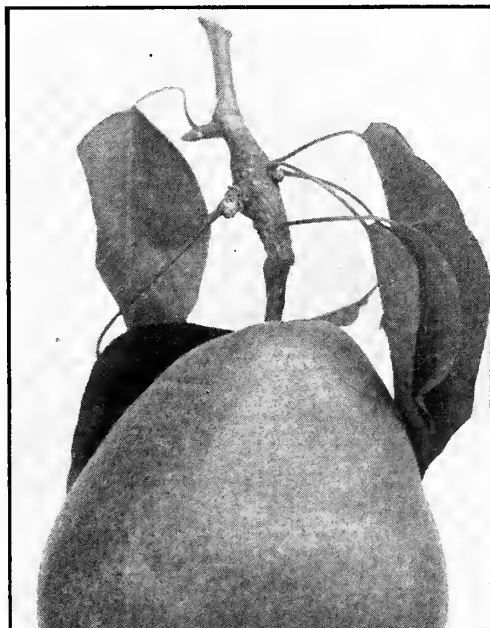
and keeping qualities. To properly ripen should remain on the trees until leaves begin to fall, then gather carefully and allow to ripen in a cool dark cellar, or other place of even temperature. Tree a most vigorous grower, an early bearer, one of the most resistant to blight, very prolific, and widely planted throughout the country. The tree is so hardy and free from insect pests as to give it greater value than most other varieties. The fruit is of high color and great beauty and sells more readily than fruits of better quality. October to November.

**Lawrence.**—Medium to large, golden yellow, with melting aromatic flesh. Unsurpassed as an early winter pear. The tree is hardy, healthy and productive, bearing large crops annually. November and December.

**Sheldon.**—A large, round, russet and red pear of very fine quality, melting, rich and delicious. Tree vigorous, erect and handsome, bears well and should be more largely planted. October.

**Seckel.**—A beautiful and delicious little pear that is the standard of excellence in its class. One of the richest and highest-flavored pears known, always in demand for desserts and luncheons and better known than any pear of its class. The tree makes a somewhat slow but stout and erect growth. September and October.

**Worden-Seckel.**—A seedling of the Seckel. Equal in quality to its famous parent which it much resembles in flavor, is equally as luscious, more juicy, and with an aroma, equally as rich and inviting, while in size, color, form and appearance it is decidedly superior. In color, when well ripened, it closely resembles Clapp's Favorite, with a skin that is usually as smooth and waxy as if it had been varnished. Tree a more upright and rapid grower than the Seckel; hardy and an enormous bearer; fruit keeps well, retaining its quality to the last. October.



Anjou

## Dwarf Pears

Dwarf Pear Trees are budded on quince roots, and on account of their dwarf habits are especially suited to small orchards, fruit yards and gardens.

The pear is very profitable, grown as a "dwarf." The dwarf pear differs from the "standard" in that it is propagated on a quince root which makes it a slow dwarfish grower—the fruit is the same in either case. There are many large orchards of dwarf pear East and West. They come into bearing young, often the second or third year. They last a lifetime. Are enormously productive, and the small trees are easily cared for, and "fancy" fruits can be raised at comparatively low cost. They can be set close together—usual distance, 10 to 15 feet. Many orchards of standard trees are planted with dwarf trees as fillers. They require practically the same treatment, and as they come into bearing very young, sometimes producing a little fruit the second or third year, they pay the cost of developing the orchard of standard trees before the latter can come into bearing.

	Each	10	100
First Class, largest size.....	\$0.40	\$2.50	\$20.00

**Cultivation.**—Plant deep with juncture of bud and stock fully three inches below the surface. Every year the new growth must be kept cut back one-half to one-third, and keep the top of tree open and the tree dwarf. Pinching top buds in the summer will produce fruit buds. Let them branch to the ground, keep clean until well established.

Following are the varieties best adapted for growing as dwarfs:

- Bartlett**—Mid-autumn.
- Clapp's Favorite**—Very early.
- Seckel**—For table and pickling.

- Beurre De Anjou**—Early-winter.
- Duchess**—Late fall, fine.



## Plums

Most of the cultivated varieties of plums are European or descendants of European varieties. But in recent years certain extraordinarily good varieties of native plums have been widely disseminated; and very recently we have received some extremely valuable varieties from Japan. Crosses from all these will from time to time bring out new and much improved varieties, especially securing the best qualities of the European plums united with the hardiness, or desirable season, or good shipping qualities of the others.

The finer kinds of plums are beautiful dessert fruits, of rich and luscious flavor. For cooking and canning they are unsurpassed. For best flavor they should be allowed to remain on the tree until fully ripe; but for shipping to market, they must be gathered a very few days earlier, when they may be shipped long distances, arriving in good condition. All the varieties listed below are hardy and vigorous in all climates.

### Two and Three Year Old

Price list of General Variety:

	Each	10	100
First Class, largest size.....No. 1	\$0.40	\$2.50	\$20.00
First Class, medium size.....No. 2	.25	2.00	15.00
First Class, smaller size, branched.....No. 3	.20	1.50	10.00



**Fellenburg Prune**

## Plums

**Bradshaw.**—A handsome bluish purple plum that is juicy and good; sells well. Tree productive. August.

**Burbank.**—A richly colored cherry red plum, mottled and dotted with yellow; very large in size, round, handsome, sweet and fine. The tree was imported from Japan by Mr. Burbank and named by Prof. H. E. Van Deman, and during the thirty years of its existence it has had a wide distribution; is the best known and best liked Japanese plum. Late August.

**Damson Shropshire.**—The trees bear enormous crops year after year with little or no care, and is found in nearly all home gardens. The fruit is dark purple, juicy and rich. October.

**Fellenburg** (French or Italian prune).—A fine late plum. Fruit handsome, of oval shape and purple color. Flesh thick, juicy and delicious; parts from stone. Excellent for drying and preserving. Very productive, ripens in September.

**German Prune.**—Medium oval purple or blue, juicy, rich, fine. Tree vigorous and very productive. One of the best. September. Sells for

higher prices in market on account of high quality. A leading favorite. There is no easily grown fruit that gives greater or more certain profit than the German Prune.

**Giant Prune or York State Prune.**—Very large; reddish purple, flesh yellow, sweet and firm, rich, delicious, freestone; an excellent shipper. September.

**Lombard.**—A handsome violet red plum of large size and of splendid quality for eating out of hand; a favorite for canning. No variety is more satisfactory for the home garden, and the markets always take them at good prices. Sept.

**Monarch.**—Very large, roundish oval; dark purple blue, freestone, of excellent quality. An abundant bearer. Season October.

**Niagara.**—Unsurpassed for beauty and productiveness. Fruit large, oval, often with a slight neck; skin reddish purple; flesh yellow, juicy and good. Its beauty as a market sort is unsurpassed.

**Reine Claude.**—Greenish yellow, spotted with red, the housewife's ideal plum. Quality is perfection.

## Peaches

All budded on North Carolina natural pits, free from insects and diseases.

The Peach Tree requires a well drained, moderately rich soil, a warm sandy loam is probably the best.

In order to preserve the continued healthy growth of the tree and the fine quality of the fruit, the tree should have the shoots and branches shortened every year, so as to produce plenty of young wood. In trimming it should be borne in mind that the fruit is produced on the previous year's growth of wood; every spring the trees should be gone over and the new wood cut back about one-half, this will keep the tree well supplied with vigorous fruit buds and bearing wood. Clean culture, annual pruning, and frequent examination for borers are the requirements of the peach.

For large commercial orchards, the low headed peach tree is preferred, the ideal tree being one with the lowest branches starting at the ground, so that the fruit can be picked without the use of a step-ladder. Such trees are less apt to break under a heavy load of fruit. For the commercial orchard and where the low headed tree is preferred, we recommend our medium grade trees; they are strong, vigorous trees, only not so tall as the first grade, and will stand cutting back better than the first grade and make a nicer head. By using a little fertilizer of fine manure when planting it will be impossible to distinguish the first grade from the second six months after planting, and saves you the difference in the price of the trees.

The way to do this, in planting fill your holes half with dirt so the trees stand well. Then go around with wagon, shaking one large fork of manure around each tree, then finish filling your hole.

We recommend the first grade where a high headed tree is preferred.

In order to get a low headed tree the trunk must be cut off the desired height from the ground; the most common practice is to cut it off 18 to 24 inches; always look before cutting the trunk off to see if there are any buds below where you are going to cut, as it is very necessary that the tree has buds left on to start from.

We do not trim our peaches high in the nursery so that if the tree is cut off 18 to 24 inches above the ground their will be a few branches left on below the cut, trim these back to one bud and your tree will form a good top and make a large growth.

Prices of all Varieties (except Rochester):

		Each	10	100
First Class, largest size.....	No. 1	\$0.35	\$1.50	\$10.00
First Class, medium size.....	No. 2	.25	1.00	7.00
First Class, smaller size.....	No. 3	.20	.75	3.00

## Peaches

**Belle of Georgia.**—Very large, skin white with red cheek; flesh white, firm and of excellent flavor; the fruit is uniformly large and showy; very prolific bearer and fine shipper. Ripens with Crawford's Early. Free.



**Rochester Peach**

**Carman.**—Fruit large, color creamy white or pale yellow with deep blush; flesh tender, fine flavor and quite juicy; one of the hardiest. Ripens with Early Rivers. Early August.

**Crawford Early.**—The Crawford Early is a very large, oblong peach with a prominent point on the blossom end, and a bright red cheek. The flesh is yellow, very rich, slightly sub-acid, juicy, good quality, and especially good for canning and eating fresh. The tree is large and very vigorous, requiring severe pruning. Bears third to fourth year. Moderately hardy. The Crawford Early always sells well but is not profitably productive or a sure bearer in all localities. Freestone. Mid-season peach.

**Crawford's Late.**—Fruit of the largest size; skin yellow or greenish yellow, with dull red cheek; flesh yellow; productive; one of the best. Late September. Free.

**Crosby.**—Fruit medium size, rich, orange yellow splashed with carmine on sunny side; per-

fect freestone, pit small; flesh yellow, tender, juicy, sweet and rich. Very hardy. September.

**Chair's Choice.**—Of largest size; deep yellow, with red cheek; flesh very firm, ripening five days earlier than Smock. Makes a strong, profuse-cropping tree. September. Free.

**Champion.**—Fruit large, beautiful in appearance; flavor delicious, skin creamy white, with red cheek; freestone. Tree hardy and prolific. One of the best. August.

**Elberta.**—The Elberta is a large, golden yellow peach nearly covered with crimson on the sunny cheek. It has done more to develop the peach-growing industry than any other variety. It can be grown profitably in most any part of the United States. The flesh is a rich yellow, red at the pit, firm and juicy, but only fair quality. The tree is a large, vigorous grower, very productive, yielding fruit uniform in size and shape and always highly colored.



**A Branch Showing Rochester Peach**

The greatest objection to the Elberta is that it is only medium quality and not an extra hardy tree. However, its adaptability to practically every soil and climate, and its prolific bearing of large, beautifully colored peaches, of splendid shipping and market qualities, and its compara-



## Peaches

tive freedom from rot, and the fact that it can be gathered for market before it is fully ripe made it the greatest peach of its time. The Elberta is found on the markets from the middle of the summer until the peach season is closed. Freestone.

**Lamont.**—Magnificent large yellow peach of good quality; tree vigorous and productive. Its fine size, beauty and productiveness make it one of the most desirable sorts. Entirely free from fungus disease.

**Mayflower.**—A gloriously beautiful "red all over" peach, so handsome and of such splendid home orchardist should plant Mayflower—it should be in gardens everywhere. Extremely early; tree hardy and healthy.

**Niagara.**—Large, yellow, with red cheek; juicy and high flavored; flesh yellow; freestone. Season medium early, following quick upon Early Crawford. This is truly a fine peach, noted for its large size and fine appearance. At its home in western New York it is regarded as a valuable commercial variety. Ripens just after Crawford Early.

**Reeves Favorite.**—Large. Yellow with red cheek; juicy, melting, like the Early Crawford in flavor and about one week later. Free.

**Smock Free.**—Fruit large; oval; skin orange yellow, mottled with red. Free. October.

**Yellow St. John.**—One of the best of the early yellow varieties. Of medium size, orange yellow with a red blush on sunny side, flesh tender, juicy and quality very good, but is not much of a shipper. Free.



A one-year ROCHESTER PEACH which stood the severe winter of 1914, with six fine peaches, grown on the Mr. Wm. Cort Farm, Irondequoit, N. Y.

## The New Rochester Peach

**Rochester Peach.**—Large, yellow and red, freestone, flesh yellow, very highly flavored, to eat out of hand or canned it cannot be equaled as a table delicacy, stone very small and will ship as good as an Elberta. The peach comes into ripening when there are no other yellow and red freestone peach on the market, you can readily see that this peach will command the highest price coming in as it does. Middle of August.

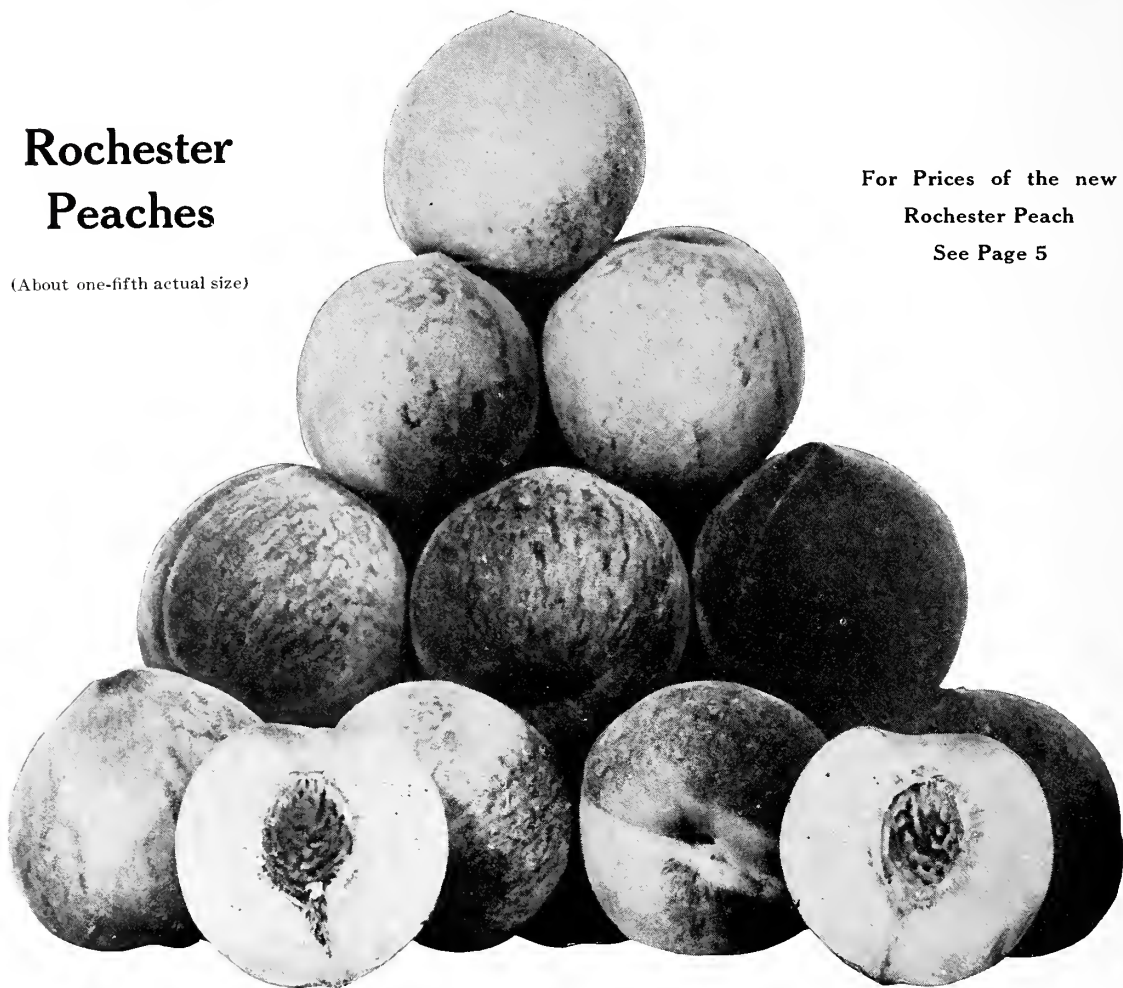
The New Rochester is better than any of the early peaches as a profit producer. The Rochester is to the Peaches what the Baldwin is to the Apples. A splendid shipper, of enormous size, heavy bearer, very showy, with the highest quality. It is the greatest money maker and you

will never regret planting the Rochester Peach. We have tested it on different kinds of soil and found that it does equally as well on one kind as the other. We have now planted 3,600 Rochester Peaches for orchard, in Penfield, and 3,000 at our Morton Farm. Remember that this is an annual bearer and will stand the severest winter, bears young and will sell from 30 to 50 cents per basket more than any other peach. This peach is one of the best keeping peaches on the market; we had a party that picked from our trees as a sample to test the keeping quality; the peaches were in fine shape to ship, very highly colored, and he stated that he had kept them home on his desk twelve days and then they were in fine shape for eating.

## Rochester Peaches

(About one-fifth actual size)

For Prices of the new  
Rochester Peach  
See Page 5



DU BELLE GRAPE JUICE COMPANY  
Irondequoit, N. Y.

December 18, 1915

Heberle Bros. Nurseries, Brighton, N. Y.

Gentlemen: The 500 Rochester Peach Trees that I bought of you three years ago, (merely to try them out), were just loaded with large, luscious fruit. The flavor, color, and size of the Rochester Peach was just as you represented it to be at the time I gave you the order.

As a fruit grower for the last twenty years, I have planted and grown many of the best varieties of peaches, and after we harvested the 1915 crop of the Rochester Peaches, I can only say that it is the peer of them all. The trees yielded 1,137 baskets at an average price of  $7\frac{1}{2}$ c, which was an unusually large price, compared with 21c for Crawfords and Albertas, I contribute the large profit to the fact that the Rochester Peach ripens fully two weeks earlier than the Crawford, and at a time when a free stone is much in demand.

Many prominent peach growers from surrounding towns came to look at the trees just before they were picked, and they were all amazed at the beautiful sight. The Rochester Peach is a money maker for the grower, and you are to be congratulated upon being so successful in propagating such a wonderful peach. Will you please have your representative call on me for an order for more trees.

Very truly yours,  
Louis J. Dubelbeiss.



## Cherries

The Cherry like the Peach do their very best on light soil, but will succeed in any soil that is dry. The Sweet varieties are of rapid growth with large, glossy leaves, forming fine pyramid shaped heads, and producing large crops of luscious sweet fruit. Sour varieties generally produce acid fruit, and do not attain so large size; are hardier and better adapted for shipping to market. We know of nothing in the fruit line that gives promise of better returns than a good well kept Cherry Orchard. There are very few markets that are ever well supplied with this fruit. We offer these varieties in Mazzard and Mahaleb.

### Two Year Old

Price List of General Varieties on Mahaleb Root:		Each	10	100
First Class, largest size.....	No. 1	\$0.40	\$2.50	\$20.00
First Class, medium size.....	No. 2	.25	2.00	15.00
First Class, smaller size, branched.....	No. 3	.20	1.50	10.00
Price List of General Varieties on Mazzard Root:		Each	10	100
First Class, largest size.....		\$0.50	\$3.00	\$25.00
First Class, medium size.....		.35	2.50	20.00
First Class, smaller size.....		.25	2.00	15.00

### HEARTS AND BIGARREAUS (SWEET)

**Black Tartarian.**—This fine old variety produces immense crops of very large, purplish black fruits of mild, sweet, jelly-like consistency. The tree makes a beautiful, erect growth. Late June and early July.

**Napoleon.**—Of fine appearance and the very largest size; yellow and amber, with bright red blush; flesh firm, juicy, delicious. Profitable for market; finds a ready sale both for canning and dessert. Forms a grand tree. July.

**Schmidt's Bigarreau.**—Heavily clustered fruits of largest size, deep crimson-black; tender, juicy, well flavored. July.

**Windsor.**—A splendid, large, liver-colored cherry that hangs a long time and rots but little. The flesh is remarkably firm and good, tree very hardy and fruitful. Exceedingly valuable for late market and home use. July.

**Yellow Spanish.**—Large, pale yellow, with light red cheek; firm and delicious. Ripens latter part of June.

### DUKES AND MORELLOS (SOOR)

**Early Richmond.**—Medium size, dark red, melting and juicy, acid flavor; one of the most valuable and popular of the acid cherries and is unsurpassed for cooking; tree slender grower, exceedingly productive and very hardy; will stand the most severe weather.

**English Morello.**—Medium to large, roundish; dark red, nearly black when ripe; flesh purplish-red, meaty, juicy, slightly astringent and good; very productive. August.

**Montmorency.**—A large red acid cherry; larger



Large Montmorency

than Early Richmond, and fully ten days later; very profitable; more largely planted for market than any other. Late June. The tree is hardy, of vigorous growth, exceedingly productive and the greatest money maker in the list.

## Grapes

The vine comes quickly into bearing, yielding fruit usually the second year after planting; requires but little space, and when properly trained is an ornament to the yard, garden or vineyard.

The soil for the Grape should be dry. When not naturally so, it should be thoroughly drained. For maximum crops it should be deeply worked and well manured, always bearing in mind that it is essential to have them in a warm, sunny exposure.

**Brighton.**—Its remarkable vigor and hardiness of vine, large compact bunches, rich wine shade of the ripened berry, delicate skin, tender, almost seedless pulp, sugary juice and rich flavor, are combined qualities that are not united to such a degree in any other sort with which we are acquainted.

**Campbell Early.**—A black grape of immense size; of the Concord type, but larger berry and bunch, much earlier and better quality. The vine is strong growing and hardy, with thick, heavy, mildew-resisting foliage. Commercial vineyardists hail Campbell Early as the most valuable early grape for market. The introducer says that Campbell Early bears about three times as much as Moore Early.

**Concord Grape.**—This hardy black grape is decidedly the most popular grape in America, and deservedly so. Bunch large, shouldered, compact, berries large, covered with a rich bloom; skin tender, but sufficiently firm to carry well to distant markets; flesh juicy, sweet pulp, tender; vine a strong grower, very hardy, healthy and productive. For general cultivation the most reliable and profitable variety.

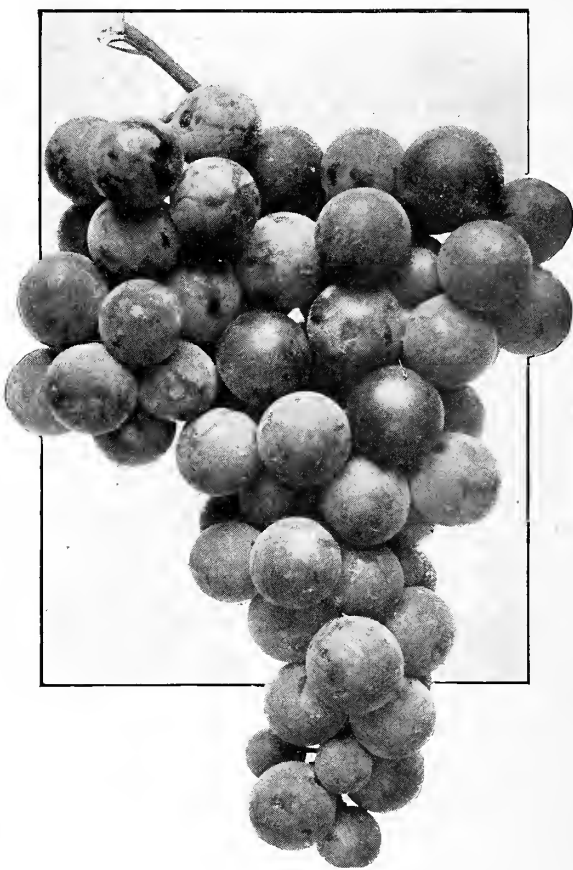
**Delaware.**—Bunches small, compact, shouldered; berries rather small, round; skin thin, light red; flesh very juicy, without any hard pulp, with an exceedingly sweet, spicy and delicious flavor. Vine moderately vigorous, hardy and productive.

**Moore's Early.**—Clusters of medium size; berries large, round, black, with heavy blue bloom. Desirable for market on account of its earliness, well suited for Canada and northern portions of the United States.

**Ives.**—A black grape of good quality; a good shipper, free from rot, vine hardy. Makes a splendid red wine, ranking close to Norton in this respect.

**Niagara Hardy White Grape.**—Popular everywhere. Bunch very large and handsome, often shouldered, compact; berries large, round; skin thin, tough, does not crack and carries well, has not much pulp when fully ripe, melting, sweet, with a flavor and aroma peculiarly its own, and agreeable to most tastes; ripens with Concord, sometimes a little earlier. Vine very vigorous and productive.

**Worden Grape.**—If you fail to plant Worden Grape you will make a mistake. When it was first introduced it was claimed to be the same



Concord

as Concord, since it resembles Concord in many respects. It is, however, much earlier than Concord in ripening and larger in size of berry. Its earliness of ripening is a strong point over Concord. It will not ship so well as Concord but for home use I know of no grape of greater value.

Everyone plants it. It is an enormous cropper and its vines are vigorous enough to ripen such crops. Worden is ripe and gone before Concord comes in. It is an early black grape, very large in cluster and berry, of good quality.

	Each	10	100	1000
General Varieties .....	\$0.12	\$1.00	\$ 6.00	\$55.00
Concord .....	.10	.75	4.50	35.00
Campbell's Early .....	.15	1.00	10.00	80.00

1 Year for 4/5 of 2 Year Price.

## Quinces

The Quince is well known and highly esteemed for cooking and preserving. It thrives best in a deep, rich soil, and is benefited by clean, high cultivation. It is improved by the application of manure as a mulch.

It is not difficult to grow quinces in abundance. It pays well to grow quinces. No kind of fruit is more certain to produce crops. If quinces are grown in a single row the trees can be set as near or as far apart as the planter may choose, but in setting an orchard 15 feet apart each way will be found all right, as the distance apart will warrant space for cross-cultivation and harvesting the fruit. The quince is known for its excellence as a canning fruit, for marmalades and jellies. It possesses a flavor peculiar to itself and unknown in all other fruits.

Prices of general varieties:

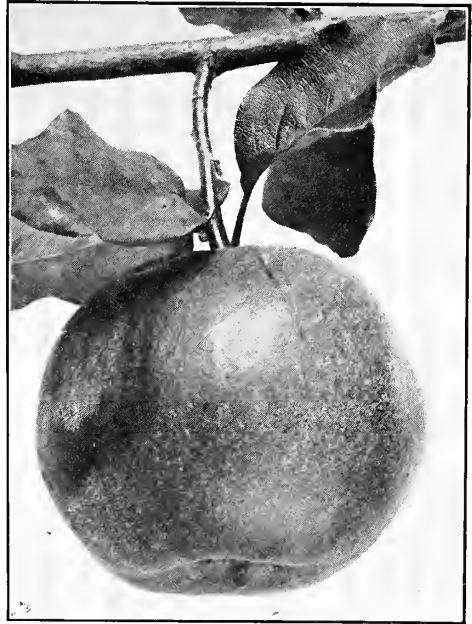
	Each	10	100
Largest Size, No. 1.....	\$0.40	\$2.50	\$20.00
Medium Size, No. 2.....	.35	2.00	15.00

**Champion.**—Fruit very large, fair and handsome, surpassing other varieties in this respect; bears abundantly while young; flesh cooks as tender as an apple and without hard spots or cores; flavor delicate, imparting an exquisite quince taste and odor to any fruit with which it is cooked, and most excellent for making preserves, jellies, marmalades, etc. The trees are vigorous growers and bear heavy crops of superior fruit. It yields fruit on very young trees soon after planting.

**Meech's Prolific.**—Pale, bright orange, with a thin fuzz, fruit large and in shape ranges from nearly apple shape to short pear shape, somewhat furrowed at the top. Very fragrant, good flavor. Bears young. Productive. Supposed to have originated in Connecticut. Midseason.

**Orange.**—This popular old variety is the very best for market. Fruit is large to very large, roundish, with short neck, golden yellow; flesh firm and of fine flavor. This quince never suffers from late frosts as it is so late in blooming. We would highly recommend this quince for home use or commercial purposes.

**Rea's Mammoth.**—Large, rich golden yellow; flesh cooks as tender as the apple and without hard spots or cores, flavor delicate, imparting an exquisite quince taste and odor to any fruit with which it is cooked. Sure to ripen even in northern latitudes; very hardy and productive. We regard it the best of all the quinces. October.



Orange

## Nuts

**American Sweet Chestnut.**—By far the most popular variety of chestnut. Price 3 to 4 ft., 30c. each, \$2.50 per 10.

**Hazelnut (Filbert).**—This is the sort usually sold in the fruit stores. Price 30c. each, \$2.50 per 10.

**Pecans.**—This nut is very productive and delicious. Price 2 to 3 ft., 35c. each, 1 to 2 ft., 25c. each.

**English or Persian Walnuts.**—One of the larg-

est, most delicious, meaty and desirable nuts. Price 2 to 3 ft., 50c.; 3 to 4 ft., 60c.; 4 to 5 ft., 75c.

**Black Walnut.**—The common well-known Black Walnut, the wood of which is most beautiful and valuable. Price 5 to 6 ft., 50c. each, 4 to 5 ft., 35c. each.

**Butternut.**—A fine native tree producing a large longish nut, which is prized for its sweet, oily, nutritious kernel. Price 3 to 4 ft., 35c. each, \$3.00 per 10. 2 to 3 ft., 30c. each, \$2.50 per 10.

## Currants

Before planting, the roots should be shortened to 10 or 12 inches, and in planting care should be taken to firm the earth about the roots. After planting, cut back the tops about one-half the previous year's growth. No plant will better repay generous treatment and high cultivation than the currant.

**Black Champion.**—An English variety of great value; very sweet and delicious; bushes thrifty, strong; berries very large; early, prolific, fine.

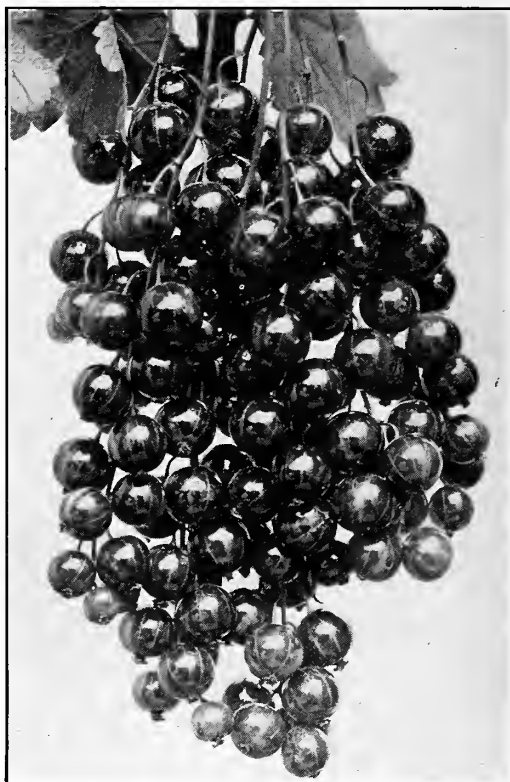
**Cherry.**—The standard Red Currant. Fruit very large; a fine, upright grower; valuable alike for market and garden; splendid quality.

**Fay's Prolific.**—The leading market variety. The fruit is very large and handsome, uniform in size, easily picked, exceedingly productive.

**Perfection.**—In color it is a beautiful bright red, a size larger than the Fay; clusters average longer and the size of berries are maintained to the end of the bunch. It is one of the most productive currants we have ever known; quality is superior to anything in the market, being of a rich, mild sub-acid flavor and having plenty of pulp with few seeds. Price, 20c. each, \$1.50 per doz., \$100.00 per 1,000.

**White Grape.**—Large yellowish white, sweet, excellent quality. Best white variety.

Prices of Currants (except where noted), strong 2-year plants: 15c. each, \$1.00 per doz., \$50.00 per 1,000.



## Apricots

Apricots are a rich, delicious fruit, coming between cherries and peaches. Very much like the peach in outward appearance, but like the plum in quality and texture. One of the finest fruits for drying, and they fill a season when there are no other large fruits.

**Price of Apricots—**

	Each	10
.....Extra—3 to 4 feet.....	\$0.25	\$2.00

**Acme.**—A new and fine variety. Tree stout, healthy and hardy; handsome foliage. Fruit large and sweet; rich yellow with red cheek. July.

**Harris.**—Rich golden yellow; large size, very fine quality; hardy, early bearer and prolific.

**Montgamet.**—Medium size; early; juicy and excellent; hardy. July.

**Moorpark.**—Large; orange and red; firm and juicy, with rich flavor; very productive. August.

## Gooseberries

The Gooseberry thrives best on a cool, damp, rich soil. It should be annually pruned and mulched with manure.

The demand for this fruit is constantly growing, the expense of cultivation is light, and the returns most satisfactory.

Price of Gooseberries.....	Each	Doz.	1000
	\$0.15	\$1.50	\$100.00

**Downing.**—Largest and best of all native American varieties. The value of Downing lies in its large size, fine quality, beautiful appearance, vigorous growth, and freedom from mildew. Downing is free from spines, of a transparent color, tending to yellow; bush upright, keeping the fruit from the sand. Enormously productive.

**Houghton.**—Medium size, roundish, oval, sweet; very productive. Pale red.

**Industry.**—Marvelously productive and bears second, if not the first year planted. The fruit is of large size, color dark red.

**Red Jacket.**—An American seedling of large size, smooth, prolific and hardy, of best quality. Has been well tested over a wide extent of territory by the side of all the leading varieties, and so far the most free from mildew, both in leaf and fruit, of them all.



## Raspberries

Prices of Raspberries (except where noted): 50c. per dozen, \$1.50 per 100, \$12.00 per 1,000.

**Black Diamond.**—A large, handsome berry of great productiveness and splendid keeping and evaporating qualities; sweet; excellent.

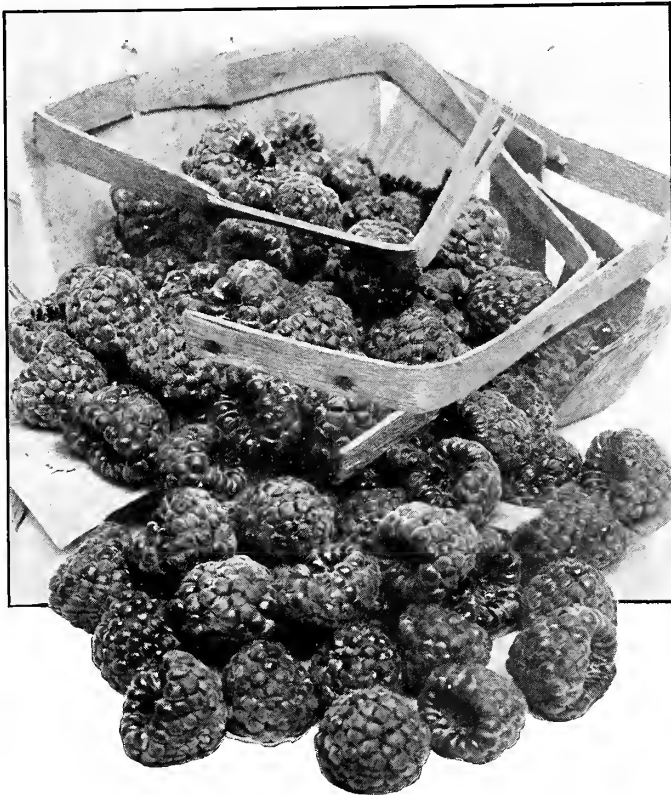
**Cuthbert, or Queen of the Market.**—A remarkably strong, hardy variety; stands the northern winter and southern summers equal to any. Berries very large, conical, rich crimson, very handsome, and so firm they can be shipped hundreds of miles by rail in good condition; flavor is sweet, rich and luscious. The leading market variety for main crop. Red.

**Columbian Raspberry.**—Is a purple variety much resembling Shafter in growth of bush and fruit. A strong grower, unexcelled for productiveness. Red.

**Herbert.**—This is a new red raspberry which originated in Canada and is very highly recommended by the Government Experimental Station at Ottawa on account of its unusual hardiness. They have thoroughly tested it and consider it one of the best market varieties. Fruit is large, bright to deep red in color; the bushes are strong growers and very productive.

**Kansas.**—Jet black, firm and delicious; as large as the Gregg, quite early. One of the best.

**Ohio.**—The standard early berry. Very productive. Fine quality; very hardy. Black.



**Black Diamond**

**St. Regis.**—Everbearing. Bright crimson, firm, rich, delicious flavor; ships well. Of iron-clad hardiness. \$1.00 per doz., \$25.00 per 1,000.

## Blackberries

**Blower's.**—Claimed to be the hardest, most productive, of finest quality and to bring the highest market price.

**Erie.**—Fruit very large, a strong grower and great bearer.

**Lawton.**—The oldest blackberry under cultivation, too well known to need a description.

**Mersereau.**—Remarkably strong grower, upright, producing stout, stocky canes. An enormous producer of extra-size berries, which are brilliant black and retain color; extra quality; sweet, rich and melting, without core. Ripens very early.

**Rathbun.**—Origin western New York. A strong erect grower with strong stem, branching freely; will root from tip of branches like a raspberry. Hardy, having endured 20 degrees below zero, and produced a good crop. Forms a neat, compact bush 4 to 5 feet high, producing its immense fruit abundantly. Fruit is sweet and luscious, without hard core, of extra high flavor, jet black, small seeds; firm enough to ship and handle well.

**Snyder.**—Early; good quality; immensely prolific; fair size; black, fine; one of the hardiest.

60c. per doz., \$3.50 per 100, \$20.00 per 1,000.



## Strawberries

Price of Strawberries (if by mail add 25c. per 100), 50c. for 25, \$1.00 for 100, \$5.00 for 1,000.

**Brandywine.**—Berries very large, regular, conical form; color bright glossy red; flesh firm and of very excellent quality.

**Wilson.**—The best berry for canning. This is an old well thought of variety that has always given satisfaction. One of the very best berries for flavor and quality. We recommend this variety to you.

**Gandy.**—A very strang growing plant; moderately productive; fruit large, uniform shape, bright color and good quality; season late.

**Glen Mary.**—Berries large, bright deep red, rich, sweet and good. One of the most productive, and holds its size well to the end. Medium to late.

**William Belt.**—Berries large, conical, rather long, regular in outline, bright red, glossy; quality good, moderately firm. Plant vigorous, healthy and quite prolific.

## Asparagus

**Palmetto Asparagus.**—This is a large growing variety particularly delicious in quality. No home garden can be complete without it. Asparagus is one of the greatest garden delicacies, coming in at a season when there is no competitor. When once planted this will continue to produce abundantly for life. The plants late in the season are objects of great beauty, and are worth growing for their beauty. Palmetto Asparagus is valuable for its health-giving properties. It is also appetizing and is a rare delicacy for any table.

**Conover's Colossal Asparagus.**—No vegetable

that is so attractive to the delicate appetite of the epicure as the first delicious cuttings of this early asparagus. No vegetable is more beneficial as an appetizer to persons of sedentary habits. It is difficult to account for its cultivation being neglected. In country gardens it is rarely to be found, although so healthful and nutritious; yet everyone should have an asparagus bed. This good old variety is known everywhere; is of large size, rapid in growth and of good quality.

Price of Asparagus: Strong 2 year plants 25c. per 10, 75c. per 100, \$5 per 1000.

## Rhubarb

**Myatt's Linnaeus.**—Those who have never grown this variety, which is of superior quality, will hardly recognize the old "Pie Plant." It is early, tender, without being in the least tough or

stringy, with a mild sub-acid flavor. Rhubarb is one of our most healthful vegetables. Early in the spring its distinctly acid flavor is quite acceptable. 10c. each, 75c. per 10, \$3.00 per 100, \$25.00 per 1,000.

## Ornamentals

### Beautifying the Home Surroundings

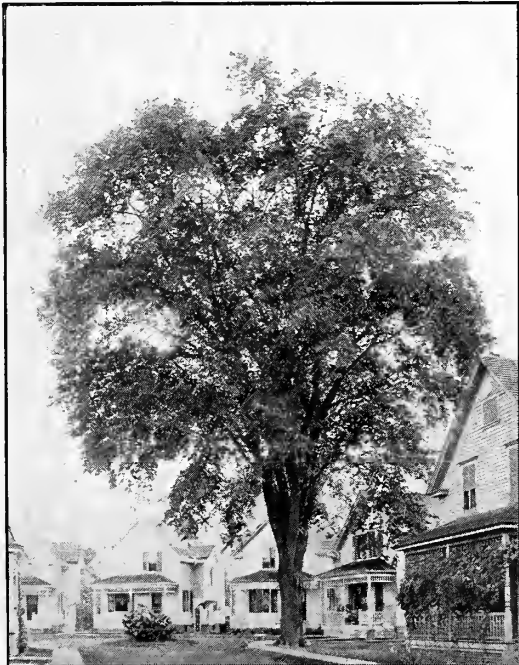
The home grounds, the yard, the garden, the lawn, no matter how large or small, can be made beautiful by an attractive planting of shrubs, roses, shade trees and climbers. At a very nominal cost a sightly effect can be produced, which will be a source of pleasure to the owner or to every passerby. In addition, real estate upon which the planting is made will enhance in value; this is an important consideration for an appraisal of property places a good value upon the trees and shrubbery on the grounds. Well planted property sells more readily than the house upon a barren clay lot.

Plant the trees and shrubs in the naturalistic style—imitate Nature as closely as possible by planting in irregular clumps or masses, and arranging them in sweeping, graceful curves. Stiff, straight, regular lines or plans are unattractive and present evidence of a measured effect, all of which produces a dead, monotonous line.

Leaving large open spaces in the center of the lawn will create an appearance of greater area. Plant the trees and shrubs along the borders to break up the monotony of a still, even ground line. Do not scatter individual specimens of shrubs and plants over the lawn, but plant them in clumps on the border or against a natural background.

To relieve the straight lines of architectural design, plant shrubs and plants about the foundation of the house—not in a straight solid band, but to fill in the corners here and there, leaving open spaces to create a natural effect.

As in constructing anything, the dimensions of the materials to be used should be considered. Some trees and shrubs grow straight and upright, others low and bushy. The taller growing shrubs and trees should form the background or the framework of the planting, and before them the smaller shrubs should be planted, thus producing the effect of a clump like the edge of a thicket.



Elm, American

**American Elm.**—The most admired of all American trees. A natural spreading and drooping tree of our own American meadows and forests, spoken of by many as the most beautiful of all American trees. It is very attractive in any suitable location, is entirely hardy and easily transplanted. There are more Elm trees planted along our streets and highways than any other one variety. This is on account of its dense green foliage, which spreads out from overhead, covering a suitable space of ground in proportion to the size of the tree, which makes it the finest shade tree in the world. 6 to 8 ft., 75c.

**Beech, Purple-Leaved** (*Purpurea*).—A remarkable variety, with very dark purplish foliage, changing to crimson, and again in the fall to dark purplish green, making a striking contrast with the green of other trees. 3 to 4 ft., 50c.

**The Cut-Leaved Weeping Birch.**—This noble tree is not only the most popular of weeping trees, but it is decidedly the best. Its tall, slender, yet vigorous growth, graceful, drooping branches, silvery white bark, and delicately cut foliage, present a combination of attractive characteristics rarely met with in a single tree. It thrives in any soil and is very hardy, needs no protection. As single specimens on the lawn or employed as avenue trees, they are very imposing and handsome. If one ornamental tree only, plant the Cut-Leaved Weeping Birch. 75c.

## Ornamentals



**Catalpa Bungei**

**Bungei (Umbrella Catalpa).**—Grafted on stems six to eight feet high, it makes an umbrella-shaped top without pruning. Perfectly hardy, and flourishes in almost all soils and climates. Leaves large, glossy, heart-shaped, deep green; lie like shingles on a roof; always make a symmetrical head. One of the most unique trees; a valuable acquisition, desirable for lawn, park and cemetery planting. 75c.

**Catalpa Speciosa.**—One of the most beautiful lawn or street trees, producing magnificent flowers early in spring; very rapid growing; beautiful. 8 to 10 feet, 50c. each.

**Crab, Bechtel's Double-Flowered (American).**—Tree medium size, covered in early spring with beautiful double-pink fragrant flowers that look like roses at a distance. 35c.

**Elm, Camperdown Weeping.**—Grafted 6 to 8 feet high, this forms the most picturesque of drooping trees. The leaves are large, dark green and glossy. 75c.

**Kilmarnock Weeping Willow (Salix).**—It forms without any trimming, an exceedingly graceful tree with large, glossy foliage and perfect umbrella shaped head; unique in form. 75c.

**Maple, Norway.**—A distinct foreign variety, with large, broad leaves of the deepest green. It retains its leaves long after other trees are bare. 75c.

**Maple, Weir's Cut-Leaved.**—A variety with cut or dissected foliage; branches slender and droop-

ing, almost as graceful as the Cut-Leaved Birch. The foliage is silvery underneath. 75c.

**Maple, Silver-Leaved or Soft.**—Foliage bright green above and silvery underneath. An exceedingly rapid grower. Makes a large tree. A very satisfactory tree to plant in large quantities. 60c.

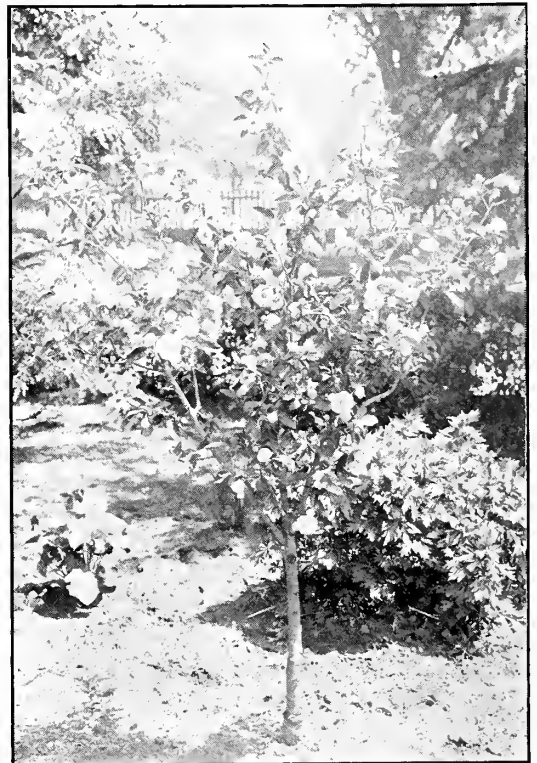
**Mulberry (Downing) Everbearing.**—Berries mild and pleasant. Bears at four and five years of age; continues in fruit from July to September. 75c.

**Magnolia, Conspicua.**—A beautiful variety, with large flowers that appear before the leaves. Tree of small size; very handsome.

**Magnolia, Soulangeana.**—Flowers white and purple; foliage large, glossy and massive; very profuse; hardy and one of the most desirable.

**Magnolia, Speciosa.**—Flowers smaller than Soulangeana; blooms later; hardy and desirable. \$1.00 each.

**Oriental Plane (Orientalis).**—Leaves heart-shape at base, deeply cut. Is among our tallest trees, growing rapidly into massive proportions. Hardy and free from disease. It does well in cities and near the seashore, and is not affected by insects. 75c.



**Bechtel's Crab**

## Ornamentals

**Plum, Purple-Leaf** (Pissardi).—Perfectly hardy. The leaves are rich purple, retaining their bright color through the entire season. Profusion of white blossoms in May, followed by small purplish-red edible fruit. 50c.

**Poplar, Lombardy**.—This is an old favorite. Well known and remarkable for its erect, rapid growth, and tall, spiral form. Indispensable in landscape gardening, to break the ordinary and monotonous outlines of most other trees. 50c.

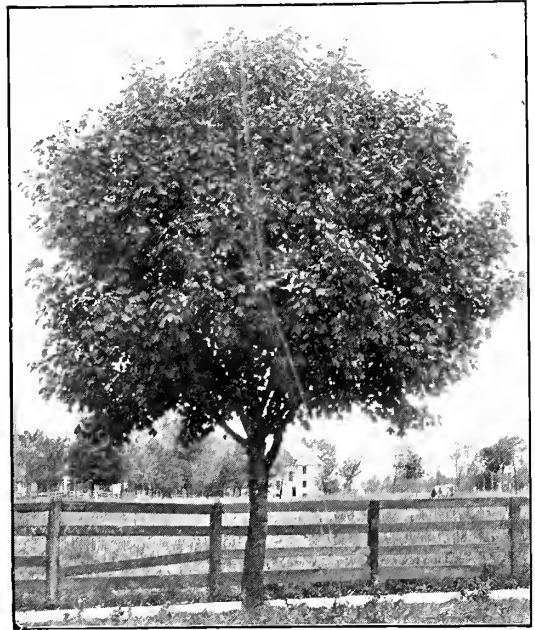
**Poplar, Carolina**.—This tree takes front rank among the best of poplars. It is one of the most rapid growers among shade trees, frequently growing eight feet during one season and thus making fine shade in two or three years. It is very desirable when planted at the roadside, in parks or along rivers and streams. It has an advantage over other shade trees because it will grow in any kind of soil. 40c.

**Teas' Weeping Mulberry**.—The most graceful and hardy weeping tree in existence. Forms a perfect shaped head, with long, slender, willowy branches, drooping to the ground. 60c.

**Thorn, Double Pink**.—Double pink or rose flowers, with white tips. 50c.

**Golden Willow**.—This is a very handsome tree, graceful and very beautiful. When young it grows straight and compact but after it is five or six years old the branches begin to droop, producing the effect noted in above photograph. It is conspicuous at all seasons but particularly

so in winter, on account of its bright yellow bark. By all means plant it. 50c.



Maple, Norway

## Deciduous Shrubs

We can supply many Flowering Shrubs in addition to those described, but confine ourselves to those having the greatest merit, and especially to such as possess some distinct qualities, either of foliage or of flower.

Should any of our professional patrons desire to experiment on their testing grounds with varieties not named herein, we shall be pleased to fill any orders therefor, but to the general planter we advise a selection from the following choice list:

Price of all shrubs, 25c each, \$2.50 per dozen (except where noted).

**Althea** (*Hibiscus Syriacus*).—The Altheas are fine, free-growing flowering shrubs of very easy cultivation. Desirable on account of flowering in August and September, when nearly every other shrub or tree is out of bloom. They are of good size, many colored, trim and attractive. Tree Altheas are very desirable, and the handsomest flowering tree we know of. Perfectly hardy and can be had in various colors if desired. Entirely free from all insect pests; always gives delight and satisfaction. Require pruning each spring. 25c.

**B. Thunbergii** (Thunberg's Barberry).—Dwarf habits; small foliage, changing to red in the fall; very pretty. 25c.

**Var. Purpurea** (Purple-Leaved Barberry).—A very handsome shrub, growing from three to five

feet high, with violet-purple leaves and fruit. Makes a fine ornamental hedge. 25c.

**Calycanthus Floridus** (Carolina Allspice—Sweet-scented Shrub).—A handsome shrub 6 to 8 feet tall; attractive reddish brown flowers with a distinct spicy fragrance that is equalled by no other shrub. 25c.

**Cornus Florida** (White Flowering Dogwood).—Large shrub or small tree, producing a mass of large white flowers in May, before the leaves appear. In the fall the deep, green foliage turns to a brilliant scarlet. 25c.

**Elegantissima Variegata**.—One of the finest variegated shrubs; of rapid growth; the leaves are broadly margined with white, while some are entirely white. 25c.



## Deciduous Shrubs

**Deutzia, Crenata, Double-Flowering.**—A hardy, vigorous shrub that does not suffer from insects or diseases and early in the season is fairly covered with very showy double white flowers that on the edge are slightly tinged with rose. Handsome, desirable shrub. 25c.



**Deutzia, Pride of Rochester**

**Deutzia, Gracilis.**—Pure white flowers in June. Two feet high when fully grown. 25c.

**D. Scabra (Rough-Leaved Deutzia).**—White, bell-shaped flowers, in small bunches; oval foliage, very rough underneath; of dwarf habit. 25c.

**Forsythia (Golden Bell).**—A fine hardy shrub. It comes into bloom early, and flowers are of a bright orange-yellow. 25c.

**Deutzia, Pride of Rochester.**—Blooms in May. Double, white, tinted with rose on the edge. 25c.

**Golden-Leaved Elder.**—The best of all the colored shrubs. A plant of this bush in a bed, or a border, or on the lawn, is a conspicuous feature, the foliage being as yellow as gold. 25c.

**Upright Honey Suckle (White).**—Pure white flowers followed by deep red berries that fill the bush till autumn; very attractive. 25c.

**Upright Honey Suckle (Pink).**—Pink flowers which contrast beautifully with the foliage. 25c.

**Hydrangea Arborescens Sterilis (Hills of Snow).**—A magnificent shrub with enormous snow white flowers blooming from early summer until fall. A glorious plant for the lawn and dooryard. 50c.

**Hydrangea Paniculata (P. G.) Grandiflora.**—Large, showy white flowers changing to a shell pink, sometimes twelve inches long, making the entire shrub a solid bank of glorious color. When planted in groups against a green back-

ground of trees or high shrubs, the contrast makes a magnificent sight. Also a splendid single specimen for the lawn. 25c.

**Lilac, Common Purple.**—The old-time violet purple favorite; fragrant; become large shrubs; less desirable than the budded varieties. 25c.

**Lilac, Common White.**—The old favorite; large size, long lived shrub. Well-known, fragrant, much admired. 25c.

**Mock Orange (Syringa).**—Flowers white, deliciously perfumed. Derives its name owing to flowers resembling orange blossoms; a delightful substitute for that noble flower. 25c.

**Paeonies (The Queen of Spring Flowers).**—The Paeony can be planted in the spring or fall. It rivals the rose in beauty and fragrance. Price and colors of Paeonies: red, pink, and pink and white, best varieties, strong roots (that will flower the coming summer). 25c.

**Phlox (Hardy).**—Very fine; perfectly hardy; beautiful plants. Colors: purple, lilac, white and pink. 25c.



**Althea**

**Rhodotypus Kerroides (White Kerria).**—Large single white flowers late in May. A good, strong growing shrub with handsome foliage. 25c.

**Spirea Anthony Waterer.**—An elegant dwarf shrub, blooms all season; flowers deep crimson. 25c.



## Deciduous Shrubs

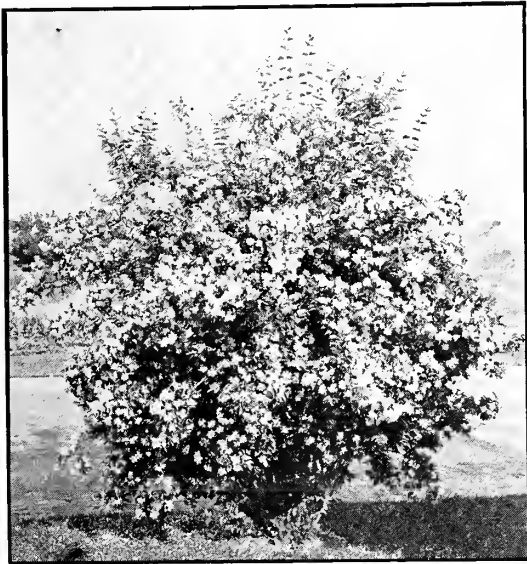


**Hydrangea**

**Spiraea Callosa Alba.**—A white flowering variety, of dwarf habit; very fine. 25c.

**Spiraea Callosa Rosea.**—Has large panicles of deep rosy blossoms; grows freely and blooms nearly all summer; fine. 25c.

**Spiraea Van Houttei.**—This is undoubtedly the best of the spiraeas. The cut shown is a fair one



**Mock Orange, or Syringa**

and shows it in full blossom. The blossoms are white. Do not pass it by. 25c.

**Snowball Opulus (High Bush Cranberry).**—One of the best for planting. Its berries resembling cranberries, hang until destroyed by frost late in the fall; wood and foliage similar to that of the Common Snowball. 25c.

**Tamarix Africana.**—A graceful, unique shrub with feathery foliage, and light pink flowers in May. An extremely rapid grower and will thrive where other shrubs fail. For quick effects it is one of the best. Its peculiar olive green foliage makes a pleasant contrast. 25c.



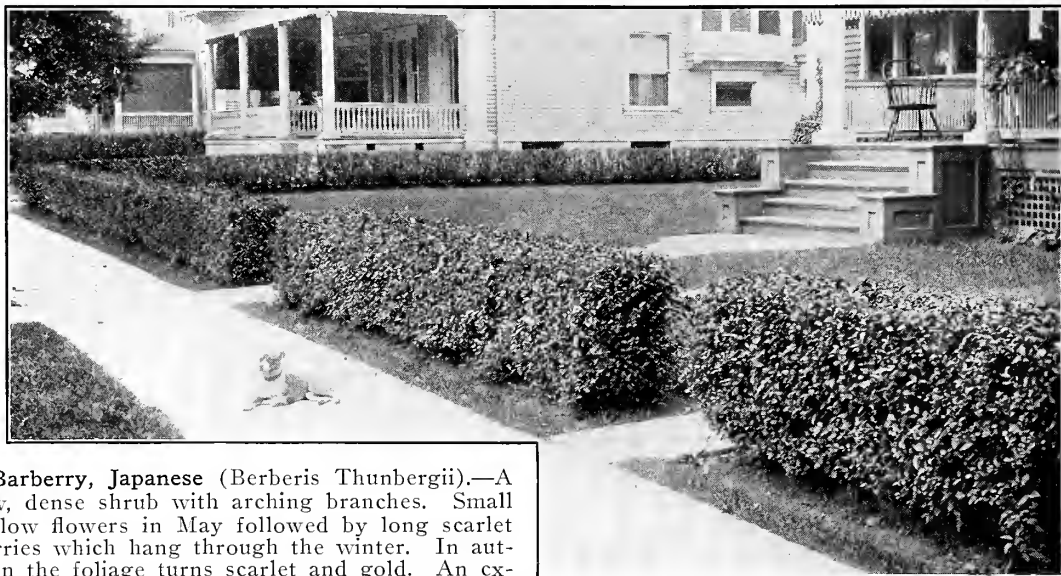
**Spiraea Van Houttei**

**Diervilla Weigela.**—Very desirable, hardy, easily grown and great bloomers. As these shrubs grow older they gradually spread and droop; in June and July they are covered with large, trumpet-shaped flowers of varying colors. In borders and groups of trees they are very effective. 25c.

**Azalea.**—Grows three to four feet high, with small hairy leaves and yellow, red and orange flowers. 75c.

**Rhododendrons (Any color).**—The Rhododendron is one of the most beautiful species of the broad-leaved evergreen. The great value of this evergreen is that its profusion of beautifully colored flowers is borne during the latter part of May and early June. \$1.00

## Hedge Plants



**Barberry, Japanese** (*Berberis Thunbergii*).—A low, dense shrub with arching branches. Small yellow flowers in May followed by long scarlet berries which hang through the winter. In autumn the foliage turns scarlet and gold. An excellent hedge plant. 12 to 18 inches, \$10.00 per 100; 18 to 24 inches, \$12.00 per 100.

**The Crimson Rambler Hedge**.—This rose is such a strong, rampant rapid grower that it soon makes a most desirable hedge or screen for a fence. Trained along a wire fence and planted three or four feet apart, they form a perfect screen and when in full bloom with its thousands of miniature crimson roses in clusters makes a truly magnificent sight. \$15.00 per 100.

**Privet, California** (*Ligustrum Ovalifolium*).—Most popular of all hedges. Makes a rapid, dense growth, and can be sheared to any desired shape. Excellent for shrubbery masses on the lawn. Foliage rich, glossy, dark green, and remains until midwinter—almost an evergreen. Small white flowers in July. Thrives in smoke and dust of cities. 18 to 24 inches, \$3.00 per 100; 2 to 3 feet, \$4.00 per 100.

## Evergreens

**Norway Spruce** (*Picea Excelsa*).—A lofty tree, of perfect pyramidal form, remarkably elegant and rich, and as it gets age, has pendulous branches; it is exceedingly picturesque and beautiful. Very popular and deservedly so. One of the best evergreens for hedges and windbreaks. 12 to 18 inches, \$15.00 per 100; 18 to 24 inches, \$20.00 per 100; 2 to 3 feet, \$25.00 per 100.

**Arbor-Vitae** (*Thuja occidentalis*).—This is the finest of all evergreens, valuable for hedges, hardy, easily transplanted; nursery specimens rarely fail. It soon forms a beautiful, dense hedge. 18 to 24 inches, \$15.00 per 100; 2 to 3 feet, \$20.00 per 100.

**Arbor-Vitae, Golden**.—Nearly spherical in outline and with bright yellow tinged foliage. 75c. each.

**Arbor-Vitae, Pyramidalis**.—The most beautiful of all the Arbor-Vitae, having dark green, compact foliage and remarkably erect form; perfectly hardy. 50c. each.

**Arbor-Vitae, Rosedale**.—Hardy, effective and handsome. 75c. each.

**Arbor-Vitae, Siberian**.—The best species native

to that country; exceedingly hardy; keeping its color well in winter; growth compact and pyramidal. 75c. each.

**Fir, Balsam**.—A well known and popular tree. Beautiful and in every way desirable. 50c. each.

**Juniper, Irish**.—A very pretty little tree. 50c. each.

**Pine, Austrian**.—Hardy and valuable. 50c. each.

**Pine, Scotch**.—Rapid growing and valuable for screens. 50c. each.

**Pine, White**.—The well known forest tree. Handsomest of native species. 50c. each.

**Spruce, Douglass**.—Conical and spreading.

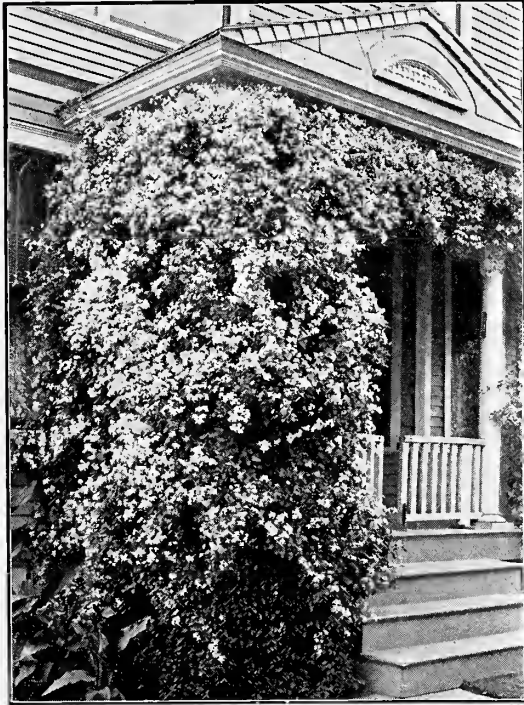
**Spruce, Hemlock**.—An elegant tree with drooping branches and fine yew-like foliage. Makes a fine ornamental hedge. 18 to 24 inches, 60c. each.

**Spruce, Weeping**.—A beautiful variety resembling Norway but with pendulous drooping branches. Fine.

**Spruce, Koster's Grafted Colorado Blue**.—A dense-growing, symmetrical, pyramidal tree, with stiff pointed foliage of a beautiful blue. Very valuable, should be in every collection. Price, 12 inches, \$1.00 each; 18 inches, \$1.25 each; 2 feet, \$2.00 each.



## Flowering Vines



**Virginia Creeper (American Ivy).**—Fine for trellises where a rapid growing vine is needed. Price 25c. each.

**Trumpet Flower.**—A grand old favorite, hardy climbing plant, with large trumpet shaped, scar-

let blossoms in August. Price 25c. each, strong 2-year vines.

**Ampelopsis Veitchii (Boston Ivy).**—This is one of the most beautiful ivies and the latest acquisition. It is a rapid grower and clings tenaciously to brick or stone walls, requiring no artificial fastening or training. Price, strong vines, 35c. each.

**Hall's Japan Honeysuckle.**—An almost ever-green honeysuckle of the greatest value, being hardy and of strong growth. The flowers are fragrant, of a pure white changing to yellow, resembling a Cape Jasmine in odor and produced in profusion from May to December. Price, strong plants, 25c. each.

**Jackmanni Clematis.**—Flowers, when fully expanded, are from 4 to 6 inches in diameter; intense violet purple, with a rich velvety appearance. Price of strong plants, 35c. each.

**Clematis Paniculata.**—This beautiful Clematis fills a long felt want for a rapid growing, hardy, easy-to-transplant flowering vine. It commences to grow very early in the spring and blooms profusely in the late fall. Flowers pure white star-shaped, about one inch in diameter, borne in large clusters; will last several days as cut flowers, retaining their freshness and fragrance. Price 25c. each.

**Henryi Clematis.**—A vigorous grower and free bloomer, producing its large, pure white flowers constantly during the summer and early autumn. Price 35c. each.

**Chinese Wistaria.**—One of the most elegant and rapid growing of all climbing plants; attains an immense size, growing at the rate of 15 to 20 feet in a season. Has long pendulous clusters of pale blue flowers in May, June and in autumn. Price, 25c. each.

## Roses

It is impossible to exaggerate the beauty of the Rose; its very name suggests beauty and fragrance. It is now possible to have roses all summer, even with but a small garden, and we will gladly aid you in selection of hardy varieties that will bloom from spring until November. Our Roses are strong dormant plants grown out of doors, are well rooted and in every way first-class. They have in most cases already bloomed before being sent out, and we believe will give satisfaction and permanent success. Prices 25c each, \$2.50 per doz.

**American Beauty.**—Large (globular; deep pink, shaded with carmine; delicious odor; has proved to be a most delightful variety for forcing and may be found valuable for cultivation out of doors.

**Baby Rambler (Red).**—This new rose is a cross between Crimson Rambler and Glory of Polyanthus, and may be described as a dwarf form of the widely known and popular climbing rose, Crimson Rambler, being hardy, vigorous and perpetual flowering. The flowers are large, well formed, of a crimson red color and borne in clusters.

**Frau Karl Druschki (Snow Queen).**—It is perfectly hardy everywhere and a most vigorous grower, throwing up enormous shoots which are covered with snow white blossoms. Although we have many so-called white roses, this is one of the most popular roses.

**General Jacqueminot.**—Brilliant crimson, large and very fine; one of the handsomest and most showy roses of this color. Beautiful in the bud, semi-double when full grown. Of fine free growth; a universal favorite. Crimson.

**Gruss an Teplitz.**—Color of the richest scarlet, shading to velvety crimson; blooms constantly.

## Roses

**Killarney.**—Large buds, long and pointed. Color flesh, shaded white, suffused with pale pink. Blooms throughout the season.

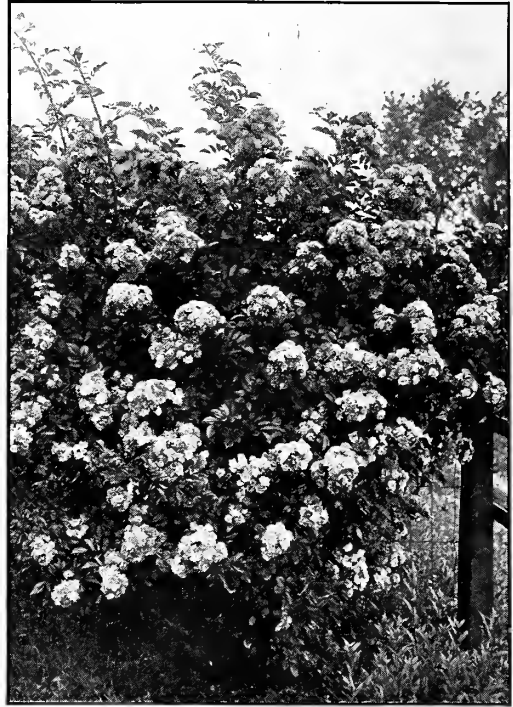
**Margaret Dickson.**—Of magnificent form, white with pale flesh center; petals very large, shell shaped, and of great substance; foliage very large, dark green.

**Madam Plantier.**—Pure white, medium size, full; flowers produced in great abundance early in the season.

**Persian Yellow.**—Deep, bright yellow; small but handsome; double; a very early bloomer, and much the finest hardy yellow rose.

**Soliel D'Or (Golden Sun).**—New. Hardy yellow rose; foliage glossy. Robust in growth and is sure to be popular.

**Crimson Rambler.**—New. Of Japan origin. Very vigorous, growing eight to ten feet a sea-



**Crimson Rambler**



**Frau Karl Druschki**

son after it is well established. Entirely hardy and extremely prolific. It blooms in clusters. Of a beautiful crimson color and lasts a long time.

**Dorothy Perkins.**—A hybrid of Rosa Wichuraiana and Mme. Gabriel Luizet. In its foliage, growth, and habit of blooming, it is remarkably like Crimson Rambler, but the flowers are more double and of a beautiful shell-pink color, and hold a long time without fading.

**Tausendschon (Thousand Beauties).**—New. Imagine a luxuriant climbing rose literally covered with thousands of bright blossoms, borne in clusters and quite double.

**White Rambler.**—Similar in origin, habit of bush and bloom to Crimson Rambler, but not so strong a grower.

### Number of Trees to an Acre

40 feet apart each way.....	25	10 feet apart each way.....	435
30 feet apart each way.....	50	8 feet apart each way.....	680
25 feet apart each way.....	70	6 feet apart each way.....	1210
20 feet apart each way.....	110	5 feet apart each way.....	1745
18 feet apart each way.....	135	4 feet apart each way.....	2725
15 feet apart each way.....	205	3 feet apart each way.....	4840
12 feet apart each way.....	300		



### NOTICE TO THE CUSTOMER

Orders should be sent in as early as possible, that there may be plenty of time for shipping.

Buyers ordering by letter should write out their order plainly, on order blank. It will prevent mistakes in the hurry of packing season.

Do not forget to sign your name plainly to the order blank.

Give plain and explicit shipping directions. When none are given we forward according to our best judgment.

All orders from unknown correspondents must be accompanied with cash or satisfactory reference.

### FREIGHT, BOXING AND PACKING FREE

We box and pack all shipments without charge. All orders are put up in boxes or bales, lined with heavy paper to guard against stock drying out; the trees are packed in moist excelsior and straw.

### CARE OF TREES ON ARRIVAL

If not ready to plant on arrival, unpack but do not leave the roots exposed to the cold or air, dig a trench, and heel in carefully by laying the trees down and covering the roots with moist earth to the lower branches, then keep them watered well until ready to plant. Do not be afraid that you will get too much dirt on them. So many trees are ruined by not being heeled in properly.

If frozen when received, do not open the boxes, but place in a cellar or some cool room that is free from frost, and let them remain until the frost is drawn out.

### DON'T BUY A TREE BECAUSE IT IS CHEAP

We strongly urge that orchard planters plant nothing but the best. Do not use valuable land and give time and energy to the growing of trees of uncertain value. Let price be the last consideration, but demand quality. Demand good, clean, healthy trees—demand the best.

A few cents saved on a tree may mean many dollars loss when the tree comes into bearing. Reputation is nowhere of so much value as in the nursery business, so trees should be bought from a firm in whom you have confidence.

### NURSERY INSPECTION

Our nurseries are carefully examined each year by State Inspectors and we are prepared to guarantee that stock purchased from us will be free from injurious insect pest or pests and in a healthy and dormant condition.

Each package of stock shipped is accompanied by a copy of the State Certificate issued to us each year by New York Department of Agriculture in accordance with the provisions of Section 83 of the Agricultural Law.

---

#### Table of Distances at Which Various Trees Should Be Planted.

**Apples**—Standard, 30 to 40 feet each way.

**Apples**—Dwarf, 15 feet each way.

**Pears**—Standard, 20 to 25 feet each way.

**Pears**—Dwarf, 15 feet each way.

**Cherries**—20 to 25 feet each way.

Mazzard and Mahaleb

**Plums**—16 to 18 feet each way.

**Peaches**—18 to 20 feet each way.

**Apricots**—16 to 18 feet each way.

**Nectarines**—16 to 18 feet each way.

**Quinces**—12 feet each way.

**Currants**—3 to 4 feet each way.

**Gooseberries**—3 to 4 feet each way.

**Raspberries**—3 to 4 feet each way.

**Blackberries**—6 to 8 feet each way.

**Strawberries**—1½ to 3 feet each way.

**Grapes**—8 to 10 feet each way.

To estimate the number of plants required for an acre at any given distance, multiply the distance between the rows by the distance between the plants, which will give the number of square feet allotted to each plant and divide the number of square feet in an acre (43,560) by this number and the quotient will be the number of plants required.



*ORDER SHEET--This blank materially aids in filling your order promptly and accurately*

# HEBERLE BROTHERS NURSERIES

BRIGHTON, N. Y.

<p><i>Please ship by</i> .....</p> <p style="text-align: center;">(Write here whether by Express, Freight or Mail)</p> <p><i>To</i> .....</p> <p style="text-align: center;">(Write here name of party to whom we shall ship)</p> <p><i>Street or R. F. D. No.</i> .....</p> <p><i>Post Office</i> .....</p> <p><i>County</i> ..... <i>State</i> .....</p> <p><i>Railroad Station</i> ..... <i>Express Office</i> .....</p> <p><i>Name of Superintendent or Gardener</i> .....</p> <p><i>Charge to</i> .....</p>	<p><i>Date</i> .....</p> <p style="text-align: center;"><b>AMOUNT ENCLOSED</b></p> <p><i>Cash</i> - - - - \$ .....</p> <p style="text-align: center;">Send only in registered letter</p> <p><i>Draft</i> - - - - .....</p> <p><i>P. O. or Exp. Order</i> .....</p> <p><i>Stamps</i> - - - .....</p> <p><b>If goods are wanted by express C. O. D., 25 per cent of the amount of the order must be paid in advance.</b></p> <p><b>Acknowledged</b> .....</p> <p><b>Recorded</b> .....</p>
--	--

PACKING AND SHIPPING. No charge is made for packing or for delivery to freight depots or express offices in Rochester, N.Y. A CERTIFICATE OF INSPECTION as to healthfulness and freedom from diseases accompanies every shipment of our stock.

**To avoid confusion, please give the size and price of each item**

QUANTITY	NAMES OF PLANTS	SIZE	PRICE	
			Dollars	Cents
<b>AMOUNT</b>		- - - - -	<b>\$</b>	

In any action to recover damages suffered by the purchaser by reason of any fruit tree or trees not being of the name or variety under which they were tagged and sold, the seller shall have the burden of proof in establishing that any contract not in writing or any provision of any such contract exempting the seller from liability or limiting his liability was fully understood and agreed to by the purchaser





## Schedule of Applications for the Combined Treatment of the Curculio, Scab, and Brown Rot.

Arsenate of lead is the poison to use for the curculio, and it is less injurious to the fruit and foliage of the peach than any other arsenical on the market. The tri-plumbic form of arsenate of lead, being less caustic than the standard or hydrogen form, should be used in preference to the latter.

As a fungicide for the control of scab and brown rot, either self-boiled lime-sulphur (the home-made preparation), or atomic sulphur (the manufactured product), may be used with equal results. The advantage of the latter is that it is prepared ready for use, needing only dilution with water at the rate of five pounds to each 50 gallons of water. The self-boiled lime-sulphur is composed of 8 pounds of sulphur and 8 pounds of lime to each 50 gallons of water, and should be prepared according to the United States Department of Agriculture Farmers' Bulletin 440, pp. 34-45.

Most of the peach orchards east of the Rocky Mountains should receive the combined treatment for the curculio, scab, and brown rot. This is particularly true of orchards located in the Southern and Middle Atlantic States, where all of these troubles are prevalent. In some of the Northern orchards the curculio may not be sufficiently injurious to require the first arsenate of lead spraying, but, as a rule, it is advisable to use the poison with the first fungicide application, even though this insect may not be serious. Aside from killing the curculio, the arsenate of lead increases the color and apparently toughens the skin of the fruit. Where this insect is not particularly troublesome, however, the first application of the following schedule may be omitted.

### Mid-Season and Medium-Early Varieties

Mid-season and medium-early varieties of peaches, such as Rochester, Belle, Early Crawford, Elberta, Late Crawford, Chairs, Stevens, Fox, and Beers Smock, and in the South, Carman, Hiley, and Mountain Rose should be treated as follows:

*First.*—Spray the trees about 10 days after the petals fall, when the calyces are pushed off (See Pl. IV, fig. 1), using  $1\frac{1}{2}$  pounds of tri-plumbic arsenate of lead and 3 pounds of lime to each 50 gallons of water. This is for the curculio, and should be applied with a nozzle capable of throwing a fine spreading mist, covering the fruit and foliage with a very thin film of poison, and under no circumstances should the trees be drenched.

*Second.*—About twenty days later, or one month after the petals fall, spray the trees with atomic sulphur, 5 pounds to 50 gallons of water, or self-boiled lime-sulphur (8-8-50). To this should be added  $1\frac{1}{2}$  pounds of tri-plumbic arsenate of lead, and where atomic sulphur is used 3 pounds of lime to each 50 gallons of the spray. This is the second treatment for the curculio and the first treatment for scab and brown rot.

*Third.*—About one month before the fruit is expected to ripen, spray the trees with atomic sulphur, 5 pounds to each 50 gallons of water, or with the self-boiled lime-sulphur. No poison should be used at this time, and since the application is intended to prevent the development of brown rot during the month preceding the ripening of the fruit and during the picking season, the trees should be sprayed rather heavily so as to coat the fruit on all sides.

### Early Varieties

The Rochester and other very early varieties, and in the North, Carman, Hiley, Champion, and Mountain Rose, as well as other early varieties, as a rule, need only two applications as follows:

*First.*—From two to three weeks after the petals fall, using arsenate of lead and atomic sulphur or self-boiled lime-sulphur.

*Second.*—About one month before the fruit is expected to ripen, using one of the fungicides without the arsenate of lead.

# Guarantee

**E**VERY TREE SHIPPED FROM OUR NURSERIES NOT ONLY IS GUARANTEED TRUE TO LABEL BUT CARRIES WITH IT OUR PERSONAL SUPERVISION IN EVERY BRANCH OF THE WORK, PLANTING, BUDDING AND PACKING.

IF THROUGH ANY FAULT OF THE *HEBERLE NURSERIES* OUR GOODS ARE NOT TRUE TO LABEL WE WILL ON SATISFACTORY PROOF REPLACE DOUBLE THE NUMBER, REFUND THE PURCHASE PRICE PAID AND MAKE GOOD THE ACTUAL NUMBER OF TREES FREE OF CHARGE.

FURTHERMORE WE WILL REPLACE ALL TREES THAT DIE THE FIRST YEAR FOR ONE HALF THE PURCHASE PRICE.

*Alfred A. Heberle*

*Bernard J. Heberle*

