

Historic, Archive Document

Do not assume content reflects current scientific knowledge, policies, or practices.

2.41

1916

FEB 23 1916

RETURN TO POMOLOGY
SECTION OF NOMENCLATURE.

INDEXED.

1920

Annual Catalog of Small Fruit Plants



Gibson-My Strain

Mayer's Plant Nursery
(THE BOHEMIAN NURSERYMAN)
MERRILL :: :: MICHIGAN



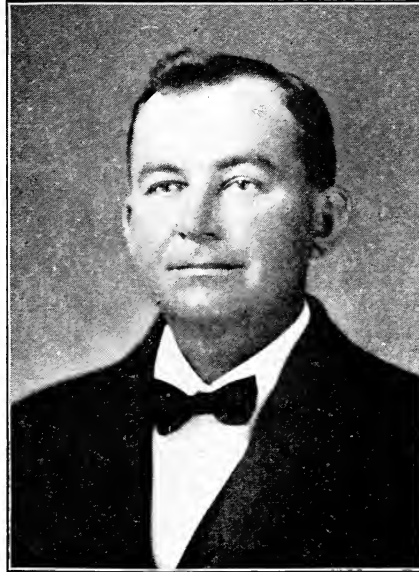
Familiar Road and Railroad Sign on My Nursery

FEB 23 1916

RECEIVED

RETURN TO POMOLOGY
SECTION OF NOMENCLATURE.

Annual Catalog of Small Fruit Plants



M. Mayer, Jr., Bohemian Nurseryman

Mayer's Plant Nursery

(THE BOHEMIAN NURSERYMAN)

MERRILL

MICHIGAN



We help Papa all we can. We are growing like Papa's Nursery is.
A whole lot bigger each year.

EXPLANATION

Dear Reader:

With the opening of the season of 1916, kindly accept this copy of my valuable new catalog with my compliments. Each year I write this valuable little book for the best possible mutual interest of us both. My motto is to avoid literature and advertising expenses, and I have accomplished this by giving entire satisfaction to my customers to such an extent that it would be impossible to mention all the results in this little business book. But, in a few words, I wish to say that I have WORDS, LINES, COLUMNS and PAGES of HUMAN advertising in well satisfied customers in the most valuable counties in the United States, and all without cost to you or me.

I might give a lengthy explanation of this and I know it would be very interesting to every reader of my catalog, but I will only say that honest dealing based on sound principles, and honest stock in my small fruit plants has done it all. I might squeeze a few more words in this little book, but what would be the use? I am going to let you be the judge. It pays to be honest, DOES IT NOT? A satisfied customer is of the first importance, IS IT NOT? It pays more to be truthful than to advertise with overdrawn pictures and beautifully colored literature, DOES IT NOT? You will be obliged to answer YES to each of these questions, and when you are all through reading this little book you will decide to place your plant order with me. I want your plant order, and I assure you that you will receive plants that are vigorous and strong with an abundance of roots. It is important to you to know that I grow all the stock that I sell, and my stock this year has grown to full maturity. Money, skill or climate, will not get you any better stock. Professor L. R. Taft, our state nursery inspector, has for the past six years inspected my nursery and has made some very complimentary remarks. At the close of his visit this year he ended up by saying, "Mr. Mayer, you have a fine plant here, your stock is certainly fine including those White Leghorn roosters." Mr. Taft, as well as many thousand of my customers, knows that I am on earth and am doing business here in Merrill, Michigan, in the most honest way possible. I extend many thanks to my customers for their past orders and trust they will favor me with their orders this year.

Yours very truly,

M. MAYER,

Mr. Bohemian Nurseryman.

MAYER'S PLANT NURSERY, MERRILL, MICH.



Office force of Mayer's Plant Nursery after school hours. (We all work.)

December is a busy month getting ready thousands of catalogs for old customers and friends to be mailed January 3rd of the new year.

MAYER'S PLANTS PRODUCE AND MAKE MONEY

MOST VALUABLE

Propagating Plants, Digging and Packing, Guarantee, To Help Pay Transportation, Sworn Statements, and References, are given in a few words as explanations which are valuable and true and should be of interest to you.

PROPAGATING PLANTS

My stock is propagated to reach growth, health and vigor, and all varieties will produce abundant crops of fruit. Read sworn statements how each and every acre receives a dressing according to my method of especially prepared stable manure just before planting selected plants from which are grown the stock I offer you.



Force in digging and packing season on my nursery. No children allowed.

DIGGING AND PACKING

My plants are always dug from young beds that have not been fruited. The entire rows are dug. Parents and all inferior plants are discarded. Nothing but well rooted and large crowned plants are tied twenty-five in a bunch, packed in moss and will reach destination in good growing condition. All varieties are carefully separated when more than one variety is ordered. Digging begins in March and continues to about May 10th.

GUARANTEE

I guarantee every plant to be first class and true to label. I guarantee safe delivery of your order and in good growing condition by Express or Mail (freight delivery shipments at purchaser's risk). All varieties are guaranteed true to name. If they prove untrue to name, upon receipt of



**Straw Mulch on Strawberries. Plants are protected while dormant.
A Scene at My Nursery.**

proper proof, your order will be refilled with double the amount of your original order. I positively stand by my product. After receiving your order and before planting same, if you are not satisfied, I will refund money, but the order must be returned to me with all charges prepaid. These conditions are accepted as above stated and no others are binding by me.

TO HELP PAY TRANSPORTATION

I make prices very low in order to partly offset transportation charges on all orders to every state in the union. My plants are best each year. I get thousands of testimonials, and from warmer states, telling how my northern-grown plants are better than the rest. I make money at my prices quoted in this catalog. Don't compare this little business book of mine with some big or over elaborated catalog, but be sure to compare my price and guarantee with any catalog you may receive. Every issue this copy will be in your favor; I don't believe in publishing testimonials, my space is limited and more valuable; I have them on file and they are yours for the asking. But I am interested in showing a few photos. Every photo in this catalog was taken at my nursery by Mr. A. A. McBride, our photographer in Merrill, Mich., and are true scenes at my nursery. You are welcome to visit my nursery and I will show you many better scenes.

1915 SWORN STATEMENT

I hereby certify that I have fertilized by my method with especially prepared stable manure, every acre planted to strawberries for nursery purposes in the spring of 1915.

MAYER'S PLANT NURSERY,
M. Mayer, Jr., Proprietor.

STATE OF MICHIGAN, County of Saginaw—ss.

Subscribed and sworn to before me, a Notary Public, this 18th day of October, 1915.

(Signed) LEONARD FRANK,
Notary Public in and for Saginaw County, Mich.
My commission expires June 13, 1917.



Spraying Strawberry Plants on my nursery.



Loading Manure in Spreaders on my nursery

REFERENCES

State Bank of Merrill, R. T. Maynard, cashier. Inclose stamped envelope for reply and you will never be disappointed.

Assistant cashier, State Bank of Merrill, Mich.: "I can recommend to the buying public M. Mayer, Jr. (Bohemian nurseryman), Merrill, Mich., who extensively grows small fruit plants, as being thoroughly upright in all his business dealings, and I feel confident that all orders will be filled to the satisfaction of every patron. Respectfully yours, John Dufty, Assistant Cashier State Bank of Merrill."

Also my many customers in most every state in the union.

PREPARING SOIL AND PLANTING

I prefer sandy loam for all small fruit plants. Always have soil well-drained. Plow and work ground to a garden bed. Roll or float just before planting. Cultivate as soon as plants are set and always keep a dust mulch. Best fertilizer is good rotted stable manure; a green crop of any kind plowed under is good.

Strawberry plants do best when planted 18 inches in rows, and rows 3½ feet apart. Keep all blossoms cut off newly set strawberry plants the first year.

Red and black raspberry plants, set three feet in the row and rows six feet apart.



Spreading Manure my way on my nursery



The Famous Money-Making Warfield Variety. Just beginning to blossom. My strain.

ORDERING AND SHIPPING

I will much appreciate cash with order as all plants must be paid for before shipment is made. All prices are f. o. b. Merrill, Mich. Always use order sheet inclosed. Write your name, address, shipping point and varieties very plainly. I closely estimate all varieties and plants are reserved when your order is booked. It is very important to place your order early. At this writing (November 15, 1915) I have hundreds of dollars worth of orders booked for spring shipment (1916). Last year I was sold out of all varieties of strawberry plants in first part of April and was obliged to return orders unfilled. I aim to grow more plants than I expect to sell each year. It is important that you order early.

SET NORTHERN GROWN PLANTS

Dormant plants are always best and can be planted from one to three weeks later in southern states with much better results than by planting southern plants which have a large growth of foliage and buds for blossoms. The successful strawberry grower of the southern states buys if possible northern grown plants. They have more vigor, will make a better growth, and will produce more and earlier berries.

REMITTANCE

Make remittance payable to Mayer's Plant Nursery. Remittances can be sent by Postoffice Money Order, Bank Draft, Express Order, or personal check.

NUMBER OF PLANTS REQUIRED TO SET AN ACRE

3 by 12 inches	14,520
2 by 18 inches	9,680
3½ by 18 inches	8,297
Plants 24 inches by 3½ feet.....	6,222
Plants 24 inches by 4 feet.....	5,445
Plants 30 inches by 3½ feet.....	4,356



Senator Dunlap Variety in beautiful white sheet of blossom. My strain.

Certificate of Nursery Inspection

No. 1589.

This is to Certify that I have examined the nursery stock of M. Mayer, Jr., Merrill, Mich., and find it apparently free from dangerous insects and dangerously contagious tree and plant diseases.

This certificate to be void after July 31, 1916.

L. R. TAFT,

State Inspector of Nurseries and Orchards.

Agricultural College, Mich., Oct. 9, 1915.

FALL BEARING STRAWBERRIES

In the past five years I have grown almost every new variety of fall bearing strawberries, but have never listed any in my little book. However, I have filled many trial orders and answered hundreds of inquiries relative to fall bearing strawberries. In my 1912 catalog, I advised my readers to be careful and only try out a few plants at any one time, and even now, at this date, the same advice will be valuable to the reader, with the exception of three or four varieties. Remember, the man who does the most talking about new varieties in his catalog, as a rule, does not know it all, and his object in view is only to sell these new varieties. From my own experience, and all the information which reaches my desk from many states, I would say that the Progressive, Superb and Productive are the three leading varieties where the climate is similar to ours here in Michigan. I picked many bushels of fine berries from the above varieties this year at my nursery in September and October, but as the weather grew colder during the last part of October and the first of November, the flavor of the berry grew flat, making them practically worthless. Weather conditions also have something to do with these valuable varieties in the fruiting season. While fall bearing strawberries have come to stay, and, in their climate and under proper cultivation and conditions will be profitable to the grower, yet many nurserymen are saying too much in their favor, even more than an originator of a new variety does.

FALL BEARING VARIETIES

Progressive (Per.)—Progressive is undoubtedly the best. The berries are of fair size, rich deep crimson in color. The plants are strong growers, having an abundance of good large leaves. This variety, like the Superb, will produce a bumper crop the second spring planted, after bearing a good crop the fall before.

Superb (Per.)—The fruit of Superb is large, dark red, firm and of extra good quality. The plants are healthy growers and make runners freely.

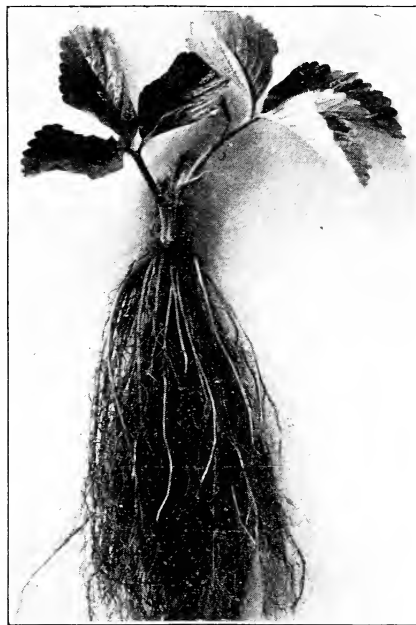
Productive (Imp.)—The plants are large, with dark green foliage. It fruits considerably on new runner plants. Color, light red. Firm.

SPRING BEARING VARIETIES

Ettersburg No. 80 (Per.)—It is very productive of fine red berries that are of large size and have a large clean cut green calyx or hull. The blossoms are very large and the runners very strong. The plant is extra vigorous and deep rooting and the foliage leathery. In the fall of the year the young foliage is of a bluish cast. The fresh fruit is of fine dessert quality, and for flavor as a canned berry it is the very best, a deliciousness I have found in no other variety. It is red, and red to the center, and will not break up in processing.



Ettersberg No. 80. My strain.



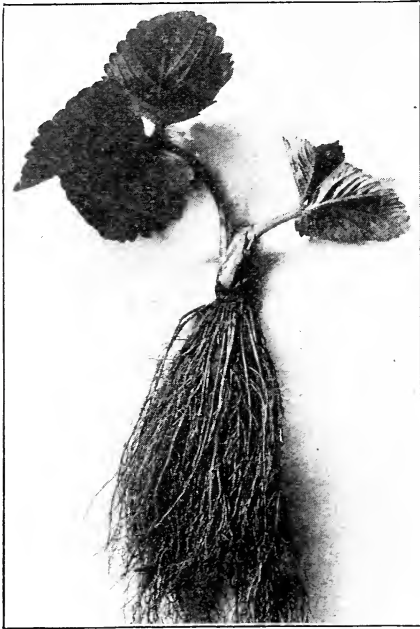
Senator Dunlap. My strain.

Ettersberg No. 84 (Imp.)—A sister plant to No. 80. Has a conical berry that is extra well-flavored but more juicy than No. 80 and not quite so good canned. Color a deep glossy red. A profuse bearer, and as a deep rooting sort it is at the head of the list. Foliage is very large, coarse, leathery and resistant to heat.

Senator Dunlap (Per.)—Plants perfectly healthy, and long rooted and comes as near being drouth proof as any variety in my list. Fruit large, smooth, regular, and very attractive. **Very firm**, and of a beautiful deep red color. It commences to ripen medium early and is of long season. **Is one of the best — if not the best — fertilizers for the Warfield.** It does well anywhere and is especially good for beginners and fruit growers, as they cannot fail with it on any kind of soil or by any mode of culture. I have tested this berry for years, and do not hesitate to recommend it as one of the very best medium early varieties. It stands today the leading market berry among all the fruit growers; large strawberry growers often planting ten to twenty acres solid to this variety, which goes to show the confidence this berry has created since its introduction. It will not disappoint you.

Warfield (Imp.)—Warfield is a richer berry and deep-red in color, thus making it one of the very best for canning; it also holds its color in the can. This is a very important point in its favor. In plant growth this variety is quite similar to Senator Dunlap, except it does not root so deep. While the individual plants are quite small it is remarkable the number of quarts produced by a lightly matted row on good strong soil. Plant Warfield with Dunlap.

Joe Johnson (Per.)—This new berry was originated in Maryland about four years ago, and has been well tested. We believe that it will prove to be one of the very best late strawberries grown. The Joe Johnson is very productive of very large berries; it is a beautiful red berry, with a bright green



Aroma. My strain.



Helen Davis. My strain.

calyx, which adds greatly to its beauty and market value. Its flavor is good and it is one of the best shipping varieties, has a perfect flower blossom, and is a strong fertilizer.

Gibson (Per.)—Gibson is the most profitable variety of strawberries grown. The flesh of the berry is red clear through. Calyx is bright green, adding greatly to its beauty and market value. The flavor is as fine as can be found in any strawberry; a perfect table and canning berry, and owing to its tough skin it is a very fine shipper. Fruit Stems are plenty and are strong and upright. (See cut on front page.) This keeps the fruit up out of the sand where they are clean and where they are easy to find and pick.

Pocomoke (Per.)—As a commercial grower this comes very nearly being a perfect variety. It is an abundant bearer of large, firm, bright red berries. It is a superior berry in every way; needs no petting and will produce large crops under reasonably good culture.

Lovett (Per.)—This is a standard variety and is a good dependable berry in all soils and seasons. A good producer of large, evenly shaped berries that are firm; medium to large size.

Aroma (Per.)—My choice of late varieties. This is one that comes nearer being suited to all localities.

Parsons' Beauty (Per.)—One that may be depended upon to produce a large crop of fruit every season. The plants are splendid growers on any soil, and without a sign of any disease. The fruit is large; conical, uniform shape, dark red. Largely planted by commercial growers on account of its vigor and productiveness.

Helen Davis (Per.)—The berry is sweet, and is a fine berry for canning. It is a heavy cropper, and will yield perfect berries, and is a strong pollenizer for imperfect varieties. It will go through hard frosts and bear a good crop of fruit.



Warfield. My strain.

Stevens' Late Champion (Per.)—This late variety seems to do well wherever tested. Very large; good shipper; a heavy yielder. It ripens later than the Gandy.

Corsican (Per.)—This is a favorite variety. The plants are large and good growers.

Springdale Beauty (Per.)—The fruit is large, firm and of high quality, resembling the Marie in appearance, and the two sorts make a good team.

Brandywine (Per.)—Rich in pollen and a good fertilizer for medium late imperfect flowering varieties. Season medium late.

Michaels' Early (Per.)—This is an old variety and needs no description. Planted now solely for table use, as its quality is unexcelled.

Sample (Imp.)—The introducer says: "Large size and fine quality; continues a long time in fruit. The berries are large to the last."

Bederwood (Per.)—This is an old reliable standard early variety.

Pride of Michigan (Per.)—Plants large, with an abundance of foliage.

Gandy (Per.)—This variety does best when planted with some other late berry.

Glen Mary (Per.)—A decidedly good berry in point of plant, yield, great size, bright color, firmness and good quality.

Haverland (Imp.)—Mid-season. A very popular variety.

August Luther (Per.)—This is an old-time favorite for an early berry.

Giant (Per.)—Productive bearer.

Ridgeway (Per.)—Plants large and stocky. A good pollenizer.

Oswego (Per.)—Productive.

Wilson (Per.)—Good, all-around berry. A standard variety.

Marie (Imp.)—Berries large, even in size.

Blizzard-Belt (Per.)—A variety of merit and vigor.

Pineapple (Per.)—Not overly large, but has a delicious flavor.

MAYER'S PLANTS PRODUCE AND MAKE MONEY



Block of Peach Trees on my nursery.

PEACH TREES

I have some very fine blocks of peach trees that I have grown myself which I will list at very low prices. They are strictly No. 1 stock in their grades of the following varieties: Elberts, Crawford Early, Deway, Oceana, Engles, Kalamazoo, Gold Mine, Fitzgerald, and Early Michigan. Stock XXXX, price 20 cents per tree; \$15.00 for 100 trees. Stock XX, price 15 cents per tree; \$10.00 for 100. Price per thousand trees on application. No less than five trees sold.

BLACKBERRIES

Eldorado and Snyder—Two productive and very hardy varieties. I have a very fine stock of sucker and transplanted plants. Stock and prices are right. Price: Sucker plants, 100 for 80 cents; 500 for \$4.00; 1000 for \$6.50; 5000 for \$30.00. Transplanted plants, 100 for \$1.00; 500 for \$5.00, 1000 for \$8.50; 5000 for \$40.00.

RASPBERRY PLANTS

Cuthbert—Red raspberry. Very productive and hardy. I have a fine block of two-year plants, strictly No. 1. Price: 100, 1.00; 500, \$3.00, 1000, \$5.50; 5000, \$25.00.

POTATOES

I grew 972 bushels of seed potatoes this year of No. 1 stock that I could guarantee free from blight. I was offered and accepted an exorbitant price for these. I have about 200 bushels of No. 2, small assorted potatoes. Carman No. 3 and Canadian White late varieties and Early Ohio. This stock is all free from blight and for seed. In change of soil, are as good as size No. 1. Price \$1 00 per bushel.

ASTER SEED

Are you a lover of flowers? Surely some one in your home is. What makes home more beautiful than a nice row or bed of asters in the lawn? At Mayer's home all are lovers of asters and many beautiful bouquets are given away. Nothing but the very best are grown. I grow my own seed, improving fertility of seed and size of blossoms, some measuring six inches in diameter, something most beautiful to look at. Look at the beautiful row of pink asters in front of the children on page two. Could you compare them with common varieties? To please many of my customers I have mixed seed of the following colors: red, purple, pink, lavender and white, all double blossoming varieties. They are worth your trial. Price 15 cents per package, postage prepaid.

LICENSES AND INSPECTION

I carry licenses for selling nursery stock. Also, see certificate of nursery inspection, a copy of which is sent with every shipment.

PRICE LIST OF STRAWBERRY PLANTS

Varieties marked (Imp.) are pistillate and must be planted near some perfect blooming varieties. Varieties marked (Per.) are perfect and can be planted by themselves. Prices are f. o. b. Merrill, Michigan. I advise that plants be shipped by express. By mail, add 20 cents per 100 plants.

	per 100	per 500	per 1,000	per 5,000	per 10,000
EARLY VARIETIES—					
Helen Davis (Per.)	\$0.40	\$1.40	\$ 2.50	\$11.25	\$20.00
Blizzard Belt (Per.)	.40	1.25	2.25	10.50	19.00
August Luther (Per.)	.40	1.25	2.00	9.50	17.50
Michael Early (Per.)	.40	1.25	2.00	9.00	17.50
Springdale Beauty (Per.)	.40	1.25	2.25	10.50	19.00
Beaderswood (Per.)	.40	1.40	2.50	11.25	20.00
Warfield (Imp.)	.40	1.25	2.00	8.75	16.50
MIDSEASON VARIETIES—					
Joe Johnson (Per.)	.40	1.40	2.50	11.25	20.00
Gibson (Per.)	.40	1.40	2.50	11.25	20.00
Pocomoke (Per.)	.40	1.40	2.50	11.25	20.00
Senator Dunlap (Per.)	.40	1.25	2.00	8.75	16.50
Osewago (Per.)	.40	1.40	2.50	11.25	20.00
Glen Mary (Per.)	.40	1.40	2.50	11.25	20.00
Lovett (Per.)	.40	1.25	2.25	10.50	19.00
Giant (Per.)	.40	1.40	2.50	11.25	20.00
Pineapple (Per.)	.40	1.10	1.65
Marie (Imp.)	.40	1.25	2.25	10.50	19.00
Corsican (Per.)	.40	1.40	2.50	11.25	20.00
Parson's Beauty (Per.)	.40	1.25	2.25	10.50	19.00
Haverland (Imp.)	.40	1.50	2.75	12.50	22.50
Ridgeway (Per.)	.40	1.50	2.75	12.50	22.50
LATE VARIETIES—					
Gandy (Per.)	.40	1.40	2.50	11.25	20.00
Aroma (Per.)	.40	1.40	2.50	11.25	20.00
Steven's Late Champion (Per.)	.40	1.40	2.50	11.25	20.00
Brandywine (Per.)	.40	1.40	2.50	11.25	20.00
Pride of Michigan (Per.)	.40	1.50	2.75	12.50	22.50
Sample (Imp.)	.40	1.40	2.50	11.25	20.00
Wilson (Per.)	.40	1.40	2.50	11.25	20.00
Ettersburg No. 80 (Per.)	1.00	5.00	10.00	50.00
Ettersburg No. 84 (Imp.)	1.00	5.00	10.00	50.00
FALL BEARING VARIETIES—					
Progressive (Per.)	1.00	4.00
Superb (Per.)	1.00	4.00
Productive (Imp.)	1.00	4.00

The above stock is as good as is grown in the United States and I could add that it would hustle many nurseries to offer as good stock as I am offering you. No change will be made from catalog price. Less than 500 plants of any one variety must be figured at 100 rates, less than 1000 plants at 500 rates, less than 5000 plants at 1000 rates, less than 10,000 plants at 5000 rates; or, in other words, 100 plants can not be bought at 500 rates, or 500 at 1000 rates, or 1000 at 5000 rates, or 5000 at 10,000 rates. Should remittance be received taking advantage of prices here quoted, I will send only number of plants of each variety wanted as per price list above. Write me for special price on 15,000 or more plants.

I will give advice on express charges or any information you may want; write me if you are interested.

Don't lay this little business book away, but send me your order at once. Have you a friend to order with you? I will much appreciate an introduction by you to your friends. Tell them about the Bohemian Nurseryman at Merrill, Michigan. I will accept favors with much pride and assure you and your friends entire satisfaction. And money can not buy better plants than I offer you. With best wishes, I surely await your order, and remain,

Yours very truly,

M. MAYER, JR.,

Bohemian Nurseryman.



MAYER'S STRAIN S. C. WHITE LEGHORNS

With the issue of this copy Mayer's strain of S. C. White Leghorn's are first offered to the buying public. While it is only the beginning, I want to assure the reader that I have been at the head of the reel with a strain of birds bred for size, eggs and show. In the past I have bred my flock of 320 laying hens not only standard, but to a present degree of perfection. From combining several blood lines, regardless of price, I have only the one breed of hens, and what I offer you I grow and raise myself, and I advise my reader to stay shy of placing orders with hucksters who advertise many different breeds of birds. I will be in position to furnish eggs that will be a high per cent fertile for the season of 1916, from January 1st to July 1st. Cockerels from October 1st, 1916, to April 1st, 1917. I ask that you correspond with me in regard to pullets, hens and roosters. I advise that all orders for eggs should be placed early and every order will be filled on the date wanted.

From pen No. 1, matured hens with heavy laying strain, 15 eggs, \$1.50; 30 eggs, \$2.75; 50 eggs, \$4.00; 100 eggs, \$7.00. From pen No. 2, pullets, good laying strain, 15 eggs, \$1.00; 30 eggs, \$1.75; 50 eggs, \$3.00; 100 eggs, \$5.00. Cockerels from pen No. 1 weighing between two and four pounds, one for \$1.50, two for \$2.75, five for \$5.00, ten for \$8.00. Cockerels from pen No. 2 weighing between two and four pounds, one for \$1.00, two for \$1.85, five for \$4.50, ten for \$7.00. I expect to be sold out of cockerels at an early date, so place your order as soon as possible. All eggs will be shipped by parcel post, prepaid. Cockerels will be shipped by express, charges not prepaid. Change the blood in your flock—it will pay you.

May I receive your order?

RUSH ORDERS

Telegram and Telephone orders will have my prompt attention. Union Telephone in my office. Bill telephone, 10c messenger. I advise Telegram for long distance.

SPECIAL OFFER FOR HOME GARDEN

For \$2.00 I will ship by parcel post 300 strawberry plants to any address in the United States. You may have 300 plants of any one variety or 100 each of any variety listed excepting Ettersburg No. 80 and No. 84, Progressive, Superb and Productive. If you wish to leave the selection to me, you may send \$2.00 and mention "Special Garden Offer," and I will send 300 selected plants of the best varieties for table use and for your climate. **Remember**, 300 strawberry plants for \$2.00, parcel post prepaid to any address in the United States.

PRICES

All prices in this catalog are f. o. b. Merrill, Mich., except when otherwise mentioned. I offer no discount or premiums on listed prices, but give you strong, vigorous stock with a value of 100 cents or more on every dollar. Something to consider.

WORDS OF MUCH IMPORTANCE

I hereby certify that every article listed in my catalog is grown by me on my nursery and shipped from Merrill, Michigan.

MAYER'S PLANT NURSERY,

M. Mayer, Jr., Proprietor,

Bohemian Nurseryman.

STATE OF MICHIGAN, County of Saginaw—ss.

Subscribed and sworn to before me, a Notary Public, this 15th day of October, 1915.

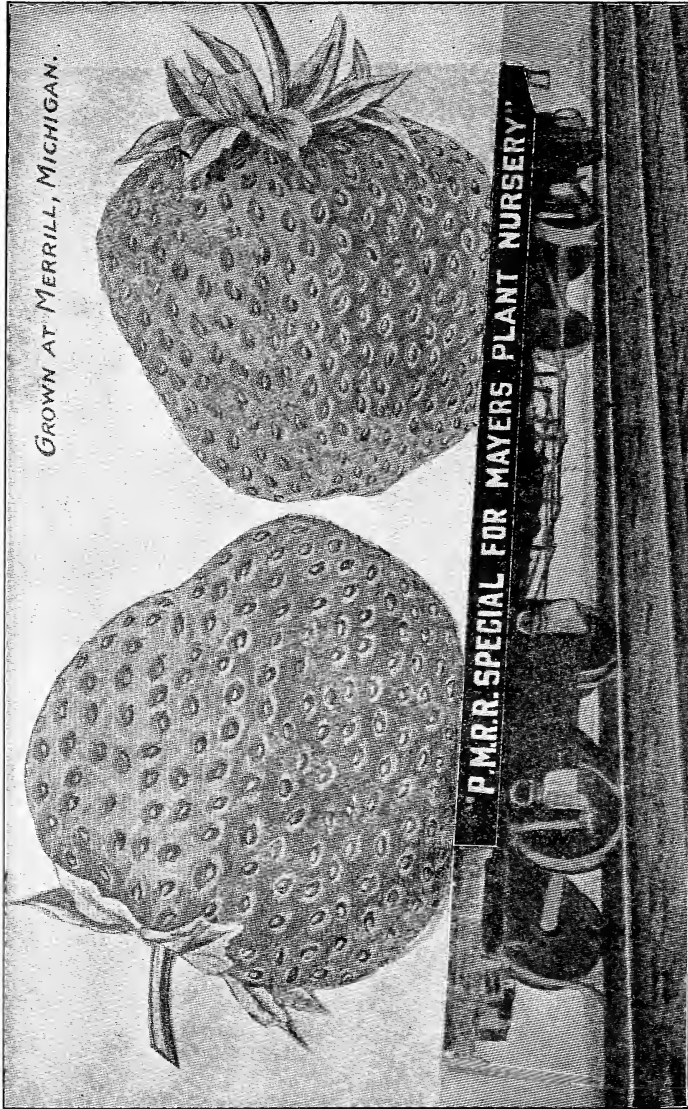
(Signed) LEONARD FRANK,

Notary Public in and for Saginaw County, Mich.

My commission expires June 13, 1917.

APPRECIATED FAVOR

Now you have read my little business book and I know you are entirely satisfied; but drawing your attention for a little favor, will you kindly send me on back of order sheet or postal card names and addresses of a few friends who would like to receive a copy of my catalog like yours. Do it now, I assure you I will appreciate it and thank you very much now for the favor.



GROWN AT MERRILL, MICHIGAN.

"P.M.R.R. SPECIAL FOR MAYERS PLANT NURSERY"

Attractive Picture, but Mightly Overdrawn. Just to Show You I Could if I Wanted To