

Historic, Archive Document

Do not assume content reflects current scientific knowledge, policies, or practices.

Fall 1916



WHOLESALE
CATALOGUE

The MCGREGOR
BROS. CO.

ROSE GROWERS
WHOLESALE FLORISTS
AND IMPORTERS

SPRINGFIELD

OHIO, U.S.A.

THE GREATEST ROSE PRODUCING
CENTER IN THE WORLD.

PELARGONIUMS

Mary Washington Geraniums



German Glory

GERMAN GLORY—This splendid novelty is quite remontant, florets and clusters are very large; ground color, Cattleya blue, very much like the Cattleya orchid. The upper petals contain two large purple magenta red spots, distinctly veined. An exceedingly beautiful and entirely new color in Pelargoniums. This kind has a very robust growth. Ready for delivery October 15, 1916.

EASTER GREETING (New)—Flowers large and free; bright amaranth-red, each petal marked with a large black blotch. This variety is distinct from the rest, and remarkable on account of its long blooming season, not only producing its prime crop very early in spring, but ordinarily continuing throughout the summer and fall. Ready for delivery September 15, 1916.

PRINCE BISMARCK—Immensely large flowers, strongly crimped of fine shade, with from six to ten petals, color rich purple with velvety black blotches. Remarkably robust habit. The large clusters rise gracefully above the beautiful foliage. The blooming plant with its enormous flowers makes a striking impression. Ready for delivery October 15, 1916.

We are offering in this list of Pelargoniums what we consider to be the cream of all the late introductions. This stock is clean and well established, out of 2½ and 3-inch pots. Price, \$1.25 per doz.; \$10.00 per 100 (except where noted).

LUCY BECKER—This grand novelty is a sport of Easter Greeting and is like it in everything but color, which is a rosy-pink. It is, if anything, even more free in bloom. Ready for delivery October 15, 1916.

GARDENERS' JOY—The ground color is apple blossom pink; the two upper petals have blotches of carbon brown, the florets are 3½ inches in diameter and are joined to enormous clusters which rise above the beautiful foliage and remind one of a Rhododeudron cluster. It is of a half dwarf nature and very sturdy. On account of its rapid luxuriant growth it is a very profitable market variety. Ready for delivery October 15, 1916.

GRAF ZEPPELIN—Considered by many to be the best novelty yet sent out by Carl Faiss. The color is salmon red and it has equally sized reddish blotches bordered with scarlet. The flowers are of fine form, semi-double and form gigantic trusses. The habit is compact and the flowers held well above the foliage. Ready for delivery October 15, 1916.

MRS. LAVAL—Of the easiest growth, and literally covered with flowers all the time. Coloring and markings extraordinary—light pink, white, dark purple, black, etc. Price, 75c per doz.; \$6.00 per 100. Ready for delivery September 15, 1916.



Everblooming Pelargonium, Easter Greeting

We cannot accept orders from this catalog, at prices quoted, in lots of less than six of one kind.

From

City

State

THE MCGREGOR BROS. CO.

Springfield,

The Greatest Rose Producing Center in the World

Ohio, U. S. A.

WHOLESALE ORDER SHEET



Money O.
 Draft
 Express O.
 Checks
 Credit Cks.
 Currency
 Coin
 Stamps

Please forward the following order, at once, to

Name
 Street and Number
 City or Postoffice
 County State
 Express Office (If different from mail address)
 Name of Express Company (Please give name of Express Company— American, Adams or Wells Fargo. All have offices here.)
 Date of Order Amount Enclosed

3% DISCOUNT FROM LIST PRICES WILL BE ALLOWED WHEN CASH ACCOMPANIES ORDER.

If you wish us to substitute to the best of our judgment, in case any varieties or size should be exhausted, write "YES".

QUANTITY	ARTICLES	SIZE	DOLLARS	CENTS

Unless references are furnished, new customers should send remittance covering order, or part with order, balance C. O. D. Claims must be made within ten days after receipt of goods. Statements will be rendered monthly for comparison of accounts. Freight shipments at purchaser's risk. One-fourth amount of order must accompany C. O. D. shipments. Prices allowed must comply with terms in catalog; three of one variety at dozen rates, twenty-five at hundred rates, two hundred and fifty at thousand rates.

IMPORTANT INFORMATION FOR CORRESPONDENTS AND CUSTOMERS

WE RESPECTFULLY CALL ATTENTION TO THE SUGGESTIONS ON THESE PAGES, WHICH, IF FOLLOWED, WILL AID IN THE PROMPT AND SATISFACTORY EXECUTION OF YOUR ORDERS.



SPRINGFIELD, OHIO, U. S. A. The Plant Growing Center

This list cancels all previous offers, and the prices quoted herein are not subject to discounts. Our stock is large and in fine condition. The plants are grown in as low temperature as possible, so that they can be shipped to all parts of the country at all seasons of the year. Our system of packing is so complete that, although we send out hundreds of packages during the coldest winter days, we rarely have a shipment injured when sent by express.

Our Facilities for Quick Transportation at Lowest Rates

ALL PLANTS WILL BE FORWARDED BY EXPRESS unless otherwise ordered. Having the rival companies—Adams, American and Wells Fargo Co., they connecting with all the other companies—the goods can be billed through at the lowest possible rates without extra charge. Customers will please say by which of the following express companies their goods are to be forwarded: Adams, American, Southern, Wells Fargo, (The Pacific has been absorbed by the Wells Fargo and the United States by other companies).

OUR BUSINESS RULES

We quote in this catalogue prices per dozen plants, per hundred plants, and per thousand. We will send not less than six of a kind at dozen rates, twenty-five at one hundred rates, and two hundred and fifty at thousand rates. Special pains are taken to pack lightly, thereby reducing the expense of transportation to a minimum. Everything is labeled. ALL GOODS IN THIS CATALOGUE are offered subject to being unsold on receipt of order, and the prices quoted are subject to advance without notice.

ADVANCE ORDERS, CONDITIONS OF ACCEPTANCE—All advance orders for growing crops, booked by us previous to harvesting and receipt, are subject to crops permitting, and

accidents or delays beyond our control. Should shortages necessitate it, we reserve the right to fill such orders prorata.

TERMS—Three per cent discount for cash with order. All bills 90 days, net.

REMITTANCES—Should be made by Draft, Postoffice Money Order or Registered letter. Remittances in any other way are entirely at the sender's risk.

UNKNOWN CORRESPONDENTS desiring to open account will please furnish reference (preferably bank reference), or parties in the trade with whom they have had credit relations, otherwise cash must accompany order.

CONDITIONS OF SALE

GOODS PACKED FREE of charge and in light corrugated paper boxes when weight of shipment will allow it. Remember, it does not cost you any more to have your order sent in several packages, provided each box weighs more than twenty pounds.

SHIPMENTS C. O. D.—Plants to be sent C. O. D. must have one-fourth of the amount with order.

NEW LOW EXPRESS RATE—We call your attention to the new low express rate, which is a reduction of twenty per cent (and on account of a gradual scale of rates, in some instances running to twenty-five and thirty-three and one-third per cent) from the regular merchandise rate at which plants have been expressed heretofore, and also that pack-

ages of 20 pounds weight receive the advantage of 100 pounds rate.

SHIPMENTS TO FAR POINTS—Shipments of Roses and some other plants to far points can be sent just as well with all soil removed and roots puddled, and at a great saving in expressage to customers. We will not remove all soil in any instance, however, unless requested.

EXPRESSAGE PREPAID—All shipments being billed from here assure customers of the plant rate. However, if you have any fear of it not being allowed, we will prepay shipments in such instances and add charges to invoice.

PLANTS SENT BY FREIGHT are entirely at purchaser's risk. We will not be responsible for any loss or damage.

The McGregor Bros. Co.,

FRANK MCGREGOR ROY MCGREGOR ALLAN MCGREGOR
DAVID MCGREGOR HAROLD MCGREGOR

Florists and Seedsmen

SPRINGFIELD, OHIO, U. S. A.

ROSES TEA AND HYBRID TEA

NEW AND STANDARD VARIETIES

NOTE—The Roses we have listed on these pages are not field grown, except where it is so mentioned. These Roses have been grown on benches under glass, lifted in the fall and potted in 4-inch pots. They are kept cold and in a semi-dormant condition. The advantages of these Roses over field grown stock is, namely, that they can be planted at any time of the year. The ball of earth contains all of the fine fibrous roots, and when the plants are shipped transplanting can be done with no more injury to the plant than if the rose had simply been removed to a larger sized pot. The growth continues just the same and the roots do not have to establish themselves, as is the case with the dormant plants.



CLIMBING KILLARNEY (Geo. Reinberg, 1908.) (C. H. T.)—An exact counterpart of Killarney in every respect except that it is of vigorous climbing habit; a deep shell-pink. This will prove a great Rose wherever a climber is needed. Price, 50c per doz.; \$4.00 per 100; 2-year plants, \$12.00 per 100.

CLIMBING WOOTTON—The color is identical with its parent, a deep velvety-crimson; hardy with slight protection. Price, 50c per doz.; \$4.00 per 100. Strong 2-year plants, \$10.00 per 100.

CLOTHILDE SOUPERT—The best market pot Rose. Strong, vigorous grower. Color blends from a shell-pink to a pure satiny-white rose. Price, 50c per doz.; \$3.00 per 100. Strong 2-year plants, \$10.00 per 100.

CLIMBING MARIE GUILLOT—Rapid grower and as vigorous a climbing Rose as we have ever seen. Pure white. Price, 50c per doz.; \$3.00 per 100. Strong 2-year plants, \$10.00 per 100.

CLIMBING BRIDESMAID—The flowers are simply beautiful (identical with Bridesmaid). A clear, dark pink. Price, 50c per doz.; \$3.50 per 100. Strong 2-year plants, \$9.00 per 100.

CLIMBING CLOTHILDE SOUPERT—Identical with Clothilde Soupert, except it is a rapid climber. Price, 50c per doz.; \$3.00 per 100. Strong 2-year plants, \$10.00 per 100.

CLIMBING KAISERIN AUGUSTA VICTORIA (A. Dickson, 1897.)—Also known as Mrs. Robt. Peary. A strong climbing form of the beautiful variety of same name now so well-known. Pure white. Price, 50c per doz.; \$3.50 per 100; 2-year plants, \$10.00 per 100.

DUCHESS DE BRABANT—Coppery-yellow center, ends of petals suffused with carmine. Price, 50c per doz.; \$3.00 per 100. Strong 2-year plants, \$9.00 per 100.

ALEXANDER HILL GRAY (Alex. Dickson, 1911.)—It is wonderfully floriferous, every shoot being crowned with a flower bud, which develops into a bloom of very large size, great substance and perfect formation, with high pointed center from which the petals gracefully reflex. The best and largest pure yellow Tea Rose yet introduced. Gold medal N. R. S. Price, 50c per doz.; \$3.50 per 100; 2-year plants, \$10.00 per 100.

ANTOINE RIVOIRE—A handsome, Rose with large, full, Camellia-shaped flowers. Color rosy-flesh on a yellow ground, shaded with a border of carmine. Price, 50c per doz.; \$3.50 per 100. Strong 2-year plants, \$10.00 per 100.

BRIDE—Price, 50c per dozen, \$3.00 per 100. Strong, 2-year plants, \$9.00 per 100.

BRIDESMAID—This variety is grown so profusely now that it hardly needs description. It is a deep pink. Price, 50c per doz.; \$3.00 per 100. Strong 2-year plants, \$9.00 per 100.

BURBANK—A free-flowering ever-blooming Rose; flowers very profusely; color light pink. Price, 50c per doz.; \$3.00 per 100. Strong 2-year plants, \$9.00 per 100.

BALDUIN (Helen Gould)—In color is quite attractive, being a soft, intense carmine, with shades of cerise and solferino, very much the color of American Beauty. Price, 50c per dozen; \$3.00 per 100. Strong 2-year plants, \$10.00 per 100.

BESSIE BROWN—The color is a delicate light pink. A fine, strong, free grower, producing long stems. Price, 50c per doz.; \$3.50 per 100. Strong 2-year plants, \$10.00 per 100.

BLUMENSCHMIDT (Hybrid Tea.)—Pure citron-yellow, outer petals edged tender rose, a sport from Franzisca Kruger, which it resembles in form, and which has a more vigorous growth. Price, 50c per doz.; \$3.00 per 100. Strong 2-year plants, \$10.00 per 100.

BON SILENE (Hardy, 1835.)—Good bloomer, fine buds. Color crimson-rose with sheen of silver. Price, 50c per doz.; \$3.00 per 100.

CATHERINE MERMET (Guillot, 1869.)—Light rosy-flesh color; large, full and globular; a charming sort. Price, 50c per doz.; \$3.00 per 100; 2-year plants, \$9.00 per 100.

CLIMBING METEOR—It is the acme of all red Climbing Roses. It is a free, persistent bloomer. Price, 50c per doz.; \$3.00 per 100. Strong 2-year plants, \$10.00 per 100.



Antoine Revoire

NOTICE All 1-year-old Roses 2 3/4-inch pot listed at \$2.75 per 100, \$25.00 per 1000; \$3.00 per 100, \$27.50 per 1000; \$3.50 per 100, \$32.50 per 1000; \$4.00 per 100, \$37.50 per 1000; \$5.00 per 100, \$45.00 per 1000.
All 2-year 4-inch pot Roses listed at \$9.00 per 100, \$1.15 per doz.; \$10.00 per 100, \$1.25 per doz.; \$12.00 per 100, \$1.50 per doz.; \$15.00 per 100, \$2.00 per dozen.

ROSES TEA and HYBRID TEA

NEW AND STANDARD VARIETIES

ETOILE DE FRANCE (Hybrid Tea.)—The gold medal Rose of France, and claimed by the raiser, J. Pernet Ducher, to be the finest Rose he has ever sent out. A very strong, vigorous grower, with handsome green-bronzy foliage, and exceedingly free flowering. The flowers are very large and borne on good, long stiff stems; color a lovely shade of clear red crimson-velvet; very fragrant and keeps well. Price, 50c per doz.; \$3.50 per 100. Strong, 2-year plants, \$10.00 per 100.

ETOILE DE LYON—This is considered one of the finest yellow bedding Roses for outside planting. Price, 50c per doz.; \$3.50 per 100. Strong 2-year plants, \$10.00 per 100.

F. R. PATZER (Alex. Dickson, 1909.)—A most beautiful and distinct Rose of very free flowering character. The blooms are produced with great freedom on stiff stems, and are of large size and substance. The color is creamy-buff, back of petals delicate warm pink; as the petals reflex the color becomes light orange-pink, forming a most charming combination. Valuable for garden culture. Price, 50c per doz.; \$4.00 per 100. 2-year-old plants, \$10.00 per 100.

FREIHERR VON MARSCHALL—Flowers large, beautifully shaped, double and full. The color is bright red. Long, well-shaped buds. Price, 50c per doz.; \$3.00 per 100. Strong 2-year plants, \$12.00 per 100.

FRANCIS SCOTT KEY—In this new rose we find the embodiment of a perfect bloom, combining form, size and color, the attributes of all exhibition flowers. Producing intensely black grain scarlet-crimson blooms on strong shoots of sturdy erect growth, embellished with a foliage of the deepest green. This rose is being used extensively for cut flowers and has a great future. Price, 60c per doz.; \$4.50 per 100. Strong 2-year-old plants, \$2.00 per doz.; \$15.00 per 100.

GENERAL MACARTHUR (Hill, 1905.)—A red Rose that is already a fixture in many gardens, particularly does it do well on the Pacific Coast. The shape is fine; color brilliant scarlet; the only red Rose we know of that will give General MacArthur a chase is Olivia. Be sure to try General MacArthur. It has certainly shown up well with us the past two seasons. Price, 50c per doz.; \$4.00 per 100. 2-year plants, \$12.00 per 100.

GRUSS AN TEPLITZ—When first opened it is a rich, dark crimson, quickly changing to a velvety fiery-red. Price, 50c per doz.; \$3.00 per 100. Strong 2-year plants, \$10.00 per 100.

HERMOSA—Best known in the entire Rose family. Color pleasing shade of pink, soft but very deep; very fragrant. Price, 50c per doz.; \$4.00 per 100. Strong 2-year plants, \$10.00 per 100.

HELEN GOOD (Good & Reese, 1906.)—This Rose is a true Cochet, being a sport from the pink Cochet. The color is a delicate yellow, suffused with pink, each petal edged deeper; very chaste and beautiful. The color, with its immense size and exquisite form, makes it without question a great Tea Rose. Price, 50c per doz.; \$3.00 per 100.

HELEN GOULD, or BALDWIN (Lambert, 1898.)—This is a grand Rose of the very highest merit for the garden; bright watermelon-red; very free grower and bloomer. A good all round red Rose. Price, 50c per doz.; \$3.00 per 100; 2-year plants, \$10.00 per 100.

JONKHEER J. L. MOCK (Leenders, 1910.)—This grand Rose is the strongest growing in the Hybrid Tea class. The blooms, which are produced with the greatest freedom, are carried on stiff and erect stems, and are of the largest size, of perfect formation and highly perfumed. Color clear imperial-pink; a glorious flower. Awarded two gold medals, one silver medal and five first prizes in Europe. We can confidently recommend this sterling novelty as a most valuable addition. Price, 50c per doz.; \$4.00 per 100. 2-year-old plants, \$10.00 per 100.

KAISERIN AUGUST VICTORIA—This beautiful Rose is a continuous bloomer; color a pure snow-white. Price, 50c per doz.; \$3.50 per 100. Strong 2-year plants, \$12.00 per 100.

KILLARNEY (Alex. Dickson, 1898.)—The finest pink forcing Rose ever introduced. In coloring it is especially beautiful, being an exquisite shade of deep sea-shell pink. The buds and flowers are of enormous size, the petals being frequently 2½ inches deep. Price, 75c per doz.; \$5.00 per 100.

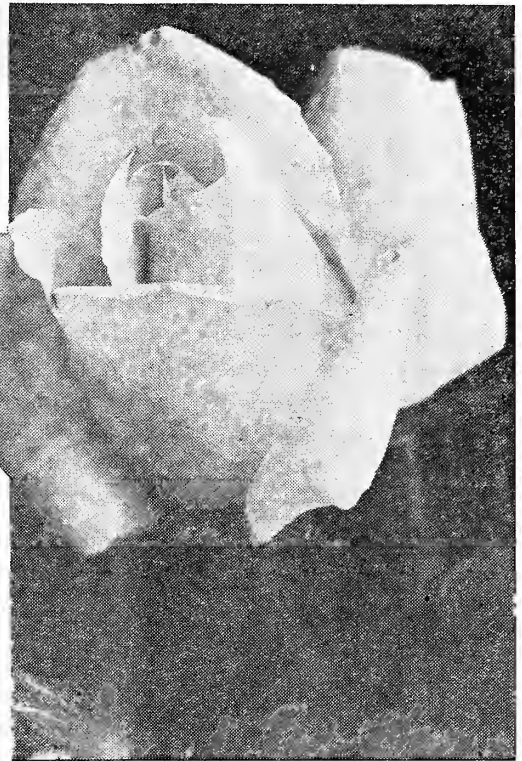
LADY HILLINGDON (Lowe-Shawyer, 1910.)—At the Detroit Rose show in January, 1912, this was awarded the sweepstakes over all yellow Roses. It has long willowy stems that are in no sense weak, as the buds are held upright; has a long slender pointed bud of brilliant deep golden-yellow. Awarded gold medal N. R. S. Price, 50c per doz.; \$4.00 per 100; 2-year-old plants, \$10.00 per 100.

LADY PIERRIE (Hugh Dickson, 1911.)—A delightful garden Rose, of very distinct coloring. Stands at the top of the "Fancy Roses." The outside petals are reddish-salmon; inside apricot, flushed fawn and copper. An ideal variety for bedding. Color, freedom of growth and abundance of bloom are bound to put this Rose in the very forefront of garden favorites. Awarded gold medal N. R. S. Price, 50c per doz.; \$4.00 per 100.

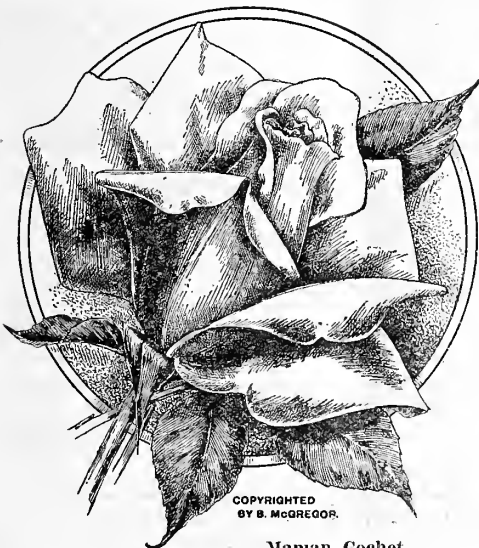
LA FRANCE—It is of superb form, and double as a Rose can be. Shy-very rose-shaded with pink. Price, 50c per doz.; \$4.00 per 100. Strong 2-year plants, \$12.00 per 100.

LAMARQUE—Large, full flowers, borne in large clusters, pure white and double. A rampant climber. Price, 50c per doz.; \$3.00 per 100. Strong 2-year plants, \$9.00 per 100.

MAMAN COCHET—One of the best pink Roses. The color is deep rosy-pink. Price, 50c per doz.; \$3.00 per 100. Strong 2-year plants, \$10.00 per 100.



Kaiserine Aug. Victoria



COPYRIGHTED
BY B. MCGREGOR.

Maman Cochet

Roses Tea and Hybrid Tea

New and Standard Varieties



Madison

MRS. AARON WARD (Pernet Ducher, 1907).—One of the most delightful Roses of recent years in a color that catches the eye at once. Coppery-orange in the open bud, golden-orange when partly developed, pinkish fawn or lovely shade when fully open, when it looks like a full fluffy silk rosette. Price, 75c per doz.; \$6.00 per 100.

MRS. R. B. CANT—A fine garden variety of even shade of bright rose. A very free grower and free bloomer. Price, 50c per doz.; \$3.00 per 100. Strong 2-year plants, \$12.00 per 100.

MARIE GUILLOT—Holds first place among white Tea Roses in purity of color. Price, 50c per doz.; \$3.00 per 100. Strong 2-year plants, \$9.00 per 100.

MARIE VAN HOUTTE—Of a fine, faultless, straw-yellow color. Price, 50c per doz.; \$3.00 per 100. Strong 2-year plants, \$9.00 per 100.

Mlle. FRANZISCA KRUGER—In its shadings of deep coppery-yellow it stands distinct from all others. Price, 50c per doz.; \$3.00 per 100. Strong 2-year plants, \$9.00 per 100.

MADAME LOMBARD—This great Southern Rose is classed among the best of pink varieties for garden planting or pot culture. Price, 50c per doz.; \$3.00 per 100. Strong 2-year plants, \$9.00 per 100.

MARY WASHINGTON—A pure white, hardy, constant blooming Rose of strong, upright growth; blooms in clusters, and is immensely productive. Price, 50c per doz.; \$3.00 per 100. Strong 2-year plants, \$9.00 per 100.

MOSELLA (Lamber, 1895).—This is a Hybrid Polyantha and bears large flowers for this class; center of flower chrome-yellow; edges of petals shading out to creamy-white. Price, 50c per doz.; \$3.00 per 100.

MADAME CONSTANT SOUPERT (Soupert & Notting, 1905).—Dark golden-yellow strongly tinted peach-pink. The flowers are large, full and perfectly formed. The introducers say this is the most valuable Tea Rose sent out in many years. Price, 50c per doz.; \$4.00 per 100.

MADAME CAROLINE TESTOUT (Pernet Ducher, 1890).—This charming Rose is in great demand, it is always scarce and always will be hard to get hold of, as it is slow in propagating. Clear bright satiny-pink; flowers very large and extremely showy; quite distinct. It is the Rose par excellence in Oregon and the Pacific Coast; in fact it does well everywhere. Price, 60c per doz.; \$4.50 per 100.

METEOR—A velvety-red ever-bloomer of the deepest glowing crimson. Price, 50c per doz.; \$3.00 per 100. Strong 2-year plants, \$10.00 per 100.

PRESIDENT TAFT (McCullough, 1908).—This Rose was raised in Cincinnati, the home of President Taft, and let us say right here, while some of you may not admire the President himself, you will, one and all, admire the Rose given his name. It is without question the most remarkable of all pink Roses. It has a shining, intense, deep pink color possessed by no other Rose. It is a fine grower, free bloomer, good size and form, fragrant, and in a class by itself as to color. Price, 50c per doz.; \$4.00 per 100; 2-year plants, \$12.00 per 100.

PRINCE ENGLEBERT CHARLES DE ARENBERG (Soupert & Notting, 1910).—Without doubt the most promising red forcing Rose in sight, a grand Rose of vigorous growth and freedom of bloom unapproachable in any other variety; buds perfectly formed, developing into a perfect open flower of ideal form; no deformed buds. The color is a clear and lively red without tone of purple that kills all the other red forcings. The color is most pleasing and under artificial light wonderfully brilliant. Growers will make no mistake in planting this Rose heavily. Price, 50c per doz.; \$4.00 per 100; 2-year plants, \$12.00 per 100.

PRES. WM. R. SMITH—The flowers are large, full and double and most exquisitely formed. The petals softly curled, colored cream with flesh tint tips, buff-yellow base and the center a heart of pink. Flowers are borne on long stems. Price, 50c per doz.; \$3.50 per 100. Strong 2-year plants, \$12 per 100.

MARIE DELESALLE (Soupert & Notting, 1910).—As free in growth as Teplitz, flowering continuously; buds long and elegant, opening into lovely blooms of fine form and large petals; color bright deep cerise; reverse of petals shaded carmine; large and full. A decidedly free bedding Rose. Price, 50c per doz.; \$3.50 per 100; 2-year plants, \$12 per 100.

MARECHAL NIEL—A Rose so famous as to really require no description. Magnificently golden-yellow. Price, 50c per doz.; \$3.50 per 100. Strong 2-year plants, 12 to 15 inches high, \$15.00 per 100; 18 to 24 inches high, \$18.00 per 100.

MADAME SCHWALLER—Large globular flowers, color transparent salmon-rose; petals finely edged with violet-carmine; highly perfumed. Price, 50c per doz.; \$3.00 per 100. Strong 2-year plants, \$10.00 per 100.

MADISON (Brandt Hentz, 1912).—This is the "money maker" among the cut flower Roses, and is a greatly improved Bride. The best feature of Madison is that the foliage does not mildew. After being planted and well established Madison will cut as many flowers as Killarney, cutting steady each month in the year. Madison is a grand addition to our forcing Roses. Price, 50c per doz.; \$3.50 per 100; 2-year plants, \$12.00 per 100.

MY MARYLAND (Cook, 1909).—An American Rose that has jumped into popular favor at once, sweeping the decks of both Europe and America clean. Color glowing, intense pink; large, full and of fine form. The freest Rose in growth and bloom that we know. Price, 60c per doz.; \$5.00 per 100.

MADEMISELLE HELENE GAMBLER (Pernet Ducher, 1893).—Grand flower, opens orange-yellow changing to coppery-yellow an dthen again changing to almost white; a most beautiful Rose. Price, 2½-inch pots, 50c per doz.; \$3.50 per 100; 2-year plants, \$12.00 per 100.

MRS. ROBERT PEARY, or Climbing Kaiserin Augusta Victoria—Flowers are extra large, full, deep and double; pure ivory-white. Price, 50c per doz.; \$3.50 per 100. Strong 2-year plants, \$12.00 per 100.

NOTE:—We cannot accept orders from this catalog, at prices quoted, in lots of less than six of one kind.

ROSES TEA HYBRID and TEA ROSES

New and Standard Varieties

RENA ROBBINS—Pure white with golden heart; flowers large and finely formed. Bedded out, this Rose is a bouquet of bloom throughout the season. Price, 50c per doz.; \$3.50 per 100.

RHEA REID—The buds are long, oval and pointed, of a most beautiful crimson, and retain their form a long time. Of all the crimson Roses which have been introduced for years, there is none that has measured up better to the ideal standard than Rhea Reid. Price, 50c per doz.; \$3.50 per 100. Strong 2-year plants, \$12.00 per 100.

RED RADIANCE—There has been a demand among the rose growers of America for a red Rose that is easy to handle, easy to grow, and one that is free from many of the failings of the other well-known red Roses of commerce. Radiance is an easy doer, and this sport of Radiance will be welcomed by many. It is not crimson, but a bright, cheerful shade of red. In habit it is Radiance, pure and simple. It has the same characteristics of foliage and growth. To the hedging Roses of America Red Radiance will be a valuable acquisition. Price, \$1.25 per doz.; \$10.00 per 100.

PRES. WM. R. SMITH—The flowers are large, full and double and most exquisitely formed. The petals softly curled, colored cream with flesh tint tips, buff-yellow base and the center a heart of pink. Flowers are borne on long stems. Price, 50c per doz.; \$3.50 per 100. Strong 2-year plants, \$12.00 per 100.

REINE MARIE HENRIETTE (Levet, 1878).—Deep cherry-red. This Rose takes the lead as a climber from New Orleans to Philadelphia. Price, 50c per doz.; \$3.00 per 100.

RADIANCE (Henderson, 1906).—A brilliant rosy-carmine, displaying beautiful rich and opaline-pink tints in the open flower. The form is fine, largest size and full, with cupped petals. It blooms constantly and is delightfully fragrant. Superb. Price, 50c per doz.; \$3.50 per 100.

SUNBURST (Pernet Ducher, 1912).—This magnificent giant yellow Rose is a fine forcer; it stands head and shoulders above all others of its color and will rank with American Beauty and the Killarneys in value and grandeur. It has long, pointed buds, which can be cut tight for market. The color is orange-copper or golden-orange and golden-yellow; edge of petals lighter. Belongs in class of big Roses. Price, 75c per doz.; \$6.00 per 100. Strong 2-year plants, \$2.00 per doz.; \$15.00 per 100.

SAFRANO—One of the best of all coppery-colored varieties; growth is very vigorous, flower large, yellow margin shading to a deep copper. Price, 50c per doz.; \$3.00 per 100. Strong 2-year plants, \$9.00 per 100.

SENATEUR MASCURAND (Pernet Ducher, 1909).—This is our pick of all the yellow Hybrid Tea Roses; it is a good grower, very free bloomer; flowers are large, full and globular; color deep orange-yellow, lighter on the edge of the petals. Price, 60c per doz.; \$4.50 per 100; 2-year plants, \$12 per 100.

SOUV. DE PIERRE NOTTING—This variety is a seedling of M. Niel and Maman Cochet, with beautiful closely-set foliage and a strong, sturdy habit of growth. Color orange-yellow, bordered in carmine-rose. Price, 50c per doz.; \$4.00 per 100. Strong 2-year plants, \$12.00 per 100.

SOUVENIR DE PRESIDENT CARNOT (Pernet Ducher, 1895).—Delicate flesh shaded to white; might best be described as having a flush of fawn overspreading the flower; large, an extra fine Rose. Price, 50c per doz.; \$4.00 per 100.

STRIPED KILLARNEY—It is a sport of the famous cut-flower Rose Killarney. The flowers are large, ground color, soft creamy-white; distinctly striped and dashed with carmine, beautiful in bud form, being quite long pointed. A distinct novelty. Price, 60c per doz.; \$5.00 per 100.

STRIPED REINE MARIE HENRIETTE—A sport from the old favorite Reine Marie Henriette, has the splendid vigorous climbing habit of the mother Rose, while beautifully striped, flamed and shaded in bright carmine over pale rose. Price, 50c per doz.; \$3.00 per 100. Strong 2-year plants, \$10 per 1000.

SOUVENIR DE LA MALMAISON (Beluze, 1843).—Blush-white shaded flesh; large and very double; sweetly scented. Especially good. Price, 50c per doz.; \$3.50 per 100; 2-year plants, \$10.00 per 100.

RICHMOND (Hill, 1905).—Pure rich scarlet, a seedling from Lady Battersea; very free and continuously flowering, splendid forcer. Price, 50c per doz.; \$4.00 per 100.

UNCLE JOHN—Pretty buff-yellow flowers shading to white and pink, large, full and fragrant; a strong, bushy grower. Price, 50c per doz.; \$3.00 per 100. Strong 2-year plants, \$9.00 per 100.



Crimson Rose Rhea Reid

WHITE KILLARNEY—A sport from Killarney; a fine white forcing variety superior to its parent in every particular. This is the greatest forcing Rose of any color or class. It is pure white in color, long in bud, of fine form. Price, 2½-inch pot, 60c per doz.; \$4.00 per 100. 4-inch pot, \$15 per 100.

WHITE MAMAN COCHET—Like its parent, the growth is vigorous, with rich, healthy foliage, producing large, fine flowers of the purest white. Price, 50c per doz.; \$3.00 per 100. Strong 2-year plants, \$10.00 per 100.

WILLIAM NOTTING (Souper & Notting, 1904).—This Rose was first sent out in this country under the name of Indiana. By some mishap it has been overlooked in the shuffle. We have found out it was a first-class Rose and we will in a manner resurrect it. The flowers are very large and full; color a bright rosy-cerise, center deeper, sweetly perfumed. It is a grand bedding Rose. Price, 50c per doz.; \$3.50 per 100; 2-year plants, \$10.00 per 100.

WELLESLEY (Waban Conservatories, 1905).—Wellesley has been awarded some of the best prizes at the Rose shows all over the country. The color is a beautiful shade of pink, the outside of the petals being very bright in color, with silvery reverse. Fine in the field. Price, 50c per doz.; \$4.00 per 100; 2-year plants, \$12.00 per 100.

WILLIAM SHEAN (Alex. Dickson, 1906).—Purest pink, petals shell-shaped, four to five inches long; flowers of immense size and substance and of perfect form; free blooming and distinct. Gold medal. N. R. S. 50c per doz.; \$5.00 per 100.

MOSS ROSES

Price, 60 Cents per Dozen; \$4.50 per 100

ELIZABETH ROWE (Rowe, 1866).—This is an old favorite with its large deep pink buds, well mossed. A beauty.

HENRI MARTIN (Portmer, 1863).—Large full flower of deep red; well mossed; fragrant.

CRIMSON GLOBE (W. Paul, 1890).—(M.) Deep crimson, large and full, nicely mossed.

BLANCH MONROE (Robert and Moreau, 1881).—Pure white flower, buds heavily and beautifully mossed.

PRINCESS ADELAIDE (Laffay, 1845).—Deep blush-pink with buds that are thoroughly mossed.

NOTICE All 1-year-old Roses 2½-inch pot listed at \$2.75 per 100, \$25.00 per 1000; \$3.00 per 100, \$27.50 per 1000; \$3.50 per 100, \$32.50 per 1000; \$4.00 per 100, \$37.50 per 1000; \$5.00 per 100, \$45.00 per 1000.
All 2-year 4-inch pot Roses listed at \$9.00 per 100, \$1.15 per doz.; \$10.00 per 100; \$1.25 per doz.; \$12.00 per 100, \$1.50 per doz.; \$15.00 per 100, \$2.00 per dozen.

HYBRID PERPETUAL ROSES Price, 50c per dozen; \$3.50 per 100; \$32.50 per 1000 (except where noted). Four-inch pots, \$1.50 per dozen; \$12.00 per 100.



ANNA DE DIESBACH (Glory of Paris)—Bright pink; long, pointed buds and large, finely formed.

CAPTAIN CHRISTY—Color a fresh delicate pink, with deeper shading in the center of the flower, the whole flower possessing a bright, satiny appearance.

CLIO—This variety is of very vigorous growth, and has large, handsome foliage; the flowers are flesh color, shaded to the center with rosy-pink.

COQUETTE DES ALPES (Lacharme, 1868.)—Pure white, delicately tinted blush on first opening.

FRAU KARL DRUSCHKI (White American Beauty) (Lamhart, 1900.)—This grand white Rose has become renowned as the very highest type of its class and the best snow-white Rose ever introduced. It is an extraordinarily strong grower, and has the vigor and hardness of an oak. Its magnificent flowers are nothing less than glorious—immense in size and produced with great freedom. The color is a marvelous white, without a tinge of yellow or any other shade. Price, 75c per doz.; \$6.00 per 100.

GLOIRE LYONNAISE—Color rich creamy-white, passing when open to a pale shade of salmon-yellow, deepest at center.

GENERAL JACQUEMINOT—Bright red, fragrant. This is too well-known to need description.

GLOIRE L'EXPOSITION DE BRUXELLES (Souper, 1890.)—Large, full, dark crimson; deepest of the Hybrid Perpetuals.

HIS MAJESTY (McGredy, 1908.)—The crimson Frau Karl Druschki. Another Rose classed by some as a Hybrid Tea. Dark deep crimson, shaded deep vermilion-crimson towards the edges. The blooms are full of great size, having wonderful substance and depth of petal, with high pointed center. It is also one of the sweetest perfumed Roses in cultivation. Awarded gold medal, N. R. S., 1908. Price, 60c per doz.; \$4.50 per 100.

MADAME CHARLES WOOD—A true perpetual bloomer; the flowers are large, very double and full and quite fragrant; color a bright cherry-red, highly perfumed.

MADAME MASSON (Masson, 1856.)—This is a glorious Rose. The flower is of the largest size. Color bright brilliant red; free bloomer. Sweetly scented.

MARIE BAUMAN—Very productive; flowers of exquisite form and fragrance. Color crimson-vermillion, suffused with carmine; large and full.

MAGNA CHARTA—A splendid Rose, extra very double, color clear rosy-red, beautifully flushed with velvety-crimson; flowers very fragrant.

PRINCE CAMILLE DE ROHAN (E. Verdier, 1861.)—Deep velvety crimson maroon, full and of good form and perhaps the best of all the hardy dark Roses.

PAUL NEYRON—Deep, shining Rose, fresh and pretty; flowers large in diameter, often measuring 5 inches.

SOUVENIR DE CHARLES MONTAULT—The buds are of deep crimson, shaded with velvety-maroon; in open flower they are regularly and elegantly reflexed to the center.

ULRICH BRUNNER (Levet, 1881.) (H. P.)—Brilliant cherry-red flowers of immense size and bold glohular form. Seedling of Paul Neyron, strong and disease resisting. Price, 60c per doz.; \$5.00 per 100.

VICK'S CAPRICE—This is the only hardy Rose that has any variegation. It is a vigorous grower, and bears large and fragrant flowers of bright rose distinctly striped with white.

W. E. LIPPIATT (A. Dickson, 1907.) (H.P.)—Brilliant velvety carmine, shaded maroon; very strongly perfumed, large, full and well formed flowers with high center, freely produced on erect stems of well-branched growth. Introduced as a Hybrid Tea, but our growers class it a Hybrid Perpetual by reason of its habit of growth and fragrance.

POLYANTHA or Baby Rambler Rose

BABY TAUSENDSCHOEN (Welter, 1911.)—This is a bush form of the Climbing Tausendschoen or Thousand Beauties, having all the charm in the variable coloring in its flowers that its parent has, being firm white, delicately flushed pink, changing to deep rosy-carmine. Price, 60c per doz.; \$4.00 per 100.

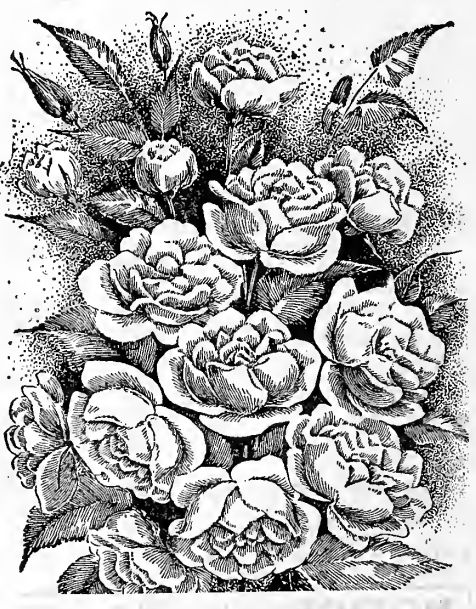
MADMOISELLE CECILE BRUNNER (Ducher, 1880.) (H. Poly.)—This is the popular Baby Pink Rose. In the past year or two this rose has fairly jumped into popularity. It always was a popular outdoor Rose on the Pacific Coast. It makes a handsome miniature Rose coming in sprays of three to five buds, and combines in beautiful effect with so many other flowers in all kinds of floral work. Every grower should try some of these—not only in the greenhouse but in his garden. It is a very prolific bloomer, and if carefully protected in the winter should be a money maker, both outdoors and under glass. The bud and flower are both handsome. Color blush, shaded light salmon-pink; distinct and desirable. Price, 60c per doz.; \$4.00 per 100.

CATHERINE ZEIMET, or WHITE BABY RAMBLER (Lambert, 1901.)—This is the far-famed white flowering Baby Rambler. Certainly a sight worth seeing when in full bloom. Pure white. Price, 50c per doz.; \$3.00 per 100. 2-year plants, \$1.25 per doz.; \$10.00 per 100.

ORLEANS ROSE (Levavasseur, 1910.)—The showiest and prettiest of all the Baby Ramblers. This charming and dainty Rose is of beautiful rounded habit and is a huge bouquet of deep cerise or Geranium-pink with distinct showy center of pure white; florets not crowded but of beautiful arrangement, making as a whole a charming combination that cannot be beaten. The color is irresistible. The plant grows like a weed and the flowers are nearly "immortelle" in their lasting qualities. We believe that they will outlast almost any other Rose in existence with their stiff paper-like texture. This pretty Rose has taken Europe by storm and will make a sensation as soon as known in this country. Awarded gold medal. Price, 50c per doz.; \$4.00 per 100. 4-inch pot, \$1.50 per doz.; \$12.00 per 100.

NOTE—The Roses we have listed on these pages are not field grown, except where it is so mentioned. These Roses have been grown on benches under glass, lifted in the fall and potted in 4-inch pots. They are kept cold and in a semi-dormant condition. The advantage of these Roses over field grown stock is, namely, that they can be planted at any time of the year. The ball of earth contains all of the fine fibrous roots, and when the plants are shipped transplanting can be done with no more injury to the plant than if the rose roots had simply been removed to a larger sized pot. The growth continues just the same and the roots do not have to establish themselves, as is the case with the dormant plants.

NOTE—We cannot accept orders from this catalog, at prices quoted, in lots of less than six of one kind.



Mlle. Cecile Brunner

HARDY CLIMBING ROSES

New and Standard Varieties

Including the Ramblers, Cl. Polyanthus and Wichuraiana

AMERICAN PILLAR (Connard, 1906).—Climbing Polyantha. A single flowering Rose which blooms two to three inches across, borne in immense clusters. Color lovely apple blossom-pink with bright golden stamens followed in autumn with red hips. A great Rose to grow in pots for Easter. Price, 50c per doz.; \$3.00 per 100; 2-year plants, \$10.00 per 100.

ALBERIC BARBIER (Barbier, 1900).—Wichuraiana, creamy-white with canary-yellow center, buds of orange-yellow. The flowers are semi-double in immense clusters. Price, 50c per doz.; \$3.00 per 100. 2-year plants, \$9.00 per 100.

BLUE RAMBLER (Veilchenblau.) (Perfectly Hardy. Violet Blue)—A seedling from the famous Crimson Rambler. The flowers are violet-blue in color, standing out in graceful form in large clusters, individual flower measuring from 1 to 2 inches across. Perfectly hardy, growth vigorous, producing beautiful foliage. Price, 50c per doz.; \$3.50 per 100. 2-year plants, \$10.00 per 100.

CRIMSON RAMBLER—Color bright crimson. Flowers produced in great pyramidal panicles, or trusses, each carrying from 30 to 40 blooms. Price, 50c per doz.; \$3.00 per 100. Strong, 2-year plants, \$9.00 per 100.

CLIMBING BABY RAMBLER, or MISS G. MESSMAN (Messman, 1911).—Climbing Polyantha. This is a true ever-blooming Crimson Rambler. Everyone knows how Baby Rambler is always in bloom. This is a climbing form of Baby Rambler. Price, 50c per doz.; \$3.00 per 100. Strong 2-year plants, \$10.00 per 100.

CLIMBING AMERICAN BEAUTY (Hoopes Bros. & Thomas, 1911).—A seedling from American Beauty with Wichuraiana and Tea blood in its veins. Good foliage, and better blooming qualities. Blooms 3 to 4 in across; has proved perfectly hardy and stands heat and drought as well as any Rose in our collection. We feel sure this Rose has a great future. Price, 50c per doz.; \$3.50 per 100; \$32.50 per 1000. Strong 2-year plants, \$10.00 per 100.

DOROTHY PERKINS—Beautiful shell-pink. Rapid grower. Blooms in clusters like Crimson Rambler. 50c per doz.; \$3.00 per 100. 2-year plants, \$9.00 per 100.

DR. W. VAN FLEET (Henderson, 1910).—Wichuraiana. The center is built high, petals beautifully undulated and cupped. The color is a remarkable delicate shade of flesh-pink on the outer surface, deepening to rosy-flesh in the center. Price, 50c per doz.; \$4.00 per 100. 2-year plants, \$10.00 per 100.

EXCELSA (Red Dorothy Perkins)—It is a good deal to claim for a Rose, but we are within bounds when we describe Excelsa as a brilliant Crimson Rambler flower on glossy, varnished Wichuraiana foliage. The defects of Crimson Rambler are its unsightly foliage in unseasonable weather, and its defoliation by insects; the infusion of Wichuraiana blood assures an ornamental climber which is nearly evergreen, and this will assure this lovely crimson-scarlet pillar Rose a place in every American garden. Price, 50c per doz.; \$3.00 per 100; 2-year plants, 4-in. pot, \$9.00 per 100. Strong 3-year, field-grown, No. 1, \$2.25 per doz.; \$18.00 per 100; No. 2, \$2.00 per doz.; \$15.00 per 100.

LADY GAY (Walsh, 1903.) (H. W.)—Cherry-pink, fading to soft white; the flowers, in large, loose trusses, together with the buds and foliage, form a mass of beauty from base of vine to tips of branches; a perfectly hardy climber.

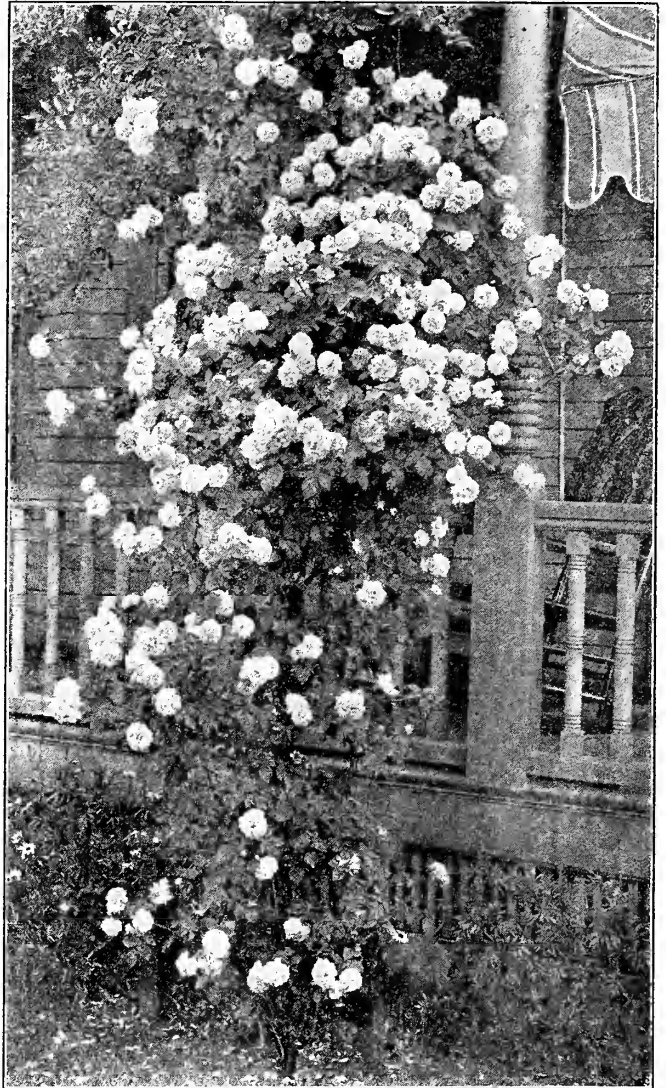
PHILADELPHIA RAMBLER—It is very free, both in growth and bloom, and will be found a splendid addition to the Crimson Rambler section. Price, 50c per doz.; \$3.00 per 100. Strong, 2-year plants, \$9.00 per 100. Strong, 3-year field-grown plants, \$2.25 per doz.; \$18.00 per 100.

SHOWER OF GOLD—An extra choice climber, with deep golden-yellow flowers, borne in fine trusses. The foliage is exceptionally beautiful, being a vivid, glossy green. Price, 50c per doz.; \$3.00 per 100. 2-year plants, \$12.00 per 100.

SILVER MOON—Flowers run 4½ inches and over in diameter, clear silvery-white in color, petals of great substance and beautifully cupped. Price, 50c per doz.; \$3.00 per 100. 2-year plants, \$10.00 per 100.

TAUSENSCHON (Hardy Climber.) (J. S. Schmidt.) The flowers are about the size of Clothilde Souper, soft pink, changing to rosy-carmine. Price, 50c per doz.; \$3.00 per 100. 2-year plants, \$10.00 per 100.

YELLOW RAMBLER (Aglala).—The color is a decided yellow; the flowers are very sweet-scented; habit of growth is very vigorous. Price, 50c per doz.; \$3.00 per 100. 2-year plants, \$9.00 per 100.



White Dorothy Perkins

WHITE DOROTHY—A pure white sport of the well-known Dorothy Perkins, of same habit of growth and freedom of flowering; a splendid companion for the pink varieties, as it flowers at the same time. Price, 50c per doz.; \$3.00 per 100. 2-year plants, \$9.00 per 100.

Hardy Climbing Prairie Roses

Price, 50c per doz.; \$3.00 per 100; \$27.50 per 1000. Strong 2-year plants, \$9.00 per 100.

BALTIMORE BELLE—Pale blush, variegated carmine, rose and white, very double. Flowers in beautiful clusters.

GREVILLE, or SEVEN SISTERS—Flowers in large clusters, varies in color from white to crimson.

PRAIRIE QUEEN—Bright rosy-red, changing to lighter as the flower opens. Of very strong, rapid growth.

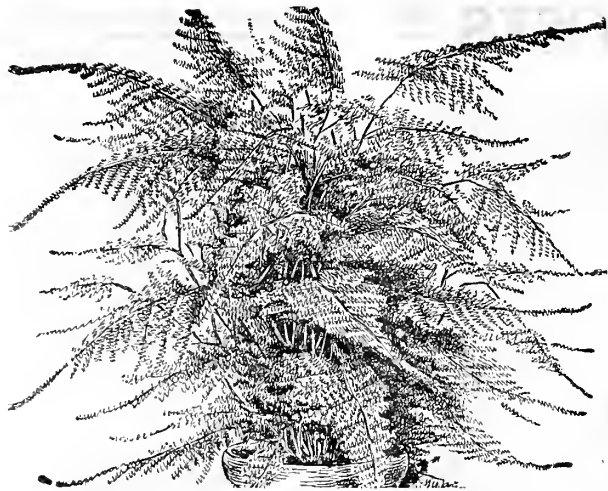
Famous Wichuraiana Hybrids

Price, 50c per doz.; \$3.00 per 100. Strong 2-year plants, \$9 per 100. **ROSA WICHURAIANA**—This hardy and lasting Rose creeps over the ground like Ivy. Pure white, with yellow center; and has a strong Wild Rose fragrance.

HAWAIIA—Brilliant scarlet, bears large clusters of single flowers, bright and effective.

WICHMOSS—The prettiest little novelty Rose of recent years. A cross between Wichuraiana and Moss Rose Salet. Buds borne in clusters, heavily mossed, and are of Enchantress pink color. Price, 50c per doz.; \$3.50 per 100.

FIELD-GROWN RAMBLER ROSE EXCELSA OR RED DOROTHY PERKINS—We have an exceptionally fine lot of this popular Rambler Rose in strong 2-year field-grown stock. Price, \$2.00 per doz.; \$15.00 per 100.



Asparagus Plumosus

Asparagus Plumosus Nanus

One of the handsomest of our foliage plants. By many florists it is used instead of Smilax, is easily grown and very much more beautiful. Price, strong 2 1/4-inch, ready for 2 1/2 and 3-inch pot, 50c per doz.; \$2.75 per 100; \$25.00 per 1000. 2 1/2-inch pots, 50c per doz.; \$3.00 per 100; \$27.50 per 1000. 3 1/2-inch, 60c per doz.; \$5.00 per 100; \$45.00 per 1000. Strong 4-inch pot, \$1.00 per doz.; \$8.00 per 100; \$75.00 per 1000.

Asparagus Sprengerii

Price, 2 1/4-inch pots, 40c per doz.; \$2.50 per 100; \$22.50 per 1000. 2 1/2-inch stock, 50c per doz.; \$3.00 per 100; \$27.50 per 1000. 3-inch pot, 60c per doz.; \$5.00 per 100. 4-inch pot, 90c per doz.; \$7.00 per 100.

Auracaria Excelsa

(Norfolk Island Pine.) Our importation of these was exceptionally large and fine selected stock, especially in the medium size, for which there is always a demand. Price, fine specimen plants, 10 to 12 inches high, 3 and 4 tiers of not less than 4 fronds each. 5-inch p. 75c each; \$9.00 per doz.



Asparagus Sprengerii

Bougainvillea

This beautiful free-flowering variety on account of its free-blooming qualities has become very popular, especially as a plant for Easter decorations. It is of strong and rapid growth, and the brilliant rosy-crimson blossoms are produced from early March until midsummer. Price, 2 1/2-inch pot, 60c per doz.; \$5.00 per 100.



Cigar Plant
Cuphea Platycentra

Cigar Plant

CUPHEA PLATYCENTRA — Flowers tubular in shape, one and one-half to two inches long, and have two bright scarlet wings at the end of each flower. The tip of the flower is bright purple, the stamens are pure white. Price, 50c per doz.; \$3.00 per 100.

Aloysia Citriodora

(Lemon Verbena) — Indispensable for the delightful fragrance of its leaves in the construction of bouquets, etc. Price, 50c per doz.; \$3.00 per 100; \$27.50 per 1000.



Lemon Verbena
Aloysia Citriodora



Bougainvillea sanderiana

Large Flowering Daisies

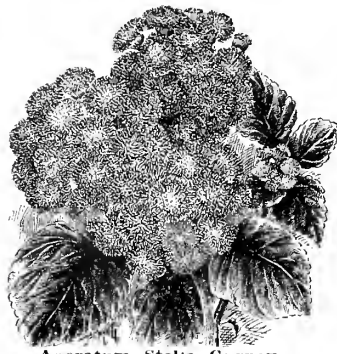
(Marguerites)—Very profitable for cut flowers. Always in demand and so easily handled. Price, 50c per doz.; \$3.00 per 100.

WHITE (Mme. Gilbert).—Best white, having a ray of white petals around a salmon disc. Splendid for cut flowers.

YELLOW (Etoile d'Or).—Finest yellow, large flowers and deep color.

Ageratum Stella Gurney

Dwarf and compact growth, fine for bedding or basket and vase; color is a deep, even blue. Price, 50c per doz.; \$3.00 per 100; \$27.50 per 1000.



Ageratum Stella Gurney

Acalyphas

SANDERI—Dark green leaves, flower a long spike of crimson scarlet. Price, 50c per doz.; \$4.00 per 100; \$37.50 per 1000.

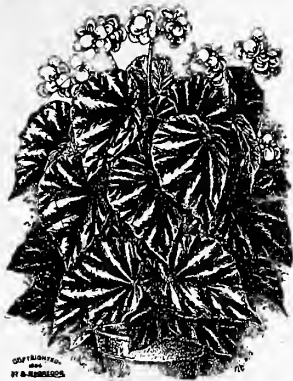
MARGINATA—Foliage dark bronze, very showy. Price, 50c per doz.; \$3.00 per 100.

TRICOLOR—Foliage bright red with crimson bronze. Price, 50c per doz.; \$3.00 per 100.



Acalypha Sanderi

Flowering Begonias



Beg. Thurstonii

Begonia Marguerite

Leaves bronzy-green, somewhat resembling Metallica; large trusses of light rose-colored flowers freely produced. Price, 50c per doz.; \$3.00 per 100.

Coral Begonia

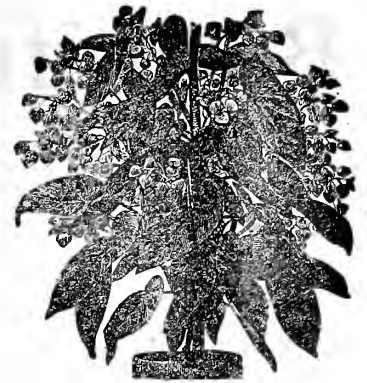
(Sandersonii.) The flowers are a scarlet shade of crimson. Leaves slightly edged with scarlet. Price, 2¼-inch plants, 50c per doz.; \$3.50 per 100. Strong 3½-inch pot, 60c per doz.; \$5.00 per 100.

Rosea Picta

In foliage resembling Rubra; occasionally showing white spots, blooms in large clusters of pink flowers, and is always in bloom. Price, 2¼-inch pot plants, 50c per doz.; \$3.50 per 100. Strong 3½-inch pot, 60c per doz.; \$5.00 per 100.

Begonia Rubra

Dark, glossy green leaves, combined with its free-flowering habit. The flowers are scarlet-rose color. Price, 2¼-inch pot, 50c per doz.; \$3.50 per 100. Strong 3½-inch pot, 75c per doz.; \$6.00 per 100.



Flowering Beg. Rubra

Begonia Thurstonii

Bright red foliage and veining underneath the leaves. The flowers are a beautiful deep pink in bud, but when expanded become a beautiful shell-pink. Price, 2¼-inch pot, 50c per doz.; \$3.50 per 100. Strong 3½-inch pot, 75c per doz.; \$6.00 per 100.

Begonia Robusta

The flowers are almost pure white, a distinct pink striped in the center of each enlivened with golden anthers. Price, 2¼-inch pot, 50c per doz.; \$3.00 per 100. Strong 3-inch pot, 60c per doz.; \$5.00 per 100.

Begonia Argentea Guttata

It has purple-bronze leaves, oblong in shape, with silver markings, and is in every way a most beautiful Begonia. Price, 2¼-inch pot, 50c per doz.; \$3.50 per 100. Strong 3½-inch pot, 60c per doz.; \$5.00 per 100.

Begonia Mme. De Lesseps

Remarkably strong growing, stiff, upright habit; flowers beautiful light pink, in large pendent panicles. Price, 50c per doz.; \$3.50 per 100.



Begonia Argentea Guttata



Begonia Gracilis Luminosa

Begonia Gracilis Luminosa

Foliage resembles a little that grand old variety, Vernon, rich glossy green, often shaded deep bronze. The flowers, when first opening, are a bright cherry, changing to a clear coral-red. Price, strong 2½-inch pot plants, 50c per doz.; \$3.50 per 100. Strong 3½-inch pot plants, 60c per doz.; \$5.00 per 100.

Coralline Lucerne

(New Flowering Begonia)

This is the grandest of all flowering Begonias. The green foliage is long and pointed, freely dotted with silvery-white. The flowers are borne in great clusters, almost hiding the plant; the color is bright coral-red. It is a wonder. Price, strong 3½-inch pot, \$1.00 per doz.; \$8.00 per 100.

President Carnot

A remarkably strong growing variety, of stiff, upright habit, foliage large and somewhat in style of Begonia Rubra, but more than twice as large, upper side deep green, under side purplish-red, flowers beautiful coral-red, in large pendent panicles. Price, 2¼-inch pot plants, 50c per doz.; \$4.00 per 100.

Begonia Gloire De Chattelaine

One of the newest Begonias with all the characteristics of the well-known flowering Begonia Lorraine, but having the vigor and constitution of the Luminosa family. For this reason it propagates more easily than Lorraine or Cincinnati and is more profitable therefore for the florist to handle. It carries the wonderful blooming qualities of Lorraine from the cutting bed to the counter. Flowers are clear pink and of exquisite coloring. Price, strong 3½-inch pot plants, 75c per doz.; \$6.00 per 100.

Beautiful Decorative Ferns



Nephrolepis Elegantissima Compacta

The fronds are considerably shorter than those of *Elegantissima*. It is a plant of very bushy and compact and symmetrical growth. A leading variety. Price, 2¼-inch pots, 60c per doz.; \$4.00 per 100. Strong plants from bench for 5-inch pot, \$2.50 per doz.; \$20.00 per 100.

Nephrolepis Roosevelt

In general characteristics it resembles the Boston Fern, but it produces more fronds; the pinnae being more divided. The foliage is heavier, of more graceful growth. Price, 2¼-inch pots, 50c per doz.; \$4.00 per 100; \$37.50 per 1000. Four-inch pot grown, \$1.50 per doz.; \$12.00 per 100. Strong plants from bench ready for 5-inch pot, \$2.00 per doz.; \$15.00 per 100.

Nephrolepis Teddy Junior

A dwarf form of the Roosevelt variety, retaining all the valuable characteristics of the parent plant. Fronds are broad and beautifully tapered, drooping just enough to be graceful. Of vigorous growth forming fronds freely. Very distinct. Price, 2¼-inch pots, 60c per doz.; \$5.00 per 100. Strong plants from bench, \$2.50 per doz.; \$20.00 per 100.

Nephrolepis Scholzei

The ideal plumed fern, holding the same position with the plumed ferns that *Scotti* holds with the *Bostons*. Of airy, feathery appearance and of good heavy habit of growth. Price, 2¼-inch pots, \$4.00 per 100; 3-inch pots, 75c per doz.; \$6.00 per 100; 4-inch pot grown, \$2.00 per doz.; \$15.00 per 100. Strong bench grown ready for 5-inch pot, \$2.25 per doz.; \$18.00 per 100.

Nephrolepis Boston Fern

One of the most valuable decorative plants we have; of easy culture. Forms large graceful plants that enable it to retain a leading place among this class of ferns. Price, strong 2¼-inch stock, 50c per doz.; \$3.50 per 100; \$30.00 per 1000; 3½-inch pots, 75c per doz.; \$5.00 per 100; 4-inch pot grown, \$1.50 per doz.; \$12.00 per 100. Strong bench grown ready for 5-inch pot, \$2.00 per doz.; \$15.00 per 100.

Nephrolepis Whitmanii

The graceful pluminess and charm of the *Whitmanii*; its characteristic features of form, size and growth gives it superior value. Foliage of heavy strong growth, stocky and upright. Price, 2¼-inch pots, 50c per doz.; \$4.00 per 100; \$37.50 per 1000; 3½-inch pot, 75c per doz.; \$6.00 per 100.

FUCHSIAS

Strong 2½-inch pot plants. Price, 50c per dozen; \$3.00 per 100

THE BLACK PRINCE—A misnomer as far as name is concerned, being of a bright, waxy carmine; tube and petals large and broad, with pale green tips; large, open pale pink corolla.

TROPHEE — Double; buds round and beautiful deep red color; open flower, dark purple and very beautiful.

ROSAINS PATRI—A variety unsurpassed among all the Fuchsias, with white corolla. Tube and sepals are brilliant deep scarlet, thick and leathery in texture; corolla is very large, double and pure white.

TRAILING QUEEN—The habit of this variety is much different from the other varieties in that it trails instead of growing upright. Pretty flowers borne in clusters.

PURPLE PRINCE—Fine double variety; sepals scarlet; corolla a beautiful distinct blue; very dwarf.

ELM CITY—A very pretty variety and one that is always in demand. Sepals a rich crimson, corolla deep purple and very double; free flowering and easy to grow.

BLAND'S NEW STRIPED—The tube and sepals are a glowing crimson, corolla a rich plum-colored purple, regularly and distinctly striped red rose.

SPECIOSA—Pale red tube and sepals; dark red corolla, there frequently being from thirty to forty flowers on a single branch.

AVALANCHE—Beautiful golden foliage, with a dark double violet-purple corolla.

SAPLEY FRERES—Erect grower; very large flower; corolla very double, of rose-violet; long, recurving sepals of bright coral red.

MME. VAN DER STRAUS—Fine, large and elegant form; sepals long and reflexed, pure red, corolla large, double white; the finest market double white Fuchsia.

MONSTROSA SURPERBA—Very large, double flowers; pure white corolla, beautifully reflexed; bright scarlet sepals.

FUCHSIA PHENOMENAL—The largest Fuchsia we have yet seen. The tube and sepals are bright coral-red, beautifully formed. The corolla, nearly two and a half inches across, is of the very richest violet shade.

WAVE OF LIFE—Golden foliage, dark purple, single flower. A beautiful variety.

HIBISCUS

Price, 50c per dozen; \$3.25 per 100; \$30.00 per 1000; strong 4-inch, 12 to 15 inches high, \$1.00 per dozen; \$8.00 per 100

PEACHBLOW—A "sport" from the double red Hibiscus *Rosa Sinensis*; the flowers are double and from four to five inches in diameter; of a charming rich, clear pink color, with a small deep crimson center.



Flowering Hibiscus Peachblow



SUB VIOLACEOUS — Flowers of enormous size, of a beautiful carmine, tinted with violet; probably the largest flower of the Hibiscus family.

GRANDIFLORA—Rich, glossy foliage, blooming profusely through the summer, literally covering the plant with scarlet-crimson flowers.

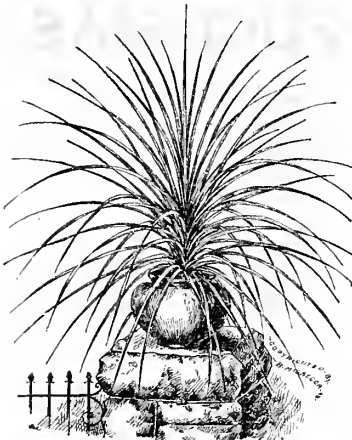
MINIATUS SEMI-PLENA—Large, semi-double, brilliant, attractive; vermilion-scarlet.

VERSICOLOR—A variety combining in its flowers all colors of the whole family, being handsomely striped crimson, buff, rose and white.

AURANTICA—Large, double orange-colored flowers; an early and profuse bloomer.

CARMINIATUS PERFECTUS—Full, round flowers of perfect shape, and of a rich soft carmine-rose, with a deep crimson eye.

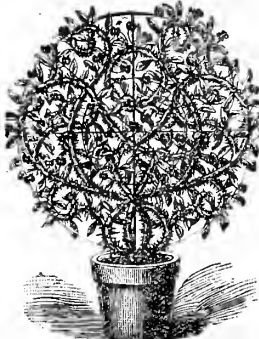
COLLERII—A remarkably distinct variety. Flowers of a buff-yellow, with a crimson-scarlet base.



Dracena Indivisa

CROWN OF THORNS

EUPHORBIA SPLENDENS—A curious plant, with thick, fleshy twining stems, which are covered with stout, sharp spines nearly an inch long. The foliage is bright green and the flowers are a beautiful coral-pink, very pretty when in bloom. Price, 50c per doz.; \$4 per 100.



Crown of Thorns
Euphorbia Splendens

DRACENA INDIVISA

Of all the plants in use for centers of vases, baskets or for beds in the open ground, nothing is so valuable as this is. Price, strong 4-inch pots, \$1.00 per doz.; \$8.00 per 100.

FANCY-LEAVED CALADIUMS

Among ornamental foliage plants there are none more beautiful in design or gorgeous in coloring than the Fancy-Leaved Caladiums. Of special value for pot culture, window and plaza boxes. We offer six distinct sorts. Brilliant red and green, green spots and red veins, etc. Price, large bulbs, \$1.50 per doz.; \$12.00 per 100.

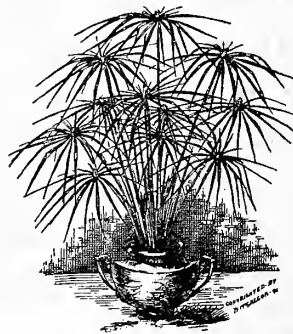
CANNAS—DORMANT ROOTS

We will have to offer for December 1st delivery a fine assortment of dormant roots, strong divisions. Write for list and prices.

CYPERUS ALTERNIFOLIUS

(Umbrella Plant)

Price, 50c per doz.; \$3.00 per 100; \$27.50 per 1000



Umbrella Plant (Cyperus)

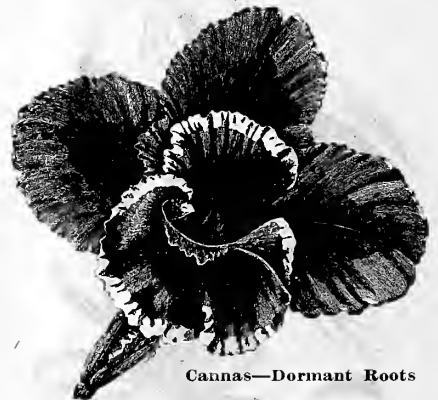


Jerusalem Cherries

Price, strong 3-inch stock \$1.50 per doz., \$12 per 100; 4-inch, \$2 per doz., \$16 per 100.

One of the best ornamental plants for winter. Extensively used during the holidays for decorating. We are offering two distinct varieties, well established and berried.

MALVENIA—Dwarf growth; berries egg-shaped set intermingles among the foliage.
FRA DIAVOLA—Dwarf growth; berries perfectly round, usually set on the crown of the plant.



Cannas—Dormant Roots

COLEUS, CHRISTMAS GEM

(**BRILLIANCY**, or **DR. ROSS**)—Leaves immense, 8 to 12 inches long. Cannot be excelled as a pot plant. The name aptly describes the appearance of this variety, which belongs to the giant-leaved section; of strong, vigorous habit. Leaves are of bright carmine, shading off to a deep maroon, the margin being yellow and green, the whole leaf having a rich velvety luster. Strong 4-inch pot plants, \$1.50 per doz.; \$12.00 per 100.

COLEUS

STANDARD MARKET SORTS—A fine stock labeled true to name. Price, 50c per doz.; \$2.00 per 100.

SENSATION—Large-leaved; color crimson-maroon, with center light red.

VERSCHAFFELTH—Maroon center, spotted of the best and most distinct kinds. All yellow.

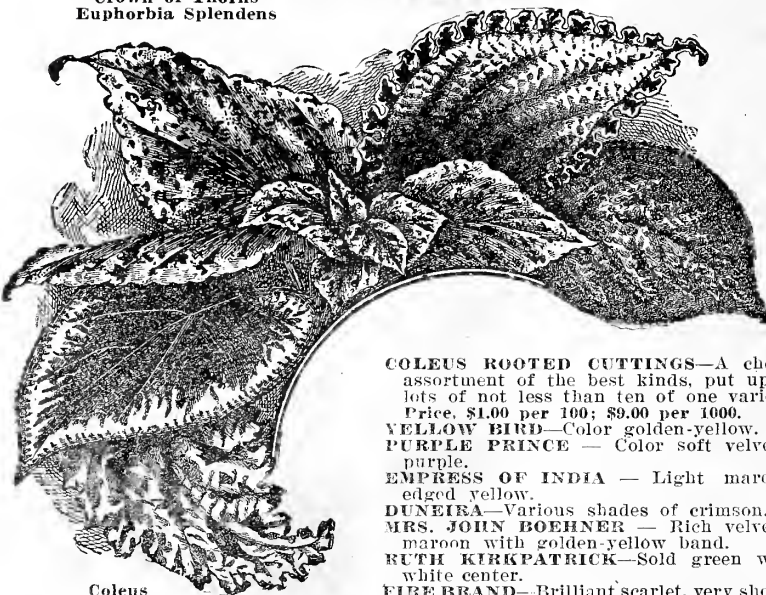
QUEEN OF THE WEST—Green center, streaked with maroon.

HERO—Darkest Coleus grown, nearly black.

BECKWITH GEM—Dark maroon, edged golden-yellow.

GRACE ADAMS—Green leaf, with small blotches of red-crested edge.

FIRE CREST—Very pointed leaf; color dark maroon splashed with flame-red.



Coleus

COLEUS ROOTED CUTTINGS—A choice assortment of the best kinds, put up in lots of not less than ten of one variety. Price, \$1.00 per 100; \$9.00 per 1000.

YELLOW BIRD—Color golden-yellow.

PURPLE PRINCE—Color soft velvety-purple.

EMPERESS OF INDIA—Light maroon, edged yellow.

DUNEIRA—Various shades of crimson.

MRS. JOHN BOEHNER—Rich velvety-maroon with golden-yellow band.

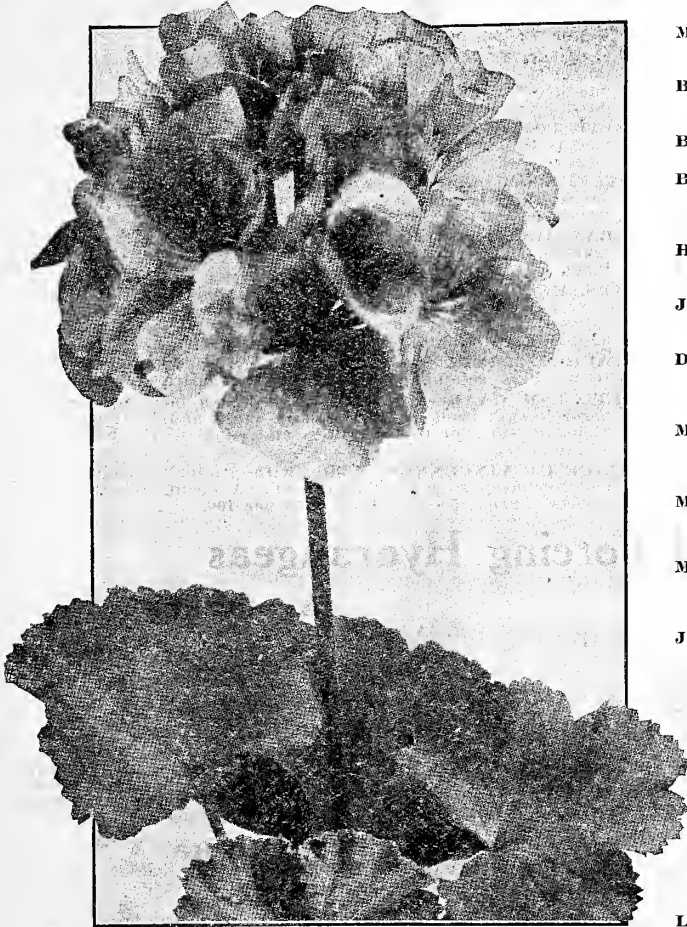
RUTH KIRKPATRICK—Sold green with white center.

FIRE BRAND—Brilliant scarlet, very showy

We cannot accept orders from this catalog, at prices quoted, in lots of less than six of one kind.

Double Geraniums

Price, 50c per doz.; \$3.00 per 100; \$27.50 per 1000 (except where noted).



Beaute Poitevine

ALPHONSO RICARD—A strong grower, dwarf and branching, and producing flowers in great masses. Both floret and trusses are of enormous size, single or slightly doubled, and color a brilliant shade of orange-red.

MARQUIS DE MONTMORT—Deep crimson-carmine. A very novel and beautiful shade. A strong, robust grower with good foliage.

BUCHNER—A new Geranium of the large-flowering type and one that has proved to be a fine bedder. Flowers purest white, not a trace of color at center. Plant dwarf and bushy.

BRUANT—The giant among Geraniums. Color of the flower is a bright vermilion-red of most striking shade.

BEAUTE POITEVINE—It is very dwarf and compact and of a very branching habit. A deep rosy-salmon, streaked and veined carmine, with deep magenta color, others with the outer petals almost a pearly-white, with carmine color.

HETERANTHE (Double Gen. Grant)—A splendid variety for bedding, the clear vermilion-red of its flowers showing well above compact, sturdy foliage.

JOHN DOYLE—It is a strong, vigorous grower, throwing its truss up well above the foliage, of enormous size, and of the richest brilliant vermilion-scarlet.

DOUBLE DRYDEN—Magnificent combination of colors; center of flowers coral-white, gradually shading to the most exquisite glowing, soft crimson; beautiful variety; strong and robust.

MARQUIS DE CASTELLANE—A giant among Geraniums. Trusses of bloom five to seven inches across; color deep rosy-scarlet, shading into pure scarlet at the edge of the upper petals.

MME. JAULIN—Very large florets produced in enormous trusses; color peach-pink surrounded by a broad border of white; unparalleled for beauty and freshness; habit a profuse bloomer.

M. ANATOLE ROSELEUR—Beautiful shade of deep rose-pink, rivaling the color of Paul Neyron Rose. Flower shows a distinct white center. Extremely handsome foliage. Price, 50c per doz.; \$3.50 per 100.

JULES VASSEUR—Semi-double; bright cardinal-red with a distinct white eye; a slight violet shading on the upper petals. Magnificent pot plant. Price, 50c per doz.; \$3.50 per 100.

JEAN VIAUD—Very large semi-double blooms borne in large trusses well above the foliage; individual floret, large color bright rosy-pink, with distinct white blotch in the center.

MRS. LAWRENCE—Clear, healthy foliage, dwarf compact habit of growth, wonderfully free, in flowering. The color is an artistic shade of bright satiny salmon-pink, slightly tinged white.

BERTHA DE PRESSILY—A most beautiful shade of silver-rose of exquisite brightness; the blooms are extra large, very double; the habit is dwarf, robust and branching, continually in bloom.

LA FAVORITE—A fine double white Geranium.

S. A. NUTT—Rick, dark crimson. Price, \$3.00 per 100; \$25.00 per 1000.

Fancy Geraniums

HAPPY THOUGHT—A tricolor Geranium with very dark green foliage, having a light, creamy almost white center, with a dark zone. Flowers bright scarlet. Price, 50c per doz.; \$4.00 per 100.

MME. SALLEROI—It makes a round pretty plant, about one foot high and wide; foliage bright green, edged with pure white. Price, 50c per doz.; \$3.00 per 100.

WM. LANGGUTH, Double Red Silver-Leaf Geranium—This new variety is the second double-flowered Geranium in the silver-leaved section. It is identically the same in every way with Mrs. Parker, except in color of flower, which is a bright scarlet. The foliage is beautiful; the center of leaf is a deep green, and outer margin broadly marked with silver-white. Price, 75c per doz.; \$6.00 per 100.

Sweet-Scented Geraniums

Price, 50c per dozen; \$3.00 per 100.

LEMON-SCENTED—Small leaves, delightfully lemon-scented; one of the most pleasing varieties.

ROSE—Beautiful pink flowers, borne in clusters.

SHRUBLAND PET—Small light green leaves, very fragrant, rose-colored flowers.

BALM—Large leaves, with a very strong fragrance.

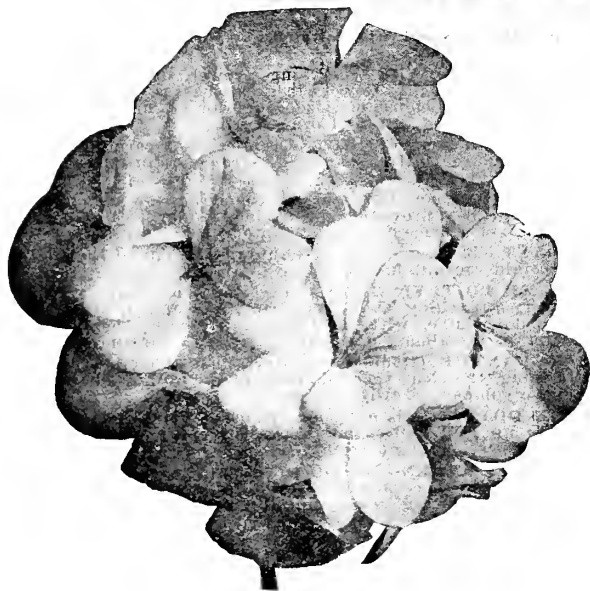


Happy Thought

GERANIUMS (Continued)

Single Varieties

Price, 50c per dozen; \$3.00 per 100; \$27.50 per 1000, (except where noted).



Single White L'Aube

PAINTED LADY—Brilliant scarlet-crimson, shading delicate violet-rose to distinct white center; magnificent bedder. Price, 50c per doz.; \$3.50 per 100.

JACQUERIE—A most beautiful shade of deep carmine-red; immense trusses on exceptionally long stems; very vigorous grower and unsurpassed as a bedder. Price, 50c per doz.; \$3.50 per 100.

NUIT POITEVINE—A remarkably strong and vigorous variety; color beautiful rosy-purple, lower petals feathered rich scarlet; splendid habit and growth.

TIFFIN—One of the freest blooming single scarlet bedding varieties; rich, glowing scarlet, crimson-maroon shading on upper petals.

GRANVILLE—A fine bedding variety, with large flower trusses. The color is a clear pink. One of the best Geraniums.

MRS. E. G. HILL—For those unacquainted with the variety we would say it is a most distinct and pleasing shade of salmon, with light shading to the center. The finest salmon-flowered Geranium to date.

L'AUBE—Enormous sized trusses, large, round florets, pure snow-white, retaining its pureness the entire season.

MRS. J. M. GAAR—Absolutely perfect as a bedding variety; never burns; is of dwarf, compact habit, and in freedom of bloom is superior to all whites, and equal to the best scarlet bedders.

ALICE OF VINCENNES—White, with gradual gradations of violet-crimson to a bright crimson. A beautiful variegated variety. Price, 50c per doz.; \$3.50 per 100.

New and Standard Forcing Hydrangeas

Avalanche

AVALANCHE—A splendid large white variety which has come well to the front in the past couple of seasons, and considered an easy forcing variety. Price, 50c per doz.; \$4.00 per 100.

La Lorraine

LA LORRAINE—A variety with very large flowers; color pale rose changing to bright pink. Has become quite popular during the past few seasons. Price, 50c per doz.; \$4.00 per 100.

Otaska

OTASKA—This is an excellent variety for pot culture and is flowered extensively for Easter decoration. It is of symmetrical growth and produces large, evenly colored pink blooms. Price, 50c per doz.; \$3.50 per 100; \$32.50 per 1000.

Mme. A. Riverain

MME. A. RIVERAIN—Superb bright rose-color; very vigorous and floriferous. One of the most successful Hydrangea growers in the U. S. considers this one of the very best varieties yet introduced. Price, 50c per doz.; \$4.00 per 100.

Mme. Maurice Hamar

MME. MAURICE HAMAR—Described by the introducer as a delicate flesh-rose color, of a pleasing shade. In some soils, the most beautiful deep blue; admired by anyone; a vigorous grower, very free and early; the individual flowers as well as the trusses being of immense size. One of the easiest to force early. Price, 50c per doz.; \$4.00 per 100.



Hydrangea Otaska

New Forcing Hydrangea Arborescens Grandiflora Alba Or Hills of Snow

This beautiful hardy American shrub is the finest addition to this class of plants found in many years. The blooms are very large, of pure snow-white color, resembling a little the hardy shrub so well known, "The Snowball," in color and make-up, only they are much larger in size and much more striking. It is a perfectly hardy, standing twenty degrees be-

low zero. Price, strong plants from 2 1/4-in. pots, fine for lining out, 50c per doz.; \$3.50 per 100; \$30.00 per 1000. Heavy field plants, two and three canes, \$1.25 per doz.; \$10.00 per 100. Three and four canes, \$1.50 per doz.; \$12.00 per 100. Four canes and up, extra select, \$2.25 per doz.; \$18.00 per 100.

Bedding Lantanas

Price, 50c per dozen; \$3.25 per 100; \$30.00 per 1000.

MICHAEL SCHMIDT—Flowers yellow passing to a purple-vermillion.

GRAND SULTAN—The best of the deep red varieties.

ALBA PERFECTA—Pure white; compact habit.

AUROMA—Flowers of clear pink.

RADIATION—Plant semi-dwarf; brilliant red, center orange-yellow.

Weeping Lantanas

This plant has a most graceful drooping habit, grows very rapidly and blooms continually summer and winter, producing large clusters of flowers of the most delicate lilac or rosy-pink. Price, 50c per doz.; \$3.00 per 100; \$27.50 per 1000.

Heliotropes

Price, 50c per dozen; \$3.00 per 100.

CENTEFLEUR—A new dwarf Heliotrope. Large sprays; color deep heliotrope with distinct white eye.

FLORENCE NIGHTINGALE—Splendid market kind; healthy, flowers bright lavender.

MADAME DE BLONAY—Very large trusses of pure white flowers.

MADAME BRUANT—Rich purple, with large white eye.

CZARINA—Another good dark one, deep purple with white eye and very fragrant.

Linum Trigynum

A winter blooming plant of great beauty, producing in the greatest profusion very large and very showy blooms of a bright yellow color. Price, 50c per doz.; \$3.50 per 100.

Impatiens

"Sultan's Balsam"

Price, 50c per doz.; \$3.50 per 100; \$30.00 per 1000

IMPATIENS ALBA—A good strong grower and a prolific bloomer; color pure white suffused with pink carmine eye.

IMPATIENS SULTANA—In cultivation the plant is literally covered with brilliant, rosy-scarlet flowers, which are three inches around.

IMPATIENS HOLSTII—The flowers measure from one and one-quarter to one and three-quarter inches across, and are of a vermillion color.

IMPATIENS PINK BEAUTY—One of the best; clear rose pink; a very strong grower.

Lemon

AMERICAN WONDER, or PONDEROSA

—It is a true ever-bearing variety. In addition to its fruit-bearing qualities it makes a very handsome plant for house culture. The dark green foliage is very large and handsome and the pure waxy flowers with yellow stamens are nearly as fragrant as orange blossoms, which they greatly resemble. Price, 2½-inch stock, 50c per doz.; \$3.00 per 100; \$27.50 per 1000. 3½-inch stock, 60c per doz.; \$5.00 per 100. Strong 4-inch pot plants, \$1.25 per doz.; \$10.00 per 100. 5-inch pot plants, \$1.50 per doz.; \$12.00 per 100. 6-inch pot plants, strong, \$3.00 per doz.

Louis Melcher, El Campo, Texas: "How is this for a Lemon Tree? It is the Ponderosa kind. The tree had 128 lemons on and the largest one weighed nearly 3 pounds and measured 17½ inches in circumference. It was bought from you four years ago and stands out in the open in our yard."



Lantanas



Giant Flowered Heliotrope Centefleur



Jasmine Grandiflora (Star Jasmine)

Jasmines

GRANDIFLORA—Flowers pure white, star shaped, of exquisite fragrance. Price, 50c per doz.; \$3.00 per 100; \$27.50 per 1000.



American Wonder Lemon



Double Oleander

Chinese Primrose

Strong 2½-inch pot plants in four separate colors. Price, 50c per doz.; \$1.00 per 100.

Double Fringed Petunias

Price, 50c per doz.; \$3.50 per 100; \$30.00 per 1000. We have a fine stock in 2¼-inch pots, named varieties, in the following colors: White, Deep Purple, Mottled White and Crimson, Bright Purple mottled with White, Lavender, Deep Purple streaked with White.

Moon Vines

THE GIANT MOONFLOWER (Maxima)—This Moonflower is an improvement over all the Moonflowers. The flowers are more than twice the size of the old variety, often times measuring from six to seven and one-half inches across, and are produced in such wonderful profusion that they completely cover the vine with a veil of glistening waxy white. We recommend this to all florists as the best thing in Moon Vines. Price, 50c per doz.; \$4.00 per 100; \$35.00 per 1000.

The True Ever-Blooming Moonflower, IPOMEA GRANDIFLORA—We have the true variety that blooms constantly. The flowers are a pure white, from five to six inches in diameter, emitting a rich, Jasmine-like odor at night. Price, 50c per doz.; \$3.50 per 100; \$30.00 per 1000.

MOONFLOWER LEARII, or Heavenly Blue—This makes a splendid companion plant to the white "Moonflower." The flowers are the most heavenly blue, with reddish-purple rays. Price, 50c per doz.; \$3.50 per 100; \$32.50 per 1000.

Silver Striped Peperomia

The leaves are distinctly variegated white and green, and have the appearance of being powdered with frosted silver. Its small spikes of Mignonette-like flowers are quite interesting. Price, 50c per doz.; \$3.00 per 100; \$27.50 per 1000.



Silver Striped Peperomia

Otaheite Orange

This valuable and distinct variety of the Orange family is a dwarf, compact grower, with glossy, deep green foliage, which has a decided odor of the orange trees of Florida, and exceedingly floriferous, producing a wonderful profusion of pure white flowers of the most delicious fragrance. Otaheite oranges fruit immediately after flowering, bearing fruit about one-half the size of the ordinary orange. As a pot plant this lovely dwarf orange is one of the most novel and beautiful that can be grown. Price, 75c per doz.; \$6.00 per 100; \$55.00 per 1000. Strong 4-inch pots, \$2.00 per doz.; \$15.00 per 100; 5-inch pot, \$2.25 per doz.; \$18.00 per 100.

Double Oleanders

Price, 50c per doz.; \$4.00 per 100; \$37.50 per 1000

OLEANDER ROSEA—Has double pink flowers. The old favorite. Very sweet.

OLEANDER LILIAN HENDERSON—Double white flowers; fragrant like the old double pink.



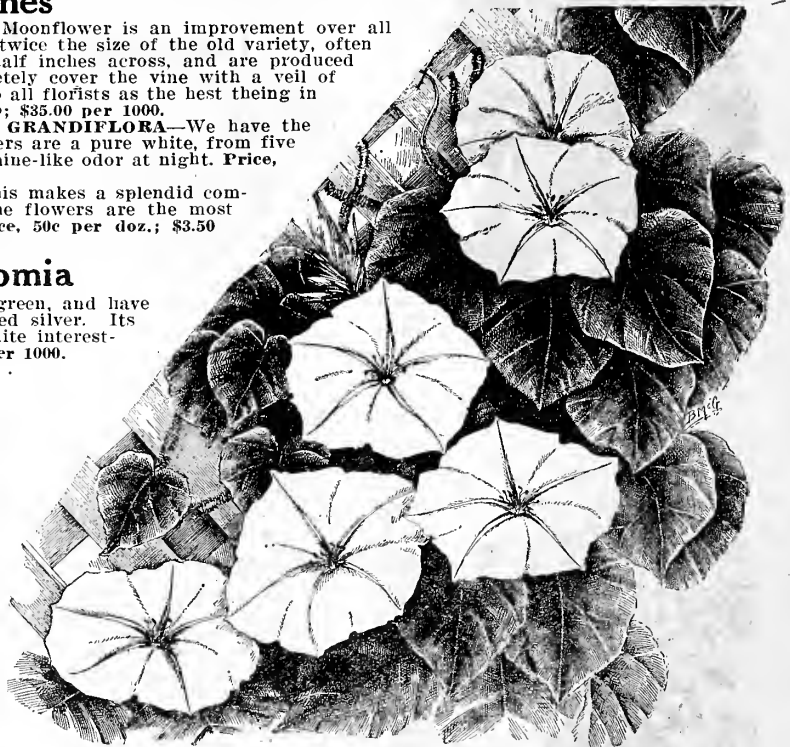
Dwarf Otaheite Orange

Giant Flowering Primula Obconica

Strong 3½-inch pot, 75c per doz.; \$6.00 per 100. We are offering a fine strain in four separate colors of the large flowering varieties. These plants are well established in 3½-inch pots, ready for a shift into 4-inch.

McGregor's New Mammoth Pansy

A splendid strain of Pansies, being a mixture of such celebrated varieties as Odier, Bugnot, Trimardeau, Cassier. They are fine transplanted plants. Price, 75c per 100; \$6.00 per 1000.



Ipomea Grandiflora

We cannot accept orders from this catalog, at prices quoted, in lots of less than six of one kind.

Double Hardy Scotch Pinks

Price, the following varieties, 2½-inch pot plants, 50c per doz.; \$3.00 per 100; \$27.50 per 1000. Strong field clumps, 75c per doz.; \$6.00 per 100.
ABBOTSFORD—Deep cherry-red, variegated with pink and white.
JULIETTE—White laced, with crimson.
HER MAJESTY—Pure white, very double.



Hardy Pinks

Strobilanthes Dyerianus

This plant will undoubtedly become universally popular on account of its brilliant and exquisite coloring. It surpasses the finest Coleus, Begonias or Bertolonias in the exquisite coloring of the leaves. Price, 50c per doz.; \$3.50 per 100; \$32.50 per 1000.



Strobilanthes

Sage

HOLT'S MAMMOTH—Plants of strong growth; leaves very large, borne well above the ground, are of unusual substance, strong flavor and superior quality. Price, 50c per doz.; \$3.00 per 100.

Plumbagoes

PLUMBAGO CAPENSIS (Blue)—Produces large heads of light blue flowers. Always in bloom; elegant bedder. Price, 50c per doz.; \$4.00 per 100.

PLUMBAGO CAPENSIS FLORA ALBA (White)—Exact counterpart of Plumbago Capensis except in color, which in this beautiful novelty is a clear white. Price, 50c per doz.; \$3.00 per 100.

PLUMBAGO (Lady Larpent)—The bardy deep blue variety. Makes a fine border plant. Price, 40c per doz.; \$3.00 per 100; \$27.50 per 1000.



Saxifraga Sarmentosa

Saxifraga Sarmentosa

One of the handsomest plants imaginable. Leaves nearly round, and striped freely with silver bands—blooms white, of great beauty and borne in spikes nearly 12 inches high; of easiest growth. Adapted for hanging baskets, vases, etc. Price, 50c per doz.; \$3.00 per 100; \$27.50 per 1000.

Salvias

Price, 50c per doz.; \$3.00 per 100; \$25.00 per 1000

MRS. PAGE—Splendid scarlet, free bloomer.

Dwarf Ever-Blooming Salvia, ZURICH—A fine scarlet; very dwarf; an ever-bloomer.

New Salvia, AUDUBON—The leaves are dark green, with light sulphur or yellow blotches covering nearly all of the leaf. Intense bright scarlet flowers.

BON FIRE—One of the leading scarlet Salvias.

SALVIA SPLENDENS—The most popular of all. Long spikes of scarlet flowers and green foliage.

ST. LOUIS—A great improvement over Splendens in flower and growth.

ALBA—Same as Splendens in every respect except color of flower, which is pure white.



Plumbago—
Capensis Alba

Wandering Jew

(Tradescantia Tricolor)—Most beautifully variegated purple, scarlet and white. Price, 40c per doz.; \$2.50 per 100.

Vinca Major Variegata

This is a beautiful variegated trailing vine admirably adapted for hanging baskets and vases. The leaves are a glossy green, broadly margined a creamy-white; flowers blue. More Vincas are employed in vase and basket work than all other vines combined. Price, field plants ready for 4-inch pot, \$1.00 per doz.; \$8.00 per 100.

Ivy, German or Parlor

Price, 40c per dozen; \$2.50 per 100.

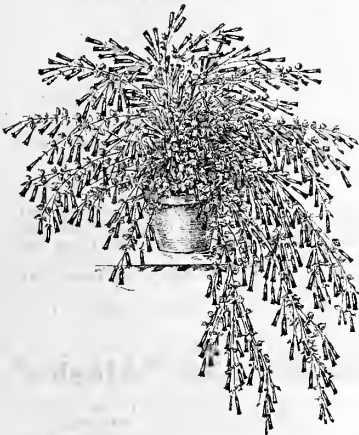
SENEICO SCANDENS—(New German or Parlor Ivy.) A more rapid or succulent kind. Leaves glossy-green and flowers yellow in clusters.



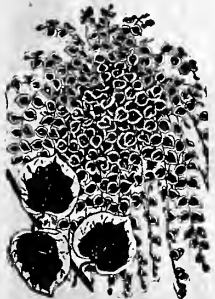
Tradescantia Tricolor—Wandering Jew

Russellia

LEMOINEI ELEGANTISSIMA—Primary stems wiry, covered with foliage, graceful and arching in form; bloom so freely produced as to cover the plant; flowers a bright soft red. A fine vase or window box plant. Price, 50c per doz.; \$3.00 per 100.



Russellia Elegantissima



Vinca Variegata



Cycas Revoluta

CYCAS REVOLUTA (Sage Palm)—We have a fine stock of Cycas in large sized plants for retailing for house decoration. They are in six and seven-inch pots and have six to twenty leaves. Price, nine plants, 10c per leaf.

Swainsonia

White—A native of Australia; extremely graceful; trained at a window or on a trellis presents a lovely sight of light green foliage, and a splendid profusion of flowers resembling Sweet Peas in form. Price, white, 50c per doz.; \$3.50 per 100.

Violets

PRINCESS OF WALES—This variety is far ahead of any other single Violet known. Flowers of a true violet color. Price, 2½-inch pots, 50c per doz.; \$3.00 per 100; \$27.50 per 1000.

LADY CAMPBELL—One of the best of the double purple-violets, similar in growth and shape of flower to Marie Louise, but color a little lighter. Price, 2½-inch stock, 50c per doz.; \$3.50 per 100.

DOUBLE WHITE VIOLET, SWANLEY WHITE—Price, strong 2½-inch pot plants, 50c per doz.; \$3.00 per 100.

Sansieviera Zeylanica

Erect, rigid, sword-like leaves, in some old specimens reaching a length of from 4 to 6 feet. Price, 2½-in. pot, 50c per doz.; \$4.00 per 100. Strong 3-in. pot, 75c per doz.; \$6.00 per 100.



HARDY PERENNIALS

HARDY PHLOX

One-year field-grown plants, 50c per doz.; \$3.50 per 100; \$32.50 per 1000

PERLE—Pure white; a fine, strong grower.
RHYNSTROM—Heralded as the best pink Phlox in existence. Color clear bright pink.
ECLAIREUR—Beautiful clear rose-magenta, with large lighter halo, large florets, magnificent bedder.

ATHIS—Deep clear salmon; considered one of the showiest varieties grown.
SIEBOLD—The finest and best red of all Phlox. Color bright orange-scarlet.
BRIDESMAID—Edged pure white flowers, deepening to carmine center.
R. P. STRUTHERS—Considered the best Phlox grown today. Color clear cherry-red suffused with salmon shades, deep red eye. Practically a solid cherry-salmon color.
OBERGARTNER WITTIG—Bright magenta with crimson-carmine eye, large flower. One of the best.
FRAU VON LASSBURG—Pure snow-white, firm grower. Is of the best of all Phlox.



Plumbago

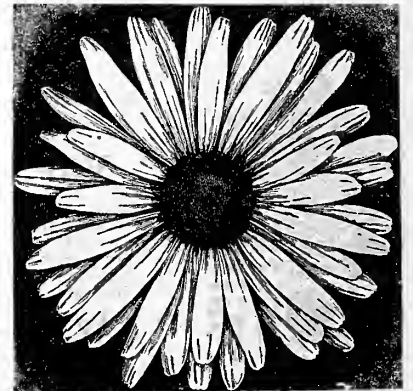
PLUMBAGO (Lady Larpent)—The hardy deep blue variety. Makes a fine border plant. Price, 40c per doz.; \$3.00 per 100.

Aquilegia Columbine

(Columbine)—Blue and yellow. The distinct, clear-cut foliage and delicate arrangement of colors in the flowers of Columbine make it one of the showiest and most desirable of the hardy garden plants. Price, 50c per doz.; \$3.00 per 100.

Shasta Daisy, "Alaska"

In growth the plants are as strong as a common field daisy. Strong, 2½-inch potted plants, 50c per doz.; \$3.00 per 100.



Improved Shasta Daisy

HARDY PERENNIALS (Continued)

Mallow or Hardy Hibiscus

One-Year Field Grown Plants, 50c per dozen; \$3.00 per 100.

CRIMSON EYE HIBISCUS (White Mallow)—Tall, free-flowering, perfectly hardy; color white, deep crimson center.

PINK HIBISCUS (Pink Mallow)—Similar to the hardy white Hibiscus, but the flower is of a clear even pink, very striking.

CRIMSON HIBISCUS (Mechan's Crimson Mallow)—New and distinct, perfectly hardy, with immense striking deep crimson flowers; nothing with as much merit has been introduced in recent years.

Funkia

(Plaintain Lily)—The Plaintain Lillies have always been very popular, due to the easy management of the plant.

FUNKIA SUBCORDATA GRANDIFLORA—Pure white, lily-shape fragrant flowers; borne in large clusters. Price, 75c per doz.; \$6.00 per 100.

FUNKIA MEDIO VARIEGATA—Green and white foliage with purple flowers. Price, 75c per doz.; \$6.00 per 100.

Hemerocallis Flava

(Lemon Lily)—This is entirely hardy; soon makes a large clump and throws numerous stalks surmounted with lemon lily flowers. Price, 50c per doz.; \$3.50 per 100.



Forget-Me-Not



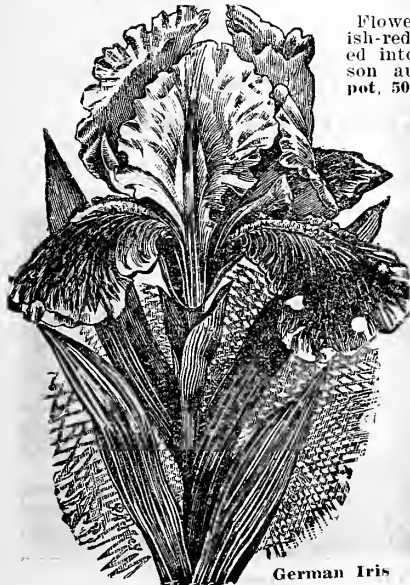
Canterbury Bells

(Campanula)

Bell-shaped flowers, shades of blue, pink and white. Two feet to six feet high, very showy. Price, 50c per doz.; \$3.00 per 100.

Gaillardia Grandiflora

Flowers with center of brownish-red, white petals are shaded into rings of orange, crimson and red. Price, 2½-inch pot, 50c per doz.; \$3.00 per 100.



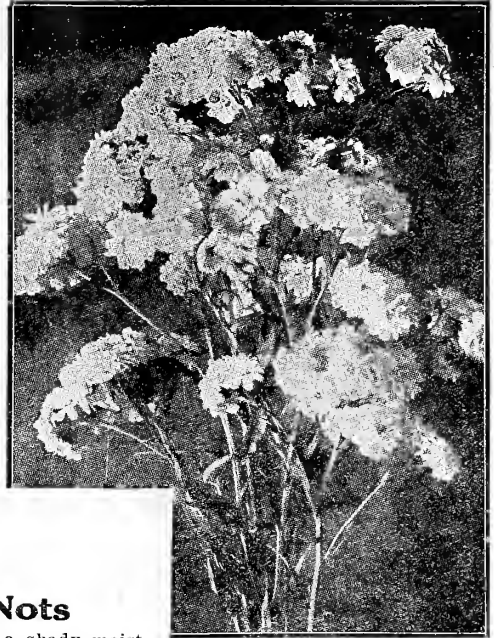
German Iris

Rudbeckia Laciniata

A hardy perennial plant growing eight feet high, branching freely and bearing by the hundreds on long, graceful stems, exquisite double blossoms of the brightest golden color, and as large as Cactus Dahlias. Price, 50c per doz.; \$3.00 per 100.

German Iris

(Iris Germanica)—We have these to offer in separate colors: Light blue, dark blue, royal purple, white tinged with blue, yellow, orange and yellow. Price, \$2.50 per 100; \$20 per 1000.



Achillea (The Pearl)

Achillea

(The Pearl)—Flowers pure white, perfectly double, and produced in large sprays. For cemetery planting it is the most valuable of all flowers. Price, 3½-inch pots, 50c per doz.; \$4.00 per 100.

Hardy Forget-Me-Nots

(Myosotis)—The Forget-Me-Nots succeed in a shady moist location. The plant is of comparatively dwarf growth, hardy, never out of flower. We offer the most popular variety, light blue color. Price, 2½-inch pots, 50c per doz.; \$3.00 per 100.

Double Hardy Scotch Pinks

Price, the following varieties, 2½-inch pot plants, 50c per doz.; \$3.00 per 100; strong field clumps, 75c per doz.; \$6.00 per 100.

ABBOTTSFORD—Deep cherry-red, variegated with pink and white.

JULIETTE—White laced with crimson.

HER MAJESTY—Pure white, very double.

Sage

HOLT'S MAMMOTH—Plants of strong growth; leaves very large, borne well above the ground, are of unusual substance, strong flavor and superior quality. Price, 50c per doz.; \$4.00 per 100; \$37.50 per 1000.

Stokesia Cyanea

(Cornflower, or Stoke's Blue Aster) Price, 50c per doz.; \$3 per 100.

Dianthus Barbatus

(Sweet Williams)—Single and double; great richness and variety of coloring; beautifully marked. Offered in mixed colors, single or double. Price, 50c per doz.; \$3.00 per 100.



Sweet William

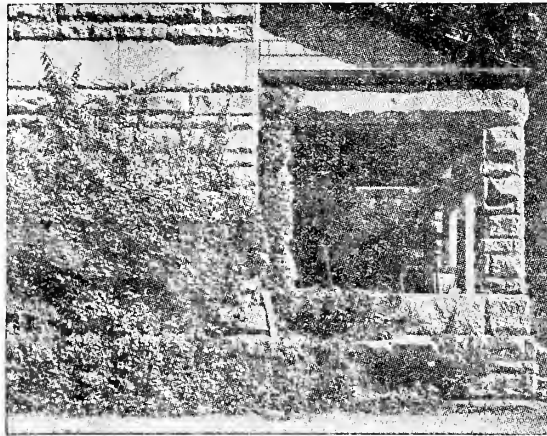


Hardy Sage

Hardy Vines and Climbers

Ampelopsis Veitchi

BOSTON IVY—This is one of the finest climbers we know of for covering walls, as it clings firmly to the smoothest surface, covering it with overlapping leaves, which form a perfect mass of foliage. Strong 2½-inch pot plants, 50c per doz. \$3.00 per 100; \$27.50 per 1000.



Emerald Vine

Belongs to the same family as the well-known Cinnamon Vine, but is entirely different and much finer. The vines are of slender growth and very graceful, and produced in dense masses. Foliage of good size and forked or divided, of a deep emerald green with a decided luster or sheen rarely seen on any foliage. Flowers in drooping racemes and so numerous as to be a very distinct and attractive feature of the vine. Price, strong roots, 40c per doz.; \$3.00 per 100.

Blue Wistaria

A vigorous, strong-growing vine, producing in early summer a great profusion of large clusters of lovely rich, violet-blue flowers, deliciously sweet and exceedingly handsome. One of the very best climbing vines for verandas, balconies, second floor fronts, etc. Price, strong 2½-inch pot plants, 50c per doz.; \$4.00 per 100.

White Wistaria

This differs from the Chinese only in color of flowers, which in this are pure white, forming a striking contrast. Price, strong 2½-inch pot plants, 50c per doz.; \$4.00 per 100.

English Ivy



English Ivy

This is the old variety that clings to walls, trellises, etc. Price, 2½-inch pot plants, 50c per doz.; \$3.00 per 100. Strong, 4-inch pot plants with long vines 3 to 5 feet, \$1.00 per doz.; \$8.00 per 100.

Clematis Paniclata

JAPANESE VIRGIN'S BOWER—One of the most beautiful of our hardy flowering vines. The flowers are pure white and are borne in large panicles or clusters of bloom, fairly covering the plant, so that it is a mass or sheet of fleecy white. Strong 2½-inch pot, 50c per doz.; \$3 per 100. 1-year field grown 75c per doz.; \$6.00 per 100. 2-year exceptionally heavy clumps, \$1.00 per doz.; \$8.00 per 100; \$75.00 per 1000.

Cinnamon Vine

Perfectly hardy, the stem dying every autumn, but growing again so rapidly in the spring as to completely cover any trellis or arbor very early in the season. It is produced from tubers that will make from ten to twelve feet of vine, having beautiful heart-shaped leaves, bright green, peculiar foliage, and clusters of delicate white flowers, sending forth a delicate cinnamon odor. Price, strong roots, 40c per doz.; \$3.00 per 100.

Hardy Sweet Pea

PINK BEAUTY—A pure pink flower, quite popular. Price, strong roots from 2½-inch pot, 50c per doz.; \$4.00 per 100.

Hardy Memorial or Evergreen Roses

"Roses That Will Really Cover the Ground." For Prices see Page 9.

Called the Wichuraiana Roses, but appropriately classed as "Memorials." They will climb when trained or they creep along the ground as closely as Ivy.

HIAWATHA—(Hardy June Blooming.) Brilliant scarlet, bears large clusters of single flowers.

ROSA WICHURAIANA—Pure white, single, yellow center.

Passifloras

Passion Vines

CONSTANCE ELLIOTT

The flowers are pure white, excepting a very slight coloring at the base of the corolla. Price, 2½-inch, 50c per doz.; \$3.00 per 100.

COERULEA (Blue)

The hardier variety of the two standing the winter any place south of the Ohio river. Color a beautiful shade of blue. Price, 2½-inch pots, 50c per doz.; \$4.00 per 100.



Passion Vine

Chinese Matrimony Vine

It is hardy everywhere. Pale purple flowers and scarlet berries are constantly appearing from early in the spring till late in the fall. Price, 50c per doz.; \$3.00 per 100.



Clematis Paniclata

Hardy Vines

(Continued)

Japanese Honeysuckle

JAPANESE HONEYSUCKLE (*Lalleana*).—A rampant evergreen climber with stems ten to fifteen feet long. Flowers white, changing to yellow, deliciously fragrant, borne in great profusion in the summer and occasionally in the autumn. Price, strong 2-year field-grown plants, \$1.00 per doz.; \$8.00 per 100. One-year field-grown plants, 75c per doz.; \$6.00 per 100; 2¼-inch pot plants, 40c per doz.; \$2.75 per 100.

Chinese Evergreen Honeysuckle

CHINESE EVERGREEN HONEYSUCKLE—A showy vine with purplish evergreen foliage. Native of China. Flowers white, changing to yellow, sweetly fragrant, freely produced in summer. Price, strong 2-year field-grown plants, \$1.00 per doz.; \$8.00 per 100. One-year field-grown plants, 75c per doz.; \$6.00 per 100; 2¼-inch pot plants, 40c per doz.; \$2.75 per 100.

Scarlet Trumpet or Coral Honeysuckle

A high-climbing variety with stems 10 to 15 feet long. Leaves oval or oblong, green or bluish-green above, glaucous beneath, the uppermost united at their bases. Flower scarlet, about 2 inches long, profuse and very showy. Splendid for porches. Price, strong 1-year field-grown plants, 75c per doz.; \$6.00 per 100; 2¼-inch pot plants, 50c per doz.; \$3.00 per 100; \$27.50 per 1000.

Golden Leaved Honeysuckle

A form of the preceding species with the leaves beautifully netted with yellow. Price, 2-year field-grown plants, 75c per doz.; \$6.00 per 100.

Hardy Creeping Myrtle

A fine rapid growing evergreen vine, producing blue flowers. One of the best vines for covering unsightly places where the grass will not grow. Price, strong plants 50c per doz.; \$3.00 per 100.

Japanese Kudzu Vine

This is the most rapid growing vine to our knowledge. The foliage is large and tropical. It is entirely hardy. We have prepared and offer pot grown plants, the kind that has the crown to the plant and the ball of earth to the roots. Price, 60c per doz.; \$5.00 per 100.



Red Coral Honeysuckle

Hardy Hedge Plants

Ibota Privet

Considered the hardiest of the popular privet hedge plants. Price, nice plants, 18 to 24 in., well branched, \$1.50 per 100; \$40.00 per 1000; 24 to 30 in., well branched, \$6.00 per 100; \$35.00 per 1000.

California Privet Hedge

The most popular ornamental hedge plants. Price, nice plants, 12 to 18 in., \$3.00 per 100; \$27.50 per 1000; 18 to 24 in., \$4.00 per 100; \$37.50 per 1000; 24 to 36 in., \$5.00 per 100; \$45.00 per 1000.

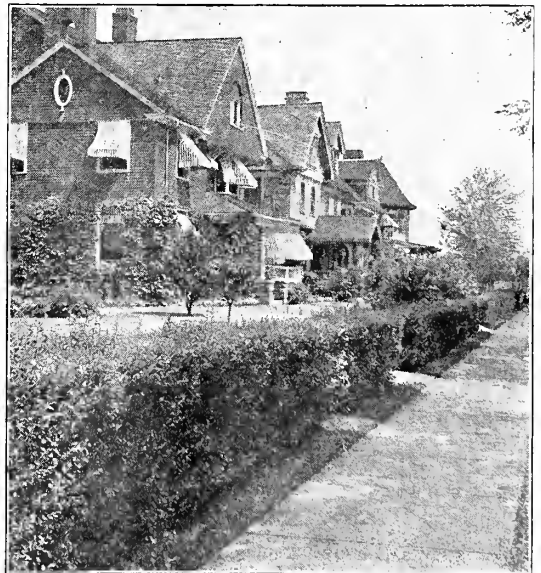
Japan Barberry

(*Berberis Thunbergii*)

One of the most valuable shrubs for a low, dwarf hedge, with graceful arching branches, but can be pruned the same as all other hedges. Leaves change in autumn to fiery crimson, at which time the plant is completely covered with the brightest of red berries. Price, bushy field plants, \$1.25 per doz.; \$10.00 per 100.

Crimson Rambler (Excelsa)

RED DOROTHY PERKINS (*Excelsa*)—It is a good deal to claim for a Rose, but we are within bounds when we describe *Excelsa* as a brilliant Crimson Rambler flower on glossy, varnished *Wichuraiana* foliage. The defects of Crimson Rambler are its unsightly foliage in unseasonable weather, and its defoliation by insects; the infusion of *Wichuraiana* blood assures an ornamental climber which is nearly evergreen, and this will assure this lovely crimson-scarlet pillar Rose a place in every American garden, for it is quite hardy in addition to all its other fine points. Price, strong 8-year field-grown plants, No. 1, \$2.25 per doz.; \$18.00 per 100; No. 2, \$2.00 per doz.; \$15.00 per 100. For other Ramblers see page 9.



Planting of Privet

Hardy Shrubs for Fall Planting



Hydrangea Aborescens Grandiflora

Forcing Hydrangea Aborescens Grandiflora Alba or Hills of Snow

This beautiful hardy American shrub is the finest addition to this class of plants found in many years. The blooms are very large, of pure snow-white color, resembling a little the hardy shrub so well known, "The Snowball," in color and make-up, only they are much larger in size and much more striking. It is perfectly hardy, standing twenty degrees below zero. Strong plants from 2 1/4 in. pots, fine for lining out, 50c per doz.; \$3.50 per 100; \$30.00 per 1000. Heavy field plants, two and three canes, \$1.25 per doz.; \$10.00 per 100. Three and four canes, \$1.50 per doz.; \$12.00 per 100. Four canes and up, extra select, \$2.25 per doz.; \$18.00 per 100.

Weigelia

WEIGELA ROSA—One of the most conspicuous shrubs that we cultivate; flowers pink, dwarf; admirably adapted to small lawns or gardens. Price, heavy, well branched stock, 24 to 36 in. tall, \$2.00 per doz.

WEIGELA EVA RATHKE—(Blooms throughout summer.) Flowers of dark carmine-red. Distinct and fine. One of the choicest. Price, heavy, well branched stock, 24 to 36 in. tall, \$2.00 per dozen.

Spirea

SPIREA PRUNIFOLIA (Florepino)—(Grows 4 to 6 feet, flowers in spring.)

A handsome arching form with very double showy white flowers completely covering the plant. The leaves are very dark green and glossy and assume brilliant orange tones in autumn. Price, stock 15 to 18 in., 75c per doz.; \$6.00 per 100.

SPIREA REEVISII—(Grows 4 to 6 feet, flowers in spring.) Double flowering, with large round clusters of white flowers. Price, 15 to 18 in., 75c per doz.; \$6.00 per 100. 24 to 35 in. bushy, \$2.25 per dozen.

SPIREA BILLARDI—(Grows 3 to 5 feet, flowers in summer.) Tall-growing, with plume-like spikes of deep rose-colored flowers. Price, 15 to 18 in., 75c per doz.; \$6.00 per 100. 24 to 36 in. bushy, \$2.25 per dozen.

SPIREA VAN HOUTTEI (Van Houttei's Bridal Wreath)—A grand and graceful arching shrub, leaves dark green, holding well into autumn. Flowers white, making a beautiful specimen shrub. Highly recommended. Price, 12 to 18 in., 75c per doz.; \$6.00 per 100.

Hydrangea Paniculata

It attains a height of four to eight feet and is perfectly hardy in all parts of the country. The flowers are white, borne in immense pyramidal panicles. It commences flowering in July and continues until November. The plant should be cut back every spring at least one-half of the last season's growth, as the flowers are borne on new wood and are much finer when the plants are treated in this way. This is the finest flowering shrub for cemetery planting we know of. Price, strong plants, well branched, 18 to 24 inches, \$1.00 per doz.; heavy, 3-year bushes, 24 to 30 inches, \$2.25 per dozen.

Lilac

Price, 24 to 30 in., \$2.00 per dozen.

PURPLE LILAC—(Common Lilac.) Grow 4 to 6 feet, flowers in spring. A large upright shrub with heart-shaped, bright green leaves. Native of Europe. Flowers purple and deliciously fragrant.

WHITE LILAC—Grow 4 to 6 feet, flower in spring. Same habit of growth as Purple Lilac, but with white flowers.

The Sensational Deciduous Shrub, Buddleya, Variabilis Magnifica The Everblooming Butterfly Bush or Summer Lilac

Free Flowering; Blooms All Summer

THE BUDDLEYA, or EVER-BLOOMING BUTTERFLY BUSH was one of the show plants of the San Francisco and San Diego Expositions. It attracted unusual attention and was greatly admired by thousands who were given the opportunity of seeing the value and possibilities of this new shrub. The Buddleya is a deciduous bush dying down in the winter. In the spring the top should be cut off quite close to the ground when the plant starts to make a new growth from the crowns in a manner similar to the Desmodium. The blooms come from the new wood produced through the summer. Buddleya is one of the most valuable plants, either for border or specimen planting, blooming as it does late in the season, and continuing in bloom from the later part of June until nipped by the frost. It is very rapid growing, and two years will make a large spreading bush, four to six feet high.

It produces long, graceful stems which terminate in tapering panicles of beautiful lilac-colored flowers that are of miniature size and borne by the hundreds on a flower head which is frequently 10 inches long. Being a semi-herbaceous shrub we recommend covering the roots with manure, leaves or other suitable material as winter approaches, as this will produce a heavy growth the following season. We are offering 1-year, field-grown plants, 18 to 24 in., \$1.00 per doz.; \$8.00 per 100.

Sweet-Scented Shrub

(Calycanthus Floridus)—(Grows 5 to 8 feet.) Flowers in spring. An old favorite and well known for its strawberry-scented flowers. The flowers when fully open are about the size of a silver dollar, of a mahogany-brown color. Perfectly hardy. Price, 18 to 24 in. bushy, 75c per doz. 18 to 24 in., \$1.00 per doz.; 24 to 36 in., \$2.25 per dozen.



Buddleya Variabilis Magnifica

Fancy-Leaved Caladiums



Fancy-Leaved Caladium

Among ornamental foliage plants there are none more beautiful in design or gorgeous in coloring than the Fancy Leaved Caladiums. Of special value for pot culture, window and -plaza boxes. We offer six distinct sorts. Brilliant red and green, green spots and red veins, etc. (Ready Dec. 1. Price, large bulbs, \$1.50 per doz. \$12.00 per 100.

Hyacinthus Candicans

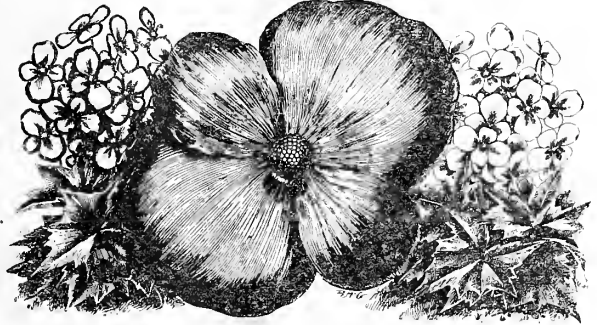
Flowers white, in handsome, pendulous bells. A straggling bulb will produce from thirty to fifty flowers. Blooms constantly until October. Price, 50c per doz.; \$3.00 per 100.

Tuberous-Rooted Begonias

We will book orders for delivery March 1, 1917. This charming class of Begonias is perhaps the handsomest of all summer-growing tuberous-rooted plants, and are deserving of much greater popularity. Either as bedding plants or grown in pots, their varied colorings are unique, and gorgeous.

SINGLE VARIETIES IN COLORS—Red, white, pink, yellow and orange. Price, 50c per doz.; \$3.00 per 100; \$20.00 per 1000.

DOUBLE VARIETIES IN COLORS—Red, white, yellow and pink. Price, 50c per doz.; \$4.00 per 100; \$37.50 per 1000.



Tuberous Rooted Begonia

Scarlet Mexican Lilly

AMARYLLIS FORMOSISSIMA (Jacobean Lily)—Flowers dark velvety scarlet, shading to maroon and having a satiny-white stripe in the center of each petal. Plant in sand and pebbles covered with water, or in soil. Price, large flowering bulbs, \$1.00 per doz.; \$8.00 per 100.

Fairy Lillies, Zephyranthes

Beautiful dwarf bulbous plants, very effective for masses of borders, flowering with great profusion during summer; are most suitable for pot culture. Price, 40c per doz.; \$2.00 per 100.

ALBA—Pure white.
ROSEA—Clear pink.

The Great Ismene

(*Ismene Calathena Grandiflora*)—Those who are familiar with the true Giant Ismene cannot say enough in praise of its beauty and purity. The flowers are of a very large size, like an Amaryllis; novel form and of snowy whiteness, and are also exceedingly fragrant. Price, heavy bulbs, 75c per dozen.

Gladiolus

In First Size Bulbs Only

MIXED—Includes a magnificent variety of beautiful colors, poor sorts discarded and places filled with "Lemoine's," "Childsil," "Groff's Hybrids," and our own best mixture. Selected to give the finest flowers and the greatest variety of colors. Price, \$2.00 per 100; \$17.50 per 1000.

AMERICA—Large flower, flesh-pink. Price, 40c per doz.; \$1.50 per 100; \$12.00 per 1000.

MRS. FRANCIS KING—Color bright scarlet. Price, \$2.00 per 100; \$15.00 per 1000.

AUGUSTA—Pure white, with blue antlers. Price, \$2.00 per 100; \$15.00 per 1000.

BARON HULOT—Color deep violet blue. Price, \$2.50 per 100; \$20.00 per 1000.

CHICAGO WHITE—White, with faint lavender streaks on lower petals. Price, \$1.00 per 100; \$32.50 per 1000.

Tuberose Double

We will book orders for delivery Feb. 1, 1917. (Dwarf Excelsior Pearl)—First size bulbs. Price, \$1.00 per 100; \$9.00 per 1000. Second size, 50c per 100; \$4.50 per 1000.

Caladiums

CALADIUM ESCULENTUM (Elephant's Ear)—We have extra fine bulbs, which will start as soon as put in the ground. This is one of the most desirable plants for center of beds, in front of porches or massed in beds for the lawn. Price, 7 to 9 inches in circumference, 50c per doz.; \$3.50 per 100; 9 to 11 inches in circumference, 85c per doz.; \$6.50 per 100; 11 inches and up, \$1.50 per doz.; \$12.00 per 100. We will book orders for delivery Feb. 1, 1917.

Orange-Yellow Calla

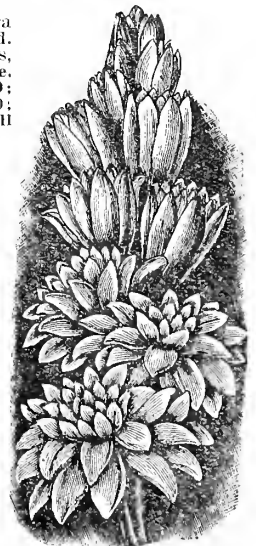
CALLA ELLIOTTIANA—This is the great new yellow Calla of marvelous beauty. Flowers are very large, rich, deep orange, often four to five inches across the mouth, leaves are spotted with white. Handsome foliage, together with remarkable orange yellow flowers. Price, large flowering bulbs, \$2.50 per doz.; \$20.00 per 100.

SPOTTED CALLA (Richardia Alba Maculata)—Plant with beautiful spotted leaves. It flowers abundantly during the summer months when planted out in the open border. It makes a fine plant for the center of vases. The flowers are shaped like those of a Calla, and are pure white, shaded with violet inside. Keep dry in the winter, and start in the spring like a Dahlia. Large blooming bulbs. Price, 50c per doz.; \$4.00 per 100.

CALLA HASTATA (Lemon-Yellow)—It is just like the others only the flower is a lemon-yellow. It is very distinct, and will enrich anyone's collection. Large blooming bulbs. Price, \$1.25 per doz.; \$10.00 per 100.



Caladium



Double Tuberose

Giant-Flowering Cyclamen



Giant Flowering Cyclamen

We are offering good, strong healthy plants in colors of white, red and pink.
 Price, strong 4-in. pot, \$1.85 per doz.; \$15.00 per 100. Strong 5-in. pot, \$2.50 per doz.; \$20.00 per 100.

INDEX

Achillea the Pearl.....	21	Daisy Shasta	26	Jasamines	17	Roses	4-5-6-7-8-9
Aquilegia (Columbine)	20	Dracena Indivisa	14	Kudzu Vine	23	Rudbeckia (Golden Glow) ..	21
Ampelopsis (Boston Ivy)	22	Daisy (Marguerites)	10	Lilium Trignum	17	Russelia	19
Amaryllis Forosissima	25	Emerald Vine	22	Lantanas	17	Sweet William	21
Asparagus Sprengerii	10	Ferns, Decorative	12	Lilac	24	Stokesia Cyanea	21
Asparagus Plumosus	10	Ferns, Dish	2	Lemon	17	Swainsonia	20
Ageratum	10	Funkia	21	Marguerites	10	Spirea	24
Aloysia Citriodora	10	For-Get-Me-Not	21	Matrimony Vines	22	Sansevieria	20
Acalypha	10	Fairy Lillies	25	Mexican Lilly	25	Sweet Pea, Hardy	22
Araucaria	10	Fuchsias	13	Myrtle, Creeping	23	Strobilanthes	19
Begonia Tuberous	25	Gaillardia Grand	21	Moonvines	18	Salvia	19
Begonias Flowering	21	Gladiolus	25	Orange	18	Saxifraga Sarmentosa	19
Bougainvillea Sanderiana	10	Geraniums	15-16	Oleanders	18	Sage, Hardy	19-21
Buddleya	24	Golden Glow	21	Pinks, Hardy	21-19	Tuberose	25
Barberry Thunbergii	23	Hibiscus, Hardy	21	Phlox	20	Tradescantia	19
Crown of Thorns	14	Hemerocallis Flava	21	Plumbagoes	20	Vinca Major	19
Cyperus	14	Hyacinthus Candicans	25	Passiflora (Passion Vine) ..	22	Violets	20
Cannas	14	Hydrangea, Pan. Grand	24	Privet	23	Weigelia	24
Caladium Fancy	14-25	Hydrangea, Abor. Grand	24	Primrose, Chinese	18	Wisteria	22
Coleus	14	Honeysuckle	23	Primula Obconica	18	Wandering Jew	19
Cuphea Platycentra	10	Hibiscus	13	Pansies	18	Zephyranthus	25
Cinnamon Vine	22	Heliotrope	17	Petunias, Double	18		
Clematis Paniculata	22	Hydrangea (Tender)	16	Peperomia	18		
Caladium Esculentum	25	Iris Germanica	21	Plumbagoes	19		
Callas	25	Ismene	25	Pelargoniums	28		
Calycanthus	24	Impatiens	17				
Canterbury Bells	21	Ivy, English	22				

FANCY FERNS FOR FERNERIES

Form one of the most extensive collections of ornamental Ferns in the country: we are illustrating nearly a dozen of the most popular varieties. They include the most improved types and make up the very best forms of compactness, grace and beauty, along with attractive variegation. Some varieties are of the most airy construction, while the particular charm of others lies in leaflets of distinct shaps of superlative size; all, however, are recognized leaders. Plants are from 2 1/4-inch pots.



Onychium Japonicum

\$3.50 per 100; \$30.00 per 1000

Especially attractive. Foliage exceedingly graceful and of wiry texture.



Pteris Tremula

\$3.50 per 100; \$30.00 per 1000

Well known. Grows easily and rapidly. Good for Ferneries and specimen pot plants. 4-in. pot, \$1.00 per doz.



Pteris Argyrea, Silver Fern

\$3.50 per 100; \$32.50 per 1000

A very showy Fern, with variegated foliage; fronds large, light green, with broad band of silver-white.



Moss Fern (Selaginella Emilliana)

\$4.00 per 100; \$35.00 per 1000



Cyrtomium Falcatum and Rochfordianum

Holy Fern

\$3.50 per 100; \$30.00 per 1000

Foliage rich, deep, glossy green. The pinnae not so sub-divided as other ferns.



Pteris Mayii

\$3.00 per 100; \$27.50 per 1000

A crested form of the Wimsetti variety, but showing variegations in colorings in foliage.



Pteris Wimsetti

\$3.00 per 100; \$25.00 per 1000

One of the most useful of the fern dish ferns. Strong growing. Does well with very little care.



Pteris Winsonii

\$3.00 per 100; \$27.50 per 1000

Of dwarf growth, deep green foliage. Leaves evenly crested. A fine variety.



Adiantum Venosum

Maiden Hair Fern

\$3.50 per 100; \$30.00 per 1000

The well known Maiden Hair Fern is indispensable in all collections. Easily grown



Hydrangea Aboreseens Grandiflora

For lining out, 2½-inch pot plants, \$3.50 per 100; \$30.00 per 1000. 1-year field-grown, single stems, ten to twelve inches, 75c per doz.; \$6.00 per 100; \$55.00 per 1000. 2-year field-grown, two and three canes, \$1.25 per doz.; \$10.00 per 100. Three and four canes, \$1.50 per doz.; \$12.00 per 100. Extra select field-grown plants, two feet, \$2.25 per doz.; \$18.00 per 100.

For further description see page 24.