

Historic, Archive Document

Do not assume content reflects current scientific knowledge, policies, or practices.



Autumn 1916

RELIABLY HARDY
EVERGREENS
FOR FALL PLANTING

Herbaceous Perennials	Climbing and
Winter and Spring	Other Hardy Roses
Flowering Bulbs	Hardy Shrubs
Pot Grown Strawberries	Trees and Vines
Hedge Plants	Fruit Trees and Small Fruits

The New England Nurseries

BEDFORD, MASSACHUSETTS

Phone, Lexington 274

FALL PLANTING

FALL Planting is becoming more and more practiced, and while early Spring is an excellent time for transplanting, much can be said in favor of planting in the late Summer or Autumn. Trees and Plants of questionable hardiness should not be transplanted in the Fall, and such varieties we have omitted from the following lists, but the greater number of sorts offered, if set out in the Fall, unquestionably thrive better than would Spring-planted stock. In the Fall, up to the last of November, the ground is just moist and warm enough to cause a transplanted Tree or Plant to at once start a root-growth, and naturally such a Plant will be in a better condition to withstand the drying winds and hot sun of the following Summer than would a plant which has been disturbed in the Spring, and particularly if it was transplanted late in the Spring, when it at once will begin sending out leaves, while in the Fall the roots only will act.

Evergreen Trees and Shrubs can be safely transplanted at any time after August first when they have finished their growth for the Summer, and the danger of drying out before the plant becomes established is comparatively slight, as rains usually are frequent at that time of the year, and conditions most favorable for an immediate root-growth, causing the plant to become well established before severe cold weather sets in.

Herbaceous Perennials are usually in condition to be moved by September first, and can be safely transplanted at any time up to the last of November.

Deciduous Trees, Shrubs and Vines, including Roses, Hedge Plants and Fruit Trees have finished their growth by the middle to the last of September, after which time they can be transplanted with the greatest degree of safety up to the time of heavy frosts.

Fumigation and Inspection.—Our Nurseries are inspected twice each year by the State Entomologist, and are kept absolutely free from all insects and pests.

Conditions of Sale

Terms.—Cash with order or a satisfactory reference from strangers.

Those having an established rating need not send reference.

Remittances should be made by Post Office Money Order, Drafts on Boston or New York Banks, or Express Money Orders. Postage stamps will be found a convenient method of remitting for small amounts and can be used by us to advantage.

A discount of 5 per cent is allowed when cash accompanies order.

We give no warranty expressed or implied as to description, quality, productiveness or any other matter of any Nursery Stock, Bulbs or Plants we sell. No complaints will be considered that are not made within five days after receipt of stock.

THE NEW ENGLAND NURSERIES CO.,
Bedford, Mass.

Prices.—The prices given in this catalogue, we believe, represent a fair value for such high grade stock as we always endeavor to supply.

When goods are to be shipped via Parcel Post, remittance should be sent to cover cost for postage.

Location of our Nurseries.—Located 15 miles from Boston, 12 miles from Lowell, 3 miles from Concord, and 5 miles from Lexington, our nurseries can be reached via Boston & Maine trains from the North Station, Boston, or via electric cars from Arlington Heights. The cars connecting Arlington Heights and Concord pass directly through our property.

Visitors are always cordially welcome, but we ask the indulgence of parties calling during our busy Spring and Fall months, when it is quite impossible for us to devote as much time as we should wish in showing our nurseries. The most courteous treatment possible, however, will always be given to those who favor us by calling.

**The New England Nurseries
Bedford, Mass.**

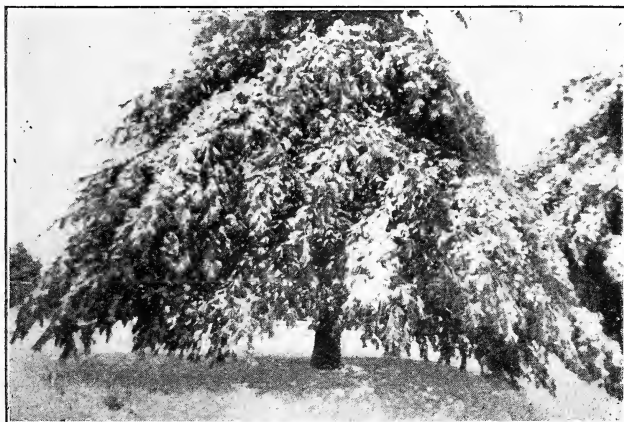
Phone, Lexington 274

ANNOUNCEMENT

It gives us much pleasure at this time to announce that we were awarded both Gold and Silver medals for the quality of our Evergreens, Shrubs and Herbaceous Perennials on exhibit at the Pan-American Exposition recently held at San Francisco. This fact greatly strengthens our previous claim that "Bedford Grown Means Quality."

IN THIS CATALOGUE

WE NAME ONLY SUCH VARIETIES OF TREES, SHRUBS AND PLANTS WHICH ARE SUFFICIENTLY HARDY TO BE SAFELY TRANSPLANTED IN THE FALL. FOR VARIETIES NOT NAMED HERE, AND FOR MORE EXHAUSTIVE DESCRIPTIONS, SEE OUR GENERAL CATALOGUE.



RELIABLY HARDY EVERGREEN TREES

in "Bedford Grown" and "Gold Medal Quality Stock."

(All hardy Evergreens may be safely transplanted at any time after August 1st.)

Evergreen trees should be planted extensively, as they are equally attractive at all seasons. In winter they afford a shelter from the wind better than do deciduous trees, for which reason they are much appreciated by the birds, who also feed upon the seeds of many varieties.

We ship no Evergreens which have not been transplanted several times.

For complete list of varieties see our general catalogue.

Abbreviations denoting size at maturity: "L," large; "M," medium; "S," small; "D," dwarf; "VD," very dwarf. Rapidity of growth: "r," rapid; "m," medium; "s," slow.

ABES—FIR

- ABIES BALSAMEA** (Balsam Fir). "L." Of rapid, slender, pyramidal growth, with very dark foliage. 3 feet, each 75c; 4 feet, each \$1.00; 5 feet, each \$1.25; 6 to 7 feet, each \$2.00.
- ABIES CANADENSIS** (Hemlock). See *Tsuga Canadensis*.
- ABIES CONCOLOR** (Blue Fir). "L.m." The foliage varies in color from a glaucous blue to a very light green. Graceful and feathery. 2 feet, each \$2.00; 3 to 4 feet, each \$3.50; 5 to 6 feet, each \$5.00; 6 to 9 feet, specimens, each \$6.00 to \$12.00.
- ABIES FRASERI** (The Southern Balsam). "L.r." A most handsome and hardy native evergreen, with rich dark foliage, 2 to 3 feet, each \$1.00; 3 to 4 feet, each \$1.50.
- ABIES VEITCHII** (Veitch's Silver Fir). "L.m." Resembles the Nordmann's, Fir, though the silvery tint is more pronounced. The foliage is dark and massive. 2 to 2 1-2 feet, each \$2.00; 3 feet, each \$3.00; 4 feet, each \$4.00.
- ABIES HUDSONIA GLAUCA** (Hudson's Bay Dwarf Fir). "D.s." A dwarf, compact growing Fir, with dark blue foliage. Rare. 2 feet, each \$2.50.

JUNIPERUS—JUNIPER

- JUNIPERUS CHINENSIS ARGENTEA, OR FOEMINA VARIEGATA.** "D.s." Bluish-green foliage, very dense, interspersed with silvery white. A charming dwarf plant. 18 inches, each \$1.00; 2 feet, each \$2.00.
- JUNIPERUS COMMUNIS.** "V.D." Our common Juniper. Light glaucous foliage. 18 to 24 inches, each 75c.
- JUNIPERUS VAR. AUREA** (Douglas' Golden). "V.D.s." Forms a mat-like, spreading growth of brilliant golden color. 15 to 18 inches, each \$2.00.
- JUNIPERUS VAR. HIBERNICA** (Irish Juniper). "M.m." Of dense, pillar-like growth. Glaucous green foliage. 2 to 3 feet, each 75c.
- JUNIPERUS VAR. SUECICA COMPACTA** (Swedish Juniper). "M.m." Grows much as the Irish does, but of more bushy form. 2 to 3 feet, each \$1.00.
- JUNIPERUS JAPONICA** (Japanese Juniper). "V.d." A very hardy, dwarf and spreading evergreen with a most pleasing dark green foliage. Rare. 1 to 1 1-2 feet, each \$1.25.
- JUNIPERUS JAPONICA AUREA** (Golden Japan Juniper). "V.d." A splendid dwarf, golden form. 2 feet, each \$1.50.
- JUNIPERUS PFITZERIANA.** "D." A beautiful new evergreen of graceful habit, resembling in form the well-known *J. Japonica aurea*, though in color the foliage is of a pleasing glaucous green. 1 1-2 to 2 feet, each \$1.50.
- JUNIPERUS SABINA** (Savin Juniper). "V.D.s." Prostrate, spreading branches, with somber green foliage. 12 to 18 inches, each 75 cts.; 18 to 24 inches, each \$1.00; 24 to 30 inches, each \$1.50; 3 feet, specimens, each \$3.00.

For complete list of varieties see our general catalogue.

NEW ENGLAND NURSERIES, BEDFORD, MASSACHUSETTS

- JUNIPERUS VAR. TAMARICIFOLIA** (Creeping Savin). "V.d." Quite prostrate, creeping over considerable space; fine for rocks, walls and dry places. 12 to 18 inches, each \$1.50.
- JUNIPERUS VIRGINIANA** (Red Cedar). "M.m." Tapering form, bright, rich green foliage. 2 feet, each 50 cents; 3 feet, each \$1.00; 4 feet, each \$1.50.
- JUNIPERUS VIRGINIANA GLAUCA** (Silvery Red Cedar). "M.m." The foliage distinctly silver gray. 2 to 3 feet, each \$1.25; 3 to 4 feet, each \$2.00; 4 to 5 feet, each \$3.50.

PICEA—SPRUCE

All the Spruces are very hardy, and desirable both as individual specimens on lawns or in masses. The White and Norway Spruces are used extensively for windbreaks and hedges. We will give special quotations for these in quantities.

- PICEA ALBA** (White Spruce). "L.m." Light, silvery green foliage and dense, pyramidal growth. Hardy in all locations, and particularly good for seashore planting. 3 to 4 feet, each \$1.00; 4 to 5 feet, each \$1.50; 5 to 6 feet, each \$2.50.
- PICEA ALCOCKIANA** (Alcock's Spruce). "M.s." A Japanese tree of the greatest value. 2 feet, each \$1.00; 3 feet, each \$1.50.
- PICEA EXCELSA** (Norway Spruce). "L.r." The most generally used of Evergreen trees. Useful for screens and windbreaks on account of its rapid growth. 3 feet, each 75 cents; 4 feet, \$1.00; 5 feet, each \$1.50; 6 feet, each \$2.50; 7 to 8 feet, specimens, each \$3.50; 10 feet, specimens, each \$6.00.
- PICEA VAR. AUREA**. "L.r." A golden-leaved form. In the early part of the season this is a brilliantly colored tree. 4 feet, each \$1.50; 5 to 6 feet, each \$2.50.
- PICEA VAR. GREGORIANA** (Gregory's Spruce). "V.D.s." Forms a cushion-like growth of dense foliage. Rare. 15 to 18-inch spread, each \$2.00.
- PICEA VAR. CONICA**. "V.d.s." Cone-like growth; very dense, dwarf and compact. 18 inches, each \$1.50; 2 to 3 feet, each \$2.50.
- PICEA VAR. INVERTA** (The Inverted Spruce). "M." It forms a pillar-like tree, which standing alone is a dominant feature in the landscape. 2 feet, each \$2.00.
- PICEA VAR. PUMILA**. "V.d.s." A pretty little dwarf form not over 2 to 3 feet in height. 18 inches, each \$1.50.
- PICEA VAR. PYGMAEA** (Pygmy Spruce). "V.d.s." One of the dwarfiest of the Spruces, attaining a height of about 2 feet only. 12 to 15 inches, each \$1.50.
- PICEA ORIENTALIS** (Eastern Spruce). Resembling a fine-leaved Norway Spruce. 18 inches, each 75 cents; 2 1-2 feet, each \$2.00.
- PICEA FULITA** (Tiger-Tail Spruce). "M.m." A tree forming a dense, broad pyramid, with stout branches and very stiff, sharp leaves. 2 1-2 feet, each \$2.00.
- PICEA PUNGENS** (Colorado Spruce). "L.r." Stiff, pungent foliage and clusters of cones. No Evergreen tree can excel it, as it has the advantage of growing vigorously where many Evergreens fail. Withstands the coldest seasons. 2 feet, each

For complete list of varieties see our general catalogue.

NEW ENGLAND NURSERIES, BEDFORD, MASSACHUSETTS

\$1.00; 3 feet, each \$2.00; 5 feet, each \$4.00; 6 feet, each \$6.00; 8 to 9 feet, specimens, each \$10.00.

PICEA VAR. GLAUCA (Colorado Blue Spruce). Habit of growth similar to that of the preceding. Foliage of a rich blue or sage color. Extremely hardy. 2 feet, each \$2.00; 3 feet, each \$3.50; 4 feet, each \$5.00; 5 to 7 feet, specimens, each \$10.00.

PICEA VAR. KOSTERIANA (Koster's Blue Spruce). Foliage silvery blue. The bluest strain that can be selected; grafted from the famous Koster variety. 12 to 18 inches, each \$1.00; 2 feet, each \$2.50; 3 feet, each \$3.50; 4 feet, each \$5.00; 5 feet, each \$7.00; 6 to 7 feet, specimens, each \$12.00.

PINUS—PINE

PINUS AUSTRIACA (Austrian, or Black Pine). "L.r." A robust growing variety, with long, dark green, stiff needles. 2 feet, each \$1.00; 3 feet, each \$1.25.

PINUS CEMBRA (Swiss Stone Pine). "S.s." Of thick, regular growth, foliage resembling the White Pine, and quite silvery. 18 inches, each \$1.50.

PINUS DIVARICATA; **SYN. BANKSIANA** (Jack Pine). "L.r." Grows on the thinnest and driest soils. It is one of the most rapid-growing Pines. 3 to 4 feet, each 75 cents; 5 feet, each \$1.00.

PINUS MASSONIANA, or **THUNBERGII** (Japanese Sea Shore Pine). "M.m." A rare but very beautiful species. Spreading growth. Bright green foliage, 3 to 4 inches long. Very hardy and particularly good for seashore planting. 2 1/2 to 3 feet, each \$2.50; 3 to 3 1/2 feet, each \$3.00.

PINUS MONTANA (Dwarf Mountain Pine). "D.s." Coarser and more upright than the following. Very hardy and excellent for massing on hillsides or for seashore planting. Attains a height of about 8 feet. 15 to 18 inches, each \$1.00; 1 1/2 to 2 feet, each \$1.50; 2 to 3 feet, bushy, each \$2.50.

PINUS MUGHUS (Dwarf Mugho Pine). "D.s." Of the highest value where a low, dense, spreading growth is desired. Very dark foliage and extremely hardy. 18 inches, each \$1.00; 2 feet, each \$2.00.

PINUS RESINOSA (Red Pine). "L.r." A native Pine, with red bark and light green foliage growing in whorls. 18 inches, each 75 cents; 3 feet, each \$2.00.

PINUS SYLVESTRIS (Scotch Pine). "L.r." Foliage much more silvery than the Austrian. 3 feet, each \$1.00; 4 feet, each \$1.50.

PINUS STROBUS (White Pine). "L.r." The most valuable of all Evergreens for timber purposes. A well-grown individual tree, with its light, silvery foliage, is always highly ornamental. In age this Pine is most impressive. Useful for hedges, it can be clipped like a shrub. 2 feet, each 50 cents; 4 feet, each \$1.50; 5 feet, each \$2.00; 6 to 8 feet, specimens, each \$3.50.

PSEUDOTSUGA—DOUGLAS SPRUCE.

PSEUDOTSUGA DOUGLASII. "L.r." A fine, long-lived tree from the Rocky Mountains. The foliage is soft and brilliant green in color, with bluish tint when young. 3 feet, each \$1.00; 4 feet, each \$1.50.

For description of varieties, see our General Catalogue.

RETINOSPORA—CHAMAECYPARIS OR JAPANESE CYPRESS

(We do not import foreign Evergreens, but offer home-grown stock only.)

RETINOSPORA FILIFERA (Thread-branched Japanese Cypress). "M.s." Slender, string-like, bright green foliage, drooping in long filaments. 18 inches, each \$1.00; 2 feet, each \$2.00; 3 feet, each \$3.00; 4 feet, each \$4.50.

RETINOSPORA OBTUSA (Obtuse-leaved Japanese Cypress). "M.s." Graceful, fern-like foliage. Hardy. 2 1-2 to 3 feet, each \$1.50; 4 to 5 feet, each \$3.00.

RETINOSPORA VAR. GRACILIS. "D.s." A dwarf variety, rather irregular in habit, with short, dark green foliage. Very bushy and desirable. 1 1-2 to 2 feet, each \$1.50.

RETINOSPORA PISIFERA (Pea-fruited Japanese Cypress). "L.m." Resembles *R. obtusa*, but with more slender and gracefully drooping branches. 2 feet, each \$1.50; 3 feet, \$2.50; 4 feet, each \$3.50; 5 to 6 feet, each \$4.50.

RETINOSPORA PISIFERA AUREA. "L.m." A fine pyramidal, bright golden form, very hardy. 2 feet, each \$1.50; 3 feet, each \$2.50; 4 feet, each \$3.50.

RETINOSPORA VAR. PLUMOSA (Plume-like Japanese Cypress). "L.m." Delicate glaucous foliage. 2 feet, each \$1.00; 3 feet, bushy, each \$2.50; 4 feet, each \$3.50; 5 feet, each \$5.00; 6 to 7 feet, each \$10.00.

RETINOSPORA VAR. PLUMOSA AUREA. "L.m." A striking, fine form of the above, and very hardy. Brilliantly golden throughout the season. One of the most desirable. 2 feet, each \$1.00; 3 feet, bushy, each \$2.50; 4 feet, each \$3.50; 5 feet, each \$5.00.

TAXUS—YEW

TAXUS BAR. REPANDENS. D.m." A graceful, spreading form. 18-inch specimens, each \$2.00.

TAXUS VAR. WASHINGTONI. "D.s." The best of the golden Yews. 18 inches, each \$2.00.

TAXUS CANADENSIS (American Yew). "D.s." A low, weeping, broad, spreading bush, dark green foliage and crimson berries. 18 inches, each \$1.50.

TAXUS CUSPIDATA (Abrupt-leaved Japanese Yew). "S.m." Upright growth and dense, very dark foliage. Valuable because it is especially hardy and rich in appearance. 1 foot, each \$1.25; 1 1-2 to 2 feet, each \$2.00.

TAXUS VAR. BREVIFOLIA. "D.s." A very handsome form of the above. Spreading and very hardy. We consider it the best variety to plant in New England. 1 foot, each \$1.25; 1 1-2 to 2 feet, each \$2.00.

THUYA—ARBORVITAE

THUYA OCCIDENTALIS (American Arborvitae.) "M.r." Of conical form and rapid growth. Used largely for hedges. 2 feet, each 40 cents; 3 feet, each 75 cents; 4 feet, each \$1.00.

For description of varieties, see our General Catalogue.

NEW ENGLAND NURSERIES, BEDFORD, MASSACHUSETTS

- THUYA VAR. ALBA** (Silver-tipped, or Queen Victoria Arborvitae). "M.m." Tipped with white; distinct. 18 inches, each \$1.50.
- THUYA VAR. GEO. PEABODY.** "M.r." A dense growing golden variety, holding its color all summer. 3 feet, each \$1.50; 4 feet, each \$2.50.
- THUYA VAR. GLOBOSA.** (Globe-headed Arborvitae.) "V.d.s." Growing in low, thick, globe form. 12 inches, each 50 cents.
- THUYA VAR. HOVEYI** (Hovey's Arborvitae), "D.s." A slow-growing form, with golden-green foliage. 18 inches, each 75 cents; 2 feet, each \$1.00.
- THUYA VAR. LUTEA.** "M.m." Bright yellow foliage on terminal branches. 3 feet, each \$1.50; 4 feet, each \$2.50.
- THUYA VAR. PYRAMIDALIS** (Pyramidal Arborvitae). "M.r." Its form is very much like the Irish Juniper. The foliage is light green and compact. 2 feet, each 50 cents; 3 feet, each 75 cents.
- THUYA VAR. SIBIRICA** (Siberian, or Wareana Arborvitae). "M.r." A low-growing, dense form. It is one of the hardiest. 18 inches, each 50 cents; 2 feet, each \$1.00; 3 feet, each \$1.50.
- THUYA VAR. SPIRALIS.** "M.m." A tree growing in spiral form, with dark green foliage. Rare. 18 to 24 inches, each 75 cents.
- THUYA VAR. TOM THUMB.** "V.D.s." Foliage resembling a Heath. Useful where low-growing forms are needed. Hardy. 12 inches, each 50 cents; 2 feet, \$1.00.
- THUYA VAR. VERVAENEANA.** "M.m." A fine, hardy variety, in which the green is singularly intermixed with a predominating shade of golden yellow. 18 inches, each 50 cents; 2 feet, each \$1.00; 3 to 4 feet, \$2.00.

TSUGA—HEMLOCK

- TSUGA CANADENSIS** (Hemlock Spruce). "L.r." A graceful tree, with loose, open growth and yew-like foliage. It can be kept in dense form if pruned. 2 feet, each 75 cents; 2-1/2 to 3 feet, each \$1.25; 4 feet, each \$2.50; 5 feet, \$3.50; 6 feet, \$5.00.
- TSUGA VAR. SARGENTI** (Sargent's Weeping Hemlock). A flat-topped form with spreading branches and drooping branchlets. 18 inches, each \$2.00.

We will quote special prizes on young Evergreens for forest planting, i. e., Pines, Spruces and Firs.

HARDY EVERGREEN SHRUBS, PLANTS AND VINES

Evergreen Shrubs, like Evergreen Trees, transplant well during the period beginning August 1st and continuing until the ground becomes frozen.

ANDROMEDA

- ANDROMEDA CATESBAEI.** (See *Leucothoe Catesbaei*).
- ANDROMEDA POLIFOLIA** (Moor Wort). "D.s." May. This little native Evergreen shrub is one of the most interesting of plants. The long, narrow leaves are silvery white beneath, and bright glaucous above. The rosy pink, waxy flowers are urn-shaped, in clusters. 8 to 12 inches, each 50 cents.

For description of varieties, see our General Catalogue.

ARCTOSTAPHYLOS UVA-URSI—BEAR-BERRY

ARCTOSTAPHYLOS UVA-URSI. A trailing plant, with rich, glossy leaves. Excellent for covering rocky or dry places. Well-rooted young plants, each 35 cents.

BERBERIS AQUIFOLIA

(See Mahonia.)

BUXUS—BOXWOOD

BUXUS, BUSH FORM. Requires protection until well established. 18 to 24 inches, each \$1.50; dozen, \$15.00.

DAPHNE—GARLAND FLOWER

DAPHNE CNEORUM. An evergreen, hardy plant, with closely set, glossy, narrow leaves. It begins in May to bloom, and its round clusters of bright pink, highly fragrant blossoms, are borne in great profusion. 6 inches, each 50 cents.

EUONYMUS

EUONYMUS RADICANS (Creeping Euonymus). "V.D." A glossy, dark-leaved vine; or it will form a spreading shrub where it cannot climb. Valuable for covering walls, to which it clings. 2 year, each 25 cents; dozen, \$2.50.

EUONYMUS VAR. VARIEGATA (Variegated Creeping Euonymus). Very distinctly variegated with white, yellow and pink shades. Each, 30 cents; dozen, \$3.00.

EUONYMUS VAR. VEGETUS, ROUND-LEAVED. A variety that is much sought by all who have seen it. Leaves broad, nearly round, and of a rich, glossy green. 2 years, each 35 cents; dozen, \$3.50.

HEDERA—IVY

HEDERA HELIX (English Ivy). Its broad, glossy, dark leaves retain their beauty all winter if planted on the eastern and northern sides of buildings, away from the sun. Large plants, each 50 cents; dozen \$5.00.

KALMIA—LAUREL

KALMIA ANGUSTIFOLIA (Lambkill). Light green, narrow leaves, with close clusters of dark red flowers. Each 50 cents.

KALMIA LATIFOLIA (Mountain Laurel). This lovely Evergreen shrub is hardy anywhere in New England. It prefers deep, leaf-mould soil, but grows wherever it will not dry out in Summer. 15 to 18 inches, each \$1.00; dozen \$10.00; 2 to 3 feet, each \$2.00. Prices on carload lots on request.

LEUCOTHOE

LEUCOTHOE CATESBAEI (Andromeda Catesbaei). Foliage thick, heavy and pointed. A shining green in Summer, the branches arching gracefully. The showy spikes of white flowers open early. Good for massing under trees, or with shrubbery, Rhododendrons, Mountain Laurel or Azaleas. 12 inches high bushy plants, each 50 cents; dozen \$5.00.

For description of varieties, see our General Catalogue.

MAHONIA

MAHONIA, or **BERBERIS AQUIFOLIA** (Ashberry). "D.m." Its large, spiny leaves, which turn scarlet in Fall, are much like those of the famous English Holly. 12 to 18 inches, each 50 cents; 18 to 24 inches, each 75 cents.

RHODODENDRONS

RHODODENDRON CATAWBIENSE. This is a native, close-growing form, with handsome foliage and large trusses of deep rose flowers. A splendid variety. Extra fine bushy plants. 18 to 24 inches, each \$1.00; 2 to 2 1-2 feet, each \$2.00; 3 feet, each \$3.00

RHODODENDRON CATAWBIENSE GRANDIFLORA. The foliage effect is similar to the preceding, but of darker, richer green. Flowers deep, rosy purple, borne in great profusion. 1 1-2 to 2 feet, each \$1.50; 2 1-2 feet, each \$3.00; 3 feet, each \$4.00.

RHODODENDRON FERRUGINEUM (Alpine Rose). "D." June and July. Flowers of a beautiful scarlet color, marked with yellow dots; oblong, shining foliage. Very lovely. Each \$1.25.

RHODODENDRON HIRSUTUM. Much like the preceding, but with hairy leaves. Each \$1.25.

RHODODENDRON PUNCTATUM. A native variety of dwarf habit; producing pale rose-colored flowers in great profusion. Each \$1.25.

RHODODENDRON WILSONI. A dwarf variety, with a profusion of pale lavender flowers. Each \$1.50.

RHODODENDRON MAXIMUM (Great Bay). "L." July. This is absolutely hardy from Vermont to Georgia. Forms a round, broad bush, from 6 to 15 feet tall. Flowers pink and white. 2 to 3 feet, bushy, each \$1.50; 3 to 4 feet, bushy, each \$2.00. By the carload, prices on application.

For complete list of Rhododendrons see our General Catalogue. (Hybrid Rhododendrons transplant best in the Spring.)

YUCCA

YUCCA FILAMENTOSA (Spanish Bayonet). Narrow, sword-like foliage. Tall, showy spikes of creamy flowers on a stem 3 to 4 feet high. Each 30 cents; dozen \$3.00.

Are you familiar with the quality of our stock and the service we give? If not, inquire of your neighbor. Our trees and plants have made thousands of homes beautiful. Our customers are our friends, because they rely on our word, and our stock succeeds well everywhere.

HEDGE PLANTS

Following is a list of plants, deciduous and evergreen, which lend themselves well to the forming of attractive hedges or screens, and a table giving the distance apart for the plants of a given size to be set, in order to form a dense growth.

For description of varieties, see our General Catalogue.

NEW ENGLAND NURSERIES, BEDFORD, MASSACHUSETTS

- ARALIA PENTAPHYLLA** (Five-leaved Aralia). Height, 2 to 3 feet; 1 1-2 feet apart; per 100, \$25.00.
- BERBERIS THUNBERGII** (Japan Barberry.) Height 12 to 15 inches; 1 foot apart, per 100, \$10.00; 15 to 18 inches; 1 foot apart; per 100, \$15.00.
- B. VULGARIS** (Common Barberry). 18 to 24 inches; 1 foot apart; per 100, \$15.00.
- B. VULGARIS PURPUREA** (Purple-leaved Barberry). Height 18 to 24 inches; 1 foot; per 100, \$18.00.
- CRATAEGUS COCCINEA** (American Thorn). Height 3 to 4 feet; 2 feet apart; per 100, \$25.00.
- C. CRUS-GALLI** (Cockspur Thorn). Height 3 to 4 feet; 2 feet apart; per 100, \$30.00.
- C. OXYACANTHA** (English Hawthorne). Height 2 to 3 feet; 1 1-2 feet apart; per 100, \$20.00.
- CYDONIA JAPONICA** (Japan Quince.) Height 18 to 24 inches; 1 foot apart; per 100, \$15.00.
- GLEDITSCHIA TRIACANTHA** (Honey Locust). Height 12 to 18 inches; 1 foot apart; per 100, \$15.00.
- LIGUSTRUM IBOTA** (Japanese Privet). Height 1½ to 2 feet; 1 foot apart; per 100, \$15.00.
- L. OVALLIFOLIUM** (California Privet). Height 18 to 24 inches; 1 foot apart; per 100 \$6.00; 2 to 3 feet; 1 foot apart; per 100 \$8.00.
- PICEA ALBA** (White Spruce). Height 2 to 2 1-2 feet; 2 feet apart; per 100, \$30.00; 4 to 5 feet; 2 1-2 feet apart; per 100, \$90.00; 6 to 7 feet; 3 feet apart; per 100, \$150.00.
- P. EXCELSA** (Norway Spruce). Height 2 to 2 1-2 feet; 2 feet apart; per 100, \$30.00; 4 to 5 feet; 2 1-2 feet apart; per 100, \$90.00.
- PINUS STROBUS** (White Pine). Height 2 feet; 2 feet apart; per 100, \$35.00.
- RHAMNUS CATHARTICUS** (Buckthorn). Height 1 1-2 to 2 feet; 1 foot apart; per 100, \$15.00; 2 to 3 feet; 1 foot apart; per 100, \$20.00.
- ROSA RUBIGINOSA** (Sweet Briar). Height 2 1-2 to 3 feet; 1 1-2 feet apart; per 100, \$15.00.
- R. RUGOSA** (Pink Ramona Rose). Height 1 1-2 to 2 feet; 1 1-2 feet apart; per 100, \$15.00.
- SALIX PENTANDDA** (Laurel-Leaved Willow). Height 1 1-2 to 2 feet; 1 1-2 feet apart; per 100, \$15.00; 3 to 4 feet; 2 feet apart; per 100, \$20.00.
- S. VITELLINA AUREA** (Golden-barked Willow). Height 4 to 5 feet; 2 feet apart; per 100, \$20.; 5 to 7 feet; 3 feet apart; per 100, \$30.00.
- SPIRAEA OPULIFOLIA** (Ninebark). Height 2 1-2 to 3 feet; 2 feet apart; per 100, \$20.00.
- S. VAN HOUTTEI** (Large-flowered Bridal Wreath). Height 2 1-2 feet; 2 feet apart; per 100, \$20.00.
- SYRINGA VULGARIS** (Common Lilac). Height 2 feet; 2 feet apart; per 100, \$20.00.
- THUYA OCCIDENTALIS** (Arborvitae). Height 1 1-2 to 2 feet; 2 feet apart; per 100, \$25.00; 2 to 1-2 feet; 2 feet apart; per 100, \$30.00.

For description of varieties, see our General Catalogue.

TSUGA CANADENSIS (Hemlock). Height 1 to 11-2 feet; 11-2 feet apart; per 100, \$30.00; 1 1-2 to 2 feet; 1 1-2 feet apart; per 100, \$50.00; 2 to 2 1-2 feet; 2 feet apart; per 100, \$65.00.

ORNAMENTAL DECIDUOUS SHRUBS . .

The following list contains every variety of hardy flowering shrubs worthy of cultivation in our climate.

The sizes of shrubs named below are those usually preferred by planters. If desired, we can generally supply larger or smaller sizes, and will quote prices on application.

Abbreviations denoting ultimate height: "L." large; "M." medium; "D." dwarf.

For description of varieties see our general catalogue.

All varieties of questionable hardiness have been omitted from the list.

ALTHAEA

(See Hibiscus.)

AMELANCHIER BOTRYAPIUM (Dwarf Juneberry). "L." 2 to 3 feet, each 35 cents; dozen \$3.50.

AMORPHA CANESCENS (Lead Plant). "S." June. Each 35 cents; dozen \$3.50.

AMORPHA FRUTICOSA (False Indigo). "L." June. 3 to 4 feet, each 35 cents; dozen \$3.50.

ARALIA PENIAPHYLLA (Five-leaved Aralia). "M." 3 feet, each 40 cents; dozen \$4.00.

ARALIA SPINOSA. (See Deciduous Trees).

ARONIA

(See *Pyrus arbutifolia*.)

AZALEA ARBORESCENS (Smooth Azalea). "M." July. 18 inch, each 75 cents.

AZALEA CALENDULACEA (Flame Azalea). "M." June. 18 inches, each 60 cents; 24 inches, each \$1.00.

AZALEA NUDIFLORA (Pinxter Flower). "M." May. 18 inches, each 75 cents.

AZALEA VASEYI, or **RHODODENDRON VASEYI**. "M." June. 18 to 24 inches, each \$1.00.

AZALEA VISCOSA (White Swamp Honeysuckle). "M." June and July. 2 feet, each 75 cents.

AZALEA PONTICA (Ghent Azaleas). "D." 18 inches, each \$1.00; 24 inches, each \$1.50.

AZALEA MOLLIS. Mixed varieties: 18 inches, each 75 cents; dozen \$7.50.

BAYBERRY

(See *Myrica*.)

EBNZOIN ODORIFERUM (Spice Bush). "L." 2 to 3 feet, each 35 cents.

BERBERIS—BARBERRY

BERBERIS THUNBERGII (Thunberg's Japanese Barberry). "M." June. A species from Japan, with round, drooping habit; leaves of a fine, brilliant green in Summer, taking on, from

For description of varieties, see our General Catalogue.

early Autumn till December, the most glowing colors. After the leaves fall the branches are seen to be loaded with scarlet-crimson berries. It is the very best of all plants to form a hedge, being impenetrable and thickly set with spines, and never growing bare. 12 to 15 inches, each 20 cts., 100, \$10.00: 15 in 18 inches each, 25 cts., 100, \$15.00.

BERBERIS VULGARIS (Common Barberry). "L." June. 2 to 2 1-2 feet, each 30 cts.; doz. \$3.00.

BERBERIS VAR. PURPUREA (Purple Barberry). "M." 2 to 2 1-2 feet, each 35 cts., doz. \$3.50

CALYCANTHUS FLORIDUS (Carolina Allspice). "M." All Summer. 2 to 3 feet, each 35 cts., doz. \$3.50.

CARAGANA ARBORESCENS (Siberian Pea Tree). "L." June. 3 to 4 feet, each 35 cts., doz. \$3.50.

CEANOTHUS AMERICANUS (New Jersey Tea). "D." June. Each 35 cts., doz. \$3.50.

CEPHALANTHUS OCCIDENTALIS (Button Bush). "M." July. Each 35 cts., doz. \$3.50.

CERCIS

(See Deciduous Trees.)

CHIONONTHUS VIRGINICA (White Fringe). "L." June. 2 to 3 feet, each 50 cts., doz. \$3.00.

CLETHRA ALNIFOLIA (Sweet Pepper Bush). "M." July to September. 2 to 3 feet, each 30 cts., doz. \$3.00.

COLUTEA ARBORESCENS (Bladder Senna). "L." July. 3 to 4 feet, each 35 cts., doz. \$3.00.

COMPTONIA ASPLENIFOLIA (Sweet Fern). "D." 18 to 24 inches, each 25 cts., doz. \$2.50.

CORYLUS AVELLANA (English Filbert). "L." 18 to 24 inches, each 35 cts., doz. \$3.50.

CORYLUS AVELLANA VAR. PURPUREA (Purple Hazel). "M." 18 to 24 inches, each 50 cts., doz. \$5.00.

CORNUS ALBA SIBIRICA. (Red barked Dogwood.) "M." 2 to 3 feet, each 25 cts., doz. \$2.50.

CORNUS VAR. ELEGANTISSIMA VARIEGATA. "M." 2 to 3 feet, each 40 cts., doz. \$4.00.

CORNUS ALBA SPAETHI. "M." 2 to 3 feet, each 40 cts., doz. \$4.00.

CORNUS ALTERNIFOLIA (Alternate-leaved Dogwood). "L." 3 to 4 feet, each 35 cts.; 4 to 5 feet, each 50 cts.

CORNUS PANICULATA (Panicked, or Gray Dogwood). "L." 2 to 3 feet, each 35 cts., doz. \$3.50.

CORNUS SANGUINEA. "L." June. Each 35 cts., doz. \$3.50.

CORNUS SERICEA (Silky Cornel). "L." 3 to 4 feet, each 35 cts., doz. \$3.50.

CORNUS STOLONIFERA. "M." 2 to 3 feet, each 35 cts., doz. \$3.50.

CORNUS STOLONIFERA AUREA (Golden-barked Dogwood). 18 inches, each 35 cts., doz. \$3.50.

CYDONIA JAPONICA (Fire Bush). "M." May. 2 feet, each 30 cts., doz. \$3.00.

CYDONIA VAR. PYGMAEA. "D." 1 to 2 feet, each 35 cts., doz. \$3.50.

For description of varieties, see our General Catalogue.

DESMODIUM

(See Lespedeza.)

- DEUTZIA CRENATA FL. PL.** (Double Pink Deutzia). "L." June. 3 feet, each 35 cts.
DEUTZIA VAR. PRIDE OF ROCHESTER. "L." June. 3 feet, each 35 cts., doz. \$3.50.
DEUTZIA GRACILIS (Slender Deutzia). "D." May or June. 15 to 18 inches, each 30 cts., doz. \$3.50.
DEUTZIA LEMOINEI. "S." 2 feet, each 35 cts., doz. \$3.00.

DIERVILLA—WEIGELA

(The Weigelias require protection until they become well established.)

- DIERVILLA CANDIDA** (White Weigela). "L." 3 feet, each 35 cts., doz. \$3.50.
DIERVILLA FLORIBUNDA. "M." June. 3 feet, each 35 cts., doz. \$3.50.
DIERVILLA AMABILIS. "M." June. 3 feet, each 40 cts., doz. \$4.00.
DIERVILLA ROSEA. "M." June. 3 feet, each 35 cts., doz. \$3.50.
DIERVILLA VAR. DESBOISII. "M." 2 to 3 feet, each 35 cts., doz. \$3.50.
DIERVILLA VAR. NANA VARIEGATA (Variegated Dwarf Weigela.) "M." 2 to 3 feet, each 40 cts., doz. \$4.00.
DIERVILLA EVA RATHKE. 2 to 3 feet, each 35 cts., doz. \$3.50; 3 to 4 feet, each 50 cts., doz. \$5.00.

- ELAEAGNUS ARGENTEA** (Silver-leaved Oleaster). "L." July and August. 2 to 3 feet, each 35 cts., doz. \$3.50.
ELAEAGNUS EDULIS, or **LONGIPES** (Japan Oleaster). "L." July. 2 to 3 feet, each 35 cts., doz. \$3.50.
EUONYMUS ALATUS (Winged Burning Bush). "L." 2 to 2 1-2 feet, each 35 cts., doz. \$3.50.
EUONYMUS AMERICANUS (Strawberry Bush). "M." June. 3 feet, each 35 cts., doz. \$5.30.
EUONYMUS EUROPAEDUS (Spindle Tree). "L." May. 3 feet, each 35 cts., doz. \$3.50.
EUONYMUS EUROPAEUS VAR. LATIFOLIA. "M." A decorative, hardy and very rare species with foliage 3 to 4 inches long; large, showy fruit and peculiar, long, slender Winter buds. 3 feet, each 75 cts.
EXOCHORDA GRANDIFLORA (Pearl Bush). "L." 2 1-2 to 3 feet, each 35 cts.
FORSYTHIA FORTUNEI (Fortune's Forsythia). "L." April. 3 feet, each 35 cts., doz. \$3.50.
FORSYTHIA SUSPensa (Weeping Golden Bell). "L." April. 3 feet, each 35 cts., doz. \$3.50.
FORSYTHIA VIRIDISSIMA. "M." May. 3 feet, each 35 cts., doz. \$3.50.
FORSYTHIA VAR. AUREA (Golden-leaved Forsythia). New. Each 50 cts.

For description of varieties, see our General Catalogue.

NEW ENGLAND NURSERIES, BEDFORD, MASSACHUSETTS

- GAYLUSSACIA FRONDOSA** (Huckleberry). 1 to 11-2 feet, each 35 cts.
GENISTA SCOPARIA (Scotch Broom). "D." Each 35 cts., doz. \$3.50.
GENISTA TINCTORIA (Dyer's Broom).^{*} Each 35 cts., doz. 3.50.

GLEDITSCHIA

(See Deciduous Trees).

- HAMAMELIS VIRGINICA** (Witch Hazel.) "L." November. 2 to 3 feet, each 35 cts., doz. 3.50; 3 to 4 feet, each 50 cts., doz. \$5.00.

HIBISCUS (ALTHAEA)—ROSE OF SHARON

While Altheas are perfectly hardy when well established, they should be given some protection the first Winter after planting.

- HIBISCUS SYRIACUS ALBA PLENA.** "L." Double white Althaea. 3 feet, each 35 cts., doz. \$3.50.
HIBISCUS VAR. ROSEA PLENA. "L." Double pink Althaea. 3 feet, each 35 cts., doz. \$3.50.
HIBISCUS VAR. PURPUREA. Single purple. 3 feet, each 35 cts., doz. \$3.50.
HIBISCUS VAR. PURPUREA PLENA. "L." Double purple. 3 feet, each 35 cts., doz. \$3.50.
HIBISCUS VAR. ALBA VARIEGATA. "L." Variegated white and red. 2 to 3 feet, each 35 cts., doz. \$3.50.
HIBISCUS VAR. FOLIA VARIEGATA. "M." A fine and distinct variegated form, the leaves marked with light yellow. One of the best variegated shrubs. 2 feet, each 50 cts., doz. \$5.00.
HIBISCUS VAR. TOTUS ALBUS. "L." Single. Pure white. One of the best. 2 feet, each, 35 cts., doz. \$3.50.
HIPPOPHAE RHAMNOIDES (See Buchthorn). "L." 2 to 3 feet, each 35 cts., doz. \$3.50.

HYDRANGEA

- HYDRANGEA ARBORESCENS GRANDIFLORA** (Snowball Hydrangea). New. "M." 18 to 24 inches, each 50 cts., doz. \$5.00.
HYDRANGEA VAR. GRANDIFLORA. "L." September. The variety bearing immense cone-shaped heads of white flowers, turning later to shades of pink and red. 2 1-2 to 3 feet, each 30 cts., doz. \$3.00.

- HYPERICUM AUREUM.** "D." July to September. 18 to 24 inches, each 35 cts., doz. \$3.50.
HYPERICUM DENSIFLORUM. "D." Each 35 cts., doz. \$3.50.
HYPERICUM KALMIANUM (St. John's Wort). "D." 24 inches, each 35 cts., doz. \$3.50.
ILEX VERTICILLA (Black Alder). "M." June. 2 to 3 feet, each 35 cts., doz. \$3.50.
ITEA VIRGINICA. "M." 2 to 3 feet, each 35 cts., doz. \$3.50.
KERRIA JAPONICA. "D." 12 to 18 inches, each 35 cts., doz. \$3.50.
KERRIA VAR. FLORE PLENA. 2 to 3 feet, each 35 cts., doz. \$3.50.
LESPEDEZA BICOLOR. "M." August. Strong plants. Each 30 cts., doz. \$3.00.

For description of varieties, see our General Catalogue.

LIGUSTRUM—PRIVET

- LIGUSTRUM IBOTA.** "M." July. A Japanese Privet of the most beautiful character. One of our best hardy hedge plants. 2 1-2 to 3 feet, each 25¢ cts., doz. \$2.50, 100, \$15.00.
- LIGUSTRUM IN "BALL SHAPE,"** can be used wherever specimen Box trees are used. Very ornamental. 2 1-2 feet in diameter, each \$2.50.
- LIGUSTRUM OVALIFOLIUM (California Privet).** "M." 18 to 24 inches, doz. \$1.00, 100, \$6.00; 2 to 3 feet, each 20 cts., doz. \$1.50, 100, \$8.00; 3 to 4 feet, each 25 cts., doz. \$2.00, 100, \$12.00.
- LIGUSTRUM VULGARE (European Privet).** "M." 2 to 3 feet, each 20 cts., doz. \$2.00, 100, \$15.00.

LONICERA—BUSH HONEYSUCKLE

- LONICERA MORROWI.** "L." July. 2 to 3 feet, each 35 cts., doz., \$3.50.
- LONICERA TATARICA (Tartarian Honeysuckle).** "L." June. 2 to 3 feet, each 35 cts., doz., \$3.50.
- LONICERA VAR. ALBA.** 2 to 3 feet, each 35 cts., doz. \$3.50.
- LONICERA VAR. RUBRA.** 2 to 3 feet, each 35 cts., doz. \$3.50.
- LONICERA VAR. BELLA ROSEA.** New. Large deep pink flowers, followed by highly colored fruit. 2 1-2 to 3 feet, each 50 cts.

- LYCIUM BARBARUM (Box Thorn).** 2 years, each 35 cts.
- LYCIUM CHINENSIS (Matrimony Vine).** "M." 2 years, each 35 cts.
- MYRICA CERIFERA (Candleberry).** "M." 12 to 18 inches, each 35 cts.
- PHILADELPHUS CORONARIUS (Mark Orange).** "L." June. 2 feet, each 35 cts., doz. \$3.50.
- PHILADELPHUS VAR. FL. PL. (Double-flowering Syringa).** "M." 2 feet, each 35 cts., doz. \$3.50.
- PHILADELPHUS VAR. FOLIIS AUREIS (Golden Syringa).** "M." July. 12 to 15 inches, each 35 cts., doz. \$3.50.
- PHILADELPHUS GRANDIFLORUS (Large-flowering Syringa).** "L." June. 3 to 4 feet, each 35 cts., doz. \$3.50.
- PHILADELPHUS LEMOINEI.** "D." Hybrid. A choice and graceful variety; produces fragrant, pure white flowers in clusters in June, 2 feet, each 35 cts., doz. \$3.50.
- PHILADELPHUS VAR. AVALANCHE.** "D." 1 1-2 to 2 feet, each 35 cts., doz. \$3.50.
- PHILADELPHUS MONT BLANC.** "D." 1 to 2 feet, each 35 cts.
- POTENTILLA FRUTICOSA (Shrubby Cinquefoil).** "D." July to September. 18 to 24 inches, each 50 cts.

PRUNUS—PLUM AND ALMOND

Under this head are grouped the double-flowered Almonds, and Prunus triloba, all of which are among the very choicest of Spring-blooming shrubs.

- PRUNUS MARITIMA (Beach Plum).** "M." April. 2 to 3 feet, each 35 cts., doz. \$3.50.

For description of varieties, see our General Catalogue.

NEW ENGLAND NURSERIES, BEDFORD, MASSACHUSETTS

- PRUNUS PUMILLA** (Sand Cherry). "D." April, 2 to 3 feet, each 35 cts.
- PRUNUS PISSARDI** (See Deciduous Trees.)
- PRUNUS SINENSIS ALBA PLENA** (Dwarf White Almond). "M." May. 2 to 3 feet, each 50 cts., doz. \$5.00.
- PRUNUS VAR. ROSEA PLENA** (Double Pink Almond). 2 to 3 feet, each 50 cts., doz. \$5.00.
- PRUNUS TRILOBA** (Double-flowering Plum). "L." May. 2 feet, each 50 cts., doz. \$5.00.

PTELIA

(See Deciduous Trees.)

- PYRUS ARBUTIFOLIA**. "L." May. 2 1-2 to 3 feet, each 35 cts., doz. \$3.50.
- RHODORA CANADENSIS** (Canadian Rhodora). "S." May. 1 to 2 feet, each 75 cts., doz. \$6.00.
- RHAMNUS CAROLINIANUS**, or **FRANGULA** (Carolina Buckthorn). "L." June 3 to 4 feet, each 35 cts., doz. \$3.50.
- RHAMNUS CATHARTICA** (Common Buckthorn). "L." July. Excellent for hedges. Black fruit in Fall. 2 to 3 feet, each 30 cts., doz. \$3.00; 3 to 4 feet, each 40 cts., doz. \$4.00.
- RHAMNUS CRENATA**, or **DAHURICA**. 2 to 3 feet, each 35 cts., doz. \$3.50.
- RHODOTYPUS KERRIODES** (White Kerria). "M." All Summer. 2 feet, each 30 cts., doz. \$3.00.
- RHUS COPALLINA** (Shining Sumach). "M." August. 2 to 3 feet, each 35 cts., doz. \$3.50.
- RHUS GLABRA** (Smooth Sumach). "L." June. 2 to 3 feet, each 35 cts., doz. \$3.50.
- RHUS TYPHINA** (Staghorn Sumach). "L." 3 to 4 feet, each 25 cts., doz. \$2.50.
- RHUS VAR. LACINIATA** (Cut-leaved Staghorn Sumach.) "L." 3 to 4 feet, each 50 cts., doz. \$5.00.
- RIBES ALPINUM** (Mountain Currant). "D." May. Fragrant, yellow flowers, good foliage. Dwarf, compact habit. The best of the Ribes. 10 to 12 inches, each 35 cts.
- RIBES AUREUM** (Missouri Currant). "M." May. 2 to 3 feet, each 30 cts., doz. \$3.00.
- RIBES SANGUINEUM** (Crimson-flowered Currant). "S." July. 2 to 2 1-2 feet, each 35 cts., doz. \$3.50.
- ROBINA HISPIDA** (Rose Acacia). "M." 2 to 3 feet, each 50 cts.

BUSH ROSES

Under this head we include the varieties of our Native Wild Rose and others used for massing and general landscape planting.

ROSA—ROSES

- ROSA BLANDA** (The Meadow Rose). 2 feet, each 25 cts., doz. \$2.50.
- ROSA CAROLINA** (The Swamp Rose). 1 to 2 feet, each 25 cts., doz. \$2.50.

For description of varieties, see our General Catalogue.

NEW ENGLAND NURSERIES, BEDFORD, MASSACHUSETTS

- ROSA LUCIDA.** 18 inches, each 25 cts., doz. \$2.50.
- ROSA VAR. ALBA.** A valuable new sort, with pure white flowers and green stems. 12 inches, each 50 cts., doz. \$5.00.
- ROSA MULTIFLORA JAPONICA.** 2 feet, each 25 cts., doz. \$2.50.
- ROSA NITIDA.** 12 inches, each 25 cts.; doz. \$2.50.
- ROSA RUBIGINOSA (Sweet Brier).** Sweet-scented foliage, pink flowers and orange-red fruit. 2 feet, each 25 cts., doz. \$2.50.
- ROSA RUBRIFOLIA (The Red-leaved Rose).** 2 feet, each 35 cts., doz. \$3.50.
- ROSA RUGOSA (The Ramona Rose).** 18 to 24 inches, each 35 cts., doz. \$3.50.
- ROSA VAR. ALBA (The White Ramona Rose).** 18 to 24 inches each 35 cts., doz. \$3.50.
- ROSA RUGOSA, VAR. PROSTRATA or REPENS (Trailing Rose Rugosa).** This variety is a hybrid from the well known Rosa Wichuraiana and Rosa Rugosa. It has the foliage and blossom of the latter and the vigorous growth and habit of the former. Each 75 cts.
- ROSA SETIGERA (The Prairie Rose).** 2 to 3 feet, each 35 cts., doz. \$3.50.
- ROSA SPINOSSISSIMA (The Scotch Rose).** Each 50 cts., doz. \$5.00.
- ROSA WICHURAIANA (The Memorial Rose).** Used extensively in cemeteries, for covering embankments and stone works. Flowers are pure white. Each 35 cts., doz. \$3.50.
- RUBUS ODORATA (Flowering Raspberry).** "M." All Summer. 2 to 3 feet, each 35 cts., doz. \$3.50.
- SAMBUCUS CANADENSIS (Common Elder).** "L." June. 2 to 3 feet, each 30 cts., doz. \$3.00.
- SAMBUCUS NIGRA (European Elder).** "M." July. 3 feet, each 30 cts., doz. \$3.50.
- SAMBUCUS VAR. AUREA (Golden Elder).** "L." 3 feet, each 35 cts., doz. \$3.50.
- SHEPHERDIA CANADENSIS (Buffalo Berry).** 2 to 3 feet, each 50 cts., doz. \$5.00.
- SPIRAEA ARGUTA.** "M." Japan. 2 to 3 feet, each 35 cts., doz. \$3.50.
- SPIRAEA JAPONICA BUMALDA (Bumaid's Spiraea).** "D." 18 to 24 inches, each 35 cts., doz. \$3.50.
- SPIRAEA VAR. ANTHONY WATERER.** 18 to 24 inches, each 35 cts., doz. \$3.50.
- SPIRAEA OPULIFOLIA (Nine Bark).** "L." June. 3 to 4 feet, each 35 cts., doz. \$3.50.
- SPIRAEA OPULIFOLIA AUREA (Golden Spiraea).** "L." Golden yellow all Summer. 2 to 3 feet, each 35 cts., doz. \$3.50.
- SPIRAEA PRUNIFOLIA FL. PL. (Bridal Wreath).** "M." 2 to 3 feet, each 35 cts., doz. \$3.50.
- SPIRAEA ROTUNDIFOLIA** "L." 3 to 4 feet, each 50 cts.
- SPIRAEA SORBIFOLIA (Ash-leaved Spiraea).** "S." July. 20 to 30 inches, each 35 cts., doz. \$3.50.
- SPIRAEA THUNBERGII (Tunberg's Spiraea).** "D." April and May. 11-2 to 2 feet, each 30 cts., doz. \$3.00.

For description of varieties, see our General Catalogue.

NEW ENGLAND NURSERIES, BEDFORD, MASSACHUSETTS

- SPIRAEA VAN HOUTTEI** (Van Houtte's Spiraea, or Large Bridal Wreath). "M." June. The finest and most satisfactory of all Spiraeas, either singly or among other shrubs. 2 to 3 feet, each 30 cts., doz. \$3.00.
- STEPHANANDRA FLEXUOSA**. "M." 2 to 3 feet, each 35 cts., doz. \$3.50.
- SYMPHORICARPOS RACEMOSUS** (Snowberry). "M." July. 2 to 3 feet, each 35 cts., doz. \$3.50.
- SYMPHORICARPOS VULGARIS** (Indian Currant). "S." 2 to 3 feet, each 30 cts., doz. \$3.00.

SYRINGA—LILAC

- SYRINGA JAPONICA** (See Deciduous Trees).
- SYRINGA JOSIKAE** (Chionanthus-leaved Lilac). "L." May. 2 to 3 feet, each 40 cts., doz. \$4.00.
- SYRINGA LIGUSTRINA PEKINENSIS**. "L." 3 to 4 feet, each 75 cts.
- SYRINGA PERSICA** (Persian Lilac). "M." May and June. 2 to 3 feet, each 35 cts., doz. \$3.50.
- SYRINGA VAR. ALBA** (White Persian Lilac). "M." 2 to 3 feet, each, 35 cts., doz. \$3.50.
- SYRINGA ROTHAMAGENSIS** (Rouen Lilac). "M." May and June. 2 to 3 feet, each 35 cts., doz. \$3.50.
- SYRINGA VILLOSA**. "L." 2 to 3 feet, each 50 cts., doz. \$5.00.
- SYRINGA VULGARIS** (Common Lilac). "L." May. Purple. 2 to 3 feet, each 30 cts., doz. \$3.00; 3 to 4 feet, each 50 cts., doz. \$5.00.
- SYRINGA VAR. ALBA** (Common White Lilac). "L." 3 feet, each 40 cts., doz. \$4.00; 3 to 4 feet, each 50 cts., doz. \$5.00.

HYBRID, OR FRENCH LILACS SINGLE VARIETIES

All varieties 2 to 3 feet, each 40 cts., doz. \$4.00.

- SYRINGA CHARLES X.** Magnificent clusters of dark red flowers, produced in the grandest profusion.
- SYRINGA FRAU BERTHA DAMMANN.** This produces the largest cluster of white Lilacs of any species known in cultivation; the flowers are of the purest white.
- SYRINGA LOUIS VAN HOUTTE.** A well known sort, with large clusters of fine, bright red flowers.
- SYRINGA LUDLIG SPAETH.** The clusters are very large, and of splendid dark purple red color; not only as buds, but even when the blossoms are fully expanded.
- SYRINGA MARIE LE GRAYE.** A dwarf grower; and one of the finest white varieties.

DOUBLE VARIETIES

- SYRINGA ALPHONSE LAVALLEE.** Trusses like a double Hyacinth, fine, blue, shaded to violet.
- SYRINGA BELLE DE NANCY.** Large, double pink, with white center.

For description of varieties, see our General Catalogue.

NEW ENGLAND NURSERIES, BEDFORD, MASSACHUSETTS

SYRINGA LEON SIMON. Color bluish crimson; buds clear coral.
SYRINGA MAD. CASSIMIR PERIER. Large trusses of very double, creamy-white flowers.

SYRINGA MAD. LEMOINE. A grand double white variety. Vigorous habit and immense foliage.

SYRINGA MICHEL BUCHNER. Plant dwarf, bearing at the top of all the branches. Pale lilac throughout, in half-opened blossoms, and also in the bud state.

SYRINGA PRESIDENT GREVY. Petals of a cobalt blue, with the center more brilliant and the edges rosy. The buds are of a violet blue.

SYRINGA PRESIDENT CARNOT. Flower delicate tint of pale marked with white in the center. Season of flowering very late.

SYRINGA SENATOR VOLLAND. Dwarf, very brilliant; buds fuchsia-red; open flowers rose-red.

NOTE: We offer this year a limited stock of Hybrid Lilacs, in plants from 1 to 1 1-2 feet high, and in a collection of **Seventy-five Sorts**, including the best varieties shown at the **Arnold Arboretum**. Price per collection, \$50.00.

TAMARIX AFRICANA. "M." June. 3 to 4 feet, each 35 cts., doz. \$3.50.

TAMARIX GALLICA (Common Tamarix). "M." July. 3 to 4 feet, each 35 cts., doz. \$3.50.

VACCINIUM CORYMBOSUM (Blueberry). "D." Each 35 cts.

VACCINIUM PENNSYLVANICUM. "D." Each 35 cts.

WEIGELA

(See Diervilla.)

VIBURNUM ACERIFOLIUM (Dockmackle). "M." 1 to 2 feet, each 35 cts.

VIBURNUM CASSINOIDES. "M." June. 2 to 3 feet, each 35 cts.

VIBURNUM DENTATUM (Arrow-wood). "M." June. 3 to 4 feet, each 35 cts., doz. \$3.50.

VIBURNUM LANTANA (Wayfaring Tree). "M." May and June. 2 to 3 feet, each 35 cts., doz. \$3.50.

VIBURNUM LENTAGO (Sheepberry). "M." 2 to 3 feet, each 35 cts., doz. \$3.50.

VIBURNUM OPULUS (High Bush Cranberry). "L." June. 2 to 3 feet, each 35 cts., doz. \$3.50.

VIBURNUM VAR. STERILE (Common Snowball). "M." 2 to 3 feet, each 35 cts., doz. \$3.50.

VIBURNUM PLICATUM (Japan Snowball). "L." May. (When planted in the Fall, it must be protected.) 2 to 3 feet, each 40 cts., doz. \$4.00.

VIBURNUM TOMENTOSUM (Japonicum). "L." (When planted in the Fall, it must be protected.) 2 to 3 feet, each 35 cts., doz. \$3.50.

XANTHORRHIZA APIIFOLIA (Yellow Root). "D." April. Each 25 cts., doz. \$2.50, 100, \$15.00.

DECIDUOUS TREES

We name in the following list only such varieties of trees as are of practical value to the planter, omitting all sorts of questionable hardiness.

NOTE.—The following letters are used to designate ultimate height of trees at maturity; "A," 50 feet and upward; "B," 20 to 40 feet; "C," 10 to 20 feet. Denoting rapidity of growth: "r," rapid; "m," medium; and "s," slow.

ACER—MAPLE

- ACER DASYCARPUM** (White or Silver Maple). "A." 6 to 8 feet, each 75 cts.; 8 to 10 feet, each \$1.00. Large specimens from \$10.00 to \$25.00 each.
- ACER VAR. WIERI LACINIATUM** (Wiers Cut-leaved Silver Maple). "A." 6 to 8 feet, each 75 cts.; 8 to 10 feet, each \$1.00.
- ACER NEGUNDO** (Ash-leaved Maple or Box Elder). "A." 8 to 10 feet, each 75 cts.
- ACER NEGUNDO VAR. FOLIIS VARIEGETA.** (Variegated Negundo Maple.) Leaves margined white. A very conspicuous and handsome tree. 5 to 6 ft. Each \$1.00.
- ACER PENNSYLVANICUM; SYN. STIATUS** (Striped-barked Maple or Moosewood). "C." 5 to 6 feet, each 75 cts.
- ACER PLATANOIDES** (Norway Maple). "A." 6 to 8 feet, each 75 cts.; 8 to 10 feet, each \$1.00; 10 to 12 feet, each \$1.50.
- ACER VAR. SCHWEDLERI** (Schwedler's Norway Maple). "B." 6 to 8 feet, each \$1.25; 8 to 10 feet, each \$2.00.
- ACER VAR. GENEVA** (Geneva Maple). "B." 6 to 8 feet, each \$1.00; 8 to 10 feet, each \$1.50.
- ACER RUBRUM** (Red, or Scarlet Maple). "B." 8 to 10 feet, each \$1.50.
- ACER SACCHARUM** (Sugar, or Rock Maple). "A." 8 to 10 feet, each \$1.00; 10 to 12 feet, each \$1.50; 12 to 14 feet, each \$1.75.
- ACER TATARICUM VAR. GINNALA.** "C." An exquisite miniature Maple from Siberia, with deeply notched leaves, which take on the most gorgeous tints of orange and crimson in October. "r." 3 to 4 feet, each 35 cts.; 4 to 5 feet, each 50 cts.

JAPANESE MAPLES

(While the following named sorts are perfectly hardy when well established, it is advisable to furnish them some protection the first Winter after planting.)

- ACER POLYMORPHUM ATDOPURPUREUM** (Blood-leaved Japan Maple). "C." 2 to 2 1-2 feet, each \$1.50; 3 feet, bushy, each \$2.00.
- ACER VAR. DISSECTUM ATROPURPUREUM** (Cut-leaved Purple Japanese Maple). "C." 18 to 24 inches, each \$2.00.
- ACER PALMATUM AUREUM.** "C." Very dwarf and compact and one of the hardiest. Foliage broad, and, a large part of Summer, a vivid golden yellow. "s." 18 to 24 inches, each \$1.75.
-

AESCULUS—HORSE CHESTNUT

- AESCULUS HIPPOCASTANUM** (The European, or White-flowering Horse-Chestnut). "A." 6 to 8 feet, each 75 cts.; 8 to 10 feet, each \$1.50.
- AESCULUS VAR. FL. PL.** Double White-flowered Horse-Chestnut). "A." 6 to 8 feet, each \$1.50.
- AESCULUS RUBICUMDA** (Red-flowered Horse Chestnut). "B." 6 to 8 feet, each \$1.75.

ALNUS—ALDER

- ALNUS GLUTINOSA** (European, or Black Alder). "B." 5 to 6 feet, each 75 cts.

ARALIA—ANGELICA TREE

- ARALIA SPINOSA** (Hercules' Club). "C." 3 to 4 feet, each 50 cts.; 4 to 5 feet, each 75 cts.
- ARALIA PENTAPHYLLA.** (See Shrubs).

BETULA—BIRCH

All birches are attractive, whether of the upright or weeping forms. They thrive on poor soil and in exposed situations. Transplant best in early Spring, but if given some protection, they can be handled safely in the Autumn.

- BETULA ALBA** (European White Birch). "A." 4 to 6 feet, each 50 cts.; 6 to 8 feet, each \$1.00.
- BETULA VAR. PENDULA LACINIATA** (Cut-leaved Weeping Birch). "B." 6 to 8 feet, each \$1.00.
- BETULA LENTA** (Sweet, or Black Birch). "A." 4 to 5 feet, each 75 cts.
- BETULA LUTEA** (Yellow Birch). "A" 4 feet, each 75 cts.
- BETULA PAPYRACEA** (Canoe, or Paper Birch). "A." 4 to 5 feet, each 75 cts.
- BETULA POPULIFOLIA** (American Gray, or Poplar Birch). "B." 6 to 8 feet, each 60 cts.

CARPINUS AMERICANA (American Hornbeam). "B." 3 to 4 feet, each 50 cts.

CARPINUS BETULUS (European Hornbeam). "B." 3 to 4 feet, each 50 cts.

CATALPA BUNGEI. "D." 7 to 8 feet, each \$1.00.

CATALPA SPECIOSA. "B." 6 to 8 feet, each 50 cts.; 8 to 10 feet, each 75 cts.

CELTIS OCCIDENTALIS. "B." 5 to 7 feet, each 75 cts.

CERASUS PADUS (European Bird Cherry). "B." 3 feet, each 35 cts.

CERASUS PENNSYLVANIA (Wild Red Cherry). "B." 3 feet, each 35 cts.

CERASUS SEROTINA (Native Black Cherry). "B." 3 to 4 feet, each 50 cts.

CERCIDIPHYLLUM JAPONICUM. "B." 4 to 5 feet, each \$1.00.

CERCIS CANADENSIS (American Judas Tree). "B." 3 to 4 feet, each 50 cts.; 4 to 5 feet, each \$1.00.

For description of varieties, see our General Catalogue.

NEW ENGLAND NURSERIES, BEDFORD, MASSACHUSETTS

- CLADRASTIS TINCTORIA; SYN. VIRGILIA LUTEA.** "B." 5 to 6 feet, each \$1.50.
- CORNUS FLORIDA** (White-flowering Dogwood). "C." 3 to 4 feet, each 60 cts.; 4 to 5 feet, each \$1.00.
- CORNUS VAR. RUBRA** (Red-flowering Dogwood). "C." 3 to 4 feet, each \$1.75.
- CRATAEGUS COCCINEA** (American White Thorn). "C." 3 to 4 feet, each 50 cts.; 4 to 5 feet, each 75 cts.
- CRATAEGUS CORDATA** (Washington Thorn). "C." 3 feet, each 50 cts.
- CRATAEGUS CRUS-GALLI** (Cockspur Thorn). 3 to 4 feet, each 50 cts.
- CRATAEGUS OXYACANTHA** (Common Hawthorn). "C." 3 to 4 feet, each 50 cts.
- CRATAEGUS VAR. ALBA PLENA** (White-flowering Double Thorn). "C." 4 to 5 feet, each 75 cts.
- CRATAEGUS VAR. COCCINEA FL. PL. PAULI** (Paul's Double Scarlet Thorn). "C." 4 to 5 feet, each 75 cts.

FAGUS—BEECH

All Beeches are very ornamental and beautiful. They are slow in growth and rather hard to establish after being moved. Transplant best early in the Spring, but can, if protection is given, be handled safely in the Fall.

- FAGUS FERRUGINEA** (American Beech). "A." 3 to 4 feet, each \$1.00.
- FAGUS SYLVATICA** (European Beech). "A." 3 to 4 feet, each 75 cts.
- FAGUS VAR. CUPREA** (Copper Beech). "A." 4 to 5 feet, each \$1.50.
- FAGUS VAR. PURPUREA RIVERSII** (Rivers Purple Beech). "A." 4 to 5 feet, each \$1.50; 5 to 6 feet, each \$2.00.

- FRAXINUS AMERICANA** (American White Ash). "A." 6 to 8 feet, each 50 cts.; 8 to 10 feet, each \$1.00.
- FRAXINUS EXCELSIOR AUREA** (Golden-barked Ash). "B." 7 to 8 feet, each \$1.50.
- FRAXINUS VAR. PENDULA** (Weeping Ash). "B." 6 to 8 feet, each \$1.75.
- GLDITSCHIA TRIACANTHOS** (Honey Locust). "B." 3 to 4 feet, each 50 cts.
- GYMNOCLADUS CANADENSIS** (Kentucky Coffee Tree). "B." 4 to 5 feet, each 75 cts.
- KOELREUTARIA PANICULATA.** (Varnish Tree.) "B." 3 to 4 feet, each 75 cts.
- LARIX EUROPAEA** (European Larch). "A." 3 to 4 feet, each 50 cts.; 6 to 8 feet, each \$1.50.
- LARIX LEPTOLEPIS; SYN. KAEMPFERI** (Japanese Larch). 3 to 4 feet, each \$1.00; 4 to 5 feet, each \$2.00.
- MORUS ALBA PENDULA** (Teas' Weeping Mulberry). Each \$1.50.
- MORUS VAR. TATARICA** (The Russian Mulberry). 5 to 6 feet, each 75 cts.

- PAVIA PARVIFLORA MACROSTACHYA** (Dwarf Buckeye). "D.m." Low, spreading tree, with very attractive divided leaves, and bearing beautiful white flowers in upright panicles in June. Distinct and unusual. 1½ to 2 feet, each 75 cts.
- PERSICA VULGARIS FLORE ALBA PLENA** (Double White-flowering Peach). "C." 3 to 4 feet, each 50 cts.
- PERSICA VAR. FLORE ROSEA PLENA** (Double Rose-flowering Peach). "C." 3 to 4 feet, each 50 cts.
- PHELLODENDRON AMURENSE** (Chinese Cork Tree). "B." Each \$1.50.
- PLATANUS ORIENTALIS** (Oriental Plane). "A." 8 to 10 feet, each \$1.50.
- PLATANUS OCCIDENTALIS** (American Plane, Sycamore, or Buttonwood). "A." 8 to 10 feet, each \$1.50.

POPULUS—POPLAR

The Poplars are all very hardy and fast growing, and therefore well adapted for screens or street planting. Special quotations will be given for Poplars in quantity.

- POPULUS ALBA** (White, or Silver Poplar). "B." 5 to 6 feet, each 75 cts.; 8 to 10 feet, each \$1.50.
- POPULUS BALSAMIFERA** (Balsam Poplar). "A." 6 to 8 feet, each 75 cts.; 8 to 10 feet, each \$1.00.
- POPULUS MONOLIFERA** (Carolina, or Cottonwood Poplar). "A." 6 to 8 feet, each 50 cts.; 8 to 10 feet, each 75 cts.; 10 to 12 feet, each \$1.25.
- POPULUS VAR. VAN GEERTII** (Golden-leaved Poplar). "B." A variety of the preceding, with bright, golden foliage. Very constant and valuable for color contrast. "r." 8 feet, each \$1.00.
- POPULUS NIGRA FASTIGIATA** (Lombardy Poplar). "B." A well-known tree of narrow, upright growth, with light green, small leaves. "r." 4 1-2 to 6 feet, per 100, \$40.00; each 50 cts.; 8 to 10 feet, each 75 cts.; 10 to 12 feet, each \$1.00.
- POPULUS TREMULOIDES** (American Aspen). "B." 6 to 8 feet, each 50 cts., 8 to 10 feet, each \$1.00.
- POPULUS TREMULOIDES PENDULA** (Weeping Poplar). A rare and beautiful form of the above, with spreading and pendulous branches. A characteristic feature of this tree is the profusion of its very long catkins that appear in earliest Spring. Makes an excellent lawn tree. 8-foot specimens, each \$1.50.

- PRUNUS PADUS** (Bird Cherry). "C." 3 to 4 feet, each 50 cts.
- PRUNUS PISSARDI** (Purple-leaved Plum). "C." 4 to 5 feet, each 50 cts.
- PYRUS AUGUSTIFOLIA** (Bechtel's Double-flowering Crab). 2 to 3 feet, each 75 cts.; 3 to 4 feet, each \$1.00.
- PYRUS BACATA** (Siberian Crab). "C." 3 to 4 feet, each 50 cts.; 4 to 5 feet, each \$1.00.
- PYRUS FLORIBUNDA** (Flowering Crab). "C." 4 to 5 feet, each \$1.00.
- PYRUS PARKMANI**. "C." 2 to 3 feet, each 75 cts.

NEW ENGLAND NURSERIES, BEDFORD, MASSACHUSETTS

- PYRUS SCHIEDECKERI.** "C." 3 to 4 feet, each \$1.00.
- PYRUS TORINGO (Dwarf Crab).** "C." 3 to 4 feet, each 75 cts.
- PYRUS SORBUS AMERICANA (American Mountain Ash).** "B." 4 to 5 feet, each 75 cts.
- PYRUS SORBUS AUCUPARIA (European Mountain Ash).** "B." 4 to 4 1-2 feet, each 50 cts.; 6 to 7 feet, each 75 cts.
- PYRUS SORBUS VAR. PENDULA (Weeping Mountain Ash).** "C." Each \$1.50.
- PYRUS SORBUS QUERCIFOLIA (Oak-leaved Mountain Ash).** "B." 6 to 8 feet, each \$1.00.
- PTELEA TRIFOLIATA.** A small, spreading tree, attaining a height of 8 to 10 feet. 3 to 4 feet, each 35 cts.; 4 to 5 feet, each 50 cts.
- PTELEA VAR. AUREA (Golden Hop Tree).** 2 to 3 feet, each 50 cts.; 3 to 4 1-2 feet, each 75 cts.
- QUERCUS ALBA (White Oak).** 4 to 4 1-2 feet, each 75 cts.; 5 to 6 feet, each \$1.00; 6 to 8 feet, each \$1.50.
- QUERCUS BICOLOR (Swamp White Oak).** "A." 4 to 4 1-2 feet, each 75 cts.; 5 to 6 feet, each \$1.00.
- QUERCUS COCCINEA (Scarlet Oak).** "B." 5 to 6 feet, each \$1.00; 6 to 8 feet, each \$1.50.
- QUERCUS MACROCARPA (Mossy-cup Oak).** "B." 4 to 4 1-2 feet, each 75 cts.; 5 to 6 feet, each \$1.25.
- QUERCUS RUBRA (Red Oak).** "A." 6 to 8 feet, each \$1.00; 8 to 10 feet, each \$1.50.
- QUERCUS PALUSTRIS (Pin Oak).** "A." 5 to 6 feet, each 75 cts.; 6 to 8 feet, each \$1.00; 8 to 10 feet, each \$1.50.
- ROBINIA PSEUDACACIA (Black Locust).** "B." 5 to 6 feet, each 75 cts.
- SALIX ALBA (Common White Willow).** "A." 5 to 6 feet, each 50 cts.
- SALIX VITELLINA AUREA (Golden-barked Willow).** "B." 4 to 5 feet, each 35 cts., 5 to 6 feet, each 50 cts.; 6 to 8 feet, each 75 cts.
- SALIX VAR. BRITZENSIS (Salmon-barked Willow).** 3 feet, each 35 cts.
- SALIX WISCONSIN WEEPING.** 5 to 6 feet, each 50 cts.
- SALIX CAPREA VAR. PENDULA (Kilmarnock Weeping Willow).** "C." 2-year head, each \$1.50.
- SALIX PENTANDRA, or LAURIFOLIA (Laurel-leaved Willow).** "B." Leaves dark, glossy green, highly ornamental. Excellent for seashore planting. 3 to 4 feet, each 35 cts.; 4 to 5 feet, each 50 cts. Special quotations for these in quantity.
- SALIX REGALIS (Royal Willow).** "C." Foliage silvery. Good for color contrasts. 3 to 4 feet, each 50 cts.
- SYRINGA JAPONICA (Japanese Tree Lilac).** "B." 3 to 4 feet, each 50 cts.; 4 to 5 feet, each 75 cts.; 5 to 6 feet, each \$1.00.
- TAXODIUM DISTICHUM (Bald Cypress).** "B." 3 to 4 feet, each 50 cts.; 4 to 5 feet, each 75 cts.

TILIA—LINDEN OR LIME

The Lindens are excellent shade trees, spreading in growth and forming large specimens. They do well on ordinary soils, making comparatively rapid growth.

For description of varieties, see our General Catalogue.

NEW ENGLAND NURSERIES, BEDFORD, MASSACHUSETTS

TILIA AMERICANA (Linden or Basswood). "A." 8 to 10 feet, each \$1.00; 10 to 12 feet, each \$1.50.

TILIA DASYSTYLA (Crimean Linden). 8 to 10 feet, each \$1.00; 10 to 12 feet, each \$1.50.

TILIA EUROPAEA (Lime, or European Linden). "B." 6 to 8 feet, each 75 cts.; 8 to 10 feet, each \$1.00; 10 to 12 feet, each \$2.00.

TILIA VAR. LACINIATA (Fern-leaved Linden). "B." 6 to 8 feet, each \$1.50.

TILIA TOMENTOSUM; SYN. ARGENTEA (White, or Silver Linden). "B." 8 to 10 feet, each \$1.50.

ULMUS AMERICANA (American White Elm), "A." Lofty and spreading, with drooping branches. "m." 6 to 8 feet, each 50 cts.; 8 to 10 feet, each \$1.00; 10 to 12 feet, each \$1.50.

ULMUS CAMPERDOWNI PENDULA; SYN. SCABRA PENDULA (Camperdown Weeping Elm). "C." Strong heads, each \$2.00.

ULMUS VAR. HUNTINGDONI (Huntingdon Elm). "B." 8 to 10 feet, each \$1.50.

Special Quotations will be given on any Shade Trees in quantity. Also on extra large specimens not mentioned in this catalogue.

For description of varieties, see our General Catalogue.

NEW ENGLAND COLLECTION OF HARDY HERBACEOUS PERENNIALS

Following are named but the most hardy sorts, and such as can be safely transplanted in the Fall. Herbaceous Perennials transplant well at any time after Sept. 1st. If early in December a light mulch with leaves or litter is given, plants set out in the Fall will produce an abundant crop of flowers the following season. For description of varieties, see our General Catalogue.

Prices: All Hardy Perennial Plants, except where noted, each 15c.; doz. \$1.50; 100, \$10.00. Twenty-five plants of one variety will be furnished at the hundred rate, and six at the rate per dozen, but less than six plants of one kind will be charged at 15 cents each.

SPECIAL OLD-FASHIONED GARDEN COLLECTIONS

50 plants in variety, 4 each, our selection, \$4.00.

100 plants in variety, 5 each, our selection, \$7.00

Prices are based upon the stock carefully packed and delivered f. o. b. Bedford.

GENERAL LIST OF "BEDFORD GROWN" SILVER MEDAL QUALITY HERBACEOUS PERENNIALS

- ACANTHUS MOLLIS (Bear's Breech). White to purple.
ACANTHUS VAR. LATIFOLIUS. Purple.
ACHILLEA EGYPTICA (Egyptian Milfoil). Pale yellow.
ACHILLEA PTAMICA VAR. "THE PEARL" (Double Sneezewort). Pure white.
ACHILLEA TOMENTOSA (Woolly-leaved Milfoil). Yellow.
ACHILLEA MILLEFOLIUM ROSEUM (Rosy Milfoil). Pink.
ACONITUM AUTUMNALE (Monkshood). Deep blue.
ACONITUM NAPELLUS (True Monkshood). Deep purple blue.
ACONITUM VAR. BICOLOR (Variegated Monkshood). Blue and white.
ADONIS VERNALIS (Spring Adonis). Yellow.
AEGOPODIUM PODOGRARIA VARIEGATA. Cream white.
AGROSTEMMA CORONARIA (Dusty Miller). Crimson.
AGROSTEMMA FLOS-JOVIS (Jupiter's Flower). Crimson pink.
AJUGA REPTANS (Bugle). Blue.

ALTHAEA ROSEA—THE HOLLYHOCKS

(Hollyhocks must be given a slight protection in Winter.)

Strong plants which will bloom next season: Each 15 cts., doz. \$1.50, 100, \$8.00.

Pure white. Double.
Canary yellow. Double.
Salmon. Double.
Carmine Pink. Double.
Red. Double.
Purple Carmine. Double.
Finest single mixed. New England strain.
Fringed or Alleghany.

ALYSSUM SAXATILE COMPACTA (Madwort). Yellow.
AMSONIA TABERNAEMONTANA.
ANCHUSA ITALICA VAR. DROPMORE (Alkanet). Blue.
ANAPHALIS MARGARITACEA (Everlasting).
ANTHEMIS TINCTORIA (Golden Marguerite). Yellow.
ANTHEMIS VAR. KELWAYI. Yellow.

THE ANEMONES

(Must be given a light protection during the Winter.)

ANEMONE JAPONICA (Japanese Windflower). Rose.
ANEMONE VAR. ALBA. White.
ANEMONE VAR. LADY ARDILAUN. Semi-double. White.
ANEMONE VAR. PRINCE HENRY. Semi-double. Dark red.
ANEMONE VAR. QUEEN CHARLOTTE. Semi-double. Silver
pink.
ANEMONE PENNSYLVANICUM (Canada Windflower). White.
ANEMONE PULSATILLA (Pasque Flower). Purple.
ANEMONE SYLVESTRIS (Snowdrop Anemone). White.

APIOUS TUBEROSA (Ground Nut). 4 to 8 feet. July and August.
Vigorous habit; a native climber.

THE COLUMBINES

AQUILEGIA COERULEA (Rocky Mountain Columbine). Blue
and white.
AQUILEGIA CALIFORNICA HYBRIDA (California Columbine).
Various colors.
AQUILEGIA CANADENSIS (Wild Columbine). Red and yellow.
AQUILEGIA CHRYSANTHA (Golden-spurred Columbine). Yellow.
AQUILEGIA VULGARIS (European Columbine). Various colors.
AQUILEGIA VAR. ALBA (Munstead White Columbine). White.
AQUILEGIA VAR. FLORE PLENO (Double European Columbine).
Various colors.

ARABIS ALBIDA (White Rock Cress). White.
ARENARIA BALEARICA. 4 inches. Of moss-like growth and
suitable for rockwork. White flowers.
ARMERIA ALPINUM (Alpine Thrift). Pinkish lavender.
ARMERIA CEPHALOTES ROSEA (Sea Pink). Light pink.
ARMERIA MARITIMA (Cushion Pink). Pink.
ARMERIA VR. ROBUSTA. Large, crimson flowers on stems 6 to
8 inches long.
ARTEMISIA ABROTANUM (Southernwood). White.

All Hardy Perennial Plants, except where noted:

NEW ENGLAND NURSERIES, BEDFORD, MASSACHUSETTS

- ARTEMISIA DRACUNCULUS (Tarragon). White.
ARTEMISIA FRIGIDA (Small Southernwood).
ARTEMISIA PONTICA (Roman Wormwood). Yellow.
ARTEMISIA STELLARIANA (Old Woman). Yellow.
ASCLEPIAS TUBEROSA (Butterfly Weed). Red orange.
ASCLEPIAS INCARNATA. Leafy and branching. Showy heads of red or purplish-red flowers.
ASPERULA ODORATA (Sweet Woodruff). White.

THE ASTERS—MICHAELMAS DAISIES

The hardy Aster deserves a place in every garden, as it thrives under any condition, is graceful in habit, and blooms profusely when the scarcity of hardy flowers is most marked.

The following varieties include the choicest of all newer and older sorts.

- ASTER ALPINUS (Alpine Aster). Violet.
ASTER VAR. AUTUMN KING. Light blue, dark center.
ASTER VAR. BEAUTY OF BEDFORD. Purplish pink with yellow center.
ASTER VAR. BOWMAN. Dark blue.
ASTER VAR. EXCELSIOR. Purplish pink, with dark center.
ASTER LADY TREVELLYN. White. 4 feet.
ASTER VAR. MAIDEN'S BLUSH. Purplish pink.
ASTER VAR. NE PLUS ULTRA. Light purple.
ASTER NOVAE-ANGLIAE (New England Aster). Purple.
ASTER VAR. NOVAE-ANGLIAE RUBRA. Large red, very showy. Each 25 cts., doz. \$2.50.
ASTER NOVA-BELGII. Blue violet.
ASTER VAR. ICEBERG. Dwarf and floriferous. White.
ASTER VAR. JUMBO. Large, purple flowers, with golden center.
ASTER VAR. PLYPHYLLUS. White, with yellow center.
ASTER VAR. SNOWDRIFT. Pure white and spreading in growth.

THREE NEW ASTERS

The following three named Asters were among a number of new varieties imported by us recently. They are pronounced by all who see them to be the most beautiful sorts yet introduced.

- ASTER VAR. NOVELTY. Light blue flowers with yellow center, produced in great quantity. 1 1-2 feet. September. Each 20 cts., doz. \$2.00.
ASTER VAR. PINK BEAUTY. Bluish pink, with dark center. 3 feet. September. Each 25 cts., doz. 2.50.
ASTER SPECTABILIS VAR. NENCO. Deep lavender. Individual flowers 2 inches across. Undoubtedly the most beautiful Fall flowering hardy Aster in cultivation. Excellent for cutting. 2 1-2 to 3 feet. September. Each 20 cts., doz. \$2.00.
ASTILBE (See Spirea).
AUBRETIA DELTOIDES (Rock Cress). Dark violet.
BAPTISIA AUSTRALIS (False Indigo). Blue.
BELLIS PERENNIS (English Daisy). Pink and white.
BETONICA (See Stachys).
BOCCONIA CORDATA (Plume Poppy). White.

Each, 15c; doz., \$1.50; hundred, \$10.00.

- BOLTONIA ASTEROIDES** (False Chamomile). White.
BOLTONIA LATISQUAMA. Pinkish lavender.
BOLTONIA VAR. NANA. Pinkish lavender. 2 feet. New. Each
25 cts., doz. \$2.50.
BUPHTHALMUM SALICIFOLIUM (Ox-Eye). Yellow.
CALLIRRHOE INVOLUCRATA (Poppy Mallow). Violet crimson.
Trailing in habit.

CAMPANULA—BLUEBELLS

The beauty of the Bluebell is well known and the plant is the most hardy and easily grown. The following list comprises the best and most free-flowering varieties.

- CAMPANULA CALYCANTHEMA** (Cup and Saucer). We offer
them in white, pink and blue, and in sizes to bloom the first
season. Should be given light protection in Winter.
CAMPANULA CARPATICA (Harebell). Blue.
CAMPANULA VAR. ALBA. White.
CAMPANULA LATIFOLIA MACRANTHA. Purp'e.
CAMPANULA MEDIA (Canterbury Bell). Biennial. Flowers blue,
white, rose and striped.
CAMPANULA PERISCIFOLIA (Peach Bells). Purple.
CAMPANULA VAR. ALBA. White.
CAMPANULA VAR. MOERHEIMI. Double white.
CAMPANULA PYRAMIDALIS (Chimney Bell). Blue.
CAMPANULA ROTUNIFOLIA (Blue Bells of Scotland). Blue.
CAMPANULA TRACHELIUM (Coventry Bells). Purple.

- CATANANCHE COERULA**. Blue.
CENTAUREA MACROCEPHALA. Yellow.
CENTAUREA MONTANA. Purple.
CENTAUREA VAR. ALBA. White.
CENTRANTHUS RUBER (Valerian). Crimson.
CERASTIUM BOISSIERII (Mouse Ear). White.
CERASTIUM TOMENTOSUM. White.
CHELONE LYONI (Turtle Head). Red.

THE DAISIES

- CHRYSANTHEMUM LEUCANTHEMUM HYBRIDUM** (Shasta
Daisy). A variety remarkable for its prolific flowering quali-
ties. White.
CHRYSANTHEMUM VAR. ALASKA. White.
CHRYSANTHEMUM VAR. CALIFORNICA. Yellow.
CHRYSANTHEMUM MAXIMUM. White.

NEW GIANT HARDY CHRYSANTHEMUMS

The following two varieties are exceptional, both in height of
plant and size of bloom.

- CHRYSANTHEMUM BAYONA**. Height 4 1-2 feet. Flowers pink-
ish lavender. 3 inches across. Each 50 cts.
CHRYSANTHEMUM ORIENT. Height 5 feet. Flowers pure
white. 3 1-2 inches across. Early. Each 50 cts.

All Hardy Perennial Plants, except where noted:

HARDY CHRYSANTHEMUMS

The hardy Chrysanthemum is very deservedly coming more and more into favor as a garden plant. Being very free flowering, excellent for cutting, and one of the last to disappear in late Autumn, it should be more generally grown. While it is quite hardy, a slight Winter protection is advisable.

CHRYSANTHEMUM AUREA FLORIBUNDA. Yellow.

CHRYSANTHEMUM BRIDESMAID. Blush.

CHRYSANTHEMUM CHARLES JENKS. Pure white, fading to light pink.

CHRYSANTHEMUM DAVIDIANA. Pink.

CHRYSANTHEMUM GOLDFINCH. Golden.

CHRYSANTHEMUM GOLDEN PHEASANT. Golden.

CHRYSANTHEMUM JULIA LAGRAVERE. Dark red.

CHRYSANTHEMUM SOLIEL D'OR. Orange.

CHRYSANTHEMUM TIBER. Red.

CHRYSANTHEMUM VICTOR. Crimson.

CHRYSANTHEMUM WHITE SWAN. White.

CHRYSANTHEMUM YELLOW QUEEN. Yellow.

BUTTON OR SMALL-FLOWERING POMPON CHRYSANTHEMUMS

These varieties are very decorative. The charming little double flowers are the last to succumb to Winter, frequently blooming after quite severe frost.

LITTLE BOB. Brownish crimson. Each 25 cts.

MIGNON. Sulphur yellow. Each 25 cts.

CIMIFUGA RACEMOSA (Snakeroot). White.

CLEMATIS RECTA. White.

CONVALLARIA MAJALIS (Lily of the Valley). White. Clumps, each 25 cts., doz. \$4.00.

COREOPSIS LANCEOLATA GRANDIFLORA. Yellow.

COREOPSIS ROSEA (Pink Tickseed). Daisy-like flowers with yellow centers and rose-colored rays.

COREOPSIS VERTICILLATA, or **TENUIFOLIA** (Whorled Tickseed). Flowers golden yellow and about one-half inch across

DELPHINIUM—LARKSPUR

The Larkspur, one of the oldest plants in cultivation, is still considered indispensable for the hardy garden. It will bloom continuously if cut back when the flowers begin to fade.

DELPHINIUM BELLADONNA. Sky blue. Each 20 cts., doz. \$2.00.

DELPHINIUM CHINENSIS GRANDIFLORA (Chinese Larkspur). Blue.

DELPHINIUM VAR. ALBA. White.

DELPHINIUM VAR. ELATUM. Violet-blue flowers.

DELPHINIUM FORMOSUM. A splendid old hardy plant, with rich blue flowers, tinged with purple; white eye.

DELPHINIUM GOLD MEDAL HYBRIDS. Flowers all shades of blue, both double and single. Best variety in cultivation.

Each, 15c; doz., \$1.50; hundred, \$10.00.

DIANTHUS—HARDY GARDEN PINKS

The following list comprises the best of the old hardy garden varieties, together with some of the newer and greatly improved forms of the double pinks. No garden is complete without its bed of Dianthus, and we offer a collection of the best varieties obtainable.

- DIANTHUS BARATUS** (Sweet William). In separate colors of pink, crimson, white, pink and white, or mixed.
- DIANTHUS DELTOIDES** (Maiden Pink). Deep pink, 6 to 9 inches.
- DIANTHUS PLUMARIUS** (Grass Pink). Pink.
- DIANTHUS VAR. SEMPERFLORENS** (Homestead Pink). Pink.
- DIANTHUS ABBOTSFORD**. Crimson. New and very fine.
- DIANTHUS ESSEX WITCH**. Pink. Double and free flowering.
- DIANTHUS HER MAJESTY**. White. Very large and double.
- DIANTHUS HOMER**. Rosy red. Double and fragrant.
- DIANTHUS JULIETTE**. White and crimson. Very double and sweet. New and one of the best. Each 25 cts., doz. \$2.50.
- DIANTHUS LOUISE M. ALCOTT**. Deep pink, extra large, with long stems. Each 25 cts., doz. \$2.50.
- DIANTHUS NEW MOUND**. Pink.
- DIANTHUS PERPETUAL SNOW**. White. Double and very large. It blooms constantly and freely.
- DIANTHUS SOUVENIR DE SALE**. Soft pink. Flowers large and fragrant.
- DIANTHUS WHITE RESERVE**. White.

NEW HARDY PINKS OF EXCEPTIONAL VALUE

- DIANTHUS MRS. TRUE**. This variety is very free flowering. Individual flowers about 1 1-2 inches across, semi-double and pure white with greenish yellow center. A most unusual and striking variety. Each 50 cts.
- DIANTHUS ELIZABETH PETERS**. This new Garden Pink is exceptionally beautiful. It is very free flowering and of the most lovely Strawberry pink, tinted with orange. Center crimson. Flowers single and 1 1-2 inches across. A most valuable addition. Each 25 cents.
- The following three varieties are semi-double, very sweet scented, and flower profusely till frost.
- DIANTHUS VAR. GARDEN QUEEN**. White, with crimson center. Semi-double, ever-blooming and sweet scented. Each 25 cts., doz. \$2.50.
- DIANTHUS VAR. INNOCENCE**. White, with light pink center. Semi-double and ever blooming. Very sweet, each 25 cts. doz. \$2.50.
- DIANTHUS VAR. RUBY KING**. Semi-double and ever-blooming. Very sweet scented. Dark red with crimson center. Each 25 cts., doz. \$2.50.

- DICENTRA EXIMIA**. Rose-colored flowers; foliage fern-like.
- DICENTRA SPECTABILIS** (Bleeding Heart). Crimson and white.
- DICTAMNUS FRAXINELLA** (Gas Plant). Red.
- DICTAMNUS VAR. ALBA**. White.

All Hardy Perennial Plants, except where noted:

DIGITALIS—THE FOXGLOVES

- DIGITALIS GRANDIFLORA. Yellow. 2 to 3 feet.
DIGITALIS PURPUREA (Foxglove). Purple.
DIGITALIS VAR. GLOXINIAEFLORA. White to pink.
DIGITALIS VAR. ALBA. White.
- DODECATHEON MEADIA (Shooting Star). Purplish.
ECHINACEA PURPUREA (Cone Flower). Reddish purple.
ECHINOPS RITRO (Globe Thistle). Steel blue.
EPILOBIUM ANGUSTIFOLIA (Great Willow Herb). Magenta.
ERYNGIUM AMETHYSTINUM (Sea Holly). Blue.
ERYNGIUM AQUATICUM (Button Snake Root). White.
EUPATORIUM AGERATOIDES (White Snake Root). White.
EUPATORIUM PURPUREUM (Joe-Pye, or Trumpet Weed). Purple pink.
EUPHORBIA COROLLATA (Spurge). White.
FESTUCA GLAUCA (Fescue Grass).
FUNKIA FORTUNEI (Plaintain Lily). Pale lilac.
FUNKIA LANCIFOLIA. Pale lilac.
FUNKIA SUBCORDATA GRANDIFLORA (White Day Lily).
White. Each 25 cts., doz. \$2.50.
FUNKIA UNDULATA VARIEGATA. Lilac.
GALLARDIA GRANDIFLORA (Blanket Flower). Crimson orange
GERANIUM ATROANGUINEUM (Red Crane's Bill). Crimson.
GERANIUM MACULATUM (Wild Crane's Bill). Lavender.
GILLENIA TRIFOLIATA (Bowman's Root). White. 3 feet.
Each 25 cts., doz. \$2.50.
GYPSOPHILA PANICULATA (Baby's Breath). White.
GYPSOPHILA REPENS (Creeping Chalk Plant). Pale pink.
GYPSOPHILA STEVENI (Stevens' Chalk Plant). White.
HELENIUM AUTUMNALE (Sneezewort).
HELENIUM AUTUMNALE VAR. RUBRUM. A new and beautiful variety. Flowers Aster-shaped and reddish-brown. A profuse bloomer. Each 20 cts., doz. \$2.00.
HELENIUM AUTUMNALE SUPERBUM. Yellow.
HELENIUM BIGELOWII. Yellow.
HELENIUM GRANDICEPHALUM STRIATUM. Orange.
HELENIUM HOOPESII. Yellow.
HELIANTHEMUM ANGUSTIFOLIUM (Sun Rose). Yellow.
HELIANTHEMUM VULGARE VAR. HYSSOPIFOLIUM. Copper.
HELIOPSIS LAEVIS (Ox-Eye). Orange.
HELIOPSIS VAR. FITCHERIANA (False Sunflower).

THE HARDY SUNFLOWERS

- HELIANTHUS DECAPETALUS (Sunflower). Yellow.
HELIANTHUS GIGANTEUS. Yellow.
HELIANTHUS LAETIFLORUS. Yellow.
HELIANTHUS MISS MELLISH. Very large, semi-double flowers of fine form and bright orange yellow, freely produced. 6 feet. New. Each 20 cts., doz. \$2.00.
HELIANTHUS MOLLIS (Hardy Sunflower). Yellow.
HELIANTHUS MULTIFLORUS FL. PL. Yellow.

Each, 15c; doz., \$1.50; hundred, \$10.00.

- HELIANTHUS TUBEROSA (Jerusalem Artichoke). Yellow. Tubers edible.
- HELLEBORUS NIGRA MAJOR (Christmas Rose). White. Should be grown in coldframe, where it will bloom in December and January. Each 30 cts., doz. \$3.00.
- HEMEROCALLIS AURANTIACA MAJOR (Homestead Lily). Orange. Each 35 cts.
- HEMEROCALLIS FLAVA (Yellow Day Lily). Orange.
- HEMEROCALLIS FULVA (Tawny Day Lily). Orange.
- HEMEROCALLIS VAR. FLORE PLENO. Yellow.
- HEMEROCALLIS MDDENDORFIANA. Golden Yellow.
- HEMEROCALLIS THUNBERGII. Bright yellow.
- HEPATICANGULOSA. Sky blue.
- HEPATICATRILOBA. Blue.
- HESPERIS MATRONALIS (Rocket). Purple.
- HEUCHERASANGUINEA (Coral Bells). Crimson.
- HEUCHERAVAR. ROSEA. Pink. 1 to 1 1-2 feet. New and valuable for the garden. Each 30 cts., doz. \$3.00.
- HIBISCUS MALLOW MARVELS. An extremely handsome type of Mallows, attaining a height of 5 to 6 feet, and producing an abundance of flowers from 6 to 7 inches across, and of the richest shades of pink, crimson, white and yellow. Good among shrubbery or in the border. Will thrive in any soil, but should be given a slight mulch in Winter. August and September. Each 30 cts., doz. \$3.00.
- HIBISCUS MOSCHEUTOS (Mallow). Rosy red.
- HIBISCUS VAR. "Crimson Eye." White.
- HIERACIUM AURANTIACUM. Orange red.
- HOLLYHOCKS. (See Althaea Rosea).
- HYSSOPUS OFFICINALIS (Hyssop).
- IBERIS SEMPERVIRENS (Candytuft.) Pure white.

IRIS

IRIS GERMANICA, OR GERMAN IRIS

The German Iris blooms in June and is one of the most desirable Spring-flowering plants. No garden should be without a collection. We offer below a number of the best and most profuse flowering varieties.

In the following descriptions "S" signifies the standards, or erect petals; "F," the falls, or drooping petals.

- ASIATICA. "S." Purple plume. "F." Darker purple.
- CANARY BIRD. "S." Canary Yellow. "F." Crimson purple.
- CELESTE. Pure celestial blue, changing to porcelain.
- DARIUS. "S." Lemon. "F." Yellow, veined and corded with purple.
- DONNA MARIA. "S." Azure. "F." Purple.
- DUCHESS DE NEMOURS. "S." Pale lilac. "F." Purple violet, veined white.
- FLAVESCENS. Light primrose yellow, large flowers.
- FLORENTINA ALBA. "S." and "F." Light porcelain blue changing to white.

All Hardy Perennial Plants, except where noted:

- FLORENTINA BLUE. "S." and "F." Yale blue. Fragrant.
 HECTOR. Yellow and brownish red.
 HONORABILIS. "S." Indian yellow. "F." Chestnut red.
 LA TENDRE. "S." Lavender blue. "F." Blue, veined violet.
 L'INNOCENCE. Pure white, penciled purple and orange.
 MADAM CHEREAU. "S." and "F." Pure white, penciled violet.
 MAORI KING. "S." Golden yellow. "F." Chocolate, veined white.
 MRS. H. DARWIN. "S." French white. "F." White, veined purple.
 PALLIDA DALMATICA. 3 to 4 feet. Lavender, stately spikes. New and very fine. Each 25 cts., doz. \$2.50.
 PRINCESS OF WALES. Combination violet purple, violet and yellow.
 PURPLE QUEEN. "S." and "F." rich violet purple.
 QUEEN OF MAY. "S." and "F." bright rosy lavender.
 SILVER KING. "S." and "F." pure white; very large. Fragrant.

IRIS KAEMPFERI (JAPANESE IRIS)

We describe here a number of the best obtainable, selected from direct importations from Japan. Large plants, each 25 cts.; doz. \$2.50; 100, \$15.00. Mixed colors, each 20 cts.; doz., \$2.00; 100, \$12.00. (Order by number or name.)

- No. 1. BANDAI-NO NAMU. White with yellow center.
 No. 7. YAMATO-NISHIKI. Light purple with dark spots.
 No. 12. GOSETSU-NO-MAI. Navy blue with dark stripe and variegated center.
 No. 13. BOTEKI-NO KOE. White and purple stripes and variegated center.
 No. 22. SUIREN. Purple with white stripes.
 No. 23. AOI-NO-UE. Light navy.
 No. 26. DATE-DOGU. Dark purple with lighter colored center.
 No. 33. AOI-GATA. Light navy with dark stripe.
 No. 40. SHIGURE-MOMIJI. Pink and white variegated.
 No. 50. USHIO-NO-IRO. Light blue, with darker edge petals and whitish center.
 No. 62. MEIGETSU. White with yellow center. (Three petals.)
 No. 66. IZIMI-GAWA. White with purple stripes.
 No. 68. SANOWATARI. White with yellow center. (Six petals.)
 No. 70. ZAMA-NO MORI. Purple, light, with white edges and white stripe.
 No. 71. KARAKO-ASOBI. Navy blue, darker at edges, with purple stripe.
 No. 72. KURO-KUMO. Purple with dark stripes.
 No. 78. TAGOTO-NO-TSUKI. White, with yellow center.
 No. 84. BANRI-NOHIBIKI. Purple, light with dark stripes.
 No. 90. KIRIN-KAKU. Navy, with variegated center.
 No. 99. TAI-HEI-RAKU. Purple, dark with red stripes.

Mixed Colors.—These are made up from some of the best sorts, and where mass planting is required will give the greatest satisfaction.

Each, 15c; doz., \$1.50; hundred, \$10.00.

MISCELLANEOUS IRIS

- IRIS CRISTATA. 8 inches. Early, light blue, fringed and spotted yellow. Each 20 cts., doz. \$2.00.
 IRIS ORIENTALIS. 3 to 4 feet. May and June. Deep Yale blue.
 IRIS VAR. SNOW QUEEN. Pure white. Very free and fine. Each 25 cts., doz. \$2.00.
 IRIS PSEUDO-ACORUS. Yellow, shaded orange.
 IRIS PUMILA. 6 to 9 inches. April and May. Deep purple. Each 20 cts., doz. \$2.00.
 IRIS VAR. CYANEA. Purple, blackish tint. Very desirable and fine. Each 20 cts., doz. \$2.00.
 IRIS VAR. FORMOSA. Deep violet blue. A most profuse bloomer. Each 20 cts., doz. \$2.00.
 IRIS VAR. SIBIRICA. June. Pale blue. Very bushy, free flowering, choice.

- JASIONE PERENNIS. Blue.
 LATHYRUS LATIFOLIUS (Everlasting Pea). Red.
 LATHYRUS VAR. ALBUS. White.
 LAVANDULA VERA. (Lavender). Blue.
 LEPACHYS PINNATA. Yellow.
 LIATRIS ODORATISSIMA (Blazing Star). Purple.
 LIATRIS PYCNOSTACHYA. Purple.
 LIATRIS SCARIOSA. Purple.

LILIUM—THE LILIES

We name below only the varieties most satisfactory for garden planting, and such as can be relied upon for hardiness and free flowering. Lilies may be planted late in the Fall, or in early Spring, and should be set about 6 inches deep.

- LILIUM AURATUM (Gold-banded Lily.) Each 20 cts., doz. \$2.00
 LILIUM BATEMANN. Clear orange, unspotted. Each 20 cts., doz. \$2.00.
 LILIUM CANDIDUM (Annunciation, or Madonna Lily). The flowers are pure snow-white and very fragrant, borne on long stems. Each 20 cts., doz. \$2.00.
 LILIUM SPECIOSUM ALBUM (Japan Lily). Pure White. Each 20 cts., doz. \$2.00.
 LILIUM VAR. RUBRUM. White, crimson spotted. Each 20 cts.; doz. \$2.00.
 LILIUM SUPERBUM. Rich yellowish red. Each 20 cts., doz. \$2.00.
 LILUM TIGRINUM (Tiger Lily). Orange. Each 15 cts., doz. \$1.50.
 LILIUM VAR. FLORE PLENO (Double Tiger Lily). Orange. Each 20 cts., doz. \$2.00.
 LINUM PENENNE. Blue.
 LOBELIA CARDINALIS (Cardinal Flower). Scarlet.
 LOBELIA SYPHILITICA (Blue Cardinal Flower).
 LUPINUS POLPPHYLLUS (Lupin). Blue.
 LUPINUS VAR. ALBUS. White.
 LUPINUS VAR. ROSEUS. Pink. Each 25 cts.
 LYCHNIS CHALCEDONICA (London Pride). Scarlet.
 LYCHNIS VAR. PLENISSIMA. Pink. Each 20 cts., doz. \$2.00.

All Hardy Perennial Plants, except where noted:

LYCHNIS HAAGEANA. Red.

LYCHNIS VISCARIA SPLENDENS PLENO (Ragged Robin).
Red.

LYSIMACHIA CLETHROIDES. White.

LYSIMACHIA NUMMULARIA (Money Wort). Yellow. Excellent
for covering ground under shade trees or bare spots in shady
places. Sun and half shade..

LYTHRUM SALICARIA (Loosestrife). Purple.

LYTHRUM VAR. ROSEUM SUPERBUM. Pink.

MALVA MOSCHATA (Marsh Mallow). Pink.

MALVA VAR. ALBA. White.

MELISSA OFFICINALIS VARIEGATA (Balm). White.

MENTHA PIPERITA (Peppermint). Purplish.

MENTHA VIRIDIS (Spearmint) Purplish.

MONARDA DIDYMA (Oswego Tea). Scarlet.

MONARDA VAR. ALBA. White.

MONARDA VAR. SPLENDENS. Crimson scarlet.

MONARDA FISTULOSA (Bergamot). Rosy purple.

MYOSOTIS PALUSTRIS (Forget-Me-Not). Blue.

OENOTHERA MISSOURIENSIS. Yellow. Each 25 cts.

OENOTHERA SPECIOSA. White.

OENOTHERA YOUNGII (Evening Primrose). Yellow.

OPUNTIA MISSOURIENSIS (Prickley Pear). Yellow. Each 20
cts., doz. \$2.00.

PACHYSANDRA TERMINALIS. White. Each 20 cts., doz. \$2.00,
100 \$15.00.

THE PAEONIES

We offer strong plants only. Prices, except where otherwise
noted. Named varieties, each 30 cts., doz. \$3.00, 100, \$20.00; Mixed
colors, doz. \$2.00, 100, \$12.00.

DOUBLE VARIETIES

AMABILIS GRANDIFLORA. White, large, sweet scented. Pet-
als fringed.

BARON ROTHSCHILD. Outside rose, center salmon. Sweet and
distinct.

BICOLOR. Outside pink; center white.

BLUSHING BRIDE. Light rose, nearly white.

BUCKII. Light crimson, rose scented.

CAROLINE MATHER. Purple crimson, very dark. Extra large.

CHARLEMAGNE. Flesh white, center tinted lilac. New. Each
50 cts., doz. \$5.00.

COURONNE D'OR (Crown of Gold). Yellowish white, center
petals with light carmine edges. Each 75 cts., doz. \$6.00.

DELICATISSIMA. Rose, large, full, sweet and very fine.

DUCHESS DE NEMOURS. Rose pink; large, sweet. One of
the best.

FESTIVA MAXIMA. Resembles Festiva alba, but larger and
blooms in clusters. The finest early white. Each 50 cts.,
doz. \$5.00, large clumps, each \$1.50.

FRAGRANTISSIMA. Violet and rose color. Very sweet.

FULGIDA. Very dark crimson.

Each, 15c; doz., \$1.50; hundred, \$10.00.

- GRANDIFLORA ROSEA. Rose crimson.
HUMEI. Rose color; large, late, sweet. One of the best.
KING OF ROSES. Deep rose; sweet.
LA FRANCE. Outside pink, yellowish center.
LIVINGSTON. (New). Pale pink; free; late. Each \$1.00.
LOUIS VAN HOUTTE. Bright purple cherry; fragrant.
MODESTE. Deep rose; bright. Very large.
NORFOLK. Rose pink, changing to nearly white.
OFFICINALIS RUBRA. Dark red. Very early.
PERFECTION. Outside rosy lilac, salmon center. Sweet.
RUBRA SUPERBA. Dark crimson. Late. Each \$1.00.
TENUIFOLIA FL. PL. Deeply cut foliage, crimson scarlet.
Early. Each 75 cts., doz. \$7.50.
TRIOMPHE DU NORD. Violet rose, shaded lilac.

THE HARDY POPPIES

- PAPAVER NUDICAULE (Iceland Poppy). Yellow
PAPAVER VAR. ALBUM. White.
PAPAVER VAR. MINATUM. Orange.
PAPAVER ORIENTALE. The common variety of Oriental
Poppy.
PARDANTHUS SINENSIS (Blackberry Lily). Orange.
PENTSTEMON BARBATUS TORREYI. Scarlet.
PENTSTEMON DIGITALIS. White.
PENTSTEMON GRANDIFLORUS. Lilac blue.
PENTSTEMON OVATUS. Purple.
PHALARIS ARUNDINACEA VARIEGATA (Ribbon Grass). Va-
riegated.
PHYSOSTEGIA VIRGINICA (False Dragon Head).
PHYSOSTEGIA VAR. ALBA. White.
PLATYCODON GRANDIFLORA (Bellflower). Blue.
PLATYCODON VAR. MARIESII. Violet blue.

THE PHLOXES

We mention here only a few of the new and better varieties.
Price, unless otherwise noted. Each 15 cts., doz. \$1.50, 106
\$10.00.

PHLOX DECUSSATA

- AETNA. Deep coral red.
ANNIE COOK. Flesh pink. Very fragrant. The best Phlox yet
introduced.
AURORA BOREALE. Orange with purple center. Large pan-
cles.
BOULE DE FEU. Beautiful bright salmon, crimson eye. Very
effective.
BRIDESMAID. Pure white, with large crimson-carmine eye.
COQUELICOT. Rich orange scarlet. One of the best and most
showy.
CREPUSCULE. Extremely large flower, mottled blue and red.
CROSS OF HONOR. Striped lilac and white.

All Hardy Perennial Plants, except where noted:

- CZARINA.** Pure white. Early.
- ECLAIREUR.** Carmine, with rose-salmon center. Dwarf in habit.
- EIFFEL TOWER.** New. One of the tallest in growth, and excellent for planting among shrubs. Flowers of immense size, cherry pink, with salmon tint. Each 25 cts., doz. \$2.50.
- ELIZABETH CAMPBELL.** New. Very large spikes, light salmon, changing to pink in the center. Each 30 cts., doz. \$3.00.
- F. G. VON LASSBURG.** Fine, pure white.
- FERDINAND-CORTEZ,** Purple red.
- GENERAL CHANZY.** Scarlet pink, with salmon tint. Brilliant.
- GEN. VON HEUTZ.** New. Enormous flowers and trusses of the most brilliant salmon red, with white center. Each 25 cts., doz. \$2.50.
- GERONDIN.** One of our best dark red varieties.
- GLOIRE DE NEUILLY.** Magenta crimson. Very fine.
- INDEPENDENCE.** Large, pure white flowers. Rather dwarf in habit.
- JEANNE D'ARC.** Pure white. Flowers extra large.
- JOSEPH BARR.** Carmine red; individual flowers, extra large.
- JOSEPH GERBEAUX.** New. Large white, with cherry-red center. Each 25 cts., doz. \$2.50.
- LA FEU DE MONDE.** Bright salmon red. Late and fine.
- LE MAHDI.** Darkest of all. Deep reddish violet, with deeper eye.
- LE SOLIEL.** Bright magenta salmon. Late and fine.
- L'ESPERANCE.** Bright lavender pink; large, white center.
- LOUIS BLANC.** Reddish violet, purple shadings.
- MADAM LANGIER.** Darkest red. Very fine.
- MISS STEVENSON.** Deep pink, with conspicuous crimson eye.
- ORNAMENT.** Large flowers, pink. Very large pink velvet center.
- PANTHEON.** Bright carmine rose. Very effective.
- PEACH BLOW.** Delicate pink; deep rose center.
- RICHARD WALLACE.** Pure white, rosy crimson eye.
- R. P. STRUTHERS.** Bright pinkish salmon, with crimson eye.
- RYNSTROOM.** A gold-medal variety. New. Color bright pink, each individual flower being larger than a silver dollar. Very large trusses. Each 35 cts., doz. \$3.50.
- VESUVIUS.** Pure red, with purple eye; a dazzling color.

PHLOX SUFFRUTICOSA

EARLY TALL PHLOX

- MISS LINGARD.** White. 2 to 3 feet. June to August. Foliage large and glossy, good for cutting. Large individual flowers. Very fine. Sun.
- INDIAN CHIEF.** Purple. 2 to 3 feet. June and July. Sun.

DWARF PHLOX

- PHLOX AMOENA (Hardy Phlox).** Pink. 4 to 6 in. April and May. Deep green leaves in tufts. Good for carpeting, border or rock garden. Sun.

Each, 15c; doz., \$1.50; hundred, \$10.00.

NEW ENGLAND NURSERIES, BEDFORD, MASSACHUSETTS

- PHLOX CAROLINA OVATA** (Mountain Phlox). Deep rose. 1 to 2 feet. June and July. Sun. Very showy and good.
- PHLOX DIVARICATA**. 10 to 18 inches. May. Fragrant lilac flowers. Good for rock garden.
- PHLOX STELLARIA** (Chickweed Phlox). Pale blue. 5 to 6 inches. April and May. Foliage narrow and dense. A handsome plant. Sun. Each 20 cts., doz. \$2.00.
- PHLOX SUBULATA** (Moss Pink). Pink. 4 to 6 inches. April and May. Foliage moss-like and deep green.
- PHLOX VAR. ALBA** (White Moss Pink.) White. 4 to 6 inches. April and May. Very floriferous and handsome.
- PHLOX VAR. THE BRIDE**. White. 4 to 5 inches. April and May. Very fine. Pink. 1 to 3 feet. July and August. A profuse bloomer and a most attractive garden plant. Sun.
- PLUMBAGO LARPENTAE** (Blue Leadwort). Blue.
- PODOPHYLLUM PELTATUM** (Mandrake). White. Each 25 cts.
- POLOMNIUM COERULEUM** (Jacob's Ladder). Bluish purple.
- POLOMONTIUM REPTANS** (Greek Valerian). Blue.
- POLOMONIUM RICHARDSONI** (Dwarf Jacob's Ladder). Sky blue.
- POLYGONATUM GIGANTEUM** (Solomon Seal). White.
- POLYGONUM CUSPIDATUM**. A vigorous-growing plant, 6 feet in height, with large, heart-shaped foliage, and innumerable racemes of white flowers; very useful for the wild garden shrubbery, borders, or for isolated positions on the lawn, etc. Each 15 cts., doz. \$1.50.
- PRIMULA OFFICINALIS** (English Cowslip). Yellow. Each 20 cts., doz. \$2.00.
- PRIMULA VERIS SUPERBA** (Giant Primrose). Yellow. Each 20 cts., doz. \$2.00.
- PYRETHRUM BALSAMITA** (Chrysanthemum balsamita). Mint-Geranium, or Costmary. Height, 2 to 3 feet. Flowers yellow, daisy-like, and quite inconspicuous. A very old-fashioned and much valued plant, with highly sweet scented leaves. Each 25 cts.
- PYRETHRUM ROSEUM** (Feverfew). Various colors.
- PYRETHRUM ULIGINOSUM** (Giant Daisy). White.
- RANUNCULUS ACRIS FL. PL.** (Bachelor's Button). Yellow.
- RANUNCULUS REPENS** (Creeping Buttercup). Yellow.
- RHEXIA VIRGINICA** (Meadow Beauty). Pink.
- RUDBECKIA FULGIDA** (Black-Eyed Susan). Orange.
- RUDBECKIA LACINIATA FL. PL.** (Golden Glow). Yellow.
- RUDBECKIA NEWMANNII**. Golden yellow.
- RUDBECKIA PURPUREA**. Crimson-purple flowers, with dark central disk.
- RUDBECKIA SUB-TOMENTOSA**. Brilliant lemon-yellow flowers, with dark purple centers.
- RUTA BRAVEOLENS** (Rue). Panicles of small, fragrant flowers and divided leaves. Each 25 cts., doz. \$2.00.
- SALVIA PRATENSE** (Meadow Sage). Blue.
- SANGUINARIA CANADENSIS** (Blood Root). White.
- SANTOLINA INCANA** (Lavender Cotton). Yellow.
-

All Hardy Perennial Plants, except where noted:

NEW ENGLAND NURSERIES, BEDFORD, MASSACHUSETTS

- SAPONARIA OFFICINALS FL. PL. (Bouncing Bet). Pink.
SAXIFRAGA CORDIFOLIA (Rock Foil). Pink. Each 25 cts.,
doz. \$2.50.
SCABIOSA CAUCASICA (Blue Bonnet). Blue. Each 20 cts.
SEDUM ACRE (Golden Moss). Yellow.
SEDUM ALBUM (White Stonecrop). White.
SEDUM EWERSII VAR. TURGESTANICUM. Purplish.
SEDUM KAMSCHATICUM (Orange Stonecrop). Yellow.
SEDUM SIEBOLDII (Siebold's Stonecrop). Pink.
SEDUM VAR. VARIEGATA. Variegated foliage.
SEDUM SPECTABILE (Showy Sedum). Pink.
SEDUM SPECTABILIS PURPUREUM. (New). Each 20 cts., doz.
\$2.00.
SEDUM VAR. STOLONIFERUM (Purple Stonecrop). Purplish.
SEMPERVIVUM (House Leek). Various colors. Single rosettes.
Each 15 cts.
SILENE VIRGINICA (Fire Pink). Crimson.
SILPHIUM LACINIATUM (Compass Plant). Yellow. Each 25
cts.
SOLIDAGO SEMPERVIRENS (Golden Rod.) Yellow.
SOLIDAGO RIGIDA. Yellow.
SPIRAEA ARUNCUS (Goat's Beard). White.
SPIRAEA KNEIFFI. White. Flowers in large clusters; foliage
finely cut. Each 30 cts., doz. \$3.00.
SPIRAEA ASTILBOIDES (Meadow Sweet). White.
SPIRAEA VAR. FLORIBUNDA. White. Each 20 cts., doz.
\$2.00.
SPIRAEA DAPIDII. Rose pink. Each 20 cts., doz. \$2.00.
SPIRAEA FILIPENDULA FL. PL. White. Best of all white.
Each 25 cts., doz. \$2.50.
SPIRAEA GLADSTONEI. White. Each 25 cts., doz. \$2.50.
SPIRAEA JAPONICA. White.
SPIRAEA PALMATA. Carmine.
SPIRAEA QUEEN ALEXANDRA. Pink Sun. Each 25 cts.,
doz. \$2.50.
SPIRAEA VENUSTA. Red. Each 25 cts., doz. \$2.50.
STACHYS LANATA (Woundwort). Purple.
STATICE LATIFOLIA (Sea Lavender). Blue.
STIPA PINNATA (Feather Grass). Each 20 cts., doz. \$2.00.
STOKESIA CYANEA (Stokes' Aster). Blue.
STOKESIA VAR. ALBA. White.
THALICTRUM AQUILEGIFOLIUM (Meadow Rue). White.
THALICTRUM DELAVAYI. Lilac.
THERMOPSIS CAROLINIANA. Yellow.
THYMUS SERPYLLUM AUREUS (Thyme). Lilac.
THYMUS VULGARIS. Lilac.
THYMUS LANUGINOSUS. Creeping habit. Leaves downy and
gray. Good for rockeries.
TRADESCANTIA VIRGINIANA (Speedwort). Purple.
TRITOMA PFITZERI (Flame Flower). Orange scarlet.
TRITOMA NOBILIS. Orange.
TROLLIUS EUROPEUS (Globe Flower). Yellow.
TUNICA SAXIFRAGA. Pink. Each 20 cts., doz. \$2.00.

Each, 15c; doz., \$1.50; hundred, \$10.00.

NEW ENGLAND NURSERIES, BEDFORD, MASSACHUSETTS

- VALERIANA OFFICINALIS.** Pink.
- VERNONIA NOVEBORACENSIS** (Ironweed).
- VERONICA AMETHYSTINA.** Blue.
- VERONICA INCANA.** Blue.
- VERONICA LONGIFOLIA SUBSESSILIS.** Blue.
- VERONICA RUPESTRIS.** Blue. Creeping in habit.
- VERONICA SPICATA.** Blue.
- VERONICA VAR. ALBA.** White.
- VERONICA SPICATA VAR. ROSEA** (Pink Speedwell). A pretty border plant with conspicuous spikes of light pink flowers produced in June and July. Each 25 cts., doz. \$2.50.
- VINCA MINOR** (Myrtle). Blue. Evergreen and creeping. Excellent for ground covering or rockeries.
- VINCA VAR. ALBA.** A white flowering form of the above. Each 25 cts.
- VINCA MINOR VAR. AUREA VARIEGATA** (Golden-leaved Myrtle). Foliage white and green variegated. Flowers white. An interesting and rare sort. Each 25 cts.
- VINCA MINOR VAR. ROSEA** (Pink Myrtle). Flowers single and rose-colored. A beautiful new variety. Good for rock gardens or ground covering. Each 25 cts.
- VIOLA CORNUTA** (Violet). Purple.
- VIOLA VAR. ALBA.** White.
- VIOLA CORNUTA VAR. LUTEA MAJOR.** A charming yellow variety. Each 20 cts., doz. \$2.00.
- VIOLA CORNUTA VAR. PURPUREA.** Dark blue flowers produced freely all Summer. New. A very attractive plant for the border or rock garden. Each 20 cts., doz. \$2.00.
- VIOLA TRICOLOR** (Heart's Ease). Deep purple, with yellow center.
- VIOLA VAR. WELLSIANA.** Blue. 8 inches. April to October. Single, and a profuse bloomer. Sun.
- VIOLA DOUBLE RUSSIAN.** Very double and sweet-scented. Each 25 cts.

HARDY FERNS

- DICKSONIA PUNCTILOBULA** (Gossamer Fern). 2 feet. Long, broad, deeply cut, light green foliage. A beautiful variety. Each 20 cts.
- ONOCLEA SENSIBILIS** (Sensitive Fern). 18 inches. Broad, triangular, light green fronds on long stems. Each 25 cts.
- CSMUNDA REGALIS** (Royal Fern). 3 feet. One of the most graceful of Ferns. Pale green fronds which unfold in the most beautiful manner in early Spring. Forms a broad clump of graceful effect. Each 20 cts.
- OSMUNDA CINNAMOMEA** (Cinnamon Fern) 5 feet. Handsomely divided fronds, densely clothed with wool when young. Each 20 cts.
- PTERIS AQUILANA** (Bracken). 4 feet. Coarse dull green and leathery foliage. Each 20 cts.

For description of varieties, see our General Catalogue.

OLD-FASHIONED HERBS FOR KITCHEN GARDENS

For medicinal purposes, flavorings, etc., a few Pot and Sweet Herbs are necessary for every garden.

- ALLIUM SCHOENOPRASUM (Chives). Each 15 cts., doz. \$1.50.
ARTEMISIA ABSINTHEUM (Wormwood). Each 15 cts., doz. \$1.50.
DRACUNCULUS (Tarragon). Each 20 cts., doz. \$2.00.
HYSSOPUS OFFICINALIS (Hyssop). Each 15 cts., doz. \$1.50.
LAVANDULA BERIS (Lavender). Each 15 cts., doz. \$1.50.
MELISSA OFFICINALIS (Balm). Each 15 cts., doz. \$1.50.
MENTHA PIPERITA (Peppermint). Each 15 cts., doz. \$1.50.
MENTHA VIRIDIS (Spearmint). Each 15 cts., doz. \$1.50.
NEPETA CATARIA (Catnip). Each 15 cts., doz. \$1.50.
RUMEX CRISPUS (Sorrel). Each 15 cts., doz. \$1.50.
RUTA GRAVEOLENS (Rue). Each 15 cts., doz. \$1.50.
SALVIA OFFICINALIS (Sage). Each 15 cts., doz. \$1.50.
THYMUS VULGARIS (Thyme). Each 15 cts., doz. \$1.50.

NEW ENGLAND QUALITY BULBS

The following listed Winter and Spring-flowering Bulbs we supply in specially selected grades only.

Unless otherwise stated, all bulbs are ready for delivery in September.

NEW ENGLAND QUALITY BULBS

The following listed Winter and Spring-flowering Bulbs we supply in specially selected grades only.

Unless otherwise stated, all bulbs are ready for delivery in September.

HYACINTHS

One of our most popular bulbs for effective beds outdoors or growing in the house in pots. Their very decorative, long-keeping, brilliant colors and delightful fragrance recommend them.

SPECIAL NAMED BEDDING AND FORCING HYACINTHS

These are large, solid bulbs, producing large spikes of flowers, and all blooming at the same time, which makes them of great value for bedding out, as one can obtain the exact color effect desired. They are also desirable for forcing in pots or pans.

75c per doz., \$6.00 per 100.

- | | |
|------------------------|---------------------|
| Special Bright Red | Special Pure White |
| Special Pink | Special Blush White |
| Special Rose | Special Dark Blue |
| Special Crimson | Special Light Blue |
| Special Porcelain Blue | |

EXHIBITION HYACINTHS

These are all extra selected bulbs of large size and the best varieties for exhibition purposes and house culture.

SINGLE PINK, ROSE AND RED

- CARDINAL WISEMAN.** Dark pink; large, full spike. Each 15 cts., doz. \$1.50.
- GARIBALDI.** Bright crimson; large truss; early; excellent for forcing. Each 20 cts., doz. \$1.75.
- GENERAL DE WET.** Pleasing soft pink, with white throat; large spike. Each 20 cts., doz. \$2.00.
- GENERAL PILISSIER.** Crimson scarlet; grand spike; one of the earliest forcers. Each 15 cts., doz. \$1.50.
- JACQUES.** Light pink; immense spike; extra exhibition sort. Each 15 cts., doz. \$1.50.
- LA VICTOIRE.** Brilliant, dark pink, with large, perfect spike; one of the brightest. Each 15 cts., doz. \$1.50.
- LADY DERBY.** Beautiful bright rose pink; a lovely shade; large, compact spike. Each 15 cts., doz. \$1.50.
- LINNAEUS.** Brilliant, deep scarlet; early; fine spike. Each 15 cts., doz. \$1.50.
- QUEEN OF PINKS.** Brilliant, clear, bright pink; large, compact spike. Each 25 cts., doz. \$2.50.
- QUEEN WILHELMINA.** Vivid, rosy pink; elegant truss. Each 15 cts., doz. \$1.50.
- ROBERT STEIGER.** Brilliant deep red; splendid bedder. Each 15 cts., doz. \$1.50.
- ROI DES BELGES.** Bright scarlet; fine spike. Each 15 cts., doz. \$1.50.
- ROSE A MERVEILLE.** Beautiful pink; grand spike. Each 15 cts., doz. \$1.50.
- ROSEA MAXIMA.** Delicate rose pink; long truss. Each 15 cts., doz. \$1.50.

SINGLE PURE AND BLUSH WHITE

- BARONESS VAN THUYLL.** Pure white; large spike. Each 15 cts., doz. \$1.50.
- LANCHEUR A MERVEILLE.** Pure white; splendid. Each 15 cts., doz. \$1.50.
- BRITISH QUEEN.** Pure white; large truss; early. Each 20 cts., doz. \$2.00.
- CORREGGIO.** Snow white; large, perfect truss. Each 20 cts., doz. \$2.00.
- GENERAL VETTER.** Blush white; enormous spike. Each 15 cts., doz. \$1.50.
- GRAND BLANCHE.** Blush white; very early. Each 15 cts., doz. \$1.50.
- GRANDEUR A MERVEILLE.** Most popular blush white. Each 15 cts., doz. \$1.50.
- LA FRANCHISE.** Cream, tinted white; large truss. Each 15 cts., doz. \$1.50.

Not less than 6 bulbs of any one variety will be supplied at dozen rate.

NEW ENGLAND NURSERIES, BEDFORD, MASSACHUSETTS

- L.A. GRANDESSE.** Snow-white; large, compact spike. Each 15 cts., doz. \$1.50.
- L'INNOCENCE.** Pure white; large spike; excellent. Each 15 cts., doz \$1.50.
- MIMI.** Clear waxy white; immense spike. Each 20 cts., doz. \$2.00.
- MME. VAN DER HOOP.** Beautiful white; very large. Each 15 cts., doz. \$1.50.
- MR. PLIMSOLL.** Ivory white; grand spike. Each 15 cts., doz. \$1.50.

SINGLE BLUE, PURPLE AND VIOLET

- BARON VAN THUYLL.** Fine, deep blue; large truss. Each 15 cts., doz. \$1.50.
- CAPTAIN BOYTON.** Bright sky blue; grand spike. Each 15 cts., doz. \$1.50.
- CZAR PETER.** Light lavender blue; an old favorite. Each 20 cts., doz. \$2.00.
- ENCHANTRESS.** Delicate light blue; beautiful. Each 20 cts., doz. \$2.00.
- GRAND LILAS.** Light lilac blue; large spike. Each 15 cts., doz. \$1.50.
- GRAND MAITRE.** Deep porcelain blue; large truss. Each 15 cts., doz. \$1.50.
- JOHAN.** Beautiful light blue; large, compact truss. Each 15 cts., doz. \$1.50.
- KING OF THE BLUES.** Rich, dark blue; large spike. Each 15 cts., doz. \$1.50.
- MARIE.** Rich, deep blue; fine truss. Each 15 cts., doz. \$1.50.
- LORD BALFOUR.** Dark violet; enormous truss. Each 20 cts., doz. \$2.00.
- MENELIK.** Glittering bluish black; immense spike. Each 15 cts., doz. \$1.50.
- PERLE BRILLIANT.** Light blue, tinged lavender; enormous spike. Each 20 cts., doz. \$2.00.
- QUEEN OF THE BLUES.** Light blue; large spike. Each 20 cts., doz. \$2.00.
- REGULUS.** Azure blue; large bells and truss. Each 15 cts., doz. \$1.50.

MINIATURE HYACINTHS

These are also known as Dutch Romans and Pan Hyacinths. They are small, single-flowering Dutch Hyacinths, and are very suitable for growing in pans, pots or boxes, using one variety only to each pan, to insure that they are all blooming at the same time. They are also fine for outdoor planting.

- GERTRUDE.** Pink. doz. 45 cts., 100 \$3.00.
- KING OF BLUES.** Dark blue. Doz. 45 cts., 100 \$3.00.
- ROI DES BELGES.** Scarlet. Doz. 45 cts., 100, \$3.00.
- GRAND MAITRE.** Light blue. Doz. 45 cts., 100, \$3.00.
- LA GRANDESSE.** Snow white. Doz. 45 cts., 100, \$3.00.

EARLY ROMAN HYACINTHS

These are specially adapted for house culture and forcing, each bulb giving from three to six spikes. By early and successive plantings they may be had in bloom throughout the Winter. If well rooted and brought into heat by the middle of November, they may be had in bloom for Christmas.

PURE WHITE. Extra selected bulbs. Doz. 60 cts., 100 \$4.50.

PURE WHITE. Mammoth bulbs. Doz. 80 cts., 100 \$6.25.

LIGHT BLUE. Selected bulbs. Doz. 50 cts., 100 \$4.00.

LIGHT PINK. Selected bulbs. Doz. 50 cts., 100 \$4.00.

WHITE ITALIAN. With larger spikes and blooming a little later than the White Romans. Doz. 50 cts., 100 \$4.00.

GRAPE HYACINTHS

One of the prettiest early Spring-flowering bulbs. Perfectly hardy. Excellent for naturalizing and for edging of clumps in the shrubbery border. Very effective, and succeed in almost any situation. For house-growing they are very pretty and interesting.

ALBUM. Pure white. Doz. 15 cts., 100 \$1.00.

COERULEUM. Bright blue. Doz. 15 cts., 100 \$1.00.

HEAVENLY BLUE. Large sky blue. Doz. 25 cts., 100 \$1.50.

TULIPS

NAMED SINGLE EARLY TULIPS

Our collection embraces all the choicest varieties for forcing and bedding. The figures before the name indicate the height in inches, and the * the best sorts for forcing.

10 **ARTUS.** Brilliant scarlet; a splendid bedder. Doz. 25 cts.
100 \$1.50, 1000 \$13.00.

10 **BACCHUS.** Rich, dark crimson. Doz. 30 cts., 100 \$2.00, 1000 \$18.00.

10 ***BELLE ALLIANCE.** Large; sweet scented; scarlet. Doz. 30 cts., 1000 \$2.25.

11 **CANARY BIRD.** Rich golden yellow. Doz. 25 cts., 100 \$1.75.

11 **CHRYSOLORA.** Large; pure yellow; fine border. Doz. 25 cts. 100 \$1.75.

11 **COTTAGE BOY.** Light orange red, bordered bronzy yellow; very distinct; fine bedder. Doz. 35 cts., 100 \$2.50, 1000 \$23.00.

9 **COTTAGE MAID.** Bright pink; fine for late forcing. Doz. 25 cts., 100 \$1.75, 1000 \$15.00.

11 ***COULEUR CARDINAL.** Brilliant crimson; a late forcer. Doz. 35 cts., 100 \$2.50, 1000 \$23.00.

12 ***CRAMOISI BRILLIANT.** Large, dazzling scarlet; excellent. Doz. 30 cts., 100 \$1.75, 1000 \$16.00.

12 **CRIMSON KING.** Large; bright crimson. Doz. 25 cts., 100 \$1.75, 1000 \$15.00.

12 ***DUCHESS OF PARMA.** Orange red, bordered yellow. Doz. 25 cts., 100 \$1.75, 1000 \$15.00.

12 ***FLAMINGO.** Carmine rose over white, giving bright, deep pink effect. Doz. 60 cts., 100 \$4.00, 1000 \$40.00.

NEW ENGLAND NURSERIES, BEDFORD, MASSACHUSETTS

- 12 ***GRACE DARLING.** Bright bronze scarlet; very large and effective bedder. Doz. 50 cts., 100 \$3.50, 1000 \$32.00.
- 11 ***GOLDFINCH.** Rich, pure yellow; fragrant. Doz. 30 cts., 100 \$1.75, 1000 \$15.00.
- 10 ***JOOST VAN VONDEL, STRIPED.** Cerise, feathered white. Doz. 35 cts., 100 \$2.25, 1000 \$20.00.
- 10 ***JOOST VAN VONDEL, WHITE (Lady Boreel).** Largest and most beautiful white. Doz. 50 cts., 100 \$3.50, 1000 \$35.00.
- 14 ***KEIZERKROON.** Brilliant red, with broad, yellow border. Doz. 40 cts., 100 \$2.50, 1000 \$22.50.
- 13 ***KING OF YELLOWS.** Deep golden, egg shaped, and one of the earliest; excellent. Doz. 35 cts., 100 \$2.00, 1000 \$17.00.
- 12 **LA GRANDEUR (Grand Scarlet).** Bright scarlet; very large, beautiful flower. Doz. 50 cts., 100 \$3.00, 1000 \$28.00.
- 11 ***LA REINE.** White, tinted pink; extra large bulbs. Doz. 20 cts., 100 \$1.50, 1000 \$10.00.
- 11 **L'IMMACULEE.** Pure white; good bedder. Doz. 25 cts., 100 \$1.50, 1000 \$12.00.
- 11 ***MON TRESOR.** Large; pure yellow; best of its color for pots or pans. Doz. 30 cts., 100 \$2.25, 1000 \$18.00.
- 10 **NELLY.** Large; pure white; splendid bedder. Doz. 25 cts., 100 \$1.60, 1000 \$12.00.
- 11 **OPHIR D'ORA.** Large; golden yellow; fragrant. Doz. 30 cts., 100 \$2.00, 1000 \$16.00.
- 11 **PINK BEAUTY.** Immense; rose pink, slightly shaded white. Doz. 50 cts., 100 \$4.00.
- 13 ***POTTEBAKKER, SCARLET.** Brilliant. Doz. 30 cts., 100 \$2.00, 1000 \$20.00.
- 13 ***POTTEBAKKER, WHITE.** Pure white; one of the best. Doz. 35 cts., 100 \$2.50, 1000 \$20.00.
- 13 **POTTEBAKKER, YELLOW.** Large, pure yellow. Doz. 40 cts., 100 \$2.75, 1000 \$22.00.
- 13 **POTTEBAKKER, YELLOW STRIPED.** Yellow, striped with red. Doz. 35 cts., 1000 \$2.00, 1000 \$15.00.
- 11 ***PRIMROSE QUEEN (Herman Schlegel).** Soft primrose, yellow; fine form and distinct. Doz. 35 cts., 100 \$2.50, 1000 \$25.00.
- 11 ***PRINCESS HELENE.** Large; pure white; extra. Doz. 35 cts., 100 \$2.50, 1000 \$23.00.
- 12 **PRINCESS WILHELMINA.** Deep pink and white; large, pointed flowers; excellent. Doz. 35 cts., 100 \$2.50, 1000 \$22.00.
- 12 ***PRINCE OF AUSTRIA.** Rich orange red; fragrant. Doz. 30 cts., 100 \$2.25, 1000 \$22.00.
- 12 ***PROSERPINE.** Rich, satiny carmine rose; very large. Doz. 50 cts., 100 \$3.50, 1000 \$32.00.
- 11 ***QUEEN OF THE NETHERLANDS.** Delicate staminy pink; extra large. Doz. 40 cts., 100 \$2.50, 1000 \$22.50.
- 10 **QUEEN OF VIOLETS.** Clear violet. Doz. 40 cts., 100 \$3.00, 1000 \$27.00.
- 10 ***ROSE GRIS-DE-LIN.** Rose pink, shading to white. Doz. 25 cts., 100 \$1.50, 1000 \$16.00.
- 10 ***ROSE LUISANTE.** Dark, silky rose; beautiful. Doz. 40 cts., 100 \$3.00, 1000 \$25.00.

NEW ENGLAND NURSERIES, BEDFORD, MASSACHUSETTS

- 10 ***ROSA MUNDI HUIKMAN.** Bright rosy pink. Doz. 25 cts.,
100 \$1.50, 1000 \$13.00.
- 12 ***SIR THOMAS LIPTON.** Large, cup shaped; brilliant scarlet.
Doz. 50 cts., 100 \$3.50, 1000 \$35.00.
- 10 ***SILVER STANDARD.** Silvery white, flaked crimson. Doz.
35 cts., 100 \$2.50, 1000 \$22.00.
- 10 ***STANLEY.** Beautiful rose carmine. Doz. 40 cts., 100 \$3.00,
1000 \$30.00.
- 14 ***THOMAS MOORE.** Fine orange color; sweet scented. Doz.
25 cts., 100 \$1.75, 1000 \$16.00.
- 10 ***VERMILION BRILLIANT.** Dazzling varmillion scarlet; large
Doz. 40 cts., 100 \$2.75, 1000 \$30.00.
- 14 ***WHITE HAWK.** Large; pure white; of great substance. Doz.
35 cts., 100 \$2.50, 1000 \$22.00.
- 11 **WHITE SWAN.** Egg shaped; pure white. Doz. 30 cts., 100
\$2.00, 1000 \$16.00.
- 10 **WOUVERMAN.** Rich purple violet. Doz. 50 cts., 100 \$3.75,
1000 \$35.00.
- 10 ***YELLOW PRINCE.** Golden yellow; sweet scented. Doz. 30
cts., 100 \$2.00, 1000 \$16.00.

SINGLE EARLY TULIPS IN DISTINCT COLORS

These are selected varieties especially adapted for color effects
in outside bedding, design work, etc.

- CRIMSON.** 100 \$1.75, 1000 \$16.00.
GOLDEN YELLOW. 100 \$1.75, 1000 \$16.00.
ORANGE. 100 \$1.75, 1000 \$16.00.
PINK. 100 \$1.75, 1000 \$16.00.
SCARLET. 100 \$1.75, 1000 \$16.00.
PURE WHITE. 100 \$1.60, 1000 \$12.00.

SINGLE EARLY TULIPS IN MIXTURE

SUPERFINE MIXTURE. A splendid mixture containing all
colors, and composed of an unusually large number of varieties
which flower nearly together. Doz. 25 cts., 100 \$1.50, 1000 \$12.00.

SINGLE DUC VAN THOL TULIPS

These are the earliest of all Tulips, growing about 6 inches
high, and especially valuable for early forcing.

- GOLD STRIPED.** Doz. 30 cts., 100 \$1.75.
RED AND YELLOW. Doz. 25 cts., 100 \$1.75.
ROSE. Doz. 30 cts., 100 \$2.00.
SCARLET. Doz. 30 cts., 100 \$2.00.
WHITE MAXIMUS. Doz. 30 cts., 100 \$2.00.
YELLOW. Doz. 30 cts., 100 \$2.00.

NAMED DOUBLE TULIPS

These are useful for bedding and forcing; the large, Paeony-
like blossoms are highly ornamental, coming into bloom about a
week or more after the single early sorts, and lasting considera-

NEW ENGLAND NURSERIES, BEDFORD, MASSACHUSETTS

bly longer in flower. They make the best display, and the effect is better when planted one variety in a bed or clump. The letter after the name indicates the time of blooming; those marked A bloom together, followed in about a week by B, and C, the latest.

Star (*) indicates best sorts for forcing.

- 11 ***BOULE DE NEIGE**. A. Large, pure white, Paeony-like flower. Doz. 50 cts., 100 \$4.00, 1000 \$35.00.
11. ***CROWN OF ROSES**. A. Deep pink; excellent. Doz. 50 cts., 100 \$3.50, 1000 \$30.00.
- 11 ***CROWN OF GOLD**. A. Rich, deep yellow; large. Doz. 40 cts., 100 \$3.00, 1000 \$25.00.
- 10 **DUKE OF YORK**. B. Carmine, white edge; fine bedder. Doz. 30 cts., 100 \$2.00, 1000 \$15.00.
- 12 ***GLORIA SOLIS**. A. Red, bordered with gold. Doz. 30 cts., 100 \$2.00, 1000 \$18.00.
- 11 **LA CANDEUR**. B. Large; white. Doz. 30 cts., 100 \$2.00, 1000 \$15.00.
- 12 ***LE MATADOR**. A. Brilliant red; splendor forcer. Doz. 45 cts., 100 \$3.00, 1000 \$25.00.
- 11 **LE BLASON**. B. Blush white, tinged rose. Doz. 30 cts., 100 \$2.00, 1000 \$15.00.
- 10 **LORD BEACONSFIELD**. B. Immense; deep pink; very double. Doz. 40 cts., 100 \$3.00, 1000 \$30.00.
- 10 ***MURILLO**. B. Beautiful light pink. Doz. 30 cts., 100 \$2.00, 1000 \$18.00.
- 10 ***QUEEN OF THE NETHERLANDS**. A. Large, delicate rose. Doz. 40 cts., 100 \$3.00.
- 10 ***REX REBORUM**. B. Bright crimson scarlet. Doz. 35 cts., 100 \$2.50, 1000 \$20.00.
12. ***ROSINE**. A. Rose pink; fine forcer. Doz. 40 cts., 100 \$2.75, 1000 \$25.00.
- 10 ***RUBRA MAXIMA**. B. Large; deep crimson; fine. Doz. 35 cts., 100 \$2.50, 1000 \$20.00.
- 10 ***TEA ROSE (Saffrona)**. B. Saffron yellow Murillo. Doz. 50 cts., 100 \$3.50.
- 11 ***TOURNESOL**. A. Rich scarlet, edged with yellow. Doz. 40 cts., 100 \$3.00, 1000 \$25.00.
- 11 ***TOURNESOL, YELLOW**. A. Bright yellow, shaded with orange. Doz. 40 cts., 100 \$3.00, 1000 \$25.00.
- 11 **VELVET GEM**. A. Deep velvety carmine; very showy. Doz. 45 cts., 100 \$3.25, 1000 \$20.00.
- 12 ***VUURBAAK**. B. Immense; brilliant orange scarlet. Doz. 40 cts., 100 \$3.00, 1000 \$25.00.
- 10 **YELLOW ROSE**. C. Golden yellow; sweet scented. Doz. 30 cts., 100 \$2.00, 1000 \$15.00.

DOUBLE TULIPS IN MIXTURE

COLUMBIA PRIZE MIXTURE. Our special mixture, composed of the best named varieties for bedding. Doz. 30 cts., 100 \$2.00, 1000 \$18.00.

SUPERFINE MIXTURE. A special mixture of great variety. Doz. 25 cts., 100 \$1.50, 1000 \$12.00.

PARROT TULIPS

A singular and picturesque species of Late-flowering Tulips for outdoor cultivation, with peculiarly feathered and fringed petals. The flowers are of large size and very brilliant colors, combining shades of green peculiar to this species alone.

- ADMIRAL OF CONSTANTINOPLE.** Red, shaded orange. Doz. 30 cts., 100 \$2.00, 1000 \$15.00.
- CAFE BRUN.** Brown on yellow ground. Doz. 30 cts., 100 \$2.00, 1000 \$15.00.
- CRAMOISI BRILLIANT.** Beautiful crimson. Doz. 30 cts., 100 \$2.00, 1000 \$15.00.
- LUTEA MAJOR.** Bright yellow, feathered crimson and green. Doz. 30 cts., 100 \$2.00, 1000 \$15.00.
- MARKGRAAF.** Brownish red, feathered orange and purple. Doz. 30 cts., 100 \$2.00, 1000 \$15.00.
- SPLENDID MIXTURE.** In great variety and color. Doz. 25 cts., 100 \$1.75, 1000 \$14.00.

SINGLE LATE COTTAGE GARDEN TULIPS

These beautiful May-flowering varieties are becoming more popular each season, being entirely distinct from the early-flowering sorts, in their taller growth and later season of blooming. The large, beautifully formed flowers of magnificent colors, with delicate markings and featherings, are at their best in this locality about Memorial Day, and last well into June in ordinary seasons. They are excellent for beds, borders and naturalizing.

- BIZARRES.** Yellow ground, feathered with crimson, violet or white. Doz. 25 cts., 100 \$1.75, 1000 \$16.00.
- BYLOEMEN ROSES.** White ground, marked with all shades of red. Doz. 30 cts., 100 \$2.00, 1000 \$18.00.
- BYBLOEMEN VIOLETS.** White ground, marked with all shades of blue. Doz. 30 cts., 100 \$2.00, 1000 \$18.00.
- BOUTON D'OR (Ida).** Large, globular; deep yellow. Doz. 30 cts., 100 \$2.00, 1000 \$16.00.
- ELEGANS.** Brilliant crimson; reflexed petals. Doz. 40 cts., 100 \$3.00, 1000 \$25.00.
- ELEGANS ALBA (White Crown).** Large; white; reflexed petals margined carmine rose. Doz. 50 cts., 100 \$4.00, 1000 \$35.00.
- FULGENS.** Tall, showy; dark scarlet; reflexed petals. Doz. 40 cts., 100 \$3.00, 1000 \$25.00.
- FULGENS.** Tall, showy; dark scarlet; reflexed petals. Doz. 40 cts., 100 \$3.00, 1000 \$25.00.
- GESNERIANA MAJOR (Spathulata).** Large; rich crimson scarlet, with blue center. Doz. 30 cts., 100 \$2.00, 1000 \$18.00.
- GESNERIANA LUTEA.** Large; pure golden yellow; excellent. Doz. 40 cts., 100 \$3.00, 1000 \$25.00.
- GESNERIANA ROSEA.** Rosy carmine, black center. Doz. 25 cts., 100 \$1.75, 1000 \$15.00.
- GOLDEN CROWN.** Large; golden yellow, edged with red. Doz. 25 cts., 100 \$1.75, 1000 \$12.00.
- GOLDEN GOBLET.** Large, cup-shaped, golden-yellow flowers. Doz. 60 cts., 100 \$4.00, 1000 \$35.00.

NEW ENGLAND NURSERIES, BEDFORD, MASSACHUSETTS

- GREIGI.** Intense scarlet orange, spotted foliage; beautiful. Each 15 cts., doz. \$1.50, 100 \$10.00.
- INGLESCOMBE PINK.** Delicate salmon rose; immense flower. Doz. 40 cts., 100 \$3.00, 1000 \$25.00.
- INGLESCOMBE SCARLET.** Enormous; vermilion scarlet. Doz. 50 cts., 100 \$3.50, 1000 \$30.00.
- INGLESCOMBE YELLOW.** Glossy canary yellow; large cup shape. Doz. 75 cts., 100 \$5.50.
- ISABELLA (Shandon Bells).** Carmine rose, shaded white. Doz. 35 cts., 100 \$2.00, 1000 \$18.00.
- LA CANDEUR.** Large, egg shape; white, passing to rose. Doz. 35 cts., 100 \$2.25, 1000 \$25.00.
- LA MERVEILLE.** Rich salmon; very striking and fragrant. Large flower. Doz. 30 cts., 100 \$2.00, 1000 \$18.00.
- ORANGE BEAUTY.** Rich orange red; enormous flower. Doz. 40 cts., 100 \$2.50, 1000 \$22.00.
- PICOTTE (Maiden's Blush).** Blush white, with rose margin. Flowers borne on long stems; splendid for forcing. Doz. 30 cts., 100 \$2.00, 1000 \$18.00.
- SUMMER BEAUTY.** Silvery rose, flaked crimson and white. Doz. 50 cts., 100 \$3.50, 1000 \$30.00.
- SPLENDID MIXTURE.** Doz. 25 cts., 100 \$1.75, 1000 \$14.00.

DARWIN TULIPS, SINGLE LATE-FLOWERING

A distinct race of Single Late Tulips, with immense flowers, of well-rounded form, on tall, thick stems from 2 to 3 feet in height. The varieties we offer are selected from a very large collection as the best and most distinct, containing none but the large-flowering sorts, in colors sure to give satisfaction.

- ALLARD PIERSON.** Deep blood red; good forcer. Doz. 40 cts., 100 \$3.00.
- ANDRE DORIA.** Velvety dark chestnut; fine forcer. Doz. 50 cts., 100 \$3.50.
- BARONNE DE LA TONNAYE.** Vivid pink, with lighter margin; a faultless flower. Doz. 40 cts., 100 \$3.00.
- CARMINEA.** Glowing dark rose, with steel blue base. Doz. 40 cts., 100 \$3.00.
- CLARA BUTT.** Beautiful, soft salmon pink; forces well. Doz. 40 cts., 100 \$3.00.
- DONDERS.** Dark blood red, with blue and white center. Doz. 60 cts., 100 \$4.00.
- DREAM.** Beautiful, large, delicate lilac. Doz. 50 cts., 100 \$3.50.
- EDMEE.** Beautiful shade of vivid cherry rose, with lighter border. Doz. 60 cts., 100 \$4.50.
- EUROPE.** Fiery salmon scarlet, white center; extra. Doz. 50 cts., 100 \$3.50.
- FANNY.** Delicate rose, with white center marked blue. Doz. 50 cts., 100 \$3.50.
- FARNCOMBE SAUNDERS.** Very large; brilliant scarlet; extra. Doz. 60 cts., 100 \$4.00.
- FLAMBEAU.** Brilliant scarlet, with blue center; showy. Doz. 50 cts., 100 \$3.50.
- FRA ANGELICO.** Dark glossy maroon. Doz. 50 cts., 100 \$3.50.

NEW ENGLAND NURSERIES, BEDFORD, MASSACHUSETTS

- GLORY.** Brilliant scarlet; splendid bedder. Doz. 50 cts., 100 \$3.50.
- GLOW.** Dazzling vermilion, blue center. Doz. 50 cts., 100 \$3.50.
- GRETCHEN.** Beautiful soft pink. Doz. 25 cts., 100 \$2.50.
- GUSTAVE DORE.** Bright pink, edged silvery rose; fine forcer. Doz. 50 cts., 100 \$3.50.
- HERRY VEITCH.** Dark brown red, blue base; early forcer. Doz. 40 cts., 100 \$3.00.
- KATE GREENAWAY.** White, flushed with lavender. Doz. 50 cts., 100 \$3.50.
- KING HAROLD.** Deep rich crimson, white base; fine forcer. Doz. 50 cts., 100 \$3.50.
- LA CANDEUR (White Queen).** Large; globular; white. Doz. 50 cts., 100 \$3.50.
- LANDELLE.** Bright rosy pink, lighter at edges. Doz. 50 cts., 100 \$3.50.
- L'INGENUE.** Soft rosy pink, with broad border of rosy white, center blue. Doz. \$1.35, 100 \$6.00.
- LOVELINESS.** Satiny rosy carmine; forces well. Doz. 50 cts., 100 \$3.50.
- MADAME K'RELAGE.** Bright rosy pink, with lighter edges. Doz. 50 cts., 100 \$3.50.
- MASSACHUSETTS.** Clear, bright rose, white center. Doz. 60 cts., 100 \$4.00.
- MAY QUEEN.** Soft lilac rose, pale blue and white center. Doz. 50 cts., 100 \$3.50.
- NORA WARE.** Silvery lilac; shaded white. Doz. 60 cts., 100 \$4.00.
- PAINTED LADY.** Milk-white on dark colored stem. Doz. 50 cts., 100 \$3.50.
- PRIDE OF HAARLEM.** Brilliant rosy carmine; fine forcer. Doz. 50 cts., 100 \$3.50.
- PSYCHE.** Rich rosy pink, silvery rose inside; fine forcer. Doz. 60 cts., 100 \$4.00.
- SALMON KING.** Rich salmon rose; brilliant; extra. Doz. 50 cts., 100 \$3.50.
- THE SULTAN.** Velvety maroon black. Doz. 35 cts., 100 \$2.75.
- WEDDING VEIL.** Silvery gray; pointed petals. Doz. 60 cts., 100 \$4.00.
- WM. PITT.** Brilliant carmine crimson; fine forcer. Doz. 60 cts., 100 \$4.50.
- YELLOW DARWIN.** Clear canary yellow. Doz. 75 cts., 100 \$5.50.
- SPECIAL MIXTURE.** Choice varieties and colors. Doz. 35 cts., 100 \$2.25.

NARCISSI, OR DAFFODILS

Among the most beautiful and fragrant of our hardy Spring-flowering bulbs the Narcissi enjoy great popularity and occupy a very prominent place in the world of flowers doing well in almost all soils and situations, for naturalizing among the grass, planting among the shrubbery, on the borders of ponds and streams, and in formal beds. For house or greenhouse culture they are equally desirable, planted in pots or bulb pans, several bulbs of one variety in each, and treated as recommended for Hyacinths.

LARGE TRUMUET NARCISSI

- ARD RIGH, or IRISH KING.** Large and early; rich, deep yellow.
Doz. 60 cts., 100 \$4.00.
- EMPEROR.** Large golden-yellow trumpet, deep primrose perianth. Doz. 50 cts., 100 \$3.25, 1000 \$28.00.
- EMPRESS.** Broad white perianth, rich golden yellow trumpet.
Doz. 50 cts., 100 \$3.25, 1000 \$28.00.
- GLORY OF LEIDEN.** Deep yellow; immense trumpet and perianth. Each 15 cts., doz. \$1.50, 100 \$12.00.
- GOLD FINCH.** Very large; intense golden yellow. Doz. 75 cts., 100 \$5.00.
- GOLDEN SPUR.** Broad perianth, and large trumpet, expanding at the lip; deep golden yellow. Doz. 50 cts., 100 \$3.00, 1000 \$28.00.
- GRANDEE MAXIMUS.** Very large, with pure white perianth and long golden trumpet; later than Empress. Doz. 30 cts., 100 \$2.00, 1000 \$18.00.
- HORSFIELDI.** A royal flower. Pure white, with large, rich yellow trumpet. Doz. 40 cts., 100 \$2.75, 1000 \$22.00.
- J. B. M. CAMM.** White perianth and soft yellow trumpet; beautiful shape. Doz. 75 cts., 100 \$5.00.
- MADAME DE GRAAF.** One of the largest and finest white Daffodils. Trumpet pale primrose, passing to white. Doz. \$1.75, 100 \$12.00.
- MADAME PLEMP.** Pure white perianth; golden-yellow trumpet. A bold and solid flower. Doz. 60 cts., 100 \$4.00, 1000 \$35.00.
- MRS. THOMPSON.** Large, early white, beautifully frilled trumpet. Doz. 50 cts., 100 \$3.50, 1000 \$25.00.
- MRS. WALTER T. WARE.** Snow-white perianth; rich,, golden trumpet, well expanded, beautifully frilled. Doz. 50 cts., 100 \$3.50, 1000 \$30.00.
- OLYMPIA.** Clear, golden-yellow flower of immense size. The huge trumpet is beautifully frilled, and a shade darker than the perianth. Doz. \$4.00, 100 \$30.00.
- PRINCEPS MAXIMUS.** The improved Princeps, pale primrose perianth and large, deep yellow trumpet. Doz. 30 cts., 100 \$2.00, 1000 \$14.00.
- RUGILOBUS.** Large golden trumpet and sulphur-yellow perianth; excellent. Doz. 35 cts., 100 \$2.50, 1000 \$20.00.
- SINGLE VON SION (Spurius).** Early; pure yellow; large, expanded trumpet; excellent for forcing or bedding. Doz. 30 cts., 100 \$2.00, 1000 \$16.00.
- TRUMPET MAJOR, DUTCH GROWN.** Flowers large; uniform, deep golden yellow. An old favorite. Doz. 30 cts., 100 \$2.00, 1000 \$16.00.
- TRUMPET MAJOR, FRENCH GROWN.** These are best suited for early forcing; if potted in September, they may be had in bloom for Christmas. Doz. 40 cts., 100 \$2.75, 1000 \$18.00.
- TRUMPET MAXIMUS.** A grand, deep golden yellow, with large fluted trumpet. Doz. 50 cts., 100 \$3.00, 1000 \$28.00.

VICTORIA (Queen of Daffodils.) Broad, flat, creamy-white petals and bold, pure yellow, trumpet, exquisitely frilled; very large. Doz. 50 cts., 100 \$3.25, 1000 \$30.00.

MIXED LARGE TRUMPET VARIETIES. Doz. 30 cts., 100 \$2.00, 1000 \$20.00.

MEDIUM TRUMPET NARCISSI

In this class will be found many of the most graceful and beautiful Daffodils, equally desirable for beds and borders, as well as for indoor cultivation, and especially adapted to nature garden planting.

BARRI CONSPICUOUS. Broad, yellow perianth, and wide short cup, edged with bright orange scarlet. Doz. 20 cts., 100 \$1.50, 1000 \$10.00.

BARRI, FLORA WILSON. Pure white perianth, yellow cup, edged with orange scarlet; beautiful. Doz. 65 cts., 100 \$5.00.

BARRI, MAURICE VILMORIN. Creamy-white perianth, long scarlet cup; extra. Doz. 50 cts., 100 \$3.50, 1000 \$30.00.

INCOMPARABILIS, CYNOSURE. One of the best, with primrose perianth and orange-stained cup. Doz. 20 cts., 100 \$1.25, 1000 \$9.00.

INCOMPARABILIS, FIGARO. Large lemon-yellow perianth and orange-red cup. Doz. 20 cts., 100 \$1.50, 1000 \$9.00.

INCOMPARABILIS, QUEEN BESS. Very early, with pure white perianth and large lemon-yellow cup. Doz. 30 cts., 100 \$1.75, 1000 \$15.00.

INCOMPARABILIS, STELLA. Large; pure white, star-shaped flowers, with bright yellow cup; one of the earliest. Doz. 20 cts., 100 \$1.25, 1000 \$8.00.

LEEDSII DUCHESS OF BRABANT. White perianth, canary-yellow cup; charming. Doz. 25 cts., 100 \$1.50, 1000 \$10.00.

LEEDSII, M. M. DE GRAAFF. Long white perianth, orange-rose cup; free flowering; extra for cutting. Doz. 40 cts., 100 \$2.50, 1000 \$20.00.

LEEDSII, MINNIE HUME. Large white perianth; fine cup, passing from lemon to white. Doz. 25 cts., 100 \$1.75, 1000 \$14.00.

LEEDSII, MRS. LANGTRY. Broad, pure white perianth; large white cup, edged yellow; showy. Doz. 20 cts., 100 \$1.50, 1000 \$10.00.

MIXED SHORT TRUMPET VARIETIES. Doz. 25 cts., 100 \$1.50, 1000 \$12.00.

POETS AND OTHER SINGLE NARCISSI

BIFLORUS. Pure white perianth, with yellow crown, two flowers to a stem, very sweet and late flowering. Doz. 20 cts., 100 \$1.25, 1000 \$8.50.

BULBOCODIUM (Hoop Petticoat). A dwarf variety, each bulb producing several deep golden-yellow flowers. When grown indoors use about a dozen bulbs to a 6-inch pan; the effect is most beautiful. Doz. 50 cts., 100 \$3.50.

BURBIDGEI. Pure white perianth, yellow crown, margined scarlet; very early. Doz. 20 cts., 100 \$1.25, 1000 \$10.00.

NEW ENGLAND NURSERIES, BEDFORD, MASSACHUSETTS

- POETICUS** (Poet's or Pheasant Eye). Pure white, with orange crown, edged with scarlet. One of the best sorts for naturalizing. Doz. 15 cts., 100 \$1.25, 1000 \$8.00.
- POETICUS, KING EDWARD VII** (Almira). Broad, pure white perianth, yellow crown margined with deep red; early and very large. Doz. 60 cts., 100 \$4.00, 1000 \$35.00.
- POETICUS ORNATUS**. Pure white perianth, broad yellow crown; margined with scarlet; early. Doz. 20 cts., 100 \$1.25, 1000 \$10.00.
- POETICUS POETARUM**. Pure white perianth, with a bright orange-scarlet crown; beautiful. Doz. 25 cts., 100 \$1.75, 1000 \$12.00.
- POETICUS GRANDIFLORA**. Pure white with crimson cup; flowers very large and early. Doz. 50 cts., 100 \$3.50, 1000 \$25.00.

NARCISSUS, POETAZ HYBRIDS

A comparatively new race, resulting from a cross between the Poeticus ornatus and the best sorts of the Polyanthus. They are perfectly hardy, very vigorous, and bear generally three or four flowers on a stem. They are also excellent for growing in pans indoors.

- ALSACE**. Broad, large flower; pure white, with yellow eye, slightly tinged with red when opening; very early. Doz. 75 cts., 100 \$5.00, 1000 \$40.00.
- ASPASIA**. Large; white, with yellow eye. Doz. 40 cts., 100 \$3.00, 1000 \$25.00.
- ELVIRA**. Pure white, with yellow eye; a very long-stemmed large flower. Doz. 40 cts., 100 \$3.00, 1000 \$25.00.
- IRENE**. Silky primrose yellow, with orange eye, and large, broad truss, with eight or nine flowers. Doz. 75 cts., 100 \$5.00, 1000 \$40.00.
- KLONDYKE**. Perianth yellow, with deep golden-yellow eye. One of the deepest yellows; large truss. Doz. \$1.50, 100 \$12.00.
- TRIUMPH**. Pure white, with deep, yellow eye; the largest of its class. Doz. \$1.00, 100 \$8.00.

POLYANTHUS NARCISSI

Beautiful, free-flowering, sweet-scented flowers, of the easiest culture. Excellent for forcing or growing in water, bearing tall trusses of delicately scented flowers. Treat as recommended for Hyacinths. They are not hardy.

- BAZELMAN MAJOR**. Pure white, with deep yellow cup; extra large. Each 8 cts., doz. 75 cts., 100 \$5.00.
- DOUBLE ROMAN**. White, with double deep yellow cup; very large and early. Each 5 cts., doz. 30 cts., 100 \$2.00.
- GLORIOSA**. Pure white, with deep orange cup. Each 5 cts., doz. 50 cts., 100 \$3.00.
- GRAND MONARQUE**. White, with primrose cup; large. Each 5 cts., doz. 50 cts., 100 \$3.00.
- GRAND SOLEIL D'OR**. Rich yellow reddish-orange cup; distinct. Each 5 cts. doz. 45 cts., 100 \$3.00.

Not less than 6 bulbs of any one sort will be supplied at dozen price.

NEW ENGLAND NURSERIES, BEDFORD, MASSACHUSETTS

- JAUNE SUPREME.** Fine primrose yellow; orange cup. Each 6 cts., doz. 50 cts., 100 \$3.50.
- MONT CENIS.** Large white flowers, with yellow cup; extra large and very early. Each 6 cts., doz. 60 cts., 1000 \$4.00.
- NEWTON.** Large; pure yellow, deep orange cup. Each 6 cts., doz. 60 cts., 100 \$4.00.
- PAPERWHITE GRANDIFLORA.** The largest, earliest and best of all for forcing. Snow-white flowers in large trusses. It is superior to the Chinese or any other Narcissus for growing in water.
- MAMMOTH BULBS.** Each 5 cts., doz. 50 cts. 100 \$3.00, 1000 \$22.00.
- LARGE BULBS.** Each 4 cts., doz. 35 cts., 100 \$2.50, 1000 \$18.00.
- WHITE PEARL.** Beautiful pearl white; profuse bloomer. Each 6 cts., doz. 50 cts., 100 \$3.50.

DOUBLE-FLOWERING NARCISSI

The double-flowering Daffodils are perfectly hardy, very popular and well adapted to outdoor planting, no garden being complete without them. They are also excellent for house or conservatory, growing in pots or pans.

- ALBA PLENA ODORATA (Double Poet's or Gardenia-flowered).** Large, double, pure white, Gardenia-like flowers. Doz. 20 cts., 100 \$1.25, 1000 \$10.00.
- INCOMPARABILIS PLENUS (Butter and Eggs).** Large, double; yellow with orange center. Fine for forcing or outdoors. Doz. 25 cts., 100 \$1.75, 1000 \$12.00.
- ORANGE PHOENIX (Eggs and Bacon).** Beautiful double; creamy white, with orange center; desirable for both indoor and outdoor planting. Doz. 30 cts., 100 \$2.00, 1000 \$14.00.
- SILVER PHOENIX or SULPHUR CROWN (Codlins and Cream).** Large, double, creamy-white flowers; excellent for pots or pans. Doz. 40 cts., 100 \$2.50, 1000 \$22.50.
- VON SION (Telamonius plenus).** The famous "Old Double Yellow Daffodil." Flowers rich golden yellow; very large and used in enormous quantities for forcing and planting outside.
- DOUBLE NOSE BULBS.** Extra large. Doz. 50 cts., 100 \$3.50, 1000 \$30.00.
- SINGLE NOSE BULBS.** Extra large. Doz. 35 cts., 100 \$2.50, 1000 \$22.50.
- MIXED DOUBLE VARIETIES.** Doz. 30 cts., 100 \$2.00, 1000 \$15.00.

JONQUILS (Narcissus Jonquilla)

Very popular and much prized for their graceful forms, beautiful color, delicious fragrance and the ease with which they may be grown. Splendid for early flowering inside, and excellent for beds, borders or clumps outside.

- DOUBLE SWEET-SCENTED.** Deep, golden-yellow flowers. Doz. 40 cts., 100 \$3.00, 1000 \$25.00.
- SINGLE SWEET-SCENTED.** Rich golden yellow; very sweet. Doz. 15 cts., 100 \$1.00, 1000 \$7.00.

NEW ENGLAND NURSERIES, BEDFORD, MASSACHUSETTS

CAMPERNELLE. Large, yellow flowers; very fragrant and largely used for forcing. Doz. 20 cts., 100 \$1.50, 1000 \$10.00.

CAMPERNELLE DOUBLE. Large, bright yellow, with four or five double, sweet-scented flowers to each stem. Doz. 60 cts., 100 \$4.00.

RUGULOSUS. The largest Jonquil. Pure yellow; fragrant. Doz. 25 cts., 100 \$1.50, 1000 \$12.00.

SILVER JONQUIL (Tenuior). Pale, silvery yellow. Doz. 40 cts., 100 \$3.00.

CHINESE SACRED NARCISSUS

JOSS FLOWER, OR CHINESE NEW YEAR LILY.

This is the variety grown by the Chinese for decorating their temples or Joss houses on their New Year's Day. They are mostly grown in water in fancy bowls, with enough fancy pebbles to keep them upright when in flower. They can also be grown in soil, sand or moss. The flowers are mostly white, with yellow cups, and very fragrant.

EXTRA LARGE BULBS. Will bloom profusely. Each 15 cts., 2 25 cts., doz. \$1.50.

ORIGINAL BASKETS. Containing 30 bulbs, \$2.50.

MAMMOTH BULBS. Each 20 cts., doz. \$2.00. Basket \$4.00.

CROCUSES "THE HERALDS OF SPRING"

This brilliant and universally admired Spring flower will thrive in any soil or situation, but to be brought to the highest perfection it should be grown in an open bed or border of deep, rich sandy loam. They are invaluable for pot culture.

GIANT BLUE AND PURPLE SORTS

BARON VON BRUNOW. Large; dark blue; free flowering; extra. Doz. 20 cts., 100 \$1.25, 1000 \$10.00.

GRAND LILAS. Large; light blue; fine. Doz. 20 cts., 100 \$1.25, 1000 \$10.00.

KING OF THE BLUES. Dark purple; extra fine. Doz. 20 cts., 100 \$1.25, 1000 \$10.00.

PURPUREA GRANDIFLORA. Bright purple. One of the best. Doz. 15 cts., 100 \$1.20, 1000 \$10.00.

GIANT STRIPED SORTS

LA MAJESTUEUSE. Very large; violet striped. Doz. 15 cts., 100 \$1.25, 1000 \$10.00.

MADAM MINA. Large; light blue, striped; early. Doz. 15 cts., 100 \$1.25, 1000 \$10.00.

SIR WALTER SCOTT. White, striped with purple. Doz. 15 cts., 100 \$1.25, 1000 \$10.00.

GIANT WHITE SORTS

CAROLINE CHISHOLM. Pure white; very free. Doz. 20 cts., 100 \$1.25.

KING OF THE WHITES. The best and largest white. Doz. 20 cts., 100 \$1.25.

MAMMOTH. Very large; pure white. Doz. 20 cts., 100 \$1.25.

MONT BLANC. Large snow white; extra. Doz. 20 cts., 100 \$1.25.

GIANT NAMED YELLOW CROCUS

- GLOTH OF GOLD.** Golden yellow, bronze veined. Doz. 20 cts.,
100 \$1.25, 1000 \$6.00.
- GOLDEN YELLOW, FIRST SIZE.** Deep yellow. Doz. 20 cts.,
100 \$1.25, 1000 \$10.00.
- MAMMOTH YELLOW.** Deep golden. Doz. 25 cts., 100 \$1.35, 1000
\$12.00.

MIXED CROCUS

Dozen 15 cts., 100 \$1.25.

ANEMONE

- SINGLE MIXED DE CAEN.** These are the Giant French or
Poppy-flowered Anemones, with quantities of beautiful Poppy-
like flowers in brilliant colors. Doz. 20 cts., 100 \$1.25, 1000
\$9.00.
- SINGLE BLUE.** Beautiful variety. Doz. 20 cts., 100 \$1.25, 1000
\$8.00.
- SINGLE SCARLET.** Very brilliant. Doz. 20 cts., 100 \$1.50, 1000
\$10.00.
- SINGLE WHITE (The Bride).** Beautiful snow white. Doz. 20
cts., 100 \$1.25, 1000 \$7.50.
- SINGLE FULGENS.** Dazzling scarlet; excellent for forcing. Doz.
40 cts., 100 \$2.50, 1000 \$22.00.

CHINONDOXA (Glory-of-the-Snow)

One of the most beautiful and effective of our Spring-flower-
ing bulbs, coming into bloom soon after the snow is gone, and
lasting a long time. They succeed well in any good garden soil,
and are excellent for clumps, edgings or naturalizing.

- GIGANTEA.** Large flowers of soft lavender blue with white
centers. Doz. 25 cts., 100 \$1.50, 1000 \$12.00.
- LUCILIAE.** Brilliant sky blue, with white center. Doz. 25 cts.,
100 \$1.50, 1000 \$12.00.
- SARDENSIS.** Rich; deep blue. Doz. 25 cts., 100 \$1.50, 1000
\$10.00.

CROWN IMPERIALS

Showy and stately, hardy border plants, producing whorls of
pendent, bell-shaped flowers at the top of the stalk, which grows
about 3 feet high. They succeed well in any good garden soil and
should be planted two or three in a clump, and 6 inches deep.

- CROWN ON CROWN.** Whorls of bright red flowers. Each 20
cts., doz. \$2.00.
- GOLD-STRIPED.** Crimson; variegated foliage. Each 30 cts.,
doz. \$3.00.
- MIXED VARIETIES.** Each 20 cts., doz. \$1.50.

FREESIA

Probably no flower is better known, or more popular than the
Freesia, with its beautiful, graceful and delicately perfumed flow-
ers. They are especially suited to house and greenhouse growing.

NEW ENGLAND NURSERIES, BEDFORD, MASSACHUSETTS

and excel as a cut-flower in the length of time they may be kept fresh. Easily forced and may be had in bloom from January to June. Plant eight to twelve bulbs in a 6-inch bulb-pan and cover one inch.

FISCHER'S PURITY. The finest and purest white sort yet introduced. Our stock is grown from the originators.

MAMMOTH BULBS. Doz. 60 cts., 100 \$3.00, 1000 \$40.00.

EXTRA LARGE BULBS. Doz. 40 cts., 100 \$2.25, 1000 \$30.00.

REFRACTA ALBA ODORATA. Pure white, with yellow throat.

LEICHTLINI MAJOR. Fine primrose yellow, with orange throat. Doz. 25 cts., 100 \$1.75, 1000 \$14.00.

FRITILLARIA MELEAGRIS

Beautiful dwarf Spring-flowering plants, with exceedingly pretty, pendent, bell-shaped flowers of various colors, beautifully mottled or striped. They are desirable for house and garden culture.

PURE WHITE. Beautiful. Doz. 30 cts., 100 \$1.75.

MIXED. Finest varieties. Doz. 25 cts., 100 \$1.50.

IRIS ANGELICA (English Iris)

Handsome flowers of rich and varied colors. The flowers are larger than the Spanish Iris, and about two weeks later. They are perfectly hardy out of doors, and also excellent for forcing.

BLUE CELESTE. Beautiful sky-blue. Doz. 50 cts., 100 \$3.50, 1000 \$30.00.

DE LAMARTINE. White, with large rose blotches. Doz. 50 cts., 100 \$3.50, 1000 \$30.00.

MONT BLANC. Large; pure white. Doz. 40 cts., 100 \$2.50, 1000 \$20.00.

OTHELLO. Purplish red. Doz. 50 cts., 100 \$3.50, 1000 \$30.00.

PRINCESS DAGMAR. White, mauve flakes. Doz. 50 cts., 100 \$3.50, 1000 \$30.00.

ROSSEAU. Clear bright blue. Doz. 40 cts., 100 \$3.00, 1000 \$25.00.

TRICOLOR. White, blue and red. Doz. 40 cts., 100 \$3.00, 1000 \$25.00.

SUPERFINE MIXED. Finest sorts and colors. Doz. 25 cts., 100 \$1.75, 1000 \$15.00.

IRIS HISPANICA (Spanish Iris)

These flower very early and are well adapted for house culture. The fragrant Orchid-like flowers are very beautiful and rich in colorings. They are of the simplest culture in the garden, succeeding in almost any soil or position, but require a slight mulching in Winter.

ALEX VON HUMBOLDT. Large; bright blue. Doz. 20 cts., 100 \$1.25, 1000 \$7.00.

BEAUTY. Pale lavender, falls white with orange blotche. Doz. 20 cts., 100 \$1.25, 1000 \$10.00.

BELLE CHINOISE. Deep golden yellow; earliest of all. Doz. 15 cts., 100 \$1.00, 1000 \$7.50.

NEW ENGLAND NURSERIES, BEDFORD, MASSACHUSETTS

- BRITISH QUEEN.** Large; pure white; extra. Doz. 20 cts., 100 \$1.25, 1000 \$7.50.
- CAJANUS.** Bright yellow, large flowers on long stems. Doz. 20 cts., 100 \$1.25, 1000 \$9.00.
- KING OF THE WHITES.** Extra large; pure white. Doz. 25 cts., 100 \$1.75, 1000 \$15.00.
- LONGFELLOW.** Light blue, with white falls; immense flowers. Doz. 25 cts., 100 \$1.75, 1000 \$15.00.
- LOUISE.** Porcelain blue, slightly spotted. Doz. 15 cts., 100 \$1.00, 1000 \$7.50.
- THUNDERBOLT.** Large; velvety, dark bronze. Doz. 25 cts., 100 \$1.75, 1000 \$12.00.
- SUPERIOR MIXTURE.** Doz. 10 cts., 100 50 cts., 1000 \$4.00.

IXIAS

Charming, half-hardy Winter-flowering bulbs of easy culture. The flowers are of the most brilliant, rich and varied colors the center, differing in color from the outer parts, forms a striking effect. Plant eight or ten bulbs in a 6-inch bulb pan and keep in a cool place till growth commences.

- AMBASSADOR.** Very deep crimson. Doz. 30 cts., 100 \$2.00.
- ALBA MUTABILIS.** Pink, changing to white. Doz. 30 cts., 100 \$1.75.
- AURANTIACA MAJOR.** Yellow, large dark eye. Doz. 30 cts., 100 \$1.75.
- CRATEROIDES MAJOR.** Rich Cerise scarlet. Doz. 40 cts., 100 \$2.50.
- EMPEROR OF CHINA.** Rich yellow, dark center. Doz. 40 cts., 100 \$2.50.
- ROSEA MULTIFLORA.** Delicate pink. Doz. 30 cts., 100 \$2.00.
- VIRIDIFLORA.** Soft green, black center. Doz. 50 cts., 100 \$3.50.
- VULCAN.** Crimson shaded orange. Doz. 30 cts., 100 \$2.00.
- MIXED.** Finest varieties. Doz. 15 cts., 100 \$1.00.

LILIES FOR FORCING

Bulbs should be potted in a rich soil, using 3 1-2 to 6-inch pots, according to the size of the bulb, and the pots plunged in a cold-frame, or kept in a cool place, to get a strong root growth. When well rooted and started 6 to 8 inches they should be shifted into larger pots to bloom, setting the bulb considerably deeper. A suitable compost is equal parts of turfy loam, leaf mold, rotted cow manure and sand. Bulbs should be potted as soon as received.

LILIUM CANDIDUM (Madonna Lily)

MAMMOTH NORTHERN-GROWN. These are of the large-flowered, pure white, thick-petaled variety. Excellent for forcing and superior as a garden lily. Each 15 cts., doz. \$1.75.

LILIUM HARISH (Bermuda Easter Lily)

Choice, thoroughly ripened stock from the best growers in Bermuda.

EXTRA-LARGE BULBS. Each 20 cts., doz. \$2.00.

LILIUM LONGIFLORUM FORMOSUM

This type of the *L. longiflorum* which comes from the island of Formosa is becoming more popular every season. It is of strong, healthy growth, 2 to 3 feet high, with beautiful, white, trumpet-shaped Lilies about 6 inches long, and may be had in bloom from early December to Easter.

EXTRA-LARGE BULBS. Each 15 cts., doz. \$1.50.

LILIUM LONGIFLORUM GIGANTEUM

The latest type of all the Longiflorum Lilies and the one most extensively used for Easter flowering. The yare of stocky growth with dark stems, and are unusually free from disease. The flowers are of the largest size and purest white.

EXTRA-LARGE BULBS. Each 15 cts., doz. \$1.50.

LILY OF THE VALLEY

One of the most useful of our Spring flowers. Pure white, delicately scented. For open ground we offer clumps, each containing many flowering crowns. Set 6 to 12 inches apart. For forcing use the flowering pips 12 to 18 may be planted in a 6-inch pot, keeping the crowns above the soil. Ready for delivery in November.

DRESDEN SELECT. The largest and best for forcing. Strong pips with long roots. Doz. 35 cts., 100 \$2.75, 1000 \$20.00, case of 2400, \$42.50.

PLANTING CLUMPS. This is the Dutch Valley, each clump containing many flowering pips and excellent for outdoor planting. Each 30 cts., doz. \$3.00, 100 \$20.00.

OXALIS

Very attractive and profuse-blooming Winter-flowering bulbs, particularly adapted for pots and hanging-baskets in the house or conservatory. Plant four to six bulbs an inch deep in a 5-inch pot, using a sandy loam. They grow and bloom best in a moderated temperature.

BOWIEI. Large; crimson rose; handsome foliage. **Mammoth Bulbs.** Doz. 25 cts., 100 \$2.00.

BUTTERCUP. Pure, bright yellow. **Mammoth Bulbs.** Doz. 25 cts., 100 \$2.00.

GRAND DUCHESS. Of dwarf, sturdy habit, with large flowers in the greatest profusion on strong stems, well above the foliage, from November until June. Excellent pot plant. In three colors. **Lavender, Pink and Pure White.** Doz. 25 cts., 100 \$1.50.

RANUNCULUS

Beautiful dwarf Spring-flowering bulbs, with very brilliant and attractive colors; readily grown in cold-frames, or in pans for the house.

DOUBLE GIANT FRENCH MIXED. Rare flowers of gorgeous colors. Doz. 15 cts., 100 75 cts., 1000 \$6.00.

NEW ENGLAND NURSERIES, BEDFORD, MASSACHUSETTS

- DOUBLE PERSIAN, MIXED.** Rose-shaped flowers in rich colors. Doz. 15 cts., 100 85 cts., 1000 7\$50.
- DOUBLE TURBAN, MIXED.** Paeony-formed flowers in vivid colors. Doz. 20 cts., 100 \$1.00, 1000 \$8.00.
- DOUBLE TURBAN GRANDIFLORA.** Deep crimson. Doz. 25 cts., 100 \$1.75, 1000 \$15.00.
- DOUBLE TURBAN HERCULES.** Pure white. Doz. 35 cts., 100 \$2.00, 1000 \$18.00.
- DOUBLE TURBAN MERVEILLEUSE.** Beautiful yellow. Doz. 35 cts., 100 \$2.25, 1000 \$18.00.
- DOUBLE TURBAN ROMANO.** Brilliant scarlet. Doz. 25 cts., 100 \$1.75, 1000 \$10.00.

SCILLA

Very early-flowering bulbs, extremely hardy and doing well in any situation. Excellent for clumps, edgings and naturalizing.

- SIBIRICA.** Spikes of intense blue flowers, about 6 inches high. Beautiful in combination with Snowdrops and Crocus. Doz. 25 cts., 100 \$1.50, 1000 \$10.00.
- CAMPANULATA COERULEA.** Bright blue; graceful spikes; 1 foot high. Doz. 20 cts., 100 \$1.25, 1000 \$7.50.
- CAMPANULATA ALBA.** Pure white; 1 foot. Doz. 20 cts., 100 \$1.25, 1000 \$10.00.

SNOWDROPS (Galanthus)

There is no more general favorite among the earliest Spring flowers than the Snowdrop.

- SINGLE-FLOWERING.** Doz. 15 cts., 100 \$1.00, 1000 \$9.00.
- DOUBLE-FLOWERING.** Doz. 30 cts., 100 \$2.00, 1000 \$15.00.

SPARAXIS

A beautiful class of bulbs for pot culture in the house or conservatory. Resemble the Ixias and require the same treatment, producing spikes of flowers of the most exquisite and beautiful colors. Plant eight to twelve bulbs in a 6-inch pan, covering them 1 inch.

- MIXED VARIETIES.** Choice sorts. Doz. 10 cts., 100 \$1.00.

RELIABLY HARDY ROSES FOR FALL PLANTING HYBRID PERPETUAL ROSES

Strong, field-grown plants.

Price: Each 35c, doz. \$3.50, except where otherwise noted.

The following named Hybrid Perpetual Roses can be relied upon for hardiness. If planted in good soil, set in the ground to the proper depth, and pruned back as directed, they will produce quantities of bloom the first season. **Deep planting and close pruning** is very essential.

- ALFRED COLOMB.** Carmine red; very large and full.
- AMERICAN BEAUTY.** Deep pink, shaded with carmine.

For description of varieties, see our General Catalogue.

NEW ENGLAND NURSERIES, BEDFORD, MASSACHUSETTS

- ANNE DE DIESBACH.** Clear, bright rose; large and fragrant.
BARON DE BONSTETTEN. Velvety maroon; large and full.
BARONESS ROTHSCILD. Bright pink; very large.
COQUETTE DES BLANCHES. White, medium size, flowers in clusters; very free. Each 50 cts.
COQUETTE DES ALPES. Large, full and well-formed, with very large petals; lovely pure white in color; fragrant; profuse bloomer; hardy. One of the very best of its class.
FISHER HOLMES. Brilliant carmine-crimson. Bush is vigorous and produces freely.
FRANCOIS LEVET. Cherry red, medium, free bloomer.
FRAU KARL DRUSCHKI. White.
GENERAL JACQUEMINOT. Bright scarlet crimson. Beautiful in all stages, from bud until petals fall.
GRUS AN TEPLITZ. Dark red.
HARRISON YELLOW. Deep sulphur yellow.
HUGH DICKSON. Crimson, shaded scarlet.
JOHN HOPPER. Bright rose, carmine center.
JULES MARIGOTTIN. Carmine rose.
LA REINE. Clear, rosy pink.
LOUIS VAN HOUTTE. Reddish scarlet.
MABEL MORRISON. One of the best white Roses.
MME. GABRIEL LUIZET. Light, silvery pink.
MME PLANTIER. Pure white; early Summer bloomer.
MME. CHARLES WOOD. Vivid crimson.
MAGNA CHARTA. Pink and crimson. Very large, full and double.
MARGARET DICKSON. White, pale flesh color.
MARIE BAUMANN. Brilliant carmine crimson; large, full; very fragrant.
MRS. JOHN LAING. Soft pink; fragrant; blooms late in Autumn.
M. P. WILDER. Cherry carmine. Excellent in hardiness and freedom of bloom.
MRS. R. G. SHARMAN-CRAWFORD. Color, deep rosy pink; flowers large and perfect; free bloomer.
PAUL NEYRON. Deep rose; very large.
PERLE DES BLANCHES. Pure white.
PERSIAN YELLOW. Bright yellow.
PRINCE CAMILLE DE ROHAN. Deep velvety crimson.
ULRICH BRUNNER. Cherry red. A fine Rose.

MOSS ROSES

These are grown mostly for their beautiful, mossy buds. They require close pruning and high culture. Set plants deeply, and prune back to within 4 or 5 inches of the ground immediately after planting; but after the first year, Moss Roses should not be pruned until at once after they have finished blooming.

Strong 2-year plants, each 35c, doz. \$3.50.

- BLANCHE MOREAU.** Pure white, large, full.
CRESTED MOSS. Deep pink, buds surrounded with mossy fringe and crest.
HENRY MARTIN. Fine rosy red.

For description of varieties, see our General Catalogue.

CLIMBING AND RAMBLER ROSES

Plant very deeply, and regardless of length of branches, prune back at once after planting to within 5 or 6 inches of the ground.

Strong, field grown plants, each 35c., doz. \$3.50, 100, \$25.00, except where noted.

BALTIMORE BELLE. Pale blush, nearly white; double.

CRIMSON RAMBLER. Clusters of bright crimson flowers in great profusion.

DEBUTANTE. A strong climber, with dark, glossy foliage. Clusters of bloom large. Color, light pink, passing to white. Double. Each 75 cts.

DOROTHY PERKINS. Clear shell pink, very sweet scented. Foliage excellent. Very vigorous. One of the best.

EXCELSA. Each 75 cts.

FLOWER OF FAIRFIELD. The new, everblooming Crimson Rambler. A strong grower and continuous bloomer. Flowers bright crimson. Each \$1.00.

HIAWATHA. Crimson and white. A new and beautiful variety. Each 50 cts.

LADY GAY. Cherry pink.

PINK RAMBLER (Euphrosyne). Brilliant light carmine.

QUEEN OF THE PRAIRIE. Bright, rosy red, double.

TAUSENSCHON. Soft pink. New and good. Each 50 cts.

TRIER. Pink. An everbloom pink Rambler of much value. Each 75 cts.

WEDDING BELLS. Pink. Resembles much the D. Perkins Rose, but blooms later.

WHITE DOROTHY PERKINS. White. One of the best yet introduced. Each 50 cts.

WHITE RAMBLER (Thalia). Pure white, sometimes tinged with blush.

YELLOW RAMBLER (Aglala). Clusters of light yellow flowers.

VEILCHEMLAU (The Iue Rambler). A vigorous climber, producing immense panicles of blooms, opening reddish lilac and changing to amethyst and steel blue. New. Each 75 cts.

DWARF BEDDING ROSES, OR BABY RAMBLERS

BABY DOROTHY. Nothing can surpass its beauty in a deep pink shade. It has all the flowering qualities of the famous Dorothy Perkins, but, being dwarf, it is completely smothered in flowers throughout the Summer and Fall. Strong, field-grown plants. Each 35 cts., doz. \$3.50.

CRIMSON BABY RAMBLER (Mme. Norbert Levavasseur). Crimson flowers similar to the popular climbing Crimson Rambler. Strong, 2-year plants. Each 35 cts., doz. \$3.50.

MRS. WM. H. CUTBUSH. A beautiful cherry pink and very free flowering. Strong 2-year plants. Each 35 cts., doz. \$3.50.

WHITE BABY RAMBLER (Catherine Zeimet). Pure white flowers, showing the yellow stamens very prettily, produced in large, candelabra-shaped trusses. Strong, 2-year plants. Each 35 cts., doz., \$3.50.

For description of varieties, see our General Catalogue.

TRAILING, OR MEMORIAL ROSES

Excellent for cemetery planting or covering embankments.

Price: Each 35c., doz. \$3.50, 100 \$25.00.

- EVERGREEN GEM.** Foliage nearly evergreen. Flowers double, rich bronze color.
- GARDENIA.** A vigorous grower, bud bright yellow, opening cream color.
- PINK ROAMER.** Single, bright pink.
- UNIVERSAL FAVORITE.** Large double pink.
- WICHURAIANA.** The true Memorial Rose. Creeps rapidly over the surface, forming a mat of dark green foliage. Flowers pure white, borne in clusters.

RUGOSA HYBRIDS

- AGNES EMILY CARMAN.** Flowers in clusters; brilliant crimson, of the shade of General Jacqueminot; very free blooming, and continuing in bloom nearly all Summer; a rampant grower, handsome foliage, and very hardy. Each 50 cts.
- CONRAD FREDERICK MEYER.** Clear silvery rose; very fragrant, very vigorous, but well formed like La France. Each 50 cts.
- MADAM GEORGE BRUANT.** Buds long and pointed, semi-double when open, white and fragrant, borne in clusters through the season; vigorous and hardy. Each 50 cts.
- NEW CENTURY.** Cross between everblooming Rose Clothilde Soupert and *Rugosa alba*. Very hardy and a continuous bloomer. Color a bright rosy pink, with bright red center. Petals bordered with a creamy white. Each 75 cts.
- ROSA RUGOSA VAR. PROSTRATA** (Trailing *Rosa rugosa*). This variety is a hybrid form of the well-known *Rosa Wichuriana* and *Rosa rugosa*. It has foliage and blossoms of the latter and the vigorous growth and habit of the former. Each 75 cts.
- ROSERAIE DE L'HAY.** A new hybrid rugosa of which we cannot speak too highly; a good grower; flowers very double; color carmine cherry red; a free bloomer and exquisitely scented. A most desirable acquisition. Each 75 cts.
- RUGOSA ALBA.** Single, pure white, having five petals and highly scented. Each 35 cts.
- RUGOSA RURA.** Single, bright rosy crimson, succeeded by large, brilliant berries of much beauty. Each 35 cts.

VINES AND CLIMBING SHRUBS

AKEBIA

- AKEBIA QUINATA.** May. One of the best Japan vines, with beautiful, Clover-like leaves and Plum-colored flowers. Each 50 cts.

AMPELOPSIS—WOODBINE

- AMPELOPSIS QUINQUEFOLIA** (Common Woodbine, or Virginia Creeper). 3 years, each 25 cts., doz. \$2.50.

For description of varieties, see our General Catalogue.

AMPELOPSIS VAR. ENGELMANNI. A variety of the above with stronger tendril discs, that cling like an Ivy to any surface. 3 years, each 30 cts., doz. \$3.00.

AMPELOPSIS VEITCHII The Japan, or Boston Ivy). 3 years, No. 1, each 35 cts.

ARISTOLOCHIA—PIPE VINE

ARISTOLOCHIA SIPHO (Dutchman's Pipe). 2 years, each 50 cts.; 3 years, strong, each 75 cts.

BIGNONIA

(See Tecoma.)

CELASTRUS—BITTERSWEET

CELASTRUS PANICULATUS (Bittersweet). 3 years, each 25 cts.

CELASTRUS SCANDENS (Roxbury Waxwork). 3 years, each 30 cts.

CLEMATIS

CLEMATIS COCCINEA (Scarlet Clematis). 2 years, each 50 cts.

CLEMATIS PANICULATA. The flowers, borne in long panicles, are white, and their fragrance is perceptible a long distance from the plant. They open near the latter part of August, and continue in flower for nearly a month. 2 years, each 25 cts.; 3 years, each 35 cts.

CLEMATIS VIRGINIANA (Virgin's Bower). August. A strong climber, with dark green foliage and very pretty white flowers; the bunches of seed have long, wooly tufts, making them very ornamental for Winter decoration. 3 years, each 35 cts., doz. \$3.50.

THE NEW CLEMATIS NEW ENGLAND

CLEMATIS VAR. NEW ENGLAND. A hybrid between *C. paniculata* and *C. Davidiana* having the foliage and bloom of the latter and the hardiness and vigorous climbing growth of the former. 2 year plants, each 50 cts.

HYBRID LARGE-FLOWERING CLEMATIS

CLEMATIS DUCHESS OF EDINBURGH. Double, white, sweet scented. 2 years, each 50 cts.

CLEMATIS HENRYI. One of the best whites. Large creamy white. 2 year, each 50 cts.

CLEMATIS JACKMANI. A general favorite. Violet purple and free flowering. 2 year, each 50 cts.

CLEMATIS, MADAM ANDRE. A vivid crimson Clematis of large size, and borne as freely as the well-known Jackmani. 2 years, each 50 cts.

For description of varieties, see our General Catalogue.

- CLEMATIS VILLE DE LYON.** New. This beautiful new Clematis of the Jackmani type cannot be too highly recommended. The flower is large, bright red, and the vine is completely smothered, when in bloom. Each 50 cts.
- HUMULUS LUPULUS (Hop Vine).** Strong grower. Each 25 cts., doz. \$2.50.
- LONICERA VAR. HALLEANA.** (Hall's Evergreen Honeysuckle). All Summer. More generally used than any other variety. Deep green foliage, which is almost evergreen through the Winter. Fragrant yellow and white flowers. Each 35 cts. Doz. \$3.50.
- LONICERA FLEXUOSA VAR. AUREA RETICULATA (Golden Variegated Honeysuckle).** Leaves variegated gold and green. Slower in growth than former variety. Each 40 cts.
- LONICERA PERICLYMENUM BELGICUM (Belgian, or Dutch Monthly Honeysuckle).** All Summer; red and yellow, very fragrant flowers in clusters. Each 40 cts.
- LONICERA SEMPERVIRENS (Scarlet Trumpet Honeysuckle).** This bears during the Summer clusters of scarlet tubular flowers, and is one of the freest and best varieties. Handsome in foliage and fruit. 3 years, each 40 cts.
- PERIPLOCA GRAECA (Grecian Silk Vine).** A fastgrowing twining vine, with glossy, dark green leaves and small purple flowers. Native of southern Europe. 2 years, each 35 cts.
- TECOMA RADICANS (Bignonia) (Trumpet Vine).** The scarlet trumpet flower. Handsome, dark green foliage and showy clusters of orange and scarlet flowers during the Summer. We have not found any other varieties of Bignonia reliably hardy in New England. Each 35 cts.
- VITIS COIGNETIAE, or CRIMSON GLORY VINE.** Its foliage is very broad, after the style of the Dutchman's Pipe, but its valuable quality rests in its remarkably brilliant coloring in the Autumn, when each one of its large, leathery leaves takes on a glowing crimson color. It is quite hardy. Each 75 cts.
- VITIS HETEROPHYLLA.** A handsome climbing plant with deeply lobed leaves, sometimes sprinkled with white and pink. Good for low trellis work. Clusters of light blue, showy berries. Each 50 cts.
- WISTARIA CHINENSIS (Chinese Wistaria).** A hardy, fast and tall growing climber, with pale green compound foliage, and foot-long clusters of purplish, Pea-shaped flowers, borne profusely in May. The popular Wistaria. Strong plants, each 50 cts.; extra heavy, each \$1.00; tree form, each \$1.50.
- WISTARIA VAR. ALBA.** A white-flowered variety of the above. Strong plants, each 50 cts.; extra heavy, each \$1.00.
- WISTARIA MULTIJUGA.** From Japan. Distinguished from *W. Chinensis* by the longer and looser racemes of flowers. Dark purple. Hardy. Each 75 cts.

For description of varieties, see our General Catalogue.

FRUIT TREES AND SMALL FRUITS

The varieties of fruit trees we offer below are such as can be particularly recommended, and are best adapted to the climate of New England. Any variety desired and not listed, we can generally supply from our Geneva, N. Y., Nurseries. ..

APPLES

First-class Standard Trees, 2 to 3 years old, 5 to 7 feet, each 50c., doz. \$4.00, 100 \$25.00.

Dwarf Trees, 3 to 4 feet, not branched, on Paradist stock, each 50 c., doz., \$5.00.

Varieties marked with an asterisk (*) can be furnished on dwarf stock.

Those marked with an X we can supply in "Extra Heavy" specimens, and about 8 feet high, at \$1.00 each, and \$10.00 per dozen.

For description of varieties, see our General Catalogue.

SUMMER APPLES

EARLY HARVEST.
EARLY STRAWBERRY.
GOLDEN SWEET.
PRIMATE.
X *RED ASTRACHAN.
SOPS OF WINE.
SWEET BOUGH.
TETOFSKY.
*WILLIAMS FAVORITE.
*YELLOW TRANSPARENT.

AUTUMN APPLES

ALEXANDER.
FALL PIPPIN.
*FAMEUSE, or SNOW.
X *GRAVENSTEIN.
MAIDEN'S BLUSH.
*DUCHESS OF OLDENBURG.
PORTER.
POUND SWEET.
RED BIETIGHEIMER.

WINTER APPLES

X *BALDWIN.
BELLE DE BOSKOOP.
*BEN LEVIS.
GOLDEN RUSSET.
*HUBBARDSTON.
JONATHAN.
X *McINTOSH RED.
*NORTHERN SPY.
X OPALESCENT.
X *RHODE ISLAND GREENING.

For description of varieties, see our General Catalogue.

ROXBURY RUSSET.
SPITZENBURG (Esopus).
STARK (Pride of Maine).
TOLMAN'S SWEET.
X *TOMPKINS KING, or KING OF TOMPKINS COUNTY.
TWENTY OUNCE.
*WEALTHY.
WINESAP.
*WOLF RIVER.
YELLOW BELLFLOWER.

CRAB APPLES

HYSLOP. Large size; dark crimson.
TRANSCENDENT. Red, showy, excellent and very handsome.
WHITNEY. Smooth, glossy green, splashed with carmine.

PEARS

Standard Pears, except Buerre Bosc, 5 to 7 feet; Each 50c., doz. \$5.00, 100 \$35.00.

Dwarf Pears, 3 to 4 feet: Each 40c., doz. \$4.00, 100 \$25.00.

Varieties marked with an asterisk (*) can be furnished on dwarf stock.

SUMMER PEARS

*BARTLETT.
*BRANDYWINE.
*CLAPPSFAVORITE.
WILDER.

AUTUMN PEARS

ANJOU.
BOSC. Moderate growth; large; russety; buttery, rich, high flavored; best. Ripening September and October. (True variety).
Each \$1.50.

*CLAIRGEAU.
FLEMISH BEAUTY.
*HOWELL.
KIEFFER.
*LOUIS BONNE OF JERSEY.
*SECKEL.
SHELDON.
VERMONT BEAUTY.

WINTER PEARS

*LAWRENCE.
LINCOLN CORELESS.
WINTER NELIS.

CHERRIES

Standard trees, two to three years: Each 50c., doz. \$5.00.

For description of varieties, see our General Catalogue.

BIGARREAU OR SWEET CHERRIES

- BLACK EAGLE.** Moderate growth; large; black, tender, rich, juicy; best. Ripening first of July.
- BLACK TARTARIAN.** Vigorous growth; very large; purplish black; one of the best. Ripe end of June.
- COE'S TRANSPARENT.** Vigorous growth; medium; pale amber and red; one of the best. Ripening end of June.
- DOWNER'S LATE.** Vigorous growth; rather large; light red; tender and juicy; good. Ripening first of July.
- GOVERNOR WOOD.** Vigorous growth; medium; clear, light red; tender, delicious. Ripe end of June.
- NAPOLEON.** Vigorous growth; very large; pale yellow with red cheek. Firm, juicy, and sweet; very good. Ripening first of July.
- ROCKPORT.** Vigorous growth; large, pale amber and red; sweet and tender; good. Ripening first of July.
- WINDSOR.** Vigorous growth; large; liver colored; very firm; very good. A valuable variety; hardy. Ripening end of July.
- YELLOW SPANISH.** Vigorous growth; large; pale yellow with red cheek; firm, juicy and delicious; very good. Ripening end of June.

MORELLO OR SOUR CHERRIES

- EARLY RICHMOND.** Medium size; dark red; juicy, rich acid flavor. The stone adheres to the stem. One of the most valuable Sour Cherries.
- EMPRESS EUGENIE.** A new French Cherry, rather dwarf in habit; very productive; fruit large, roundish, flattened; skin rich, dark red; flesh red, tender, rich, juicy, subacid; very good; stone small.
- MONTMORENCY (Large Montmorency).** A Cherry of the Richmond class, but larger and more solid.
- MORELLO, ENGLISH.** Large; lark red, nearly black; tender, juicy, subacid; valuable for preserves; tree small, slender growth; productive.

PLUMS

Trees, 5 to 7 feet: Each 50c., doz. \$5.00.

PLUMS OF EUROPEAN TYPE

- BRADSHAW.** A very large, oval, dark violet red; juicy, sweet and good; a valuable market variety.
- COE'S GOLDEN DROP.** Very large; light yellow; rather firm; rich, sweet and good; adheres to the stone. Tree moderately vigorous and productive. A valuable late variety. Last of September.
- LOMBARD.** Medium; oval; violet red; juicy, pleasant and good; adheres to the stone; tree vigorous and very productive.
- REINE CLAUDE (Bavay's Green Gage).** Round; greenish yellow; juicy, melting, sugary, rich and excellent; separates from the stone; tree very vigorous and remarkably productive. A valuable market Plum. Ripens last of September.

For description of varieties, see our General Catalogue.

SHROPSHIRE DAMSON. Originated in England. Dark purple; larger than the common Damson; very productive.

SHIPPER'S PRIDE. Fruit large; color bluish purple, handsome and showy; flesh firm, of excellent quality; very productive, and a valuable market variety.

JAPANESE PLUMS

The Japan varieties are no longer experimental, as their success has given new life to the Plum culture. Large orchards are being planted, and are bringing good returns to their owners.

ABUNDANCE. (Bhotan). Beautiful lemon-yellow ground, nearly overspread with bright cherry.

BURBANK. Large and beautiful, a clear red cherry, with a thin lilac bloom; flesh a deep yellow.

OCTOBER PURPLE. Large, round fruit; dark, reddish purple yellow; flesh of most superb quality. Ripens middle of September.

RED JUNE. An early-ripening Japanese Plum; medium to large; roundish; conical, purple red; handsome; flesh yellow; quality good.

SATSUMA (Blood). Large, globular, with sharp point. Color purple and red, with bloom; flesh firm, juicy, dark red of blood color; fine quality; pit very small. August.

WICKSON. Originated by Burbank. A sturdy, upright grower; fruit remarkably handsome, deep maroon red, covered with white bloom.

PEACHES

Prices, first-class, 5 to 6 feet: Each 30c., doz. \$2.50, 100 \$15.00.

ALEXANDER.

BELLE OF GEORGIA.

CARMAN.

CHAMPION.

COOLIDGE'S FAVORITE.

CRAWFORD'S EARLY.

CRAWFORD'S LATE.

CROSBY

ELBERTA.

FITZGERALD.

FOSTER.

GREENSBORO.

MOUNTAIN ROSE.

OLDMIXON.

RIVERS', or EARLY RIVERS'.

SRUMP THE WORLD.

TRIUMPH.

WHEATLAND.

QUINCES

First-class, 4 to 5 feet: Each 50c., doz. \$5.00.

BOURGEAT. A new variety of the best quality, tender and good. Ripening shortly after Orange, and keeping till past Midwinter.

For description of varieties, see our General Catalogue.

NEW ENGLAND NURSERIES, BEDFORD, MASSACHUSETTS

- CHAMPION.** The fruit is very large. Young trees, two years old from bud, are often loaded with fruit. Its season is about two weeks later than the Orange.
- ORANGE.** Large, roundish, bright golden yellow; cooks quite tender, and is of very excellent flavor. October.
- MEECH'S PROLIFIC.** Remarkable for its earliness and productiveness; will bear when two or three years old. Pear-shaped and of high quality.
- HEA, or REA'S MAMMOTH.** A very large and fine variety of the Orange Quince. One of the best.

CHESTNUTS

- AMERICAN SWEET.** Nuts sweet and of delicate flavor; 4 to 5 feet, each 50 cts., doz. \$5.00.
- JAPANESE CHESTNUT.** This variety makes a tree about 30 feet high, but bears when five years old. The nuts are three times larger than the American variety, but not so sweet, yet superior to the Spanish nut. It is a highly ornamental tree. Each \$1.00.
- PARAGON (The famous "Sober" variety).** A vigorous grower and early, abundant bearer. Nuts very large, three or four in a burr, and particularly sweet and rich. 5 to 6 feet, each \$1.00.

THE WALNUTS

- BLACK.** A native tree of large size and majestic form, beautiful foliage. Tree a rapid grower, producing a large, round nut of excellent quality. 5 to 6 feet, each 75 cts., doz. \$7.50.
- BUTTERNUT (White Walnut).** A native tree of medium size; nut oblong and rough; highly prized for its sweet, nutritious kernel. 5 to 6 feet, each 75 cts., doz. \$7.50.
- JAPAN.** The nuts are considerably larger than the common Hickory nut, and borne in clusters of 15 to 20. The shell is a little thicker than that of the English Walnut, which it resembles in a general way. The tree begins to bear when two or three years old. 5 to 6 feet, each 75 cts., doz. \$7.50.

HARDY NATIVE GRAPES

Strong 2 and 3-year vines. Price, except where noted; Each 30c., doz. \$3.00, 100 \$20.00.

BLACK

- CAMPBELL'S EARLY.** A fine new grape; clusters large, compact and handsome; berries large, nearly round; black, with light purple bloom; flesh firm, but tender; the seeds few; quality rich, sweet, slightly vinous; a strong and vigorous grower. Each 50 cts.
- CONCORD.** Bunch and berry large, round, black, thickly covered with a beautiful bloom; flesh moderately juicy, sweet pulp, quite tender when fully ripe.
- MOORE'S EARLY.** Bunch and berry large, with a blue bloom, quality better than Concord; its size and earliness render it desirable.

For description of varieties, see our General Catalogue.

WORDEN. Bunches large, handsome; berries large, sweet. Ten days earlier than Concord and superior to it in flavor; ripens well in cold localities.

RED AND REDDISH PURPLE

AGAWAM. Large, tender, juicy, vinous; vine vigorous.

BRIGHTON. Large, handsome and of the best quality, and ripens early.

CATAWBA. Well known; highly flavored, but late.

DELAWARE. Medium or small, but delicious; highly esteemed everywhere.

SALEM. One of the best and most popular of the Rogers; ripens with the Concord.

VERGENNES. Large and showy; pleasant, but not rich; ripens with the Concord; keeps well.

WHITE

GREEN MOUNTAIN. One of the very best; ripens early; good bearer; free from mildew; vigorous grower. Each 50 cts.

MOORE'S DIAMOND. Bunch large, compact; berry about the size of Concord; color greenish white, with a yellow tinge when fully ripe; flesh juicy and almost without pulp; quality very good; vine vigorous and productive; early.

NIAGARA. Bunch medium to large; berry large; skin thin but tough; slightly pulpy, tender, sweet; vine vigorous, healthy, and very productive; ripens with Concord. All things considered probably the most valuable white Grape in cultivation.

BLACKBERRIES

Strong plants; Doz. \$1.00, 100 \$5.00.

AGAWAM. Fruit medium size, jet black, sweet, tender and melting to the core; a very valuable variety for home use, being sweet throughout as soon as black; very hardy, healthy and productive.

ANCIENT BRITON. Medium size; melting, without core. Hardy and very prolific. One of the best.

ELDORADO. New. This splendidly variety is, perhaps the best ever introduced. It stands when other varieties are Winter-killed, and has never failed to produce enormous crops of its very large, jet-black fruit, which are sweet and melting, and keep well after picking.

ERIE. Fruit very large, excellent quality. There is no berry that rivals it in combining hardiness, large size, earliness and productiveness.

RATHBUN. Fruit is very large, color intense black with a high polish, pits very large, with small seeds; flesh juicy, high flavored, sweet and delicious.

SNYDER. A marvel for productiveness; fruit medium size, sweet and melting to the core; extremely hardy, standing the Winters where the Kittatinny and Early Harvest kill down.

WACHUSETT THORNLESS. Fruit of medium size, oblong, oval, moderately firm and less acid than any Blackberry we have seen; the plant is said to do equally well on light and heavy soils; it is hardy and almost free from thorns.

For description of varieties, see our General Catalogue.

RASPBERRIES

Price, except where noted: Doz. \$1.00, 100 \$5.00.

- BLACK DIAMOND.** Most prolific; berries black, of high quality and good size; productive and hardy.
- CARDINAL.** The best of the purple Raspberries and a most desirable variety for home use. Vigorous in growth, ornamental in appearance and enormously productive.
- COLUMBIAN.** A new variety of great promise. It is a very vigorous grower and very hardy. Fruit purple and delicious for table or canning, and an excellent shipping variety.
- CUTHBERT (Queen of the Market).** Large, dark crimson berries of firm texture, sprightly acid and of excellent quality; a certain cropper, always to be recommended.
- LOUDON.** Remarkably productive of bright red berries of largest size, fine quality and firm texture.
- MARLBORO.** Large, bright crimson fruit of splendid quality, early and very hardy.
- GOLDEN QUEEN.** Large, yellow fruit, of highest quality and best size; hardy and productive; fine for either home use or shipping purposes. Doz. \$1.50, 100 \$7.50.
- ST. REGIS EVERBEARING.** (New.) Red; berries of large size and of a bright crimson color. Flavor very sweet and rich; excellent quality. Highly productive and very hardy. Producing abundantly throughout the entire Summer. Each 20 cts., doz. \$2.00, 100 \$12.00.

CURRANTS

Two-year plants, except Perfection: Doz. \$1.00, 100 \$8.00.

- BLACK NAPLES.** Very large; black; bunches of medium length. Much valued for jellies. Strong grower and coarse leaves.
- CHERRY.** Fruit of the largest size; deep red, rather acid; short bunches; growth strong, stout, erect; short-jointed shoots.
- FAY'S PROLIFIC.** Fruit very large, bright red and of excellent flavor; less acid than the Cherry. It has a long stem which admits of rapid picking and is enormously productive.
- LA VERSAILLES.** Very large; red; long bunches of great beauty and excellent quality. One of the finest.
- PERFECTION.** The color is a beautiful, bright red, size as large or larger than Fay's; the clusters averaging longer. The quality is rich, mild subacid, plenty of pulp, with few seeds. After three years' trial, this fruit was the first to receive the \$50.00 Gold Medal of the Western New York Horticultural Society. Doz. \$2.00, 100 \$10.00.
- WHITE GRAPE.** Very large, yellowish white; sweet, or a very mild acid. Excellent quality and valuable for the table. The finest of the white sorts.

GOOSEBERRIES

- DOWNING.** Whitish green; vigorous and prolific; juicy and good. A fine reliable berry for general culture. Doz. \$1.50, 100 \$12.00.

For description of varieties, see our General Catalogue.

NEW ENGLAND NURSERIES, BEDFORD, MASSACHUSETTS

- HOUGHTON.** Vigorous but slender grower. Its medium pale red berries are plentiful and good, and it can be depended upon. Doz. \$1.50, 100 \$12.00.
- INDUSTRY.** An English variety more generally planted than any other, as it is free from mildew and bears freely very large dark red fruit of delicious quality. We recommend this for general use. Doz. \$3.00, 100 \$20.00.
- PEARL.** The most prolific Gooseberry known. One bush produced 2500 berries. It is free from mildew, and is much larger than the Downing. The color is bright green and quality first-class. Being thoroughly tested, we offer it as the best of its class yet grown. Doz. \$1.50, 100 \$12.00.

POT-GROWN STRAWBERRY PLANTS

The Strawberry will grow in any good garden soil where the ground has been thoroughly prepared. For family use we recommend planting them in double rows, 1 foot apart each way. Our pot-grown Strawberry plants are well-rooted, healthy plants, ready for shipment in August, and, by setting them any time during August and September, a fine crop of fruit may be had the next season. Out of the many varieties now on the market, the following sorts have proved the most satisfactory for growing in this locality.

Price: \$3. per 100, \$25 per 1000, except where noted.

- ABINGTON.** Strong grower and great yielder. Large, bright red berries, firm and fine flavor. Early to medium.
- BARRYMORE.** This new Strawberry was awarded a Silver Medal by the Massachusetts Horticultural Society in 1908. The plants are of strong growth and very productive. The conical-shaped berries are of medium size and of a dark, glossy, crimson color, the flesh is a rich red and very juicy. \$4.00 per 100.
- BRANDYWINE.** Large, glossy crimson; solid and fine flavor. medium.
- BUBACH.** Very early. Berry crimson and large.
- GOLDEN GATE.** New seedling; resembles the Marshall and will succeed where the Marshall fails. It produces strictly fancy firm fruit, clear to the end of the season, of a rich crimson color.
- GLEN MARY.** One of the most productive; very large, highly colored, firm, excellent flavor. Medium.
- HUB.** Large, firm, rich, glossy red fruit; very productive and best quality, and its season is very long. Doz. 75 cts., 100 \$4.00.
- MARSHALL.** Large; rich crimson; fine flavor. Medium.
- SAMPLE. P.** Very large, bright scarlet, handsome form; fine quality; very prolific. Late.
- SENATOR DUNLAY.** Early and very fine quality; large, rich, dark red and excellent flavor.

NEW EVERBEARING STRAWBERRY

- PAN-AMERICAN.** Perfect blossoms; a variety that produces a large and continuous crop of berries from August until the ground is frozen. Fine quality and good color. Doz. \$1.75. 100 \$10.00.

For description of varieties, see our General Catalogue.

RHUBARB

- CHAMPAGNE. A choice new English variety. Each 50 cts., doz. \$5.00.
LINNAEUS (Myatt's). Large, early and of good quality. Each 25 cts., doz. \$2.00.

SPECIAL OFFERS 1, 2, 3, AND 4 SPECIAL OFFER NO. 1

18 OLD-FASHIONED HERBS FOR KITCHEN GARDENS.
PRICE \$1.50.

(Delivery free to any point in New England.)

- 2 Plants of Spearmint.
- 2 Plants of Tarragon.
- 2 Plants of Hyssop.
- 2 Plants of Balm.
- 2 Plants of Thyme.
- 2 Plants of Sage.
- 2 Plants of Chives.
- 2 Plants of Rue.
- 2 Plants of Lavender.

SPECIAL OFFER NO. 2

18 PLANTS FOR ROCK GARDENS. PRICE \$1.50.

2 plants each of the following interesting and rare varieties.
(Delivery free to any point in New England.)

- Ajuga reptans (Bugle).
- Alyssum saxatile (Madwort).
- Arabis albida (Rock Cress).
- Armeria robusta (Sea Fink).
- Asperula odorata (Sweet Woodruff).
- Campanula carpatica (Hare-bell).
- Campanula rotundifolia (Scotch Bluebell).
- Cerastium tomentosum (Mouse Ear).
- Dianthus deltoides (Maiden Pink).

SPECIAL OFFER NO. 3

20 OLD-FASHIONED HARDY GARDEN PLANTS.. PRICE \$1.50.

(For Free Delivery add 20 cents.)

1 plant each of 20 unnamed choice varieties. All plants to bloom the first year, and of a selection to furnish flowers all through the season.

SPECIAL OFFER NO. 4

20 BEST UNNAMED VARIETIES OF HARDY PHLOX.
PRICE \$1.50.

(Delivery free to any point in New England.)

1 plant each of 20 choice sorts, and of sizes to bloom the first season.

For description of varieties, see our General Catalogue.

Our Stock of Trees and Plants, which are grown under severe climatic conditions, we confidently recommend as the hardest and best obtainable. Winters start here about December 15, and generally end by March 15. The lowest record of recent years was reached in January, 1914, when the thermometer registered 32 degrees below zero. Our usual record is 22-25 below, and it is safe to say that "Bedford grown trees and plants will live and thrive everywhere."

While we give our best efforts to produce and furnish high grade trees and plants, and do not attempt to pose as landscape architects, we are always happy to give such assistance as we can to customers in making the proper selection of what to plant, and advice as to the care of plants, and we respectfully invite correspondence pertaining to problems of interest to planters.

ANNOUNCEMENT

In response to many inquiries, we have published a pamphlet on "Practical Methods of Attracting Wild Birds," by Mrs. George H. Mellen, of Newton. Price in paper cover, 25 cents; board cover, 35 cents. Prof. C. J. Maynard, the well-known ornithologist, says of Mrs. Mellen's success: "I have been very much interested in your account of your birds. I think it very remarkable that you are able to attract so many birds in such a settled section of the city."

NOTE:—At the prices given in this catalogue, we will guarantee to furnish strictly first class stock of the sizes and ages named, but as our prices are low, and as it is impossible for us to guarantee the life of a plant after it leaves our hands, we can not replace free stock which may fail to grow. If a guarantee for one year is desired, add 20 per cent to the catalog price.

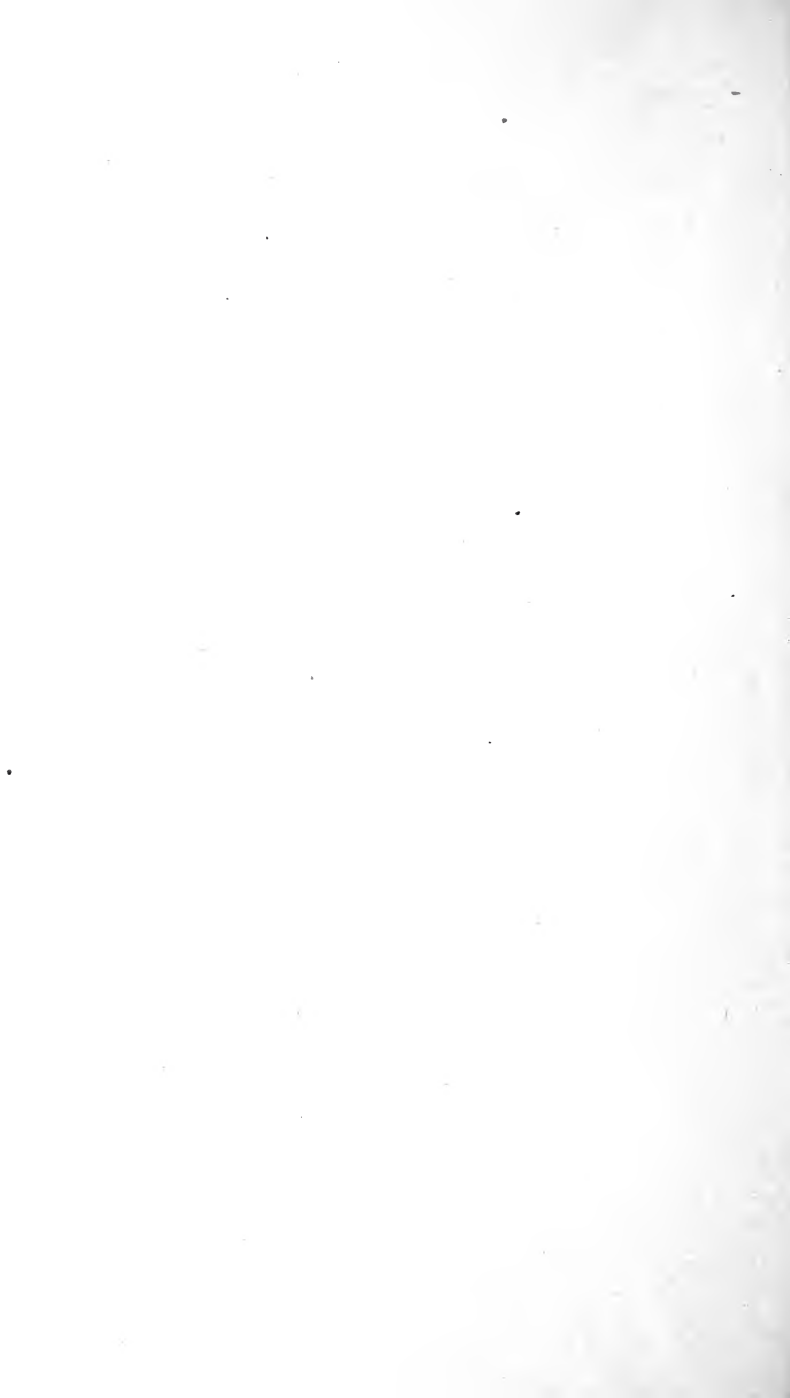
INDEX

Abies.....	2	Daffodils.....	50
Acer.....	19	Daisies.....	28
Aesculus.....	20	Daphne.....	7
Akebia.....	63	Delphinium.....	29
Alder.....	20	Desmodium.....	12
Almond, Flowering.....	14	Dianthus.....	30
Alnus.....	20	Diervilla.....	12
Althea.....	10, 13	Digitalis.....	31
Ampelopsis.....	63	Douglas Spruce.....	4
Andromeda.....	16	Euonymus.....	7
Anemone.....	26, 56	Fagus.....	21
Angelica Tree.....	20	Ferns.....	40
Apples.....	66, 67	Fir.....	2
Aralia.....	20	Foxglove.....	31
Arborvitae.....	5	Freesia.....	56
Arctostaphylos.....	7	Fritillaria Meleagris.....	57
Aristolochia.....	64	Garland Flower.....	7
Aronia.....	10	Gleditschia.....	13, 19
Asters.....	27	Gooseberries.....	72, 73
Barberry.....	10	Grapes.....	70, 71
Bayberry.....	10	Hedera.....	7
Bearberry.....	7	Hedge Plants.....	8
Beech.....	21	Hemlock.....	6
Berberis.....	7, 10	Hibiscus.....	13
Betula.....	20	Hollyhocks.....	25
Bignonia.....	64	Honeysuckle.....	14
Birch.....	20	Horse Chestnut.....	20
Bittersweet.....	64	Hyacinths.....	41, 42, 43, 44
Blackberries.....	71	Hydrangea.....	13
Bluebells.....	28	Iris.....	32, 57
Boxwood.....	7	Ivy.....	7
Bush Roses.....	15	Ixias.....	58
Buxus.....	7	Juniper.....	2
Campanula.....	28	Juniperus.....	2
Celastrus.....	64	Kalmia.....	7
Cercis.....	11, 19	Larkspur.....	29
Chamaecyparis.....	6	Laurel.....	7
Cherries.....	67, 68	Leucothoe.....	7
Chestnuts.....	70	Ligustrum.....	14
Chinonodoxa.....	56	Lilac.....	17
Chrysanthemum.....	28	Lilies.....	34, 58
Clematis.....	64	Lilium.....	34
Columbines.....	26	Lime.....	23
Crocus.....	55	Linden.....	23
Crown Imperials.....	56	Lonicera.....	14
Currants.....	72	Mahonia.....	8

NEW ENGLAND NURSERIES, BEDFORD, MASSACHUSETTS

Maple	19	Retinospora.....	6
Michaelmas Daisies.....	27	Rhododendrons ..	8
Narcissus.... 51, 52, 53, 54, 55		Rhubarb.....	74
Oxalis	59	Rosa	15
Paeonies.....	35	Rose of Sharon.....	13
Peaches	69	Roses..... 15, 60, 61, 62, 63	60
Pears	67	Scilla	60
Phlox..... 37, 38, 39, 40		Snowdrops	60
Picea.....	3	Sparaxis.....	60
Pine.....	4	Spruce.....	3
Pinks.....	30	Strawberry Plants.....	73
Pinus.....	4	Sunflower.....	31
Pipe Vine.....	64	Syringa.....	17
Plums..... 68, 69		Taxus	5
Poplar.....	22	Thuja	5
Poppies.....	36	Tilia.....	23
Populus.....	22	Tsuga	6
Privet.....	14	Tulips. 44, 45, 46, 47, 48, 49, 50	7
Prunus	14	Uva Ursi.....	70
Ptelea..... 15, 19		Walnuts	12, 18
Pseudotsuga	4	Weigela.....	63
Quinces..... 69, 70		Woodbine.....	5
Ranunculus	59	Yew.....	8
Raspberries.....	72	Yucca	





CONTENTS

	Page
1. Evergreen Trees - - - -	1
2. Evergreen Shrubs - - - -	6
3. Hedge-Plants - - - -	8
4. Deciduous Shrubs - - - -	10
5. Deciduous Trees - - - -	19
6. Herbaceous Perennials - - -	25
7. Hardy Ferns - - - -	40
8. Old Fashioned Herbs for Kitchen Gardens - - - -	41
9. Bulbs for Winter or Spring Flowering	41
10. Reliably Hardy Roses - - -	60
11. Vines and Climbing Shrubs - -	63
12. Fruit Trees and Small Fruits - -	66
13. Pot Grown Strawberry Plants - -	73
14. Special Offers - - - -	74
15. General Index - - - -	76



"BEDFORD GROWN" MEANS QUALITY

The New England Nurseries
BEDFORD, MASSACHUSETTS

Phone, Lexington 274



EVERGREENS IN WINTER