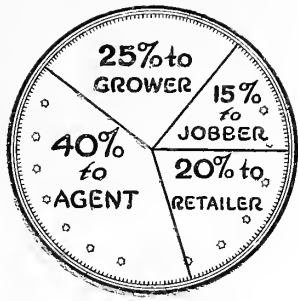
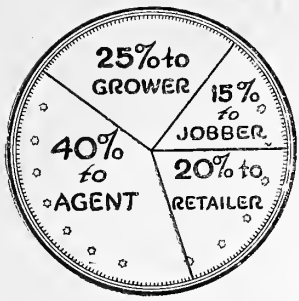


## **Historic, Archive Document**

Do not assume content reflects current scientific knowledge, policies, or practices.





**FREE--A Million Dollar Peach**  
(This offer good until Dec. 1, 1916)

How would you like a peach tree bearing peaches, weighing  $13\frac{1}{2}$  ounces. That's the J. H. Hale peach. It has a smooth thick skin drawn over deep yellow meat, fine grained and firm and has a mouth-watering, luscious peachy flavor unequalled. It ripens earlier than the Elberta. It is called the "million dollar peach." A bearing tree is worth from \$5.00 to \$10.00.

WE DON'T OFFER THESE FOR SALE, but will send you 1 absolutely free with every order for \$10 or over received before Dec. 1st, 1916.

**Don't Overlook This Rare Opportunity**

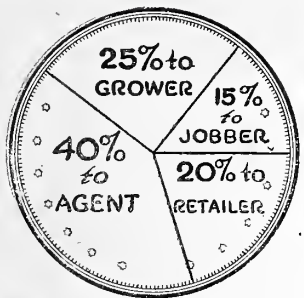
**Our Guarantee**

RECEIVED

We guarantee every article to be exactly as represented; trees true to name, safe delivery, quality and entire satisfaction; and trees equal to or better than trees costing five times as much.

OR you can HAVE YOUR MONEY BACK including all transportation charges. You be the judge and jury. You render the verdict. We won't quibble about it. We'll cheerfully return your money. WE MUST SATISFY YOU.

**Planters Nursery Co., Winfield, Kan.**



*1c Paid*  
Winfield, Ks.  
Permit No. 14

**Save 75c of Your Dollar**

*U. S. Dept. of Agri.,*

*E. R. Lake,*

*Washington, D. C.*

**Buy Trees  
The One-Profit Way  
From Grower to Planter**

# The Why and How of It

## Being a Heart to Heart Talk on Buying and Planting Trees

### **Planters One-Profit Way A Success**

A landslide of orders greets every new announcement of the Planters One-Profit Way of buying trees; orders from new customers and re-orders from old—many from friends and neighbors of those who have proven out the high quality of our trees, and who have quickly seen the useless waste of money in buying trees with **three unnecessary profits**.

This constant increase in business proves conclusively that the Planters One-Profit Way—direct from grower to planter—is **right**.

### **Best Trees Grown by the Million**

We know we are growing the best trees that nature can produce with the aid of more than twenty years of expert, scientific, practical experience. Thousands of acres devoted exclusively to the culture of fruit trees makes possible the lowest growing cost per tree. Considering the utter wiping out of the three big profits—the jobber's, the retailer's, and the agent's, and you know you can at last buy **good** trees at a **right** price, and **BACKED BY A POSITIVE GUARANTEE OF SATISFACTION OR MONEY BACK**.

### **Our Lowest Prices—Right Prices and Why**

Why should you pay the tree peddler's profits, salary and expenses on top of the other handlers' profits, when you can buy direct "from our soil to your soil" sturdy, healthy, well-rooted, true-to-name trees, that will grow and bear fruit in the shortest time. Think it over.

### **One Cost One Profit**

Don't be deceived by our low prices. These prices are **RIGHT**, because there is only **one cost** and **one profit**. The remainder is your benefit, representing a saving of 50 per cent to 100 per cent. Put this money in your own pocket. You can use it.

### **Skeptics and Knockers**

Skeptics and knockers will say our prices are too low for high quality trees. Compare the stock we send you with trees costing four times as much. Read what our customers say about the trees they bought. Put your own judgment against the real facts. Throw our iron-clad guarantee into the balance. You take no chances for if you are not entirely satisfied with the trees you

buy, you can have your money back, cheerfully, every cent of it. Read our guarantee.

What do you care about beautiful pictures and word claims of tree peddlers? You want good trees—trees that will **LIVE** and that will fruit quickly and well—vigorous, full of life-sap and fruit germs. You want a square deal, and the Planters Nursery Company will give it to you.

### **Perfect Condition—No Damage**

Trees sent the Planters One-Profit Way will not dry out; are not damaged by three or four handlings and repackings and varieties cannot get mixed. You get just what you order, fresh from the soil, carefully packed by experts, and delivered to you in first class condition **UNDER GUARANTEE**.

### **Success in Your Orchard Means Our Success**

We must satisfy every buyer. We cannot afford to have a single failure for we depend upon word-of-mouth testimony and successful results in all the orchards we sell. Satisfied customers are our biggest boosters, and so far as we know, we have not one dissatisfied.

### **Plant in November**

Get your trees in the ground without delay. The best month of the year to plant trees is November. Those who know advise fall planting. The sap is down then and the tree is "ripened" ready for its winter rest—it has gone to sleep. Move the tree while it sleeps. The sap begins to flow in February and the quickly following spring awakens it and its growth is faster and sturdier because it is already in the ground. Then again, you're much busier in the spring than you are in November and can give better attention to the planting.

Don't let another season roll 'round without planting that orchard or that fruit patch you've been talking about, and which can and will be a big profit builder and household provider.

### **Tell Us About It**

Tell us your needs. You may not find just what you want in this folder. Write for Planters One-Profit prices on any tree or plant that grows. Remember, we grow trees and plants in million quantities and sell direct to you, with only **one profit**. That's why our prices are so much lower than others.

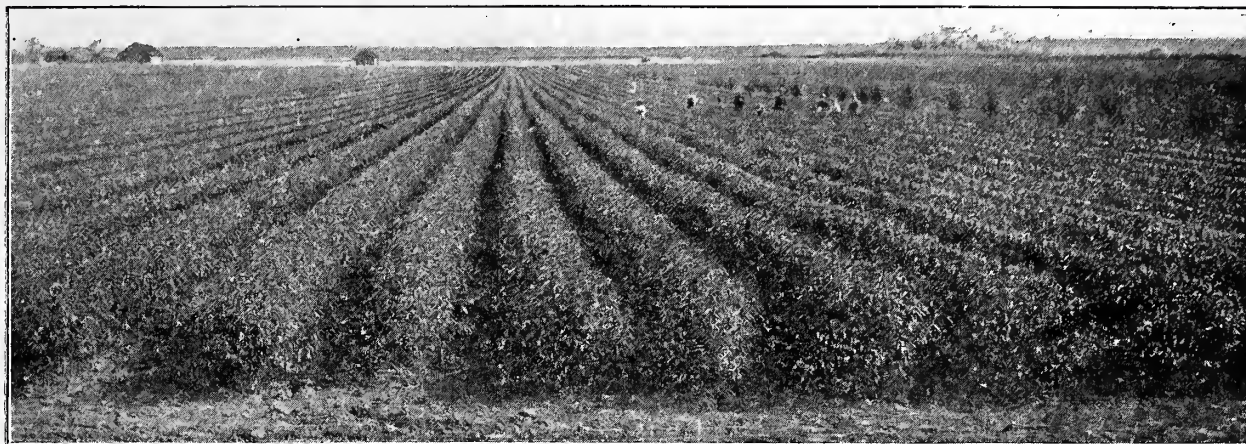
# The Planters Nursery Company

## Winfield, Kansas

---

November—The Best Time of All the Year to Plant Trees





Millions of trees in sight here in the Great Arkansas River Valley

## Apples

Of all apples here is a tested selection which cannot be beat. Apples are getting higher in price every year. Right now they are selling in Winfield at \$1.25 a bushel in carload lots. One man has 40,000 bushels on 200 acres of land. Nearly every farm has some ground where apples will do well. If you don't know about apple ground, write us description of your land, and we'll tell you honest facts. Don't plant apples on land with a rock subsoil. That's the kind of land for peach, plum, and apricot. Apples want a clay subsoil.

Now, our one year apples have two year whole roots and are fine. Two year apples 2 to 3 feet, are culls and I could sell them at 4 cents, but they won't pay you.

|                           | Each   | 10     | 100     | 1000     |
|---------------------------|--------|--------|---------|----------|
| Two Year 5 to 6 feet..... | \$0.17 | \$1.50 | \$13.20 | \$110.00 |
| Two Year 4 to 5 feet..... | .14    | 1.10   | 10.00   | 90.00    |
| Two Year 3 to 4 feet..... | .12    | .90    | 7.00    | 60.00    |
| One Year 3 to 5 feet..... | .16    | 1.40   | 12.00   | 100.00   |
| One Year 2 to 3 feet..... | .10    | .80    | 7.00    | 60.00    |

### Summer and Fall

Varieties are listed below in the order as they ripen. Plan your order for ripe apples at all seasons.

**\*Yellow Transparent**—Light transparent, earliest of all, bears young.

**\*\*Liveland Raspberry**—Almost white covered with crimson, red stripes, bears young and heavy, hardy north to south. A wonderful good quality early apple.

**\*Early Harvest**—Yellow, flat shaped, big cropper, a favorite for cooking and eating.

**\*Red June**—Solid bright red, fine for eating and cooking, hardy.

**Sweet June**—Big yellow sweet apple, like sugar, best of all sweet apples. Bears heavy, hardy.

**\*\*Coopers Early White**—Very large, bears very young, sauce in five minutes cooking, midsummer season when other apples are scarce. One of the best.

**\*Maiden Blush**—Light yellow with blush, fine for cooking like Coopers White.

### Early and Late Winter

**\*\*Grimes Golden**—Large golden yellow, finest of quality, a leader.

**\*\*Jonathan**—Deep solid red, rich and juicy, fine quality and very hardy. Brings highest market price. We grow big field of this one apple and never can supply demand.

**\*King David**—Very dark red, bears young, resembles Jonathan.

**\*\*Delicious**—A great big red beauty. Delicious don't half describe the flavor. Trees in nursery grow bigger than most other varieties. You can't plant a hardier better tree or apple. Look at our One-Profit price. Same as other varieties.

**\*\*Stayman Winesap**—Lot larger than Winesap, red striped, not so sour, yellow meat, Biggest, richest, best quality of any apple that grows for the season, Oct. 1st to Christmas. Trees thrifty, hardy and heavy croppers. We are eating them now with Grimes Golden, but like Stayman best.

**\*\*Missouri Pippin**—Dark red, marked with white dots. Planted for big quick crops. Regular and young bearing make it much prized by Kansas and Oklahoma planters.

**\*\*Black Ben Davis**—Large solid dark red, bears heavy, late keeper. Money maker in commercial orchards. Big improvement over Ben Davis.

**\*\*Winesap**—Bright red Winesap, who can beat it for quality, regular bearing, late keeping, big profits? Families and markets never tire of it.

**Other Varieties**—Summer: \*Benoni, Duchess Oldenbury, Red Astrachan. Fall: Wealthy, \*Penn. Red Streak, Fall Sweet. Winter: Rome Beauty, Northern Spy, Winter Banana, Northwest Greening, Spitzenburg, McIntosh Red, Wagner, \*Mammoth Black Twig, Ben Davis, Arkansas Black, York Imperial.

**IMPORTANT NOTICE**—I have put a star by some of the varieties I would recommend for family orchards and two stars for both family and commercial orchards. Don't plant too many varieties for a commercial orchard.

## Crab Apple

Finest jelly, finest preserves, finest cider that can be produced from any fruit. If you have more than you want for your own use, your store will always give you \$1.00 to \$2.00 a bushel, because crab apples are nearly always scarce in town. They are the first trees to leaf out in the spring, and are fine to plant half a dozen around your back door to make lots of shade.

Four profit nurseries charge 50 cents each. Our price same as other apples.

|                           | Each   | 10     | 100     |
|---------------------------|--------|--------|---------|
| Two Year 5 to 6 feet..... | \$0.17 | \$1.50 | \$13.20 |
| Two Year 4 to 5 feet..... | .14    | 1.10   | 10.00   |

**Whitney**—Early large red striped, mild, good eating, bears heavy.

**Transcendent**—Large transparent with red side, one of best for jelly, preserving and market.

**Florence**—Large red with yellow background, very fine, bears young. Nothing better.

**Hyslop**—Almost black red, prized for preserving.

**Siberian**—Small, grown in bunch, good for sweet pickling.

## Peaches

Selling here now at \$3.75 a bushel. Do best on thin sandy land or rocky, gravelly soil. Inclined to make too much wood growth on rich soil. I know lots of folks who are farming this kind of land with corn, losing dollars and dollars every year, and working hard too. That same land will grow 120 peach trees to the acre and bear four or five bushel to the tree—less work, and yield ten times the bushels to the acre that rich corn land will yield. Every farm needs a family orchard of peaches—so easy to grow.

Our trees are sturdy and chuck full of vitality. You never bought better and we seriously doubt whether you ever got as good. Try Planters trees. The low price is owing to the One-Profit plan.

|                   | Each   | 10     | 100     | 1000     |
|-------------------|--------|--------|---------|----------|
| 4 to 5 feet ..... | \$0.18 | \$1.65 | \$12.50 | \$105.00 |
| 3 to 4 feet ..... | .14    | 1.10   | 9.00    | 80.00    |
| 2 to 3 feet ..... | .12    | .70    | 7.00    | 60.00    |

Season of ripening varies from ten days to two weeks according to weather each year. We list these in order of ripening. All good for

## Fall Planted Trees Endure Drouths Better than Spring Planted Trees





You'd be proud to grow peaches like these. Plant some this fall.

family and local markets. Just the best tested varieties out of over one hundred.

(Plant varieties marked with a star (\*) for commercial orchards.)

### Ripening June 1st to August 1st

**Alexander**—Red and white, half cling. First to ripen.

**\*Early Wonder**—Beats all other early peaches. Ripe here July 4th. Bears next year after planting. Bright red with white meat and red juice which colors meat red when dead ripe. Best desert peach. Fine for canning. Brings big price, perfect freestone, small seed. The wonder of all peaches. Sold and introduced by us. You would not take \$5 a tree after you eat the fruit, and you get it next year after planting.

| Prices on Early Wonder peach only | Each   | 10     | 100     |
|-----------------------------------|--------|--------|---------|
| 3 to 4 feet                       | \$0.40 | \$3.50 | \$30.00 |
| 2 to 3 feet                       | .35    | 3.00   | 25.00   |

**\*Greensboro**—White freestone, second to ripen.

**\*Mamie Ross**—Big creamy white, with red blush. One of the grandest rich sugary sweet peaches grown. Hardy, bears when others fail, loads oown with fruit. Don't fail to plant this.

**\*Champion**—The Queen of white freestone peaches, flavor like Mamie Ross. Hardy and heavy fruiter. Include in every order. Would take a page to tell its good qualities and money making.

Other good varieties of this season: Mayflower, Red Bird Cling, Triumph, Carman, Alton, Hiley.

### August 1st to October 1st

**\*Belle of Georgia**—Big white freestone with red blush, solid, good shipper, fine quality, heavy fruiter. Best described by calling it the White Elberta of the peach family. You ought to plant ten acres of these on that poor ground that don't pay in corn.

**\*Elberta**—Big yellow freestone with blush. The standard money-maker. Commercial planters generally plant fifty to eighty per cent of this variety and then sometimes plant balance in same thing. We have grown this variety by the hundreds of thousands.

**\*Chinese Cling**—Big creamy white cling with very light blush. Ripening with Elberta. No finer cling.

**\*Capt. Ede**—Yellow freestone, very large, fine quality, ripening after Elberta. Highly prized by all planters.

**\*Krummels October**—Big round yellow, deep yellow meat, red at seed. The best yellow late freestone. Ripe when peaches are scarce.

Other varieties of this season: \*Foster, \*Crawfords Late, \*Elberta Cling, Stump, \*Heath Cling, Salway, Blood Cling, Wonderful.

**Peach Seedlings**—For wind breaks. Will bear heavy small peaches mostly seed. We buy this kind of seed at \$1 per bushel, sometimes more, to grow budding stock. 12 to 24 inch \$1.50 per 100, \$10 per 1000.

## Plums

You can plant these on very poor land, or on rich land they will bear loaded down. Just avoid wet land. The Japanese varieties like Burbank, Wickson and Satsuma are those great big plums that just weight the trees down to the ground and make them look like an umbrella.

|             | Each   | 10     | 100     | 1000     |
|-------------|--------|--------|---------|----------|
| 4 to 5 feet | \$0.25 | \$2.00 | \$18.00 | \$160.00 |
| 3 to 4 feet | .20    | 1.70   | 15.00   | 120.00   |
| 2 to 3 feet | .15    | 1.30   | 13.00   | 100.00   |

Japanese varieties, particularly suited to Kansas and Oklahoma planting, will not succeed in extreme north though are doing fine in

Colorado at forty five hundred feet altitude. Fine over large range of territory. Given in order of ripening.

### June 1st to August 20th

**Red June**—Bright Red, yellow meat, rich, sweet and juicy like a peach.

**Abundance**—Larger than goose plum, greenish yellow, covered with dull red, sugary sweet juice like honey, bears loaded down second year, bears itself to death sometimes by tenth year. But it does more work than some do in forty years.

**Burbank**—Sprawling tree, made that way so limbs can lay down to the ground with the loads of fruit just like an umbrella, bears fruit from one end of limb to other like Gooseberries, large red and yellow, yellow meat, best plum that grows, bears young and heavy, fruit keeps for long shipments.

**Satsuma**—Large, blood red color, skin, juice and meat. Every woman wants them for preserving, fine quality too.

**Wickson**—Late Japanese plum, gets killed sometimes with spring frosts. Begins bearing second year, big as peaches. Seven inches around. Deep wine color.

### Hybrid Plums

|             | Each   | 10     | 100     | 1000     |
|-------------|--------|--------|---------|----------|
| 4 to 5 feet | \$0.30 | \$2.70 | \$23.00 | \$190.00 |
| 3 to 4 feet | .25    | 2.20   | 18.00   | 150.00   |
| 2 to 3 feet | .20    | 1.70   | 14.00   | 120.00   |

**Omaha**—Great big red beauty, deep rich juicy flesh. Bears heavy from north to south and east to west. Originated in Nebraska. The plum you have been looking for. Stands cold weather, blooms late after frost danger.

**America**—Golden yellow, covered with bright red, large, hardy.

**Gold**—Large, round, deep yellow with red blush, thick skin makes it fine for shipping. Deep yellow meat, fine flavor, heavy bearing. Hardy in all climates. One of the best.

### American Plums

Hardy varieties for planting extreme north and south. Our native varieties. Prices same as Hybrid plums.

**Milton**—Very early, large round, bright red, yellow meat.

**Wild Goose**—Large red plum, old variety, bears heavy, poor shipping qualities make it suitable only for home use and local markets.

**Pottowattomie**—Medium size, red, tart, prized for jellies.

### European Plums

Thick meat rich plums. Hardy in extreme north, also in Kansas, Oklahoma and northern planting. Highly prized in western states. Do not come into bearing so young as other families. Same price as Hybrid.

**German Prune**—Medium size, deep blue, fine for canning and drying.

**Silver Prune**—Egg shape, very large, yellow, sweet as sugar.

**Lombard**—Large purple, yellowish green meat, fine quality.

Other well-known varieties: Blue Damson, Green Gage, Italian Prune, Shropshire Damson.

### Cherry Plum

**Compass Cherry**—Seed like a plum, flavor of a cherry. Should be called Cherry Plum. Fruit purplish red, almost one inch in diameter. Bears fruit the second year. Blooms late, missing frost. Hardest fruit can plant. Stands drouth. Grows on all kinds of soil.

|             | Each   | 10     | 100     | 1000     |
|-------------|--------|--------|---------|----------|
| 4 to 5 feet | \$0.35 | \$3.30 | \$29.00 | \$250.00 |
| 3 to 4 feet | .30    | 2.70   | 23.00   | 190.00   |

## Cherries

Cherry pie—cherries canned—who don't like them? They are a dry climate fruit and do well on high land, in the wheat belt where some other fruits do not succeed. They bloom late and make a sure crop every year. Plant on well-drained land. Grow fine on all land except wet land. Don't like wet feet. Our Cherry trees are better than those you get of the four-prong fellow. Our soil grows stocky trees full of vitality.

|                      | Each   | 10     | 100     | 1000     |
|----------------------|--------|--------|---------|----------|
| One year 4 to 5 feet | \$0.35 | \$3.50 | \$30.00 | \$250.00 |
| One year 3 to 4 feet | .33    | 3.00   | 26.00   | 220.00   |
| One year 2 to 3 feet | .25    | 2.20   | 19.00   | 165.00   |
| Two year 5 to 6 feet | .39    | 3.50   | 31.00   | 275.00   |
| Two year 4 to 5 feet | .34    | 3.00   | 26.00   | 225.00   |

**Early Richmond**—Bright rich red, early cherry, one of the best.

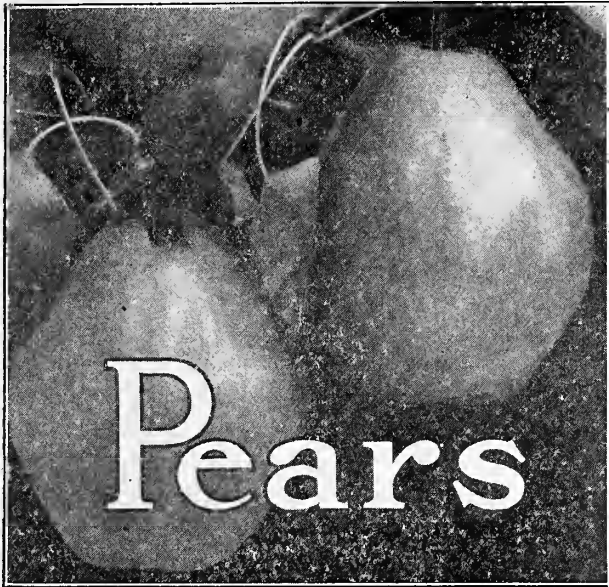
**Montmorency**—Large red cherry of the Richmond type, ripening about ten days later.

**English Morello**—Large black red cherry. Trees short lived, not so hardy as others.

**Wragg**—Improved English Morello. Same type fruit, trees hardier and better, bears heavy.

Other varieties: Royal Duke, Dyehouse, Black Tartarian, Napoleon.

**Move the Young Tree While in its Winter Sleep—November is Best**



# Pears

They do well right in the yard sod. In the chicken yard or on land with gumbo or clay subsoil, just where apples will not do well. You will make big money with pears if you plant Keiffers and Garber, because they are hardy. There are trees right here, 34 years old. We have 50,000 of these two varieties because they are always good, and as easy for the planter to grow as a cottonwood grove.

**Keiffer**—Greatly reduced photograph of Kieffer pear grown right here, weight one pound each. Big orchards growing on ridge land with stiff clay or gumbo subsoil right in this country keep making money, money, money. Keiffer begins to bear when three to four years old. Plant 20 feet apart, one hundred trees to the acre. Figure it yourself. Pears always in demand, you know the price you pay for one bushel. Keiffer and Garber the hardy varieties for Kansas and Oklahoma.

**Garber**—About same quality as Keiffer, except slightly smaller in size. Plant five to ten per cent Garber to pollenize Keiffer.

|                      | Each   | 10     | 100     | 1000     |
|----------------------|--------|--------|---------|----------|
| Two Year 5 to 6 feet | \$0.28 | \$2.40 | \$21.00 | \$160.00 |
| Two Year 4 to 5 feet | .24    | 2.00   | 18.00   | 140.00   |

### Standard Pears. Other Varieties

|                      | Each   | 10     | 100     | 1000     |
|----------------------|--------|--------|---------|----------|
| Two Year 5 to 6 feet | \$0.35 | \$3.00 | \$25.00 | \$220.00 |
| Two Year 4 to 5 feet | .30    | 2.50   | 20.00   | 170.00   |

**Clapps Favorite**—Rich, luscious, thin skinned pear, first to ripen, resembles Bartlett.

**Bartlett**—Old favorite variety, sometimes called Belle pear which describes shape. Large melting buttery, delicious flavor. Should be planted in every yard. Ten year tree in yard here produced ten bushel. Plant in sod to prevent danger of blight. Ripens in August.

**Buerre d'Anjou**—Brings highest market price on account of rich flavor, ripens next after Bartlett.

**Seckle**—Known as the little sugar pear. Always highly prized on account of quality, small size red to collar.

**Duchess**—Ripens just ahead of Keiffer. Fine for canning, very large hardy tree. Bears young as a Standard.

### Dwarf Pear

Pears budded on Quince stock to make small size tree for yard planting, or often used as fillers in other orchards. Can be planted twelve to fifteen feet apart. First class trees not so tall as Standards. Come into bearing quick. Very common to see trees full of fruit 2nd or 3rd year.

|             | Each   | 10     | 100     | 1000     |
|-------------|--------|--------|---------|----------|
| 4 to 5 feet | \$0.35 | \$3.00 | \$25.00 | \$220.00 |
| 3 to 4 feet | .30    | 2.50   | 20.00   | 190.00   |

Varieties succeeding best as Dwarfs: Clapps Favorite, Bartlett, Duchess and Seckle.

## Quince

Someone will plant an acre and pay a mortgage off of the farm. Selling here now at fifty cents a dozen. Easy to grow, makes a big bush or dwarf tree. Good for preserves, jellies and to flavor butters and preserves made out of apples and pears.

**Orange**—Large yellow, rich quality. By far better than any other variety.

Van Deman, Champion, Missouri Mammouth, other varieties but none so good as Orange.

## Apricots

Here is the tree you can plant right in the rocks just so you can find enough dirt to plant it in. A fine tree to

**Plant Trees NOW—They'll Start Sap in February and GROW**

plant for fruit and for yard shade and bears wherever peaches will. No home grounds, be they ever so small, are complete without Apricots.

|             | Each   | 10     | 100     | 1000     |
|-------------|--------|--------|---------|----------|
| 4 to 5 feet | \$0.26 | \$2.40 | \$22.00 | \$200.00 |
| 3 to 4 feet | .22    | 2.00   | 20.00   | 170.00   |
| 2 to 3 feet | .17    | 1.50   | 14.00   | 130.00   |

**Moorpark**—Large, two inches in diameter, deep gold color, rich, juicy, yellow sweet meat. One of the best.

**Royal**—Large light yellow, sweet, fine for canning or drying.

**Superb**—Medium size to large, hardy, late bloomer.

## Grapes

If you ride around on a sulky plow and are buying all the things you need to use in the corn field and do not buy your wife even fifty grape vines, I hope you will wake up and be so ashamed of yourself that you will send to me for grapes right away even if you don't buy anything else. They are the easiest fruit to grow, they bear the first year after planting out, and if you have a lot of nice grapes for your wife and children to eat you will not have any doctor bills to pay. Stomach specialists, they tell us, diet people on pure grape juice when they can't eat anything. We have put such a low price on grapes that you will just feel compelled to send and get some grapes and plant them right away.

### Prices on Two Sizes of Grape

|                 | Heavy Grape Vines<br>for people who want big vines |        |        |         | Small Size Vines<br>well-rooted |        |        |
|-----------------|--|--------|--------|---------|---------------------------------|--------|--------|
|                 | Each   | 25     | 100    | 1000    | Each                            | 25     | 100    |
| Concord         | 8c   | \$1.00 | \$4.00 | \$30.00 | 5c                              | \$0.75 | \$2.00 |
| Moore's Early   | 12c  | 1.50   | 6.00   | 45.00   | 8c                              | 1.00   | 4.00   |
| Worden          | 12c  | 1.50   | 6.00   | 45.00   | 8c                              | 1.00   | 4.00   |
| Niagara         | 12c  | 1.50   | 6.00   | 45.00   | 8c                              | 1.00   | 4.00   |
| Agawam          | 12c  | 1.50   | 6.00   | 45.00   | 8c                              | 1.00   | 4.00   |
| Delaware        | 12c  | 1.50   | 6.00   | 45.00   | 8c                              | 1.00   | 4.00   |
| Diamond         | 12c  | 1.50   | 6.00   | 45.00   | 8c                              | 1.00   | 4.00   |
| Campbells Early | 18c  | 3.00   | 10.00  |         | 12c                             | 2.00   | 8.00   |

### Varieties

**Moore's Early**—Big black grape, compact clusters, ripens early.

**Campbells Early**—Big black early grape, new variety.

**Worden**—Resembles Concord, ripens a week earlier, sweeter, finer quality, thin skinned.

**Concord**—Black well-known variety, hardy, good quality, big crop, firm skinned, ships well.

**Diamond**—Very fine Quality, hardy, white grape.

**Niagara**—Ought to be called white Concord on account of the hardiness and fine quality.

**Agawam**—Very large, dark ded, ripens late.

## Blackberries

We positively agree never to send you old patched plants, or suckers. What we send you will be plants grown from root-cuttings, branched like a grape vine. They bear loaded down with fruit the next year after planting them. We have seen plants bear a gallon a bush the second year, and pay \$300.00 an acre the second year.

|               | No. 1  |        |        |         | No. 2  |        |        |         |
|---------------|--------|--------|--------|---------|--------|--------|--------|---------|
|               | Each   | 25     | 100    | 1000    | Each   | 25     | 100    | 1000    |
| Early Harvest | \$0.08 | \$1.00 | \$3.00 | \$21.00 | \$0.05 | \$0.60 | \$2.25 | \$15.00 |
| Blower        | .10    | 1.25   | 3.50   | 28.00   | .06    | .75    | 2.50   | 18.00   |
| Mercereau     | .08    | 1.00   | 3.50   | 28.00   | .06    | .75    | 2.50   | 18.00   |
| Ward          | .08    | 1.00   | 3.50   | 28.00   | .06    | .75    | 2.50   | 18.00   |
| Planter       | .10    | 1.50   | 5.00   | 30.00   | .08    | 1.00   | 3.00   | 22.00   |
| Dewberry      | .08    | 1.00   | 3.00   | 21.00   | .05    | .60    | 2.25   | 15.00   |

**Early Harvest**—Earliest, bears loaded down, sweet, hardy.

**Blower**—Large round, jet black, very fine quality.

**Mercereau**—Best late berry, extremely large, low spreading bush, heavy foliage protects from sun.

**Ward**—Very fine late berry, similar to Mercereau.

**Planter**—Our new berry, extremely large, big sweet luscious berry. No finer flavor, hardy.

**Lucretia Dewberry**—Big as your thumb, 1½ inches long. Plant on clay hills or poor ground. Too much vine on rich ground.

## Raspberries

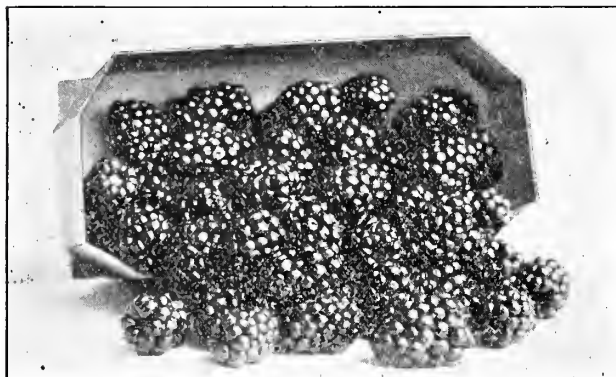
You know what it means to have ripe, fresh raspberries for the table with thick cream. Wife says they are the cheapest fruit to can even at \$4.00 a crate, because there is no wast to them. She gets 23 or 24 quarts out of a crate canned. We try every new variety that comes out, so in making a selection of what you



want in raspberries you can go by just what we say about them.

Red Raspberries not very hardy for the West. Best Blackcaps, marked with \*, bear double standard varieties.

|   | Each   | 25     | 100    | 1000    |
|---|--------|--------|--------|---------|
| <b>Cardinal</b> , best purple                     | \$0.05 | \$0.50 | \$2.00 | \$15.00 |
| <b>Cuthbert</b> , standard red                    | .05    | .50    | 2.00   | 15.00   |
| <b>St. Regis</b> , red everbearing                | .15    | 2.00   | 5.00   | 25.00   |
| * <b>Cumberland</b> , large blackcap              | .05    | .75    | 2.10   | 15.00   |
| <b>Kansas</b> , standard black cap                | .05    | .60    | 2.00   | 15.00   |
| * <b>Plum Farmer</b> , big blackcap, fine quality | .05    | 1.00   | 3.00   | 20.00   |



Berries like these bring highest market prices.

## Gooseberries

|  | Each   | 25     | 100    | 1000    |
|--|--------|--------|--------|---------|
| <b>Houghton</b> , old standard                       | \$0.10 | \$1.50 | \$6.00 | \$50.00 |
| <b>Downing</b> , large oblong berry                  | .12    | 2.00   | 8.00   | 70.00   |
| <b>Champion</b> , promising new variety, bears heavy | .12    | 2.00   | 8.00   | 70.00   |

## Currants

|   | Each   | 25     | 100    | 1000    |
|---|--------|--------|--------|---------|
| Don't do well in hot climates.          |        |        |        |         |
| <b>Pomona</b> , favorite red            | \$0.10 | \$1.50 | \$6.00 | \$50.00 |
| <b>Red Dutch</b> , old standard         | .10    | 1.50   | 6.00   | 60.00   |
| <b>White Dutch</b> , best white variety | .10    | 1.50   | 6.00   | 60.00   |
| <b>Perfection</b> , new red variety     | .20    | 3.00   | 12.00  | 120.00  |

## Strawberries

Sold for spring delivery only. Write for Planters Company prices direct to planter.

## Maliner Kren

We could't get along without this every year, neither could you once that you had it. Grows roots as big as your arm. It is the improved horse radish. Five times larger than old-fashioned variety, a little milder and sweeter. Be sure to include some of this in your order.

|                  | Each   | 25     | 100    | 1000    |
|------------------|--------|--------|--------|---------|
| One year roots   | \$0.10 | \$0.75 | \$2.50 | \$20.00 |
| 3 to 4 inch sets |        | .50    | 1.75   | 12.00   |

## Rhubarb

I grow it by the hundred thousand. Best variety of all, Linnaeus, the big kind. Plan two year divided or whole root for quick results.

|                        | Each   | 10     | 100    | 1000    |
|------------------------|--------|--------|--------|---------|
| One year whole roots   | \$0.05 | \$0.40 | \$3.00 | \$20.00 |
| Two year divided roots | .05    | .50    | 3.50   | 25.00   |
| Two year whole roots   | .07    | .60    | 4.50   | 30.00   |

## Asparagus

Conover's Colossal, best of all varieties, big fine plants. 10, 10c; 100, 65c; 1000, \$6.00.

## Forest Tree Seedlings

|  | 100    | 1000   |
|--|--------|--------|
| Russian Mulberry, 8 to 12 inch               | \$0.40 | \$3.00 |
| " " 12 to 18 inch                            | .60    | 5.00   |
| " " 18 to 24 inch                            | .80    | 6.00   |
| " " 2 to 3 feet                              | 1.20   | 10.00  |
| Catalpa Speciosa, 8 to 12 inch               | .40    | 3.00   |
| " " 12 to 18 inch                            | .60    | 5.00   |
| " " 18 to 24 inch                            | .80    | 7.00   |
| " " 2 to 3 feet                              | 1.20   | 10.00  |
| Black Locust, same price as Russian Mulberry |        |        |
| Maple 12 to 18 inch                          | .60    | 5.00   |
| " 18 to 24 inch                              | .80    | 7.00   |
| " 2 to 3 feet                                | 1.25   | 10.00  |
| Elm, same price as Maple.                    |        |        |

## Shade Trees

|   | Each   | 100    | 1000    |
|---|--------|--------|---------|
| Ash, 4 to 6 feet                                | \$0.25 | \$2.00 | \$18.00 |
| Ash, 6 to 8 feet                                | .35    | 3.00   | 25.00   |
| Locust, Black, 8 to 10 feet                     | .50    | 4.00   | 35.00   |
| Box Elder, 4 to 6 feet                          | .25    | 2.00   | 18.00   |
| Box Elder, 6 to 8 feet                          | .35    | 3.00   | 25.00   |
| Catalpa, 3 to 4 feet                            | .15    | 1.40   | 12.00   |
| Catalpa, 6 to 8 feet                            | .25    | 2.00   | 18.00   |
| Catalpa Bungeii (Umbrella Catalpa) 4-6 ft heads | .80    | 7.50   |         |
| Elm, 6 to 8 feet                                | .35    | 3.00   | 25.00   |
| Elm, 8 to 10 feet                               | .60    | 5.00   | 40.00   |
| Elm, 10 to 12 feet, 1 1/2 to 2 inch             | 2.00   | 15.00  | 100.00  |
| Elm, English Cork Bark, 4 to 6 feet             | .60    | 5.00   | 40.00   |
| Maple, Soft or Silver, 4 to 6 feet              | .20    | 1.80   | 15.00   |
| " " 6 to 8 feet                                 | .30    | 2.50   | 22.00   |
| " " 8 to 10 feet                                | .50    | 4.00   | 35.00   |
| Poplar, Carolina, 5 to 6 feet                   | .15    | 1.40   | 12.00   |
| " " 6 to 8 feet                                 | .25    | 2.20   | 20.00   |
| " " 8 to 10 feet                                | .35    | 3.00   | 25.00   |
| " " 10 to 12 feet, 1 1/2 to 2 inch              | 1.00   | 8.00   | 70.00   |

|   |      |       |       |
|---|------|-------|-------|
| Poplar, Norway, same prices as Carolina.            |      |       |       |
| Sycamore, 4 to 6 feet                               | .25  | 2.00  | 18.00 |
| " 6 to 8 feet                                       | .35  | 3.00  | 25.00 |
| " 8 to 10 feet                                      | .60  | 5.00  | 40.00 |
| Poplar, Silver Leaf, 10 to 12 feet, 1 1/2 to 2 inch | 1.25 | 10.00 | 90.00 |

## Hedges and Ornamental Clumps

|                                 |     |      |       |
|---------------------------------|-----|------|-------|
| Osage Hedge, 12 to 18 inch      |     | .25  | 2.25  |
| California Privet 12 to 18 inch | .30 | 2.50 | 20.00 |

Write for prices on other varieties of Ornamental Hedges.

## Ornamental Shrubs

Priced so that every woman customer of ours can fix up her home yard. We believe that the wife who stays at the house all day long and works hard ought to have plenty of shade trees and ornamental shrubs. It is restful to her, makes her work easier and makes her children grow up to enjoy better things and be better men and women.

Two year strong plants, Each, 25c; 10, \$2.00

**Althea**, Rose of Sharon. Double varieties, like roses, hardy blooms all summer in hottest weather.

Double Pink, beautiful, one of the best.

" Red, best named red variety.

" White, pure white, very double, fine.

" White, with red center, very showy, don't miss it.

**Barberry**, Japanese—Grows 2 to 4 feet high, beautiful foliage. Covered with bright red berries in winter.

**Flowering Quince**—Bright scarlet red, first to bloom in spring.

**Hydrangea**, P. A.—Big single bunches of white flowers, beautiful.

**Mock Orange**—Sweet scented, white with yellow center, hardy.

**Spirea**, Van Houttei—Drooping bush covered with white flowers, like loaded down with snow. Hardy, don't miss it.

**Lilac**—Purple old well-known variety.

**Snowball**—Big white balls, early spring.

**Russian Olive**—Silver color leaf, yellow bloom, grows 16 feet high, beautiful, fine to cover up and shut out barns and ugly sights. Plant in bunches 3 to 4 feet apart.

## Climbing Vines

They cover up the old fences, they turn unsightly back yards into a paradise; they creep over the windows and porches and shut out the hot, burning sun. They bear a profusion of sweet scented flowers; they furnish cut flowers for the house when flowers are scarce. A little money in vines goes farther to make home beautiful and pleasant than almost anything else.

Each, 25c; 10, \$2.00

**Honeysuckle**—Hall's sweet scented, best white and cream colored.

**Ivy**, Boston—For stone walls or arbors, turns red in winter.

**Clematis**, P. G.—Small white flower, sweet scented; blooms all summer.

**Wisteria**—Purple, like bunches of grapes, hardy, one of the best.

## Roses

Don't buy green house plants that you can buy for 10 to 15 cents each. They will not live when you put them outdoors. Get our strong, hardy two year old field grown roses. They grow.

|                        | Each | Ten of one variety |
|------------------------|------|--------------------|
| Strong two year plants | .35c | \$3.00             |

**Baltimore Belle**—Old variety, white climbing rose.

**Excelsa**—New bright red climbing rose, leads all for beauty. Beats Crimson Rambler.

**Dorothy Perkins**—Sweet scented, lovely double pink, loaded down with blooms, lasts longer than others. Queen of all climbers.

**Frau Karl Drschki**—Biggest and most beautiful white rose grown, perfectly hardy. Hybrid P.

**General Jacqueminot**—Dark red, the first favorite of more women than any other red rose, very hardy. Hybrid P.

**Paul Neyron**—Large pink or rose color. My favorite, so large, looks almost like a peony, fine bloomer. Hybrid P.

We just listed a few of the very best. Order by color if you want a collection and want us to select best varieties. Climbing roses are not ever bloomers. Roses marked Hybrid P. are ever bloomers. They bloom most in spring and fall. They are hardy. Tea roses bloom more but are not hardy.

Large general list of hardy Hybrid Perpetual Roses in all colors at above prices. Name color wanted and we will select best.

**You're Not so Busy in November as You Will be Next Spring**





Activity in a Planters One-Profit berry patch. One year after planting.

## The Planters One-Profit Way of Selling Direct to You Read Carefully Before Ordering

**Use the Order Blank** and please write plainly, filling it out carefully so there may be no misunderstanding as to what you want. If you lose the order blank, use any other paper.

**Prices.** "Kind" of trees means apple, peach, plum, etc. "Variety" means name of each different one of a kind of fruit, such as "kind" peach; "variety" Elberta. Varieties are tied ten in a bunch. Order that way for lowest price. Each price applies to less than 10 of a single variety. 10 price applies to less than 50, if 10 of a variety. 100 price applies to 50 or more of a kind if 10 of a variety. 1000 applies to 300 or more of a kind if 10 of a variety.

**Freight or Express.** Railroads run out of here ten different directions like wagon spokes, making quick and cheap freight in every direction. There is a special low express rate on nursery stock. Prices named free on board cars Winfield, Kansas.

**Free Packing.** No charge for packing trees fresh from the ground in paper lined box, or small orders in special protected bales. Packed this way, shipped direct to you, they grow. We guarantee all shipments to arrive in good condition. Orders lost or damaged will be refilled at once, free of charge.

**Certificate by State Entomologist.** Every shipment is sent under printed certificate, showing our stock found clean and healthy under examination.

**Guaranteed.** We guarantee every article to be exactly as represented or we will return your money and pay transportation charges both ways. We guarantee trees true to name. In case of error, or trees do not prove true to name, you can have your purchase price, plus freight both ways, returned cheerfully in cash. Trees sold direct to you cannot get mixed as they do in the four-profit plan.

**References.** You are at liberty to write the Cowley County National Bank, or any business man of Winfield, about the Planters Nursery Co., or about the trees.

**How to Send Money.** Send the handiest way. Your check is acceptable. Make it payable to the Planters Nursery Company.

**Terms.** Cash before shipment is the rule. It cuts out expense of bookkeeping, and collecting, and your paying for the other fellows goods. If you choose, send one-fourth cash with order, and we will hold stock for you until shipping date, when you can either remit balance or pay upon arrival.

### Money Order Deposit

Money with order, saves bookkeeping, time and loss and helps to keep dollars in your pocket. But if you want to see your tree first and make us safe, you can do so by attaching this coupon to your order.

(Name) ..... has deposited \$ .....

in this bank to be forwarded to you by us after he has received his nursery stock ordered from you, which it is agreed must be satisfactory to him.

Signature of Bank .....

---

NOTE—Direct your bank to forward money to us after you have unpacked and examined your trees. If not perfectly satisfied, notify us at once.

# PLANTERS NURSERY CO.

WINFIELD



KANSAS

# What They Who Have Planted Say

Just a Few of Thousands of Letters on File in Our Office—Convincing Evidence That the Planters One-Profit Way is RIGHT

**Everyone Alive and Growing** Oct. 13, 1915  
The trees I bought of you last spring were sure fine ones, well packed and every one of them alive and growing. I don't think I ever planted trees that made a better start. Not a single one missing. I will remember you in the future when in need of good trees.—Albert S. Brown, Wellington, Kansas.

**Best Value for the Money** Mar. 22, 1916  
Trees received in fine condition. Will say they are the best value for the money in fruit trees ever received. Also were well packed. Shall recommend your nursery to my friends.—F. W. Pearson, Brogado, Texas.

**Better at One-Third Cost** Apr. 3, 1916  
We received the nursery stock ordered from you a few days ago. They came in fine shape and am well pleased with them. They are as good and lots of them better trees than I ever bought before and have paid three times as much for trees and plants as you ask for them. You may expect orders from me in the future.—T. M. Etherington, Hamilton, Kansas.

**Trees Look Too Good** Apr. 7, 1916  
Received my nursery stock in good order. The trees look good to me. I will know where to send when I need some more nursery stock.—Albert W. Tilton, Louisburg, Kansas.

**Finest From Any Nursery** Apr. 12, 1916  
The trees were sure the finest trees I ever saw come from a nursery. You will get several orders from here next year.—A. Lumbert, Wilburton, Kansas.

**Better Than I Expected** Apr. 7, 1916  
I received the trees today and am much pleased with them. They were better than I expected and if I can get any more orders for you in this part of the country I will surely do it. I will have another order this fall. I suppose they will be bearing in about two years.—A. O. Markusen, Alliance, California.

**Recommend to Friends** Apr. 11, 1916  
I received shipment of trees and vines yesterday O. K. They were in very, very nice shape indeed. I want to thank you people for doing what you say you will do. I will say also that I can recommend you people to my friends and neighbors as being a responsible firm to deal with.—B. C. Bowden, Bowie, Texas.

**Good as Forty Cent Trees** Apr. 10, 1916  
I received my trees and am well pleased with them. They are as good trees as I have been paying 35 and 40 cents for. If I want any more trees will let you know where to send them.—J. W. Howard, Perry, Okla.

**A Fine Lot** Apr. 10, 1916  
I want to compliment you and to thank you for sending such a fine lot. I have had trees from a good many nurseries, and I must say that I never saw many that were superior to these. The two year old apple trees are exceptionally fine, the trunks being large and sturdy. Being planted under such favorable conditions and being so strong and vigorous at the start, I think I should have exceedingly good luck with them.—C. C. Chrisman, St. Louis, Missouri.

**Largest Trees I Ever Bought** Apr. 17, 1916  
I have received the pear trees and grape vines shipped on my recent order and set the trees at once. They are the largest and best looking trees I have ever bought. What the fruit may be time only can tell but I am more than pleased with the prospect. They surely merit future patronage for you.—R. C. Hawthorne, West Point, Ind.

**Why Pay Such "Foxy" Prices** Apr. 18, 1916  
I received my trees today. I found the trees better than expected. They are as nice and green as can be. It looks to me that every one must grow. Agents here want from 25 to 40 cents for apple trees and from 50 to 80 cents for cherry trees. Why pay such foxy prices when you can buy just as good a tree from you for 10 and 12 cents apiece? Never will I buy from agents any more. I paid as high as 50 cents for plum trees and just think when they came to bearing they were all wild plums.—Louis Wurst, Fort Jennings, Ohio.

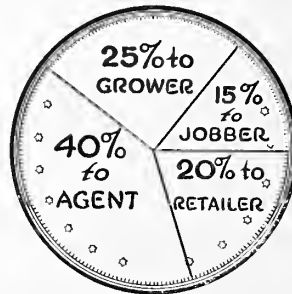
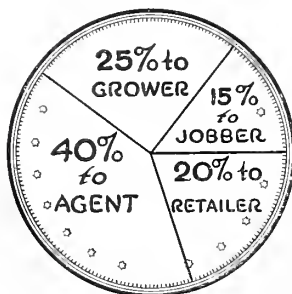
**Prompt and Fair Dealing** May 4, 1916  
My blackberries and peach trees arrived the 31st and I planted them the same day. They are quite satisfactory and as my ground is a rich sandy loam and in fine condition I am sure they will do well. Thanks for your prompt and fair dealing.—R. R. Coffey, Woodward, Okla.

**Finest Condition Ever** Apr. 13, 1916  
Shrubs came in today in the finest condition I have ever received stock from any nursery.—H. V. Jeffers, Jefferson, Oklahoma.

**Received None More Beautiful**  
I received my trees 10 days ago, was more than pleased with them. I never received more beautiful trees than those. I am just building up a new home and it is getting rather late to plant much more this spring or I would give you a nice big order.—Mrs. Thornburgh, Okmulgee, Oklahoma.

**They All Grew** June 21, 1916  
I bought some trees and grapes of you this spring for half price and they all grew. It does my soul good to look at them.—N. A. Hahn, Jennings, Kansas.

Remember the Lesson of the Dollar—Keep 75c of It and Buy the Planters One-Profit Way—THIS FALL



We Offer You Special Inducements to Plant This Fall—Start Right