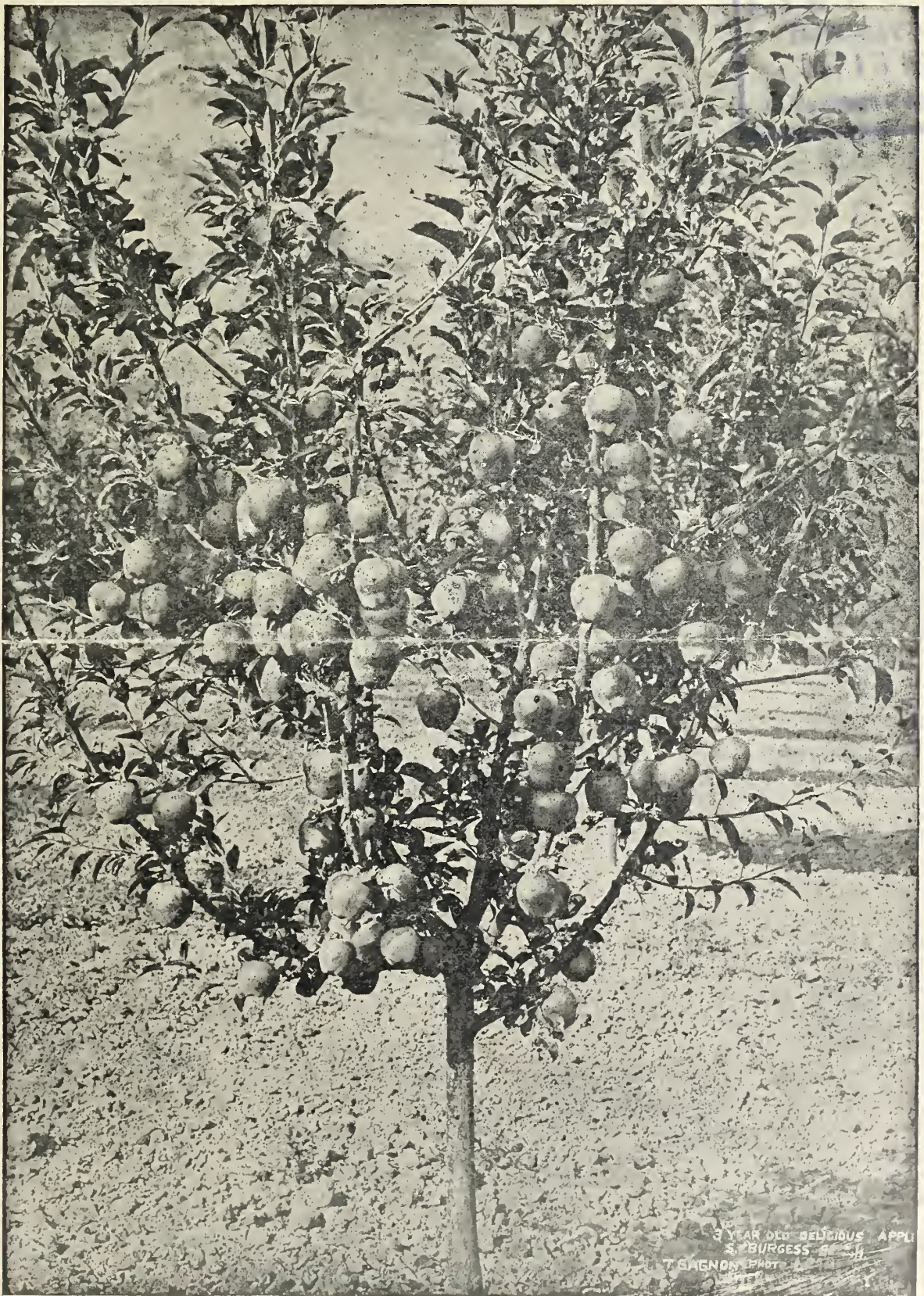


Historic, Archive Document

Do not assume content reflects current scientific knowledge, policies, or practices.



Wholesale Price List



Stark Delicious Apple—A 3-Year-Old Tree—"Stark Trees Bear Fruit"

Stark Bro's - Nurserymen - Louisiana, Mo.

Stark Bro's at Louisiana, Mo., since 1816

Centennial Cash Price List

Fall 1915 — Spring 1916

Wholesale Prices Herewith are for first-class stock, packed free and delivered f. o. b. our local freight and express office.

Terms Cash with order, or we will ship if one-fourth cash is remitted with order, balance to be paid on arrival.

Small Orders No order too small to receive our most careful attention—none too large for our capacity.

We Box and Pack Free These cash prices pay for everything delivered on board the cars at Louisiana, Mo. There are no further uncertain charges for service, packing, drayage, etc., as some nurseries charge.

Special Quotations—Estimates We make special

vines, berry plants and small size Ornaments in the same manner—prices are 3 cents more than listed. However, we prefer express and freight shipments, but make this offer for those far removed from railroads.

All stock damaged in transit, we will replace without charge—claim must be made to us within one week after arrival of stock. We use the utmost care to avoid all mistakes and Stark Trees may be depended upon to bear fruit true to label, but if through error or otherwise, any should prove untrue, we will replace the trees of same size as originally ordered, but are liable in no further manner. Our just and liberal dealing with the public for 100 years—since 1816—is our strongest guarantee to customers.



The Great "Stark Seal," on all genuine Stark Trees—The Mark of Positive Quality

Rate—10 or more of a variety, but if as 30 or more, customer is entitled to 100

ch Rate—Less than 10 of any variety at 100

buying grape vines, raspberries, black-gooseberries, currants, dewberries, hedge climbing vines and paeonies, 25 of one go at the 100 rate, 500 at the 1000 rate.

ts. No diseased or infested trees are sold in our nurseries.

Now Orders are handled here, as they are received. All orders are carefully selected and reserved in customer's or shipment at the proper time. We always advise prompt, early orders—better for customers, better for ourselves. Order **now!**

(Wholesale List)

SPECIAL CENTENNIAL PRICE OFFER

Big Apple Trees At Small-Tree Prices

As a special celebration of our One Hundredth Birthday and an extra inducement to large planting this year, we offer 4-foot trees at 2-foot prices on all varieties of apples.

Therefore, order your apple trees from this special price list—not from the regular list printed on page to which this is attached. We will have a very small stock of small trees this year anyway, and these will be galled or held over, according to quality. Stark trees, produced this year, produced trees never before equaled. You are given the benefit in this opportunity of

DOUBLE-SIZED TREES AT ORDINARY PRICES

APPLE

Usual Varieties	Each	10	100	1000
ONE-YEAR, 3 to 4 2 to 3 ft.	18c	\$1.60	\$12	\$100
" 4 to 6 3 to 5 ft.	25	2.10	18	140
TWO-YEAR, X, 3 to 4 ft.	20	1.70	13	110
" XX, 4 to 5 ft.	25	2.10	18	150
" XXX, 5 to 7 ft.	35	3.00	25	180
Akin	Longfield			
American G. Russet	Lowry (Dixie of Va.)			
Baldwin	Maiden Blush			
Bellflower, Yellow	McMahon White			
Bonum	Ortley (White Bellflower)			
Charknof (Ey Duchess)	Pennsylvania Red S.			
Chenango Strawberry	Pryor Red			
Cox Orange	Rambo			
Early Harvest	Red Astrachan			
Early Colton	Rhode I. Greening			
Fall Cheese	Roman Stem			
Fameuse (Snow)	Salome			
Fanny	Smokehouse			
Gravenstein	Stark			
Hubbardston Non'h	Virginia Beauty			
King Tompkins Co.	Wolf River			
Lady Sweet	Yellow Horse			

APPLE—Continued

Special Varieties	Each	10	100	1000
ONE-YEAR, 3 to 4 2 to 3 ft.	24c	\$2.10	\$19	\$160
TWO-YEAR, 4 to 6 3 to 5 ft.	30	2.70	23	200
" X, 3 to 4 ft.	25	2.20	20	170
" XX, 4 to 5 ft.	30	2.70	24	210
" XXX, 5 to 7 ft.	35	3.10	27	240
Am. S. Pearmain	Mother (A Fall Delicious)			
Bellflower Improved	Okabena			
Buckingham Imp	Old Wife Pippin			
(Stark Strain)	Primate			
Chicago	Patten Greening			
Colorado Orange	Red Jefferis			
Eastman	Red R. Bty. Illinois			
Ensee	Red Rome Bty. O. Bright			
Estelle (Imp. Duchess)	Red R. Bty., Ohio Dark			
Fall Pippin	Red R. Bty., Washington			
Giant Jeniton (T.-M.)	Scarlet Pippin			
Gravenstein, Banks Red	Stark-Star (T.-M.)			
Gravenstein, Red	Stark Summer Queen			
Hackworth	Vandiver Improved			
Henry Clay (T.-M.)	White Pippin			
Imperial Rambo	Windsor			
Lansingburg (Rock P.)	Winter Maiden Blush			
Magoon	Wisner Dessert			
Mammoth G. Golden				

DWARF APPLE

	Each	10	100	1000
YEAR, XXX	75c	\$6.50	\$60	\$500
" XX	65	5.50	50	500
" X	55	4.50	40	400

ia (Winter)	Stark Delicious (T.-M.)
Ben	Stark King David (T.-M.)
Clay	Stayman Winesap
han	Senator
	Stark Star (T.-M.)
nd Raspberry	Wealthy
t. Bty. (O. Dark)	Wilson Red June

CRAB APPLE

	Each	10	100	1000
-YEAR, XXX, 5 to 7 ft.	40c	\$3.50	\$30	\$250
" XX, 4 to 5 ft.	35	3.00	25	200
" X, 3 to 4 ft.	30	2.50	20	160
	Stark Florence (4c extra)			
	Stark Gold (4c extra)			

PEAR

	Each	10	100	1000
-YEAR, 3 to 5 ft.	50c	\$4.30	\$38	\$320
" 2 to 3 ft.	45	4.00	35	250
-YEAR, XXX, 5 to 7 ft.	55	5.00	45	400
" XX, 4 to 5 ft.	50	4.50	40	350
" X, 3 to 4 ft.	45	4.00	35	300

fer—"Big Bearer Everywhere"

	Each	10	100	1000
-YEAR, 3 to 5 ft.	32c	\$2.80	\$24	\$190
" 2 to 3 ft.	27	2.30	17	130
-YEAR, XXX, 5 to 7 ft.	45	4.00	35	250
" XX, 4 to 5 ft.	35	3.00	25	200
" X, 3 to 4 ft.	30	2.50	20	150

Leading Varieties

	Each	10	100	1000
-YEAR, 3 to 5 ft.	40c	\$3.60	\$32	\$270
" 2 to 3 ft.	35	3.10	27	220
-YEAR, XXX, 5 to 7 ft.	45	4.10	37	320
" XX, 4 to 5 ft.	40	3.60	32	260
" X, 3 to 4 ft.	35	3.10	27	200
	Riehl Best			
	Snyder			
ett Hybrid	Stark Seckel (Riehl Strain)			
re Bosc	Stark Tyson (Wallis Strain)			
radio Seedless	Theodor Williams (Stella)			
ice	Triumph			
ker W. Bartlett	Wallis Kieffer			
s (Trade-Mark)	Winter Bartlett			
Gold Nugget (20c Extra)	Winter Nelis			
King Karl	Worden Seckel			

APPLE—Double-Worked

(Including "Double-Life" Grimes)

Double-worked trees on Stark Delicious body—hardy, disease and aphid resistant—better stock for double-working than Northern Spy.

	Each	10	100	1000
ONE-YEAR, 3 to 4 2 to 3 ft.	28c	\$2.50	\$21	\$190
" 4 to 6 3 to 5 ft.	35	3.00	27	240
TWO-YEAR, X, 3 to 4 ft.	30	2.60	22	200
" XX, 4 to 5 ft.	35	3.00	27	240
" XXX, 5 to 7 ft.	45	3.90	34	280

Duchess (Oldenburg)	Liveland Raspberry
Early Melon	Mother
Grimes Golden—	Paradise Winter Sweet
"Double-Life"	Tolman Sweet
Imperial Rambo	Wealthy
Jefferis	Winesap
King Tompkins Co.	Yellow Transparent
Lady Sweet	

Commercial Varieties	Each	10	100	1000
ONE-YEAR, 3 to 4 2 to 3 ft.	20c	\$1.70	\$13	\$110
" 4 to 6 3 to 5 ft.	27	2.20	19	160
TWO-YEAR, X, 3 to 4 ft.	22	1.80	14	120
" XX, 4 to 5 ft.	27	2.20	19	160
" XXX, 5 to 7 ft.	37	3.10	26	200

Albemarle Pippin	Minkler
Arkansas Black	Nero
Banana (Winter)	Newtown Pippin
Bonum	Northern Spy
Black Ben (T.-M.)	Northwestern Greening
Carolina Red June	Paradise Winter Sweet
Champion (T.-M.)	Paragon Winesap
Delicious (T.-M.)	Rome Beauty
Duchess (Oldenburg)	Senator (T.-M.)
Early Melon	Spitzenburg
Early Ripe	Stark Delicious (T.-M.)
Gilbert Winesap	Stark King David (T.-M.)
Gr. Golden	Stayman Winesap
Grimes Golden "Double-Life" —8c extra	Steele Red (I. Canada)
Ingram	Summer Champion
Jefferis	Sweet Bough
Jeniton	Tolman Sweet
Jonathan	Wagener
Kinnaird Choice	Wealthy
King David (T.-M.)	White W. Pearmain
Liveland Raspberry	Williams Early Red
Lowell (Orange Pippin)	Willow Twig
Magnat (Magnate)	Wilson Red June
Jeniton B. Twig	Winesap
Jonathan Red	Yellow Transparent
Kinnaird Choice	York Imperial
King David (T.-M.)	
Liveland Raspberry	
Lowell (Orange Pippin)	
Magnat (Magnate)	
Mammoth B. Twig	
McIntosh Red	

IMPORTANT—Most desirable varieties are printed in extra heavy Black type.

King Tompkins Co.
Lady Sweet

Yellow Transparent

Gold Nugget (20c Extra)
King Karl

