

Historic, Archive Document

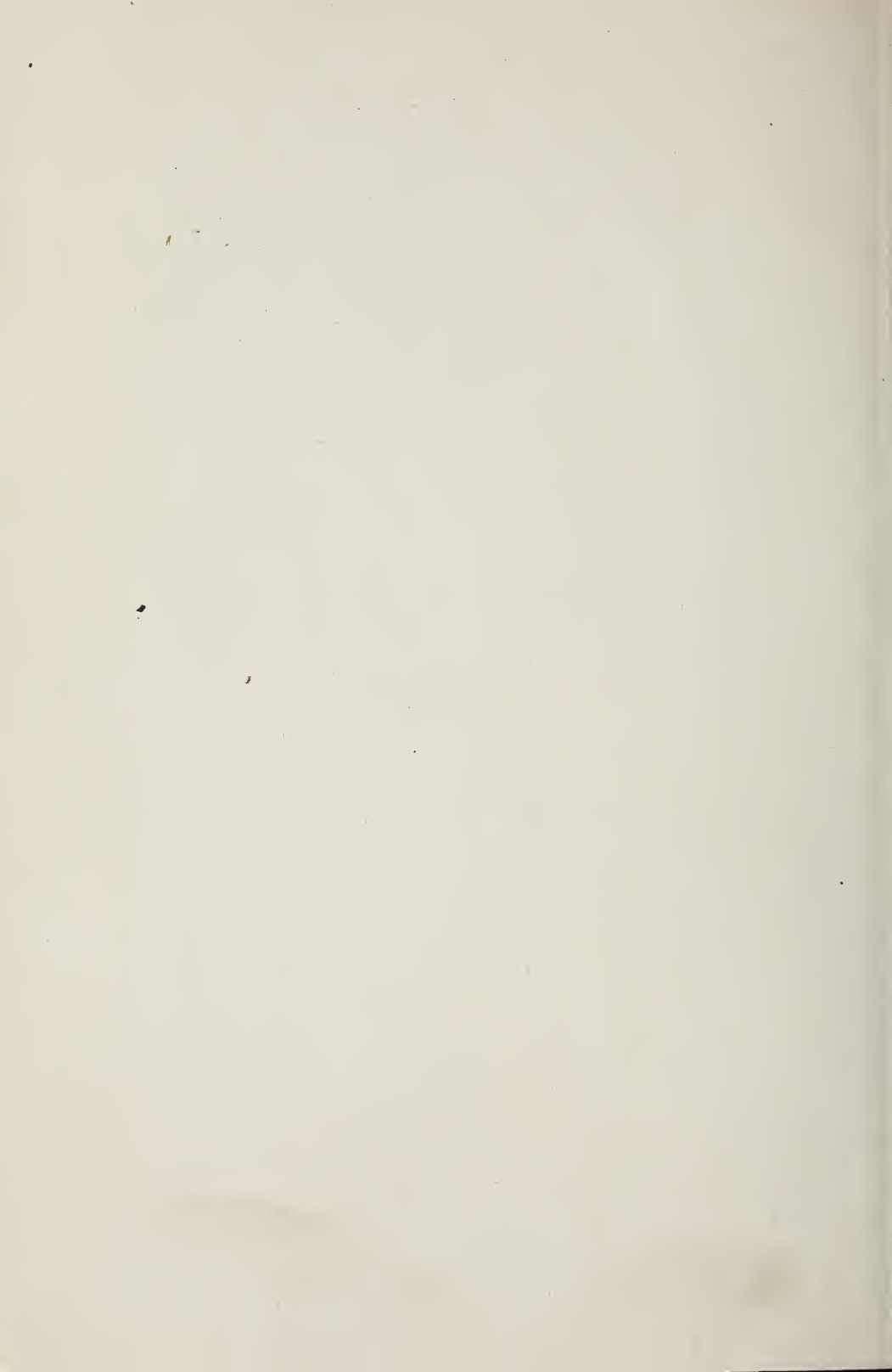
Do not assume content reflects current scientific knowledge, policies, or practices.

21/1127 INDEXED LIBRARY
62.17 RETURN TO POMOLOGY
INDEXED. SECTION OF POMOLOGICAL
★ AUG 20 1920 ★
U.S. Dept. of Agriculture
The C.E. Thomas
Nurseries

BRUEN WEBB BLDG., TAMPA, FLORIDA.



INDEXED
CHICAGO OFFICE
835-837 Marquette Bldg

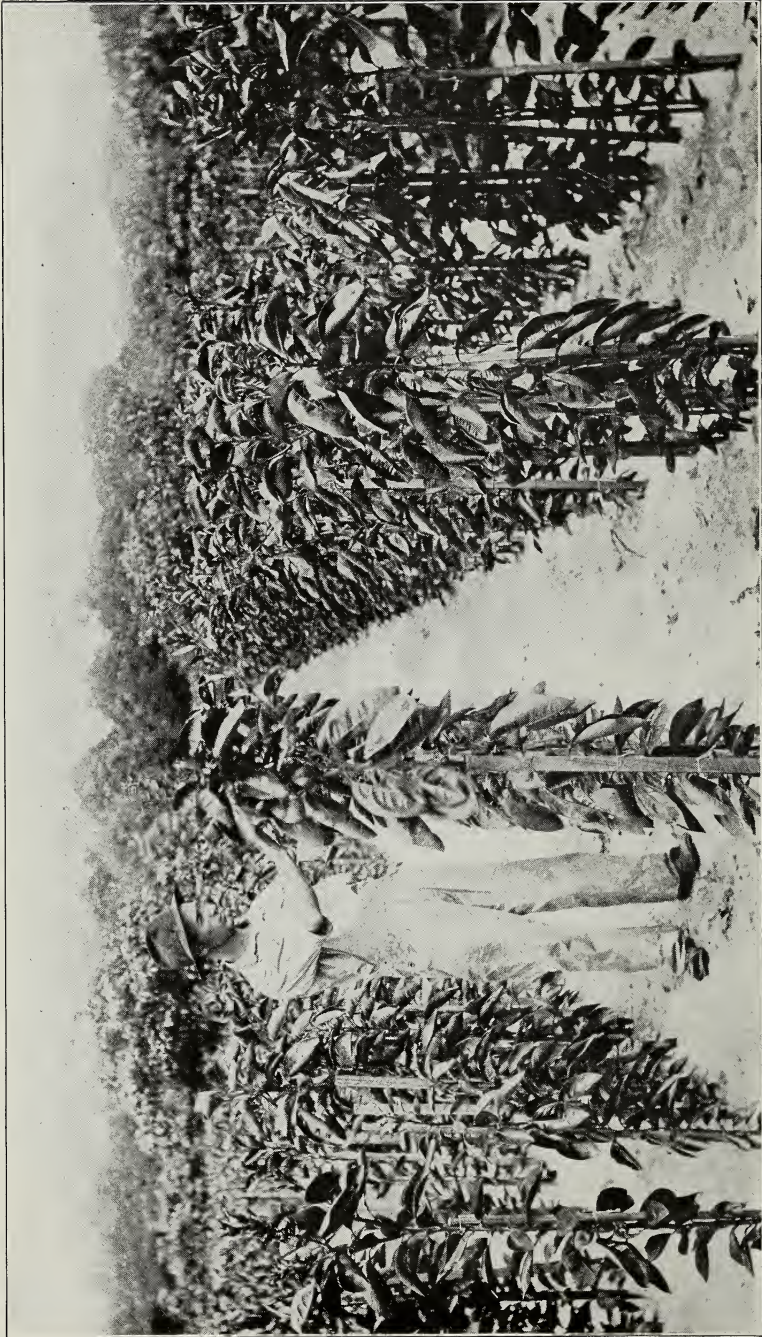


INDEXED
RETURN TO POMOLOGY
SECTION OF NOMENCLATURE.

MAY 5 - 1916

1915-1916
CATALOGUE
OF
THE C. E. THOMAS
NURSERIES

Office Bruen Webb Building
TAMPA, FLORIDA



Grapefruit and Orange Trees at Our Nurseries, Every Tree Receives Constant and Careful Attention to Insure as Perfect Stock as Can Possibly Be Grown

The C. E. Thomas Nurseries

TAMPA

FLORIDA

FOREWORD

In offering our 1915-16 catalog, we believe that we have listed all of the best Citrus fruits adapted to Florida. We have also endeavored to give our purchasers much valuable information regarding preparing the ground for a Citrus grove, planting trees, fertilizing and caring for same.

The information we have given is thoroughly reliable and is quoted largely from men who have been with the United States Agricultural Department and made these matters their study for many years.

While our office is located in Tampa, Florida, our main Nurseries are located at Eagle Lake and Lake Wales in the Winter Haven district. The above localities are noted for their special adaptability to Citrus fruit culture and as being ideal locations for raising Nursery stock.

All of our Nurseries are in the care and under the supervision of thoroughly competent and experienced Nurserymen. Our Nursery near Winter Haven is managed and cared for by one of the best Nurserymen in the State. He has been in the business for many years. He has made a life study of it and his hobby is the raising of the best Citrus fruit trees that it is possible to produce.

Every tree which we will sell during the season of 1915-16 has been budded from selected bud wood taken from proven prolific bearing trees so that we can justly claim that our trees are pedigreed stock. Practically all of our trees are budded on to roots ranging from 3 to 3 1-2 years of age so that a good root system will be assured.



A Block of Excelsior Grapefruit at Our Lake Wales Nursery Showing Growth Attained the Second Year. Note the Smooth Clean Trunks Denoting Perfect Growth

T a m p a ::: ::: ::: F l o r i d a

Our trees are at the time of issuing this catalog in perfect condition and we will have plenty of all kinds of stock listed in this catalog in all sizes from 3 1-2 to 7 1-2 feet, which trees will caliper from 5-8 to 1 1-2 inches according to age. The trees will be dug and packed with the utmost care by experienced Nurserymen who thoroughly understand their business.

Our Nurseries at Eagle Lake and Lake Wales, together with another Nursery which we own near Tampa, contain more than 400,000 trees, a large number of which will be ready for delivery during the coming Winter planting season. In addition to the above mentioned Nurseries, we have a young Nursery of about 15 acres in the Brandon and Bloomingdale district, southeast of Tampa, where we are growing as fine Nursery stock, as has ever been offered for sale in Florida.

Many of these seedlings are large enough to bud now, but our plan is not to bud any of them until next Winter, as we believe in budding only on to well grown, healthy seedlings of good size and of good root system.

Our Guarantee

We guarantee every tree we ship to be first class Nursery stock, true to the name and if trees are set according to instructions given in this catalogue we will guarantee every tree to grow, or replace same F. O. B. at our Nurseries without cost.

Prices and Terms of Sale

The prices listed in this catalogue are F. O. B. railroad station at either of our nurseries. Always state whether to ship by express or freight.

Terms of Payment

Cash with order, or where trees are ordered reserved for future delivery 10% must be paid at the time of placing the order.

The C. E. Thomas Nurseries

About Planting a Grove

Preparation of the Land

Too much importance cannot be attached to the careful preparation of the land for a citrus fruit grove. The ideal way is to remove all stumps, roots and growth of every kind, although a good grove may be successfully grown, especially on high, rolling land where the large stumps are left standing.



A One Year Old Grove

After the clearing is done the ground should be plowed deep and thoroughly disked and harrowed until the ground is thoroughly broken up and level. If the ground is not thoroughly worked the soil remains loose and it will dry out, where if it is in good condition it will hold the moisture.

It is preferable in all cases where it is possible to do so to plant prior to the time of setting out the grove either a crop of velvet beans, or cow peas. If the ground is low and inclined to be sour unless either a crop of cow peas or velvet beans can be raised prior to planting it is often necessary to sweeten the land with lime.

Time to Plant Trees

Citrus fruit trees may be set in Florida at almost any time of the year when the land is ready and there is sufficient moisture to favor their growth. The preferable time, however, is from November 15th until the latter part of March, or during the rainy season in June. Many authorities advise planting trees in the early Winter after the trees have become dormant, on the theory that the roots will become thoroughly healed and put the trees in condition for a good, vigorous growth early in the Spring. Others claim that the month of February and early part of March is preferable. We do not think any mistake will be made by following either plan, providing that the ground is sufficiently moist, or if it is not the trees must be watered until they become thoroughly set. The main advantage of June setting is, that at that time of the year there is usually plenty of rain so that watering will not be necessary.



**Row of One Year Old Luc Gim Gong
Orange. Sturdy Healthy Trees
enable Us to Guarantee Every
Tree We Ship. See De-
scription on Page 19**

Distance for Planting

The following table shows the number of trees it takes per acre according to the distance apart they are planted:

The various authorities on Citrus fruit growing estimate that trees should be set anywhere from 15 x 15 to 30 x 30. The United States Department of Agriculture in their Bulletin on citrus fruit growing advises

The C. E. Thomas Nurseries

that large growing citrus fruit trees, such as grapefruit and oranges, should not be set closer than 100 trees to the acre. They state that in small growing varieties, such as Mandarin oranges or limes, should not be set closer than 200 trees to the acre.

Table Showing Number of Trees per Acre according to Distance

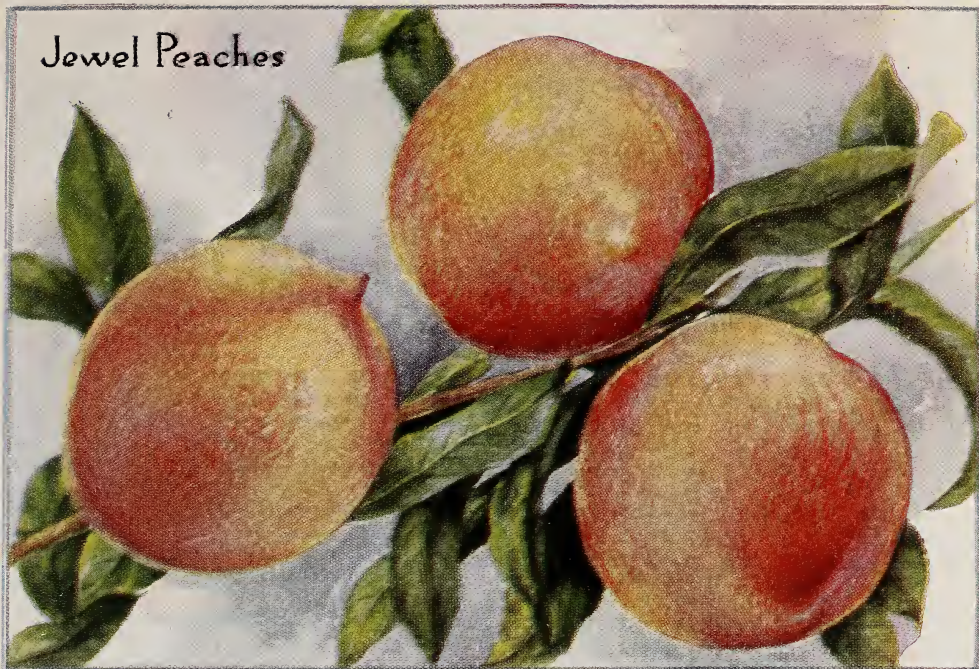
Distance apart, feet	No. of trees	Distance apart, feet	No. of trees
1 by 1.....	43,560	15 by 15.....	193
2 by 2.....	10,890	16 by 16.....	170
3 by 3.....	4,840	17 by 17.....	150
4 by 4.....	2,722	18 by 18.....	134
5 by 5.....	1,742	19 by 19.....	120
6 by 6.....	1,210	20 by 20.....	108
7 by 7.....	888	25 by 25.....	69
8 by 8.....	680	30 by 30.....	48
9 by 9.....	537	35 by 35.....	35
10 by 10.....	435	40 by 40.....	27
11 by 11.....	360	45 by 45.....	21
12 by 12.....	302	50 by 50.....	17
13 by 13.....	257	60 by 60.....	12
14 by 14.....	222		

Some authorities advise the setting of trees 30 x 30 which is only 48 trees to the acre. We believe this plan is all right looking far into the future, but it does not take much of a mathematician to figure that in as



Combination Grape Fruit and Peach Grove

Jewel Peaches



Excelsior
Plums



Kumquats

T a m p a :: :: :: F l o r i d a

much as it costs the same to clear and prepare the land and very little extra for fertilizing and care of the grove that a much larger income can be realized the first few years by setting the trees considerably closer together.

Suppose, for instance as an example, a tree at a certain age would produce five boxes of fruit. On the plan of setting 48 trees to the acre, 240 boxes of fruit would be realized where if they were planted 18 x 30, 385 boxes would be grown, making a difference of 145 boxes of fruit per acre, which would mean at say \$2.50 per box for grapefruit, a difference of \$362.50 per acre. Even if the trees were planted 15 x 15 it would, perhaps, be at least five years after the tree commenced to bear before the trees would be large enough to interfere to any material extent with each other.



A Two Year Old Orange Tree

In setting the trees 15 x 15 each acre would contain 193 trees. Figuring on the same plan of five boxes per tree would mean 965 boxes of fruit; figuring the fruit at \$2.50 per box, would amount to \$2,412.50 per acre as against an income of \$560 per acre figuring the same number of boxes per tree in a grove set with only 48 trees to the acre. This would make a difference of \$1,852.50 in the yearly returns of each acre.

Using the above figures as a basis it would seem where a person only has a limited amount of land to start with that it should pay to set the trees fairly close together with the idea of taking some of them up at a later date. It is now a well known fact that trees ten and twelve years old can be removed and transplanted without any serious damage ex-

The C. E. Thomas Nurseries

cepting the loss of one year's fruit. Taking it for granted that the best distance for an old grove is 30 x 30 if the trees were planted 15 x 30 all of the trees could be left standing for say, from three to five years after the starting of the bearing period. After that time every other tree could be removed which would leave the trees thirty feet apart. During that time figuring on that basis, your income would be double the amount for the first few years.

Summing the matter up our advice is to set the trees either 18 x 30 taking 77 trees to the acre, or 25 x 25 taking 69 trees to the acre, provided that it is the intention of the grower to grow other crops between the trees, or intersperse with peach trees which we strongly advise—as stated elsewhere in our catalogue. On the other hand, we believe that in case one does not care to raise either vegetables or plant peach trees between the rows when the citrus fruit trees are young, no mistake can be made by planting the trees fifteen feet apart with the idea of taking out the surplus trees at a later date.

How to Plant the Trees

As the Florida State law now requires defoliation it is necessary to remove the leaves and it is best in all cases to prune or cut back the trees to correspond with the root system. Unless otherwise instructed all of our trees will be defoliated and cut back at the Nursery. This is much the best plan, besides the trees make a better package and cost less for freight.

When the trees arrive they should be placed in a cool, shady place; or if not to be set for sometime they should be heeled in, but this is not usually necessary as the trees are packed in such a way that they will keep without injury for sometime, especially during the dormant season.

It is not advisable to dig a hole for the trees prior to the time they are planted as the ground should be fresh and damp. The hole should be large enough to admit the roots without crowding. If trees are to be transplanted in June they should be put into the ground as quickly as possible. Care should be taken to keep separate the sub-soil and top soil so that same can be replaced properly in packing in the earth. It is preferable to use only rich top soil in filling in the hole. It should be the invariable rule to pour water in with the dirt so as to pack the ground thoroughly so the roots will be properly set. The growing of the tree may be greatly handicapped by careless setting. Do not throw the dirt back in spadeful, or lumps, but

T a m p a :: :: :: F l o r i d a

sift in carefully so the ground will become thoroughly packed. A careless or hurriedly set tree may be put back several months even though it lives and apparently does fairly well.

After the dirt has been replaced it should be firmly pressed down with the foot taking care not to give more pressure near the root than away from it, as this has a tendency to upturn the roots.

After the dirt has been filled in an elevation should be made around the outer rim of the hole leaving a saucer shaped basin equal in diameter to the root system of the tree into which should be poured two or three gallons of water. After this has settled thoroughly throw the loose earth of



Picking Grape Fruit

The C. E. Thomas Nurseries

the elevated rim in around the tree until level after which it must be thoroughly pressed down by treading.

It is highly important that a tree should not be set deeper in the grove than in the Nursery as in this case the growth of the tree will be retarded. A great many authorities even advise the setting of the tree from two to three inches shallower than it was growing in which case they can be banked at a later period. This is an advantage where trees are set upon somewhat low ground, as ridges can be made which will help in drainage.

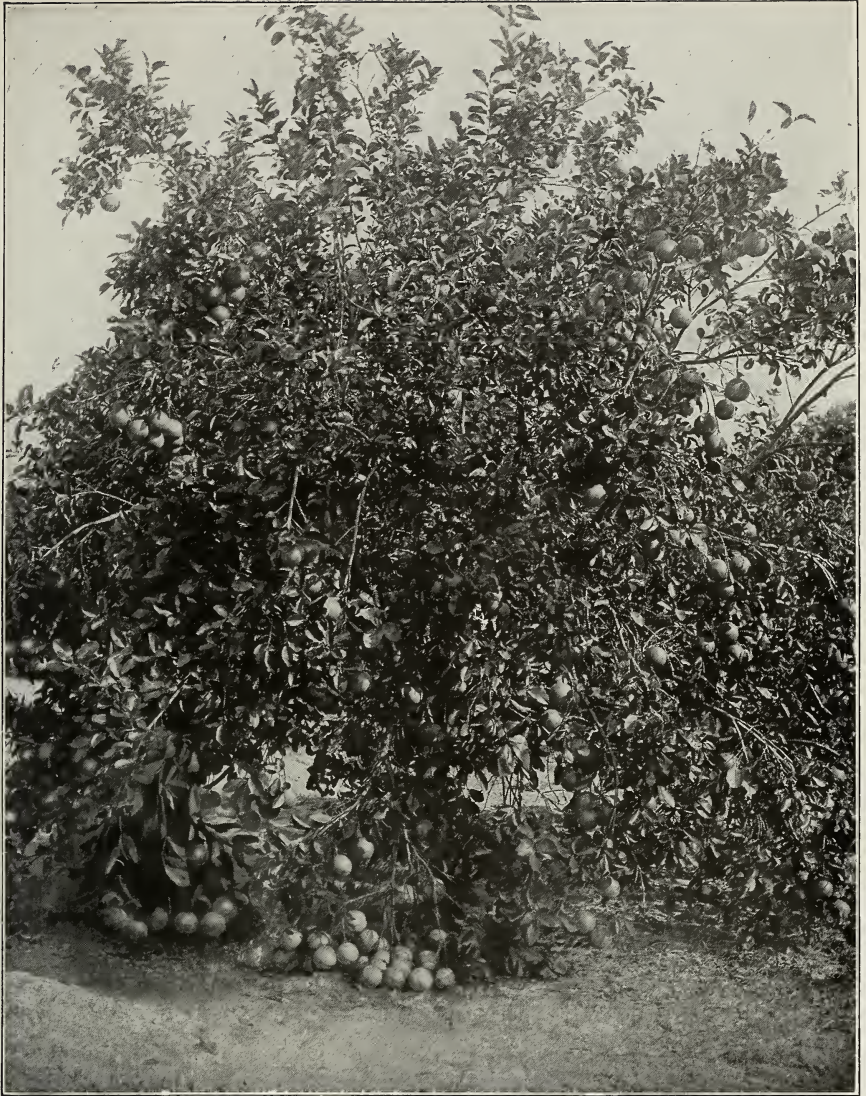
Banking the Trees

Many years ago it was many nursery men's idea to bud the trees from six to twelve inches or more above the ground, but of late years it has become the almost universal practice to bud either at, or as near the ground as possible. This is a much preferable method and all of our trees are budded in this manner. This enables the grower to bank the trees when young which in case of frost would preserve the budded growth. We strongly advise the banking of young trees especially for the first two or three winters to the height of from 12 to 15 inches. The expense is not great and in case of frost the tree can be cut off so that it will preserve the tree and does not seriously retard its growth.

Fertilizing

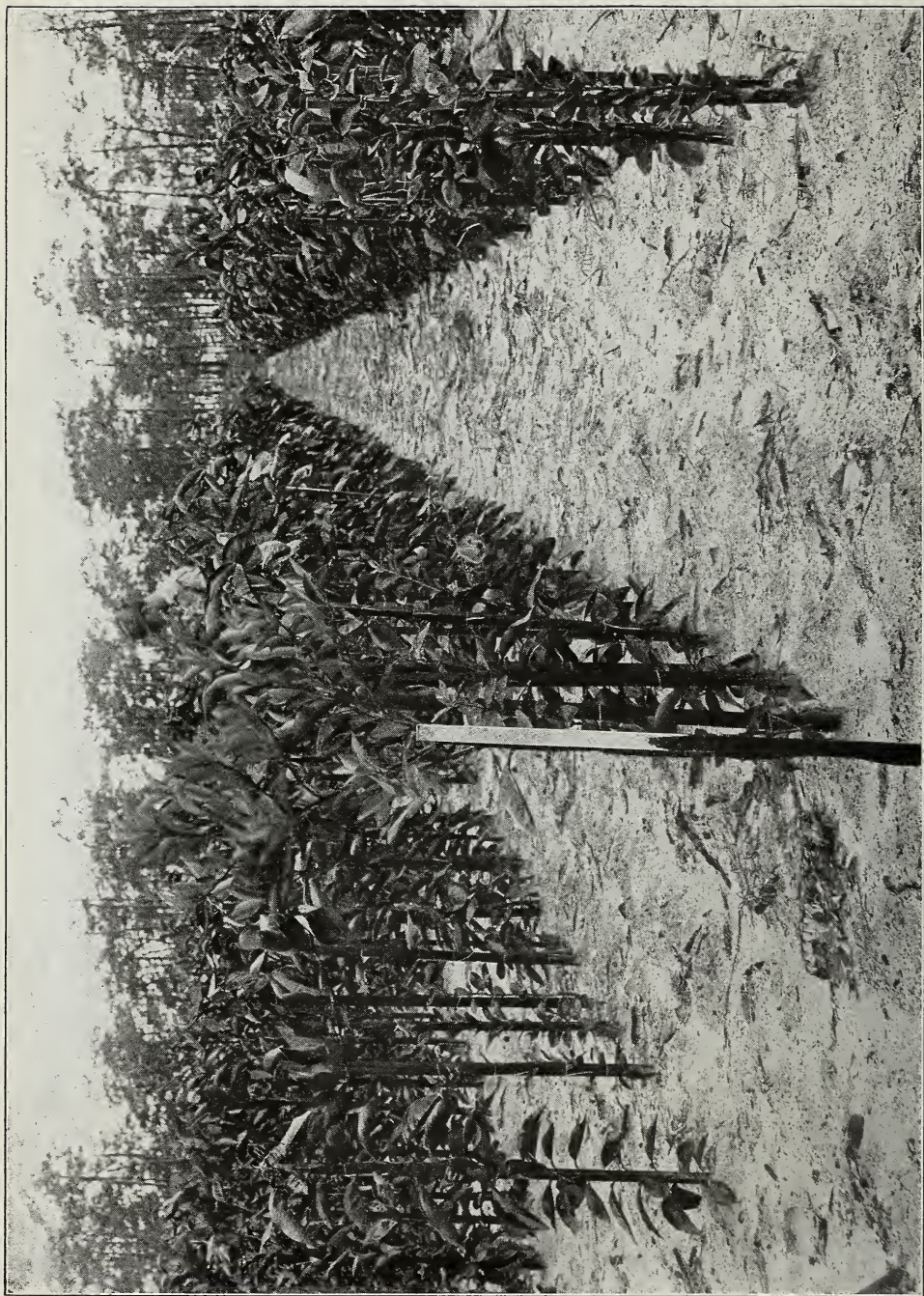
The subject of fertilizing is a somewhat exhaustive one and we advise all growers to purchase some good book on the subject. The various fertilizer companies also furnish pamphlets pertaining to fertilization. We can furnish and recommend a book on Citrus fruit growing by W. J. Jackman which covers the subject in quite an exhaustive manner, giving a great deal of valuable information in regard to caring for a grove, fertilizing and spraying. The regular price of this book is \$1.50, but we have made arrangements with the publishers so we can furnish the \$1.50 edition to our customers, which is bound in substantial cloth at \$1.00 each. (See description on last page giving list of contents.)

Authorities differ as to whether it is advisable to use fertilizer when the young tree is set out. If the ground has been properly sweetened either by the raising of a crop of cow peas or velvet beans, or by the use of lime, we do not think it is absolutely necessary to mix any fertilizer with the soil when the tree is set, in which case it is a good plan to wait two or three



A Ten Year Old Grape Fruit Tree

weeks and then apply about a pound of orange tree fertilizer to each tree raking same in. However, we believe that it is a good idea to mix from tree-fourths to one pound of fertilizer with the dirt when it is replaced around the tree. Many novices make a serious mistake in using too much fertilizer, as a tree can be damaged by applying too much, especially when young.



Pineapple Orange Trees at Our Lake Wales Nursery. The Best Early and Mid-season Orange That Can Be Grown. See Description on Page 16

Oranges, Lemons and Limes

The oranges which are herein listed are all well known and standard varieties. Please note that we have both early and late varieties budded on both sour orange and rough lemon stock. We believe, and it seems to be the opinion of many good Nursery men and U. S. Agricultural experts that the best universal stock for all purposes is the sour orange, but if you are going to plant your trees on high, rolling and a rather light piece of land do not believe you will make any mistake in using the lemon stock. The sour orange stock is unquestionably the best for any land that is inclined to be low and heavy. The sour orange stock is much less liable to disease and has other advantages for planting in this kind of soil.



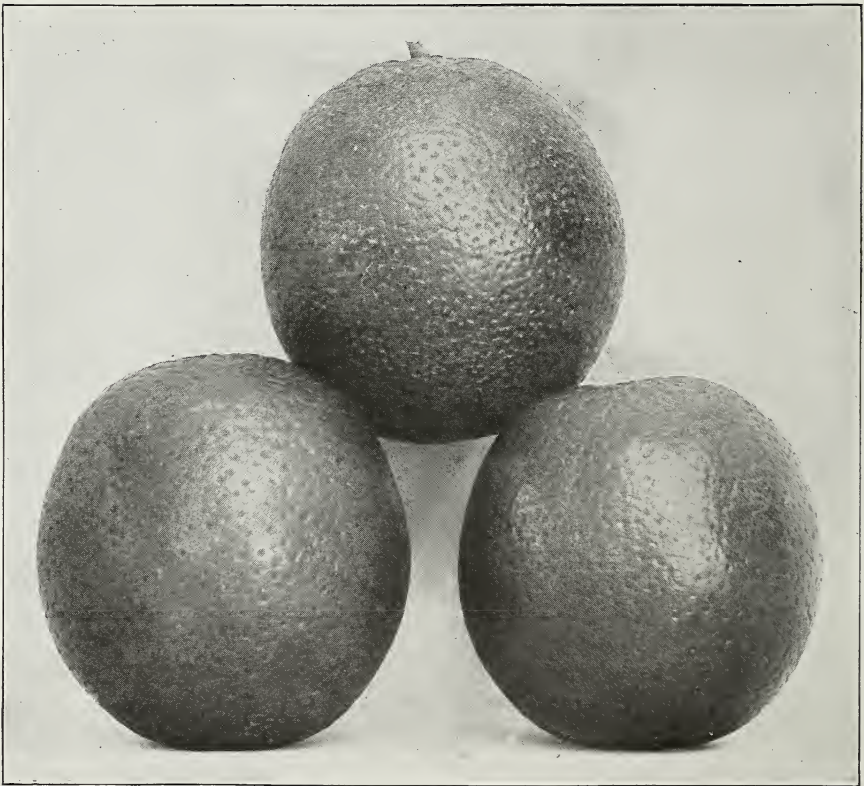
A Twenty-five Year Old Parson Brown Orange Grove

The C. E. Thomas Nurseries

The following are considered the best paying varieties

Pineapple Orange

This variety is considered by a great many of the best authorities as being the best orange for general culture produced in the state of Florida. It certainly has no equal as an early and mid-season orange. It ripens quite early in the fall—in fact, it colors at about the same time as the Parson Brown, and, therefore, may be classed as a very early variety. Although it ripens early it has the advantage that it can be held on the tree until February and sometimes until March. It is also a fine shipper. Mr. S. C. Inman, of Winter Haven, Florida, who is one of the oldest and best known growers in the state recently made the statement that he considered the Pineapple the best fruit and the most profitable orange grown. The tree is a strong vigorous upright grower and is exceedingly prolific. The fruit



T a m p a ::: ::: ::: F l o r i d a

is medium to large; the color is deep orange with a reddish tinge; the flavor is rich and spicy; the rind is thin. We strongly recommend the Pineapple as being without question the best early and mid-season orange grown.

Hart's Late or Tardiff

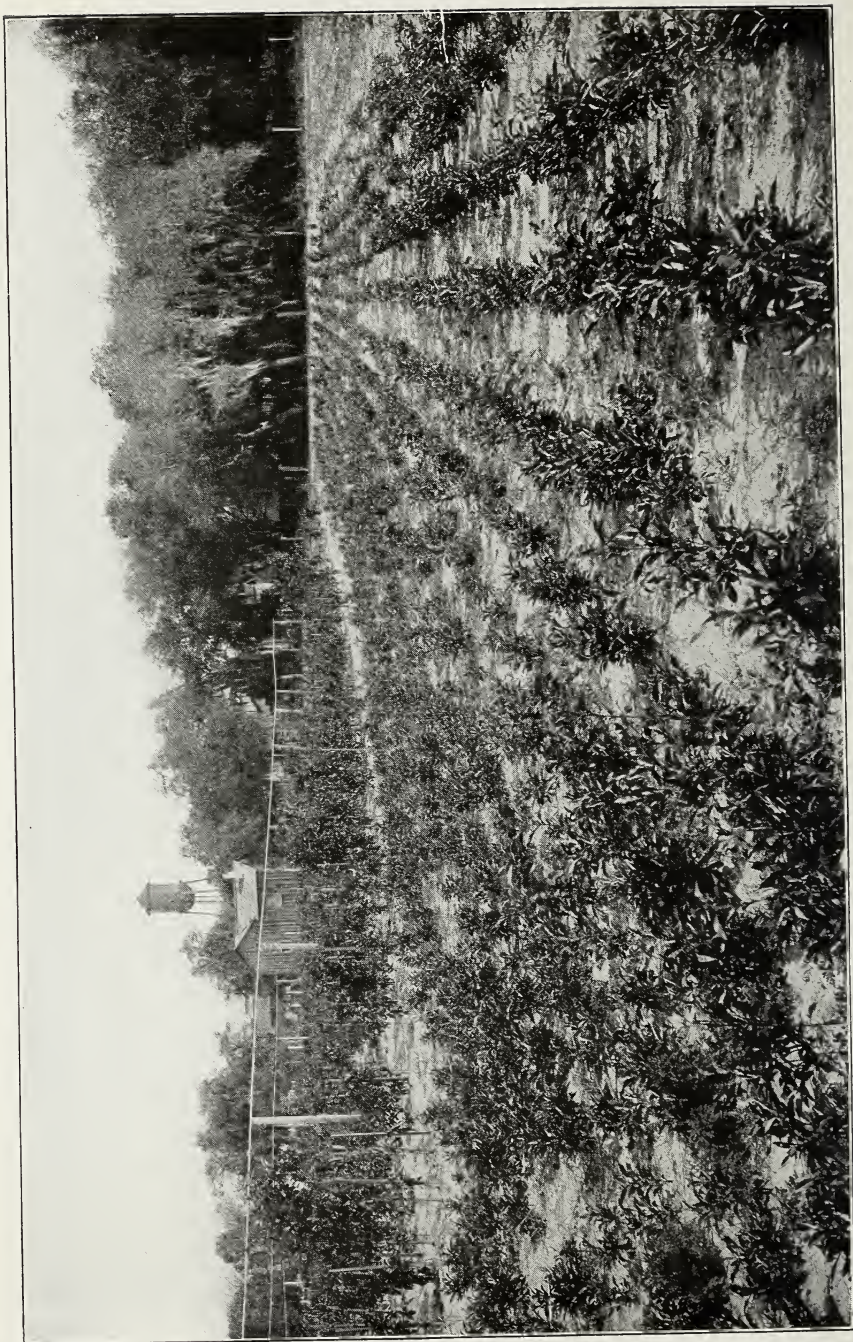
Form round, or sometimes slightly oval; size medium to large; color golden orange; rind smooth, thin and tough; flesh orange in color; juice abundant; acidity and sweetness well combined; pulp melting; flavor rich; excellent quality. It ripens in Florida from the latter part of April to July and is a good keeping fruit. It is a fine handsome fruit and one that brings the best market prices wherever it is offered. The tree is a vigorous grower and a good producer. The advantage of this fruit being that it will remain on the tree in good shipping condition very late in the Spring, or early Summer.

Valencia Late

This orange is one of the very best of the late oranges. It is said by some to have originated from a budded Tardiff. This orange perhaps, carries better and keeps better than any known variety, except perhaps, the Lue Gim Gong. It is a desirable fruit in size and appearance. We consider it one of the very best, if not the best of the late varieties. The trees are of vigorous growth with a few thorns and have dense foliage. They come into bearing two or three years from planting.

PRICES FOR ORANGES, GRAPEFRUIT, LEMONS, LIMES AND TANGERINES

Grade	Each	10	100	1000
2 to 3 feet—Sold by height	\$0.45	\$ 4.00	\$ 35.00	\$ 320.00
3 to 4 feet—Caliper $\frac{1}{2}$ to $\frac{5}{8}$ inches55	5.00	45.00	420.00
4 to 5 feet—Caliper $\frac{5}{8}$ to $\frac{3}{4}$ inches70	6.50	60.00	550.00
5 to 7 feet—Caliper $\frac{3}{4}$ to 1 inch90	8.00	75.00	700.00
2 years—Caliper 1 to $1\frac{1}{4}$ inches	1.50	14.50	125.00	1000.00



View Showing First Growth of Citrus Fruit Stock From the Seed. When Trees Reach Proper Height They Are Budded

The C. E. Thomas Nurseries

Lue Gim Gong Orange

A late orange said to have special merits as to the hardiness of the tree and the late keeping qualities of the fruit. This variety was originated at Deland by Lue Gim Gong. The introducers claim the tree to be more hardy and vigorous than other late varieties. Also that the fruit will hang on the tree in good condition considerably longer than other late varieties. The fruit reaches full maturity in July and August and it is claimed to hang on the trees throughout the entire Summer and Fall and that oranges have been known to remain on the trees in good condition for 24 months. Size medium to large; color deep orange red; rind thin and smooth; flesh deep orange; juice abundant, even in fruit a year or more old; comparatively few seeds. If this fruit is all that it is claimed to be and proves a good producer, it is the equal, if not the superior of any late orange.

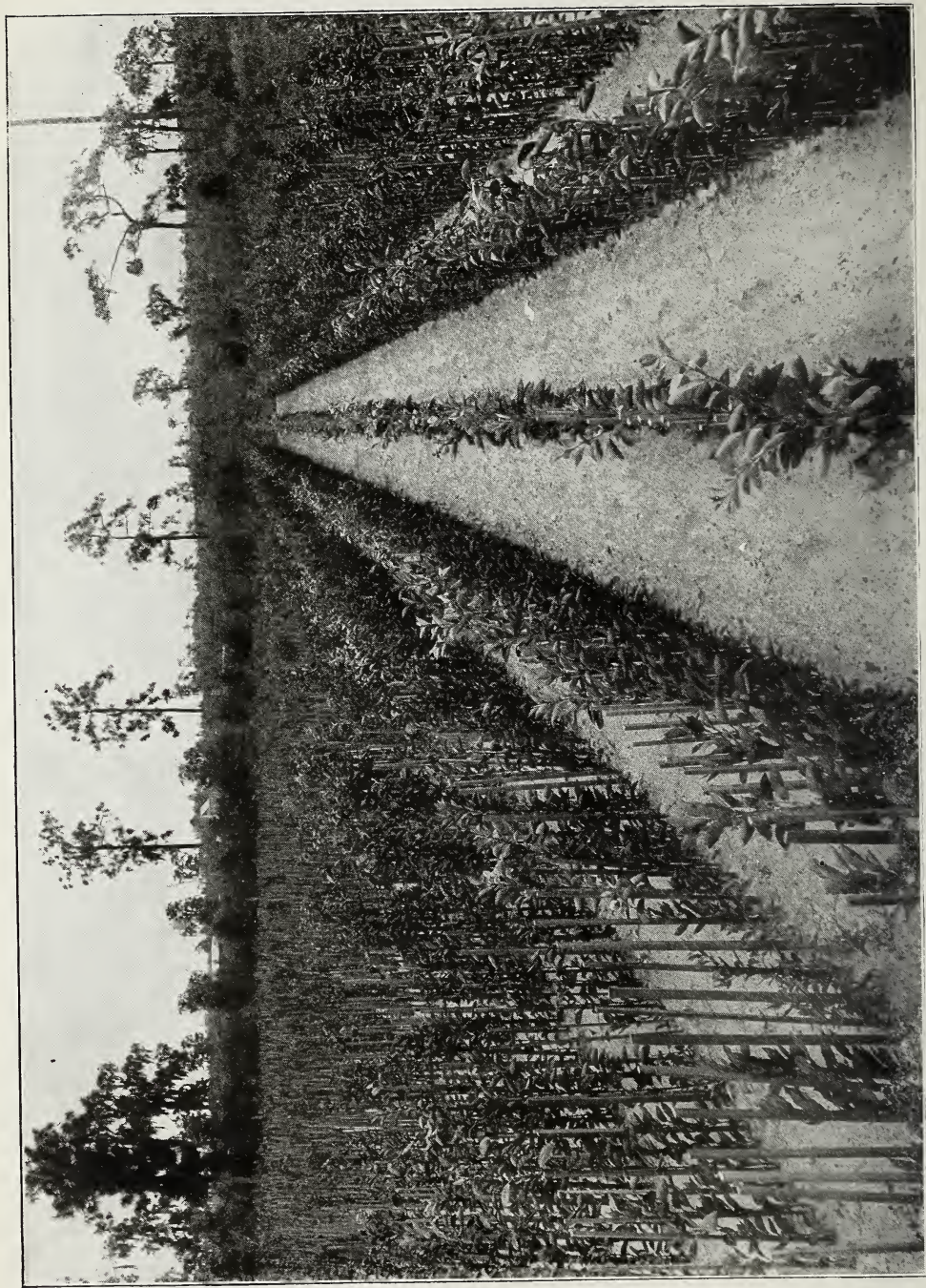
Prices for Lue Gim Gong Orange

Grade	Each	10	100	1000
2 to 3 feet—Sold by height.....	\$0.45	\$4.00	\$35.00	\$320.00
3 to 4 feet—Caliper $\frac{1}{2}$ to $\frac{5}{8}$ inches.....	.55	5.00	45.00	420.00
4 to 5 feet—Caliper $\frac{5}{8}$ to $\frac{3}{4}$ inches.....	.70	6.50	60.00	550.00
5 to 7 feet—Caliper $\frac{3}{4}$ to 1 inch.....	.90	8.00	75.00	700.00

As some of the varieties of oranges are of slender growth we reserve the right to sell either on caliper or height.

Tangerines

This orange belongs to the Mandarin family and is known as the kid glove orange. The color is deep orange red; size small to medium. A well known characteristic of this orange is that the rind separates easily from the flesh; flavor rich; very juicy; comparatively few seeds. The tree is prolific and is a vigorous grower. This orange has a good sale and we advise all purchasers to include at least a few of these trees.



Valencia Late Oranges in the Foreground. Mandarin and Tangerine Oranges on the Left.
These trees is carefully trained to straight growth by Supporting Stakes

The C. E. Thomas Nurseries

The Lime Industry In Florida

The lime industry is today attracting as much attention as any other branch of the citrus fruit growing business and we believe is destined to become of great importance.

There are today, comparatively few growers raising limes and therefore it should appeal especially to those who contemplate planting new Citrus groves. There are several excellent reasons why all land owners should plant at least a part of their grove to limes, as the following comparisons will prove:

Comparative Bearing Age

Other citrus fruits such as oranges, grapefruit, tangerines, etc., do not bear commercial crops until the fourth to fifth year from planting. Lime trees will begin to bear a commercial crop in two years and increase their production rapidly.

Difference in Number of Trees Set to The Acre

The best authorities agree that the proper number of grapefruit and orange trees to set to the acre for a permanent grove is from 69 (which is 25x25 feet apart) to 77 (which is 30x18 feet apart). Lime trees being considerably smaller in size when fully matured can easily be set from 200 to 300 trees to the acre. The following table gives the various distances and number of lime trees which should be set to the acre:

12 x 12 feet.....	302 trees
14 x 14 feet.....	222 trees
15 x 15 feet.....	193 trees
20 x 20 feet.....	108 trees

We do not recommend planting limes further apart than 15x15 feet unless peach trees are to be planted between the rows.

Comparative Cost of Production

Practically the only difference in the cost of planting a lime grove is the cost of additional trees and the slight additional labor in planting, which however, is easily offset by the great difference in production.

It costs no more to cultivate an acre of lime trees than it does orange or grapefruit and the amount of fertilizer will be very little, if any more, on account of the smaller tree. The crop production should therefore be greater in addition to the advantage of getting much quicker returns from your grove.

The C. E. Thomas Nurseries

Uses of the Lime

The lime is used in the same way as the lemon, in the making of lemonade and for seasoning food, etc. Other by-products can also be made, such as sulphate of lime, citric acid and concentrated lime juice. At the present time most of the lime products come from the West Indies, but South Florida is especially adapted for the raising of limes. No other species of citrus fruit succeeds so well on poor, sandy soils. It grows and fruits quite prolifically when poorly cultivated and cared for or even neglected entirely. Unless the trees are budded the Mexican Lime is liable to range in size anywhere from a pigeon egg to a medium size lemon.

All of the trees of the C. E. THOMAS NURSERIES are budded stock.

Mexican Lime

The form of the Mexican Lime is somewhat oblong or oval. Size, small; color, light lemon yellow; rind, smooth and thin; oil sacks, numerous. The flesh is fine grained, of light yellowish green in color. The juice is plentiful and is practically colorless. The pulp is melting and of a very strong acid flavor, distinctly lime. The Mexican Lime contains very few or no seeds. This lime ripens all the year round. The tree grows from 10 to 15 feet high. Some growers consider the Mexican Lime the best market variety on account of its keeping qualities, although it is not as handsome a fruit as the Tahiti.

Tahiti Lime

The form of the Tahiti Lime is broadly oval. Size, large; color, lemon yellow; rind, smooth and thin; flesh, fine grained, greenish in color, juice plentiful, practically colorless, pulp melting; acid pure, with strong agreeable flavor, practically seedless; season, fall and winter. The Tahiti lime grows as a round top tree 10 to 15 feet in height. Fruit is produced singly or in clusters of two and three, usually well covered by foliage.

Prices of Limes

Grade	Each	10	100	1000
2 to 3 feet, sold by height.....	\$0.45	\$ 4.00	\$ 35.00	\$ 320.00
3 to 4 feet, Caliper $\frac{1}{2}$ to $\frac{5}{8}$ inches.....	.55	5.00	45.00	420.00
4 to 5 feet, Caliper $\frac{5}{8}$ to $\frac{3}{4}$ inches.....	.70	6.50	60.00	550.00
5 to 7 feet, Caliper $\frac{3}{4}$ to 1 inch.....	.90	8.00	75.00	700.00
2 years, Caliper 1 to $1\frac{1}{4}$ inches.....	1.50	14.50	125.00	1000.00

Grapefruit or Pomelo

We list only the best selling varieties.

It is a well known fact that the best grapefruit sold in American markets is produced in Florida. California seems unable to produce a fruit which will compare favorably with that grown in Florida. The demand for grapefruit is increasing very fast and we advise everyone who is going to raise a fair sized grove to plant at least half of same in this popular fruit.

The grapefruit trees which we list are all standard and no mistake can be made in ordering any of the following varieties either for home use or commercial purposes.

Excelsior Late

This is one of the very best varieties of late grapefruit produced in Florida. It is a fruit of good color and of fair size running from medium to large. It has a bright yellow, smooth, tough skin. It is a late variety and can be shipped safely until June and July. This fruit was propagated by C. M. Marsh at Fort Mead, Florida, in 1891 and has been one of the most popular late grapefruit since that time. We heartily recommend this as one of the two or three best varieties of grapefruit for general planting.

Hall's Silver Cluster

This is a very popular variety of fair size, ranging from 4 to $4\frac{1}{8}$ inches and larger. Color light yellow, but slightly darker than that of most grapefruit; acidity and sweetness well marked; juice almost transparent; season from February to March. A good, medium grapefruit for general planting and one that brings a good market price.

Pernambuco

This variety was imported by the United States Department of Agriculture from Pernambuco, Brazil. It is a variety of very fine quality and is strongly recommended. It is a fruit of medium size; light yellow color; rind one-fourth of an inch thick; compact and closely attached; flesh grayish green; bitterness well marked; acidity and sweetness good. Pernambuco is a late grapefruit ripening somewhat earlier than the Excelsior.

The C. E. Thomas Nurseries



Marsh Seedless Grape Fruit Tree

Marsh's Seedless

This is a grapefruit of good form, color and quality and is at the present time a very popular fruit on account of the fact that it is seedless. We believe it is a good variety for planting, as there is an increasing demand for seedless grapefruit. It is of medium size. On account of being seedless is popular with hotels, restaurants and is sure to be in continued good demand. It is a late prolific variety and we advise all who are raising a grove for commercial purposes to plant a fair quantity of this fruit.



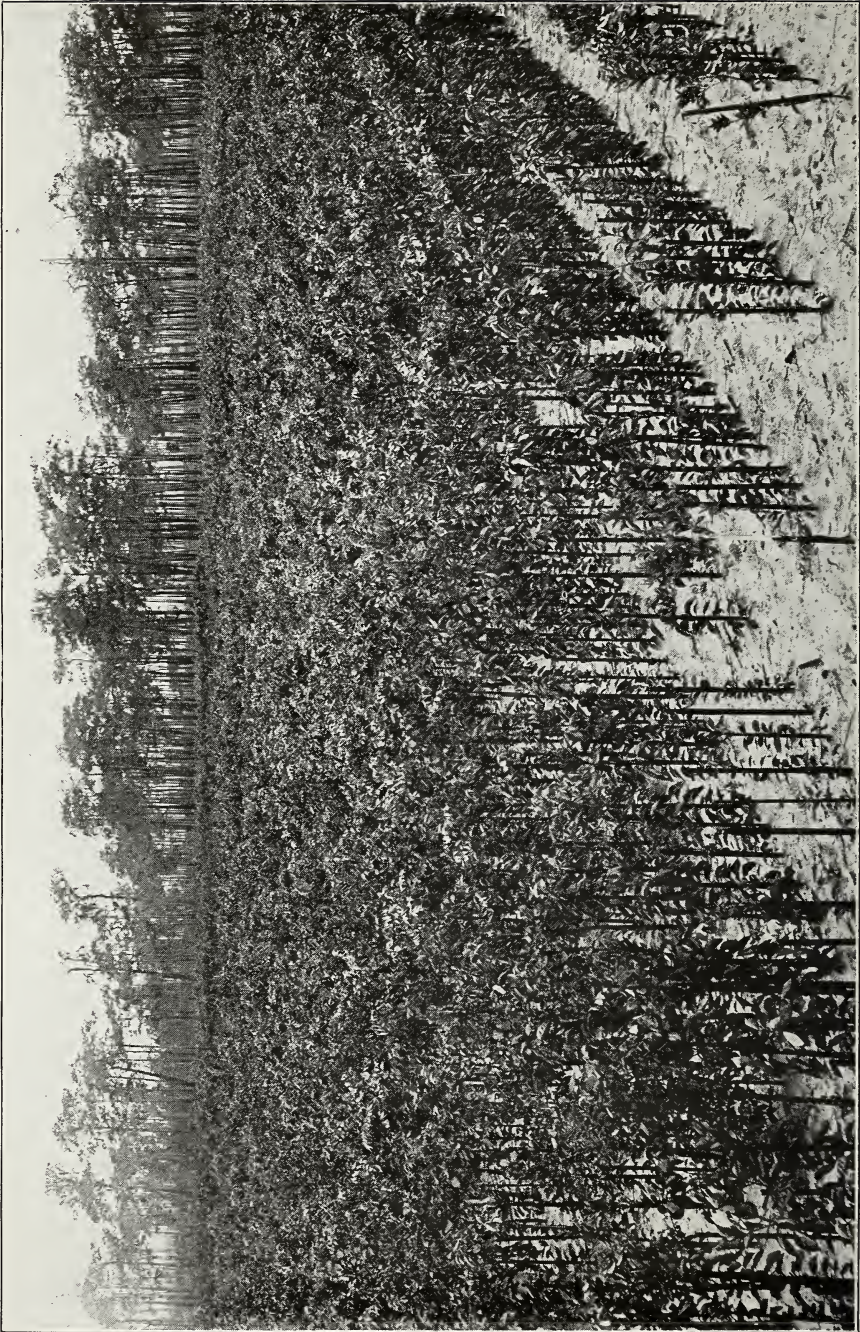
Pineapple
Oranges



Florida Standard or Old Fashioned Grape Fruit

✓ **Florida Standard or Old Fashioned Grapefruit**

This variety was budded at Leesburg, Florida, from some old seedling trees which were renowned for the excellent quality of their fruit. The parent trees are very thrifty and are prolific, steady bearers. The fruit is a good size and color and ships well. The fruit averages somewhat larger in size than any of the other above mentioned varieties ranging from 54 to 64 to the box. To those who want a good, thrifty steady bearing tree producing a good sized fruit of handsome appearance and good shipping quality which will always find a ready market we cannot too highly recommend the Old Fashioned Florida grapefruit.



General View of Our Lake Wales Nursery Which Shows the Young and Smaller Trees
in the Foreground

The C. E. Thomas Nurseries

Walters Grapefruit

Walters is one of the standard varieties of grapefruit and is considered by some growers to be the best all around grapefruit grown. It is very similar in appearance to Hall's Silver Cluster excepting that it does not have the tendency to form in clusters. It is of just about the right size for shipping. We strongly recommend Walters as being one of the very best varieties for those who are planning a commercial grove. Form, oblate; size, medium, approximately 3 3-4 by 4 7-8 in.; color, pale yellow; rind, smooth; acidity and sweetness good; quality, very good. Season, medium late.

Pink Shaddock

A fruit very similar to the grape fruit, excepting that it is much larger, some being fully twice the size of the average grapefruit. The color is lemon yellow and the flesh is reddish pink. The juice sacks are large and the seeds few. This fruit can be eaten like a grapefruit and it also makes an excellent salad, the color being an added attraction. While the market is somewhat limited every grower should have a few Pink Shaddock trees.



A Pink Shaddock

Prices of Grape Fruit, Tangerines and Pink Shaddocks

Grade	Each	10	100	1000
2 to 3 feet, sold by height.....	\$0.45	\$ 4.00	\$ 35.00	\$ 320.00
3 to 4 feet, Caliper $\frac{1}{2}$ to $\frac{5}{8}$ inches.....	.55	5.00	45.00	420.00
4 to 5 feet, Caliper $\frac{5}{8}$ to $\frac{3}{4}$ inches.....	.70	6.50	60.00	550.00
5 to 7 feet, Caliper $\frac{3}{4}$ to 1 inch.....	.90	8.00	75.00	700.00
2 years, Caliper 1 to $1\frac{1}{4}$ inches.....	1.50	14.50	125.00	1000.00

The C. E. Thomas Nurseries

Florida Peaches

While we advise the growing of citrus fruit trees in preference to peaches, we believe that by planting the varieties which we list herein, which are especially adapted to Central Florida, that a peach grove will be a profitable and good paying investment.



Hillsboro County Peach Grove, 5 Months Old—Picture of same Grove shown on Next Page taken at 17 Months Old.

Taking into consideration the fact that a peach tree will produce fruit in from one to two years it is a splendid supplementary crop to bring an income in while you are waiting for the Citrus Fruit trees to come in to bearing.

Ordinarily speaking the life of a peach tree is from 5 to 8 years, although the trees which we sell which are budded on wild plum stock will live on an average much longer.

We strongly advise those who plant a citrus fruit grove and who do not intend to raise other crops between the trees to plant peach trees between the rows using the same number as are planted to grapefruit and oranges. These trees will have outlived their usefulness and may be removed before they interfere to any extent with the bearing of the citrus fruit grove.

T a m p a :: :: :: F l o r i d a

The trees are not expensive and there is no additional expense for clearing and the added expense for setting, and fertilizing is not heavy.

The three varieties we list as stated above are budded on wild plum stock and are supposed to be absolutely immune from root diseases which



17 Months Old Peach Grove. Same Grove as Shown on Page 28, Showing Growth Made in One Year

are common to peach trees budded on peach stock. Do not make the mistake of buying peach trees budded on peach stock.

Jewel

Medium to large; roundish oblong; highly colored, red on exposed parts; flesh yellow, red about pit; juice melting, excellent quality; free stone. The tree is very vigorous and healthy and is a good producer. Claimed to be one of the best available marketing varieties for central and southern Florida. It is very early.

Hall's Yellow

Large size, nearly round; color yellow washed with red; flesh yellow; red stone from which flesh parts freely; quality good. Ripens from middle to latter part of June.

The C. E. Thomas Nurseries

Angel

Large, round and slightly pointed; color yellow tinged with red; very handsome; flesh white, sweet and melting; juice sub-acid of exquisite flavor; free stone. The tree bears while very young and is very prolific. It blooms quite late, thus escaping injury from early frosts. The fruit ripens early but not as early as the Jewel.

Prices of Standard Varieties of Peaches

	Each	10	100
2 to 3 feet, light size	\$0.20	\$1.60	\$12.00
3 to 4 feet, medium size25	2.00	15.00
4 to 5 feet, standard size30	2.50	20.00
5 feet up, large size40	3.00	25.00

Early Florida Plums

To those who desire to plant one of the best varieties of plums either for home use, or commercial purposes, will say that we have a limited supply and can furnish as long as they last, the Excelsior Plum. We believe this to be without any doubt one of the very best varieties for Florida planting. The tree is a remarkably strong grower. Fruit medium averaging from one to one and one-fourth inches in diameter; nearly round, color reddish purple, with heavy bloom; flesh yellow, reddish near pit. Ripens in May. Prices of Excelsior Plums as follows:

Prices of Plums

	Each	10	100
2 to 3 feet, small size	\$0.25	\$2.00	\$16.00
3 to 4 feet, medium size30	2.50	20.00
4 to 5 feet, standard size40	3.00	25.00
5 feet up, large size50	4.00	35.00

THE C. E. THOMAS NURSERIES

BRUEN WEBB BUILDING, :-- TAMPA, FLORIDA

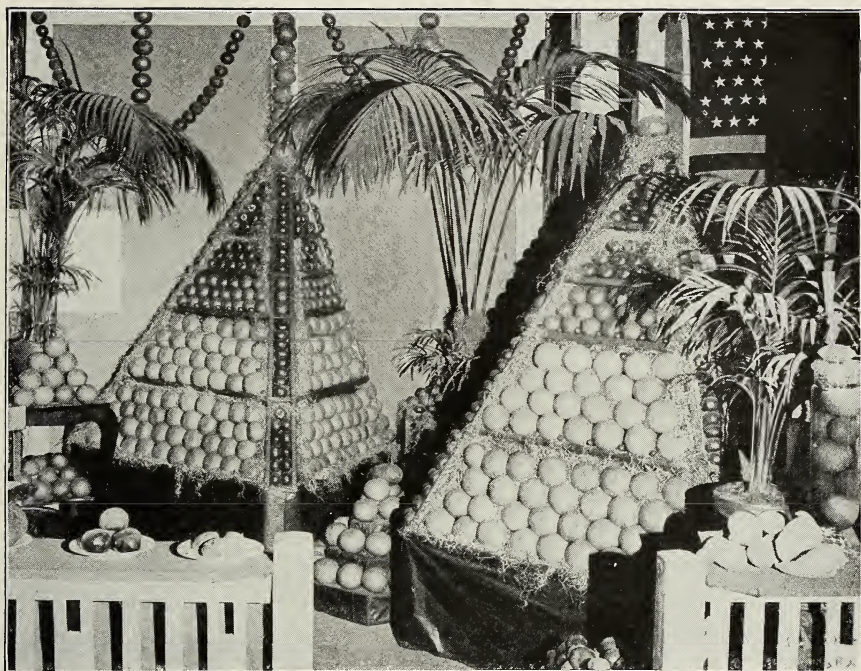


Exhibit of Florida Citrus Fruits Shown at United States Land Show Held in Chicago





