

Historic, Archive Document

Do not assume content reflects current scientific knowledge, policies, or practices.

6273

Order? 1916?

EVIDENCE OF "WAKRU" SUPERIORITY

"1913 test order leads to 1914 entire order"

June 24, 1914.

Your letter, answering questions about lifting Darwin Tulips, received; for which I thank you very much. I am sending you my entire order for Tulips, as those I bought from your firm last year were superior to those I bought elsewhere. Am also sending a small order for a friend.
Nelsonville, N. J. E. N. N.

Bulbs ordered last year highly satisfactory—Darwin Tulips a wonder

July 5, 1915.

The bulbs I ordered from you last Fall produced an abundance of beautiful blooms. The loveliness of the Darwin Tulips was to me a wonder. Your bulbs are highly satisfactory and I always recommend them to my friends.
Nelsonville, N. J. E. N. N.

Daffodils wonderful this year

May 11, 1915.

The tulip flowers are splendid. My daffodils were wonderful this year.
Tioga, Phila. A. E. H.

Fine, firm bulbs sent—bloomed beautifully

You have sent me fine, firm bulbs which bloomed beautifully. I enclose list for catalogs. As these friends admired my tulips and hyacinths, I am sure they will order from you.
Charlestown, W. Va. J. M. J.

Bulbs so grand last year, want to order more

The bulbs I ordered from you last year were so grand that I want to get more. I have just read in Garden Magazine that your catalog is "on press." Send me one.
Americus, Ga. D. R. A.

"As fine a lot of Dutch bulbs as ever I've seen"

November 26, 1915.

The bill of lading for my bulbs was received on Wednesday and the case of bulbs arrived the same day. It is as fine a lot of Dutch bulbs as I have ever seen. Next year I am going to send my order in earlier in the season, as I realize that the present conditions make shipping delays unavoidable.
New Orleans, La. E. H. R.

Bulbs an eye opener—30 to 34 inches high

June 28, 1915.

The mixture of Darwin Tulips which you sent me last Fall was surely an eye opener to me. Had scores of specimens that stood 30 inches high, and some (a pale lavender) that stood 34 inches high by actual measurement. Have had a dozen inquiries as to where I got such remarkable bulbs.
St. Paul, Minn. R. W.

Request for catalog to be sent to few dozen flower lovers

January 24, 1916.

I enclose a list of a few dozen flower lovers in this locality and suggest that you send each your catalog. I shall gladly speak to each of them about the fine bulbs purchased from you, and your satisfactory business dealings.
Crawfordsville, Ga. H. F. W.

Pleased with results in Spring—sending further order

June 15, 1915.

Last Fall I sent you two orders for bulbs—hyacinths, crocus and tulips—and I was more than pleased with results this Spring. I enclose my bulb order for this year.
Cheyney, Pa. C. S. B.

DUTCH BULBS AND PLANTS DIRECT FROM HOLLAND



Wakru Quality Bulbs are not a new, untried product.

Fifty years ago the growers, Gt. Van Wakru & Kruijff, began growing superior quality tulips, hyacinths, narcissus, etc.

The garden lover in America could not depend on getting these superior grade bulbs till 1911, when their first retail catalog was issued, offering to sell direct to America. Later the name "Wakru" was adopted in connection with the "Dutch Girl" trade-mark, to designate their very highest quality bulbs.

ORDERS RECEIVED BY AUGUST 1st ARE ALL PACKED IN HOLLAND, assuring superior quality at lower price and trueness to name and color. We make it pay you to order early—see within.

The best evidence of the superior quality of Wakru bulbs is found in the hundreds of voluntary testimonials, covering every State in the Union, and coming from judges of the highest courts, agricultural experts, bank officials, and flower lovers everywhere. You will find a few in this booklet.

WAKRU SEED AND BULB CO.
P. O. Box 176 Philadelphia

Reference:
Any Mercantile Agency or
any National Bank
in Philadelphia



"Bulbs make a grand show in my border"

June 15, 1915.

The bulbs I bought last year make a grand show in my border. It was certainly gratifying to me this Spring to overhear many favorable comments by strangers as they passed my residence. I did not know that tulips possessed so many beautiful tints, particularly on such long stems. I desire to thank you for your careful attention to my small orders. I shall order more this season.
Philadelphia. S. P. B.

Blooms admiration of all, spite of climate

March 22, 1915.

Last Fall I obtained some tulip bulbs from you and planted them quite late. I was anxious to see if they would produce anything worth while in this climate, as I had been told it was questionable. The blooms are the admiration of all our neighbors. I enclose a list containing names of many who asked that I have your catalog sent to them.
St Augustine, Fla. Mrs. B. E. D.

THE WAKRU GROUP PLANTINGS



The "Wakru" Girl
Trade Mark Registered

Offered last year proved so popular that we are offering this year a large number of special selections. Unless one has a large number of bulbs in his garden and is anxious to add certain specific varieties which his friends have grown, he will probably find no other method of buying bulbs so satisfactory and so economical.

By combining various collection offers you can make your property a bower of bloom throughout, from early spring to June.

Our special offer of 10% discount payable in seeds for orders received and paid for by July 1st applies to all collections on this and rear pages.

Wakru Quality Bulbs are not costly—although it is Wakru policy never to sacrifice quality in order to reduce price. It pays to buy dependable bulbs. If you buy good grade Darwin Tulips, May-flowering Tulips, or Narcissus, you may leave them in the ground and, in addition to the beautiful bloom of the first spring, they will bear largely year after year.

Prices given are for these special assortments only. Any changes in assortment will entail a considerable addition to cost.

COLLECTION "E."

For \$1.00 We Furnish These 66 Bulbs.

- 6 Pink Hyacinths (Gertrude Miniature).
- 12 Early Single Tulips, white, with a delicate tinge of pink (La Reine).
- 12 Late Parrot Tulips (mixed)
- 12 Late, May-flowering, Yellow Tulips (Golden Crown).
- 24 Crocus mixed.

This collection could be used as follows:

Plant the Hyacinths in two pots, bury them in your garden until the middle of February, and bring them into the room. Follow instructions for indoor blooming.

They can also be planted outside and will make their appearance in front of your porch about the same time as the early single tulips. You then have a good combination for an outdoor start. If you plant the Hyacinths in front of a space about 2 feet wide, you should use the early single tulips in the second row or intersperse with the Hyacinths.

About 6 inches behind that row plant the Late Parrot Tulips, and 6 inches behind that the Late Yellow one. You will have a succession of flowers undoubtedly to your satisfaction. The Crocus should be planted in your lawn or can be put in amongst the other bulbs where they will flower when the others are just peeping above the ground.

COLLECTION "F."

We furnish 62 bulbs for \$1.00 specially fitted as a border for your hedge.

Make a border along your hedge with Daffodils. We will send you 25 Single Daffodils (Princeps) and 12 Double Daffodils (Van Sion), and in addition to these you can plant 25 Winter Aconites, which are the earliest spring-flowering bulbs. The Daffodils can be used on a 50-foot front. You can

leave them in the ground and enjoy them spring after spring.

"G"—\$1.00 for 80 Bulbs.

Will edge with a double row of early single tulips, the front of two beds each 12 feet long or of one bed 24 feet long. Plant 6 inches apart. Bloom at about same time and in equal height.

40 Early Single Tulips, scarlet (Artus).

40 Early Single Tulips, white, slightly tinged with pink (La Reine).

H. 40 Darwin Tulips, \$1.00.

Assortment of ten fine-named varieties of these remarkable long-stemmed, long-season tulips, suitable for garden decoration in beds, herbaceous borders, and among shrubs. Remarkable shades and colors.

I. 45 Parrot Tulips, \$1.00.

Assortment of six fine-named varieties of parrot (or dragon) tulips, embracing every shape, shade and coloring in these remarkably artistic flowers. (See cut on front page.)

J. THE "AMERICA" HYACINTH GROUP.

4 Red, 5 White, 4 Blue for \$1.00.

One bulb for each of the original colonies, 13 in all. Excellent for forcing indoors or planting outdoors.

COLLECTION "K."

\$2.00 for 90 May-flowering and Darwin Tulips.

If you already have a bed planted with Shrubs and Herbaceous plants, you could not improve on it better than by planting a quantity of May-flowering and Darwin Tulips amongst them. These will flower at a time when the other plants are just about starting to grow, and the bright colors make a wonderful contrast with the bright green foliage just sprouting out or the darker color of the ever-greens. You need not disturb the bulbs when through blooming, but leave them in the ground and have the same effect for several years.

For this purpose we offer you

- 12 May-flowering Tulips, yellow (Button d'Or).
- 12 May-flowering Tulips, blush white changing into deep carmine (Isabella).
- 12 May-flowering Tulips, orange-red (La Merveille).
- 12 May-flowering Tulips, white with pink edge (Picotee).
- 12 May-flowering Tulips, brilliant scarlet with blue center (Gesneriana Spathulata).
- 30 Darwin Tulips in six different named varieties.



TESTING GROUNDS

Where all Wakru bulbs are thoroughly tested each year before they are offered to the buying public.

The bedding combinations suggested in this catalog, the special groups listed on the cover, the descriptions of the various varieties—all are thus based upon proven experience.

This is but one of many features which assures "Wakru" dependability.

Our low prices for finest bulbs

can be maintained this year only by close observance of certain conditions, which are based largely on the present state of transportation congestion, etc.

- (1) Orders received later than dates noted on each page (August 1st on tulips, hyacinths and daffodils, etc., for instance) may not be shipped until October—and are likely to reach you after ground is frozen. The earlier you order, the earlier your goods will be delivered.
- (2) No orders will be taken for less than one dollar.
- (3) No accounts will be opened on orders of less than \$5, and then only when satisfactory references are furnished if party is unknown to us.
- (4) To secure earlier orders, to distribute the work more evenly, and to introduce our New Seed Department, we will allow a cash discount of ten per cent., payable in seeds shown on page 18, for orders sent us prior to July 1st.
- (5) We guarantee Wakru bulbs true to name and color. We cannot guarantee results or growth, which are too often spoiled by neglectful treatment. Claims as to condition of bulbs should be made promptly on arrival. It is well to keep a copy of your order. In a number of cases we have received complaint that goods were incorrectly packed, when the records showed that evidently the customers had not ordered what they intended to order, but what they ordered was correctly sent.
- (6) We strive to deliver all packages by the least costly method. Express costs you less on larger and distant shipments; but parcel postage is cheaper on smaller packages and shorter hauls. In the latter case parcel postage is paid by us and billed to you, as our prices include ocean freight, duties, etc., but not delivery.

Address all communications as follows:

THE WAKRU SEED & BULB CO.

P. O. BOX 176

PHILADELPHIA

(Sole American selling agents for Wakru Quality Bulbs.)

Note the new, reduced prices in this catalog.

Never before have we offered such remarkable values.

100 prices apply down to 25, of any one variety; 1000 prices down to 250

(Six at dozen prices only where specially marked.)

BULBS ARE EASY TO GROW

The three important points to be remembered are these:

First, to get high quality bulbs always. We have many customers who tell us that results from the hyacinths we sell as second size are better than those ever secured from any other first size bulbs ever secured elsewhere. Yet we recommend that all who can afford them buy our first size, in named hyacinths especially.

Second. Plant early as possible in October, to give the bulbs ample chance to make roots before winter comes; and to plant at as even a depth as possible.

Third. To provide good drainage if your soil is clayey. While bulbs prefer good, rich soil and sun (especially tulips and hyacinths), they grow in any average soil, if well underdrained. Even coal ashes below will help to make clayey soil drain better and aid in avoiding rotting.

CROCUS. These may be scattered all over the lawn. They will stand a lot of rough handling and yet show up cheerfully in the early spring. Plant them a couple of inches deep, single or in little groups.

SNOWDROPS may be treated in the same way and certainly repay for the little money and trouble bestowed on them.

HYACINTHS. A splendid display of these typical Dutch bulbs can be made by putting them in beds. Pick out the location for your bed which can be made oblong, round or square or any shape, according to taste. An oval bed of about 11½ feet by 7½ feet will require about 300 bulbs, while 100 bulbs make an excellent showing in an oblonged bed 2½ by 7 feet. Plant them six inches deep and six inches apart. It will be well to pay attention to the various color combination we are giving under the heading "first size Hyacinths." We might say that the second size as well as Bedding suit the purpose of planting outdoors just as well as the first size and will not run into such a high cost.

TULIPS are also ideal for bedding purposes in much the same manner as the Hyacinths. They should be planted about four inches deep and four inches apart. It is, however, very important to put the right kind and shades in one bed, as all varieties do not flower at the same time and height. Our little guide will help you to pick out the right varieties (see Tulips).

NARCISSUS. While Hyacinths and Tulips like to have plenty of Sunshine, Narcissus are well contented with shady places. Along hedges and around and between evergreen they show up fine. They are not very particular as to the depth at which they are planted.

INDOOR BLOOMING

In potting bulbs for indoor blooming, be careful not to plant bulbs too deep. The soil should not come within a half-inch of the top of the pot and the top of the Narcissus bulbs should be up to the surface; the Tulips, not over an inch below; Hyacinths or Crocus, not over a half-inch below.

The soil should be light and rich, three parts loam; one part leaf mould and one part sand is a good combination; the leaf mould serving the purpose of holding the moisture.

A six-inch pot should not contain more than five Tulips, or two Narcissus, or two Hyacinths, or six Crocus. An eight-inch pan will hold ten Tulips, or eight Hyacinths, or eight Narcissus, or twelve Crocuses.

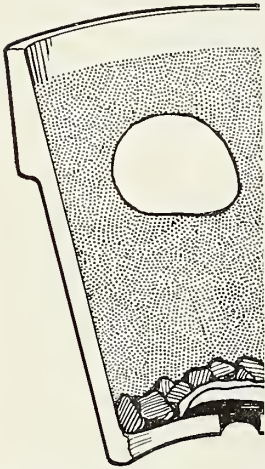
The bulbs having been potted, they are placed in the cold and dark for a period of a month and a half to three months, being watered only every ten days to prevent the soil from drying up.

It is much simpler if you have garden space to do it, to dig a trench a foot and a half deep, fill in about six inches with ashes, and place the potted bulbs on this layer. Then water well and cover with soil or coal ashes. Unless the season is unusually dry the bulbs will need no further attention till it is time to bring them in. Remember that ample root development is the important point in forcing bulbs. Till the removal of one of the pots from this trench shows that the roots have developed to such an extent that they can be seen through the drainage hole, it is not wise to bring them in.

After bringing these to the light, indoors, an average temperature of 55 degrees is plenty high enough. At no time, especially while the bulb is flowering, should the temperature exceed 60 degrees, if you desire best results. Over three-fourths of the failures in forcing bulbs result from too high a temperature; therefore, beware.

Too much water before rooting and too little water after are the prime causes of failures in raising bulbs. Water plentifully once you have them indoors—remember that the house is dry and warm; that air, light and water are the cheapest things in the world and the most essential to success in indoor bulb culture.

If blooms are being borne on too short flower stems and you know that the root growth is ripe, put an open paper cone about a foot high and a couple of inches wide at the top, over the top of the bulb. The stem will draw up in the desire to reach the light. This treatment is particularly applicable to Hyacinths.



BULBS FOR FORCING

WATER CULTURE

What better winter decoration for the home is there than the fragrant Paperwhite Narcissus, the Dutch Hyacinths, Daffodils and Crocuses?

Any of these can be easily raised in water, in a flat jardiniere which has been partially filled with sand or pebbles. Stones between the bulbs will hold them firmly in place, assuring erect flower spikes.

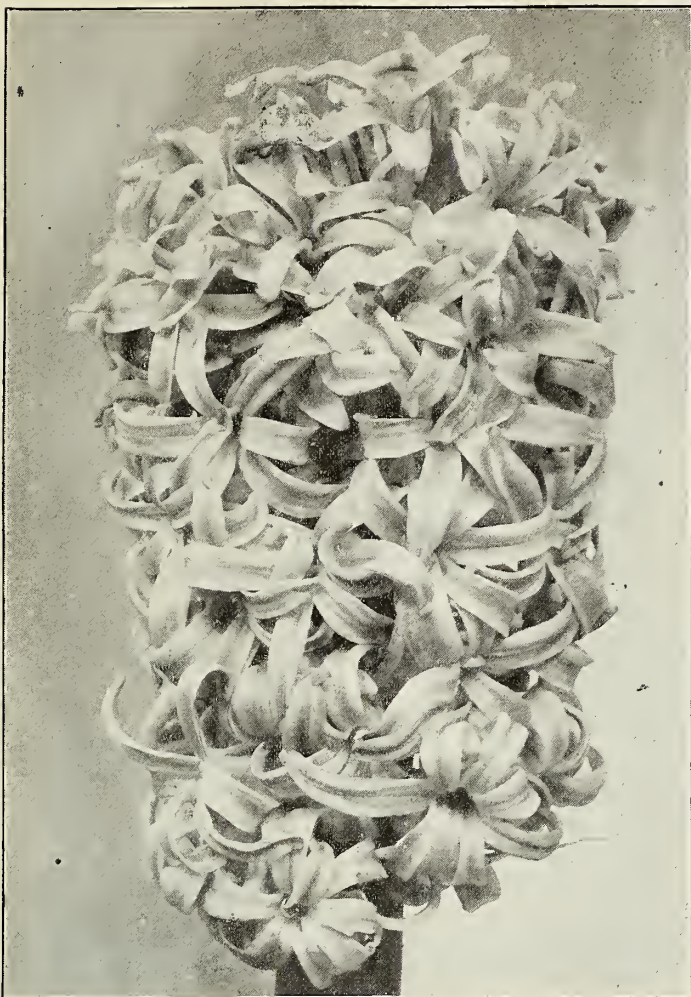
Hyacinths grow beautifully in glasses especially made for this purpose and obtainable in most flower shops. Be careful not to let the bottom of the bulb touch the surface of the water. There should be about the thickness of a nickel between. Place the glass in a dark cupboard or closet and wait till the roots crawl over the bottom of the glass. If the water should become foul, let it run out, but never remove the bulb from the

glass. Clean the root by shaking the glass gently after filling again and put in fresh water after the dirt is out. Be careful not to break the roots.

It is well to fill the glasses with soft (rain) water, and to add a little charcoal from the start, using plant food in the water around blooming time to increase the size of the flowers and the strength of the stem.

A dozen or more Crocuses in a flat bowl make an excellent display, but to assure bloom keep these in an unheated room, if possible.

Remember in growing bulbs in water that it is just as essential to get good roots before exposing to the light, as in the case of indoor forcing in soil. Unless there is a good root growth you are almost sure to be disappointed with the results.



GERTRUDE (Dark Rose).

**MINIATURE (Dutch Roman)
HYACINTHS**

These bulbs, if planted at the same time as Romans, or as soon as they are at hand, may be had in bloom in January, if grown inside. Grown outside they give fine results. By planting 8 to 10 inches deep the blooms last longer.

We can supply all colors mixed at 30c. per dozen, or \$2.25 per hundred. Note again that we offer below definite, named varieties, while those whose motto is "not how good, but how cheap" omit all names. Why buy mixtures, when named varieties cost no more?

SINGLE DARK RED.

	Doz.	100.
Garibaldi, early, for forcing	\$0.45	\$2.50
General Pelissier, early, fine for forcing	.35	2.25
Robert Steyger	.35	2.25

SINGLE ROSE AND PINK.

Gertrude, dark rose, big spike	.30	1.85
Gigantea, pale rose, big spike	.35	2.25
Moreno, nice rose spike	.30	2.00

SINGLE WHITE AND BLUSH.

	Doz.	100.
Grandeur a Merveille, blush	\$0.30	\$2.00
La Grandesse, pure white	.45	3.00
L'Innocence, pure white	.45	3.00
Madame van der Hoop, compact spike	.40	2.75

SINGLE LIGHT BLUE.

Czar Peter, very beautiful	.40	2.75
Grand Maitre, large spike	.40	2.75
Johan, one of the best light blues	.40	2.50

HYACINTHS

It has always been admitted that Hyacinths—because of their large heads of fragrant flowers, held at uniform height on substantial stems—were ideal for the formal spring bulb bed.

But the flower lover who uses them only for this purpose—who fails to thoroughly intersperse them in the front of the perennial and annual borders and beds, is losing sight of an opportunity to beautify such portions of his ground, at a season when bloom is otherwise sadly lacking.

Hyacinths are also one of the best plants that can be relied upon to brighten the home during the months when nothing is in bloom outside. They force easily—if you tried them unsuccessfully it is probable that we may give you some hints which would obtain you better results. As a guide to best results we state below those that have given greatest satisfaction for forcing.

Plant six inches deep (to bottom of bulb) and six inches apart in beds.

A splendid display of these typical Dutch bulbs can be made by putting them in beds. Pick out the location for your bed which can be made oblong, round, or square or any shape, according to taste. An oval bed of about 11½ feet by 7½ feet will require about 300 bulbs, while 100 bulbs make an excellent showing in an oblong bed 2½ by 7 feet. Plant them six inches deep and six inches apart. It will be well to pay attention to the various color combination we are giving under the heading "first size Hyacinths." We might say that the second size as well as Bedding suit the purpose of planting outdoors just as well as the first size and will not run into such a high cost.

We can furnish mixed hyacinths in either red, white, or blue at 5c. each; 50c. a doz., or \$3.00 per hundred; but we lay the emphasis on these because experience shows that knowing garden lovers realize that even this superior grade of mixed is not as desirable for bedding as those below nor at all available for forcing.

SINGLE DARK BLUE.

Baron van Tuyl, very early, dark	.45	3.00
King of the Blues, good spike	.45	3.00

SINGLE YELLOW.

Ida	.50	3.25
King of the Yellows, the best yellow	.50	3.50

BEDDING HYACINTHS

Chiefly for Outside Planting.

Although we reserve the right to ourselves to send out Bedding Hyacinths after our own Selection, yet we are willing to accommodate our customers as far as possible when they want us to send the Bedding Hyacinths with names attached.

This should be mentioned on the order sheet.

Do not confuse these with the cheaper "bedding mixtures" which are always without names.

	Doz.	100.
Single Red	\$0.60	\$4.00
Rose and Pink	.60	4.00
White	.60	4.00
Blue	.60	4.00
Light and Porcelain Blue	.60	4.00
Yellow	.70	4.50
Double Red	.70	4.50
Rose	.70	4.50
White	.70	4.50
Blue	.75	5.00
Light and Porcelain	.75	5.00
Yellow	.75	5.00



A small corner of one of our Hyacinth Fields in which the finest Hyacinths which come from Holland are grown.

SECOND SIZED HYACINTHS FOR FORCING

Although as a rule first sized Hyacinths are superior to second sized ones when it comes to forcing, yet these second sized Hyacinths will make a very nice display in beds or even when planted in pots. Used largely by florists. We feel convinced that you will be satisfied with them.

Six at a dozen price; 25 at hundred price.

SINGLE DARK RED.

	Doz.	100.
Garibaldi, early forcer	\$0.85	\$6.00
General Pelissier, early forcer85	6.00
Robert Steyger, crimson75	5.50

SINGLE ROSE AND PINK.

	Doz.	100.
Baron van Thuyll, rose	\$0.85	\$6.00
Cardinal Wiseman, late, big spike85	6.00
Gertrude, dark rose, very nice70	5.00
Gigantea, pale rose70	5.00
Moreno, deep pink, big spike70	5.00
Rosea Maxima, rose70	5.00

SINGLE WHITE AND BLUSH.

	Doz.	100.
Grandeur a Merveille, blush white, elegant spike.....	.70	5.00
Grande Blanche, compact spike, big bells	\$0.70	\$5.00
La Grandesse, finest pure white	1.25	9.00
L'Innocence, pure white, fine and early75	5.00
Madame van der Hoop, compact spike, big bells.....	.85	6.00

SINGLE LIGHT BLUE.

	Doz.	100.
Czar Peter, very beautiful, porcelain blue	1.25	9.50
Johan, one of the best light blue70	5.00
La Peyrouse, sky-blue70	4.75
Lord Derby, very showy	1.15	9.00
Queen of the Blues, fine spike	1.15	8.00

SINGLE BLUE AND DARK BLUE.

Captain Boyton, big spike	1.15	8.00
Grand Maitre, big spike, big bulb85	6.00
King of the Blues, dark, good spike85	6.00

SINGLE YELLOW.

Ida, big spike, one of the finest yellows	1.15	8.50
King of the Yellows, extra big spike	1.10	8.00
Yellow Hammer, golden yellow	1.25	9.50

SINGLE MAUVE AND PURPLE.

Haydn, bluish violet	1.15	8.50
Lord Balfour, mauve	1.00	7.00
Sir William Mansfield, purple90	6.50

DOUBLE RED, LIGHT RED AND ROSE.

Bouquet Tendre, dark red	1.05	7.75
Noble par Merite, deep rose	1.05	7.50
Prince of Orange, rose	1.10	8.00

DOUBLE WHITE AND BLUSH WHITE.

Bouquet Royal, pure white	1.05	7.50
La Tour d'Auvergne, pure white	1.00	7.00
La Virginite, rosy-white	1.00	7.00

DOUBLE BLUE AND PORCELAIN BLUE.

Bloksberg, light	1.30	10.00
Charles Dickens	1.20	9.00
Garrick, blue, dark centre	1.30	10.00
Van Speijk, deep blue	1.15	8.50

DOUBLE YELLOW AND ORANGE.

Goethe, fine spike	1.20	9.00
Jaune Supreme, rose centre	1.20	9.00
Sovereign, magnificent spike	1.40	11.00

Shall recommend your bulbs to others.

Jan. 20, 1915.

I received your package marked "6 R. Hyacinths with interest for overlooking your order." I appreciate your kindness very much but am not aware that you have overlooked any order of mine. Your house has been very nice to me, and if there has been a mistake I shall be glad to help you get it straight. I like your bulbs immensely and shall recommend them to others.

Durham, N. C.

Miss A. E. B.

FIRST-SIZED NAMED HYACINTHS

Six at dozen prices; 25 at hundred prices.



La Innocence-Pure White

SINGLE RED.

	Doz.	100.
*Etna, half double, large bells	\$1.35	\$10.50
*Garibaldi, crimson, early forcer	1.05	7.00
*General Pelissier, dark red, forces very early	1.10	7.25
*La Victoire, large crimson spike, early	1.10	7.25
*Robert Steyger, fine for bedding	.90	6.50

SINGLE ROSE AND PINK.

*Baron van Thuyll, pink	\$1.00	\$7.00
*Charles Dickens, pretty pink, nice flower	1.40	10.00
*Gertrude, dark rose, large truss	.90	6.00
*Gigantea, pale pink, gigantic truss	.95	6.50
*Lady Derby, rose extra, new	1.25	8.00
*Moreno, gigantic flower, deep rose	1.00	6.75
*Rose a Merveille, deep pink, excellent spike	1.20	9.00

SINGLE PURE WHITE.

*Alba Maxima, very early	\$1.30	\$10.00
*Blancheur a Merveille, big spike	1.00	7.00
*La Grandesse, the best pure white	1.50	10.00
*L'Innocence, fine and early	1.10	8.00
*Mad. van der Hoop, big bells, fine for bedding	1.10	8.00

SINGLE BLUSH AND CREAMY WHITE.

Grandeur a Merveille, blush, big spike	1.20	9.00
Mr. Plimsoll, blush white	1.00	7.00

For bedding as well as forcing, it pays to buy first-sized hyacinths of named varieties. Full spikes of true-to-name Hyacinths are well worth the investment.

One particularly important point, which is too often overlooked, is the fact that few really first-sized hyacinths are offered this year, and none too many any year. For it takes five years to grow a hyacinth bulb to the point where we class it a first-size bulb—although there is a tendency to sell smaller younger bulbs as first-size.

“Wakru” First Size Hyacinths are the pick of the five-year fields of Gt. Van Waveren & Kruijff, whose reputation on hyacinths has been that of leadership for a score of years.

Try this size once—note how large and firm the bulbs are—how strong and full of bells each flower stem is—you will select Wakru first size thereafter.

The varieties marked with * are best for glasses or pots.

Wakru “Named Hyacinths first-sized Bulbs” are real first-sized Bulbs, and far superior to those often offered as first-sized Bulbs.

A slight difference in price, a big difference in quality.

Try our first size.

SELECTED BEDDING COMBINATIONS.

For bedding purposes we give you the following combinations, which may be very handy for you: Robt. Steyger, dark red.

Mad. van der Hoop, white.

King of the Blues, dark blue.
King of the Yellows, golden yellow.

Gertrude, pink.
L'Innocence, pure white.

Robt. Steyger, dark red.
King of the Yellows, yellow.

L'Innocence, pure white
Johan, light blue.

Sir Wm. Mansfield, purple.
King of the Yellows, golden yellow.

SINGLE LIGHT BLUE.

	Doz.	100.
Bismarck, the earliest light blue Hyacinth, very big spike	\$2.40	\$16.00
*Czar Peter, fine porcelain blue	1.50	10.00
*Enchantress, nicely shaded, light blue	1.75	12.00
*Johan, light, good spike	1.05	7.50
*Lord Derby, large spike	1.55	10.00
*Potgieter, very fine blue	1.55	10.00
*Queen of the Blues, handsome big light blue spike	1.55	10.00

SINGLE BLUE AND DARK BLUE.

Baron van Thuyll, dark	\$1.10	\$8.00
*Captain Boyton, big spike like Gr. Maitre	1.50	10.00
*Grand Maitre, big spike, big bulb	1.15	7.50
King of the Blacks, the darkest blue, nearly black	2.00	15.00
*King of the Blues, dark, good spike	1.35	9.00
*Marie, good deep blue	1.35	10.50

SINGLE YELLOW AND ORANGE.

City of Haarlem, beautiful yellow	\$1.75	\$12.00
*Ida, big spike, one of the finest yellows	1.25	8.00
*King of the Yellows, fine spike, specially recommended	1.15	8.00
*Yellow Hammer, golden yellow	1.35	9.00

SINGLE MAUVE AND PURPLE.

Haydn, blush violet	\$1.40	\$11.00
*Lord Balfour, mauve	1.05	7.00
*Sir William Mansfield, purple	1.15	8.00

DOUBLE HYACINTHS

DOUBLE RED, ROSE AND BLUSH.

*Bouquet Tendre, well known, early variety, pink...	\$1.50	\$10.00
Koh-i-Noor, semi-double, large truss	1.50	10.00
*Noble par Merite, large flower, rosy red, extra	1.45	9.50

DOUBLE WHITE.

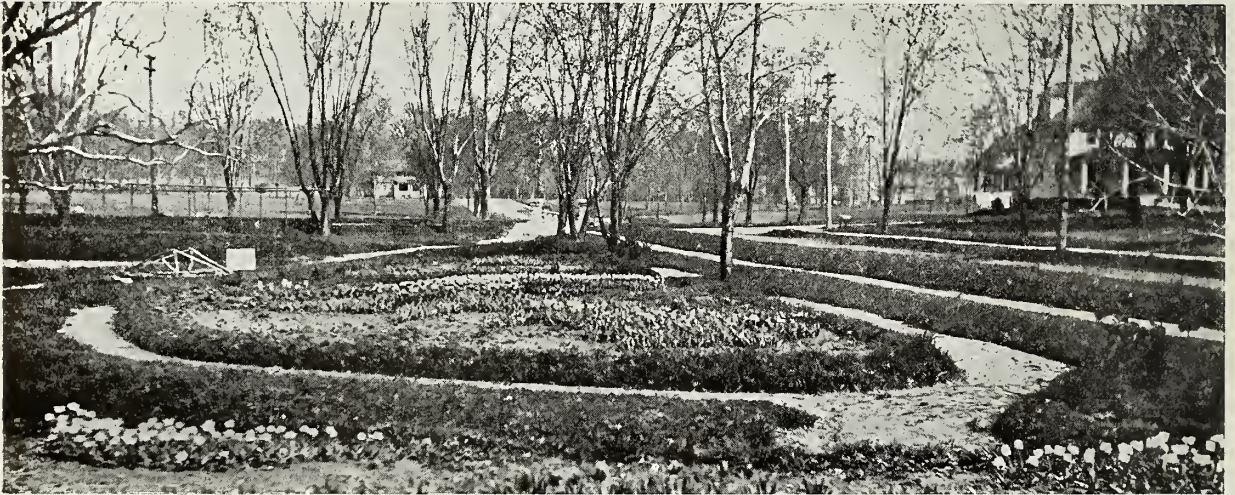
Bouquet Royal, pure white, fine spike	\$1.50	\$9.50
*La Grandesse, pure white, same bells as the single..	1.60	11.00
*La Tour d'Auvergne, large spike, very early	1.35	9.50
La Virginite, blush	1.35	10.50

DOUBLE BLUE.

*Blokberg, prettily formed spike	\$1.50	\$10.00
Charles Dickens, good spike	1.65	12.50
Crownprince of Sweden, violet blue, large spike	1.45	9.00
*Van Speijk, large spike and bells	1.45	9.50

DOUBLE YELLOW AND ORANGE.

*Goethe, fine spike	\$1.45	\$10.00
*Jaune Supreme, yellow with rose centre	1.45	10.00
Sovereign	1.75	12.00



TULIPS

The time has long since passed when the planting of tulips in the average garden was restricted to a few formal beds. Now the early single tulips and the early double tulips are profusely used for formal beds and borders, while the Darwins, parrots and May Flowering Tulips are generously used to brighten the perennial beds and lengthen their season of bloom.

SPECIAL OFFER ON NEW VARIETIES

We suggest that tulip lovers acquaint themselves with a few new varieties each year. For this purpose we offer ten each of three finest recent single tulips (Herman Schlegel, Le Reine des Reines and Pelican) for \$4.25. Ten each of the finest recent double tulips (Boule de Neige, Mary Garden, Schoonard and Theeroos) for \$6.00.

INSTRUCTIONS ON PLANTING TULIPS. Plant 4 inches deep (to top of bulbs) and 4 inches apart in beds.

The culture of Tulips is one of our great specialties. Being owners of the very best grounds for Tulips (rich loam and pure sand), we dare say their Tulips are unsurpassed and sure to give the greatest satisfaction, for forcing as well as for bedding purposes.

ARRANGEMENTS OF COLORS FOR BEDDING.

Chrysolora and Belle Alliance.
 Couleur Cardinal, itself makes one of the most beautiful beds.
 Cottage Maid and Yellow Prince.
 Duc De Berlin and White Hawk.
 Duchesse de Parma, by itself.
 Keizerskroon, by itself.
 La Reine and Artus.
 Maes, unsurpassed when bedded without anything else.
 Pottebakker White and Chrysolora.
 Princess Marianne and Ophir d'Or.
 Prince of Austria and Herman Schlegel.
 President Lincoln, by itself.
 Rose Gris de Lin, separate in one bed.
 Thomas Moore, by itself.
 Wouwer Man and Ophir d'Or.
 Vermillion Brilliant and White Hawk.

If you will note these suggested varieties you will have a complete succession of bloom from Christmas until the Easter season.

ALL WAKRU BULBS ORDERED BY AUGUST 1st ARE SELECTED AND PACKED IN HOLLAND AND SHIPPED IN ORIGINAL PACKAGES

SINGLE TULIPS FOR FORCING

For Flowering in December and Early January.

ALL OF THE DUC VON THOL VARIETIES; MON TRESOR, PROSERPINE, THOMAS MOORE, VERMILLION BRILLIANT and WHITE POTTEBAKKER.

For Flowering January until March.

BELLE ALLIANCE, DUCHESSE de PARMA, KEIZERSKROON, LA REINE, PRINCE OF AUSTRIA, ROSE GRIS DE LIN, VERMILLION BRILLIANT, YELLOW PRINCE.

For Flowering from Early March to Early April.

BELLE ALLIANCE, COULEUR CARDINAL, FLAMINGO, LA REINE, PRINCE DE LIGNY, PRINCE OF AUSTRIA, PROSPERITY, ROSE GRIS DE LIN, ROSE LUISANTE, VERMILLION BRILLIANT, WHITE HAWK, YELLOW PRINCE.

EARLY SINGLE TULIPS

"DUC VAN THOLL" THE VERY EARLIEST.

	Doz.	100.	1000.
Cocheneal, glowing vermilion, very early....	\$0.40	\$2.25	\$18.00
Crimson23	1.25	10.00
Red and Yellow, maximus35	2.00	16.00
Rosy28	1.75	11.00
Scarlet28	1.50	12.00
Vermillion23	1.50	12.00
Violet23	1.25	10.00
White Maximus25	1.35	11.75
Yellow42	2.00	17.50
All colors mixed25	1.30	10.00

EARLY SINGLE TULIPS



LA REINE

	Doz.	100.	1000.
MIXED EARLY SINGLE TULIPS.....	\$0.15	\$0.85	\$8.00
1—Adeline, rosy violet, with a yellow centre. Height 8 inches43	2.45	21.00
Arms of Leiden, white flamed carmine....	.23	1.25	11.00
2—Artus, rich scarlet, with clear yellow centre. Height 10 inches20	1.10	9.50
1—Belle Alliance (Waterloo), crimson-scarlet, with yellow centre. Height 9 inches30	1.75	15.00
1—Brilliant Star, brilliant scarlet, color and habit as Vermillion Brilliant, but much larger, splendid early forcer95	5.00	40.00
2—Cerise Gris de Lin, rosy-violet. Height 10 inches	\$0.80	\$4.00	\$35.00
1—Chrysolora, deep golden-yellow. Height 11 inches30	1.50	12.00
1—Cottage Boy, orange-red bordered orange-yellow. Height 9 inches42	2.50	23.00
1—Cottage Maid, lovely rosy pink shading to cream-white. Height 9 inches23	1.25	10.50
2—Couleur Cardinal, intense crimson, shaded with plum on the exterior, yellow centre. Height 11 inches37	2.15	19.00
A grand Tulip, which makes a very decided show in a bed.			
1—Duc de Berlin, scarlet, edged orange-yellow. Height 8 inches30	1.75	16.00
2—Duchess of Parma, large orange-red with a bold irregular margin of deep yellow, suffused with rose on the outer petals. Height 13 inches24	1.45	11.50
2—Flamingo, shape like White Hawk, color white, flaked rosy red80	4.15	36.00
A variety which has not been on the market very long. In forcing it gives great satisfaction, the color resembling the beautiful plumage of the flamingo bird.			
1—Fred. Moore, bright orange shaded with scarlet, handsome and effective. Height 15 inches23	1.50	11.00
Very sweet-scented and of a fashionable color.			
2—Goldfinch, the pure yellow golden Prince. Herman Schlegel. The yellow La Reine. This flower is of a light yellow color and has the same light rose like the La Reine; it is an easy forcer. 5c each....	.27	1.45	12.00
	.35	2.00	

The varieties marked 1 generally begin to flower about the 20th of April; those marked 2 after the first of May. By selecting bulbs preceded by the same figure, and of the colors desired, you find the problem of making up a bed of Tulips pleasing in color combination, which will bloom at about the same time, very much simplified.

	Doz.	100.	1000.
1—Joost van den Vondel, rosy red, more or less flaked with white, and suffused with delicate rose on the outside.			
1—Joost van den Vondel, white, pure white, extremely beautiful. Height 10 inches.	.62	3.15	26.50
1—Keizerkroon (Grand Duc), crimson-scarlet, edged bright yellow. Height 14 inches30	1.95	17.50
Owing to its enormous cup and broad foliage this variety is generally looked upon as one of the best for outdoor work. The striking contrast of the yellow and red in the flower makes it very showy.			
1—King of the Yellows, pure yellow in the way of Canary Bird, but far superior. Height 12 inches30	1.65	14.00
La Precieuse (see Cottage Maid)23	1.25	10.50
1—La Reine (Queen Victoria), white suffused with delicate pink. Height 11 inches20	1.20	10.50
La Reine des Reines (Prosperity). Delicate and lovely pink, very early, splendid forcer. 10c each.....			
	1.10	9.00	
1—Le Matelas, silvery pink, tipped with white and shaded with blush white, early and very effective. Height 1 foot	.50	2.95	24.00
1—Maes, rich scarlet, tinged with purple on the interior, centre bronze surrounded with bright yellow; the finest tulip for bedding. Height 10 inches47	2.75	19.00
1—Mon Tresor, intense golden yellow. Height 11 inches35	2.00	18.00
Is very easy to force; one of the varieties you should start your experiments with because you will be certain of good results if you follow our instructions.			
1—Ophir d'Or, canary yellow, very sweet scented. Height 11 inches. The very best single yellow tulip for bedding....	.30	1.95	18.00
Pelican. Large white flower lightly suffused with rose on upper petals; one of the biggest flowers. 35c each.....			
	3.75		
2—Pink Beauty, bright rose pink, shading to blush white near the yellowish centre. Height 11 inches. Award of merit R. H. S., May 8th, 190075	4.00	36.00
1—Pottebakker, pure yellow. Height 13 inches40	2.25	19.00
2—Pottebakker, scarlet (Verboom), rich scarlet with a yellow centre. Height 13 inches38	2.00	18.00
1—Pottebakker, white, large cup-shaped pure white flowers. Height 13 inches42	2.50	21.00
2—Prince of Austria, scarlet suffused with orange, yellow centre, sweet scented. Height 12 inches35	2.00	17.30
1—Princess Marianne, creamy-white, suffused with pink, shading to rose; very large. Height 10 inches22	1.15	10.00
1—Proserpine, bright rose, suffused with purple, very handsome. Height 12 inches50	3.00	28.00
Also a very easy forcing variety.			
2—Rose Gris de Lin, rose flushed with pink, excellent shape. Height 8 inches....	.20	1.10	9.00
A most beautiful and useful variety which should be included in every order.			
2—Rose Luisante, dark silky rose, the finest rose tulip. Height 9 inches40	2.40	19.50
2—Standard Golden, scarlet, tipped and flaked with yellow. Height 10 inches..	.75	4.50	40.00
2—Standard Royal (Silver Standard), white ground, flaked and tipped with scarlet. Height 10 inches75	4.50	40.00



Vermillion Brilliant Tulips make a showy bed.

EARLY SINGLE TULIPS—Continued

	Doz.	100.	1000.
2—Thomas Moore, bright orange, shaded with scarlet; very handsome and effective. Height 14 inches23	1.30	10.50
2—Verboom, rich scarlet, yellow centre. Height 13 inches38	2.25	19.00
1—Vermillion Brilliant, dazzling scarlet, with yellow centre. Height 10 inches.38	2.40	20.00
This variety is considered by a good many as the best scarlet. It certainly deserves all the credit which is given to it.			
1—White Hawk, pure white, robust habit; one of the very best white Tulips. Height 12 inches. (Fine white for Easter)42	2.50	21.00
This flower is one of the largest, and will add wonderfully to your garden.			
2—White Swan, true, pure white, egg-shaped flowers. Height 14 inches.28	1.55	13.00
This variety cannot be forced, but for outdoor planting it is very useful. Its name indicates its shape. The flowers are borne on long Swan-necked-shaped stems, which give it a very graceful appearance.			
1—Wouwerman, rich dark purple. Height 10 inches60	3.90	36.00
2—Yellow Prince, rich yellow, sweet scented. Height 9 inches25	1.50	12.00

DOUBLE TULIPS SUITABLE FOR

FORCING For Flowering in January.

SALVATOR ROSA.

For Flowering End of January to End of March.

COCHENILLE, COURONNE D'OR, EL TOREADOR, IMPERATOR RUBRORUM, MURILLO, TITIAN, TOURNESOL, YELLOW TOURNESOL.

ARRANGEMENTS FOR PLANTING

DOUBLE TULIPS IN BEDS.

Double tulips should be placed one variety in each bed; grouping different varieties does not produce such a good effect. We advise for that purpose the following splendid varieties:

COURONNE D'OR, LA CANDEUR, LADY PALMERSTON, LE MATADOR, MURILLO, SALVATOR ROSE, WILLIAM III and LA CANDEUR.

EARLY DOUBLE TULIPS

The varieties marked 1 generally begin to flower last week of April; those marked 2 first week in May, while the latest to flower are marked 3.

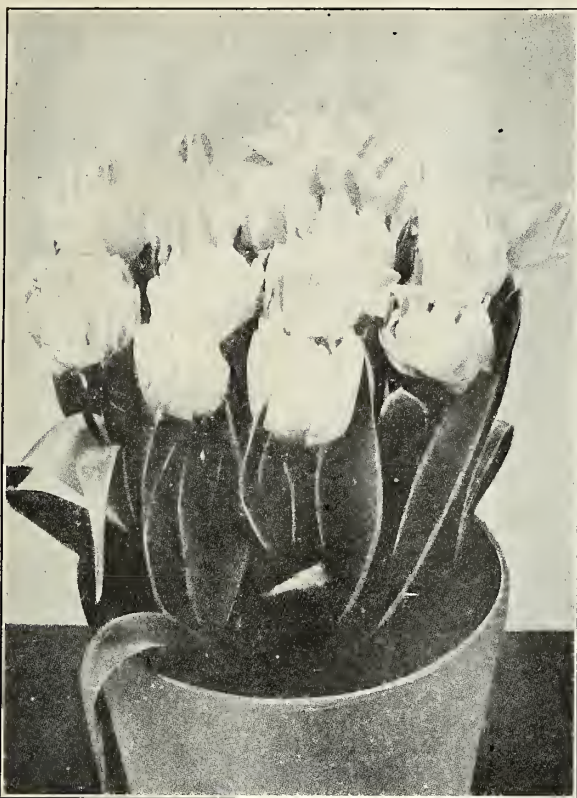
	Doz.	100.	1000.
Boule de Neige. Also a pure white sport of Murillo, which forces easily, the whole when in flower is something after a white Pæony. 5c each.....	.50	3.25	
1—Cochenille, fiery scarlet40	2.15	19.00
1—Couronne des Roses, rich pure rose, shaded white. Height 11 inches. Extra	.55	4.75	40.00
1—Couronne d'Or, deep yellow, marked with orange red. Height 11 inches42	2.80	24.00
Crown of Gold would be the English name for this variety, and it certainly is a golden Crown when in flower. It makes a splendid bedding Tulip.			
2—El Toreador, reddish bronze and orange with a yellow base; very handsome. Height 11 inches. Award of Merit R. H. S., May 9th, 190075	4.00	38.00
1—Fluweelen Mantel (Velvet Gem), deep crimson, edged dark orange-yellow. Height 10 inches40	2.25	20.00
1—Gloria Solis, rich yellow, running to deep red. Height 12 inches32	1.85	16.00
2—Imperator Rubrorum, bright scarlet. Height 12 inches40	2.35	20.00
2—La Candeur, pure white. Height 11 inches. Remains in flower a very long time25	1.50	13.00
1—Le Matador, scarlet with purple glow at the outside of the petal. Height 12 inches. Extremely beautiful42	2.45	21.00
2—Lord Beaconsfield, brilliant crimson rose, the shape of the flower resembles a giant Ranunculus. Height 10 inches....	.42	2.65	22.50
Mixed—Extra fine, all colors18	1.00	9.00
Mary Garden. Pure yellow, the shape of Murillo, the only pure yellow double tulip in existence. 50c each.....			5.50

SEEDS FREE

to value of 10 per cent on all bulb orders paid for by July 1st, 1916. (See page 18)

The remarkable new double yellow tulip Mary Garden introduced by Van Waveren & Kruijff.





Murillo is a fine double tulip in beautiful blush-pink

EARLY DOUBLE TULIPS, Continued

	Doz.	100.	1000.
2—Murillo, delicate blush pink. Height 10 inches25	1.50	12.00
Most decidedly one of the best double Tulips known. It is very fine for forcing purposes, as well as for outside work.			
3—Queen of the Netherlands, white flushed rose. Height 10 inches70	3.50	28.00
2—Rubra Maxima, dazzling scarlet, splendid bedding variety. Height 10 inches30	1.65	13.50
1—Salvator Rosa, beautiful deep rose; extra. Height 10 inches30	1.75	16.00
Schoonoord. A pure white Sport of Murillo, with all the good qualities of that well-known variety. Excellent forcer. 6c each.....	.55	3.45	
Theeroos (Tea Rose). Another Sport of Murillo, called Theeroos (tea rose) because it is both in color and shape like that well-known rose. 8c each.....	.60	4.00	
2—Titian, scarlet, edged yellow. Height 10 inches37	2.75	26.00
2—Tournesol, rich scarlet, edged yellow, very showy. Height 11 inches50	3.00	27.00
2—Tournesol Yellow, bright yellow, slightly shaded orange. Height 11 inches42	2.45	21.00
2—Vuurbaak, bright scarlet, with a slight flush of orange, when fully open; very handsome. Height 12 inches42	2.40	21.50
2—William III, rich orange scarlet; extra. Height 12 inches40	2.45	21.00

Others want to order bulbs.

May 7, 1915.

Will you please let me know when you will have your new price list, as I have several parties who will want to order bulbs who have seen mine and just rave over them. Send me several of your catalogs and I will distribute them for you.
Pleasanton, Cal.

J. E. B.

LATE DOUBLE TULIPS

Very Tall Growing Varieties (Not Adapted for Forcing).

	Doz.	100.	1000.
Admiral Kinsbergen, red and yellow	\$0.42	\$2.00	
Blauwe Vlag (Lord Wellington), blue	1.50	8.50	
Mariage de ma Fille, white feathered crimson rose; very large and elegant. Height 14 inches80	4.65	\$37.20
Overwinnaar, blue and white, striped and spotted58	3.40	27.20
Pæony Gold, red and gold striped30	1.75	14.00
Pæony Red, scarlet30	1.75	14.00
Yellow Rose, pure yellow30	1.50	12.00

VARIEGATED-LEAVED TULIPS

The unusually attractive variegated foliage of these Tulips and the pleasing flowers are sure to make them popular in America once they are better known. Yellow Rose, particularly, deserves to be more planted. Blooms late, bears sweet-scented double flowers of an excellent yellow.

SINGLE.

	Doz.	100.	1000.
Purple Crown, golden yellow border	\$0.62	\$3.50	\$28.00
Yellow Prince, bright golden, yellow edged, extra40	2.25	18.00

DOUBLE.

La Candeur, silver variegated62	3.50	28.00
Rex Rubrorum, flowers rosy red, leaves silver variegated, extra42	2.50	20.00
Tournesol, rich scarlet, edged yellow gold variegated75	4.50	36.00
Yellow Rose, edged yellow, very striking....	.42	2.50	20.00

LATE SINGLE TULIPS

BYBLOOMS.

Violet and purple on a white ground. Flaked and striped.

	Doz.	100.	1000.
Mixture	\$0.30	\$1.75	\$14.00
Named Varieties42	2.75	22.00

BIZARDS.

These bizard Tulips, blooming in late May, are being used largely for naturalizing in borders and for oddity beds. Imagine the wonderful contrast of purple, crimson and brown markings on the yellow grounds of these large, showy flowers, you will realize why these are so popular in Europe and the British Isles for their outdoor effects and cutting purposes.

	Doz.	100.	1000.
Mixture	\$0.36	\$1.50	\$11.00
Named Varieties44	3.00	23.00

BREEDERS.

Large, handsome flowers of sombre though charming colors.

	Doz.	100.	1000.
In fine named Varieties	\$0.42	\$3.15	\$25.00
Mixed, all colors35	2.00	18.00

Tulips proved everything one could wish for.

April 23, 1915.

Last Fall I sent you an order for some tulips and also some Dahlias. The tulips I received in due time and they proved everything one could wish for. I hope the dahlias will be equally successful.

Laton, Cal.

Mrs. C. D. M.

Bulbs gave great satisfaction—may expect another order.

June 8, 1915.

I purchased some bulbs from you last Fall which gave me great satisfaction. I am writing for your bulb catalog, and you may expect another order.

Bellevue, Mich.

Rev. G. T. C.



DARWIN TULIPS

We strongly recommend this class of Tulips for garden decoration in groups, in the herbaceous border and amongst shrubs.

Grown for cut flowers, they will prove very valuable at a time that our garden's yield so little to decorate our rooms.

They flower during the middle part of May, a time in which the spring flowers are over and the summer flowers, such as roses, have not yet come in.

Growing to a height of a couple feet, with perfectly colored flowers double the size of an ordinary Tulip, the Darwin deserves to be thoroughly interspersed along the borders.

It is well to put Darwin Tulips at the back—other May-flowering Tulips in front, and a border of early Tulips if you want almost continuous bloom, while the other plants are getting started.

Fine for Forcing

By slowly forcing in pots they may be had in bloom in March or even earlier; most of the varieties improve in color by protection under glass or canvas.

The list of varieties we offer is carefully selected and includes nothing but fine varieties. We have discarded a great many varieties which we considered inferior to those we now offer.

	Doz.	100.	1000.		Doz.	100.	1000.
Assortment in 25 named varieties	\$0.62	\$3.50	\$30.00	Gustav Doré, bright rose	.50	3.00	27.00
Assortment in 10 fine named varieties	.35	2.50	20.00	Hecla, deep crimson maroon; very beautiful.	.42	2.50	21.00
Ariadne, fiery scarlet red	.85	5.00	45.00	Isis, bright crimson	.95	5.50	48.00
Mixed, all colors, extra quality	.30	1.50	12.75	Kate Greenaway, white flushed lilac; very late and beautiful	.47	2.75	24.00
Andromeda, dark violet-red flower of strong growth	.72	4.25	37.00	La Candeur (White Queen), lovely soft white, slightly tinged blush, anthers black; a beautiful, large, globular, erect flower...	.50	2.75	22.00
Baronne de la Tonnay, vivid rose	.40	2.75	20.00	La Tristesse, lilac blue; extra	.95	6.50	58.00
C. J. Salter, bright rose, fine flower	.42	3.45	32.00	La Tulipe Noire (The Black Tulip), very large	\$1.20	\$7.50	
City of Haarlem, brilliant scarlet with a pure white centre, very large	4.50	35.00		Marconi, violet, white centre, large	1.95	12.00	
Clara Butt, soft delicate pale salmon rose, a flower of remarkable beauty	.35	2.00	17.00	Massachusetts, beautiful light rose	.60	3.00	27.00
Donders, crimson, dark violet centre	.47	2.75	24.00	Melicette, deep lilac	1.85	11.85	
Ergusti, dull violet, inside of petals darker, white base	1.05	6.25		Mme. Krelage, vivid pink, light bordered, extra	.42	2.50	20.00
Europe, bright carmine red; extra	.60	3.25	25.00	Mrs. Cleveland, delicate pink	.70	4.00	35.00
Farncombe Sanders, fiery scarlet	.72	4.25	37.00	Nauticus, purplish rose, large	.40	2.75	22.00
Faust, dark violet	1.40	8.00	70.00	Nora Ware, silvery lilac, shaded white, extremely beautiful	.70	4.00	36.00
Glory, brilliant scarlet	.50	3.00	27.20	North Dacotah, fiery red, white basal blotch	.50	3.45	24.00
Glow, brilliant glowing vermillion, centre blue, margined white	.53	3.00	25.00	Nymph, pale lilac	.45	2.75	22.00
Gudin, light blue, slightly edged with an even paler shade of same color	1.10	6.50	58.00	Ouida, fiery red	.45	2.50	22.00
Gretchen, large globular flower; outside blush, inside soft blush; very beautiful	.30	1.65	14.00				

From Covington, Tenn.—"Better results from ours second year, than from others first year."

"Two years ago I gave your firm an order and I want to say that nothing has ever been seen here like the results I got. Especially the Hyacinths and Tulips. My Liliiums did not do so well, owing, I think, to weather conditions. Last year I mislaid your catalogue and ordered from other florists with indifferent results. In fact, the bulbs from your firm did better the second year than the first year bulbs from other florists. Several parties have asked me about ordering from you and I think I can secure you several responsible customers at this place." S. S., 5-26-14.

DARWIN TULIPS

(CONTINUED)

	Doz.	100.	1000.
Painted Lady, soft milky white flowers on dark purple stems; flowers resemble the beautiful Nymphaea or Waterlily	.50	3.00	23.00
Peter Barr, bright rose...	.45	2.75	22.00
Pride of Haarlem, large flower, dazzling cerise-scarlet	.42	2.50	21.00
Psyche, delicate pink, very beautiful	.60	3.50	32.00
Rev. Ewbank, vivid heliotrope lilac, light bordered	.50	3.25	27.00
Scylla, fiery scarlet	.50	3.25	24.00
Sieraad van Flora, large flower, vivid rosy red; one of the earliest	.80	4.50	40.00
Stanley, fiery scarlet	.70	4.00	35.00
Sunrise, yellowish-bronze, peculiar color	.72	4.25	37.00
Therese Schwartze, soft heliotrope lilac	.85	4.50	40.00
The Sultan, black (may be called the black tulip)	.30	1.80	15.00
William Copland, lilac, early	.70	4.00	30.00
William Copland, lilac, early	.70	4.00	30.00
Wedding Veil, nearly pure white	.65	4.00	36.00
William Pitt, scarlet red, excellent forcer	.50	3.00	28.00
Yellow Perfection, light bronze yellow, edged golden, extremely beautiful	1.25	7.00	62.00
Zulu, violet-back, very distinct shape; a splendid and very remarkable flower	1.25	8.50	85.00

DARWIN TULIP—PRIDE OF HAARLEM

Imagine what it means to have beautiful dazzling cerise-scarlet flowers like this on tall graceful stems.



Crocus—Named Varieties

Our Crocus prices are not the lowest, but for the quality of stock we furnish they are very moderate, and we question if such quality can be had except direct from growers like W. & K.

You will have a pleasing surprise the first spring day next year if you scatter Crocuses liberally across your lawn and in colonies along the front of your flower beds now. Don't confine yourself to the yellow sorts alone—remember that a touch of blue color in early spring is most welcome; that the white, purple and striped and spotted sorts offer an excellent forecast of your garden season of pleasure.

Plant Crocus on the lawn 2 inches deep, and 3 inches apart in colonies, blending away to intervals of 6 inches, if you want an old and pleasing effect. Remember it does them no harm to be cut down when the lawn needs its first application of the mower.

	Doz.	100.	1000.
Albion, purple	\$.25	\$1.00	\$8.00
Albion, striped	.25	1.00	8.00
Baron von Brunow, dark blue	.25	1.00	8.00
Grande Vedette, blue	.28	1.25	10.50
King of the Whites, white	.23	1.00	8.50
La Majestueuse, striped	.22	1.00	8.00
Madame Mina, violet striped	.22	1.00	8.00
Mont-Blanc, white	.23	1.00	8.00
Non plus ultra, blue, bordered white	.23	1.00	8.00
Purpurea grandiflora, dark purple	.40	2.25	19.00
Queen Victoria, white	.23	1.00	8.00
Sir John Franklin, blue, large	.23	1.00	8.50
Sir Walter Scott, striped	.22	1.00	8.00
Mixed white	.15	.60	5.00
Mixed blue and purple	.15	.65	5.50
Mixed striped	.18	.80	7.00
Mixed extra giant flowering, all colors	.18	1.00	9.00

YELLOW CROCUS

Top size	.24	1.30	11.50
1st size	.22	1.15	10.00
2d size	.17	.95	8.25



PARROT TULIPS
(Sometimes called "Dragon Tulips")

These unique flowers were formerly raised in too few American gardens.

PARROT (or Dragon) TULIPS

In the whole garden year nothing is more showy, more grotesque than the fragrant Parrot (or Dragon) Tulips. The wavy, irregular outlines, the brilliantly streaked petals, the oddly grotesque fashion in which they combine contrasting colors, are responsible for the growing interest being shown by the American public.

They bloom outdoors about the middle of May; have large flowers on graceful stems.

	Doz.	100.	1000.
Mixture	\$0.22	\$1.25	\$9.75
Admiral de Constantinople, scarlet.....	.30	1.45	12.00
Cramoise Brilliant, carmine30	1.45	12.00
Gloriosa, red and yellow30	1.45	12.00
Lutea Major, yellow30	1.45	12.00
Markgraaf van Baden, red and yellow40	1.75	14.00
Monstre rubra major, scarlet, extra for forcing and for bedding30	1.45	12.00
Perfecta, yellow and red30	1.45	12.00

REMBRANDT TULIPS

Darwins which have broken into a permanent variegation, being striped or spotted.

	Doz.	100.	1000.
Collection of 3 named sorts	\$0.75	\$4.50	\$36.00
Collection of 6 named sorts80	4.75	38.00
Finest Mixture62	3.50	28.00

MAY-FLOWERING TULIPS

Amongst the following the most beautiful objects will be found for the herbaceous border as well as for other decorative purposes.

As their large, brilliant flowers are borne on long, sturdy stems, the May-flowering Tulips furnish excellent flowers for cutting during the middle of that month, when bloom is scarce. The Gesnerianas are distinctive for their various eyes or centres.

These Tulips should be planted outdoors only—they do not force well.

	Doz.	100.	1000.
Mixture, finest grade	\$0.25	\$1.45	\$13.50
American Lac (Hobbema), large, satiny lilac-salmon75	4.50	42.00
Bouton d'or (Golden Beauty), the finest and deepest golden-yellow tulip for cutting30	1.65	14.00
Elegans, dark crimson, elegantly reflexed....	.40	2.35	20.00
Elegans, Alba, beautiful white reflexed petals, margined rosy red95	5.50	47.00
Ellen Willmott, undoubtedly the finest May flowering tulip; flowers very large, beautifully shaped and of a soft creamy yellow color, with a delicious fragrance.....	.80	4.75	42.00
Fulgens, rich crimson, very tall40	2.45	19.00
Fulgens Lutea (Mrs. Moon), the finest yellow of this class	1.10	4.50	38.00
Gesneriana Alba Oculata (Rosalind), rich crimson scarlet, with white eye, very lovely	.30	1.25	10.00
Gesneriana Lutea, deep yellow, tall and handsome35	1.75	15.50
Gesneriana Lutea Pallida, large primrose yellow; extra70	4.00	35.00
Gesneriana Macrospela, crimson-scarlet, black and yellow centre, sweet scented30	1.65	14.50
Gesneriana Rosea, rosy carmine, black centre23	1.25	11.00
Gesneriana Major (Spathulata), rich crimson scarlet, blue black centre; very showy.	.35	1.90	16.50
Golden Crown, golden yellow, edged red18	1.00	9.00
Greigi, gigantic flower, scarlet-orange, foliage spotted purplish brown	1.50	9.00	
Inglescombe Pink, salmon rose40	2.25	19.00
Inglescombe Scarlet, brilliant scarlet, black base45	2.50	21.00
Inglescombe Yellow, may be called the yellow Darwin tulip, large flowers of a perfect form, glossy canary yellow, very beautiful65	3.65	32.00
Isabella (Shandon Bells, Blushing Bride), creamy yellow changing to dark magenta..	.23	1.25	11.00
La Candeur (Parisian White), pure white, afterwards suffused with rose35	2.00	18.00
La Merveille, scarlet suffused with apricot orange23	1.25	11.00
Mrs. Moon	1.10	4.50	38.00
Picote (Maiden's Blush), white, graceful recurved petals, margined rose, elegant flower	.30	1.65	14.00
Primrose Beauty, belongs to the same type as Miss Willmott, color soft primrose, changing to white40	2.25	19.00
Retroflexa, light yellow with elegantly recurved petals, fine for cutting38	2.35	22.00
Sweet Nancy, white edged lilac25	1.35	12.00
Viridiflora, green, edged yellow55	3.25	29.00
Zomerschoon, flesh color, striped with salmon red. 40c each.....	3.75		

Well pleased with results from goods purchased.

May 6, 1915.

While I am not in position to order anything at the present time, I trust I may be able to keep track of you during the summer, and would say I have been well pleased with the results obtained from goods purchased from you last Fall.

Philadelphia, Pa.

A. B., Jr.

Friends enthusiastic over variety of color and forms.

May 10, 1915.

I felt as if I must write you how beautiful are the Darwin Tulips I bought of you last Fall. I had a small studio tea to show them to my friends, and they were all enthusiastic over the variety of color and their graceful forms.

Philadelphia, Pa.

M. F. B.

NARCISSI (DAFFODILS)

The Narcissus vies closely with the Tulip and Hyacinth for spring honors. Dainty in color, graceful in habit, it furnishes long-stemmed flowers which are highly desirable for cutting.

The poeticus varieties are very sweet-scented and like all the Narcissi are especially well adapted for naturalizing in the semi-shady spots where the sun's rays are slightly broken.

It is well to be remembered that Tulips and Hyacinths need more sun and lighter soil than the Narcissus, and to arrange your planting accordingly if you want flowers that excel all in the neighborhood.

In planting do not break off the small bulbs which adhere to the sides of the Narcissus bulb—as these will send up blooms and provide for growth of a small clump from each bulb. Strangely, the American habit seems to be to separate the small attached bulb from the parent, losing its vitality largely and preventing the increasing clump, which Narcissi form.

Remember, too, that Narcissi should be used generously for naturalizing in meadows, etc., as they will increase year after year without any necessity of lifting the bulbs, provided the grass is not cut before the Narcissi tops have ripened.



TRUMPET NARCISSUS EMPEROR

NARCISSUS POETAZ

From a cross of Narcissus Poeticus and the Polyanthus Narcissi.

This new strain may be considered to be an improved race of the old Polyanthus Narcissi. They are perfectly hardy, have many-flowered stems and larger sweet-scented flowers, and fit for pot culture as well as for forcing.

	Doz.	100.
Alsace, white, cup lemon yellow, bordered orange...	\$0.75	\$5.00
Aspasia, white, cup deep yellow	\$0.60	\$3.50
Elvira, white with yellow cup55	3.25
Ideal, white with orange cup	1.05	6.00
Irene, yellow with orange cup80	5.50
Klondyke, yellow all over	2.50	14.50
Profusion, white with orange cup	1.75	10.00
Triumph, white with yellow cup	1.10	7.00

SINGLE NARCISSI

	Doz.	100.	1000.
Mixture	\$0.25	\$1.40	\$12.00

INCOMPARABILIS VARIETIES

	Doz.	100.	1000.
Incomparabilis Barri Conspicuous, sulphur....	\$0.20	\$1.10	\$10.00
" Cynosure, yellowish20	1.10	9.00
" Sir Watkin, yellow cup, sulphur perianth40	2.25	18.00
" Albus Stella, white20	1.10	9.00
Leedsi Katherine Spurrell, lemon cup, cream white perianth50	3.50	22.00
" Minnie Hume, canary yellow cup, pure white perianth50	3.50	
" Mrs. Langtry, cup and perianth, both pure white22	1.20	9.00

POETICUS VARIETIES (POET'S NARCISSUS)

	Doz.	100.	1000.
Biflorus, white, yellow cup	\$0.20	\$1.10	\$10.00
Poeticus, white, orange cup (does not force)15	.80	7.00
" King Edward VII (Almira), very early, orange cup65	3.50	32.00
Ornatus, very early15	1.00	7.25
" double crowns22	1.15	10.00
Poeticus Poetarum, very early.....	.50		

From U. S. Department of Agriculture, Bureau of Plant Industry, Washington, D. C.

"I have to-day passed voucher in your favor for The bulbs furnished by your firm to this Department last fall were entirely satisfactory, as shown by the results secured on the Department's trial grounds this spring. You will receive check from our Disbursing Office in due course."
 R. A. O.,
 Acting Assistant in Charge.

TRUMPET VARIETIES

The Bulbs listed below are virtually all double crowns, extra size.

	Doz.	100.	1000.
Ard Righ (Irish King), very early; extra....	\$0.45	\$2.75	\$24.00
Bicolor grandis, yellow trumpet, white perianth25	1.50	12.50
" Empress, white and yellow, large....	.45	2.75	24.00
" Victoria, grand, double crowns70	4.00	32.00
" Emperor, yellow, large flower45	2.75	24.00
Golden Spur, golden yellow selected double crowns, monster bulbs....	.60	3.50	30.30
" " standard first size.....	.40	2.25	19.00
Glory of Leiden, deep golden-yellow, very big and fine formed trumpet, big bulbs....	1.60	11.00	
King Alfred, a most desirable early Daffodil of an uniform rich golden-yellow; very large, refined flower and most vigorous grower			Each \$0.50
	Doz.	100.	1000.
Madame de Graaff, petals white, trumpet cream color	\$1.30	\$8.00	
Moschatus (Albicans), sulphury-white50	3.50	24.00
Trumpet Major, yellow, fine trumpet30	1.45	12.00
" Princeps, pale yellow28	1.50	13.00

DOUBLE NARCISSI

Among the double Narcissi none is so well known as the double Von Sion. This is the double yellow daffodil so popular in America around the Easter season, and for this purpose it is forced by florists in larger quantities than any other Narcissus.

The orange Phoenix shades from white to deep orange with a blending of yellow between; the Sulphur Phoenix from white to sulphur yellow. Of these two, the Orange Phoenix is generally considered the more satisfactory for forcing—but in common with all other double Narcissus, any of these varieties are easily grown outdoors.

	Doz.	100.	1000.
Mixture	\$0.25	\$1.35	\$12.00
Albo pleno odorato, white. The gardenia flowered Narcissus, sweet scented18	1.00	8.50
Capax Plenus, "Queen Ann's double Daffodil," star-shaped, lemon color		Each \$0.50	
	Doz.	100.	1000.
Incomparable, yellow, early	\$0.28	\$1.55	\$13.00
Orange Phoenix, yellow and orange25	1.60	14.00
Sulphur Phoenix, sulphury white30	2.00	14.75
Van Sion, double yellow trumpet, extra selected bulbs, double-nose bulbs.....	.65	3.50	32.00
Van Sion, double yellow trumpet, first size..	.40	2.50	20.00

DOUBLE NARCISSI

POLYANTHUS NARCISSI

(Bunch Flowered Narcissus)

Force easily and early. If grown outdoors they require well-drained soil and good protection.

	Doz.	100.
Bathurst, pale yellow	\$0.75	\$4.50
Bazelman Major, white	1.10	6.50
Grand Monarque, white, a fine variety50	3.00
Grand Primo, sulphur50	3.00
Grand Soleil d'or, golden-yellow50	3.00
Her Majesty, white with yellow cup70	4.00
Jaune Supreme, yellow70	4.00
Newton, bright yellow85	5.00
Queen of the Netherlands, white, early70	4.00
White Pearl, white70	4.00
Mixed, all colors, excellent assortment40	2.25
Mixed, white, excellent assortment40	2.25
Mixed, yellow, excellent assortment40	2.25

From Germantown, Pa.—"A fine display this spring."

"The lot of Bulbs I bought from you made a fine display this spring. I will call on you in the fall."

May 12, 1915.
G. H. L.

From Beverly, Mass.—"Superior to the blooms in the Boston Public Garden."

"The Tulips were fine. My 'Duchess de Parma,' 'Maes,' and 'Rose Gris de Lin' were equal, if not superior, to the blooms in the Boston Public Garden. My mixed bed also was very good."

May 9, 1913.
P. A. T.

Florist never had finer bulbs.

October 19, 1914.

The bulbs received and must say that I am pleased with them. If they give blooms the size of the bulbs I will have fine stock for Easter. I never had finer bulbs.
Lancaster, Pa.

J. F. J.

Trust next order will equal last for quality.

April 29, 1913.

We enclose herewith check for \$71.10. We are very well satisfied with the bulbs we purchased from you last season and we trust that the order we have given your salesman for next season will be of same good quality.
Swarthmore, Pa.

S. & L.

JONQUILS

	Doz.	100.	1000.
Double, sweet scented	\$0.30	\$2.00	\$16.50
Single, sweet scented20	.90	6.50
Single Campernelli, large yellow18	.90	7.00
Single Odorus Rugulosus (Improved Campernelli)20	1.05	8.00

DOUBLE ANEMONES

	Doz.	100.
In 6 fine-named Varieties	\$0.35	\$1.90
In 10 fine-named Varieties45	2.30
All Colors Mixed25	1.60
Scarlet, Mixed30	1.80
Blue, Mixed35	2.20

SINGLE ANEMONES

	Doz.	100.
All colors, mixed	\$0.20	\$1.00
Scarlet, mixed25	1.30
Blue, mixed25	1.35
Violet, mixed25	1.35
The Bride, pure white20	1.00

ANEMONES DE CAEN

	Doz.	100.
All colors, mixed (single)	\$0.25	\$1.50

ANEMONES ST. BRIGID

If you will try this wonderful new race of half double anemones, particularly in a cool, shaded spot around the shrubs and bushes, you will find a pleasing surprise in wonderful scarlet, purple and cerise flowers, of a type that is still rare in America.

	Doz.	100.
Splendid mixture	\$0.45	\$2.50

RANUNCULUS

The Ranunculus Grandiflora is a brilliant feature of the fine gardens on the continent, but is comparatively little known, at its best, in America. In the opinion of American experts who have studied the conditions under which they flourish abroad, it should be easy to grow them in California and the entire Southwest, where the rainy season most closely duplicates those of their native Asia Minor. In other sections, growing Ranunculus outdoors requires care and skill—is a worth while test of expert gardening ability.

As a forcing flower Ranunculus has been standard for a half-century, there is no reason why any one should have trouble in getting a profusion of blooms with Ranunculus in his greenhouse.

Persian, in 10 fine-named varieties	\$0.35	\$1.60
Persian, all colors mixed20	.95
French, in 10 fine-named varieties35	1.60
French, all colors mixed20	1.05
Turban, in 6 named varieties25	1.40
Turban, all colors mixed20	1.20

IRIS

In few flowers is there more world-wide interest than in the Iris. The German Iris, or Flag, was the first to interest any large number of American flower lovers, but the more graceful Japanese types have been introduced into most American gardens long before this.

Admittedly the ideal Iris is Iris Hispanica, or Iris Anglica, the growing of which has been confined largely to American florists due to the feeling that the plant was difficult to raise.

True, the Spanish Iris requires more winter protection than the sturdy German types, but it is worth the effort, if you will plant in September and give it a rich, moist soil and good winter protection, you will find that the orchidlike blooms secured in May will well reward you.

IRIS ANGLICA

	Doz.	100.
In named varieties, our selection	\$0.75	\$4.50
Superfine Mixture50	3.00
Bleu Mourant, blue60	3.50
Mont Blanc, pure white, extra60	3.50
Othello, dark blue85	5.00

THE IRIS HISPANICA

If planted around the end of September and given good winter protection, produces orchidlike flowers of remarkable beauty.

IRIS HISPANICA

	Doz.	100.
In named varieties, our selection		
Alex von Humboldt, indigo blue	\$0.25	\$1.40
Belle Chinoise, deep yellow		
British Queen, pure white	\$0.25	\$1.40
Chrysolora, pale yellow		
Darling, dark blue		
Leander, deep yellow		
Louise, pearl color		
Marie, blue		
Reconnaissance, dark violet-bronze35	1.80
Mixed15	.75

MISCELLANEOUS BULBS

(Order by July 1st)

We have cut down this list to only the most popular kinds of miscellaneous bulbs.

Being specialists in bulbs we do not like to make the impression on you that ours is a catalogue from which you can order just anything you find in any other ordinary price-list. What we offer we grow and supply to you direct from our own fields.

	Doz.	100.
Allium, azureum, heaven-blue	\$0.85	\$5.00
“ Molly Luteum, yellow20	1.20
“ Neapolitanum20	1.20
“ Ostrowskianum, fine rose20	1.20
Chionodoxa gigantea, Glory of the Snow, blue.....	.35	2.00
“ Luciliae, Glory of the Snow, blue with white star30	1.75
Chionodoxa Sardensis, Glory of the Snow; fine blue	.25	1.50
Colchicum Autumnale, the autumn flowering crocus. Blooms in August or September, sends forth fine foliage following June, blooms again following September. A beautiful, interesting plant, flowers a pretty pale lilac65	4.15
Eranthis Hyemalis, yellow, very early15	.80
Ixia, mixed15	.60
Muscari Botryoides, blue, grape Hyacinths15	.65
“ white, grape Hyacinths20	.90
“ Plumosum, violet feather Hyacinths20	1.20
Scilla Bifolia, blue20	1.20
“ white	2.50	15.00
“ campanulata alba, white18	1.00
“ “ blue18	.90
“ sibirica, blue, blooms very early outdoors....	.20	1.00
Snowdrops (Galanthus Nivalis). These little white heralds of the spring are simply lovely. The snow has hardly left your lawn and lo! they push up their tiny heads to ring in the time which inspires the whole flower-world with new life. And they don't require any special attention either. They just invite you to look at them and enjoy spring.		
Snowdrops, Single	Doz.	100.
“ Double	\$0.20	\$1.20
“ Elwesii (large single flowers)*30	1.70
*No dependable supply because of war.		

ALL THE BULBS ON THE FOREGOING PAGES

should be ordered before August 1st. Orders by July 1st are in every way more advantageous.

Dahlias, Gladiolus, Spireas and Begonias

we prefer to ship in Spring, as they do not arrive till late Fall and are likely to reach customer after the ground is frozen. If you wish to include these in your fall order—advise and we will send a complete list of the finest Holland grown stock, making deliveries in Spring unless you specifically request otherwise.

You cannot secure equally fine stock elsewhere.

Bulbs different from any purchased elsewhere.

All the Tulips are beautiful and entirely different from the 200 Early Flowering ones I purchased elsewhere at the same time. Overbrook, Pa. May 13, 1915
J. L. A.

Dahlias doing nicely.

Enclosed please find P. O. order for twenty-four and 65/100 dollars to cover bill for Dahlias. They are doing very nicely and are satisfactory. March 4, 1915.
S. H., Jr.
Paterson, N. J.

Geisha Dahlia arrived in fine shape and generous quantity.

The Geisha Dahlia ordered from you arrived on Saturday last in fine shape and generous quantity. If it is as true to name as it is satisfactory otherwise, I shall have received the greatest value for the money since I have been planting seeds, etc. I shall take pleasure in bringing this before our society. Would be glad to receive your catalog if you distribute any. Please find amount due you enclosed. March 29, 1915.
Dr. H. A. I.
Philadelphia, Pa.

"WAKRU QUALITY" SEEDS, FREE

To celebrate the 50th anniversary of Van Waveren & Kruijff, growers of Wakru Quality Bulbs, and to introduce the new Wakru Seed Department, the Wakru Girl offers FREE any of the following seeds to a value of ten per cent. on any order exceeding one dollar for bulbs found on the preceding pages. The only condition is that the order is to be given and paid for before July 1st, 1916, enabling us to send your order early to Holland and secure the very best pick of this season's bulbs.

The seeds offered are all seasonable for planting now and during the next couple months. Any seeds listed below can be bought at the price per packet listed and such cash purchases may be added to your bulb purchases to determine the total on which your ten per cent. of FREE SEEDS may apply. When sending your order please note on back of blank your preference as to varieties of FREE SEEDS, giving a second choice where possible, as the quantity of many of these extra quality seeds which can be furnished at this season is necessarily limited.

ANNUALS FOR FALL BLOOM IF PLANTED BEFORE JULY 15th

In late summer and fall, when bloom in the garden is scarce, these annuals will brighten the garden and furnish excellent flowers for cutting, if planted by July 15th or before.

	Packet		Packet
Asters, <i>Crego</i> Mixed, large flowers with beautifully curled petals. All colors.....	10c	Cineraria, a fine house plant, easily grown from seed planted in July	
<i>Semple's</i> Giant Flowering, mixed.....	5c	<i>Grandiflora</i> Prize Strain, finest mixed.....	50c
Candytuft, mixed.....	5c	<i>Stellata</i> <i>Hybrida</i> , tall, elegant flowers.....	30c
Giant white, hyacinth head, fine forcer.....	10c	<i>Cosmos</i> Giant flowering, mixed.....	10c
<i>Calliopsis</i> (<i>Coreopsis</i>) showy, fine for cut flowers. Choice mixed.....	5c	<i>Gypsophila</i> (<i>Baby's</i> Breath) <i>Elegans</i>	
<i>Calendula</i> (<i>Pot</i> Marigold) mixed.....	5c	<i>Alba</i> <i>Grandiflora</i> , pure white flowers.....	10c
Prince of Orange, dark orange, striped.....	10c	<i>Mignonette</i> , sweet scented, can readily be grown in open ground or in pots.....	5c
<i>Centurea</i> <i>Cyanus</i> (<i>Cornflower</i>), mixed.....	5c	<i>Morning</i> <i>Glory</i> , <i>Imperial</i> Japanese, mixed. The finest of all	
Double Blue, the largest.....	10c	<i>Morning</i> <i>Glories</i> , wonderful color.....	10c
<i>Imperialis</i> (<i>Imperial</i> Sweet Sultan).....	10c	<i>Phlox</i> , large flowering <i>Drummondii</i> . A grand mixture of all colors.....	10c
<i>Clarkia</i> , beautiful sprays for table decoration.....	10c		

A Few Vines Which Should Be Better Known.

- Humulus* (*Japanese* Hop Vine) a remarkably rapid grower for covering porches, trellises free from insect attacks. Grows 20 to 30 feet in a season, foliage is very thick and ornamental, provides pleasing shade
- Japonicus*, dense green, foliage..... 5c
- Variegatus*, leaves mottled silvery white..... 10c
- Japanese* *Kudzu* Vine, will grow six or eight feet from seed first season, and spread 40 or 50 feet next season..... 15c
- Perennial, beautifully, glossy, green foliage

Sow These Biennials Now.

- Campanula*, the delightful *Canterbury* Bells, may be sown up till September for blooming next year. Easily protected with leaves and straw over winter. Finest mixed..... 10c
- Pansies*, sown thinly in beds in July or August will yield profusion of blooms next spring. Only slight winter protection is required.
- Fine Mixed..... 10c
- Giant *Trimardeau*, a packet containing practically 400 seeds of finest colors..... 20c

HARDY PERENNIALS EASILY GROWN FROM SEED

Here is real interest for the garden lover—and real profit. He can grow from seed (planted either indoors now and transplanted outside in September, or planted outdoors now), many of the finest perennials—a single plant of which would cost him more than the generous packets of seed listed below:

	Packet		Packet
<i>Aquilegia</i> (<i>Columbine</i>) single mixed.....	10c	<i>Pyrethrum</i> <i>Hybridum</i> , the beautiful flowering pyrethrum, fine for cutting. Mixed single.....	15c
Double mixed.....	10c	Mixed double.....	30c
<i>Delphinium</i> (<i>Perennial</i> Larkspur) choicest mixed.....	10c	<i>Myosotis</i> (<i>Forget-me-not</i>), choice mixed.....	10c
(Sift coal ashes over these in fall to keep out grubs)		(Sowing in August in cold frames assures much earlier bloom)	
<i>Marguerite</i> <i>Carnation</i> , an annual which blooms earlier and keeps blooming longer if planted in fall and protected slightly over winter		<i>Digitalis</i> (<i>Foxglove</i>) grows 4 to 5 ft. high.	
Choicest mixture.....	15c	<i>Gloxiniodes</i> (mixed) fine spotted flowers.....	10c
<i>Iceland</i> <i>Poppy</i> , mixed, finest colors.....	10c	<i>Monstrosa</i> (mammoth) mixed flower.....	15c
		<i>Sweet</i> <i>William</i> , fine for cutting, rich color, single mixed large packet.....	10c
		Double mixed.....	10c

All large, fine bulbs.

I wish to thank you for the bulbs on my order; they were all fine large bulbs and only one rotten one in the collection. I received your catalog too late last season, as I had already sent my order to the _____ Company, but this season if you could send me your catalog early and could send two extra ones, as I have two friends that wish bulbs, I will give the books and recommend the bulbs, which will be better than to have you send them direct

Healdsburg, Cal.

Jan. 12, 1915.

Mrs. C. H. P.

If you have flower beds and wish to make a border around them, use one of the following collections (L): Planted in two rows, 6 inches apart; 90 bulbs will be sufficient to edge the front of a 25-foot bed. These varieties will be of about equal height and will flower at about the same time.

COLLECTION "L"—No. 1.

180 Early Single Tulips for \$2.00.

- 90 Early Single Tulips, scarlet (Artus).
- 90 Early Single (La Reine) Tulips, white, pink tinge.

COLLECTION "L"—No. 2.

135 Double Tulips for \$2.00.

- 90 Early Double Tulips, beautiful pink (Murillo).
- 45 Early Double Tulips, red (Rubra Maxima).

Use sixty-five of the pink for the first row and alternate the remainder with the fifty bright red.

COLLECTION "M."

158 Bulbs for \$2.50.

- 24 Hyacinths, red, rose, white and blue separate.
- 24 Single Tulips, red, rose, white and yellow.
- 50 Crocus, white, yellow, blue and striped separate.
- 24 Single Narcissus, white and yellow.
- 24 Spanish Iris, yellow, white, light and dark blue.
- 12 Snowdrops (Galanthus Nivalis).

COLLECTION "N."

Twelve Early Single Tulips FREE.

If you combine in one order any combination of the \$1.00 selections or the \$1.00 and \$2.00 selections to make a \$3.00 total, we will send free one dozen Early Single Tulips—a striking red with yellow border—Duc de Berlin.

COLLECTION "O"—\$3 FOR 188 BULBS.

To Collection "M" at \$2.50 we add thirty May-flowering of rare beauty in six choice varieties.

COLLECTION "P."

96 Bulbs for \$4.00.

Same as Collection "Q," except that only six of the first item (named Hyacinths) and six of the fifth (Paperwhite Narcissus) are included.

COLLECTION "R"—\$5.00.

This Collection ("R" No. 1) Consists of 329 Bulbs for \$5.00.

Six very large Hyacinths for pots in three colors—red, white and blue (Gertrude, L'Innocence and Grand Maitre).

- 25 Early Single Tulips, red with yellow edge, very striking (Duc de Berlin).
- 25 Early Single Tulips, yellow, fragrant (Gold Finch).
- 25 Early Single Tulips, beautiful pink (Cottage Maid).
- 25 Parrot Tulips, flowering in May, very distinct. (See cut on cover.)
- 25 May-flowering Tulips, white, pink edged (Pico-tee).
- 25 May-flowering Darwin Tulips—five varieties.
- 50 Crocus in finest mixture. 12 Snowdrops.
- 25 Poeticus Narcissus (Ornatus).
- 50 Single Daffodils (Princeps).
- 30 Iris Hispanica in named varieties.
- 6 Paperwhite Narcissus (for bowls filled with water and pebbles).

Wakru Seed & Bulb Co., P. O. Box 176, Philadelphia ORDER SHEET, 1916

<p>Date _____</p> <p>Name, (<small>Please prefix</small>) _____ <small>(Mr., Mrs. or Miss)</small></p> <p>Street, P. O. Box or Rural Delivery _____</p> <p>Express Office, (<small>If different</small>) _____ <small>from P. O.</small></p> <p>County, _____ State _____</p> <p>Amount Enclosed <small>State whether P. O. Order</small> _____ <small>Express Money Order, Draft, \$</small> _____ <small>Postage Stamps or Cash.</small></p> <p style="text-align: center;"><small>Note on other side of sheet your preference as to free seeds.</small></p>	<p>PLEASE DO NOT WRITE HERE, but use separate paper for communications. We will with much pleasure send our catalogue to any of your friends whose address you would kindly mention to us on opposite side.</p>
--	--

--	--	--	--	--	--	--	--

If pleased with our tulbs kindly indicate names of friends on the other side.

Make payment direct WAKRU SEED AND BULB CO., P. O. Box 176, Philadelphia

SPECIAL WAKRU GROUP PLANTINGS

COLLECTION "R"—No. 2.

349 Bulbs for \$5.00.

Or, if you prefer the Hyacinths for your garden, we will send you, in addition to the varieties listed above, instead of the six large Hyacinths, twenty bulbs of smaller dimensions. (Please mention which you desire.)

COLLECTION "Q."

114 Bulbs for \$5.00.

- 12 Large Hyacinths in twelve named sorts for pots or glasses.
- 12 Hyacinths, early Roman, pure white.
- 24 Single Tulips in eight named sorts.
- 6 Double Tulips in two named sorts.
- 12 Narcissus, Paperwhite, early flowering.
- 24 Narcissus, single, in six named sorts.
- 24 Crocus in four named sorts.

COLLECTION "T."

600 Bulbs for \$10.00.

A remarkable collection. Will plant any average garden complete.

- 50 Hyacinths, red, rose, white and blue separate.
- 100 Single Tulips, red, rose, white and yellow separate.
- 150 Darwin Tulips, finest mixture.
- 100 Crocus, white, yellow, blue and striped separate.
- 75 Single Narcissus, white and yellow.
- 25 Double Narcissus, white and yellow.
- 100 Spanish Iris, yellow, white, light and dark blue separate.

COLLECTION "S."

400 Bulbs for \$7.50.

- 50 Miniature Hyacinths in three colors.
- 200 Early Single and Double Tulips in twenty different and most beautiful colors; all named.
- 25 Single Daffodils (Golden Spur).
- 25 Double Daffodils (Van Sion).
- 100 Mixed Crocus.

COLLECTION "U."

\$12.50 for 500 Fine Early Single May-flowering and Darwin Tulips.

Contains a high-grade choice of various Tulips, including some lesser known varieties.

- 50 Early Single Tulips, white flamed pink and white (Arms of Leiden).
- 50 Early Single Tulips, scarlet (Belle Alliance).
- 50 Early Single Tulips, scarlet, edged yellow; very striking (Duc de Berlin).
- 25 Early Single Tulips, very beautiful pink and white (Flamingo).
- 50 Early Single Tulips, yellow (Mon Tresor).
- 50 Early Single Tulips, pure white (White Hawk).
- 50 May-flowering Tulips, bright scarlet (Gesneriana Spathulata).
- 50 May-flowering Tulips, white pink, edged (Picotee).
- 125 Darwin Tulips in four exquisite varieties Clara Butt (25), Farncombe Sanders (50), La Candeur (25), Negro (25).

Continuation of order blank and preference on FREE SEEDS.

Names and addresses of friends, who are interested in bulbs.

Note below what seeds you prefer—FREE—total to equal 10% of any order prepaid before July 1st, 1916