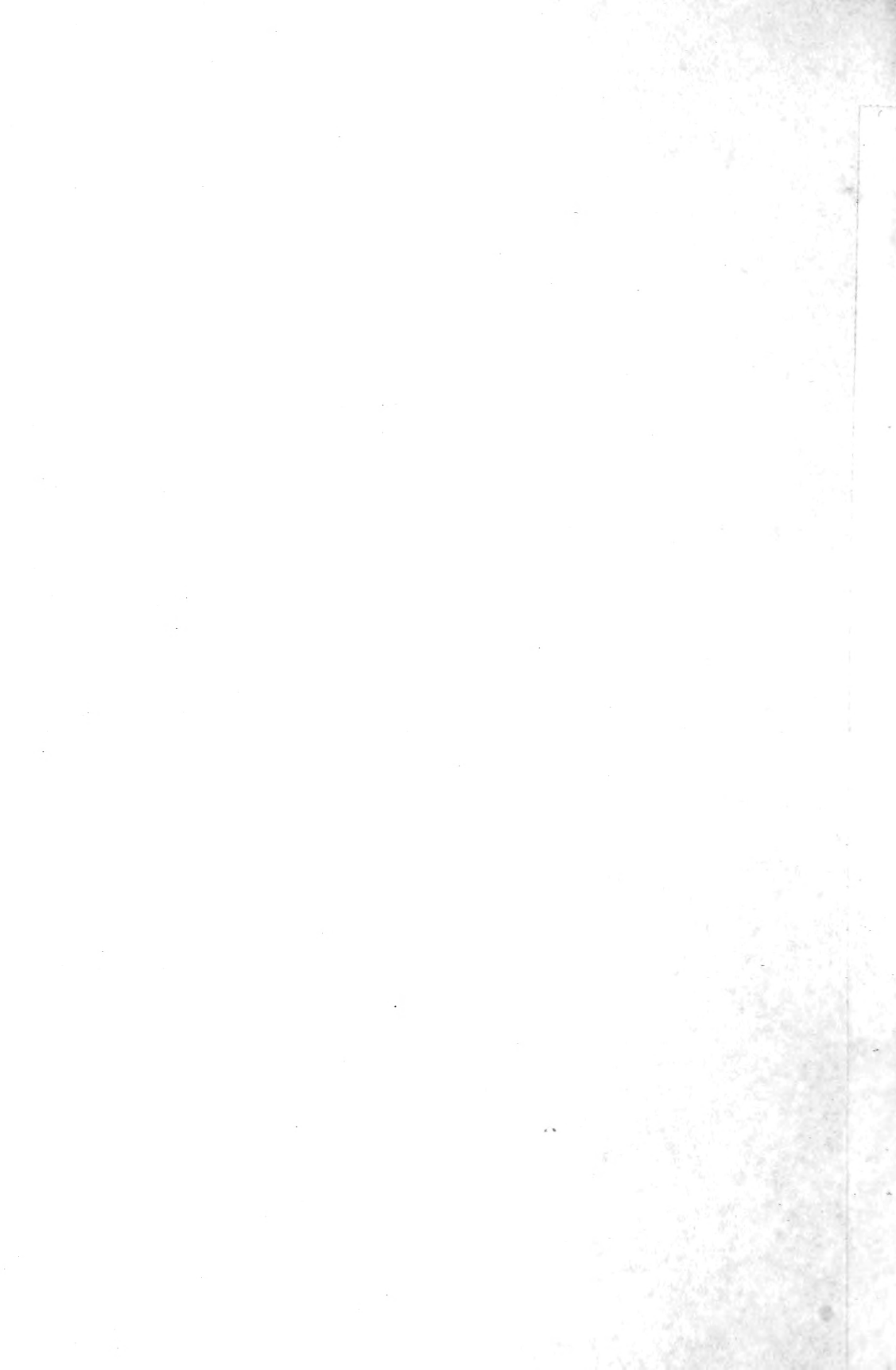
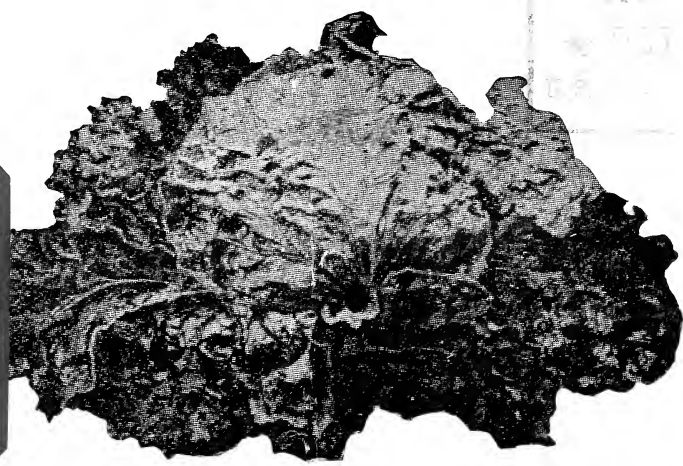
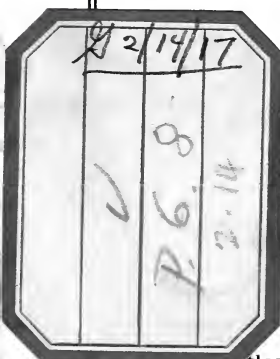


Historic, Archive Document

Do not assume content reflects current scientific knowledge, policies, or practices.



1917



Portland Cream Lettuce—(See page 8 for description and prices.)

ANNUAL CATALOGUE

Arnold's Seeds

Especially Suited for Southwest Texas **Gulf Coast Country**

ARNOLD SEED & PRODUCE CO.

Portland, ^{On The} Bay Texas

PAY A LITTLE MORE AND BUY THE BEST

"A few cents saved in your Seed Bill may cause you a loss on your year's work"



Crystal White Wax Onions—(See description and prices, page 9).



Arnold's Kleckley Sweet Melon—(See Prices Page 11)

TO OUR FRIENDS AND PATRONS:

Again we have the pleasure of greeting our many customers through the medium of our Annual Catalogue. We thank you for your valued orders given us for execution during the past year and we are sure that the crop grown from our seeds have met your expectations judging by the many letters of praise received from your hands.

Our seed supply is contracted for direct from the most particular seed growers in different parts of the world.

The price we have to pay is of second consideration with us: the main inducement is "highest quality."

To those who have never used our SEEDS we ask for a trial order.

Awaiting the pleasure of serving you, we are,

Yours very truly,

ARNOLD SEED & PRODUCE CO.

SELECTION OF SEEDS

While this list of seeds does not embrace all the numerous varieties that are advertised in the various catalogues of the country—many of which are obsolete, and the same seed often passing under half a dozen names—it does embrace all the leading standard varieties that have been tested and known to be adapted to our soil and climate.

Truck farming is a great industry in Southern Texas. Each new season adds thousands of acres of her virgin soil to the production of vegetables for the Northern and Western markets, and as the time rolls on, experience will point the way to a success of greater magnitude than has hitherto been attained in this country.

NON-WARRANTY CLAUSE

These seeds are all grown especially for us, and are fresh, genuine and reliable. We handle no commission seeds. Our seeds are kept in cloth bags. Beware of seeds in paper bags. In this climate seeds will not keep fresh wrapped in paper.

Seeds of the best quality often fail to germinate by reason of improper planting, weather conditions, etc.; in fact, most failures are from disregard of necessary conditions, and since these conditions are so varied and so far beyond our control, it is impracticable for us to in any way guarantee crop results, and while we exercise every care in reason, we give no warranty, express or implied, as to description, quality, productiveness, or any other matter of any seeds, and will not be in any way responsible for the crop. If the purchaser does not accept the goods on these terms, they are at once to be returned.

IMPORTANT—READ THIS

Market Gardeners, or other large planters, requiring larger quantities of seeds than are here offered, are invited to write us for Special Prices, and must be sure to name varieties and quantities they will want.

CASH WITH ORDER

Please Bear in Mind that the prices on Garden Seed (except on Peas and Beans) given in this book include cost of transportation when cash accompanies order. If sent C. O. D. purchaser must pay transportation.

Seeds by Express or Freight. We deliver seeds to any express or railroad company, the purchaser to pay transportation charges upon receipt of goods, except as above noted.

Name, Address, Etc. When ordering please give your name and full address. Many orders reach us on which the name or postoffice address is lacking. It is, of course, impossible to fill these orders until they are identified.

How to Send Money. Money can be sent at our risk, either by postoffice order, bank draft, express order or registered letter. If your order amounts to \$1 or more, it is best to send by one of the above methods. Postage stamps received the same as cash. Always be sure to sign your name, postoffice, county and state. Cash should always accompany the order.

ORDER NOW. Don't delay your seed order, as it is better to have seeds on hand weeks ahead ready to start planting at the proper time rather than wait one day when you need them. Or let us book your order now to be shipped later.

PRICES QUOTED IN THIS CATALOGUE ARE SUBJECT TO CHANGE WITHOUT NOTICE.

BEANS

Culture—For the earliest crop they should be planted after all danger of frost is past. For a succession they should be planted about every two weeks in rows 2 ½ feet apart; drop a bean every one or two inches; hoe frequently, always, however, when the vines are dry—drawing the soil up towards the plants. Bush Beans planted in this latitude during the months of June and July will not produce very much. August and September are good months in which to plant again, as they will produce abundantly until killed by the frost. Plant about 1 to 1 ½ bushel seed per acre.

DWARF OR BUSH

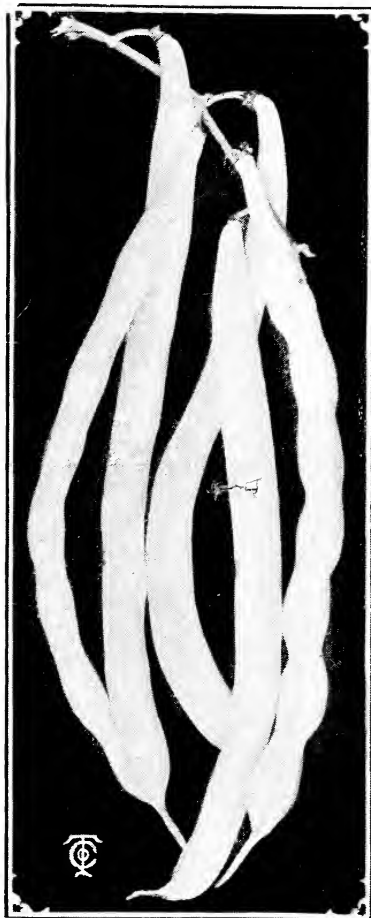
ARNOLD RECOMMENDS GREEN PODDED SORTS

Burpee's Stringless Green Pod—The Stringless Green Pod is recognized as being one of the best beans offered for market garden or general use. In point of earliness, it ranks among the first and is excelled by none in bearing ability and in good quality. The pod is very brittle, long and round and is entirely without strings. It is about five inches in length, green in color, very tender, and of the highest and best flavor, remaining for a long while in eatable condition, and bearing continuously for weeks. Color of seed yellowish brown. Lb., 25c; Bu., \$9.50.

Hopkin's Round Pod Red Valentine—For snaps there is nothing superior to this variety among the dwarf green podded sorts both for the home and market garden and many prefer it to the wax varieties. The plants are of medium size, erect, with dark green leaves. The pods are of medium length, about four and one-half inches, medium green color, curved, cylindrical, with crease in back, very fleshy,

crisp and tender. Seed long, of medium size and unsymmetrical in shape, purplish pink splashed with pale buff. Our strain combines in high degree all the good qualities of the sort. Lb., 20c, Bu. \$7.50.

Black Valentine—A very hardy and productive green podded sort with strong, vigorous vines. The pods are nearly round or slightly flattened but very handsome, are much longer, straighter and less fleshy than Red Valentine, the plant a little more spreading, and in season a little later. It is very extensively used for shipping. The pods are of medium dark green color and about six inches long. Seed small to medium sized, black, oblong, slightly flattened. Lb., 20c; Bu., \$8.00.



Prolific German Wax Beans

DWARF OR BUSH—Wax Podded Sorts

Prolific German Wax, Black Seeded—Exceptionally productive, very hardy, reliable and of the best quality. The plants are medium sized, erect in growth, with small foliage, very vigorous, early intermediate in season with longer bearing period than most sorts. The pods are of medium length, four and one-fourth to four and one-half inches, borne well up from the ground, curved, cylindrical and fleshy. They are of a clear, light golden yellow color and remain a long time in condition for use as snaps. Seed small, oblong, jet black. Lb., 25c; Bu., \$10.00.



Burpee's Stringless Green Pod

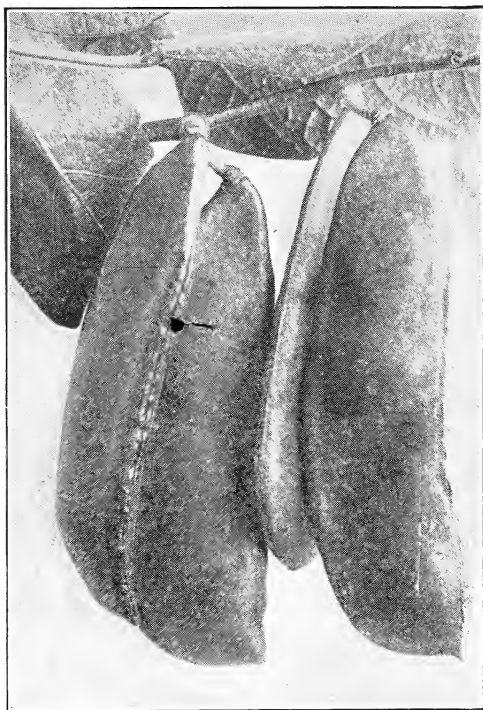
Hodson Wax—The plants of this late maturing variety are exceedingly vigorous, hardy and productive. It is rust-resistant and is becoming popular with shippers. This variety is well adapted for market gardening purposes on account of its productiveness and freedom from bean diseases. The pods are handsome, clear creamy white, very long, about six to seven inches, straight or slightly curved, flat but fleshy and of good quality. They are crisp and tender if picked when quite young. Seed long, cylindrical, uniform in shape; color dull purplish red splashed with pale buff. Plant about $\frac{1}{2}$ bu. seed to acre. **Lb., 25c; Bu., \$10.00.**

We recommend planting 1 bu to $1\frac{1}{2}$ bu Bean seed to the acre, except Hodson Wax variety.

Beans are one of the best paying crops for early spring and fall planting.

LIMA BEANS

Culture—Drill in two foot rows, plant 2 inches deep and $\frac{1}{2}$ foot apart. Requires about 40 lbs. to the acre.

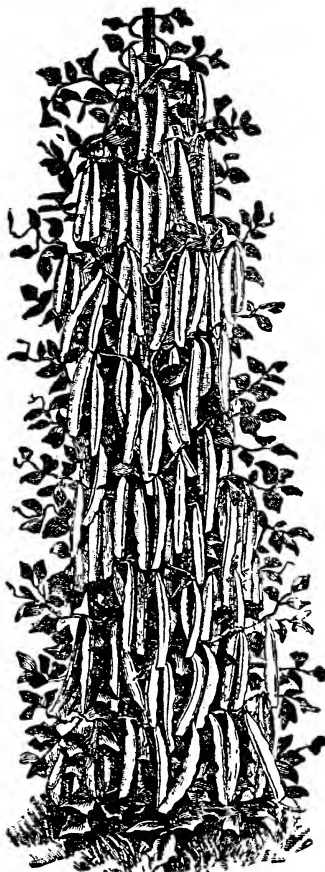


Fordhook Bush Lima Beans

Fordhook Bush Lima Beans—The old-fashioned name of "butter-bean" given to lima beans can be best appreciated when eating this delicious variety fresh from your own garden. There are from three to five beans in each pod, which grows in clusters of from two to five on long spikes, which make the picking easy where the beans are eaten green. The bush is a vigorous grower, reaching a height of two feet, erect and strong. The Fordhook is a splendid variety. **Price, one pound, 25c; bushel, \$12.00.**

Henderson's Bush Lima—A dwarf variety of the Sieva or Southern Lima; produces enormous crops of small beans. **One pound, 20c; Bu., \$10.00.**

GREEN POD POLE BEANS



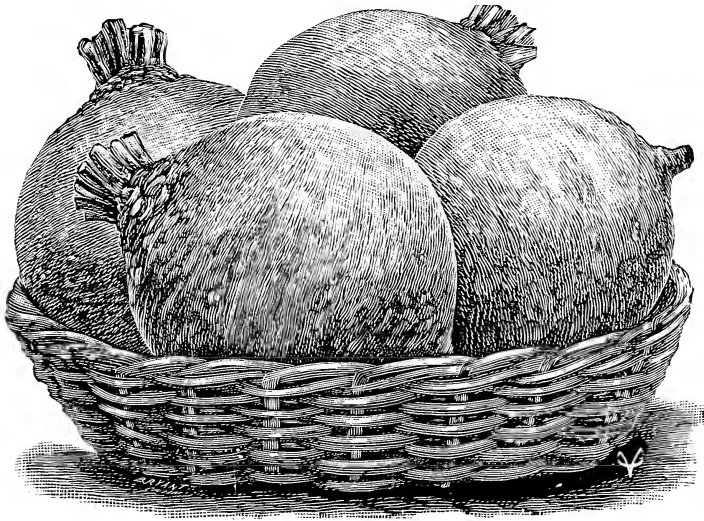
Kentucky Wonder

Kentucky Wonder—We believe this variety is the most practically useful of the green podded pole beans suitable for use as snaps. It is an early, very prolific sort, with showy pods which are of most excellent quality. The vines are vigorous, climbing well and very productive, bearing pods in large clusters. The pods are medium light green, very long, often reaching nine or ten inches, curved and twisted, nearly round and very crisp when young, becoming very irregular and spongy as the beans ripen. Seed long, oval, slightly flattened, dun colored. One of the very best early pole snap beans for the home garden or market. The quality of our stock is unsurpassed. **Lb., 25c, Bu., \$9.00.**

Kentucky Wonder—Wax Podded—Otherwise same as above. **Lb., 25c; Bu., \$10.**

WE SELL MORE BEAN SEED THAN ANY SEED HOUSE ON THIS COAST.—THERE IS A REASON FOR THIS: NO ONE CAN OFFER YOU BETTER VALUE.

OUR BEAN SEED ARE ALL NORTHERN GROWN



Extra Early Eclipse Beet

BEETS

FRENCH GROWN SEEDS

American Grown Beet Seed does not do well in the South. Don't be deceived and buy elsewhere because the price is lower. The same critical dealers and growers buy in large quantities from us year after year.

Culture—Sow in drills 18 inches apart for hand work or 28 inches for horse cultivating, and about one inch deep. Time for planting September to January for shipping. Sow about 7 pounds of seeds to the acre.

Extra Early Eclipse—This is the best extra early variety grown for this market. Perfectly smooth and round; skin and flesh of a bright red color. It does not grow to a large size, and is therefore preferred by the large truckers in this section for shipping purposes. Our strain has a great reputation among gardeners, and hundreds of them plant only our superior stock. **Price, Oz., 10c; lb., 70c.**

Detroit Dark Red—Uniform deep rich color the most desirable for canning. The tops are small and upright in growth. The leaves are dark green, shaded with red. The roots are medium sized, globular or nearly round, very smooth and of dark blood red color. The flesh is deep vermilion-red, zoned with a lighter shade of the same color. The variety is very desirable for bunching. Most uniform in shape and size and the most attractive in color. It is unsurpassed in quality. **Oz., 10c; Lb., 80c.**

Crosby Egyptian—Very early of dark blood color. Rather flat shape. Extra select stock seed—none better. **Oz., 10c; Lb., 90c.**

CARROTS

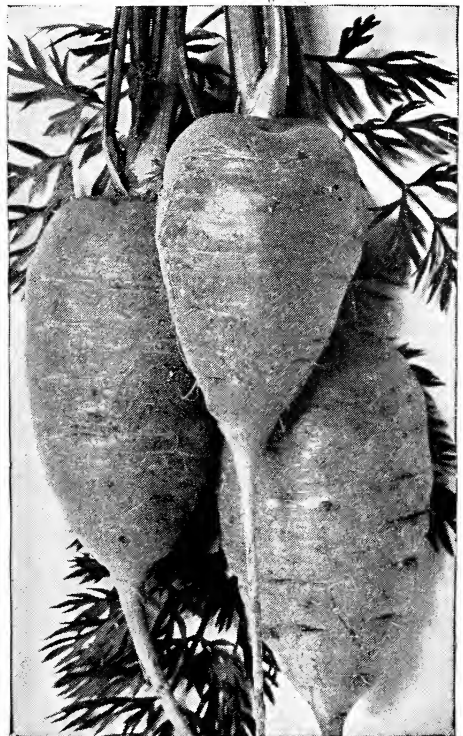
FRENCH GROWN

Culture—Similar to beets except plant about ¼-inch deep. This is one of the hardest seeds to germinate and slowest crop to grow. Plant about one pound of seed to the acre.

Improved Short White—One of the very best field carrots because of its enormous productiveness and the ease with which it can be harvested. The roots are half long, seven to nine inches in length,

smooth, very heavy at the shoulder but tapering regularly to the point. The color is creamy white with light green crown. The flesh is white, solid, crisp and of excellent quality for stock feeding. **Oz., 10c; Lb., 80c.**

Oxheart or Guerande—One of the most popular and best croppers among the short carrots. The shape is particularly desirable for heavy soils. The true type is about 4½ inches long and 3½ inches thick at the shoulders. It tapers slightly to the bottom, and is very stump-rooted. **Oz., 10c; Lb., 90c.**



Oxheart or Guerande Carrot

CABBAGE

LONG ISLAND GROWN SEED

We sell large quantities of cabbage seed.

Cabbage is a staple vegetable crop for this coast and usually pays well.

Culture—Plant in rows 3 to 3 ½ feet apart and chop out plants to 2 feet apart in row. 1 lb. seed will plant an acre.

Charlestown Wakefield—By far the best of the early sort and one of the most popular with shippers as it carries well and is attractive in appearance. **Oz., 15c; Lb., \$1.50.**

All Seasons—A very desirable large cabbage of intermediate season, adapted for autumn as well as late summer use, and considered one of the most desirable for kraut. The plants are very vigorous and sure heading, with few outer leaves which are large and fairly smooth or slightly waved. The heads are nearly round or somewhat flattened, very solid and of excellent quality. It is remarkable for its ability to stand the hot sun and dry weather, remaining an exceptionally long time in condition for use. **Oz., 15c; Lb., \$1.50.**



Early Winnigstadt

Early Winnigstadt—One of the best of the second early or medium early sorts, very hardy, with a very hard sharply pointed head and is a very sure cropper. Owing to its compact and upright habit of growth and peculiar texture of its rather short and thick, dark green leaves, the variety resists cold, wet and insect pests exceptionally well. The heads are of medium size, very closely and convolutely wrapped, sharply conical, of good quality and keep very well. The leaves are dark bluish green with much bloom. It is sometimes planted late and then makes a desirable winter cabbage. **Oz., 15c; Lb., \$1.50.**

Hollander or Danish Ball Head—Very hardy, sure heading, very solid, of good quality and one of the very best keepers. The plants are vigorous and compact, with stem of medium length. They are exceedingly hardy in resisting cold and stand dry weather well. The leaves are distinctly upright in growth, few but

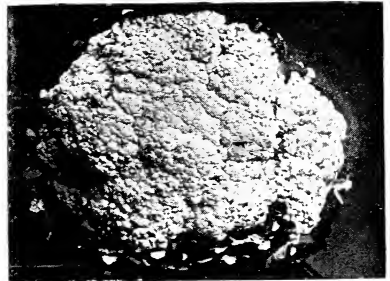
rather large, thick, smooth, bluish green covered with whitish bloom. The heads are medium sized, round, exceptionally solid and stand shipment better than any other late sort. Our strain of Hollander is shorter stemmed and produces heads generally larger than the stocks obtainable elsewhere. **Oz., 20c; Lb., \$2.00.**

Stein's Early Flat Dutch—A very desirable second early sort. **Oz., 15c; Lb., \$1.50.**

Chinese Cabbage—A delicious new vegetable introduced recently on this coast. It is more easily grown than the ordinary cabbage and when boiled with meat, it is much better than either cabbage or turnips. As a salad or cold slaw it is excellent. Every home garden should have a plot of Chinese Cabbage. Grow it exactly as you do lettuce. **Oz., 50c; Lb., \$5.00.**

CAULIFLOWER

Culture—Sow early varieties June and July, late varieties November in deep, loose soil, broadcasted, and transplant to eighteen inches apart in rows two and a half to three feet apart, and give careful culture and watering at all times, as checked growth brings poor results. One ounce of seed will produce 2,000 plants.



Arnolds Early Snowball

Arnold's Early Snowball—This is the standard variety and the earliest maturing sort. More popular than any other kind. **Oz., \$2.00; Lb., \$20.00.**

California Pearl—**Oz., \$2.00; Lb., \$20.00.**

Do not let low prices tempt you to buy cheap Seeds.

EGGPLANT

Culture—Seed should be sown in hotbed in the early part of December or sooner. When the plants are two inches high, they should be transplanted into another frame, so that the plants may become strong and healthy. When warm enough, generally during March, transplant to the open ground in rich soil, two to three feet apart.

New York Improved Large Purple—This variety is a general favorite for both market and home use. Fruits large, good shape, slightly rounder than the New Orleans Market, and of a dark purple color. Very prolific and spineless. **Price, Oz., 35c; Lb., \$3.50**

Black Beauty—A little earlier than above variety, not so large. **Oz., 40c; Lb., \$4.00.**

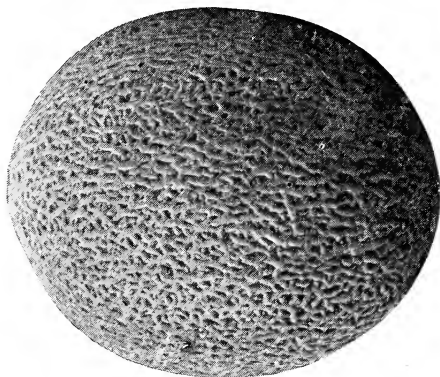
CANTALOUPE

We get our cantaloupe seed from one of the largest and best seed growers in Colorado. We pay well for this privilege, but we know there is no better seed to be had at any price. The soil of the "Portland lands" are especially adopted to cantaloupe culture and our farmers demand the best seed.

Two pounds of seeds will plant one acre.

Culture—Melons thrive best in a light rich soil. Rich earth for the young plants is far better than manure, but if the latter must be used, see that it is well rotted and thoroughly mixed with the soil. Plant the seed in hills six feet apart each way, dropping ten to twelve seeds in a hill. When up and all danger of insects has passed, pull out all but two plants. Cultivate until the vines cover the ground, and pinch the ends of the growing shoots to induce early fruiting.

PORTLAND IS RENOWNED FOR ITS DELICIOUS CANTALOUPE



ARNOLD'S ROCKY FORD
(Solid Net)

Arnold's New Pink Meat Rock Ford—Melting in flavor—more rust and insect resisting than some other varieties. **Oz., 20c; Lb., \$2.00.**

CUCUMBERS

Cucumber is a specialty with us and the seed we offer is from the best seed grown in the United States.

We sell large quantities of cucumber seed to a particular trade who wish the best. 1 1/2 lbs. of seed will plant an acre.

Culture—Cucumbers succeed best in a warm, rich, loamy soil. Plant in hills four to six feet apart each way. The hills should be made rich with a shovelful of well decomposed manure. Plant 8 to 10 seeds in each hill, covering them about half an inch deep. When the plants are well up, thin out to two of the strongest plants to each hill. Plant cucumbers in the open ground as early as February, protecting them from cold by small boxes with a pane of glass on top. These boxes are removed during the day and put back in the evening. Cucumbers are often started in hotbeds, styled here as "Dirt Bands," and planted out of doors just as soon as they are hardy enough to resist the cold.

OUR SEEDS ARE SUITABLE
FOR THE COAST COUNTRY

Early Fortune—One of the most popular varieties for the gardener who plants for the early market. A rich attractive green color, and it holds this color for a long period of growth. **Oz., 10c; Lb., 60c.**

Superior Dark Green—Considered by some as superior to all others. A very dark green colored sort and a good shipper. **Oz., 10c; Lb., 70c.**



Early Fortune

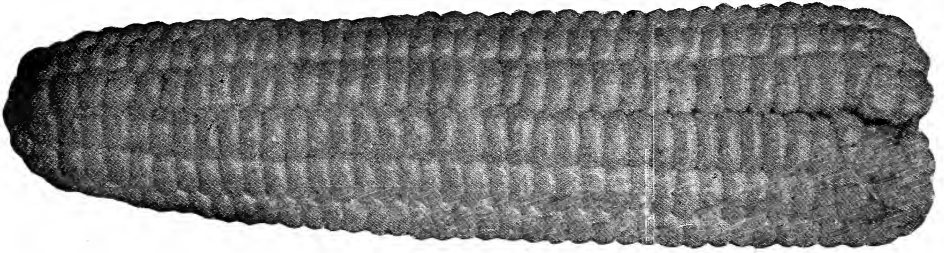
New Davis Perfect—Decidedly the best variety of the large cucumbers. Long slender dark green. Both ends pointed. **Oz., 10c; Lb., 70c.**

PEPPERS

The culture is the same as for egg plant and the plants need quite as much heat to perfect them. Sow seed about November 15th, in hotbed, or about middle of spring in open bed, the soil being light and warm. When three inches high transplant in rows about two and one-half feet apart and two feet apart in the row. Cultivate and keep free from weeds. Guano, hen dung, or any other bird manure hoed into the surface soil when the plants are about six inches high, will undoubtedly increase the product.

Ruby King—An improved American variety, very large and attractive. The plants are about two and one-half feet high, vigorous, compact and productive. The fruits are often four to four and one-half inches long and of deep green color when young, bright red when ripe. The flesh is thick and mild flavored. One of the best varieties for mangoes or stuffed peppers. **Oz., 30c; Lb., \$3.00.**

Anaheim Chili, (Chili Caliente).—The country around Anaheim is the greatest pepper growing section in the world, the shipments running over 100 carloads a year. Our seed is selected from the finest and most productive fields in that vicinity and is certain to produce splendid crops. This pepper is from 6 to 8 inches long and tapers from one and one-half to two inches in diameter at the top to a point. When dried it is a brilliant scarlet. **Oz., 30c; Lb., \$3.00.**



Stowell's Evergreen

CORN

It is to the advantage of the farmer to get our Seed Corn, for we secure the very best grade of seeds to be had suitable for planting in this coast country. We contract the most of our seed field corn from Oklahoma and north Texas.

Stowell's Evergreen Sugar Corn—This is the most popular of all varieties; although not an early sort, it is, without any exception, the best for table use, although quite late. Some may observe they have tried it and have not had the pure stock, as no variety degenerates so quickly without the grower is exceedingly careful. Our stock is pure. **Prices, Lb., 10c; Peck, \$1.00; Bu., \$3.50.**

Trucker's Favorite—A grand variety maturing medium early. Largely grown in many sections of the South. This variety is very profitable to grow for market as a Sugar Corn; it is a large White Dent, twelve rowed, long symmetrical, well-filled ears. **Prices, Lb., 10c; Peck, \$1.00; Bu., \$3.00.**

Improved White Wonder—This is the grandest variety of Corn ever introduced. It originated in Oklahoma. Will grow under conditions that kill all other varieties. It is, as its name implies, veritably a White Wonder Corn. It ripens the same time as the early varieties, and is the only large-eared corn for late planting that we know of that ripens so soon. Known to make one hundred bushels to the acre when other varieties made but thirty to forty bushels. The stalks grow from ten to thirteen feet in height, and are exceedingly thick, with short and heavy joints. **Prices, Lb., 5c; Peck, 75c; Bu., \$2.75.**

Genuine Mexican June—The old original Mexican June Corn. A hard flinty corn that is almost worm and weevil-proof. Can be planted from April to July. It is only equalled by our White Wonder for late planting. **Price, 5c; Peck, 75c; Bushel, \$2.50.**

LETTUCE

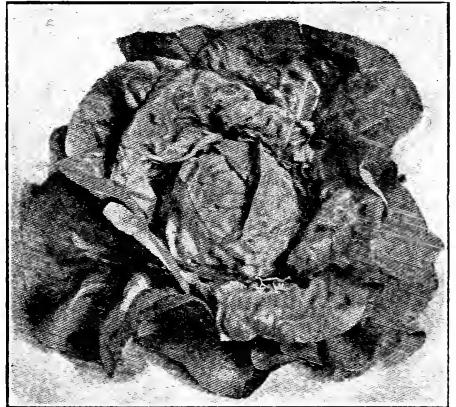
Culture—Write for special circular.

This is one of the best crops for money that is planted along this coast. Our seed is superior. Nothing better to be found. 1 1/2 lbs. Seed to the acre.

Portland Cream—Is large, crinkly and of delicious flavor; dark green foliage, but blanched heart and extremely solid. This variety should be grown in winter time only. Sow the seed any time from September 1st to February 1st. (See cut on front Page). **Oz., 20c; Lb., \$2.00.**

Select Big Boston—This variety is popular for outdoor culture and is also much in demand as a compact, large heading,

forcing sort for cold-frames. The plants are large, very hardy and vigorous. The leaves are broad, comparatively smooth but wavy at the edge, thin very hard and crisp. In color they are bright light green, the head slightly tinged with reddish brown. The inner leaves blanch to an attractive greenish white, tinged with light yellow. Is grown extensively in the South for shipment North in the winter. **Oz., 15c; Lb., \$1.50.**



Select Big Boston

GARLIC—Italian

Plant in October and November in drills two and one-half or 3 feet apart about six inches in the drill and one inch deep. Harvest by plating the tops together and hang up in a cool place. **Lb., 30c.**

MUSTARD

Culture—Autumn sowing brings best greens for they revel in cool weather. Not particular as to soil, though a medium heavy one is best.

Southern Giant Curled—Leaves large, fourteen to sixteen inches in length, which are cooked with spinach, and have a very agreeable flavor. One of the best green foods for poultry. **Oz., 10c; Lb., 40c.**

CASABA

Culture—Similar to Cantaloupe.

Arnold's Prince Casaba

This Casaba became hybridized with the Montreal muskmelon, and since this time, by careful selection for many years we have the Prince of all Casabas. **A good keeper and shipper and a most delicious flavor. Late to ripen. Price, Oz., 25c; Lb., \$2.50.**

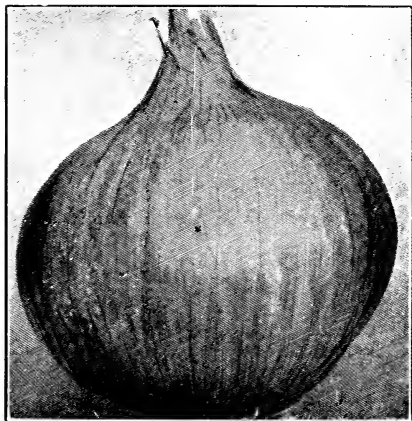
OKRA

Culture—Sow in spring after soil is warm, in rows two to three feet apart, putting seed down two inches. When well up, thin to eight or ten inches apart. Hoe soil up against stem of plant.

White Velvet—Pods round, smooth, free from seams; exceedingly tender, well flavored and very prolific. **Oz., 10c; Lb., 50c.**

ONION SEEDS

Plant three pounds to an acre in drills.



Red Creole Onion

Although onions are often raised from sets by far the best and cheapest mode of production is from seed. The facility with which seed is sown and the superior bulbs it produces, recommend it for general use.

We offer seeds of true type. We handle this seed in large quantities as it will be remembered Southwest Texas leads all other States in onion culture.

White Bermuda Onion—Our stock of seed is from the Island of Teneriffe, grown by the most reliable seed grower in that celebrated district. A large, flattish onion, very mild and of a pale straw color. **Oz., 25c; Lb., \$2.50.**

Crystal White Wax—A large white onion of the Bermuda type. It is very early, mild in flavor. The seed is very generally sown in beds, and transplanted to the fields when partly grown. Our stock of seed is from the same Teneriffe grower that has supplied us with our fine strain of White Bermuda seed for years. While the supply is limited we are able to offer, **Oz., 35c; Lb., \$3.50.** (See cut on front page).

Red Creole—Color brownish red, flesh solid and fine grained and rather strong flavored. Like all strong onions it is a fine keeper and shipper. **Oz., 40c; Lb., \$4.00.**

ONION SETS

We buy our onion sets from the best growers in the country and receive best grade of stock.

White Onion Sets 15c per Lb.; \$3.00 Bu.

Shallots, 20c per Lb.; \$3.50 Bu.

The Shallot is a small white onion which grows in clumps. Fine for bunch onions when grown on rich ground.

PARSLEY

Culture—Sow in fall from September to November. Seed germinates very slowly taking from two to three weeks to come up.

Extra Double Curled—This variety is the most profitable sort for market and the best for shipping. A very vigorous grower. The leaves are large, beautifully curled and very dark green in color. Resists heat and cold better than most varieties. **Oz., 20c; Lb., \$1.00.**

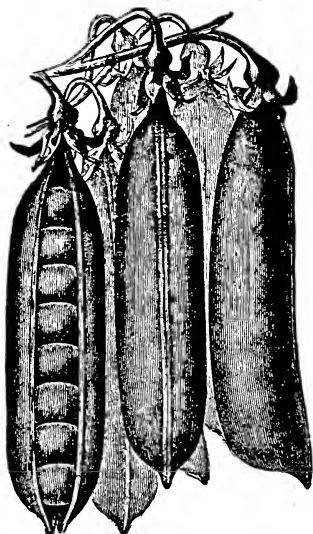
PEAS

Do not plant on too rich soil and be sure the land is well drained, otherwise culture similar to beans. Plant one and one-half to two bushels of Peas to the acre.

American Wonder—The earliest of the dwarf, wrinkled varieties. The vines are about nine to twelve inches high and produce a good crop of well filled pods of medium size, about two and five-eighths to two and three-fourths inches long, containing five to eight large peas which are exceedingly sweet, tender and well flavored. Seed medium sized, generally flattened, wrinkled and pale green. **Lb., 20c; Bu., \$6.75.**

Nott's Excelsior—The best very early, dwarf pea. The vines average about twelve inches high. The pods are medium sized, about two and three-fourths inches long. The peas, in sweetness and quality, are unsurpassed. Seed medium sized, wrinkled, green and somewhat flattened. A most desirable early sort for the market gardener and unsurpassed for the home garden. **Lb., 20c; Bu. \$7.00.**

Sutton's Excelsior—An early, wrinkled pea, one of the largest podded of the dwarf varieties. The pods mature very nearly as early as those of Nott's Excelsior but are broader and with the foliage distinctly lighter green. The pods are large for so early a variety, two and three-fourths to three inches long. The vines are about fourteen to sixteen inches high. **Lb., 20c; Bu., \$7.50.**



**American
Wonder
Peas**

Laxtonian—This very handsome wrinkled pea is the largest podded of the dwarf varieties on our list. Beautiful dark green pods, splendid quality. The vines are vigorous and productive, averaging fifteen to eighteen inches high; foliage dark green; pods about four inches in length. Seed light green, large, wrinkled, flattened, irregular in shape. **Lb., 25c; Bu., \$9.00**

PUMPKIN

Plant in rows 8 to 10 feet apart each way or they may be raised in fields of corn. Two or three plants to a hill when thinned out.

Sugar or New England Pie—Small, but of most excellent quality for pies. The fruits are deep orange, eight to ten inches in diameter, round or somewhat flattened and slightly ribbed. The flesh is rich deep yellow, fine grained and very sweet. **Oz., 10c; Lb., 80c.**

Mammoth King or Potiron—The best large pumpkin. Forms immense globular melons, flattened a little at the end. Skin reddish yellow in color and flesh rich orange. It runs very uniform in shape and color and all are of immense size. **Oz., 10c; Lb., 90c.**

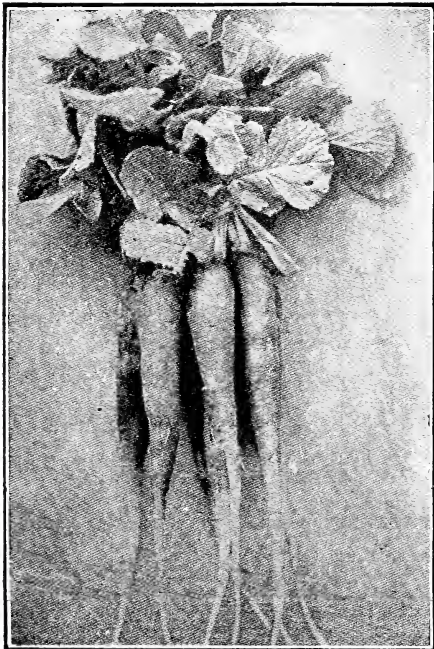
Green Stripped Cushaw—Fruits very large, with crooked neck. Color creamy white, irregularly striped or traced with green. Flesh light yellow, very thick, and sweet. This sort is very productive. **Oz., 10c; Lb., 90c.**

RADISHES

The quality of our radish seed cannot be surpassed. Plant about six pounds to the acre.

Culture—The best results are obtained from a rich, loose, moist soil. Radishes are sown in this latitude the whole year, during the summer months they require frequent watering to make them grow quickly. The Long varieties are usually planted by the local truckers for summer crop. The Turnip varieties are planted in the fall and spring. Can be sown in drills twelve inches apart.

Early Scarlet Turnip, White Tipped—The most profitable market gardeners' variety. Medium in size, very uniform and round in shape, bright scarlet in color, with a distinct white tip, flesh white and of the finest quality. The scarlet is unusually deep and affords a very distinct and pleasing contrast with the large clear white tip. **Oz., 10c; Lb., 50c.**



Cincinnati Market

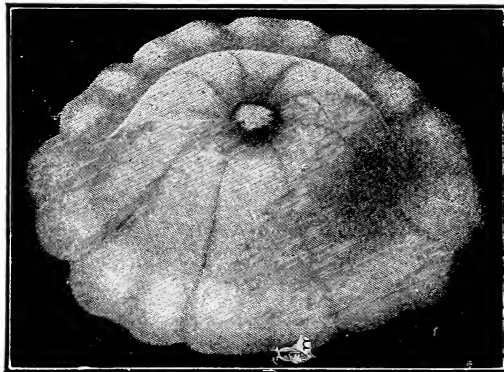
Cincinnati Market—A desirable market variety, deep red in color. The roots are slender, and before becoming pithy are often six to seven inches long by about five-eighths of an inch in diameter at the shoulder. **Oz., 10c; Lb., 50c.**

New Icicle A very attractive, pure white radish, the earliest of the long, white summer sorts and of most excellent quality. The roots when mature are five to six inches long by about one-half to five-eighths of an inch in diameter. One of the most desirable varieties for outdoor summer planting for the home garden and market. It is also adapted for forcing. **Oz., 10c; Lb., 60c.**

French Breakfast—A very popular French variety of quick growth; very mild and tender; of an oval form; scarlet, tipped with white. A splendid sort for market or garden use. **Oz., 10c; Lb., 50c.**

SQUASH

Sow in hills 4 feet apart each way at the same time as cucumbers and melons are sown. One ounce of seed to 25 hills.



Early White Bush

Early White Bush, or Patty Pan—The best early variety. The plants are of the true bush form, and produce fruit very early in the season. Largely grown in the South for shipment to the Northern markets. **Oz., 10c; Lb., 50c.**

Arnolds Prolific Earliest White Bush—Similar to the above except smaller and more prolific. **Oz., 10c; Lb., 70c.**

Yellow Summer Crookneck—Plants are very productive and are early bearing. Skin of fruit orange yellow and thickly warted. **Oz., 10c; Lb., 50c.**

Warted Hubbard—Olive green oblong shape warted. Excellent quality of meat. Fine for winter use. **Oz., 10c; Lb., 75c.**

SPINACH

Undoubtedly the finest greens that can be grown. For summer use sow early in the spring in deep rich soil; sow in drills about one foot apart, cover one inch deep. For a continued supply of "greens," resow every two or three weeks throughout the winter season, commencing about the first of October. Soak seed in hot water before planting. One ounce of seed will plant 100 feet of drill; eight pounds in drills will plant an acre.

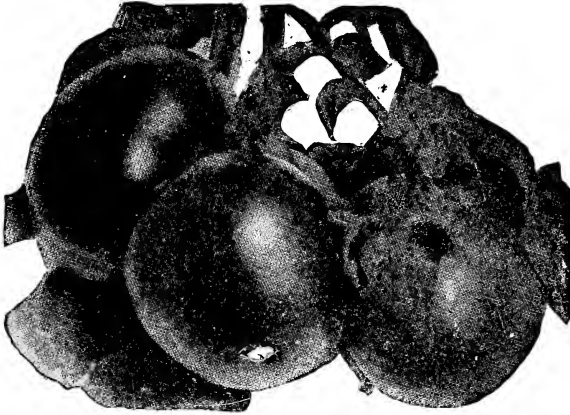
Bloomsdale Savoy—Highly popular with market gardeners. Bloomsdale is considered the best sort for the South. The leaves are wrinkled in the same manner as the Savoy Cabbage. A crop of this variety weighs much heavier than any other variety. It grows very quickly. Fine for fall sowing. **Oz., 5c; Lb., 25c.**

TOMATOES

This Is One of Our Specialties

Tomatoes do best on light, warm, not over-rich soil and success depends largely upon securing a rapid, vigorous and unchecked growth during the early part of the season. Sow in hotbed or in shallow boxes in the house from six to eight weeks before they can be set out of doors, which is when danger from frost is past; when the plants have four leaves transplant into shallow boxes or cold-frames, setting them four or five inches apart; give plenty of air and endeavor to secure a vigorous but steady and healthy growth, so that at the time of setting in the open ground they will be strong and stocky. Even a slight check while the plants are small will materially diminish their productiveness.

Some plant the seed in drills in the field during the month of February and hold their plants in seed beds as a reserve in case of late frost. One ounce of seed will produce 1,000 plants. The seed we offer is the best graded stock to be had. Try our seed and you will use no other.



OUR LEADER

Arnold's June Pink—An extra early, purplish pink tomato similar to the popular scarlet fruited Earliana in growth of vine, shape and size of fruits and time of maturing. A valuable variety for market gardeners who want a very early, purplish pink tomato. **Oz., 30c; Lb., \$2.75.**

Chalk's Early Jewel—One of the very best early tomatoes yet introduced. The vines are vigorous and very productive. The fruits are bright deep scarlet-red.

nearly round or somewhat flattened, smooth, of large size and most excellent quality. They ripen very early and the pickings continue through a long season. It is a most desirable sort for the home garden. **Oz., 30c; Lb., \$3.00.**

Early Detroit—This splendid variety, introduced in 1909, is the largest of the early purplish pink tomatoes. The vines are vigorous and very productive. The fruits are very smooth, uniform in size, nearly globe-shaped, firm, and of excellent quality. **Oz., 30c; Lb., \$3.00.**

Bonnie Best—This is a very early and very popular variety. Vigorous grower and exceedingly prolific. Beautiful scarlet color. **Oz., 25c; Lb., \$2.50.**

John Baer—(New)—Introduced by John Baer in 1914. Claimed to be the earliest and best Tomato grown. Bright red color. Good shipper and good canner. We think this Tomato is well worth trying. **Oz., 50c; Lb., \$5.00.**

McGee—A black land tomato, prolific bearer. Color bright crimson **Oz., 30c; Lb., \$3.00.**

WATERMELONS

(Southern Grown)

Arnolds Tom Watson. **Oz., 10c; Lb., 75c.**

Arnold's Alabama Sweet. **Oz., 10c; Lb., 75c.**

Arnold's Kleckley Sweet. **Oz., 10c; Lb., 75c.**

TURNIPS

While turnips are a favorite fall and winter vegetable, they may also be had in spring by proper sowings. They are of easy culture, but need well-worked, rich soil to insure a quick uninterrupted growth, when they will be tender and free from woodiness.

For fall and winter use sow in August, in rows 10 to 18 inches apart, using one ounce to 250 feet of row, thinning the plants when very young to three or four inches apart. For spring use sow in January.

For field culture sow in rows two feet apart, using one to three pounds of seed per acre.

Early Snowball—A medium globe-shaped variety of pure white. Very solid and of the best quality. **Oz., 10c; Lb., 50c.**

Purple Top White Globe—A valuable turnip for either table use or stock feeding. Roots globe-shaped, white with purple top. Flesh white, firm and tender. **Oz., 10c; Lb., 40c.**

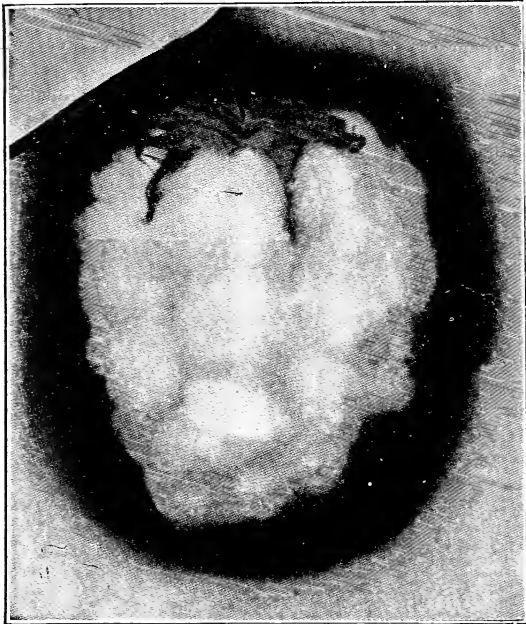
Amber or Yellow Globe—Skin is a clear yellow. Is of large size and fine flavor. Fine also for stock. **Oz., 10c; Lb., 40c.**



FIELD SEEDS



Field of Whippoorwill Cow Peas



**Mebane's Triumph Cotton
COTTON SEED**

Mebane's Triumph—It is a cross between the long lint and the Texas Storm-proof; has large boll; five-lock; short-jointed; very prolific, and is well adapted to black waxy land of any character; but, like the Rowden, is easily picked. Mebane Triumph Big Boll (selected), Bu., \$1.50.

The Best Field Run Graded Seed at \$3.00 cwt.

EGYPTIAN WHEAT

Egyptian Wheat—Per lb., 5c; 10 lb. lots at 4c.

Write us for prices on large quantities.

We supply a particular trade and can please you.

COWPEAS

~~Cowpeas will do more for your land than all the fertilizers that have ever been put on it.~~

Whippoorwill—A favorite early bunch-growing variety; has brown-speckled seed which are more easily gathered than from the vine growing sorts. This variety is a prime favorite on account of its early maturity and habit of growth. 5c per lb., 10 lb. lots, 4c.

BARLEY

Bearded—Nothing better for hog pasture. Per lb., 4½c; bu., \$1.75.

FETERITA

Feterita—Has proven itself to be one of the most wonderful drouth resisting plants that can be grown in the Southwest. Under normal conditions has yielded as high as 100 bushels per acre. Seven heads to the plant are not unusual. Per lb., 5c; 10 lb. lots at 4c.

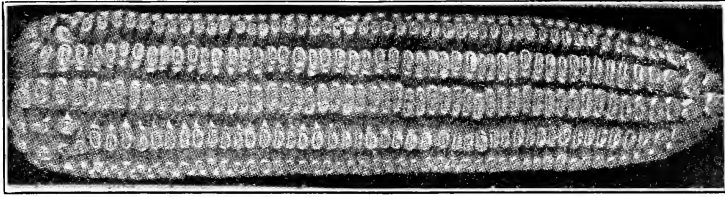
SORGHUM

The Sorghums will make a larger yield in the same length of time than any other forage crop. There is no food that is more nutritious, or more greatly relished by cattle, and it should be one of the staple crops of every Southern farmer. It also makes an excellent green feed. It can be cut two or three times during a season, yielding two or three crops from one seeding. Sorghum will stand dry weather much better than millet, and is a much surer and larger yielding crop, although not quite so easy to cure for dry feed. For forage purposes, sow thickly at the rate of one to one-half bushels per acre, or for sorghum, sow in drills at the rate of one peck per acre.

CANE SEED

Arnold's Red Top, (selected). Lb., 3c.

**DO NOT BE DECEIVED IN BUYING
CHEAP SEED**



CORN

Eight quarts to plant an acre

The varieties of Field Corn listed below are especially selected for the soil and the climate of Southwest Texas. In buying from us you have the satisfaction of knowing that you are securing seed raised for the express purpose of being planted in Texas soil, and thus you do not run the risk of securing unacclimated seed.

Cultivate shallow, Cultivate often, Cultivate late. (See page 8)

	Bushel
Arnold's Improved White Wonder	\$2.75
100 days.	
Arnold's Chisholm (white) red cob	2.50
Arnold's Yellow Flint 100 days	3.00
Arnold's Mexican June	2.50
Arnold's Improved Squaw	2.50

Arnold's Seeds Satisfy. We Can Serve You better than a Far Away Seed House.

KAFFIR CORN

White Kaffir Corn—This variety grows from four to eight feet tall, making a straight, upright growth. It has a long stem with enormous wide leaves. The Stalks keep green and are brittle, making excellent fodder, either green or dried, which is highly relished by cattle and horses. The heads range in length from six to fifteen inches. As early as these heads begin to show development, the joints next below the top send out seed heads, so that the crop yields an enormous amount of seed. Where the seed is the object it will be well to cut out the first or top heads as soon as they are ripe, as this will cause a better development of the second crop of heads. For the grain sow in rows three feet apart, eight lbs. to the acre. For fodder, sow from one-half to one bushel to the acre, either broadcast or in drills. **Price, lb., 3½c.**

Dwarf Black Hull White Kaffir—Not as tall as the Standard White, and a much harder variety. Can be harvested with header and does not need as much moisture as the original strain. Grows four or five feet high. Sixty to eighty bushels of grain from this variety is not unfrequent acre yields. **Price, lb., 4c.**

Genuine Dwarf Milo Maize—The stalks are short, but large and stand up

remarkably well. The heads are large, so are the seeds. Earlier than the Kaffir Corn and Standard Milo Maize. The yield is from 60 to 100 bushels to the acre. It is a straight-necked variety, which is a valuable feature in gathering, feeding and cutting the heads. It will stand greater drouth than any other Sorghum, and for that reason, is admirably adapted to dry farming. Should be extensively grown, in fact, every farmer should plant a few acres, for if drouth comes, he will be sure of feed. Should be planted about the 1st of April until June 1st. Every animal on the farm, from the hen to the horse, will eat and fatten on the seed. Sow 8 lbs. to the acre. **Lb., 4c.**

ROOT CROPS FOR STOCK FEEDING

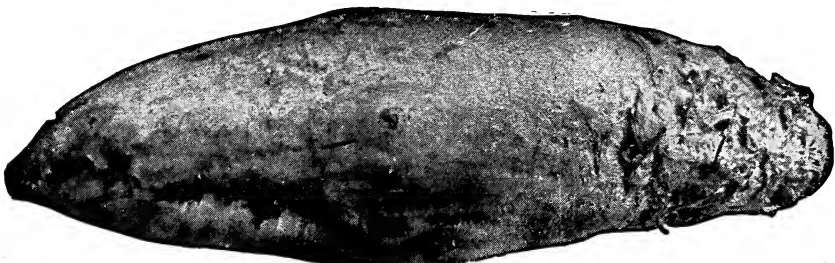
Mangel Wurzels—The value of Root Crops for stock feeding during the winter months is being more recognized. Foremost among these are the Mangel Wurzels and the Sugar Beets, of which an enormous crop may be raised at a trifling cost per acre. The roots, if fed to the cows, will greatly increase the flow of milk; they will improve the general condition and health of all animals to which they are fed, besides saving hay. They should be planted in rows 3 feet apart in very rich soil. Five or six pounds of seed will plant an acre. **Price, lb., 35c.**

Golden Tankard—Extra large roots with small tops and small necks; flesh of rich golden yellow color. **Price, lb., 35c.**

Mammoth Long Red—The roots of this variety grow to a larger size than those of the other sorts. They are well formed, with flesh of a blood-red color. Very nutritious. **Price, Lb., 35c.**

GIANT FEEDING SUGAR BEET OR HALF SUGAR MANGEL

This strain of beets is very desirable for stock feeding, affording not only a very large crop much easier to harvest than other sorts but also having higher nutritive value, being especially rich in sugar. Roots light bronze green above ground, grayish white below, with white flesh. **Price, Lb., 35c.**



Mammoth Long Red Mangel

MILLET

Diamond "A" Brand Big German—This is the finest quality of Fancy Big Head German Millet that we can buy. Our seed is thoroughly re-cleaned and of the best quality. We have been selling this grade of Millet for a great many years and have numbers of customers who will buy nothing else. If you want the highest grade of Fancy Big German Millet we recommend Diamond "A" Brand. **Fancy Big German, Price, Lb., 5c.**

POPCORN

Arnold's White Rice. **Price, Lb., 12 ½c.**

SPANISH PEANUTS

One and one-half bushels of unshelled Peanuts will plant an acre.



Spanish Peanuts

In addition to their value for growing for the nuts, these are very largely used as a forage and fattening crop for hogs and other stock. They are early to mature very productive, and, in the South, two crops can be made in a year, the tops making a hay crop and the nuts a grain crop. In harvesting, the nuts hang to the vine, and the tops and nuts are fed together to hogs, cows and horses as a whole grain ration. Spanish Peanuts grow in more compact form than the Virginia Peanuts, making it possible to grow them closer, making the cultivation easier also. The nuts are produced closer in a bunch, making them easy to save. The best crop in the South for fattening hogs, and no Southern farm, where stock is raised, should be without them. **Lb., 15c; 10 lb. lots at 12 ½c.**

SEED POTATOES

We recommend the Tennessee Red Triumph Seed Potatoes as being by far the best variety to plant in Southwest Texas for a sure crop.

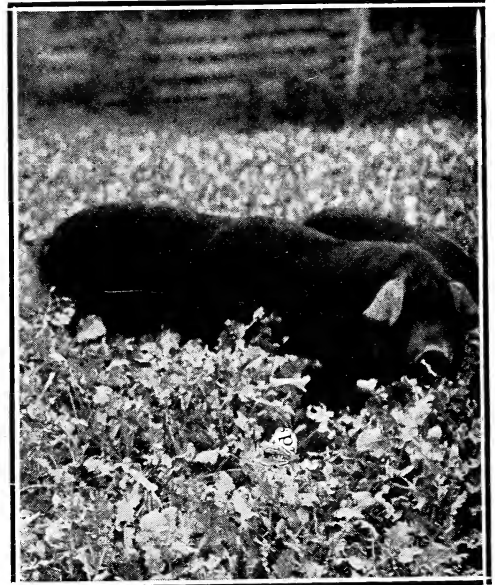
Triumph, Northern Crown. Ask for prices.

Irish Cobbler. Ask for prices.

with grain as 56 bushels of Corn would do. A plant with as great a feeding value as Rape should find a welcome where hogs are raised. An acre of Rape in the experiment equalled much more than an average acre of Corn and the cost of producing was much less and the cost of harvesting nothing, as it is done by the pigs. Sow 5 to 10 lbs. per acre. **Lb., 20c; 10 lb. lots at 15c.**

DWARF ESSEX RAPE

Under favorable circumstances is ready for pasture in six weeks from time of sowing. One acre of good Rape will carry a flock of a dozen sheep for two months. The experiment station found that an acre of Rape produced as much gain in pigs when used as a pasture crop along



Grazing in Rape Field

MAMMOTH RUSSIAN SUNFLOWER

The best variety for the farmer. Makes heads nearly double the size of the common kind, and makes a much larger yield of seed. Will yield, under favorable conditions, 40 to 60 bushels to the acre, and the yields of as high as 125 bushels have been reported under exceptionally favorable conditions. It is highly recommended for poultry and is the best egg-producing food known, and the leaves make excellent fodder, relished by all kinds of stock. The seed is a good food for horses. **Price, lb., 20c.**

SUDAN GRASS**(Drouth Resisting)**

This wonderful new grass promises to be one of the greatest grasses ever introduced for the South. It will make from three to four cuttings each year, makes splendid hay and is liked by all stock. Very highly recommended by the Government. **Price, per lb., 10c; per 100 lbs., (ask for prices.)**

Grows 6 to 10 feet high, small stem. For hay sow broadcast about 6 pounds to acre or in rows 3 feet apart, about 3 pounds to acre; for seed sow 2 pounds to acre in 3 foot rows.

VEGETABLE BOXES AND BASKETS

Crates	
	Each
4 Baskets, Tomato	9c
Cabbage	25c
Mixed Vegetable	20c
Baskets	
Climax, 1/2 bu.	7 1/2c
Picking, 1/2 bu.	25c
Barrels	
Sugar (new)	60c
Sugar (second-hand)	40c
Hampers	
Bushel Size	13c
1/2 Bushel	11 1/2c
Burlap, per pound	05c
Twine, 1/2 lb. ball	15c

SPECIAL PRICES

We make special prices to associations and large buyers who order in large quantities. We ask such trade to send us a list of their requirements and we will submit our best prices.

SET YOUR PLANTS WITH MASTERS PLANT SETTER



A great labor saver. Actually does three men's work easily. One man can set from 10,000 to 15,000 plants daily. Holds enough water to set 125 to 150 plants at one filling.

NO STOOPING—NO LAME BACKS. Sets, waters and covers every plant. Transplant Sweet Potatoes, Tomatoes, Peppers, Cabbage, Cauliflower, etc.

Saves cost every day used. Write for particulars. **Delivered Price, \$4.00.** Place your order early.

THE CYCLONE SEED SOWER

A very popular Hand Seeder and very extensively sold.

This seeder is guaranteed to distribute seed perfectly even over the land. It sows all kinds of seeds broadcast which can be sowed with and other seeder. One man can sow from 40 to 60 acres per day. Full directions with each machine. Write us for further information. **Price delivered, \$1.50.**

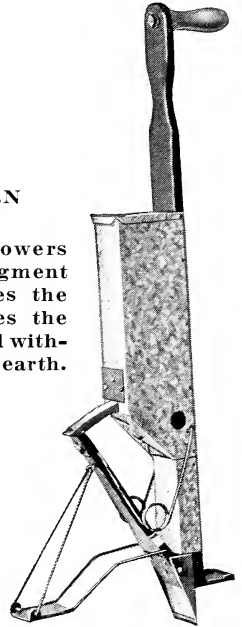


THE SOWER THAT SCATTERS EVENLY

Place your order early. We can get seeds to you quick—when you want them.

SEGMENT CORN PLANTER

All large melon growers are now using the Segment Corn Planter—it does the work better. Places the seed under the ground without drying out the top earth. **Price, \$2.00.**



Prices are delivered to you. Place your order early.

THE AUTO SPRAYER



PATENTED.

No other compressed air sprayer will do such a variety of work.

We consider this sprayer one of the best for use in the vegetable garden. Holds 4 gallons. With improved Auto pop—Brass Sprayer, **\$8.00.**

With Improved Auto pop—Galvanized, **\$5.50.**

FERTILIZER MATERIAL

We are agents for one of the largest plants in the South, and would like to have the opportunity to figure with you when you are in the market for anything in this line. Write us what you want and let us quote prices.

If you are pleased with our Seed tell others; if not tell us. We are here to please you.



SUDAN GRASS ROOTS
 Note vigorous growth and
 lack of root stocks



Arnold's June Pink Tomato—Select Stock

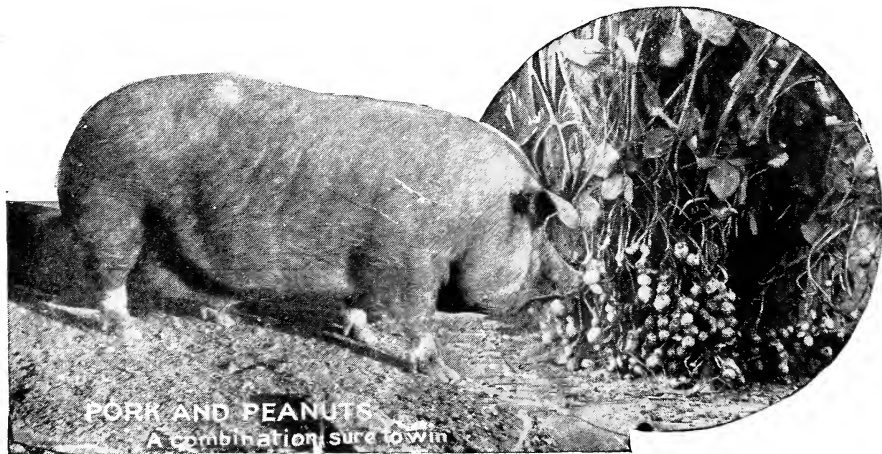


German
 Millet

**GOOD SEEDS INSURE
 GOOD CROPS**

Arnold's Seed Succeed
 "Safety First"

Arnold Seed & Produce Co.
 PORTLAND, TEXAS



PORK AND PEANUTS
 A combination sure to win