

## **Historic, Archive Document**

Do not assume content reflects current scientific knowledge, policies, or practices.



2.37

RETURN TO POMOLOGY  
SECTION OF NOMENCLATURE,

INDEXED

MAR 4 1916  
LIBRARY  
RECEIVED  
MAR 21 1920  
U. S. Department of Agriculture

INDEXED

# WILKINS'

1916 CATALOGUE  
of SMALL FRUITS

---

---

READ THIS BOOK CAREFULLY!  
BESIDES DESCRIBING THE BEST  
VARIETIES OF STRAWBERRIES,  
DEWBERRIES AND RASPBERRIES  
IT CONTAINS OTHER INFORMA-  
TION WHICH MAY BE OF GREAT  
VALUE TO YOU. DO IT NOW!

---

---

WILKINS & COMPANY  
SALISBURY, MARYLAND

## Instructions for Shipping

**TIME OF SHIPMENT**—From the receipt of this Catalogue until May 1st. However, the best time is during March and April. But we would advise our friends to send their orders in at once, as we frequently run short on some varieties later in the season. By doing this you are certain to get just what you want. If not prepared to send all the money, send one-fourth with the order, which will be booked and shipped on receipt of balance of payment.

**GUARANTEE**—All plants guaranteed to be true to name and to reach customers in good condition if promptly taken from the express or post-office. All plants sent by freight will be at purchaser's risk.

**WRITE PLAINLY**—This is very important. Be sure to sign your name and address; sometimes this is forgotten, consequently there is nothing to do but consign the communication to the waste basket, and naturally the writer thinks his confidence has been misplaced.

**TERMS OF PAYMENT**—Cash with order, draft, Postoffice money order or check. Please do not ask for credit.

**NURSEYMEN**—Get in touch with us before you buy as we make a specialty of filling nurserymen's orders.

**YOU TAKE NO RISK** in sending us your money. We will send you the nearest variety to what you order, should we be out of same, or we will cheerfully refund your money.

---

### PARCEL POST RATES

It is almost impossible to figure out the exact rate on plants that go by Parcel Post, but the table below will be found very accurate and will be the rate on which we will base your order, whether a little more or less. Plants may be sent at the following rates:

1st zone, add \$	.10 per 100 plants
2d zone, add	.13 per 100 plants
3d zone, add	.17 per 100 plants
4th zone, add	.20 per 100 plants
5th zone, add	.25 per 100 plants
6th zone, add	.30 per 100 plants

MAR 4 1916

RETURN TO POMOLOGY  
SECTION OF NOMENCLATURE.

DESCRIBES THE GREAT MONEY-MAKING VARIETIES

## To Our Friends and Customers

**T**HE MARYLAND-DELAWARE PENINSULA, which comprises Delaware and the Eastern Shore Counties of Maryland and Virginia has long been known as the greatest strawberry section in the United States. The Federal statistics show that it produces about one-fourth of all the berries grown in the country. The berries also bring more money at the same season than those from any other section. The reason for this is the soil is better adapted to strawberry growing than in many places and the climate seems just suited to bring big results. We believe a big factor is the excellent quality of the plants, which seem to grow larger and stronger than those produced elsewhere. It seems that all nurserymen know the "Peninsula" grown plants are far superior for nursery planting, as we supply some of the largest nurserymen in the country for their own planting as well as for their trade. Now, why not send us your order and secure the best stock grown? However, be sure to get the "Peninsula" grown stock, and you will not be disappointed at harvest time.

Our plants are grown in springy, mellow soil, which not only produces long and healthy roots, but insures their removal from the beds without injury, thus helping them make a rapid and vigorous growth. Our plants are grown on new land, we having recently added a large acreage to our nursery, and just as fast as it is cleared up, we set with plants.

Our stock is very large, particularly of the standard varieties, and is as good as can be grown. We would especially call the attention of our customers to what we term the "Big Six." We believe they embody the best qualities of all the strawberries grown. Here they are: Early Woodrow, Joe Johnson, Missionary, Chesapeake, Gandy and Klondyke. Most of these varieties are so well known that further argument is unnecessary. But to those who have not planted them we urge to do so.

We desire to thank our friends for their liberal patronage the past season, which we trust was merited, and hope to be able to serve you again this year. The large increase in our business over the previous year shows conclusively that the stock we put out is above the average quality.

Yours very truly,

WILKINS & COMPANY.

Reference: Salisbury National Bank, Salisbury, Md.  
Peoples National Bank, Salisbury, Md.  
Truckers and Savings Bank, Pittsville, Md.

## Suggestions for Planting

We realize that most persons who grow strawberries have their own method of cultivation that will bring them the best results, but for the benefit of those who have not grown strawberries before, we offer the following suggestions :

If planting a large acreage for commercial purposes, plow your ground very deep in Fall or early Spring and, if any fertilizer is to be used, it should be spread broadcast and should be well plowed into the soil. Any good commercial fertilizer can be used, but stable manure is preferable. Pulverize soil just before ready to set, but do not place fertilizer directly under plants.

The rows are usually about three and one-half feet apart, and plants 18 to 20 inches apart in the rows for matted beds. To prepare row before setting, run furrows three and one-half feet apart. Another furrow run from either side will make a small ridge which should be raked flat so that the plants may be even with the soil after first cultivation. Plants should be worked in a short time after setting and should be set with crown of roots level with the soil, which should be pressed firmly around the plant. This will hold the moisture and materially aid the young plant in getting a vigorous start. Plant as early in Spring as possible to produce good beds.

## Plant the "Big Six"

We especially recommend the the following varieties, which we consider the greatest all-around berries for commercial purposes on the market: Early Woodrow, Joe Johnson, Missionary, Chesapeake, Gandy and Klondyke. With this collection you will have berries continuously from the very first to the last of the season and of the very best quality. Any grower who has tried out these varieties will vouch for this statement, and the ones who are not growing them are not making the money out of the business that they should. See our price list—you'll find the "Big Six" printed in heavy type. You are losing money if you do not grow them.

---

---

## Certificate of Nursery Inspection

### *To Whom It May Concern :*

This is to certify that on the 31 day of August, 1915, we examined the Nursery Stock of Wilkins & Company, growing in their nurseries at Salisbury, County of Wicomico, State of Maryland, in accordance with the laws of Maryland, 1898, Chapter 289, Section 58, and that said nurseries and premises are apparently free, so far as can be determined by inspection, from the San Jose Scale, Peach Yellows, Pear Blight and other dangerously injurious insect pests and plant diseases. This Certificate is invalid after August 1, 1916, and does not include nursery stock not grown within this State, unless such stock is previously covered by certificate and accepted by the State Entomologist and State Pathologist.

No. 12.

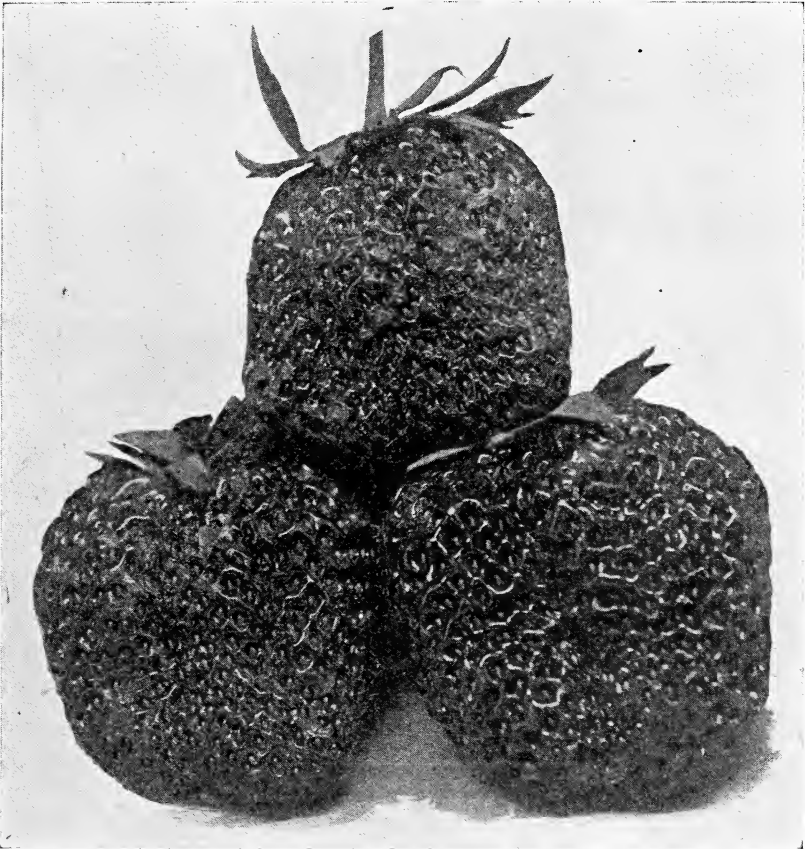
College Park, Md., Sept. 9, 1915.

THOMAS B. SYMONS, State Entomologist.

J. B. NORTON, State Pathologist.



## DESCRIBES THE GREAT MONEY-MAKING VARIETIES



THE EARLY WOODROW

**Early Woodrow**---We first introduced this variety last year and, after seeing it fully tested for two seasons, believe it to be one of the most wonderful berries ever put on the market. For two seasons it has brought more money by the crate than any variety sold at our shipping point. It was tested with the Klondyke and was found to keep longer in perfect condition than that variety, with which every berry grower is acquainted. The Early Woodrow is a good plant

maker and one of the fullest bearers that we have ever seen. The fruit is large and well colored; ripens early and continues bearing until nearly all the latest varieties are through. Too much cannot be said of the Early Woodrow. We will refund to any one of our customers the purchase price who buys this variety and are dissatisfied with the results. We have never seen any plant similar to the Early Woodrow and you will make no mistake in sending us your order

## WILKINS & CO.'S 1916 STRAWBERRY CATALOGUE

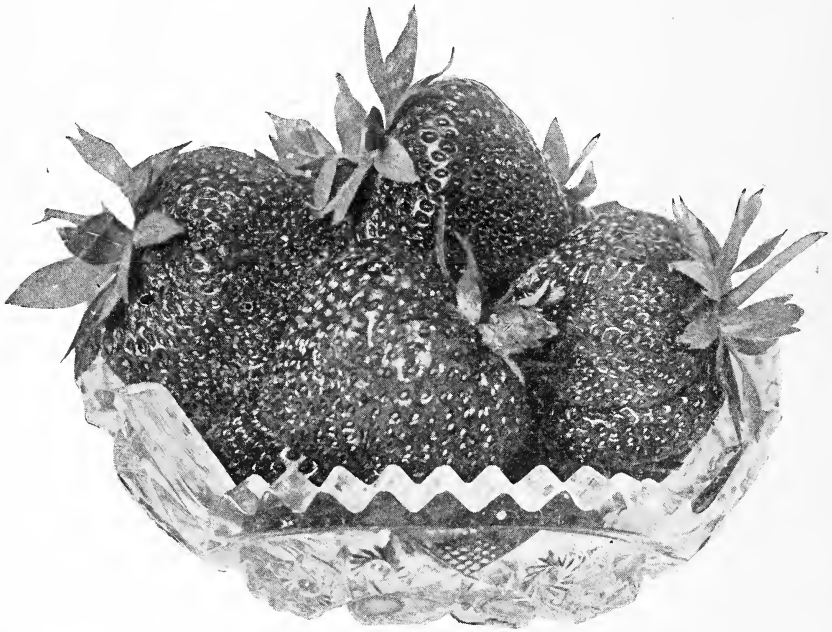
for some of the plants.

Price: \$1.50 per 100; \$5.00 per 500; \$10.00 per 1000; 150 postpaid \$2.00; 200 post paid \$2.50.

**Mascot** Extra large and of fine flavor, very productive and has a long season. As an all around late variety this is a good one.

**Hoffman** Fruit extra fine but not very prolific. A great favorite in some sections.

as in this variety, people coming from different parts of the country in teams and automobiles to see it. It was conceded to be the largest berry ever seen here. It is a great plant maker—almost equal to Missionary or Klondyke, and will grow in almost any soil where any other variety will grow. Berries are extra large, firm and of good color. If any of our rela-



JOE JOHNSON

**Joe Johnson**---This is one of the largest and best of the late varieties we believe yet known to the strawberry growers of America. We did not have enough plants to go around last season and turned down orders for several thousand. We only kept a small plot to fruit and have never seen so much interest taken in any new strawberry

tives, friends or customers write us to select some good varieties we will always include the Joe Johnson. Do not fail to add some of them to your order, if you do you are losing money.

Price: \$3.00 per 1000.

**Chesapeake**---Perhaps one of the most popular berries in the



## DESCRIBES THE GREAT MONEY-MAKING VARIETIES

---



A WELL SET MISSIONARY PLANT BED

United States at this time. It ripens a few days earlier than the Gandy and is more productive. The berries are of immense size, a beautiful dark red in color, firm and without green tips. It makes a sufficient number of plants to give it the best results in fruiting, the plants being large with strong fruit beds and very large leaves, thus protecting the bloom and fruit from the frost. It always presents a handsome appearance and commands a fancy price. The Chesapeake should be included in your order.

Price \$4.00 per 1000.

Page 6

**Missionary**---A very popular berry everywhere but especially so in the South, where the acreage is larger than any other variety grown. The fruit is bright scarlet in color and of a delicious mild flavor. The berries are lighter in weight than most varieties and has a tough skin, thus making it a splendid shipper. Will stand long shipment and arrive in market in excellent condition. It is a great plant maker and withstands drouth in an excellent way, always producing a large growth of plants and fruit. Foliage is beautiful, not a blemish of rust ever shows on

## WILKINS & CO.'S 1916 STRAWBERRY CATALOGUE

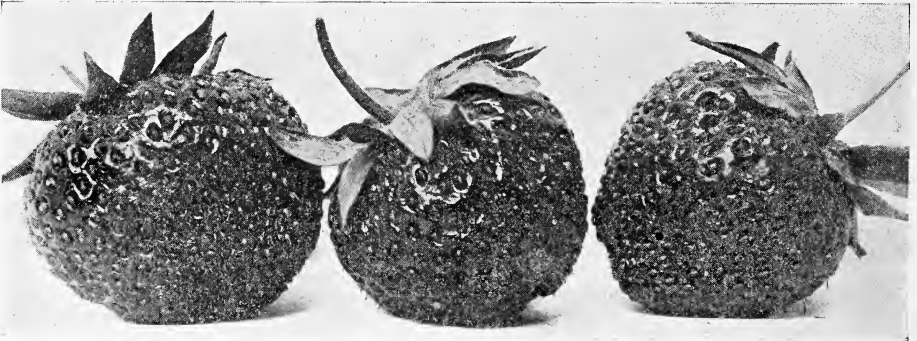
them. Sets plants just right for a good crop and every plant is a fruiter. A very prolific bearer for a long season. Every grower of strawberries should add this to his list, if not already included. We especially recommend it to our Southern patrons.

Price \$2.50 per 1000.

**Klondyke**---One of the best known of all the medium early sorts and popular everywhere. We believe there are more acres set to Klondyke than any other

**Gandy**---One of the old reliable varieties and does its best when planted in low, springy land, where there is some clay; but never plant in dry, sandy land. Produces large quantities of dark crimson berries of excellent quality; is a splendid shipper and always brings fancy prices. A free plant maker. More popular than ever and certainly one of the best late varieties known. We have a fine supply of the Gandy.

Price \$2.50 per 1000.



GANDY

variety grown in the United States. The fruit is of good size and color and can be shipped from Florida to Canada in good condition and always brings a fancy price. If the old beds are left to fruit they will invariably produce more fruit the second and third season than the first one. The berries are handsome in appearance, dark red in color and of uniform shape and size. Makes an abundant growth of strong plants and an unusual number of crowns.

Price \$2.50 per 1000.

**Lady Thompson**---Another very popular berry in the South and is so well known it needs no description. We are well prepared to take care of your orders this season as our stock is large and first class.

**Glen Mary**---Very productive of large to very large dark red berries of somewhat varied shape and rich in color. For best results we would suggest it being planted with Aroma and Parsons Beauty.

**Stevens' Late Champion**  
—Splendid for the home market and is very productive. Size large to extra large, mild flavor and ordinarily firm. Very popular in the North.

## DESCRIBES THE GREAT MONEY-MAKING VARIETIES



HAVERLAND

✓ **Uncle Jim**---Is one of the largest berries grown, especially in favorable seasons. Just the kind to plant for local market or where they can be picked one day and sold the next. Strong, healthy and productive.

✓ **Brandywine**---Well known for its shipping qualities and is very popular as a commercial variety in the West. The berries are crimson in color, firm and very handsome. They color all over evenly and retain a good size to the last picking. The quality is excellent and the flavor all that could be desired. The plant is vigorous and productive.

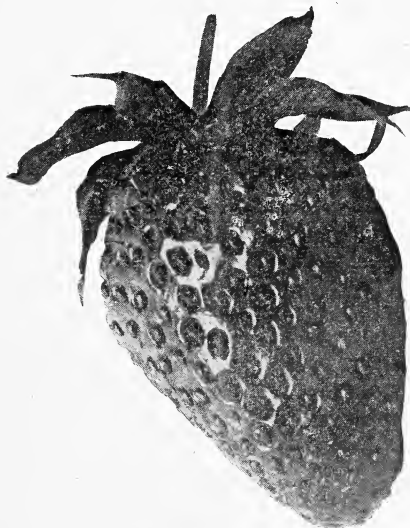
✓ **Wm. Belt**---For a home variety the Wm. Belt has few equals. The flavor is of the best. Always in great demand. Midseason.

✓ **Twilley** ---Very productive, fruit firm and of good flavor, medium to large. A good plant maker and seems to do well on most any soil.

✓ **Excelsior**---A very productive, firm berry of medium size; highly flavored and a splendid shipper.

✓ **Wilkins' Early**---This wonderful new variety has measured up in every way to our fullest expectations. We have tested it a number of seasons and it has made good in every way, and reports from others who have tried it out are very flattering. It is one of the earliest berries known but blossoms too early for the North, as the frost invariably gets it even in this climate, it being so early. As a commercial variety, however, we can recommend it to our Southern friends as one of the very best and guarantee it to give satisfaction. The berries are very firm, of large size and fine color, making it an excellent shipping variety. It is a good plant maker and should be set on good land. This is unquestionable the coming berry for Southern planting—the berry that will make your profits mount. If you have not tried the Wilkins' Early include it in your order this season; you are sure to be delighted with it. The plants are very strong and vigorous and we have a large supply.

✓ **Massey**---We have fruited this variety two seasons and find it to be all that is claimed for it. Fruit is extra large and it is a good plant maker. We believe it one of the best late berries.



MASSEY



# WILKINS & CO.'S 1916 STRAWBERRY CATALOGUE

**Aroma**---Not quite so late as the Gandy in beginning, but will continue nearly as long. A very popular variety in the West and Southwest. Bears an immense crop of very fine fruit that will stand shipment to distant markets.

**Parsons Beauty**---A tremendously productive variety of the Haverland type and does well for any local market. The plants are strong and vigorous and free from rust. Fruit very large and of fine flavor. Extremely popular in the Northern States, being one of their heaviest fruited.

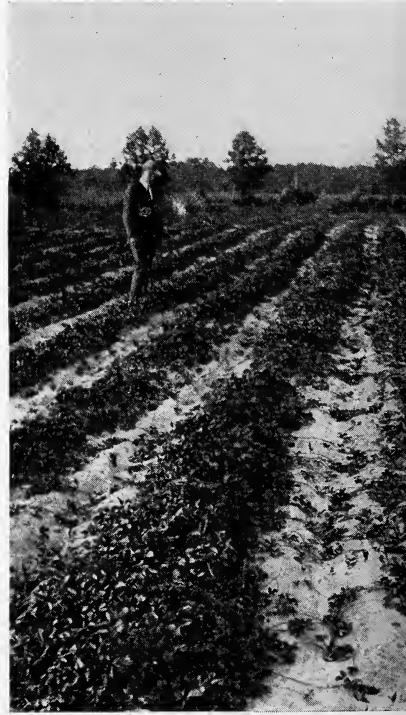
**Marshall**---Is a general favorite in many sections where a strictly fancy berry is in demand. Not very productive in either fruit or plants, but has the quality to over-balance this loss. The Marshall is noted for its fine flavor and appearance and every berry is a perfect one. The demand for the Marshall is always heavy but we will be able to supply the needs of our customers with the best of stock.

**Nick Ohmer**---One of the very best late varieties for Southern States and is an excellent shipper. More productive than Gandy and held in great favor everywhere. Rich in flavor and a good plant maker.

**Ekey**---This variety is largely grown in the berry sections of the East. Is very productive and an excellent shipper. The fruit is large and somewhat pointed and of extra fine flavor. It makes a lot of extra large plants that hold the fruit well from the ground. The plants show no blemish of rust and is a sure cropper. We have a large stock of fine plants this season.

**St. Louis**---A free plant maker and stands the crowth well. Fruit extra large of light scale color, but not firm enough for shipment to distant markets. Very productive and a sure fruiter. A good one for the home market.

**Early Ozark**---Begins with the earliest and ripens its crop in a very short time. Fruit extra large and of good quality; very firm, and is classed by all buyers of berries as one of the best shippers. It is a general favorite as an extra early variety, and in productiveness is second to few. The plants are large and bushy, free from rust, and are very vigorous and productive.



A VIEW OF ONE C

**Sample**---Dark red and top-shaped in appearance, and a sure fruiter. One of the best imperfect varieties and so well known as to need no description; late.

**Hummer**---Bears a heavy crop of fair quality fruit. Good plant maker and free from rust. Is very popular in some sections but has not been largely grown in the East.

## DESCRIBES THE GREAT MONEY-MAKING VARIETIES

✓ **Golden Gate**---Is a strong plant maker and is entirely free from rust or any other disease. Does well on any soil and always brings forth a well matured crop of fancy berries. Midseason.

✓ **New York**---Where a fancy berry is wanted for the local market it is hard to beat, but is too soft for long shipments. Midseason.



KLONDYKE PATCHES

**Ryckman**---Fruit large and handsome, but scarcely firm enough for the Southern States. Flavor mild and considered good for table use; midseason.

✓ **Fendall**---One of the most productive sorts. Fruit large to very large when properly fertilized and has a long fruiting season. A good plant maker and entirely free from rust. Early to late.

**Haverland**---A well known and very popular variety. Makes large quantities of luscious red berries. Best results can be obtained by mulching, as the fruit stems of this berry are weak and can thus be kept from the ground.

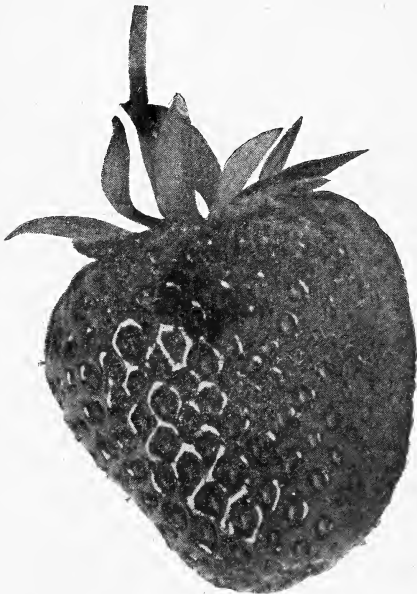
**Chipman**---A good variety for Northern sections. A good, all around berry of medium size, of the Klondyke type; very productive and ripens its crop in a few days. Plants are small and upright. A very good variety for either home or commercial purposes.

**Early Queen**---This variety has been tested in almost every section of the United States and seems to do well everywhere. The berry is very attractive, being large and of wedge-shape. A very strong plant maker and a great drouth resister. A great seller; early to mid-season.

**Uncle Sam**---As firm a berry as one could wish for distant shipments. The fruit is extra large and holds its size well until the last pickings. Color very dark red when fully ripe; ripens red all over, no green lips, and the dark color extends clear to the center. The flavor is considered excellent and one of its strongest points. The plants are strong and stalky, dark and healthy and free from rust. Its heavy foliage is a great frost protector.

**Climax**---Makes strong, healthy plants and does its best in low, springy soil. A sure money maker every season and does well in most any section. Fruit large, moderately firm and of good quality; very hardy and a sure cropper.

**Improved Marshall**---Very slight resemblance to the old Marshall, but a far more valuable berry. Fruit large to very large, colored through and through; flavor as fine as one could wish and firm. A moderate plant maker of choice, strong well rooted plants. Midseason to late.



REWASTICO

✓ **Rewastico**---This new berry was originated in this county and was introduced in 1913 by Mr. W. F. Allen, who says that he considers it the only real competitor the Chesapeake has and in some respects it even surpasses that popular variety. Our supply of this stock is large and very fine.

✓ **Bubach** --- This has long been the standard in many sections of the country and is still grown in great quantities. It does its best when planted in low, springy soil. It cannot be surpassed for the home market.

✓ **W. W. W.**---Makes an excellent plant growth and bears an enormous quantity of fruit of the very best quality and size; an ideal commercial variety and will bring a fancy price on any market. Mid-season.

✓ **Tennessee Prolific**---One of the best known varieties on the market and still very popular. Very productive of large, good quality fruit.

✓ **Helen Davis**---The quality is one of the strong points of the Helen Davis. Fruit is medium to large and holds up well in size and the calyx remains green. The crimson color extends to the center. Firm enough for a good shipper. Plants are productive and make a strong growth.

✓ **Heflin Early** ---A very popular variety in some sections, but a failure in others. Has its greatest popularity in the Carolinas and Virginia. Fruit is extra large and good quality, but a light bearer.

✓ **Michael's Early**---One of the oldest varieties and too well known for description. Is grown almost exclusively as a table berry and is perhaps unexcelled for that purpose.

✓ **Oaks Early**---A free plant maker and does well on any soil. Is a great favorite in the South and as far North as Delaware. Fruit medium size and of good quality.

✓ **Baltimore**---Has a beautiful color and ripens red to the center, and of mild, sweet flavor. Large and uniform in size and top-shaped. Another of the new ones that is coming to the front. The Baltimore is a great drouth resister.

✓ **New Superior**---This is one of the productive sorts that should be grown in all sections where there is danger of early frost; it is a continuous bloomer and if killed down will then bear a full crop. It is of the old Superior type, a great plant maker—in fact to give best results the vines should be cut off. Fruit is large and of fine quality, always reaching market in splendid condition, no matter what the weather. Especially recommended for the North.

✓ **Lea**---Fruit medium in size and of ordinary quality, bright red in color and very firm. An excellent plant maker and free from rust. One of the newer sorts that is coming into popular favor.



## DESCRIBES THE GREAT MONEY-MAKING VARIETIES



A FIELD OF THE POPULAR CHESAPEAKE

**Senator Dunlap** This berry seems to thrive in all sections, though it is planted principally in the North. A strong, healthy grower, although the plants are generally very small. The fruit is medium to large and of excellent quality; dark red and glossy, with seed showing prominently. A general favorite and will suit for most any use.

**Warfield** This is a very good variety; fruit large and of good quality. Moderately productive; plants strong and healthy.

**Norwood** A very fancy variety doing its best under good cultivation. The fruit is very large and of excellent flavor and every berry is a good one, though it is not very productive. The plants are healthy and make a moderate supply of

runners. The Norwood is supposed to be a cross between the Marshall and Corsican.

### The Matthews

Have you read what the introducer and others have to say about this wonderful new berry? It will be worth your while to investigate this matter at once. All berry growers are looking for extra good varieties; this seems to be one of them.



CLEARING NEW GROUND TO MAKE ROOM FOR MORE PLANT BEDS

---

## Fall Bearing Varieties

Every grower should include some of these wonderful fall-bearing varieties to his collection. It is only within the past few years that this goal has been reached—a continuous crop of delicious strawberries until cold weather. For full fall crops it is best to remove all blossoms and stems until about the middle of July, and in all other respects should be given the same care and cultivation as any other variety. If frost should cut the blossoms in the early spring it will do the plants no injury, as they will continue to bloom and make just as large a crop. There is always a demand for strawberries and, with the addition of the fall bearing varieties the season is extended until cold weather. Give them a trial.

**Progressive---**Without a doubt the best of all the fall bearing varieties. It is a strong plant maker. The fruit is highly colored and is red to the core; medium in size and of extraordinary quality. The flavor is unusually fine, especially the fruit produced in the fall. It not held too long after picking, will make long shipment in good condition. No one need hesitate to plant the Progressive. We recommend it to our friends.

**Superb---**The fruit is larger than that of the Progressive, and next to that well known variety is perhaps the most valuable fall bearing variety. The seeds are very prominent, resembling the Chesapeake, and is very attractive. Is a good plant maker but the young plants do not

produce fruit the first season. By growing them one summer like other berries a full crop may be picked in the regular season and then a second crop from mid-summer until frost.

✓ **Americus---**The plant is very healthy and a vigorous grower, producing berries medium to large in size, firm and uniform in shape; color bright red to the center. If late frosts cut the first fruit the plants will keep on bearing more, thus making it a very desirable variety.

---

*The great money-makers: Early Woodrow, Joe Johnson, Missionary, Chesapeake, Gandy and Klondyke. Be sure to try them.*

# DESCRIBES THE GREAT MONEY-MAKING VARIETIES

## Dewberry Plants

Every berry grower should add one of the dewberry varieties to his list. The dewberry seldom fails to produce a crop, and in this section is one of the best paying crops grown. They should not be planted where the soil is too rich, and should be set in the early spring. To obtain best results the plants should be given some support and not allowed to trail on the ground. The plants should be tipped in August and by the first of November should be well rooted.



LUCRETIA DEWBERRY

**Lucretia**---This is unquestionably the best variety of all the dewberries in cultivation today and is more extensively grown for market purposes. The fruit is large and handsome, rich black, and of the very finest quality. Is very hardy and extremely prolific and seems to thrive everywhere; is entirely free from insect attacks and rust.

Price: \$1.00 per 100 plants; \$6.00 per 100 plants; \$25 per 5000 plants; less than 100 lots at 100 rate.

**Austin**---The berries are very large and if not allowed to remain on the vines too long after they are ripe, they may be shipped a considerable distance. Ripens about a week earlier than the Lucretia and is of excellent quality, very hardy and seldom fails to produce a fine crop. A fine companion for the Lucretia and one of the best to be obtained.

Price: \$1.00 per 100 plants; \$6.00 per 1000 plants; \$25 per 5000 plants; less than 1000 lots at 100 rate.



AUSTIN DEWBERRY



## ✓ The Matthews

This new berry is attracting unusual attention at this time. It was originated by Mr. F. E. Matthews, of Somerset county, Md., who has thoroughly tested it out before placing it on the market. We have never fruited it but understand it to be an extra fancy early variety and with blossoms so strong that the frosts do not injure it. Mr. Matthews says:

"In writing this short description of my extra early strawberry "Matthews" I do so with the knowledge that berry growers generally are somewhat suspicious of these new varieties, and it is not to be wondered at as so many of them (I might say most of them) have been disappointments. I do not know, of course, how this berry will behave in the future, but judging from the way it has acted during the four years that I have fruited it, beside three or four years close observation of it in the spot where it first started in my peach orchard, I feel confident that it will prove entirely satisfactory and will please and pay all who plant and cultivate it properly. I surely think it will prove to be what growers have always been looking for, that is a fancy extra early berry. Remember, this is no second early, but ripens with the very earliest and no scrapping here and there either to fill a quart, as large quantities of fruit ripen at once; in other words, when it begins to ripen pickers must get busy. I have no hesitancy in saying and feel confident that of the many who have seen it fruiting there is not one but who will agree with me in stating that it is truly a Fancy Berry. This berry has a perfect blossom, plentifully supplied with pollen. It is of large size, beautiful deep red color with a large green cap. It is also immensely productive. The plants are large with plenty of dark green foliage, and is a very early bloomer, but the bloom must be very hardy as frost does not seem to damage it to any extent. I have never had a short crop and the berries have always brought the top price in home and city markets. The first picking, May 10, 1915, of 10 thirty-two quart crates, wholesaled for \$5.05 per crate at local shipping point. Eleven cents was the lowest price received for it in city markets last season.

"Read testimonials carefully as I have made it a point to only ask the opinion of persons who have been watching this berry ever since I have been fruiting it. Consequently their opinions are valuable."

Pocomoke City, Md., Jan. 19, 1916.

My dear Mr. Matthews:—Referring to your request for an expression of my judgment of the new strawberry "The Matthews," propogated by you and which you have been growing for several years, I beg to say:

As you know I have a number of times visited your farm and closely examined the said berry plants and their fruit. I have also a number of times noticed them in our local market. I must state that my observations fully convince me that you have an unusually valuable berry, a berry which is certainly the earliest I know, ripening fully a week ahead of the Missionary and being a much larger and more prolific than any other early variety. It also seems to be a berry that will carry good. Indeed I think your experience with it in putting it on the markets the past year shows that it is a good shipping berry. If you propose to market the plants this season and wish to refer any prospective buyer to me I shall take pleasure in giving the above opinion as to its merits. With best wishes I am, very truly yours,

COLMER E. BYRD, Cashier of Citizens National Bank.

Princess Anne, Md., Jan. 11, 1916.

My dear Mr. Matthews:—I have been visiting your farm for the last three years studying the new strawberry grown on your farm. I am glad to know you have called the berry "Matthews" for it deserves a good name. I consider this strawberry the earliest and most prolific I have ever seen, also of excellent size. The last time I was in your patch you remember I picked about four quarts without moving. This was a sight for the Horticulturist and I wish every one in the U. S. could have seen it. I also consider it one of the best shippers, as it holds up well.

Yours very truly,

H. S. LIPPINCOTT, Farm Demonstrator Somerset County, Md.

Mr. Matthews has many other testimonials equally as convincing but owing to lack of space we are unable to use them. We are offering this new variety to our customers for the first time at \$1.50 per 100 prepaid, \$10 per 1000

# DESCRIBES THE GREAT MONEY-MAKING VARIETIES

## Apple Trees

✓ **Stayman's Winesap**—Fruit medium large; skin green and yellow almost hidden by dark red stripes. Flesh yellow, firm; quality unexcelled. November to April. One of the best.

✓ **Mammoth Black Twigg**—One of the very best winter apples. Extra large in size; skin smooth, yellowish covered with deep red. Flesh tender, tinged with yellow, crisp, aromatic, of excellent quality in every respect and will keep in fine condition until summer apples come.

✓ **Grimes' Golden**—Skin golden yellow, sprinkled with gray dots, large size. Flesh tender, crisp and juicy. One of the very best. September to January.

✓ **Ben Davis**—Succeeds wherever apples are grown. Good keeper. Large, round, yellow with red stripes, Flesh white, juicy, sub-acid. Season November to March.

✓ **York Imperial**—(Johnson's Fine Weather.) Medium white, shaded with crimson in the sun, juicy, crisp, mild, sub-acid. Tree moderately vigorous and productive. This is a large and beautiful red winter apple, originating in Pennsylvania, where it is a great success. Its foliage and fruit are free from scab. Its skin is bright yellow covered with bright red and striped; it is a good shipper, bringing the highest prices. Its bright red sells the fruit. This is the leading variety in Pennsylvania. Very hardy and suitable to any part of the country.

✓ **Baldwin**—Large, roundish, skin-deep red; flesh juicy, crisp, sub-acid, good flavor; very vigorous and productive. The best all-around winter apple for New England and Northern States; Splendid keeper. December to March.

✓ **Northern Spy**—Large bright, light red and yellow. Flesh juicy, rich, crisp, tender, aromatic, of good flavor. Tree strong grower. November to March.

✓ **Early Harvest**—Ripens in August. Medium size; pale yellow; fine flavor. Tree a moderate grower and a good bearer.

	Each	10	100	1000
First class, 2 year, 5 to 6 feet.....	\$0.25	\$2.00	\$15.00	\$125.00
First class, 2 year, 4 to 5 feet.....	.20	1.50	12.00	100.00
First class, 1 year, 3 to 4 feet.....	.15	1.25	10.00	90.00

## Peach Trees

✓ **Ray**—Tree a fine grower. Fruit ripens early in August, of large size, very productive, white with red blush.

✓ **Greensboro**—Ripens here from June 25th to July 10th. Our earliest peach to ripen. Large in size, white in color with a red cheek, flesh rich and melting, very juicy; tree a strong grower. Anyone who has a yard or garden should set a few trees of this wonderful peach.

✓ **Elberta**—Ripens with us about the middle of August. Very large, skin golden yellow, with fine red cheek; flesh is yellow, juicy and extremely high flavored, a perfect freestone. This is the most successful variety yet introduced. Succeeds well both North and South and in any section of the country that will grow peaches; a hardy grower and medium to heavy bearer.

✓ **Carman**—Of Chinese type. A freestone when fully ripe; ripens here about the middle of July to first of August. Tree is rather low, spreading habit, has a dark foliage; very hardy in fruit buds and extremely productive. Fruit is large, rich creamy white and pink.

	Each	10	100	1000
First class, 1 year, 4 to 5 feet.....	\$0.15	\$1.30	\$8.00	\$70.00
First class, 1 year, 3 to 4 feet.....	.10	.80	7.00	70.00

NOTE:—No orders for assorted varieties of either apples or peaches will be accepted for less than 5 trees.

# 1916 Price List of Strawberry Plants

	100	500	1000
Rewastico .....	.65	2.00	4.00
Pride of Somerset .....	.75	2.50	5.00
Wilkins Early .....	.75	2.50	5.00
<b>Missionary</b> .....	<b>.50</b>	<b>1.25</b>	<b>2.50</b>
<b>Chesapeake</b> .....	<b>.65</b>	<b>2.00</b>	<b>4.00</b>
Excelsior .....	.50	1.50	2.50
Climax .....	.50	1.60	2.50
Lea .....	.50	1.60	3.00
Heflin Early .....	.50	1.60	3.00
Superior .....	.50	1.60	3.00
St. Louis .....	.45	1.50	2.50
Warfield .....	.50	1.50	2.50
Early Ozark .....	.65	1.50	3.00
Michaels Ear'y .....	.50	1.25	2.50
Early Queen .....	.65	1.50	3.00
Chipman .....	.50	1.50	3.00
Success .....	.65	1.50	3.00
Ekey .....	.50	1.50	3.00
Lady Thompson .....	.50	1.25	2.50
<b>Klondyke</b> .....	<b>.50</b>	<b>1.25</b>	<b>2.50</b>
Tenn. Prolific .....	.50	1.25	2.50
Helen Davis .....	.50	1.50	3.00
Wilson .....	.50	1.50	3.00
Senator Dunlap .....	.50	1.25	2.50
Haverland .....	.50	1.50	3.00
Twilley .....	.50	1.50	3.00
Glen Mary .....	.65	1.50	3.00
Wm. Belt .....	.65	1.25	2.50
Parsons Beauty .....	.50	1.25	2.50
New York .....	.50	1.60	3.00
Bubach .....	.50	1.25	2.50
Fendall .....	.65	1.25	2.50
W. W. W. ....	.65	1.25	2.50
<b>Early Woodrow</b> .....	<b>1.50</b>	<b>5.00</b>	<b>10.00</b>
Kellog's Prize .....	.75	1.50	3.00
Sample .....	.50	1.50	3.00
Barkley .....	.65	2.00	4.00
Marsha'l .....	.75	2.50	5.00
Ryckman .....	.65	2.00	4.00
Masey .....	.65	1.60	3.00
Norwood .....	.65	1.50	3.00
Baltimore .....	.65	2.00	4.00
<b>Joe Johnson</b> .....	<b>.65</b>	<b>1.50</b>	<b>3.00</b>
Brandywine .....	.50	1.50	3.00
Mascot .....	.50	1.50	3.00
<b>Gandy</b> .....	<b>.50</b>	<b>1.25</b>	<b>2.50</b>
Nic Ohmer .....	.50	1.25	2.50
Aroma .....	.50	1.50	3.00
Stevens' Late Champion .....	.50	1.25	2.50

## Fall Bearing Varieties

	12	25	50	100	200	500	1000
Progressive .....	.35	.50	.75	\$1.50	\$2.50	\$5.00	\$10.00
Supurb .....	.35	.50	.75	1.50	2.50	5.00	10.00
Americus .....	.35	.50	.75	1.50	2.50	5.00	10.00

Write Us for Special Prices on Large Quantities



## DESCRIBES THE GREAT MONEY-MAKING VARIETIES

### ✓ **St. Regis Raspberry**

This is generally conceded to be the best raspberry grown at this time. It is the earliest of all raspberries, beginning to ripen at the close of the strawberry season. The berries are red, of a bright crimson and of very large size. Plants set in the early spring will produce a small crop of fruit the following fall, and beginning in the spring will yield enormous crops of fruit until late fall. The St. Regis succeeds on all soils, whether light or heavy, and stands severe cold weather without damage, being absolutely hardy. To say nothing of its fall-bearing qualities it is decidedly ahead of anything as a spring or summer variety in size, quality and quantity. The St. Regis is very popular at this time and seems to thrive in all sections. Our customers who have not done so, should try them out—they will swell your bank account. Price per 500, \$6.00; per 1000, \$12.00. No order received for less than 500.

---

---

### **Important to Nurserymen.**

We make a specialty of filling nurserymen's orders and supply some of the largest nurserymen in the United States. In cases of shipment to distant points, we will send your orders direct with your own shipping card attached. And we promise not to take the name and address of your customer either. Let us have your orders and they will receive the same prompt and careful attention that we give our own. Our stock is very large and as good as can be grown, especially of the standard varieties.

Yours very truly,

**Wilkins & Company**  
Salisbury, Maryland

