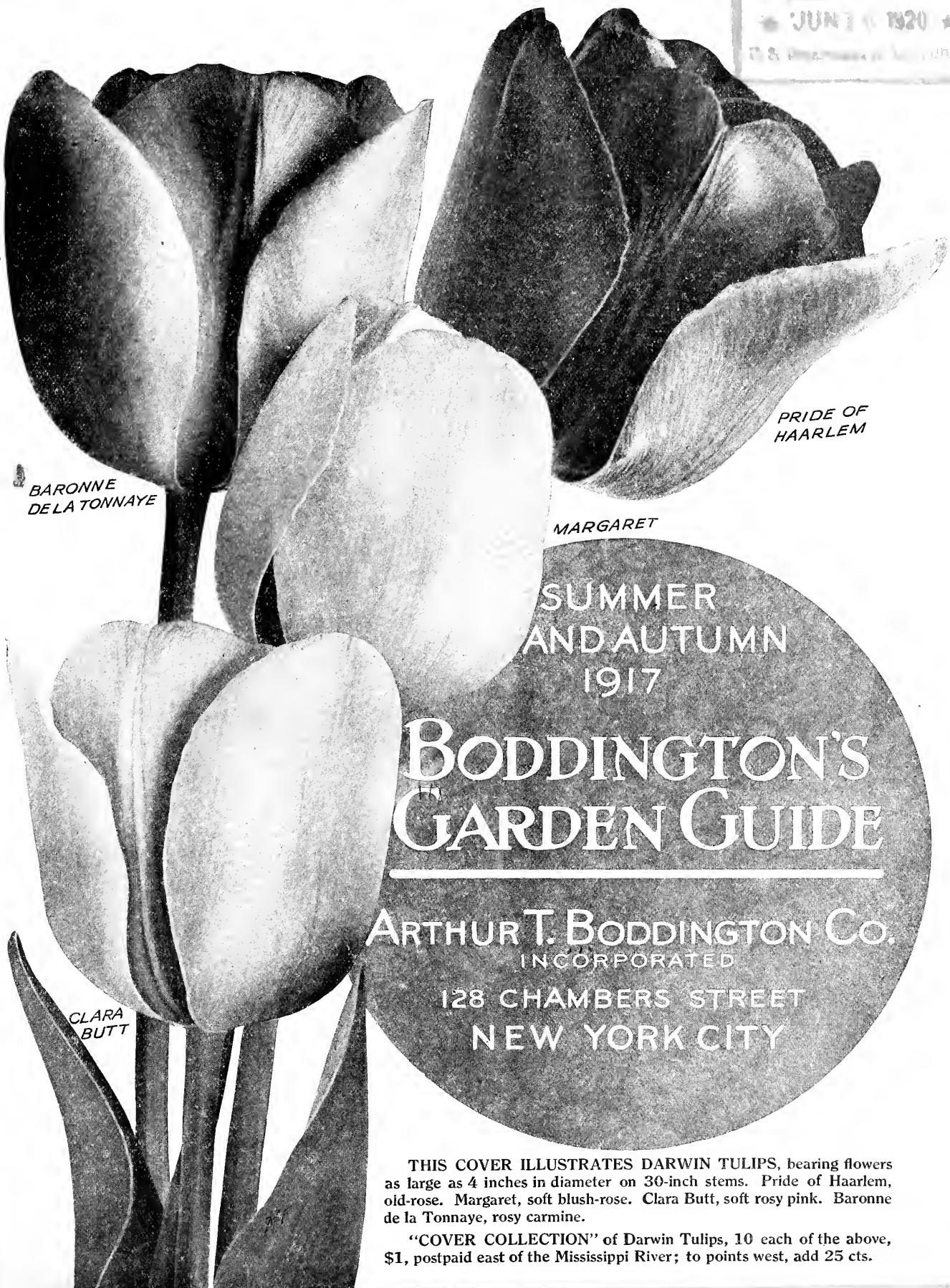


Historic, Archive Document

Do not assume content reflects current scientific knowledge, policies, or practices.

62.61

LIBRARY
JUN 10 1920
U. S. DEPARTMENT OF AGRICULTURE



BARONNE
DE LA TONNAYE

PRIDE OF
HAARLEM

MARGARET

CLARA
BUTT

SUMMER
AND AUTUMN
1917

BODDINGTON'S GARDEN GUIDE

ARTHUR T. BODDINGTON CO.
INCORPORATED
128 CHAMBERS STREET
NEW YORK CITY

THIS COVER ILLUSTRATES DARWIN TULIPS, bearing flowers as large as 4 inches in diameter on 30-inch stems. Pride of Haarlem, old-rose. Margaret, soft blush-rose. Clara Butt, soft rosy pink. Baronne de la Tonnaye, rosy carmine.

"COVER COLLECTION" of Darwin Tulips, 10 each of the above, \$1, postpaid east of the Mississippi River; to points west, add 25 cts.

FOREWORD

At this time America holds much in trust for humanity. Not the least, in our opinion, is the preservation and perpetuation of the wonderful achievements of the Holland bulb specialists.

For the past two years the Dutch bulb-growers have lost enormously through being cut off from their principal markets in England, Germany, and France, and were we in America also to abstain from planting, it would mean that Holland bulb cultivation would have to cease altogether, and many of the marvelous introductions in Tulips, Narcissi, etc., which have added so much beauty to our parks and gardens, would disappear from cultivation and be lost forever.

We deplore the underlying principle of much that has been advocated by speakers and writers against the purchase of certain so-called "luxuries," including flowers, bulbs and flower seeds. Must we abandon all the refining and humanizing influences that go to make life worth living? We feel assured that horticulture will not be allowed to deteriorate in America during this critical period for the world, and future generations will admit a debt to this country, not only for its material aid in the cause of freedom, but because America kept aloft the torch of human achievement in the arts of civilization.

ARTHUR T. BODDINGTON COMPANY, Inc.

SEEDS and BULBS; Free Delivery Terms

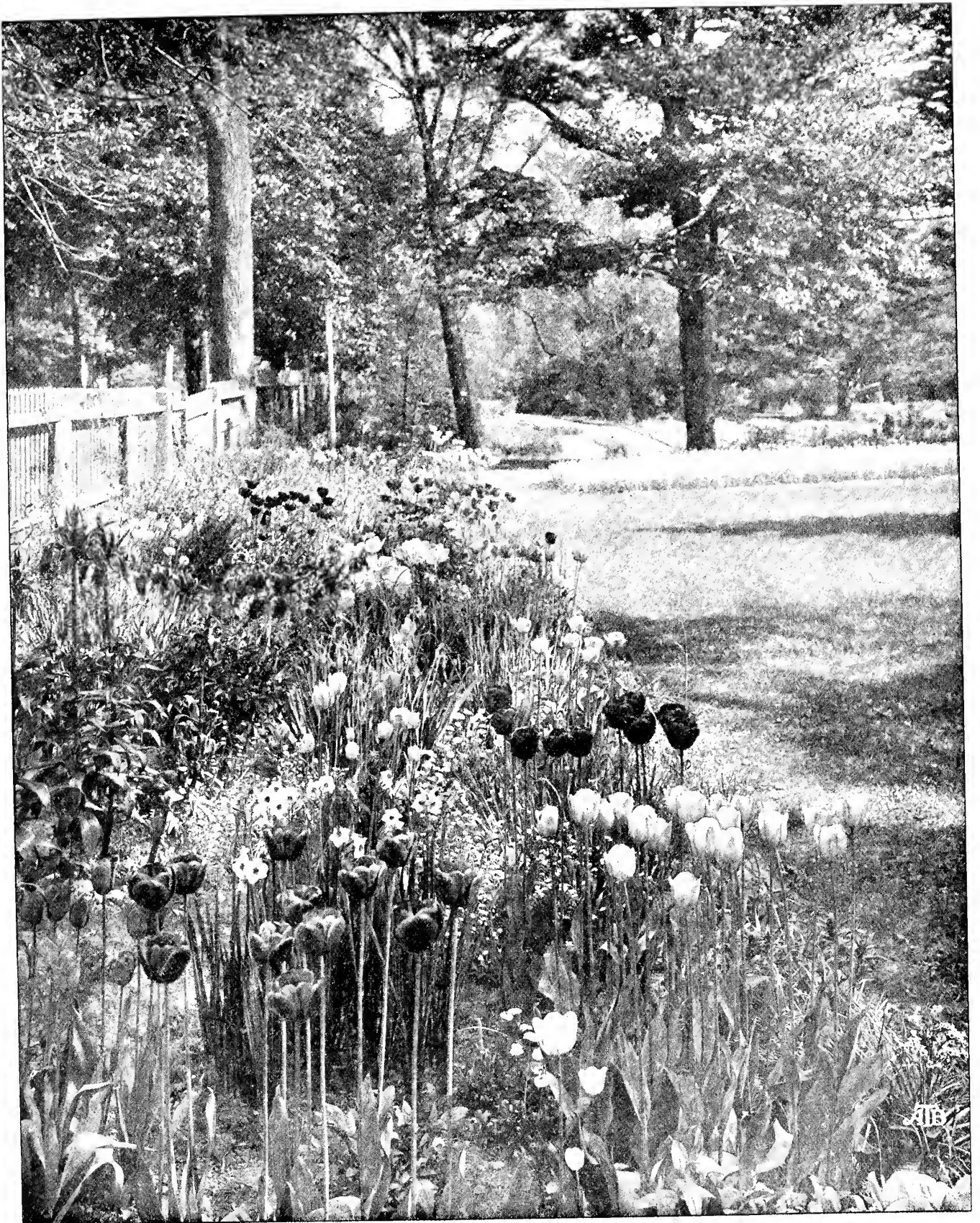
We deliver all Seeds and Bulbs free anywhere in the states east of the Mississippi River at prices named in this catalogue, if your purchase amounts to One Dollar or over, and cash accompanies the order, by parcel post, express, or freight, at our option, to your town or city. Customers west of the Mississippi River are recommended to have their shipments forwarded by express, but shipments by parcel post can be made if desired. In either case, 15 per cent of the value of the order must be added to amount of the remittance to cover the extra expense of delivery west of the Mississippi. On Miscellaneous Garden Supplies, Implements, Fertilizers, Insecticides, Potatoes, Grass Seeds, Plants, Spirea, and Lily-of-the-Valley clumps, we do not pay postage, express, or freight charges.

REMITTANCES should be made by Draft on Bank, Post-Office Order, Registered Letter or Express Money Order. When Personal Checks are sent, please add 10 cts. for exchange. Small sums may be sent in loose postage stamps of small denominations. Particular care is essential in having name, post office, county and state distinctly written. We are in receipt of many orders deficient in these important particulars, often causing a delay of weeks in executing them, to the great inconvenience of both parties. Charge accounts are readily opened to all persons of approved credit.

NON-WARRANTY.—Arthur T. Boddington Company, Inc., give no warranty, express or implied, as to description, quality, productiveness, or any other matter, of any Seeds, Bulbs, or Plants they send out, and will not be responsible for the crop. If the purchaser does not accept the goods on these terms, they are at once to be returned. All claims must be made within 5 days after receipt of goods.

TO FOREIGN AND COLONIAL CUSTOMERS

We do not prepay transportation charges to foreign countries, or to the outlying territories or colonial possessions of the United States. It is, however, our practice to add extra articles wherever practicable, to offset the cost of transportation.



DARWIN TULIPS AND NARCISSI

BODDINGTON'S "QUALITY" DARWIN TULIPS

Darwins form a distinct class of Tulips, and one can easily tell Darwins from other late Tulips by the cup-shape of the flowers, the robust growth of almost every one of them, and the white, blue or black, but never yellow, markings inside at the base of the flowers. If the base is yellow, it is not a Darwin. Another notable characteristic is that, when looking into the flowers, they are just as beautiful, and, in some instances even more beautiful than when looking at the outside, which is never so with any other Tulips. And the greatest difference between Darwins and other late Tulips is that almost every Darwin can be forced, some of them by the middle of February. With their long stems and their bright colors ranging from white through all the shades of pink and purple to the most fiery scarlet, they form an exquisite material for garden decoration. There are no yellow Darwins. Those that are sold as yellow are either Cottage Tulips or Breeders, and can be found under those heads in our list.

Planted in the herbaceous border, they make a great show in late May and June. Flowers are large and borne upon tall, erect stems. To secure the best effects, plant five to twenty bulbs in a group.

Outdoor Culture.—The bulbs should be planted about 5 inches deep and not less than 5 inches apart. A position sheltered from strong winds should be selected if possible. The best time to plant the bulbs is from October 15 to November 15, though they may be planted later than this, provided the place selected has been protected with a mulching of manure to prevent frost entering the ground. This mulching should not be renewed after the bulbs have been planted, as it tempts mice and moles to make the flower-bed their winter quarters, during which time they devour the bulbs. For the culture of Darwin Tulips in pots and pans, see Early Tulips.

Those marked with a star (*) are especially recommended for forcing

- ANTON ROOZEN.** Large-flowering; rosy pink. Height 26 in. 45 cts. per doz., \$2.75 per 100, \$25 per 1,000.
- ***BARONNE DE LA TONNAYE.** Clear, rosy carmine; flowers are large, well formed, and keep their brightness to the last. The stems are very tall and strong. One of the best bedding Darwins. Height 26 in. 35 cts. per doz., \$2.25 per 100, \$21 per 1,000.
- ***Bartigon.** Fiery red. Excellent forcer. Height 26 in. 55 cts. per doz., \$3.75 per 100, \$35 per 1,000.
- Bleu Aimable.** Bright violet-purple, shaded steel-blue; inside dark violet-purple with a blue base; very large. Height 26 in. \$2 per doz., \$14 per 100.
- Bleu Celeste.** Light blue, very distinct. Height 30 in. \$2.50 per doz., \$18 per 100.
- City of Haarlem.** The largest of the scarlet Darwins. Brilliant scarlet, with pure white center. Height 32 in. \$3.50 per doz., \$25 per 100.
- CLARA BUTT.** Beautiful, soft rosy pink. Height 24 in. 40 cts. per doz., \$2.50 per 100, \$24 per 1,000.
- Dal Ongaro.** Pale lavender-violet; large flower. Height 24 in. \$1.50 per doz., \$9 per 100.
- DREAM.** Soft lilac. Height 27 in. 55 cts. per doz., \$3.75 per 100, \$35 per 1,000.
- Electra.** Soft lilac; a splendid variety. Height 28 in. 60 cts. per doz., \$4.25 per 100, \$40 per 1,000.
- ERGUSTE.** Soft violet, with a slight silvery flush; white base; inside, dark violet. Height 26 in. 75 cts. per doz., \$5.50 per 100, \$50 per 1,000.
- EUTERPE.** Brilliant clear lilac. Height 26 in. \$1 per doz., \$7 per 100.
- Europe.** Fiery salmon-scarlet, white center. Height 22 in. 50 cts. per doz., \$3.25 per 100, \$30 per 1,000.
- FARNCOMBE SANDERS.** Fiery scarlet; large. Height 25 in. 60 cts. per doz., \$4 per 100, \$35 per 1,000.
- Faust.** Dark violet, almost black; unique. Height 30 in. \$1.30 per doz., \$10 per 100, \$90 per 1,000.
- Feu Brillant.** Brilliant clear scarlet; large. \$1.25 per doz., \$8 per 100, \$75 per 1,000.
- Fra Angelico.** Deep glossy maroon. One of the finest of this color. Height 26 in. 75 cts. per doz., \$5 per 100.
- GLOW.** Brilliant glowing vermilion, center blue, margined white. Height 23 in. 55 cts. per doz., \$3.50 per 100, \$30 per 1,000.
- Isis.** Glowing vermilion; one of the brightest-colored Darwins; very fine. Height 26 in. 60 cts. per doz., \$4.25 per 100, \$40 per 1,000.
- ***King Harold.** Purple-red; unique. Height 24 in. 45 cts. per doz., \$2.75 per 100, \$25 per 1,000.
- LA TRISTESSE.** Dull slaty blue, with a white base. Height 26 in. 80 cts., per doz., \$6 per 100, \$55 per 1,000.
- LA FIANCEE.** Lilac-rose, fading to light rose at the edge; very large and handsome. Height 26 in. \$3 per doz., \$20 per 100.
- LOVELINESS.** Soft rosy carmine, exquisite color. Height 21 in. 45 cts. per doz., \$2.75 per 100, \$25 per 1,000.
- MME. JULIE VINOT.** Vivid rosy pink, with white base. A large-sized Darwin of sturdy habit. Height 26 in. 60 cts. per doz., \$4.25 per 100, \$40 per 1,000.
- May Queen.** Beautiful soft rose; one of the finest of its color. Height 26 in. 50 cts. per doz., \$3.25 per 100, \$30 per 1,000.
- MARGARET** (Gretchen). Beautiful globular flower; outside blush, inside soft blush-rose. The cup-shaped flower is borne on a strong stem; medium size. Height 22 in. 35 cts. per doz., \$2.25 per 100, \$20 per 1,000.
- Massachusetts.** Beautiful light rose; most attractive. Height 26 in. 50 cts. per doz., \$3.25 per 100, \$30 per 1,000.
- Massenet** (syn. The Dove). Soft apple-blossom, flushed white, center white; good-sized flower of very delicate beauty. The latest bloomer of all. Height 24 in. \$3 per doz., \$20 per 100.
- ***Mrs. Krelage.** A large flower of purplish rose, with a broad margin of blush-pink; on a very tall stem. Stands forcing splendidly and produces a flower of a very pleasing color. Height 28 in. 45 cts. per doz., \$2.75 per 100, \$25 per 1,000.
- Mrs. Grover Cleveland.** Beautiful delicate flesh-color; on a tall stem. Height 24 in. 45 cts. per doz., \$2.75 per 100, \$25 per 1,000.
- MRS. POTTER PALMER.** Bright purplish violet; large flower. Height 28 in. 70 cts. per doz., \$5 per 100, \$48 per 1,000.
- Noire, La Tulipe.** The historic black Tulip. Height 25 in. \$1 per doz., \$7 per 100, \$65 per 1,000.
- ***PAINTED LADY.** Creamy white, flushed light lilac. Very effective when used as a border around a bed of one of the scarlet varieties. Height 27 in. 50 cts. per doz., \$3.25 per 100, \$30 per 1,000.
- PHILIPPE DE COMMINES.** Velvety dark purple; large flower on strong stem. Height 24 in. 55 cts. per doz., \$3.50 per 100, \$32 per 1,000.
- ***PRIDE OF HAARLEM.** Old-rose flowers of great size and fine form. Most flowers have more than six petals, which gives them a semi-double form. The best Darwin Tulip of its color. Height 3 ft. 45 cts. per doz., \$3 per 100, \$28 per 1,000.
- Prince of the Netherlands.** Glowing cerise-scarlet, flushed salmon-rose; extra-large flower. Height 30 in. \$1.50 per doz., \$10 per 100.
- ***Prof. Rauwenhoff.** Splendid; salmon-red. Early forcer, and beautiful bedding variety. Height 28 in. 70 cts. per doz., \$4.75 per 100, \$45 per 1,000.
- ***PSYCHE.** Soft rose; enormous long-stemmed flower. This is one of the Darwins which is even more beautiful when you look into the cup than when you look at the outside of the flower. It is one of the earliest forcers. Height 26 in. 60 cts. per doz., \$4 per 100, \$37.50 per 1,000.
- Purple Perfection.** An extra-fine dark purple. Height 23 in. \$1.25 per doz., \$9 per 100.
- PYGMALION.** Purplish red; large flowers. 75 cts. per doz., \$5 per 100, \$48 per 1,000.
- Queen of Brilliants.** Large, deep; full rose, shaded scarlet. Height 25 in. 60 cts. per doz., \$4.25 per 100, \$40 per 1,000.
- Rev. Ewbank.** Heliotrope-lilac, flushed silver-gray. Height 22 in. 55 cts. per doz., \$3.50 per 100, \$32 per 1,000.
- REV. HARPER CREWE.** Amaranth-red, edged deep mauve; inside brilliant crimson-carmine, with blue base. Height 25 in. \$1 per doz., \$7 per 100.
- RONALD GUNN.** Clear violet, with white centers; extra-large flower. Height 23 in. 35 cts. each, \$2.25 per doz., \$15 per 100.
- Seylla.** Fiery red; a striking variety. Height 26 in. 45 cts. per doz., \$2.75 per 100, \$25 per 1,000.
- THE SULTAN.** Maroon-black; very showy. Height 25 in. 35 cts. per doz., \$2.25 per 100, \$20 per 1,000.
- VALENTIN.** Light violet, with electric-blue center; large and bold flower. Height 30 in. \$2 per doz., \$13 per 100.
- WHITE QUEEN, or La Candeur.** White. Can be called the only white Darwin. It opens rosy white, but passes to pure white. One of the most popular varieties; forces easily. Height 24 in. 50 cts. per doz., \$3.25 per 100, \$30 per 1,000.
- ***WILLIAM COPELAND.** The best early forcing Darwin. May be flowered to perfection early in January; its color, when forced, is a delicate lavender. For outdoor planting we do not recommend it, as the color is a common rosy lilac in the open. Height 25 in. 60 cts. per doz., \$4.25 per 100, \$40 per 1,000.
- Zulu.** Blue-black; very distinct form; a splendid and very remarkable flower. Height 32 in. \$1.50 per doz., \$7 per 100, \$65 per 1,000.
- BODDINGTON'S QUALITY MIXED.** A fine mixture of all the best named varieties. \$1 per doz., \$5.50 per 100, \$50 per 1,000.
- BODDINGTON'S SPLENDID MIXED.** 35 cts. per doz., \$2.25 per 100, \$20 per 1,000.

COTTAGE or MAY-FLOWERING TULIPS

For Planting among Herbaceous Plants and Formal Borders of Shrubbery, etc.

The difference between this class of Tulips and the Darwins is, in some instances, merely a botanical one, of little importance to the horticulturist, consisting of an inconspicuous yellow marking at the base of the petal inside the cup. Some varieties of Cottage Tulips are as large as the Darwins and have petals of obtuse shape. Many of them do not grow so tall as the Darwins, and a majority of the varieties have pointed petals which give the flower a chalice shape, as will be seen in the accompanying illustration of the variety Picotee. They flower in May and June at the same time as the Darwins, and the majority of the varieties are equally desirable.

Bizarres. Handsome, rich flowers, with yellow ground, feathered or striped with crimson, purple and white. Finest mixed.....	Doz.	100	1,000
	\$0 30	\$2 00	\$18 00
Bouton d'Or. Has deep, clear yellow, globular, medium-sized blossoms, with curious black-anthered stamens: Height 20 in.....	35	2 50	22 00
Bybloems, Violets. Late Tulips, with white ground, blotched, striped or feathered with lilac, purple, violet, blue or black; extremely handsome and effective. Finest mixed.....	35	2 25	20 00
Bybloems, Rose shades. Superfine mixed....	35	2 25	20 00

CALEDONIA. Bright orange; very beautiful variety. Height 20 in. 40 cts. per doz., \$2.50 per 100, \$22 per 1,000.

Carnation. White, changing to rose. An improved form of Picotee; larger and more handsome. 55 cts. per doz., \$3.75 per 100, \$35 per 1,000.

CYGNET. White, with black anthers, giving the flowers a very distinct appearance. Height 20 in. 60 cts. per doz., \$4.25 per 100, \$40 per 1,000.

CYCLOPS. Beautiful scarlet, with yellow center and black anthers; very distinct. Height 24 in. 70 cts. per doz., \$4.75 per 100, \$45 per 1,000.

Chameleon. Pale heliotrope, flaked maroon on a canary-yellow ground; very rare. \$6 per doz., \$45 per 100.

Doris. Large globular flower; lilac-rose flushed silvery gray; very tall. 50 cts. per doz., \$3.25 per 100, \$30 per 1,000.

Elegans. Dark crimson, beautifully reflexed. Height 15 in. 45 cts. per doz., \$2.75 per 100, \$25 per 1,000.

ELLEN WILLMOTT. Undoubtedly one of the finest May-flowering Tulips. Flowers very large; beautiful in form and of a soft creamy yellow; very fragrant. Height 18 in. 65 cts. per doz., \$4.50 per 100, \$42 per 1,000.

Flava. Beautiful soft lemon-yellow. Fine for massing in beds of single color. Height 25 in. \$1.50 per doz., \$10 per 100.

GALA BEAUTY, or COLUMBIA. Elotched vermilion and golden yellow. Height 20 in. Doz. 100 1,000 \$2 00 \$15 00

Gesneriana spathulata or major. This variety has long been in cultivation. The beautifully curved flowers are brilliant scarlet, with a bluish black center, on tall stems. Height 24 in..... 35 2 25 \$20 00

Gesneriana macrospeila. Crimson-scarlet, black and yellow center. Height 24 in..... 25 1 75 15 00

Gesneriana lutea. Beautiful yellow; tall and handsome. Height 24 in..... 45 2 75 24 00

Gesneriana ixioides. Beautiful yellow, with black center. Height 22 in..... 1 25 9 00

Greigii. The beautifully formed flowers are of large size and of a gorgeous orange-scarlet color, so brilliant as at once to attract the attention. The plant is quite ornamental, on account of its broad, spotted foliage. Height 9 in..... 2 00 15 00

INGLESCOMBE SCARLET. Very brilliant scarlet, black base; an excellent variety. Height 20 in..... Doz. 100 1,000 \$0 50 \$3 25 \$30 00

INGLESCOMBE YELLOW. A large, canary-yellow flower of perfect form, glossy and very beautiful. Height 21 in..... 70 4 75 42 00

INGLESCOMBE PINK. One of the best pink sorts. Height 24 in..... 40 2 50 22 00

Isabella, or Shandon Bells. The petals are a rose color, flushed or flaked with white when they are first open, and after two or

three days change to a suffused deep rose and red. Remains longer in bloom than many others; stands well when cut. Height 20 in. 30 cts. per doz., \$2 per 100, \$18 per 1,000.

La Merveille. A magnificent variety, with very large, sweet-scented blossoms. Salmon-rose, overlaid with orange-red. A good border variety. Height 20 in. 40 cts. per doz., \$2.50 per 100, \$22 per 1,000.

Mrs. Kerrell. Light rose, with dull amber tinge; center white, bordered electric-blue. \$4 per doz., \$30 per 100.

Maiden's Blush, or Picotee. Clear white, margined on the edge with pink. When it opens, the petals are white and margined or penciled with pink to cerise. After two or three days the flowers change to a deep rose, and, unless one is acquainted with it, it would not be recognized as the same Tulip. It stands well when cut. Height 20 in. 30 cts. per doz., \$2 per 100, \$18 per 1,000.

MOONLIGHT. A big, oval-shaped flower of unusual substance on a very tall and strong stem. The color is soft yellow and pleasing, like that of moonlight, hence its name. One of the best novelties. Height 25 in. \$1 per doz., \$7 per 100.

MRS. MOON. The finest late yellow; beautifully reflexed petals. A charming variety. Height 25 in. \$1 per doz., \$6 per 100, \$55 per 1,000.



Picotee or Maiden's Blush Tulips

Parisian White (La Candeur). White, passing to light pink. Height 16 in..... Doz. 100 1,000 \$0 40 \$2 50 \$22 00

PRIMROSE BEAUTY. Soft primrose, changing to white. Height 16 in..... 45 3 00 28 00

Royal White. Pure white with yellow center. Height 15 in..... 60 4 00 37 00

Striped Beauty. Rose, flaked deep crimson and white; immensely pretty. Height 18 in. 50 3 25 30 00

THE FAWN. Very large, oval flower; light grayish rose, changing to soft rosy white. Height 20 in..... 50 3 25 30 00

Vitellina. Pale primrose, passing off to pure white; tall and exceedingly handsome. Height 20 in..... 50 3 25 30 00

Boddington's "Quality" Superfine Mixture of May-flowering Tulips, for acclimating and for planting in herbaceous or shrubby borders..... 30 1 75 15 00

Parrot or Dragon Tulips

Parrot Tulips flower in May. Their marvelously striped and colored petals have slashed edges. The bulbs should be planted not more than 4 inches apart, as they are rather shy bloomers.

Admiral de Constantinople. Large; red, yellow edge.....	Doz. 100	1,000
	\$0 30	\$18 00
Cramoisi Brillant. Rich blood-crimson, with bluish markings.....	30 2 00	18 00
Lutea major. Large; showy yellow.....	30 2 00	18 00
Markgraaf von Baden. Red and yellow, orange inside; very showy.....	30 2 00	18 00
Perfecta. Yellow, striped red.....	30 2 00	18 00
Boddington's "Quality" Superfine Mixed Parrot Tulips	25 1 75	16 00

Rembrandt Tulips

Rembrandt Tulips are simply queerly striped and feathered Darwin Tulips. They resemble Bybloems, but are larger, and there is more variety in the colors.

	Each	Doz.	100
Aladdin. Lilac, striped amaranth.....	\$0 08	\$0 75	\$5 00
Crimson Beauty. Carmine and white, flamed dark red.....	08	75	5 00
La Coquette. Lilac and white, striped black; very handsome.....	08	75	5 00
Purity. Almost entirely white, with delicate rose stripes.....	08	75	5 00
Titania. Rosy lilac and white, striped red ..	08	75	5 00
Victor Hugo. Carmine, flamed white.....	08	75	5 00
Mixed Superfine		50	3 00

Breeder Tulips—Self-Colored

To those in search of the unusual for group-planting in the perennial border, the Breeder Tulips (flowering in late May) present a fascinating choice. The most refined and artistic color combinations and soft blendings and graduations of purple, buff, bronze, maroon, and terra-cotta are here revealed to the garden enthusiast exploring this class.

Breeder Tulips are noticeably sweet scented. They are closely allied to the Darwins and some of the varieties bear even larger flowers and are of more vigorous growth than that well-known class. Cultural directions same as for Darwin Tulips.

Bronze Queen. Large flowers; light bronze. Height 28 in. 10 cts. each, \$1 per doz., \$6.50 per 100.
Cardinal Manning. Dull wine-red and bronze; an enormous flower of a peculiar color. Height 30 in. 7 cts. each, 60 cts. per doz., \$4 per 100.
Dom Pedro. A very beautiful bronze variety. Height 24 in. 30 cts. each, \$3 per doz., \$23 per 100.
Faery (Panorama). Reddish mahogany; extra large. 15 cts. each, \$1.50 per doz., \$10 per 100.
Godet Parfait. Bright violet with white base; very large bloom. Height 30 inches. 12 cts. each, \$1.25 per doz., \$9 per 100.
Jaune d'Oeuf (Sunrise). Orange-red. Height 21 in. 7 cts. each, 60 cts. per doz., \$4 per 100.
Louis XIV. Dark purple, with broad margin of gold. One of the best. Height 30 in. 75 cts. each, \$7.50 per doz., \$50 per 100.
LUCIFER. Bright terra-cotta-orange; very pretty. Height 20 in. 25 cts. each, \$2.50 per doz., \$15 per 100.

Marie Louise. Old-rose flushed orange-salmon. Height 23 in. 12 cts. each, \$1.25 per doz., \$8 per 100.
Media. Salmon-carmine; large flower. Height 26 in. 7 cts. each, 60 cts. per doz., \$4 per 100.
Prince of Orange. Orange-red, light border. Height 27 in. 10 cts. each, 75 cts. per doz., \$5.50 per 100.
Queen Alexandra. Soft sulphur-yellow with black anthers. 8 cts. each, 75 cts. per doz., \$5 per 100.
Tarenne. Purplish brown, with broad margin of soft yellow. One of the largest of all and very early. Height 30 in. 20 cts. each, \$2 per doz., \$12 per 100.

VELVET KING. Shining purple; enormous flowers. Height 25 in. 20 cts. each, \$2 per doz., \$15 per 100.
Yellow Perfection. Light bronzy yellow, edged golden yellow. Height 24 inches. 15 cts. each, \$1.50 per doz., \$10 per 100.
Mixed Superfine. 5 cts. each, 45 cts. per doz., \$3 per 100, \$28 per 1,000.



Boddington's Early Bedding Tulips

BODDINGTON'S EARLY TULIPS

FOR BEDDING OR FORCING. FIRST-SIZE FLOWERING BULBS ONLY

CULTURAL DIRECTIONS

Tulips in Pots and Pans.—Seven bulbs planted in a 6-inch pan are very satisfactory. It is important in the pot culture of Tulips to have rich, light soil. Cover the hole in the pot with a piece of broken pot, and over this place a half-inch layer of moss or grass roots which will keep the soil from clogging the drainage thus provided. In potting, place each bulb so that its top shall be half an inch below the surface of the soil and an inch below the rim of the pot. The soil should be of usual natural moisture and should be pressed moderately firm. The filled pots may be placed in a coldframe where there is protection from frost or in the coolest part of the cellar; keep well watered. In many houses the furnace will keep the cellar too warm. An excellent plan is to place them on a bed of moist, sifted coal-ashes, covering the pots to a depth of 6 inches with the same material. When well rooted, which will be in about twelve to fourteen weeks, the bulbs may be brought indoors and forced. For the first two or three weeks they should be kept in a temperature not exceeding 50 degrees. **Success in forcing depends much on their having strong roots before being brought to the light.** The top grows rapidly, and unless the roots are started much in advance they are unable to nourish the plant, and failure results. Tulips for forcing must be potted in September or October. The blooms last much longer if shaded from the sun after they show color. The varieties preceded by a star (*) are the best for forcing.

Outdoor Culture. There is one important difference between hyacinths and Tulips. Under similar treatment most hyacinths flower about the same time, while Tulips come into bloom at successive periods. The divergence has frequently been the source of much disappointment, for, in a bed (or even a vase or pot) planted with different Tulips, one variety may be overblown before the others show their colors.

The figures following the varieties indicate earliness in flowering, No. 1 being the earliest; No. 2 following; No. 3 being still a little later, but coming into bloom before the No. 2's are out. The height is indicated by "D" for dwarf, "M" for medium, "T" for tall. Tulips for bedding should be planted about 6 inches apart and about 4 inches deep, reckoning from the tops of the bulbs.

Arrangements of Color Schemes for Bedding, etc.

For brilliant bedding effects, solid masses of color are to be preferred, especially for design bedding.

Prince of Austria and Vermilion Brilliant.
Chrysolora and Belle Alliance.
Couleur Cardinal. Bedded by itself makes one of the most beautiful beds.

Duchesse de Parma and La Reine.
La Reine and Artus.
Maes. Unsurpassed when bedded alone.
Pottbakker White and Chrysolora.

Pink Beauty and Ophir d'Or.
Rose Gris-de-Lin. Separate in one bed.
Keizerkroon. Makes a unique bed.
Cramoisi Brillant and Ophir d'Or.

Single Scarlet and Crimson

	Doz.	100	1,000
Artus. 2 D. Dark scarlet.....	\$0 25	\$1 75	\$15 00
* Belle Alliance. 2 D. Scarlet; good bedder or forcer.....	45	2 75	25 00
* Couleur Cardinal. 3 T. Crimson-scarlet...	60	4 25	39 00
Cramoisi Brillant. 3 T. Bright scarlet...	30	2 00	18 00
Crimson King. 3 D. Crimson; showy bedder.	25	1 50	14 00
* Duc Van Thol Cochineal. 1 D. Scarlet; earliest of all.....	45	2 75	25 00
Dusart. 2 M. Deep vermilion; of large size.	35	2 25	20 00
* Maes. 1 M. Bright scarlet; large flower....	45	3 00	22 00
* Pottbakker Scarlet. 2 T. Bright scarlet; good forcer; very fine.....	35	2 25	20 00
Sir Thomas Lipton. 2 T. Beautiful brilliant scarlet; one of the finest bedders.....	60	4 25	40 00
* Vermilion Brilliant. 2 D. Bright scarlet and vermilion; excellent for pots; showy bedder.....	55	3 75	35 00

Single White

* Duc Van Thol White (Maxima). 1 D. Very early.....	35	2 25	20 00
* Lady Boreel. (True.) 2 M. Pure white; an excellent forcer.....	55	3 75	36 00
* La Reine. 2 M. White, slightly rose-shaded; good forcer and bedder..	35	2 25	20 00
* La Reine. 2 M. Top roots.....	40	2 50	24 00
* Pottbakker White. 2 T. Pure white; large, showy flower; splendid for forcing.....	50	3 25	30 00
* White Hawk. (True.) 2 T. Very large; fine pure white; early...	45	3 00	27 00
Washington. 2 M. Silvery white; fine bedder and forcer.....	35	2 25	20 00
White Swan. (True.) 2 T. Long-stemmed, pure white egg-shaped flower; one of the best whites.....	25	1 75	15 00

Single Pink and Rose

	Doz.	100	1,000
* Cottage Maid. 2 D. Rosy pink, white striped. Recommended for bedding and forcing.....	\$0 40	\$2 25	\$19 00
* Duc Van Thol Rose. 1 D. Early.....	30	2 00	18 00
* Flamingo. 2 M. Carmine-rose, white-shaded.....	75	5 25	50 00
* Jenny. 2 M. Beautiful velvety carmine-rose. On the middle of the petals a silvery white stripe, broadening toward the base. One of the best novelties in Tulips. Forces very easily and is a very bright bedder.....	55	3 50	33 00
* Le Matelas. 2 M. Splendid bright rose, edged white; early.....	60	4 00	36 00
* McKinley. 2 T. Silky rose, shaded carmine outside. Large flower. Can be forced very early. An improved Prosperine.....	75	5 00	45 00
Pink Beauty. 3 T. A lovely Tulip; deep glowing rose, with bold, snowy white flush on outer petals, center white and yellow.....	60	4 25	40 00
* Proserpine. 2 M. Large, rich, silky rose; early forcer.....	60	4 25	40 00
* Queen of the Netherlands. 2 M. Delicate, rosy blush-pink. There is no other pink in Tulips that approaches the delicate color of this Tulip, when it is forced slowly. When forced too hard the color is too pale. The flowers are large and well formed and, when properly grown, it is one of the best Tulips we know of.....	45	2 75	25 00
* Queen of Pinks. 2 M. One of the best pink varieties. Blush, bordered with bright pink. Good for forcing and bedding.....	45	2 75	25 00
Rose Gris-de-Lin. 2 D. Delicate pink, tinged white; good forcer.....	25	1 75	15 00
Rose Luisante. 3 M. Deep pink; a high-class, showy variety.....	55	3 50	31 50
Rosa Mundi Huyckman. 3 M. Bright pink; feathered white.....	40	2 50	21 00

Single Yellow Tulips

* Canary-Bird. 2 M. Clear yellow; large flower; early.....	Doz. 100	1,000	
	\$0 45	\$2 75	\$24 00
* Chrysolora. 2 M. Pure yellow; handsome flower.....	35	2 25	20 00
Cottage Boy. 2 D. Bronze-yellow, with orange. Sport from Cottage Maid. A very showy and excellent bedder with large flowers.....	50	3 25	28 00
* Due Van Thol Yellow. 1 D. Golden yellow; very early.....	35	2 25	18 00
* Goldfinch. 2 D. A very fine, pure yellow; flowers of handsome form, good for bedding or forcing.....	40	2 50	21 00
* Golden Queen. 2 T. A most beautiful yellow Tulip; flower pure yellow, very large and of graceful globular form.....	55	3 50	32 00
King of the Yellows. 2 T. Deep golden yellow.....	40	2 50	22 50
* Mon Tresor. 2 M. Pure yellow; large cup; handsome; good forcer.....	50	3 25	30 00
Ophir d'Or. 2 M. Rich golden yellow; a handsome bedding Tulip of large size and fine form.....	40	2 50	22 50
* Pottebakker Yellow. (True.) 2 T. Large; pure yellow.....	35	2 25	20 00
* Rising Sun. 2 T. Very large flower of great substance on tall stem, color deep golden yellow. Created a sensation at the New York Flower Show in the spring of 1917.....	2 00	15 00	
* Yellow Prince. 2 D. Pure yellow; good for bedding or forcing.....	40	2 50	21 00

Single, Striped, Variegated and Purple

* Clusiana. 1 D. This Tulip has been in cultivation since about 1634. It is the Tulip of Claes, the unfortunate hero of Balzac's "The Quest of the Absolute." Quaint and unusual. Color white, striped red. Can be forced very early.....	Doz. 100	1,000	
	\$0 50	\$3 25	\$30 00
* Due Wet. 2 T. Golden yellow, striped fiery orange-scarlet. Real orange when forced. Sensation at the International Flower Show, New York, 1916.....	5 00	40 00	
Duchesse de Parma. 2 M. Orange-red, yellow shaded; large flower.....	40	2 50	21 00
* Due Van Thol, Red and Yellow. 1 D. Fine for very early effects.....	30	2 00	18 00
Joost Van Vondel. 2 M. Very handsome red, feathered white.....	40	2 50	22 50
* Keizerkroon. 2 T. Red, with broad yellow edge; large and effective. Extra top roots; the best stock for forcing or bedding.....	50	3 25	30 00
	45	2 75	25 00
La Remarquable. 3 M. An immense flower of great substance; silky plum, shading off to silvery pink at the edges; yellow base.....	70	4 75	45 00
* Prince of Austria. 3 T. Orange-vermilion; large; fine for forcing or bedding.....	45	2 75	25 00
Thomas Moore. 2 T. Apricot-orange; fine variety; sweet scented.....	35	2 25	20 00
Wouwerman. 2 M. Dark violet; a unique variety.....	60	4 25	40 00

Boddington's Fine Mixed Single Tulips

An extra-fine mixture of good bedding Tulips for planting. 25 cts. per doz., \$1.75 per 100, \$15 per 1,000.

BODDINGTON'S "QUALITY" NAMED DOUBLE TULIPS

The value of Double Tulips lies chiefly in their lasting qualities. They lack the length of stem and grace of the Singles; nevertheless, we know of no Tulips more beautiful than some of the Doubles, especially when flowered in pots or pans. They cannot be flowered so early as the Singles, and no attempt should be made to force them into bloom before the middle of March. For cultural directions see Single Early Tulips. When forcing Double Tulips, we advise to let them come slowly at first, to prevent them from getting green-tipped.

Double Red

* Imperator Rubrorum. 3 M. Hand-Doz. 100 1,000 some scarlet; showy and lasting. One of the older double scarlets that holds its own wonderfully well among the many newer red varieties.....	\$0 55	\$3 50	\$31 00
* Rex Rubrorum. 3 M. Bright scarlet.....	45	2 75	25 00
* Vuurbaak. 3 M. Brilliant scarlet.....	60	4 00	36 00
Le Matador. 3 M. Brilliant scarlet, good flower.....	50	3 25	30 00

Double Yellow

* Couronne d'Or (Crown of Gold). 3 M. Yellow, tinged old-gold; one of the finest for forcing, either for pots or pans. Makes a brilliant effect when massed in a large bed.....	60	4 25	40 00
* Tournesol Yellow. 3 D. One of the best double yellows. Very large flowers; fine for late bedding.....	60	4 00	36 00
Yellow Rose. 3 M. Rich yellow; very fragrant; large flower.....	45	2 75	25 00

Double Pink

Couronne des Roses (Crown of Roses). 3 M. Delicate rose; a beautiful variety.....	70	4 75	45 00
* La Grandesse. 3 M. Deep rose.....	35	2 25	20 00
Lord Beaconsfield. 3 M. Deep rose.....	50	3 25	30 00
Lucretia. 3 M. Splendid deep pink; large flowers. Good for forcing.....	45	3 00	26 00
* Murillo. 3 M. Magnificent blush-white; flowers large; excellent forcer ..	40	2 50	22 00
Top roots.....	45	2 75	25 00
* Rose d'Amour. 3 M. Beautiful soft rose; very fine variety. This Tulip has come to be one of the most popular for forcing or for outdoor planting.....	55	3 50	33 00

DOUBLE PINK, continued

Rosea Perfecta. 3 M. Round-formed flower; a beautiful pink, white on the outer edges.....	Doz. 100	1,000	
	\$0 50	\$3 25	\$30 00
* Salvator Rosa. 3 M. Deep rose, striped white.....	50	3 25	30 00
* Tea Rose. 3 M. A pale yellow sport from Murillo, of a pleasing soft Safrano-yellow shade, light orange at the tips of the petals. It is a splendid variety for growing in pans.....	65	4 50	42 00

Double Striped and Oddly Colored

* Tournesol, Red and Yellow. 3 D. Good forcer and bedder.....	Doz. 100	1,000	
	\$0 60	\$4 00	\$36 00
* Toreador. 3 M. Bright scarlet, margined buff-yellow; fine forcer.....	70	4 75	45 00
Titian. 2 M. Scarlet, edged yellow; a most charming variety.....	55	3 75	35 00

Double White

Alba maxima. 3 D. Large; double; white.....	\$0 40	\$2 50	\$23 00
* Boule de Neige. 3 M. Pure white; one of the finest.....	50	3 25	30 00
* Blanche Hativ. 3 M. A superb white; good bedder.....	45	2 75	25 00
La Candeur. 3 M. Pure white; a splendid bedder, which holds its flowers a long time.....	40	2 50	22 00

Boddington's "Quality" Superfine Mixed Double Tulips

Comprises only the best bedding varieties in equal proportions, and contains a splendid assortment of showy colors. 30 cts. per doz., \$2 per 100, \$18 per 1,000.

How to Have Flowers in the House Thanksgiving Day, Christmas and until Easter

An abundant supply of flowers can be had in every home from Thanksgiving until Easter at comparatively small cost with no greater facilities than exist in every dwelling-house.

Roman Hyacinths and Paper-White Narcissi can be bloomed by Thanksgiving, and are perhaps the most satisfactory bulbs that can be grown in a sunny window for winter flowers.

See the cultural directions below for Paper-White Narcissi, which apply exactly to Polyanthus or Bunch-flowered Narcissi, Chinese Sacred Narcissi and Roman Hyacinths.

Cultural Directions. Plant the bulbs in shallow pans or boxes having a depth of 4½ inches, in ordinarily good garden soil. The bulbs should be planted thickly so that they almost touch. They should be set at such a depth that the tops protrude slightly above the surface of the soil when the potting is done. Provide drainage by placing a piece of broken flower-pot over the hole in the bottom of the pot. The surface of the soil in the pan should be half an inch below the rim of the pan, so as to allow the bulbs to be watered efficiently.

As soon as planted the pan should be well watered and set away in the coolest part of the cellar, not near the furnace or any fire heat. If the cellar is light, the bulbs should be covered with boxes or old bagging, or anything that is convenient to keep them dark.

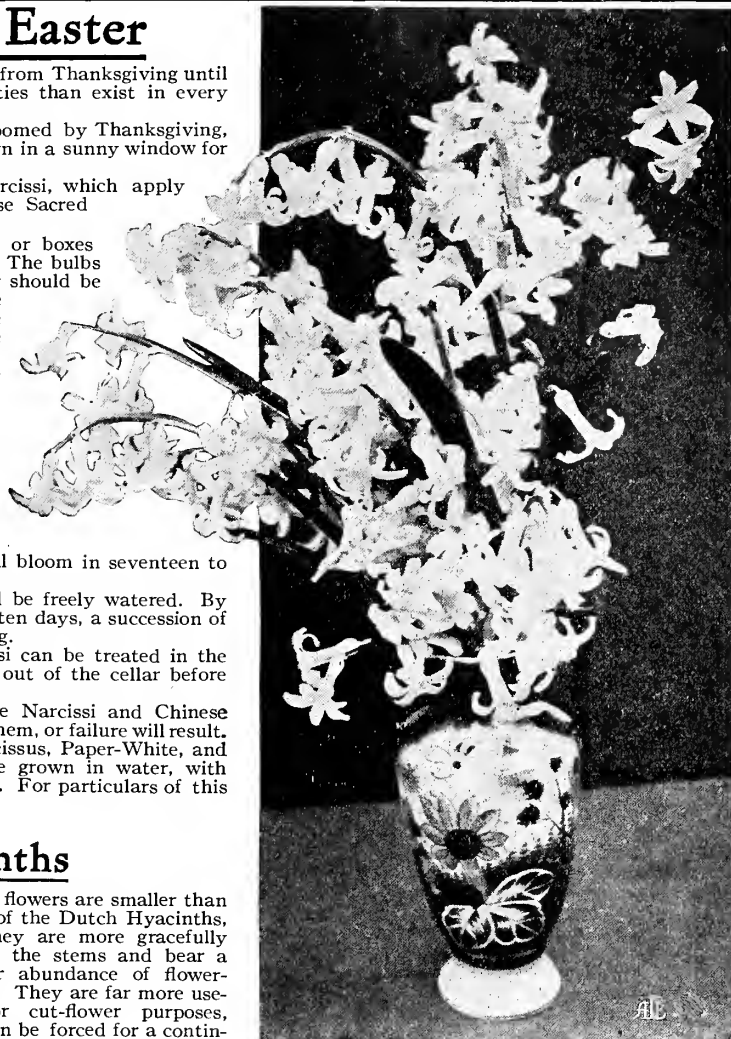
If the soil gets dry it must be watered and a natural condition of moisture maintained. Bulbs that have been potted early in September should be thoroughly rooted by November 10. They may then be brought into the living-room and will bloom in seventeen to twenty-one days.

After bringing the pans into the living-room they should be freely watered. By taking a pan or more of bulbs from the cellar every week or ten days, a succession of flowers for the table can be had through the winter and spring.

Dutch Hyacinths, Tulips and Single and Double Narcissi can be treated in the same manner, except that the bulbs should not be brought out of the cellar before February 8 to 10.

French Roman Hyacinths, Polyanthus and Paper-White Narcissi and Chinese Sacred Narcissi are not hardy. Do not allow the frost to reach them, or failure will result.

Culture in Water with Pebbles. Chinese Sacred Narcissus, Paper-White, and all the Polyanthus or Bunch-flowered Narcissi can also be grown in water, with pebbles, in shallow dishes and bowls or in our Prepared Fiber. For particulars of this interesting cultivation see page 8.

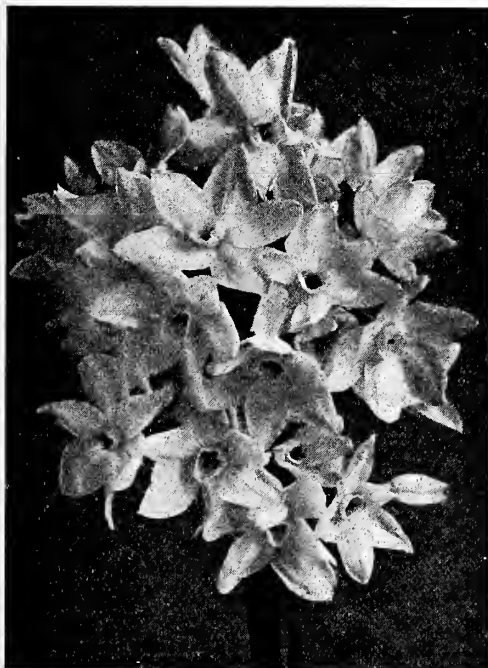


Boddington's French Roman Hyacinths

French Roman Hyacinths

The flowers are smaller than those of the Dutch Hyacinths, but they are more gracefully set on the stems and bear a greater abundance of flower-spikes. They are far more useful for cut-flower purposes, and can be forced for a continuance of bloom from November to Easter. For cultural directions, see above.

	Doz.	100	1,000
White. 12 to 15 centimeters circumference.....	\$1 10	\$8 00	\$75 00
White. 13 to 15 centimeters circumference.....	1 25	8 50	80 00
White. 14 centimeters and over.....	1 50	10 00	95 00
Pink. 12 to 15 centimeters circumference.....	80	6 00	55 00
Blue. 12 to 15 centimeters circumference.....	80	6 00	55 00
Yellow. 12 to 15 centimeters circumference.....	1 25	8 50	80 00
White Italian. 12 to 15 centimeters circumference.....	80	6 00	55 00



Paper-White Narcissus, *Grandiflora multiflora*

Narcissi

Boddington's "Quality" Paper-White Narcissi

Most useful for early forcing is the well-known Paper-White Narcissus *Grandiflora*. The flowers are pure white, chaste and beautiful, borne on long stems, sometimes as many as fifteen to a stem. This variety is not hardy and can only be grown under glass, or in a sunny window. For cultural directions, see above.

	Doz.	100	1,000
Paper-White, Grandiflora.			
XXX, 15 centimeters and up.....	\$0 75	\$4 50	\$40 00
XX, 14 centimeters and up.....	60	3 50	30 00
X, 13 centimeters and up.....	50	2 75	25 00

House Culture of Bulbs in Fiber

How to Grow Bulbs in Vases, Bowls, Jardinieres, etc., without drainage

A delightful and interesting method of cultivating bulbs is to grow them in our specially prepared Fiber in vases, bowls or jardinieres, without drainage. The advantage of this system is that the vases can be placed anywhere about the house without fear of damage from moisture, as drainage with this culture is unnecessary. Any receptacle can be used, provided it is non-porous and large enough to allow space for good root-growth. Our specially prepared Fiber is fertilized and mixed with pulverized charcoal and crushed oyster shells. This combination furnishes all the plant-food elements required by bulbs, and only needs to be moistened with water before use. Almost any of the spring-flowering bulbs may be grown in our prepared Fiber, but we consider the following species best suited for this purpose: Roman and Dutch Hyacinths, Narcissi, Jonquils, Early Tulips, Crocuses, Scillas, Freesias, Snowdrops, also Lily-of-the-Valley Pips, Spireas, etc. It is better not to mix different varieties of bulbs in one bowl unless simultaneous flowering can be assured.

CULTURAL DIRECTIONS

When growing bulbs in vases without drainage it is first necessary to water the Fiber, then rub it through the hands until it is free from lumps. If the mixing is properly done the Fiber will increase in bulk, and if taken in the hand and squeezed, little or no water should drop out. When potting, put the large pieces of charcoal (which we send with the Fiber) in the bottom of the vase to absorb the impurities and keep the mixture sweet, then put in 1 to 3 inches of the Fiber, according to the depth of the bowl. After placing the bulbs in position so that their tips reach to within half an inch of the rim, the spaces between and around the bulbs should be filled with the moistened Fiber. It is not necessary or desirable to press it tightly, as the roots do not grow freely if it is pressed too firmly. Small bulbs such as Scillas, Crocuses, Snowdrops, Jonquils, etc., should be planted fairly close together in order to produce the best effect. After planting, the bowls should be kept in a cool, airy cellar or room (not a confined closet) for about eight or ten weeks, so that they may develop good root-growth, which is very essential in order to get good results. The bowls should be examined once a week, and a little water given when necessary, as the Fiber must not be allowed to get dry or the flower buds become "blind." The surface should always look moist, but if too much water has been given, the bowl may be held carefully on its side so that the surplus water can drain away. As the growth increases more water will be required and as much light as possible to insure sturdy foliage. A succession of bloom may be had during the winter by taking into the house a few dishes at intervals of about two weeks.

Boddington's Prepared Fiber

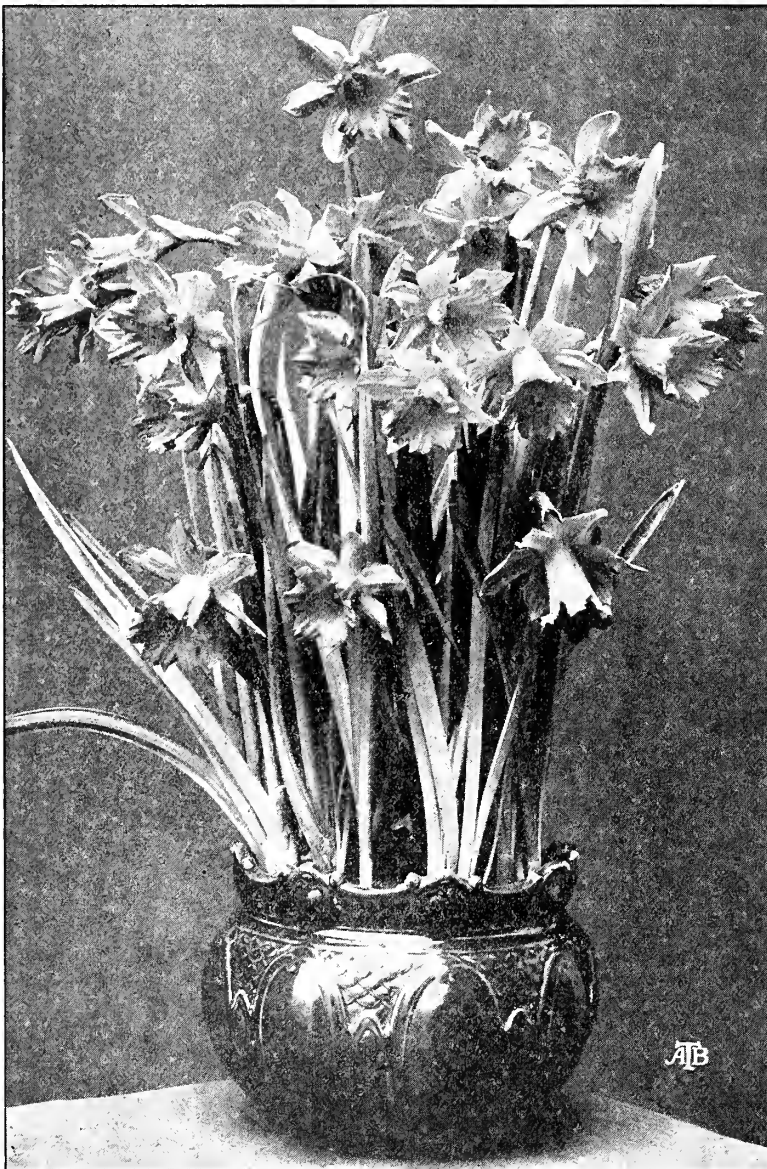
Half-peck 30 cts., peck 50 cts., half-bushel 85 cts., bushel \$1.50. We do not pay transportation on Prepared Fiber. If wanted by parcel post, add for postage at your zone rate from New York, on $\frac{1}{2}$ peck, postage for 4 lbs., peck, postage for 7 lbs., bushel, postage for 27 lbs.

Special Offer. YOUR CHOICE OF

3 Single Dutch Hyacinths, your choice of color;
or 6 Single Tulips, your selection of color;
or 5 Paper-White Narcissi;
or 5 Yellow Trumpet Narcissi;
or 3 Chinese Sacred Narcissi;
or 3 White Roman Hyacinths,
with one Art Jardinier and sufficient Fiber and charcoal to grow them, for \$1. Add postage at your zone rate from New York for 4 lbs.
or, 1 bundle, 25 pips, of Cold-Storage Lily-of-the-Valley, with one Art Jardinier and sufficient Fiber and charcoal to grow them, for \$2.50. Add postage on this offer at your zone rate from New York for 5 lbs.

ART JARDINIERS, 50 cts. each. Add postage at your zone rate from New York for 2 lbs.

To those who have Jardinieres of their own we can highly recommend the COLD-STORAGE LILY-OF-THE-VALLEY, bundle of 25 pips for \$2, postpaid, which we can supply at all seasons of the year. It will flower in a temperature of 60° to 70° in about 30 days planted in our prepared fiber. For cultural directions see page 16.



Golden Spur Narcissus Grown in Boddington's Prepared Bulb Fiber

Boddington's Extra-Selected Named Dutch Hyacinths

CULTURAL DIRECTIONS

HYACINTHS IN POTS. It is important in the pot culture of Hyacinths to have rich, light soil. If the bulbs are to be potted singly, pots 5 inches in diameter are the proper size. Cover the hole in the pot with a piece of broken pot, and over this place a layer of moss, which will keep the soil from clogging the drainage thus provided. Break off any offsets which appear at the base of the bulbs, and, in potting, place each bulb so that its top shall be half an inch below the surface of the soil and an inch below the rim of the pot. The soil should be of usual natural moisture, and should be pressed moderately firm. The filled pots may be placed in a coldframe where there is protection from frost, or in the coolest part of the cellar, and well watered. An excellent plan is to place them on a bed of moist, sifted coal-ashes, covering the pots to a depth of 6 inches with the same material. When well rooted, which will be in about ten weeks, the bulbs may be brought indoors and forced. For the first two or three weeks they should be kept in a temperature not exceeding 50 degrees. **Success in forcing depends much on their having strong roots before being brought to the light.** The top grows rapidly, and unless the roots are started much in advance they are unable to nourish the plant, and failure results.

Hyacinths for early use may be potted in September or October. When desired for late use, it is better to pot them in October and keep them in a coldframe or cellar above freezing until it is desired to force them into bloom. To obtain dwarf foliage and fine flower-spikes, Hyacinths, when being forced, should have plenty of manure-water and fresh air, and should have as much light as possible. The blooms last much longer if shaded from the sun after they show color.

PRICES OF DUTCH HYACINTH BULBS

	Each	Doz.	100
Boddington's "Top-Root" Named Dutch Hyacinths, purchaser's selection of varieties	\$0 30	\$3 00	\$20 00
Boddington's Strictly First-size Named Dutch Hyacinths	20	1 75	12 00
Boddington's Strictly Second-size Named Dutch Hyacinths	15	1 50	9 00
Boddington's Third-size or Named Bedding Dutch Hyacinths	10	1 00	6 00

SINGLE WHITE AND TINTED

- Albertina.** Pure white; very fine.
- British Queen.** Very fine, pure white.
- Grandeur a Merveille.** Finest blush-white; immense truss.
- Grande Blanche.** Blush-white; very large bells; excellent truss.
- GENERAL VETTER.** A grand white variety.
- L'Innocence.** Pure white; extra large.
- La Grandesse.** Finest pure white; large bells.
- MR. PLIMSOLL.** Ivory-white; fine bells; very showy.
- Mme. Van der Hoop.** Pure white; large truss; dwarf; late.
- QUEEN OF ENGLAND.** Pure white; large bells; early.

SINGLE RED, ROSE AND PINK

- CARDINAL WISEMAN.** Bright rose; large flower.
- ETNA.** Brilliant pink; very large bells; late.
- GENERAL DEWET.** Light pink; also called the pink Grand Maitre.
- GENERAL PELISSIER.** Deep crimson; fine truss; early.
- Gertrude.** Rosy pink; compact truss.
- Gigantea.** Blush-rose; large; close truss.
- Garibaldi.** Glossy crimson; good truss; very early.
- Jacques.** Delicate pink; very large spike.
- KOHINOOR.** Bright pink; extra-large truss; one of the largest flowers; semi-double.
- LADY DERBY.** Most beautiful light pink.
- LA VICTOIRE.** Immense, brilliant red truss of the most perfect form.
- Moreno.** Waxy pink; large bells and truss.
- Ornement Rose.** Light rose; superb flower.
- QUEEN OF THE PINKS.** Lively pink. This is a sport of the well-known King of the Blues.
- Rosea Maxima.** Lovely pink; grand bloom.
- Roi des Belges.** Fine, deep red.
- VICTOR EMANUEL.** Brilliant red; large truss; early.

SINGLE BLUE, PURPLE AND VIOLET

- BISMARCK.** Light sky-blue; blooms very easily at Christmas. The earliest blue Hyacinth.
- Czar Peter.** Large; porcelain-blue, lighter center; grand truss.
- ELECTRA.** Porcelain-blue; enormous flower.
- ENCHANTRESS.** Very delicate porcelain-blue.
- Grand Lilas.** Light porcelain-blue; good variety for early forcing.
- Grand Maitre.** Deep porcelain-blue; large truss.
- Johan.** Pale blue-gray; large bells; splendid, compact spike.
- King of the Blues.** Rich, dark blue; splendid, well-finished truss.
- L'Esperance.** Dark purple; splendid bedding variety.
- Lord Balfour.** Deep violet; very early; enormous truss. The best of the violets.
- Marie.** Deep blue; large truss.
- MENELIK.** The darkest of all the blues; immense truss.

SINGLE BLUE, PURPLE AND VIOLET, continued

- PERLE BRILLANT.** Light, brilliant blue; an excellent all-round variety.
- Pieneman.** Brilliant light blue; large, broad truss.
- Potgieter.** Light blue; excellent variety.
- Queen of the Blues.** Porcelain-sky-blue; large bells and fine spike.
- Regulus.** Porcelain-blue; large bells.
- SCHOTEL.** Pale blue; good forcer.
- Sir William Mansfield.** Violet; splendid truss; one of the best in its color; splendid bedder.

SINGLE YELLOW AND ORANGE

- CITY OF HAARLEM.** Golden yellow; extra-large flower; one of the best of the yellows.
- Ida.** Pure, light yellow; large truss; early.
- King of the Yellows.** Pure, deep yellow; large truss.
- MacMahon.** Nankeen-yellow; fine.
- MARCHIONESS OF LORNE.** Orange-yellow; very fine spike.
- Yellow Hammer.** Golden yellow; the finest single of its color.

DOUBLE WHITE AND TINTED

- Bouquet Royal.** Pure white, yellow center; good truss.
- GRAND VAINQUEUR.** Pure white; early.
- Isabella.** Blush-white; large bells; very fine.
- La Grandesse.** The double form of this well-known variety.
- La Tour d'Auvergne.** Pure white; good bells; large truss; extra.

DOUBLE RED, ROSE AND PINK

- CHESTNUT FLOWER.** Rose; large truss; very beautiful.
- Le Grand Concurrent.** Beautiful pale rose; large bells and truss; extra.
- Lord Wellington.** Delicate rosy blush; large bells and truss; one of the best.
- PRESIDENT ROOSEVELT.** Fine, dark pink; a strenuous variety; large bells; early.
- Prince of Orange.** Rose-red; semi-double; a beautiful variety.

DOUBLE BLUE AND PURPLE

- Bloksberg.** Pale porcelain-blue; grand.
- Garrick.** Bright blue; very large bells.
- GENERAL KOHLER.** Bright blue; extra fine; an excellent variety.
- Van Speyk.** Light blue; large bells and truss.

DOUBLE YELLOW

- Goethe.** Light yellow; large bells; fine spike.
- Jaune Supreme.** Deep yellow, salmon tinted.
- SIR ROLAND HILL.** Pure, dark yellow; large bells; very fine.

For prices of Hyacinths, "Top-root," First, Second and Third or Named Bedding Sizes, see above, and bear in mind that our prices include transportation charges when cash accompanies the order, east of the Mississippi River.

BODDINGTON'S COLLECTION SIX "TOP-ROOT" HYACINTHS in six finest varieties, \$1.50 postpaid
(If west of Mississippi, add 20 cts.)

BODDINGTON'S COLLECTION SIX NAMED BEDDING DUTCH HYACINTHS in six finest varieties, \$1 postpaid
(If west of Mississippi, add 15 cts.)



BODDINGTON'S "TOP-ROOT" HYACINTHS

Boddington's "Quality" Bedding Hyacinths to Color

Bedding Hyacinths should be planted about 8 inches apart each way—or, say twenty to the square yard—and 4 or 5 inches deep, reckoning from the top of the bulb. The actual number requisite for a given area, however, must be determined in every instance by the local conditions and the object in view; a large bed in the distance need not be so closely planted as a small bed in the immediate foreground, and of course a smaller number will be necessary in either case if a groundwork such as Myosotis, Pansies or Arabis be provided. Hyacinths planted alternately with Narcissi produce a striking effect; for this combination 6 inches from bulb to bulb is a suitable distance.

The following Hyacinths, although offered at very low prices, have all been imported by us from Holland this year and can be strongly recommended for their high quality. They are specially adapted for groups in borders and shrubberies, where they will give a brilliant display of very handsome flowers; but for beds, where uniformity of shade is of importance, we recommend the named bedding Hyacinths offered on page 9.

	Doz.	100	1,000		Doz.	100	1,000
Single Red. Various shades, mixed.....	\$0 60	\$4 50	\$40 00	Double Red. Various shades, mixed.....	\$0 75	\$5 00	\$48 00
Single Dark Blue. Various shades, mixed.....	60	4 50	40 00	Double Blue. Various shades, mixed.....	75	5 00	48 00
Single White. Various shades, mixed.....	60	4 50	40 00	Double White. Various shades, mixed.....	75	5 00	48 00
Single Yellow. Various shades, mixed.....	60	4 50	40 00	Double Pink and Rose. Various shades, mixed..	75	5 00	48 00
Single Pink and Rose. Various shades, mixed..	60	4 50	40 00	Double Light Blue. Various shades, mixed..	75	5 00	48 00
Single Light Blue. Various shades, mixed.....	60	4 50	40 00	Double Blush-White. Various shades, mixed..	75	5 00	48 00
Single Blush-White. Various shades, mixed... 60	4 50	40 00		Double Yellow. Various shades, mixed.....	75	5 00	48 00
Single All Colors, Mixed	60	4 50	40 00	Double All Colors, Mixed	75	5 00	48 00

Boddington's Dutch Roman or Miniature Hyacinths

These are small bulbs, or Miniature Dutch Hyacinths, and are now very largely used for growing in pans or pots. They are also used extensively for bedding purposes, as they produce large spikes of flowers. We can specially recommend our "Quality" Dutch Romans to those who have never grown them, and therefore do not know their value. They consist of named sorts, similar to regular first-size Dutch Hyacinths, of the finest grade and true to name. 12 to 15 centimeters in circumference.

Albertina. Pure white.	Johan. Pale blue.	Moreno. Waxy pink.
Czar Peter. Light porcelain-blue.	King of the Yellows. Pure, deep yellow.	Queen of the Blues. Sky-blue; fine.
Gertrude. Rosy pink.	Lady Derby. Beautiful light pink.	Roi des Belges. Bright red.
Gigantea. Daybreak-pink.	La Grandesse. Pure white.	Schotel. Pale blue.
Grand Maitre. Deep porcelain-blue.	L'Innocence. White; one of the best.	Yellow Hammer. Finest golden yellow.
Grandeur a Merveille. Blush-white.	Mme. Van der Hoop. Best late white.	

Any of the above, 50 cts. per doz., \$3 per 100, \$28 per 1,000

Grape, Feathered, and Musk Hyacinths (Muscari)

These Hyacinths will grow in any good garden soil, and are admirably adapted for borders that are shaded by trees, also make excellent pot-plants.

	Doz.	100	1,000		Doz.	100	1,000
Plumosum (Feathered Hyacinth). Blue....	\$0 25	\$1 50	\$12 50	Botryoides caeruleum. Light blue.....	\$0 25	\$1 50	\$12 50
Botryoides album (Grape Hyacinth). White. 25	1 25	10 00		Botryoides monstrosum. Giant blue.....	25	1 50	12 50
				Racemosum (Starch Hyacinth). Blue.....	25	1 50	12 50

NARCISSI AND DAFFODILS

Polyanthus or Bunch-Flowered Narcissi

Polyanthus Narcissi are not hardy, and must not be subjected to frost at any time. For culture, see Narcissus Paper-White, page 7.

	Doz.	100	1,000
Chinese Sacred. White, yellow cup. Top roots.....	25	25	250
Chinese Sacred. First-size bulbs. 15c. each..	1 50	10 00	
Double Roman. White flowers, yellow cup..	35	2 25	\$20 00
GRAND SOLEIL D'OR. The "Yellow Paper-White."			
French-grown. Earlier than Guernsey-grown.....	90	6 00	50 00
Guernsey-grown. Not so early, but can be flowered for Christmas; superior as to color	75	5 00	40 00
Grand Monarque. White flower, yellow cup.	60	3 50	30 00
Grand Primo. Large, white flower, citron cup.....	60	3 50	30 00
PAPER-WHITE GRANDIFLORA—			
XXX, monsters, 15 cms. up.....	75	4 50	40 00
XX, extra large, 14 cms. up.....	60	3 50	30 00
X, first size, 13 to 15 cms.	50	2 75	25 00
Staten General. Large, white flower.....	60	3 50	30 00

The above can be grown in bowls of water or in our prepared fiber

Chalice-Cup or Star Narcissi

	Doz.	100	1,000
Barrii, Conspicuous. Large soft yellow perianth; short cup, edged orange-scarlet.....	\$0 30	\$2 00	\$19 00
Incomparabilis, Stella. Large, white perianth; yellow cup.....	35	2 25	20 00
Incomparabilis, Cynosure. Primrose perianth, changing to white; cup stained orange.	35	2 25	20 00
Incomparabilis, Figaro. Perianth primrose-sulphur; cup bordered orange-red.....	35	2 25	20 00
Leedsii, Mrs. Langtry. Broad white perianth and large white cup, edged bright yellow..	30	2 00	19 00
Leedsii, Queen of England. Beautiful large flowers, with fine, fringed, citron-yellow cup.....	35	2 25	20 00
Cup Narcissi, Mixed. Many varieties.....	25	1 75	15 00

Poet's Narcissi

Poeticus (type) (Pheasant's Eye, or Poet's Narcissus). Mother bulbs.....	25	1 60	14 00
Poeticus, Cassandra. Strong grower; flowers of fine substance with broad, white perianth; cup deeply rimmed dark red... Each, 20c...	1 75	12 00	
Poeticus, Horace. Broad snowy white perianth; large cup deeply edged blood-scarlet. Very beautiful..... Each, 20c...	2 00	15 00	
Poeticus, King Edward VII. Snow-white petals and beautiful shape; cup canary-yellow, bordered red.....	55	3 75	35 00
Poeticus ornatus. An improved Poeticus. Pure white perianth, distinct red crown. Top roots (3 flowers). XXX.....	40	2 50	22 00

Jonquils *Narcissus Jonquilla*

	Doz.	100	1,000
Double Sweet-scented. Fine, deep yellow... \$0 35	\$2 25	\$20 00	
Giant Sweet-scented. Deep yellow.....	25	1 25	12 00
Giant Campernelle. Large; yellow.....	25	1 50	14 00
Rugulosus. Very fragrant, large Jonquils. Double-nosed bulbs. XXX.....	35	2 25	20 00

NARCISSI AND DAFFODILS, continued

The commercial florists have been foremost to give the Narcissi or Daffodils the attention due them. They have learned how easily and successfully these lovely flowers may be forced into bloom during the winter, and how fascinating the blossoms are when planted in colonies in the borders or grouped in the lawn. They may be planted in pots or bulb-pans 6 inches or more in diameter, several bulbs in each, according to size. Treat in the same manner as hyacinths.

Giant Single Trumpet Narcissi

	Each	Doz.	100	1,000
Albicans. Perianth white, trumpet primrose, passing to white.	\$0 05	\$0 55	\$3 50	\$30 00
Ard Righ (Irish King). Perianth full yellow, trumpet deep yellow; one of the best of the Trumpet varieties.	06	60	4 00	36 00
Emperor. A noble single Narcissus; pure golden yellow, of very large size, with immense trumpet.				
First-size round bulbs. X.	05	45	2 75	25 00
Double-nose bulbs (2 flowers). XX.	06	55	3 50	32 00
Top roots (3 flowers). XXX.	07	65	4 50	40 00
Empress. Pure white perianth, with rich yellow trumpet; a splendid variety.				
First-size round bulbs. X.	05	45	2 75	25 00
Double-nose bulbs (2 flowers). XX.	06	55	3 50	32 00
Top roots (3 flowers). XXX.	07	65	4 50	40 00
Glory of Leiden. Long, large yellow trumpet, perianth primrose-yellow.	15	1 25	8 00	75 00
Glory of Sassenheim. Larger flower and earlier than Victoria; white perianth, yellow trumpet. Top-root bulbs.	10	1 05	7 25	68 00
Golden Spur. Deep yellow perianth and trumpet; very large; equally good as a forcer and for garden.				
First-size round bulbs. X.	05	45	2 75	25 00
Double-nose bulbs (2 flowers). XX.	06	60	4 00	37 50
Top roots (3 flowers). XXX.	07	75	5 00	45 00
Guernsey-Grown. Can be flowered under glass by January 1.	07	60	4 00	35 00
French-Grown. Can be flowered under glass in December.	10	80	6 00	55 00
Henry Irving. Magnificent flowers of richest yellow; trumpet beautifully frilled.	07	60	4 00	36 00
Horsfieldii. Pure white, with yellow trumpet; very early.				
Double-nosed bulbs (2 flowers). XX.	05	45	2 75	25 00
Top roots (3 flowers). XXX.	06	50	3 25	30 00
King Alfred. Golden yellow perianth and trumpet; of beautiful form with deeply frilled mouth; gigantic flower; strong grower; does not force well. Top roots.	50	5 00	40 00	
Madame de Graaff. Perianth pure white, trumpet pale primrose.				
Top roots.	15	1 50	9 00	85 00
Obvallaris. Perianth and trumpet yellow.	05	45	3 00	26 00
Olympia. Pale yellow perianth, yellow trumpet; as large as King Alfred. Good forcer. Top roots.	40	4 00	30 00	
Princeps. Early; sulphur trumpet, white perianth. A popular forcing variety.				
Double-nose bulbs (2 flowers). XX.	04	30	2 00	18 00
Top roots (2 to 3 flowers). XXX.	05	40	2 50	23 00
Silver Spur. Resembles Empress. The earliest Bicolor variety for forcing.	10	80	6 00	55 00
Sir Watkin. Perianth sulphur, cup yellow, tinted bright orange; large flower.				
Double-nosed (2 flowers). XX.	05	45	2 75	25 00
Top roots (3 flowers). XXX.	06	55	3 75	35 00

GIANT SINGLE TRUMPET NARCISSI, continued

	Each	Doz.	100	1,000
Trumpet Major. (French-grown.) Excellent for Christmas forcing; not worth growing for any other purpose.	\$0 07	\$0 50	\$3 25	\$30 00
Van Waveren's Giant. Primrose perianth, bright yellow trumpet; larger than King Alfred and a better forcer.	35	3 50	25 00	
Victoria. A fine bicolored trumpet variety. White perianth, yellow trumpet.				
First-size, round bulbs. X.	05	45	2 75	25 00
Double-nose (2 flowers). XX.	06	55	3 50	32 00
Top roots (3 flowers). XXX.	07	75	5 00	45 00
VON SION, Single. Fine yellow trumpet.	05	45	2 75	25 00
Trumpets, Mixed. Many varieties.	25	1 75	16 00	

Double Narcissi, or Daffodils

	Doz.	100	1,000
Von Sion (True Double Daffodil). Specially Selected Top-root bulbs. XXXX.	\$0 70	\$4 75	\$45 00
Double-nosed. XXX.	55	3 75	35 00
Extra-first-size round bulbs. XX.	45	2 75	25 00
First-size round bulbs. X.	35	2 25	20 00
Alba-plena odorata (Gardenia-flowered Daffodil). Double, snow-white flowers; very sweet-scented; late flowering.	30	1 75	15 00
Incomparabilis fl.-pl. (Butter and Eggs). Rich yellow and white; double; good forcer or for outside.	35	2 25	20 00
Orange Phoenix (Bacon and Eggs). Beautiful white-and-orange Narcissi.	40	2 50	22 00
Sulphur or Silver Phoenix (Codlins and Cream). Creamy white, pale sulphur center.	45	2 75	25 00
Boddington's "Quality" Double Mixture. Excellent for bedding or naturalizing.	25	1 75	16 00

New Narcissi, Poetaz Hybrids

Hybrids between N. poeticus ornatus and N. polyanthus varieties

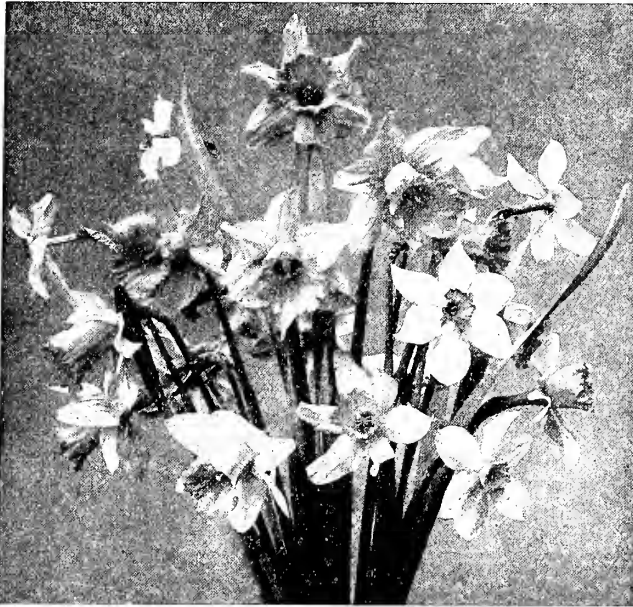
Perfectly Hardy

Admiration. Sulphur-yellow perianth, sulphur-yellow eye, bordered scarlet. Perhaps the finest of all the Poetaz varieties. 30 cts. each, \$2.75 per doz., \$20 per 100.
Alsace. Petals pure white, with yellow eye; when bursting into flower the eye is slightly edged reddish. Broad, large flowers of true Poet form; one of the earliest. Has three flowers on a stem. 7 cts. each, 70 cts. per doz., \$5 per 100, \$46 per 1,000.
Elvira. Pure white, with yellow eye; large flower of remarkably good substance. Long-stemmed, and a good keeper; four flowers on a stem. Highly recommended. 5 cts. each, 50 cts. per doz., \$3.25 per 100, \$30 per 1,000.
Ideal. Perianth white, with dark orange eye; large truss bearing six or seven flowers; beautiful, striking color. 10 cts. each, 95 cts. per doz., \$6.50 per 100, \$60 per 1,000.
Irene. Perianth pure yellow, orange eye. Eight or nine flowers on a stem. 8c. each, 75c. per doz., \$5.25 per 100, \$50 per 1,000.
Jaune a Merveille. Perianth yellow, with deep golden yellow eye. 25c. ea., \$2.50 per doz., \$18 per 100.
Mignonne. White, orange-scarlet cup; four to five flowers on a stem. 30 cts. each, \$2 per doz., \$15 per 100.

ORCHIDS

The Oncidiums and Odontoglossums are well known to Orchid connoisseurs as a very desirable class embracing a great variety of beautiful forms and colors. They are of easy culture and can be grown in an ordinary greenhouse or conservatory. They may be grown in pots, pans, and orchid baskets, using a potting mixture of fibrous peat and sphagnum moss. Water with caution at first, increasing as growth advances and allow plenty of ventilation in suitable weather. We have just imported, direct from their native habitats in Mexico and Brazil, a stock of epiphytal Orchids in the following three varieties:

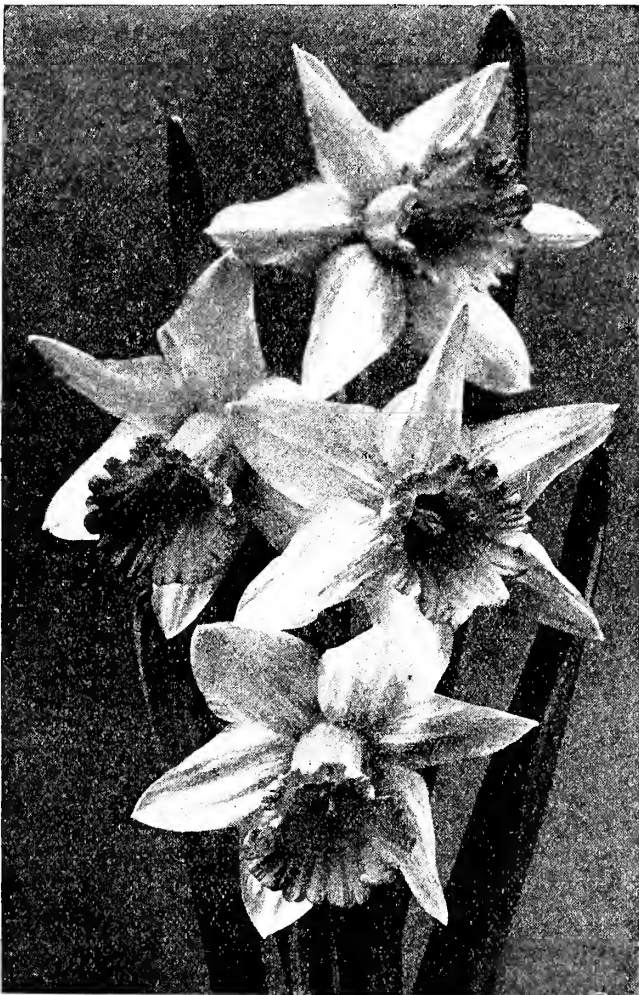
	Each	Doz.	100
Oncidium varicosum Rogersii. Long branched spikes bearing quantities of large yellow flowers. A very fine Orchid and useful for decorative purposes.	\$2 00	\$20 00	\$150 00
Oncidium tigrinum. Flowers yellow, heavily blotched; large and beautifully scented.	1 50	15 00	100 00
Odontoglossum citrosimum. Drooping spikes; white flowers; fragrant.	1 50	15 00	100 00



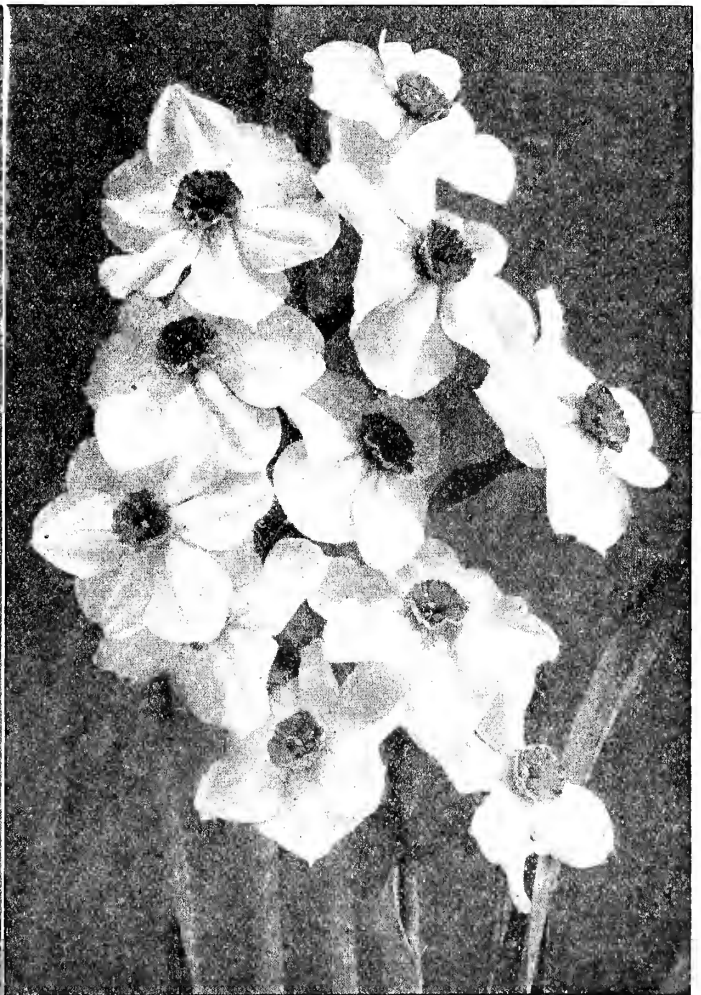
Single Trumpet and Chalice-Cup Narcissus in variety



Double Narcissus, Von Sion



Single Trumpet Narcissus, Emperor



Narcissus Poetaz, Irene



Lilium candidum (Madonna, St. Joseph, or Annunciation Lily). Perfectly hardy; flowers outdoors in June

Lilies for Growing and Forcing Under Glass in the Greenhouse or Conservatory or Outdoor Planting

Pot Culture.—Lily bulbs should be potted immediately after they are received. The soil should be rich, and well drained by placing three or four pieces of broken flower-pot over the hole in the pot. In planting, place each bulb so that its top shall be half an inch below the surface of the soil, and an inch below the rim of the pot, so as to allow the pot to be watered efficiently.

After potting give a thorough watering and set outside in a coldframe or bury the pots outdoors. After they have stood about two months, they may be brought into a greenhouse having a night temperature of 58 to 60 degrees.

After the plants show buds, slightly higher temperature may be used to advantage.

Outdoor Culture of Lilies.—A deep, moist, rich loam is necessary for Lilies. They all thrive best in soil containing an abundance of decomposing vegetable matter, and a partially shaded location is desirable, such as an open space in the shrubbery or perennial border. If manure is used in the preparation of the bed, be sure that it is well rotted and that it does not come in direct contact with the bulbs; in fact, we recommend placing an inch of sand immediately beneath each bulb to provide drainage. Due to the varying sizes of bulbs of different varieties, it is not possible to make any hard-and-fast rule as to the depth that Lily bulbs should be planted. It is a safe practice, however, to cover the bulbs twice their own depth.

October Delivery **LILIUM CANDIDUM** (Madonna, St. Joseph, or Annunciation Lily)

This is the old-fashioned garden Lily. Can be forced for Easter and is perfectly hardy, blooming in the open ground in June. The many snow-white flowers, borne on a stem 3 to 4 feet high, make this Lily most effective. This variety should be planted in the early fall, as it makes an autumn growth. Bulbs grown for us near Paris, France; the large-flowering, thick-petaled variety. **20 cts. each, \$1.75 per doz., \$12 per 100. Monster bulbs, 25 cts. each, \$2.50 per doz., \$16 per 100.**

EASTER LILIES

Lilium longiflorum formosum

The earliest type of the well-known Easter Lily. Ready for delivery in September. Easy to force in the greenhouse, and hardy outdoors with slight protection. Flowers in the open ground in June.

	Each	Doz.	100
7- to 9-inch bulbs	\$0 15	\$1 50	\$11 00
9- to 10-inch bulbs	25	2 50	20 00
10- to 11-inch bulbs	40	3 75	30 00
11- to 13-inch monster bulbs	50	5 00	40 00

Lilium longiflorum giganteum

This dark-stemmed variety flowers later than Formosum, but is of larger size and of greater substance. November delivery. Hardy outdoors with slight protection. Flowers in the open ground in June.

	Each	Doz.	100
6- to 8-inch bulbs	\$0 10	\$1 00	\$8 00
7- to 9-inch bulbs	15	1 50	10 00
8- to 10-inch bulbs	20	2 00	15 00
9- to 10-inch bulbs	25	2 50	20 00
10- to 11-inch bulbs	40	3 75	30 00

BERMUDA EASTER LILY *Lilium Harrisii*

Ready for delivery in August. Hardy only when protected by a heavy manure mulch. Blooms in the open ground in June. **7- to 9-inch bulbs, 25 cts. each, \$2.50 per doz., \$14 per 100.**

JAPANESE LILIES

For Outdoor Planting, or Growing in Pots for Summer Flowering

Special Notice.—Japanese and some of the European Lilies seldom arrive in New York until about November 15. As the ground is likely to be frozen in many localities about this date, the ground where the bulbs are to be planted should be protected with a covering of manure, old bagging, or any other material that may be handy, to keep the frost out of the ground until the bulbs are received. Varieties arriving after December 1 we will deliver in the early spring, unless we are notified to the contrary. For outdoor culture of Lilies, see page 14.

Orders for Seeds and Bulbs amounting to \$1 or more, accompanied by cash, are delivered free east of the Mississippi River; for points West, add 15 per cent.

Lilium auratum

Golden-rayed Lily of Japan

Monstrous white flowers, thickly studded with crimson spots, each petal marked with a wide gold band.

	Each	Doz.	100
8- to 9-inch bulbs.	\$0 10	\$1 00	\$8 00
9- to 11-inch bulbs.	20	2 25	15 00
11- to 13-inch bulbs.	40	3 50	25 00
Monsters.	45	4 50	35 00



Lilium auratum

RARE LILIAM AURATUMS

	Each	Doz.	100
LILIAM AURATUM PICTUM. A very choice type of <i>Lilium auratum</i> ; pure white, with red and yellow bands through each petal	\$0 40	\$3 50	\$25 00



Lilium speciosum Melpomene magnificum

LILIAM AURATUM PLATYPHYLLUM. A very strong and vigorous type of <i>L. auratum</i> . Flowers of immense size, pure ivory-white, with a deep golden band through each petal.	Each \$0 50	Doz. \$5 00	100 \$40 00
LILIAM AURATUM RUBRUM VITTATUM. A unique variety; flowers 10 to 12 inches across, ivory-white, with broad crimson stripe through center of each petal	1 00	10 00	75 00
LILIAM AURATUM VIRGINALE ALBUM. The White Lily of Japan. Exquisitely pure white flowers, very large, with sulphur-yellow band through each petal	50	5 00	40 00
LILIAM AURATUM WITTEL. A Lily of magnificent proportions; immense flowers; very tall and free-blooming; color creamy white, with gold band	1 00	10 00	75 00

LILIAM SPECIOSUM

LILIAM SPECIOSUM ALBUM. Pure white; hardy and popular.	Each	Doz.	100
8- to 9-inch bulbs.	\$0 20	\$2 25	\$15 00
9- to 11-inch bulbs.	35	3 50	25 00
11-inch and over.	45	4 50	35 00
LILIAM SPECIOSUM MELPOMENE MAGNIFICUM. Very rich crimson on white ground; excellent for cut-flowers.	Each	Doz.	100
8- to 9-inch bulbs.	\$0 10	\$1 00	\$8 00
9- to 11-inch bulbs.	20	2 25	15 00
11- to 13-inch bulbs.	35	3 50	25 00
Monsters.	45	4 50	35 00
LILIAM SPECIOSUM RUBRUM. White ground, spotted rose on each petal; excellent for cut-flowers.	Each	Doz.	100
8- to 9-inch bulbs.	\$0 10	\$1 00	\$8 00
9- to 11-inch bulbs.	20	2 25	15 00
11-inch and over.	35	3 50	25 00
Monsters.	45	4 50	35 00

Lilium regale myriophyllum is perhaps the most satisfactory of the hardy Lilies. White, slightly suffused pink, canary-yellow at the center. \$1 each, \$10 per doz., \$80 per 100.

LILY-OF-THE-VALLEY

Boddington's "Wedding Bells." New crop—November and December delivery. We offer extra-strong pips of the German crowns grown in Holland. \$1.25 per bundle of 25, \$4.50 per 100, \$40 per 1,000.

CULTURAL DIRECTIONS

New-crop Lily-of-the-Valley should always be frozen before forcing. If they are not to be forced immediately, they must be stored in a temperature as near freezing as possible and a natural condition of moisture maintained about the roots. New-crop Lily-of-the-Valley may be forced into bloom in a temperature of 60 to 65 degrees in twenty-five days. Plant the roots half an inch apart, in sand or our prepared fiber. The propagating-bench in the greenhouse may be used for this purpose, or 6-inch pots. Lily-of-the-Valley can be flowered by the amateur very satisfactorily in the living-room. We however recommend Cold-storage Pips for this purpose. Lily-of-the-Valley will succeed and always look well in shady places where it is difficult to get other plants to grow.

Lily-of-the-Valley from Cold Storage

Will flower in eighteen to twenty-one days after planting. Soak in water for six or eight hours, then pot or box up, and place in a temperature of 60 to 70 degrees, as directed above.

We recommend shipments at frequent intervals to keep up a continuous supply of blooms.

For many customers we ship a small quantity weekly. \$2 per bundle of 25, \$6 per 100, \$50 per 1,000.

CALLAS

Aethiopica and *The Godfrey* may be successfully flowered in a sunny window in the early spring, if potted in the autumn. *Elliottiana* and *Mrs. Roosevelt* may be flowered in March and April under the same conditions, or the two latter varieties may be planted in the open ground early in May and will produce a profusion of bloom throughout the summer. The roots must be lifted in the autumn and stored in a frost-free, dry place over the winter.

Calla *Aethiopica* (White Calla Lily). Too well known to need description. Dry roots, with center shoots ready for forcing.

	Each	Doz.	100
1 3/4 to 2 inches in diameter	\$0 25	\$2 50	\$20 00
2 to 2 1/2 inches in diameter	35	3 50	25 00
Monster	45	4 50	35 00
The Godfrey. A miniature white Calla; very free and prolific	30	3 00	20 00



Boddington's Rainbow Freesias

CALLAS, continued.

Elliottiana. Flowers large, rich, dark golden yellow; leaves beautifully spotted white	Each	Doz.	100
	\$0 40	\$4 50	\$30 00
Mrs. Roosevelt. Flowers light, clear yellow; very free; long stems; foliage spotted white.	25	2 50	

FREESIAS

Of all South African flowering bulbs the Freesias are doubtless the best known and most esteemed. If planted early, they may be had in bloom by Christmas. Plant eight or ten bulbs in a 6-inch bulb-pan, covering them 1 inch.

EXCELSIOR. A greatly improved form of <i>Refracta alba</i> . Flowers twice as large	Doz.	100	1,000
	\$0 80	\$6 00	\$50 00

Fischer's Splendens (New)

Larger and stronger grows than Fischer's Purity	Doz.	100
Blue-Lavender	\$4 50	\$30 00
Mauve-Lavender	4 50	30 00

Boddington's Rainbow Freesias

A new race of colored Freesias which has created a sensation wherever shown. A mixture of various shades of lavender, orange, pink, yellow, etc. \$1 per doz., \$6 per 100, \$50 per 1,000.

Freesia, Fischer's Purity

The flowers, which are snowy white, of large size, are borne in great profusion on stems 2 to 2 1/2 feet, which grow upright and stiff; are excellent for cut-flower purposes. First size, 40 cts. per doz., \$2.50 per 100, \$20 per 1,000. Mammoth bulbs, 60 cts. per doz., \$3.50 per 100, \$30 per 1,000.

Freesia *Leichtlinii*

Primrose-yellow, with orange blotch on each petal. 35 cts. per doz., \$2.50 per 100, \$20 per 1,000.

Freesia *refracta alba*

French-grown, XXX, 1/8 to 1 in. diameter. 35c. per doz., \$2.25 per 100, \$20 per 1,000.
 French-grown, XX, 3/8 to 1/2 in. diameter. 25c. per doz., \$1.75 per 100, \$15 per 1,000.
 French-grown, X, 1/2 to 3/4 in. diameter. 20c. per doz., \$1.25 per 100, \$10 per 1,000.



Blue-Lavender

Freesias, Fischer's New Splendens

Mauve-Lavender

MISCELLANEOUS BULBS

The varieties marked with an asterisk (*) are not hardy, and must not be subjected to frost

ACHIMENES.* Very tender bulbous plant, suitable only for greenhouse culture or hanging-baskets and pans. In variable colors. We offer them in ten named varieties. 10 cts. each, 75 cts. per doz., \$5 per 100.

ALLIUM* *Neapolitanum.* An excellent forcer for winter-flowering, with immense trusses of
 white flowers..... Doz. 100 \$0 15 \$1 00
Luteum. Yellow..... 15 1 00
Roseum. Pink..... 25 2 00
Azureum. Blue..... 1 50 10 00

AMARYLLIS*

On receipt of the bulbs in the autumn they should be placed where they will be always slightly moist and warm, under the benches of a greenhouse, for example; do not pot up the bulbs before the flower-buds appear; when first potted, give very little water, and promote growth by giving moderate bottom heat; increase the supply of water as the plants progress. Very often the mistake is made that bulbs are potted up too early; the consequence is that only leaf-growth is made. The proper soil for Amaryllis is turfy loam enriched with rotten manure.

Owing to the increasing popularity of the better class of Amaryllis, we are encouraged to offer the Gold Medal Collections, imported directly from our English growers. On application we will send a list of varieties, with full descriptions and prices.

Vittata Hybrids, Boddington's Seedlings. These seedlings contain some wonderful varieties, almost equal to named sorts. We can recommend them with the utmost confidence. \$1 each, \$10 per doz., \$75 per 100.

Johnsonii (Bermuda Spice Lily). Crimson flowers, white-striped; one of the best-known varieties. 35 cts. each, \$3 per doz.



Gold Medal Amaryllis—New York International Flower Show Strain

AMARYLLIS, continued

Formosissima (Jacobæan Lily). Dark crimson. 25 cts. each, \$2 per doz.

Belladonna major (Belladonna Lily). Flowers white, flushed and tipped deep rose. 20 cts. each, \$1.50 per doz.

Vallota purpurea (Scarborough Lily). Vivid scarlet. 40 cts. each, \$4.50 per doz.

AMARYLLIS Halli, or Lycoris squamigera (The Magic Lily of Japan). A perfectly hardy Amaryllis, producing beautiful pink flowers. In early spring attractive green foliage appears which grows until July, when it ripens off and disappears, and anyone not familiar with its habits would think the bulb had died; but about a month later, as if by magic, the flower-stalks spring from the ground to a height of 2 or 3 feet, developing an umbel of large and beautiful lily-shaped flowers, 3 to 4 inches across, and from eight to twelve in number, of a delicate lilac-pink, shaded with clear blue. As the bulb is perfectly hardy without any protection, it can be planted either in the fall or spring. Cover the crowns about 4 inches. Very useful for the hardy border or among shrubbery. Strong, flowering bulbs, 25 cts. each, \$2.50 per doz., \$15 per 100.

ANEMONE*

Plant in October or November, six roots in a 6-inch pot or bulb-pan, covering them 1 inch. They may be kept in a cellar or frame protected from frost, until spring, when they may be placed in the greenhouse or window to bloom.

St. Brigid. Beautiful Irish Anemone. Colors range from maroon and brightest scarlet to flesh-pink and from lilac to purple. Doz. 100 \$0 50 \$3 00

Blanda. The beautiful, single dark blue Anemone. 75 5 00

Coronaria, Single Blue. A charming variety. 25 1 50

Single White (The Bride). Pure white. 25 1 50

Single Scarlet. Very brilliant. 25 1 75

Double Ceres. White, shaded with rose. 30 2 00

Double Ceres, Rosetti. Dark pink. 25 1 50

Double Ceres, King of the Scarlets. Vermilion. 30 2 00

Fulgens. Rich dazzling scarlet. 60 3 50

Boddington's Choice Single Mixed. 1,000, \$12. 20 1 50

Boddington's Choice Double Mixed. 1,000, \$18. 30 2 00

CAMASSIA esculenta (Indian Quamash). Hardy, thriving in sheltered and partially shaded situations; flower-stalks 2 to 3 feet high and bear twenty or more large blue flowers, each 2 inches across. 20 cts. per doz., \$1.25 per 100, \$10 per 1,000.

CHIONODOXA (Glory-of-the-Snow). The most beautiful of dwarf, blue, spring flowers.

Boissier. Large-flowering; blue; extra fine. Doz. 100 1,000 \$0 30 \$2 00 \$18 00

Luciliae. Flowers of brilliant sky-blue, with a white center. 25 1 75 15 00

Sardensis. Deep gentian-blue; very beautiful. 25 1 75 15 00

Gigantea. Unusually large flowers of lovely lilac-blue, with conspicuous white center. 25 1 75 15 00

CROWN IMPERIAL (*Fritillaria imperialis*). Hardy border plants of stately growth, producing whorls of pendent bell-shaped blossoms, ranging in color from pure yellow to deep shades of orange and reddish buff. Plant 9 inches deep. Each Doz. 100

Finest Varieties, mixed. \$0 20 \$2 00 \$15 00

CROCUSES, AUTUMN- AND WINTER-BLOOMING

Exceedingly beautiful Crocus-like flowers flowering from September to March outdoors in the North without protection. These are worthy of a place in every garden. Bulbs are ready for delivery now, and must be planted immediately.

Colchicum autumnale majus. Large, Each Doz. 100

rich purple. \$0 10 \$1 00 \$7 00

Autumn- and Winter-Flowering. Doz. 100 1,000

Crocus. Mixed. \$0 30 \$1 75 \$15 00



Boddington's Spring-blooming Crocuses

CROCUS, SPRING-BLOOMING

The bulbs should be set 3 inches deep, and should be planted in October or early in November to insure success. They are very effective when combined with Snowdrops, *Scilla Sibirica*, *Chionodoxa Lucilia*, Daffodils, and other spring flowers. For a natural effect in the lawn they can be scattered in handfuls and planted where they lie. Crocuses may also be grown indoors either in pots or bulb-pans in loam, or in dishes filled with our fiber, in which the bulbs are set closely, half an inch below the surface.

Boddington's "Quality" Crocuses

	Doz.	100	1,000
Albion. Blue, striped white.....	\$0 20	\$1 25	\$10 00
Baron von Brunow. Dark blue.....	20	1 25	10 00
Caroline Chisholm. White.....	20	1 25	10 00
Cloth of Gold.	20	1 25	10 00
King of the Whites. Largest white.....	20	1 25	10 00
King of the Whites. Top roots.....	25	1 50	12 00
Madame Mina. Striped.....	20	1 25	10 00
Mammoth Golden Yellow. X.....	20	1 00	9 00
Mammoth Golden Yellow. First size, XX	25	1 50	12 00
Mammoth Golden Yellow. Top roots, XXX.....	30	1 75	15 00
Mont Blanc. Pure white.....	20	1 25	10 00
Purpurea grandiflora. Deep purple.....	30	2 00	18 00
Purpurea grandiflora. Top roots. XXX.....	35	2 25	21 00
Sir Walter Scott. White, lilac-striped.....	20	1 25	10 00
Sir Walter Scott. Top roots. XXX.....	25	1 50	12 00

Mixed Crocuses

Large Golden Yellow. Very fine.....	20	75	6 50
Large Striped. Various shades.....	20	75	6 50
Large White. Various shades.....	20	75	6 50
Large Blue. Various shades.....	20	75	6 50
Large Mixed. All colors.....	20	75	6 50

DIELYTRA spectabilis (Bleeding-Heart). One of the most ornamental of hardy spring-flowering plants, with elegant green foliage and long, drooping racemes of heart-shaped flowers of deep pink. 25 cts. each, \$2.50 per doz., \$15 per 100.

ERANTHIS hyemalis (Winter Aconite). The Winter Aconite is the very "firstling" of the year, covering the ground with gilt spangles in the bleakest days of February. Any soil or situation will suit this flower, and it should be planted in large patches within view from the windows. 25 cts. per doz., \$1.50 per 100, \$12 per 1,000.

ERYTHRONIUM (Giant Dog's-Tooth Violet). Beautiful plants, perfectly hardy; the foliage is charmingly variegated, and a mass of fifteen or twenty plants is a pretty sight, even when not in flower; but when the graceful flowers are in bloom the effect is matchless. The plants luxuriate in rather moist, partially shady positions, and do very nicely when grown in pots for winter blooming.

Amaranum. Large, cream-colored flowers with Doz. 100 maroon band at base; leaves richly mottled; six to ten flowers on a stem are common.....	\$1 00	\$7 50
Dens-Canis. Mixed varieties.....	25	1 50

EREMURUS. Majestic, tuberous-rooted plants, with flower-spikes 6 to 10 feet high, forming a magnificent column of bloom during June and July. Give a sunny position, sheltered from gales; plant the tubers in the fall, while dormant, and set about 8 inches deep. Although hardy, it will be safer in northern states to protect with 4 to 6 inches of leaves, straw, manure, or similar covering to prevent the young growth, which starts very early, from being nipped by late frosts.

Bungei. Beautiful golden yellow. One of the rarest Each Doz.
and most lovely of the Eremurus.....\$1 50 \$15 00

Elwesianus. Soft pink, with bands of deeper color
down the middle of segments..... 1 50 15 00

Himalaius. Peach-pink..... 1 00 10 00

Robustus. Delightful rosy pink..... 1 00 10 00

Collection of one each of above for \$4.50; 3 collections for \$12

FRITILLARIA meleagris (Snake's Head, or Guinea Hen Flower). An elegant species, growing from 10 to 18 inches high, bearing in spring curious, drooping, bell-shaped flowers, most of which are very oddly marked, many being checkered and splashed white and purple, cream and maroon, etc. Perfectly hardy and splendid for naturalizing, especially in semi-shaded places. Plant 4 inches deep.

Mixed Colors. 40 cts. per doz., \$2.50 per 100.

Fritillaria meleagris alba. Pure white. 40c. per doz., \$2.50 per 100.

WINTER-FLOWERING GLADIOLI

Cardinalis, Nanus, or Colvillei Type

READY IN NOVEMBER

Greenhouse Culture.—Plant six or eight bulbs 1½ inches deep in a 6-inch bulb-pan. Keep in a cool but frost-free place for about eight weeks, or until well rooted, after which they may be forced gently.

Outdoor Culture.—This type of Gladiolus may be planted in the open ground in the autumn, if mulched sufficiently to exclude frost.

Ackermannii. Salmon-orange, with white blotches, edged scarlet; very handsome. 25 cts. per doz., \$1.50 per 100, \$12 per 1,000.

Blushing Bride. A most beautiful delicate pink Gladiolus for early forcing. 25 cts. per doz., \$1.50 per 100, \$12 per 1,000.

Delicatissima superba. Pure white, large, bright carmine blotch. 30 cts. per doz., \$2 per 100, \$16 per 1,000.

Fairy Queen. Carmine-red, white blotch, carmine-bordered. 25 cts. per doz., \$1.50 per 100, \$12 per 1,000.

Fiery Knight. This is a specially striking and beautiful variety. Dark scarlet, flaked violet-carmine. 55 cts. per doz., \$3.50 per 100, \$30 per 1,000.

Fire King. Orange-scarlet, purple blotch, purple-bordered; a beautiful variety. 50 cts. per doz., \$3.25 per 100, \$30 per 1,000.

Non Plus Ultra (Ramosus type). Large, rosy red, flaked white, shaded magenta. 35 cts. per doz., \$2.25 per 100, \$20 per 1,000.

Peach Blossom. Lovely, soft pink, on the order of the Killarney Rose. 25 cts. per doz., \$1.50 per 100, \$12 per 1,000.

Pink Perfection. Lilac-rose, white blotch, carmine-bordered. 30 cts. per doz., \$2 per 100, \$18 per 1,000.

Queen Wilhelmina. Blush-white, with conspicuous blotches of cream with scarlet margins. 40 cts. per doz., \$2.50 per 100, \$20 per 1,000.

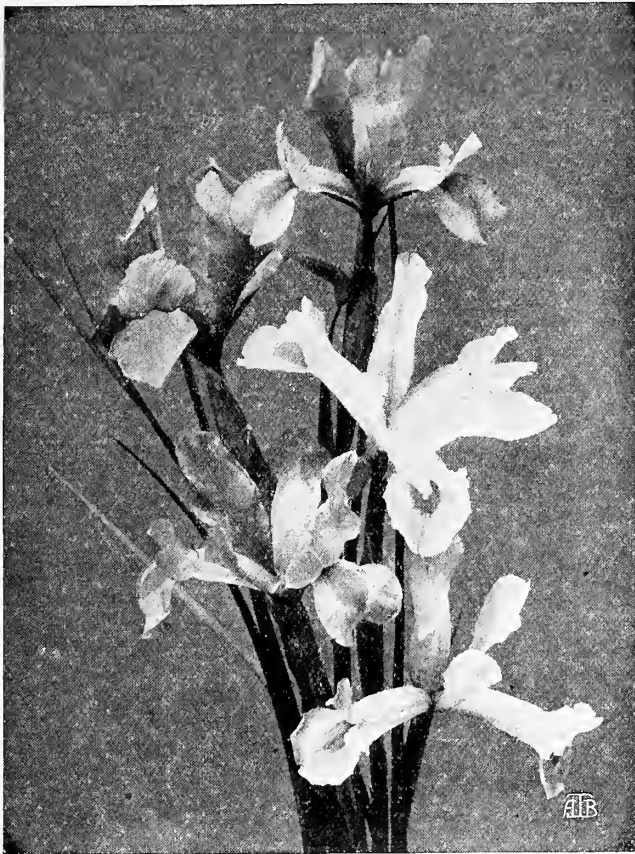
Sappho. Large; white, shaded pale lilac, with faint, creamy blotches, edged violet. 25 cts. per doz., \$1.50 per 100, \$12 per 1,000.

The Bride (Colvillei alba). White; makes a useful cut-flower for early spring use. 25 cts. per doz., \$1.50 per 100, \$12 per 1,000.

Tristis (grandis). Creamy white. 60 cts. per doz., \$3.50 per 100, \$30 per 1,000.

Gladiolus Gandavensis Hybrids

	Doz.	100
America. Immense size; beautiful flesh-pink.....	\$0 75	\$5 00
Augusta. White. First-size bulbs.....	75	5 00
Brenchleyensis. (True). Fiery scarlet. Top roots...	75	5 00
Boddington's Mixed White and Light	50	3 00
May. Pure white, flaked rosy crimson.....	75	5 00
Mrs. Francis King. Light crimson.....	50	3 00
American Hybrids. A mixture of all colors.....	40	2 50



Spanish Iris

ENGLISH IRIS (*Iris Anglica*)

The flowers are nearly as large as those of the Japanese Iris. They grow from 18 to 20 inches high and are perfectly hardy and flower after the Fleur-de-Lis and before the Japanese Iris.

- Argus.** Pink and white.
- Bleu Celeste.** Sky-blue.
- Couleur Cardinal.** Dark velvety blue.
- Duke of Richmond.** Magenta.
- Mont Blanc.** Pure white.

- Othello.** Magenta-purple.
- Thackeray.** Rich claret-color.
- Tricolor.** White, blue and red.
- Washington.** Pale lavender, mottled blue.
- Bleu Mourant.** Blue and white.

Price of the above.....	\$0 40	\$3 00	\$22 00
Splendid mixture.....	25	1 75	15 00

SPANISH IRIS (*Iris Hispanica*)

Adapted for forcing for Easter blooming and for massing in beds for July flowering, or for colonizing in the herbaceous border.

- Belle Chinoise.** Pure yellow.
- British Queen.** Large; white.
- Cajanus.** Deep golden yellow.
- Chrysolora.** Pale yellow.
- Czar Peter.** Porcelain-blue.
- Darling.** Blue; very fine; early
- Queen Wilhelmina.** White, yellow blotch.

- King of the Blues.** Finest blue.
- La Grandesse.** Purest white.
- Louise.** Pale blue, spotted.
- Queen Emma.** Deep golden yellow.
- Snowball.** Very large; white.

Top-root Bulbs of above-named varieties....	Doz.	100	1,000
First-size Bulbs of above-named varieties...	\$0 25	\$1 50	\$12 00
Boddington's Choicest Mixed, all colors.....	20	1 25	10 00
	15	1 00	7 50

FRENCH IRIS Early-Flowering

- Filifolia.** French-grown bulbs. Deep blue. Can be forced into bloom by January 1..... Doz. 100 \$1 00 \$5 00
- Tingitana.** French-grown, Dark blue with yellow. Can be flowered January 1..... 1 75 12 00

DUTCH IRIS (*Iris Hollandica*)

A new race of early large-flowering, bulbous Iris, coming into bloom fully two weeks in advance of Spanish Iris, and in all respects greatly superior. Hardy in the latitude of New York.

- Anton Mauve.** Soft blue.
- C. Van de Windt.** Pure white, yellow blotch.
- David Teniers.** Lavender, falls citron-yellow.

- Hart Nibbrig.** Clear blue.
- Hobbema.** White, yellow falls.
- J. Weissenbruch.** Pale mauve.
- Rembrandt.** Deep blue, orange blotch.

Price of the above, 75 cts. per doz., \$5 per 100, \$45 per 1,000
Mixed Dutch Iris, 65 cts. per doz., \$4.25 per 100, \$40 per 1,000

FLEUR-DE-LIS (*Iris Germanica*)

The true "Fleur-de-Lis." They are perfectly hardy, grow luxuriantly and bloom in June in any ordinary garden soil.

Boddington's Collection of 5 varieties named, White, White Tinged Lavender, Light Blue, Dark Blue, and Yellow Variegated for \$1. Named or mixed varieties as per our Spring Garden Guide, 25 cts. each, \$2.50 per doz., \$15 per 100.

Iris pallida Dalmatica

Color deep, clear lavender; very large; flowers sweet-scented. 30 cts. each, \$3 per doz., \$20 per 100.

JAPAN IRIS (*Iris Kaempferi*)

The most showy and gorgeous of the Iris family. The stately flowers are often 10 inches in diameter, and are produced freely in July. They require rich, moist soil. We offer a collection of 25 varieties covering every desirable shade and variation of color in this species for \$5. Named varieties as per our Spring Garden Guide, 25 cts. each, \$2.50 per doz., \$18 per 100.

MOURNING IRIS (*Iris Susiana*)

The groundwork of the flower is silvery gray, so mottled and veined and lined with dark chocolate and black as to leave one under the impression that it is only a silver lining showing through. 20 cts. each, \$2 per doz., \$15 per 100.



Fleur-de-Lis, *Iris pallida Dalmatica*

IXIAS.* The Ixia is a beautiful little winter-flowering bulb, with long, slender, graceful spikes of bloom. The colors are rich, varied and beautiful, the center always differing in color from the other parts of the flower, so that the blossoms, expanding in the sun's rays, present a picture of gorgeous beauty.

	Doz.	100
Azure. Azure-blue, large maroon eye.....	\$0 35	\$2 00
Conqueror. Red, shaded yellow.....	35	2 00
Crateroides major. Bright scarlet. The best of this color.....	50	3 00
Emperor of China. Yellow, slightly tinged brown; dark eye.....	35	2 00
Excelsior. Rich, bronzy scarlet, outside deep crimson..	35	2 00
Galatea. Pure white, deep violet eye.....	35	2 00
Iridiflora. A pretty tint of green.....	35	2 00
Lady of the Lake. Magenta-color, dark eye.....	35	2 00
Lady Slade. Bright pink, slightly striped white.....	35	2 00
Rosea-plena. Double; rose; an excellent variety.....	35	2 00
Smiling Mary. The best bright pink.....	75	5 00
Snowdrop. White, blue eye.....	50	3 00
Fine Mixed Varieties	30	1 50

LILY-OF-THE-VALLEY. Large clumps of Lily-of-the-Valley for outside planting and naturalizing. These clumps will throw from fifteen to twenty spikes of flowers. 40 cts. each, \$3.50 per doz., \$25 per 100.

LEUCOJUM. Produces flowers like monster snowdrops; very graceful in growth, having the delicate fragrance of the violet. It is one of our earliest spring flowers, with white blossoms distinctly tipped green, handsome in outline and prized for bouquets. They should be grown in quantities in the borders or in spots on the edges of shrubbery, where they are beautifully effective, and when established produce enormous quantities of flowers.

	Doz.	100	1,000
Vernum (Spring Snowflake).....	\$0 25	\$1 50	\$12 00
Æstivum. A snow-white flower resembling the Snowdrop, but larger.....	25	1 50	12 00

NERINE* (Amaryllidaceæ). These popular South African bulbous plants are among the most charming and most useful of all early winter-flowering plants. Coming into bloom, as they do, at a time when bulbous flowers of real choiceness are scarce (October and November), we find that Nerines amply repay the little care and attention which they require. The length of stem, the vivid and luminous colors, intensified as they are by artificial light, make this comparatively little-known plant a most desirable cut-flower for dinner-table decoration. Its use and value for this purpose are well understood in Newport and Lenox. Same cultural directions as for Amaryllis.

Corusca major. Scarlet. 75 cts. each, \$7.50 per doz., \$50 per 100.
Fothergillii major. Vivid scarlet; a splendid Nerine. 75 cts. each, \$7.50 per doz., \$50 per 100.

ORNITHOGALUM Arabicum* (Star of Bethlehem). Of the easiest culture, throwing up a tall spike bearing numerous large, milk-white, star-shaped flowers, with a black center, and having a distinct aromatic perfume. 10 cts. each, 60 cts. per doz., \$3.50 per 100.

Umbellatum (American Star of Bethlehem). Perfectly hardy; flowers white and star-shaped; fine for naturalizing. 20 cts. per doz., \$1.50 per 100, \$12 per 1,000.

OXALIS* (Lovely little bulbous plants for hanging-pots and baskets.) The bulbs should be planted an inch deep, six to eight in a 5-inch pot. They need a sunny situation.

	Doz.	100
Bermuda Buttercup. Deep yellow; extra-large bulbs.....	\$0 30	\$2 00
Bowiei. Rosy crimson; fine flower.....	30	2 00
Grand Duchess, White	30	2 00
" Pink.....	30	2 00
" Lavender.....	30	2 00
Lutea. Single yellow.....	30	2 00
" Double.....	50	3 00
Rosea. Rose.....	30	2 00
Versicolor. Crimson and white.....	30	2 00
Mixed, All Colors	20	1 00

RANUNCULUS* Boddington's Giant. Gorgeous double flowers, easily grown in pots for winter blooming, or in coldframes for spring. Same culture as for Anemones, which see.

Giant French. Mixed colors. 25 cts. per doz., \$1.50 per 100.
Giant Persian. Mixed colors. 20 cts. per doz., \$1 per 100.
Giant Turban. Mixed colors. 20 cts. per doz., \$1 per 100.

SPARAXIS.* Tender, bearing beautiful flowers about 2 inches across, on long, graceful spikes. Should be grown in the conservatory or house in pots, flowering during the winter and spring months.

10 Choice Named Varieties. 25 cts. per doz., \$1.50 per 100.
Choice Mixed Colors. 20 cts. per doz., \$1.25 per 100.

SCILLA præcox (Sibirica). The Blue Squill is perfectly hardy, and should be largely grown in the open border in conjunction with Snowdrops. Mammoth bulbs, 20 cts. per doz., \$1.50 per 100, \$12 per 1,000.

Campanulata (Bell-flowered Squill). Rosy purple color. Good for acclimatizing or planting among herbaceous plants.

	Doz.	100	1,000
Excelsior. The best blue of all.....	\$0 20	\$1 25	\$10 00
Heavenly Blue.	20	1 50	12 00
Rose Queen. Lovely rose.....	30	1 75	15 00
Alba. White.....	30	1 75	15 00
Mixed. All colors.....	20	1 25	10 00

Nutans cærulea. The English Blue Canterbury Bell; fine for acclimatizing. 20 1 25 10 00

Rosea maxima, Robin Hood. The pink variety of the above and equally good for planting in the wild garden. 40 2 75 25 00

SPIRÆA, or ASTILBE

November Delivery

Spiræas make excellent plants for Easter and Memorial Day decorations. They should be potted on arrival and be kept in a cellar or coldframe till about two months before they are needed in flower.

	Each	Doz.	100
AMERICA. Elegant flowers of lilac-rose, with silvery reflex.....	\$0 35	\$3 00	\$20 00
AVALANCHE. Pure white.....	35	3 00	20 00
PHILADELPHIA. Lavender-pink.....	35	3 00	20 00
RUBENS. The darkest of all the pink varieties; very large.....	35	3 00	20 00
PEACH BLOSSOM. Soft pink; very free....	20	2 00	15 00
QUEEN ALEXANDRA. Shell-pink.....	25	2 50	15 00
ASTILBOIDES FLORIBUNDA. Pure white	25	2 50	15 00
COMPACTA MULTIFLORA. White.....	25	2 50	15 00
GLADSTONE. Enormous spikes; pure white.	25	2 50	15 00
JAPONICA. The old white variety.....	20	1 50	12 00
QUEEN OF HOLLAND. Early bloomer; white.....	25	2 50	15 00
PALMATA ROSEA. The beautiful deep pink hardy Spiræa.....	25	2 50	15 00
ARUNCUS. The wonderful hardy white Spiræa.....	25	2 50	15 00

SNOWDROPS (Galanthus). Among the hardiest and earliest of spring flowers. The bulbs should be planted 2 inches deep. They thrive in almost any soil and situation and are fine for naturalizing.

	Doz.	100	1,000
Large Single. First-size X.....	\$0 25	\$1 75	\$15 00
Large Double. First-size X.....	30	2 25	20 00

TRILLIUM grandiflorum (American Wood-Lily). Perfectly hardy, growing and flowering profusely in partially shaded nooks about the lawn, under trees, etc. The flowers are large, of the finest white, changing in a few days to soft rose. 10 cts. each, \$1 per doz., \$7.50 per 100.

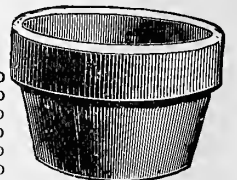
Erectum. This is the Purple Wood-Lily, the earliest to flower. 15 cts. each, \$1.25 per doz., \$9 per 100.

TRITELEIA uniflora (Spring Star Flower). 15 cts. per doz., 75 cts. per 100, \$6 per 1,000.

TROPÆOLUM tricolorum (Bulbous Nasturtiums). Scarlet tube, yellow center, tipped black. The stems are usually trained on wires, but they may be allowed to fall down from a pot or basket. The sunniest part of the greenhouse should be devoted to this bulb. 20 cts. each, \$1.75 per doz., \$11 per 100.

BULB-PANS, ROUND

	Width	Height	Doz.	100
6 in.	3½ in.	\$0 85	\$5 70
7 in.	3¾ in.	1 50	10 00
8 in.	4 in.	2 25	15 00
10 in.	5 in.	4 50	30 00
12 in.	6 in.	9 00	60 00
14 in.	7 in.	13 50	90 00



STANDARD FLOWER POTS

	Size	Doz.	100	1,000
4 in.	\$0 30	\$2 25	\$20 00
5 in.	60	3 75	34 00
6 in.	85	5 50	50 00

INSECTICIDES, FUNGICIDES, ETC.

Aphine. Kills plant-sucking insects, such as green, black or white fly, red spider, thrip, mealy bug, brown and white scale. Used as a spray or wash, as directed on each can. An excellent cleaner for house plants. 1/2 pt. 40 cts., pt. 65 cts., qt. \$1, gal. \$2.50.

Aphis Punk. For use in greenhouses only. A paper that has been thoroughly saturated with nicotine. Used for fumigating, giving off dense fumes of nicotine. For destroying aphis, thrip, white and green fly, also red spider. Pkg. 60 cts., \$7 for 12 pkgs.

Black-Leaf 40. A concentrated solution of nicotine sulphate; an excellent spray for black aphides and sucking insects of all kinds. Dilutes one part to 900 or 1,000 parts of water, according to treatment. Full directions on each package. 1-oz. bottle 25 cts., 1/2-lb. tin 75 cts., 2 lbs. \$2.50, 10 lbs. \$10.75.

Fir-Tree-Oil Soap, Stott's. 1/2-lb. can 30 cts., 2-lb. can 85 cts.

Fish-Oil Soap. For mild forms of scale, and is an excellent summer spray when something stronger cannot be used, where the San José scale exists. Lb. 25 cts., 3-lb. box 65 cts., 25 lbs. \$4, 100 lbs. \$15.

Flowers of Sulphur. A specific against mildew in the greenhouse. Lb. 10 cts., 10 lbs. 75 cts., 25 lbs. and over at 6 cts. per lb.

Fungine. An infallible remedy for mildew, rust, wilt and other fungous blights affecting flowers, fruits, etc. 1/2 pt. 40 cts., pt. 65 cts., qt. \$1, gal. \$3.50.

Imp. Soap Spray. Peculiarly effective against red spider, on fruit, etc., rose bug, white, black and green fly, mealy bug, thrip, aphis, and other insect pests. Qt. 55 cts., gal. \$1.05, 5 gals. \$7.50.

Nico-Fume, Liquid. An excellent tobacco extract for spraying or vaporizing in greenhouses. Lb. \$1.50, 4 lbs. \$5.50, 8 lbs. \$10.50.

Nico-Fume. A nicotine-saturated paper for greenhouse fumigating, used also for tying beneath chrysanthemum blooms in the autumn to discourage insect pests. Packed in tins. 24 sheets, 85 cts.; 144 sheets, \$4; 288 sheets, \$7.50.

Nicoticide. Used as a spray for aphis, but chiefly for vaporizing in greenhouses. 1/4 pt. 70 cts., 1/2 pt. \$1.25. Pt., sufficient for 32,000 cubic feet, \$2.50; gal. \$15.

Nikoteen. For vaporizing in greenhouses against insect pests. Lb. bottle \$1.50, 10 lbs. \$14.

Scalecide. For the destruction of San José scale. Qt. 40 cts., gal. \$1, 5 gals. \$3.75, 10 gals. \$6.75.

Sodium Cyanide. Used in conjunction with sulphuric acid to produce hydrocyanic acid gas. Death to all animal and insect life. Great care must be exercised in its use. \$1.50 per lb.

Tobacco Dust. The burning or dusting kind. 5 lbs. will fumigate a house 100 by 25 feet. Put up in 100-lb. bags for \$4.

Tobacco Stems. 100-lb. bale \$2, 300 lbs. \$5.

X-L-All Liquid Insecticide. English preparation for spraying; harmless to very delicate plants; kills mealy bug, red spider, and all insect pests. Qt. \$1.25, 1/2 gal. \$2.25, gal. \$4.25.

X-L-All Vaporizing Compound. Claimed to be the most easy, effectual and cheapest method of fumigating greenhouses and frames. In liquid and dry-cake form, box of 80 cakes for \$10.50, 15 cts. per cake. Each cake sufficient for 1,000 cubic feet.

No. 1. \$8.00 bottle contains sufficient for 40,000 cubic feet of space
 No. 2. \$4.50 " " " " 20,000 " " "
 No. 3. \$2.50 " " " " 10,000 " " "
 No. 4. \$1.50 " " " " 5,000 " " "

VARIOUS SEASONABLE GARDEN SUNDRIES

Labels, Wooden, Pot or Garden		Plain	Painted
	Plain	1,000	1,000
	Painted	1,000	1,000
4-in.	\$0 75	\$0 90
4 1/2-in.	80	1 00
5-in.	90	1 25

Labels, Wooden, Notched Tree		Plain	Painted
	Plain	1,000	1,000
	Painted	1,000	1,000
3 1/2-inch	\$0 60	\$0 90
5-inch	1 50	2 00

Pencils, Garden, Wolf's Indelible Black. For wooden labels. 10 cts. each, \$1 per doz.

Stakes for Plants, Light.		Round, painted green, tapering.
	Doz.	100
2 feet	\$0 30
3 feet	50

Stakes, Galvanized Wire.		No. 8 wire.
	100	1,000
3 feet	\$2 50
3 1/2 feet	3 00
4 feet	3 25

Raffia, White. 25 cts. per lb., 90 cts. for 5 lbs., \$1.50 for 10 lbs. Extra long, fresh and heavy, 35 cts. per lb., \$1.50 for 5 lbs., \$2.75 for 10 lbs.

Raffia, Green. \$1 per lb., \$9.50 for 10 lbs.

Silkalene. For stringing smilax, etc. Fast green colors; will not fade or break.

	Spool	Box
FFF. Coarse. 2-oz. spools, 1 lb. in box, 8 spools	\$0 25
FF. Medium. 2-oz. spools, 1 lb. in box, 8 spools	25
F. Fine. 2-oz. spools, 1 lb. in box, 8 spools	25

Twine, Soft. For tying vines, etc.; very strong. 3- and 5-ply. Large balls, 35 cts.

Tarred Yarn. Excellent, low-priced material for raspberries, shrubs, etc. Lb. 50 cts.

Boxes, Flower, Cardboard. Order by number.			
No.	Depth	Length	Width
No. 4 1/2	3 1/2 inches	16 inches
No. 6A	3 inches	18 inches
No. 12A	6 inches	26 inches
No. 23	5 inches	30 inches

Boxes, Corrugated Cardboard. For shipping. Very strong and reinforced. Shipped flat.			
No.	Doz.	100	
No. A.	20 x 7 x 4 inches	\$2 00
No. B.	28 x 8 x 5 inches	2 75
No. C.	30 x 12 x 6 inches	3 50
No. D.	36 x 14 x 8 inches	4 50
No. E.	42 x 13 x 6 inches	4 75
No. F.	48 x 18 x 8 inches	6 00

Boxes, Leatheroid for Shipping Cut-Flowers. Light and strong, fitted with willow trays, lock, and strap. Full particulars on application.

Lever Clip, Blake's. For fastening rose and chrysanthemum wire stakes. A labor-saving device. Blake's Lever Clip is the "tie that binds." It binds the wire to the stakes. 90 cts. per box (500 to the box), \$1.50 per 1,000.

Watering Pots, "The Philadelphia." With brass joints and two copper-faced roses. 6-qt. \$2.50, 8-qt. \$2.75, 10-qt. \$3.75, 12-qt. \$4.

Watering Pots, Haw's Pattern		No.	Each
0.3 qts.; shelf; 9-in. spout, Each	4. 8 qts.; japanned; 2 roses	\$5 50
1 pot rose and extra joint	\$3 75	5. 10 qts.; japanned; 1 rose
1. 3 qts.; japanned; 2 roses	4 00	and spreader	6 00
2. 4 qts.; japanned; 2 roses	4 25	6. 12 qts.; japanned; 1 rose
3. 6 qts.; japanned; 2 roses	5 00	and spreader	7 25

Watering Pots, French. Brass handles and joints, two copper-faced roses, coarse and fine. 6-qt. \$2.75, 8-qt. \$3, 10-qt. \$3.25.

Watering Pots, Strawberry or Shelf. Galvanized; holds 3 qts. \$1.50.

Rubber Hose, The Revero. A model, indestructible hose for the lawn, greenhouse, stable and garage. Cut any length and fitted with couplings. 3/4-inch, 27c. per foot; 1/2-inch, 22c. per foot.

Hose Menders, Cooper's. 3/4-inch, 10 cts. each, \$1 per doz.

Boston Rose Hose Sprinkler. A wide-face nozzle, like the rose of a watering pot. 3-inch face, \$1 each; 4-inch face, \$1.25 each.

Schubert's Sprinkler. Can be used for either watering or syringing; especially recommended for greenhouse purposes. \$1.50 each.

Stott Sprayer. A favorite with rose-growers; throws a fine, misty spray with great force, thus exterminating red spider. Single-spray type, \$1.25 each; double-spray type, \$1.75 each.

THERMOMETERS

Japanned. Tin case, 10- and 12-in., 65 cts., and 80 cts. each.

Self-registering (Maximum and Minimum). \$3.75 each.

Mushroom-bed. Galvanized frame, wood handles and mercury bath, so constructed as to insure accurate temperature reading instantly. \$2 each.

Hicks' English Self-registering, Japanned. Tin case, white porcelain indicator, highly finished. The most accurate thermometer manufactured. 8-inch, \$8.50; 10-inch, \$9.50; 12-inch, \$12.

FERTILIZERS, MANURES, ETC.

Bone Meal for General Use. Pure finely ground bone. 100 lbs. \$3, 200 lbs. \$5.50, ton \$52.50.

Bone Meal for Roses. For use under glass; the highest quality obtainable. 100 lbs. \$3.25, 200 lbs. \$6, ton \$55.

Bone, Crushed, Coarse. For vine borders, etc. 1/4 inch to 1/2 inch. 100 lbs. \$4.50, ton \$80.

Guano, Peruvian. (Genuine.) High in ammonia, potash, and phosphoric acid. Lb. 30 cts., 5 lbs. \$1, 10 lbs. \$1.75, 25 lbs. \$3.25, 50 lbs. \$5.50, 100 lbs. \$10.

NITRATE OF SODA. 100 to 300 lbs. per acre. 25-lb. bag \$2.50, 50-lb. bag \$4.50, 100-lb. bag \$8.50.

SHEEP MANURE, PULVERIZED. In bags of 100 lbs. \$2.75, 500 lbs. \$12, 1,000 lbs. \$21, ton \$40.

Scotch Soot. (Genuine Imported.) Sold in 100-lb. bags only, \$5 per bag.

Thomson's "Special" Chrysanthemum Manure. An excellent stimulating manure for top-dressing of chrysanthemums and similar plants. 28-lb. bag \$4, 56-lb. bag \$7, 112-lb. bag \$13.50.

Thomson's Vine, Plant, and Vegetable Manure. Admirably adapted for mixing with the soil when potting in the proportion of four pounds to each wheelbarrow-load of soil. 28-lb. bag \$2.50, 56-lb. bag, \$4.50, 112-lb. bag \$8.

"BORDER" COLLECTION OF HARDY BULBS

SUMMER
AND AUTUMN
1917

BODDINGTON'S GARDEN GUIDE

ARTHUR T. BODDINGTON CO.
INCORPORATED

128 CHAMBERS STREET
NEW YORK CITY

The accompanying illustration is a suggestion for an attractive bulb border providing a beautiful display of flowers suitable for cutting.

- 20 Darwin Tulips (half collection offered on front cover).
- 30 Narcissus Barri Conspicuus.
- 12 Narcissus Poetaz Elvira.
- 50 Narcissus Victoria (Trumpet Bicolor).

Special price for the above collection \$3, postage or express paid east of the Mississippi River; to points west add 50 cents.

