

Historic, Archive Document

Do not assume content reflects current scientific knowledge, policies, or practices.

PEONIES
IRIS
PHLOX
AND OTHER
PERENNIALS

OFFERED BY THE

Cherry Hill Nurseries



1916 - 1917

T. C. THURLOW'S SONS, Inc.
WEST NEWBURY, MASS.



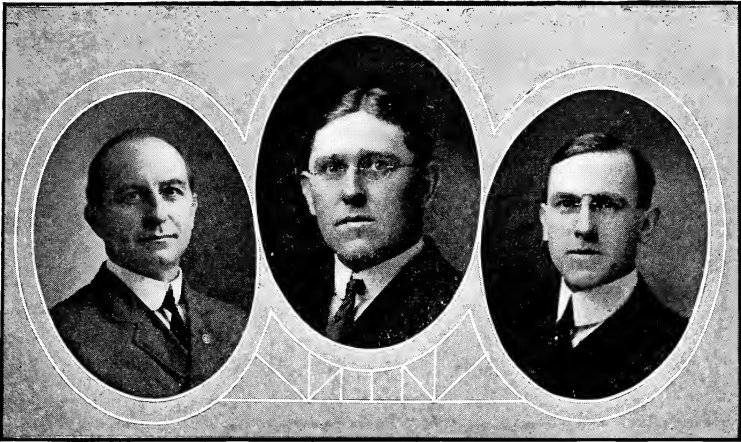
GOLD MEDAL
Awarded 1915
by The American Peony Society

GOLD MEDAL PEONIES

On June 27th, 1914, we were awarded the Gold Medal of the Massachusetts Horticultural Society for our work on Peonies.

On June 12th, 1915, at the Greatest Peony Exhibit ever held in Boston, The American Peony Society awarded us a Gold Medal for the largest and best collection of Peonies (this collection consisted of 137 different varieties).

JUN 23 1916



GEORGE C. THURLOW, President

DAVID C. STRANGER, V. President

WINTHROP H. THURLOW, Treasurer

FOREWORD



It is our privilege and pleasure to greet you once more, and to endeavor through the message of this book to interest you still further in what we believe to be the "Queen of Flowers." For many years we have lived with them, until we feel that they are a part of our lives, and springtime would not be half so glorious without their happy smiling faces—ever new, yet friends of long standing.

From year to year we have planned to see all new varieties and to secure those of merit whenever possible. Thousands of dollars have thus been spent in securing the best obtainable. Hundreds of much-heralded Peonies have been tried out in our trial grounds and afterwards discarded for not having intrinsic value.

Our present collections consist of nearly four hundred varieties and cover about six acres of ground, and to see hundreds of thousands of rare and exquisite blooms is a privilege that kings and queens might envy. Yet here they are, and throngs visit us daily through the flowering season and go away happy and refreshed from partaking of the beauty and fragrance of these magnificent flowers.

We want you to visit us during the flowering season, but especially about mid-June when the Peony season is at its height, so that you, too, may see these wondrous beauties and depart with joy in your heart from a day's association with the chaste and beautiful flowers.

It has always been our aim to supply our customers with plants true to name, thrifty and vigorous and of good size and to so pack them that they will travel with safety practically any distance.

SHIPPING NOTES

All the plants listed in this book will be carefully selected with good roots and well packed with good clean moss in strong, light packages. Small lots will be sent either by parcel post or express and larger lots by freight. Please specify in all cases just how you wish them to come.

Our Peony flowering season is all through the month of June, but is at its best from about the 10th to 25th.

We gladly invite all to visit us on any week-day but WE DO NO BUSINESS ON SUNDAY AND OUR GROUNDS ARE CLOSED ON THAT DAY.

PEONIES

Peonies have been known to man for more years than we know—some of the records among the Chinese more than a thousand years ago mention the Peony and it has been admired by them as one of the finest flowers of the Flowery Kingdom. What then can we say of the newer Peonies which seem as far in advance of the Peonies of fifteen years ago as those were in advance of the red “piney” of our grandmother’s garden. These wonderful flowers coming in such magnificence, laden with perfume so that the air is sweetly and delicately scented for some distance, are a triumph of horticultural skill. But when we speak of man’s skill let us not forget the greater part of Mother Nature who is so willing to pour out her gifts to us.

There are so many varieties that one can select those which will give a succession of bloom from the middle of May until July or one can have them all in one burst of glory. We are giving a list of varieties from early to late for the convenience of those who wish a long season, or we will be very glad to recommend a list for any particular time.

MONTH OF PEONIES

As a guide to those who wish a succession of blooms we have listed below a number of varieties which will give a season of blooms from the very earliest to the latest.

WHITE.

Whitleyi major, Single	Mme. Emile Lemoine
Mme. de Verneville	Baroness Schroeder
Festiva Maxima	Duchesse de Nemours
Marie Jacquin	Duc de Wellington
James Kelway	Couronne d’Or

BLUSH AND SHELL PINK.

Adana, Single	Eugenie Verdier
Delicatissima	Therese
Mme. Calot	Triomphe de l’Ex. de Lille
Lamartine (Calot)	Venus
Mme. Ducl	Mme. Emile Gallé
Virginie	Grandiflora (Richardson)

ROSE PINK.

Off. Rosea	M. Boucharlat ainé
Emily, Single	Souv. de l'Ex. Universelle
Edith Lyttleton	Mme. Boulanger
Edulis Superba	Etta
Torquemada	Jules Calot
Mme. Barillet Deschamps	Livingstone

CRIMSON.

Peter Barr	Felix Crousse
Smoutha	Dr. Caillot
Off. Rubra plena	Adolphe Rousseau
Mrs. Key, Single	Mr. Manning
M. Martin Cahuzac	Grover Cleveland
Marechal Vaillant	Rubra Superba

CULTURE OF PEONIES

Peonies may be transplanted at almost any time in the year, but the best season is during the months of September and October when the plants are dormant. At this time there will be found small white and pink buds which will be the stalks of the next year's growth. The plants may be planted with success in the early spring before they make any growth with the first warm days. We do not store any Peonies in the cellar over winter, but oftentimes dig them early in April and keep them dormant until May. If we are notified, orders may be held in this way until the garden is ready to plant. They will usually bloom that same season, but not as much as if planted the fall previous.

The beds where they are to be planted should be well prepared for, although Peonies will live and bloom in grass, yet they respond to care. If manure is used it should be old and well rotted, as too strong applications of fresh manure are liable to promote decay in the roots. Spade the ground thoroughly and if the land is a heavy clay, add sand or better yet, work in leaf mold or peat muck. This makes a porous soil, retentive of moisture. Plant the Peonies so that the crown will be from two to three inches below the surface and firm the earth around the plant. In the late fall a mulch of strawy manure will be beneficial and a further application of some garden fertilizer or pulverized manure may be put on in the spring and lightly worked in. Liberal watering when the buds have formed until they have opened will make the flowers much larger and often times fresher colored.

There is no class of plants so free from insects and diseases as the Peony. Small black ants are often seen in abundance on the flower buds, but they are only after the honey that oozes from the buds. The rose bug or rose chafer often appears in such numbers as to injure the flowers, especially the sweetest and most delicate ones.

4 CHERRY HILL NURSERIES, WEST NEWBURY, MASS.

The best remedy is hand picking; a small shallow pan containing kerosene is a good receptacle for them. This is the way we rid our rose bushes, etc., from these troublesome pests. These bugs do not often travel far when they once light on a place, and one or two thorough pickings are usually enough. Sometimes a few stalks will be found to be wilted. These should be at once removed and burned. Cut below the withered stalk into the green tissue even if you have to cut down to the crown. This prevents the fungus from spreading and no further harm need be expected.

The Peonies we offer are strong, vigorous plants which will in most cases, if planted in September, bloom the following season. Our varieties are all verified, as we do not sell plants until we have seen them bloom here in our grounds. Should there be any mistake we will be glad indeed to rectify it, and would appreciate your advising us of the fact. Oftentimes Peonies will not bloom the first year as they will later; sometimes double flowered varieties will produce a single flower, but as soon as there is strength enough in the root the blooms will appear all right.

For quicker effects we list Peonies in two, three and four year clumps. Many garden owners desire these large clumps, as Peonies are more showy in developing than many other plants. When once established they will grow and bloom for years. Indeed the plants, although producing fine blooms when small, will not reach their full strength and vigor until they are seven or eight years old when the flowers of some of the new varieties are really superb.

In a great many varieties we can furnish two, three and oftentimes four-year old plants for those desiring large clumps. The *two-year* old clumps we can furnish at 50 per cent. increase of the printed rates; *three-year* old at 100 per cent. increase, and *four-year* old at 150 per cent. increase.

How far may Peonies and Iris be sent with safety?

This question may be answered by an extract from a letter recently received:

Wuhu, China, April 3, 1915.

"All the peonies and Iris came up; the officnalls is a foot high. . . ."



KELWAY (ENGLAND) SILVER MEDAL

Awarded us for Display of Peonies

SINGLE HERBACEOUS PEONIES SERIES A

50 cents each; \$5.00 per dozen except as noted.

For 2 year clumps add 50% to price.

For 3 year clumps add 100% to price.

For 4 year clumps add 150% to price.

In this series we have listed the varieties which begin the Peony season. By a selection you may have Peonies in flower for from six to eight weeks. The early European varieties lead, then the Chinese singles, closely followed by the double varieties until the Peony bed is a mass of color. While the singles are not as good for cut flowers as the large, full blooms, yet for garden or landscape effects the single flowers are exceptionally fine, the beautiful silky petals with the masses of bright yellow stamens seeming to float over the plants, so light are they. Toward evening these flowers close and seen at dusk are especially beautiful, looking like large rosebuds.

If desired, we will be glad to suggest a selection which will give a continuation of flowers.

AREOS, soft pink fading to white. Early.

ARGUS, rich deep rose.

BLACK PRINCE (Thurlow), a seedling of our own growing, very dark garnet with a mass of golden stamens, soft, rich coloring, not glossy.

Not for sale.

CELESTE BROCHET (Brochet), an exquisite flower, petals milky white minutely dotted with small flecks of lilac, total effect soft flesh pink. Stock limited, \$2.50 each.

DEFIANCE, brilliant crimson.

DREADNOUGHT (Barr), crimson; extra fine. 75 cents each.

EMILY, beautiful soft rose pink.

HERMES, a delicate hydrangea pink.

LADY LILLIAN OGLE (Kelway), a fine blush white variety with large, silky petals. \$1.00 each.

LA FIANCEE (Dessert 1902), tall, vigorous grower, producing very large flowers of white with golden stamens. \$2.00 each.

METEOR, bright dazzling crimson; extra fine. 75 cents.

MILLAIS, dark red with a mass of golden stamens.

MRS. KEY bright glossy crimson; yellow stamens. 75 cents.

PRINCE ALEXANDER, very fine cherry color.

PRINCE BISMARCK, rich crimson.

PRINCESS OF WALES (Barr), a delightful shade of pink resembling a wild rose. Stock limited \$2.00 each.

PURITY (Kelway), pure white of large size. \$2.00 each.

ROSY DAWN (Barr), very vigorous plant with dark green leaves and spreading habit; flowers a little flushed but changing to a pure white; yellow stamens. \$2.00 each.

SINGLE WHITE, single whites of our own growing; yellow stamens. \$1.00.

STANLEY, rich deep crimson, pure gold-colored stamens, a free bloomer; very desirable.

SURPRISE (Barr), bright crimson with golden stamens. 75 cents each.

THE QUEEN (Kelway), a strong growing, blush white variety; flowers in profusion. \$1.50 each.

VICTORIA (Barr). brilliant crimson; extra fine.

WHITLEYI MAJOR, slightly tinted pink, fading to pure white with a mass of orange colored stamens. Vigorous grower and free bloomer. \$1.50.

SINGLE JAPANESE VARIETIES

These interesting Peonies have no pollen, but have a cushion of thick, yellow stamens in striking contrast to the petals. They bloom later than the Chinese singles.

DOG ROSE (Kelway), so named for its resemblance to the wild rose. Soft pink petals and yellow stamens. \$1.00 each.

ISANI GUIDI, pure white petals with a broad mat of golden yellow stamens. Very fine, \$4.00 each.

KING OF ENGLAND, rich red petals with stamens at first golden, then as flower develops, lined with red. Not for sale.

PERLE BLANCHE (Dessert), pure white, cup-shaped flower, with a golden heart. Exquisite. \$3.00 each.

TAMATBAKO, broad petals of bright yet soft pink, large center of yellow stamens. \$5.00 each.

WHITE LADY, one of the finest of the Japanese varieties. Pure white petals of large size with a solid mass of golden stamens. Dwarf plant. Not for sale.

YESO, guard petals pure white, narrow central petals white, tinged straw color, tipped minutely with carmine. \$3.00 each.

LEMOINE'S HYBRIDS

These are hybrids of the Chinese Peony and *P. Wittmanniana*, flowering very early, just before the Chinese singles.

AVANT-GARDE, very pale pink, showing veining, golden stamens, medium size. \$2.00 each.

LE PRINTEMPS, large flowers with creamy yellow petals center veined reddish plum color. \$2.00 each.

MAIFLEURI, delicate flesh white with creamy tints, very large flowers. \$2.00 each.

PAEONIA LUTAEA, a species from the Yunnan Mountains; dwarf bushy plant producing single flowers two to three inches across of buttercup yellow with deep orange center. Last year we had blooms until the middle of July. Perfectly hardy. \$2.00 each.

EUROPEAN PEONIES

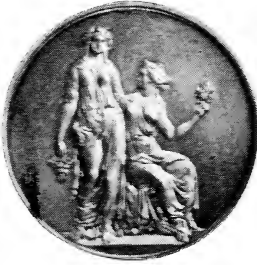
These varieties are all early flowering, blooming in May and the first week in June. They form an attractive group, some having broad leaves like the Chinese Peonies, while others have delicately cut foliage. Most of them are rather dwarf, and their deep red or pink blossoms give a very beautiful effect in a border. The addition of these early varieties makes the Peony season two weeks longer, and they should be included in every collection.

ARIETINA BAXTERI, single deep rose.

DECORA ELATIOR, single, rich crimson; very large.

DECORA PALLASII, single, deep crimson.

- OFFICINALIS ALBA PLENA**, pink, changing to pure white.
- OFFICINALIS ROSEA PLENA**, rich rose; a free bloomer; large.
- OFFICINALIS RUBRA PLENA**, the old-fashioned early red variety; a brilliant, deep crimson. 25 cents each; \$2.50 per dozen.
- OFFICINALIS TENUIFOLIA FLORE PLENO**, blossoms very brilliant crimson, almost scarlet, nestling amongst feathery green foliage. Rather dwarf.
- OFFICINALIS SABINI**, single rich crimson with bridge yellow stamens.
- PETER BARR (Barr)**, the earliest of all to bloom, coming to us here by the 12th or 15th of May. Single flowers of brilliant crimson with golden stamens. Plant dwarf. Not for sale.
- SMOUTH**, large single flowers of rich deep red, wide petals of silky texture, foliage divided. Next to Peter Barr in season of blooming. \$2.00 each.



GOLD MEDAL
of the Massachusetts Horticultural Society

DOUBLE HERBACEOUS PEONIES SERIES B

35 cents each; \$3.50 per dozen, except as noted.

For 2 year clumps add 50% to price.

For 3 year clumps add 100% to price.

For 4 year clumps add 150% to price.

While these are not as good as the varieties listed under the other series, we have listed only those which will give a good bloom. We have many varieties not listed on which we can make special quotations.

CANDIDISSIMA (Calot 1856), pure white guard petals deepening to sulphur yellow in the center. Well formed and lasting.

COMTE de DIESBACH (Calot 1873), light crimson; one of the first to bloom.

EDULIS SUPERBA (Lemon 1824), rosy pink, sometimes striped carmine. Very early.

FRANCOIS ORTEGAT (Parmentier 1850), deep amaranth red; very showy. 25 cents each.

HENRI DEMAY (Calot 1866), produces large crimson flowers on branching stems.

LOUIS VAN HOUTTE (Calot 1867), brilliant, satiny crimson; fine form.

PSYCHE, deep rose, guard petals with a lighter center. Very good for landscape effects. 25 cents each.

QUEEN VICTORIA, creamy white; broad guard petals; compact center, with a red blotch on central petal; a fine variety.

SERIES C

50 cents each ; \$5.00 per dozen.

For 2 year clumps add 50% to price.

For 3 year clumps add 100% to price.

For 4 year clumps add 150% to price.

In this series are listed a great many fine varieties which though not new are as good as ever. We have been able to propagate a larger stock and so place them in this collection.

- ACHILLE** (Calot 1865), delicate flesh color; very fresh coloring.
- AGNES MARY KELWAY** (Kelway), light rose guard petals, yellow petaloids, with a rose tuft in center; very pretty.
- ALEXANDRE DUMAS** (Guerin 1862), soft rose interlaced with cream; large flower; free bloomer.
- ALICE CROUSSE** (Calot 1872), soft rose pink, tall, strong grower; fragrant. Midseason.
- ALICE de JULVECOURT** (Pele 1857), white slightly tinted lavender; creamy white collar; petals flecked with crimson. Midseason.
- BERNARD de PALISSY** (Crousse 1879), large, very full blooms of blush pink, fading to nearly white in the full bloom. Very effective in massing. Late.
- DELICATISSIMA**, soft pink changing to flesh; very delicate coloring; early.
- DR. BRETONNEAU** (Verdier 1854), (syn. Lady Bramwell), clear pink, large, full flower.
- DORCHESTER** (Richardson), a beautiful soft pink or cream color tinted pink; fine form; rather dwarf.
- duc de WELLINGTON** (Calot 1859), soft white; large flowers of good form and substance.
- EDOUARD ANDRE** (Mechin 1874), glossy crimson maroon; stamens golden yellow.
- FESTIVA MAXIMA** (Miellez 1851), pure, waxy white with occasional flecks of crimson on the central petals; very large and vigorous. The most popular Peony in existence.
- GOLDEN HARVEST** (Rosenfield 1900), rose guard petals, yellow petaloids, tufted pink center.
- JOHN FRASER**, bomb-shaped flowers of rose pink with silvery reflex. Early.
- L'INDISPENSABLE**, very large full flower of shell pink. The petals are packed very tightly, sometimes occasioning a bursting bud.
- MADAME BUCQUET** (Dessert 1888), very dark crimson with garnet tints; brilliant and free flowering. Midseason.
- MADAME COSTE** (Calot 1873), flesh pink; center petals white, tinted flesh; one of the best early blooming varieties.
- MADAME FOREL** (Crousse 1881), large flowers of rose pink shading a little darker in the center; petals silver tipped. Somewhat similar to Mme. Geissler.
- MLLE. LEONIE CALOT** (Calot 1861), very soft salmon pink, almost blush white; blooms in clusters.
- MLLE. RENEE DESSERT** (Mechin 1880), soft pink with silvery reflex.
- MARECHAL VAILLANT** (Calot 1864), immense blooms of crimson borne on long stems; the flowers are so heavy that they should be supported; very late.

NOBILISSIMA (Mieliez 1858), very deep rose to red; tall, erect grower, making it a good variety for landscape work. Mid-season to late.

PLUTARCH (Kelway), deep crimson; stamens golden yellow; large and showy.

PRINCESS BEATRICE (Kelway 1886), pink guard petals; yellow and pink center.

TORQUEMADA, large blooms of clear pink appearing through a long season.



KELWAY MEDAL
Awarded 1897

SERIES D

75 cents each; \$7.50 per dozen.

For 2 year clumps add 50% to price.

For 3 year clumps add 100% to price.

For 4 year clumps add 150% to price.

The following are well tested varieties which we can recommend.

ADELAIDE DELACHE, deep rose tipped white; a profuse bloomer.

AUGUSTIN d'HOURL (Calot 1867), syn. Marechal MacMahon, rich full carmine; free bloomer.

CAMERON (Crousse 1879), medium height, deep violet rose; late.

DELIA, white, yellow center; extra.

DISTINCTION (Dessert 1895), broad guard petals of vinous red, central petals narrow striped with yellow. Midseason.

DOCTEUR CAILLOT (Verdier 1856), a free flowering variety, bearing blooms of tyrian rose of fine shape.

DUCHESS de NEMOURS (Calot 1856), cup-shaped bloom; sulphur white; extra.

GENERAL CUSTER (Terry), bright pink edged lighter; semi-double, showing two rows of golden stamens.

GRACE D. BRYAN (Rosenfield, 1908), brilliant pink; very double. A tall grower and very late.

JEANNE d'ARC (Calot 1858), soft rose; center white, tinted carmine; very fine.

LA COQUETTE (Guerin 1861), large flower; deep rose pink, striped carmine in the center.

LA TULIPE (Calot 1872), large pink buds beautifully striped with crimson opening into large flesh-colored bloom; a very interesting and satisfactory Peony.

MME. BARILLET DESCHAMPS (Calot 1868), large, well formed flower of a rosy pink with silvery reflex; foliage very broad and distinct.

MME. CAMILLE BANCEL (Crousse 1897), large blooms of solferino pink with silvery reflex. Good both as a cut flower and for landscape effects. Late.

10 CHERRY HILL NURSERIES, WEST NEWBURY, MASS.

- MME. de GALHAU** (Crousse 1883), compact globular blooms of delicate pink with rose white guards; distinct.
- MME. de GOVIN** (Crousse 1875), compact blooms of shell pink, center lighter, sometimes marked with crimson flecks. Late and a good variety.
- MME. de VERNEVILLE** (Crousse 1885), a very valuable Peony, both for cut flowers and as a landscape variety; white, center petals tipped carmine; early midseason.
- MME. DUCEL** (Mechin 1880), large globular bloom like a chrysanthemum, pink with silvery white reflex. Extra.
- MME. GEISSLER** (Crousse 1880) very large; rose pink, shading to white or silvery flesh; petals fairly crowded together in center.
- MME. MECHIN** (Mechin 1880), very dark, glossy garnet; one of the best of the "black" Peonies.
- MODELE de PERFECTION** (Crousse 1875), large, compact light pink, silver tipped, somewhat darker in center.
- M. BOUCHARLAT AINE** (Calot 1868), large, imbricated blooms of soft pink; plants strong and vigorous and excellent for landscape work.
- OCTAVIE DEMAY** (Calot 1867), large flowers of delicate pink and white; dwarf habit; fragrant and very fine. Early.
- PRINCE OF WALES** (Kelway), fine dark crimson, semi-double, showing golden stamens.
- PRINCESS IRENE** (Kelway), guard petals flesh color, center petals sulphur yellow; general effect, light yellow.
- RUBRA SUPERBA** (Richardson), dark crimson; fine form and fragrant; vigorous grower and good bloomer when well established; very late.



THE MASS. HORTICULTURAL SOCIETY'S
SILVER MEDAL
Awarded 1909

- SOUVENIR de L'EXPOSITION de BORDEAUX** (Dessert 1896), large blooms of clear, vinous red; very good as a landscape flower.
- SOUVENIR de L'EXPOSITION du MANS** (Mechin 1880), rather loosely formed flowers of deep red with a silvery reflex. Midseason.
- SOUVENIR de L'EXPOSITION UNIVERSELLE** (Calot 1867), a peculiar shade of glossy light pink; "lively" and very pleasing to the eye.
- TRIOMPHE de L'EXPOSITION de LILLE** (Calot 1865), very finely formed, cup-shaped flower of a hydrangea pink shade, the petals seemingly splashed with a deeper color.
- TRIOMPHE de PARIS** (Guerin 1850), deep rose, inner petals buff.
- UMBELLATA ROSEA** (Dessert 1895) (formerly listed as Sarah Bernhardt), large flower; guard petals pink, center salmon; very early bloomer.
- VENUS** (Kelway), a delicate shell pink; beautiful compact bloom; extra good for cut flowers and landscape.

VIRGINIE C (Calot 1858), large, very fragrant blooms of shell pink, fading to flesh. When fully developed, flower shows row of golden stamens.

VISCOUNTESS FOLKSTONE, clear white, with a row of narrow filamentary petals next to the guard petals, a distinct variety.

ZOE CALOT (Mieliez 1855), pretty, soft pink; large and double.

SERIES E

\$1.00 each; \$10.00 per dozen.

For 2 year clumps add 50% to price.

For 3 year clumps add 100% to price.

For 4 year clumps add 150% to price.

This series contains some of the very finest in our collection selected because of their sturdiness, free blooming qualities, and quality of flower.

ALFRED de MUSSET (Crousse 1885), full double blooms of milk white, shading to blush or light pink in the center.

ARMAND ROUSSEAU (Dessert & Mechin 1893), very pretty cup-shaped bloom of bright rose pink; center mixed with golden stamens.

AURORE (Dessert 1904), cup-shaped flower; very soft flesh pink, salmoned yellow at base of petals.

AVALANCHE (Crousse 1886), large ivory white blooms of very fine quality. Sometimes the flowers will be splashed with carmine, while others will have a mere indication of red on the edge of one petal. Built high in center, forming a substantial bloom. Very fine.

BOULE de NEIGE (Calot 1862), cup-shaped bloom; white with a tinge of yellow, center splashed carmine.

CAROLINE ALLAIN (Kelway), a beautiful white of exceptional purity; central petals narrow. Midseason.

COURONNE D'OR (Calot 1872), large pure white, showing golden stamens when in full bloom; fine form and very valuable as a late white variety.

EDITH LYTTLETON (Kelway), globular flowers of deep shell pink, very fresh coloring; a fine variety. Early and a free bloomer.

ETTA (Terry), exceptionally large, flat flowers of deep shell pink produced very late; one of the last to bloom. Stems are stiff and plant rather dwarf.

EUGENIE VERDIER (Calot 1864), syn. *Pottsii* Alba, very large flower; deep flesh, center lighter; tall grower and free bloomer.

FELIX CROUSSE (Crousse 1881), large claret red flower with ruby red center; globular shape; full; late midseason.

GLOIRE de CHARLES GOMBAULT (Gombault 1886), light rose guard petals surrounding a mass of creamy white petals with rose tuft in the centre. Midseason.

GLOIRE de CHENONCEAUX (Mechin 1880), large, soft pink with central petals marked red; rather pleasant odor.

GRANDIFLORA (Richardson), large, well-shaped flower; silvery pink; fragrant; very late; extra.

HELENA, white inner petals suffused yellow; finely and delicately shaped.

JULES CALOT (Calot 1861), full double flowers of a very pleasing shade of solferino pink, rather late and a free bloomer in clusters.

12 CHERRY HILL NURSERIES, WEST NEWBURY, MASS.

LAMARTINE (Calot 1860), offered by many growers as *Gigantea*. Very large flowers of a delicate pink shade; a popular variety.

LIVINGSTONE (Crousse 1879), large, compact blooms of silvery pink borne on long, strong stems; late and especially valuable for cut flowers.

MADAME CALOT (Mieliez 1856), large, flesh pink with shell pink shades; early and vigorous.

MADAME CROUSSE (Calot 1866), pure white; large and very beautiful flower.

MADAME EMILE GALLE (Crousse 1881), clear shell pink, of medium size and fine shape; late. Very attractive.

MADAME LOISE MERE (Calot 1863), beautiful flesh pink, petals edged with crimson; large full flower; late.

MLLE. DESBUISSONS (Crousse 1893), large imbricated flower; tender glossy pink.

MLLE. MARIE CALOT (Calot) 1872), pure milk white with occasional flecks of crimson; fragrant. Late midseason.

MARIE (Calot 1868), white, slightly tinted yellow; well formed flowers on long stems.

MARIE LEMOINE (Calot 1869), creamy white with golden reflex; large compact flower; dwarf plant; very late.

MARIE JACQUIN (Verdler) *syn Bridesmaid*, flowers white or delicate flesh color of the most exquisite form and beauty. Side buds oftentimes semi-double, resembling water lilies. Very robust and floriferous.

MIRELLE (Crousse 1894), large, full, milky white flower; late.

MR. MANNING (Kelway), deep glowing crimson, showing row of golden stamens; one of the finest of its color. Excellent for landscape effect.

MODESTE GUERIN (Guerin 1845), bright solferino pink; large globular bloom; vigorous and floriferous.

MONSIEUR DUPONT (Calot 1872), pure white with central petals striped carmine; a well formed lasting flower; rather late; very popular.

PIERRE DESSERT (Dessert & Mechin 1890), large medium compact flowers of dark garnet. Early midseason, one of the first of the dark reds.

PIERRE DUCHARTRE (Crousse 1895), very large globular blooms of pale pink, erect habit; late.

WASHINGTON (Barr), large blooms of bright rosy pink; fine for landscape as the many blossoms make a brilliant show; midseason to late.



APPLETON SILVER MEDAL
of The Massachusetts Horticultural Society

SERIES F

\$1.50 each; \$15.00 per dozen.

For 2 year clumps add 50% to price.

For 3 year clumps add 100% to price.

For 4 year clumps add 150% to price.

ADOLPHE ROUSSEAU (Dessert & Mechin 1890), tall; large, dark, metallic garnet blooms; one of the finest of its color.

ALBERT CROUSSE (Crousse 1893), immense, very full blooms of light salmon pink; a valuable and distinct variety.

AMAZONÉ (Lemoine 1899), creamy white, outer petals tinted rose, a very pretty flower, but not good as a cut flower. Midseason.

ASA GRAY (Crousse 1886), large compact flower; flesh, sprinkled carmine; very fine.

BARONESS SCHROEDER (Kelway), flesh changing to pure white. A strong, vigorous grower with stiff stems, so that the flowers are always erect, seeming to float over the plant. As a cut flower this is also exceptionally fine and we consider this to be one of the best white Peonies in existence.

CLAIRE DUBOIS (Crousse 1886), satiny pink, petals tipped white, globular form, fine as a cut flower and for landscape effects. Late.

COQUELIN (Dessert), full, cup-shaped bloom of china pink with silvery reflex.

EUGENE VERDIER (Calot 1864), hydrangea pink, tinted lighter; stems short but strong, late. Lasts well as a cut flower.

JAMES KELWAY (Kelway), tall and vigorous, and a very free bloomer. Fragrant flowers, blush, fading to white, showing golden stamens in the center. An exquisite variety.

LA PERLE (Crousse 1885), large cup-shaped flowers, blush white growing a little darker around the edge; fragrant. Midseason.

LA ROSIERE (Crousse 1888), light yellow guard petals with deeper center; exquisite coloring of a tea rose; fragrant.

MADAME BOULANGER (Crousse 1886), globular blooms of glossy pink, oftentimes with accidental carmine in the center. One of the most delightfully fragrant of Peonies, equaling a rose in perfume.

MADAME EMILE LEMOINE (Lemoine 1899), produces tall stems crowned with large, full blooms of soft flesh white. A very fine variety and a good bloomer.

MLLE. ROUSSEAU (Crousse 1886), pure white, tinted in the center, with accidental carmine flecks; blooms freely.

MARCHIONESS OF LANSDOWNE (Kelway), full double flowers of hydrangea pink sometimes flecked carmine. Produces fragrant flowers about midseason.

MARGUERITE GERARD (Crousse 1892), pale hydrangea pink fading to creamy white; large full flowers displaying a row of golden anthers. Strong grower and bloomer.

M. JULES ELIE (Crousse 1888), very large chrysanthemum shaped flowers of bright pink; very fine in every way; one of the best in this shade; midseason.

NORFOLK (Richardson), large cup-shaped flowers of soft pink. Late.

PASTEUR (Crousse 1896), blush fading to creamy white towards the center with delicate yellow at base of petals. Very fine.

PERFECTION (Richardson), tall, vigorous plant bearing large, light pink or flesh colored blooms, fragrant; late.

PETITE RENEE (Dessert, 1899), large flowers of clear carmine shaded darker, central petals striped white.

RENOMEE (Crousse 1897), well formed flowers of glossy pink.

SIMONNE CHEVALIER (Dessert 1902), soft salmon pink, regular flower, early.

SOUVENIR de DR. BRETONNEAU (Dessert 1896), very dark rose; loosely formed flowers borne freely.

SUZANNE DESSERT (Dessert & Mechin 1890), clear pink, center splashed carmine; erect growth; midseason.

SERIES G

The Peonies listed in this series are new and rare varieties and numbered among them are the finest ever introduced. It is impossible to obtain them in any quantity and necessarily our stock is limited. We give the name of the originator in parenthesis.

ALSACE LORRAINE. (Lem. 1906.) Very large flat, semi-rose type. Petals arranged like a water-lily. Cream-white, deepening to pale yellow, distinct and beautiful. Tall, vigorous, free bloomer. Late. Extra. \$4.00 each.

AVIATEUR REYMOND (Dessert 1915), large and beautiful flower, very bright cherry red shaded garnet and brilliant amaranth. Very showy. (Originator's description.)

BELISAIRE. (Lem. 1901). Large, globular, semi-rose type. Color pale lilac, splashed with minute dots of deeper lilac, guards and center flecked crimson. Medium tall, strong growth. Midseason. \$2.50 each.

BELLE MAUVE (Lemoine 1903), very large flat flowers of silvery pink; very fragrant; midseason.

CHERRY HILL (ThurLOW 1915), tall vigorous grower, bearing an abundance of blooms of exceptionally dark garnet, sometimes showing golden stamens in the centre. Very noticeable in the field, making it extra good as a landscape variety. Awarded Silver Medal, 1915, by the Massachusetts Horticultural Society, and very highly commended by the American Peony Society on the same date. We have only a limited number to offer. \$30.00 each.

CORONATION (Kelway), pale pink guard petals with a creamy white center showing golden anthers. Very delicate coloring. \$3.00 each.

DOCTEUR H. BARNSBY (Dessert 1913), large compact blossoms of deep crimson; free bloomer in clusters. Late.

E. G. HILL (Lemoine 1906), beautiful, clear light red with practically no purple; very large flat flowers in immense clusters on strong, stiff stems; very distinct. Midseason. \$4.00 each.

ESTAFETTE (Dessert, 1910). Semi-rose type; midseason. Large globular flowers. Color velvety, clear crimson, shaded with brilliant amaranth with distinct carmine reflex, and a large border of silvery-rose. A fine variety. \$4.00 each.

EUGENE REIGNOUX (Dessert), large semi-double flowers of brilliant carmine pink, blooms freely in clusters. \$2.50 each.

CHERRY HILL NURSERIES, WEST NEWBURY, MASS. 15

- EVANGELINE** (Lemoine 1910), large, very compact, flat flowers of silvery pink splashed crimson; tall and a strong grower; late. Extra. \$5.00 each.
- EXQUISITE** (Kelway 1912), one of Kelway's finest productions. Very large, flat flowers of deep rosy pink showing golden anthers in the center. Very fragrant. \$25.00 each.
- FRANCES SHAYLOR** (Shaylor 1915), finely shaped, globular blooms of pure waxy white; the open flowers show golden stamens; rather dwarf; late.
- FRANCES WILLARD** (Brand 1907), globular flower, often developing a higher crown showing golden stamens; delicate, blush white fading to white when fully open.
- GEORGIANA SHAYLOR** (Shaylor 1908), exceptionally large, flat flowers, of pale rose pink with a few flecks of crimson. Midseason to late. \$10.00 each.
- GERMAINE BIGOT** (Dessert, 1902), pale rose or flesh, splashed carmine, produces large flowers in clusters about midseason. \$2.00 each.
- GINETTE** (Dessert 1915), large, imbricated, cup-shaped flower, very soft flesh pink shaded salmon, frequently flecked with carmine; fragrance very pleasant; free bloomer in clusters. (Originator's description.)
- GROVER CLEVELAND** (Terry), large, compact, dark crimson; late. Extra good as a landscape variety. \$2.00 each.
- JEANNE GAUDICHAU** (Millet), large, cup-shaped flowers of white with pink reflex; petals edged carmine. Very attractive. \$6.00 each.
- JOHN RICHARDSON.** (Rich.) Very large, compact, flat, rose type. Pale lilac-rose. Fragrance XX. Erect, tall, compact habit. Midseason. Extra good. \$5.00 each.
- KARL ROSENFELD** (Rosenfeld 1908), bright crimson, very distinct, showing no trace of purple. Very fine for landscape work, as it is tall and vigorous. \$5.00 each.
- KELWAY'S GLORIOUS** (Kelway 1909), large flowers of pure glistening white with a touch of pink on the outer petals. Very sweetly scented. One of the best of Kelway's introductions. \$25.00 each.
- KELWAY'S QUEEN** (Kelway 1909), perfumed flowers of clear pink with crimson markings; tall grower and free bloomer. Late midseason. \$6.00 each.
- LADY ALEXANDRA DUFF** (Kelway), the true variety. There has probably been more controversy over this variety than any other, as the originator sent out many other varieties under this name. Immense blooms. French pink shading to flesh color in the center. A very fine variety and well worth the attention called to it. \$25.00 each.
- LA FAYETTE** (Dessert, 1904), large imbricated blooms with fringed petals; deep velvety pink with silvery reflex. \$3.00 each.
- LA FEE** (Lem.), globular, compact flowers of mauve rose with creamy white collar. Sweetly scented; a free bloomer; early. \$10.00 each.
- LA FIANCEE** (Lemoine 1898), very large blooms of creamy white; high crown flecked crimson showing stamens. Strong, vigorous grower; midseason. \$2.00 each.
- LA FRANCE** (Lemoine 1901), large compact flowers of soft apple blossom pink, tall and a free bloomer. Late midseason. \$8.50 each.

16 CHERRY HILL NURSERIES, WEST NEWBURY, MASS.

- LA LORRAINE** (Lemoine 1901), immense blooms of creamy white with a golden light. \$6.00 each.
- LA TENDRESSE** (Crousse 1896), milk white, sometimes splashed with carmine, fragrant blossoms in clusters; very good. \$2.00 each.
- LAURA DESSERT** (Dessert 1913), creamy white guard petals, center canary yellow. Early and a fine variety. \$6.00 each.
- LE CYGNE** (Lemoine 1907), large globular blooms of pure white sometimes showing golden stamens. Petals much incurved, making it a very distinct variety. Stock extremely scarce. \$15.00 each.
- LOST TREASURE** (Pleas), very large, delicate pink. Very attractive, well formed blooms. Midseason.
- LOVELINESS** (Hollis 1907), considered to be Hollis' best. Flat flowers of hydrangea pink fading lighter. Strong stems bearing buds in clusters. Midseason. \$12.00 each.
- MADAME AUGUSTE DESSERT** (Dessert 1899), large blooms of glossy flesh tinged carmine, center flecked crimson; well formed and lasting, both as a cut flower and for landscape effects. \$2.00 each; \$20.00 per dozen.
- MADAME D. TREYERAN** (Dessert 1899), delicately tinted white petals dotted and splashed with lilac. A free bloomer and very fragrant. \$4.00 each.
- MADAME FOULD** (Crousse 1893), exceptionally full flowers of milk white, borne on strong stems. Very late. Buds have a tendency to burst due to the close packed petals. \$2.00 each.
- MADAME GAUDICHAU** (Millet 1909), very dark, brilliant crimson; nearly as dark as M. Martin Cahuzac and a better grower. \$8.00 each.
- MADAME JOANNE SALLIER** (Paillet), violet rose; guards and center flecked with crimson. Very beautiful. Semi-double, globular, large size,. Early bloomer. \$3.00 each.
- MADAME JULES DESSERT** (Dessert 1909), white, tinged pale pink and splashed with carmine; a few golden stamens are displayed, making some extremely beautiful tints. Very rare. \$10.00 each.
- MADAME MANCHET** (Dessert 1913), large, full flowers of silvery lilac shaded deeper at base of petals. Very late.
- MADAME SAVREAU** (Paillet), large, lilac-white, with a creamy yellow color; center petals flecked with scarlet. Medium early. Very choice sort. Extra good. \$5.00 each.
- MILLE. JEANNE RIVIERE** (Riviere 1908), delicate flesh color with sulphur white center; perfectly shaped flowers on strong, erect stems. Fragrant. \$5.00 each.
- MARCELLE DESSERT** (Dessert 1899), creamy white slightly flushed; central petals sometimes touched carmine; sweet scented. Very fine. \$2.50 each.
- MARGUERITE GAUDICHAU** (Millet & Son), a very fine light pink. Midseason. New. \$5.00.
- MARIE CROUSSE** (Crousse 1892), globular blooms of delicate shell pink; a strong grower and bloomer and is very fine for cut flowers as well as for landscape effects. \$3.00 each.
- MARQUIS C. LAGERGREN** (Dessert 1911), bright cherry red with darker shadings; blooms freely in clusters. Excellent for landscape plantings. \$4.00 each.
- MARTHA BULLOCH** (Brand 1907), immense flowers of deep rose pink shading to silvery shell pink in the outer petals. The largest of the good Peonies. (Originator's description).

CHERRY HILL NURSERIES, WEST NEWBURY, MASS. 17

- MIGNON** (Lemoine 1908), compact and globular shape, well formed and fragrant. Slightly flushed white changing to rich cream. A very fine variety. \$7.00 each.
- MILTON HILL** (Richardson), large full blooms of shell pink appearing very late. A scarce variety. One of the finest of the Richardson varieties. \$3.00 each; \$30.00 per dozen.
- M. MARTIN CAHUZAC** (Dessert 1899), very dark garnet shaded deep maroon. The darkest Peony ever introduced and when well established a fine flower. Extremely scarce. \$6.00 each.
- MONT BLANC** (Lemoine 1899), immense blooms of clear white occasionally flecked crimson; very fragrant. An especially fine variety. Very scarce. \$7.50 each.
- NEPTUNE** (Dessert 1905), glossy white tinged flesh pink at base of petals; fragrant. Midseason. \$2.00 each.
- ODETTE** (Dessert 1909), very soft lilac or shell pink splashed with deeper pink. Strong grower and free bloomer. \$2.50 each.
- PHILLIPE RIVOIRE** (Riviere 1911), perfectly formed blossoms of very dark crimson. Sweetly perfumed which distinguishes it from all others of this color. Late. A valuable new Peony offered for the first time by American growers. \$15.00 each.
- PIERRE REIGNOUX** (Dessert 1908), large, rather loosely formed flowers of tyrian rose. Not good for cut flowers, but very attractive growing in the garden. Early. \$2.50 each.
- POMPONETTE** (Dessert 1909), full double blooms of velvety pink shaded deeper at base of petals with a silvery reflex; rather dwarf. Midseason. \$2.00 each.
- PRIDE OF ESSEX** (Thurlow), delicate flesh pink; rose form, holds shape and color well. Exceedingly pleasing. Midseason.
- PRIMAVERE** (Lemoine 1907), large blooms of sulphur white shaded yellow in the center; tall and vigorous; extra. The deepest yellow of any of the double Peonies. \$5.00 each.
- RAOUL DESSERT** (Dessert 1910), exceptionally large blooms of shell pink, deeper at base of petals. "A variety of great beauty." \$7.50 each.
- ROSA BONHEUR** (Dessert), large flat flowers of delicate flesh pink; wide petals overlapping; making a flower of great beauty. \$6.00 each.
- SARAH BERNHARDT** (Lemoine 1906), the true variety. Large blooms of Apple blossom pink; very charming. \$4.00 each.
- SOULANGE** (Lemoine 1907), very distinct glossy white, with salmon pink heart; full globular blooms. Late. \$7.50 each.
- SUSETTE** (Dessert 1911), brilliant rose colored petals intermixed with golden stamens. A distinct shade. \$4.00 each.
- THERESE** (Dessert 1904), large, cup-shaped flower; glossy flesh, lightly shaded pink, medium height and a vigorous grower. We consider this one of the finest Peonies in existence. \$6.00 each.
- TOURANGELLE** (Dessert 1910), delicate rose color with salmon tints. A very pleasing shade. Midseason. Extra. \$7.00 each.
- VICTOIRE de la MARNE** (Dessert 1915), very attractive, globular blooms of a great size, velvetish amaranth red with silvery reflex, a very bright coloring. (Originator's description.)
- VOLCAN** (Lemoine 1898), medium sized blooms of deep but bright red; very good for landscape effect. \$2.00 each.

18 CHERRY HILL NURSERIES, WEST NEWBURY, MASS.

WALTER FAXON (Richardson), wonderful flowers of hydrangea pink deepening toward the center; very fresh coloring. Mid-season. \$8.00 each.

WINNIKENNI (Thurlow), very full blooms of cherry pink, tall and vigorous grower and bears a profusion of flowers. Buds very tight and sometimes inclined to burst. Very late.



KELWAY MEDAL
Awarded for Display of Peonies.

MIXTURE OF NAMED VARIETIES

25 cents each; \$2.00 per dozen.

We have a mixture of named varieties which we can offer very low. This does not mean that they are necessarily inferior, but we have a surplus of this stock and can give our customers the benefit of very low prices



Effective massing of Phlox.

PHLOX

IN a wet season Phlox is liable to mildew, but applications of Bordeaux Mixture at intervals of two or three weeks will prove a preventive. This is not a cure and should be applied before the leaves have become diseased. Sulphur is also beneficial if dusted dry on the leaves. The fumes of the sulphur check the fungus and prevent it from spreading further.

Care should be taken to remove all seedlings which may appear, as they are easily distinguished when in

bloom. They are usually of a purplish shade and many amateurs have made the mistake of thinking that their Phlox have "reverted" from the fact that the seedlings have been allowed to come up so thickly that they have choked out the original plant.

SERIES A

We have selected twelve varieties which we would recommend for general cultivation in this country, feeling sure that they will give good satisfaction. They are all clean, healthy plants and bright colored flowers.

Price, 15 cents each ; \$1.50 per dozen (one of each if desired); \$9.00 per hundred. A general assortment if desired.

ANNIE COOK, medium, light flesh pink, of even color and good blooming qualities. New.

ANTONIN MERCIÉ, tall; white center deepening to a beautiful shade of lavender.

CANDEUR, dwarf; pure white flowers in a large truss; very fine.

ECLAIREUR, medium; deep carmine rose, center lighter; a very early and continuous bloomer and large flower.

LE FEU DE MONDE, tall; brilliant crimson red.

LE POLE NORD, very tall; medium sized flower; white with a large crimson eye; one of the best tall late blooming varieties; clean and vigorous.

LE SOLEIL, medium; beautiful soft rose, shaded pink; one of the best Phlox in our collection; blooms constantly and abundantly throughout July, August and September.

MADAME MEURET, tall; flame color, changing to rich salmon; center deep carmine; one of the best varieties and always satisfactory. We have had this Phlox for over twenty-five years. Not subject to mildew or any other disease.

MADAME PAPE-CARPENTIER, medium; large, pure white, waxy flowers, borne in large trusses; very fine; extra.

MISS LINGARD, tall; white with very small red eye; early flowering and blooms continuously throughout the season; dark green, glossy foliage.

RICHARD WALLACE, tall; white with violet red center; a good old sort always clean and fresh.

STELLA'S CHOICE, very tall; pure white; vigorous, and a free bloomer; very late and valuable for cut flowers.

SERIES B

The following are newer varieties which we have selected from among the many which we have on trial. Some of them being still scarce, can be supplied only by the dozen.

Price 20 cents each ; \$2.00 per dozen ; \$12.00 per hundred.

CHARLES DARWIN, tall; bright salmon pink; with small carmine eye.

COQUELICOT, medium; bright vermillion with a small purple eye; one of the brightest and most noticeable of that color.

DAWN, medium; fresh pink with small crimson eye.

ESPERANCE, medium; clear lilac with lighter center.

20 CHERRY HILL NURSERIES, WEST NEWBURY, MASS.

- EUGENE DANZANVILLIERS**, medium; large truss of soft lavender, shading lighter toward the center.
- EUROPA**, medium; white with large carmine eye.
- F. G. VON LASSBURG**, medium; pure white flowers. The individual panicles are the largest of the white varieties.
- FLORA HORNUNG**, dwarf, suffused white with deeper crimson eye.
- GEN. VAN HEUTZ**, tall; large flowers of salmon red with a small, grayish eye.
- HANNY PFLEIDERER**, medium; white overlaid with crimson; free bloomer.
- INDEPENDENCE**, tall; pure white; early.
- LA NEIGE**, dwarf; snow-white blossoms borne on large trusses.
- LANIBOIRE**, tall; rosy scarlet shading darker toward the center; flowers in abundance.
- LE MAHDI**, medium dark bluish violet, large flower. One of the best of this shade.
- PANTHEON**, tall; a very fine shade of satiny-rose, large flowers.
- PEACH BLOW**, dwarf, soft shell pink with a lighter eye.
- PINK BEAUTY**, tall; bright, even pink.
- REICHSGRAF VON HOCHBERG**, medium; very dark velvety plum, a very striking variety and the finest of this shade.
- R. P. STRUTHERS**, bright salmon pink; one of the finest of this color.
- TAPIS BLANC**, dwarf; pure white; early, and a free bloomer.

SERIES C

During the last two or three years we have imported many new varieties and list in this series a number of new, distinct shades which are very attractive in mass planting or as specimen plants.

Price 35 cents each ; \$3.00 per dozen.

- BARON VON DEDEM**, medium; glistening blood-red; the individual panicles are large and showy.
- BERENICE**, medium; pure white; vigorous, and free-blooming.
- ELISABETH CAMPBELL**, dwarf; one of the best varieties which we have imported for many years; large, salmon-pink flowers with no shade of purple. Very distinct.
- ETNA**, medium; deep, coral red.
- FRAU ANTON BUCHNER**, tall; both the truss and the individual flower are large; pure white with red stem.
- G. A. STROHLEIN**, tall, brilliant orange-red flowers borne in large heads; one of the best of this color.
- GRUPPENKONIGEN**, tall; deep, flesh-color with crimson eye.
- LE CYGNE**, medium; pure waxy white of large size, and a good bloomer.
- MME. PAUL DUTRIE**, medium; soft pink of a *Cattleya* shade.
- MRS. OLIVER**, medium; produces well-formed trusses of salmon pink with lighter center.
- RYNSTROOM**, tall; exceptionally large flowers of brilliant rose, very fine for massing.
- SELMA**, tall; large flowers of hydrangea pink with a darker eye. Masses of bloom.
- WANADIS**, beautiful soft blue somewhat like *P. divaricata canadensis* with a reddish eye. Large trusses. New.



When Iris Bloom at Cherry Hill.

JAPANESE IRIS

WE have one of the finest collections of Japanese Iris (*Iris Kämpferi*) in the country, and we have the following varieties to offer. They may be transplanted in spring or fall; but if in the fall it should be *early*, so that the roots may become well established before winter. Iris does best in damp—not wet—ground, but will grow well in any good garden soil. They bloom for several weeks and the beautiful orchid-like flowers are not surpassed by any of their season. They are at their best in July.

As they are not as hardy as the German Iris, it is better to cover them every winter.

Some of the varieties have been renamed in this country, but the names of the new Japanese sorts are so cumbersome that we have omitted them from our list, and have designated them merely by their numbers. We can give the name to each number if customers so desire it.

SERIES A

The following are all well-tested, good varieties.

Price, 15 cents each ; \$1.50 per dozen ; \$10.00 per hundred for a variety.

COMMODORE PERRY, 6 petals; velvety royal purple; medium sized flower.

NO. 21, 6 petals; velvety blue; double, vigorous; rather late.

NO. 32, 6 petals; deep violet-blue; strong.

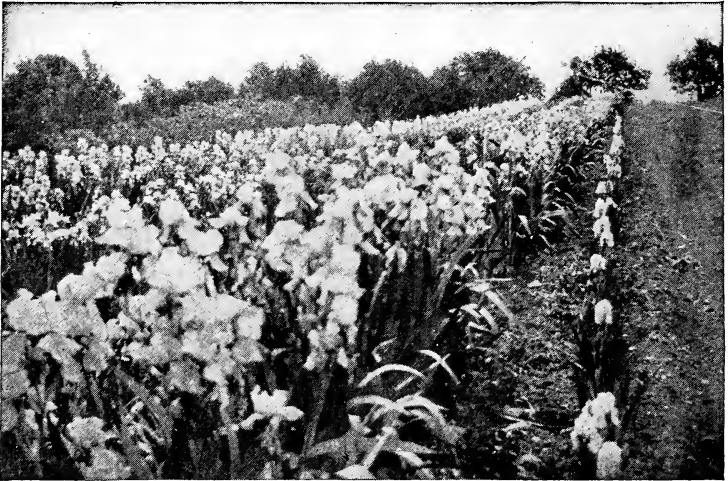
NO. 50, 3 petals; red, striped white; vigorous.

SERIES B

The following are among the best in the country; all are thoroughly tested.

Price, 25 cents each; \$2.50 per dozen.

- TOKIO**, 6 petals; light blue, striped white; large. Late.
NO. 9, 3 petals; red, striped white; large flowers; vigorous and very floriferous.
NO. 16, 3 full petals with secondary petals half developed; deep blue; double; vigorous and floriferous.
NO. 24, 6 petals; royal purple; tufted; blossoms in clusters.
NO. 27, 3 petals; white, veined and shaded lavender.
NO. 39, 6 petals; rich red, striped white; large.
NO. 51, 6 petals; broad white petals with golden center.
NO. 52, 3 petals; deep red, veined white.



German Iris with their rich and varied coloring.

GERMAN IRIS

THESE plants, blooming in rainbow colors, at a season of the year when there are few other flowers, should be included in every garden collection. Their great range of color, height, and season of blooming, make them seem almost of different families. The dwarf Irises, blooming the last of April, followed by those of greater height, to the stately Pallida varieties, and finally the Siberian types appearing nearly two months later, in various shades of red, white, yellow, blue and violet, are a splendid pageant gathered from all parts of the world.

They may be transplanted in the fall or early spring. Do not use manure around the roots, and plant in shallow holes, barely covering the bulbs or root stalks with soil. They will do best on a rather dry soil, with a dressing of leaf mold.

We have been a number of years getting a collection and think we have a very fine one. We have received many

prizes for the cut flowers, having taken the first prize for a number of years at the Massachusetts Horticultural Society exhibits.

Many times customers are deterred from ordering their favorite plants from points not near at hand. *Our method of selecting and packing*, however, makes it possible to send our plants almost any distance with safety, as may be seen from the following extracts:

Piedmont, Cal., May, 1915.

"Your iris at the Exposition certainly tops everything of the kind . . . Will it be possible for me to get some of them at the close of the Exposition?"

O. E.

San Francisco, Cal., May.

"I wish you could see what a beautiful showing your wonderful Iris are making at the Fair and how much they are admired. . . . I wish I might get those when the blooming season is over."

Mrs. L. B. M.

In the following descriptions S. signifies standards or upright petals, and F. the falls or drooping petals.

SERIES A

**Flowering clumps, 15 cents each; \$1.00 per dozen;
\$6.00 per hundred for a variety.**

EDITH, height, 30 inches. S., white; F., clear deep lavender; flowers in abundance; very desirable for a border.

GOLIATH, height, 24 inches. S., lavender; F., white, reticulated purple; good bloomer.

JOHN BRIGHT, height, 18 inches. Reddish violet.

KHEDIVE, height, 30 inches. Beautiful pure lavender with orange crest; extra.

LUTESCENS VAR. STATELLAE, height, 9 inches. S., white; F., pale primrose.

MARIEBA, height, 24 inches. S., copper, clouded red; F., red violet; very pretty.

MISS MAGGIE, height 24 inches. Soft pinkish lavender, extra.

PUMILA, height, 4 to 5 inches. Beautiful sky blue; earliest of all, blooming with the crocus.

SIBIRICA ORIENTALIS, height, 42 inches. Deep blue, having a charming effect when in the bud form. Blooms a little later than the German Iris.

VAN GEERTII, height, 24 inches. S., clouded lavender; F., dark violet, reticulated white, orange crest.

VIRGILE, height 18 to 24 inches. S., bronze; F., purple; very floriferous.

SERIES B

**Flowering clumps, 25 cents each; \$2.00 per dozen;
\$10.00 per hundred except as noted.**

ALBA (Variegata), height, 30 inches. S. and F., pure, clear white, with orange crest on fall.

APHILLA, height, 30 inches. S. and F., white, fringed purple.

24 CHERRY HILL NURSERIES, WEST NEWBURY, MASS.

- AUREA** (Variegata), height, 24 inches. 35 cents each; \$3.00 per dozen. S. and F., rich, orange yellow.
- CHARLES DICKENS**, height, 36 inches. S. dark, rich blue. F. reddish plum color. 35 cents each.
- CRIMSON QUEEN**, height, 24 inches, very dark reddish plum. A fine shade which is very attractive. 75 cents each.
- CYPRIANA SUPERBA**, height, 18 inches. S. and F., fine royal purple; large flower.
- DR. BERNICE**, height, 30 inches. S., coppery bronze; F., rich velvety plum; extra.
- ELEGANS**, height 30 inches. S. white shaded bluish lavender. F. reddish plum.
- FAIRY**, height 30 inches, white, sometimes delicately shaded lavender. Branching habit bearing quantities of flowers. 35 cents each; \$3.00 per dozen.
- FLAVESCENS**, height, 30 inches. S. and F., a delicate shade of soft yellow; prolific bloomer. Very good for borders.
- FLORENTINA**, height, 18 to 24 inches. White; very early and vigorous; valuable for cut flowers.
- GLORY OF READING**, height 30 inches. S. deep blue. F. rich royal purple with a conspicuous orange beard. 75 cents each.
- GRACCHUS**, height, 18 inches. S. clear yellow; F., maroon red, reticulated white.
- HALFDAN**, height 24 inches. Very faint yellowish white. S. and F. self color with yellow beard. Very early. 50 cents each.
- H. CRAMER**, height, 24 inches. S., pale lavender; F., a little darker.
- HECTOR**, height, 30 inches. S., soft clouded yellow; F., rich violet red; very showy.
- HER MAJESTY**, height, 24 inches. 35 cents each; \$3.00 per dozen. S., old rose; F., white, striped rosy lilac. Very large flower.
- INGEBORD**, height, 15 inches. Light straw color, nearly white with light yellow beard. Early. 50 cents each.
- IROQUOIS**, height 24 inches. S. clouded lavender dotted brown. F. very dark plum reticulated white. Unique. 75 cents each.
- IRIS AUREA** (specie), clear bright yellow, blooming between the Siberian and Japanese species. 35 cents each; \$3.00 per dozen.
- IRIS KING** (new), height, 30 inches. S., rich yellow; F., velvety plum edged yellow. A very striking variety. 50 cents each.
- JACQUINIANA**, height 36 inches. S., bright coppery crimson; F., rich dark maroon.
- JUANITA**, height 36 inches. Clear blue with tall stems and large flowers. Very fine. 75 cents each.
- KHARPOT**, height, 24 inches. Very large; rich royal purple; extra.
- LOHENGRIN**, height 36 inches. A beautiful shade of old rose, a vigorous grower producing large flowers in abundance. 75 cents each.
- LORD WOLSELEY** (Monspur), height, 36 inches. A new hybrid blossoming in the latter part of June. Narrow foliage, and light blue flowers.
- LORELEY**, height 24 inches. S., light yellow; F., ultramarine blue, bordered cream. 75 cents each.

CHERRY HILL NURSERIES, WEST NEWBURY, MASS. 25

- MADAME CHEREAU, height, 3 to 4 feet. Pure white, edges beautifully pencilled azure; superb.
- MADAME PACQUITTE, height, 30 inches, S., and F., bright rosy claret; late.
- MISS E. EARDLEY, height 24 inches. S., creamy yellow. F., blue bordered cream. 50 cents each.
- MRS. H. DARWIN, height, 24 inches. White; F., slightly reticulated violet at base; extra.
- MRS. NEUBRONNER, height, 24 inches. Deep golden yellow, one of the best of this color. 50 cents each; \$5.00 per dozen.
- MONSEIGNEUR, height, 30 inches. S. rich violet, F. darker. Very rich coloring. New. \$1.00 each.
- MONTEZUMA, height. 24 inches. S., golden yellow dotted brown at base. F., white, clouded yellow and veined rich brown especially on the throat. Very delicate and fine. Not for sale.
- MT. PENN, height 30 inches. S., violet red. F., deeper with rich coloring. Not for sale.
- PALLIDA AUSTRALIS, height, 36 inches. S., deep lavender; F., soft blue. Very handsome.
- PALLIDA DALMATICA, height, 36 inches. A much sought after variety with strong, broad leaves and wide petaled lavender flowers. The true variety is very scarce both in this country and Europe.
- PALLIDA SPECIOSA, height, 3 to 4 feet. We formerly listed this under the name of P. Dalmatica, but this variety is taller and, we think, more effective than the latter in mass plantings. It has the broad foliage of the Pallida varieties and lavender flowers borne four and five on a stalk.
- PFAUENAUGE, height 24 inches. S., rich yellow. F., velvety plum color bordered deep yellow. 75 cents each.
- PRINCESS VICTORIA LOUISE, height, 30 inches. S., pale yellow; F., rich violet edged cream. Very fresh coloring and especially attractive in the garden. 75 cents each.
- QUEEN OF MAY, height, 30 to 36 inches. Delicate old rose; early.
- ROSE UNIQUE, height 24 inches. Very bright old rose, the nearest to clear pink of any Iris we have seen. 75 cents each.
- SNOW QUEEN (Siberica), height, 42 inches. Pure white. This is a variety of the Siberian Iris which blooms a little later than the German Iris.
- TECUMSEH, height 30 inches. S., clouded yellow or buff. F., reddish plum. 75 cents each.
- THORBECK, height 12 inches. S., white, sometimes marked blue. F., rich clear blue. 35 cents each.
- VICTORINE, height, 25 inches. S., milky white. F., dark violet blue. Very distinct and beautiful. 50 cents each.
- WALHALLA, height, 20 inches. S., deep lavender. F., plum color. Early. 50 cents each.
- WALNERIANA, height, 30 inches. S., light blue, flushed bronze; F., pale violet; orange crest.
- WINDHAM, S., soft lavender pink. F., heavily veined darker. Large flower. 75 cents each.

HERBACEOUS PLANTS

The intrinsic value of our Perennials is too well known to need a lengthy description.

Our aim always has been to give our customers "JUST A LITTLE BETTER THAN PROMISED" and in that way merit the confidence they have placed in us year after year.

We are taking great pains to secure the best stock obtainable, and shall offer to our customers only such varieties as we have proved in our own grounds.

The following brief descriptions will serve as an index to what we carry in our general stock. It frequently happens, however, that we have many varieties not listed, and are always glad to correspond in regard to anything not found in this catalog.

- ACHILLEA PTARMICA FL. PL., VAR. "THE PEARL."** (Yarrow). Small double flowers of pure white throughout the summer. 2 feet.
- ACONITUM AUTUMNALE.** (Monkshood). Tall spikes of violet blue helmet shaped flowers. Fairly late. 4 feet.
- A. NAPELLUS BI-COLOR.** Beautiful blue and white blossoms. Aug. to Sept. 4 ft.
- AGROSTEMNA CORONARIA.** (Mullein Pink). Plants have wooly stems with leaves of a leathery appearance; flowers beautiful rosy crimson. June and July. 2 to 3 feet.
- ALTHAEA ROSEA.** (Hollyhock). Single and double varieties, ranging from light pink to dark maroon. 6 to 8 ft.
- ALLEGHANY HOLLYHOCKS.** Single flowers, with wide fringed petals of silky texture. From light pink to red. Mixed colors. 6 to 8 feet. 20 cents each; \$2.00 per dozen.
- ALYSSUM SAXATILE, VAR. COMPACTUM** (Gold Tuft). Numerous clusters of small yellow flowers. Plant very dwarf—8 to 12 inches. Useful for rockwork. May.
- ANCHUSA ITALICA DROPMORE VARIETY.** Bright gentian blue flowers. 3 to 5 feet. May and June.
- ANEMONE JAPONICA.** A beautiful, Fall-flowering plant, 2 to 3 feet high. Flowers rosy red or carmine, with yellow stamens.
- VAR. ALBA.** A white form of the above, with yellow stamens. Plants 2 to 3 feet. September to November.
- VAR. PRINCE HENRY.** A distinct double deep pink variety. 2 to 3 ft.
- VAR. QUEEN CHARLOTTE.** Deep apple blossom pink. 2 to 3 feet.
- VAR. WHIRLWIND.** Semi-double flowers of pure white. 3 to 4 feet.
- AQUILEGIA CANADENSIS.** (Columbine). Bright scarlet and yellow. 12 to 18 inches. May and June.
- A. LONG-SPURRED HYBRIDS.** A new, large-flowering strain, producing flowers of exquisite shades.

Prices for Perennials, unless otherwise noted, are 15 cents each; \$1.50 per dozen; \$10.00 per hundred. Fifty at the hundred rate and six at the rate per dozen. Extra large clumps at proportionate increase.

CHERRY HILL NURSERIES, WEST NEWBURY, MASS. 27

- A. NIVEA GRANDIFLORA. Pure white flowers. Very fine.
- A. CHRYSANTHA. Yellow with tinted claret tip.
- ARABIS ALPINA. (Rock Cress). A dwarf rock plant. Pure white. May.
- ASTER NOVAE-ANGLIAE. (New England Aster). Soft blue flowers on stems from 3 to 6 feet tall. September and October.
- VAR. ROSEA. A charming variety of the above, with soft rose-colored flowers.
- A. NOVI-BELGI. Flowers pale blue, not quite as tall as the novae-angliae.
- ASTILBE JAPONICA, (Spirea). VAR. GLADSTONE. Flowers fine white, in large heads. June and July. Height 2 feet.
- VAR. QUEEN ALEXANDRA. A new hybrid, soft pink. Very handsome. 25 cents each; \$2.50 per dozen.
- BOCCONIA CORDATA. (Plume Poppy). Buff flowers 5 to 8 feet. July and August.
- BOLTONIA ASTEROIDES. (False Chamomile). 6 or 8 feet. Heads of Aster-like white flowers. Sept. and Oct.
- B. LATISQUAMA. 4 to 6 feet. Large, pink to lavender shade.
- CAMPANULA CARPATICA. (Carpathian Harebell). A very beautiful dwarf plant. 12 inches tall. Flowers large, deep blue. June to September.
- C. MEDIA (Canterbury Bells). A biennial. 2 to 4 feet. Bell-shaped flowers in dark blue, light blue, white, rose.
- PERSICIFOLIA GRANDIFLORA. Large, deep blue flowers, salver shaped. 2 feet.
- PERSICIFOLIA ALBA. A pure white form of above.
- VAR. CALYCANHEMA. (Cup and Saucer). Solid colors of blue, rose and white. 2 to 3 ft.
- CHRYSANTHEMUM LEUCANTHEMUM HYBRIDUM (Shasta Daisy). August and September. Pure white blossoms 3 to 4 inches across. 15 to 18 inches.
- HARDY POMPON CHRYSANTHEMUMS. October and November. Strong plants in yellow, white, bronze and pink. 2 to 3 feet.
- CONVALLARIA MAJALIS. (Lily of the Valley). 6 to 10 inches. Waxy-white flowers. May. Clumps 25 cents each; \$2.50 per dozen; \$20.00 per 100.
- COREOPSIS LANCEOLATA. Bright golden-yellow flowers of single form. June to September. 2 feet.
- DELPHINIUM BELLADONNA. (Larkspur). Beautiful turquoise blue. Free bloomer throughout the season. Dwarf habit. 25 cents each; \$2.50 per dozen.
- D. CHINENSIS. 12 to 15 inches tall. Delicate light blue.
- VAR. ALBA. A white form of the above.
- D. ELATUM. 3 to 6 feet. Dark blue flowers. One of the best.
- VAR. HYBRIDUM. (Thurlow's Hybrids). 3 to 6 feet. Delicate azure to deep blue.
- GOLD MEDAL HYBRIDS. Superb strain, all shades of blue.
- D. FORMOSUM. 2 to 4 feet. Deep blue, with white eye.
- VAR. COELESTINUM. Turquoise blue, with darker center. 3 feet.
-

Prices for Perennials, unless otherwise noted, are 15 cents each; \$1.50 per dozen; \$10.00 per hundred. Fifty at the hundred rate and six at the rate per dozen. Extra large clumps at proportionate increase.

28 CHERRY HILL NURSERIES, WEST NEWBURY, MASS.

- DIANTHUS BARBATUS** (Sweet William). 12 inches. Large, flat heads of flowers. Scarlet, white, maroon, Pink Beauty; also mixed colors. Entire season.
- D. PLUMARIUS**. (Hardy Garden Pink). Silvery foliage. Very fragrant flowers; 12 to 18 inches. Mixed colors, single and double. May to July.
- DICENTRA SPECTABILIS**. (Bleeding Heart). Peculiar heart-shaped blossoms, borne in long racemes. 20 cents each; \$2.00 per dozen. May to June. 2 feet.
- DICTAMNUS FRAXINELLA**. (Burning Bush). 2 to 2½ feet. Racemes of peculiar red flowers having the scent of the balsam. 25 cents each; \$2.50 per dozen. June.
- DIGITALIS GLOXINIAEFLORE**. (Foxglove). A beautiful strain of showy flowers in many colors. 3 to 4 feet. June to August.
- FUNKIA COERULEA** (Blue Day Lily). 12 to 18 inches. Blue flowers. July and August.
- F. SUBCORDATA GRANDIFLORA** (White Day Lily). Foliage pale green, white flowers, 20 cents each; \$2.00 per dozen.
- GAILLARDIA GRANDIFLORA**. (Blanket Flower). Showy single flowers of crimson and gold. Entire season. 18 to 24 inches.

Prices for Perennials, unless otherwise noted, are 15 cents each; \$1.50 per dozen; \$10.00 per hundred. Fifty at the hundred rate and six at the rate per dozen. Extra large clumps at proportionate increase.

GLADIOLI

- Strong flowering bulbs. 35 cents per dozen; \$2.50 per hundred except as noted.
- AMERICA**. One of the best known. Flowers very large and of an exquisite shade of soft flesh pink.
- BRENCHLEYENSIS**. Brilliant vermilion-scarlet. Excellent for planting among shrubbery.
- CHILDSI HYBRIDS**. A superb mixture of large flowering bulbs in a variety of pleasing colors.
- GOLDEN KING**. Rich golden yellow with crimson markings. \$1.50 per doz.; \$10 per 100.
- GOV. HANLEY**. Very fine, rich red, brilliant and effective. \$1.50 per doz.; \$10 per 100.
- KUNDERD'S GLORY**. Exquisite pink shaded creamy buff; ruffled petals. One of the finest for display. \$1 per doz.; \$7 per 100.
- LEMOINE HYBRIDS**. A variety remarkable for their free flowering and richness and variety in coloring.
- MRS. FRANCIS KING**. Brilliant flame color, large flowers. 50c per doz.; \$3 per 100.
- MRS. FRANK PENDLETON**. Bright but soft rose pink. Considered by Mr. Kunderd as one of his best. \$1.50 per doz.; \$10 per 100.
- NIAGARA**. Delicate yellow of very pleasing tone. \$1 per doz.; \$7 per 100.
- PANAMA**. A decided improvement on America. Flowers much larger and of a deeper shade. One of the choicest. 25 cents each; \$2.25 per dozen.

- PINK BEAUTY.** Quite early. Handsome deep pink with crimson throat.
- PRINCEPS.** Extra large flowers dazzling scarlet in color. Plants dwarf. 50 cents per dozen; \$4.00 per 100.
- GYPSOPHILA PANICULATA.** (Baby's Breath). 2 to 3 feet. A beautiful plant, with branching stems, small single flowers in clouds. Unequaled for cutting. July and August.
- G. VAR. FLORE PLENO.** A double-flowered variety, small rosette-shaped flowers. 25 cents each; \$2.50 per dozen.
- HELENIUM AUTUMNALE.** (Sneezewort). 4 to 6 feet. Brilliant yellow flowers. August and September.
- H. VAR. RUBRUM.** A new variety. Bright terra cotta flowers.
- HELIANTHUS MOLLIS.** (Sunflower). 5 feet. Superb flowers of lemon yellow. Heavy velvety foliage. July and August.
- HEMEROCALLIS GOLD DUST.** (Yellow Day Lily). 2½ feet. Bright Indian yellow. Buds and reverse side of petals handsome gold bronze. May and June.
- H. FLAVA.** (Lemon Lily). Has a tuft of narrow green foliage. Single yellow flowers. 2 feet. June.
- H. KWANSO FL. PL.** Double, orange, with deep red spots. Of more substance than the other forms.
- H. MIDDENDORFI.** Dark orange yellow. Flowers in good succession.
- H. SIEBOLDI.** Rich yellow buds, reverse, petals bronze yellow. 1½ to 2 feet.
- H. THUNBERGI.** Much like the *H. Flava*, but later. When planted together the season extends over June and July.
- HEUCHERA SANGUINEA** (Alum Root). Blooms from June to September. Bright crimson flowers. Good for cutting.
- HIBISCUS MOSCHEUTOS.** (Mallow). **VAR. CRIMSON EYE.** 4 to 5 feet. Single flowers of white, with crimson center. August.
- HOLLYHOCKS.** See *Althea*.
- IBERIS SEMPERVIRENS.** (Candytuft). 9 to 12 inches, bearing many flat heads of snow white flowers. May and June.
- LAVANDULA VERA.** (Sweet Lavender). Silver gray foliage, aromatic. Fragrant lavender flowers. July to September.
- LILIUM AURATUM.** (Gold-banded Lily). A wonderful, pure white tube, dotted with brownish spots with a broad gold band through the center of each petal. Fragrant. July and August. 2 to 3 feet. 20 cents each; \$2.00 per dozen.
- L. CANDIDUM.** 3 to 4 feet. June and July. Pure white, resembling an Easter lily. 20 cents each; \$2.00 per dozen.
- L. SPECIOSUM, VAR. ALBUM.** 3 feet. August and September. Large white fragrant flowers with recurved petals. 20 cents each; \$2.00 per dozen.
- VAR. RUBRUM.** (Melpomene). 3 feet. August and September. White, spotted with red. 20 cents each; \$2.00 per dozen.
- L. TIGRINUM.** 4 to 5 feet. August. Scarlet, with crimson dots. Very showy.
- LOBELIA CARDINALIS.** (Cardinal Flower). 3 feet. July and August. Intense cardinal flowers on long spikes.
- L. SYPHILITICA.** 2 feet. September. Spikes of deep blue flowers.
- LUPINUS POLYPHYLLUS.** (Lupin). 2 to 4 feet. Deep blue flowers on long spikes. Very handsome. May and June.

- MONARDA DIDYMA ROSEA.** (Bergamont). Beautiful rose colored flowers, very fragrant. July and August. 2 to 3 feet.
- OENOTHERA MISSOURIENSIS.** (Evening Primrose). 12 inches. Large, handsome yellow flowers spotted with red. June to September.
- PAPAVER NUDICAULE.** (Iceland Poppy). Dwarf. 12 inches. Numerous blossoms in a beautiful mixture of yellow, white and orange. Entire season.
- P. ORIENTALE.** (Oriental Poppy). Large, brilliant scarlet flowers. Very handsome. Stems 3 feet high. May and June.
- PENTSTEMON BARBATUS TORREYI.** (Beard Tongue). 3 feet. Flowers borne in spikes of deep scarlet red. June to August.
- P. DIGITALIS.** Plants 2 to 3 feet high, having large spikes of Foxglove-shaped white flowers inflated. June and July.
- PINKS.** See *Dianthus*.
- PHYSOSTEGIA VIRGINICA.** (False Dragon Head). 3 to 4 feet. Erect spikes of bright pink. Very pretty. July and August.
- PLATYCODON GRANDIFLORA.** (Chinese Bell Flower). 2 to 3 feet. A bushy plant, blooming all summer. Flowers soft blue.
- VAR. ALBA.** A white form of the above.
- P. MARIESI.** A dwarf variety. Large, deep violet colored flowers.
- POLYMONIUM RICHARDSONI.** (Jacob's Ladder). 18 inches. Finely cut foliage, heads of blue flowers. June and July.
- VAR ALBA.** A variety of the above, having white flowers.
- PYRETHRUM HYBRIDUM FL. PL.** (Feverfew). Very showy. June. 2 feet. Double. Pink, red and white. 30 cents each; \$3.00 per dozen.
- PYRETHRUM ULIGINOSUM.** (Giant Ox Eye Daisy). Profusion of daisy-like blossoms. 4 to 5 feet. September.
- SCABIOSA CAUCASICA.** (Mourning Bride). Handsome bunches of lilac blue flowers. 1 to 1½ feet. June to September.
- SEDUM ACRE.** (Stone Crop). 4 to 6 inches. Very pretty, many flat heads of yellow flowers. Good for edging. May and June.
- S. SPECTABILE.** 18 inches to 2 feet in height. Rosy colored and purple flat heads of flowers, very showy.
- SPIREA.** See *Astilbe*.
- TROLLIUS EUROPAEUS.** (Globe Flower). 16 inches to 2 feet in height. Large lemon-yellow flowers. Showy. June and July.
- VAR. ROSEA.** A clear pink variety of the above.
- VERONICA INCANA.** (Speedwell). Very ornamental for rockery or border. White wooly plants with pale blue flowers. 1 to 1½ feet. July and August.
- V. LONGIFOLIA SUBSESSILIS.** 2 to 3 feet. Long spikes of deep blue flowers. July and August. 25 cents each; \$2.50 per dozen.

VIOLA CORNUTA—TUFTED PANSIES

- ADMIRATION.** Handsome, dark blue to soft purple with dark blotch. April to November.
- LUTEA SPLENDENS.** Rich, golden yellow.
- WHITE PERFECTION.** Fine white, sweet scented.
- PERFECTION.** Light blue, very nice.

INDEX TO PEONIES

Name	Page	Name	Page
Achille	8	Eugene Verdier	13
Adelaide Delache	8	Eugenie Verdier	11
Adolphe Rousseau	13	Evangeline	15
Agnes Mary Kelway	8	Exquisite	15
Albert Crousse	13	Felix Crousse	11
Alexandre Dumas	8	Festiva Maxima	8
Alfred de Musset	11	Frances Shaylor	15
Alice Crousse	8	Frances Willard	15
Alice de Julvecourt	8	Francis Ortegat	7
Alsace Lorraine	14	General Custer	9
Amazone	13	Georgiana Shaylor	15
Areos	5	Germaine Bigot	15
Argus	5	Ginette	15
Arietina Baxteri	6	Gloire de Charles Gombault..	11
Armand Rousseau	11	Gloire de Chenonceaux	11
Asa Gray	13	Golden Harvest	8
Augustin d'Hour	8	Grace D. Bryan	9
Aurore	11	Grandiflora	11
Avalanche	11	Grover Cleveland	15
Avant-Garde	6	Helena	11
Aviateur Reymond	14	Henri Demay	7
Baroness Schroeder	13	Hermes	5
Belisaire	14	Isani Guidi	6
Belle Mauve	14	James Kelway	13
Bernard de Palissy	8	Jeanne d'Arc	9
Black Prince	5	Jeanne Gaudichau	15
Boule de Neige	11	John Fraser	8
Cameron	9	John Richardson	15
Candidissima	7	Jules Calot	11
Caroline Allain	11	Karl Rosenfield	15
Celeste Brochet	5	Kelway's Glorious	15
Cherry Hill	14	Kelway's Queen	15
Claire Dubois	13	King of England	6
Comte de Diesbach	7	La Coquette	9
Coquelin	13	Lady Alexandra Duff	15
Coronation	14	Lady Lillian Ogle	5
Couronne d'Or	11	La Fayette	15
Decora Elatior	6	La Fee	15
Decora Pallasii	6	La Fiancee (double)	15
Defiance	5	La Fiancee (single)	5
Delia	9	La France	16
Delicatissima	8	L'Indispensable	8
Distinction	9	La Lorraine	16
Docteur Bretonneau	8	Lamartine	12
Docteur Caillot	9	La Perle	13
Docteur H. Barnsby	14	La Rosiere	13
Dog Rose	6	La Tendresse	16
Dorchester	8	La Tulipe	9
Dreadnought	5	Laura Dessert	16
Duc de Wellington	8	Le Cygne	16
Duchess de Nemours	9	Le Printemps	6
Edith Lyttleton	11	Livingstone	12
Edouard Andre	8	Lost Treasure	16
Eduilis Superba	7	Louis Van Houtte	7
E. G. Hill	14	Loveliness	16
Emily	5	Madame Auguste Dessert	16
Estafette	15	Madame Barillet Deschamps..	9
Etta	11	Madame Boulanger	13
Eugene Reignoux	15	Madame Bucquet	8

32 CHERRY HILL NURSERIES, WEST NEWBURY, MASS.

Name	Page	Name	Page
Madame Calot	12	Pasteur	13
Madame Camille Bancel	9	Perfection	14
Madame Coste	8	Perle Blanche	6
Madame Crousse	12	Peter Barr	7
Madame de Galhau	10	Petite Renee	14
Madame de Govin	10	Phillipe Rivoire	17
Madame de Verneville	10	Pierre Dessert	12
Madame D. Treyeran	16	Pierre Duchartre.....	12
Madame Ducl	10	Pierre Reignoux	17
Madame Emile Galle	12	Plutarch	9
Madame Emile Lemoine	13	Pomponette	17
Madame Forel	8	Pride of Essex	17
Madame Fould	16	Primavere	17
Madame Gaudichau	16	Prince Alexander	5
Madame Geissler	10	Prince Bismarck	5
Madame Joanne Sallier	16	Prince of Wales	10
Madame Jules Dessert	16	Princess Beatrice	9
Madame Loise Mere	12	Princess Irene	10
Madame Manchet	16	Princess of Wales	5
Madame Mechin	10	Psyche	7
Madame Savreau	16	Purity	5
Mlle. Desbuissons	12	Queen Victoria	7
Mlle. Jeanne Riviere	16	Raoul Dessert	17
Mlle. Leonie Calot	8	Renomee	14
Mlle. Marie Calot	12	Rosa Bonheur	17
Mlle. Renee Dessert	8	Rosy Dawn	5
Mlle. Rousseau	13	Rubra Superba	10
Maifleuri	6	Sarah Bernhardt	17
Marcelle Dessert	16	Simonne Chevalier	14
Marchioness of Lansdowne ..	13	Single White	5
Marechal Vaillant	8	Smoutha	7
Marguerite Gaudichau	16	Soulange	17
Marguerite Gerard	13	Souvenir de Dr. Bretonneau ..	14
Marie	12	Souvenir de l'Exposition de	
Marie Crousse	16	Bordeaux	10
Marie Jacquin	12	Souvenir de l'Exposition du	
Marie Lemoine	12	Mans	10
Marquis C. Lagergren	16	Souvenir de l'Exposition Uni-	
Martha Bulloch	16	verselle	10
Meteor	5	Stanley	5
Mignon	17	Surprise	6
Millais	5	Susette	17
Milton Hill	17	Suzanne Dessert	14
Mirelle	12	Tamatbako	6
Mrs. Key	5	The Queen	6
Mr. Manning	12	Therese	17
Modele de Perfection	10	Torquemada	9
Modeste Guerin	12	Tourgangelle	17
Monsieur Boucharlat aine ...	10	Triomphe de l'Exposition de	
Monsieur Dupont	12	Lille	10
Monsieur Jules Elie	13	Triomphe de Paris	10
Monsieur Martin Cahuzac	17	Umbellata Rosea	10
Mont Blanc	17	Venus	10
Neptune	17	Victoire de la Marne	17
Nobilissima	9	Victoria	6
Norfolk	13	Virginie	11
Octavie Demay	10	Viscountess Folkestone	11
Odette	17	Volcan	17
Officinalis alba plena	7	Walter Faxon	18
Officinalis rosea plena	7	Washington	12
Officinalis rubra plena	7	White Lady	6
Officinalis sabini	7	Whitley Major	6
Officinalis tenuifolia flore pleno	7	Winnikenni	18
Paeonia Lutea	6	Yeso	6
		Zoe Calot	11



SILVER MEDAL

Awarded for our new Seedling Peony, "Cherry Hill"
This honor is seldom conferred on an individual variety

Cherry Hill Nurseries

WEST NEWBURY : : MASSACHUSETTS

T. C. THURLOW'S SONS, Inc.