

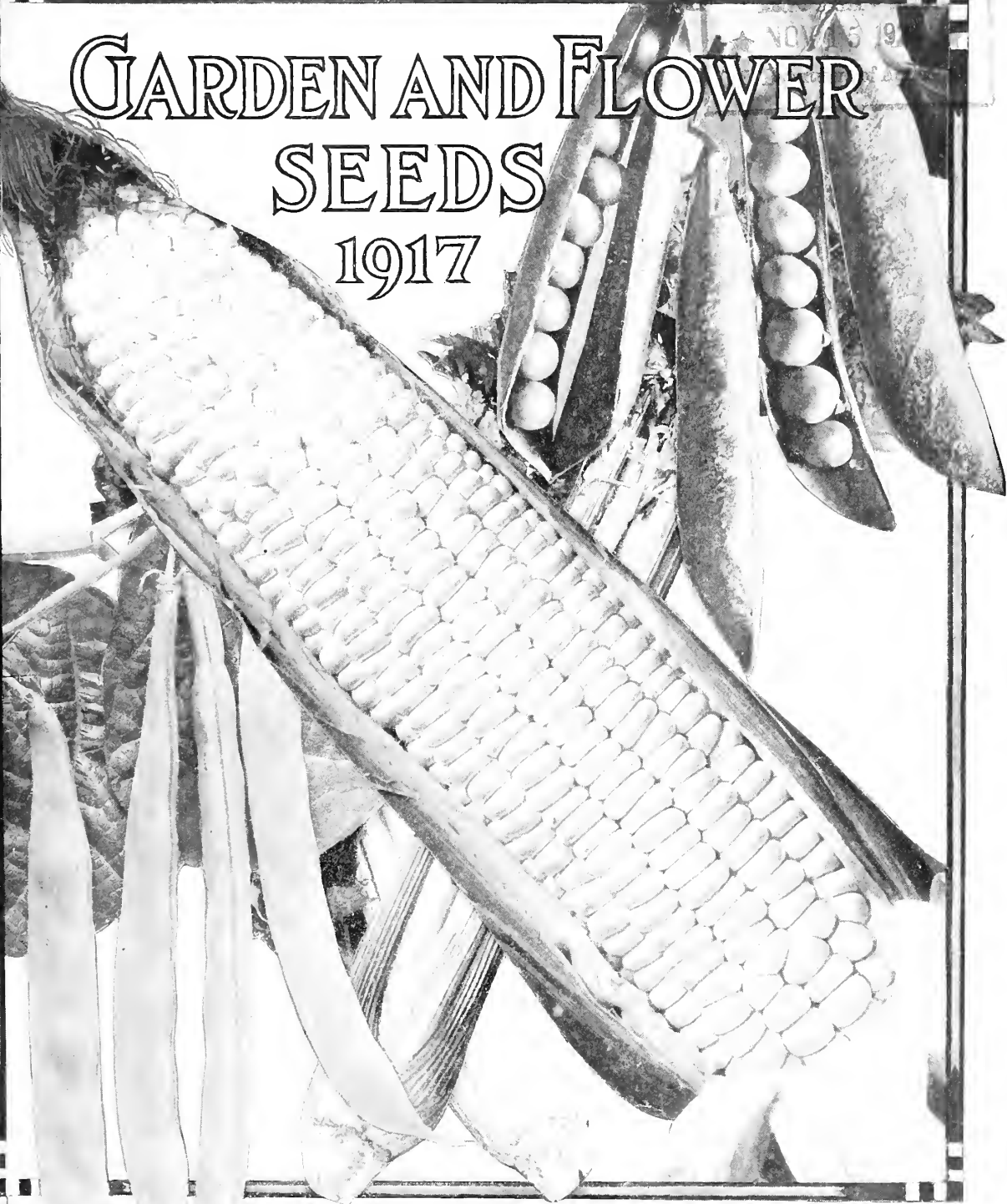
Historic, Archive Document

Do not assume content reflects current scientific knowledge, policies, or practices.

62,13

Seed Marketing Investigations.

GARDEN AND FLOWER SEEDS 1917

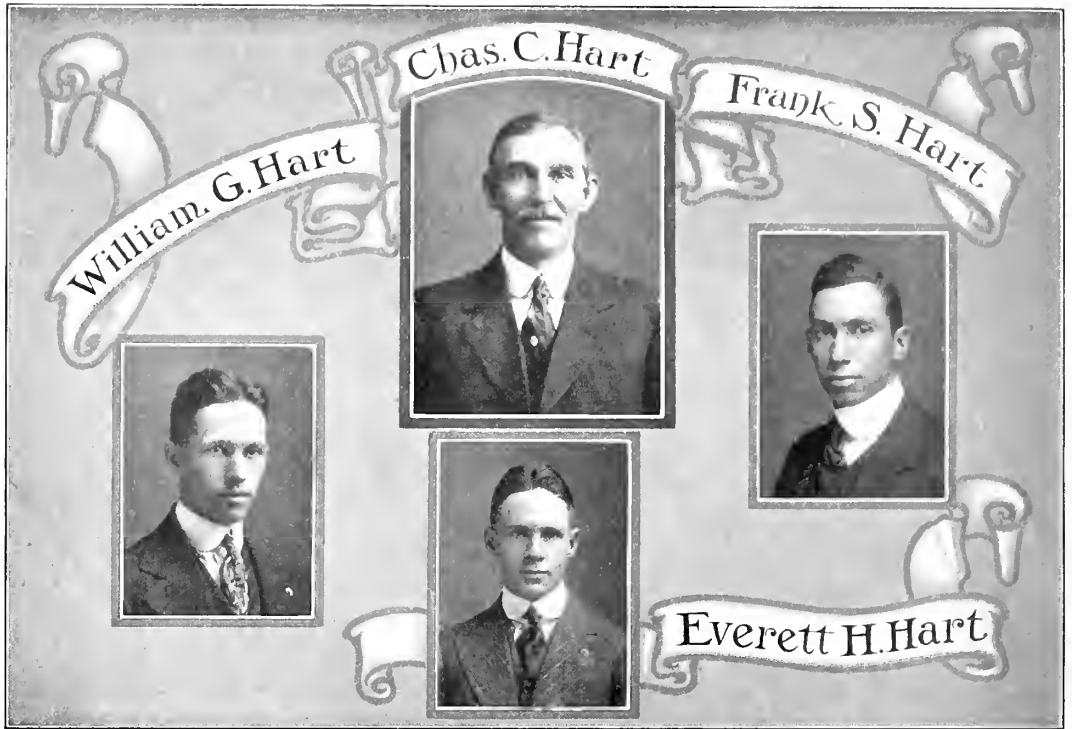


CHAS. C. HART SEED CO.

Growers Importers and Dealers in Garden
Flower and Farm Seeds

WETHERSFIELD

CONNECTICUT.



To my Friends and Customers:

I beg to announce that since sending you our last Catalog, I have purchased the interests of my partner, Mr. F. J. Welles, in the firm of Hart Welles & Co., and he has retired from the business.

It gives me great pleasure to announce that I have now taken into partnership with me three of my sons, whom I introduce in the above grouping, and shall carry on the business under the name of Chas. C. Hart Seed Co. My sons have been brought up in the seed business, and are familiar with all its branches, and I trust the new firm may have the pleasure of doing business with you for many years to come.

In introducing the new firm I thought it might be of interest to you to know something of our history, and will briefly say, I first served for 14 years with a firm of seed growers, and in 1892 started in the seed business for myself, in a very small way, and two years later formed the firm of Hart, Welles & Co., who for 23 years carried on the business of growing, and selling seeds at wholesale, to dealers in all parts of the country. In 1913 we added a Mail Order Department to our seed business, and sent out our first descriptive catalog. We shall continue the business in all its branches. From a very small beginning I have seen our business grow from year to year, until it is now of considerable importance, and I intend by fair and honest dealings, to continue to increase it. My sons share with me that same feeling of responsibility, and pride in our business, and it will be a pleasure for us to work for the best interests of our customers, as well as for our own.

I believe there is no one will give you better seeds or try harder to merit your confidence than we will, and I ask for a share of your orders.

This is a year of shortages in all lines of seeds, which with the increased cost of production must necessarily advance prices. The shortage on many varieties is so serious that it is not so much a question of price, as it is to be able to get the seed, especially good seed, of strong vitality. There are many houses that will be unable to fill orders this year on the very scarce kinds. I believe we are in position to do better for you than any one else can, and shall feel pleased if you will give us a trial.

Thanking you for past favors, and with best wishes, I am

Cordially yours,

CHAS. C. HART.

FROM.....

.....

CHAS. C. HART SEED CO.
SEEDSMEN
WETHERSFIELD,
CONN.

How To Order

It will be to your advantage to **order early**.

Every inquiry will receive a **prompt** and **courteous** reply, and the smallest order will receive the same careful attention as a large one.

TERMS. Our terms are strictly cash with orders.

HOW TO SEND MONEY. Money may be safely sent by Post Office or Express Money Orders, Registered Letter or Bank Draft. Personal Checks—if you have the money back of them, send them right along; you are the class of customer we want. We will accept postage stamps, if received in good condition, for amounts up to \$1.00.

Seeds may be sent by Parcel Post, up to 50 lbs. in the 1st and 2d zone limit of 150 miles; and up to 20 lbs. in the 3d zone limit of 300 miles. **See table of postage rates.**

Postage must be fully prepaid and added to the cost of the seed. If postage is not added and no shipping instructions given we will ship cheapest and best way, either by express or freight, and transportation charges must be paid by purchaser.

Remember, name and address should always be given. Use our order sheet and envelope, filling out the blank, and signing your name and P. O. address **plainly**, and your order will receive prompt and careful attention.

When ordering 4 quarts, pecks, 1/2 bushel and over, cloth bags must be used in packing. We charge 5c. for 4-quart and peck bags, 10c. for 1/2 bushel bags, 25c. for two-bushel bags, and 30c. for barrels. If customers wish to return bags and will send by Parcel Post, prepaid, we will refund money paid us for them. Barrels are not returnable.

If your local dealer handles our seeds in bulk they will be the same **good quality** seeds as you would get direct from us. If he does not handle them, send to us.

GUARANTEE. Our seeds are all tested before they are sent out, and we know they will sprout, and believe they will produce the variety represented, but there are so many contingencies continually arising which prevent the best seeds from always giving satisfaction, and which is in no way the fault of the seeds, that we can give no warranty, expressed or implied, as to description, quality or productiveness, or any other matter of any seeds, bulbs, plants, roots or trees that we send out, and we will not be in any way responsible for the crop.

Please remember that while we cannot guarantee crops, **it is to our interest** to give you **the best there is**, and we trust you will have confidence enough in us, to believe we will do so.

We shall be pleased to hear from you, and with our best wishes, we are,

Sincerely yours,

CHAS. C. HART SEED CO.

There is nothing more enjoyable than a good garden. Do not be without one, when for a small amount we can supply you with choice vegetable and flower seeds, direct to your door, by Parcel Post.

Parcel Post Rates

Weight limit, 50 lbs. in first and second zones of 150 miles, and 20 lbs. in third zone of 300 miles.

Measurement limit around package, both ways, 72 inches in all zones.

Pounds.	1st and 2d zones.		3d zone.		Pounds.	1st and 2d zones.		3d zone.		Pounds.	1st and 2d zones.		3d zone.	
	Cts.	Cts.	Cts.	Cts.		Cts.	Cts.	Cts.	Cts.		Cts.	Cts.	Cts.	Cts.
1	5	6	15	19	34	29	33	43	47					
2	6	8	16	20	36	30	34	44	48					
3	7	10	17	21	38	31	35	45	19					
4	8	12	18	22	40	32	36	46	50					
5	9	14	19	23	42	33	37	47	51					
6	10	16	20	24	44	34	38	48	52					
7	11	18	21	25	..	35	39	49	53					
8	12	20	22	26	..	36	40	50	54					
9	13	22	23	27	..	37	41					
10	14	24	24	28	..	38	42					
11	15	26	25	29	..	39	43					
12	16	28	26	30	..	40	44					
13	17	30	27	31	..	41	45					
14	18	32	28	32	..	42	46					



ASPARAGUS

4 to 5 lbs. to the acre.

Culture.—Sow the seed as early in Spring as ground can be worked, in drills 12 to 14 inches apart. When two years old, transplant into permanent beds, well and deeply manured. In setting the roots, spread them out well and cover them to the depth of 6 inches. Very little, if any, should be cut the first year after transplanting, but a fair crop can be cut the second year. Later in the season all the shoots should be allowed to run to seed, and in the Fall all the tops should be cut off, the ground cleaned up, and a good dressing of manure and wood ashes spaded into the bed. An occasional dressing of salt is beneficial and keeps down the weeds.

If sent by mail, add 5c. per lb. for postage.

Conover's Colossal. The standard variety, and very tender. Pkt. 5c., oz. 8c., $\frac{1}{4}$ lb. 15c., lb. 35c.

Columbia Mammoth White. A large, thick variety; very white, even above ground. Pkt. 5c., oz. 10c., $\frac{1}{4}$ lb. 20c., lb. 40c.

Palmetto. A large, early variety; very popular, and good for shipping. Pkt. 5c., oz. 10c., $\frac{1}{4}$ lb. 20c.; lb. 40c.

Asparagus Roots

Strong, 2-year-old roots of the above. Per 50, 30c., per 100, 50c.; per 1000, \$4.00.



Palmetto Asparagus

BEANS

Culture.—Beans require a light, well-drained soil, and should not be planted too early, as they are very sensitive to cold and wet. Plant usually around the first of May, and at intervals throughout the season for a succession, until the latter part of August. Plant in drills about 2 feet apart, and 5 or 6 plants to the foot. Keep well cultivated.

Owing to a short acreage and an unfavorable season, the supply of beans is the shortest ever known. We fear that late in the season seedsmen will be unable to fill orders at any price. We want your business, and will take good care of you if you will order early.

Dwarf, Green-Podded, Bush or Snap

1 qt. weighs about 2 lbs.

If sent by mail, add 6c. per qt. for postage.

Burpee's Stringless Green Pods. Extra early, round, stringless pods. Pkt. 10c., pt. 35c., qt. 70c., 4 qts. \$2.50

Longfellow. Long, straight, round pods. Pkt. 10c., pt. 35c., qt. 70c., 4 qts. \$2.50.

Extra Early Refugee. Very early; round pod. Pkt. 10c., pt. 35c., qt. 70c., 4 qts. \$2.50.

Extra Early Red Valentine. Very early; round, solid pod. Pkt. 10c., pt. 35c., qt. 70c., 4 qts. \$2.50.

Black Valentine. Extra early; round, solid pod. Pkt. 10c., pt. 35c., qt. 70c., 4 qts. \$2.50.

Bountiful. Early flat pod; tender and great yielder. Pkt. 10c., pt. 35c., qt. 70c., 4 qts. \$2.50.

Long Yellow Six Weeks. Early, flat pod; very productive and excellent quality. Pkt. 10c., pt. 35c., qt. 70c., 4 qts. \$2.50.

Stringless Green Pods (Giant). Very early; round, stringless, full pods. Pkt. 10c., pt. 35c., qt. 70c., 4 qts. \$2.50.

Refugee, or 1000 to 1. Late; round, tender pod. Excellent for pickling. Pkt. 10c., pt. 35c., qt. 70c., 4 qts. \$2.50.

White Kidney. Field Bean for soup and baking. Pkt. 10c., pt. 20c., qt. 40c., 4 qts. \$1.50, pk. \$3.00.

White Marrow. Excellent for baking. Pkt. 10c., pt. 20c., qt. 40c., 4 qts. \$1.50, pk. \$3.00.

Dwarf Wax, Yellow-Podded, or Butter Beans

If sent by mail, add 6c. per qt. for postage.

Hodson Wax. Large, rustless, flat pod. Pkt. 10c., pt. 35c., qt. 70c., 4 qts. \$2.75.

Valentine Wax. Extra early; round, meaty pod. Pkt. 10c., pt. 35c., qt. 70c., 4 qts. \$2.75.

Prolific Black Wax. Early and prolific; pods nearly round; full, stringless and fine quality. Pkt. 10c., pt. 35c., qt. 70c., 4 qts. \$2.75.

Davis White Kidney Wax. Long, white, waxy, flat pods; very prolific. Pkt. 10c., pt. 35c., qt. 70c., 4 qts. \$2.75.

Improved Golden Wax. The most popular standard variety; pods are long, tender and meaty, stringless and rust-proof. Pkt. 10c., pt. 35c., qt. 70c., 4 qts. \$2.75.

Currie's Rust-Proof Black Wax. Pods long and flat; excellent quality; early and prolific. Pkt. 10c., pt. 35c., qt. 70c., 4 qts. \$2.75.

Wardwell's Kidney Wax. An extremely heavy bearer; pods large and flat, and fine quality. Pkt. 10c., pt. 35c., qt. 70c., 4 qts. \$2.75.

Round Pod Kidney Wax. A fine, round, long pod variety, and entirely stringless. Pkt. 10c., pt. 35c., qt. 70c., 4 qts. \$2.75.

Golden-Eyed Wax. A very desirable variety; early and prolific; pods flat and free from rust. Pkt. 10c., pt. 35c., qt. 70c., 4 qts. \$2.75.

DWARF WAX, YELLOW PODDED, or BUTTER BEANS—
Continued

Refugee Wax. Very early, thick, fleshy, round, stringless, wax-like pods, of fine quality. Pkt. 10c., pt. 35c., qt. 70c., 4 qts. \$2.75.

Keeney's Rustless Golden Wax. Similar to Imp. Golden Wax. Vines strong and vigorous, and produce an abundance of long, tender, light yellow, wax-like pods, free from rust. Pkt. 10c., pt. 35c., qt. 70c., 4 qts. \$2.75.

Detroit Wax. Vines very hardy and productive. Pods light yellow; straight, broad and flat. Tender and rust-proof. Pkt. 10c., pt. 35c., qt. 70c., 4 qts. \$2.75.

Dwarf Beans—Varieties for Shelling

Dwarf Horticultural, or Cranberry. One of the best for shelled beans. When nearly ripe pods are striped and splashed with crimson. Pkt. 10c., pt. 25c., qt. 50c., 4 qts. \$2.00, pk. \$4.00.

Low's Champion. Very productive; large, green, flat pods. Excellent both as a shell bean and string bean. Pods are tender and stringless. As a shell bean rich and fine flavor. Pkt. 10c., pt. 25c., qt. 50c., 4 qts. \$2.00, pk. \$4.00.

French Horticultural Dwarf. A new and improved variety. Pods are larger and more beautifully splashed with bright crimson than the ordinary Dwarf Horticultural. Vines sometimes inclined to send out runners, but will not climb a pole; this does not affect the bean in any way. Pkt. 10c., pt. 25c., qt. 50c., 4 qts. \$2.00, pk. \$4.00.

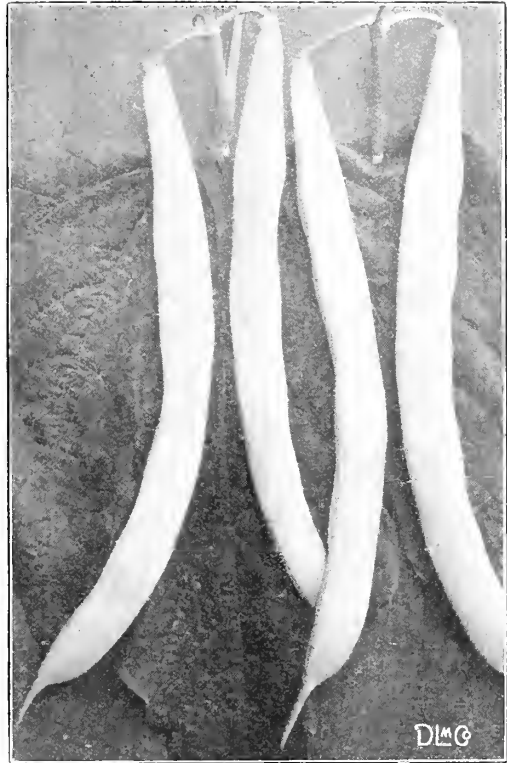
Goddard, or Boston Favorite. Similar to Dwarf Horticultural, except beans are longer and pods more highly colored. Pkt. 10c., pt. 25c., qt. 50c., 4 qts. \$2.00, pk. \$4.00.

Dwarf, or Bush Lima

Culture.—Plant in drills from 2 to 3 feet apart; drop beans about 3 inches apart in the row. Cover about 1½ inches deep. They can also be planted in hills 3 feet apart one way and 2 feet the other.

Burpee's Bush Lima. A good yielder. Pods are well filled with large beans, identical in size and luscious flavor to the large pole Beans. Pkt. 10c., pt. 20c., qt. 40c., 4 qts. \$1.50, pk. \$2.75.

Burpee's Improved Bush. Grows more vigorously than the original Burpee's Bush Lima, is earlier, pods are larger, and beans are same flavor and quality as pole Lima. Pkt. 10c., pt. 25c., qt. 45c., 4 qts. \$1.60, pk. \$3.00.



Hodson Wax Bean

Dreer's New Wonder Bush. A fine strain of Dwarf Lima, producing large pods and beans a week earlier than the regular Burpee's Bush, and have same luscious flavor. Pkt. 10c., pt. 25c., qt. 45c., 4 qts. \$1.60, pk. \$3.00.

Fordhook Bush Lima. An improved variety of the Dreer's, or Potato class of Limas. The shelled beans are thicker and more blocky in shape, and are of luscious flavor, and are considered by many to be the best of the dwarf Limas. Pods are large and contain 4 or 5 beans. Pkt. 10c., pt. 25c., qt. 45c., 4 qts. \$1.60, pk. \$3.00.

Henderson's Bush Lima, or Dwarf Sieva. A dwarf form of small, white Lima, early and productive, with small, white, flat beans of luscious flavor. Pkt. 10c., pt. 20c., qt. 40c., 4 qts. \$1.50, pk. \$2.75.

Pole, or Running Varieties

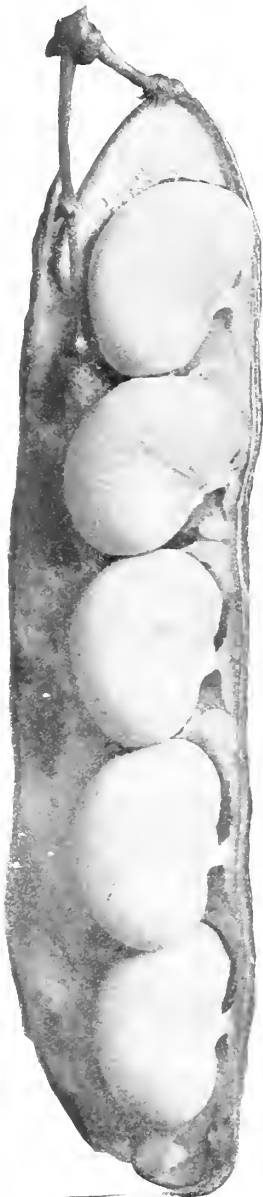
Early Leviathan Lima. The earliest Pole Lima grown, large-sized pod and bean, and very productive. Pt. 20c., qt. 35c., 4 qts. \$1.25, pk. \$2.25.

Large White Lima. The old favorite, and very popular; large podded, luscious beans. Pt. 20c., qt. 35c., 4 qts. \$1.25, pk. \$2.25.

Siebert's Early Large Lima. One of the earliest pole Limas. Very vigorous and productive; large, thick pods, and easily opened. Pt. 20c., qt. 35c., 4 qts. \$1.25, pk. \$2.25.

Early Jersey Lima. A very popular extra early variety. Pods good size, and beans of excellent quality. Pt. 20c., qt. 35c., 4 qts. \$1.25, pk. \$2.25.

Carpenteria Large Lima. A favorite with market gardeners, as it is one of the longest podded and heaviest croppers of all the Pole Limas; beans fat and delicious. Pt. 20c., qt. 35c., 4 qts. \$1.25, pk. \$2.25.



Burpee's Improved Bush Lima

POLE or RUNNING BEANS—Continued

- King of the Garden Lima.** A strong grower, and uniformly large podded; pods frequently contain 5 to 6 large beans of excellent quality. Pt. 20c., qt. 35c., 4 qts. \$1.25., pk. \$2.25.
- Dreer's Improved Lima.** Also called Challenger and Potato Lima. Very productive; beans very thick, nearly round, and of excellent quality. Pt. 20c., qt. 35c., 4 qts. \$1.25, pk. \$2.25.
- Horticultural, or Cranberry.** Very popular; large yielder; beans unsurpassed for quality; pods splashed and striped with crimson. Pt. 20c., qt. 35c., 4 qts. \$1.25, pk. \$2.25.
- Old Homestead, or Kentucky Wonder.** Very productive; pods long and hang in clusters from top to bottom of pole; entirely stringless. The best green-podded string Bean in cultivation. Pt. 20c., qt. 35c., 4 qts. \$1.25, pk. \$2.25.
- Golden Cluster Wax.** This is the best yellow wax string Bean in cultivation; vines are filled with great clusters of long pods the entire length of pole. Pkt. 10c., pt. 30c., qt. 50c., 4 qts. \$1.80
- Lazy Wife.** Produces large, stringless pods in great abundance; peculiarly luscious either as string Beans or shelling, and are fine baked, when ripe. Pkt. 10c., pt. 30c., qt. 50c., 4 qts. \$1.80.
- Dutch Case-Knife.** Vines moderately vigorous, climbing well, and excellent for a corn hill Bean. Shelled beans are broad, white, kidney-shaped, early and prolific. Pt. 20c., qt. 35c., 4 qts. \$1.25, pk. \$2.25.
- Scarlet Runners.** Ornamental, and an excellent string Bean. Pt. 20c., qt. 35c., 4 qts. \$1.25, pk. \$2.25.



Crosby's Egyptian Beets

BEETS—Garden Varieties

Culture.—The best results are obtained on a deep, rich, sandy loam. Sow as early as ground can be prepared, in drills 14 to 18 inches apart, and thin out to 3 inches in the row. Always sow in freshly prepared soil, which should be pressed firmly over the seed. For Winter use, sow from last of June to last of July.

Sow at the rate of 5 to 6 lbs. to the acre.

Add 5c. per lb. for postage, if sent by mail.

- Crosby's Egyptian.** One of the earliest and best, either for market or the home garden; round, dark red; flesh tender and sweet. Pkt. 5c., oz. 15c., $\frac{1}{4}$ lb. 40c., lb. \$1.25.
- Crimson Globe.** Early and smooth; fine dark red color; flesh deep crimson, tender and sweet. Pkt. 5c., oz. 15c., $\frac{1}{4}$ lb. 40c., lb. \$1.25.
- Detroit Dark Red.** One of the best table varieties, and for canning and pickling. Small, dark red, tender and sweet. Pkt. 5c., oz. 15c., $\frac{1}{4}$ lb. 40c., lb. \$1.25.
- Edmand's Blood Turnip.** One of the best for main crop; round, smooth and deep blood red; tender and sweet. Pkt. 5c., oz. 15c., $\frac{1}{4}$ lb. 40c., lb. \$1.25.
- Eclipse.** An early, round, dark red variety; very sweet and tender, and one of the best for greens, as the tops seem to be tenderer and richer than other sorts. Pkt. 5c., oz. 15c., $\frac{1}{4}$ lb. 40c., lb. \$1.25.
- Early Blood Turnip.** The leading general crop variety; is Turnip-shaped; color deep red; flesh tender and sweet; a good keeper, and desirable for Autumn and Winter. Pkt. 5c., oz. 15c., $\frac{1}{4}$ lb. 40c., lb. \$1.25.
- Long Dark Red.** Long, very dark red, sweet and tender; stands dry weather well, and is a good Winter keeper. Pkt. 5c., oz. 10c., $\frac{1}{4}$ lb. 25c., lb. 75c.
- Extra Early Egyptian.** A rather flat variety; very dark red, and popular for forcing purposes. Pkt. 5c., oz. 15c., $\frac{1}{4}$ lb. 40c., lb. \$1.25.



Eclipse Beet

BEETS—Continued

- Dewing's Early Blood.** Deep red color, smooth and fine form; one of the leading sorts for market and family garden. Pkt. 5c., oz. 15c., $\frac{1}{4}$ lb. 40c., lb. \$1.25.
- Lentz Blood Turnip.** Is a large, dark red, main crop variety; very profitable for market and home garden. Pkt. 5c., oz. 15c., $\frac{1}{4}$ lb. 40c., lb. \$1.25.
- Arlington Imp. Blood Turnip.** Early, round, dark red, medium size; very tender and sweet. Pkt. 5c., oz. 15c., $\frac{1}{4}$ lb. 40c., lb. \$1.25.
- Early Model.** A new variety. Is a perfect globe in shape; dark red in color and uniform in size. Pkt. 5c., oz. 15c., $\frac{1}{4}$ lb. 40c., lb. \$1.25.
- Early Bassano.** An early, quick-growing variety, excellent for the table, and especially adapted for use as greens. Pkt. 5c., oz. 10c., $\frac{1}{4}$ lb. 25c., lb. 75c.
- Half Long Dark Blood.** Excellent for Winter and Spring use. The flesh is rich, dark red, very sweet, crisp and tender. Good for slicing for pickles. Pkt. 5c., oz. 15c., $\frac{1}{4}$ lb. 40c., lb. \$1.25.

Swiss Chard

- The Chard Beet is grown for the tops, which are superior to common Beet for greens, and are also fine for feeding to chickens.
- Swiss Chard, or Silver Beet.** This variety has large, thick, plain, pale green leaves. Pkt. 5c., oz. 10c., $\frac{1}{4}$ lb. 30c., lb. \$1.00.
- Green Curled Chard.** Large stalk with green curled leaves. Pkt. 5c., oz. 10c., $\frac{1}{4}$ lb. 30c., lb. \$1.00.
- Lucullus.** A variety of special merit, as two different dishes can be prepared from a single plant. The stalks are thick and broad, and are prepared and served in the same manner as Asparagus. The leaves are used for greens, and are considered by many as superior to Spinach. Pkt. 5c., oz. 15c., $\frac{1}{4}$ lb. 40c., lb. \$1.25.

We very strongly recommend growing Sugar Beets and Mangels for Stock. Special prices for large quantities.

Mangel and Sugar Beets for Stock

- Culture.—Both Mangels and Sugar Beets require deep, well enriched soil. Sow in May or June, in rows $2\frac{1}{2}$ feet apart, and thin to 8 or 10 inches in the row. 5 or 6 lbs. of seed required to the acre.
- Note.—The value of Mangels and Sugar Beets for stock feeding is clearly seen in the improved health and condition of animals, the increased flow and quality of milk from the cows, and the saving in fodder. Everyone who keeps even one cow should grow a patch of either Mangels or Sugar Beets for Winter feed.
- Giant Long Red.** Largest of all the Mangels and heaviest cropper. Pkt. 5c., oz. 8c., $\frac{1}{4}$ lb. 20c., lb. 40c.
- Golden Tankard.** Very heavy cropper; skin and flesh a deep yellow color, and good milk producing qualities. Pkt. 5c., oz. 8c., $\frac{1}{4}$ lb. 20c., lb. 40c.
- Yellow Globe.** Well adapted for shallow soils, and more easily pulled. Yields well, and is an excellent keeper. Pkt. 5c., oz. 10c., $\frac{1}{4}$ lb. 25c., lb. 50c.
- Long Yellow.** A fine yellow Mangel; heavy cropper and good milk producer. Pkt. 5c., oz. 10c., $\frac{1}{4}$ lb. 25c., lb. 50c.
- Improved White Sugar.** One of the best stock feeding Beets. It is claimed by many dairy farmers that Sugar Beets produce more and better quality milk than Mangels. Pkt. 5c., oz. 10c., $\frac{1}{4}$ lb. 25c., lb. 50c.



Giant Long Red Mangel



Brussels Sprouts

BRUSSELS SPROUTS

The plants are very hardy, and grow from 2 to 3 feet high, bearing a large mass of leaves at the top. The sides of the main stem are covered with small Cabbage heads, which are broken off and cooked the same as Cabbage.

Improved Half Dwarf. The standard variety. Pkt. 5c., oz. 15c., $\frac{1}{4}$ lb. 50c., lb. \$2.00.

CABBAGE

Culture.—To successfully grow Cabbage the ground must be highly manured and thoroughly worked. For very early plants, the seed is often sown last of September, and protected in coldframes through the Winter. But the more common way is to sow in hotbeds in February or March, and while plants are very small, prick them out into coldframes to be transplanted later, when danger of frost is past. For late crops sow in May. Set plants in rows 2 to 2½ feet apart, and 18 inches in the row.

One ounce of seed will produce about 2000 plants.

Add 5c. per lb. for postage, if sent by mail.

Copenhagen Market. New Early Danish Cabbage. Large, round, solid heads. As early as Jersey Wakefield, and being larger, yields more in a given space. Pkt. 5c., oz. 25c., ¼ lb. 75c., lb. \$3.00.

Early Jersey Wakefield. One of the earliest and best of the pointed head varieties. Pkt. 5c., oz. 15c., ¼ lb. 50c., lb. \$2.00.

Early Winnigstadt. A very desirable pointed head sort. Pkt. 5c., oz. 15c., ¼ lb. 50c., lb. \$2.00.

Early Spring. An extra early flat head variety. Pkt. 5c., oz. 15c., ¼ lb. 50c., lb. \$2.00.

Enkhuizen Glory. A valuable early variety, producing large, solid heads of very compact growth, which permits close planting, thus increasing the yield of a given area. Pkt. 5c., oz. 25c., ¼ lb. 75c., lb. \$3.00.

Large Charleston Wakefield. Same type as Jersey Wakefield, but heads are considerably larger, and is a week later. Pkt. 5c., oz. 15c., ¼ lb. 50c., lb. \$2.00.

All-Head Early. One of the earliest of the flat-headed varieties. Is good for both Summer and Autumn. Pkt. 5c., oz. 15c., ¼ lb. 50c., lb. \$2.00.

Succession. A second early, flat head variety, and for a medium early, main crop, or late use, has no superior. Pkt. 5c., oz. 15c., ¼ lb. 50c., lb. \$2.00.

Henderson's Early Summer. A desirable early, large, flat head variety. A good keeper and does well in Summer and Autumn. Pkt. 5c., oz. 15c., ¼ lb. 50c., lb. \$2.00.

Fotter's Improved Brunswick. A very low-growing, flat head variety; large and solid, and a desirable intermediate or late sort. Pkt. 5c., oz. 15c., ¼ lb. 50c., lb. \$2.00.

Surehead. A large, late, flat-headed sort; hard and firm. Pkt. 5c., oz. 15c., ¼ lb. 50c., lb. \$2.00.

Premium Late Flat Dutch. A very popular standard variety. Its keeping qualities are unsurpassed; heads large, tender and fine flavored. Pkt. 5c., oz. 15c., ¼ lb. 50c., lb. \$2.00.

Danish Ball-Head. The great Winter keeper. Heads very heavy, globe-shaped, and keeping qualities unsurpassed. Pkt. 5c., oz. 15c., ¼ lb. 50c., lb. \$2.00.



Early Jersey Wakefield Cabbage

Danish Round-Head. Similar to Danish Ball-Head, but grows more compact. Heads are extremely hard and solid. One of the best keeping varieties. Pkt. 5c., oz. 15c., ¼ lb. 50c., lb. \$2.00.

Warren's Stone Mason. A very solid and hard, late, flat head. Pkt. 5c., oz. 15c., ¼ lb. 50c., lb. \$2.00.

Perfection Drumhead Savoy. Large, solid heads; sweet and tender; leaves curled and crumpled. Pkt. 5c., oz. 15c., ¼ lb. 50c., lb. \$2.00.

Mammoth Red Rock. Excellent for pickling. Heads round and hard, and dark red color. Pkt. 5c., oz. 15c., ¼ lb. 50c., lb. \$2.00.

All Seasons. One of the finest of the second early sorts. The heads are hard and solid, and flattened on top. It is called **All Seasons** because it is as good for Autumn and Winter as for early Summer. Pkt. 5c., oz. 15c., ¼ lb. 50c., lb. \$2.00.

CAULIFLOWER

Culture.—The culture of Cauliflower is much the same as that of Cabbage. The soil should be made rich, and be thoroughly cultivated. Sow seed in hotbed early in March, and when sufficiently large, transplant in coldframes, and gradually harden by exposure. As early as weather will permit, set in the open ground, in rows 3 feet apart, and 2 feet in the row. For late Fall crops, sow at same time and treat in same manner as for late Cabbage. Cauliflower will not head in hot, dry weather; therefore, planting should be regulated so they will head either in early Summer or Autumn. Keep well watered when they begin to head. If the leaves are drawn up and tied loosely over the head, it will hasten blanching.

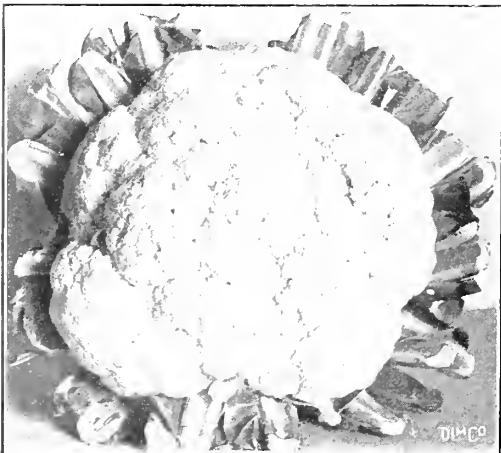
One ounce will produce about 2000 plants

Early Snowball. The best and most popular early dwarf variety grown, producing large, white, solid heads, and a sure header. Pkt. 15c., oz. \$1.25, ¼ lb. \$4.50, lb. \$18.00.

Early Dwarf Erfurt. An early variety, forming good, solid, white heads. Pkt. 10c., oz. \$1.00, ¼ lb. \$3.50, lb. \$14.00.

Autumn Giant. A valuable late variety; heads are large, white and solid, and remain a long time fit for use. Pkt. 10c., oz. 50c., ¼ lb. \$1.50, lb. \$5.50.

Extra Early Paris. The most dwarf and earliest heading of all. Heads are solid, but rather smaller than the Erfurt type. Pkt. 10c., oz. 50c., ¼ lb. \$1.50, lb. \$5.50.



Early Snowball Cauliflower

CARROT

Culture.—Like all root crops, a rich, deeply cultivated soil that has been well manured for some previous crop, is most suitable for Carrot. Newly manured ground has a tendency to produce forked roots. For early crops sow as early as ground can be worked, and for later crops sow up to the first of June. Sow in rows 14 inches apart, and cover not over $\frac{1}{2}$ inch, and thin to 3 inches in the row.

An ounce will sow 100 feet of drill; 3 to 4 lbs. to an acre.

Add 5c. per lb. for postage, if sent by mail.

Chantenay. A very desirable and popular variety, and makes a fine bunching sort; stump-rooted; 5 to 6 inches long. Pkt. 5c., oz. 15c., $\frac{1}{4}$ lb. 50c., lb. \$1.75.

Danvers Half-Long Stump Root. The best variety for general purposes, and the most largely used, both for stock feeding and table use. Pkt. 5c., oz. 15c., $\frac{1}{4}$ lb. 50c., lb. \$1.75.

Early Scarlet Horn. A good, short variety for table use. Pkt. 5c., oz. 15c., $\frac{1}{4}$ lb. 50c., lb. \$1.75.

Rubicon. This is a new and distinct American strain, finely shaped, and of a deep orange color. It is early, half-long, stump ending, and excellent for growing under glass, or outside at any season of the year. Pkt. 5c., oz. 20c., $\frac{1}{4}$ lb. 60c., lb. \$2.00.

Oxheart, or Guerande. One of the best croppers among the short Carrots, and is very desirable for heavy soils. Stump-rooted and about 4 inches long. Pkt. 5c., oz. 15c., $\frac{1}{4}$ lb. 50c., lb. \$1.75.

St. Valery, or Intermediate. A scarlet, half-long variety; broad at the shoulder and tapering to a point. Good general cropper. Pkt. 5c., oz. 15c., $\frac{1}{4}$ lb. 50c., lb. \$1.75.

Improved Long Orange. The standard long variety for garden or field crops. A very heavy yielder. Pkt. 5c., oz. 15c., $\frac{1}{4}$ lb. 50c., lb. \$1.75.



Danvers Half-Long Stump-Root Carrot

CELERY

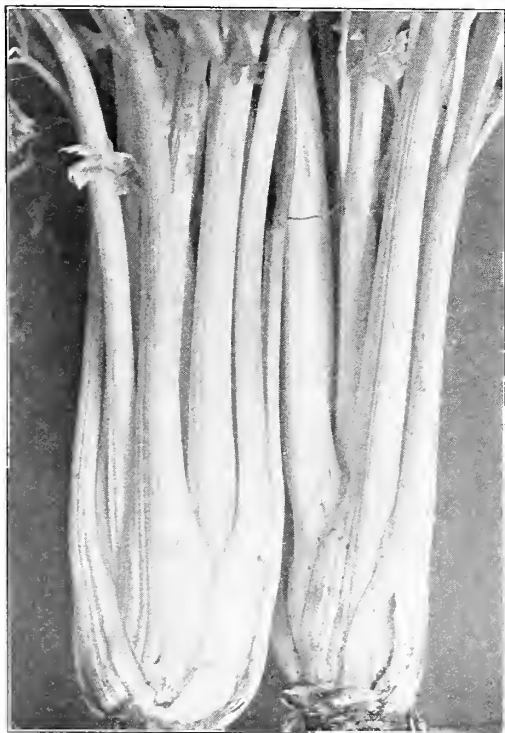
Culture.—Sow the seed in the open ground as early as ground can be worked. The seed is slow to germinate, and should be firmed into the soil rather than covered, and the soil where it is planted should be kept moist. If seed is sown in rows where it is intended to remain, the plants should be thinned out when 3 or 4 inches high, to 5 or 6 inches apart, and plants taken up may be transplanted. When transplanting clip off the tops, and the ends of the roots to make the plants stocky. Rows should be 4 to 5 feet apart, and plants 5 or 6 inches apart in the row. After planting is completed cultivate frequently. About the middle of August begin to draw the earth up to the plants to blanch or whiten them. Continue hilling or banking them at intervals until cold weather, when they should be taken up and put in a pit or cellar for Winter use. To get very early plants seed should be started in boxes or hotbeds, and if grown too large before time to set them out in the open, clip off the tops to make them grow stocky.

An ounce of seed will produce 3000 plants.

Add 5c. per lb. for postage, if to be sent by mail.

Paris Golden, French Grown. The most popular market variety, especially for early crop. It is golden yellow, both stem and leaves, and unlike any other variety, and unless the seed is French grown will not produce the best results. (Our seed is imported direct from the grower.) Pkt. 15c., oz. \$1.00, $\frac{1}{4}$ lb. \$3.75, lb. \$14.00.

Golden Self-Blanching, American Grown. The most popular American variety in use, both as an early and main crop. The plant is naturally golden yellow, but needs to be blanched to make it brittle and fit for table use. Pkt. 10c., oz. 25c., $\frac{1}{4}$ lb. \$1.00, lb. \$4.00.



Golden Self-Blanching Celery

CELERY—Continued

Golden Hearted. A very popular Winter variety. Pkt. 5c., oz. 15c., $\frac{1}{4}$ lb. 40c., lb. \$1.25.

Giant White Solid. Large, solid, pure white stalks of fine appearance and flavor when properly blanched. A good Winter variety. Pkt. 5c., oz. 15c., $\frac{1}{4}$ lb. 40c., lb. \$1.25.

Boston Market. Solid green stalks, blanching white. Pkt. 5c., oz. 15c., $\frac{1}{4}$ lb. 40c., lb. \$1.25.

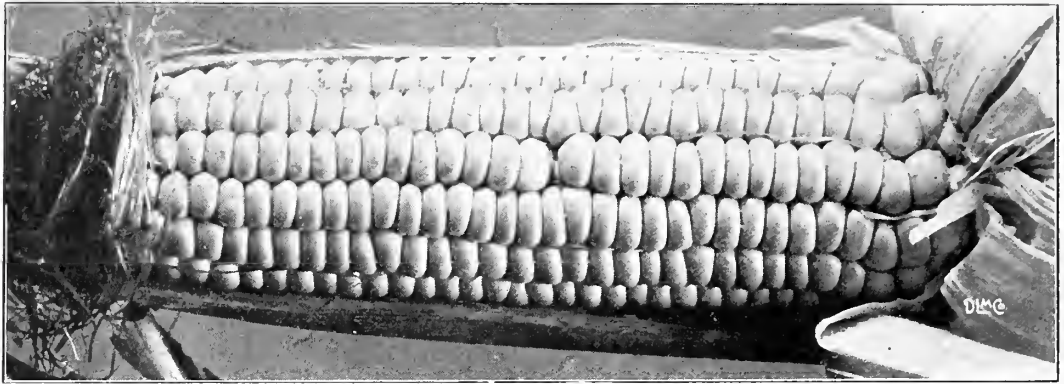
Celeriac, or Turnip Rooted. Produces Turnip-like roots which keep well for Winter use. It is highly esteemed either cooked for flavoring soup, or sliced and used as a salad. Pkt. 5c., oz. 15c., $\frac{1}{4}$ lb. 40c., lb. \$1.25.

Columbia. A fine second early sort, of stocky growth with broad, heavy stalks; crisp, nutty flavor, easily blanched. Pkt. 5c., oz. 15c., $\frac{1}{4}$ lb. 40c., lb. \$1.25.

Giant Pascal. A large, long keeping Winter variety; crisp and fine flavor. Pkt. 5c., oz. 15c., $\frac{1}{4}$ lb. 40c., lb. \$1.25.

Winter Queen. A fine Winter variety; grows large, and is of fine flavor. Pkt. 5c., oz. 15c., $\frac{1}{4}$ lb. 40c., lb. \$1.25.

White Plume. A very desirable, early variety, that can be blanched for use early in the Fall; tender and fine flavor. Pkt. 5c., oz. 15c., $\frac{1}{4}$ lb. 40c., lb. \$1.25.



Early Dawn Corn

Sweet corn in general has been a short crop, and our supply is limited. Crops through the Middle West and West have been injured in curing, and the vitality is poor, consequently good seed corn is very scarce, and prices are high. Our sweet corn is home grown, thoroughly cured, and strong vitality. We know you will be well pleased with it.

SWEET CORN

Much of the Sweet Corn Seed that is offered is produced in the West, where it can be grown much cheaper than it can in the East. But the West, with its level country, high winds, and vast areas of Field Corn, which mixes with the Sweet Corn, destroys that luscious sweetness so much prized in our Connecticut-grown seed. Our Sweet Corn seed is all grown here at home, where we make a specialty of growing the choicest strains. Our seed has the reputation of producing the *niciest* and *sweetest* Corn to be found. Our friends will be sure of getting something *nice* if they buy their Sweet Corn from us. Sweet Corn can be raised on any good, ordinary soil, but it should be deeply and thoroughly worked before planting, and cultivated frequently.

8 to 10 qts. required for an acre, if planted in hills.

1 qt. weighs about $1\frac{1}{2}$ lbs.; add 6c. per qt. for postage, if ordered by mail.

Early Dawn. This fine, new Sweet Corn is the earliest variety grown, and is the best money maker of them all. It is ready for market so early, it always commands fancy prices, and a large piece can be cleaned up at high prices, before any other variety is ready. It is deliciously sweet and fine flavored. Pkt. 5c., pt. 20c., qt. 40c., 4 qts. \$1.50, pk. \$3.00.

Peep O'Day. Very early, tender and sweet. Pkt. 5c., pt. 15c., qt. 25c., 4 qts. \$1.00, pk. \$2.00.

Early Red Cory. Very early; good cropper; delicious flavor. Pkt. 5c., pt. 15c., qt. 25c., 4 qts. \$1.00, pk. \$2.00.

White Cory. Very similar to Red Cory, except it has white cob and kernel. Pkt. 5c., pt. 15c., qt. 25c., 4 qts. \$1.00, pk. \$2.00.

Early Maine. Extra early; fine quality. Pkt. 5c., pt. 15c., qt. 25c., 4 qts. \$1.00, pk. \$2.00.

Golden Bantam. Golden yellow in color. This is a general favorite wherever used; is early, very tender, and the sweetest and most delicious Corn grown. Pkt. 5c., pt. 20c., qt. 40c., 4 qts. \$1.50, pk. \$3.00.

Early Minnesota. A standard early variety. Pkt. 5c., pt. 15c., qt. 25c., 4 qts. \$1.00, pk. \$2.00.

Early Crosby. One of the best sorts for all purposes. Pkt. 5c., pt. 15c., qt. 25c., 4 qts. \$1.00., pk. \$2.00.

Metropolitan. Second early; large ears. Pkt. 5c., pt. 15c., qt. 25c., 4 qts. \$1.00., pk. \$2.00.

Kendal's Early Giant. Medium early; large; good quality. Pkt. 5c., pt. 15c., qt. 25c., 4 qts. \$1.00, pk. \$2.00.

Early Large Champion. Produces the earliest large ears, and is the favorite market gardener's variety. Pkt. 5c., pt. 15c., qt. 25c., 4 qts. \$1.00, pk. \$2.00.

Perry's Hybrid. Medium early, and good size. Pkt. 5c., pt. 15c., qt. 25c., 4 qts. \$1.00, pk. \$2.00.

Black Mexican. Medium early; very sweet. While in its green state the kernels are white, but turn black as they ripen. Pkt. 5c., pt. 15c., qt. 25c., 4 qts. \$1.00, pk. \$2.00.

White Mexican. Like the Black Mexican it is very sweet and delicious. Medium early and a heavy yielder. Pkt. 5c., pt. 15c., qt. 25c., 4 qts. \$1.00, pk. \$2.00.

Squantum, or Potter's Excelsior. Very sweet; a large, second-early variety. Pkt. 5c., pt. 15c., qt. 25c., 4 qts. \$1.00, pk. \$2.00.

SWEET CORN—Continued

Moore's Early Concord. Thick, large ears, and medium early. Pkt. 5c., pt. 15c., qt. 25c., 4 qts. \$1.00, pk. \$2.00.

Early Evergreen. Very similar to Stowell's Evergreen, but is a week to ten days earlier. Pkt. 5c., pt. 20c., qt. 40c., 4 qts. \$1.50, pk. \$3.00.

White Evergreen. This is a high-bred, white type of Stowell's Evergreen; very sweet and delicious, and, on account of its paper whiteness, is very attractive when served on the table. Ears large, with very deep kernels. Pkt. 5c., pt. 20c., qt. 40c., 4 qts. \$1.50, pk. \$3.00.

Zig-Zag Evergreen. This fine strain possesses the sweet, delicious flavor of the Stowell's Evergreen, but is earlier and the grains run zig-zag, instead of in straight rows. Pkt. 5c., pt. 20c., qt. 40c., 4 qts. \$1.50, pk. \$3.00.

Stowell's Evergreen. The standard variety for the home garden, market and canning. The kernels are long, tender and sweet. Pkt. 5c., pt. 20c., qt. 40c., 4 qts. \$1.50, pk. \$3.00.

Country Gentleman. The best late sort of all for the home table. Cob is small, and crowded with long, irregular kernels, tender and sweet. Pkt. 5c., pt. 25c., qt. 45c., 4 qts. \$1.65, pk. \$3.25.

Long Island Beauty. Most desirable late sort; quality extra good. Pkt. 5c., pt. 15c., qt. 25c., 4 qts. \$1.00, pk. \$2.00.

Late Mammoth. Very tall, late sort, with mammoth ears, of the best quality; sweet and tender. Pkt. 5c., pt. 15c., qt. 25c., 4 qts. \$1.00, pk. \$2.00.

Field and Ensilage Corn

If a bag or more is wanted, write us for special prices

Extra Early Adams. The earliest Corn of all, and first to make ears; stalks are dwarf and stocky; kernels white. Pt. 10c., qt. 20c., 4 qts. 75c., pk. \$1.50.

Early Large Adams. Although not a Sweet Corn, can often be used as such on account of its fine white kernels, which are quite sweet and tender. Is very hardy, and can be planted earlier than Sweet Corn. Pt. 10c., qt. 20c., 4 qts. 75c., pk. \$1.50.

Early Yellow Canada. Also known as Yellow Flint and 90-Day Yellow. A rapid-growing, early variety. Pt. 10c., qt. 20c., 4 qts. 60c., pk. \$1.00, bu. \$3.00.

Longfellow. An early yellow Flint variety, with very long ears. Pt. 10c., qt. 20c., 4 qts. 60c., pk. \$1.00, bu. \$3.00.

Improved Leaming. A great yielder; the kernels are long and a deep golden yellow. The best Yellow Dent Corn on the market. Qt. 15c., 4 qts. 50c., pk. 75c., bu. \$2.50.

Red Cob Ensilage. A late white Corn. Red cob; used for ensilage. Pt. 10c., qt. 20c., 4 qts. 60c., pk. \$1.00, bu. \$3.00.

Eureka Ensilage. A large, leafy sort. One of the best for silos. Pt. 10c., qt. 20c., 4 qts. 60c., pk. \$1.00, bu. \$3.00.

Pop Corn, White Rice. The most popular variety. Per lb. on the ear, 8c.; shelled, pt. 15c., qt. 20c., 4 qts. 50c.

Corn Salad

Culture.—This excellent salad may be had the year round. For Summer use, plant in early Spring. For Winter and early Spring use, sow in August and September, and protect with a covering of straw on approach of Winter. Sow thickly in shallow drills 12 to 14 inches apart, and press the soil down firmly on the seed.

One ounce will sow 100 feet of drill.

Add 5c. per lb. postage, if wanted sent by mail.

Large Seeded. The most popular variety. Pkt. 5c., oz. 10c., $\frac{1}{4}$ lb. 25c., lb. 60c.

Cress, or Peppergrass

A popular salad which should be sown early in the Spring in drills, at short intervals for succession, as it soon runs to seed.

Extra Curled. The best variety; used for garnishing. Pkt. 5c., oz. 10c., $\frac{1}{4}$ lb. 20c., lb. 50c.

DANDELION

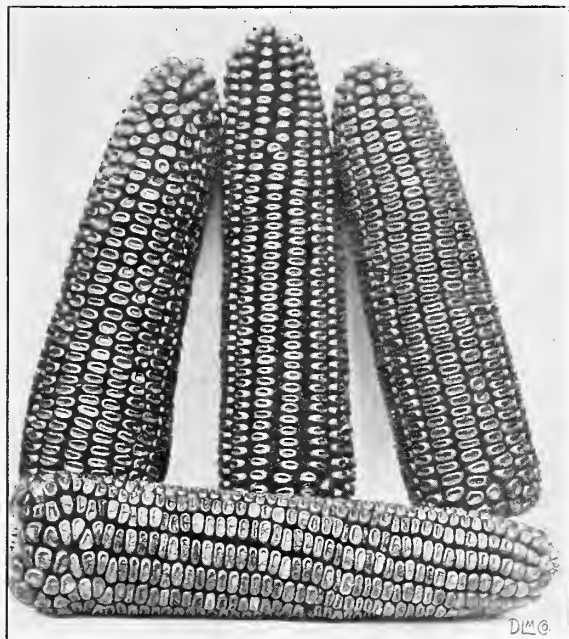
Culture.—This is one of the earliest, as well as the best and most healthful Spring greens, or salads. Sow from May to last of June, in drills 14 inches apart, and thin out to 5 or 6 inches in the row. Cultivate frequently, and the following Spring they will be fit for use.

One ounce will sow 150 feet of drill.

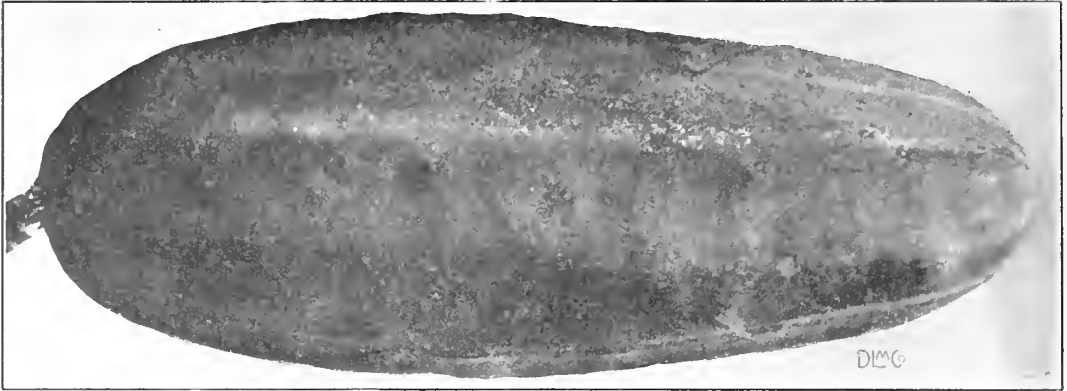
Add 5c. per lb. for postage, if sent by mail.

Improved Broad Leaf. An improved thick-leaved variety. Pkt. 5c., oz. 50c., $\frac{1}{4}$ lb. \$1.50, lb. \$6.00.

Common Cultivated. Popular for greens. Pkt. 5c., oz. 25c., $\frac{1}{4}$ lb. 75c., lb. \$3.00.



Improved Leaming



Early Arlington White Spine Cucumber

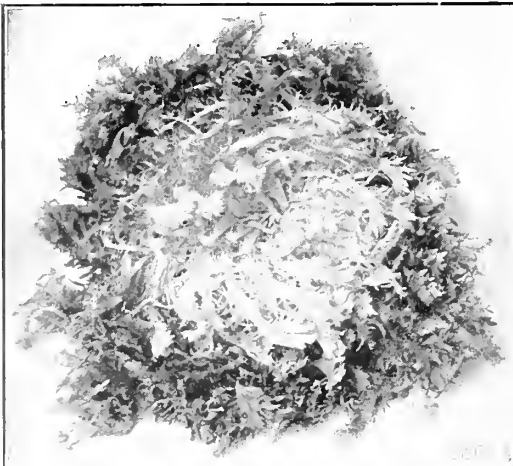
CUCUMBER

Culture.—Cucumbers succeed best in a rich, loamy soil. To get early vines, start in hotbed, about middle of April. Seed can be sown on pieces of sod, grass side down, and when weather will permit can be placed in the prepared hills, 4 feet apart each way. For a general crop, plant in the open ground in May. When danger of bugs is past, thin out to 4 vines in a hill. For pickles, plant middle of June to middle of July. Sprinkle vines with plaster, or spray them to protect from bugs.

About 3 lbs. of seed required for an acre.

Add 5c. per lb. for postage, if sent by mail.

- Early Russian.** A small extra early variety. Pkt. 5c., oz. 10c., $\frac{1}{4}$ lb. 25c., lb. 60c.
- Early Cluster.** Medium size; vines bear in clusters. Pkt. 5c., oz. 10c., $\frac{1}{4}$ lb. 25c., lb. 60c.
- Boston Pickling.** A favorite pickling sort. Pkt. 5c., oz. 10c., $\frac{1}{4}$ lb. 25c., lb. 60c.
- Davis Perfect.** The best and most profitable Cucumber for the market gardener, or the home garden. They are early, very long, dark green. Can be produced out of doors, and sell in the market for hothouse grown, and always bring a good price. Pkt. 5c., oz. 10c., $\frac{1}{4}$ lb. 25c., lb. 60c.
- Early Arlington White Spine.** One of the best sorts for forcing; the fruit is long, dark green, uniform in size, and crisp, tender flesh of excellent flavor. Pkt. 5c., oz. 10c., $\frac{1}{4}$ lb. 25c., lb. 60c.
- New Century White Spine.** A new fine strain, 8 to 10 inches in length, rich dark green, smooth and regular. The skin is quite thin and tender, flesh white and crisp. The seed space is firm and solid, making an excellent slicing variety. Pkt. 5c., oz. 10c., $\frac{1}{4}$ lb. 25c., lb. 60c.
- Fordhook Famous White Spine.** One of the largest and most attractive Cucumbers grown. It retains its deep green color longer than any other variety. The flesh is very thick and mild flavor. Vines are of strong, vigorous growth and bear continuously throughout the season. Pkt. 5c., oz. 10c., $\frac{1}{4}$ lb. 25c., lb. 60c.
- Improved White Spine.** Excellent for slicing or pickles. Pkt. 5c., oz. 10c., $\frac{1}{4}$ lb. 25c., lb. 60c.
- Green Prolific.** Uniform size; fine for pickles. Pkt. 5c., oz. 10c., $\frac{1}{4}$ lb. 25c., lb. 60c.
- Klondike.** An extra early, fine strain of White Spine. Pkt. 5c., oz. 10c., $\frac{1}{4}$ lb. 25c., lb. 60c.
- Improved Long Green.** Extra long; fine for slicing or pickles. Pkt. 5c., oz. 10c., $\frac{1}{4}$ lb. 25c., lb. 60c.
- Everbearing.** Early and productive. Pkt. 5c., oz. 10c., $\frac{1}{4}$ lb. 25c., lb. 60c.
- Cool and Crisp.** Medium length; tender and crisp. Pkt. 5c., oz. 10c., $\frac{1}{4}$ lb. 25c., lb. 60c.
- Jersey Pickling.** An excellent sort for both table use and pickling. Vines vigorous and productive. Fruit straight, handsome, small at each end, crisp and tender, and make excellent pickles. Pkt. 5c., oz. 10c., $\frac{1}{4}$ lb. 25c., lb. 60c.
- Japanese Climbing.** The strong vines throw out numerous tendrils and can be trained upon a trellis, or chicken wire, which ensures earlier ripening and better fruits. It endures Summer heat and drought exceedingly well. The Cucumbers are very long, dark green, and flesh is crisp and mild flavored. Pkt. 5c., oz. 10c., $\frac{1}{4}$ lb. 25c., lb. 60c.



Endive

ENDIVE

Culture.—One of the best and most wholesome salads for Fall and Winter use. Sow in April for early use, and in June and July for Fall and Winter use. When leaves are about 8 inches long, tie them together with a string near the top to blanch.

One ounce will sow 150 feet of drill.

Add 5c. per lb. for postage, if sent by mail.

- Green Curled.** Finely curled leaves, tender and crisp. Pkt. 5c., oz. 10c., $\frac{1}{4}$ lb. 25c., lb. 80c.
- White Curled.** Very tender and easy to blanch. Pkt. 5c., oz. 10c., $\frac{1}{4}$ lb. 25c., lb. 80c.
- Broad-Leaf Batavian (Escarolle).** Leaves are wide, thick and straight; very tender and crisp. Pkt. 5c., oz. 10c., $\frac{1}{4}$ lb. 25c., lb. 80c.



New York Improved Purple Egg Plant

EGG PLANT

Culture.—This seed germinates slowly and should be started in the hotbed in March or April. When 3 inches high transplant into coldframes, 4 inches apart, or set them into small pots and protect from the cold. After all danger from cold nights is past, gradually harden by exposure and transplant in the open ground, 2 feet apart. Shade, when first transplanted, and protect from the potato bug, which is one of the worst obstacles encountered in Egg Plant culture. Draw earth up to stem when about 1 foot high.

One ounce will produce about 1000 plants.

Add 5c. per lb. for postage, if sent by mail.

New York Improved Purple. One of the best for market and private use. Pkt. 5c., oz. 25c., $\frac{1}{4}$ lb. \$1.00, lb. \$4.00.

Black Beauty. An early prolific variety; fruit round; skin black. Pkt. 5c., oz. 25c., $\frac{1}{4}$ lb. \$1.00, lb. \$4.00.

GOURDS

Gourds. Culture same as Squashes. The vines make a rapid growth and are much used for covering old fences, trellises, stumps, etc. The foliage is ornamental, with curiously shaped fruit of extraordinary markings. They are a tender annual and grow 10 to 20 feet high.

Mixed Varieties. Pkt. 5c., oz. 10c., $\frac{1}{4}$ lb. 20c., lb. 80c.

KALE, or BORECOLE

(GERMAN GREENS)

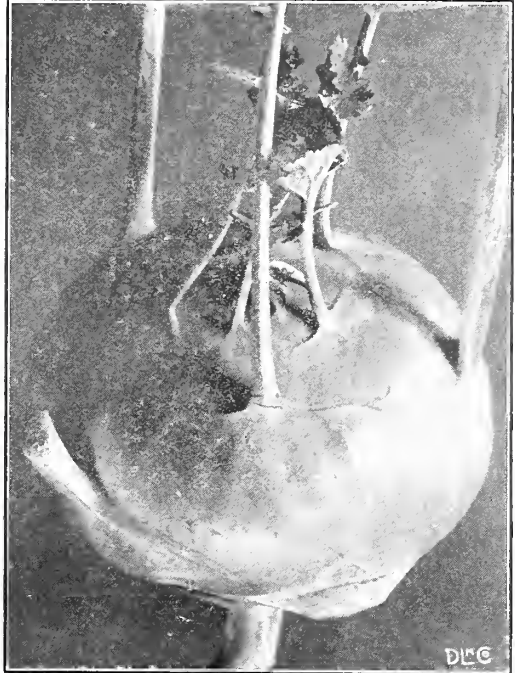
A species of Cabbage forming a mass of leaves, some varieties being very beautiful and curled. The leaves are cooked as greens. Sow in April for early use, and in August and September for Winter and early Spring use. Sow in drills, 14 inches apart, and thin to 4 inches in the row. Protect with a light covering of straw or litter during the Winter.

One ounce will sow 150 feet of drill.

Add 5c. per lb. for postage, if sent by mail.

Green Curled Scotch. Most popular sort for general use. Pkt. 5c., oz. 10c., $\frac{1}{4}$ lb. 25c., lb. 80c.

Dwarf Siberian. The best for Fall sowing. Pkt. 5c., oz. 10c., $\frac{1}{4}$ lb. 25c., lb. 80c.



Early White Vienna Kohl Rabi

KOHL RABI

A plant forming a bulb above the ground and bearing short leaves. The bulb is the edible part, and when cooked combines the virtues of the Turnip and Cabbage, but excels both in nutritive, hardy and productive qualities.

Culture.—Sow in early Spring for Summer use, and in July for Fall use. Plants should be thinned out to 8 inches in the row.

One ounce will sow 150 feet of drill.

Add 5c. per lb. for postage, if sent by mail.

Early White Vienna. The most desirable for general use. Pkt. 5c., oz. 15c., $\frac{1}{4}$ lb. 40c., lb. \$1.50.

Early Purple. An early variety with purple bulb. Pkt. 5c., oz. 15c., $\frac{1}{4}$ lb. 40c., lb. \$1.50.



Dwarf Siberian Kale

LEEK

A species of Onion which does not form a bulb, but is used for its mild and delicious root, stem and neck.

Culture.—Sow early in Spring, in drills 14 inches apart and thin out to about 4 inches. When well grown, hill up with earth to get a long, white stem.

One ounce will sow 100 feet of drill.

Add 5c. per lb. for postage, if sent by mail.

American Flag. Most popular variety; forms large stems of good flavor. Pkt. 5c., oz. 10c., $\frac{1}{4}$ lb. 25c., lb. 85c.

Giant Musselburgh. The largest variety; mild and good flavor. Pkt. 5c., oz. 10c., $\frac{1}{4}$ lb. 25c., lb. 85c.

LETTUCE

Culture.—No vegetable is more universally used than Lettuce, and to be thoroughly appreciated it must be brought to the table fresh and unwilted; quality depends largely upon rapid and vigorous growth. Have the soil well enriched, and keep it moist. Give it plenty of water, and you will have delicious, tender Lettuce. Sow in hotbed in March, and transplant, for very early plants. For general use, sow in the open ground, as early as ground can be worked, in drills 14 inches apart; thin out as they grow. To get good heads, plants should be 10 inches apart in the row. For a succession sow every two or three weeks during the season.

One ounce will sow 150 feet of drill.

Add 5c. per lb. for postage, if sent by mail.

Simpson's Early Curled. One of the earliest and best loose curled heads. Pkt. 5c., oz. 8c., $\frac{1}{4}$ lb. 20c., lb. 75c.

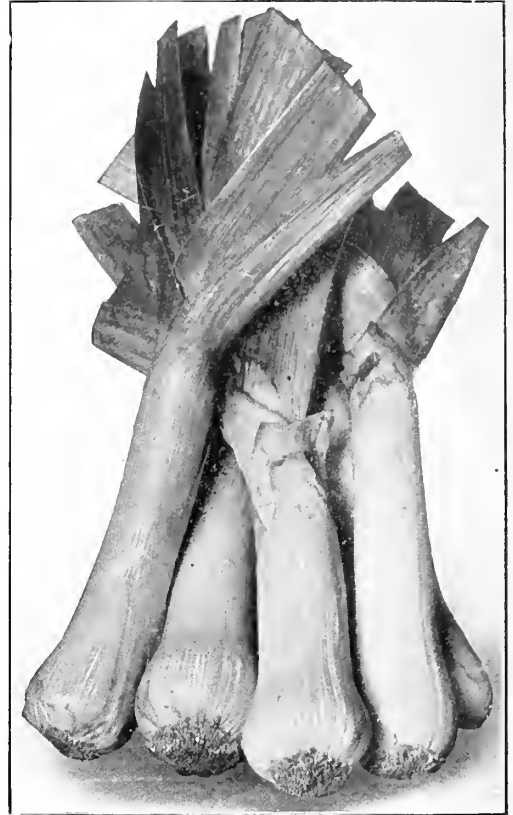
Simpson's Black Seed. Loose, curled, light green leaves. Pkt. 5c., oz. 8c., $\frac{1}{4}$ lb. 20c., lb. 75c.

Grand Rapids. A good forcing variety; very curly and attractive. Pkt. 5c., oz. 8c., $\frac{1}{4}$ lb. 20c., lb. 75c.

Prize Head. Very tender, reddish-brown leaves, curled and attractive. Pkt. 5c., oz. 8c., $\frac{1}{4}$ lb. 20c., lb. 75c.



Big Boston Head Lettuce



American Flag Leek

May King. A very choice early head Lettuce. One of the best for coldframe, or outdoor culture. Heads are good size, early, solid and tender. Wherever grown it is sure to become very popular. Pkt. 5c., oz. 8c., $\frac{1}{4}$ lb. 20c., lb. 75c.

Big Boston Head. A popular market variety; forms large, solid heads. Pkt. 5c., oz. 8c., $\frac{1}{4}$ lb. 20c., lb. 75c.

Boston Market. Popular forcing sort; heads crisp and solid. Pkt. 5c., oz. 8c., $\frac{1}{4}$ lb. 20c., lb. 75c.

Tennis Ball, Black Seed. Desirable for forcing in Winter, and withstands the Summer heat well. Forms solid, crisp heads. Pkt. 5c., oz. 8c., $\frac{1}{4}$ lb. 20c., lb. 75c.

Wonderful, or New York Head. A large, crisp, tight-heading variety; leaves are dark green and curled at the edges. Pkt. 5c., oz. 8c., $\frac{1}{4}$ lb. 20c., lb. 75c.

Hartford Bronze Head. Forms large, compact heads of a beautiful bronzed red color, shading to dark green toward the roots. A distinct variety, and has no equal. Pkt. 5c., oz. 8c., $\frac{1}{4}$ lb. 20c., lb. 75c.

Iceberg. Heads compact and solid, with curled, light green leaves, tinged with red at the edges. Pkt. 5c., oz. 8c., $\frac{1}{4}$ lb. 20c., lb. 75c.

Deacon Head. Forms large, buttery heads; very tender and crisp. Pkt. 5c., oz. 8c., $\frac{1}{4}$ lb. 20c., lb. 75c.

Brown Dutch. Forms large, solid heads; leaves smooth and bronzed with red. Pkt. 5c., oz. 8c., $\frac{1}{4}$ lb. 20c., lb. 75c.

White Paris Cos, or Romaine. Best of the Cos varieties; leaves should be tied up for a few days to facilitate blanching. Pkt. 5c., oz. 8c., $\frac{1}{4}$ lb. 20c., lb. 75c.

MUSKMELON

Culture.—A warm, rich, sandy loam is best adapted for Melon culture. The middle of May is early enough for planting in the open ground, but the crop can be forced by starting in hotbeds on sods and transplanting same as Cucumbers. Plant in hills 5 or 6 feet apart each way. When danger from bugs is over, thin to 3 or 4 plants in a hill. When the main shoot is a few feet long, pinch off the ends, to force the laterals on which the fruit is borne.

One ounce for 80 hills; 3 lbs. for an acre.

Add 5c. per lb. for postage, if sent by mail.

Green Citron. Early; medium sized; flesh deep green, fine flavor. Pkt. 5c., oz. 10c., $\frac{1}{4}$ lb. 25c., lb. 75c.

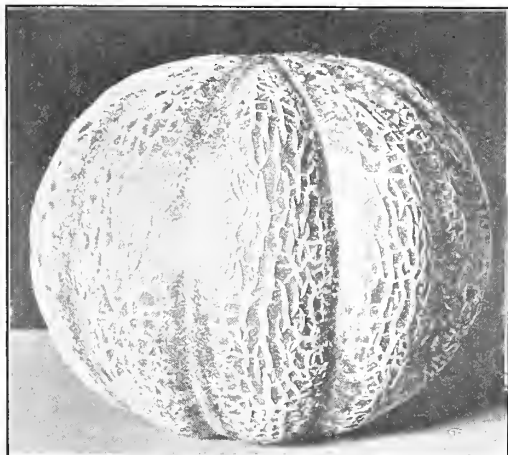
Extra Early Hackensack. Excellent for market or private garden. Heavily ribbed and netted; flesh thick and light green. Pkt. 5c., oz. 10c., $\frac{1}{4}$ lb. 25c., lb. 75c.

Emerald Gem. A salmon-fleshed variety of delicious flavor, skin generally smooth; deep emerald green color, and ripening to the rind; very sweet. Pkt. 5c., oz. 10c., $\frac{1}{4}$ lb. 25c., lb. 75c.

Jenny Lind. Very early and prolific; small and netted; flesh green and sweet. Pkt. 5c., oz. 10c., $\frac{1}{4}$ lb. 25c., lb. 75c.

Rocky Ford, or Netted Gem. One of the earliest and best Melons. Uniform in size and shape, being oval and finely netted; flesh deep green, luscious and sweet. Pkt. 5c., oz. 10c., $\frac{1}{4}$ lb. 25c., lb. 75c.

Miller's Cream, or Osage. A large-sized, salmon-fleshed variety. Pkt. 5c., oz. 10c., $\frac{1}{4}$ lb. 25c., lb. 75c.



Emerald Gem Muskmelon

Acme, or Baltimore. Flesh is thick, green and very sweet. Pkt. 5c., oz. 10c., $\frac{1}{4}$ lb. 25c., lb. 75c.

Long Island Beauty. An early, large, green-fleshed variety, of good quality. Pkt. 5c., oz. 10c., $\frac{1}{4}$ lb. 25c., lb. 75c.

Burrell's Gem. A medium-sized, oval variety, deep netted, having salmon or red flesh, has a entirely distinct and delicious flavor. Pkt. 5c., oz. 10c., $\frac{1}{4}$ lb. 25c., lb. 75c.

WATERMELON

Culture.—Same as for Muskmelons, except they should be planted 8 feet apart.

One ounce will plant 25 hills; 4 lbs. to the acre.

Add 5c. per lb. for postage, if sent by mail.

Alabama Sweet. Large, oblong form; firm, dark green, slightly striped rind. Flesh bright red, and good flavor. Seeds are white. Pkt. 5c., oz. 10c., $\frac{1}{4}$ lb. 20c., lb. 50c.

Dixie. Very popular; large, striped and oblong shape; flesh red and sweet. Pkt. 5c., oz. 10c., $\frac{1}{4}$ lb. 20c., lb. 50c.

Cole's Early. Medium size, oblong, striped and mottled; flesh red, solid and sweet. Pkt. 5c., oz. 10c., $\frac{1}{4}$ lb. 20c., lb. 50c.

Ice Cream (White Seed). Oblong, with dark, mottled skin; flesh pink and sweet. Pkt. 5c., oz. 10c., $\frac{1}{4}$ lb. 20c. lb. 50c.



Cole's Early Watermelon

Mountain Sweet. Large, oval shaped; skin green; flesh red, solid and sweet. Pkt. 5c., oz. 10c., $\frac{1}{4}$ lb. 20c., lb. 50c.

Phinney's Early. Oblong shaped; very early; thin rind; delicious flavor. Pkt. 5c., oz. 10c., $\frac{1}{4}$ lb. 20c., lb. 50c.

Early Fordhook. Very early and fine quality; nearly round; mottled green. Pkt. 5c., oz. 10c., $\frac{1}{4}$ lb. 20c., lb. 50c.

Kleckley Sweets. Long; dark green skin; bright red flesh of luscious sweetness. Pkt. 5c., oz. 10c., $\frac{1}{4}$ lb. 20c., lb. 50c.

Tom Watson. Large, oblong, dark green skin, with thick netting. Flesh bright red, delicious flavor. Pkt. 5c., oz. 10c., $\frac{1}{4}$ lb. 20c., lb. 50c.,

Florida Favorite. Large, oblong and green mottled; flavor is excellent. Pkt. 5c., oz. 10c., $\frac{1}{4}$ lb. 20c., lb. 50c.

Halbert's Honey. A large, oblong variety, especially sweet and of delicious flavor. Pkt. 5c., oz. 10c., $\frac{1}{4}$ lb. 20c., lb. 50c.

Citron. Used exclusively for preserves and pickling. Pkt. 5c., oz. 10c., $\frac{1}{4}$ lb. 20c., lb. 50c.

MUSTARD

The leaves of Mustard make excellent greens, of sharp, pungent flavor, and are cooked the same as Spinach, or Beet Greens. Sow the seed in early Spring, and at intervals during the Summer.

One ounce will sow 50 feet of drill.

Add 5c. per lb. for postage, if sent by mail.

White English. Oz. 5c., $\frac{1}{4}$ lb. 15c., lb. 35c.

New Chinese. Pkt. 5c., oz. 10c., $\frac{1}{4}$ lb. 25c., lb. 70c.

ONION

Culture. The most important thing in growing Onions is to have good seed—seed that will come up and produce the variety you want. Being growers and farmers ourselves we fully appreciate the importance of this item, and our customers may have perfect confidence that the seed we send them will be right in every particular. The soil for Onions should be a rich loam, thoroughly enriched with well rotted manure, and the soil well pulverized before sowing the seed. Sow the seed as early in the Spring as ground can be worked, in drills 14 inches apart, covering one-quarter to one-half inch. Begin cultivating as soon as rows can be plainly seen, and keep them clean, for if Onions once get choked by weeds they never produce so good, or full a crop. A top dressing of wood ashes applied after second weeding and cultivated in, is beneficial.

One ounce will sow 100 feet of drill; 5 lbs. to the acre.

Add 5c. per lb. for postage, if sent by mail.

Southport Red Globe. A large, globe-shaped, bright, deep red variety; a late sort, and excellent keeper. Pkt. 5c., oz. 15c., $\frac{1}{4}$ lb. 50c., lb. \$2.00., 5 lbs. \$7.00

Extra Early Red Flat. A very early, flat variety, with dark, purplish-red skin; forms a solid, hard bulb. A good keeper. Pkt. 5c., oz. 15c., $\frac{1}{4}$ lb. 50c., lb. \$2.00, 5 lbs. \$7.00.

Wethersfield Large Red. The best known and most widely used red variety. It is a thick, flattish-shaped Onion with firm flesh; a good keeper and heavy yielder. Pkt. 5c., oz. 15c., $\frac{1}{4}$ lb. 40c., lb. \$1.50., 5 lbs. \$6.00.

Southport Yellow Globe. A fine orange-yellow, globe-shaped variety. Is a heavy cropper, and forms a good keeping, hard bulb. Pkt. 5c., oz. 15c., $\frac{1}{4}$ lb. 50c., lb. \$2.00, 5 lbs. \$7.00.



Red Wethersfield Onion

Yellow Globe Danvers. A popular yellow, round Onion for market and shipping. Is almost ball-shaped, but a trifle flattened at both ends. It is a heavy cropper, and a firm, hard-fleshed variety. Pkt. 5c., oz. 15c., $\frac{1}{4}$ lb. 40c., lb. \$1.50, 5 lbs. \$6.00.

Danvers Yellow Flat. A bright orange-yellow, flat Onion; yields large crops, and is a good keeper. Is a good variety to transplant to get early Onions. Pkt. 5c., oz. 15c., $\frac{1}{4}$ lb. 40c., lb. \$1.50.

Ohio Yellow Globe. One of the best of the Yellow Globe varieties. The flesh is firm and fine grained; the bulbs are uniform in size and shape and all fine keepers. Pkt. 5c., oz. 15c., $\frac{1}{4}$ lb. 40c., lb. \$1.50.

Prizetaker. A very large, globe-shaped variety, with yellow skin and white flesh of mild flavor. A heavy cropper, and a good keeping Onion. Pkt. 5c., oz. 15c., $\frac{1}{4}$ lb. 50c., lb. \$2.00.

Southport White Globe. A pure white, globe-shaped variety. Its pearl-white flesh is fine grained and mild. Pkt. 5c., oz. 20c., $\frac{1}{4}$ lb. 75c., lb. \$3.00.

White Portugal, or Silver Skin. A white, flat Onion, very hard and firm, and an excellent keeper. Is used largely for pickles. Pkt. 5c., oz. 20c., $\frac{1}{4}$ lb. 60c., lb. \$2.50.

If large quantities of Onion Seed are wanted write for special price.

ONION SETS

Culture.—These are the very small-sized Onions that have been grown from seed and wintered over. Set them out in the open ground as early in the Spring as ground can be worked, in drills 14 inches apart, and 4 inches in the row. Keep well cultivated, and they will produce large Onions ready for market much earlier than can be raised from seed, and always command much higher prices. They are ready for use as soon as bulbs are of fair size. They may be used green, and for bunching. Weight per bu. 32 lbs.

8 to 10 bus. (according to size) required for an acre.

Add 5c. per lb. for postage, if sent by mail.

(Good sound sets are scarce).

Red Sets. 25c. per lb. up to 10 lbs.; 10 lbs. and over, 20c. per lb.

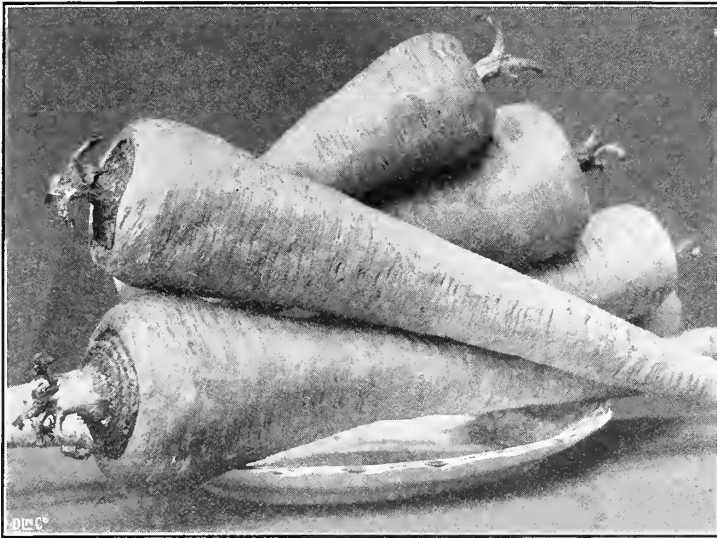
Yellow Sets. 25c. per lb. up to 10 lbs.; 10 lbs. and over, 20c. per lb.

White Sets. 30c. per lb. up to 10 lbs.; 10 lbs. and over, 25c. per lb.

Egyptian, or Top Onion. These set out in August or September live in the ground all Winter, and make green bunching Onions for very early Spring use. 20c. per lb. up to 10 lbs.; 10 lbs. and over, 15c. per lb.



Southport Yellow Globe



Champion Hollow Crown Parsnip



Okra

OKRA, or GUMBO

Culture.—The young seed pods are excellent used in soups, stews, catsups, etc. After danger from frost is past, plant in rows about 3 feet apart, cover about 1 inch deep, pressing soil down firmly. Thin to about 1 foot apart in the row. The pods are in best condition to use when from 1 to 3 inches long.

Add 5c. per lb. for postage, if sent by mail.

White Velvet. Of tall growth; pods white, smooth and tender. Pkt. 5c., oz. 10c., $\frac{1}{4}$ lb. 20c., lb. 50c.

Improved Long Green. Pods are long, smooth, green in color, and very tender. Pkt. 5c., oz. 10c., $\frac{1}{4}$ lb. 20c., lb. 50c.

Improved Dwarf Green. Grows very stocky and productive. Pods medium length, quite thick, and very tender. Pkt. 5c., oz. 10c., $\frac{1}{4}$ lb. 20c., lb. 50c.

PARSLEY

Used for garnishing meats, and for flavoring.

Culture.—The seed is very slow to germinate; usually from two to three weeks will elapse after sowing, before the plants make an appearance. To hasten it, soak the seed a few hours in tepid water, and when it swells, sow thickly in shallow drills, about 14 inches apart; cover lightly, and firm the soil on the seed, thin out to 2 or 3 inches in the row. For Winter use, protect in coldframes or a light cellar.

Hamburg Parsley is cultivated for its roots, and should be treated in same manner as Carrots.

One ounce will sow 150 feet of drill.

Add 5c. per lb. for postage, if sent by mail.

Champion Moss Curled. The best variety for market and home use; is beautifully crimped and curled. Pkt. 5c., oz. 10c., $\frac{1}{4}$ lb. 25c., lb. 75c.

Plain-leaved. Is stronger in flavor than the curled and is used for flavoring soups, etc. Pkt. 5c., oz. 10c., $\frac{1}{4}$ lb. 25c., lb. 75c.

Hamburg, or Turnip Rooted. The root, which resembles a small Parsnip, is the edible portion and is used for flavoring soups, etc. Pkt. 5c., oz. 10c., $\frac{1}{4}$ lb. 25c., lb. 75c.

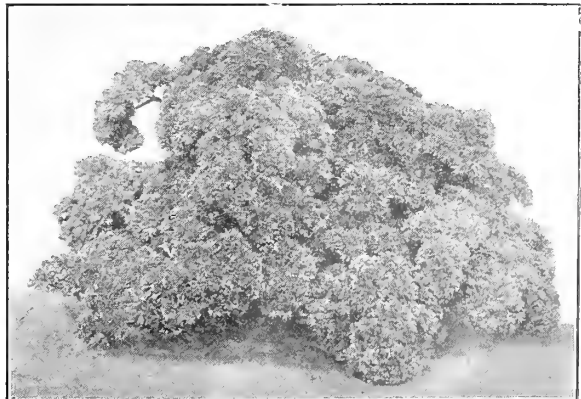
PARSNIP

Culture.—As this is so slow to germinate, plant only new seed, and sow very liberally. Parsnips do best in a deep, rich, sandy loam, but will make good roots on any soil that is deep and mellow, and moderately rich. Sow early in Spring in rows 14 to 16 inches apart, cover not over $\frac{1}{2}$ an inch, and press the earth firmly on the seed. Thin out to 4 inches in the rows. Parsnips are improved by frost, therefore part of the crop should be left out in the ground over Winter.

An Ounce for 150 feet of drill; 4 to 5 lbs. for an acre.

Add 5c. per lb. for postage, if sent by mail.

Champion Hollow Crown. An improved strain of Hollow Crown. This has been selected for its handsome form, whiteness of skin and flesh, good size, and freedom from tendency to side roots, and for its superior quality. Pkt. 5c., oz. 10c., $\frac{1}{4}$ lb. 20c., lb. 60c.



Champion Moss Curled Parsley

PEAS

Culture.—For First Early crop sow the Extra Early Smooth Peas, and plant as early as land can be worked. Select a rich, light, sandy soil, and cover lightly, and they will mature quicker and can be cleaned up in two pickings. Wrinkled Peas should be planted thicker, as they are not as hardy as the smooth sorts, but are sweeter and better flavored, and do best in a deep, rich loam. Avoid using coarse, rank manure, as it drives the plants to vines without pods. For market crops, sow in rows $2\frac{1}{2}$ to 4 feet apart, according to the variety. In the private home garden, where they will be cultivated by hand, the tall sorts may be planted in double rows, 6 or 8 inches apart, sticking brush firmly in the ground between the rows; or they may be planted in single rows 3 feet apart and chicken wire used for the vines to run on. The dwarf sorts may be planted $1\frac{1}{2}$ to 2 feet apart. Cover from 2 to 4 inches, according to the character of the soil and time of planting. Lightest on heavy soil and early planting, and deepest on light soil and late planting. Deep planting has a tendency to prevent mildew, and prolongs the bearing season, yet on cold, heavy soil the seed is liable to rot if planted deep. If drills are made 5 inches deep, and the seed is covered only 1 or 2 inches, the earth can be gradually drawn into the trench as the vines grow. In this way a good stand can be had at a good depth. A succession of the same varieties may be had by sowing every two weeks.

One quart will plant about 100 feet of drill; 2 to 3 bushels for an acre.

1 qt. will weigh about 2 lbs.; add 6c. per qt. for postage, if sent by mail.

Extra Early East Hartford. This Pea is a favorite with the market gardeners around Hartford. It is a very early, smooth Pea, with vines growing $2\frac{1}{2}$ feet high. Pt. 15c., qt. 30c., 4 qts. 90c., pk. \$1.75, bu. \$7.00.

Alaska. Extensively used by canners and market gardeners for first early. It ripens very uniformly; seed is smooth and blue. Vines 2 feet high. Pt. 15c., qt. 30c., 4 qts. 90c., pk. \$1.75, bu. \$7.00.

First and Best. One of the first earlys. Very productive, and uniform in ripening; seed round and smooth. Vines $2\frac{1}{2}$ feet high. Pt. 15c., qt. 30c., 4 qts. 90c., pk. \$1.75, bu. \$7.00.

Surprise, or Eclipse. An extra early, wrinkled variety, of very choice quality. Pods are good size, Peas sweet and delicious flavor. Vines 2 feet high. Pt. 15c., qt. 30c., 4 qts. 90c., pk. \$1.75, bu. \$7.00.

American Wonder. An extra early dwarf wrinkled Pea. Vines 1 foot high. Pt. 15c., qt. 30c., 4 qts. 90c., pk. \$1.75, bu. \$7.00.

Premium Gem. An extra early dwarf wrinkled Pea. An improvement on the Little Gem. Vines 18 inches high. Pt. 15c., qt. 30c., 4 qts. 90c., pk. \$1.75, bu. \$7.00.

Nott's Excelsior. One of the earliest and best of the dwarf wrinkled varieties, and the most used. Vines 15 inches high. Pt. 15c., qt. 30c., 4 qts. 90c., pk. \$1.75, bu. \$7.00.

Little Marvel. A fine new variety of dwarf wrinkled Peas. Vines average 15 inches in height, and are heavily set with large pods, frequently borne in pairs. They are fully as early as Wonder, or Nott's Excelsior, while pods are larger and vines produce a heavier crop. Pt. 15c., qt. 30c., 4 qts. 90c., pk. \$1.75, bu. \$7.00.

Sutton's Excelsior. A new early, dwarf, wrinkled Pea, similar in growth to Nott's Excelsior; a few days later, but the pods are much larger, and well filled with delicious, large peas. Vines 18 to 20 inches high. Pt. 20c., qt. 35c., 4 qts. \$1.20, pk. \$2.25, bu. \$8.00.

Early Morn. This new variety is claimed by the grower who introduced it to be an improvement on the Gradus, which it closely resembles in every respect. A desirable variety; wrinkled. Vines 3 feet high. Pt. 20c., qt. 40c., 4 qts. \$1.25, pk. \$2.25, bu. \$9.00.

Laxtonian. One of the largest podded of the early dwarf Peas. Dark green pods similar to Gradus in shape, and nearly as large in size, and mature a little earlier. Vines vigorous and productive, averaging 15 to 18 inches high. Pt. 25c., qt. 45c., 4 qts. \$1.50, pk. \$3.00.

McLean's Advancer. A favorite second early; wrinkled. Fine quality. Vines 30 inches high. Pt. 15c., qt. 30c., 4 qts. 90c., pk. \$1.75, bu. \$7.00.

Thomas Laxton. Very similar to Gradus in growth, earliness and foliage. A wrinkled Pea, more hardy, and surer cropper than Gradus; pods fully as large, but are joint at the ends; well filled with large peas of finest quality. Vines 3 feet high. Pt. 20c., qt. 40c., 4 qts. \$1.25, pk. \$2.25, bu. \$9.00.

Gradus, or Prosperity. One of the best of the early, large-podded, wrinkled Peas; only a few days later than Nott's Excelsior, with pods nearly as large as Telephone, filled with large, handsome peas, tender and sweet. Vines 3 feet high. Pt. 20c., qt. 40c., 4 qts. \$1.25, pk. \$2.75, bu. \$9.00.

Horsford's Market Garden. A second early, wrinkled Pea. A favorite canning variety; tender and sweet. Vines 30 inches high. Pt. 15c., qt. 30c., 4 qts. 90c., pk. \$1.75, bu. \$7.00.



Nott's Excelsior Pea

PEAS—Continued

Everbearing. A large, medium early, wrinkled Pea; very prolific and fine quality. Vines 2½ feet high. Pt. 15c., qt. 30c., 4 qts. 90c., pk. \$1.75, bu. \$7.00.

Yorkshire Hero. A hardy and prolific, medium early, wrinkled Pea. Vines 2½ feet high. Pt. 15c., qt. 30c., 4 qts. 90c., pk. \$1.75, bu. \$7.00.

Carter's Daisy, or Dwarf Telephone. A medium early, dwarf, wrinkled Pea, with large pods; very prolific, tender and sweet. Vines 20 inches high. Pt. 20c., qt. 35c., 4 qts. \$1.20., pk. \$2.25, bu. \$8.00.

Dwarf Champion. A dwarf variety of the old favorite, Champion of England, retaining its delicious qualities. A wrinkled Pea, with vines 2½ feet high. Pt. 15c., qt. 30c., 4 qts. 90c., pk. \$1.75, bu. \$7.00.

Potlatch. A superior medium early, dwarf, wrinkled Pea. Pods are large, and well filled with large, luscious peas; a great bearer. Vines 2 feet high. Pt. 20c., qt. 35c., 4 qts. \$1.20., pk. \$2.25, bu. \$8.00.

Stratagem. An excellent, wrinkled Pea, with medium early, large pods. Vines 20 inches high. Pt. 20c., qt. 35c., 4 qts. \$1.20, pk. \$2.25, bu. \$8.00.

Telephone. The leading wrinkled Pea with market gardeners. Follows Gradus in earliness. A great cropper; bears very large, well-filled pods of the best quality. Vines 4 feet high. Pt. 15c., qt. 30c., 4 qts. 90c., pk. \$1.75, bu. \$7.00.

The Admiral. This variety is remarkable for its ability to remain a long time in an edible condition. The vines are about 4 feet high, and produce a large quantity of good-sized pods. The peas are of excellent quality. Pt. 15c., qt. 30c., 4 qts. 90c., pk. \$1.75, bu. \$7.00.

Alderman. A very large-podded, wrinkled Pea of the Telephone type. An immense bearer; fine quality; medium early. Vines 4 feet high. Pt. 15c., qt. 30c., 4 qts. 90c., pk. \$1.75, bu. \$7.00.

Boston Unrivalled. An improved strain of Telephone. Seed wrinkled. Vines grow 4½ feet high, filled with large pods and continue in bearing a long time. Pt. 15c., qt. 30c., 4 qts. 90c., pk. \$1.75, bu. \$7.00.

Champion of England. One of the richest and best flavored Peas grown. A late or main crop variety; wrinkled. Vines 5 feet high. Pt. 15c., qt. 30c., 4 qts. 90c., pk. \$1.75, bu. \$7.00.



Telephone Pea

Black Eye Marrowfat. Very hardy and prolific bearer, but indifferent quality. Seed is smooth and white, with black eye. Vines 5 feet high. Pt. 15c., qt. 25c., 4 qts. 75c., pk. \$1.50, bu. \$6.00.

White Canada Field. For fodder and plowing under. Qt. 15c., 4 qts. 50c., pk. \$1.00, bu. \$3.50.

PEPPER

Culture.—Sow seed in the hotbed in April, or in a warm, sheltered spot out of doors in May. When weather becomes settled and warm, transplant into rows 2 feet apart and 18 inches in the row. Cultivate often and draw up the earth a little to support the stems.

One ounce will produce about 2000 plants.

Add 5c. per lb. for postage, if sent by mail.

Chinese Giant. The appearance of this Pepper is most striking and attractive, and it sells on sight. It is of monstrous size, and flesh is thick and meaty, and extremely mild; color brilliant scarlet. Pkt. 5c., oz. 25c., ¼ lb. 90c., lb. \$3.50.

Neapolitan Large Early. The most productive of all large Peppers and decidedly the earliest. No other large Pepper develops so quickly. The skin and flesh are bright red; they are thick meated and sweet, and "mild as an Apple." Pkt. 5c., oz. 20c., ¼ lb. 75c., lb. \$2.50.

Long Red Cayenne. A strong, pungent variety, having long pointed fruit, which is bright red when ripe. Pkt. 5c., oz. 20c., ¼ lb. 75c., lb. \$2.50.

Large Bull Nose, or Bell. A popular variety for stuffing, fruit large, round and blocky. The color is deep green when young, but when ripe is a glossy red. Pkt. 5c., oz. 20c., ¼ lb. 75c., lb. \$2.50.

Ruby King. This variety grows to a large size. When ripe it is a handsome ruby red color. Its flesh is thick and mild. Very desirable for stuffing. Pkt. 5c., oz. 20c., ¼ lb. 75c., lb. \$2.50.

Sweet Mountain. Resembles Bull Nose in size, shape and color, but is hotter in flavor, although pleasant to the taste. Is much esteemed for pickling and stuffing. Pkt. 5c., oz. 20c., ¼ lb. 75c., lb. \$2.50.

Anaheim Chili. This is one of the hottest Peppers grown. In size is about 2 inches across the top, tapering to a point, and about 6 inches long; bright red when ripe. Pkt. 5c., oz. 20c., ¼ lb. 75c., lb. \$2.50.



Neapolitan Pepper

POTATOES

Culture.—The Potato will thrive in almost any soil or climate. Old sod plowed the previous Fall will produce the most abundant and certain crop. On no other crop are the results from the use of phosphates more manifest than on the Potato. Organic manure promotes rot and other diseases, while commercial fertilizers prevent them, and will grow smooth, fine tubers. Plant as early in Spring as ground can be thoroughly worked, in rows 2½ feet apart, and 15 to 18 inches apart in the row. Cut one or two eyes from the surface to the center of the tuber, and plant in each hill; cover 3 or 4 inches. Cultivate frequently from the time the young plants appear until they blossom. Seed should be renewed every year or two.

From 8 to 10 bushels required to plant an acre.



Green Mountain Potato

Potatoes are sent at purchaser's expense. Prices on Potatoes quoted upon application.

Our prices for Potatoes will always be found as low as the market will permit; but, on account of fluctuations in values, which we cannot anticipate at the time our catalogue is issued, prices will be quoted upon application.

Early Six Weeks. Extra early. Cooks well before it is fully grown.

Irish Cobbler. Very early; big yielder; fine quality.

New Queen. A good general cropper; nothing better for quality; skin and flesh white.

Green Mountain. A leader in the market. One of the best yielders, keepers and sellers ever introduced. A fine Potato for home use, as the quality is unsurpassed.

PUMPKIN

Culture.—Pumpkins are easily grown in any section. If planted with Corn, drop 2 or 3 seeds in every third or fourth Corn hill at the time of first hoeing. If planted in fields by themselves, drop 5 or 6 seeds in hills 8 or 10 feet apart each way. Cover about half an inch, and thin out to 3 plants after vines are well started.



Small Sugar Pumpkin

One ounce will plant 15 to 20 hills, 3 lbs. to an acre.

Add 5c. per lb. for postage, if sent by mail.

Connecticut Field. A large, yellow field variety; very productive and used mostly for feeding stock. Oz. 5c., ¼ lb. 15c., lb. 50c.

Small Sugar. This is the Pumpkin from which the celebrated Yankee Pumpkin pie is made. A small, round, very prolific variety; skin and flesh deep orange yellow. Very fine grained and sweet. Oz. 5c., ¼ lb. 15c., lb. 50c.

Large Cheese, or Kentucky Field. Large, flat and round like a cheese; color of skin deep orange; flesh somewhat lighter. Oz. 5c., ¼ lb. 15c., lb. 50c.

Striped Cushaw. Resembles in shape the Winter Crookneck Squash. Skin striped, with mottled green bands of creamy white. Rich yellow meat, tender and fine flavored. Pkt. 5c., oz. 10c., ¼ lb. 25c., lb. 75c.

King of the Mammoths. This is a giant among Pumpkins; sometimes reaching 2 feet or more in diameter, and weighing from 100 to 250 lbs. Salmon-orange skin, very thick, bright yellow flesh, fine grained and tender, and of excellent quality for pies. Pkt. 5c., oz. 10c., ¼ lb. 25c., lb. 75c.

RADISH

Culture.—Radishes to be mild, crisp and tender must make a steady, rapid growth; therefore a rich, light, sandy soil is best adapted for their culture. Where possible, give them plenty of water, which forces them along. If it is too dry they are apt to be strong, wormy and pithy. For early use sow in hotbeds on gentle heat, in rows 6 inches apart, and thin enough to prevent crowding. They should be large enough to use in 4 or 5 weeks from time of planting. Plant in the open ground soon as land can be worked, in rows 10 to 12 inches apart. For succession, sow every week or ten days as long as wanted. The Winter varieties should be sown in July or August, taken up before severe frost and stored in a cool cellar, packed in sand for Winter use.

One ounce will sow 100 feet of drill.

Add 5c. per lb. for postage, if sent by mail.

Early Scarlet Globe. A bright scarlet color. Very popular for forcing. Pkt. 5c., oz. 10c., $\frac{1}{4}$ lb. 20c., lb. 50c.

French Breakfast. Excellent for market or forcing. Color bright rose, with white bottom. Pkt. 5c., oz. 10c., $\frac{1}{4}$ lb. 20c., lb. 50c.

Early Scarlet Turnip. A popular Turnip-shaped variety for forcing or outdoor culture. Color deep red. Pkt. 5c., oz. 10c., $\frac{1}{4}$ lb. 20c., lb. 50c.

Long Scarlet. Popular long variety. Color red; flesh crisp and firm. Pkt. 5c., oz. 10c., $\frac{1}{4}$ lb. 20c., lb. 50c.

Early Crimson Giant. A very rapid-growing globe-shaped Radish, of beautiful crimson-carmine color, and of excellent quality. One of the best varieties for forcing, and desirable for general outdoor planting. Pkt. 5c., oz. 10c., $\frac{1}{4}$ lb. 20c., lb. 50c.

White Tipped Scarlet. One of the most popular and attractive globe-shaped Radishes. Color bright rose carmine, with bottom clear white. Pkt. 5c., oz. 10c., $\frac{1}{4}$ lb. 20c., lb. 50c.

Early White Turnip. Both skin and flesh white; very mild, tender and crisp. Pkt. 5c., oz. 10c., $\frac{1}{4}$ lb. 20c., lb. 50c.

Icele. A quick-growing, long, white variety; very crisp and mild flavor. Pkt. 5c., oz. 10c., $\frac{1}{4}$ lb. 20c., lb. 50c.

White Strasburg. A large, white variety for late Summer use. Thick at the shoulder and tapering to about 5 inches in length. Keeps solid a long time. Pkt. 5c., oz. 10c., $\frac{1}{4}$ lb. 20c., lb. 50c.

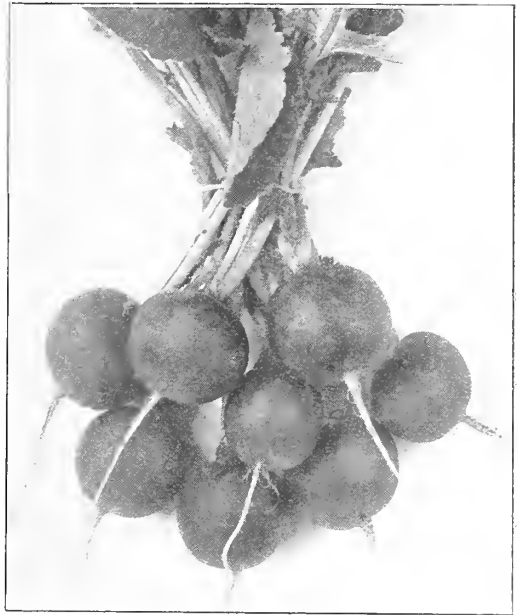
Giant White Stuttgart. A crisp, late Summer Radish. Very large and top-shaped; both skin and flesh white. Pkt. 5c., oz. 10c., $\frac{1}{4}$ lb. 20c., lb. 50c.

China Rose Winter. A fine keeper for Winter use. Skin rose colored; flesh white and firm, and quite pungent. Pkt. 5c., oz. 10c., $\frac{1}{4}$ lb. 20c., lb. 50c.

Round Black Spanish. A Winter Radish. Skin black; flesh white, firm and highly flavored. An excellent sort for Winter. Roots keep a long time. Pkt. 5c., oz. 10c., $\frac{1}{4}$ lb. 20c., lb. 50c.

Long Black Spanish. One of the latest and best keeping of the Winter Radishes. Roots are long, black and very pungent. Pkt. 5c., oz. 10c., $\frac{1}{4}$ lb. 20c., lb. 50c.

Half-Long Black Spanish. Half-long and grayish black in color; flesh white, firm and crisp. A good keeper for Winter use. Pkt. 5c., oz. 10c., $\frac{1}{4}$ lb. 20c., lb. 50c.



Early Scarlet Globe Radish

RHUBARB

Culture.—Sow the seed early in April in drills $\frac{1}{2}$ inch deep, and thin to 6 inches apart. Transplant to permanent beds the following Spring, or procure single roots by dividing the large roots, and set out 3 or 4 feet apart each way. Ground should be dug and manured well. Do not pull stalks until second year after transplanting roots.

One ounce will produce several hundred plants.

Add 5c. per lb. for postage, if sent by mail.

Victoria and Linnæus. Two good sorts. Pkt. 5c., oz. 10c., $\frac{1}{4}$ lb. 30c., lb. \$1.00.

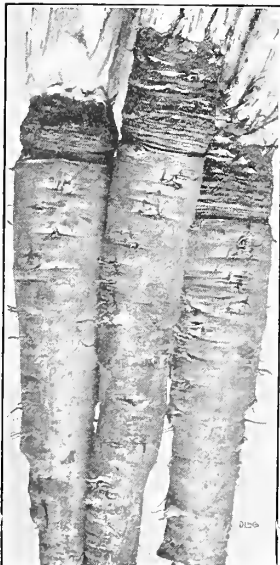
SALSIFY, or VEGETABLE OYSTER

Culture.—Plant and cultivate same as Parsnips. As it is perfectly hardy, it can remain in the ground during the Winter, but it should be dug in the Spring before it commences to sprout. Store a supply for Winter use in a cool cellar, like other root crops.

One ounce will sow 100 feet of drill.

Add 5c. per lb. for postage, if sent by mail.

Mammoth Sandwich Island. This is an improved type of Salsify, superior in every way to the other sorts. The roots may be served boiled as a vegetable or sliced and fried, or they may be made into fritters. It is almost impossible to distinguish them from the oyster fritter. Pkt. 5c., oz. 15c., $\frac{1}{4}$ lb. 50c., lb. \$1.75.



Mammoth Sandwich Island Salsify

SPINACH

The finest "greens" of any plant in cultivation.

Culture.—For Spinach the ground cannot be too rich, yet it will thrive on almost any good soil. Make drills 14 inches apart, use a liberal amount of seed, cover about $\frac{1}{2}$ inch, pressing the earth firmly on the seed. For early Spring use, sow in August or September, and protect during the Winter with a light covering of litter, which should be removed as soon as plants begin to grow in the Spring. For Summer use sow as early in Spring as ground can be worked, and for a succession sow every two weeks.

One ounce will sow 100 feet of drill; 8 to 10 lbs. for an acre.

Add 5c. per lb. for postage, if sent by mail.
(Spinach is very scarce).

Early Giant Thick Leaf. Produces large, thick, dark green leaves, somewhat crumpled. Pkt. 5c., oz. 10c., $\frac{1}{4}$ lb. 25c., lb. 80c.

Large Viroflay. Large, dark green leaves, slightly crumpled. Suitable for either Spring or Fall sowing. Pkt. 5c., oz. 10c., $\frac{1}{4}$ lb. 25c., lb. 80c.

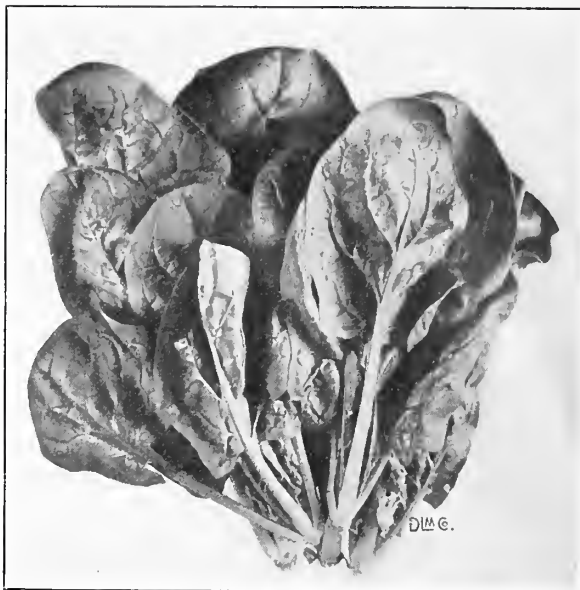
Victoria. Broad, dark green leaves; remains in prime condition long after nearly all other varieties have run to seed. Pkt. 5c., oz. 10c., $\frac{1}{4}$ lb. 25c., lb. 80c.

Giant Crumpled Leaf. Large, quick-growing sort; leaves crumpled and curled. Pkt. 5c., oz. 10c., $\frac{1}{4}$ lb. 25c., lb. 80c.

Bloomsdale, or Savoy. Leaves curled and wrinkled. Pkt. 5c., oz. 10c., $\frac{1}{4}$ lb. 25c., lb. 80c.

Prickly, or Winter. For Fall sowing. A very hardy variety. Pkt. 5c., oz. 10c., $\frac{1}{4}$ lb. 25c., lb. 80c.

If large quantities of Spinach are wanted write for special prices.



Victoria Spinach

New Zealand. Is a distinct variety. Started early in the Spring, the plants will resist heat and dry weather, and make a strong growth during the Summer. Pkt. 5c., oz. 10c., $\frac{1}{4}$ lb. 25c., lb. 80c.

SQUASH

Culture.—The Squash vine is very tender and so sensitive to cold that it cannot be planted with safety before the middle of May. The hills should be prepared in the same manner as those for Cucumber; the Summer varieties 3 to 4 feet apart each way, and the later sorts 6 to 8 feet. Plant 6 or 8 seeds in each hill, and cover half an inch; thin to 4 plants after they have obtained their rough leaves, and danger from bugs is past.

Of the early varieties, one ounce will plant 40 hills and 12 hills of the late sorts; 4 lbs. of the early and 6 lbs. of the late, for an acre.

Add 5c. per lb. for postage, if sent by mail.

White Bush Scallop. The old "Patty Pan"; white skin and flesh. Very early. Pkt. 5c., oz. 10c., $\frac{1}{4}$ lb. 20c., lb. 60c.

Yellow Bush Scallop. Similar to White Scallop, but color is yellow. Pkt. 5c., oz. 10c., $\frac{1}{4}$ lb. 20c., lb. 60c.

Giant Summer Crookneck. This strain is earlier even than the common small variety, and equally tender and sweet, while the Squashes grow to an extra long size. Pkt. 5c., oz. 10c., $\frac{1}{4}$ lb. 25c., lb. 80c.

Golden Hubbard. The heavily warted skin is of a rich orange yellow turning to a deep salmon red when ripened. It is equally as productive and fine in quality as the original Hubbard. Pkt. 5c., oz. 10c., $\frac{1}{4}$ lb. 25c., lb. 80c.

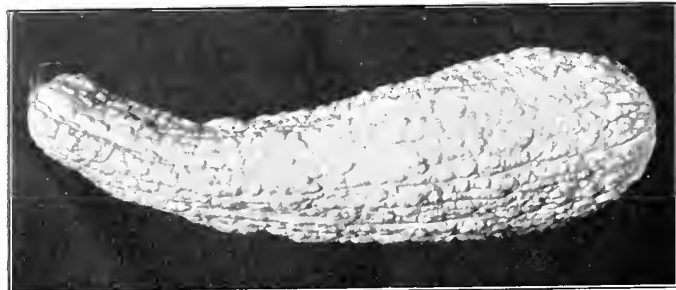
Boston Marrow. A popular second early Squash for Autumn use; skin thin, reddish yellow; flesh dry, fine-grained and delicious. Pkt. 5c., oz. 10c., $\frac{1}{4}$ lb. 25c., lb. 80c.

Common Summer Crookneck.

This is the small Crookneck, very early and tender. Rich golden yellow color; thickly warted. Pkt. 5c., oz. 10c., $\frac{1}{4}$ lb. 25c., lb. 80c.

Warted Hubbard. Similar in size and quality to the well-known Hubbard, but is more heavily warted. Pkt. 5c., oz. 10c., $\frac{1}{4}$ lb. 25c., lb. 80c.

True Hubbard. This old variety for years has stood the test of all rivals, and is the most popular Winter Squash grown. Hard green shell; flesh bright orange yellow, fine grained, very dry, sweet and of rich flavor. Keeps in perfect condition throughout the Winter. Pkt. 5c., oz. 10c., $\frac{1}{4}$ lb. 25c., lb. 80c.



Giant Summer Crookneck Squash

SQUASH—Continued

Fordhook. This is a very desirable running variety for both Summer and Winter. Oblong in form; slightly ridged, smooth, thin, yellow skin; flesh very thick and light straw yellow. Can be used for cooking when young, while if allowed to ripen on the vines, they will keep well all Winter. Pkt. 5c., oz. 10c., $\frac{1}{4}$ lb. 25c., lb. 80c.

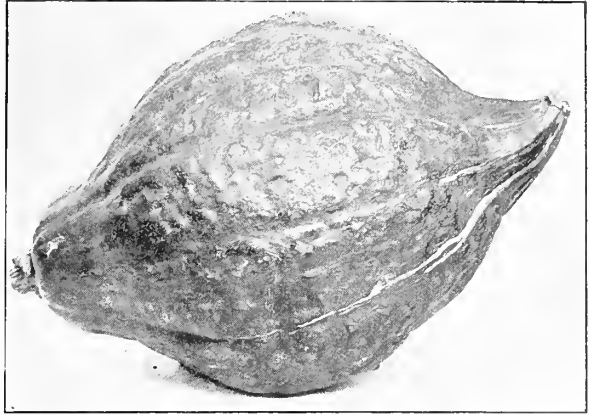
Essex Hybrid. Valuable for Fall and Winter use. An excellent keeper, of good size; bright orange color; flesh thick, dry and delicious. Pkt. 5c., oz. 10c., $\frac{1}{4}$ lb. 25c., lb. 80c.

Mammoth Chili. Good for stock and exhibitions; often weighing 100 to 200 lbs. Pkt. 5c., oz. 10c., $\frac{1}{4}$ lb. 25c., lb. 80c.

Delicious. A Fall and Winter Squash, being excellent at all seasons, though it does not acquire its best quality until Winter, when it is very sweet and rich in flavor. Pkt. 5c., oz. 10c., $\frac{1}{4}$ lb. 25c., lb. 80c.

Winter Crookneck. Excellent for Winter; flesh sweet and of fine flavor. Pkt. 5c., oz. 10c., $\frac{1}{4}$ lb. 25c., lb. 80c.

Cocozelle Longe (Italian variety). A Summer va-



True Hubbard Squash

riety of compact bush growth. Fruits large, oblong in shape, skin dark green, marbled and mottled with yellow and dark green stripes. Pkt. 5c., oz. 10c., $\frac{1}{4}$ lb. 25c., lb. 80c.

TOMATO

Culture.—Tomatoes do best on a light, warm, not over-rich soil. For early plants sow in March or April in the hotbed, in drills 3 inches apart, 4 or 5 seeds to the inch; cover lightly. Or they may be started in boxes in some sunny window in the house. Transplant when 2 inches high into other hotbeds, or into boxes, or single pots, and place in the frames. Avoid crowding the plants; 4 inches is as near as they should stand in the frames. Lift the sash on warm, sunny days, and 2 or 3 weeks before setting outside, gradually harden them by exposure to the night air. Set 4 feet apart each way in the open ground in May as soon as danger from frost is past. For later use sow in the open ground in May, and transplant when large enough to handle. By training the vines on trellises, or tying them up to stakes, the fruit will ripen better, be of superior quality, and increase their productiveness.

One ounce will produce about 1200 plants.

Add 5c. per lb. for postage, if sent by mail.

June Pink. A fine, early, pink variety. Pkt. 5c., oz. 15c., $\frac{1}{4}$ lb. 50c., lb. \$2.00.

Chalk's Early Jewel. Medium early; large, smooth, and fine flavor. Pkt. 5c., oz. 15c., $\frac{1}{4}$ lb. 50c., lb. \$2.00.

Earlibell. A new extra early; smooth, beautiful, glossy, scarlet Tomato; ripens uniformly all over; and bears continuously until frost. Pkt. 5c., oz. 15c., $\frac{1}{4}$ lb. 50c., lb. \$2.00.

Sparks' Earliana. A popular extra early, large, red Tomato. Pkt. 5c., oz. 15c., $\frac{1}{4}$ lb. 50c., lb. \$2.00.

Early Acme. Standard family Tomato; early, solid, and smooth. Pkt. 5c., oz. 15c., $\frac{1}{4}$ lb. 50c., lb. \$2.00.

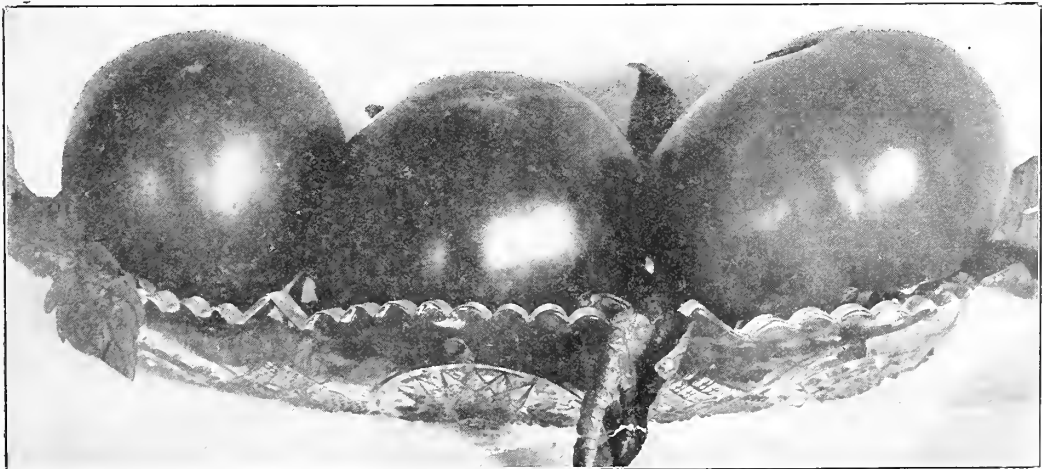
Stone. A favorite everywhere; large, solid and smooth; color red. Pkt. 5c., oz. 15c., $\frac{1}{4}$ lb. 50c., lb. \$2.00.

Dwarf Champion. Plants grow stiff and upright; early; purplish pink. Pkt. 5c., oz. 20c., $\frac{1}{4}$ lb. 75c., lb. \$2.50.

Dwarf Stone. Plants similar to Dwarf Champion, but fruit is double the size; bright scarlet, solid and smooth. Pkt. 5c., oz. 20c., $\frac{1}{4}$ lb. 75c., lb. \$2.50.

Livingston's Beauty. Large, solid, smooth, purplish pink. Pkt. 5c., oz. 15c., $\frac{1}{4}$ lb. 50c., lb. \$2.00.

Livingston's Perfection. Bright red, smooth and good size. Pkt. 5c., oz. 15c., $\frac{1}{4}$ lb. 50c., lb. \$2.00.



Livingston's Beauty Tomato

TOMATO—Continued

- Golden Queen.** Large, smooth and pure yellow. Pkt. 5c., oz. 15c., $\frac{1}{4}$ lb. 50c., lb. \$2.00.
- Fordhook First.** Solid; deep pink; quite early. Pkt. 5c., oz. 15c., $\frac{1}{4}$ lb. 50c., lb. \$2.00.
- Matchless.** A good main crop; cardinal red; solid and smooth. Pkt. 5c., oz. 15c., $\frac{1}{4}$ lb. 50c., lb. \$2.00.
- Ponderosa.** Very large, coarse ribbed; deep-purple. Pkt. 5c., oz. 20c., $\frac{1}{4}$ lb. 75c., lb. \$3.00.
- Trophy.** Very large, solid and smooth; bright red. Pkt. 5c., oz. 15c., $\frac{1}{4}$ lb. 50c., lb. \$2.00.
- Yellow Pear.** Small, pear-shaped. Good for pickling. Pkt. 5c., oz. 15c., $\frac{1}{4}$ lb. 50c., lb. \$2.00.
- Yellow Plum.** Small and round. Good for pickling. Pkt. 5c., oz. 15c., $\frac{1}{4}$ lb. 50c., lb. \$2.00.
- Red Plum.** Small, round, pickling sort. Pkt. 5c., oz. 15c., $\frac{1}{4}$ lb. 50c., lb. \$2.00.

TURNIP

Culture.—For the main crop the old rule is good: "Sow Turnips the 25th of July, wet or dry." Yet, fine crops of large, smooth Turnips are often grown from seed sown early in August. New land, plowed the previous Spring, thoroughly harrowed, and given a liberal dressing of some good commercial fertilizer, will produce the best crops. Sow broadcast and rake or brush in. For Summer use sow the early flat varieties, as early as the ground can be worked, in drills 14 inches apart; cover lightly and thin to 6 or 8 inches in the row. Avoid using fresh manure, as it produces rough, scabby, worthless Turnips.

One ounce will sow 10 square rods; one lb. for an acre.

Add 5c. per lb. for postage, if sent by mail.

- Extra Early Purple Top Milan.** Earliest flat Turnip; fine table quality. Pkt. 5c., oz. 10c., $\frac{1}{4}$ lb. 20c., lb. 60c.
- Extra Early Snowball.** Earliest round, white Turnip; fine table quality. Pkt. 5c., oz. 10c., $\frac{1}{4}$ lb. 20c., lb. 50c.
- White Egg.** Handsome oval form; skin white. Pkt. 5c., oz. 10c., $\frac{1}{4}$ lb. 20c., lb. 50c.
- Early White Flat Strap-Leaf.** A popular early sort. Pkt. 5c., oz. 10c., $\frac{1}{4}$ lb. 20c., lb. 50c.
- Early Red, or Purple Top Strap-Leaf.** The standard early. Pkt. 5c., oz. 10c., $\frac{1}{4}$ lb. 20c., lb. 50c.
- Long White Cowhorn.** Pure white, except at the top. Pkt. 5c., oz. 10c., $\frac{1}{4}$ lb. 20c., lb. 50c.



Rape



Yellow Globe Turnip

- White Globe Strap-Leaf.** Early; globe-shaped. Pkt. 5c., oz. 10c., $\frac{1}{4}$ lb. 20c., lb. 50c.
- Red, or Purple Top White Globe.** Fine globe-shaped table Turnip. Pkt. 5c., oz. 10c., $\frac{1}{4}$ lb. 20c., lb. 50c.
- Yellow Globe.** Fine for table or feeding; yellow flesh. Pkt. 5c., oz. 10c., $\frac{1}{4}$ lb. 20c., lb. 50c.
- Yellow Aberdeen.** Good for both table and feeding; yellow flesh. Pkt. 5c., oz. 10c., $\frac{1}{4}$ lb. 20c., lb. 50c.
- Golden Ball.** Very firm and tender; yellow flesh. Pkt. 5c., oz. 10c., $\frac{1}{4}$ lb. 20c., lb. 50c.

RUTA BAGA, or SWEDE
TURNIPS

One ounce will sow 150 feet of drill; one lb. to the acre.

- White Sweet German.** Flesh white, fine grained, sweet and tender. Pkt. 5c., oz. 10c., $\frac{1}{4}$ lb. 20c., lb. 50c.
- White French.** Popular white-fleshed variety. Pkt. 5c., oz. 10c., $\frac{1}{4}$ lb. 20c., lb. 50c.
- White Rock.** One of the best of the white Swedish sorts. Pkt., 5c., oz. 10c., $\frac{1}{4}$ lb. 20c., lb. 50c.
- American Purple Top Yellow.** An improved strain of yellow-fleshed Swede. Pkt. 5c., oz. 10c., $\frac{1}{4}$ lb. 20c., lb. 50c.
- Long Island Yellow.** A fine yellow-fleshed sort; sweet and tender. Pkt. 5c., oz. 10c., $\frac{1}{4}$ lb. 20c., lb. 50c.

TOBACCO

- Connecticut Seed Leaf.** Pkt. 5c., oz. 20c., $\frac{1}{4}$ lb. 75c., lb. \$2.50.
- Havana.** Pkt. 5c., oz. 20c., $\frac{1}{4}$ lb. 75c., lb. \$2.50.

RAPE,—Dwarf Essex

Furnishes excellent pasturage for cattle, sheep and hogs in six weeks from sowing. Its fattening properties are estimated to be twice as great as those of Clover, and for green-manuring or for exhausted soils, it has no equal. $\frac{1}{4}$ b. 10c., 1 lb. 20c. 10 lbs. and over, 15c. per lb.

HERBS

For Culinary and Medicinal Use

The garden is not complete without a few Herbs for culinary or medicinal purposes. A small space will give all the Herbs needed in any family.

Culture.—The culture is very simple. The best way is to make a little seed-bed in early Spring, and set the plants out as soon as large enough. The Herbs should be harvested on a dry day, just before they come into full bloom, and dried quickly. They may be hung in a dry, cool loft or garret until they are needed for use.

All Pkts., 5c. each.

- Anise.** For cordials and flavoring. Oz. 10c., lb. \$1.25.
- Balm.** For culinary purposes. Oz. 15c., lb. \$2.00.
- Basil, Sweet.** For flavoring. Oz. 15c., lb. \$2.00.
- Basilicone** (Italian Herb). For culinary purposes. Oz. 15c., lb. \$2.00.
- Caraway Seed.** For flavoring. Oz. 10c., lb. \$1.00.
- Chervil.** Used like Parsley. Oz. 10c., lb. \$1.00.
- Coriander.** Useful for flavoring. Oz. 10c., lb. \$1.00.
- Dill.** Used in pickles, soups and sauces. Oz. 15c., lb. \$1.50.
- Fennel, Sweet.** The leaves boiled used in sauces. Oz. 10c., lb. \$1.00.
- Horhound.** For tonic and cough remedies. Oz. 15c., lb. \$2.00.
- Lavender.** Perfume for oil and water. Oz. 15c., lb. \$1.50.
- Sweet Marjoram.** For seasoning. Oz. 10c., lb. \$1.00.
- Summer Savory.** Seasoning and flavoring. Oz. 15c., lb. \$2.00.
- Sage.** Leaves are used in dressings and in sauces. Oz. 15c., lb. \$1.50.
- Thyme.** For seasoning. Oz. 15c., lb. \$1.50.
- Wormwood.** For medicinal purposes; also beneficial for poultry, planted in poultry yards. Oz. 15c., lb. \$2.00.



LAWN GRASS SEED

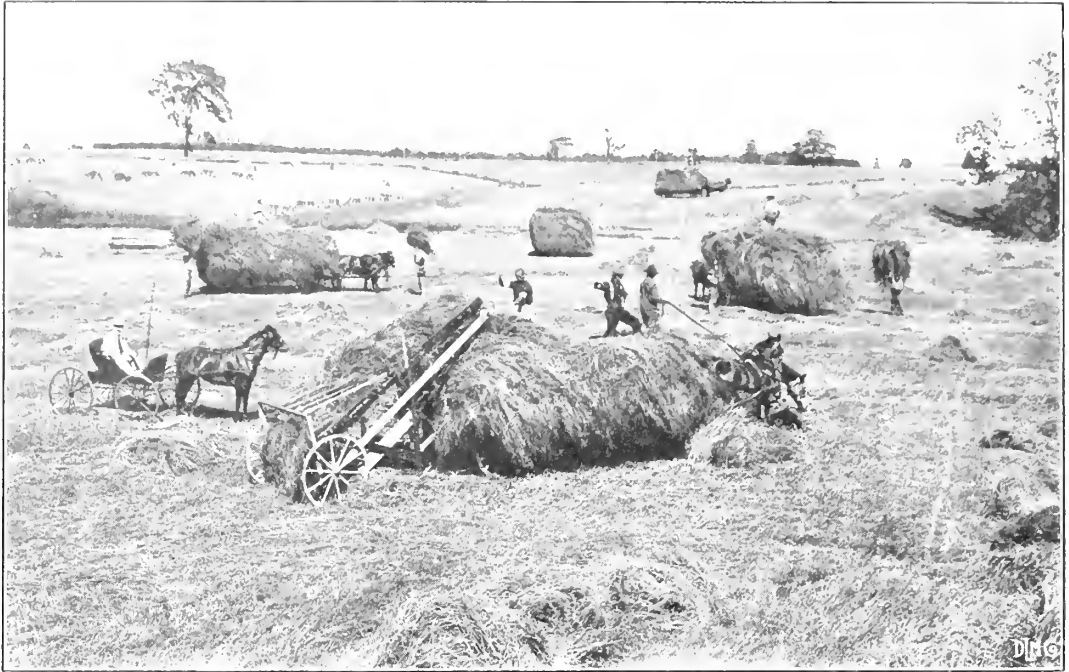
Make your place look like home by fixing up a good lawn

Culture.—April and May are two good months to lay down a lawn and sow the seed. August and September are also good months, and give the grass time to make a good growth before Winter sets in. Seed does not start well during the hot, dry Midsummer months. After sowing, the ground should be rolled in order to press the seed firmly in the soil, and should be rolled over every Spring as soon as frost is out of the ground. All lawns are benefitted by frequent mowing, but do not cut too close in hot, dry weather, or too late in the Fall.

One pound will sow 400 square feet of new ground.

Add 5c. per lb. for postage, if sent by mail.

	Up to 5 lbs. per lb.	Up to 10 lbs. and over, per lb.
(20 lbs. to the bus.)		
Hart's Best Mixture	\$0.25	\$0.20
Central Park Mixture20	.15
Shady Place Mixture35	.30



GRASS SEEDS

(Prices on Grass Seeds subject to change)

	Per lb.	10 lbs. and over Per lb.
Timothy—Herd's Grass. (45 lbs. to bu.) 1/2 bu. to the acre.....	\$0.15	\$0.10
Fancy Red Top. (36 lbs. to bu.) 15 lbs. to the acre.....	.17	.12
Orchard Grass. (14 lbs. to bu.) 3 bu. to the acre.....	.25	.20
Kentucky Blue Grass. Recleaned seed. (25 lbs. to bu.) 30 lbs. to the acre.....	.20	.15
English Rye Grass. (24 lbs. to bu.) 2 bu. to the acre.....	.20	.15
Red Clover. (60 lbs. to bu.) 15 to 20 lbs. to the acre.....	.25	.22
White Clover. Sow from 10 to 15 lbs. to the acre.....	.50	.45
Alsike Clover. Sow from 10 to 15 lbs. to the acre.....	.25	.20
Alfalfa, or Lucerne. Sow 20 to 30 lbs. to the acre.....	.25	.22

Mixture per Acre Recommended for Hay.

Timothy. 15 lbs. Red Top. 10 lbs. Red Clover. 5 lbs.

MILLETS

Hungarian Grass. (Bu. 48 lbs.) Sow 1 bu. to the acre. Lb. 10c., 10 lbs. and over, 6c. per lb.
Japanese, or Barnyard Millet. (Bu. 32 lbs.) Sow 1 bu. to the acre. Lb. 15c., 10 lbs. and over, 10c. per lb.
German, or Golden Millet. Lb. 15c., 10 lbs. and over, 10c. per lb.

Spring Rye. Especially valuable to sow as a "catch crop" where Winter grain has failed. Sow about 1 1/2 bu. to the acre. (Bu. 56 lbs.) Pk. 65c., bu. \$2.00.

SEED GRAINS

Barley. Barley is largely grown in New England for a late fodder crop. It can be sown from early Spring until September. As it withstands the most severe frosts it makes the best of green feed long after all other kinds are gone. Sow about 2 bu. per acre. (Bu. 48 lbs.) Pk. 50c., bu. \$1.75.

Winter White Rye. The time for sowing is from the middle of August to last of September. Prepare the ground same as for Wheat, and sow broadcast, or with a drill at the rate of 1 1/2 bu. to the acre. This has no equal as a crop to be used for late Fall and early Spring pasture, and is one of the best to turn under for green manure. (Bu. 56 lbs.) Pk. 60c., bu. \$1.75.

SEED OATS

Silver Mine. Large white Oat; a heavy yielder. Pk. 40c., bu. \$1.25.
Lincoln. Early, and rust-proof. Pk. 40c., bu. \$1.25.
Big Four. A large and heavy yielding variety. Pk. 40c., bu. \$1.25.

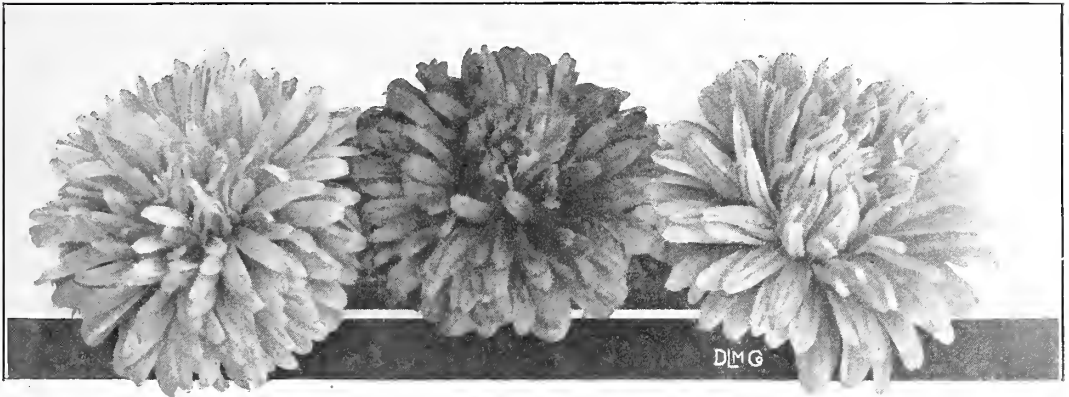
VETCHES

(Very scarce, prices subject to change)

Spring Vetches. (Bu. 60 lbs.) Generally sown in the Spring. Makes fine forage; also enriches the soil if plowed under. Per lb. 25c.; per 10 lbs. and over, 20c. per lb.

Hairy Vetches. (Bu. 60 lbs.) Sown alone or with Rye and Clover makes fine Winter covering; excellent to plow under to enrich the soil. Per lb. 25c.; per 10 lbs. and over, 20c. per lb.

If a quantity of any of the above is wanted, write for special prices.



FLOWER SEEDS

Sowing the Seed. Nine-tenths of the failures in flower culture come from improper treatment of the seeds and young plants. **Do not plant any of the seeds when the ground is wet.** Make the surface as fine and smooth as possible. Cover each sort of seed in proportion to its size. The finest seeds should be merely sprinkled on the surface of the ground, and barely covered with finely sifted, light, mellow soil. Press the soil down firmly over the seed; a short piece of board is good for this. For large seeds the depth should be regulated according to the size of the seed. Procure a bit of lath (it would be better if planed smooth), say 2 feet long, press the edge down into the soil evenly, so as to make a groove as deep as the seed is to be planted; scatter the seed along this, allowing 4 or 5 of the larger, to 15 or 20 of the smaller seeds to the space one plant is to occupy when grown; cover the seed by pressing the earth together over it, then turn your lath sideways, and press the soil down firmly and evenly.

Annuals bloom from seed and die the first year.

Biennials grow from seed the first year, and bloom and die the next, though some varieties bloom the first season when sown early.

Perennials last for several years, blooming annually after the first season, though some varieties will bloom the first season if sown early.

The seeds we offer are all very choice and the best strains.

AGERATUM, Mixed. Feathery flowers; suitable for pots in Winter or bedding in Summer. Annual. Pkt. 5c., oz. 20c.

ALYSSUM, Sweet, Little Gem. A favorite annual, bearing clusters of white flowers. Pkt. 5c., oz. 30c.

ANTIRRHINUM, or SNAPDRAGON. Showy flowers, blooming the first year from seed.

Tall Mixed. Pkt. 5c., oz. 25c.

ASTERS. The most popular garden annuals.

Tall Mixed Sorts. Pkt. 5c., oz. 50c.

Chrysanthemum Flowered. Mixed. Pkt. 5c., oz. 50c.

Sample's Branching Mixed. Pkt. 10c., oz. 75c.

White. Pkt. 10c., oz. \$1.00.

Crimson. Pkt. 10c., oz. \$1.00.

Pink. Pkt. 10c., oz. \$1.00.

Lavender. Pkt. 10c., oz. \$1.00.

Purple. Pkt. 10c., oz. \$1.00.

BALSAM (Lady's Slipper). A favorite garden annual.

Camellia-flowered. Choicest Mixed. Pkt. 5c., oz. 40c.

BALLOON VINE (Love in a Puff). A rapid growing annual climber; flowers white. Pkt. 5c., oz. 20c.

CALLIOPSIS. A showy annual, producing large flowers throughout the Summer.

Finest Mixed. Pkt. 5c., oz. 20c.



Sample's Branching Aster



Centaurea

CANDYTUFT. Well-known dwarf, profuse flowering garden annual.

Choicest Dwarf Mixed. Pkt. 5c., oz. 20c.

CARNATION, Marguerite. This superb new dwarf is a double, fragrant flower, and blooms fully from seed the first year. Pkt. 10c., oz. 50c.

CANARY BIRD FLOWER. An attractive climber, with beautiful yellow flowers freely produced with tender green foliage. Annual; height 10 to 20 feet. Pkt. 5c., oz. 25c.

CENTAUREA, or Bachelor's Button (Cornflower). Fine for bedding, vases, etc. Annual.

Choice Mixed. Pkt. 5c., oz. 40c.

CANTERBURY BELL. Biennial.

Single Mixed. Beautiful bell-shaped flower. Pkt. 5c., oz. 25c.

CLARKIA. Free-blooming annual.

Choice Mixed. Pkt. 5c., oz. 20c.

COLUMBINE, Perennials. Very desirable old-fashioned border flowers, forming large, permanent clumps.

Finest Double Mixed. Pkt. 5c., oz. 25c.

COSMOS. Large, single flower; 5 to 6 feet high; fine for cutting. Annual.

Mammoth Choice Mixed. Pkt. 5c., oz. 25c.

COCKSCOMB. Produces graceful plumes of bright colors. Annual.

Choice Mixed. Pkt. 5c., oz. 20c.

CYPRESS VINE. For training upon a light, ornamental trellis, the Cypress Vine cannot be excelled. It has a profusion of scarlet and white star-shaped blossoms. Pkt. 5c., oz. 25c.

DAHLIA. Although perennial, these will flower the first season if seed is sown early. Grow 4 to 6 feet high.

Large White Single Flowers. Pkt. 10c., oz. 40c.

DIGITALIS, or Foxglove. Perennial. Producing long spikes of showy flowers.

Choice Mixed. Pkt. 5c., oz. 25c.

ESCHSCHOLTZIA, or California Poppy. Popular garden annuals, bearing large, saucer-shaped flowers.

Finest Mixed Colors. Pkt. 5c., oz. 25c.

GAILLARDIA (Blanket Flower). Annual. Will produce a continuous profusion of brilliantly colored flowers from early Summer until late Fall.

Mixed Colors. Pkt. 5c., oz. 25c.

GODETIA. Very showy, large flower. Annual.

Choice Mixed Colors. Pkt. 5c., oz. 25c.

HOLLYHOCK. Beautiful, hardy plants, with immense flowers on spikes 5 to 6 feet high; flowers second year.

Finest Double Mixed. Pkt. 10c., oz. 50c.

LARKSPUR. Well-known annual, producing long spikes of flowers.

Dwarf Double German. Finest Mixed. Pkt. 5c., oz. 25c.

MARIGOLD. Well-known annual.

Finest French Mixed. Pkt. 5c., oz. 25c.

Choice Eldorado. Double Mixed. Pkt. 5c., oz. 30c.



Larkspur

MIGNONETTE, Sweet. Fragrant garden annuals.

Crimson Giant. Pkt. 5c., oz. 20c.

Perfection, Fine Selected. Pkt. 5c., oz. 30c.

MORNING GLORY. Annual climbers.

Tall Mixed. Pkt. 5c., oz. 10c., $\frac{1}{4}$ lb. 20c., lb. 75c.

Japanese Mixed. Pkt. 5c., oz. 10c., $\frac{1}{4}$ lb. 25c., lb. 80c.

NASTURTIUM. Beautiful and valuable flowering Summer plants. They require but little care: seed sown early in Spring will produce a profusion of blooms during all the season.

Tall, Mixed Colors. Pkt. 5c., oz. 10c., $\frac{1}{4}$ lb. 25c., lb. 75c.

Dwarf, Mixed Colors. Pkt. 5c., oz. 10c., $\frac{1}{4}$ lb. 25c., lb. 75c.

PANSIES. Annual. Most popular flower grown.

Fine Mixed. Pkt. 5c., oz. \$1.00.

Large Selected French Strain. Pkt. 10c., oz. \$1.00.

Giant Madame Perret. Very choice. Pkt. 15c., oz. \$1.50.

PETUNIA. Very popular annual.

Fine Mixed. Pkt. 5c., oz. 35c.

Extra Choice Mixed. Pkt. 10c., oz. 50c.

PHLOX Drummondii. Popular garden annual, flowering continuously during the Summer.

Very Choice Mixed. Pkt. 5c., oz. 50c.

POPPY, Shirley. Brilliant and popular flowering annuals.

Beautiful Mixed. Pkt. 5c., oz. 25c.

PINKS. Annuals. Flowers of most brilliant colors, produced freely all Summer.

Splendid Double Mixed. Pkt. 5c., oz. 25c.

PORTULACA. Annual. Adapted for dry, hot situations, producing brilliant flowers all Summer.

Choice Single Mixed. Pkt. 5c., oz. 20c.



Nasturtiums

RICINUS, or CASTOR OIL BEAN. Annuals of luxuriant growth with large, Palm-like leaves. Pkt. 5c., oz. 15c., $\frac{1}{4}$ lb. 40c., lb. \$1.00.

SALVIA Splendens, or Flowering Sage. Annual. Bushy plants about 3 feet high, producing dazzling scarlet flowers.

Very Choice. Pkt. 10c., oz. \$1.25.

SALPIGLOSSIS. Beautiful garden annuals, about 18 inches high, bearing gorgeous Petunia-like flowers.

Large-flowering Mixed. Pkt. 10c., oz. 50c.

SCABIOSA, or MOURNING BRIDE. Also called Old Maid's Pincushion. Annual. Beautiful, large, double flowers on long stems: fine for cutting. Pkt. 5c., oz. 25c.

STOCK. Very fragrant annual. Flowers double, and of various colors.

Dwarf German Mixed. Pkt. 5c., oz. 40c.

Large Flowering. Extra fine. Pkt. 10c., oz. 50c.,

SUNFLOWER.

Mammoth Russian. Pkt. 5c., oz. 10c., $\frac{1}{4}$ lb. 15c., lb. 20c.

Tall Double Flowered. Pkt. 5c., oz. 10c., $\frac{1}{4}$ lb. 20c., lb. 50c.

SWEET WILLIAM. A favorite garden perennial, bearing heads of fragrant, richly colored flowers.

Choice Single Mixed. Pkt. 5c., oz. 30c.

Choice Double Mixed. Pkt. 5c., oz. 40c.

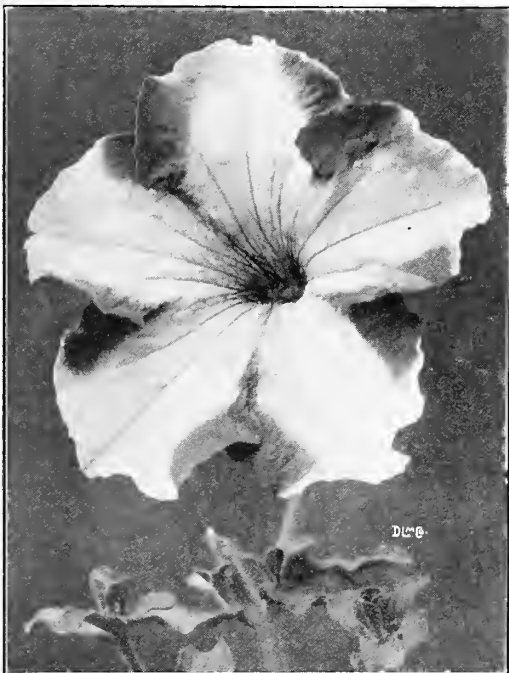
VERBENA. For beds and massing the Verbena is not equaled by any other plant for profusion of bloom, brilliancy and variety of colors. They flower the first season.

Choice Mixed. Pkt. 5c., oz. 50c.

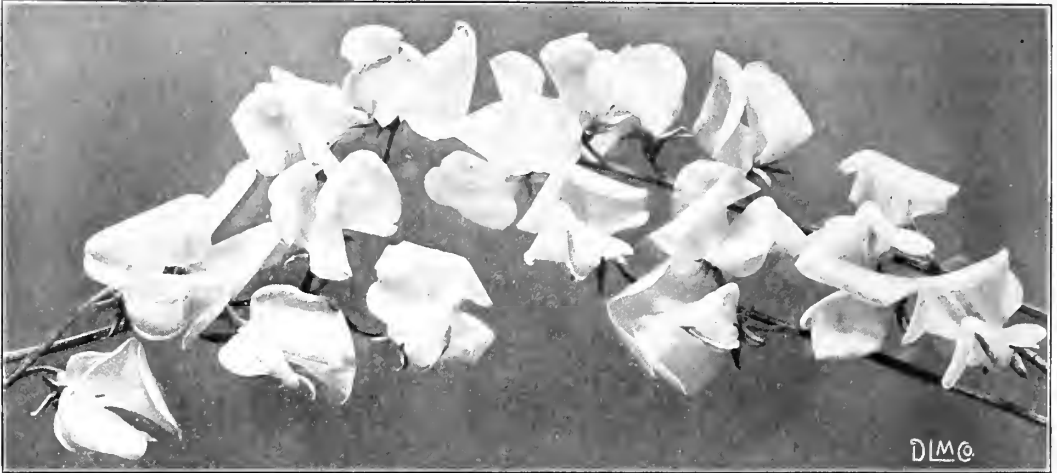
ZINNIA. A well-known annual, bearing showy flowers during Summer and Fall.

Double Mixed. Pkt. 5c., oz. 25c.

Extra Choice Double Mixed. Pkt. 5c., oz. 40c.



Petunia



SWEET PEAS

Culture.—Sweet Peas are, without doubt, the most beautiful and fragrant, and more generally grown than any other flower. They are of easy culture. The best way is to make a drill about 5 inches deep, dropping 4 or 5 seeds every 4 inches and covering about 2 inches, working the soil around the plant as it comes up, until it is on a level with the surface; this leaves the roots deep enough not to be affected by dry weather. They require an abundance of water. If water is applied, it should be at the roots, and not sprinkled on the vines. A trellis of brush, strings, or chicken wire is necessary. They bloom better if picked every day. Sweet Peas have been improved and developed to such an extent that there is a long list of names, many being so similar that it is hard to see any difference, except slight shades and markings of colors, and forms of hoods, or length of stems. For this reason we have discarded from our list all duplicates, and offer only the best and distinct varieties of each of the separate colors.



Sweet Peas. Spencer Type

Spencer Types

Pkt. 8c., oz. 15c., $\frac{1}{4}$ lb. 40c., lb. \$1.50.

Asta Ohn Spencer. Pinkish lavender.

Countess Spencer. Beautiful, clear pink.

King Edward Spencer. Deep red.

Othello Spencer. Rich maroon.

White Spencer. White.

Spencer Mixed. Pkt. 8c., oz. 15c., $\frac{1}{4}$ lb. 30c., lb. \$1.00.

Large-Flowering Eckford and Grandiflora Types

Pkt. 5c., oz. 10c., $\frac{1}{4}$ lb. 25c., lb. 75c.

Blanche Ferry Extra Early. Pink and white.

Black Knight. Deep maroon.

Countess of Radnor. Lavender.

Dorothy Eckford. Finest pure white.

Duke of Westminster. Purple.

Janet Scott. Pure pink.

King Edward VII. Deep red.

Lord Nelson. Blue.

Lottie Eckford. Lilac, changing to blue.

Mrs. Kenyon. Yellow.

Prince of Wales. Crimson.

Choice Mixed Colors. Our mixture of colors contains all the new and best sorts, as well as every known color and shade, and is the most beautiful blend of colorings to be found in any mixture. Pkt. 5c., oz. 10c., $\frac{1}{4}$ lb. 20c., lb. 60c.

NURSERY STOCK

We have added a new department to our seed business, and in addition to seeds are pleased to offer a few of the best varieties of Fruit Trees, Flowering Shrubs, Hardy Perennial Plants and Roses.

We feel sure if you give us a trial you will get better stocks, and feel better satisfied with us than you would if you bought them of any one else.

We guarantee our Trees, Roots, Shrubs and Plants to be true to name and in good condition on leaving our hands, but we do not guarantee them to live under adverse conditions, nor do we make up any loss due to climate effects or neglect in after culture on the part of the purchaser. Should errors occur in naming plants we cheerfully agree to replace them with the true variety, as originally ordered, but will not be held liable for any damage.

We will ship as early in the Spring as the different plants and roots may be safely sent out. We feel positive you will be well satisfied with anything you get from us, and hope you will try us.

Hardy Perennial Plants

The following collection embraces the most desirable species and varieties. They are all showy and beautiful plants, of easy cultivation, and of various seasons of flowering, from May to November. By a judicious selection a continuous display of flowers may be obtained from early Spring to the end of Autumn.

AGROSTEMMA. Rose Champion

Add 2c. per root for postage by Parcel Post.

Coronaria (Mullein Pink). Bright crimson flowers on stems $2\frac{1}{2}$ to 3 feet high. June and July. Each 20c., doz. \$2.00.

AQUILEGIA. Columbine

Each 20c., doz. \$2.00.

Add 2c. per plant for postage by Parcel Post.

One of the hardiest and most popular Spring and early Summer-flowering subjects, doing well under ordinary conditions.

Californica hybrida. A fine mixture, including scarlet and yellow, white and red combinations.

Cærulea.. Bright blue, tinted lilac and white; long spurred.

Chrysantha. Sutton's long-spurred, beautiful, blended colors.

HARDY ASTERS

Michaelmas Daisies, or Starworts

Add 2c. per plant for postage by Parcel Post.

These are among the showiest of our late-flowering hardy plants, giving a wealth of bloom at a season when most other hardy flowers are past. Unless otherwise specified, they bloom in September and October.

Each 20c., doz. \$2.00.

Beauty of Colwall. Ageratum blue, double flowers on stout, erect stems; distinct; 3 to 4 feet. August.

Colwall Pink. A splendid, new, semi-double variety, clear pink in color. Each 25c., doz. \$2.50.

St. Egwin. Large, pure pink, flat flowers, densely branched; fine. September and October. 3 feet. Each 25c., doz. \$2.50.

Mrs. F. W. Raynor. Good-sized, light crimson flowers; 3 feet.

Ferry. Dwarf; horizontally branched; extra fine pink.

Thos. S. Ware. Large; rosy lilac.

Sawyer. Delicate, soft blue; 3 feet.

White Queen. A large, broad-petaled white, of bold habit; $3\frac{1}{2}$ feet.

DWARF HARDY ASTERS

Add 2c. per plant for postage by Parcel Post

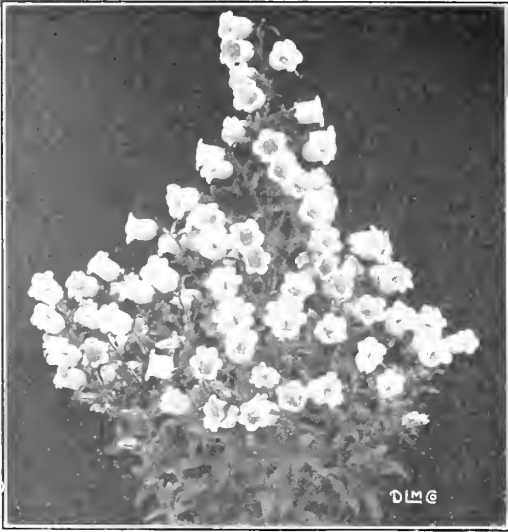
Alpinus. Grows 6 to 10 inches high, and bears large, bluish purple flowers. May and June. Each 20c.

Albus. Identical to the above, but with pure white flowers. Each 20c.

Sub-Cæruleus. (New.) About 12 inches high, bearing during June and July flowers 3 inches in diameter, of a pleasing shade of bluish violet, with golden center. Each 25c., doz. \$2.50.



Aquilegia and Digitalis



Campanula Media

CAMPANULA. Bellflower; Harebell

Add 2c. per plant for postage by Parcel Post.

Media (Canterbury Bells). An old-time favorite, with flowers of various colors in July; 2 to 3 feet. Each 20c., doz. \$2.00.

Gigantea Moerheimi. (New.) Large spikes of pure white, double, Camellia-like flowers, 2 to 2½ inches in diameter; in bloom from the middle of May until late in July. Each 25c., doz. \$2.50.

POMPON CHRYSANTHEMUMS

Add 2c. per plant for postage by Parcel Post.

There is nothing better for late Fall blooming in the garden than these small-flowering Chrysanthemums. They bloom after frost has destroyed nearly everything else in the garden. We offer a list of the best varieties.

Each 20c., doz. \$2.00.

Baby Margaret. A miniature white.

Dawn. Daybreak pink.

Dundee. Maroon, shaded scarlet.

Golden Fleece. Clear yellow.

Golden Pheasant. Rich, golden yellow.

L'Ami Couderchet. Sulphur white.

Little Pet. Violet crimson.

Model of Perfection. Beautiful white.

Pettilant. Creamy sulphur.

President. Rich, purplish crimson.

Hardy, Old-fashioned, Large-flowered Chrysanthemums, in red, white, pink and yellow. Each 20c., doz. \$2.00.

DELPHINIUMS. Hardy Larkspur

Add 2c. per plant for postage by Parcel Post.

The hardy Larkspurs are one of the most satisfactory plants in the herbaceous garden. Their long spikes of flowers are produced continuously from June until late in the Fall.

Belladonna. Beautiful, sky blue flowers; grows from 2 to 3 feet high, and is always in bloom. Each 25c., doz. \$2.50.

DIANTHUS. Pink

Add 2c. per plant for postage by Parcel Post.

Each 20c., doz. \$2.00, except where noted.

Dianthus Barbatus (Sweet William). One of the oldest garden flowers; one which perpetuates itself by self-sowing. Colors brilliant and effective; 20 inches. June and July. Each 15c., doz. \$1.50.

Plumarius (Scotch, or Garden Pink). Pink, purplish and white, fragrant flowers on long spikes; 9 inches. June.

DIGITALIS. Foxglove

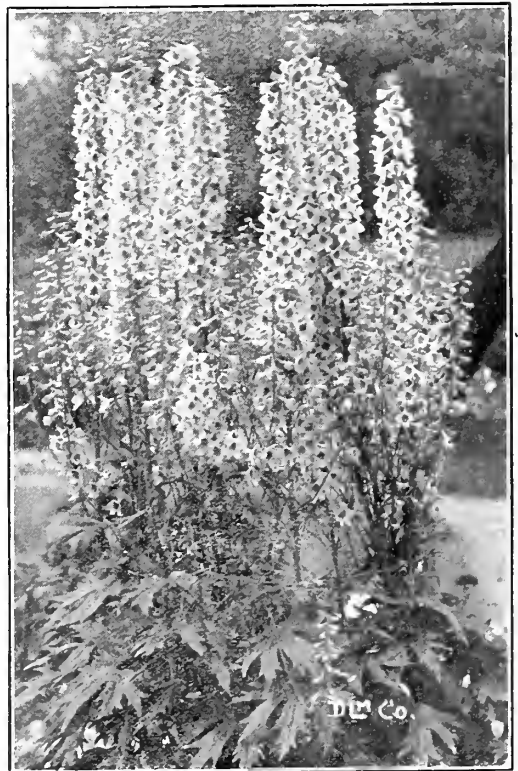
Add 2c. per plant for postage by Parcel Post.

Flowers very showy, with a large range of color, from pure white to purple; thimble-shaped and borne close together on stalks from 3 to 4 feet high. June to August. Each 20c., doz. \$2.00.

GAILLARDIA. Blanket Flower

Add 2c. per plant for postage by Parcel Post.

Grandiflora. One of the showiest, hardy plants; beginning to flower in June, they continue one mass of bloom the entire season. The large flowers are of gorgeous coloring; the center is dark, red brown, while the petals are variously marked with rings of brilliant scarlet crimson, orange and vermilion, and often a combination of all these colors in one flower. Each 20c., doz. \$2.00.



Delphiniums

HIBISCUS. Mallow

Each 25c., doz. \$2.50.

Add 3c. per plant for postage by Parcel Post.

Moscheutos (Swamp Rose Mallow). Flowers 6 inches in diameter; of a light, rosy red color with darker eye. August.

“Crimson Eye.” Flowers of immense size, color purest white, with a large spot of deep, velvety crimson in the center. August.

HOLLYHOCKS

Add 2c. per plant for postage by Parcel Post.

For planting in rows or groups on the lawn, or for interspersing among shrubbery, they are invaluable. The flowers form perfect rosettes of the most lovely shades.

We offer strong plants which will flower this season.

Double White Pink Yellow Bright Red

Each 20c., doz. \$2.00, 100 \$15.00.

INCARVILLEA. Hardy Gloxinia

Add 2c. per plant for postage by Parcel Post.

Each 25c., doz. \$2.50.

Delevayi. Large, Gloxinia-like, rose-colored flowers, produced in clusters on stems 18 inches high.

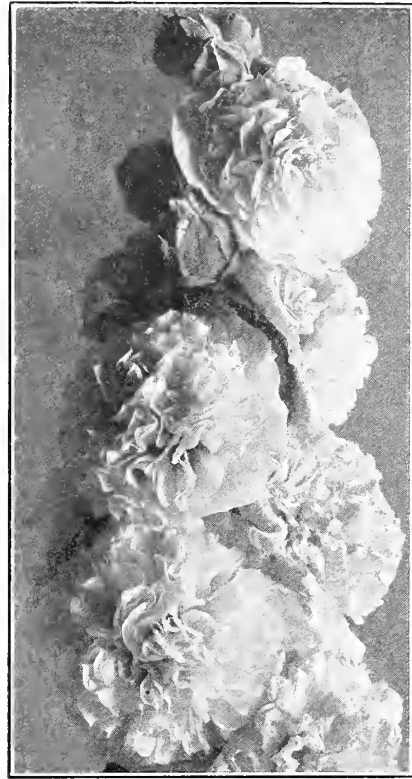
Grandiflora. An improvement on the above, the flowers being one-half larger, as well as brighter in color.

LOBELIA. Cardinal Flower

Add 2c. per plant for postage by Parcel Post.

Cardinalis. Spikes of fiery cardinal flowers; very effective; 3 to 4 feet. August and September. Each 20c., doz. \$2.00.

Syphilitica Hybrida (Great Lobelia). A choice selection of our native Lobelia, producing large spikes of flowers varying from blue to pure white; 2 to 3 feet. July to September. Each 15c., doz. \$1.50, 100 \$10.00.



Hollyhock

ŒNOTHERA. Evening Primrose

Add 2c. Per plant for postage by Parcel Post.

Fraserii. Golden yellow flowers; very showy; 15 inches. June to August. Each 20c.

Missouriensis. Large, golden yellow; 1 foot. Each 20c.

DOUBLE HERBACEOUS PÆONIES

Add 5c. per plant for postage by mail.

Pæonies have always held an important place among hardy plants and with the wonderful improvements made during recent years have established themselves among the leaders for popular favor, giving an abundance and wealth of flowers which rival the finest Roses in coloring, and produce during their flowering season a gorgeous effect not equaled by any other flower.

Each 35c., doz. \$4.00, except where noted.

Admiral Dewey. Deep, brilliant crimson; fine. Each 50c.

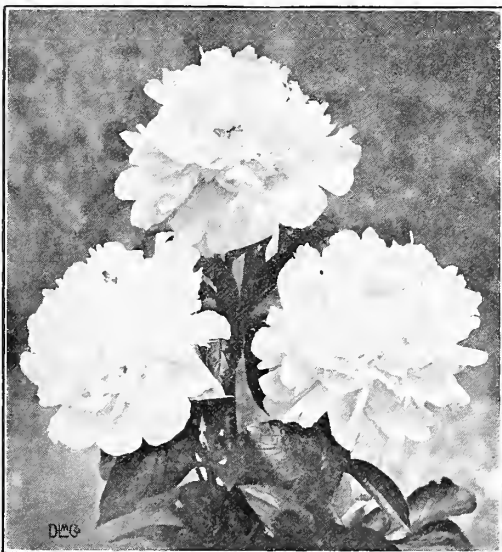
Albert Crousse. Very large and full; flesh pink. Each 50c.

Canari. White, yellow center; very showy. Each 50c.

Francoise Ortegal. Very brilliant crimson, giving us a blaze of splendor so deep as to verge on the purple.

Grandiflora rosea. Deep rosy guards, center petals have striped appearance; showy.

Grandiflora rubra. Deep crimson carmine; large and full.



Peony

PHLOX

Add 2c. per plant for postage by Parcel Post.

Hardy Phlox. Probably the most important and best known of the hardy perennial plants. They flower continuously from early Summer until late in the Fall, and embrace a wider range of color than can be found in any other species.

Each 20c., doz. \$2.00, 100 \$15.00, except where noted.

B. Comte. Intense, velvety crimson; darkest of all the Phloxes.

Bridesmaid. Pure white; large, crimson center.

Beranger. White, suffused with pink, rosy lilac eye.

Baron van Dedem. Brilliant, cochineal red, with salmon shadings.

Coquelicot. Fine, pure scarlet, with deep carmine eye.

Eclairer. Purplish crimson, with white halo.

Elizabeth Campbell. Very bright salmon pink, with lighter shadings and dark crimson eye; an entirely new and much wanted shade in Phlox.

PRIMULAS. Primrose

Add 3c. per plant for postage by Parcel Post.

Veris (English Cowslip). The plants we offer have been grown from a select strain of seed, and embrace a fine range of colors. Each 20c.

Veris superba. A giant-flowering form; flowers from 1 to 2 inches across; color a bright canary yellow, with a golden center, and when in flower presents a sheet of bloom. Each 25c.

Vulgaris (English Primrose). One of the earliest Spring flowers to open; of a bright canary yellow and very fragrant. Each 20c.



Hardy Phlox

TRITOMA Red-Hot-Poker, or Flame Flower

Add 2c. per plant for postage by Parcel Post.

Pfitzerii (The Everblooming Flame Flower). Spikes from 3 to 4 feet high and heads of bloom 12 inches long, of a rich, orange scarlet, shading to salmony rose at edges, producing a grand effect either planted singly in the border or in masses. Each 20c., doz. \$2.00.

ROSES

HARDY REMONTANT, or HYBRID PERPETUAL ROSES

Add 5c. per root for postage by mail.

Our select list of Roses comprises the very best varieties. These are hardy, strong plants, grown outdoors. They are, therefore, not to be compared with the cheap imported Roses, or those which are so freely advertised and sent out by mail, which, being grown in the greenhouse, seldom stand the shock of removal or give the purchaser much pleasure.

With the Hybrid Perpetuals we also class some of the hardier and handsomer Hybrid Noisettes and other Roses found valuable for outdoor culture.

Large field-grown plants, 2 years old, each 35c., doz. \$3.50, 100 \$25.00, except where noted.

Anne de Diesbach. Carmine, a beautiful shade; very large. A superior garden sort; fragrant.

Captain Hayward. Bright crimson carmine; an entirely distinct shade of color. Flowers of perfect form and very sweet.

John Hopper. Bright rose, with carmine center; large and full. A profuse bloomer and standard sort.

Mabel Morrison. White, sometimes tinged with blush; in the Autumn the edges of the petals are often pink.

Madame Gabriel Luizet. Pink; very large, cup-shaped; somewhat fragrant.

Mrs. John Laing. Soft pink; large and of fine form, produced on strong stems; exceedingly fragrant, and flowers continuously.

Paul Neyron. Deep rose color; by far the largest variety in cultivation. A free bloomer; very desirable as a garden Rose.

Persian Yellow (Austrian). Deep, golden yellow; double and fine.

Prince Camille de Rohan. Deep, velvety crimson; large, moderately full. A splendid Rose.

Ulrich Brunner. Brilliant cherry red; a very effective color; flowers of fine form and finish. One of the best.



Rose Gruss an Teplitz

HYBRID TEA ROSES

Not quite as hardy as Hybrid Perpetuals.

We especially recommend this collection of Roses to those who wish a supply of extra choice flowers for cutting throughout the Summer and Fall months.

Each 35c., doz. \$3.50, 100 \$25.00, except where noted.

Add 5c. for postage by Parcel Post.

Gruss an Teplitz. One of the brightest colored Roses grown. Dark, rich crimson, changing to bright scarlet, shading to velvety, fiery red. Delightfully fragrant.

Jonkheer J. L. Mock. The flowers, which are produced with the greatest freedom, are borne on stiff, erect stems, are of large size and perfect form, of a deep, imperial pink, the outside of the petals silvery rose-white and highly perfumed.

Kaiserin Augusta Victoria. A superb white Rose, fairly tinted with cream and lemon yellow. Large, full and double; their fragrance is peculiarly rich and delightful.

La France. Delicate, silvery rose, changing to silvery pink; very large; full, of fine, globular form; a most constant bloomer.

Lady Hillingdon. One of the loveliest Roses that one could imagine. The color is superb, being of deep yellow tinged with light blush on the outer edge of petals. The bloom does not fall like many of the yellow Roses. Buds are very slender and graceful, borne on long, stiff stems. Rapid grower and free bloomer.

Mrs. Tait (syn. Antoine Rivoire). An ideal bedding Rose of large size and fine form; color soft peach, shading to yellow at the base of petals.

Richmond. This great American Rose, with its gorgeous color, brilliant, flaming scarlet crimson, has swept everything before it, both at home and abroad.

Radiance. A brilliant rosy carmine, displaying beautiful, rich and opaline-pink tints in the open flower. The form is fine, largest size and full, with cupped petals. It blooms constantly and is delightfully fragrant. This is a superior Rose. From the day you plant it you will become a Rose enthusiast the rest of your life.

HARDY CLIMBING ROSES

Each 35c., doz. \$3.50, except where noted.

Add 5c. for postage by Parcel Post.

Baltimore Belle. Pale blush, passing to white; large clusters.

Climbing American Beauty. Rosy crimson flowers, produced freely in June and occasionally throughout the season; growth vigorous. A splendid new Rose. Each 75c.

Crimson Rambler. Heavy trusses of brilliant, double, crimson flowers.

Dr. Van Fleet. Flesh pink, deepening to rosy flesh in the center; large, full, double flowers carried on long stems resembling the popular Souvenir de President Carnot. Each 75c.

Dorothy Perkins. Soft, light pink flowers carried in beautiful clusters; strong, vigorous growth and glossy, healthy foliage; very hardy. A splendid variety.

Tausendschon. Large, individual flowers of splendid form, carried in trusses, varying in color from light to bright pink and rosy carmine; a charming climbing Rose.

White Dorothy Perkins. A white counterpart of the lovely Dorothy Perkins and one of the best white climbing Roses.

MOSS ROSES

Each 35c.

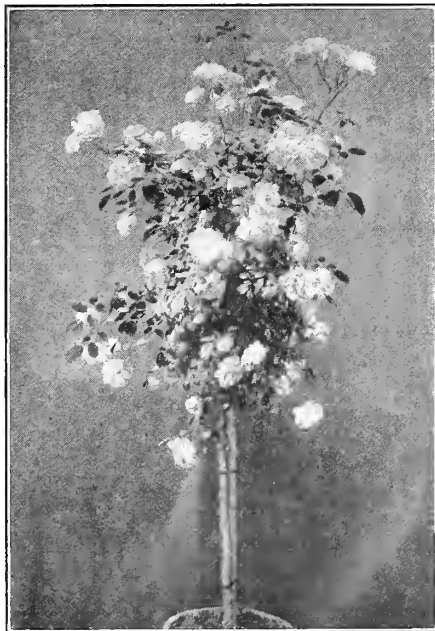
Add 5c. for postage by Parcel Post.

The charm of a Moss Rose is the bud. Such kinds as the Gracilis and Crested, with graceful buds, are especially recommended.

Blanche Moreau. White. One of the best of the Mosses.

Crested Moss. Deep pink. A fragrant, very beautiful Rose.

Gracilis. Pink buds, surrounded with delicate fringe-like moss.



Tausendschon

Flowering Shrubs

All Flowering Shrubs sent by express at purchaser's expense.

ALTHEA, or ROSE OF SHARON Hibiscus

Each 50c., doz. \$4.00.

These are fine, hardy, free-growing and flowering shrubs, blooming in August and September, when few plants are in blossom.

Double Purple.

Double Red.

Double White. Very large and double, with reddish purple center.

Variiegated Leaved; Double Purple Flowered. A conspicuous variety with leaves distinctly marked with light yellow; showy and desirable.

ALMOND. Prunus Sinensis

Double Rose Flowering (Japonica fl. pl.). A beautiful shrub, producing in May, before the leaves appear, small, double, Rose-like flowers, closely set on the branches. Each 75c., doz. \$6.00.

Double White Flowering (Japonica flore Albo Pleno). Producing beautiful, white flowers in May. Each 75c., doz. \$6.00.

BARBERRY. Berberis

Thunberg's (Berberis Thunbergii). A low, dense, neat little shrub, with white flowers in May. These are followed by a heavy crop of rich red berries that cling through the Winter. In Autumn, when both leaves and berries are bright red, it is very showy. Valuable for low, ornamental hedges, masses, borders, etc. 12 to 18 inches, each 20c., doz. \$2.00, 100 \$15.00; 18 to 24 inches, each 25c., doz. \$2.50, 100 \$20.00.



Berberis Thunbergii

DEUTZIA

Gracilis (Slender Branch). A dwarf variety, covered with a profusion of white flowers in June. Each 35c.

Lemoinei. Flowers pure white, borne on stout branches of upright growth. Dwarf and free flowering. Each 35c.

FORSYTHIA. Golden Bell

The Forsythia is indispensable as an early-blooming shrub. The flowers appear in immense quantities before the leaves, completely hiding the branches.

Fortunei. Upright in habit, with broad, deep green foliage; flowers deep yellow and in great profusion. Each 35c.

HONEYSUCKLE, UPRIGHT

Lonicera

Each 35c.

Red Tartarian (Tatarica Rubra). Beautiful flowering shrub, blossoming early in Spring; bright pink flowers.

White Tartarian (Tatarica Alba). Similar to the Red Tartarian in growth; producing white flowers very abundantly.

HYDRANGEA

Paniculata grandiflora. The showiest of all Autumn-blooming shrubs, bearing immense heads of creamy white flowers, turning to pleasing shades of pink. Each 50c.

Tree Form. Trained plants of the last, with a clean stem 3 to 4 feet in height; a small lawn tree. Each \$1.00.



Hydrangea

PRIVET. Ligustrum

- Ibota.** A Japan privet of the most beautiful character. Dark, oval foliage, white, fragrant flowers. Each 25c.
- Ovalifolium** (California Privet). Oval-shaped leaves which remain on well into the Winter. One of the most universal of hedge plants.

SNOWBALL. Viburnum

- Common** (Sterilis). The well-known sort, and a general favorite on account of its large clusters of white flowers in June. Each 75c.
- Japan** (Plicatum). Surpassing the Common Snowball; foliage handsomer, flowers whiter and more delicate. Each 75c.

SPIRÆA

- Anthony Waterer.** A variety with broad heads of deep pink flowers. Grows 2 to 3 feet high. Blooms almost continuously from June throughout the season. Each 35c.
- Bridal Wreath** (Prunifolia). Double, Daisy-like flowers of pure white. Each 35c.
- Van Houttei.** The grandest of all the Spireas; it is a beautiful ornament for the lawn at any season, but when in flower it is a complete fountain of white bloom. Each 50c.

SYRINGA. Philadelphus

- Coronarius** (Mock Orange). Shrub with upright branches; the pure white, fragrant flowers are produced in clusters in June. Each 35c.
- Aurea** (Golden Syringa). A graceful variety, with bright yellow foliage, which retains its color throughout the season; very effective in shrubberies. Each 50c.

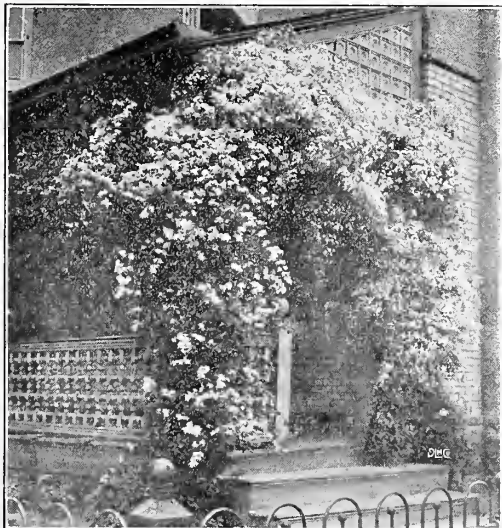


Viburnum plicatum

WEIGELA. Diervilla

- Eva Rathke.** A charming new Weigela; flowers brilliant crimson; a beautiful, distinct, clear shade. Each 35c.
- Rose-Colored** (Rosea). A beautiful shrub, bearing in May a profusion of rose-colored flowers. Each 35c.
- Variegated-Leaved.** Variegated foliage, yellowish white, and lasts the entire season. Rose-colored flowers. Each 35c.

Climbing and Trailing Vines



Clematis Paniculata

CLEMATIS

Add 5c. per root for postage.

- Jackmanni.** Flowers large and of intense violet purple; remarkable for its velvety richness. July to October. Each 75c.
- Paniculata.** The flowers are of medium size, pure white, and of a most delicious fragrance. September. Each 35c. and 50c.

HONEYSUCKLE. Lonicera

Add 5c. per root for postage.

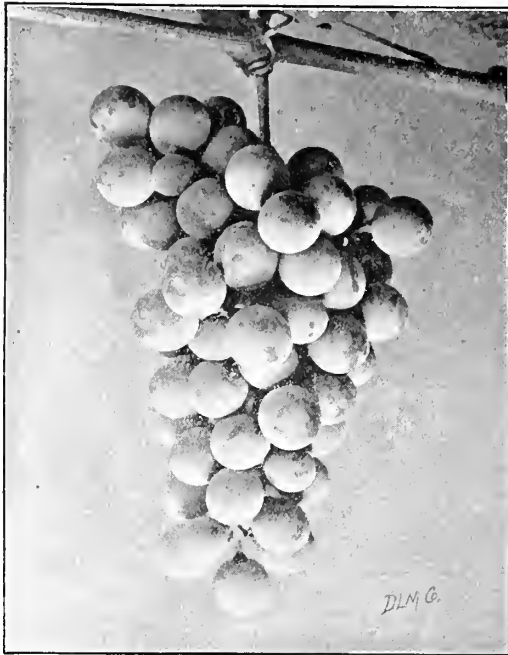
- Hall's New Japan** (Hallcana). An almost evergreen variety, with pure white flowers, changing to yellow; very fragrant. Each 35c. and 50c.

WISTARIA

Add 10c. per root for postage.

- Chinese Purple** (Sinensis). One of the most magnificent climbers, producing racemes of pale purple flowers early in Spring. Each 75c.
- Chinese White** (Sinensis Alba). Differing from the above only in color, being a pure white. Each 75c.

SMALL FRUITS



Niagara

GRAPES

BLACK GRAPES

Price: 2-year-old Vines, each 25c., doz. \$2.50, 100 \$15.00, except as noted.

Add 5c. per root for postage by Parcel Post.

Campbell's Early. Large and handsome; quality A 1. Each 35c.

Concord. One of the most popular Grapes.

Moore's Early. Large, black, with a blue bloom.

Wilder (Rogers' No. 4). Flesh tender, juicy, sweet.

Worden. Larger than Concord, and is superior.

RED GRAPES

Brighton. Sugary, juicy and rich flavor.

Delaware. Small; skin thin, light red.

Salem (Rogers' No. 53). Very sweet and sprightly.

Vergennes. Color light amber; flavor rich and delicious.

WHITE GRAPES

Diamond (Moore's Diamond). Sweet to the center.

Green Mountain (Winchell). Skin thin; pulp tender and sweet. Each 50c.

Niagara. Berries larger than Concord; quality good.

Pocklington. Good quality; ripens at the time of the Concord.

GOOSEBERRIES

Add 5c. per root for postage by Parcel Post.

Price: 2-year-old, doz. \$2.00, 100 \$15.00.

Industry. Large; oval; dark red; hairy; rich and agreeable.

Josselyn. A new red berry of large size and good quality.

Smith's Improved. Oval form; light green; sweet and excellent.

CURRENTS

Add 5c. per root for postage by Parcel Post.

Price: 2-year-old, doz. \$1.00, 100 \$6.00, except as noted.

Champion (Black). The finest black Currant.

Cherry (Red). Very large; deep red; rather acid; bunches short.

Fay's Prolific (Red). Fine flavor and prolific.

Perfection (New). Color red; larger than Fay and Cherry. Doz. \$2.00, 100 \$12.00.

White Grape. The finest of the white sorts.

RASPBERRIES

RED AND YELLOW VARIETIES

Price: Doz. 75c., 100 \$4.00.

Add 2c. per root for postage.

Columbian. Fruit very large, rich, sprightly flavor. **Cuthbert.** Of excellent quality, and immensely productive.

Golden Queen. Rich golden yellow; of highest quality.

St. Regis. A variety said to produce fruit for four months. Brilliant crimson; good quality.

BLACK CAPS

Cumberland. Fruit enormous; quality unsurpassed.

Gregg. Of great size; fine quality.

Kansas. Jet black, firm and delicious; as large as Gregg.

BLACKBERRIES

Add 2c. per root for postage.

Price: Doz. 75c., 100 \$4.00.

Kittatiny. Large, black, sweet; very hardy. One of the best.

Eldorado. Berries large, jet black; sweet, melting, fine flavor.

Snyder. Medium size, very hardy and enormously productive.

Rathbun. Fruit borne on long stems; berry very large; sweet.

Add 15c. per 100 plants for postage.

STRAWBERRIES

Those marked (P) have pistillate or imperfect flowers, and must be planted near perfect-flowering kinds, in order that the flowers may be fertilized. The varieties not so marked are bi-sexual or perfect flowering, and can be planted alone.

Add 15c. per 100 plants for postage.

Prices: Layer plants, 100 75c.

Gandy. The late market beauty, always commanding fancy prices.

Glen Mary. A fine, large, late berry of excellent quality.

Haverland (P). Large, long, bright red; a great yielder.

Sample. The fruit is very large; of fine quality.

Senator Dunlap. Large, bright red. Quality best.

Steven's Late Champion. Light red berries; very firm and of high quality.

FRUIT TREES

All trees shipped by Express at purchaser's expense.

APPLES

Price for Apple Trees, first class, 5 to 7 feet: **Each 35c., doz. \$4.00, 100 \$25.00.**

SUMMER APPLES

Astrachan Red. Large; deep crimson; juicy, rich, acid. August.

Early Harvest. Medium size, straw color; tender, sub-acid. August.

Golden Sweet. Large; pale yellow; very sweet and good. August.

Yellow Transparent. Very early; color pale yellow.

AUTUMN VARIETIES

Fall Pippin. Large; yellow; tender, juicy and rich. October.

Hubbardston. Large, striped yellow and red.

Gravenstein. Large; striped; tender, juicy and high flavored.

Maiden Blush. Medium size; pale yellow, with red cheek.

WINTER

Baldwin. Large; bright red; juicy, crisp, sub-acid.

King (Tompkins County). Large, striped red and yellow.

McIntosh. Medium size; dark red; flesh white.

Northern Spy. Large; striped; sub-acid, delicious flavor.

Peck. Large; pale yellow; very tender and rich.

Rhode Island Greening. Greenish yellow; juicy and rich.

Russet, Roxbury. Greenish yellow, covered with russet.

CRAB APPLES

Price: **Each 50c.**

Hyslop. Large; dark red, with a blue bloom; flesh yellowish.

Transcendant. Juicy and crisp. Skin yellow, striped with red.

PEARS

Price: First-class trees, 5 to 7 feet: **Each 50c., doz. \$5.00, 100 \$30.00.**

SUMMER VARIETIES

Bartlett. Large size; very juicy and high flavored.

Clapp's Favorite. Rich and buttery; earlier than Bartlett.

AUTUMN AND WINTER

Anjou. A large, handsome Pear; buttery and melting.

Angouleme. Very large; yellow, with a dull red cheek.

Louise. Juicy, rich, and excellent flavor.

Lawrence. Above medium size; yellow; tender and melting.

Sheldon. Large size; roundish; greenish yellow.

Seckel. Small size; the richest and finest variety known.

Winter Nelis. Medium size; greenish yellow, spotted with russet.

CHERRIES

HEARTS AND BIGARREAU (Sweet)

Price, 5 to 7 feet: **Each 75c., doz. \$6.00.**

Tartarian. Large; black; flavor mild and pleasant.

Wood. Clear, light red; tender and delicious.

Napoleon. Pale yellow, with red cheek.



Peach

PLUMS

JAPANESE PLUMS

Price, first class, 5 to 6 feet: **Each 50c., doz. \$5.00, 100 \$30.00.**

Abundance. Color amber, turning to a rich, cherry red.

Chabot, or Yellow Japan. Orange yellow.

October Purple. Reddish purple color; flesh yellow.

Red June. Deep vermilion red; very showy.

Satsuma. Color dark purple; flesh firm; juicy, dark red.

PEACHES

A FEW OF THE BEST VARIETIES.

ALL FREESTONES.

Price: 4 to 6 feet, **each 25c., doz. \$2.50, 100 \$12.00**; 3 to 4 feet, **100 \$10.00.**

Belle. Large; skin white, with red cheek; flesh white.

Connecticut. Large; deep yellow, with red cheek; rich and sweet.

Crawford's Early. A large yellow Peach of good quality.

Crawford's Late. Large size; skin yellow, with dull red cheek.

Early Rivers. Large; white, with a delicate pink cheek.

Elberta. One of the very best yellow Peaches for market.

Mountain Rose. Large; red; flesh white, juicy, rich and excellent.

QUINCES

Price, 3 to 4 feet: **Each 50c., doz. \$5.00, 100 \$30.00.**

Apple or Orange. Large; bright, golden yellow. One of the best.

Bourgeat. Rich, golden color, with delicious Quince odor.

CHAS. C. HART SEED CO.

Growers Importers and Dealers in Garden
Flower and Farm Seeds

WETHERSFIELD

CONNECTICUT

