

Historic, Archive Document

Do not assume content reflects current scientific knowledge, policies, or practices.

NURSEYMEN and LANDSCAPE
GARDENERS



THE
BLUE HILLS
NURSERIES

HARLAN P. KELSEY, Sec.

Joint Nomenclature Committee

First-Class Matter

SALEM, MASS.



W. W. HUNT & CO. Proprietors
Hartford, Conn.

To Our Friends and Patrons



WE wish to thank our many friends for the liberal and ever-increasing patronage which has been bestowed upon us in the past thirty years. Our personal attention is devoted to every branch of the business, and our long experience enables us to judge as to the varieties of fruit and ornamental trees best adapted to the different localities. Our advice is free and we are always glad to give our customers the benefit of our experience.

We guarantee all trees and plants to be true to name and in good condition on leaving our hands; but we do not guarantee them to live under adverse conditions, nor do we make up loss due to climate effects, or neglect in after-culture on the part of the purchaser. Should errors occur in naming plants, we agree to replace them with the true varieties, as originally ordered, but are not to be held liable for more than the original invoice value in refunding money.

Our Nurseries

Are located on Blue Hills Avenue, near Albany Avenue, Hartford, Conn. About one and one-half miles from City Hall. Electric cars (Blue Hills and Bloomfield line) pass the Nurseries every fifteen minutes.

Visitors at the Nurseries are always welcome.

Our Office and Salesroom

Is No. 24 State Street, a few doors from Main Street. At our salesroom as well as at the Nurseries, we always have in stock fruit trees, small fruits, shrubs, vines, roses, and a good selection of everything in the nursery line.

Landscape Department

This department is under the personal direction of a first-class and up-to-date Landscape Architect. Through him we prepare and carry out plans for grading and planting new places and remodeling of old ones.

We do not have Agents. Buy direct from the grower and do away with the middleman's profit and agent's commission.

W. W. HUNT & COMPANY

Nurserymen and Landscape Gardeners

Hartford

:-:

Conn.



We make a specialty of planting ornamental stock, also lay out grounds, arrange the trees and shrubs.

To all who entrust us with the arrangement of their grounds, we guarantee the most artistic and pleasing effects. We supply only first-class nursery stock, and this, set out in a first-class manner, cannot fail to give entire satisfaction.

Upright Deciduous Trees

Varieties marked (L) are of largest size when fully grown. Varieties marked (M) are of medium height, and varieties marked (S) are of short habit adapted to the lawn, but not for street planting.

ASH (*Fraxinus*)

Golden Barked (*Aurea*) (M)—Particularly conspicuous in winter, 6 to 8 feet, \$1.00.

White (*Alba*) (M)—Our own noble native ash, 8 to 10 feet, \$1.00.

BEECH (*Fagus*)

American (*Ferruginea*) (L)—A well-known native sort, 6 to 8 feet, \$1.50.

Fern-Leaved (*Heterophylla*) (M)—An elegant tree of symmetrical habit, having beautiful cut, fern-like foliage. 5 feet, \$2.00.

Purple-Leaved (*Purpurea*) (L)—Dark purplish foliage, making a striking contrast with the green of other trees. \$1.00 to \$5.00.

Rivers (M)—Crimson foliage in the spring, changing to a dark purple. The finest of all purple-leaved trees. \$1.50 to \$5.00.

BIRCH (*Betula*)

Graceful and suitable for any lawn. Hardy and thrifty in all soils.

Common White (*Alba*) (M)—A well-known variety, having long, slender branches. 8 to 10 feet, \$1.00.

Purple-Leaved (*Foliis purpurea*) (M)—A variety having rich purple foliage. 6 to 8 feet, \$1.50; 8 to 10 feet, \$2.00.

Sweet, Black, or Cherry Birch.—A native tree; dark brown bark and bronze-reddish twigs, very aromatic. \$1.00 to \$2.00.

Yellow or Gray Birch.—Native of America. Bark yellowish-gray. \$1.00 to \$2.00.

Paper or Canoe Birch.—Native of America. Bark brilliant white, leaves large and handsome. \$1.00 to \$2.00.

CATALPA

Speciosa (M)—A tropical looking tree, and flowers in July, when few trees are in bloom. \$1.25 to \$2.00.

Bungei.—Foliage large and glossy. Top-grafted on tall stems it makes an effective tree for formal gardens. \$1.50 to \$5.00.

CHESTNUT (*Castanea*)

Americana (*American Chestnut*) (L)—Its nuts are sweeter than those of any other variety. 5 to 6 ft., \$1.00.

Japonica (*Japan Chestnut*) (S)—Bears when five years old. The nuts are larger than the American variety, but not so sweet. 3 to 4 feet, \$1.00.

Paragon (S)—It bears nuts as large across as a silver half dollar. Fruit sweet. 4 to 5 feet, \$1.50.

CRAB (*Pyrus*)

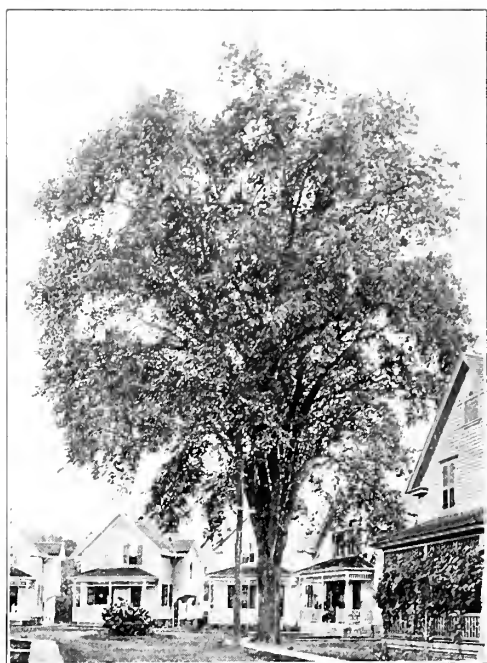
Bechtel's Double Flowering Crab (S)—When in bloom this tree presents the appearance of being covered with pink roses. Flowers fragrant and beautiful. 3 to 4 feet, \$1.00; 4 to 5 feet, \$1.50.

Floribunda (S)—Flowers crimson, produced in great profusion. A charming variety. 3 to 4 feet, \$1.00.

DOGWOOD (*Cornus*)

White Flowering (*Florida*) (S)—The flowers appear before the leaves and are about three inches in diameter; white and very showy. 3 to 4 feet, 75c; 4 to 5 feet, \$1.00.

Red Flowering (*Flora Rubra*) (S)—A valuable variety, producing beautiful carmine flowers. 3 to 4 feet, \$1.50.



American Elm

ELM (Ulmus)

American White (Americana) (L)—A native tree of large size, with graceful, drooping branches. \$1.00 to \$2.00.

English (Campestris)—A native of Europe, forming a tall, erect tree, with slender branches and small leaves. 6 to 8 feet, \$1.00.

HALESIA (Snowdrop. Silver Bell)

Tetraptera (S)—Flowers in mid-May. The resemblance to snowdrop flowers suggests its common name. 5 to 6 feet, \$1.00.

HORSE CHESTNUT (Aesculus)

European or White Flowering (Hippocastanum) (L)—A well-known tree, with dark green foliage and an abundance of showy flowers early in Spring. \$1.50 to \$3.00.

Red Flowering (Rubicunda)—A splendid tree, producing showy red flowers a little later in the season than the white. 6 to 8 feet, \$1.50.

JUDAS TREE OR RED BUD (Cercis)

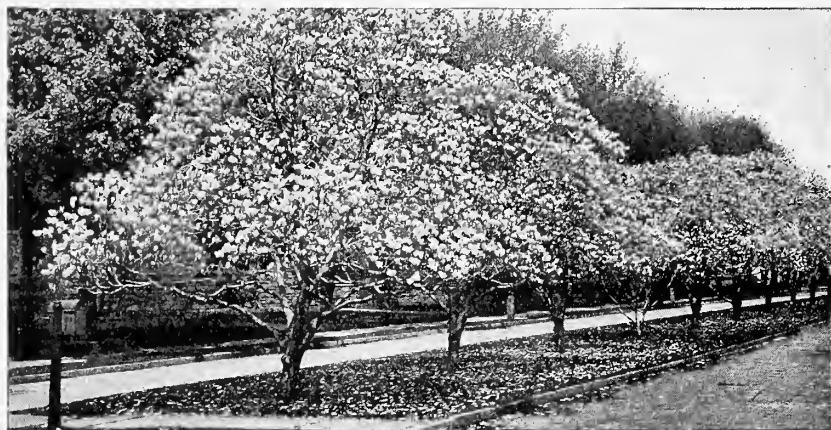
American (Canadensis) (M)—A very ornamental tree. Before the foliage appears, it is covered with delicate pink flowers, from which it derives its name, Red Bud. 5 to 6 feet, \$1.00.

KOELREUTERIA

Paniculata (S)—A large shrub or small tree, with foliage somewhat resembling that of the Sumach, and producing large panicles of showy flowers in July. Foliage very brilliant in autumn. 50c to \$1.00.



Flowering Dogwood



Magnolia Soulangeana

LARCH (Larix)

European (Europaea) (M)—A beautiful, rapid-growing tree, of pyramidal form, with drooping branches. \$1.00 to \$5.00.

LOCUST (Robinia)

Pseud-Acacia (Yellow Locust) (M)—A dense-growing tree, with numerous clusters of creamy white flowers. \$1.00 to \$3.00.

LINDEN OR LIME (Tilia)

American, or Basswood (Americana) (L)—A rapid-growing tree, with large leaves. Very desirable. 6 to 8 feet, \$1.00; 8 to 10 feet, \$1.50.

European (Europaea) (L)—A very fine pyramidal tree, smaller in all its parts than the preceding. \$1.00 to \$3.00.

White-Leaved European (Alba) (L)—Large handsome foliage, quite downy and whitish underneath; smooth above. \$1.00 to \$1.50.

MAGNOLIA

Chinese White (Conspicua)—A small tree, producing large white flowers—appearing before the leaves. \$2.50 to \$3.00.

Glauca (Sweet Bay)—Foliage glossy, deep green. It blossoms in June; flowers white and sweet-scented. \$1.50.

Lenne (Lennei)—Crimson-purple outside and pearl colored within. One of the finest of the purple Magnolias. \$2.00 to \$3.00.

Showy Flowered (Speciosa)—Bloom a week later and remain longer on the tree than any other variety. \$2.00 to \$3.00.

Stellata; Halliana—Dwarf habit; blooms earlier than other Magnolias, producing double white, fragrant flowers. \$2.50 to \$3.50.

Soulangeana—A variety of the Conspicua, with white and purple flowers, cup-shape, and three to five inches in diameter. \$2.50 to \$3.50.

MAPLE (Acer)

Ash-Leaved (Negundo) (S)—A rapid-growing tree, with leaves and branches of a light green. \$1.00 to \$3.50.

Norway (Platanoides) (L)—Very popular on account of its clean, broad foliage of rich, deep green. \$1.50 to \$5.00.

Scarlet, or Red (Rubrum) (L)—Remarkable in the Spring for its red flowers, and in the Fall for its crimson leaves. 75c to \$2.00.

Schwedler's Norway (Schwedler) (M)—Young shoots and leaves of a purplish crimson color. \$1.50 to \$5.00.

Silver-Leaved, or White (Dasyarpum) (L)—Rapid-growing variety of the largest size. 50c to \$5.00.

Sugar or Rock (Saccharinum) (L)—A well-known native tree. Desirable as an ornamental shade tree. \$1.00 to \$5.00.

Wier's Cut-Leaved (Wierri Laciniatum) (M)—Grows very rapidly. The leaves are deeply and delicately cut. \$1.00 to \$5.00.

JAPANESE MAPLES

Cut-Leaved Purple Japan (Dissectum Atropurpureum)—Form dwarf and weeping. Leaves are of a beautiful rose color, deeply cut, giving them an elegant fern-like appearance. \$2.50 to \$5.00.

Dark Purple-Leaved Japan Maple (Atropurpureum)—Forms a bushy shrub; foliage dark purple. The best of the Japan Maples. \$1.00 to \$10.00.

Japan (Polymorphum)—Foliage small and green in Spring and Summer, changing to crimson in Autumn. 3 to 4 feet, \$2.50.



Cut Leaf Japanese Maple

MOUNTAIN ASH (Pyrus Sorbus)

Aucuparia (European Mountain Ash) (M)—Fine tree, bearing clusters of scarlet berries from July to winter, making it very attractive. 8 to 10 feet, \$1.00.

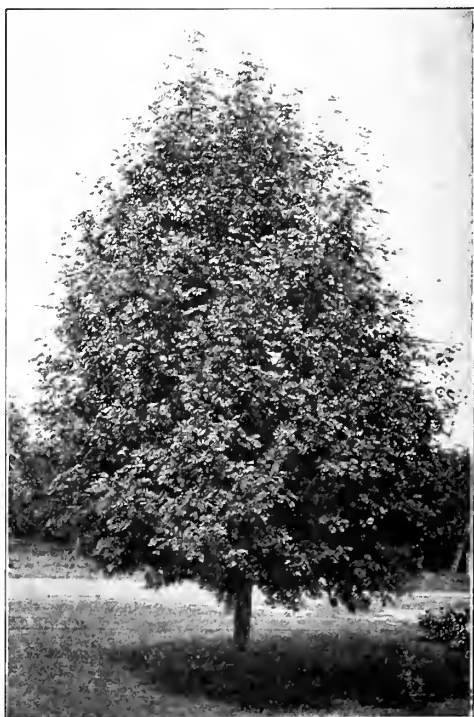
MAIDEN HAIR TREE, OR GINGKO (Salisburia)

Adiantifolia (M)—A beautiful tree from Japan, with remarkable fern-like foliage, distinct and fine. 6 to 8 feet, \$1.00.

OAK (Quercus)

American White Oak (Alba) (L)—One of the finest American trees; of large size, and spreading branches. 6 to 8 feet, \$1.25.

Burr, or Mossy Cup (Macrocarpa) (L)—One of the noblest varieties; foliage the largest and most beautiful. 6 feet, \$1.00.



American Mountain Ash

OAK—(Continued)

Rubra (Red Oak) (L)—A broad tree of rapid growth; large foliage, which turns to a bronzy red in the Fall. 6 feet, \$1.00.

Scarlet Oak (Coccinea) (L)—Especially remarkable in Autumn, when the foliage changes to a bright scarlet. 6 feet, \$1.00.

Pin Oak (L)—A tall, upright growing variety when young, but with age the branches droop. One of the best oaks for street planting. 6 feet, \$1.00; 8 feet, \$2.00.



Oriental Plane Tree

POPLAR (Populus)

Desirable where rapid growth is wanted.

Carolina (L)—Pyramidal in form. Leaves large, and pale to deep green in color. 50c to \$3.00.

Lombardy (Fastigiata) (L)—Well-known for its erect, rapid growth and commanding form. 50c to \$3.00.

SYCAMORE (Plantanus)

Oriental Plane (L)—A lofty, wide-spreading tree; heart-shaped leaves; free from worms or insects. 8 to 10 feet, \$1.50.

THORN (Crataegus)

Double White (Alba Pleno) (S)—Flowers small, clear white and desirable. 75c to \$1.00.

Paul's New Double (Coccinea Flore Pleno Paulii) (S)—Producing crimson double flowers. One of the best. 5 to 6 feet, \$1.00.

YELLOW WOOD (Virgilia lutea) (M)

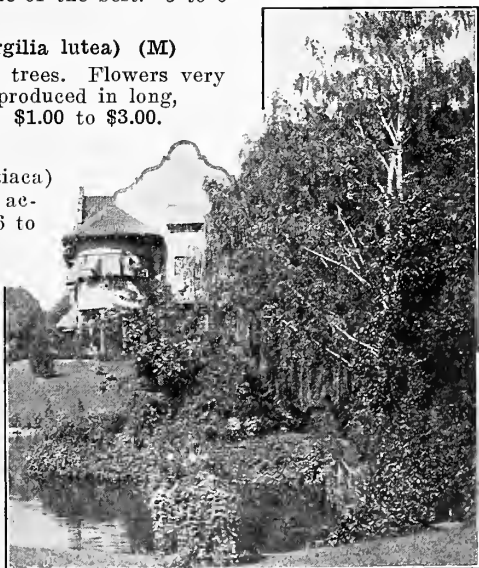
One of the finest native trees. Flowers very fragrant, pure white, and produced in long, drooping racemes in June. \$1.00 to \$3.00.

WILLOW (Salix)

Golden (Vitellina Aurantiaca) (M)—Very conspicuous on account of its yellow bark, 6 to 8 feet, \$1.00.

Laurel-Leaved (S) — Large, shiny leaves. 5 to 6 feet, 75c.

Rosemary-Leaved (Rosemarinifolia) (S)—Makes a striking pretty, small-sized tree. 6 feet, \$1.00.



**Weeping
or
Drooping
Deciduous
Trees**



**Mulberry
Tea's Weeping**

ASH (Fraxinus)

European Weeping (Excelsior Pendula)—One of the finest lawn or arbor trees; covers a great space and grows rapidly. \$2.00.

BEECH (Fagus)

Weeping (Pendula)—Quite ungainly in appearance, divested of its leaves, but when covered with rich, luxuriant foliage, of wonderful grace and beauty. \$2.50.

BIRCH (Betula)

Cut-Leaved Weeping (Lacinata Pendula)—One of the most desirable and beautiful trees for planting in door-yards or on lawns, having white or silvery bark, and branches of a graceful, drooping habit, with foliage delicately cut and very fine. \$1.00 to \$2.50.

CHERRY

Japan Weeping, Rose-Flowered (Japonica Rosea Pendula)—One of the finest pendulous trees for lawns or small grounds. Branches slender, drooping gracefully to the ground. \$2.00.

DOGWOOD (Cornus)

Weeping (Pendula)—A weeping form of the White Flowering. Possesses the abundant bloom, handsome foliage and fruit of the White Flowering. \$1.50 to \$2.50.

ELM (Ulmus)

Camperdown (Camperdown Pendula)—One of the most graceful of all weeping trees, having large, luxuriant foliage. \$2.00.

MOUNTAIN ASH (Pyrus Sorbus)

Weeping (Acuparia Pendula)—The branches of this variety are of a straggling, pendant character, turning and twisting in all directions and producing a very pleasing effect. \$2.00.

MULBERRY (Morus)

Tea's Weeping—The most graceful weeping tree. Forms perfect umbrella shaped head, with long, slender, willowy branches, drooping to the ground. It has beautiful foliage; is wonderfully vigorous and healthy. \$1.50 to \$2.50.

-WILLOW (Salix)

New American Weeping (Americana Pendula)—Having slender shoots and delicate leaves of great beauty. \$1.00 to \$2.00.

Kilmarnock Weeping (Caprea Pendula)—A very desirable small lawn tree, having a perfect umbrella-shaped head, and with the branches drooping gracefully to the ground. \$1.00 to \$2.00.

Weeping (Babylonica)—Our common, well-known weeping variety; forms a large, round headed, graceful tree. 50c to \$1.50.

Elegantissima (Thurlow's Willow)—Similar to, but more upright growing than Babylonica. 50c to \$1.50.

EVERGREENS



Douglas Fir

EVERGREEN TREES (Conifers)

In the following list we confine ourselves strictly to hardy species and varieties, such as are most useful for general planting.

The prices noted are for trees of the usual size. Extra-sized specimens charged for in proportion.

ARBOR VITAE (Thuja)

American (*Occidentalis*)—A well-known variety of great value; it forms an upright, conical tree of only medium size. 2 to 3 ft., 50c; 3 to 4 ft., 75c; 4 to 5 ft., \$1.00.

Aurea (George Peabody Arbor Vitae)—The finest of the golden Arbor Vitae; its golden hue is the brightest and most permanent. \$1.00 to \$5.00.

Globosa (Globe-Headed Arbor Vitae)—Form a dense round shrub. Very desirable. \$1.00 to \$2.50.

Compacta—Form hemispherical; light green foliage. A good dwarf, hardy sort. 50c to \$1.00.

Pyramidal (*Pyramidalis*)—Of upright, compact habit. 75c to \$1.50.

Siberian (*Siberica*)—Well known and deservedly popular; makes an excellent lawn tree. 50c to \$1.50.

Tom Thumb—Remarkable for its low, compact habit; valuable for planting in small places, where large trees are not admissible. 75c to \$1.50.

FIR (*Abies*)

Balsam (*Balsamea*)—A well-known and popular tree; assuming the upright or conical form; leaves dark green. 50c to \$2.00.

Concolor (Silver Fir of Colorado)—Tree of graceful habit; broad, handsome foliage, bluish above, silvery beneath. A grand tree, very distinct and exceedingly rare as yet. \$1.00 to \$10.00.

Fraseri—Similar to the Balsam Fir, with richer and darker foliage. Very desirable. 50c to \$2.00.

Veitchii (Veitch's Fir)—A hardy and beautiful Japanese Fir. \$1.00 to \$2.50.

JUNIPERS (*Juniperus*)

Chinensis Aurea (Golden Chinese Juniper)—One of the finest evergreens; spreading habit and beautiful gold foliage. \$1.50 to \$3.00.

JUNIPERS (*Juniperus*)—Continued

Chinensis (*Argenteo-Variiegata*)—A beautiful variegated variety, in which numerous sprays of white are prettily interspersed among the dark green foliage. \$1.50 to \$2.50.

Hibernica (*Irish Juniper*)—Dense pillar-like growth; glaucous green foliage, with tips of branchlets erect. 50c to \$1.00.

Japonica aurea—Distinct and attractive. Rare and very choice. Splendid golden color. \$1.50 to \$3.00.

Sabina (*Savin Juniper*)—Spreading, of procumbent growth. Branchlets slender. Leaves needle-shape, dark green. 50c to \$3.00.

Succica (*Swedish Juniper*)—Grows much like the Irish Juniper, but not so compact. 50c to \$1.00.

Virginiana (*Red or Virginia Cedar*)—A native form, very common in New England. Bright, green foliage. Thrives on dry soil. 50c to \$2.00.

Glauca (*Blue Virginia Cedar*)—One of the handsomest forms of evergreens. Foliage is silvery gray. Should be in every collection of evergreens. \$1.00 to \$3.00.

Prostrata (*Prostrate Juniper*)—Low, spreading, trailing close to the ground. Foliage bright green; bronzy in Winter. 75c to \$1.50.

Prostrata, Aurea (*Golden Prostrate Juniper*)—A most beautiful plant, of low, spreading habit; forms a dense mass of foliage of a reddish brown shade, brilliantly tinged with yellow. \$1.00 to \$2.00.

Pfitzeriana—Very distinct, being of striking graceful habit; the color bright silvery green; perfectly hardy. \$1.50 to \$3.00.

PINES (*Pinus*)

Austrian, or Black (*Austriaca*)—Remarkably robust, with long, stiff leaves and deep green foliage. 75c to \$2.00.

Cembra (*Swiss Stone Pine*)—A tree of conical form; silvery foliage. An elegant and valuable ornamental. 75c to \$1.50.

Scotch (*Sylvestris*)—A rapid-growing, hardy variety, with short, light green leaves. 75c to \$2.00.

Mugho (*Dwarf Mugho Pine*)—An upright, small, beautiful pine bush. 50c to \$3.00.

White, or Weymouth (*Strobus*)—Our common White Pine, and the handsomest of all the native species. 50c to \$2.00.

Umbrella Pine (*Seiadopitys Verticillata*)—A Japan evergreen upright trunk with horizontal branches, bearing whorls of shining green, very broad flat needles. These needles, by their remarkable size, and still more remarkable arrangement in umbrella-like tufts, give this tree the most unique and elegant appearance of any known conifer. \$2.00 to \$10.00.

RETINOSPORA (*Japan Cypress*)

Filifera—This has slender, string-like, drooping shoots, distinct from any other. It makes a unique specimen evergreen. \$1.00 to \$3.00.

Filifera Aurea—A golden form of the preceding. \$1.00 to \$3.00.

Obtusa—A charming lawn tree of vigorous growth, assuming a pyramidal outline, and graceful, waving branches. \$1.00 to \$2.50.

Obtusa Nana—One of the best and hardiest. Intensely dark, shell-like leaves. A most elegant evergreen shrub. \$1.50 to \$3.00.





Boxwood

RETINOSPORA (Japan Cypress)--Continued

Plumosa—More compact growing than *Filifera*, and makes a nice ornamental tree. 75c to \$5.00.

Plumosa — Aurea—One of the most valued of all, because of its golden color. It makes a compact growth. 75c to \$5.00.

Pisifera—Beautiful tree, with delicate branches and fine, feathery foliage. \$1.00 to \$3.00.

Pisifera Aurea—A fine pyramidal, bright golden form; popular and graceful. \$1.00 to \$3.00.

Squarrosa—This valued sort has steel-colored foliage. It grows to a large size, but by pruning can be kept down to almost any size, as, in fact, can all *Retinosporas*. 75c to \$5.00.

SPRUCE (Picea)

Alcockiana (Alcock Spruce)—A pyramidal habit of growth. Foliage deep green, with silvery tinge beneath. Rare. \$1.50 to \$5.00.

Colorado Blue, or Rocky Mountain (Picea Pungens)—A magnificent evergreen from the Rocky Mountains; foliage blue. \$2.00 to \$15.00.

Koster's Blue—A selected strain from the bluest tints of the Colorado Blue Spruce. Propagated by grafting to preserve the true type, making it more expensive than seedling trees. The most attractive conifers ever introduced. It holds its deep color throughout the year. Price of tree according to height and shape, from \$1.00 to \$25.00.

Douglass (Douglassii)—Conical form, branches spreading. A very desirable variety. \$1.00 to \$3.00.

Hemlock (Canadensis)—An elegant tree with fine yew-like foliage. Makes a fine ornamental hedge. 50c to \$2.50.

Norway (Excelsa)—Of very rapid growth and gracefully drooping habit when of some size. 50c to \$5.00.

White Spruce (Alba)—A New England species, with light-colored foliage, of pyramidal form; moderate grower. 75c to \$3.00.

TAXUS (Yew)

Canadensis (American Yew)—A native evergreen, and is one of the few evergreens that even prefers a shady situation. \$1.00 to \$2.00.

Cuspidata (Japan Yew)—A rare and beautiful, low-growing evergreen. Remains a deep green through the Winter. \$1.00 to \$3.00.

Broad-Leaved Evergreen Shrubs

ANDROMEDA

Floribunda—Admired for its racemes of white flowers in early May, as well as for its evergreen character. \$1.00.

Japonica—A beautiful species, having bright green leaves and drooping racemes of waxy white flowers. Blossoms early in May. One of the most beautiful of dwarf broad-leaved evergreens. \$1.00.

LEUCOTHOE

Catesbaei (*Andromeda Catesbaei*)—Foliage thick, heavy and pointed. A shining green in Summer, the branches arching gracefully. The showy spikes of white flowers open early. Can be used in shaded spots. \$1.00 each.

LAUREL (Our State Flower)

Mountain Laurel (*Kalmia Latifolia*)—In its blooming season this is almost as showy as the Rhododendrons. The white and pink flowers are borne in great showy clusters in May. \$1.00 to \$2.00.

AZALEA

Amoena—This little gem is practically evergreen. In late Spring the plants are literally smothered with masses of rosy-crimson flowers. Bushy plants, 12 to 15 inches high. \$1.25 each, \$12.00 per doz.

Hinodegiri—A magnificent variety from Japan. A marked improvement upon *Azalea amoena*, which it resembles somewhat in habit. The flowers are larger and are more brilliant, the color being a striking shade of bright carmine pink. \$1.00 to \$2.00.

BOXWOOD

The different species vary in size from low bushes to medium-sized trees. All are of dense, compact growth, and have dark green, glossy leaves.

Boxwood for edging, 4 to 6 inches, \$8.00 per 100.

Bushes, 18 to 24 inches, 50c each.

Pyramid shaped, \$1.00 to \$5.00.

Standard or Tree-shaped, \$2.50 to \$12.50 each.

HOLLY (Ilex.)

Crenata—Beautiful dense growing evergreen with small, deep, glossy green foliage. A plant of great ornamental merit. 50c to \$1.50.

MAHONIA

Aquifolia (*Holly-Leaved Mahonia*)—Of medium size; large, purplish green, prickly leaves, and bright yellow flowers. 50c to \$1.00 each.

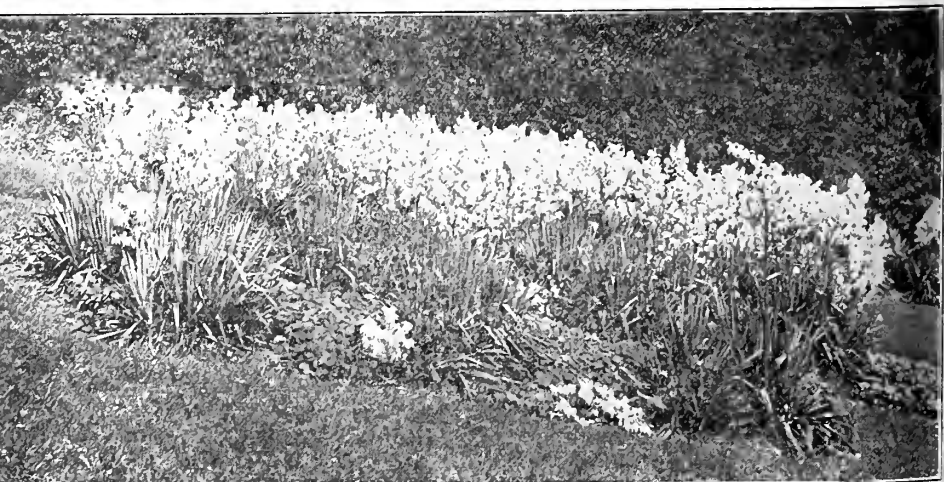
RHODODENDRON

Hybrid Rhododendrons are superb evergreen shrubs, producing dense clusters of magnificent flowers, being white, red, pink and purple. We can supply all colors, and offer a large list of named varieties. 1½ to 2 ft., \$1.00 each, \$10.00 doz.; 2 to 2½ ft., \$2.00 each, \$20.00 doz.; 2½ to 3 ft., \$3.50 each.

Rhododendron Maximum (*Great Laurel*)—This is the hardy native Rhododendron which blooms in Midsummer, with their white, bluish and delicate pink flowers. \$1.50 to \$5.00 each, \$15.00 to \$40.00 doz. By the 100 or carload, prices on application.

YUCCA (Adam's Needle)

Filamentosa—Broad, sword-like foliage and tall, branched spikes of large, fragrant, drooping, creamy-white flowers. 25c and 50c.



YUCCA—Spanish Bayonet

Deciduous Hedge Plants



California Privet

California Privet (*Ligustrum Ovalifolium*)—This is the most rapid-growing of all plants used for hedges. 2 to 3 feet, \$8.00 per 100; 3 to 4 feet, \$10.00 per 100.

Ibota—One of the most graceful of all Privets; branches spreading; excellent hedge plant. 2 to 3 feet, \$15.00 per 100.

The following are also very desirable for ornamental hedging, description of which will be found under the proper headings in this catalogue.

Altheas,
Berberry Thunbergii,
Purple Berberry,

Rosa Rugosa,
Spiraeas,
Tartarian Honeysuckle.

EVERGREEN HEDGE PLANTS

All described in their appropriate places in this catalogue:

American Arbor Vitae,

Hemlock,

Norway Spruce (especially adapted for wind-brakes),

Siberian Arbor Vitae,

Tom Thumb Arbor Vitae, for borders.

Flowering Shrubs

Prices quoted are for stock of the ordinary commercial sizes, varying according to the natural vigor or the rarity of the variety offered. Large specimen shrubs can often be supplied at proportionally higher rates. Special rates will always be given on large quantities.

We make a specialty of planting ornamental stock, also lay out grounds, arrange the trees and shrubs, plant them and guarantee them to give perfect satisfaction in every way.

ALTHAEA, OR ROSE OF SHARON (*Hibiscus*)

50 cents each, \$4.00 per dozen.

These are fine, hardy, free-growing, and flowering shrubs, blooming in August and September, when few plants are in blossom.

Double Purple.

Double Red.

Double White—Very large and double, with reddish-purple center.

Variegated Leaved; Double Purple Flowered—A conspicuous variety with leaves distinctly marked with light yellow; showy and desirable.

ALMOND (*Prunus Sinensis*)

Double Rose Flowering (*Japonica fl. pl.*)—A beautiful shrub, producing in May, before the leaves appear, small, double, rose-like flowers, closely set on the branches. 75c each; \$6.00 per doz.

Double White Flowering (*Japonica fl. Alba Pleno*)—Producing beautiful white flowers in May. 75c each; \$6.00 per doz.

ARALIA

Pentaphylla—A pretty shrub, of medium size and rapid growth, with fine lobed palmate leaves. 35c each.

AZALEAS

Mollis (Chinese Azalea)—A most desirable and attractive dwarf shrub, bearing an abundance of large, bright red and yellow blossoms, and varying shades of color in May. In masses they are most gorgeous. Strong plants, with buds, in variety. \$1.25 each; \$12.00 per doz.

Pontica (Hardy Ghent)—Fragrant flowers, ranging from white to deep crimson, appear in great profusion in early Spring, literally covering twig and branch. Their rich coloring cannot be surpassed. \$1.25 each; \$12.00 per doz.

Yodogama—This is one of the most valuable introductions of recent years. Flowers double light violet, completely covering the plant and remaining a long season. 12 to 18 inches, \$1.50 each; \$15.00 per doz.



Azalea

BARBERRY (Berberis)

American (Canadensis)—Yellow flowers, succeeded by red berries. 35c each.

Purple; Leaved (Purpurea)—A very handsome shrub, growing from three to five feet high, with violet-purple leaves and fruit. 35c.

Sieboldii (Siebold's Barberry)—A Japanese form with very showy, solitary fruit of comparatively large size. 50c each.

Thunberg's (Berberis Thunbergi)—A low, dense, neat little shrub, with white flowers in May. These are followed by a heavy crop of rich red berries that cling through the winter. In autumn when both leaves and berries are bright red it is very showy. Valuable for low ornamental hedges, masses, borders, etc. 12 to 18 inches, 20c each, \$2.00 doz., \$15.00 per 100; 18 to 24 inches, 25c each, \$2.50 doz., \$20.00 per 100.

BUDDLEIA (Butterfly Bush)

The greatly improved varieties offered here are genuine acquisitions among sub-shrubs. Although they really belong in the shrub grouping, they are of equal value in the perennial border where they enhance the display from early July until frost by their profusion of fragrant violet-colored racemes, and where they prove a great attraction to bees and butterflies—hence the popular name. While they attain a growth of five or six feet and are quite hardy, the wood dies back near the ground, the new growth appearing from the base. During Winter the plants should be protected with soil or coarse manure to a height of 18 inches from the ground.

Variabilis Magnifica—Violet-purple flowers produced in endless profusion throughout the season. The growths terminate in long racemes and may be cut freely, inducing additional growths to continue the display. As a cut flower, it is of great decorative value.

Variabilis Veitchii—Clusters of fragrant violet-mauve flowers. An excellent companion to the above. Strong plants, 25c each, \$2.50 per doz. Extra large size, 50c each, \$5.00 per doz.



Buddleia—(Butterfly Bush or Summer Lilac)

BENZOIN

Odoriferum (Spicewood)—The whole plant is fragrant. Yellow flowers in Spring, and scarlet fruit in Summer. 35c.

CALYCANTHUS FLORIDUS

Sweet Shrub—An old garden favorite, valued for the fragrance of its chocolate-colored flowers. 35c.

CLETHRA ALNIFOLIA

(**Sweet Pepper Bush**)—A pretty little shrub that blooms freely in Summer; very fragrant white flowers. 35c each.

Cassandra Calyculata (Leather-Leaf)—A low, branching shrub, with nearly evergreen leaves, bearing in early spring leafy racemes of small white flowers. It grows about a foot high.

CORNUS (Cornel or Dogwood)

Valuable shrubs when planted singly or in groups or masses, some distinguished by their elegantly variegated foliage, others by their bright colored bark.

Alba (Red-branched Dogwood)—Very conspicuous and ornamental in winter, when the bark is blood red. 35c each; 3 to 4 ft., 50c each.

Elegantissima Variegata—One of the finest variegated shrubs; of rapid growth; the leaves are broadly margined with white, while some are entirely white. Bark bright red in winter. 50c each.

Spaethii—While the variegation in elegantissima is white, in this variety it is pale yellow. One of the finest variegated shrubs. 50c each.

CURRENT (*Ribes*)

Yellow; Flowering (*Aureum*)—Yellow flowers in early Spring. Blossoms have a delicate spicy fragrance. 35c.

DAPHNE

Mezereon—Small; branches erect, with clusters of pink flowers in March. The earliest flowering shrub we have. 50c each.



Calycanthus or Sweet-scented Shrub

DEUTZIA

Double-Flowering (Crenata flore pleno)—Flowers very double, white, tinged with rose. 35c each.

Lemoinei—Flowers pure white, borne on stout branches of upright growth. Dwarf and free flowering. 35c each.

Pride of Rochester—Large, double white flowers, tinged with rose; habit vigorous, and a profuse bloomer. 35c each.

Gracilis (Slender Branch)—A dwarf variety, covered with a profusion of white flowers in June. 35c each.

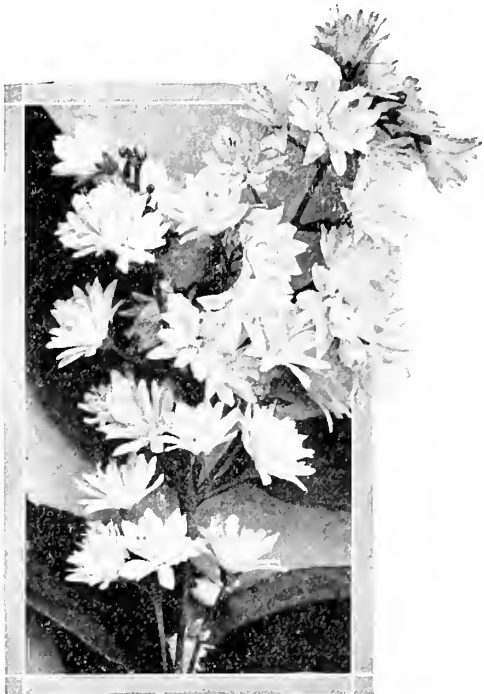
Gracilis Rosea—A lovely, rose-colored form of the preceding.

ELDER (Sambucus)

Golden (Aurea)—Leaves a golden yellow. The blossom, which resembles the common Elder bloom, appears in July. 35c.

EXORCHORDA GRANDIFLORA, OR PEARL BUSH

A fine shrub, producing large white flowers in May. 50c.



Deutzia

EUONYMUS (Strawberry or Spindle Tree)

The Euonymus are all highly ornamental in autumn, when covered with showy fruit.

Alatus (Cork-barked Euonymus)—Of dwarf, compact habit; wood very corky; leaves small; fruit red. Very beautiful in autumn when foliage turns bright red. 50c each.

Europaeus—A large shrub or tree, bearing rose-colored fruit in autumn; fine. \$1.00 each.

FORSYTHIA (Golden Bell)

35c each.

The Forsythia is indispensable as an early-blooming shrub. The flowers appear in immense quantities before the leaves, completely hiding the branches.

Fortunei—Upright in habit, with broad, deep green foliage; flowers deep yellow and in great profusion.

Intermedia—This is an erect-growing shrub, but when full grown the branches become arching and it resembles **Suspensa**.

Suspensa—In this variety we have the weeping form with long, pendulous branches; golden-yellow flowers early in April.

Viridissima—Forms a more bush-like shrub than other varieties and the flowers somewhat later than the other sorts.

FRINGE

Purple Fringe, or Smoke Tree (*Rhus Cotinus*)—A small tree or shrub, very much admired on account of its peculiar fringe or hair-like flowers, covering the whole surface of the bush in midsummer. 75c to \$1.50.

White (*Chionanthus Virginica*)—One of the finest shrubs, with delicate fringe-like greenish-white flowers in May and June. \$1.00 to \$2.00.

HONEYSUCKLE, UPRIGHT (Lonicera)

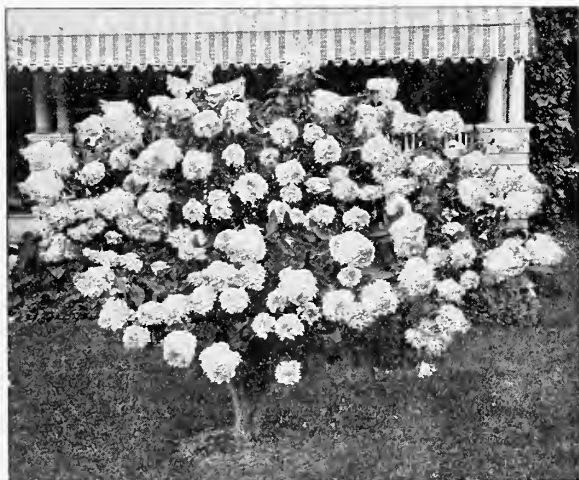
35c each.

Morrowi—One of the handsomest of the bush Honeysuckles. Grows 6 feet high. Flowers followed by red fruit in August.

Tartarica Grandiflora—A beautiful shrub, producing large red and white flowers.

Red Tartarian (*Tartarica Rubra*)—Beautiful flowering shrub, blossoming early in Spring; bright pink flowers.

White Tartarian (*Tartarica Alba*)—Similar to the Red Tartarian in growth; producing white flowers very abundantly.



Hydrangea Paniculata Grandiflora

HYDRANGEA

Arborescens Alba Grandiflora (New)—The blooms are of the largest size, of pure white. One of its most valuable characteristics is its coming into bloom just after the passing of the early Spring shrubs. 75c each.

Paniculata Grandiflora—The showiest of all Autumn-blooming shrubs, bearing immense heads of creamy white flowers, turning to pleasing shades of pink. 35c and 50c.

Tree Form—Trained plants of the last, with a clean stem 3 to 4 feet in height, a small lawn tree. 75c and \$1.00.

HYPERICUM (St. John's-wort)

Hypericum (Aureum)—A dense, globular shrub with oval, glossy foliage and myriads of bright golden-yellow flowers. 35c.

ILEX (Holly)

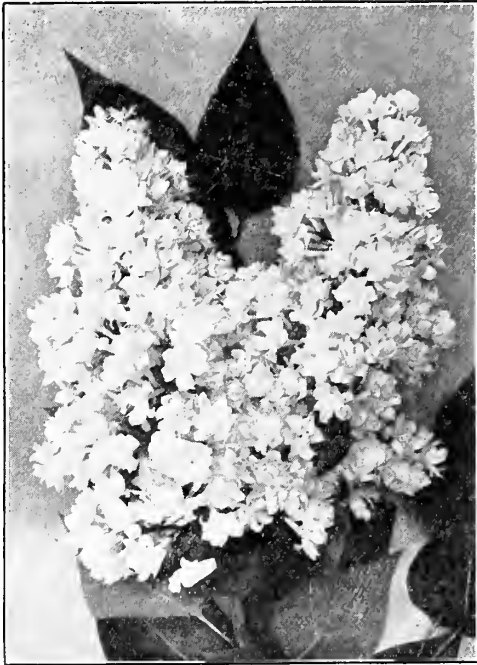
Verticillata (Black Alder, or Winterbury)—Of close, upright growth, with oval foliage; thickly studded in Autumn and throughout the Winter with masses of most brilliant scarlet berries. 35c.

KERRIA (Chorchorus. Globe Flower)

Japonica—A beautiful shrub of graceful habit, with slender green branches and thickly studded with single, golden-yellow flowers in early Summer. 35c each.

Flora Pleno—Double flowering Kerria. A medium sized shrub, with double yellow flowers. July to October. 35c.

Follis Variegatis (Variegated)—Of dwarf habit, with foliage beautifully edged and striped with silver. 35c.



Madame Abel Chatenay

LESPEDAZA

Desmodium penduliflorum—A very desirable late-blooming plant; produces rosy purple flowers in September, drooping in numerous long racemes, which at the top of the plant are paniced. 50c.

Bicolor—A shrub from Japan, with slender branches; foliage resembles clover leaf; small purple flowers in July. 35c.

LILAC (Syringa)

Charles X.—Deep purplish lilac flowers in large trusses. \$1.00.

Frau Bertha Dammann—This produces the largest clusters of lilacs of the common species, also the purest white. \$1.00.

Japonica (Japan Tree Lilac)—One of the remarkable tree lilacs of Japan; flowers creamy white. Should be on every lawn. 5 to 6 feet, \$1.00; 6 to 8 feet, \$2.00.

Ludwig Spaeth—Deep purplish red flowers in dense, large panicles. Best of its color. \$1.00.

Madame Abel Chatenay—Large panicle; double white, very fine. \$1.00.

Marie Legeray—Large panicles of white flowers. \$1.00.

Madame Lemoine—Superb double white. \$1.00.

President Grevy—Elegant, large, dense trusses of double, deep blue flowers. One of the finest new double sorts. \$1.00.

Persica (Persiau Lilac)—Small foliage, purple flowers. 50c.

Alba (White Persian Lilac)—Delicate white fragrant flowers. 75c.

Vulgaris (Common Lilac)—Bluish purple flowers. 50c to \$1.00.

Alba (Common White Lilac)—Cream colored flowers. 50c to \$1.00.

PRIVET (Ligustrum)

Ibota—A Japan privet of the most beautiful character. Dark, oval foliage, white, fragrant flowers. 25c each.

Ovalifolium (California Privet)—Oval-shaped leaves which remain on well into the Winter. One of the most universal of hedge plants.

RHODOTYPUS (White Kerria)

Kerroides—A slender-branched bush, deeply veined leaves, and pure white flowers. 35c each.

SNOWBALL (Viburnum)

Common (Sterillis)—The well-known sort, and a general favorite on account of its large clusters of white flowers in June. 75c.

High, or Bush Cranberry (Opulus)—Red berries resembling cranberries. 50c.

Dentatum (Arrow-Wood)—Glossy, handsome leaves, white flowers, and fine, steel-blue berries in fall. 50c.

Japan (Plicatum)—Surpassing the Common Snowball; foliage handsomer, flowers whiter and more delicate. 75c.

Tomentosum (Single Japan Snowball)—Foliage resembles the Japan Snowball; flowers white, in flat racemes. 75c.

Opulus Nana—A dwarf variety attaining a height of 18 inches when full grown. Valuable as an edging plant or for a low hedge. Does not blossom. 8 to 12 in., 35c., \$3.00 per doz.

SPIRAEA

Anthony Waterer—A variety with broad heads of deep pink flowers. Grows 2 to 3 feet high. Blooms almost continuously from June throughout the season. 35c each.

Arguta—Of dwarf habit, with clear white flowers in early Spring. Foliage very attractive, and habit graceful. 35c.

Callosa (Fortunei)—Very fine and distinct; having bright, rose-colored flowers, in flat clusters, blossoming throughout the Summer. 35c.

Callosa Alba—A dwarf variety of the above, having pure white flowers in the greatest profusion. 35c.

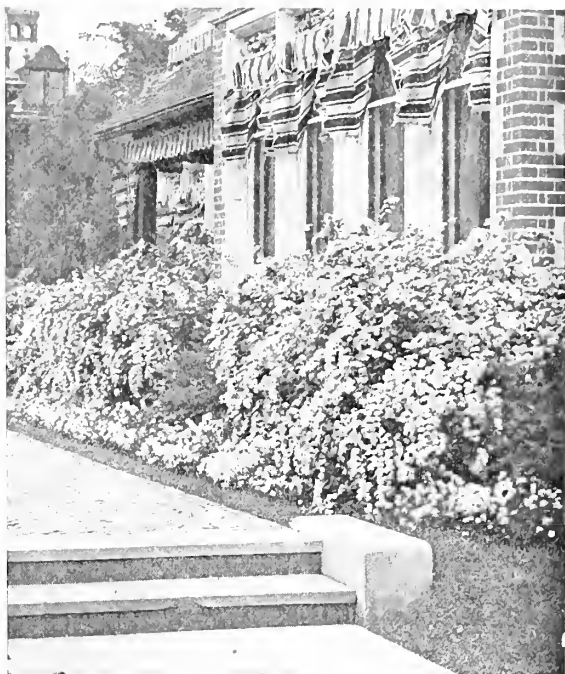
Bridal Wreath (Prunifolia)—Double, daisy-like flowers of pure white. 35c.

Opulifolia Aurea (Golden Spirea)—Foliage golden yellow; very distinct and beautiful; in June the branches are covered with a double white flower. 50c.

Opulifolia—Strong-growing upright form; foliage large and light green; large white flowers in June. 35c.



Mock Orange



Spiraea, Van Houttei

SPIRAEA—Continued

Thunberg's (Thunbergii)—Extremely graceful in its habits; dwarfish; drooping branches; narrow, green foliage; white flowers, early in Spring. 35c each.

Van Houttei—The grandest of all the Spiraeas; it is a beautiful ornament for the lawn at any season, but when in flower it is a complete fountain of white bloom. 35c and 50c.

STEPHANANDRA

Flexuosa—A handsome, graceful shrub with spreading, drooping branches and elegant foliage. Bears pure white flowers in June. In Autumn the foliage takes on handsome purplish coloring. 50c.

SYMPHORICARPOS

Symphoricarpos Racemosus (Snowberry)—Small foliage and pink flowers, followed by showy clusters of pure white berries. 35c.

Vulgaris (Coral-berry, or Indian Currant)—The small, drooping, pink flowers are followed by dense clusters of showy, deep red berries, that remain on the plant until Spring. 35c.

Vulgaris variegata—A variegated form of the above of great value. 35c.

SYRINGA (Philadelphus)

Coronarius (Mock Orange)—Shrub with upright branches; the pure white, fragrant flowers are produced in clusters in June. 35c.

Aurea (Golden Syringa)—A graceful variety, with bright yellow foliage, which retains its color throughout the season; very effective in shrubberies. 35c and 50c.

Grandiflorus (Large-flowering Syringa)—A vigorous, upright variety, with large, showy flowers in June. 35c.

SUMAC (Rhus)

Copallina (Shining Sumach)—Foliage green in Summer, changing to crimson in the Autumn. Yellow flowers in August. 35c.

Fern-Leaved (Laciniata)—Large, beautiful, fern-like leaves, changing to a brilliant scarlet in Autumn. 35c.

Typhina (Staghorn Sumach)—A large shrub or tree, brilliant foliage and scarlet fruit in Autumn. 50c.

WEIGELA (Diervilla)

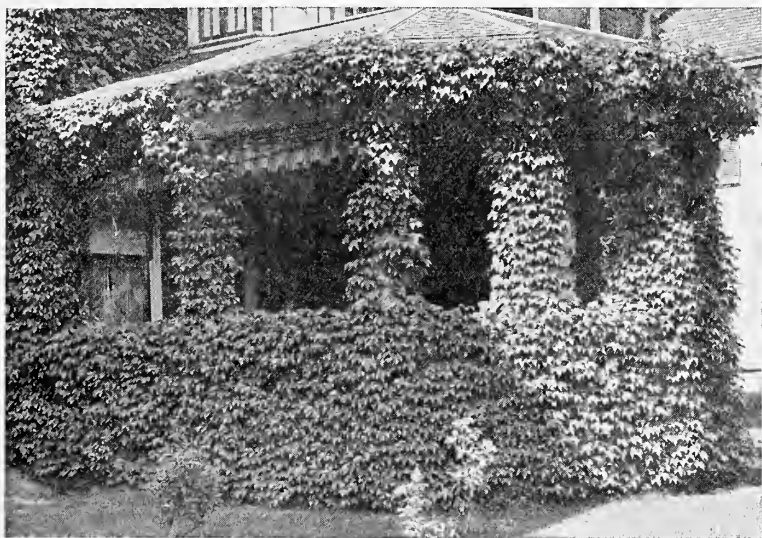
Eva Rathke—A charming new Weigela, flowers brilliant crimson; a beautiful, distinct, clear shade. 35c.

Rose-Colored (Rosea)—A beautiful shrub, bearing in May a profusion of rose-colored flowers. 35c.

Variegated-Leaved—Variegated foliage, yellowish white, and lasts the entire season. Rose-colored flowers. 35c.

White (Candida)—A valuable variety; flowers pure white, and produced in great profusion during June. 35c.

Climbing and Trailing Vines



Boston Ivy

ACTINIDIA

Polygama—A Japanese climber, with light brown bark and clean foliage; grows very rapidly, and is an excellent vine for trellis or arbor; flowers small, white, fragrant. 25c and 50c.

AKEBIA

Quinata—A charming Japanese climber with shining foliage and chocolate-colored flowers in June; very desirable. 35c.

AMPELOPSIS

Virginia Creeper or American Ivy (Quinquefolia)—Of vigorous growth; fine green, changing to crimson in Autumn. 25c.

Veitchii, Boston or Japan Ivy—One of the finest climbers for walls, covering it evenly with overlapping leaves, which form a perfect mass of foliage; green in Summer, changing to the brightest crimson in Autumn. 35c each; \$3.00 per doz.

BIGNONIA, OR TRUMPET FLOWER

Radicans—A vigorous and hardy climber, with clusters of scarlet, trumpet-shaped flowers in August. 35c.

Grandiflora (New)—Leaves thick and shining, and immense blossoms of gorgeous crimson and yellow. 50c.

CELASTRUS

Scandens (Bitter Sweet)—Light green foliage and yellow flowers during June, which are followed in the Autumn with bright orange fruit. 25c each.

DUTCHMAN'S PIPE (Aristolochia Sipho)

A rapid climber with large, dark green foliage, and curious, pipe-shaped, yellowish-brown flowers. 75c.

CLEMATIS

Coccinea—Bears thick, bell-shaped flowers, bright red-coral; blooms very profusely during June. 35c.

Crispa—Flowers blue, with center of petals an opaque white; fragrant. 35c.

Henryii—One of the best perpetual hybrids. The flowers are white, large and very showy. July to October. 75c.

Jackmanni—Flowers large and of intense violet purple, remarkable for its velvety richness. July to October. 75c.

Mad. Edouard Andre—Dark crimson. Very handsome. 75c.

Paniculata—The flowers are of medium size, pure white, and of a most delicious fragrance; September. 35c and 50c.

Ramona—A perpetual bloomer, giving an abundance of flowers through the season. Deep sky-blue. 75c.



Clematis Henryii

EUONYMUS

Radicans (Creeping Euonymus)—A low, trailing shrub; very desirable for covering rocky banks or rough walls. 25c to \$1.00.

Variegata (Variegated Creeping Euonymus)—Similar to the above. Variegated with white, yellow and pink shades. 25c.

HONEYSUCKLE (Lonicera)

Hall's New Japan (Halleana)—An almost evergreen variety, with pure white flowers, changing to yellow; very fragrant. 35c and 50c.

Golden-Leaved (Aurea Reticulata)—Moderately strong grower, with leaves veined and spotted with bright golden yellow. 35c.

Monthly Fragrant (Belgium)—Flowers red and pale yellow; sweet scented; blooms through the Summer. 35c.

Scarlet Trumpet Monthly (Sempervirens)—Flowers deep red, trumpet-shaped; flowers all Summer. 35c.

Hydrangea Climbing (Hydrangea Scandens)—Rare and very beautiful vine from Japan clinging to the trunks of trees and to stone like English Ivy. While slow in growth when young, it eventually grows to be a large and beautiful vine. It is strictly hardy and will become popular as soon as better known. \$1.00 each.

HOP VINE (Humulus Lupulus)

Common—A useful climber for covering unsightly places. 25c.

Golden—A golden-leaved variety of the common Hop Vine. 25c.

IVY (Hedera)

Helix (English Ivy)—Does well when planted on the eastern or northern side of buildings where it is free from sun in the Winter. 25c and 50c.

KUDZU VINE

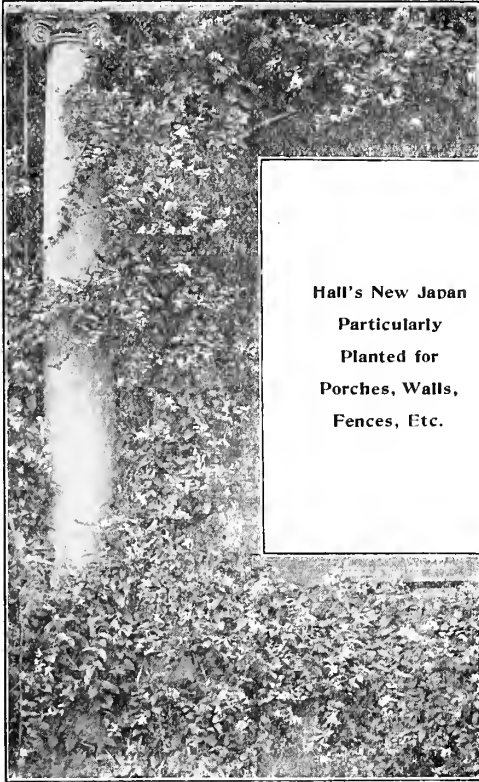
Large foliage and dense shade, growing 50 feet in one season. Flowers plentiful in August; rosy-purple, pea-shaped—in small racemes. 25c.

MATRIMONY VINE (Lycium)

Chinese—A most vigorous, hardy climber. It continues flowering and new berries are forming from late Spring until frost. 35c.

PERIPLOCA (Silk Vine)

Graeca (Grecian Silk Vine)—A fast-growing, twining vine, with glossy dark green leaves and small purple flowers. 35c.



Hall's New Japan
Particularly
Planted for
Porches, Walls,
Fences, Etc.

POLYGONUM

Baldschuanicum—Hardy, woody, twining plant. Its flowers are white, and borne in large, feathery sprays throughout the Summer and Autumn. Somewhat rare. 75c; extra strong, \$1.00.

WISTARIA

Chinese Purple (Sinensis)—One of the most magnificent climbers, producing racemes of pale purple flowers early in Spring. 75c.

Chinese White (Sinensis Alba)—Differing from the above only in color, being a pure white. 75c.



Chinese
Purple
Wistaria

ROSES



Hardy Remontant or Hybrid Perpetual Roses

Our select list of Roses is the result of long-continued study and trial. It comprises the very best varieties. These are hardy, strong plants, grown outdoors. They are, therefore, not to be compared with the cheap imported Roses, or those which are so freely advertised and sent out by mail, which, being grown in the greenhouse, seldom stand the shock of removal or give the purchaser much pleasure.

With the Hybrid Perpetuals we also class some of the hardier and handsomer Hybrid Noisettes and other Roses found valuable for out-door culture.

Price: Large field grown plants, 2 years old, 35 cents each; \$3.50 per doz.; \$25.00 per 100; except where noted.

Anne de Diesbach—Carmine, a beautiful shade; very large. A superior garden sort; fragrant.

Baron de Bonstetten—Rich velvety maroon; large, full.

Baroness Rothschild—Light pink, cupped form, very symmetrical; without fragrance. One of the finest exhibition varieties.

Coquette des Alpes (Hybrid Noisette)—The blooms are of medium size, white slightly tinted with rose on the edges of the petals.

Captain Hayward—Bright crimson carmine, an entirely distinct shade of color. Flowers of perfect form, and very sweet.

Clio—The flower is perfection in form, with fine broad petals; color delicate satiny blush, with a light shading of rosy-pink.

Fisher Holmes—Deep, glowing crimson; large, moderately full, and of fine imbricated form. A superb rose.

Frau Karl Druschki—This Rose is unquestionably the ideal hardy white rose. Its flowers, which are very large, are perfect in form and snow-white in color, with large shell-shaped petals, forming a beautiful flower.



Frau Karl Druschki



George Dickson

General Jacqueminot—Brilliant crimson; not full, but large and extremely effective; fragrant.

George Dickson (New)—Velvety black, shaded crimson, veined crimson maroon; fragrant and of splendid substance and form. A grand addition to this class. 75c each, \$7.50 per doz.

Gloire Lyonnaise—White, tinted yellow; large, moderately full, resembles a Tea Rose in form and fragrance.

Harrison's Yellow (Austrian)—Bright yellow.

Hugh Dickson—Intense brilliant crimson shaded scarlet, with large, smooth petals, slightly cupped. Vigorous growth.

J. B. Clark—This splendid rose is robust in growth, with clean, heavy foliage. Flowers are large and superbly constructed; deep scarlet overlaid with crimson.

John Hopper—Bright rose with carmine center; large and full. A profuse bloomer and standard sort.

Louis Van Houtte—Crimson-maroon; medium size; full; very free blooming, and one of the best crimson roses.

Mabel Morrison—White, sometimes tinged with blush; in the Autumn the edges of the petals are often pink.

Madame Gabriel Luizet—Pink; very large, cupped shape; somewhat fragrant.

Madame Plantier (Hybrid China)—Pure white, medium size. One of the best white roses for hedges and for massing in groups.

Magna Charta (Hybrid China)—Bright pink, suffused with carmine; very large, full and fragrant.

Margaret Dickson—Of magnificent form; white, with pale flesh center; petals very large, shell-shaped; fragrant.

Marshall P. Wilder—Carmine, resembles Alfred Colomb, but in some respects superior to that fine Rose; large, full, globular, fragrant.

Mrs. John Laing—Soft pink; large and of fine form, produced on strong stems; exceedingly fragrant; and flowers continuously.

Mrs. R. G. Sharman-Crawford—Flowers large; deep bright rose, white at the base of petals and pale flesh on the reverse.

Paul Neyron—Deep rose color; by far the largest variety in cultivation. A free bloomer; very desirable as a garden rose.

Persian Yellow (Austrian)—Deep golden yellow; double and fine.

Prince Camille de Rohan—Deep velvety crimson; large, moderately full. A splendid Rose.



Paul Neyron

Soleil D'Or (Golden Sun)—Color superb, varying from gold and orange-yellow to reddish-gold, shaded with nasturtium red.

Ulrich Brunner—Brilliant cherry red, a very effective color; flowers of fine form and finish. One of the best.

Hybrid Tea Roses

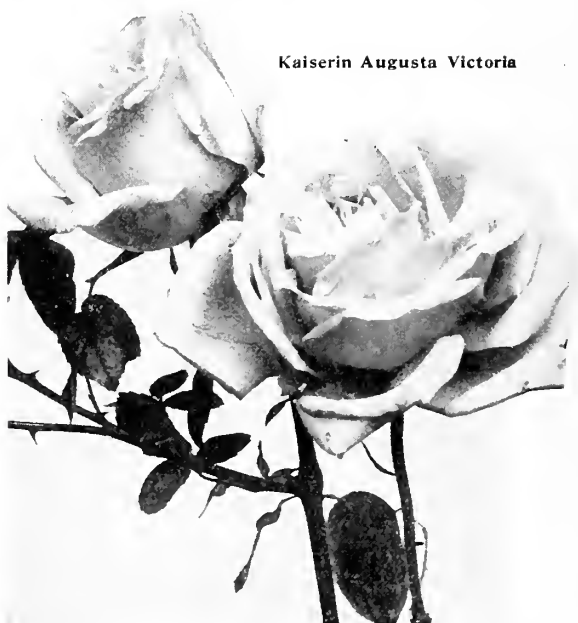
Not quite as hardy as Hybrid Perpetuals.

We especially recommend this collection of Roses to those who wish a supply of extra choice flowers for cutting throughout the Summer and Fall months. Price: 35c each; \$3.50 per doz.; \$25.00 per 100; except where noted.

Augustine Guinoseau—Flowers white, slightly tinged with flesh. Sometimes called White La France.

Belle Siebrecht—The flowers are large, full and double; the buds are long and pointed. The color is a brilliant, rich, deep pink.

Captain Christy—Flesh color, deepening toward the center; medium size, full. Ill-shaped flowers are not uncommon, but when the flowers are perfect, there are none more admirable.



Kaiserin Augusta Victoria



Killarney

Duchess of Albany—A rich, deep, even pink tint; free blooming and fragrant.

Etoile de France—A new French variety; flowers full and double. In color it is a rich, velvety crimson, with vivid cerise-red center.

Gruss an Teplitz—One of the brightest colored Roses grown. Dark rich crimson, changing to bright scarlet, shading to velvety fiery red. Delightfully fragrant.

Jonkheer J. L. Mock—The flowers, which are produced with the greatest freedom, are borne on stiff, erect stems, are of large size and perfect form, of a deep imperial pink, the outside of the petals silvery rose-white and highly perfumed.

Kaiserin Augusta Victoria—A superb white Rose, fairly tinted with cream and lemon-yellow. Large, full and double; their fragrance is peculiarly rich and delightful.

Killarney—Its color is a sparkling, brilliant pink. The blooms are large, the buds long and pointed; a Rose of unusual excellence.



La France

Konigin Carola—Perfect in form, both in bud and when fully expanded. In color a beautiful satiny-rose, with the reverse of the petals silvery-rose; very floriferous and desirable in every way.

La France—Delicate silvery rose, changing to silvery pink; very large; full, of fine globular form; a most constant bloomer.



Gruss an Teplitz

Lady Hillingdon—One of the loveliest Roses that one could imagine. The color is superb, being of deep yellow tinged with light blush on the outer edge of petals. The bloom does not fail like more of the yellow Roses. Buds are very slender and graceful, borne on long, stiff stems. Rapid grower and free bloomer.

Lady Alice Stanley—Deep coral-rose, inside pale flesh, slightly flushed deeper flesh; a remarkably attractive and pleasing color combination. The blooms are very large, full, of great substance and produced very freely and deliciously fragrant; one of the best bedding varieties. 50c.

Lady Ashtown—The flowers are large, double, with high-pointed center, and are produced on long stems; in color a soft rose, shading to yellow at the base of the petals.

Mrs. Aaron Ward—In color is a distinct shade of Indian-yellow, which, as the flower expands, shades lighter towards the edges, making a splendid color combination, which is more decided in dry than wet weather, the yellow shading sometimes disappearing almost entirely in extended periods of wet, cold weather; one of the freest flowering varieties in our collection.



Lady Hillingdon

Mrs. Taft (Syn.) Antoine Rivoire—An ideal bedding Rose of large size and fine form; color soft peach, shading to yellow at the base of petals.

Madame Edouard Herriot—Color, coral red shaded with yellow and bright rosy scarlet passing to prawn red; but coral red shaded with yellow at the base. The plant is a most vigorous grower with ample bronzy green foliage. 50c.

Madame Abel Chatenay—One of the greatest Hybrid Tea Roses of its type; color rosy carmine with darker shadings; reverse of petals pale salmon. Splendid in the open ground. A strong grower and a free bloomer.

Madame Jenny Gillemot—A brilliant saffron-yellow Rose, opening canary with dark golden shades. The buds are long and beautiful and the flowers are large with immense petals. Hardy and vigorous, it is in constant bloom all Summer.

Madame Jules Grolez—One of the best; a beautiful satiny china-rose color, very bright and attractive; flowers of large size, very double, of good form and remarkably free flowering.

Madame Ravary—Color rich, deep nankeen-yellow, becoming lighter as the flower expands. The flowers are of splendid form, full, double and very fragrant.

Madame Caroline Testout—Flowers large, very double; silvery rose; free bloomer.

Maman Cochet—Color deep rose-pink, inner side of petals silvery-rose; borne on long, stiff stems; very double and exquisite when in bud.

Richmond—This great American Rose with its gorgeous color, brilliant, flaming scarlet crimson, has swept everything before it, both at home and abroad.



Rhea Reid

Rhea Reid—This has no equal as a crimson garden Rose. The color is vivid scarlet-crimson; the flowers are large, bold, full and double and produced in immense profusion. A splendid grower, hardy and will succeed in all climates.

Radiance—A brilliant rosy-carmine, displaying beautiful rich and opaline-pink tints in the open flower. The form is fine, largest size and full, with cupped petals. It blooms constantly and is delightfully fragrant. This is a superior Rose. From the day you plant it, you will become a Rose enthusiast the rest of your life.

The Lyon—A lovely combination of orange-yellow, shading to red-dish gold with deeper shadings of red; very fragrant. 50c.

Viscountess Folkstone—The best of its color, which is a creamy-pink, shading deeper at the center; large, full and very free.

White Maman Cochet—Identical with Maman Cochet, except in color; an ideal bedding variety.

White Killarney—A pure white sport of the popular Killarney Rose, identical in every way with its parent, excepting in color which is a pure white.

Novelties

All the novelties we offer in 4-inch pots at \$1.00 each; \$10.00 per doz.

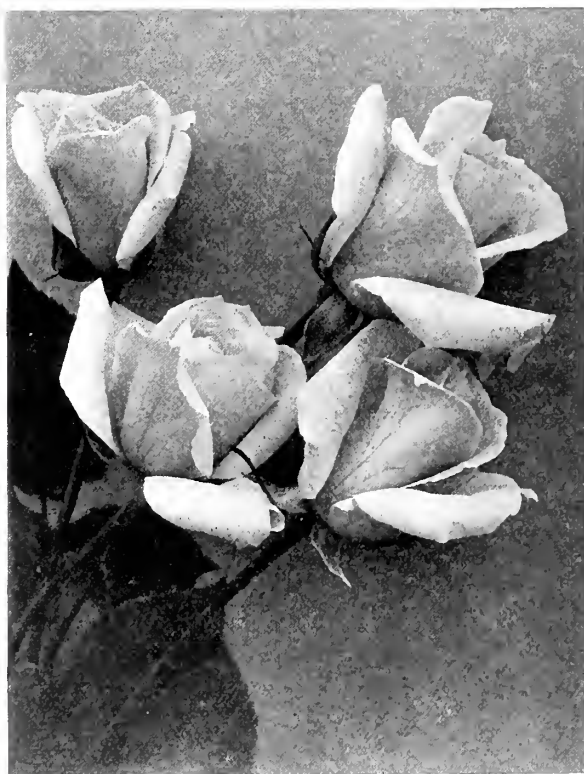
Admiral Ward—Beautiful crimson red, shaded fiery red and deeper crimson; blackish-red in the bud stage; large, full globular flowers with immense petals somewhat curved. The foliage is a healthy, attractive shade of bronzy green.

Crimson Champion—Scarlet crimson overlaid deep velvety crimson. Flowers very large and not too double; petals well rounded and of enormous size; healthy, glossy dark green foliage and vigorous spreading growth. One of the most prolific garden roses ever sent out, flowering throughout the season. Awarded a Silver Medal by American Rose Society at the Hartford Test Garden.

Coronation—A recent fine addition to this section, flowers of immense size and great substance, produced on very stout, upright stems. Color, shading from flesh to bright shrimp pink; very free. Awarded gold medal of the National Rose Society and numerous other awards.

Red Radiance—In offering Red Radiance to our patrons, we present an exact replica of its prototype Radiance, except in color, which is a splendid even shade of clear red and an improvement to that extent. It is extremely free and continuous in flowering; the growth is vigorous. Altogether it is a rose destined to become a leader among garden roses and as such we recommend it without hesitation.

Mme. Charles Lutaud—Chrome-yellow center, slightly tinted rosy scarlet on the outer petals. Long, pointed flowers, carried on stiff, erect stems; very large, full and globular. A fine exhibition and garden rose.



Ophelia

Ophelia—Salmon-pink shaded with rose; large, well-formed flowers of perfect form carried on long, rigid stems and produced continually. One of the best roses for any purpose sent out in recent years.

Panama—This splendid new rose is a seedling from the popular Frau Karl Drusehki. It is unusually vigorous and free-flowering, even more so than its parent. In color, it is a very delicate flesh shading lighter towards the petal margins. Awarded the American Rose Society's silver medal at the Hartford Test Garden.



Coronation

Hardy Climbing Roses

35c each; \$3.50 per dozen; except where noted.

American Pillar—Very large, single flowers produced in huge clusters. Clear pink with distinct white eye and bright yellow stamens.

Baltimore Belle—Pale blush, passing to white; large clusters.

Christine Wright—A splendid new Wichuraiana Hybrid bearing large, double flowers of a most attractive wild-rose pink color, both singly and in clusters, and remaining in flower for a long period. Growth strong and rugged. 75c each.

Climbing American Beauty—Rosy crimson flowers produced freely in June and occasionally throughout the season; growth vigorous. A splendid new rose. 75c each.

Crimson Rambler—Heavy trusses of brilliant double crimson flowers.

Dr. Van Fleet—Flesh pink deepening to rosy flesh in the center; large, full, double flowers carried on long stems resembling the popular Souvenir de President Carnot. 75c each.

Dorothy Perkins—Soft light pink flowers carried in beautiful clusters; strong vigorous growth and glossy healthy foliage; very hardy. A splendid variety.

Excelsa (Red Dorothy Perkins)—Intense scarlet crimson; flowers very double and produced in immense trusses. The best red rambler. 75c each.

Hiawatha—Brilliant scarlet, clear white eye, flowering in large clusters; a brilliant and effective variety.

Silver Moon—Foliage beautiful bronze green; mildew proof. Flowers are very large, and produced on strong stems. Color silvery white, with prominent yellow stamens. Very fragrant and attractive. 75c each.

Tausendschon—Large individual flowers of splendid form carried in trusses, varying in color from light to bright pink and rosy carmine; a charming climbing rose.

White Dorothy Perkins—A white counterpart of the lovely Dorothy Perkins and one of the best white climbing roses.

Wichuraiana—The true Memorial rose. A splendid trailing species with pure white single flowers and showy yellow anthers; a good ground cover.

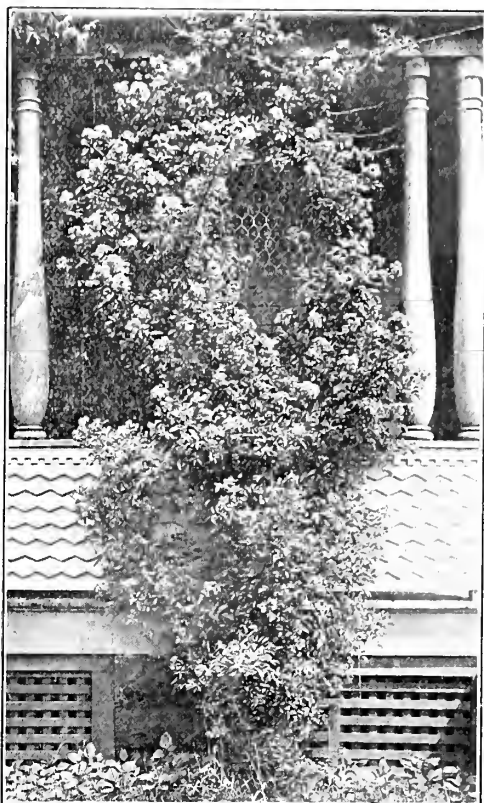
MOSS ROSES. 35c each

The charm of a Moss Rose is the bud. Such kinds as the Gracilis and Crested, with graceful buds, are especially recommended.

Blanche Moreau—White, one of the best of the Mosses.

Crested Moss—Deep pink. A fragrant, very beautiful Rose.

Gracilis—Pink buds, surrounded with delicate fringe-like moss.



White
Dorothy
Perkins

RUGOSA ROSES AND HYBRIDS

For massing or hedge planting, the Rugosas cannot be excelled. 35c each; \$3.50 per doz.; \$25.00 per 100.

Rosa Rugosa—An upright shrub, attaining 5 to 6 feet in height. Foliage shining dark green; flowers single, red, fragrant; fruit bright crimson-scarlet.

Alba—The habit and foliage is similar to the above, but the flowers are pure white, single and as attractive in the bud as when open.

Conradi Ferdinand Meyer—Clear silvery rose, very large and double; fragrant.



Crested Moss

Mme. George Bruant—This is a very free-blooming, white variety; a strong grower and blooms continuously; flowers semi-double.



Thousand Beauties

DWARF BEDDING ROSES OR BABY RAMBLERS

35c each; \$3.50 doz.

They form shapely, compact, bushy specimens, about 18 inches high, producing in great profusion from early in the season until severe frost, immense trusses of small flowers.

Annen Muller—Brilliant rose-pink flowers in large clusters.

George Elgar—Clear, coppery, golden-yellow, passing to clear yellow on opening. Flowers produced in large corymbs. Very free flowering and of good upright habit. The best yellow variety in this class.



Baby Rambler

Katharine Zeimet—The white Baby Rambler.

Marie Pavic—An exquisite little Rose and one of the best in this class. Color white, with flushed rose center; of excellent habit, flowering continuously. Always in bloom.

Mme. Norbert Levavasseur—The original Baby Rambler and the best known of the type.

Mrs. Wm. Cutbush—A beautiful shade of pink in color and a very profuse bloomer.

Hardy Perennial Plants

The following collection embraces the most desirable species and varieties. They are all showy and beautiful plants, of easy cultivation, and of various seasons of flowering, from May to November. By a judicious selection, a continuous display of flowers may be obtained from early Spring to the end of Autumn.

ACHILLEA (Milfoil or Yarrow)

Perry's White (New)—A splendid improvement on all other varieties, the individual flowers being twice as large and completely double, entirely concealing the center of the flower. The clear white sprays are excellent for cutting. A most useful plant for the border. Price 25c each, \$2.50 per dozen.

Ptarmica fl. pl. "Boule de Neige"—A more desirable and compact form of "The Pearl." 20c each; \$2.00 per doz.

Ptarmica fl. pl.—"The Pearl." Pure double white flowers; flowering freely during the Summer. 20c each; \$2.00 per doz.



Anemone

ACONITUM (Monkshood) 25c each; \$2.50 per dozen.

Invaluable for planting under trees or in shady positions, succeeding better there than almost anything else. All the varieties are more or less poisonous.

Autumnale (Autumn Aconite)—3 to 5 feet. September to frost. Deep blue flowers in a simple spike, becoming a panicle; showy.

Fischeri—Very large, pale blue flowers, in September and October.

Wilsoni (New)—Attaining a height of from 5 to 6 feet; large flowers of a light violet blue color. It commences to bloom early in September, extended to the end of October. 35c each; \$3.00 per doz.

ADONIS. 25c each

Vernalis—Finely divided leaves, and growing about six inches high. Flowers bright yellow, about two inches in diameter. May.

ACORUS

Acorus Japonica Variegated (Variegated Sweet Flag)—One of the finest variegated plants in cultivation. 25c each; \$2.50 per doz.

AGROSTEMMA (Rose Campion)

Coronaria (Mullein Pink)—Bright crimson flowers on stems 2½ to 3 feet high. June and July. 20c, \$2.00 a doz.

ALYSSUM

Saxatile Compactum (Basket of Gold, Gold-Tuft)—Growing 1 foot high and producing early in summer masses of broad, flat heads of bright yellow flowers. 20c, \$2.00 per doz.

AMSONIA

Tabernaemontana—A stout, shrublike plant, with terminal spikes of clear blue flowers in June; 2 feet high. 20c, \$2.00 a doz.

ANCHUSA

Italica (Dropmore Variety)—One of the most important hardy plants of recent introduction. It attains a height of 5 to 6 feet and produces its pretty blue flowers, which are from 1 to 1¼ inches in diameter, through the entire Summer. 20c each, \$2.00 per doz.

Myosotidiflora—A handsome new species from the Caucasus, producing a myriad of rich blue Forget-me-not like flowers, during April and May. 35c each, \$3.50 per doz.

Opal—A beautiful lustrous blue variety of the above. One of the finest herbaceous plants in this color. 20c each, \$2.00 per doz.

ANEMONE (Wind Flower)

20c each; \$2.50 per doz.

These beautiful Anemones are valuable on account of their continuing in full beauty until cut down by hard frost. The plants grow 2 to 3 feet high, are perfectly hardy if given the protection of 2 or 3 inches of leaves or litter during the winter.

Elegantissima—Large satiny-rose, semi-double flowers.

Japonica—Flowers 2½ inches in diameter; purplish rose, with golden yellow centers. September to November.

Japonica Alba—A fine large snowy white; very chaste.

Prince Henry—Large, very double, deep rich pink flowers; beautifully formed; very free-flowering.

Queen Charlotte—Large flowers. La France Pink. August.

Whirlwind—A variety producing double white flowers in great profusion in the Autumn.

ANTHEMIS (Chamomile)

Tinctoria (Golden Marguerite)—Flowers golden yellow, one to two inches across, from July to November; 12 to 18 inches. 20c.

ANTHERICUM

Liliastrum (St. Bruno's Lily)—Grass-like foliage and long spikes of white, fragrant, lily-like flowers in May and June. 20c.

Liliastrum Giganteum (Giant St. Bruno's Lily) (New)—It produces 2½ feet high stems which, during May and June, are terminated by spikes of very large white flowers. 25c each; \$2.50 per doz.

AQUILEGIA (Columbine). 20c each, \$2.00 doz.

One of the hardiest and most popular Spring and early Summer-flowering subjects, doing well under ordinary conditions.

Californica hybrida—A fine mixture, including scarlet and yellow, white and red combinations.

Coerulea—Bright blue, tinted lilac and white; long spurred.

Chrysantha—Sutton's long spurred, beautiful blended colors.

Haylodgensis—A fine assortment of large-flowering, long-spurred varieties of the *Coerulea* type.

Nivea Grandiflora—Pure white; very beautiful.

ARABIS (Rock-Cress)

Arabis Alpina—One of the finest plants for the border, rockery, or for edging; pure white flowers completely obscuring the foliage. April and May. 20c.

Alpina fl. pl.—Sprays of pure white double flowers, produced abundantly. Very fragrant. 25c each, \$2.50 per doz., \$15.00 per 100.

ARMERIA (Thrift, Sea Pink)

Formosa—Narrow, grass-like leaves; white flowers. 20c.

Maritima (Cushion Pink. Common Thrift)—Rosy-lilac; one of the best for edging; 6 inches. June and July. 20c.

ARTEMISIA (Wormwood)

Stellariana (Old Woman)—Deeply cut silvery foliage; much used in carpet bedding. 20c.

Lactiflora—A new and distinct variety, producing stately spikes of fragrant Spiraea-like flowers from August to October. Valuable. Four to five feet. 20c each; \$2.00 per doz.

HARDY ASTERS (Michaelmas Daisies, or Starworts)

These are among the showiest of our late-flowering hardy plants, giving a wealth of bloom at a season when most other hardy flowers are past. Unless otherwise specified they bloom in September and October. 20c each; \$2.00 per doz.

Beauty of Colwall—Ageratum blue, double flowers on stout, erect stems. Distinct. Three to four feet. August.

Colwall Pink—A splendid new semi-double variety, clear pink in color. 25c each; \$2.50 per doz.

St. Egwin—Large, pure pink flat flowers, densely branched. Fine. September and October. Three feet. 25c each, \$2.50 per doz.

Mrs. F. W. Raynor—Good-sized light crimson flowers; 3 feet.

Perry—Dwarf; horizontally branched; extra fine pink.

Thos. S. Ware—Large; rosy-lilac.

Sawyer—Delicate soft blue; 3 feet.

White Queen—A large broad-petalled white, of bold habit; 3½ feet.

DWARF HARDY ASTERS

Alpinus—Grows 6 to 10 inches high, and bears large, bluish-purple flowers; May and June. 20c.

Albus—Identical to the above, but with pure white flowers. 20c.

Sub-Coeruleus (New)—About 12 inches high, bearing during June and July flowers 3 inches in diameter, of a pleasing shade of bluish-violet, with golden center. 25c each; \$2.50 per doz.

ASCLEPIAS (Butterfly Weed)

Tuberosa—About 2 feet high, and producing from July to September, close compact umbels of orange-colored flowers. 20c.

BAPTISTIA (False Indigo)

Australis—2 feet high; with dark green, deeply cut foliage and spikes of dark blue flowers in June and July. 20c.

Tinctoria—Produces spikes of bright yellow flowers, during June and July; 2 to 3 feet high. 20c.

BOCCONIA (Plume Poppy, or Tree Celandine)

Cordata—Beautiful in foliage and flower, 6 to 8 feet; flowers in panicles, of a creamy-white color, during July and August. 25c.

BOLTONIA (False Chamomile)

20c each; \$2.00 per doz.

The plant is in bloom during the Autumn months, and with its thousands of flowers open at one time, produces a very showy effect.

Asteroides—Pure white; very effective; 5 to 7 feet.

Latisquama—Pink, slightly tinged with lavender; 4 to 6 feet.

Latisquama Nana—A new dwarf form perennial; 18 inches in height, bearing a profusion of clear lavender-lilac flowers in September.

CAMPANULA (Bellflower. Harebell)

An elegant genus of plants, rich in color, profuse in bloom.

Carpatica—Bright porcelain-blue flowers, compact dwarf growth. A good rock plant. 20c.

Carpatica Alba—Pure white. 20c.

Media (Canterbury Bells)—An old-time favorite, with flowers of various colors in July; 2 to 3 feet. 20c each; \$2.00 per doz.

Persicaefolia—3 feet. June and July. Broad, single, purple, bell-shaped flowers arranged along a tall flower spike. 20c.

Rotundifolia (Blue Bells of Scotland)—Clear blue flowers from June to August; grows about 1 foot high. 20c each; \$2.00 per doz.

Gigantea Moerheimi (New)—Large spikes of pure white double camellia-like flowers, 2 to 2½ inches in diameter; in bloom from the middle of May until late in July. 25c each; \$2.50 per doz.

CALLIRHOE (Poppy Mallow)

Involucrata—An elegant trailing plant, with finely divided foliage and large saucer-shaped flowers, of deep rosy crimson, with white centers, which are produced during the entire Summer months. 25c.



Hardy Chrysanthemums—Shasta Daisy

CASSIA (American Senna)

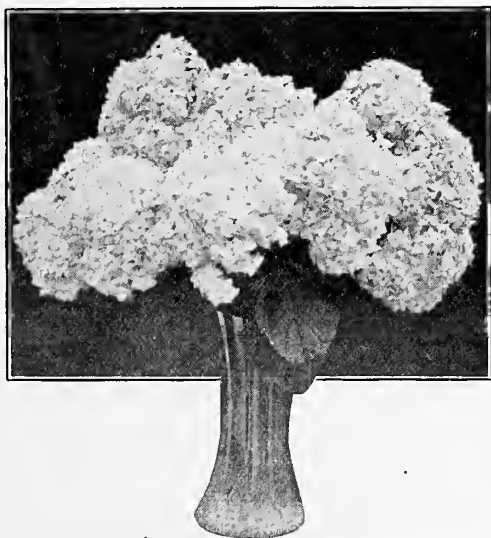
Marilandica—3 to 4 feet high, bushy, with large panicles of bright yellow flowers; July to August. The beautiful pinnate light green foliage is very pleasing. 25c each.

CENTAUREA (Hardheads, or Knapweed)

Glastifolia—Silvery thistle-like heads of yellow flowers on 3 to 4 feet high plants; July to September. 20c.

Hirta Nigra Variegata (Variegated Button Weed)—Variegated green and gold foliage, July and August purple flowers. 20c.

Montana Alba—Large white flowers during July and August. 20c.



CHRYSANTHEMUMS (Moonpenny Daisy)

Princess Henry—White flowers, 3 to 4 inches across; produced in great profusion during the Summer and Fall. 25c.

Shasta Daisy—A mammoth daisy producing pure white flowers with bright yellow center. Flowers freely on long stems. 25c.

POMPON, CHRYSANTHEMUMS

There is nothing better for late Fall blooming in the garden than these small-flowering chrysanthemums. They bloom after frost has destroyed nearly everything else in the garden. We offer a list of the best varieties. 20c each; \$2.00 per doz.

Baby Margaret—A miniature white.

Dawn—Daybreak-pink.

Dundee—Maroon, shaded scarlet.

Golden Fleece—Clear yellow.

Golden Pheasant—Rich golden-yellow.

L'Ami Couderchet—Sulphur-white.

Little Pet—Violet-crimson.

Model of Perfection—Beautiful white.

Pettilant—Creamy-sulphur.

President—Rich purplish-crimson.

Hardy, Old-fashioned, Large Flowered Chrysanthemums in red, white, pink and yellow. 20c each; \$2.00 per doz.

CHELONE (Shell Flower)

Stately and handsome perennials, growing about 2 feet high, and bearing numerous spikes of large flower-heads during the summer and fall.

Lyonii—Heads of showy deep red flowers. 25c each; \$2.50 per doz.

CLEMATIS

Clematis Davidiana—3 feet. August and September. Hyacinth-like, sweetly scented, pale blue flowers. 25c each; \$2.50 per doz.

Recta—3 to 4 feet. June. Large panicles of small, fragrant, white flowers on long stalks. 25c.

CONVALLARIA (Lily of the Valley)

Majalis—Large luxuriant foliage; flowers small, bell-shaped, in pretty racemes, and very fragrant. 25c each; \$2.50 per doz.

COREOPSIS (Tickseed)

Grandiflora—Golden yellow flowers; keeps in flower throughout the Summer; one of the best hardy plants; 1 to 3 feet. 20c.

DELPHINIUMS (Hardy Larkspur)

The hardy Larkspurs are one of the most satisfactory plants in the herbaceous garden. Their long spikes of flowers are produced continuously from June until late in the Fall.

Belladonna—Beautiful sky blue flowers; grows from 2 to 3 feet high, and is always in bloom. 25c each; \$2.50 per doz.

Chinensis—18 inches high, handsome flowers, varying in color through all the lighter shades of blue. 20c each; \$2.00 per doz.

Elatum (Bee Larkspur)—Blue, with dark centers; 3 to 5 feet. 20c.



Delphinium—(Larkspur)

Formosum—Dark blue; in flower almost continuously from June till frost. 20c each; \$2.00 per doz.

Mixed Hybrids—A fine lot of seedlings and sure to produce a splendid range of colors from the palest to the deepest blue. 20c each; \$2.00 per doz.

King of Delphiniums—One of the finest yet introduced; the plant is of remarkably strong growth, with flowers of gigantic size, semi-double and of a deep blue color, with large white eye. 50c each; \$5.00 per doz.

Moerheimi—This recent introduction is undoubtedly the best pure white Delphinium yet introduced and should be in every collection. Splendid habit and one of the most continuous in flowering.

DIANTHUS (Pink)

20c each; \$2.00 doz., except where noted.

Dianthus Barbatus (Sweet William)—20 inches. June and July. One of the oldest garden flowers; one which perpetuates itself by self-sowing. Colors brilliant and effective. 15c each; \$1.50 per doz.

Deltoides—6 inches. May and June. One of the prettiest border Pinks; creeping habit; dark red and crimson-eyed flowers.

Excelsior—Light rose-pink, shaded darker.

Homer—Rich crimson, clover-scented; finely fringed.

Her Majesty—Large, double, pure white fragrant flowers.

Plumarius (Scotch, or Garden Pink)—9 inches. June. Pink, purplish and white fragrant flowers on long spikes.

DIELYTRA (Dicentra)

Spectabilis (Bleeding Heart)—An old-fashioned favorite, its long racemes of graceful heart-shaped pink flowers are always attractive. 25c.

DICTAMNUS, FRAXINELLA, OR GAS PLANT

A choice perennial, forming a bush about 2 feet high, and bearing spikes of curious red and white flowers, which are fragrant.

Alba—White; 12 to 18 inches. June. 25c.

Rubra—Red; 12 to 18 inches. June. 25c.

Caucasicus—A gigantic form; the flowers being fully double the size of the type and borne on much larger spikes. 25c each.

DORONICUM (Leopard's Bane)

One of the most effective very early Spring-flowering perennials, beginning to bloom early in April.

Austriacum—Large, golden-yellow; 1½ feet. 25c.

Excelsum—Large orange-yellow; 1½ feet. 25c.

DIGITALIS (Foxglove)

Flowers very showy, with a large range of color, from pure white to purple; thimble-shaped and borne close together on stalks from three to four feet high. June to August. 20c each; \$2.00 doz.

ECHINOPS (Globe Thistle)

Ritro—Handsome thistle-like foliage, with globular metallic blue flowers in July and August; fine for cutting. 4 feet. 25c.

EUPHORBIA (Spurge)

Corollata—Broad umbels of pure white flowers with green eye; 18 inches. July and August. 25c.

Polychroma—Very beautiful and effective in spring, when it bears masses of chrome-yellow flower-like bracts; 2 feet. 25c each; \$2.50 per doz.

EUPATORIUM

Ageratoides—Pure white flowers, produced freely in heads. An excellent plant for the border or wild planting. Vigorous growth. Four feet. August to September.

Coelestinum—Similar to the above; light blue flowers in quantity. Two and one-half feet. August to October. 15c each; \$1.50 per doz.; \$10.00 per 100.

FUNKIA (Plaintain Lily)

The Plaintain Lilies are among the easiest plants to manage; their broad massive foliage makes them attractive subjects for the border even when not in flower. 20c each; \$2.00 per doz.

Coerulea—Blue, broad green leaves.

Robusta elegans variegata—The most robust of all the variegated-leaved varieties; foliage large, green, with pretty, white variegations. 25c each.

Subcordata Grandiflora—Pure white, lily-shaped, fragrant flowers.

Undulata Media Picta—Variegated foliage, purple flowers.

FEVERFEW

Little Gem—Large, double, white flowers, June until October; 12 to 15 inches high. 20c.

GAILLARDIA (Blanket Flower)

Grandiflora—One of the showiest hardy plants; beginning to flower in June, they continue one mass of bloom the entire season. The large flowers are of gorgeous coloring. The center is dark red-brown, while the petals are variously marked with rings of brilliant scarlet-erimson, orange and vermillion, and often a combination of all these colors in one flower. 20c each; \$2.00 per doz.

GEUM (Avens)

Atrosanguineum fl. pl.—A useful and attractive plant for the hardy border or rock garden. Showy, blood-red flowers, produced in graceful profusion. Two feet. 20c.

Coccineum (Mrs. W. J. Bradshaw) (New)—Brilliant, double crimson flowers. A great improvement. 25c each; \$2.50 per doz.

HARDY FERNS

With few exceptions, Ferns do best in a shady or semi-shady position in rich but well-drained soil, where they can be liberally supplied with water during dry seasons.

We offer a choice selection of varieties at 20c each; \$2.00 per dozen.

Hardy Ornamental Grasses

For single specimens, beds or groups on the lawn, nothing gives a finer effect than these.

Eulalia Gracillima Univittata (Japan Rush)—Of graceful habit, with very narrow foliage; of bright green color, with a silvery mid-rib. 25c each; \$2.50 per doz.; clumps, 50c each.

Eulalia Japonica—Foliage bright green. 25c each; \$2.50 per doz.; clumps, 50c each.

Eulalia Japonica Variegata—A very ornamental variety; long, narrow leaves striped green, white and often pink or yellow. Flower stalks from 4 to 6 feet. 25c each; \$2.50 per doz.; clumps, 50c each.

Phalaris Arundinacea Variegata (Variegated Ribbon Grass, or Gardener's Garters)—Large variegated foliage; an excellent Grass for bordering large beds. 15c each; \$1.50 per doz.

Zebrina (Zebra Grass)—The long blades of this variety are marked with broad yellow bands across the leaf. 25c each; \$2.50 per doz.; clumps, 50c each.

GYPSOPHILA (Chalk Plant)

Paniculata (Infant's Breath)—A fine herbaceous plant, forming a compact bush about 4 feet high; flowers small, white, in large, loose panicles. Valuable for bouquets. July. 25c.

Paniculata Fl. Pl. (Double-flowering Baby's Breath)—This is one of the most beautiful of all the introductions to the hardy plants. The charming double rosette-like flowers are borne on branched panicles in great profusion. 2 to 3 feet. July, August. 25c each; \$2.50 per doz.

Repens—A very pretty trailing plant for the rockery. Small white flowers in quantity during July and August. 20c each; \$2.00 per doz.

HELENIUM (Sneeze Weed)

Hoopesii—Large, deep yellow flowers, from June to September. Two feet. 20c.

Riverton Gem—2½ to 3 feet high. Covered from the middle of August to the end of October with brilliant flowers, old-gold suffused with bright terra-cotta, changing to a wallflower-red. 25c.

Riverton Beauty—Rich lemon-yellow, with large purplish-black cone. 25c each.

HELIANTHUS (Sunflower)

20c each; \$2.00 per doz.

Maximilliana—Immense single flowers, rich golden-yellow, with center of reddish brown; completely enveloped in bloom from base to apex.

Multiflorus Fl. Pl. (Double Sunflower)—A blaze of gold in late Summer and early Autumn.

Soleil d'Or—Closely resembles a Cactus Dahlia in shape and finish; blooming in great profusion the entire season. Clear yellow.

HELIOPSIS (Orange Sunflower)

Pitcherianus—2 to 3 feet; beginning to flower early in the season and continuing in bloom the entire Summer; deep golden-yellow color, about 2 inches in diameter. 25c.

HEMEROCALLIS (Day Lily)

20c each; \$2.00 per doz.

Flava (Yellow)—One of the finest hardy plants; flowers large, golden-yellow and very fragrant; plant vigorous. 3 feet. June.

Fulva (Tawny Day Lily)—Tawny orange-colored flowers, excellent for planting among shrubbery; blooms in July and August.

Kwanso Fl. Pl. (Double Orange Day Lily)—Large orange-colored flowers, shaded copper; blooms during July and August.

Thunbergii—Latest flowering variety, sweet-scented lemon-yellow flowers on 2½ feet high stems in August and September.

HESPERIS (Rocket)

Matronalis—A strong-growing perennial, forming stout, bushy plants, 3 to 4 feet high, with showy terminal spikes of pink flowers during June and July. 15c each; \$1.50 per doz.

HEUCHERA (Alum Root)

25c each; \$2.50 per doz.

Sanguinea—2 feet; flowers from June to August in loose, graceful spikes in the greatest profusion; light coral-red to crimson.

HIBISCUS (Mallow)

25c each; \$2.50 per doz.

Moscheutos (Swamp Rose Mallow)—Flowers 6 inches in diameter; of a light rosy-red color with darker eye. August.

"Crimson Eye"—Flowers of immense size, color purest white with a large spot of deep velvety crimson in the center. August.

Mallow Marvels—A robust type of upright habit, producing an abundance of flowers of enormous size in all the richest shades of crimson. 50c each.

HOLLYHOCKS

For planting in rows or groups on the lawn, or for interspersing among shrubbery, they are invaluable. The flowers form perfect rosettes of the most lovely shades.

We offer strong plants, which will flower this season.

Double White, Pink, Yellow, and Bright Red. 20c each; \$2.00 per doz.; \$15.00 per 100.



Double Hollyhocks

HYPERICUM (St. John's-wort)

Moserianum—One of the best herbaceous plants in our collection, measuring from 2 to 2½ inches in diameter; a rich golden-yellow; blooms the entire season. 25c.

IBERIS (Perennial Candytuft)

Profuse blooming shrubby plants of dwarf habit, well suited for rockeries, stumps, edgings, etc. 20c each; \$2.00 per doz.

Gibraltarica—Flowers large, white tinted with red; fine.

Sempervirens (Evergreen Candytuft)—Flowers pure white, completely covering the plant with bloom. April or May.

Snowflake—A new variety, having exceptionally large and pure white flowers, and borne in great masses during May and June.

INCARVILLEA (Hardy Gloxinia)

Delevayi—Large, gloxinia-like rose-colored flowers, produced in clusters on stems 18 inches high. 25c each; \$2.50 per doz.

Grandiflora—An improvement on the above, the flowers being one-half larger as well as brighter in color. 25c each; \$2.50 per doz.

IRIS GERMANICA (German Iris)

The German Iris is one of the most desirable early Spring-flowering plants. The flowers are of large size and of exquisite colors. 20c each; \$2.00 per doz.

We offer them in the following colors: Blue, Pure White, Pearly-White, Lavender, Orange, Yellow and White-Penciled Blue.

JAPANESE IRIS

Kaempferi—Flowers differ from the German Iris, in being broad and flat. They rank among the most desirable of hardy plants; succeed best in a moist soil; 3 to 4 feet. July. 25c each; \$2.50 per doz.

A. L. Sherwood—Purple, veined white.

Blue Jay—Fine azure-blue, freely mottled.

Eclair—Lovely pure white; extra large and fine.

Eclipse—Reddish purple.

Gold Bound—Pure white, with large gold-bound center.

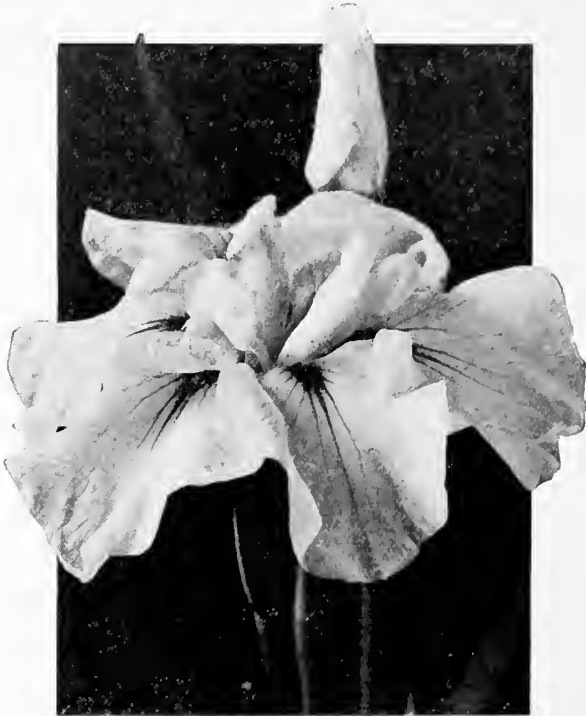
Hannibal—Light blue, freely veined indigo, yellow center.

Mahogany—Reddish maroon.

Pyramid—Violet blue, veined white.

Navy Blue—Rich dark blue.

Robert Craig—Ash grey with violet veins.



Japanese Iris

LAVANDULA (Lavender)

Lavandula—2 feet. Fragrant bluish flowers; foliage gray, with fragrance of lavender.

LILIUM (Lily)

It is in the hardy border that Lilies do best, as they get the benefit of the shade of the surrounding plants, which is so necessary for their welfare.

Auratum (Gold-banded Lily)—Large, graceful flowers, composed of six petals of a delicate ivory-white thickly studded with chocolate-crimson spots, and striped through the center a golden-yellow. 25c.

Canadense—Flowers various shades of yellow, orange and red, with dark spots. An excellent variety. 25c.

Candidum (Madonna Lily)—An old favorite; flowers are pure white and very fragrant. 20c.

Speciosum Album—Large white flowers of great substance, with a greenish band running through the center of each petal. 25c.

Speciosum Rubrum, or Roseum—White, heavily spotted with rich rosy crimson spots. 25c.

Tigrinum Splendens (Tiger Lily)—Very large flowers, orange spotted black. 20c.

Umbellatum—2 feet. June. Deep orange scarlet flowers; very large heads. 25c.



Lily Candidum

LIATRIS (Blazing Star)

Showy plants with long spikes of purple and pink flowers.

Blanche Nova—Clear lilac; 1 foot. July and August. 20c.

Spicata—Large purple spikes. Very compact. 20c.

LINUM (Flax)

Flavum—1 foot. Numerous yellow flowers. Plant forms a bush. 20c.

Perenne (Perennial Flax)—July. A desirable plant either for border or rockery, growing 18 inches high. Large clear blue flowers. 20c.

LOBELIA (Cardinal Flower)

Cardinals—Spikes of fiery cardinal flowers; very effective; 3 to 4 feet. August and September. 20c each; \$2.00 per doz.

Syphilitica Hybrida (Great Lobelia)—A choice selection of our native Lobelia, producing large spikes of flowers varying from blue to pure white; July to September; 2 to 3 feet. 15c each; \$1.50 per doz.; \$10.00 per 100.

LUPINUS (Lupin)

20c each; \$2.00 per dozen.

Perennis (Common Wild Lupine)—2 feet. June and July. Flowers in large, loose terminal spikes or racemes, blue varying to white.

Roseum—A very pretty variety with rosy-pink flowers. A free bloomer.

Albus—4 feet. July and August; showy white flowers.

LYCHNIS (Lamp Flower)

Chalcedonica (Scarlet Lychnis)—Brilliant scarlet; large truss, 3 feet. July and August. 25c.

Chalcedonica Fl. Pl.—A double-flowering form; vermilion-scarlet flowers; 2 to 3 feet high, flowering from July to September. 25c each; \$2.50 per doz.

Vespertina, Double White—Double White flowers, produced in profusion the entire Summer; 18 inches. 25c each; \$2.50 per doz.

MERTENSIA (Blue Bells)

Virginica—An early Spring-flowering plant, growing about 1 to 1½ feet high, with drooping panicles of handsome light blue flowers, fading to clear pink. May and June. 20c.

Alba—A form of the preceding with white flowers. 20c.

MONARDA (Horse-mint, or Balm)

Didyma (Bee-balm, or Oswego Tea)—Scarlet flowers; a very showy plant in the garden; 2 to 3 feet. June to August. 20c.

MYOSOTIS (Forget-me-not)

Palustris Semperflorens—A variety that is hardly ever out of flower; useful in a shady spot in the border. 15c each; \$1.50 per doz.

OENOTHERA (Evening Primrose)

Fraserii—Golden-yellow flowers; very showy; 15 inches. June to August. 20c.

Missouriensis—Large golden yellow; 1 foot. 20c.

Double Herbaceous Paeonies

Paeonies have always held an important place among hardy plants and with the wonderful improvements made during recent years have established themselves among the leaders for popular favor, giving an abundance and wealth of flowers which rival the finest Roses in coloring, and produce during their flowering season a gorgeous effect not equalled by any other flower.

Price: 35c each; \$4.00 per doz.; except where noted.



Mont Blanc

Admiral Dewey—Deep brilliant crimson. Fine. 50c.

Albert Crousse—Very large and full, flesh pink. 50c.

Baroness Schroeder—Flesh changing to pure white. A strong, vigorous grower with stiff stems so that the flowers are always erect. As a cut flower this is also exceptionally fine and we consider this to be the best white peony in existence. \$2.00 each.

Beauty of France—Pink, large and full.

Candidissima—Pure white.

Caroline Mathieu—Very double; light red, ragged in appearance.

Canari—White, yellow center, very showy. 50c.

De Candolle—Currant red, tinged emaranth; distinct color; very large and double.

Dortens Coros—Bright pink, an extra fresh and pretty shade.

Empress of China—An immense flower measuring 7 inches across; very double; very large pink and white petals; a tall grower; choice. 75c.

Festiva Alba—Flower of large size; pure snowy white.

Festiva Maxima—Pure, waxy white with occasional flecks of crimson on the central petals; very large and vigorous. The most popular Peony in existence. 75c.

Floral Treasure—Fine bright pink; good bloomer and fragrant. 75c.

Francoise Ortegale—Very brilliant crimson giving us a blaze of splendor, so deep as to verge on the purple.

Grandiflora Rosea—Deep rosy guards, center petals have striped appearance, showy.

Grandiflora Rubra—Deep crimson carmine, large and full.

Judge Dillon—Very large; deep blood red; very full and fragrant. 75c.

Jules Calot—Carmined pink, shaded white.

La Sublime—Rich, glowing crimson; fine, full, fragrant.

La Tulipe—Very large, globular flower; rosy white center, outside of the flower lively carmine, center striped deep carmine; extra fine. 75c.

Lamartine—Bright red.

Louis Van Houtte—Bright purple cherry; large, globular, and full; fragrant.

Madame Chaumy—Bright pink, tinged flesh, large and full. 75c.

Marie Lemoine—Extra large, free-flowering; ivory-white. 75c.

Marquise de Lory (Double Decker)—It has a large, broad open and fragrant flower. In a day or two another perfect flower rises in the lap of the first, and you have a beautiful, double blossom, quite at home, as it sits there claiming your admiration. The flower is light pink, fading to white. 75c.

Mont Blanc—Guard petals snow white, center lemon-yellow changing to creamy white. 75c.

Mad. Breon—Flesh, white centered; changing to pure white.

Monsieur Rousselon—Rose carmine; very extra. 50c.

Norfolk—Beautiful soft pink, and finely shaped flower. 75c.

Officinalis Mutabilis—Fine large full flower, opening pale flesh, finishing creamy or blush white; earliest white paeony. 50c.

Officinalis Rosea—Large double pink flower and the earliest pink.

Officinalis Crimson—The well-known paeony of our grandmothers' days. Brilliant crimson. Very early.

Plutarch—Light crimson, fine form.

Perfection—Very large, double flowers, often raised at the center; light pink to flesh; very sweet. 75c.

Prince de Talindyke—Very dark, purple; late; distinct and choice.

Queen Victoria—Flesh colored, guard petals, full and compact center, with red blotch in center.

Silacina—Dark rose color, late bloomer.

Sir Chas. Berresford—Immense size; beautiful pale pink; very double; one of the handsomest of the pink varieties. 50c.

Triomphe du Nord—Violet rose, shaded with lilac, a fine color.

Tenuifolia Fl. Pl.—Divided foliage, flowers full, and a deep blood-red. A dwarf grower, and early bloomer. 50c.

Whittelyi—Light rosy, center sulphur white.

SINGLE FLOWERING PAEONIES

These single flowering varieties with their large flowers, from 6 to 7 inches across, are very gorgeous and showy. 50c each.

Bridesmaid—White; extra fine.

Emily—Very large; bright pink; color very delicate.

Oniverie—Crimson; very fine.



Perfection

TREE PAEONIES

These form large shrubs with showy foliage and immense flowers measuring from 6 to 8 inches across and borne in the greatest profusion in May. Exceedingly showy.

- Banksii**—Fragrant flowers of rose-blush with purple center.
- Bijou de Chusan**—Flesh-white.
- Cornelia**—Bright light red. Fragrant.
- Elizabeth**—Rosy-crimson in center, shading to light rose.
- Rosea Plena**—Bright pink.
- Zenobia**—Double purple. Distinct and fine.

PACHYSANDRA

Terminalis—Procumbent, evergreen plant, choice for ground cover. Thick, glossy, deeply toothed foliage. Flowers in May. 20c each; \$2.00 per doz.

PAPAVER (Poppy)

Orientalis (Oriental Poppy)—Their large flowers, rich, brilliant colors and freedom of bloom render them conspicuous in any position. Mixed colors. 20c each; \$2.00 per doz.

Nudicaule (Iceland Poppy)—Purest white and yellow to the deepest orange-scarlet. June to October. Mixed colors. 20c each; \$2.00 per doz.

PENTSTEMON (Beard Tongue)

Barbatus Torreyii—Spikes of brilliant scarlet flowers; height 3 to 4 feet; June to August; very effective. 25c.

Digitalis—Large spikes of long, purple-white flowers, with purple throats, during June and July; 2 to 3 feet. 25c.

Phlox

Hardy Phlox—Probably the most important and best known of the hardy perennial plants. They flower continuously from early Summer until late in the Fall, and embrace a wider range of color than can be found in any other species. 20c each; \$2.00 per doz.; \$15.00 per 100, except where noted.

- B. Comte**—Intense velvety crimson; darkest of all the Phloxes.
- Bridesmaid**—Pure white, large crimson center.
- Beranger**—White suffused with pink, rosy-lilac eye.
- Baron van Dedem**—Brilliant cochineal-red with salmon shadings.
- Consul H. Trost**—Pure red, with bright French purple eye.
- Champs Elysee**—A bright rosy-magenta; very effective.
- Coquelicot**—Fine pure scarlet, with deep carmine eye.
- Eclairer**—Purplish crimson, with white halo.
- Danton**—Scarlet, with pure red eye.
- Edmond Rostand**—Medium; deep rose with star-shaped white center.
- Eiffel Tower**—A pretty, delicate, soft pale rose, with distinct red eye.
- Elizabeth Campbell**—Very bright salmon-pink, with lighter shadings and dark crimson eye; an entirely new and much wanted shade in Phlox.
- Etna**—Scarlet, with dark crimson eye.
- Eugenie Danzanvilliers**—Soft lilac blue, with large white center.
- Europa**—A white variety with very decided crimson-carmine eye, the individual flowers as well as the trusses are very large.
- F. G. Van Lassburg**—The finest white in cultivation, the individual flowers being truly double the size of any other; pure in color, and a strong, clean, vigorous grower.
- Independence**—Very early, white, large, extra fine.
- Jeanne d'Are**—A late-flowering pure white.
- L'Esperance**—Light lavender-pink, large white center.
- Lothair**—Large flower; rich salmon color, crimson eye, large spreading spike, one of the finest varieties.
- La Vague**—Pure mauve, with aniline-red eye.
- Louise Abbema**—Very large dwarf, pure white.
- Lumineaux**—Carmine and rose with blush center.
- Mad. P. Langier** (or J. H. Slocum) (Tall)—Bright geranium red, vermilion center; fine spike; handsome variety.
- Manzelbrunnen**—A large, bright, soft pink with a large white eye.
- Mme. Paul Dutrie**—Delicate lilac-rose in shade like a soft pink Orchid; flowers very large, borne in immense panicles.
- Mme. Bezanson**—Best crimson.
- Mme. Meuret**—Flame color, carmine center.
- Matador**—Orange-scarlet, cherry-red eye.
- Montagnard**—Deep crimson dark center.
- Peachblow**—Delicate pink; deep rose center.
- Pantheon**—Deep salmon rose; very fine.
- Professor Virchow**—Bright carmine, overlaid with orange-scarlet.
- Rosenberg**—Bright reddish-violet, with blood-red eye, large truss, and individual flowers as large as a silver dollar. 35c.



Hardy Phlox

Richard Wallace—White with violet center; a good sort.

R. P. Struthers—Brilliant rosy-red, with crimson eye.

Rheinlander—A most beautiful salmon-pink with flowers and trusses of immense size. The color of the flower is intensified by a very decided deep claret-red eye.

Rynstrom—Attractive pale pink; growth strong and of medium height. A decidedly showy variety.

Selma—Delicate pale rose, with distinct red eye. Very pretty.

Sir Edwin Landseer—Very bright crimson, large trusses and vigorous healthy growth.

Sunset—Dark, rosy pink.

Sunshine—Deep salmon pink; rose center.

Von Hochberg—The ideal crimson Phlox; the richest deep colored variety in our collection.

Von Goethe—A rich salmon rose, shading to a white center; a large flower, the finest of its color.

William Robinson—Flowers very large; pale salmon with rose center, fine.

W. C. Egan—One of the finest Phloxes yet introduced, and while the individual flowers according to the color-chart are of a delicate lilac color illuminated by a large bright solferino eye, the color effect as a whole is a delicate pleasing shade of soft pink.

DWARF PHLOX

Amoena—One of the best early flowering species. Flowers pinkish purple. 20c.

Divaricata—Fragrant lilac flowers. 6 inches, 25c.

Divaricata Laphami (Perry's Variety)—In this new variety we have a great improvement, the plant being more robust, the flowers considerably larger and of a more intense shade of blue. 25c each; \$2.50 per doz.

PHLOX SUBULATA (Moss Pink). 20c.

An early Spring-flowering type, with pretty moss-like evergreen foliage, which, during the flowering season, is hidden under the masses of bloom.

Nelsoni—Pure white.

Rosea—Bright rose.

PHLOX SUFFRUTICOSA

This type, while it does not contain the rich, bright colors which are a feature of the varieties offered on this and preceding page, bloom in May, or fully six weeks earlier than the other sorts.

Clouded Gem—White suffused with rose.

Gyp—Bright rosy, lilac.

Indian Chief—Deep magenta with crimson eye.

Miss Lingard—A grand free-flowering white.

20c each; \$2.00 per doz.

PHYSALIS (Chinese Lantern Plant)

Francheti—An ornamental variety of the Winter Cherry, forming dense bushes about 2 feet high, producing freely its bright orange scarlet lantern-like fruits; highly interesting. 20c.

HARDY GARDEN PINKS

(See Dianthus.)

PHYSOSTEGIA (False Dragon's-Head)

20c each; \$2.00 doz.

Virginiana—3 feet. Erect spikes of pretty pink flowers.

Alba—A beautiful white-flowered form.

PLATYCODON (Balloon Flower, or Bell-Flower)

The Platycodons are closely allied to the Campanulas, and form neat, branched bushes of upright habit; flowers from June until October.

Grandiflorum—Deep blue cupped star-shaped flowers; 1½ feet. 20c.

Grandiflorum Album—A white-flowered form of the above. 20c.

POLEMONIUM (Jacob's Ladder)

Useful border plants, about 12 inches high, with deep green finely-cut foliage and spikes of showy flowers during June and July.

Richardsonii—A beautiful variety; sky-blue flowers, with golden anthers. 20c.

Richardsonii Alba—A white-flowered form of the above. 20c.

POTENTILLA (Cinquifolium)—

Brilliant, double flowers that are produced from June to August; they grow about 18 inches high, and will succeed in any garden soil.

California—Rich yellow. 20c.

Phoenix—Scarlet marked with yellow. 20c.

Vulcan—Glistening red. 20c.

PRIMULAS (Primrose)

Veris (English Cowslip)—The plants we offer have been grown from a select strain of seed, and embrace a fine range of color. 20c.

Veris Superba—A giant-flowering form; flowers from 1 to 2 inches across; color a bright canary-yellow with a golden center, and when in flower present a sheet of bloom. 25c.

Vulgaris (English Primrose)—One of the earliest Spring flowers to open; of a bright canary-yellow and very fragrant. 20c.

PYRETHRUM

Hybridum Fl. Pl.—June. The bloom is similar to that of an Aster, and ranges in color from pure white and the various shades of pink and red to deep purple. Splendid for cutting, lasting a week in good condition. 35c each; \$3.50 per doz.

Single Varieties—In choicest mixtures. 20c each; \$2.00 per doz.

Uliginosum (Giant Daisy)—4 to 5 feet; white Daisy-like flowers; 3 inches in diameter; July to September. 25c each; \$2.50 per doz.

RANUNCULUS (Buttercup)

Acris Fl. Pl. (Bachelor's Buttons)—A double-flowering form; bright, golden-yellow; 2½ feet high, and bears masses of flowers during May and June. 20c.

RUDEBECKIA (Cone Flower)

Golden Glow—5 to 6 feet, produces masses of double golden-yellow flowers from July to September. 15c each; \$1.50 per doz.

Rays of Gold—The flower is full to the center and forms a perfect globe; a decided improvement on the flat flowers of the old sort. 25c each; \$2.50 per doz.

Newmanii—Dark orange-yellow flowers, 3 feet high; flowers from July to October. 25c each; \$2.50 per doz.

Purpurea (Giant Purple Cone-flower)—Flowers about 4 inches across, reddish purple, with a large cone-shaped center of brown; 2 to 3 feet; July to October. 25c each; \$2.50 per doz.

SALVIA (Meadow Sage)

Azurea Grandiflora—2 to 3 feet high, producing during August and September pretty sky-blue flowers in the greatest profusion. 20c.

Argentea—Grown for its large, ornamental, silvery-white foliage; flowers white; in June; 2 feet. 20c.

SAXIFRAGA (Saxifrage)

A very interesting and beautiful group of plants, with large, handsome, luxuriant foliage, and showy flowers in early Spring.

Cordifolia—Blush; heart-shaped foliage; April and May. 25c.

Ligulata—1 foot. Flowers white to lilac, in clusters. 25c.

Speciosa—Deep rosy-crimson.

SCABIOSA

Caucasica—1½ feet. June to September. A vigorous and handsome border plant, with large heads of soft lilac-blue flowers. Useful for cutting. 25c each; \$2.50 per doz.

Alba—A charming variety of the preceding with white flowers. 25c.

SEDUM (Stone-crop)

20c each; \$2.00 per doz.

Album—A very pretty variety, with small foliage and white flowers.

Maximowiczii—July. Yellow flowers in broad, striking heads.

Maximum Atropurpureum—Metallic brown foliage and red flowers.

Very effective for borders and carpet bedding.

Sieboldii—Foliage broad, glaucous, margined with pink. Flowers rose-pink.

Spectabilis (Brilliant Stone-crop)—18 inches, with broad, oval, light green foliage and immense, showy heads of handsome rose-colored flowers; indispensable as a late Fall-blooming plant.

Stolonifera—6 inches. July, August. Trailing plant. Most desirable of the Sedums. Flat succulent leaves. Flowers purplish pink, sometimes white.

Telephium—12 to 18 inches. August. Pink flowers in dense globular heads.

SPIRAEA (Meadow Sweet)

25c each; \$2.50 per doz.

Among the most ornamental and valuable of Herbaceous plants.

Gladstone—Free-flowering, having as many as thirty to forty large, snow-white sprays at one time. June, July.

Japanica—Beautiful sprays of silvery white flowers in June.

Palmata (Astilbe Rubra)—One of the most striking and beautiful hardy plants in cultivation; bright crimson flowers.

Queen Alexandra—A beautiful new hybrid of a soft, delicate pink, most used as a pot plant, but being a perfectly hardy plant, it will prove just as valuable for the border. 30c each; \$3.00 per doz.

SPIRAEA (Arendsi)

A new type introduced by the well-known hybridist, Arends, of Germany, resulting from crossing A. Davidii with A. Japonica and others. These are robust-growing varieties of branching habit, producing graceful, feathered heads of flowers.

Ceres—Delicate lilac rose, with attractive silvery sheen.

Juno—Handsome deep violet-rose plumes. Strong, erect growth.

Kriemhilde—Salmon-pink; very beautiful.

Rose Perle—Dense pyramidal trusses of soft rose; early flowering. 30c each; \$3.00 per doz.

STATICE (Sea Lavender)

Most valuable plants either for the border or rockery; grows from 15 to 18 inches high, and blooms from June until September.

Latifolia (Great Sea Lavender)—Immense heads of deep blue flowers which last for months if cut and dried. 20c.

Tartarica—Bright purplish-red flowers in graceful panicles.

STENANTHIUM (Mountain Feather Fleece)

Robustum—Flowers white, bell-shaped, and about one-half inch across, borne in slender panicles often three feet long. July and August. 3 to 5 feet. 50c each.

STOKESIA CYANEA (The Cornflower, or Stokes' Aster)

A most charming and beautiful hardy plant; 18 to 24 inches, bearing freely from July until late in October its handsome lavender-blue centaurea-like blossoms. 20c each; \$2.00 per doz.

Alba (New)—In this variety we have a counterpart of the parent in general habit of growth and freedom of bloom, but in color it is a pure white. 20c each; \$2.00 per doz.

Sweet William—See Dianthus Barbatus.

THALICTRUM (Meadow Rue)

Thalictrum Aquilegifolium—2 feet. May to July. A graceful border plant, with heads of feathery cream-colored flowers; foliage finely cut. 20c each; \$2.00 per doz.

Delavayi—2½ to 3 feet. Lovely blue-green foliage; flowers large, handsome lilac-color. A very graceful and striking variety. Good for cutting. 20c.

TRADESCANTIA (Spiderwort)

Showy native plants, forming erect bushes 18 to 24 inches in height; flowers produced in the greatest profusion all Summer.

Virginica—Blue, 18 to 24 inches.

Alba—White, 18 to 24 inches.

TROLLIUS (Globe Flower)

The main crop of flowers appear in May and June, but they continue in bloom up to frost. All admirable for cutting. 25c each; \$2.50 per doz.

Asiaticus—Very large, globular, orange flowers.

Europaeus—Bright yellow flowers.

Orange Globe—A rare variety, with large, deep orange-colored flowers.

TRILLIUM (Wood Lily, or Wake Robin)

Excellent plants for shady positions in the hardy border, or in a sub-aquatic position, flowering in early Spring. 20c.

Erectum—This is the purple wood-lily, and the earliest to flower.

Grandiflorum—The large white; probably the handsomest.

TRITOMA (Red-hot-Poker, or Flame Flower)

Pfitzerii (The Everblooming Flame Flower)—Spikes from 3 to 4 feet high and heads of bloom 12 inches long, of a rich, orange-scarlet, shading to salmony rose at edges, producing a grand effect either planted singly in the border or in masses. 20c each; \$2.00 per doz.

VALERIANA (Spurred Flower)

Coccinea (Valerian)—An old-fashioned perennial, bearing numerous showy heads of reddish flowers from June to October; 2 feet.

Coccinea Alba—A white-flowered form.

VERONICA (Speedwell)

Gentianoides—Pretty violet-blue flowers in June and July; 1½ feet. 20c.

Longifolia—2 feet. July and August. A strong, heavy, upright, densely growing species. Flowers numerous and of a lilac-blue. 20c.

Longifolia Subsessilis—A pretty species with blue flowers, produced on spikes a foot long, continuing in bloom the entire Summer and Fall. 25c each; \$2.50 per doz.



Pansies (Viola Cornuta)

VINCA (Periwinkle, or Trailing Myrtle)

Minor—An excellent dwarf evergreen trailing plant that is used extensively for carpeting the ground under shrubs and trees. 15c each; \$1.50 per doz.; \$10.00 per 100.

Minor aurea—A very attractive new golden variegated form of the preceding variety. Beautiful. Strong plants, 25c each; \$2.50 per doz.

VIOLA (Violet)

Desirable low-growing perennials of great value for border or rockeries, all thriving in any good loam; free flowering and with a neat habit of growth.

Russian—6 inches. Deep intense blue flowers, with a most pleasing and lasting odor. 15c each; \$1.50 per doz.

VIOLAS OR TUFTED PANSIES (Viola Cornuta)

The improved forms of Viola Cornuta are one of the important bedding plants. They flower continuously for nearly eight months in the year; and while their flowers are not so large as those of the Pansy, their bright colors and floriferousness make them welcome additions to any garden.

Admiration—Soft purple, with dark blotch.

Lutea Splendens—Rich golden yellow.

Papilio—Violet, with dark eye.

White Perfection—A fine white.

10c each; \$1.00 per doz.

Autumn Bulbs for Spring Flowers



Hyacinths

We import large quantities of Dutch bulbs in early Autumn. These are imperative to have early Spring flowers. Tulips, Hyacinths and Narcissus, which can be grown by everybody and in every clime.

Named Hyacinths

Single Red and Rose.

75c doz.; \$4.50 per 100.

Gertrude—Fine pink color, compact spike.

Gigantea—Blush pink, large, broad truss.

Moreno—Waxy pink, large bells, fine flower.

Robert Steiger—Fine deep crimson.

Roi Des Belges—Dark red, very fine truss.

Single White and Blush-White
 Blancheur A Merveille—Pure white, broad truss.
 Grande Blanche—Blush white, large.
 Grandeur A Merveille—Rosy white, large truss.

Single Blue and Porcelain Blue
 Charles Dickens—Porcelain blue, shaded with purple, large truss, excellent spike.
 King of the Blues—Blackish-purple, extra large spike.
 Marie—Dark blue, large spike.
 Queen of the Blues—Large, light blue, splendid truss.

Single Early Tulips

Artus (8 M.)—Bright deep scarlet; a splendid bedding variety. \$10.00 per 1,000; 20c per doz.; \$1.25 per 100.

Belle Alliance (10 M.)—One of the most popular scarlets for bedding; always does well. \$17.50 per 1,000; 30c doz.; \$2.00 per 100.

Chrysolora (10 M.)—Rich, pure yellow; a splendid bedder. \$12.00 per 1,000; 25c per doz.; \$1.50 per 100.

Cottage Maid (10 M.)—White, bordered and suffused rosy pink; makes a beautiful bed or border. \$12.00 per 1,000; 25c per doz.; \$1.50 per 100.

Couleur Cardinal (10 L.)—Rich, glittering cardinal-red; splendid in every way. \$20.00 per 1,000; 35c per doz.; \$2.25 per 100.

Crimson King (10 M.)—Crimson scarlet; fine bedder. \$12.00 per 1,000; 25c per doz.; \$1.50 per 100.

Kaiser Kroon (15 M.)—Bright red, margined golden yellow; extra large and grand in every way. \$15.00 per 1,000; 30c per doz.; \$1.75 per 100.

La Reine (10 E.)—Pure white; sometimes tinted rose; fine for bedding or forcing. \$10.00 per 1,000; 20c per doz.; \$1.25 per 100.

Pink Beauty (12 M.)—Rich, glowing rosy-pink, flushed with snowy-white at the base of petals; a magnificent sort of heavy texture, lasting a long time in perfect condition. \$40.00 per 1,000; 65c per doz.; \$4.50 per 100.

Pottebakker White (12 M.)—One of the finest whites for general use. \$18.00 per 1,000; 30c per doz.; \$2.00 per 100.

Pottebakker Yellow (12 M.)—Very large and fine yellow. \$15.00 per 1,000; 30c per doz.; \$1.75 per 100.

Pottebakker Scarlet (12 M.)—Very bright. \$18.00 per 1000; 30c per doz.; \$2.00 per 100.

Rose Grisdelin (8 M.)—The finest dwarf bright pink, beautiful as a border. \$10.00 per 1,000; 20c per doz.; \$1.25 per 100.

Yellow Prince (10 M.)—The leading golden yellow for forcing; is also equally valuable for bedding. \$12.00 per 1,000; 25c per doz.; \$1.50 per 100.



MIXTURE OF SINGLE EARLY TULIPS

There are great differences in the various grades of mixed Tulips. As a rule they are made up by the growers in Holland out of cheap, undesirable or surplus lots, and little attention given to variety of color or time of flowering.

We import each season a large quantity of selected bulbs of the best-named varieties to make this superb mixture. It contains a care-

fully balanced range of colors, and must not be compared with mixtures as usually sent out, and notwithstanding the great care to make this the finest mixture ever sent out we are in a position to offer it at the price usually charged for a very inferior grade. 20c per doz.; \$1.00 per 100; \$9.00 per 1,000.

DOUBLE TULIPS, EARLY

Named Varieties. 30c per doz.; \$2.25 per 100.

DARWIN GIANT TULIPS

Named Varieties. 50c per doz.; \$3.50 per 100.

CROCUS

Blue and Purple, White, Striped, Yellow. 15c per doz.; \$1.00 per 100.

NARCISSUS or DAFFODILS

Emperor—The best single Narcissus; pure golden yellow; of very large size, with immense trumpet. 50c doz.; \$3.00 per 100.

Empress—Pure white perianth, with rich yellow trumpet; a splendid variety. 50c doz.; \$3.00 per 100.

Poeticus (Pheasant's Eye)—Sweet scented, pure white, red crown. 15c doz.; \$1.00 per 100.

Trumpet Major (Dutch Crown)—Large bulbs, pure yellow. 25c doz.; \$1.50 per 100.

Von Sion (The old well-known Double Daffodil)—A very hardy variety which has been in cultivation for a long time. Flowers very double; deep yellow. Very popular. 30c doz.; \$2.00 per 100.

Paper White Grandiflora (First Size Bulbs)—Pure white flower; used extensively for forcing. 30c doz.; \$2.00 per 100.

JONQUILS

Campernelle—Large yellow. 15c doz.; \$1.00 per 100.

Chinese Sacred Lily. 10c each; 3 for 25c.

Spanish Iris—The flowers are beautiful and very delicate, used for bedding outdoors or forcing. They take up no particular space and require little or no special attention after planting. 15c doz.; \$1.00 per 100.

Belle Chinoise—Pure yellow.

British Queen—Large white; very fine.

King of the Blues—Finest blue.

Louise—Pale blue, slightly spotted; fine flower.

SNOWDROPS

These beautiful early flowering bulbs are desirable for edging bulb beds or for planting in masses. The flower is pure white, blooming frequently while there is yet ice and snow on the ground.

Elwee's Giant Single. 15c doz.; \$1.00 per 100.

Double. 25c doz.; \$1.50 per 100.

SCILLAS (Squills)

They flower very early and remain in bloom some time, making an attractive combination when planted with Snowdrops or Crocus. For growing in pots or pans they are also desirable.

Sibirica—Blue, first size. 15c doz.; \$1.00 per 100.

Summer Flowering Bulbs

NAMED GLADIOLUS

40c doz.; \$4.00 per 100.

The most attractive of all Summer-flowering bulbs are the Gladioli. A succession of bloom may be had from July to September by planting at intervals from April to June.

America—Conceded to be one of the finest varieties for cutting or bedding ever sent out; color a beautiful soft flesh-pink; orchid-like in its coloring and texture; growth and habit perfect.

Baron Hulot—Rich, royal violet-blue. This, when cut in combination with one of the yellow varieties, is truly exquisite.

Brenchleyensis—The best and most effective vermilion-scarlet for massing.

Glory of Holland—A beautiful pure white, with lavender anthers; flowers very large; first-class in every way.

Groff's Hybrid Seedlings (the most popular strain in America). 30c doz.; \$2.00 per 100.

TUBEROSES

One of the most delightfully fragrant and beautiful of the Summer-flowering bulbs.

Excelsior Double Pearl—Extra large bulbs. 30c doz.; \$2.00 per 100.



Red Astrachan

Fruit Department

APPLES

Our list embraces a most careful selection of the best sorts for the several seasons, and a few, if any, are omitted, that have proved worthy of general culture in New England.

Price for Apple Trees, first class, 5 to 7 feet, 35c each; \$4.00 per doz.; \$25.00 per 100.

Dwarf trees can be furnished in many of the varieties. 50c each.

SUMMER APPLES

- Astrachan Red**—Large, deep, crimson, juicy; rich, acid; August.
- Early Harvest**—Medium size, straw color; tender, sub-acid. August.
- Golden Sweet**—Large; pale yellow; very sweet and good. August.
- Sweet Bough**—Large; pale-yellow; tender and sweet. August.
- Yellow Transparent**—Very early; color, pale yellow.

AUTUMN VARIETIES

- Fall Pippin**—Large, yellow; tender, juicy and rich. October.
- Fameuse (Snow Apple)**—Medium; deep crimson.
- Hubbardston**—Large, striped yellow and red.
- Gravenstein**—Large, striped; tender, juicy and high flavored.
- Jersey Sweet**—Striped red and green; very sweet.
- Maiden Blush**—Medium size; pale yellow, with red cheek.
- Oldenburg**—Medium size; yellow, streaked with red.
- Wealthy**—Medium; yellow, mostly covered with dark red.

WINTER

- Baldwin**—Large, bright red, juicy, crisp, sub-acid.
- Fallwater**—Large, globular; yellowish green, dull red cheek.
- King (Tompkins County)**—Large, striped red and yellow.
- McIntosh**—Medium size; dark red; flesh white.
- Northern Spy**—Large; striped; sub-acid, delicious flavor.
- Peck**—Large; pale yellow; very tender and rich.
- Rhode Island Greening**—Greenish yellow; juicy and rich.
- Russet, Roxbury**—Greenish yellow, covered with russet.
- Tolman**—Medium; pale yellow; very sweet.

CRAB APPLES

Price: 50c each.

- Hyslop**—Large; dark red, with a blue bloom; flesh yellowish.
- Transcendant**—Juicy and crisp. Skin yellow, striped with red.
- Whitney's Seedling**—Large; splashed with carmine.



Anjou

PEARS

Price: First-class trees, 5 to 7 feet, 50c each; \$5.00 per doz.; \$30.00 per 100.

SUMMER VARIETIES

Bartlett—Large size; buttery, very juicy and high flavored.

Clapp's Favorite—Rich and buttery, earlier than Bartlett.

Wilder—Small to medium; yellow, with red cheek; sweet.

AUTUMN AND WINTER

Anjou—A large, handsome pear; buttery and melting.

Bosc—A large russet pear, with a long neck. \$1.00 each.

Angouleme—Very large; yellow, with a dull red cheek.

Louise—Juicy, rich and excellent flavor.

Lawrence—Above medium size, yellow, tender and melting.

Sheldon—Large size; roundish; greenish yellow.

Seckel—Small size; the richest and finest variety known.

Winter Nelis—Medium size; greenish yellow, spotted with russet.

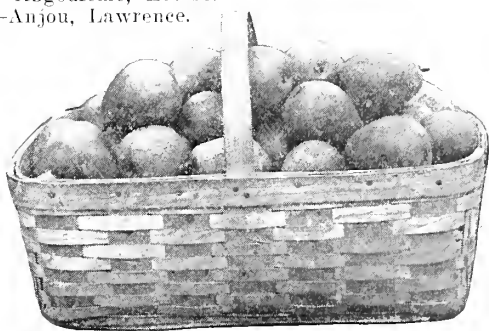
DWARF PEARS

50 cents each.

Summer—Bartlett, Clapp's Favorite.

Autumn—Angouleme, Louise.

Winter—Anjou, Lawrence.



A Basketful of Angouleme

CHERRIES



Napoleon

HEARTS AND BIGARREAUS (Sweet)

Price: 5 to 7 feet, 75c each; \$6.00 per doz.

Tartarian—Large; black; flavor mild and pleasant.

Wood—Clear, light red; tender and delicious.

Napoleon—Pale yellow, with red cheek.

Windsor—Fruit large; liver-colored; firm and fine quality.

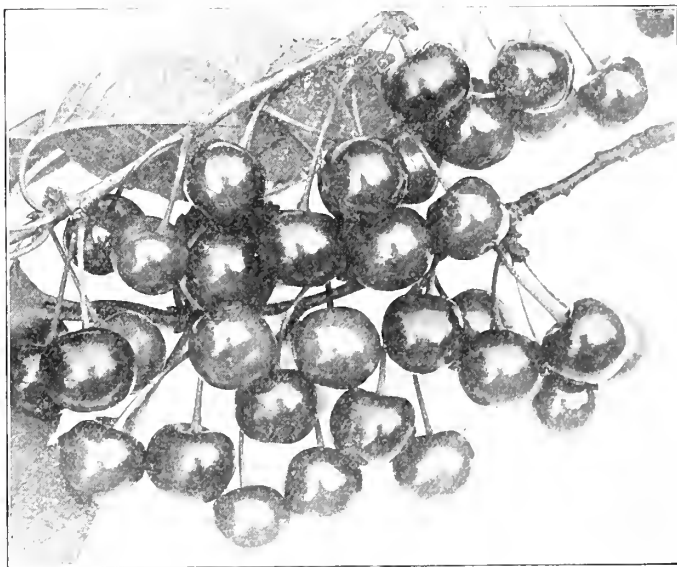
Spanish—Yellow, with a bright red cheek.

DUKE AND MORELLO CHERRIES (Tart)

Richmond—An early red, acid cherry; very valuable.

May Duke—Large, dark red; juicy sub-acid, rich.

Montmorency, Large—Fruit large, fine flavor, bright red.



Montmorency

PLUMS

JAPANESE PLUMS

Price: First-class, 5 to 6 feet, 50c each; \$5.00 per doz.; \$30.00 per 100.

Abundance—Color amber, turning to a rich, cherry red.

Burbank—Much like Abundance in size and color, but ripens later.

Chabot or Yellow Japan—Orange yellow.

October Purple—Reddish purple color. Flesh yellow.

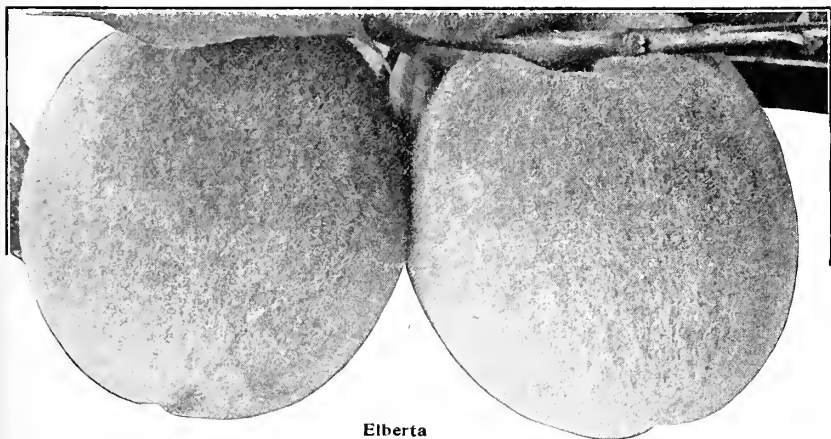
Red June—Deep vermilion red, very showy.

Satsuma—Color dark purple, flesh firm, juicy, dark red.

Wickson—Large, color deep maroon red.

EUROPEAN PLUMS

- Bradshaw—Large, early, purple, good quality. August.
 Coe's Golden Drop—Large, sweet. September.
 German Prune—Purple, juicy, rich, fine. September.
 Lombard—Medium red; productive; popular. August.



Elberta

PEACHES

A few of the hardiest varieties of good quality, most reliable for New England. All freestones.

Price: 4 to 6 feet, 25c each; \$2.50 per doz.; \$12.00 per 100; 3 to 4 feet, \$10.00 per 100.

- Belle—Large; skin white with red cheek; flesh white.
 Connecticut—Large; deep yellow, with red cheek; rich and sweet.
 Crawford's Early—A large yellow peach of good quality.
 Crawford's Late—Large size; skin yellow, with dull red cheek.
 Early Rivers—Large; white, with a delicate pink cheek.
 Elberta—One of the very best yellow peaches for market.
 Mountain Rose—Large; red; flesh white, juicy, rich, and excellent.
 Oldmixon—Pale yellow, with a deep red cheek.
 Stump of the World—Large; skin white, with a bright red cheek.

QUINCES



Apple or Orange Quince

- Price: 3 to 4 feet, 50c each; \$5.00 per doz.; \$30.00 per 100.
 Apple or Orange—Large; bright, golden yellow. One of the best.
 Bourgeat—Rich golden color, with delicious quince odor.
 Rea's—The largest and finest variety of the quince.

GRAPES

BLACK GRAPES

Price: 2-year-old Vines, 25c each; \$2.50 per doz.; \$15.00 per 100, except as noted.

Campbell's Early—Large and handsome; quality A 1. 35c.

Concord—One of the most popular grapes.

Moore's Early—Large, black, with a blue bloom.

Wilder (Rogers' No. 4)—Flesh tender, juicy, sweet.

Worden—Larger than Concord, and is superior.



Concord

RED GRAPES

Brighton—Sugary, juicy and rich flavor.

Delaware—Small; skin thin, light red.

Salem (Rogers' No. 53)—Very sweet and sprightly.

Vergennes—Color light amber; flavor rich and delicious.

WHITE GRAPES

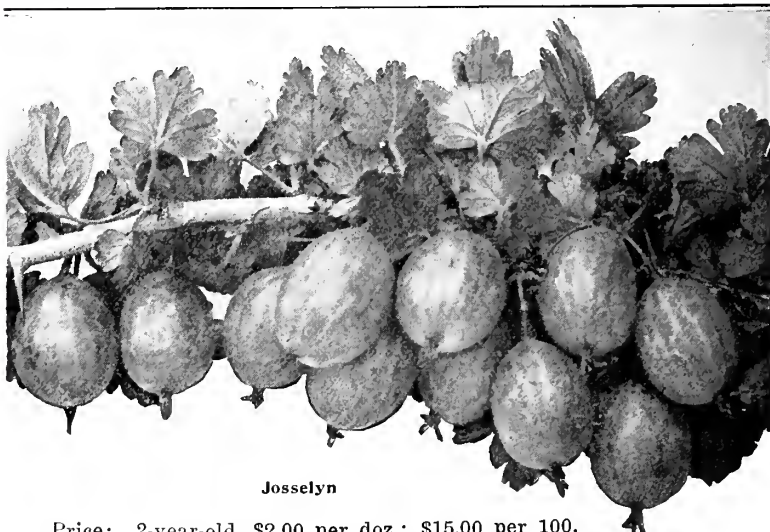
Diamond (Moore's Diamond)—Sweet to the center.

Green Mountain (Winchell)—Skin thin; pulp tender and sweet. 50c.

Niagara—Berries larger than Concord; quality good.

Pocklington—Good quality; ripens at the time of the Concord.

GOOSEBERRIES



Josselyn

Price: 2-year-old, \$2.00 per doz.; \$15.00 per 100.

Industry—Large; oval; dark red; hairy; rich and agreeable.

Josselyn—A new red berry of large size and good quality.

Smith's Improved—Oval form; light green; sweet and excellent.

CURRENTS

Price: 2-year-old, \$1.00 per doz.; \$6.00 per 100, except as noted.

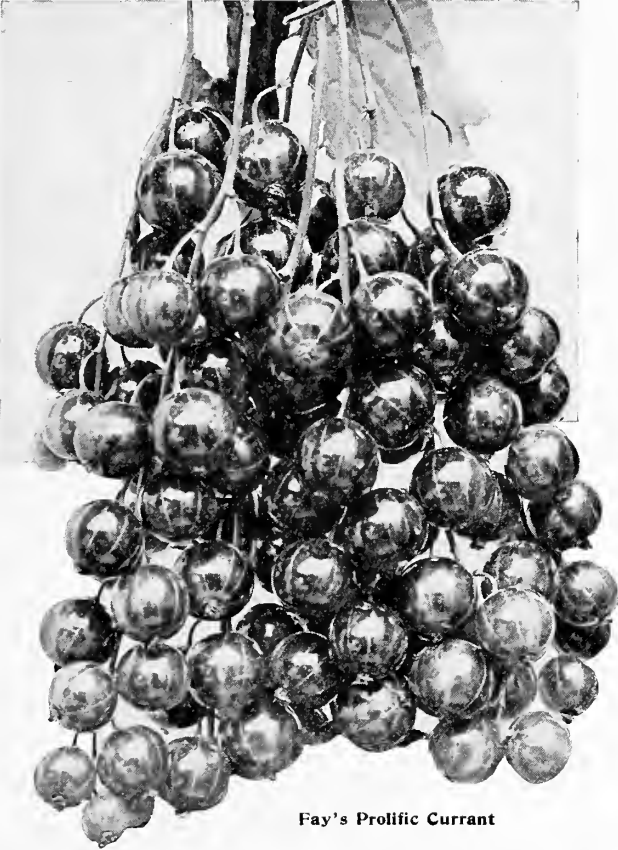
Champion (Black)—The finest Black Currant.

Cherry (Red)—Very large; deep red; rather acid; bunches short.

Fay's Prolific (Red)—Fine flavor and prolific.

Perfection (New)—Color red; larger than Fay and Cherry.
\$2.00 per doz.; \$12.00 per 100.

White Grape—The finest of the white sorts.



Fay's Prolific Currant

RASPBERRIES

RED AND YELLOW VARIETIES

Price: 75c per doz.; \$4.00 per 100.

Columbian—Fruit very large, rich, sprightly flavor.

Cuthbert—Of excellent quality, and immensely productive.

Golden Queen—Rich golden yellow, of highest quality.

St. Regis—A variety said to produce fruit for four months. Brilliant crimson; good quality.

BLACK CAPS

Cumberland—Fruit enormous; quality unsurpassed.

Gregg—Of great size, fine quality.

Kansas—Jet black, firm and delicious; as large as Gregg.

BLACKBERRIES

Price: 75c doz.; \$4.00 per 100.

Kittatiny—Large, black, sweet; very hardy. One of the best.

Eldorado—Berries large, jet black; sweet, melting, fine flavor.

Snyder—Medium size, very hardy and enormously productive.

Rathbun—Fruit borne on long stems, berry very large; sweet.

STRAWBERRIES

Those marked (P) have pistillate or imperfect flowers, and must be planted near perfect-flowering kinds, in order that the flowers may be fertilized. The varieties not so marked are bi-sexual or perfect flowering, and can be planted alone.

Prices: Layer plants, per 100, 75c.

Gandy—The late market beauty, always commanding fancy prices.

STRAWBERRIES—Continued

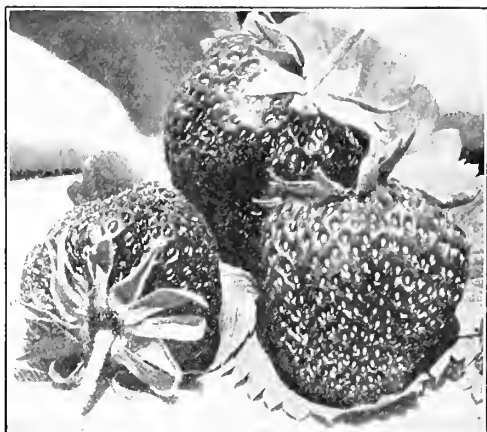
Glen Mary—A fine, large, late berry of excellent quality.

Haverland (P)—Large, long, bright red; a great yielder.

Sample—The fruit is very large; of fine quality.

Senator Dunlap—Large, bright red. Quality best.

Steven's Late Champion—Light red berries; very firm and high quality.



Senator Dunlap

FALL BEARING VARIETIES

The following varieties blossom from May until December. They would bear large crops in June and small crops in the fall, if unmolested. By picking the early blossoms up to as late as August 1st, we get large crops of fruit in September, October and early November.

Superb—The berries are very large, regular in shape, glossy and attractive; quality extra fine. 50c doz.; \$3.00 per 100.

Progressive—This is the latest addition to the Fall-bearing type and the originator considers it the best of his introductions. Berries of good size, beautiful, luscious and prolific. 50c doz.; \$3.00 per 100.

MULBERRIES

Downing's Everbearing—Yields an abundant supply of its large refreshing berries for about three months. \$1.00.

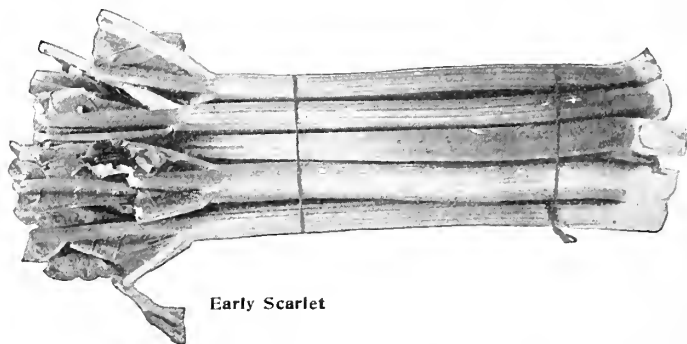
Russian—A hardy, rapid-growing tree. Fruit of little value. 50c.

ASPARAGUS

Price: 2-year-old roots, \$1.00 per 100.

Conover's Colossal—A well-known and popular variety.

Palmetto—A very early variety; of excellent quality.



Early Scarlet

RHUBARB OR PIEPLANT

Price: 25c each; \$2.00 per doz.; \$10.00 per 100.

Early Scarlet—Smaller than Myatt's early and very highest quality.

Myatt's Linnaeus—Tender, with a mild sub-acid flavor.

INDEX

<p>A</p> <p>Abies, 7 Achillea, 32 Acer, 3 Aconitum, 32 Acorus, 32 Actinida, 19 Adonis, 32 Adam's Needle, 10 Aesculus, 2 Agrostemma, 32 Akebia, 19 Almond, 11 Althea, 11 Alum Root, 38 Alyssum, 32 Amsonia, 32 American Ivy, 19 Ampelopsis, 19 Anchusa, 32 Anemone, 33 Andromeda, 10 Anthemis, 33 Anthericum, 33 Apples, 52 Aquilegia, 33 Arbor Vitae, 7 Arabis, 33 Aralia, 12 Armeria, 33 Artemisia, 33 Aristolochia, 19 Ash, 1-6 Asclepias, 34 Aster, 33 Asparagus, 58 Avens, 37 Azalea, 10-12</p> <p style="text-align: center;">B</p> <p>Baby's Breath, 38 Boltonia, 34 Balm, 41 Balloon Flower, 46 Baptistia, 34 Barberry, 12 Bellflower, 34-46 Beard Tongue, 44 Beech, 1-6 Betula, 1-6 Berberis, 12 Benzoin, 13 Birch, 1-6 Bignonia, 19 Bitter Sweet, 19 Blanket Flower, 37 Blackberries, 57 Blazing Star, 41 Bleeding Heart, 36 Blue Bells of Scotland, 34 Blue Bells, 41 Boston Ivy, 19 Bocconia, 34 Boltonia, 34 Boxwood, 9-10 Bulbs, 49-50 Buddleia, 12 Butter Cup, 46 Butterfly Bush, 12 Butterfly Weed, 34</p> <p style="text-align: center;">C</p> <p>Campanula, 34 Candytuft, 39 Canterbury Bell, 34</p>	<p>Callirhoe, 34 Cassia, 35 Cardinal Flower, 41 Catalpa, 1 Castanea, 1 Calycanthus, 13 Celandine, 34 Centaurea, 35 Cercis, 2 Celastrus, 19 Chamomile, 33 Chalk Plant, 38 Cherries, 6-54 Chrysanthemum, 35 Chinese Lantern Plt, 46 Cinquifol, 46 Chionanthus, 15 Chorchorus, 16 Chestnut, 1 Clethra, 13 Clematis, 19-35 Climbing Vines, 19 Columbine, 33 Cone Flower, 46 Corn Flower, 47 Cornus, 1-6 Conifers, 7 Coralberry, 18 Convallaria, 35 Coreopsis, 36 Crab Apple, 1-52 Crocus, 51 Crataegus, 5 Currants, 13-57 Chelone, 35</p> <p style="text-align: center;">D</p> <p>Daisies, 33 Day Lily, 38 Daffodil, 51 Daphne, 13 Delphinium, 36 Deutzia, 14 Dianthus, 36 Dictamnus, 37 Dicentra, 36 Dielytra, 36 Digitalis, 37 Diervilla, 18 Dogwood, 1-6 Doronicum, 37 Dutchman's Pipe, 19</p> <p style="text-align: center;">E</p> <p>Echinops, 37 Elm, 2-6 Elder, 14 Eulalia, 38 Euonymus, 15-20 Euphorbia, 37 Evening Primrose, 41 Evergreen Trees, 7 Evergreen Shrubs, 10 Exorchora, 14 Eupatorium, 37</p> <p style="text-align: center;">F</p> <p>Fagus, 1-6 False Indigo, 34 False Dragons Head, 46 Feverfew, 37 Ferns, 37 Fir, 7 Flax, 41 Flame Flower, 48</p>	<p>Forget-me-not, 41 Foxglove, 37 Forsythia, 15 Fraxinella, 37 Fraxinus, 1-6 Fringe Purple, 15 Fringe White, 15 Funkia, 37</p> <p style="text-align: center;">G</p> <p>Gas Plant, 37 Gaillardia, 37 Ginkgo, 4 Geum, 37 Gladiolus, 51 Globe Flower, 16-48 Globe Thistle, 37 Gloxinia, 39 Golden Bell, 15 Golden Marguerite, 33 Gooseberries, 56 Grapes, 56 Grasses, 38 Gypsophila, 38</p> <p style="text-align: center;">H</p> <p>Hardy Ferns, 37 Hardy Perennials, 32 Halesia, 2 Helianthus, 38 Heliopsis, 38 Hedge Plants, 11 Hedera, 20 Helenium, 38 Hemerocallis, 38 Herbaceous Plants, 32 Hesperis, 38 Heucheria, 38 Hibiscus, 11-39 Holly, 10-16 Hollyhocks, 39 Hop Vine, 20 Horse Chestnut, 2 Horse-mint, 41 Honeysuckle Bush, 15 Honeysuckle Vine, 20 Humulus, 20 Hyacinths, 49 Hydrangea, 15 Hypericum, 16-39</p> <p style="text-align: center;">I</p> <p>Iberis, 39 Ilex, 10-16 Incarvillea, 39 Indian Currant, 18 Iris, 40-51 Ivy, 20</p> <p style="text-align: center;">J</p> <p>Jacob's Ladder, 46 Japan Cypress, 8 Japan Ivy, 19 Jonquils, 51 Judas Tree, 2 Junipers, 7</p> <p style="text-align: center;">K</p> <p>Kalmia, 10 Kerria, 16 Knapweed, 35 Koelreuteria, 2 Kudzu Vine, 20</p>
---	--	--



