

## **Historic, Archive Document**

Do not assume content reflects current scientific knowledge, policies, or practices.



62.97

1917

FEB 10 1917



Hardy Nursery Stock  
Northern Grown



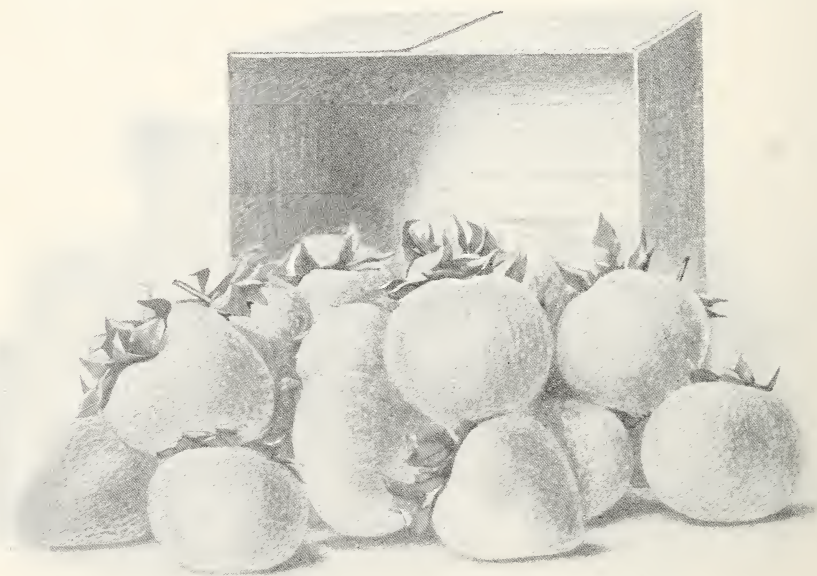
KELLOGGS NURSERY

111

Janesville, Wisconsin



HARDY SHRUBS AND ORNAMENTAL STOCK



### EVERBEARING STRAWBERRIES

Ripen from June until killed by frost. Price 50 cents per dozen. See page 14 for varieties and further description.



RETURN TO POMOLOGY  
SECTION OF NOMENCLATURE

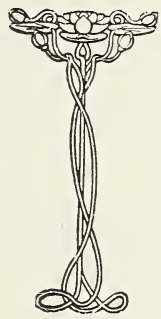
FEB 10 1917

INDEXED.

1854

1917

**Price List**  
*of*  
**Nursery Stock**



**Kellogg's Nursery**  
Janesville, Wisconsin

# SPRAYING CALENDER

EXPLANATION—While the number of applications recommended will be found desirable in seasons when the fungi are particularly troublesome, a smaller number may often suffice. An asterisk (\*) cautions against spraying with poisons while the plants are in blossom; two asterisks (\*\*) indicate that there is danger in making an application within 3 weeks of the time the fruit is to be used as food.

PLANTS	1st Application	2nd Application	3d Application	4th Application
APPLE, Scab, codling moth, bud moth, caterpillar, canker worm.	After the blossoms have formed, but before they open, Bordeaux.	Within a week after blossoms fall, Bordeaux and Paris Green.	10 to 14 days later, Bordeaux and Paris Green.	10 to 14 days later, Bordeaux.
CHERRY, Rot, aphid, curculio, slug, knot.	As flower buds appear, but before they open, Bordeaux; for aphid use Kerosene Emulsion.	When fruit has set, Bordeaux and Paris Green.*	10 to 14 days later, if signs of rot appear, repeat.	10 to 14 days later, Ammoniacal Carbonate of Copper.
CURRENT, Mildew, worms.	As soon as worms are found on lower and inner leaves, Paris Green.	If they reappear, repeat, adding Bordeaux for mildew.**	If worms still trouble, Pyrethrum or Hellebore.*	After fruit is picked, Bordeaux.
GOOSEBERRY, Mildew, worms.	As leaves open, Bordeaux and Paris Green.	In 10 to 14 days repeat with both.	10 to 14 days later, Sulphide Potash, on English varieties.	10 to 14 days later, repeat.
GRAPE, Fungus diseases, flea beetle.	When first leaves are half-grown, Bordeaux and Paris Green.	As soon as the fruit has set, repeat.*	10 to 14 days later, repeat.	10 to 14 days later, if disease is present, apply Bordeaux.
PEAR, Leaf blight, scab, codling moth.	Just before blossoms open, Bordeaux.*	Within a week after blossoms fall, Bordeaux and Paris Green.	8 to 12 days later, repeat.	10 to 16 days later, Bordeaux.
PLUM, Fungous diseases, rot, curculio, knot.	Within a week after blossoms have fallen, Bordeaux.*	10 to 12 days later, repeat.	10 to 20 days later, Bordeaux.	Note—If black knots are found on plum or cherry trees they should at once be cut out and burned.
BLACKBERRY, RASPBERRY, Anthracnose, rust.	Cut out canes badly diseased with anthracnose and burn. Before buds open spray with Copper Sulphate solution.	When new canes appear, Bordeaux and Paris Green.**	10 to 14 days later, repeat.**	Note—If red rust appears, the entire stool effected should be grubbed out and burned.
ROSE, Aphid, worms.	Kerosene Emulsion for aphid.	10 days later, Bordeaux and Paris Green.	Afterwards keep lice and caterpillars off by turning a fine stream from hose on under side of leaves.	

Do not spray with arsenites or copper compounds within three weeks of the time the sprayed portions are to be eaten. While there would be no danger of fatal effects resulting, it is best not to run any risk. Bordeaux mixture and other lime compounds should not be used upon rough or full-grown vines even as late as that time. Not only does the lime disfigure the fruit, but the amount of copper is large.

# ANNOUNCEMENT

SIXTY-THIRD YEAR

SIXTY-THREE Years ago this business was established by Geo. J. Kellogg, father of the present proprietor. During that time it has been the policy of this firm to offer to the public such varieties of fruits of all kinds, and such ornamental trees, shrubs, etc., as have in our judgment been proven to be hardy and reliable. From time to time we offer new varieties but in doing so we select only such as we believe have merited a place in our trial plats and are worthy of a general trial.

We extend our thanks to our customers in the past; and from those who receive this list, who have not heretofore favored us with their patronage, we solicit a trial order, feeling sure we can interest you with our prices and satisfy with our goods. We want our customers to get value received.

We offer a large stock of trees, plants, vines, etc., of the best standard varieties, well grown and thrifty. All stock is handled and packed under cover with no exposure to sun or wind; packing is done by experienced men under our personal direction.

We deliver the goods well packed to the transportation companies, after which our responsibility ceases.

**WE DO NOT GUARANTEE STOCK TO GROW** at the prices we ask. The planter must take that risk and give all stock good care. Where parties wish stock guaranteed to grow we do so but at an advanced price.

**GUARANTEE**—We exercise the greatest care to have all stock true to name and grade and satisfactory in every way, but it is hereby agreed between the purchaser and ourselves that should any stock not prove true to name, on proper proof, we will replace it or refund the purchase price, but shall not be held for further damage.

**CLAIMS**—All claims for shortage, errors, etc., must be made within **FIVE DAYS** of receipt of stock, or same will not be allowed. Mistakes do occur; but we are always willing to do all we can to correct any errors for which we are responsible. But in making complaints be reasonable.

**ORDERS** are acknowledged at once upon receipt of same, and should you fail to receive an answer in ten days write us again. Always give your name and address and write same very plainly; also give full shipping directions.

Order early before the assortments are broken and thereby avoid disappointment and possible delay.

Orders are shipped in rotation, as far as possible, and late ones must take their turn.

**SUBSTITUTION**—When any variety or grade is exhausted we reserve the right to substitute or to put in a smaller grade of trees, unless otherwise stated in the order, but in this case the true name will always be on such stock, and full value sent if smaller grades are used. We furnish 6 at dozen, 50 at hundred and 500 at thousand rates, and allow an assortment of varieties.

**TERMS**—CASH with order.

**REMITTANCES**—Remit by draft upon Chicago or New York, registered letter, money order or express order. Parties sending personal checks must add 10 cents to cover cost of collection.

Plant With Care, and see that the earth is packed firmly about the roots and that all trees planted are thoroughly wet down and well mulched. The ground should be well prepared before planting and given thorough cultivation afterwards.

On receipt of stock dip roots in water and bury in moist ground, except strawberry and raspberry plants, which should not be wet, these should be heeled in the moist soil, open the bundles and spread out, packing the soil firmly to the roots. All stock should be set out as soon as possible.

To parties wishing same, a short list of instructions in regard to planting and cultivation of stock, spraying and formulas, will be mailed on request.

Any information not given in this list will be furnished on application.

**PACKING CHARGES**—Bales of less than 50 trees, 25c; 50 to 100 trees, 50c; 150 trees, 75c. Where more than 150 trees are ordered they will have to be boxed, in which case no charge will be made for packing except the cost of boxing, as follows: 30 by 30 inch heads, \$2.50; 24 by 24 inch, \$2.00; 18 by 18 inch, \$1.50; all 8 to 10 feet long. No charge for packing small fruit plants at the list price or for cartage. We have Wells Fargo and American Express Companies and C. & N. W. R. R., C. M. & St. P. R. R. and Rockford, Beloit & Janesville Electric Railway Company.

Please give preference, if any, by what line you wish order shipped. Send your orders direct to an old reliable firm and save the profit of the middleman. We thank you for past favors and solicit your further orders and all orders sent us will receive our most careful attention.

KELLOGG'S NURSERY,

M. S. Kellogg, Prop.



# PARCELS POST SHIPMENTS

The regulations of the Post Office Department are such that the shipment of trees by Parcels Post is not practical; packages of more than 84 inches in combined length and thickness are not mailable.

The following weights will be a partial guide in helping to determine the amount of postage necessary.

Strawberry plants, 1 dozen, 1 pound. 50, three pounds. 100, five pounds. 200, seven pounds. 500, 18 pounds. 1000, thirty pounds.

Currants. Gooseberries. Grapes. 1 Dozen, 8 pounds. 25, seventeen pounds. 50, thirty-three pounds.

Raspberries, black. 1 dozen, 1 lb. 50, 4 lbs. 100, 8 lbs. Red, 1 doz. 1 lb. 50, 3½ lbs. 100, 7 lbs. Blackberries same as black raspberries.

Roses and Climbing Vines, ½ dozen, 4 lbs. 1 dozen, 8 lbs.

Flowering Shrubs 3 to 4 ft. not mailable. 2 to 3 ft. each 3 lbs. Dozen, 30 lbs.

If you are in doubt as to how much to send for postage after you have asked your postmaster for the zone and rate; send enough for the postage or the goods will be sent by express. We will not open small accounts for postage and the surplus over enough to pay postage will be promptly returned.

---

## APPLES

In the propagation of this fruit we use as nearly all nurserymen do, the piece root graft, using a long cion and a short root.

The experience of over half a century has demonstrated that such trees are better for the north than either whole root grafts or budded trees. When the long cion and short root is used the lower half of the cion (which is all below ground except the upper two inches) will nearly always start roots, and these being the same variety as the cion makes the tree hardier and longer lived. Our grafts are made here by experienced men under our personal direction.

Varieties marked thus \* are recommended for the extreme north.

	Each	Doz.	100
5 to 7 feet .....	\$0.30	\$2.50	\$15.00
4 to 6 feet .....	.25	1.75	10.00
3 to 4 feet, branched .....	.15	1.00	5.00

### SUMMER VARIETIES.

**YELLOW TRANSPARENT**—(Russia) Medium, roundish, conical, light yellow, juicy, sub-acid. One of the best early varieties. July-August.

\***DUCHESS**—(Russia) Large roundish, flattened, light yellow covered with stripes and splashes of dark crimson, firm, sub-acid. August-September.

**IOWA BEAUTY**—(Iowa) Fruit large, roundish, irregular yellow striped and splashed with red; firm, juicy, acid. A valuable variety where hardiness is necessary. August-September.

\***LIVELAND (LOWLAND RASPBERRY)**—(Russia) Medium to large; smooth waxen white, striped and splashed with fine light crimson; flesh white often stained with red; fine grained, crisp, mild sub-acid. August. One of the earliest.

### FALL VARIETIES.

**McMAHON**—(Wis.) Large, roundish, slightly flattened, light yellow to white, crisp, juicy, acid. October.

**WOLF RIVER**—(Wis.) Very large, roundish, irregular, yellow, covered with dark crimson, coarse grained, juicy. October-December.

\***WEALTHY**—(Minn.) Medium to large, roundish, oblate, striped, bright crimson to dark solid red. A very attractive fruit. Very juicy, sub-acid. October-January.

\***HIBERNAL**—(Russia) Large roundish, flattened, green striped with red, juicy firm, acid, (cooking). September-November. One of the hardest varieties known.

\***PLUMBS CIDER**—(Wis.) Large, roundish, conical, green with red stripes, firm, juicy, fine grained, sub-acid. October-January.



**PEERLESS**—(Minn.) Medium to large, roundish, conical, greenish, striped with dull red, firm, sub-acid- October-January.

**PRICES SWEET**—Medium, oblong, conical, greenish yellow with dull red splashes juicy, sweet. September-October.

### FALL AND WINTER.

\***LONGFIELD**—(Russia) Medium, roundish, conical, light yellow with red blush, very juicy, sub-acid. October-December.

\***PATTEN'S GREENING**—(Iowa) Large, round, slightly flattened, yellowish green with bronze blush, sub-acid. October-January.

**FAMEUSE OR SNOW**—Medium, roundish, flattened, deep solid red, sometimes striped, juicy, fine grained, mild sub-acid. October-January.

**BROUGHTON SWEET**—(Wis.) Large roundish, flattened, green and yellow with fine dots, firm, juicy, sweet. October-January.

\***HAMILTON**—Medium to large, oblate, yellow with blush cheek, quality good, tree very vigorous upright grower; very hardy. October—November.

### WINTER VARIETIES.

**PEWAUKEE**—(Wis.) Large, roundish, irregular, striped with dull red, mild, sub-acid. December-February.

\***NEWELL**—(Wis.) Large, roundish, deep yellow with slight blush, juicy, sub-acid. January-March.

**TALLMAN SWEET**—Medium, round, whitish yellow, juicy, mild, sweet. January-March.

**FLUSHING SPITZENBURGH**—(N. E.) Medium to large roundish, conical, greenish yellow with red splashes and stripes, juicy, crisp, nearly sweet. October-February.

**SALOME**—(Ill.) Medium sized, roundish, conical, yellow with large light colored dots, mild sub-acid. Good. January-May.

\***SCOTTS WINTER**—(Vt.) Medium roundish, oblate, red striped to dark red, juicy, sub-acid. February-April.

**WINDSOR (WINDSOR CHIEF)**—(Wis.) Medium, oblate, slightly conical, light greenish yellow, covered with marbled dull red and russet, fine grained, spicy, sub-acid. Very good. December-May.

\***N. W. GREENING**—(Wis.) Large, roundish, oblong, regular, yellowish green, firm mild, sub-acid. February-May.

**BEN DAVIS**—Large, roundish, conical, light to dark red, striped, coarse grained, mild, sub-acid. February-May.

**McINTOSH RED**—(Can.) A choice variety of the Fameuse type. Medium to large, smooth polished yellow covered with solid crimson, with heavy blue bloom, flesh snow white, crisp, very tender, sub-acid. Of the best quality. A vigorous spreading tree and an annual bearer. December-January.

**DELICIOUS**—(Iowa) A new variety of finest quality. Fruit large roundish, conical, yellow with stripes and splashes of bright crimson, and whitish bloom; color yellow, fine grained, juicy, sub acid. Quality of the best. December or January. 35 cents each.

**RAMSDELL'S SWEET**—(Conn.) Medium to large, oblong conical, red striped to dark red, firm, very sweet. October-February.

## CRABS

Prices and sizes same as for apples.

**HYSLOP**—(Origin America) Large, roundish, tapering dark solid red, acid, October.

\***SWEET RUSSET**—(Hybrid) Large, roundish, oblong, greenish yellow, mild sweet. September.

\***VIRGINIA**—(Iowa) Medium, roundish, flattened, nearly solid red, very juicy, acid September-November.

\***WHITNEY NO. 20**—(Hybrid, origin Illinois) Large, roundish, oblong, waxen yellow covered with dark red, juicy, mild sub-acid. August-September.

\***TRANSCENDENT**—(America) A standard variety, large, roundish oblate, yellow with red blush, firm sub-acid. September-October.

**MINNESOTA**—(Hybrid, origin Minn.) Large, roundish, oblong, yellow, mild sub-acid. September-October.

## PEARS

5 to 7 feet, 35c each; \$3.00 per doz.; \$25.00 per 100.

**DUCHESS DE ANGOULEME**—Very large, oblong, greenish yellow, juicy, good quality. July.

**BARTLETT**—Large, oblong, yellow, fine grained, juicy, sweet. September.

**FLEMISH BEAUTY**—Large, yellow with reddish brown tinge, juicy, sweet. September.

**CLAPP'S FAVORITE**—Large, ovate, pale yellow, juicy, melting. September.

**KIEFFER**—Large oval, yellow with light bluish coarse grained, very hardy. October-December.

## PLUMS

We propagate mainly of the native varieties (*Prunus Americana*) as we find they are much more reliable than the European or Japan sorts. We use the piece root graft and hardy native seedling.

A most satisfactory fruit, especially for exposed or unfavorable locations. Will grow anywhere, even on poor ground; fruits well even under neglect and is perfectly hardy.

There is a marked shortage in stock of the American plum this season and we advise those wishing same to place their orders early.

	Each	Doz.	100
5 to 7 feet .....	\$ .35	\$3.50	\$25.00
4 to 5 feet .....	.25	2.50	20.00

\***DESOTO**—Large, oval, light yellow to red, sometimes mottled, juicy, good quality. an early and regular bearer, producing large crops. September. Origin Wisconsin.

\***FOREST GARDEN**—Large, roundish oblong, deep red with yellow tinge, firm, sub-acid. September. Origin Iowa.

\***WYANT**—Large, oblong, flattened, purple red, firm, meaty, good quality. One of the best American varieties. September. Origin Iowa.

\***SURPRISE**—Very large, roundish oval, bright crimson, sometimes mottled, vigorous upright grower, an early bearer and a very choice variety. Flesh firm, meaty, sweet. August. Origin Minn.

**LOMBARD**—Large, oblong, slightly flattened, purplish red with blue bloom, flesh firm, meaty; mild sub-acid. September.

**WOLF**—Large, round, yellow blotched with red. Flesh firm, good quality, freestone. Origin uncertain.

**CHENEY**—Large, roundish oblong, green covered with mottled red. Flesh yellow, firm. Quality very good. August 1 to 15th; clingstone. On drift soil is somewhat subject to plum pocket, but is valuable in many sections.

**HAWKEYE**—Large, roundish oval, yellow covered with red and purple. Flesh firm, good quality. Mid season.

### PROF. HANSEN'S HYBRID PLUMS.

	Each	Doz.
4 to 5 feet .....	\$0.50	\$5.00
3 to 4 feet .....	.35	3.50

We can heartily recommend these plums as to hardiness, size, color and productiveness; they have in a very short time made a place for themselves in the Horticulture of the Northwest that will endure for all time. Our stock of these plums is limited and parties wishing same should place orders at once. We will not agree to supply these varieties on orders received after April 1st. Order NOW.

**SKUYA**—Sioux Indian for SWEET. This plum in our opinion is one of the plums that have come to stay no matter what may be produced later. It is a cross of the red June, a large early Japanese plum, and the De Sota plum, which is known to practically everyone in the North who has ever grown plums. The color of the fruit is a very dark red and yellow, and is the most delicious for eating purposes of any plum we have ever tasted. It is an excellent keeper and shipper. In August, when this plum ripens, we took a half bushel basket of them and set them in our office here and allowed it to stay there for more than one week; at the end of that time the plums were gone over care-

fully and not a discolored spot on any of them or any indication of decay. They have retained their peculiar fragrance to the end. The pits of the Skuya are exceptionally small. The size of the fruit on the young trees is not quite as large as the Hanska, but of a larger size than most any of the American plums.

**HANSKA**—(Sioux Indian for TALL), and refers to the extraordinary growth and symmetrical shape of the Hanska plum. The Hanska does not come into bearing as early as those varieties containing Sand Cherry blood, but three and four year old trees in the nursery were loaded with most excellent fruit. The Hanska was produced by crossing a wild Northwestern plum with the very large, firm freshed fragrant apricot plum of China—*Prunus Simoni*—which is so very popular in all of the orchards of California. This variety has all of the good qualities a plum should have. The Hanska is a very large plum, a great many specimens measuring better than 1½ inches in diameter. Is of the best quality for eating from the tree, for canning, preserving, or making jelly. None of the California or native American plums compare with it in any way. In color it is a bright red with heavy blue bloom. In shape it resembles its male parent, the Apricot plum. To see this tree in the nursery, its tropical foliage, its limbs laden with the luscious reddish-blue fruit, to get on the lee side of it and catch its fragrance, is a pleasure that can only be exceeded by the actual eating of the fruit. As a shipper no other plum compares with it.

**OPATA**—Is a cross between the Dakota Sand Cherry and the Japanese Gold plum. Vigorous in growth, heading low and of spreading habit; forms fruit buds readily on one year wood and bears the year following; color is dark reddish purple with green flesh; size from 1¼ inches to 1½ inches in diameter; quality is of the best. Pit very small. Ripens July 10th.

**SAPA**—A cross between the Sand Cherry and the Japanese plum Sultan. Large size, purple with a rich glossy skin, flesh reddish purple, quality of the best. When left on the tree till fully ripe it is nearly black in color of skin and flesh. Is retained on the tree very readily and is a valuable variety for market. Season about the same as Opata.

**CHERESOTA**—A cross of the Sand Cherry and the DeSoto plum. Size from one to 1¼ inches in diameter; a glossy black when ripe, flesh yellowish green, sprightly pleasant flavor, thin skin, and free from astringency. Blooms late and is nearly if not quite free from damage by frost. Ripens just after the Sapa and Opata. Excellent for canning, etc.

## CHERRIES

4 to 6 feet .....	\$ .50	\$4.50	\$30.00
3 to 5 feet .....	.35	3.50	20.00

\***EARLY RICHMOND**—An early variety of extreme hardiness, bearing large annual crops of medium sized fruit, light to dark red, very juicy. Season June.

\***MONTMORENCY**—Large, bright crimson, very juicy, strong, upright grower and one of the best late varieties. Season July.

**WRAGG**—Large, dark crimson nearly black when ripe, firm, juicy. July.

**ENGLISH MORELLO**—Large, dark red, juicy, tree somewhat dwarfish in growth. July.

## CURRANTS

**VICTORIA**—A standard market variety, always reliable, dark red, very productive, berry medium to large, good quality, season early. 10c each; 2\$1.00 per doz.; \$4.00 per 100.

**LONDON MARKET**—A strong vigorous grower, an early and abundant bearer, berry of large size and deep, rich crimson, fine quality; bunches long, mid-season to late. 10c each; \$1.00 per doz.; \$4.00 per 100.

**WILDER**—A new variety largely grown for market, bunch and berry very large, dark rich red, and good quality. Always brings the top price. 10c each; \$1.00 per doz.; \$4.00 per 100.

**POMONA**—A new early variety, very desirable, medium to large size, bright crimson, very productive, of good quality, a good shipper and a leading market sort. 10c each; \$1.00 per doz.; \$4.00 per 100.

**WHITE GRAPE**—A large sized standard white variety of finest quality. 10c each \$1.00 per doz.; \$4.00 per 100.



**PERFECTION**—A seedling of Fay's and White Grape. The color is bright red. Size as large or larger than Fay, size of berry being maintained well to the end of bunch. Very productive, resembling White Grape in this respect. Ripens about mid-season. Quality, rich, mild sub-acid; plenty of pulp and few seeds. Vigorous in bush with large healthy foliage. Habit of growth is intermediate between Fay and White Grape. Price each 25c; \$1.50 doz.; \$12.00 hundred.

**LEE'S PROLIFIC**—(Black) An English variety; large size and of good quality; strong vigorous grower and very productive. 10c each; \$1.00 per doz.; \$4.00 per 100.

## GOOSEBERRIES

**DOWNING**—Strong upright, vigorous grower, very productive, medium size, thin bright green and of first quality. The standard market variety. 15c each; \$1.25 doz.; \$9.00 per 100.

**CARRIE**—A seedling introduced by Hon. Wyman Elliott of Minneapolis, Minn., bush a strong vigorous grower, and very productive. Fruit large to very large, fine quality. A decided addition to our gooseberry list. 2 year old bushes, 20c each; \$1.50 per doz.

## BLACKBERRIES

**ANCIENT BRITON**—A standard market variety, fruit large, juicy, fine, strong grower producing profitable crops. Season late. 50c per doz.; \$1.50 per 100; \$12.00 per 1000.

**SNYDER**—Strong vigorous grower and very hardy, medium to large size, very productive, good quality, ripens early. 50c per doz.; \$1.50 per 100; \$12.00 per 1000.

## RASPBERRIES

**KING**, a very promising new early variety of undoubted merit. Large size, firm, bright scarlet, a good shipper, and of good quality. 25c doz.; \$1.00 per 100; \$7.50 per 1000.

**CUTHBERT**—An old standard variety, well and widely known. In the extreme north needs winter protection. Strong, vigorous grower, berries very large, conical, rich crimson, very fine, productive, late, of first quality. 25c per doz.; 75c per 100; \$6.00 per 1000.

**COLUMBIAN**—(Purple) Very large, roundish, purple. Bush a strong grower and very productive. In the extreme north needs winter protection. Flesh firm, juicy sub-acid. 35c per doz.; \$2.00 per 100.

\***CUMBERLAND**—Very large, black, firm and of first quality. Strong vigorous grower and very productive. Early to mid-season. 25c doz.; \$1.50 per 100; \$10.00 per 1000.

\***PLUM FARMER**—A variety from Northern New York, and a few days later than Palmer; maturing the entire crop in a very short period, making one of the most profitable early market sorts. The berries are thick-meated, firm with a bloom similar to Gregg. Berry large and very attractive when picked ready for market. 50c per doz.; \$1.50 per 100; \$12.00 per 1000.

\***OLDER**—Large roundish, firm, early and a sure cropper, vigorous grower and very hardy. 25c per doz.; \$1.50 per 100; \$10.00 per 1000.

## GRAPES

Strong 2-Year Vines.

10c each; \$1.00 per doz.; \$6.00 per 100 except as noted.

**CONCORD**—(Black) Too well known to need much description; is considered by many to be the best all around grape grown; is extremely hardy, vigorous and productive; bunches large, compact; berries large, juicy, buttery and sweet; will succeed well almost anywhere. 10c each; \$1.00 per doz.; \$4.00 per 100.

**CAMPBELL'S EARLY**—(Black) A strong, vigorous and hardy sort; ripens early, very productive; berry large, black with blue bloom; tender, sweet and rich; is a good shipper and a long keeper and a good market variety. 25c each; \$2.50 per doz.; \$15.00 per 100.

**WORDEN**—(Black) A seedling of Concord, vine is vigorous and hardy; an early and productive variety; bunch large and compact, berry round, black with blue bloom, pulpy, juicy, and very pleasant; ripens several days earlier than the Concord.

**MOORE'S EARLY**—(Black) Hardy and prolific; bunch large compact, berry round, black with heavy blue bloom; quality better than Concord. A good market variety; ripens two weeks ahead of Concord.

**AGAWAM**—(Red) (Rogers No. 15) Bunch large, compact, shouldered, berry large, dark red, tender, juicy and of fine quality. Later than Concord.

**BRIGHTON**—(Red) Vigorous and hardy; bunch medium to large, berry large; flesh tender, rich, sweet and of first quality. Ripens with Concord.

**DIAMOND**—(Moore's Diamond) (White) Vigorous and productive; free from mildew; bunch large and compact, somewhat shouldered; berry medium size, greenish white; berry tender, juicy and nearly transparent, sweet and rich. Ripens ten days before Concord.

## ASPARAGUS

We have three varieties that are grown largely here for the market and they are reliable.

**CONOVER'S COLOSSAL**—This good old variety is known everywhere is of large size, rapid in growth and of good quality.

Price, large two year old plants, 25c per 12; 50c per 100; \$4.00 per 1,000.

**PALMETTO**—A valuable new variety, and is planted very largely. It is larger than Conover, fully as early and the flavor is excellent.

Two year old plants, 25c per 12; 50c per 100; \$4.00 per 1,000.

**COLUMBIAN MAMMOTH WHITE**—This variety is white and stays white longer than the others. As some markets demand a white variety this is a very profitable one to grow in such cases. It is a very vigorous grower and very prolific.

Price: 2 yr. old plants, 25c per 12; 50c per 100; \$4.00 per 1,000.

## RHUBARB

This deserves to be ranked among the best early fruits in the garden. It affords the earliest material for pies and tarts, continues long in use, is valuable for canning.

**LINNAEUS**—Large, early, tender and fine.

**VICTORIA**—Very large, long stocks; a great market sort.

10c each; 75c per doz.; \$4.00 per 100.

## ORNAMENTAL TREES

4 to 6 feet.....25c each; \$2.50 per doz.; \$15.00 per 100

6 to 8 feet.....50c each; 4.00 per doz.; 25.00 per 100

8 to 10 feet.....75c each; 6.00 per doz.; 40.00 per 100

Larger trees than above can sometimes be furnished and prices will be about \$1.00 for each inch of diameter over 2 inches. 2 inch trees will be furnished for \$1.00 each and will run about 10 to 12 feet.

**ELM, AMERICAN WHITE**—The noble, spreading, drooping tree of our woods. One of the grandest of park or shade trees.

**ASH, WHITE**—Rapid growing tree, of fine, symmetrical outline. A valuable street or park tree and should be extensively planted.

**CATALPA**—A native of the South. A rapid growing beautiful tree, with very large heart-shaped leaves and pyramidal clusters of white and purple flowers a foot long. Blooms late in July.

**LINDEN**—(American) A rapid growing, large, beautiful native tree. Flowers very fragrant.

**CAROLINA POPLAR**—Takes front rank among best of poplars; it is one of the most rapid growers among shade trees. Its branches spread just enough to give it a symmetrical appearance. It has advantages over other shade trees because it will grow on any kind of soil, swampy or muck, light or heavy. Its roots penetrate the hardest soil, it withstands all hardships and thrives in places where others fail to live. It is easily started and gives shade in a short time. Its leaves are large and stay green till quite late in the fall.

**MAPLE, SILVER**—(Soft) A hardy, rapidly-growing native tree of large size. Valuable for producing a quick shade. Excellent for street planting.

**NORWAY MAPLE**—A large handsome tree, with broad deep green foliage; has a very compact growth; attains to a large size; a valuable tree for parks, lawns or streets. 4 to 6 foot trees 75c each; 6 to 8 foot trees \$1.00, 8 to 10 foot \$1.25 each.

**BIRCH**—(Cut-Leaf Weeping) Erect, stately, rapid growing tree, with long slender pendant branches, delicately cut leaves and silvery white trunk; especially fine when near evergreens; hardy; the most excellent weeping tree on the list. 6 to 8 feet \$1.25 each; \$12.00 per doz.

## EVERGREENS

	each	doz.	100
Norway Spruce, 3 to 4 feet .....	\$0.75	\$7.50	
Norway Spruce, 2 to 3 feet .....	.50	5.00	\$40.00
Norway Spruce, 18 to 24 inches .....	.35	3.50	25.00
Balsam Fir, 3 to 4 feet .....	.75	7.50	
Balsam Fir, 2 to 3 feet .....	.50	5.00	
Balsam Fir, 18 to 24 inches .....	.35	3.50	
Am. Arborvitaea, 2 to 3 feet .....	.50	5.00	
Am. Arborvitae, 18 to 24 inches .....	.35	3.50	
Pines, White and Scotch:			
2 to 3 feet .....	.50	5.00	
18 to 24 inches .....	.35	3.50	

## ROSES

2-Year Bushes 18 to 24 inches of wood, 50c each; \$5.00 per doz.; \$30.00 per 100.

### HYBRID PERPETUALS.

**FRAU KARL DRUSCHKI**—(New) A pure paper-white, large sized and free flowering. The bloom is perfect in form on fine, long stems, and during the past season in our Rose Gardens bloomed continuously from June till November.

**SOLEIL d'OR**—A cross between Persian Yellow and Antoine Ducher. It is a fine hardy outdoor Rose, showing much the same character as the Hybrid Perpetuals. Especially valuable because of its rare color; gold and orange yellow varying to ruddy gold, suffused with Nasturtium red.

**GEN. JACQUEMINOT**—Deep red, free bloomer, fragrant, large size one of the finest.

**M. P. WILDER**—Deep red, one of the finest red roses. Large size and full. Free bloomer.

**ULRICH BRUNNER**—Bright red, large size, fragrant. Very fine.

**CLIO**—Pink, large, fine in form either as bud or open flower. Very free bloomer. The finest pink Hybrid Perpetual.

**JOHN HOPPER**—Pink, large and full and a free bloomer; fragrant.

**MADAM PLANTIER**—White, large size, and very full, very hardy.

**ANNA DE DIESBACH**—Brilliant rose, large and very fragrant. Vigorous grower. and persistent bloomer.

**MAGNA CHARTA**—Bright pink suffused with carmine, large size. Strong upright grower, vigorous and healthy. One of the best.

**PAUL NEYRON**—The largest rose in cultivation, blooms often measure five inches in diameter; strong, vigorous grower. Pink. Very fresh and attractive.

**ROSA RUGOSA ALBA**—Bright shiny green foliage, flowers pure white, blooms in clusters. Very hardy; needs no winter protection.

**ROSA RUGOSA RUBRA**—Same as above. Flowers single, rosy crimson.

**PERSIAN YELLOW**—An old favorite, and still one of the best yellow Roses for the yard. Deep golden yellow, semi-double.

### MOSS ROSES.

**HENRI MARTIN**—Rich glossy pink tinged with crimson; large globular flowers.

**PRINCESS ADELAIDE**—Soft velvety pink, large blooms. Very hardy. One of the best.

### CLIMBING ROSES.

**DOROTHY PERKINS**—Beautiful shell pink, full and double, large size for cluster rose. Closely resembles the Crimson Rambler.

**CRIMSON RAMBLER**—The most beautiful crimson climbing rose. Flowers in large pyramidal clusters of from 30 to 40 blooms, strong grower and hardy.



**BALTIMORE BELLE**—Blush white changing to white, blooms in clusters, flowers large and full.

**QUEEN OF PRAIRIE**—Pink, large, full, vigorous grower and blooms freely.

**SEVEN SISTERS**—Dark reddish pink changing to white as the petals fall. Very strong grower and profuse bloomer. Very hardy.

**VEILCHENBLAU**—(The Blue Rambler) This grand new rose is past the novelty stage, and is commonly accepted as a truly blue Rose. Its flowers are somewhat larger than Crimson Rambler, but otherwise it closely follows the type.

## SHRUBS

2 to 3 feet. 25c Each. \$2.50 per Doz. Except as Noted.

**SPIREA VAN HOUTTII**—(Bridal Wreath) Large white flowers, early bloomer. "A snow bank of bloom." The finest of all the shrubs.

**BERBERIS THUNBERGII**—Dwarf in growth with graceful drooping branches. Yellow bloom, scarlet fruit, foliage green changing to scarlet and gold in the fall.

**PURPLE LEAVED BARBERRY**—Very similar to the common barberry but differs in that the foliage is a rich purple.

**COMMON BARBERRY**—A hardy native shrub, strong, vigorous upright grower, foliage green, fruit dark red.

**GOLDEN WILLOW, LAUREL LEAF WILLOW, JAPAN QUINCE**—Much used in massing shrubs and are valuable in this connection.

**WEGELIA ROSEA**—Blossoms in June, large trumpet shaped flowers of rose color that fade to nearly white. Very desirable.

**WEGELIA VARIEGATED**—Resembles Wegelia Rosea; has variegated green and white leaves. Very choice.

**WEGELIA Eva Rathka**—Similar to W. Rosea but has very fine dark rich red blossoms. Very choice. Each, 35c.

**HYDRANGEA ABORESCENS**—"Hills of Snow." A new shrub but one that will give very satisfactory returns. Flowers of large size pure white, similar in shape to the Snowball but much larger. Blooms freely from June to August. Each 35c, doz. \$3.50.

**HYDRANGEA P. G.**—A fine shrub, blooms August and September, large white flowers pyramidal shape, often a foot long. This can be pruned into tree form and will make a very large shrub often upwards of eight feet in height.

**LIGUSTRUM**—(Privet). Amoor River North. A fine hedge plant. Curving branches with grayish leaves; retains its color well into the Winter. We have tested it for three years and so far it has shown no injury from the winter, and is remarkably resistant to drouth. Each 25c, doz. \$2.00.

**TAMARIX AFRICANA**—Tall growing shrub with fine feathery foliage like that of the Juniper; small pink flowers in April or May. Each 35c, doz. \$3.00.

**RUSSIAN OLIVE**—Tree attains a height of from 20 to 30 feet, bark dark green, wood very heavy and burns like a candle (called by some the European Candle Tree), foliage rich silver color, willow shape; flowers deep golden and very fragrant; hardy. It is a beautiful ornamental tree, and should be in every collection.

**SYRINGA (Alba Grandiflora)**—A large vigorous, upright growing shrub. Flowers white, blooms very freely in June.

**LILACS**—Purple, white and variegated.

**SNOWBALL**—A well known shrub, large white flowers latter part of May.

**HONEYSUCKLE**—(Bush) Red and white. Blooms in June.

**SPIREA BUMALDA**—Dwarf but vigorous grower, blooms freely during mid-summer and autumn. Rose color. Very desirable.

**SPIREA SORBIFOLIA**—White, medium size, vigorous grower. August.

**SPIREA BILARDI**—Bright with dense panicles of rich pink flowers. July-August.

**GOLDEN ELDER (Sambucus Aurea)**—Beautiful golden yellow foliage, fine for single specimens or used in massing with other shrubs or alone.

**SNOWBERRY (Symphoricarpos Alba)**—Vigorous and hardy. Berries white.

**INDIAN CURRANT (Symphoricarpos Rubra)**—Similar to above, berries red in color.

## CLIMBING VINES

25c each; \$2.50 doz.

**SCARLET TRUMPET HONEYSUCKLE**—(Climbing) Red, strong, rapid grower, blooming all summer.

**BITTER SWEET**—One of the best native climbing vines, a vigorous grower and free bloomer, and very ornamental, even in late fall with bright red berries, which it retains all winter; needs no protection.

**JAPAN IVY**—One of the hardy climbers, clings to the smoothest surface.

**AMERICAN IVY**—(Virginia Creeper) Native climber too well known to need description.

**AKEBIA QUINATA**—A perfectly hardy, fast growing Japan vine, with magnificent foliage, producing flowers in large clusters, of chocolate purple color, possessing a most delicious perfume; unsurpassed for covering trellises and verandas, the foliage never being attacked by insects.

## CLEMATIS

2-Year, 35c each. \$3.00 per dozen.

In planting the Clematis be careful to put them in quite deeply even to 4 to 6 inches below the surface. This will often prevent loss by the breaking off of the vine just where it leaves the root. Also be sure that they are well firmed in to prevent drying out.

**C. JACKMANNII**—A very profuse blooming variety with flowers from four to six inches in diameter, of an intense violet-purple color borne successively in continuous masses on the summer shoots. The very best sort for general planting.

**C. HENRYII**—Fine bloomer; flowers large, or a beautiful creamy white, consisting generally of from six to eight sepals. June to October.

**C. MADAME EDOURD ANDRE**—Flowers large, or a beautiful bright velvety red, very free flowering and continuous bloomer.

**C. PANICULATA**—A great novelty. One of the most desirable, useful and beautiful of hardy garden vines, a luxuriant grower, profuse bloomer with fine foliage. Flowers of medium size, very pretty and fragrant, produced in the greatest profusion in late summer.

## PEONIES

Red, white and pink. Each 35c; doz. \$3.50; 100, \$25.00.

Named varieties, 50c each; \$5.00 doz.

**DUCHESS DE NEMOURS** (Calot)—Cup-shaped sulphur-white flowers, fading to pure white.

**EDULIS SUPERBA** (Lemon)—Lovely rose-pink, fine form, high tufted center; very early.

**FESTIVA MAXIMA** (Miellez)—The standard of perfection in Peonies; paper-white with few carmine flakes.

**MARIE LEMOINE** (Calot)—Solid, massive, flat bloom of large size; delicate ivory white; very late.

**OFFICINALIS ALBA**—Fl. Pl. Large double white flowers and the earliest white peony.

**OFFICINALIS ROSEA**—Very early; salmon color.

**OFFICINALIS RUBRA PLENA**—Deep crimson; very early; one of the best.

**OFFICINALIS TENIFOLIA**—Rich, crimson, single.

**RUBRA TRIUMPHANS**—Dark purplish crimson.

## PHLOXES

TALL CHOICE PERENNIAL VARIETIES.

OUR PLANTS ARE WELL-GROWN AND STRONG.

Hardy Phloxes have long been so popular that it is rare to find a garden without a collection of at least a few of the many beautiful varieties now in cultivation. No plant is more attractive or more useful, either for the adornment of the garden or for supplying cut flowers.

To those not familiar with these plants we desire to say that they are perfectly hardy, and succeed well in almost any kind of soil. Small plants are usually selected to start with, as they increase rapidly in size, not in height so much, which is from 2 to 3 feet, but in the number of flower stems, which multiply year after year.

Assorted colors, white, white with lavender eye, pink, pink and white, red, lavender, and light red. 15c each; \$1.50 per doz.

**BUDDLEIA, VARIABILIS MAGNIFICA** (Butterfly Bush)—A beautiful shrub, carries long graceful panicles of deep purple-lilac flowers, which begin to open in mid-summer and continue till frost. The long, gray-green leaves, add greatly to its beauty. A late blooming shrub of merit. 2 to 3 feet, \$35c each; \$3.50 per doz.



# STRAWBERRIES

To this department we give special attention and the plants we offer are equal to any grown, are carefully graded, and no small, inferior ones sent out; they are fresh dug from new beds that have never fruited, and are shipped to our customers while in fresh, vigorous condition. They are not held in the packing house till half their vitality is gone. We ship in baskets or light boxes, and all plants are neatly trimmed and tied in bunches of 25. They are carefully packed and we guarantee them to arrive in good condition when shipped by express. We do not recommend freight shipments for this class of stock.

Those varieties which are strong growers and make a heavy stand of plants are more reliable than those which only make a moderate growth. When we prove a variety to be inferior to the standards it is discarded, and while all varieties may not succeed the same as with us, we judge them by actual test in field culture grown with the object of marketing fruit at a profit.

Plant two by four feet on thoroughly prepared ground, cultivate often and when you have a solid matted row two feet wide, restrict the growth, (don't let a weed grow) mulch in fall with straw or some coarse material free from weed seed, remove a part of it the following spring and place between the rows as mulch.

Varieties marked "Imp." are imperfect in blossom and must be set with "Per." perfect flowering kinds.

Varieties marked \* we especially recommend for general cultivation.

Owing to the very dry summer the past season we have a much lighter stand of plants than usual. Indications are that the supply of plants in the entire country is far from up to a normal amount; those who wish plants must place their orders early. We will not agree to accept orders after April 15th for strawberry plants. Our present stock of plants will be exhausted long before the season is over and we shall have to depend on buying to fill many of our orders, and plants will be sent direct to our customers.

If you want good plants, true to name and properly handled, place your orders with us. We guarantee plants to be true to name and will be delivered to the transportation companies in the best of condition but we decline to accept any responsibility and plants must travel at the buyer's risk. We will be pleased to have you visit our nursery at any time and inspect our stock.

**AROMA**—Per. Medium to large, roundish, conical form, berry bright red and of good quality. Plant strong but not a free runner; moderately productive, season late.

**\*BEDERWOOD**—Per. Medium size, roundish regular form, moderately firm, very productive and of good quality. An early variety of strong vitality and profitable for near market.

**BRANDYWINE**—Per. A large late dark red berry of good quality. A large plant carrying the bloom high, somewhat above the foliage, is easily affected by frost. One of the best late varieties.

**BUSTER**—Imp. Large, mid-season to late, plant vigorous and healthy, with large dark green foliage, quite resistant to drouth. Berries hold size to the end of season. A new variety of merit.

**CLYDE**—Per. Large to very large roundish regular form, bright scarlet, moderately firm, good quality, mid-season to late. A strong plant but not a free runner, yet producing large crops of fine fruit which hold to the end of the season. Is one of the best all 'round varieties for home or market.

**FENDALL**—Imp. Large to very large, irregular form, rich glossy red. Plant a strong grower with light green foliage. Has yielded 16,800 qts. per acre it is claimed. A new variety of merit.

**GLEN MARY**—Per. Very vigorous and productive, large size, irregular shape, very firm, late, ships well. Does not always ripen evenly, plants are large but not free runners.

**HAVERLAND**—Imp. Early, medium size, conical form, light color, inclined to be soft. Plant a good grower and for home market is all right.

**HELEN DAVIS**—(Per.) This variety, originated by Mr. Geo. W. Davis, of Indiana, has sprung into popular favor very rapidly. We are very favorably impressed with the showing it has made. The Helen Davis plants are very hardy and strong. The fruit is exceptionally large and of a beautiful dark red color clear through. It is of symmetrical shape, excellent quality, and very productive. In season it commences to ripen early, but continues nearly as long as the later varieties.

**KLONDYKE**—Per. Large to very large roundish conical regular form, very productive, late, deep red and of finest quality. A strong grower and one of the best but will not class as a shipper.

**\*LOVETT**—Per. Medium to large, dark red, conical, very productive, a vigorous



grower and one of the best. A good shipper. This is one of the old reliable sorts and seldom fails to produce a large crop.

**NORWOOD**—Per. A new variety of merit. The plant is strong and healthy, making a liberal but not excessive number of strong runners. The berry is conic and regular in shape; the quality is unsurpassed and the size unequaled, some attaining enormous size. Color bright red all the way through, growing darker with age; firm, a good keeper and ships well. Holds its size well through the season and remains in bearing a long time.

**OZARK** (Early Ozark)—Per. Large to very large, regular form, firm, and of good quality. Plant vigorous and healthy and very productive; blossoms large and rich in pollen. Said to be the "largest extremely early berry ever introduced."

\***PARSON'S BEAUTY**—Per. Medium to large, roundish conical form, dark red, firm and a good shipper, mid-season. A large, strong plant and a free runner; produces large crops of fine fruit, berry holding size well to the end of season.

\***SPLENDID**—Per. Very productive, firm, medium to large, roundish regular form and of first quality; a vigorous grower but inclined to rust, yet is one of the good market varieties.

\***SAMPLE**—Imp. Medium to large, roundish conical, dark red, very firm, quality good, a strong vigorous grower and very productive, season late, and a first-class market berry. One of the best stillates we have.

\***SENATOR DUNLAP**—Per. Medium to large, conical, dark red, firm and of first quality, mid-season. A vigorous grower and usually makes too many plants for best results, unless growth is restricted. It is as productive as Warfield, berries are better colored and a third larger. The best market variety and no list is complete without it.

**STEVEN'S LATE CHAMPION**—Per. Large size, long, slightly flattened, bright red, firm and of fair quality. The flowers and berries are well protected by the ample foliage. Will keep well after being picked.

**WARFIELD**—Imp. Medium size, roundish conical, dark red, very firm and a good shipper. A leading market variety; perhaps more largely grown than any other. This and Senator Dunlap make a fine pair.

## EVERBEARING STRAWBERRIES

A new departure in fruit growing. The Everbearing Strawberry is one of the new things that has come to stay. For more than ten years we have been working with this new class of berries and now we are convinced that they are a success not only for the home garden but also for the commercial grower if he will give them the proper care. The trial test of Mr. Clarence Wedge of Minneosta proves this when he picked 74¾ quarts from one square rod of Progressive; plants were set May 1st and buds and runners were cut off till July 10th and between July 23rd, when the first ripe berries were picked, and October 31st the square rod produced 74¾ quarts. At this rate the yield would be 747½ cases (16 quarts) per acre the year of planting and the fruit comes at a time when it will readily sell at from 20 to 25 cents per quart. We have tried a large number of varieties of the Everbearers but have discarded them all but three, for one fault or another, of these three varieties we have a fair stock and we offer them at prices named below.

In growing the Everbearers the following is the most approved method of culture. Plant as early in spring as the condition of soil and weather will permit, keep all bloom removed from the plants until about one month before you wish the fruit to begin to ripen. Allow the plants set to produce from four to eight runners and when these are rooted keep all other runners cut off as soon as they appear. You will then have a hedge row or half matted row system and if clean culture is given and with good fertile soil you will get lots of berries. If you wish fruit do not let them make too many plants. A bed of the Everbearers after having fruited the year of planting should be well covered and can be carried over to fruit the following June if desired or the fruit stem can be kept off the second season until July 15th and they will bear again in the fall. Right varieties, rich soil and good culture will win with the Everbearers but the greatest of these is GOOD culture.

**PROGRESSIVE**—(Rockhills No. 16) Originated by Harlow Rockhill of Iowa and said by him to be his best variety, among the many he has produced. Large size and fine quality. Productive.

**SUPERB**—Per. Large, dark, roundish, dark colored, glossy, of first quality. Plant is about average size, strong grower and winters well. A good plant maker. One of the best. Succeeds best on light soil.

**AMERICUS**—Per. One of the best of the fall bearing varieties. Plant is a strong grower, healthy and winters well after bearing in the fall. Fruit large and of fine quality. Does not fruit quite as early in fall as some but holds in fruit later than others. On heavy soil this is very successful. Medium plant maker.

Price 50c per doz.; \$3.00 per 100.

# PRICES OF STRAWBERRY PLANTS SPRING 1917

Name	Season	Doz.	100	1000
Aroma, Per., Late		\$0.25	\$0.75	\$6.00
Bederwood, Per., Early		.25	.60	4.50
Brandywine, Per., Late		.25	.60	5.00
Buster, Imp., Mid-season		.40	.75	
Clyde, Per., Mid-season		.40	.60	5.00
Enhance, Per., Late		.25	.60	5.00
Fendall, Per., Mid-season		.40	.75	
Glen Mary, Per., Late		.25	.75	
Haverland, Imp., Early		.25	.75	
Helen Davis		.40	.75	
Klondyke, Per., Late		.25	.60	5.00
Lovett, Per., Mid-season		.25	.60	4.50
Marie, Imp., Early		.25	.60	5.00
Norwood, Per., Mid-season		.40	.75	
Ozark (Early Ozark), Very early		.40	.75	
Parson's Beauty, Per., Late		.25	.60	5.00
Splendid, Per., Mid-season		.25	.60	4.50
Sample, Imp., Late		.25	.60	5.00
Senator Dunlap, Per., Early		.25	.60	4.50
Steven's Late Champion, Per., Late		.25	.60	5.00
Warfield, Imp., Early		.25	.60	4.50

We will furnish plants at the thousand rate in assortment of varieties not less than 250 of a variety. At the hundred rate we will furnish assortment not less than 25 of a variety.

NOTICE—The above prices are for plants spring of 1917. To those needing plants the coming August or September the price will be \$1.00 per 100.

## STRAWBERRY BOXES

We carry a line of berry boxes and will quote prices on application.

## TREE PROTECTORS

We offer veneer tree protectors, the best cheap protector on the market. Will last 2 to 4 years. 25c per doz.; \$100 per 100. Special prices on larger quantities.

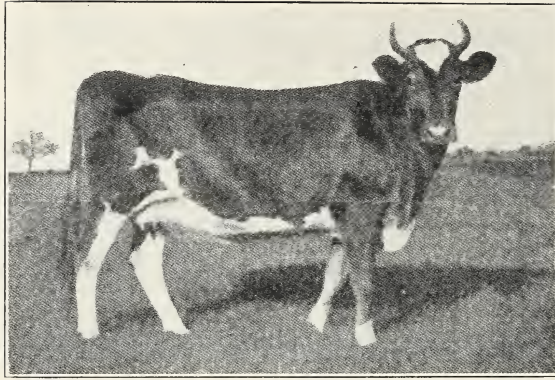
## SINGLE COMB WHITE LEGHORNS

We have some of the finest and highest scoring birds this year we have ever raised. Cockerels \$1.50 each. Eggs \$1.00 per setting. \$6.00 per 100.

## INSPECTION—FUMIGATION

Entomologists Certificate of Inspection will accompany all shipments.

We are prepared to fumigate with Hydro-cyanic Acid Gas, and will do so when requested, or where State laws require it.



## SAXALEA GUERNSEYS

In 1914 we began the breeding of GUERNSEY Cattle. We have some young stock, bull calves and a few females to offer and shall be glad to hear from any who are interested, and in case we do not have any stock of our own there are several breeders near here with whom we are in touch and it might be possible for us to refer you to some one who would have the stock you are looking for.

Our foundation cow, Imp. Ceres of Sarnia No. 53728, has just finished a year under semi-official test and produced 350.3 lbs. of butter fat under ordinary herd care, running on pasture and milking twice a day. Our herd is strong in May Rose blood and we shall follow that strain of breeding and blend with it Masher 63 and other leading families.

Our herd sire, Park's Billy France, No. 34537, is by Rhea's King of the May, through whom he traces to Imp. King of the May and Imp. May Rose King. His dam, Billy France's Fillpail, now in our herd, made 54 lbs. of butter fat in 30 days as a two year old, and traces to Fillpail IV. of the Hall and Billy France.

Write us when you are in the market for a sire and we will do all we can to supply your wants or put you in touch with someone who can.

Respectfully yours,

### KELLOGG'S NURSERY

JANESVILLE, WIS.

M. S. KELLOGG, Prop.





**ST. REGIS  
EVERBEARING  
RASPBERRY**

A new everbearing variety of merit. The berries are a bright crimson, good size, firm and of good quality. Canes very hardy. Spring set plants will produce fruit the first summer and fall.

**Per doz. - - - - \$1.00**

**Per 100 - - - - 4.00**

**SUNBEAM  
RASPBERRY**

A new variety of high merit. A strong upright grower, with remarkably healthy foliage; fruit large, bright crimson, firm, and of fine quality. One of the new fruits of Prof. N. E. Hansen of South Dakota, and worthy of general trial.

**Per doz. - - - - \$1.00**

**Per 100 - - - - 4.00**



**EARLY  
RICHMOND CHERRY**

The standard cherry for the Northwest. Medium size, dark red, juicy, rich acid flavor. June. Should be in every garden. 4- to 6-foot trees.

**Each - - - - \$0.50**

**Per doz. - - - - 4.50**

