

Historic, Archive Document

Do not assume content reflects current scientific knowledge, policies, or practices.



McGregor's

Bulbs and Plants

for Autumn 1917

TULIP
MAIDENS
BLUSH

PARROT
TULIP

TULIP
BESNERIANA
MAJOR

TULIP
ISABELLA

BY BLOOMEN TULIP

POPULAR MAY
FLOWERING TULIPS
FOR DESCRIPTION
AND PRICE
SEE PAGE 6

McGREGOR'S
GIANT FLOWERED
PRIMULA OBCONICA
FOR
DESCRIPTION AND
PRICE SEE PAGE 17

The
McGregor Bros. Co.
Springfield, Ohio.

Select Named SINGLE Hyacinths

Single Hyacinths are much to be preferred to double ones. In double Hyacinths where the single florets are doubled, they are much farther apart on the stem, and therefore do not form nearly so handsome a truss as the single varieties, where the trusses are much longer and fuller. We strongly advise the single instead of the double for both bedding and pot culture.

The Largest Flowered New Varieties

Price, Your Selection, 12c Each.

Single Pure and Tinted White

- MR. PLIMSOL**—Cream-white, grand showy spike. Fine for pots or bedding.
L'INNOCENCE. Early, large open spike, very large bells, blush turning to pure white. A leading forcer and a very good bedder.
ALBERTINE—Pure white early, large and full.

Single Red, Rose and Pink

- GIGANTEA**—Soft light pink; very large spike.
ROSE AMARANTH—Beautiful bright pink; large bells; strong, fine, extra fine for bedding.
CARDINAL WISEMAN—Carmine-red, broad spike; large, fine for pots.
KING OF THE BELGIANS—Bright crimson scarlet, upright spike; good bedder.
GERTRUDE—Dark pink, compact spike. Excellent for bedding or pots.

Single Blue, Lavender and Purple

- KING OF THE BLUES**—Rich dark blue, very large, compact flower. Fine for pots or bedding.
JOHAN—Beautiful light blue, extra large flower; fine for bedding.
GRAND MAITRE—Deep sky-blue, a favorite color. Splendid for pots or beds.
ENCHANTRESS—Delicate porcelain-blue with pale center.

Single Yellow

- YELLOW HAMMER**—Creamy-yellow, fine, compact.



Single Hyacinths Johan, King of the Belgians, L'Innocence and Rose Amaranth.

Special Offer Four fine Hyacinths, as illustrated above, for outdoor planting—Johan, King of the Belgians, L'Innocence and Rose Amaranth, for 39c, postpaid.

Four Wonderful New Hyacinths for Pot Culture

These varieties have been so improved and brought to such perfection by expert bulb growers in Holland that they can be forced into bloom many weeks earlier than it was possible to do a few years ago. You cannot fail to have fine blooms from these Hyacinths during the dreariest of winter months, filling the house with brightness, cheer and fragrance. Equally good for outdoor culture.

LA VICTOIRE (Victory)—This great novelty will take the place of honor in our catalogue for many years to come. It is one of the showiest and brightest bedders. When planted outside the large flower is a brilliant dark scarlet. When grown in pots the color is a brilliant dark carmine-scarlet, which fully answers to the taste of the American public. Can easily be flowered for Christmas. Price, 18 cents each.

QUEEN OF THE BLUES—The unusually big, very light, lavender-blue bells form a lovely, compact, long-stemmed truss which is unrivaled for pot culture. Price, 18 cents each.

LADY DERBY—Is rapidly becoming the leading pink Hyacinth owing to its lovely shade of soft rose-pink, its perfect spike and splendid forcing qualities. Price, 15 cents each.

L'INNOCENCE—The very best white Hyacinth known for house culture or bedding. Lovely erect spikes of large pure white bells. Price, 15 cents each.

SPECIAL HYACINTH FOR POT CULTURE—The four above named varieties, one each, sent postpaid by mail for 60c.

Special Offer BY EXPRESS—Any twelve named Hyacinths, either Single or Double, your selection of varieties, for \$1.25, by express at purchaser's expense.
BY MAIL—Any ten named Hyacinths, Single or Double, for \$1.05, postpaid.

Unnamed Single Hyacinths

We recommend single-flowering Hyacinths for bedding, as they hold their blooms more erect and give much more satisfactory results. We offer these fine Single Hyacinths in separate colors as follows:

| | | |
|------------|-------------|------|
| PURE WHITE | BLUSH WHITE | ROSE |
| LIGHT BLUE | BRIGHT BLUE | PINK |
| PURPLE | YELLOW | RED |

Price, 6c each; 65c per dozen, by mail, postpaid; 55c per dozen, \$4.00 per 100, by express, at purchaser's expense.

SPECIAL NOTICE—These unnamed Hyacinth bulbs will produce as fine blooms as shown in illustration above.

Grape Hyacinths

This charming little gem should be found in every garden in abundance. It has been termed the "Blue Lily of the Valley."
BLUE—Price, 3 for 5c; dozen, 15c; 100, 75c.
WHITE—Price, 3c each; 20c per dozen.

Ixias

The Ixias produce their beautiful flowers in spikes, and are of the most dazzling and brilliant colors. For pot culture in the house they give great satisfaction. Plant in October (6 to 8 in a 5-inch pot) in sandy loam one inch deep. 2c each; doz., 18c; 100, 75c.



Ixias—2c each.

SELECT NAMED Double Hyacinths

In the following list of double flowering Hyacinths we offer you the latest improvements in this popular flower. We have made every effort to obtain the most distinct and richest colored varieties producing the largest flowers in both Single and Double Flowered Hyacinths.

The Largest Flowered New Varieties

PRICE, YOUR SELECTION, 12c EACH

DOUBLE PURE AND TINTED WHITE

LA TOUR D'AUVERGNE—Earliest pure white; grand spike; an extra fine one.

ISABELLA—A beautiful white, faintly tinted with delicate pink; large. **LA GRANDESSE**—A splendid snow-white flower. Large, perfectly double bells forming a long spike. New.

DOUBLE BLUE, LAVENDER AND PURPLE

PRINCE OF SAXONY—A rich purple-blue; large and early.

DELICATE—Charming light blue with darker blue shading in the center. Firm, erect, extra large spike.

VAN SPEYK—Lavender tinted azure, compact fine spike.

DOUBLE RED, ROSE AND PINK

BOUQUET TENDRE—Dark carmine-red, good spike.

GROOVORST—An old favorite; fine blush-rose.

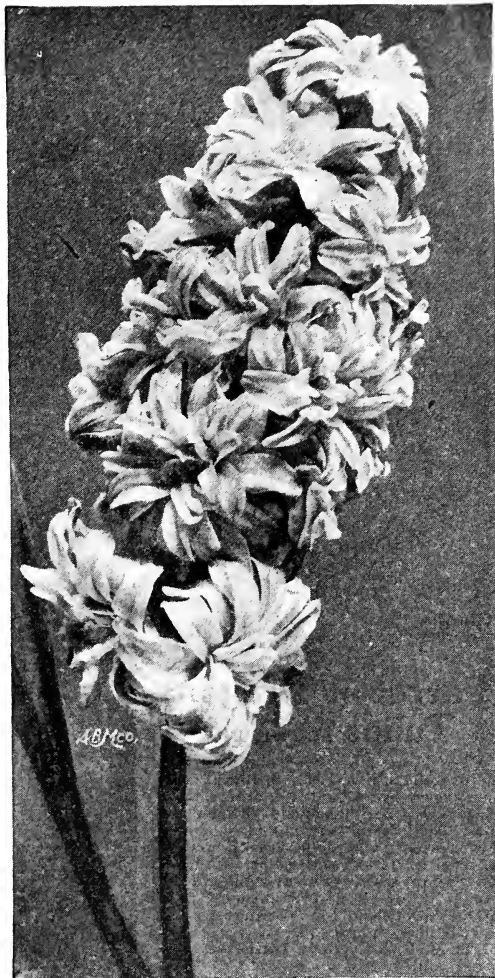
PRESIDENT ROOSEVELT—A fine, bright pink. Big, compact spike.

CHESTNUT FLOWER—Extra large truss of exquisite delicate pink. Bells very large and very double.

PRINCESS LOUISE—Rich deep red. An extra fine flower.

DOUBLE YELLOW

SUNFLOWER—Clear, pure light yellow; one of the best.



Hyacinth, Pres. Roosevelt—12c each.

Unnamed Double Hyacinths

In Separate Colors for Bedding Out in the Fall

These are selected unnamed sorts, and are chiefly used for outdoor planting, but can also be used for pot culture, although we advise using the named varieties for house culture. These are just what is wanted for massing in borders or display beds. These bulbs are the product of one of the best growers in Holland, and are good size, solid, and will produce splendid flowers. We offer them in the following separate colors:

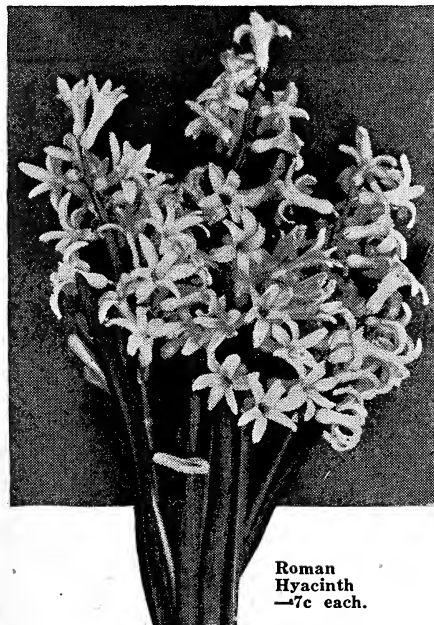
| | | |
|-------------|-------------|------------|
| PURE WHITE | BLUSH WHITE | LIGHT BLUE |
| PINK | PURPLE | YELLOW |
| BRIGHT BLUE | RED | ROSE |

Price, 6c each; 65c per dozen, by mail, postpaid.

Price, 55c per dozen; \$4.00 per 100; by express, at purchaser's expense.

Special Offer Any 10 named Double or Single Hyacinths for \$1.05, postpaid.

WE IMPORT ONLY FIRST-CLASS HOLLAND GROWN HYACINTH BULBS, both named and mixed, and guarantee them all to be blooming bulbs.



Roman Hyacinth—7c each.

Hyacinth Azureus

The "February" or "Heavenly Blue" Hyacinth

A new variety of the Grape Hyacinth type, but much improved. Color a clear blue. Greatly valued because it is in full bloom in February in the open ground. Price, 4c each; 25c per dozen.

Feather Hyacinth

Curious little flowers, with feathery, plume-like spikes; deep blue, tinged with red. Price, 3c each; 6 for 15c; 12 for 25c.

Scillas, Wood Hyacinths

SCILLA SIBIRICA BLUE—Most beautiful hardy spring bulbs, producing in profusion masses of exquisite rich blue flowers almost before the snow has disappeared. If grown in masses, their flowers fairly carpet the ground, and make a pretty effect when grown in pots in the house. Price, 4c each; 6 for 20c; 35c per dozen.

SCILLA SIBIRICA ALBA—Pure white. Price, 4 cents each; 6 for 20 cents; 35 cents per dozen.

SCILLA CAMPANULATA (Spanish Bluebell or Wood Hyacinth)—Beautiful; spikes of bell-shaped flowers in blue, white and rose. Perfectly hardy and requires no further care when once planted. This is one of the few things that will thrive under pine trees. In three separate colors—Blue, White and Pink. Price, 4 cents each; six for 20 cents; two of each color, 25 cents; 35 cents per dozen, postpaid.

Special Offer One White, One Pink and One Blue Roman Hyacinth for 18c, postpaid.

Early French Roman Hyacinths

The Roman Hyacinth is indispensable in the winter window garden, but can not be planted outdoors. They are among the few flowers which can be had as early as Christmas or New Years. Three can be planted in a four-inch pot, which, when in bloom, form a mass of waxy bells of unrivaled beauty and fragrance. Each bulb throws up several flower spikes.

EARLY WHITE ROMAN

Will produce several spikes of waxy white bells. Price, 7c each; 65c per doz.

SINGLE BLUE ROMAN

Clear pale sky-blue; fine in contrast with white and pink. Price, 7c each; 65c per dozen.

SINGLE PINK ROMAN

Exquisite delicate pink; very charming for early flowering in house. Price, 7c each; 65c per dozen.

Mountain Hyacinth

CAMASSIA ESCULENTA.—A fine, hardy plant, thriving best in a partially shaded situation. Produces beautiful spikes two feet tall, which bear twenty or more clear, rich blue flowers. Fine either to bloom in the house in winter or in masses in the garden in early spring. Price, 4 cents each; 20 cents per dozen; \$1.25 per 100.

Choice Early Tulips

Tulips are of the most satisfactory spring-flowering bulbs. They are extremely hardy and of easy culture, blooming as freely and producing as fine flowers in a confined town garden as in a more favorable place. Double and Single Tulips, when associated together and planted in beds or in front of shrubs, maintain a longer display than if either are separately planted. Our collection includes the very best varieties, both in the early and late-flowering classes. (The figures indicate height of flower.)

Double Early Tulips

| | Each | Doz. | 100 |
|---|--------|--------|--------|
| LA CANDEUR—Pure white, full, large, extensively grown for bedding (8 inches)..... | \$0.04 | \$0.35 | \$2.00 |
| DUKE OF YORK—Lovely variety, very double carmine-rose, edged broadly with white suffused rose (10 inches)..... | .04 | .35 | 1.75 |
| COUNT LEICESTER—Orange and yellow feathered, very fine (7 inches)..... | .04 | .35 | 2.00 |
| GLORIA SOLIS—A grand flower; deep crimson, with broad golden margins; very large (9 inches)..... | .04 | .35 | 2.25 |
| LA MATADOR—If planted in October in either soil or fibre, this variety will come into bloom soon after Christmas. A perfect shape, very double, glowing scarlet, and very handsome..... | .06 | .50 | 2.50 |
| SALVATOR ROSA—Fine double dark pink Tulips; brilliant pink, almost solid color; fine for house or garden..... | .04 | .40 | 2.00 |
| RUBRA MAXIMA—Dazzling ruby-red, base of petals green, early (8 inches)..... | .04 | .40 | 2.25 |
| JOSEPH ISRAELS—Largest double red, rich deep brilliant red, tinted vermilion (8 inches).... | .05 | .40 | 2.25 |
| MURILLO—Finest double light pink. Opening blush-white shaded pink, turning to lovely bright pink (7 in.)..... | .04 | .40 | 2.00 |
| ALBA MAXIMA—A fine new double white with yellow base..... | .04 | .35 | 1.75 |

SUPERFINE MIXTURE DOUBLE TULIPS—A fine mixture. Price, 30c per dozen, 45 for \$1.00, by mail, postpaid. By express, \$1.65 per hundred.



Double Tulip
Murillo.
4c each.

Parrot or Dragon Tulips

MAY FLOWERING

Very large flowers of singular and picturesque forms and brilliant colors: very beautiful and interesting. The petals are curiously fringed or cut. They form extravagantly showy flower beds or borders, are of endless variety in form and color, stand a long time when cut, and should be grown in every flower garden.

CONSTANTINOPLE—Orange-scarlet with black markings.

LUTEA—Clear yellow, feathered with red and green.

PERFECTA—(Gloria). Bright yellow, scarlet and green.

Price of any of the above named Parrot Tulips, 4 cents each; 35 cents per dozen.

¹ Mixed Parrot Tulips—Price, 3 cents each; 30 cents per dozen.



Parrot Tulip, Constantinople—4c each.

CHOICE SINGLE Early Tulips

| | Each | Doz. | 100 |
|--|--------|--------|--------|
| ARTUS—Bright scarlet showy bedder (8 in.)..... | \$0.03 | \$0.30 | \$1.25 |
| CHRYSOLORA—Clear bright yellow, very large, exquisitely fragrant (10 inches).... | .03 | .35 | 1.75 |

| | Each | Doz. | 100 |
|---|--------|--------|--------|
| COTTAGE MAID—Charming pink; lower half pure white with yellow base (8 inches)..... | \$0.03 | \$0.35 | \$1.25 |
| JOOST VAN VONDEL—Deep cherry-red, with feather of white at base of each petal (10 inches)..... | .05 | .45 | 2.00 |
| KAISER-KROON—Base and edge of petals a rich orange, having in the center a crown of scarlet; rich, brilliant..... | .05 | .45 | 2.50 |
| LA REINE—(Queen Victoria). White, faintly tinged rose; (10 in.)..... | .03 | .30 | 1.25 |
| L'IMMACULEE—(Snowball.) Pure white, yellow base (9 inches)..... | .03 | .30 | 1.25 |
| MONTRESOR—The earliest yellow. Extra large flower of rich yellow. Splendid for bedding or forcing (10 inches)..... | .05 | .50 | 2.25 |
| PRINCESS WILHELMINA—Deep, rich pink, shading in center to white; extra large, tall growing, fine for bedding (12 inches)..... | .04 | .40 | 2.00 |
| PRINCE OF AUSTRIA—Glittering coppery-red with orange shading. Very large and sweet scented (9 inches)..... | .05 | .35 | 2.50 |
| ROSE GRIS DE LIN—The finest bright pink Single Tulip; delicate cerise-pink, base of petals white (6 inches)..... | .03 | .35 | 1.25 |
| VERMILION BRILLIANT—Very dazzling vermilion-scarlet, decidedly the most popular of all red Tulips (12 inches)..... | .05 | .50 | 3.75 |
| WHITE HAWK (Albion)—Very large snow-white flowers, one of the finest whites for either bedding or forcing (12 inches)..... | .05 | .50 | 2.50 |
| WHITE SWAN—Lovely pure white flower, of a true egg shape, very large, tall and graceful. Nothing finer for cemetery..... | .05 | .50 | 2.50 |
| YELLOW PRINCE OF ORANGE—A beautiful canary-yellow; after flower has bloomed for several days flecks of red appear (12 in.)..... | .03 | .35 | 1.50 |

SUPERFINE MIXTURE SINGLE TULIPS—A first-class mixture. Price, 30 cents per dozen; 45 for \$1.00, by mail, postpaid. By express, \$1.65 per hundred.



Vermilion Brilliant—5c each.

Early Duc Van Thol Tulips

These Tulips are Single Flowering and very early. Especially desirable for shallow fern dishes or small pots. Are very graceful, not growing over seven inches high. Can be brought into bloom in the house during early winter, and are the first to bloom outdoors. They are among the most satisfactory Tulips for all purposes, and their early blooming season brings them out at a time when they are most effective and appreciated.

| | Each | Doz. | 100 |
|---|--------|--------|--------|
| ROSE—Fine pink; open white..... | \$0.03 | \$0.30 | \$1.75 |
| SCARLET—The most popular of this class..... | .03 | .30 | 1.75 |
| WHITE MAXIMUS—Improved white; large flower. | | | |
| Extra splendid for house..... | .03 | .30 | 1.75 |

The "Unique" Tulip Collection

This group is composed of the most unusual and exquisite art shades known in Tulips. All late blooming and holding their blooms for many days. Most enjoyable novelties.

- 1 BLACK TULIP (La Tulipe Noire)—Velvety black.
- 1 GREEN TULIP (Verdiflora)—A true green.
- 1 SUNSET TULIP (Billetiana)—Several blended shades.
- 1 SUNRISE TULIP (Jaune d'Oeuf)—Ruddy apricot.
- 1 BRONZE QUEEN (The Biscuit)—Bronze-buff.
- 1 THE FAWN—Rosy fawn and apricot.
- 1 BYBLOOMEN—Heliotrope-violet and white-striped.

The above seven Tulips for 60c, postpaid.

A BEAUTIFUL NOVELTY The Green Tulip, "Verdiflora"

This remarkable Tulip is not only desirable because of its rare color, but its real beauty. The flower is large, composed of long, pointed petals which curve outward; a most graceful form, and exquisite color. A lovely shade of green with soft yellow edges. Quite a sensation. Price, 10c each; \$1.00 per dozen.

The Black Tulip —"La Tulipe Noire"

"The Flower That Set a Nation Mad."—The largest amount of money ever offered for the production of a single flower was \$100,000, for a perfectly black Tulip, over three hundred years ago, during the Tulip craze in Holland. The romance of its production formed the plot for a noted novel; and it is also responsible for one of the greatest financial panics of the world. The descendants of this flower are still very scarce, rare and valuable. We have secured a few bulbs of this historical Tulip and offer you bulbs of the jet black, wonderful large flowered Tulip. There is yet no variety which surpasses this in either beauty or size. Price, 12c each; \$1.00 per dozen.



Giant Crocus—25c per dozen.

Snowdrops

These are the first flowers to greet us in the spring, their pretty, drooping, snow-white blossoms appearing in March, a few days ahead of the Scilla Sibirica, with which they form a charming contrast. They are also charming for house culture in pots.

- GIANT SNOWDROP ELWESII**—A large, tall variety; fine for cutting; flowers three times the size of ordinary single Snowdrops, and sweet-scented. Price, 2c each; 20c per doz.; \$1.15 per 100.
- GIANT DOUBLE SNOWDROP**—Price, 3c each; 30c per doz.; \$1.50 per 100, by mail.

LARGE YELLOW—Most prolific bloomer; very large, brilliant yellow.

PRESIDENT LINCOLN—A rich, dark purple, extra large.

SIR WALTER SCOTT—White, finely striped with violet; a dainty flower.

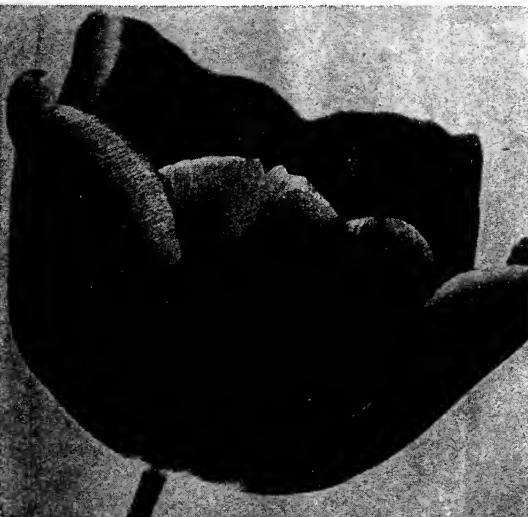
BARON VON BRUNO—Enormous flower of brilliant blue.

KING OF THE WHITES—The finest and largest pure white.

CLOTH OF GOLD—The earliest of all Crocus. Deep yellow with brown shadings.

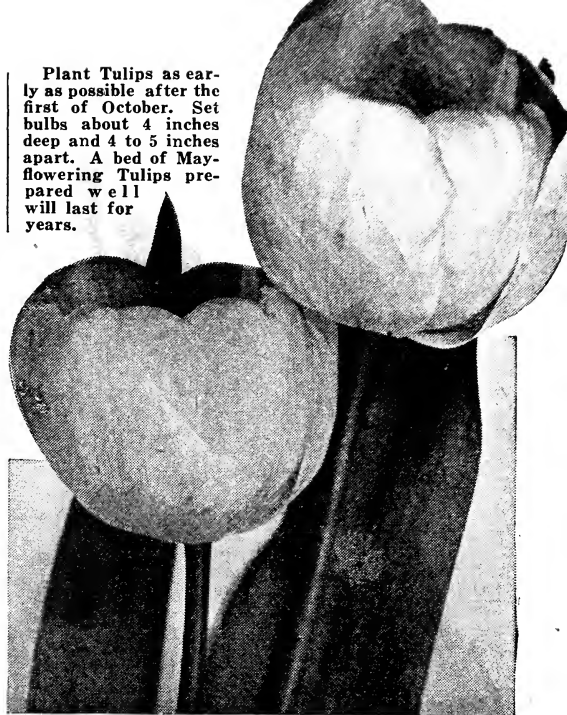
Price, any of the above named Giant varieties, 25 cents per dozen; by mail, \$1.50 per 100.

Mixed Giant Crocus, 20 cents per dozen; \$1.25 per 100.



The Black Tulip, "La Tulipe Noire"—12c each.

Plant Tulips as early as possible after the first of October. Set bulbs about 4 inches deep and 4 to 5 inches apart. A bed of May-flowering Tulips prepared well will last for years.



Giant Darwin Tulip, Gretchen—3c each.

Gretchen A GOOD TULIP TO GROW IN POTS FOR EASTER

If planted in October in either soil or fibre, kept in a cool, dark place until January and brought gradually to light and heat, this variety will produce tall, elegant, light pink blossoms at Easter, remaining perfect for over two weeks. Price, 3c each; 35c per doz., postpaid; \$2.75 per 100, by express.

Crocus

The Crocus is one of the first flowers of spring and one of the best for blooming in the house during the winter. They bloom splendidly when planted on the lawn among the grass. They lift their bright heads up through the sod very early, and give the lawn a charming aspect. **LARGE CROCUS (Mixed)**—Mixed colors, 12c per doz.; 75c per 100.

Named Giant Crocus

Giant Crocus produce from ten to twenty blooms to each bulb.

A New Tulip for the Cemetery

WHITE SWAN—Lovely pure white flower, of a true egg shape, very large, tall and graceful. Nothing finer for the cemetery. Price, 5c each; 50c per doz., postpaid; \$2.50 per 100, by express.



Giant May Flowering Tulip, Rev. H. Ewbank—7c each.

May-Flowering Tulips

Superb Giant Darwin Tulips

This class is without doubt the Queen of Tulips, very stately and beautiful—producing immense flowers on tall stately stems two to three feet in height. The flower are models of perfection in form and remain perfect longer than any other Tulip. They are constitutionally so strong that grass will not choke them and will thrive for several years with no attention if planted in grassy places. In color they are both dainty and rich—white, pink, rose and crimson, also mauve, light blue, purple or maroon, all with perfectly marked centers.

| | Each | Doz. | 100 |
|--|--------|--------|--------|
| ASA GRAY —Fine, rich dark crimson, large flower on tall dark stem. Fancy fluted foliage, extra fine foliage and flower.... | \$0.05 | \$0.45 | \$3.25 |
| CLARA BUTT —Clear pink flushed salmon-rose; good-sized flower of very handsome shape. The finest Darwin of its color. Exquisitely beautiful out-of-doors, and one of the best for pots if not forced too early. (Height, 24 inches)..... | .05 | .45 | 3.25 |
| EUROPE (Salmon King) —Large globular flower of glowing salmon-scarlet; white base. A splendid variety (22 inches).... | .05 | .45 | 3.25 |
| GRETCHEN —Soft, silvery-pink, with a bright light blue spot at base of each petal. An exquisite color. Flowers large and globular. Splendid for pots to bloom for Easter. (Height, 27 inches)..... | .03 | .35 | 2.75 |
| HARRY VEITCH —A gorgeous flower of brilliant blood red with blue base; splendid for borders and also for pots. (24 in.) | .05 | .45 | 3.00 |
| PAINTED LADY —One of the best of the white Darwins; opens with a faint shading of heliotrope. Very tall and graceful, flowers lasting many weeks, (27 in.) | .05 | .50 | 4.00 |
| PHILIPPE DE COMMINES —A grand flower, of dark, polished mahogany color, with a purple base. Magnificent in size, height and color. (Height, 27 in.)..... | .07 | .75 | 5.00 |
| PRIDE OF HAARLEM —Magnificently formed flower of immense size; brilliant carmine-red, shaded scarlet, light blue base. This variety, perhaps the most widely known for its stately habit and glorious color, is unsurpassed for border or early forcing in pots. (Height, 27 inches)..... | .05 | .50 | 3.75 |
| REV. H. EWBANK —A large broad flower of silvery-lavender shading towards the center into bluish-heliotrope. A most pleasing color, making a lovely contrast to Vitellina and Philippe de Commines. (Height, 24 inches)..... | .07 | .75 | 5.00 |
| WHITE QUEEN —A very large globular flower of pure white faintly flushed with blush in places (24 inches)..... | .06 | .75 | 5.00 |

May Flowering Tulips Cottage Tulips

This class, as well as the Darwin Tulips, is becoming very popular. They are very hardy and robust, flowers are large in size and very rich in coloring. The stems are long and wiry and the flowers are durable in a cut state. They are effective planted in clumps or borders.

| | Each | Doz. | 100 |
|---|--------|--------|--------|
| ISABELLA, or SHANDON BELLS —Opens as a pale primrose-flush with pink changing to a bright rosy-carmine; a large and long flower, bloom remains perfect for several weeks (15 inches)..... | \$0.04 | \$0.35 | \$2.00 |
| LA MERVEILLE —Orange-cherry, flushed rose, with yellow base; very large and delicately scented (20 inches)..... | .04 | .35 | 2.00 |
| FAIRY QUEEN —Rosy-heliotrope, broadly margined yellow; flowers of enormous size and last a long time (20 inches).... | .05 | .50 | 3.00 |
| PICOTEE, or MAIDEN BLUSH —Large bell-shaped flower; white, with broad pink border, edged with crimson; exquisite (24 inches)..... | .04 | .35 | 2.00 |
| GOLDEN CROWN —Pale yellow, edged crimson; pointed petal (20 inches)..... | .03 | .25 | 1.25 |
| THE FAWN —Very large flower of dainty art shades. Center of petals apricot-fawn shading to violet-rose with pale pink edges, and a golden-yellow spot at base of each petal (24 inches)..... | .06 | .60 | 4.00 |
| VITELLINA —Light sulphur-yellow, becoming almost white; beautiful flower on strong stem (24 inches)..... | .05 | .50 | 3.50 |

New Tulip "Sunset" (Billietiana)

An exquisite combination of many colors, orange, scarlet, pink and yellow; streaked, blended and flushed on a white ground. Well named Sunset. A superb flower. Price, 8c each; 85c per dozen.

Cover Collection There is nothing in the Spring Flowering Bulbs to equal the May Flowering Tulips, that produce perfect blooms, are always safe from late frosts, and are superior to other Spring blooming bulbs in brilliancy of color and length of stem. On the front of our cover we have illustrated, and are offering a trial collection as a sample of the varied blooms that may be had in these flowers. Price of the collection of five Tulips, 20c; two collections for 35c, postpaid.

Darwin Tulip

CIRCE—Delicate heliotrope, flushed white. 7c each; 75c per dozen; \$5.00 per 100.

Superfine Mixed Darwin Tulips

35 cents per dozen; \$2.25 per 100.

SPECIAL OFFER Any ten of the above named varieties of Superb Giant Darwin Tulips for 50c, postpaid. Try this wonderful bargain.



New Tulip, Sunset—8c each.

May-Flowering TULIPS

New Dutch Breeder Tulips

Breeder Tulips are similar in habits to the Giant Darwins and bloom at the same time. Their chief attractions are: their immense blooms on tall stems, many of them taller and larger than the gigantic Darwins; their lasting qualities, and their exquisite and odd colorings, making them unique and different.

BRONZE QUEEN (Biscuit)—Soft rich buff on the inside, outside tinted golden-bronze; base green bronze; magnificent, remaining in bloom several weeks. (26 inches.) Price, 12c each; \$1.25 per dozen.

SUNRISE (Jaune d'Oeuf)—Ruddy apricot with soft yellow edge. The reddish shade of the lower part of the petals ends in a black spot at the base. Hard to describe, but very beautiful. (24 inches.) Price, 7c each; 70c per dozen.

Breeder Tulips

GRAND MAITRE—Purple violet; large flower of sturdy habit. 9 cents each, \$1.00 per dozen.

ASPASIA—Vinous red, bold flower. 9c each; \$1.00 per dozen.

LE MOGEL—Light blue. 12c each; \$1.25 per dozen.

MEDEA—Salmon rose; enormous flower. 5c each; 55c per dozen.

NOIRE VERITABLE—Very dark, almost black. 8c each; 85c per dozen.

ROSE DES DAMES—Rosy lilac, center blue and white. 8c each; 85c per doz.

QUEEN ALEXANDRA—Sulphur yellow, tipped brown. 7c each; 75c per dozen.

YELLOW PERFECTION—Bronzy copper yellow, very fine. 12c each; \$1.25 per dozen.

SABRINA—Coffey brown, instead mahogany brown. Yellow base. 7c each; 75c per dozen.

CARDINAL MANNING—Dull wine red tinged salmon bronze. Price, 8c each, 85c per dozen.



Bizarre and Bybloomen Tulips—4c and 5c each.



Breeder Tulip, Rose des Dames 8c each.

Late Striped and Flamed Tulips

BIZARES—Varieties with deep yellow grounds, marked with orange, maroon, crimson, brown, black, etc., mixed colors. 4c each, 40c per dozen.

BYBLOOMEN—White ground color, flaked or blotched with blue, lilac, violet, rose, purple or black; markings are very pretty. Price, 5c each, 45c per dozen.

The Giant Gesneriana Tulips

This beautiful class is becoming more popular each season. They are quite distinct from the early flowering sorts. For bedding they are superb, while as cut flowers they are much to be preferred to the early type, having long stems with flowers of great substance that remain in perfect condition for a month, and are much more brilliant in color.

| | Each | Doz. | 100 |
|---|--------|--------|--------|
| GESNERIANA SPATHULATA (Major) —One of the tallest and showiest Tulips known; rich, dazzling scarlet, with blue black center (24 inches) | \$0.05 | \$0.40 | \$2.00 |
| GESNERIANA AURANTICA —The enormous flower is of the most brilliant orange-scarlet; sweet scented; (24 in.) | .06 | .60 | 2.25 |
| GESNERIANA LUTEA —Considered by many the finest of all yellow Tulips; immense globe-shaped flowers of rich golden-yellow, delicately perfumed (20 inches)... | .06 | .60 | 2.25 |
| GESNERIANA MACROSPELLA —Sweet-scented, large crimson-scarlet, black and yellow center (20 inches) | .04 | .35 | 1.25 |

Prepared Fiber for Bulb Growing

This is something new in which to grow and flower bulbs during winter in bowls, jardinières, fern dishes, etc., without drainage. A splendid advantage for town-people or city people who have difficulty in obtaining good potting soil.

Prepared Fibre is composed of excellent Holland peat, combined with other materials, such as charcoal, crushed oyster shells, etc., to keep it sweet. It does not dry out as quickly as soil nor sour if too much water is given. It is light, clean and nice to handle, and if used as directed will encourage healthy growth and perfection of bloom. By our own testing of

this material we have found that the bulbs come into flower two weeks earlier when planted in fibre, and that the flowers are much larger. This is especially true of the four Hyacinths, recommended for pot culture. As soon as Hyacinth bud begins to show color bring the pot into a warm, sunny position and give an abundance of water.

An excellent medium in which to grow Hyacinths, Roman Hyacinths, Tulips, Narcissus, Crocus, Chionodoxas, Freesias, Scillas, etc. Full directions sent with every package.

Price, 14c per quart, postpaid; 4 quarts for 50c, postpaid. By express, 4 quarts for 40c; 8 quarts for 60c.

Tulips for Home Culture

We would recommend for growing in fibre to bloom during January and February, such Tulips as Kaiser-Kroon, White Hawk, Montresor, Vermilion Brilliant and all the Duc Van Thols. Also Double Murillos, Salvador Rosa and La Matador.

New Breeder Tulip, Yellow Perfection—12c each.

New Narcissus Poetaz

The Hardy Cluster Flowered Poet's Narcissus

These new hybrids between Poeticus and Polyanthus are hardy, healthy, strong growers, some of the varieties attaining the height of two feet. The Poeticus-like flowers are borne in clusters like those of the Polyanthus type. As a border, particularly when edged with Grape Hyacinth, they prove very effective and will become permanent. Excellent for pots, also.

ELVIRA—A large flower of remarkable substance, three to four borne on long stems, two and three stems to a bulb; fine for cutting; color pure white, with yellow cup; strong grower and free-flowering; fragrance distinct, resembling that of a Gardenia. Height, 24 inches. Price, 5c each; 50c per dozen.

IRENE—Yellow perianth, with deep golden-orange cup; broad flowers borne seven to eight on a stem; three stems to a bulb. The largest yellow. Very rich and handsome. Price, 6c each; 60c per dozen.

Double Roman Cluster Narcissus

Outer petals cream-white with double orange and yellow cup; very early and free-flowering, and valuable for forcing and pot culture. Also splendid for growing in water and pebbles in same manner as advised for Paper White. Price, 6 cents each; 50 cents per doz., postpaid.

Grand Soleil d'Or

Outer petals rich, golden yellow, cup deep orange-red. Very brilliant. Splendid for outdoor planting as well as for house culture. Price, 7 cents each; 60 cents per doz., postpaid.

NOTICE The three Narcissus, Paper White, Roman Cluster and Grand Soleil d'Or, are grown in France, and are hard to obtain this year; though we have fortunately secured a fine lot of them, they cannot reach this country before October 1st, which allows plenty of time for you to bring them into early bloom.

SUPERIOR NARCISSUS COLLECTION.

SPECIAL OFFER—One each of Narcissus Poetaz, Orange Phoenix, Albus Stella, Victoria, Mrs. Langtry, Golden Spur, Emperor, Sir Watkins, Conspicuous and Princess Maximus for 35c postpaid. Ten Superior Narcissus, all different, for 35c.



Narcissus Poetaz—5c each.

Chinese Sacred Narcissus

ORIENTAL LILY or "JOSS FLOWER"

The most satisfactory of all winter-blooming bulbs. Nothing is easier cared for or gives as great an abundance of deliciously scented bloom. Fill a bowl or similar vessel with pebbles, in which place the bulb, setting it about one-half its depth, so that it will be held firmly, then fill with water to the top of the pebbles, and place in a warm, sunny window. The bulbs will at once commence rapid growth and bloom in four or five weeks. Price, extra size, 14 cents each; 4 for 50 cents; by express, \$1.35 per dozen.



Chinese Sacred Lily, Narcissus—14c each.

Narcissus Jonquilla, or Sweet Jonquils

Much prized for their charming golden and delicious sweet-scented flowers; perfectly hardy and flowering very early in the spring; they are admirably adapted for winter forcing.

DOUBLE JONQUIL—Heads of small but very double deep golden-yellow flowers, powerfully scented, and good for forcing. Price, 4 cents each; 35 cents per dozen.

CAMPERNELLE—A grand variety, producing freely large yellow flowers; sweet-scented, four to six on a stem. Price, 3 cents each; 20 cents per dozen.

CAMPERNELLE REGULOSUS—Giant Jonquil, the largest flowering. A handsome flower, color pure yellow; very fragrant. Price, 3 cents each; 25 cents per dozen.

NEW DOUBLE REGULOSUS JONQUIL—A lovely very double and very large rich bright yellow and orange flower. Fine for early blooming in the house. Exquisitely fragrant. Price, 5 cents each; 50 cents per dozen.

Double Peerless Narcissus

DOUBLE VON SION—"The True Double Yellow Daffodil." Rich golden-yellow perianth and trumpet. This is the old favorite so highly prized in old-fashioned gardens. It is as handsome as ever, and deserves to be planted in quantity where it can remain undisturbed for several years. Mammoth bulbs, producing two or more flowers, 6 cents each; 50 cents per dozen.

INCOMPARABLE—"Butter and Eggs." Full double flower, of rich yellow, with orange nectary. Splendid for blooming in the house. Price, 4 cents each; 35 cents per dozen.

Double Rose-Flowered Narcissus

SULPHUR or SILVER PHOENIX—(Codlins and Cream.) Creamy-white, with pale sulphur center. Considered the finest double sort; form of a double Rose. Price, 6 cents each; 50 cents per dozen.

ORANGE PHOENIX—(Eggs and Bacon.) Light citron, with deep orange center; a beautiful, artistic blossom, and easily forced for house blooming. Price, 6 cents each; 50 cents per dozen.

ALBA PLENA ODORATA—(The Double White Poet's Narcissus, or Gardenia-Flowered Daffodil.) Double, snow-white, gardenia-like flowers; exquisitely scented. Price, 3 cents each; 25 cents per dozen.



Double Von Sion, Narcissus. —6c each.

Narcissus

or DAFFODILS

Large Trumpet Narcissus

Narcissus are among the most popular and largely grown of spring-flowering bulbs, and deservedly, too. Their exquisite grace, beauty and charm of habit have been immortalized in the poetry of all times. No garden should be without them. They are all of the easiest cultivation, thriving in almost any soil and situation, and they may be left alone for several years after once being planted. They do best, however, in a deep and somewhat stiff soil, and in a partially shaded position.

GOLDEN SPUR—Large, spreading, full deep yellow perianth; trumpet golden-yellow. A charming, richly perfumed flower and one of the very best of the golden trumpets. 6c each; 60c per dozen.

EMPEROR—One of the finest Daffodils in cultivation. Entire flower of the richest yellow, trumpet of immense size, and the petals of the perianth are so broad they overlap, and measure three and one-half inches across; grand for cutting. Price, 6c each; 60c per dozen.

VICTORIA (Bicolor Trumpet)—A bicolor famous for its large and durable flowers, which stand boldly erect. Broad perianth of creamy-white, large, broad, fluted trumpet of rich yellow. A strong grower and splendid keeper. A grand variety for either garden or pot culture. Height, 16 inches. 5c each; 50c per dozen.

SIR WATKIN (Incomparabilis)—Perianth primrose-yellow, large and well-formed yellow cup, tinged deep yellow. A giant among the Medium Trumpet sorts. A grand flower of wonderful substance for garden or pots, and one of the finest Narcissi grown. Height, 21 inches. Price, 5c each; 50c per dozen.

SINGLE VON SION, or TRUMPET MAJOR—Flowers large and almost a deep golden; highly prized as an early forcing sort. Price, 4c each; 35c per dozen.

PRINCEPS MAXIMUS—Very early. This is one of the most popular winter-flowering and forcing varieties grown. Flowers large, perianth sulphury; an immense, rich yellow trumpet. Price, 3c each; 30c per dozen.

Star Narcissus

STELLA—One of the first to bloom; flowers star-shaped, pure white with yellow cup; large, wonderfully free-blooming, and one of the very best for general decoration or for cutting. Price, 3c each; 30c per dozen.



Narcissus Sir Watkin—5c each.



Narcissus Emperor and Victoria—6c each.



Narcissus Paper White—6c each.

Polyanthus Narcissus

LARGE-FLOWERED PAPER WHITE NARCISSUS

If grown in pot, six or seven weeks will produce the flowers. We especially recommend growing this bulb in a dish filled with water and bulbs well supported with pebbles, after the fashion of Chinese Sacred Lilies, as they are far superior to the latter. Flowers appear in six weeks in greater number and more perfected. Failures are not known. It is advisable to start the bulbs in a dark place for four to six days. Grow cool and give plenty of water. Large clusters of pure white flowers, which remain perfect for several weeks. Extra size bulbs. 6c each; 50c per doz. postpaid.

Single and dozen prices for bulbs include postage. The 100 rates are by express at purchaser's expense. Not less than six of any one variety supplied at dozen rates, and not less than 25 at 100 rates.

MAURICE VILMORIN (Barrii)—Creamy white perianth, the cup is rather long and heavily stained scarlet. An exquisite variety for garden and pot culture. Price, 8 cents; 3 for 20 cents; 75 cents per dozen.

MRS. WALTER T. WARE (Bicolor Trumpet)—White perianth with deep golden yellow trumpet which expands at the brim. This is a strong grower and produces a finely formed flower. It is one of the best varieties for the garden because of the contrast in color. Price, 8 cents, 3 for 20 cents; 75 cents per dozen.

SEAGULL (Barrii)—Broad perianth of the purest white, having a cup of pale lemon-yellow, usually with tiny edge of light orange. This is a beautiful variety and a very free bloomer. Price, 8 cents; 3 for 20 cents; 75 cents per dozen.

Cup Narcissus

MRS. LANGTRY—Pure white perianth, broad and overlapping; large, white cup, edged bright canary-yellow; free bloomer, and exquisite as a cut flower. Price, 3c each; 30c per dozen.

CONSPICUUS (Barrii)—Large, broad-spreading perianth of soft yellow, short, yellow cup, edged bright orange-scarlet. A fine, large flower; one of the handsomest of all. Splendid for midseason forcing, and good for any position in the garden. Height, 21 inches. Price, 3c each; 30c per dozen.

Narcissus Poeticus

PHEASANT'S EYE, or POET'S NARCISSEUS—Flowers large, snow-white, with beautiful cup suffused with bright orange-red; blooms in May; very fragrant. Price, 2c each; 20c per dozen; by express, \$1.00 per 100.

POETICUS ORNATUS—The most perfect form of the Poet's Narcissus. It is more symmetrical than the old Poeticus, and blooms almost a month earlier; flowers large, pure white cup margined with scarlet; and as fragrant as the type. Price, 3c each; 25c per dozen; by express, \$1.25 per 100.

Triteleia Laxa

A little gem for pot culture. Flowers in very early spring; grows about 6 to 8 inches high, each bulb producing several pretty, star-shaped flowers of rich dark blue. Price, 2 for 5c; 25c per dozen.

Spanish Iris Iris Hispanica

These have appropriately been called "the Orchids of the Hardy Flower Garden," some of the choicer orchids being their only rivals, and even they can hardly be said to exceed them in richness, variety and beauty. They are of the simplest culture, succeeding in almost any soil or position. The bulbs should be planted two or three inches deep and six inches apart.

General List Spanish Iris

Price, 3 for 5c; 18c per dozen; \$1.00 per 100.

- CAJANUS**—Yellow, rich in coloring and marking.
DARLING—Dark blue; very fine, with purple shading.
BLANCHE SUPERBE—White; lily-like.
LOUISE—Light blue, with pearl-gray shading; very delicate.
COUNT OF NASSAU—(King of the Blues.) A strong-growing, early blue; very good.
BRITISH QUEEN—Pure white, gold blotched, tall and extra large.
MIXED SPANISH IRIS—Price, 15c per dozen; 80c per 100.

SPECIAL OFFER—Two each of the above six New Spanish Iris (12 bulbs) for 24 cents.

New Spanish Iris

- EXCELSIOR**—Very large flower, lovely light violet-blue veined bright blue, orange blotch.
RECONNAISSANCE—Rich dark bronze or golden-brown; very fine contrasted with yellow.
RAPHAEL—large white tinted light blue with fluted petals; a most beautiful variety.
FLORA—Pale lavender, flushed blue, beautifully frilled and large, late.
 Any of the above New Spanish Iris, price, 3c each; 25c per doz.

Snowflake

(*Leucojum Vernum*.) Pretty bulbous plants, allied to the Snowdrop, but of much stronger and bolder habit, growing in rich soil from one to two feet high, and producing freely, beautiful large white flowers, distinctively tipped with green, excellent for cutting. When once planted they take care of themselves and should have a place in all hardy collections; can also be grown in pots. Price, 4c each; 35c per dozen.



New Orchid-flowering Spanish Iris.

Iris

(FLOWERING FLAG—FLEUR-DE-LIS)

German Iris (IRIS GERMANICA)
See page 37.

Sparaxis

A beautiful class of bulbs, allied to the *Ixias* and requiring the same treatment, producing spikes of flowers of the most exquisite and brilliant colors. Mixed varieties. Cultivate as *Ixias*. Price, 3 for 5c; 15c per dozen.

Anemones

Very beautiful and brilliant spring-flowering bulbs, which should be found in all gardens. Fine colors, such as brilliant scarlet, red, blue, rose, striped, carnation, etc. For pot culture they are very fine.
SINGLE—Mixed colors. Price, 2c each; 20c per doz.
DOUBLE—Mixed colors. Price, 3c each; 25c per doz.

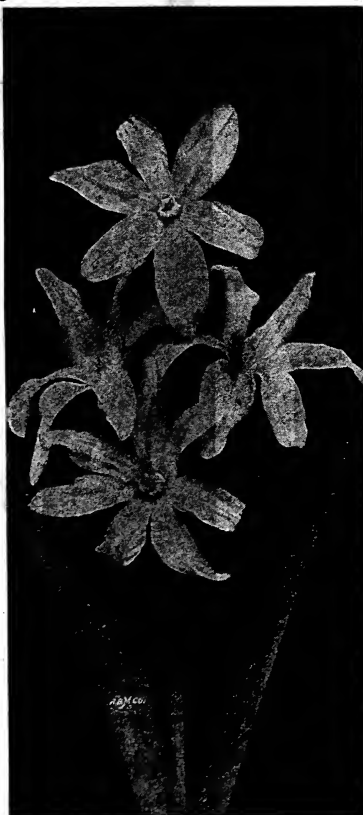
Giant French or Poppy Anemones

This beautiful class is stronger growing and produces much larger flowers than the common Single Anemones. It also contains a much greater variety of colors, while the highly effective carmine and scarlet shades are well represented and especially magnificent. Flowers over two inches across. Blooms continuously in late spring.

This superb new race will begin blooming in January if grown in a conservatory. Unsurpassed for pot culture. Price, 4c each; 35c per dozen.

Puschkinia

LIBANOTICA (Striped Squill). A beautiful, hardy spring-flowering bulb; looks like a gigantic *Scilla Sibirica*; the flowers, however, are blue-white, with a darker stripe through the center of each petal. Begins blooming in March, and continues in good condition for weeks. Price, 3c each; 20c per dozen; \$1.25 per 100.



Chionodoxa—Glory of the Snow.

Chionodoxa Luciliae

(Glory of the Snow)

One of the most lovely hardy flowering spring bulbs, producing lovely azure-blue flowers with pure white center. It is one of the earliest of all flowers, blooming before the *Crocus*. Price, 2c each; 20c per dozen; \$1.50 per 100, by mail.

Single and dozen prices for bulbs include postage. The 100 rates are by express at purchaser's expense. Not less than six of any one variety supplied at dozen rates, and not less than 25 at 100 rates.



Snowflake—4c each.



The Beautiful Winter Flowering Freesia
—3c each.

Freeseias

REFRACTA ALBA (Cream White)—For winter blooming in the house it is most popular. The splendid blossoms are borne in great profusion; color creamy-white, the lower petals touched with yellow; the perfume is delicious. By planting at intervals from September to November a succession of flowers can be had throughout the winter. Price, extra sized bulbs, 3c each; 6 for 15c; 12 for 25c; 30 for 50c.

THE NEW WHITE FREESIA (Purity)—A grand Freesia, and no one should be without a few bulbs of this delightful novelty. Flowers, which are snowy-white, of large size, are borne in great profusion on long stems, which grow upright and stiff; are excellent for cut-flower purposes. Price, extra sized bulbs, 4c each; 6 for 20c; 35c per dozen.



Gorgeous Mexican Scarlet Lily—15c.

Bulbs Adapted for House Culture Only

Oxalis

Admirably adapted to house culture, and nothing is prettier for window plants, as they flower freely. Plant in pots, six or eight bulbs in a pot, and cover about one inch deep.

BERMUDA BUTTERCUP OXALIS

This is one of the finest winter-flowering plants for pot culture that we have ever seen. The large flowers are of the purest buttercup-yellow. Blooms for many weeks. Price, 3c each; 25c per doz.

NEW OXALIS, GRAND DUCHESS

New varieties of great beauty; of dwarf, sturdy growth, throwing their large, exquisite flowers well above the foliage. Extremely free-flowering, never being out of bloom from November till June. One of the most desirable for window culture. We offer them in four distinct colors, Pink, White, Yellow and Lavender. Price, 3c each; two of each color for 18c; 25c per dozen.

OXALIS BOWENI — Vivid, rosy-crimson, very large flower, remarkably fine. Price, two for 5 cents; 20 cents per dozen.

OXALIS RUBELLA — The well-known bright pink variety. A very profuse bloomer. Price, 3 for 5 cents; 20 cents per dozen.

HIRTA ROSEA — Crimson and white. 3 cents each; 2 for 5c; 25c per dozen.

CERNUA LUTEA—Single yellow. 3c each; 2 for 5c; 25c per dozen.

MIXED OXALIS—Fine bulbs in mixed colors, which will make a very pretty effect when planted together. Price, 4 for 5c; 10c per dozen.



Amaryllis Johnsonii.
35c.

Amaryllis Johnsonii

One of the most gorgeous bulbous plants grown. Specimens of a few year's growth have completely filled a window. Nothing is more showy than this grand plant during the late winter or early spring, bearing large flowers of intense crimson with a delicate white feather in each petal. Price, extra large bulbs, 35 cents each.

Allium Neapolitanum

A very pretty winter blooming bulb in the house. Its flower stems are twenty inches high, supporting a large cluster of delicate white flowers, which keep perfectly for many weeks. Price, 3 for 5 cents; 15 cents per dozen.



Buttercup Oxalis—3c.

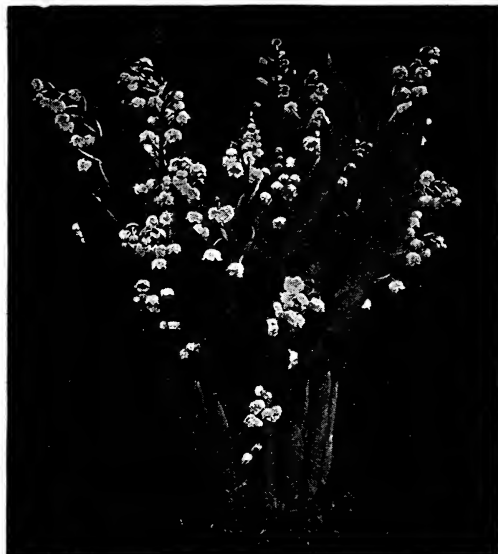
Mexican Scarlet Lily

(Amaryllis Formosissima)

Any description would be inadequate to give a correct idea of the superb brilliancy of the flowers of this Lily. They are of a dark, velvety scarlet, shading to maroon, and having a satiny-white stripe in the center of each petal. If planted in the same manner as the Chinese Sacred Lily the blooms will appear much sooner. Price, 15 cents each; two for 25 cents; three for 35 cents.

Lily of the Valley

Too well known to need any special description. Everyone knows their value for outdoor blooming, but all do not realize that their sprays of fairy bells can be obtained in winter just as easily. If you wish them for Easter, start them in February. We can supply the bulbs all winter. Price, 5c each; 50c per dozen.



Mammoth Flowering Lily-of-the-Valley—5c.

SPECIAL BARGAIN COLLECTIONS For Outdoor Planting

"1917 Special" Hyacinth Collection

- 1 Double Hyacinth, delicate blue.
- 1 Single Hyacinth, light pink.
- 1 Single Hyacinth, large white.
- 1 Double Hyacinth, lovely yellow.
- 1 Double Hyacinth, handsome blue.
- 1 Double Hyacinth, Royal purple.
- 1 Single Hyacinth, rich red.

Sure to bloom and sure to please you. Each bulb wrapped and color marked. 7 Select Hyacinth Bulbs sent **48c** postpaid, for

"Satisfaction" Tulip Collection

- 1 Double Tulip, Duke of York, dark-red and cream color.
- 1 Double Tulip, Murillo, lively pink.
- 1 Double Tulip, Count Leicester, rich orange and scarlet.
- 1 Single Tulip, L'Immaculee, pure white.
- 2 Single Tulips, Cottage Maid, beautiful pink.
- 2 Single Tulips, Artus, bright scarlet.
- 2 Single Tulips, Chrysolora, fine yellow.
- 4 Fancy Parrot Tulips.
- 4 Assorted Late Flowering May Tulips.
- 2 Odd Striped Tulips.

This collection is wonderful for the price. The very largest sized, sure to bloom bulbs. 20 Fine Tulip Bulbs **49c** sent postpaid, for.....

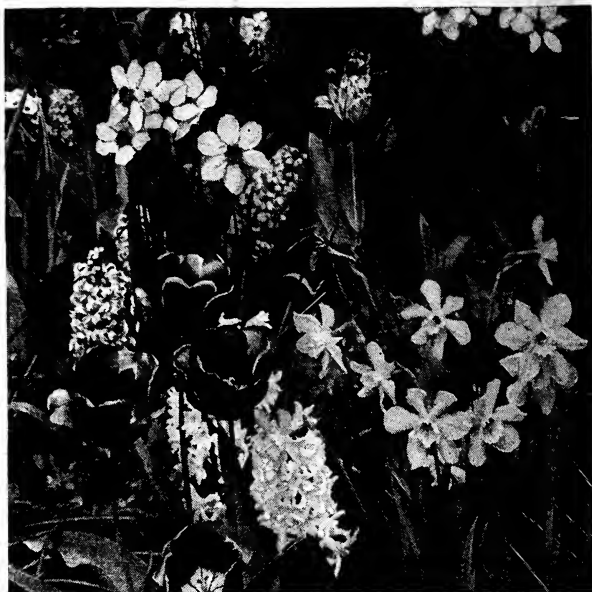
"New Mammoth" Hyacinth Collection

- 1 Double Hyacinth, pink.
- 1 Double Hyacinth, blush white.
- 1 Double Hyacinth, brilliant blue.
- 1 Single Hyacinth, light pink.
- 1 Single Hyacinth, dark blue.
- 1 Single Hyacinth, bright rose.
- 1 Single Hyacinth, delicate blue.
- 1 Double Hyacinth, yellow.
- 1 Double Hyacinth, sky-blue.
- 1 Double Hyacinth, pure white.
- 1 Single Hyacinth, bright blue.
- 1 Single Hyacinth, blush white.
- 1 Single Hyacinth, pure white.
- 1 Single Hyacinth, rich crimson.

All well selected, sound bulbs; sure to bloom. Each bulb wrapped separately, with color of flower printed on **96c** paper. 14 Choice Hyacinth Bulbs, sent postpaid, for.. One-half of this Collection—48c.

"Nature's Garden" Mixture of Daffodils, Jonquils and Narcissus

This mixture is made up of four distinct sorts blooming at different periods, so that but one kind is in flower at a time. 100 bulbs, \$2.00, by parcel post, prepaid. By express, at purchaser's expense, \$1.50. A field of bloom for six weeks.



The "Snow White" Cemetery Collection

- 1 Liliun Candidum, The Beautiful Madonna Lily.
- 2 Tulips, "White Swan," pure white single.
- 2 Tulips, Pure White, Double, "La Candeur."
- 2 Hyacinths, Pure White, Double and Single.
- 10 Crocus, Large-Flowering White.
- 4 Spanish Iris, Blanche Superb, White.
- 2 Narcissus, Poeticus, Single White.
- 2 Gardenia Flowered Daffodil, Double White, Sweet.
- 2 Star Narcissus, Large White.

This collection is suitable for cemetery planting or the home garden, where only white flowers are wanted. Try it, and you will be more than pleased. Blooms from **66c** February to June. 27 Select Bulbs sent postpaid, for **ONE-HALF COLLECTION (Including Madonna Lily)...32c**

The "Spring Glory" Collection

- 6 Hyacinths, one each white, yellow, pink, red, purple and blue; all large sure to bloom bulbs.
- 6 Narcissus, all different early blooming, Daffodils and Jonquils.
- 6 Tulips, named extra early varieties, all different, all colors.
- 6 Crocus, giant flowered in variety.
- 6 Snowdrops, lovely white, very early.
- 6 Chionodoxa, charming blue.

These are all first quality bulbs, and under ordinary conditions, the entire collection should produce from fifty to sixty blooms and sprays of bloom. Try this! 36 Earliest Flowering Bulbs for Outdoor Planting, sent post- **64c** paid, for

One-half of this collection—32c.

The "Daffodil" Collection

This collection will make a very pretty little flower bed to bloom in early spring. Splendid value for the money, as these are all first-class large-flowering bulbs.

- 1 Double Incomparable Narcissus.
- 1 Single Von Sion Narcissus.
- 2 Double Alba Plena Odorata Narcissus.
- 1 Poeticus, or Pheasant's Eye Narcissus.
- 2 Alba Stella Narcissus.
- 2 Jonquil Campenelle Narcissus.
- 9 Fine Narcissus sent postpaid for..... **29c**

The "February" Collection

- 5 Crocus, Cloth of Gold, many large yellow flowers.
- 5 Scilla Sibirica—Sprays of lovely rich blue.
- 5 Snowdrops—Large bells; pure white.

This collection is composed of the earliest-flowering bulbs, for outdoor planting. Sure to bloom in February, and often in full bloom when snow covers the ground. 15 **29c** Bulbs sent postpaid, for.....





Single Tulip, Rose Gris de Lin.

"Bulb Specials" for Holland Fibre

The new method of growing and blooming bulbs in Holland fibre is so fascinating that all wish to try it. Not only is it cleaner and more convenient than soil, but the bulbs will come into flower two weeks earlier than if planted in either soil or water. Full directions with every quart of fibre.

- 1 New Hyacinth, La Victoire—Magnificent carmine-scarlet.
- 1 Special Hyacinth, Queen of Blues—Exquisite lavender-blue.
- 2 New Tulip, La Matador—Large, double, glowing scarlet.
- 2 Tulip, Duc Van Thol—Lovely bright colors.
- 4 Hyacinths, Azureum—Lovely bright blue, like blue lilies of the valley.
- 1 Narcissi—Large yellow trumpet.
- 1 Narcissi, Double Roman—Clusters of fine double yellow.

Twelve Bulbs of Unusual Merit, With 2 Quarts of Holland Fibre, Sent Postpaid for **79c**



Narcissus Grown in Water.

The "Winter Water Garden" Collection

These are especially adapted for growing in water. When the ground is frozen and earth for growing bulbs hard to obtain, it is very convenient to start a "winter water garden" in vases or dishes of water and pebbles. Fill the dish with large pebbles, place the bulbs so two-thirds of each is above the pebbles, and fill with water to the top of the pebbles. Hyacinths can be grown in water only in hyacinth glasses, or wide mouthed bottles, so that the bottom of the bulb always touches the water. Place in dark for two weeks or more for roots to grow. Sure to bloom.

- 1 Chinese Sacred Lily—Blooms six weeks after planting. A garden by itself.
 - 1 Hyacinth—Largest-sized bulb; will give several fine flowers of lovely blue or pink.
 - 2 Paper White Narcissus—Clusters of pure white, waxy stars; exquisite.
 - 2 White Roman Hyacinths—Early flowering, lasting for weeks; fragrant.
 - 2 Narcissus Double Roman—Clusters of cream and yellow flowers.
- Eight Valuable Bulbs by Mail, **65c**
Postpaid, for

"Winter Cheer" COLLECTION

A collection of winter-flowering bulbs which can easily be brought into bloom in midwinter by any amateur. This collection will give you a window full of brilliant, fragrant and delicate flowers for several weeks. Buy the bulbs early in the fall, and plant them at once in pots or boxes. Water them abundantly immediately after planting, cover the tops of the pots with leaves or excelsior, and place in a dark, cold room or cellar, watering once a week for four or five weeks, until the roots are well grown. Bring them out to a sunny window three or four weeks before the blooms are desired, as the tops will grow strong and rapidly after the roots are well grown. Give them plenty of water.

- 1 Grand Soleil d'Or Narcissus—Splendid rich yellow clusters with orange-scarlet cup. Very brilliant.
 - 4 Allium Neapolitanum—Large clusters of silky white flowers.
 - 3 Tulips—Early-flowering varieties of rich colors for house culture.
 - 1 White Hyacinth—Delicate, fragrant and beautiful.
 - 1 Pink Hyacinth—Delicate, fragrant and beautiful.
 - 1 Blue Hyacinth—Delicate, fragrant and beautiful.
 - 1 Narcissus, Double Roman—Large clusters of double yellow flowers.
 - 3 Scilla Sibirica, Blue—Brilliant blue; in bloom a month.
 - 3 Scilla Sibirica, Alba—Lovely waxy white stars, very dainty.
- Eighteen "Sure to Bloom Bulbs" Sent Postpaid for **68c**

The "Wonder" Collection

When placing our orders for bulbs, which we import from Holland, France, Italy, China, Bermuda, etc., it is impossible to estimate the demand, therefore we usually have a surplus of some varieties, even the finest and most expensive. As they can not be kept over, we like to close them out at the end of the season; therefore, we are able to offer you assorted collections at sacrifice prices. The "Wonder" Collection contains 45 good sized sound bulbs, each variety wrapped separately and named, for 50 cents. This collection cannot be sent until November. Order at any time, and we will forward the bulbs as soon as possible after the first week in November.

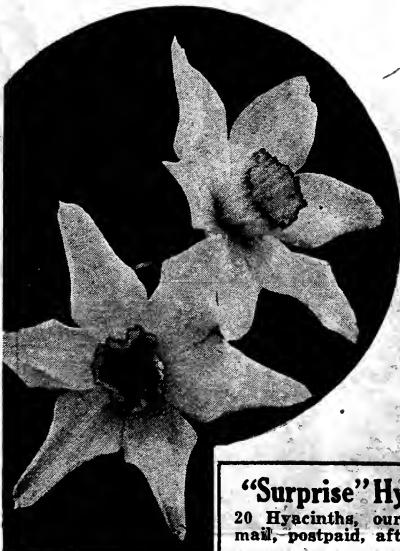
Thirty-five Bulbs by Mail, Postpaid, After Nov. 1, 1917, for... **50c**

Growing bulbs in Prepared Fibre is an interesting, quick, easy and cleanly method of flowering them in the house in winter. All Narcissus are especially good for growing in Fibre.

"Surprise" Collection

Like the "Wonder" Collection, this is made up of fine, sound bulbs of choice varieties which are unsold when the rush of trade is over. It contains a large proportion of the heavier and more expensive bulbs, such as Hyacinths, Tulips, Narcissus, etc., each variety wrapped separately and named. This collection cannot be sent until November. Order at any time, and we will forward the bulbs as soon as possible after the first week in November.

Seventy-five Assorted Bulbs by Mail, Postpaid, After November 1, 1917, for **\$1.00**



"Surprise" Hyacinth Collection

20 Hyacinths, our selection, by mail, postpaid, after Nov. 1, '17 **\$1.20**

"Surprise" Tulip Collection

50 Tulips, our selection, by mail postpaid, after Nov. 1, 1917, for **\$1.10**



New Fancy Double Geraniums

Geraniums are more popular today than ever before. This is to be wondered at when we consider the magnificent varieties which are now on the market. Every color, shade and variegation is to be had, from the most dazzling to the most delicate tint. Recent introductions give us a variety of choice specimens which cannot help but satisfy anyone. We have taken care to keep the prices down so that they will be within the reach of all.

S. A. Nutt This is the darkest and richest double Geranium grown. It is a very bright, dark, deep, rich velvety maroon. 15c each; three for 40c.

Mrs. Lawrence Unsurpassed as a bedder. Color is an artistic shade of bright, satiny salmon-pink, slightly tinged white. 15c each; 3 for 40c.

Alphonse Ricard Produces flowers in great masses. Color a brilliant shade of orange-red. 15c each; 3 for 40c.

Buchner Large flowering, a fine bedder. Flowers purest white; not a trace of coloring at center. 15c each; 3 for 40c.

Jean Viaud Color bright rosy-pink with distinct white blotch in the center. 15c each; 3 for 40c.

Heteranthe Clear vermilion-red, showing sturdy foliage. 15c each; 3 for 40c.

La Favorite A fine double white; one of the best of the white Geraniums. 10c each; 3 for 25c.

John Doyle Vigorous grower and one of the richest brilliant vermilion-scarlet. 15c each; 3 for 40c.

Marquis de Castellaine Deep, rosy-scarlet, shading pure scarlet. 15c each; 3 for 40c.

La Condole A deep, soft rose. The favorite pink bedding Geranium. 15c each; 3 for 40c.

Mme. Barney A splendid deep pure pink of a lively shade. Grand habit of growth, compact and yet well branching; very free in bloom, semi-double and of large size. 15c each; 3 for 40c.

Double Dryden Coral white, shading to glowing soft crimson. 15c each; 3 for 40c.

Francis Perkins Best double pink bedding Geranium. Flowers bright pink. 15c ea.; 3, 40c.

Marquis de Montmort Color brilliant purple, nearest we have to the blue. 15c each; 3 for 40c.

Leopold Bouville Semi-double, bright solferino red, richly shaded bright carmine. 15c each; 3 for 40c.

Jules Vasseur Bright cardinal-red with distinct white eye. 15c each; 3 for 40c.



Orange-red Bedding Geranium
Alphonse Ricard—15c each.

Beauty Poitevine

Beautiful rosy-salmon, nicely shaded and tinted from deep orange to pure salmon. 15c each; 3 for 40c.

Bertha de Pressily

Beautiful silver-rose of exquisite brightness; the blooms are very double; the habit is dwarf, robust and branching. 15c each; 3 for 40c.

Bronze Leaf Geranium

Bronze Bedder—A beautiful Geranium with bright golden-yellow foliage and blossoms of brilliant scarlet. It stands the sun well. Price, 15c each; 3 for 40c.



Geranium Bronze Bedder—15c each.



Bertha de Pressily—15c each.

SWEET SCENTED Geraniums

These beautiful and useful Geraniums are now very extensively grown for their highly fragrant foliage. Price, 15c each; 3 for 40c; \$1.25 per dozen, postpaid.

CUT-LEAF ROSE—Needs no description. Indispensable in the formation of bouquets. Beautiful pink flowers, borne in clusters.

SKELETON LEAF or DR. LIVINGSTON

The most popular scented Geranium. Leaf is deeply cut, or fern-like.

BALM

A Geranium with large leaves and with a very strong fragrance. Large flowers; light lilac color.

LEMON-SCENTED

Small leaves, one of the most pleasing varieties; flowers red.

LADY MARY

A nutmeg scented Geranium with small bright green foliage.

OAK-LEAVED

Leaves somewhat resembling those of the oak tree; dark chocolate center; grows on the order of the ivy; splendid for hanging baskets.



Sweet-Scented Cut-Leaf Rose Geranium—15c each.



Flowering Beg. Pres. Carnot
—15c each.

Beg. Pres. Carnot

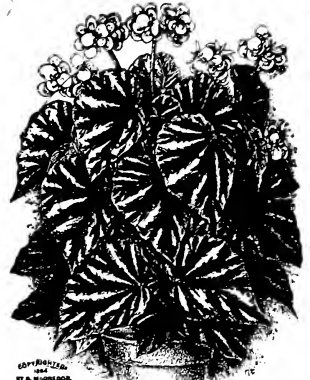
A remarkably strong growing variety, of stiff, upright habit; foliage large and somewhat in style of Begonia Rubra, but more than twice as large; upper side deep green, under side purplish-red, flowers beautiful coral-red, in large pendent panicles. 20c each; 3 for 50c.



Mammoth Leaved Rex Begonias.

Mammoth Leaved Rex Begonias

The Rex division of the Begonia family has been a great favorite, having a great variety of bright colors. For rockeries they are unexcelled and they grow luxuriantly along foundations where shaded. Thrives best in a rather shady and moist situation. The soil should be light and porous and well fertilized. Price of Rex Begonia, good, strong established plants, 20c each; 3 different varieties for 50c; \$1.75 per dozen.



Beg. Thurstoni.

Beg. Thurstoni

A cross between B. Metallica and B. Sanguinea. Has bright red foliage and veining underneath leaves, and bright metallic green, shading to red, in the younger growth on top. Flowers beautiful deep pink in bud, when expanded, shell-pink. 15c each; 3 for 40c; \$1.25 per dozen.



Flowering Beg. Rubra—20c each.

Beg. Rubra

One of the finest Begonias in cultivation. Its dark, glossy green leaves combined with its free-flowering habit, make it one of the very best plants for house or conservatory decoration. The flowers are scarlet-rose color. 20c each; three for 50c.



Beefsteak Begonia (Feastii)

A low, spreading Begonia, with circular leaves, red beneath, and dark glossy green above, and of heavy texture. The finest pot Begonia we have for house culture. Price, 20c each; 3 for 50c.



Flowering Beg. Coralline
Lucerne—25c each.

Beg. Coralline Lucerne

Blooms last from a month to six weeks, borne in immense clusters, almost hiding the plant. Color bright coral-red, changing to delicate pink. Nice plants, 25c; 3 for 60c.



Flowering Beg. Triumph—15c each.

Beg. Triumph

The most attractive of white-flowering Begonias, being a mass of waxy-white flowers both summer and winter. Growth is dwarf and compact, making an excellent pot plant, while nothing is better for bedding out in summer. 20c each; 3 for 50c; \$1.25 per dozen.



Flowering Beg. Gracilis Luminosa—15c each.

Gracilis Luminosa

Foliage rich, glossy green, shaded deep bronze; flowers bright cherry, changing to coral-red. 15c each; 3 for 40c; \$1.25 per doz.



Flowering Beg. Argentea
Guttata—15c each.

Argentea Guttata

Purple-bronze leaves, oblong in shape, with silver markings; white flowers. 15c each; 3 for 40c; \$1.25 per dozen.

NEW FANCY Single Geraniums

In the different types here offered will be found the most beautiful that can be imagined; magnificent in size, perfect in form and extremely gorgeous in coloring; some in splendid solid colors that fairly dazzle the eye, others in exquisite combinations of foliage and flower that baffle successful description, and must be seen to be appreciated. They are recommended for bedding and pot plants, and wherever the very finest in Geraniums is desired.

Mrs. E. G. Hill Magnificent variety. Enormous trusses of large florets. Light salmon, bordered rose. A favorite bedder and pot variety. 15c each; 3 for 40c.

Nuit Poitevine Brilliant scarlet-crimson, shading delicate violet-rose to distinct white center; magnificent bedder. 15c each; 3 for 40c.

Jacquiere Brilliant crimson-scarlet. A most beautiful shade. Immense trusses, exceptionally long stems. Vigorous grower. 15c each; 3 for 40c.

Tiffin A very effective shade of rich, glowing scarlet, with crimson shading on upper petals. One of the finest blooming single bedding varieties. 15c each; 3 for 40c.

Mrs. J. M. Gaar Dwarf, compact habit. Fills a long-felt want in a white bedder. 10c each; 3 for 25c.

Alice of Vincennes White, with gradual gradation of violet-crimson to a bright crimson; magnificent. 15c each; 3 for 40c, postpaid; \$1.25 per dozen.

L'Aube Enormous sized trusses, large, round florets, pure snow-white, retaining its pureness the entire season; in freedom of bloom, splendid habit and growth of plant it resembles La Favorite. 15c; 3 for 40c; 12 for \$1.25.

Granville A magnificent bedding variety; trusses are of extraordinary size, of almost Pansy form; the color is deep soft pink, a bright and distinct shade. This variety has been universally admired by all who have seen it in flower. 15c each; 3 for 40c; 12 for \$1.25.

Wm. Languth

(Double Red Silver-Leaf) — This new variety is the second double-flowered Geranium in the silver-leaved section. Identical with Mrs. Parker, except in color of flower, which is a bright scarlet. The center of the leaf is a deep green and the outer margin broadly marked with silvery-white. 20c each; 3 for 50c; 6 for 90c; \$1.75 per dozen.

Mrs. Pollock

(Golden Tricolor Geranium) — The best and most satisfactory of all the tricolor foliage Geraniums. It is very distinct in its markings, having a bright, bronzy-red zone belted with crimson and edged with golden-yellow; flowers orange-red. 15c each; 3 for 40c; 6 for 75c; \$1.25 per dozen.



Alice of Vincennes—15c each.

Easter Greeting

Easter Greeting is the most wonderful flowering variety of all Pelargoniums. Its blooming season extends from late winter to early fall, and through the summer the plants are gorgeous. Strong, compact, bushy habit, holding its foliage well. The color is hard to describe—a fiery amaranth-red. Each of the five petals being marked with a large dark brown or black spot in the center, the spot being bordered with crimson penciling. 20c each.

Pansy Geranium

Rivals the Pansy in Showiness of Flowers.

(Mrs. Loyal Pelargonium) — Mrs. Loyal Pansy Geranium (Pelargonium) bears flowers the markings of which are most extraordinary—also rivaling the Pansy in showiness of flower. The plant is of the easiest growth and is literally covered with flowers all the time. A remarkable plant of permanent beauty. Nice plants, 20c each; 3 for 50c; \$1.75 per dozen.



Happy Thought

(Tricolor Geranium) — A tricolor Geranium; dark green foliage, light creamy-white center, with a dark zone. Flowers bright scarlet. 15c each; 3 for 40c; 6 for 75c; doz., \$1.25.

Madame Salleroi

(Silver Leaf Geranium) — It makes a round, pretty plant, about one foot high and wide, foliage bright green, edged with pure white; delicate pink flowers. 10c each; 3 for 25c; 6 for 45c; 90c per dozen.

S. A. Nutt

(New Silver-leaved Geranium) A new variety with foliage distinctly edged with white. Very similar to the bedding Geranium, Mme. Salleroi. The variegated S. A. Nutt is a strong growing variety; flowers are large, produced in fine trusses, very free bloomer; color brilliant crimson-scarlet. 20c each; 3 for 50c, postpaid; \$1.50 per dozen; \$10 per 100, by express.



20c each, 3 for 50c.



15c each, 3 for 40c.

Acalyphas

Two Beautiful Foliage Plants for Summer Bedding

ACALYPHA TRICOLOR—Beautiful red foliage, with blotches of crimson-bronze. This plant, when planted in beds, makes it equal to any variety of Coleus for an attractive bed. Price, 15 cents each; 3 for 40c; \$1.25 per dozen; 50 for \$3.00.

ACALYPHA MARGINATA—Dark bronze with rose-margined foliage. This variety equals the showiest varieties of Coleus. Is hardier and does not wilt in the hottest and driest weather. Price, 15 cents each; three for 40 cents; \$1.25 per dozen.



Acalypha Tricolor 15c each.



Price—15c each, \$1.50 per dozen.

Watermelon Begonia

(*Peperomia Variegata*)—A beautiful ornamental plant from the Sandwich Islands. Excellent for house, window or table. The leaves are distinctly variegated white and green, thick and waxy-like and have the appearance of being powdered with frosted silver. The fleshy leaves enable them to withstand the dry air of living rooms much better than the great majority of plants. The Watermelon Begonia requires shade in the summer, but should be given full sun in the winter and less water than the majority of plants. A loose soil provided with good drainage places them at their best. 15c each; 3 for 40c; \$1.50 per dozen.

Lemon Verbena

A universal and well known favorite, grown principally for its deliciously scented foliage. Its pale green, foliage, delightfully scented, goes well with any flower.

Price, 15 cts., each; 3 for 40 cents; \$1.25 per dozen.



Fountain of Gold (Genista)—15c each.

Beautiful Winter Flowering Plant.

Fountain of Gold

(*Genista Canariensis*)—A beautiful Easter flowering plant. The drooping branches are covered with delicate sage-green foliage, and every twig tipped with a long raceme of exquisite pea-shaped blossoms of a pure canary color, almost hiding the foliage. 15c each; 2 for 25c.

Linum Trigynum

A winter-blooming plant of great beauty, blooms produced in great profusion and of a bright yellow. The flowers are about the size of a Morning Glory, and no matter how small the plant is it will bloom profusely. 15c each; 2 for 25c; \$1.25 per dozen.



Royal Purple Plant (Strobilanthes)—20c each.

Royal Purple Plant

(*Strobilanthes Dyerianus*)—An ornamental foliage bedding plant universally popular on account of its brilliant and exquisite coloring, its extraordinary easy growth and usefulness as a decorative plant. It surpasses the finest Coleus, Begonias or Bertolonias, in the exquisite coloring of the leaves, besides the long racemes of lovely violet blossoms. Does best under conditions of high temperature and abundance of moisture. Price, each, 20c; 3 for 50c; doz., \$1.50, postpaid.

Sansevieria

(Snake Plant)—A decorative house or porch plant of great value. Nothing more striking in foliage and habit and none other stands as much downright neglect and hardship. It will stand gas and dust, and will go for months without a drop of water. Propagated easily and simply by division of the roots. 15c each; 3 for 40c; dozen, \$1.25, postpaid; larger size, by express only, each, 35c; 3 for 75c; doz., \$2.50.



Sansevieria Zeylanica—15c each.

Improved Obconica

See Cover Primroses See Cover

OBCONICA ROSEA—A variety with beautiful flesh-pink flowers. One of the best of the collections. (Illustrated front of cover.) Price, 20c; 3 for 50c; large size, 35c; 3, \$1.00.

OBCONICA ALBA—A variety with beautiful white flowers which always enhance the beauty of the crimson, pink and lilac, and other shades. Price, 20c; 3 for 50c; large size, 35c; 3 for \$1.00.

OBCONICA CARMINEA—Flowers bright carmine rose; foliage good deep green. Price, 20c; 3 for 50c; large size, 35c; 3 for \$1.00.



McGregor's Giant Flowered Primula Obconica—25c each.

Feather Fern

(*Asparagus Sprengerii*)—The *Asparagus Sprengerii* gives us a plant of the bushy and drooping form of the *Asparagus* family. The foliage is composed of dense glossy green, graceful and drooping branches. The Feather Fern or *Asparagus Sprengerii* is probably of a hardier nature than the *Plumosus*, and subjects itself to wider usage. It is especially valuable for window box and hanging basket planting, for vases and as specimens when grown in pots or as tub plants. The Feather Fern or *Asparagus Sprengerii* gives us a more valuable house plant, being one of easy culture, the sprays growing four to five feet long, and when the foliage is used for cut flower work it retains its freshness for an unusual length of time. The Feather Fern is particularly free from troublesome insects or diseases, and in this has one advantage over the large family of decorative Ferns of the Boston Fern type. The plants are of rapid growth, succeeding well in ordinary rich soil, and there is every reason to believe that all plant growers can have the greatest success with them. Price, nice strong growing young plants, 15 cents each; 3 for 40 cents; \$1.50 per dozen. Strong plants, 25 cents; 3 for 60c; \$2.25 per dozen. Larger plants, 50c each; 3 for \$1.25.



Kentia Forsteriana
40c and 80c each.

Kentia Belmoreana

The *Kentia Belmoreana* Palm represents the best of the Palm family. It has the grace and lightness of the *Cocos*, but robust in growth and heavy in foliage. Nice young plants, 40c; larger plants, 80c, by express only.

Kentia Forsteriana

One of the finest plants of any of the Palm family, being almost impregnable against disease. Very similar to *Kentia Belmoreana*, with broader foliage. Price, nice plants, 40c, postpaid. Larger plants, 80c each, by express only.

Lace Fern

(*Asparagus Plumosus*)—The family of *Asparagus* plants comprises a number of varieties. Some are climbers, some drooping or trailing, some erect and bushy. Many of them are highly prized for their beautiful and graceful foliage, and the two varieties which we list on this page are practically the most popular and valuable of all.

The variety *Plumosus* (*Asparagus Plumosus Nanus*) is a tall climbing decorative plant and one of the rarest and of delicate beauty. Its bright green foliage is extremely fine and plume-like. The fronds grow from six to eight inches in width and when cut retain their color and shape for weeks. The plant may be grown as a pot plant, a bushy form or climbing. Florists grow the *Asparagus Plumosus* to give them rich green strings of foliage to be used similar to the popular *Smilax*. It will thrive under practically all conditions. The *Asparagus* likes a good rich soil and fairly warm temperature. The plant does best when kept in a growing condition through a plentiful supply of nourishment. Nice young strong growing plants, 15c each; 3 for 40c; \$1.50 per dozen. Larger plants, 25c; 3 for 60c; \$2.25 per dozen.



Fern Dish Ferns.

Ferns for Fern Dishes

Special Offer For a Fern Dish five to six inches in diameter we will send you six Ferns, all different, our selection of varieties, the kinds most suitable for this purpose, for 50 cents, postpaid; for a Fern Dish six to seven inches in diameter, we will send nine Ferns for 75 cents, postpaid; for Fern Dish 7 to 9 inches in diameter we will send 12 Ferns, all different, our selection, for \$1.00; 6 for 50 cents, postpaid; 9 for 75 cents, postpaid; 12 for \$1.00, postpaid.

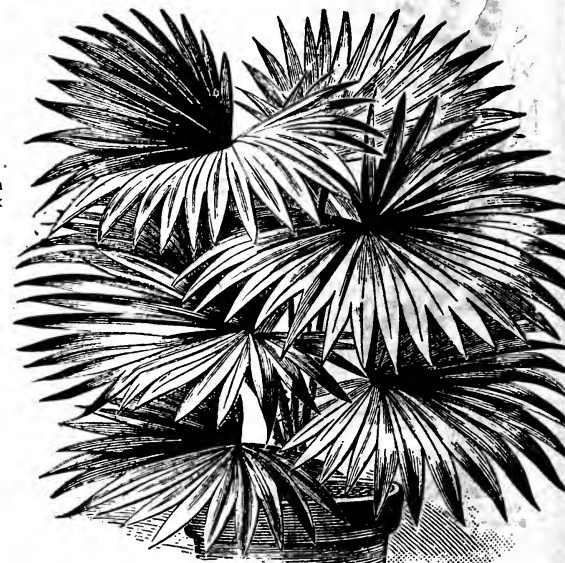
SPECIAL OFFER—Collection of Boston or Sword Ferns. One each of the following Ferns: Boston, Scholzei, Roosevelt, Teddy, Jr., and Gold Medal, described and illustrated on pages 20 and 22 for 65 cents. Same, five plants, all of the larger size, for \$1.30.



Asparagus Sprengerii (Trailing Basket Fern)
—15c and 25c each.

Fan Leaf Palm

(*Latania Borbonica*)—This is the typical Palm and is more largely grown than all other varieties combined. Nothing is more satisfactory as a decorative plant that a well-grown specimen of *Latania*. This is the Palm from which the Chinese Palm fans are made. Adapted to all decorative purposes within or without doors. Its vigorous, healthy habit and large, glossy, green, fan-like leaves commend it to all. Nice young plants, 20c each; larger plants, 40c each.



The Popular Fan Leaf Palm (*Latania Borbonica*)
—20c and 40c each.



Asparagus Plumosus (Feather Fern)
—15c and 25c each.

Field-Grown Fragrant Carnations

Price for nice, well-established field plants, 20c each; 2 for 35c; 6 for 90c, postpaid. Price by express, 15c each; any 2 for 25c; any 6 for 75c.

The field grown plants we offer have been grown in our grounds this season and are strong, bushy and well branched plants, of blooming size. They should not be compared with small size pot plants which are all right for out-door spring planting, but of comparatively little value for winter blooms. We have nice

plants in the following colors: light clear yellow; light pink; pure white striped with bright pink and scarlet; bright salmon-rose; deep golden yellow, red stripes; glistening pink; pure white; rich crimson; flaming scarlet; delicate pink.



Fragrant Carnations—15c and 20c.

Giant Flowering Chinese Primrose

There are many species and varieties of Primulas. Perhaps the prettiest, as also the best known type, is the Chinese Primrose, one of the best house plants in existence. Price, 20c each; three for 50c.

PRIMROSE ALBA—Flower pure white, foliage green.

RUBY QUEEN—Bright carmine, yellow eye.

DUCHESS—White, carmine center.



Price—20c each.



Price—15c each.

Weeping Lantana

A New Weeping Plant of Great Beauty

One of the grandest plants grown. The plant has a most graceful, drooping habit, grows very rapidly and blooms continually summer and winter, producing large clusters of flowers of the most delicate lilac or rosy-pink. Foliage a beautiful dark green. We know of nothing of recent introduction that is so easily grown and gives so much pleasure and satisfaction as this beautiful Lantana. Strong plants,

15c each; two for 25c; \$1.50 per dozen, postpaid.

GIANT FLOWERING HIBISCUS

Hibiscus Rosea Sinensis or Green-house Hibiscus is a summer flowering plant; grows easily in ordinary soil and produces constantly single and double flowers of immense size. In winter plants can be kept by withholding water and keeping them in a temperature of about fifty degrees. Price, any variety, 15c each; 3 for 40c; doz., \$1.25, postpaid; 100, \$7.50, by express. Larger plants, 30c each; 2 for 50c; \$2.75 (by express) per dozen.

AURIANTICA—Double, orange-colored flowers.

COLLERII—Buff-yellow, crimson-scarlet base.

GRANDIFLORA—Scarlet-crimson.

MINIATUS SEMI-PLENA—Semi-double vermilion-scarlet flowers.

SUBVIOLEACEOUS—Flowers enormous size, tinted violet.

PEACHBLOW—One of the finest plant novelties offered; flowers double and from 4 to 5 inches in diameter; a charming rich, clear pink, with a small, deep crimson center. 15c each; two for 25c; \$1.25 per dozen, postpaid; \$8.75 per 100, by express. Larger size, 30c; two for 50c; \$2.75 per dozen, by express.



Australian Silk Tree—15c each.

Large Leaved Fancy Coleus CHRISTMAS GEM

(Brilliance, or Dr. Ross) — Leaves immense, 8 to 12 inches long. The name aptly describes the appearance of this variety, which belongs to the giant-leaved section; of strong, vigorous habit. Leaves bright carmine shading off to deep maroon, the margin being yellow and green, the whole leaf having a rich velvety luster. Christmas Gem Coleus is exceptionally striking as a decorative pot plant. Nothing more showy in foliage or color. As a bedding plant it is unexcelled, grows easily. Price, 15c each; 3 for 40c; twelve for \$1.25, postpaid.



Christmas Gem Coleus—15c each.



Hibiscus Peachblow—15c each.

The Boston Fern



Ostrich
Plume Palm
—60c, \$1.25,
\$2.50.

Phoenix Roebelini

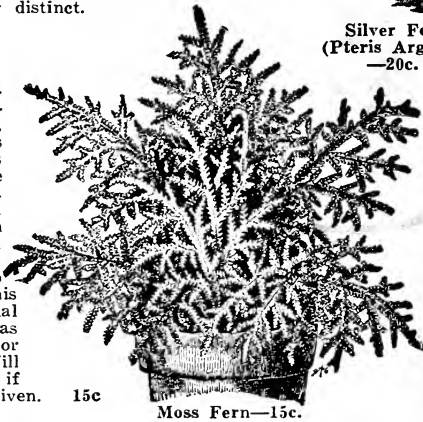
(The Ostrich Plume Palm)—This beautiful Palm has the grace and lightness of *Cocos Weddelliana*, but is more robust in growth, foliage gracefully curved, spreading in habit. It is as hardy as the *Kentia Palm*, succeeding admirably as a house plant. Fine large plants, \$2.25, by express only.

Silver Fern

(*Pteris Argylea*)—A very showy Fern with variegated foliage; fronds large, light green, with broad band of silver-white down the center of each. Very distinct. 20c; 3 for 50c.

Moss Fern

(*Selaginella Emiliana*)—A new, upright-growing Moss, with numerous feathery stems branching from the base and forming a dense tuft. Well grown plants attain twelve to eighteen inches in height. We know of no other Fern of this type that can equal this variety, either as a Fern for dishes or as a pot plant. Will keep for long time if proper care is given. each; 2 for 25c.

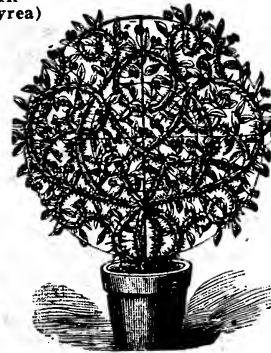


15c

Moss Fern—15c.



Silver Fern
(*Pteris Argylea*)
—20c.



Crown of
Thorns—20c.



The Boston Fern—15c, 25c and 50c.

The Plumed Fern Scholzei

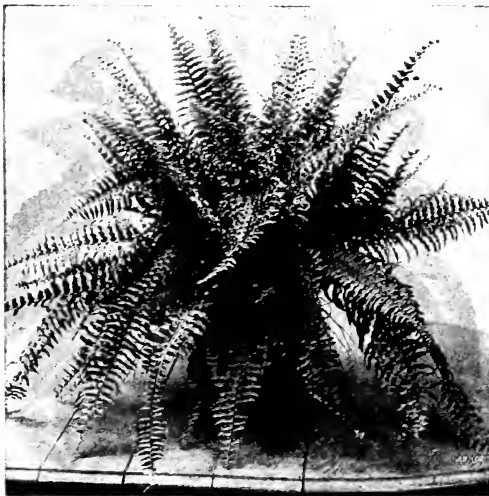
The ideal plumed Fern, holding the same position to all other plumed varieties that *Scotti* holds to the old Boston. The pinnae is subdivided, giving it an airy, feathery appearance. Nicely shaped plants, 15c; larger sizes, 30c and 50c.

Crown of Thorns

(*Euphorbia Splendens*)—Thick fleshy twining stems. Covered with stout, sharp spines nearly an inch long. Foliage bright green and flowers are beautiful coral-pink. 20c each; three for 50c, postpaid.

Areca Lutescens

Its dark, glossy green leaves are gracefully curved on slender stems, and the entire foliage is gracefully disposed; the trunk and stems are golden-yellow. Nice plants, 35c, postpaid; larger plants 75c, by express.



Roosevelt Fern—35c each.

Roosevelt Fern

Probably never in the history of horticulture has a plant been introduced that has received the universal admiration, praise and place that has been accorded the decorative Fern. The Boston Fern has had the most phenomenal sale of any decorative plant. The new variety, Roosevelt, is more attractive than the Boston. Fronds grow very broad and heavy, often measuring six inches or more across, and five or six feet long. Valuable, not only on account of its beauty, but on account of its ease in culture, hardiness and general adaptability. It has all the free-growing, hardy characteristics of the Boston Fern, and, like that plant, is equally suitable for house culture. Well established plants at 15c each; 3 for 40c, postpaid; strong plants, 30c each; 3 for 80c, postpaid; larger plants, 50c each; 3 for \$1.25, postpaid. (The largest sizes of these Decorative Ferns should be sent by express.)



Areca
Lutescens
—35c and
75c.

White Calla

(New Godfrey)—A wonderful improvement over the old White Calla. The plant is very bushy, having double as many leaves as the old variety, and producing three times as many flowers. Flowers are unusually large, held high, and on stiff stems. After the summer growing season, the bulbs can be taken up in September, given a slight rest, and will flower through the winter. The same plant will grow and bloom for years and the quantity of flowers this variety will produce is astonishing. The blooms are of large size and of snowy whiteness. 20c each; 3 for 50c; 6 for \$1.00. Large bulbs, 40c each; 3 for \$1.00.

Yellow Calla

(Calla Hastata)—The flowers are clear lemon-yellow, produced freely on long stems. The foliage is deep rich green, and the plant is quite showy. It does well planted outside, strong growing and blooming freely. This new variety is a genuine Calla and is cultivated the same as the Common White Calla. It has the habit of the more dwarf sorts by blooming when quite small. Treated as a summer flowering bulb it will bloom as well outdoors as within. 25c each; 2 for 40c; \$2.25 per dozen.



The Yellow Calla Hastata, 25c. Blooms both in and out of doors, beautiful lemon-yellow flowers.



The White Godfrey Calla, 20c, 40c. Wonderful improvement over the old White Calla; bloom of snowy whiteness.



The Beautiful Spotted Calla, 20c.

Spotted Calla

The Richardia Alba, or Spotted Calla, is a plant of magnificent appearance. The leaves are of the richest green, spotted with pure white. The flowers are white with delicate chocolate throat. 20c each; 3 for 50c; \$1.50 per dozen.



Grand Improved Yellow Calla Elliottiana —35 cents.

Orange-Yellow Calla

(Calla Elliottiana)—This is the great new yellow Calla of marvelous beauty. Flowers are very large, rich, deep orange-yellow, often four to five inches across the mouth, leaves are spotted with white. Handsome foliage, with remarkable flowers. Large flowering bulbs, 35c each; 3 for \$1.00, postpaid; \$3.50 per doz., by express.

Strawberry Geranium

(Saxifraga Sarmetosa.) One of the handsomest plants imaginable, a gem of many colors, exceedingly rare and beautiful. Leaves nearly round, and striped freely with silver bands—blooms white, of great beauty and borne in spikes nearly twelve inches high; of easiest growth. It is adapted for hanging baskets, vases, etc. 15c each; three for 40c; \$1.25 per dozen.

The American Wonder Lemon

A true everbearing Lemon. The tree has fruit in all stages of development, from the size of a pea up to the ripe fruit, showing it to be a true everbearer. Fruit weighing over four pounds has been taken from a tree. The American Wonder Lemon far exceeds the ordinary Lemons for making pies. The plant is of very easy culture, flowering and fruiting in ordinary good soil. Flowers are fragrant as orange blossoms, which they greatly resemble. The plant does best under heat and moisture. The growth can be pruned to any size or shape. Price, 15c each; three for 40c; larger plants, 25c each; three for 60c; extra large two-year-old plants, 40c each; three-year plants, 75c, by express only.

New Fruiting Orange

It is a dwarf Orange of great beauty and novelty, which grows, blooms and fruits freely in pots, when only a foot or two high. Fruit is about half the size of ordinary oranges, very sweet and delicious. Blossoms are produced in abundance, delicate and beautiful, rich in delicious perfume. Price, 15c each; three for 40c; large size, 25c each; three for 60c; fine specimen plants, 50c each; large plants, by express only, 75c.



American Wonder Lemon. Lemon Ponderosa, 15c, 25c, 40c and 75c. plants, 50c each; large plants, by express only, 75c.



Ornamental Fruiting Orange —15c, 25c, 50c and 75c.

The Dwarf Roosevelt Fern "Teddy Junior"

See Illustration.

(The Fern for every household)—This magnificent Fern is a sport from the now famous Roosevelt Fern, and while its habit of growth is to produce a shorter frond it retains all the valuable characteristics of the parent plant. The fronds are broad and beautifully tapered from base to tip; they droop just enough to make a shapely, graceful plant, permitting it to finish with a fine full center and perfect symmetrical spread. The pinnae are distinctly undulated, giving the fronds an attractive wavy appearance, which adds materially to their charming decorative effect. It is such a compact, vigorous grower that it will thrive under most adverse conditions. Owing to its habit of producing the great quantity of massive foliage in small pots, this Fern makes the finest pedestal plant ever produced. As a table decoration, Fern growers can appreciate a dwarf variety that will produce forty to fifty fronds twelve to fifteen inches long in a four-inch pot. Young plants, 15c; strong plants, 35c.



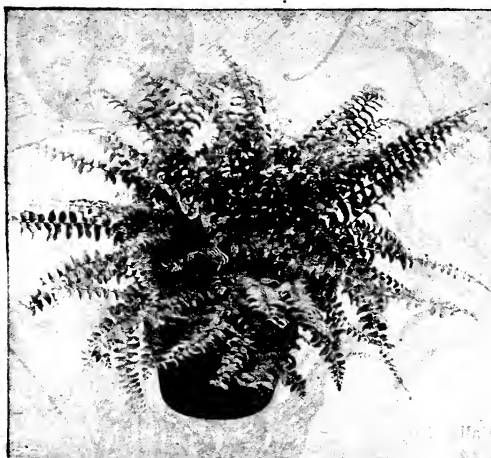
Holly Fern
—15c each.

Holly Fern

(*Cyrtomium Falcatum*)—We consider this one of the finest Ferns in cultivation to grow into specimen plants. The leaf is a rich, glossy green, and each leaflet is about the shape and size of a rose leaf. The fronds are fine for cutting on account of their lasting quality. Price, 15 cts. each; 3 for 40 cts.

Hardy Ferns

These graceful and universally popular plants are of easy culture and afford a wide range of possibilities; (Hardy Ferns are classed with perennials. See page 36).



The Dwarf Roosevelt Fern, Teddy, Jr.—15c, 35c.

Shaking Fern

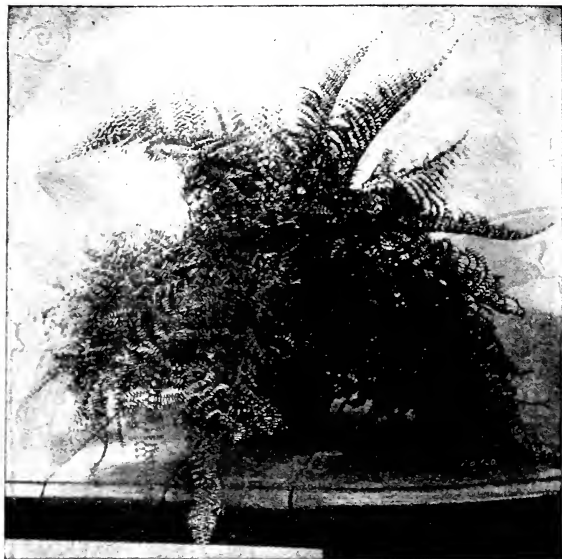
(*Pteris Tremula*)—The foliage of the *Pteris* varieties is large and very graceful. The slightest movement of the air shakes the leaves of the *Tremula*, which we recommend more than any other for house culture, etc. It grows readily and very fast. Price, 15c each; 3 for 40c, postpaid.

Popular Maiden Hair Fern

(*Adiantum Cuneatum*)—Forms long, graceful fronds, with the ends of the fronds developed into bunching, tasseled heads; distinct and lovely. 15c each; 3 for 40c. Larger size, 25c each (should be sent by express).



Maiden Hair Fern—15c and 25c each.



The Gold Medal Fern, *Elegantissima Compacta*.
20c, 30c, and 50c each.

The Gold Medal Fern

(*Elegantissima Compacta*)—The fronds grow very broad and heavy, often measuring six inches or more across, and five to six feet long. The plant assumes an exceedingly massive yet graceful appearance. The divided pinnae or miniature fronds which are so gracefully arranged, keep growing constantly. It is wonderfully valuable on account of its easy culture, hardiness and general adaptability. Is especially suitable for the home culture and conservatory decoration. We offer well established plants at 20c each; 3 for 50c, postpaid; strong plants, 30c each; 3 for 80c, postpaid; extra strong plants, 50c each; 3 for \$1.25.

Fern Dish Fern

(*Pteris Rochfordianum*)—This variety is really an uncommon one among the ornamental Ferns. It is offered because of its particular value for ornamental dishes and specimen pot plants. The foliage is rich, glossy, dark green, the growth is vigorous and symmetrical, the leaves being undulated and deeply cut. Price, 15c each; 3 for 40c; \$1.50 per dozen.

Fern Dish Fern

(*Pteris Victoria*)—This is one of the best of the Fern Dish type of Ferns. The foliage is variegated. The growth is compact, but strong and vigorous, and as a specimen pot plant it makes a dense, rich growth, symmetrical in form and unusually striking. Used with other ornamental Ferns in dishes it is very effective because of its variegated leaves. Price, 15c each; 3 for 40c; \$1.50 per dozen.



Pteris Tremula
(Shaking Fern)
—15 cents.

Onychium Japonicum

Of all the dwarf growing ornamental Fern Dish or Table Ferns, this variety is probably the most beautiful and graceful of all. Its light and feathery foliage is distinct and delicate, and the wiry texture of the leaf makes it keep for a long time. A Fern Dish made up of six or more plants of this variety alone is exceedingly beautiful. 15c each; 3 for 40c; 6 for 75c; \$1.25 per dozen.

Onychium Japonicum—15c each.

Hydrangeas for the Porch, Lawn and Garden

The list of Hydrangeas here offered presents the best introductions of European hybridizers. These Hydrangeas are especially adapted for Pot or tub plants for indoor, porch, lawn or garden decoration. In some soils flowers turn blue; this color can be secured artificially with one-half lb. of broken alum added to half bu. of soil.

AVALANCHE—Large white, an easy forcing variety. 20c; 3 for 50c; \$1.75 per dozen.

BOUQUET ROSE. An excellent variety for pot culture; produces large evenly colored pink blooms. Price, each, 15c; 3 for 40c; \$1.35 per dozen.

MME. RIVERAIN—Bright rose color; very vigorous; one of the best. 20c each; 3 for 50c; \$1.75 per dozen.

MME. HAMAR—Color delicate flesh-rose; pleasing shade. In some soils beautiful deep blue; immense size. 20c each; 3 for 50c; \$1.75 per dozen.

LA LORRAINE—Large flowers; color pale rose changing to bright pink. 20c each; 3 for 50c; \$1.75 per dozen.

Jasmine

GRAND DUKE—This Jasmine is very easily grown, even small plants bearing a profusion of very double creamy-white flowers, having a delicious perfume. It can be stored in dry cellar in winter. 20c each; 3 for 50c.



Ficus Elastica, Rubber Plant—50c each.

India Rubber Plant

(Ficus Elastica)—Ficus Elastica, better known all over the country as the Rubber Plant, is undoubtedly one of the most popular and satisfactory house plants that has ever been distributed. The plant is of tropical nature, being at its best under moist conditions and high temperature, but if well cared for, the foliage kept clean, good drainage provided, and the soil kept sufficiently moist, it will continue growing throughout the year. Branched plants are produced by simply cutting out the top, which should be done in the early spring. The Rubber Plant does not require more than what might be termed good garden soil. Its wonderfully thick leathery leaves enable it to stand excessive heat and dryness, while its deep, glossy green foliage always presents a showy appearance. Particularly adapted to house culture and porch decoration. Large plants by exp., 50c.

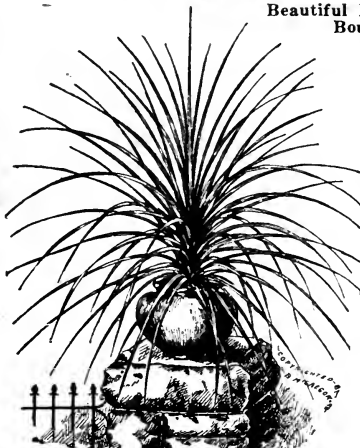
Popular Oleanders

These old-fashioned shrubs are becoming immensely popular again. No plant makes more handsome specimens in tubs for the veranda or yard. Can be wintered in the cellar. 20c each; 2 for 35c, except where noted, or the set of 3 for 50c. Per dozen, purchaser's selection of varieties, \$2.00.

OLEANDER ROSEA—Double pink flowers; the old favorite; very sweet. **OLEANDER LILIAN HENDERSON**—Double white flowers; fragrant. **OLEANDER RUBRA**—Semi-double flowers; watermelon red.



Popular Oleander—20c



Dracena Indivisa—15c, 25c.

Dracena Indivisa

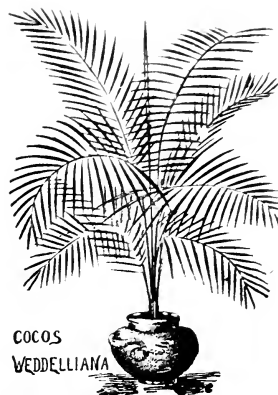
A beautiful house or garden plant with slender, drooping leaves. The leaves are several shades of green, with delicate stripings of yellow and red which become marked as the plant grows older. Price, 15c each; larger plants, 25c.

Wandering Jew

(Tradescantia Multicolor)—A variegated plant of easy and rapid growth; foliage most beautiful variegated purple, scarlet, yellow and white, and producing small white flowers. 15c each; 2 for 25c; \$1.00 per dozen, postpaid.



The Wandering Jew—15c each.



COCOS
WEDDELLIANA

Price 40c each.

Cocos Palm

(Cocos Weddelliana)—The most elegant and graceful of all the smaller Palms. Its slender stem is freely furnished with graceful and arching leaves of a glossy green color. The smaller sizes are admirable for fern dishes. The larger sizes make up some of the best specimens of the Palm family.

Price, 40c, by express.



Beautiful Pot or Tub Hydrangeas,
Bouquet Rose—15c.

Norfolk Island Pine

(Araucaria Excelsa)—A decorative plant for the house. Has deep green, feathery foliage, arranged in whorls. Its symmetry of form, grace and beauty of foliage is unequalled. Easily grown and highly ornamental. We offer fine selected stock, especially in the medium size. The plants withstand drought and neglect to an unusual extent. The soil in the pot from top to bottom should be kept evenly moist, but not continually soggy. During the heat of the summer, to keep up the proper growth, the plants should be kept in practically total shade and syringed constantly and not allowed to dry out. Nice large plants, 4 tiers, 15 to 20 in. high, \$1.25, by express only.



Norfolk Island Pine (Araucaria)—\$1.25 each.

New and Beautiful Fuchsias

Easily Grown—Sure to Bloom

GLOIRE DES MARCHES—Brilliant deep scarlet. The corolla is very large and double and pure white.
BLAND'S NEW STRIPED—(Double.) The tube and sepals are a glowing crimson, corolla rich plum-colored purple, striped red rose.

BLACK PRINCE—(Single.) Bright, waxy carmine; large, open pale pink corolla.

MONSTROSA—Tube and sepals are a bright, rich reddish-crimson color; corolla extra large, full and double.

TRAILING QUEEN—Flowering varieties. Flowers in drooping clusters. Single, wine color.

ELM CITY—Sepals a rich crimson; corolla deep purple; double.

WAVE OF LIFE—Golden foliage, dark purple, single flower.

TROPHEE—Double; open flower, dark purple. Very beautiful.

ROSAINS PATRI—Tube and sepals are brilliant, deep scarlet, corolla double and pure white.

AVALANCHE—Beautiful golden foliage, dark, double violet-purple corolla.

MME. VAN DER STRASS—Sepals pure red, corolla large, double white.

SPECIOSA—Single; tube and sepals a bright rose; corolla brilliant carmine.

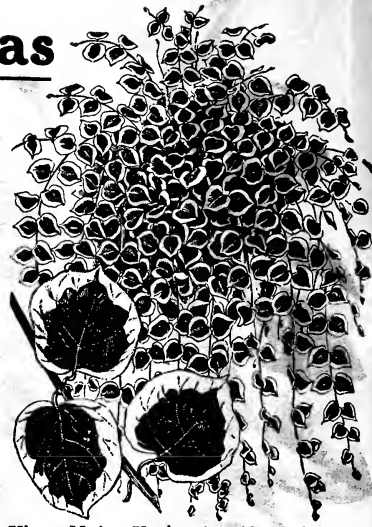
PHENOMENAL—Enormous flowers; bright scarlet; corollas rich violet-purple; very double.

PURPLE PRINCE—Double; sepals scarlet, corolla beautiful distinct blue; very dwarf.

15c each; 3 for 40c; 6 for 75c; \$1.25 per dozen, purchaser may make selection of one or more varieties.



Beautiful New Fuchsias
—15c each.



Vinca Major Variegata—10c each.

Vinca

(Variegated Periwinkle) — A beautiful variegated trailing vine admirably adapted for hanging baskets and vases. Leaves glossy green, broadly margined a creamy-white; flowers blue; indispensable for vase, basket or porch box work. 10c each; \$1.00 per dozen, postpaid; large plants, 25c each; \$2.50 per dozen, by express.

Umbrella Plant

(Cyperus Alternifolius)—An ornamental grass throwing up stems about two feet high; surmounted with a whorl of leaves, diverging horizontally. Is of the easiest culture, a large specimen being as handsome as a Palm for decoration. Grows luxuriantly in water. 15c each; 2 for 25c; large size, 25c; 3 for 65c.

Giant Flowering Cyclamen

One of our prettiest winter-blooming plants. Plant grows rapidly, blossoms freely, and remains a long time in flower. Cool temperature and moist condition of soil are conditions which must be kept up. White, Pink, Crimson and White with Carmine eye. Price, 20c each; 3 for 50c.



Lady Campbell Violet—15c each.

DOUBLE AND SINGLE SWEET SCENTED Violets

The most popular and important flower in culture, for it ranks third in commercial importance; the Rose first, Carnation second and Violet third. This comparison is reckoned commercially by the length of the blooming season, which is rated as ten, eight and seven months. It is a beautiful flower, popular with all, and of easy culture, doing well in any good rich soil.

NEW SINGLE VIOLET PRINCESS OF WALES—Ahead of any other single Violet known. The grand single flowers of a true violet-blue color that does not fade, and of the richest, most delicious fragrance. 15c each; 3 for 40c; \$1.25 per doz.

MARIE LOUISE—Bold, fine flowers, fragrant and very prolific. Dark blue; flowers double. The favorite double or blue Violet that you see in the florists' windows. 15c each; 3 for 40c; \$1.25 per dozen, postpaid.

SWANLEY WHITE—A sport of Marie Louise, the same growth, the same freedom of flowering, the same perfect perfume, and the individual flower equally as large and of the purest white. 15c each; 3 for 40c; \$1.25 per dozen, postpaid.

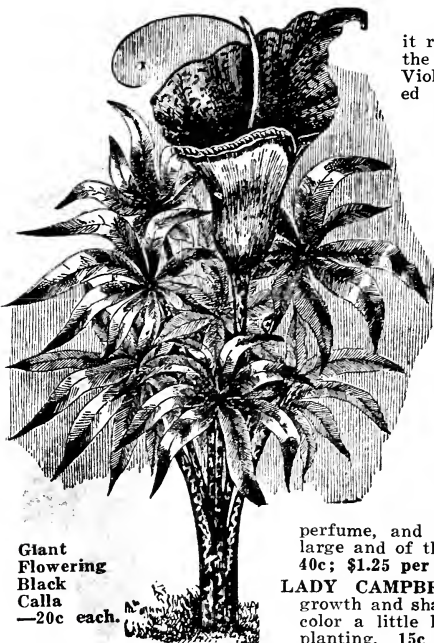
LADY CAMPBELL—Double purple, similar in growth and shape of flower to Marie Louise, but color a little lighter; very good for cut-flower planting. 15c each; 3 for 40c; \$1.25 per dozen.



Giant Flowering Cyclamen—20c each.

Dragon Arum

(Arum Dracunculus) — This plant has the honor of producing the largest flower of any plant that is hardy in this country. The leaf, stem and flower stalks are all spotted; upon the top of the latter opens a flower of gigantic size and curious color. The center of the flower is of a glossy purple-black color. Good bulbs, 20c each, postpaid; 3 for 50c; extra large bulbs, 30c; 4 for \$1.00.



Giant Flowering Black Calla
—20c each.

THREE OSTRICH PLUME CHRYSANTHEMUMS

A grand collection of these unique Chrysanthemums. The term "Ostrich Plume" is applied to this type on account of the feathery growth with which the petals are thickly covered.

- L'ENFANT (Des d'Mondes)**—Pure white. Grand white sport from L. Boehmer; is a strong grower, of good habit, and is considered the best white of the hairy type. Price, 15 cents each; 3 for 40 cents; \$1.50 per dozen.
- PERLE OF LYONNAISE**—Bright, clear golden-yellow, somewhat plumed; beautiful globular form. Price, 15c each; 3 for 40c; \$1.50 per doz.
- LOUIS BOEHMER**—Beautiful lavender-pink shaded with silver-pink; good size, splendidly incurved. Price, 15c each; 3 for 40c; \$1.25 per dozen.

Twelve Cut Flower Chrysanthemums

- CLEMENTINE TOUSET**—Grand white. Strong stem; good cut-flower.
- BLACK HAWK**—(See description under illustration).
- ROMAN GOLD**—Intense yellow; easy to manage. 15c each; 3 for 40c.
- ESTELLE**—Extra-sized flowers of purest white; fine deep form. 15c each; 3 for 40c.
- CHRYSOLORA**—Yellow; midway in shade between Col. Appleton and Major Bonaffon. 15c each; 3 for 40c.
- MRS. HENRY ROBINSON**—No grander white variety, no matter when it blooms; immense incurving. 15c each; 3 for 40c.
- MONROVIA**—Deep orange-yellow; incurved petals; early. 15c each; 3 for 40c.
- IVORY**—Pure white flower of exquisite form and finish. 15c each; 3 for 40c.
- COL. D. APPLETON**—Ideal exhibition variety; flower incurved; clear yellow; faultless. 15c each; 3 for 40c.
- DR. ENGUEHARD (Midseason)**—Color deep, clear pink, much darker shade than any other listed. Incurved with broad petals, the lower ones drooping as the center opens. 15c each; 3 for 40c.
- CHIEFTAIN (Midseason)**—This is probably the most popular pink Chrysanthemum grown. It has large petals, good sized flower, blooming freely. Its popular color gives it a place among the first ten of the cut-flower varieties. 15c each; 3 for 40c; \$1.35 per dozen.
- WELL'S LATE PINK**—Produces an enormous bush; stem stiff as a ramrod. The color is pure, true, bright pink. 15c each; 3 for 40c.



Black Hawk—15c each.

Special Offer Cut Flower Chrysanthemums, the twelve varieties as described above, (totaling at single price \$1.80) by mail, postpaid, for \$1.40. Any six for 75 cents; any three for 40 cents.

Black Hawk Flowers of massive size; deep velvety-crimson. 15 cents each; 3 for 40 cents.

Hardy Chrysanthemums STRONG, FIELD-GROWN PLANTS

Universally planted in almost all gardens. Have no equal in the late fall either in solid beds or in mixed borders, as they give life and color to the garden after all other vegetation is destroyed by frost. They are of the very few flowering plants that improve after the first frost.

- UNIDA**—Large flowering yellow.
- GOLDEN QUEEN**—Very large flowering yellow.

- EXCELSIOR**—Deep yellow.
- HOMESTEAD**—Large flowering pink.
- SNOW WREATH**—Large flowering white.

Price of any of the above varieties, 20c each; 3 for 50c; \$2.45 per dozen.

Hardy Chrysanthemums—Pompon

The glorious displays of bloom with every variation of color and shades, and their simplicity of culture, will cause them to fill our gardens and borders.

- PRINCE OF WALES**—Small flowering; button white.
- FLORA**—Yellow.

Price of any of the above varieties, 20c each; 3 for 50c; \$2.45 per dozen.

Special Offer (Field Plants)—Any variety of the Hardy Chrysanthemums described in strong two-year field plants, 20c each; 3 for 50c; 5 for 75c. Remember these plants are strong field clumps not to be compared with small pot plants.

SWEET SCENTED Heliotropes

- 15c each; 3 for 40c; dozen, \$1.50, postpaid.
- FLORENCE NIGHTINGALE**—Flowers bright lavender.

MADAME DE BLONAY—Large trusses of pure white flowers.

- MADAME BRUANT**—Immense panicles of very large flowers, rich purple with white eyes.
- CZARINA**—A beautiful new dark Heliotrope of exceptional qualities.

Centefleur New giant-flowered heliotrope. This new variety is the result of efforts made by our most expert plant growers to improve the Heliotrope. Size of foliage and flowers is doubled and the plant is compact and bushy, flowering heads sometimes measure 15 inches across. 15c each; 3 for 40c.

Sultan's Balsam

- IMPATIENS SULTANI**—Most beautiful and free blooming bedding or house plant. 15c each; 3 for 40c; \$1.25 per dozen.
- IMPATIENS HOLSTII**—Strong, robust grower; flowers brilliant vermilion. 15c each; 3 for 40c; \$1.25 per dozen.
- PINK BEAUTY**—Grows strong and bushy, wonderfully free flowering; rose-pink. 15c each; 3 for 40c; \$1.25 per dozen.



Large Flowering and Pompon Hardy Chrysanthemums

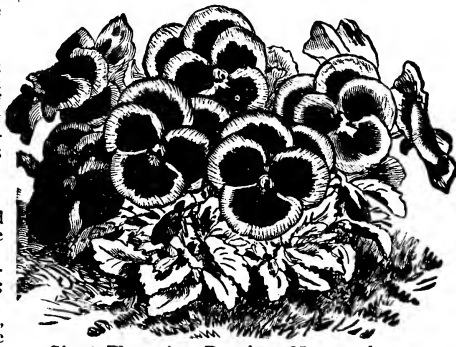
Double Fringed Petunias

For a number of years double Petunias have formed one of our specialties, and the varieties which we are offering mark the highest standard of this flower. They make excellent bedding plants, producing immense blooms throughout the summer.

- PINK BEAUTY**—Large, clear pink. Double fringed.
- MAJESTIC**—Deep purple.
- SNOW STORM**—Pure white; double; extra fringed.
- GEM**—Variegated; white mottled crimson.
- VESUVIUS**—Very dark. Magenta.
- SEAFOAM**—Best white, lavender tinged.
- ACHILLEA**—Purple, mottled white.
- FAVORITE**—Beautiful, lavender.
- Price, 15c each; 2 for 25c; \$1.00 per dozen, postpaid.

Giant Flowering Pansies

There is no flower more admired than the Pansy. The combination of colors embraces striped, spotted, bordered and fringed; in rainbow colors, with rich, velvety textures. Pansy plants, planted in the spring as soon the frost is out of the ground, will begin to bloom at once. To get best results and extra large flowers, the soil must be extremely rich—we use equal parts well-rotted manure and soil. 25c per dozen; 25 for 50c; 50 for \$1.00; 100 for \$2.00.



Giant Flowering Pansies—25c per dozen.

Francis Scott Key

The New American Rose. The Rose for every garden of every American home. Named in honor of the writer of the Star Spangled Banner. Dazzling crimson, globular Rose of gigantic size. Vigorous and free branching of sturdy erect growth. 1 year plants, 20c; 2 year plants, 40c.

Lady Hillingdon

Beautiful Yellow Rose. Everybody can grow it. (Summer blooming, hardy with protection.) A deep shade of yellow which does not easily fade. Buds very slender and graceful. Very free in the production of flowers. Nice strong 1 year plants, 20c each; 3 for 40c. Strong, 2 year plants, 40c each; 3 for \$1.25.

Red Radiance

(Summer blooming.) Flowers brilliant carmine-red, a color of wonderful brightness and charm. Flowers quite full with enormous petals and high pointed center, forming a noble and remarkable flower. A perfect exhibition and cut flower Rose. A fine bedding Rose, distinct and sweet scented. 1 year, 20c; 3 for 50c; 2 year, 40c; 3 for \$1.10.

Reine Marie Henriette

(Summer blooming, hardy with protection.) Excellent crimson flowered everblooming climber. Full, double, delightfully tea scented, strong growing, free flowering. 15c each; 2 year-old plants, 30c each.

Striped Reine Marie Henriette

(Summer blooming, hardy with protection.) The extra large and full double blossoms of this variety are strikingly marked. They are striped and flamed in bright crimson and pale rose. Very fragrant; plant growth vigorous. Strong, 1 year plants, 15c each; 3 for 40c; 2 year plants, 30c each; 3 for 85c.

Etoile de Lyon

(Summer blooming, hardy with protection.) This magnificent Tea Rose is a rich golden-yellow, strong, healthy, vigorous grower, immense bloomer, bearing flowers and buds early and late. Flowers are deep rich, full; very sweet. 15c each; 2 year plants, 30c.

Souv. de Pierre Notting

(Summer blooming, hardy with protection.) This variety is a seedling of Marechal Niel and Maman Cochet, with beautiful closely set foliage and a strong sturdy habit of growth. Color, apricot-yellow, changing to clear yellow; long buds opening to finely formed flowers. Extra fine. 20c each; 3 for 40c, postpaid. Large, 2 year plants, 40c each; 3 for 95c.



The Crimson Garden Rose, Francis Scott Key—a Rose in which we find the embodiment of a perfect bloom, size, form and color; 20c.

Etoile de France

(Summer blooming, hardy with protection.) The gold medal Rose of France. Strong, vigorous grower. Flowers large, borne on long stiff stems; color, lovely shade of clear red-crimson velvet; very fragrant. 15c each; 3 for 40c; 2 year old plants, 35c.

White Killarney

Distinctive in form of flower and clear in color. A Rose of special charm. Blooms freely and is classed with the best summer blooming garden Roses. 1 year plants, 20c; 2 year plants, 40c.

NATIONAL EMBLEM —

Color dark crimson of perfect shape and habit. Buds are long and pointed. 1 year, 25c; 2 year, 50c.

PINK LA FRANCE —

Silvery-rose shading with pink; has a satin sheen over all its petals. Worthy of its name, the queen of Roses. 1 year, 20c; two year, 40c.

RENA ROBBINS —

Pure white with a golden heart. Flowers large and finely formed. Blooms throughout the season. 1 year, 20c; 2 year 40c.

SAFRANO —

The color of this Rose is rich, apricot-pink and fawn, very unusual. 1 year, 15c; 2 year, 30c.

SENATOR MASCURAND —

Color from pronounced yellow to delicate orange, deliciously fragrant, deep and double. 1 year, 15c; two year, 30c.

SOUV. DE LA MALMAISON —

A rich flesh color. A grand old variety of immense size, producing flowers in abundance. 1 year, 20c; 2 year, 40c.

UNCLE JOHN —

Rich pinkish-white. Flowers very large with long pointed buds; free blooming. No variety can surpass it in its delicate coloring. 1 year, 15c; 2 year, 30c.

WELLESLEY —

Color a beautiful shade of pink, the petals being bright in color with silvery reverse. 1 year, 20c; 2 year, 40c.

WILLIAM NOTTING —

A bright rosy-cerise color, large blooms borne in profusion; a grand bedder. 1 year, 20c; 2 year, 40c.

WILLIAM H. TAFT —

Color bright clear salmon-pink, perfectly formed, deliciously fragrant. A Rose unrivaled. 1 year, 15c; 2 year, 40c.

WM. SHEAN —

The color is of purest pink with buds of full heavy form and substance, vigorous growing. 1 year, 20c; 2 year, 40c.

W. R. SMITH —

Color white, shading to pink. Foliage is beautiful, firm and glossy. Immense blooms. 1 year, 15c; 2 year 30c.



Etoile de France—particularly attractive in its bud stage—15c each.

**THE
WONDERFUL
ROSE**

Mrs. Aaron Ward

(Summer Blooming, Hardy With Protection)—A variety of the most pleasing and attractive color, Indian-yellow washed with salmon-gold. In the bud stage the flower is of the deepest yellow, which becomes lighter as the flower expands. The growth is handsome, uniform and perfect, holding its sweet and delicious blooms rigidly upright. Its foliage is also remarkable and distinct, showing its flowers up with wonderful effect. Price, nice, 1 year plants, 20c each; 3 for 50c; \$1.75 per dozen; stronger plants, 40c each; 3 for \$1.00; \$3.25 per dozen. Extra large, 60c each; 3 for \$1.50; \$5.00 per dozen.

Antoine Rivoire

(Summer blooming, hardy with protection.) Sturdy in growth; branching in habit. Charmingly shaded rosy-flesh color, on yellow ground with a delicate border of carmine; flowers sweetly fragrant. 20c each; 3 for 50c. Strong 2 year plants, 40c each; 3 for \$1.10.

Caroline Testout

(Summer blooming, hardy with protection.) The petals are large and of the elegant La France form; exquisitely edged and bordered with clear silvery rose. Both flowers and buds are extra large and of very elegant form; the color is brilliant satiny rose, deepening at center to clear red. A Rose of great beauty. 15c each; 2 year plants, 30c.



Grand Bedding Rose, Mrs. Aaron Ward
—1 year, 20c; 2 year, 40c.

ALEXANDER HILL GRAY—A long pointed bud of golden-yellow opening to large, full, pure yellow flowers. 1 year, 15c; 2 year, 40c.

BALDUIN—Color, very soft intense carmine-crimson with deeper shades in the depth of the petals; unique. 1 year, 15c; 2 year 30c.

BON SILENE—The color of this prime favorite is deep rose shaded to carmine, a charming combination of color. 1 year 15c; 2 year 30c.

BURBANK—Deep clear pink, with large petals perfectly formed, quite in a class by itself; very fragrant. 1 year, 15c; 2 year, 30c.

CATHERINE MERMET—From the purest silvery-rose to the exquisite combining of yellow and rose, faultless in form. 1 year, 15c; 2 year, 30c.

CRIMSON QUEEN—A free blooming Rose of a bright velvety-crimson color. Flowers are quite full, of wonderful depth and substance. 1 year, 20c; 2 year, 40c.

DUCHESS DE BRABANT—Bright China-rose with coppery-yellow center; ends of petals beautifully carmine. 1 year, 15c; 2 year, 30c.

F. A. PATZER—Color is creamy-buff, back of petals delicate warm pink, as the petals reflex the color becomes light orange-pink. 1 year, 15c; 2 year, 35c.

HELEN CAMBIER—Color, varying tints of salmon-rose to copper-rose, becoming lighter as flowers expand. 1 year, 15c; 2 year, 30c.

HELEN GOOD—Delicate pink being a sport from the Maman Cochet. The buds are beautifully formed, being firm and elegantly pointed. 1 year, 20c; 2 year, 40c.

JONKHEER J. L. MOCK—The pink giant from Holland. Color clear rose-pink in two tones, blooms round and massive. 1 year, 15c; 2 year, 30c.

LA FRANCE—Bright silvery-rose, with pale lilac shading. Very sweet-scented; extra large. 1 yr., 20c; 2 yr., 40c.

Blumenschmidt

“A Splendia Bedding Sort.”

(Summer blooming, hardy with protection.) It is a pure citron-yellow; outer petals edged tender rose. It is a splendid bedding sort, flowering abundantly and growing freely; fine stems and foliage. 15c each; 3 for 40c, postpaid; 2 year plants, 40c each; 3 for \$1.00.

Charming Polyantha or Fairy Rose

Especially Attractive for Children

Baby Doll

Flowers Borne in Clusters
Highly Fragrant.

This delightful little Rose is an everblooming Polyantha. The color is a golden-yellow, tipped with clear, bright cerise. 1 year plants, 20c; 2 year plants, 40c.

President Taft

Vigorous free branching growth with large full flowers carried on stiff erect stems, color clear salmon-pink; flowers well formed, with pointed center, one of the best introductions of recent years. 15c each; 3 for 40c; 2 year plants, 40c each; 3 for \$1.00.

LADY PIERRIE—Deep coppery-red-dish salmon. In the bud state it is unrivaled; flowers perfectly formed. 1 year, 20c; 2 year, 40c.

MADAM CAROLINE TESTOUT—Color brilliant satiny-rose. A wonderful Rose, exquisitely formed and unequalled. 1 year, 15c; 2 year, 30c.

MME. CONSTANT SOUPERT—Large full flowers; brilliant yellow suffused pink. 1 yr., 15c; 2 yr., 40c.

MADISON—Pinkish-salmon with center of yellow and orange, a beautiful combination. Flowers large and full. 1 year, 15c; 2 year, 30c.

MRS. CHAS. RUSSELL—Crimson-scarlet color, magnificent buds with the free-blooming habit and delightful fragrance. 1 year, 25c; 2 year, 50c.

MRS. R. B. CANT—Color clear bright rosy-pink, of round, full form and quite fragrant, an excellent Bedding Rose. 1 year, 15c; 2 year, 30c.

Freiherr Von Marshall

“Wonderfully Strong Growing
and Hardy.”

(Summer blooming, hardy with protection.) It has wonderfully beautiful foliage and produces large, full, beautiful shaped flowers. Magnificent crimson-scarlet with long and pointed buds; deliciously fragrant. 1 year plants, 15c; 2 year plants, 35c.

Malmaison

Has no equal as a summer bedding Rose. Its flesh colored flowers are of immense size, and are produced in abundance. 1 year size, 20c; large 2 year size, 40c.

MARECHAL NIEL—A beautiful golden-yellow Rose. It is a free bloomer and flowers throughout the season. 1 year, 15c; 2 year, 25c.

MARIE GUILLOT—Flowers of an unusual style, entirely double to the center, very sweet scented. Color white. 1 year, 15c; 2 year, 35c.

MARIE VAN HOUTTE—Color straw-yellow, with the outer petals washed and outlined with a bright rosy-crimson. 1 year, 15c; 2 year, 30c.

MME. F. KRUGER—Color soft rose-pink, elegantly shaded with crimson and amber, delightfully sweet. 1 year, 15c; 2 year, 25c.

MAD. LEON PAIN—Silvery-white and carnation, center yellow and orange, back of petals salmon-pink. 1 year, 20c; 2 year, 40c.

MOSELLA or YELLOW SOUPERT—Is a strong grower. Chrome-yellow in the center, turning to creamy-white. 1 yr., 15c; 2 yr., 35c.



The striking colored winter flowering pot rose, Baby Doll —20c each.

Hardy Rose, Frau Karl Druschki White American Beauty

This magnificent variety has taken first prize at all the great Flower Shows of Europe. Delightfully fragrant; vigorous grower; entirely hardy; abundant bloomer. Recommended highly. 1 year plants, 25c each; 2 for 50c, postpaid; 2 year size, 40c; 4 for \$1.40.

VICK'S CAPRICE—(Hardy June Blooming.) The flowers are large, color soft, satiny-pink, distinctly striped and dashed with carmine. It is beautiful in the bud form, being quite long and pointed, also showing the stripes and markings to great advantage. 20c each; 3 for 50c; large 2 year plants, 40c each; 3 for \$1.00.

ULRICH BRUNNER—(Hardy June Blooming.) Color brilliant cherry-red. It has fine form, is intensely fragrant, and the flowers have great lasting qualities. The branches are almost thornless and the foliage is very strong and healthy. 1 year size, 20c; 3 for 50c; 2 year, 40c; 3 for \$1.00.

HIS MAJESTY (The Crimson Frau Karl Druschki)—Color dark, deep crimson, shaded vermilion-crimson towards the edges. The blooms are full, of great size, having wonderful substance and depth of petal, with high pointed center. It is one of the sweetest perfumed Roses in cultivation. Price, 20c each; 3 for 50c; 2 year plants, 40c each; 3 for \$1.00.

GLOIRE DE L'EXPOSITION DE BRUXELLES—The largest, sweetest and best of all Hardy Roses. For immensity in size, rich color, exquisite form and delicious fragrance, it stands without an equal. Rich, velvety-crimson. 20c each; 3 for 50c, postpaid; 2 year plants, 35c.

GLOIRE LYONNAISE—The open flower is enormous, full, deep and double. Color, rich, creamy-white, passing when open to a pale shade of salmon-yellow, deepest at the center. Price, 15c each; 3 for 40c; 2 year plants, 35c each; 3 for \$1.00; \$2.35 per dozen.

BLACK PRINCE—Color varies from a flashing red and darker to crimson. There is a strong, lasting rosy fragrance. Flowers are borne freely, large, full and of the most delicious fabric. Price, 20c each; 3 for 50c, postpaid; 2 year size, 40c each; 3 for \$1.00.

CAPTAIN CHRISTY—Fresh delicate pink. Whole flower possesses a bright satiny appearance. Price, 1 year plants, 15c; 2 year, 35c.

CLIO—Most beautiful hardy Rose grown. Flowers very large, color flesh, shaded in center to rosy-pink. Price, strong 1 year plants, 20c; 2 year, 40c.



The World Renowned Rose, Paul Neyron—20c each.

Paul Neyron

Among the Foremost Roses of the World. (Hardy June Blooming.) Paul Neyron enjoys the distinction of producing the largest of Roses. The plant blooms two or three times a year. The color is clear pink, shading to rose—most beautiful in the massiveness of the blossom. Very fragrant. The Rose is very strong and vigorous. 20c each; 3 for 50c; large 2 year plants, 40c each; 3 for \$1.00.

PRINCE CAMILLE DE ROHAN—One of the darkest of the Roses—blood-red and maroon. Strong fragrance. Plants grow vigorously. Price, 15c each; 3 for 40c; 2 year plants, 35c each; 3 for \$1.00.

MADAM MASSON—Blooms all the time; the flowers are large, full and delightfully perfumed; color bright rich crimson; it is a robust, sturdy grower. Price, 15c each; 3 for 40c, postpaid; 2 year size, 35c each; 3, \$1.00.

ANNA DE DIESBACH (Glory of Paris)—Brilliant pink, sometimes shaded with bright maroon; long pointed buds and large, finely formed compact flowers. Price, strong 1 year plants, 20c; 2 year, 40c.

GEN. JACQUEMINOT—Rich velvety crimson; changing to scarlet crimson. Price, strong 1 year plants, 20c; 2 year, 40c.

MAGNA CHARTA—Wonderfully strong and upright; vigorous, with splendid heavy dark bronze-green foliage. Clear rosy-red, beautifully flushed velvet-crimson. Strong 1 year plants, 20c each; 3 for 50c; 2 year, 40c each; 3 for \$1.00.

COQUETTE DES ALPS—Pure white hybrid Rose; occasionally shows light flesh when first opening; beautiful shell-shaped petals, evenly arranged. Price, 15c each; 3 for 40c. Large plants, 35c each; 3 for \$1.00.

MADAM CHAS. WOOD—(Hardy June Blooming.) The flowers are large, perfectly double and of a dazzling scarlet-crimson color, and have the rich, spicy fragrance peculiar to best Hybrid Roses. 15c each; 3 for 40c; large 2 year plants, 40c each; 3 for \$1.00.

Special Offer We will send to any address in the United States, postpaid, any twelve of the Roses listed on this page, in one-year size, for \$1.65, or any six for 90c. We will send any 12 in the 2 year size for \$3.50, or any 6 for \$1.85.

Moss Roses

HENRY MARTIN—Color bright rosy-red, a free bloomer. 1 year plants, 20c; 2 year, 35c.

CRIMSON GLOBE—Color crimson, flowers fragrant. 1 year plants, 20c; 2 year, 40c.

ELIZABETH ROE—Pure Rose pink. Large flowers. 1 year plants, 20c; 2 year, 40c.

Wichuraiana Roses

ROSE WICHURAIANA—Pure white with yellow center. 1 year plants, 10c; 2 year 25c.

HIAWATHA—Color brilliant scarlet. 1 year plants, 15c; 2 year, 35c.

WICHMOSS—Beautiful pink. 1 year plants, 15c; 2 year, 35c.



Mrs. Chas. Wood—15c and 40c each.

Wonderful Hardy Climbing Roses

Climbing American Beauty

Hardy June blooming. The color is glowing crimson, red, the real American Beauty color. This beautiful Rose is absolutely hardy in all localities. Nice strong, 1-year plants, 20c each; 3 for 50c, postpaid; 2-year plants, 40c each; 3 for \$1.00.

Philadelphia

(Crimson Climbing Rose)

Splendid flowers, perfectly double, borne in clusters, completely covering the whole bush. Color, pure, deep, rich crimson. Unequaled for covering porches, trellises, screens, fences, etc. One-year plants, 15c each; 2 for 25c; 6 for 70c, postpaid; strong, 2-year-old plants, 25c each; 2 for 40c; 6 for \$1.15. Extra large field-grown plants, 40c each; 2 for 75c; 6 for \$2.00, by express only.

White Dorothy Perkins

A pure white sport of Dorothy Perkins, of same habit of growth. Price, 15c each; 4 for 50c; \$1.35 per dozen, postpaid; 2-year-old plants, 30c each; \$2.50 per dozen; large 3-year-old plants, 50c each, by express only; 6, \$2.50; doz., \$4.50.

Shower of Gold

IMPROVED YELLOW RAMBLER—Deep golden-yellow and orange; vigorous grower. Foliage is beautiful, with high metallic luster. 15c each; 4 for 50c; \$1.35 per dozen, postpaid; 2-year-old plants, 30c each; \$2.00 per dozen.

Climbing Roses

MARY WASHINGTON—Color pure white, blooms in clusters. One-year plants, 15c; 2 year plants, 30c.

REINE MARIE HENRIETTE—A crimson everblooming climber. 1-yr. plants, 15c; 2-yr. plants 30c.

BALTIMORE BELLE—Pale blush, variegated carmine, rose and white. One year plants, 15c; 2 year plants, 30c.

PRAIRIE QUEEN—Color bright rosy-red. One-year plants, 15c; 2-year plants, 30c.

GREVILLE—Color varies from white to crimson. One-year plants, 15c; 2-year plants, 30c.

Special Offer Any three of the Roses listed on this page, in strong 1-year plants, for 40c, postpaid. Any three in strong 2-year plants for 90c, postpaid.



Climbing Rose, Excelsa—1-yr., 15c.

Excelsa

THE RED DOROTHY PERKINS—A distinct variety. Is an intense crimson-maroon, with tips of petals tinged scarlet. Price, 15c each; 4 for 50c; \$1.35 per dozen, postpaid; 2-year plants, 30c each; \$2.20 per dozen; large 3-year plants, 50c each; by express only; 6 for \$2.50; \$4.50 per dozen.

American Pillar

Flowers measure three to five inches across, very double. Color flaming pink, center a cluster of bright yellow stamens. Extremely vigorous habit of growth. Never troubled with insects. Price, 20c each; 3 for 50c, postpaid; 2-year, 40c each; 3 for \$1.00.

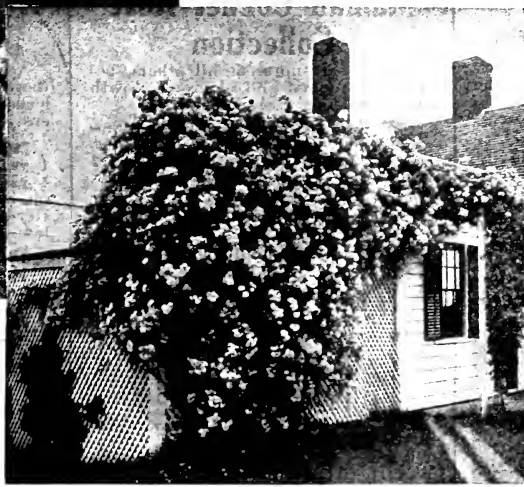
Wonderful Hardy Monthly Blooming Climbing Rose

Dr. W. VanFleet

Dr. W. Van Fleet stands at the very head of the climbing Roses. The flowers when open, run four inches and over in diameter. The color is a very delicate shade of flesh-pink on the outer surface, deepening to rosy-flesh in the center. The flowers are full and double, delicately perfumed. Strong 1-year plants on own roots, 20c each, postpaid; 3 for 50c; 6 for 90c; 12 for \$1.50, postpaid. Stronger 2-year plants, 50c each; 3 for \$1.25; 6 for \$2.00; 12 for \$3.75.

Silver Moon

The flowers run four and one-half inches and over in diameter, clear silvery-white in color, petals of great substance and beautifully cupped. The center is filled with bright yellow stamens, a very attractive feature. They are borne on strong stems, twelve to eighteen inches long, and are deliciously fragrant. Price, 20c each; 3 for 50c, postpaid; 2-year plants, 40c each; 3 for \$1.00.



Dorothy Perkins—1 yr., 15c.

Dorothy Perkins

Beautiful shell-pink. Grows from ten to fifteen feet in one season. Withstands the severest winters without injury. Blooms in clusters, flowers double and large. Price, 15c each; 4 for 50c; \$1.35 per dozen, postpaid; 2-year-old plants, 30c each; \$2.25 per dozen; large 3-year old plants, 50c each, by express only; 6 for \$2.50; \$4.50 per dozen.

Tausendchoen

(Thousand Beauties)

Colors run from delicate balsam or tender rose, through the intermediate shades of bright rose and carmine, with white, yellow and various other delicate tints showing. Absolutely hardy. Price, 20c each; 3 for 50c; \$1.75 per dozen, postpaid; large two-year-old plants, own roots, 40c each; 3 for \$1.00; \$3.50 per dozen. Extra heavy 3-year plants, 60c each; 3 for \$1.50.

Blue Rambler

(Veilchenblau)

The flowers are violet-blue in color; standing out in graceful form in large clusters. Perfectly hardy, growth vigorous, producing beautiful foliage. Well-established plants, 15c each; 3 for 50c, postpaid; strong 2-year-old plants, 35c each; 3 for \$1.00.

Special Offer Any six of the Hardy Climbing Roses listed on this page, in strong 1-year plants, for 75c, postpaid. Any six in strong 2-year plants for \$1.60, postpaid.



Climbing American Beauty—20c each.



The Five Nearest Hardy Black Roses

Our collection of five Nearest Black Roses is made up of varieties of the darkest and deepest crimson. Perfectly hardy, vigorous and produce immense, fragrant blooms.

SPECIAL OFFER—Gloire de L'Exposition Bruxelles, 1 year, 20c; 2 year, 40c. His Majesty, 1 year, 20c; 2 year, 40c. Prince Camille de Rohan, 1 year, 20c; 2 year, 40c. Black Prince, 1 year, 20c; 2 year, 40c. George Dickson, 1 year, 20c; 2 year, 40c.

The five 1 year plants, postpaid, 75c.
The five 2 year plants, postpaid, \$1.50.



Maman Cochet Rose Collection

Roses that supersedes all others, because of rugged and vigorous growth and marvelous free-blooming.

SPECIAL OFFER—White Maman Cochet, 1 year, 15c; 2 year, 30c. Yellow Maman Cochet, 1 year, 20c; 2 year, 35c. Crimson Maman Cochet, 1 year, 20c; 2 year, 35c. Pink Maman Cochet, 1 yr., 15c; 2 yr., 30c. Red Maman Cochet, 1 yr., 15c; 2 yr., 35c.

The five 1 year plants, postpaid, 60c.
The five in 2 year plants, postpaid, \$1.45.



Hermosa Rose Collection

A popular family of Roses embodying those qualities most desired in Roses; bushy growth, hardiness, freedom of flowers and wonderful fragrance.

SPECIAL OFFER—Pink Hermosa, 1 year, 15c; 2 year, 30c. Red Hermosa, 1 year, 15c; 2 year, 30c. Crimson Hermosa, 1 year, 15c; 2 year, 30c. White Hermosa, 1 year, 15c; 2 year, 25c. Yellow Hermosa, 1 year, 15c; 2 year, 30c.

The five in 1 year plants, postpaid, 60c.
The five in 2 year plants, postpaid, \$1.50.



Everblooming Climbing Rose Collection

These popular climbing Roses are especially suited for the Central and Southern States. They are continuous monthly bloomers; need a little protection.

SPECIAL OFFER—Climbing Meteor, red, 1 year, 15c; 2 year, 30c. Climbing Kaiserin, white, 1 year, 20c; 2 year, 30c. Climbing Killarney, pink, 1 year, 15c; 2 year, 35c. Climbing Marchal Neil, yellow, 1 year, 15c; 2 year, 25c.

The four in 1 year plants, postpaid, 45c.
The four in 2 year plants, postpaid, 90c.

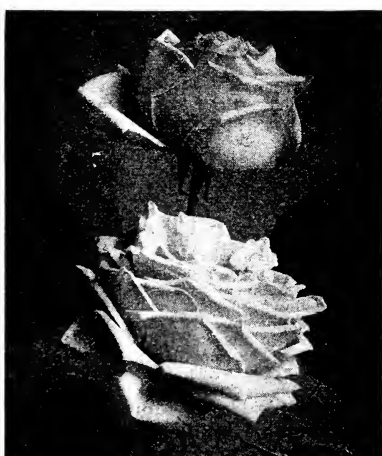


Hybrid Perpetual Rose Collection

A collection of varieties suitable for the coldest and most exposed location. All of the varieties bloom freely.

SPECIAL OFFER—One each of the 6 Hybrid Perpetual Roses: Black Prince, 1 year, 20c; 2 year, 40c. Paul Neyron, 1 year, 20c; 2 year, 40c. Mme. Chas. Wood, 1 year, 20c; 2 year, 40c. Coquette Des Alpes, 1 year, 20c; 2 year, 40c. Clio, 1 year, 20c; 2 year, 40c. Gen. Jacqueminot, 1 yr., 20c; 2 yr., 40c.

The six, 1 year plants, postpaid, 75c.
The six, 2 year plants, postpaid, \$1.50.



The American Beauty Rose Collection

These Roses need no introduction, as they are known and eagerly sought for all over the country. They are world renowned because of their giant flowers.

SPECIAL OFFER—American Beauty, red, 1 year, 25c; 2 year, 50c. Radiance, pink, 1 year, 20c; 2 year, 40c; Frau Karl Druschki, white, 1 year, 20c; 2 year, 40c.

The three in 1 year plants, postpaid, for 50c.

The three in 2 year size, postpaid, for \$1.05.

Baby Rambler Rose Collection

Roses that take the front rank for bedding purposes.

SPECIAL OFFER—Baby Rambler, red, 1 year, 20c; 2 year, 30c. Catherine Zeimet, white, 1 year, 20c; 2 year, 40c. Jean de Arc, white, 1 year, 20c; 2 year, 40c. Orleans, cerise, 1 year, 20c; 2 year, 40c. Baby Tausendschoen, rosy-carmine, 1 year, 20c; 2 year, 40c. Phillis, pink, 1 year, 20c; 2 year, 40c.

The six in one year plants, 85c.
The six in two year plants, \$1.80.

McGregor's Hardy Ever Blooming Roses

OUR BACK COVER COLLECTION OF ROSES offers a wonderful dozen of Roses that will bloom freely. Strong and fragrant; of wide range of color, white through all shades to deepest crimson; of unusual vigor and growth, and of a hardiness that will stand zero weather if slightly protected.

SPECIAL OFFER—The 12 in one year plants, postpaid, 75 cents; the 12 in two-year plants, postpaid, \$2.40.

American Beauty

The National Rose of America. (Hardy June blooming, should be protected.) A hardy Rose of the largest size. In color it is a deep brilliant rosy-carmine, shaded towards the center with rich carmine-crimson. The back of the outer petals takes the coloring of lighter dull carmine. Strong 1 year plants, 25c; strong 2 year, 50c.

Hadley

In color it is a deep velvety-crimson, retaining its brilliancy at all seasons of the year. The variety is double and buds are well formed. The fragrance is excelled only by American Beauty. Price, strong 1 year plants, 20c each; 3 for 50c; 2 year, 40c each; 3 for \$1.00.

Prince E. C. DeArenburg

Erect, vigorous growth; buds and flowers of large and perfect form, being long and pointed; massive petals. Color, brilliant, fiery-scarlet. Price, 20c each; 3 for 50c, postpaid; 2 year size, 40c each; 3 for \$1.00.

Mrs. George Shawyer

A shade of brilliant clear rose or bright peach-pink. Wonderful grower and bloomer, producing great numbers of strong shoots, each shoot tipped with a bud. Price, 1 year plants, 20c each; 3 for 50c; 2 yr., 40c each; 3, \$1.25.

Jonkheer Rook

(Half Hardy.) Big, round flowers of bright pink, faced with carmine. A good grower. Nice strong 1 year plants, 20c each; 3 for 60c, postpaid; strong 2 year, 40c each; 3 for \$1.25.

Kaiserine Augusta Victoria

Color pure creamy-white. It far surpasses any other white Rose. Rich perfume. Price, 15c each, \$1.35 per dozen, postpaid; large, 2 year plants, 35c each, \$2.75 per dozen, prepaid.

Mrs. Charles Russell

(Summer blooming, hardy with protection.) Beautiful rosy carmine with rosy scarlet center, large, and of perfect shape, with long upright stiff neck, of splendid lasting qualities. 1 year, 25c; 2 year, 50c; 3 for \$1.35.



Mrs. Charles Russell
—25c each.



Hoosier Beauty—25c each.

Hoosier Beauty

The flowers are a glowing crimson with darker shading. It is very fragrant, and the flowers are produced on long, strong, stiff stems. The bush is remarkably vigorous and sturdy in growth. Price, strong 1 year plants, 25c each; 3 for 85c. Strong 2 year plants, 50c each; 3 for \$1.50.

My Maryland

(Summer blooming, hardy with protection.) Its brilliant, live shade of pink and beauty of form is without a superior. Double, fragrant blossoms all summer. Extremely hardy. Strong 1 year plants, 20c each; 3 for 50c; 2 year, 40c each; 3 for \$1.10.

Ophelia

Ophelia is a fine grower. It is long-stemmed, bushy and free-branching, and a free producer of bloom. Color clear, bright pink, suffused yellow. Price, strong 1 year plants, 25c each, 3 for 70c; 2 year, 60c each, 3, \$1.75.

Sunburst

Fine long pointed buds. long stems; vigorous, healthy. A beautiful orange-copper, golden-yellow; brilliant in effect. Strong 1 year plants, 20c each; 3 for 50c; 2 year plants, 40c each; 3 for \$1.10, postpaid.

Mrs. Aaron Ward

Deep golden-orange, shading to creamy-yellow at edge of petals; buds are cupped and very deep. Price, fine 1 year plants, 20c each; 3 for 60c; strong 2 year plants, 40c each; 3 for \$1.25.

Madison

The best feature of Madison is that the foliage does not mildew. It flowers very freely and is equal to any of the varieties producing many flowers. Color pure white. Price, 15c each; 3 for 40c, postpaid; 2 year size, 30c each; 3 for 80c.

Radiance

Pink American Beauty Rose. Lovely rosy-pink. Very free in growth and bloom, has good habit and lasting qualities of this flower are wonderful. Nice strong 1 year plants, 20c each, 3 for 50c, postpaid; strong 2 year plants, 40c each, 4 for \$1.50.

Killarney

Buds are large, long and pointed. Color exquisite, a brilliant imperial pink, almost sparkling. 40c each.

Richmond

(Summer blooming, hardy with protection.) Produces freely, throughout the year, long-pointed crimson buds on tall, straight stems with elegant dark foliage. Price, 20c each; 3 for 50c, postpaid; 2 year plants, 40c each.

Bridesmaid

(Summer blooming, hardy with protection.) Tea Rose. Bud is of exquisite shape and contour, solid and firm, and the stems are long and stiff. 15c each; large 2 year plants, 30c each.

The Bride

(Summer blooming, hardy with protection.) White Tea Rose. The flowers are very large and double, on long, stiff stems, of fine texture and substance, and last a long time. During extreme hot weather it becomes a pinkish-white, at other times a beautiful pure white. 15c each; large plants, 30c.

Rhea Reid

(Summer blooming, hardy with protection.) The buds are long, oval and pointed, of a most beautiful rich crimson, and retain their form for a long time. Highly recommended. Price, 20c each; 3 for 50c; 7 for \$1.10, postpaid; strong 2 year plants, 40c each; 3 for \$1.00.



Ophelia—25c.



Hydrangea Arborescens Grandiflora
—20c, 35c, 50c and \$1.00.

Snowberry

Has small pink flowers and beautiful, large white berries, that hang on the stems through the winter. 20c each, \$2.00 per dozen; large field-grown plants, by express only, 40c each, \$3.50 per dozen.

Coral Berry

(*Symphoricarpos Rubra*)—Splendid shrub for mass planting or planted singly in borders. Has attractive foliage, flowers and striking purplish red berry. Good, strong plants, 20c; 3, 50c.

Exochorda Grandiflora

(Pearl Bush)—Flowers in late spring. Pure white. One of the most distinctively ornamental shrubs in cultivation. By express, 20c each; 3 for 50c; \$1.75 per dozen.

Double White Syringa

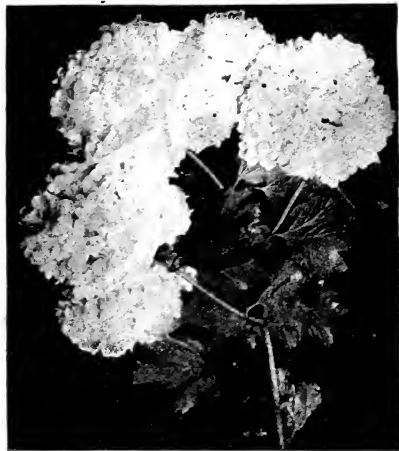
Philadelphus (Bouquet de Blanc)—A fine double flowering variety, attaining a height of 4 to 5 feet, having erect branches, completely covered with large and showy double white flowers. Very fragrant. 20c each; 3 for 50c.

Syringa—Philadelphus

(Common Mock Orange)—A hardy shrub with upright often arching branches, attaining a height of 6 to 8 feet. Leaves ovate bright green, 2 to 4 inches long. Flowers creamy-white, deliciously fragrant, borne in great profusion in late spring. Very showy. 20c each; 3 for 50c; \$1.15 per doz.

Golden Leaf Syringa

(Golden Leaf Mock Orange)—A form of the Common Mock Orange with yellow foliage, much prized for its bright foliage effect. Grows three to four feet. 20c each; 3 for 50c; \$1.75 per doz.



Common Snowball—20c and 40c each.

Hydrangea Arborescens

The blooms are very large, of pure snow-white color; resembling a little the hardy shrub so well known, the "Snowball," in color and make-up. Comes into bloom just after the passing of the early spring shrubs. Perfectly hardy, standing 20 degrees below zero. 20c each, \$2.00 per doz.; larger plants, by express only, 35c each, \$3.00 per dozen; large field-grown plants, 2 and 3 years old, 50c each, by express, \$5.00 per dozen. Extra large bushy plants, 24 to 36 inches, \$1.00 each.

Weigelas

Beautiful shrubs that bloom in June and July. Height about three or four feet. 20c each, \$2 per doz.; large field-grown plants, 40c, by express only.

WEIGELA ROSEA—Flowers pink; dwarf; admirably adapted to small lawns or gardens.

WEIGELA ROSEA VARIEGATA—Like the above variety except in color of foliage, which is a yellow and green variegation.

WEIGELA EVA RATHKE—Flowers of dark carmine-red. Distinct and fine.

Bush Honeysuckle

(Upright.) One of the most shapely ornamental hedge plants to be found. Blossoms followed by bright, shiny berries. Plant 15 to 18 inches apart. 20c each, \$2.00 per doz.; large field-grown plants, by express only, 40c each, \$3.50 per dozen.

Desmodium Penduliflorum

A shapely pretty leaved herbaceous shrub from 2 to 4 feet high. Covers itself in early autumn with long drooping racemes of magenta-colored flowers. Price, good strong plants, 35c.

High Bush Cranberry

A beautiful May flowering shrub, flowers single white, borne in flat clusters followed by brilliant red berries. Price, good strong plants, 20c.

Sweet Scented Shrub

(*Calycanthus Floridus*)—Grows 5 to 8 feet. Flowers in spring. An old favorite and well known for its strawberry-scented flowers. Perfectly hardy. 20c; 3 for 50c; \$1.75 per dozen; large field-grown plants, 40c each; 3 for \$1.00; \$3.50 per dozen.

Lilacs

(*Syringa Vulgaris*)—Popular shrub that flowers abundantly early in May. Vigorous in growth, running 6 to 8 feet in height and admirably adapted for hedges or screens, or equally valuable planted as single specimens. Price, good strong plants, 20c.

COMMON LILAC—Strong grower, rosy-lavender bloom. Price, good strong plants, 20c.

COMMON WHITE LILAC—Identical in growth with purple Lilac and producing white flowers. Price, good strong plants, 20c.

CHARLES X—A strong grower with loose trusses of reddish purple flowers. Price, good strong plants, 25 cents.

MAD. LEMOINE—An extra fine double white variety. Price, good strong plants, 25c.

SOUVENIR DE SPAETH—Single flowers of dark purple and distinct from all other kinds. Price, good strong plants, 25c.

MICHAEL BUCHNER—Flower trusses have large and erect individual flowers. Double pale-lilac color. Price, 25c.



Buddlea (Summer Lilac)
—20c and 50c each.

The Butterfly Bush

(Summer Lilac)—Free flowering, blooms all summer. Produces long stems of beautiful lilac colored flowers which attract hundreds of butterflies. Heavy plants, each 50c; 3 for \$1.25; \$4.35 per dozen. Nice young plants, \$1.75 per dozen; 3 for 50c; each, 20c.

Common Snowball

A grand hardy shrub with handsome showy flowers, produced in large globular clusters. 20c each, \$1.95 per dozen; large field-grown plants, by express only, 40c each; \$3.50 per dozen.

Golden Elder

(*Sambucus Aurea*)—Contrasted with other shrubs, the golden yellow leaves of this Elder give beautiful effects in tone and color. Flowers white, flat, grows naturally ten to fifteen feet, but can be pruned to a neat compact shrub. Price, good strong plants, 20c.



The Popular Lilac—20c and 40c each.

Spirea

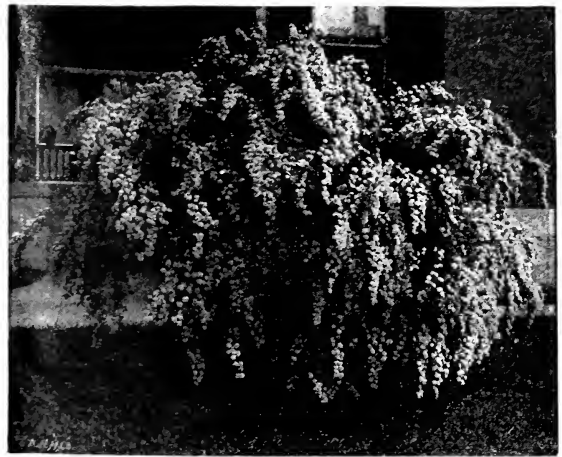
SPIREA PRUNIFOLIA (Floreplo)—(Grows 4 to 6 feet, flowers in spring.) A handsome arching form, very double showy white flowers. Price, 20c each.

SPIREA ANTHONY WATERER—A fine dwarf Spirea, with dark crimson flowers; one of the finest. Price, 20c each.

SPIREA REEVESII—(Grows 4 to 6 feet, flowers in spring.) Double flowering, clusters of white flowers. Price, 20c; larger plants, 40c.

SPIREA BILLARDI—(Grows 3 to 5 feet, flowers in summer.) Plume-like spikes of deep rose-colored flowers. Price, 20c; large plants, 40c.

SPIREA THUNBERGI—A beautiful shrub with numerous slender branches, forming a dense feathery bush, 2 to 3 feet tall. Leaves narrow, bright green, fading in autumn with brilliant tones of orange and scarlet. Flowers pure white in late spring. By express, 20c; 3 for 50c.



Spirea Van Houttei (Bridal Wreath)—20c and 40c.
Spirea Van Houttei

(Van Houttei's Bridal Wreath)

A handsome arching form with very double showy white flowers completely covering the plant. The leaves are very dark green and glossy and assume brilliant orange tones in autumn. One of our grandest shrubs. Price, 20c each; 3 for 50c; \$1.75 per dozen. Large field-grown plants, 40c each; 3 for \$1.00; \$3.50 per dozen.

Popular Hedge Plants

California Privet

The most popular ornamental hedge plants. Its foliage is a rich, dark green, nearly evergreen, remaining on the plant until midwinter. Nice plants, 15 to 18 inches, 50 cents per dozen, \$4.00 per 100; stronger plants, 18 to 24 inches, 60 cents per dozen, \$4.50 per 100; heavier plants, 24 to 30 inches, 75 cents per dozen, \$5.00 per 100; extra strong plants, 30 to 36 inches, 85 cents per dozen, \$6.00 per 100.

Purple Barberry

Dark purple foliage. Growth compact and erect. Golden-yellow flowers and bright crimson berries. 20 cents each, \$2.00 per dozen; large field-grown plants, by express only. 40 cents each, \$3.50 per dozen.

Barberry

Of dwarf, graceful habit; foliage small, changing to beautiful bright red in early fall; very showy. Price, nice plants, 15 cents each, \$1.00 per dozen, \$5.00 per 100. Larger plants, 20 cents each, \$1.60 per dozen, \$8.00 per 100. Extra large plants, 25 cents each, \$1.75 per dozen, \$12.00 per 100.

Ibota Privet

Considered the hardest of all the popular privet hedge plants; dense and compact in growth; leaves long and shining; flowers white and very magnificent; grows well in all soils. Nice plants, 15 cents each, \$1.00 per dozen, \$5.00 per 100. Larger plants, 20 cents each, \$1.60 per dozen, \$8.00 per 100. Extra large plants, 25 cents each; \$1.75 per dozen, \$12.00 per 100.



Hydrangea Paniculata Grandiflora
—20c, 35c and 50c.

Hydrangea Paniculata Grandiflora

Attains a height of three to four feet; perfectly hardy in all parts of the country. Flowers are white, borne in immense pyramidal panicles nearly a foot in length. Flowers from July until November. 20c each; \$2.00 per dozen. Larger plants, 35c each; \$2.25 per dozen; 50c each; \$5.00 per dozen.

Deutzia

An elegant species of strong-growing shrubs, bearing numerous clusters of white and pinkish-white flowers in May.

Price, 20c each, \$2.00 per doz.; large, field-grown plants, by express only, 40c each, \$3.50 per dozen.

DEUTZIA CANDIDISSIMA—Pure white, double flowers.

DEUTZIA GRACILIS—Very desirable; flowers pure white. Single.

PRIDE OF ROCHESTER—Flowers large pinkish white with under side of petals rose colored. Tall growing.

LEMOINE—May flowering with snow-white blooms borne abundantly on long splendid branches.

Kerria

Japanese Rose (Corchorus Japonica, Globe Flower)—Grows 4 to 5 feet high. Bright green leaves and single yellow flowers.

Japonica Floriplena—Double orange-yellow flowers, bright green branches.

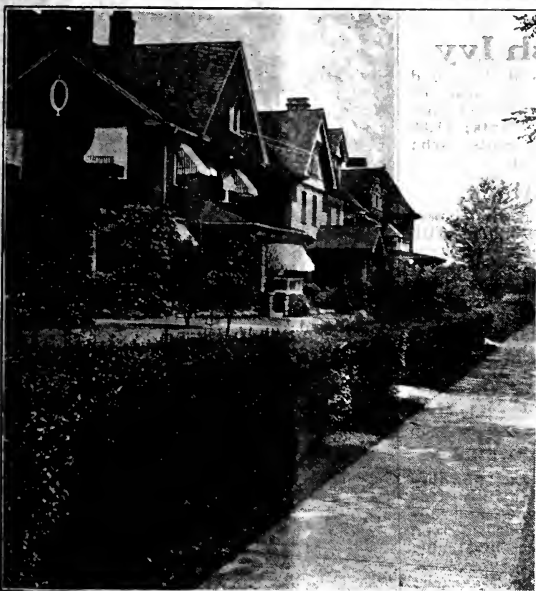
Variiegated Leaved Kerria, (Japanese Rose)—Dwarf form, flowering in midsummer. Grows 2 to 3 feet high. Variiegated foliage, yellow and white flowers. Price, 20c each; 3 for 50c, by express.

Golden Bell

Pretty shrubs of medium size. Flowers are yellow and appear very early in spring, before the leaves.

Forsythia Viridissima—Foliage deep shining green, flowers bright yellow; one of the earliest of the flowers of spring.

Forsythia Fortunei—A variety with very erect and handsome branches, broad dark green leaves, flowers yellow. Price, 20c each; \$2.00 per doz. Field-grown plants by express only. 40c; \$3.50 per dozen.



California Privet Planting—50c, 60c, 75c and 85c per doz.

Hardy Climbing Vines

NOTE—All Vines should be given a deep fertile soil, and ample moisture and the ground for them should be thoroughly prepared.

Hardy Cluster Flowered Clematis *Paniculata*

The plant is of strong, rapid growth. The flowers appear in greatest profusion during August and continue late in the fall; are creamy-white color, and most deliciously fragrant. **Price**, good, strong plants, 15 cents each; two for 25 cents; 70 cents per dozen; two-year-old plants, 25 cents each; three for 70 cents; 2.50 per dozen, postpaid. Extra size, three-year-old vines, 35 cents each; three for \$1.00; \$3.50 per dozen.

Dutchman's Pipe

(*Aristolochia Sipo*)—A vigorous and rapid growing hardy vine, producing dense shade. Leaves are large and broad, foliage retains its color from early spring until late fall. Plant bears singular brownish colored flowers, resembling the shape of a pipe. Strong plants, 50c each; 3 for \$1.25; \$4.50 per dozen, by express.

Virginia Creeper

AMPELOPSIS QUINQUEFOLIA—Woodbine—A well known hardy, rapid, high climbing vine. Foliage fades in autumn and assumes brilliant and gorgeous shades of yellow, crimson and scarlet. Strong plants, 3 to 4 feet; 40c; 3 for \$1.00.

Mammoth Trumpet Creeper

BIGNONIA RADICANS (Trumpet Flower)—A robust, woody vine, twining tightly, with numerous roots along its stems. Its orange-scarlet, trumpet-shaped flowers cluster at the tip of the branches. Leaves light green. 25c each; 3 for 60c, by express.

Hardy Sweet Pea

LATHYRUS LATIFOLIUS—Free flowering, attractive; makes growth of eight to ten feet in a season. Hardy.

PINK BEAUTY—A pure pink flower, quite popular. Nice plants, 25c each; 3 for 60c; \$2.25 per dozen.

WHITE PEARL—Magnificent white variety with extra large individual flowers. Blooms entire season. 25c each; 3 for 60c; \$2.25 per dozen.



Sweet-Scented Clematis

Price, nice young plants, 15c each, 2 for 25c; 2-year plants, 25c each, 3 for 70c; 3-year plants, 35c each, 3 for \$1.00.

Hardy Sweet-Scented Honeysuckles

Price, any of the following varieties, nice young plants, 15c each; 3 for 40c; \$1.50 per dozen. Extra strong plants, 30c each; 3 for 75c; \$2.75 per dozen.

EVERGREEN SWEET-SCENTED HONEYSUCKLE—Evergreen foliage. Leaves purple. Flowers white, changing to yellow, sweetly fragrant.

JAPANESE HONEYSUCKLE (*Halliana*)—A rampant evergreen climber with dark green leaves; dense. Flowers white, changing to yellow, deliciously fragrant.

GOLDEN-LEAVED HONEYSUCKLE—A form of the preceding species with the leaves beautifully netted with yellow.

SCARLET TRUMPET or CORAL HONEYSUCKLE—A high-climbing variety with stems ten to fifteen feet long. Flowers scarlet, profuse and very showy.

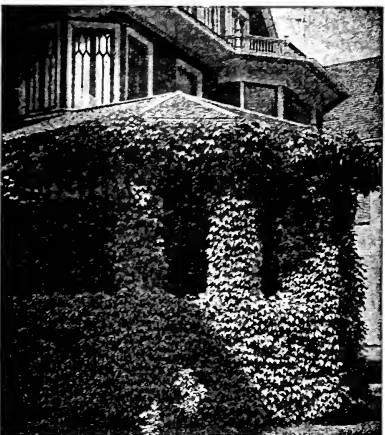
Passion Flower

CÆRULEA (BLUE)—Flowers large, symmetrically arranged. 15c each; 3 for 40c; \$1.50 per dozen.

CONSTANCE ELLIOTT—Flowers pure white. Price, 15 cents each; 3 for 40 cents; \$1.50 per dozen. Larger plants, 25 cents; 3 for 60 cents; \$2.25 per doz.

The Japan or Boston Ivy

(*Ampelopsis Veitchii*)—Clings fast to the tallest walls. Handsome green foliage, which changes in autumn to bright crimson. Good strong plants, 15c each; 2 year plants, 30c each. Extra strong 2 year plants, 50c each.



Ampelopsis Veitchii (Boston Ivy)—15c, 50c. old plants, 25c each; 12 for \$2.50, postpaid.



Hardy Blue Wistaria—20c and 50c.

Wistaria

BLUE WISTARIA—A vigorous, strong-growing vine, producing a profusion of rich, violet-blue flowers, deliciously sweet. Price, 20c; 3 for 75c; \$2.75 per dozen. Larger plants, 50c each; 3 for \$1.25; \$4.00 per dozen.

WHITE WISTARIA—Differs from Chinese only in color of flowers, which are pure white, forming a striking contrast. Price, 30c; 3 for 75c. Larger plants, 50c; 3 for \$1.25; \$4.00 per dozen.

Hardy English Ivy

Hardy evergreen vine with dark-colored foliage, used for covering walls, also for covering graves where grass will not succeed. 15 cents each; 3 for 40 cents; \$1.00 per dozen. Larger plants, 25 cents each; 3 for 60 cents; \$2.00 per dozen.

Akebia Quinata

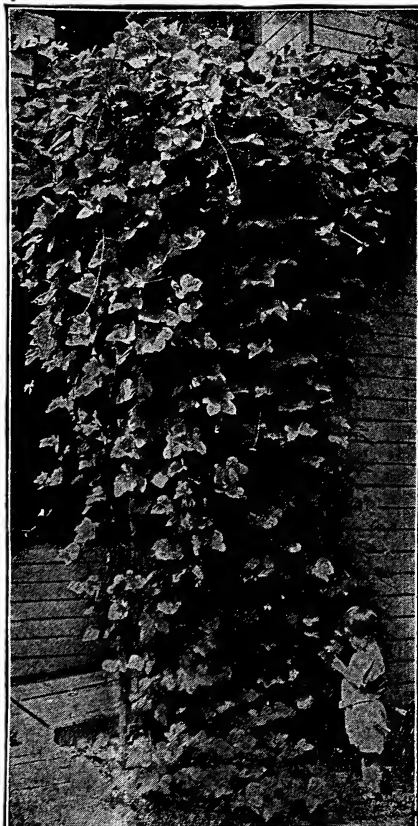
(*Akebia* Vine)—A fast growing, perfectly hardy and graceful climber, with deep green foliage, producing in large clusters bunches of violet-brown flowers. Fine for trellises and verandas. 15c each; 3 for 40c; \$1.25 per dozen.

Cinnamon Vine

Perfectly hardy. Beautiful, heart-shaped leaves and clusters of delicate white flowers, sending forth a delicate cinnamon odor. Price, 10c each; 3 for 25c; \$1.00 per dozen.

Hardy Japanese Kudzu Vine

(*Pueraria Thunbergiana*, Jack-and-the-Bean-Stalk)—Clusters of delightfully fragrant purple flowers in summer and autumn, with large, beautiful, deep green leaves affording dense shade; invaluable for porches, arbors, fences, rockeries. Price, strong, 1 year old roots, 15c each; 3 for 40c; or 12 for \$1.30. Large 2 year



Japanese Kudzu Vine—15c and 25c.

Hardy Garden Lilies



Lilium auratum—Gold-banded Lily.—25c each.

Lilium Auratum

Gold Band Japan Lily—Flowers ivory-white with a distinct central band of bright yellow, marked with deep purple spots. A popular variety in American gardens. Excellent massed or planted with perennials or shrubbery. Price, large bulbs, 25c each; 3 for 65c; \$2.50 per dozen.

Lilium Tigrinum

DOUBLE TIGER LILY—Growing from four to six feet high, bearing an immense number of double, bright orange-red flowers, spotted with black. 15c each; 3 for 40c; \$1.50 per dozen.



Lilium Elegans—15c each.

Lilium Elegans

Produces a magnificent flower. Rich blood-crimson spots, on delicately tinted pink petals; much darker and richer in color than Rubrum. 15c each; 4 for 50c; \$1.50 per dozen.

Lilium Batemanniae

Bright apricot-tinted flowers; grows to a height of three feet, with fine erect flowers. Price, 20c; 3 for 50c; \$1.75 per dozen.

Lilium Tenuifolium

The lovely Coral Lily of Siberia. A great beauty, the brightest of all Lilies. Grows twenty inches high, with finely cut foliage, slender stems and beautifully shaped flowers; brilliant coral-red; fine for cutting, and for the lawn; blooms early. Price, 15c each; 3 for 40c; \$1.50 per dozen.

Lilium Candidum

ANNUNCIATION or MADONNA LILY—The Favorite June Lily. This favorite Lily of the old-fashioned garden, produces strong, stiff stems, studded with a mass of pure, glistening white flowers, beautifying the June garden. Mammoth bulbs, price, 20c each; 3 for 50c; \$1.75 per dozen.

Lilium Harrisii

BERMUDA EASTER LILY—The flowers are trumpet-shaped, pure white, gracefully formed and delightfully fragrant. Even the smallest bulbs bloom freely. This is one of the best of all Lilies for winter forcing or flowering. Can be had in bloom indoors from Christmas to Easter. Price, large bulbs, 25c each; 3 for 65c; \$2.50 per dozen.



Lilium Speciosum Album and *Rubrum*—20c each.

Lilium Speciosum Album

WHITE JAPANESE LILY—Large, waxy flowers; pure white, very fragrant. 20c each; 3 for 50c; \$1.75 per dozen.

Lilium Speciosum Rubrum

PINK JAPANESE LILY—Large, wide flowers. Fragrant; hardy; lovely rose and white, spotted crimson. 20c each; 3 for 50c; \$1.75 per dozen.

Lilium Speciosum Melpomene

RED JAPANESE LILY—Rich blood-crimson spots, on delicately tinted pink petals; much darker and richer in color than Rubrum. 20c each; 3 for 50c; \$1.75 per doz.



The Well-known Easter Lily, *Lilium Harrisii*—25c each.



Lilium Candidum or *Madonna Lily*—20c each.



Giant Flowering Peony, Festiva Maxima—50c each.

Bleeding Heart

(*Dielytra Spectabilis*.) (Hardy. Grows 24 inches. Plant in sun or shade. Blooms in May.) These pretty spring bloomers with their graceful drooping sprays of heart-shaped pink and white flowers are very ornamental, and bloom freely early in the season. 20c each; 3 for 50c.

Hardy Ferns

(For Shady Places.) These graceful and universally popular plants do well in a shady place, where the soil is moist and the drainage good. They will improve an ideal location especially if a liberal amount of leaf mold or woods earth is available, and better still if rocks and stumps may unite in breaking the monotony of the grounds surface.

Price, 25c each; 3 for 70c; 6 for \$1.35; \$2.50 per dozen, by express only.

Platycodon

(Japanese Bellflower) — Hardy. Grows 24 to 30 inches in a sunny location. Flowers July to September.

MARIESI—Deep blue bell-shaped flowers.

Price, 15c each; 3 for 40c.

Hardy Plumbago

(Lady Larpent.) (Grows 6 to 8 inches. Plant in a sunny location. Blooms August and September.) An excellent plant for beds. Flowers beautiful deep violet-blue.

Price, 15c each; 3 for 40c; \$1.35 per dozen.

Monarda Rosea

(Bergamot.) Hardy. Grows 24 to 36 inches. Plant in a sunny location. Blooms June, July and August. It is a very striking border plant with handsome foliage and sweet-scented flowers of a clear rose color. These plants do well in any situation, but prefer moist places, and are seen to best advantage massed.

Price, 15c each; 3 for 40c; \$1.50 per dozen.

Pyrethrum

(Oriental Pink Daisy)—These are handsome, hardy plants of easy culture, which are extremely free blooming. The flowers are large, from two to three inches across, in color ranging from purest white through flesh and rose to brilliant carmine and blood-red. 15c each; 3 for 40c; \$1.50 per dozen.

Gypsophila

Paniculata fl. pl. (Baby's Breath)—Small, rough, narrow leaves; double white flowers. Very graceful; stems wiry. Price, 20c each; 3 for 50c.



Shasta Daisy—15c each.

Shasta Daisy

In growth the plants are as strong as a common field daisy, very tall, well branched, with fine cut foliage and huge white flowers borne in profusion on long, stiff stems. The flowers are pure white with gold center, petals very long and center soft and velvety. Price, 15c; 3 for 40c; \$1.50 per dozen.

Delphinium

HARDY LARKSPUR—The hardy Larkspurs should be planted extensively, even in the smallest garden. Their long spikes of different shades of blue flowers are produced continuously from June until late fall. Strong plants, 25c each; 3 for 60c; \$2.00 per dozen.

Double Golden Sunflower

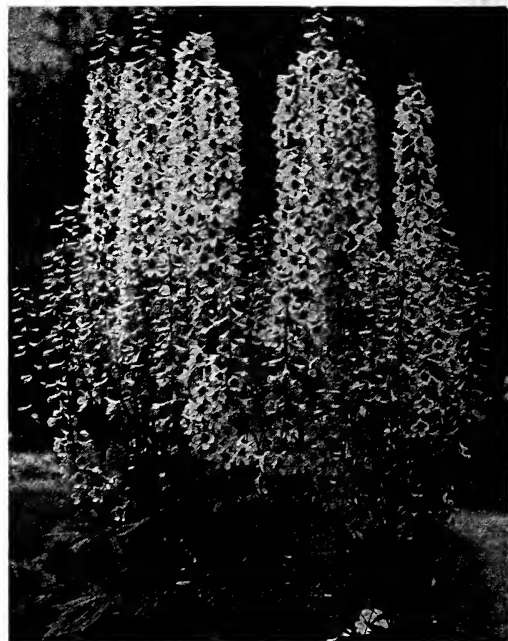
(Golden Glow)—A hardy perennial growing eight feet high; exquisite double blossoms of the brightest golden color.

Price, 15c each; 3 for 40c.

Lemon Lily

(*Hemerocallis Flava*)—Few plants present a more striking appearance on the lawn or border than a large clump of this clear, lemon-colored Lily, which is produced in the greatest profusion.

Price, 20c each; 3 for 50c.



Delphinium or Hardy Larkspur—15c each.

Hardy Garden Flowers

Peonies

There is quite a revival in the planting and demand for these old-time favorites. Their requirements are few. Give them a good, rich, deep soil and plenty of water and there will be bloom in abundance. They succeed best in an open, sunny location, but will do almost equally well in partially shaded places.

Old Fashioned Garden Peonies

OFFICINALIS ROSEA—Deep cerise-pink. Price, 25c each.

OFFICINALIS ALBA—Pure white; large flower. Price, 25c each.

OFFICINALIS RUBRA—Deep crimson; early. Price, 25c each.

McGregor's Standard Peonies

Price, good strong roots, 30c each, two for 35c; or the collection of four for 70c.

AGIDA—Midseason; beautiful shade of dark red. DUCHESS DE NEMOURS—Early; pure white; very attractive. MARIE STUART—Midseason; delicate pink. CANARI—Midseason; white with yellow center.

Popular Peonies

Price, good strong roots, 40c each, 2 for 65c; or the collection of 4 for \$1.25.

L'ECLANTANTE — Rich red. BOULE DE NEIGE—Early mid-season; white with red spots. MME. FOREL — Late midseason; beautiful clear pink. MONSIEUR CHAS. LEVEQUE — Rich rose, changing to salmon.

Superior Peonies

Price, strong roots, 50c each, 2 for 95c, or the collection of 4 for \$1.75.

FELIX CROUSSE—Late midseason; ruby-red. FESTIVA MAXIMA—Early; white, clear carmine spots on the edge of the center petals.

ASA GRAY—Carmine-pink; mid-season; a novelty; white with red stripes, stays in bloom two weeks.

Fancy Peonies

Price, strong roots, 75c each; 2 for \$1.40; or the collection of 4 for \$2.25.

SOUV. DE CASP. CALOT — Beautiful soft lilac-pink. ALBATRE — Midseason; ivory-white.

ALBERT CROUSSE—Late; even delicate seashell-pink. MAD. DE GALHAU—Late; guards rose-white, center petals lilac-rose.

McGregor's Improved Hardy Phlox

Price, nice 1 year field-grown plants, 20c each; 3 for 50c; \$1.75 per dozen.
MISS LINGARD—Pearl white flower.
VON HOCHBERG—Solid, rich velvety-crimson.
RHYNSTROM—The best pink Phlox in existence.
ECLAIREUR—Beautiful clear rose-magenta.

R. P. STRUTHERS—Solid cherry-salmon.
OBERGARTNER WITTIG—Bright magenta with crimson-carmine eye.
FRAU VON LASSBURG—Pure snow-white.
ATHIS—Deep clear salmon.
BRIDESMAID—Edged pure white flowers, deepening to carmine in the center.

Beautiful Hollyhock

The Hollyhocks are among the most stately of our garden plants. The colorings vary in shade from pure white to the darkest red, white, pink, yellow and crimson. Price, for separate colors, your selection, 15c each; any 3 for 40c; \$1.50 per dozen, postpaid. Same, strong two-year plants, 25c each; 3 for 60c; \$2.25 per dozen, by express.

Achillea

THE PEARL—Flowers pure white, perfectly double, and produced in large sprays. For cemetery planting it is the most valuable of all flowers. 10c each; 3 for 25c; 75c per doz.

Hardy Garden Carnation Pinks

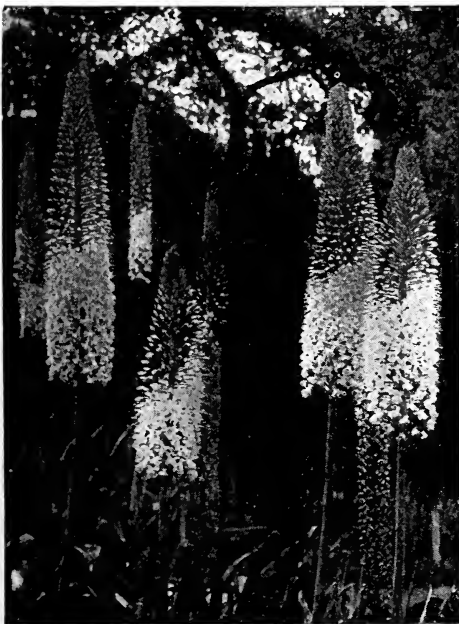
A fine hardy perennial which grows 15 to 20 inches in a sunny location, flowering in June and July.

HER MAJESTY—New double white. 15c each; 3 for 40c.
ESSEX WITCH—Deep cherry red, variegated; very fine. Price, 15c each; 3 for 40c.
ABBOTSFORD—Rosy red, dark center. Price, 15c; 3 for 40c.
LAURA WILMER—White, maroon center. 20c each; 3 for 50c.

Eremurus

Himalaicus—A very stately plant for a garden, producing fine pure white flowers which grow to a height of six to eight feet. They require a good loamy soil and should be planted in a sunny position. Price, large, heavy, field-grown plants, \$1.25 each, by express only.

Robustus—This variety has pale pink flowers, growing about nine feet high. It is valued for the size of its flower stems, as they make a striking effect in the garden. Plant in a sunny position, loamy soil, and after they are established should be left undisturbed. Price, large, heavy field-grown plants, \$1.25 each, by express only.



Giant Flowering Eremurus—\$1.25 each.

German Iris—Iris Germanica

The plants bloom in May and June, several or many flowers to a stem, much taller than the leaves, which are silvery-green and sword-shaped. We offer colors, purple, dark purple, white, yellow, variegated, etc. 15c each; \$1.50 per dozen.

Aquilegias or Columbines

Price, 15c each; 2 for 25c; \$1.50 per dozen. (Grows 18 to 36 inches. Plant in sunny location. Bloom in May and June). One of the most elegant and beautiful hardy plants, producing their graceful spurred flowers on long stems. Highly prized for cutting.
CHRYSANTHA (Golden Columbine)—Bright yellow, long spurred flowers.
COERULEA (Rocky Mountain Columbine)—Bright blue and white, long spurred flowers.
NIVEA GRANDIFLORA—A fine pure white sort.



McGregor's Improved Hardy Phlox—20c each.

Tritoma Pfitzerii

(Red Hot Poker)—The flower spikes are of gigantic size, frequently four and one-half feet high, with heads of bloom over twelve inches long; of a rich orange-scarlet, shading to salmon-rose on edge. Price, 25c each; 3 for 60c.

Coreopsis

(Lanceolata Grandiflora) — Flowers rich golden-yellow. Blooms the entire summer. Valuable border plants. Perfectly hardy and of the easiest culture. Much prized for cutting. 15c each; 3 for 40c; \$1.50 per dozen.

Campanula

(Hardy)—Grows 18 to 35 inches. Plant in a sunny location. Blooms May to September. The Campanulas are strong growing and do best in the rich soil, with fertilizer added. We offer varieties in colors, blue, pink, and white. Price, 20c each; 3 for 50c; \$2.00 per dozen.

Gaillardia Grandiflora

Flowers with center of brownish-red, white petals are shaded into rings of orange, crimson and red. 15c each; 2 for 25c.

Hardy Forget-Me-Nots

(Myosotis)—Flowers are of a beautiful light blue color. Nice young plants, 10c each; 3 for 25c; 6 for 50c; 90c per dozen.

Day Lily

(Funkia Subcordata Grandiflora) — Pure white, Lily-shaped fragrant flowers. 25c each; 3 for 50c.

(Funkia Media Variegata)—Green and white foliage with purple flowers. 25c each; 3 for 50c.

Fountain Grass

Eulalia Gracillimum—Beautiful hardy grass. Of easy cultivation; forms large clumps and grows five to seven feet high. Beautiful large plumes. Strong plants, 50c each, by express only.

Hardy German Iris—15c each.

Hardy Hibiscus

This hardy perennial grows 36 to 60 inches in a sunny location, flowering July to September. Colors, white with crimson center, pink and deep crimson. Price, 20c each; 3 for 50c; field-grown plants, 40c; 2 for 75c.

Stokesia Cyanea

CORNFLOWER or **STOKES' ASTER**—A most charming and beautiful native hardy plant, with handsome lavender-blue flowers. 25c each; 3 for 60c.

Foxgloves or Digitalis

(Hardy. Grows 24 to 48 inches. Plant in sun or partial shade. Blooms June and July). One of the most popular of the hardy perennials. The strong flower-stalks frequently 4 to 6 feet high, rise from rich and luxuriant masses of leaves. Mixed colors, price, 20 cents each; 3 for 50c; \$1.75 per dozen.

McGregor's Select Flower Seeds

FOR FALL SOWING

On this page we give a list of seeds of the easiest grown and best Hardy Perennials which are now so deservedly popular. Sown this fall in a cold frame or protected corner of the garden, you can have, with little trouble, an abundant supply of Columbines, Canterbury Bells, Foxgloves, Gaillardias, Hollyhocks, Larkspurs, Forget-Me-Nots, Daisies, Sweet Williams, etc., for flowering in 1918. The list also includes a choice selection of other Flower Seeds for autumn sowing to produce blooming house plants during the winter and spring.



Antirrhinum—Pkt., 10c.



Campanula Medium—Pkt., 5c.

Campanula

PERSICIFOLIA GRANDIFLORA — (Peach Bells) — Large bell-shaped flowers of blue or white. Packet, 5c.
MEDIUM — (Canterbury bells)—Blue or white, or rose. Fine for either border or pot plants. Packet, 5c.
MEDIUM CALYCANTHEMA—(Cup and Saucer Canterbury Bells) —Blue, rose and white, in cup and saucer shape. Packet, 5c.

Candytuft

EMPRESS—Large, pure white flowers. Pkt., 5c.
MIXED VARIETIES — Including all colors. Packet, 5c.

Antirrhinum—Snapdragon
GIANT-FLOWERED MIXED—All colors. Plant in September for early spring flowers. Packet, 10c.

Alyssum

LITTLE GEM—Very sweet. Packet, 5c.

Bellis Perennis—Double English Daisy

NEW ENGLISH DAISY, MONSTROSA—Robust plants, producing flowers as large as small Asters. Very fine. Pkt., 15c.
NEW SNOWBALL—Large pure white. Packet, 10c.

GIANT MIXED—All colors, large flowered sorts. Packet, 10c.

FINE MIXED—All colors. Packet, 5c.

Early Single Hardy Chrysanthemum

A valuable addition to a hardy border, especially so, as they bloom during the fall when many other plants have finished blooming. Beautiful Daisy-shaped flowers in a great variety of colors. Seed sown in early spring will bloom the following fall. Price, 15c per packet.

Calendula

ORANGE KING (Pot Marigold)—Mammoth flowers. Packet, 5c.

Aquilegia—Columbine

NEW LONG-SPURRED HYBRIDS—Splendid long spurred new varieties, mixed. Packet, 15c.

DOUBLE VARIETIES—Newest varieties, all colors. Packet, 10c.

Carnations

GIANT MARGUERITE CARNATIONS, MIXED—An improved strain, immense double flowers, all colors, white, pink, yellow and crimson. Packet, 10c.

Giant American Malmaison Carnation

Flowers extra large, on long stems, colors brilliant and in great variety. As fine as varieties grown in greenhouses. Pkt., 15c.

Pyrethrum

FINEST DOUBLE MIXED—Double daisy-like flowers in shades of red and pink. Packet, 20c.

COMET FLOWERED—Single twisted petals. Packet, 20c.

Coleus

FINE MIXED—Good assortment of fine colors. Packet, 10c.

SUPERFINE MIXED—Large leaves, vivid colors. 15c.



Aquilegia or Columbine—Pkt., 10c and 15c.

Begonias

MAGNIFICA—Rich red bronze leaves, bright crimson flowers. Packet, 15c.

SINGLE EVERBLOOMING MIXED—Packet, 10c.

Double Hollyhocks

GIANT ALLEGHENY MIXED—Semi-double, large-flowering plants, great variety of colors. Flowers are beautifully fringed. Packet, 10c.

McGREGOR'S DOUBLE MIXED—Finest imported strain; very double flowers, all shades. Packet, 10c.

DOUBLE—In six separate colors. Each, Packet, 10c.

CHATER'S SUPERB DOUBLE MIXED—Fine double Hollyhock, vivid colors and fringed. Finest known. Pkt., 15c.

Calliopsis—or Coreopsis

DOUBLE MIXED—All colors; red, brown, yellow. Packet, 5c.

COREOPSIS LANCEOLATA GRANDIFLORA (Hardy)—Large, showy, bright yellow. Packet, 10c.

Pansies

McGREGOR'S MAXIMA MIXTURE—Finest of all mammoth flowering kinds in endless variety. Packet, 25c.

ENGLISH PRIZE—Giant English prize varieties; extra fine color and size. Pkt., 25c.

GIANT MASTERPIECE—Beautifully curled and crimped, of rich coloring. Pkt., 20c.

GIANT PARIAN STRAINED—Very large and beautifully streaked and blotched. Packet, 20c.

GIANT PURE WHITE PANSY, SNOW QUEEN. Packet, 10c.

GIANT SKY-BLUE PANSY, ADONIS—Pkt., 10c.

GIANT MADAME PERRETT—Beautiful, delicate pink. Packet, 20c.

GIANT CARDINAL—Rich, bright red, nearly scarlet. Packet, 10c.

GIANT BRILLIANT BLUE—Immense, cornflower-blue color. Packet, 10c.

GIANT WINE-RED PANSY, RUBY—Brilliant ruby-red. Packet, 10c.

McGREGOR'S MAMMOTH MIXTURE—Our own finest strains. Packet, 10c.

Anchusa Italica, Dropmore Variety

One of the most important hardy plants of recent introduction, and a plant which, on account of its remarkable freedom of flowering and beautiful blue color, is sure to become one of our most popular Hardy Perennials. It attains a height of 5 to 6 feet, and produces its pretty blue flowers, which are from 1 to 1¼ inches in diameter, throughout the entire summer. Packet, 20c

Dianthus—Sweet Clove Pinks

DOUBLE HARDY MIXED—Double and semi-double, fringed in many shades. Packet, 10c.

SINGLE HARDY MIXED—Packet, 5c.

NEW "PRINCESS" PINK—Single annual pink, with fringed flowers, spotted and striped in many rich colors. Packet, 10c.

NEW FRINGED PINK "MARVELOUS"—New annual Pink from Japan; flowers cut into thread-like fringes. All shades of pink, red and white. Packet, 10c.

NEW DOUBLE PINK "EXCELSIS"—A new double-flowering Japanese annual Pink. Flowers three to four inches in diameter, deeply cut or fringed; colors rich and varied. Packet, 15c.

McGREGOR'S ANNUAL DOUBLE IMPERIAL PINKS—This mixture is made from the varieties that are very double, fringed on the edges and striped in brightly contrasting colors. Packet, 10c.

Sweet William

DOUBLE GRANDIFLORA MIXED—Pkt., 10c.

SINGLE MIXED—All colors. Packet, 5c.



Pyrethrum—Packet, 20c.

Baby's Breath

(*Gypsophila paniculata* fl. pl.)

One of the most important hardy perennials of recent introduction. The plant grows from 3 to 3½ feet high, bearing its pretty little double white flowers in much-branched panicles, which when cut, can be used to great advantage with other flowers or by themselves, as they retain their beauty for months. Packet, 20 cents.

Forget-Me-Not Myosotis

MIXED COLORS—Containing white, pink, pale blue and deep blue. Packet, 5c.

VICTORIA—Bushy plants, large sky-blue flowers. Pkt., 10c.

PLUSTRIS SEMPERFLORENS—In bloom from early spring until autumn; delicate blue; very hardy. Pkt., 10c.

Larkspur

A quick-growing, free-flowering annual, with fine feathery foliage and tall spikes of odd shaped flowers in purple, blue, pink, rose and white. Sow quite early in the spring and thin out.

IMPROVED DOUBLE TALL STOCK - FLOWERED—Splendid spikes of double flowers, 18 inches long; very brightest and best colors. Packet, 10c.

Delphinium—Giant Hardy Larkspur

GOLD MEDAL HYBRIDS—All shades of blue. Pkt., 20c.

Salvia

SPLENDENS—Bright scarlet. Packet, 10c.

ZURICH—Ever-blooming; bright scarlet. Packet, 15c.

Smilax

Tender climber, glossy dark green leaves. Packet, 10c.

Stocks

LARGE FLOWERING TEN WEEKS MIXED DOUBLE. Packet, 10c.

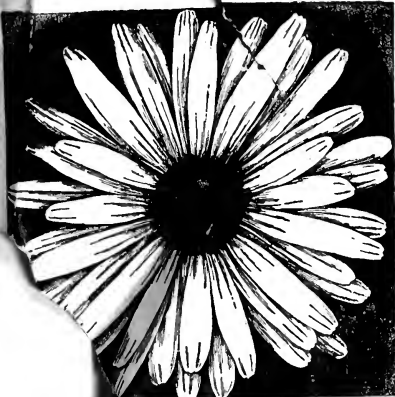
CUT AND COME AGAIN, MIXED DOUBLE. Pkt., 10c.

Lavender

LAVENDER—Small, fragrant flower. Packet, 5c.

Musk

A small plant, easily grown, whose leaves are used as a perfume. Packet, 5c.



Flowering Shasta Daisy
Per Pkt., 15c.

McGregor's Select Flower Seeds

FOR FALL SOWING

Sweet Peas

SELECT GRANDIFLORA VARIETIES—In separate colors or mixed, each, 6c per packet; 12c per oz.; 35c per ¼ lb.
NAMED SPENCER SWEET PEAS—10c per packet; six packets for 50c. (State color desired.)

Sweet Pea Mixtures

GRANDIFLORA MIXED SWEET PEAS—This mixture of the finest varieties of large-flowered Sweet Peas is unequalled. Select seeds of only the most beautiful named varieties are in this mixture; for both delicacy and brilliancy of colors and large flowers none can be found better. Price, 6c per packet; 15c per oz.; 40c per ¼ lb.

EXTRA EARLY FLOWERING MIXED SWEET PEAS—This mixture contains all varieties and colors of the extra early flowering type. Price, 8c per packet; 15c per oz.; 60c per ¼ lb.

ORCHID FLOWERED or SPENCER MIXED SWEET PEAS—A splendid mixture of the finest of these broad, handsome flowers. Price, 10c per packet; 25c per oz.; 70c per ¼ lb.

McGREGOR'S OWN MIXTURE SWEET PEAS—A very good mixture of the leading and best varieties; rich colors, fine bloomers. Price, 5c per packet; 8c per oz.; 20c per ¼ lb.

Verbenas

MAMMOTH WHITE. Packet, 10c.

MAMMOTH PINK—Pkt., 10c.

MAMMOTH SCARLET—Pkt., 10c.

MAMMOTH BLUE—Packet, 10c.

MAMMOTH MIXED—Pkt., 10c.

HYBRID MIXED—Pkt., 5c.

Digitalis—Foxglove
GLOXINIA FLORA MIXED—Finest rich colors, splendidly spotted. Packet, 10c.



Gaillardia Grandiflora.

Gaillardia

GRANDIFLORA SPLENDENS—A showy, effective, hardy perennial which will thrive in any soil. Blooms the first year from seed. Immense crimson and gold flowers. Packet, 10c.

Shasta Daisy

IMPROVED LARGE FLOWERING—Packet, 15c.

Phlox Drummondii

McGREGOR'S NEWEST GRANDIFLORA MIXED PHLOX—A splendid mixture of all shades in the largest flowering varieties. Packet, 10c.
GOOD MIXED—All colors. Packet, 5c.

Hardy Perennial Phlox

This is fine for planting in a perennial hardy border. All varieties, mixed, brilliant colors. Packet, 15c.

Cowslip—Primula Vera

COWSLIP (Primula Vera)—Hardy, brown and yellow; very fragrant. Packet, 10c.



Hardy Poppy.—Per Pkt., 10c and 15c.

Hardy Poppies

NEW HARDY ORIENTAL HYBRIDS—All shades of red, orange, pink and salmon; immense flowers; very new. Packet, 15c.

ORIENTAL "MAMMOTH"—Enormous glowing scarlet, upright flowers on stems over four feet high. Pkt., 15c.

ORIENTAL POPPIES—Old favorite, rich scarlet. Pkt., 10c.

Pentstemon

EXCELSIOR—Long spikes of gloxinia-like flowers. Pkt., 20c.



Perennial Pea.—Per Pkt., 10c.

Lathyrus, Perennial Pea—Hardy

A splendid vine, bearing blossoms just like Sweet Peas. Perfectly hardy. Mixed, all colors, price, 10c per pkt.; 20c per oz.

Viola

(*Admirabilis*) "**PANSY VIOLET**"—An improved strain of the much-beloved Tufted Pansies, with new and very showy colors, such as are found only among the newest Pansies. The plants are hardy. Packet, 15c.

Mignonette

RED GOLIATH—New variety; giant flowers for house culture. Packet, 10c.

RESEDA ODORATA—The old-fashioned sweet. Pkt., 5c.

DEFIANCE—Extra fine, long, full flowers; sweet. Pkt., 10c.

MACHET—Broad, large spike, very fragrant. Packet, 5c.

Platycodon

GRANDIFLORA MIXED—Fine shades of blue and white. Very large flowering. Packet, 5c.

Centaurea Imperialis

(Royal Sweet Sultan)

This class is distinctly new, very vigorous in growth, with handsomely fringed flowers, very large, borne on long stems; white, pink, rose, lavender, blue and purple. Pkt., 10 cents.

Geraniums

ZONAL MIXED—Leaves are marked with rich, dark rings; flowers scarlet, but may come any shade, which makes them interesting to plant. Packet, 10c.



BURBANK

MARIE VAN HOUTTE

CLOTHILDE SOUPERET

McGregor's Hardy Everblooming Roses

The superb vigor, profusion of bloom, the exquisite coloring of this glorious dozen Roses together with hardiness to stand zero weather, place them at once without rivals.

Any 6 1-YEAR ROSES 50c 12 1-YEAR ROSES 75c 12 2-YEAR ROSES \$2.40 Any 6 2-YEAR ROSES \$1.35

See page 30.



SAFRANO

GRUSS TEPLITZ

ETOILE DE LYON



MRS. R. B. CANT

WHITE COCHET

HELEN GOULD



MD. F. KRUGER

RHEA REID

SOUV. DE MALMA