

Historic, archived document

Do not assume content reflects current scientific knowledge, policies, or practices.

U. S. Department of Agriculture

FOREST SERVICE

GIFFORD PINCHOT, FORESTER

1
F765Fo
Salt Lake
Reserve

Flat
Folio

FOREST ATLAS

OF THE

NATIONAL FORESTS OF THE UNITED STATES

SALT LAKE

FOLIO

FOREST ATLAS

GENERAL CLASSIFICATION

Commercial Timber

	Less than 2,000 B.F. per acre
	2,000 to 5,000 B.F. per acre
	5,000 to 10,000 B.F. per acre
	10,000 to 25,000 B.F. per acre
	25,000 to 50,000 B.F. per acre

Woodland, cordwood, poles, etc.

Chaparral or brush

Sagebrush

Grassland, parks, etc.

Barren, above timberline, etc.

Desert

Burn, not restocking

Burn, scattering trees

Burn, forest cover established

Windfall

Bug-killed or diseased

Old cutting, less than 1/4 of the merchantable timber removed

Old cutting, 1/4 to 3/4 of the merchantable timber removed

Old cutting, 3/4 to all of the merchantable timber removed

Timber sales, less than 1/4 of the merchantable timber removed

Timber sales, 1/4 to 3/4 of the merchantable timber removed

Timber sales, 3/4 to all of the merchantable timber removed

Cultivated

Irrigated

TITLE

Alientions

Permanent alienations

State lands, approved

State lands, not approved

Indian allotments

Lieu selections

Railway lands, patented

Railway lands, not patented

Homesteads, patented

Homesteads, not patented

Cash entry

Timber and stone

Coal entry

Townsite entry

Mineral lode claims, patented

Mineral placer claims, patented

Mineral mill site, patented

Mineral classification

GRAZING MAP LEGEND

Supervisor's headquarters

Supervisor's division

Ranger's division

Grazing districts

Open for all stock

Open for cattle and horses only.

Open for sheep and goats only

Closed for all stock

Lambing grounds

Driveways for stock

Corral

CONVENTIONAL SIGNS

Block line

Compartment line, sales

Boundary line for all other classifications

Grant line

Telegraph line

Telephone line

Power line

Pipe line

Aqueduct

Railroad

Tramway

Wire rope conveyor

Wagon road

Secondary or private road

Pack trail

Foot trail

Fire line

Fence

Ditch

Flume

Slide

Log driving route

Rollway

Skidway

Bridge

Ferry

Ford

Sowing

Nursery

Corral

Supervisor's headquarters

Ranger's headquarters

House

Railroad station

Stage station

Power station

Hotel

Store

School

Church

Cemetery

TEL. Telegraph office

TLP. Telephone office

Cabin

Dairy

Logging camp

Sawmill, portable

Sawmill, stationary

Grist mill

Grist and sawmill

Apiary

Mine location, unpatented

U.S. Improvements made by the United States are marked U. S.

Proposed improvements are shown by the appropriate sign and are designated by "Proposed" on the margin of the maps

Abandoned improvements are shown by zeros O O O O and designated on the margin of the maps

ALPHA-NUMERIC SYMBOLS FOR WESTERN COMMERCIAL TREE SPECIES

These will be used on maps, where limited space makes necessary, in the following manner:

D129 = *Pseudotsuga taxifolia*, average stand 29,000 B.M. per acre

Q612 = *Quercus agrifolia*, average stand 12 cords per acre

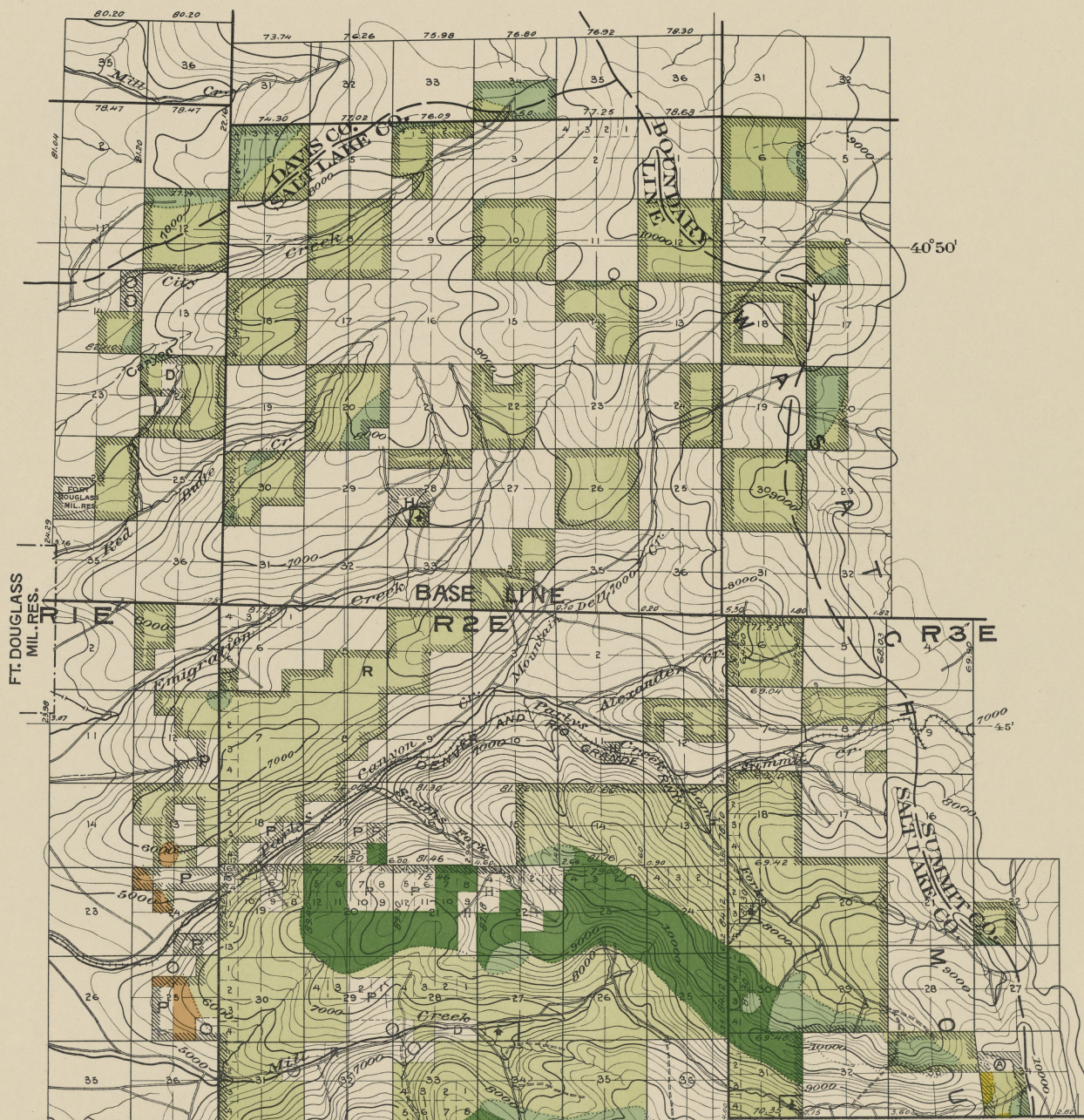
T67 = *Thuja plicata*, average stand 7 tele-poles per acre

P0	<i>Pinus murrayana</i>	Lodgepole Pine
1	<i>flexilis</i>	Limber Pine
2	<i>monticola</i>	Western White Pine
3	<i>lambertiana</i>	Sugar Pine
4	<i>ponderosa</i>	Yellow Pine
5	<i>coulteri</i>	Coulter Pine
6	<i>sabiniana</i>	Gray Pine
7	<i>jeffreyi</i>	Jeffrey Pine
8	<i>radiata</i>	Monterey Pine
9	<i>attenuata</i>	Knobcone Pine
B2	<i>strobiformis</i>	Mexican White Pine
5	<i>albicautis</i>	White-bark Pine
6	<i>torreyana</i>	Torrey Pine
7	<i>edulis</i>	Pinon
9	<i>monophylla</i>	Single-leaf Pinon
A1	<i>Abies magnifica</i>	Magnificent Fir
2	<i>concolor</i>	White Fir
3	<i>shastensis</i>	Shasta Fir
4	<i>nobilis</i>	Noble Fir
5	<i>lasiocarpa</i>	Alpine Fir
6	<i>grandis</i>	Lowland Fir
7	<i>arizonica</i>	Arizona Cork Fir
8	<i>amabilis</i>	Lovely Fir
9	<i>venusta</i>	Bristle-cone Fir
S2	<i>Picea engelmanni</i>	Engelmann Spruce
3	<i>parryana</i>	Blue Spruce
5	<i>breweriana</i>	Weeping Spruce
6	<i>sitchensis</i>	Sitka Spruce
D1	<i>Pseudotsuga taxifolia</i>	Douglas Fir (Red)
5	<i>macrocarpa</i>	Bigcone Spruce
H5	<i>Tsuga mertensiana</i>	Black Hemlock
6	<i>heterophylla</i>	Western Hemlock
R1	<i>Sequoia sempervirens</i>	Redwood
5	<i>washingtoniana</i>	Bigtree
C5	<i>Chamaecyparis nootkatensis</i>	Yellow Cedar
6	<i>lawsoniana</i>	Port Orford Cedar
T6	<i>Thuja plicata</i>	Red Cedar
L5	<i>Larix lyallii</i>	Alpine Larch
7	<i>occidentalis</i>	Western Larch
O5	<i>Libocedrus decurrens</i>	Incense Cedar
K5	<i>Cupressus macabiana</i>	Macab Cypress
6	<i>macrocarpa</i>	Monterey Cypress
7	<i>arizonica</i>	Arizona Cypress
8	<i>goveniana</i>	Gowen Cypress
J1	<i>Juniperus utahensis</i>	Utah Juniper
2	<i>pachyphlea</i>	Alligator Juniper
4	<i>occidentalis</i>	Western Juniper
5	<i>sabinoidea</i>	Mountain Juniper
7	<i>californica</i>	California Juniper
9	<i>monosperma</i>	One seed Juniper
Q0	<i>Quercus chrysolepis</i>	Canyon Live Oak
1	<i>californica</i>	California Black Oak
2	<i>lobata</i>	California White Oak
3	<i>douglasii</i>	Blue Oak
4	<i>garryana</i>	Pacific Post Oak
5	<i>wislizeni</i>	Highland Oak
6	<i>agrifolia</i>	California Live Oak
7	<i>gambelii</i>	Gambel Oak
8	<i>densiflora</i>	California Tanbark Oak
9	<i>engelmanni</i>	Engelmann Oak
M2	<i>Acer macrophyllum</i>	Oregon Maple
5	<i>glabrum</i>	Dwarf Maple
9	<i>negundo californicum</i>	California Boxelder
W0	<i>Populus trichocarpa</i>	Black Cottonwood
2	<i>fremontii</i>	Fremont Cottonwood
5	<i>tremuloides</i>	Aspen
7	<i>angustifolia</i>	Narrowleaf Cottonwood.
F1	<i>Fraxinus pennsylvanica</i>	Red Ash
6	<i>oregona</i>	Oregon Ash
8	<i>lanceolata</i>	Green Ash
U1	<i>Prunus demissa</i>	Western Choke Cherry
Y7	<i>Platanus wrightii</i>	Arizona Sycamore
8	<i>racemosa</i>	California Sycamore
X0	<i>Salix lasiandra</i>	Western Black Willow
2	<i>sessilifolia</i>	Silverleaf Willow
9	<i>amygdaloides</i>	Almondleaf Willow

T 2 N

T 1 N

T 1 S



FT. DOUGLASS
MIL. RES.

Compiled by C.C. Bassett
G.T.T.—1908

40° 50'

R 3 E

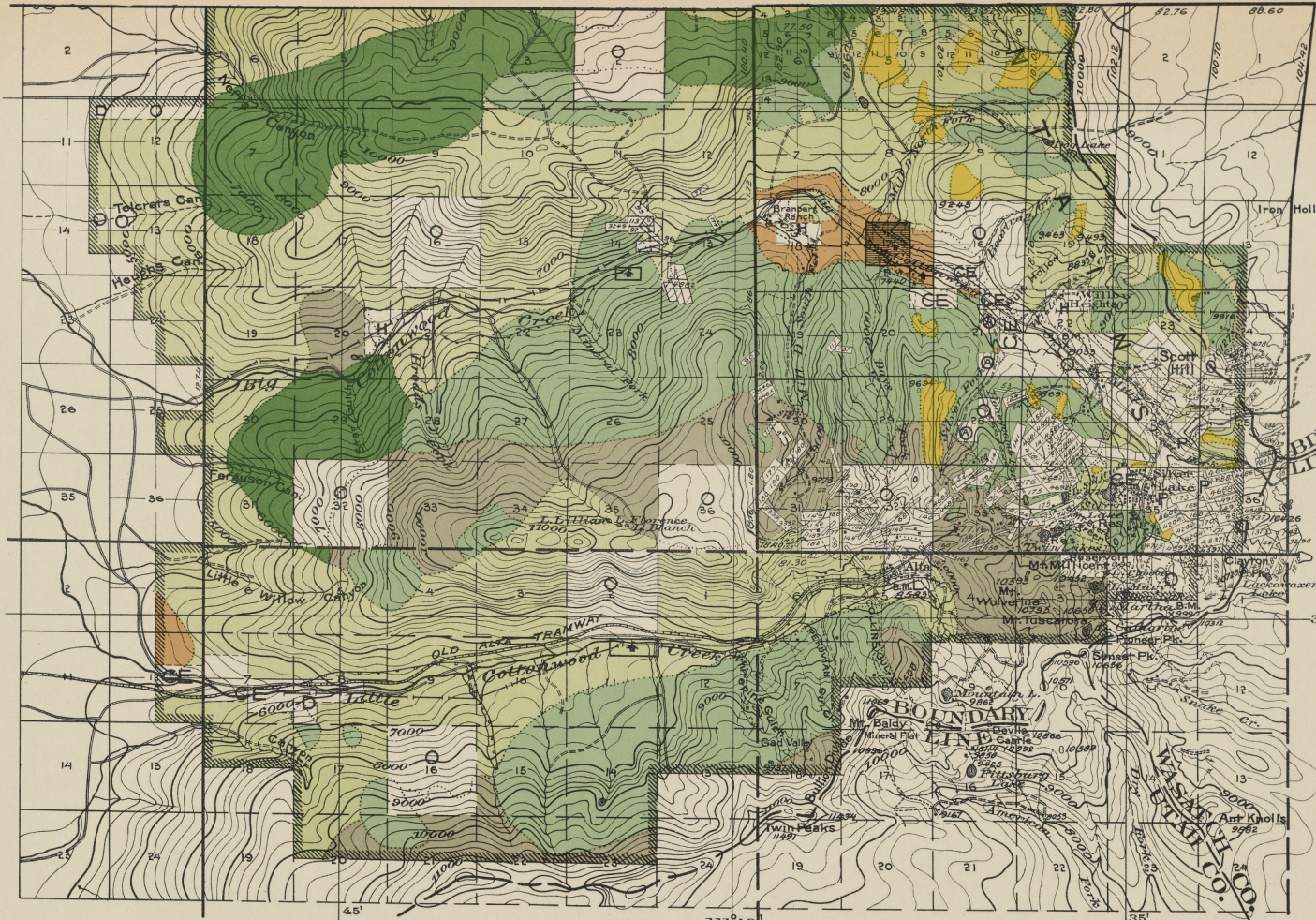
4-5'

R 1 E

R 2 E

R 3 E

SALT LAKE
SALT LAKE BASE AND MERIDIAN



40°40'

T 2 S

35'

T 3 S

Compiled by C.C. Bassett
G.T.T.—1908

R 1 E

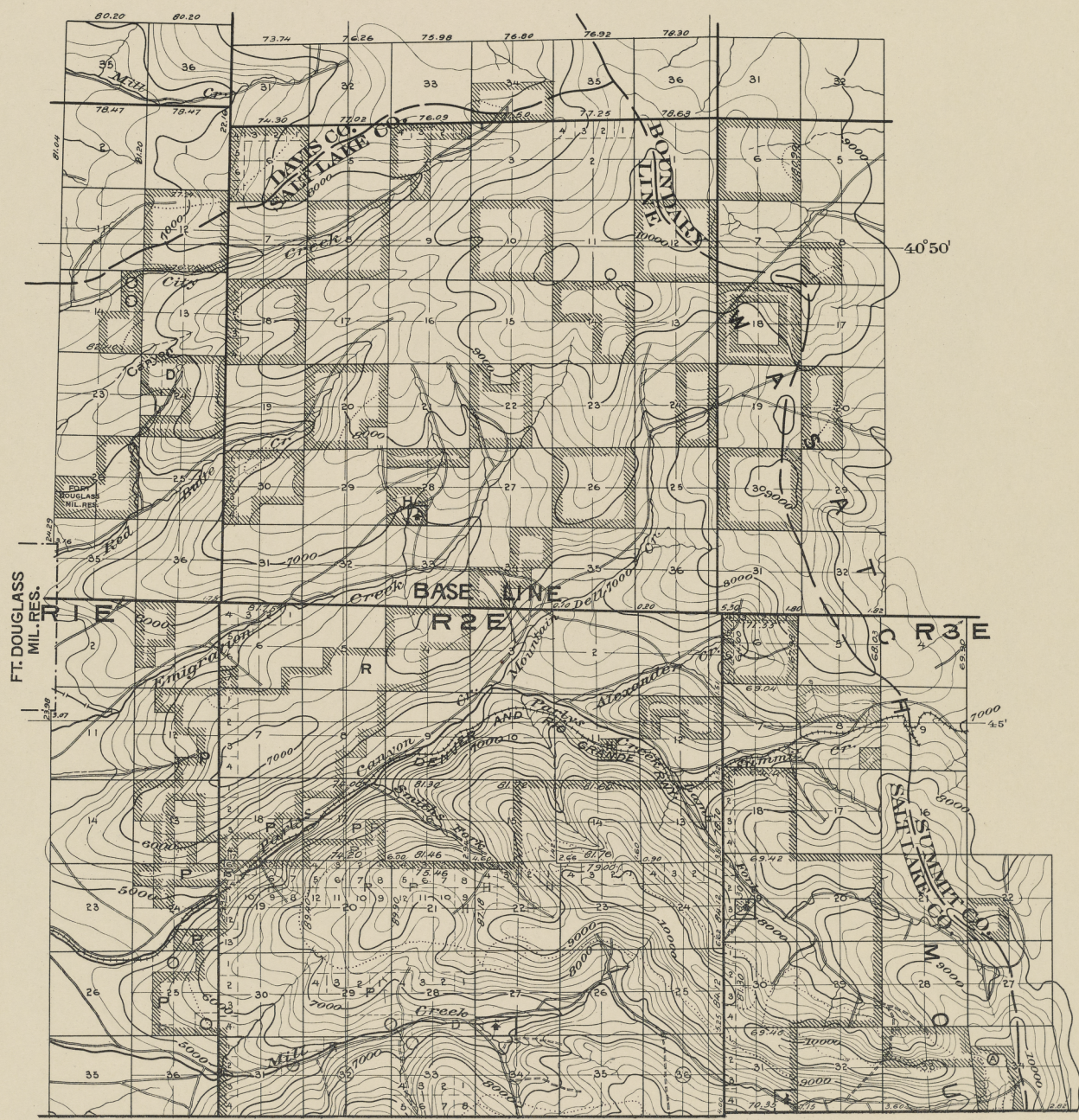
R 2 E

R 3 E SALT LAKE
SALT LAKE BASE AND MERIDIAN

T 2 N

T 1 N

T 1 S



FT. DOUGLASS
MIL. RES.

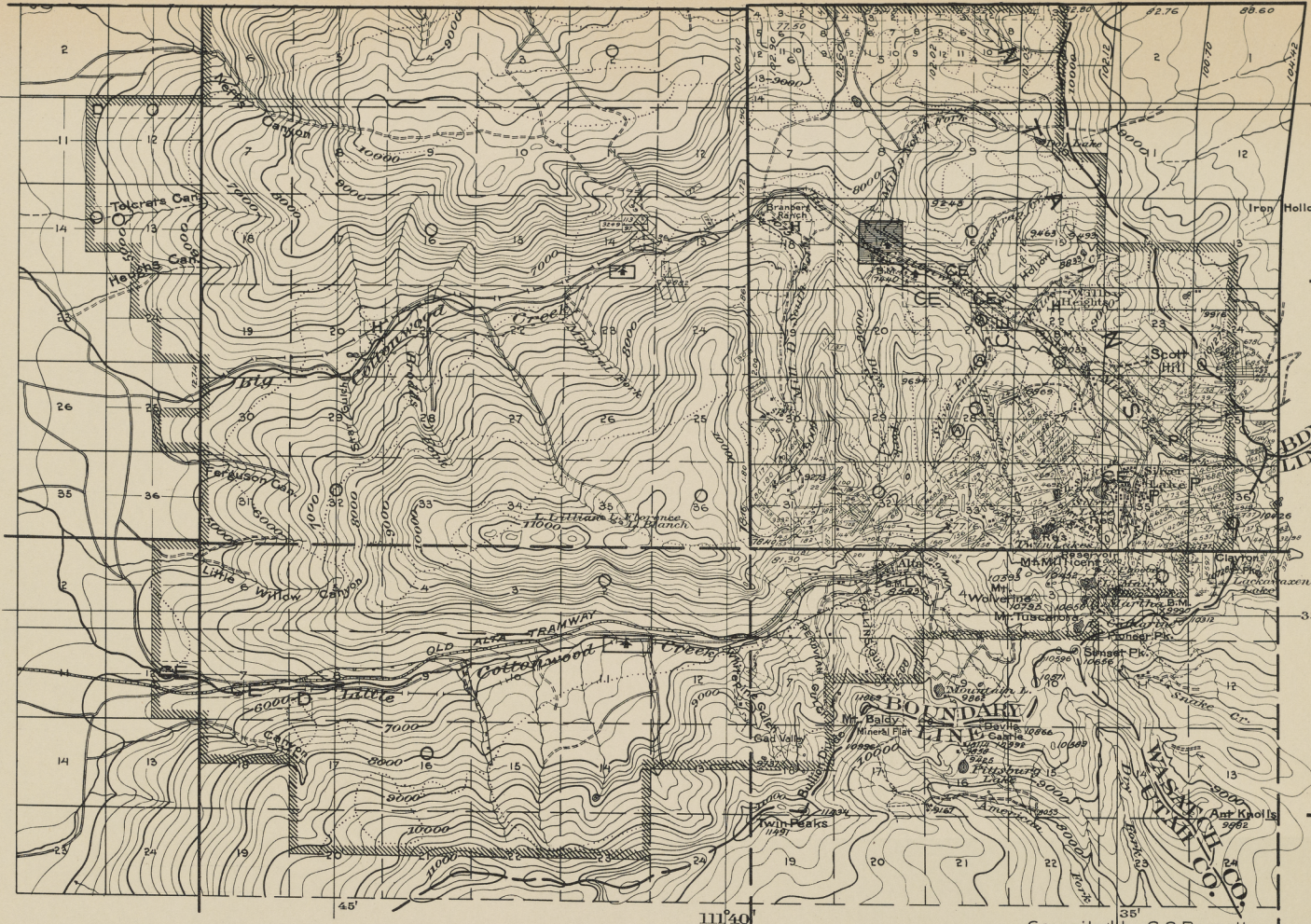
Compiled by C.C. Bassett
G.T.T.—1908

SALT LAKE
SALT LAKE BASE AND MERIDIAN

R 1 E

R 2 E

R 3 E



40°40'

T 2 S

35'

T 3 S

111°40'

Compiled by C.C. Bassett
G.T.T.—1908

R 1 E

R 2 E

R 3 E SALT LAKE
SALT LAKE BASE AND MERIDIAN

