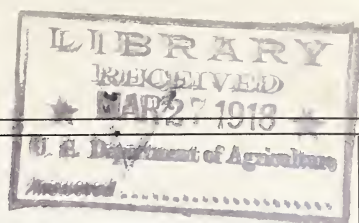


## **Historic, Archive Document**

Do not assume content reflects current scientific knowledge, policies, or practices.





# BURBANK'S 1918

OFFERING OF TWENTIETH CENTURY

## Fruits, Flowers *and* Various Economic Plants

Having been in business more than forty years, millions of trees and plants raised in my establishment are now blooming and bearing fruit, not only in the Western United States, but everywhere on earth where the sun shines and trees and plants can be grown. Customers do not complain that the varieties which I have sent out are not as represented. Does this forty years' record mean anything, and is it surprising that such a reputation should be worth trading on? *Counterfeit coins are not counterfeited—it is the genuine ones that are misrepresented.*

At this date, November 15th, there have been grown and shipped out of the State of California this season *ONE MILLION, ninety-two thousand, two hundred and fifty-six crates* of plums and cherries alone of varieties which were created on my own grounds, besides one large shipping firm which could not make a variety report. Need more be said in regard to the value of my horticultural creations?

Some *SEVEN MILLION BUSHEL*s of Burbank Potatoes were also grown here this season, and unnumbered carloads of *Rhubarb, Prunes*, and other horticultural products can be added for good measure.

### PRICES

*The time and expense involved in the production and introduction of these new fruits and flowers have been great, as those acquainted with the facts are well aware, but it is my aim to place the new varieties in the hands of growers as quickly as possible and at as low prices as are consistent with sound business, in at least, partially repaying for their production and introduction. The expense of properly packing a tree or plant for safe delivery to my customers is almost as great as that for packing twenty or a hundred. No charges for packing are made on anything mentioned in this catalogue.*

Would call special attention to the very valuable new but old food grain "*QUINOA*" described in my seed catalogue. Nearly three hundred years ago Montezuma required the Pueblos of Mexico to fill his eighteen royal granaries of 9,000 bushels capacity each with this white "*Quinoa*" of which I now offer seed.

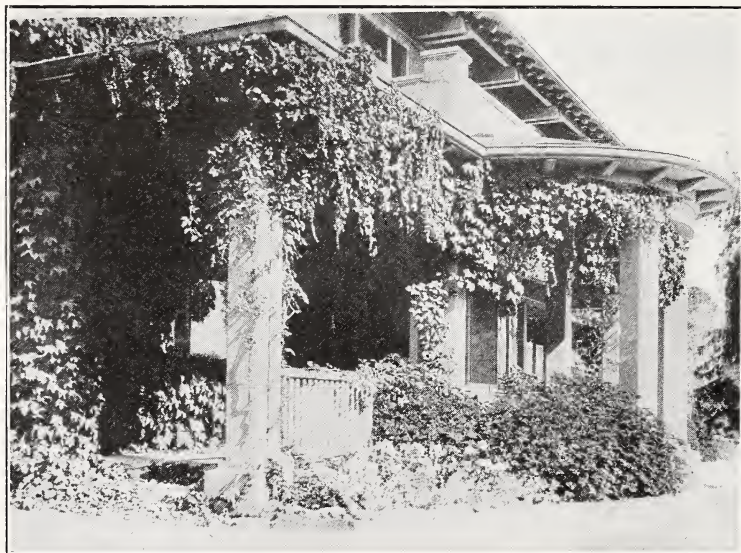
LUTHER BURBANK

*Burbank's Experiment Farms*

Santa Rosa, California

## New Shipping Plum "Eldorado"

Many years ago a small black Japanese Hybrid plum was produced on my Sebastopol place which was the wonder of all who saw it, ripening early in July and remaining in best condition on the trees through the summer heat to the last of August; a wonderful plum, but too small for shipping purposes. Thousands of seedlings from it were long keepers, but still too small; but at last, in 1904, "ELDORADO" appeared, just like the little purple "All Summer," but about ten times as large; a big apple-shaped black plum which was fully colored and in fine shipping condition with the other early plums, and remaining so for weeks, even to the last of August. No other plum compares with it in the combination of great size, early ripening, late keeping, rich black color so much desired by growers and shippers. "ELDORADO" has a firm light-salmon flesh of fine quality, and is a *freestone*. Of the many valuable shipping plums which have been produced and introduced from my grounds, among them the "Wickson," "Burbank," "Beauty," "Climax," "Formosa," "Gaviota," "Santa Rosa" plums, the "Conquest," "Stoneless," "Giant," "Sugar," and "Standard" prunes, the "Burbank" cherry, "Pineapple" and "Vandeman" quinces, etc., none has promised as well as this well tested "ELDORADO." The trees are very strong, vigorous growers, and have never failed to produce a full crop of big, black, beauty plums. I had thought it best to wait another year and offer *trees*, but several prominent growers and shippers who have seen the trees and fruit have urgently requested me to offer *grafting wood this season*, and I do hereby offer a limited amount. Price per foot, liberal measure, \$10. Not less than one foot will be sold to any one person or firm this season. The time, skill, care, and expense required to produce these new fruits are great, and no patent can be invoked to protect these and others which have proved to be of such priceless value to growers, carriers, dealers, and consumers.



THE BURBANK HOME IN SUMMER

# Burbank's 1918 Fruits, Flowers and Plants

## The Burbank Royal Walnut

The first "ROYAL" Walnut ever produced by the skill of man was produced on my own grounds and was first named, first described, and first introduced by myself. If you wish to start right it is well to go to the fountain head by purchasing trees or nuts for a grove DIRECT



A "ROYAL" Tree Growing in Connecticut; Nine Feet in Height at Fifteen Months of Age. Any Walnut the First Year After Transplanting Grows Only a Few Inches. The Second Season the "ROYAL" Often Grows Six to Ten Feet.

FROM THE ORIGINATOR. It saves trouble later, as the originator of a new tree or plant or product of any kind must feel an interest in its success which is not often shared by others who have something to offer "just as good as Burbank's."

The "Royal" is the most rapid growing and most valuable hardwood timber tree known and has also been found to be the best of all as a foundation stock for all the Persian walnuts. It is also one of the handsomest of shade trees. If interested send for special circular.

*Extra Selected* one year nursery trees of "ROYAL" from the *Original Tree*; each, \$1; ten, \$8; hundred, \$75.

*One year selected* as above; each, 60c; ten, \$5; hundred, \$30.

*One year general run* as above; each, 25c; ten, \$2; hundred, \$15.

*Nuts for planting* from Original Giant tree; each, 15c; ten, \$1; hundred, \$6.

*Wood for grafting* from the Original Tree; foot, 50c; ten feet, \$3; hundred feet, \$25.

## The New Apple—"Goldridge"

A seedling of the Newtown Pippin, which ripens soon after the Gravenstein and Baldwin and is in best condition for six months or more. Fruit averages about as large as apples ever grow and as smooth and perfect as if turned in a

lathe; clear yellow with a faint crimson blush. Quality, for any purpose for which apples are ever used, surpassingly fine. Has been almost universally pronounced the "*best apple ever produced.*" As many of my customers desire to test new fruits quickly I offer trees this season on dwarf French paradise roots.

Price, one year, 60c; three, \$1.50.

## The "Cardinal" Balloon Berry

For many years I have been growing seedlings from a very unique berry which was sent me from Central China. One of these proved to be just what was sought, a new berry fruit of enormous size and superior quality, handsome, productive, and *ripening before any other bush fruit*, with strawberries. Balloon Berry is an appropriate name as, like the strawberry, there is no core but a large open space like the raspberry. Fruit of "Cardinal" is bright red, delicious mild or sub-acid aromatic flavor, being most like a delicious Salmon Berry of *gigantic size*. The bush is very ornamental, growing to four or five feet in height and having strong self-supporting canes. *The best* of all early berries for home use. Strong plants which will commence to bear at once, each, \$1; three, \$2.50; five, \$3.50; ten, \$6.



CARDINAL BALLOON BERRY, NATURAL SIZE

## A New Himalaya Berry—The "Superb"

The well known "Himalaya" introduced by myself some twenty years ago is proving to be of inestimable value. Thousands of acres are now in bearing and it has been found to be the *most productive of all berries*, as well as the *best keeper*, by careful test at one of the United States Experiment Stations. These facts are so well known that particulars need not be given here. The new berry, "*Superb*," is the *best result of eighteen more years* of the growing and selection of seedlings, and it is by far the most highly flavored, sweet, and delicious black-berry grown and is larger and more productive even than the well known "Himalaya."

Strong yearling plants, \$1; three, \$2; rooted tips, 60c; three, \$1.25.

## The Burbank Thornless Blackberries

These thornless blackberries produce when well established, enormous quantities of firm, extra sweet fruit. The vines are just what all berry growers and berry pickers have wished for and waited for during the past one hundred years. The production of new thornless berries has been very expensive of time, thought, and labor, and I take peculiar pleasure in offering them to growers. No one who has not worked among them can imagine the sense of perfect security from ugly wounds which all other blackberries are prepared to inflict. I am still at work improving them, but am happy to offer two varieties which produce great quantities of large, sweet, luscious fruits. They ripen later in the fall than most berries and are unlike the common blackberry which produces a multitude of unnecessary suckers. These grow only from tips. Both of these here offered are as free from spines as a silken thread, making them, owing also to their firmness and rare keeping qualities, altogether the most desirable of all berries for home use or for market. "SANTA ROSA," the earliest of the two, and "SEBAS-TOPOL," a few days later and possibly slightly larger.

Each, 50c; both, 90c; ten of either or both, \$3.

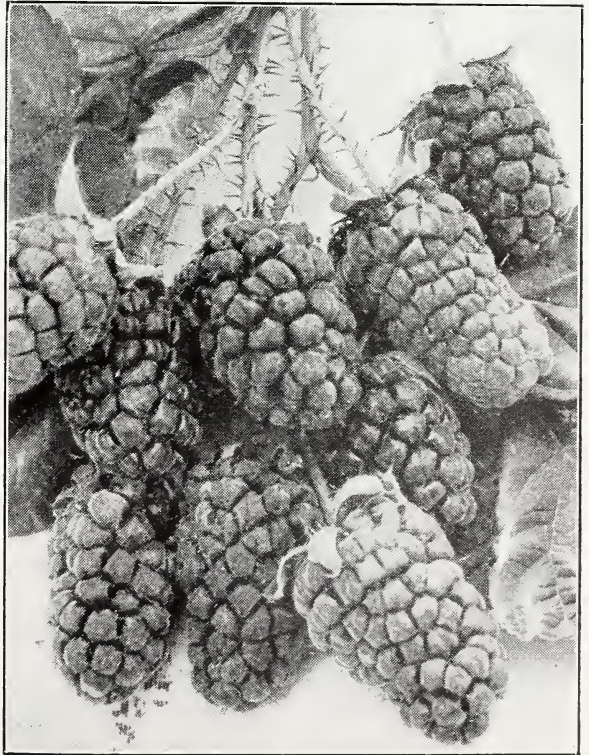
## New White Blackberry—"Snowbank"

This new berry is a seedling of "Iceberg," sent out several years ago, the first white blackberry ever produced, and is a great improvement on that variety in size, quality, and especially in productiveness. Both of these new white blackberries are too soft for market, but are very unique and pleasing for home use and of excellent quality.

Each, 75c; three, \$1.50; ten, \$3.

## Phenomenal Berry

It takes a long time for a new fruit to come into general cultivation and have its qualities recognized. The Phenomenal was produced on my grounds in 1890 and introduced in 1893, but as it was sold to an Eastern seedsman where it did not thrive as it does in the West, it was not generally known here until nearly ten years later. Meantime the Loganberry had become well known in the West and now, though the Phenomenal is much larger, sweeter, firmer and better flavored and of better color, they all pass under the name of Loganberries. The true Phenomenal Berry from the original stock, each, 25c; ten, \$1.50; hundred, \$10.



PHENOMENAL BERRY

## A New Strawberry—"Exquisite"

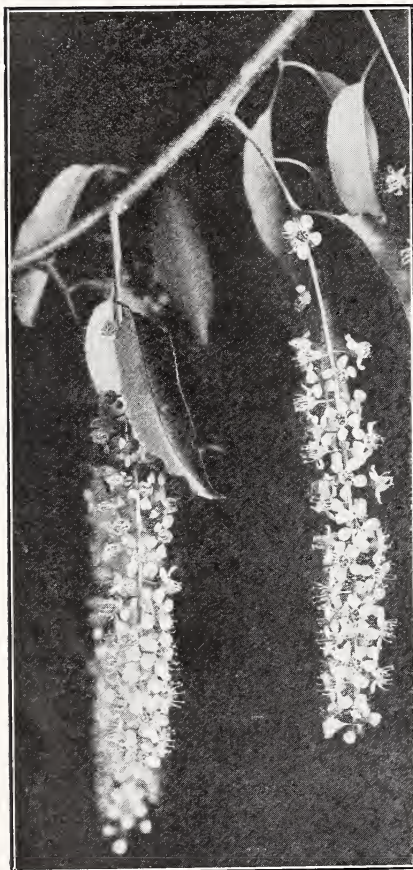
A new departure in hybrid strawberries. Unusually vigorous and fairly productive plant, making just the right quantity of vigorous runners. Fruit large, conical, sometimes flattened. Very delicious. A berry with a true wild strawberry flavor for every home. Does well on rather poor sandy soil. Ten, 50c; twenty-five, \$1; hundred, \$3.

## A New Grape

From the warmer part of Central China I received, some ten years ago, seeds of a new species of grape said to bear a fruit very useful for jellies, etc., and having enormous ornamental leaves. Thousands of seedlings have been raised and fruited of it, and from *the best one of all of these* I offer seedling plants which bear early and abundantly large long clusters of medium sized grapes which when cooked have the exact flavor of *Blackberries*; and stranger yet, the vines are wholly covered with curious nodules resembling thorns but wholly harmless. People who pass the vines often remark, "What a curious blackberry vine." One of the most ornamental vines in existence. Each, 50c; tree, \$2; hundred, \$15.

## Buffalo Berry

From a select heavy fruiting stock. Shrub; hardy everywhere. Silvery leaves and abundance of currant-like fruit. Good for jellies. Each, 20c; ten, \$1; hundred, \$8.



CIRUELA BLOOMS

## Evergreen Patagonian Cherry "Ciruela"

The most rapid growing of all cherries. Lumber greatly prized for furniture. Very ornamental symmetrical upright grower; long clusters of fruits in profusion like that of *Prunus serotina*, but larger and sweeter. Especially valuable for drying. Each, 25c; ten, \$1.50; hundred, \$12.

## Oso Berry (*Nuttallia Cerasifera*)

Rare fruiting shrub with broad magnolia-like leaves, racemes of white flowers and oblong purple fruits in abundance. Greatly improved cultivated variety. Each, 25c; ten, \$1.50; hundred, \$10.

## *Dracoena Indivisa Compacta*

The *Dracœna* (Dragon Tree) so freely used in the streets and parks of California does not grow very uniform in many cases. "Compacta" is the finest form, growing to about 12 feet in height, then branching into a beautiful, symmetrical tree. The foliage is the best tying material so far found for shrubs, vines, berry plants, etc.;



far better and stronger than the New Zealand Flax or Hemp rope. Sooner or later this *Dracæna* will be grown by the acre for its fibre, which requires no preparation except to moisten the leaves and split into widths, appropriate for use. Large plants, each, 40c; ten, \$3; hundred, \$18.

### Alabama Sweet Gum—(Liquidamber)

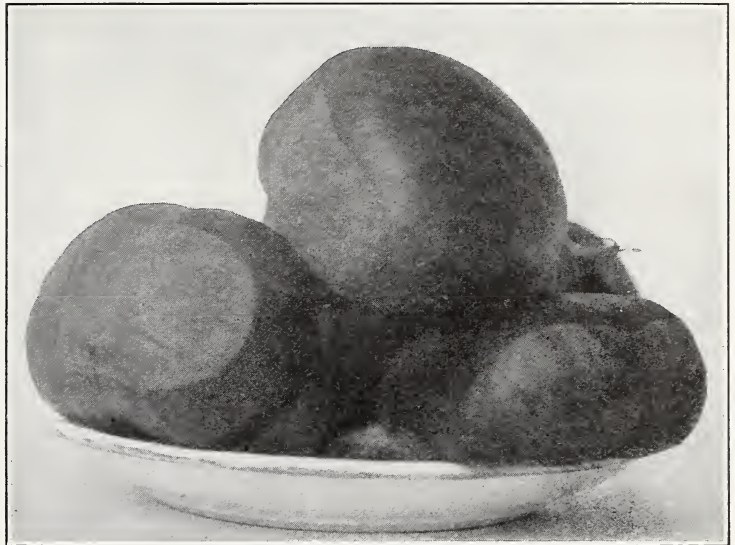
Makes a large, beautiful, maple-like tree with colored foliage in the Fall. Trees two feet, each, 25c; ten, \$2.

### Mountain Ash—Special Selected

Medium sized tree bearing great drooping clusters of bright scarlet berries. Very much more ornamental even than the common varieties, all of which are beautiful. One year, two to three feet, each, 50c; ten, \$3.

### Miracle Chestnut

Now first offered; bears at once and continuously, large sweet chestnuts, even when only a foot high. Only a few grafted trees this season. Each, \$5.



MIRACLE CHESTNUT

### Purple Leaved Barberry

Single specimens or in hedges the purple barberry is very ornamental, especially when associated with the Golden Privet. Each, 25c; ten, \$1.50.

### Fruiting Barberry

Bears great quantities of acid crimson fruit. Each, 25c; ten, \$1.

### California Privet—New Variegated

Some twenty-five years ago I imported the Corean Privet, which was purchased by several Eastern nurserymen, and found to be an ideal hedge plant, and millions on millions of this "California" Privet are offered by nurserymen, and thousands of miles of beautiful hedges of it are now growing. The Golden variegated form is most beautiful either as a single specimen or in a hedge. Strong field grown plants, each, 50c; ten, \$3.50.

## A New Asparagus—"Quality"

If any more delicious vegetable than crisp, well grown asparagus has been invented, tell us about it. And yet people who buy it in the markets seldom, if ever, get the best in its best condition. If you possess half a square rod of ground almost anywhere under the sun, you can produce a daily supply of this most healthful vegetable for a family for several months at so little care and expense that you will have good reason to laugh. Thoroughly fertilize the space allotted, spade deeply, add more fertilizer and spade again, making the soil rich, deep, and fine. The bed should be a little raised above the paths when finished. Plant the young plants four inches under the surface, placing them eighteen inches to two feet apart. Do not cut the stalks the first season if you desire best results for the *next fifty years*, during which with very little care, never-failing crops will be produced. Many years ago I produced and introduced a new large, white asparagus, which excelled in flavor all others known. In the passing years since, even this has been greatly improved and I now for the first time offer this, the best asparagus ever grown.

"Quality" produces very large, sweet, light-colored stalks which will be a delight to all who grow or use it. You will find that it is "not like other asparagus."

Yearling plants, ten, 75c; twenty-five, \$1.50; hundred, \$5. Select two-year-old plants, ten, \$1.50; twenty-five, \$3; hundred, \$8.



A GOOD ARTICHOKE

## The New Artichoke "Santa Rosa"

The most productive and the best flavored of all artichokes. This superior variety originated on my own grounds from seed sent me directly by King Emmanuel of Italy from his private garden. Strong plants, each, 75c; four, \$2.

## Artichoke—Improved Spanish

Far superior to the ordinary artichoke. Strong plants, each, 30c; four, \$1.00.

## Artichoke Seedlings

Each, 20c; four, 75c; ten, \$1.50.

## Perpetual Rhubarb—Burbank Giant

The standard from which many fortunes have been made originated on my grounds, and all the "Rhubarb Kings" of California and South Africa have been produced through this production which has proved of such unusual value. From \$1,500 to \$2,500 per acre the first year is claimed by some parties in this State who have planted it for the Eastern markets. If half as much can be made when intelligent culture and marketing are combined, the profits would seem to be sufficient. Not suitable for cold climates. Plants direct from the original mother plant, each, 40c; ten, \$3; hundred, \$15.

## Pawpaw

Young plants from a large fruiting very superior market variety. Each, 40c; three, \$1.

## Shasta Daisy — "Alaska"

The true "Alaska" has never been surpassed in size, beauty, and abundance of flowers. From divisions of my original stock, each, 25c; ten, \$1; hundred, \$6.



TWO ALASKA DAISIES

## Australian Fruiting Passion Vine

This *Passiflora* is hardy in the larger part of California and produces quantities of fruit the size of duck eggs, with a hard shell. This fruit is highly prized in Australia, New Zealand, Africa, and other countries and is shipped to England, where it brings fancy prices on account of its exquisite flavor.

Each, 40c; three, \$1; ten, \$2.

## A Really Wonderful New Everblooming Poppy

Several years ago I succeeded in crossing the Oriental (perennial) poppy with the Pæony flowering (annual) poppy. The result was a strain of single *perennial everblooming* poppies bearing enormous flowers on long stems, of various shades of scarlet, crimson and orange. *Unlike all other poppies, these bloom all the time throughout the year* in this climate and may perhaps be hardy in severe climates.

Field grown roots, each, 40c; three, 90c; five, \$1.25.

## Offer Extraordinary

---

### Burbank Gladiolus

*One hundred thousand absolutely new varieties* of about every form and color ever produced from this wonderfully variable plant, including scarlet, crimson, yellow, blue, purple, lavender, orange, salmon, and pink, with infinitely varied combinations of rainbow colors. Such a mass of brilliant colors can not be produced at many times the cost of these in any other flower. Last season people came in multitudes to look over the fence in admiration of these very ones here offered. Not an old one in the whole lot. All Burbank productions. Bulbs, each, 40c; ten, \$3; hundred, \$20; thousand, \$150.

### New Gladiolus—"Elora"

Height, three and one-half feet; great bloomer, even from the smallest bulbs; slender blue green foliage; long, full truss; flowers produced in greatest abundance, four and a half to five inches across; WHITE suffused with pale violet; yellow throat with dainty crimson featherings; very striking. Multiplies with great rapidity. Unequaled in health and vigor. It is destined to be the forerunner of a new race. Bulbs, each, \$3; ten, \$25.

Gladiolus bulbs can be planted at *any time of year*, when most convenient to the planter, in all climates where the ground does not freeze over three inches in depth; in colder climates, all Spring and early Summer; and, if planted in succession, will yield a wealth of blooms which no other flower can surpass in abundance, beauty, variety, or ease of culture.

Plant *six inches deep* and two to six inches apart each way in beds, or two to six inches apart in rows, which may be one to four feet apart.

### Watsonia (Bugle Lily)

A genus of sixteen species of bulbous plants, all from the Cape of Good Hope, except one from Madagascar. The flowers of the original species have scarlet, rose, and white flowers only and bloom from July to September. They are very much like Gladioli, having the same foliage and a similar corm. The main differences between Watsonias and Gladioli are that the Watsonias have regular flowers, while the upper and lower petals of Gladioli differ in form and size. More beautiful varieties of Watsonias are now growing on my farms by the acre than in all the rest of the world. A veritable transformation from an ordinary flower to one equal to the wonderfully varied Gladiolus. The purity of colors makes it especially valuable for floral work. Treat Watsonias exactly like Gladiolus, though the bulbs are slightly more sensitive to drying too much. From August to November are the best months to move them. Bulbs ripen in August and September. Orders taken now. Royal White resembles a tall snow white Gladiolus but of a pure glistening crystal white never seen in Gladiolus.

### New Watsonia—"Snow Storm"

A perfect storm of snowiest white, graceful, open, saucer-shaped flowers, nearly three inches across. Short, broad foliage; height, four to seven feet. Bulbs, each, \$1; ten, \$9.

## New Watsonia—"Salmonia"

Fiery salmon flowers, compact truss, short dark-green foliage. Very large, long, tubular flowers. Bulbs, each, \$1; ten, \$9.



BURBANK'S WATSONIA HYBRIDS  
New Types, New Colors, Enormous Flowers, Double and Single

## New *Watsonia*—"Royal White"

No *Watsonia* before seen can compare with "Royal White" in its astounding productiveness of large, purest white flowers borne on double and triple trusses. "Royal White" most resembles a tall branching white *Gladiolus*, but will produce nearly or quite ten times as many blossoms to each bulb, and of a crystal, glistening whiteness never seen in *Gladioli*. The coming florists' flower, "Royal White" produces *all large bulbs* (no small ones), multiplies rapidly, and in all respects is the best *Watsonia* ever produced. Height, four to five feet. Large bulbs, each, \$1; ten, \$8; hundred, \$70.

## New *Watsonia*—"Combustion"

Very dwarf plant, with short, slender foliage. Stems three feet in height, with flowers of intense fiery scarlet salmon color. Commences to bloom earlier than others. A beautiful foreground for the taller varieties. Bulbs, each, 90c; ten, \$8.

## Watsonias

*New Hybrid Seedlings*, mixed. Bulbs, ten, 75c; hundred, \$5.

## A New Hybrid *Hemerocallis*—The "Burbank"

The "Lemon Lily," though bearing a small flower, has been considered one of the best until recently the "Grandiflora Aurantiaca Major" was introduced. And now comes a new one, the "Burbank," which in combination of size, great beauty of form and color of the flowers, and their amazing abundance and perpetual production, has never been equaled—a new form. Height, twelve to eighteen inches. Every little plant blooms abundantly from the first; the flowers open wide and flat, not irregular and tubular like all those heretofore known; flowers five to six inches across; purest sparkling pale-lemon yellow throughout. Increases rapidly. Each, \$2; three, \$5.

## A New Hybrid *Hemerocallis*—"Calypso"

The flowers of "Calypso" resemble big pure lemon-yellow lilies, and can be produced anywhere, while the true lilies are not easily grown. The flowers are produced nearly all the season; the petals are revolute like the true lilies; height, three feet. Each, 75c; three, \$1.50.

## Another New *Hemerocallis*—"Surprise"

Flowers, very light straw yellow—almost white—very large, full, and open. Blooms almost constantly through the season; height, two feet. Greatly surpasses the older kinds. Each, 60c; three, \$1.50.

## *Dierama* (*Sparaxis Pulcherrima*)

The most graceful and one of the most beautiful of all decorative plants. Long, slender, grass-like foliage and slender, wiry, gracefully drooping stems four to six feet in height, bearing numerous pendulous deep rose-colored flowers like a gigantic *Ixia*. Of unique and graceful decorative value. For parks, lawns, gardens, hall, or house adornment, few plants can compare with these. Hardy where the ground does not freeze over three inches deep. Large clumps, each, 75c; three, \$1.50; ten, \$2.50; hundred, \$12.

## Isemena Calathina

This unique and beautiful flowering bulbous plant from the mountains of Peru belongs to the Amaryllis family, but is much more easily raised. The large pearly white flowers are among the most unique and handsomest of bulbous plants. Plant out of doors in California. Large field-grown bulbs, each, 30c; ten, \$2.

## Cannas

Too well known to need general description. California grown Cannas far surpass in vigor those grown in colder climates, where they have to be stored to avoid freezing.

### “Tarrytown”

The best of my crimson seedlings. Height, four feet. It is well known that no Canna surpasses this triple truss, pure crimson Canna in brilliance of color and freedom of bloom. It sends out truss after truss of flowers from Spring to frost; a veritable mass of crimson. Each, 30c; four, \$1; ten, \$2; hundred, \$12.

### Canna—“Burbank”

This is now well known and prized everywhere for its giant, pure yellow flowers and broad, thick, dark-green foliage. Height, three feet; each, 20c; four, 75c; ten, \$3; hundred, \$12.

### Canna—“Wintzer’s Giant”

The largest Canna ever grown. The deep crimson flowers are six to seven inches across. Free bloomer. Height, five feet. Each, 25c; four, \$1; ten, \$2; hundred, \$12.

### Canna—“Firebird”

One of the finest of all the Cannas. Enormous seven-inch cardinal scarlet flowers. Early and abundant bloomer. Each, 30c; four, \$1; ten, \$2.

### Canna—“Yellow King Humbert”

Foliage green. Enormous clear lemon yellow flowers brightly spotted with crimson. Each, 30c; four, \$1; ten, \$2.

## New Hybrid Crinums

The Crinums have flowers and bulbs somewhat resembling the Amaryllis. Many of the best species are tropical and can not, therefore, be grown where frosts occur. Some twenty-five years ago my own work with the Crinums commenced, and from this work new, beautiful, and more *hardy varieties* have been produced.

The bulbs of all those here offered will thrive outdoors throughout most of California and similar climates, and anywhere if taken up in the Fall and kept dry through the Winter. Flowers very large, like Amaryllis, mostly purest white and pale rose; often fragrant. *Beautiful new hybrids. Enormous bulbs weighing five to seven pounds.* Each, \$2; ten, \$15. Vigorous off’sets, each, 50c; ten, \$3.50.

## A New Agapanthus (Cape Colony Lily)

### Agapanthus Albo Gigantea

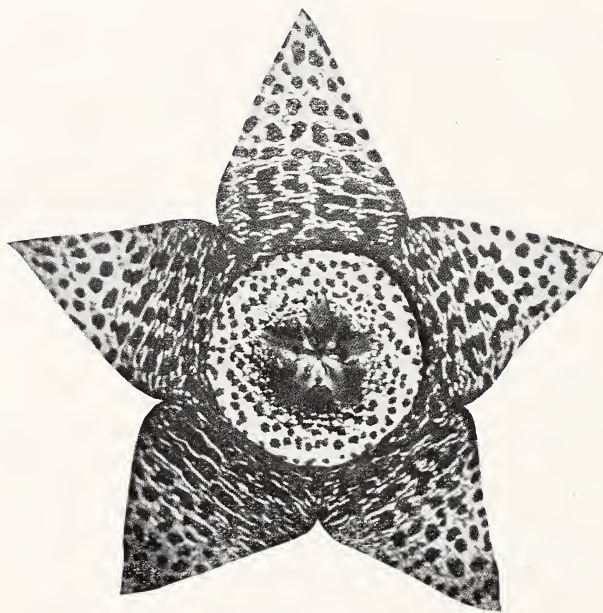
A new gigantic Agapanthus, bearing immense heads of snow-white flowers on strong stems, nearly four feet in height. The flowers last for two or three months and have a most unusual decorative value. A distinct new florists' flower which will become popular everywhere. Never before offered. Strong field-grown divided roots. Each, \$2; two, \$3. One-year seedling plants, each, 30c; ten, \$2.50.

## A New Tritoma—"Exquisite"

A most beautiful new dwarf, almost ever-blooming Tritoma, bearing yellow flowers, shaded crimson, in unusual abundance. Each, 50c; ten, \$3.

## Acanthus Mollis Latifolia

One of the most striking, rapid growing, and most decorative of all perennial garden and park plants. Gigantic, glossy, crenate leaves in abundance. Height, three to four feet. Improves in beauty and effectiveness from year to year. Rare. Fine field-grown plants, each, 75c; two, \$1; five, \$3.



STARFISH PLANT

## "Starfish Plant" (Stapelia Asterias)

An interesting low-growing South African succulent plant with very curious but not fragrant flowers, two inches or more across. A warm, sunny location suits it. Each, 20c; ten, 75c.

## The New Asters

For many years I have been greatly interested in the American Asters. The wild ones grow in every State of the Union, and, though they have smaller blooms, less highly colored than the improved China Asters, yet the flowers are

produced a hundred times more abundantly and have fully as charming tints, and the plants can be grown anywhere with almost no care or attention and, best of all, are hardy everywhere and do not have to be renewed each season, but last over from year to year. They are greatly prized in Europe and are rapidly becoming so in America. I have always admired the changing tints of the wild ones when crossing the continent anywhere in the Fall, but their wonderful decorative beauty is never fully appreciated until brought under scientific development through the skill of the plant originator.

During the past twenty years magnificent new varieties have originated on my farms. Among these are new pure deep *crimson* ones with greatly enlarged flow-



ers, and snowiest white ones growing thickly along the numerous long slender branches, making wreaths of beauty for decoration; these are plants growing six feet in height and as much across, with ten thousand flowers each; others with the most rare and charming tints of pale and dark blue lavender and purple. I have given names to a few of these among most decorative of all Fall blooming plants and take great pleasure in offering this season these new beauties. They surpass any before offered anywhere.

### “Wreath of Snow”

Wonderful bloomer; snow white flowers in most graceful wreaths; height, six feet.

### “Crimson Cloud”

This may almost be called semi-double, as the petals are so thickly arranged about the yellow disc; flowers very large and pure *crimson*. This color is new in this class of plants. Height, two to three feet.

### “Desert Sunset”

Large lavender blue flowers with a faint tinge of purple. Height, three feet.

Any one of these, each, 50c; the three, one each, \$1; ten, your own choice of each, \$1.50.

### Golden Rods

The Golden Rods, too, grow in every State and have received my most careful attention and, from an extensive collection which has been under observation and improvement for years, I have produced two varieties which are unusually desirable. These, like the asters, are perennial. Both may be readily increased each season by division.

### “Pale Gold”

Unusually large, graceful clusters of pale gold or lemon yellow flowers in abundance. Height, three and a half feet.

### “Golden Fluff”

Deep yellow fluffy flowers like great clusters of ostrich plumes. Height, three feet.

Each, 25c; both, 40c; ten, \$2.

### The “Square” Plant—(Silphium Grandiflorum)

A greatly improved variety of a native, hardy, easily grown, perennial growing four to six feet in height and very much resembling a sunflower except that the stalks are sharply *square* instead of round. The flowers are yellow and about four inches across. Well grown stalks make light and unique *square* canes.

Roots, each, 25c; three, 50c; ten, \$1.

### New Dahlia—“Oakland”

The new, gigantic, eight-inch pure white; selected from my seedlings as the official flower of the city of OAKLAND, CALIFORNIA. Field roots, each, \$1.

## New Hybrid Dahlia — "Dazzling"

A brilliant fiery scarlet, unique Dahlia from a cross of the twisted petal Cactus type and a wild scarlet Dahlia (Purpusi) lately discovered in Mexico by Dr. Purpus, from whom I purchased the entire stock of seed. Field roots, each, \$1.

## New Dahlia — "Lavendera"

A new gigantic lavender-pink Dahlia, seedling of "Geisha." Field roots, each, 40c.

None of these three new Dahlias have ever been offered before, though they have been greatly admired by many Dahlia specialists.

## Hybrid Amaryllis

Seedlings from the largest and finest type in existence. Each, 25c; five, \$1; ten, \$1.50.

## Actinidia

Hardy deciduous climbing vine; fragrant white flowers and edible fruit, in appearance like a very small banana. Each, 40c; four \$1.

## Vitex Laciniata

Handsome blue flowering shrub from China. Each, 30c; ten, \$2.

## Cissus Heterophylla

Dwarf vine bearing a profusion of berries which are first green then turquoise and later snow white. Each, 25c; ten, \$1.50.

## New Rose — "Cathay"

Cherokee and Crimson Rambler cross. Extra strong grower and profuse bloomer. Single flowers deep rose-pink, in clusters, each blossom 1½ inches in diameter. Does not fade and does not mildew. Field grown plants, each, \$1.

## New Rose — "Garland"

Cherokee and Crimson Rambler Cross. Strong grower, fine foliage, does not mildew. Flowers of a light shell-pink color in enormous clusters; each cluster a perfect bouquet which lasts, without fading, for a long time. Field grown plants, each, \$1.

## New Rose — "Dainty"

Crimson Rambler type. A good grower and heavy bloomer in beautiful clusters of medium sized flowers of a dark pink shading to a pure white center; yellow stamens; fragrant. Field grown plants, each, 60c.

## Hardy English Primrose — Giant New Hybrids

One of the best perennial Winter-blooming plants for moist climates and shady places. Very beautiful colors. Each, 25c; three, 50c; ten, \$2.50.

ANTHERICUM MAJOR—White or pale rose. Each, 20c; ten, \$1.

IRIS—New, tall, pure yellow Chilian. Each, 60c.

RICHARDIA (*Calla*)—A fine, new, free blooming variety. Ten, 50c; hundred, \$3.

PHORNIUM TENAX (*New Zealand flax*)—A large, handsome, useful, and decorative perennial plant. Field grown. Each, 40c; ten, \$3.

SOAP ROOT—A new dwarf kind which multiplies rapidly by bulb division. Each, 20c; ten, \$1.

