

## **Historic, Archive Document**

Do not assume content reflects current scientific knowledge, policies, or practices.



# F. W. BROW NURSERY CO.

2.61  
ROSE HILL, N.Y.

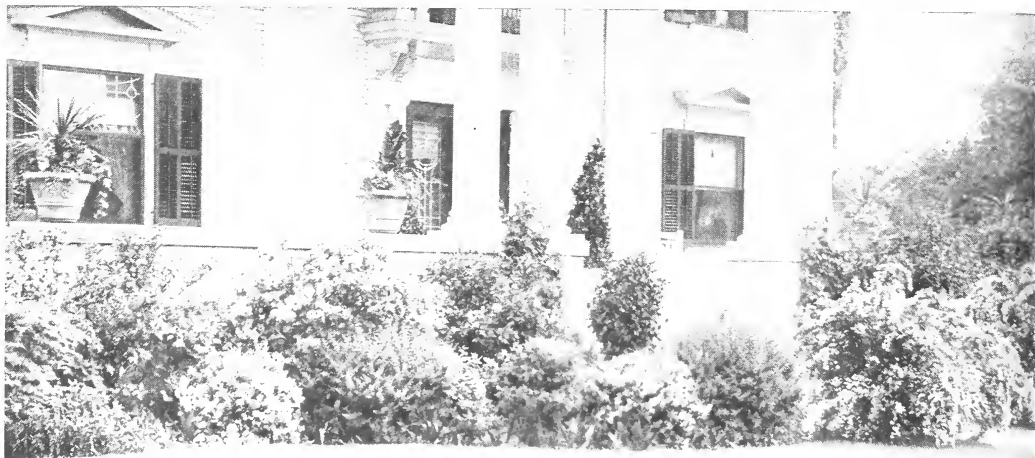


*Plants*~TO BEAUTIFY YOUR HOME  
*Seeds*~TO PLANT YOUR GARDEN



# Effective Planting at Little Cost

A home to be ideal must be set amidst beautiful surroundings, the costliest house is without attraction if the grounds about it are without trees or shrubs. The judicious planting of these inexpensive subjects adds greatly to their beauty as may be seen by the illustrations.



See how attractive these inexpensive plants make the house look in the above picture. Any house, large or small, old or new, can be placed in as beautiful environment as the one shown above at a small cost. We will send you the thirteen shrubs required to plant the above as illustrated for \$3.00. All plants will be carefully labeled and instructions enclosed with each order how to arrange them for the above effect.



**BERBERRY THUNBERGII** in the foreground, which can be used either for hedges or border effect. There is a charm about the Berberries hard to describe, and no more practical and beautiful shrub can be grown. Their masses of yellow or orange flowers are showy in spring, their leaves color brightly in fall, the scarlet berries are persistent through most of the winter. They make a dense, low hedge, will stand any amount of shearing, are perfectly hardy and will grow in almost any place. We supply strong plants at 15c each; 10 for \$1.25; 100 for \$10.00.

Remember We Sell Plants that Grow. See Inside Catalogue for Fruit and Seed Bargains

# E. W. BROW NURSERY COMPANY, INC

## ROSE HILL, NEW YORK

**PLANTS BY PARCEL POST OR EXPRESS**

## To Our Patrons and Friends

We take pleasure in presenting our annual descriptive and illustrated Catalogue and Price List of Fruit Trees, Berry Plants, Roses, Shrubs, Vines, etc., and wish to assure our customers that orders entrusted to us shall have our prompt, careful and personal attention.

**THIS BOOK IS OUR ONLY SALESMAN**, and in purchasing from us you save the agent's commission and middlemen's profits and have the additional advantage of receiving your plants direct from the grower. We have no connection with any other house. We sell through our Catalogue at Wholesale Prices.

Read what the U. S. Government Department of Agriculture says, in the Farmer's Bulletin, about buying trees and plants. "If the Farmer makes his purchase direct from the Nurseryman, he will save the expense of the middleman or agent and is less liable to the mistakes and injuries that will occur through repeated handling."

### DEAL DIRECT WITH THE GROWER

It is the only sure way to get good stock and the only way to save money when buying Trees and Plants. **WE GROW WHAT WE SELL!**

### OUR GUARANTEE PROTECTS YOU

We guarantee our stock to be true to name and will cheerfully replace any that may prove untrue. No sale by us carries any further warranty express or implied and for any error we shall not be liable for more than the purchase price. A life's experience in propagating and growing trees and plants enables us to produce the best and pack same so that they will reach our customers in perfect condition.

**WE REQUIRE CASH WITH ORDER.** This method of doing business, as well as the features explained above, further enables us to sell our plants at these low prices, as we are thus saved considerable office expense in the way of bookkeeping, etc. You get the benefit of this saving.

### HOW TO SEND YOUR ORDER

Make out your order on order sheet enclosed in this catalog (if you cannot get one use any ordinary writing paper) and be sure to write your name and address plainly and correctly, giving express office, county and state, then give quantity of each variety wanted with catalogue price and enclose the total amount.

**YOU CAN SAFELY SEND YOUR MONEY TO US.** We refer you to the City Bank of Syracuse, N. Y., as to our reliability. Remittances may be sent by Postoffice or Express Money Order, Bank Draft, Personal Check or Registered Letter. Postage stamps will be accepted for amounts less than \$1.00. Do Not Send Money Loose unless by Registered Mail. We cannot be held responsible for cash sent loose in letters.

## SEEDS FOR YOUR GARDEN

Owing to numerous requests from our patrons for Garden Seeds, we have decided to offer only the leading and useful garden varieties. **SEE PAGES 45, 46, 47 and 48.** If you order seeds and plants together we will at once forward your seeds and will ship your plants separately when weather conditions are favorable for planting.

Our nurseries are inspected by the New York State Inspectors and a Certificate will be attached to each shipment, certifying that our trees are entirely free from all disease.

### References:

City Bank, Syracuse, N. Y.  
American Express Company, Rose Hill, N. Y.,  
Postmaster, Rose Hill, N. Y.



McIntosh Red

## “King of Fruits”---Apples

No ordinary farm crop will produce such a good income per acre as a good apple orchard. No family can afford to dispense with the apple. Physicians say, “that if a person would eat an apple a day they could dispense with doctors’ bills.”

**MONEY MAKING.** Figure what a good investment a 10-acre orchard would be to you. Say you have 28 permanent trees to the acre, which you would have if you planted 40 feet apart. This would of course leave room for “fillers” of early bearing apples or peach trees between your permanent trees. Each of your permanent trees will at 8 or 10 years of age produce about 10 bushels of good fruit, which at the lowest price would be worth about \$10, so you see 28 trees on the acre would produce \$280, and your 10-acre orchard would be worth to you \$2,800 per year. In addition to that you would have been picking fruit from your “fillers” from the time they were 3 or 4 years old. The expense of the upkeep of your orchard would be less than \$800 per year, leaving a sure profit of \$2000 per year. What better investment could you make? What other farm crops will do this for you? None.

### PRICES OF APPLE TREES

|  | 1      | 10     | 50     | 100     |
|--|--------|--------|--------|---------|
| 1 year old trees, 3 to 4 feet -----                            | \$0.20 | \$1.75 | \$8.00 | \$15.00 |
| 2 year old trees small -----                                   | .25    | 2.25   | 9.00   | 15.00   |
| 2 year old trees, medium -----                                 | .20    | 2.00   | 8.00   | 14.00   |
| 2 year old trees, large size -----                             | .15    | 1.50   | 6.00   | 10.00   |
| 1 year old trees may be sent by Parcel Post 25c each postpaid. |        |        |        |         |

## Summer Varieties

**EARLY HARVEST.** Medium to large size; pale yellow; tender, with a mild, fine flavor. Tree an erect grower and a good bearer; excellent for orchard and garden; one of the first to ripen. August.

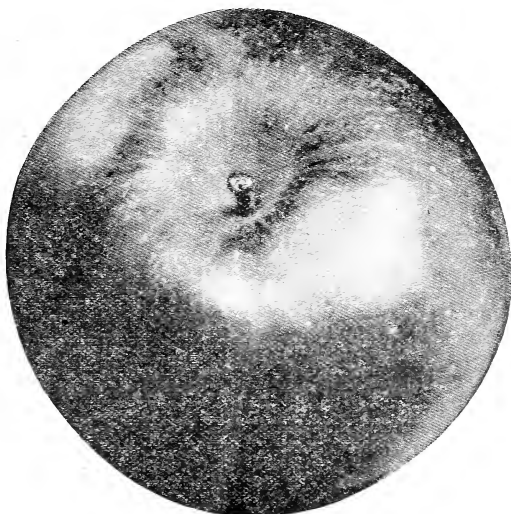
**RED ASTRACHAN.** Tree hardy and regular bearer, a very vigorous grower;

fruit large, roundish, nearly covered with deep crimson overspread with a thick bloom; juicy, rich and beautiful. This fruit commands the best price of all the summer varieties. July and August.

**YELLOW TRANSPARENT.** Medium size, roundish, oblate, slightly conical; skin pale yellow when fully matured, flesh tender, juicy, sprightly, sub-acid; good. Ripe in August.

## The Varieties We Grow are the Leading Kinds

✓ **DUCHESS OF OLDENBURG.** A large, beautiful apple; roundish; streaked red and yellow; tender, juicy, pleasant, a kitchen apple of best quality. Tree a vigorous, fine grower and an abundant bearer. The hardiest fall apple. Duchess is the most valuable commercial variety, a sure cropper, hardy as an oak and a wonderful variety. We recommend Duchess for either orchard or garden planting. August and September.



### Autumn Varieties

✓ **FALL PIPPIN.** Very large; greenish yellow; flesh white, juicy and rich. Does well in all localities. Tree vigorous. Sept. and Oct.

✓ **GRAVENSTEIN.** Orange yellow with stripes of light and dark red; tender, juicy, aromatic, sub-acid. Good size and attractive appearance. In quality it ranks amongst the best. The tree is a strong grower and a sure bearer. Growers are

making large profits from this variety. Sept. to Nov.



✓ **WEALTHY.** This variety is valuable for cold climates, the tree is hardy and bears well and early. A tree four years old has been known to produce three bushels of apples. Just figure what this would bring if you planted Wealthy as "fillers," 82 plants to the acre, each tree producing about \$3.00 worth of fruit. At the end of four years from planting this would bring you nearly \$250.00 per acre and your crop would increase year by year. Its early bearing qualities make it valuable as a "filler" for orchards and very valuable for garden use. Fruit is large and round, covered with dark red, flesh white, tender and juicy. Quality good. Oct. to Jan.

✓ **TWENTY OUNCE.** Very large, yellow striped, red, fine quality apple; good keeper. Tree vigorous grower, productive. Oct. to Jan.

✓ **POUND SWEET.** This is considered the best sweet variety of its season; very large, round, yellow russet apple. Sweet and rich, vigorous and rapid grower. Oct. to Nov.

### Winter Varieties

✓ **FAMEUSE (Snow Apple).** Medium size, roundish, very handsome, deep crimson; flesh snowy white, tender, juicy, highly flavored and delicious. This apple suc-

ceeds well over a wide range of territory. The tree is hardy and vigorous and an annual cropper. Oct. to mid-winter.

**RHODE ISLAND GREENING.** This apple ranks next in popularity to the Baldwin. The tree does not come into bearing very young, but when well grown produces a large percentage of high grade fruit that is smooth, uniform and large, with very few undersized apples, and is strong and vigorous. The skin is thick and tough and grass-green or yellow in color. The flesh is yellowish, firm, crisp, tender and sub-acid. The Rhode Island Greening is of the highest quality. In ordinary storage its season is from October to February, but in cold storage it may be held commercially until April.

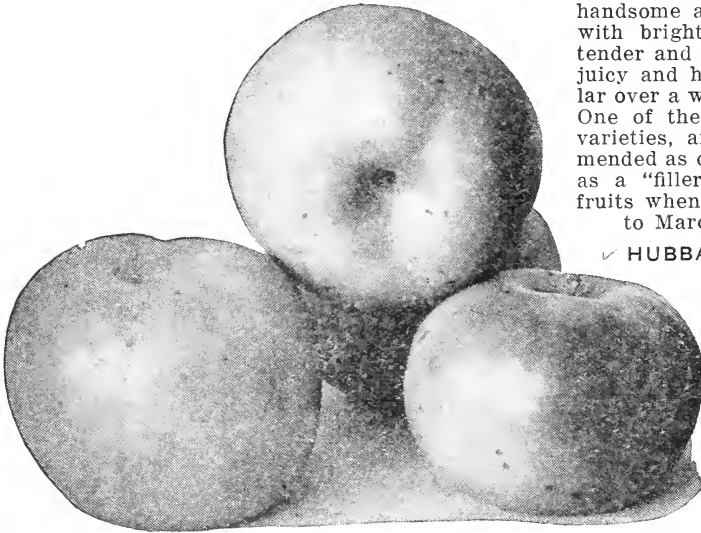
**BALDWIN.** Without question, the leading commercial variety in New England, New York, Ontario, Ohio, Michigan and in many sections from Colorado to Washington. You are taking absolutely no chances when investing your money in this variety. No variety yields larger crops, bears shipping better, or is more attractive in color, size or shape. Thousands of barrels



Northern Spy, a World Favorite

of this fruit are exported to England annually. Fruit is large, bright red, crisp, juicy and rich. Trees are vigorous and productive. Dec. to Jan. In western New York the advice used to be, "if you are planting 1000 trees, plant 999 Baldwins, and the other a Baldwin also."

✓ **ROME BEAUTY.** A large and handsome apple almost covered with bright red. The flesh is tender and of high quality, very juicy and highly flavored, popular over a wide range of country. One of the leading commercial varieties, and especially recommended as one of the best to use as a "filler" in orchards as it fruits when two years old. Nov. to March.

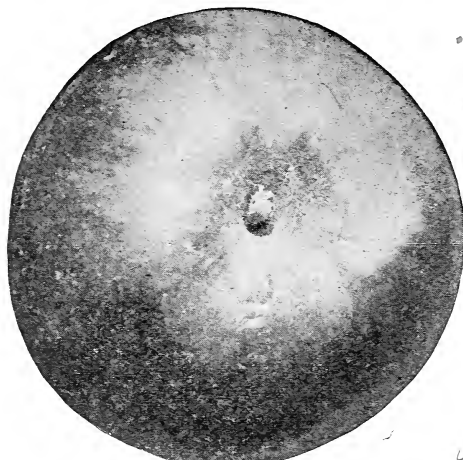


Fall Pippin, White, Juicy and Rich

✓ **HUBBARDSTON NONESUCH.** "Hubbardston is an excellent variety for commercial planting and deserves to be better known among New York fruit-growers."—From the Apples of New York, by the Department of Agriculture, New York State. This

Do Not Forget To Look Over Our Seed Offerings on Pages 45, 46, 47 and 48





Hubbardston's Nonesuch

is a large, roundish, smooth apple with a yellow skin mottled and splashed with bright red. The flesh is firm, fine grained, tender, crisp and juicy; in quality very good to best. Season from Oct. to Jan. The tree is vigorous and bears when young, making it a very valuable orchard variety.

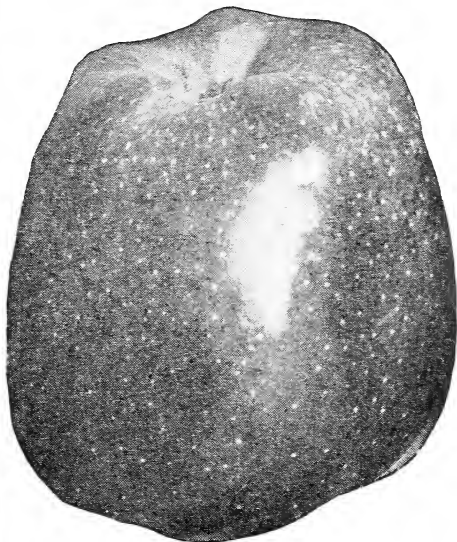
**NORTHERN SPY.** This variety ranks about third in commercial importance with the fruit-growers of Pennsylvania, New York and Ohio, being surpassed by Baldwin and R. I. Greening. Fruit is large and very attractive, of bright red color with a delicious bloom; flesh is very juicy, crisp, tender and excellent for dessert or culinary uses. Its fine reputation brings high prices in the market and the fruit is always in demand. The fruit is ready for use in November or December; keeps well in cold storage until April, or if more carefully handled, until May. The tree is very strong and a thrifty grower; orchard trees should stand 40 to 50 feet apart to prevent them crowding.

**YORK IMPERIAL.** This is a fine, hardy large, red, winter apple. It succeeds

over a wide range of country. It comes into bearing at four years from planting, bears regularly and heavily. The foliage and fruit are remarkably free from scab. The fruit is of medium size, skin yellow and almost wholly covered with two shades of red, the darker one disposed in distinct stripes. A good shipper, bringing highest prices. Nov. to Feb.

**MCINTOSH RED.** A choice variety of the Fameuse type. Tree vigorous with spreading head; a good natural bearer. Fruit above medium large, highly perfumed; smooth polished yellow, almost covered with brilliant solid crimson; a beautiful fruit; flesh snow white, crisp, tender, sprightly aromatic, sub-acid; very good quality. Season December and January.

**DELICIOUS (Winter Apple).** The Delicious is a wonderfully beautiful winter fruit, distinctively different from any other apple. The great national dessert apple. Its vigor, productiveness, and the exceptionally high quality of the fruit, its great beauty and unusual shipping qualities, put it in a class by itself. The apple is striped and marked with bright and dark red. The coloring is so deep on the cheek next to the sun that it is almost a solid crimson with a light blue bloom spreading over it. On the shaded side, or where it has been covered by a leaf or branch it often shows a rich golden yellow. The apples are large and of uniform size. The shape is unique. It is round and long, broadly ribbed tapering, with five distinct knobs on the blossom end.



Delicious, the Most Popular

**Small Garden Collection No. 1**

We offer the following 12 leading varieties of Apple Trees for

**\$3.00**

**Summer Varieties**

Two Red Astrachan Two Duchess

**Autumn Varieties**

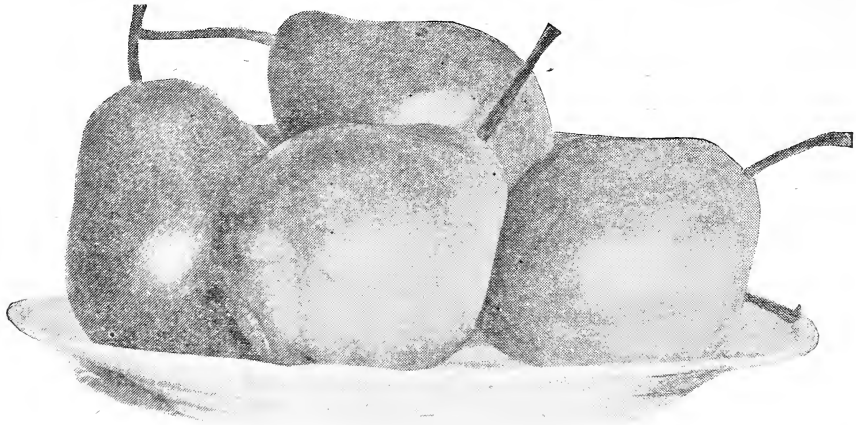
Two Gravenstein Two Wealthy

**Winter Varieties**

Two Baldwin Two Northern Spy

All first class stock; good roots and well furnished trees

# Pears are the Favorite of Millions



Bartlett's are General Favorites

Pears do best in a strong loamy soil, but succeed well in a variety of soils, and on almost any land that will produce good grain or vegetables. The demand for pears always exceeds the supply, so that there is always a good market for them. Bartlett is, of course, the leading variety, in fact there are more of this variety planted than all other kinds combined. By a careful selection of varieties, their season can be prolonged from July to February.

### PRICES OF STANDARD PEARS

|                                 | Each   | 10     | 100     |
|---------------------------------|--------|--------|---------|
| First class, 5 to 7 feet -----  | \$0.25 | \$2.25 | \$20.00 |
| Second class, 4 to 5 feet ----- | .20    | 2.00   | 15.00   |

1 year old trees can be sent by Parcel Post, 30 cents each postpaid.

**BARTLETT** is by far the best and most popular of all pears, both for market and home use. Large and when fully ripe is a beautiful waxy yellow with a soft brush on the sunny side. The fruit ripens at a time when there is no competition with other pears, making a most profitable market variety. Its flesh is buttery and melting, and has a rich musky flavor. You will never make a mistake by planting Bartlett. Aug. and Sept.

**KIEFFER.** Large, rich golden yellow, sometimes tinted red on the sun exposed side; fair quality, excellent for canning. It has become a profitable market variety on account of its good shipping and keeping qualities. To properly ripen should remain on the trees until leaves begin to fall, then gather carefully and allow to ripen in a cool dark cellar, or other place of even temperature. Tree a most vigorous grower, an early bearer, one of the most resistant to blight, very prolific, and widely planted throughout the country. The tree is so hardy and free from insect pests as to give it greater value than most other varieties.

The fruit is of high color and great beauty and sells more readily than fruits of better quality. October to November.

**BEURRE DE ANJOU.** This is one of the most popular and prolific late pears. A large, handsome fruit, buttery and melting with a fine flavor. It is a fine keeper and will stay good until mid-winter. There is no better variety for late fall or early winter. Oct. to Jan.

**CLAPP'S FAVORITE.** Large, fine pear, resembling the Bartlett, but without its musky flavor, lemon yellow, with brown dots; fine texture, melting, juicy, with rich, sweet flavor. Hardy and productive. Aug. and Sept.

**DUCHESS D'ANGOULEME.** A most dependable cropper, often fruiting the first season after planting. Fruit large, frequently weighing a pound. A dull greenish-yellow, spotted russet, flesh white, rich and good quality. An all-round profitable market pear. Oct. and Nov.

**SECKEL.** A beautiful and delicious little pear; the standard of excellence in its class. One of the richest and high-

est flavored pears known. It is always in great demand for desserts and is better known than any other pear of its class. The tree is very productive. This variety is so popular with consumers

that it has a market price that is all its own. When there is a glut in the market with other varieties of pears the price and demand for Seckel keeps up to the standard. October.

# Dwarf Apple and Pear Trees

## DWARF APPLE TREES

Dwarf Apples commence bearing fruit the second year after planting and as they do not attain as large a size as standard trees, they are especially desirable for village or city gardens. The great advantage of these dwarf trees is that they bear fruit several years earlier, usually the first year after planting and produce more returns for a given space than standard trees. Heretofore city people have been obliged to buy all their apples because the size of their garden plot would not enable them to plant standard trees on account of the amount of space these standard trees required. There is no question as to the desirability of being able to go into your own fruit garden and pick fruit from trees of your own growing and eat it when in the freshest condition. These dwarf trees open up a new avenue to the people who have gardens of a limited size.

Price of Dwarf Apples, 30c each; 12 for \$3.25. The varieties we grow are: Baldwin, Wealthy and Yellow Transparent, Early Harvest, McIntosh and Northern Spy.

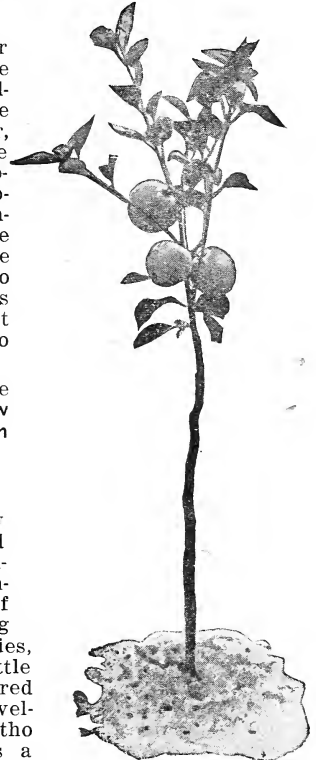
## DWARF PEAR TREES

The Dwarf Pear like the Dwarf Apple bears fruit very early, does not grow so large a tree as the standard trees, consequently is valuable where space is a consideration. It is also valuable and profitable for commercial planting, being an ideal “filler” in orchards of standard pears or apples, because of its early fruiting

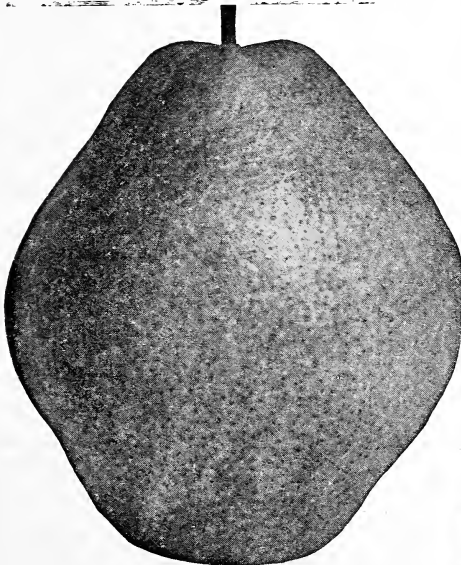
tendencies, and the little space required for its development. Although the tree is a dwarf, the fruit is as large as that produced by standard trees.

Price of Dwarf Pears, 30c each, 10 for \$2.50, 100 for \$20.00.

The varieties we grow are Bartlett, Duchess d'Angouleme and Kieffer.



A 2-yr old Dwarf Apple Bearing Fruit



Kieffer, the Great Market Pear

### Dwarf Tree Collection No. 2 Suitable For Small Garden

- 1.....Dwarf Bartlett Pear
- 1.....Dwarf Duchess Pear
- 1.....Dwarf Kieffer Pear
- 2.....Dwarf Baldwin Apple
- 1.....Dwarf Wealthy Apple
- 1 Dwarf Yellow Transparent

The Seven Trees for \$2.00



## Luscious Plums Find a Ready Market

We grow only the leading varieties that are of proved merit so that our patrons cannot make any mistake by making their selection from our catalogue.

The plum will grow on any well drained soil, but is partial and does best in a heavy soil. Being almost free from disease, they can be grown very profitably. To prevent insects and disease, it is advisable after the blooms have fallen to spread a sheet on the ground under the tree, then jar the tree to shake down the stung fruit and insects, which should be burned. When making your selection do not overlook the Japanese varieties. Abundance and Burbank being the best of this class.

### PRICES OF PLUM TREES

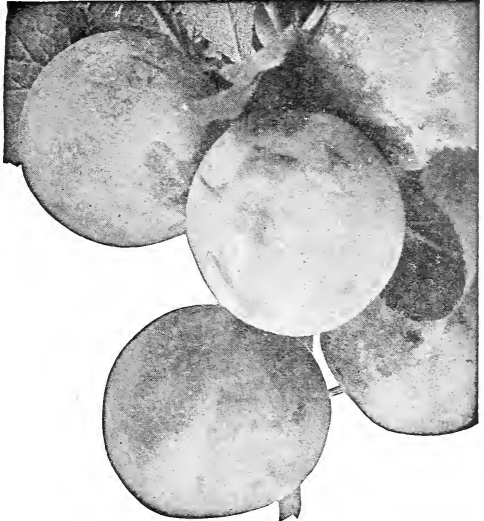
|   |               |               |                 |
|---|---------------|---------------|-----------------|
| First class, large size   | -----25c each | 10 for \$2.25 | 100 for \$20.00 |
| Second class, medium size                                       | -----20c each | 12 for \$2.25 | 100 for \$18.00 |
| 1 year old trees may be sent by Parcel Post, 30c each postpaid. |               |               |                 |

**ABUNDANCE.** One of the most popular of all Japanese varieties. It is favorable everywhere and should be in every collection. The fruit is large, showy and beautiful. It has a bright cherry-red color. The flesh is yellow, firm, juicy, sweet and very delicious. Stone is small and parts freely from flesh. Its season is very early, which adds greatly to its value. The tree is vigorous and

exceedingly productive. It is liable to overbear unless thinned.

**BRADSHAW.** A very large, dark violet-red plum, very juicy and good. The quality of Bradshaw is very fine and is popular wherever planted. The tree is erect, vigorous, hardy and very productive. One of the finest for market and canning. Ripens 12 days after Abundance.

✓ **BURBANK.** This variety is very much like Abundance, except that it is much deeper in color, and ripens from ten to fourteen days later. It is one of the handsomest plums on the market and always finds a ready sale. The fruit is large, reddish-purple; flesh yellow, juicy and good. The tree is very vigorous. It will withstand the frost better than most varieties. We recommend this very highly to our customers.



Burbank

✓ **GRAND DUKE.** Fruit oval with a short neck. Skin almost black, but reddish when shaded and covered with bloom; flesh yellow, adhering closely to the stone; with a sweet rich flavor when fully ripe. Leading plum growers state that it is one of the most profitable plums for market. September.

✓ **ARCH DUKE.** A large dark and very prolific plum ripening October 1st. A very valuable addition to late plums and profitable to the amateur and orchardist. Last of September.

✓ **GREEN GAGE.** Yellowish green when mature, flesh pale green, melting, luscious and sweet. This plum is considered the standard of excellence. Moderate grower, bears very freely, ripens middle of August.

fruit of medium size, produced in thick clusters of groups, dark purple color, esteemed for preserving. Always sells well. October.

✓ **LOMBARD.** A great favorite because it is a wonderful and early bearer and a hardy, strong grower. Fruit hangs so thickly on the trees that it must be thinned. It is a good variety to eat out of hand and also to can. Lombard is a handsome reddish plum. Flesh is yellow, juicy and pleasant. It can be relied upon for a crop when other varieties fail. Ripens in August.

✓ **MONARCH (New).** Fruit dark purple covered with a thin bloom; large size, specimens measuring six inches in circumference; flesh pale greenish-yellow, parting freely from the stone; juicy with a pleasant flavor. It is a leading market sort. The tree is a vigorous grower. Ripens in September. This variety fruits when the trees are very young.

✓ **SHROPSHIRE DAMSON.** One of the favorite Damsons. Fruit oval; tree a good grower and enormously productive;

✓ **GERMAN PRUNE.** A large, long oval variety; much esteemed for drying; color dark purple; of very agreeable flavor. September.

Gentlemen:

Texas.

Several days ago we received Raspberries from you and they have turned out so fine have decided to buy more and are sending you our order for the plants. Please rush as the season is getting late.

Respectfully, J. H. Shelton.

Rosemont Farm, Virginia, May 20, 1915.

Sirs: Your shipment of Trees and Shrubs arrived in fine shape. Most compliment your firm for packing. Trees and Shrubs supplied last year by your firm exceeded expectations.—Robert R. Moss, Manager for J. Low Harriman, Esq.

Virginia, May.

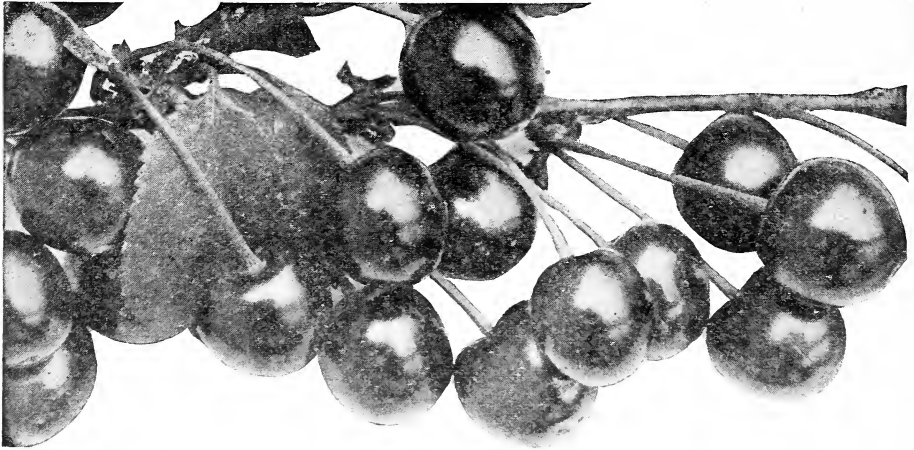
Gentlemen: Accept my thanks for the splendid Nursery Stock just received from you. One can easily take pride in caring for such promising plants and I shall hope for a great deal from these. They look brim-full of life and vigor. While not looking to fruit raising as a business I enjoy working with good plants, trees, etc., and feel sure that these will give me pleasure. Yours very truly, J. L. Kent, M. D.

Pa., April 20, 1914.

Dear Sirs: My trees arrived today in fine condition; we were all pleased with them and find them to be just what your catalogue calls for. Yours respectfully,

Zach Williams.

Garden Seeds will be found on pages 45, 46, 47, 48



## There's Money in Cherries

Cherries commence to bear fruit very young, and a three-year-old cherry tree has been known to produce a gallon of cherries. An eight-year-old tree will produce about 150 pounds. One acre will grow 100 trees; figuring 150 pounds to the tree, this acre will produce 15,000 pounds, which if sold at 7 cents per pound would bring a return of \$1,050 per acre.

### Why Not Plant Cherries?

The tree is very hardy and will thrive in almost any soil providing it is well drained. It is the most profitable of all fruits that are grown. Fruit-growers are realizing this more and more and enormous profits are being realized from young orchards. They require little care, and there is practically no cost of labor to keep up an orchard.

#### PRICES OF SWEET AND SOUR CHERRIES

|                                 | Each   | 10     | 100     |
|---------------------------------|--------|--------|---------|
| First class, large size .....   | \$0.30 | \$2.50 | \$20.00 |
| Second class, medium size ..... | .25    | 2.00   | 18.00   |

#### SOUR CHERRIES

**DYEHOUSE.** A hardy and valuable cherry. Unquestionably the earliest cherry, ten days earlier than Richmond, fine quality, its early bearing is as remarkable as its great hardiness. Often bears at two years old, and has the appearance of being covered with a scarlet cloth, such is the abundance of the fruit. Has the smallest pit of any cherry known; a splendid keeper and free from knots. For tarts, pies, and especially for canning it has no superiors. Ripens in June.

**EARLY RICHMOND.** This is one of the most valuable and popular cherries and is unsurpassed for cooking purposes. This hardy cherry fruits on young trees soon after planting. It is the good old variety that yields such marvelous crops in the gardens. The most hardy of all varieties, uninjured by the coldest win-

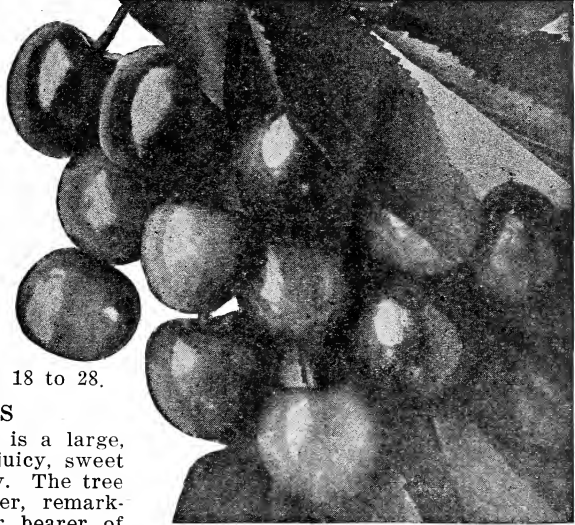
ters. Tree slender in growth, with a roundish, outspreading head, exceedingly productive. Fruit is medium size, round and dark red. The flesh tender, juicy, and sub-acid. Ripens in June.

**MONTMORENCY.** This is the best of all the sour varieties of cherries. There is a greater demand on the market for this cherry than for any other. The trees are the cleanest and best growers and are less subjected to disease, less affected by wet weather, and the best bearers of the best fruit of all other varieties. No matter how unfavorable the season may be, Montmorency can be depended upon for a full crop. The Montmorency is a good shipper, very attractive looking and always brings good prices. The canning factories are always calling for them by the hundreds of tons. The fruit is good sized, fine fla-

## Cherry Orchards are Veritable Gold Mines

vored and bright, clear, shining red. The flesh is of fine quality and sub-acid. Fruit ripens 10 days after Early Richmond.

Small fruits such as Gooseberries, Currants, Raspberries, Blackberries, etc., can be planted profitably between the rows in your orchard and will easily pay for the expense of your orchard, and more, until your trees come into bearing. This plan is being adopted by many cherry growers. We can supply these small fruits. See pages 18 to 28.



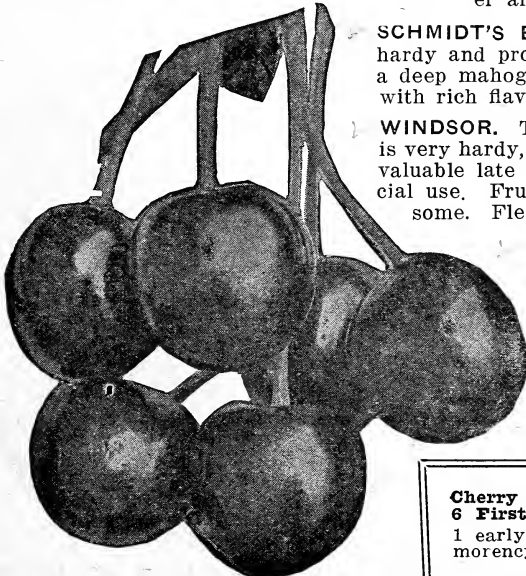
### SWEET CHERRIES

✓ **BLACK TARTARIAN.** This is a large, black, heart-shaped, tender, juicy, sweet cherry of unsurpassed quality. The tree is an upright, dense grower, remarkably vigorous and a regular bearer of immense crops. In 1910 a fruit-grower in Michigan produced fruit from this tree which sold at the rate of \$4,000 per acre. Fruit ripens last of June or first of July.

✓ **GOV. WOOD.** One of the finest of the high colored cherries. Fruit is large, tender, juicy and productive, one of the best shaped trees of all the cherry vari-

eties. Fruit ripens in June and hangs well on the tree. We recommend this cherry very highly.

**LAMBERT.** A wonderful variety of the sweet cherry and one of the largest. The skin is dark purplish-red, almost jet-black when ripe. Flesh is firm, rich and juicy. The tree is hardy, a strong grower and an enormous bearer.



Black Tartarian

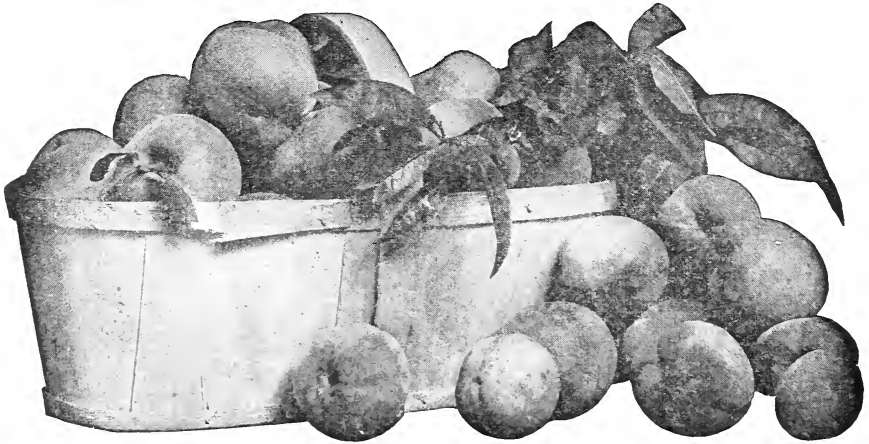
**SCHMIDT'S BIGGAREAU (New).** Remarkably hardy and productive. Fruit of the largest size; a deep mahogany color; flesh dark, tender, juicy with rich flavor. Stone small. Ripe in July.

**WINDSOR.** This cherry came from Canada. Tree is very hardy, vigorous and prolific. It is the most valuable late sweet cherry for family or commercial use. Fruit is large and liver colored, handsome. Flesh is firm, fine quality. Ripe in July.

**NAPOLEON or ROYAL ANN.** This is one of the largest and best of all sweet cherries. It is a magnificent variety, large, sweet, pale yellow, with a bright red cheek. A splendid shipper and fine for canning. To eat out of the hand it is unsurpassed. Flesh is firm and juicy. The tree is a fine grower and an immense bearer.

**WE OFFER FOR \$1.75**  
**Cherry Collection No. 3 for Small Growers**  
**6 First Class Trees of Leading Varieties**  
 1 early Richmond; 1 Gov. Wood; 1 Montmorency; 1 Napoleon; 1 Black Tartarian;  
 1 Windsor  
**Or Two Trees of Each Variety for \$3.00**

# Peaches of the Best Varieties



A Basket of Elbertas

So great is the demand for peaches that it is safe to say that there are more peaches being planted annually than any other fruit. The ease with which peach trees may be grown, their freedom from disease, and their early bearing propensities, together with the large demand for the fruit makes them a profitable investment. We grow only the best varieties, our trees are grown on an elevation of 1,500 feet, making them hardy, stocky plants and safe to transplant.

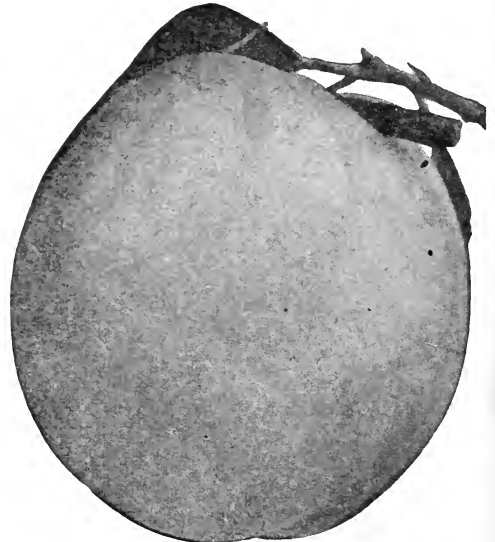
### PRICES OF PEACH TREES

|   |               |               |                 |
|---|---------------|---------------|-----------------|
| First class, selected trees -----20c each | 12 for \$2.00 | 50 for \$8.00 | 100 for \$14.00 |
| First class, ordinary trees -----15c each | 12 for \$1.50 | 50 for \$7.00 | 100 for \$12.00 |

**ELBERTA.** The leader of all peaches and the greatest commercial variety on the market; 50 per cent of all the peaches planted are Elberta. In all probability no peach will succeed over so wide a range of territory as this kind. It will thrive where any peach can be grown. A beautiful peach of good quality, not only the best orchard variety, but also valuable for planting in the garden. Elberta is hardier in bud than many varieties, therefore a more uniform cropper. It is large, yellow, with red cheek, juicy and high flavor; flesh yellow, freestone. Season medium early, following quickly upon Early Crawford. Early September.

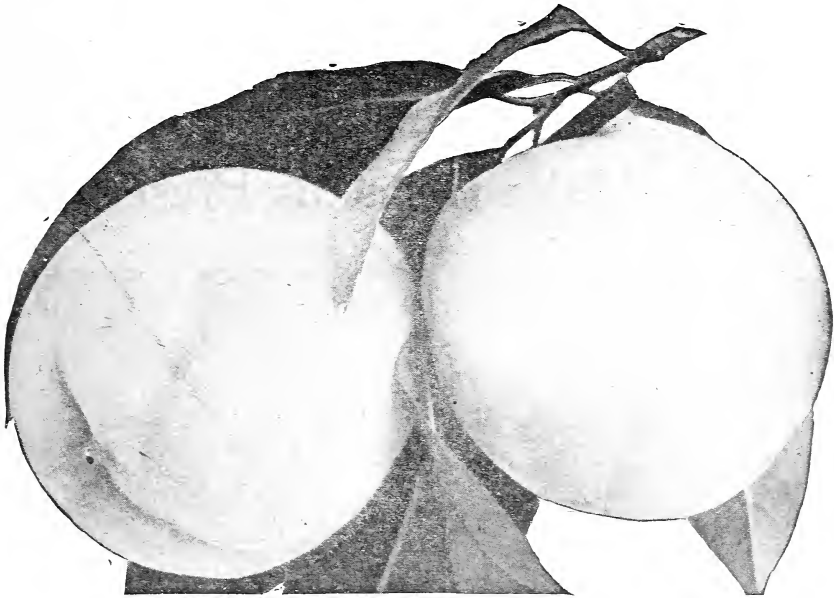
**CRAWFORD'S EARLY.** A magnificent large yellow peach of good quality. Tree vigorous and prolific. Its size, beauty and productiveness make it one of the most popular varieties. Freestone. Early Sept.

**CHAMPION.** This is a very large peach



If You Do Not Want Trees See Our Garden Seeds Pages 45, 46, 47, 48





Elberta

sometimes measuring 10 inches in circumference. It is very hardy and productive. Both the tree and fruit buds have stood 18 degrees below zero, and produced a full crop the following summer. The fruit is of fine flavor, sweet, rich and juicy. Skin creamy white with a red cheek, very handsome. Is very prolific and the fruit ships well. Freestone. Ripens end of August.

**HILL'S CHILI.** One of the best. Medium to large oval, yellow with red. Amongst the hardiest and a great bearer. Freestone. Ripens end of September.

**SALWAY.** Large, roundish, deep yellow with rich red cheek; flesh yellow, firm, juicy and sugary; a late market sort. Freestone.

**CROSBY,** called the Frost-proof Peach. A fine, handsome yellow peach with so well known that it will be no experiment planting it. It has been planted in nearly all peach-growing states, and is spoken of in the highest terms. Many large orchards of this variety have been planted the past season. The strongest claim for its superiority made over other varieties is the frost proof character of its fruit buds.

**FITZGERALD.** Origin Canada. Fully equal to Early Crawford in size, quality and color, with much smaller pit; a very early bearer, often when two years from bud; extra hardy, succeeding in Canada and Michigan perfectly; fruit large, bril-

liant yellow with red cheek; highest quality; ripens after Early Crawford. Freestone.

**STUMP (or Stump the World).** Very large, roundish; skin is white with a bright red cheek; flesh white, juicy and good. Tree is vigorous and productive. Ripens near the end of September and is a freestone.

**YELLOW ST. JOHN.** A large, handsome peach and very popular wherever it is grown. The flesh is yellow, rich and juicy. The flavor is equal to that of the Crawford. It ripens the latter part of July and is a profitable market variety on account of its earliness. Yellow St. John is a perfect freestone peach. Tree is strong and vigorous.

**NIAGARA.** A very large peach and a popular one, especially in Niagara County, N. Y., where it originated. The tree

**See What We Offer!**

for a Small Garden Collection of Peaches

- 1 Crawford's Early
- 1 Elberta
- 1 Champion
- 1 Crosby
- 1 Niagara
- 1 Fitzgerald
- 1 Stump
- 1 Yellow St. John

No. 4  
8 TREES  
—for—  
**\$1.50**

Or You Can Have Two of Each Variety for \$2.75

is very vigorous, extremely hardy and healthy, being seldom affected with leaf curl. Niagara is also a very productive and regular bearer, and in many orchards in New York State has borne heavy crops of uniformly large fruit ev-

ery season for the past seven years. Sometimes called the New Elberta, but is much better in all respects. Has all the desirable qualities of Elberta, but none of its defects. Ripens one week earlier than Elberta or about Sept. 1.

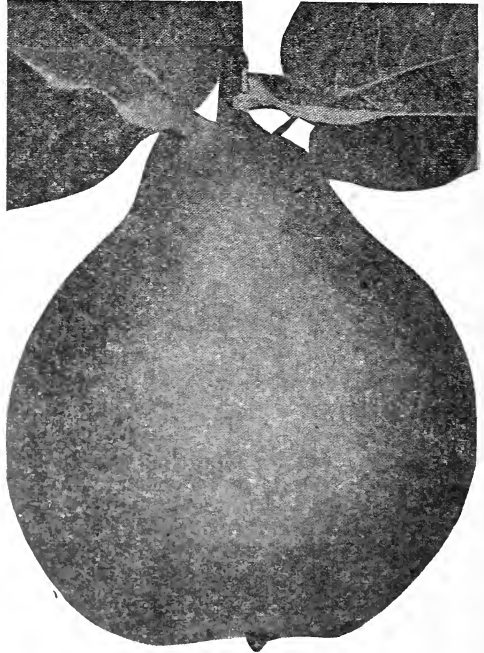
## Quinces Make Delicious Preserves

Under proper conditions the quinces bear heavily and regularly; profitable crop. The market demand is never fully supplied. We offer only the two best varieties, Champion and Orange. In Quinces we have a very desirable fruit. It is used a great deal for preserves and canning, especially with other fruit.

|                    |       |        |         |
|--------------------|-------|--------|---------|
|                    | Each  | Dozen  | 100     |
| First class -----  | \$.25 | \$2.75 | \$12.00 |
| Second class ----- | .20   | 2.25   | 9.00    |

**CHAMPION.** Will bear more quickly than any other variety. Trees in the nursery row often bear when two years old. Fruit is large and handsome. Flesh cooks as tender as an apple and without hard spots or cores. Fine for preserves, jellies, marmalades, etc. The tree is vigorous, hardy and very productive. Champion is a fine all around quince. Ripens in November.

**ORANGE.** This quince is more largely planted than any other variety. One of the old varieties that always bear and give good satisfaction wherever planted. The fruit is large, bright golden yellow. Cooks very tender and has a great flavor. There is always a demand for this quince and it is a variety we can recommend very highly. Very fine for preserves, jellies, etc.



### Look Over Our Bargain Fruit Collections For Small Gardens

#### APPLE COLLECTION NO. 5

2 Summer Apples, Red Astrachan, Duchess of Oldenburg; 2 Autumn Apples, Gravenstein, Wealthy; 2 Winter Apples, Baldwin, Northern Spy. 6 of the leading varieties of Apples for \$1.50; or 2 of each kind, making 12 Trees, for \$2.70.

#### STANDARD PEAR COLLECTION NO. 6

Early Pear, Bartlett; Mid-season Pear, Duchess d'Angouleme; Late Pear, Kieffer; Very Late Pear, Buerre d'Anjou. These 4 Select Pears for \$1.00

#### DWARF PEAR COLLECTION NO. 7

2 Bartlett; 1 Duchess; 1 Kieffer. Four good Dwarf Pears for \$1.00.

#### PLUM COLLECTION NO. 8

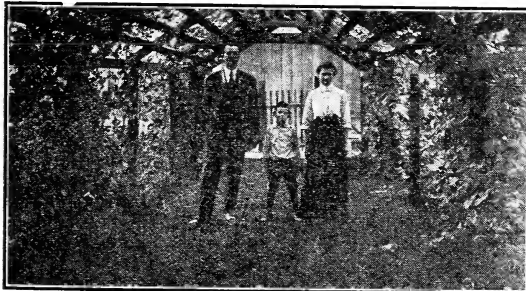
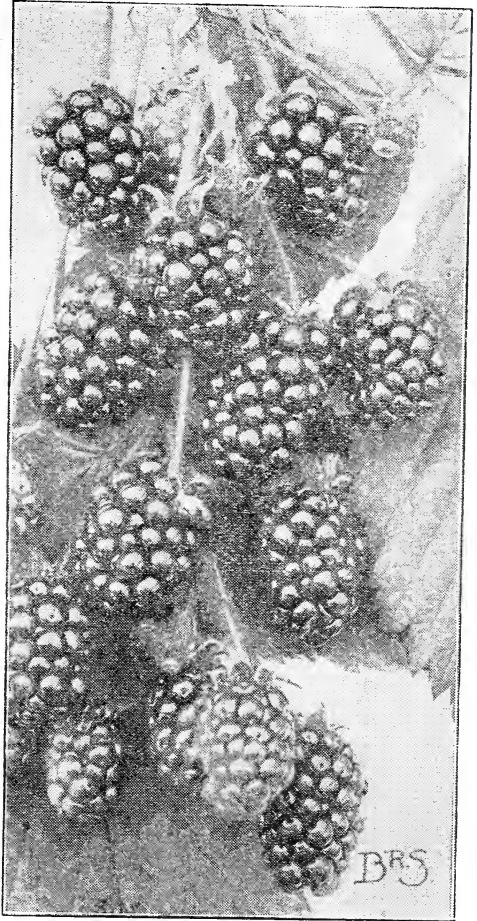
1 Abundance; 1 Bradshaw; 1 Burbank; 1 Green Gage; 1 Lombard; 1 Shrop. Damson 6 of the leading varieties of Plums for \$1.50

# Giant Himalaya Berry

We Have Picked 80 Individual Berries from One Bunch of this Variety

This wonderful berry was recently introduced from the cold regions of the Himalaya Mountains. There are several different forms of it, but this seems to be the only one of general value. It grows like a grape vine, and can be trained to a trellis of any kind. The plant is extremely hardy, and for rapid and immense growth it is almost unbelievable; a single cane, under favorable conditions, will, if permitted, often reach a growth of fifty feet in a single season. Sprouts do not come up from the ground like the blackberry, but start from the one root. These canes when one or more years old, send out fruit laterals from 16 to 40 inches long, which bear enormous crops, from 6 to 10 tons per acre. For these and other reasons apparent to the grower, the vines should be pruned and trained high with plenty of room. About four canes should be allowed to grow from a root, and trained to suit. After reaching the length desired, the tip should be pinched off so that the vine will not expend any more energy in that direction, but will give attention to fruit bearing. The berries are jet black, oblong in shape, and have a port wine flavor.

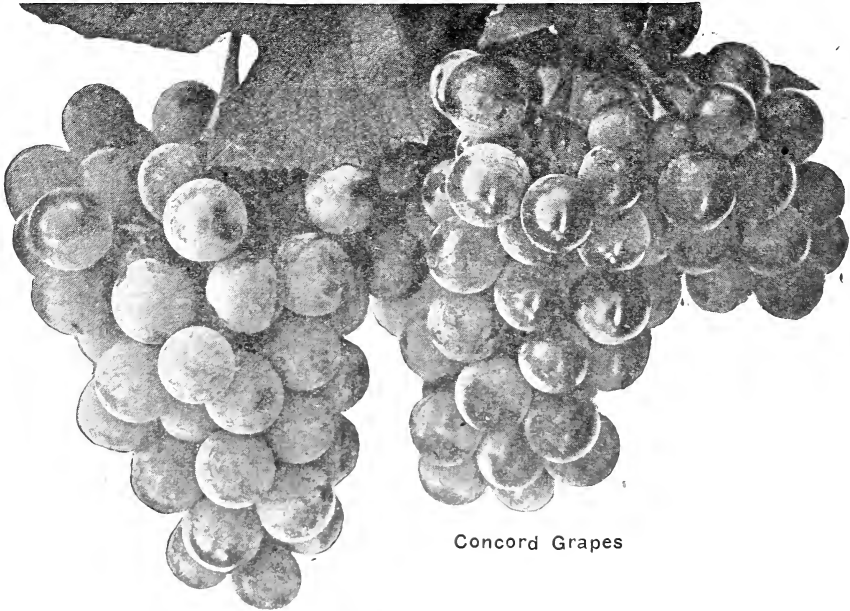
No other berry will so amply repay the labor expended upon it. The fruit is one of the best sellers on the market. The plant begins to fruit in July and continues to produce fruit until October, the plants growing larger and producing more fruit each year. There is no berry in existence like it. The fruit is large, almost coreless, and unsurpassed for eating when picked fresh from the vines, or cooked, canned or preserved in any form. Plants do well in the hot, dry sections of the South and West, and are making wonderful records in the Middle, Northern and Eastern States.



A wonderful berry, because the vines do not die down after fruiting. 3 for 30c; 6 for 60c postpaid. 15 for 75c; 25 for \$1.00; 100 for \$3.00, by express not prepaid.

F. Moody, Grand View, Wash., writes: "I enclose you a photograph of my arbor of Himilaya Berry vines, 18 months old. Arbor is 12 feet wide, 42 feet long, and is covered from six plants. Some of the vines have run 35 feet this season. The berry beats the old blackberry, and is better for jellies and canning. It is the wonder of the town."

# Always Room For Grape Vines



Concord Grapes

Prices of varieties listed on this page are for good, strong well rooted plants, 15c each; 10 for \$1.00 postpaid. 25 for \$2.00; 100 for \$5.00 by express.

Who wants to go without a few grape vines in their garden when grapes can be bought at these prices? Anyone can grow them. They can be trained over fences, used to cover unsightly buildings, or trained over trellises or doorways. Plant them in rich deep soil. In garden soils, where manure has been used for years, it is best to use a heavy application of raw bone meal. In fact there is nothing that the vines like better than a bone, and any waste bones about the place will be useful buried under the vines in planting.

**WHEN TO PRUNE**—The first spring after planting, cut the vines back to the ground again, leaving only one spur of three or four buds above ground. Let two canes grow the second season. They ought then to show a growth of from five to eight feet; if so, cut one of them back to three buds in the spring following, and the other to within three or four feet, to bear fruit. Should they show a larger growth, more may be left.

**SUMMER PRUNING**—This supplements winter pruning. As soon as the new shoots are about 12 inches long, break off all new shoots that neither show flower buds nor are needed for the next season's bearing canes. All further pruning during the summer is harmful.

**BRIGHTON.** Red. Bunch large, well formed fruit; above medium to large, round; excellent flavor and quality; one of the earliest in ripening.

flesh juicy, sweet, pulpy, tender; vine a strong grower, very hardy, healthy and productive.

**CONCORD.** Black. Early. Decidedly the most popular grape in America and deservedly so. Bunch large shouldered, compact; berries large, covered with rich bloom, skin tender, but sufficiently firm to carry well to distant markets,

**DELAWARE.** Superior as a table grape. Bunch medium, very compact, berries medium round; skin thin, of a beautiful dark red color when fully ripe; flesh tender and juicy, exceedingly sweet. Vine hardy, moderately vigorous and productive. Ripens early in September.

Illustration Inside of Back Cover Shows How We Get All Roots When Digging

**NIAGARA WHITE.** Occupies the same position among the white varieties as Concord among the black; the leading profitable market sort. Bunch and berries large, greenish white changing to pale yellow when fully ripe. Skin thin but tough; quality much like Concord.

**WORDEN.** Black. Bunch large, sometimes shouldered, compact; berries very large; skin thin. Superior to the Concord in the following points: better quality, larger berries, more compact, and ripens five to ten days earlier. Fully equals Concord in vigor, health and productivity.

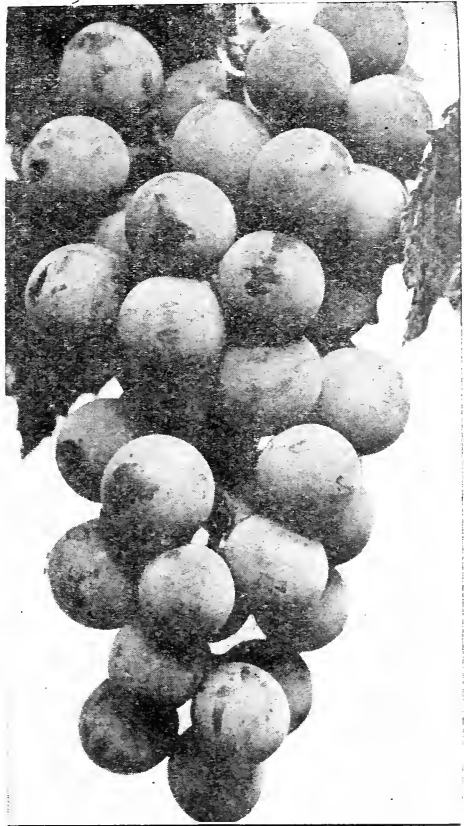
**New Grape**

**CATAWBA-CONCORD or CACO**

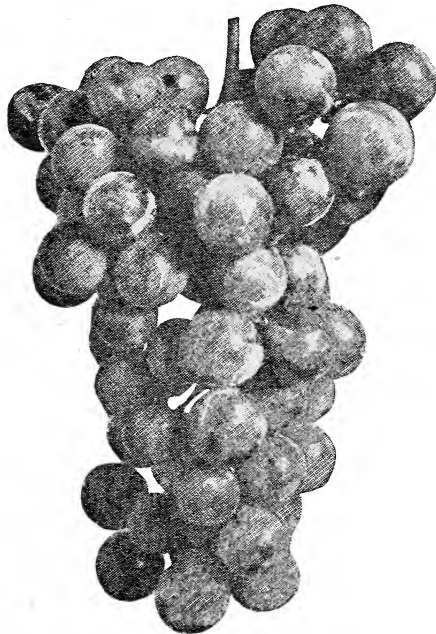
(Registered U. S. Patent Office)

An early grape and without exception the best early variety we have ever known. A cross between Catawba and Concord, scientifically made, and possessing the merits of both varieties with the defects of neither.

Fifty years ago the Catawba was universally popular; it is still the standard of excellence, in quality, among hardy grapes. Concord, as is well known, is unexcelled in productivity, vigor, hardiness of vine, and freedom from disease of foliage. The good properties of the Catawba-Concord are: High quality—equaling in tenderness of pulp,



**Niagara White Grape**



**Delaware**

sweet luscious flavor and aroma the Catawba with added sweetness and juiciness. Rich sparkling light red, with abundant bloom. Bunch large and compact—just like the Catawba. Berry medium to large and nearly round—exactly like the Concord. Season early; a little in advance of Concord. Berry adheres firmly to bunch, hence a superior shipper and keeper. Vine of extreme vigor—a stronger grower than the Concord, and of ironclad hardihood. A heavy annual yielder. There is nothing like it on the market today. Stock is limited and high priced.

Strong one-year-old vines, 50c, 3 for \$1.25, 5 for \$2.00, postpaid.

---

Dear Sirs: Pa.  
I received a card from the Express Company on the 14th of April that there was a bale of trees there for me. It being a very wet day, did not get them till the morning of the 15th of April. The trees and vines are all planted and growing fine. Very thankful for the nice trees.—C. C. Lehman.



## Currants Are Very Profitable

The growing of this fruit and the gooseberry is the easiest and least troublesome, and at the same time among the most profitable of any the fruit-grower has to deal with. About the only thing to do is to keep the weeds down and to gather the crop which later process does not demand that close attention necessary for other berries. They mature just before raspberries and can be used either raw or cooked. Being very hardy, they do not winter-kill and are easy of cultivation, requiring little care. They can be grown in any good garden soil. An acre yields from 200 to 250 bushels of fruit, bringing a price of \$4.00 to \$5.00 per bushel. Plant 4 feet apart each way and mulch with good manure.

Our plants are strong well rooted plants that will bear fruit early. We offer only the best varieties. Price 10c each, 12 for \$1.00, 25 for \$2.00, 50 for \$3.00, 100 for \$5.00 by express.

**CRANDALL'S.** This variety is often used as a flowering shrub as it has large, yellow flowers which are produced in great profusion. Fruit is very large, black and unexcelled for jams, tarts and jellies.

**FAY'S PROLIFIC.** Has fully satisfied all the claims that were made for it by the originator when first introduced, and

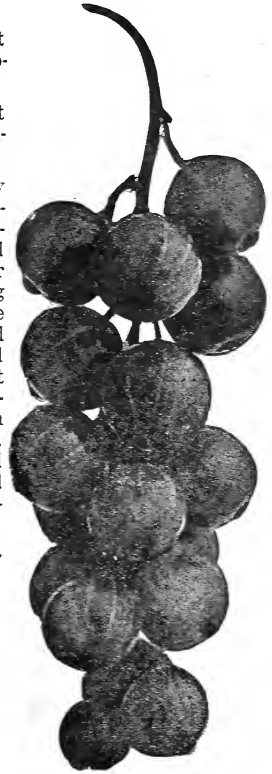
is one of the best red currants. It has been widely planted, and has given general satisfaction; fruit large, bright red, and excellent flavor, less acid than Cherry. It has a long stem, which admits of rapid picking, and is enormously productive. One of the most valuable fruits of recent introduction. Comes into bearing early.

**LEE'S PROLIFIC.** The largest berry and bunch, and best in quality and productiveness of any black variety yet introduced. Fruit large and of fine quality. Black.

**WHITE GRAPE.** The best of all white currants and it should be planted in every garden owing to the great beauty of the fruit as compared with the other varieties.

**PERFECTION.** This grand new fruit was originated by Charles G. Hooker of New York, by crossing the Fay's Prolific with the White Grape Currant, with the view of combining the large size and color of the Fay with the good quality and productiveness of the White Grape. The color is a bright red; size as large or larger than Fay, the long stem making it easy to pick without crushing any of the berries. It is a great bearer. The berries are of rich, mild flavor, sub-acid, plenty of pulp, with few seeds. Less acid and of better quality than any currant in cultivation. It is the best bearer, with largest berries; the sweetest currant ever tasted, and the easiest to pick. Anybody can pick a basket of Perfection as fast or faster than cherries. If I should plant ten acres of currants for profit, I would plant Perfection only. Our plants are true Perfection; all will have the seal of the introducer attached, so our customers are sure to get the true kind.

Price, 2-yr. No. 1, each 15c; 12 for \$1.50; 100 for \$12.00.



Perfection  
Currants



Awarded the  
**BARRY MEDAL**  
The Fifty-Dollar Gold Medal  
of the  
Western New York  
Horticultural Society  
after three years' trial

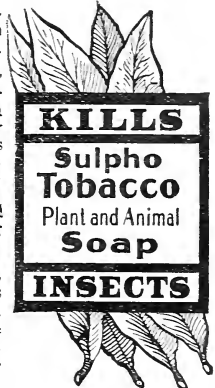
The first fruit to receive this grand prize. Also received the HIGHEST AWARD given any new fruit at the PAN-AMERICAN EXPOSITION.

**SULPHO-TOBACCO PLANT AND ANIMAL SOAP**

It Kills Ants, Red Spider, Plant Lice and All Sucking Insects. An Inexpensive Insecticide

A sure, immediate and convenient exterminator of insect life and vermin on plants, shrubbery, vines, small fruits and trees. Non-poisonous and absolutely safe to handle. It will not injure the tenderest growth. A fertilizer, reviving plants wilted from the ravages of insects. Dissolve about two ozs. of soap in a gallon of warm or cold water. Apply liquid, when cold, with atomizer, a common sprinkler, etc. Many of the most famous florists and growers constantly and extensively use Sulpho-Tobacco Animal Soap with gratifying results.

Prices, 3 oz. cake, makes 1 1/2 gallons prepared solution 14c, 8 oz. cake, makes 4 gals. for 28c. 10 lb. cake, makes 80 gallons, \$3.62 postpaid.



# Gooseberries are Healthful



Downing Gooseberries

The expense of growing this fruit is very light and the returns are most satisfactory as the demand for the fruit is constantly growing. Good plants should produce 200 bushels per acre the third year after planting, and 300 to 400 bushels the fourth year. You can usually get from \$4.00 to \$6.00 per bushel for the fruit,\* so you can judge of the profits to be obtained from such an investment. Agricultural Colleges are urging people to plant gooseberries because there is a demand for the fruit and they are profitable. We sell good plants of the best varieties that will produce fruit the first year after planting.

Prices, 18c each, 6 for \$1.00 postpaid. 25 for \$3.00, 50 for \$5.00 by express.

**DOWNING.** Is the largest and best of all native American varieties. The value of Downing lies in its large size, fine quality, beautiful appearance, vigorous growth and freedom from mildew. It is recommended as proof against mildew. Downing is free from spines, of a transparent color, tending to yellow; bush upright, keeping the fruit from the sand. It is enormously productive. Since plants of Downing can be produced in America and plants of foreign varieties cannot, Downing plants can be sold at a lower price, which is another inducement for planting. An acre of Downing can be made to yield \$500 within a few years from planting. It is unsurpassed for canning. Easily harvested by stripping the branches with a gloved hand, enab-

ing the picker to gather many bushels in a day.

**HOUGHTON.** Medium size, pale red, sweet and juicy; vigorous grower, abundant bearer and free from mildew. Sweet and good in flavor and quality.

**PEARL.** The most prolific gooseberry known. One bush produced 2,500 berries. It is free from mildew and is larger than the Downing. The color is light green and quality first class. Being thoroughly tested, we offer it as the best of its class yet known. This is a valuable variety for home use or market.

Gentlemen: Okla., May 2, 1914.  
The St. Regis Raspberry plants I got of you are growing finely. Thank you.  
Miss Agnes Russell.

Gentlemen: Minn., May 14, 1914.  
The trees arrived yesterday and seem to be in good condition. If they go good in our climate I will buy more next spring. I cut them down nearly half of their height before planting. The roots were fine. Yours truly, Alf. Johnson.

Pa., May 22, 1914.  
Dear Sirs: I received the plants you sent me; they are certainly beauties. You certainly have done all in your power to make the first lot of plants good. I think when I get any more I will have them sent in the early fall instead of spring. Thanking you for your kindness, I remain,  
Yours truly,  
Mrs. T. A. McClellan.

## Berry and Currant Collection

No. 9

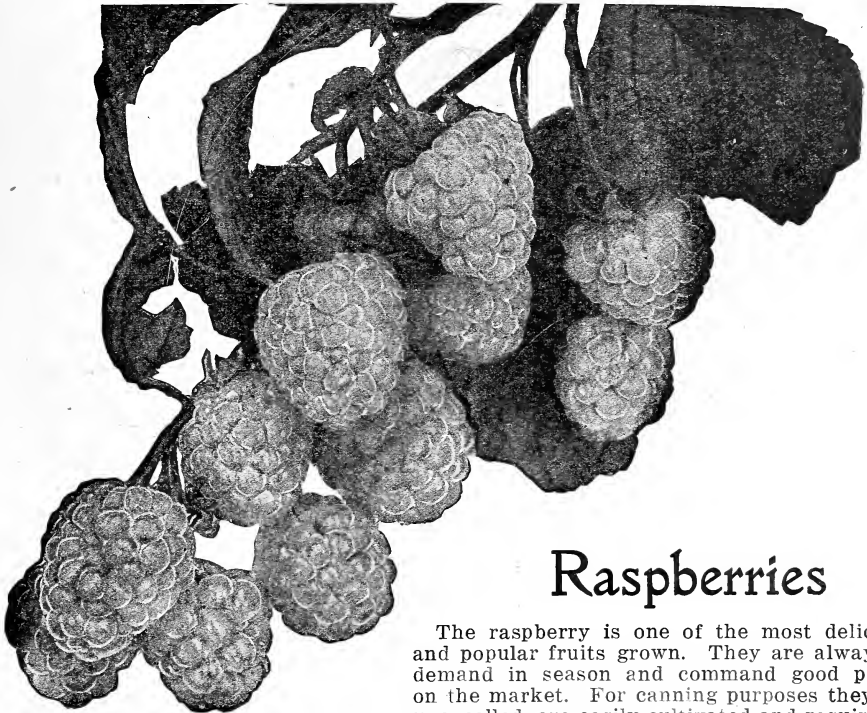
\$1.00 if sent in a Registered Letter

2 Black Currants      2 Red Currants  
2 White Currants    3 Gooseberry  
2 St. Regis Raspberry

Double the above with 6 St. Regis Raspberry for \$2.00

Two year plants, and will bear next season. When ordering be sure to give the number of the Collection.





## Raspberries

The raspberry is one of the most delicious and popular fruits grown. They are always in demand in season and command good prices on the market. For canning purposes they are unexcelled, are easily cultivated and require lit-

tle care. Cut out the old, weak shoots each year; plant in good soil in hills about four feet apart. With a little care and attention they will produce large crops of berries. For winter protection, bend canes over, cover with straw or leaves and remove early in the spring.

### ✓ St. Regis Everbearing Red Raspberry

(Berries from June until October)

St. Regis is unlike any other raspberry, for it yields a crop of fruit the first season and continues to bear fruit perpetually for four months. Plants set early in April produced ripe berries on June 12 of the same year and canes continued to produce ripe berries freely, without intermission until the middle of October. The berries are large and beautiful, brilliant crimson, firm, and full flavored to the very last. St. Regis is of pure American blood and is of ironclad hardiness, the canes enduring the severest cold uninjured and are wonderfully prolific. Its foliage never suffers by sunburn or scald, nor is its growth of cane impaired by the heat and drouth of summer.

The following sworn statement will

give an idea of what can be raised on a small plot:

"During the season of 1912, from one and one-quarter acres of the new Everbearing St. Regis Red Raspberry, I, George W. Swank, harvested and sold 15,502 pints of berries for \$962.42; my net receipts being \$526.59.

"In addition to the above, there were 151 pints lost in transit, claims for which are pending with the express company; and fruit was eaten freely at our table, and occasionally supplied to neighbors, of which no account was kept. The plants continued to bear after we stopped picking, ripe fruit being taken from the patch on the third of November."

G. W. Swank being duly sworn says that the foregoing is correct.

Sworn and subscribed to before Wilber R. Tilton, Notary Public.

We have acres of this grand berry in our nursery and can supply selected plants at—5 for 25c, 20 for \$1.00 post-paid; 50 for \$2.00, 100 for \$3.00 by express.

Calif., March 19, 1915.  
Dear Sirs: The Trees and Berry Plants safely to hand and am much pleased with them.  
Very truly yours,  
Mrs. H. H. Estee.



Cuthbert, or Queen of the Market

The following varieties of raspberries are among the best of the older kinds. We can supply any of these varieties at prices that will suit you. 12 good plants for 60c postpaid, 50 for \$1.25, 100 for \$2.00 by express.

**CUTHBERT, or QUEEN OF THE MARKET.** Fruit is large, luscious, and produced in the greatest profusion. Color deep rich crimson; fruit very firm. Ripens from July 10 to 20, and continues a long time in fruit. Entirely hardy and yields heavy crops. Follows the Marlboro in season of ripening.

**CUMBERLAND.** In hardness and productiveness it is unexcelled by any other variety. In size, the fruit is simply enormous, far surpassing any other sort. The berries run seven-eighths and fifteen-sixteenths of an inch in diameter, and are of such handsome appearance that their fruit sold for 10c per quart, when other varieties were selling for from 5 to 7 cents per quart. In spite of its unusual size, the fruit is possessed of great firmness and is thus well adapted for standing long shipments.

**KING.** Earliest red raspberry on record. It is the early red raspberry that makes the money, often sells for 25c a quart. You should add this one to your collection. Round, medium size, light crimson colored, firm and of excellent quality.

**COLUMBIAN.** Dark red or purple, similar to Schaffer's Colossal, but a much better grower and bearer, larger and firmer. The most prolific raspberry known and best for canning and drying. Although red, it propagates from the tip only and never suckers. Late.

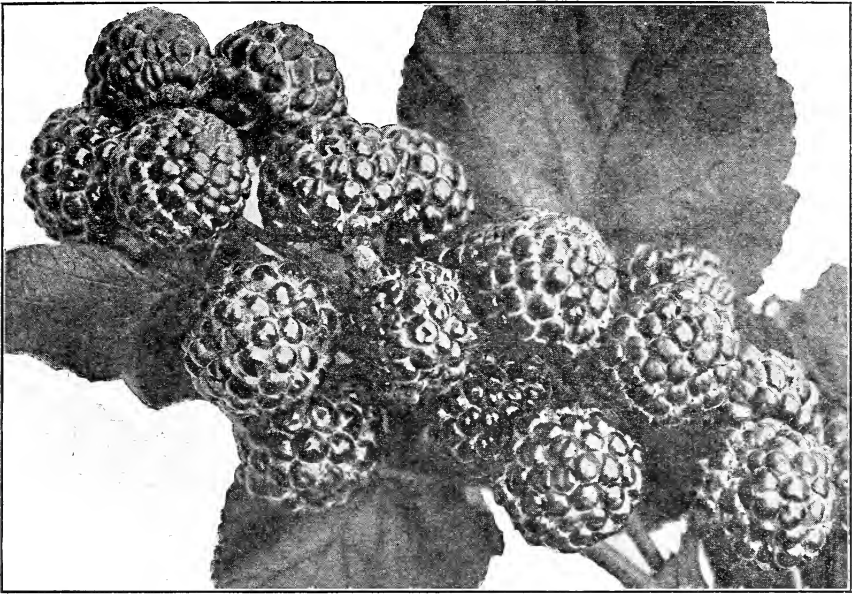
**PLUM FARMER.** This is the largest, most productive and most desirable blackcap in cultivation. The plants are stout stock growers, very clean and healthy and when ripened in the fall have a silvery blue color which distinguishes them from all others. The berries are very large, sometimes an inch in diameter when grown on rich soil with good cultivation. The flavor is very appetizing and much superior to

any blackcap we have ever tasted. The berries are firm, thick and meaty and adapted for home use, canning or shipping to distant markets, anywhere you can place them.

**GIANT CARDINAL RASPBERRY.** This wonderful berry is a surprise in many ways—its great growth, extreme hardness and the exceeding productiveness of its choice purple, pure flavored ber-



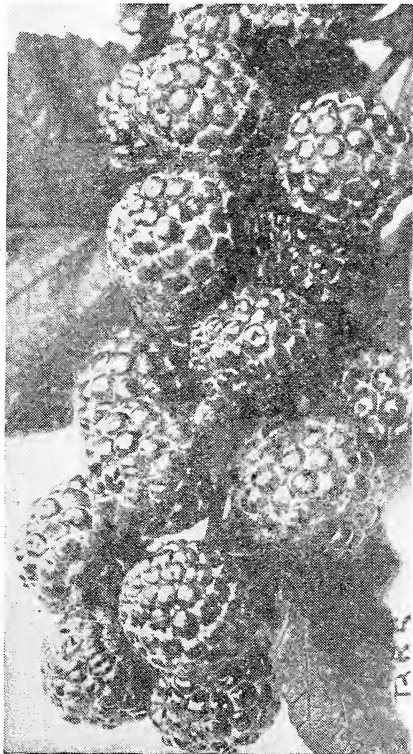
Cumberland Black



Plum Farmer, the best black cap

ries. It will pay to grow it everywhere. Not a novelty, but a variety of great merit. Leading horticulturists say that it is one of the wonders of the century, exceeding all others. The president of the Kansas State Horticultural Society, said at a meeting of the society that the Cardinal raspberry would add millions to the wealth of the farmers of the country because of its great vigor and exceeding productiveness.

Plants, 3 for 30c, 6 for 50c postpaid, 15 for 75c, 25 for \$1.00, 100 for \$3.00, by express.



### Small Fruit Collection No. 10

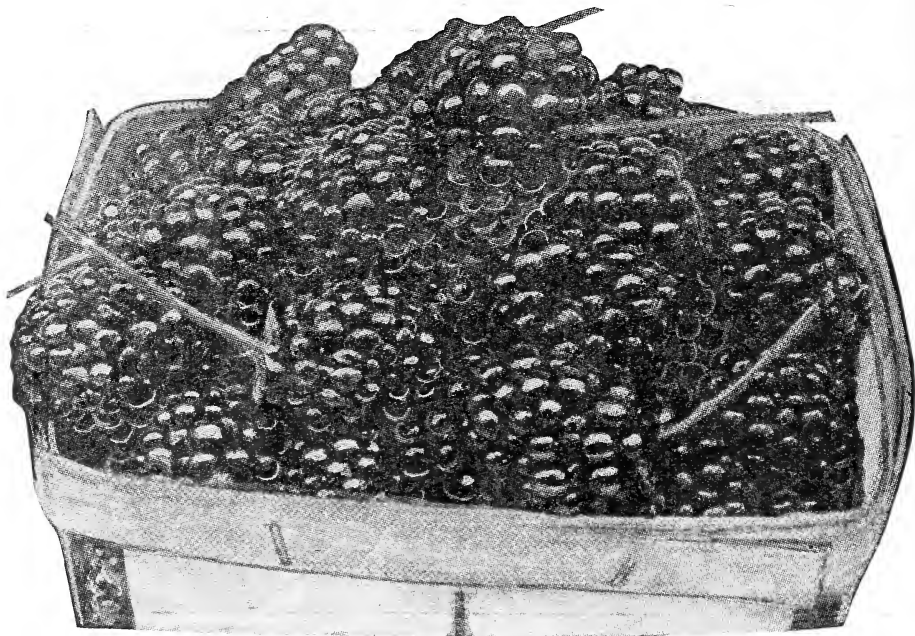
These Twenty Plants in Selected Kinds for \$2.00

- |                 |                   |
|-----------------|-------------------|
| 1 White Grape   | 2 Red Currant     |
| 1 Black Grape   | 2 White Currant   |
| 1 Red Grape     | 2 Blackberry      |
| 1 Gooseberry    | 2 Dewberry        |
| 2 Black Currant | 2 Black Raspberry |
| 3 Everbearing   | Red Raspberry     |

Remember They are "Quality" Plants and Sure to Grow

N. Y., Oct. 25, 1916.

Received my Shrubs in fine shape and you certainly send out finely rooted Shrubs. I am enclosing another order and would like to receive same by express. Very truly, Matilda W. Moutauge.



Star of Wonder Blackberry

## Blackberries Are Desirable

Any moderately rich soil will answer for their cultivation, but to avoid too strong a growth and straggling habit, pinch the ends of the shoots during the season. This will give you more fruit and a better shaped bush.

### Star or Wonder Blackberry Known Also as Ewing's Wonder

A wonder indeed! In growth, excellence and productiveness. The canes are like a grape vine in vigor—growing under favorable conditions twenty feet or more in a season; the fruit is of the highest quality and a single plant has produced over eighty quarts of berries in one year. The berries are coal black, extremely firm, as large as those of the Ward, or any of the popular varieties, melting and of sprightly flavor. It has undoubtedly descended from the widely known cut-leaf or evergreen blackberry, but is unlike it in flavor and ten times as productive. It holds its leaves until well into the winter and the canes are very hardy and are entirely exempt from fungus and insects attacks.

The following statement does not read like a conservative one, yet it is, and was made by conservative men of authority. It was issued by Mr. Frankline Dye, Secretary of the New Jersey State Board of Agriculture, after visiting the grounds of Mr. Ewing in company with a number of eminent horticulturists: "The Ewing's Wonder Blackberry is all its name implies and exceeds in productiveness the most sanguine expectations. When the promoter first told us of its growth and yield, we were decidedly skeptical and thought he was romancing. A visit to the farm and to the blackberry field and inquiries made among the neighbors dissipated all doubts. The berry is of medium size, compact in structure and of the finest flavor. Farmers who give attention to berry raising cannot afford to be without this plant."

An extremely unique and valuable berry, totally unlike any other blackberry in general cultivation.

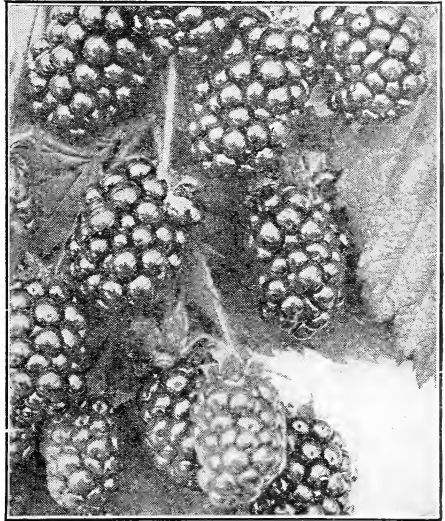
Strong plants, 15c each, 8 for \$1.00 postpaid, 25 for \$2.50 by express.

**For Our Offerings of Best Garden Seeds See Pages 45, 46, 47 and 48**

✓ **ELDORADO.** Is one of the valuable varieties for market and home use. A strong upright grower, moderately full of thorns. About equal in productiveness to Snyder. The fruit is jet black, never coloring red after picking, fully as large again as the average Snyder berry. The flavor is excellent, differing from all others in that respect, imparting a rich aroma, melting and juicy with but little core. Highly recommended by experimental stations and growers everywhere. Berries sell for 50c to \$1.00 per bushel in advance of Snyder. Eldorado is unquestionably one of the best commercial blackberries grown. The finest quality of the blackberry family.

3 for 30c, 6 for 50c, 15 for \$1.00, postpaid; 50 for \$1.25, 100 for \$2.00 by express.

✓ **BLOWERS GIANT BLACKBERRY**—In describing it a large fruit-grower says: "Blowers is such a sturdy grower, the canes, if unchecked, attain a height of 10 to 12 feet and are as hardy as an oak." The Blower yields very heavily and for a long season. The fruit is



Eldorado Blackberry

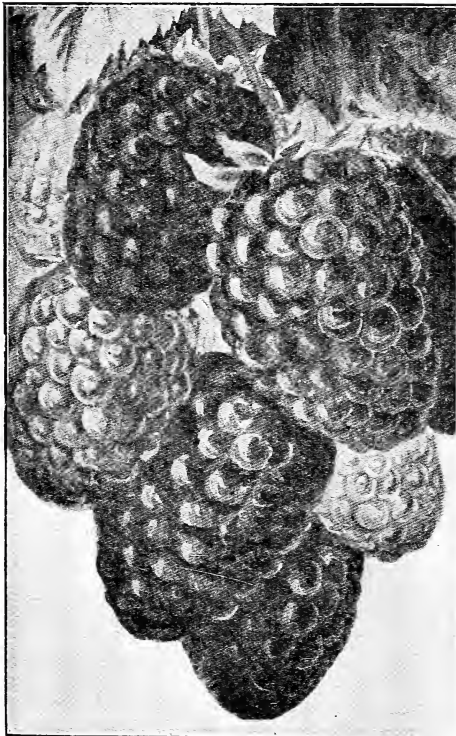
large and handsome and of superb quality, with small seeds and very juicy. Mr. E. P. Powell, the well known horticulturist, declares: "The best I have ever tested." Its canes endured a temperature of 20 degrees below zero unharmed and it has yielded at the rate of 280 bushels per acre. Begins to ripen in mid-season, continuing for a long time.

Strong plants 3 for 30c, 6 for 50c, 15 for \$1.00, postpaid; 50 for \$1.75, 100 for \$3.00 by express.

✓ **Giant Dewberry**

The Giant Dewberry is earlier than blackberries and as large as the largest of them. Canes are hardy and very prolific, thriving everywhere; of slender, trailing habit and free from disease of insect attacks. Fruit is large and handsome, jet black, rich and mellow. Ships and keeps well. Perfectly hardy, stands extremes of heat or cold and a very productive and pleasing berry.

Strong plants, 3 for 20c, 6 for 35c, 12 for 60c, postpaid.



Giant Dewberry

Virginia, March 23, 1915.  
Gentlemen: I got some Everbearing Black Raspberry plants from you last year and every one grew. I want to try a few Red Raspberries to see how we will like them. Mrs. Mary M. Hattel.

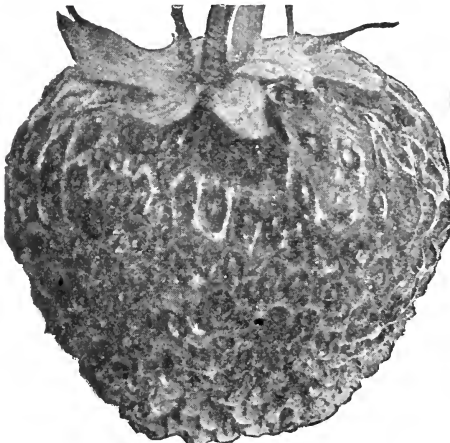
Texas, March 30, 1915.  
Dear Sirs: The goods that you sent are as fine as I ever bought and the roots to the plants the best that I ever saw.  
Yours truly,  
J. W. Ozment.



Americus, the Great Everbearing Strawberry

## Strawberries are the Favorite Fruit

Much has been written about Fall Bearing Strawberries. They have come to stay. As a rule they are inclined to overbear or yield so much fruit that they weaken the plants, so it is advisable to pick off most of the bloom the first year and into July of the second year so that the plants may become established. Anyone who is fond of strawberries that fails to plant a bed of these Fall Bearing kinds is not living up to his privileges. You can have strawberry shortcake in October, in fact, till frost stops the growth of plants, and berries for three months instead of four or five weeks as formerly. Everyone should plant a few of these Fall Bearing varieties.

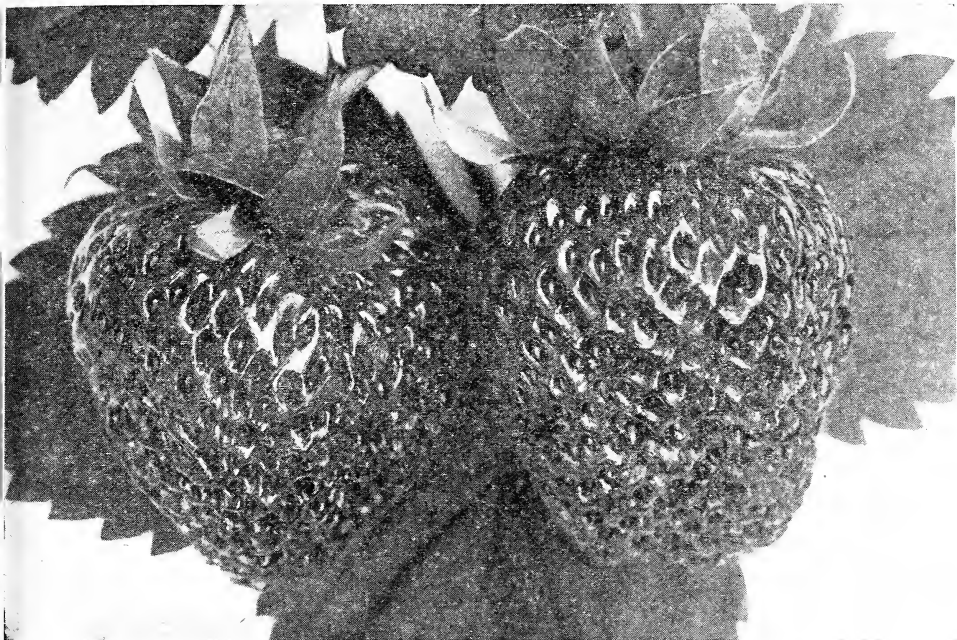


Progressive

### Fall and Everbearing Strawberries

**AMERICUS.** This is the most wonderful everbearing strawberry ever produced. Outrivals its parents both in large size and productiveness. Plant very healthy and strong grower; gives fruit from May until hard freezing weather; size medium to large, bright red through and through. The berries literally lie about the plants in heaps and piles, flavor thought to be height of perfection in quality.

**PROGRESSIVE.** Not only the finest of the Rockhill varieties, but by far the finest and best of all the tested varieties of fall or everbearing strawberries to date. The plant is of strong, vigorous habit with good large leaves, and it mult-



Brow's Giant Prolific

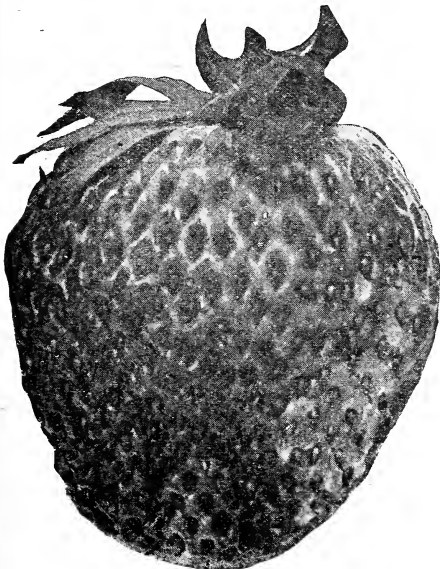
implies all that it ought to. The berries are beautiful; nearly round, glossy, rich deep crimson, of fair size, excellent quality and firm. It begins to ripen with the second early June kinds, and the plants yield such vast quantities of such nice and good berries, it is among the best for its June crop alone. As it

continues to yield fine fruit (though not so lavishly, of course) until late autumn, it is indeed a variety of great value.

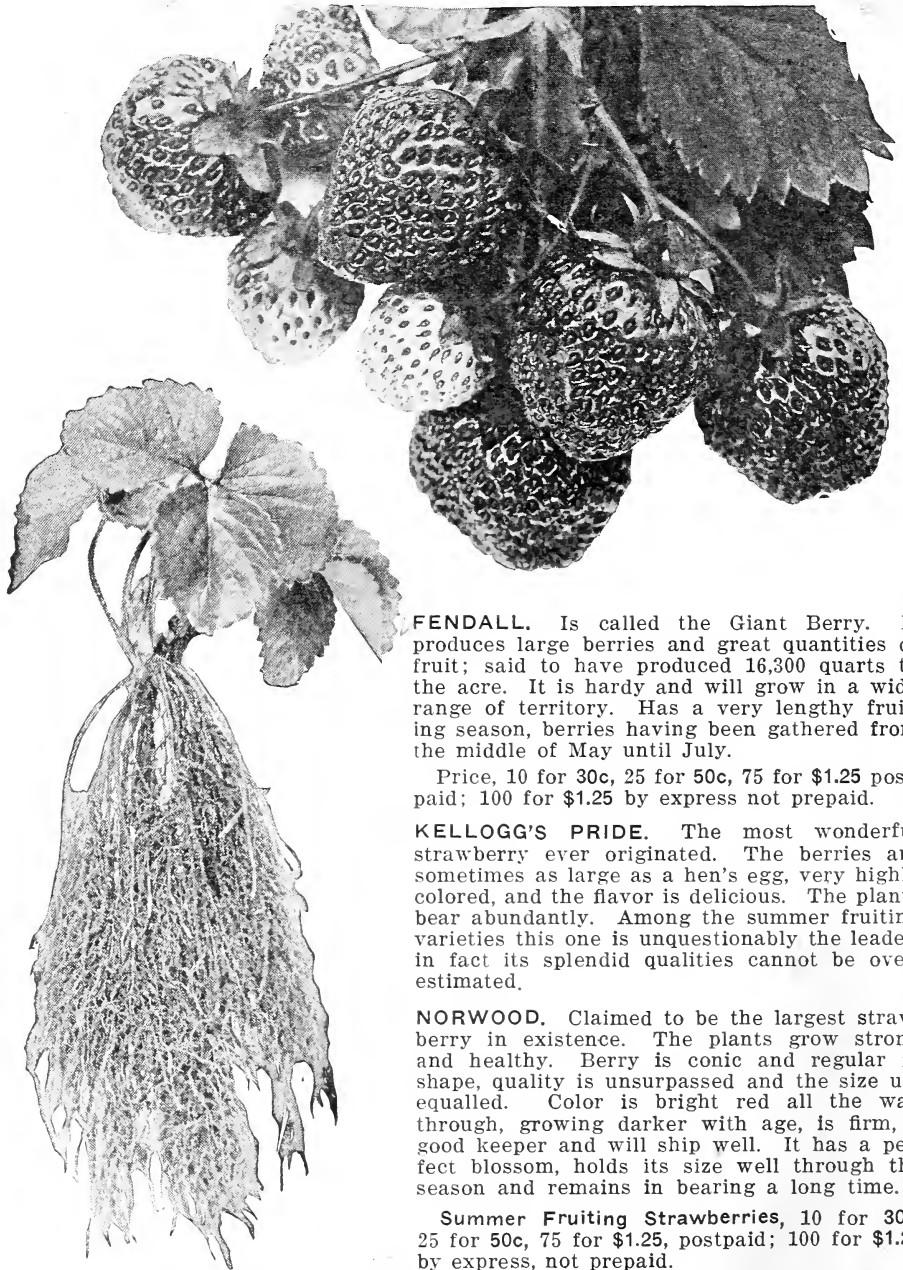
Prices of Everbearing plants, 5 for 25c, 25 for \$1.00 postpaid; 100 for \$3.50 by express.

## Brow's Giant Prolific Strawberry

Never in the history of modern strawberry growing has any variety, in our experience, reached such a high point of merit as **Brow's Giant Prolific**. The plant has a vigorous constitution and is not susceptible to fungous diseases in any form. The berries start to ripen early in June; they are very large, finely colored berries with red, luscious finely flavored flesh. As a commercial berry we can with every confidence recommend this as the very best. The berries carry well, being firm and of good color. We picked berries from this variety amongst the first of the season and everyone who saw the fruit was so enthusiastic over it that we were simply swamped with orders for this one variety. Give it a trial and we are sure that, when you see the fruit and habit of this grand berry, you will grow no other variety. We have only a limited quantity to offer. Strong plants, 25 for 60c, 50 for \$1.20, postpaid; 100 by express \$2.00, not prepaid.



## SUMMER FRUITING STRAWBERRIES—Continued



**FENDALL.** Is called the Giant Berry. It produces large berries and great quantities of fruit; said to have produced 16,300 quarts to the acre. It is hardy and will grow in a wide range of territory. Has a very lengthy fruiting season, berries having been gathered from the middle of May until July.

Price, 10 for 30c, 25 for 50c, 75 for \$1.25 postpaid; 100 for \$1.25 by express not prepaid.

**KELLOGG'S PRIDE.** The most wonderful strawberry ever originated. The berries are sometimes as large as a hen's egg, very highly colored, and the flavor is delicious. The plants bear abundantly. Among the summer fruiting varieties this one is unquestionably the leader, in fact its splendid qualities cannot be over-estimated.

**NORWOOD.** Claimed to be the largest strawberry in existence. The plants grow strong and healthy. Berry is conic and regular in shape, quality is unsurpassed and the size unequalled. Color is bright red all the way through, growing darker with age, is firm, a good keeper and will ship well. It has a perfect blossom, holds its size well through the season and remains in bearing a long time.

Summer Fruiting Strawberries, 10 for 30c, 25 for 50c, 75 for \$1.25, postpaid; 100 for \$1.25 by express, not prepaid.

---

Dear Sirs: A few lines about the trees I received from you this spring; I must say we were certainly fine. I never expected such nice trees as you sent me; one of the Quince trees had about 34 blossoms this spring. If I need goods in your line I will surely buy of you again. (Signed) Michael J. Gross.

New York, June.



# Asparagus Roots

Every home garden should have a bed of asparagus. It has become one of the most favored and profitable garden crops; makes a return early in the spring before any other out-of-door crop can be marketed, and when a bed is well established it will yield splendid crops for a number of years.

We offer good roots of all varieties at the following prices: 50 for 60c, 100 for \$1.00, postpaid.

Extra selected roots, \$1.25 per 100, by express.

**PALMETTO.** The finest and best variety grown; remarkably tender and rich when cooked; free from any tough or woody fibre. Has been tested in the North and South and has proved entirely successful in every instance.

**BARR'S MAMMOTH.** Stalks are very large, grows quickly, light colored nearly equal to the Palmetto, but somewhat larger.

**COLUMBIAN MAMMOTH WHITE.** A new variety; has white shoots which

stay white as long as fit for use. A strong, vigorous grower.

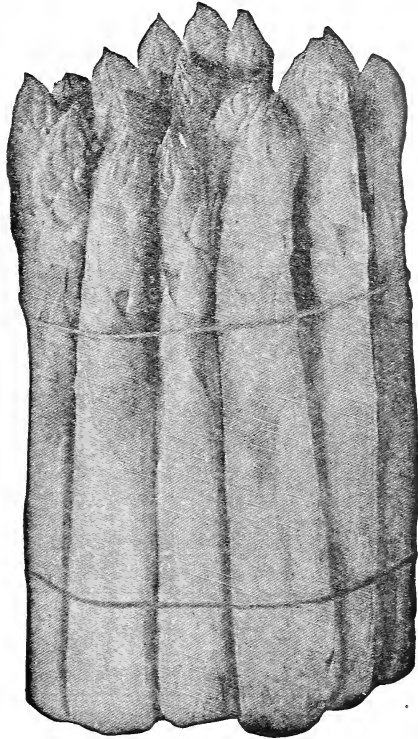
**CONOVER'S COLOSSAL.** A well known, large, rapid grower. Tender and fine flavored.

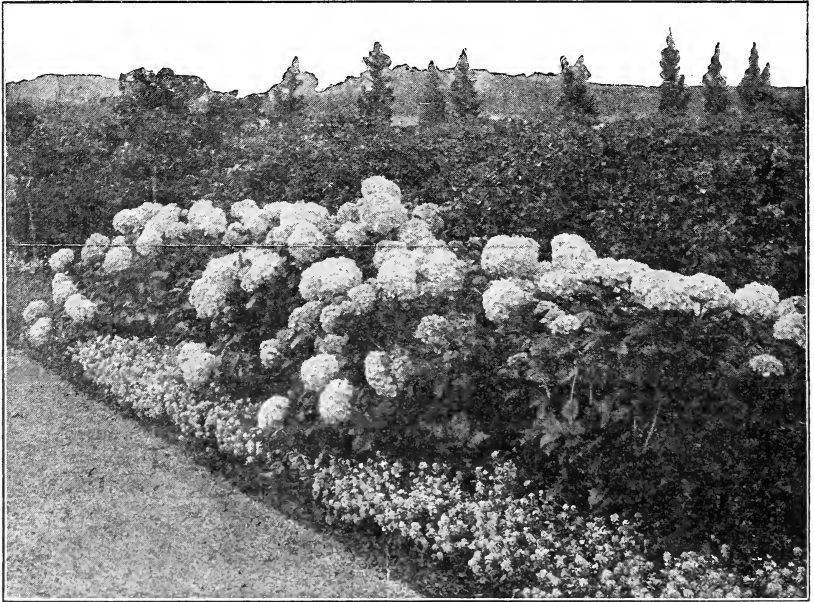
**Culture.** Best results are obtained by planting the roots in April or May, or in the South in the fall, about October, in soil well drained and very rich. Dig trenches about 15 inches wide and about 18 inches deep, set the roots from 15 to 18 inches apart and keep the rows 4 to 5 feet apart for field cultivation. For small garden, a bed 4 feet wide can be prepared and good, well decayed manure placed in the bottom, covering with soil as advised for field cultivation and plant roots 12 to 15 inches between rows. Be careful to spread the roots carefully and put about 3 to 4 inches of manure in bottom of trench; cover this with 2 to 3 inches of soil, then place roots on top of this, and cover them with 3 or 4 inches of soil.

## Rhubarb or Pie Plant

**GIANT CRIMSON.** Our Giant Crimson Rhubarb is one of the best varieties ever offered. It is the earliest of all rhubarb, and fit for use not only in the spring, but all through the summer and fall, while common sorts are fit only a few weeks in spring. As fast as stalks are pulled new ones take their places, and in the South or Pacific states, it may be used all the year, requiring only water in dry localities to keep it growing. Stalks are medium size, of good length, about 1 inch in diameter, of beautiful crimson color, the quality being simply superb.

Price 10c each, 6 for 50c, 25 for \$1.50, 100 for \$4.00 by express. Small, mail size, 15c each, 4 for 50c, 10 for \$1, postpaid.





Hydrangea

## Ornamental Flowering Shrubs

The judicious planting of shrubs adds greatly to the beauty of the home. They are the most valuable among the ornamentals, whether planted in masses or as single specimens, and are indispensable in the parks, the city gardens or the country home. A judicious selection will produce abundant bloom the entire season. The following list of varieties are among the best and most reliable. Hardy, free flowering and easy to grow. Our shrubs are all strong, well-rooted, transplanted stock from open ground. Once carefully planted in suitable positions they increase in size and beauty from year to year, and require but little further care.

Strong plants of any variety 30c each post paid, 6 for \$1.50 by express not prepaid.

**ALTHEA (Hibiscus).** A large shrub, sometimes trained into tree form, that blooms freely in September, when almost every tree is out of bloom. Vigorous growth and succeeds everywhere. Also called Rose of Sharon. We can furnish varieties in these colors. Red, pink and white.

**DEUTZIA, PRIDE OF ROCHESTER.** Very large, double white flowers. A hardy, vigorous shrub that does not suffer from insects or diseases and early in the season is fairly covered with showy double white flowers that on edge are slightly tinged with rose. A desirable shrub.

**DEUTZIA, GRACILIS.** A dwarf variety covered with a profusion of white flowers in June. Fine for pot culture, as it flowers freely in low temperature during the winter.

**BARBERRY, PURPLE LEAVED.** A very effective bush to plant for color schemes. Violet-purple foliage

**BARBERRY THUNBERGII.** Dwarf habit; small foliage, changing to red in the fall; very pretty. See illustration and price on inside of front cover.

**HYDRANGEA PANICULATA GRANDIFLORA.** Absolutely hardy, thrives in all soils; grows rapidly and blossoms



Deutzia,



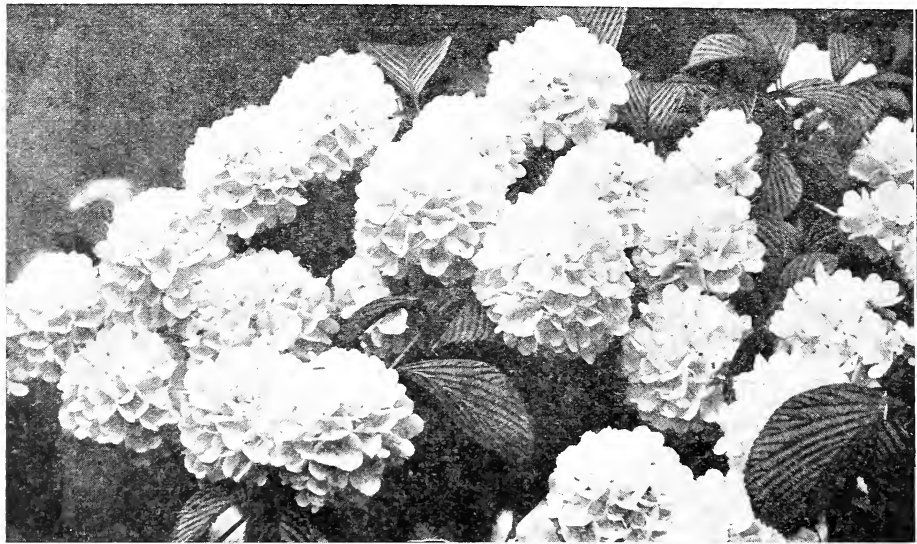
Forsythia, See description on page 33

profusely. The flowers are pure white, afterward changing to pink, and are borne in large pyramidal trusses often more than a foot long and six to eight inches in diameter. Begins to bloom early in August, and continues to bloom for several weeks. Wherever known it is considered to be one of the finest flowering shrubs. See illustration on opposite page.

**ARBORESCENS GRANDIFLORA.** A grand addition to summer flowering hardy shrubs dwarfing the show of others in July and August by the magnitude and profusion of its flower heads. The flow-

ers are, in a large way, similar to the familiar "Snowball" in appearance, and are so conspicuously white and imposing that whether as single specimens, as cut flowers, or in groupings, their presence is predominant.

**TAMARIX.** These are very beautiful shrubs, with small leaves, somewhat like those of the Juniper, and delicate small flowers in spikes. They are invaluable for planting by the seaside, where scarcely anything else will grow. Foliage very fine and feathery on slim branches, flowers pink, very small and numerous so as to cover the branches



Snowball

of preceding year's growth. The peculiar flowers and leaves make this an attractive shrub.

**SNOWBALL, JAPANESE** (*Viburnum Plicatum*). Very popular shrub. An upright grower, fine, dark crumpled foliage, and densely covered with large balls of pure white flowers, which last for many weeks. June.

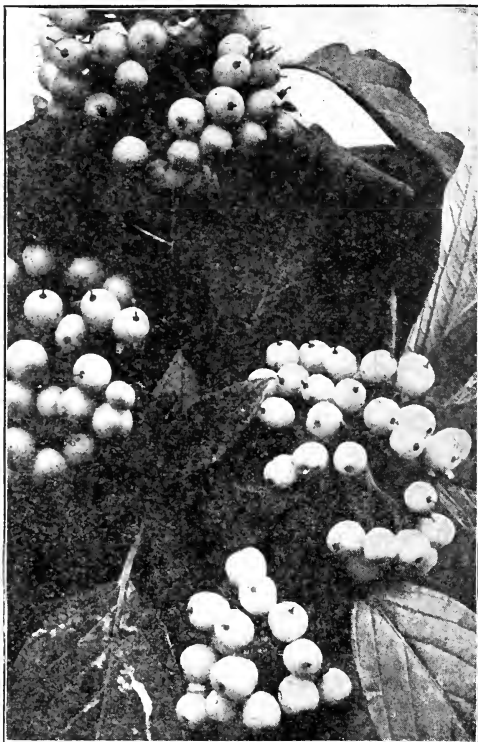
**SNOWBALL OF GUILDER ROSE** (*Viburnum Sterilis*). A well known old shrub bearing large balls of snow-white flowers in June. Perfectly hardy.

**SNOWBALL, HIGH BUSH CRANBERRY** (*Viburnum Opulis*). Ornamental as well as useful. Its white flowers are followed by clusters of red berries resembling cranberries, which remain on the bushes a long time.

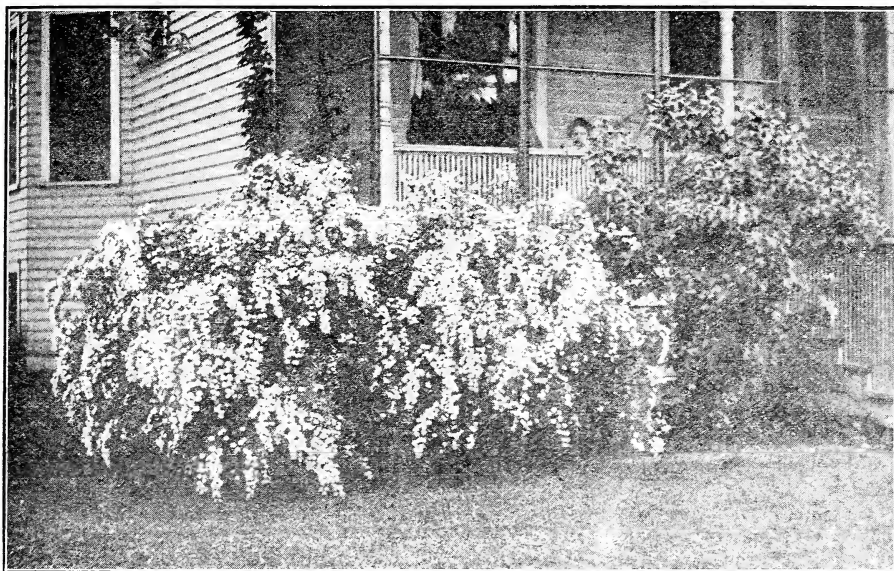
**PHILADELPHUS GRANDIFLORA** (*Syringa* or Mock Orange). One of the best and most popular shrubs. They are usually tall, vigorous growers, with large foliage and flowers, and so are valuable for backgrounds, screens, grouping and specimens. Their flowers are very sweet-scented, milk-white in most cases, and beautiful for cutting.

**PHILADELPHUS AUREUS**. A striking shrub of medium size, with golden yellow leaves that remain bright through the season. Valuable for contrastive grouping.

**SYMPHORICARPUS RACEMOSUS** SNOWBERRY. A well known shrub with small pink flowers, and large white



Snowberry



*Spirea Van Houttei*

berries that hang on the plant through part of the winter.

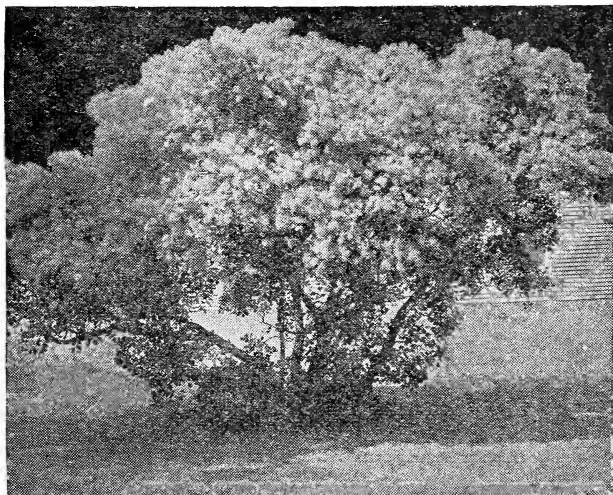
**SYMPHORICARPUS, CORAL BERRY** (*S. Vulgaris*). A slender branched upright shrub, valuable for planting in shady places, as the foliage is very persistent. The fruit is a purplish red and hangs on well into winter; flowers small and rose colored.

**FORSYTHIA, SUSPENSА.** A pretty weeping or drooping variety makes a

very effective and pretty shrub when covered with its yellow flowers in early spring. See illustration on page 31.

**SPIREA VAN HOUTTEI** The finest and most valuable of all spireas either for individual planting or amongst other shrubs. It forms a round and graceful bush with arching branches, which in June are covered from end to end with beautiful white blossoms, giving the bush a most beautiful and graceful appearance. The illustration will give you an idea as to its habits and free flowering qualities. It is literally a fountain of bloom.

**SMOKE TREE (Purple Fringe).** A very elegant and ornamental large shrub. The large masses of misty purplish flowers, which cover the whole bush in June, give it the name of Smoke Tree, as it resembles very much a cloud of smoke in the distance. See illustration. The leaves change to various colors in fall. We can recommend this as a highly attractive plant, worthy of a place in your collection of shrubs and trees.



Smoke Tree

**SPIREA THUNBERGII** (Thunberg's Spirea). Of dwarf habit and rounded, graceful form; branches are slender and somewhat drooping; foliage narrow and yellowish green, flowers white, appearing early in spring, being one of the first spireas to flower. Esteemed on account of its graceful habit.

**SPIREA ANTHONY WATERER.** Dark crimson, flowers all summer. One of the finest shrubs and very desirable.

**LILACS.** Lilacs are a class of shrubs embracing a large list of varieties, many of which are hardly dissimilar. We offer two distinct colors of the leading hardy kinds.

**LILAC, WHITE.** Cream colored flowers. Very fine.

**LILAC, PURPLE.** Large, shining flowers. Large, single, reddish-purple.

**HONEYSUCKLE, RED TARTARIAN** (Bush Honeysuckle). Fragrant pink flowers in May, and beautiful, orange colored berries which hang on the bushes well into the winter, making it a valuable shrub for winter effect.

**HONEYSUCKLE, WHITE TARTARIAN.** Differs only in color of the flowers.

**CLIMBING HONEYSUCKLE, H. HALLEANA** (Hall's Japan). Very vigorous. Flowers open pure white and change to yellow. Very fragrant and floriferous. Leaves remain green to winter. The finest of all honeysuckles.

**WEIGELIA, CANDIDA.** This is the very best of all the white flowering Weigelias. A strong, upright, erect grower; flowers pure white and produced in great profusion in June and continues to bloom throughout the entire summer.

**WEIGELIA, EVA RATHKE.** A charming new variety; flowers brilliant crimson, a beautiful, distinct, clear shade; flowers twice in one season.

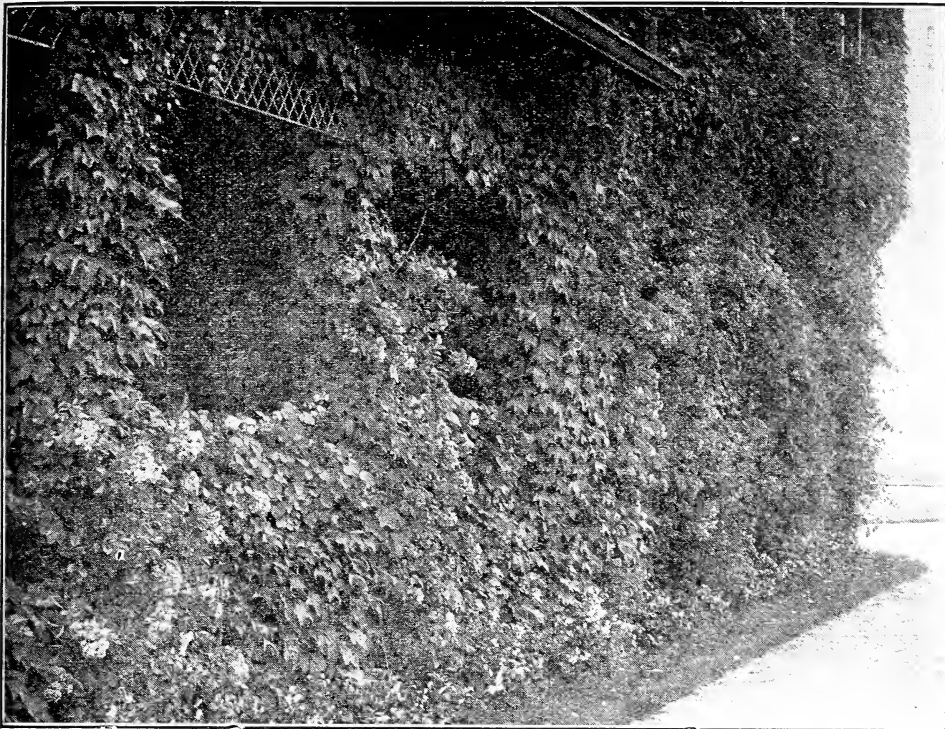
**WEIGELIA, ROSEA.** A hardy and beautiful shrub bearing in May a profusion of rose colored flowers.

**WEIGELIA, VARIEGATED.** Fine, variegated foliage and lasts the entire season; contrasts finely with its rose-colored flowers.



Lilac

N. Y., June 19, 1916. You sent me a half dozen Rose plants early in the spring, all of which were most satisfactory. They have, at this early date, begun to bloom. If these new plants are as fine as the last I shall be very much pleased.  
DYER B. TALLY.



Ampelopsis and Dorothy Perkins Roses

## Hardy Climbing Vines

Our vines are hardy, out-door-grown plants, well rooted and sure to grow. You can make a selection of any four varieties in this list for \$1.10, or 30c each, postpaid.

### AMPELOPSIS

**A. ENGELMANNI.** Very similar to *Quinquefolia*, clings closely to its support, and is a valuable vine for covering walls and trellises and for running over trees and ugly places. The five-fingered leaves are handsome at all times, and very bright in the fall.

**A. VEITCHII, BOSTON or JAPAN IVY.** The now famous Japan or Boston Ivy used so extensively to cover brick or stone buildings. The foliage is dense, completely carpeting the surface, and the autumnal tints of green and red are unsurpassed for beauty. The plants when young should have a winter protection, but when well established no vine cares for itself equal to this superb variety.

**BIRTHWORT or DUTCHMAN'S PIPE.** A rapid growing vine, with magnificent

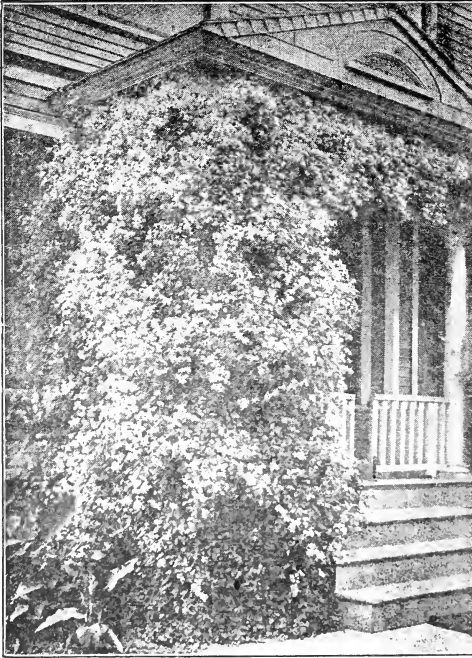
foliage and curious, pipe-shaped brown flowers.

**LYCIUM BRABARUM** (*Matrimony Vine*). This is a rapid climber, and its long, vigorous shoots push upward 8 to 10 feet, and then recurve gracefully to the ground, strung along their entire length, late in summer, with transparent brilliant crimson berries.

### CLEMATIS

**CLEMATIS, PANICULATA.** Single, white. Of extremely rapid growth, with shining green foliage, and a profusion of flowers, which are small; but borne in large panicles; very popular. See illustration. 30c each, postpaid.

**CLEMATIS, JACKMANNI.** Single. Very large, deep purple; forms a perfect mass of the richest blooms. 30c each, postpaid.



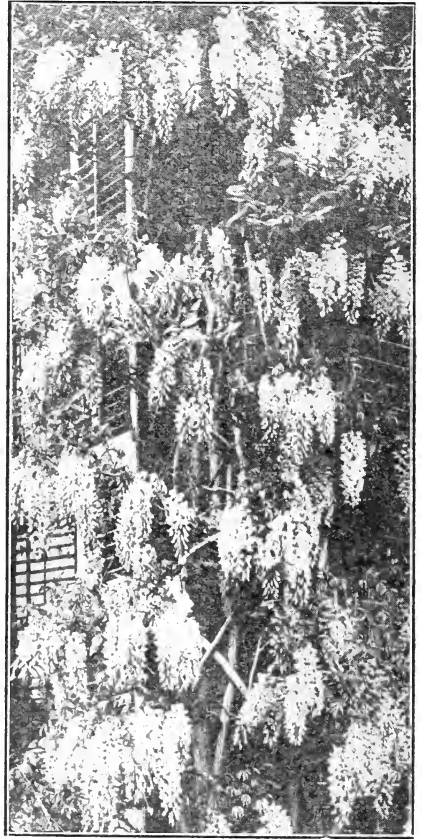
Honeysuckle

**HONEYSUCKLE, HALL'S.** See Climbing Honeysuckles on page 34.

**WISTARIA, CHINESE BLUE.** Grows 15 to 20 feet in a season and produces long hanging clusters of pale blue flowers, in spring and fall. 30c each.

**W. CHINESE WHITE.** Same as above except that flowers are pure white. 30c each. See illustration

When buying Ornamental Shrubs and Vines be sure to note carefully the specifications as to grade. The ones we offer are Two Year, strong transplanted No. 1, and are far superior to small size stock, sometimes offered by others at a few cents less.



Wisteria

See Our List of Hardy Climbing Roses, Page 42, Any of Which Can be Planted With These Climbing Vines.

## A Fine Selection of Roses

Starts on next page.

Among all the flowering shrubs that make for beauty, grace and ornamentation, there is none that can compare with the rose. The wide range of color, shape and size of the blooms and the diversity and character of the foliage gives it a wider range for decoration than any other single group of plants. When added to these qualifications are ease of culture, quick and ample response in blossoms, it is not to be wondered that the rose has been aptly termed the "Queen of Flowers." In most collections of flowering or ornamental shrubs it is in first place.



## Choice Everblooming Hybrid Tea and Tea Roses



This we believe is the most popular class of roses now in cultivation. These varieties are a result of a union between the Everblooming Teas and the hardy Hybrid Perpetual class, thus combining the exquisite richness of coloring and beauty of form in the one with the hardiness, vigorous growth and pungent fragrance of the other.

It is rather exceptional in the roses of any other class to find so many excellent qualities, and when you add the splendid feature of blooming so freely and continuously throughout the season, it is easier to understand why these Hybrid Tea Roses are so popular.

Two-year-old plants, 30c each or 6 for \$1.50, 12 plants if selection is left to us, \$3.00 by express not prepaid.

**ETOILE DE FRANCE (Star of France).** Crimson. Makes beautiful large pointed buds and extra large full double flowers,  $3\frac{1}{2}$  to  $4\frac{1}{2}$  inches across. Color intense, brilliant crimson; very fragrant.

**ETOILE DE LYON.** Color is clear bright golden yellow; makes beautiful buds and is very double and sweet.

**GRUSS AN TEPLITZ;** Virginia R. Coxé, or Crimson Hermosa. Dark rich crimson passing to velvety fiery red—one of the very brightest colored roses we know. Flowers large, full and sweet; blooms constantly and profusely the whole season.

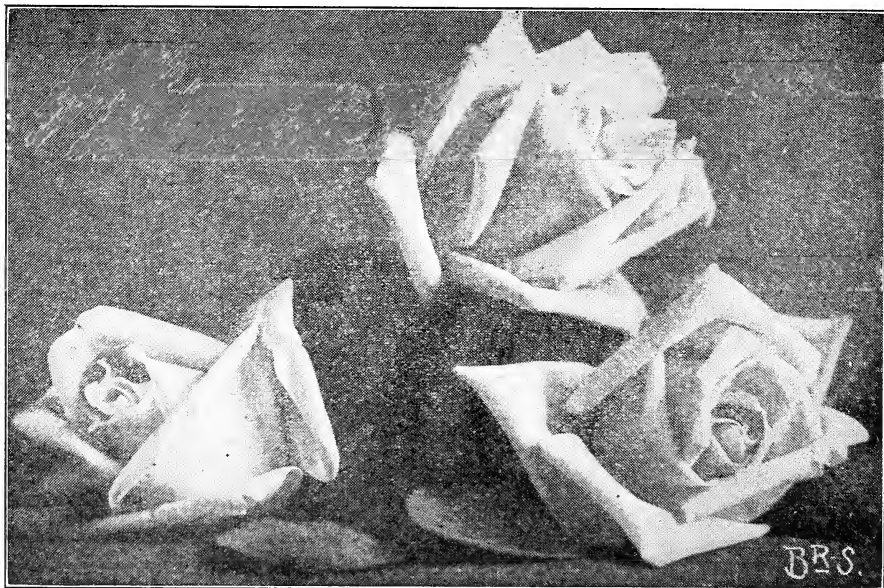
**KILLARNEY.** Flowers are rich imperial pink, produced on strong, sturdy stems. A most popular rose, and very free bloomer.

**KAISERIN AUGUSTA VICTORIA.** White. This grand rose is still unsurpassed in beauty. Extra large, finely formed flowers, borne singly on strong, upright stems; very deep, full and sweet, free bloomer. One of the finest roses, color, pure white, shading to lemon; a free bloomer.

**LA FRANCE.** This is probably the most popular rose in cultivation. Both buds and flowers are of lovely form and grand size, exceedingly sweet; color fine peach blossom, elegantly clouded with rosy flesh. Begins to bloom while very small, and continues bearing until stopped by freezing weather.

**MADAME CAROLINE TESTOUT.** Flowers large and double, color clear bright rose, very sweet, resembling La France, but of more sturdy habit, very free flowering; one of the best roses.

**WHITE KILLARNEY.** In form, size and freedom of bloom this rose is the same as the famous Pink Killarney, of which it is a sport, but is more double than the parent and flowers are waxy white.



White Maman Cochet

Our collection of Roses has been selected as being the best and most reliable varieties to grow. Our plants are hardy field grown plants, grown on an elevation of 1,500 feet, exposed to all weathers, making them hardy and safe to transplant almost anywhere.

**HYBRID PERPETUAL ROSES**

2-year, large, strong bushes, 25c each.  
Add 5c if desired by Parcel Post.

**AMERICAN BEAUTY.** Color, deep pink to crimson, and intensely fragrant. This



American Beauty

is a most beautiful rose and a great favorite in some sections of the country where it thrives abundantly in the open ground. In the cutflower realm it reigns supreme; think of blooms 4 inches across on stems 4 feet long, for so they grow under glass. Is it any wonder they command a price of \$5.00 per dozen and often more, and figure prominently in floral decorations of the most important public and social functions. There is a large demand for American Beauty.

**ALFRED COLOMB.** Cherry red, passing to bright rich crimson; flowers extra large, double and full; extremely fragrant and a superb sort.

**BARON DE BONSTETTEN.** Extra large flowers, very solid, round and full; dark rich crimson, delightfully scented; free bloomer, hardy and vigorous habit.

**CLIO.** Flesh color shaded in the center with rosy pink; large, of fine form.

**COQUETTE DES ALPES.** Elegant large flowers; pure milk white, faintly tinged with rose. Great bloomer.

**HUGH DICKSON.** New, brilliant crimson, shaded scarlet; good size and fine form; petals smooth, slightly cupped and reflexed; free flowering and vigorous in growth; very highly perfumed. Awarded Gold Medal, National Rose Society, of England.

**F. K. DRUSCHKI.** The best white rose.

**GENERAL JACQUEMINOT.** The premier hardy crimson rose. Famous the world over as one of the most magnificent hardy Crimson roses ever introduced. It is a strong, vigorous grower, entirely hardy, an early and profuse bloomer. Buds and flowers are considered models of perfection, and its brilliant, shining crimson color is the standard by which other roses are judged. In fact, it is almost unequaled in beauty of form and brilliant intensity of color.

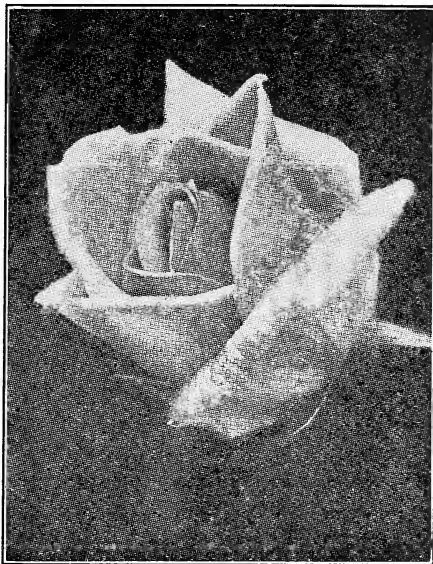
**MAGNA CHARTA.** Extra large, full flowers of unusual depth and substance; bright rosy pink; very grand, profuse bloomer; one of the hardiest and best blooming perpetuals.

**MRS. R. G. SHARMAN CRAWFORD.** Deep, rosy pink; very double and full; exceedingly beautiful.

**MRS. JOHN LAING.** Soft pink of beautiful form; exceedingly fragrant and remarkably free-flowering.

**MARSHALL P. WILDER.** Extra large, full flowers; dark, deep red; free bloomer; very handsome.

**MARGARET DICKSON.** Originated by the same firm as the "Killarney" and a splendid mate for it. The flowers are superb, pure white, with rosy flesh center and large, shell-shaped petals. A vigorous grower and excellent in every way.



Margaret Dickson

**PAUL NEYRON.** The largest rose. This reliable, well-known H. P. rose, sometimes called "The Peony Rose", still leads all others of its color and class. Color, clear pink. It is the largest rose in cultivation, single blooms often measuring 5 to 6 inches across. One of our customers in Alaska writes: "The Paul Neyron rose bought from you has now flowered 6 inches across."

**TAFT ROSE.** Pink. We find it one of the most profusely blooming, brightest colored, sweetest scented pink roses we have ever grown. Color is rich salmon pink, shaded at the base with chrome yellow.

**PRINCE CAMILLE DE ROHAN.** Very dark, velvety crimson almost black.

**ULRICH BRUNNER.** This is by a great many considered the finest red rose in existence. Color, brilliant cherry-red. This variety is a seedling of Paul Neyron, from which it derives its immense size. It has fine form, is intensely fragrant, and the flowers have great lasting qualities, which make it valuable for cutting. The branches are almost thornless and the foliage is very strong and healthy. See prices page 38.



White Killarney

Ill., March 25, 1916.

Gentlemen: Last spring we sent you an order, including three Rose bushes, and you sent us one of the most beautiful Roses ever seen, La France. Please send us eight more of these and also twelve others as per enclosed order.

Respectfully,  
H. W. Court.



Frau Karl Druschki

**PINK MAMAN COCHET.** This superb rose is well known as a queen among roses, one of the best and most beautiful varieties ever grown, and quite hardy. The flowers are of enormous size, very full and of great depth and substance. Color, rich coral-pink, elegantly shaded with rosy crimson; has broad, thick shell-like petals and makes superb long-pointed buds; immense bloomer, and flowers the whole season.

**SOUV. DE PIERRE NOTTING.** Flowers are very large, perfectly full and double. Colors are distinct; rich orange-yellow, dashed and bordered with soft carmine-rose. Has received six gold medals and grand prizes. A very free bloomer.

**WHITE MAMAN COCHET.** A sport from Maman Cochet, which it resembles in every particular except color, which is pure white, occasionally tinged with blush. A very handsome variety.

**PERLE DES JARDINS.** Deep yellow; one of the loveliest roses in existence.

**FRAU KARL DRUSCHKI or WHITE AMERICAN BEAUTY**

**The Best White Rose in Existence**

This magnificent variety has taken first place at all the great flower shows of Europe. Pure snow white, with long buds and immense perfectly double flowers, 4 to 5 inches across, with wax-like petals and very durable. It is one of the most continuous flowering roses in this excellent class. The bush is a vigorous grower of upright habit and luxuriant foliage. Hardy everywhere that roses grow. Both for cutting and for garden decoration, "White American Beauty" is universally admitted to be the finest white rose in cultivation. See illustration above.

---

Mass., April 29, 1916.

Order received, very much surprised it came so soon. I am very much pleased with same. Thanking you, I am,  
Yours truly, Cap. O. F. Mendell.

## Some of the Most Valuable of the New Varieties

Price 30c Each; add 5c per Plant if by Parcel Post

**DEAN HOLE.** A strong growing variety with exceedingly long buds and large flowers; intense salmon-pink.

**DUCHESS OF WELLINGTON.** Intense saffron yellow. A fine strong-featured rose familiarly called the "Orange Killarney."

**GENERAL McARTHUR.** To those who prefer a rose with full color, we can recommend none more highly than this gorgeous crimson-scarlet Hybrid Tea. It is hardy in practically all localities; as outdoor rose has no superior. Strong, vigorous, healthy, branching freely. Produces wonderful blooms profusely from May until October. Every shoot carries a large, double, well-formed flower of exquisite fragrance.

**GENERAL SUPERIOR ARNOLD JANNSEN.** Deep, glowing carmine; large, full, deep flowers; finely formed buds, carried on erect robust stems; very fragrant. An excellent rose for bedding and cut flower purposes.

**GEORGE DICKSON.** H. T. Velvety black-crimson, back petals heavily veined with deep pure crimson-maroon. Gold Medal, N. R. S.

**HARRY KIRKE.** Tea. Very fragrant, elegant long buds and splendid flowers. Color deep sulphur yellow, lighter at the edges.

**JONKHEER J. L. MOCK.** A Hybrid Tea called the Giant Pink. Of distinctive merit, being an extremely strong grower, one of the strongest of the Hybrid Tea class, blooming as it does with the greatest freedom, the buds carried on long, stiff, erect stems, of the very largest size imaginable to obtain in a rose bloom and still retain its perfect formation. Very fragrant. Color clear, imperial pink on the order of the La France. This rose has produced a sensation wherever grown.

**KONIGIN CAROLA.** An enormous but well-formed flower in the way of Caroline Testout. Color satiny rose, reverse of petals silvery white. A free flowering rose of excellent habit.

**LADY ALICE STANLEY.** Deep, clear rose color; inside of the bloom pale flesh. A very attractive rose. The blooms are large, of great substance, and are produced freely. Rose is exceptionally hardy.

**LAURENT CARLE.** Brilliant, velvety carmine; very large and perfect in form; growth vigorous and very hardy. A sterling bedding variety under all climatic conditions.

**LADY ASHTOWN.** Similar to Mad. Caroline Testout. Splendid grower, producing large, strong bush continually loaded with blooms. Buds long, pointed. Color soft, carmine-pink.

**LADY HILLINGDON.** New. Makes exquisite buds of deep apricot-yellow, shading to orange. Deliciously fragrant.

**LA TOSCA.** A beautiful shade of light pink; in many cases having the appearance almost of a pure white rose.

**MME. JULES GROLEZ.** China-rose, passing to clear rich satiny pink.

**LYON.** Scored 100 points at the National Rose Show, Paris; salmon-pink, shaded chrome-yellow and shrimp-pink.

**MRS. AARON WARD.** Newest of all Yellow Hybrid Tea roses, beautiful in form and color. Color ranges from coppery orange in the bud, to golden orange when flower is fully open. Vigorous, every shoot producing a flower. One of the best.

**MAD. CHARLES LUTAUD.** Chrome-yellow center, slightly tinted rosy scarlet on outer petals. Long, pointed flowers on stiff, erect stems; large, full, globular. A fine exhibition rose.

**MRS. A. E. COXHEAD.** New. Claret-red, shaded vermilion; long-pointed buds.

**MRS. THEODORE ROOSEVELT.** A charming seedling of La France, bearing all the good points of its parent. In color, creamy white, dainty pink shadings. Buds handsome, hardy. Constant bloomer.

**MME. EDOUARD HERRIOT (The Daily Mail Rose).** Coral-red bud shaded with yellow on the base; medium size, semi-double, superb coloring, coral-red shaded with yellow, bright rosy scarlet passing to prawn-red.

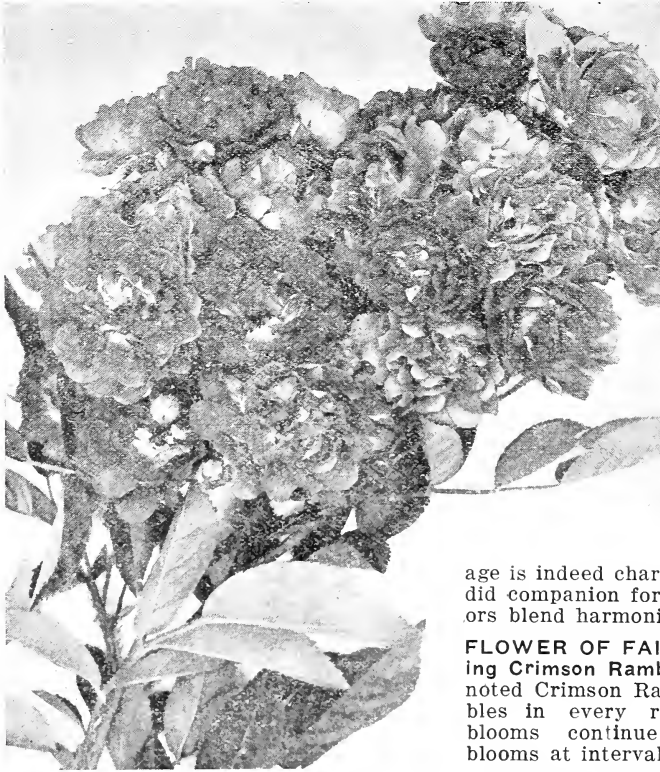
**RADIANCE.** Best budding rose. Flowers beautiful blending of shades of carmine-rose, with opal and coppery reflections. Splendid, sturdy growth, constant bloomer. A first class rose.

**RAYON D'OR.** Medium growth, branchy habit, little subjected to disease or insect attacks; fairly continuous in bloom thru season. Oval buds, tinged coppery orange, streaked with scarlet bars. Flowers large, full, globular form; yellow cadmium as bloom begins to open, toning to sunflower yellow when fully expanded.

**RHEA REID.** The firm, well-made flowers make this an excellent rose for forcing and cutting; color rich, cherry-crimson; very fragrant.

**WM. R. SMITH.** Color is cream with pink shading, buff-yellow base and the center a heart of pink; fragrant.

## Select Climbing Roses for Porches and Arbors



2-year plants, 30c each by mail, 5 for \$1.00 by express, not prepaid.

**AMERICAN PILLAR.** When this rose was introduced it caused something of a sensation and it proved to be one of the great roses of the year. It is a very vigorous climbing rose, making as much as 10 to 12 feet in a year. It produces large conical clusters of flowers, clear rosy pink with white center.

**THE BLUE ROSE (Veilchenblau).** "A sensation of the Century." A new rose from Holland that originated from Crimson Rambler. It bears semi-double flowers of medium size, in large bunches.

**CRIMSON RAMBLER.** A universal favorite, with magnificent large trusses of brilliant crimson flowers. The plants are of a strong, climbing habit, with bright, glossy green foliage. The flowers lose none of their brilliancy under glass.

**DOROTHY PERKINS.** Grows 10 to 15 feet in a season. Flowers are perfectly double with petals crinkled, and color a clear shell-pink, in immense clusters that

cover the bush for several weeks in the spring.

**WHITE DOROTHY.** A pure white sort of the well-known Dorothy Perkins, of the same habit of growth and freedom of flowering; splendid companion for the pink variety, as it flowers at the same time.

**LADY GAY.** Flowers in large, loose clusters which are of a delicate cherry pink color, fading to soft tinted white. The effect of a plant in full bloom with the combination of pretty blush-white flowers, cherry-pink buds and deep green foliage is indeed charming. It makes a splendid companion for Crimson Rambler, colors blend harmoniously.

**FLOWER OF FAIRFIELD.** (Everblooming Crimson Rambler. A sport from the noted Crimson Rambler, which it resembles in every respect, but the first blooms continue longer and it also blooms at intervals until frost.

**THOUSAND BEAUTIES (Tausendschon).** Colors of every imaginable shade, from pure white to deep pink. Almost thornless. New.

**WICHURAIANA.** The Hardy Single White Memorial rose. Hardy as grass, will grow in sun or shade, poor ground or rich. Makes a beautiful display of blossoms, single and very large, often 5 or 6 inches around, pure satiny white with bright golden stamens in center.

**Dwarf or Baby Ramblers**  
1 yr. plants, 30c each; 3 for 80c postpaid.

**RED BABY RAMBLER.** (Madame Norbert Levavasseur). Grows 18 to 24 inches. The flowers are borne in clusters of 20 or more, in every way resembling Climbing Crimson Rambler blossoms.

**PINK BABY RAMBLER.** (Baby Dorothy or Maman Levavasseur). Beautiful bright pink, blooms incessantly.

**WHITE BABY RAMBLER.** Each branch bears from 15 to 50 little creamy-white flowers.

## Beautiful Hardy Moss Roses

30 cents each postpaid.

**BLANCHE MOREAU.** Pure white, large, full and perfect form. The buds and flowers are frequently furnished with a deep green moss.

**HENRY MARTIN.** Medium sized flowers, bright and rosy red.

**PRINCESS ADELAIDE.** Extra large flowers, double, sweet. Color bright pink; green moss.

## Rosa Rugosa or Japan Rose

This class is valuable for mass planting or mixing with shrubbery, also valuable for forming hedges. The flowers are followed by large berries, very attractive in early and late fall.

**ROSA ALBA.** Came from Japan. Single pure white flowers of five petals and highly scented, followed by pretty berries. Price 30c each, postpaid.

**ROSA RUBRA.** Another excellent rose from Japan. Flowers are a beautiful bright rosy crimson and single, succeed well; berries of rich, rosy red. Exceedingly ornamental. 30c, postpaid.

## True English Sweetbrier

(*Rosa Rubiginosa*)

This is a true English Briar, and highly valued for the delightful fragrance of its foliage as well as its pretty pink flowers; extremely hardy and splendid for hedges, or planting amongst shrubs. Price, 25c each, postpaid.

# Herbaceous Paeonies

A noble flower, almost rivaling the rose in brilliancy of color and perfection of bloom. It may be truly said to be "hardy as an oak." Their vigorous habit, healthy growth and freedom from all diseases are important arguments in favor of their cultivation. Each year adds to their size and beauty. Rich, glossy foliage of a beautiful deep green. The paeony may be planted singly on the lawn or used in a border. Flowers early in the month of June.

See the beautiful effect of massed planting of Paeonies on outside back cover.

We offer strong plants that will flower the first year after planting for 25c each, 12 for \$2.50.

**BARON JAS. ROTHSCHILD.** One of the best cheap flowers in our collection. Guard petals very regular, rose in color. Very compact bomb shape center of salmon, the tip showing purple.

**DUCHESS D'NEMOURS.** Large and full; the most nearly pure white.

**COURONNE D'OR (Crown of Gold, Calot).** F. Imbricated petals. Compact solid white, with golden reflex. Center touched with carmine. A fine variety. Late and a good keeper.

**EDULIS SUPERBA (Lemon 1824).** A fine flower. Violaceous pink mixed with narrow, whitish petals; silvery reflex.

**FESTIVA MAXIMA (Meillez).** F. Glorious queen of the white, often seven inches across. A large, loose flower of driven white, center marked carmine. Perhaps most popular paeony grown.

**FAUST (Meillez).** F. Soft, lilaceous flesh colored, with deep chamois center; full, shapely, splendid flower; desirable.

**FELIX CROUSSE (Crousse).** F. One of the most resplendent of its class, rich brilliant ruby red of effulgent splendor. One of the best of the class of deep, glowing red.

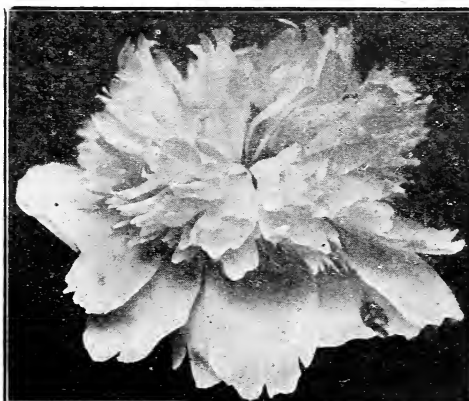
**FRANCOIS ORTEGAT.** Old favorite; purplish crimson, golden center.

**GRANDIFLOWER CARNEA PLENA**

(Lemon). Lilaceous mottled pink, one of the best keepers. Very charming, flowers in clusters. Should be in every garden.

**QUEEN VICTORIA (English).** Flesh fading to pure white; one of the florists' standard flowers. Great favorite.

**LA TULIP (Calot).** This belongs in a class by itself. The bud is very beautiful, interlaced with green and red. The flower is soft blush mingled with carmine, fading to pure white. Fragrant.



## Hardy Perennial Plants

The plants of this class are perfectly hardy in the open ground; they die down to the ground in winter but grow up again in spring. Once planted they are a lasting pleasure; failure with them is almost impossible. The following collection embraces the most desirable varieties. By a judicious selection a continuous display of flowers may be obtained from early spring to the end of autumn. Strong roots of any of the following varieties, 15c each, 12 for \$1.50.

**ANEMONE, WINDFLOWER.** One of most showy of all autumn-blooming herbaceous plants. Blooms from Aug. until frost. Plant in moist, rich soil; beautiful, hardy border.

**AQUILEGIA, COLUMBINE.** Elegant habit, distinct in foliage and flowers. Latter form showy crown well above the clear cut leaves. All species like partially shaded, well-drained soil and succeed best in shade.

**ACHILLEA, THE PEARL.** Has very showy heads of pure white, double flowers, on strong, erect stems; 2 feet high; blooming constantly.

**BOLTONIA (Asteroides).** Tall, 4 feet or more in height; white, aster-like flowers in broad heads during August. A handsome plant for borders and masses.

**CHRYSANTHEMUM (Hardy Variety).** This class of beautiful plants is now universally popular for out-door bedding, and justly so. They produce a lavish profusion of blooms, giving color, life and beauty to the garden at a time when other plants have been nipped by frost. They are quite hardy, 2 to 3 feet.

**SHASTA DAISY.** Large, snowy-white flowers four inches across; in bloom all summer; a good cut-flower variety.

**DICENTRA (Bleeding Heart).** Hardy perennial with heart-shaped, rose-colored flowers in drooping spikes. One of the best border plants; perfectly hardy and easily cultivated. April or May.

**DIGITALIS (Fox Glove).** Long, bell-shaped flowers, on stems 3 to 4 feet high; white and red; showy. July to Sept.

**EULALIA.** These beautiful hardy grasses are deserving of highest commendation. For the garden they are invaluable, being very showy and ornamental and of easy cultivation. They should be in every collection.

**FUNKIA (Day Lily).** A superb autumn flower, broad, light green leaves, prettily veined; long, trumpet-shaped, pure white flowers; possess a delightful, though delicate fragrance.

**HELIANTHUS (Sunflower).** Very showy hardy perennial. Large flowers, light to deep orange. Tall, graceful stalk.

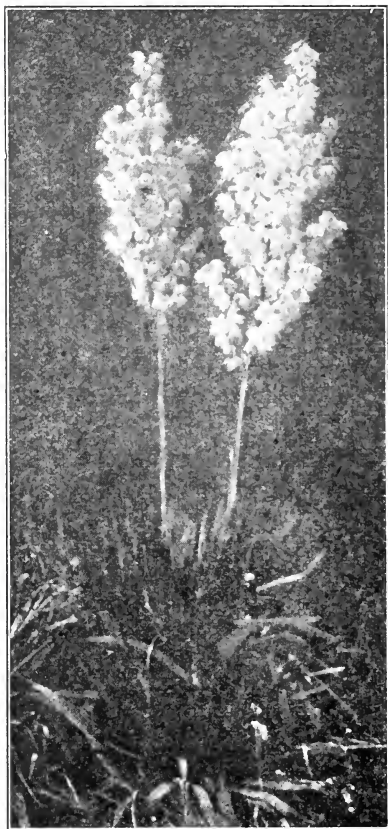
**PHLOX.** Gorgeous and very easily grown. Perfectly hardy. Magnificent spikes of showy flowers year after year with little care.

**YUCCA FILAMENTOSA (Adam's Needle).** Very conspicuous plant. The flower stalks, 3 to 4 feet high, are covered with large, white, bell-shaped flowers. See illustration.

**RUDBECKIA (Golden Glow).** Distinct, tall-growing hardy perennial, 6 to 7 feet high. Foliage deeply cut, bright green; very double golden-yellow flowers, 2 to 3 in. across. Borne on long, smooth stems, they form a solid head of bloom.

**IRIS, GERMANICA (German Iris).** Blooms in May with wonderful combinations of coloring; leaves broad sword-like.

**IRIS KAEMPFERI (Japan Iris).** Plant in cool, moist, rich soil. Flowers in late June and July quite distinct from all varieties; compare favorably with some of the exotic orchids.



Yucca



# QUALITY GARDEN SEEDS

Seeds mailed postpaid. In considering our price of standard Garden Seeds, please bear in mind that we pay the POSTAGE by the packet and ounce. IF YOU ARE INTERESTED IN LARGER QUANTITIES than those quoted here please write us and we will gladly send you prices.

## BEET.

**Early Blood Turnip**—Roots turnip shaped, deep crimson, tender and sweet. The best turnip shaped beet, fine grained, grows smooth and of very fine grain. Pkt. 5c; 3 pkts. 12c; oz. 15c.

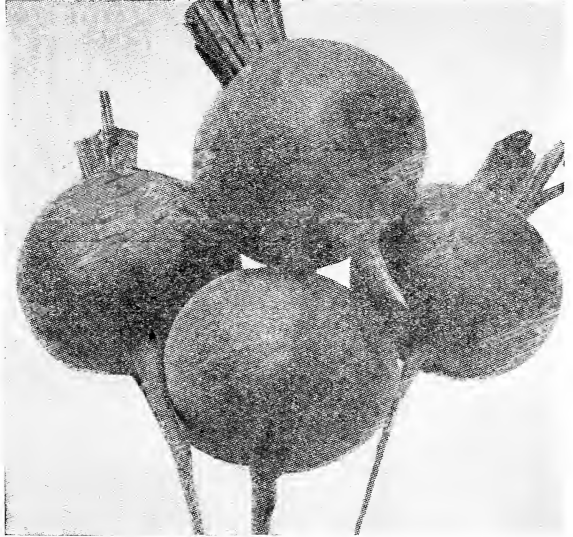
**Eclipse**—Very early, dark red. This variety is especially desirable either for home or for bunching. It will mature under favorable conditions in sixty days. Pkt. 5c; 3 pkts. 12c; oz. 15c.

**Improved Mammoth Long Red**—The roots are very large, uniformly straight and well formed. Color deep red, roots solid, tops small. Roots attain a large size. Produces an immense bulk and tonnage. Pkt. 5c; 3 pkts. 12c; oz. 15c.

**Swiss Chard or Sea Kale Beet**—This variety is cultivated solely for its leaves. The midrib is served as asparagus, the other portion of the leaves being used as spinach. Pkt. 5c; 3 pkts. 12c; oz. 15c.

## BEANS

**Giant Stringless Green Pod**—One of the most largely grown garden and market varieties. Plants very erect when young, free from runners, early intermediate in season,

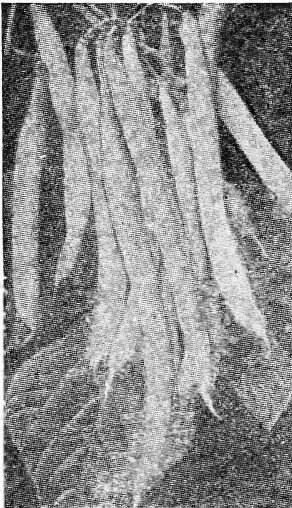


Early Blood Turnip Beets

of moderate bearing period and very productive. Pods are about 6 inches in length, slightly curved, dark green in color, extremely brittle, absolutely stringless and without fiber. A magnificent bean either for the home or for the market. Pkt. 10c; 3 pkts. 25c.

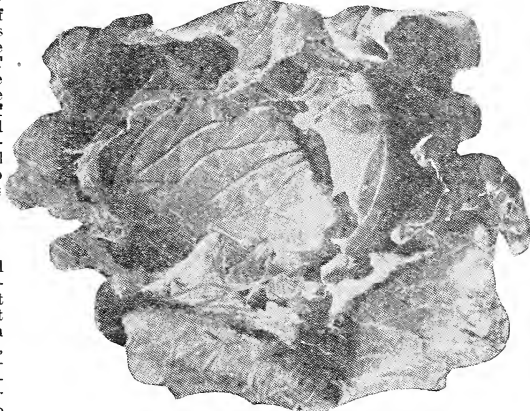
**Improved Golden Wax**—This bean is considered to be one of the most reliable of the extremely early wax-podded sorts, suitable either for home or market consumption, shipping qualities quite fair and except for a greenish tinge which sometimes appears under certain growing conditions, of beautiful appearance. Its season is rather short. Pods are 5 inches long, straight, oval, deep yellow color and stringless. Pkt. 10c; 3 pkts. 25c.

**White Marrowfat**—If you have any spare ground and want to help the conservation of our resources during the war **PLANT BEANS**. We have a large quantity of this good market variety and will be glad to quote prices on request.



Improved Golden Wax

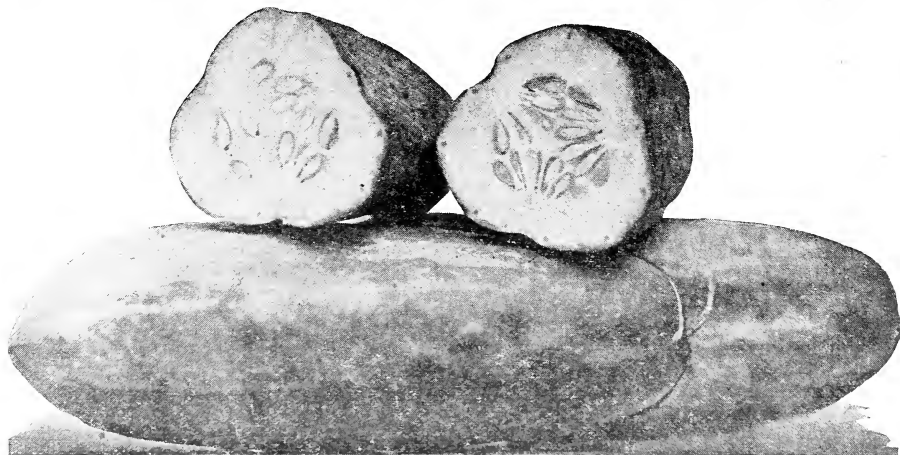
has become very popular among large planters, probably due to the fact that it has very deep-set head which increases its bulk very appreciably. All-Head Early is used very extensively for kraut, and also can be carried through the winter. Pkt. 5c; 3 pkt. 12c; oz. 15c.



Late Flat Dutch Cabbage

## CABBAGE

**All-Head Early**—A second early sort of the flat type which



White Spine Cucumbers—The Leading Variety

**Early Winningstadt**—A hardy sharply pointed cabbage which is a sure cropper, for owing to the texture of its dark green leaves, it does not suffer from insects and diseases as some other less hardy varieties. Early Winningstadt is well adapted for kraut, and is very often used as a winter cabbage when the seed is sown late. Pkt. 5c; 3 pkts. 12c; oz. 25c.

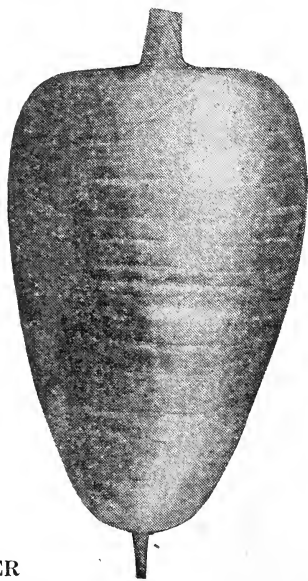
**Late Flat Dutch**—One of the old standard late winter cabbages. The deep, flat heads are as solid as a rock and have excellent keeping qualities. It has a reputation for producing more tons to the acre than any other cabbage, and by some is used in preference to Late Danish. Pkt. 5c; 3 pkts. 12c; oz. 25c.

**CUCUMBER**

**White Spine**—This variety has been a leader for many years, we can recommend it above all stock which we have been able to secure. The fruit averages about 7 inches long and are blunt at both ends, being especially well rounded at the stem end. The skin is a dark green, showing some white stripes. Flesh is very tender, crisp and white, making excellent slicing variety for which it is mostly used. Pkt. 5c; 3 pkts. 12c; oz. 15c.

**Improved Long Green**—A well known variety. The fruits grow from 12 to 16 inches long, and it is well known by everyone that this variety cannot be surpassed for pickling and when ripe, it is the best for sweet pickles. Vines grow strong and fruit is always produced in great abundance, making it one of the most productive varieties. Pkt. 5c; 3 pkts. 12c; oz. 15c.

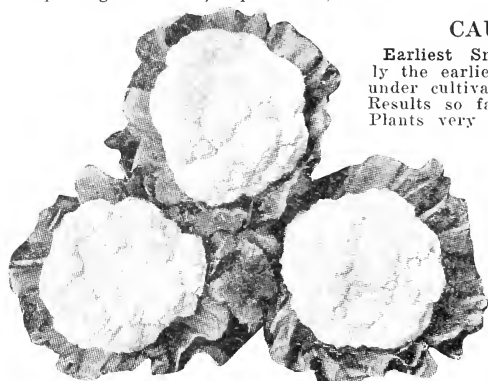
**Prolific Pickling**—Very superior to most strains of Boston Pickling. It is both an early variety and a heavy yielder, which makes it very popular with a large number of customers, who grow for the pickling. Pkt. 5c; 3 pkts. 12c; oz. 15c.



Orange Danvers

**CAULIFLOWER**

**Earliest Snowball**—Unquestionably the earliest strain of cauliflower under cultivation, is well adapted for home or market use. Results so far attained from it have been most excellent. Plants very compact, with few short, outside leaves, thus allowing more plants to the acre. Heads when blanched are pure white and are of the very best market size being solid in their makeup. Snowball is altogether one of the most attractive cauliflowers we know of under cultivation. Pkt. 5c; 3 Pkts. 25c.



Earliest Snowball

**CARROTS**

**Orange Danvers**—Best variety and well adapted to all soils and sections; very famous yielder. Very best quality, medium in length, tapering at point. Roots smooth and of a drak rich orange color. Pkt. 5c; 3 pkts. 12c; oz. 15c.

**Improved Long Orange**—A well known standard sort; roots long, thickest near the crown, tapering regularly to a point; the

color deep orange, suitable for the table and main field crop. Pkt. 5c; 3 pkts. 12c; oz. 15c.

**LETTUCE**

**Early Prize Head**—A large, loose headed, thin leaved sort; leaves large, bright green, tinged with reddish brown; crisp and sweet. Pkt. 5c; 3 pkts. 12c; oz. 15c.

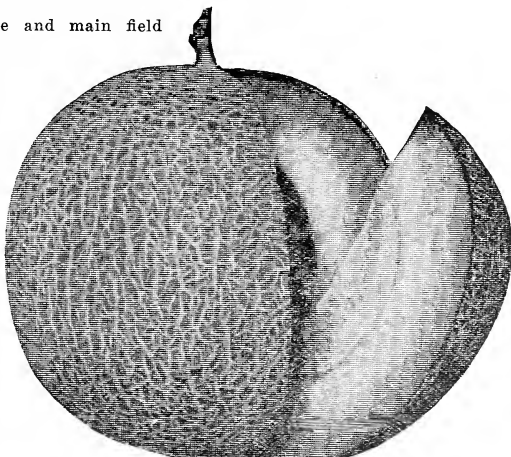
**Golden Ball**—Heads fine golden color. Early and slow to seed. Best for forcing or early planting. Medium size, having thick, dark green leaves. Forms solid heads which are crisp and tender. Pkt. 5c; 3 pkts. 12c; oz. 15c.

**Black Seeded Simpson**—One of the best for forcing under glass or for open ground culture. Forms large, thin loose leaves of light green, very tender, crisp and of fine quality. Pkt. 5c; 3 pkts. 12c; oz. 15c.

**WATERMELON**

**DIXIE**—This desirable variety combines long keeping qualities with great productiveness, high flavor and freedom from stringiness. Color of skin dark green, striped with lighter shade, making it very attractive; rind thin but tough; flesh bright scarlet, ripens closely to the rind. Pkt. 5c; 3 pkts. 12c; oz. 15c.

**Kleckley Sweets**—The handsomest and best selling melon of the long, dark green-skinned varieties. Kleckley Sweets has long been known as the sweetest, finest grained and best flavored watermelon. It is ideal in shape, color and quality. The rind is thin and tough, and the melons average 18 to 20 inches in length by



Emerald Gem Muskmelon

12 to 14 inches in diameter. The flesh is a bright scarlet, crisp and melting. For the home garden and for nearby markets this variety is unexcelled. Pkt. 5c; 3 pkts. 12c; oz. 15c.

**Tom Watson**—Very similar in size, shape and general conformation to Kleckley Sweets. Not quite so sugary and tender, but a better shipper and most largely used in the greatest watermelon growing sections. Pkt. 5c; 3 pkts. 12c; oz. 15c.

**MUSKMELON**

**Rocky Ford**—The world-wide popularity of this variety is as great today as when it first came into prominence several years ago. No melon has ever been so popular in the large city markets and has sold so readily at such high prices as the Rocky Ford. The vines are exceedingly healthy and vigorous, bearing an abundant supply of fruit during the entire season. The melon when ripe should have a silver colored lace-like veiling, making it very attractive in appearance. The green flesh is very deep, very solid, yet so sweet and melting as to be eaten up close to the rind. Pkt. 5c; 3 pkts. 12c; oz. 15c.

**Emerald Gem**—One of the very best. Skin smooth and emerald green. Vines thrifty and produce an abundance of fruit, very rich and sweet in flavor. Pkt. 5c; 3 pkts. 12c; oz. 15c.

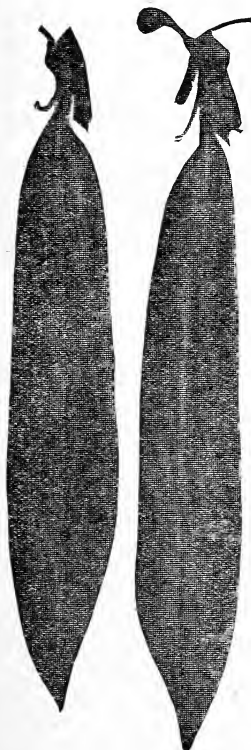
**Montreal Market**—Largest round muskmelon in the world; weighs from 30 to 40 pounds each, slightly ribbed; ripens early and keeps well. Pkt. 5c; 3 pkts. 12c; oz. 15c.

**PEAS**

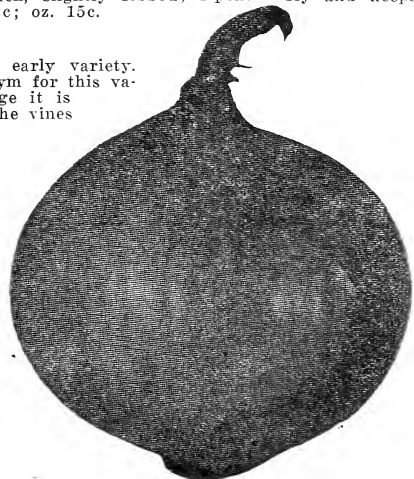
**First of All**—The best early variety. Earliest of All is a synonym for this variety and to our knowledge it is the earliest pea grown. The vines grow about 2½ feet high, are of a light green with white; under good growing conditions produces a tremendous crop of well filled pods about 2½ inches long. Sow this variety at intervals in your garden and you can keep up your supply of green peas all summer. Pkt. 10c; 3 pkts. 25c.

**ONION**

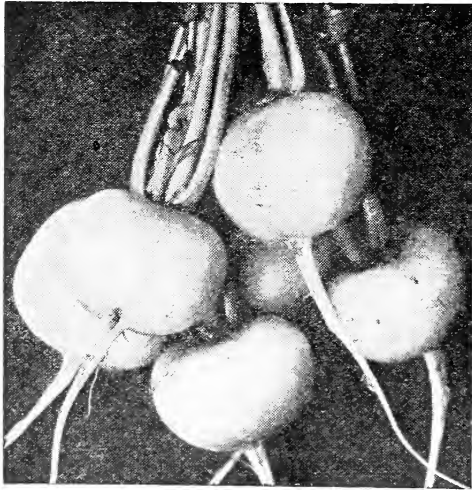
**Yellow Globe Danvers**—The bulbs are large and globular with very thin necks; rich orange yellow color. An enormous yielder and a fine keeper. Flesh is white and mild. Pkt. 5c; 3 pkts. 12c; oz. 30c.



First of All



Globe Danvers



Early Snowball Turnip

**Large Red Wetherfield**—The standard variety of red onions. Of large size, a heavy yielder and a most excellent keeper. Form round, somewhat flattened. Skin deep purplish red, moderately fine grained, of stronger flavor than other kinds. Will do well on thin soils and stands drought well, in fact it is the best variety for poor or dry soil. Pkt. 5c; 3 pkts. 12c; oz. 30c.

**PUMPKIN**

**Golden Sugar Pumpkin**—This is a splendid pie pumpkin, which has been produced through a careful selection. The pumpkins are not large, but of excellent quality, and we are sure no pumpkin ever introduced has given more satisfaction. It is extremely early and remarkably prolific, yielding from six to twelve medium sized pumpkins to a vine. The flesh of this pumpkin is fine grained, sweet, sugary and it is the earliest of all pie pumpkins. Pkt. 5c; 3 pkts. 12c; oz. 15c.

**PARSNIP**

**Improved Long Smooth or Sugar**—This is the best parsnip in cultivation. It matures early, yielding a large crop and bringing the highest prices. The roots grow to a fine size enabling them to be easily dug. They are very smooth, flesh is fine grained and of excellent quality. It is a great cropper, and will yield more. Pkt. 5c; 3 pkts. 12c; oz. 15c.

**RADISH**

**Early Scarlet, White Tipped**—A very early variety, smooth skinned, of good flavor, tender, crisp and mild; a valuable market variety. Pkt. 5c; 3 pkts. 12c; oz. 15c.

**Long Scarlet Short Top**—The best long red radish and the leading outdoor variety, early and quick growing. Pkt. 5c; 3 pkts. 12c; oz. 15c.

**California Mammoth White Winter**—The best and largest of all winter radishes. Pkt. 5c; 3 pkts. 12c; oz. 15c.

**SQUASH**

**Hubbard**—Deservedly the most popular variety of winter squash in all parts of this country. Its orange-yellow flesh is always rich in flavor, sweet, and dry. Vines strong and productive. Pkt. 5c; 3 pkts. 12c; oz. 15c.

**TURNIP**

**Early Snowball**—Small and quick growth, pure white. Pkt. 5c; 3 pkts. 12c; oz. 15c.

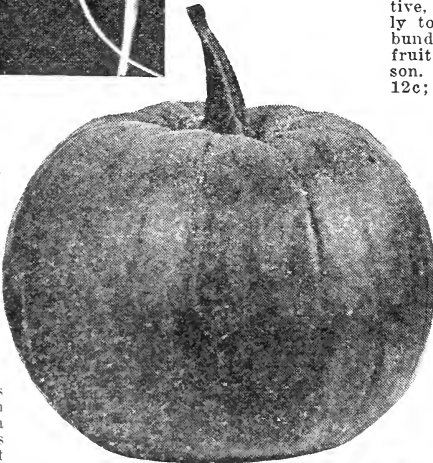
**White Flat Dutch**—An excellent early sort. Pkt. 5c; 3 pkts. 12c; oz. 15c.

**White Egg**—A handsome egg-shaped white variety, grows large. Pkt. 5c; 3 pkts. 12c; oz. 15c.

**Giant White Sweet Rutabaga**—A very choice Rutabaga, growing to a good size; always solid and rich flavor. Pkt. 5c; 3 pkts. 12c; oz. 15c.

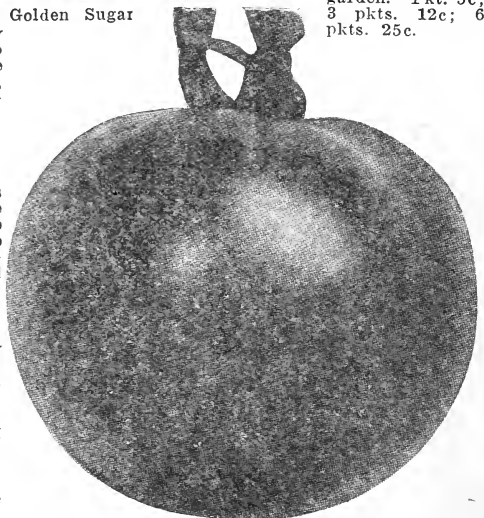
**TOMATO**

**Early Jewel**—Extra early bright red, fine flavor and very productive, one of the best early tomatoes giving an abundance of fine smooth fruit early in the season. Pkt. 5c; 3 pkts. 12c; 6 pkts. 25c.



Golden Sugar

**Ponderosa**—A main season purple tomato bearing very large fruits, ripening close up to the stem through the entire crop. The vigorous and strong growing vines are not subject to blight or rust. Ponderosa is particularly in demand in many eastern and southern markets. It is unexcelled for cooking or slicing and recommended for either commercial or home garden. Pkt. 5c; 3 pkts. 12c; 6 pkts. 25c.



Ponderosa

# LANDSCAPE GARDENING

Let Us Help You to do it Yourself



Here is an example of what can be done with this beautiful hedge plant. We can supply you with plants to make a hedge like the above, thirty yards long for \$4.00. This is a vigorous growing plant, California Privet (*Ligustrum Ovalifolium*), nearly evergreen, has thick glossy foliage of rich green which hangs on the plants in cold localities till Christmas, and when sheltered they will keep green all winter. Can be pruned any shape. Strong plants, 20 for \$1.00; 100 for \$4.00.



The Keystone of Success—Perfect Trees with Perfect Roots

Very delicate rootlets or root hairs are the agents which take the plant food and moisture from the soil. These are broken off when plants are dug with spades. We use a specially constructed Digging Machine, as seen in the above picture, to which we have six horses attached. This machine gets under the trees and scoops them up with all their entire root system, thus insuring success in the transplanting of our trees. Look at the complete Root System of the tree held by our Mr. Brow in the foreground of the picture.

# Peonies

SEE INSIDE FOR  
VARIETIES AND PRICES

