

## **Historic, Archive Document**

Do not assume content reflects current scientific knowledge, policies, or practices.



v 62.61

FEB

1918

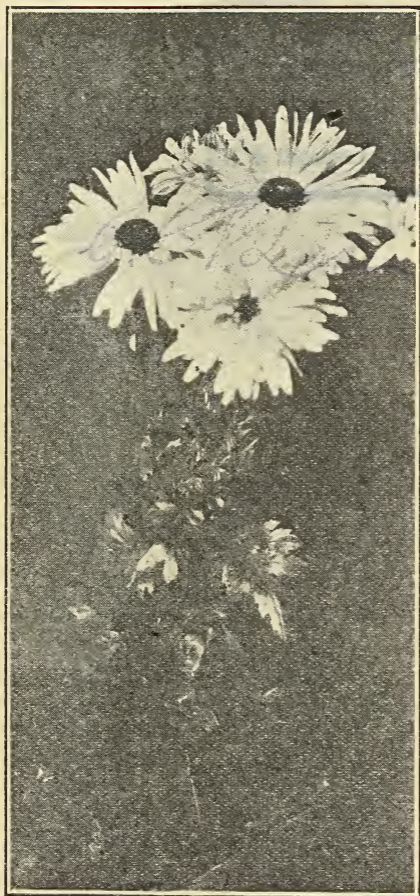
INDEX

1918 PRICE LIST

**Chrysanthemums**

ROSES, CARNATIONS, &c.

**And Nursery Stock**



*Ophelia*

**Scott Brothers**

ELMSFORD NURSERIES

Elmsford, N. Y.

WM. SCOTT.

JAS. T. SCOTT.

## INTRODUCTORY

**I**N presenting our price list for 1918, we again take this opportunity to thank our customers for their liberal support and patronage, and to assure them that their orders will receive as careful attention in the future as they have done in the past.

All our business relations last year were exceedingly satisfactory. Many customers wrote thanking us for the high quality of stock sent them; all of which we very much appreciate.

This year we have again added to our large nursery capacity, and have otherwise added considerably to our stock and facilities, and are now in a better position than ever before to handle high class stock.

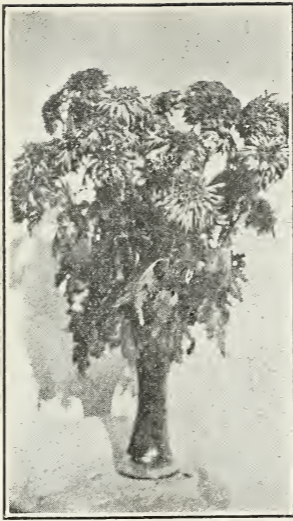
We shall always exert ourselves in maintaining our reputation for high class goods, and those who intrust us with their patronage may rest assured that the stock supplied will be the very best procurable.

Scott Bros.  
ELMSFORD NURSERIES  
Elmsford, N. Y.

Telephone Elmsford 1719.



Tarrytown Press-Record Print.



Betty.

## Chrysanthemum Novelties for 1918.

We are offering this year six novelties of exceptional merit—three singles and three Japanese Anemones.

In doing so, we have in mind the many varieties of excellent quality that are now on the market, and our selection from a great many seedlings has been rigid.

We are sure that their outstanding features of color, size, stem, and productiveness are not now equalled by any on the market.

Price, from 2 ¼ inch pots: 50c each; \$5.00 doz.

**Ophelia.** One of the best single sorts that we have ever seen. The individual flowers are exceptionally large, measuring over five (5) inches across. The color is best described as an Ophelia pink, shading to yellow at the base as does the "Ophelia Rose." It will produce 5 to 6 fully developed flowers to a spray. The stems are stiff and wiry, and the growth free and vigorous.

**Betty (Anemone).** Ray florets a deep old rose, disc the same color, tipped with golden yellow. The flowers are full and large, sprays producing 6 to 8 fully developed flowers. The growth is free and vigorous; a tall erect grower.

**Ina.** A free-flowering single, with large four to five inch flowers, producing eight to ten fully developed flowers to a spray. The color is a deep maize shading to golden bronze towards the ends of the petals. A most decorative variety.

**Jessie (Anemone).** An improved yellow "Garza"; both the ray and the disc are pure yellow, the disc being large and prominent. A strong, erect grower with stiff stems, producing 8 to 10 fully developed flowers to a spray.



**Ina.**

**Jean (Anemone).** Ray florets are pure pink, with a yellow disc; a beautiful combination. The flowers are large and full with stiff, erect stems.

**Mrs. Thos. Luke.** A very free flowering single variety that will produce 8 to 10 fully developed flowers to a spray. Color a lovely shade of "Enchantress pink." The petals are arrayed in a single row around the yellow disc. They are quilled and fluted and stand out very straight, making a very effective flower.



**Mrs. Thomas Luke.**



**Jean.**

## **Wells-Pockett-Totty Novelties for 1918.**

**Mrs. H. S. Firestone.** The outstanding novelty of the year. It is wonderfully massive; stem perfectly rigid and foliage right up to the flower. Color, pinkish, chamois buff. This variety will be found invaluable in the classes calling for "any other color," in the exhibitions. Height, 4½ ft.



**Jessie.**

**Joan of Arc.** Named by President Wilson at the Cleveland Show. Very much like the old Pres. Carnot in type. Stem is absolutely stiff and easily able to carry the bloom erect; foliage continues right up to the flower. Blooms are enormous in size and another year it will occupy a prominent place in the list of reflexed white 'Mums. Height 5 ft.

**Mrs. W. Dennis.** A very distinct pink variety; petals of which twist back as the flower ages; stem, foliage and flower are all A-1. We consider this variety par-excellence as an exhibition pink. Color much deeper than Mrs. J. Gibson and more evenly distributed over the petals. In size it is the largest pink to date. Height 4 to 5 ft.

**Mrs. Willis D. Buhl.** Crimson of the very largest size and a welcome addition to this color, which is very much like Pockett's Crimson, but the plant is considerably taller in growth, running 5 to 6 ft. Bud about August 25th gives best results as to color, size and finish of flower.

**Mrs. Frank H. Traendly.** Somewhat resembles Joan Stratton, changing to a deeper, more even shade of pink, and has a very much larger flower. Foliage is somewhat sparse but this is amply made up for when the flower is finished.

**Reflexed Louisa Pockett.** Duplicate of Louisa Pockett in every way except that the petals reflex instead of incurve, but in all other respects it is identical; having large foliage, strong stem and enormous flower. Height 5 ft. Bud late August or early September gives best results.

Price (of above), 2¼ in., \$2.00 each; \$2.00 per doz.

**Connie Dick.** This has been aptly termed the "Yellow Doty." It is almost identical in every respect except color, which is a clear, glowing yellow; very striking in contrast with other varieties.

Price, 50c each; \$5.00 doz.; \$35.00 per 100.

## Chrysanthemum Novelties of 1917.

Price (from 2¼ in. pots), except where noted: 50c each; \$5.00 per doz.; \$35.00 per 100.

**Bol d'Or.** A clear maize yellow of largest size and fine build.

**Louisa Pockett.** The largest white Chrysanthemum on the market, surpassing the popular "Wm. Turner." An easy doer and perfect in every respect.

**Nag-ir-roc.** The best of last year's introductions, and the finest exhibition orange yellow on the market. Every flower comes perfect; an easy variety to grow.

**October King.** An early-flowering deep golden yellow. The best on the market for its season. Price, \$1.00 each; \$10.00 per doz.

**President John Everitt.** Color a chamois-buff, with a bronzy-crimson reverse. A dwarf grower of immense size.

**Wm. H. Waite.** A deep bronze, shading to scarlet, of largest size; stem and foliage perfect; a grand sort.



## Chrysanthemum Novelties of 1916.

Price, 2¼ in.: 25c each; \$2.50 per doz.; \$20.00 per 100.

- Alexander J. Guttman.** The earliest large-flowered lavender pink on the market. Matures Sept. 10th to 20th.
- Alice Day.** An ideal commercial early white, of purest color, perfect form and very dwarf habit.
- Miss Elvia Scoville.** A white sport of "Well's Late Pink." Makes an excellent bush plant for cutting or decorative work.
- Mrs. G. G. Mason.** A very distinct exhibition variety. Color deep blood-red with gold reverse.
- Mrs. J. Gibson.** A pleasing light pink; enormous alike in stem, foliage and flower.
- Wm. Rigby.** Yellow sport of "Mrs. G. Drabble"; an exact duplicate of the parent except in color. On account of its being hard to propagate, the price is 30c each, \$3.00 per doz.
- White Doty.** A pure white sport of the popular "Lillian Doty." It may be grown as a single stem, or in sprays. For quantity and quality, on a given space it cannot be surpassed. Its score of 95 points before the C. S. A. speaks for itself.
- Yellow Wm. Turner.** A light yellow sport of the popular "Wm. Turner." A counterpart of the parent in every respect except in color.

## General Collection Exhibition Varieties.

Price, 2¼ inch pots: 15c each; \$1.50 per dozen; \$10.00 per 100.

- Artista.** A creamy white of dwarf habit and artistic in appearance.
- Alice Lemon.** A beautiful light pink.
- Annie L. Angus.** A white "F. S. Vallis."
- Antigone.** A pure white of great quality.
- Beatrice May.** A fine old white still in demand.
- Bob Pulling.** A pure yellow of great size and substance; one of the best.
- Calumet.** A solid incurving light bronze; good for either exhibition or commercial.
- C. H. Totty.** A glowing chestnut-scarlet.
- Cheltoni.** A good old yellow, always reliable.
- Daily Mail.** A fine incurved, deep yellow.
- Earl Kitchener.** Amaranth with a silvery reverse.
- Elberon.** A closely incurved light pink.
- F. E. Nash.** A light pink Japanese.
- F. S. Vallis.** Always a winning yellow.
- Francis Joliffe.** One of our best exhibition yellows.
- F. T. Quittenton.** A grand exhibition crimson.
- Gertrude Peers.** A high class crimson. The best in its color.
- Glenview.** A fine dark red, incurved.
- Harry E. Converse.** A fine exhibition crimson with gold reverse; always in demand.
- Hon. Mrs. Lopes.** A grand, large yellow.
- James Fraser.** An improved "F. S. Vallis."
- Kewanee.** Buckskin or chamois colored, incurved, and largest size.
- Lady Hopetown.** A grand old pink variety.
- Leslie Morrison.** Rosy crimson, broad floréts.
- Manhattan.** A clear pink of largest size.
- Marquise V. Venosta.** A fine dark pink.

- Mankato.** Purple-rose amaranth; fine reflexing form, and splendid habit.
- Mary Donellan.** A fine, rich yellow, incurved.
- Mary Farnsworth.** A golden pink, shading to bronze; magnificent flower. Always a winning exhibition variety.
- Mary Mason.** A fine, large bronzy red.
- Meudon.** A fine, dwarf, bright pink of largest size.
- Miss Emma Roope.** A fine, late-flowering, mauve-pink, with good foliage and erect stems.
- Miss Lelia Mary Bennet.** A very distinct rich crimson of largest size; good stem and foliage.
- Montigney.** A fine yellow that is hard to beat.
- Morristown.** A large exhibition pink.
- Morton F. Plant.** A large dark pink.
- Mrs. David Syme.** A fine exhibition white.
- Mrs. Edgar J. Slater.** A distinct variety of great merit. Color, a rich glowing amber.
- Mrs. Ernest Wild.** Crimson with bronze reverse.
- Mrs. Gilbert Drabble.** A monster ivory white; always reliable. Price: 25c each; \$2.50 per doz.
- Mrs. G. Lloyd Wigg.** An immense light yellow.
- Mrs. G. W. C. Drexel.** A fine incurved shell-pink.
- Mrs. H. J. Jones.** A true Japanese of largest size. Color, when opening, a chartreuse green, changing to a rich, deep yellow.
- Mrs. H. Stevens.** Golden salmon-bronze.
- Mrs. J. C. Neil.** A fine pale yellow.
- Mrs. John E. Dunne.** Old rose; size immense.
- Mrs. J. Purroy Mitchell.** A fine, large, pure white.
- Mrs. Paul Moore.** A fine light yellow, with stiff stem and fine foliage.
- Mrs. R. C. Pulling.** A large lemon yellow.
- Mrs. R. H. Boggs.** One of our largest whites.
- Mrs. W. E. Tricker.** Enchantress pink, fine.
- Mrs. Wm. H. Walker.** A large, clear, lemon-yellow.
- Mrs. Wm. Duckham.** A fine reflexing yellow.
- Mme. L. Rosseau.** A clear, incurving pink.
- Nakota.** An immense yellow Japanese incurved.
- Nerissa.** A fine, large, rosy mauve, incurved.
- Odessa.** One of the best incurved yellows.
- Pearle Franchise.** A large reflexing soft lavender pink.
- Pockett's Crimson.** A rich crimson; gold reverse.
- President Viger.** A fine, large, rose pink.
- Rose Pockett.** Old gold, shaded bronze.
- Wm. Duckham.** A fine pink, still in demand.
- Wells Late Pink.** Still one of the best pink sorts.
- W. Mease.** A bright, rosy red.
- Wm. Turner.** Most popular white in commerce.
- W. Woodmason.** A fine, large, reddish crimson.
- Wm. Vert.** A fine rich crimson.

## Chrysanthemums--- Choice Commercial Sorts.

Prices: 10c each; \$1.00 per doz.; \$8.00 per 100. 3 of a variety at dozen rate; 25 of a variety at 100 rate.

- August Dasse.** A dwarf stiff-stemmed variety; intense yellow; late.
- Autocrat.** A fine late white; for Thanksgiving.
- Chieftain.** Deep, clear pink; midseason variety. An improved pink "Bonnaffon."
- Chrysolora.** A fine, early yellow.

- Crystal Gem.** A fine, early white; matures Oct. 15.  
**December Queen.** A late yellow for December cutting.  
**Dolly Dimple.** A fine, late yellow.  
**Dick Witterstatter.** A fine, bright crimson.  
**Edwin Seidewitz.** A late incurving pink, maturing for Thanksgiving cutting.  
**Early Frost.** A very early commercial white.  
**Early Snow.** A very early dwarf white.  
**Golden Glow.** One of the very earliest yellows.  
**Golden Chadwick.** One of the best late yellows.  
**Golden Queen.** A fine incurved yellow; a grand midseason commercial variety.  
**Mary Golden.** A late yellow.  
**Major Bonaffon.** Yellow commercial sort.  
**Marigold.** A grand yellow, unsurpassed in its season in size and color. Matures Oct. 5th  
**Nagoya.** A fine late yellow.  
**Oconto.** A large early to midseason white.  
**Pacific Supreme.** A widely grown early pink.  
**Ramapo.** A fine yellow of the "Appleton" type.  
**Smith's Sensation.** An incurving pink.  
**Thanksgiving Queen.** A good, late white.  
**Unaka.** A fine early pink Japanese incurved; matures early in October.  
**Wells' Late Pink.** A late pink; good for bush  
**White Bonaffon.** A pure white sport of the popular "Major Bonaffon."  
**White Gloria.** A pure white "Gloria."  
**W. H. Chadwick.** A fine, late white.  
**W. H. Lincoln.** A good late yellow, also good for bush plants.  
**W. H. Rieman.** A late yellow, for bush plants.

## Large-Flowered Japanese Anemones---

Price, 2 ¼ inch pots: 30c each; \$3.00 per doz.; \$20.00 per 100.

- Clemencia.** Deep pink, with darker center.  
**Graf Von Oriola.** Rose pink; center petals tipped gold. Strong grower.  
**Graf Von Fleming.** Color pale lavender; petals tubular and narrow. A very striking variety.  
**H. J. Heinz.** Canary yellow, with orange center.  
**Innocencia.** Outer petals pure white, center petals flushed pale pink.  
**Juno.** Deep lilac, shading to white.  
**Old Rose.** Old rose color, with prominent center; very large; robust grower.  
**Pepita.** Outer petals pale pink, center orange yellow. Has fine substance and is a good shipper.  
**Titian Beauty.** Deep, rich bronze, with darker center.  
**Wee Wah.** Terra cotta, shading to bronzy yellow. A dwarf grower.  
**Wilfreda.** Pale Yellow, with darker center.  
**Yellow Prince.** Maize yellow, with brilliant yellow center. Very attractive.  
 Price: 15c each; \$1.50 per dozen; \$10.00 per 100.  
**Garza.** A fine, pure white; the best.  
**Mrs. Shimmins.** A deep bronze, bronze center.  
**Madam Barney.** A golden bronze, yellow center.  
**Myer's Perfection.** Lemon yellow with yellow disc.  
**Surprise.** A fine, large pink.  
**Yellow Garza.** Identical with "Garza," except in color.

## Chrysanthemums---Decorative Varieties.

SUITABLE FOR POT PLANTS, DECORATIVE WORK, AND FOR CUT FLOWERS.

Price, from 2¼ inch pot: 20c each; \$2.00 per dozen; \$15.00 per 100.

- Annie Laurie.** A fine dark pink; one of the very best for pot plant, or specimen.
- Brutus.** A fine, lively bronze; easy doer.
- Butler's Caprice.** Deep pink; a fine pot plant.
- Bronze Source de Or.** A deep, golden bronze sport of "Source de Or."
- Crimson Quintus.** An excellent decorative crimson.
- Goschers Crimson.** A fine deep crimson.
- Greystone.** Chamois bronze; dwarf.
- Ethel Thorp.** A lavender-pink "Caprice."
- Harvard.** Rich maroon; a grand late variety.
- Lady Lydia.** Pure white; striking variety for growing in sprays; also an ideal pot plant.
- Mizpah.** A very dwarf single variety. Color, mauve pink; useful only as a pot plant, for edging groups or conservatory decoration, for which purpose it has no equal.
- Purple Caprice.** The popular "Caprice" family.
- Source de Or.** Bright orange-shaded yellow; for growing in sprays or for decorative work.
- White Caprice.** The popular "Caprice" family.
- Yellow Caprice.** The popular "Caprice" family.

## Single Chrysanthemums.

Price, 2¼ inch: 15c each; \$1.50 per dozen; \$10.00 per 100.

3 of a variety at the dozen rate; 25 of a variety at the 100 rate.

- Amber.** Color, pure amber; large; fine grower.
- Anna.** A small white, for bush plants and sprays.
- Arthur.** Deep, rosy lake, with a broad white band.
- Caledonia.** Extra large; rosy lilac, with a white ring around the disc; one of the best.
- Chas. Kingsley.** Golden yellow; perfect shape.
- Cloth of Gold.** A rich, golden bronze; fine.
- Crimson Mary Richardson.** A crimson sport from the popular "Mary Richardson."
- Dorothy Dann.** Salmon bronze; medium size.
- Ethel Archer.** A beautiful shade of mauve on a white ground; fine stem, and large, bold flowers.
- E. Nottell.** Delicate primrose, perfect in shape; dwarf in habit; a grand pot plant.
- Ernest Iselin.** A rich purple amaranth.
- Excelsior.** A large scarlet bronze, of fine form and good habit. One of the best in this color.
- Fair Rosamond.** A fine dark pink.
- Golden Mensa.** Pure yellow; grand form.
- Hector Menzies.** Identical in form to "Mensa," but rich, glowing yellow in color.
- Hilda Lawrence.** Pink; shaded lavender.
- H. S. Bevins.** Crimson, with yellow disc.
- Itoska.** Fine, large salmon pink.
- Irene Cragg.** A fine, pure white.
- Joan Edwards.** A fine clear pink.
- Jessie Curtis.** Deep crimson; a fine, bold flower.
- Laura Hearn.** Crimson maroon, with white ring.

- Lady Lu.** A fine, large, clear white.
- Marcella.** A rich ruby red.
- Margaret Walker.** A fine, orange bronze.
- Marie Clyde.** A pleasing shade of golden amber, with base of petals slightly quilled.
- Mensa.** Pure white; splendid form.
- Merstham Jewel.** Reddish terra-cotta, tipped gold.
- Minnesota.** A grand, late blood-red.
- Miss Foot.** Cerise pink; base of petals white.
- Miss Hilda Wells.** A fine pure white.
- Narcissus.** A fine yellow, suffused red.
- Mrs. E. A. Isaacs.** A fine, large blush pink.
- Mrs. A. Middleton.** A rich canary yellow.
- Mrs. Parsons.** Yellow with orange shadings; very striking.
- Mrs. T. Edward Wilder.** A fine, clear, quilled pink.
- Mrs. E. D. Godfrey.** A lovely pink, same shade as "Lady Hopetown"; a fine, strong grower; late.
- Mrs. Reddan.** A fine, bold yellow; dwarf.
- Mrs. W. Prouting.** A fine, late primrose yellow.
- Peter Plant.** A late rosy pink.
- Phyllis Bryant.** A fine sulphur yellow; perfect form.
- Robt. Thorpe.** A fine, flesh pink.
- Roupel Beauty.** Deep Plum color; one of the best.
- Rose Queen.** A fine, clear pink.
- Red Light.** Tuscan red, large flower.
- Ruby Beauty.** A fine, deep crimson.
- Sylvia Slade.** Deep rosy-red; white band at base.
- The King.** A very large rosy crimson.
- Uplands.** A grand bronze; one of the best.
- Vick.** Can be best described as a canary-yellow "Mensa"; a grand variety.

## Improved Hardy Pompon Chrysanthemums.

20c each; \$2.00 per dozen; \$15.00 per 100.

The very finest sorts in the Pompon section.

- White Doty.** A grand, pure milk-white, large-sized "Pompon"; otherwise described under Novelties of 1916. Prices: 25c each; \$2.50 per dozen; \$20.00 per 100.
- Donald.** Light-pink; very free, large button sort.
- Golden Climax.** Deep orange yellow; one of the very best.
- Golden Harvest.** Deep golden yellow; shaded red.
- Golden West.** A rich golden yellow; twice as large as "Golden Baby."
- Inez.** A brilliant scarlet bronze; tall grower.
- Julia La Grevere.** Deep crimson; a grand sort.
- Lilian Doty.** Unquestionably the finest clear pink in the large-flowered "Pompon" section. As a cut flower it is a money maker, either disbudded one flower to a stem, or grown in sprays. The stems are long and wiry, easily supporting the flower. The foliage is short and leathery which allows close planting. This variety should be grown in quantity by everybody.
- Mary.** Pearl white, flushed pink.
- Meg.** Wine red; shaded garnet.
- Model.** A perfect model as the name implies; erect, stiff stems; pure white in color.
- Western Beauty.** A fine deep rose-pink; the best in its color; a late variety.

## Hardy Early-Flowering Chrysanthemums

This early flowering type is of recent introduction. They differ from the pompons in being larger flowered and mature their bloom early enough to avoid frost. A slight covering of dry litter or leaves during the winter to protect their crowns will carry them through the winter in safety. They can also be grown as pot plants for house decoration.

**Price: 20c each; \$2.00 per dozen; \$15.00 per 100.**

3 plants of a variety at the dozen rate; 25 plants at the 100 rate.

**Chaldon.** Reddish crimson, with gold tips.

**Champagne.** Fiery, ruby red.

**Dorothy.** Snow white; one of the very best.

**Etoile de Or.** Yellow.

**Glory of Seven Oaks.** A fine yellow, which flowers from July till frost; is best adapted for sprays, but when disbudded will make flowers 4 to 6 inches across.

**Miss Burchfell.** Blush pink, with gold center.

**Miss F. Collier.** Purest white, waxy flowers.

**Normandy.** Delicate pink; the earliest in this color.

**Perle Chatillonnaise.** Creamy white, with peach shadings.

**Provence.** Bright pink, with gold tips.

## Hardy Pompon Chrysanthemums.

**Price, 2¼ inch: 10c each; \$1.00 per dozen; \$7.50 per 100.**

No finer plants can be grown in the hardy border for late fall flowers than these hardy Pompon Chrysanthemums; or, if grown in open frame or beds all summer and protected from early frosts, they will repay you with much nicer flowers.

**Aubre de Noel.** Bronze yellow; very good.

**Baby.** Yellow; button sort.

**Black Douglas.** Fine, bronze red.

**Bedouin.** A mixture of garnet and white; small.

**Boston.** Golden-bronze.

**Bohemia.** Fine, pure white; for cutting.

**Bradshaw.** Large, silvery pink.

**Brown Bessie.** A deep, clear bronze.

**Celco.** Bright yellow, shading to orange.

**Cerise Queen.** Cerise pink; fine for cutting.

**Dunollo.** A fine yellow, with bronze shadings.

**Eagle de Or.** Fine, clear yellow.

**Ermine.** Orange-scarlet.

**Fairy Queen.** Clear pink; midseason variety.

**Globe de Or.** Dwarf; clear yellow; early.

**Golden Bedder.** A fine, deep yellow; button sort.

**Golden Pheasant.** Small; rich lemon-yellow.

**Glorie de France.** A fine, silvery pink; for cutting.

**Helen Newbury.** A fine, late white for Thanksgiving.

**Hijos.** Beautiful primrose-pink.

**Hill Crest.** A fine, large, clear yellow; dwarf habit.

**Ida.** Bright, golden-yellow; early; one of the best.

**Irene.** White, shaded flesh; early.

**J. Bannister.** A grand, large, early yellow.

**Jeanetta.** Yellow-tipped pink.

**Jersey.** White; large-flowered; late.  
**King Philip.** Rich rose-pink.  
**Klondyke.** A very brilliant yellow, with heavy stems and fine foliage.  
**Lady Oliva.** Beautiful dwarf white, pink shadings.  
**Little Pet.** Rich violet-pink.  
**Lovely.** A fine pink.  
**Lyndhurst.** Scarlet orange.  
**Lulu.** A fine, dwarf, white-button sort.  
**Maid of Honor.** White; pink shading.  
**Maid of Kent.** A fine free early white; very hardy.  
**Minta (Smith).** Beautiful shell-pink.  
**Madam Barney.** Golden bronze; anemone center.  
**Mrs. Porter.** Bright bronze.  
**Myer's Perfection.** Pure white; anemone; yellow center.  
**Northumberland.** Single scarlet; yellow disc.  
**Palmyra.** Large pink, anemone center.  
**Peto.** Rich bronze.  
**Queen of Whites.** Fine white; for cut flowers.  
**Rufus.** Crimson-maroon.  
**St. Illora.** Silvery rose.  
**Salem.** Silvery rose; long-quilled.  
**S. Blandis.** Dark cerise pink, shaded white; fine.  
**St. Michael.** A grand lemon-yellow.  
**Sunshine.** Bright golden-yellow; for cutting.  
**Yellow Gem.** A fine, rich yellow.

## Carnations---Novelties for 1918.

Price	Rooted Cuttings	From 2 1/4 in. Pots.
Per Doz.	\$ 2.50	\$ 3.00
Per 100	16.00	20.00

**Crystal White.** A new introduction of the Cottage Gardens Company having the same vigorous constitution as "Matchless," with large full flowers of the purest glistening white; early and very productive; can be brought into full crop by Nov. 1st. "Crystal White" has been awarded the A. C. S. Gold Medal and numerous other prizes.

**Laddie (Dorner & Sons).** Color, a warm rose salmon-pink; size 3 1/2 to 4 inches. A clean, healthy, vigorous grower with long, stiff stems. As fine a carnation as has been raised in years.

## Carnations---Novelties of 1917.

Price	Rooted Cuttings:	2 1/4 in. Pots:
Per Doz.	\$ 1.25	\$ 1.50
Per 100	9.00	12.00

**Cottage Maid (Cottage Gardens).** A light, flesh pink colored sport of "Mrs. C. W. Ward," with the same perfection of growth; vigor, size and keeping qualities of the parent.

**Belle Washburne.** Brilliant red; 3 1/2 to 4 inch flower, none-bursting calyx, exceptionally large stiff stems; a free and continuous producer.

**Nebraska.** A bright scarlet of the largest size; Non-bursting calyx; long stiff stems; growth healthy and vigorous; free and continuous. One of the best things of recent introduction.

**Thenanthos.** This has been aptly described as a "Red Enchantress." One of the most vigorous and healthy growers that we have ever seen. The stems are rigid and the flowers extremely large. It appears to be without a fault.

## Carnations---General Collection.

Price	Rooted Cuttings:	2 ¼ in. Pots:
Per Doz.	\$ .75	\$ 1.00
Per 100	6.00	8.00

**Alice.** A beautiful color; a clear shade of blush pink. A wonderfully free and easy grower under any conditions. A very productive and all round satisfactory variety.

**Aviator.** A very free flowering intense scarlet, with wiry, stiff stems and no superfluous grass. Should be planted closer than the average. For quantity it cannot be surpassed.

**Beacon.** The standard and popular red.

**Benora.** Easily the best variegated variety.

**British Triumph.** A rich, glowing crimson with old clove perfume.

**Enchantress Supreme.** A non-splitting "Enchantress," with a deeper and a faster color; an easy doer, and wonderful producer.

**Good Cheer.** Color dark pink; stems extra long and stiff; size 3 to 3½ inches; a good keeper, an early and continuous bloomer.

**Matchless.** The most productive white that we have ever grown; healthy, vigorous and non-splitting; very fragrant. A carnation for all purposes that is hard to beat.

**Mrs. C. W. Ward.** Still the standard variety in the dark pink section.

**Princess Dagmar.** The largest and finest crimson to date. A wonderful keeper, and free grower.

**Red Wing.** A much improved "Beacon" of the same habit and character, but a better color and a much superior calyx.

**White Enchantress.** Off the pure white strain; a very satisfactory variety for all seasons.

## Roses---Novelties for 1918.

Prices:	Grafted stock.		
Pots	Each	Per doz.	Per 100.
2 ¼ in.	60c	\$6.00	\$40.00
3 in.	75c	7.50	50.00
4 in.	\$1.00	10.00	60.00

**Columbia (E. G. Hill Co.).** The sensational rose novelty of the year. Color, true pink, about the shade of a perfect "Shawyer." In size, perfume, and lasting qualities it measures up to "Mrs. Chas. Russell." The growth is vigorous and healthy, with long, stiff stems which are almost thornless. The introducers say, "That it is absolutely free from mildew."

**Double Ophelia. (Breitmeyer).** Similar to "Ophelia" in every respect, except that the flowers have twice as many petals. It opens freely at all times and is beautifully finished in form. It will make an excellent summer rose.

**Mrs. Henry Winnett (Dunlop).** A new red rose that is going to take the place of "Richmond," "Prince E. C. de Arenberg" and similar colored roses. The introducers claim for it "That it will out-grow and out-bloom anything in the rose line." The stems are strong and straight and the form and substance all that can be desired.



**Ophelia Supreme** (Dailedouze). A sport of "Ophelia," having the same distinctive qualities from the parent as "Enchantress Supreme" carnation has over the old "Enchantress." The color is light rose pink, with darker shading in the center, and yellow at the base. Habit, growth, foliage, and quick cropping qualities same as the parent. The flowers are fuller, and will average four to five petals more than "Ophelia." This is undoubtedly the best sport of "Ophelia" on the market.

## Roses---General Collection.

### FORCING VARIETIES.

Price:—Grafted plants (except where noted).

Pots	Each	Per doz.	Per 100
2¼ in.	30c	\$3.00	\$22.50
3 in.	35c	3.50	30.00
4 in.	45c	4.00	40.00

Price: Own root plant, except Sunburst.

Pots	Each	Per-doz.	Per 100
2¼ in.	20c	\$2.00	\$17.50
3 in.	25c	2.50	20.00
4 in.	35c	3.50	30.00

Three plants at dozen rate; 25 at 100 rate.

**American Beauty.** Needs no description.

**Antoine Rivoire** (Mrs. Taft). Light shell-pink.

**Baby Doll.** A cluster rose similar in habit to "Cecil Brunner" (Mignon). The color is golden yellow tipped with bright cerise pink; a unique and beautiful combination. The little buds and blooms are perfectly finished. As a buttonaire rose it has no equal.

**Cecil Brunner.** Also known as Sweetheart, Mignon, etc.; a dainty miniature rose, light pink in color and especially adapted for choice corsages and for fine floral work.

**Crimson Queen.** A deep velvety crimson of the same class as Hadley and Hoosier Beauty. The stem, foliage and habit is excellent, more bushy in form than the varieties mentioned.

**Francis Scott Key.** An exceptionally vigorous, productive, and large, full rose; every shoot produces a flower that equals the American Beauty.

**George Elgar.** A cluster rose similar to "Mignon," except in color, which is a deep golden yellow.

**Hadley.** Deep, velvety crimson, and very fragrant.

**Hoosier Beauty** (Dorner). A rich, velvety crimson, as fragrant as "Richmond," with more petals and better keeping qualities; a clean, healthy grower and wonderfully productive.

**Irish Fireflame.** A single rose with only five petals, but in the bud it is beautiful, and when open the color is exquisite being crimson at the base, shading into a rich orange salmon.

**Kaiserine Augusta Victoria.** The old reliable white

**Killarney Brilliant.** Identical with "Killarney," but more brilliant in color.

**Killarney Double White.** The standard white today.

**Killarney Pink.** The old stand-by.

**Lady Alice Stanley.** A healthy, vigorous, dark pink.

**Lady Hillington.** A fine, productive, clear yellow.

**Madam Collette Martinette.** Deep golden yellow, which does not bleach. A free, full rose worthy of a place.

**Mrs. Aaron Ward.** Orange yellow; an easy doer.

**Mrs. Charles Russell.** A grand pink rose, sweetly perfumed, which rivals the "American Beauty" for size, and of better color.

**Price: Grafted only.**

Pots	Each	Per doz.	Per 100
2¼ in.	35c	\$3.50	\$25.00
3 in.	45c	4.00	30.00
4 in.	50c	5.00	40.00

**My Maryland.** The freest indoor pink rose we have.

**Ophelia.** Color, salmon-flesh, shaded with rose; the plant rustles with health and is not subject to mildew; an exceptionally free bloomer; one of our very best roses.

**Prince E. C. de Arenberg.** The color is a clear red, without a trace of blue; a healthy, vigorous grower, and of fine form. For freedom, might be aptly called "a Red Killarney."

**Radiance.** The freest dark pink rose in existence. It rustles with health and is not subject to mildew.

**Richmond.** The standard red; very fine.

**Sunburst.** Unquestionably the best yellow rose for indoor use. The color is orange-copper to golden yellow; a color much admired. The plants are free and vigorous. We offer "Sunburst" on its own roots only as grafted stock has not been successful.

This variety is slow to propagate, and we offer this on its own roots, at the same price as grafted stock.

## Miscellaneous Greenhouse Plants.

**Asparagus Plumosa Nana.** Excellent for table decoration, or mixing with cut flowers.

**Asparagus Sprengeri.** Useful for hanging baskets, window boxes, or for cut sprays for decorative work.

**Prices:**

2½ -inch, \$10.00 per 100; 3-inch, \$15.00 per 100.

**Begonia, Glory of Cincinnati.** This variety is endorsed by all leading florists, and will in time displace "Glorie de Lorraine."

**Price:**

2¼ -inch, \$4.00 per dozen, \$25.00 per 100.

3½ -inch, \$5.00 per dozen; \$30.00 per 100.

**Begonia, Gloire de Lorraine.** Strong, young leaf cuttings. Stock for May delivery.

**Price:**

2¼ -inch, \$3.00 per dozen; \$20.00 per 100.

3½ -inch, \$4.00 per dozen; \$27.50 per 100.

**Begonia de Chatelaine.** A fine pink begonia belonging to the bedding type, also useful as a pot plant.

**Price:**

2¼ -inch, \$1.50 per dozen; \$10.00 per 100.

3 -inch, \$2.00 per dozen; \$15.00 per 100.

**Bouvardia.** True, old-fashioned flowers that are easy to handle. If grown outdoors in boxes all summer and taken in before danger of frost, they will give a lot of flowers during the dull winter (single-flowered varieties), white, pink, and red.

**Prices:**

2¼ -inch, \$1.00 per dozen; \$8.00 per 100.

3 -inch, \$1.50 per dozen; \$12.00 per 100.

**Gardenia Veitchii.** Young stock for spring delivery.

2¼-inch, \$1.50 per dozen; \$12.00 per 100.

3½-inch, \$3.00 per dozen; \$25.00 per 100.

**Poinsettias.** Excellent Christmas plants, too well-known to need description.

Prices:

2¼-inch pots, \$1.50 per dozen; \$10.00 per 100.

3-inch pots, \$2.00 per dozen; \$15.00 per 100.

**Smilax.**

3-inch, \$1.00 per dozen; \$8.00 per 100.

**Stevia Serrata.** The dwarf variety. Very useful as a cut flower.

Prices:

2¼-inch pots, \$0.75 per dozen; \$6.00 per 100.

3-inch pots, \$1.00 per dozen; \$10.00 per 100.

**Hydrangea Hortensis.**

**Otaska.** The old standby. An easy forcer and grand for outdoor specimens during the summer months.

Prices:

14-inch tubs, \$5.00 each.

Specimens in half-barrels, \$7.50 to \$10 each.

**Mme. E. Mouillere.** A fine, white French variety.

Prices:

4-inch pots, \$0.35 each; \$3.50 per dozen.

6-inch pots, \$0.75 each; \$7.50 per dozen.

8-inch pots, \$1.50 each; \$15.00 per dozen.

**Euphorbia Jacquinaeflora.** Comes in just right for Christmas, with long sprays of bright red flowers.

Price:

2¼-inch pots, \$1.50 each; \$10.00 per dozen.

3-inch pots, \$2.50 each; \$15.00 per dozen.

## Miscellaneous Bedding Plants.

**Ageratum, Blue and White.**

2½-inch, \$0.75 per dozen; \$6.00 per 100.

**Alternanthera Brilliantissima (Red) and Aurea Mana (Yellow).** Used extensively in formal and carpet beds, for which purpose they have few equals. 2-inch, \$6.00 per 100; \$50.00 per 1,000.

**Begonias, Vernon, Erfordii, Luminosa, Vesuvius and Regina.** For bedding purposes, window boxes and pot culture they have few equals.

2¼-inch, \$6 per 100; 3½-inch, \$10.00 per 100.

**Bellis, English Daisy.**

Price: \$0.75 per dozen; \$6.00 per 100.

### CANNAS.

**Beaute Poitevine.** Dark crimson, 4 ft.

**Buttercup.** Dark yellow; reliable.

**Firebird.** Brilliant cardinal red.

**Gustave Gumper.** A fine yellow; 3½ ft.

**Hungaria.** An ideal pink variety; 3 ft.

**Kate. F. Deemer.** A rich oriole yellow, red center.

**King Humbert.** The most popular Canna; red foliage.

**Meteor.** A fine dark red; 4 ft.

**Pres. Meyer.** Bronze foliage; flowers, rich red.

**Rosea Gigantea.** The best rose-colored variety.

**Tarrytown.** A fine dwarf scarlet.

**Venus.** Soft pink, with mottled yellow border.

Price, 4-inch pots, May or later: 25c each; \$2.50 per dozen; \$15.00 per 100.

**Echeveria Secunda.** For formal bedding.

\$5.00, \$6.00 and \$7.00 per 100, according to size.

**Coleus, Verschaffeltii, and Verschaffeltii Aurea.**

2½ -inch, \$6.00 per 100; \$50.00 per 1,000.

**English Ivy.** 3½ -inch. Strong. \$25.00 per 100.

**Forget-Me-Nots.** \$0.75 per dozen; \$6.00 per 100.

### GERANIUMS.

**Beaute Poitevine.** Fine double salmon-pink.

**Jean Viaud.** Bright, double rose-pink.

**La Favorite.** Fine double white.

**S. A. Nutt.** Dark scarlet; double. The best.

**Summitt of Perfection.** Double red, improved "Grant."

Price: 2¼ -inch, \$1.50 per dozen; \$12.00 per 100.

3½ -inch, \$2.50 per dozen; \$15.00 per 100.

**Heliotrope.**

2¼ -inch, \$1.00 per dozen; \$8.00 per 100.

3½ -inch, \$1.25 per dozen; \$10.00 per 100.

**Pansies.** Strong plants for early spring.

Price: \$1.00 per dozen; \$6.00 per 100.

**Salvia.** Both the tall and dwarf varieties.

2¼ -inch, \$1.00 per dozen; \$6.00 per 100.

3 -inch, \$1.50 per dozen; \$10.00 per 100.

**Vinca Japonica Variegata.** Used extensively for baskets and window boxes.

2¼ -inch \$2.00 per dozen; \$12.00 per 100.

3 -inch, \$3.00 per dozen; \$20.00 per 100.

3½ -inch, \$3.50 per dozen; \$25.00 per 100.

**Verbenas.** Red, white, blue and variegated.

Price: \$0.75 per dozen; \$6.00 per 100.

## Ferns.

**Adiantum Cuneatum (Maiden Hair Fern).** The old stand-by for cut fronds or pot culture.

Prices:

Size pot	Each	Per doz.	Per 100
----------	------	----------	---------

2¼ -inch.	\$ .10	\$1.00	\$ 8.00
-----------	--------	--------	---------

3 -inch	.15	1.50	12.00
---------	-----	------	-------

4 -inch	.50	5.00	
---------	-----	------	--

6 -inch	1.50	12.00	
---------	------	-------	--

**Adiantum Croweanum.** A hardier and stronger grower than "Cuneatum," and most useful for cutting purposes.

Prices:

3-inch, \$0.15 each; \$1.50 per dozen.

6-inch, \$1.75 each; \$15.00 per dozen.

8-inch, \$2.50 each.

**Adiantum Farleyense Gloriosa.** Very much resembles the old "Farleyense," but a much easier variety to grow. Succeeds under any ordinary conditions.

Prices:

3-inch pots, \$0.50 each; \$5.00 per dozen.

4-inch pots, \$0.75 each; \$7.50 per dozen.

**Nephrolepis, Boston, Scotti and Harrissii.**

2¼ -inch, \$2.00 per dozen; \$15.00 per 100.

3½ -inch \$3.00 per dozen; \$25.00 per 100.

6 -inch, \$1.00 each; \$9.00 per dozen.

8 -inch, \$2.00 each; \$18.00 per dozen.

**Nephrolepis, Elegantissima, Eleg.-Compacta, Whit-Manii and Superbissima.**

2½ -inch, \$2.50 per dozen; \$20.00 per 100.

4 -inch, \$0.50 each; \$5.00 doz.; \$35.00 per 100.

6 -inch, \$1.00 each; \$10.00 per dozen.

8 -inch, \$2.00 each; \$18.00 per dozen.

**Mixed Ferns.** An assortment of varieties suitable for fern dishes.

Price: 2¼ -inch pot, \$1.00 dozen; \$7.50 per 100.

## Indoor Grape Vines.

We have a large stock of home-grown grape vines. One and two-year old for graperies planting. The eyes for propagation were all taken from the best private graperies where the highest class of stock is produced. They are all pot-grown, and are superior in every way for planting canes to the imported stock. We can supply the following varieties, viz.:

- ✓ **Black Hamburgh.** Best black for early graperies.
- ✓ **Buckland Sweetwater.** Best white for early graperies.
- ✓ **Gros Colmar.** Fine, large black for late graperies.
- ✓ **Gros Maroc.** Fine, large black for late graperies.
- ✓ **Muscat of Alexandra.** Best white grape for second early.
- ✓ **Madersfield Court and Muscat Hamburgh.** Both good black grapes for second early.

Prices:

One-year old vines, \$2.00 each.

Two-year-old vines, \$3.50 each.

✓ **Diamond Jubilee.** Black; one of the newer mid-season sorts. \$5.00 each.

Also Large Imported Plants, suitable for fruiting in pots, in the above varieties if ordered before February 15th.

Prices: From \$5.00 to \$7.50 each.

### PEACHES.

✓ **Duchess of Cornwall.** An early peach, medium size; freestone. Skin creamy yellow, with a red-striped cheek. Melting and delicious.

✓ **Gross Mignonne.** Large; melting and excellent; forcing well, and is one of the finest sorts in cultivation.

✓ **Hale's Early.** Large; melting and very good.

✓ **Peregrine.** A distinct mid-season variety. The fruits are large and handsome, with a brilliant crimson skin; the flesh rich and highly flavored.

✓ **Princess of Wales.** Very large. One of the largest and best peaches known, and one of the most beautiful; its color is cream, with a rosy cheek; melting, rich and excellent.

✓ **Thomas Rivers.** A large, round peach, with a bright red cheek. Flesh firm, juicy and of good flavor. A remarkably heavy fruit. Freestone. Forces well.

Prices for above varieties, \$3.00, \$5.00, and \$7.50 each.

### NECTARINES.

✓ **Cardinal.** A valuable nectarine, adapted for forcing only. The fruit ripens ten days before "Early Rivers."

✓ **Early Rivers.** Very large; skin, rich crimson next sun, light yellow marked with red on the shaded side; flesh, green, tender and juicy.

✓ **Newton.** Fruit of the largest size; sugary, rich and delicious.

✓ **Spencer.** One of the largest nectarines; late.

✓ **Stanwick Elruge.** Large, melting and rich.

✓ **Victoria.** Large, roundish oval, flattened at the top; greenish yellow, crimson on the sunny side; very rich and sugary.

Prices for the above varieties, \$3.00, \$5.00, and \$7.50 each.



Blue Spruce in Our Nursery.



# NURSERY STOCK.

This past summer we purchased another thirty acres of very fertile land, just such land as is best adapted for the growing of choice nursery stock, and we already have it well stocked with fine specimens.

This past summer we also bought the entire stock of a private nursery near us. This stock principally consists of very choice specimen Evergreens. They were planted about twelve years ago and are thoroughly acclimated. Every plant has been moved within the past three years, and they are clean and in perfect health. They are planted wide enough apart to allow cultivation both ways, and have never been neglected in any way. Each tree and plant is an individual specimen; a finer lot of stock could not be found anywhere. They have an excellent root system and can be safely transplanted without any risk.

Anyone interested in real choice stock would do well to visit us before buying elsewhere. Our prices are not any higher than is usually charged for ordinary stock.

## Evergreens.

### ABIES (See also *Picea*).

**Abies Canadensis** (Hemlock Spruce). A lovely native species that has few equals as a specimen tree, or as a hedge plant. Will succeed in partial shade.

18 to 24 inches, \$1.00.	2 to 3 feet, \$1.50.
3 to 4 feet, \$2.50.	4 to 5 feet, \$5.00.
5 to 6 feet, \$7.50.	Specimens, \$10.00 to \$25.00.

**Abies Cephalonica** (Silver Fir). A broad-leaved variety with silvery reverse; makes a handsome specimen.

3 feet, \$2.50; 4 feet, \$6.00; 5 feet, \$7.50; 6 feet, \$10.00; 8 feet, \$15.00.

**Abies Concolor** (White Fir). One of the finest Evergreens. A native of Colorado. Almost as blue as the Colorado Spruce and much handsomer.

2 feet, \$2.00; 3 feet, \$4.00; 4 feet, \$6.00; 5 to 6 feet, \$10.00 to \$12.00; 6 to 7 feet, \$12.50 to \$15.00.

**Abies Concolor Violacea**. A very fine variety of the "Blue Fir," with heavy, glaucous blue foliage.

5 to 6 feet, \$10.00 each.

**Abies Douglassi** (Red or Douglas Fir). A vigorous symmetrical, and graceful tree from the Rocky Mountains. The foliage is a brilliant soft green. A long-lived tree.

1½ feet, \$1.00; 2 to 3 feet, \$2.00; 4 feet, \$2.50; 5 feet, \$3.50.

**Abies Nobilis Glauca** (Oregon Fir). A handsome, hardy tree, with soft-blue foliage.

2 feet, \$2.50; 3 feet, \$4.50; 4 feet, \$6.00; 5 to 6 feet, \$10.00 to \$12.50.

**Abies Nordmanniana** (Nordmann's Fir). A fine majestic Fir with massive, dark green, shining foliage; silvery reverse.

2½ to 3 feet, \$3.00; 3 to 4 feet, \$5.00; 4 to 5 feet, \$7.50; 5 to 6 feet, \$10.00; 6 to 7 feet, \$15.00; 7 to 8 feet, \$20.00.

**Abies Pinsapo** (Spanish Silver Fir). A very handsome tree; branches and foliage very thick and compact.

4 to 5 feet, \$12.50 each; 5 to 6 feet, \$17.50.

**Abies Veitchii** (Veitch's Silver Fir). A hardy Japanese variety, somewhat resembling Nordmann's Fir, but hardier and of more rapid growth.

3½ feet, \$4.00; 4 feet, \$6.00; 5 feet, \$7.50; 6 feet \$10.00; 7 to 8 feet, \$15.00.

**PICEA** (See also *Abies*).

**Picea Alcockiana** (Alcock's Spruce). A fine tree from Japan; of close growth; pale green foliage; silvery underneath.

2 to 3 feet, \$2.00; 3 to 4 feet, \$3.00; 4 to 5 feet, \$5.00; 5 to 6 feet, \$10.00.

**Picea Excelsia** (Common or Norway Spruce). Our best known Evergreen; used everywhere. Adapted for specimens, wind-breaks or hedges.

2 to 3 feet, \$1.00; 3 to 4 feet, \$2.00; 4 to 5 feet, \$3.00; 5 to 6 feet, \$5.00; 6 to 7 feet, \$7.50.

**Picea Excelsa Columnaris**. Very pyramidal in growth; a rapid and sturdy grower. The general appearance is much the same as *Orientalis* (the same dark green), but a little heavier.

8 feet, \$15.00; 9 feet, \$20.00; 10 feet, \$25.00.

**Picea Excelsa Inverta** (Weeping Spruce). A weeping form of the common Spruce.

2 feet, \$2.50; 3 feet, \$3.50; 4 feet, \$5.00; 5 to 6 feet, \$7.50; 6 to 7 feet, \$10.00.

**Picea Excelsa Pyramidalis** (Pyramidal Spruce). An upright form of compact habit. A rapid grower, with dark green foliage.

3 feet, \$2.00; 4 feet, \$3.00; 5 feet, \$4.00; 6 to 7 feet, \$7.50.

**Picea Pungens** (Colorado Spruce). Foliage bluish green to silvery white, makes a handsome specimen and very hardy.

8 feet, \$20.00; 9 feet, \$25.00.

**Picea Nigra Doumetti**. A dense and compact tree, needles small, with pronounced bluish tint.

2½ feet, \$2.50; 3 to 3½ feet, \$5.00; 4½ x 4½ specimens, \$15.00.

**Picea Orientalis** (Eastern Spruce). One of the handsomest Spruces, pyramidal in form, with dense growth. The needles are short and thickly set and its color is the darkest of all the Spruces.

1½ to 2 feet, \$1.50; 2 to 2½ feet, \$2.00; 3 to 3½ feet, \$3.50; 4 to 5 feet, \$5.00 to \$7.50; 5 to 6 feet, \$10.00; 6 to 7 feet, \$12.50; 7 to 8 feet, \$15.00.

**Picea Polita** (Tiger's Tail Spruce.) A Japanese variety, of erect and rigid habit. The leaves are sharply pointed, and bright green.

3 feet, \$3.50; 4 feet, \$5.00; 5 to 6 feet, \$9.00; 6 to 7 feet, \$12.50.

**Picea Pungens Kosteriana** (Koster's Blue Spruce). The well known "Blue Spruce," absolutely the hardiest and best of them all.

1½ foot, \$2.50; 2 feet, \$3.00; 2½ to 3 feet, \$4.00; 3 to 3½ feet, \$6.00; 3½ to 4 feet, \$7.50; 4 to 5 feet, \$10.00; 5½ feet, \$12.50; 6 feet, \$15.00; 6½ feet, \$17.50; 7 feet, \$20.00; 7½ feet, \$22.50; 8 feet, \$25.00; 8½ feet, \$27.50; 9 feet, \$30.00; 10 feet, \$40.00; 11 feet, \$45.00.



### BIOTA.

*Biota Orientalis* (Chinese Arborvitae). Makes a very compact plant. The color is bright green in summer, changing to a dull red in winter. Fine for grouping.

2 feet, \$1.00; 3 feet, \$1.50; 4 feet, \$2.50; 5 feet, \$3.50; 6 feet, \$4.50.

### CEDAR,

*Cedrus Atlantica Glauca* (Blue Cedar). A pyramidal tree of open growth which rivals the Blue Spruce in color effect.

3½ to 4 feet, \$3.50; 4 to 4½ feet, \$5.00; 5 feet, \$7.50; 6 feet, \$10.00.

### CRYPTOMERIA.

*Cryptomeria Lobbi*. A distinct and pretty Evergreen Bright green in summer, changing to dull red in winter.

2½ to 3 feet, \$3.00; 3 to 4 feet, \$4.00.

*Cupressus Lawsonii* var *Allumci*. A perfectly hardy form of "Lawson's Cupressus"; pyramidal in form, and naturally very compact, with silvery blue foliage. Makes a very fine specimen.

5 to 6 feet, \$10.00; 6 to 7 feet, \$12.50; 8 to 10 feet, \$15.00 to \$20.00 each.

### JUNIPERS.

*Juniperis Canadensis Aurea* (*Douglasii*). Of dwarf spreading growth, with bright golden foliage.

1 foot, \$1.00; 1½ feet, \$1.50; 2 feet, \$2.50.

*Juniperis Communis Hibernica* (Irish Juniper). Very dense and upright in growth. Color throughout the year, a silvery gray.

2 feet, 75c; 3 feet, \$1.00; 3½ to 4 feet, \$2.00.

*Juniperis Communis Neaboriensis*. More bushy than *Hibernica*, which it somewhat resembles. Needles very sharp.

2 feet, \$1.50; 3 feet, \$2.50; 6 to 7 feet x 6 feet, \$20.00 each.

*Juniperis Chiensis Aurea* (Golden Chinese Juniper). A fine golden upright plant of regular form.

1 foot, \$1.50; 1½ foot, \$2.00; 2½ feet, \$3.50; 3 feet, \$5.00; 3½ feet, \$7.50; 4 feet, \$12.50; 5 feet x 3½ feet, \$15.00.

*Juniperis Fortunei*. Very distinct; densely branched, upright in form, with blue foliage.

6 x 6 feet, \$10.00; 7 x 7 feet, \$15.00 each.

*Juniperis Japonica Aurea* (Japanese Golden). A very choice Juniper with beautiful golden foliage; spreading habit.

3 feet, \$3.50; 4 feet, \$5.00 to \$7.50 each.

*Juniperis Sabina* (Savins Juniper). Of dwarf spreading growth and dark green foliage.

15 to 18 inches, 75c.; 18 to 24 inches, \$1.50; 2½ to 3 feet, \$2.50.

*Juniperis Sabina Tamariscifolia*. A trailing variety, with broad, feathery branches.

1½ feet, \$1.50; 2 feet, \$2.50; 3 feet, \$4.00 to \$5.00.

*Juniperis Sinensis Argentic Variegata*. Similar to *Sinensis*, but the foliage is interspersed with silvery white.

2 feet, \$1.50; 3 feet, \$3.50.

*Juniperis Sinensis Procumbens*. Has the bluish green, dense foliage of the type, but has a trailing habit and is well adapted for rockery planting.

1½ feet, \$2.00; 2 feet, \$2.50; 2½ feet, \$3.50.

**Juniperis Sinensis Pfitzeriana.** The most beautiful and graceful of all the Junipers. Is slightly procumbent and is well adapted for any situation; is very hardy. The foliage is luxuriant and feathery and of a grayish-green hue.

1½ foot, \$2.50; 2 feet, \$3.50; 2½ to 3 feet, \$5.00; 6 feet x 6 feet, \$20.00 each.

**Juniperis Virginiana (Red Cedar).** Our well-known Cedar; suitable for massing in dry situations.

2 feet, \$1.00; 3 feet, \$2.00; 4 feet, \$2.50; 5 feet, \$3.50.

**Juniperis Virginiana Glauca.** Has the habit and hardiness of the type, with fine silvery foliage.

2 feet, \$1.50; 3 feet, \$2.50; 4 feet, \$3.50; 5 feet, \$7.50; 6 feet, \$10.00; 7 feet, \$12.50; 8 to 10 feet, \$15.00 to \$20.00.

**Juniperis Virginiana Cannarti.** A pyramidal variety with glossy green foliage; compact and very hardy.

2 feet, \$2.50; 2½ to 3 feet, \$3.50; 3 to 4 feet, \$5.00; 7 feet, \$10.00; 8 feet, \$15.00.

**Juniperis Elegantissima (Golden Cedar).** Beautiful golden brown foliage; very effective.

2 to 2½ feet, \$2.50; 2½ to 3 feet, \$3.50; 3 to 4 feet, \$5.00; 5 feet, \$10.00; 6 feet, \$15.00.

**Juniperis Virginiana Schotti.** A fine hardy Evergreen of Columnar habit; foliage, light green.

2 feet, \$1.50; 3 feet, \$2.00; 5 feet, \$7.50; 6 feet, \$10.00; 7 feet, \$12.50.

#### PINUS, THE PINES.

**Pinus Austriaca (Austrian Pine).** A robust tree of rapid growth and very hardy, with long dark green leaves.

2 feet, \$1.50; 2½ feet, \$2.00; 3 feet, \$3.00; 4 feet, \$3.50; 5 feet, \$6.00; 7 feet, \$10.00; 8 feet, \$15.00; 8½ feet, \$17.50; 9 feet, \$20.00; 10 feet, \$25.00.

**Pinus Cembra (Swiss Stone Pine).** Short branches with silvery foliage, forming a dense, narrow pyramid.

2 feet, \$2.50; 2½ feet, \$3.00; 3 feet, \$4.00; 3½ feet, \$5.00; 4 feet, \$7.50; 5 feet, \$10.00; 6 feet, \$12.50.

**Pinus Montana (Swiss Mountain Pine).** Of dwarf habit, with bright green foliage.

1½ feet, \$1.50; 2 to 2½ feet, \$2.50.

**Pinus Mughus (Dwarf Mugho Pine).** A dwarf compact tree for slopes.

1 foot, \$1.50; 1½ feet, \$2.00; 2 feet, \$3.00.

**Pinus Strobus (White Pine).** One of our best native pines; bright green foliage; very hardy.

2 feet, 75c; 3 feet, \$1.50; 4 feet, \$2.50; 5 feet, \$4.00.

**Pinus Sylvestris (Scotch Pine).** A hardy tree of rapid growth, with bluish green foliage.

2 feet, \$1.00; 3 feet, \$1.50; 4 feet, \$2.50; 5 feet, \$4.50.

#### RETINOSPORAS, JAPANESE CEDARS.

**Retinospora Ericoides.** Of compact growth. Violet green in summer, dark brown in winter.

1 foot, 50c; 1½ feet, \$1.00; 2 feet, \$2.50.

**Retinospora Filifera.** Thread-like drooping branches with bright green foliage.

1½ to 2 feet, \$1.50; 2 to 2½ feet, \$2.50; 2½ to 3 feet, \$3.00; 3 to 3½ feet, \$4.00; 3½ to 4 feet, \$5.00; 5 to 6 feet, \$10.00 to \$12.50.

- Retinospora Filifera Aurea.** Similar to above, with bright golden foliage. Very attractive.  
1 foot, \$2.00; 1½ feet, \$2.50; 2½ feet, \$5.00; 3 feet, \$7.50.
- Retinospora Leptoclada.** A very dwarf grower, with dark foliage; very compact.  
2 to 3 feet, \$7.50 each.
- Retinospora Lycopoidies.** An exquisite, rare Japanese, of which we have a few very fine specimens.  
6 feet, \$15.00; 7 feet, \$20.00 to \$25.00 each.
- Retinospora Obtusa Crippsi.** A beautiful golden form of Obtusa, but not so stiff.  
6 feet, \$12.50; 7 to 8 feet, \$20.00.
- Retinospora Obtusa Gracilis.** Very graceful specimens; foliage bright green.  
9 to 10 feet, \$15.00 to \$20.00 each.
- Retinospora Obtusa Aurea.** Same as the former, with bright golden color.  
5 feet, \$10.00; 5½ feet, \$15.00; 6 feet, \$20.00.
- Retinospora-Pisifera (Svara Cypress).** One of our hardiest and finest Evergreens for grouping purposes.  
2 feet, \$1.00; 2½ feet, \$1.50; 3 feet, \$2.00; 3½ feet, \$3.00; 4 feet, \$3.50; 5 feet, \$5.00; 6 feet, \$7.50; 7 feet, \$10.00.  
Specimens, \$12.00 to \$20.00.
- Retinospora Pisifera Aurea.** Similar to the preceding in every particular except in color, which is an effective golden yellow.  
2 feet, \$1.00; 2½ feet, \$1.50; 3 feet, \$2.00; 3 to 4 feet, \$3.50; 4 to 5 feet, \$5.00; 5 to 6 feet, \$7.50; 6 to 7 feet, \$10.00. Specimens from \$12.50 to \$25.00.
- Retinospora Plumosa.** Forms a dense, compact, conical bush with graceful green feathery foliage.  
1 foot, 50c; 1½ feet, 75c; 2 feet, \$1.35; 2½ feet, \$1.50; 3 feet, \$2.50; 3½ feet, \$3.50; 4 to 4½ feet, \$5.00; 4½ to 5 feet, \$6.00; 5 to 6 feet, \$7.50; 6 to 7 feet, \$10.00: Larger Specimens, \$12.50 to \$25.00.
- Retinospora Plumosa Aurea.** A golden yellow form of the preceding. Very effective.  
1 foot, 50c; 1½ feet, 75c; 2 feet, \$1.50; 2½ feet, \$2.50; 3 feet, \$3.50; 4 feet, \$5.00; 5 feet, \$6.50; 6 feet, \$7.50. Larger Specimens, \$10.00 to \$25.00.
- Retinospora Squarrosa Sulphurea.** Forms a very compact specimen with foliage of a sulphur-yellow tint.  
1 foot, 50c; 1½ feet, \$1.00; 1½ to 2 feet, \$2.00; 2 to 2½ feet, \$3.00. Specimens, 5 feet, 6 feet diameter, \$15.00 to \$25.00.
- Retinospora Squarrosa Veitchii.** Forms a compact specimen with fine bluish green foliage.  
1 foot, 50c; 1½ feet, \$1.00; 2 feet, \$1.50; 3 feet, \$3.00; 4 feet, \$5.00; 5 feet, \$7.50. Larger Specimens, from \$10.00 to \$35.00.
- Sciadopitys Verticillata (Japanese Umbrella Pine).** Very long needles, in whorls along the branches; dark green in color.  
2 to 3 feet, \$5.00; 3 to 4 feet, \$10.00; 4 to 5 feet, \$15.00.

#### TAXUS, THE YEWS.

- Taxus Cuspidata.** The Japanese pointed Yew, of bushy low growth, and dark green foliage. The

hardiest of all the Yews.

1½ feet, \$2.00; 2 feet, \$3.00; 2½ feet, \$5.00;  
3½ feet, \$7.50.

**Taxus Baccata Washingtoni** (Golden English Yew).  
The best and hardiest of the English Yews; very  
compact; fine golden foliage; handsome and rare.  
We have a number of as fine specimens as ever  
grew.

4 to 5 feet x 4 feet, \$20.00 to \$30.00 each.

**Taxus Hibernica Aurea** (Golden Irish Yew). Gold-  
en yellow; upright and compact in form; very  
handsome specimens. These have been grown  
here for ten years in an exposed situation, with-  
out protection, and are thoroughly acclimated.

4 feet x 2 feet, \$7.50 each; 4½ to 5 feet x 2½  
feet, \$10.00.

### THUYA, THE ARBORVITAE.

**Thuya Occidentalis** (Common American Arborvi-  
tae). A most useful Evergreen, used extensively  
for hedges, but looks equally as well when used  
for grouping or individual specimens.

1½ feet, 35c; 2 feet, 50c; 2½ feet, 75c; 3 feet,  
\$1.00; 4 feet, \$1.75; 5 feet, \$2.50; 6 feet, \$3.50;  
7 feet, \$5.00.

**Thuya Occ. Columbia.** Strong habit; broad foliage  
with silver variegation; compact form.

6 feet, \$12.50; 7 feet, \$15.00.

**Thuya Occ-Globosa** (Globe Arborvitae). A dwarf  
form of the above of compact, globular growth.

1 foot, 75c; 1½ feet, \$1.50; 2 feet, \$2.50.

**Thuya Occ-Hoveyi** (Hovey's Golden Arborvitae).  
A dwarf compact globular form, with golden  
foliage.

1 foot, 75c; 1½ feet, \$1.50.

**Thuya Occ. Lutea** (Peabody's Golden Arborvitae).  
A fine, golden colored variety of pyramidal  
growth.

2 feet, \$1.25; 2½ feet, \$2.00; 3 feet, \$2.50; 3½  
feet, \$3.50; 4 to 5 feet, \$5.00; 5 to 6 feet, \$7.50;  
7 feet, \$12.50; 8 feet, \$15.00.

**Thuya Occ. Pyramidalis** (Pyramidal Arborvitae).  
A fine pyramidal form of dense, compact habit  
and dark green foliage.

1 foot, 35c; 1½ feet, 50c; 2 feet, 75c; 2½ feet,  
\$1.00; 3 feet, \$1.50; 4 feet, \$2.00; 5 feet, \$3.50;  
6 feet, \$5.00.

**Thuya Occ. Rosenthalii.** A dark green, compact  
grower; very choice.

5 feet, \$10.00; 6 feet, \$15.00.

**Thuya Occ. Verveaniana.** Foliage streaked yellow,  
bronzy in winter. A very hardy, compact, and  
symmetrical grower.

6 feet, \$10.00; 7 feet, \$15.00.

**Thuya Occ. Wareana** (Siberian Arborvitae). The  
hardiest of the family. The foliage is full and  
heavy and dark green in color. Makes a very  
compact ornamental specimen.

1 foot, 75c; 1½ feet, \$1.50; 2 feet, \$2.00; 2½  
feet, \$2.50; 3 feet, \$3.50; 4 feet, \$5.00.

**Thuyopsis Standishii** (Japanese Arborvitae). One  
of the handsomest and hardiest of all the Arbor-  
vitae, with massive, dark green foliage and  
graceful, pendulous habit.

1½ feet, \$1.50; 3 feet, \$3.00; 4 feet, \$4.00; 5  
feet, \$5.00; 6 feet, \$7.50; 7 feet, \$10.00.

## Broad-Leaved Evergreens.

### AZALEA.

**Azalea Amoena.** A fine dwarf Evergreen shrub which gives a profusion of rosy purple flowers in May. In summer the leaves are glossy green, changing to a bright bronze in winter.

1 foot, \$1.25; 1½ feet, \$2.00; 2 feet, \$2.50.

**Azalea Hinodigeri.** Similar to "Amoena" in every respect except the color of the flowers, which are brilliant red.

1½ feet, \$2.50; 2 feet, \$3.50.

### ANDROMEDAS.

**Andromeda Japonica.** A pretty shrub of low growth which flowers profusely in early spring. The flowers are white and drooping and much resembles Lily of the Valley.

1 foot, \$1.50; 1½ feet, \$2.50; 2½ feet, \$4.00.

### BOXWOOD.

**B. Suffruticosa.** Dwarf, for edging paths in formal gardens.

4 to 6 inch, \$ 7.50 per 100; \$60.00 per 1,000.

6 to 8 inch, \$10.00 per 100; \$80.00 per 1,000.

**Box Bush Form.**

1 foot, 75c; 1½ feet, \$1.00; 2 feet, \$2.00.

3 feet x 3 feet, \$10.00.

**Box Pyramidal Form.**

3 feet, \$3.00; 4 feet, \$5.00; 5 feet, \$7.50.

**Box Standard or Tree Form.**

2½ feet stem, 2½ feet crown, \$7.50.

**Buxus Hansworthii.** A heavier growing and harder variety than the *Sempervirens*, with larger leaves and darker color.

2½ x 2½ feet, \$7.50; 3 x 3 feet, \$10.00; 3½ x

3½ feet, \$15.00; 4 x 4 feet, \$25.00 each.

### DAPHNE.

**Daphne Eneorum.** A low Evergreen plant, with narrow, glossy leaves, with clusters of bright pink, very fragrant flowers in May and August. Strong plants from 50c to \$1.00 each.

**Ilex Buxifolia** (Japanese Holly). A beautiful hardy evergreen with dark, glossy foliage.

4 to 5 feet, \$10.00 to \$12.50 each.

### RHODODENDRONS.

#### HYBRID VARIETIES.

All of the varieties listed have been thoroughly tested in our nursery, and have proved to be perfectly hardy.

**Album Elegans.** White, suffused pink; tall grower.

**Album Grandiflorum.** Soft pink.

**Abraham Lincoln.** Soft, rosy red, or deep pink.

**Boule de Neige.** Purest white; dwarf spreading and in price one-third more than the others.

**Caractacus.** Dark crimson; a strong grower.

**Catawbiense Grandiflora.** Purplish lavender.

**Chas. Bagley.** Cerise pink.

**Chas. Dickens.** Very brilliant crimson.

**Delicatissimum.** White, flushed pink.

**Everestianum.** Fine, soft pink; dwarf.

**Giganteum.** Bright rose, with white markings.

**H. H. Hunnewell.** Dark crimson; large flower.

**H. W. Sargent.** Dark crimson; one of the hardiest.

**General Grant.** Rose scarlet.

**Lady Armstrong.** Rosy pink, shaded white.

**Lady Clermont.** Dark red; a strong grower.

**Mrs. Milner.** Rosy crimson; one of the best.  
**Parson's Grandiflorum.** Bright purplish rose; one of the finest and hardiest.  
**President Lincoln.** Bright pink.  
**Roseum Elegans.** Fine, clear, even pink; a fine grower and very hardy.

**Prices:**

1½ to 2 feet, \$1.75; 2 to 2½ feet, \$2.00.  
 2½ to 3 feet, \$3.50; 3 to 3½ feet, \$5.00.  
 3½ to 4 feet, \$7.50; 4 to 5 feet, \$10.00 each.

The dwarf growers and the dark and crimson varieties average one-third more in price.

**RHODODENDRON MAXIMUM** (Native variety). Suitable for shady places, and as a background for the finer, hybrid sorts. Field clumps, viz.:

2 feet, \$1.50 each; \$12.00 per dozen.  
 3 feet, \$2.50 each; \$25.00 per dozen.  
 4 feet Specimens, \$5.00 each; \$50.00 per dozen.  
 5 to 6 feet Specimens, \$10.00 each.

Or by the carload on application.

**Kalmia Latifolia.** Mountain Laurel.

1½ feet, \$1.00; 2 feet, \$2.00; 3 feet, \$3.00 each.  
 Or price per carload on application.

## TREES.

### Ornamental and Shade.

#### MAPLES.

**Acer Colchicum Rubrum.** (European Red Maple). An attractive medium-sized tree of rounded form, with medium-sized leaves and clean growth.

14 to 16 feet, 3-inch calipre, \$5.00.

16 to 18 feet, 3 to 3½-inch calipre, \$7.50 each.

**Acer Dasycarpum Pyramidalis** (Pyramidal Silver Maple). This makes a beautiful tree of pyramidal form. The leaf is cut, light green and silvery underneath. It is almost as rapid a grower as the Poplar, but much handsomer and longer-lived. For screening purposes we have trees that are branched from the ground up.

8 to 10 feet, \$1.50 each.

10 to 12 feet, 2-inch calipre, \$2.50 each.

12 to 14 feet, 2½-inch calipre, \$3.50 each.

12 to 14 feet, 2½ to 3-inch calipre, \$5.00 each.

14 to 16 feet, 3 to 3½-inch calipre, \$7.50 each.

**Acer Platinoides** (Norway Maple). One of the hardiest and most vigorous of all trees for shade and avenue planting. Forms a very compact globular head and is free from disease and natural enemies.

8 to 10 feet, 1 -inch calipre, \$1.00 each.

10 to 12 feet, 1½-inch calipre, \$1.50 each.

10 to 12 feet, 2 -inch calipre, \$2.50 each.

12 to 14 feet, 2½ -inch calipre, \$3.50 each.

14 to 16 feet, 2½ to 3-inch calipre, \$5.00 each.

16 to 18 feet, 3 to 3½-inch calipre, \$7.50 each.

Specimens, \$10.00 to \$15.00.

**Acer Plat-Schwedlerii** (Schwedler Norway Maple). In every respect similar to the Norway Maple except in the color of the leaves which are bright purple when young and retain a purplish green

color all summer. This is the most decorative of all Maples.

12 to 14 feet, 2½-inch calipre, \$3.50 each.

14 to 16 feet, 2½ to 3-inch calipre, \$5.00 each.

16 to 18 feet, 3 to 3½-inch calipre, \$10.00 each.

**Acer Plat-Spathi.** Somewhat resembles the Norway Maple, but the leaf is larger, darker green, and not so smooth. The under-side of the leaf is brownish purple. A very handsome tree.

12 to 14 feet, 1½ to 2-inch calipre, \$3.50 each.

14 to 16 feet, 2 to 2½-inch calipre, \$5.00 each.

14 to 16 feet, 3 to 3½-inch calipre, \$10.00 each.

**Acer Plat-Reitenbachi.** Of the Norway type, but more erect in growth, large, glossy foliage, green in spring changing to purple towards midsummer.

14 to 16 feet, 2 to 2½-inch calipre, \$5.00 each.

16 to 18 feet, 3 to 3½-inch calipre, \$10.00 each.

**Acer Saccharinum** (Sugar Maple). The well-known native Maple.

10 to 12 feet, 1 to 1½-inch calipre, \$2.50 each.

14 to 16 feet, 2 to 2½-inch calipre, \$4.00 to \$5.00 each.

## The Japanese Maples.

**Acer Polymorphum Atropurpureum** (Blood-leaved).

This is the best of all the Japanese Maples. The foliage is reddish crimson or blood-red in spring and becomes duller as the season advances, but it holds this color all the season. The growth is upright and bushy and makes a beautiful "Lawn Specimen."

1½ feet, \$1.50; 2 feet, \$2.00; 2½ feet, \$2.50;

3 feet, \$3.00; 3½ feet, \$4.00; 4 feet, \$5.00;

5 feet, \$7.50; 6 feet, \$10.00. Larger Specimens, \$15.00 to \$25.00.

**Acer Poly-Atro Dissectum** (Cut-leaved). The foliage is very fine cut and blood-red when young; changing to purplish green in summer. Very dwarf, with graceful weeping form.

1 foot, \$1.50; 1½ feet, \$2.00; 2 feet, \$3.00;

2½ feet, \$4.00; 3 feet, \$5.00; 3½ feet, \$7.50.

Larger Specimens, \$15.00 to \$25.00.

**Acer Poly-Versicolor** (Various Colored): Of upright growth, and finely branched. The leaves are green, margined with pink and white and are finely cut.

2 feet, \$2.00; 2½ feet, \$2.50; 3 feet, \$3.00.

## HORSE-CHESTNUT.

**Aesculus Hippocastanum.** A well-known tree with abundance of white flowers in May. Makes a fine "Lawn Specimen."

8 to 10 feet, \$2.00.

10 to 12 feet, 2-inch calipre, \$2.50.

12 to 14 feet, 2 to 2½-inch calipre, \$3.50.

12 to 14 feet, 2½ to 3-inch calipre, \$5.00.

14 to 16 feet, 3 to 3½-inch calipre, \$7.50.

**Aesculus-Hippo-Alba Flore Pleno.** Double white-flowering Horse-Chestnut. The flowers are produced on large spikes, and are a beautiful sight when in full bloom. It does not produce fruit, and consequently makes a very clean "Lawn Specimen."

Fine Specimens, \$3.50, \$5.00 and \$7.50 each.

**Aesculus Rubicunda Flore Plena.** Makes a smaller tree than the former, with double red flower and

darker green leaves.

8 to 10 feet, 2 inch-calibre, \$3.00.

10 to 12 feet, 2½ to 3-inch calibre, \$5.00.

12 to 14 feet, 3 to 3½-inch calibre, \$7.50.

#### BIRCH.

*Betula Alba* (White Birch). One of our well-known native trees.

5 to 6 feet, \$1.00; 6 to 8 feet, \$1.50; 8 to 10 feet, \$2.00; 10 to 12 feet, \$2.50.

*Betula Pendula Youngi* (Young's Weeping Birch).

A graceful weeping tree with fine cut foliage.

5 to 6 feet stems, \$2.50 to \$5.00 each.

#### CATALPA.

*Catalpa Bungei* (Umbrella Tree). A most useful tree for formal planting. The stems are 6 to 8 feet high and surmounted with a round, formal top which grows thus naturally without trimming. The leaves are broad and glossy. A very ornamental tree.

6 to 8 feet high, 1½ feet heads, \$2.50 each.

6 to 8 feet high, 2 feet heads, \$3.50 each.

#### JUDAS TREE, OR RED BUD.

*Cercis Canadensis*. One of the first trees to flower.

The branches are covered in early spring with a mass of dark pink or magenta colored flowers which are succeeded later by pale green leaves.

3 to 4 feet, 50c; 4 to 5 feet, 75c; 5 to 6 feet, \$1.00 each.

#### JAPANESE CHERRY.

*Cerasus Japonica pendula* (Weeping Cherry). Produces an abundance of beautiful pink flowers in early spring, before the leaves appear. The branches are slender and droop to the ground like a large umbrella.

6 to 7 feet stem, \$1.50 to \$5.00 each.

*Cerasus James Veitch*. An upright growing variety with double flowers, which makes a handsome tree.

5 to 6 feet, \$2.50 to \$3.50 each.

#### DOGWOOD.

*Cornus Florida* (White Dogwood). A fine native tree of medium growth, with large white flowers in early spring, followed by an abundance of red berries in the fall. The foliage in fall is also very brilliant.

4 to 5 feet, \$1.50; 6 feet, \$2.50; 7 feet, \$3.50;

8 feet, \$5.00. Larger Specimens, \$7.50 to \$10.00 each.

*Cornus Florida Rubra* (Red Flowered Dogwood). Like the preceding, except that the flowers are deep pink. This variety is very scarce.

3 to 4 feet, \$2.50 each; 4 to 5 feet, \$3.50 each;

5 to 6 feet, \$5.00 to \$7.50 each.

#### HAWTHORNE.

*Crataegus Oxyantha*. The celebrated hedge plant of England; also useful for single specimens.

4 to 5 feet, 75c; 5 to 6 feet, \$1.50. Larger Specimens, \$2.50 to \$3.50 each.

*Crataegus oxy coccinea Fl., Pl.* (Paul's Double Scarlet Thorn). The best of the "Thorn" family; flowers are double and bright red.

4 to 5 feet, \$1.00; 5 to 6 feet, \$1.50; 6 to 8 feet, \$2.50.

#### BEECH.

*Fagus Sylvatica* (European Beech). The famous English Beech. Makes a large, symmetrical tree,



with dark green leaves.

5 to 6 feet, \$1.50; 8 to 10 feet, \$3.50; 9 to 12 feet, \$5.00; 12 to 16 feet, \$7.50.

**Fagus Sylvatica Purpurea** (Purple Beech). The foliage is dark purple and the tree of slower growth, otherwise identical with the former.

3 to 4 feet, \$1.50; 4 to 6 feet, \$2.50; 6 to 7 feet, \$3.50.

**Fagus Purpurea Pendula** (Weeping Beech). A weeping form of the purple Beech. Slow in growth, but very attractive.

4 to 5 feet, \$2.50; 5 to 6 feet, \$3.50.

#### MAIDEN HAIR TREE.

**Ginkgo Biloba**. A handsome tree of medium size; pyramidal in growth with foliage resembling the maiden hair fern.

5 to 6 feet, \$1.50; 8 to 10 feet, \$2.50; 10 to 12 feet, \$5.00.

#### THE MAGNOLIAS.

**Magnolia Alexandria**. A rather dwarf variety producing pink flower in early May.

3 to 4 feet, \$2.00; 4 to 5 feet, \$2.50 to \$3.50.

**Magnolia Lenni**. A strong grower with large foliage and deep cup-shaped dark pink flowers.

3 to 4 feet, \$2.00; 4 to 5 feet, \$3.50; 5 to 6 feet, \$5.00; 6 to 8 feet, \$7.50; 8 to 10 feet, \$10.00; 10 to 12 feet, \$15.00 to \$20.00.

**Magnolia Soulangeana**. Flowers white, tinged pink. Large foliage. One of the hardiest.

3 feet, \$1.50; 4 feet, \$2.50; 5 feet, \$3.50; 6 feet, \$5.00; 8 feet, \$7.50; 10 feet, \$10.00 to \$12.50; 12 feet, \$15.00 to \$20.50.

**Magnolia Stellata** (The Star Magnolia). A dwarf growing variety which gives an abundance of star-like, delicately fragrant white flowers in early spring.

2 feet, \$2.50; 2½ to 3 feet, \$3.50 to \$5.00.

#### MULBERRY.

**Morus Tartarica** (Russian Mulberry). A rapid grower. Very hardy; black fruit.

5 to 6 feet, 75c; 6 to 8 feet, \$1.00.

**Morus Tartarica Pendula** (Teas Weeping Mulberry). One of the prettiest of our dwarf weeping trees. Forms a perfect umbrella-shaped head. The branches touching the ground.

Two Year Heads, \$2.50; Three Year Heads, \$3.50 to \$5.00 each.

#### PLANE.

**Platanus Orientalis** (Oriental Plane). One of our longest-lived and most massive trees. Much used for street planting. Is not troubled by any natural enemies. Succeeds well in any situation, but does best in a rich, moist soil.

8 to 10 feet, 1 inch calipre, \$1.00.

10 to 12 feet, 1½-inch calipre, \$2.00.

12 to 14 feet, 2 to 2½-inch calipre, \$3.50.

14 to 16 feet, 2½ to 3-inch calipre, \$5.00.

14 to 16 feet, 3 to 3½-inch calipre, \$7.50.

#### POPLARS.

**Populus Fastigiata** (Lombardy Poplars). A fast pyramidal growing tree that can be planted close together for an immediate screen.

10 to 12 feet, \$1.00; 12 to 14 feet, \$1.50; 14 to 16 feet, \$2.00; 16 to 18 feet, \$3.00; 18 to 20 feet, \$4.00 to \$5.00.

**Populus Monilifera** (Carolina Poplar). Also of quick growth, but more spreading than the former, and is useful where a quick, cheap shade tree is wanted.

8 to 10 feet, \$1.00; 10 to 12 feet, \$1.50; 12 to 14 feet, \$2.50.

#### FLOWERING CRABS.

**Pyrus Malus Parkmanni** (Parkmann's Flowering Crab). A very ornamental dwarf tree, covered with pink blossoms in early spring.

3 to 4 feet, \$2.00; 4 to 5 feet, \$3.50.

**Pyrus Malus Floribunda**. A companion to above. Buds are bright red, opening pink and white, followed later by yellow fruit.

3 to 4 feet, \$2.00; 4 to 5 feet, \$3.50.

#### THE OAKS.

**Quercus Concordia** (Golden Oak). A superb variety with orange-yellow leaves which retain their color throughout the season.

8 to 10 feet, \$5.00.

**Quercus Americana Rubra** (American Red Oak). A fine tree of rapid growth; beautiful fall foliage, 5 to 6 feet, \$1.00; 6 to 8 feet, \$1.50; 8 to 10 feet, \$2.50.

**Quercus Palustris** (Pine Oak). One of the finest of all the oaks; compact and of elegant growth. The foliage is finely cut and colors brilliantly in the fall.

10 to 12 feet, \$3.50; 12 to 14 feet, \$5.00.

#### WILLOW.

**Salix Babylonica** (Weeping Willow). Our common, well-known Willow; hardy and of rapid growth. 10 to 12 feet, \$1.50; 12 to 14 feet, \$2.50.

**Salix Babylonica Anrea** (Golden Willow). Same as above with golden foliage.

10 to 12 feet, \$2.00; 12 to 14 feet, \$3.50.

#### MOUNTAIN ASH.

**Sorbus Aucuparia** (The Rowan Tree). Of medium growth; glossy green pinnate leaves, with clusters of red berries in the fall.

10 to 12 feet, \$2.00; 12 to 14 feet, \$3.50.

#### LINDEN.

**Tilia Argentia** (Silver Linden). One of our finest ornamental trees, pyramidal in form and very shapely. The leaves are light green and the underside silvery white.

10 to 12 feet, 2-inch calipre, \$3.00.

10 to 12 feet, 2½-inch calipre, \$4.50.

12 to 14 feet, 2½ to 3-inch calipre, \$6.00.

14 to 16 feet, 3 to 3½-inch calipre, \$10.00.

**Tilia Europea** (European Linden). A fine-leaved variety of compact growth, with a profusion of fragrant flowers in spring.

10 to 12 feet, 2-inch calipre, \$2.50.

12 to 14 feet, 2½-inch calipre, \$3.50.

12 to 14 feet, 3-inch calipre, \$5.00.

14 to 16 feet, 3 to 3½-inch calipre, \$7.50.

#### ELMS.

**Ulmus Campestris** (English Elm). One of our most stately trees. Sometimes troubled with Elm beetles, but worthy of the attention it needs.

12 to 14 feet, 3 to 3½-inch calipre, \$5.00.

16 to 18 feet, 3½ to 4-inch calipre, \$7.50.

18 to 20 feet, 4 to 4½-inch calipre, \$10.00.

## Flowering Shrubs.

We have on hand a fine assortment of hardy flowering shrubs in large sizes. They have all been recently transplanted and lift with fine balls. They are particularly adapted for massing where an immediate effect is desired, or for screening any unsightly objects. On varieties not listed herein, or on larger quantities, we will be glad to quote prices upon inquiry.

### ALTHEA, ROSE OF SHARON.

Althea. In several named varieties.

2 to 3 feet, 35c; 3 to 4 feet, 50c each.

Althea. Standard in tree form.

From \$1.25 to \$2.00 each.

### AZALEA.

Azalea Arborescens. Native white Azalea.

1 foot, 50c; 1½ feet, 75c; 2 feet, \$1.00 each.

Azalea Mollis. Assorted colors.

1½ feet, \$1.00; 2 feet, \$1.50; 2½ feet, \$2.50.

Azalea Pontica. Hardy Ghent Azalea. Choice named sorts.

1 foot, 75c; 1½ feet, \$1.00; 2 feet, \$1.50; 2½ to 3 feet, \$2.50 to \$3.50 each.

Azalea Amoena. See Evergreens.

Azalea Nudiflora (American Honeysuckle). Beautiful flesh-pink flowers in May.

1 to 2 feet, 75c; 2 to 3 feet, \$1.50; 3 to 4 feet, \$2.50.

### THE BARBERRY.

Berberis Thunbergii. Japanese Barberry. One of the finest shrubs we have; will grow in any situation; succeeds well in partial shade; for dwarf grouping and hedging cannot be equalled. Has an abundance of red berries and bright scarlet foliage in autumn.

12 to 15 in., 25c each; \$2.00 doz.; \$12 per 100.

18 to 24 in., 30c each; \$2.50 doz.; \$20 per 100.

2 to 2½ ft., 40c each; \$3.50 doz.; \$25 per 100.

2½ to 3 ft., 50c each; \$5.00 doz.; \$35 per 100.

Larger plants, 75c to \$1.50 each.

Berberis Vulgaris. Common Barberry.

2 feet, 35c; 2½ to 3 feet, 50c each.

Berberis Vulgaris Purpurea. Purple Barberry.

2 feet, 35c; 2½ to 3 feet, 50c each.

### CALYCANTHUS SWEET SHRUB.

Calycanthus Floridus. Strawberry Bush.

2 feet, 35c; 2½ to 3 feet, 50c each.

### CORCHORUS, OR KERRIA.

Corchorus Japonica. Globe Flower.

2 feet, 50c; 3 feet, 75c; 3½ to 4 feet, \$1.00 each.

### JAPANESE QUINCE.

Cydonia Japonica.

2 feet, 50c; 2½ feet, 75c; 3 feet, \$1.00.

### CHIONANTHUS.

Chionanthus Virginica. White Fringe. Grows into a large symmetrical bush and is fine for individual specimens. Blooms profusely, bearing snow-white fringe-like flowers.

2 feet, 50c; 3 feet, 75c; 3 to 4 feet, \$1.00 to \$1.50.

Clethra Alnifolia (Sweet Pepper Bush). A useful shrub for wet or shady places.

2 to 3 feet, 50c; 4 to 5 feet, 75c each.

### THE DEUTZIA.

- Deutzia Crenata*. Tall, white.  
2 feet, 35c; 3 feet, 50c; 4 feet, \$1.00; 5 to 6 feet, bushy, \$2.00.
- Deutzia Gracilis*. Dwarf white.  
1½ to 2 feet, 35c; 2 to 3 feet, 50c each.
- Deutzia Lemoinei*. Medium white.  
1½ to 2 feet, 35c; 2 to 3 feet, 50c each.
- Deutzia Plena Rosea*. A fine double pink.  
2 to 3 feet, 35c; 3 to 4 feet, 50c.
- Deutzia*. *Pride of Rochester*. Fine large white.  
2 to 3 feet, 35c; 3 to 4 feet, 50c.
- Deutzia Scabra*. Tall, pinkish white.  
2 feet, 35c; 3 feet, 50c; 4 feet, \$1.00.

### EUONYMUS.

- Euonymus Alatus*. Cork-barked *Euonymus*.  
2 to 3 feet, \$1.00; 3 to 4 feet, \$1.50; 4 to 5 feet, \$2.50 each.

### EXOCHORDIA, PEARL BUSH.

- Exochordia Grandiflora*.  
2½ to 3 feet, 50c; 3 to 4 feet, 75c each.

### FORSYTHIA, GOLDEN BELL.

- Forsythia Fortunei*.  
2 to 3 feet, 35c; 3 to 4 feet, 50c; 4 to 5 feet, \$1.00.
- Forsythia Intermedia*.  
2 to 3 feet, 35c; 3 to 4 feet, 50c.
- Forsythia Suspensa*. Weeping Golden Bell.  
2 to 3 feet, 35c; 3 to 4 feet, 50c; 4 to 5 feet, \$1.00.
- Forsythia Viridissima*. The best of the *Forsythia*.  
2 to 3 feet, 35c; 3 to 4 feet, 50c; 4 to 5 feet, \$1.00.

### HYDRANGEAS.

- Hydrangea Arborescens Sterillis*. Early white of dwarf bushy habit and gives an abundance of white flowers in June and July when hardly another shrub is in bloom. Very hardy.  
2 feet, 35c; 3 to 4 feet, 50c; larger plants, \$1.00 to \$2.50 each.
- Hydrangea Paniculata Grandiflora*.  
2 to 3 feet, 25c; 3 to 4 feet, 50c; 4 to 5 feet, \$1.00.
- In standard tree form.  
4 to 5 feet, \$1.00 each; 5 to 6 feet, \$1.50 each.

### KERRIA.

- Kerria Japonica*. A fine, green-branched shrub with bright yellow flowers from June to October.  
2 to 3 feet, 35c; 3 to 4 feet, 50c.
- Kerria Japonica*. Fl. Pl. A double-flowering form of the above.  
2 to 3 feet, 50c; 3 to 4 feet, 75c.
- Kerria Japonica Variegated*. Finely variegated foliage.  
2 feet, 50c each.

### PRIVETS.

- Ligustrum Amurense* (*Japanese Privet*). Large, oblong, glossy-green foliage; half Evergreen and very hardy.  
2 to 3 feet, 25c each; \$2.50 per dozen.  
3 to 4 feet, 35c each; \$3.50 per dozen.
- Ligustrum Ovalifolium* (*California Privet*). The well-known plant so extensively used for hedges. We always have a large stock of this on hand in all sizes. The 3 to 4 feet size has been several times cut back and is very full and bushy. While

the price is higher than the smaller stock, less than half the number of plants is needed, which therefore gives an immediate hedge at the same price per running foot as the smaller stock costs.

1½ to 2 feet, \$1.00 per dozen; \$5.00 per 100.

2 to 3 feet, \$1.50 per dozen; \$7.50 per 100.

3 to 4 feet, \$2.00 per dozen; \$12.00 per 100.

4 to 5 feet, \$2.50 per dozen; \$15.00 per 100.

*Ligustrum Oval-variegatum*. A variegated form of the California Privet.

2 to 3 feet, 50c each.

*Ligustrum Aureum* (Manda's Golden Privet). A dwarf-growing form, with bright golden foliage. Suitable for a dwarf choice hedge or for edging paths.

8 inch, 15c each; \$1.50 doz.; \$12.00 per 100.

12 inch, 25c each; \$20.00 per 100.

*Ligustrum Regelianum* (Regal Privet). More dense and spreading than the Californian with a smaller, handsomer leaf. Will grow in partial shade. Makes fine individual specimens.

12 to 18 in., 25c each; \$2.50 doz.; \$15 per 100.

18 to 24 in., 35c each; \$3.50 doz.; \$20 per 100.

2 to 2½ ft., 50c each; \$4.00 doz.; \$25 per 100.

#### BUSH HONEYSUCKLE.

*Lonicera Fragrantissima* (Fragrant Honeysuckle). Small, dark green foliage and fragrant pink flowers before the leaves; almost Evergreen.

2 to 3 feet, 35c; 3 to 4 feet, 50c; 4 to 5 feet, \$1.00.

*Lonicera Morrowi*. Strong, upright-growing bush with white flowers, followed later by red berries.

2 to 3 feet, 35c; 3 to 4 feet, 50c; 4 to 5 feet, \$1.00.

*Lonicera Tartarica*. Both white and pink. Upright-growing bushes, followed by red berries.

2 to 3 feet, 35c; 3 to 4 feet, 50c.

*Lonicera Standishii*. An improved type of *Fragrantissima*.

2 feet, 35c; 3 feet, 50c; 4 feet, 75c.

#### MOCK ORANGE.

*Philadelphus Coronarius*. Mock Orange.

2 to 3 feet, 35c; 3 to 4 feet, 50c; 4 to 5 feet, \$1.00.

*Philadelphus Coronarius*. Fl. Pl. Double-flowering Mock Orange.

2 to 3 feet, 50c each.

*Philadelphus Boquette Blanc*. Large, pure-white, showy flowers.

2 to 3 feet, 35c each; \$3.50 per dozen.

*Philadelphus Aureum* (Golden-Foliaged Mock Orange). A dwarf, bushy grower; very effective.

2 feet, 50c; 3 feet, \$1.00.

*Philadelphus Lemoinei*. A tall, upright-growing variety.

2 to 3 feet, 35c; 3 to 4 feet, 50c.

*Philadelphus Grandiflora*. Flowers creamy white.

2 to 3 feet, 35c; 3 to 4 feet, 50c.

#### FLOWERING ALMOND.

*Prunus Japonica Alba* Fl. Pl. Very attractive in spring with long spikes of double white flowers.

*Prunus Tribola* (Double-Flowering Plum). Long, slender branches in early spring, covered with double pink flowers.

3 feet, 50c; 4 feet, 75c; 5 feet, \$1.00.

Standards from \$2.50 to \$5.00 each.

**Prunus Pissardi.** Dark red foliage; a very effective bush.

4 to 6 feet, \$1.00 each.

#### RHUS.

**Rhus Cotinus** (Purple-Fringe or Smoke-Bush). Makes a large, attractive specimen shrub; dark, glossy, small round leaves, with hair-like flowers in mid-summer.

3 to 4 feet, 50c each.

**Rhus Typhina** (Staghorn Sumach). Has fine-cut foliage and highly-colored fruit in autumn.

3 to 4 feet, 50c each.

#### SPIREA.

**Spirea Antony Waterer.** A low shrub with purple flowers in late fall.

2 feet, 35c; 3 feet, 50c; 3½ feet, 75c.

**Spirea Opulifolia Aurea.** A tall-growing shrub with beautiful yellow foliage in spring and early summer.

2 to 3 feet, 35c; 3½ to 4 feet, 50c; 4 to 5 feet, \$1.00 each.

**Spirea Prunifolia** (The Bridal Wreath). A mass of double white flowers in spring.

2 to 3 feet, 35c; 3 to 4 feet, 50c.

**Spirea Thunbergii.** A fine dwarf shrub with very narrow leaves and long thin branches covered in early spring with white flowers.

2 to 3 feet, 50c; 3 to 4 feet, \$1.00.

**Spirea Van Houtte.** White flowers in clusters at the end of the branches which droop to the ground and make a regular bank of white.

3 to 4 feet, 50c; 4 to 5 feet, \$1.00.

#### STEPHANANDRIA.

**Stephanandria Flexnosa.** A dwarf shrub with Hawthorne-like foliage, bright green in summer and dull red in the fall and holds its foliage late.

2 feet, 25c; 3 feet, 35c; 3½ to 4 feet, 50c each.

#### SYMPHORICARPUS.

**Symphoricarpus Vulgari** (Coral Berry or Indian Currant).

2 feet, 25c; 2½ to 3 feet, 35c; 3 to 4 feet, 50c.

**Symphoricarpus Racemosa** (Snowberry).

2 feet, 25c; 2½ to 3 feet, 35c; 3 to 4 feet, 50c.

**Sambucus Nigra Anrea** (Golden Elder).

2 feet, 25c; 3 feet, 35c; 4 feet, 50c.

#### LILAC.

**Syringa Alphonse Levallee.** Single pale Lilac.

**Syringa Alba Grandiflora.** Single pure white.

**Syringa Chas. X.** Single, dark reddish purple.

**Syringa Casimir Perrier.** Fine double white.

**Syringa Leon Simon.** Lavender.

**Syringa Michael Buchner.** Fine double Lavender.

**Syringa Marie Le Graye.** A fine single white.

**Syringa Pres. Grevy.** Double blush lavender.

**Syringa Souv. de Ludwig Spaeth.** One of the best single rich deep purple.

**Syringa Vivian Morel.** Large double bluish lilac.

2 feet, 50c; 3 feet, 75c; 3 to 4 feet, \$1.50; 4 to 5 feet, \$2.00.

**Syringa Josikea** (Hungarian Lilac). Makes a taller tree than the Persian varieties and blooms after the others are past; purple in color.

**Syringa Rubra de Marley.** Common dark Lilac.

**Syringa Vulgaris Alba.** Common White Lilac.

1½ to 2 feet, 25c; 2 to 3 feet, 35c; 3 to 4 feet, 75c; 4 to 5 feet, \$1.50 each.

### TAMARISK.

**Tamarix Gallica.** Very fine foliage on long, slender branches; covered in spring and fall with pink plume-like flowers.  
3 feet, 50c; 4 feet, 75c.

### SNOW BALLS,

**Viburnum Opulus** (High Bush Cranberry), Has a flower like a snowball and bright red berries.

**Viburnum Opulus Sterilis,** Common Snow-ball.

**Viburnum Plicatum** (Japanese Snow-ball). Has a fine, large flower, and thick, dark, plicated leaf.

**Viburnum Tomentosum** (Single Japanese Snow-ball). A vigorous bush with white flowers; black-berries in fall.

2½ to 3 feet, 50c; 3 to 4 feet, 75c; 4 to 5 feet, \$1.50 each.

### WEIGELIA.

**Weigelia Alba.** White-flowered,

**Weigelia Amabilis.** Robust grower with pink flowers.

**Weigelia Eva Rathke.** A free red-flowering variety.

**Weigelia Floribunda.** Large, dark pink flowers.

**Weigelia Nana Variegata.** A dwarf, bushy grower, with white and green foliage.

2 to 3 feet, 35c; 3 to 4 feet, 50c; 4 to 5 feet, \$1.00.

## FRUIT TREES.

### APPLES.

**Baldwin.** A large, bright red winter apple.

✓ **Duchesse of Oldenburg.** Pale yellow streaked red, Good all-round apple for late fall.

✓ **Early Harvest.** A large pale yellow; good bearer, The best early apple.

✓ **Golden Russet.** Medium size; late; good keeper.

✓ **Gravenstein.** Large, pale yellow with red streaks, A fine late fall sort.

✓ **King of Tompkins.** A beautiful red apple of the largest size and finest quality; winter.

✓ **McIntosh.** Large, round, red; white-fleshed, handsome apple. A good keeping winter apple.

✓ **Northern Spy.** A fine, large, juicy apple; striped, with a crimson cheek. A rapid grower and good bearer. One of the finest late keeping apples.

✓ **Red Astrachan.** Large, round, deep crimson, overspread with a thick bloom; very hardy and a good bearer. An early fall variety.

✓ **R. I. Greening.** A very vigorous, spreading tree and a good bearer. Good for cooking or dessert. Large green fruit. A good winter keeper.

✓ **Spitzenberg.** Large, round red, with grey dots; of finest flavor. Season December to April.

✓ **Stayman's Winesap.** Greenish yellow, mixed with dark red; flesh yellow, fine quality; winter.

✓ **Yellow Transparent.** Medium size; slightly conical fruit; ripens in August.

All our trees are fine, clean, healthy stock.

5 to 6 feet, 50c; 6 to 7 feet, \$1.00; 7 to 8 feet, \$1.50 each.

### DWARF APPLE TREES.

These are the same varieties as are offered above as standards, but they are low grafted on **English Paradise** stock. They make a lower branched and much dwarfer tree. They are particularly

adapted for **Home Grounds and Small Places**. The fruit is equally as good and just as abundant and the trees come into bearing at an earlier age. They are superior in every way to the ordinary stock.

Price, \$1.00 each; \$9.00 per dozen.

#### CRAB APPLES.

✓ **Red Siberian**. Yellow with scarlet cheek.

✓ **Transcendent**. Red and yellow.

5 to 6 feet, 50c; 6 to 7 feet, \$1.00.

#### PEARS.

✓ **Bartlett**. One of our best summer pears with rich, musky flavor.

✓ **Beaurre de Anjou**. A large, handsome, fine-flavored pear. A vigorous grower and good bearer. Keeps till Christmas.

✓ **Clapps Favorite**. Resembles Bartlett, but ripens a few days earlier.

✓ **Duchesse de Angouleme**. Large; white-fleshed; juicy and of extra quality; season, late fall.

✓ **Seckel**. A small but highly flavored pear; an erect grower and very free fruiting. An early pear.

All the early pears should be picked at least 10 days before they would ripen on the trees.

5 to 6 feet, 75c; 6 to 7 feet, \$1.00.

#### QUINCES.

✓ **Champion and Bourgeat**.

5 to 6 feet, 50c; \$5.00 per dozen.

#### CHERRIES.

✓ **Black Tartarian**. Large black oxheart. Mild flavor, heavy bearer. Season end of June.

✓ **Early Richmond**. An early red, sour cherry; free, healthy grower. Ripens early in June.

✓ **Gov. Wood**. Light red oxheart of fine flavor. Ripens end of June.

✓ **Montmorency**. A beautiful large red sour cherry. Larger than **Early Richmond** and about 10 days later.

✓ **Napoleon Bigarreau**. One of the largest; pale yellow with bright red cheek. Heavy bearer; juicy and sweet, and one of the latest to ripen.

✓ **Rockport-Bigarreau**. Large; pale amber and light red; very sweet.

✓ **Yellow Spanish**. Large pale yellow with red cheek; sweet. Season late in June.

5 to 6 feet, 75c each; \$7.50 per dozen.

6 to 7 feet, \$1.00 each; \$10.00 per dozen.

#### PLUMS.

✓ **Abundance**. A Japanese variety. Very large oblong red fruit. Very productive.

✓ **Burbank**. A Japanese plum. Very similar to **Abundance**, but the color is deeper and ripens about two weeks later.

✓ **German Prune**. Large oval dark purple; good flavor.

✓ **Felleberg**. Large, oval, purple, juicy and delicious.

✓ **Lombard**. Medium size; oval; violet-red; flesh, yellow; juicy, and good flavor.

✓ **Reine Claude**. Round: greenish yellow; juicy, melting; sugary; an excellent, strong growing, productive late sort.

✓ **Wickson**. A sturdy Japanese sort. Deep maroon red covered with white bloom. Firm and fine.

5 to 6 feet, 75c each; \$7.50 per dozen.

6 to 7 feet, \$1.00 each; \$10.00 per dozen.



## PEACHES.

In Peaches, as in other "Fruit Lines," we offer only a limited assortment. Yet we consider that the varieties listed are ample, and the very best in their season.

- ✓ **Belle of Georgia.** Ripens early in August. The flesh is white and firm, the quality delicious.
- ✓ **Carman.** Ripens the third week in July and in its season there is not a finer peach. The fruit is large, attractive and luscious. The flesh is creamy white with red tinge.
- ✓ **Crawford's Early.** Very large, yellow, juicy, melting free-stone; ripens early in September.
- ✓ **Crawford's Late.** Resembles the early variety, but ripens about one month later.
- ✓ **Elberta.** Large yellow, with red cheek; flesh firm, yellow and juicy. Fine quality. September 1st.
- ✓ **Morris White.** Color, creamy white, tinged with red; flesh, white, melting and juicy. September 15th.
- ✓ **Stump of the World.** Large creamy white with red cheek; fine flavor and very productive. Late September.  
50c each; \$5.00 per dozen.

## GRAPES.

- ✓ **Caco.** New hardy out-door grape. This is the much talked of Catawba-Concord. This has the richness of flavor of the indoor grape, combined with vigor, and productiveness.

Price: 50c each; \$5.00 per dozen.

**BLACK SORTS:** ✓ Campbell's Early, Concord, ✓ Moore's Early, Worden.

**RED SORTS:** ✓ Brighton, ✓ Catawba, Delaware.

**WHITE SORTS:** ✓ Green Mountain, ✓ Moore's Diamond, ✓ Niagara.

25c each; \$2.50 per dozen.

## CURRENTANTS.

- ✓ **Black Naples, Fay's Prolific, Perfection, White Grape.** 15c each; \$1.50 per dozen.

## BLACKBERRIES.

- ✓ **Blowers, Kenoyer, Ward.**

50c per dozen; \$3.50 per 100.

Larger Transplanted Plants, \$1.00 per dozen; \$7.50 per 100.

## RASPBERRIES, RED VARIETIES.

- ✓ **St. Regis Everbearing (New).** Everbearing. The early till late variety.

10c each; \$1.00 per dozen; \$7.50 per 100.

Larger Plants, \$1.50 doz.; \$10.00 per 100.

- ✓ **Cuthbert, ✓ Marlboro and ✓ Golden Queen (Yellow).**

50c per dozen; \$3.50 per 100.

Larger Transplanted Plants, \$1.00 doz.; \$7.50 per 100.

## BLACK CAPS (OR BLACK RASPBERRIES).

- ✓ **Cumberland, Kansas, Hoosier.**

50c per dozen; \$3.50 per 100.

Larger Transplanted Plants, \$1.00 doz.; \$7.50 per 100.

## GOOSEBERRIES.

- ✓ **Downing.** The best green variety.

- ✓ **Josselyn.** The standard red variety.

25c each; \$2.50 per dozen.

## ASPARAGUS ROOT.

\$1.50 per 100; \$12.00 per 1,000.

## RHUBARB ROOTS.

15c each; \$1.50 per dozen; \$10.00 per 100.

## Vines and Trailing Plants.

**Actinidia Arguta.**

50c each; \$5.00 per dozen.

**Ampelopsis Veitchii.**

25c each; \$2.50 per dozen; \$20.00 per 100.

**Ampelopsis Muralis.**

30c each; \$3.00 per dozen; \$25.00 per 100.

**Aristolochia Siphon.**

50c and 75c each.

**Bignonia Radicans.**

25c each; \$2.50 per dozen.

**Celastrus Scandens (Bitter Sweet).**

25c each; \$2.50 per dozen.

**Clematis Jackmanni Henryi, Ville de Lyon, and Seiboldi.**

50c each; \$5.00 per dozen.

**Clematis Paniculata.**

35c each; \$3.50 per dozen.

**Euonymus Radicans Variegata.**

25c each; \$2.50 per dozen; \$20.00 per 100.

Larger Plants, 50c each; \$5.00 per dozen.

**Lonicera Halleana.**

15c each; \$1.50 per dozen; \$12.00 per 100.

**Ivy (English). Strong Plants from 4-inch pots.**

35c each; \$3.50 per dozen; \$20.00 per 100.

Heavier Grades: Prices on application.

**Vinca Minor (Periwinkle).** A familiar Evergreen creeper, bearing blue flowers in early spring. Extensively used for a ground cover in shady places, also in cemeteries and rock gardens.

Prices, strong clumps, 20c each; \$2.00 per dozen. \$12.00 per 100.

**Vinca Minor Fl. Pl. (Double-Flowered Periwinkle).** Resembles "Vinca Minor" in every particular, except that the flowers are double, much resembling a "Marie Louise" violet. A distinct and valuable novelty.

Price strong clumps, 50c each; \$5.00 per dozen.

**Vinca Minor var Alba (White-Flowered Periwinkle).** Resembles "Vinca Minor" in every particular, except that the flowers are white. A decided acquisition; will be particularly useful for cemetery work. The white flowers show so much clearer than the blue against the dark green foliage.

Price, 35c each; \$3.50 per dozen; \$25.00 per 100.

**Pachysandra Terminalis.** A low creeping plant 6 to 8 inches high, with glossy green foliage which thrives in the densest shade and under most adverse conditions; an ideal ground cover for places where nothing else will grow.

20c each; \$2.00 per dozen; \$15.00 per 100.

**Wisteria Chinensis (Blue Wisteria).** Too well known to need description. One of the hardiest and best climbers for any purpose. Flowers in May and again in August.

**Wisteria Chinensis Alba (White Wisteria).** Identical in every way with the former except that the color of the flower is white.

Two year old plants, 50c each; \$5.00 per dozen.

Three year old plants, 75c each; \$7.50 per dozen.

# HARDY GARDEN ROSES.

## Hybrid Tea, and Tea Varieties.

These are popularly known as monthly or ever-blooming Roses. The improvement in this class of Roses has been very marked in the last few years. In size, color and perfume they equal the Hybrid Perpetual, with the distinct advantage that they give a continuous succession of bloom from early Summer until late in the Fall, and with slight protection they are perfectly hardy.

**Two year old, healthy, strong, field-grown plants.**

**Prices (except where noted), 60c each; \$6.00 per dozen; \$45.00 per 100.**

**Antoine Revoire.** Rosy flesh-pink; yellow base.

**Betty.** Glowing coppery rose.

**Bessie Brown.** Creamy white; large and very full.

**British Queen.** Pure white; large full flowers.

**Caroline Testout.** True shell-pink.

**Edward Mawley.** A rich crimson, shaded maroon; a strong, free grower, and very fragrant.

**Etoile de France.** A fine, rich red.

**Francis Scott Key.** A grand red rose of American origin. It is much freer than "American Beauty" and rivals it in size.

**George Dickson.** Velvety black crimson.

**George Elgar.** An everblooming, golden yellow polyantha.

**George C. Waud.** Vermillion shaded orange. Very free.

**George Arends.** Pink Frau Karl Druschki.

**Gruss an Teplitz.** Dark red, everblooming, bedding

**Irish Elegance.** Color, apricot pink. In bud state the flowers are orange scarlet.

**J. L. Mock.** Rich imperial pink. Very free.

**J. B. Clark.** Rich deep scarlet. Fine.

**Juliet.** Golden yellow, inside red.

**Kaiserin Aug. Victoria.** A grand white rose.

**Killarney.** Pale flesh pink. Very free.

**Killarney, White.** A pure white Killarney.

**Lady Alice Stanley.** Deep rose pink. Very large.

**Lady Hillington.** Deep golden yellow. Very free.

**Laurent Carle.** Deep rosy carmine.

**Lyon-Rose.** Pink shaded coral red. Large.

**Mme. Cecile Brunner (Sweetheart).** A beautiful rose pink; strong grower, and perpetual bloomer.

**Madame Edouard Herriot (Daily Mail).** A marvelous combination of reddish terra-cotta bronze, with flame shadings; fine foliage.

**Madame Ravary.** A fine orange yellow.

**Mme. Jules Grolez.** Bright china rose. Very fine.

**Maman Cochet.** A beautiful rose pink. Very prolific.

**Maman Cochet, White.** A pure white form of Cochet.

**Mrs. Aaron Ward.** A fine coppery yellow. High class.

**My Maryland.** A true salmon pink. Constant.

**Ophelia.** Salmon flesh, shaded rose.

**Radiance.** A fine dark pink; full flowers.

**Richmond.** Pure scarlet red. Very fragrant.

**Sunburst.** One of the best yellow roses grown.

**Willowmere.** Resembles Lyon-Rose, but freer.

**Winnie Davis.** Apricot pink, with darker tints; a very beautiful rose.

## NEW CALIFORNIA ROSE.

**Los Angeles.** One of the finest roses ever raised. color, a luminous flame-pink, toned with coral and shaded gold at the base. The flowers are perfect in shape and largest size. The growth is vigorous, producing a continuous succession of long-stemmed flowers. Heavy two-year-old plants. Price, \$2.00 each.

## Hybrid Remontant, or Hybrid Perpetual Roses.

Two year old, healthy, strong, field-grown plants.

Price: 60c each; \$6.00 per doz.; \$45.00 per 100.

**Captain Hayward.** Dark pink. One of the best.  
**Conrad F. Meyer.** Silvery pink. Hybrid rugosa.  
**Frau Karl Druschki.** White. The finest rose grown.  
**Genl. Jack.** Glowing scarlet.  
**Mrs. John Laing.** A grand soft pink.  
**Paul Neyron.** Dark rose. Free and very hardy.  
**Ulrich Brunner.** A fine rosy cerise.  
Rugosa and Hybrid Rugosa, in several varieties.

## Climbing or Rambler Roses.

**American Pillar.** A large-flowered single pink.  
**Crimson Rambler.** Needs no description.  
**Dorothy Perkins.** Fine hardy shell pink.  
**Dr. Van Fleet.** A superb new pink variety of great merit. Price, 75c each.  
**Excelsa.** A red "Dorothy Perkins."  
**Gardenia.** The best yellow climbing variety.  
**Hiawatha.** Single red, with white eye.  
**Lady Gay.** Cerise pink. A vigorous grower.  
**Tausendschon.** Fine, long standing pink.  
**Silver Moon.** A very fragrant, snow white rose. The foliage is a healthy dark green. A very free, hardy grower, and abundant bloomer. Price, 75c each; \$7.50 per dozen.  
**White Dorothy Perkins.** The best white climber.  
**Wichuriana.** Single white memorial rose. Price: 60c each; \$6.00 per doz.; \$45.00 per 100.

## Ever-Blooming Bush, or Baby Ramblers.

**Ellen Poulsen.** Brilliant rosy pink.  
**Erna Tessendorf.** Brilliant dark red.  
**Clothilde Soupert (Tea Polyantha).** A very free white sort.  
**Hermosa (China).** A popular pink variety.  
**Jeanne de Arc.** A fine, free white.  
**Jessie.** Bright, cherry red. One of the best.  
**Mme. N. Levavasseur.** The original Baby Rambler. The best known of the type. Deep pink.  
**Orleans.** Cerise pink; free bloomer. Two year old, 60c each; \$6.00 per dozen.

## Standard Roses.

A good general assortment of the best varieties grown in standard form.

Price, \$1.00 each; \$10.00 per dozen.

## Potted Field Roses.

For late Spring and early Summer delivery. We can supply potted stock at 75c each; \$7.50 per dozen.

## PERENNIAL PLANTS.

We have always on hand a good assortment of "Old-Fashioned Perennials," and are adding more every year. We offer here an abridged list for lack of space at this time but we will be pleased to quote on any varieties not mentioned here.

Perennials are supplied in field grown clumps, 15c each; \$1.50 per dozen; \$12.00 per 100; except where noted.

*Achillea Ptarmica*. Boule de Neige, and The Pearl. The best white varieties.

*Achillea Millefolium Roseum*. Rose pink.

*Aconitum Napellus*. The blue Monkshood. 25c each.

*Aconite Napellus Alba*. The white Monkshood. 25c each; \$2.50 per doz.

*Alyssum Saxitale compacta*. The yellow Madwort.

*Anchusa Italica Dropmore*. Fine sky-blue.

*Anemone Japonica Alba*. The old-fashioned white Wind Flower. 25c each; \$2.50 per doz.

*Anemone Japonica Roseum*. Pink Wind Flower. 25c each; \$2.50 per doz.

*Anemone Japonica Rubrum*. Rosy Red, yellow stamens. 25c each; \$2.50 per doz.

*Anemone Japonica Whirlwind*. Snow-white, semi-double. 25c each; \$2.50 per doz.

*Anemone Japonica Queen Charlotte*. Delicate pink. 25c each; \$2.50 per doz.

*Aquilegia* (Columbine). Finest mixed Hybrids.

*Arabis Alpina* (Rock Cress). For rockeries.

*Armeria Martima Splendens* (Sea Pink). Fine rosy pink.

*Artemisia Lactifolia*. A new, distinct variety of Wormwood, with long spikes of white flowers. 25c each; \$2.50 per doz.

Hardy Aster or Michaelmas Daisy. In several of the best varieties.

*Asclepia Tuberosa*. Showy orange flowers.

*Astilbe Davidii* (Meadow Sweet). Reddish purple. 25c each; \$2.50 per doz.

*Astilbe Japonica* (or *Spirea Japonica*). White Meadow Sweet. 25c each; \$2.50 per doz.

*Astilbe Japonica Queen Alexandria*. A fine pink variety. 25c each; \$2.50 per doz.

*Baptisia Australis*. Deep blue False Indigo.

*Boltonia Asteroides*. White, False Starwort.

*Boltonia Latisquama*. Pink, False Starwort.

*Boltonia Latisquama Nana*. A dwarf type.

*Bupthalamum*. Ox eye; an immense yellow daisy.

*Campanula Carpatica*. Dwarf Harebell.

*Campanula Persicifolia*. Blue Bellflower. 25c each.

*Campanula Persicifolia Alba*. White Bell Flower. 25c each.

*Caryopteris Mastacanthus*. Blue Spirea. 25c each.

Chrysanthemums. Hardy Pompon and other varieties. See Greenhouse Stock.

Chrysanthemum Maximum. Shasta Daisy, and others.

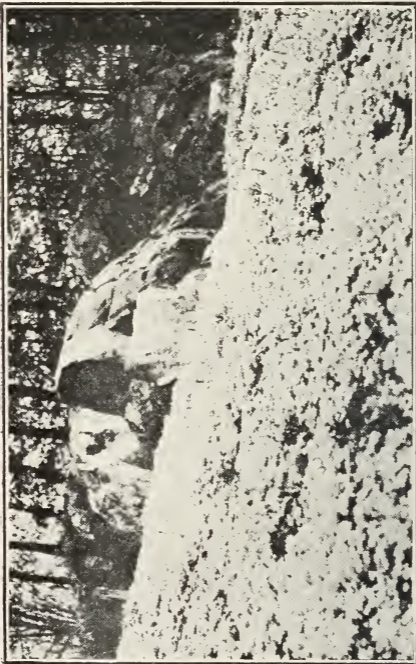
*Cimicifuga Simplex* (Snake Root). White spikes for late fall cutting. 25c each; \$2.50 per doz.

*Clematis Recta* (Bush Clematis). 25c each.

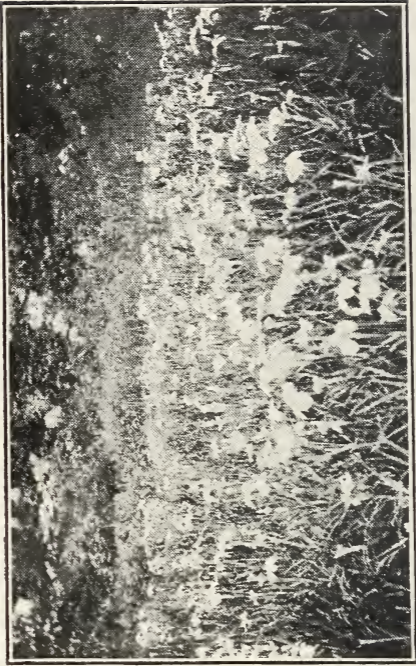
*Convallaria Majalis* (Lily of the Valley). Strong field clumps. 25c each; \$2.50 doz.; \$20 per 100.

*Coreopsis Lanceolata* (Tickseed). Golden yellow.

*Coreopsis Lanceolata Grandiflora*. An improved type.



**Phlox Subulata Rosea In Our Nursery.**



**Japanese Iris In Our Nursery; Azalea In Background.**

- Coreopsis Rosea.** A low growing pink variety.
- Daphne Cneorum** (Garland Flower). Very sweet. 50c, 75c and \$1.00 each, according to size.
- Delphinium** (Larkspur), **Formosum Chiensis** and best Hybrid seedlings. 25c each; \$2.50 per doz.; \$20.00 per 100.
- Desmodium Penduliflorum.** Long racemes of rosy purple flowers. 25c each; \$2.50 per doz.
- Dianthus Barbatus** (Sweet William). Finest sorts, **Dianthus Plumarius.** Old-fashioned Spice Pinks.
- Dictamnus Fraxinella** (Gas Plant), Red flowers.
- Dictamnus Fraxinella Alba.** White-flowered Gas Plant. 25c each; \$2.50 per 100.
- Dielytra Spectabilis** (Bleeding Heart). 20c each.
- Dielytra Formosa.** Dwarfier than above. 25c each.
- Digitalis Grandiflora** (Fox Glove). Pale yellow.
- Digitalis Gloxinaeflora.** In several colors.
- Dodecatheon Media** (American Cowslip), Early spring flowers.
- Eryngium** (Sea Holly). In several varieties. 25c each.
- Funkia Alba Marginata** (Plaintain Lily). A fine dwarf border plant; white, green leaves. 20c each; \$2.00 per doz.
- Gaillardia Grandiflora** (Blanket Flower).

#### HARDY ORNAMENTAL GRASSES.

- Arundo Donax** (Reed Grass). For marshy ground, \$25c each; \$2.50 per doz.
- Eulalia Gracillima.** Green, narrow-leaved. 25c each; \$2.50 per doz.
- Eulalia Zebrina.** Green, banded white. 25c each; \$2.50 per doz.
- Eulalia Variegata.** Green, striped white. 25c each; \$2.50 per doz.
- Phalaris Arundinacea Variegata.** Ribbon Grass.
- Gypsophila Paniculata** (Baby Breath).
- Gypsophila Paniculata Fl. Pl.** Double-flowered. 35c each; \$3.50 per doz.
- Helianthemum** (Rock Rose). In several varieties.
- Helenium Autumnale sup.** Color, golden yellow.
- Helenium Hoopsi.** Pure orange yellow.
- Helenium Riverton Beauty.** Yellow, dark center.
- Helianthus** (Sunflower) **Daniel Dewar.** Early.
- Helianthus Maximilianus.** A fine large sort.
- Helianthus Miss Mellish.** Semi-double. 25c each.
- Helianthus Multiflora Plena.** Very double; full.
- Helianthus Orgyalis.** Very tall; narrow leaved.
- Hemerocallis Flava** (Yellow Day Lily).
- Hemerocallis Fulva** (Tawny Day Lily).
- Hemerocallis Middendorfi.** Rich golden yellow.
- Heuchera Sanguinea** (Coral Bells).
- Hibiscus Mallow Marvels.** 25c each; \$2.50 doz.
- Hollyhocks.** Single and double sorts.
- Iberis Gibraltarica** (Candytuft). White, shaded pink.
- Iberis Sempervirens.** Pure white Evergreen Candytuft.

## IRIS KAEMPFERI—JAPANESE IRIS.

We can supply **Japanese Iris** in 25 distinct varieties. We have an ideal location for these and a very large stock. **25c each; \$2.50 per doz.** Will be pleased to quote on larger quantities.

## IRIS GERMANICA—FLEUR-DE-LIS OR GERMAN IRIS.

We also have a good collection of these German Iris and will supply descriptions if wanted.

**Liatris Pycnostachya.** Large spikes of purple flowers.

**Linum Perene (Flax).** Beautiful azure blue.

**Lobelia Cardinalis (Cardinal Flower).** Fiery scarlet.

**Lobelia Syphilitica.** Pale blue flower in fall.

**Lupinus Polyphyllus.** Old-fashioned Lupine. **25c each; \$2.50 per doz.**

**Lychnis Chalcedonica (Scarlet Lychnis).**

**Lychnis Haagenana.** Flowers orange to scarlet dwf.

**Lychnis Vespertina Alba Plena (White Evening Champion).**

**Lychnis Viscaria Splendens.** Fine, double cerise pink.

**Lythrum Roseum.** For wet places.

**Monardia (Bergamot).** Several varieties.

**Moss Pink.** See Phlox Subulata.

**Oenothera Fraseri (Evening Primrose).**

**Papaver Orientalis (Oriental Poppy).**

**Paeonies.** Fine named sorts. **35c, 50c, 75c each,** according to size and variety.

**Physostegia Virginica.** Fine soft pink flowers.

**Pentstemon Barbatus.** Scarlet red.

**Pentstemon Digitalis.** Foxglove-like flowers.

## PHLOX DECUSSATA PERENNIAL PHLOX.

We have a big collection and large variety of these on hand, and will gladly supply descriptions on application.

**Phlox Subulata (Moss Pink).** In three varieties. We can supply them in 10,000 lots. **10c each; \$1.00 per doz.; \$7.50 per 100.**

**Platycodon (Japanese Bell Flower).** Blue and white. **20c each; \$2.00 per doz.**

**Polygonum (Giant Knotweed).**

**Ranunculus (Buttercup).** Several sorts.

**Rudbeckia, Golden Glow (Double Cone Flower).**

**Sedum (Stone Crop).** In several varieties.

**Stachys Latifolia (Sea Lavender).** **20c each; \$2 doz.**

**Spirea Aruncus.** Large white. **20c each; \$2 doz.**

**Spirea Filipendula Fl. Pl.** Double-flowered. **20c...**

**Spirea Palmata.** Color, rosy pink. **20c each.**

**Spirea Ulmaria.** Sweet scented. **20c each.**

**Stokesia Cyanea (Stokes Aster).** Blue.

**Stokesia Cyanea Alba.** White form of above.

**Sweet William.** See Dianthus Barbatus.

**Thalictrum (Meadow Rue).** Fern-like foliage.

**Veronica Longifolia Subsessilis.** Fine blue. **25c.**

**Veronica Virginica.** White.

**Vinca (Periwinkle).** See vines and trailing plants.

**Viola Cornuta Geo. Wermig.** A grand blue perpetual flowering.

**Yucca Filamentosa.** **25c each; \$2.50 per doz.**



# FERTILIZERS

We are regular agents for the sale of Rogers and Hubbard's celebrated bone base fertilizers, and will be glad to quote bottom prices on complete fertilizers where a quantity is needed.

**Hubbard's Pure Raw Knuckle Bone Flour.** This is the kind you want for your Roses, Mums and Carnations. The bone is white, raw, and fresh, and in a perfectly natural condition. This bone is not dissolved with acid, but is ground to a white flour, and is quickly available as a plant food. Do not confound this with the ordinary brands of bone, which is dissolved with oil of vitriol. They are all right for the open fields, but positively dangerous in a greenhouse.

**Prices on Application.**

---

## GRASS SEED

**Elmsford Evergreen Lawn Grass Mixture.**—We have made an extensive study of grasses, and have here combined in one mixture several of the very best kinds in such proportions as will give the best results. Some of the kinds are naturally early and give the lawn a bright color as soon as spring opens up. Others will stand the heat and drought of summer, and others again will keep growing until late in the Fall. We consider our "Elmsford Evergreen Mixture" to be as good as any on the market to-day. For new lawns, sow 85 to 100 pounds to the acre. **Per bushel (20 pounds), \$6.00.**

**The Elmsford Shady Spot Grass Mixture**—A combination of grasses that naturally grow in shady places; of guaranteed purity and free from weeds. **Per bushel, \$6.00.**

**Permanent Pasture Mixture**—A combination of various grasses recognized for good pasturing qualities—a combination that will keep growing from early Spring until late in the Fall. Sow 50 to 75 lbs. per acre.

**Per bushel (14 pounds), \$3.50.**

**Hay Mixture**—A superior mixture, suitable for hay and permanent pasture; of guaranteed purity. Sow 40 pounds per acre.

**Per bushel (14 pounds), \$3.50.**

---

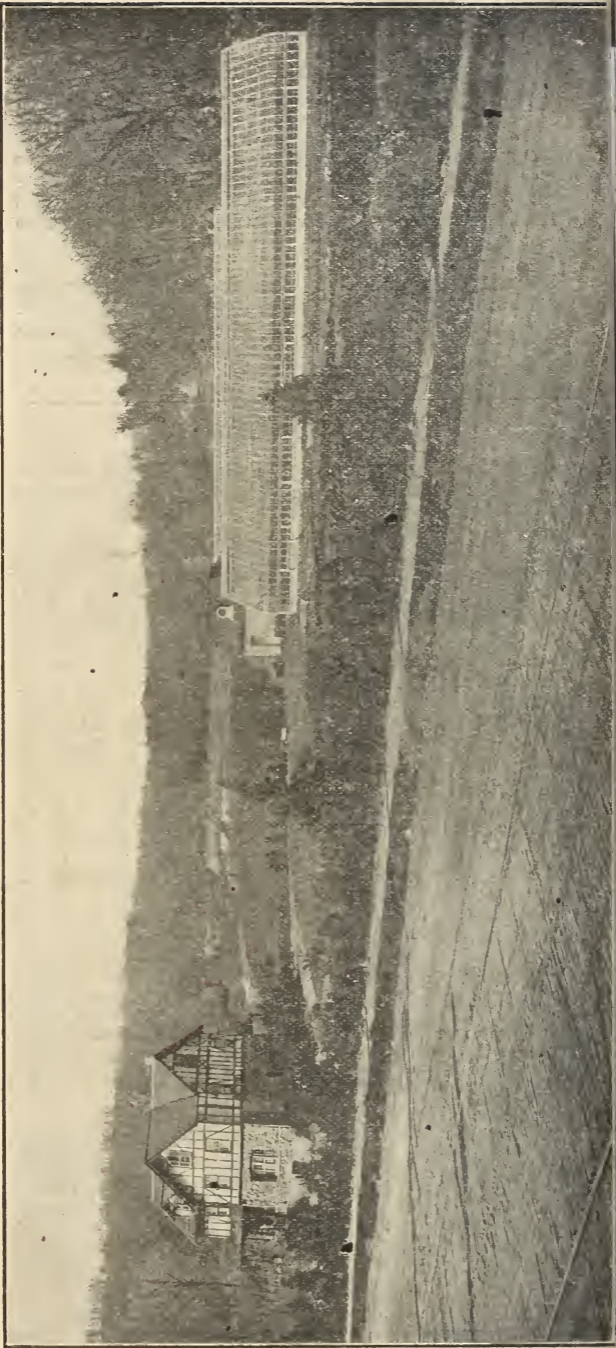
## INSECTICIDES AND FUNGICIDES

### ALPHINE

Effective against all soft-bodied and plant-sucking insects, such as green, black, and white fly; red spider, thrips, mealy bug, brown and white scale, currant and cabbage worm, etc. Used as a spray or wash as directed on each can. A recognized standard. **Gill, 25c.; half-pint, 40c.; pint, 65c.; quart, \$1.00; gallon, \$2.50.**

### FUNGINE

An infallible remedy for mildew, rust, wilt, bench rot and other blights. A sulphur composition which diluted with water contains no sediment and does not stain the foliage. One gallon makes fifty gallons of spraying materials. **Price on application.**



*A View of Our Nurseries.*