

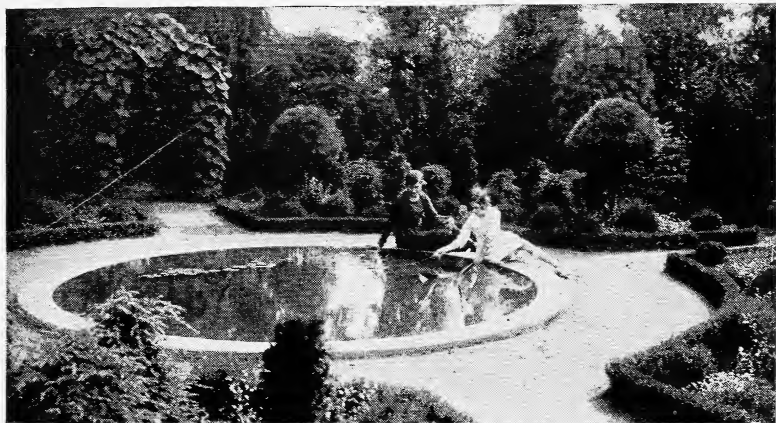
Historic, Archive Document

Do not assume content reflects current scientific knowledge, policies, or practices.



62.13

Recd 1/19/23



Garden bordered with Box-Barberry. Two-year-old stock was used.

BOX-BARBERRY

THE NEW HARDY EDGING and DWARF HEDGE

***A Distinct Novelty: Offered
this Year for the First Time***

BOX-BARBERRY is a dwarf, upright form of the familiar *Berberis Thunbergii*; it is perfectly hardy, thriving wherever *Berberis Thunbergii* grows. *It does not carry wheat-rust.*

Box-Barberry lends itself most happily to low edgings for formal gardens, when set about four inches apart. It also makes a beautiful low hedge when set 6 to 8 inches apart. The foliage is light green, changing in autumn to dazzling red and yellow.

2 year, field-grown, \$30.00 per 100; \$250.00 per 1000

3 year, field-grown, 40.00 per 100; 350.00 per 1000

(50 at 100 rates; 250 at 1000 rates)

Specimens 4 years, \$1.00 each, six for \$5.00

Available stock limited. Orders filled strictly in rotation received.

THE ELM CITY NURSERY CO.

Woodmont Nurseries, Inc.

BOX 210, NEW HAVEN, CONN. (Near Yale Bowl)

*Our Catalogue, now ready, lists a comprehensive assortment of choice Shade and Fruit Trees, Evergreens (including *Taxus cuspidata* type), Shrubs, Vines, Roses, Hardy Plants. Catalogue mailed the day your request is received.*

