

## **Historic, Archive Document**

Do not assume content reflects current scientific knowledge, policies, or practices.



# HILL'S Evergreens

SPRING

1918



THE D. HILL NURSERY CO.

Evergreen Specialists

DUNDEE, ILLINOIS

Founded 1855



# HILL'S Evergreens

SPRING

1918



THE D. HILL NURSERY CO.

Evergreen Specialists

DUNDEE, ILLINOIS

Founded 1855

# Hill's Evergreens



D. HILL  
The Evergreen Specialist

Ever since this Evergreen business was established—and that's over fifty years ago—my motto has always been, "Give every customer more than he expects." Living up to that motto all these years, together with constant, never-tiring experiment and careful growing methods, has combined to give Hill's Evergreens a national reputation for quality and has enabled me to build up the largest Evergreen business in America.

*D. Hill*  
President

No other order of plants presents such a diversity of size as that of the Evergreen family. From the humble trailing sorts to the lordly Sequoia Gigantea, 300 feet in height, it embraces trees of every size.

Every shade and tint of gold, silver and green is also beautifully displayed in the foliage of the various species.

Evergreens are limited to no particular climate or country, but are native of the torrid, frigid and temperate zones throughout the whole world.

On the coldest summits of the Alpine peaks of Lapland, at the very utmost limits of vegetation, are found many of the dwarf species, while on the other extreme, some splendid varieties develop their beauty beneath the scorching sun of the torrid zone.

To obtain beautiful effects with Evergreens does not require any special knowledge of horticulture. The only requisite for success is that they be given reasonable attention, same as the rose garden or vegetable patch.

As ornamental trees Evergreens are unsurpassed. No other trees remain green throughout summer and winter; none are more beautiful. But while their value in this respect is great, Evergreens are most useful in many other ways.

For grouping at entrances, near dwelling houses and for massing in formal plantings, Evergreens are favorites because they are always cheerful, in evidence and wide awake the year around.

The year around beauty of Hill's Evergreens, planted either in groups or singly around your home, will add a touch of quiet beauty—an air of thrift and pride of ownership that impresses all beholders.

Permanency is the big thing in Evergreens. When all other out-door life starts on its long winter sleep, giving a dreary, lifeless aspect to all surroundings, that's when Evergreens are best appreciated. Evergreens are all the year 'round trees, serving you faithfully and efficiently through each season of the year.



Evergreens—All the  
Year 'Round Trees



A view showing a small section of our Evergreen Nursery. Note the clean cultivation and distance between rows and trees. This results in vigorous, healthy stock.

## The Home of Evergreens

In 1855 a small nursery devoted exclusively to Evergreens was started at Dundee, Illinois, only thirty-eight miles northwest of Chicago. The Hill Nurseries have now expanded, until at the present time our nurseries cover a space of more than four hundred and fifty acres.

We are located just far enough north to insure hardiness and just far enough south for good substantial growth. Nature could not have provided a more fertile, soil perfect country for growing Evergreens.

There is a vigor about Hill Evergreens and a wide range of sizes and varieties to choose from. There is genuine pleasure in the possession of such plants. You get enjoyment from Hill Evergreens because they grow thriftily and give luxuriant foliage.

### Care During Growth

Hill Evergreens are all perfect specimens, having good roots and symmetrical tops, due to frequent transplanting, cultivation, root-pruning, shearing and staking. Remember, height alone cannot by any means establish value. An Evergreen grown close and crowded may be exactly the same in height as a Hill Evergreen, but will not be as heavy, compact, symmetrical or have as good roots. Hill Evergreens are all grown in wide rows with ample room for development of both root and top.

Frequent transplanting and root-pruning give Hill Evergreens masses of fine, fibrous feeding roots, which together with annual shearing, results in heavy, bushy, symmetrical tops and insures the success of Hill's Evergreens in the hands of the planter.



Cultivating

## Importance of Careful Digging

The importance of careful digging is another vital step that cannot be overestimated. Hill's Evergreens are dug with great care to retain all the fine fibrous roots. In digging the larger trees designated as "Specimens" the "Ball and Burlap" method is followed.



In some sections of the country it is impossible to dig Evergreens with a solid ball of earth on account of loose, sandy, rocky soil, which will not stick to the roots. Our rich black soil contains just enough clay to give it good texture, and when interwoven with masses of fine, fibrous feeding roots, easily holds in place. As additional protection, each earth ball is securely tied in burlap.

The so-called "ball and burlap" method employed by some firms simply consists in running a tree digger under the rows, pulling up the Evergreens, shoveling a little loose dirt into a sack, tying it about the roots thus making an artificial ball. You can depend on Hill Evergreens being handled right. Every Hill Specimen Evergreen is separately dug by hand with a solid ball of earth about the roots. The advantage of this method is the roots are undisturbed. As a result, when you set out a Hill Evergreen it at once becomes established and promptly starts strong growth.

## Careful Packing

The careful growing of Hill quality Evergreens is but one of the essential steps. Seeing that your Evergreens are carefully packed is of equal importance. Our over sixty-two years' expert knowledge in properly packing Evergreens for long distance shipment is your guarantee of safe delivery.

Our close proximity to Chicago (the world's greatest railroad center) affords direct connection with all the leading lines in the country, and assures our customers quick service and low rates.



An interesting "Evergreen Garden" at Lake Geneva, Wis., planted with Hill's Evergreens. The effect is such as can be readily produced within a few months with our products.





## Landscape Service

Should you desire the services of a competent Landscape Architect to assist you in the proper arrangement of your trees, we will gladly put you in touch with some one in your immediate locality, who can give you all the assistance necessary. We are in direct communication with all the leading Landscape Architects and can easily refer you to some one best qualified to handle your problems.

## High Quality

There are different qualities of Evergreens just as there are different qualities of silks, calicoes, etc. Do not be misled by low prices. Hill Evergreens are the most satisfactory kind. They will be found the most economical in the long run, as they are grown for strictly high-class trade. When you want quality Evergreens, order Hill's stock. Large and complete assortment always on hand.

## The Hill Way of Doing Business

**Prices:** The prices quoted in this catalog are net and are as reasonable as is consistent with first quality stock. All prices include delivery to our local freight and express station. Five trees of the same variety and size will be supplied at the ten rate; 50 at 100 rate; 500 at 1,000 rate. We dig and pack carefully, quality being our watchword.

**Guarantee:** We guarantee that all Evergreens purchased from us will reach you safely and in good condition; be found true to name and prove entirely satisfactory or we cheerfully refund money paid.

**Payments:** Cash should be sent with all orders except those accompanied by satisfactory references. To those of approved credit or who supply satisfactory financial references, our usual 30 day terms will be extended. A health certificate issued by our State authorities accompanies each shipment.



A serviceable Evergreen planting with a natural pleasing vista. Permanent effects like this are easily produced with Hill Evergreens.

## Hemlock

(*Abies Tsuga Canadensis*)

### A Graceful and Ornamental Evergreen

A grand Evergreen unequalled for ornamental planting. The needles are flat and oblong, measuring about one-half inch in length. Each season the older trees bear a crop of striking, reddish brown cones, one-half to three-fourths inches long. It is particularly valuable for its ability to grow in dense shade. Splendid for mass planting. Especially attractive in the early summer, when the foliage is tipped with the new growth, a delicate light green.

Hemlock responds readily to shearing, making splendid hedges or beautiful single specimens wherever low Evergreens are wanted. If planted alone on the open lawn will attain a height of forty to fifty feet when not sheared.



The Foliage of Hemlock Is Bright and Cheerful  
the Year Around

Price, Specimens—		Each	10
1	to 1½ feet.....B&B	\$1.50	\$10.00
1½	to 2 feet.....B&B	1.75	13.00
2	to 3 feet.....B&B	3.00	25.00
3	to 4 feet.....B&B	3.75	30.00
4	to 5 feet.....B&B	5.25	45.00

Price, Transplants—		5	10	100
6 to 10 inches.....		\$0.75	\$1.50	\$12.00
10 to 12 inches.....		1.15	2.30	18.00
12 to 18 inches.....		1.50	3.00	25.00

5 of same size at 10 rate; 50 at 100 rate. B&B signifies Ball and Burlap.

## Colorado Douglas Fir

(*Abies Douglassi*)

### A Handsome, Valuable, Ornamental Tree

Naturally forms a large, spreading pyramid with beautiful deep green foliage, growing forty to fifty feet high. Holds its color well. Needles average one-half inch in length. Young cones are reddish purple, changing to a rich, golden hue which contrasts very beautifully with the foliage.



Colorado Douglas Fir Makes a Handsome  
Lawn Specimen

A pleasing effect is produced by planting medium or low-growing Junipers or Pines directly in front of the Douglas Fir. Also makes handsome lawn specimen.

Price, Specimens—		Each	10
2 to 3 feet.....B&B		\$ 2.00	\$ 15.00
3 to 4 feet.....B&B		2.65	22.50
4 to 5 feet.....B&B		4.00	35.00
5 to 6 feet.....B&B		6.75	60.00
6 to 7 feet.....B&B		8.00	75.00
7 to 8 feet.....B&B		10.50	97.50
8 to 9 feet.....B&B		13.50	127.50
9 to 10 feet.....B&B		15.00	.....

Price, Transplants—		5	10	100
6 to 12 inches.....		\$1.15	\$2.30	\$14.00
12 to 18 inches.....		1.50	3.00	21.00
18 to 24 inches.....		2.20	4.40	35.00
2 to 3 feet.....		3.50	7.00	52.50

5 of same size at 10 rate; 50 at 100 rate.  
B&B signifies Ball and Burlap.



An Artistic Planting of Hill's Evergreens on the Grounds of  
Clement Studebaker, South Bend, Indiana

## Rocky Mountain Silver Fir

(*Abies Concolor*)

### Queen of the Firs

Foliage varies in color from glaucous blue to silvery green. Needles are flat, two to three inches in length. Cones oblong and vary in color from gray-green, dark purple, or bright, canary yellow, three to five inches long. Grows forty to fifty feet high. Beautiful group effects are produced by planting Concolor Fir, Colorado Douglas Fir and Colorado Blue Spruce, for the charming tints of their foliage contrast prettily.

Price, Specimens—		Each	10	
1½ to 2 feet.....	B&B	\$ 1.85	\$13.50	
2 to 3 feet.....	B&B	2.25	18.75	
3 to 4 feet.....	B&B	3.75	30.00	
4 to 5 feet.....	B&B	6.75	60.00	
5 to 6 feet.....	B&B	8.25	75.00	
6 to 7 feet.....	B&B	12.00	.....	
7 to 8 feet.....	B&B	15.00	.....	
8 to 9 feet.....	B&B	18.00	.....	
Price, Transplants—		5	10	100
10 to 12 inches.....		\$1.50	\$3.00	\$20.00
12 to 18 inches.....		2.00	4.00	30.00
18 to 24 inches.....		2.50	5.00	40.00

5 of same size at 10 rate; 50 at 100 rate.  
B&B signifies Ball and Burlap.



Rocky Mountain Silver Fir

## Balsam Fir

(*Abies Balsamea*)

### Most Fragrant of all Evergreens

The characteristic odor of the northern woods is chiefly, if not solely, due to this Fir. The foliage is very fragrant, young growths often being used for making the favorite "Balsam Pillows." Makes a handsome lawn specimen rarely growing over thirty to forty feet high. Contrasts beautifully with Hemlock and Red Cedar.

Price, Specimens—		Each	10	
4 to 5 feet.....	B&B	\$ 6.00	\$ 57.00	
5 to 6 feet.....	B&B	9.00	75.00	
6 to 7 feet.....	B&B	13.00	100.00	
Price, Transplants—		5	10	100
6 to 10 inches.....		\$1.10	\$2 20	\$12.00
10 to 12 inches.....		1.40	2.80	18.00
12 to 18 inches.....		1.70	3.40	24.00

5 of same size at 10 rate; 50 at 100 rate.  
B&B signifies Ball and Burlap.



An Avenue of Grafted Blue Spruce on the Estate of E. W. Shields, Kansas City, Mo.  
Philip W. Thomas, Landscape Architect.

## Red Cedar

(*Juniperus Virginiana*)

### Most Widely Planted Juniper in the World

The foliage is a beautiful light green in summer, turning to a purplish bronze in winter, rather soft in texture and takes a graceful habit of growth; is scale-like and very flexible. In season the tree is covered with bright blue and silver colored berries, which adhere to the branches a long time. The foliage and wood emits that pleasing, spicy, fragrant, woody, cedrus odor. Grows twenty to thirty feet high. Our trees are of the tall, pyramidal type, so often used as sentinels at entrances and along walks. They contrast prettily with the dark green foliage of other Evergreens and are very attractive when used in groups.

**Price, Specimens—**

		Each	10
3 to 4 feet.....	B&B	\$ 3.75	\$ 35.00
4 to 5 feet.....	B&B	5.25	45.00
5 to 6 feet.....	B&B	7.50	67.50
6 to 7 feet.....	B&B	15.00	135.00
7 to 8 feet.....	B&B	20.00	175.00

**Price, Transplants—**

	5	10	100
6 to 12 inches.....	\$1.25	\$2.50	\$16.00
12 to 18 inches.....	2.00	4.00	31.50

5 of same size at 10 rate; 50 at 100 rate.  
B&B signifies Ball and Burlap.

## Pyramidal Red Cedar

(*Juniperus Virginiana Pyramidalis*)

This is a distinct pyramidal type of Red Cedar. Grows very narrow and upright, seldom exceeding a spread of four feet at the base. The foliage is of a glaucous color in contrast to the purplish red of the Red Cedar. Reaches a height of fifteen to twenty feet.

Its spire-like shape makes it very valuable for formal gardens, where very artistic effects can be produced by mixing it with a variety of other Junipers.

**Price, Specimens—**

	Each	10
2 to 3 feet.....	B&B	\$3.75 \$30.00

5 of same size at 10 rate  
B&B signifies Ball and Burlap



Red Cedar

The Red Cedars sent to Wichita, Kansas, arrived in good order, are planted and look very well.  
When we are in need of more Evergreens, you will get the first consideration.  
SUPERINTENDENT,  
For Cyrus McCormick, Lake Forest, Ill.

## Juniper Glauca

(*Juniperus Glauca*)

### A Distinct Bright Green Variety

The foliage is a soft, silvery blue, both summer and winter, making a most striking contrast to the beautiful purple berries which cover the tree in the late autumn and winter. Responds readily to shearing, permitting its use in many ways. It grows twelve to eighteen feet, with a spread of three to four feet at the base.

For groups and conifer beds the Juniper Glauca looks best when planted with dark green Comarti and Schotti Junipers and Savin Junipers. Groups of Junipers are very practical for small lawns where space is limited, as they can be set close together and kept trimmed so as to not over run their space or obstruct the view. All of our trees have been trimmed carefully each season so they are compact, bushy and symmetrical.



Juniper Glauca

Price, Specimens—		Each	10
2 to 3 feet.....	B&B	\$ 3.00	\$ 21.50
3 to 4 feet.....	B&B	5.00	45.00
4 to 5 feet.....	B&B	7.50	70.00
5 to 6 feet.....	B&B	12.00	112.50

5 of same size at 10 rate.

B&B signifies Ball and Burlap.

*As a boy in northern Illinois I used to help my father plant Evergreens in the spring, even after they had started slightly, and we very rarely lost a tree. These were Red Cedars, White Pines, Balsam Firs and Norway Spruces.*

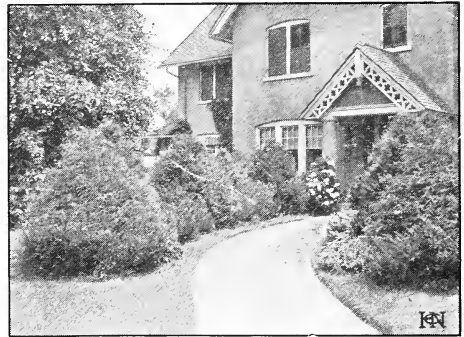
M. B. WAITE,

Pathologist in Charge, U. S. Dept. of Agriculture, Washington, D. C.

*The Evergreens received from your nursery were a nice lot, and arrived here in very good condition.*

JOHN REDWOOD,

Gardener to Wm. Rockefeller, Bay Pond, New York.



What Can Be Done With Junipers

## Juniper Schotti

(*Juniperus Schotti*)

### A Pyramidal Upright Grower

The Schotti Juniper is easily distinguished by its bright pea-green color. It has the characteristic soft, flexible foliage of the Junipers. Grows twelve to fifteen feet high, but can be kept at any desired height or shape by annual shearing. Makes a splendid background for any of the low-growing or creeping Junipers. Its growth is very symmetrical and upright. Foliage is interspersed with light blue and silvery colored berries, in season, which are very attractive. Contrasts prettily with the dark green of the Comarti Juniper and silvery blue of the Juniper Glauca.

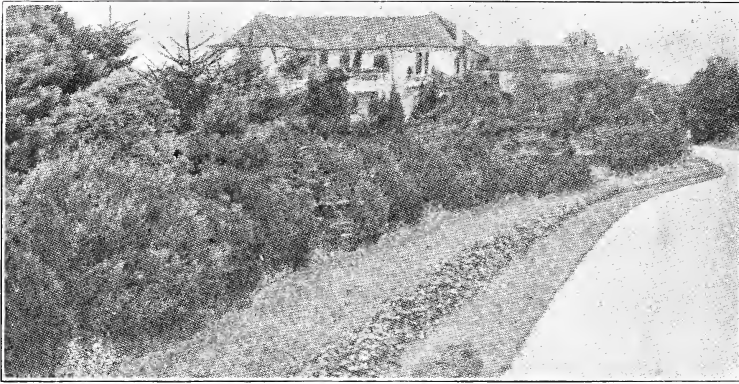
Price, Specimens—		Each	10
2 to 3 feet.....	B&B	\$3.50	\$30.00
4 to 5 feet.....	B&B	7.50	67.50

5 of same size at 10 rate.

B&B signifies Ball and Burlap.



Juniper Schotti



A Splendid Border Planting Producing Wide Sweeping Effects. Hill's Evergreens Are Heavy, Low Branched Specimens That Will Quickly Make Effects Like This or Produce Handsome Individual Specimens.

## Counarti Juniper

(*Juniperus Counarti*)

**Handsome Dark Green**

Grows upright, pyramidal in outline, eight to twelve feet high, with a spread of three to four feet. Foliage is a deep verdant green and thickly pervaded with bright, silver colored berries. Exceedingly attractive when planted in groups with such varieties as Pfitzeriana Juniper, Juniper Glauca, Schotti and Lee's Golden Juniper.

Can be trimmed artistically or the graceful branchlets can be allowed to grow naturally in low, flexible shoots.

<b>Price, Specimens—</b>	Each	10		Each	10
2 to 3 feet.....B&B	\$ 4.00	\$ 37.50	4 to 5 feet.....B&B	7.50	67.50
3 to 4 feet.....B&B	5.65	52.50	5 to 6 feet.....B&B	12.00	112.50
5 of same size at 10 rate. B&B signifies Ball and Burlap.					

## Pfitzeriana Juniper

(*Juniperus Pfitzeriana*)

**A Fine, New, Hardy Juniper**

Very distinct in habit of growth. The spreading branches grow upward, then outward, forming a flat top and irregular outline. Foliage is a bright, fresh green in spring, changing to deep green in autumn and winter. Valuable for foundation planting, or where it is not desirable to obstruct the view. Grows only eight to ten feet high, but often spreads five to six feet.

<b>Price, Specimens—</b>	Each	10		\$ 37.50
2 to 3 feet.....B&B	\$ 3.75	\$ 33.50		
5 of same size at 10 rate.				
B&B signifies Ball and Burlap.				

## Lee's Elegants Juniper

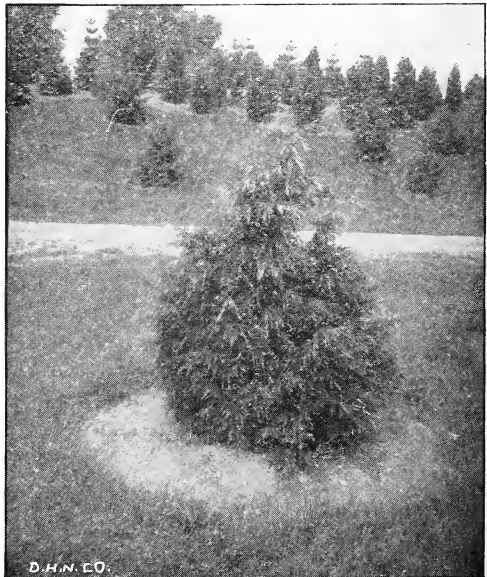
(*Juniperus Elegantissima Lee*)

**Foliage Bright Golden Tipped.  
Graceful, Drooping Form**

Grows rather globe-shaped unless trimmed to a pyramid. It often reaches a height of eight to ten feet. Like most all the Junipers, it is covered with bluish berries in autumn and winter. The foliage is a dark green and the tips of each branch are bright yellow or golden.

A few of these golden Junipers will add color and attractiveness to any planting. It is one of the most ornamental varieties.

<b>Price, Specimens—</b>	Each	10		\$ 22.50
1½ to 2 feet.....B&B	\$ 2.75	\$ 22.50		
2 to 3 feet.....B&B	4.00	37.50		
5 of same size at 10 rate.				
B&B signifies Ball and Burlap.				



**Lee's Elegants Juniper**



A Splendid Planting of Savin Juniper in Foreground

## Savin Juniper

(*Juniperus Sabina*)

### A Beautiful Dwarf Juniper

Splendid for Borders, Rockeries, Edging and Conifer Beds

As shown in lower right hand corner of the cut above, Savin Juniper grows different from any other Evergreen—open and vase-like. There is no main trunk, but the branches grow upward, then outward from the base. Foliage is a deep green. Especially valuable for planting in front of taller Evergreens to taper off the planting. Seldom grows over three to four feet high, often spreading four to six feet. A group of Juniper Sabina *Tamariscifolia*, Sabina Prostrata, Pfitzeriana and Savin Juniper are excellent for foundation plantings.

<b>Price, Specimens—</b>	Each	10	Each	10	
1 to 1½ feet.....B&B	\$2.25	\$18.75	1½ to 2 feet.....B&B	\$3.00	\$25.00
5 of same size at 10 rate. B&B signifies Ball and Burlap.					

## Juniper Sabina Prostrata

(*Juniperus Sabina Prostrata*)

A prostrate or creeping form of the Savin Juniper. The foliage is loose and open, soft, bluish-green in early spring and summer. In late fall and early winter gradually changes to a deep, purplish-blue. Never grows over one foot tall, but forms a solid mat, spreading eight to twelve feet in diameter. Makes excellent ground cover, often being used for low borders, barren banks and terraces.

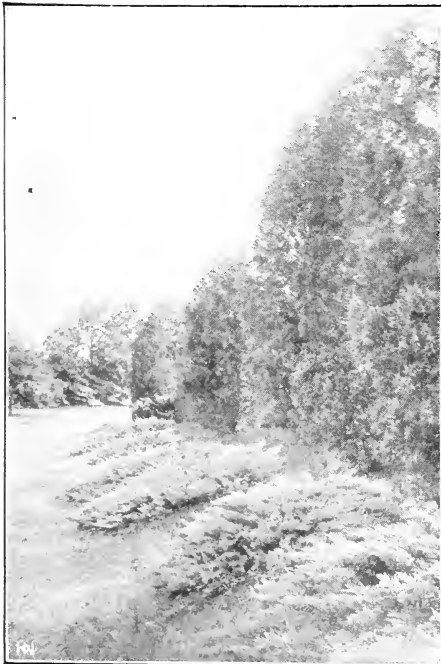
<b>Price, Specimens—</b>	Each	10
1 to 1½ feet.....B&B	\$3.00	\$26.50
1½ to 2 feet.....B&B	4.50	37.50
5 of same size at 10 rate.		
B&B signifies Ball and Burlap.		

## Juniper Sabina Tamariscifolia

(*Juniperus Sabina Tamariscifolia*)

One of the favorite creeping forms. A very vigorous grower, forming a compact and perfect mat of dark green. The foliage is very fine in texture, grows very dense and never changes in color. Average height is one foot with a spread of six to eight feet.

<b>Price, Specimens—</b>	Each	10
1 to 1½ feet.....B&B	\$3.50	\$30.00
1½ to 2 feet.....B&B	4.75	40.00
2 to 2½ feet.....B&B	6.00	52.50
5 of same size at 10 rate.		
B&B signifies Ball and Burlap.		



Juniper Sabina Prostrata—Excellent Creeping Form

## Juniperus Canadensis

This is really the most unique little tree in our entire collection of Junipers

We offer two types, the gold and green, which are exactly alike in form and outline. The habit of growth is low and spreading, the branches being covered with feathery-like foliage. Grows as broad as it is high, averaging three to six feet.

### Juniperus Canadensis (Green Type)

<b>Price, Specimens</b>		Each	10
1	to 1½ ft. B&B	\$2.65	\$22.50
1½	to 2 ft. B&B	3.50	30.00
2	to 2½ ft. B&B	4.50	37.50

### Juniperus Canadensis Aurea (Golden Type)

<b>Price, Specimens</b>		Each	10
1	to 1½ ft. B&B	\$2.65	\$22.50
1½	to 2 ft. B&B	3.50	30.00
5 of same size at 10 rate.			
B&B signifies Ball and Burlap.			



Juniperus Canadensis Aurea

## Japanese Trailing Juniper *(Juniperus Chincensis Procumbens)*

Its slender branches are covered with short, sharp-needed foliage of a deep, somber green. In late autumn it is covered with small, shining, purplish berries. Its growth is solid and rapid. At maturity it often extends over the ground for ten or fifteen feet in every direction, but never taller than one to two feet. It is most useful for covering rockeries and shows up to good advantage when planted in front of tall growing Evergreens or shrubs.

<b>Price, Specimens—</b>		Each	10
1	to 1½ feet.....	B&B	\$2.75 \$25.00
1½	to 2 feet.....	B&B	4.25 35.00
2	to 2½ feet.....	B&B	6.00 52.50
2½	to 3 feet.....	B&B	7.50 .....
5 of same size at 10 rate. F&B signifies Ball and Burlap.			

*I am very much pleased the way the Juniperus Procumbens have grown. They are planted in an open position at the lake, particularly exposed to the most biting cold winds all winter—so strong that no snow can settle. They have kept a fine color all winter and do not show the slightest touch this spring.*

GUSTAV A. REUSS,  
Milwaukee, Wis.



A Foundation Planting Which Shows How Effectively Evergreens Blend the Lawn With the Architecture. Photographed Only Three Months After Planting.



## Swedish Juniper

(*Juniperus Saeuica*)

### Excellent for Use in Formal Planting

Its attractive habit of growth makes it very useful and should be included in all ornamental plantings. Rarely grows over eight to ten feet tall and its spire-like shape makes it stand out like a sentinel, whether massed with other Evergreens or planted singly. Needles are short and sharp, of a light, bluish green. Requires but little space as matured trees never spread over eighteen inches at the base.

Trees of this character make a decided contrast in a mass planting, emphasizing the different growing habits of all other Evergreens planted near them.

**Price, Specimens—** Each 10  
1 to 1½ feet.....B&B \$1.85 \$15.00

5 of same size at 10 rate.  
E&B signifies Ball and Burlap.



Swedish Juniper

## Juniperus Kosteri

### A Handsome Spreading Juniper

A distinct low growing type of Juniper. Has fine, dark green foliage and retains its color well. Grows about eighteen inches tall, spreading four to five feet in diameter. Especially valuable for use in low borders, conifer beds, foundation plantings or single specimens.

**Price, Specimens—** Each 10  
1½ to 2 feet.....B&B \$3.00 \$27.75

5 of same size at 10 rate. B&B signifies Ball and Burlap.



Irish Juniper

## Irish Juniper

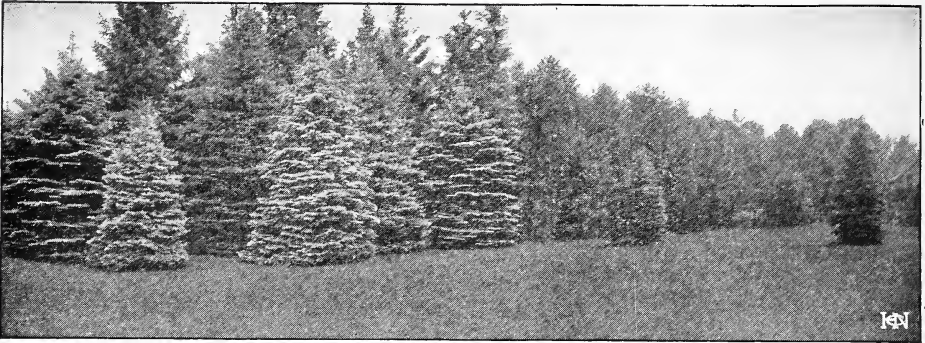
(*Juniperus Hibernica*)

### Ideal for Cemetery Planting or where Space is Limited

Very formal and erect in growth, forming a light, silvery green column, growing six to eight feet in height. Habit of growth is dense and compact. For lawn or garden planting, especially in formal or Italian gardens or avenues, it is of highest importance. It is also very popular and well suited for cemetery planting because of its erect, pyramidal habit of growth, requiring but very little space, never spreading over one and one-half feet at the base. The foliage is entirely different from any other Evergreen, branches being covered with short, delicate, sharp, pointed needles of a light green color, sometimes tinged with blue.

**Price, Specimens—** Each 10  
1½ to 2 feet.....B&B \$1.50 \$11.25

5 of same size at 10 rate.  
E&B signifies Ball and Burlap.



Dark Foliaged Pines and Spruce Make a Splendid Background for the Silvery Colored Blue Spruce

## Colorado Blue Spruce

(*Picea Pungens*)

**A Gem of the Rockies—Glistening Silvery Blue in Color—Absolutely Perfect in Form and Hardiness**

Other trees there are of almost every imaginable color and form, but here is truly the culmination of nature's highest effort to produce the beautiful. Picture in your mind a perfectly shaped tree, with an abundance of heavy foliage of a rich, glistening blue, which flashes and sparkles in the sunlight, and you can form only a faint idea of the magnificent beauty of this truly marvelous tree. The glory of the Blue Spruce is in its foliage, which is an intense steel-blue. It is difficult to form an idea of the beauty and immensity of this phenomenal tree. It has created a great sensation throughout the United States and Europe and is indeed a triumph in Evergreen growing.

As we have specialized in this variety for many years, we have succeeded in building up a magnificent stock (without doubt the largest in the world), and in walking through our nurseries, one sees block after block of these wonderful trees in all sizes and stages of growth, all being perfect in form and color, which annually attract many visitors from all over the country.

The outline of the Blue Spruce is conical. Branches are heavily clothed with foliage, which overlaps each succeeding layer. The needles are stiff and sharp, three-fourths to one inch long. The tree reaches twenty to forty feet at maturity with a spread of ten to twelve feet at the base. Group several trees in the corner of the lawn and watch them grow. Allow passages between the trees for best effect. They also show up well at entrances and along paths and drives. The growth is upright, bold, solid and massive, making a splendid lawn decoration. We recommend it without reserve. It should be planted about every home in every state in the Union, and everywhere will it give satisfaction.

Our Koster's Blue Spruce are all the grafted type, which insures uniform deep blue color.

Says D. Hill: "Plant liberally of this tree and you will never regret it. I have yet to see a place where it will not grow successfully, and I have been shipping it to every state in the Union ever since first introduced from the Rocky Mountains of Colorado."

### Colorado Blue Spruce

Price, Transplants—		5	10	100
6	to 10 inches.....	\$1.50	\$3.00	\$20.00
10	to 12 inches.....	2.50	5.00	40.00
12	to 18 inches.....	3.50	7.00	60.00

### Koster's Grafted Colorado Blue Spruce

Price, Specimens—		Each	
		5	10
1	to 1½ feet.....	B&B \$ 2.50	\$ 22.50
2	to 3 feet.....	B&B 5.50	50.00
3	to 4 feet.....	B&B 8.25	75.00
5	to 6 feet.....	B&B 13.00	120.00
6	to 7 feet.....	B&B 15.00	142.50
7	to 8 feet.....	B&B 18.75	.....

5 of same size at 10 rate; 50 at 100 rate.  
B&B signifies Ball and Burlap.



The Beautiful Blue Spruce



Norway Spruce in Snow

## Hill's Norway Spruce

(*Picea Excelsa*)

A fast, upright grower of splendid conical shape. Its wonderful sturdy, spreading branches grow in symmetrical whorls around the trunk, overlapping each other, forming a dense, compact tree.

The Norway Spruce grows forty to sixty feet high, with a spread at the base of ten to twelve feet. The dark green needles are one to one and one-half inches long, and are borne abundantly.

Norway Spruce is probably better known than any other Evergreen on account of its use as Christmas trees. In season it bears attractive light brown cones, four to seven inches long.

<b>Price, Specimens</b>		Each	10
2 to 3 feet.....	B&B	\$2.25	\$18.75
3 to 4 feet.....	B&B	3.50	30.00
4 to 5 feet.....	B&B	5.00	42.50
5 to 6 feet.....	B&B	6.50	55.00
6 to 7 feet.....	B&B	7.00	65.00
7 to 8 feet.....	B&B	9.00	80.00

<b>Price, Transplants—</b>			
	5	10	100
12 to 18 inches....	\$0.90	\$1.80	\$10.00
18 to 24 inches....	1.25	2.50	15.00
2 to 3 feet.....	2.00	4.00	25.00
5 of same size at 10 rate; 50 at 100 rate.			
B&B signifies Ball and Burlap.			

## American White Spruce

(*Picea Alba*)

### One of the Leading Native Evergreens

**Foliage Is a Light Green, Slightly Tinged With Blue**

Described by Bailey, the eminent horticulturist, as "a native of the northern parts of America and justly thought to be one of our best Evergreens. A compact and upright grower of great longevity."

Derives the name White Spruce due to its light, frosty green foliage, slightly tinged with blue. Needles are sharp and pointed, growing singly on the branches, measuring one-half to one inch long. Grows to large size, often reaching fifty to sixty feet. Makes splendid screens, windbreaks and shelters. By careful trimming makes a dense, compact, formal hedge. Bears an abundance of small brown cones, one to one and one-half inches long, which remain on the trees over winter.

<b>Price, Specimens—</b>		Each	10
2 to 3 feet.....	B&B	\$ 2.75	\$22.50
3 to 4 feet.....	B&B	3.75	30.00
4 to 5 feet.....	B&B	5.25	45.00
5 to 6 feet.....	B&B	7.50	72.50
6 to 7 feet.....	B&B	10.50	90.00

<b>Price, Transplants—</b>			
	5	10	100
12 to 18 inches....	\$1.25	\$2.50	\$16.00
18 to 24 inches....	1.50	3.00	21.00
2 to 3 feet.....	2.65	5.30	35.00
3 to 4 feet.....	3.00	6.00	43.75

5 of same size at 10 rate; 50 at 100 rate.

B&B signifies Ball and Burlap.



American White Spruce

# Black Hill Spruce

(*Picea Canadensis*)

## A Splendid Evergreen for Exposed Locations. Very Hardy.

One of the most dense and compact growing Spruces. Branches are strong, growing out from the main trunk in regular whorls, quite close together. The foliage is a most pleasing color, varying from a deep verdant green to a light, frosty blue, needles measuring one-half inch in length. Grows forty to fifty feet high, spreading ten to twelve feet at the base. It has slender brown cones which nod and sway gracefully with the wind. The bark is a handsome reddish brown with overlapping irregular scales.

Botanically it is merely a form of the White Spruce of the East, but the foliage possesses less of the glaucous tinge and the needles are heavier and more prominent.

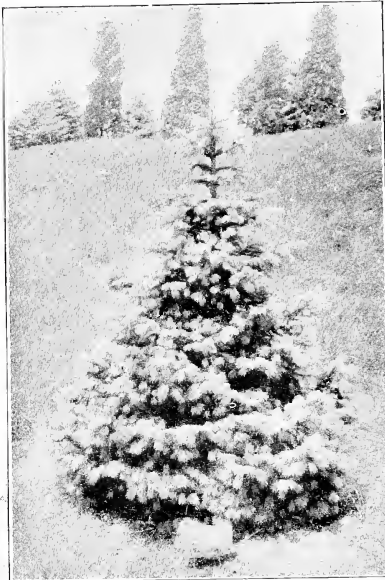


Black Hill Spruce

Price, Specimens—		Each	10
1 1/2	to 2 feet.....	B&B \$ 1.50	\$ 12.50
2	to 3 feet.....	B&B 2.65	18.50
3	to 4 feet.....	B&B 4.00	37.50
4	to 5 feet.....	B&B 6.00	55.00
5	to 6 feet.....	B&B 8.25	75.00
6	to 7 feet.....	B&B 12.00	105.00

Price, Transplants—		5	10	100
6	to 10 inches.....	\$1.30	\$2.60	\$16.00
10	to 12 inches.....	1.50	3.00	20.00
12	to 18 inches.....	1.90	3.80	28.00
18	to 24 inches.....	2.50	5.00	40.00
2	to 3 feet.....	3.80	7.60	56.00

5 of same size at 10 rate; 50 at 100 rate. B&B signifies Ball and Burlap.



Engelmann Spruce

# Engelmann Spruce

(*Picea Engelmanni*)

The Engelmann Spruce closely resembles the Blue Spruce in color, being a light, grayish green, sometimes tinged with blue. Needles are soft and pliable, one-half to one inch long. A medium height variety growing sixteen to twenty feet, with a spread of eight to ten feet.

Price, Specimens—		Each	10
2	to 3 feet.....	B&B \$3.35	\$30.00
3	to 4 feet.....	B&B 4.50	41.25
4	to 5 feet.....	B&B 6.75	60.00

Price, Transplants—		5	10	100
6	to 10 inches.....	\$1.50	\$3.00	\$21.00

5 of same size at 10 rate; 50 at 100 rate.  
B&B signifies Ball and Burlap.

*This is quite a district for tree planting. I have advertised and boosted your company through our free distribution. I have done this only because I am well pleased with your system of doing business and the excellent stock you put out.*

FRANK D. BLAIR,  
Field Supt. Minnesota Game and Fish Protective League, Minneapolis, Minn.



Pines Are Much Used for Large Lawns. They Make Splendid Screens and Form Cheerful Vistas at All Seasons of the Year.

## Austrian Pine

(*Pinus Austriaca*)

### Hardy, Rapid Grower, Long Lived, Deep green Foliage

The foliage is a rich dark green, while the needles grow in pairs, averaging two to three inches in length. On account of its dark green color it is sometimes called the Black Pine. The branches are strong, sturdy and well shouldered at the union with the stem. Has a spread of eight to ten feet at the base and reaches a height of twenty to thirty feet. Especially valuable for massing in screens or planting in wind-swept situations. Thrives successfully on poor sandy or gravelly soil.

Price, Specimens—			Each	10	
1½	to 2 feet.....	B&B	\$1.85	\$15.00	
2	to 3 feet.....	B&B	2.25	18.75	
3	to 4 feet.....	B&B	3.75	33.50	
Price, Transplants—			5	10	100
12	to 18 inches.....	\$1.80	\$3.60	\$19.80	
18	to 24 inches.....	2.25	4.50	28.80	
2	to 3 feet.....	2.70	5.40	36.00	

5 of same size at 10 rate; 50 at 100 rate. B&B signifies Ball and Burlap.



Hillside Planting of White Pines

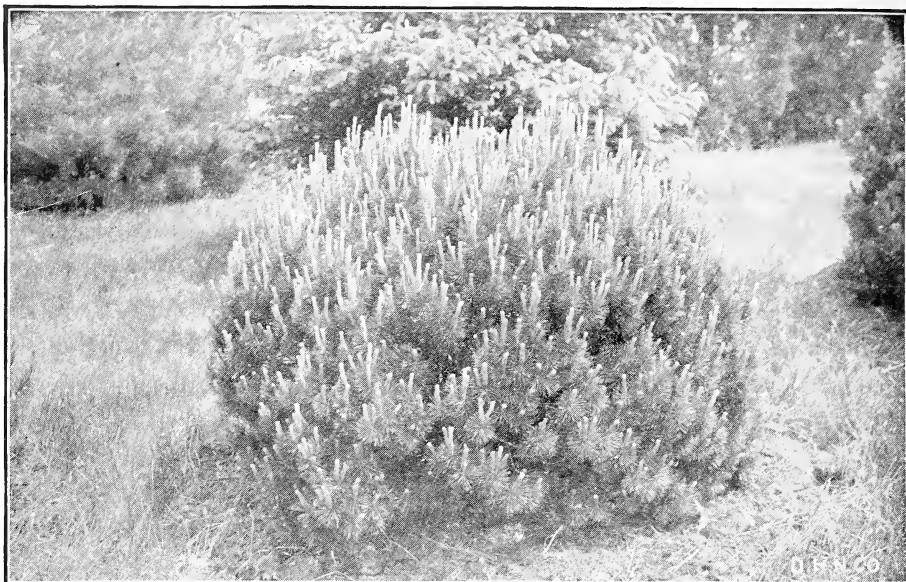
## White Pine

(*Pinus Strobus*)

This is one of the most important timber trees of the northern United States. The silvery green needles three to four inches long are borne in sets of five to the sheath, which distinguishes it from most all other Pines. Needles are very pliant, which sparkle and shimmer as they sway gracefully in the wind. Naturally is a strong, robust grower, and forms a wide-spreading tree fifteen to twenty feet at the base, fifty to seventy-five feet in height. Annually bears abundant crop of attractive cones four to six inches long, which provides winter food, thus attracting the squirrels.

Price, Specimens—			Each	10	
2	to 3 feet.....	B&B	\$1.85	\$15.00	
3	to 4 feet.....	B&B	2.50	22.50	
4	to 5 feet.....	B&B	3.50	30.00	
5	to 6 feet.....	B&B	4.50	40.00	
6	to 7 feet.....	B&B	5.00	45.00	
Price, Transplants—			5	10	100
6	to 12 inches.....	\$1.40	\$2.80	\$12.30	
12	to 18 inches.....	1.65	3.30	17.50	
18	to 24 inches.....	2.10	4.20	26.00	
2	to 3 feet.....	2.70	5.40	35.00	

5 of same size at 10 rate; 50 at 100 rate. B&B signifies Ball and Burlap.



Dwarf Mountain Pine. A Grand Dwarf Variety From Switzerland. Fine Lawn Tree When Planted in Groups or Singly. Its Beauty is Indescribable.

Director Largest Observatory in World Highly Pleased with Hill's Evergreens

The shipment of Evergreens reached here last evening and are now all planted. The stock was excellent in every way and arrived in good order. Will use more of your Evergreens as we proceed with the planting of our grounds.

EDWIN B. FROST,

Director of Yerkes Observatory, Williams Bay, Wis.

## Dwarf Mountain Pine

(*Pinus Mugho*)

Rarely Grows Over Six Feet Tall. Fine for Low Borders, Beds or Singly.

Does not have a single or main trunk, but is composed of many short stems, which grow outward, then slightly upward, often spreading twice as broad as it is tall. The foliage is a vivid dark green, which it holds at all seasons of the year. The new growth, when first appearing in spring, closely resembles tiny candlesticks, which completely covers the entire tree. This is plainly shown in the illustration above.

The Dwarf Mountain Pine was originally discovered in the Alps of Switzerland, high up on the mountain peaks where practically no other vegetation was found. It is a splendid variety to plant close to foundation walls or porch, while a pair at either side of the entrance to yard, or in groups with other Evergreens, makes a most pleasing effect.

<b>Price, Specimens—</b>	Each	10
1 foot .....	B&B	\$1.50 \$10.00
1 to 1½ feet.....	B&B	1.85 16.50

<b>Price, Transplants—</b>	5	10	100
8 to 10 inches.....	\$2.40	\$4.80	\$30.00
10 to 12 inches.....	3.00	6.00	40.00
12 to 18 inches.....	3.50	7.00	50.00
5 of same size at 10 rate; 50 at 100 rate.			

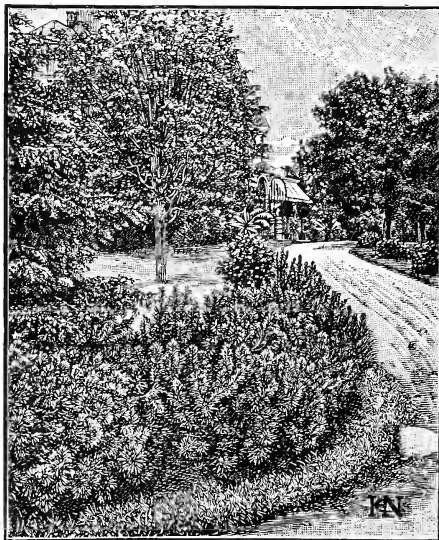
B&B signifies Ball and Burlap.

During the month of April, 1914, I received from you forty Dwarf Mountain Pines, which developed beautifully and are all sturdy, good looking specimens. Lost only one tree.

JOHN I. BEGGS,  
Milwaukee.

Received shipment of Evergreens. Trees arrived in good order and we planted them at once. I want to congratulate you on the quality of the stock. They are the best I have ever seen.

R. O. LARSEN,  
Missouri.



Dwarf Mountain Pine. Splendid for Border.

**Red Pine**

(*Pinus Resinosa*)

**Very Hardy and of Rapid Growth**

Has strong spreading branches, which are well covered with smaller branchlets, tips being a bright orange color. The needles, in clusters of two, are a lustrous dark green, four to six inches long, slender and flexible. Grows to fairly large size forty to fifty feet, spreading ten to twelve feet. The cones are from one to two inches in length and are a beautiful light brown in color. The bark is thick and a dark reddish brown, and it is from this characteristic that it derives its name.

**Price, Transplants**

	5	10	100
12 to 18 inches.....	\$1.85	\$3.70	\$21.00
18 to 24 inches.....	2.20	4.40	28.00
2 to 3 feet.....	2.50	5.60	38.50

5 of same size at 10 rate; 50 at 100 rate.

Accept our thanks for your care and promptness in filling our order. We have received the three cars of Evergreens in good condition and all are carefully planted on the estate of S. A. Fletcher.  
ALEX. TUSCHINSKY,  
Landscape Architect, Indianapolis, Ind.



Scotch Pine

**Scotch Pine**

(*Pinus Sylvestris*)

The branches are covered with short, stiff tufts of bluish green needles that grow in pairs one to two inches long. At maturity it reaches a height of fifty to sixty feet, spreading twelve to fourteen feet. The bark is thick and heavy, slightly reddish in color. The cones are a golden brown and remain on the tree all through the winter.

Grows very well on dry, sandy or gravelly soil and thrives under very adverse conditions. The growth is rapid and where quick, permanent protection is wanted for screens or shelter it is highly recommended.

Where natural wooded effects are desired a mixed planting of Scotch, Austrian and Red Pine is very suitable.

**Price, Transplants—**

	5	10	100
12 to 18 inches.....	\$1.00	\$2.00	\$14.00
18 to 24 inches.....	1.85	3.70	21.00
2 to 3 feet.....	2.30	4.60	28.00

5 of same size at 10 rate; 50 at 100 rate.

COL. FRANK O. LOWDEN, GOVERNOR OF ILLINOIS  
is an enthusiastic Evergreen planter, and on his Ogle County, Illinois, estate of 5,000 acres he has planted upwards of 100,000 Hill Evergreen Trees annually for the past fourteen years. Col. Lowden believes in the value of Evergreens for beauty and utility. He purchases his Evergreens exclusively from the D. Hill Nursery Co.



A Natural Wooded Effect Easily Produced by Hill Evergreens



A Small Block of Junipers, Pines and Hemlocks in Hill Nurseries

## Ponderosa Pine

(*Pinus Ponderosa*)

### A Rapid, Robust, Rugged Grower

Its most striking characteristic is the long, glossy needles, about the size of a darning needle, often measuring six inches in length. They grow in sets of two and three and in this respect are exceptional to the usual habit of pines. The whole tree is heavily clothed with foliage of a deep green color. It reaches forty to fifty feet in height, spreading twelve to fifteen feet at the base. Bears handsome, round, plump cones, two to two and one-half inches in length. Ponderosa Pine has been widely planted throughout the western states.

Price, Transplants—	5	10	100
10 to 12 inches.....	\$1.45	\$2.90	\$14.00
12 to 18 inches.....	1.70	3.40	17.50
18 to 24 inches.....	2.00	4.00	24.50
2 to 3 feet.....	2.25	4.50	28.00
5 of same size at 10 rate; 50 at 100 rate.			

## Flexilis Pine

(*Pinus Flexilis*)

Its attractive characteristics are its bark, cones and branches. The bark is creamy white, corky and porous; the cones are heavy and large, eight to ten inches long. The branches are very slender and flexible, from which characteristic the tree derives its name. Attains a height of twenty to thirty feet, with a spread at the base of eight to ten feet.

Price, Transplants—	5	10	100
6 to 12 inches.....	\$1.60	\$3.20	\$15.75
12 to 18 inches.....	2.10	4.20	26.25
18 to 24 inches.....	2.40	4.80	31.50
5 of same size at 10 rate; 50 at 100 rate.			

Mrs. Haines and I are more than pleased with the magnificent specimens of White Pine you sent out to us, and we want to thank you for same. We deeply appreciate your kindness and courtesy.

J. ALLEN HAINES,  
Winnetka, Ill.

## Jack Pine

(*Pinus Banksiana*)

### Grows Successfully on Poorest of Soil

In regions where tree growing has been considered almost impossible on account of sandy soil and continued drought, Jack Pine has been planted and grown with complete success. This Evergreen is sometimes called Gray Pine and Northern Pine. Reaches a height of forty to fifty feet, with a spread of twelve to fifteen feet.

Its short, fresh, light green needles, three-fourths to one and one-half inches long, in-curved on the branchlets, easily distinguish it from all other pines.

Price, Transplants—	5	10	100
12 to 18 inches.....	\$1.60	\$3.20	\$16.00
18 to 24 inches.....	1.75	3.50	19.00
2 to 3 feet.....	2.10	4.20	24.50
5 of same size at 10 rate; 50 at 100 rate.			



Ponderosa Pine



## Dwarf Japanese Yew

(*Taxus Cuspidata Brevifolia*)

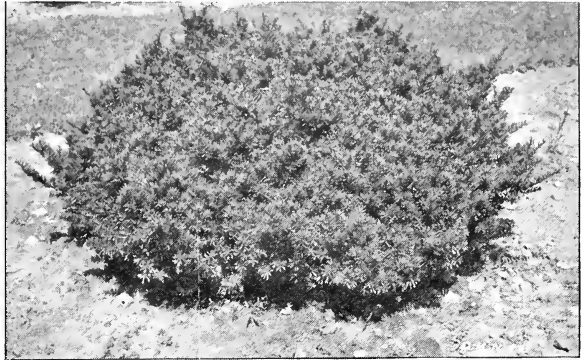
The very deep green, soft, waxy-looking foliage makes it very attractive. It only grows three to four feet high, but often spreads four to six feet. Excellent for planting in low borders with Dwarf Mountain Pine, Savin Juniper or American Yew. Also much used for foundation planting and conifer beds.

**Price, Specimens**

	Each	10
1 to 1½ ft. B&B	\$3.00	\$24.75
1½ to 2 ft. B&B	3.35	30.00
2 to 2½ ft. B&B	4.85	45.00

5 of same size at 10 rate.

B&B signifies Ball and Burlap.



Dwarf Japanese Yew

## Japanese Yew

(*Taxus Cuspidata*)

The Japanese Yew is a pyramidal upright grower, reaching a height of fifteen to twenty feet. The foliage is very beautiful, in summer it is a deep dark green, slightly tinged with silver underneath. Late in the autumn it changes to a rich copper color. Its tiny red fruits remain on the tree all winter, providing food for birds.

**Price, Specimens—**

	B&B	Each	10
1 to 1½ feet.....	\$2.25	\$15.00	
2 to 3 feet.....	3.75	33.50	
3 to 4 feet.....	6.00	52.50	

**Price, Transplants—**

6 to 10 inches.....	\$2.00	\$ 4.00
10 to 12 inches.....	2.50	5.00

5 of same size at 10 rate. B&B signifies Ball and Burlap.

## American Yew

(*Taxus Canadensis*)

The foliage is a deep dark verdant green changing to a purplish bronze in winter. Its certain richness and stiff formality of growth pleases the taste of almost everyone. It rarely grows over six feet tall and about twice as broad, almost fan shaped. Its bright red berries contrast very prettily with its dark green foliage. It grows splendidly in shady locations.

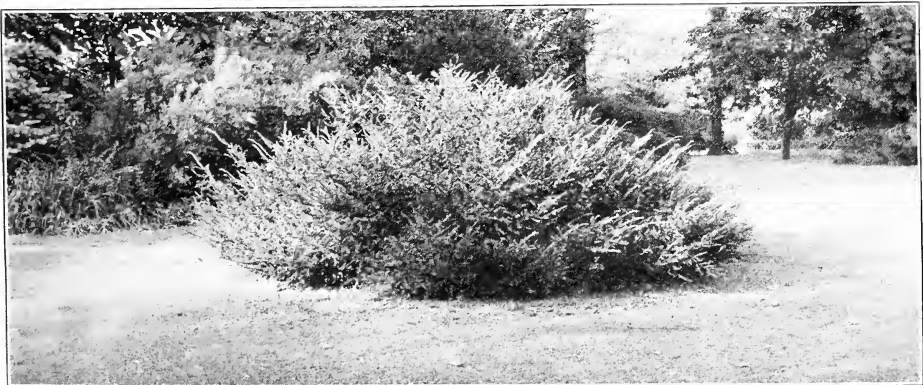
**Price, Specimens—**

	B&B	Each	10
1 to 1½ feet.....	\$1.50	\$13.50	

**Price, Transplants—**

6 to 12 inches.....	\$2.25	\$4.50
12 to 18 inches.....	3.00	6.00

5 of same size at 10 rate. B&B signifies Ball and Burlap.



American Yew, a Splendid Dwarf Growing Variety

## American Arbor Vitae

(*Thuja Occidentalis*)

### National Evergreen Hedge Plant

There is perhaps no other tree in the entire Evergreen family that can be used in so many different ways as the American Arbor Vitae. On account of its flat fern-like foliage it can be sheared, producing beautiful, dense, compact hedges in a remarkably short time. Retains its green foliage at all seasons of the year, and for this reason is much superior to the unsightly, leafless Privet or other leaf-bearing hedge plants.

When allowed to grow without shearing it naturally reaches a height of fifteen to twenty feet, with a spread at the base of three to four feet. It is often planted in groups with other Evergreens, also makes a fine appearance when planted singly, growing tall and stately. Grows successfully in any well-drained soil and also thrives in a cool, moist soil, as well as in partial shade or in full sun.



American Arbor Vitae

Price, Specimens—		Each	10
2 to 3 feet.....	B&B	\$ 1.25	\$ 9.50
3 to 4 feet.....	B&B	2.25	20.00
4 to 5 feet.....	B&B	3.75	30.00
6 to 7 feet.....	B&B	7.75	70.00
7 to 8 feet.....	B&B	10.00	90.00

Price, Transplants—			
5	10	100	
10 to 12 inches.....	\$1.15	\$2.30	\$12.00
12 to 18 inches.....	1.60	3.20	16.50
18 to 24 inches.....	2.00	4.00	25.00
2 to 3 feet.....	3.00	6.00	37.50

5 of same size at 10 rate; 50 at 100 rate. B&B signifies Ball and Burlap.



## Pyramidal Arbor Vitae

(*Thuja Pyramidalis*)

Perhaps to the majority of planters the Pyramidal Arbor Vitae is the most familiar of all the Arbor Vitae family. It is one of the old well-known Evergreens, having been sold for many years. The habit of growth is tall, narrow and straight like a column, mature trees fifteen feet in height seldom measuring over two feet in diameter at the base.

The foliage somewhat resembles that of the American Arbor Vitae, but is finer and more lacy. Color is a rich dark green, which it holds at all seasons. This splendid variety is much used in formal garden planting, bordering walks or markers for corners. Also much used for planting on either side of entrance gate. Fits in well with almost any scheme of planting.

Price, Specimens—		Each	10
2 to 3 feet.....	B&B	\$2.25	\$18.75
3 to 4 feet.....	B&B	3.00	26.50
4 to 5 feet.....	B&B	3.75	33.50

5 of same size at 10 rate.  
B&B signifies Ball and Burlap

*The American Arbor Vitae which I purchased from you several seasons ago is growing nicely, and people from our section are beginning to recognize the superiority of Arbor Vitae for hedges over other hedge plants used here. During the early summer months the Grafted Blue Spruce which I got from you is the admiration of all who see it.*

GEO. B. KERSTETTER,  
Gowen City, Pa.

Pyramidal Arbor Vitae

**Siberian Arbor Vitae**

(*Thuja Wareana Siberica*)

Grows very dense and compact, upright with a broad base three to four feet in diameter, reaching a height six to eight feet. Was originated in the famous Royal Gardens of England, but named Siberian because of its rugged constitution. The foliage is rather thick and a very dark green. Branches are short and stiff. Single trees alone grow conical and clean-cut in outline. Also makes splendid hedges.

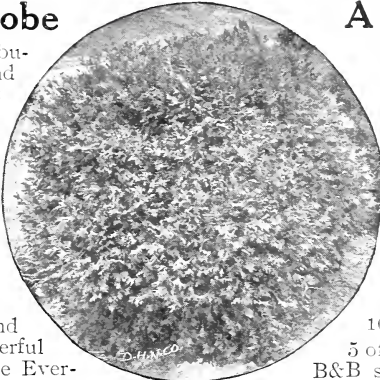


Siberian Arbor Vitae

<b>Price, Specimens—</b>		Each	10	<b>Price, Specimens—</b>		Each	10
1	to 1½ feet.....	B&B	\$2.25	2	to 3 feet.....	B&B	4.00
1½	to 2 feet.....	B&B	3.00	2	to 4 feet.....	B&B	6.00
		5 of same size at 10 rate.				B&B signifies Ball and Burlap.	

**Woodward's Globe**

Its shape is round or globular, very dense in growth, and does not require shearing. It seldom grows over three to three and one-half feet in diameter. The foliage is soft and flat and of a deep green color. It is suitable for lawn, door-yard or window-box planting, and is very popular where space is limited. A pair of these little trees planted among the tall Pines and Spruces, suggests the wonderful contrasts in the habits of the Ever-



Woodward's Globe Arbor Vitae

**Arbor Vitae**

(*Thuja Woodwardi*)

green family. Evergreens that grow into a natural globe are great favorites with many planters as they readily work into any scheme of planting.

**Price, Specimens—**

1	to 1½ feet.....	B&B	
Each	.....	\$	2.65
10	.....		33.50

5 of the same size at 10 rate. B&B signifies Ball and Burlap.

**Thuja Rosenthalii**

An intermediate grower reaching a height of six to seven feet with a spread of two and one-half to three feet. The foliage is bright fresh green, while the new growth terminates with a whitish ball. A very interesting variety and an attractive novelty.

**Price, Specimens—**

1½	to 2 feet.....	B&B	\$3.00	Each	10
2	to 3 feet.....	B&B	3.75		33.00

5 of same size at 10 rate. B&B signifies Ball and Burlap.



American Arbor Vitae Is the National Evergreen Hedge Plant of America

## Douglas Golden Arbor Vitae

(*Thuja Douglassi Aurca*)

### A Distinct Golden Green

One of the most ornamental Evergreens. The flat fern-like foliage in summer is golden tipped, and changes to bronze in autumn and early winter. It is rather broad, spreading three to four feet at the base, and reaches fifteen to eighteen feet in height. The little brown cones are one-fourth inch long, and borne abundantly in clusters. It is easily sheared and can be kept at any height or form desired. Its rare beauty is best displayed when planted among the darker green varieties of Junipers, Pines, Spruces or Firs.

Price, Specimens—		Each	10
1 ½	to 2 feet.....B&B	\$1.85	\$13.50
2	to 3 feet.....B&B	3.00	26.50
5 of same size at 10 rate.			
B&B signifies Ball and Burlap.			



Douglas Golden Arbor Vitae



Peabody's Golden Arbor Vitae

## Peabody's Golden Arbor Vitae

(*Thuja Occidentalis Lutea*)

### A Superb Golden Foliaged Variety

A very distinct golden type. The bright golden color does not change but remains the same at all seasons. It is rather slender in habit, and grows but eight to ten feet high, with a diameter of two to two and one-half feet. The growth is pyramidal and upright, and can be trimmed as wanted. There are no cones or berries. A few of these Golden Arbor Vitae planted in contrast to the deep green of the Firs and Pines, and mixed with some Blue Spruce will produce beautiful effects.

Price, Specimens—		Each	10
1	to 1 ½ feet.....B&B	\$1.50	\$12.50
1 ½	to 2 feet.....B&B	1.85	13.50
5 of same size at 10 rate.			
E&B signifies Ball and Burlap.			



American Arbor Vitae Hedges Can Be Trimmed to Any Height Desired. Will Make Solid Walls 12 to 15 Feet High or Low Hedge 4 Feet in Height as Illustrated.



You Can Easily Make Your Place Look Like This by Using Hill's Evergreens

## Hill's Dwarf Evergreens

New, Rare and Choice Varieties of Dwarf Evergreens Suitable for Japanese Gardens, Tea Gardens, Rock Gardens, Foundation Planting, Terraces, etc.

The following list of plants are all of special merit. Originating mostly in the Orient, they possess a distinctive charm and are thoroughly reliable for planting in the United States.

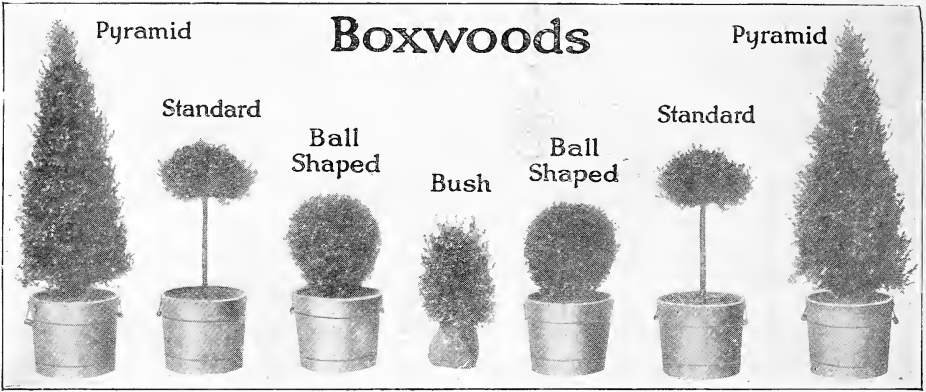
					Each	10
Juniperus	Canadensis	1	-1 1/2	feet	B&B \$2.65	\$22.50
Juniperus	Canadensis	1 1/2	-2	feet	B&B 3.50	30.00
Juniperus	Canadensis	2	-2 1/2	feet	B&B 4.50	37.50
Juniperus	Canadensis Aurea	1	-1 1/2	feet	B&B 2.65	22.50
Juniperus	Canadensis Aurea	1 1/2	-2	feet	B&B 3.50	30.00
Juniperus	Kosteri	1 1/2	-2	feet	B&B 3.00	27.75
Juniperus	Fitzleriana	2	-3	feet	B&B 3.75	33.50
Juniperus	Procumbens	1	-1 1/2	feet	B&B 2.75	25.00
Juniperus	Procumbens	1 1/2	-2	feet	B&B 4.25	35.00
Juniperus	Procumbens	2	-2 1/2	feet	B&B 6.00	52.50
Juniperus	Procumbens	2 1/2	-3	feet	B&B 7.50	...
Juniperus	Sabina	1	-1 1/2	feet	B&B 2.25	18.75
Juniperus	Sabina	1 1/2	-2	feet	B&B 3.00	25.00
Juniperus	Sabina Prostrata	1	-1 1/2	feet	B&B 3.00	26.50
Juniperus	Sabina Prostrata	1 1/2	-2	feet	B&B 4.50	37.50
Juniperus	Sabina Tamariscifolia	1	-1 1/2	feet	B&B 3.50	30.00
Juniperus	Sabina Tamariscifolia	1 1/2	-2	feet	B&B 4.75	40.00
Juniperus	Sabina Tamariscifolia	2	-2 1/2	feet	B&B 6.00	52.50
Pinus	Mugho	1	1	foot	B&B 1.50	10.00
Pinus	Mugho	1	-1 1/2	feet	B&B 1.87	16.50
Taxus	Canadensis	1	-1 1/2	feet	B&B 1.50	13.50
Taxus	Cuspidata Brevifolia	1	-1 1/2	feet	B&B 3.00	24.75
Taxus	Cuspidata Brevifolia	1 1/2	-2	feet	B&B 3.35	30.00
Taxus	Cuspidata Brevifolia	2	-2 1/2	feet	B&B 4.85	45.00
Thuja	Woodwardi	1	-1 1/2	feet	B&B 2.65	23.50

5 of same variety and size at 10 rate. B&B signifies Ball and Burlap.

## Japanese Gardens and Rockeries



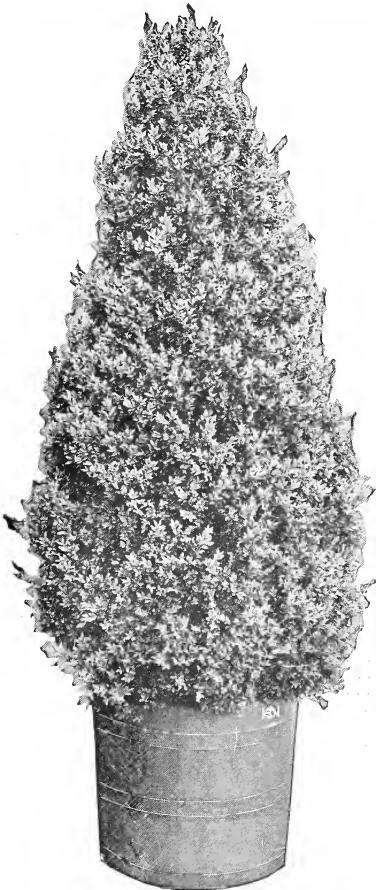
For the construction of Japanese Gardens, Rockeries, etc., we offer the services of Mr. T. R. Otsuka, Landscape Architect, to those of our customers desiring his assistance. Mr. T. R. Otsuka has had plenty of experience along this line, having built some of the most notable Japanese Gardens in this country and Europe. Write for complete information.



## Boxwoods

(*Buxus Sempervirens*)

There are different qualities of Boxwoods just as there are different qualities of roses, carnations, silks, calicoes, etc. Do not be fooled by low prices; there is always plenty of cheap or inferior stock on the market to be had almost for the asking, but quality Boxwoods, grown properly and handled right, always command a fair price. Hill Boxwoods are the satisfactory kind. You will not be disappointed. They are the cream of especially selected stocks, grown for high-class trade. Satisfaction guaranteed. When you want "quality" Boxwoods, come to Hill's.



Pyramidal Boxwood

**Notice:**—Orders for Boxwood will be accepted conditionally, subject to arrivals. We expect to be able to make deliveries as usual this spring. Order early, Boxwoods will be very scarce this season.

### Boxwood, Pyramidal Shape

	Each	Pair	Doz.
Without Tubs—			
2 to 2½ feet .....B&B	\$3.25	\$6.00	\$34.50
3 feet .....B&B	4.85	9.00	51.75
4 feet .....B&B	7.75	15.00	87.75

If tubs are wanted, add 75c per tree.

### Boxwood, Ball Shaped (Clipped Solid)

	Each	Pair	Doz.
Without Tubs—			
15x15 inches .....B&B	\$4.75	\$9.00	\$51.75

If tubs are wanted, add 75c per tree.

### Boxwood, Bush Shaped

	Each	Doz.	100
10 to 12 inches .....	\$.75	\$ 7.20	\$ 52.50
15 inches .....	1.35	14.40	112.50
18 inches .....	1.75	18.00	135.00

I am sending your letter to O. C. Simonds & Co., who are superintending planting for the Indian Hill Club. I want to express my admiration of your action and to assure you that all of the members of the club who are familiar with its affairs will always feel that they are safe in supplying their requirements from your nursery.

A. W. SHAW,  
Publisher of System, Chicago, Ill.



Juniperus.

Picea.

Thuya.

Juniperus.

## Evergreens Suitable for Tubbing

Hill's Evergreens for tubbing stand at the head of the list of hardy plants suitable for outside decoration, both summer and winter. They are easily moved from place to place, require little attention, are always green and are never injured by continued cold or freezing.

Can be used in hallways, entrances, balconies or sun parlors and will remain a permanent decoration wherever placed. They can be set in the garden or wherever wanted. In summer or winter they attractively add to their surroundings. Your selection is not limited. The varieties listed below will be ample for your requirements.

### Hardy Evergreens (Clipped Bushy Specimens)

	Size		Matched	
			Each	Pairs
Abies Tsuga Canadensis (Light Green).....	2 feet	B&B	\$3.75	\$6.75
Abies Tsuga Canadensis (Light Green).....	3 feet	B&B	4.85	9.00
Juniperus Counarti (Dark Green).....	2 feet	B&B	4.85	9.00
Juniperus Counarti (Dark Green).....	3 feet	B&B	6.75	12.75
Juniperus Glauca (Silvery Blue).....	2 feet	B&B	3.75	6.75
Juniperus Glauca (Silvery Blue).....	3 feet	B&B	6.00	11.25
Juniperus Virginiana (Grayish Green).....	4 feet	B&B	6.75	12.75
Juniperus Virginiana (Grayish Green).....	5 feet	B&B	8.25	15.75
Juniperus Virginiana (Grayish Green).....	6 feet	B&B	16.00	31.50
Picea Canadensis (Bluish Green).....	3 feet	B&B	5.25	9.75
Picea Canadensis (Bluish Green).....	4 feet	B&B	7.50	14.25
Picea Canadensis (Bluish Green).....	5 feet	B&B	9.75	18.75
Thuya Occidentalis Pyramidalis (Dark Green).....	2 feet	B&B	3.00	5.25
Thuya Occidentalis Pyramidalis (Dark Green).....	3 feet	B&B	4.00	7.50
Thuya Occidentalis Pyramidalis (Dark Green).....	4 feet	B&B	5.25	9.75
Thuya Wareana Siberica (Dark Green).....	1 foot	B&B	3.00	5.25
Thuya Wareana Siberica (Dark Green).....	2 feet	B&B	4.85	9.00
Thuya Wareana Siberica (Dark Green).....	3 feet	B&B	7.00	13.50
Thuya Woodwardi (Dark Green).....	1 foot	B&B	3.35	6.00

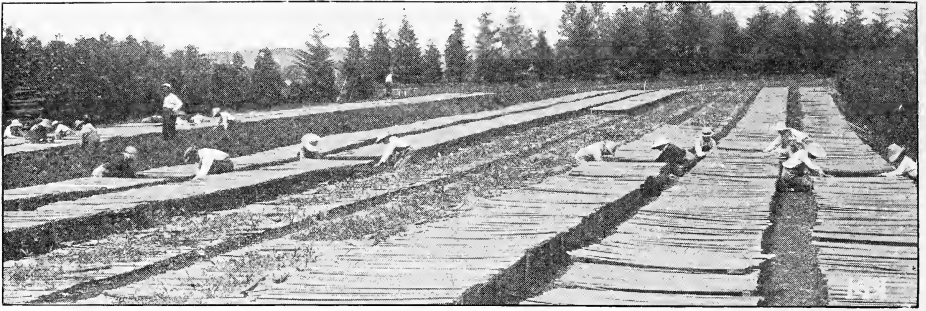
If tubs are wanted add 75c extra per tree.

*Evergreens ordered from you received. They are certainly fine and very satisfactory.*

CARL GUTGSELL,  
Supt. Lochevan, Derby, N. Y.

*We received a carload of Evergreens from you last spring and did not lose one.*

MRS. JOHN G. WILLIAMS,  
2601 East Second St., Duluth, Minn.



Hand Weeding Evergreen Seedlings—Allowing Only the Seedling Trees to Absorb Plant Food and Moisture From the Soil

## Young Evergreen and Deciduous Seedlings for Forestry Planting

There has been a widespread interest in Forestry and Woodlot planting and an enormously increased demand for our valuable native timber trees. We have made a specialty of growing this class of stock for many years and have an immense stock always on hand. All are strong, healthy and well rooted, freshly dug, plainly labeled and tied twice in bundles of fifty.

### Hill's Evergreen Seedlings

Variety—	Size	Age	100	1,000
Concolor Fir.....	4 to 8 inches	3 yr.	\$3.00	\$18.00
Douglas Fir.....	2 to 5 inches	2 yr.	2.25	13.50
Douglas Fir.....	4 to 8 inches	3 yr.	3.00	18.00
Red Cedar.....	2 to 4 inches	1 yr.	2.25	13.50
European Larch.....	2 to 5 inches	2 yr.	2.65	16.50
White Spruce.....	4 to 8 inches	3 yr.	2.75	21.00
Norway Spruce.....	4 to 8 inches	3 yr.	2.65	13.50
Norway Spruce.....	6 to 10 inches	3 yr.	3.00	18.00
Jack Pine.....	3 to 6 inches	2 yr.	2.25	13.50
Jack Pine.....	6 to 12 inches	3 yr.	3.00	18.00
Limber Pine.....	2 to 5 inches	2 yr.	3.75	22.50
Bull Pine.....	2 to 5 inches	2 yr.	2.25	13.50
Bull Pine.....	4 to 8 inches	3 yr.	3.00	18.00
Bull Pine.....	10 to 12 inches	4 yr.	3.35	22.50
Pitch Pine.....	2 to 4 inches	2 yr.	2.25	15.00
White Pine.....	2 to 5 inches	2 yr.	2.25	15.00
White Pine.....	6 to 12 inches	4 yr.	3.00	22.50
Scotch Pine.....	6 to 12 inches	3 yr.	2.65	18.00
American Arbor Vitae.....	3 to 6 inches	2 yr.	2.25	13.50
American Arbor Vitae.....	4 to 8 inches	3 yr.	3.00	18.00

Fifty of same variety and size at 100 rate; 500 of same variety and size at 1,000 rate.

### Hill's Deciduous Seedlings (Leaf Bearing)

Variety—	Size	Age	100	1,000
Norway Maple.....	4 to 8 inch	2 yr.	\$3.00	\$18.00
Hard or Sugar Maple.....	12 to 24 inches	3 yr.	3.35	20.25
Hard or Sugar Maple.....	24 to 36 inches	3 yr.	4.50	30.00
American Sweet Chestnut.....	8 to 15 inches	1 yr.	3.00	22.50
White Ash.....	6 to 12 inches	1 yr.	2.65	6.75
Black Walnut.....	12 to 18 inches	1 yr.	2.65	22.50
White Oak.....	3 to 6 inches	1 yr.	3.35	24.75
Swamp White Oak.....	3 to 6 inches	1 yr.	4.00	27.00
Scarlet Oak.....	3 to 6 inches	1 yr.	3.00	24.75
Bur Oak or Mossy Cup Oak.....	3 to 6 inches	1 yr.	3.35	24.75
Pin Oak.....	3 to 6 inches	1 yr.	3.75	30.00
Red Oak.....	3 to 6 inches	1 yr.	2.25	18.00
Black Locust.....	6 to 12 inches	1 yr.	2.25	5.25
American White Elm.....	12 to 24 inches	2 yr.	2.25	9.00
American White Elm.....	24 to 36 inches	2 yr.	2.65	13.50

Fifty of same variety and size at 100 rate; 500 of same variety and size at 1,000 rate.

Orders for seedlings must call for at least 50 of any one variety.



# Hill's Deciduous Trees (Leaf Bearing)

This department includes trees of varieties which drop their leaves in Winter. Their uses are manifold, the more important being the beautification of landscape, shade and shelter. No garden or landscape is complete without them. Plant a few of these on your lawn, dooryard or treebank and you will be surprised how they will increase the value and beauty of your property. The trees offered below are all select, straight specimens and fully uphold the reputation of all "Hill Grown" stock.

## American White Elm

**A Good Shade Tree. Fine for Treebank, Park and Boulevard Planting.**

Probably the most picturesque and graceful of all shade trees. The branches are thickly covered with leaves, but stand wide apart at the tops, making vase-like trees. We grow them for high-class retail trade, and have a complete supply of all sizes.

Price, Transplants	Each	10	100
6 to 8 feet .....	\$0.60	\$ 3.50	\$ 15.75
8 to 10 feet .....	1.15	7.75	52.50
1 to 1½ inch diameter, 10 to 12 feet	1.50	10.50	80.00
1½ to 2 inch diameter, 12 to 14 feet	1.75	14.00	130.00



Norway Maple

## Norway Maple

We have yet to find a place where Norway Maples will not thrive, or to find any other tree so satisfactory in growth, with such handsome foliage, such splendid rugged frame and trunk. They grow fast, their shape is graceful when they are little, and when they are old their foliage is beautiful and they are thoroughly dependable in all situations.

Price, transplants	Each	10
8 to 10 feet .....	\$1.75	\$15.00
1 to 1½ inch diameter, 10 to 12 feet.....	2.50	22.00
1½ to 2 inch diameter, 12 to 14 feet.....	3.50	30.50
2 to 3 inch diameter, 14 to 16 feet.....	5.25	44.00

## Schwedler's Purple Leaved Maple

Another distinct variety of Maple. Has foliage of a deep purple in early spring. This changes through the summer and fall, first to bright light green, which it holds for weeks, and then to gold and red. Very beautiful.

Price, transplants	Each	10
1 to 1½ inch diameter, 10 to 12 feet.....	\$2.50	\$22.00
1½ to 2 inch diameter, 12 to 14 feet.....	3.50	30.50
2 to 3 inch diameter, 14 to 16 feet.....	6.50	60.00



American White Elms are beautiful trees for street planting



Group Your Shrubs Like This and They Will Show Splendidly

## Hill's Ornamental Flowering Shrubs

The planting of shrubs combined with Evergreens offers great opportunity for the improvement of a residence or country home. Shrubs around a house hide unsightly corners, foundations, etc., while planted in groups along walks, driveways and fences, they give a home-like tone to any surroundings.

It is our aim to produce everything in flowering shrubs that is useful, hardy and worthy of general cultivation in our climate. Plantings can be arranged so you will get a succession of bloom from early Spring until frost comes in the Fall, followed by various colored foliage and bright berries.

### Japanese Barberry

Price	Each	10
1½ to 2 feet.....	\$0.35	\$2.50

### Golden Bell

Price	Each	10
2 to 3 feet.....	\$0.50	\$3.50

### Japanese Bush Honeysuckle

Price	Each	10
2 to 3 feet.....	\$0.50	\$3.50

### Tatarian Honeysuckle

Price	Each	10
2 to 3 feet.....	\$0.50	\$3.50

### Large Flowering Mock Orange

Price	Each	10
2 to 3 feet.....	\$0.50	\$3.50

### Golden Elder

Price	Each	10
2 to 3 feet.....	\$0.50	\$3.50

### Cut Leaved Elder

Price	Each	10
3 to 4 feet.....	\$0.60	\$4.25

### Snowberry

Price	Each	10
2 to 3 feet.....	\$0.50	\$3.50

### Purple Persian Lilac

Price	Each	10
2 to 3 feet.....	\$0.60	\$4.25

Five of same variety and size at 10 rate.



Mock Orange

Barberry

## A Word of Appreciation

We wish here to express sincere thanks to our many friends and patrons who have written kind words relative to the quality of stock and treatment they have received from us the past season. We greatly appreciate these expressions of confidence and shall endeavor to maintain the reputation they have so kindly given us.

### Hill Quality

The name of D. Hill has come to be synonymous with "High Quality" in Evergreens. Over half a century of conscientious effort, unbounded enthusiasm, a close study of the value of every new specie introduced; and above all, an ambition to make new friends and keep the old, has been the method by which this high position has been reached.

### Your Success With Our Stock

is a matter in which we are mightily interested. Therefore we endeavor to do everything reasonable within our power to help you succeed with the stock we send you, because we love trees and want you to enjoy them also. No firm is more careful in filling orders; we use every reasonable means to learn the customer's wishes without delaying the shipment. Your interests are our interests and we present you this 1918 catalog, confident that we merit your trade, and assure you of the best treatment, whether the order is large or small.

---

## BEAUTIFUL BLUE SPRUCE Special Offer No. 100

Truly a sensational triumph in Evergreen growing. It excites the wonder and admiration of all. The bright, gorgeous, silvery blue tints, when flashed in the sunlight, afford a wonderful effect, and as our friends become acquainted with it, they join us in similar admiration of its exquisite form and delicate beauty.

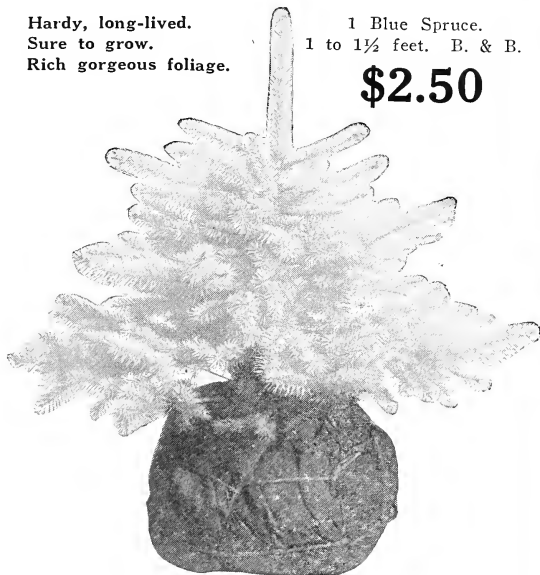
It should be in the lawn or garden of every lover of beautiful Evergreens. Described by an eminent horticulturist as "a marvel of rich beauty." It grows to perfection in all parts of the country and is absolutely hardy.

Thousands took advantage of this wonderful offer last season and many expressed great surprise at the magnificence of the tree. The illustration shows the tree dug with ball of earth and burlapped ready to box and ship to you.

**Hardy, long-lived.  
Sure to grow.  
Rich gorgeous foliage.**

1 Blue Spruce.  
1 to 1½ feet. B. & B.

**\$2.50**



The Beautiful Blue Spruce

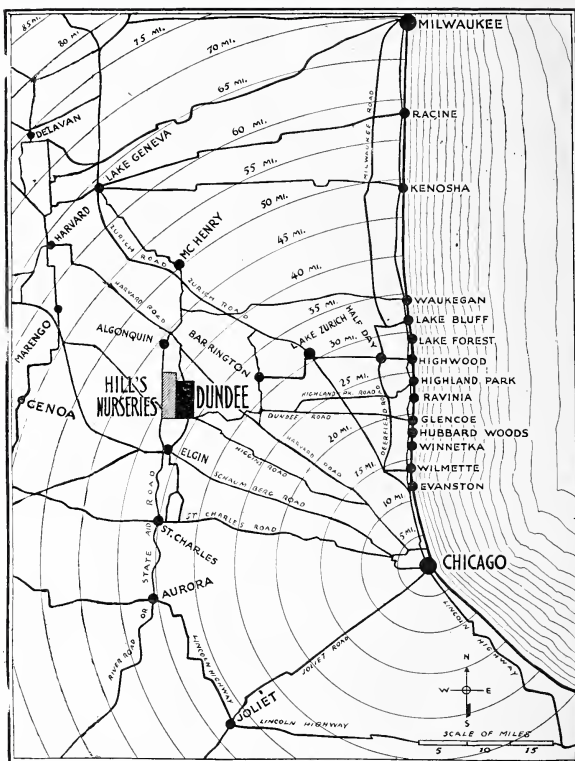
# How to Reach Our Nurseries

You are cordially invited to visit our nurseries.

We are situated in Northern Illinois, on well drained, rich fertile soil. Located 38 miles west of Chicago on the Galena Division of the C. & N. W. Ry., as well as the A. E. & C. inter-urban electric system.

Visitors are always welcome and when coming by the way of Chicago are directed to the C. & N. W. Depot on Madison street, from where it is an interesting ride through the famous Fox River Valley dairy district of one hour and thirty minutes, direct to the nursery.

For an hourly service from Chicago's shopping district, take the A. E. & C. electric line at Fifth avenue and Jackson boulevard direct to Elgin, transferring to the Carpentersville car, getting off at stop No. 4, Dundee, from where it is but a two-minute walk direct to the nursery.



## INDEX

EVERGREENS		PAGE	PAGE		
Arbor Vitæ (Thuja) . . . . .	22-24	Juniper (Juniperus) C't'd		Spruce (Continued)	
American . . . . .	22	Lee's Elegants . . . . .	10	White . . . . .	15
Douglas Golden . . . . .	24	Pfitzeriana . . . . .	10	Yew (Taxus) . . . . .	21
Peabody's Golden . . . . .	24	Procumbens . . . . .	12	American . . . . .	21
Pyramidal . . . . .	22	Red Cedar . . . . .	8	Dwarf Japanese . . . . .	21
Rosenthal's . . . . .	23	Sabina . . . . .	11	Japanese . . . . .	21
Siberian . . . . .	23	Sabina Prostrata . . . . .	11		
Woodward's Globe . . . . .	23	Sabina Tamariscifolia . . . . .	11	DECORATIVE STOCK	
Boxwood (Buxus) . . . . .	26	Schotti . . . . .	9	Boxwood (Buxus) . . . . .	26
Cedar . . . . .	8	Swedish . . . . .	13	Ball Shaped . . . . .	26
Pyramidal . . . . .	8	Pine (Pinus) . . . . .	17-20	Bush Shaped . . . . .	26
Red . . . . .	8	Austrian . . . . .	17	Pyramidal . . . . .	26
Also see Junipers.		Flexilis . . . . .	20	Evergreens for Tubbing . . . . .	27
Fir (Abies) . . . . .	6-7	Jack . . . . .	20		
Balsam . . . . .	7	Mountain (Dwarf) . . . . .	18	DECIDUOUS TREES	
Concolor . . . . .	7	Ponderosa . . . . .	20	Elm (American White) . . . . .	29
Douglas . . . . .	6	Red . . . . .	19	Maple (Acer) . . . . .	29
Hemlock . . . . .	6	Scotch . . . . .	19	Norway . . . . .	29
Japanese Gardens . . . . .	25	White . . . . .	17	Schwedler's . . . . .	29
Juniper (Juniperus) . . . . .	8-13	Spruce (Picea) . . . . .	14-16		
Canadensis . . . . .	12	Black Hill . . . . .	16	DWARF EVERGREENS . . . . .	25
Canadensis Aurea . . . . .	12	Colorado Blue . . . . .	14		
Counarti . . . . .	10	Douglas . . . . .	6	SHRUBS	
Glauca . . . . .	9	Engelmann . . . . .	16	General Assortment . . . . .	30
Irish . . . . .	13	Hemlock . . . . .	6	SEEDLINGS	
Kosteri . . . . .	13	Koster's Blue . . . . .	14	For Forestry Planting—	
		Norway . . . . .	15	Deciduous . . . . .	28
				Evergreens . . . . .	28



