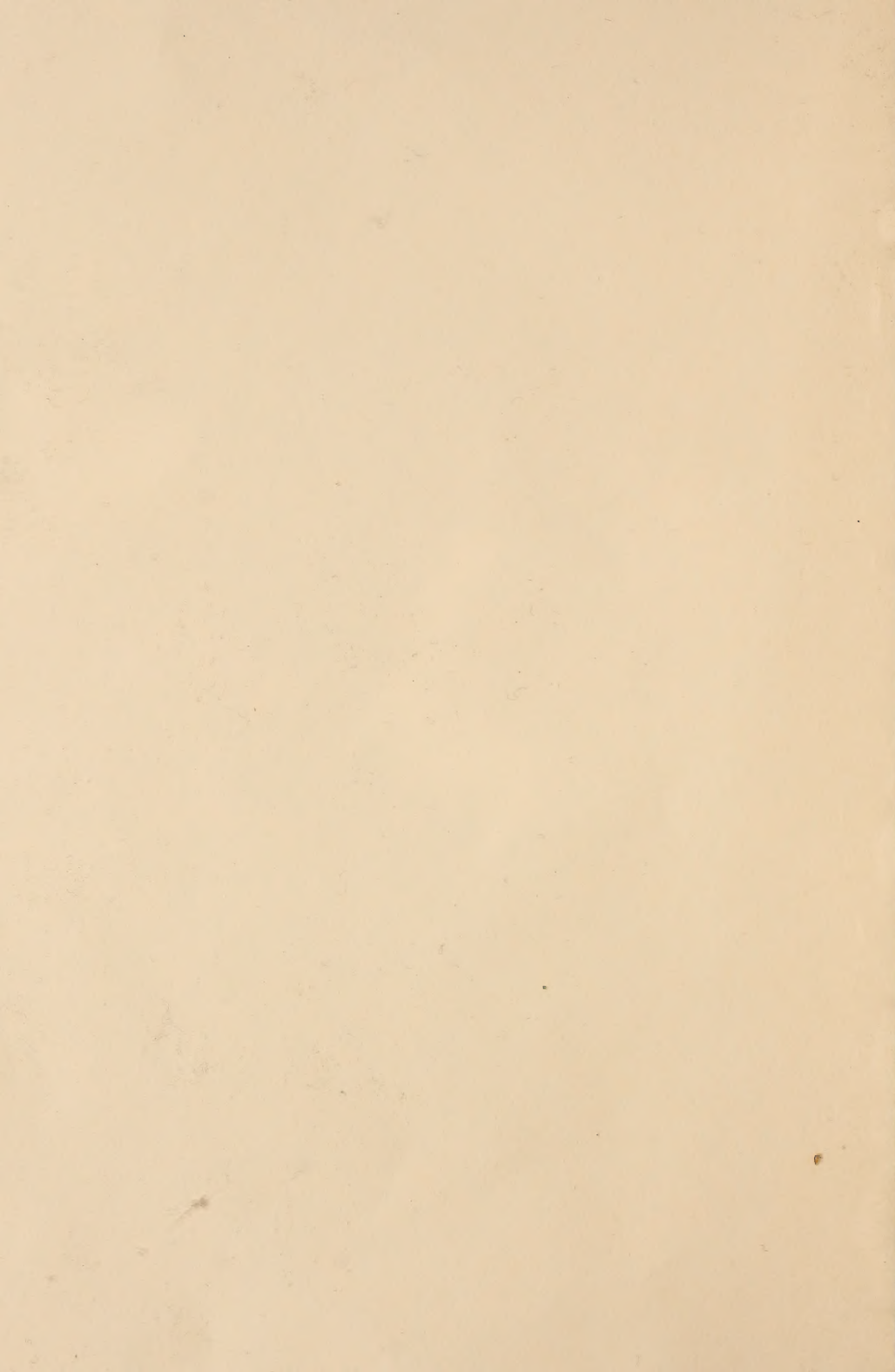


Historic, Archive Document

Do not assume content reflects current scientific knowledge, policies, or practices.



FALL OF 1905.

TRADE LIST

OF THE

MOUNT HOPE NURSERIES

ROCHESTER, N. Y.

ELLWANGER & BARRY, PROPRIETORS.

ESTABLISHED, 1840.

We take pleasure in presenting herewith our Wholesale Catalogue or Trade List for the Fall of 1905.

The stock herein offered is of the best quality in all respects and well worthy the attention of Dealers, Nurserymen, and Planters.

We keep all our departments fully up to the times, adding every new variety of merit as soon as we are satisfied of its value.

Our collections are carefully examined every year, and such things as seem to have little or no value are discarded. In this way we offer to our customers assortments which we can recommend with the greatest confidence.

The extent and completeness of the collections of both Fruit and Ornamental Departments of these Nurseries, their reputation for accuracy, which is scrupulously maintained; the long experience of the Proprietors and their assistants, in digging, packing, shipping, and in every detail of Nursery work, are well worthy the consideration of purchasers. No pains will be spared to insure satisfaction to those who favor us with their orders.

THE FALL PACKING SEASON.

We usually commence digging and packing the first week in October, and continue until the freezing of the ground, say, middle of November.

DIRECTIONS FOR SHIPPING.

Parties ordering are requested to state explicitly the mode of conveyance by which they desire their trees forwarded. When no route is designated, we exercise our judgment; but in no case do we assume any responsibility after the packages are shipped, unless for our own mistakes. When losses occur by detention, claims should at once be made on the forwarder.

CONDITIONS OF SALE.

FIRST—The articles in the following list will be furnished at the annexed prices only when the quantity specified shall be taken. *Five hundred* will be furnished at the *thousand* rate, fifty at the *hundred* rate, and five at the rate per ten. *In no case will we supply long lists of selected varieties, two or three of each, of either Fruit or Ornamental Trees or Plants, to Nurserymen or others, at wholesale rates, but at such a discount from retail prices as circumstances will justify.* Ordinarily a discount of from 20 to 33½ per cent. from retail single prices will be allowed on such lists.

SECOND—In furnishing assortments of Fruit Trees, as well as Ornamental Trees, Shrubs and Plants, at the prices in this Catalogue, we reserve the right of selecting varieties, but these will be of leading popular sorts, and in all cases we will give the purchaser his choice as far as practicable.

THIRD—In growing and furnishing all nursery stock we use the greatest care to have it true to name, and will replace any that may prove untrue. But no sale by us carries a warranty of quality, express or implied, and for any error we shall not be liable for more than the purchase price. Every purchase from us is made on these terms.

FOURTH—The terms of payment, CASH, or satisfactory security before delivery or shipment of trees.

The prices annexed do not include boxes or bales, which we charge for, at cost, as follows:

Boxes (including packing)	12 feet long by	30-inch ends	\$3 50
“ “ “	12 “ “	28 “	3 25
“ “ “	10 “ “	30 “	3 00
“ “ “	10 “ “	28 “	2 75
“ “ “	10 “ “	24 “	2 50
“ “ “	9 “ “	30 “	2 75
“ “ “	9 “ “	28 “	2 50
“ “ “	9 “ “	24 “	2 25

Bales, according to size, 15 cents to \$2.50.

No charge is made for cartage from the nursery to the Railroad Station.

CATALOGUES.

OUR GENERAL CATALOGUE of *Trees, Shrubs, Roses, etc.*, carefully revised, beautifully illustrated with half-tone engravings, contains accurate and trustworthy descriptions of the most valuable varieties in cultivation, and is replete with practical hints, indispensable to planters. *Free* on request.

WHOLESALE CATALOGUE OR TRADE LIST, issued semi-annually, *free*.

FRUIT TREES, SMALL FRUITS, ETC.

NOTE.—In filling orders at the prices annexed, we reserve the right of selecting the varieties, but will consult the wishes of our customers as far as we can. Orders for select varieties will be charged at special rates. Such articles as are not enumerated in this list can be supplied in retail quantities only.

	Per 10	Per 100	Per 1000
APPLES, STANDARD—First class, 5 to 7 ft. ³ / ₄ in. and up	\$	\$15 00	\$ 80 00
“ “ “ Medium, 4 to 5 ft. ³ / ₄ to ³ / ₂ in....		12 00	60 00
CRAB APPLES—Standard, first class, 5 to 7 ft. ³ / ₄ in. and up		15 00	
“ “ “ Medium, 4 to 5 ft. ³ / ₄ to ³ / ₂ in....		12 00	
PEARS, STANDARD—First class, 5 to 6 ft. ³ / ₄ in. and up		20 00	120 00
“ “ “ Medium, 4 to 5 ft. ³ / ₄ to ³ / ₂ in....		12 00	80 00
“ DWARF—First class, 3 to 4 ft.....		10 00	
“ “ “ Medium, 2 to 3 ft.....		8 00	
CHERRIES, STANDARD—First class, sweet.....		25 00	
“ “ “ sour.....		20 00	
PLUMS, STANDARD—First class, 5 to 6 ft. ³ / ₄ in. and up		25 00	
“ “ “ Medium, 3 to 5 ft.....		20 00	
“ “ “ ABUNDANCE, BURBANK, RED JUNE, WICKSON, 1 yr. branch'd		20 00	
PEACHES—On Peach stock, 1 year, first class.....		10 00	60 00
“ “ “ Medium, 2 to 3 ft.....		8 00	40 00
GOOSEBERRIES—DOWNING.....		5 00	
“ “ SMITH'S IMPROVED.....		5 00	
“ “ COLUMBUS.....		8 00	
“ “ PEARL.....		5 00	
“ “ RED JACKET (Josselyn).....		5 00	
“ “ TRIUMPH.....		8 00	
BLACKBERRIES—AGAWAM.....		1 50	10 00
“ “ ANCIENT BRITON.....		1 50	10 00
“ “ EARLY KING.....		1 50	10 00
“ “ EL DorADO.....		1 50	
“ “ KIT TATINNY.....		1 50	
“ “ TAYLOR.....		1 50	
“ “ SNYDER.....		1 50	10 00
“ “ WILSON JUNIOR.....		1 50	10 00
“ “ RATHBUN.....		1 50	
DEWBERRIES—LUCRETIA.....		1 50	
STRAWBERRY-RASPBERRY.....		3 00	
NUTS—BUTTERNUT, 4 to 5 ft.....	1 50		
“ “ CHESTNUT, AMERICAN, 4 to 5 ft.....	2 00		
“ “ “ RIDGELY, 5 to 7 ft.....	2 00		
“ “ “ SPANISH, 3 to 4 ft.....	2 50		
“ “ “ “ 4 to 5 ft.....	3 00		
“ “ WALNUT, ENGLISH, 2 to 3 ft.....	2 50		
CURRENTS—CHERRY, 2 years.....		4 00	
“ “ FAY'S PROLIFIC, 2 years.....		4 00	25 00
“ “ POMONA, 2 years.....		4 00	
“ “ RED CROSS, 2 years.....		4 00	30 00
“ “ VERSAILLAISE, 2 years.....		4 00	
“ “ VICTORIA, 2 years.....		4 00	
“ “ WHITE GRAPE, 2 years.....		4 00	
“ “ WILDER, 2 years.....		4 00	30 00
“ “ BLACK CHAMPION, 2 years.....		4 00	
“ “ BLACK NAPLES, 2 years.....		4 00	
“ “ LEE'S BLACK, 2 years.....		4 00	
RASPBERRIES, Red—CUTHBERT.....		1 50	8 00
“ “ “ COLUMBIAN (tips).....		1 50	

	Per 10	Per 100	Per 1000
RASPBERRIES, Red—CLARKE.....	\$	\$ 1 50	\$
“ “ MARLBORO.....		1 50	8 00
“ “ MILLER.....		1 50	
“ Yellow—CHAMPLAIN.....		1 50	
“ “ GOLDEN QUEEN.....		1 50	
“ Black—EUREKA.....		1 50	
“ “ GREGG } tips.....		1 50	
“ “ KANSAS }.....		1 50	
MULBERRIES—NEW AMERICAN.....	2 50	20 00	
“ DOWNING.....	2 50		
“ WHITE, 5 to 6 ft.....	2 00		
FIGS—.....	2 00		
STRAWBERRIES—BRANDYWINE, BUBACH, GLADSTONE, MARSHALL, MCKINLEY, MICHEL'S EARLY, SHARPLESS.....		1 00	5 00
RHUBARB—Best varieties.....		5 00	
ASPARAGUS—BARR'S MAMMOTH, 2 years.....		1 00	5 00
“ COLUMBIAN WHITE, 2 years.....		1 00	5 00
“ CONOVER'S COLOSSAL, 2 years.....		1 00	5 00
“ PALMETTO, 2 years.....		1 00	5 00
HARDY GRAPES—Two Years.			
AGAWAM (Rogers' No. 15).....	1 00	5 00	
BARRY (Rogers' No. 43).....	1 00	5 00	
BRIGHTON.....	1 00	5 00	
CAMPBELL'S EARLY (new).....	1 00	6 00	50 00
CATAWBA.....	1 00		
CHAMPION.....	1 00	3 00	
CLINTON.....	1 00		
CONCORD.....	1 00	3 00	20 00
CREVELING.....	1 00		
DELAWARE.....	1 00		
DIANA.....	1 00		
DUCHESS.....	1 00		
EATON.....	1 00	5 00	
EUMELAN.....	1 00		
GÆRTNER (Rogers' No. 14).....	1 00		
HARTFORD.....	1 00	3 00	
HERBERT (Rogers' No. 44).....	1 00		
IONA.....	1 00		
ISABELLA.....	1 00		
LADY.....	1 00		
LINDLEY (Rogers' No. 9).....	1 00		
LUCILE (new).....	1 00		
MARTHA.....	1 00		
MASSASOIT (Rogers' No. 3).....	1 00		
MERRIMACK.....	1 00		
MILLS.....	5 00		
MOORE'S DIAMOND.....	1 00	5 00	
MOORE'S EARLY.....	1 00	5 00	
NIAGARA.....	1 00	4 00	
POCKLINGTON.....	1 00		
SALEM (Rogers' No. 53).....	1 00	5 00	
VERGENNES.....	1 00		
WILDER (Rogers' No. 4).....	1 00	5 00	
WINCHELL (identical with Green Mountain).....	1 50	10 00	
WORDEN.....	1 00	4 00	

ORNAMENTAL TREES, EVERGREENS AND SHRUBS

DECIDUOUS TREES.	Per 10	Per 100
AILANTHUS —GLANDULOSA, 4 to 6 ft.....	\$ 2 00	\$
ALDER —IMPERIAL CUT-LEAVED, 4 to 5 ft.....	5 00	
ALMOND —DAVIDIANA ALBA, 3 to 4 ft.....	2 00	
“ “ RUBRA, 3 to 4 ft.....	2 00	
“ “ LARGE DOUBLE FLOWERED, 3 to 4 ft.....	2 00	
AMELANCHIER —CANADENSIS, 2 to 3 ft.....	2 50	
ASH —AUCUBA-LEAVED, 6 to 8 ft.....	5 00	
“ EUROPEAN, 6 to 8 ft.....	4 00	
BEECH —BROAD-LEAVED, 5 to 6 ft.....	10 00	
“ CRESTED-LEAVED, 3 to 5 ft.....	7 50	
“ CUT-LEAVED, 3 to 4 ft.....	7 50	
“ “ “ 4 to 5 ft.....	10 00	
“ FERN-LEAVED, 3 to 4 ft.....	7 50	
“ OAK-LEAVED, 3 to 4 ft.....	7 50	
“ PURPLE-LEAVED, 3 to 4 ft.....	5 00	
“ “ “ 4 to 5 ft.....	6 00	
“ “ “ 5 to 6 ft.....	10 00	
“ “ “ 6 to 8 ft.....	20 00	
“ PURPUREA MAJOR, 3 to 4 ft.....	7 50	
“ “ “ 4 to 5 ft.....	10 00	
“ RIVERS' PURPLE, 3 to 4 ft.....	6 00	
“ “ “ 4 to 5 ft.....	7 50	
“ WEEPING. See Weeping Trees.		
BIRCH —CUT-LEAVED WEEPING, 5 to 6 ft.....	6 00	30 00
“ “ “ “ 6 to 8 ft.....	7 50	40 00
“ EUROPEAN, 6 to 8 ft.....	4 00	30 00
“ “ 8 to 10 ft.....	5 00	40 00
“ FASTIGIATA (Pyramidal Birch), 3 to 4 ft.....	5 00	
“ “ “ 6 to 8 ft.....	7 50	
“ NIGRA (rubra), 3 to 4 ft.....	3 00	25 00
“ “ “ 6 to 8 ft.....	5 00	
“ PAPER, 5 to 6 ft.....	3 00	25 00
“ “ 6 to 8 ft.....	4 00	30 00
“ “ 8 to 10 ft.....	5 00	40 00
“ PURPLE-LEAVED, 3 to 4 ft.....	5 00	
BIRD CHERRY —EUROPEAN, 5 to 7 ft.....	3 00	
BOX ELDER —See Negundo.		
BUCKEYE —5 to 6 ft.....	3 00	
BUTTONWOOD —See Plane.		
CATALPA —BUNGEI, top worked, 6 to 7 ft., 2 years.....	6 00	50 00
“ JAPAN HYBRID, 6 to 8 ft.....	3 00	
“ “ “ 8 to 10 ft.....	4 00	
“ KÆMPFERI, 6 to 8 ft.....	2 50	20 00
“ “ “ 8 to 10 ft.....	4 00	
“ SPECIOSA, 6 to 8 ft.....	2 50	15 00
“ “ “ 8 to 10 ft.....	4 00	
“ “ “ 10 to 12 ft.....	5 00	
“ “ “ 12 to 14 ft.....	7 50	
“ SYRINGÆFOLIA, 6 to 8 ft.....	2 50	
“ “ “ 8 to 10 ft.....	4 00	
CHERRY —LARGE, DOUBLE-FLOWERED, 4 to 6 ft.....	3 00	
“ RHEXII (DOUBLE-FLOWERED), 3 to 4 ft.....	4 00	

	Per 10	Per 100
CHERRY —SIEBOLD'S DOUBLE WHITE-FLOWERED, 2 to 3 ft.	\$ 4 00	\$
“ WEeping. See Weeping Trees.		
CORNUS —FLORIDA. See Dogwood.		
CRAB APPLE —BECHTEL'S DOUBLE-FLOWERED (New), 3 ft.	3 00	
“ “ FLORIBUNDA, 3 to 4 ft.	4 00	
“ “ “ ATROSANGUINEA, 3 to 4 ft.	4 00	
DOGWOOD —WHITE-FLOWERED, 2 to 3 ft.	3 00	25 00
“ “ “ 3 to 4 ft.	4 00	
ELM —AMERICAN, 6 to 8 ft. 1 in.	4 00	25 00
“ “ 8 to 10 ft. 1½ to 1½ in.	5 00	35 00
“ “ 10 to 12 ft. 1½ to 2 in.	7 50	
“ “ 12 to 14 ft. 2½ to 3 in.	15 00	100 00
“ “ 14 to 16 ft. 3 to 4 in.	30 00	
“ “ 16 to 20 ft. 4 to 5 in.	50 00	
“ DOVÆI, 6 to 8 ft.	5 00	
“ “ 10 to 12 ft.	9 00	
“ “ 16 to 20 ft. 4 to 5 in.	50 00	
“ HUNTINGDON, 6 to 8 ft. 1 in.	5 00	35 00
“ “ 8 to 10 ft. 1¼ to 1½ in.	6 00	50 00
“ “ 10 to 12 ft. 1½ to 2 in.	10 00	75 00
“ “ 12 to 14 ft. 2 to 2½ in.	15 00	
“ “ 14 to 16 ft. 3 to 4 in.	30 00	
“ PURPLE-LEAVED, 5 to 6 ft.	5 00	
“ “ 8 to 10 ft.	7 50	
“ SCOTCH, 6 to 8 ft.	4 00	25 00
“ “ 8 to 10 ft.	5 00	
“ SUPERBA, 6 to 8 ft. 1 in.	5 00	35 00
“ “ 10 to 12 ft.	10 00	
“ WEeping, CAMPERDOWN. See Weeping Trees.		
HORSE CHESTNUT —DOUBLE, WHITE-FLOWERED, 5 to 6 ft.	6 00	
“ “ “ “ “ 6 to 8 ft.	7 50	
“ “ “ “ “ 8 to 10 ft.	20 00	
“ “ “ RED-FLOWERED, 5 to 6 ft.	7 50	
“ “ “ “ “ 6 to 8 ft.	10 00	
“ “ “ “ “ 8 to 10 ft.	20 00	
“ “ “ WHITE-FLOWERED, 5 to 6 ft.	3 00	
“ “ “ “ “ 8 to 10 ft.	10 00	
JUDAS TREE —AMERICAN, 3 to 4 ft.	2 50	20 00
“ “ 4 to 5 ft.	3 00	
LABURNUM —ENGLISH, 2 to 3 ft.	2 50	20 00
“ “ 3 to 4 ft.	3 00	
“ SCOTCH, 2 to 3 ft.	2 50	20 00
LINDEN —AMERICAN, 6 to 8 ft.	4 00	30 00
“ “ 8 to 10 ft.	5 00	
“ “ 12 to 14 ft.	15 00	
“ DASYSTYLA, 6 to 8 ft.	5 00	
“ EUROPEAN (small-leaved), 6 to 8 ft.	4 00	
“ “ “ “ 8 to 10 ft.	5 00	
“ “ “ “ 12 to 14 ft.	15 00	
“ “ (broad-leaved), 6 to 8 ft. 1 in.	4 00	
“ “ “ “ 8 to 10 ft. 1¼ to 1½ in.	5 00	40 00
“ “ “ “ 10 to 12 ft. 1½ to 2 in.	7 50	60 00
“ “ “ “ 12 to 14 ft. 2 to 2½ in.	15 00	90 00
“ “ “ “ 14 to 16 ft. 3 to 4 in.	20 00	
“ RED FERN-LEAVED, 6 to 8 ft.	7 50	60 00
“ “ “ 8 to 10 ft.	10 00	
LOCUST —BLACK OR YELLOW, 4 to 5 ft.	2 00	15 00
“ HISPIDA (Moss Locust). 2 to 3 ft.	3 00	
MAGNOLIA —CONSPICUA, 3 to 4 ft.	25 00	
“ NORBERTIANA, 3 to 4 ft.	25 00	
“ SOULANGEANA, 3 to 4 ft.	20 00	
“ SPECTIOSA, 2 to 3 ft.	20 00	
“ STELLATA, 2 ft.	20 00	

	Per 10	Per 100
MAPLE —ASH-LEAVED—See Negundo.	\$	\$
“ ENGLISH, 3 to 4 ft.	4 00	
“ “ 4 to 5 ft.	5 00	
“ EUROPEAN SYCAMORE, 16 to 20 ft., 3 to 4 in. diameter.	30 00	
“ GINNALA, 3 to 4 ft.	3 00	20 00
“ “ 5 to 6 ft.	5 00	
“ PURPLE-LEAVED SYCAMORE, 6 to 8 ft.	7 50	
“ TRICOLOR-LEAVED SYCAMORE, 3 to 4 ft.	5 00	
“ WORLE'S GOLDEN-LEAVED SYCAMORE, 6 to 7 ft.	7 50	
“ JAPAN ATROPURPUREUM, 18 to 24 in., in pots	15 00	
“ “ 2 to 3 ft., “ “	25 00	
“ “ CUT-LEAVED PURPLE, 2 ft, in pots.	15 00	
“ NORWAY, 6 to 8 ft., 1 in.	4 00	30 00
“ “ 8 to 10 ft., 1½ to 1¾ in.	5 00	40 00
“ “ 12 to 14 ft., 2 to 2½ in.	20 00	100 00
“ “ 14 to 16 ft., 3 to 4 in.	30 00	
“ “ 16 to 18 ft., 4 to 5 in.	50 00	
“ “ CURLED-LEAVED (CUCULLATUM), 6 to 8 ft.	7 50	
“ GENEVA, 5 to 6 ft.	5 00	
“ “ 6 to 8 ft.	7 50	
“ GOLD MARGINED-LEAVED, 6 to 8 ft.	7 50	
“ LORBERGH, 3 to 4 ft.	5 00	
“ REITENBACH'S, 5 to 6 ft.	5 00	
“ “ 6 to 7 ft.	7 50	
“ “ 8 to 10 ft.	15 00	
“ SCHWEDLER'S, 6 to 7 ft. Beautiful purple-leaved Norway Maple in spring	7 50	50 00
“ UNULATUM, 6 to 8 ft.	7 50	
“ “ 8 to 10 ft.	10 00	
“ “ 12 to 14 ft.	20 00	
“ PENNSYLVANICUM, 3 to 4 ft.	4 00	
“ RED OR SCARLET, 6 to 8 ft.	5 00	
“ “ “ GLOBE-HEADED, 6 to 8 ft.	5 00	
“ “ “ FULGENS, 4 to 5 ft.	5 00	
“ Silver-leaved OR SOFT, 6 to 8 ft. 1 in. diameter.	2 50	15 00
“ “ “ “ 8 to 10 ft. 1½ to 1¾ in. diam.	3 00	20 00
“ “ “ “ 10 to 12 ft. 1½ to 2 in. diam.	4 00	30 00
“ “ “ “ 12 to 14 ft. 2 to 2½ in. diam.	7 50	50 00
“ “ “ “ 14 to 16 ft. 2½ to 3 in. diam.	10 00	75 00
“ “ CUT-LEAVED (E. & B.), 8 to 10 ft.	7 50	
“ CRISPUM, 5 to 6 ft.	5 00	
“ LUTESCENS, 6 to 8 ft.	5 00	
“ TRIPARTITUM, 6 to 8 ft.	5 00	
“ WIER'S CUT-LEAVED, 6 to 8 ft. 1 in. diameter	3 00	25 00
“ “ “ “ 8 to 10 ft. 1¼ to 1½ in. diam.	4 00	30 00
“ “ “ “ 10 to 12 ft. 1½ to 2 in. diam.	5 00	40 00
“ “ “ “ 12 to 14 ft. 2 to 2½ in. diam.	10 00	75 00
“ “ “ “ 14 to 16 ft. 2½ to 3 in. diam.	15 00	
“ “ “ “ 16 to 20 ft. 3 to 4 in. diam.	30 00	
“ SUGAR, 6 to 8 ft., ¾ to 1 in. diam.	4 00	30 00
“ “ 12 to 14 ft., 2 to 2½ in. in diam.	20 00	
“ “ 16 to 18 ft., 2 to 3 in. in diam.	25 00	
“ MONUMENTALIS, 6 to 8 ft.	7 50	
MOUNTAIN ASH —AMERICAN, 4 to 5 ft.	4 00	
“ “ ELDER-LEAVED, 8 to 10 ft.	5 00	
“ “ EUROPEAN, 6 to 8 ft.	3 00	
“ “ OAK-LEAVED, 6 to 8 ft.	3 00	25 00
“ “ “ 8 to 10 ft.	4 00	
NEGUNDO —ASH-LEAVED MAPLE (BOX ELDER), 6 to 8 ft.	2 50	15 00
NETTLE TREE —(CELTIS OCCIDENTALIS), 6 to 8 ft.	4 00	
OAK —BICOLOR, 5 to 6 ft.	7 50	
“ CHESTNUT, 4 to 5 ft.	7 50	
“ ENGLISH, 5 to 6 ft.	5 00	

	Per 10	Per 100
OAK—ENGLISH, 6 to 8 ft.	\$ 7 50	\$ 50 00
“ “ 8 to 10 ft.	10 00	75 00
“ PIN (PALUSTRIS), 5 to 6 ft.	5 00	40 00
“ “ “ 6 to 8 ft.	7 50	50 00
“ “ “ 8 to 10 ft.	10 00	75 00
“ “ “ 10 to 12 ft.	15 00	100 00
“ “ “ 12 to 14 ft.	20 00	
“ PYRAMIDAL EVERGREEN, 5 to 6 ft. } A beautiful {	7 50	
“ “ “ 6 to 8 ft. } formal tree. {	10 00	
“ RED, 5 to 7 ft.	7 50	60 00
“ “ 8 to 10 ft.	15 00	
“ TURKEY, 10 to 12 ft.	20 00	
“ WHITE, (AMERICAN WHITE), 5 to 6 ft.	10 00	
“ “ “ 6 to 8 ft.	15 00	
PAVIA—WHITLEYII, 5 to 6 ft.	5 00	
“ “ “ 6 to 8 ft.	6 00	
PLANE—AMERICAN (PLATANUS OCCIDENTALIS) 6 to 8 ft., 1 in.	4 00	30 00
“ “ “ 8 to 10 ft., 1½ to 1½	5 00	
“ ORIENTAL (PLATANUS ORIENTALIS), 6 to 8 ft., 1 in.	4 00	30 00
“ “ “ 8 to 10 ft., 1½ to 1½	5 00	
POPLAR—ALBA (WHITE POPLAR), 6 to 8 ft.	2 50	15 00
“ BALSAM (BALM OF GILEAD), 6 to 8 ft.	2 00	10 00
“ “ “ 8 to 10 ft.	2 50	15 00
“ “ “ 10 to 12 ft.	3 00	20 00
“ BOLLEANA, 6 to 8 ft.	3 00	
“ CANADIAN OR COTTONWOOD, 8 to 10 ft.	2 50	
“ “ “ 10 to 12 ft.	3 00	
“ CANESCENS, 6 to 8 ft.	2 00	
“ CAROLINA, 6 to 8 ft., ¾ to 1 in.	1 50	8 00
“ “ 8 to 10 ft., 1¼ to 1½ in.	2 00	10 00
“ “ 10 to 12 ft., 1½ to 2 in.	2 50	15 00
“ “ 12 to 14 ft., 2 to 2½ in.	4 00	20 00
“ CERTINENSIS, 8 to 10 ft.	2 50	
“ “ “ 10 to 12 ft.	3 00	
“ CRISPA, 8 to 10 ft.	2 50	
“ ELEGANS, 6 to 8 ft.	2 00	
“ EUGENIE, 6 to 8 ft.	2 00	
“ GOLDEN (VAN GEERT'S), 6 to 8 ft.	2 00	
“ “ “ 8 to 10 ft.	2 50	
“ LOMBARDY, 6 to 8 ft., ¾ to 1 in.	2 00	10 00
“ “ 8 to 10 ft., 1¼ to 1½ in.	2 50	
“ NOLESTII, 10 to 12 ft.	3 00	
“ TRICHOCARPA, 8 to 10 ft.	2 50	
“ “ “ 10 to 12 ft.	3 00	
SALISBURIA—(MAIDEN HAIR TREE, GINKGO), 4 to 5 ft.	4 00	
SWEET GUM—(LIQUIDAMBAR), 3 to 4 ft.	3 00	
THORN—DOUBLE SCARLET, 4 to 5 ft.	4 00	30 00
“ “ RED, 4 to 5 ft.	4 00	
“ “ WHITE, 4 to 5 ft.	4 00	
“ PAUL'S DOUBLE SCARLET, 4 to 5 ft.	4 00	30 00
“ AZAROLUS, 4 to 5 ft.	4 00	
“ CARRIERII, 4 to 5 ft.	4 00	
“ COCCINEA, 3 to 4 ft.	2 50	
“ CRUS-GALLI, 3 to 4 ft.	2 00	15 00
“ “ 6 to 8 ft.	4 00	25 00
“ GUMPERI, 4 to 5 ft.	4 00	
“ MESPILUS, 4 to 5 ft.	4 00	
“ NIGRA, 4 to 5 ft.	4 00	
“ OXYACANTHA, 18 to 24 in.	1 50	10 00
“ “ 3 to 4 ft.	2 50	
“ TANACETIFOLIA, 3 to 4 ft.	4 00	
VIRGILIA—LUTEA (YELLOW WOOD), 5 to 7 ft.	5 00	
WALNUT—CUT-LEAVED (RUPESTRIS), 5 to 7 ft.	4 00	

	Per 10	Per 100
ARBOR VITÆ—TOM THUMB, 9 to 12 in.....	\$ 2 50	\$
JUNIPER—IRISH, 18 to 24 in.....	2 00	15 00
“ “ 2 to 3 ft.....	2 50	20 00
“ “ ROBUST (ROBUSTA), 3 to 4 ft.....	4 00	
PINE—AUSTRIAN, 18 to 24 in.....	2 50	20 00
“ “ 2 to 3 ft.....	3 50	
“ MUGHO, 12 to 15 in.....	5 00	
“ SCOTCH, 18 to 24 in.....	2 50	
“ WHITE, 18 to 24 in.....	2 50	20 00
“ “ 2 to 3 ft.....	3 00	25 00
“ “ 3 to 4 ft.....	5 00	35 00
SILVER FIR—CONCOLOR, 2 to 3 ft.....	20 00	
“ “ NORDMANN'S, 18 to 24 in.....	10 00	
“ “ 2 to 3 ft.....	15 00	
SPRUCE—DOUGLASI, 2 to 3 ft.....	5 00	
“ HEMLOCK, 18 to 24 in.....	4 00	30 00
“ “ 2 to 3 ft.....	6 00	50 00
“ “ 3 to 4 ft.....	10 00	
“ NORWAY, 18 to 24 in.....	2 50	15 00
“ “ 2 to 3 ft.....	3 00	20 00
“ ORIENTAL, 2 to 3 ft.....	15 00	
“ PUNGENS GLAUCA (SELECTED BLUE), 18 to 24 in.....	20 00	
“ “ “ “ 2 to 3 ft.....	25 00	
“ “ “ “ 3 to 4 ft.....	40 00	
“ “ GREEN, 18 to 24 in.....	3 00	25 00
“ “ “ 2 to 3 ft.....	4 00	30 00
“ “ “ 3 to 4 ft.....	5 00	
“ WHITE, 2 to 3 ft.....	4 00	
YEW—ELEGANTISSIMA (GOLDEN), 6 to 9 in.....	6 00	50 00
“ “ “ 12 to 18 in.....	7 50	60 00
“ STRICTA (ERECTA), 12 to 18 in.....	5 00	40 00
“ “ “ 18 to 24 in.....	7 50	50 00
“ “ “ 2 to 3 ft.....	10 00	75 00
“ WASHINGTON GOLDEN, 18 to 24 in.....	10 00	

EVERGREEN SHRUBS.

DWARF BOX.....	1 50	5 00
EUONYMUS—JAPONICUS RADICANS, 9 to 12 in.....	2 00	15 00
“ “ “ 12 to 15 in.....	2 50	20 00
MAHONIA—AQUIFOLIA, 12 in.....	2 00	15 00

DECIDUOUS SHRUBS.

ALMOND—DWARF DOUBLE RED, 2 ft.....	2 00	15 00
“ “ “ WHITE, 2 ft.....	2 00	15 00
ALTHÆA—DOUBLE. Named varieties, 18 to 24 in.....	1 50	10 00
“ “ “ 2 to 3 ft.....	2 00	
“ VARIEGATED-LEAVED, 18 to 24 in.....	2 00	
“ TOTUS ALBUS (SINGLE PURE WHITE), 2 ft.....	1 50	
ARALIA—SPINOSA, 2 to 3 ft.....	2 50	20 00
AZALEA—MOLLIS.....	5 00	
BACCHARIS—HALIMIFOLIA, 2 to 3 ft.....	1 50	10 00
BARBERRY—HOLLY-LEAVED, 18 to 24 in.....	2 50	
“ EUROPEAN (VULGARIS), 2 to 3 ft.....	1 50	10 00
“ PURPLE-LEAVED, 2 to 3 ft.....	1 50	10 00
“ THUNBERG'S (B. THUNBERGH), 18 to 24 in.....	1 50	10 00
BUCKTHORN—18 to 24 in.....	1 50	8 00
“ 5 to 7 ft.....	2 50	15 00
CALYCANTHUS—18 to 24 in.....	1 50	10 00
CARAGANA—ARBORESCENS, 2 to 3 ft.....	1 50	10 00

	Per 10	Per 100
CARYOPTERIS—MASTACANTHUS, 12 to 18 in.....	\$ 1 50	\$ 10 00
CEANOTHUS—AMERICANUS, 12 to 18 in.....	1 50	10 00
CEPHALANTHUS—OCCIDENTALIS, 2 to 3 ft.....	1 50	10 00
CLETHRA—ALNIFOLIA, 18 to 24 in.....	1 50	10 00
COLUTEA—ARBORESCENS, 2 to 3 ft.....	1 50	10 00
“ “ “ 3 to 4 ft.....	2 00	12 00
CORNUS—ALTERNIFOLIA, 2 to 3 ft.....	1 50	10 00
“ “ “ 3 to 4 ft.....	2 00	15 00
“ “ MASCULA, 18 to 24 in.....	1 50	10 00
“ “ “ 3 to 5 ft.....	2 00	15 00
“ “ “ VARIEGATA, 18 to 24 in.....	2 00	
“ “ PANICULATA, 2 to 3 ft.....	1 50	10 00
“ “ SANGUINEA, 2 to 3 ft.....	1 50	8 00
“ “ “ 3 to 5 ft.....	2 00	12 00
“ “ “ ELEGANTISSIMA, 2 to 3 ft.....	2 00	15 00
“ “ SIBERICA, 2 to 3 ft.....	2 00	15 00
“ “ SPÆTHII, 2 to 3 ft.....	2 50	20 00
“ “ STOLONIFERA AUREA (YELLOW-BARKED), 2 to 3 ft...	2 00	15 00
“ “ “ RED-BARKED, 2 to 3 ft.....	1 50	10 00
“ “ “ “ 3 to 4 ft.....	2 00	15 00
“ “ VIRIDISSIMA, 2 to 3 ft.....	2 00	15 00
CURRENT—AUREUM (YELLOW-FLOWERED), 2 to 3 ft.....	1 50	10 00
“ “ GORDON'S, 2 to 3 ft.....	1 50	10 00
“ “ SANGUINEUM (DOUBLE) 2 ft.....	2 50	
DESMODIUM—PENDULIFLORUM, 18 to 24 in.....	2 00	15 00
DEUTZIA—CRENATA FL. PL. (DOUBLE PINK), 2 to 3 ft.....	1 50	10 00
“ “ “ ALBA (DOUBLE WHITE), 2 to 3 ft.....	1 50	10 00
“ “ GRACILIS, 12 to 18 in.....	1 50	10 00
“ “ “ CAMPANULATA, 2 to 3 ft.....	2 00	
“ “ “ CARMINEA, 2 to 3 ft... } Lemoine's {	2 00	
“ “ “ ROSEA, 2 ft..... } New Deutzias. {	2 00	
“ “ “ VENUSTA, 2 to 3 ft..... }	2 00	
“ “ LEMOINEI, 2 ft.....	1 50	10 00
“ “ PRIDE OF ROCHESTER, 2 to 3 ft.....	1 50	10 00
“ “ PARVIFLORA, 18 to 24 in.....	2 00	
“ “ SCABRA, 2 to 3 ft.....	1 50	
ELÆAGNUS—ARGENTEA, 2 to 3 ft.....	1 50	10 00
ELDER—ACUTILOBA, 2 to 3 ft.....	1 50	10 00
“ “ CANADENSIS, 2 to 3 ft.....	1 50	10 00
“ “ CUT-LEAVED, 2 to 3 ft.....	1 50	
“ “ GOLDEN-LEAVED, 2 to 3 ft.....	1 50	10 00
“ “ PYRAMIDALIS, 2 to 3 ft.....	1 50	
“ “ RACEMOSUS, 3 ft.....	1 50	
EUONYMUS—ATROPROPUREUS, 18 to 24 in.....	2 00	15 00
“ “ BUNGEANUS, 2 to 3 ft.....	2 00	
“ “ “ 4 to 5 ft.....	2 50	
“ “ EUROPEAN, 2 to 3 ft.....	1 50	10 00
EXOCHORDA—2 to 3 ft.....	2 00	15 00
FORSYTHIA—FORTUNEI, 2 to 3 ft.....	1 50	10 00
“ “ INTERMEDIA, 2 to 3 ft.....	1 50	10 00
“ “ SUSPENS, 18 to 24 in.....	1 50	10 00
“ “ VIRIDISSIMA, 2 to 3 ft.....	1 50	10 00
HIPPOPHÆ—RHAMNOIDES, 2 to 3 ft.....	2 00	15 00
HOP TREE—(PTELEA), 3 to 4 ft.....	1 50	10 00
“ “ “ “ 5 to 7 ft.....	2 00	15 00
“ “ “ “ GOLDEN-LEAVED, 3 to 4 ft.....	2 50	
HONEYSUCKLE—ALBERTI, 12 to 18 in.....	2 00	15 00
“ “ FRAGRANTISSIMA, 18 to 24 in.....	2 00	15 00
“ “ LEDEBOURI, 12 to 18 in.....	2 00	
“ “ GRANDIFLORA ALBA, 18 to 24 in.....	1 50	
“ “ “ RUBRA, 2 to 3 ft.....	1 50	
“ “ RED TARTARIAN, 18 to 24 in.....	1 50	10 00
“ “ WHITE TARTARIAN, 2 to 3 ft.....	1 50	

	Per 10	Per 100
HONEYSUCKLE —BELLA CANDIDA, 2 to 3 ft.....	\$ 1 50	\$ 10 00
“ BELLA ROSEA, 2 to 3 ft.....	1 50	10 00
“ MORROWI, 2 to 3 ft.....	1 50	10 00
“ RUPRECHTIANA, 2 to 3 ft.....	1 50	10 00
HYDRANGEA —PANICULATA GRANDIFLORA, 2 to 3 ft.....	1 50	8 00
“ “ “ Tree form, 3 to 3½ ft.....	2 50	
HYPERICUM —MOSERIANUM, 9 to 12 ft.....	2 00	15 00
JAPAN QUINCE —BLUSH AND UMBELICATA, 18 to 24 in.....	1 50	10 00
“ “ SCARLET, 18 to 24 in.....	1 50	8 00
“ “ “ 2 to 3 ft.....	2 00	10 00
“ “ MAULEII, 2 to 3 ft.....	2 50	
KERRIA —JAPONICA, 18 to 24 in.....	1 50	
LAURUS —BENZOIN, 2 to 3 ft.....	2 00	15 00
LILAC —AMURENSIS, 2 to 3 ft.....	2 00	15 00
“ COMMON PURPLE, 2 to 3 ft.....	1 50	10 00
“ “ WHITE, 2 ft.....	1 50	10 00
“ CÆRULEA SUPERBA, 3 to 4 ft.....	2 00	15 00
“ CHARLES X., 2 to 3 ft.....	2 00	15 00
“ JAPONICA, 2 to 3 ft.....	2 00	15 00
“ “ 3 to 4 ft.....	2 50	20 00
“ LAMARCK, 3 to 4 ft.....	2 50	
“ MME. LEMOINE, 2 to 3 ft. New double white.....	2 50	
“ PRESIDENT GREVY, 2 to 3 ft.....	2 50	
“ PRINCESS ALEXANDRA (White), 2 to 3 ft.....	2 50	
“ ROTHOMAGENSIS, 3 to 4 ft.....	2 00	15 00
“ SIBERIAN WHITE, 2 to 3 ft.....	2 00	
“ VILLOSA, 2 to 3 ft.....	2 00	15 00
“ OUR ASSORTMENT, } Finest named { 2 to 3 ft.....	2 50	20 00
“ “ “ } varieties { 3 to 4 ft.....	3 00	25 00
MYRICA —CERIFERA, 12 to 18 in.....	1 50	10 00
PHILADELPHUS —See Syringa.		
PRINOS —VERTICILLATA, 18 to 24 in.....	2 00	
PRIVET —ALBA MARGINATA, 2 to 3 ft.....	1 50	
“ AUREA VARIEGATA, 2 to 3 ft.....	1 50	
“ BOX-LEAVED, 2 to 3 ft.....	1 50	
“ CALIFORNIA, 18 to 24 in..... \$25 per 1000	1 00	5 00
“ “ 2 to 3 ft..... \$30 per 1000	1 50	6 00
“ COMMON (ENGLISH PRIVET), 2 to 3 ft.....	1 50	
“ IBOTA, 2 to 3 ft.....	1 50	10 00
“ REGELIANUM, 2 to 3 ft.....	1 50	10 00
“ WHITE-BERRIED, 2 to 3 ft.....	1 50	10 00
PRUNUS —PISSARDI, 4 to 5 ft. Purple-leaved Plum. Retains its color throughout season.....	2 00	15 00
“ TRILOBA (DOUBLE-FLOWERED), 2 to 3 ft.....	2 00	12 00
PURPLE FRINGE —2 ft.....	1 50	10 00
QUINCE —JAPAN—See Japan Quince.		
RHAMNUS —IMERETINA, 3 ft.....	2 50	
“ ALPINUS, 4 to 5 ft.....	2 50	
RHODOTYPUS —KERRIOIDES, 18 to 24 in.....	1 50	
RHUS —AROMATICA, 18 to 24 in.....	2 50	
“ COTINUS, 2 ft.....	1 50	10 00
“ TYPHINA, 2 to 3 ft.....	2 00	15 00
SNOWBERRY —See Symphoricarpus.		
SPIRÆA —ANTHONY WATERER (new, superb), 18 to 24 in.....	1 50	10 00
“ ARGUTA, 2 ft.....	1 50	10 00
“ BILLARDI, 2 to 3 ft.....	1 50	10 00
“ BUMALDA, 3 ft.....	1 50	10 00
“ CALLOSA, 2 to 3 ft.....	1 50	10 00
“ “ 3 to 4 ft.....	2 00	15 00
“ “ ALBA (FORTUNE'S DWARF WHITE), 18 to 24 in.....	1 50	10 00
“ CRATÆGIFOLIA, 2 to 3 ft.....	1 50	10 00
“ DOUGLASHI, 2 to 3 ft.....	1 50	10 00
“ FREBELII, 2 to 3 ft.....	1 50	10 00

	Per 10	Per 100
SPIRÆA—OPULIFOLIA (Green), 2 to 3 ft.....	\$ 1 50	\$ 10 00
“ “ AUREA (GOLDEN SPIRÆA), 2 to 3 ft....	1 50	10 00
“ PRUNIFOLIA, FL. PL., 2 to 3 ft.....	1 50	
“ REEVESII, 2 to 3 ft.....	1 50	10 00
“ “ FL. PL., 2 ft.....	1 50	
“ ROTUNDIFOLIA ALBA, 2 to 3 ft.....	1 50	
“ SALICIFOLIA, 2 to 3 ft.....	1 50	10 00
“ SORBIFOLIA, 2 to 3 ft.....	1 50	10 00
“ “ 3 to 4 ft.....	2 00	15 00
“ THUNBERGII, 18 to 24 in.....	1 50	10 00
“ ULMIFOLIA, 2 to 3 ft.....	1 50	
“ VANHOUTTEI, 2 to 3 ft.....	1 50	10 00
STEPHANANDRA—FLEXUOSA, 18 to 24 in.....	2 00	
SYMPHORICARPUS—VULGARIS (INDIAN CURRANT), 2 to 3 ft.	1 50	10 00
“ RACEMOSUS (SNOWBERRY), 2 to 3 ft...	1 50	8 00
“ “ “ 3 to 4 ft... ..	2 00	10 00
SYRINGA—(PHILADELPHUS, MOCK ORANGE).		
“ CORONARIUS, 2 to 3 ft.....	1 50	10 00
“ GORDONIANUS, 2 to 3 ft.....	1 50	10 00
“ GRANDIFLORUS, 2 to 3 ft.....	1 50	10 00
“ GOLDEN-LEAVED, 18 to 24 in.....	2 00	15 00
“ LEMOINEI ERECTUS, 2 ft.....	1 50	10 00
“ NIVALIS, 2 to 3 ft.....	1 50	10 00
“ SPECIOSISSIMUS, 2 to 3 ft.....	1 50	
“ ZEYHERI, 2 to 3 ft.....	1 50	10 00
TAMARIX—AFRICANA, 2 to 3 ft.....	1 50	8 00
“ CHINENSIS, 2 to 3 ft.....	1 50	8 00
“ INDICA, 2 to 3 ft.....	1 50	8 00
“ NARBONNE, 2 to 3 ft.....	1 50	8 00
VIBURNUM—CASSINOIDES, 18 to 24 in.....	2 50	20 00
“ DENTATUM, 2 to 3 ft.....	2 00	15 00
“ LENTAGO, 2 to 3 ft.....	2 00	15 00
“ “ 3 to 4 ft.....	2 50	20 00
“ MOLLE, 2 to 3 ft.....	2 00	15 00
“ “ 3 to 4 ft.....	2 50	20 00
“ OPULUS, 2 to 3 ft. HIGH BUSH CRANBERRY....	1 50	10 00
“ PLICATUM (JAPAN SNOWBALL), 18 to 24 in.....	2 50	20 00
“ STERILIS (COMMON SNOWBALL), 2 to 3 ft.....	1 50	10 00
“ TOMENTOSUM, 2 to 3 ft.....	2 00	15 00
VITEX—AGNUS CASTUS, 18 to 24 in.....	2 00	15 00
WEIGELA—AMABILIS, 2 to 3 ft.....	1 50	10 00
“ CANDIDA (White), 2 to 3 ft.....	1 50	10 00
“ DESBOISII, 2 to 3 ft.....	1 50	10 00
“ DWARF VARIEGATED-LEAVED, 18 to 24 in.....	1 50	10 00
“ “ “ 2 to 3 ft.....	2 00	15 00
“ EVA RATHKE, 18 to 24 in.....	2 00	15 00
“ FLORIBUNDA, 2 to 3 ft.....	1 50	10 00
“ GUSTAVE MALLET, 2 to 3 ft.....	1 50	10 00
“ HENDERSONI, 2 to 3 ft.....	1 50	10 00
“ OTHELLO, 2 to 3 ft.....	1 50	
“ P. DUCHARTRE, 2 to 3 ft.....	1 50	10 00
“ ROSEA, 2 to 3 ft.....	1 50	10 00

HEDGE PLANTS.

	Per 100	Per 1000
BARBERRY—THUNBERGII, 18 to 24 in.....	10 00	
BUCKTHORN—18 to 24 in.....	8 00	
PRIVET CALIFORNIA, 18 to 24 in.....	5 00	25 00
“ “ 2 to 3 ft.....	6 00	30 00
JAPAN QUINCE, 18 to 24 in.....	8 00	
ARBOR VITÆ—SIBERIAN, 18 to 24 in.....	12 00	
“ “ “ 2 to 3 ft.....	15 00	

	Per 10	Per 100
CLIMBING SHRUBS.		
ACTINIDIA.....	\$ 2 00	\$ 15 00
ARISTOLOCHIA.....	3 00	
AMPELOPSIS—QUINQUEFOLIA (AM. IVY, VIRGINIA CREEPER).....	1 50	6 00
“ VEITCHII, 2 years, field grown.....	1 50	10 00
BIGNONIA—RADICANS (TRUMPET FLOWER).....	1 50	8 00
CISSUS—VARIEGATA.....	1 50	10 00
CELASTRUS—SCANDENS.....	1 50	10 00
“ PANICULATUS.....	1 50	10 00
CLEMATIS—HENRYII.....	2 50	20 00
“ JACKMANNI.....	2 50	20 00
“ MME. EDWARD ANDRE.....	2 50	
“ PANICULATA.....	1 50	8 00
“ SIEBOLDII.....	2 50	
“ VIRGINICA (AMERICAN WHITE).....	1 50	8 00
HONEYSUCKLE—CANADENSIS.....	1 50	
“ GOLDEN-LEAVED.....	1 50	8 00
“ HALLEANA (HALL'S JAPAN).....	1 50	8 00
“ PERICLYMENUM.....	1 50	8 00
IVY—GIANT. Pot plants.....	2 00	
“ IRISH. Pot plants.....	2 00	
“ RHOMBEA VARIEGATA. Pot plants.....	2 00	
LYCIUM—(MATRIMONY VINE).....	1 50	8 00
PERIPLOCA—GRÆCA (SILK VINE).....	1 50	10 00
VIRGINIA CREEPER—(AMPELOPSIS QUINQUEFOLIA).....	1 50	6 00
WISTARIA—CHINESE PURPLE.....	2 50	15 00

ROSES.

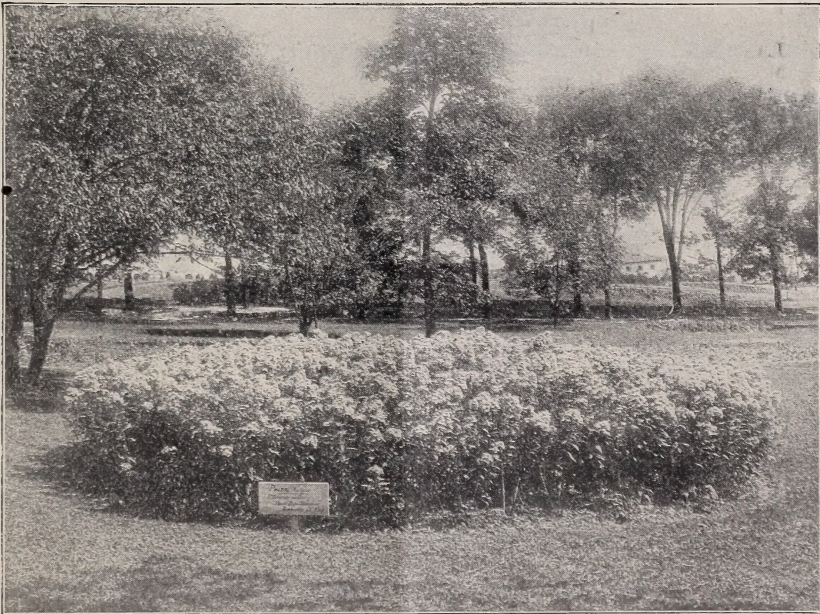
**One of Our Leading Specialties. Strong, Field-grown Plants.
All of our own growing.**

	Per 10	Per 100
CLIMBING—BALTIMORE BELLE.....	\$ 1 50	\$ 8 00
“ CRIMSON RAMBLER.....	1 50	10 00
“ HELENE.....	1 50	10 00
“ PHILADELPHIA RAMBLER (new).....	1 50	10 00
“ PINK RAMBLER.....	1 50	8 00
“ PSYCHE (new).....	1 50	
“ QUEEN OF PRAIRIES.....	1 50	8 00
“ WHITE RAMBLER.....	1 50	8 00
“ YELLOW RAMBLER.....	1 50	8 00
“ LEUCHTSTERN } New Ramblers.....	1 50	10 00
“ RUBIN.....		
“ WICHURIANA (the type).....	1 50	8 00
“ “ HYBRID—DOROTHY PERKINS.....	1 50	8 00
“ “ “ IN VARIETY.....	1 50	8 00
SUMMER—CAROLINA.....	1 50	8 00
“ MME. PLANTIER.....	1 50	10 00
“ DAWSON.....	1 50	10 00
“ PERSIAN YELLOW.....	2 00	13 00
HYBRID PERPETUAL—ANNE DE DIESBACH, BARON DE BONSTETTEN, EUGENE FURST, FRANCOIS LEVET, GEN. JACQUEMINOT, JOHN HOPPER, LADY HELEN STEWART, MME. GABRIEL LUIZET, MAGNA CHARTA, MARGARET DICKSON, MRS. JOHN LAING, PAUL NEYRON, PRINCE CAMILLE DE ROHAN.....	1 50	10 00

	Per 10	Per 100
HYBRID RUGOSA —MME. G. BRUANT.....	\$ 1 50	10 00
RUGOSA —RUBRA.....	1 50	10 00
POLYANTHA —CLOTHILDE SOUPERT. Pot plants.....	2 00	12 00
“ CLIMBING CLOTHILDE SOUPERT (dormant)	1 50	12 00
BOURBON —HERMOSA. Pot plants.....	2 00	12 00
BRIAR —COMMON SWEET BRIAR.....	1 50	8 00
NEW HARDY YELLOW ROSE.		
SOLEIL D'OR.....	3 00	15 00
NEW HARDY EVERBLOOMING ROSE.		
MME. NORBERT LEVAVASSEUR (Baby Rambler)....	3 00	25 00
TREE ROSES.		
Crimson Rambler.....	4 00	
TREE PÆONIES.		
BANKSII —CHINESE DOUBLE BLUSH, first-class.....	5 00	
HERBACEOUS PÆONIES.		
CHINESE —SELECTED VARIETIES, Pink and Red.....	2 00	10 00
“ “ “ White.....	3 00	25 00
“ FESTIVA MAXIMA.....	5 00	
“ TENUIFOLIA FL. PL.....	2 50	20 00
HARDY PHLOXES. A Superb Collection.		
Belvedere—Salmon pink, crimson eye. Distinct.....	1 50	6 00
Caran d'Ache—Pink.....	1 50	6 00
Coquelicot—Scarlet.....	1 50	10 00
Henri Murger—Pure white, carmine eye. Extra.....	1 50	6 00
La Vague—Beautiful silvery rose, crimson eye.....	1 50	6 00
Le Siecle—Pink.....	1 50	6 00
Lothair—Large truss, salmon color, crimson eye. One of the finest	1 50	6 00
Pantheon—Large florets, pink. A beautiful shade.....	1 50	6 00
Pharaon—Light purple, white star-shaped center. Distinct and fine	1 50	6 00
Queen—Pure white.....	1 50	6 00
Richard Wallace—Large truss, white, with violet eye.....	1 50	6 00
Wm. Robinson—Salmon.....	1 50	6 00
HARDY BORDER PLANTS.		
All good sized plants or good divisions.		
ACHILLEA —IN VARIETY.....	1 00	7 00
ACONTIUM —UNCINATUM.....	1 50	10 00
AGROSTEMMA	1 00	
AJUGA —REPTANS ALBA.....	1 00	8 00
“ “ RUBRA.....	1 00	8 00
ALYSSUM —ARGENTÆUM.....	1 00	8 00
“ SAXATILE.....	1 00	
“ “ COMPACTUM.....	1 00	
AMSONIA	1 00	
ANEMONE —JAPONICA.....	1 50	8 00
“ “ ALBA.....	1 50	8 00
“ QUEEN CHARLOTTE.....	1 50	8 00
“ WHIRLWIND.....	1 50	8 00
AQUILEGIA —MIXED.....	1 00	6 00
ARABIS —ALPINA.....	1 50	8 00
ARMERIA —MARITIMA.....	1 00	
ARUNDO —DONAX.....	1 50	10 00
ASCLEPIAS —TUBEROSA.....	1 00	
ASPERULA —ODORATA.....	1 00	8 00
ASPHODELINE —LUTEA.....	1 00	6 00

	Per 10	Per 100
ASTER—In variety.....	\$ 1 00	\$ 8 00
ASTILBE—JAPONICA.....	1 00	8 00
“ PYRAMIDALIS.....	1 50	
AUBRETIA—OLYMPICA.....	1 50	8 00
BOCCONIA—CORDATA.....	1 00	6 00
BOLTONIA—LATISQUAMÆ.....	1 00	8 00
CAMPANULA—In variety.....	1 00	8 00
CENTAUREA—In variety.....	1 00	8 00
CENTRANTHUS—ALBUS.....	1 00	
CERASTIUM—In variety.....	1 00	8 00
CLEMATIS—DAVIDIANA.....	1 50	
CORONILLA—VARIA.....	1 00	
COREOPSIS—In variety.....	1 00	8 00
DELPHINIUM—SEEDLINGS.....	1 00	6 00
DICENTRA—SPECTABILIS.....	1 50	10 00
DICTAMNUS—ALBUS.....	2 50	
“ RUBRA.....	2 50	
DIGITALIS—SEEDLINGS.....	1 00	
ECHINOPS—HUMILIS.....	1 00	8 00
ERIANTHUS—RAVENNE.....	1 00	8 00
ERYNGIUM—AMETHYSTINUM.....	1 00	
EULALIA—GRACILLIMA UNIVITTATA.....	1 00	8 00
FUNKIA—CÆRULEA.....	1 00	
“ GRANDIFLORA ALBA.....	1 50	10 00
“ JAPONICA.....	1 50	10 00
GERANIUM—In variety.....	1 00	
GYSOPHILA—PANICULATA.....	1 50	
HARPALIUM—RIGIDUM.....	1 00	
HELENIUM—AUTUMNALE SUPERBUM.....	1 00	6 00
HELIANTHEMUM.....	1 00	8 00
HELLEBORUS—NIGER.....	2 50	
HEMEROCALLIS—FLAVA.....	1 00	6 00
“ KWANSO, FL. PL.....	1 00	
“ MIDDENHORFIANA.....	1 00	
“ SIEBOLDII.....	1 00	8 00
“ THUNBERGII.....	1 00	8 00
HIERACIUM—AURANTIACUM.....	1 00	
HIBISCUS—ALBUS.....	1 00	8 00
“ INCANUS.....	1 00	8 00
“ ROSEUS.....	1 00	8 00
IBERIS—CORRÆFOLIA.....	1 50	
“ SEMPERVIRENS.....	2 00	15 00
IRIS—GERMAN. In variety.....	1 00	6 00
“ JAPAN. In variety.....	1 50	8 00
LINUM—PERENNE.....	1 00	
LOBELIA—CARDINALIS.....	1 50	10 00
LOTUS—CORNICULATUS.....	1 50	10 00
LYCHNIS—CHALCEDONICA.....	1 00	8 00
LYSIMACHIA—THYSIFLORA.....	1 00	
MONARDA—DIDYMA.....	1 00	
ŒNOTHERA—FRASERII.....	1 00	8 00
PAPAVER—ORIENTALE.....	1 00	6 00
PHLOX—AMGENA.....	1 50	10 00
“ SUBULATA.....	1 50	10 00
“ “ ALBA.....	1 50	10 00
PLATYCODON—GRANDIFLORUM.....	1 00	8 00
“ “ ALBUM.....	1 00	8 00
POLEMONIUM—CÆRULEUM.....	1 00	8 00
PRIMULA—In variety.....	1 00	8 00
PYRETHRUM—ULIGINOSUM.....	1 00	
“ KING OSCAR.....	2 00	
RANUNCULUS—In variety.....	1 00	8 00
RUDBECKIA—NITIDA.....	1 00	8 00

	Per 10	Per 100
RUDBECKIA—GOLDEN GLOW.....	\$ 1 00	\$ 5 00
SANGUINARIA—CANADENSIS.....	1 00	8 00
SAPONARIA—OCYMOIDES.....	1 00	
SAXIFRAGRA—In variety.....	1 00	
SEDUM—In variety.....	1 00	8 00
SHASTA DAISY.....	1 00	8 00
SILENE—VISCOSA PLENA.....	1 50	10 00
SPIRÆA—ASTILBOIDES FLORIBUNDA.....	1 50	8 00
“ FILIPENDULA.....	1 00	8 00
“ “ FL. PL.....	1 00	8 00
“ LOBATA.....	1 50	10 00
“ PALMATA ELEGANS.....	1 00	8 00
“ ULMARIA.....	1 00	8 00
“ “ FL. PL.....	1 00	8 00
STACHYS—LANATA.....	1 00	8 00
STOKESIA—CYANEA.....	1 00	8 00
TRADESCANTIA—VIRGINICA.....	1 00	
TRILLIUM—GRANDIFLORUM.....	1 50	10 00
VERONICA—GENTIANOIDES.....	1 00	8 00
VINCA—CÆRULEA MINOR.....	1 00	6 00
“ HERBACEA.....	1 00	8 00
“ PURPUREA PLENO.....	1 00	8 00



A Bed of Phlox Lothair at St. Louis World's Fair, 1904.

Exhibited by Ellwanger & Barry.

EVERGREENS FOR WINTER DECORATION

Suitable for planting in tubs, vases, etc. We have a good stock of different kinds.

PURPLE-LEAVED NORWAY MAPLE "SCHWEDLERI"

This is one of the best ornamental foliaged trees. It is a rapid grower, vigorous, healthy, very effective, and deserves to be extensively planted.

WILLOWS

We beg to draw particular attention to our large stock of CHOICE WILLOWS. These are handsome, rapid growing trees, and very useful where immediate results are desired.

PURPLE-LEAVED PLUM PRUNUS PISSARDI

A valuable small tree, with very handsome purple foliage. It has the merit of retaining its deep purple color throughout the season, and is very ornamental on that account.

TWO NEW, BEAUTIFUL AND DISTINCT RAMBLER ROSES

DESERVING A PLACE IN EVERY GARDEN

RUBIN—A ruby red Rambler of rapid, vigorous growth, flowering freely. We confidently recommend it to planters to accompany the CRIMSON RAMBLER.

LEUCHTSTERN—Another Rambler, vigorous and free-blooming, flowers single, rose colored with white eye. A unique variety.

PHLOXES AND PEONIES

Our stock is very large and comprises the best varieties.

CALIFORNIA PRIVET

FOR HEDGES

We have a large supply of fine plants.

PIN OAK

Beautiful trees.

BOCCONIA CORDATA

PLUME POPPY

A very picturesque plant, growing 6 to 8 feet high; suitable for screens, the back of borders, or for planting singly. In each case it is very effective, and gives immediate results most satisfactorily.

Leading Specialties

FOR FALL, 1905

CURRENT—Fay's.

RASPBERRY—Marlboro.

GRAPES—Campbell's Early; Concord.

BIRCH—Paper.

CATALPA—Bungei. Standards.

CHERRY—Weeping.

LINDEN—European Broad-leaved.

MAPLE—Silver-leaved, 8 to 10 ft.; 10 to 12 ft.; 12 to 14 ft.

OAK—Pin, 6 to 8 ft.; 8 to 10 ft.

POPLAR—Carolina, 8 to 10 ft.; 10 to 12 ft.; 12 to 14 ft.

WILLOWS—In variety (fine).

THORN—Double Scarlet.

CORNUS—Sanguinea.

LILAC—Common Purple, 2 to 3 ft.

HYDRANGEA—Paniculata Grandiflora.

PRUNUS—Pissardi.

SNOWBERRY, 2 to 3 ft.

PRIVET—California.

VIBURNUM—Dentatum.

“ Lentago.

“ Tomentosum.

VIRGINIA CREEPER.

HARDY HERBACEOUS PLANTS.

“ PHLOX—Distinct Varieties.

“ ROSES—In Variety.

NOVELTIES

NEW ANEMONE—Queen Charlotte.

NEW ROSES—Leuchtstern; Rubin; Philadelphia Rambler.