

## **Historic, Archive Document**

Do not assume content reflects current scientific knowledge, policies, or practices.



# Knigh't's Guide

## TO SMALL FRUITS



SUPERB is the BEST EVERBEARING STRAWBERRY

Strawberries  
Raspberries, Blackberries  
Currants, Grapes, Etc.

**DAVID KNIGHT & SON**  
SAWYER, MICHIGAN

# HOW WE DO BUSINESS

Post Office, Express Office and Telegraph Office at Sawyer, Michigan. Bell Telephone in our office.

**TERMS.**—Cash with order, or part cash when order is sent, the balance to be sent before shipment.

**REMITTANCES.**—Send money by Check, Draft, Post-Office Money Order, Express Money Order, or Registered Mail. Currency sent in a letter without registering is at sender's risk.

**HOW TO ORDER.**—Use the order sheet found in this catalog, being sure to write your name and address plainly, and fill out all blanks carefully with reference to where you want your plants shipped, whether you want them sent by express, freight, or mail, and at what time.

**HOW WE SHIP.**—Express is much the safer way and, as there is a general special rate applied to nursery stock, the cost is not exorbitant. We guarantee express shipments to reach destination in good condition. Raspberry, blackberry, and other heavy plants can be shipped safely by freight early in the season and considerable transportation charges saved thereby. However, all freight shipments go at consignee's risk.

**PARCELS POST.**—Plants may be sent by mail at a reasonable expense. For instance, 100 strawberry plants can be sent anywhere in the 1st zone for about 7 cts.; 2nd zone, 7 cts.; 3rd zone, 10 cts.; 4th zone, 15 cts.; 5th zone, 20 cts.; 6th zone, 25 cts.; 7th zone, 31 cts.; 8th zone, 36 cts. We cannot give you a very close estimate on raspberry and blackberry plants as they vary so much in weight. Plants may be sent C. O. D., both for cost of plants and postage. However, this costs you more for return of money.

**ORDER EARLY.**—Do not delay placing your orders until you are ready to plant. The earlier orders are placed, the better it is for you and for us. All orders are booked in rotation as received, therefore it is to your advantage to get your order placed early before varieties you wish are gone.

**GUARANTEE.**—We are careful to label, count, and pack our plants correctly, and we assume the responsibility of replacing, free of charge, any stock sent by us that proves untrue to label or short in count; however, it is understood between the purchaser and ourselves that we are not to be held liable for any greater sum than that paid for such stock as may prove untrue to label.

**COMPLAINTS.**—Complaints, if any, must be made within ten days after receipt of stock.

**SHIPPING SEASON.**—Commences about March 15 and continues until about May 15.

*American National Bank*

*Benton Harbor Michigan*

December 1, 1913

To whom it may Concern:

We take pleasure in informing you that we have known and transacted business with David Knight & Son since the origin of this Bank.

We know they do a large nursery business and that all promises or statements made by them may be absolutely depended upon

Respectfully yours,

The American National Bank,

By *L. R. Taft* Cashier

## CERTIFICATE OF NURSERY INSPECTION No. 1847

*This is to certify that I have examined the nursery stock of David Knight & Son, Sawyer, Mich., and find it apparently free from dangerous insects and dangerously contagious tree and plant diseases.*

*This certificate to be void after July 31, 1918.*

L. R. TAFT,

State Inspector of Nurseries and Orchards,  
Agricultural College, Michigan, October 6, 1917.



David Knight



A. R. Knight

## A. D. 1918



**W**HAT the coming year has in store for us, personally, we none of us know. What changes will come to the great nations of the earth no one can say. But one thing we are sure of; **WE MUST PRODUCE FOOD STUFFS.**

While we glory in the spirit of the millions of men who are now serving this country so nobly and well and feel that in no other way could the freedom and dignity of this great Republic be sustained, still we must remember that practically all of these men who are fighting so bravely for us have, within a very few months, been taken from pursuits of production to those of consumption and destruction. But, regardless of this, the business of producing **MUST GO ON** and we, who for various reasons have not been called to the Colors, must be the producers. We stay-at-homes simply must "do our bit" by growing more grain, stock or fruit than we have in the past. If you grew only one acre of berries last year, plant two this year, or if you didn't grow any then be sure to get, at least, a garden patch started. By doing so you will not only perform a patriotic duty but will be engaging in a highly profitable and enjoyable occupation.

We are now entering on our 33rd year in the plant business and we wish to take this opportunity of expressing our appreciation for the generous patronage given us last season and in years past. We take a just pride in the fact that many of our customers have been purchasing plants from us for fifteen and twenty years for it shows they have been well treated. In fact our present large business has been built up by the word being passed along from our customers to their friends that "The best place to buy plants is from Knight at Sawyer, Mich.", for we have done no extensive newspaper advertising and have thus been able to sell the best plants obtainable at a price that our customers could afford to pay.

This year the plant crop is rather short but our stock will be right up to the Knight quality and if your order is placed with us you can depend upon receiving prompt service plus the very best plants that over thirty years experience have taught us how to grow.

---

### RECEIVES \$136.33 FROM AN INVESTMENT OF ABOUT \$2.50

Dear Sirs:—Just finished harvesting another "KNIGHT'S PLANTS" stunning strawberry crop. From 850 Knight's plants we picked and sold 1,385 boxes of berries netting a return of \$136.33, besides an additional 150 boxes not marketed. The unusual size, color and flavor of the berries brought a ready sale. Although the town was literally flooded with all kinds of berries, the demand for ours was greater than the supply.

Yours very truly, MELLERA SISTERS, Illinois.





This is the kind of roots Knight's Strawberry plants develop

## Something About Us and Our Plants

A saving of 50 cts. or \$1.00 per thousand on small fruit plants is mighty poor economy if, by doing so, you sacrifice quality. The cost of enough plants to set an acre of berries is very small when compared to the expense of getting your land in shape and caring for the patch until it produces fruit. It is therefore most essential to get the very best plants obtainable, regardless of cost, for by not doing so you stand a good chance of not only losing the initial cost of the plants but also your labor for a year and the use of your land for that length of time.

You naturally ask "Who has the best plants, I receive fifteen or twenty catalogs every year and they all claim their stock is superior, so how am I to know where to buy?" Well, the answer isn't easy, but we want to tell you a few reasons why we believe your interests will be best served by using KNIGHT'S plants.

In the spring of 1885 our first catalog was mailed. It was simply a folder describing just one variety, the old Wilson's Albany strawberry. Only two hundred copies were sent out and, naturally, our business was very small. However, every year since, Knight's catalog, in gradually larger size and larger quantity has been mailed to a continually enlarging number of customers, until at present we ship millions of plants every season to patrons in nearly every State in the Union.

Our business having grown from practically nothing in 1885 to one of the largest of its kind in the country today is an assurance that we know the plant business well and that we have always had the interest of our customers at heart for, were this not true, our career as nurserymen would have been ended years ago. It is your assurance that an order placed with us will bring you good, strong, true-to-name plants, the kind that will surely produce a productive fruiting patch for you.

Glowing, over-drawn descriptions, catch phrases, and possibly lower prices may attract you, but why take a chance when KNIGHT'S fruit plants have made so much money for thousands of fruit growers throughout the whole country and will just as surely be profitable for you.

The plants which we use in setting our new patches are those selected with great care so that no weak or imperfect plants will be the mother-plants to the stock sent our costumers.

Our strawberry patches are set in the spring, make their growth of runners and new plants during the summer and fall, and the following spring the whole row is dug. The mother-plant and the smaller and weaker plants are thrown away and only the selected best ones sent out to the trade. In this manner you not only get selected stock, but the plants are produced from mother-plants that have never borne fruit.



This is the root-system that makes Knight's small-fruit plants produce big crops

### KNIGHT'S PLANTS PRODUCE FRUIT THAT IS A WONDER TO THE COMMUNITY

Dear Sirs:—I have been a customer of yours for several years on a small scale and have had fine successes with all the plants I have bought from you. I set out a fair sized patch of strawberries two years ago and last spring I had the finest berries anywhere around. In fact they were the wonder of everyone who saw them, both for size and quality. They were pictures and held up in size to the last picking.

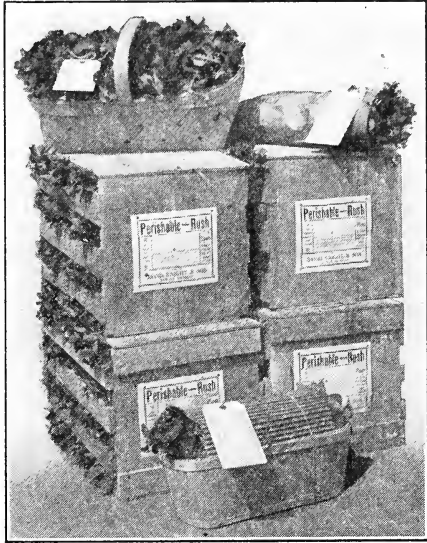
Yours truly,

MISS IOLA E. McDEVITT, Ohio.

Our black raspberry plants are produced by tipping down the canes of young patches only, and the enormous root system is a surprise and delight to all who use our stock. The illustration at bottom of opposite page is a photograph of one of our bunches of black caps. It was not selected because it was better than the average stock but is simply a fair example of all of our plants. Also note the strawberry plants at the top of opposite page. Such fine fibrous plants cannot help but grow if properly packed so as to reach you in good condition and our many years experience has taught us how to pack stock so it will arrive in the very best state of preservation, regardless of the distance. The illustration on this page shows how some of our plants are packed.

Only the very best selected plants of strawberries, raspberries, blackberries and other small fruits are packed and shipped from our nursery and, we repeat, you cannot afford to buy plants of any firm or at any price, that have not been grown and selected with as much care as we exercise here at Sawyer.

That it pays to grow small fruits is an established fact, but if you wish to get the most for your labor you should be sure that the plants you use are well grown, strongly rooted, and true to name. You cannot afford to set plants of inferior quality no matter how cheap you can get them. The best is none too good and when you pay for plants you are entitled to good stock and should have it. If your order is placed with us you will receive the same kind of stock that the large growers all over the country have been using for years and depend upon. Stock that has made big money for others and will just as surely make big money for you.



Good packing is very essential. All of our plants are packed in bundles, baskets and crates, and are sure to reach you in good condition.

## ORDER EARLY

During the winter months you have plenty of time to plan the size patch of berries you wish to set and decide on the varieties to use. And as soon as this Catalog is received, it will be much to your advantage, and to ours, if you will make up your order at once and send it to us, for all orders are filled in rotation as received and if you wait until late in the season you will have to take your chance with hundreds of others and may not receive your plants just when you want them. Another thing. Plants, especially certain varieties, are a short crop this season, and it is practically certain that we will be sold out of some sorts before the season is far advanced. These may be just the varieties you want, so insure yourself against disappointment by ordering early. Don't overlook the Premium Offer for Early Orders on the Back Cover of this Catalog.





One of our patches from which plants will be dug this spring. Photograph taken four months after setting. Note the strong growth. We have millions of plants like these. Sand hills in the distance are on the shore of Lake Michigan

## Horticultural Pleasures and Profits

Never before has such intelligent thought been given to the possibilities in horticulture as at the present time. It was not so many years ago that the farmer was looked down upon by the city man as illiterate, lacking in refinement, unacquainted with the current issues of the day, and altogether a person to be ignored and avoided. But this feeling is rapidly undergoing a complete change. None of the modern conveniences for making life more pleasant are now denied the farmer. He can have all of them and does have them. When he goes to town he is not conspicuous by the hay seed in his hair or the oddity of his garb. He is a business man among business men, but with the added advantage of much more independence, freedom from the worries of competition and, in a great many cases, more ready money and financial backing than the city business man. His children are given all the advantages of their city cousins and when they grow to maturity have a much broader understanding of life and its problems than children born and raised in the city. And what has caused this change? Many things. But chief among them is horticulture with its profits and possibilities. Horticulture has now in its ranks men and women of the highest culture and learning, and the fact that one is a tiller of the soil is now something to be proud of rather than despised. When you stop to consider that the fruit of one particular state in 1908 was more valuable than all the gold mined in the United States during the same period, you will begin to appreciate what a great and glorious occupation is ours who make horticulture our business. And among all of its branches there is none more interesting, pleasant and remunerative than the growing of small fruits. Any man who has five or ten acres of good fruit land can, by planting it to small fruits and giving them the proper attention, make himself independent for the railroad, steamship, and interurban companies now reach nearly every section of the country where any marketable crop is grown and it is hard to find a location that hasn't a good market at its very door.





The patch of strawberries above was set with KNIGHT'S PLANTS and represents an initial investment of \$30.00. The following spring the fruit harvested sold for \$266.31 and about \$75.00 worth of plants were dug for a new patch, so that within one year after the \$30.00 was invested it had grown to nearly \$350.00. Hundreds of people are making just as big money with KNIGHT'S PLANTS. YOU can do the same.

## STRAWBERRIES

While Strawberries will grow and do well in any soil that will produce corn, wheat, or potatoes, still the greatest yield and choicest berries are to be had when grown in rich and well-prepared soil; therefore, no pains should be spared in selecting and preparing your bed. Do not plant your patch in a newly turned sod, but rather select a piece of land that has been in a cleanly cultivated crop for two or three years. First apply a liberal covering of well-rotted stable manure, plow under, harrow and disc until the soil is mellow and free from clods. Mark off the land in rows  $3\frac{1}{2}$  feet apart, and set the plants in rows from 18 to 30 inches apart, depending upon the nature of the plants, some varieties making much more growth than others. If your plants are a little dry when received, wet them thoroughly, not in the package in which you receive them, but each bunch separately.

If you are not ready to set out when the plants arrive or if the weather is unfavorable, being dry and windy, then open the bunches and heel the plants in the ground, firm the earth around the roots, water, and shade them from the sun, in which condition they will keep in good shape for several days. Trim the roots back about one-third when setting, which will cause them to put out an abundance of new fibers. See that the roots are spread out and placed down straight in the opening made for them, leaving the crown just above the surface of the ground, then firm the soil around the roots and pull it up to the plants. Just as soon as the plants are set, the same day if possible, commence to cultivate, and keep right on cultivating every week or ten days until along toward the middle of August. Hoe, too, just as often as is necessary to keep the weeds down and prevent a crust forming around the plants. Plants should not be allowed to fruit the first season, for all of their vitality is needed in making growth to produce a crop the following year.

All plants are either staminate (male) or pistillate (female). Staminate plants have perfect blossoms and are capable of fertilizing themselves, but pistillate plants have imperfect blossoms and need to be planted near perfect-blooming sorts in order to become fertilized and produce fruit successfully. All staminate varieties in this book will be marked "Per." and Pistillate varieties "Imp."

### 8,000 KNIGHT'S PLANTS MAKE THE FINEST PATCH HE EVER HAD

Dear Sirs:—Having bought 8,000 Senator Dunlap plants of you last spring, I have now one of the finest patches I ever had and I feel very grateful to you for the fine plants received.

Yours truly,

ARTHUR BOWMAN, Michigan.

## FALL BEARING STRAWBERRIES

Fall bearing Strawberries are one of the most valuable additions to fruit growing that has ever been known. There is absolutely no doubt as to their value and, although thousands and thousands of fall bearing plants are being set every spring, it will be a good many years before the price of fresh strawberries in the fall is lower than at the present time for the demand is enormous and people are willing to pay fancy prices for strawberries in what they consider, out of season. So if you have never grown fall bearing strawberries, get a start of them this year for they are indispensable to the home garden and they open up an entirely new and profitable field to the commercial grower. But by all means place your order for plants early, for there has never been a season when we have had enough plants to supply all orders and we will not have this year.



Progressive

Progressive is certainly an exceptionally worthy sort and a close second to Superb. The berries are of fair size, rich deep crimson in color, nearly round and very glossy. The plants are strong growers having an abundance of large healthy leaves. This variety, like Superb, will produce a bumper crop the second spring planted after bearing a good crop the fall before. We have a fairly good supply of Progressive this season, but don't fail to order early for that is the only way you can be assured of getting any of the fall bearing plants.

**SUPERB.** Per. On our grounds Superb is still the leader of all fall varieties. Not as to quantity of fruit produced, but as to size, hand some appearance, and quality. The berries grow very regular in shape and ripen all over at once. They are very large and attractive, having a dark red glossy color that is very attractive. In our opinion there has never been a variety introduced, either spring or fall bearing, that has so much vitality and such fruit producing qualities as Superb. It seems almost unbelievable that, after producing a crop of fruit the first fall after being planted, they will also produce as large a crop the following spring as any of the spring sorts; still this is absolutely the fact and, besides, they will produce another crop the following fall. The plants are strong healthy growers and make runners freely, however, the most fruit can be had by planting for hill culture and keeping runners removed. We have a large acreage of Superb, but the demand is so very heavy for them that we will be sold out early.

### **PROGRESSIVE.**

Per. A good many growers rate Progressive as the best of the fall bearers and Superb second. This has not been our experience, although

#### GIBSON PLANTS BEAT ALL OTHER VARIETIES IN IOWA

Gentlemen:—We enclose order for plants. . . . We had about three-quarters of an acre of Gibson in bearing last year and it beats all other varieties. Our pickers were always anxious to pick the "big kind" and they sold well in the market. Yours truly, BLACKMAN BROS., Iowa.

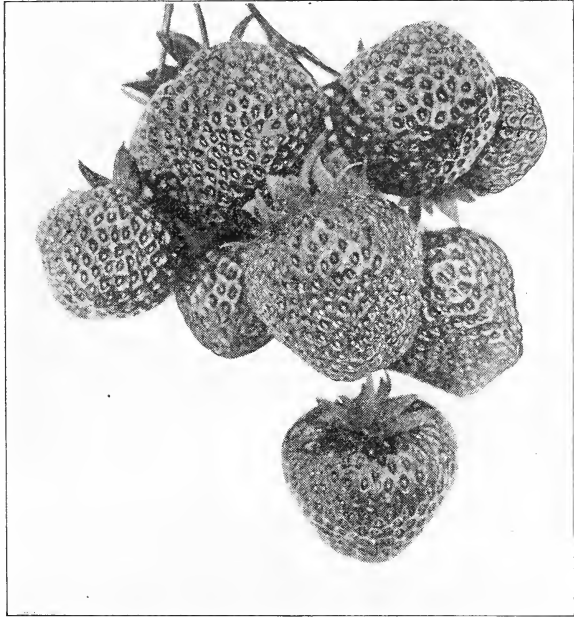
#### 68 YEARS OLD AND KNIGHT'S PLANTS AS GOOD AS HE EVER SAW

Dear Sirs:—I received the strawberry and raspberry plants in fine condition. I am 68 years old and have been in the strawberry business many years, and those plants were as good as I have ever seen. Yours truly, LEVI W. BEARD, Indiana.

## RECENT INTRODUCTIONS OF GREAT MERIT

**CHARLES I.** Per.

This has proven one of the best and most profitable of any of the extra-early varieties grown in this section of the country. It commences bearing earlier than the old Mitchell's Early and is much superior to that variety in productiveness, firmness, and quality. The berries are of good size, good color, and good quality, and ripen at a time when they can be sold at a good price. If you are in need of a profitable extra-early variety, be sure to include Charles I in your order.



Charles First

**BILLY**  
**SUNDAY.**

Per. An Ohio grower says: "I have been growing Strawberries for fifteen years and have fruited nearly all standard varieties, but haven't found any that will take the place of Billy Sunday. The plants are hardy, great crown-makers, tall dark green foliage, long heavy fruit-stalks, making berries easily gathered. The fruit is large, glossy red, slightly wedge-shaped, uniform in shape and size, and has a delicious sweet flavor. They begin to ripen with Haverland and end with Sample." The Michigan Agricultural College says of them: "The Billy Sunday plants were exceedingly fine with us this year, although just before the fruiting time it was unusually dry. The quality is very high."

**OHIO BOY.** Per. This is one of the most recent introductions in the late-variety class and has already made a good name for itself. It is a strong, vigorous grower and very productive. The fruit is of good size, dark red all the way through and possesses a rich flavor that makes it very popular.

**THREE W's.** Per. You should start on this grand new variety, as it is one of the best. The fruit is very large, of good flavor, and dark glossy red in color. It has a long season of ripening and holds up well in size to the end. It is very firm, and at the St. Louis World's Fair won a record for keeping ten days. It ripens from mid-season to late.

**REWASTICO.** Per. The fruit of this variety is very firm in texture and will stand shipment to distant markets in splendid condition. Berries are large and regular in size, being a light cardinal red in color. It is of exceptionally good quality, being rich and tart, making it a splendid canning sort. It is a mid-season variety but stays in bearing a long time and holds its size well to the end. Our supply of plants is very limited this season.

**ST. LOUIS.** Per. We needed another good early variety, and this one seems to be just what we are looking for. The plants are large, with tall, bright glossy green foliage, very deep-rooted, and great drought-resisters. It is very productive for an early variety and the fruit is large, roundish conical, bright, glossy red, and of good quality. The fruit-stalks are large and strong and keep the fruit from the ground. It is in great demand on account of its earliness, large size, and productiveness, and it is firm enough for shipment to markets that are not too far distant.



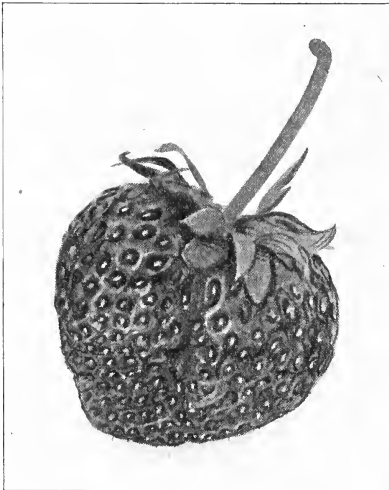
## OLD STANDARD VARIETIES of STRAWBERRIES

**AROMA.** Per. One of the old standard varieties that, in certain sections, continues to be a favorite in spite of the many new varieties being introduced. It seems to be better adapted to the South and Southwest, although it has been grown very successfully here in Michigan. Fruit is very large, bright red in color to the center, and has a delicious flavor. It is productive and firm of texture, making it a great shipping berry. It has a long fruiting season and continues good until the end. The demand for this variety is usually far in excess of the supply.

**AUGUST LUTHER.** Per. This is one of the best early Strawberries grown. It is prolific, comes in bearing early, and continues good size until all of its crop is produced. Fruit is uniform in size and shape, is dark red, firm, and easily picked.

**BUBACH No. 5.** Imp. One of the largest berries of the old varieties. It is popular in nearly all sections of the country. The plants are model growers, making just enough plants for a nice fruiting row. Every year the demand for plants of this grand old variety is larger than the preceding one. They do not make plants very freely and for that reason they cannot be sold as cheaply as some other varieties. We have a good stock, but as the demand for them is always heavy, you should order early so as to be assured of getting them.

**BEDERWOOD.** Per. This is one of our best standard Berries for market. It is early, a strong yielder, and continues a long time in bearing. The fruit is of good size and as firm as the Crescent, but it is



Aroma

liable to rust and should not be planted on wet soil. Does better North than South.

**BRANDYWINE.** Per. A vigorous, perfect-blooming plant; tall fruit-stalks; broad, heavy, dark green foliage. Plants productive, having four and five stalks heavily loaded with large to very large berries. Medium red, somewhat like Gandy, only a little more dull; large yellow seeds on surface. Flesh red clear through, firm, somewhat acid, but with sprightly flavor; ripens medium to quite late. Does best on heavy loam or heavy clay. Like all large berries, they should have plenty of room in the row, so they can build up strong stools.

**CHESAPEAKE.** Per. A perfect-flowering variety, late in season, and as far as quality is concerned is not surpassed by any. While the Chesapeake is a shy plantmaker it seems to be in great demand by the largest commercial growers, and it is seldom that any variety has won so much favor in such a short time. We do not advise planting this variety on light, sandy soil, but for best results secure a low, springy spot, well drained. Two years ago we discontinued growing Chesapeake, as they produced so few plants that they were not profitable from a plant standpoint. However, our customers kept calling for them, so we set another patch again last year. We will have only about 50,000 plants of this variety; so you will have to order early in order to get some of them.

**GLEN MARY.** Per. A strong, vigorous-growing, healthy plant. Some seasons it has pollen to fertilize itself, but it is better to plant it next some perfect-blooming variety, like Ridgeway, Brandywine, or Gibson. The Glen Mary is fast growing in favor all over the country. The berry is so large and fine looking it always commands the highest price in market. It needs good soil, good culture, and plenty of room in the row.

**GANDY.** Per. This is one of the most reliable, large, late berries that is grown. It is one of the old standard varieties that you can depend upon. It is a strong grower and a good plant-maker. The large, handsome, appearance of the fruit always commands for it a large price in market. The fruit always grows large and is one of the best shipping varieties known. In some localities the Gandy is not so productive as some varieties, but the fact that it ripens late and is of a hardy nature indicates that it will do well in any soil where other berries grow. You can't afford to be without Gandy, whether for home or market.



## GIBSON—The Best of All Spring Varieties



This is Mr. Nord's patch of Gibson. His net profits were \$615 per acre. How would you like to pull down money like that?

### ✓ GIBSON

Without doubt the biggest money-making Strawberry grown. We have received dozens and dozens of letters from those who grow Gibson and we hear nothing but praise for it. It will grow almost anywhere and will thrive in poor soil better than any other variety we know of. The fruit is large, well-formed, juicy, and delicious. From the outside to the heart the fruit is a clear red. Many Strawberries are large at first, but decrease in size

toward the end of the season. With Gibson the exact opposite is true for it holds its size even to the last berry on the plant.

We have grown Strawberries for thirty-two years and we believe Gibson to be the best variety we ever had.

For market you can't beat Gibson for it ships well, arriving at distant markets in prime condition. The handsome appearance of the fruit and its delicious taste cause it to pull the highest prices in any market. The plant is a strong grower and produces big crops. It is as near rustproof as a plant can be.

Mr. E. C. Nord, of Rice Lake, Wisconsin, in sending in a picture of his crop of Gibson, says: "The patch I planted with Gibson that I bought from you is the best that I ever had. Last year they yielded me a net profit of \$665 per acre and in a dry season at that. I had several Strawberry-growers inspect my patch and they pronounced it the finest they had ever seen. By looking at the accompanying picture you will note that my patch is located on the lake shore, and the first season I harvested the crop most of the other berries were hurt by the late frosts. My Gibsons were not affected at all."

While we have a larger acreage of Gibson than ever before, the national popularity of this grand variety makes a demand far in excess of the supply, so take our advice and order early and heavily of Gibson, for it will surely pay you big money on your investment.



Gibson

**HAVERLAND.** Imp. Exceedingly productive. Fruit large and fine. One of the most popular of the well-tested varieties. It will stand more frost than most any other variety, often bearing large crops when others are killed. We can always depend on a large crop. Few varieties will produce more fruit per acre or sell for more money. The demand for plants is always great.

## HERITAGE.

Per. The plant is very large, of extremely heavy texture, some single-crown plants carrying foliage with a spread of 20 or 22 inches. Deep rooted and extremely free in fruiting, beginning to ripen its fruit about early midseason and continuing to very late. Another prominent feature is that the fruit-stems continue to shoot so late that during the early picking season there are many blossoms, which indicates to the experienced grower their long season of productiveness. The berry is dark, shiny, crimson to the center. Has a perfect blossom. Carries an unusually heavy green calyx, adding decidedly to its market value. Extremely large from the first picking to much above the average for the main crop and continuing large after the better known varieties are gone. We have fruited the Heritage for several seasons and every year grow more enthusiastic over it. Don't fail to include this one in your list, as it will prove a money-maker for you.

**HELEN DAVIS.** Per. A handsome berry of value for market or home consumption. Size is large, somewhat blunt on the end. Ripens early, possesses an excellent flavor and is a good shipper. Plants are thrifty and productive.

**KING EDWARD.** Per. Described by a grower in Massachusetts as follows: "It is a rich man's berry, poor man's berry, lazy man's berry, and market man's berry. If one wishes to grow the largest number of quarts to the acre, this is the berry to grow every time. It is not one of those coarse over-large berries, but of uniform size throughout the season; indeed, all of the berries look as though they had been run in the same mold. They are a very attractive light scarlet color. The plant is a strong



Heritage

staminate variety and is just loaded with fruit."

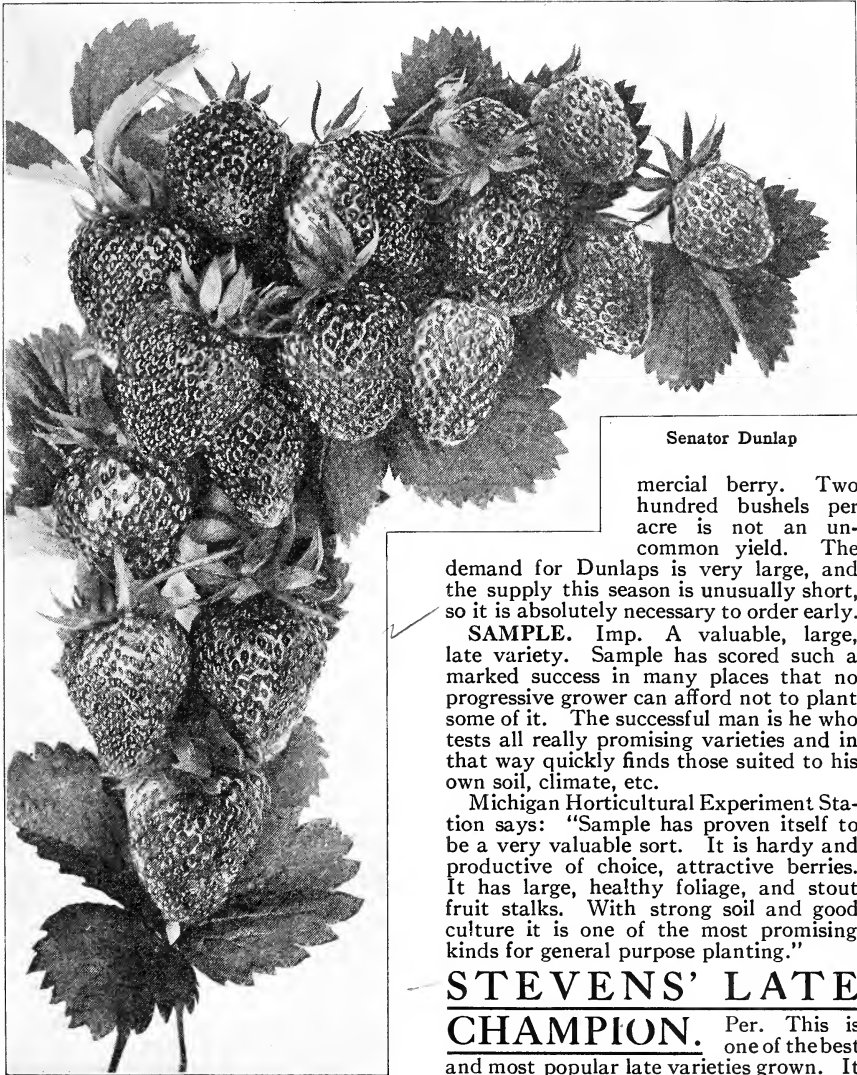
**POCOMOKE.** Per. From the standpoint of a commercial grower this comes very near being a perfect variety. It is a healthy, luxuriant grower, making plenty of runners, and is an abundant bearer of large, firm, bright red berries. Never misshapen and holds up in size better than a great many varieties. It is a superior berry in every way, with the exception of being a little tart; however, this makes it very popular as a canning berry. Needs no petting and will produce large crops under reasonably good culture. For some time we have noticed the similarity of the Pocomoke and Parson's Beauty and are now convinced that they are one and the same variety.

Be sure to include some Pocomoke plants in your order.

**PROLIFIC.** Per. We are still very enthusiastic over the Prolific after fruiting it another season, and consider it one of our very best sorts.

Plants very numerous, unusually productive. Has a record of yielding as high as 14,502 quarts per acre. Blooms and ripens in midseason, picks easily. Fruit very large to above medium, retains size well as season advances, roundish cone to blunt wedge, rather light in color, but nevertheless an attractive bright scarlet. On account of its vigor, the great productiveness of its plants, and the attractiveness of the large, well-colored berries, this variety gives promise of taking front rank among standard commercial strawberries.





Senator Dunlap

mercial berry. Two hundred bushels per acre is not an uncommon yield. The

demand for Dunlaps is very large, and the supply this season is unusually short, so it is absolutely necessary to order early.

**SAMPLE.** Imp. A valuable, large, late variety. Sample has scored such a marked success in many places that no progressive grower can afford not to plant some of it. The successful man is he who tests all really promising varieties and in that way quickly finds those suited to his own soil, climate, etc.

Michigan Horticultural Experiment Station says: "Sample has proven itself to be a very valuable sort. It is hardy and productive of choice, attractive berries. It has large, healthy foliage, and stout fruit stalks. With strong soil and good culture it is one of the most promising kinds for general purpose planting."

## STEVENS' LATE CHAMPION.

Per. This is one of the best and most popular late varieties grown. It makes strong, vigorous plants which produce an abundance of fruit. The plants send out a great many runners that take root quickly and cover the ground if not restrained. The fruit and blossoms are well protected by the abundance of foliage. The fruit is large, long, and slightly flattened. The color is a deep red, the flesh being also red. It ripens all over and is very firm, being one of the best varieties to hold up after picking that we know. Its season of ripening is about with that of the Gandy and is a worthy rival of that grand old variety as a popular and profitable late berry.

**SENATOR DUNLAP.** Per. In all localities where it has been planted we hear nothing but praise for the Senator Dunlap. It sends out many runners and should have plenty of room. The plant is perfectly healthy and an enormous bearer. It commences to ripen soon after the earliest and continues until near the close of the season. The fruit is large and conical in form. The color is a deep, rich red, the flesh is also red, and has a sprightly, delicious flavor.

This variety is grown largely as a com-



Wm. Belt

**TEDDY ROOSEVELT.** Per. Several years ago a few plants of this variety were sent to us from a grower in Indiana. We set them out and nearly forgot about them. But the following year one of our men, who is interested in all new varieties, took some of the plants and set them on his own farm. He kept setting the new plants every year until this year he has a good-sized patch of them. He reports to us that, out of about thirty varieties he is growing, Teddy Roosevelt, has proven superior to them all. The season of ripening is late. The fruit is large, dark red, and of excellent flavor. The plants are unusually strong and healthy and can be depended upon for a crop even when adverse weather conditions seriously affect other varieties. We have only a few of these plants to offer this year, so send your order in early to be sure of getting your supply.

**WM. BELT.** Per. The plant is very large, a most luxuriant grower and remarkably productive. It is medium in ripening, neither very early nor very late; size is very large indeed. In form it is conical, rather long and quite uniform in shape. The color is a brilliant, glossy red—as near perfection as was ever seen in a berry. It ripens all over without green tips. The quality is good—better than is usually found in large berries. The foliage of Wm. Belt, as grown here, is affected with some rust and, to insure a good crop every year, it should be sprayed, and it should be planted on well-drained, warm soil.

**UNCLE JIM.** Per. A good grower of large, stocky plants, well spaced for fruiting. The fruit is large, highly colored, quite firm, and of good quality. A choice among the standards. The plant is very large, and the roots go deeper than any variety we have, which makes it well able to resist drought.

✓ **WARFIELD.** Imp. The Warfield is a great plant-maker, covering the soil, with only fair treatment. The berries are deep glossy red and are very attractive in market, when well grown. It is red to the center, very firm, and much sought for by canners. It has the record of producing immense crops of berries, but to do its best must have a rich, moist soil, good culture, and the plants must be kept thinned somewhat in the row. Warfield is an excellent market berry.

#### KNIGHT'S RASPBERRY PLANTS "FINE"

Dear Sirs:—As the raspberry plants received from you were so fine I will try some of your strawberry plants also, so please send. . . . .

Yours truly,  
JOHN H. DENNIS, Ohio.

#### KNIGHT'S PLANTS MAKE \$100 CLEAR FROM AN INVESTMENT OF \$6.00

Dear Sirs:—We were well pleased with our strawberry plants that we bought from you. We never lost a plant and they cleared us \$100 from \$6.00 worth of plants besides having all we could use. The berries were fine; some of the selected ones only took 16 to fill a quart.

Yours truly,  
H. S. QUICK, Ohio.

#### KNIGHT'S FALL BEARING PLANTS TRUE TO NAME

Dear Sirs:—The plants I got from you last spring are doing nicely. The Superbs are beginning to bear nice fruit.

Yours truly,  
DR. L. O. GRIGGS, Illinois.

#### HE BOUGHT ELSEWHERE FOR A WHILE, BUT CAME BACK—"THERE'S A REASON"

Dear Sirs:—The strawberry plants came in fine condition. Think I will buy from you from now on.

Yours truly,  
WM. DUTCHER, Michigan.

#### KNIGHT'S PLANTS SATISFACTORY

Dear Sirs:—The plants received from you were very satisfactory. Thank you. I am in hopes of doing business with you another season.

Yours very truly,  
EVERETT G. TULLEDGE, Wisconsin.



## Price List of Strawberry Plants

We sell 250 of any one variety at thousand rate. 100 each of several varieties takes the hundred rate.

### FALL BEARING

	25	100	1,000
Superb.....	\$0.75	\$1.50	\$12.00
Progressive.....	.75	1.50	12.00

### GENERAL LIST

Aroma.....	.35	.65	4.00
August Luther.....	.25	.60	3.50
Bederwood.....	.25	.55	3.00
Billy Sunday.....	.35	.65	4.00
Brandywine.....	.25	.60	3.50
Bubach.....	.40	.75	4.50
Charles I.....	.35	.65	4.00
Chesapeake.....	.50	1.00	6.00
Gandy.....	.35	.65	4.00
Gibson.....	.35	.65	3.75
Glen Mary.....	.35	.65	4.00
Haverland.....	.25	.60	3.50
Heritage.....	.35	.65	3.75
Helen Davis.....	.25	.60	3.50
King Edward.....	.35	.65	4.00
Ohio Boy.....	.35	.65	4.00
Pocomoke.....	.35	.65	3.75
Prolific.....	.35	.65	4.00
Rewastico.....	.40	.70	4.50
Sample.....	.35	.65	4.00
Senator Dunlap.....	.25	.60	3.50
Steven's Late Champion.....	.35	.65	3.75
St. Louis.....	.35	.65	4.00
Teddy Roosevelt.....	.40	.70	4.50
Three W.....	.35	.65	4.00
Uncle Jim.....	.40	.70	4.50
Warfield.....	.25	.60	3.50
Wm. Belt.....	.35	.65	4.00

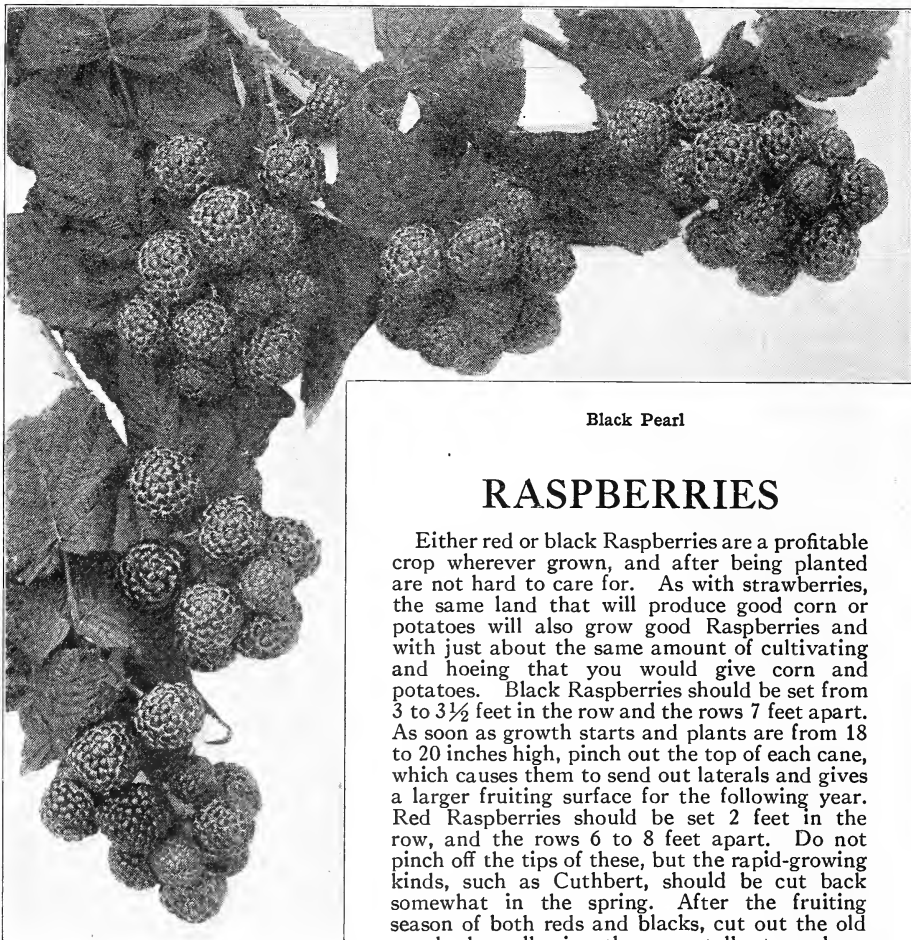
**NOTE.**—Write us for special quotations on orders of 20,000 or more. It is often the case that we have a surplus of some varieties, and these may be included in the list you want. In this case we would make you quite a material reduction from catalog price.

**Remember,** we guarantee these plants to reach you in good live condition when sent by express or mail, and if not so, we will refill the order, but we must have proof of this promptly upon receipt of the plants.

**Freight Shipments** go at your own risk. Our liability ends when we deliver them to the freight station in good condition and receive bill of lading.

---

I received the berry plants O. K. Plants were all good ones. Many thanks.—G. W. HOLMES, Indiana.



Black Pearl

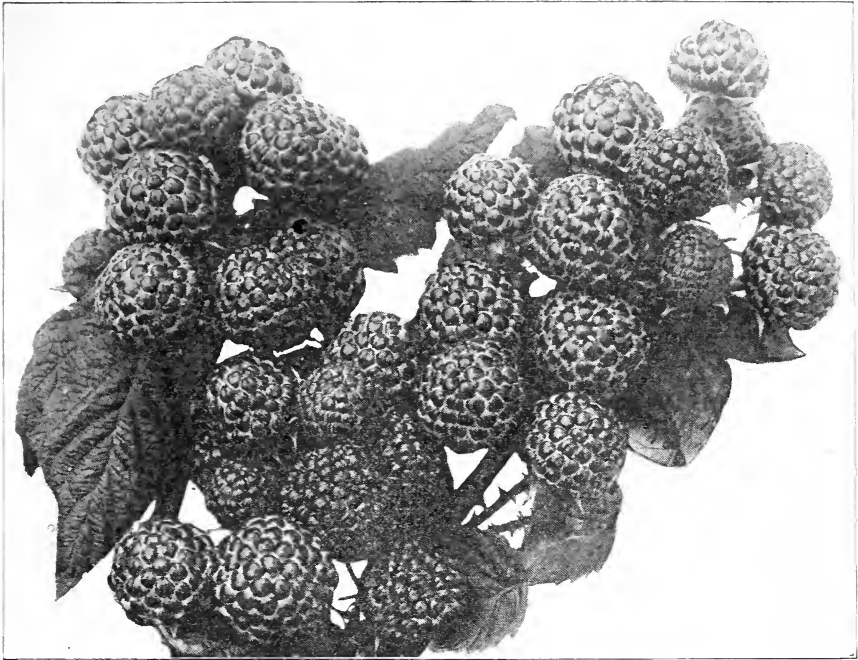
## RASPBERRIES

Either red or black Raspberries are a profitable crop wherever grown, and after being planted are not hard to care for. As with strawberries, the same land that will produce good corn or potatoes will also grow good Raspberries and with just about the same amount of cultivating and hoeing that you would give corn and potatoes. Black Raspberries should be set from 3 to 3½ feet in the row and the rows 7 feet apart. As soon as growth starts and plants are from 18 to 20 inches high, pinch out the top of each cane, which causes them to send out laterals and gives a larger fruiting surface for the following year. Red Raspberries should be set 2 feet in the row, and the rows 6 to 8 feet apart. Do not pinch off the tips of these, but the rapid-growing kinds, such as Cuthbert, should be cut back somewhat in the spring. After the fruiting season of both reds and blacks, cut out the old wood, thus allowing the new stalks to make a good growth for the coming season.

### BLACK RASPBERRIES

**BLACK PEARL.** This variety originated near St. Joseph, Missouri, a few years ago and the fruit-growers in that section and the Middle West generally have found it so profitable that they are planting more heavily of it than of all other varieties combined. One grower writes of it: "I have grown the Black Pearl Raspberry now for three years, and find it the best and earliest blackcap Raspberry grown in the Middle West. Earlier than Kansas and much more prolific than Cumberland." Another grower writes: "I have found them to be superior in many ways to the Cumberland and Kansas blackcap. They seem to be good drought-resisters and never winter-kill. The bushes will stand up under a big load of fruit and never tumble down like other varieties do." A great many plants are being sold for Black Pearl that are in no way related to that variety and all growers should be careful from whom they purchase their stock. There is absolutely no doubt as to the purity of the plants we offer for sale. If you want to grow Raspberries that will bring high market prices, or if you grow for your own table, you can't go wrong on Black Pearl. In our estimation and in the opinion of many noted growers Black Pearl will soon become the greatest of all Black Raspberries.

If the Mellera Sisters made \$136.33 with 850 KNIGHT'S PLANTS, costing \$2.55, why do you hesitate about where to order your plants? Read their testimonial on page 1.



Cumberland

**SCARFF.** The introducer of this remarkable berry, Mr. W. N. Scarff, of Ohio, writes us as follows: "We wish to call your attention briefly to a new blackcap Raspberry, which we purchased three years ago from a fruit-grower of our county. We have grown blackcap Raspberries for a quarter of a century, and have tried almost all of the new ones, and can truthfully state that this is by odds the best one we have ever grown or seen. We fully believe that all that is necessary to prove it the best all-round blackcap is to put it in test with other kinds and let it prove its own merits. We could offer dozens of local testimonials but we believe you have faith enough in us to believe what we say, and we could not afford to offer it as we do if we did not fully believe that it would outstrip any other kind. In size it compares with the Cumberland, possibly a little larger. In productiveness it is far ahead of any blackcap we grow. It is absolutely hardy. Canes free from disease and strong upright growers. The canes are cleaner by far than any Raspberry we have ever seen and we think it will stand heat and drought better."

Our stock was purchased direct from the introducer, so you can be assured of

its purity. Frankly speaking, we consider this variety one of the finest of all Raspberries now on the market. You should include some Scarff in your next order.

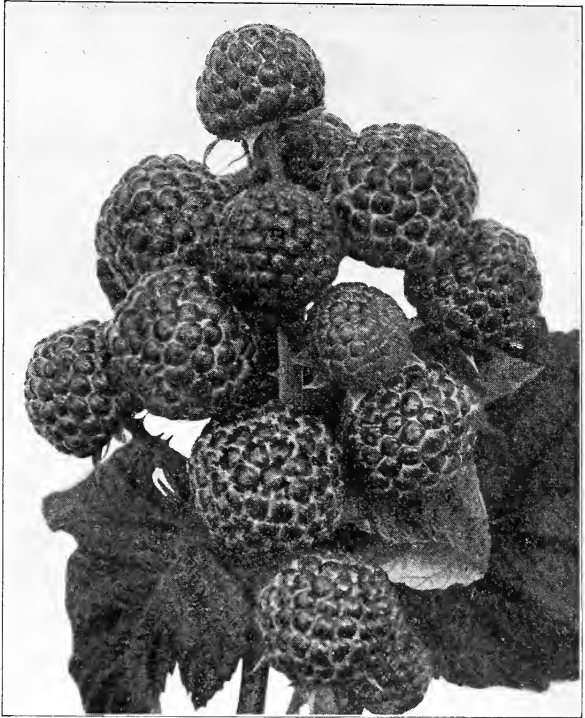
**CUMBERLAND.** This is the largest of all the old standard blackcaps and one of the very best. New ones come and go, but since the Cumberland was introduced several years ago, it has been forging steadily ahead, until at present we believe there are more Cumberland grown than any other two varieties. There is only one reason for this and that is that they are money-makers. They are healthy, vigorous growers, throwing up stout, stocky, well-branched canes that produce immense crops of magnificent berries. The fruit is large and firm, the quality is fine. Ripens in midseason and continues for two to three weeks. We have the finest crop of black Raspberry plants, particularly Cumberland, this year that we ever grew. If you want to be assured of a profitable patch, send to us for your supply of plants.

**CONRATH.** An early variety of merit. It is a strong grower and hardy in wood and bud. Very productive, fruit being nearly coal-black and of good size and flavor. It has a long season and holds its size well until the last picking.



**GREGG.** For years Gregg has been the standard market berry all over the country, and in some sections it is the main crop. The fruit of Gregg is of the very best quality, good sized, and covered with bloom. It is one of the latest varieties in ripening and in sections where it still does well is very profitable to grow.

**KANSAS.** One of the best and most widely grown early varieties. In some sections it is planted more extensively than any other sort. The canes are strong and healthy and produce large crops of fruit. Berries are jet-black, of good size, firm, sweet, and of best quality. Kansas has been a general favorite for several years and we have sold thousands of plants from which we hear of excellent results. No matter whether you grow for your own table or for market, Kansas should be in your garden. Include some in your order.



Plum Farmer

**PLUM FARMER.** Although this is one of the newer introductions in black-caps, it has come rapidly to the front. In this section it is being planted very heavily for an early variety and our growers find it more profitable than any other sort. The berries are of large size and excellent quality. They are coal-black but covered with some bloom, which gives them a bluish gray appearance. The canes are strong growers, hardy, and produce a

very large crop of fruit which is matured quickly. Don't hesitate to plant freely of Plum Farmer, as you will find it exceedingly profitable. We have planted Plum Farmer quite extensively and find it all right in every respect. In fact it is an excellent variety for home use and market. If you want to sell your crop, Plum Farmer ripens before the markets have other varieties on sale. There is no question about its worth for it has proved it in many gardens.

#### KNIGHT'S PLANTS HAVE A HEAVIER ROOT GROWTH THAN OTHERS

Sirs:—The plants arrived just at the proper time and were in excellent condition. Root growth much heavier than on plants received from another Michigan grower, in fact again as heavy. I always speak a good word for Knight & Son as I have found them reliable at all times.

Sincerely yours, FREDERIC WAGNER, Illinois.

#### KNIGHT'S RASPBERRY PLANTS THE BEST HE EVER SAW

Dear Sirs:—I received my raspberry plants all right and will say they are the best I ever saw. As I worked at the nursery business nine years I know what good plants should look like.

Respectfully, P. A. DAWDY, Kansas.

#### KNIGHT'S PLANTS STAND EXTREMES OF WEATHER

Dear Sirs:—The plants that I got from you were just fine. How did they come through this hard winter in such fine shape? The Gibson that I got of you several years ago are doing remarkably well. Yours very truly, G. GOODHART, Iowa.

#### KNIGHT'S PLANTS "FINE AS SILK"

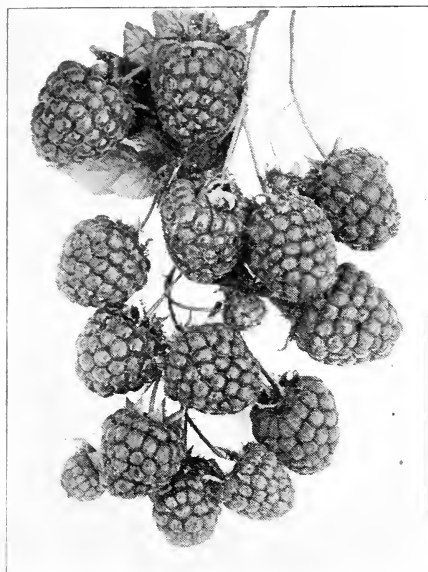
The plants and vines came all right. They are fine as silk.

Yours truly,

W. W. SAWYER, North Carolina.



## RED RASPBERRIES



Cuthbert

✓ **KING.** Since its introduction several years ago, the King has been rapidly growing in public favor, until at the present time it takes the lead of all early varieties. Fruit is of good size and of a bright, beautiful color; it is firm and of exceptionally good quality. Immensely productive and commencing to ripen early, it always commands a good price in market. Making a selection from the old standards, our advice would be to plant King for early and Cuthbert for late, and you will always be assured of a profitable crop.

✓ **ST. REGIS.** This variety is unusual from the fact that it produces fruit from early summer until late fall. It is the earliest Raspberry to ripen, coming with the last of Strawberries. The spring crop is the main crop but they continue, in smaller quantities of course, all during the summer and autumn. By the last of August the new growth of wood, which has been maturing during the summer, is ready to bear fruit and continues to do so until stopped by frosts. The fruit is of good size, a beautiful, brilliant crimson

## ✓ CUTHBERT.

This is one of the most valuable of the old standard varieties. It has been widely grown in all sections of the country and has given excellent results both for home use and commercial purposes. Cuthbert is a good, vigorous grower and produces bountifully large and beautiful bright red berries. Probably no other red Raspberry is grown so extensively as the Cuthbert and the demand for plants is always heavy. We grow them by the million every year in anticipation of the enormous demand, but even then we sometimes run out of them before the season is ended. Don't fail to get a supply of the Cuthbert for the main crop, for they are the very best late red that we have and no fruit-grower can afford to be without them.

HOW MANY  
CUTHBERTS SHALL  
WE SEND YOU?



King

color, of delicious flavor, and firm enough to ship to distant markets. In our opinion St. Regis will never be grown as extensively as Cuthbert and King for commercial purposes, but everyone should have some of them in order to enjoy delicious red Raspberries on their tables all during the season.

**COLUMBIAN.** Purple Cap. This, in our opinion, is the best of the purple varie-

ties. It is very hardy and produces large quantities of berries of enormous size, sometimes measuring one inch in diameter. The color is dark red, nearly purple. It shows its relationship to the blacks by propagating its plants from the tips. We do not believe that any of the purple caps will ever be considered seriously as commercial berries, but for home use and home market they have proven very satisfactory.

## BLACKBERRIES

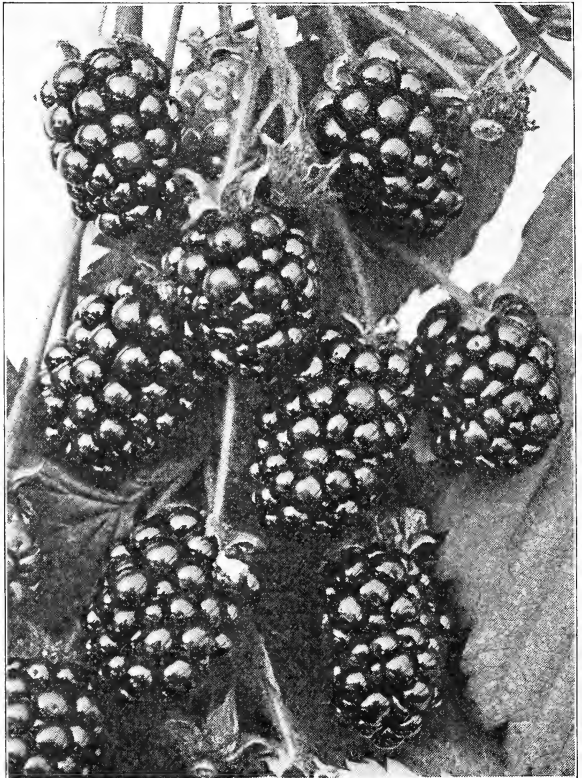
In planting your Blackberry patch, select land that is full of humus and retains moisture well, for this crop ripens at a time when we can naturally expect dry weather, and if your patch is on land that quickly dries out, the crop will suffer. Culture for Blackberries is the same as raspberries, only they need more room and should be set 3 to 4 feet apart in the row and the rows from 7 to 8 feet apart.

### EARLY HARVEST.

This is one of the earliest Blackberries in cultivation, a compact, stocky grower. Fruit medium size and firm; quality good; an enormous bearer. Grown here largely for market, and is meeting with great favor. It is not so hardy as some other varieties, but will do well with a little winter protection.

**ELDORADO.** Has been cultivated many years, and under careful test at different experiment stations has never winter-killed or failed to produce a full crop of the finest fruit. The vines are very vigorous and hardy, enduring the winters of the far Northwest without injury, and their yield is enormous. Berries are very large, jet-black, borne in large clusters, and ripen well together; are very sweet, melting, pleasing to the taste, and have no hard core; quality unimpaired.

**MESEREAU.** Originated in northwestern New York. Ironclad in hardiness; has a combination of the desirable qualities of a good Blackberry; exceptionally sweet, rich, and melting, nearly without core. Canes very strong; upright grower, attaining a height of 7 to 8 feet. The yield is simply enormous, and affords heavy picking from the first until all the crop is matured. Season late.



Eldorado

**BLOWERS.** This new Blackberry was introduced by M. Crawford, and we know it must be good or he would not introduce it. He makes the following claims for it besides furnishing a long list of testimonials

from good authorities all over the East. "Blowers Blackberries are always on top. They are big, luscious, overshadowing all others; never winter-kill, always in demand, rich in quality and quantity. Record from one-fourth acre: 2,347 quarts, 3,520 pounds, 1 ton, 1,520 pounds, 73 bushels, net price \$254.04; rate of \$1,056.16 per acre. Height of bushes, 14 feet; berries on one bush, 2,694."

That we believe, is a record for any berry. A thousand dollars from an acre of land is one of the things most all of us would like to get, but how many do? We don't claim that Blowers will make you rich over night, but with even medium

results it should pay big dividends on the investment this year.

**WILSON'S EARLY.** One of the largest and most productive of the early sorts. It is grown here largely for the market, as it pays better than any other variety. It always sells at a premium over other Blackberries in Chicago market and is daily quoted higher. The berry is large, jet-black, and holds its color, never turning red. It is not hardy, and here in the North needs winter protection to insure crop. By taking pains to lay it down, as is done here, it can be grown anywhere in the North. In the South it will need no protection.

## Price List of Raspberries and Blackberries

We sell 250 of any one variety at thousand rate. Not less than 50 plants at the hundred rate. One hundred each of several different varieties still takes the hundred rate.

### RASPBERRIES

	25	100	1,000
Cuthbert .....	\$0.75	\$1.50	\$10.00
King .....	.75	1.50	10.00
St. Regis .....	1.00	2.00	15.00
Columbian .....	1.00	2.00	15.00
Black Pearl .....	1.00	2.00	15.00
Conrath .....	.75	1.50	10.00
Cumberland .....	.75	1.50	10.00
Gregg .....	.75	1.75	12.00
Kansas .....	.75	1.50	10.00
Plum Farmer .....	.75	1.50	10.00
Scarff .....	1.00	2.00	15.00

### BLACKBERRIES

Blowers .....	1.00	2.00	15.00
Early Harvest .....	.75	1.75	12.00
Eldorado .....	.75	1.75	12.50
Mesereau .....	1.00	2.00	15.00
Wilson .....	.75	1.75	12.00

### NUMBER OF PLANTS REQUIRED TO SET ONE ACRE

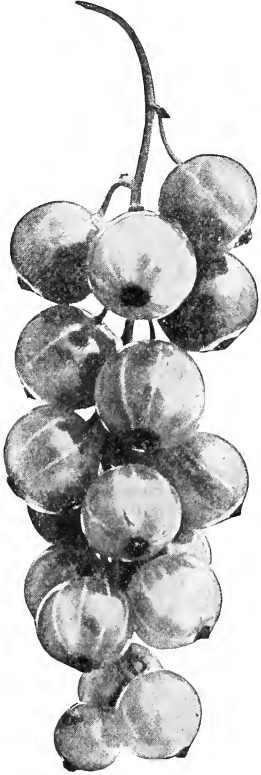
2 x 2 feet.....	10,890	6 x 5 feet.....	1,452
3 x 2 feet.....	7,270	6 x 6 feet.....	1,210
3 x 3 feet.....	4,840	7 x 2 feet.....	3,111
4 x 2 feet.....	4,445	7 x 3 feet.....	2,074
4 x 3 feet.....	3,630	7 x 4 feet.....	1,555
4 x 4 feet.....	2,722	7 x 5 feet.....	1,244
5 x 2 feet.....	4,365	7 x 6 feet.....	1,037
5 x 3 feet.....	2,904	7 x 7 feet.....	888
5 x 4 feet.....	2,178	8 x 3 feet.....	1,815
5 x 5 feet.....	1,724	8 x 4 feet.....	1,361
6 x 2 feet.....	3,630	8 x 5 feet.....	1,089
6 x 3 feet.....	2,420	8 x 6 feet.....	905
6 x 4 feet.....	1,815		



## CURRANTS

There should be at least a few Currant plants in every garden. The fruits make excellent jams and jellies, and the plants are hardy and easy to grow. Currants require a rich soil which retains moisture well. The plants should be set 3 to 4 feet apart and the rows 5 to 6 feet apart. Keep the patch well hoed, cultivated and trimmed.

**PERFECTION.** A variety that has created a big sensation for several years past. It was propagated by scientific principles from the Fay's Prolific and the White Grape, and so successfully was it crossed that it possesses most of the good qualities of both. It won the famous



Perfection

Patrick Barry Medal, the committee making the following report: "Season of ripening same as Cherry and Fay. Color bright red; a good grower. Size very large, larger than Fay and Cherry, clusters very long. Productive, resembling the White Grape in this respect. Quality fine. Not so acid as Fay and other red sorts. As a table Currant, cannot be surpassed. An important fact is that it has a long stem making it easy to pick." In addition to the Barry Gold Medal, the Perfection won the highest awards at the Pan-American Exposition and a gold medal at the St. Louis World's Fair. The call for the Perfection has been so great since its introduction that there have never been enough plants to supply the demand, and those who want some plants of this Currant we would advise to place their orders just as early as possible. 2-yr., No. 1 plants, \$1.50 per doz., \$9 per 100.

**FAY'S PROLIFIC.** Probably the most popular of all the older varieties of Currants. It is early, of a good color and size, and very productive. It does better on a heavy soil, and when given proper care can always be depended on for a crop that will sell at good prices. 2-yr., No. 1 plants, 85 cts. per doz., \$4.50 per 100.

**WILDER.** A remarkable variety, for which we predict great popularity, both for table and market. One of the strongest growers and most productive. Bunch and berries very large, bright attractive red color, even when dead ripe; hangs on bushes in fine condition for handling as late as any known variety. Compared with the celebrated Fays is equal in size, with longer bunch, better in quality, with much less acidity; ripens at same time, continues on bush much longer; fully as prolific, in some trials largely outyielding it. Recommended by our Experiment Station as the best red currant. Strong plants. 85 cts. per doz., \$4.50 per 100.

### AN INDIANA CUSTOMER PLEASSED WITH KNIGHT'S PLANTS

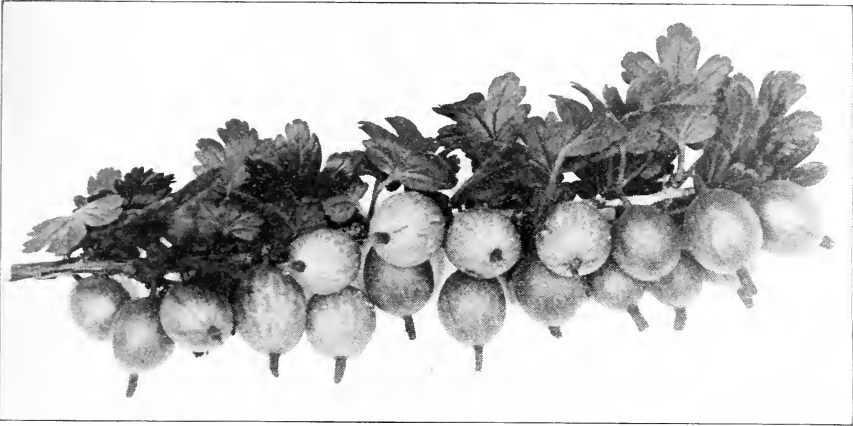
Dear Sirs:—Enclosed please find order for plants. I got plants from you three years ago and they were fine.  
Yours truly, ALVA Y. CATHCART, Indiana.

### KNIGHT'S PLANTS MAKE SATISFIED CUSTOMERS

Dear Sirs:—Enclosed please find order and remittance. If these come in as good condition, and give the same satisfaction that the strawberry plants received from you did, they will be O. K.  
Yours truly, GEORGE W. MIETH, Illinois.

### KNIGHT'S PLANTS DO WELL IN ILLINOIS

Dear Sirs:—Enclosed please find order for plants and remittance. The plants I got of you two years ago did fine. I had a fine crop last year.  
Yours truly, E. P. ROCKWELL, Illinois.



Downing

## GOOSEBERRIES

Excellent fruits for making jellies. The bushes are hardy and vigorous. Cultivate Gooseberries the same as Currants.

**DOWNING.** A very strong, vigorous grower. Healthy and free from mildew. It produces great quantities of large, pale green, tender-skinned berries of splendid quality. It is one of the oldest and most widely grown varieties and is excellent for family use and very profitable for market. Plant Downing for profit. 2-yr., No. 1 plants, \$1.50 per doz., \$8 per 100.

**HOUGHTON.** The berries of Houghton are smaller than Downing, but it is a strong grower, free from mildew, and particularly healthy and hardy. You can nearly always depend on a full crop and it never fails entirely. The fruit is pale red; skin thin, and flavor sweet. A good all-round table and market berry. 2-yr., No. 1 plants, \$1.25 per doz., \$7 per 100.

## GRAPES

Considered from all standpoints, this is one of the most satisfactory crops that can be grown. Almost as sure as the seasons come and go you can depend upon a grape crop. Sometimes larger and sometimes smaller, but they can be classed as a dependable crop and the average amount that can be made per acre, year after year, is very satisfactory indeed. And then the harvesting of the fruit and the culture of the vineyard is not such exacting work as with some other fruits, for the picking season extends over a period of two or three weeks, and the pruning of the vines can be done in the late fall or at any time during the winter when there is a day suitable. No plot of ground is too small to have a few vines planted for table use, and it seems that they cannot be planted on too large a scale for commercial purposes. For instance, here at Sawyer and in the vicinity adjacent are located vineyards of The Lakeside Vineyard Company, comprising over 600 acres of grapes in full bearing. This is the largest vineyard under one management in this state.

Any good dry soil with sufficient drainage is suitable for growing Grapes, if the exposure and climate are favorable. Before planting, plow, harrow, and pulverize thoroughly down to a depth of 12 or 18 inches. Plant in rows 8 to 10 feet apart and the plants 10 to 12 feet in the rows. There are so many methods of pruning, different methods being adapted to different localities, that we will not dwell on that point, only to say that proper pruning is very essential to the successful growing of Grapes, and the method that is proving best in your locality is the one for you to follow.



Concord

**CONCORD.** Black. Decidedly the most popular Grape in America, and deservedly so. Bunch large, compact; berries large, covered with rich bloom; skin tender, but sufficiently firm to carry to distant markets; flesh juicy, sweet, pulpy, tender; vine a strong grower, very hardy, healthy and productive. For general cultivation the most reliable and profitable variety grown. 2-yr. plants, \$1 per doz., \$4 per 100, \$30 per 1,000.

**NIAGARA.** White. Occupies the same position among the white varieties as Concord among the black, the leading profitable market sort. Bunch and berries greenish white, changing to pale yellow when fully ripe. Skin thin but tough, quality much like Concord. Niagara will thrive and produce big crops almost anywhere. It does well in Michigan and south to the most southern states. Read what the experiments stations say about it:

"If restricted to one variety, for either home or market, would choose Niagara. Other sorts are better in some particulars, but taken as a whole, there is no other its

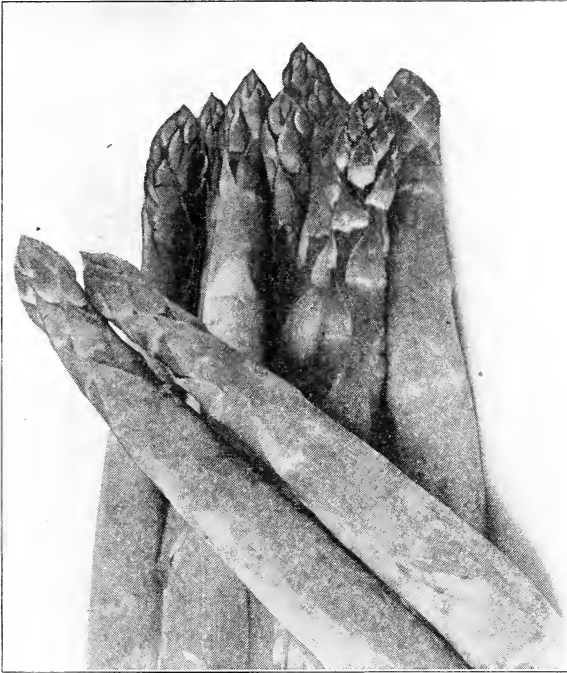
equal. Good growers, productive enough, always handsome in bunch and berry, of very good quality, with flavor one does not tire of. Will hang after ripening without rotting, cracking or wilting."—Illinois Experiment Station.

"Standard White Grape for home and market."—Georgia Experiment Station. 2-yr. plants, \$1 per doz., \$5 per 100, \$45 per 1,000.

**MOORE'S EARLY.** Very popular for early market. Moderate grower, healthy, and hardy; with good soil, high cultivation, and pruned long it is sufficiently productive. Larger than Concord; same color and flavor. 2-yr. plants, \$1 per doz., \$6 per 100, \$50 per 1,000.

**CAMPBELL EARLY.** One of the strongest growers, and hardiest varieties. It ripens with Moore's Early; quality is good. Its long keeping and good shipping qualities are really marvelous and unequaled by any other variety, old or new, and it is and will be the most profitable to grow. An enthusiast says: "It is the best of all American Grapes." 2-yr. plants, \$1.50 per doz., \$10 per 100, \$85 per 1,000.





## ASPARAGUS

Asparagus will grow well in almost any soil except low, damp ground, but the land should be under good cultivation and free from weeds. Mark the rows off  $4\frac{1}{2}$  feet apart, making the trenches in which the roots are to be set by plowing twice in the same furrow with a two-horse plow and then shoveling out the loose earth, making a trench about 10 inches deep with a smooth, flat surface. The plants are now placed in this trench at a distance of 12 to 18 inches apart, spreading the roots out flat. Then cover with 2 or 3 inches of soil, allowing the shoots to come up through, and get a foot or so in height before the trench is filled up level full. Or, if you wish, while you are hoeing during the summer to keep the weeds down, you can fill in the trench a little at a time until it is full. After the first good freeze, the tops will die down and should be cut off and burned, after which the bed should have a liberal covering of well-rotted manure, or, if you do not have that, in the spring you can apply some commercial fertilizer and harrow in well before growth starts.

We have three varieties that are grown largely here for the Chicago market and they are reliable.

**CONOVER'S COLOSSAL.** This good old variety is known everywhere; is of large size, rapid growth, and of good quality. Large 2-yr. plants, \$1 per 100, \$6 per 1,000.

**PALMETTO.** A valuable variety widely planted. It is larger than Conover, fully as early, and the flavor is excellent. 2-yr. plants, \$1 per 100, \$6 per 1,000.

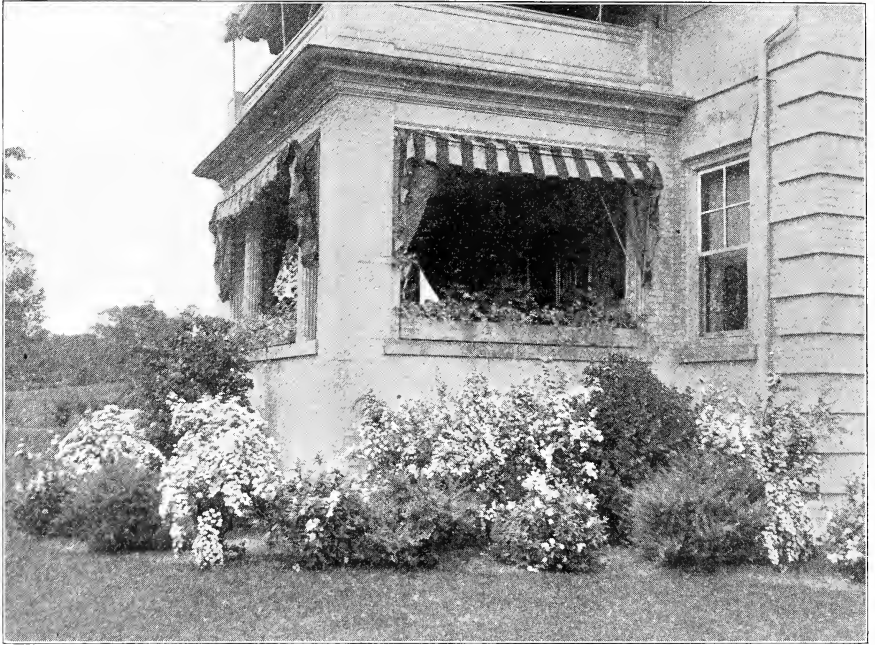
**COLUMBIAN MAMMOTH WHITE.**

This variety is white and stays white as long as it is fit to use. As some markets demand a white variety, this is a profitable one to grow in such cases. It is a vigorous grower and very prolific. Columbian Mammoth White is considered by many people to be the best variety of Asparagus. 2-yr. plants, \$1 per 100, \$6 per 1,000.

### NURSERY FIRM PLEASED WITH KNIGHT'S PLANTS

Dear Sirs:—Please express the following as quickly as possible. . . . . We thank you for the good stock of former shipments and the good quick service.

Yours very truly, L. T. CURTIS & SON, Michigan.



See how much more attractive and valuable a home can be made by a simple planting of shrubbery

## ORNAMENTALS FOR THE HOME GROUNDS

Our customers of late years are becoming more prosperous. Berry-growers are making money, and one of the results of this is that hundreds of them want to improve their home surroundings. Every season we get letter after letter asking if we cannot supply some good flowering shrubs such as are best adapted for country homes. For that reason we have prepared the following list of Shrubs and Vines, all of which we know from personal experience to be hardy and particularly adapted to beautifying any grounds. We have excellent plants to fill orders, and the descriptions will tell you what each kind is like and what it is good for. There is no way in which a few dollars can be spent so satisfactorily and bring so much pleasure to yourself and your family as in beautifying the home and making it a more attractive place in which to live. And again, if you should ever wish to sell your property, it will attract buyers much more quickly and you will get a great deal more for it than your neighbor, for instance, who would not spend a small amount of time and money to make his home grounds attractive. We would like to see all of our customers order a good supply of these Shrubs and Vines this season, for we know from personal experience the pleasure and satisfaction there is in growing them.

**ALTHAEA** (Rose of Sharon). One of the most valuable of tall, hardy shrubs. Blooms from August to October, a season when but few shrubs are in blossom. Excellent for either hedge or specimen plants. Strong bush plants, assorted varieties, 2 to 3 feet, 25 cts. each.

**PHILADELPHUS** (Mock Orange). Almost as fragrant as lilac. Literally covered with white flowers in little clusters. The bushes grow from 4 to 6 feet high. They are splendid in groups of a dozen or so, and for hedges. Strong bush plants, 2 to 3 feet, 25 cts. each.

### KNIGHT'S PLANTS FAVORITES AT HOME

Dear Sirs:—I received the cane plants O. K. They are fine plants and I am very well pleased with them. I enclose an order for a neighbor. Yours truly, CHAS. H. DeKOSEN, Michigan.





*Spirea* (Bridal Wreath)

**SAMBUCUS NIGRA AUREA** (Golden Elder). Of value more particularly on account of its foliage, which is of a beautiful golden yellow color and makes a fine contrast among shrubs with a green foliage. Don't fail to include some of the Golden Elder in your order. Strong bush plants, 2 to 3 feet, 25 cts. each.

**SPIREA, ANTHONY WATERER.** A valuable variety of bright crimson color. It is of dwarf, dense growth, never exceeding 30 inches in height. Continues in bloom all during the summer and fall. For a splendid showy effect, plant in masses of a dozen or more. Strong bush plants, 6 to 9 inches, 25 cts. each.

**S. VANHOUTTEI** (Bridal Wreath). A large shrub which produces immense numbers of white flowers late in the spring. The leaves are deep green, branches arch outward and are 5 to 6 feet long. Plant half a dozen specimens close to the house. Strong bush plants, 2 to 3 feet, 25 cts. each.

**SYRINGA ALBA** (White Lilac). This is a form of common Lilac that produces all white blossoms and single where the others are sometimes double. Lilacs, both purple and white, make excellent hedges or specimen plants and will grow to a height of 8 to 10 feet in good soil. Strong bush plants, 2 to 3 feet, 25 cts. each.

**S. VULGARIS** (Old-fashioned Purple Lilac). Everyone knows what a Lilac is, but not enough people have them in their yards. Their good points are extreme hardiness, very early blooming, and wonderful fragrance. Strong bush plants, 2 to 3 feet, 25 cts. each.

**VIBURNUM OPULUS** (High-bush Cranberry). Grows 8 to 10 feet tall. Vase-shaped. White flowers borne in flat-topped clusters during June, followed by showy scarlet berries that hang on all winter. Splendid for planting singly or in groups or hedges. Strong bushes, 2 to 3 feet, 25 cts. each.

**V. PLICATUM** (White Double-flowering Snowball). A perfectly hardy shrub, with immense globular flowers borne in clusters. Very showy and handsome. You probably all know this, as it is an old-time favorite. Grows 6 to 8 feet high. Plant several bushes singly. Strong bushes, 2 to 3 feet, 25 cts. each.

**WEIGELA, EVA RATHKE.** The finest Weigela grown. It is remarkably free-blooming and flowers continually throughout the summer and autumn. Blossoms are trumpet-shaped, of a beautiful ruby-carmine. For foundation or specimen planting there is nothing better. Strong bush plants, 2 to 3 feet, 35 cts. each.



## VINES

On the home grounds Vines are always useful. They give to the house a touch of beauty and mellowness, making it blend with the landscape as Mother Nature originally intended. Use them to cover up stones, stumps and the walls of the house. Plant them on the sunny side of the porch, where they can make it more beautiful and keep off the heat of the sun's rays.

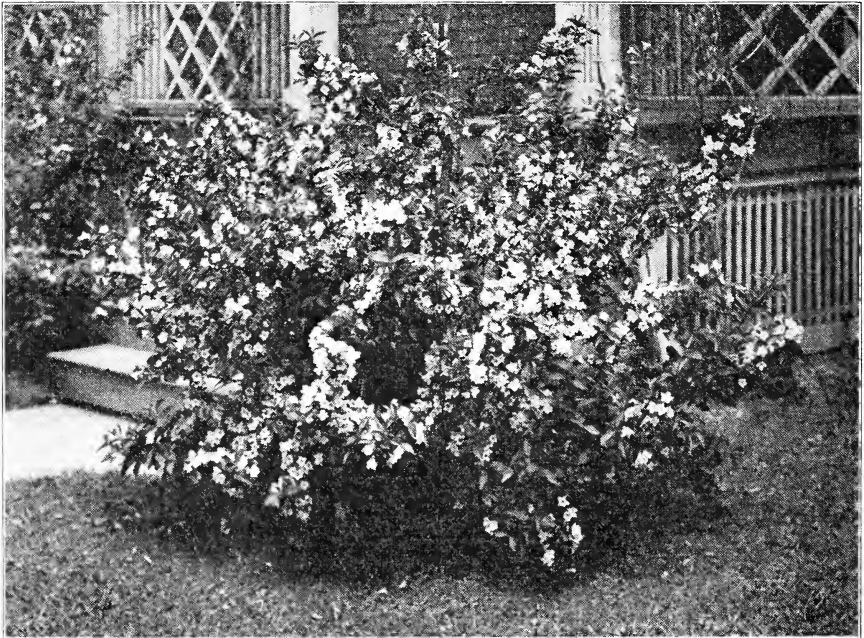
Vines are fond of good soil, but they will grow well in any ordinary garden loam. In the following list we present the varieties that we know will give good results.

**BOSTON IVY.** The old, reliable climbing vine of the North. It has glossy leaves overlapping each other, and its long shoots stretch up the walls with such a rapid growth that they reach the roof in a short time. In planting Boston Ivy the plants, if still in a dormant condition, should be cut back to within 6 inches of the ground. Strong 2-yr. plants, 25c. each.

**JAPAN HONEYSUCKLE.** A nearly

evergreen vine of good growth and with yellowish white flowers. Deliciously fragrant. Strong 2-yr. plants, 25 cts. each.

**MATRIMONY VINE.** A very ornamental climber, which is capable of adapting itself to any condition. It makes a strong growth and produces small purplish flowers in summer, followed by a large crop of scarlet berries. Strong 2-yr. plants, 25 cts. each.



Weigela, Eva Rathke

### KNIGHT'S PLANTS ADVERTISE THEMSELVES

Dear Sirs:—The enclosed order is for a neighbor of mine who saw the plants I got from you a few days ago and wanted me to order some for him. The plants you sent me arrived in excellent condition and were fine.  
Yours truly, FRED F. ALLEN, Michigan.

### KNIGHT'S PLANTS ARE PACKED RIGHT

Gentlemen:—The strawberry plants were received May 9th. They were packed in good shape and received in good condition after being five days on the road. Yours truly, I. LOBB, Wisconsin.

### KNIGHT'S PLANTS PLEASE IN NEW YORK

Dear Sirs:—The plants arrived on the 2nd, and were in first-class condition. I am much pleased with them and thank you for your kindness. Yours truly: WM. E. PALMER, New York.

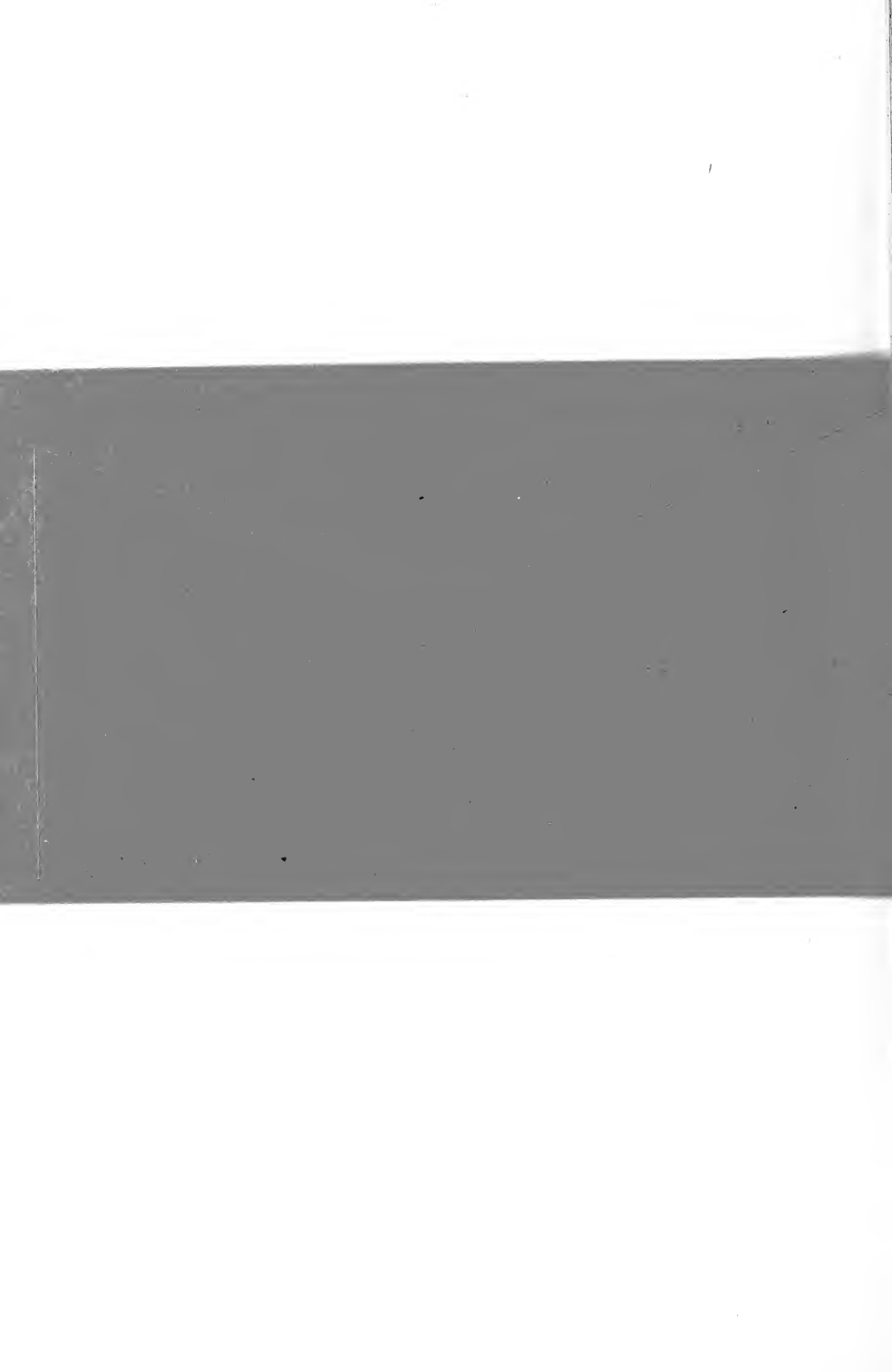
From \_\_\_\_\_

\_\_\_\_\_

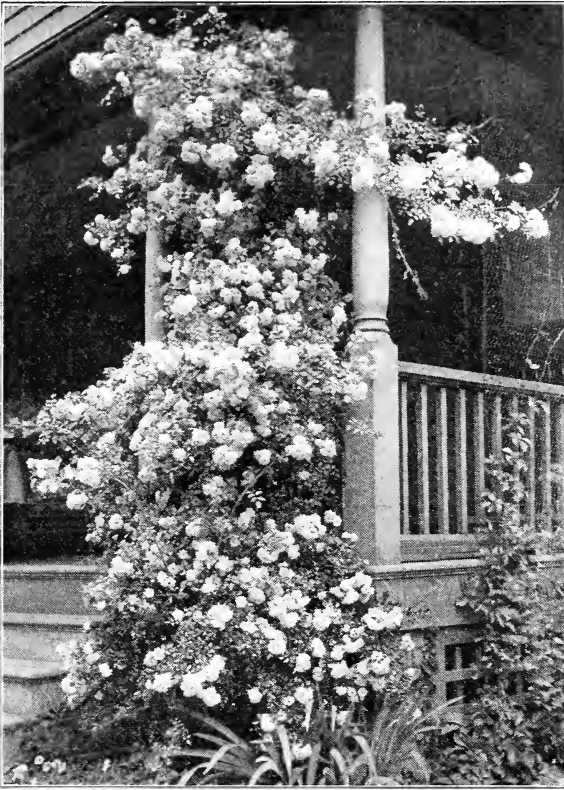
# DAVID KNIGHT & SON

NURSERYMEN

SAWYER, MICH.







Dorothy Perkins

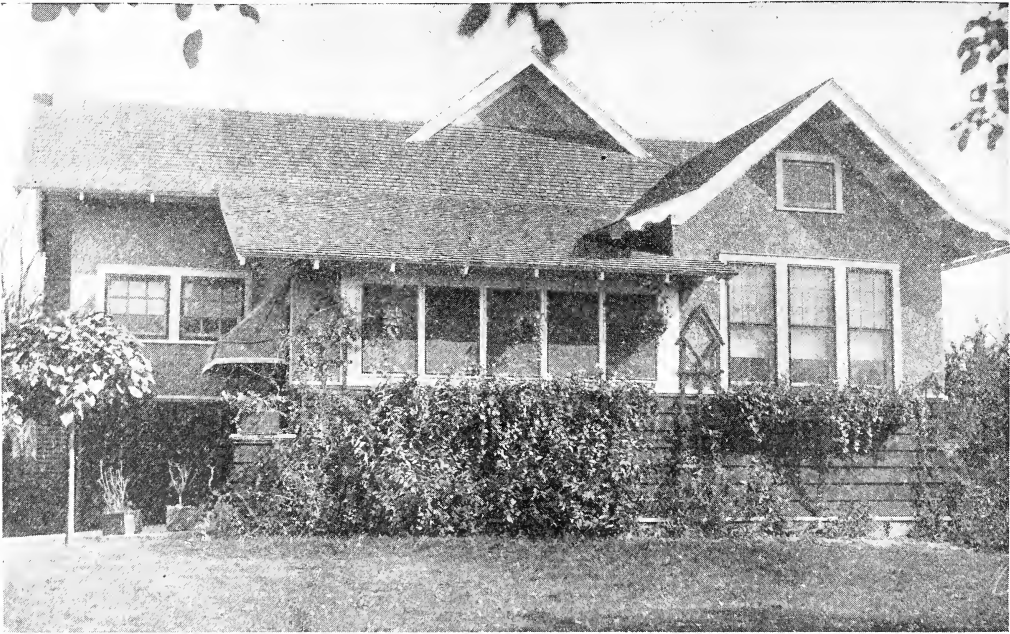
## CLIMBING ROSES

This class is one of the hardiest and most valuable of all Roses. They thrive in the cold winters of the North and revel in the hot summers of the South. For porch decorations they are effective and they protect from the hot rays of the sun and make the porch more pleasant.

Climbing Roses are fond of rich soil. Of course they will grow in soil that is not fertilized, but will do far better if a quantity of rotted manure or commercial fertilizer is spaded in around the roots of the plants. We list below two climbing Roses which are hardy and bloom profusely.

**DOROTHY PERKINS.** It is safe to say that this is one of the most valuable of all climbing Roses. It is a strong, vigorous grower and cares not where it is planted—in New Orleans or Detroit—so wide is its range. The canes grow rapidly, sometimes reaching 20 feet in a single summer. Foliage is bright, lustrous green and remains on the plant until winter. The flowers are delicate shell-pink and are borne profusely in large clusters. A few plants of this variety will make your home grounds more beautiful next summer. Strong 2-yr. plants, 25 cts. each.

**CRIMSON RAMBLER.** This is another excellent Rose for home-ground decoration and it is especially valuable for trellis and walls. To give good results it should have lattice-work to support its canes. For walks and hedges Crimson Rambler has a plan all its own. It is a vigorous grower. The flowers are small, pink-crimson, and bloom abundantly in large clusters. Strong 2-yr. plants, 25 cts. each.



This planting of shrubbery makes our home more "homey"

## HEDGES

Many of us do not fully know how much beauty and value a Hedge will add to the home grounds. For planting about the house a Hedge is just as effective as a fence and far more beautiful. Lots of people still cling to that fence between their grounds and their neighbor's. A Hedge of Privet or Barberry would greatly improve the looks of both places, at the same time giving an air of privacy to both. Talk it over with your neighbor, if he has anything to say about it, and decide to plant a Hedge this year.

### California Privet (*Ligustrum ovalifolium*)

This is easily the most popular of all ornamental Hedge plants, and more of it is used than all others combined. Its foliage, which remains on the plant nearly all winter, is a rich, dark green. It is a strong grower and will succeed, even under the dense shade of trees, where other plants would not exist. Plants should be set from 10 to 12 inches apart in the row and pruned back severely the first two seasons. Strong plants, 2 to 3 feet, 8 cts. each, \$6 per 100.

### Thunberg's Barberry (*Berberis Thunbergii*)

For a low Hedge and for planting around foundations in front of larger shrubbery, nothing equals this beautiful Barberry. It is of spreading habit, growing very thick right from the base, and requires but little trimming. The leaves are small, light green, turning to brilliant colors toward fall. It is absolutely hardy in all parts of the country, and should not be left out of your shrubbery list. Strong plants, 12 to 18 inches, 20 cts. each, \$2 per doz., \$15 per 100.

---

#### KNIGHT'S PLANTS ARRIVE O. K.

Dear Sirs:—The strawberry plants ordered of you just received O. K. Many thanks.  
Yours truly, W. C. ROBODKA, Wisconsin.

#### A WISCONSIN CUSTOMER PLEASSED WITH KNIGHT'S PLANTS

Dear Sirs:—I received the plants in good shape and am very well pleased with them.  
Yours truly, JOHN HAYNES, JR., Wisconsin.

## TESTIMONIAL LETTERS

We have hundreds of testimonial letters like the ones below and you should read them over carefully, for the words of fruit growers who have used KNIGHT'S PLANTS and found them profitable, will have more weight than anything we could say.

### KNIGHT'S PLANTS THE BEST HE EVER SAW

Dear Sirs:—Your plants, or mine rather, came in good shape. I might say they were the finest I ever got, large and well rooted. I thank you for your attention to this small order. You seem to take an interest in the little fellow.

Yours truly, ISAAC N. COOPER, Indiana.

### BOUGHT KNIGHT'S PLANTS TWELVE YEARS AGO. STILL BUYING THEM

Dear Sirs:—I received your fine berry catalog this year, as for the past twelve years. Thanks. I am enclosing an order for some Gibson plants. I have always had good success with your plants and have always been treated right. Thanks to you, gentlemen, for the same.

Yours truly, JOHN HENDERSON, Minnesota.

### KNIGHT'S PLANT'S FINE

Dear Sirs:—Plants received O. K. and they are fine.

Yours truly, BENJ. RUHL, Indiana.

### KNIGHT'S PLANTS ARE THEIR OWN ADVERTISING

Dear Sirs:—Plants came through O. K. Thank you for your kindness. Plants fine. You will get an order from my mail carrier. I gave him my catalog. Kindly send me another one.

Yours very truly, ISAAC N. COOPER, Indiana.

### PLANTS AND EGGS PLEASE AN ILLINOIS CUSTOMER

Dear Sirs:—I am enclosing an order for strawberry plants, currants and potatoes. The eggs and plants I got of you a few years ago were very satisfactory, also the potatoes.

Yours truly, M. C. KELL, Illinois.

### PLEASED WITH KNIGHT'S SUPERB PLANTS

Dear Sirs:—I was so well pleased with the Superb plants I got from you last year that I want to get some more this season.

Yours truly, GEO. CHRISTENSON, Connecticut.

### KNIGHT'S PLANTS PLEASE KANSAS CUSTOMER

Dear Sirs:—I received my plants O. K. and am well pleased with them. Your plants always please or I would order elsewhere. Many thanks for your promptness in filling orders and good plants.

Yours truly, JNO. THOS. MORROW, Iowa.

### KNIGHT'S PLANTS SURVIVE LONG DELAYS

Dear Sirs:—My plants arrived in due time, but I was not well enough to attend to them until today. Of course I was prepared for the worst, but to my very great surprise I never saw strawberry plants look finer. I am well pleased.

Yours truly, EUGENE BRYAN, Illinois.

### A WISCONSIN CUSTOMER PLEASED WITH KNIGHT'S PLANTS

Dear Sirs:—The plants you sent me have been received all right. They were good ones. I thank you for sending such good plants. If I need anything more in your line will call on you.

Yours truly, JENS NIELSON, Wisconsin.

### KNIGHT'S GIBSON STRAWBERRIES "JUST FINE"

Dear Sirs:—Enclosed please find remittance for plants. My Gibson strawberries are just fine. I have an acre of the old patch and a half acre new one.

Yours truly, MRS. W. P. WEBBERT, Michigan.

### KNIGHT'S PLANTS A LITTLE HIGHER IN PRICE, BUT QUALITY MAKES IT UP

Dear Sirs:—Enclosed please find order for plants. My strawberries and shrubs that I bought of you last spring are the best I ever bought. Your prices are a little higher than some catalogs I have, but I am satisfied yours are the best.

Yours truly, F. J. CRANSON, Michigan.

### A MISSISSIPPI SHIPMENT LOOKS AS FRESH AS WHEN DUG

Dear Sirs:—The raspberry plants arrived this morning in good condition. Looked as though they had just come out of the ground. Thank you very much.

Yours truly, ALLINE M. SNIFFEN, Mississippi.

Mr. Quick cleared \$100 with \$6 worth of Knight's Plants. The Mellera Sisters had a net return of \$136.33 from 850 Knight's Plants costing \$2.55. Mr. Nord had a net profit of \$615 from one acre of Knight's Gibson Plants. You can do just as well with Knight's Plants. Why think of buying elsewhere?



# White Wyandotte

“THE HEN FOR PROFIT”

**I**T WILL pay you to improve your flock of chickens by getting some of our White Wyandotte eggs. We make a specialty of the White Wyandotte, which are of the Dustin Strain, acknowledged as being the best strain of layers known.

We have grown nothing else but White Wyandottes for the past six years and are justly proud of our beautiful flock. You can have just as good a one.

Chicken feed of all kinds having been so very scarce and high for the past year, many farmers have reduced their flocks by half while others have shipped all of their fowls to market. The effect of this will be shown in a very short time by unusually high prices for eggs and poultry. We believe the man who lays his plans to get a good big flock hatched out this spring will be substantially repaid for his foresight, and remember, **THERE ARE NO BETTER FOWLS GROWN FOR EGG PRODUCTION OR FOR MARKET THAN THE WHITE WYANDOTTE.**

**Price of eggs, \$2.00 for 15. \$7.50 per 100.**

## **SPECIAL PREMIUM OFFER**

**For every order of \$3.00 or more, at catalog price, accompanied by cash and reaching us by March 15th, we will send you a setting of White Wyandotte eggs at half price, \$1.00. If you wish this premium, kindly notify us when ordering.**

# BUSY BEE HENNERY

VALENTINE PETZOLD, Prop.

BRIDGMAN, MICH.

BREEDER OF

**Rose Comb Reds      Single Comb White Leghorns**  
**Golden and Silver Seabright Bantams**

**ROSE COMB REDS.** Our heavy laying strain of Reds has been bred for 15 years for egg production and 8 years for show purposes. We have not bred for feathers alone, but breed for egg production first and, by doing so, we produced that desired type in Reds, the long back and the fine body both in males and females. That our Reds are also good in color has been proven by our winnings in good shows where Reds were in competition. We have won at the Greater Chicago Show twice, at Blue Island twice, at Washington Heights twice. Also at Berrien Springs, Mich., and Michigan City, Ind., we won the blue ribbons and silver cups.

**We can furnish hatching eggs from three selected matings at \$2.00 per setting of 15 eggs.**

Our utility Reds are mated to three fine yearling male birds and should produce good results as they are tested breeders.

**Price per 100 eggs, \$7.50.**

**SINGLE COMB WHITE LEGHORNS.** Our White Leghorns are of the very best strain in the country. They are exceptionally good layers and of fine type. We have mated two fine breeding pens, the cream of the flock of our very best birds, last year's winners, and should produce very good stock. Pen No. 1 and Pen No. 2 have two of our finest male birds from last year's breeding, which won the blue ribbon at South Bend, Ind., and Berrien Springs, Mich., shows.

**Eggs for hatching, \$1.00 and \$2.00 per setting of 15 eggs.**

Our utility flock of fine Leghorns, carefully culled and headed by two yearling males, also winners at shows above mentioned, to good yearling hens and pullets.

**Price per 100 eggs, \$6.00.**

**GOLDEN AND SILVER SEABRIGHT BANTAMS.** Our Bantams are bred for ornamental purposes and are beauties. Pronounced by judges "Excellent." They have been consistent winners at the Coliseum Show, Chicago, at the South Bend, Ind., Show, at the Greater Chicago Show, at the South Bend Interstate Fair, Berrien Springs, Mich., Peoria, Ill., and others too numerous to mention.

**Eggs per setting, \$2.00 per setting of 13 eggs.**

**WE HAVE A LIMITED AMOUNT OF STOCK FOR SALE  
PRICE ON APPLICATION**

For advertising purposes our prices have been lowered this season so that now anyone desiring to get hatching eggs from some of the very best stock in the country can do so at a very reasonable price.

**We Guarantee Fertility**, and also that you will be greatly pleased with all stock received from us. We have many satisfied customers who can vouch for our honesty and fairness in all of our transactions. When writing be sure to mention that you saw this advertisement in Knight's Catalog.

**VALENTINE PETZOLD, Box 100, Bridgman, Michigan**

We have personally inspected Mr. Petzold's Poultry Farm and know that he has some of the finest birds in the country, having recently taken **22 prizes from one show alone**. He has many silver cups and dozens of ribbons won at the various poultry shows. You can depend upon quality stock and a square deal from the Busy Bee Hennerly.—DAVID KNIGHT & SON.

# The "Kant-Klog" Sprayer



A few seconds working of the air pump charges the sprayer with compressed air, a powerful and elastic force, which discharges the liquid in the form of either fine sprays or solid streams as desired.

Sprays Trees, all kinds of Small Fruits, and Garden Vegetables, Disinfectants, Whitewash and many other uses.

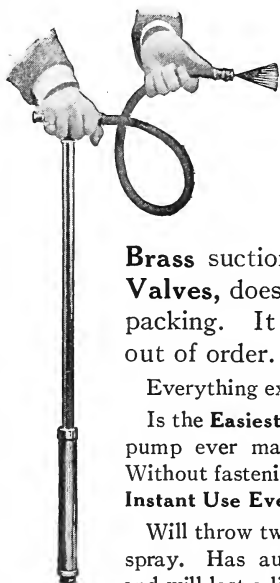
## Description

The Sprayer body is made of heavy polished brass or galvanized steel as desired. Both top and bottom are dome shaped; joined to body under heavy pressure, making a complete double seam. When completed this body is thoroughly tested at double the pressure ordinarily used, the result being that not one in a thousand give any of the troubles common with other constructions.

Hose is high grade, couplings solid brass with standard cut threads. Air pump of two inch heavy brass tubing. Fitted with "Kant-Klog" nozzle for making two round and one flat spray, two solid streams, spring hose cock, carrier strap and safety valve.

Price of Galvanized steel and above fittings .....	\$6.25
Price of Brass body and above fittings.....	9.60
Brass pipe for tree spraying, 3 feet.....	.60

# A New Spray and Force Pump



We do away entirely with the objectionable foot-rest, clamps, leather suction, packing, etc., etc.

This pump requires **no fastening of any kind**, holds itself down and works anywhere and everywhere. All the operator need do is to press the plunger down. **It rises of itself.** The **All**

**Brass** suction working within a **brass cylinder** with all **Brass Valves**, does away entirely with all leather, rubber or other packing. It is practically impossible for any part to get out of order.

Everything except handle and hose are **Solid Brass**.

Is the **Easiest Working** and will do more different kinds of work than any pump ever made. Will pump from a pail, barrel, tank, spring or creek. Without fastening of any kind it stands firmly wherever placed. **Ready for Instant Use Everywhere.**

Will throw two solid continuous streams, one flat spray and one fine round spray. Has automatic mixer to keep solution stirred, pleases everybody and will last a lifetime.

JUNIOR  
No. 5

Price of Pump complete as shown in cut.....	\$4.25
---	--------







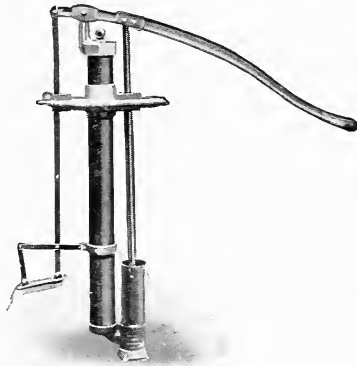
# GET THE BEST

---

*A Good Spray Pump  
Earns Big Profits and  
Lasts for Years*

## The Eclipse

Is a good pump. As practical fruit-growers, we were using common sprayers in our own orchards, found their defects, and invented the Eclipse. Its success forced us to manufacturing on a large scale. You take no chances. We have done all the experimenting.



We are placing in the market this season a light, compact power-outfit, the price placing it within the reach of every class of growers. The efficiency is equal in every respect to our hand-pump, which has been tested thoroughly and been proven successful. Write today for Catalog and Price-List.

**MORRILL & MORLEY MFG. CO.**

Box No. 1

BENTON HARBOR, MICH.





## BLACK PEARL

Don't fail to order some plants of this grand new Black Raspberry.

---

Beautify your home grounds with shrubbery.

### SPECIAL PREMIUM OFFER FOR EARLY ORDERS

For every Five Dollar Order of Plants at Catalog Price, accompanied by cash and reaching us by

March 15th, we will send you the following FREE:

- 1 Spirea (Bridal Wreath).
- 1 Althea (Rose of Sharon).
- 1 Dorothy Perkins (Pink Rambler Rose).
- 1 Crimson Rambler (Red Rambler Rose).

*Signify your wish for these plants when ordering.*

THIRTY-FIVE YEARS IN THE PLANT BUSINESS IS  
YOUR ASSURANCE OF SATISFACTION WHEN YOUR  
ORDERS ARE PLACED WITH

**DAVID KNIGHT & SON - Sawyer, Michigan**