

Historic, Archive Document

Do not assume content reflects current scientific knowledge, policies, or practices.



J. W. JONES & SON

ALLEN, MARYLAND

1918

STRAWBERRIES

SELECTED PLANTS OF THE BEST VARIETIES





A part of one of our fields of Strawberry plants

What We Will Agree to Do

We sell by catalog only, and to everyone at the same price, filling all orders with the same high-grade stock.

With the exception of Strawberry plants, we can ship anything listed any time after the receipt of this catalog. Strawberry plants frequently can be shipped during warm spells in winter, and after March 1 in unlimited quantities. From then until May 1 we are busy every day filling orders for customers. After May 1 we can fill a limited number of orders, but at purchaser's risk **always**.

We Ship Out Only Fresh-dug Stock of every kind, and will replace free of charge anything that reaches you in bad order, provided the transportation companies have given the shipment **reasonable** dispatch. If it has been unreasonably long on the way, the purchaser should examine it and, if spoiled, decline to receive it and make claim on the railroad or express company.

This offer does not apply to Strawberry plants shipped by freight, nor to stock of any kind shipped after April 15, by freight.

We Will Make Good anything shipped by express (if not delayed) until May 1.

We Pay Freight on all **Peach** and **Apple** trees ordered and paid for, to the amount of \$5 or more, on or before March 15, for delivery anywhere east of the Mississippi River. **Positively** this offer does not extend to anything except Peach and Apple trees, and not to them unless the order is received by March 15, and amounts to \$5 or more.

Our Terms are Cash with Order, and please remember when you are sending your money in advance that every one else is doing exactly the same thing. We will, of course, book orders, and hold them a reasonable length of time awaiting remittance.

Remit by Bank Draft, Check, Post-Office or Express Money Order or Registered Letter. Your personal check preferred.

As to Our Responsibility, we refer you to the Peoples National Bank of Salisbury, Maryland. In writing it, please inclose stamp for reply.

We Guarantee everything that we sell true to name, and believe 99 per cent of everything that we have ever shipped has proved so. However, sometimes in spite of the utmost precautions, mistakes do occur, and we will, upon proper proof, replace anything that proves untrue to label and, at same time refund the purchase price as compensation for delay and expense incidental to taking care of first order.


Strawberry Plants are packed in slatted crates, with plenty of damp moss, and will carry as far as from any concern in the United States. Trees are packed in paper-lined boxes or bales, for which no charge is made.

Fall Orders. We especially urge our friends not to set Strawberry plants in the fall. They will fail so often that the risk is too great; but trees can be set in fall to advantage. They are really better, as the soil gets firmly settled around the roots by spring. We do not, however, mail our catalog to our whole mailing list until January of each year. To anyone wishing to plant trees in the fall, we shall be glad to mail a copy, upon request, any time after October 1.

J. W. JONES & SON, Allen, Md.

1918

To Our Friends and Customers

 HE season of 1917 will go down in the history of this section as the most unfavorable, from a weather viewpoint, ever known. Never in the memory of the oldest inhabitant has so much rain ever fallen as during the past summer. It practically ruined our berry crop, and with the unprecedented scarcity of farm labor, making it impossible to properly cultivate our plants in the early summer; the rain has reduced our plant production so that we have one of the smallest crops we have ever grown.

The plants are nice, but there are not many of them.

Our prices are higher. They had to be. Labor, fertilizer, lumber, and stationary; all items of great importance in handling berry plants; have all advanced so enormously that it is impossible to sell them at the old prices.

We have made the advance as small as possible. The quality of the plants you will receive **will not** be lowered, and you can still get "Jones' Quality Plants and Trees" for less than the same quality can be had in almost any other quarter.

We hope to have your order. It will have our personal attention. You will get what you buy and the packing will be done so carefully that the stock is sure to reach you in A 1 order.

We advise early orders to us or the other fellow; however, we hope to have enough plants for all our friends, and will, unless there is an unprecedented demand.

We expect to see strawberries sell for the highest prices this summer they have ever brought, and they will be higher in 1919 than this year. The acreage is being constantly reduced. In this section 50% from last year. This spring there will be next to none planted. It can mean but one thing: a constantly lessening supply of berries and a higher price for them.

Plant all you can handle. The future was never so bright for a big profit. It's a certainty. That's our tip.

Just Another Word

After a careful survey of the Strawberry situation, based on reports from most all sections we are convinced that the real facts are these.

First. There are not more than one-half as many berry plants in the nurseries of the country this season as for many past years.

Second. That while this half crop is true, there will be less than half the usual number of plants set by berry growers this spring; so that there will be enough plants to meet the demand and possibly an excess.

Third. The crop of berry plants available for next year's planting will be smallest in twenty years; so that if there is a demand next year plants will be unobtainable and the price prohibitive.

Fourth. Our honest opinion is that all who can should plant all the berries they possibly can this spring. Good prices are a certainty and you can carry over your patch next year and be independent of the nursery next spring; when plants are sure to be very high and exceedingly hard to get. We ourselves find we cannot get labor to cultivate quite half what we usually have, for next year. What is true of us is true of all other nurserymen in the whole United States; and in many sections it is worse than here.

These are the indisputable facts of the situation.

Respectfully,

Allen, Md., January 11, 1918.

J. W. JONES & SON.

How We Grow Strawberries

Every year we have numberless requests for information on the best method of growing Strawberries. Of course, every one recognizes that this is a very difficult question to answer, as conditions vary so greatly in different localities and on different soils. Nine-tenths of all berries grown, or even more, are grown by the matted-row system; that is, to leave about all the runners on the parent plants to take root and make a wide row, leaving enough room in the alley between the rows for the convenience of the pickers.

The fundamental element of success in growing of any crop is the selection of a soil. Strawberries need a strong, well-drained location, but, at the same time, the land should be as retentive of moisture as it is possible to have it. Strawberries suffer from dry weather more often than from any other cause and, therefore, a moist soil always contributes to success. Here we always grow cowpeas on land the year previous to planting Strawberries; where they are not practicable, sow rye in the early fall and plow under early the next spring, as Strawberries need a soil **full of humus**. It holds the moisture and makes them grow and bear.

We always plow in the fall, but when that cannot be done, plow as early in the spring as possible. This is important, as berry plants need a well-compacted soil. Settling during the winter puts the soil in ideal condition for spring planting.

Make your rows $3\frac{1}{2}$ to 4 feet apart and set plants from 15 inches to 3 feet apart in the rows, depending on the variety. Chesapeake, making few plants, should be placed about 15 inches. Dunlap, a prolific plant-maker, will get too thick quite often if set 3 feet. Haverland, Ekey and most midseason kinds will usually make a proper bed if planted 3 feet apart. Gandy, 2 to $2\frac{1}{2}$ feet. We run our furrows with a double row marker, sow fertilizer down the furrow at the rate of 400 to 500 pounds to the acre, and then make a sharp list with a one-horse turning plow; strike this down nearly to the level of the field with a hoe, or small drag, and you are ready to set your plants.

We desire to warn our friends against the too heavy application of commercial fertilizers to young Strawberry plants. It is dangerous in the extreme. Many plants have been injured and often killed outright, but 400 or 500 pounds will not hurt them, provided it is well scattered and then cultivated in before setting plants.

There are many methods of setting the plants. We use a two-horse transplanter, but no particular method has advantage over any other except in the saving of labor. **The important thing** is to get your plants in the ground the same depth as they grew in the original bed, and to pack the dirt firmly around the roots. This done, there is little choice as to the method of doing it. The cultivation is always important and should be started as soon as planting is finished. If one will take the trouble to destroy all grass and weeds the year previous on land to be planted to Strawberries, it will be found to pay handsomely, as the seeds thus destroyed will not be in your berry-beds to plague the grower and run up the cost of hoeing. Keep them clean until frost, hoe shallow so as not to disturb the roots, and success is assured.



The roots of our Strawberry Plants



A corner of one of our berry fields

Something About Soils That Are "Strawberry Sick"

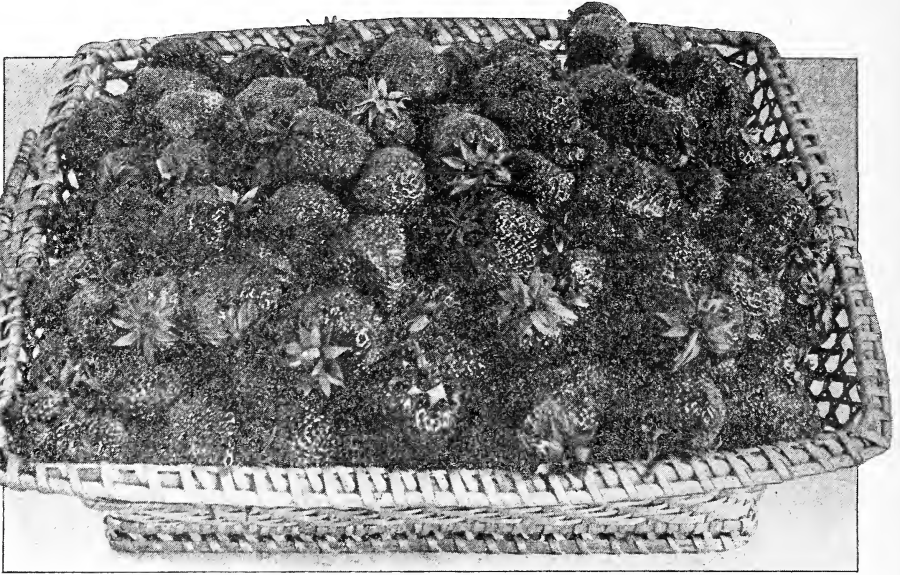
Every berry grower of extensive experience has found that frequently his berry plants refuse to grow. As a rule he has erroneously attributed this to disease in the plants, especially if they were purchased, rather than propagated by himself. Experiments have convinced many growers that the real trouble is in the soil itself; that there are certain places where it is practically impossible to grow berries successfully. Whether this refusal on the part of berry plants to grow in these given places is due to the lack of a certain bacteria or plant food, or whether the soils contain some poison that kills the plant is a moot question as yet, and one that a number of our State Experiment Stations are now at work on.

Our life-long experience in growing Strawberries has taught us, however, that a number of kinds are practically immune from trouble on **any** soil, while there are others that have to be planted on favorable soils or they refuse to grow. In order that our friends may have the benefit of our experience we propose to call attention to those kinds that refuse to grow in some places, and also to the kinds **which** will grow **anywhere**.

We have found Chesapeake particularly susceptible to soil poison; St. Louis, Klondyke, Parsons' Beauty, and Gandy also display a weakness in this direction. Big Joe, Amanda, and Matthews, on the contrary, grow anywhere and hold up the crop—while Ekey, Haverland, Sample, Aroma, and First-Quality are ideal, scarcely ever showing any weakness. Wm. Belt, Eubach, Glen Mary, New York, Dunlap, Tennessee, Orem, Abington, Warren, and Wolverton are medium, not doing so well on all soils as Haverland, Sample, and Aroma, but are much surer everywhere than Chesapeake and the others named in that class. Among the Fall Bearers the same distinction prevails. The Superb grows superbly everywhere, while the Progressive is quite critical as to location, sometimes refusing to grow altogether.

Every Peach on our list is a standard, and has been thoroughly tried out. No matter what your conditions, you can find the kind here that will meet them.

Send us your order for \$5 worth of Jones' Apple or Peach trees, and be assured of receiving first-class stock, with freight paid to your station.



Abington Strawberries

List of Strawberries

Abington

From Massachusetts, with a record that was hard to believe and harder to sustain, but it convinced the unbelieving by field-tests everywhere. Sent out to displace Bubach and to pollenize Sample. Hasn't done the former yet, but it is the best pollenizer for Sample, and as good for Haverland as we know anything about. Begins to ripen about the same time and the berries may be crated with either of these two well-known kinds without disparagement to either. **A good, strong grower in plant**, making enough runners for a good bed; berries large and fine looking. A good seller and a heavy bearer, you may plant Abington with confidence. Ripens midseason, and comes on **quickly**. Its only weakness seems to be lack of firmness.

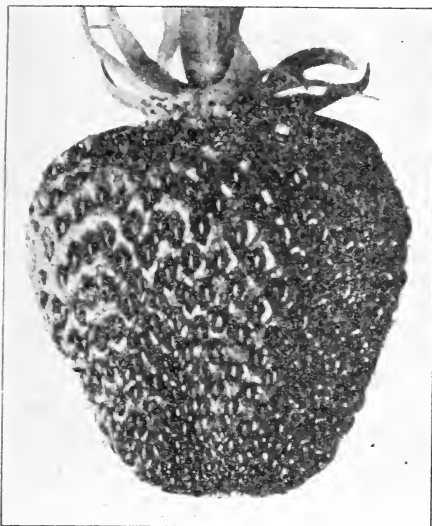
AMANDA

Probably the very best of the large-fruited kinds, as many very large berries display prominent weaknesses in some direction. Amanda is a perfect

grower, a heavy bearer, and the fruit is simply immense. We have quite a good stock for this year, and can recommend Amanda to all who wish a large, productive Strawberry. Especially suited to those who wish to sell direct to the home market, as those who buy it once will be sure to want more.

AROMA

There are a few Strawberry varieties that "run out" quickly; there are a few others that "hold their own" for a long time; but Aroma seems to be one that improves with age. It has really been growing steadily better here ever since we first grew it. Grows better, bears better and sells immensely better than ever before. It ripens with the regular midseason kinds, such as Haverland and Sample. It is every bit as good a seller as the Gandy, being quite as large, firm and handsome as that well-known standard of shipping excellence; on any kind of dry soil will bear twice the quantity of berries as Gandy. In fact we do not know of any kind that holds up better on dry, thin soils than Aroma. It is also



Aroma Strawberry

a good sure grower in nearly every locality and on all kinds and conditions of soils, for while the plants are not so large as many others, for toughness and vigor it has no superior. **But the biggest thing in its favor is its selling quality.** On all the Middle West markets Aroma is always quoted at from 25 cts. to \$1 per crate higher than average varieties, which in a season of over-production means a lot. Our own experience leads us to recommend it as a good pollinizer, though it has not usually been recommended for that purpose. We have found it better than Chesapeake, for it is much more vigorous in growth. Certainly in the Middle West no grower can make a mistake in planting Aroma.

BIG JOE

On the back cover page of this catalog will be seen a photograph of a cluster of this most remarkable berry. The berries were picked here on May 24, mailed to Harrisburg, and the photograph made on the 26th, so it must ship fairly well. This picture will give some idea of the wonderful productiveness of this berry, as it is not in the least exaggerated and that single cluster contains fourteen berries. In size it is the equal of anything we have ever seen, taking the entire crop right through, as the last berries are almost as large as

the first; and this is spite of the fact that it bears as many quarts as any kind we have ever seen. It ripens midseason, along with Haverland and Sample, comes on rapidly and ripens all over at once, making it easy to pick. The shipping quality is about equal to Bubach, Haverland or Sample, we would say. It is not so firm as Aroma or Gandy, but it has shipped well from this section for a number of years and has brought the very highest prices ever paid for any kind in the history of the berry deal here. We have known of many instances where a whole crop of Big Joe brought 10 cent a quart at the loading station. It is also a particularly strong and vigorous grower; the equal of Haverland at its very best. We feel sure that it meets every possible requirement of the market berry-grower, being productive, a strong and healthy grower, and has a perfect bloom, so that it does not require a pollinizer. In fact, we think it can be used as a pollinizer for any of the midseason varieties. For lots of big red berries that bring the money, plant Big Joe, as every report we have ever had from it spoke enthusiastically in its praise.

Bubach

This has been one of the most widely disseminated and most valuable varieties that was ever introduced, and today, after more than thirty years, it is still the most largely planted of any in many sections. Ripens among the very earliest of the midseasons, perfectly healthy in plant-growth, making just enough plants for a profitable crop, with berries that are the very largest that grow; it lacks only exceeding firmness to make it perfect as a market berry. There are a great many who grow it to ship to distant market by rail, but we do not consider that it is the best for that purpose. **But where one has a home market, it is doubtful if there is any that will show a greater profit, year after year, than Bubach.** For this reason we heartily recommend it.

Cardinal

With us this fine berry has always been one of the very best we grow, but it does not seem to be making any gains in popular favor; in fact we do not sell so many plants of it now as we did a few years ago. It has never failed to give us a tremendous crop of large, fine berries, of excellent shape and color

and the best of shipping qualities. In plant-growth it is all that can be desired—vigorous, healthy, absolutely free from rust in summer or at fruiting time. Would recommend a trial of it, for wherever it does as well as here, it is a good one. Ripens with Bubach.

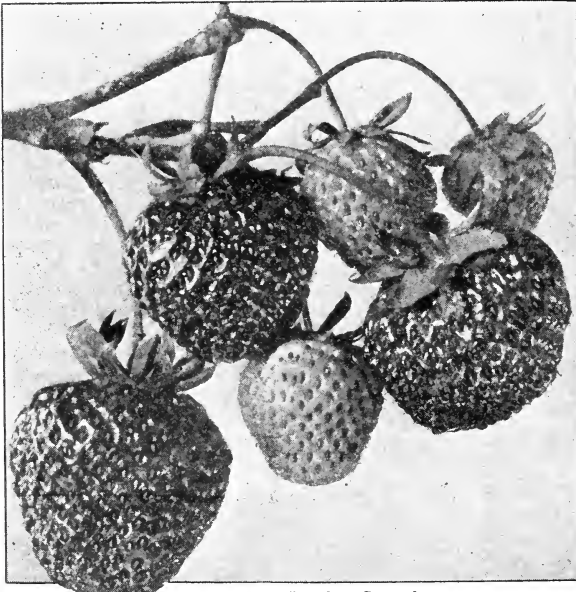
CHESAPEAKE

The most valuable of all of W. F. Allen's introductions. For many years there has been a place for a fancy late berry of good shipping qualities and Chesapeake has filled it. **We have never seen any that was of more beautiful appearance; large, even in shape and uniform in size, it seems to have reached perfection so far as market qualities are concerned.** Ripens a little earlier than Gandy, but holds out about as long, and in most localities is vastly more productive, though Gandy may occasionally, with ideal soil, bear quite as many berries as Chesapeake. The great superiority that it has over nearly all others is its remarkable selling qualities, for we have positively known of sales where it brought twice as much per quart as other standard varieties of its season, and last year it

sold for more than the Gandy the season through. It may be that there will be an over-production of poor berries, but we doubt if there will ever be too many of such high quality and handsome berries as Chesapeake. Its only weakness is a difficulty in getting a bed of the plants.

Early Jersey Giant

For years and years there has been a persistent effort to secure an extra-early Strawberry that would prove satisfactory; but there seems to have been something lacking in every offering. It does seem, however, that Early Jersey Giant is going to fill the long-felt want. It was originated by Dr. Walter Van Fleet, of New Jersey. The berries are large, brilliant, scarlet in color, with something of a point at the tip; they have a large, green cap. that makes them very showy. A large Burlington County grower says, "On Monday, May 12, I picked my first Early Jersey Giant, the same day as St. Louis. As an early berry it is in a class by itself." One of the best of the early kinds because of the size of the fruit, the flavor, the color, and its carrying qualities.

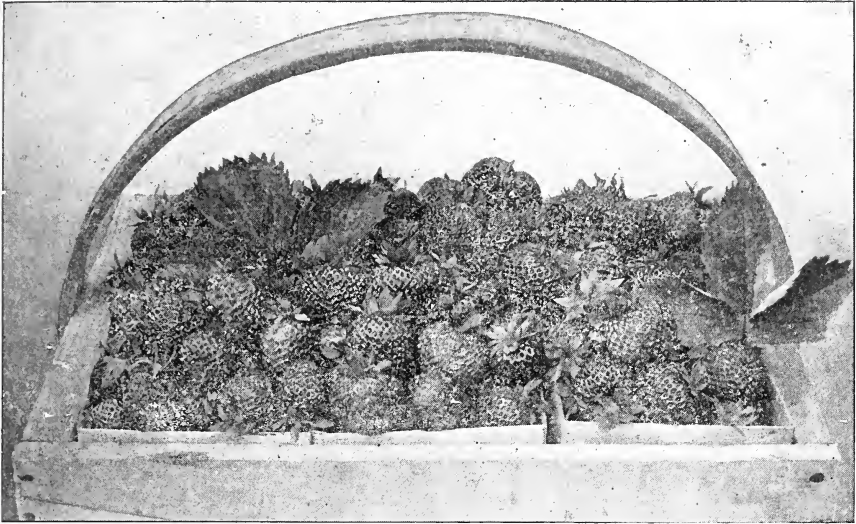


Dunlap Strawberries

Dunlap

Makes more plants than any that we grow, and if allowed to get too thick the berries are generally small; but, when properly thinned, you find it hard to get a berry that will produce more nice market berries than Dunlap. Has become the standard for pollenizing such varieties as Cardinal, Haverland and Warfield. The fruit is average in size and perfect in shape and ships well, but the great point with Dunlap is that it may be depended on to **grow well and bear well everywhere and every time**, even during a record-breaking drought. Ripens with the very earliest midseason berries and matures its crop rapidly.

There is not a Strawberry in this book we cannot recommend fully.



Early Ozark Strawberries

Early Ozark

For three or four seasons, after this was introduced here it was the most largely planted kind in existence, but for the past two seasons it has not held up. The fruit seems to fade and soften up as soon as picked, and we do not advise planting it unless you are acquainted with its behavior.

Ekey

We do not really know who introduced this, but it originated in Ohio, and we are convinced that it is one of the very best of the introductions on the market today. It has seemed to us that it would make an ideal pollenizer for Haverland, ripening at just the same time, with a strong, staminate blossom, and the berries are almost identical in size and shape, except that the Ekey has a much finer gloss than Haverland. It is a splendid grower, making just enough strong-rooted plants for a perfect matted row. There is no sign of rust on them, their dark green foliage being marked in any field where they are grown. It is tremendously productive; we believe that it is equal in this respect to any we have ever grown, and it has the advantage of ripening the entire crop during the first few days of the season. It is also a splendid shipper and keeper, and will always command the highest market price.

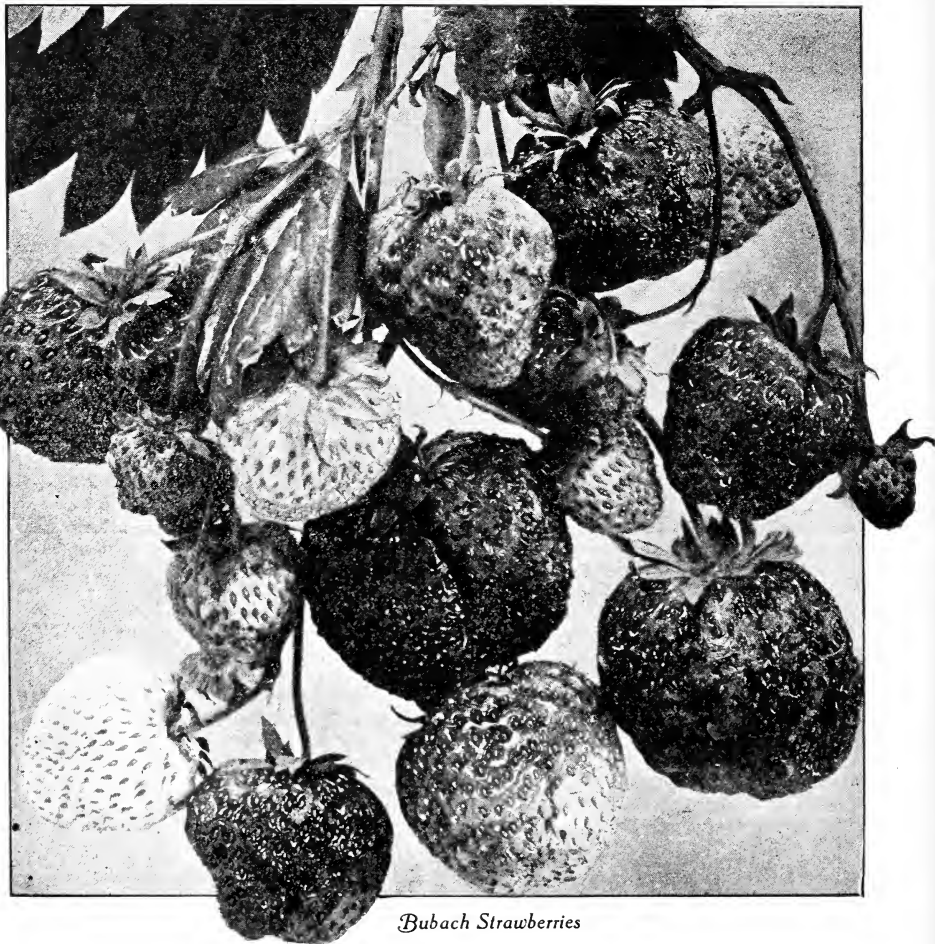
Fairfield

This is not quite so early as the Excelsior, lacking perhaps forty-eight hours, but is equally productive and of much better quality. The plants, shape of berry and habit of growth bear a very close resemblance to Haverland. The berries are a good size, running larger than Excelsior.

FIRST-QUALITY

We feel well within the facts when we say that First-Quality is one of the best Strawberries we have ever seen. It has, to a very great degree the first essential of a good Strawberry—vigor of plant-growth. If the plant won't live and grow, a Strawberry is worthless. First-Quality does both. We feel sure that fewer plants of them died during the past season than of any kind we set, and they are a marvel for growing right along under all unfavorable conditions. The berries are almost identical in size and shape with the Haverland, but are very much more glossy in color and a great deal firmer and, we believe, it is fully as productive. It is a perfect bloomer and good pollenizer.

Send us \$1.25, and we will send postpaid to any post office in the U. S., 100 plants of Progressive, the great Fall-bearing Strawberry.



Bubach Strawberries

Fendall

Originated in Baltimore County, Md., several years ago. Of the New York type, but perhaps an improvement on that well-known kind. A good reliable variety of mid-season ripening.

Glen Mary

This has for several years now been a standard for number of quarts produced wherever it does well. It has an inclination to rust in many places, which makes it impossible to grow it successfully, but in the North it is certainly one of the leaders. One of the

strongest points in its favor is the very vigorous growth that it always makes. While not a persistent runner, it yet makes plenty of the largest, stockiest plants that one can imagine. The berries are large to the very largest, but not always of the best shape; neither is it a good shipper; but, where one has a home market, and is sure that Glen Mary will not rust, we can recommend it with every confidence that it will fill the bill. Its time of ripening, the earliest of the mid-seasons, makes it very valuable, and its exquisite flavor makes it one of the most desirable Strawberries especially for the home garden.

GANDY

For twenty years the leading late kind and **by many still considereed the best.** The only trouble is, that on dry soil or in a very dry season it cannot be depended on to bear well. Of extraordinary shipping and selling qualities, it is still the leading market berry for late in all important berry-producing centers, and we annually sell plants of it well up toward the 500,000 mark, the most indisputable evidence of its widespread popularity. A free plant-maker and a good grower generally, yet sometimes failing in vigor; it is easy to grow, and its remarkable firmness makes it keep on the vines longer than almost any kind we know, and it never fails to bring the price.

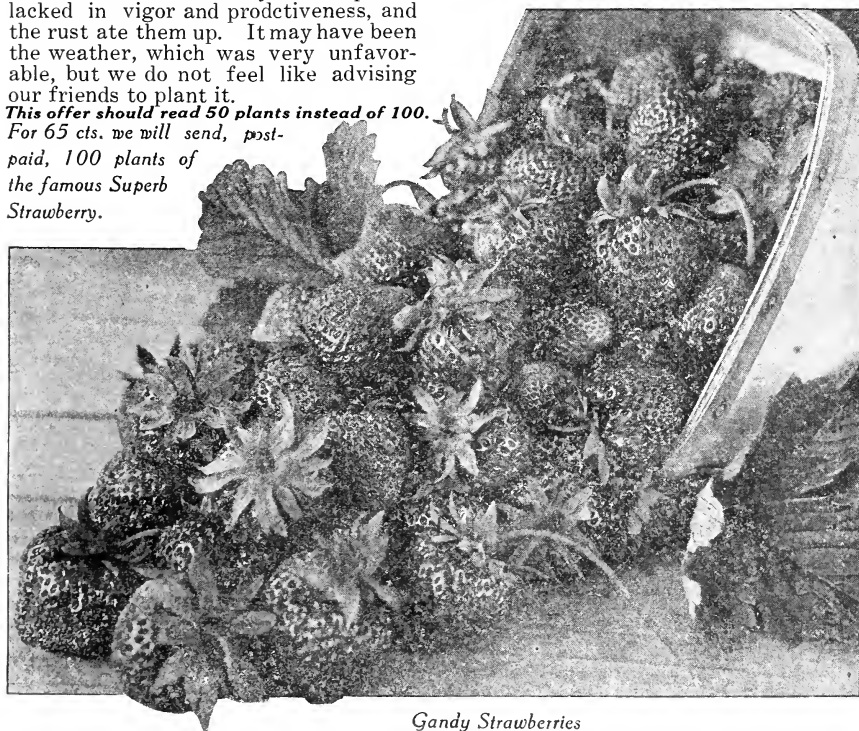
Heritage

We regret very much that we are obliged greatly to modify our opinion of the virtues of this. For a number of years it was remarkably good, but last season it fell down badly. The plants lacked in vigor and prodtiveness, and the rust ate them up. It may have been the weather, which was very unfavorable, but we do not feel like advising our friends to plant it.

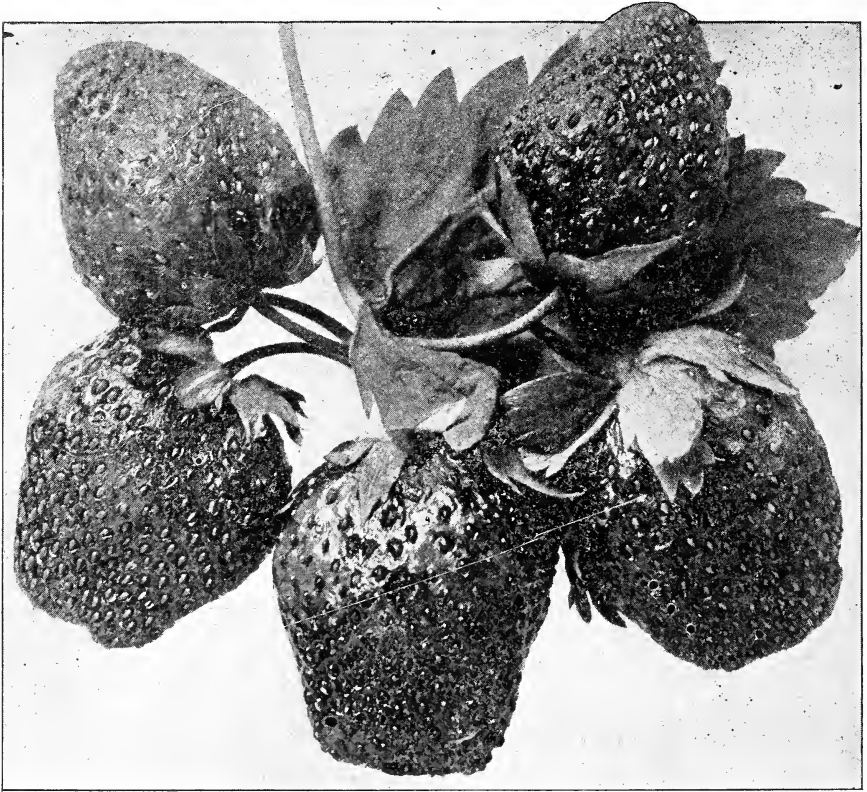
This offer should read 50 plants instead of 100. For 65 cts. we will send, post-paid, 100 plants of the famous Superb Strawberry.

HAVERLAND

This is, today, unquestionably the most popular variety grown in America. It combines more good points than any Strawberry ever introduced. It is a **tremendously heavy yielder; it can be depended upon to bring up a crop every season—hot or cold wet or dry.** If you have any berries at all, you are sure to have Haverland; it is one of the toughest and strongest growers that there is on the list, and it is **nearer frost-proof than any variety in cultivation, if not the nearest.** These four points have combined to make it one of the most desirable berries for the average grower there is, and the fact that the sales on this more than thirty-year-old kind are constantly increasing is proof that it is greatly appreciated. The berries are large to very large, long-conical, fairly firm and a good shipper, and it never rusts. There have been times when many other kinds were



Gandy Strawberries



Haverland Strawberries

“all in” from drought and heat, Haverland was picking a fine crop. If in doubt, plant Haverland, and we know you will not be disappointed.

✓ Hansbach

From the same source as the Mascot, being a cross between that and Gandy. The berries are very large, but too soft. Fruit ripens as late, if not later than the Gandy. The plants are wonderful growers and producers.

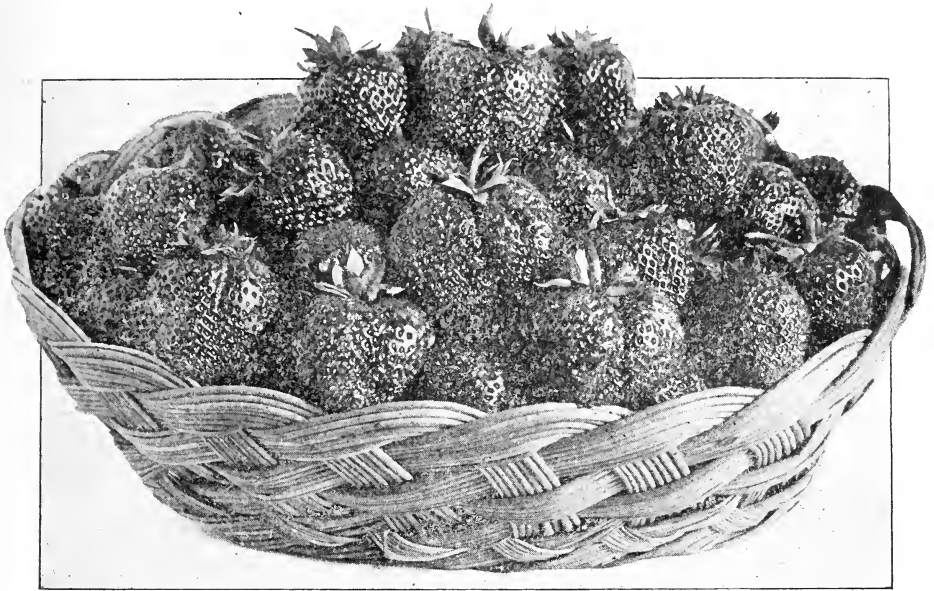
✓ Klondyke

This has been more largely planted for several years in this vicinity than any other variety in cultivation. It has been found valuable, not for the quantity of fruit that it produced, but from the fact that what it bore was of such fine appearance and shipping quality that it would command the top of the market always. It has a strong, staminate

blossom which we think will make it satisfactory as a pollinizer. It is not tremendously productive, but bears a very fair crop, and the berries are remarkably uniform in size, shape and appearance, and of extra-fine quality. It begins to ripen about three days after Excelsior, and continues in bearing through a long season.

✓ Keystone

On a visit to the berry-growing section around Louisville, Ky., during the fall of 1915 our Mr. Roscoe Jones ran across this new variety; and it was so highly recommended by every one who had ever seen it that he procured plants and we are able to offer it this year to the public. A splendid grower; very productive; firm, good sized and a splendid pollinizer; we unhesitatingly recommend it to all who want a good midseason kind.



Mascot- Strawberries

✓ Mascot

Originated in Virginia, and sold a few years ago in this vicinity by salesmen who declined to let nurserymen have any. We did not pay much attention to it until we had some friends to fruit it, and we, as was nearly everyone else, were much pleased with the showing it made. **It is as late as Gandy and a better grower, and the berries are larger and much more productive,** selling equally well, if not better, on the market. The quality is equal to Wm. Belt in every respect, and we feel sure that it will become very popular in a few years. Stands a drought marvelously well. A good one.

✓ Missionary

We have always felt that this and Klondyke were identical, but we have a good many friends who know more about Strawberries than we do who claim that they are not. Anyhow, the difference is very trifling, and we do not consider where one has either it or Klondyke he need trouble to get the other. It was in the main very profitable here last season, as the berries were fine and sold for fancy prices.

Matthews

A new early kind offered this season for the second time. We confidently believe it to be the best extra-early berry ever introduced. We saw it in fruit in three different places last spring, one patch on a gravelly sand, one on a good ordinary clay, and one on a very thin and all were simply fine. From 1½ acres on clay land last season Mr. Matthews sold \$712 worth of fruit during a season of very low prices. That is a real record and one not equalled by any other kind in existence last year. It ripens as early as Excelsior grows strong and vigorously on every kind of soil and is very productive of good sized and splendid shipping berries; **but the one big thing in its favor is the fact that it appears to be absolutely frost proof.** We have the testimony of many disinterested men that, in the spring of 1913, when the early berry crop was swept out by late freeze, that Matthews did not seem to suffer a particle, but gave one of the finest crops it ever did. That's a big thing to say, but we believe it true. This is our last years description. After seeing this remarkable variety in fruit on our own farm, we are convinced it is every word true.

Marshall

In many places in the North this is counted as one of the most profitable berries that can be grown, and indeed we think that it is likely to prove so most in places where quality counts for a great deal. The only serious weakness that we have ever found in it is that there is a strong tendency to rust here, especially during a wet season. The berries are always large to very large, though rough in shape, dark red in color and quite firm. It is only fairly productive, hardly to be classed among the most productive kinds. It ripens in early midseason and continues in bearing for a long time.

New York

This has never been recommended as a shipping berry. It is as firm as Bubach, which is grown extensively in many places and shipped to market by rail, but for a late home-market variety we doubt that there is anything superior to New York. It is almost a faultless grower, making just about enough plants that are large, strong-rooted and absolutely free from rust or any other plant disease or weakness. The berries are large to very large, fairly firm, of a bright red color, good, smooth surface, and while not exactly conical, are yet well shaped. In productiveness it ranks with Haverland and Bubach and ripens a little later than those two sorts. The quality is superb, and it always makes a fine appearance. Do not leave out New York for home use or near market.

Orem

For so many years Gandy has been the leader by a long margin as a late berry that most growers look askance at anything recommended as a competitor of it; but the Orem seems to be a competitor, and a real one. A great many growers, who have long experience, consider it the best of all late kinds. Orem begins to ripen at the same time as Gandy; is more productive, fully as showy and quite as large. If you have been growing Gandy do not fail to try Orem.

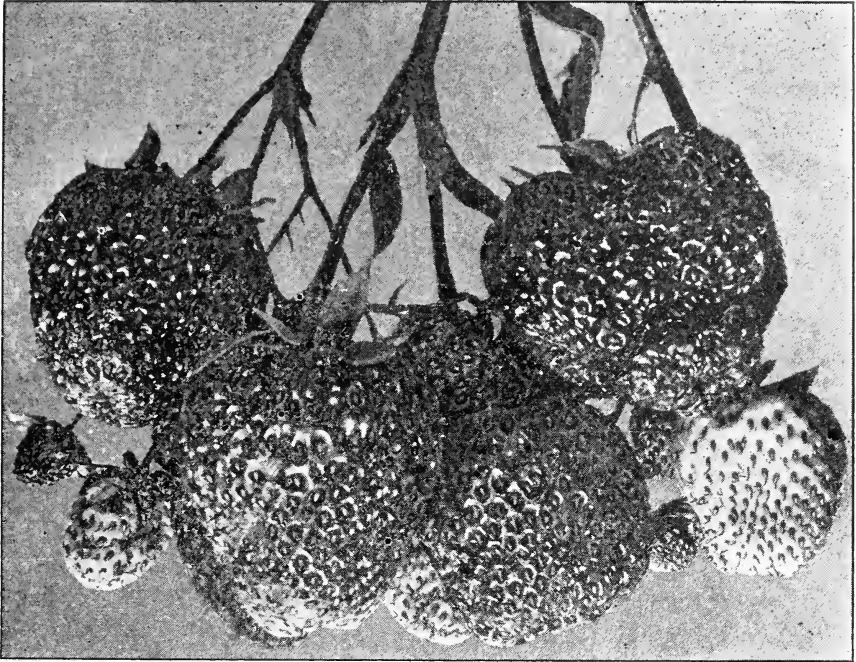
Parsons' Beauty

This is a tremendously productive berry of the Haverland and Tennessee type, and while it does not do its best every season, still we know it to be one of the best for size and a crop that can

be planted. We do not recommend it, however, except for a moist, swampy soil of fair fertility; but, when given that, it is one of the greatest berries ever grown, provided the season is not too wet at picking time. If there is much rain when they are ripening they are sure to rot badly.



Every bunch labeled—You can't mix them



Wm. Belt Strawberries

✓ REWASTICO

This variety is tremendously productive; but we were greatly disappointed last season to have it rust badly at fruiting time and we cannot recommend it unreservedly. However, it does do well in many places and it grows beautifully everywhere. Try only a few.

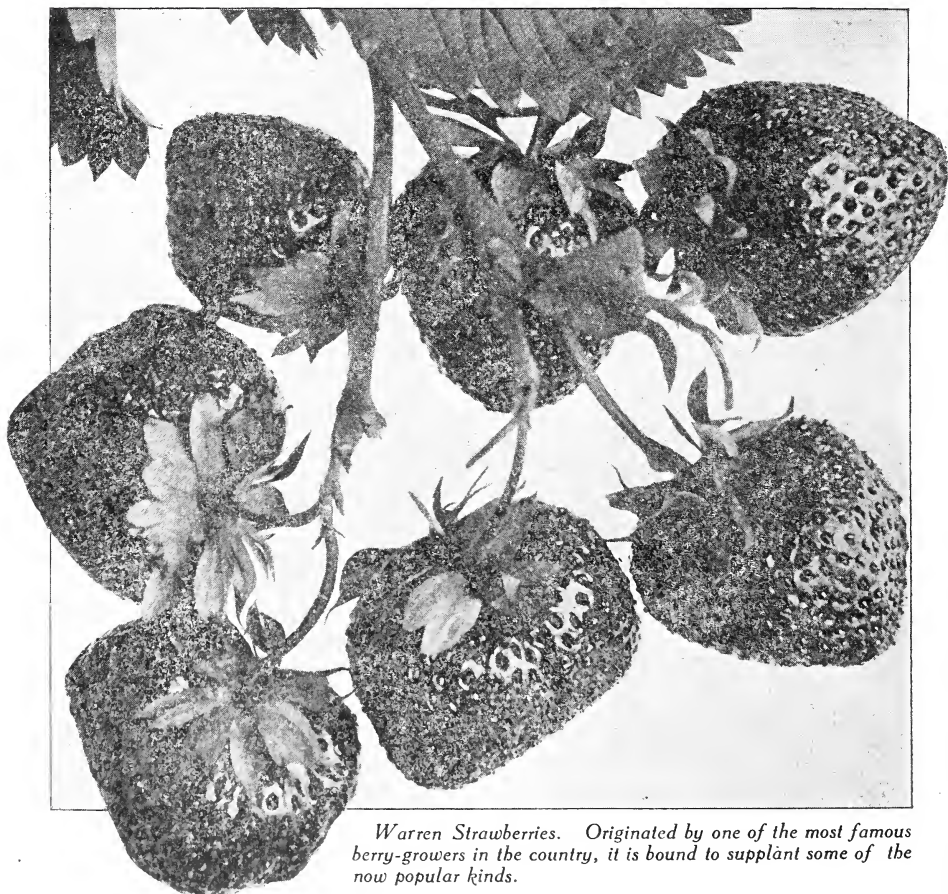
✓ SAMPLE

Like the Aroma, this is better than when we first grew it. It used to rust some at picking time quite often, but for a number of years now it has been one of the healthiest and strongest growers we have. It is a beautiful grower, making just enough plants for an ideal fruiting-bed; and for productiveness it is not excelled by anything ever introduced. It is not likely that there is another sort that will bear as many quarts of berries as Sample. **They are of a beautiful bright red, firm enough to ship any reasonable distance, and the quality and appearance are good enough to bring top**

prices always. The season of ripening is medium, about the same as Eubach or Haverland, and there is none that holds up better in size to the end of the season. Anyone wanting to plant main-crop berries would do well to include Sample in their list. It is reliable, especially in Pennsylvania and the Middle West. J. W. Hunt, of Indiana, writes us, "Haverland, as usual, was great, but Sample was **better.**" It should be a part of every planting.

✓ St. Louis

We have fruited this quite extensively a number of times, and found it a variety of remarkable merit. We had expected to find it soft, from reports that we had seen, but with us it was firm enough to ship well. The size was large and the berries were very well shaped. It was nearly as early as Fairfield or Excelsior, and bore a crop equal to the very best mid-season kinds. This Strawberry is one of the coming kinds for commercial planting.



Warren Strawberries. Originated by one of the most famous berry-growers in the country, it is bound to supplant some of the now popular kinds.

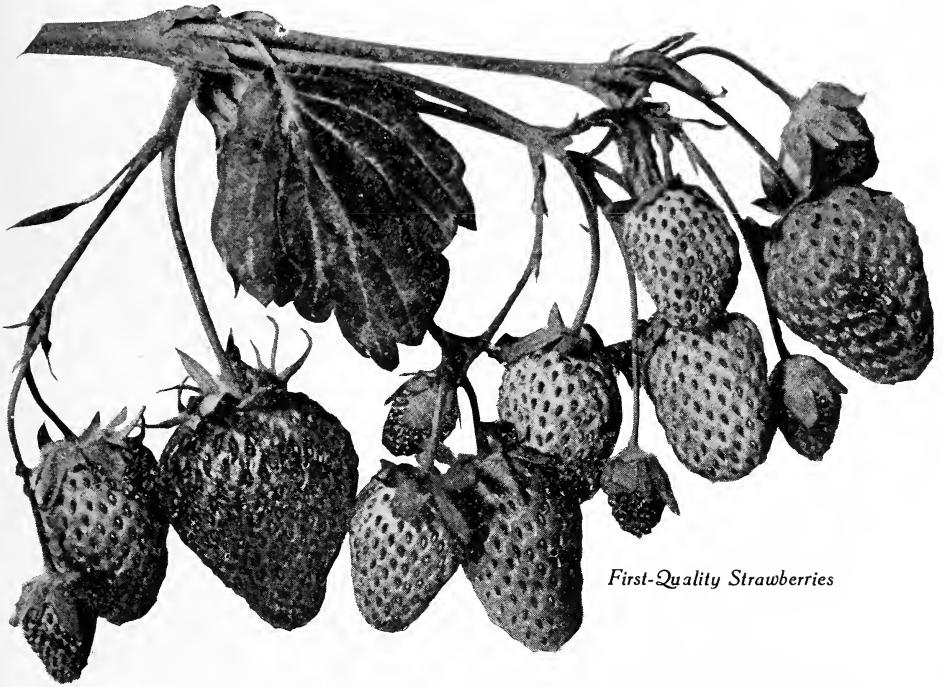
Tennessee

A few years ago this was one of the most popular varieties that we listed, but six or seven years ago the sales of it gradually decreased until we sold scarcely any; but of late years we have found that it is gradually coming back. We suppose that it had been discarded by many for something that when tried did not prove so satisfactory as the Tennessee had, and that customers are slowly going back to it. It is one of the very strongest and toughest growers that we have, and never shows any disposition to rust; the berries are always large to very large early in the season, but often show a tendency to

run down in size after the first few pickings. The fruit is only moderately firm in appearance, but still seems to ship pretty well. The great value that it has for many is that it is a sure cropper and a good pollenizer for any mid-season variety. And, too, it is doubtful if there are many on the list that will produce more quarts to the acre than Tennessee. A reliable variety where little attention is paid to appearance and quality. An abundant plant-maker.

Warfield

One of the oldest and yet remains one of the most popular varieties grown in many parts of the West. Its ability

*First-Quality Strawberries*

to withstand the most untoward conditions has made it one that can be relied on almost every time. We have never liked it as it always gets so thick on the beds that the berries are too small. It is a very large cropper, and is earlier than most of the midseason kinds.

Warren

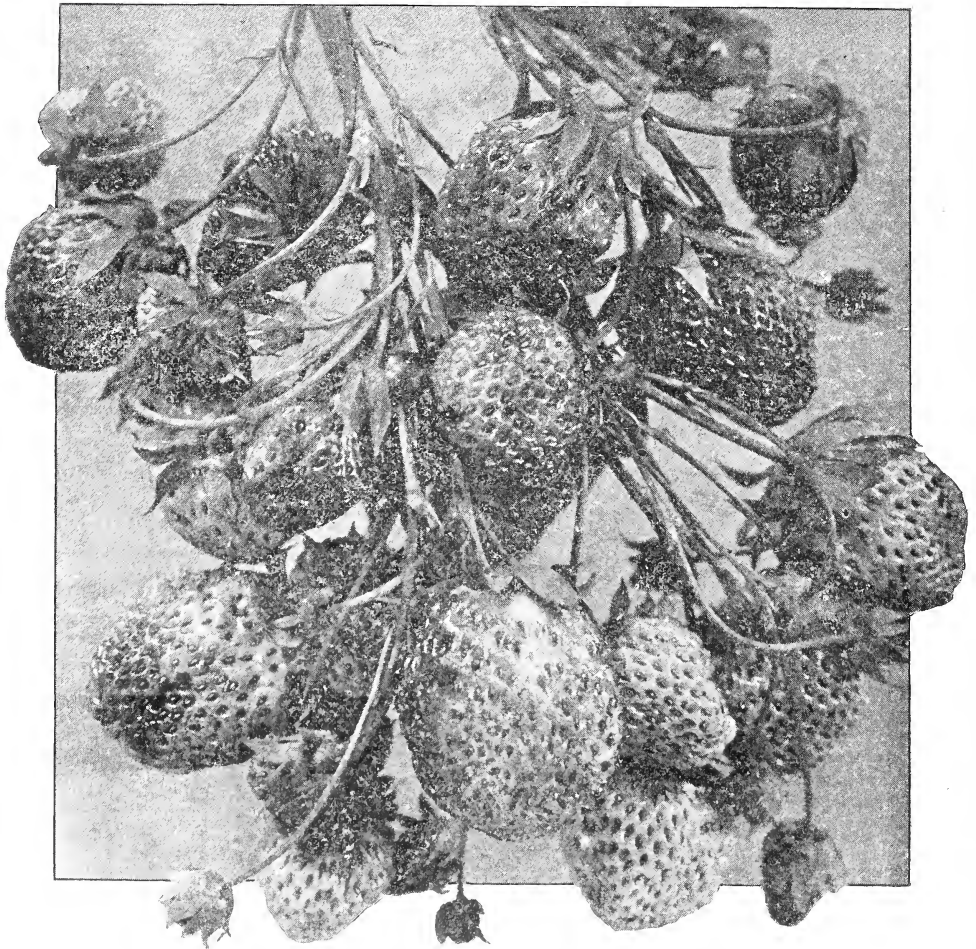
From Massachusetts, originated by the veteran grower of that state, Mr. S. H. Warren, and named for himself. Has not fruited for us yet, but we have the greatest confidence in its worth on account of its originator and introducer. A midseason variety in time of ripening, we look for it to take the place of some of the present-day kinds. It is a

very fine and vigorous grower; plants strong and stocky, free from rust or blight. With large, highly colored berries, of excellent shipping qualities, it is bound to become a leader.

Wm. Belt

This has for many years been the standard of excellence so far as **quality goes**, and we do not know of any that as yet has taken its place. It is a fair grower, but sometimes rusts badly in late summer, and we do not get a good bed. The flavor is so delicious that there is always a demand for more when once it has been placed on the market. It is moderately productive and ripens medium late.

Illustrations on pages 2 and 12 will show the remarkable quality of the roots and crowns of our Strawberry plants. Roots such as there shown insure the health and vigor of the plants, and guarantee that large crops will result if they are given but half a chance.



Progressive Strawberries

Fall Bearing Strawberries

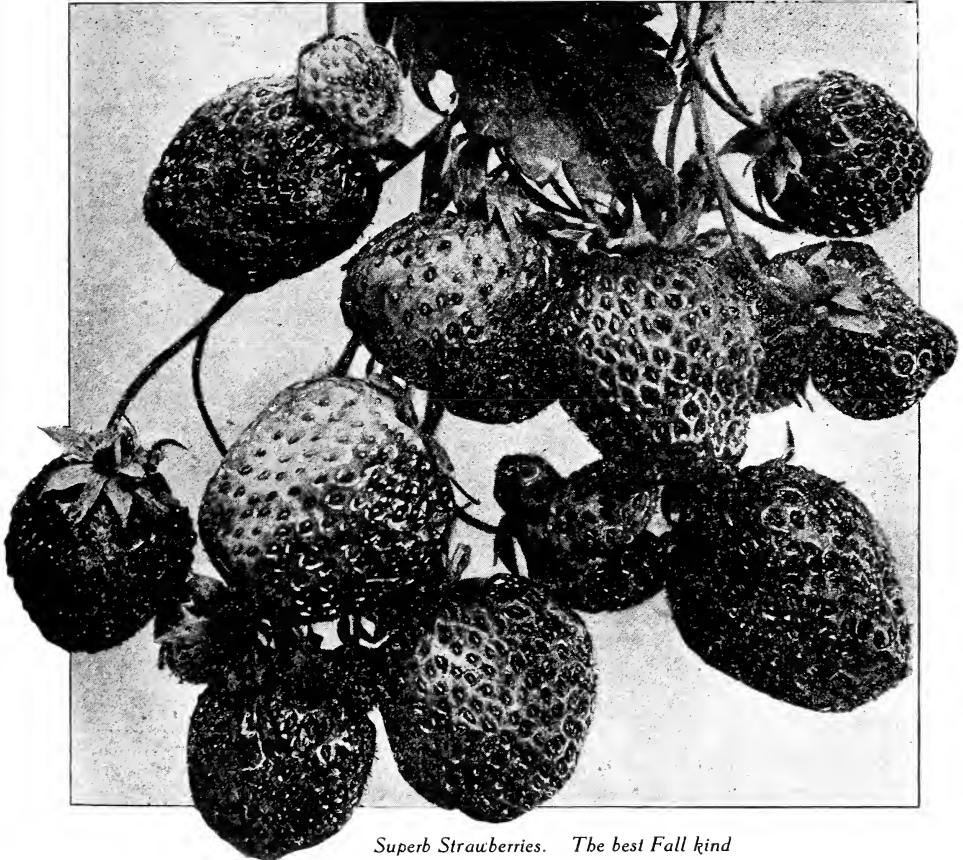
Progressive

For many years there has been a persistent effort on the part of berry-breeders to secure a summer-bearing Strawberry that was really worth while. Progressive and Superb are real successes. We consider that Progressive is the best for general purpose, for the reason that it will bear freely the same year that it is planted on the current-year plants. That is to say, the runners that take root in May and June will make a profusion of berries in late August and September. If berries are wanted earlier, the best way is to set the plants close together, say about 12 inches in the row and the rows $2\frac{1}{2}$ to 3 feet apart, and keep all runners and blossoms cut off until about the 15th of June, when your plants will have made a good start. By the 15th of July you will have on these spring-set plants a profusion of berries. Better-sized berries may be had by this method than by the matted row, but there will not be so many of them. In quality they are in every respect the equal of Wm. Belt or New York, have good color and shape and, if rain is fairly plentiful, they attain a size about equal to Dunlap. The plant is vigorous and healthy in every respect, and makes runners in great pro-

fusion. If the early summer is favorable, and you use the matted row system, by August 1st you will have a bed sufficiently wide to produce a good picking of berries three times a week at least. Under ordinary conditions the berries are firm enough to be shipped several hundred miles, and as they come at a time when Strawberries are a luxury the grower is reasonably sure of getting a big price.

Superb

This will not bear during the first summer on young plants, like the Progressive, but the berries will run twice as large and are as glossy and handsome as Gandy or Chesapeake. Where one does not object to the outlay, we advise setting Superb plants 12 by 24 inches in good, rich soil, and cutting off all runners. Plants of Superb treated this way will "stool" nicely; that is, new crowns will form around the parent plants until the old plants will be 8 to 10 inches in diameter frequently, and each of these "crowns" will throw out blooms and bear fine berries. By the last of July you can have plenty of berries, if plants are well treated, as large and luscious as you enjoyed in the regular season. If planted by the ordinary method, Superb will make a good matted row, and the parent plant will bear berries all summer; then the next berry season you can pick a full crop of handsome, large fruit that will sell with the best regular varieties. Immediately after this crop is harvested work out your beds nicely, and by mid-summer they will begin to bear a second crop and will continue to do so until halted by frost. By growing them one summer like other berries a full crop may be picked in the regular season and then a second crop from mid-summer until frost.



Superb Strawberries. The best Fall kind

Price List of Strawberry Plants

BY FREIGHT OR EXPRESS, RECEIVER TO PAY CHARGES

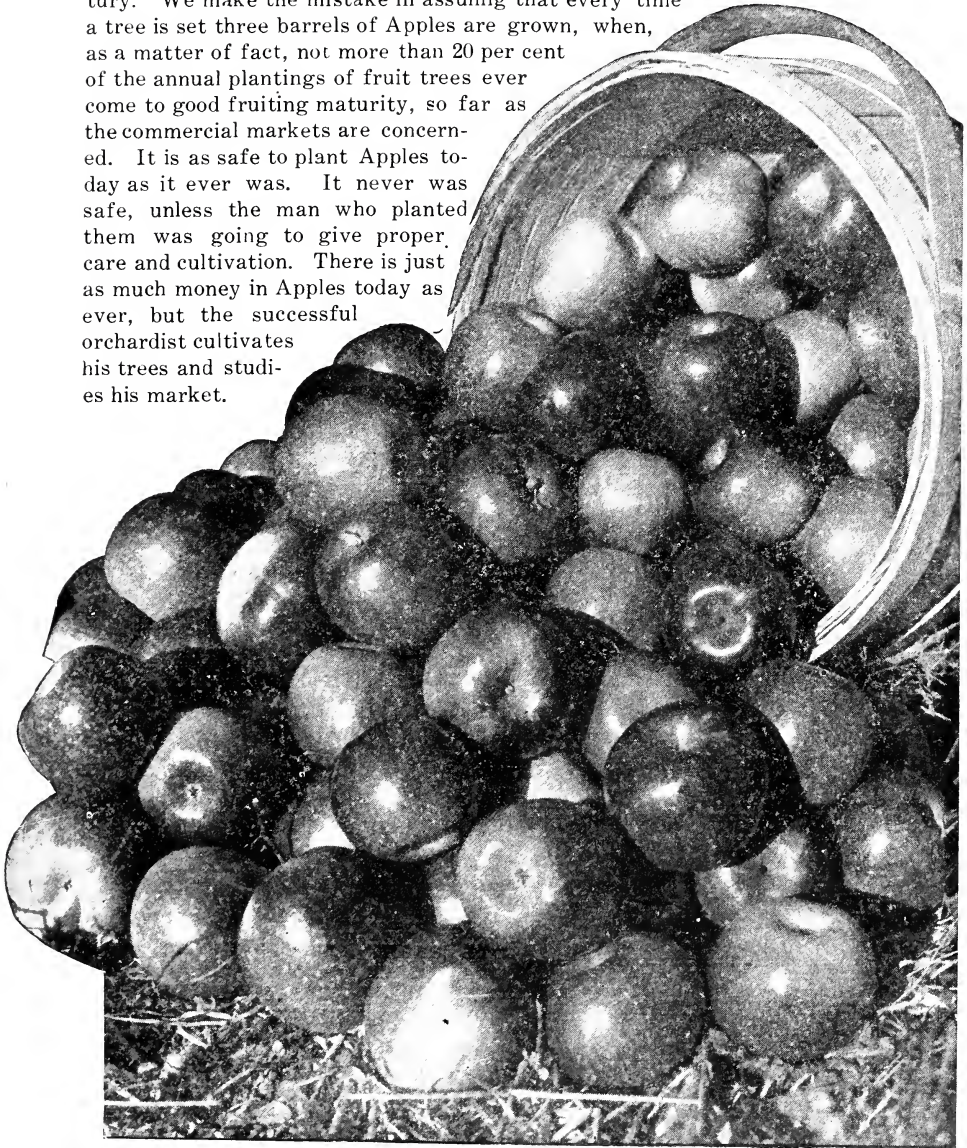
| | 3,000 | 1,000 | 500 | 250 | 100 | 50 | 25 | 12 |
|--------------------------|--------|--------|--------|--------|--------|--------|--------|--------|
| Abington | \$9 00 | \$3 25 | \$1 70 | \$0 90 | \$0 45 | \$0 25 | \$0 20 | \$0 15 |
| Amanda | 9 00 | 3 25 | 1 75 | 90 | 45 | 25 | 20 | 15 |
| Aroma | 9 00 | 3 25 | 1 70 | 90 | 45 | 25 | 20 | 15 |
| Big Joe | 11 00 | 4 00 | 2 00 | 1 00 | 45 | 25 | 20 | 15 |
| Bubach (Imp)..... | 11 00 | 4 00 | 2 00 | 1 00 | 45 | 25 | 20 | 15 |
| Cardinal (Imp)..... | | 3 25 | 1 70 | 90 | 45 | 25 | 15 | 10 |
| Chesapeake | 14 00 | 5 00 | 2 50 | 1 40 | 60 | 40 | 25 | 15 |
| Dunlap..... | 8 00 | 2 75 | 1 65 | 85 | 40 | 25 | 15 | 10 |
| Early Jersey Giant..... | 11 00 | 4 00 | 2 00 | 1 00 | 45 | 25 | 20 | 15 |
| Early Ozark..... | 11 00 | 4 00 | 2 00 | 1 00 | 45 | 25 | 20 | 15 |
| Ekey..... | 9 00 | 3 25 | 1 70 | 90 | 45 | 25 | 20 | 15 |
| Fendall | 9 00 | 3 25 | 1 70 | 90 | 45 | 25 | 20 | 15 |
| Fairfield | | 3 25 | 1 70 | 90 | 45 | 25 | 20 | 15 |
| First-Quality..... | 9 00 | 3 25 | 1 70 | 90 | 45 | 25 | 20 | 15 |
| Gandy | 9 00 | 3 25 | 1 70 | 90 | 45 | 25 | 20 | 15 |
| Glen Mary..... | 10 00 | 3 50 | 1 75 | 1 00 | 55 | 30 | 25 | 15 |
| Keystone | 9 00 | 3 25 | 1 70 | 90 | 45 | 25 | 20 | 15 |
| Haverland (Imp)..... | 9 00 | 3 25 | 1 70 | 90 | 45 | 25 | 20 | 15 |
| Heritage | 9 00 | 3 25 | 1 70 | 90 | 45 | 25 | 20 | 15 |
| Klondyke | 9 00 | 3 25 | 1 70 | 90 | 45 | 25 | 20 | 15 |
| Matthews | 11 00 | 4 00 | 2 00 | 1 00 | 45 | 25 | 20 | 15 |
| Marshall | | | 3 00 | 1 50 | 60 | 30 | 25 | 15 |
| Mascot | | 3 50 | 1 75 | 1 00 | 45 | 30 | 20 | 15 |
| Missionary | 9 00 | 3 25 | 1 70 | 90 | 45 | 25 | 20 | 15 |
| New York..... | | 5 00 | 2 50 | 1 50 | 65 | 35 | 30 | 25 |
| Orem | 11 00 | 4 00 | 2 00 | 1 00 | 45 | 25 | 20 | 15 |
| Parsons' Beauty..... | 9 00 | 3 25 | 1 70 | 90 | 45 | 25 | 20 | 15 |
| Rewastico | 8 50 | 3 00 | 1 50 | 80 | 45 | 25 | 20 | 15 |
| Sample (Imp)..... | 9 00 | 3 25 | 1 70 | 90 | 45 | 25 | 20 | 15 |
| St. Louis..... | 9 00 | 3 25 | 1 70 | 90 | 45 | 25 | 20 | 15 |
| Tennessee..... | 9 00 | 3 25 | 1 70 | 90 | 45 | 25 | 20 | 15 |
| Warfield (Imp)..... | 9 00 | 3 25 | 1 70 | 90 | 45 | 25 | 20 | 15 |
| Warren | 11 00 | 4 00 | 2 00 | 1 10 | 50 | 30 | 25 | 15 |
| Wm. Belt..... | 9 00 | 3 25 | 1 70 | 90 | 45 | 25 | 20 | 15 |
| Progressive (Fall) | 27 00 | 10 00 | 5 00 | 2 75 | 1 10 | 60 | 30 | 20 |
| Superb (Fall) | 22 00 | 8 00 | 4 00 | 2 10 | 1 00 | 50 | 25 | 20 |

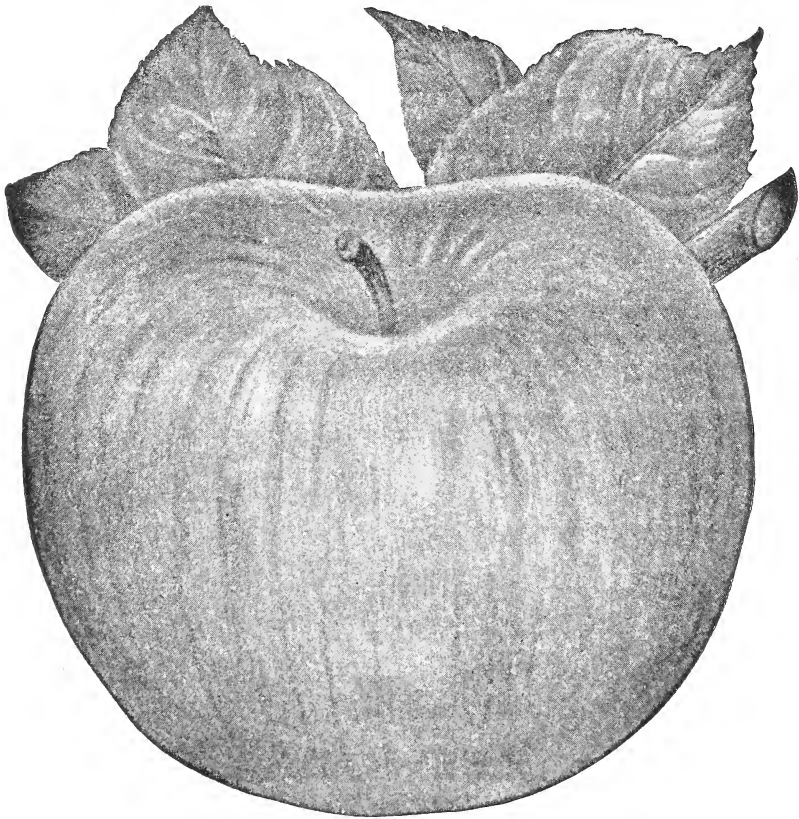
Important. Please note that all varieties are priced in 3,000 lots at a rate lower per thousand than in 1,000 lots. This means that orders will be taken for 3,000 or more of one kind at this lower price, but does not mean that we will accept orders for 3,000 plants of three kinds for \$9.00 where they are \$3.25 per thousand. For instance, we will furnish 3,000 Haverland at \$9, but 1,000 each of Haverland, Abington and Aroma will be \$9.75.

However, 4,000 Haverland will be \$12.00, 5,000, \$15.00, etc. Customers trying to place orders for less than 3,000 of one variety at the reduced price for 3,000 will find, upon receipt of their plants, that the quantity has been cut down to conform with the money sent.

APPLES

There has been a great deal said in the last few years about the over-production of Apples, just as in the nineties it was said by the wise ones that too many Apples were being planted then. The fact remains, however, that the orchards planted in the nineties, and given proper care, are returning today fabulous profits. It is safe to say that the orchards planted this year, and given proper care, will be making good money in the "twenties" of the present century. We make the mistake in assuming that every time a tree is set three barrels of Apples are grown, when, as a matter of fact, not more than 20 per cent of the annual plantings of fruit trees ever come to good fruiting maturity, so far as the commercial markets are concerned. It is as safe to plant Apples today as it ever was. It never was safe, unless the man who planted them was going to give proper care and cultivation. There is just as much money in Apples today as ever, but the successful orchardist cultivates his trees and studies his market.





Stayman's Winesap Apple

PRICES OF TWO-YEAR APPLE TREES

All well-branched, smooth and clean, with well-formed heads.

| | Each | 10 | 25 | 100 |
|-------------------------------|--------|--------|--------|---------|
| 5 to 6 ft., first-class..... | \$0 35 | \$3 00 | \$5 00 | \$18 00 |
| 4 to 5 ft., first-class..... | 30 | 2 50 | 4 00 | 15 00 |
| 3½ to 4 ft., first-class..... | 25 | 2 25 | 3 25 | 12 00 |

Where 300 or more trees are wanted, write for special prices. Please always state varieties, the number of each variety wanted and the size

Baldwin The best winter Apple for New England and New York; south of this section it is a late fall kind. The only trouble with it is that it does not bear young, eight years being as early as you can expect much fruit. The fruit is large, round, brilliant red; the flesh is fine grained, tender and crisp, and the flavor is delicious. A fine keeper and shipper.

BEN DAVIS. Good for show, but poor to eat. We do not recommend it, as we believe the time is soon coming when Apples of such poor quality as Ben Davis will not sell at all. If you want Apples without respect to quality, plant Ben Davis. Probably the best-keeping Apple on the list.

If your tree order is \$5 we pay the freight

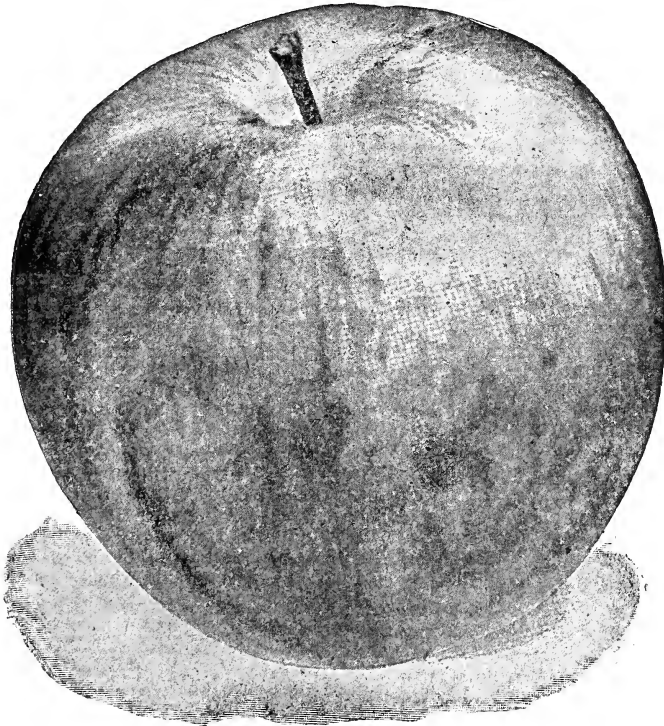
Delicious. The chief claim to distinction of this splendid Apple is the most excellent quality of its fruit. It has repeatedly, by virtue of this extra quality, sold for more than any known variety on all leading markets. All reports indicate that it is one of the finest-flavored Apples ever introduced, the flesh being crisp, juicy and tender. The tree is very hardy and a rapid grower, much resembling the Stayman, and is an early and prolific bearer. Sure to be one of the leading winter Apples.

GRIMES GOLDEN. North of the 40th parallel rated as a winter Apple, but for this section a good fall variety. The standard of quality among Apples. Medium in size; flesh crisp and tender; color, as its name signifies, a deep golden. Blooms late, and seldom caught by frost. Tree a particularly strong and healthy grower.

Jonathan. We believe that this is the most certain bearer for every year we know anything about, except it be Stayman's Winesap. We have never had it to miss altogether, and for twenty years have had a full crop nearly every year. Medium size; a handsome, brilliant color and as good as there is. Flesh is white, crisp, juicy and of excellent flavor. A good keeper and seller, and the tree is strong and vigorous, and bears young.

NORTHERN SPY. A really good kind for the North, but not good south of New York or northern Pennsylvania. It blooms late, and nearly always escapes frost. The fruit is large, beautifully colored and of extra-fine flavor. A variety that is popular in its own territory.

RED ASTRACHAN. A summer Apple with many good points, but not equal to Yellow Transparent as a money-maker. It does not usually bear except



Jonathan Apple

every other year and then rather shyly. The Apples are large, fine-looking, deep crimson in color; the fruit is quite juicy and has a slightly acid flavor; ripens in August. Excellent for cooking in every way.

Rome Beauty. Will keep longer than any other kind we know anything of. Very reliable, being frost-proof, strong-growing, and sure-bearing. The leading variety in Ohio, and is undoubtedly better in all that section where Baldwin is being grown than that old standby. It is a real beauty, nothing finer in appearance, and its good keeping qualities make it a favorite with dealers. Quality good, but not the best.

Stayman's Winesap. Perhaps the greatest of them all. Occupies the same place among Apples that Elberta does among Peaches, and Concord among Grapes. We have sold more trees of this sort than of all others combined. One of the juiciest and most delicious of Apples. Beautiful in color, being yellow, but so heavily striped with red that it has the appearance of being a solid red. Flesh is melting and tender, and of extra-fine quality. A good seller everywhere. Does better on thin, dry soils than any other kind, as the tree is a strong, vigorous grower where many others would fail altogether. Comes into bearing very young, five-year-old

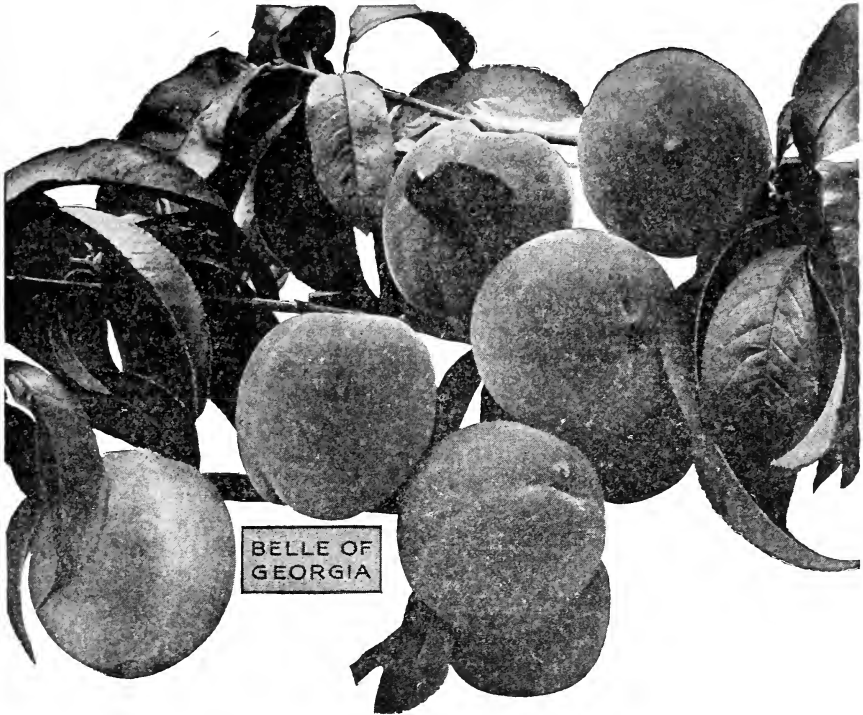
trees often producing a barrel per tree, and is a sure annual cropper. Plant Stayman.

Yellow Transparent. For early summer Apples absolutely without an equal. Bears younger and heavier than any variety we have ever fruited. The only fault is that the tree is not a vigorous grower and not long-lived. Therefore we recommend it chiefly as a filler, if one contemplates a permanent orchard, though we have trees twenty years old that bear heavily and seem thrifty. We believe that summer Apple-growing offers as large or larger profits to the fruit-grower than the winter crop, and Yellow Transparent is the kind to plant. Fruit medium size, with a brilliant waxy skin, and the flesh is tender, juicy and crisp. Shows a bruise very plainly and must be handled carefully. Put up in "fancy" packages, it always brings high prices.

YORK IMPERIAL. A really good one and in some places still considered the best, as it is a reliable, heavy, annual bearer and comes into fruiting early. The fruit is among the very best; greenish, but heavily splashed with red, and the size averages large. Flesh is white, juicy, subacid and crisp, of a most delightful flavor, making it a most desirable flavor, making it a most desirable dessert Apple. Tree a strong, healthy grower.



Our plants on the farm of J. W. Hunt, Borden, Ind.



PEACHES

In our Southland the Peach is the most highly prized fruit. What is more delicious than a soft, well-ripened Peach? Trees planted and well cared for may be expected to bear some fruit at two years old, and after that good crops annually. No farm home is complete without a bountiful supply, and large commercial orchards often make "big money" if properly cared for. Trees should be sprayed as soon as the leaves drop in the fall with lime-sulphur for scale and as a preventive of leaf-curl and many other fungous diseases. Also in July of each year the trees should be gone over carefully and any borers found should be removed from the trunks. These are found just under the ground. We do not offer a long list, but a **good one**. If all varieties of Peach, except eight or ten of the present-day leaders, had been put out of existence ten years ago, the orchardists would be vastly better off today. So long as many worthless kinds are offered some will continue to plant them to their sorrow.

PRICES OF ALL KINDS:

| | Each | 10 | 25 | 100 |
|---------------------------------|--------|--------|--------|---------|
| 4 to 6 ft., extra heavy | \$0 25 | \$2 00 | \$3 75 | \$13 00 |
| 3½ to 4½ ft., first-class | 20 | 1 75 | 3 50 | 12 00 |
| 3 to 4 ft., medium | 18 | 1 50 | 2 75 | 10 00 |

Write for prices on 300 or more, stating sizes and varieties

Belle of Georgia. Next to the famous Elberta the most popular Peach in existence today. A great commercial variety for the North or South, and the quality

is good enough to make it desirable for home use everywhere. It, like all the leading kinds of today, belongs to the North China type, and is particularly hardy in both bud and wood. It begins

to ripen just ahead of the Elberta, but overlaps that sort to some extent. Here it usually begins to ripen about August 5. **The fruit is large and uniform in both size and shape;** flesh white and firm; one side well tinted with red and the other usually splashed with red spots. The tree is a rapid and vigorous grower. No commercial orchard should be projected without plans for a liberal planting of Belle of Georgia, and no home-garden list is complete without it.

CHAMPION. A white Peach, originating in Illinois and very widely planted. It ripens about the same time as Belle of Georgia and is not really equal to that variety; but there are some who do not think so, hence we offer it. The quality is very fine, better than Belle, and the trees grow nicely; it is a reliable and heavy cropper, but the fruit is too tender to ship very long distances. We do not know if there is any kind that is more delicious. The fruit has little color, being almost a clear white all over.

CRAWFORD LATE. Until the advent of the Elberta this was the most widely known and extensively planted yellow variety; but since then it has been gradually losing ground. One reason for this is the fact that it has a reputation for shy bearing. As a matter of fact it does yield poorly on light soils, but on heavy clay land it may be depended upon to bear as well as many of the best. We think there is a place for it in every orchard, as it is fully a week later than the Elberta, and is therefore the best one to plant to follow that well-known kind in the order of ripening. The quality is exceptionally good. Tree is a good, strong, upright grower, long-lived and healthy, and a regular bearer.

Carman. The Carman is a very popular Peach in many places, and deservedly so. The tree is a fine, strong, upright grower and is the surest bearer that we have ever fruited. When nearly all other kinds would be a total failure, Carman will have at least a fair crop of fruit. In fact, we have never seen it **fail entirely.** It is large in size and of good, smooth, oval shape; flesh tender and juicy, with a most excellent flavor. Skin white, nearly all over, sometimes faintly flushed on the sunny side. It keeps and ships fairly well, but not so well as Belle of Georgia or Elberta. Ripens August 1.

Elberta. The greatest Peach ever discovered. More trees of it are in bearing today than of any five other varieties combined. **It is the best bearer among the yellow kinds; the best shipper and the highest seller of any kind in existence.** These points of superiority have combined to give it a popularity not enjoyed by any other kind. From Maine to Texas, from Florida to Oregon, wherever Peaches are grown, there you will find Elberta at the head of the procession. It is not a high-quality fruit, lacking the richness and sweetness of the Crawford Late and others of its class, but its rot-resistant and great shipping qualities, together with its great productiveness and strong, vigorous-growing characteristics have enabled it to forge far ahead of anything on the Peach list. It is a bright, golden yellow nearly covered with red on the sunny side; flesh is firm and rather dry. Good for canning. Freestone. Season August 10 here.

FOX SEEDLING. We do not recommend this as a market variety as a rule, but it is such a very strong growing and healthy tree, and such a reliable bearer of medium-sized Peaches that we feel a few should always be included in every orchard for home consumption alone. We do not really think there is a better quality in the entire list. The size is against it for a strictly market kind, but if you can get the customer to eat one he will want more, for its superfine qualities have made many friends for it. Ripens August 20 here.

Greensboro. We have never seen anything that is anywhere its equal at its time of ripening, usually about the last of June here, though we have seen them ripen by the 20th of June. It is as large as any of the midseason commercial kinds, such as Belle of Georgia or Champion; very free from rot; hardy in bud and wood nearly everywhere, and will grow on a great variety of soils. The tree is a strong, vigorous and healthy grower; in fact better than the average. The fruit is, as remarked before, **as large as the best midseason kinds,** flushed on one side, nearly every one growing to a perfect shape; and it is a heavy annual bearer. If you are interested in early Peaches, Greensboro is undoubtedly the best on the list. The only possible ob-

jection that we know to it is the fact that it is a semi-cling, but so are all the other early kinds.

✓ **Heath Cling.** The only cling Peach that has ever proved popular. It is undoubtedly the best for canning there is. We have many times known it to sell for more in our large eastern markets than the best of Elbertas. The flavor is simply delicious; skin and flesh both a clear white; firm, and a good keeper. The size is good, and is a full and regular bearer; the tree is a strong, healthy grower. Those who have a local market to supply will find a ready demand at good prices for all the Heath Clings they can grow.

✓ **HILEY.** Sometimes spoken of as Early Belle. We do not recommend it especially as a market Peach for long distance shipping, as we think the skin too tender and the fruit-texture rather too delicate to stand long shipment; but for near market or home consumption it is an extraordinarily good one. Ripens just before Carman, not more than four days earlier; of excellent size and shape, slightly flushed on one side; almost a perfect freestone, and the flavor is perfectly delicious. In fact, we do not know one of a better quality on the list. Tree grows strong and healthy, and it is a very heavy bearer.

✓ **IRON MOUNTAIN.** This white Peach ripening about September 1, has never been planted to any considerable extent in this vicinity, but is exceedingly popular in nearly all parts of New Jersey, many growers holding it to be the very best for profit it is possible to grow. The tree is a good grower and a full and regular bearer.

✓ **MAMIE ROSS.** The strongest grower and most prolific bearer that we have ever seen. We have some trees that we feel sure have borne twice as many Peaches per tree for the last five years as any other kind we have fruited. In fact, its tendency to overbear is a drawback unless one thins the fruit, as it is nearly always small. The quality is good, a deep flush on the sunny side; in fact almost red all over. Ripens about the same time as Carman, is not so large as that kind, but more productive. If you want Peaches every time, plant Mamie Ross.

✓ **MOUNTAIN ROSE.** For growing and bearing everytime and everywhere, with or without care, we doubt if there is a kind that beats Mountain Rose. A good many years ago it was a leading market variety, but it is hardly large enough to meet modern market demands. Where one wants a really high-class, well-colored Peach of medium size, we think Mountain Rose will fill the bill, as it grows on any kind of soil and bears every year.

✓ **SMOCK.** This ripens about Sept. 1, and in spite of the many new kinds that have been sent out to take its place, still continues to be the most valuable of its season. The size is only medium, but it is most beautiful in coloring, being a deep orange-yellow, handsomely blushed with deep red; the flesh is firm, but tender, juicy and of excellent flavor. It is always eagerly sought for in market and brings high prices. Heavy bearer.

We pay freight on all orders of \$5 and more on trees.

About Stock By Mail

The parcel-post system does not make a lower rate on nursery stock than the regular merchandise rate; it is therefore prohibitive in cost except for short distances. For instance, the rate in the 6th zone is 8 cts. per lb., which is too high, unless one is remote from express office, or wants only a light package. We can mail Strawberry plants in almost any quantity by making a number of different packages of the order, as follows:

On 12 and 25 plants: add 6 cts. for zones 1, 2, 3 and 4 and 8 cts. for zones 5, 6 and 7. Postage must be inclosed in your order in addition to the price.

On 50 plants: for zones 1, 2 and 3, add 8 cts.; for zone 4, 11 cts.; for zone 5, 14 cts.; for zone 6, 17 cts.

On 100 plants: for zones 1, 2 and 3, add 10 cts.; for zone 4, 19 cts.; for zone 5, 25 cts.; for zone 6, 33 cts.

On 250 plants: for zones 1 and 2, add 14 cts.; for zone 3, 24 cts.; for zone 4, 43 cts.; for zone 5, 62 cts.; for zone 6, 81 cts.

On 500 plants: for zones 1 and 2, add 24 cts.; for zone 3, 44 cts.; for zone 4, 83 cts.; for zone 5, \$1.22; for zone 6, \$1.61.

J. W. JONES & SON

ALLEN, MARYLAND

THE BEST VARIETIES ONLY OF APPLE AND PEACH TREES
STRAWBERRY PLANTS



BIG JOE
STRAWBERRY