

## **Historic, Archive Document**

Do not assume content reflects current scientific knowledge, policies, or practices.



283

INDEXED.

FOUNDED 1878

LIBRARY  
RECEIVED  
★ AUG 70 1920 ★  
U. S. Department of Agriculture.



A. MILLER & SONS  
INCORPORATORS

# MILTON NURSERY CO.

MILTON  
OREGON

FRUIT  
SHADE AND  
ORNAMENTAL  
TREES

1917



ESTABLISHED 1878

INCORPORATED 1908

# Milton Nursery Company

A. MILLER & SONS  
INCORPORATORS

---

---

**1 9 1 8**

---

---

Fruit, Shade and Ornamental  
Trees, Shrubs, Plants,  
Vines, Roses, etc.



*“Genuineness and Quality”*

MILTON, OREGON

40 YEARS IN BUSINESS

*One of the Oldest and Largest Nurseries  
in the Northwest*

## PLEASE READ

1.—We begin shipping in the Fall, about the 20th of October, continuing until freezing weather, and usually in the Spring from March 1st to the middle of April.

2.—Orders should be sent in as early as possible, that there may be plenty of time for shipping long distances when necessary.

3.—Buyers ordering by letter should write out their order plainly. This will prevent mistakes in the hurry of the packing season. Also, write your name, post-office, state and county as plain as possible.

4.—Give plain and specific directions. When none are given we forward according to our best judgment, but in no case do we assume any responsibility after the delivery of the stock in good condition to the forwarder.

5.—Those who are not acquainted with the merits of the different varieties will do well to leave the selection to us, stating if wanted for family or market use, and giving the proportion of Summer, Fall and Winter, as we shall send only such as give general satisfaction, and our long experience enables us to select varieties adapted to the locality. The description of the various kinds of fruits, etc., in this catalog is, in the main, correct, but sometimes altitude, soil and climatic conditions and cultivation influence the quality, color, size and season to a noticeable degree, so much so that customers may doubt the genuineness of certain varieties of fruit. Before condemning anything as untrue to name always allow the foregoing to have proper weight.

6.—We take great care to have our trees true to name, cutting all our scions and buds from bearing trees ourselves, and not trusting it to our hired men, but if any should prove untrue we will replace the same or refund the money. It is, however, understood between the purchaser and ourselves that in no case will we be held liable for a greater sum than the original price paid for the trees that prove untrue.

7.—All the trees and plants are carefully labeled and securely packed in the best possible manner and delivered to carriers, for which no extra charge is made for cartage.

8.—Orders must be accompanied with the cash or satisfactory reference.

9.—Remittances may be made by bank draft, express checks, postal orders or registered letters.

10.—Our customers are requested to notify us immediately if any errors occur in filling their orders, so that we may at once correct them, as we desire to conduct our business in all respects satisfactory to those who favor us with their confidence.

**SPECIAL NOTICE**—Those only who can show a contract issued during the current year, with our seal and signature attached, are authorized to solicit orders for us. We wish to call special attention to this notice, as unprincipled persons are known to have taken orders in our name, and filled them with inferior stock secured from other sources. Patrons will confer a favor on us by promptly reporting the name of any person who they believe is not a duly appointed agent of this company.

Address all communications to the Company. Inquiries relative to stock and prices will be promptly answered and any information or advice that we are able to impart will be gladly given. No business transacted on Saturday.

Address,

MILTON NURSERY COMPANY,  
Milton, Oregon.

## Fruit Department



### TO WASHINGTON, MONTANA AND IDAHO PURCHASERS

Purchasers from these points will remember that we are under bonds to the amount of \$1,000.00 in Washington and Montana and \$5,000.00 in Idaho for license to ship trees in said places, which is required by law. If any of our nursery stock is found to be infected with pests of any kind, we are held responsible by these states and the infected stock is burned. While we never, to our knowledge, have sent out an infected tree, this will serve for an extra warrant that stock from our nursery will be clear from all insect pests. And furthermore, we are in the nursery business to stay, and we realize that our future success depends on sending out only clean, thrifty trees, true to name.

### HINTS ON PLANTING, CULTURE, PRUNING, ETC.

**WHAT TO PLANT**—Select thrifty young trees in preference to old or very large ones; the roots are more tender and fibrous and bear transplanting better and are far more apt to live. They can also be more easily trimmed and shaped to any desired form, and in the course of a few years will usually outstrip the old ones in growth. The largest and most successful planters almost invariably select one-year-old trees.

**TREATMENT**—When the trees are received from the nursery, bury the roots in well pulverized soil until you are ready to plant them. Never expose the roots to sun or wind. If trees are received in a frozen state, place the package unopened in a cellar, away from frost and heat, until thawed out, then unpack. If partly dried from long exposure, bury entirely in the ground, or place in water from twelve to twenty-four hours.

**PLANTING**—Make the holes large enough to admit the roots without cramping or bending and deep enough to bring the tree to its natural depth. The fine surface soil should be used in covering the roots, and this should be carefully worked among them. If the ground is dry it is well to pour in some water when the hole is partially filled. See that the ground is firmly and solidly packed over all parts of the roots, so there will be no opportunity for dry air or frost to enter and destroy roots deprived of the full benefit of their natural protection. Omission to pack the earth solidly is a more frequent cause of failure in planting nursery stock than any other. Fill the holes full enough to be even with the surrounding surface after the fresh earth settles. Large standard trees should be staked and tied so that the wind will not loosen the roots. Be sure to cut the tops back fully one-third soon after planting; more is better.

**AFTER CULTURE**—Cultivate vegetables among your trees, never grain or grass. In order to make your trees have a good healthy growth you must cultivate them the same as you would corn or potatoes; in fact you cannot cultivate them too much the first three years.

**PRUNING**—Pruning should be varied according to the condition of the tree and the purpose of the planter. It should be done regularly every Spring before the buds swell. By doing this the removal of large branches will be avoided.

**SHADE TREES**—If large, should be cut back liberally when planted and well staked until they become firmly established. After pruning will seldom be necessary as they are to provide shade and will form natural heads.

Careful attention should be given to spraying both as a preventive and a curative measure. When signs of disease or attack by insects are first seen a remedy should be sought and carefully applied. Timely application of a suitable spray may save a large expenditure later, even the tree itself or perhaps the whole orchard. Consult the State Agricultural College Bulletins on this subject.



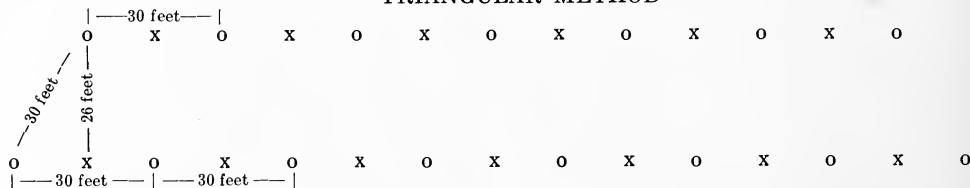
Pruning two-year-old Rome Beauty apple trees. Baker-Langdon orchard, Walla Walla, Wn.

**DISTANCES FOR PLANTING**

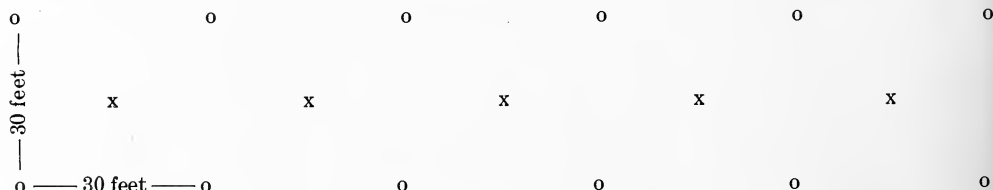
Standard Apple.....	25 to 30 feet apart each way
Standard Pears.....	20 to 25 " "
Strong Growing Cherries.....	20 to 25 " "
Duke and Morello Cherries.....	16 to 18 " "
Standard Plums and Prunes.....	16 to 18 " "
Apricots, Peaches and Nectarines.....	16 to 18 " "
Grapes.....	7 to 10 " "
Currants and Gooseberries.....	4 to 6
Raspberries and Blackberries.....	3 to 4 by 5 to 7
Strawberries for field culture.....	1 to 1½ by 4 to 4
Strawberries for garden culture.....	1 to 2 feet apart

All communications relative to nursery stock and prices will be attended to promptly, and any information or advice that we are able to impart, when desired, will be given freely.

**TRIANGULAR METHOD**



**SQUARE METHOD**



o indicates permanent trees. x indicates fillers.





Baker-Langdon Orchard. Two-year-old Rome Beauty apple trees. Four hundred acres where thousands of our trees are now growing. Walla Walla, Wn.

**Rule, Square Method**—Multiply the distance in feet between the rows by the distance the plants are apart in the rows, and the product will be the number of square feet for each plant or hill, which, divided by the number of square feet in an acre (43,560), will give the number of plants or trees to the acre.

**Rule, Equilateral Triangle Method**—Divide the number required to the acre, “square method,” by the decimal .866. The result will be the number of plants required to the acre by this method.

NUMBER OF TREES OR PLANTS ON AN ACRE AT GIVEN DISTANCES APART

Distance,	1 foot apart each way, No. Plants . . . . .	Square Method	Triangular Method
“ 2	“ “ “ “ . . . . .	43,560	50,300
“ 3	“ “ “ “ . . . . .	10,890	12,575
“ 4	“ “ “ “ . . . . .	4,840	5,899
“ 5	“ “ “ “ . . . . .	2,722	3,143
“ 6	“ “ “ “ . . . . .	1,742	2,011
“ 7	“ “ “ “ . . . . .	1,210	1,397
“ 8	“ “ “ “ . . . . .	888	1,035
“ 9	“ “ “ “ . . . . .	680	785
“ 10	“ “ “ “ . . . . .	537	620
“ 12	“ “ “ “ . . . . .	435	502
“ 14	“ “ “ “ . . . . .	302	348
“ 15	“ “ “ “ . . . . .	222	256
“ 16	“ “ “ “ . . . . .	193	222
“ 18	“ “ “ “ . . . . .	170	191
“ 20	“ “ “ “ . . . . .	134	154
“ 25	“ “ “ “ . . . . .	109	125
“ 30	“ “ “ “ . . . . .	69	79
“ 35	“ “ “ “ . . . . .	48	55
“ 35	“ “ “ “ . . . . .	35	40
“ 40	“ “ “ “ . . . . .	27	31



"Delicious"

## Apples

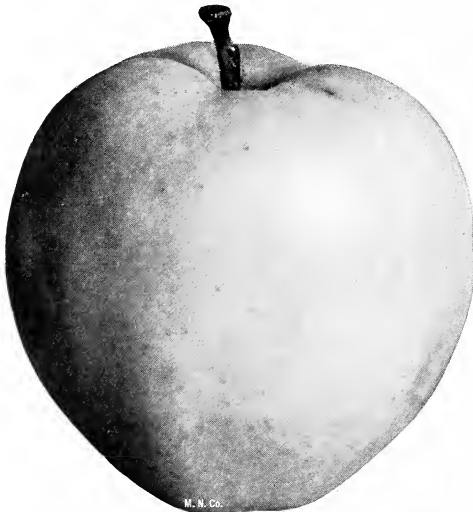
The apple will grow on a variety of soils, but seldom thrives on very dry sands, or soils saturated with moisture. A deep, strong, gravelly, marly, or clay loam, or a strong sandy loam with gravelly subsoil, produces the best crops, and the highest flavored fruit, as well as trees of the greatest longevity. Always dig the holes large enough to receive the roots without crowding; if one-year trees are planted, cut back to required height to form the head; if two-year-old are planted cut back all laterals about two thirds.

### SUMMER APPLES

- ✓ **Early Goodwin**—Perfectly hardy, bears an immense crop of fruit annually. Fruit large size, smooth, beautifully colored. Flesh white, tender, juicy, sub-acid; excellent for cooking and dessert.
- ✓ **Early Harvest**—Fruit medium size, skin yellow, flesh very white, tender and juicy; ripens middle of July.
- ✓ **Red June**—A medium size apple of good quality, productive and hardy; July and August.
- ✓ **Red Astrachan**—Rich, juicy and acid; a strong growing tree, perfectly hardy and a good bearer; July.
- ✓ **Sweet June**—Rather large, pale yellow, sweet and juicy; last of August.
- ✓ **Yellow Transparent**—The earliest apple grown. Flesh fine grained, juicy, rich sub-acid; the tree is perfectly hardy.

### FALL APPLES

- ✓ **Autumn Strawberry**—Color, streaks of light and dark red; tender, juicy, sub-acid, fine. September to October.
- ✓ **Alexander**—Of Russian origin; large, deep red; flesh, yellowish white; crisp, tender, with pleasant flavor. Very good. October.
- ✓ **Duchess of Oldenburgh**—Flesh juicy, sprightly, sub-acid; very hardy; very early and abundant bearer.
- ✓ **Fameuse or Snow**—Flesh snowy white; juicy and pleasant; tree very hardy. November to December.
- ✓ **Gravenstein**—Large, striped and beautiful; tender, juicy and high flavored; vigorous and productive. September to October.
- ✓ **Jeffries**—Flesh white, tender, juicy, with a rich, mild, sub-acid flavor. The best eating apple grown in its season; September and October.
- ✓ **Maiden's Blush**—Fine grained, tender, pleasant acid flavor; tree extremely hardy; very good. September to October.
- ✓ **Rambo**—A very popular Autumn fruit. It is valuable for the table or kitchen, fruit of medium size, with a rich flavor. October to December.



Yellow Transparent

- ✓ **Liveland Raspberry**—Some larger than Yellow Transparent, early, flesh snow white, tender, juicy, often stained red under skin, medium tart.

- ✓ **Red Beitigheimer**—Fruit very large. Flesh white, firm, sub-acid, with a brisk, pleasant flavor. September to October.
- ✓ **Sops of Wine**—Fruit medium, roundish, yellow and red. Flesh white, mild, pleasant sub-acid. Good. August and September.
- ✓ **Twenty Ounce**—Very large; yellow, striped with red; quality good. October to December.
- ✓ **Waxen**—Fruit medium size with deep, rich yellow in the sun; flesh crisp, tender, juicy, acid. Last of October.
- ✓ **McIntosh Red**—Valuable, hardy, Canada sort; medium size, nearly covered with dark red; flesh white, fine, very tender, juicy and refreshing. A good, annual bearer. November to February. A profitable apple in high altitudes. A leader in Montana.
- ✓ **Northern Spy**—Flesh white, fine grained, tender, slightly sub-acid and delicious flavor; tree a good grower; a long keeper.
- ✓ **Ortley**—Bears abundantly. Flesh white, fine grained, tender, juicy, sub-acid, very pleasant. November to February.
- ✓ **Palouse**—Large, bright red, juicy, crisp and fine flavor. Fruit resembles Baldwin, better keeper. January to May.

### WINTER APPLES

- ✓ **Arkansas Black**—Fruit large, smooth and round, very black, dotted with whitish specks. Flesh yellow, very juicy and a delicious flavor.
- ✓ **Bismark**—Tree somewhat dwarf in habit of growth; thick, heavy foliage. Fruit large, handsome. Tree a prolific and early bearer. Hardy.
- ✓ **Baldwin**—Flesh yellowish white with an agreeable mild acid and yet high flavor. November to March.
- ✓ **Ben Davis**—Showy, rather coarse quality; productive. A long keeper.
- ✓ **Black Ben Davis**—Of the Ben Davis family. Not distinguished from Gano.
- ✓ **Bailey's Sweet**—Flesh white, tender, almost melting, with a honeyed sweet flavor. The best late sweet apple. October to November.
- ✓ **Blue Pearmain**—Tree hardy. Fruit large, dark red, rich, sub-acid. December to February.
- ✓ **Delicious**—Is all that is claimed for it. Is a thrifty grower; very hardy; has never failed to bear full crop. The apples are large, quite even, and for color about half way between Rome Beauty and Jonathan; it is solid; will mellow about Christmas, and will keep until February. Quality and flavor unsurpassed.
- ✓ **Grimes Golden Pippin**—Flesh crisp, tender, juicy, rich, sub-acid; very good. December to March.
- ✓ **Gano or Black Ben Davis**—Fine grained, tender, pleasant, mild, sub-acid; tree healthy, vigorous and hardy; an annual and prolific bearer. February to May.
- ✓ **Golden Russett**—Medium size, yellow covered with dull russett. Flesh whitish yellow, fine grained, mild sub-acid. Good.
- ✓ **Jonathan**—Fine grained, very tender and finely flavored; tree very productive. An excellent market variety. December to February.
- ✓ **Jeniton**—Fruit rather large, yellowish shaded red, flesh whitish yellow, tender, juicy, sub-acid. Good.
- ✓ **King**—(King of Tompkins County)—Flavor like the Baldwin. One of our best Winter apples. Very salcable. November to December.
- ✓ **King David**—Similar to, but excelled in quality by Jonathan. Plant Jonathan in preference for an apple of this type.
- ✓ **Lady Apple**—A dainty, small, flat apple, of uniform size, deep bright red in color. Late keeper.
- ✓ **Mammoth Black Twig**—(Paragon)—Very large, bright red, pleasant, sub-acid; fruit hangs well on tree; fine late keeper.
- ✓ **Missouri Pippin**—Large; red cheek, with darker red stripes, fair quality. Good grower; early and immense bearer.
- ✓ **Red Cheek Pippin**—(Mammoth Pippin)—Large, greenish yellow, with a fine red cheek; juicy, tender, good; tree erect, vigorous, productive. Keeps well till March or April.
- ✓ **Rome Beauty**—Tree vigorous and productive; bears quite often when but four years old; fruit large, roundish, approaching conic; yellow shaded and striped with a beautiful bright red; very tender, juicy, sprightly, sub-acid and very pleasant. December to March.
- ✓ **Rhode Island Greening**—Skin smooth, dark green, becoming yellow when thoroughly ripe; rich, tender and fine grained. November to December.
- ✓ **Roxbury Russet**—Medium to large; greenish or yellow russet; crisp, good, sub-acid flavor; tree vigorous and productive; very popular, on account of its long keeping. June.
- ✓ **Spokane Beauty**—Largest apple known; color a greenish yellow, shaded and striped with deep red; flesh crisp, juicy and rich, with a delicious high flavor; unsurpassed for cooking and drying; a long keeper.
- ✓ **Spitzenburg, Esopus**—Truly delicious apple; fruit striped and splashed with red; flesh yellow, rather firm, with a delicious rich acid flavor. November to April.
- ✓ **Stayman Winesap**—Tree much in appearance like Winesap; fruit hangs well on the tree. Fruit medium to large, greenish yellow, striped with dark dull red; flesh yellow, firm, tender, juicy, rich, mild sub-acid. Season January to May.
- ✓ **Talman Sweet**—Medium; pale yellow, slightly tinged with red; firm, rich and very sweet; the most valuable baking apple; vigorous and productive. November to April.
- ✓ **Winesap**—Medium, dark red, sub-acid; excellent. Tree a moderate grower and abundant bearer; an old favorite market apple. December to May.
- ✓ **White Winter Pearmain**—Above medium size; roundish, oblong, conic; pale yellow, with a slight blush; extra high flavor; one of the best. December to March.
- ✓ **Wolf River**—Fruit very large and handsome, being covered with two shades of light and dark red; flesh whitish; juicy, breaking, pleasant sub-acid. A good bearer. November.
- ✓ **Wealthy**—Tree hardy, vigorous, productive; a beautiful and excellent fruit; skin smooth, white yellow, shaded with deep rich red; flesh white, fine, sometimes stained with red; tender, juicy, lively sub-acid; very good. December to February.
- ✓ **Wagener**—Medium to large; deep red in the sun; flesh firm, sub-acid and excellent; very productive and bears very young. December to April.

**Winter Banana**—Fruit large, fine grained, a beautiful golden yellow, shaded with bright red, unusually handsome. Flesh of golden yellow, very large and highly perfumed and considered the finest flavored apple grown. Tree hardy. An early and prolific bearer. November to May.

**Yellow Newtown Pippin**—This stands as high as any apple in our markets, and is one of the best keepers; flesh firm, crisp, juicy and with a fine flavor. January to June.

**Yellow Bellflower**—Large, oblong; skin yellow, with a beautiful tinge of red on the sunny side; flesh crisp, juicy with a delicious high flavor. October to January.

Prices on standard sorts:

	Each	Dozen	100	1000
1 yr, 3-4 ft..	\$.30	\$3.00	\$20.00	\$150.00
1 yr, 4-6 ft..	.35	3.50	22.50	180.00
2 yr, 5-6 ft..	.40	4.00	25.00	.....

Prices on new and rare sorts: Spokane Beauty, Early Goodwin, Bismark, Palouse, Lady, Liveland Raspberry, Sops of Wine.

	Each	Dozen	100	1000
1 yr, 3-4 ft..	\$.40	\$4.00	\$30.00	.....
1 yr, 4-6 ft..	.50	5.00	40.00	.....

CRAB APPLES

**Hyslop**—Produced in clusters; dark, rich red; flesh yellowish, sub-acid; good for culinary uses and cider. Good last of September.

**Martha**—A new fruit raised from seed of Duchess of Oldenburg. Resembles the Transcendent, but larger. Very productive.

**Red Siberian**—A beautiful little fruit, produced in rich clusters; highly esteemed for preserving. First of September.



Four-tier Winesaps grown on trees bought of Milton Nursery Company.

**Transcendent**—A handsome little apple for dessert and preserving. Early Autumn.

**Yellow Siberian**—Small, beautiful golden yellow. September to October.

**Whitney's No. 20**—One of the largest Crabs; glossy green, splashed carmine, juicy, pleasant; great bearer, excellent for cider. August.

	Each	Dozen	100
1 yr, 3-4 ft.....	\$.40	\$4.00	\$25.00
1 yr, 4-6 ft.....	.50	5.00	30.00



Jonathans, Baker-Langdon Orchard, 1914

# Pears

The best soil for this fruit is a strong loam of moderate depth on a dry subsoil. Trees should be handled in same manner when planting, as any other fruit tree, not failing to cut back tops, which insures better growth. Most varieties are much finer in flavor if picked from tree before being fully mature, and allowed to ripen off the tree.

## SUMMER

**Bartlett**—Large, buttery, juicy, high flavored; great bearer. One of the most popular of all the Summer varieties. August to September.

**Clapp's Favorite**—Fruit large, skin thin, pale yellow; flesh white, fine grained, juicy, buttery, melting, rich, sweet, vinous; a little perfumed; very good. Ripens two weeks earlier than Bartlett.

**Rossney**—Ripens about two weeks after Bartlett, averages larger; excellent keeper; uniform size, shape and color, one of the handsomest; creamy skin, with crimson blush; flesh melting, juicy sweet and tender, of superior flavor.



Bartlett

## AUTUMN

**Beurre d'Anjou**—A fine pear; rather large; flesh yellowish-white, buttery, fine grained, rich, vinous flavor. Tree a good grower and fine bearer. October and November.

**Beurre Bosc**—Large, deep yellow russet colored, long neck. Half melting, juicy, delicious with pleasant odor. Tree good grower and productive. Good shipper. September.

**Doyenne du Comice**—Tree moderately vigorous, upright grower. Fruit large, roundish. Skin greenish yellow, becoming fine yellow at maturity, often lightly shaded with crimson and fawn in the sun. Flesh white, fine, melting, a little buttery, juicy, sweet, rich, slightly aromatic. Very good. October to November.

**Flemish Beauty**—Fruit large, pale yellow, becoming reddish-brown at maturity on the sunny side. Flesh yellowish-white, juicy, melting, very saccharine and rich. Last of September.

**Howell**—Early, profuse bearer; fruit rather large, flesh white, juicy, melting, vinous. Very good.

**Idaho**—Introduced from Lewiston, Idaho. Flesh white, exceedingly fine grained, very tender and buttery, with a rich, acid flavor. Ripens a month after the Bartlett.

**Kieffer**—Tree vigorous grower, blight resistant; fruit fine size, rich color. Best when allowed to mature and laid away to ripen.

**Louise Bonne de Jersey**—Rather large, greenish-yellow, with a bright red cheek; juicy, buttery and melting; excellent, very productive; a fine grower. September and October.

**Seckel**—Small, yellowish brown, red cheek; sweet, juicy, melting. Best. September and October.

**White Doyenne**—(Fall Butter)—Medium; pale yellow, with a faint blush; fine flavor. October to November.

## WINTER

**Beurre Easter**—Tree grows upright and thrifty. Fruit large, flesh white, fine grained, very buttery, melting and juicy, with a sweet and rich flavor. January to May.

**Vicar of Winkfield**—Trees hardy and thrifty; fruit quite large, with pale yellow reddish cheek. Rich and juicy, first quality for cooking and is a valuable variety. November to January.

**Winter Nelis**—Tree hardy and thrifty; a very delicious Winter pear of medium size; flesh yellowish-white, fine grained, buttery and very melting, abounding with juice of a rich, aromatic flavor; good to very good. December to February.

**Wildcr**—Medium to large, roundish, light yellow, flesh white, juicy, sweet, peculiar flavor, vigorous grower. December to January.

**Winter Bartlett**—Fruit large, closely resembling the Bartlett in shape and appearance; perfectly smooth, flesh tender; juicy and melting; flavor similar to the Winter Nelis, but season a little later, and as good as can be desired.

Prices on standard sorts:

	Each	Dozen	100	1000
1 yr, 3-4 ft.	\$.045	\$4.50	\$25.00	\$225.00
1 yr, 4-6 ft.	.50	5.00	30.00	275.00

Prices on New and Choice sorts: Rossney, Winter Bartlett, Wildcr.

	Each	Dozen	100
1 yr, 4-6 ft.	\$.060	\$6.00	\$35.00

## DWARF PEARS

	Each	Dozen	100	1,000
1 yr., 3-4 ft.	\$.045	\$4.50	\$25.00	\$225.00
1 yr., 3-4 ft.	.50	5.00	30.00	275.00

Bartlett  
Beurre d'Anjou

**SWEET VARIETIES**

**Bing**.—This grand new black cherry was originated by Seth Luelling, of Milwaukie, Ore. Almost as large again as the Black Republican; flesh very solid, flavor of the highest quality; tree thrifty, upright grower, very hardy and productive; a fine shipping and market variety. First of July.

**Black Republican**.—Fruit large, very dark color when ripe; very rich and solid and an excellent keeper. Middle of July.

**Black Tartarian**.—Very large, purplish-black, half tender; flavor mild and pleasant. Tree a remarkable, vigorous, erect and beautiful grower, and an immense bearer. Ripe last of June and beginning of July.

**Centennial**.—A new cherry, very much like the Royal Ann, but ripens a few days later; sweet and good.

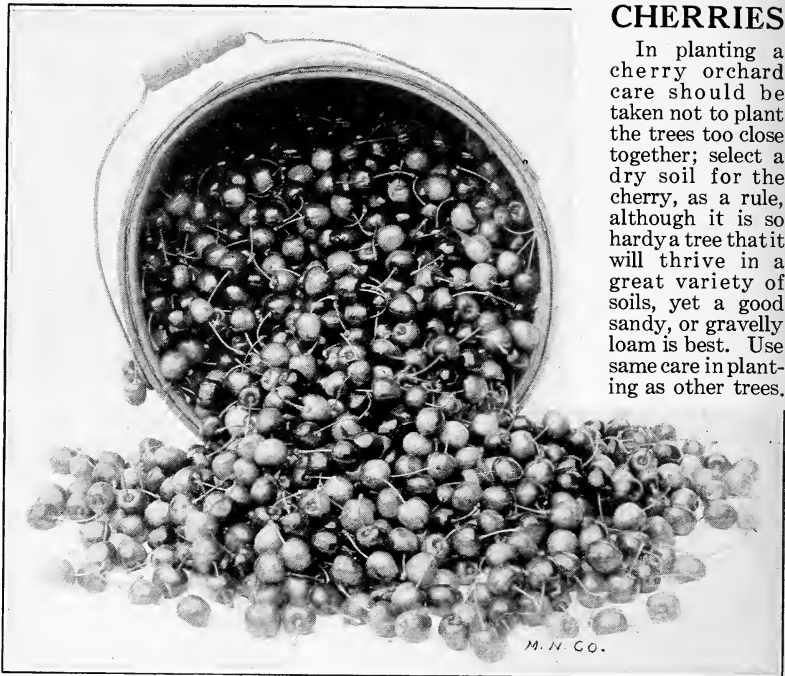
**Early Purple**.—An early variety, ripening the last of May in favorable seasons; skin dark red, almost black, flesh juicy and rich.

**Governor Wood**.—Medium size; rich, light yellow with red cheek; juicy and sweet; One of the best. Last of June.

**Lambert**.—Size very large; form roundish, heart shaped; cavity medium, regular, with gradual slope; stem long, slender; suture of medium depth, wide, extending from cavity to apex, which is of a round russet dot in a broad depression; surface smooth, glossy; color dark purplish-red, with numerous minute, indented russet dots; flesh dark purplish-red with whitish veins, meaty and of firm texture; semi-cling, small seed for so large a fruit; flavor sweet or very mild sub-acid, aromatic, rich. Quality very good and an excellent shipper.

**Royal Ann**.—Fruit large; very dark color when ripe, very rich and solid and an excellent keeper. Middle of July.

**Shelton**.—A seedling of the well known Royal Ann, which it very much resembles, but ripens two weeks earlier; tree hardy, upright and vigorous grower, and a continuous and heavy bearer. Fruit very large pale yellow, with bright red cheek; flesh sweet, juicy and very rich; the best early cherry grown. For home use.



**CHERRIES**

In planting a cherry orchard care should be taken not to plant the trees too close together; select a dry soil for the cherry, as a rule, although it is so hardy a tree that it will thrive in a great variety of soils, yet a good sandy, or gravelly loam is best. Use same care in planting as other trees.

**Windsor**.—Fruit large, firm and fine quality; dark color, sweet. Hardest of all sweet cherries.

**DUKE AND MORELLOS**

**Early Richmond**.—(Kentish)—Medium size, bright red; flesh melting, juicy and rich acid flavor. Last of June.

**English Morello**.—Medium to large; blackish-red, rich, acid, juicy and good.

**Late Duke**.—Fruit large, roundish, rich, dark red, sub-acid. Tree hardy; very valuable. Ripens last of July.

**May Duke**.—This is one of the best hardy cherries; medium size, dark red, melting, rich and juicy. First of June.

**Montmorency**.—Large, red cherry; larger than Early Richmond and fully ten days later.

**Olivet**.—Tree hardy; fruit very large; a shining deep red sort; tender, rich and good. Last of June.

**Ostheim**.—Tree hardy, fruit large, dark red, tender, juicy, near sweet.

**Wragg**.—Larger than English Morello which it resembles. Productive, hardy.

Price on standard sorts:

	Each	Dozen	100	1000
1 yr, 3-4 ft.	\$.50	\$5.00	\$30.00	.....
1 yr, 4-6 ft.	.60	6.00	32.50	\$280.00

Prices on choice sweet commercial sorts.

Best shippers: **Bing, Lambert and Royal Ann.**

	Each	Dozen	100	
1 yr, 4-6 ft.	\$.60	\$6.00	\$32.50	\$280.00

# Plums

The finest and most abundant crops are borne in clay loam soils. The varieties selected will do well in most sections of this Northwest.

**Abundance**—Very prolific; fruit large to very large; color yellowish green, with red cheek in the sun; flesh deep yellow and exceedingly sweet; pit very small.

**Blue Damson**—Fruit small, oval; skin dark purple, covered with blue bloom; much used for preserves.

**Bradshaw**—Large, dark red; flesh green, juicy, good; ripens first of September.

**Burbank**—(Japan)—Tree a vigorous grower; early and very heavy bearer; fruit very large; yellowish ground, with red cheek in the sun; flesh yellow, firm and very sweet when fully ripe; extremely small pit, which clings. Middle of June.

**Climax**—One of the best, early, large fruit, delicious flavor, dark red skin, flesh yellow, juicy. Japanese variety.

**Columbia**—Tree vigorous and productive; fruit of largest size; skin dark purple, flesh orange, not very juicy, but very rich, sugary and excellent. August.

**Coe's Golden Drop**—Large and handsome; light yellow, firm, rich and sweet. September.



Formosa

**Formosa**—Unusually handsome fruit, very uniform in size, averaging about six by eight inches in circumference, shading from light to deep cherry in color, sweet, delicious, delightful apricot flavor; nearly freestone. Trees thrifty growers, large, thick, healthy, light green foliage. "Best plum in existence" at the present time.

**Green Gage**—A medium small greenish yellow plum of high quality. One of the best of American sorts. Midseason.

**Peach Plum**—Fruit of the largest size and earliest to ripen; regularly formed, roundish; skin red, dotted with a blue bloom; flesh greenish-yellow; becomes tinged with red at maturity; a rich, brisk flavor; the leading market variety. Middle of July.

**Prunus Simoni**—(Apricot Plum)—Of Chinese origin; fruit large, flattened; of the size and appearance of a nectarine and of brick-red

color; flesh shows a fine apricot yellow, with a peculiar aromatic flavor; July.

**Satsuma**—Japanese variety, blood red flesh, small pit, pleasant flavor. Hardy.

**Wickson**—Remarkably handsome fruit, maroon red, small stone, flesh fine, firm, sugary, good keeper and shipper. Japanese variety.

Prices on standard sorts:

**Yellow Egg**—Largest size; skin yellow; flesh yellow, very sweet; first-class for canning and a good bearer. September.

	Each	Dozen	100
1 yr, 4-6 ft. . . . .	\$0.50	\$5.00	\$30.00

Prices on Japanese sorts: **Abundance, Burbank, Climax, Prunus Simoni, Satsuma, Wickson.**

	Each	Dozen	100
1 yr, 4-6 ft. . . . .	\$0.60	\$6.00	\$35.00

**Formosa**—  
1 yr, 4-6 ft. . . . . \$1.00 10.00 . . . . .

## PRUNES

The prune is very similar to the plum, requiring same soil and planting treatment. Generally used for drying; also valuable for shipping in fresh state.

**Golden Prune**—Large size, rich golden yellow; very sweet. The dried fruit, when cooked, requires no sugar.

**Hungarian**—Largest size, with a beautiful bright red, making it one of the best for marketing; not good for drying. September.

**Italian**—(Fellenberg)—Medium to large size oval, dark purple; flesh juicy, sweet and delicious; a standard drying and shipping variety. September.

**Petite d'Agen**—(French Prune)—The well-known variety so extensively planted for drying; medium size, reddish purple, juicy, sugary, rich and sweet; bears immense crops. September.

**Silver Prune**—Large size and sweet; a good dryer; ripens rather late for Northern climates. October.

**Sugar Prune**—An extremely early prune, ripens August 1st; cures superbly rich, with a yellow flesh, tender and rich in sugar juice; fruit large, skin very tender, at first of a light purple, tinted with green, changing at maturity to dark purple, covered with a thick white bloom. Tree a vigorous grower and very productive.

**Tragedy**—Medium size; skin dark purple; flesh of yellowish green, very rich and sweet; frees readily from pit. Its early ripening (in July) makes it a valuable shipper.

Prices standard sorts:

	Each	Dozen	100	1000
1 yr, 4-6 ft. . . . .	\$.045	\$4.50	\$30.00	\$250.00

**Italian**—

1 yr, 3-4 ft. . . . .	.25	2.50	18.00	.....
1 yr, 4-6 ft. . . . .	.35	3.50	22.50	200.00
1 yr, 6-7 ft. . . . .	.40	4.00	25.00	225.00



Italian Prunes

# Peaches

The best soil for the peach is a deep rich sandy loam. Trees should be vigorously pruned back when planted to form good strong heads.

**Arp Beauty**—Of the Elberta type, but hardier in tree, bud and bloom; very prolific. Skin yellow, blushed and mottled bright crimson; flesh yellow, firm, juicy, excellent flavor. Ripens when Alexander is going out. An extra good shipper. Sometimes freestone when ripe. The best early peach grown.

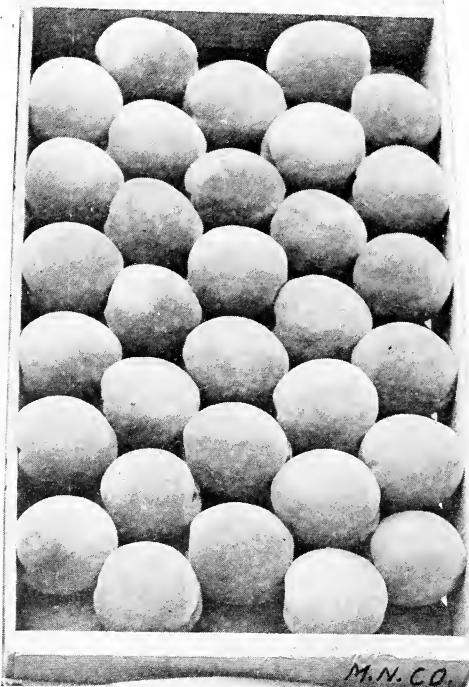
**Alexander**—Medium to large; greenish-white, covered with a deep rich red; very juicy, clinging to stone. Best early market variety.

**Champion**—It is a large, handsome peach, with a creamy white skin and beautiful red cheek. In flavor it is exquisite, and is a true freestone. Ripens about the middle of July.

**Crosby**—"Crosby" produces full annual crops when all others fail; fruit medium size, rich orange yellow, splashed with carmine on the sunny side; perfect freestone, pit small, flesh yellow, juicy, tender, sweet and rich.

**Cox's Cling**—Large, yellow, with dark red cheek; flesh yellow, sweet and delicious. Last of September.

**Early Crawford**—A magnificent, large yellow peach of good quality. Its size, beauty and productiveness make it one of the most popular varieties. Extensively planted. Freestone.



Elberta peaches, 64 to box

**Elberta**—Very large; skin golden yellow where exposed to sun, faintly striped with red. Flesh yellow, very fine grain, juicy, rich and sweet. Tree very prolific and presents a handsome appearance. This peach is a perfect freestone. September.

**Early Elberta**—The Elberta type, but earlier and quality improved.



Arp Beauty orchard. Bears when others fail

**Foster**—Fruit large, deep orange red, becoming very dark red on the sunny side; flesh yellow, very rich and juicy, with sub-acid flavor; ripens with Early Crawford; a very handsome freestone peach.

**Globe**—Large; flesh firm, juicy, yellow; quality good, pleasant, rich, vinous and luscious. A profitable freestone peach ripening about the middle of August.

**Hale's Early**—Medium, nearly round; skin mottled red, dark red cheek. Flesh white, juicy, melting, high flavored, free from stone. First of August.

**Heath Cling**—A most delicious cling. Very large; skin downy, creamy-white with faint blush of red; flesh white, slightly red at the pit; very tender, juicy and sweet; valuable for canning; season, early September.

**Indian Peach**—Very large, dark purple clingstone. Flesh dark purple, firm and rich. September.

**J. H. Hale**—In size and color surpassing Elberta, freestone, solid, free from stringiness, excellent flavor, good keeper and shipper. Coming commercial peach.

**Lemon Cling**—Large size, lemon color. One of best market varieties, on account of its firmness, size and excellent qualities. September.

**Late Crawford**—A superb, large, yellow, freestone peach; very rich. Last of September.

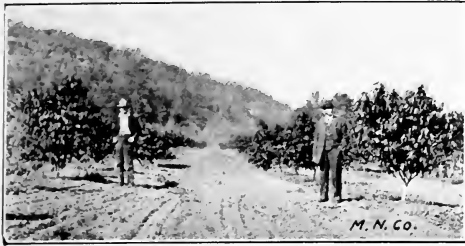
**Mayflower**—Earliest of all varieties, well colored all over, tree vigorous, bears young and heavy, good flavor and size.

**Malta or Muir**—Very sweet and firm, yellow, with sometimes a faint blush. Large, very free, pit quite small. Most popular drying and canning variety on the coast. August.

**Orange Cling**—(Runyan's)—Fruit large, yellow, rich, sugary, vinous flavor. Tree heavy bearer, hardy.

**Perfection**—The fruit is of the largest size, yellow, with a beautiful blush cheek. The flesh is thick and very fine grained, yellow, with red around the pit, which is nearly as small as a prune seed. Its tough skin, firm flesh and good keeping qualities place it in the lead for a desirable shipping and market variety. Ripens from 10th to 15th of September. We cannot recommend this new peach too highly to our friends and patrons.





Milton Nursery Co. Peach trees 18 months from planting. E. A. Hackett orchard, Wilbur, Ore.

**Royal**—A fine large French variety; fruit roundish, large, oval, slightly compressed. Skin dull yellow with an orange cheek, very faintly tinged with red. Flesh pale orange, firm and juicy, with a rich, vinous flavor. Ripens the latter part of July.

**Tilton**—Fruit large size, rich apricot color, with a flavor of the highest quality. As a result of its fruit buds putting out much later than other varieties it is said to bear immense crops every year, and is considered the most prolific of all apricots, either for canning or drying.

**Yakimine**—Very similar to the ordinary apricot; cross with plum. Very vigorous grower.

**Russian Variety**

**J. L. Budd**—Tree a strong grower and profuse bearer; fruit large, white, with red cheek; sweet, juicy, with a sweet kernel, as fine flavored as an almond; the best late variety and a decided acquisition. July.

**Salway**—A large, yellow English peach, with deep yellow flesh; very juicy, melting and rich. A valuable late market variety.

**Slappey**—Fruit yellow, good keeper, excellent flavor, fine grained, rich. Hardy, best medium early yellow peach.

**Triumph**—Earliest yellow flesh peach; ripens a few days later than Alexander, blooms late; sure and abundant bearer; strong vigorous grower; fruit good size; yellow, with red and crimson cheek.

Prices on standard sorts:

	Each	Dozen	100	1000
1 yr, 3-4 ft...	\$0.30	\$3.00	\$18.00	\$160.00
1 yr, 4-6 ft...	.35	3.50	20.00	180.00

Prices special varieties: **Arp Beauty, Mayflower, J. H. Hale, Perfection.**

	Each	Dozen	100
1 yr, 4-6 ft.....	\$0.50	\$5.00	\$35.00

Prices on standard sorts:

	Each	Doz	100	1000
1 yr, 3-4 ft...	\$0.45	\$4.50	\$25.00	\$225.00
1 yr, 4-6 ft....	.50	5.00	30.00	250.00

Prices on special sorts: **Tilton, Yakimine.**

	Each	Doz	100	1000
1 yr, 4-6 ft....	\$0.75	\$7.50	\$35.00	.....

**NECTARINES**

In growth, habit, treatment and soils precisely similar to the peach. Valuable for dessert; smooth skin.

**Early Violet**—Medium size, skin yellowish green, with a purple cheek. Flesh melting, rich and highly flavored. July.

**Humboldt**—Large, orange-yellow color, orange flesh. Better than Boston.

Prices on standard sorts:

	Each	Dozen	100
1 yr, 3-4 ft.....	\$0.50	\$5.00	\$30.00
1 yr, 4-5 ft.....	.60	6.00	35.00

**APRICOTS**

This is one of the most beautiful of the stone fruits. A thrifty grower soon making a fine head, producing an abundance of fruit. Requires practically same conditions and treatment as the peach.

**Moorpark**—Fruit large, roundish, about 2 1/4 in. in diameter. Skin orange in the shade, but deep orange or brownish-red in the sun. Flesh quite firm, bright orange, parting from the stone. Ripens early in August.

**each Apricot**—One of the largest; fruit firm, juicy, with a rich flavor; productive. Last of July.



"Wenatchee" Moorpark

**QUINCES**

This fruit is valuable for flavoring and preserving either alone or for its pleasant flavor if added to other fruits. Rather moist soils which are deep and rich give best results.

**Champion**—A prolific and constant bearer. Fruit large and of excellent flavor. Bears extremely young. Hardy.

**Orange Quince**—Large, golden color. Excellent for preserves and flavoring.

**Pineapple**—Originated by Luther Burbank. Suggestive of the pineapple. Makes a superior jelly. Can be eaten raw and is said to cook as tender in five minutes as the best cooking apple; possessing a most exquisite and delicious flavor not equaled by any other quince.

Prices on standard sorts:

1 yr, 3-4 ft.....	\$0.60 ea	\$6.00 doz
-------------------	-----------	------------

**MULBERRIES**

This tree should be planted in every garden. A hardy deciduous tree thriving in a great variety of soils.

✓ **Downing Everbearing**—Fruit large, black and of best quality. Bears abundantly for three months in the year. Tree hardy.

✓ **New American**—An attractive tree of rapid

growth, with very large leaves and producing dark-colored fruit of good size and flavor.

1 yr, 4-6 ft. \$1.00 each; \$10.00 per doz.

✓ **Russian**—A very hardy, rapid grower. Fruit small but produced in abundance. A valuable tree for wind-breaks.

	Each	Dozen	100
2 yr, 4-6 ft.....	\$0.40	\$4.00	\$25.00
2 yr, 6-7 ft.....	.50	5.00	35.00

**Nut Trees**

The planting of nuts of various kinds would prove profitable in many places unsuited to other purposes. Waste places and hillsides could be utilized and made to produce profit if planted to walnuts, chestnuts, or filberts. The better the soil, however, the greater the results.

**ALMONDS**

**Dayton**—Our attention was called to this Almond at Dayton, Washington, where it has been bearing large, annual crops for a number of years. Dayton being in a high altitude and at the foot of the Blue Mountain Range proves the hardness of this variety, the origin of which is unknown. Large, sweet, rich kernel; soft shell. Tree a strong, upright grower and very prolific.

✓ **I. X. L.**—Large, generally single kernel; hulls easily; soft shell; tree is strong, upright grower.

✓ **Nonpareil**—Large, full kernel, thin shell; tree of a weeping habit and a strong grower.

	Each	Dozen	100
1 yr, 4-6 ft.....	\$0.50	\$5.00	\$30.00
Dayton, 4-6 ft.....	.75	7.50	40.00

**CHESTNUTS**

✓ **American Sweet**—Wherever soil is adapted to its growth; valuable for ornament, timber and nuts.

✓ **Spanish or Italian**—A handsome, round-headed tree, producing abundantly very large nuts that find a ready market at good prices. Not quite as sweet as the American Chestnuts. Tree is hardy with us.

	Each	Dozen
American Sweet, 3 yr, 4-5 ft.	.75	\$7.50
Spanish (Italian) 2 yr, 2-3 ft.	.50	5.00
Spanish (Italian) 3 yr, 3-4 ft.	.60	6.00

**FILBERTS**

Native of Pacific Coast, the hazel or filbert growing everywhere. The select varieties should be planted as their culture has met with success over large areas. Pruned to tree form better results are obtained.

✓ **Du Chilly**—Largest filbert fruited in coast section; nuts uniformly large, well formed, full flesh and sweet.

✓ **Avellana**—Tall, spreading in growth. Good for screens and backgrounds. 60c each, \$6.00 per doz.

**PECANS**

A native nut belonging to the hickory nut family. Tree is of tall growth and bears abundantly; not entirely hardy in the North. Should be planted wherever it will succeed. The shell is very thin, the kernel sweet and delicious.

75c each, \$7.50 per doz.

**WALNUTS**

✓ **American Black**—This valuable tree grows and succeeds well on this coast. Valuable for timber and nuts.

	Each	Dozen	100
1 yr, 2-3 ft.....	\$0.30	\$3.00	\$20.00
2 yr, 3-4 ft.....	.40	4.00	30.00
3 yr, 4-5 ft.....	.50	5.00	.....

✓ **Butternut or White Walnut**—A fine native tree, producing a large, longish nut, which is prized for its sweet oily nutritious kernel. Tree hardy.

3 yr, 3-4 ft..... \$0.50 each \$5.00 doz

**ENGLISH WALNUTS**

Trees begin to bear in about six years. This tree is propagated by grafting, budding, and from seed. The grafted tree is harder to grow and commands a higher price. An excellent nut is produced from trees grown from selected first generation nuts. The nuts we plant are from a choice strain of grafted varieties, growing in the nut districts of California.



Franquette

✓ **Franquette Walnut**—Nut very large and long; kernel full fleshed, sweet and rich; buds out late in the Spring, which enables it to escape the disastrous effects of late frosts. Tree a hardy, thrifty, grower and abundant bearer.

✓ **Mayette Walnut**—This is one of the finest flavored nuts grown; it is quite large, uniformly so; kernel is full fleshed, sweet and nutty. Tree grows well, quite hardy and blooms late, which insures a good annual crop.

	Each	Dozen	100
2 yr, 3-4 ft.....	\$0.75	\$7.50	\$50.00

## Grapes

There are two distinct classes of the grape; the American, or hardy varieties and the European, which usually require some winter protection to insure a crop each season. A dry and warm soil is considered best for the grape and if deep and rich will bring it to perfection.

### AMERICAN VARIETIES

✓ **Agawam**—Vine very vigorous, productive; bunch large, moderately compact, shouldered; berry large, roundish, dark red or maroon; flesh almost tender, juicy, vinous, rich, peculiar aromatic flavor. Especially adapted for arbor culture. Ripens with the Concord. We consider this the best of American varieties.

✓ **Concord**—The well known standard variety, succeeds wherever grapes will grow. Black, sweet, good. First of September.

✓ **Chasselas Musk**—Berries round, amber colored, russety when ripe, strong delicious sweet musky flavor.

✓ **Campbell's Early**—Strong grower, with large healthy foliage; productive; its keeping and shipping qualities are equalled by no other early grape. Ripens with Moore's Early. Bunch and berry, large, glossy black with blue bloom; sweet and juicy; seeds few and small; part readily from the pulp. Stands at the head of early black grapes for quality.

✓ **Delaware**—Bunches compact; berries rather small, round, skin thin, of a beautiful light red; exceedingly sweet. September.

✓ **Isabella**—Bunches and berries of medium size; black. A good variety for arbors. September and October.

✓ **Moore's Early**—Bunch large; berry large; round, with heavy blue bloom; vine exceedingly hardy. Its earliness makes it desirable for an early market. Its hardiness particularly adapts it to Canada and northern portions of the United States.

✓ **Niagara**—Occupies the same position among the white varieties as Concord among the black. A profitable market sort. Bunch and berries large, greenish white, changing to pale yellow when fully ripe. Skin thin; quality much like Concord.

✓ **Worden**—This new variety is a seedling of the Concord, which it greatly resembles in appearance and flavor, but the berries are larger. The fruit is said to be better flavored and ripens several days earlier.

### EUROPEAN VARIETIES

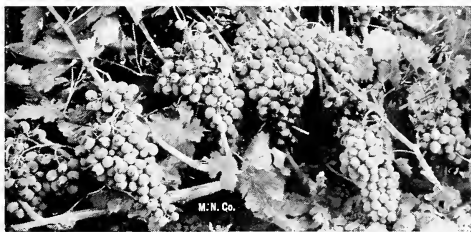
✓ **Black Hamburg**—A fine, tender grape, producing large, magnificent, compact bunches; berries black, very large and round. A great favorite everywhere, especially for table. Last September.

✓ **Black Prince**—Very large, oval; bunches medium; flesh firm, with a rich delicious flavor, and highly esteemed as a market variety. September.

✓ **Chasselas Golden**—(Royal Muscadine)—This is the earliest grape to ripen. Bunches large and compact; berries medium size, round; skin thin, transparent, greenish yellow; pulp tender, juicy, sweet and richly flavored. Vines are hardy. First of August.

✓ **Flame Tokay**—Bunches very large and moderately compact; berries large, skin thick, pale red, covered with bloom; flesh firm, sweet; an old standard variety, always demands a good price in the markets, and as a table grape, more extensively planted than any other variety. October.

✓ **Muscat of Alexander**—Bunches large, long, and loose; berries large, slightly oval, pale amber when ripe, covered with a thin, white bloom; flesh firm, brittle, exceedingly sweet and rich; fine flavored; the variety most extensively planted for raisins. September.



Muscat of Alexander

✓ **White Sweetwater**—Vines hardy; fruit rich and sweet. Very much resembles the Royal Muscadine but the berries are not so compact on the bunch. First of August.

Prices American and European varieties, 25c each; \$2.50 doz.; \$12.50 per 100.

Prices choice sorts: **Moore's Early, Tokay Agawam**, 30c each; \$3.00 doz.; \$15.00 per 100.

Price **Campbell's Early** (American) 50c each; \$5.00 doz.; \$35.00 per 100.

## Berries and Small Fruits

A supply of the various kinds of berries and small fruits are a great addition to any home garden, and will prove profitable in a commercial way in most places. Good rich sandy loam rather moist yet warm will produce fruit in abundance.

### BLACKBERRIES

✓ **Evergreen**—Heavy grower, berries large, black sweet, delicious, long season. Good for trellis.

✓ **Himalaya Giant**—Vigorous grower, must be trellised, fruit large, black, abundant bearer, juicy, small seed and core, heavy yielder, distinct flavor.

✓ **Lawton**—Large, black sweet. Very productive. One of the best.

✓ **Mammoth**—Grows entirely unlike any other blackberry plant known. It is a rampant grower, trailing on the ground, and under favorable conditions will grow twenty feet in a season; the canes are large, of deep red color when exposed in the sun; productive

and exceedingly early, ripening three weeks before other cultivated kinds; fruit enormous specimens; seeds small, core small, soft; in size and flavor said to surpass all other varieties of blackberries. Vines not very hardy.

✓ **Mersereau**—Early, mammoth, ironclad blackberry. In quality, it is exceptionally sweet, rich, melting and luscious, being without core; the seedy character of the Snyder and most other sorts is noticeably absent.

✓ **Wilson**—A magnificent, large, very early beautiful berry, of sweet excellent flavor. Ripens evenly, holds its color well and brings highest market price. Strong grower, exceedingly productive. Not very hardy.

**Wilson, Lawton**, \$1.50 doz; \$7.50 per 100; \$60.00 per 1000.

**Mersereau**, \$1.75 doz; \$10.00 per 100; \$75.00 per 1000.

**Evergreen, Himalaya, Mammoth**, 25c each; \$2.50 doz.

#### Hybrids

✓ **Logan**—(Raspberry-Blackberry)—Fruit size of large blackberries, same form and shape; color dark, bright red; partakes of the flavors of both blackberry and raspberry; mild, pleasant, vinous, excellent for table and for canning, jelly, etc. Seeds few and small.

✓ **Phenomenal**—It very much resembles the Loganberry but is claimed to be superior in quality. 25c each; \$2.50 doz; \$15.00 per 100.

#### RASPBERRIES

✓ **Cumberland**—The largest Black Raspberry known. In hardiness and productiveness it is unexcelled by any other variety. The berries run seven-eighths and fifteen-sixteenths of an inch in diameter and are of such handsome appearance that their fruit sold for 10c per quart, when other varieties were selling for 5c to 7c per quart. The quality is very similar and fully equal to Gregg.



Cuthbert.

✓ **Gregg**—This is decidedly the largest and most prolific Blackcap that we have ever seen. Fine quality, very productive and hardy.

✓ **Golden Queen**—A beautiful, large, golden yellow berry; seedling of the Cuthbert and surpassing that variety in size, beauty, quality and adaptability. Canes hardy, of strongest growth, productive. Should be in every home garden, its beauty and high quality placing it at the head for table use.

✓ **St. Regis**—Commences to bear early, ripens early in season, large, well flavored berries and continues to produce fruit till frost.

**Cuthbert**, 20c each; \$1.25 doz; \$6.00 per 100; \$45.00 per 1000.

**Cumberland, Gregg, Golden Queen**, 20c each; \$1.50 doz; \$7.00 per 100; \$65.00 per 1000.

**St. Regis**, 25c ea., \$2.00 doz; \$10.00 per 100.



Loganberry.

#### DEWBERRY

✓ **Lucretia**—One of the low-growing, trailing blackberries. In earliness, size and quality it equals any of the tall growing sorts. The plant is extremely hardy, healthy and productive. Fruit is of the largest size, soft, sweet, luscious throughout, with no hard core; very valuable. \$1.75 doz; \$10.00 per 100; \$75.00 per 1000.

#### GOOSEBERRIES

The best soil for it is a deep strong loam, well enriched. For the gooseberry regular and liberal pruning is very essential.

✓ **Downing**—Fruit larger than Houghton, light green, smooth, juicy and fine flavor.

✓ **Houghton**—Medium, skin pale red; very productive, sweet and good.

✓ **Oregon Champion**—Large, skin light green. Flesh very sweet, juicy excellent flavor; very prolific bearer and will not mildew.

✓ **Red Jacket**—(Josselyn)—An American seedling of large size; smooth, prolific and hardy; of best quality. Has been well-tested over a wide extent of territory by the side of all the leading varieties, and so far the freest from mildew, both in leaf and fruit, of them all. A wonderful cropper, with bright, clean, healthy foliage.

**Oregon Champion, Houghton**, 25c each; \$2.50 per doz; \$12.00 per 100.

**Downing**, 30c ea.; \$3.00 doz; \$15.00 per 100.

**Red Jacket**, 35c ea.; \$3.50 doz; \$20.00 per 100.



Oregon Champion

## CURRANTS

- ✓ **Cherry**—Large, bright red, very good, but not productive.
- ✓ **Fay's Prolific**—The berry is fully equal to Cherry Currant, while the flavor is much superior. The stems are double the length on an average, and the fruit hangs on well, never dropping as in other currants. Surpasses any other variety ever introduced.
- ✓ **Lee's Prolific**—(Black)—A new English variety. The fruit is large and of superior quality; the bush is a vigorous grower and enormously productive, rendering it very profitable.
- ✓ **Perfection**—Berries are a beautiful bright red and larger than Fay's Prolific. In quality it is said to be superior to anything in the market today; rich, mild, sub-acid flavor, with plenty of pulp and few seeds, clusters are long and size of berry is maintained to the end.

✓ **White Grape**—Berries very large, whitish yellow sweet and good; very productive.  
Standard sorts, 25c ea.; \$1.75 dz.; \$10.00 per 100.  
**Perfection**, 30cea.; \$3.00 doz.; \$20.00 per 100.

## RHUBARB OR PIE PLANT

Rhubarb, with its flavor of the springtime, is a valuable aid to the action of the gastric juice, adds novelty to the bill of fare, has the good points of a fruit, and combines deliciously as a dessert or a conserve.

**Mammoth**—Large, early, tender and good. 25c each; \$1.75 doz.; \$10.00 per 100.

✓ **Crimson Giant**—Very early, crimson colored. 50c each; \$5.00 doz.

## ASPARAGUS

To prepare a bed, dig the ground deep, incorporating large quantities of well decomposed manure. Plant the roots about three inches deep, in rows two and one-half feet apart and one foot apart in the rows.

**Conovers Colossal, Palmetto**, 75c doz; \$2.00 per 100; \$15.00 per 1000.

## HORSE RADISH

**Horseradish**—Requires deep, fertile soil for best results; roots pungent, used for pickling and flavoring. 20c each; \$1.50 per doz.; \$8.50 per 100.

## STRAWBERRIES

**Note.**—We put up plants in bunches of fifty. Do not order less than fifty of a kind as we do not break bunches and a less number would be of little value to you.

✓ **Gold Dollar**—Early, large size, dark red clear through, fine flavor. Perfect bloom, heavy cropper, adapted to most sections.

✓ **Hood River**—(Clark's Seedling)—Originated at Hood River, Oregon, where it is planted to the exclusion of all others for long-distance shipments; large, round, and smooth; color a beautiful dark red, and in quality is unsurpassed. Ripens early.

✓ **Magoon**—This new berry was originated near Portland, Oregon, and is now one of the leading berries in the Northwest. A good shipping and canning variety. Ripens about ten days later than Hood River.

✓ **Oregon**—A vigorous grower, and well adapted to a variety of soils and locations. An abundant bearer of large well formed berries of good quality. Bears through a long season.

**Hood River, Magoon** 60c per 50; \$1.00 per 100; \$8.50 per 1000.

**Oregon, Gold Dollar**, 85c per 50; \$1.50 per 100; \$10.00 per 1000.

✓ **Progressive**—Large, well colored, delicious, good keeper and shipper, best of the ever-bearers.

✓ **Superb**—Begins bearing in June and continues bearing almost continuously till freezing weather. Berries large, beautiful color, delicious flavor, ripens evenly; healthy, productive plants. Every one should grow a few.

**Superb, Progressive**, \$1.25 per 50; \$3.00 per 100; \$20.00 per 1000.



Progressive Strawberry

This photo-engraving shows the condition of a plant of our **Progressive** ever-bearing strawberries on September 17, 1917. The plants commence to bear an early summer crop along with the ordinary varieties and continue to yield an abundance of fruit during the summer months and until frost comes. You will note the blossoms for the fall crop are coming on at the same time the plant is loaded with green, half-ripe and fully-ripened luscious fruit. This variety of strawberries is all claimed for it and even more. Every garden should have a few. The first year plants are set the blooms should be kept cut off till about the middle of August. After this date the plants can be allowed to set fruit and will produce many berries the first season. After treatment of plants is the same as ordinary varieties.

# Ornamental Department



Home Grounds of J. W. Langdon, Walla Walla, Wash.  
Two Cutleaf Weeping Birch to left; Camperdown Elm, Purple Fringe to right. Judicious use of Shrubs transforms grounds into pleasing landscape.

## SHADE AND ORNAMENTAL TREES, SHRUBS, PLANTS, VINES AND ROSES

Much of the time and activities of the home builder throughout the Northwest has been spent in the development of that which will furnish substantial cash returns in the way of setting and care of commercial orchard fruits, etc. This has been done at the expense of the esthetical side of life, as many of our home grounds and public parks testify. A very small outlay of time and money, with a careful selection of suitable shade and ornamental trees and shrubbery, will add beauty and comfort to the home and enhance its value commercially many fold. Many undesirable and barren spaces adjacent to many of our towns could be made into cool retreats by planting trees and shrubs. In planting shade trees it should be done with the thought that they will need as much care and attention for a few years at least as our orchard. Quicker and more satisfactory results will thus be obtained.

Select well shaped, nursery grown trees in preference to forest grown trees, or cheap stunted nursery stock. The wide range in selection offered makes it easy to secure trees for all purposes. The large number of varieties, habits of growth, variations in foliage and floral effects may be used very advantageously in beautifying the garden or the landscape.

Our trees are all select specimens and such as are found to be adapted to the conditions which obtain generally throughout the Pacific Northwest.

### BLACK LOCUST.

**Black Locust**—(*Robinia Pseudo Acacia*)—  
A very rapid growing tree, covered in June with sweet-scented, white flowers; valuable as a shade tree and also for its hard wood.

	each	doz	per 100	per 1000
1 yr, 12-18 in.....			\$ 2.50	\$17.50
1 yr, 18-24 in.....			3.50	25.00
5 to 6 feet.....	\$0.35	\$3.50	25.00	.....
7 to 8 feet.....	.45	4.50	30.00	.....
9 to 10 feet.....	.65	6.50	50.00	.....
1¼ to 1½ inch....	.95	9.50	60.00	.....
1½ to 2 inch.....	1.25	12.50		

### BIRCH

**Birch, European White**—(*Betula Alba*)—A

graceful tree, with silvery bark and slender branches. A vigorous grower, with branches rather pendulous. A beautiful tree for either street or lawn.

6-7 feet..... \$0.50 each \$5.00 doz

### CAROLINA POPLAR

**Carolina Poplar**—(*Populus Carolinensis*)—  
A vigorous, healthy, native tree of rapid growth, pyramidal in form, with large, glossy leaves; valuable for park or street planting. Makes a fine, spreading head if well cut back the first few seasons. Succeeds well everywhere.

5 to 6 ft.	\$0.30 ea	\$3.00 doz.	\$20.00 per 100
7 to 8 ft..	.40 "	4.00 "	25.00 per 100
9 to 10 ft.	.50 "	5.00 "	35.00 per 100

**CATALPA**

**Catalpa**—The Catalpa flowers in July, when few trees are in bloom. Blossoms are large, very showy and quite fragrant. Leaves large, heart-shaped and greenish-yellow. A very effective, tropical looking lawn tree. Hardy.

5-6 ft....	\$0.40 ea	\$4.00 doz	\$30.00 per 100
7-8 ft....	.60 "	6.00 "	
9-10 ft....	.75 "	7.50 "	
1¼-1½ in. caliber..	1.00 "	10.00 "	

**ELM**

**English**—(*Ulmus Campestris*)—A sturdy, vigorous, upright growing tree. Desirable for streets or parks. Hardy.

5 to 6 ft.....	\$0.50 ea	\$5.00 doz
7 to 8 ft.....	.75 "	7.50 "

**American White**—(*Americana*)—The noble, spreading, drooping tree of our own woods. One of the grandest and hardiest of park or street trees.

7 to 8 ft.....	\$0.50 ea	\$ 5.00 doz
9 to 10 ft.....	.75 "	7.50 "



Cork Bark Elm

**Cork Bark**—Very desirable for streets and avenues, young branches very corky. Forms large, well shaped heads; one of the best.

7 to 8 ft.....	\$1.00 ea	10.00 doz
9 to 10 ft.....	1.50 "	15.00 "

**Elm Camperdown**—(*Scabra pendula*)—See weeping trees.

**FLOWERING CRAB (*Malus*)**

**Bechtel's Double Flowering**—(*Ioensis bechteli*)—Makes a medium sized ornamental tree of great beauty; perfectly hardy; succeeds well in all soils not extremely wet. When in bloom in early Spring this tree presents the appearance of being covered with perfectly double small, pink roses, of de-

licious fragrance. The only sweet-scented double crab, blooms quite young. Unlike many other trees it does not bloom until the leaves are fully developed, which adds greatly to its beauty. Has become popular wherever known.

3 to 4 ft.....	\$0.75 ea	\$7.50 doz
----------------	-----------	------------



Scarlet Flowering Thorn Tree

**FLOWERING THORN (*Crataegus*)**

**Paul's Double Scarlet**—(*Monogyna Pauli*)—Flowers large, deep carmine scarlet, very showy and slightly perfumed. The Thorns justly deserve to be classed among the most beautiful flowering trees. They will thrive in dry soil.

5 to 6 ft.....	\$0.75 ea	\$7.50 doz
----------------	-----------	------------

**HORSE CHESTNUT (*Aesculus*)**

**Red Flowering**—(*H. Rubicunda*)—Not so rapid or as fine a grower as the White; foliage of deep green and blossoms later with showy red flowers.

**White Flowering**—(*Hippocastaneum*)—A very beautiful well-known tree, with round, dense head, dark green foliage and an abundance of showy flowers in early Spring, readily transplanted, hardy, and succeeds well on a variety of soils.

Red, 5 to 6 ft.....	\$0.75 ea	\$7.50 doz
Red, 6 to 7 ft.....	1.00 "	10.00 "
Red, 9 to 10 ft, 2 in. cal	1.50 "	15.00 "
White 5 to 6 ft.....	.65 "	6.50 "
White, 6 to 7 ft.....	.85 "	8.50 "
White, 9 to 10 ft, 2-in. cal	1.25 "	12.50 "

**KOLREUTERIA**

**Kolreuteria** (*Varnish Tree*)—Small, ornamental tree, glossy divided foliage, yellow flowers. Fine for single specimens.

3 to 4 ft.....	\$0.75 ea
4 to 5 ft.....	1.00 "

**LABURNUM (*Cytisus*)**

**Golden Chain**—(*Vulgare*)—Bears long, pendant racemes of yellow flowers in June; showy and beautiful. Should be in every lawn.

5 to 6 ft.....	\$0.50 ea	\$5.00 doz
----------------	-----------	------------

**LINDEN, OR BASSWOOD (*Tilia*)**

**American—(*Americana*)**—A native tree of value for ornamental purposes. It has large, dark green foliage and very fragrant white flowers in July. It makes a large tree and rapid growth in good soil.

5 to 6 ft.....	\$0.60 ea	\$6.00 doz
7 to 8 ft.....	.75 "	7.50 "

**MAIDEN HAIR**

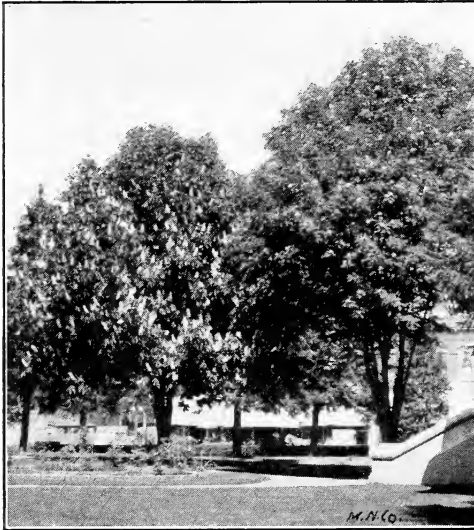
**Maiden Hair—(*Ginkgo*)**—Of spreading growth, hardy, deep green thick leaves similar in shape to maiden hair fern. For specimen trees.

4 to 5 ft.....	\$0.50 ea
5 to 6 ft.....	.75 "

**MOUNTAIN ASH (*Sorbus*)**

**European—(*Aucuparia*)**—A fine hardy, shade and ornamental tree; head dense and regular; covered from July till mid-Winter with large clusters of bright red berries.

6 to 7 ft.....	\$0.60 ea	\$6.00 doz
8 to 9 ft.....	.75 "	7.50 "
9 to 10 ft.....	1.00 "	10.00 "



White Horse Chestnut

European Mt. Ash

**MAPLES (*Acer*)**

**Ash Leaved, or Box Elder—(*Negundo*)**—A rapid growing variety with spreading head. Succeeds well in dry soil, where other varieties do not thrive. Too well known to need further description.

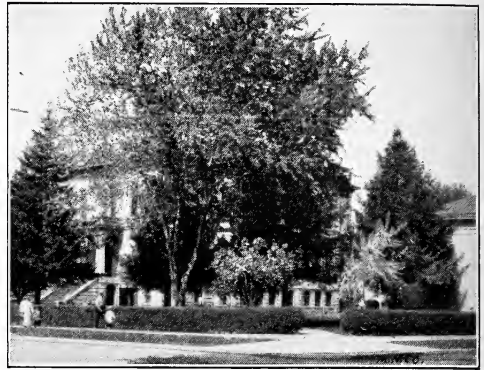
5 to 6 ft.	\$0.35 ea	\$3.50 doz	\$20.00 pr 100
7 to 8 ft.	.45 "	4.50 doz	30.00 "
9 to 10 ft.	.60 "	6.00 "	40.00 "

**Norway—(*A. Platanoides*)**—A native of Europe. Its large, compact habit, broad, deep green shining foliage and its vigorous growth, renders it a desirable tree.

7 to 8 ft.	\$0.60 ea	\$6.00 doz	\$45.00 pr 100
8 to 9 ft.	.75 "	7.50 "	55.00 "
9 to 10 ft.	1.00 "	10.00 "	65.00 "

1 1/4 to 1 1/2 inch caliber.. 1.25 " 12.50 "

**Silver or Soft Maple—(*A. Dasycarpum*)**—This rapid growing tree is being largely planted in many places. It is a clean tree of great



Large tree, Soft Maple. Privet Hedge

beauty, and hardy. One of the best for streets, parks and lawns.

7 to 8 ft.	\$0.50 ea	\$5.00 doz	\$35.00 pr 100
9 to 10 ft.	.75 "	7.50 "	50.00 "

1 1/4 to 1 1/2 in. cal. 1.00 " 10.00 " 65.00 "

**Sycamore—(*A. Pseudo Platanus*)**—A handsome, broad spreading tree, with large, thick, dark green leaves. It is a rapid grower and hardy.

7 to 8 ft..	\$0.50 ea	\$5.00 doz	\$35.00 pr 100
9 to 10 ft.	.75 "	7.50 "	50.00 "

1 1/4 to 1 1/2 in. cal. 1.00 " 10.00 "

**Schwedler's Norway Maple—(*Schwedleri*)**—A beautiful variety, with the young shoots and leaves of a bright purplish or crimson color, which change to purplish green in the older leaves. One of the most valuable.

6 to 8 ft.....	\$1.50 ea	\$15.00 doz
8 to 10 ft.....	1.75 "	17.50 "

**Silver Variegated—(*A. Argenta*)**—This we consider one of the most attractive small ornamental trees grown; so much of the leaf is variegated, that at a short distance it has the appearance of the whole leaf being a silver white. The tree is as hardy as the ash



Variegated Leaf Maple



leaved and a specimen should be in every lawn.  
 4 to 5 ft. . . . . \$1.00 ea \$10.00 doz

**SYCAMORE**

**American Plane or Sycamore** (*Platanus Occidentalis*)—A large, lofty tree forming wide head. Leaves shallowly lobed, the border toothed, bright green at maturity, borne on stout petioles which encase the winter bud at their bases. Flowers and fruit pendulous, the latter about an inch in diameter. Rapid grower, very beautiful, with picturesque white or gray bark.

8 to 9 ft. . \$0.75 ea \$7.50 doz \$55.00 pr 100  
 9 to 10 ft. 1.00 " 10.00 " 65.00 "  
 1 1/4 to 1 1/2  
 in. cal. 1.25 " 12.50 " 75.00 "

**European Plane or Sycamore**—(*Platanus Orientalis*)—Superb tree of gigantic proportions, dense foliage of bright green leaves, generally five lobed. As shade tree cannot be excelled. General favorite for planting in parks, avenues, and streets; rapid grower.

6 to 7 ft. . \$0.50 ea \$5.00 doz \$35.00 pr 100  
 7 to 8 ft. . .60 " 6.00 " 45.00 "  
 8 to 9 ft. . .75 " 7.50 " 55.00 "  
 9 to 10 ft. 1.00 " 10.00 " 65.00 "  
 1 1/4 to 1 1/2  
 in. cal. . 1.25 " 12.50 " 75.00 "

**TULIP TREE**

**Tulip Tree or Whitewood**—(*Liriodendron Tulipifera*)—A magnificent native tree of rapid growth; broad, glossy and fiddle shaped leaves. It is valued for its clean, smooth bark and handsome green foliage. The flowers appear in the first week in June. They are large, greenish yellow, blotched



Camperdown Weeping Elm

orange, and have the shape of a tulip. It makes a very desirable tree for shade or street planting, thriving in low as well as high ground. Plant only in Spring and prune very closely. Allied to the Magnolia, and like them, difficult to transplant unless of small size.

3 to 4 ft. . . . . \$0.60 ea \$6.00 doz  
 4 to 5 ft. . . . . .75 " 7.50 "

**WEEPING TREES**

**Birch, Cut-Leaved Weeping**—(*Betula, alba laciniata pendula*)—Beyond question one of the most popular and elegant of all weeping or pendulous trees. Its tall, slender, yet vigorous growth, graceful drooping habit, silvery white bark and delicate cut foliage, presents a combination of attractive characteristics rarely met with in a single tree. It is easily transplanted and thrives well in any soil and climate.

6 to 7 ft. . . . . \$1.00 ea \$10.00 doz  
 7 to 8 ft. . . . . 1.25 " 12.50 "  
 9 to 10 ft. . . . . 1.50 " 15.00 "

**Birch, Purple Leaf**—(*F. Sylvatica purpurea*)—A handsome tree, deep purple foliage.

7 to 8 ft. . . . . \$1.00 ea \$10.00 doz

**Elm, Camperdown Weeping**—(*Ulmus scabra pendula*)—A vigorous grower, having a uniform weeping habit, overlapping very regularly and forming a roof-like head. The leaves are large, dark green and glossy and cover the tree with a luxuriant mass of verdure.

7 ft head . . . . . \$2.50 ea

**Willow, Wisconsin Weeping**—(*Salix Babylonica dolorosa*)—A beautiful tree with straggling, weeping branches. Makes a fine tree for the lawn or background.

7 to 8 ft. . . . . \$0.75 ea \$7.50 doz



M. N. Co.

European Sycamore or Plane tree. Three-year



Four-year-old Norway Maple

## Hardy Flowering Shrubs

### AZALEA

**Azalea Mollis**—Among the rarest and choicest of all garden flowers. Great flaming masses of bloom are produced by these new hardy Azaleas, making a show, the glory of which one cannot describe. Suffice it to say that the blossoms are often larger than the hot-house Azaleas, and more brilliant and fiery in colors, scarlet, red, orange, yellow, pink, etc., often flamed and variegated in a lovely manner. Perfectly hardy anywhere in the United States and the most brilliant flowering shrub known. We only send out plants that are well set with bloom buds, and will blossom the first year.  
Balled (with bloom buds)..... \$1.50 ea

### ALTHEA

**Althea, or Rose of Sharon**—(*Hibiscus*)—A showy and beautiful flowering shrub. The flowers are large size, very double and full of brilliant colors, beginning to bloom the same year it is transplanted and continues to bloom every year from mid-Summer until frost. We have the following selected varieties to offer:

- Admiral Dewey**—Semi-double; violet blue.
- Elegantissima**—Double white, shaded with rose.
- Rubra pleno**—Double red althea—Clear color, one of the best.
- Syriacus**—(*Var flore pleno fol var*)—Variegated leaved double purple flowered althea. Foliage finely marked with light yellow, double purple flowers. One of the finest variegated leaved shrubs.  
2 to 3 ft..... \$0.50 ea.

### CALYCANTHUS

**Calycanthus** — (*Butneria*) — Sweet-scented Shrub. Flowers purple, very double and deliciously fragrant; remains in bloom for a long time; very desirable.  
2 to 3 ft..... \$0.50 ea \$5.00 doz

### CURRENT

**Red Flowering Currant**—(*Ribes Sanguineum*) — Blooms abundantly in Spring, bearing bright pinkish carmine flowers. Native to Coast sections.

**Yellow Flowering Currant**—(*Ribes Aureum*) — Same as above, with yellow flowers.  
18 to 24 in..... \$0.50 ea \$5.00 doz

### DEUTZIAS

**Crenata** — Flowers double white, tinged with pink; blooms in June. One of the fine hardy shrubs.

**D. Gracilis** — Fine hardy shrub, forming round and compact mass of white in June. Makes pretty hedge.

**Pride of Rochester**—Double variety. A variety raised by Elwanger & Barry and producing large, double white flowers; the back of the petals being tinted slightly with rose. It excels all the older sorts in size of flowers, length of panicle, profuseness of bloom and vigorous habit; blooms earlier than Crenata.  
2 to 3 ft..... \$0.50 ea \$5.00 doz

### ELDER

**Elder racemosa**—(*Sambucus*)—Leaves beautifully cut and drooping, flowers in racemes followed by showy red fruit.  
4 to 5 ft..... \$0.75 ea

**E. Aurea**—Golden yellow foliage; one of the best golden-leaved shrubs.  
3 to 4 ft..... \$0.75 ea

**FORSYTHIA**

**Fortunei (Golden Bell)**—(*Suspensa*)—Similar to the above in flowers, but of more upright growth, with foliage a darker green.

**F. Intermedia**—Flowers bright golden; foliage glossy green.

**F. Viridissima**—Foliage deep, shining green; flowers bright yellow. A fine hardy shrub and one of the earliest to bloom in the Spring.  
2 to 3 ft. . . . . \$0.50 ea \$5.00 doz

**FRINGE**

**Purple**—(*Rhus Cotinus*)—Smoke Tree. Curious, large growing shrub, forming round headed, broad bush. Delicate fringe-like or feathered flowers in summer; very profuse bloomer, leaves bright pea-green. Has appearance of cloud of smoke when in full bloom.  
3 to 4 ft. . . . . \$0.65 ea  
5 to 6 ft. . . . . .85 "

**HONEYSUCKLE BUSH**

**Tartarica** — (Tartarian Honeysuckle) — Pink flowers, which contrast beautifully with foliage. . . . . \$0.50 ea \$5.00 doz

**T. Alba**—(White Tartarian Honeysuckle)—Forms a high bush, with creamy white fragrant flowers . . . . . \$0.50 ea \$5.00 doz

**T. Grandiflora** — (Red Flowered Honeysuckle) — Beautiful shrub, very vigorous and produces large bright red flowers striped with white, in June. . . . . \$0.50 ea \$5.00 doz

white flowers of gigantic size. The trusses of bloom are eight to ten inches long and are nearly as thick through. Begins blooming in July and lasts until November, flowers turning pinkish toward the last. No other shrub makes such a show on the lawn or is so universally admired. Hardy in any country, and always blooms finely the first Summer.

2 to 3 ft. . . . . \$0.50 ea \$5.00 doz  
3 to 4 ft tree. . . . . .75 " 7.50

**Hydrangea Arborescens**—(Hills of Snow)—Foliage green, bluish beneath. Very attractive.

2 to 3 ft. . . . . \$0.75 ea \$7.50 doz

**KERRIA (Corchorus)**

**Kerria Japonica** — Green branched shrub, nicely cut leaves, conspicuous in winter, abundant yellow flowers from June to October.

**Kerria**—(*Flore Plena*)—Handsome double yellow, rose-shaped flowers.  
2 to 3 ft. . . . . \$0.50 ea \$5.00 doz

**LILAC**

**Purple**—(*Rosea Syringa Vulgare*)—The common purple species and one of the best.

**White**—(*Alba*)—Flowers pure white; very fragrant and beautiful.  
2 to 3 ft. . . . . \$0.50 ea \$5.00 doz

**Lilac Persica**—More slender growth than common variety, purple flowers in immense spikes.

**Lilac Persica**—(*Alba*)—Similar to above except in color which is white.  
2 to 3 ft. . . . . \$0.75 ea \$7.50 doz

**Budded Varieties**

**Alphonso Lavallo** — Double. Blue shaded violet.

**Belle de Nancy** — Double. Very large; color satiny rose, white toward center.

**Charles X.**—Strong rapid grower, leaves dark and shiny, trusses large and rather loose, color reddish purple.

**Ludwig Spaeth**—Flowers large, single, dark purplish red; trusses very long.

**Madam Abel Chatenay**—Large truss; flowers double white; very fine.

**President Grevy**—A grand sort. Flowers perfectly double, a beautiful blue. Blossoms measure three-fourths inch in diameter; truss the largest of all, frequently measuring ten inches long. One of the finest.  
3 ft. . . . . \$0.75 ea \$7.50 doz

**OREGON GRAPE**

**Oregon Grape**—(*Mahonia Aquifolium*)—Bushy shrub, leaves at first fresh green, tinged purple, assuming beautiful red and bronze tints in autumn, which are retained throughout the winter. Yellow flowers in spring.

15 to 18 in . . . . . \$0.60 ea \$6.00 doz  
Hedge, 12 to 15 inch., \$3.00 per doz.; \$20.00 per 100.



Hydrangea, P. G.

**HYDRANGEA**

**Hydrangea**—(*Paniculata Grandiflora*)—Generally considered the most valuable and ornamental shrub in existence. Bushy and robust, every branch tipped in mid-Summer with an immense close panicle of flat, snow



Hydrangea, P. G., in nursery row

**PHILADELPHUS** (*Mock Orange*)

**Coronarius**—(Common Mock Orange)—Flowers pure white and very fragrant in May and June in profusion.

**Grandiflora**—Large creamy white flowers, vigorous shrub; fine large foliage.

**Gordonianus**—A vigorous grower and profuse bloomer, flowers slightly fragrant, late bloomer.

3 to 4 ft. . . . . \$0.50 ea \$5.00 doz

**PLUM**

**Prunus Triloba**—(Double flowering plum)—Vigorous growth; flowers semi-double, delicate pink, upward of an inch in diameter, thickly set on branches in May. Very attractive, choice for specimen planting on lawn.

**P. Pissardi**—(Purple leaved plum)—Vigorous upright growth; foliage maroon red, very handsome from early spring to late Fall. Fine for massing or single specimens.

4 to 6 ft. . . . . \$0.75 ea \$7.50 doz.

**QUINCE**

**Japan Flowering**—(*Cydonia pyrus japonica*)—Bright scarlet crimson flowers in great profusion in early Spring, and in the Fall the bush hangs full of small golden quinces. Perfectly hardy anywhere.

2 to 3 ft. . . . . \$0.50 ea \$5.00 doz

**Japan Flowering Umbelicata**—(*Cydonia Japonica*)—Flowers brilliant rosy red, succeeded by large, showy fruit; forms a large shrub. One of the finest.

2 to 3 ft. . . . . \$0.75 ea \$7.50 doz

**SPIREAS**

**Anthony Waterer**—A new crimson-flowered variety which is, in our estimation, one of the best dwarf flowering plants. It makes a low, compact bush two to three feet high and is covered from Spring until late in the Fall with large heads of deep crimson flowers. Perfectly hardy.

15 to 18 in. . . . . \$0.50 ea \$5.00 doz

**Opulifolia aurea**—An exceptionally fine variety, not only for its floral display but for the golden foliage. Creamy white flowers produced in clusters all along the stem. Of great beauty.

2 to 3 ft. . . . . \$0.50 ea \$5.00 doz

**Prunifolia**—Very beautiful; its flowers are double and like white daisies. From Japan. Puts forth its white blossoms in May.

2 to 3 ft. . . . . \$0.50 ea \$5.00 doz

**Thunbergii**—Graceful; flowering early in spring, the first to bloom; branches slender and drooping; small bright green leaves, pure white flowers. Dwarf.

15 to 18 in. . . . . \$0.50 ea \$5.00 doz

**Van Houtte**—It is a beautiful ornament for the lawn at any season, but when in bloom it is a complete fountain of white flowers, the foliage hardly showing. Perfectly hardy.

3 to 4 ft. . . . . \$0.50 ea \$5.00 doz

**SUMAC**

**Glabra**—(Smooth sumac)—Crimson hairy seeds in autumn, narrow serrated leaflets with white under surface, turning scarlet in fall; fine for color effect.

3 to 4 ft. . . . . \$0.50 ea

**Glabra laciniata**—(Cut-leaved sumac)—Very striking plant of moderate size, with deeply cut leaves, resembling fern leaves, dark green above, glaucous below, and turning to a rich red in autumn.

2 to 3 ft. . . . . \$0.50 ea

**Typhina**—(Staghorn sumac)—A large shrub or tree, brilliant foliage and scarlet fruit in autumn; velvety bark. For mass planting to produce rich color effects.

3 to 4 ft. . . . . \$0.50 ea

4 to 5 ft. . . . . .75 ea

**SNOWBALL**

**Snow Ball** — (*Viburnum Sterilis*) — A well-known shrub; attains a height of eight to ten feet; produces its snow white flowers in large balls in May.

2 to 3 ft. . . . . \$0.50 ea \$5.00 doz

3 to 4 ft tree form . . . . .75 " 7.50 "



Snowball

**High Bush Cranberry**—(*Viburnum Opulus*)—  
Handsome and dense foliage; flowers white in  
drooping flat cymes, followed by brilliant  
scarlet fruit in showy, pendulous bunches that  
remain on the plant all Winter.  
2 to 3 ft. . . . . \$0.50 ea \$5.00 doz  
3 to 4 ft. . . . . .75 " 7.50 "

**TAMARISK**

**T. Africana**—Strong, slender growing, irregular  
shrub, feathery foliage, small delicate pink  
flowers, borne on graceful drooping branches,  
which have red bark.  
4 to 5 ft. . . . . \$0.50 ea

**T. Hispida Aestivalis** — Very vigorous;  
branches grow several feet during season.  
Covered with rosy carmine flowers in July.  
Very light and feathery.  
3 to 4 ft. . . . . \$0.50 ea

**WEIGELA**

**Candida**—A vigorous, erect grower; flowers  
pure white, borne all through the Summer  
months. 2-3 ft., 50c each; \$5.00 doz.

**Eva Rathke**—Remarkably free bloomer; flow-  
ers very distinct in color, being rich reddish  
purple, different from other sorts. Excellent.  
2-3 ft., 65c each; \$6.50 doz.

**Nana foliis variegatis**—Variegated leaf, dwarf  
—clearly defined silver variegated leaves;  
flowers nearly white. One of the best. 18-24  
in., 50c each; \$5.00.

**Rosea**—Flowers of good size, delicately blushed  
rosy pink; blooms in June and July. 2-3  
ft., 50c each; \$5.00 doz.

**EVERGREEN SHRUBS**

**Rhododendron or Rosebay**—Thrives in most  
any good soil, does best in coast sections.  
Broad thick evergreen foliage, bears profuse  
clusters of flowers of great beauty.  
Balled, 5 to 8 bloom buds . . . . . \$2.75 ea

**Yucca Filamentosa**—(Adam's Needle—bear-  
grass)—A hardy, evergreen plant, with long,  
narrow leaves that are bright green the whole  
year. The flowers are creamy, bell-shaped,  
produced in long spikes, three to four feet  
high. Fine, stately lawn plant, easy to make  
grows, and does well in any climate. 50c each

**EVERGREEN TREES**

Evergreens are very desirable, but they are  
rather difficult to transplant. They should be  
subjected to as little exposure as possible, set  
with care and shaded well the first three or four  
months after transplanting.

**ARBORVITAE** (*Thuja*)

**American**—(*Occidentalis*)—One of the finest  
evergreens for hedges. It grows rapidly and  
soon forms the most desirable and ornamental  
hedge or screen to divide the lawn from other  
parts of the ground.  
15 to 18 in. . . . . \$0.75 ea \$ 7.50 doz  
Hedge, 10 to 12 in. . . . . 2.00 doz 12.50 100

**Globe**—(*Globosa*)—Forms a dense low globe;  
handsome shade of green.  
18 to 24 in. . . . . \$1.25 ea

**Pyramidal Arborvitae**—(*T. Occidentalis Pyr-  
amidalis*)—A compact and narrowly pyr-  
amidal tree. Branches short and densely  
clothed with bright green foliage. Very  
formal and attractive, and the narrowest  
and most columnar of the arborvitae.  
18 to 24 in. . . . . \$1.75 ea

**CYPRESS** (*Chamaecyparis Cupressus*)

**Lawson's**—(*Lawsoniana*)—A fine evergreen, na-  
tive of the Pacific Coast. One of the most  
graceful and beautiful of evergreens; of fine,  
compact habit; delicate feathery, vivid green  
foliage. 18 to 24 in. \$1.50 each.

**JUNIPER** (*Juniperus*)

**Irish**—(*Communis hibernica*)—Very erect and  
tapering in its growth, forming a column of  
deep blue foliage; a general favorite.  
18 to 24 in. . . . . \$1.50 ea

**Red Cedar**—(*Virginiana*)—A well-known Amer-  
ican tree, with deep green foliage. Can be  
trained in any form and makes a fine orna-  
mental tree. 18-24 in., \$1.25 each.

**SPRUCE** (*Picea*)

**Norway**—(*Excelsa*)—A lofty, elegant tree, of  
perfect, pyramidal habit, remarkably ele-  
gant and rich, and as it gets age, has fine,  
graceful, pendulous branches. It is exceed-  
ingly picturesque and beautiful. Very popu-  
lar and should be largely planted.  
18 to 24 in. . . . . \$1.00 ea  
2 to 3 ft. . . . . 1.50 "

**Koster's Blue Spruce**—(*P. Pungens Kosteri*)—  
The best of the blue spruce; very showy and  
conspicuous, an ideal specimen tree. The  
handsomest of the evergreen species.  
Grafted. 2 ft., \$2.50 each.



Koster's Grafted Blue Spruce

# Hardy Ornamental Climbing Vines

## AMPELOPSIS

**American Ivy, or Virginia Creeper**—(*Quinquefolia*)—A native vine of hardy, rapid growth, with large, luxuriant foliage, which in Autumn takes on the most gorgeous coloring. One of the finest vines for covering walls, verandas, etc.

2 yr. . . . . \$0.40 ea \$4.00 doz

**Boston, or Japanese Ivy**—(*Veitchii*)—Leaves a little smaller and more ivy-like in form than the foregoing. The plant requires some protection until it is established.

3 yr plants . . . . . \$0.50 ea \$5.00 doz

## CLEMATIS

Clematis plants of the improved sorts are exceedingly hardy and produce beautiful large flowers in great abundance during a long period. They do best in a rich soil, in a sunny situation. The young shoots that spring up after transplanting sometimes die down, but if the root is left in the ground undisturbed, it will most always send forth strong shoots early the following Spring, which will bear handsome blossoms the same season.

**Henryi**—Fine bloomer, flowers large, of a bright, beautiful creamy white, consisting generally of from six to eight sepals; it is not only a vigorous grower but a remarkably free and continuous bloomer.

2 yr. . . . . \$0.75 ea

**Jackmanni**—The flowers, when fully expanded, are from four to six inches in diameter; intense violet-purple, with a rich velvety appearance, distinctly veined; flowers continually from July to October.

2 yr. . . . . \$0.75 ea

**Madam Edouard Andre**—This is the nearest approach to a bright red Clematis and has been called the crimson Jackmanni. The plant is a strong, vigorous grower, and very free in bloom.

2 yr. . . . . \$0.75 ea

**Paniculata**—(New, Sweet-Scented Japan Clematis)—No introduction of recent years has met with such ready sale and given such satisfaction wherever planted. It grows and thrives anywhere and is a very rapid grower and profuse bloomer. Flowers are pure white, borne in large clusters, converting the plant into a perfect mass of white. Its extreme hardiness, bright green foliage and delightfully fragrant flowers serve to make this one of the finest hardy climbing plants in cultivation.

2 yr. . . . . \$0.50 ea

## HONEYSUCKLE (*Lonicera*)

**Belgica**—Monthly fragrant, or Dutch honeysuckle—Blossoms all summer; red and yellow flowers, very fragrant. 50c each.

**Halleana**—A new, hardy variety from Japan, and has proved to be one of the best Honeysuckles grown. Blossoms from June to November. It is almost evergreen and one of the most fragrant. White, changing to yellow. 50c each.

**Red Coral**—(*Sempervirens*)—A hardy, rapid grower; flowers are red and fragrant. 50c each.



M. N. CO.

Clematis Paniculata

## TRUMPET FLOWER (*Tecoma*)

**Radicans**—A hardy rapid growing climber, with large, scarlet, trumpet-shaped flowers. Blossoms almost continuously throughout the Summer season. 50c each.

**Grandiflora**—(New large flowered trumpet creeper)—A rare and beautiful variety of the Trumpet Vine, which is perfectly hardy. Flowers very large, salmon colored, center yellow, striped red; fine. 50c each.

## WISTARIA

**Chinese Purple**—(*Sinensis*)—Most beautiful climber; of rapid growth, producing fine large clusters of lovely blue in great masses. It is very hardy, and one of the most superb vines ever introduced. 50c each.

**Chinese White**—(*Sinensis Alba*)—Flowers borne in long, drooping clusters as in the purple variety; pure white in color, making a striking and elegant contrast. 50c each.





National Emblem



Double White Killarney

## The Rose Garden

Perhaps no flower affords such delightful results as the rose. The Pacific Northwest seems peculiarly adapted to its successful culture, and it responds to the gentle touch of the lowly in humble abodes as well as being a joy in the rich man's rosary. It sends forth its beauty and gentle perfume to be enjoyed alike by the lofty and humble.

### HOW TO GROW ROSES

**Location of Beds**—Roses should be planted where they will be open to sunlight for at least half of each day. In locating beds, avoid trees, shrubbery and shady sides of buildings and fences. This will lessen the danger from insects and diseases.

**Soil**—Any good garden soil, which will grow good vegetables, will grow with proper fertilization, fine Roses. The ideal soil is a clay loam of sufficient porosity to permit of ready drainage.

**Preparation of Beds**—The beds should not be so large that the Roses cannot be reached without treading among them. Long, narrow beds, with one continuous row of plants, are preferable. Spade the soil to a good depth, mixing in well-rotted stable manure as you do so. Cow manure is considered the best, though well-rotted horse manure will do. Bone meal is excellent.

**Planting**—Most varieties should be planted about 2½ feet apart, when the soil is in a nice, mellow condition. Spread the roots out well and press the soil down firmly. Plant slightly deeper than previously grown and give one good watering if weather is warm and dry.

**Watering**—Most people water their Roses too much. Once a week is often enough and that early in the morning. Keep the soil mulched or cultivated around the bushes to prevent baking.

**Mulching and Protection**—Only the tenderest varieties need any protection in this country. This can best be supplied by mulching the soil around the plants with a heavy application of cow manure, which should be spaded in the following Spring. All plants should have this mulching.

**Pruning**—Field-grown dormant Roses should be cut back severely when first set out. Subsequent prunings should be attended to in late Winter and early Spring, when all dead and weak growth should be removed entirely and the strong, live canes shortened back to one or two feet in length, according to the growth of the previous season. It may be accepted as a general rule that weak growth should be pruned severely and strong ones sparingly. Climbing Roses should not be cut back any more than is necessary to keep the plant in a shapely appearance.

**Best Time for Planting**—No question is asked more frequently than, "When is the best time to plant Roses?" Our dormant field-grown Roses can be planted any time that the soil can be worked, between October and April. Probably the best month is March. Most people plant in that month and with best results when the soil has warmed up with the increasing strength of the sun's rays.

### DISEASES AND INSECTS

Healthy, vigorous, well-cultivated Roses in well-located beds are less liable to the ravages of insects and diseases than weak specimens of slender growth and poor vitality. Therefore, keep your Roses healthy by good cultivation. It is the indifferent, indolent grower whose Roses are the prey for insects, although the weather in certain seasons aggravates the troubles of a Rose grower considerably.

**Mildew**—This is a fungus disease, shown by the grayish, crinkled and mouldy appearance of the foliage, caused chiefly by cool nights and hot days. Remedy: Dust lightly over the foliage flour of sulphur on a warm, sunny day.

**Black Spot**—Another fungus disease, usually making its appearance on Hybrid and Hybrid Tea Roses late in the season. The black spots on the foliage cause same to turn yellow and drop off. Pick off affected leaves and spray with "Bordeaux Mixture." Spray also when dormant the following Spring.

**Aphis or Green Fly**—A little sucking, green insect, which sometimes gathers in countless numbers upon the new growth. Steep tobacco stems or leaves in water over night and apply with a spray pump or whisk broom. Warm soap suds is also effective.



## THE CREAM OF THE NEW ROSES FOR 1918

Admirers of Roses are always interested in the Newest Introductions: we therefore have arranged the following, which have been selected as the finest of the European and American introductions for 1918. These Roses are two-year old, grown on own roots in our blocks and are thoroughly acclimated to the Northwest.

**Augustus Hartmann**—(B. R. Cant & Sons, 1914)—Brilliant geranium-red, flushed with orange, sometimes bright cerise; flowers of large size and beautifully formed. The color is very striking. It obtained the Silver Medal on many occasions as "the best bloom in the show" and the Gold Medal at the Botanical Gardens, 1914. \$1.50 each; \$15.00 per dozen.

**Autumn Tints**—(B. R. Cant & Sons, 1914)—The color and shadings of this New Rose is similar to Mme. Edward Herriott, which is so admired by all, being of a coppery-red shaded with orange and salmon; flowers produced in great profusion. An exceedingly attractive garden Rose. \$1.50 each; \$15.00 per dozen.

**Gorgeous**—(McGredy, 1915)—Strong, vigorous, free branching growth; handsome dark olive-green foliage. Flowers very large and full, exquisitely formed, produced freely and continuously on stout erect stems. Color deep orange yellow, heavily veined with reddish-copper. A most striking combination of colors. A very fine bedding and an exhibition Rose of first magnitude. \$2.00 each, \$20.00 per dozen.

**Lillian Moore**—(Hugh Dickson, 1917)—The Hugh Dickson rose which won the \$1000 prize at the Panama Pacific Exposition. "This rose is a garden gem with flowers of exquisite form and delightful fragrance; it is a deep, pure Indian yellow in color, deeper in the center. The flowers are large and full, of perfect Camellia shape, carried on stiff erect stems with handsome foliage, buds long and pointed; quite perpetual in habit. A superb rose." \$2.00 each; \$20.00 per dozen.

## LAST SEASON'S GOLD MEDAL ROSES

The following are the novelties of Gold Medal Roses that have proven their merit and are now becoming in great demand. These also, are two-year old, own-root bushes, grown in our own fields.

**Admiral Ward**—(Pernet-Ducher, 1915)—Vigorous, branching, erect growth. Large, glossy, bronzed foliage. Large, full, globular flowers, freely and continuously produced. Color deep velvety crimson-red, shaded firey-red. A grand garden Rose. \$1.00 each; \$10.00 per dozen.

**Countess Clanwilliam**—(Hugh Dickson, 1914)—Flowers very large and full, produced in endless abundance; buds long and pointed, opening to large, full, high centered flowers of great beauty and refinement. Color delicate peach-pink at the base of the petals, which are flamed and heavily edged with deep cherry-red, a beautiful contrast of color. A charming rose. Gold medal National Rose Society. 75 cents each; \$7.50 per dozen.

**Daily Mail Rose**—(See Madame Edward Herriott).

**Florence Forrester**—(McGredy, 1914)—Clear snow-white with lemon tinge; as the flowers age they become pure white, the blooms are even larger than Paul Neyron. For size and substance has no equal among Hybrid Teas. It is very sweetly perfumed. Gold medal, National Rose Society. 75c each; \$7.50 per dozen.

**Francis Scott Key**—(Cook, 1914)—This is a heavy, double Rose of great substance. The flowers are rich crimson-red in color, and of excellent form. Throughout the summer this Rose is unequalled as a cut Rose. 75 cents each; \$7.50 per dozen.

**Hoosier Beauty**—(Dorner, 1915)—Glowing crimson-scarlet with darker shadings; buds of good length and splendid shape; ample petalage with a texture like velvet, opening into a magnificent bloom of dazzling brilliance, fragrant as "Richmond." A strong and clean grower, free from spot and mildew, producing long, stiff stems with a bud on every shoot. 75 cents each; \$7.50 per dozen.

**Lady Greenall**—(Alex. Dickson, 1914)—Intense saffron-orange, heavily toned overspread on deep creamy-white;

reflex of petals faintly suffused delicate shell-pink, large, perfectly finished, very floriferous, strongly tea perfumed. A truly magnificent Rose. \$1.00 each; \$10.00 per dozen.

**Madame Edward Herriott or Daily Mail Rose**—(Pernet-Ducher, 1913)—The new French rose which won the \$5000 offered by the London Daily Mail. Long pointed buds, of a deep coral red shaded with yellow at the base. Opens into a flower of a beautiful shade of rosy scarlet tinged and flushed with yellow. The wonderful coloring is a revelation to all who first see it. Awarded Gold Medal by National Rose Society. 75c each; \$7.50 per dozen.

**Los Angeles**—(Howard & Smith, 1917)—This is the Rose which was admired so much by all who saw it at the Panama-Pacific Exposition. It was commonly called the "No. 101 Rose." Its characteristics are unsurpassed. The color being of luminous flame pink, toned with coral and shaded with translucent gold at the base of the petals. Buds long and pointed, expanding into flowers of mammoth proportions. It has unusual lasting qualities, retaining its beauty five or six days when cut and placed in water. Its fragrance is remarkable, being as pronounced as the Marechal Neil. \$2.00 each; \$20.00 per dozen.

**Ludwig Moeller or Yellow Druschki**—(Lambert, 1915)—This is the wonderful Yellow Druschki. It has all the good qualities of Frau Karl Druschki. Vigorous grower, free bloomer, and has deep yellow flowers. A great beauty. \$2.00 each; \$20.00 per dozen.

**Mrs. James Lynas**—(Hugh Dickson, 1915)—Flowers very large and full, produced freely and continuously. Color pearly-pink at the base of petals, flushed delicate rose, rosy-peach at edges and on the reverse of petals. One of the most valuable garden Roses of recent years. Par excellence. Gold Medal, National Rose Society. \$1.00 each; \$10.00 per dozen.

**National Emblem**—(McGredy, 1915)—Color is of a beautiful dark crimson, overlaid velvety crimson and shading to vermilion toward the edges. The buds are very long and pointed and of ivory-like substance. The flowers are quite full, every one coming perfect and are produced with marvelous freedom. \$2.00 each; \$20.00 per dozen.

**Yellow Frau Karl Druschki**—(See Ludwig Moeller).

**Mrs. Edward Alford**—(Lowe & Sawyer, 1913)—A most charming rose of handsome silvery-pink; flowers large, full and carried erect on long stem. Strong grower and very free-blooming. \$1.00 each; \$10.00 per dozen.

**Mrs. Frederick W. Vanderbilt**—(McGredy, 1913)—This is a Gold Medal Rose with many excellent qualities. The color and shadings are deep orange-red, shaded with beautiful, bronzy apricot-red. A valuable addition to any Rose collection. \$1.00 each; \$10.00 per dozen.

**Ophelia**—(W. Paul, 1912)—Brilliant salmon-flesh shaded with rose on outer edges of petals, with a heart of glowing peach-pink and orange-yellow shadings, all passing finally to lighter shades; fragrant as Richmond, faultless form in bud and flower; erect habit, stiff, long stems; handsome, bright foliage; immune to mildew and black spot. 75 cents each; \$7.50 per dozen.

**Willowmere**—(Pernet-Ducher, 1913)—Coral, rich shrimp-pink, shaded yellow in the center, and toning to carmine pink toward the edges of the petals. Vigorous growth, erect and branching habit. Long carmine coral bud, carried on long stems. Very large flower, full and of elongated cup shape. A superb rose. 75 cents each; \$7.50 per dozen.



Ophelia

## FINEST ROSES OF RECENT INTRODUCTION

We list below, a few of the late introductions which are notable for their distinctiveness and most likely to please the rose-lover who is seeking novelty and variety in his garden and who wishes something newer and better than other sorts afford. Our prices must not be confused with those of some concerns who offer one year plants at low prices, as all of our stock is two-year, field grown on own roots.

**Edith Part**—(McGredy, 1913)—Rich red, suffused deep salmon and coppery-yellow, with a deeper shade in the bud of carmine and yellow, a blending of colors heretofore unknown and quite indescribable. Free blooming and of beautiful habit, very sweetly scented. Awarded Silver-Gilt Medal by the National Rose Society. 50 cents each; \$5.00 per dozen.

**George Dickson**—(Alex. Dickson, 1912)—Very strong and vigorous, upright growth. Flowers of the largest size; perfect in shape and unique in color, being a velvety blackish crimson, with the back of the petals heavily veined with pure crimson maroon. Delightfully scented. \$1.00 each; \$10.00 per dozen.

**Heinrich Munch**—(Hinner, 1912)—Immense globular flowers; a beautiful silvery-pink color; remarkably fine form, with heavy wax-like petals. Rank growing, producing strong canes of great length, furnished with massive green foliage. Winner of several prizes in European rose shows, 75 cents each; \$7.50 per dozen.

**H. V. Machin**—(Alex. Dickson, 1914)—A dazzling rose of gigantic size. Its intensely black grained scarlet-crimson are considered unique amongst all Roses. Awarded gold medal, National Rose Society and several medals for best bloom. A truly magnificent Rose. 75 cents each; \$7.50 per dozen.

**Lady Mary Ward**—(Bide, 1911)—This Rose is a free bloomer, vigorous grower and hardy. The color is a rich orange,

shaded deeper orange with metallic veining; very brilliant; splendid for bedding and cutting. \$1.00 each; \$10.00 per dozen.

**Mabel Drew**—(Alex. Dickson, 1911)—Sturdy erect growing with large, full, perfectly formed flowers. Creamy yellow buds passing to intense canary yellow as the flower expands. Delightful tea scent and a grand garden Rose. 75 cents each; \$7.50 per dozen.

**Mrs. Andrew Carnegie**—(Cocker, 1913)—This handsome, new Rose receives the admiration of all for its beautiful shape and delightful fragrance. Pale lemon-yellow at base of petals, shading to pure white. Gold Medal National Rose Society. 75 cents each; \$7.50 per dozen.

**Mrs. Charles Russell or Pink American Beauty**—(Montgomery, 1912)—Strong, rank growth, canes stout and thornless, clothed with handsome dark-green foliage. Flowers very large and massive. Form globular and very full. Remarkable for its lasting quality. Color bright rich cerise shaded to scarlet at center. A continuous bloomer all season through. 75 cents each; \$7.50 per dozen.

**Pink American Beauty**—(See Mrs. Charles Russell.)

**White Shawyer**—(Totty, 1915)—This is a sport from the famous Mrs. George Shawyer, and like its parent it is a grand Rose. Snow-white, of the largest size, and a good keeper. It is a strong, vigorous grower and a free bloomer. 50 cents each; \$5.00 per dozen.

## FAVORITE COLLECTION OF BEAUTIFUL ROSES

These splendid Roses are newer varieties that are becoming more plentiful and can be offered at a very low price. In this list you will find many famous prize-winners and some of the most beautiful and popular roses. All strong, two-year, field-grown, own-root bushes. Any three or more bushes of the same price per dozen at the dozen rate.



Duchess of Wellington

**British Queen**—(McGredy, 1912)—Color pure white sometimes tinted with flesh shades; petals massive, with an exquisite reflex producing a globular yet pointed form. Stiff slender stems; free blooming and fragrant. Awarded Gold Medal at National Rose Society. 50 cents each; \$5.00 per dozen.

**Chateau des Clos Vougeat**—(Pernet-Ducher, 1908)—Deep velvety crimson shaded with blackish maroon. The nearest approach to a black rose. As if cut from so much velvet, the most wonderful rose in color, and texture. A true everblooming variety. 50 cents each; \$5.00 per dozen.

**Dorothy Page Roberts**—(Alex. Dickson, 1907)—Coppery-pink suffused apricot-yellow. Very free and perpetual bloomer. Flowers well formed with very large petals. A very handsome rose. 40 cents each; \$4.00 per dozen.

**Double Pink Killarney**—(Robert Scott & Son, 1911)—Possesses all the good points of the Killarney, and is a stronger grower, producing larger flowers with one-third more petals. Color, an exquisite shade of deep shell-pink lightened with silvery-pink. The buds are exceptionally long and beautifully formed. It has a delicate Tea Rose fragrance. 40 cents each; \$4.00 per dozen.

**Double White Killarney**—(Budlong, 1912)—A pure white sport from the White Killarney; has a much larger bud and has many more petals than its parent. The long pointed buds are of ideal form, petals purest white and heavy wax-like texture. 40 cents each; \$4.00 per dozen.

**Duchess of Wellington**—(Alex. Dickson, 1909)—Intense saffron-yellow, stained with deep crimson, deepening with the development of the flower to a coppery-yellow of a distinct new shade. An admirable new rose of great merit. 50 cents each; \$5.00 per dozen.

**Edward Mawley**—(S. McGredy, 1911)—Velvet-crimson of a deep, rich color on huge petals beautifully arranged to form faultless blooms of wonderful depth, sweetly perfumed and never off color in the hottest weather. Growth handsome, uniform and perfect, holding each bloom rigidly upright. An ideal, free and perpetual flowering garden rose. Awarded Gold Medal National Rose Society. 50 cents each; \$5.00 per dozen.

**George Ahrends**—(See Pink Frau Karl Druschki.)

**Harry Kirk**—(Alex. Dickson, 1907)—A splendid rose, of most robust growth; flowering freely and continuously; the blooms are large and of perfect form. Color deep sulphur-yellow, passing to a lighter shade at the edge of the petals. Awarded gold medal by National Rose Society of England. 50 cents each; \$5.00 per dozen.

**Herzogin Marie Antoinette**—(Jacobs, 1911)—Very long buds of pure orange or old gold; very large flowers of perfect form. Bush is of free-growing habit with clear bright foliage. Has received several European medals. 50 cents each; \$5.00 per dozen.



Lady Ashtown



Pink Frau Karl Druschki

**Lady Alice Stanley**—(McGredy, 1910)—Delicate flesh pink, outside of petals deep coral rose. Beautiful long pointed buds opening to a fine large well-formed flower having a delightful fragrance. Fine strong growing variety with beautiful green foliage. One of the finest new exhibition and garden roses. 50 cents each; \$5.00 per dozen.

**Lady Ashtown**—(Alex. Dickson, 1905)—Deep rose, shading to silvery-pink, with touches of yellow at base of the petals; large, full form, free and constant bloomer. A rare and most beautiful variety. 50 cents each; \$5.00 per dozen.

**Lady Hillingdon**—(Lowe & Shawyer, 1910)—Deep apricot yellow, long pointed buds, a fine forcing and garden rose, excellent for cutting. Is considered one of the best decorative roses in its class. Awarded gold medal National Rose Society. 50 cents each; \$5.00 per dozen.

**Madame Jules Bouche**—(Croibier, 1911)—A beautiful white, suffused with salmon-pink center, deeply shaded with virginal-pink; large and full. This rose has won numerous medals and awards. 50 cents each; \$5.00 per dozen.

**Melody**—(Alex. Dickson, 1911)—A most charming and decidedly beautiful rose, which attracts much attention. The blooms are of good size; the color is an intense, pure, deep saffron-yellow, with primrose edges, delightful color harmony. A rose of the highest merits. 50 cents each; \$5.00 per dozen.

**Mildred Grant**—(Alex. Dickson, 1901)—Ivory-white with an occasional flush of pale peach. High pointed center, with unusually large and massive petals, opening to perfectly formed flowers of enormous size and substance. You can make no mistake in planting this grand variety. Awarded Gold Medal National Rose Society. 50 cents each; \$5.00 per dozen.

**Mrs. Arthur R. Waddell**—(Pernet-Ducher, 1908)—Long and pointed buds of rosy-scarlet, opening coppery-salmon; large semi-double and extremely showy. Highly colored and free blooming. Foliage dark, glossy green. Extremely popular. 40 cents each; \$4.00 per dozen.

**Mrs. Charles E. Pearson**—(McGredy, 1913)—A glorious orange-yellow, flushed and tinted with red, apricot and fawn, sweetly-scented; a remarkably fine rose. Awarded Gold Medal National Rose Society. 50 cents each; \$5.00 per dozen.

**Mrs. Foley Hobbs**—(Alex. Dickson, 1910)—Delicate ivory-white, faintly tinged clear pink on edges of thick, shell-shaped, enormous petals which form giant blooms of exquisite form and finish. Deliciously tea-scented. Winner of gold medal National Rose Society. 50 cents each; \$5.00 per dozen.

**Mrs. George Shawyer**—(Lowe & Shawyer, 1911)—Brilliant rose-pink, or bright peach-pink. Flowers large, well formed, with petals of good substance. Very free growth, with leathery foliage, every shoot tipped with a bud. Do not leave this rose out of your collection. 50 cents each; \$5.00 per dozen.

**Pink Frau Karl Druschki or George Ahrends**—(Hinner, 1910)—The flowers are of large and massive proportions, surmounting stout canes in a most imposing manner. The color is a delightful flesh and bright shade of pink with silvery suffusions. Perfectly hardy in any locality. 50 cents each; \$5.00 per dozen.

**Sunburst**—(Pernet-Ducher, 1912)—Orange-copper or golden-orange and golden-yellow, all intense shades, giving and extremely brilliant effect. A giant rose, long stems, long pointed buds, vigorous, free and healthy, with splendid keeping qualities as a forcer, also an excellent bedder. Be sure to add this to your collection. 50 cents each; \$5.00 per dozen.



Sunburst

## COLLECTION OF FINE EVERBLOOMING ROSES

This includes some of the most popular varieties for garden and cut flowers. 40c each, \$4.00 per doz., unless otherwise priced. Any three or more bushes of the same price per dozen at dozen rate.

**Charles Dingee**—(See Wm. R. Smith.)

**Etoile de Lyon**—(Guillot, 1881)—This magnificent Tea Rose is a rich, golden-yellow; strong, healthy and vigorous grower. Immense bloomer, bearing flowers and buds early and late. Remarkably hardy with us.

**Irish Fireflake**—(Alex. Dickson, 1913)—Old gold, coppery-yellow or deep maddery-orange, flamed with carmine, becoming fiery orange as the spiral bud develops, conveying the impression of a flame of fire. Large, single flowers, deliciously tea-perfumed. A unique and fancy rose. Gold Medal, National Rose Society. 50 cents each; \$5.00 per dozen.

**Janette Heller**—(See Wm. R. Smith.)

**Madame Derepas-Matrat**—(See Yellow Maman Cochet.)

**Maiden's Blush**—(See Wm. R. Smith.)

**Maman Cochet**—(Cochet, 1892)—Rich, rosy-pink, shaded silvery-rose on outer petals; exquisite in color and graceful in form from bud to bloom and delightfully fragrant; beautiful, healthy foliage and long stiff stems. Unquestionably the queen of pink Tea Roses and a leading cut-flower variety.

**Marie Van Houtte**—(Ducher, 1871)—Rich creamy-white, faintly tinted with rose; extra large, very double, full and deliciously scented flowers; good form and habit; succeeds anywhere in any soil.

**Papa Gontier**—(Nabonnand, 1883)—An excellent crimson Tea, and one of the best for all purposes. It is a perfect shaped bud on good length of stem, making it desirable for cut flowers. Should be included in every collection of roses.

**Perle des Jardins**—(Levet, 1874)—Clear, golden-yellow of a rich and beautiful shade; flowers large, globular in form and of great depth; richly perfumed.

**Rainbow**—(Sievers, 1891)—Deep coral-pink, striped with intense crimson, and center of rich, glowing amber; beautiful buds and large, deep flowers. A sport from Papa Gontier.

**Safrano**—(Beauregard, 1839)—Bright apricot-yellow changing to orange-fawn, reverse of petals tinted with flesh-pink; splendid buds and fine star shaped flowers; productive and fragrant.

**Souvenir du Pierre Notting**—(Souper & Notting, 1912)—This variety is a seedling of Marechal Neil and Maman Cochet, with beautiful closely set foliage and a strong, sturdy habit of growth. The bloom is very large, perfectly full, of elegant form; has a beautiful long bud; color, orange yellow, bordered in carmine rose.

**Sunset**—(Henderson, 1884)—This grand rose is a favorite wherever known. The color is a rich, golden amber, or old gold, elegantly shaded and buds are extra large, full finely formed and deliciously perfumed.

**The Bride**—(May, 1885)—A lovely, hardy Tea Rose and very popular. It has beautiful foliage and flowers of large size and most snowy white.

**The Queen**—(Dingee, 1890)—Pure snow white; beautifully formed buds and large petals; a free and continuous bloomer; exquisitely scented.

**White Maman Cochet**—(Cook, 1897)—Very large and beautifully formed in bud and bloom; pure white with faint pink flush on edges of petals. Vigorous and produces abundantly for cutting.

**Wm. R. Smith, Charles Dingee, Jeanette Heller or Maiden's Blush**—(Shellum, 1908)—Creamy white with shadings of pink; a seedling from Maman Cochet and Kaiserin Augusta Victoria; beautiful in form and colors; glossy foliage; long stiff stems; vigorous in growth; a superb Summer bedder and hardy with light protection.

**Yellow Maman Cochet or Madame Derepas-Matrat**—(Buatois, 1898)—Heavy foliage and strong stiff stems, carrying graceful shaped buds and fine open flowers of sulphur yellow.



Irish Fireflame

## BEAUTIFUL HYBRID TEA EVERBLOOMING ROSES

In this collection will be found some of the choicest of garden roses which have excellent growing and blooming qualities. 40c each, \$4.00 per doz., unless otherwise priced. Any three or more bushes of the same price per dozen at the dozen rate.

**Arthur R. Goodwin**—(Pernet-Ducher, 1909)—Coppery orange-red, passing to a salmon-pink as the flower expands. A superb combination of coloring which is most striking and attractive. One of the most distinct new sorts and a most valuable addition to our list of fancy Roses.

**Antoine Rivoire or Mrs. Taft**—(Pernet-Ducher, 1896)—Creamy-white, delicately tinted with pink; extra large petals, making a bloom of decidedly distinct and beautiful form; full and double.

**Augustine Guinoisseau**—(See White La France.)

**Baldwin**—(See Helen Gould.)

**Betty**—(Alex. Dickson, 1905)—Very large flowers; fairly full and of splendid form. Color of coppery-rose, shaded golden-yellow, deliciously perfumed. Without a doubt a sterling rose. Awarded Gold Medal, National Rose Society.

**Chrissie MacKellar**—(Alex. Dickson, 1913)—A gorgeously beautiful rose, combining in charming combination the following tones, tints and colors; crimson-carmine, deep rich ochery-madder, becoming a delicate but bright orangey-pink as the flower develops. It is strongly and deliciously pure primrose-tea scented. 50 cents each; \$5.00 per dozen.

**Countess of Gosford**—(McGredy, 1906)—A new, ever-blooming rose of English origin; of good robust growth and healthy; flowers of large size, good form and rich fragrance; color is blush-pink with a shading of yellow at base of petals. Gold Medal at National Rose Society.

**Dean Hole**—(Alex. Dickson, 1904)—An intense salmon-pink with bud of extraordinary length opening into a mammoth bloom of splendid substance; perfect form, vigorous, free branching habit; continuous bloomer. Gold Medal National Rose Society.

**Duchess of Albany**—(See Red La France.)



Milred Grant

**Etoile de France**—(Pernet-Ducher, 1904)—A brilliant shade of clear red-crimson velvet, centering to vivid cerise; large flowers on long stiff stems; remarkably vigorous, free-blooming and hardy. A very desirable bedding variety.

**F. R. Patzer**—(Alex. Dickson, 1909)—Creamy-buff, reverse of petals delicate warm pink; changing as the petals reflex to light orange-pink; large, full flowers of good substance freely produced on stiff stems; highly perfumed. A valuable garden and exhibition rose.

**General McArthur**—(Hill, 1905)—A grand crimson-scarlet rose. It is very free-blooming, every shoot producing a beautiful and richly-colored bud and flower, which does not fade in the hottest sun. The flowers are large, double, of fine form, and very fragrant. Undoubtedly one of the best garden roses, and no collection is complete without it. Try it.

**Helen Gould, Baldwin or Red Maman Cochet**—(P. Lambert, 1898)—A remarkably vigorous grower, quickly throwing up strong shoots and producing great masses of splendid roses throughout the season. Flowers are large, perfectly double, and deliciously sweet; color is rich vinous crimson, elegantly shaded and exceedingly beautiful. It is as hardy as La France.

**Johnkeer J. L. Mock**—(Leenders, 1909)—Clear imperial pink, reverse of petals rosy, silvery-white; blooms of magnificent size and form, produced freely on stiff, erect canes; the strongest grower of the Hybrid Tea Class. Awarded two gold and one silver medals and five first prizes in Europe.

**Kaiserin Augusta Victoria**—(P. Lambert, 1890)—This beautiful rose is celebrated the world over for its elegant, large pointed buds and full fragrant flowers. The color is a delicate creamy white, with a faint tinge of lemon in the center.

**Lady Battersea, Red Kaiserin or Red Niphetos**—(Paul, 1901)—The color, brilliant cherry crimson, is most beautiful and striking; buds long and pointed, flowers well formed; free blooming and vigorous growth. A very desirable garden variety.

**La France**—(Guillot, 1867)—Pink, tinted silvery blush. Flowers large and borne freely. Delightfully fragrant, excelling nearly all others in this respect. One of the great favorites.

**Madame Abel Chatenay**—(Pernet-Ducher, 1895)—A rose of extraordinary merit. A free bloomer, with flowers of good size and substance. Color, beautiful rosy carmine, with darker shadings. Very richly colored. One of the finest varieties; should find a place in every rose garden.

**Madame Caroline Testout**—(Pernet-Ducher, 1890)—A grand rose of the LaFrance type, but with flowers larger and finer. Color, bright satiny pink; very fragrant and free in bloom. One of the handsomest roses and should be planted extensively.

**Madame Melaine Soupert**—(Pernet-Ducher, 1905)—A superb new orange-yellow everblooming rose; strong upright grower and constant and abundant bloomer; makes long pointed buds and splendid large double flowers. Color, orange and rosy yellow. Very beautiful.

**Madame Pernet Ducher**—(Pernet-Ducher, 1891)—The color is a solid, perfectly clear waxy golden-yellow, free from all apricot tints. A most valuable addition to the very limited list of really good yellow roses.

**Meteor**—(Geschwindt, 1887)—A reliable everbloomer of the deepest glowing crimson; flowers very double and petals slightly recurved; a beautiful open rose, a vigorous grower and a very fine bloomer.

**Mrs. Aaron Ward**—(Pernet-Ducher, 1907)—A most striking color, yellow, tinted salmon-rose, shading out to lemon or creamy-yellow at edge of petals. The buds are cupped and very deep, showing the glowing heart to the best advantage. One of the most beautiful roses in existence.

**Mrs. Taft**—(See Antoine Rivoire.)

**My Maryland**—(J. Cook, 1909)—Salmon-pink of a soft pleasing shade, with long stems and pointed buds, very full in bloom and exquisitely fragrant. Vigorous growing and free blooming.

**Perle von Godesburg or Yellow Kaiserin**—(Schneider, 1902)—Canary-yellow of a rich shade, passing toward white. A sport from and otherwise identical with the white.

**Red Kaiserin Augusta Victoria**—(See Lady Battersea.)

**Red La France**—(W. Paul, 1888)—Two shades darker than its parent, the Pink La France, of which it is a duplicate in size, form and habit.

**Red Maman Cochet**—(See Helen Gould.)

**Red Niphotos**—(See Lady Battersea.)

**Rhea Reid**—(Hill, 1908)—The flowers are of fine size and build, double to the center. Color, a rich shade of cerise-crimson. Very free in growth and bloom. Won first honors at Paris in competition with all the choicest new roses of Europe.

**Richmond**—(Hill, 1905)—Scarlet-crimson of a most brilliant hue; long pointed buds and beautifully striking flowers on tall, erect stems; handsome foliage; a rapid grower and a constant producer.

**Souvenir de President Carnot**—(Pernet-Ducher, 1894)—Superb in shape and exquisite in color. Long, beautifully pointed buds, developing into large, full and double flowers with thick, heavy, shell-like petals. A delicate flush-white shaded a trifle deeper at the center, very slightly suffused with fawn. Each individual flower distinctly apparent on a long, stiff stem.



Gruss an Teplitz

**Viscountess Folkstone**—(Bennett, 1886)—There is no rose of any class that beats this superb variety. The color is white suffused with fawn. Very large in size; very free bloomer. A most wonderful rose.

**White La France or Augustine Guinoisseau**—(Guinoisseau, 1889)—This magnificent rose is pure white, having just a breath of rose tint blush, decidedly clouding the depth of its broad petals; the buds and flowers are extra large and very full and finely formed.

**Yellow Kaiserin Augusta Victoria**—(See Perle von Godesburg.)

## FINEST EXTREMELY HARDY GARDEN ROSES

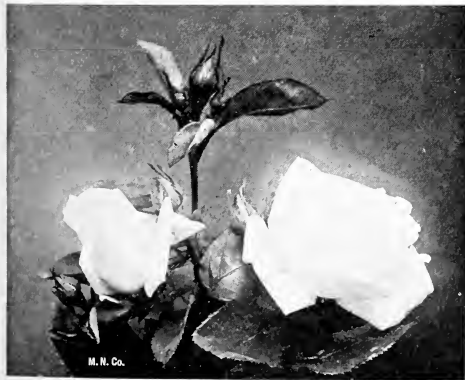
We have here arranged a list of roses of proved merit, of everblooming habit, which are entirely hardy in any locality 40c each, \$4.00 per doz. unless otherwise priced. Any three or more bushes of the same price at the dozen rate.

**American Beauty or Madame Ferdinand Jamin**—(Ledechaux, 1875)—Color rich, rose-crimson, shaded and veined in the most charming manner. Hardy, free bloomer, and very desirable.

**Amoena or Pink Cherokee**—(Hockbridge, 1909)—Color, pink; single, very large and fragrant; foliage is very beautiful, being deep, rich, lustrous green. Native of Japan and China.

**Black Prince**—(W. Paul, 1862)—Deep, dark crimson, richly shaded, vigorous, richly perfumed. An old favorite.

**Burbank**—(Burbank, 1900)—Color, cherry-rose; by many prized highly as a fine bedder, as it blooms very freely.



Frau Karl Druschki

**Captain Hayward**—(Bennett, 1893)—This is probably the grandest of all red Hybrid Perpetuals. The bloom is of the largest size. Color, deep glowing red, flushed with crimson. A free bloomer; deliciously perfumed.

**Champion of the World**—(Woodhouse, 1894)—A free-blooming rose of great merit; the flowers are large size, color a lovely clear, deep pink. Is constantly in bloom.

**Clio**—(W. Paul, 1894)—Flesh color, shaded in the center to rosy-peach. Large, fine globular form; free bloomer and distinct.

**Conrad Ferdinand Meyer**—(Dr. Mueller, 1899)—Pure, silvery-pink, surpassing all others of the Rugosa family in beauty of color and fullness of form; fragrant and hardy; will not mildew nor black spot; handsome in foliage and valuable as an ornamental shrub.

**Dinsmore or Madame Charles Wood**—(E. Verdier, 1861)—A vigorous, healthy rose of branching habit, very popular and highly recommended for garden planting. Flowers of a rich bright crimson.

**Frau Karl Druschki, White American Beauty or Snow Queen**—(P. Lambert, 1801)—This giant white rose is without a doubt the most popular variety of the day. Buds of immense size, egg shaped, with heavy waxy petals opening into a mammoth snowy white bloom of great refinement. Hardy as an oak tree. Can be planted anywhere.

**General Jacqueminot**—(Roussel, 1852)—Large velvety flowers of the most intense maroon-scarlet, each set in a cluster of rich green leaves. Blooms repeatedly through the Summer and Fall and is one of the most popular roses grown.

**Gruss an Teplitz or Virginia R. Coxe**—(Geschwindt, 1897)—Hardy in all sections; grows freely to a height of four to five feet; vivid dazzling, fiery-crimson; sweetly fragrant; produces a mass of gorgeous blooms on long stems. An old favorite.



Hugh Dickson

**Hugh Dickson**—(H. Dickson, 1904)—Brilliant crimson, shaded scarlet; very large and beautiful in form, with large, smooth petals, slightly reflexed on the edges. A vigorous grower, with handsome foliage; very fragrant.

**J. B. Clarke**—(H. Dickson, 1905)—Intense scarlet, shaded crimson-maroon, very dark and rich, and fragrant; petals large, deep and smooth; extremely high pointed center; foliage bronzy-green changing to dark green; growth strong and upright, making a large handsome bush.

**Madame Charles Wood**—(See Dinsmore.)

**Madame Ferdinand Jamin**—(See American Beauty.)

**Madame Plantier**—(Plantier, 1835)—This grand variety, when once planted, is as hardy as a hydrangea. Flowers pure white, very large and double. One of the very best white roses.

**Magna Charta**—(W. Paul, 1876)—A general favorite, prized on account of its strong, upright growing and bright, healthy foliage, as well as for its magnificent bloom. The color is a beautiful bright pink, suffused with carmine.

**Margaret Dickson**—(Alex. Dickson, 1891)—Of magnificent form; white with pale flesh center; petals very large, shell-shaped and of great substance; foliage very large, dark green.

**Marshall P. Wilder**—(Ellwanger, 1884)—Color bright cherry-carmine; fragrant, of vigorous growth, with fine foliage. One of the freest of the Hybrid Perpetuals to bloom. Undoubtedly a grand rose.

**Mrs. John Laing**—(Bennett, 1887)—A beauty in clear, bright shining pink; each bud in its long, serrated calyx with adjacent foliage, forms a dainty and lovely boutonniere; immense, full blooms on long, stiff stems.

**Paul Neyron**—(Levet, 1869)—Immense double flowers, with a shining carmine pink; very double and fine scented. The largest rose known.

**Prince Camille de Rohan**—(E. Verdier, 1861)—Universally known as "The Black Rose," owing to its very deep, velvety crimson color, passing to intense maroon, and shaded black; large handsome and fragrant blooms.

**Snow Queen**—(See Frau Karl Druschki.)

**Ulrich Brunner**—(Levet, 1881)—This is really a magnificent rose; extra large bold flowers, full and globular; petals large and of a good substance; color, rich glowing crimson, elegantly flamed with scarlet; a good grower and fine bloomer.

**Virginia R. Coxe**—(See Gruss an Teplitz.)

**White American Beauty**—(See Frau Karl Druschki.)



J. B. Clarke

## CHOICE LIST OF BABY RAMBLERS AND POLYANTHUS

A type of roses which grow only a foot or two high, bear large clusters of flowers possessing great lasting qualities, and are always in bloom. They are fine for massing in beds or for bordering large rose beds or planted singly in lawns. Perfectly hardy. 40c each, \$4.00 per doz. Any three or more bushes of the same price per dozen at dozen rate.

**Baby Rambler or Madame Norbert Levassasseur**—(Levassasseur, 1903)—The Crimson Rambler in dwarf form, with the same clear, brilliant, ruby-red color. Hardy and healthy everywhere, attaining a height of twenty inches, and blooming in profuse clusters until frost, and throughout the winter if taken indoors.

**Baby Tausendschoen or Louise Welter**—(Welter, 1909)—Small cupped blooms of veined rose with feathered edges of soft clear pink. A lovely little novelty, each bush forming a symmetrical bouquet.

**George Elger** (Turbat & Co., 1913)—A lovely little Polyantha Rose with a good admixture of Tea blood. It is free in growth and bloom. The dainty little pointed, yellow buds open into little symmetrical Roses.

**Louise Welter**—(See Baby Tausendschoen.)

**Madame Norbert Levassasseur**—(See Baby Rambler.)

**Mlle. Cecile Brunner, Mignon or Sweetheart**—(Ducher, 1880)—Salmon-pink. The clustered flowers are small, daintily formed and exquisitely colored. The little buds are especially beautiful. Blooms constantly. A truly charming rose.

**Mignon**—(See Mlle. Cecile Brunner.)

**Orleans**—(Levassasseur, 1914)—This is the showiest and prettiest of all the Baby Ramblers. When in bloom this Rose presents the appearance of a huge bouquet of deep cerise or Geranium-pink with distinct showy center of pure white; the color is irresistible. The plant is a very rapid grower and flowers outlast almost any other Rose in existence. Awarded Gold Medal.

**Perle d'Or**—(Guillot, 1883)—Although not new this little Rose is very novel and beautiful with nankeen-yellow and orange centers. It is similar to Mme. Cecile Brunner but is unsurpassed by that very popular Rose.

**Sweetheart**—(See Mlle. Cecile Brunner.)

**White Mlle. Cecile Brunner**—(1914)—Identical with the pink form of that famous rose, Mlle. Cecile Brunner. This variety is destined to become as famous as its parent. See description of Mlle. Cecile Brunner.



Prince Camille de Rohan

## MOSS ROSES

Among the hardest, vigorous growing shrubs. Should be pruned sparingly. Flowers produced on wood two years old or more, so should be pruned sparingly. Like all of our roses, the following varieties are two-year-old, field grown and well rooted. 40c each, \$4.00 per doz.

**Elizabeth Rowe**—(Rowe, 1866)—This is an old favorite with its large deep pink buds well mossed. A beauty.

**Henny Martin**—(Portner, 1863)—Large full flowers of deep red; well mossed; fragrant.

**Mousseline**—(Robert and Moreau, 1881)—Pure white flowers, buds heavily and beautifully mossed.

**Princess Adelaide**—(Laffay, 1845)—Deep bluish-pink with buds that are thoroughly mossed. An old favorite.

## CLIMBING HYBRID TEA ROSES OF RECENT INTRODUCTION

This class of climbing roses has filled the long wished for Rose of Teas and Hybrid Teas having climbing habits with the excellent qualities of the standards. 40c each, \$4.00 per dozen unless otherwise priced. Any three or more bushes of the same price per dozen at the dozen rate.

**Climbing American Beauty**—(Hoopes Bros. & Thomas, 1911)—Same color, size and fragrance as American Beauty, with the addition of the climbing habit. Good foliage and better blooming qualities. 50 cents each; \$5.00 per dozen.

**Climbing Etoile de France**—(Howard Rose Co., 1914)—This Rose is identical in every respect with Etoile de France, save that it is a rampant climber, making it one of the very best dark, velvety crimson Climbing Roses.

**Climbing Kaiserin Augusta Victoria or Mrs. Robert Peary**—(Alex. Dickson, 1897)—Ivory-white, identical with its parent Kaiserin Augusta Victoria, except in its strong climbing habit. One of the best white climbing roses.

**Climbing Madame Caroline Testout**—(Chauvry, 1901)—The grandest addition to our list of climbing roses. Covered during the season with immense globular flowers of the same beautiful shade of pink as seen in the bush sort. Without a doubt the finest pink climbing rose to date.

**Climbing Sunburst**—(Howard Rose Co., 1915)—The grandest of all Yellow Climbing Roses. A counterpart of Sunburst, except it is a vigorous climber. Although a New Rose it has become a favorite as a Climbing Hybrid Tea, as much so as the Sunburst is among yellow Hybrid Teas. \$1.50 each; \$15.00 per dozen.



Captain Hayward

**Marchal Neil**—(Pradel, 1864)—Climbs to a great height and yields beautiful golden-yellow buds and blooms in rich profusion, with a fragrance peculiar to Marchal Neil. The finest of all yellow climbers. 50 cents each; \$5.00 per dozen.

**Mrs. Robert Peary**—(See Climbing Kaiserin Augusta Victoria.)

## HARDY CLIMBING AND PILLAR ROSES

Strong, robust growers, bearing large clusters of fragrant flowers. Their rambling habit of growth make them useful for covering arbors, porches, etc. Perfectly hardy. 40c each, \$4.00 per dozen unless otherwise priced. Any three or more bushes of the same price per dozen at the dozen rate.

**Aglaia**—(See Yellow Rambler.)

**American Pillar**—(Conard, 1909)—A single flowering variety of great beauty. The flowers are of enormous size, sometimes three to four inches across, of a lovely shade of apple-blossom pink, with a clear white eye and cluster of yellow stamens. It forms a beautiful decorative subject throughout the autumn.

**Apple Blossom**—(See Empress of China.)

**Baltimore Belle**—(Feast, 1843)—This elegant climbing rose is a pale blush, variegated carmine, rose and white. It is very double and flowers in beautiful clusters, the whole plant appearing a perfect mass of bloom. It is one of the best climbing roses.

**Climbing Baby Rambler or Miss G. Messman**—(Messman, 1911)—A true ever-blooming Crimson Rambler, a climbing sport from the original Crimson Baby Rambler. The combination of color and habit make this a most desirable rose.

**Climbing Mile. Cecile Brunner**—(Californica, 1901)—In this fine rose we have the exact counterpart of Madame Cecile Brunner, except this is a rampant climber. The flowers are produced in clusters and like the bush variety, are of exquisite form and color. A gem among climbers.

**Crimson Rambler**—(Turner, 1893)—The most popular climber of today; a rapid producer of long heavy canes, reaching a height of ten to twenty feet in one season; rich clusters of bloom form a mass of vivid crimson beauty until late in the season. Perfectly hardy.

**Dorothy Perkins**—(Perkins, 1902)—Beautiful shell-pink color, which holds for a long time, fading finally to a lovely deep rose; very sweet-scented; fully equal to Crimson Rambler in foliage, hardiness, habit of growth and blooming qualities.

**Empress of China or Apple Blossom**—(Jackson, 1896)—A very beautiful climber. It commences to bloom the last of May, and if properly cared for, will bloom until late in the Fall. Flowers are beautiful red, but soon turn to lovely pink. Perfectly hardy.

**Euphrosyne**—(See Pink Rambler.)

**Excelsa**—(See Red Dorothy Perkins.)

**Flower of Fairfield**—(Loudorf, 1908)—A counterpart of Crimson Rambler in every respect, except it shows ever-blooming tendencies, many new growths being terminated

with a cluster of flowers. It is frequently called the Everblooming Crimson Rambler.

**Greville**—(See Seven Sisters.)

**Hiawatha**—(Walsh, 1904)—Glowing ruby-crimson, with a clear white eye; single flowers in clusters; light glossy green foliage; excellent for climbing, trailing or forcing.

**Miss G. Messman**—(See Climbing Baby Rambler.)

**Philadelphia Rambler**—(Conard, 1902)—Deep, rich crimson, brighter and more intense than the Crimson Rambler, with larger, fuller and more lasting flowers in panicles; extremely vigorous and productive; one of the hardest and free from mildew.

**Pink Rambler or Euphrosyne**—(Schmidt, 1895)—A vigorous climber, producing large trusses of delightfully fragrant flowers of deep pink.

**Prairie Queen**—(Feast, 1843)—Flowers are very large and of a peculiar, globular form. A bright rosy red, changing to lighter as the flower opens. Of very strong rapid growth.

**Red Dorothy Perkins**—(Walsh, 1909)—Intense crimson-scarlet; double flowers in brilliant clusters set in glossy, shining foliage which never mildews nor spots. Extremely vigorous and the handsomest of all red roses.

**Seven Sisters or Greville**—(America, 1900)—Flowers in large clusters of seven or more, varying from rosy-red to blush-white, several shades being frequently found in the same cluster. An old favorite.

**Showers of Gold**—(Paul, 1910)—Deep, golden-yellow and orange flowers borne in splendid trusses forming a mass of bloom. Extremely long laterals and densely clad with a beautiful foliage, the leaves on upper side a vivid, glossy green, the under side and stems a reddish-brown.

**Tausendschoen or Thousand Beauties**—(Schwartz, 1906)—Varying shades from a delicately flushed white to a deep pink or rosy-carmine, in bright clusters of blossoms almost covering the handsome green foliage. A vigorous, hardy climber with few thorns; of German origin.

**Thalia**—(See White Rambler.)

**White Rambler**—(Lambert, 1896)—In habit of growth, foliage, manner of blooming and shape of flowers, this is identical with Crimson Rambler, differing only in color, which is pure, clear white.

**Yellow Rambler or Aglaia**—(Schmidt, 1895)—Rapid grower; color a clear, decided yellow, changing to a beautiful cream. Blooms in clusters same as Crimson Rambler. Very hardy.

ALPHABETICAL LIST OF ROSES

On this page we give an alphabetical list of Roses we have to offer, together with the prices of the same and the pages in our catalog on which they will be found described. Remember that these are two-year field-grown Roses, with strong heavy branches and ample roots. They must not be confounded with the so-called two-year-old pot grown roses as sold by Eastern florists. Special Prices: Any three or more bushes of the same price per dozen at the dozen rate.

Variety	Page	Each	Dozen	Variety	Page	Each	Dozen
Admiral Ward.....	29	\$1.00	\$10.00	Mabel Drew.....	30	\$ .75	\$ 7.50
Aglaia.....	35	.40	4.00	Mad. Abel Chateau.....	32	.40	4.00
American Beauty.....	33	.40	4.00	Mad. Caroline Testout.....	32	.40	4.00
American Pillar.....	35	.40	4.00	Mad. Charles Wood.....	34	.40	4.00
Amoena.....	33	.40	4.00	Mad. Derepas-Matrat.....	31	.40	4.00
Antoine Rivoire.....	32	.40	4.00	Mad. Edward Herriott.....	29	.75	7.50
Apple Blossom.....	35	.40	4.00	Mad. Ferdinand Jamin.....	34	.40	4.00
Arthur R. Goodwin.....	32	.40	4.00	Mad. Jules Bouche.....	31	.50	5.00
Augustine Guinoisseau.....	32	.40	4.00	Mad. Melanie Soupert.....	32	.40	4.00
Augustus Hartmann.....	29	1.50	15.00	Mad. Norbert Levavasseur.....	34	.40	4.00
Autumn Tints.....	29	1.50	15.00	Mad. Pernet-Ducher.....	32	.40	4.00
Baby Rambler.....	34	.40	4.00	Mad. Plantier.....	34	.40	4.00
Baby Tausendschoen.....	34	.40	4.00	Magna Charta.....	34	.40	4.00
Baldwin.....	32	.40	4.00	Maiden's Blush.....	31	.40	4.00
Baltimore Belle.....	35	.40	4.00	Maman Cochet.....	31	.40	4.00
Betty.....	32	.40	4.00	Margaret Dickson.....	34	.40	4.00
Black Prince.....	33	.40	4.00	Marie Van Houtte.....	31	.40	4.00
British Queen.....	30	.50	5.00	Marechal Neil.....	35	.50	5.00
Burbank.....	33	.40	4.00	Marshall P. Wilder.....	34	.40	4.00
Captain Hayward.....	33	.40	4.00	Melody.....	31	.50	5.00
Champion of the World.....	33	.40	4.00	Meteor.....	33	.40	5.00
Chateau des Clos Vougeat.....	30	.50	5.00	Mignon.....	34	.40	4.00
Charles Dingee.....	31	.40	4.00	Mildred Grant.....	31	.50	5.00
Chrissie MacKellar.....	32	.50	4.00	Miss G. Messman.....	35	.40	4.00
Climbing American Beauty.....	35	.50	4.00	Mlle. Cecil Brunner.....	34	.40	4.00
Climbing Baby Rambler.....	35	.40	4.00	Mrs. Aaron Ward.....	33	.40	4.00
Climbing Etoile de France.....	35	.40	4.00	Mrs. Andrew Carnegie.....	30	.75	7.50
Climbing Kaiserin A. Victoria.....	35	.40	4.00	Mrs. Arthur R. Waddell.....	31	.40	4.00
Climbing Madame Carolina Testout.....	35	.40	4.00	Mrs. Charles E. Pearson.....	31	.50	5.00
Climbing Mlle. Cecile Brunner.....	35	.40	4.00	Mrs. Charles Russell.....	30	.75	7.50
Climbing Sunburst.....	35	1.50	15.00	Mrs. Edward Alford.....	29	1.00	10.00
Clio.....	33	.40	4.00	Mrs. Frederick W. Vanderbilt.....	29	1.00	10.00
Conrad Ferdinand Meyer.....	33	.40	4.00	Mrs. Foley Hobbs.....	31	.50	5.00
Countess Clanwilliam.....	29	.75	7.50	Mrs. George Shawyer.....	31	.50	5.00
Countess of Gosford.....	32	.40	4.00	Mrs. James Lynas.....	29	1.00	10.00
Crimson Rambler.....	35	.40	4.00	Mrs. John Laing.....	34	.40	4.00
Daily Mail Rose.....	29	.75	7.50	Mrs. Robert Peary.....	35	.40	4.00
Dean Hole.....	32	.40	4.00	Mrs. Taft.....	33	.40	4.00
Dinsmore.....	33	.40	4.00	Mousseline.....	35	.40	4.00
Dorothy Page Roberts.....	30	.40	4.00	My Maryland.....	33	.40	4.00
Dorothy Perkins.....	35	.40	4.00	National Emblem.....	29	2.00	20.00
Double Pink Killarney.....	30	.40	4.00	Ophelia.....	29	.75	7.50
Double White Killarney.....	30	.40	4.00	Orleans.....	34	.40	4.00
Duchess of Albany.....	32	.40	4.00	Papa Gontier.....	31	.40	4.00
Duchess of Wellington.....	39	.50	5.00	Paul Neyron.....	34	.40	4.00
Edith Part.....	30	.50	5.00	Perle des Jardines.....	31	.40	4.00
Edward Mawley.....	30	.50	5.00	Perle d'Or.....	34	.40	4.00
Elizabeth Rowe.....	35	.40	4.00	Perle von Godesburg.....	33	.40	4.00
Empress of China.....	35	.40	4.00	Philadelphia Rambler.....	35	.40	4.00
Etoile de France.....	32	.40	4.00	Pink American Beauty.....	30	.75	7.50
Etoile de Lyon.....	31	.40	4.00	Pink Frau Karl Druschki.....	31	.50	5.00
Euphrosyne.....	35	.40	4.00	Pink Rambler.....	35	.40	4.00
Excelsa.....	35	.40	4.00	Prairie Queen.....	35	.40	4.00
Florence Forrester.....	29	.75	7.50	Prince Adelaide.....	35	.40	4.00
Flower of Fairfield.....	35	.40	4.00	Prince Camille de Rohan.....	34	.40	4.00
Francis Scott Key.....	29	.75	7.50	Rainbow.....	31	.40	4.00
Frau Karl Druschki.....	33	.40	4.00	Red Dorothy Perkins.....	35	.40	4.00
F. R. Patzer.....	32	.40	4.00	Red Kaiserin A. Victoria.....	33	.40	4.00
General Jacqueminot.....	33	.40	4.00	Red La France.....	33	.40	4.00
General McArthur.....	32	.40	4.00	Red Maman Cochet.....	33	.40	4.00
George Ahrends.....	30	.50	5.00	Red Niphetos.....	33	.40	4.00
George Dickson.....	30	1.00	10.00	Rhea Reid.....	33	.40	4.00
George Elger.....	34	.40	4.00	Richmond.....	33	.40	4.00
Gorgeous.....	29	2.00	20.00	Safrano.....	31	.40	4.00
Greville.....	35	.40	4.00	Seven Sisters.....	35	.40	4.00
Gruss an Teplitz.....	33	.40	4.00	Shower of Gold.....	35	.40	4.00
Harry Kirk.....	30	.50	5.00	Souv. du Pierre Notting.....	31	.40	4.00
Heinrich Munch.....	30	.75	7.50	Souv. de Pres. Carnot.....	33	.40	4.00
Helen Gould.....	32	.40	4.00	Snow Queen.....	34	.40	4.00
Henry Martin.....	35	.40	4.00	Sunburst.....	31	.50	5.00
Herzogin Marie Antoinette.....	30	.50	5.00	Sunset.....	31	.40	4.00
Hiawatha.....	35	.40	4.00	Sweetheart.....	34	.40	4.00
Hoosier Beauty.....	29	.75	7.50	Tausendschoen.....	35	.40	4.00
Hugh Dickson.....	34	.40	4.00	Thalia.....	35	.40	4.00
H. V. Machin.....	30	.75	7.50	The Bride.....	32	.40	4.00
Irish Fireflame.....	31	.50	5.00	The Queen.....	32	.40	4.00
J. B. Clarke.....	34	.40	4.00	Ulrich Brunner.....	34	.40	4.00
Jeanette Heller.....	31	.40	4.00	Virginia R. Coxé.....	34	.40	4.00
Johnkeer J. L. Mock.....	32	.40	4.00	Viscountess Folkstone.....	33	.40	4.00
Kaiserin A. Victoria.....	32	.40	4.00	White American Beauty.....	34	.40	4.00
Lady Alice Stanley.....	31	.50	5.00	White La France.....	33	.40	4.00
Lady Ashtown.....	31	.50	5.00	White Maman Cochet.....	32	.40	4.00
Lady Greenall.....	29	1.00	10.00	White Mlle. C. Brunner.....	34	.40	4.00
Lady Battersea.....	32	.40	4.00	White Rambler.....	35	.40	4.00
Lady Hillingdon.....	31	.50	5.00	White Shawyer.....	30	.50	5.00
Lady Mary Ward.....	30	1.00	10.00	Willowmere.....	29	.75	7.50
La France.....	32	.40	4.00	Wm. R. Smith.....	32	.40	4.00
Lillian Moore.....	29	2.00	20.00	Yellow Frau Karl Druschki.....	29	2.00	20.00
Los Angeles.....	29	2.00	20.00	Yellow K. A. Victoria.....	33	.40	4.00
Louise Weiter.....	34	.40	4.00	Yellow Maman Cochet.....	32	.40	4.00
Ludwig Moeller.....	29	2.00	20.00	Yellow Rambler.....	35	.40	4.00





A Block of "Festiva Maxima" Milton Nursery Grounds

## Peonies

The wonderful improvement made during recent years in these old fashioned hardy plants has brought them into renewed popularity. The gorgeous flowers which rival the finest roses in size, form and color are produced in great abundance. After once being planted they require little care and attention, thrive anywhere and are absolutely hardy even in the coldest climates; each year after planting they grow into greater value, producing more and more flowers. They are not troubled with insect pests. Try some of our peonies and see what grand flowers they are.

**Time to Plant**—The best time to plant the roots is in the **Fall** when the plants have matured and are dormant. If planted in the fall and given proper care, they will bloom the first year planted.

**Size of Roots**—The roots we offer are divisions having from three to five eyes. Those desiring heavier roots, please write for special prices.

**Albatre**—(Crousse, 1885)—Very large, very double, rose type. Ivory white, central petals margined with carmine. Fragrant. Strong, vigorous tall grower, very free bloomer. Mid-season. One of the grandest white peonies. \$1.00.

**Albert Crousse**—(Crousse, 1893)—Very large, bomb type, bloom flat, compact. Color rose white, center flecked, slightly crimson. Fragrance pleasant. Strong grower, late, free bloomer. Extra. \$1.25.

**Asa Gray**—(Crousse, 1886)—Large, pale lilac bloom, sprinkled with lilac dots. Free bloomer. Fragrant. Very distinct and beautiful. 75c each, \$7.50 per doz.

**Boule de Neige**—(Colot, 1862)—Very large, medium globular, compact, semi-rose type. Milk-white, guards and center prominently flecked crimson. Tall, erect, free bloomer. For cut bloom extra good. A choice early midseason variety. 40c each, \$4.00 per doz.

**Charlemagne**—(Crousse, 1880)—Very compact, large, globular, lilac white, rose type with a slight blush center. Odor pleasant. Late, free bloomer, good variety. 40c each, \$4.00 per doz.

**Clare Dubois**—(Crousse, 1886)—Very large, globular, rose type. Uniform color, delicate satiny pink, tipped silvery white. Erect, tall, strong grower. Late. One of the finest pink peonies we have. \$1.00.

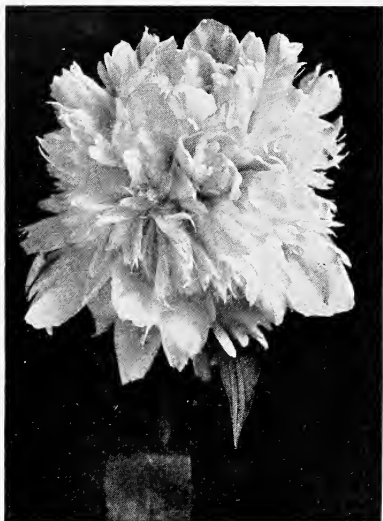
**Couronne d'Or**—(Calot, 1873)—Large, flat, semi-rose type. Pure white, with a ring of yellow stamens around a tuft of center petals, tipped carmine. Solidly and perfectly built from edge to center. Fragrant. A good grower and reliable late bloomer. Keeps well when cut for bloom. One of the very choicest and best peonies in cultivation. 75c each, \$7.50 per doz.

**Dorchester**—(Richardson, 1870)—Large, compact, rose type. Hydrangea pink. Odor pleasant. Medium dwarf. Upright, free bloomer. Late. Extra good. 50c each, \$5.00 per doz.

**Duke of Wellington**—(Calot, 1859)—Very large, well formed, sulphur-white bloom. Habit ideal. Stems very firm and long. A strong grower and free bloomer. Very fragrant. Good late cut bloom. A very beautiful variety. 40c each, \$4.00 per doz.

**Duchess De Nemours**—(Calot, 1856)—Very fine cup shaped bloom; guard petals pure white, sulphur-white center with greenish reflex. Very fine bud; fragrant. Good grower and free bloomer. An early white peony of great beauty. 40c each, \$4.00 per doz.

**Duchess d'Orleans**—(Guerin, 1846)—Very pretty, deep pink, with violaceous tints on center petals interspersed with salmon. Fragrant. A good, midseason, cut flower variety. 40c each, \$4.00 per doz.



Boule de Neige

- Edulis Superba**—(Lemoine, 1824)—Large, loose, flat crown type. A most beautiful bright clear mauve-pink with silvery reflex. Very fragrant. One of the very best commercial pinks for Decoration Day. 40c each, \$4.00 per doz.
- Eugene Verdier**—(Calot, 1864)—Very large, compact, typical rose bloom. Color, hydrangea pink with outer guard petals lilac-white. Odor pleasant. Extra strong, vigorous growing plant, rather dwarf habit, extra strong stems, free bloomer. Good cut flower peony. One of the best late varieties of perfect habit. Extra. \$1.50 each.
- Felix Crousse**—(Crousse, 1881)—Large, globular, typical bomb type. Brilliant red. Fragrant. Strong, vigorous grower, medium late. Good cut flower variety. Both color and size are startling. We place Felix Crousse in the front rank of all the red peonies. 75c each, \$7.50 per doz.
- Floral Treasure**—(Rosenfield, 1900) (*Syn. Delicatissima*)—Rose type; early midseason. Very large, full flowers of clear even pink, shading lighter at the center; very delicate color. Long stems uphold the big handsome blooms. Almost seven inches across; a most unique and charming variety. Fine for cut flowers. "A splendid hemisphere of fragrant loveliness." 40c each, \$4.00 per doz.
- Festiva Maxima**—(Mieliez, 1851)—Enormous, globular, rose type bloom; often 7 to 9 inches in diameter, on strong, extra long stems. Pure white, center prominently flecked bright crimson. Free early bloomer and very fragrant. The most popular white variety for cut flowers. 50c each, \$5.00 per doz.
- General Bertrand**—(Guerin, 1845)—Large, compact, globular, typical bomb. Uniform solferino-red, center slightly tipped silver. Tall, strong, upright grower. Very fragrant, early, handsome variety of bright color. 40c each, \$4.00 per doz.
- General Dodds**—(Crousse, 1893)—Very large, globular, compact, semi-rose type. Uniform dark tyrian rose, guards splashed green, a few white petals in center. Tall, strong grower, free bloomer. Late. Extra. \$1.00 each, \$10.00 per doz.
- Golden Harvest**—(Rosenfield, 1900)—Large size, loose, bomb or informal rose type. Guards pale lilac-rose, center creamy white, developing many wide petals of a peach-blossom pink. Odor pleasant. Dwarf habit, very free bloomer. Midseason. A most beautiful variety. 50c each, \$5.00 per doz.
- L'Eclatante**—(Calot, 1860)—Bomb type, midseason. Flowers very double and full; colors, deep brilliant, velvety-crimson. Extra good cut flower variety. 50c each, \$5.00 per doz.
- Livingstone**—(Crousse, 1879)—Rose type; late. Very full imbricated bloom; both buds and flowers are large and beautiful. Color pale lilac-rose with sheen of silver; very free sure bloomer in clusters; upright, erect grower; fine cut flower variety. One of the prize winners. 75c each, \$7.50 per doz.
- L'Indispensable**—A variety of unknown French origin. Very large full bloom of a delicate shell-pink. Tall, strong grower; midseason. A fine sort. 50c each, \$5.00 per doz.
- Lottie Collins**—(Kelway)—Medium size, semi-rose type bloom. Dark crimson, black reflex. Strong grower, rather short stem. Medium bloomer. Late. Good variety. 50c each, \$5.00 per doz.
- Madame Calot**—(Mieliez, 1856)—Large, pale hydrangea pink; rose type, center shaded slightly darker with a sulphur tint in collar. Very fragrant. Medium tall, strong grower, free, sure bloomer. One of the desirable peonies. Early. 50c each, \$5.00 per doz.
- Madame de Verneville**—(Crousse, 1885)—Large, very full, bomb type. Broad, guard petals pure white; center delicate rosy white tinted sulphur, fading to pure white, with carmine tipped central petals. Fragrant. Extra free bloomer. A very early white variety of great beauty. 50c each, \$5.00 per doz.



Duchess D'Orleans



L'Esperence.

**Mademoiselle Leonie Calot**—(Calot, 1861)—Very full, rose type bloom, perfect in form. Color a delicate rose-white with soft lilac-pink center, tinted with salmon. A tall grower, and blooms so freely that its delicate colored blossoms hide the plant. Medium to late. A charming variety. 75c each.

**Marie Lemoine**—(Calot, 1869)—Massive, very compact, rose type blooms with a rather flat center; white with cream white center with an occasional carmine line on central petals. Fragrant; of strong vigorous growth, medium height, with extra good stem; blooms freely and very late. A good landscape variety, good cut flower and grand in every way. Always admired. As indispensable as *Festiva Maxima*. 75c each, \$7.50 per doz.

**Marie Stuart**—(Calot, 1856)—Crown type; midseason. Flesh-pink fading to white at base of petals. Tall grower, free bloomer, with a pleasing fragrance. Extra fine. 75c each.

**Monsieur Jules Elie**—(Crousse, 1888)—Bomb type, early midseason. Immense, globular, very full flowers. Color an ideal glossy lilac-pink, shading to deeper rose at the base, the entire bloom overlaid with a sheen of silver that fairly shimmers in the sunlight. Very fragrant. A good keeper, thus a good cut flower. An unapproachable variety from any standpoint. \$1.00 each.

**Queen Victoria**—(Whiteley)—Bomb type; early midseason. The very best every-day white. For cut flowers a good keeper; a very

free bloomer. Flowers of good substance and color, guard petals white with faint blush, with creamy center. Fragrant. An old standby. 40c each, \$4.00 per doz.

**Rubra Triumphans**—(Delache, 1854)—Type of bloom semi-double, globular, loose. Color dark, satiny crimson. The foliage is also very dark, with reddish stalks, presenting, especially in the early season, a pleasing contrast when planted with a light green foliage sort like *Marie Lemoine*. Early midseason. Fragrant. 40c each, \$4.00 per doz.

**Thryne**—Light pink, center sulphur, changing to nearly white; strong grower and free bloomer. Midseason. Fragrant. 40c each, \$4.00 per doz.

**Umbellata Rosea**—(Unknown: reintroduced by Dessert)—Large and fine flowers of elegant and variable form, guard petals delicate silvery violet rose, those of center intermingled with narrow petals amber white tinged salmon. One of the earliest Chinese peonies to bloom. Charming variety and very beautiful coloring. Fragrant. 75c each.

#### EARLY MAY FLOWERING PEONIES

These varieties bloom from two to three weeks earlier than the *Chinensis* section. Always in bloom during the month of May. The peonies of our mothers' gardens.

**Officinalis Rosea Pallida Plena**—(*Syn. Mutabilis*)—Pretty bud; large, full bloom; glossy, soft pink, shaded chamois, changing to pure white. 40c each, \$4.00 per doz.

**Officinalis Rosea Plena**—Full double bloom, soft rose. Some claim this to have the prettiest pink shade of all the peonies. 40c each, \$4.00 per doz.

**Officinalis Rubra Plena**—Large globular bloom; brilliant crimson. This is the early-flowering red peony so common to the old-time gardens, much used on Memorial Day, when the Chinese peonies bloom too late. 40c each, \$4.00 per doz.

One each of these 3 grand early peonies for \$1.00.

**Tenuifolia Flore Plena**—(The Fern-leaf Peony)—Dazzling crimson-red with very double flowers. Has finely cut foliage like a Fern. No other peony like it in this respect. Very desirable. 50c each, \$5.00 per doz.

#### BARGAIN COLLECTION OF MERIT

This collection embraces peonies of merit that bloom early to late, in assorted colors.

Dorchester.....	\$0.50
Duchess de Orleans.....	.40
Edulis Superba.....	.40
Officinalis Rubra.....	.40
Queen Victoria.....	.40
Rubra Triumphans.....	.40

\$2.50

This collection of six choice varieties for only \$2.00.

# Hardy Perennials

Under this head is included those hardy plants, the foliage of which dies to the ground each winter. Every spring a new and stronger growth may be expected. These plants are adapted to most soils, responding readily to thorough cultivation and occasional enrichings. The old tops should be cut down after the foliage has matured. We offer a few of the more common and hardy kinds.

<b>Bleeding Heart</b> ( <i>Dicentra</i> ).....	\$0.30 ea	\$3.00 doz
<b>Daisy Alaska</b> .....	.25 "	2.50 "
<b>Golden Glow</b> .....	.25 "	2.50 "
<b>Hollyhocks</b> , new double four colors.....	.25 "	2.50 "

**Iris**—The Irises are very popular and easily grown, ranging through yellow, blue, purple, white and mahogany colors. A dry sunny location with a moderately rich soil suits them best. Perfectly hardy.

**Iris Germanica** — (German Iris)—There is nothing prettier than this German Iris, blooming in the late Spring and early Summer months. The large plants we send our customers will bloom the first season planted. Price 25c each. Set of five choice varieties for \$1.00.

**Florentine**, creamy white, faintly flushed lavender.

**Honorabilis**, golden-yellow, falls mahogany brown.

**Madam Chereau**, white, with border of clear blue.

**Purple Prince**, violet blue, falls dark purple.

**Pallida Dalmatica**, delicate lavender, falls deep lavender.

**Larkspur** — (*Delphinium*) — Hardy. Three shades of blue. 30c each, \$3.00 per doz.



Hardy Phlox



Hollyhocks

**Phlox**—(Hardy Perennial Phlox)—This is one of the most easily grown, hardy perennials. Their noble flowers are most beautiful during the Summer and Autumn months.

Standard list of hardy Phlox, strong plants.

Set of six for \$1.00. 20c each.

**Beauty**, delicate silver pink.

**Gen. Von Heutsze**, salmon pink, red eye.

**Independence**, pure white; good.

**Niobe**, a rich velvety purple.

**Pantheon**, bright pink, with faint halo.

**R. P. Struthers**, cherry red, deep red eye.

**Best Hardy Phlox**—This list is made up of newer varieties and some that are very rare. Extra strong plants that will bloom the first season.

Set of ten for \$2.00. 25c each.

**Baron von Dedem**, brilliant, scarlet red.

**Bridesmaid**, white, with crimson center.

**Elizabeth Campbell**, light salmon, with dark center.

**Embrazement**, brilliant orange.

**Henry Murger**, white, deep rose center

**Mme. Bezanson**, best crimson.

**Obergartner Wittig**, bright magenta, carmine eye.

**Rhynstrom**, pink, like Paul Neyron rose.

**Sir Ed. Landseer**, crimson scarlet, with red center.

**Widar**, light reddish [violet, white center.

# Index

Althea	22	Kolreuteria	19
Almonds	14	Laburnum	19
American Ivy	26	Larkspur	40
Ampelopsis	26	Lilacs	23
Apples	6-8	Linden	20
Apricots	13	Locust, Black	18
Arborvitae	25	Loganberry	16
Asparagus	17	Mahonia	23
Azalea Mollis	22	Maiden Hair	20
Basswood	20	Maple, Ashleaved	20
Barberry-Berberry	27	Maple, Norway	20
Bechtel's Fl. Crab	19	Maple, Soft	20
Berries	15	Maple, Sycamore	20
Birch, European White	18	Maple, Schwedler	20
Birch, Purple	21	Maple, Silver Var. Leaf	20
Birch, Weeping	21	Mountain Ash	20
Bleeding Heart	40	Mock Orange	24
Black Locust	18	Moss Roses	35
Blackberries	15	Mulberries	14
Box Elder	19	Nectarine	13
Boston Ivy	26	Nut Trees	14
Butternut	14	Oregon Grape	23
Carolina Poplar	18	Peaches	12-13
Catalpa	19	Pecan	14
Calycanthus	22	Pears	9
Cherries	10	Peonies	37-39
Chestnuts	14	Perennials	40
Climbing Roses	34-36	Philadelphus	24
Clematis	26	Phlox	40
Corchorus	23	Phenomenal Berry	16
Cork Elm	19	Pieplant	17
Crabs	8	Plums	11
Crab Flowering	19	Plum, Flowering	24
Currant, Flowering	22	Plane Tree	21
Currants	17	Poplar, Carolina	18
Cypress	25	Polyantha Roses	34
Daisy, Alaska	40	Prunes	11
Dewberries	16	Prunus Pissardi	24
Deutzias	22	Privet	27
Elm, American	19	Quince	13
Elm, English	19	Quince, Japan Flowering	24
Elm, Cork	19	Raspberry	16
Elm, Camperdown	19-21	Red Cedar	25
Elder Box	19	Rhubarb	17
Elder	22	Rhododendron	25
Evergreens	25	Rose of Sharon	22
Filberts	14	Roses, See Page	28-36
Flowering Crab	19	Smoke Tree	23
Flowering Thorn	19	Snowball	24
Forsythia	23	Spruce Norway	25
Fringe, Purple	23	Spruce, Koster's Blue	25
Ginkgo	20	Spireas	24
Golden Chain	19	Strawberries	17
Golden Glow	40	Sumac	24
Gooseberries	16	Sycamore, American	21
Grapes	15	Sycamore, European	21
Hedges	27	Tamarisk	25
High Bush Cranberry	25	Thorn, Flowering	19
Horseradish	17	Trumpet Flower	26
Honeysuckles	23-26	Tulip Tree	21
Hollyhocks	40	Varnish Tree	19
Horsechestnut	19	Variegated Leaf Maple	20
Hydrangea, P G	23	Virginia Creeper	26
Hydrangea, Arborescens	23	Walnut, Black	14
Hybrid Tea Roses	32	Walnut, English	14
Iris	40	Weeping Trees	21
Ivy, American	26	Weigela	25
Ivy, Japan	26	Wistaria	26
Juniper, Irish	25	Willow Weeping	21
Kerria (Corchorus)	23	Yucca Filamentosa	25

FOUNDED 1878



**ROSES**  
SHRUBS  
PLANTS  
AND  
VINES

MILTON NURSERY CO.  
A. MILLER & SONS  
INCORPORATORS  
MILTON, OREGON