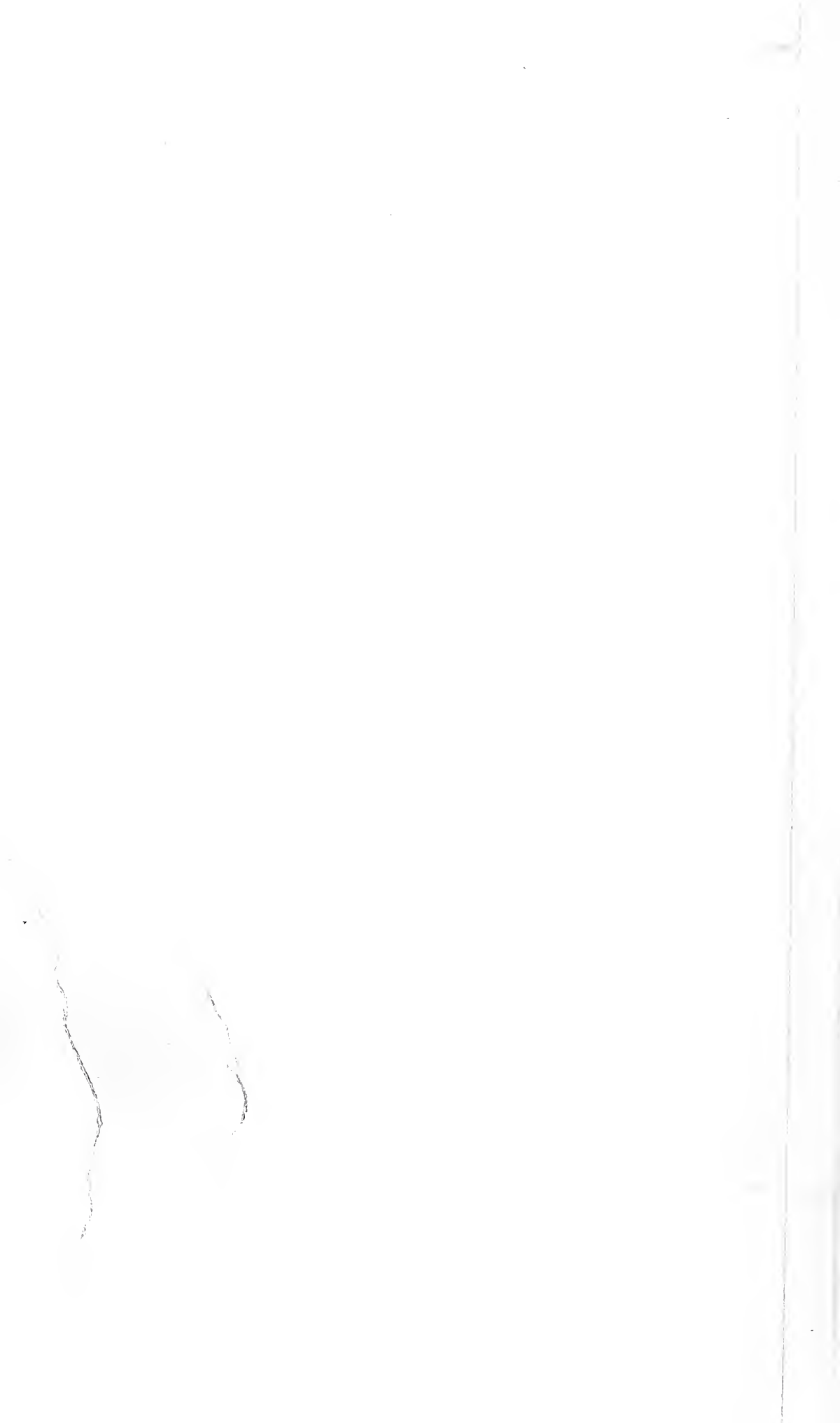


Historic, Archive Document

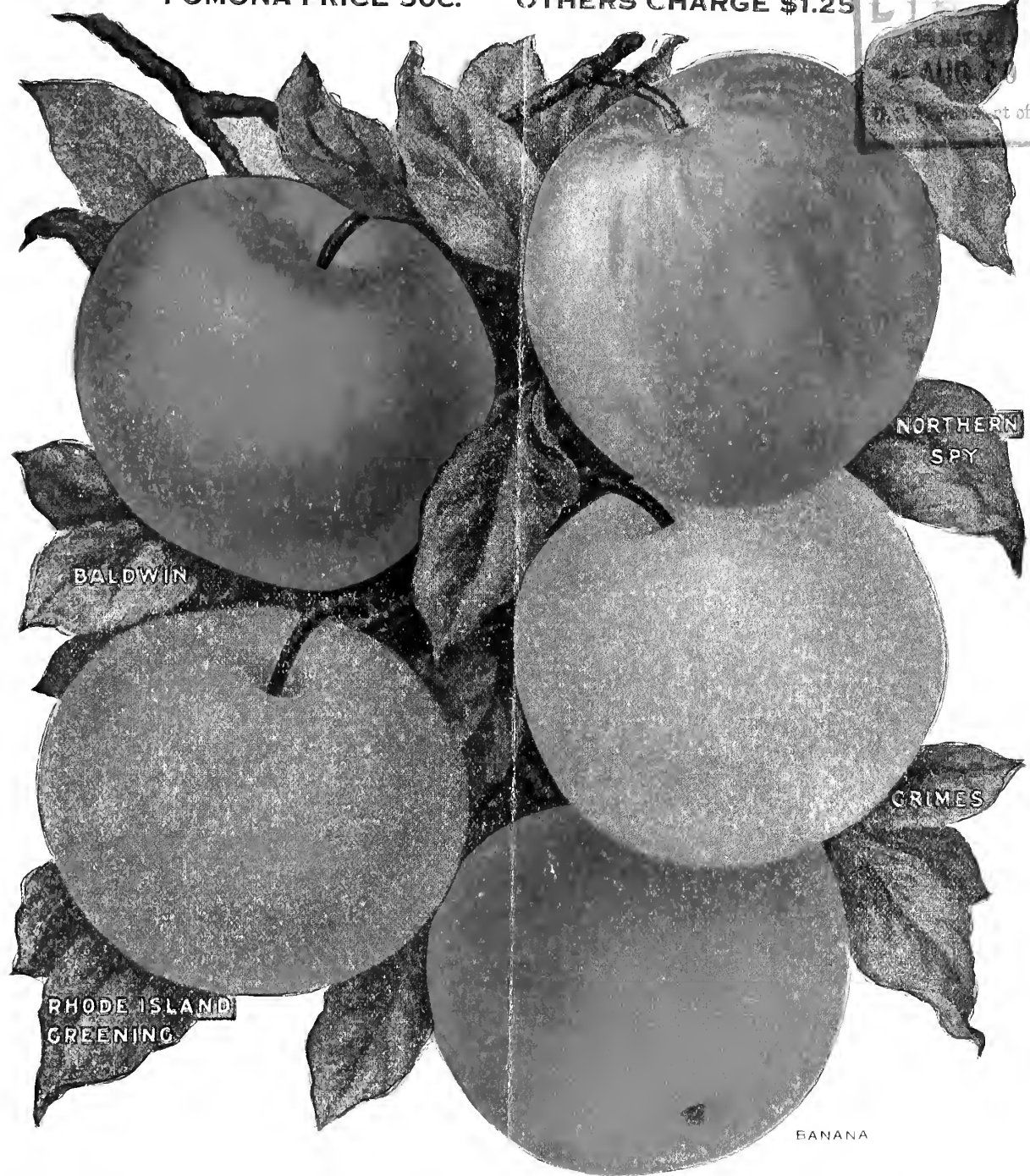
Do not assume content reflects current scientific knowledge, policies, or practices.



APPLE COLLECTION NO. 14

POMONA PRICE 50C. OTHERS CHARGE \$1.25

LIBRARY
APR 19 1920
Department of Agriculture



BALDWIN

NORTHERN
SPY

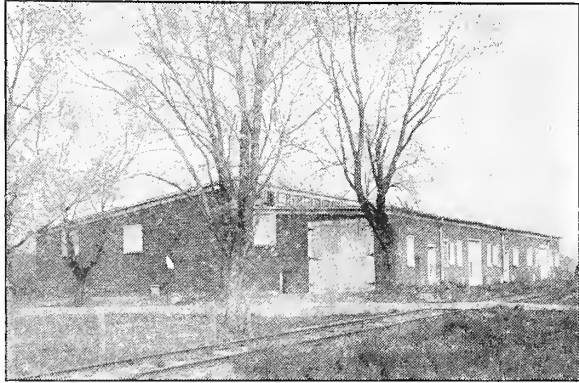
GRIMES

RHODE ISLAND
GREENING

BANANA

POMONA APPLE TREE COLLECTION NO. 14

One tree each of the five varieties illustrated Baldwin, Northern Spy, Grimes Golden, R. I. Greening and Banana
POMONA PRICE for 5 2 Yr. Trees 3 to 4 Feet High 50 Cents. OTHERS CHARGE \$1.25



Frost Proof Packing House of Pomona Nurseries

Best Size Trees to Plant

Genuineness of Variety First Importance

Of first importance is to secure the variety you need, **true to name**. Upon this depends the future of your orchard and not on the size of the trees planted.

It is a mistaken idea that a smaller size tree is a stunted tree. There are hundreds of causes which may effect the size of a fruit tree in the nursery row. The fact of the matter is this size of a tree from a well cultivated block, carefully grown, healthy, clean, free from disease, and carefully handled is of equal value as the larger tree grown in the same block and will come into bearing equally as early.

The most important point in the value of a tree is genuineness. It must be **true to name** or its actual value is lost; free from insect pests, and when bought from the nursery direct, you run no risks with trees sold by **Pomona Nurseries** as they are guaranteed to prove in every way as represented above.

Our Guarantee as to Size and Quality of our Stock

Every order is accepted by us with the understanding that if the stock we send you is not found satisfactory in every respect and of a larger size and of a better quality than represented in this catalog, we will refund your money, providing you notify us five days after receipt of order. You can readily see that we could not afford to make this guarantee unless we were sure of pleasing you. We however, do not agree to replace free, stock that fails to grow.

Our References

Our satisfied patrons are our best advertisement; read what they have to say. You can also learn of our responsibility through any commercial agency, bank or banker.

Cash with Order

You will readily see that it is impossible for us to open hundreds of small accounts every spring, with the attendant labor and expense of bookkeeping; that we ask for **cash with order** is no reflection whatever on the credit of our customers but a necessity to the success of a mail order business, and at the low price we are selling it is impossible for us to accept of any **order amounting to less than \$1.00**.

Easy Way to Pay

And have your varieties reserved now. If your order amounts to **\$5.00** or more

Our C. O. D. Plan

Makes it easy for you to do this.

25% Cash with Order

The balance you pay when stock reaches your express or freight agent.

We Make No Reductions

from the prices quoted in this catalog. We conduct business on the very lowest margin of profit that is possible at all times and sell our goods lower than so-called reduction prices, throughout the season. When you buy from **Pomona Nurseries** you get the lowest prices at all times.

How Best to Remit

Remit by Bank Draft, Express Money Order, Post Office Money Order or Registered Letter. We will ship trees and plants C. O. D., providing 25% of the total of your order is sent in cash. If the order goes by express you pay the balance to your express agent upon arrival. If the order goes by freight you pay the balance at your bank, where you will also find freight bill and order on your freight agent to deliver shipment to you.

Free Boxing and Packing

We box and pack all shipments without charge. All orders are put up in boxes or bales, lined with heavy paper to guard against stock drying out; the trees and plants are packed in moist excelsior and and straw.

Others Charge 20 Cents
OUR PRICE 10 Cents

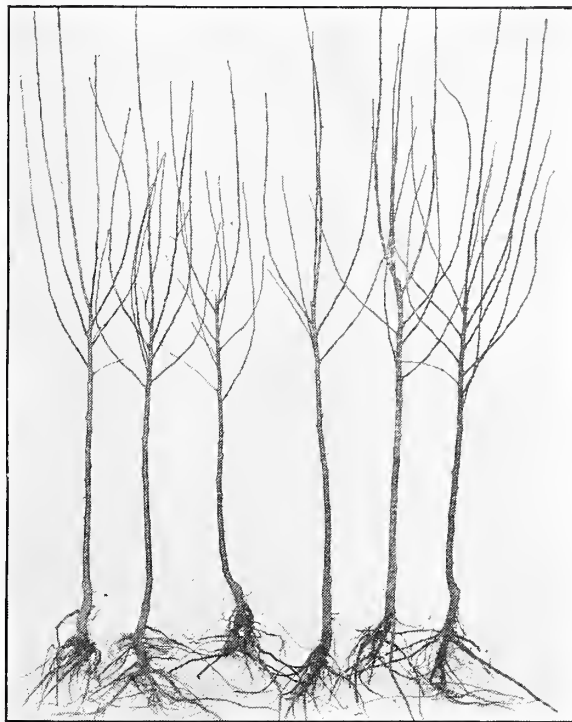
Greetings to our Friends and Patrons

We are pleased to take this opportunity to extend to you our earnest appreciation of your good will, support and patronage.

It has been and always will be the ideal and foundation principle of the Pomona Nurseries to supply you trees and plants of known high quality at ten cents each, and to give in every way the best service of which we are capable.

Distances Between Trees and Plants When Planting

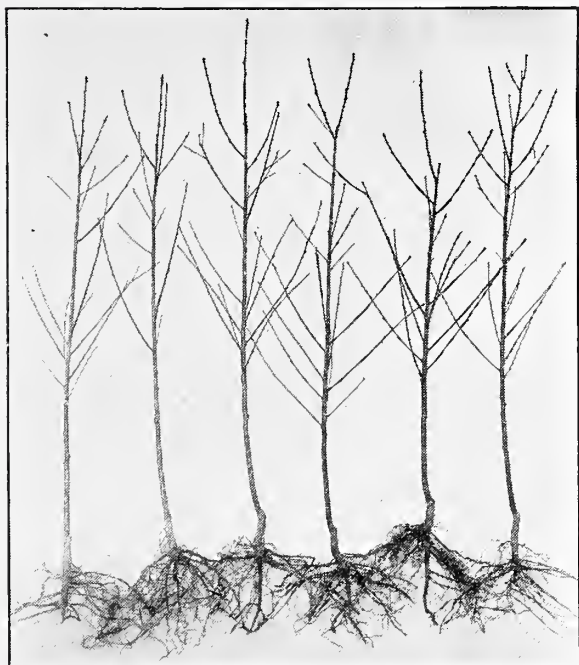
Standard apple trees, 30 to 40 feet apart each way. Pear and cherry trees, 20 feet apart each way. Cherries will do well planted 18 feet apart each way. Plums, peaches and apricots, 16 feet apart each way. Quinces 10 to 12 feet apart each way. Currants, gooseberries, raspberries 3 to 4 feet apart; blackberries, 6 to 8 feet apart; grapes, 8 to 10 feet apart.



**Pomona First Class 2 Year Apple Trees,
Guaranteed true to name, 3 to 4 Feet High**

Place Your Order Early

All orders should be sent in as early as possible to insure prompt attention. As far as possible it is our rule to fill all orders according to the rotation in which they are received. All trees and plants are packed in the best manner for shipment to all distant points, and delivered on board cars here at the prices named in this catalogue. We ask our patrons to notify us immediately after receipt of order if any errors have occurred in the filling of their orders, so that we may adjust such complaints. We desire to conduct our business in all respects satisfactorily to those who favor us with their confidence. All orders should be written out on the order-sheet herewith; this will save us much trouble and prevent mistakes.



Pomona Peach Trees 3 to 4 feet high, well rooted and branched

Certificate of Inspection of Nursery stock grown by Pomona Nurseries will be sent with every shipment.

We Gained the Confidence of our Patrons



To establish our business it was necessary to gain full confidence of the people. This could be done only by satisfying customers and supplying our best 3 to 4 ft., 2 year trees well rooted and branched, true to name **at ten cents each.**

Moosup, Conn., May, 1,
Pomona Nurseries, Dansville, N. Y.—

I received the nursery stock yesterday and they were well packed and are the finest **two year trees** that ever came to this town.

Very truly yours,
J. M. FANNING.

Ellicott City, Md., Apr. 6,
Pomona Nurseries, Dansville, N. Y.—

I received trees promptly and in excellent condition. I am highly pleased with same and do not see how it is possible for you to send such stock at **ten cents each.**

Respectfully yours,
E. A. PENN.

Greenwich Village, Mass., May 17,
Pomona Nurseries, Dansville, N. Y.—

The trees and shrubs received are all of A. 1 quality and much larger than some I bought last year and paid **thirty-five cents each.** I thank you for sending such fine looking trees.

Yours truly,
REV. G. A. FULLER, M. D.

Xenia, Ohio, Apr. 6, 1917
Pomona Nurseries, Dansville, N. Y.

Gentlemen: Received my trees you sent March 29th, on March 31st.; only two days on the road. I would advise anyone to have trees sent by express. They were in as good condition as if taken from nursery at home.

I was more than pleased with them and feel that I saved \$30.00 by buying the trees from you, at least that is the difference of price given me by other nurseries. These trees were inspected for me by several of our most prominent fruit growers in this section. They all say the trees are regular 50c trees.

Sincerely yours,
LOUIS CLOS.

Mt. Pleasant, Ia., May 6,
Pomona Nurseries, Dansville, N. Y.—

The trees came yesterday and were the finest lot I ever saw. I bought of ——— last year and paid **fifty cents each** for them and they are not to be compared with yours.

Yours very truly,
O. MORROW.

Atlanta, Ga., Mar. 17, 1917
Pomona Nurseries, Dansville, N. Y.—

The trees that I have purchased were a credit to any firm. Some of the flowering shrubs that my wife has bought from Pomona Nurseries are a delight to the eye and no stock, however costly, can surpass it.

Very respectfully,
M. T. SALTER, M. D.

Orange, Va., April 15th,
Pomona Nurseries, Dansville, N. Y.

Gentlemen: Trees, shrubs and grape vines received in good condition. They are absolutely the best looking I have seen for three or four times the price. It is wonderful how you can furnish such goods at this price. It will give me pleasure to recommend your trees, as I do not believe better ones could be furnished at any price.

Yours very truly,
C. W. GRIM.

Burlington, N. C., Dec. 8, 1917
Pomona Nurseries, Dansville, N. Y.

Gentlemen: Received the 300 Pear and Apple trees from you. Mighty fine trees.

Have paid 75 cts. each for not as good as your trees at only 10 cts. each.

Thank you most kindly for such fine trees.
Respectfully,
ARTHUR SIMMONS

We Do Not Sell the Stunted Little Trees Catalogued by Others. But Guarantee to Supply Healthy, Thrifty, Hardy, Well Rooted and Branched, Upland Grown Trees,—or Money Refunded.

Others Charge 20 Cents

OUR PRICE 10 CENTS



50,000 Pomona Baldwin Apple Trees 3 to 4 Feet

Pomona Special Collections of Fruit Trees

POMONA APPLE TREE COLLECTION NO. 1

10 Trees 3 to 4 ft. for 90 Cents

2 Baldwin	2 R. I. Greening
1 Am. Blush	1 Wealthy
1 Duchess	1 Northern Spy
1 Delicious	1 Red Astrachan

Pomona Price 90 Cents. Others Charge \$2.00

POMONA GARDEN COLLECTION NO. 8

10 Assorted Trees 3 to 4 ft. for 90 Cents

1 Montmorency Cherry	1 Eng. Morello
1 Yellow Egg Plum	1 Seckel Pear
1 York State Prune	1 Bartlett Pear
1 Elberta Peach	1 Carman Peach
1 Delicious Apple	1 Am. Blush

All trees 3 to 4 ft. well rooted and branched.

Pomona Price 90 Cents. Others Charge \$2.00

POMONA PLUM TREE COLLECTION NO. 3

10 Trees 3 to 4 ft. for 90 Cents

2 Reine Claude	1 Yellow Egg
1 Abundance	2 Bradshaw
2 Lombard	2 York State Prune

Pomona Price 90 Cents. Others Charge \$2.00

POMONA PEAR TREE COLLECTION NO. 11

10 Pear Trees 3 to 4 ft. for 90 Cents

2 Bartlett	2 Clapp's Favorite
2 Seckel	2 Anjou
2 Flemish Beauty	

Pomona Price 90 Cents. Others Charge \$2.00

POMONA PEACH TREE COLLECTION NO. 5

10 Trees 3 to 4 ft. for 90 Cents

2 Elberta	2 Ea. Crawford
2 Late Crawford	2 Carman
1 Champion	1 Niagara

Pomona Price 90 Cents. Others Charge \$2.00

POMONA CHERRY TREE COLLECTION NO. 4

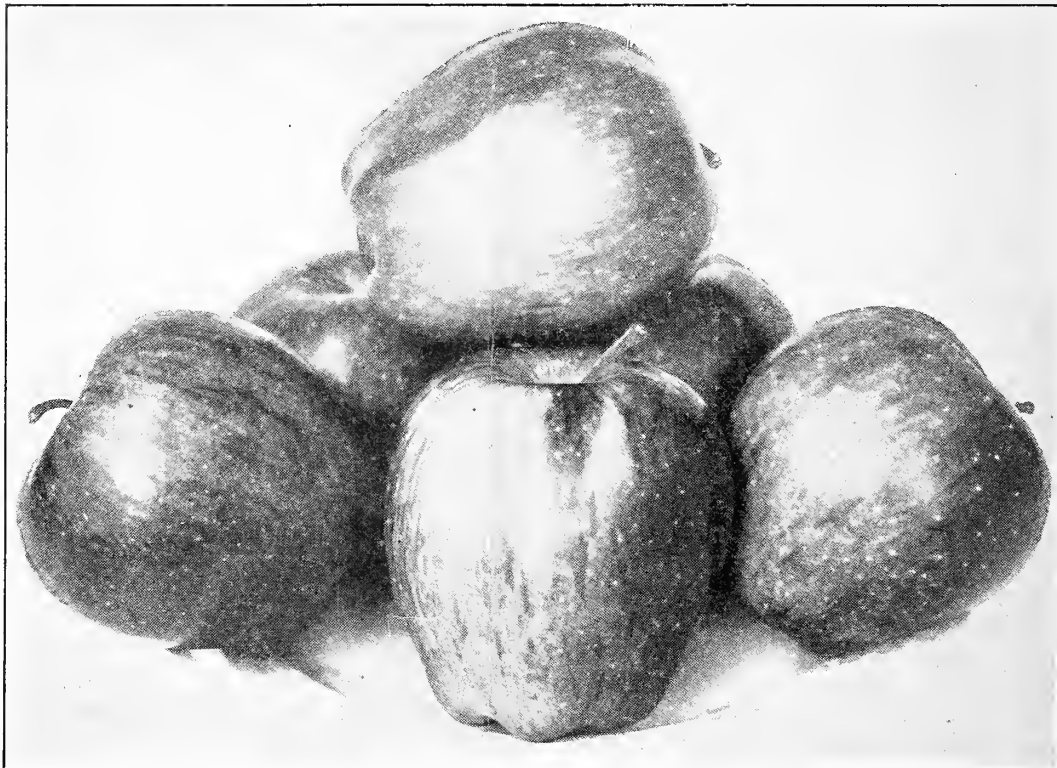
10 Trees 3 to 4 ft. for 90 Cents

2 Eng. Morello	2 Montmorency
2 Early Richmond	2 Dyehouse
1 Napoleon	1 Bk. Tartarian

Pomona Price 90 Cents. Others Charge \$2.00

We Do Not Sell the Stunted Little Trees Catalogued by Others. But Guarantee to Supply Healthy, Thrifty, Hardy, Well Rooted and Branched, Upland Grown Trees,—or Money Refunded.

OUR LEADING APPLE



DELICIOUS RED (reduced size)

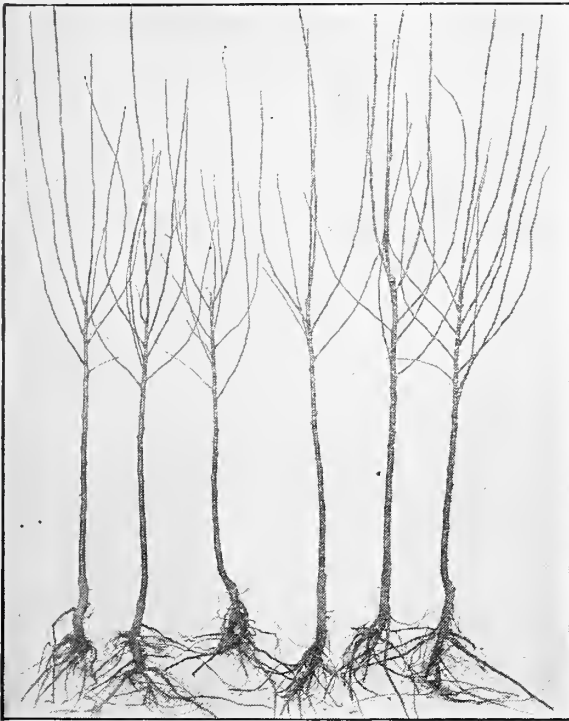
Delicious Red. This apple is appropriately named for it is of handsome appearance as well as high quality, rivaling Spitzenberg. It is oblong in shape and its bright red and yellow skin is very handsome. This apple has been largely planted in the Northwest and ranks high in commercial orcharding. Since it has made good in the apple growing sections someone has said it is a gem. It is the best in quality of any apple I have tasted. Everyone should plant one or more trees.

Select Varieties of Crab Apples

- Transcendent**—Medium to large; roundish, oblong; golden yellow, with a rich crimson cheek, covered with a delicate white bloom; flesh yellow, crisp and when fully ripe, pleasant and agreeable; perfectly hardy; young and abundant bearer. Sept. and Oct.
- Red Siberian**—About an inch in diameter, grown in clusters; yellow, lively scarlet cheek. Tree erect, vigorous, bears young, abundantly. Sept. and Oct.
- Hyslop**—Almost as large as Early Strawberry Apple; deep crimson; very popular on account of its large size, beauty and hardiness. Keeps well into the Winter.
- Whitney**—Large, averaging one and one-half to two inches in diameter; skin smooth, glossy, green striped, splashed with carmine; flesh firm, juicy and rich. A great bearer and very hardy. Tree a vigorous, handsome grower. Has no superior.

Pomona Prices For all varieties of 2 Year Selected Apple Trees. Guaranteed True to Name, 3 to 4 Feet High, 10 Cents each, 10 for \$1.00, 100 for \$9.50.

We Do Not Sell the Stunted Little Trees Catalogued by Others. But Guarantee to Supply Healthy, Thrifty, Hardy, Well Rooted and Branched, Upland Grown Trees,—or Money Refunded.



Pomona Apple Trees 2 Yr, 3 to 4 Ft. High, well rooted and branched

Standard Varieties of Apples

Duchess of Oldenburg—A large, beautiful Russian apple; round; streaked red on yellow; tender, juicy, pleasant; a kitchen apple of best quality and esteemed by many for dessert. Tree a vigorous, fine grower, and an abundant bearer. Succeeds well in the Northwest, where most varieties fail. Aug. and Sept.

Dudley (North Star)—A hardy, productive, variety, fruit large, bright greenish-yellow washed and splashed with red, attractive good quality. A few years ago it was introduced by a Rochester Nursery under the name of **North Star**. Sept. and Oct.

Gravenstein—An apple of excellent quality. For culinary purposes it is perhaps unexcelled by any variety of its season. Fruit large and uniform in size, skin thin, tender, greenish-yellow overlaid with dark red. Sept.

Maiden's Blush—Medium, pale, yellow, red cheek, fine quality, sub-acid. Oct.

Rambo—Medium streaked and splashed with red, rich, sub-acid. Oct.

Red Bietigheimer—Large, yellow, shaded red; flesh white, juicy, with a brisk sub-acid flavor. Oct.

Fall Pippin—Very large, roundish, oblong, yellow; flesh tender, rich and delicious. Tree is a free grower, spreading, and fine bearer. One of the most valuable varieties for table or market. Extensively grown in Western New York. Oct.

Walter Pease—A superb red fall apple of large size and excellent quality. Good for the home garden or for market. A rare variety that you should have in your collection. Sept. to Oct.

Princess Louise—Of medium size, color mixed and striped red over a yellowish ground; fine, juicy, tender; good quality. Oct.

Fameuse (Snow Apple)—Hardy, medium size; deep crimson; flesh is snowy white, tender, melting and delicious. Tree vigorous with dark wood; one of the finest dessert fruits, and valuable for market; succeeds particularly well in the North. Nov. to Jan.

Wealthy—This is a beautiful, hardy winter apple, originating in Minnesota, fruit large; roundish; skin smooth, oily, covered with a dark red. Flesh white, tender, juicy, vinous, sub-acid; quality, very good. This is one of the few most desirable varieties for Minnesota, Wisconsin, Iowa, Nebraska, as well as the Eastern and Middle States. In season it differs somewhat, according to locality; in New York and neighboring states its season is Dec. to Feb. and owing to its early bearing qualities it is planted largely as a filler.

Hubbardston (Hubbardston Nonesuch)—Large; striped yellow and red; tender, juicy and fine; great bearer. One of the best. Nov. to May.

✓ **Red Astrachan**—This hardy early variety is well known. Fruit large, roundish, nearly covered with deep crimson, handsome, juicy, good, highly esteemed on account of its fine appearance, earliness, and hardness. Aug.

✓ **Carolina Red June**—Small or medium, deep red, quality good. Tree hardy and a fine grower. Aug.

✓ **Williams Favorite**—A bright red apple of mild, agreeable flavor. Aug. to Sept.

✓ **Golden Sweet**—Large, pale yellow, tree a good grower and very productive. Aug. to Sept.

✓ **Early Harvest**—Medium, pale yellow, tender, juicy. Excellent for orchard and garden; one of the first to ripen. Last of Aug.

✓ **Yellow Transparent**—A Russian apple of splendid quality. The hardiest and finest summer apple grown. July and August.

✓ **Tetofsky**—Tree very hardy and productive, fruit striped and splashed with red, flesh white, firm tender, juicy, quality fair to good. Aug. to Sept.

✓ **Fanny**—Large, deep rich crimson, tender, juicy, pleasant. Tree vigorous and very productive. Aug.

Pomona Prices For all varieties of 2 Year Selected Apple Trees. Guaranteed True to Name, 3 to 4 Feet High, 10 Cents each, 10 for \$1.00, 100 for \$9.50.

We Do Not Sell the Stunted Little Trees Catalogued by Others. But Guarantee to Supply Healthy, Thrifty, Hardy, Well Rooted and Branched, Upland Grown Trees,—or Money Refunded.



McIntosh Apple—Very Productive and High Quality

✓ **McIntosh Red Apple**—An exceedingly valuable, hardy, attractive apple. A good annual bearer of fair, handsome fruit, being especially desirable for fancy trade. It comes into bearing young, yielding large crops of fine fruit almost annually. Oct. to Jan.

✓ **American Blush**—Here is an apple that is not surpassed the world over for large size, great beauty of color, or for excellent quality. It is an apple that should be growing in every garden and orchard. Fruit large, roundish; color bright red on yellow skin; flesh yellow, with a fine, rich aromatic flavor, sub-acid. The tree is a vigorous grower, and is exceedingly productive, bearing an abundant crop of fruit every year. Nov. to Jan.

✓ **Shiawassee Beauty**—Hardy, and of finest quality. One grower has remarked that "every family should have one." Medium in size; whitish, splashed and striped with rich red. Oct. to Jan.

✓ **Golden Russet**—Vigorous growth; medium; russet; crisp, juicy, mild sub-acid; hardy; very good; long keeper. Nov. to Apr.

✓ **Baldwin**—A great market apple, very productive of fair handsome fruit. No variety yields larger crops or bears shipment better, or is more attractive in color, size and shape, than the Baldwin. It is esteemed as an eating apple, and for cooking. Thousands of barrels of this fruit are exported to England annually. For a commercial orchard it can be relied upon. Large, bright red, crisp, juicy and rich; tree vigorous, upright and productive. Dec. to Mar.

✓ **Gano**—A fine commercial sort. Very hardy. A half brother to Ben Davis, though of better quality. Very richly colored, uniform in size; keeps until March; rapid grower, fruit very handsome, flesh pale yellow, mild, sub-acid, good. Large, good marketing and keeping.

✓ **Boiken**—Medium size; yellow, tart acid, long keeper. A very good cooking apple.

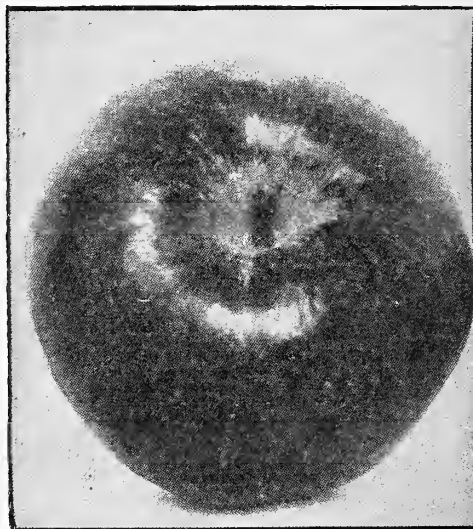
✓ **Grimes' Golden**—Medium to large size; skin golden yellow, sprinkled with gray dots; flesh crisp, tender, juicy, sprightly, very good to best. Grown in the South and Southwest. Jan. to Apr.

✓ **Stayman's Winesap**—Fruit medium, large; skin green and yellow, red-striped; flesh yellow, firm; quality excellent. A seedling of Winesap but larger, better and more productive. Dec. to Apr.

✓ **Pewaukee**—One of the hardy varieties. The size is medium; shape, nearly round, very full at the stem cavity and often lipped; color, greenish yellow with mixed and striped red; flesh, yellowish, juicy.

✓ **King of Tompkins County**—One of the standard varieties grown for commercial purposes, and gives the greatest satisfaction when top-worked on some hardier variety. The fruit is of a bright red color, large and uniform. It is well adapted for marketing in fancy packages and is in good demand for both special and general trade, often selling at an advance over standard varieties in both domestic and foreign markets. The flesh is yellowish, crisp, tender, juicy and sub-acid, and of the best quality. Feb.

✓ **Northwestern Greening**—A hardy winter apple of very large size, much larger than R. I. Greening. This apple is highly prized in localities where the ordinary Greening will not succeed. Prof. H. E. VanDeman says: "One of the best of the hardy kinds. The size is large, very round and symmetrical in shape; color, green, which turns yellow at full maturity; flesh yellowish, fine grained, tender, juicy; sub-acid; quality good."



Baldwin Apple—Reliable and Productive

Pomona Prices For all varieties of 2 Year Selected Apple Trees. Guaranteed True to Name, 3 to 4 Feet High, 10 Cents each, 10 for \$1.00, 100 for \$9.50.

We Do Not Sell the Stunted Little Trees Catalogued by Others. But Guarantee to Supply Healthy, Thrifty, Hardy, Well Rooted and Branched, Upland Grown Trees,—or Money Refunded.



American Blush

Wagener—This is one of the varieties that bear at an early age. The tree is a quick grower and very thrifty. It is planted a great deal as a filler for orchards, as it bears an abundance of fruit when young; is of rather dwarf habit and gets weak when old. The fruit is medium to large, skin tough and of a bright light red color. Flesh whitish, firm, crisp, tender, very juicy and sub-acid. Wagener is of the very best quality. Oct. to Feb.

Esopus Spitzenburg—Large, deep red with gray spots, and delicately coated with bloom; flesh yellow, crisp, rich and excellent. Nov. to Apr.

Jacob Sweet—A large, showy apple, green or yellowish, often with bright flush. One of the best sweet apples. Oct. to Apr.

Ontario—Fruit large, uniform in size and shape; color, yellow splashed with carmine, highly colored, flesh tender, sub-acid. Nov. to Mar.

Wolf River—Fruit is very large, some specimens weighing twenty-seven ounces; round, flattened, conical, highly colored. An excellent cooking apple. Sept. to Dec.

Seek No Further (Westfield)—An old favorite dessert apple. Oct. to Feb.

Northern Spy Apple—This variety has long been a favorite in commercial sorts, in northern New England, New York, Michigan, etc. It is superior to some other standard varieties in flavor and quality and commands top prices. Large, striped and quite covered on the sunny side with dark crimson; and delicately coated with bloom. Juicy, rich, highly aromatic, retaining its freshness of appearance and flavor till July. A remarkably rapid, erect grower, and a great bearer. *One of the finest late keeping apples.*

Burlington, N. C., Dec. 8, 1917

Pomona Nurseries, Dansville, N. Y.

Received the 300 Pear and Apple trees in good condition. **Mighty fine trees.** Have paid 75 cents each for not as good as your trees at only 10 cents each. Thank you most kindly for such fine trees.

Yours truly,

ARTHUR SIMMONS

Walker Beauty—A late winter apple comes into bearing rather young. An annual cropper fruit, predominantly yellow; attractive in color. Nov. to April.

Rhode Island Greening—This large and superior winter apple is famous over a large extent of country, and is more highly prized for cooking and eating than any other variety. It is a good keeper but will keep better if picked early. This Greening is a beautiful yellow color when ripe, and is a most abundant yielder. March to April.

Jonathan—A beautiful red apple, highly flavored and of excellent quality, being tender, juicy, spicy and rich—a splendid family sort and highly profitable for market. Tree long-lived, productive, and an early bearer. Nov. to Apr.

Mann—Season, winter. Size, medium to large. This is an attractive yellow apple, mild sub-acid; a prolific and profitable variety. It is a long keeper in or out of cold storage, and a fine, vigorous grower.

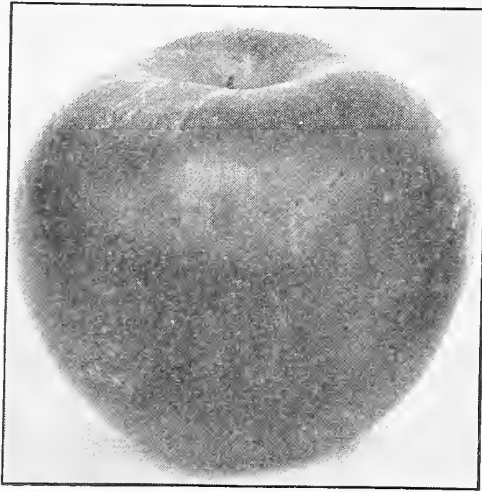
Tolman Sweet—Season, winter. Medium to large size; color, light yellow; flesh, white, firm, rich, and very sweet. Excellent for winter baking. Keeps well into spring. A late, well known favorite. Nov. to April.



Northern Spy Apples

Pomona Prices For all varieties of 2 Year Selected Apple Trees, Guaranteed True to Name, 3 to 4 Feet High, 10 Cents each, 10 for \$1.00, 100 for \$9.50.

We Do Not Sell the Stunted Little Trees Catalogued by Others. But Guarantee to Supply Healthy, Thrifty, Hardy, Well Rooted and Branched, Upland Grown Trees,—or Money Refunded.



Wealthy Apple

✓ **Winter Banana**—Perfect in form; golden yellow, and beautifully shaded with bright crimson red; flesh lemon-yellow, fine grained, sub-acid, rich, aromatic flavor, and of the highest quality. A good keeper. Tree remarkably strong grower. Its early bearing is something simply wonderful, generally producing a fine crop the second year. A valuable market variety. Nov. to Jan. Mr. A. H. Hill, N. Y., picked $5\frac{1}{2}$ bushels from a Banana apple tree six years old.

✓ **Yellow Belleflower**—Season, winter. A hardy apple of large size, a beautiful golden color, often with red blush; conical in shape. Flesh very tender and fine grained, crisp, juicy, sub-acid, of excellent quality. Oct. to Feb.

✓ **Walbridge**—Season, late winter. This is a very hardy apple, known by some as Edgar Red Streak. Size, medium; pale yellow with red cheek. Crisp, tender, sub-acid, fairly good.

Bailey Sweet—A beautiful red apple of good quality. Oct. to Jan.

Stark—Fruit fair, smooth, uniform and attractive. Large, striped, mild, sub-acid. Valuable as a keeper. A good variety for the commercial orchard because the tree is thrifty, hardy, healthy, a reliable cropper and very productive. Jan. to May.

Mammoth Black Twig—The tree is a strong grower, a regular and abundant bearer. A good winter apple. Deep red; sub-acid, very high flavored.

Rome Beauty—A large and handsome apple, almost entirely covered with bright red; of high quality. The flesh is tender, juicy and highly flavored. It is a popular apple over a wide range of country, particularly in the West. Dec. to Mar.

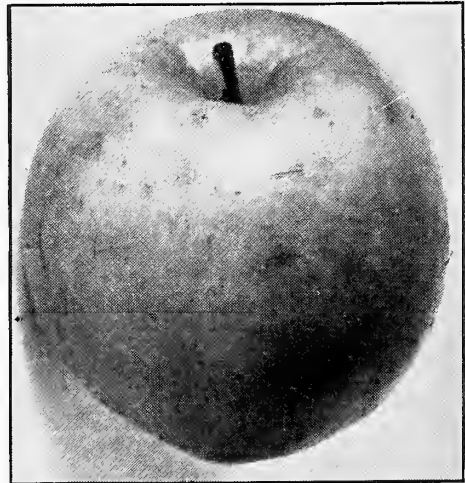
✓ **Roxbury Russet**—Medium to large. Surface rough, greenish covered with russet. Tree free grower, spreading; a great bearer. Keeps until June.

Sutton Beauty—Medium to large, roundish; waxen yellow, striped with deep carmine; flesh white, sub-acid; tender, juicy, good. A long keeper. Jan. to Feb.

✓ **Ben Davis**—Succeeds wherever apples are grown. There is no apple that has more favors on account of its hardiness, productiveness, beauty and endurance in shipping. It is excellent for cooking. The fruit is thick-skinned, does not show bruises easily and presents a good appearance in the package after being handled and shipped in the ordinary way. Nov. to Apr.

Smoke House—This grand apple is a great favorite in Pennsylvania and doesn't seem to be known much elsewhere. Tree a vigorous grower, healthy hardy, and a reliable cropper. The fruit hangs well to the tree and is of good color and quality, uniform in size and shape. Oct. to Mar.

York Imperial—This fine, hardy, large, red winter apple has rapidly leaped into favor of late, and on account of its beauty has been in demand for shipment to Europe. It succeeds over a wide range of country. It comes into bearing at four years from planting, bears regularly and heavily. The foliage and fruit are remarkably free from scab. The fruit is of medium size, oblong, oblique smooth, skin yellow and almost wholly covered with two shades of red, the darker one disposed in distinct stripes; basin deep, cavity deep and narrow; stem short; flesh yellow, juicy, firm, sub-acid, good; season, late winter. A good shipper, bringing highest prices. Nov to Feb.



Yellow Transparent Apple

Pomona Prices For all varieties of 2 Year Selected Apple Trees. Guaranteed True to Name, 3 to 4 Feet High, 10 Cents each, 10 for \$1.00, 100 for \$9.50.

We Do Not Sell the Stunted Little Trees Catalogued by Others. But Guarantee to Supply Healthy, Thrifty, Hardy, Well Rooted and Branched, Upland Grown Trees,—or Money Refunded.

Select Varieties of Dwarf Apples



Dwarf Apple Tree

Dwarf Apple Trees Appeal to City Buyers whose small gardens have no room for Standard Trees but offer ample space for a few dwarfs

Like Dwarf Pear Trees they come into bearing much earlier than Standard Trees. Their low broad heads are within reach, so that apples or pears can be easily picked. You can plant your garden full of dwarf fruit trees and still grow strawberries and vegetables. With dwarfs some varieties will bear the second year, and will bear a full crop the fourth year. The use of dwarf trees is usually confined to apple and pears. While more dwarf trees can be planted upon an acre, and larger fruit can be produced, still they have not found favor among commercial orchardists except in a few sections where an extra high grade fruit is desirable. Dwarf trees are secured by propagating upon a slow growing root, but will not remain dwarf unless severely headed-in every year.

I offer the best trees budded on Paradise or Doucin stocks. They will succeed in many places where standard trees fail. In a word, they are the kind of dwarf trees that will put their strength into fruit instead of wood which I can supply in the following varieties:

Yellow Transparent, Baldwin, McIntosh, Fameuse, Duchess, Red Astrachan, Fall Pippin, Delicious, Wealthy, Wagener, Nor. Spy, R. I. Greening, Twenty Oz., Hub. Nonsuch

Pomona Prices For all varieties of Dwarf Apple Trees, Guaranteed True to Name, 2 to 3 Feet High, 10 cents each, 10 for \$1.00, 100 for \$9.50.

Select Varieties of Dwarf Pear

Dwarf pear trees often bear fruit the same year planted, and the trees occupy but little room in the garden. They can be planted very closely together and kept headed back. There is scarcely a city or town lot so small that room cannot be found for a few dwarf fruit trees. Their hardiness makes it possible for anybody, anywhere, to produce delicious fruits. I am confident that if my patrons were to spend hours choosing from local nurseries or the agent's catalogues, they would not find an equal number of varieties that possessed more valuable features for the home or market than those offered in this list.

I offer the following list of superior varieties of Dwarf pear trees. These are about all the varieties that will succeed as Dwarf trees. (See description of these on other pages.)

✓ Bartlett, Seckel, Clapp's Favorite, Clairgeau, Duchess, Kieffer, Lawrence, Louise Bonne, Flemish Beauty and Wilder Early.

Pomona Price for all varieties of 2 year selected Dwarf Pear Trees, guaranteed true to name, 2 to 3 ft., 10 cents each, 10 for \$1.00, 100 for \$9.25



Select Varieties of Apricots

The leading characteristics of the apricots are extreme hardiness, early bearing, productiveness, and freedom from disease. Every garden should have one or more trees. In the selection of choice garden fruits it is quite indispensable. It succeeds well trained against a house wall, fence or trellis, leaving the open ground for other trees. In cold sections, too, where the trees get winter killed, or the blooms injured by the late spring frosts, trees can easily be protected by mat or board screens. We offer all hardy varieties as follows:

Alexis—Large, yellow, red blush, sub-acid, rich; good quality.

Moorpark—Large size surface orange-red with a deep orange-red cheek with a rich, high flavor.

Budd—Yellow with fine red cheek, sweet, juicy. Tree a good grower and very productive.

Harris—Medium, hardy, productive, bright yellow with red cheek, juicy and good.

Pomona Price for all varieties of 2 year selected Apricot Trees, guaranteed true to name, 2 to 3 ft., 10 cents each, 10 for \$1.00, 100 for \$9.50.

We Do Not Sell the Stunted Little Trees Catalogued by Others. But Guarantee to Supply Healthy, Thrifty, Hardy, Well Rooted and Branched, Upland Crown Trees,—or Money Refunded.





Pomona Plum Trees 2 Year, 3 to 4 feet, well rooted and branched

Japanese Varieties of Plums

- ✓ **Burbank**—The largest, and best of the Japanese plums. Trees thrifty, free from black knot and other diseases, and perfectly hardy. Last of August or first of September.
- ✓ **Climax**—Color of flesh yellow, sweet and delicious with a pineapple fragrance. Tree a vigorous grower, very productive.
- ✓ **Wickson**—Large; carmine; flesh sweet. The stone is small and the flesh of fine texture, firm, sugary and delicious. One of the largest plums grown. Sept.
- ✓ **October Purple**—Fruit large; dark maroon; fine flavor. Tree good grower. Middle of Sept.
- ✓ **Satsuma**—Large; purplish red; flesh juicy, dark red. Hardy and vigorous. Aug.

European Varieties of Plums

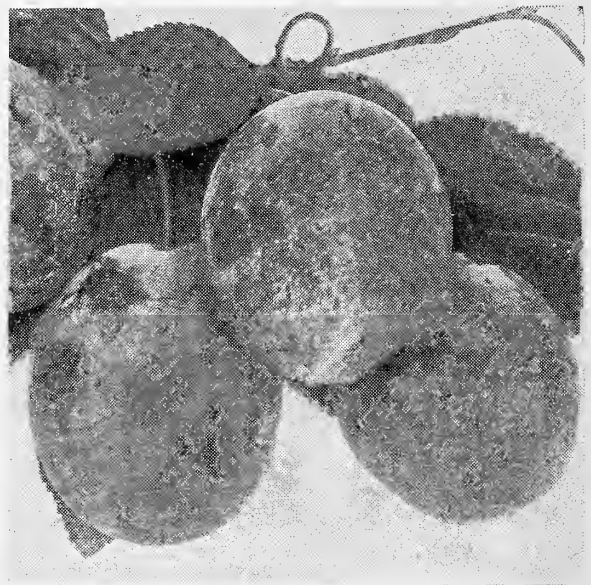
- ✓ **Shropshire Damson**—An English Plum of great merit for preserving. Large, and much more desirable than the common Damson. Tree vigorous grower, hardy and abundant bearer. Oct.
- ✓ **Coe's Golden Drop**—A large light yellow plum; flesh firm, rich and sweet. Valuable on account of its large size and fine appearance. Last of Sept.
- ✓ **Geuii**—Very large; deep bluish purple; covered with thick bloom; flesh yellowish green, sweet and pleasant. Great bearer and very early; tree hardy and rapid grower. First to middle of Sept.

Select Varieties of Plums

Plums are hardy and grow vigorously in nearly all sections, succeeding on any soil that grows good corn or potatoes. Plum trees are planted about as far apart as peaches; that is, from 15 to 18 feet apart each way. Many growers prefer to plant them closer one way than the other, and eventually to stop cultivation in one direction. If this system is used they may be placed 18 to 20 feet apart one way, and from 10 to 12 feet the other way. The trees are pruned the same way that apple trees are, when planted.

✓ **Red June**—Tree strong and spreading, immensely productive, and comes into bearing in two or three years, brilliant red. Last of July.

✓ **Abundance**—The popular plum. Tree, thrifty, hardy, and beautiful; fruit large, showy and good, richly perfumed. The editor of *The Rural New Yorker* writes: "From one little Abundance tree we picked ten pecks of fruit. The quality is excellent. When fully ripe they are full of juice. The flesh is tender and there is mingled with the plum a peach flavor that is refreshing and agreeable." August 4th, 1895, *The Rural New Yorker* said: "The Abundance Japan Plum tree on our grounds is a sight to behold. The branches are wreaths of fruit, and they as well as the tree itself are held up by props and ropes. Here we have Abundance loaded with beautiful fruit, while not a precaution has been taken to destroy the curculio. First of August.



BRADSHAW PLUM

Pomona Prices For all Varieties of 2 Year Selected Plum Trees, Guaranteed True to Name, 3 to 4 Feet High, 10 cents each, 10 for \$1.00, 100 for \$9.50.

We Do Not Sell the Stunted Little Trees Catalogued by Others. But Guarantee to Supply Healthy, Thrifty, Hardy, Well Rooted and Branched, Upland Grown Trees,—or Money Refunded.

Select Varieties of European Plums

Imperial Gage—Of medium size; oval; greenish; flesh juicy, rich and delicious; parts from stone. Tree a vigorous grower; very productive and one of the best of plums. Middle of Aug.

York State Prune (The Dansville Prune)—One of the largest, best in quality and most productive of all prunes, large size; color dark blue, covered with purple black; delicious; freestone, last of Aug.;



Yellow Egg—Very large and beautiful; yellow; a little coarse, but excellent for cooking. Vigorous and productive. Aug.

Yellow Gage—Fruit large; flesh deep yellow, rich, sugary and melting. Tree very vigorous and productive. Middle of Aug.

Shipper's Pride—Very productive. Fruit of large size and nearly round; color handsome dark purple; quality fine, juicy and sweet; excellent for canning; a good shipper. Middle of Sept.

German Prune—Of medium size; oval; purple or blue; rich, juicy, fine. Tree vigorous and very productive. Sept.

Tatze—Evidently a seedling of the Lombard. Is larger, more nearly round, darker color and finer quality than that well known and excellent variety. Claimed to be the hardiest, most productive and longest-lived plum known.

Washington—This is one of the finest and most popular plums. Fruit very large, roundish oval; skin yellow, with a slight crimson blush in well ripened specimens; flesh very sweet. Tree vigorous and very productive. Last of Aug.

Niagara—Of large size and first rate flavor; color dark blue. Good bearer; not liable to rot. Ripens about Aug. 1st.

Pond's Seedling—A magnificent plum; light red, changing to violet; flesh rather coarse. Tree a vigorous grower and most abundant bearer. One of the most attractive in cultivation. Sept.

Moore's Arctic—Skin purplish black, with a thin blue bloom; flesh greenish yellow, juicy, sweet and of pleasant flavor. "The hardiest plum grown, and free from black knot. Tree healthy, vigorous; an early and abundant bearer." Sept.

Roosevelt—Fruit large, color purple, good quality and unexcelled for eating and canning.

Felleberg (French or Italian Prune)—The finest quality prune; oval; purple; flesh juicy and delicious; parts from stone; fine for drying. Tree a free grower and very productive. Sept.

Grand Duke (New)—A valuable late plum as large as the Bradshaw, entirely free from rot and ripening latter part of Sept.

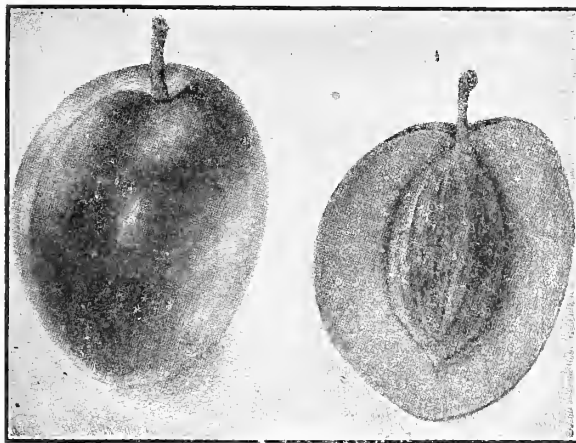
Green Gage—Of the highest quality. Tree a moderate grower. Sept.

Lombard—A favorite with plum growers, of medium size; oval violet red; flesh yellow, juicy and pleasant. Tree very vigorous, a great bearer, and peculiarly well adapted to light soils. In my experience it outyields all other varieties, yet all varieties of Plums are remarkably productive. The fruit usually hangs so thick that one should thin out one half. The more you thin it the larger and better the fruit. Sept.

Monarch—Of the largest size, even larger than Grand Duke; brilliant bluish purple. Free from rot and disease, and of extra good quality. One of the very best for home or market. Sept.

Bradshaw—A fine early plum; very large; dark violet red; juicy and good. Tree erect and vigorous. As regards productiveness it has no equal. To produce the finest fruit heavy thinning should be practiced. The quality is excellent, and is destined to become one of the most popular Plums for canning. This plum is very largely planted throughout Western New York. Valuable for market and home use. Aug.

Beauty of Naples—Large size; color greenish yellow; flesh firm, juicy and very fine flavored. Tree very hardy and prolific. Middle of Sept.

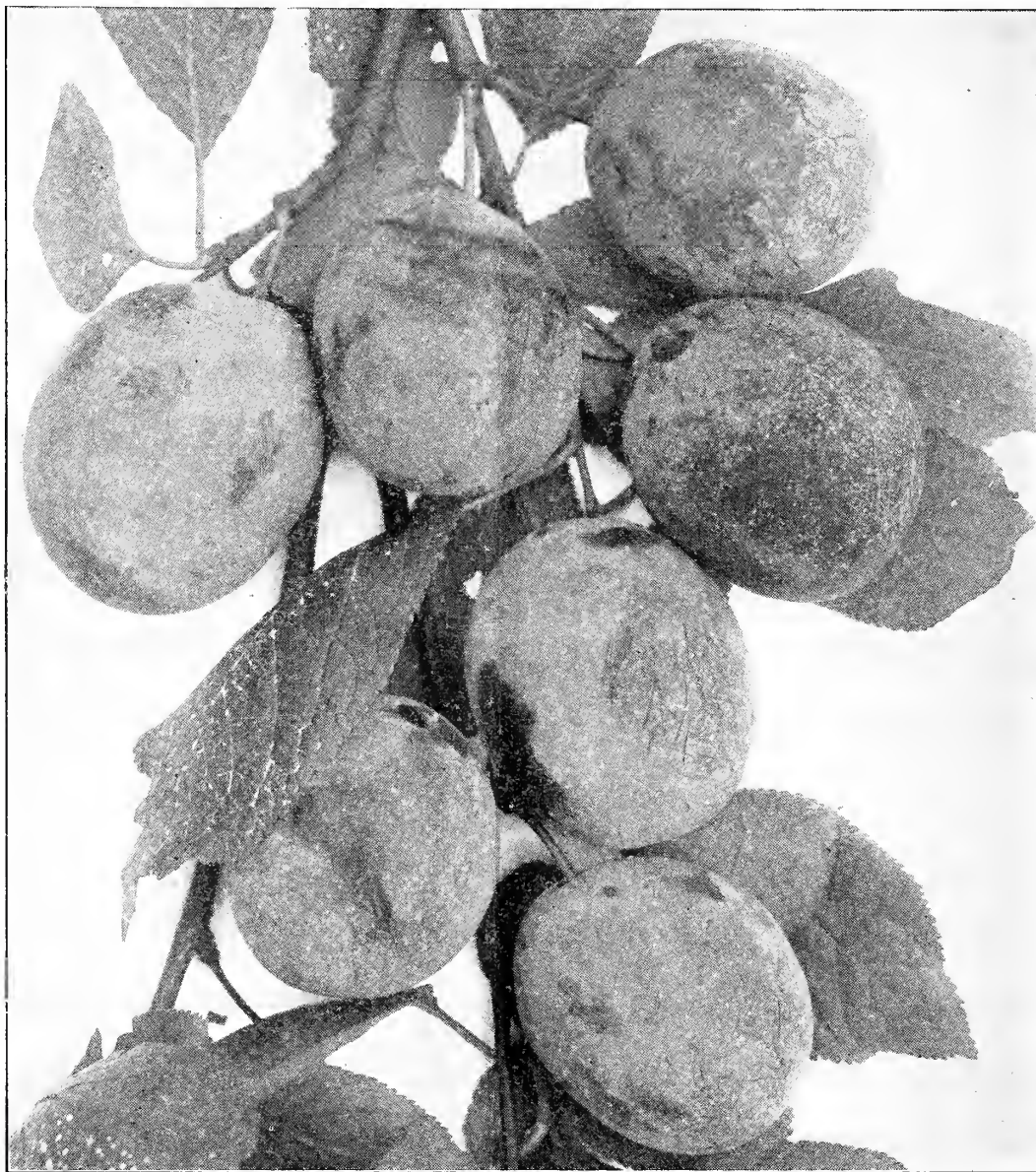


York State Prune

Pomona Prices For all Varieties of 2 Year Selected Plum Trees, Guaranteed True to Name, 3 to 4 Feet High, 10 cents each, 10 for \$1.00, 100 for \$9.50.

We Do Not Sell the Stunted Little Trees Catalogued by Others. But Guarantee to Supply Healthy, Thrifty, Hardy, Well Rooted and Branched, Upland Grown Trees,—or Money Refunded.

OUR LEADING PLUM

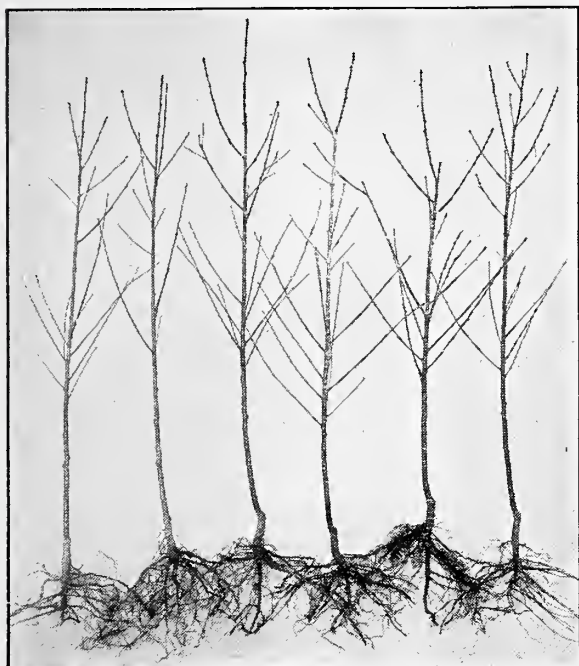


BRADSHAW PLUM

Bradshaw. This is a very large, dark violet red plum, very juicy and good. The quality of Bradshaw is very fine and is very popular wherever planted. The tree is erect, vigorous, hardy and very productive. One of the finest for market and canning purposes.

Pomona Prices For all Varieties of 2 Year Selected Plum Trees, Guaranteed True to Name, 3 to 4 Feet High, 10 cents each, 10 for \$1.00, 100 for \$9.50.

We Do Not Sell the Stunted Little Trees Catalogued by Others. But Guarantee to Supply Healthy, Thrifty, Hardy, Well Rooted and Branched, Upland Grown Trees,—or Money Refunded.



Pomona Peach Trees 2½-3½ ft. high, well rooted and branched

Select Varieties of Peaches

Peach trees are easily cultivated, their comparative freedom from disease, the short period before they become productive, with the immense demand for the fruit and the facilities with which it may be shipped to distant markets, make peach growing extremely profitable, and there are few kinds of fruits more highly prized and more keenly relished.

To secure healthy, vigorous and fruitful trees, the ground must be kept clean and mellow and it should receive an occasional dressing of wood ashes. It should be remembered that peaches are all borne on wood of the previous season's growth, and that this makes it absolutely necessary to prune the trees yearly, to remove dead branches and let in light and air, and keep the trees in good shape to produce bearing wood.

Triumph—Earliest yellow-flesh peach, with good eating and shipping qualities, sure and abundant bearer; strong, vigorous grower.

Willett—Bright yellow, mostly covered with red. Flesh juicy and rich. Sept. Freestone.

Gold Drop—Medium size; hardy, very productive, quality the best, early bearer. Last of Sept.

Reeves' Favorite—Yellow with beautiful red cheek. Tree fine and large; bears crop regularly.

Stump—Roundish, white, with bright red cheek; flesh white, juicy and good. Late. Sept.

Sneed—Very early; fruit creamy white with crimson blush; productive; not inclined to rot.

Hill's Chili—Medium; deep yellow shaded with dark red. Hardy, vigorous and productive. Good market variety. First of Sept.

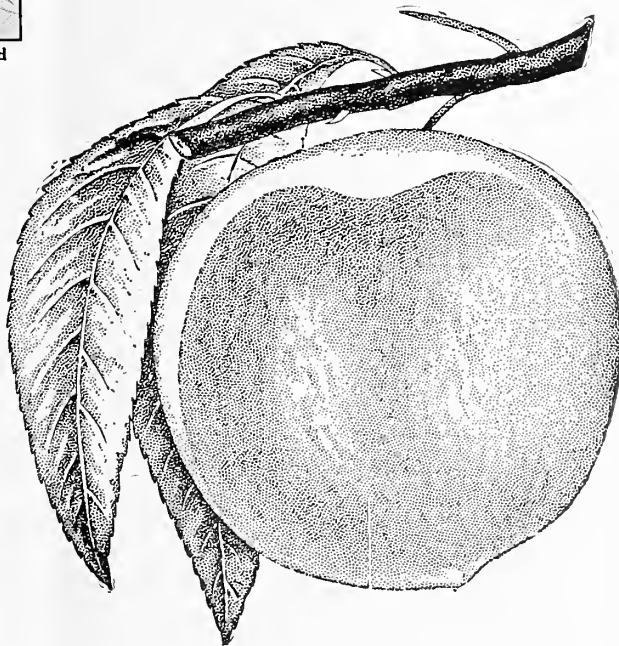
Kalamazoo—Large, golden yellow, with crimson cheek; flesh thick yellow, superb quality, small pit. Strong grower, early bearer, hardy and productive.

Salway—Large; deep yellow, red cheek. Flesh yellow, juicy. Oct.

Smock—Large size; light orange yellow with red cheek. Flesh yellow, juicy and rich. Oct.

Yellow St. John—One of the best of the early yellow varieties. Of medium size, orange yellow with a red blush on sunny side, flesh, tender, juicy and quality very good. Popular in many sections. Aug. 15th.

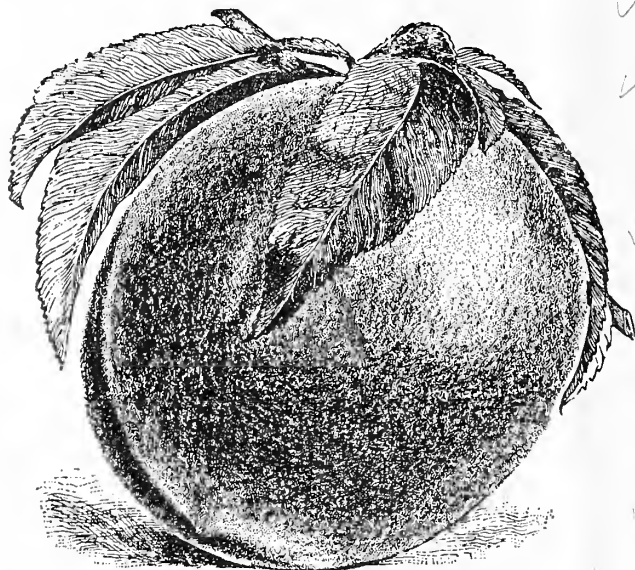
Greensboro—A valuable early white peach. Much larger in size than Alexander, ripening about the same time. July.



Carman—The Best Early Freestone Peach

Pomona Prices For all Varieties of Selected Peach Trees, Guaranteed True to Name, 3 to 4 Feet High, 10 cents each, 10 for \$1.00, 100 for \$6.65.

We Do Not Sell the Stunted Little Trees Catalogued by Others. But Guarantee to Supply Healthy, Thrifty, Hardy, Well Rooted and Branched, Upland Grown Trees,—or Money Refunded.



Elberta—The Most Profitable Market Peach

- ✓ **Elberta**—A valuable, large peach of good quality. The best orchard variety, and valuable also for planting in the garden. Elberta is hardier in bud than many varieties, therefore a more uniform cropper. Elberta is large, yellow, with red cheek, juicy and high-flavored, flesh yellow; freestone. Season medium early, following quickly upon Early Crawford.
- ✓ **Early Rivers**—Large; color creamy white, with a delicate pink cheek, flesh melting, with a remarkably rich, racy flavor. Middle of Aug.

✓ **Foster**—Large, deep orange red, becoming very dark red on the sunny side; flesh yellow, very rich and juicy.

✓ **Crosby Frost-proof Peach**—A fine, handsome, yellow peach, with remarkably small pit, that bears regular crops north of the peach belt. Quality delicious; season follows quickly after Early Crawford. Crosby is now so well known that it will be no experiment planting it.

✓ **Crawford's Early**—A magnificent large yellow peach of good quality. Tree vigorous and prolific; its size, beauty and productiveness make it one of the most popular varieties. Season beginning of September. This valuable peach has long been a favorite for large size, beauty and quality of fruit. Most people when they buy peaches ask for Crawfords, knowing but little about any other variety. In past years this was the earliest peach, but now much earlier kinds are known, hence it is about mid-season in ripening. Everybody who plants peach trees plants Crawford's Early.

✓ **Beer's Smock**—Large, yellow, with red cheek; flesh yellow and of the very best quality for the season; a regular and enormous bearer, making it very desirable for market purposes. Sept.

Belle of Georgia—Large; white, with red cheek; flesh white, firm and of excellent flavor. Tree a rapid grower and very productive. Early July.

Early Canada—Originated in Canada. As early as the earliest. Of good size, fine quality and handsome appearance. July.

Old Mixon Free—Large pale creamy white, flushed and marbled red; exquisite flavor.

Banner—Fruit large, deep yellow with crimson cheek; flesh yellow, fine quality. A profitable late peach.



Yellow St. John—The Best Early Yellow Freestone Peach



Champion Peaches (reduced)

Pomona Prices For all Varieties of Selected Peach Trees, Guaranteed True to Name, 3 to 4 Feet High, 10 cents each, 10 for \$1.00, 100 for \$6.65.
 We Do Not Sell the Stunted Little Trees Catalogued by Others. But Guarantee to Supply Healthy, Thrifty, Hardy, Well Rooted and Branched, Upland Grown Trees,—or Money Refunded.



Niagara—One of the Best Early Yellow Peaches

✓ **Champion**—Tree and fruit buds extremely hardy—has stood eighteen degrees below zero and produced a full crop the following summer. The flavor is delicious, sweet, rich and juicy; skin creamy white with red cheek, strikingly handsome. A good shipper. Last of Aug.

✓ **Wager**—Medium, yellow, good quality. Tree hardy and productive. A profitable late variety. Last of Sept.

✓ **Fitzgerald**—Fully equal to Crawford's Early in size, quality and color, a very early bearer, hardy, succeeding in Canada and in Michigan perfectly; fruit large, brilliant yellow with red cheek; highest quality; ripens after Crawford's Early.

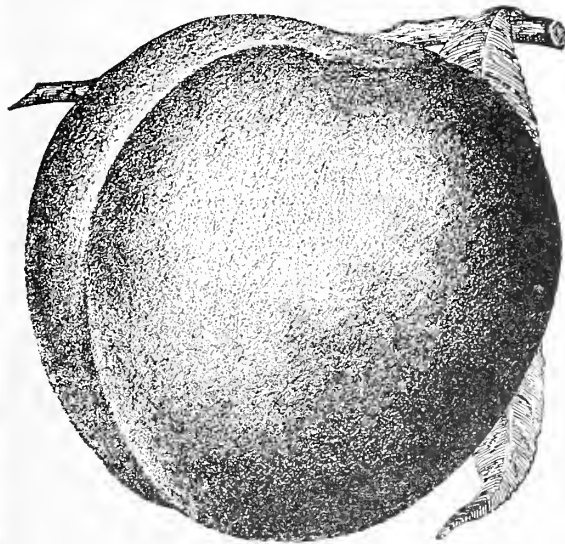
✓ **Niagara Peach**—One of the best medium early yellow peaches that has been introduced for many years past is the Niagara. It originated in Niagara county, New York, and has been grown there for about ten years past, but only in a small way, until very lately. The fruit of the Niagara peach is much like that of Early Crawford in appearance, being large, oval, yellow with brilliant red cheeks. The flavor is rich and piquant, reminding one of the very best peaches he ever ate. The season is medium early, coming in just before Elberta.

✓ **Chair's Choice**—Deep yellow, with red cheek; flesh yellow and very firm. Oct.

✓ **Hiley**—A large, early, white Peach highly colored on sun-exposed side. A profitable, commercial variety, very hardy in wood and bud.

✓ **Engle's Mammoth**—Large, round, suture slight; yellow with red cheek; flesh yellow, stone small, free; sweet, rich, juicy.

✓ **Crawford's Late**—Of large size; skin yellow or greenish yellow, with dull red cheek; flesh yellow. Tree vigorous; moderately productive; one of the finest late sorts. Last of Sept.



Late Crawford Peach

✓ **Matthews' Beauty**—Fruit large; ripens two weeks later than Elberta. Skin golden yellow, streaked with red; flesh yellow, firm, excellent flavor.

✓ **Carman**—A very hardy peach, ripening at same time as Early Rivers, yet almost as large and fine as Elberta. Skin pale yellow with blush on sunny side; flesh white, tender, sweet and melting. Ships well. Middle of August.



A Fruited Branch of Early Crawford Peaches

Pomona Prices For all Varieties of Selected Peach Trees, Guaranteed True to Name, 3 to 4 Feet High, 10 cents each, 10 for \$1.00, 100 for \$6.65.

We Do Not Sell the Stunted Little Trees Catalogued by Others. But Guarantee to Supply Healthy, Thrifty, Hardy, Well Rooted and Branched, Upland Grown Trees,—or Money Refunded.



Pomona Sweet Cherry Trees 3 to 4 feet high

Sweet Varieties of Cherries

The fruit of which is heart-shaped with tender, sweet flesh and the trees rapid growers. With my experience in growing cherries I by all means urge every owner of a home with a little space to plant Sweet Cherry Trees. No fruit is more liked by members of the family than this delightful fruit when fresh picked, stewed or preserved.

Napoleon Cherry—Fruit very large, oblong, pale yellow with a bright red cheek in the sun. Flesh very hardy, brittle, reddish at stone, juicy and sweet. Tree a vigorous and erect grower, very productive. Early in July.

Bing—One of the most delicious Sweet Cherries grown. Tree very hardy and vigorous with heavy foliage. It succeeds in the East better than most sweet varieties. Fruit is large, dark brown or black and of very fine quality. Bing is a good shipper and should be planted with Lambert for commercial purposes.

Black Tartarian—Very large; bright purplish black; half tender; juicy, very rich. Tree a remarkably vigorous and erect grower, and an immense bearer. One of the most popular varieties in all parts of the country. Ripe last of June.

Gov. Wood—One of the best. Clear, light red; tender and delicious. Tree vigorous and productive. End of June.

Lambert—A valuable Sweet Cherry of the largest size. Skin dark purplish red, almost jet-black when ripe. Flesh firm, rich and juicy. Tree hardy, a strong grower and an enormous bearer.

Windsor—Fruit large; liver colored, resembling the Elkhorn, ripening a few days after that variety; flesh remarkably firm, of fine quality. Tree hardy and prolific. Vigorous. Middle of July.

Yellow Spanish—Large, pale yellow, with red cheek; firm, juicy and excellent; one of the best light colored cherries; productive. Last of June.

Rockport—Fruit large, heart-shaped; skin pale amber; sweet and excellent. July.

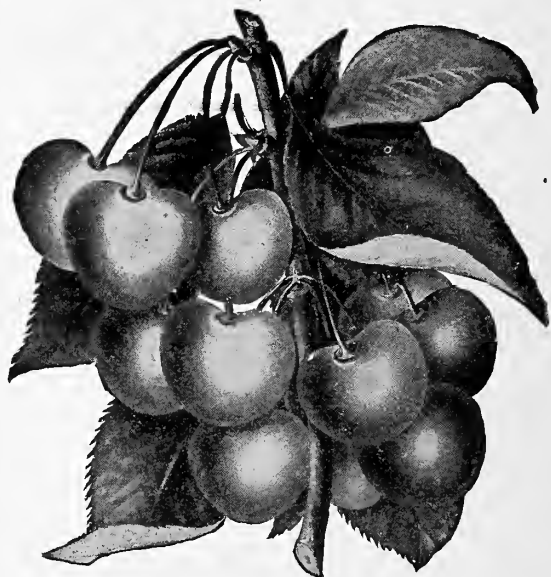
Schmidt's Bigarreau—Black; flesh dark, firm. Very productive. July.

Black Heart (Black Ox Heart)—An old variety; deep black; flesh tender, juicy, sweet. July.

Black Russian—Fruit large; deep black; flesh solid and firm. Last of July.

Mercer—Tree very hardy. Fruit dark red, larger than Black Tartarian. End of June.

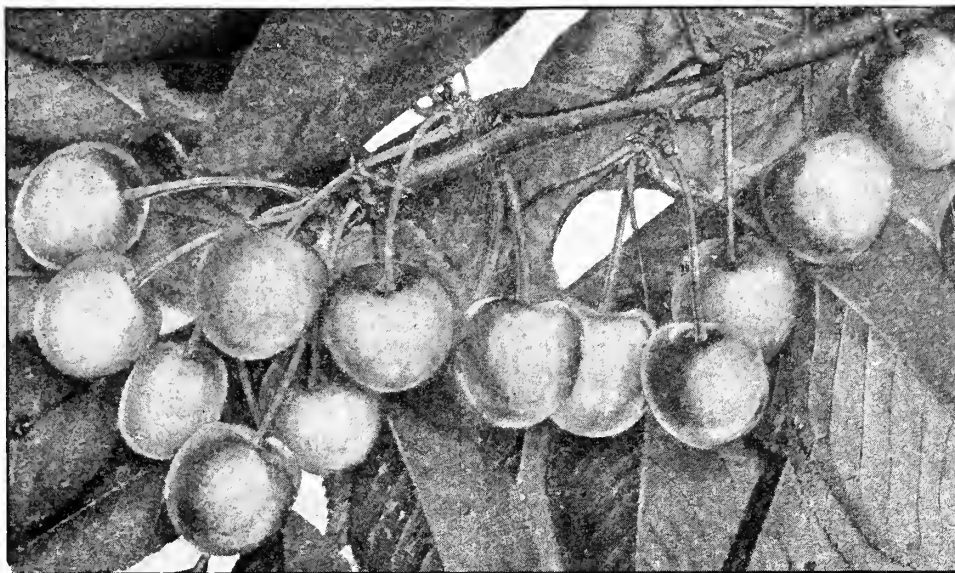
Royal Ann (Napoleon)—A valuable cherry of the largest size. Pale yellow, with bright red cheek; very firm, juicy and sweet; valuable for canning.



Napoleon Cherries (reduced one-half)

Pomona Prices For all varieties of 2 Yr. Selected Sweet Cherry Trees, Guaranteed True to Name, 3 to 4 ft. high, 10 cents each, 10 for \$1.00, 100 for \$9.50.

We Do Not Sell the Stunted Little Trees Catalogued by Others. But Guarantee to Supply Healthy, Thrifty, Hardy, Well Rooted and Branched, Upland Grown Trees,—or Money Refunded.



Montmorency Cherry

- ✓ **English Morello**—The most valuable late cherry. Easily grown, producing a heavy crop every year. Fruit dark red, quality good, with a rich, acid flavor; late. Tree very hardy, for extremely cold latitudes. It is one of the few varieties that seems to succeed well with neglect. Birds do not bother it, May bugs shun it, rot is unknown to it, all in all it is one of the safest cherries to plant. Early Richmond, Montmorency and English Morello make a very fine combination to plant, ripening in the order named.
- ✓ **Ostheime**—Very hardy, fruit large and roundish. Flesh is liver colored, tender, juicy and almost sweet, although a sub-acid Cherry. Quality good. Middle of July.
- ✓ **Vladimir**—A Russian variety. Hardy, strong grower, very productive, sub-acid, of excellent quality, juicy.
- ✓ **Reine Hortense**—Large, bright red, vigorous, productive, delicious.
- ✓ **Olivet**—A tree of this variety should be in every garden. The fruit is very large, has a shining deep red color; tender, mild sub-acid flavor. Finest table and canning Cherry you can get. Ripens in June.
- ✓ **Louis Phillippe**—Large, dark red; flesh tender, mildly acid, good to best. Mid-July.
- ✓ **Wragg**—A Russian variety. One of the hardest cherries, vigorous and productive, medium size, dark purple, fine quality and has produced annual crops at the northernmost limit.
- ✓ **Montmorency Ordinaire**—The most popular of all hardy cherries for market and home use. This cherry is planted largely in all parts of the country. The fruit is in great demand by canning factories and others, and sells at fancy prices. Montmorency has been growing in popularity all over the country each year, so that it has been almost impossible to grow trees fast enough to keep up with the demand. It is of large size, light red in color, stem rather short. The tree is very hardy and a vigorous grower.



Early Richmond Cherry

Pomona Prices For all varieties of 2 Yr. Selected Sour Cherry Trees, Guaranteed True to Name, 3 to 4 ft. high, 10 cents each, 10 for \$1.00, 100 for \$9.50.

We Do Not Sell the Stunted Little Trees Catalogued by Others. But Guarantee to Supply Healthy, Thrifty, Hardy, Well Rooted and Branched, Upland Grown Trees,—or Money Refunded.

Select Varieties of Sour Cherries---Continued



Pomona Sour Cherry Trees, 3 to 4 ft. high, well rooted and branched

Baldwin—Of the Morello type; round, slightly sub-acid, sweetest and richest. A fine upright grower, remarkable for its earliness, hardiness and productiveness. June.

Dyehouse—A very early and sure bearer, ripens a week before Early Richmond. For tarts, pies and canning it has no equal for home use. June.

May Duke—Large red; juicy and rich; an old, excellent variety; vigorous, productive. June 15.

Early Richmond—One of the most valuable and popular cherries, unsurpassed for cooking purposes. It is the good old variety that yields such marvelous crops in the gardens. The most hardy of all varieties, uninjured by the coldest winters. Tree slender in growth, with a roundish spreading head, exceedingly productive. Ripens through June. The cherry tree bears almost every year, and is an easy fruiter. For many years Dansville has been the largest cherry growing section of the U. S., while the majority of nurserymen are buyers instead of growers.

The Cherry grows best on gravelly soil, and there attains its highest perfection, but will do very well in almost any situation except a wet one. It is one of the most ornamental of all fruit trees which, with its delicious and refreshing fruit, makes it very desirable for planting near the dwelling, where beauty and shade, as well as fruit, are so desirable.

Pomona Prices For all varieties of 2 Yr. Selected Sour Cherry Trees, Guaranteed True to Name, 3 to 4 ft. high, 10 cents each, 10 for \$1.00, 100 for \$9.50.

Select Varieties of Quince

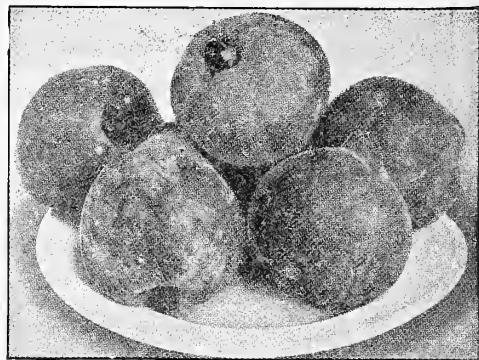
Orange—Large; roundish, of a bright golden yellow color, flesh firm and tough until cooked, when it becomes tender, juicy and of excellent flavor. Tree has rather slender shoots and oval leaves; very productive. This is the variety most extensively cultivated for the fruit. Ripe in Oct.

Rea (Rea's Mammoth)—A large and fine variety of the Orange Quince. Rich and aromatic, one of the largest and handsomest. Bears young. A strong grower and productive.

Van Deman—A strong grower, the hardiest, surest and youngest bearer. Fruit golden, big, fine flavored. Tree productive.

Champion—A good variety, but ripens rather late for some sections. One of the best for sections not subject to early frosts.

Meech's Prolific—A large, late ripening variety; one of the best.



A Plate of Orange Quince

Pomona Prices For all Varieties of Selected Quince Trees, Guaranteed True to Name, 2 to 3 feet high, 10 cents each, 10 for \$1.00, 100 for \$9.50.

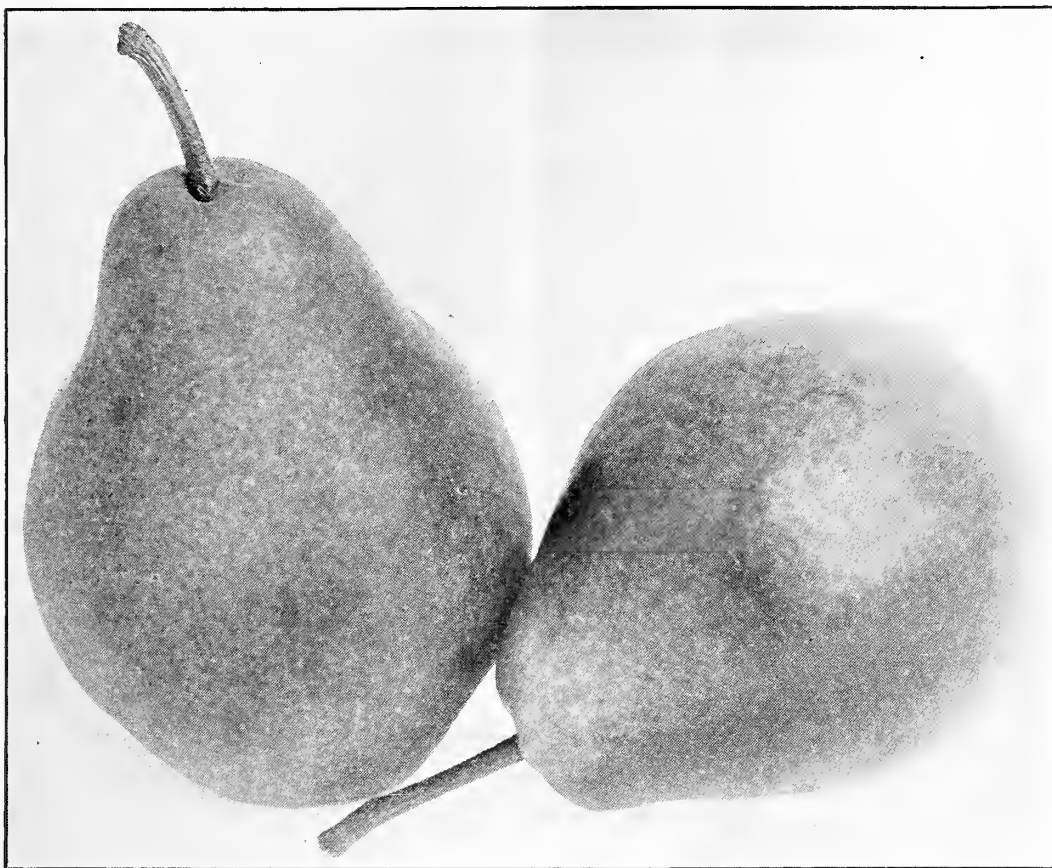
Pomona Nurseries, Dansville, N. Y.

Gentlemen: Trees, shrubs and grape vines received in good condition. They are absolutely the best looking I have seen for three or four times the price. It is wonderful how you can furnish such goods at this price. It will give me pleasure to recommend your trees, as I do not believe better ones could be furnished at any price.

Orange, Va., April 15th
Yours very truly,
C. W. GRIM

We Do Not Sell the Stunted Little Trees Catalogued by Others. But Guarantee to Supply Healthy, Thrifty, Hardy, Well Rooted and Branched, Upland Grown Trees,—or Money Refunded.

CLAPP'S FAVORITE PEAR



CLAPP'S FAVORITE (reduced size)

Clapp's Favorite. A superb, large, long, yellow Pear, richly flushed with russet-red next the sun; juicy and delightful; ripens before Bartlett. Pick the fruit of this variety at least ten days before it ripens on the tree. Aug.

For years we have been growing pear trees and today have the best and largest stock of pear trees in the U. S. Every tree is well branched and abundantly rooted. The soil of our nurseries is particularly adapted to their culture. No better trees than ours, either Standard or Dwarf, can be sent out from any Nursery. Dansville trees are the very best obtainable. The Pear will grow on almost any soil, but thrives best in a rather heavy clay or loam.

Pomona Nurseries, Dansville, N. Y.

New Orleans, La., April 3d.

Gentlemen: Received the trees all O. K. I only planted them yesterday. I am more than pleased with them—did not expect so fine a tree for such little money.

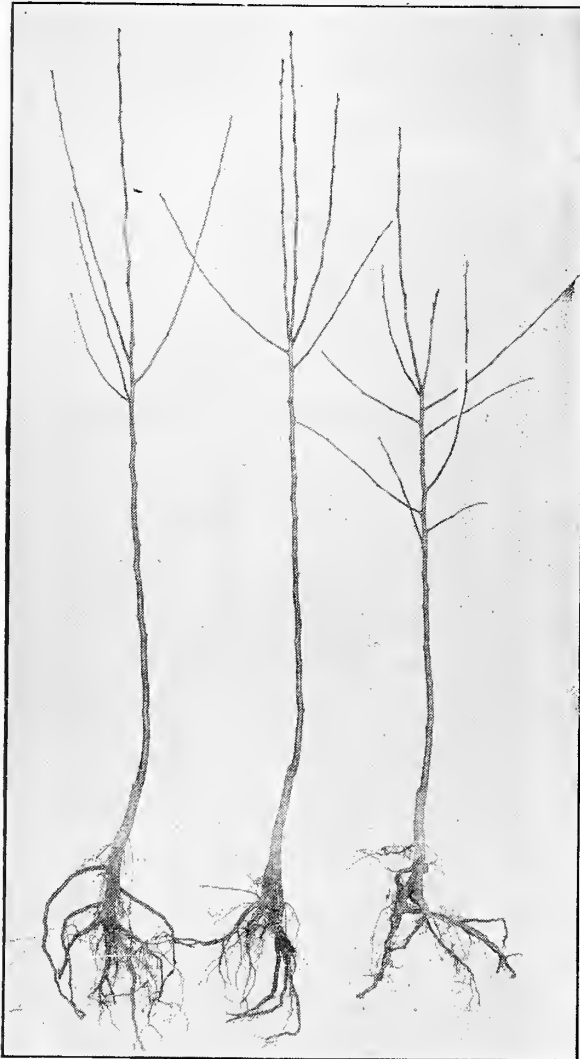
I surely will tell all the people interested in fruit trees about them. You say others charge 20c—not down here—35c and 50c for trees nothing like those you sent.

Yours truly,

MRS. C. ADAMS.

Pomona Prices For all varieties of 2 Year Selected Standard Pear Trees, Guaranteed True to Name, 3 to 4 ft. high, 10 cts. each, 10 for \$1.00, 100 for \$9.50.

We Do Not Sell the Stunted Little Trees Catalogued by Others. But Guarantee to Supply Healthy, Thrifty, Hardy, Well Rooted and Branched, Upland Grown Trees,—or Money Refunded.



Pomona Bartlett Pear Trees, 2 Year, 3 to 4 feet, well rooted and branched

Kieffer—A vigorous grower, an early and regular bearer and very productive, fruit large, rich yellow tinged with red, somewhat russety, flesh white, buttery and juicy. Good canning pear. Oct.

Buerre Clairgeau—Very large; light yellow, shaded with crimson and russet; an early and abundant bearer. Jan.

Howell—Large size; light-waxen yellow, sweet and melting; excellent quality; a strong and hardy grower and good bearer. Sept. to Oct.

Bartlett King of Pears

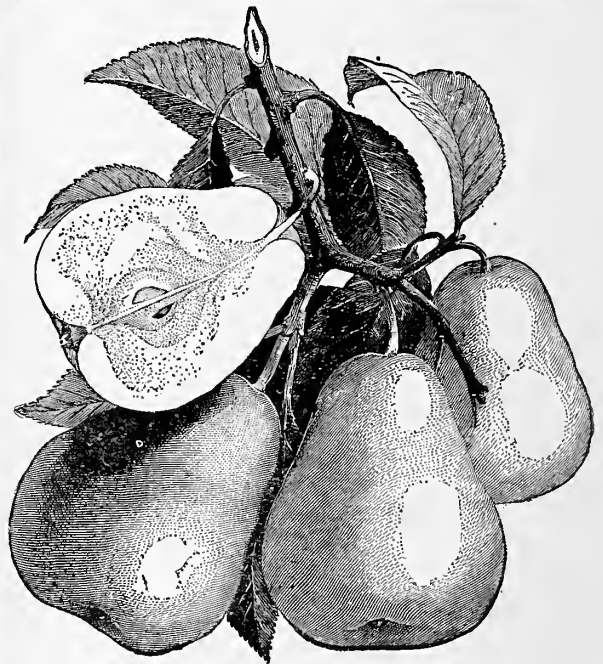
Bartlett—Large, coloring when fully ripe to waxen yellow with red blush; juicy, melting, highly flavored. The tree bears early and abundantly. May be grown either as dwarf or standard, but succeeds best as standard. Aside from the fact that it bears early, regularly and abundantly, the Bartlett pear is justly popular on account of its size, beauty and excellence. It originated in Berkshire, Eng., about 1770. When introduced to this country its name was lost. Since it was cultivated and discriminated by Enoch Bartlett, it became universally known as the Bartlett. Aug. and Sept.

POMONA PEAR TREE COLLECTION NO. 2

10 Trees 3 to 4 ft. for 90 cents

2 Anjou	2 Flemish Beauty
2 Bartlett	2 Seckel
2 Clapps Favorite	

Pomona Price 90 cents. Others Charge \$2.00



Don't fail to order for your garden the special Pear tree collection offered above, these trees will furnish a daily supply for your family, and help to make the home attractive.

Pomona Prices For all varieties of 2 Year Selected Standard Pear Trees, Guaranteed True to Name, 3 to 4 ft. high, 10 cts. each, 10 for \$1.00, 100 for \$9.50.

We Do Not Sell the Stunted Little Trees Catalogued by Others. But Guarantee to Supply Healthy, Thrifty, Hardy, Well Rooted and Branched, Upland Grown Trees,—or Money Refunded.



A Kieffer Pear Orchard Five Years After Planting

- ✓ **Lawrence**—Above medium size, yellow, tender and melting; quality best; one of the best winter pears. In season during mid-winter.
- ✓ **Garber**—Earlier than Kieffer; large and much better quality; free from blight, very hardy, immensely productive, bears young; excellent for canning and preserving. Sept. to Oct.
- ✓ **Sheldon**—Large size; roundish; greenish yellow, mostly covered with thin light russet; very juicy, melting, sweet and vinous; a fine grower and good bearer. Oct. to Nov.
- ✓ **Duchess d' Angouleme**—Very large; of greenish yellow, with patches of yellow and a dull red cheek; a vigorous and a strong grower and a good bearer while quite young. Oct. to Nov.
- ✓ **President Drouard**—Highly recommended for its rich flavor and great keeping qualities. Tree a vigorous grower. Fruit large and handsome; melting and juicy. Mar. to May.
- ✓ **Louise Bonne de Jersey**—Large size, pale green in the shade but overspread with brownish red in the sun; very juicy and melting with a rich and excellent flavor. Sept. to Oct.
- ✓ **Tyson**—Medium size; deep yellow at full maturity, slightly russet, with a crimson cheek; melting, juicy and fine flavored; a vigorous and rapid grower. Aug.
- ✓ **Seckel**—Small size; yellowish russet, with red cheek; flesh whitish, buttery, very juicy and melting. The richest and finest variety known and extensively planted. A prolific bearer. Sept. to Oct.
- ✓ **Flemish Beauty**—Large size; greenish yellow and brown; rich and juicy. An old and highly esteemed variety; a strong grower and a great bearer; hardy and desirable. Sept. to Oct.
- ✓ **Rossney**—Ripens about two weeks after Bartlett, averages larger, excellent keeper and shipper, uniform size, shape and color. Tree a vigorous grower.

✓ **Anjou**—One of the best known, most popular and profitable late pears. The tree is a vigorous grower, hardy and prolific; of large size, green in color, but often yellowing when thoroughly ripe. For late fall and early winter use, there is no better variety. Oct. to Jan.

✓ **Worden-Seckel**—Color, bright red on one side and light golden on the other. Very hardy; bears young, and is an enormous producer; ripens just after Seckel; a splendid keeper.

✓ **Clapp's Favorite**—Large size; pale lemon yellow; flesh fine grained, juicy, melting, rich and buttery, earlier than Bartlett and resembling the Flemish Beauty in

growth. It is equally hardy with Flemish Beauty; a good grower and productive. Care should be taken to pick the fruit at least ten days before it would ripen upon the tree. Aug. and Sept.

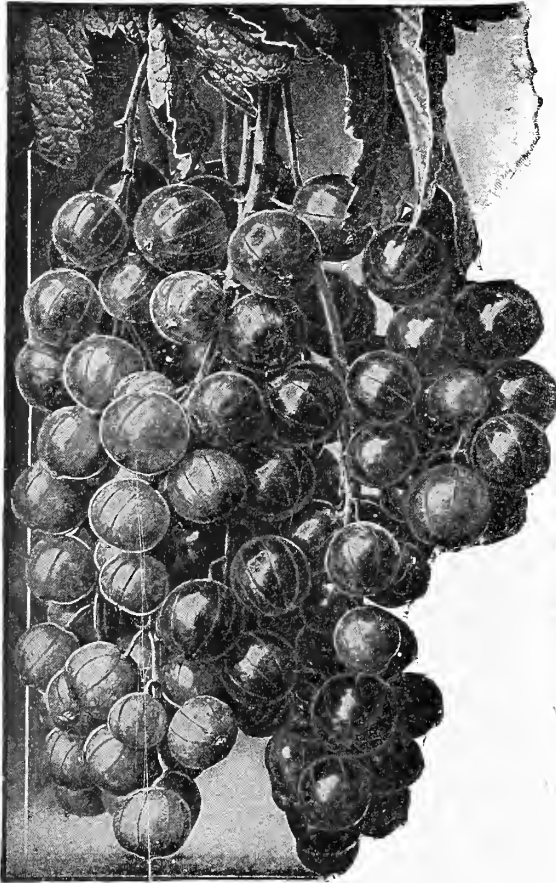
✓ **Wilder**—Handsome, melting, sweet, pleasant, with small core, fine grained, tender and juicy. Greenish yellow with brownish red cheeks. Aug.



Clapp's Favorite Pear

Pomona Prices For all varieties of 2 Year Selected Standard Pear Trees, Guaranteed True to Name, 3 to 4 ft. high, 10 cts. each, 10 for \$1.00, 100 for \$9.50.

We Do Not Sell the Stunted Little Trees Catalogued by Others. But Guarantee to Supply Healthy, Thrifty, Hardy, Well Rooted and Branched, Upland Grown Trees,—or Money Returned.



Fay's Prolific Currant

White Grape—Very large; yellowish white; sweet or very mild acid; excellent quality and valuable for the table. The finest of white sorts. Very productive.

Pomona Prices for all varieties of Currants 1 Year No. 1, 10c each, 10 for 60c, 100 for \$3.80, 1000 for \$23.75
2 Year No. 1, 10 for 75c, 100 for \$4.75, 1000 for \$34.25.

Garden Roots—Asparagus and Rhubarb

Conover's Colossal Asparagus—A standard variety of large size, tender and excellent quality. This variety is known everywhere. You will get more satisfaction out of a bed of asparagus than any other vegetable.

Palmetto Asparagus—A very early variety; even, regular size, of excellent quality. No home garden can be complete without it. This is a large growing variety, particularly delicious in quality. Plant in rows 3½ feet apart, and one foot apart in the row. Let the lower ends of the roots extend down as far as they can but do not cover the crowns deep when planting:

Pomona Price for 2 year old Asparagus Roots, 25 for 50 cents, 100 for 95 cents, 1000 for \$6.25.

Linnaeus Rhubarb—Large, early, tender and fine. The very best of all, which is a good paying, all season crop. There is a constant demand for it.

Pomona Price for 2 year old Rhubarb Roots, 10 cents each, 10 for 75 cents, 100 for \$4.75.

We Do Not Sell the Stunted Little Trees Catalogued by Others, But Guarantee to Supply Healthy, Thrifty, Hardy, Well Rooted and Branched, Upland Grown Trees,—or Money Refunded.



Select Varieties of Currants

The Currant is one of the most productive and best paying small fruit that we have. There is, I believe, more profit to the acre in currants than any other small fruit that can be planted. They can be planted between the rows of trees. Records show that Currants will yield, when planted in a field by themselves, 200 to 250 bushels per acre and the selling price is from \$3.00 to \$4.00 per bushel.

Plant in rows four feet apart each way. Keep the ground mellow, free from weeds, and in a good state of fertility and prune freely every spring.

Wilder (President Wilder)—A vigorous grower, berries large to very large, bright red; excellent with a mild sub-acid flavor. Ripens early and remains bright and firm until very late. Because of its exceedingly vigorous growth, great productiveness, high quality and remaining good so long after ripening, I recommend this as one of the best red currants for both table and market.

Black Champion—From England, pronounced to be the finest Black Currant. The bushes grow very large and the flavor of the fruit excellent.

Cherry (Red)—Very large; deep red; bunches short. Plants erect, stout, vigorous and productive.

Fay's Prolific (Red)—A cross between Cherry and Victoria. Of large size, fine flavor, and claimed to be twice as prolific as the Cherry. Highly commended by those who have seen or had experience with it.

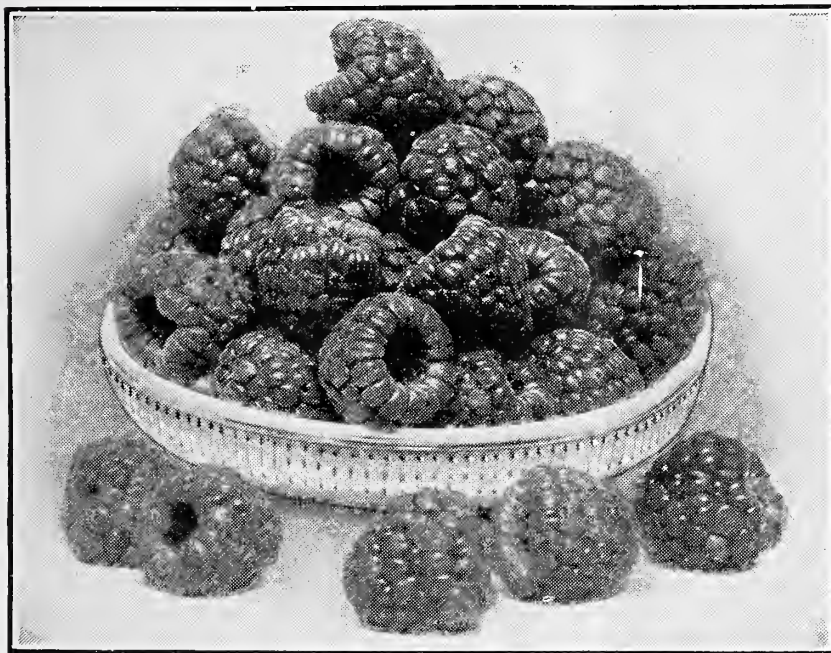
Lee's Prolific (Black)—The fruit is large and of superior quality; the bush is a vigorous grower and productive.

Perfection—A cross between Fay's Prolific and White Grape. Color, beautiful bright red; size as large or larger than the Fay, the clusters averaging longer.

Red Cross—A strong growing variety. Cluster long; berry medium to large, bright red; quality good to best. Very productive.

Victoria (Red)—A valuable variety, ripening two or three weeks later than the others, and continuing in fine condition for a long period. Bunches extremely long, berries of medium size, brilliant red and of the highest quality.

Select varieties of Red and Black Raspberries



St. Regis Everbearing Raspberry "Early till Late"

Coming immediately after Strawberries, when there is a dearth of other fresh fruit. Raspberries are equally desirable for planting in the garden for home use, and in the field for market. They are easily cultivated. Beds seldom require renewing. Their season of ripening is long. The fruit bears transportation well, and aside from the demand for it for immediate consumption, it brings highly remunerative prices for drying and canning.

Plant in good soil, and manure it from time to time freely. The hills should not be less than four feet apart each way, with two or three plants on a hill. Cut out the old and weak shoots each year, preserving not over six for fruiting. Surplus suckers take strength from the bearing plants. They should be cut away or hoed up frequently.

✓ **St. Regis Everbearing Raspberry**—Too many farm homes are still dependent upon the fence rows and waste places of the farm for their supply of raspberries. No fruit is easier to manage than this one. The plants need very little care where only the home table is to be supplied. No other fruit can take the place of the raspberry, which has a flavor and deliciousness all its own. The variety illustrated herewith is the St. Regis which is said to produce fruit for four months; very hardy, vigorous sort, with brilliant crimson berries larger than either Cuthbert or Loudon, and is also remarkably productive. It is one of the comparatively new varieties.

✓ **Ohio**—A very strong growing hardy sort; fruit medium to large, productive; valuable for market and much esteemed for drying.

✓ **Columbian**—A strong grower; canes often ten to fifteen feet in length and over an inch in diameter. Never suckers from the roots. Very hardy. Fruit very large, dark red, bordering on purple; one of the most productive.

✓ **Shaffer's Colossal Purple**—An immense raspberry, both in cane and fruit. Canes are of wonderful vigor and size, hardy and enormously productive; berries are very large and of a purplish color.

✓ **Cuthbert** (The best red raspberry for market)—Large size, deep rich crimson; firm; of excellent quality. A vigorous grower, entirely hardy, and immensely productive. No fruit grower can afford to omit planting Cuthbert. During the last year or two there has been a great scarcity of red raspberries, and the price has advanced so that this year the price opened at twenty cents per quart, and did not go lower than fifteen cents per quart.

✓ **Kansas**—A strong, vigorous grower; jet black, firm and delicious; larger than Gregg; the hardest black cap known, successfully withstanding the winters of Canada. One of the very best.

✓ **Cumberland** (Black)—Hardy; productive; fruit enormous; quality unsurpassed. The great firmness of the berry makes it a splendid shipper. Ripens just before the Gregg.

✓ **Gregg**—Of good size, fine quality, very productive and hardy. It takes the same position among black caps as Cuthbert among the red sorts. No one can afford to be without it.

✓ **Nemaha**—An excellent, large, black, good quality, late variety. The very fact that it is considered to be better than the Gregg is enough to cause it to be planted by every grower of black raspberries desiring a late variety.

Pomona Price for all varieties of Raspberries on this page, 10 for 50c, 100 for \$2.40, 1000 for \$14.25

We Do Not Sell the Stunted Little Trees Catalogued by Others. But Guarantee to Supply Healthy, Thrifty, Hardy, Well Rooted and Branched. Unland Grown Trees,—or Money Refunded.



Concord Grape Vine

Select Varieties of Grapes

Grapes are planted anywhere and everywhere—to trail over the sides of houses, on arbors, sheltering paths, fences, etc.; even people who live in the crowded parts of cities may have them.

✓ **Diamond White**—The leading early white grape, ripening before Moore's Early. White, with rich yellow tinge; juicy, few seeds, almost free from pulp, excellent quality; above medium size, adheres firmly to stem.

Chas. A. Green White—Claimed by the introducer to be a new and valuable variety, a vigorous grower and an enormous yielder of very large and beautiful clusters of excellent fruit.

✓ **McPike**—This mammoth black grape has been exhibited in all parts of the country. Its great size, fine flavor and beauty creating quite a sensation. The bunches are large, even and compact.

Worden (Black)—A splendid grape of the Concord type, larger, better quality and earlier. Vines vigorous, hardy and productive.

✓ **Brighton**—Perhaps the best red grape in cultivation. Bunch large; compact; strong grower and very productive; quality good.

POMONA GRAPE COLLECTION NO. 6

10 2 Year Grape Vines for 75 Cents

2 Concord	2 Worden
2 Niagara	1 E. A. Green
1 Brighton	1 Delaware
1 Campbells Early	

Pomona Price 75 Cents Others Charge \$2.00

✓ **Concord**—Bunch large, shouldered, compact; berries large, covered with a rich bloom. Vine a strong grower, very hardy.

✓ **Campbell's Early (Black)**—Strong grower, with large, healthy foliage; productive, its keeping and shipping qualities are equaled by no other early grape.

Moore's Early (Black)—Bunch and berry large, round with heavy blue bloom; vine exceedingly hardy. Its earliness makes it desirable for an early market.

Agawam (Roger's No. 15) (Red)—Berries very large, thick skin, pulp soft, sweet, sprightly, very vigorous, ripens early.

Diamond—Leading early white grape, ripening before Moore's Early.

Pocklington—One of the largest and most showy white grapes of the Concord type.

Lindley (Roger's No. 9)—Berries medium to large; flesh tender, sweet and aromatic; ripens early.

Catawba—Berries large, round; when fully ripe of a dark copper color.

Salem (Roger's No. 53)—Bunch large, compact; berry large, round, coppery red, tender, juicy. Ripens with Concord.

Delaware—Red, finest flavor. Bunch and berry small, compact; sweet, thin skin; slow grower; requires good soil.

✓ **Niagara White**—Occupies the same position among the white varieties as Concord among the black; the leading profitable market sort. Bunch and berries large, greenish white changing to pale yellow when fully ripe. Skin thin but tough; quality much like Concord.



Niagara Grape

**Pomona Prices 1 year No. 1, 10 cents each, 10 for 75 cents, 100 for \$4.00.
of Grape Vines 2 year No. 1, 10 for \$1.00, 100 for \$5.25.**

We Do Not Sell the Stunted Little Trees Catalogued by Others. But Guarantee to Supply Healthy, Thrifty, Hardy, Well Rooted and Branched, Upland Grown Trees,—or Money Refunded.



Eldorado Blackberry

Select Varieties of Blackberries

This profitable fruit should be planted for garden use in rows five feet apart, with plants three feet apart in rows; for market, in rows six feet apart, with plants three feet apart in the rows. Give the plants the same cultivation as for raspberries.

Eldorado—The best all-round berry yet produced, combining nearly all the good qualities found in a blackberry. The vines are very hardy and vigorous, enduring the winters of the far Northwest without injury, and their yield is enormous. The berries are large, jet black, borne in large clusters and ripen well together; they are very sweet, melting, have no hard core and keep for eight or ten days after picking with quality unimpaired.

Snyder—Extremely hardy; enormously productive medium size.

Agawam—Ripens earlier than other kinds, and has a flavor similar and equal to the wild berry. Hardy.

Ancient Briton—Bush hardy and very productive. One of the best old sorts, and still grown in immense quantities by successful market gardeners.

Blower—Large size, jet black, good shipper, best quality, unexcelled productiveness are the main characteristics of this splendid new sort.

Early Harvest—The earliest blackberry and valuable for market. The canes are strong and upright in growth and enormously productive. Berries sweet and of the highest quality.

Erie—Bush vigorous; berry large, round; good quality; early and productive. An excellent market sort.

Lawton—Very large, excellent quantity, and an abundant bearer.

Pomona Price for all Varieties of Blackberry Plants, 10 for 50 cts., 100 for \$2.85, 1000 for \$21.30

Select Varieties of Gooseberries

Downing—Greenish white; bush very hardy, with stiff, strong shoots; foliage heavy, covering the fruit from the sun, bears most abundantly and is profitable for market.

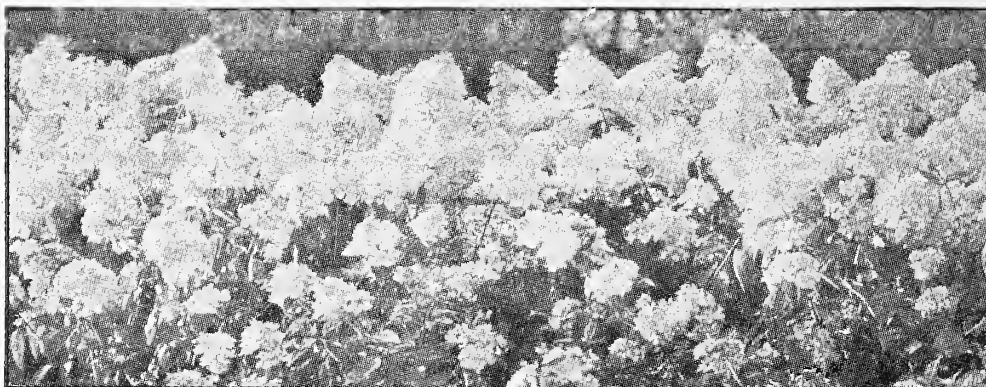
Houghton—Bush very productive. Fruit medium size, pale red, tender and good.

Red Jacket (Josselyn)—A new red berry of large size and good quality; hardy and very productive.

Pomona Prices of 1 year 10 cents each, 10 for 85 cents, 100 for \$6.20; Gooseberry Bushes 2 year No. 1, 100 for \$8.10.

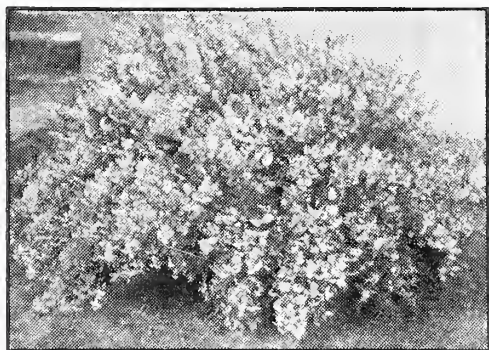
We Do Not Sell the Stunted Little Trees Catalogued by Others. But Guarantee to Supply Healthy, Thrifty, Hardy, Well Rooted and Branched, Upland Crown Trees,—or Money Refunded.

Select Varieties of Hardy Flowering Shrubs



A HEDGE OF HARDY BUSH HYDRANGEA

Hardy Bush Hydrangea (*Paniculata Grandiflora*)—We urge our friends to plant the Hydrangea. Plant it for the following reasons: It is hardy, enduring the severest winters out doors without protection. It is easily transplanted, not one in a thousand dying. *It never fails to blossom the first year planted*; no matter how small the plant, it immediately buds out in great profusion of flowers, many of them as large as the head of a full grown child. When the specimens first open they are greenish white, later they turn to a pure white, and still later to a delicate pink.



Deutzia, Pride of Rochester

Deutzia, Pride of Rochester—A new variety raised from *Deutzia Crenata*, and exceeding all others in size of flowers, length of panicles, profuseness of bloom and vigorous habit: a charming acquisition to the list of Deutzias.

Deutzia Double Flowering (*Crenata*)—Flowers double white, tinged with rose. One of the most desirable flowering shrubs in cultivation. Their hardiness, luxuriant foliage and profusion of attractive flowers, render them deservedly among the most popular of flowering shrubs. The flowers are produced in June in racemes four to six inches long.

Viburnum Opulus (High Bush Cranberry)—Handsome, dense, brilliant green foliage; a rich setting of large bunches of crimson berries which enliven.

Syringa—European Fragrant or “Mock Orange” (*Philadelphia Coronarius*)—A well-known, very hardy shrub, with snowy white flowers which are very fragrant.

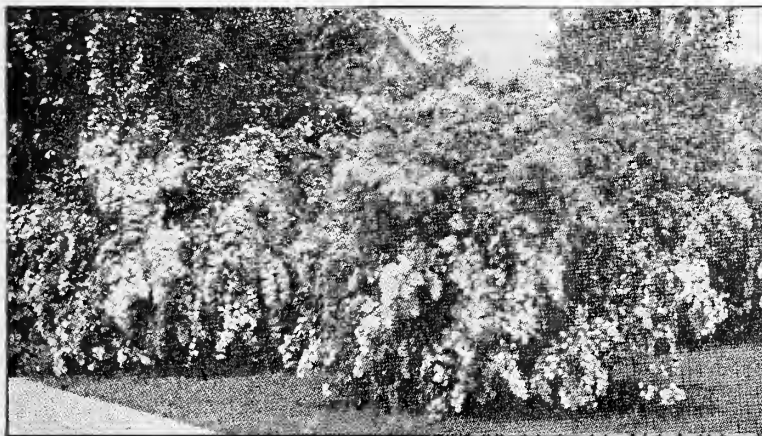


Syringa—Mock Orange

Pomona Price for all varieties of Flowering Shrubs 15 to 18 inches high, 10 cents each, 10 for \$1.00.

We Do Not Sell the Stunted Little Trees Catalogued by Others. But Guarantee to Supply Healthy, Thrifty, Hardy, Well Rooted and Branched, Upland Grown Trees,—or Money Refunded.

Select Varieties of Hardy Flowering Shrubs



SPIRAEA VAN HOUTTEI, the most attractive hardy flowering shrub

Spiraea Billardi—Blossoms nearly all summer; rose colored; fine; showy.

Spiraea Callosa—Desirable because it blooms nearly all summer. The flowers are rose-colored, borne in panicles. A very free grower.

WEIGELAS

Shrubs of erect habit while young, but gradually spreading and drooping as they acquire age. They produce in June and July superblarge, trumpet-shaped flowers of all shades and colors, from pure white to red. In borders and groups of trees they are very effective, and for margins the variegated-leaved varieties are admirably suited, their gay-colored foliage contrasting finely with the green of other shrubs.

Weigela Rosea (Rose-colored Weigela)—An elegant shrub, with fine rose-colored flowers; of erect, compact growth; blossoms in June.

Weigela Candida (White-flowered Weigela)—Of vigorous habit, an erect grower, becoming in time a large-sized shrub; flowers pure white and produced in great confusion in June, and the plants continue to bloom through the summer, even until autumn.

POMONA SHRUB COLLECTION

6 Flowering Shrubs for 58 cents

- | | |
|---------------------|------------------------------|
| 1 Hydrangea | 1 Spiraea Van Houttei |
| 1 Double Red Althea | 1 Deutzia Pride of Rochester |
| 1 Purple Lilac | 1 Weigela Rosea |

Pomona Price 58 cents. Others Charge \$1.10

SPIRAEAS

A class of low, compact, easily grown flowering shrubs, vigorous and hardy as a class, with blossom periods extending over a wide range of seasons. We offer the following varieties:

Spiraea Van Houttei (S. Van Houttei)—The most showy of all the Spiraeas, and one of the very best flowering shrubs in cultivation. The plant is a rather tall upright grower, with long slender branches that droop gracefully with their weight of foliage and flowers. Flowers pure white, in great clusters and whorls, forming cylindrical plumes two or three feet long. This is one of the hardiest of all the Spireas.

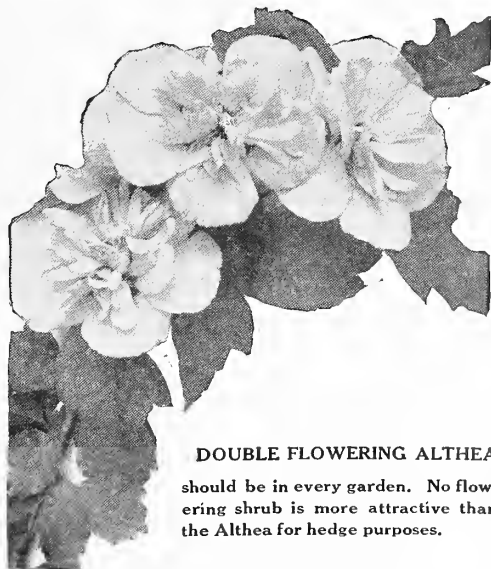
Double Flowering Althea (Rose of Sharon)—One of the most showy

flowering shrubs; strong, erect growing, with large bell-shaped, double flowers of striking color, borne abundantly in August and September when most other shrubs are out of bloom. I offer them in the three colors all being double blossoms.

Double Red—(Rubra flore pleno.)

Double Purple—(Purpurea flore pleno.)

Double White—(Alba flore pleno.)



DOUBLE FLOWERING ALTHEA

should be in every garden. No flowering shrub is more attractive than the Althea for hedge purposes.

Pomona Price for all varieties of Flowering Shrubs 15 to 18 inches high, 10 cents each, 10 for \$1.00

We Do Not Sell the Stunted Little Trees Catalogued by Others. But Guarantee to Supply Healthy, Thrifty, Hardy, Well Rooted and Branched, Upland Grown Trees,—or Money Refunded.

Select Varieties of Hardy Flowering Shrubs and Hedge Plants

LILACS

Best beloved of all the old-time garden shrubs, whose flowers never fail to charm with their delicate beauty or refresh the soul with their tender fragrance. New varieties are occasionally produced, with deeper coloring and larger form, so that our lists present a wide and varied offering.

Lilac Purple—The well-known variety, one of the best. A good grower; flowers and young wood fragrant; purple.

Lilac White—A very desirable contrast to the purple; those who have one should have the other.

Barberry Purple Leaved—A very handsome shrub, growing from three to five feet high, with violet-purple leaves and fruit.

Golden Glow or Cone Flower—Among the most valuable hardy plants, growing from 1½ to 7 feet in height, producing showy golden yellow flowers. Useful for cut flowers.

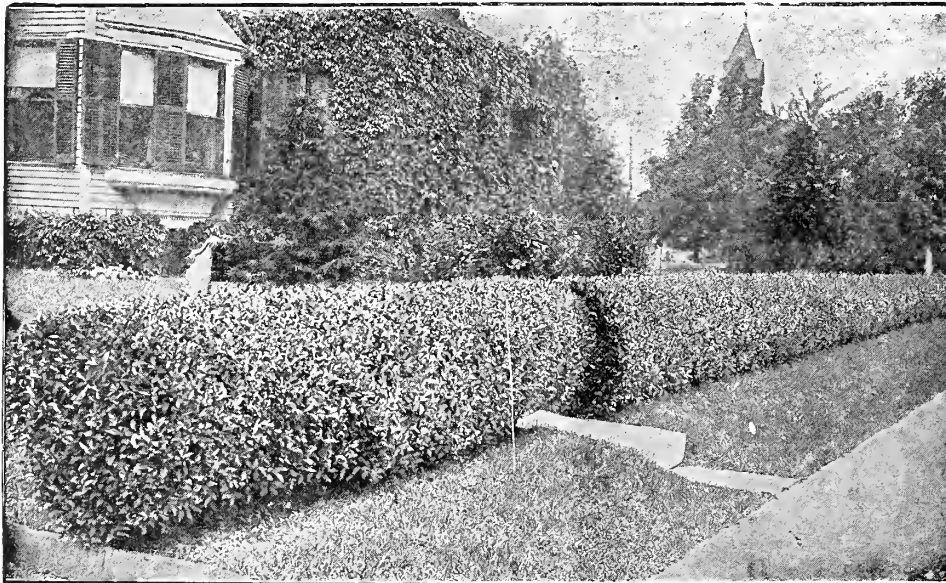
Pomona Price for all varieties of Flowering Shrubs 15 to 18 inches, 10 cents each, 10 for \$1.00.

California Privet—A vigorous-growing variety, of fine habit, thick, glossy, nearly evergreen leaves. Of all ornamental hedge plants this is the most highly prized. If cut to the ground one or two years after planting, it makes a very thick hedge right from the bottom, sending up many strong shoots. The *Privet* in all its varieties deserves attention as an ornamental plant. It is almost an evergreen, and grows freely in all soils; compact and regular in its form, and bears shearing to any extent. The leaves are a rich green, and will remain on the plants up to Christmas, and if they are a little sheltered they will keep almost all winter.



Hedge of Barberry Thunbergii

Barberry Thunbergii—A shrub of marked excellence on account of its bright green foliage, which changes to brilliant colors in the fall, and its bright scarlet berries, which are very conspicuous throughout the winter. Their habit is dwarf and regular spreading. Grows well in the shade and extensively used in landscape work. Is very hardy, never known to winter-kill. **Strong Plants 12 to 18 inches, 10c each; 10 for \$1.00, 100 for \$9.50.**



Price of California Privet 18 to 24 inches high,
 10c each,
 75c for 10,
 \$3.80 for 100,
 \$28.50 for 1000.

Extra Selected California Privet
 2 to 3 feet high,
 \$1.00 for 10,
 \$4.75 for 100,
 \$38.00 for 1000.

CALIFORNIA PRIVET Makes the Best Ornamental Hedge

We Do Not Sell the Stunted Little Trees Catalogued by Others. But Guarantee to Supply Healthy, Thrifty, Hardy, Well Rooted and Branched, Upland Grown Trees,—or Money Refunded.



DOROTHY PERKINS ROSE

Dorothy Perkins—The flowers are borne in clusters of thirty or forty, and sometimes even fifty and sixty. The blooms are large for a Rose of this class, very double, sweet-scented and of a beautiful shell-pink; it is also entirely hardy. A valuable Rose.

Crimson Rambler—Climbing Rose. An exceedingly vigorous and rapid grower, making shoots 8 to 10 feet in one season, and when in bloom commands admiration by the gorgeous display of its brilliant crimson flowers. Very hardy, having withstood 10 degrees below zero without covering.

Pomona Price for all varieties of Rose Bushes 2 Year Second Size, 10 cents each, 10 for \$1.00.

(Not over 10 Rose Bushes to any one person)

We Do Not Sell the Stunted Little Trees Catalogued by Others. But Guarantee to Supply Healthy, Thrifty, Hardy, Well Rooted and Branched, Upland Grown Trees,—or Money Refunded.

Select Varieties of Strawberries

✓ **Corsican** is a great strawberry for many reasons. First, it is the biggest berry; second it is the brightest and best in color; third it is a great yielder, and producer; fourth, and the most important of all, the foliage is exceedingly vigorous and leathery, resisting fungus, drought, weeds, and even neglect of cultivation.

✓ **Senator Dunlap**—One of the most desirable sorts. Very productive, plants strong and thrifty, producing immense quantities of large, fine, juicy fruit which brings highest prices.

✓ **Sample**—Late, of large size and yields enormous quantities of high quality bright red berries. A standard shipping variety.

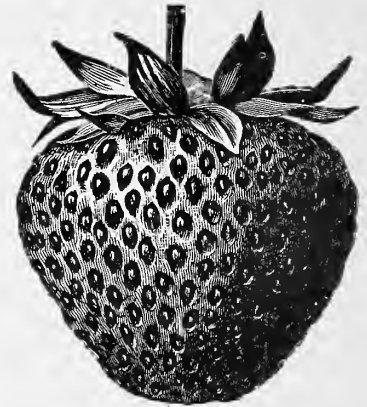
NOTE:—Do not order strawberry plants sent by freight. My patrons order from 50 to 500 trees, and 500 or more strawberry plants by freight. Now the trees should go by freight and the strawberries by express, or small lots by mail. In all cases when desired by mail, add postage at rate of 20c per 100. Always state plainly that the strawberry plants are to be sent by express or mail.

✓ **Jessie**—Large, handsome, roundish conical; firm; of good quality. Plant vigorous and productive.

One of the best for home market. Season early to medium.

✓ **Brandywine**—A very late and firm berry; a good shipper, good canner, a good all round strawberry. Season medium to very late.

✓ **McKinley**—Medium to late. Fruit large and firm, of round, conical shape and bright red color which extends clear through the meat. Always attractive and of highest quality.



Brandywine Strawberry

Pomona Price Strawberry Plants, 25 for 75 cts., 100 for \$1.20, 1000 for \$7.15

Pomona Premiums for Early Orders



CLUMP OF PÆONIES

Pomona Pæonie Premium

1 Pæony=Your Selection of Color

**Red, White (Given with every Cash Order of \$2.50
or Pink (received on or before April 1st, 1918.**

This applies to orders placed at the each and ten rates only. Be sure to mention color selected when ordering.

Pæonies (The Queen of Spring Flowers)—The Pæonie can be planted in the spring or fall. Very popular everywhere, being very hardy in root and more easily cultivated than many flowering plants. Their flowers are very lasting; some of them are finely finished and exquisitely colored. Plant in deep, rich, well prepared soil, covering the bulbs but an inch or two. We plant them in beds and in clumps. They rival the rose in beauty and fragrance. **Don't fail to take advantage of this Special Offer.**

No Cash Discount allowed with any premium offered.

No Premium allowed on orders placed at the 100 and 1000 rates.

THIS SPECIAL OFFER EXPIRES APRIL 1st, 1918.

3%

SPECIAL CASH DISCOUNT

IN PLACE OF PREMIUM OFFERED

3%

If your order does not amount to \$2.50 or you prefer to take advantage of a special cash discount in place of the premium offered, we will allow on all cash orders for shipment this spring a special cash discount of three per cent.

We Do Not Sell the Stunted Little Trees Catalogued by Others. But Guarantee to Supply Healthy, Thrifty, Hardy, Well Rooted and Branched, Upland Grown Trees,—or Money Refunded.

Trees of a Larger Size than Catalogued

We have had so many calls for a larger size tree than we catalogue that we deem it best to price below the two grades sold by others larger than **we sell at 10c each.**

We can supply all varieties listed in Catalogue at the following prices.

Standard Apple Trees

					EACH	TEN	HUNDRED
Largest Size	2 Year	6 to 7 Feet	$\frac{3}{4}$ and up	XXX	35	\$3.00	\$20.00
Medium Size	2 year	5 to 6 Feet	$\frac{5}{8}$ to $\frac{3}{4}$	XX	30	2.50	17.00

Dwarf Apple Trees

					EACH	TEN	HUNDRED
Largest Size	2 year	4 to 5 Feet		XXX	35	\$3.00	\$3.00
Medium Size	2 Year	3 to 4 Feet		XX	30	2.50	2.50

Peach Trees

					EACH	TEN	HUNDRED
Largest Size	1 Year	5 to 6 Feet	$\frac{1}{16}$ and up	XXX	25	\$2.00	\$12.00
Medium Size	1 Year	4 to 5 Feet	$\frac{7}{16}$ to $\frac{1}{16}$	XX	18	1.50	9.00

Sour and Sweet Cherry Trees

					EACH	TEN	HUNDRED
Largest Size	2 Year	6 to 7 Feet	$\frac{3}{4}$ and up	XXX	35	\$3.00	\$24.00
Medium Size	2 Year	5 to 6 Feet	$\frac{5}{8}$ to $\frac{3}{4}$	XX	30	2.50	19.00

Standard Pear Trees

					EACH	TEN	HUNDRED
Largest Size	2 Year	6 to 7 Feet	$\frac{3}{4}$ and up	XXX	35	\$3.00	\$19.00
Medium Size	2 year	5 to 6 Feet	$\frac{5}{8}$ to $\frac{3}{4}$	XX	30	2.50	16.00

Dwarf Pear Trees

					EACH	TEN	HUNDRED
Largest Size	2 Year	4 to 5 Feet	$\frac{5}{8}$ and up	XXX	25	\$2.00	\$15.00
Medium Size	2 Year	3 to 4 Feet	$\frac{1}{2}$ to $\frac{5}{8}$	XX	20	1.75	12.00

Plum Trees

					EACH	TEN	HUNDRED
Largest Size	2 Year	6 to 7 Feet	$\frac{3}{4}$ and up	XXX	35	\$3.00	\$20.00
Medium Size	2 Year	5 to 6 Feet	$\frac{5}{8}$ to $\frac{3}{4}$	XX	30	2.50	17.00

Quince Trees

					EACH	TEN	HUNDRED
Largest Size	2 Year	4 to 6 Feet	$\frac{1}{16}$ and up	XXX	35	\$3.00	\$22.50
Medium Size	2 Year	3 to 4 Feet	$\frac{7}{16}$ to $\frac{1}{16}$	XX	30	2.50	18.00

Special Cash Discount of 8% allowed on all orders placed at above prices.

Don't fail to mention the size of trees needed when placing your order.

**TO BE STRONG
TO BE LIBERAL
TO BE PROMPT**

To serve its patrons well and truly, holding their interests identical with its own; to welcome small orders as cordially as the large ones; to be satisfied with small margins of profit, and to give its customers healthy, hardy, true-to-name nursery stock, carefully selected and handled, is the policy of the

Pomona Ten Cent Nurseries, Inc.



**OUR TREES ARE OF
STANDARD QUALITY**

While we do not claim to be the largest growers in New York State, neither have we been in business as long as claimed by others, we do know that the stock grown and shipped by us is equal to that sold by our competitors here and elsewhere, at a much higher price. **We guarantee it to be well grown, healthy, hardy, well rooted and branched, true to name, free from disease and not stunted stock as some claim with whom we compete, who are using the same grade and selling it at much higher prices.**

**Read What our Patrons Have to
Say About Our Quality Stock**

POMONA



**POMONA TEN CENT
NURSERIES INC.
DANSVILLE, N.Y.**