

## **Historic, Archive Document**

Do not assume content reflects current scientific knowledge, policies, or practices.



62.83

Plant Industry

1917/18

LIBRARY  
 RECEIVED  
 FEB 16 1918  
 U. S. Department of Agriculture  
 Answered . . . . .

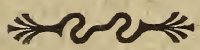
LIBRARY  
 RECEIVED  
 U. S. Department of Agriculture

SEASON 1917-1918



**A. W. STEINBRING**

**NURSERYMAN**



**NEW BRAUNFELS,  
 TEXAS**

Zeitung Print, New Braunfels, Texas

## Please Read Before Ordering

---

When ordering, always write your name and address plainly. Shipping season begins about November 15, and extends to March 10.

We fill orders as soon as received if possible.

Packing is done in the best manner, and we bear all cost of same.

We guarantee every tree and plant true to name, but mistakes are liable to occur. In such cases we will refund the money paid or refill the order free, but not for a greater sum than that originally received.

Terms are cash with order. Money can be safely sent either by postoffice money orders, express money orders, or in a registered letter.

Transportation charges are not paid by us, but we always add extra trees and plants to partly or wholly pay the cost of same.

We have the I. & G. N. and M. K. & T. railroads, and the Wells-Fargo and American express companies. Directions for marking and shipping orders should be given. If express office is different from postoffice, this should be stated on the order sheet.

Mistakes, if any are made by us, will be cheerfully adjusted, if reported.

Small trees, plants, etc., can be sent by Parcels Post, but sufficient postage must be sent with order; all larger trees and plants can be shipped much safer by Express, at low rates.

If we are out of a variety ordered, and you allow us to put in some other, we will try to give superior value, but if you prefer the money returned, please say so in your order.

Except where particular varieties are wanted, you will get the best assortment by leaving the selection, in part at least, to us.

We have no agents whatever. This book is our only salesman.

Address all letters etc.

**A. W. STEINBRING,**  
NEW BRAUNFELS, TEXAS.

P. O. BOX 573.

R. F. D. ROUTE 2.

# A. M. Steinbring

Nurseryman



Season 1917 - - 1918



New Braunfels, Texas

# GREETING

---

We take great pleasure in handing you our new edition of our Annual Nursery Catalog of first-grade "stuff" with complete descriptions and prices; and if you buy of me through this "Silent Salesman", I will prove to you by fair and square dealings that your confidence is not misplaced.

We keep our variety lists confined to such sorts as are best adapted to the different sections of our territory, offering only such varieties as should produce the best results under ordinary conditions.

We have a fine lot of trees, plants, bulbs, etc., of the following varieties, and my prices are as low as can be made.

We guarantee that your orders will be filled with but first class stock, and same be delivered in good condition to R. R. or Express Office here.

I wish to thank all my friends and customers for their liberal patronage and solicit a continuance of the same. With best wishes,

Yours very truly,

**A. W. STEINBRING.**



## G r u ß

---

Hiermit überfende ich Ihnen die neue Ausgabe meines jährlichen Katalogs mit ausführlichen Beschreibungen und Preisangaben, und wenn Sie durch diesen „stillen Verkäufer“ von mir kaufen, werde ich durch reelle und ehrenhafte Handlungsweise mich Ihres Vertrauens wert zeigen.

Ich danke allen meinen werten Freunden und Kunden für ihre mir bisher zuteilgewordene liberale Kundenschaft und hoffe, daß sie mich auch fernerhin mit ihren Aufträgen beehren werden. Mit besten Wünschen,

Hochachtungsvoll,

**A. W. Steinbring.**

# Fruit Trees

## Peaches

There is no other fruit that is more successfully grown in Texas than peaches, as they succeed in almost any soil. Plant from 14 to 18 feet apart each way, and give clean cultivation. Don't fail to cut trees back to about 2 to 3 feet when planted.

While there are many hundreds of varieties of peaches, in the following list will be found the cream of the lot. Date of ripening is about the average at New Braunfels.

Rein Obst wird in Texas mit besserem Erfolge gezogen als Pfirsiche; sie gedeihen fast in jedem Boden. Man pflanze die Bäume 14 bis 18 Fuß weit auseinander in jeder Richtung und kultiviere, so daß das Land rein bleibt. Beim Pflanzen schneide man auf 2 bis 3 Fuß zurück. Aus hundertten von Sorten wird man folgende als die besten finden. Die angegebene Reifezeit ist die durchschnittliche für New-Braunfels.

Prices, except as noted: 4 to 6 feet, 25 cents each; \$2.50 per 12; 2 to 4 feet, 20 cents each; \$2.00 per 12.

Write for prices of varieties in larger quantities.

## FREESTONE

**May-Flower.** A beautiful "red all over" peach, of good size and good flavor. A good bearer for so early a variety, as it ripens with or before Victor.

**Japan Dwarf Blood.** Bright color; tree grows not quite so tall as other varieties; sure bearer. Ripens in May.

**Greensboro.** A large white peach with red cheek; fine flavor. Ripens with or before Alexander. One of the best early peaches.

**Alexander.** Large red, of good quality. Ripens the last days of May.

**Triumph.** The best early yellow peach; excellent quality, sure bearer. June 5 to 15.

**Bokara.** Large, of good quality and bears every year; very hardy. June 1 to 10.

**Honey.** Medium size, the sweetest peach that grows; a good bearer. June.

**Katherine.** One of the finest peaches we have to ripen by the end of June; large, white with red cheek, flesh firm and of excellent flavor; a good bearer. 25 cents per tree, \$2.50 per 12; extra large trees, 50 cents each, \$5.00 per 12.

**Early Belle.** A fine, red-cheeked peach, very large and of finest flavor; tree is a strong grower and productive. June and July.

**Carman.** Very large and of finest flavor; productive. Ripens June 10 to 15.

**Pallas.** White with red cheek, of good quality; annual bearer. June and July.

**Lula Crawford.** A peach much resembling "Thurber", only ripening a few days earlier. Tree also a strong grower and, can say, a sure bearer. Fruit of best quality.

**Belle of Georgia.** Large, white and of fine flavor; bears well. July.

**Elberta.** One of the best for home or market; large, yellow, fine flavor; good bearer. July 15 to 25.

**Capt. Ede.** A large white freestone, of good flavor. The tree is one of the strongest growers and bears well. Ripens in July.

**Thurber.** Large, white flesh, red cheek; sure bearer. July.

### CLINGSTONE

**Mamie Ross.** Large size, of good quality; bears well. Middle of June.

**Gen. R. E. Lee.** A large, cream-colored peach; good bearer. June and July.

**Comal Cling.** Large, yellow with red cheek. July.

**Old Mixon Cling.** One of the best clingstone peaches, juicy and of finest flavor; productive. August.

**Weaver.** A large yellow Clingstone of very good quality. Good bearer. One of the best peaches that ripen in September.

**Heath Cling.** A large, white peach, good quality. September.

**Stinson's October.** Large, white with red cheek, flesh firm and juicy. October and November.

**Seedling Peaches.** 2 to 3 feet, 10 cents each; \$1.00 per 12. 3 to 5 feet, 15 cents each; \$1.50 per 12.

---

### Plums

Plant same as peaches, and give frequent cultivation. There is no other fruit that bears at as early an age as the plum; some varieties bear fruit when but one year old. Plums seem more fruitful when there are different varieties in an orchard, as they pollinize each other more perfectly.

All you want is the best, and they will be found in the following list.

Man pflanze wie Pfirsiche und bearbeite häufig. Kein anderer Obstbaum trägt so jung wie der Pfirsichenbaum; einige Sorten tragen schon,



wenn ein Jahr alt. Pflaumenbäume scheinen besser zu tragen, wenn verschiedene Sorten durcheinander gepflanzt werden, da die Blüten dann vollständiger befruchtet werden.

Prices: 4 to 5 feet, 30 cents each; \$3.00 per 12; 2 to 4 feet, 20 cents each; \$2.00 per 12.

For larger quantities, prices upon application.

**Funk's Early** (Hybrid). This is the best early plum. Red, heart-shaped, of good size, sweet and firm, very prolific; ripens middle of May.

**McCartney** (Native). Large, golden yellow color, egg-shaped, productive. May.

**Wild Goose** (Native). Large red, very good; good bearer. June.

**Happiness** (Hybrid). A new plum. The fruit is very large, color glowing red, and in quality it is rarely equaled. It is really the finest plum I ever saw. Tree is a good grower and very productive.

**Excelsior** (Hybrid). A variety which has proven its value in nearly all sections of the South. Fruit of good size; round, reddish purple; flesh juicy, melting, and sweet. Does remarkably well.

**Botan** (Japan). Large, yellowish green overspread with red; sweet. Plant some Botan plum trees. June

**Gonzales** (Hybrid). A large red plum, sweet and juicy; tree is a good grower and very prolific; should be in every orchard; one of the very best. Middle of June.

**Red June** (Japan). Large red, flesh yellow, good quality, productive. June.

**Nona** (Native). Large, bright red color, juicy and of good quality. June.

**Shiro** (Hybrid). Fruit large, yellow, egg-shaped; will keep for a long time; bears enormous crops. June.

**Normand** (Japan). Large, of beautiful golden color. Ripe June and July.

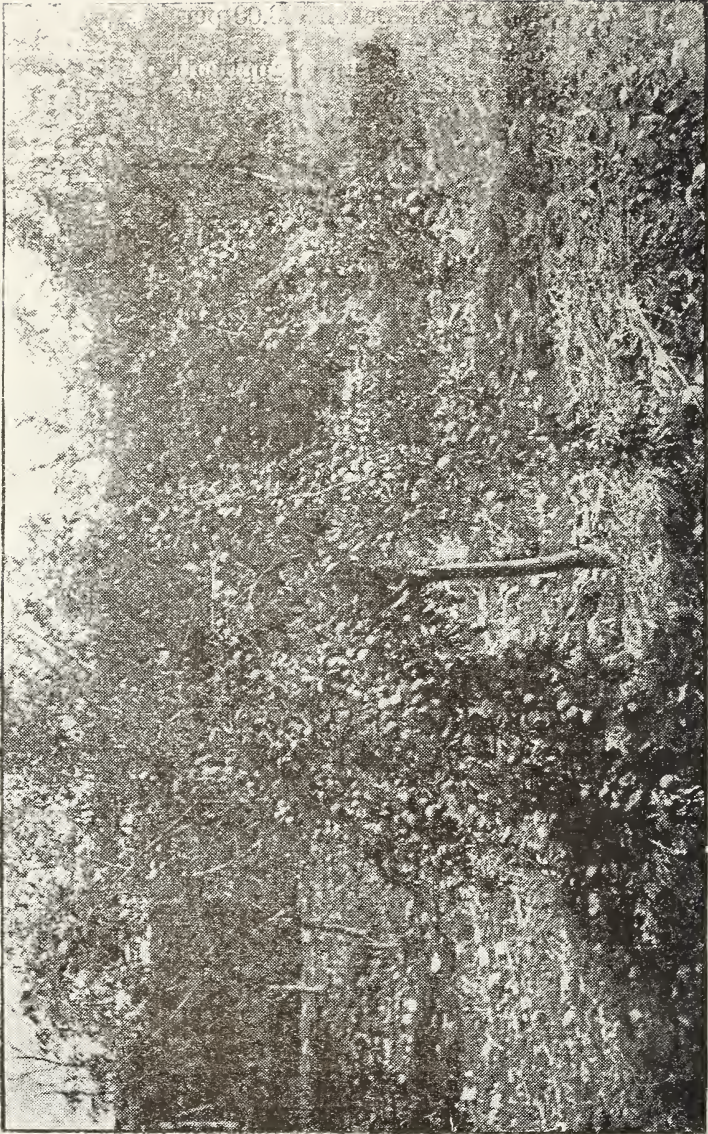
**Wickson** (Japan). Very large, dark red color; tree of upright growth and very productive; should be in every orchard. July.

**Burbank** (Japan). Large, roundish, flesh yellow, sweet when fully ripe; sure bearer. Don't fail to plant it. June and July.

**Bartlett** (Japan). A large crimson plum. Has exactly the quality and flavor of the Bartlett pear.

**Kelsey** (Japan). Very large, of greenish yellow color; finest quality; tree blooms early. August.

**Satsuma** (Japan). Large, with blood-red flesh and of good quality. Tree grows large and bears well.



**Three-year-old Gonzales Plum.**



Kieffer Pear trees, 2 years old.

## Pears

This list of select varieties is well tested and proved valuable throughout the greatest section of the South.

Folgende auserlesene Sorten sind gründlich erprobt worden und haben sich im größeren Teile des Südens als wertvoll bewährt.

Prices: Two-year-old trees, 4 to 5 feet, 30 cents each; \$3.00 per 12; 2 to 4 feet, 20 cents each. \$2.00 per 12. Large trees 50 cents.

Special prices on larger quantities: state varieties wanted.

**Bartlett.** The old standard. Large yellow, flesh melting and juicy. Ripens in August.

**Garber.** Fruit resembles Kieffer in size and color. Tree most vigorous and good bearer. Ripens a month before Kieffer.

**Kieffer.** Fruit large to very large, bright yellow with red cheek, and of good quality when fully ripe. Tree vigorous, rarely fails to bear a full crop. One of the best.

**LeConte.** A most rapid grower, and an annual bearer of large, pale yellow, bell-shaped fruit of best quality. The pear that leads its way to the South. July and August.

**Smith's Hybrid.** In growth similar to LeConte; fruit larger, very juicy. Ripens just before LeConte.

## Apples

The growing of apples is fast assuming commercial importance in some parts of our State. Apple trees, the same as pear trees, should not be planted on land where there is root rot, as such soil will cause the trees to die out. If you think that your land may be adapted to apple culture, you should plant a few, or a dozen trees. We have tested many varieties of apples. The following is a collection of those that have proved valuable here.

Apfelzucht wird in einigen Theilen des Staates bald commercielle Bedeutung erlangen. Apfelbäume, wie auch Birnbäume, sollten nie auf Land gepflanzt werden, wo Wurzelfäule ist, weil sie auf solchem Boden absterben. Wer aber geeignetes Land hat, sollte einige, oder ein Duzend Bäume pflanzen. Wir haben viele Apfelsorten probiert; die folgenden haben sich hier als wertvoll erwiesen.

Prices: Trees 4 to 5 feet, buded or grafted on first-class seedlings. 20 cents each; \$2.00 per 12.

**Red June.** Medium to large, dark red, mealy and high flavored. June and July.

**Yellow Horse.** Large, yellow with blush, a good summer apple, very prolific. July.

**Wealthy.** Fine quality, good all purpose apple, light yellow with red, tender and juicy, very productive. August.

**Missouri Pippin.** A fine apple of good size, pale yellow with red blush, prolific bearer. August and September.

**Winesap.** Medium size, flesh red and of good quality.

**Ben Davis.** Large, red on yellowish ground; very valuable.

**Jonathan.** Medium red, very fine eating apple. Tree a strong grower and very productive. July.

**Transcendent Crab Apple.** Worth all other crabs put together Yellow striped with red. Tree a strong, healthy grower and an annual bearer. Ripens first part of July.

---

## Apricots

The apricot seems to do best if planted where they will not be cultivated, except for the first year or two. The fruit has a fine, rich flavor, and a few trees should be planted in the back yard or some corner about the place. We can recommend the two varieties which we here offer.

Die Aprikose scheint am besten zu gedeihen, wenn sie nur im ersten u. vielleicht auch im zweiten Jahre kultiviert wird, dann aber nicht mehr. Die Frucht hat ein feines, reiches Aroma, und einige Bäume sollten im Hof oder in irgend einer Ecke gepflanzt werden. Die nachstehend offerierten zwei Sorten können wir empfehlen.

Price: 4 to 5 feet, 35 cents each; \$3.50 per 12. 2 to 4 feet, 25 cents each; \$2.50 per 12.

**Moorpark.** Large, orange yellow with red cheek; sweet and juicy. June.

**Cluster.** Fruit medium, yellow, good quality. Tree blooms late. June.

---

## Japan Persimmons

Some of these should be planted by every family. The trees bear young and are very ornamental!

Jede Familie sollte einige dieser Bäume pflanzen; sie tragen jung und sehen sehr schön aus.

Price 30 cents each; \$3.00 per 12: large trees, 50 cents.

**Hyakume.** Large, orange red, very sweet, few seeds.

**Yemone.** Fruit large, resembles a tomato, color orange yellow to red.

**Tau-Nashi.** Very large, yellow to red, very few seeds. Very good quality when fully ripe.

---

## Quinces

Price: 25 cents each; \$2.50 per 12.

The quince is only used for making all kinds of preserves and jellies, for which it is very valuable.

Die Quitte wird nur zum Einmachen und zur Herstellung von Gelee benutzt und ist für diesen Zweck ausgezeichnet.

**Meech.** Fruit large, yellow and of fine flavor.

**Orange.** Large, roundish, bright yellow.

---

## Mulberries

Every farm should have a few mulberry trees about the back yard and where the chickens run. They make a quick shade and are long-lived.

Im Hofe und wo die Hühner herumlaufen, sollten auf jeder Farm Maulbeerbäume gepflanzt werden; sie geben schnell Schatten und werden alt.

Prices: 5 to 6 feet, 25 cents each, \$2.50 per 12. 7 to 8 feet, 50 cents each; \$5.00 per 12.

**Hick's Everbearing.** Tree of vigorous growth, and produces immense quantities of fruit for over two months.

**Black English.** A fine, large mulberry. Tree a rapid grower and good bearer.

**New American.** A quick-growing tree, very productive; the berries are very large, black.

**Russian.** Mostly planted as a shade tree, which is hardy and long-lived; the fruit is small. Some trees do not bear fruit at all. 8 to 10 feet, fine trees, \$1.00 each; other sizes as above.

---

## Cherries

The cherry is not recommended for South Texas, but succeeds well in some portions of the State, especially towards the Panhandle.

Für Südtexas werden Kirichen nicht empfohlen, aber in einigen Theilen des Staates, besonders nach dem Panhandle zu, gedeihen sie.

Price: 30 cents each; \$3.00 per 12.

**Early Richmond.** Medium, red, an old standard variety.

**English Morello.** Another popular variety. Ripens later.

---

## Figs

Figs should be planted more extensively. Ripe fruit can be had almost every day from June till frost, provided there is enough moisture to keep the trees growing. Following are the hardiest and best varieties for general cultivation.

Feigenbäume sollten in ausgedehnterem Maßstabe angepflanzt werden. Reife Feigen gibt es fast jeden Tag von Juni bis Frost, wenn der Boden feucht genug ist für die Bäume zum Wachsen. Die folgenden Sorten sind die empfehlenswertesten und gedeihen am besten.

Prices: 2 to 3 feet, 20 cents each; \$2.00 per 12; 1 to 2 feet, 15 cents each; \$1.50 per 12.

**Magnolia.** Fruit large, yellowish-white, productive. Very sweet.

**Brown Turkey.** Very hardy and one of the best bearers we have. Fruit brown, excellent quality.

**Celestial.** A small blue fig, very productive. Very sweet.

**Brunswick.** The large purple fig. Tree a strong grower.

---

## Pecans

No class of trees is growing in popularity as fast as are pecan or other nut trees. Pecans are much harder to bud or graft successfully than other trees, so have to be sold at a higher price.

---

Keine Baumjorte gewinnt schneller an Beliebtheit, als Pecan- und andere Nußbäume. Es ist viel schwieriger, Pecanbäume mit Erfolg zu ocu-  
lieren und pflropfen, als andere Bäume; sie kosten daher etwas mehr.

Price: 2 to 3 feet, 75 cents each, \$7.50 per 12; 3 to 5 feet, \$1.00 each, \$10.00 per 12; 5 to 7 feet, \$1.25 each; 7 to 9 feet, \$1.50 each.

**Stuart.** Very large; shell thin; tree a rapid grower and an early bearer.

**Schley.** Large size; shell thin; flavor rich. Good grower and prolific.

**Frotscher.** Very large; meat can be taken out whole, and is of fine quality.

**Van Deman.** Large, 45 to 50 to the pound; shell thin; quality good.

**Seedling Pecans.** Grown from fine nuts. 2 to 3 feet, 25 cents each, \$2.50 per 12. 4 to 5 feet, 50 cents each, \$5.00 per 12.

---

## Japan Walnut

These come into bearing early. Excepting pecans, this is perhaps the finest nut that grows. The tree has an abundance of fibrous roots, therefore transplants readily. Price. 3 to 4 feet, 50 cents each.

---

## Almonds

Price: 5 to 6 feet, 50 cents; 3 to 4 feet, 25 cents.

The tree blooms very early, so crops are often destroyed by late frosts.

**Sultana.** A standard variety, strong upright grower.

**Medina.** Originated in Medina County; said to be a good bearer, as it blooms later than the other varieties.

---

## Pomegranates

Price: 20 cents each, \$2.00 per 12. Large, 35 cents.

**Large Sweet.** Fruit very delicious; different from the common sour kind. A good bearer.

## Oranges

**Satsuma.** Hardest of the sweet orange family, fruit reddish yellow, almost seedless, very sweet, an abundant bearer. Trees 2 to 3 feet, 50 cents each.

**Otaheite.** An extra fine pot plant with glossy leaves. The little bright oranges will hang on the tree for nearly a year after they are ripe. 25 cents each.

---

## Lemons

**Wonder** (or **Ponderosa**). The largest edible lemon grown, useful and ornamental, an everbearing variety. Price 25 cents each.

---

## Grapes

The grape succeeds in almost any soil, therefore it should be planted more extensively than it is. We offer for sale only a few of the best, such as we can recommend.

Der Weinstock gedeiht fast in jedem Boden und sollte deshalb in ausgedehnterem Maße gepflanzt werden als bisher. Wir offerieren einige der besten Sorten; solche, die wir empfehlen können.

Price: 15 cents each; \$1.50 per 12; \$10.00 per 100.

**Concord.** Large bunches and berries, very good for table and market, blue-black.

**Brighton.** A fine large red grape for table, market, or wine.

**Martha.** Large white, very good table and market sort.

**Moore's Early.** Large, black, productive, very early. June.

**Herbemont.** Fruit of medium size, large clusters, very productive, purple.

**Niagara.** Large, amber-white, good quality.

**Black Spanish.** One of the best grapes, berries of medium size, good bearer. Extra heavy three-year-old plants 30 cents. \$3.00 per 12. Big lot of strong plants at price of other varieties.

**Catawba.** Clusters and berry large, dark red, juicy; fine for market, table and wine.

**Muscadine Grapes.** The Muscadine type of grapes is at home in the South; are rank growers and heavy bearers. They are desirable for jelly, preserves or wine. We have several varieties, all black. 25 cents each, \$2.50 per 12.



## **Straubberries**

We can supply these at 20 cents per 12, \$1 per 100, in the following three best varieties: **Klondyke**, **Excelsior** and **Lady Thompson**.

---

## **Berries**

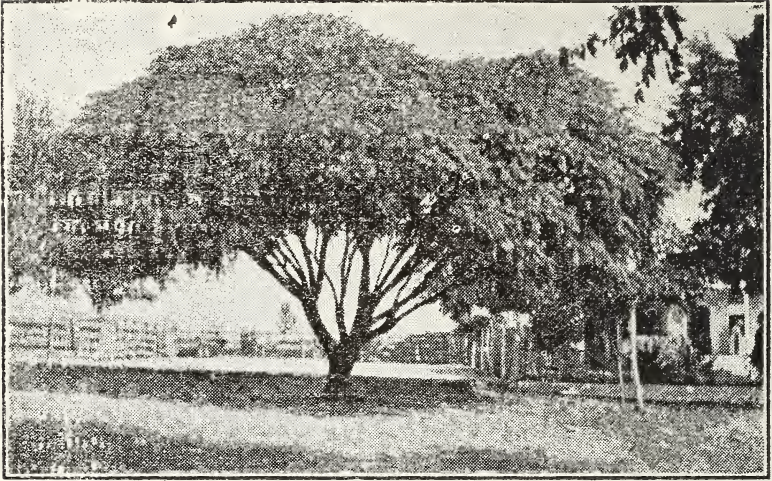
Every farm or city garden should contain a patch of blackberries or dewberries. They bear one year after they are planted, and annually thereafter.

Jeder Farm- oder Stadtgarten sollte ein Beet Brombeeren enthalten. Sie tragen ein Jahr nachdem sie gepflanzt sind, und von da an jedes Jahr.

**Austin Mayes Dewberry.** Fruit very large and fine-flavored; produces a full crop each year. Ripens in May. 50c per 12, \$3.00 per 100.

**McDonald Berry.** This is a new berry, a cross between the blackberry and the dewberry. Fruit is large, juicy and of the very best quality. Hardest, most vigorous and most productive of all berries here. Earliest of all, ripening first of April. Price 50 cents per 12, \$3.00 per 100.

## Shade and Ornamental Trees



**Texas Umbrella China.**

Nothing adds so much to the appearance of the home as well-cared-for shade trees or ornamentals.

Nichts verschönert ein Heim mehr, als gutgepflegte Schatten- und Zierbäume.

**Catalpa.** A rapid grower, very hardy. The leaves are heart-shaped and often measure ten inches across. In spring the tree produces large clusters of beautiful yellow flowers. 6 to 8 feet, 50 cents each. \$5.00 per 12. 5 to 6 feet, 25 cents each. \$2.50 per 12.

**Umbrella China.** Makes a fine shade quicker than any other tree. 6 to 8 feet, 50 cents; \$5.00 per 12; 5 to 6 feet, 30 cents. \$3.00 per 12.

**Cottonwood.** A rapid-growing shade tree. 5 to 6 feet, 20 cts. each, \$2.00 per 12; 6 to 7 feet, heavy, 30 cents each. 7 to 9 feet, heavy branched, 60 cents.

**Sycamore.** This is one of the most satisfactory shade trees for any kind of soil. 5 to 6 feet, 25 cents each; \$2.50 per 12.

**Box Elder.** A well-known beautiful shade tree. 5 to 6 feet, 25 cents; \$2.50 per 12; 6 to 8 feet, well-branched, 40 cents; \$4.00 per 12.

**Carolina Poplar.** A successful shade tree. Resembles Cottonwood. 5 to 7 feet, 25 cents each, \$2.50 per 12.

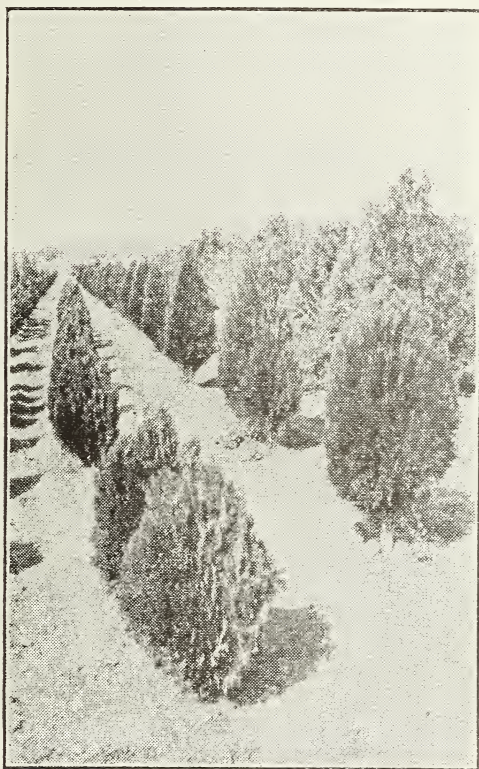
**Silver-Leaved Poplar.** Leaves are white on under side, very ornamental, also good for shade. 5 to 6 feet, 25 cents each. \$2.50 per 12.

**Red Bud.** A very ornamental tree, producing reddish purple flowers early in the spring. It is an attractive tree. 5 to 6 feet, 25 cents each. \$2.50 per 12; 6 to 7 feet, 50 cents each.

**Russian Mulberry.** A tree well adapted to our hot climate; grows rapidly, making a beautifully shaped tree, which is hardy and long-lived. Price for nice well-branched trees: 6 to 8 feet, 50 cents each, \$5.00 per 12; 5 to 6 feet, 25 cents each, \$2.50 per 12; 8 to 10 feet, well-formed trees, \$1.00.

**Sterculia Platanaefolia** (Varnish Tree). A very desirable shade tree of rapid growth. Leaves large, bark very smooth and green. 4 to 5 feet, 40 cents.

**Ash.** Grows to a nicely shaped tree, 5 to 7 feet, 25 cents each, \$2.50 per 12; 7 to 9 feet, 50 cents, \$5.00 per 12.



**Dwarf Golden Arbor Vitae.**

**Weeping Willow.** A well-known, grand old tree with long branches that droop downward. Price, 6 feet, 25 cents; 8 feet, 50 cents.

**Flowering Willow.** These are natives of the dry section of

West Texas. They grow on any soil and bloom constantly from spring until late fall. We have white and purple flowering. Price of trees, 5 to 7 feet, 50 cents each; 3 to 5 feet 25 cents, \$2.50 per 12.

We have some very large shade trees and Mulberry trees, from 2 to 4 inch caliper of trunk. Prices and specifications upon application.

## Evergreens

A few Arbor Vitae, or other evergreens, planted in the yard add much to the appearance of your home. No yard fence is so restful as an evergreen hedge. Plant a row of cheap Arbor Vitae for wind-breaks.

Einige Lebensbäume oder andere immergrüne Bäume oder Sträucher im Hofe verschönern das Heim sehr. Die schönste Einfriedigung ist eine immergrüne Hecke. Man pflanze eine Reihe billige Lebensbäume als Schutz gegen den Wind.



Pyramidal Arbor Vitae.

Wir machen auf die niedrigen Preise in der folgenden Liste aufmerksam.

**Dwarf Golden Arbor Vitae.** A perfect gem for garden or cemetery. Will not grow higher than 7 or 8 feet. 2 feet, 50 cents each, \$5.00 per 12.

**Golden Arbor Vitae.** Very handsome, green with a beautiful yellow tint. 2 feet, 40 cents each, \$4.00 per 12.

**Rosedale Arbor Vitae.** The most beautiful of all Arbor Vitae; of compact growth, with fine, cedar-like foliage of a bluish cast. 4 to 5 feet \$1.00; 5 to 6 feet, \$1.50.

**Pyramidal Arbor Vitae.** Of quick upright growth. 2 to 3 feet 40 cents, \$4.00 per 12; 3 to 4 feet, 75 cents.

**Cypress, Pyramidal.** A beautiful evergreen of rapid, upright growth. 1 foot, 40 cents.

(Notice.—Our Cypress Pyramidalis are pot grown one year before being planted in open ground, which gives the plants a fine root system.)

**Red Cedar.** A handsome evergreen, easy to transplant. 4 to 5 feet, 75 cents each.

**Buxus Arborescens.** An old favorite, fine for hedging. Nice bushes, 25 cents each.

**California Privet.** The most satisfactory for hedges or screens, also for single specimens. Prices, 2 to 3 feet, 10 cents each; for hedging, \$3 and \$4 per 100.

**Japan Privet** (*Ligustrum Japonicum*). The best of all privets, having dark-green leaves, fine for single specimens. It makes a beautiful shade tree which produces large bunches of creamy-white flowers. Trees trimmed, 3 to 4 feet, 35 cents each. \$3.50 per 12. Bushy plants 1 to 2 feet 20 cents, \$2.00 per 12; 2 to 4 feet, 30 cents, \$3.00 per 12.

**Magnolia Grandiflora.** A beautiful, long-lived tree. In summer it produces large white flowers. Leaves should be cut off before planting. 2 to 3 feet, 50 cents each; 3 to 4 feet, 75 cents each.

**Cape Jasmine.** Large glossy foliage; flowers large, white and delightfully fragrant. 1 to 2 feet, 25 cents each.

---

## Everblooming Roses

### “The Queen of Flowers”

For outdoor planting we consider these the cream of the world. They will bloom from spring until frost if given a little attention to keep them growing. We sell strong bushes, grown in the field. All have bloomed, and will commence blooming early in spring after planting.

The following varieties are the best and finest obtainable. All are hardy outdoors. Trim off about one-half of the wood when planted.

Für den Garten gibt es nichts Schöneres als immerblühende Rosen. Vom Frühjahr bis zum Frohwetter blühen sie, wenn man sie ein wenig pflegt, so daß sie beständig wachsen. Wir verkaufen starke, im Felde gezo-

gene Büsche, die alle geblüht haben und in den ersten Frühlingstagen nach dem Uerpflanzen wieder anfangen werden.

Die folgenden Sorter sind die besten und reinsten, die man bekommen kann. Alle halten unsern Winter ohne Schutz aus. Man schneide um ungefähr die Hälfte zurück beim Pflanzen.

Prices, except as noted: Extra strong one- and two-year-old plants, 25 cents each; \$2.50 per 12. Strong one-year-old, 20 cents each; \$2.00 per 12. The 30 cents varieties at \$3.00 per 12.

**Bride.** Pure white, often shows pink on outside of petals.

**Mary Washington.** Snow white, producing large, double blooms in great profusion from spring until frost; half climber.

**Kaiserin Augusta Victoria.** Pearl white, a grand rose of vigorous growth.

**White Cochet.** This variety is like its parent, Maman Cochet, except in color, which is white, tinged with pale blush.

**White La France.** Finest white large flowers, free bloomer.

**White Killarney.** A sport from Killarney; long in bud. 30 cents each.

**Antoine Rivoire.** Creamy white, tinted with pink; large and double.

**Bessie Brown.** Of a distinct type in shape and color; white flushed with pink, growing deeper toward center. Erect stems, very beautiful.

**Frau Karl Druschki.** (White American Beauty.) Vigorous grower, with bright green leaves. Splendid long buds and magnificent white blooms with large saucer-shaped petals. 40 cents each. One year, 30 cents.

**Snowflake.** (Marie Lambert.) Pure white, does not pink; a good grower and bloomer. Flowers of medium size.

**Wm. R. Smith.** Creamy white, shaded with pink; beautiful in form and color; flowers produced on long, stiff stems. Vigorous grower.

**Etoile de Lyon.** Finest yellow, large, beautifully shaped flowers, very full.

**Sunkurst.** The color is golden-orange; edge of petals lighter. One of the yellowest of all roses. 30 cents.

**Lady Hillingdon.** Apricot-yellow to orange, long pointed buds; a striking rose. 30 cents each.

**Perle des Jardins.** Clear deep yellow, large and double, one of the best yellow roses, free bloomer.

**Blumenschmidt.** Citron-yellow, outer petals edged tender rose. A sport from Francisca Krueger, which it resembles in form and foliage.

**Francisca Krueger.** Coppery yellow, one of the finest yellow roses, free bloomer.

**Bridesmaid.** Beautiful pink, a rank grower, very popular.

**Vick's Caprice.** A variegated rose, large, fragrant and at-

tractive flowers of satiny pink, striped with white and red. Healthy and vigorous grower.

**Madame Testout.** A standard pink. The flowers are large, very free bloomer.

**Duchess de Brabant.** Large pink, beautiful flowers. Very profuse.

**Duchess of Albany (Red La France).** Very large, deep pink, highly perfumed.

**My Maryland.** Salmon pink of a soft and pleasing shade. A splendid new rose, easy to manage and free to grow; double flowers, on long stems, long pointed buds. 30 cents each.

**Paul Neyron.** Bright shining pink, clear and beautiful; very double and full. The largest of all rose blooms. The plant is a strong grower and stems are almost thornless.

**Killarney.** Brilliant pink, with large pointed buds, and enormous semi-double flowers of exceeding beauty. A very fine rose. 30 cents each.

**Pink Cochet.** Silvery rose. The buds are beautiful, large and elegantly pointed; profuse bloomer.

**La France.** Silvery rose, very large and of beautiful form.

**Malmaison.** Light pink, very large flowers and very double; the best for general cultivation.

**Madame Lombard.** Rosy bronze changing to salmon and fawn, very fine.

**J. L. Mock.** Clear imperial pink; very large, of perfect form and highly perfumed. 30 cents.

**Madame Masson.** This is a grand rose. Very large flowers of bright brilliant red color; sweetly scented. A good grower and free bloomer.

**Mad. Chas. Wood.** Flowers large and double and quite fragrant. Bright red, handsome and showy.

**American Beauty.** Brilliant red; very large, cup shaped flowers borne on stiff bushy stems. Two years, 40 cents each, \$1.00 per 12. One year, 30 cents each, \$3.00 per 12.

**Richmond.** Scarlet crimson; long pointed buds, and beautiful flowers on long stiff stems; dark green foliage; a strong grower and free bloomer. 30 cents each.

**Rhea Reid.** A new, rich, dark red rose, free blooming and very fragrant. Flowers large and double. One of the finest of red roses. 30 cents each.

**Queen's Scarlet.** The best of all red roses for bedding. Always in bloom.

**Etoile de France.** A fine new rose. Flowers very large and double, on long stiff stems; dark crimson in color.

**Balduin.** Very soft carmine crimson, with deeper shades in depths of petals. A strong grower and free bloomer.

**General McArthur.** The color is the brightest crimson scarlet; flowers are of good size and very fragrant. 30 cents.

**Meteor.** Dark red, very double.

**Gruss an Teplitz.** Bright scarlet, best bedding rose.  
**Papa Gontier.** Blood red, long pointed buds.

---

## Climbing

**Climbing Kaiserin Augusta Victoria.** Flower same as the Kaiserin, free bloomer.

**Climbing White Cochet.** Here we have a climber that will become as popular as its parent has as a bush sort. White flowers tinged pink. Good grower.

**Climbing Meteor.** A strong, vigorous grower, producing buds and flowers in great profusion throughout the season.

**Climbing Wootton.** A strong, rampant climber. Profuse with large, velvety-red flowers.

**Reine Marie Henriette.** Of vigorous growth, producing well-formed, rich crimson flowers. It is a first-class climber.

**Climbing American Beauty.** A seedling of American Beauty with an admixture of Wichuriana blood. A hardy rapid climber. Flowers same as the bush sort.

**Climbing Killarney.** Possesses all the splendid qualities of the parent Killarney. A vigorous climber. 30 cents each.

**Gainsborough.** A strong grower and good bloomer; color light pink, almost white.

**Dorothy Perkins.** Deep pink, small double flowers, borne in large clusters. A good climber.

**Everblooming Crimson Rambler.** (Flower of Fairfield.) Brilliant crimson; flowers perpetually and profusely in clusters.

**W. Allen Richardson.** Bright yellow; the center is highly colored with glowing copper and rose. A fine climbing rose.

**Marechal Niel.** Beautiful yellow, a very large, free bloomer, the finest climbing rose.

**Blue Rambler.** (Veilchenblau.) A sport from Crimson Rambler and as vigorous a climber. A German novelty, the nearest approach to a blue rose.



## Flowering Shrubs

---

The following shrubs are the most constant bloomers to be found for the South. A few shrubs will add much to the pleasure, beauty and value of a home.

Die folgenden Ziersträucher sind die am beständigsten blühenden für den Süden. Einige solche Sträucher machen ein Heim schöner, angenehmer und wertvoller.



Althea (Rose of Sharon).

### Altheas

(Rose of Sharon)

This is one of the most desirable flowering shrubs for the yard or garden. They are very hardy, and if kept growing,

bloom constantly during the entire summer. I have added many new varieties to my collection, embracing all shades and colors.

Prices: Grafted plants. 2 feet, 20 cents each; \$2.00 per 12; 3 feet, 30 cents each, \$3.00 per 12.

**Banner.** Large, double flowers, striped white and pink; very beautiful.

**Rubra Plena.** Large, double, violet-blue flowers; very desirable.

**Carnation Striped.** Large flowers of flesh color with red veins, double.

**Elegantissima.** Large, semi-double, nearly white, red center.

**Lucy.** Very large, double rose-red flowers; a beautiful sort.

**Lady Stanley.** Large double flowers, white, shaded rose.

**Joan d' Arc.** Perfectly double pure white flower, exceedingly handsome.

**Ardena.** Rosy-purple. Double, fine.

---

## Flowering Willow

These are natives of the dry sections of West Texas; it is a tall-growing shrub, will grow on any soil and blooms constantly from spring until late fall. White and purple flowering. 5 to 7 feet, 50 cents; 3 to 5 feet, 25 cents, \$2.50 per 12.

---

## Rosmarinus

(Rosemary)

Too well known to need a description. Strong bushes, 25 cents each, \$2.50 per 12.

---

## Pomegranate

(Double-Flowering)

A tall-growing shrub, producing flowers in great profusion in spring and summer. Foliage bright green. We have white, variegated and red. 3 to 4 feet, 20 cents each. \$2.00 per 12.

## Lilacs

A well-known shrub; early bloomers, very fragrant.

**Purple**, 15 cents each, \$1.50 per 12.

**Belle de Nancy**. (Grafted.) Very large and double, brilliant satiny rose, with white toward the center; very fine. 25 cents each.

**Virginalis Alba**. (Grafted.) Flowers pure white; large compact panicles. 25 cents each.

**Lamark**. (Grafted.) Flowers large and very double; rosy lilac. 25 cents each.

---

## Grape Myrtle

These should be in every flower garden; blooming throughout the entire summer; a glow of color.

**Pink**. Blooms early and in profusion throughout the season. 2 to 3 feet, 25 cents. 1 to 2 feet, 15 cents; \$1.50 per 12.

**Red**. A rich red color. Good grower. 2 to 3 feet, 25 cents. 1 to 2 feet, 15 cents; \$1.50 per 12.

**Purple**. A strong growing sort, free flowering. Delicate lilac or purple bloom. 2 to 4 feet, 25 cents, 1 to 2 feet, 15 cents; \$1.50 per 12.

**White**. This is of dwarfish habit, but blooms profusely. 2 feet, 30 cents each.

---

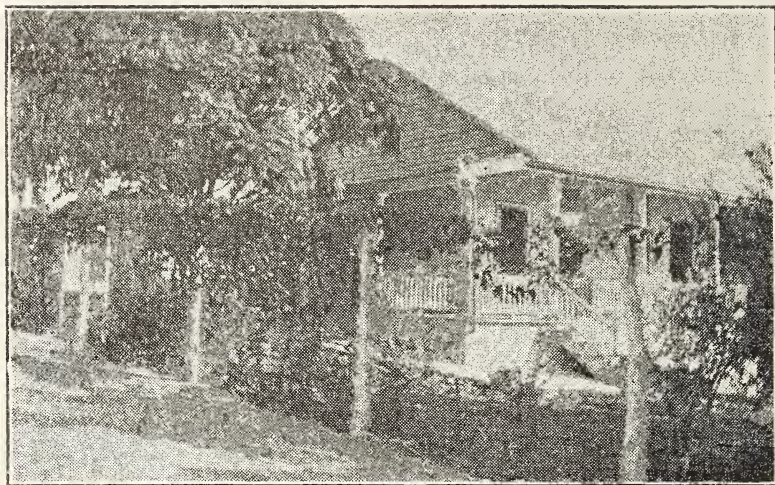
## Deutzia

A valuable genus from Japan. Their fine habit, luxuriant foliage and profusion of attractive flowers place them among the most beautiful of flowering shrubs. They bloom in spring in racemes 4 to 6 inches long.

Price: Fine, strong plants, 2 to 3 feet, 20 cents each; \$2.00 per 12; 3 to 4 feet, 30 cents.

**Crenata Flore Plena**. Snow white flowers, tinted with pink; a fine shrub.

**Pride of Rochester**. Double white; back of petals pink.



**Queen's Wreath (Antigonon Leptopus).**

### **Spirea**

**Queen's Wreath. (Antigonon Leptopus.)**

Price: 2 feet 20 cents each, \$2.00 per 12; 4 feet 50 cents.

**Van Houttei.** Snow white flowers, very beautiful, immense bloomer.

**Blue Spirea.** One of the best blue-flowering garden shrubs; blooms from midsummer until frost; very handsome.

---

### **Philadelphus**

(Mock Orange)

Vigorous growing shrubs, producing beautiful flowers in spring. Price: Strong plants, 4 to 5 feet, 25 cents each; \$2.50 per 12.

**Coronarius.** With pure white, highly-scented flowers.

---

## **Climbing Plants**

A most useful class of plants for this country for covering cottages, verandas, walls, trellises, etc.

Neueste nützliche Zierpflanzen für diesen Staat, um Häuser, Wände, Veranden, Gestelle u. s. w. zu bedecken.

**Queen's Wreath.** (*Antigonon leptopus*). The loveliest of climbing vines; will excite the admiration of the amateur planter. Brilliant rose-colored flowers. 15 cents per bulb, \$1.50 per 12.

**Clematis Paniculata.** A hardy climber. The vines are covered with a fleece of pure white flowers, which are as fragrant as a violet. 20 cents each.

**Bignonia Grandiflora.** (Trumpet Vine.) A most beautiful climber of medium growth, producing large trumpet-shaped flowers of deep orange color. In bloom all summer. Two-year-old grafted plants. 40 cents each.

**Ampelopsis Quinquefolia.** Has beautiful leaves that become rich crimson in autumn; a very rapid grower. 25 cents each.

**Bignonia Radicans.** (Trumpet Vine.) A rank growing vine, suitable for running over fences, trellises, etc. Flowers not as large as "B. Grandiflora". 20 cents each, \$2.00 per 12.

**Honeysuckle (Halliana).** The finest white honeysuckle, with dark-green foliage; very desirable. 20 cents each.

**Honeysuckle (Fuchsia-Flowered).** A strong, rapid climber; flowers are long and trumpet-shaped, coral red, borne in clusters and drooping like a Fuchsia. 25 cents each.

**Honeysuckle (Variegated).** A strong grower with green leaves variegated with yellow; elegant and desirable. 20 cents each.

**Honeysuckle (Yellow Trumpet.)** Same as "Fuchsia-Flowered", only flowers are golden-yellow. 25 cents.

**Wistaria Sinensis.** A hardy, woody vine, covered in spring with fragrant flowers; purple. 20 cents each.

**Wistaria Sinensis Alba.** A white-flowering variety; a beautiful, graceful climber. 20 cents each.

**Jasminum Nudiflorum.** A desirable deciduous variety; produces yellow flowers in great abundance in spring. 20 cents each.

**Vinca Major.** A trailing evergreen with blue flowers; fine for covering rockwork. 15 cents each; \$1.50 per 12.

---

## Greenhouse Plants

---

The plants offered are in the best possible condition.  
Die hier offerierten Pflanzen sind im bestmöglichen Zustande.

**Phoenix Reclinata.** A fine, graceful palm of easy growth. Will stand much neglect without injury. Fine plants, 50 cents each.

**Asparagus Plumosus Nanus.** The leaves are a bright green and finely woven; one of the handsomest foliage plants. 25 cents each.

**Asparagus Sprengerii.** A fine house plant, with fronds frequently 3 to 4 feet long, which retain freshness for weeks after cutting. Splendid plants, 25 cents each.

**Araucaria Excelsa** (Norfolk Island Pine). One of the finest and most beautiful of all plants adapted to house culture. Its deep green, feathery foliage is arranged in whorls, rising one above the other at regular distances; a fine, rare decorative plant. Fine plants, 15 to 18 inches, \$1.25 each.

**Oleander.** (Nerium.) Too well known to need a description. Have double white and double red. Plants 1 to 2 feet, 25 cents each; \$2.50 per 12.

**Hibiscus** (Chinese). Large growing plants, with large glossy, dark-green foliage, blooming freely in our hot sun if bedded out during the summer. Enormous, bright colored flowers. Three varieties: double pink, double red, and single red. 25 cents each.

**Boston Fern.** The old standard decorative plant. Grows rapidly under all conditions. Matured fronds often attain a length of four feet. Nice plants 25 cents each.

**Palm, Washingtonia Filifera.** One of the hardiest palms with large, fan-shaped leaves. Can be planted in the open ground; quick grower. Nice plants, 15 to 18 inches, 25 cents. Large plants, 50 cents.

---

## Flowering Plants and Bulbs

---

**Antirrhinum.** (Snapdragon.) These are becoming very popular as bedding plants, and deservedly so. Seedlings, from seed of the finest varieties, all shades and colors, 20 cents per 12.

**Dianthus.** (Pinks.) One of the prettiest of cut flowers. The colors are rich and striking. Choice mixed, 25 cents per 12.

**Violets.** Single blue, very fragrant. 5 cents each, 50 cents per 12.

**Pansies.** Large flowering, all-colors, mixed. 12 for 20 cents.



### Mexican Tuberose.

**Mexican Tuberose.** A single white Tuberose. The flower spikes are large and evenly filled with pure waxy-white flowers; delightfully fragrant. 5 cents each; 50 cents per 12; \$3.00 per 100.

**Salvia Greggii.** It grows easily, blooms on long spikes. Red flowers. 15 cents each. Large, 25 cents.

**Daisies.** Giant hardy. Flowers snow-white, yellow disc. 5 cents each, 50 cents per 12.

**Lemon Lily.** Soon makes a large clump and throws numerous stalks with lemon lily flowers. 10 cents.

**Everblooming Tritoma.** An attractive flowering plant, producing tall spikes of bright orange-red flowers from June until frost, 15 cents each.

**Gladiolus.** Mixed varieties. Large bulbs, 5 cents each; 50 cents per 12.

**German Iris.** Very pretty when in bloom during early spring. They are not particular as to soil, will grow where anything will. We have them in white, creamy-white, rosy-pink, white and blue, and purple. 10 cents each, \$1.00 per 12.

**Angel Lily.** (Crinum.) The finest of lilies, blooming in spring and summer. Large white, striped rose. 15 cents each, \$1.50 per 12.

**Caladium Esculentum.** (Elephant's Ear.) A beautiful and startling ornamental foliage plant; immense leaves. Grows in any good soil, but should have plenty of water for best results. Small bulbs, 15 cents, large 25 cents.

**Carnations, Chrysanthemums, Begonias and Geraniums** ready after March 1, in named varieties, or colors. 15 cents each, \$1.50 per 12.

---

## Dahlias

A show of brilliant and stately flowers from April until winter. 15 cents each, \$1.50 per 12.

- Winsome.** (Cactus.) Large creamy-white flowers.
  - Perle de Lyon.** (Decorative.) Pure white.
  - Delice.** (Decorative.) Delicate pink.
  - Countess of Lonsdale.** (Cactus.) Salmon pink.
  - Chas. Burton.** (Decorative.) Large yellow, fine.
  - Queen Victoria.** (Show.) Yellow, beautifully quilled.
  - Sylvia.** (Show.) Pink with white center.
  - Chas. Clayton.** (Cactus.) Brilliant red.
  - Souv. de Gustave Doazon.** (Decorative.)—A pleasing shade of orange - scarlet, very large.
  - Catherine Duerr.** (Decorative.) Rich scarlet.
  - Standard Bearer.** (Cactus.) Large flowers, color bright pure scarlet.
  - Jack Rose.** (Decorative.) Rich crimson red, of perfect form.
  - Wm. Agnew.** (Decorative.) Flowers large, an unshaded crimson.
  - Stradella.** (Show.) Purplish maroon.
  - Wilhelm Miller.** (Decorative.) Large ball-shaped flowers, purple.
  - Zulu.** (Decorative.) Darkest of all Dahlias; nearly black.
- 

## Everblooming Cannas

The Canna makes a magnificent show in rows or beds, blooming all summer long until frost. Large strong bulbs 15 cents each. \$1.50 per 12.

- Austria.** Large flowered, golden-yellow.
- Allemania.** Orange-red blotched and bordered yellow.
- Dr. Robert Funke.** Large heads of bright scarlet flowers.
- Indiana.** Orange-red with marks of deep red.
- Jean Tissot.** One of the best scarlets.
- J. D. Eisele.** A rich shade of scarlet, overlaid with orange.
- Mad. Crozy.** Bright red, with narrow margin of yellow.
- Pennsylvania.** Large deep red flowers.
- Shenandoah.** Flowers rose-pink, bronze foliage.



**King Humbert.** The most beautiful crimson canna, very large flowers. The foliage is rich bronze or red, with greenish stripes.

---

### Seeds

We have to offer the following seeds, all the same kind that we are using for our own sowings and plantings.

- Beet.** Improved Early Blood Turnip. Pkt. 5c.
- Cabbage.** Charleston Wakefield. Best large early. Pkt. 5c.
- Cabbage.** Premium Early Flat Dutch. Pkt. 5c.
- Cucumber.** Improved Long Green. Pkt. 5c.
- Cucumber.** Early Frame. Best for pickling. Pkt. 5c.
- Kohlrabi.** Early Purple Vienna. Pkt. 5c.
- Musk Melon.** Rocky Ford. Best of all. Pkt. 5c.
- Water Melon.** Alabama Sweet. Pkt. 5c.
- Onion.** White or yellow Bermuda. Pkt. 10c.
- Onion.** Red Bermuda. Pkt. 10c.
- Okra or Gumbo.** Tall Green; long pods. Pkt. 5c.
- Pepper.** Giant Sweet. Pkt. 5c.
- Radish.** Early Scarlet Turnip. Pkt. 5c.
- Radish.** China Rose. Winter. Plant in fall. Pkt. 5c.
- Radish.** Long Black Spanish. Winter. Pkt. 5c.
- Tomato.** Dwarf Champion, Dwarf stiff habit. Pkt. 5c.
- Tomato.** Sparks' Earliana. Very early. Pkt. 5c.
- Tomato.** Acme. Early, of medium size. Pkt. 5c.
- Turnip.** Purple Top White Globe. Pkt. 5c.
- Seeds,** by mail postpaid, no orders for less than 25 cents.

---

### FLOWER SEEDS.

- Antirrhinum.** (Snapdragon.) Giant tall-growing, all colors, mixed. Pkt. 5c.
- Coxcomb.** Very large; tall growing. Pkt. 5c.
- Dianthus Chinensis.** (Chinese Pink.) Double mixed colors. Pkt. 5c.
- Sweet Peas.** Grandest Mixture; the very best. Pkt. 5c.
- Pansy.** A Mixture of several "Giant" strains. Mammoth-flowering, in a good range of color. Pkt. 10c.
- Poppy.** Large Double; ball-shaped. Pkt. 5c.
- Phlox.** Grandiflora. Finest mixed. Pkt. 5c.
- Stocks.** Large-Flowering Ten Weeks. Mixed. Pkt. 10c.
- Vinea.** Mixed colors. Pkt. 5c.
- Zinnias.** Dwarf. Finest double varieties mixed. Pkt. 5c.

## Planting, Cultivating, etc.

---

If trees cannot be planted immediately when received they should be unpacked and set in a trench; cover roots with mellow earth and thoroughly wet. If trees are frozen when received, the whole bundle should be laid in a trench and covered with earth, or placed in a cool cellar until the weather moderates.

To plant trees dig holes large enough to hold roots in their natural position. When a plow can be used the holes are easily dug by throwing out two or three furrows, and shoveling out the dirt where the tree are to stand. Set the tree so that it will stand the same depth as it did in the nursery, then fill in soil to cover roots, and pour in a bucket or two of water. When this is soaked into the ground, then fill in the balance of soil, and then cut the tree back to about 2 to 4 feet, according to size and age of tree.

Cultivating.—Frequent and thorough cultivation, especially for the first year or two, is almost necessary.

To prevent rabbits from injuring young trees, would suggest that either corn stalks or old newspapers be tied around each tree.

Selection of Varieties.—Except where particular varieties are wanted, the best assortment is secured by leaving the selection to us, stating the general character of soil, the desired time of ripening, etc.

We buy seedling peach seed, or all small seeds. Write us for prices. We don't want the very large seed.

---

### OFFICIAL NURSERY INSPECTION CERTIFICATE.

Copy of Certificate No. 212.

STATE OF TEXAS,  
Department of Agriculture. }

THIS IS TO CERTIFY THAT THE Nursery Stock grown, exhibited or held for sale by A. W. STEINBRING, at New Braunfels, County of Comal, State of Texas, has been inspected by a duly authorized Inspector of this Department in accordance with the provisions of the Orchard and Nursery Inspection Laws of the State of Texas, and was found to be apparently free from Dangerously Injurious Insect Pests and Plant Diseases.

A printed copy of this certificate on any shipping tag attached to any shipment of Nursery Stock is authority to any freight or express agent in Texas to accept same for transportation. This Certificate is void after September 1, 1918.

Austin, Texas, September 11, 1917.

Approved: **FRED W. DAVIS,**  
Commissioner of Agriculture.

**ED. L. AYERS,**  
Chief Inspector of Orchards  
and Nurseries.







# ORDER SHEET

1. CUSTOMER'S NAME

2. ORDER NO.

3. ORDER DATE

4. ORDER TIME

5. ORDER PLACE

6. ORDER TYPE

7. ORDER STATUS

8. ORDER REFERENCE

9. ORDER COMMENTS

10. ORDER TOTAL

11. ORDER TAX

12. ORDER NET

13. ORDER GROSS

14. ORDER NET

15. ORDER NET

16. ORDER NET

17. ORDER NET

18. ORDER NET

19. ORDER NET

20. ORDER NET

21. ORDER NET

22. ORDER NET

23. ORDER NET

24. ORDER NET

25. ORDER NET

26. ORDER NET

27. ORDER NET

28. ORDER NET

29. ORDER NET

30. ORDER NET

31. ORDER NET

32. ORDER NET

33. ORDER NET

34. ORDER NET

35. ORDER NET

36. ORDER NET

37. ORDER NET

38. ORDER NET

39. ORDER NET

40. ORDER NET



