

Historic, Archive Document

Do not assume content reflects current scientific knowledge, policies, or practices.



STARK BRO'S BEST FRUITS

Profit-Making Orchard Trees...

STARK DELICIOUS KING OF ALL RED APPLES



LIBRARY RECEIVED
★ ★
U. S. Department of Agriculture.

PHOTO ACTUAL SIZE

GOLDEN DELICIOUS "NEW QUEEN OF YELLOW APPLES"

Stark Bro's Nurseries

102 Years at
LOUISIANA - MO.





Clarence Stark



Judge Eugene Stark



Edgar Stark



Lloyd Stark



Paul Stark



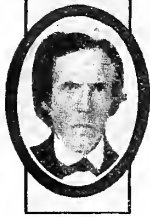
Tom Stark



Lawrence Stark



Edwin Stark



Judge James Stark



Clay Stark

102 Years of Successful Fruit Tree Growing

The year 1816 saw the establishment of Stark Bro's Nurseries here at Louisiana, Mo. For 102 years from these nurseries have come good trees; and this accumulated experience finally produced the Old Oak Process of growing Whole Root Trees that have brought big crops of most valuable fruit to the orchards of America and success to the owners of these orchards.

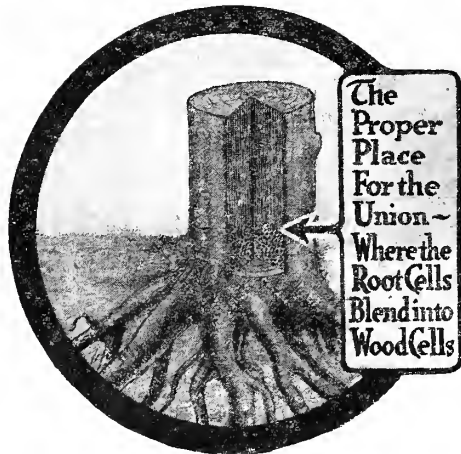
THESE now world-famous nurseries were founded in that early year of America's history by Judge James Stark, son of the Col. James Stark, veteran of the American Revolution. Judge Stark, himself, responded to his Nation's call to arms during the war of 1812, just as have representatives of the Stark family gone forth as volunteers in the service of our beloved land in this present world war. The Judge picked as the site of the nurseries, destined to become world famous, the little village of Louisiana in northern Missouri, near the Iowa line. Here he found the right soil, the right climate and the right growing conditions for a successful nursery.

But Judge Stark planted more than merely a successful nursery here at Louisiana, Mo. He started something **greater** than simply a money-making institution. He wished that his nurseries should become a constant and an unceasing source of help to all the world of

fruit growers. He wished that it might raise the ideals of fruit raising. It was his ambition that Stark Trees would always be better trees—that his nurseries should improve the "breed" of fruit trees—the quality of fruit—the productivity of orchards throughout the world.

For 102 years the descendants of Judge Stark and their descendants and those who came after them have worked to this end. They have discovered, propagated and introduced the choicest, greatest money-making fruits that America now boasts—that American fruit growers now harvest from the hardy trees that come from "the home of hardy trees"—Stark Bro's Nurseries at Louisiana, Mo.

The fact that Stark Bro's Nurseries is the home of trees that will bear the finest, highest market-priced-fruit is something that has been and is recognized by the most progressive and prosperous fruit growers. **Genuine Stark Trees** come only from Louisiana, Mo.



The Proper Place For the Union—Where the Root Cells Blend into Wood Cells

Old Oak Process Whole Root Trees

Registered U. S. Patent Office

The Secret of Stark Trees' Amazing Hardiness and Productiveness

The success of literally hundreds of thousands of rich orchardists is directly traceable to planting absolutely nothing but **Stark Bro's Old Oak Process Whole Root Trees** which always come from Louisiana, Mo.

This is a fact that everyone—the man who wants to "put out" thousands of trees or the home owner who wishes to plant a few in his back yard, can remember with profit to himself.

Over a generation ago Stark Bro's discovered why such an amazing number of orchards were short lived—why many fruit trees failed to grow—why so many of them never bore, bore late or died years before a good tree should die. They discovered that too many nurseries were growing their trees **wrong**. Their method of growing was actually **against nature**. Too many nurseries had been attempting to grow trees from piece roots.

Thousands of trees were tested here at the nursery testing grounds at Louisiana, Mo. and at our propagating grounds and demonstration orchards, North, East, South and West.

Finally, Stark Bro's announced to the world its Old Oak Process Whole Root method of growing stronger, healthier, more vigorous, longer-lived, more drought-resistant and more productive trees.

Obtainable Only From Stark Bro's

Stark Bro's is the only nursery that can supply **genuine Old Oak Process Whole Root Trees**. By growing them by **millions**, we so reduce their cost that we sell them almost as cheaply as ordinary piece-root trees. The patented trade marks on every lot of Stark Trees add nothing to their price—but they do **add** to your safety. They assure you that the trees to which they are attached are **exactly as represented—Best by 102 years' test.**

WHAT AUTHORITIES SAY:

Chas. Downing, one of the highest fruit tree authorities who ever lived, says: "But one healthy permanent tree can ever be grown from a single seedling stock."

Mr. Benjamin W. Douglas, successful orchardist, Ex-State Entomologist and Inspector of Ind. says: "I can furnish a splendid demonstration of why NOT to plant cheap trees (piece root)."

The former manager of the orchard I now have charge of bought and planted some trees—cheap in price, cheaper in quality. They are now **FIVE YEARS** old. They are stunted, crooked, have required extra cultivation and care. It is almost impossible to make them grow.

STARK TREES (OLD OAK PROCESS WHOLE ROOT) PLANTED THREE YEARS AGO ARE MUCH LARGER, finer and more shapely than the five-year-old cheap trees (piece root)."

COL. G. B. BRACKETT Late U. S. Pomologist

In "A Century of Horticulture" wrote: "Col. James Stark, a soldier of the Revolution and of Boston Tea Party Fame, and pioneer nurseryman was an illustrious ancestor of the Stark Bro's, of Louisiana, Mo. His son, Judge James Stark, established what is now the largest nursery in the world, one that has been of vast importance in shaping horticultural progress. He also bequeathed to his descendants honesty, integrity, good common sense and humanitarianism—qualities in Stark Bro's Nurseries that make his memory live today."

The "WHY" of the Old Oak Process

You see, a fruit tree is made up of wood cells and root cells, varying both in make-up and functions. At one place in the tree (see cut above) the wood cells blend into root cells. At this place nature makes a **perfect** union between the scion wood and the hardy seedling root. This is one of the basic secrets of the Old Oak Process Whole Root Method.

Of course it costs more for us to grow our trees by this method. Nurserymen who use the ordinary piece-root method make three to six—sometimes eight trees out of the same seedling from which we would make but one tree. But think how much that method protects **you**. It means that every Stark Tree you buy is full of stamina and vigor, is robust, healthy, grows fast, bears young and will outlive many generations of cheap piece-root trees.

Old Oak Process Protected by U. S. Government (Reg. U. S. Patent Office)

Read these excerpts from the Patent Office Records:—

"Stark Bro's Nurseries & Orchards Co., Louisiana, Mo., by virtue of the authority in them vested by and under the full text of the record of the U. S. Patent Office, No. 14,322, hold the exclusive right in introducing, propagating, growing and selling **OLD OAK PROCESS WHOLE ROOT TREES**, and no other person, firm or corporation has the right to such use, and all such are hereby warned, under penalty of the law, against any infringements."

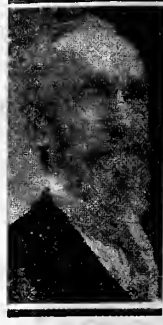


THE WILDER MEDAL
The American Pomological Society has awarded the Wilder Medal to Stark Bro's for Stark Delicious and Black Ben Apples. The Wilder Medal is the highest award attainable in the fruit industry.



HON. CHAMP CLARK
Speaker of the House of Representatives

Writes: "Most early settlers of Missouri were soldiers, as was Judge James Stark, who came to Pike, one of the richest counties in Missouri, and laid the foundation for the largest nursery in this world. He little dreamed while riding horseback from far-famed Kentucky carrying in his old fashioned saddle bags scions with which to start a nursery that he was beginning a business which would render the name Stark honorably familiar throughout America and beyond the seas."



America's Fruit Growers Pick Fortunes Off Stark Trees

THE "BONANZA" orchards of our land—those that actually "pan out" profits of \$500.00 and \$700.00 and even \$1,000.00 per acre per year—are without important exceptions orchards of Stark Trees. Extraordinary profits can be secured only from extraordinary trees just as surely as you must have men of more than ordinary caliber to make an army of more than ordinary achievement.

Take for instance that famous 640 acre orchard planted in the Pecos Valley of New Mexico. It was an all-Stark-Tree proposition. After it had borne crops of tremendous quantity and quality for years it was divided into small tracts and sold at an amazing increase over its original cost and the very year it was cut up and sold it brought the new owners practically as much as their orchards had cost them.

THE MAN WITH A SMALL TRACT OF LAND WILL PROFIT BY THESE FACTS

The finest tree quality is just as important to the man who wants to buy only a few trees for his back yard or for a half-acre or acre orchard as for him who intends to plant hundreds and thousands of fruit trees. Those few trees must live, grow, thrive, bear early and bear abundantly or all the time and effort and money they have involved are forever lost.

The thing to do is to be sure. To be sure means to get genuine Stark Trees. Don't gamble the difference of several cents per tree against the profits that come with the planting of genuine OLD OAK PROCESS Whole Root Trees.

When tempted to think that "all nursery trees are alike," remember that all orchard profits are not alike—and that orchard profits find their roots in the trees planted in the orchard. When so tempted, remember these orchard profit facts that you now read.

PROFITS AND PLEASURE FROM "BACK YARD" ORCHARDS

C. A. Woodford, Lawrence Co., Mo., has eighteen Montmorency Stark cherry trees in his back lot. He averages ninety to ninety-eight crates a year off this one-eighth acre of twelve year old trees—and for years he has been paid \$180.00 to \$200.00 each year for his crop off these eighteen trees. That's an average income from \$1440.00 to \$1600.00 per acre!

YOUNG J. H. HALE TREE BEARS ENORMOUS CROPS

F. H. Davis, Amador Co., Calif., secured a small lot of Stark Bro's grown J. H. Hale peach trees from us a few years back. On Oct. 2, 1917, he writes: "My largest tree at twenty months from planting ripened one hundred-twelve fine peaches. Everyone said they were the finest they ever saw. I sold \$5.75 worth off this one tree, after giving several boxes of these wonderful peaches to friends. How is this for a twenty-months old tree? It measured ten and one-half inches in circumference six inches from the ground and twelve feet and five inches high—ten feet, nine inches spread through branches four feet up. Some tree! I do not think it can be beat!"

\$92.70 FROM BACK YARD ORCHARD

Kirby S. Bennett, Chase Co., Kan., pocketed a profit of ninety-two dollars and seventy cents in one season from just a few Old Oak Process Whole Root Trees in a fifty by one hundred foot back yard.

Another man with a sixty foot back yard—Dr. T. Guy Hetherlin, Pike Co., Mo., made sixty-seven dollars and fifty cents from one crop of Stark Trees.

Just one eight-year Stark King David tree gave W. K. Morrow, Cochise Co., Ariz., eleven hundred and ninety pounds of apples—a net profit of fifty-nine and one-half dollars for the season.

FACTS THE LAND OWNER CAN'T AFFORD TO IGNORE

You have a perfect right to plan to get and to get the maximum net profit from your land. To do that you cannot afford to ignore the profit possibilities of putting at least part of your land into fruit trees. For you must remember that actual statistics prove that—

One Genuine Old Oak Process Whole Root Stark Tree will yield more actual cash profit than an acre of hay.

Two Genuine OLD OAK PROCESS Whole Root Stark Trees will yield more actual cash profits than an acre of corn.

Three Genuine OLD OAK PROCESS Whole Root Stark Trees will yield more actual cash profits than an acre of potatoes.

PEACHES BORE AT RATE OF \$1,072.00 PER ACRE

Fourteen Stark Bro's peach trees netted one hundred and thirty-four dollars for J. D. Hechler, Perry Co., Ill. For an acre that would mean \$1,072.00.

I. D. Schwimmer, Ford Co., Ill., cleared \$17.00 from one crop of just one Early Gold Plum Tree. If he had an acre of similar trees his profits would have been at the rate of \$2,200.00 per acre.

OWNERS OF FORTY TO FIFTY ACRES—LISTEN TO THESE FACTS

Wm. Brenner, Lawrence Co., Mo., an enthusiastic Stark Bro's customer, paid \$4,500.00 for a 20 acre orchard 4 years ago. Since he has planted 1,600 OLD OAK PROCESS Whole Root Stark Trees (both apple and peach) on his land. His first crop paid for the entire 40 acres. Out of all the 1,600 trees purchased from us not one has died.

ONE FRUIT CROP PAYS FOR FARM

Elva C. Barrows, Tulsa Co., Oklahoma, had a crop this year that simply "snowed him under." His big crop of Stark Early Elbertas was exceedingly profitable. His grapes from Stark Bro's vines produced a tremendous crop and they sold at 5 to 8½ cents per pound in the field. His orchard and vineyards planted exclusively with STARK TREES yielded smashing big dividends this year. His fruit crop for this year alone paid for his big farm.

The Tosca Orchard (40 acres) near Santa Fe, New Mexico, is planted all to genuine Stark Trees—(Delicious, Winesap, Wealthy and other leading varieties)—a profit clear of all expenses of \$10,000.00! The owner this year planted another orchard all with genuine Stark Trees—Stark Delicious and Stayman Winesap.

The Lewistown, Ill., Record reports that George H. Eveland, owner of two 35 acre orchards near that city cleared \$4,000.00 for the 1917 season's crop alone.

40 ACRE ORCHARD BRINGS \$15,000.00 IN ONE YEAR

Over in Johnson County, Ill., Guy Beaman has a 40 acre orchard. This year's crop was 3,000 barrels, bringing in a smashing total of \$15,000.00 in cash. Suppose you had 40 acres of Stark trees in bearing now?

STARK DELICIOUS IN ILLINOIS BRINGS \$1,350.00 PER ACRE

When Kenneth O. Clark of Pike Co., Ill., planted his 4 acre orchard a few years ago, he planted only one variety—genuine Stark Delicious—400 of them—all now bearing. Last season he gathered an average of 6 barrels

(18 bushels) of this great, flashing, red fruit from each tree. Despite the fact that he sold them before the market went up, he got \$5,400.00 for this one season's crop—an average of \$1,350.00 per acre.

BIG ORCHARDS BRING LARGE DIVIDENDS

W. T. Lindsey, of Polk Co., N. C., banks \$3,000.00 on the average every year from the crop of his 15 acre vineyard. That's \$200.00 per acre per year.

A. S. Pickett, Erie Co., Ohio, cleared \$10,000.00 on one crop from 80 acres of cherries. In 9 years Roy Phillips, Door Co., Wis., netted \$21,000.00 from only 6 acres of cherries.

W. H. Gebhart, Oceana Co., Mich., sold 2,658 bushels of peaches from 10 acres for \$5,316.00 or \$531.60 per acre.

R. M. Love, Pecos Valley, N. M., has a 100 acre Old Oak Process apple orchard which has made \$200 land worth \$1000 an acre.

H. C. Cupp, Adams Co., Ill., says: "Have had apples every year since Stark Delicious (Old Oak Process) trees started to bear, 5 years ago."

OWNERS OF BIG COMMERCIAL ORCHARDS PLANTED STARK TREES

And the big fellows plant STARK TREES. Their orchards are marvelous proofs of the truth of the maxim "Stark Trees Bear Fruit." Their bank accounts furnish dollars and cents proof that STARK TREES make "Success Orchards."

Successful men in all walks of life—Doctors, Bankers, Lawyers, etc., succeed in orcharding by planting STARK TREES. They have found it a safe way to make big profits without taking big chances. It need not interfere with their other duties.

This past season H. A. Aldrich of Cumberland Co., Ill., got nearly 25,000 barrels of apples from his 200 acre orchard.

The Omaha Bee reports that over 4,000 barrels were harvested this season of 1917 on the 100 acre orchard of Franklin Bros. near Barada, Neb. This paper stated that these apples are selling for \$6.00 a barrel.

John Tom, Albemarle Co., Va., got \$4,100.00 for his apples from 20 acres and still some people cannot understand the true economy of paying a little more to get the whole lot more of quality that is the possession of every genuine Old Oak Process Whole Root Stark Tree.

The 10,000 trees of the orchard of the Bowles Estate at Colesville, Virginia, produced an apple crop of \$64,913.90, which, after paying all expenses, including salaries, meant that this orchard netted its owner a clear profit of \$38,000.00.

The apple king of Illinois, Chris Ringhausen of Calhoun Co., sold his annual apple crop for a figure closely approaching \$35,000.00. This greatest of all Illinois apple growers has and is still planting genuine STARK TREES and has always found them to be the most prolific profit producers as well as the trees of longest life.



T. GUY HETHERLIN M.D.



HENRY C. CUPP



ADAM THOMPSON



D. O'BRIEN



KIRBY S. BENNETT



R. M. LOVE



J.C. HECHLER



TWO 6 YEAR OLD ORCHARDS
60 FEET APART
STARK TREES | PIECE ROOT TREES

Plant Stark Bro's Patented Trade-Mark OLD OAK PROCESS Whole Root Trees Like This 6 Year Old Orchard

Do NOT Plant Piece-Root Trees Like This 6 Year Old Orchard "Just Across the Road"

"\$110 per Acre, Average Return from American Orchards—Only \$13 per Acre from Grain Crops!" U. S. Chamber of Commerce Report

Stark Delicious

The Master Apple of the World

OLD MOTHER NATURE has her masterpieces. Her California Red Wood, towering majestically over all trees, is one of her triumphs. It is her master forest tree. Her magnificent Stark Delicious Apple Tree is her greatest fruit tree accomplishment. It is her master orchard tree.

It is now over 22 years since the late C. M. Stark of Stark Bro's discovered the original Stark Delicious tree. He visited the farm of Jesse Hiatt, the originator, in Peru, Madison Co., Iowa, and secured perpetual rights to that tree, for he knew that in it he had the apple that would astound the pomological world and bring happiness and fortune to orchardists throughout the land. The right to propagate from this original tree is still the exclusive property of Stark Bro's Nurseries at Louisiana, Mo. When we introduced "Stark Delicious" we secured a registered trade-mark on it from the U. S. Government. Get the genuine Stark Delicious from us.

The dominant superiority of the Stark Delicious hardly needs emphasis. One might as well argue about the supremacy of a gem of Tiffany silvercraft. But—take one of these master apples in your hand. Note its great size—its flashing beauty. Let your teeth sink into it. What joyous relish is yours! Its crisp, tender, fine grained, juice-laden flesh delights the palate. Then comes the sparkling zest of its flavor—something reminiscent of a great juicy pear, blended with the never-to-be-forgotten spiciness of the odor of a superb carnation. Words are poor things to describe this indescribable flavor.

The popularity of this master apple among connoisseurs is proof of its supremacy. The extraordinary prices it brings in the market is sure, doubt-destroying evidence of the claim that it is "The Money Maker Of The Orchard." Read the absorbingly interesting facts on page 3 of this condensed catalog, to gain a better idea of the astonishing profits made from the quality apples borne by one genuine Stark Delicious tree—by two trees—by a little back yard full of these master fruit trees—by the thousands of splendid Stark Delicious orchards which are today and have for years poured big profits into the hands of their owners. Note the specific instances on this page of the superabundant satisfaction that genuine Stark Delicious trees have brought to their planters.



Photo of Jesse Hiatt and Original Stark Delicious Tree—Purchased by Stark Bro's—45 years old—Still bearing annual crops in cold bleak Iowa.



6 Year-Old Stark Delicious bearing its third crop in Mr. Fette's Missouri Orchard (STARK OLD OAK PROCESS Whole Root Trees) (see below)

SHOWERS OF APPLES

At the time of writing these words, the splendid genuine Stark Delicious Tree Orchards of C. M. Fette, Marion Co., Mo., are simply loaded with magnificent specimens of Stark Delicious apples.

Nothing less than "Showers of Apples" can describe the sight of the loaded five and six year old Stark Delicious (Old Oak Process Whole Root) apple trees in this orchard. The trees (Stark Trees), look like veritable piles of apples. The above photo shows one of Fette's six year old Stark Delicious bearing its third crop of apples big as your two fists. Think of such a crop for the third time in succession on a 6-yr. tree—began bearing when three years old. Only a Stark Bro's Patented Old Oak Process Whole Root tree has ever achieved such a record!

SELLS STARK DELICIOUS CROP YEAR IN ADVANCE—GETS \$12 PER BARREL

In October of this year Mr. Fette writes:—"My Stark Delicious had all been previously sold—orders placed last season."

There is a great moral in this brief sentence that, if heeded, will mean big profits for those who are planning to plant orchards. Think what it means to be so sure of having a next year's crop that you can sell it twelve months in advance. You can if you plant genuine Stark Delicious trees. Buyers are always anxious to buy your Stark Delicious crop and they will pay higher prices than for any other variety. E. S. Marlott, Port Murray, N. J. writes: "Have sold my 1917 crop of Stark Delicious for \$12 per barrel."

"The Stark Delicious apple is bringing a higher price in Seattle, Washington market, than at any time in past six years."—Chl. Produce News, Oct. 1917.

SUCCEEDS NORTH, EAST, SOUTH, WEST

These great Stark Delicious trees have mastered the difficulties of all climates and all soils from Maine to Seattle from Atlanta, Ga., to Los Angeles, Calif. from Duluth, Minn. to New Orleans, La.

For instance, Mr. Harold Simmons, the noted Minnesota horticulturist declares: "This season here in Minnesota is as amply demonstrative of the superior quality of the Stark Delicious apple as last winter was a demonstration of its hardiness." Has stood 50 degrees below zero without injury."

\$1350.00 PER ACRE FOR STARK DELICIOUS CROP

My young Stark Delicious orchard produced 6 bbl. of apples to the tree (\$1350.00 per acre) My No. 1 Stark Delicious apples brought \$5.00 per bbl. in the orchard early in the season when prices were lowest and before the prices went up. I know from experience that I can make more money growing Stark Delicious apples than any other crop of fruit that grows out of the ground. Stark Delicious is by far the best apple being grown today and certainly the most profitable. Why orchardists should plant old-time varieties when they can grow Stark Delicious, I can't see. Since we Illinois Orchardists have learned how to spray we have found out that we can grow just as fine fruit and make just as big profits as the Northwest. K. O. CLARK, Pike Co., Ill.

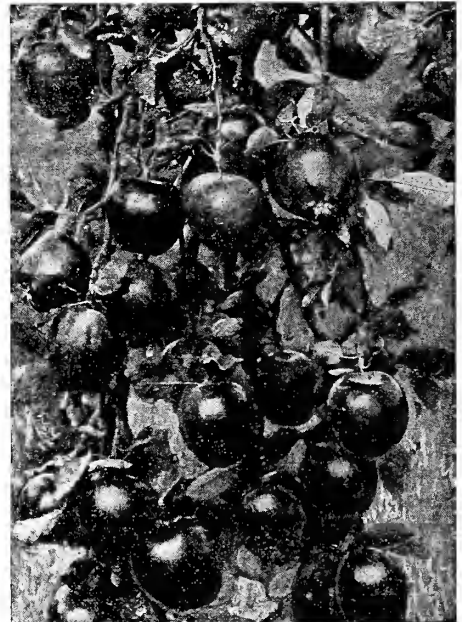


"Stark Delicious" Tree 4 years old

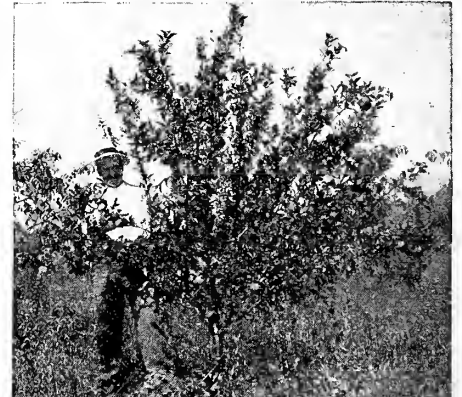


A 3-Year-Old "Stark Delicious" Tree

"Stark Trees Bear Fruit"



Loaded Branch of a 11-yr.-old Mo. Stark Delicious bearing its 7th successive crop for Mr. D. O'Brien.



3-Year Stark Delicious in Bearing in Pennsylvania

Delicious should be picked just as soon as well colored and seeds brown and put in cellar or storage. I pick Stark Delicious middle of September. My Stark Delicious solid as a rock now—more than two months after picking. Will keep until late spring or longer. Genuine Stark Delicious Old Oak Process Whole Root trees the healthiest and most resistant to insects and diseases. This fall, in looking for borers, I could not find any in my Stark Delicious trees. Other varieties badly attacked."—D. O'Brien.

The Orchardist who has made Money is he who has Refused to Plant Cheap Trees.

Dollar Maker of the Orchard

"The Finest Apple in all the World"—Says Luther Burbank, "The Wizard of Horticulture"



PROF. H. E. VAN DEMAN
Ex-United States Pomologist

He says—
"Stark Bro's trees bear everywhere. Stark Bro's, who bought outright the exclusive right to propagate Stark Delicious have sent it all over the world—to Asia, Europe, Korea, Australia, New Zealand and elsewhere. The tree has endured very cold climates safely. It is very productive as well. It certainly has a great record for reliability and quality."



E. P. POWELL,
Horticultural Author and Orchardist of International Fame.

Mr. Powell writes—
"Burbanks are wizards; Stark Bro's are saviors. I have known a large number of Burbanks in my life—but I have never found a satisfactory predecessor for Stark Bro's. The firm that saved Stark Delicious, the noblest apple in the world today—and made it known to the world, is a benefactor equal to Luther Burbank."

"Stark Delicious" Pleases Virginia Grower

Your Delicious apple has a certain future in the Shenandoah Valley of Virginia. Delicious in our orchard show size, shape, and color equal to the Western exhibits that I have seen at apple shows. We like the way Delicious trees grow—upright, and with strong, stubby fruit wood.—H. M. Magie, Augusta Co., Va.

LUTHER Burbank's opinion is shared by all the hundreds of expert pomologists all over America. These men, who know apples "like a book," have enthusiastically declared Stark Delicious to be the peer of all apples. Nearly all of them are growing Stark Delicious in their own orchards. Such an expert is H. B. Fullerton, Long Island, N. Y., Agr. Exp. Station, who writes this fall: "Our Stark Delicious grown on genuine Stark Trees, are corkers this year. The color is superb and the size extremely large, far larger than I ever saw in New York, and the flavor simply glorious. It proved conclusively to me that at 58 years the palate is just as sensitive to good eating as it was at 18."

This Stark Orchard Has Helped This Man To Become Independent

Five years ago, we received an inquiry from W. S. Mygrant, Conductor of the Mygrant's City Band of New York City, and famous cornet soloist at the Waldorf-Astoria hotel. He had just bought an old abandoned farm near Saugerties, N. Y., and wanted to put out an orchard. On Aug. 11, 1915, he wrote us: "I bought several hundred trees from you five years ago; genuine Stark Delicious, Stayman Winesap, Black Ben, Stark King David, etc. They have all made wonderful headway and fruited. Stark Delicious large—wonderful flavor. (See photograph, page 11.) I well remember that the _____ advised me not to plant these trees, but you assured me they would grow and fruit—and I took your advice. I am working on a plan that many people could follow who are trying to get away from the big cities into the country. To my son, I said: 'Boy, we will be partners. You work the farm—I will stay in the city at my business and support you and your orchard until you and your industry can support me.' We gave the son a large interest in the farm and orchard, when he married last September—and I am now arranging to retire, except for one or two days a week in the city. I enclose an order for more Stark trees. I must say that your trees surely had the right 'back bone' in them to grow as they have."

"Stark Delicious" Sells for \$7.50 per Barrel When Other Apples Fail to Bring More Than \$2.50

The Greencastle Orchard Co., of Putnam Co., Ind., shipped this fall a carload of Stark Delicious, barreled, to the Boston market. They sold for \$7.50 per barrel. Ben Davis from the same section were bringing \$2.50 at the same time. The Greencastle Orchard Co. had on display at the Indiana Apple Show 125 boxes of Delicious, which they sold at the show at \$2.00 per box. They are enthusiastic about Stark Delicious and are boosting it all the time. Mr. Hind, a member of the Orchard Company, says that Stark Delicious is their big payer and that in future plantings they will plant them largely. He says that it is the greatest apple grown. He declares that the markets will never get enough Stark Delicious, and that they will always bring good prices.

Among other points that the Greencastle people and other orchardists in Indiana grow enthusiastic over is that Stark Delicious is absolutely free from blight. One Indiana man told us that he had an orchard of 8 or 9 year old apple, among them 40 Stark Delicious. These were surrounded by Jonathan and other standard sorts, and while the others, especially Jonathan, were blighted badly, Stark Delicious had never shown a black leaf.

Genuine "Stark Delicious" Trees Marvelously Hardy

Since "Stark Delicious" was first introduced by Stark Bro's in 1895, millions of genuine "Stark Delicious" (trade-mark) trees have been supplied by us to the fruit growers of the world. The orchardists of America have made "Stark Delicious" their favorite tree.

Their experience with genuine Stark trees has shown them how unusually hardy and disease-resistant these trees are. It has proven their strong growing habits, their habits of bearing young and their habits of bearing heavy crops of extra fancy fruit every year. Their experience has hammered home the truth of the old axiom "Stark Trees Bear Fruit."

A Wonderful Money Maker For Growers

The profits their "Stark Delicious" crops enable them to bank every year, because of the surpassing quality and excellent keeping and shipping ability of this remarkable apple, clinches their long cherished faith in all the offerings of this, the Oldest and Most Up-To-Date Nursery in America—the Largest in the World.

Whether you are a big commercial orchardist or a man who wishes to plant a little home orchard or a few trees in the back yard, you must in justice to your pocketbook and your palate include "Stark Delicious" in your planting. In fact, at least half your orchard, it makes no difference how large or how small it is, should be "Stark Delicious" trees.

Kunze, Famous Chicago Fruit Store, Makes Wonderful Record With Stark Delicious. Have Brought 35c Each

One of the most remarkable records ever made in keeping apples was accomplished by the Kunze Fruit Store—an institution that handles the highest grade fruit in the world, and caters to the select trade of Chicago.

Stark Delicious is a splendid long keeping apple, and if you want further proof of this fact read what Mr. Kunze says: "I have just completed a record of having Stark Delicious on sale in my fruit store every day for more than twelve months. These apples were from the 1914 crop, picked in October and I sold them every day until November, 1915—three weeks more than a year. I could have kept them longer, but the supply gave out. The last of these apples was still juicy and of fine flavor.

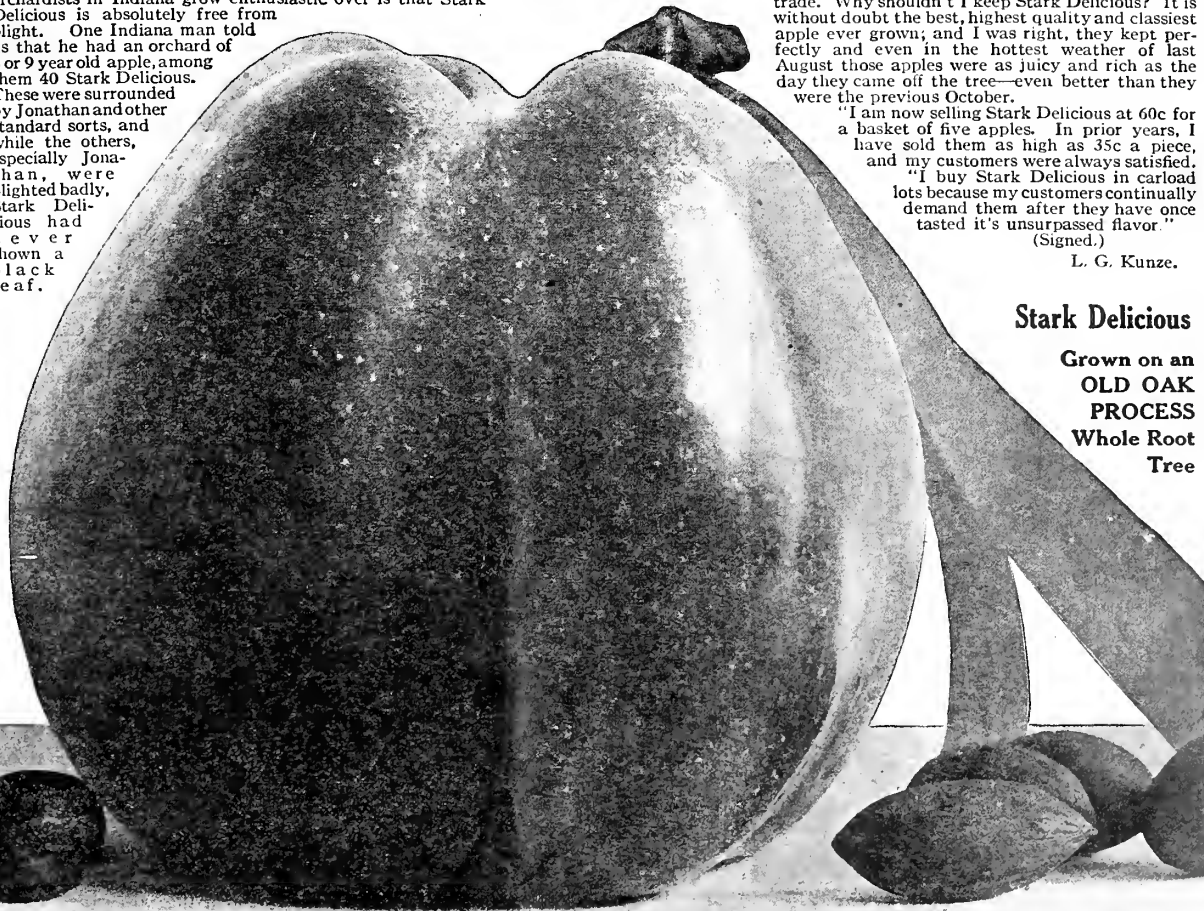
The reason I decided to keep Stark Delicious on sale all through the summer was because I always have trouble getting high quality summer apples for my trade. Why shouldn't I keep Stark Delicious? It is without doubt the best, highest quality and classiest apple ever grown; and I was right, they kept perfectly and even in the hottest weather of last August those apples were as juicy and rich as the day they came off the tree—even better than they were the previous October.

"I am now selling Stark Delicious at 60c for a basket of five apples. In prior years, I have sold them as high as 35c a piece, and my customers were always satisfied.

"I buy Stark Delicious in carload lots because my customers continually demand them after they have once tasted it's unsurpassed flavor."

(Signed.)

L. G. Kunze.



Stark Delicious

Grown on an OLD OAK PROCESS Whole Root Tree

"Stark Delicious"—Grown on "Stark Trees" by A. B. Cullum. Weight 20½ oz., Circum. 13¾ inches.

"Show Me an Orchardist who is making Big Money and I will show you a man who has Planted Genuine STARK TREES"

The "Golden Delicious"

The Golden Reward of a Century's Search—A Fitting Team Mate for Stark Delicious

A CENTURY'S search is ended! Another great new fruit is now added to the choicest fruits of America brought forth by Stark Bro's Nurseries. A chance discovery of a hitherto unknown yellow apple—a journey of a thousand miles by rail and twenty-five by horseback in the heart of West Virginia's mountain wilderness to investigate this new yellow apple at its source—careful testing in Northern, Western and Eastern soils and climates—and years of special propagation and tree growing now render us ready and able to present this marvel yellow apple to the world.

So here it is—ready for your orchards—Golden Delicious, the Queen of yellow apples—the glorious new golden team-mate of that wonder red apple—Stark Delicious. For over a century orchardists have longed for a yellow apple combining within itself the charm of delicious flavor, great size, late keeping and sturdy tree characteristics.



Golden Delicious Grimes Golden

Golden Delicious is 50% to 75% larger than Grimes

50% LARGER THAN GRIMES GOLDEN SUPERIOR IN FLAVOR

The glorious fruit of these superb Golden Delicious trees is unusually large (see illustration on front cover), 50% larger than Grimes Golden and of a beautiful glowing golden yellow color. Permeated with an exquisite spicy, aromatic flavor as delicious as the finest pear. Its fine-grained, crisp, creamy yellow flesh is saturated with delicious juiciness. Can be eaten in October—yet will keep until spring and still retain to the full its sprightly, refreshing qualities. Can be easily kept all winter in ordinary cellar storage.

GREAT SHIPPER—STANDS HARD KNOCKS

The strong texture of the Golden Delicious skin makes it a splendid shipper. Very hard shipping tests have proved this. These apples were even shipped in loosely packed barrels from West Virginia to Louisiana, Mo., and back again—a journey of 2000 miles and more—then held perfectly in ordinary cellar storage all winter until spring. Other shipments have been made from Coast to Coast and arrived in perfect condition.

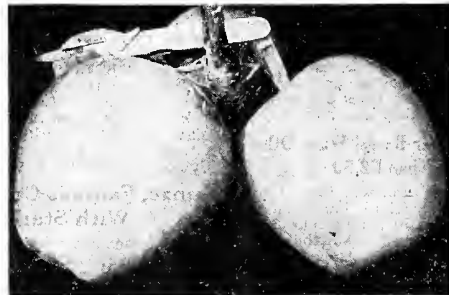


18-Months-old Top Graft of Golden Delicious bearing an immense crop at Louisiana, Mo. This is certainly a World's Record for young and heavy bearing. Although extremely heavily loaded they grew to very large size—a very valuable characteristic.

The firm, solid flesh of this great yellow apple resists bruising to a remarkable degree, but when it does bruise, rot does not result. The bruises dry up—a splendid quality for a commercial apple. The Golden Delicious is the most valuable yellow apple for the market ever propagated.

ASTOUNDING YOUNG BEARING RECORD

It is a big thing to say, but since it is the mere truth, we must say it:—The Golden Delicious is absolutely the youngest bearer we have ever



Mo. Grown Golden Delicious!

One of its valuable qualities is its ability to set and mature big crops of large size fruit

tested—as well as a heavy and sure bearer. The photo reproduced on this page shows a top graft that was set in the previous year. Just 18 months from the time the graft was inserted it had grown up and borne this big crop of fine, extra large golden fruit. Nothing to equal this is recorded in all our 102 years of orchard work. This test was made here in Louisiana, Mo., right under our very eyes.

TESTED NORTH, EAST, SOUTH, WEST THRIVING EVERYWHERE IT IS PLANTED

Our reports from orchards as far west as Idaho and Washington—from orchards in the East and from our own demonstration orchards in Northern climates, all indicate that here, at last, is the big yellow apple that will thrive, grow fast, bear young and prove a heavy, sure bearer everywhere.

We went to this time and trouble and expense so that there would be no guesswork about the value of the Golden Delicious to all orchardists—so that we could safely recommend it to the entire world.

THE INBORN TREE-VIRTUES OF GOLDEN DELICIOUS TREES

It is recognized that the superb quality of the Stark Delicious apple is splendidly matched by the exalted virtues of the Stark Delicious tree. The wonderful superiority of the apple is only one of the positive reasons why owners of little home orchards and the largest commercial orchards put Stark Delicious first in their lists. The dominant reasons for its universal preference over all red apple trees are its great hardiness—sturdiness of tree and blossom—heavy pollen production—exceptionally strong, healthy, disease-resistant root system—heavy foliage (which forms the "food factory" of every tree) and its heavy young and annual bearing.

From all the tests the strong points of the Stark Delicious are duplicated in Golden Delicious, which will cause it to take first rank above all other yellow apples in the estimation of fruit growers, both little and big. The beauty and superior quality of the apple itself is indisputable. But it is the combination of all orchard tree virtues possessed by the Golden Delicious tree that makes it completely worthy of the title "Team-Mate to Stark Delicious."

It is positively one of the strongest and thriftiest growers. The shape is ideal—upright, spreading,

The original Golden Delicious tree, located far up on the rocky, thin-soiled slopes of the forbidding West Virginia Mountains, was never sprayed or cared for in the least and still it was simply loaded with handsome, large golden balls of exquisite sprightly flavored fruit.

Tested out on poor, thin hill land, it has produced heavy crops. Planted in heavy rich soil, it has flourished like the proverbial "green bay tree"—and brought forth golden hordes of super-quality fruit and on clay soil it has set brand new records.

Red apples cannot satisfy the demand for yellow ones any more than cherries can take the place of plums. The Grimes Golden Apple only partially satisfies this demand. Its excellent flavor doesn't last, as it is not a late keeper.

Golden Delicious trees propagated and grown by Stark Bro's Patented Old Oak Process are marvelously sturdy. The original Golden Delicious tree—the "Mother" of every Golden Delicious tree—grew and thrived and has withstood the bitter cold and wintry blasts of the bleak and barren mountains of West Virginia, and bore and is still bearing prodigious crops year after year. These trees inherit this stamina and vigor, are extremely fast growers and early and heavy bearers. They resist disease and drought, are fairly alive with health from their widespread, strong roots to their symmetrical, stout limbed tops.

Trail of the Golden Delicious

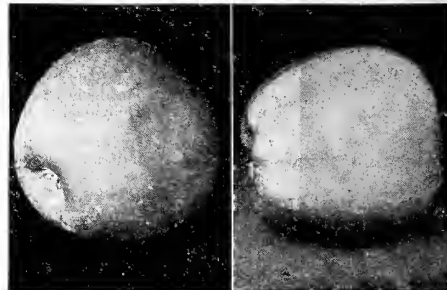
By Paul Clarence Stark

The first "clue" was placed in our hands on an April day some years ago. Three yellow apples arrived at our office from an orchardist in the West Virginia mountain wilds. He wrote that these apples were a new—a hitherto unknown variety. But we get letters from growers every day who say the same thing. Only once in many years does a really valuable new variety appear.

The second "clue" came when my brother, L. C. Stark, bit into one of these golden yellow apples. Then came the astonishing discovery. The apples looked like Grimes Golden—but, lo and behold! They tasted more like Stark Delicious!—Furthermore, they were longer in shape than Grimes Golden. And here they were in fine condition in April—Grimes Golden would have been rotted and gone three or four months before.

Here we had waited and longed for—and searched for years for the long keeping, supreme yellow apple.

All our experts were called in. All were given "a taste" of one of those precious apples. The commotion that resulted could have had only one parallel in our history—that being the time when Stark Delicious, now the king of all red apples, was discovered by C. M. Stark in Iowa.



W. Va. Grown

Idaho Grown

Widespread testing has proven its great adaptability to different climates and soils

The last apple of the cherished three was mailed to the late Col. Brackett, Chief U. S. Pomologist at Washington, D. C. Friends present at the time told us how the Colonel came hurrying into the front office, with a little slab of that wonderful apple perched on his knife blade, exclaiming, "Taste this. Here is a new apple that has an even better flavor than Grimes Golden!" He wrote glowing praises.

With these "clues" in hand, the "trail of the Golden Apple" was taken up. We had to see the tree as well as the fruit before we could be sure.

So, in the fall, when the apples were almost ripe, the writer started on the "trail." All we knew was that the tree was growing away up on a mountain side in West Virginia, 20 miles from a railroad. A 1000 mile ride by rail brought me to a little railway station in the West Virginia wilds. Twenty miles away "the tree" awaited inspection. A horse-back ride through a wild country accompanied by a guide, brought me to the farm of Mr. A. H. Mullins, who had sent in the three samples and on whose place the tree had grown—no one knew how.

Back of the house I could see a large orchard. So I hastened toward it. And here came a crushing disappointment. The orchard proved to be nothing but wild seedling trees—the great majority being runts. There wasn't one of them I would think of placing in my own orchard, much less introduce and advertise to the world.

Dejected and sick at heart I turned around and gazed gloomily on up the mountain side.

Then—I saw it!

There, beaming forth from the midst of a small clump of leafless, barren trees, was a tree that looked like it just stepped from the Garden of Eden. Its boughs were bending down to the ground under a tremendous crop of great glorious golden apples.

I started for it on the run. As I neared it fear bothered me. "Suppose it's only a Grimes Golden, after all?" But as I came close, I saw that the fruit were 50% larger than Grimes Golden. I tasted one that I plucked from the tree. Again I found that same rich, spicy, delicious flavor that had been the dominant quality of those three samples that had come to us in Louisiana, Mo.

Just as I had eaten my apple, core and all, I turned to see Mr. Mullins with a "I-told-you-so" smile on his face, climbing the hill to welcome me.

Cut Down Food Expense—Plant a STARK TREE Orchard in your own back yard—Raise your own Fruit

New Queen of Yellow Apples

A Prophecy and a Warning

TWENTY-TWO years ago we prophesied that Stark Delicious would bring unheard of profits to orchardists who planted Stark Delicious generously. Our prophecies have more than come true. Thousands of Stark Delicious growers are getting four times greater prices per bushel for their apples than even we thought would ever be possible.

We warned orchardists that he who hesitated in planting Stark Delicious would be the loser. And that he who planted other varieties, to the exclusion of a generous planting of Stark Delicious, would be a sorry man. How true this proved to be. Even as prosperous an orchardist as Judge Adam Thompson, De Kalb County, Missouri, who sells his fruit on the trees at highest market prices every season, says regretfully: "I have thirty acres of apple orchard. When this orchard was started I listened to too much neighborly advice and planted too many varieties, having fourteen different sorts. I have received big prices for my fruit because my Stark Delicious trees sold the crop. I have always refused to sell the Stark Delicious by themselves and would only let them go when the entire orchard was taken. But if I had thirty acres of Stark Delicious right here I would consider it worth \$2,000. per acre. When planting this orchard I had decided to plant three-quarters of it to Stark Delicious it would today be worth three times the biggest price offered for it."

OUR 1918 PROPHECY is that Golden Delicious will be as big a money-maker for orchardists as Stark Delicious has been and is. The orchardist who will plant genuine Stark Bro's Old Oak Process Whole Root Golden Delicious generously will reap a wonderful reward a very few years from now. The orchardists who go in for raising Golden Delicious in earnest and plant generously now, and beat their neighbor orchardists to it, are going to make the most money.

Profite by past experience. Remember our Stark Delicious prophecy, and how it came true. Take heed of our Golden Delicious prophecy, for it is sure to come true. It is not a mere advertising boast. It is a calm, deliberate prediction based not only on the orcharding knowledge, intensive study of market demands and ability to judge the true value of new fruit varieties gained in our 102 years of orchard experience, but on the unequalled endorsement and unrestricted enthusiasm of the shrewdest, orchardists and horticulture experts in the U. S. Golden Delicious will create a great new demand for high quality, long keeping yellow apples and the yellow apple demand is just starting.

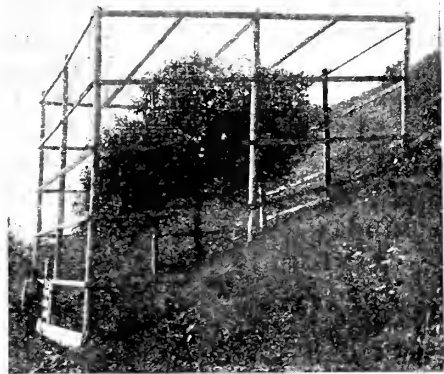
Originator's First Statement

This seedling has never been pruned or sprayed and grows on a poor hillside on one of our West Virginia hills, still the apples are fine and are such sure bearers. The tree and blossoms are very hardy, never failed to bear a crop. The apples hang evenly all over the tree and do not drop off during the summer like the other trees. It is the healthiest and finest growing tree in my orchard in spite of the neglect.

This apple ripens along with the other late winter apples. They keep fine and do not rot, remaining crisp and nice until late spring. I found some in my cellar in May, sound and nice. I am sure this tree is a seedling, because it stands on my farm which has been in the hands of our family for forty years. The tree is now only about nine years old and to my knowledge has borne big crops for the past four years. I don't know how many crops it bore before then.

Last year the tree bore twelve bushels of fine fruit and this year it has a good crop although the rest of my orchard and neighboring orchards are failures. Four years ago there were no apples in this country, but this tree had a full crop.

(Signed) A. H. MULLINS.



\$5,000.00 For One Tree

This picture shows the original Golden Delicious tree which we purchased outright for \$5,000.00. It stands there on that West Virginia Mountain side, entirely enclosed in a huge cage constructed by us and protected by a system of burglar alarms which will give warning of any trespassing to the alert guardians of this wonder tree. Bearing every year even when all other apples failed and undergoing all of the hardest tests and privations imaginable, still this splendid sturdy, never-failing tree held its own for long years till fate led us to its side. Its strong, healthy constitution indicates that this tree will bear fruit for several generations to come.

The Judgment of the Authorities Read What America's Fruit Experts Say

First Choice for Future Orchards—Says Illinois Expert

The public has long been clamoring for a long keeping Grimes Golden and we now have it in Golden Delicious. It does not lose flavor by storage in ordinary cellar; a valuable quality not found in many apples. When I consider that it eats as well as Grimes Golden in September and retains that same high flavor until February with all appearance of keeping until late spring, I feel certain that we have a long looked for apple, one that takes the place of Grimes after Grimes is gone—a future leader as a market apple. The size is good, just right, firm, but not too much so, flavor of the highest—just enough acid to break the sweet. It is equal in quality to any of our best apples—shape ideal and the color a waxy golden. Bruises dry up, has a tough skin and will stand rough handling—splendid keeping qualities. It has more good points than any yellow apple now on the market. I foresee that it will be the first choice for future orchards.

JOS. GERARDI,
Jersey Co., Illinois.

Creates a Sensation

"Even better than Grimes. It created a sensation here at our office. It is certainly a valuable yellow apple. Will prove a winner."

G. B. BRACKETT,
Head U. S. Pomologist.

The flavor of Golden Delicious is very pleasing and it will be popular from a standpoint of quality. If the tree resists collar rot you have made a valuable discovery.

E. P. TAYLOR,
Horticulturist, University of Idaho.

(NOTE—The original tree has never shown any signs of collar rot or any other weakness—it is a splendid healthy tree in the orchard.)

Most Promising Yellow Apple I Know

Golden Delicious pleases me very much. Handsome, quality splendid and it should make a splendid commercial variety. I do not hesitate to say that this is the most promising yellow apple I know. It is well worth pushing.

U. P. HEDRICK,
Horticulturist, N. Y. Agr. Exp. Sta.

Golden Delicious is certainly a splendid apple—highest quality and very late keeper—a fine grower. Great improvement over Grimes.

THOS. F. RIGG,
Iowa Authority & Horticultural Editor.

Fine Commercial Points

Golden Delicious has just the fine form and beautiful finish which an apple ought to have to be an attractive commercial sort. A very beautiful and symmetrical apple. Its bright golden color makes it one of the most attractive yellow sorts.

J. C. WHITTEN,
Dean of Horticulture, Missouri State Exp. Station.

Hardy as Wealthy and

Stark Delicious Beautiful size and shape for shipping and the best in quality of any new apple I ever tasted since the advent of Stark Delicious. This new priceless apple is certainly worthy of the name Golden Delicious, for it has many of the characteristics of the world-famous Stark Delicious. With its large luxuriant leathery leaves and a very strong grower in the orchard, it is much like the Stark Delicious in blossoming and its rare characteristics in having very few blank blossoms that did not set fruit. And fruit set seems to cling fast to the tree. I grow this year every set to maturity, not a one set dropped off. This, in my judgment is of exceptional value, if any new fruit and no expert in testing the quality of the Golden Delicious with all other good American apples will doubt for one minute its high rank as a long keeper. I think it will out rank in keeping about all the best apples. The samples I sent you of the Golden Delicious picked Oct. 15, 1917, I could keep until April. I have eaten this apple in October and in the March following and the quality kept well. In my orchard seems as hardy as Wealthy and Stark Delicious. I wish to congratulate you on having discovered this new apple. That I think will add more laurels to Stark Bro's N. & O. Co., as benefactors to your day and generation.

SILAS WILSON, Nampa, Idaho.
(Owner of the famous 500 acre Wilson Orchards.)

Indiana Authority lants Golden Deliciou.

The best yellow apple I ever tasted. More tender and more juicy than any Grimes Golden I ever saw.

BENJ. DOUGLAS,
Ex-State Entomologist of Indiana.
(Mr. Douglas has planted an orchard of Golden Delicious and reports every tree growing splendidly.)

Golden Delicious is certainly a fruit of quality.

W. PADDOCK,
Professor of Horticulture, Ohio.



Joseph Gerardi.



G. B. Brackett.



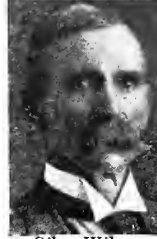
E. P. Taylor



Thos. F. Rigg.



J. C. Whitten.



Silas Wilson.



Benjamin Douglas

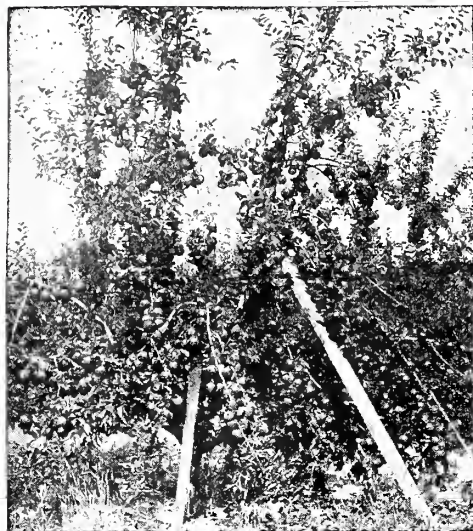


Wendall Paddock



Typical Golden Delicious—A Striking Resemblance to Stark Delicious in Shape, Size and Quality

Your Stark Tree Home Orchard will meet your family needs and bring you Extra Money, Too



A 6-Yr.-Old Stayman ("Stark Tree"), On The Middleton Ranch, Bearing 7 Boxes of Apples—Bears Young and Tremendous Crops.



Enormous Stayman in Blackman 7-Yr. "Stark Tree" Orchards. Nearly All Graded Fancy or No. 1—Note The Silver Dollar.

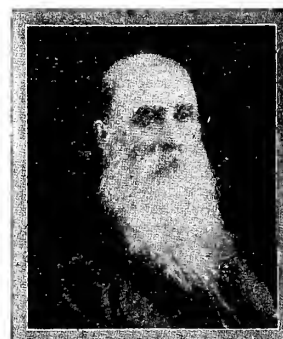


13 Boxes from a 7-Yr.-Old Stayman ("Stark Tree"), in J. N. Reed's Orchard. People Drove for Miles To See This Marvelous Hope, N. M., Orchard.

Stayman—Best of the Winesap Family

(Late Winter)

IN accordance with a suggestion from Prof. E. R. Lake, Sec'y of the American Pomological Society, we drop the word "Winesap" from the name and from this date in our literature this great apple will be known as Stayman. One of the greatest American commercial apples. Without a doubt the most valuable of the great family of Winesaps. Red, distinctly striped with carmine; of large size and exceedingly handsome. (See large photo below.) The quality is indescribable; the flesh is juicy and crisp with a mild and pleasing acidity and a flavor that has made it, in just a few years, one of the most sought-for and best-liked apples, and a general favorite on all the markets of the world. Stayman, Stark Delicious and Black Ben are an ideal trio for the commercial orchard. They are large, very fine color, and the trees are satisfactory in every particular. No orchard



The Late Dr. J. Stayman, Veteran Originator of Stayman Apple.

This Life-Size Apple Was Grown by Mr. James Turner

"The large Stayman sent you weighed 20½ oz. and measured 14 inches in circumference. It grew on a genuine whole-root Stark Tree from Stark Bro's at Louisiana, Mo. No weak, sick trees could produce an apple as big and fine as this."
Jas. Turner,
Pike Co.,
Mo.

combination will make more money or give more satisfaction in growing. The tree of Stayman resembles old Winesap, but is a stronger grower and hardier, being profitably grown in far northern apple sections where Winesap will not stand. The growth of Stayman in popularity has been truly marvelous. About eighteen years ago the originator, the late Dr. Stayman of Kansas, after trying without success to encourage his friends to take it up wrote us: "There will come a time when all will want it." Dr. Stayman was right. We immediately began

its propagation upon his advice and that of Mr. J. W. Kerr of Maryland. At that time we were most favorably impressed with the variety, but the astonishing popularity it has achieved has surprised even us. Everywhere, in all climates and under all differing conditions it has proven its superiority and established itself as an orchard leader and a commercial King. Plant Stark Delicious and Stayman for big profits. NNCS.

Enormous Profits in the Pecos Valley

J. W. Reed took from one Stayman tree 13 boxes of the finest apples ever seen. He had, I expect, the best crop of apples ever grown in America on his Stayman Winesap trees. People drove for many miles to see it. His profits will be enormous.—L. W. Adams, Eddy Co., N. M.

Am more strongly confirmed in my good opinion of Stayman Winesap for either home orchards or commercial planting.—F. O. Harrington, Secy., Iowa Horticultural Society.

"Stayman will probably produce more quantity and quality combined than any other variety I have. The nearest approach that has yet been made toward the ideal all-purpose apple."—Frank Moffit, Hamilton Co., Ind.

"The more I see of Stayman Winesap, the better I like it."—Benj. Buckman, Illinois' Famous Fruit Authority.

A grand apple, particularly fine in the old Winesap districts, and in the tide-water section of Virginia and Maryland.—M. B. Waite, Pathologist U. S. Department of Agriculture.

Frost-Proof Blossom

Am much pleased with Stayman Winesap, and want another block of them. A fine, strong tree, with frost-proof blossoms. I wish my whole orchard were Delicious, Stayman and a few Jonathan.—C. M. Fette, Vice-President Mississippi Valley Apple Growers' Congress.

Most Popular

With us Stayman Winesap is by far the most popular winter variety.—C. P. Close, State Horticulturist, Maryland.

"Stayman is one of the very best apples for this section. If I were planting a new orchard I would use Stayman, Stark Delicious, Grimes, Rome Beauty and Liveland Raspberry."—L. Marks, Washington Co., Ark.

The Best of the Winesaps

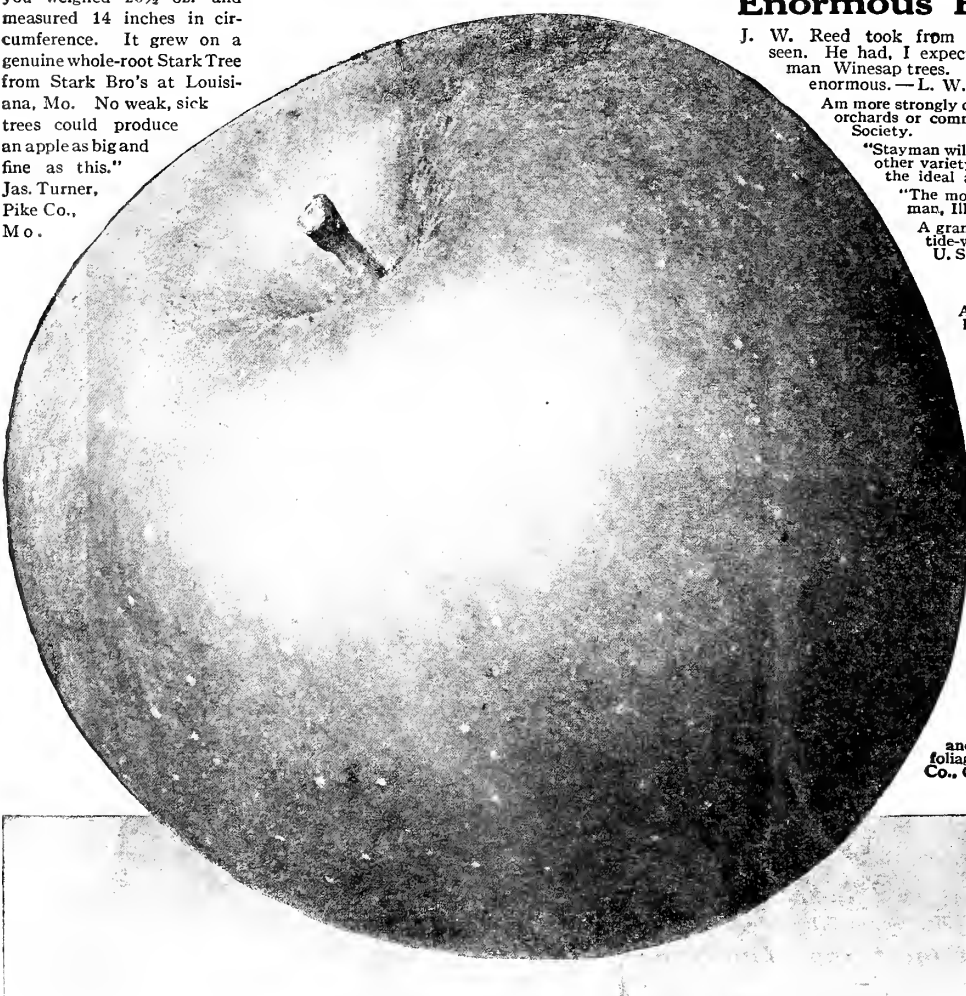
Seems to be the culmination of the Winesap family. I think we will never get a better one in that line; my favorite as an eating apple. Has as few faults in both tree and fruit as any apple I know. Not so liable to set its fruit too full and overbear, but the size of the fruit gives the tree all it can bear with any safety, and it produces but few small apples.—Frank Femmons, Madera Co., Calif.

Next To Delicious

An apple of fine quality, nice large and smooth. Tree bears young and has nice upright habit; bears heavily; strong grower; has thick foliage. For quality, stands next to Delicious.—Jno. Cottle, Washington Co., Ohio.

Tolman Sweet Yellow, delicate pink blush; good for cooking and preserving. A splendid winter sweet apple. Tree long-lived, very hardy, strong grower, bears young and regularly. NNCS.

This Enormous Stayman Grown on an OLD OAK PROCESS Whole Root Tree by Mr. Turner, Pike Co., Mo.



Stayman Winesap This Year Was the Largest I Ever Saw

"Stayman Winesap this year was the largest apple I ever saw, larger than the Wolf River or Twenty Ounce." W. H. Scott, Laclede Co., Mo.



"Black Ben" [Trade-Mark] Apple

"It Fills The Barrels." "Sold My Black Ben for \$3.00 Per Bu. Box."—C. W. Wilmeroth.

FROM the standpoint of dollars and cents, and year in and year out bearing, Black Ben has, except *genuine* "Stark Delicious" no equal. The fruit is big and flashy—rich, glowing red that always takes the eye on the markets. Black Ben and *genuine* "Stark Delicious" are the two apples that have put the old Ben Davis out of business. They are far better apples and far bigger money makers.

S. T. Cole planted 58 acres Black Ben in his Ozark Mountain Orchards. These showed up so well that he planted 40 acres more of Black Ben trees from Stark Bro's Nurseries. In speaking of one plat of trees he says: "Stark Trees are the best I ever planted. Out of 800 lost only 4 or 5." Sold my crop of Black Ben at \$3.00 to \$5.00

per barrel. The best price offered for the Ben Davis was from \$1.00 to \$1.50 per barrel. Remembering that Black Ben bears just as heavy and produces bigger apples than Ben Davis, you can see what a difference this price makes, for as Editor Irvine of the Fruit Grower said: "It fills the barrels."

Sold My "Black Ben" For \$3.00 Per Bushel

The color of the fruit is just right for market and C. W. Wilmeroth, the well-known commission man and orchardist says: "have just refused an offer of \$2.00 to \$2.25 per (bu.) box from a N. Y. dealer for a carload of Black Ben." LATER: "Sold my Black Ben on the N. Y. market the other day for \$3.00 per box. Jonathan only brought \$2.00. Just had a pleasant call from Tibbits, Pres. of the Wenatchee Apple Growers' Association, who told me—"I have a block of Black Ben (trees from Stark Bro's) which commenced to bear at 3 years of age and have borne every year. This year they are 8 years old and averaged 10 boxes to the tree. They bear heavier than Red Ben Davis."

"Black Ben" Handsomest Apple

I ever saw" says Mac Alexander of Mifflin Co., Pa. All well posted fruit men now heartily agree with what we said when we first introduced it years ago. We believed all orchardists would some day plant it instead of Ben Davis if they knew as much about it as we did—a decided improvement in apples; more beautiful, more solid dark red color, better quality, better keeper and a surer bearer than Ben Davis—four very important money-making points. It is far ahead of Gano; decidedly larger, a longer keeper, and does not scald in cold storage. It is much deeper and richer red in color than Gano; Black Ben catches the eye, excites the appetite and *sells itself* by its superior appearance.

Black Ben Finer than Your Description

says Henry Oliver, an orchardist of Franklin Co., Tenn. "Comparing the fruit with your description shows no mistakes, no errors, no falsehood. I can recommend Black Ben."

Bore in 2 Years.

From up in Custer Co., Nebr., J. H. Gavin writes: "Stark trees are the finest I have ever had. Black Ben bore fruit the second year. This, the third year, they are fruiting freely."

Finest Orchard in the State

Mr. J. S. Moore, whose famous Stark Tree orchard in Van Buren Co., Ia., says: "Our orchard contains 2000 Black Ben trees, all from Stark Bro's, and have made a splendid record with us. Authorities from the Ames Exp. Station pronounced it the finest orchard in the state. We will want more Stark Trees from Stark Bro's at Louisiana, Mo., because they are the best money can buy." Photo Moore Orchard, page 15.

History of "Black Ben"

Black Ben, like Stark Delicious, is an exclusive Stark Bro's introduction. It is a seedling which originated in the Ozark Mtns. of Wash. Co., Ark., on the farm of M. Black. From the original tree 9 grafts were taken and set in J. F. Bain's orchard where each year they excelled Ben Davis, bearing some years when Ben Davis failed.

Black Ben a Great Sensation

Black Ben has probably created a greater sensation than any apple we have ever introduced with the single exception of Stark Delicious. It has been the subject of more discussion in horticultural circles than any apple we know, and after the test of time it has come out victor—has proven itself far superior, larger, better color and a bigger money-maker than Gano, Ben Davis, Red Ben Davis or any apple of that class. In fact, for both commercial and home orchards, the combination of Stark Delicious and Black Ben cannot be improved upon, along with "Double-Life" Grimes Golden and our other commercial leaders, such as Stayman Winesap, ordinary Winesap (which is again gaining well-earned popularity), Wealthy, Jonathan, York, etc.

Successful Orchardist Praises "Black Ben"

W. B. Cross of Denver Co., Colo., says: "If I were to set another orchard of 100,000 trees I should plant 30,000 Black Ben, 10,000 Delicious, 5,000 King David, the remainder Winesap, Jonathan and Rome Beauty. I think you have done the right thing by discarding Ben Davis, Gano, Missouri Pippin, altho' I suppose it has been a hard thing for you to give up Ben Davis".

Note.—Stark Bro's won't grow,—haven't grown, a Ben Davis for years. It isn't worth planting because Black Ben is better in every way.

Black Ben

Trade-Mark Reg.

Introduced by Stark Bro's



Actual Size



Reg. U. S. Pat. office



Trade Mark Reg. U. S. Pat. Off.

Grown on OLD OAK PROCESS Whole Root Trees

"Stark King David"

(Trade-Mark—Reg. U. S. Pat. Office)

"A Brilliant Red Grimes Golden"

—Says Prof. H. E. Van Deman, Ex. U. S. Pomologist

PROBABLY the greatest beauty of all appledom—and the quality—"Put your teeth into a Stark King David and the sensation is like old wine penetrating the whole system! Begins bearing at four years (or younger), and bears heavily every year—brought the highest price of any apple on the markets of Great Britain last year," says the Hon. T. H. Atkinson, famous Washington Orchardist.

When we first hunted through the now famous Ozark Mountains in search of improved new apples, we heard of an apple of marvelous beauty, superb color and the flavor of old wine—even better than Jonathan—and which stuck on the tree a month longer than Jonathan—one that the wind could not blow off. But only after a long search and after several long, hard trips over the rough Ozark Mountain roads did we finally discover it—still loaded with apples on Oct. 25th, after all Jonathans in the neighborhood had fallen five weeks earlier. We bought the original tree and all rights to scions and buds with the Exclusive Rights of Introduction. We named it "Stark King David" and registered it as Stark Bro's Trade-Mark in the U. S. Pat. Office at Washington.

"Larger and Better Colored than Jonathan"

Praised by Great New York authority: "King David superior to either Jonathan or Arkansas Black. Hardy. Larger than Jonathan, better colored. This makes King David one of the orchard beauties. Added to its deep, solid red color are rotundity in shape and uniformity in size. These three qualities give the variety almost perfection. Fruit hangs long and well. Flesh is firm, fine, crisp, tender, spicy and juicy."—Prof. U. P. Hedrick in the Official Report of N. Y. Agricultural Experiment Station.

Western Farmer's Review, Sept. 30, 1915: "From the 185 acre orchards of E. F. Stephens, Pres. Idaho Hort. Board, there will be 10,000 bushels of the state's choicest apples. In this orchard the Stark King David is the most productive, most vigorous grower of all varieties planted. One five year tree bore one thousand five hundred and forty apples. A young productive bearer, suffers less from blight and is higher colored than Jonathan.



143 Large Stark King David on 3-Year Tree in the Famous Round Crest Orchard



Actual Size

Stark King David Grown by R. Rasmussen, Washington Co., Neb.

Frank Moffit, Carmel, Ind. authority, says: "King David has been fruiting here for five or six years and has a way about it of making friends. The tree is a strong grower and a young cropper, while the fruit does not spot like Jonathan."

"Hardy enough here; a heavy bearer; fine color; good quality; is a better keeper than Jonathan. Have seen no blight at all on it and Jonathan blights."—F. O. Harrington Treas. Iowa Horticultural Soc.

"Stark King David proved good grower and early bearer. Have planted about twice as heavily of it as Jonathan and picked from four to five bushels from five year old trees. One of our very best sellers."—F. H. Bancroft & Son, Kent Co., Del.

How to Pocket Biggest Profits Growing "Stark King Davids"

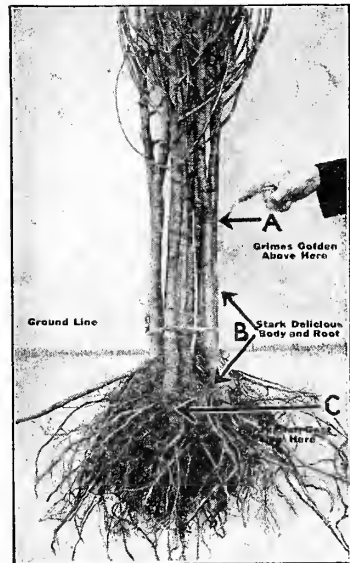
The secret of growing Stark King David for greatest profit is in knowing when to pick it. Like most all high class apples, it should be picked while still crisp and firm (as early as Grimes Golden). Picking at the right time—early enough—will greatly increase the keeping quality of all the late winter keepers.

DOUBLE-LIFE

Stark Bro's Trade Mark

GRIMES GOLDEN

The Accumulated "Know-How" of 100 Years Conquers the Only Weakness of This Great Apple



These trees show why our Trade Mark Process doubles the life of the Grimes Tree. "A" shows where the Grimes starts—below this point is the splendid hardy, disease-resistant trunk of the Stark Delicious with the stiff sturdy roots of Stark Delicious below.

GRIMES Golden is a golden transparent yellow apple with a fragrant aroma. It is of crisp, tender flesh, rich, spicy and has won great popularity on all markets and is commanding big prices everywhere.

The Grimes Golden tree, however, has a fatal weakness. Although it is hardy, a vigorous grower, late bloomer and a young bearer, yet its one weakness has raised havoc among Grimes Golden orchards all over the world. "Collar rot" has shortened the life of the Grimes Golden tree. Just when it has reached the point where it bears big crops, it is stricken and soon dies. But Stark Bro's double-life method of double working Grimes Golden has freed it from collar rot. Ordinary double working as commonly practiced could not be entirely relied upon. But our double-life method insures long life, vigor, strength, everything that the tree requires.

Hon. Thos. F. Rigg, Horticultural Editor of the AMERICAN POULTRY JOURNAL, says: "Your new plan of propagating Grimes Golden on Stark Delicious is the most important step ever taken by an American nursery. This method gives a wonderful strong root system which means greatly increased vigor and increased production."

"Double Life" Method—Result of Years of Investigation

In order to find the stock we required for double working Grimes, we experimented for years. The ideal stock must be hardy, vigorous growing, resistant to canker, collar rot and other diseases and should also be Aphis resistant. There were varieties such as Northern Spy which had most of these characteristics, but the one big thing we were searching for was a variety that would root on its own wood, thus making the roots just as hardy and just as resistant to disease and insects as the top of the tree. Our years of testing proved Stark Delicious to be exactly what was required.

Here is our Trade-Marked method. We start with carefully selected hardy, French crab roots. To each is grafted a long scion of sturdy Stark Delicious from which grows the main mass of husky roots and the trunk. High above the ground on this sturdy body is added the Grimes Golden bud. The wood of the Grimes Golden starts well above the ground surface—no soil touches it and there can be no collar rot and the trunk becomes stronger at the union than at any other point. This process requires three years to produce a one year double life Grimes Golden tree, but it practically doubles its life.

Some people top work weak growing varieties on Northern Spy, Ben Davis, etc., but these varieties have serious faults—Northern Spy is a slow grower, the roots knot badly and comes into bearing very late. Ben Davis is short lived, subject to canker and other diseases. There is as much difference between our "double-life process" and the old method of double working as there is between the old method of double working and the ordinary trees that are not double worked. It is the splendid Stark Delicious root that grows on double-life trees that makes them grow so much stronger in nursery and orchard.

Doubles the Life of the Grimes Tree

The double-working process trade-marked by Stark Bro's as conceived and completed here at Louisiana, Mo., injects into Grimes Golden trees the blood of long life—the stamina and roots of the Stark Delicious tree. It doubles the life and more than doubles the profit to the grower of Grimes Golden.



Above Mr. Stark's Finger Note the Strong, Stiff Stark Delicious Brace Roots and Body that Give the Vigor to "Double-Life" Trees.

"Don't Waste!" Cheap Trees are Always Wasteful! STARK TREES have a 102-Year Record for Big Annual money-making Crops

Stark Bro's Select Apples

Our Picked Sorts After a Century of Growing and Testing

DEMAND FOR FINE APPLES GREATER THAN SUPPLY

THIS love of apples is growing. The desire for and willingness to pay for finer apples is increasing faster than fine apples are being grown in this country. This country of 100,000,000 people offers a tremendous market for the output of tens of thousands more orchards planted with the higher grade apple trees that produce the higher grade, higher-priced apples. As Editor Collingwood says: "The great orchards of Europe have been almost wiped out—it will take 25 years to replace them. I firmly believe that the American who plants an apple orchard today has greater opportunities than ever before." And in further proof of this fact, the U. S. Government Reports show that whereas the actual number of fruit trees has in a decade increased only 1 per cent in number, the value of the product of these apple trees has increased 68 per cent.

FOUNDERS OF PROFIT BUILDING ORCHARDS

Our century of experience—of constant endeavor to better fruit quality, to increase the quantity of crops per tree and to add to the profits of fruit growers

RIPENING LIST

EARLY SUMMER		
Stark Star (Trade-Mark)	Belleflower, Yellow	
Henry Clay (Trade-Mark)	Belleflower, Improved	
Liveland Raspberry	Am. Golden Russet	
Yellow Transparent	Steele Red (Canada Red)	
Early Harvest	"Double-Life" Grimes Golden (Trade-Mark)	
Benoni	Grimes Golden	
Red Astraehan	Colorado Orange	
Red June	Magnet (Magnate)	
Early Ripe	Jonathan	
Sweet Bough	Stark King David (T. M.)	
Williams Early Red	Lowry (Dixie)	
SUMMER APPLES		
Stark Summer Queen	Rome Beauty	
Charlamof (Early Duchess)	Rome Beauty, Ill. Red	
Wilson Red June	Rome Beauty, Ohio Bright	
Duchess	Rome Beauty, Ohio Dark	
Chenango Strawberry	Ensee (Improved Rome Beauty)	
Summer Champion	Spitzenburg (Esopus)	
Old Wife Pippin	Vandiver Improved	
Yellow Horse	Virginia Beauty	
Jefferis Red	Kingalrd Choice	
Maiden Blush	Golden Winesap	
FALL APPLES		
Gravenstein (Banks Red)	Paradise Winter Sweet	
Early Melon	Lady Sweet	
Lowell (Orange Pippin)	Pryor Red	
Patten Greening	Akin Red	
Fall Pippin	LATE WINTER	
Estelline (Late Duchess)	White Winter Pearmain	
Wealthy	Senator (Trade-Mark)	
Rambo	York Imperial	
Wolf River	Chicago	
Buckingham Improved	Minkler	
Mother	Mammoth Grimes Golden	
EARLY WINTER		
Wagener	White Pippin	
Fameuse	Albemar Pippin	
Hubbardston Nonsuch	Newtown Pippin	
N. W. Greening	Jeniton (Ralls Janet)	
McIntosh Red	Champion (Trade-Mark)	
Wisner Dessert	Arkansas Black	
King Tompkins Co.	Stark	
Roman Stem	Stayman Winesap	
Tolman Sweet	Mammoth Black Twig	
R. I. Greening	Winesap	
WINTER APPLES		
Baldwin	Gilbert Winesap	
Smokehouse	Paragon Winesap	
Northern Spy	Giant Jeniton (T. M.)	
Mazoon	Willow Twig	
Banana (Winter Banana)	Stark Delicious (T. M.)	
	Golden Delicious	
	Ingram	
	Black Ben (Trade-Mark)	

means much to you and every apple grower. Stark Bro's have introduced to the world Stark Delicious, Golden Delicious, Black Ben, Stark King David, Senator, Champion, "Double-Life" Grimes Golden and a host of other improved apples and other fruits. We have felt it our duty to always urge the planting of only the best varieties—those apples that would begin bearing youngest, bear heaviest, bear most regularly and bear finest quality fruit in greatest quantity. We won't sell our friends and customers trees that we would not feel safe in planting in our own orchards.

In the general descriptions, varieties are in alphabetical order, but in the left column we arrange them according to the season of ripening—the earliest sort at the top of the list; the latest winter keeper at the bottom. It makes easy a selection for home orchards that will give fruit from the time the earliest apple ripens until the latest. Throughout this book the region for which a sort is recommended is indicated thus:

N—North; **C**—Central; **S**—South; **NN**—Extreme North. Thus **NCS** indicates a variety that succeeds either North, Central or South, etc.

apple perfect as though turned in a lathe. Golden yellow ground almost completely covered with bright red in finely pencilled streaks, broader stripes and often deep solid red. Flesh young, juicy, good and does not become dry and mealy even in late Spring. NCS

DUCHESS, Oldenburgs. (Summer.) A hardy Russian variety that is beautiful and good. Medium size, striped and mottled bright red and crimson. Liveland Raspberry, ripening earlier than Duchess is our Summer apple favorite. NCS

EARLY MELON (Fall.) An extra good fall apple, very much resembling Wealthy and ripening earlier. Bears immense crops—even larger than Wealthy. NCS

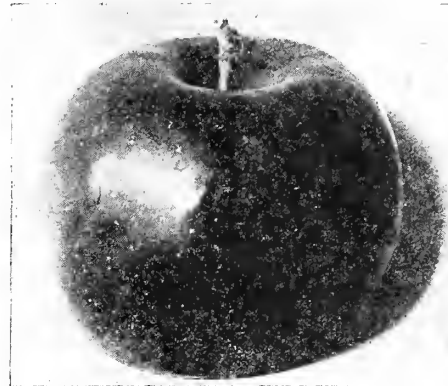
Best bearing apple I have.—W. C. Banks, Ark. **ENSEE, Improved Rome Beauty.** (Winter.) Brisk and refreshing in quality. Hangs later than Rome Beauty and is a valuable apple. NCS

GIANT JENITON (Winter.) A Missouri apple of the Jeniton-Ingram type named and introduced by us about eighteen years ago. Late bloomer, larger than Jeniton or Ingram. NCS

GOLDEN DELICIOUS—The new queen of yellow apples. Highest quality, late keeper. (See page 6.)

GOLDEN WINESAP (Late Winter.) This beautiful big yellow apple originated in the orchard of C. E. Bennett, Ogden, Utah, from seed of Winesap. The fruit ranges from medium to large in size.

an acid apple. The tree is adapted to many sections; orchards of them are found in the North, South, East and West and they always pay. A seedling of Spitzenburg, but of wider adaptability; tree is long-lived, productive and a young bearer; Hon. Richard Dalton, President of the Missouri State Board of Horticulture, has a great orchard of Jonathan at Saverton, Mo. Colonel Dalton's Jonathan are famous among Chicago apple men, and last year he sold his crop (largely Jonathan), for \$20,000.00. NCS



Jonathan—a beautiful and popular apple that succeeds in practically all orchard regions. Always sells well. (These photos reduced size.)

KING DAVID—(See page 10.)

LADY SWEET (Winter.) A desirable sweet apple almost entirely overspread with red and striped with crimson; mild, sweet, tender. NCS

Liveland Raspberry (Early Summer.) The queen of all early summer apples. H. B. Fullerton, Director Long Island Experiment Station, says: "Far and away the best early apple." It is of Russian origin, as hardy as an oak, an upright grower, bears young and produces enormous crops and is larger than Yellow Transparent. A beautiful fruit; the waxy white surface being almost entirely overspread with a blush and with stripings of pinkish red. The flesh is white as snow, tender, fine grained and often slightly streaked with red next the skin. The quality is delightful; juicy, mild with just the right degree of tartness. The U. S. Pomologist advises us that Liveland Raspberry should take the place of Yellow Transparent, as it is the most beautifully colored fruit ever placed on the market and superior to Transparent in quality. Henry Wallis, Missouri authority, says it is the best early apple he knows. The South Dakota Experiment Station says that no early apple East or West is better. It has been thoroughly tested and has not been found wanting. We urge its planting. NCS

MAIDEN BLUSH (Late Summer.) The old and well known lemon yellow apple that is still popular, but is being supplanted by other sorts. Wilson Red June, Early Melon and Wealthy are better. NCS



Henry Clay (T. M.)—great early apple, sure bearer delicious quality. (Photo one-third size.)



Liveland Raspberry—best early apple, excellent quality, young bearer. Always brings fancy prices on early market. Plant more early apples—big profits.

round to roundish oblong in shape with a firm, crisp, juicy flesh and an appetizing flavor. It has the juicy tartness of Jonathan, the satisfying meanness of Stayman Winesap and the deep, rich, yellow of Grimes with a rich, red blush. Then add the keeping qualities of the good old Winesap and you have a mental picture of this apple. It is an exceedingly late keeper and cold storage specimens have never shown the least trace of scald as late as April 1. A promising apple but Golden Delicious is better.

GRAVENSTEIN, Bank's Red. (Fall.) A bright red strain of Gravenstein from Nova Scotia. Fruit is almost a solid red. NCS

Grimes Golden (Winter.) For many years this splendid apple has held first place among all yellow varieties. However, Stark Bro's new apple, Golden Delicious, has all of the good qualities of Grimes and none of its faults. Leading authorities state that Golden Delicious is superior in quality to Grimes. The Grimes Golden tree is subject to collar-rot and should be grown by Stark Bro's "Double-Life" methods.—See page 10. **Flavor Never Forgotten.**—Of all yellow apples none more beautiful; once tasted never forgotten.—Prof. H. E. Van Denman, in FRUIT GROWER.

Henry Clay (Trade-Mark.) (Early Summer.) The best early yellow apple, often with a bright red cheek. The tree is a strong, spreading grower and bears regularly and abundantly. Gone by the time Yellow Transparent is half picked. Tree blooms late and has stood 32 degrees below zero in Iowa without injury; has never blighted. Originated in Kentucky and introduced by us. R. F. Rutledge, Tennessee, says: "The most delicious apple I ever tasted." NCS

IMPERIAL RAMBO (Early Winter.) Well known Rambo type, but almost twice as large. NCS

Jonathan (Winter.) A brilliant, flashing red apple with a spicy, rich acidity that has made it a prime favorite with all lovers of



Champion—latest keeper, young, sure and annual bearer. Resists drought and succeeds everywhere. Plant more Champion—they fill the barrels.

BALDWIN (Winter.) Large red, popular east, but other varieties taking its place. Stark Delicious is the perfect apple for all Baldwin communities. NC

BANANA (Winter.) Clear yellow with bright blush. Flavor suggestive of the banana—hence the name. Very handsome, but a poor shipper. NCS

BELLEFLOWER IMPROVED, Mason's Orange. (Winter.) Best of the Belleflower type of apples. NCS

BENONI (Early Summer.) Better than Red June in quality, but tender north; inferior to Liveland Raspberry. NCS

BUCKINGHAM IMPROVED, Special Stark Strain. (Fall.) A good red Fall apple for drying and family use, but Wealthy is better.

Champion (Late Keeper.) (Trade-Mark Registered.) In color, beauty, smoothness, keeping, for quick and sure profit, Champion surpasses Willow Twig, Mammoth Black Twig, Ark. Black and other extremely late keepers. It originated in Washington Co., Ark., and was discovered and introduced by us twenty years ago. The original tree when it first attracted our attention was, without any care whatever, bearing a wonderful crop of perfect fruit—every

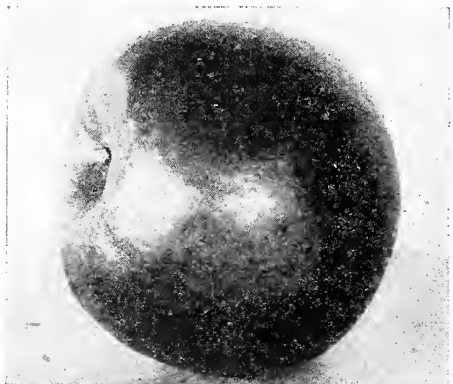
Our New Big 64-Page Book Showing Leading Fruits in Natural Colors, Sent FREE on Request

Apples—Continued

MAMMOTH BLACK TWIG, Stark Strain. (Late Winter.) The Virginias grow them to perfection. The apple sections of Indiana, Illinois, Missouri, Arkansas and New Mexico plant them largely, also far West and Northwest. The one fault of old Black Twig was that it did not come into bearing until late. This strain bears younger, more regularly and larger crops. NCS

MAMMOTH GRIMES GOLDEN (Winter.) Resembles Grimes Golden in shape, color and quality, but is larger and a better keeper; a pure clear golden yellow. Golden Delicious is superior. NCS

McINTOSH RED (Early Winter.) A popular bright red apple largely grown in the North where hardiness is required. A Massachusetts authority calls it "The Brother Jonathan of New England." Our propagation is from selected Montana orchards. NNCS



Paragon—"The Glorified Winesap." Far better than old M. Black Twig, a regular bearer, very late keeper. Proven one of the best of Winesap type.

MOTHER (Fall.) A handsome red apple, resembling Spitzenburg. Some apple lover has called Mother "Fall Delicious" and the name is appropriate. NCS

NEWTOWN PIPPIN (Late Winter.) A large yellow-spicy flavored apple that is very popular in the Northwest, in Virginia, and in other restricted districts. NCS

NORTHWESTERN GREENING (Early Winter.) Large greenish-yellow, fair quality; good cooking apple. NCS

ORTLEY, White Bellflower. (Early Winter.) Of the Bellflower type and about the same size, but a very pale yellow. Good quality. NCS

PARADISE WINTER SWEET (Winter.) A delicious yellow sweet apple, bronze blush. For home use only. NCS

Paragon Winesap (Late Winter.) The best wherever Winesap grows. It has been called the "Glorified Winesap." A Winesap seedling, and of the Winesap type, but averages much larger, even a deeper color and is superior in quality; tree stronger and more vigorous. Some authorities have mistakenly considered Paragon identical with Mammoth Black Twig and this information, widely disseminated, created confusion and caused much loss. Be sure and get the genuine, and don't forget that old Mammoth Black Twig of Arkansas is a tardy and shy bearer, while Paragon bears young and bears big crops. Thos. F. Rigg, an Iowa authority, writes us: "I was in Virginia a few years ago when there was a great boom there for Mammoth Black Twig. These apples were Paragon, not Mammoth Black Twig." Paragon has made the name of Mammoth Black Twig famous. NCS

In all winesap regions Paragon will crowd out all late keepers, as it has beauty and quality to a high degree.—Jos. Gerardi, Jersey County, Ill.

RED JUNE, Carolina. (Early Summer.) A brilliant flashing red summer apple, tart, juicy, popular, but scabs badly. Liveland Raspberry better. NCS

Rome Beauty (Late Winter.) A large bright red apple that is tender fleshed, juicy, good quality and an A-1 cooker. Bears young, blooms late, fruit hangs firmly and can

a ways be depended upon for a full crop. Throughout the Central West it is one of the most widely planted sorts and growers get good returns, for Rome Beauty sells well. Always on the lookout for improvements, we grow several strains of this variety—two from Ohio and one from Illinois. Rome is a splendid late keeper. NCS

ROME BEAUTY, Illinois Red. (Late Winter.) From the great orchard of Senator H. M. Dunlap of Illinois. Always sells at best prices. NCS

ROME BEAUTY, Ohio Dark Red. (Late Winter.) Found in the orchard of U. T. Cox, the Ohio Rome Beauty King. A perfect Rome Beauty but dark red and very handsome. NCS

ROME BEAUTY, Ohio Bright Red. (Late Winter.) Another strain from the orchard of Mr. Cox. Bright, flashing red.

Senator (Trade-Mark.) (Winter.) One of the smoothest, handsomest and most gloriously colored of all apples and one that will instantly attract attention on all markets—a brilliant, glossy, cherry red. In size it is medium to large, flesh white, sometimes faintly touched with pink near the skin; crisp, breaking, juicy, with a never-to-be-forgotten flavor that gives it high rank in quality. Senator has proved thoroughly hardy; Montana has planted them by the thousands along with their McIntosh. Minnesota, Wisconsin, Maine and all New England plant them with Wealthy and other rugged kinds; in Mo., Mich., Ill., Ind., Ohio, Pa., and all the Central States it has become a standard commercial variety, and most popular for the home orchard. In Va., West Va., Tenn., Ky., Ark., N. M. and every state in the West—everywhere, Senator is growing and is pleasing every grower. The variety originated in Arkansas and was introduced and trade-marked by us about twenty years ago. NNCS

STARK DELICIOUS—(See description page 4.)

STARK STAR (Trade-Mark.) (Early Summer.) A beautifully blushed yellow apple that somewhat resembles Maiden Blush. NCS



Rome Beauty—An extra heavy sure bearer, blooms late. Fine quality, long keeper and deservedly popular

STARK SUMMER QUEEN (Summer.) Large, bright red striped, of excellent quality. A good summer apple for home and local market. NCS

STAYMAN WINESAP (For description see page 8.)

SUMMER CHAMPION (Summer.) Valuable early summer deep red apple. Tree a strong grower with heat and drouth resisting foliage. J. E. Suttle of Washington County, Ark., says: "Have 300 trees bearing. Netted me \$2.50 per bushel." NCS

SWEET BOUGH, Early Sweetheart. (Summer.) A pale yellow sweet apple, medium size. Ripens through a season of thirty to forty days. NCS

Wealthy (Fall.) The best, handsomest, most satisfactory fall apple. Largely planted throughout the United States and well known and liked everywhere. It is large and uniform in size, a brilliant red all over marked with stripes and splashes of deeper red. The tree grows large and symmetrical, is an enormous bearer and is hardy and thrifty. Those who prefer an apple that is tart and juicy, hold Wealthy as one of the finest apples grown. We think it almost the equal of Jonathan. Wealthy trees bear extremely young and none more profitable earlier in life. Wealthy, Stark Delicious and Senator are a splendid combina-

tion for Northern orchards. It originated with the late Peter M. Gideon of Minnesota, who also originated the Florence crab. We visited the original Wealthy tree, recognized its value and have grown it and advised its planting for nearly thirty years. Northern apple growers will endorse the statement of Harold Simmons of Minnesota: "It stands by hundreds of thousands as living monuments to the name of Peter Gideon."

WHITE PIPPIN, Col. Brackett Strain. (Late Winter.) Large, light waxen yellow, sometimes slightly blushed. "Am convinced it is equal to Yellow Newtown in quality and much better adapted to wider area of country."—G. B. Brackett, late U. S. Pomologist.

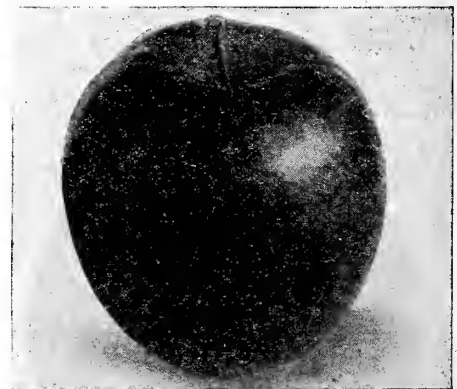
Wilson Red June (Late Summer.) A big handsome black-red apple as deeply colored as Arkansas Black or Black Ben. Without a doubt the most beautiful of all summer apples and the price it commands is causing immense plantings to be made. The tree is extremely hardy, growing and bearing perfectly in Wisconsin and Minnesota, standing 40 degrees below zero without injury and producing good crops. Kansas City markets have paid as high as \$16.00 per barrel for this marvelous apple. H. B. Fullerton of the Long Island Experiment Station, says: "The most beautiful apple I have ever looked at and it eats as good as it looks. One of the best trees that ever came over the Pike." Benj. Buckman, recognized Illinois authority, says: "The showiest large apple of its season—reliable bearer." Frederick Craneheld, Wisconsin orchard authority, says: "Wilson Red June grown at Sturgeon Bay were very fine. We certainly have something worthy of our attention." We advise and urge the planting of this, the best summer variety ripening after Liveland Raspberry. NNCS

Bears third year and stands 40 below zero.—E. G. Tullege, Wisconsin.

Winesap (Late Winter.) An old, well known, bright red apple of medium size that keeps well in common cellar and cold storage. Largely planted in Central, Western and Southern apple sections. Stayman Winesap and Paragon Winesap, however, are being largely planted in all Winesap communities. We grow Winesap by double-working on strong vigorous stock to overcome its greatest fault—weak root system. NCS

Yellow Transparent (Early Summer.) A transparent waxen apple of good quality. Tree upright, almost like a pear tree, vigorous, but has a vital fault—blight. All Russian varieties blight to a certain extent. Liveland Raspberry, however, our favorite of all Russian importations, has never blighted seriously and we advise planting Liveland wherever an apple of this type is desired. NCS

YORK IMPERIAL, Johnson's Fine Winter. (Late Winter.) A lop-sided, pinkish-red, long keeping apple that is largely planted in many parts of the Central West and South. The tree is long lived, blooms late and is satisfactory, but the fruit scalds in storage and quality is only fair. NCS



Wilson Red June—Grown by H. B. Fullerton, L. Isl. Exper. Sta. Largest and best Summer apple—bears young and heavily—an ideal filler. Have sold for \$16 per bbl. (Photos on this page greatly reduced size.)

Additional Varieties

In addition to the varieties described herewith, we can furnish the following which are priced in the complete price list. These second choice varieties are not recommended. The improved sorts described in this book are superior in every way. However, we can supply the following list in any quantity desired and in all sizes:

- | | |
|------------------------|---------------------------|
| Akin | Magnet |
| American Golden Russet | Minkler |
| Albemarle Pippin | Northern Spy |
| Arkansas Black | Old Wife Pippin |
| Bellflower, Yellow | Ortley (White Bellflower) |
| Charlamof | Patten Greening |
| Chicago | Pryor Red |
| Colorado Orange | Rambo |
| Chenango Strawberry | Red Astrachan |
| Early Ripe | Rhode Island Greening |
| Estelline | Roman Stem |
| Early Harvest | Smokehouse |
| Fameuse (Snou) | Stark |
| Fall Pippin | Strawberry |
| Gravenstein Red | Spitzenberg |
| Gravenstein Banks Red | Steele Red |
| Hubbardston Nonsuch | Tolman Sweet |
| Ingram | Virginia Beauty |
| Jeffers Red | Willow Twig |
| Jenilton | Wismer Dessert |
| King Tompkins County | Wagner |
| Kinnalrd's Choice | Wolf River |
| Lady | White Winter Pearmain |
| Lowell (Orange Pippin) | Williams Early Red |
| Lowry (Dixie of Va.) | Yellow Horse |
| Magoon | |



Prize Winning Wealthies—the best of all Fall Apples, extremely hardy.

Leading Cherries

THE so-called "sour cherries" are not really sour but have enough acidity to make them refreshing when eaten fresh or when cooked. Cherry pies, sauce or preserves are always popular. These cherries thrive in back yards, fence corners and on any ordinary well drained soil from Maine to Alabama and from ocean to ocean. No other fruit will bear more regular crops and will produce bigger profits; \$250 to \$500 per acre is not out of the ordinary. The fruit ripens early and is welcomed on the early markets. The demand is always heavy and more cherry orchards are needed. We recommend the Montmorencies as the best, most profitable and most widely successful cherry grown.

6 Acres of Cherries a Gold Mine

"PLANT SIX ACRES OF YOUR LAND TO CHERRIES AND YOU WILL SOME DAY HAVE A LITTLE GOLD MINE. Everybody laughed at that advice when it was given to Roy Phillips, but today the gold mine is there. During the last nine years this little cherry orchard has yielded more than 21,000 crates of fruit, and has returned to its owner a net revenue of more than \$21,000."—Country Gentleman.

\$300.00 Per Acre in Chicken Yard

A. K. McGraw, of Washington County, Md., says: "I bought a five and one-half acre tract for a chicken farm. It was planted to fruit—apples with cherries (Montmorency) as fillers. They have never been cultivated nor pruned. Their unusually rapid growth I attribute to the presence of the poultry—at 7 years they returned \$300.00 net per acre." (In addition to profit from apples and poultry.)

One-Fourth Acre Stark Cherries \$240.00

"Our 35 cherry trees—every one a Stark Tree—Montmorency King, Suda Hardy, Dyehouse, on one-fourth acre brought \$240.00 this year."—E. B. Barnes of Emporia High School Faculty, Lyon Co., Kansas.

Leading Cherries

BING, Sweet. A delicious sweet cherry, popular west and seems to succeed east better than most sweets. Large, black, fine quality. NCS

BLACK TARTARIAN IMPROVED, Early Sweet. This is a greatly improved seedling of old Black Tartarian. Wherever sweet cherries grow, plant this sort. Large, black, heart-shaped, unsurpassed in quality. NCS

DYEHOUSE, Very Early. Better and a week earlier than Early Richmond. Larger. Pit smaller. Strong grower, good bearer. NCS

EARLY RICHMOND (Early May.) (Early.) A week later than Dyehouse. Clear bright red. A standard sort. Sometimes called "pie cherry." NCS

ENGLISH MORELLO (Very Late.) Dark red, acid. Small tree. Suda Hardy of same type is better. NC

GERMAN OSTHEIMER (Late.) Large, heart shaped, productive. Suda Hardy better. NCS

GOV. WOOD (Early.) Large light yellow, heart-shaped, sweet, rich. NCS

LAMBERT, Late Sweet. Mammoth size, dark red, tart when ripe. Firm, rich, splendid sweet cherry popular everywhere. NCS

MAY DUKE. Large, rich red, semi-sweet. Succeeds everywhere. NCS

Montmorencies The Montmorencies are the best so-called sour cherries. When fully ripe, however, they are sweet and luscious. The Montmorency is planted everywhere—east, west, north, south. Perfect tree, resists diseases, most popular, best bearers of all. We grow several strains that are the favorites among commercial cherry growers. Our strains have been grown by us for many years and are kept absolutely pure. Ripens ten days later than Early Richmond.

Years ago about the only variety we heard of was Early Richmond. Today the best cherry is Montmorency. A fine grower, bears early, is hardy, fruit of large size and is in great demand by canners and preservers.

Mr. Wade, from 400 Montmorency trees, produced last season 3200 16-quart crates, which averaged in Chicago \$1.50. He states that no other variety will compare with Montmorency for profit.—W. I. Smith, West. N.Y. Hort. Society.

MONTMORENCY KING (Early.) Ordinaire. The old type of the well known Montmorency. Beautiful in tree. Crop never fails. Every farm should have its row of Montmorency trees. NCS

Montmorency King—Most Valuable Cherry.—Began bearing when two years old, has borne ever since. This season a full crop where 25 varieties were almost all a failure. Superior to any other of its class. Tree is a rapid grower in spite of its annual production.

I have several of your Montmorency King cherry trees. I picked 25 gallons off one tree this year, seven years old. —G. W. Maxwell, Jasper Co., Mo.

\$19.00 From One Mont. King Tree.—I have a Montmorency King cherry tree which has been loaded every year. Have gathered enough fruit from this tree in one year to pay for all the stuff I bought of you, and the bill was over \$19.00.—Mrs. Al. McQuay, Champaign Co., Ill.

MONTMORENCY LARGE (Early.) Somewhat larger than King and ripens a little later. Some so-called "large" Montmorencies have proven worthless. Get the true strain. NCS

MONTMORENCY MONARCH (Early.) A splendid strain of Montmorency from the Iowa Experiment Station. Introduced by us twenty years ago and has never disappointed. NCS

MONTMORENCY STARK. In our judgment the best type of the Montmorencies. Originated on our grounds. Larger than any other Montmorency. Stronger grower than King. Profitable. Plant it. NCS

MONTMORENCY SWEET

(Early.) A true Montmorency

but sweeter than any other

strain. NCS

NAPOLEON (Late.) A large

yellow-sweet cherry, pink blushed.

Beautiful and delicious. NCS

Most Productive and Most Profitable.

—Napoleon cherry, the most productive

of the yellow sweet cherries, fruit

large, heart-shaped and mottled with

red, texture firm, and quality fair. The

trees are hardy and thrifty; one of the

most profitable sweet cherries on trial. Very

firm; valuable both for home use and market. Vig-

orous, productive—bore the heaviest crop of any

sweet on trial.—Michigan Experiment Station.

ROYAL ANN (Late.) One of the best known

and most popular light colored sweet cher-

ries. NCS

ROYAL DUKE (Early.) The best of the Duke

type of cherries. Ours is a Colorado strain. Large,

light red, tender, semi-sweet. Plant fewer Duke

and more Montmorencies. NCS

SCHMIDT'S BIGARREAU (Late.) Black, sweet,

immense size, attractive. Popular in the east. NCS

SUDA HARDY (Very Late.) The best cherry of the

English Morello type. Hardy, better bearer, better

tree. Originated at Louisiana, Mo. We have grown

it more than twenty-five years. NCS

More Vigorous Than Morello.—Suda Hardy is more

vigorous than others of the English Morello type; one of

the most productive. Valuable for market.—Michigan

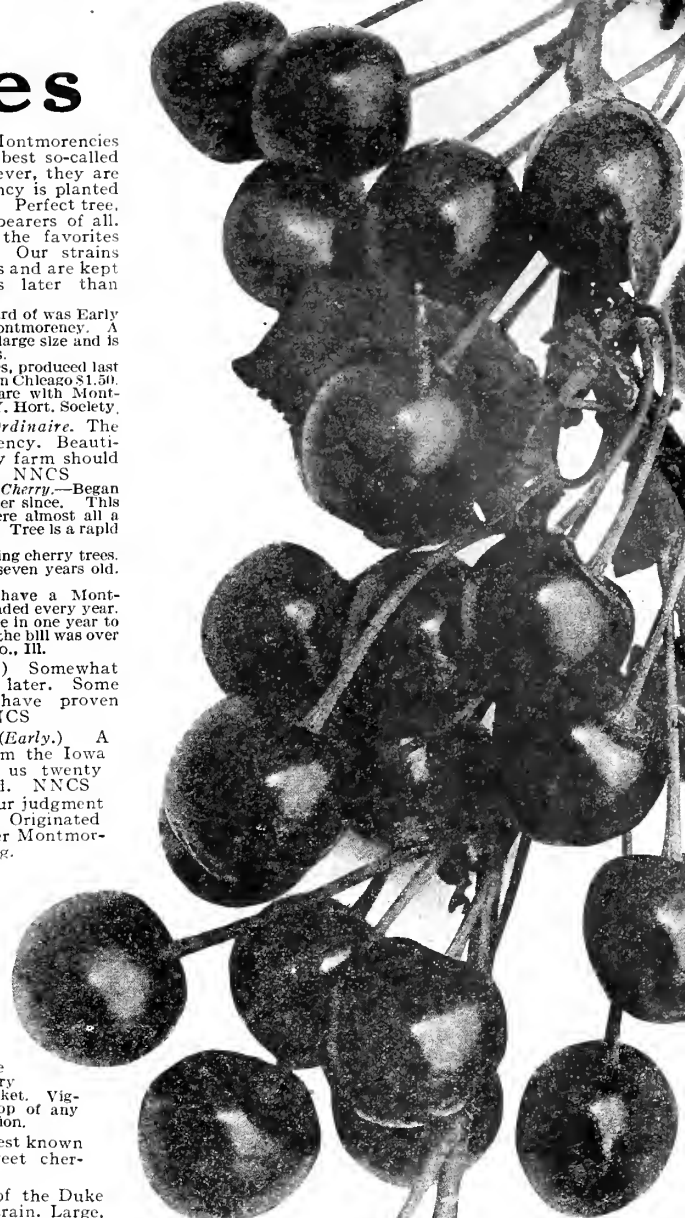
Experiment Station.

A Sure and Heavy Bearer.—Suda tree eight years planted,

has given five heavy crops, this year 12 gallons, the trunk is

barely 5 inches through, tree 10 ft. high, every limb loaded.

Bears every year. No failure. P. J. Thienoff, Shelby Co., Mo.



Montmorency Stark

Succeeds everywhere, best all-around money-making cherry grown

WINDSOR. A dark colored sweet cherry, firm

flesh, ships well. Popular east. NCS

WRAGG (Very Late.) Suda Hardy same type is

better. Montmorencies superior to any of the

English Morello type. NCS

YELLOW SPANISH. Large, heart-shaped, light

yellow, sweet. Popular. NCS

Missouri Needs More Cherry Orchards — A Gold Mine

"My orchard is one-half Montmorency and one-half Early Richmond. Good old Missouri stands at the head with big red apples. We need more cherries. Plant them so we can ship in car lots, like we do apples and peaches. Every fruit grower who plants a variety of fruits will always have a fat bank account. Cherries begin to bear at four years and from ten to twenty years are equal to a gold mine."—Daniel Lowmiller, Platte Co., Mo.

STARK GOLD (Trade Mark)

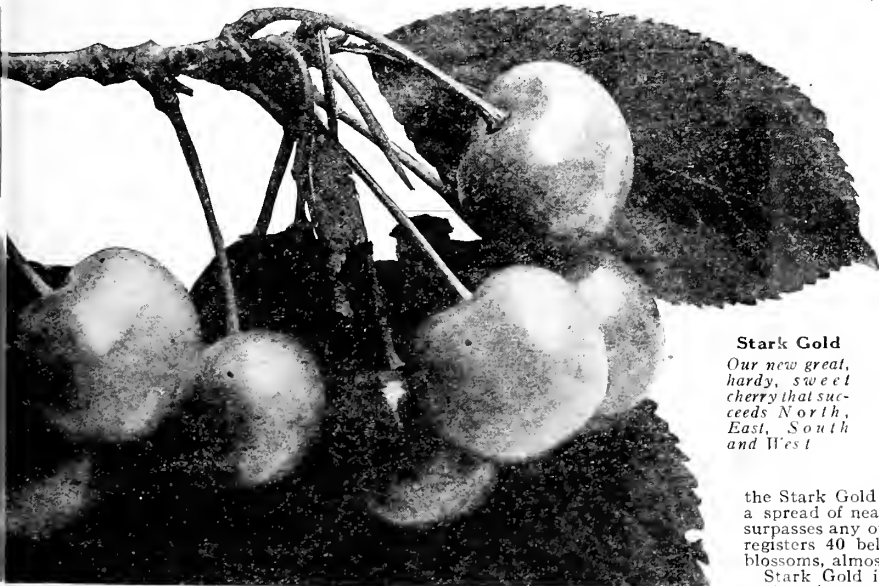
A beautiful and luscious sweet cherry that has proven as hardy as Montmorency. Stands forty degrees below zero and bears big crops.

Stark Gold is a large sweet cherry of superb quality—a dazzling golden yellow, not a sign of blush—the only high quality pure golden yellow cherry that we know. The fruit ripens about two weeks later than Early Richmond, but will hang on the trees ten days after ripe. It has very firm flesh, ships well and is an ideal sweet cherry. Here is a cherry of tremendous value and it enables fruit growers in localities of extreme cold to produce a sweet cherry that is second to none in beauty and in quality.

Let the Originator Tell the Story

"The parent Stark Gold tree is twenty years old. At three years it bore the first crop and has never failed since. This year when Early Richmond and English Morello bloom was killed, the Stark Gold tree bore a tremendous crop. The tree is about 36 feet high with a spread of nearly 40 feet. Limbs strong and tough, never breaking. Stark Gold surpasses any other cherry on my place in hardiness where the thermometer often registers 40 below zero, yet, it is never injured. In bloom a beautiful sight, large blossoms, almost like a crab."

Stark Gold is a trade-mark. We recommend this marvelous sweet cherry for cold sections or wherever any cherries grow. NCS



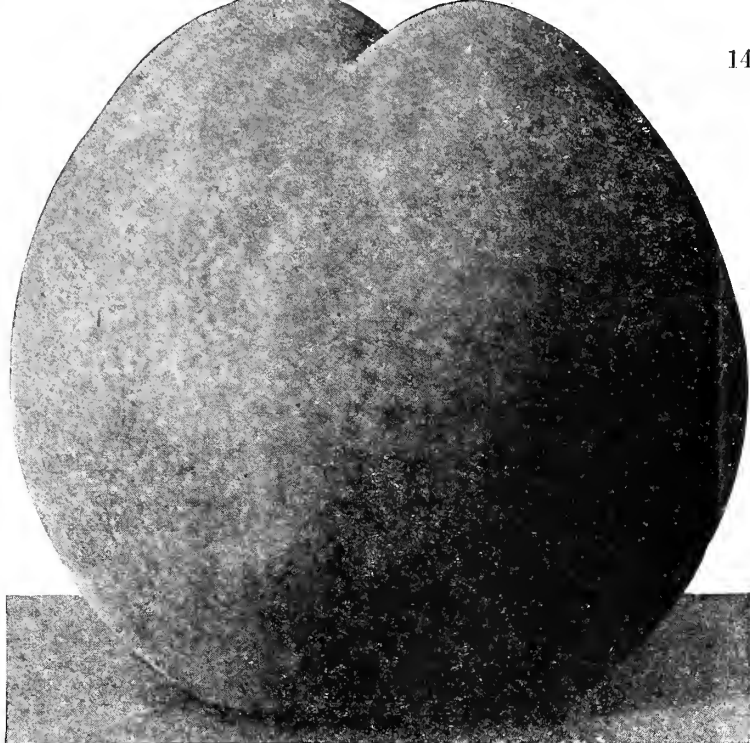
Stark Gold

Our new great, hardy, sweet cherry that succeeds North, East, South and West

Plant Stark Cherry Trees in Your Yard—Orchard—Everywhere. They Bear Young and are Dependable Yearly Profit Makers

THE GREAT That Pulls in Stark Early Elberta

"A Model Peach! Congratulations!"
—Luther Burbank



Stark Early Elberta

Specimen from Stark Early Elberta Trees in Orchard of Dr. E. L. Morris, Fayette Co., Tenn. These were the biggest, handsomest peaches we ever saw—average 16 ounces.



Dr. Sumner Gleason, Originator.

Stark Bro's Exclusive Contract for Stark Early Elberta

In consideration of S. . . . the said Sumner Gleason (the originator of Stark Early Elberta) does hereby grant, assign and set over unto Stark Bro's the exclusive right and control of all stock and buds of the original tree to the sole use and control of Stark Bro's; said Sumner Gleason agrees to personally supervise the cutting of buds from original bearing tree or any parent tree.

THE GLORY OF A CENTURY'S NURSERY WORK

Stark Early Elberta—as grown in abundance on genuine Stark Bro's Old Oak Process Whole Root trees—are beyond all question one of the most radiantly beautiful creations of old Mother Nature. As Dr. Crossett, of Tennessee, a friend of our old advisor, Dr. E. L. Morris of Moscow, Tenn., expresses, "They hang on the trees like huge globes of gold." The genuine Stark Early Elberta is a great freestone, glowing golden in color, with its strong protecting skin blending into a deepest red blush on its sunny side—with luscious flesh saturated with nectar—sweet juice.

This big wonder peach allures with its beauty—gratifies with its quality—and sells for top market prices in every state in the Union.

FAR SUPERIOR IN EVERY WAY TO OLD ELBERTA

As compared with old Elberta the genuine Stark Early Elberta is larger, 10 days to 2 weeks earlier, more highly colored, decidedly better in quality, the World's Record shipper, not so fuzzy, has smaller seed, with none of the bitterness or coarseness so noticeable in old Elberta, and the flesh is not stringy.

In texture the genuine Stark Early Elberta is melting and buttery—not spongy and coarse as is often found in Elberta. It colors all over before it softens, which makes it ideal for distant shipments. The tree is hardier and will bear as many bushels as old Elberta or any other known variety. Furthermore, it always sells for higher prices than ever have been paid or ever will be paid for old Elberta.

"Stark Early Elberta trees bought from you 2 years ago had some of the finest peaches on them you ever saw. They ripened a week ahead of old Elberta and were larger in size."—Louis Siebert, Tancy Co., Mo.

NOTE—On the Chicago and St. Louis Fruit Markets during the week of August 9 to 15, genuine Stark Early Elberta from the orchards of Louis Siebert of Tancy Co., Mo., brought from \$3.00 to \$3.60 per crate. Old Elberta could not be sold for more than \$1.25 to \$1.45 per crate in these markets that season. Both varieties sold much higher in 1917.

Best Commercial Peach

"I consider this the very best commercial peach that has ever been introduced into the trade. Coming at a season preceding the standard Elberta, by a week or ten days, often making a difference of a hundred per cent increase in the returns."—L. D. Batchelor, State Horticulturist of Utah.

"It Brings Me More Money Than Anything Else I Grow,"—Connecticut's Greatest Peach Grower

B. Carine, Connecticut's greatest peach grower, landed in Connecticut 25 years ago with \$22 in his pocket. Today he owns immense orchards containing 100,000 fruit trees, owns 4000 acres of fruit land and has the largest peach orchards in Connecticut. He writes:

"I would rather have an orchard of genuine Stark Early Elberta than any other variety of peach. It brings me more money than anything else I grow. I have received at the rate of \$2.70 per crate when the old Elbertas were averaging the same season only \$1.50. (Both varieties sold much higher in 1917—as high as \$5.00 per bushel.)

"Genuine Stark Early Elberta comes on the market about a week or ten days ahead of old Elberta when the market is right, with no other peaches to spoil the market.

"It is by far the best quality yellow peach grown anywhere—extremely hardy, sure bearers.

"I am planting genuine Stark Early Elberta heavily. Four years ago I planted 700 trees, the next year 2000, last year 4000, and this year I wanted 5000 or 6000 more but Stark Bro's were sold out and I got my order in too late to have it filled.

"I have stopped planting old Elbertas altogether and am going to stick to genuine Stark Early Elbertas."

Warning to Peach Planters

Several inferior so-called Early Elbertas have been grown by others. Just because they ripened a few days ahead of Elbertas they were called "Early" Elbertas. We have found, after careful investigation, that they are not genuine Stark Early Elberta, but entirely alien varieties originating in other sections. Be sure you get the genuine. Stark Bro's have a contract for the exclusive propagating rights of all genuine trees owned by Dr. Gleason, the originator.

Be Sure You Get GENUINE Stark Early Elberta

The claims made on this page refer only to genuine Stark Early Elberta trees, coming from Stark Bro's at Louisiana, Mo. Genuine Stark Early Elberta trees from Stark Bro's carry the individual labels with the autograph signature of Dr. Sumner Gleason, who planted the original Stark Early Elberta tree, sent to him by Stark Bro's.

BREAKS WORLD'S SHIPPING RECORD SHIPPED 11,000 MILES WITHOUT ICE

Last year six boxes of regular run Stark Early Elberta were packed in the Gleason Orchards by Dr. Sumner Gleason, the famous originator of this peach, in Davis Co., Northern Utah. These were shipped to H. W. Collingwood, Editor Rural New Yorker, 2,920 miles away.

He reshipped 5 of the 6 to Prof. E. J. Wickson, Director of Calif. Agric. Exp. Station, making a total journey up to this point of 6,471 miles.

In time Prof. Wickson reshipped one of the boxes of Early Elbertas to E. H. Favor, Editor Fruit Grower and Farmer, St. Joseph, Mo., and when they reached Mr. Favor they had completed a total journey of 8,646 miles.

He in turn expressed 2 of the peaches to our offices in Louisiana, Mo., an additional trip that brought the total up to 8,973 miles.

But—even this wasn't the end! We shipped 1 of these 2 peaches again to the Editor of Rural New Yorker and he returned it by express to us—making a Grand Total of 11,509 miles without an ounce of ice.

Every recipient of the peaches at every stage of the tremendous trip reported the Stark Early Elberta in magnificent eating condition! And that peach reached us after its semi-world-encircling trip almost as solid and fresh and luscious as the day it was picked. Not a trace of decay. Firm and sound as a dollar!

This proves that Stark Early Elberta is the world's greatest shipper among all peaches.



These Are Not Cannon Balls—They Are Stark Early Elbertas, Grown in Tennessee—average 16 oz.



Ordinary Elberta

Stark Early Elberta

Average Specimens Grown in Same Orchard Under Identical Conditions. Stark Early Elberta Brought 86% More Than Old Elberta Same Season.



3-year-old Stark Early Elberta. Orchard of Mr. Knudson Heavily Loaded with Magnificent Peaches. Successful Wherever Peaches Grow and the Hardest Yellow Peach We Know. A young, heavy and sure bearer—a proven success.

Stark Improved Hardy Peaches—Young and Sure Bearers, North, East, South and West

PEACH TEAM

Biggest Profits

J. H. Hale Peach

The Ideal Orchard Team-Mate for Stark Early Elberta

THIS is the peach that has made such giant strides towards a high place in the estimation of all peach growers during the last few years. It has completely earned the proud title of "Team-Mate to the Stark Early Elberta." This is particularly so because of the fact that the J. H. Hale follows Stark Early Elberta about two weeks in ripening. By the time that your Stark Early Elberta have all ripened and been picked, you can begin picking the J. H. Hale, which ripens just at the time the old-fashioned Elbertas ripen.

By planting J. H. Hale to follow Stark Early Elberta in the ripening season, you lengthen your picking season—which means a considerable saving of money as compared with the picking cost if your whole orchard ripened at the same time.

MAGNIFICENT IN APPEARANCE;—EXQUISITE IN FLAVOR

We know of no peach gifted with greater sun-painted beauty. Truly kingly in appearance. Huge in size. Ruddy streaked golden globes, enveloped in blushing velvet. Its solid but melting flesh is of purest gold in color—tender—dripping with a honey tart lusciousness that once tasted is never to be forgotten. It is so deliciously different from the bitter tang that has always been the drawback of old Elberta.

STARK BRO'S WAS THE FIRST NURSERY TO FRUIT J. H. HALE

We grew our first 13,000 crop of J. H. Hale in 1911-12, years ago, before J. H. Hale trees were generally known. All of these trees were sold to Mr. J. H. Hale.

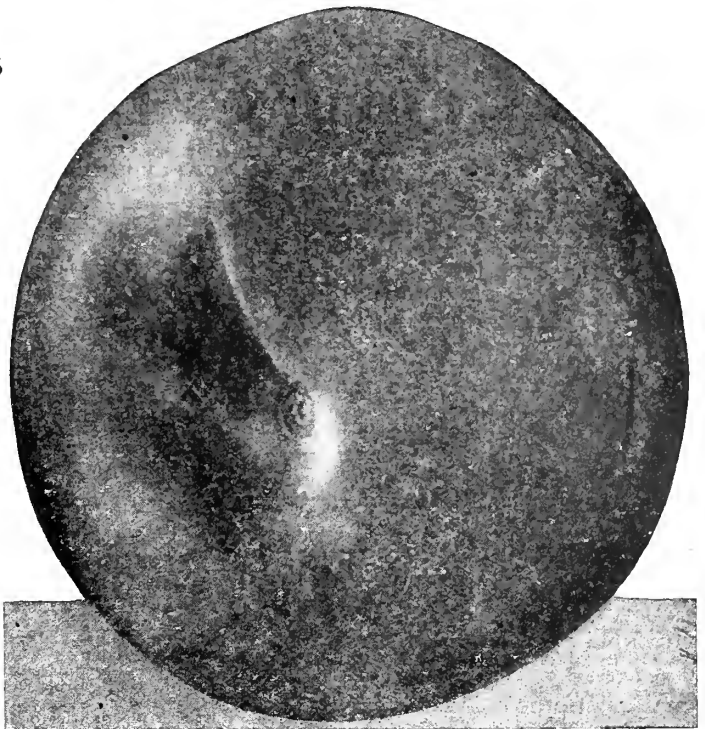
Prof. P. F. Williams wrote in "The Southern Fruit Grower" (Aug. 1912): "The J. H. Hale peach I received is one of the most beautiful examples of perfection in peach growing I have ever seen. The rather thick, firm tenacious skin is another fine point in its favor. Its quality is excellent. I understand that Stark Bro's of Louisiana, Mo., are propagating this new peach."

J. H. HALE BRINGS \$250.00 MORE PER CAR THAN OLD ELBERTA

As a further proof of the extra profit gained by raising J. H. Hale rather than Old Elberta, a recent number of the Atlanta "Constitution," had this to say:

"In car lot shipments, cars loaded one-half old Elberta and one-half J. H. Hale have been sent out, thus testing their selling value side by side. Last year the new peach netted 50% a crate or \$250.00 a car more than old Elberta."

This great peach becomes perfectly colored before fully grown, and if the trees are too heavily laden with fruit, they can be thinned and the peaches thus removed can be shipped. The following week, the peaches left on the tree have reached enormous size, but should the market be crowded, such is its sturdy qualities that it can be left on the trees for yet another week, and then be in prime condition for shipment."



J. H. Hale

A Beautiful Life Size Peach Grown by the Late J. H. Hale at South Glastonbury, Conn.

A MARVELOUS PROFIT MAKER HAS RECORD OF \$1,420.00 PER ACRE

J. H. Hale trees have yielded such enormous crops of such fancy fruit that they have actually produced the astonishing profit of \$1,420.00 per acre on one year's crop. Quoting from Southern Farming: "From this one acre of J. H. Hale trees we harvested 748 bushels, which would make practically 1,500 full peach baskets and 1,000 six-basket crates. 95% of this fruit was in first class, merchantable condition and sold the next morning at an average of 60% higher than the old Elberta."

WONDERFUL SHIPPERS

The flesh of this marvelous peach is almost as firm as that of a clingstone. J. H. Hale were actually shipped in barrels, like potatoes or apples—made a long 1,000 mile trip and arrived in tip-top condition. This certainly proves the remarkable shipping quality possessed by this peach. The reason for its unique shipping ability is given to us in a letter we recently received from Prof. M. A. Blake, that well-known authority on Horticulture, of the N. J. Agri. Exp. Station. He says: "From our experience the J. H. Hale is a much superior peach commercially to old Elberta. One of the good qualities of J. H. Hale is its firmness at the ripening state, this makes it such an extraordinarily good shipper."

J. H. HALE HAS MADE OLD ELBERTA OBSOLETE

It has won the distinction of being the one and only team-mate of the Stark Early Elberta.

The greatest experts confirm us in this statement. G. D. Brackett, Pomologist, U. S. Department Agriculture, said: "J. H. Hale is better quality than Elberta and a longer keeper." F. C. Sears, Prof. of Pomology, Mass. Agricultural College says: "Handsomest peach I have ever seen. Professor Chenoweth and I agree that J. H. Hale is a much handsomer peach than old Elberta. Better in quality and a much better peach." Joseph Gerardt, Illinois authority, says: "From what I know of J. H. Hale it's goodbye Old Elberta!"

Hon. Parker Earle cooperated with Stark Bro's in growing fruit in that famous 70,000-tree orchard in the Pecos Valley, New Mexico, that later brought \$800 per acre—also read Mr. Earle's article on Pear Growing on page 45 of "Success Orchards."

Recently, Mr. Earle wrote us: "I have fruited the J. H. Hale this past season from trees planted last year (fruited one year from planting). I had specimens 3 1/4 and 3 1/2 inches in diameter. They grow as large as Early Elberta and that is a plenty!"



THE J. H. HALE PEACH Monument to Genius of the Late J. H. Hale

This great man, known throughout the world as "The Peach King of America," wrote a message to the readers of Stark Bro's Year Book, in which he said: "New and harder varieties have made it easily possible to grow good peaches in nearly every state of the Union, with the possible exceptions of Minnesota, North and South Dakota and Montana. I would be glad to see from one to a dozen peach trees in every family garden. There is a great money-making opening for commercial peach growing. It's a great business opening too long neglected."

STARK BRO'S J. H. HALE TREES ARE THE GENUINE STRAIN

Our J. H. Hale trees are the genuine strain and are fully up to the high standard of Stark Bro's quality. Our record of 100 years of successful tree growing is back of every genuine Stark Tree.



A Young J. H. Hale Tree in Stark Bro's Orchards, Enormous Red and Gold Peaches and Wonderfully Solid. Note the Size—Bigger Than a Baseball.



This Big Tree is Only 20 Months Old and is a genuine J. H. Hale from Stark Bro's—Bore 112 Big Peaches for F. H. Davis. "Stark Trees Bear Fruit."



A Branch of J. H. Hale, "Just as Thick as They Can Stick" on Stark Bro's Orchard Trees of J. H. Hale at Louisiana, Mo. A Wonderful Profit Earner.

The Owners of Stark Tree Orchards Walk Away with the Fruit Show Prizes

The Century's Best Peach Discoveries

Alton (*Early White Freestone.*) Magnificent white fleshed freestone peach that is larger than Carman, better quality than Champion and handsomer than any picture ever painted. One of the sweetest and most luscious peaches and no tree will bear more or bigger crops. U. L. Coleman, a South Missouri orchardist says:

"They have borne every year since they came into bearing. I know one fellow who has had them eight or nine years and they have missed but one crop." E. A. Riehl of Alton always gets \$1.50 per bushel for his Altons. Dr. E. L. Morris, well known Tennessee orchardist sold them at fifty cents per dozen. Calvin R. Clark of Scott Co., Iowa says: "Finest peach I ever saw; brought three times as much on the markets as my other sorts. Everything considered Alton is the best and most profitable white peach in propagation." NCS

Highest Price of All.—ALTON succeeds well here, bringing the highest price of any peach that I grow. Hardy, exceedingly handsome, fine flavor. Best of them all for eating and preserving.—S. S. Haswell, Essex Co., Mass.

Finest Early July Peach.—Sold at 50 cents per dozen.—Dr. E. L. Morris, Fayette Co., Tenn.

People Fought for Them.—Sold this summer by the wagon load at high prices; people simply fought for them.—E. H. Riehl, Ill. Experiment Station.

BELLE OF GEORGIA (*Mid-season White Freestone.*) Large, rich, creamy white flesh with a bright red blush; delicious. Popular in all peach sections. Good shipper. NCS

BIG INDIAN BLOOD CLING (*Mid-season Red Flesh.*) Biggest, handsomest peach of all the Blood Clings. The peach par-excellence for pickling and preserving. NCS

CHAIR'S CHOICE (*Late Yellow Freestone.*) Best of the Crawford Late type. Large, deep yellow with red cheek. NCS

CAPT. EDE (*Mid-season Yellow Freestone.*) Large, excellent shipper. A general favorite; a strong growing, hardy tree. Popular in Northern peach sections. NCS

CARMAN (*Early White Freestone.*) Large, creamy white, deep blushed. We consider Alton, practically the same season, its superior. NCS

CHAMPION (*Mid-season White Freestone.*) A magnificent white peach, most excellent and deservedly popular. However, fewer Champion are being planted as Alton becomes better known. NCS

Champion a Money-Maker.—Extreme hardness and productiveness render it a never-failing source of profit; never fails. So large, so beautiful and such high quality it always commands highest market prices.—Report Western N. Y. Hort. Society.

CRAWFORD EARLY IMPROVED (*Mid-season Yellow Freestone.*) Better quality and harder than old Crawford Early—the best peach of this type. CS

CRAWFORD LATE IMPROVED (*Late Yellow Freestone.*) Larger, better quality, harder, surer bearer than old Crawford Late. Not sufficiently hardy far North. CS

ELBERTA (*Mid-season Yellow Freestone.*) For years the standard, yellow peach for commercial orchards. Many years of experimenting, observation and testing enables us to offer peaches of the Elberta type ripening throughout the season. Plant June Elberta, Stark Early Elberta, J. H. Hale Elberta, Late Elberta, October Elberta and Krummel October for big profits. Our strain of Elbertas is a select one. NCS

EARLY MAMIE ROSS (*Early White Semi-Freestone.*) The best peach of the Mamie Ross type, ripening nearly a week earlier than the old strain and is larger and finer looking. Valuable. NCS

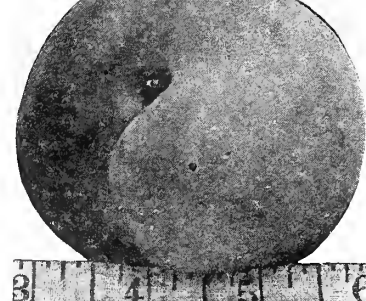
Elberta Cling (*Mid-season Yellow.*) A big, handsome, yellow cling that looks just like an Elberta; the queen of Cling peaches. NCS

Pine Market Peach.—Lasts longer than Elberta.—J. W. McAnulty, Ark.

From six trees gathered more than 100 baskets.—S. J. Blythe, Buchanan Co., Mo.

Early Elberta (*Greatest Yellow Freestone.*) Ripening ahead of Elberta. See Stark Early Elberta page 14. NCS

ENGLER MAMMOTH (*Mid-season Yellow Freestone.*) Immense size, attractive, splendid quality; makes friends and holds them; thoroughly hardy. Popular North. NCS



Alton—White freestone of highest quality, fine for commercial planting or home orchard—Best of its type



Krummel—A 3-year-old Stark Tree heavily laden, hardy, sure bearer, best late peach



Fine for market and home use—every housewife wants cling peaches—always sell well



Red Bird—Earliest good peach. Larger, better shipper than Elberta and a great money maker

EARLY ROSE (*Very Early.*) A hardy, beautiful, good quality extremely early peach from the experimental orchards of J. H. Hale at South Glastonbury, Conn. It has the large white blossoms of the North China type which insures hardiness. It has quality, size, beauty. Ships well and is fast taking its place as an extra fine early variety and should be planted with Red Bird Cling in all peach sections. NCS

Eureka (*Early White Freestone.*) One of the hardiest, thriftiest, healthiest of peaches. Extreme cold that kills most varieties seldom injures Eureka. Growers along the Northern limit of the peach belt should plant Eureka. NCS

GOLDEN SWEET CLING (*Mid-season Yellow.*) One of the juiciest, sweetest and most delicious of all clingstone peaches; thoroughly hardy and immense size. NCS

IDAHO MAMMOTH (*Late Yellow Freestone.*) An immense yellow peach with red blush. Attractive and delicious. NCS

Illinois (*Mid-season White Freestone.*) Large, Eureka, Alton, Champion and Illinois make an ideal white peach combination. NCS

J. H. Hale 15) has proved successful throughout America—wherever peaches grow. There is no question of its wide adaptability, hardiness and extremely young bearing qualities.

Everyone of our customers who have tried out genuine Stark Bro's Old Oak Process Whole Root J. H. Hale trees are loud in their praise of the wonderful qualities of both the tree and its fruit. They like the tree's habit of bearing young and prodigiously—its sturdiness—its vigor—its hardiness. They cannot say too much in praise of the beauty, quality and flavor of its fruit. They congratulate us and themselves every time they send J. H. Hale peaches to the market and reap the extra profits J. H. Hale's always bring. NCS

June Elberta (*Earliest Yellow Semi-Freestone.*) The earliest ripening peach of the Elberta type. "They ripen evenly, flavor fine, meat deep, rich yellow clear to the seed. Hardest, healthiest trees I ever saw and by far the best early peach," says Wm. H. Welch of Dent County, Mo. It has a large, light pink bloom of the hardy North China type. NCS

Making Great Record in Largest Connecticut Orchard.—Showing up in splendid shape.—One of the heaviest bearers in my orchard—a great money-maker.—B. Carline, Conn.

Krummel October (*Late Yellow Freestone.*) Largest, handsomest peach of all the late peaches. Ripens about a week after Salway. It has less competition on the market than any other big, yellow peach, as it is ripe after all other good peaches are gone. "Krummel October has made me more money year after year than any peach I have," says Joseph Gerardi, well known Illinois orchardist. No peach is sweeter or better—no bitterness whatever next to the pit; the flesh is firm, fine texture. Ships perfectly. NCS

LATE ELBERTA (*Late Yellow Freestone.*) A big, handsome, highly colored Elberta that ripens 25 days after old Elberta is gone and comes on the market when good peaches are scarce. NCS

LATE QUALITY QUEEN (*Very Late White Freestone.*) Originated near Louisiana, Mo., on the estate where our nurseries were located before the Civil War. Large, beautifully blushed, unsurpassed in quality. NCS

MAMMOTH HEATH CLING (*Very Late White.*) One of the sweetest, juiciest, and most luscious of peaches—the housewife's favorite for canning and preserving. Large, creamy white, red blush; good shipper. NCS

MARTHA FERN CLING (*Late White.*) Originated in Pike County, Mo. Immense size, superb quality. One of the finest white clingstones. NCS

MAYFLOWER (*Very Early White Freestone.*) A gloriously beautiful "red all over" peach. The earliest of all. Every home orchard should contain Mayflower. Hardy and healthy in tree. NCS

OLD MIXON FREE IMPROVED (*Mid-season White Freestone.*) Similar to Old Mixon Free but larger, higher color and more productive; flavor is exquisite. NCS

OCTOBER ELBERTA (*Very Late Yellow Freestone.*) A big, handsome peach that looks just like Elberta but larger and better quality and ripens just ahead of Krummel October. NCS

Red Bird Cling (*Very Early White.*) As large as Elberta, strikingly handsome and the first big peach that is ready for market. A sensation everywhere; bright glowing red on a background of creamy white; flesh firm, making it an ideal shipper. Early in the season people are fruit hungry and these big, handsome peaches bring prices that are almost unbelievable. W. A. Jeffers, a well known Arkansas orchardist, got as high as \$10.00 per bushel for Red Bird; also, E. W. Kirkpatrick, Texas' great peach authority says: "Now selling at from \$4.00 to \$6.00 per bushel by the carload." The advent of this glorious peach makes possible tremendous profits. It is so superior to Sneed, Alexander and other poor quality, soft, watery peaches ripening at the same time. NCS

No Early Peaches So Profitable.—My Red Bird Cling brought \$2.00 per bushel this season. Would have brought \$3.00 if I had demanded it.—R. A. Schlaue, Marlon Co., Ill.

SALWAY, *Holsinger Strain.* (*Very Late Yellow Freestone.*) An improved Kansas strain from the grounds of Major Frank Holsinger. Not as good as Krummel. NCS

SMOCK IMPROVED, *Geary Hold-on.* (*Very Late Yellow Freestone.*) A large and good yellow peach, but Krummel October a few days later is better. CS

SEA EAGLE IMPROVED (*Late White Freestone.*) A delicious white peach of great beauty and enormous size. Good in all soils in all peach regions. NCS

STARK SUMMER HEATH (*Mid-season White Cling.*) Of the Heath type with snow white flesh clear to the pit. It has no peer for canning or preserving. NCS

STARK HEATH CLING (*Very Late White.*) The best strain of Heath Cling that after careful test was declared by the Michigan Experiment Station to be 100 per cent more productive than old Heath Cling on their grounds. NCS

UNEEDA CLING (*Early White.*) Clear white, beautifully blushed. Firm, good shipper, very attractive; hardy, great producer. NCS

WASHINGTON (*Mid-season White Freestone.*) Just simply a Late Champion almost identical in shape, size, color and quality, but is three weeks later. Tree vigorous, hardy, sure cropper. NCS

YATES RED CLING (*Late White.*) Choicest Cling of its season; practically red all over. Fine for canning and preserving. NCS

Additional Sorts supply of other varieties not described on this page. All varieties in price list.

The Big Grower's Plant Stark Trees

The judgment of the big growers is the best guide for the man who is buying a few trees—even just a handful for a fruit garden in his back yard. These big growers are experts. They know tree values. When they approve any particular brand or variety of tree you may wisely follow their lead. Stark Bro's OLD OAK PROCESS Whole Root Trees are the standard of excellence in all orchard regions.

Read these words from two of the biggest growers in the peach state—Georgia:

"I have received the 4,000 Stark Bro's Old Oak Process Whole Root J. H. Hale trees in good shape and am well pleased with them."—W. A. Shore, care W. A. Shore & Co., Grower of Peaches, Habersham Co., Ga.

An "echo" of the same letter—from one of our many loyal Georgia patrons:

"Shore is tickled to pieces with his J. H. Hale peach trees received from Stark Bro's at Louisiana, Mo. Just telephoned to say they are the finest he ever saw."

Cornwall & Brazey, Growers of Fine Fruit, Habersham Co., Ga.

U. S. Food Administration Directs:—"Use Fruit Generously"—"Use Less Wheat and Meat"
Grow Your Own Fruit on Your Own Stark Trees in "Back Yard" or Home Orchard

"Lincoln"—King of all Pears

Stark Bro's Great 100 Year Leader

Lincoln
Delicious
Dependable
Profitable

IN PEARS, the variety we find worthy of our highest commendation is the *genuine* True Lincoln of Illinois—a splendid early fall pear—largely popularized by Stark Bro's—(not the old worthless Lincoln Coreless, offered by some). From the Alleghenies to the Rocky Mountains, from the Great Lakes to the Gulf, no other pear has proved its equal. Genuine Stark Lincoln Pear Trees bear fruit of the highest quality. These trees are remarkably blight resistant, heavy croppers and have the habit of living and bearing long after other pear trees have died. The old original tree, now 80 years old, still bears crops of luscious pears, after weathering the drouths and blizzards of nearly a century. This great high quality pear has stood the test of time—has defied blight and disease for four score of years. Today it is the pear sensation of the fruit world—the very best for eating fresh, canning. The Lincoln is a clear, beautiful yellow pear with sometimes a blush of red. The handsomest pear that ever grew. In size and quality it is even better than Bartlett; the leader for many generations. It ships well and its quality and beauty commands top prices. You should be sure you get the *genuine*. That means "Look for the Stark Bear Seal." Plant the true Lincoln of Illinois—not the worthless Lincoln Coreless for satisfactory results. Stark Bro's propagation comes direct from the original tree—hence you take no risk. A. H. Gaston of the Ill. Hort. Society wrote us: "Grow Lincoln by the millions so they can be planted for yard, street and park tree. Lincoln should become a national fruit." Better than Bartlett—sold readily at \$3.00 to \$4.00 a bushel.

Several Hundred Varieties—Lincoln Best.

Benj. Buckman, whose splendid experiment orchard in Ill. is recognized by the U. S. Dept. as one of the most valuable in the U. S., says: "Have 500 Lincoln trees. The best pear to plant for market or home use—the most desirable of several hundred. I have tested here—tree vigorous, blights less than any other good pear."

Prof. E. J. Wickson, Dean of Horticulture, California Agricultural College, and one of the best authorities on fruit growing in the United States: "Your pear seems to have the good points—high quality and good keeping; you are very wise to propagate it. Its blight-resistance is most important."

"Lincoln and Bartlett best here."—C. H. Lefingwell, Ward Co., Tex.

Lincoln Simply Delicious

"Lincoln finest I ever saw, very large, simply delicious; one tree third fruiting bore 8 bu, after I pulled great many to prevent breaking—nothing to compare with it here."—E. M. Willis, McCracken Co., Ky.

"Lincoln orchard heavily loaded last year. Give me prices on trees, as I have helped you get the genuine wood. I would prefer to deal with you."—W. E. Jones, Owner Original Lincoln Tree, Logan Co., Ill.

Hardier than Apples

"Not a sign of blight on Lincoln. Other pears growing beside it blighted badly. Came through the winter without a dead twig—wish my apples had fared as well."—C. H. Swearingen, Henry Co., Ia.

"Has never blighted. One small tree bore peck of handsome fruit—all others failed."—Report Ill. Exp. Station.

"Have True Lincoln from your firm—produced enormously large, beautifully shaped yellow fruit, fine texture, delicious flavor. Tree and fruit free from blemish."—J. C. Whitten, Mo. State Horticulturist.

"Lincoln the only dependable pear for this climate. Keiffer gets killed by frost, others by blight, Lincoln alone is the perfect pear."—N. B. Freeman, Stephens Co., Okla.

Best Fall Pear

"Henry Wallis, St. Louis Co., Mo.; Originator of New Fruits and Grapes, says: "What you say about Lincoln is all true—best early fall pear I know."

"Lincoln more blight resistant than any other I have observed, equals Bartlett in flavor and texture. Good keeper, rarely core-rot; have never discovered a winter-killed tree, foliage clean and healthy."—J. W. Jones, Emmet Co., Idaho.

Ours is the True Lincoln

"Bought Lincoln trees from 3 nurseries and have 3 different pears, all labeled Lincoln. Yours are the only genuine Lincoln Pear Trees.—Jas. Honselman, Platt Co., Ill.

"Lincoln smooth, rich, yellow; flavor excellent—prefer it to Bartlett. Picked September 8; kept two weeks before used. Tree free from blight."—Prof. H. G. French, Southern Ill. University.

Lincoln—Centennial Pear Leader

Our New 100th Birthday Pear

Winter Sugar Pear—Originator Says Free From Blight

FROM F. H. Davis, several years ago, late in the spring, we received a box of pears, as peculiar in shape as Stark Delicious apples; also a bundle of letters from America's leading fruit authorities praising this new pear, the "Gold Nugget." In one of these letters, Col. Brackett, U. S. Pomologist, suggested that the pear be named Nugget and we are glad to follow this suggestion in its introduction.

After watching and testing for several years we now feel that it is a new pear that is deserving of Stark Bro's recommendation—and propagation. We have found this pear to be an exceptionally young bearer. One of the most vigorous growing pear trees we ever tried out in our test orchards. Albert Bentley, Wash. Co., Ark., says: "Gold Nugget is the strongest grower we have—even stronger than Kieffer." Gold Nugget has a thick protecting skin—juicy, fine-grained, honey-sweet flesh larger than Bartlett, but more round in shape—nearly apple shape, making it ideal for packing and shipping.

The originator, Mr. F. H. Davis, of Esmeralda, Calif., writes: "The Gold Nugget trees blight resistant. Two other trees not over 30 feet from the original Gold Nugget tree are practically dead from blight. But Gold Nugget is absolutely free from it, and now 40 years old. Have never known it to fail to bear; will keep as long and perfectly as any winter apple. Tree a late bloomer, blooming after all other varieties are out. It will ship to Europe and back to Frisco and still be in fine shape to sell. I have shipped them to France and they arrived in perfect condition."

Luther Burbank, the Master-mind of American Horticulture: "Certainly very fine in quality and in appearance. Well worthy of propagating."

G. B. Brackett, U. S. Pomologist: "Gold Nugget is certainly near the head of the list of fine pears. Very seldom have I tasted one so good, etc. It is a wonder to me that you have never brought this excellent pear to notice before."

"The Gold Nugget carefully examined and tested. Shape is peculiar and unmistakable once you have seen it. Nicely flavored and cuts like butter, but its best point is the amount of sugar it contains. The most remarkable point of your delicious pear is the way it keeps and travels. From Esmeralda Ranch to Paris—cars, railways, steamer, change of temperature and handling."—C. W. Vopereau, Paris, France.

Stark Bro's (at Louisiana, Mo.) have bought the Gold Nugget from Mr. Davis, the Originator, of Amador Co., Calif., and now offer it exclusively.

Introducer's Contract

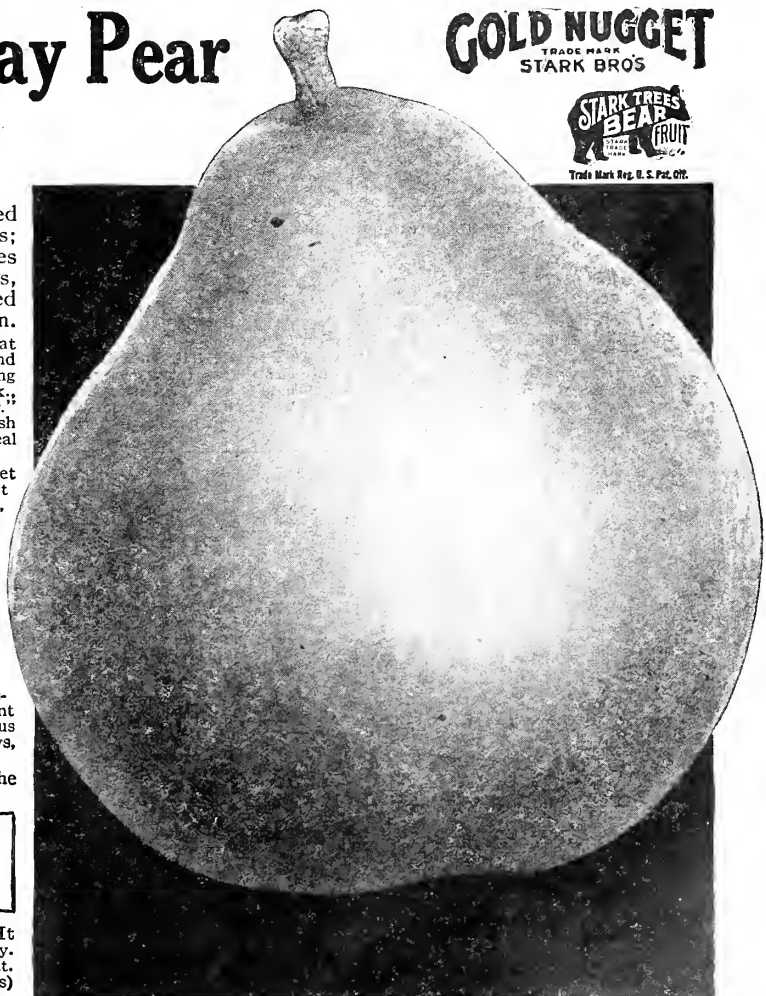
IN CONSIDERATION of _____ F. H. Davis hereby agrees to give said Stark Bro's exclusive control of all scions, buds, grafts and propagating wood—taken from the said—original Gold Nugget pear—tree, and its offsprings.
(Signed) F. H. Davis.

Gold Nugget Pear has a rich, sweet, wine flavor that is hard to describe. It is juicy and nearly buttery, also fine grained. There is no grit nor astringency. I have never before tasted a pear so sweet that had "Oriental" blood in it.
BENJ. BUCKMAN, (Well known Authority of Illinois)

GOLD NUGGET
TRADE MARK
STARK BROS



Trade Mark Reg. U. S. Pat. Off.



The Century's Most Famous Pears



Anjou—Extremely profitable, highest quality—sells as high as \$5.00 per bushel. Prof. E. P. Taylor reports \$2500.00 for one car of Anjou.

Anjou (Late Fall.) A large, handsome, yellow, blushed dull red pear of richest quality. With proper care can be kept until the holidays. A great money-maker for home or commercial orchards. It ripens about a month later than Bartlett and is remarkably free from blight. It is a very upright grower, thoroughly hardy, bears young and regularly, a late bloomer. We advise wide planting of this splendid pear. Anjou and Bartlett make an ideal combination. Dwarf Anjou and Bartlett are largely used for fillers in standard pear orchards, as they give quicker returns. NNCS

Keeps Till Midwinter.—I consider Anjou one of the best of its season; of good size and excellent quality. It begins to ripen in October, and if carefully handled, it sometimes keeps until midwinter. The tree is hardy, bears well and in every way is worthy of a place in every pear orchard.—Hon. G. B. Brackett, U. S. Pomologist.

Bartlett (Summer.) Favorite in all orchards and on all markets. A large, rich, golden yellow pear with a soft blush. It is very juicy, melting and with a rich, indescribable flavor that has made it popular everywhere. The tree is a strong grower, bears young, large crops every year and is a late bloomer. Bartlett is probably the most widely planted and best known pear in propagation. One of the best for canning and shipping. Bartlett and Anjou make an ideal combination, and are grown largely—both as standards and dwarfs; but for commercial purposes, the standard trees, of course, should be used. We grow it by many thousands and advise its planting in all pear sections along with the Anjou, Lincoln, Gold Nugget and Stark Seckel. NCS

Most Profitable in Mich.—Still leads as the most profitable variety grown.—Mich. Exp. Station.

Everybody Likes Bartlett.—The pear everybody likes. Popular for canning.—N. Y. Tribune Farmer.

\$10,000.00 From 20 Acres of Bartlett.—27 carloads of Bartlett pears from 20 acres is the record made this year by the orchard of C. O. Keck, Yakima Co., Wash. With 680 boxes to the car this makes a total slightly more than 18,000 boxes. The returns net him a return of almost \$10,000 from his 20 acres.

\$2,000.00 An Acre.—I sold \$500.00 worth of Bartlett pears from about one-fourth acre of Stark Trees from Stark Bros. One tree bore 630 pounds which I sold for 5 cents per pound.—H. C. Day, Graham Co., Ariz.

BARTLETT HYBRID (Summer.) Resembles Bartlett but averages larger. A good grower, bears young, is hardy and healthy. Quality good. NCS

BEURRE BOSCH (Fall.) A large, fine looking pear that is sweet and delicious. Deep yellow, rather long in shape. A regular bearer and profitable. NCS

BOUSSOCK (Summer.) Rich, clear yellow, occasionally blushed; profitable on late summer markets. NCS

COMICE (Late Fall.) A valuable pear for late market; ships well and keeps well. A golden yellow, fine grained, rich and luscious. NCS

CLAPP FAVORITE (Early Summer.) Large, fine looking, fair quality, hardy and a favorite in many sections. NCS

DUCHESS, Angouleme. (Fall.) Extremely large, often weighs over a pound. Dull yellow, good quality. Widely planted both as standard and dwarf. NNCS

FAME (Trade-Mark.) (Late Summer.) Originated in Northern Arkansas, introduced by us many years ago. Large, blushed, yellow, melting, sweet and rich. Fame and Lincoln are both native Western seedlings and both are blight resistant. NCS

FLEMISH BEAUTY (Fall.) Large, beautiful, sweet and good. Grown largely throughout the North. NNCS



King Karl—An extremely young bearer very profitable.

Stark Seckel—Best quality, include in every planting.

GARBER (Fall.) Large, handsome, but only fair quality. Largely used to pollinize Kieffer. NCS

GOLD NUGGET (Trade-Mark.) A new winter sugar pear of great promise. (See page 17.)

HOWELL (Fall.) Large, pale waxen yellow, often blushed. A young and annual bearer. NCS

KIEFFER (Winter.) The pear for the millions east of the Rocky Mountains. An immense golden yellow, sometimes tinted red on the sun-exposed side. Only fair in quality though excellent for canning; vigorous, young bearer and one of the most resistant to blight. NCS

King Karl (Late Fall.) Fruit is beautiful and good. An extremely young and heavy bearer. NCS

KOONCE (Early Summer.) An early pear of large size, golden yellow with red cheek. Fair quality. NCS

LAWRENCE (Winter.) A russet marked pear that is sweet and of good quality. Delicious for early winter. NCS

LUCY DUKE (Fall.) Golden russet, shaped like Bartlett. Rich, spicy, good quality; recommended for local and fancy market. NCS

RIEHL BEST (Fall.) A fine grained, juicy pear, free from grit and does not rot. Discovered by E. H. Riehl of the Illinois Experiment Station.

ROSSNEY (Late Summer.) Pale yellow, with crimson blush. Hardy but blights somewhat. NCS

QUINCE

Quince is a dwarf growing tree and can be planted close, 10 to 15 feet apart. They bear young and are always in demand for canning, preserves, marmalades, etc.

MISSOURI MAMMOTH. A large and handsome quince tree, bears young and big crops. Van Deman is our first choice, but Missouri Mammoth is our second choice. CS

ORANGE. Of good size but smaller than Van Deman. Late, well known and popular in many sections. NCS

Van Deman (Trade-Mark.) Originated with Luther Burbank and introduced by us many years ago. It is without a shadow of a doubt, the best and largest quince grown. The tree is hardy and dependable. The fruit is of enormous size, fine flavor and is unapproached in quality. Fine for baking; canned or dried it retains all the quince flavor. NNCS

Frost Proof Bloom.—Van Deman last year weighed 15 ounces. Bloomed early and the frost killed them. Later it bloomed again and raised fruit. That is the kind of trees to have.—Frost proof.—Chas. H. Sikes.

Two Van Deman trees, set two years ago bore 20 fine quinces weighing from 12 to 14 ounces each, sold on Spokane market at two for 25 cents. Perfectly hardy here—has a bright future.—Mrs. J. M. Morgan, Washington.

Stark Seckel Sugar Pear. (Late Summer.)

We grow a select strain of this great pear from the orchard of E. H. Riehl. For more than a century Seckel has been the standard of pear quality. Tree is healthy, hardy, succeeds everywhere. Its spicy, honeyed flavor makes it popular everywhere.

Eleven Trees on Waste Land Brought \$45.00.—(Later.)—\$45 was paid last year for the fruit on eleven trees growing 15 feet apart on waste land. Bears constantly; long lived and one of the freest from blight; demand always good.—E. H. Riehl.

Richest, Sweetest Known.—Generally admitted to be the richest, sweetest, highest flavored pear known. Probably as little subject to leaf blight, pear blight, etc., as any other.—M. B. Walte, U. S. Dept. Agr.

SNYDER (Early Summer.) A large, deep golden yellow pear that is sweet and satisfying in flavor. Tree remarkably free from blight. NCS

STARK TYSON (Very Early Summer.) Resembles Seckel but is much earlier. Fine texture, melting, juicy, perfumed. Long lived, hardy tree. NCS

TRIUMPH (Winter.) Fruit resembles Duchess but is much better quality and will keep until January. NCS

THEODORE WILLIAMS, Stella. (Winter.) Named for the veteran Nebraskan who originated it. A Kieffer seedling, but outclasses Kieffer in hardiness, productiveness and keeping qualities. NNCS

WINTER NELIS (Winter.) A greenish-yellow pear dotted with russet that is delicious in quality, a heavy annual bearer; largely planted commercially. NCS

WINTER BARTLETT (Winter.) A late keeping large pear of the Bartlett type. A large tree and remarkably free from blight, keeps late into the winter. NCS

WILDER EARLY (Very Early Summer.) A delicious early pear of medium size. Yellow with brownish-red cheek. NCS

WORDEN SECKEL (Fall.) A seedling of Seckel, but larger and more beautiful; excellent quality. NCS

VERMONT BEAUTY (Late Summer.) Medium size, yellow, bright cheek, often russet. Very hardy. NCS



Bartlett—A standard favorite on all markets and still largely planted because growers make big money from them. Bartlett and Anjou an ideal combination.

DWARF PEAR

Dwarf pear is the ordinary pear grown on quince roots which produces a small tree and brings it into bearing much younger than when grown as a standard tree. Dwarf pear trees should be planted in every back yard. They can be used in a row like a hedge. For commercial purposes, of course, the standard pear tree is preferable. However dwarf Anjou, Bartlett and Duchess are profitably planted as fillers in orchards of standard pears. In dwarf pear we offer: Anjou, Bartlett, Comice, Duchess, Fame, King Karl, Lincoln, Stark Seckel and Triumph.

APRICOT

Always in demand. The hardy sorts such as Superb and Stella will stand wherever peaches will grow.

BLLENHEIM. Deep orange color, slightly blushed and splendid flavor. NCS

COLORADO. Of large size and good quality. Tree hardy. NCS

MOORPARK. One of the best known; large, handsome and best of all apricots. NCS

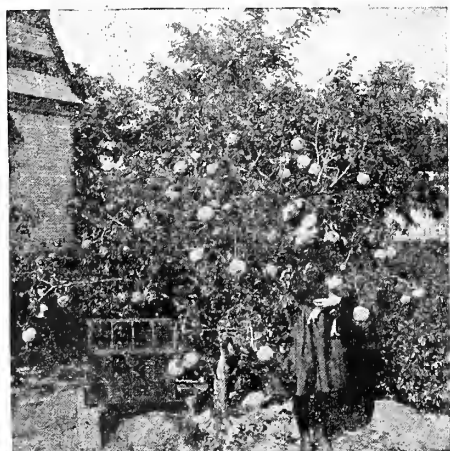
ROYAL. Widely planted in California and other apricot sections. Dull yellow mottled with brown.

WENATCHEE MOORPARK. This strain of Moorpark comes from the famous Wenatchee Valley of Washington. Superior to ordinary Moorpark. NNCS

SUPERB. A magnificent, hardy, improved Russian apricot; largely planted throughout the Central West. Successful in peach regions. NCS

STELLA. Very productive, improved Russian, originated in Nebraska. The hardiest apricot known. NNCS

TILTON. Sure bearing tree and fruit of superior quality. Large, handsome, high flavor. NCS



Van Deman (Trade Mark) Best Quince Grown.

Stark Pear Trees Bear Young—Heavy, Year by Year. "1/2 Acre Anjous Yielded \$1000.00 Crop this Year"

—Prof. E. P. Taylor

\$1.50 BONUS FREE With this Certificate
attached to a \$5.00
CASH ORDER BEFORE MARCH 15, 1918.

To reward you for early ordering, and spot cash payment, we offer you famous Stark Bro's Stock to the value of \$1.50.

1 APPLE---STAYMAN WINESAP	1 GRAPE---MOORE EARLY
1 APPLE---HENRY CLAY	1 GRAPE---WORDEN
1 PEAR---ANJOU	1 ORNAMENTAL SHRUB

Early orders help us in shipment and help you because early planting is best. Raise your order to \$5.00 or more and reap this big advantage--\$6.50 for \$5.00. Sign and attach this Free Certificate to your order and remittance. Customers are not permitted to make any changes in Bonus Collection. NOT REDEEMABLE AFTER MARCH 15, 1918. Positively must be attached to order, or you may not receive Bonus.

SIGN HERE _____

If supply of any sort exhausted
another of equal value will be sent.

DATE _____

STARK BRO'S NURSERIES, LOUISIANA, MO.

\$3.00 BONUS FREE With this Certificate
attached to a \$10.00
CASH ORDER BEFORE MARCH 15, 1918.

To reward you for early ordering, and spot cash payment, we offer you famous Stark Bro's Stock to the value of \$3.00.

2 APPLE---STAYMAN WINESAP	2 GRAPE---MOORE EARLY
2 APPLE---HENRY CLAY	2 GRAPE---WORDEN
2 PEAR---ANJOU	2 ORNAMENTAL SHRUB

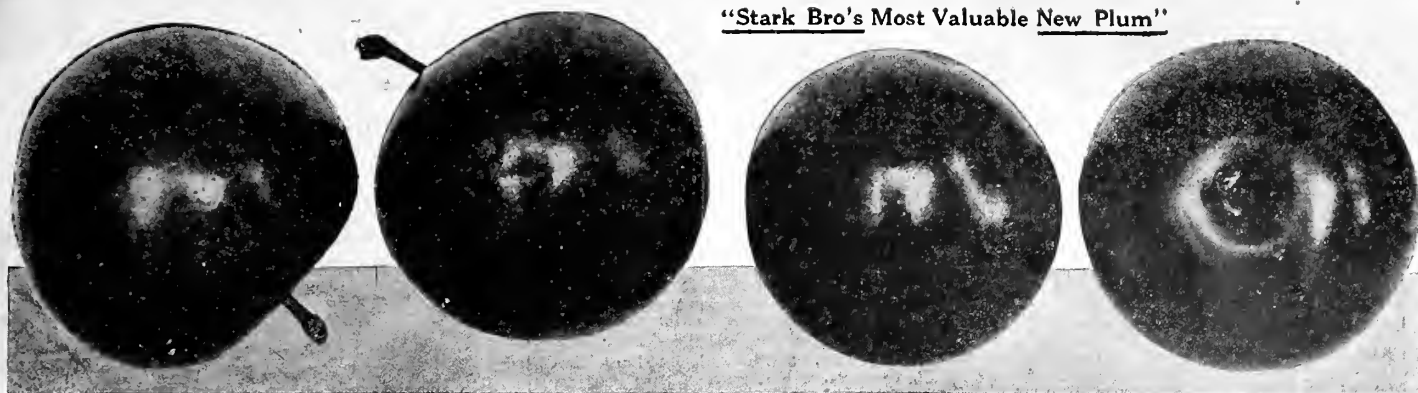
Early orders help us in shipment and help you because early planting is best. Raise your order to \$10.00 or more and reap this big advantage--\$13.00 for \$10.00. Sign and attach this Free Certificate to your order and remittance. Customers are not permitted to make any changes in Bonus Collection. NOT REDEEMABLE AFTER MARCH 15, 1918. Positively must be attached to order, or you may not receive Bonus.

SIGN HERE _____

If supply of any sort exhausted
another of equal value will be sent. **DATE** _____

STARK BRO'S NURSERIES, LOUISIANA, MO.

"Stark Bro's Most Valuable New Plum"



Mammoth Gold Plum

Mammoth Gold Plum

A GREAT big, luscious, red blushed, golden plum of enormous size; so early that they are ripe and gone by the 4th of July—a fit orchard mate for the great "Gold" plum which has created such a sensation among plum growers all over the country.

Mrs. Wm. Bywater, Adams Co., Ill., says—"Our four trees are a picture—nothing can be seen but plums and a few leaves. One plum measured $7\frac{3}{4}$ inches in circumference."

Mammoth Gold will enable you to supply the early market demand for good plums. The trees bear young, the fruit is of splendid size, sweet and delicious, clear to the seed. None of the sharp bite that some plums have. Another point worth considering is that of its early ripening habit which practically eliminates chances of brown rot. Mammoth Gold originated with the late George W. Endicott of Illinois Experiment Station—a scientific experimenter who did a great work for central and western orchardists. Mammoth Gold is undoubtedly the greatest of all of his plum breeding achievements. We have exclusive contract with Mr. Endicott for propagation from original tree.

Dawson Grady, of Pike County, Missouri, says that his Mammoth Gold trees bore the second summer that the fruit was of immense size, beautifully blushed and far ahead of other plums. He stated further that although the season was very wet and plums rotted badly, not one Mammoth Gold showed a bit of rot. NNCS

Other Leading Plums

ABUNDANCE (Early, Japanese.) Large, cherry red, pure Japanese, firm, sweet, excellent quality, ships well. NCS

America (Very Early, Hybrid.) Large, glossy red. Beautiful as a plum can be. America, Mammoth Gold, Gold, Early Gold (Shiro) and Omaha are the five best plums east of the Rocky Mountains. NNCS

BLACK DIAMOND (Mid-Season, European.) A huge dark purple plum almost black; delicious. NC

BURBANK (Mid-Season, Japanese.) Richly colored red plum mottled and dotted with yellow. Well known and widely planted. NCS

COMPASS, Cherry. (Early, Hybrid.) Medium size, light red, changing to dark red at maturity. Popular in the West and planted sparingly in Central West and East. A hybrid of Sand Cherry and a plum. NCS

DAMSON, BIG MACKAY (Mid-Season, European.) A strain of the Stark Free Stone that averages larger. Originated in Pike County, Missouri and recommended because of size, bearing and general tree characteristics. A true Free Stone. NCS

DAMSON, MAJESTIC (Mid-Season, European.) The earliest of all Damsons. NCS

DAMSON SHROPSHIRE (Mid-Season, European.) Best known Damson. Trees bear enormous crops. NCS

DAMSON STARK, Freestone. (Mid-Season, European.) The largest Damson. Originated in Pike County, Missouri. NCS

Duarte (Mid-Season, Hybrid.) The new blood plum originated by Luther Burbank, who says: "A fine grower, hardy, never failing—bears abundant crops. Very rich, delicious and nearly freestone." Beautiful, enormous size, good quality, promising everywhere. We advise it for extensive trial in all sections. A variety with splendid parentage. Produced from seeds of America



"Photo of my 2-year-old Early Gold (Shiro) bearing 3 gals. luscious plums. They are all your Year Book claims them to be." J. J. Rosenberger.

An Old Oak Process Whole Root Tree

and pollenized by Climax. Has proven hardy in our New York nurseries and here at Louisiana (in Northern Missouri). NCS

EARLIEST OF ALL (Very Early, Japanese.) One of the earliest; solid red, medium size, popular. NCS

Early Gold (Shiro, Very Early, Hybrid.) Pure Transparent Golden Yellow—a huge honey drop, also Luther Burbank's production. Early Gold is probably second only to Gold. A marvelous plum. NCS

FREESTONE GOOSE (Mid-Season, Native.) An improved Wild Goose originating with Theo. Williams of Nebraska. Immense size and of iron-clad hardness. NCS

GERMAN PRUNE (Mid-Season, European.) One of the largest and handsomest and best of the prunes. NCS

Gold (Trade-Mark.) (Mid-Season, Hybrid.) Our great Gold, the \$3,000 plum, has created a great sensation and made more friends than any other of the many valuable plums we have introduced in the last one hundred years. We consider it the most valuable mid-season plum; just as much so as its great team mate, Mammoth Gold is the best very early plum ever introduced. Gold is so delicious, so large and beautiful, such a heavy bearer and so successful everywhere that we have never been able to grow enough trees to supply the demand for it. Buy the genuine from Stark Bro's, the exclusive introducers and owners. "Gold" is a trade-mark of ours, registered in the U. S. Patent Office. Gold is a union of the best plum blood of the earth's two great continents—Asia and America. Hybrid of Burbank (Japanese) and Robinson's Native. The originator says: "Gold is one of the most remarkable fruits known. The best plum ever introduced. Delicious, juicy, sweet; two weeks later than Burbank; keeps a month or more; clear, semi-transparent, light golden yellow, later nearly overspread with a hazy carmine blush; when fully ripe a transparent light cherry red—the handsomest plum in existence. Among plums there is nothing on earth as beautiful or good."

\$3000, was the price we gladly paid to Burbank when we bought the Gold plum some years ago.

A. N. Seymour, of Dane County, Wisconsin says: "Stands our winters like the hardiest natives." H. Floyd, Winnebago County, Wisconsin, says: "Not a bud injured. Gold is all right even North of LaCrosse and Oshkosh." J. B. Broughton, New Madrid County, Missouri, says: "Have two Gold plum trees with a record of 260 gallons this season—130 gallons from each tree."

We could quote from hundreds of growers as to the hardness and sturdiness of tree, its marvelous bearing qualities and of the beauty and clearness of its fruit. Truly a marvelous plum. NNCS

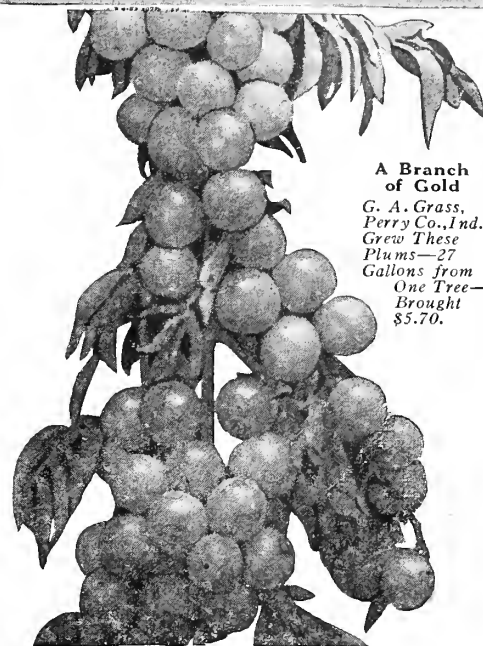
INDIAN BLOOD, Duarte. (Mid-Season, Hybrid.) The new blood plum from Luther Burbank. Beautiful, enormous size. Plant everywhere. NCS

ITALIAN PRUNE (Mid-Season, European.) Similar to German prune but distinct. Probably more largely grown than any other. NCS

LATE GOOSE (Late, Native.) From Theo. Williams of Nebraska. Recommended because of size, beauty, quality and extreme hardness. NCS

LOMBARD (Mid-Season, European.) Large, violet-red, pleasant flavor. Favorite everywhere. NCS

OCTOBER PURPLE (Mid-Season, Native.) Rich, dark reddish-purple, superb quality. Desirable for home garden and for market. NNCS



A Branch of Gold

G. A. Grass,
Perry Co., Ind.,
Grew These
Plums—27
Gallons from
One Tree—
Brought
\$5.70.

Omaha (Mid-Season, Hybrid.) The greatest creation of Theo. Williams, the Burbank of the North (Nebraska). The value of his productions is recognized everywhere. His best plum which he requested us to introduce and name for the Capitol of his state, Omaha, has proved one of the most valuable introduced from any section for many years. Very large, almost perfectly round, dark rich red, deeper in color than Abundance, flesh meaty and delicious. Sturdy and hardy as an oak and grows without the least damage far North; has always proven thoroughly satisfactory in the South. The originator said: "No other plum in existence is as cosmopolitan as Omaha. It has fruited from Alberta (Canada) south to the Gulf; it thrives in Vermont and has been tested west to the Pacific. Not since we introduced Gold has any variety suited us so perfectly as Omaha and Mammoth Gold." NNCS

ORIENT (Mid-Season, Japanese.) Orange colored, overlaid with cherry red; sweet and excellent. NCS

POOLE PRIDE (Mid-Season, Native.) Most valuable of the Chickasaw type. Red with heavy bloom. Delicious for preserves and jellies. NNC

Red June (Very Early, Japanese.) Named twenty-five years ago. Dark coppery red, free from rot, does not drop. Fine canning variety. NCS

SANTA ROSA (Very Early, Hybrid.) An origination of Luther Burbank. An immense red plum with firm flesh, strong skin and an excellent shipper. Won the Gold Medal at the Lewis & Clark Exposition. Ripens about a week ahead of Gold. NCS

SATSUMA (Mid-Season, Japanese.) Fine red fleshed, large, purplish-crimson, excellent quality, but not quite hardy east of the Rockies. We prefer Purple Flesh which is hardy and more dependable.

STARK GREEN GAGE, Missouri. (Mid-Season European.) Introduced by us. All plum lovers commend it as the best of its type. A home or market orchard is not complete without it. Large, good quality, bears abundantly. NCS

STARK PURPLE FLESH (Mid-Season, Jap.) Hardy Japanese variety that succeeds far north where Wickson and Burbank will not stand. The finest red fleshed variety. NNCS

STRANG (Early, Japanese.) A seedling of Abundance, ripening just after Red June. NCS

TATGE (Mid-Season, European.) A rival of Lombard. Fruit richer, darker color and very fine quality. NNC

WICKSON (Mid-Season, Japanese.) One of the handsomest plums; widely planted throughout the country. Mammoth Gold more profitable. NCS

WILD GOOSE IMPROVED (Mid-Season, Native.) Superior to old Wild Goose. Bright red, delicious, sweet and juicy. NCS

The Foundation of America's Money Making Orchards—Stark Old Oak Process Whole Root Trees

Berries

Blackberry

The Blackberry is more and more becoming the most profitable of the bush fruits and should be grown commercially for all markets as well as for home uses.

A strong, deep and fertile loam is best for the Blackberry, though it succeeds almost as well on sandy soils and in clay land. It responds generously to fertilizers, mulches and good, clean cultivation. Space rows 6 feet apart and set the plants 2 feet apart in the rows. Head the canes back to force out laterals for fruit bearing.

BLOWERS (*Everbearing*.) Large, jet black, ships well. Popular. NCS

EARLY HARVEST (*Very Early*.) The old standby, extremely productive, good quality. CS

EARLY KING (*Early*.) A long time favorite of good size. Fine, vigorous and hardy. NCS

ELDORADO (*Mid-Season*.) Large, jet black. Keeps well after picking. NNCS

MCDONALD (*Very Early*.) Large and fine. NCS

MERSEREAU (*Mid-Season*.) One of the hardest sorts, bears enormous crops, ships well. Berries of excellent quality. NCS

SNYDER (*Mid-Season*.) Hardy and most dependable, good size and of good quality. NCS

WARD (*Late*.) Healthy, strong growing, bears large crops, fruit of splendid quality. NCS

Dewberry

AUSTIN (*Early*.) Fine for Centra. States and largely planted South. CS

LUCRETIA (*Early*.) The best and most dependable of all dewberries. Large, jet black and fine flavor. NNCS

Raspberry

The Raspberry, for best results, needs a deep, rich, strong loam, which should be prepared as for potatoes. Set plants 2 feet apart in the rows; space rows 6 feet apart. Cut canes back to 3 or 4 inches at planting time to stimulate root growth. Cultivate thoroughly. The canes grow one year and bear the next and will then bear no more. Therefore when the fruit has been picked and as soon as the leaves drop, cut the bearing cane out—to leave it in only takes vigor from canes that will bear next season. The Raspberry patch should be renewed every five or six years.

BLACK PEARL (*Early Black*.) Large size, hardy, big cropper. NCS

COLUMBIAN (*Mid-Season*.) Large, rich purple, unrivaled for productiveness. NCS

CUMBERLAND (*Early Black*.) The best of all black caps. Perfectly hardy. NCS

Approached by no other in either quality or commercial value.—Long Island Agronomist.

CUTBERT (*Mid-Season*.) Well known red variety, popular and profitable. NCS

GOLDEN QUEEN (*Mid-Season*.) Large, beautiful clear amber yellow. NCS

HOOSIER (*Mid-Season*.) Jet black, firm. NNCS

KANSAS (*Late*.) Glossy black, good quality, productive vine. We prefer Cumberland. NCS

KING (*Early*.) Red. One of the best and most profitable red sorts. NCS

ST. REGIS (*Everbearing*.) Bright crimson, firm, rich and delicious. Iron-clad hardness. NNCS



St. Regis Raspberry

Asparagus Lives year after year without replanting and should be more widely grown. Plant in good soil and manure. A fifty foot row of Asparagus should be planted in every garden. We offer all the leading varieties.

Rhubarb *Pieplant*. Grows successfully everywhere and should be in every garden. Beds will last for years without renewing. We offer the two leading kinds.

Horseradish Prefers a deep, loose, loamy soil. It is easily grown; hardy and should be in every garden.

Stark Eclipse grapes is the only early grape in existence today that has the quality. It ripens ten days ahead of Moore Early.—J. L. Ince, Erie Co., N. Y.

GRAPE VINES

Great opportunities await the grape grower. They are easily grown in almost any soil and no home garden is complete without them. Plant them along the fences, in the corners, or cover unsightly buildings. Use them for borders along the walks and drives.

AGAWAM. Dark red, finely flavored, hardy, ripens just after Concord. NCS

BANNER. A delicious red grape introduced by us from the vineyard of Jas. Bachman of Ark. Bunches very solid, berries medium size, ripens late, ships well. NCS

BARRY. Black, attractive, high quality, keeps well, fine, hardy. NCS

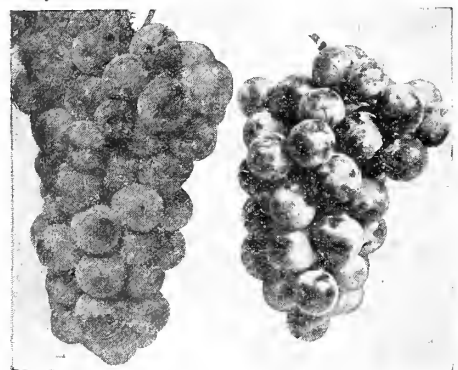
BRIGHTON. Bright red, heavy bunches, one of the sweetest and most delicious red grapes. NCS

CAMPBELL EARLY. An early black grape of immense size. It is of the Concord type, but larger in both bunch and berry. About two weeks earlier and better quality. NCS

CATAWBA. A favorite red grape. Makes delicious grape juice. CS

CLINTON. A fine wine grape, small bunch and berries. NCS

CONCORD. The most widely grown, most popular of all grapes; rich, black, good bunch, good quality, good shipper. Produces tremendous crops everywhere. NCS



Moore Early

Stark Eclipse

DELAWARE. No American grape has a more delicate flavor or more pleasing aroma. Bright red, ripens early, profitable. NCS

DIAMOND. A magnificent white grape, slightly earlier than Niagara. As dependable in vine and in fruit as Concord. Plant everywhere. NCS

HICKS. A valuable black grape; an improvement on Concord. Originated in St. Louis County, Missouri and becoming popular in all grape sections. NCS

Larger and sweeter than Concord, more vigorous, harder; roots less.—E. J. Ayres, Supt. Ill. Exp. Station.

On the station grounds Hicks is more prolific than Concord; vines of stronger growth.—Grapes of New York.

IVES. A black grape of good quality that makes a splendid red wine. Fruit ships perfectly. NCS

KING, *Giant Concord*. A black grape that is larger than Concord and of very fine quality. NCS

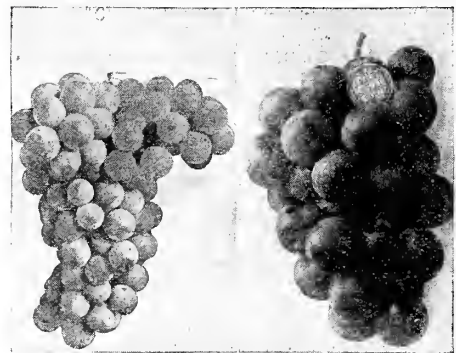
LINDLEY. A handsome light red grape that is tender, sweet and good. NCS

LUCILE. Dark red, best in quality. Vine is vigorous, hardy and productive. NCS

LUTIE. Large, red, good everywhere and under all conditions. It seldom rots and can always be depended upon. NCS

MOORE EARLY. The most widely planted, most popular of the early black grapes. Similar to Concord in appearance and quality and two weeks earlier. Succeeds everywhere Concord grows. We advise the planting of Moore Early for it always pays. NCS

NIAGARA. The best known white grape. As vigorous and productive as Concord. We grow it largely and recommend it commercially. NCS



Niagara

Wallis Giant

STARK ECLIPSE (*Trade-Mark*.) The finest early black grape, the sweetest and best in quality. Ripe a week or ten days ahead of Moore Early and the markets are always ready for them. Hardy, early, strong growing, bears well. Does not crack in wet weather. NCS

New York Experiment Station Unqualifiedly Recommends It—Eclipse is the only new grape in a collection of over four hundred that we can unqualifiedly recommend. We have had it at this station since 1893, and it has been fruiting since 1896, and each year obtains greater favor in the eyes of those who see it. It is a seedling of Niagara and, therefore, a grandchild of Concord, which it resembles, differing chiefly in being earlier and of much better quality. The vines are hardly surpassed by those of any other variety; being hardy, healthy and productive—qualities that should commend it for commercial vineyards. The ripe fruit hangs on the vines for some time without deterioration and the grapes do not crack in wet weather. It should make a splendid forerunner of Concord.—Report N. Y. Exp. Station.

Nut Trees

CHESTNUT, AMERICAN SWEET. A large native ornamental tree of symmetrical habit. Bears sweet nuts of fine flavor. Fine for specimen or groups on the lawn.

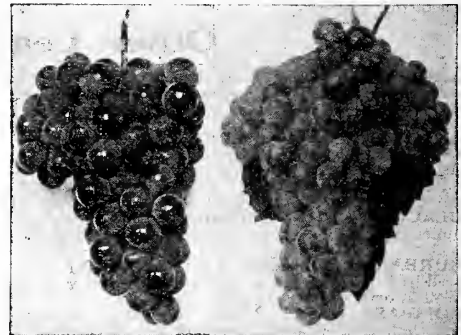
FILBERT, AMERICAN, Corylus. A hardy shrub to 7 ft., bearing a good quantity of edible nuts.

HICKORY, MISSOURI MAMMOTH. Tree grows to a great height. Nuts large and of good quality.

HICKORY, SHELLBARK. Shaggy bark, very picturesque. Bears large crops of high quality nuts.

PECAN, ILLINOIS SEEDLING. Originated in Pike Co., Ill. A thrifty tree producing extra large nuts.

PECAN, MISSOURI SEEDLING. Produced from tree bearing extra large nuts near our home nursery.



Hicks

Stark Delicious

Mr. Endicott Thinks It a Great Grape—Hardy in both vine and bud. Good grower; heavy fruiter when properly pollinated, and Stark Delicious seems to be the best to pollinate it as it blooms at the same time. I like them both for their good quality and heavy fruiting.—Geo. W. Endicott, Vice-Pres. Southern Ill. Hort. Society.

Best Early Black Grape—Stark Eclipse is most decidedly the best early black grape. It hears out all you claim for it. Have no other early black grape that is its equal.—A. B. Morse, Hampshire Co., Mass.

Stark Delicious (*Trade-Mark*.) A magnificent light red sort that is the sweetest, richest, best in quality of all red grapes. Ripens in September. The bunch is large, the berry medium to large in size, the bunch long shouldered, compact and goes on the market in good shape. The first specimens Mr. Riehl sent us about seven years ago were undoubtedly the most beautiful red grapes we had ever seen. It has even surpassed our high expectations and we urge its planting wherever a red grape is wanted, both for home use and for market. NCS

WALLIS GIANT (*Trade-Mark*.) Huge bunches of giant size, delicious, sweet, juicy grapes—Henry Wallis' greatest creation. Now offered for the first time. Owned, controlled and for sale only by Stark Bro's at Louisiana, Mo.

WOODRUFF (*Late*.) A handsome showy red grape, large bunch and berries fair quality. NCS

WORDEN. A magnificent black grape; as hardy, vigorous and productive as Concord and larger, better quality and ten days earlier. NCS

GRAFTED PECAN, Pabst. Nut of excellent quality of moderate size. Shell soft, parting well from meat.

GRAFTED PECAN, Stuart. The best paper-shell pecan. Tree a vigorous grower, bearing high quality nuts.

GRAFTED PECAN, Van Deman. A large nut of good quality, oblong in shape, with moderately thin shell.

WALNUT, BLACK, Juglans Nigra. A large spreading tree growing to 50 ft. Extensively planted as a timber tree, wood is very valuable. Perfectly hardy and prolific, bearing large rich nuts.

WALNUT, JAPAN, Juglans Sieboldiana. A hardy tree from Japan. An abundance of thin-shelled nuts.

WALNUT, WHITE OR BUTTERNUT, Juglans Cinerea. Fast growing tree. Oblong nuts with rich meat.

We Prepay Freight! That makes our Nursery as near to you as your Railroad Station



SHADE TREES



Lombardy Poplar, an unusual and picturesque tree that gives variety to the planting. Valuable for lawn, avenue or screen.

ASH, AMERICAN, *Fraxinus Americanus*. A stately, symmetrical tree of spreading habit reaching a height of 80 ft. Of rapid growth. Excellent for shade and ornamental planting. Foliage glossy green and divided. A clean, quick growing tree.

BIRCH, CUT LEAVED WEEPING WHITE, *Betula Alba Laciniata Pendula*. Excellent ornamental tree, finely cut, fern-like foliage on slender drooping branches.

BIRCH, EUROPEAN WHITE, *Betula Alba*. Rapid growing symmetrical tree, graceful form, slightly drooping branches. Bark white. Small foliage, glossy green.

CATALPA, UMBRELLA, *Catalpa Bungei*. A broad foliaged tree of dwarf habit usually only about 6 to 8 ft. in height. Neat, compact, round head on slender trunk. Requires no trimming. Used extensively for planting on either side of walk leading to residence.

CRAB, FLOWERING, *Pyrus Parkmanni*. An attractive small tree or shrub, 8 to 12 ft. in height. Flowers semi-double and pink succeeded by small dark red fruits which ripen in late autumn.

ELM, AMERICAN WHITE, *Ulmus Americana*. The best of all our native shade trees and the most popular. Of graceful spreading habit with slightly drooping branches. Adapted to a variety of conditions and succeeds everywhere. Easily transplanted. An excellent avenue tree and unexcelled as a rapid growing shade tree.

KENTUCKY COFFEE BEAN TREE, *Gymnocladus Canadensis*. A native tree of large size. Rapid growth, producing heavy spreading branches. Flowers green in June followed by long pods which produce the beans said to have been used by early settlers for coffee.

LINDEN, AMERICAN, *Tilia Americana*. A valuable native tree of rapid growth forming a broad round open top. Fragrant creamy-white flowers July. A honey-bee favorite. Adapted to a variety of soils. A good avenue or specimen tree.

LINDEN, BROAD LEAVED EUROPEAN, *Tilia Platyphyllos*. A broad leaved European species often 75 ft. in height. Fine for avenue or lawn.

LOCUST, BLACK, *Robinia Pseudocacia*. A native rapid growing tree with spreading branches. Long drooping clusters of creamy white peap-shaped fragrant flowers in Spring.



American White Elm, the noblest of all native trees—grows everywhere.

MAPLE, ASH LEAVED or BOX ELDER, *Acer Negundo*. A large native tree of rapid growth and spreading habit. Planted extensively in West where it endures both cold and arid conditions. Valuable for street planting for quick effect.

MAPLE, NORWAY, *Acer Platanoides*. An excellent compact, round headed tree of medium growth, to 50 ft. in height. Requires little or no pruning. An ideal avenue tree. Perfectly hardy. Leaves dark green remaining on the tree until late autumn when they turn a bright yellow. The best of all the maples.

MAPLE, SCHWEDLERI or PURPLE LEAVED, *Acer Platanoides var Schwedleri*. Spreading habit attaining about 40 ft. in height. Foliage a bright red at first, turning to a dark purplish green.



Weeping Willow, a graceful drooping tree. Adapted for lawn, cemetery or near water. Popular in the Old World for centuries.

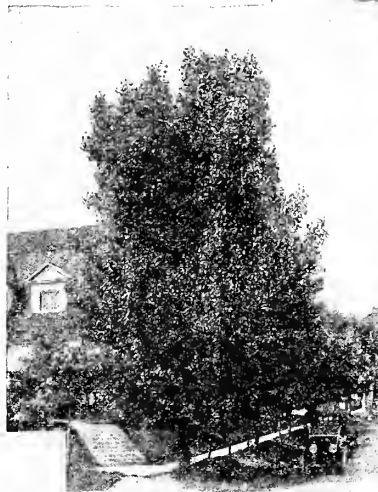
MAPLE, SILVER LEAF, *Acer Dasycarpum*. Very rapid growing tree used extensively for street planting where immediate results are desired. Grows to 60 ft. in height. Easily transplanted and very hardy. Not particular as to soil, of spreading habit.

MAPLE, SUGAR or ROCK, *Acer Saccharum*. A fine round headed tree with spreading branches. Of moderate growth and long life. An excellent avenue tree and as a specimen where dense shade is desired. Valuable also for its sugar production. Leaves bright green changing to golden yellow and orange in Autumn.

MAPLE, WIERS CUT LEAF, *Acer Dasycarpum Weirii*. A strong growing tree with finely cut foliage and drooping branches. Hardy. An attractive specimen tree on the lawn. Very desirable on account of its graceful habit.



Norway Maple, has been called the "One Best Shade Tree." Fairly rapid grower and splendid for avenue or lawn planting.



Carolina Poplar (seven years old). The most rapid grower. Extremely hardy—succeeds under all conditions. Used for street, lawn, screen or wind break.

MULBERRY, TEA'S WEEPING, *Morus alba pendula*. A graceful weeping tree growing 6 to 8 ft. high.

OAK, PIN, *Quercus Palustris*. Unexcelled for street planting, being a very shapely tree.

OAK, RED, *Quercus Rubra*. A native species of rather fast growth.

OAK, WHITE, *Quercus Alba*. One of our large native deciduous trees.

PERSIMMON, *Diospyros Virginica*. A medium sized native tree to about 40 ft in height.

PLUM, CRIMSON LEAF, *Prunus Pissardi*. Foliage and twigs dark purple forming a striking contrast when planted near the border.

POPLAR, CAROLINA, *Populus Monotifera*. A widely known tree of exceedingly rapid growth with bright green foliage. Used exten-

sively for avenue, lawn or windbreak. It soon attains the height of 40 or 50 ft. Fine for wind-break when planted close together. Succeeds everywhere. Used largely in between the slow growing trees in order to get quick shade.

POPLAR, LOMBARDY, *Populus Nigra Fastigiata*. A familiar Italian tree from the province, Lombardy. A very rapid growing tree of slender upright habit, the height often exceeding 80 ft. Excellent to break the skyline in massed planting.

POPLAR, NORWAY, *Populus "Norway"*. An excellent tree of the Carolina type but of more rapid growth and said to be hardier. Termed "The Sudden Sawlog" in the west.

RUSSIAN OLIVE or SILVER LEAVED OLEASTER, *Elaeagnus Argentea*. A small tree or shrub to about 12 ft. with small willow like foliage silvery white in appearance. Flowers small yellow and fragrant, succeeded by yellow fruit. Perfectly hardy, makes a good hedge.

SYCAMORE, AMERICAN or WESTERN PLANE TREE, *Platanus Occidentalis*. A native tree of immense size, succeeds easily. Of rapid growth and spreading habit. Leaves large with pointed lobes. Used as street trees. Globe-shaped heads of seed hang on until winter.

SYCAMORE, EUROPEAN or ORIENTAL PLANE TREE, *Platanus Orientalis*. An erect tree of rapid growth. Easily transplanted. Extensively used for avenue planting in large cities as it withstands smoke and dust. Practically free from insects and diseases. Thrives most anywhere and is most desirable.

TULIP TREE or YELLOW POPLAR, *Liriodendron Tulipifera*. An excellent tree of large proportions. Of rapid growth to 60 ft. Flowers tulip-shaped; bright green and orange yellow.

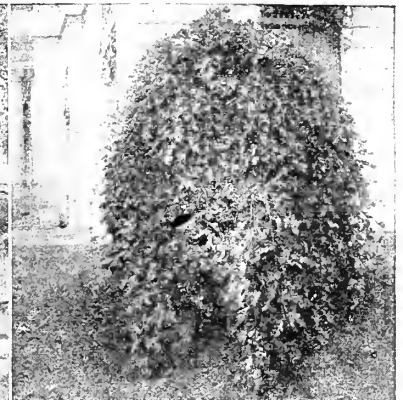
WILLOW, WEEPING, *Salix Babylonica*. A large spreading tree with long slender drooping branches often 40 ft. in height. An excellent effect when planted near the edge of water.

Evergreens

Standard varieties, symmetrical and thoroughly dependable. Express or freight shipments on cash orders. Evergreens are shipped separate from fruit trees and orders should be written on special evergreen order blank. Write for descriptive literature and prices.



Catalpa Bungei or Umbrella Tree, a unique tree that is largely used on the lawn.

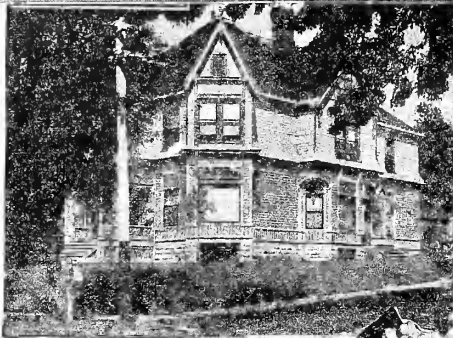


Tea's Weeping Mulberry, long slender stems droop to the ground. Hardy, largely used.

"\$10 Spent In Ornamenting Your Home Grounds Will Add \$500.00 to the Selling Value"

FLOWERING SHRUBS

A Missouri Home Before Planting Shrubs. The photograph on the right was taken before Stark Bro's Landscape Department planned and superintended the landscape planting. The second picture on the right illustrates the wonderful improvement that can be secured at a very moderate cost. Note particularly, that the house before planting appears very tall and bleak. After planting the shrubs about the foundation, the house appears lower, more protected and far more attractive.



A Wonderful Change Secured in Three Months. The two pictures on the left give a good illustration of "before and after" effects from a planting made from one of Stark Bro's Free Planting Plans. This result is all the more remarkable because of the great "immediate" change. Note the beautiful hedge which gives privacy, also the graceful outlines of the shrubbery which hide the foundation.

AMELANCHIER CANADENSIS, June Berry. Large upright shrub or tree. Flowers white in early spring before leaves appear.

ARALIA CHINENSIS, Chinese Angelica Tree. (Hercules Club). A large shrub or tree to 30 ft. with large heavy, prickly stems. Foliage large and divided. Gives a sub-tropical appearance.

ARALIA PENTAPHYLLA, Five-Leaved Angelica Tree. A prickly shrub of neat appearance bearing dense foliage of bright green color on graceful drooping branches. Flowers greenish-white in June. Makes a good ornamental hedge.

BERBERIS THUNBERGII, Japanese Barberry. A compact growing hedge plant of symmetrical habit from Japan. Foliage small, bright green turning bright crimson in autumn which, together with the orange-red berries it produces, makes this plant most attractive.

BERBERIS VULGARIS, Common Barberry. European species of stocky appearance. Flowers yellow, produced in May and followed by orange-scarlet berries which hang on throughout winter.

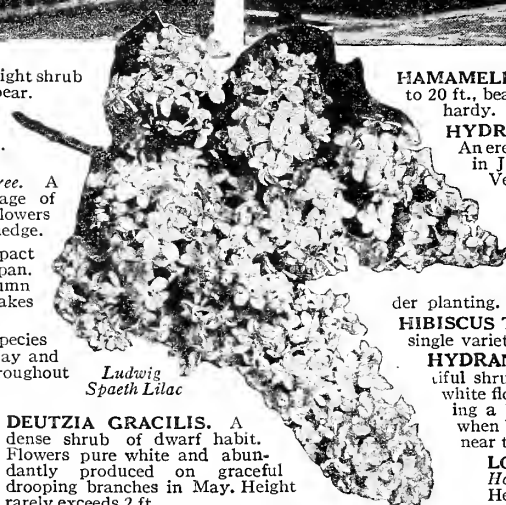
BERBERIS VULGARIS ATROPURPUREA, Purple Leaved Barberry. Shrub of upright habit bearing purple foliage throughout summer.

CALYCANTHUS FLORIDUS, Carolina Allspice. A widely known shrub with dark green foliage and bearing chocolate colored spicy, aromatic flowers in May. Height from 4 to 6 feet.

BUDDLEIA VARIABILIS MAGNIFICA, Butterfly Bush. Beautiful shrubs to 4 ft. with large clusters of lilac colored flowers, which attract butterflies in large numbers. Sometimes winter kills to the ground, but renews growth in the spring.

CEPHALANTHUS OCCIDENTALIS, Button Bush. A sturdy native, round topped shrub of rapid growth. Height 5 to 7 ft.

CERCIS CANADENSIS, Red Bud. A native shrub or medium sized tree producing many red pea-shaped flowers in early spring before leaves unfold. Height 16 to 25 ft. Leaves heart-shaped.



Ludwig Spæth Lilac

DEUTZIA GRACILIS. A dense shrub of dwarf habit. Flowers pure white and abundantly produced on graceful drooping branches in May. Height rarely exceeds 2 ft.

DEUTZIA LEMOINEI. One of the hardiest Deutzias. Flowers pure white, borne profusely. Shrub of spreading habit to 3 ft.

DEUTZIA SCABRA, "Pride of Rochester." One of the earliest flowering Deutzias. Flowers double, white tinged pink; borne in profuse clusters during the early part of May. Reaches 6 ft.

DIERVILLA FLORIDA, OR WEIGELA ROSEA. A spreading shrub, arching branches; trumpet shaped rose colored flowers in early June freely borne on the stout branches. Height 6 ft. Leaves dark green. A graceful and beautiful shrub that is a necessity in all planting. Spirea Van Houttei and Diervilla are two of the best shrubs grown. Illustrated on page 71.

DIERVILLA FLORIDA "CANDIDA," White Flower Weigela. Same as preceding.

DIERVILLA HYBRIDA "EVA RATHKE," Red Flowering Weigela. A shrub to 4 ft. with clusters of carmine red flowers.

EUONYMUS ALATUS, Winged Burning Bush. Compact spreading shrub to 8 ft. Twigs and branches with corky wings. Flowers in May or June followed by red berries.

FORSYTHIA FORTUNEI, Fortune's Forsythia. A vigorous shrub with upright or arching branches. Flowers yellow thickly set on slender twigs before leaves appear.

FORSYTHIA SUSPENSIS. A graceful drooping shrub which, when trained on a trellis, will grow 8 to 10 ft., but when left alone rarely exceeds 4 ft. Excellent shrub for front of border or entrance planting. Yellow flowers in April before the leaves appear. The best very early flowering shrub. Known as "Golden Bell."

HAMAMELIS VIRGINICA, Witch Hazel. Shrub or small tree to 20 ft., bearing small yellow flowers in late autumn. Perfectly hardy. Valuable for deep border planting.

HYDRANGEA ARBORESCENS STERILIS, Hills of Snow. An erect shrub to 4 or 5 ft. with large white balls of flowers in July and August, resembling the Snowball, but larger. Very attractive planted in large groups in the border.

HIBISCUS, Altheas. Assorted colors—bush form, with all the variations of the following colors. Height 5 ft.: Red, white, rose color, both double and single.

HIBISCUS SYRIACUS, Rose of Sharon. Fine single purple flowers in profusion. Fine for border planting. 6 to 8 ft. in height.

HIBISCUS TOTUS ALBA, White Rose of Sharon. Pure white single variety. Bush 6 ft. high.

HYDRANGEA PANICULATA GRANDIFLORA. A beautiful shrub to 8 ft., bearing immense cone-shaped clusters of white flowers in July and August, almost all sterile and turning a bright pink as they become older. Very attractive when banked in the border planting, or as specimen plants near the house.

LONICERA FRAGRANTISSIMA, Fragrant Bush Honeysuckle. Sweet scented white flowers in May. Height 4 to 6 ft. with dark green foliage.

LONICERA GRANDIFLORA ROSEA. Large pink flowers followed by red berries which are very showy in late summer. Good border plant, or where clumps of rich green are desired. Splendid Bush Honeysuckle.

LONICERA MORROWI, Japanese Bush Honeysuckle. An open spreading bush from Japan bearing dark green leaves and white flowers in May.

LONICERA TATARICA ALBA. Large white flowers followed by scarlet berries in August. Foliage dark green. Very ornamental when in fruit or blossom and the foliage effect is always valuable.

LONICERA TATARICA RUBRA. Deep pink flowers in May. Height 5 ft. Good for front of border.

PHILADELPHUS AUREUS, Golden Syringa. A variety of Philadelphus coronarius with golden yellow foliage throughout summer.

PHILADELPHUS CORONARIUS, Mock Orange. An old fashioned shrub that is still very popular. Sometimes grows 10 ft. high. Flowers produced freely of creamy white color and very fragrant; May and June. Presents a very ornamental and attractive appearance in the border. Of spreading habit and should be allowed sufficient room to fully develop. Good specimen plant on the lawn. Known as Syringa.

PHILADELPHUS GORDONIANUS, Gordon's Syringa. Fine shrub with flowers similar to preceding but later.

PHILADELPHUS LEMOINEI, Lemoines Syringa. A sweet scented hybrid smaller than the preceding, rarely exceeding 4 ft. Erect growing with small foliage. Creamy white flowers in June entirely covering plant.

PRUNUS TRILOBA, Flowering Almond. A Chinese shrub which produces abundant pink, double rose-like flowers before the leaves appear in Spring. Very attractive.

RHODOTYPUS KERROIDES, White Kerria. Introduced from Japan. 3 to 5 ft. high. Flowers white; late May, followed by black conspicuous seeds which hang to the plant all winter.

RHUS COTINUS, Smoke Bush. (Purple Fringe). A native of Europe growing from 10 to 15 ft. high. The feathery flowers are purplish and cover the entire bush giving it the appearance of smoke from a distance.

RHUS GLABRA, Smooth Sumac. A tall shrub, 10 to 12 ft. in height, with smooth bark. Flowers July, produced at the end of branches followed by clusters of dark crimson berries. Brightly foliaged; very attractive in Autumn.

Philadelphus Coronarius 'Mock Orange'

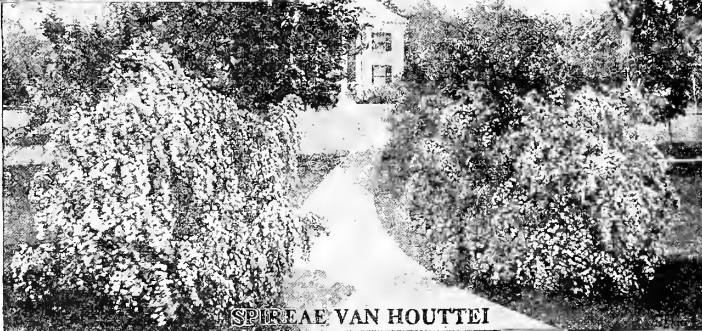


"SNOWBALL"
Viburnum
Opulus
Sterilis

Snow Ball—an old favorite.

CORNUS ALBA SIBERICA, Red Stem Dogwood. A very ornamental shrub attaining the height of 8 ft. Clusters of white flowers succeeded by bright red berries in autumn.

CORNUS FLORIDA, White Flowering Dogwood. A native shrub from 10 to 15 ft. high. Very showy white flowers in early spring. Fine for specimen planting on the lawn or background in the border.



SPIRÆA VAN HOUTTEI

The best and most popular shrub.

Plant Ornamentals Around Your Home NOW Before Prices Advance—See Back Cover

Flowering Shrubs—Continued

RHUS TYPHINA LACINIATA, *Cut Leaved Stag-horn Sumach*. Shrub or small tree attaining 15 ft. Very picturesque with its finely cut fernlike foliage.

ROBINIA HISPIDA ROSEA, *Moss Locust, Rose Acacia*. A dwarf tree to 12 ft. Large, drooping clusters of rose colored flowers in May. Branches with bristles like Moss Rose.

ROSA RUGOSA. A beautiful bush to 5 ft. with rich dark green crinkled foliage. Flowers single red throughout the summer followed by large attractive orange-red fruits. Fine for hedge planting.

SAMBUCUS AUREA, *Golden Elder*. A golden leaved variety of the European Elder. Very attractive. Will grow to 8 ft. but can be pruned back into a neat shrub any height. Large clusters of white flowers in June or July followed by black berries in August. Very good for contrast in dark places of border.

SPIREA ANTHONY WATERER. A very good variety of *S. bumalda* bearing flat clusters of bright pink flowers throughout summer. Height 2 ft.

SPIREA BILLARDI. Rather open shrub with small foliage. Vigorous and hardy. To 6 ft. in height. Flowers densely clustered at the end of long slender branches. July and August. Splendid border plant or for near the house.

SPIREA OPULIFOLIA AUREA, *Golden Spirea*. A vigorous growing shrub to 7 ft. with golden yellow foliage. Flowers white in June.

SPIREA THUNBERGII, *Thunberg's Spirea*. A graceful bush with slightly drooping branches. Of dwarf form, growing to 4 ft. Flowers single white, borne very early in spring.

SPIREA VAN HOUTTEI. The one best shrub. B. of all varieties of Spirea. Grows to 6 ft., bearing clusters of small white flowers in May and June which almost entirely cover the bush, giving it the appearance of a huge snowball from a distance. Of graceful drooping habit and well adapted to grouping front of building or around entrances. Also a fine border plant. The one best shrub for all purposes; will succeed everywhere.

SYMPHORICARPUS RACEMOSUS, *Snowberry*. A low growing shrub to 3 ft. Flowers small, pink, followed by large pure white berries which remain on the plant late into winter, causing the slender branches to bend with their load. Desirable for front or border or around entrances.

Lilac—Syringa

LILAC, *Common Purple*. Purple variety with smaller flowers and clusters than the budded varieties. A widely known shrub. Height 6 ft.

LILAC, *Common White*. A white flowered variety of the above species.

BELLE DE NANCY, *Budded Lilac*. Large flowers of satiny rose color blending to white towards the center.

FRAU DAMMANN, *Budded Lilac*. Large, single white flowers in immense clusters.

GIANT TREE, *Budded Lilac*. A late blooming variety producing large clusters of attractive white flowers after other varieties are past flowering. Sometimes attains the height of 15 to 20 ft.

HENRI SLADEK, *Budded Lilac*. Immense clusters of dark reddish-purple flowers. One of the best. Originated in our nurseries and named after one of our employees who first propagated it. An improved variety of Ludwig Spaeth.

LUDWIG SPAETH, *Budded Lilac*. Flowers of large size and very attractive. Of a dark purplish-red color.

MADAME ABEL CHATENAY, *Budded Lilac*. A creamy white variety with large double, very fragrant flowers.

MARIE LEGRAYE, *Budded Lilac*. Large trusses of single pure white flowers, very fragrant.

MICHAEL BUCHNER, *Budded Lilac*. Flowers very double, pale lilac color.

PERSIAN LILAC. Large clusters of purplish-lilac flowers borne in June.

PRESIDENT GREVY, *Budded Lilac*. Exceptionally large individual double flowers of a very beautiful distinct blue color. The finest and largest lilac we know.

TAMARIX AFRICANA, *Tamarisk*. A feathery light green foliage plant of upright habit, growing to 8 ft. in height. Flowers small, bright pink borne in slender clusters; April or May.

VIBURNUM DENTATUM, *Arrow-wood*. A native shrub with slender smooth branches. Flowers in June; flowers creamy white.

VIBURNUM LANTANA, *Wayfaring Tree*. An upright growing shrub of compact habit to 10 ft. White flowers in May followed by pink berries which later turn red, then black.

VIBURNUM OPULUS, *High Bush Cranberry*. A showy shrub, flat clusters of white flowers. The bright red berries are attractive in August and September.

VIBURNUM OPULUS STERILIS, *Snowball*. A variety of the above but much more attractive with its large round heads of pure white sterile flowers which are so familiar on Decoration Day. Makes a fine specimen plant or is good in the border.

WEIGELA (See *Diervilla Florida*.)

YUCCA FILAMENTOSA, *Adams Needle*. A hardy plant with broadpointed sword shaped foliage. Flowers are creamy white, thickly set, on a tall stem in June. Very showy when in blossom.

THE ROSE

The different classes are indicated thus: Climbers (Cl.), Hybrid Perpetuals (H. P.), Hybrid Teas (H. T.), Teas (T.), Rugosa (R.), China (C.), Moss (M.), Polyantha (P.), etc.

If you plan to plant a rose garden you should have Stark Bro's Rose Book which gives complete directions and instructions. Write for it—sent free on request.

Climbing Roses

AMERICAN PILLAR (Cl.) A popular large single variety. Color deep pink with yellow stamens.

BALTIMORE BELLE (Cl.) A well known old favorite. Flowers white tinted pink, very double. A fine hardy climbing variety that always gives satisfaction.

CHRISTINE WRIGHT (Cl.) A new rose of many fine qualities. Bright clear pink and double.

CLIMBING AMERICAN BEAUTY (Cl.) Similar in every respect to American Beauty with added quality of climbing. Flowers large, deep pink and fragrant. Vigorous and very profuse bloomer.

CLIMBING BABY RAMBLER, *Miss Messman* (Cl.) A climbing, everblooming form of the Baby Rambler.

CRIMSON RAMBLER (Cl.) Profuse clusters of bright crimson double flowers. Vigorous climber.

DR. W. VAN FLEET (Cl.) Very rapid growth, climber. Color flesh pink. Flowers full and double.

DOROTHY PERKINS (Cl.) Immense clusters of beautiful double pink fragrant flowers. Perfectly hardy and a vigorous grower. Porch climber or trellis. The one best climbing rose.

EVER-BLOOMING CRIMSON RAMBLER (Cl.) Similar in every respect to Crimson Rambler, but blooms continually.

EXCELSA, *Red Dorothy Perkins* (Cl.) An excellent brilliant, crimson climber. Foliage glossy.

QUEEN OF PRAIRIES (Cl.) An old familiar standby, red climbing rose. Extremely hardy and vigorous climber. In bloom this rose presents a magnificent sight. Succeed wherever roses grow.

TAUSENDSCHOEN, *Thousand Beauties* (Cl.) A rapid growing climber. Flowers pink deepening to rosy carmine in clusters. Almost thornless.

TRIER (Cl.) A most beautiful climber with large clusters of yellowish-white, semi-double flowers. The open center is filled with bright, yellow anthers which gives a distinct yellow color. Extremely vigorous.

WHITE DOROTHY PERKINS (Cl.) A white flowering sort of the well known Dorothy Perkins.

ANNA DE DIESBACH (H. P.) Flowers large and full. Color carmine pink.

Bush Roses

BURBANK (C.) Free blooming, cherry-rose colored flowers.

BABY RAMBLER, *Mad. Norbert Levasseur* (P.) A dwarf with large clusters of bright crimson flowers in profusion. A continuous bloomer. Fine for edging.

CATHERINE ZEIMET (Poly.) Flowers pure white in immense clusters. Fragrant. Good for edging.

CLIO (H. P.) A vigorous grower. Flowers large, globular, flesh color shaded to pink in center.

CLOTHILDE SOUPERT (P.) One of the very best bedders. Ivory-white, shaded pink. Excellent for borders. Blooms continually.

CONRAD F. MEYER (H. P.) Clear silvery rose color. Very vigorous, hardy, fragrant. Cross of hardy Rugosa and the Tea.

EUGENE FURST (H. P.) A large full rose of a deep red color. A splendid bloom of velvety texture.

GENERAL JACQUEMINOT (H. P.) An old favorite. A large full flower of crimson-scarlet color.

GRUSS AN TEPLITZ (C.) An excellent bedder. Bright red changing to velvety crimson. Flowers borne in clusters, fragrant. A continuous bloomer.

HELEN GOULD (H. T.) A free grower with bright red flowers. Good bloomer. Very popular.

J. B. CLARK (H. P.) A vigorous grower producing large beautiful flowers of a deep scarlet color.

JONKHEER, J. L. MOCK (H. T.) Flowers large, full, fragrant. Color, beautiful carmine outside and light pink inside.

KAISERIN AUGUSTA VICTORIA (H. T.) White flowers. Free bloomer, full and fragrant.

KILLARNEY (H. T.) Large buds and flowers of a deep sea-shell pink color. Fine for forcing.

LA FRANCE (H. T.) Silvery pink color and fragrant. A free bloomer.

MADAME CAROLINE TESTOUT (H. T.) Very free flowering. Flowers silvery rose with deep center. One of the best Hybrid Teas.

MADAME PLANTIER (H. P.) Pure white flowers of medium size and very fragrant, produced abundantly. Extremely hardy. Valuable Decoration Day variety—called the Cemetery Rose.

MAGNA CHARTA (H. P.) Extra large, full flowers of a bright rosy pink color.

MAMAN COCHET (T.) One of the best roses grown. Long pointed buds. Color rich coral-pink.

MARSHALL P. WILDER (H. P.) Flowers large. Deep rich red. Fragrant. Strong grower.

MRS. JOHN LAING (H. P.) A profusion of large bright pink flowers. Full and double, very fragrant.

PAUL NEYRON (H. P.) Largest of all roses. Deep rose color. Well formed buds on stout nearly thornless stems. Called the "Peony Rose."

PERSIAN YELLOW. A familiar rose of grandmother's garden. Abundant yellow flowers very early.

PINK MOSS (M.) An excellent pink with beautiful moss covered buds and branches.

PRINCE CAMILLE DE ROHAN (H. P.) Full, dark velvety crimson maroon.

RADIANCE (H. T.) A constant bloomer with large brilliant rosy carmine flowers.

RED MOSS (M.) A beautiful old time red rose with mossy buds and stem. Very hardy and vigorous.

ROSA RUGOSA (R.) An attractive single ever-blooming red rose from Japan. Extensively used in border or hedge. Flowers succeeded by red fruits. Very showy.

ROSA RUGOSA ALBA, *White Japanese Rose* (R.) A white form of the preceding.

SNOW QUEEN (H. P.) Often called White American Beauty. Best white variety. Hardy and vigorous.

ULRICH BRUNNER (H. P.) A fine cherry-red rose of immense size. Fine form and fragrant.

WM. R. SMITH (H. T.) Rose pink, with beautiful flesh tints, large, pointed buds of exquisite fragrance, a constant bloomer.

Hedges

JAP. BARBERRY, *Berberis Thunbergii*. Hardest and best hedge plant. Fine foliage with masses of red berries that hang on over winter. A good protective hedge.

PRIVET, AMOOR RIVER NORTH, *Ligustrum Amurense*. Upright growth with shiny foliage and white flowers. Hardy enough for the North.

IBOTA PRIVET, *Ligustrum Iboti*. The hardest privet. Excellent for hedges. Of upright habit.

CALIFORNIA PRIVET, *Ligustrum Ovalifolium*. The most familiar of hedge plants. Flowers pure white in July. Foliage glossy green. Can be pruned to any shape desired. Excellent hedge. Very quick grower.

REGEL'S PRIVET, *Ligustrum Regelianum*. Readily distinguished by the almost parallel slender branches which slightly droop. Fine for low clumps.

COMMON PRIVET, *Ligustrum Vulgare*. Dark green foliage and white flowers. Leaves turn purplish in the fall. Excellent for massing in the border.

Peonies

PEONY, ASSORTED VARIETIES. Our selection. You may depend on getting the best we grow.

EDULIS SUPERBA. Early, silvery pink.

EUGENE VERDIER. Early pink, new, very fine.

FESTIVA MAXIMA. The most popular peony. A pure white early variety.

FELIX CROUSSE. Large, perfect flowers of a deep crimson color. A late bloomer. New.

OFFICINALIS RUBRA. An early peony. Rich deep, purplish-crimson.

QUEEN VICTORIA. A free flowering white with petals slightly edged pink. Early.

Climbers

AMERICAN IVY, *Ampelopsis Quinquefolia*. Beautiful green divided leaves which turn bright crimson in autumn. Fine for covering porches, trellises, etc. A rapid grower and perfectly hardy and it clings well.

BOSTON IVY, *Ampelopsis Veitchii*. Hardy vine, small, compact foliage. Used extensively for covering stone or brick residences and walls. Clings tightly to any support.

DUTCHMAN'S PIPE, *Aristolochia Sipho*. Pipe-shaped flowers of a purplish-brown color. Leaves very large.

CLEMATIS HENRYI. Creamy white.

CLEMATIS JACKMANNI. Violet-purple, large.

CLEMATIS MADAM ANDRE. Large crimson.

CLEMATIS PANICULATA GRANDIFLORA. Great masses of fragrant, white, star-shaped flowers.

HALL'S HONEY SUCKLE, *Lonicera Halleana*. A half evergreen, retaining foliage late in winter. Flowers white, turning to yellow. Good for covering low walls, banks or fences.

TRUMPET CREEPER, *Tecoma Radicans*. Flowers trumpet-shaped and orange colored.

WISTARIA CHINENSIS. Rapid growth. Flowers pea-shaped and pale blue in long clusters. A good porch and arbor climber.

WISTARIA CHINENSIS ALBA. Similar to preceding, but white flowers.

Stark Bro's Landscape Department

*"Master Creators of
Homes Beautiful..."*

*Stark Bro's Offices
Louisiana, Missouri
An Example of
Stark Landscaping*



Plant Ornamentals NOW Before Prices Advance

Enjoy the Beauty — Reap the Profit

There is more than sentiment and pride in the beautifying of a home with Nature's decorations. It is good business. As Prof. Miller, of the University of Illinois says:—

"Nobody can afford to have bare and ugly home grounds. You can get a bigger profit for money put into trees and shrubs than for the same amount spent on the house. People have made from 100% to 1000% profit from ornamental planting."

Your Last Chance at Low Prices

No doubt you have had the planting of some ornamentals in mind for some time. And this is the time to *act* on the idea.

The prices at which you can buy, if you buy quickly, will surprise you. We are selling flowering shrubs, shade trees, roses and plants at prices based on cost of production two years ago. Fortunately for our customers we had grown a large and complete stock before the labor and other costs advanced. Our next supply will have to be sold at a big increase in price, about 50%. Labor is so high, in fact every item entering into production has gone up so much

that the new young stock coming on must bring much higher prices. So decide *now* to take advantage of our present low prices.

Learn How Little It Will Now Cost to Transform Your Home with a Stark Bro's "Nature Planting"

Think of the investment side of this opportunity as well as the personal pleasure that a beautiful setting for your home will bring you. You will be surprised at the moderate cost.

Get your order in while the stock is complete. Every specimen we offer in flower, shrub, vine or tree is up to that high standard of Stark Bro's quality.

Landscape Plans and Advice FREE

We have a staff of expert landscape architects whose services we offer you free. Let them save you the lost time and disappointments due to haphazard planting. Let them design a plan of your home surroundings, indicating the most effective way to plant for permanent beauty. They will consider your soil, the lay of the land, the climate, every factor in the success of your planting, and tell you frankly what will flourish and what will not. By the Stark Method they can do it as well as by a personal visit. This service is free and offered without wishing to put you under any obligations whatever.

Write for Portfolio of Home Landscapes

We have a set of unusually fine landscape views which you will enjoy seeing and which will give you ideas for your place. The Portfolio is free and will be sent you promptly upon request. There is a postcard enclosed for your convenience in requesting it. Write today.

STARK BRO'S NURSERIES
At Louisiana, Mo. Since 1816