

## **Historic, Archive Document**

Do not assume content reflects current scientific knowledge, policies, or practices.



62.17

1918

MAR 6 1918

INDEXED

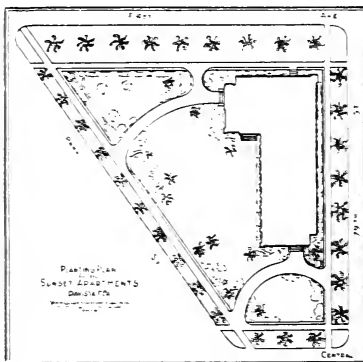
# Royal Poinciana Nurseries, Inc.

PLANTING

PLAN

September

1916



Photograph

Below

ONE YEAR

LATER



St. Petersburg, Florida





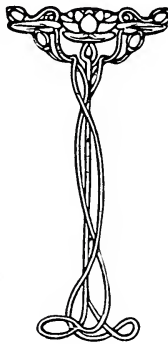
# Royal Poinciana Nurseries

(Incorporated)

ST. PETERSBURG, FLORIDA

---

Capital, \$60,000



CHAS. R. HALL, President

ROY S. HANNA, Vice-President

R. T. WEDDING, Secretary and Treasurer

---

## BOARD OF DIRECTORS

DR. J. A. CHILDS

ROY S. HANNA

CHAS. R. HALL

EDWARD T. LAMB

R. T. WEDDING

---

1918

# Business Rules

---

**LOCATION**—Our mail, telegraph, express and freight address is St. Petersburg. We are right on the street-car line at Thirty-fifth and Central avenue. Frequent trolley service enables visitors to come and go at their convenience. Visitors arriving in St. Petersburg via Favorite Line steamers, or any railroad can take the trolley at either terminus direct to the Nursery; fare 5c.

**VISITORS**—We take pleasure in showing our stock to visitors. Come to see our place when in St. Petersburg.

**AGENTS**—We have no agents and have no connection with other nurseries.

**CLUB ORDERS**—Neighbors can club together to buy, and thus secure the advantage of reduced prices for larger quantities of plants.

**TERMS**—Cash with order. Remit by bank draft, post-office money order, express money order, currency by registered mail, or any sure way. Receipt will always be acknowledged.

**METHODS OF SHIPPING**—All orders are filled promptly. If not instructed, we ship as we think best for our customers, by mail, express or freight. With our perfect packing system, plants should arrive in good condition.

**CLAIMS**—If plants arrive in a damaged condition have the agent note facts on expense bill; or, if plants are lost, file claim with the transportation company for compensation. We will give every assistance in our power to locate plants or collect damages; but our responsibility necessarily ends when plants are delivered in good condition to the carrier.

**RESPONSIBILITY**—We make every effort to have all plants as per catalogue and guarantee them to be true; but in case of error, it is mutually agreed that we shall be responsible to the purchaser only for the amount of the purchase price.

**SHIPPING BY MAIL**—All prices in our catalog are net and plants are sent charges collect; but where sent by mail 15 per cent of cost price should be added to cover prepayment.

**TIME FOR SHIPPING**—All our plants ARE GROWN IN POTS AND CAN BE SAFELY PLANTED AT ANY TIME, with the exception of a few trees and the HARDY AND HALF HARDY FRUITS and ROSES, which must be field grown, and should not be set out only in winter, when dormant.

**SUBSTITUTION**—We desire to follow our customers' wishes in this respect, so please advise in ordering whether you wish us to substitute or not.

**ERRORS**—We want none but satisfied customers and make every effort to please every purchaser, willingly doing so at a loss to ourselves rather than permit dissatisfaction.

In the hurry and rush of filling orders, errors will sometimes creep in; but we are anxious to correct any that occur if you will only call our attention to them. We will make good any and all errors if notified within ten days after receipt of the plants.

## Planting Notes

---

Most of the Florida soils are acid and need lime before planting. The soil should be thoroughly plowed or dug, all roots removed, top soil mixed with well-rotted manure, and humus added.

Plants should be taken out of the packing case as soon as possible, the roots wetted and set in a cool, shady place until wanted. Try to have everything ready for planting when the plants arrive. If plants are wilted stand in luke-warm water for half an hour and they will usually revive.

Plant  $\frac{1}{2}$  to 1 in. deeper than the plants stood in the pot and firm the earth well around them. A mulch is a fine protection against the fervid sun of summer and also helps to hold moisture. **NEVER STRAIGHTEN OUT THE ROOTS OF POT-GROWN PLANTS.** This is sometimes done to the great detriment of the plants.

With some tender tropical plants a protection against sudden cold weather in some parts of Florida is necessary. This can be had by covering with paper, sacks, grass, leaves, etc., or by various means of heating. In some cases it is well to cover the plant with cloth, a tent, or to build a light, portable house over it, and put in a small oil heater.

Do not apply commercial fertilizer until certain that new roots have been produced, as this will sometimes kill young plants. If not sure how much commercial fertilizer to use, err on the side of giving too little. Many amateurs habitually give too much and defeat the object of fertilizing.

A plant must be fed to thrive; but a great deal should be done in the preliminary preparation of the soil, especially with roses and palms. They are both rank feeders on nitrogen and want well-rotted manure in quantity, mixed with the soil, and plenty of water. It is much better to use manure in preparing the soil for planting than to set in the ground and depend on commercial fertilizers.

A careful attention to the above points will prevent many mistakes and failures.

The earth should be firmly packed around plants, with the feet, as our loose, sandy soil will permit the drying out of the plant before it roots, in many cases, if this is not done.

We shall be pleased to give you cultural advice, recommend plants for different soils, and help you in any way within our power. Our experience in Florida soils and plants covers many years and we may be able to suggest something of value to you. Try us.



Sunset Apartment Hotel, Davista, St. Petersburg, Fla.  
Showing one of our Plantings

## Landscape Design

---

"The will of the workman, in doing and bestowing charges, shall smally avayle, without he have both arte and skill in the same. For that cause, it is the chieftest . . . to understand and know what to begin and follow."  
—Dydymus Mountaine.

"Mere planting and grading do no make a landscape garden; in fact, they often spoil it."

Love of plants alone is not sufficient; knowledge of the Principles of Design is not sufficient, nor is familiarity with plants and their treatment sufficient to produce a worth-while garden. An Artist is not a Landscape Man; a Nurseryman is not a Landscape Man; bua a competent Landscape Designer must have the training of both Artist and Nurseryman.

The progressive American of today uses the Specialist. We offer the services of a trained specialist in Landscape Design because we know it will be a benefit to our customers as well as ourselves. Proper selection and location of the plants will enhance their beauty and we know that the Satisfied Customer is the greatest advertising power on earth.

The Competent Man is always in demand and his services cannot be had for nothing. We do not offer you a free plan in order to sell our plants. Our plants are specially selected for Out-of-Doors and are well worth all we ask for them. It is an old story that you "Cannot get something for nothing." Our charge for planning is the lowest consistent with the time and training that go into it. Experience has shown that permanent, soul-satisfying results can only be had through good design.

Write us your problems, or come to see us. We will refer you to numbers of satisfied clients or, better still, we will show you SOME OF OUR PLANTINGS WHICH SPEAK FOR THEMSELVES.

# Supplementary List of Plants

**A DENANTHERA pavonina, RED SANDALWOOD TREE.** A large tree with pinnate leaves and white and yellow flowers. The red seeds are curiosities.

20 cents each, \$1.75 per 10.

**AESCHYNOMYNE elaphroxylon.** A leguminous shrub. New. 50 cents ea.

**AVERRHOA bilimbi, CUCUMBER TREE.** An ornamental fruit tree, bearing numerous fruits with a pleasant acid pulp. \$1 each.

**BRITOA acida.** a small tree bearing guava-like fruits, very acid. Fine for conserve \$1 each.

**CAESALPINIA coriaria, DIVI-DIVI.** A spreading tree with green and white flowers and delicate pinnate leaves.

30 cents each.

**CARICA papaya, MELON PAWPAW.** A new sort with unusually large fruits, from Costa Rica. 20 cents each.

**CARISSA carandas.** A large shrub with fruit like a damson. For pickles and jelly making. The hardiest Carissa.

75 cents each.

**CASSIA occidentalis, NEGRO COFFEE.** A sub-shrub, seeds a substitute for coffee. New. 50 cents each.

**CEIBA casearia, SILK COTTON TREE.** An immense tree, blooming from July to Christmas. A very large specimen is near Clearwater.

Fine plants 75 cents ea.; \$6 for 10.

**CELTIS sp.** A tree 30 ft. high, from Brazil. The small orange-colored fruits are edible and much sought after by small boys. Strong plants, \$1 each.

**COCCOLOBUS species.** A new introduction, smaller than the well-known seagrape. Has done well with us. \$1.00 each.

**COCCOTHRINAX garberi.** A very dwarf, fan-leaved palm from Biscayne Bay. 50 cents each.

**COCOS coronata.** A beautiful palm, like *Cocos plumosa*, but smaller.

Fine plants, 75 cents each.

**CUPRESSUS sempervirens, ITALIAN CYPRESS.** A tall, very slender tree. The classical cypress of the Greeks and Romans.

Strong young plants, 50 cents each.

**ERYTHRINA corallodendron, CORAL TREE.** A prickly tree, with deep scarlet flowers, followed by black-spotted scarlet seeds. 50 cents each; \$4 per 10.

**EUCALYPTUS viminalis, MANNA GUM.** A slender-leaved variety. The hardiest in Florida. Small plants 20c ea.; \$1.75 per 10.

**FICUS lacer.** A recent introduction, with small leaves and purplish nerves, which has done exceedingly well with us.

Strong plants, 75 cents each.

**FICUS wendlandi.** A new sort with heart-shaped leaves, 1 ft. long with light-green ribs and veins. Strong plants, \$2.50 each.

**FLACOURTIA ramontchi, GOVERNOR'S PLUM.** A tree bearing an edible fruit, eaten raw or cooked. \$1.00 each.

We have the largest collection of Chinese and other Hibiscus in the United States and offer herewith a few of the named kinds of which we have propagated a fair stock.

The colors and shapes are entirely new to the trade, none of them having been offered before.

**HIBISCUS altheoides.** Petals old-rose with delicate white veins. Shaped like the Hollyhock. \$1 each.

**H. childsii.** A very strong grower, reaching 15 ft., with extraordinarily large, dark-green leaves. Flower a warm scarlet, 6 in. across, with purplish nerves. This is the fastest grower and most profuse bloomer of our new sorts. \$1 each.

**H. erubescens.** A small delicately rose-pink, translucent corolla, ends of petals cut. The rare satiny tint of this new flower is wonderful. A joy to those who delight in soft colors. Does well in full sun. \$1 each.

**H. labiatus.** Petals delicate pink striped white on black; center same tint shaped like a bignonia, but more open. \$1 each.

**H. lutea.** Petals delicate creamy yellow, shading to white with crimson eye. A real beauty and a free bloomer. About the tint of the Marechal Niel rose. \$1 each.

**H. oculirubus.** A fine sort with large blossom, petals a warm orange-pink with unusually large center of reddish crimson. A constant bloomer. \$1 each.

**H. purpureus.** Deep salmon and purple petals with purple center. Blotches of yellow and pink on under side. Something unusual in that it shows a real purple. \$1 each.

**H. weddingii.** A hybrid with medium-sized flower, petals deep scarlet, strongly recurved, finely notched on ends. Swings on a long petiole. A very striking flower. \$1 each.

In addition to the above we have nearly fifty other sorts some named and some not yet bloomed, of which we have a few plants only and so do not list this year. We will furnish these as long as they last at the same price as above.

**HYMENAEA courbaril, CAROB.** A tree bearing pods filled with sweetish acid pulp which tastes like licorice. It also furnishes a resin called W. I. copal. 50 cents ea.; \$4 per 10.

**ILEX intricata.** A low shrub with thick bright-green leaves. White flowers and bright red berries. 50 cents each.

**JASMINUS floridum.** A very hardy new yellow-flowered Jessamine from China. 50 cents each; \$4 per 10.

**LEUCOTHOE racemosa.** A hardy native summer-blooming shrub. 35c each.

**MIMUSOPS elengi.** A tropical tree from Mauritius bearing a sweet, edible fruit like the sapodilla. \$1 each.

**MONTANOA hibiscifolia.** A fine hibiscus-leaved shrub bearing composite white flowers. Just introduced. \$1 each.

**MYRCIARIA floribunda, GUAVA BERRY TREE.** 30 ft. high, white flowers, acid aromatic fruit which makes delicious preserve. \$1 each.

**NANDINA domestica, SACRED BAMBOO.** A shrub to 9 ft., hairy, white flowers and persistent red berries. 35 cents each.

**PARMENTIERA cereifera, CANDLE TREE.** Fruits a foot long, closely resembling wax candles in color and size, edible and very fragrant. \$1 each.

**PELTOPHORUM Inerme.** A magnificent tree with feathery foliage and rusty yellow fragrant flowers. \$1 each.

**PELTOPHORUM linnaei.** New, said to be a fine shade tree. Flowers yellow. \$1 each for strong plants.

**PERKESKIA aculeata, BARBADOS GOOSEBERRY.** A leaf-bearing cactus, flowers greenish white, fragrant. Fruit size of an olive, in enormous quantities, edible. 20 cents each; \$1.75 per 10.

**PLEIOGYNIUM solandri.** Tree from Australia; good for shade and as hardy stock for Mango. 50c each.

**PODACHAENIUM eminens.** A ten-foot shrub with white and yellow flowers. 75 cents each.

**QUISQUALIS indica, RANGOON CREEPER.** Blossoms from June to September, petals rose and scarlet. A strong-growing vine. Pot-grown plants, 75 cents each.

**RIVINA aurantiaca.** A new form having yellow berries. 50 cents each.

**SAMANEA saman, RAIN TREE.** A tall, spreading tree with yellowish flowers; a fast grower and good shade tree. 50 cents each.

**SIDEROXYLUM dulcificum.** A 6 ft. shrub, with edible fruit like Sapodilla. 50 cents each.

**SOLANUM torvum.** A new sort with strong prickles and likes a dry soil. \$1 each.

**SOPHORA davidii.** A Chinese shrub 5 ft. high, good for hedges. 50 cents each.

**SYNECANTHUS species, THE UCHUL PALM.** This slender pinnate palm bears fruits bright red, the size of a cherry. Strong plants, \$1 each.

**SYZYGIUM cumini, JAVA PLUM.** An East Indian fruit tree. 30 cents each.

**TERMINALIA arjuna.** A large tree from India. New. Bark used for tanning. \$1 each.

**TRACHYCARPUS takil.** A strong, very hardy palm, trunk covered with old leaf sheaths. \$1 each.



# Supplementary List of Plants

**ADENANTHERA pavonina, RED SANDALWOOD TREE.** A large tree with pinnate leaves and white and yellow flowers. The red seeds are curiosities.

20 cents each, \$1.75 per 10.

**AESCHYNOMYNE elaphroxylon.** A leguminous shrub. New. 50 cents ea.

**AVERRHOA bilimbi, CUCUMBER TREE.** An ornamental fruit tree, bearing numerous fruits with a pleasant acid pulp. \$1 each.

**BRITOA acida.** a small tree bearing guava-like fruits, very acid. Fine for conserve \$1 each.

**CAESALPINIA coriaria, DÍVI-DÍVI.** A spreading tree with green and white flowers and delicate pinnate leaves.

30 cents each.

**CARICA papaya, MELON PAWPAW.** A new sort with unusually large fruits, from Costa Rica. 20 cents each.

**CARISSA carandas.** A large shrub with fruit like a damson. For pickles and jelly making. The hardiest Carissa.

75 cents each.

**CASSIA occidentalis, NEGRO COFFEE.** A sub-shrub, seeds a substitute for coffee. New. 50 cents each.

**CEIBA casearia, SILK COTTON TREE.** An immense tree, blooming from July to Christmas. A very large specimen is near Clearwater.

Fine plants 75 cents ea.; \$6 for 10.

**CELTIS sp.** A tree 30 ft. high, from Brazil. The small orange-colored fruits are edible and much sought after by small boys. Strong plants, \$1 each.

**COCCOLOBUS species.** A new introduction, smaller than the well-known seagrape. Has done well with us. \$1.00 each.

**COCCOTHRINAX garberi.** A very dwarf, fan-leaved palm from Biscayne Bay. 50 cents each.

**COCOS coronata.** A beautiful palm, like *Cocos plumosa*, but smaller.

Fine plants, 75 cents each.

**CUPRESSUS sempervirens, ITALIAN CYPRESS.** A tall, very slender tree. The classical cypress of the Greeks and Romans.

Strong young plants, 50 cents each.

**ERYTHRINA corallodendron, CORAL TREE.** A prickly tree, with deep scarlet flowers, followed by black-spotted scarlet seeds. 50 cents each; \$4 per 10.

**EUCALYPTUS viminalis, MANNA GUM.** A slender-leaved variety. The hardiest in Florida. Small plants 20c ea.; \$1.75 per 10.

**FICUS lacer.** A recent introduction, with small leaves and purplish nerves, which has done exceedingly well with us.

Strong plants, 75 cents each.

**FICUS wendlandi.** A new sort with heart-shaped leaves, 1 ft. long with light-green ribs and veins. Strong plants, \$2.50 each.

**FLACOURTIA ramontchi, GOVERNOR'S PLUM.** A tree bearing an edible fruit, eaten raw or cooked. \$1.00 each.

We have the largest collection of Chinese and other Hibiscus in the United States and offer herewith a few of the named kinds of which we have propagated a fair stock.

The colors and shapes are entirely new to the trade, none of them having been offered before.

**HIBISCUS atheoides.** Petals old-rose with delicate white veins. Shaped like the Hollyhock. \$1 each.

**H. childsii.** A very strong grower, reaching 15 ft., with extraordinarily large, dark-green leaves. Flower a warm scarlet, 6 in. across, with purplish nerves. This is the fastest grower and most profuse bloomer of our new sorts. \$1 each.

**H. erubescens.** A small delicately rose-pink, translucent corolla, ends of petals cut. The rare satiny tint of this new flower is wonderful. A joy to those who delight in soft colors. Does well in full sun. \$1 each.

**H. labiatus.** Petals delicate pink striped white on black; center same tint shaped like a bignonia, but more open. \$1 each.

**H. lutea.** Petals delicate creamy yellow, shading to white with crimson eye. A real beauty and a free bloomer. About the tint of the Marechal Niel rose. \$1 each.

**H. oculirubus.** A fine sort with large blossom, petals a warm orange-pink with unusually large center of reddish crimson. A constant bloomer. \$1 each.

**H. purpureus.** Deep salmon and purple petals with purple center. Blotches of yellow and pink on under side. Something unusual in that it shows a real purple. \$1 each.

**H. weddingii.** A hybrid with medium-sized flower, petals deep scarlet, strongly recurved, finely notched on ends. Swings on a long petiole. A very striking flower. \$1 each.

In addition to the above we have nearly fifty other sorts some named and some not yet bloomed, of which we have a few plants only and so do not list this year. We will furnish these as long as they last at the same price as above.

**HYMENAEA courbaril, CAROB.** A tree bearing pods filled with sweetish acid pulp which tastes like Peccorie. It also furnishes a resin called W. I. copal

50 cents ea.: \$4 per 10.

**ILEX intricata.** A low shrub with thick bright-green leaves. White flowers and bright red berries. 50 cents each.

**JASMINUS floridum.** A very hardy new yellow-flowered Jessamine from China.

50 cents each; \$4 per 10.

**LEUCOTHOE racemosa.** A hardy native summer-blooming shrub. 35c each.

**MIMUSOPS elengi.** A tropical tree from Mauritius bearing a sweet, edible fruit like the sapodilla. \$1 each.

**MONTANOA hibiscifolia.** A fine hibiscus-leaved shrub bearing composite white flowers. Just introduced. \$1 each.

**MYRCIARIA floribunda, GUAVA BERRY TREE.** 30 ft. high, white flowers, acid aromatic fruit which makes delicious preserve. \$1 each.

**NANDINA domestica, SACRED BAMBOO.** A shrub to 9 ft., hairy, white flowers and persistent red berries. 35 cents each.

**PARMENTIERA cereifera, CANDLE TREE.** Fruits a foot long, closely resembling wax candles in color and size, edible and very fragrant. \$1 each.

**PELTOPHORUM Inerme.** A magnificent tree with feathery foliage and rusty yellow fragrant flowers. \$1 each.

**PELTOPHORUM linnaei.** New, said to be a fine shade tree. Flowers yellow. \$1 each for strong plants.

**PERKESKIA aculeata, BARBADOS GOOSEBERRY.** A leaf-bearing cactus, flowers greenish white, fragrant. Fruit size of an olive, in enormous quantities, edible. 20 cents each; \$1.75 per 10.

**PLEIOGYNIUM solandri.** Tree from Australia; good for shade and as hardy stock for Mango. 50c each.

**PODACHAENIUM eminens.** A ten-foot shrub with white and yellow flowers. 75 cents each.

**QUISQUALIS indica, RANGOON CREEPER.** Blossoms from June to September, petals rose and scarlet. A strong-growing vine. Pot-grown plants, 75 cents each.

**RIVINA aurantiaca.** A new form having yellow berries. 50 cents each.

**SAMANEA saman, RAIN TREE.** A tall, spreading tree with yellowish flowers; a fast grower and good shade tree. 50 cents each.

**SIDEROXYLUM dulcificum.** A 6 ft. shrub, with edible fruit like Sapodilla. 50 cents each.

**SOLANUM torvum.** A new sort with strong prickles and likes a dry soil. \$1 each.

**SOPHORA davidii.** A Chinese shrub 5 ft. high, good for hedges. 50 cents each.

**SYNECANTHUS species, THE UCHUL PALM.** This slender pinnate palm bears fruits bright red, the size of a cherry. Strong plants, \$1 each.

**SYZYGIIUM cumini, JAVA PLUM.** An East Indian fruit tree. 30 cents each.

**TERMINALIA arjuna.** A large tree from India. New. Bark used for tanning. \$1 each.

**TRACHYCARPUS takil.** A strong, very hardy palm, trunk covered with old leaf sheaths. \$1 each.



Chinese Hibiscus

## Evergreen Flowering Shrubs

**ABELIA grandiflora, "FAIRY CUP."** A sturdy, low-growing, very hardy, free-flowering shrub, reaching four feet. Splendid for hedges. Flowers white, changing to bluish-pink, bell-shaped. 35c each

**ACACIA farnesiana, POPINAC.** A much-branched shrub, from 6 to 10 ft. high, with exceedingly delicate, bipinnate leaves; flower heads large, round, deep yellow and very fragrant. Grown in France for perfumery. Fine plants, 20c ea.; \$1.75 per 10.

**ACACIA gregii, PARADISE FLOWER,** TEXAS MIMOSA. A shrub 4 to 5 feet high; the creamy-yellow flowers appear in spikes during September. Likes dry situation. 20c ea.; \$1.75 per 10.

**ACACIA podalyriaefolia, CUT-FLOWER ACACIA.** A tall, much-branched shrub, branches and leaves a delicate gray; flowers in fragrant yellow racemes at the end of the branch in midwinter. The beautiful gray, ovate leaves and abundant lasting flowers make it a very desirable plant for an orna-

mental and for cut flowers. The best acacia known. New.

Fine plants, 20c ea.; \$1.75 per 10.  
Larger, 40c ea.; \$2.50 per 10.

**ARTOBOTRYS odoratissimus, FALSE YLANG-YLANG.** A somewhat scandent shrub about 10 feet high; with smooth, evergreen leaves; flowers large, a greenish-yellow and very fragrant. The berries are plum-like and yellow, fragrant when ripe. Flowers used for perfume. Hardy in South Florida. Fine plants 20c ea.; \$1.75 per 10.

**AZALEA indica, INDIAN AZALEA.** This well-known shrub is one of the best winter-blooming pot plants. We offer them in a variety of colors.

Nice plants ready to bloom, \$1.50 each.

**AZALEA indica.** A very hardy species with soft pink flowers, produced in thousands in April. The only Azalea we know that is adapted to Florida outdoors.

Strong pot-grown plants, \$1.00 each.



**BACCHARIS halimifolia, GROUNDSEL TREE.** A fine hairy shrub that is covered in winter with a mass of white flowers. Likes wet soil near the sea.

20c ea.; \$1.75 per 10.

**BAUHINIA glandulosa, THORNY TWIN.** A small semi-scandent shrub, prickly, with white flowers in spring. Introduced by us. Hardy.

20c ea.; \$1.75 per 10.

**BOUARDIA angustifolia.** Handsome evergreen shrubs, with thick terminal bunches of slender red flowers.

20c ea.; \$1.75 per 10.

**B. flava.** Same as above with yellow flowers.

20c ea.; \$1.75 per 10.

**B. longiflora.** Flowers white.

20c ea.; \$1.75 per 10.

**CAESALPINIA mexicana.** A tall shrub, with coarse, pinnate leaves; yellow flowers and rough pods.

20c ea.; \$1.75 per 10.

**C. pannosa, PALO ESTACA.** A drought-resistant species from lower California; branches slender, leaves pinnate and very showy yellow flowers. Much used for fences.

20c ea.; \$1.75 per 10.

**C. pulcherrima, DWARF POINCIANA.** A leguminous shrub bearing a profusion of gaudy red and yellow flowers. The leaves rather delicate and mimosa-like. Reaches 6 to 12 ft.

20c ea.; \$1.75 per 10.

**C. pulcherrima var. flava, YELLOW DWARF POINCIANA.** Habit like the preceding except that the flowers are pure yellow.

Fine plants 20c ea.; \$1.75 per 10.

**CAMELLIA japonica, CAMELLIA.** A beautiful dwarf shrub, reaching 8 feet; with lovely, dark-green leaves, and a wide range of flowers, in both singles and doubles. We offer fine plants at

\$1.00 each

**CASSIA corymbosa, WHITE SENNA.** A beautiful, free-blooming shrub from Argentina. Flowers yellow. Hardy and an old favorite. From pots 20c ea.; \$1.75 per 10.

**CESTRUM diurnum, DAY-BLOOMING JESSAMINE.** An evergreen shrub; rapid grower, with shining green leaves; flowers white, sweet-scented by day. Comes from the West Indies. Hardy.

Fine plants, 20c ea.; \$1.75 per 10.

**C. nocturnum, NIGHT BLOOMING JESSAMINE.** Grows from 4 to 12 ft. high; bears slender, creamy-yellow flowers, intensely fragrant by night. Evergreen, also from the West Indies.

20c ea.; \$1.75 per 10.

**CHALCAS paniculata, ORANGE JESSAMINE.** A fine, slow-growing shrub, with evergreen leaves; bearing a profusion of white, fragrant flowers. Well-established plants,

20c ea.; \$1.75 per 10.

**COCOLOBA uvifera, SEA GRAPE.** A tall shrub with immense, heart-shaped, leathery, shining leaves with a red midrib and veins; a strikingly beautiful, dense plant, found near the sea. Likes a lime soil. Fruit is grape-like in bunches and makes an exquisite jelly. A first-class ornamental. Strong plants, 20c ea.; \$1.75 per 10.

40c ea.; \$3.50 per 10.

**COFFEA arabica, COMMERCIAL COFFEE.** A beautiful, shining-leaved plant, with fragrant white flowers and red berries. Tender except in S. Florida.

Nice plants, 20c ea.; \$1.75 per 10.

**C. liberica, LIBERIAN COFFEE.** Shrub; leaves longer and wider than in C. arabica;

clusters of white flowers; sometimes as many as 15 in one bunch. Tender.

20c ea.; \$1.75 per 10.

**C. stenophylla.** Leaves narrower than in commercial coffee; flowers in clusters of 1 to 3, white. A beautiful shining-leaved plant. Promises to rival C. arabica in commerce. Blooms several times a year. Introduced by us from Central America.

20c ea.; \$1.75 per 10.

**CORDIA sebestena, SEBESTEN PLUM.** A tall shrub with large, rough, cordate leaves and big trusses of orange-colored flowers. Rather tender except in S. Florida. An escape at Key West. 20c ea.; \$1.75 per 10.

**CROTALARIA madurensis, RATTLE BOX.** A yellow-flowered, much-branched shrub, about 4 feet high; with obovate leaves, of a grayish-green. The seeds rattle in the pod, something like a rattlesnake's warning.

Strong plants, 20c ea.

**CUPHEA micropetala, CIGARETTE PLANT.** Shrubby plant, many branches, from 2 to 4 ft. high; leaves stiff; flowers tubular, very numerous, scarlet at base, yellow towards top with orange tip, resembling a lighted cigarette. A splendid out-door shrub or a fine, blooming pot plant.

20c ea.; \$1.75 per 10.

**DAEDALACANTHUS nervosus, BLUE SAGE.** A very pretty little plant, blooming in winter only. The flowers are a deep blue, a real blue, which is a rare color in winter-blooming plants. Likes sunny place, rich soil and plenty of water.

20c ea.; \$1.75 per 10.

**DATURA suaveolens, ANGEL'S TRUMPET.** A large shrub with leaves a foot long and fragrant, white, trumpet-shaped flowers, from 6 to 12 in. long. A magnificent sight when in flower.

10c ea.; .85 per 10.

20c ea.; \$1.75 per 10.

**DOMBEYA wallichii, PINK BALL.** A rapid growing shrub from Madagascar which bears large heads of soft pink flowers in mid-winter. Evergreen and perfectly hardy here.

Strong plants 50c each

**DURANTA plumieri, GOLDEN DEW-DROP.** An armed shrub, splendid for hedges. May be trimmed with impunity at any time of the year. Leaves small, evergreen; flowers a pale lilac; the ornamental bunches of yellow fruit hang on a long time. Almost everblooming.

20c ea.; \$1.75 per 10.

**ERYTHRINA crista-galli, CORAL TREE.** A woody, bushy shrub, with large bright crimson flowers.

Pot-grown plants, 1 yr., 20c ea.; \$1.75 per 10.

**EUPHORBIA pulcherrima, POINSETTIA, CHRISTMAS FLOWER.** Grows 8 to 10 ft. high, with large entire leaves, the upper ones narrower and becoming the brightest vermilion-red in the winter. Good for specimen plant; but better in masses in the background, as the color is too vivid for many persons.

10c ea.; 85c per 10.

**GARDENIA florida, CAPE JESSAMINE.** A beautiful shining-leaved shrub bearing large, waxy-white flowers in spring and summer, very fragrant. Should be mulched when planted out.

20c ea.; \$1.75 per 10.

**GENISTA canariensis, YELLOW SHOWER.** A much-branched shrub, 6 ft. high with hairy leaves and fragrant, bright yellow flowers in the summer.

20c ea.; \$1.75 per 10.

**GOSSYPIUM arboreum, ORIENTAL TREE COTTON.** A sturdy shrub, bearing hun-



*Bauhinia purpurea* No. 1; Dwarf Poinciana No. 2.

dreds of soft yellow flowers resembling those of the commercial varieties. It is a hardy, woody plant and will repay cultivation. Strong plants 20c ea.; \$1.75 per 10.

**GREWIA asiatica, FAIRY HIBISCUS.** A low-growing shrub bearing small soft pink flowers exactly like those of Chinese hibiscus, not more than 1-2 to 3-4 inches long. Pot grown plants, 20c each

**HIBISCUS grandiflorus, ROSE MALLOW.** A vigorous perennial that loves swampy soil. Leaves large, 3-lobed and flowers 7 to 8 inches across, pure white.

20c ea.; \$1.75 per 10.

**HIBISCUS mutabilis, COTTON ROSE.** A tall shrub with heart-shaped, 5-angled leaves. Flowers are single, opening white or pink changing to deep red before night. A lovely and hardy plant.

Open ground, 20c ea.; \$1.75 per 10.  
do. large, 40c ea.; \$3.50 per 10.

**HIBISCUS oculiroseus, ROSE MALLOW, CRIMSON EYE.** A bog-loving kind, with large woolly leaves, and single flowers 6-8 ins. across, pure white with a deep crimson

eye. Must have wet, rich soil to thrive. Seems to do best near the coast. Deciduous. 20c ea.; \$1.75 per 10.

**HIBISCUS physaloides.** A new form with beautifully cut leaves; a vigorous grower. Introduced by us. 20c ea.; \$1.75 per 10.

**CHINESE HIBISCUS OR CHINESE ROSE**

The Chinese Hibiscus is probably the best of the flowering plants in Florida, as it flowers freely both in winter and summer; if cut back hard about the first of September it will bloom all winter. The flowers occur in a wonderful variety of shapes and colors and are very much loved throughout the tropics. We offer the finest collection ever seen in this country.

**H. archeri.** A lovely new form; a hybrid between the coral hibiscus and single scarlet. It is six inches across, a warm scarlet, with recurved petals, and delicately frilled edges. Introduced by us.

A few plants only, \$1.00 each.

**HIBISCUS rosa-sinensis, aurantiacus.** Low shrub with large, dark-green leaves and big, very double, orange-colored flowers. New, very fine. 20c ea.; \$1.75 per 10.



**H. auranti-coccineus.** A form of aurantiacus that produces both red and orange flowers at the same time.

20c ea.; \$1.75 per 10.

**H. carminatus-perfectus.** Full, round flowers of fine shape, rich, soft carmine-rose with deep crimson eye; 6 in. across.

20c ea.; \$1.75 per 10.

40c ea.; 3.50 per 10.

**H. carneus pictus.** Single flowers, beautifully varied in several shades of pink. New.

15c ea.; \$1.25 per 10.

20c ea.; \$1.75 per 10.

Large, open ground, 30c ea.; \$2.50 per 10.

40c ea.; \$3.50 per 10.

**H. coccineus arrectus.** A lovely, new, single scarlet, vigorous, with dark green leaves and purplish stems; name for the peculiar erect habit of the petals. A beautiful new shade and shape. Developed by us.

15c ea.; \$1.25 per 10.

20c ea.; \$1.75 per 10.

Large from open ground:

40c ea.; \$3.50 per 10.

**H. collerii.** Flowers a clear, tender buff-yellow; look like fluted silk. One of the finest double flowers known.

20c ea.; \$1.75 per 10.

**H. decorus.** A new, very large, pink-flowered kind. Strong grower and free bloomer. Nice plants 50c ea.; \$4.50 per 10.

**H. Double Crimson.** This grand variety has immense flowers of the richest crimson, combined with glossy leaves. The best of all.

20c ea.; \$1.75 per 10.

Open ground 40c ea.; \$3.50 per 10.

**H. Double Pink.** A rich, deep pink, very large and double. Habit bushy and a quick grower.

15c ea.; \$1.25 per 10.

20c ea.; \$1.75 per 10.

Open ground 40c ea.; \$3.50 per 10.

**H. Double Red.** Flowers a rich, gorgeous red, large and numerous. Rather slow-growing.

20c ea.; \$1.75 per 10.

**H. Double Scarlet.** Flowers very large and double, of a warm, vivid scarlet in color. A splendid, free-blooming kind.

15c ea.; \$1.25 per 10.

20c ea.; \$1.75 per 10.

Open ground 40c ea.; \$3.50 per 10.

**H. euterpe.** A tall, quick-growing sort introduced by Reasoner. The flower is large, single, salmon, with numerous pink lines, a touch of purple and a deep crimson center.

15c ea.; \$1.25 per 10.

20c ea.; \$1.75 per 10.

40c ea.; \$3.50 per 10.

Specimens 75c each.

**H. grandiflorus.** Rich, glossy, cut foliage, literally covered with gigantic single flowers of a rich rose color.

20c ea.; \$1.75 per 10.

Open ground 40c ea.; \$3.50 per 10.

**H. miniatus semi-plena.** A semi-double flower of large size of a strong, warm scarlet. Leaves shining. One of the most desirable kinds.

20c ea.; \$1.75 per 10.

Open ground 40c ea.; \$3.50 per 10.

**H. Peachblow.** A very floriferous double sort; flower large, a clear, delicate peach-pink.

15c ea.; \$1.25 per 10.

20c ea.; \$1.75 per 10.

30c ea.; \$2.50 per 10.

Large, from open ground, 40c; \$3.50 per 10.

**H. schizopetalus, CORAL HIBISCUS.** A wonderful plant with long drooping flowers, edges of petals like delicate lace; coral red.

20c ea.; \$1.75 per 10.

**H. sinensis giganteus.** Branches freely; blooms early and profusely; flowers enor-

mous, often 8 to 10 in. across, opening flat and of a vivid crimson-scarlet. Look like a flaming torch from a distance. Single and a very rapid grower.

20c ea.; \$1.75 per 10.

Open ground 40c ea.; \$3.50 per 10.

**H. Single Dark Pink, Scarlet Center.** A lovely, medium-sized flower, borne in quantities nearly all the year. A vigorous grower.

20c ea.; \$1.75 per 10.

Large, from open ground:

40c ea.; \$3.50 per 10.

**H. Single Pink.** A soft, rich clear pink; plants vigorous and grow quickly. An old favorite.

15c ea.; \$1.25 per 10.

20c ea.; \$1.75 per 10.

Bushy plants from open ground,

40c ea.; \$3.50 per 10.

5 to 6 feet high, 75c ea.; \$6.00 per 10.

**H. Single Red.** Flowers large, single, opening flat. Leaves dark-green and shining. A much-branched, leafy, everblooming sort.

20c ea.; \$1.75 per 10.

**H. sub violaceus.** Giant flowers, carmine-violet. Probably the largest flower of the Hibiscus family. A very free bloomer.

15c ea.; \$1.25 per 10.

20c ea.; \$1.75 per 10.

Open ground 40c ea.; \$3.50 per 10.

**H. "WHITE WINGS."** A new flower, pale pink in winter, outer petals becoming white.

50c ea.; \$4.50 per 10.

**H. versicolor.** A fine large warm scarlet flower with white stripes. A strong, free-flowering sort.

20c ea.; \$1.75 per 10.

Open ground 40c ea.; \$3.50 per 10.

**H. zebrinus.** A dwarf sort, with wonderful flowers striped white and pink. It resembles picnic candy. Rather tender.

A few plants only, 20c each.

**HYDRANGEA Avalanche.** A beautiful new French variety with large, pure-white flowers. Strong plants.

40c each.

**H. La Lorraine.** A very large-flowered sort; pale rose changing to bright pink. Has become a general favorite in the past two years.

40c ea.; \$3.50 per 10.

**H. otaksa monstrosa.** The largest and best in Florida; flowers white changing to light purple or lilac pink and then bluish purple.

40c ea.; \$3.50 per 10.

**H. ramus pictus, RED-BRANCHED HYDRANGEA.** Stems reddish-purple; flowers rose-pink changing to bluish-purple.

30c ea.; \$2.50 per 10.

**IXORA amboina. FLAME-OF-THE-WOODS.** A much-branched shrub, with long-lasting, showy, orange-yellow flowers; leaves evergreen, large, leathery and glossy. Blooms almost continually.

20c ea.; \$1.75 per 10.

35c ea.; \$3.00 per 10.

**I. coccinea.** Much like the above; leaves rather rounded; flowers in dense corymbs, orange-red and very numerous. Constant bloomer.

20c ea.; \$1.75 per 10.

35c ea.; \$3.00 per 10.

**JACOBINIA coccinea, BRAZILIAN PLUME PLANT.** A dense, large-leaved, ever-green shrub, with thick spikes of crimson flowers. A very fine ornamental plant outdoors.

15c ea.; \$1.25 per 10.

20c ea.; \$1.75 per 10.

40c ea.; \$3.50 per 10.

**JASMINUM, Grand Duke.** A dark-green shrub with very double, button flowers, pure white and intensely fragrant. Hardy and good. Slow grower.

20c ea.; \$1.75 per 10.

**J. primulinum.** A shrubby, low-growing Jasmine with small leaves and slender



*Carissa bispinosa* No. 1; *Ixora amboina* No. 2.

stems; flowers primrose-yellow, sometimes 2 in. across; fragrant.

Open ground, 20c ea.; \$1.75 per 10.  
40c ea.; \$3.50 per 10.

#### LANTANAS

Lantanas are fine shrubs with rough, ovate leaves and numerous verbena-like flowers. They are growing in popularity with the development of many fine shades and colors in recent years. We offer a complete list of the best of both old and new kinds. They are splendid, blooming pot plants and make dense masses in open ground.

**LANTANA, alba perfecta.** Flowers pure white with a gold-colored eye, fragrant.  
15c ea.; \$1.25 per 10.

**L. Comtesse de Biencourt.** Flower pink, rich shade. 15c each.

**L. Grand Sultan.** Red and yellow, free-bloomer. 15c each.

**L. Harkett's Perfection.** Foliage variegated white and yellow on a green ground. 15c ea.

**L. Charles R. Hall.** New. A large-growing kind. Inner flowers clear pale yellow, with darker yellow eye; outer flowers pale violet with dark yellow eye.

Strong plants 15c ea.; \$1.25 per 10.

**L. Jaune d' Or.** Flower cream and pink. Fine. 15c ea.

**L. Leo Dex.** Flower orange and crimson. 15c ea.

**L. La Pluie D' Or.** A rich golden yellow. A beauty. 15c ea.

**L. M. Schmidt.** Orange. 15c ea.

**L. mista.** Opening yellow, becoming saffron, then brick red. 10c ea.; .85 per 10.  
15c ea.; \$1.25 per 10.

**L. mutabilis.** Flowers change in one day through white, yellowish lilac, rose and blue. 10c ea.; .85 per 10.  
15c ea.; \$1.25 per 10.

Large plants, all kinds, 50c each.

**LAGERSTROEMIA flos-reginae, QUEEN CRAPE MYRTLE.** A tall deciduous shrub, with large, glossy leaves; flowers rich royal purple, 2-3 ins. across. Rare.

Strong plants, 40c each.

**L. indica. CARMINE CRAPE MYRTLE.** A favorite shrub throughout the South. Bears immense panicles of crape-like flowers in Spring. Blooms for two or three months. A soft carmine rose.

Open ground, 20c each.

**L. indica. PINK CRAPE MYRTLE.** Habit like the above with a clear pink flower.

Open ground, 20c each.

**L. indica, WHITE CRAPE MYRTLE.** A rare form with pure white flowers.

40c ea.; \$3.50 per 10.

**LAWSONIA alba, HENNA BUSH, CAMPHIRE OF SOLOMON.** Rose-scented flowers, famous throughout the East.

20c ea.; \$1.75 per 10.



**LEUCAENA glauca, WHITE POPINAC.** A free-blooming shrub with round balls of white flowers. A very hardy plant in Florida.  
20c ea.; \$1.75 per 10.

**MALVAVISCUS arboreus, TURK'S CAP.** A strong-growing malvaceous plant with soft 3-lobed leaves and lovely red flowers that never open wide. Resembles a Chinese hibiscus to which it is kin. The flowers will last a week as cut flowers. Hardy outdoors. Strong plants, 50c each.

**M. drummondii, SUN MALLOW.** A small-er, clambering form of the above, with deli-

grance. Flowering period from April to June.

Small plants, 20c each

Strong plants 75c each

Larger \$1.25 each

**MYRICA cerifera, WAX MYRTLE.** A large shrub growing well on the seashore. Perfectly hardy and evergreen.

20c ea.; \$1.75 per 10.

**MYRICA gale, DUTCH MYRTLE.** A shrubby plant with small wedge-shaped lanceolate leaves, emitting a pleasant odor. Flowers small. A few plants only at 25c ea.



— Nerium oleander by the seashore.

cate little red flowers about an inch long, followed by bright red berries.

20c ea.; \$1.75 per 10.

**MICHELIA fuscata, BANANA SHRUB.** One of the most popular shrubs in the Southern States. Ten to fifteen feet high, with glossy, evergreen leaves; flowers 1 1/2 ins. across, bright-yellow, with a carmine edge, exhaling a strong banana-like fra-

#### OLEANDERS.

Oleanders are splendid, flowering shrubs with thick, evergreen lanceolate leaves. They may be pruned with impunity and will reach 15 to 20 ft. if left alone in good soil. They are hardy and have flowers in a wide range of colors, many of them fragrant. They grow best in open ground and all we offer are sturdy, field-grown stock.

**NERIUM oleander, atro-purpureum plenum.** A deep, rich crimson, double flower with occasional white lines.

25c ea.: \$2.00 per 10.

40c ea.: \$3.50 per 10.

Large 5-6 ft. 75c ea.; \$6.00 per 10.

**N. carneum.** Flowers a flesh color, with pink lines in the throat. A very free-blooming sort.

20c ea.: \$1.75 per 10.

40c ea. \$3.50 per 10.

Large \$1.00 each.

**N. De Brun.** A double crimson, lighter in

**N. Madame Du Bois.** Flowers single, pure white with slight fragrance.

20c ea.; \$1.75 per 10

Large, 40c ea.; \$3.50 per 10.

5-6 feet 75c each.

**N. Madonna Grandiflora.** Flowers large, double white, very fragrant.

20c ea.; \$1.75 per 10.

40c ea.; \$3.50 per 10.

Large, 6 ft., 75c each.

**N. Henry Mares.** Rich, double pink with



Jerusalem Thorn.

hue and larger than atropurpureum plenum. Large plants, 40c each.

**N. Chas. Baltet.** A semi-double pink very soft tint and a free bloomer.

20c ea.; \$1.75 per 10.

40c ea.; \$3.50 per 10.

**N. Frederick Guibert.** Flower single, light pink, throat crimson.

A few large plants, 40c each.

**N. Lillian Henderson.** Pure white, small flower, double. 20c ea.; \$1.75 per 10.

a touch of carmine. Large, free-flowering and fragrant.

20c ea.; \$1.75 per 10.

40c ea.; \$3.50 per 10.

**N. Madame Peuch.** A beautiful rose-pink semi-double flower.

Large plants, 40 and 75c each.

**N. Savort.** Flower double, small, pale-pink.

20c ea.; \$1.75 per 10.

Large, 40c ea.; \$3.50 per 10.

5-6 ft. 75c each.

**N. Notaire Cavalliere.** A fine single red, not fragrant. 40c each.



**N. Single White.** Flower pure white and fragrant.

20c ea.; \$1.75 per 10.

40c ea.; \$3.50 per 10.

5 ft., 75c; 6-7 ft. \$1.00 each.

**N. splendens.** Flower double pink, and fragrant, large.

20c ea.; \$1.75 per 10.

40c ea.; \$3.50 per 10.

Large 75c each.

**N. rosea variegata.** Flowers double pink, like splendens; leaves beautifully variegated green, golden-yellow and white.

Strong young plants, 20c each.

Large, 40c each.

**PARKINSONIA aculeata, JERUSALEM THORN.** A large shrub, branches pendulous, long slender rachis and numerous very small leaflets. The flowers are yellow in pendulous racemes, fragrant and attract bees. This plant thrives on the very poorest, driest soils. Fine plants 20c and 40c each.

**RAPHIOLEPIS japonica.** A dwarf shrub with thick, shining leaves, and trusses of white or pink flowers. Likes high ground.

Small plants 15c ea.; \$1.25 per 10.

**RIVINA humilis, BLOODBERRY.** A low shrub bearing light lilac flowers and quantities of persistent scarlet berries. Pot grown.

20c ea.; \$1.75 per 10.

**RHODOMYRTUS tomentosus, HAIRY MYRTLE.** A hardy shrub of great usefulness in South Florida. It grows well in any kind of soil. Leaves broad and evergreen; flowers 11-2 ins. across, in quantities. Bright rose-pink.

20c ea.; \$1.75 per 10.

**RUSSELLIA elegantissima, CORAL PLANT.** A tender, shrubby, rush-like plant, with pendulous branches and linear leaves; flowers in profusion of a bright, coral red

20c ea.; \$1.75 per 10.



**Tabernaemontana grandifolia, or Rose Bay.**

**PLUMBAGO capensis, LEADWORT.** A drooping, many-stemmed shrub with pale green leaves and perpetual masses of azure blue flowers. Fine and hardy.

20c ea.; \$1.75 per 10.

Very large, 40c ea.; \$3.50 per 10.

**PLUMBAGO capensis alba.** About the same as the preceding with masses of almost perpetual pure white flowers.

20c ea.; \$1.75 per 10.

**P. coccinea.** A rare red-flowered variety, with large, dark-green leaves.

Strong plants 50c each.

**SESBANIA punicea, FLAME PEA.** An exceedingly quick-growing, leguminous shrub, of deciduous habit; with enormous masses of large orange-red, pea flowers in the spring, followed by queer, 4-angled, flanged pods. Gorgeous. Strong plants, open ground:

20c ea.; \$1.75 per 10.

6-7 ft. high, 40c ea.; \$3.50 per 10.

**SESBANIA coccinea.** A new sort from seeds presented to us by Father Jerome.

20c ea.; \$1.75 per 10.

**SOLANUM pseudo-capsicum, JERUSALEM CHERRY.** A beautiful dwarf shrub producing quantities of red fruits which hang on for months.

20c ea.; \$1.75 per 10.

**STENOLOBIUM stans, YELLOW ELDER.** A tall, fast-growing shrub, with light-green leaves and flower tubular, yellow and very fragrant in great masses in the Autumn.

10c ea.; 85c per 10.

20c ea.; \$1.75 per 10.

**STROBILANTHES anisophylla.** A small, bushy shrub with numerous slender stems and narrow, dark-green leaves and quantities of light purple or lilac flowers in Winter and early Spring.

20c each.

**S. dyerlanus, RAINBOW PLANT.** A most exquisitely colored plant, surpassing coleus or begonias. The colors in the leaves are iridescent, hence the name.

20c ea.; \$1.75 per 10.

**S. Isophylla.** Somewhat like the anisophylla except that the leaves and flowers are larger and of a lighter color. Both plants fine for the low border or for blooming pot plants.

20c each.

**TABERNAEMONTANA coronaria, CRAPE JESSAMINE.** A shining-leaved, evergreen shrub, with many white, fragrant flowers, peculiarly twisted on the margin of the petals. A fine plant.

20c ea.; \$1.75 per 10.

Open ground 40c ea.; \$3.50 per 10.

Extra large 75c each.

**T. grandifolia, ROSE BAY.** Like the preceding with larger, glossier leaves and larger, white flowers. Reaches 8 to 10 ft. A beauty.

20c ea.; \$1.75 per 10.

Open ground 40c ea.; \$3.50 per 10.

Extra large, 75c each.

**THEVETIA nerifolia, TIGER APPLE, LUCKY SEED.** An oleander-like plant bearing bright yellow flowers. The leaves are narrow and the seeds are considered charms by West Indian negroes. The fruit is poisonous if eaten.

20c ea.; \$1.75 per 10.

**THUNBERGIA erecta, KING'S MANTLE.** A fine, branched shrub, from 4 to 6 ft. high, with small, evergreen leaves and numerous, deep mauve, tubular flowers, with a soft yellow base. Almost everblooming. Rather tender until established.

15c ea.; \$1.25 per 10.

20c ea.; \$1.75 per 10.

**TRIPHASIA trifollata.** A pretty little member of the Citrus family. It has dark, shining, evergreen leaves, and attains a height of 2-4 ft. Flowers white and fragrant; fruit red, 1-2 in. in diameter. A dainty little hedge plant. Grows very slowly.

20c ea.; \$1.75 per 10.

**VINCA rosea, MADAGASCAR PERIWINKLE.** A small shrub with glossy, oblong leaves and rosy purple or white flowers (the latter with a crimson eye). Very easy of cultivation. Thrives anywhere. A fine border plant; almost everblooming. An escape in Florida. It is said to "Go everywhere man goes in Florida."

Open ground, 20c ea.; \$1.75 per 10.

**OFFER** →

7 differen flowering shrubs for \$1.00; our choice.

## Roses

The Rose is justly known as the "Queen of Flowers." We offer the choicest of the proven kinds, in Teas, Bengals and Hybrids, all grafted on Manetti stock to prevent the attacks of the "Root Knot."

Roses will flourish in the light, sandy soil of Florida if the soil is thoroughly loosened to a depth of one foot, all roots removed, four inches of well-rotted manure laid over and then dug in. Where the rose is to go, dig 2 ft. deep and put 10 ins. of well-rotted manure, firm well; then four inches of plain soil and pack with the feet tightly. Set the rose on this and fill in with good garden soil and firm well, then water. Plant four inches above the union.

Roses should be pruned in September and March to get the best results. Cut back hard. Well-rotted manure spread over the bed 2 to 3 in. deep is good, also the commercial fertilizer known as "Blood & Bone." Give plenty of water; but see that drainage is good. For Aphid and Thrips use tobacco solution; for mildew, the lime-sulphur solution gives satisfaction.

A mulch of leaves, lawn clippings or pine needles is essential during the summer months to protect the tender roots from the sun after rain has fallen. Plant during the winter when the plants are dormant and there is no trouble to make them grow; this also permits them to be established before summer and they stand the heat much better.

**ROSA, THE ROSE.** Grafted stock, 1 yr. 25c ea.; \$2.00 per 10. 2 yr. 35c ea.; \$3.00 per 10.

**KEYING:** B—Bengal; CB—Climbing Bengal; CT—Climbing Tea; HP—Hybrid Per-

petual; T—Tea; HT—Hybrid Tea; CHT—Climbing Hybrid Tea; CN—Climbing Noisette.

### RED.

**CLIMBING WOOTEN, CHT.** Very large, rather open flowers, magenta-red, passing to crimson, richly shaded. A free grower and a strong bloomer.

**J. B. CLARK, HP.** Crimson with shapely buds. Unsurpassed. Strong grower and a free bloomer.

**JAMES SPRUNT, CB.** Deep, cherry-red flowers, very full, double and sweet. Cut flowers keep a long time. Blooms in all seasons.

**LOUIS PHILLIPPE, B.** Rich velvety crimson. A showy and vigorous red for gardens or beds. Blooms nearly all the year.

**METEOR, HT.** Very large perfectly double, cherry red shaded crimson.

**REINE MARIE HENRIETTE, CT.** Cherry red. A pure shade, does not fade. Double and well-shaped. One of the finest climbing roses.

**SEMPERVIRENS.** A vigorous climber producing flowers in dense corymbs. Recommended for pergolas, etc. Will grow 40 feet in one year.

20c ea.; \$1.75 per 10.

### PINK.

**MAD. LAMBARD, T.** Deep salmon-rose, highly scented. Buds large and of fine form; flowers all the year.

**CATHERINE MERMET, T.** Pink with inner surface of petals lighter. Well-formed buds and good bloomer.



**DEVONIENSIS.** CT. White with light pink tints.

**PINK KILLARNEY.** HT. Pink of a beautiful shade. Well-formed, sweet-scented flowers; a vigorous grower. Flowers on long stems.

**PAPA GONTIER.** T. Red and pink; good buds.

**PAUL NEYRON.** HP. Strong and vigorous pink. The largest flower grown; 6 in. across.

**PINK MAMAN COCHET.** T. Foliage beautiful, free-bloomer with large, long-pointed buds of a clear pink.

#### WHITE.

**FRAU KARL DRUSCHKI.** HP. White with blossoms 4-6 in. across. Buds full, well-formed. Nearly always in bloom.

**KAISERIN AUGUSTE VICTORIA.** HT. White with lemon center, full pointed buds.

One of the newer sorts; foliage bright; flowers on long straight stems.

**WHITE KILLARNEY.** HT. White petals; a free bloomer. A great favorite.

**W. MAMAN COCHET.** T. Strong grower, with white, lemon-tinted in the center. One of the very best white roses.

#### YELLOW.

**ISABELLE SPRUNT.** T. Lemon-yellow; buds like Safrano. A fine bloomer.

**LA MARQUE.** N. Beautiful blush white, center pale yellow. A vigorous grower, fragrant.

**MARCHAL NIEL.** CN. Deep yellow, very large, delightfully fragrant. In the South it is at home and is at its best. Flowers freely all the year.

**MARIE VAN HOUTTE.** T. Delicate and beautiful tint of canary yellow, always bright and clear. Splendid buds.

## Foliage Plants

**ACALYPHA bicolor compacta.** Dwarf; broad leaves, margined creamy-white.

35c ea.; \$3.00 per 10.

**A. godseffiana.** A low shrub of dense habit with green leaves having cream-colored margins. Grows 1 to 2 ft. high.

20c ea.; \$1.75 per 10.

**A. hispida. CHENILLE PLANT, REDHOT CAT TAIL.** Grown for its long, red spikes of flower. Leaves green. An almost ever-blooming plant. Tender. Blooms very young in pots. Nice plants 20c ea.; \$1.75 per 10.

**A. miltoniana.** A small plant with curiously cut leaves, variegated white and cream on a green ground. A lovely pot or tub plant.

15c ea.; \$1.25 per 10.

20c ea.; \$1.75 per 10.

40c ea.; \$3.50 per 10.

**A. tricolor, FIRE DRAGON.** A vigorous shrub with large leaves, variegated, red, pink and green.

Small 20c ea.

Large plants, 40c ea.; \$3.50 per 10.

**A. wilkesiana var. marginata. COPPER LEAF.** A very dense-leaved kind; foliage pointed, bronze-green, marked with light pink margin, changing to crimson. One of the hardiest and finest foliage plants. 6 to 10 feet high.

20c ea.; \$1.75 per 10.

Large plants, 40c ea.; \$3.50 per 10.

See illustration on opposite page.

**A. wilkesiana var. musaica.** Leaves green mottled with yellow, orange, pink and red, slightly folded, very large. A splendid pot plant and much used in extreme South Florida for hedges.

20c ea.; \$1.75 per 10.

40c ea.; \$3.50 per 10.

**A. wilkesiana var. obovata.** Large obovate leaves, green or coppery, edged white when young, changing to bronze with pink margins. Some old leaves almost red. A hardy, vigorous shrub, foliage, very dense. Good for hedges or specimen plants.

20c ea.; \$1.75 per 10.

40c ea.; \$3.50 per 10.

**ASPARAGUS plumosus. ASPARAGUS FERN.** A tall climbing shrub, or vine, with very delicate, plume-like foliage. Used for baskets and cut sprays. Hardy in South Florida in protected place.

10c ea.; .85 per 10.

Larger, 20c ea.; \$1.75 per 10.

**A. sprengeri, CRYSTAL FEATHER.**

Foliage coarser than in *A. plumosus*, thick and long. For window boxes, baskets, etc. Hardy to cold and drouth. It has bright red berries about Christmas. The best Asparagus for a house plant

10c ea.; .85 per 10.

20c ea.; \$1.75 per 10.

40c ea.; \$3.50 per 10.

Hanging baskets, \$1.25 and \$1.50 each.

**ASPIDISTRA lurida variegata.** Broad, dark-green leaves striped with white. Likes ditch banks and full sun. Very effective in a mass of ferns. Good pot plant.

Fine plants, 75c ea.; \$6.00 per 10.

**BEGONIA macrophylla. CUBAN BEGONIA.** A very large-leaved kind from Cuba. Grows three feet high; panicles of small white flowers. Very effective in tubs. Tender. Large plants, 20c, 50c and \$1 each.

#### CROTONS

Crotons are the finest and most gorgeous of colored shrubs. They thrive in full sun in a sheltered place outdoors. Magnificent pot plants. All grown in pots, fine strong plants. Give plenty of manure and water freely; keep well-drained.

**CODIAEUM variegatum andreanum.** Yellow, with red veins. Leaves broad and gorgeous.

Large, 40c each.

**C. angustifolium.** A narrow green and yellow leaf with yellow margin and ribs.

25c each.

**C. appendiculatum.** A green-leaved kind, midrib exposed in center as if stripped. A wonderful form.

20c each.

**C. aurea maculata.** Very slender, green leaves with gold spots.

25c each.

**C. Baroness Rothschild.** Very wide leaves about 7 in. long, yellow with red veins.

20c each.

**C. barryii.** Broad leaves, yellow; changing to white midrib, veins and dots.

20c each

**C. bachii.** Leaves large, mottled yellow, pink, red and green. A beauty.

20c each.

**C. Beauty.** Leaf broad, yellow margins and midrib, ground green; long, slightly sinuous.

20c each.

**C. cooperii.** Leaves yellow, narrow with red center and spots.

20c each.



Copper Leaf.

*C. Dayspring.* Leaf yellow, red-mottled, margined green, ovate.

Large plants, 35c each

*C. evansianum.* Three-lobed, mottled; yellow with red and bronze veins. 20c each.

*C. Ingomar.* Leaf long, very slender, green with yellow center. 20c each

*C. irregulare.* Leaves green, irregular, contracted below middle, yellow spots and midrib. 20c each.

*C. Lady Zetland.* Leaf slender and green, midrib yellow changing to red. 20c each.

*C. maculatum-katoni.* Leaf banjo-shaped, speckled with bright yellow on a green ground. 20c each.

*C. majesticum.* Yellow, margin and midrib red; linear and large. 20c each.

*C. mortii.* Broad green leaf with midrib and veins yellow. 20c each.

*C. Queen Victoria.* Broad leaf mottled green, yellow and red. 20c each.

*C. quercum undulatum.* Leaf 3-lobed, Somewhat like an oak leaf. 20c each.

*C. reedii.* Yellow, veins and midrib red and rose-pink; yellow stripes on each side of midrib. Broad leaf. 20c each.

*C. Rex.* Broad leaf; spiral, yellow with red and green spots. 20c each.

*C. spirale.* Midrib red, yellow or green. Leaf spiral and narrow. 20c each.

*C. veitchii.* Long and yellow with red midrib and wide veins. A very fine form. 20c each.

*C. volutum.* Leaf green, midrib and veins yellow. Strongly recurved. 20c each.

*EUONYMUS japonicus.* SPINDLE TREE. An evergreen shrub with glossy leaves and greenish-white flowers in June and July. Hardy and especially good for hedges. Open ground, 1-2 ft. 35c each.

*LIGUSTRUM ovalifolium,* CALIFORNIA PRIVET. A splendid, hardy hedge plant. Used everywhere.

20c ea.; \$1.75 per 10.; \$10 per 100.





Crotons No. 1; Jacaranda No. 2; Jasminum Maid of Orleans No. 3.

**PITTOSPORUM rhombifolium. QUEENSLAND PITTOSPORUM.** A small tree with evergreen toothed leaves, and flowers resembling the Dogwood. Handsome yellow berries last all winter. A new introduction.  
50c each.

**PITTOSPORUM tobira.** A beautiful symmetrical, evergreen shrub, with thick, obovate leaves having a delicate fragrance. A good, very hardy, evergreen hedge plant; also good for specimens owing to its standard shape.  
30c each.  
Large, 3 ft., 75c ea.; \$6.00 per 10.  
3 1-2 ft., \$1.00 each.

**P. tobira variegatum.** A rare variegated form of the preceding. Smaller and the leaves mottled with green, yellow and white. Good in urn or tub and makes nice low hedge.  
1 1-2 to 2 ft. 50c ea.; \$4.50 per 10.  
2 to 3 ft. \$1.00 ea.; \$8.50 per 10.

**PHYLLANTHUS nivosus var. atropurpureus.** A vigorous-growing shrub with thin, delicate leaves, variegated green, and

several shades of purple. A beauty.  
20c ea.; \$1.75 per 10.

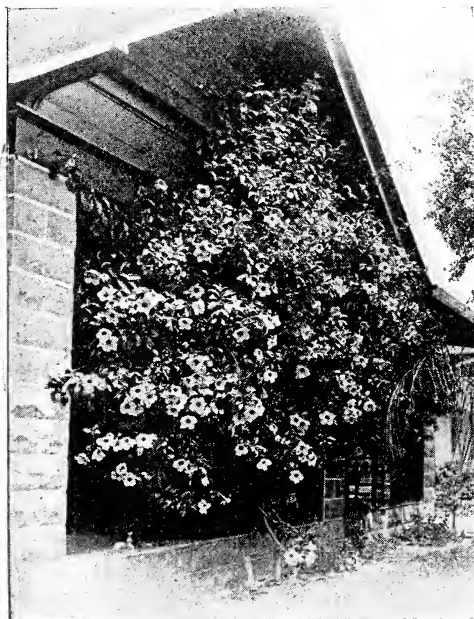
**P. nivosus var. roseo-pictus CALICO BUSH.** A smaller form than tropurpureus; leaves delicately variegated in white, green, pink and red. A gorgeous plant in full sun. Fine for hedges or specimen plant.  
15c ea.; \$1.25 per 10.  
20c ea.; \$1.75 per 10; \$15.00 per 100.

**TELANTHERA amoena, ALTERNANTHERA.** A very dwarf plant, with thick foliage blotched red and orange. Very popular for low bedding such as making letters and geometric designs.  
5c each; 25c per 10; \$2.00 per 100.

**T. aurea nana compacta.** Much like the preceding, but not quite as tall, leaves green and gold. A beauty.  
5c each; 25c per 10; \$2.00 per 100.

|  |   |
|--|---|
|  | 7 foliage plants, our choice, for \$1.00. |
|--|---|

# Vines and Scandent Shrubs



*Allamanda hendersonii*.

**ABRUS precatorius, CRAB'S EYE VINE.** A delicate pinnate-leaved vine, with clusters of pale pink flowers. Seeds scarlet with a black eye, borne profusely. Used by the Buddhists for rosaries and anciently used for apothecaries' weights.

20c ea.; \$1.75 per 10.

**ALLAMANDA cathartica var. grandiflora, GOLDEN TRUMPET.** Bushy, leaves thin, pointed, in threes; flowers lemon or primrose-yellow. Brazil. 20c ea.; \$1.75 per 10.

**A. cathartica var. hendersonii.** A tall and strong grower; leaves thick and leathery in 3's or 4's, dark-green and very glossy; flowers yellow-orange or yellow, large, purplish on outside of bud. Excellent plant for roofs, porches, pergolas, etc. Comes from Guiana. 20c ea.; \$1.75 per 10.

**A. cathartica var. williamsii.** Slender, dwarf climber. Easy to train as a bush. Leaves short-stemmed, a rich, dark green; flowers in pairs, yellow. 20c ea.; \$1.75 per 10.

**A. neriifolia.** Dwarf, bushy form; leaves smaller, dark-green above, lighter beneath; flowers yellow, on short, pale stems. A very free bloomer. From Brazil. 20c each.

**A. violacea, PURPLE ALLAMANDA.** Slender climber, leaves in fours; bright, reddish-purple flowers in pairs, 2 in. long, tubular. A distinct species. Hard to propagate, hence very rare. \$1.00 each.

**ANTIGONON leptopus, MOUNTAIN ROSE.** Rough, heart-shaped leaves, flowers very numerous, rose-pink. Likes a sunny situation. Fine for porches, fences, arbors, etc. Very floriferous. 20c ea.; \$1.75 per 10.

**ARGYREIA nervosa, SILVER VINE.** A tall-growing vine from Cuba, with large purple and white flowers, the leaves heart-shaped and covered with silver hairs. Introduced by us. 50c ea.; \$4.00 per 10.

**ARISTOLOCHIA elegans, DUTCHMAN'S PIPE, or CALICO FLOWER.** Slender vine, with large, long-stalked leaves; flowers purple and white, blotched. The hanging, basket-like fruit is very attractive.

20c ea.; \$1.75 per 10.

**A. galeata, COCK'S COMB.** A strong-growing vine kin to Dutchman's pipe, with flowers shaped like a rooster's head. Has proven hardy at our nurseries. 50c each.

**BIGNONIA speciosa, LAVENDER VINE.** A woody vine; leaves intensely dark-green; flowers tubular of a lovely, delicate lavender. Hardy to cold. Strong plants 20c each.

**BIGNONIA unguis cati, CAT'S CLAW BIGNONIA.** A very fast-growing, hardy vine; leaves dark-green; flowers 2 in. long, trumpet-shaped, yellow with orange lines in the throat. Clings to wood or stone.

From pots, 10c ea.; 75c per 10.

**BOUGAINVILLEA glabra sanderiana, PAPER FLOWER.** A very quick-growing scandent shrub; leaves dark and shining; flowers reddish-purple and very numerous. Blooms several times a year. It may be pruned to bush form or if permitted it will climb over a two-story house.

25c ea.; \$2.00 per 10.

Large, 50c ea.; \$4.00 per 10.

Standards, heavy, \$1.00 each.

See illustration on opposite page.

**CLEMATIS paniculata.** A vigorous, hardy climber. Very leafy, with thick masses of fragrant, white flowers. Fine on porches, fences, pergolas, etc. 20c ea.; \$1.75 per 10.

**CLERODENDRON speciosum.** A quick-growing vine with large, rough leaves. Flowers in profusion, a dull red, the light calices persisting after the corolla falls.

20c each.

**C. thompsonae, BLEEDING HEART.** A dense, quick-growing, climbing shrub, literally covered with brilliant scarlet and white flowers.

15c ea.; \$1.25 per 10.

20c ea.; \$1.75 per 10.

**CLITORIA ternatea, BUTTERFLY PEA.** A woody, leguminous vine, grows fast; foliage thick and abundance of real blue flowers, with a pure white eye. New and good. Comes from the Molucca Islands.

Strong plants, 20c each.

**CRYPTOSTEGIA grandiflora, PALAY.** A charming woody climber with purple flowers. Two inches across. Yields fine rubber, 64 per cent caoutchouc. Grows 10 to 15 ft. high.

20c ea.; \$1.75 per 10.

**DERRIS scandens, LEATHER BREECHES.** A woody vine; leaves pinnate; flowers pale rose in long racemes. Rare and fine. A few strong plants, 40c each.

**DOLICHOS giganteus, LAB-LAB.** A wonderfully fast-growing woody bean vine from Australia. Flowers white. Will run 50 ft. in one summer. Perennial. Pot grown plants, 20c ea.; \$1.75 per 10.

**FICUS pumila var. minima, CREEPING FIG.** A climbing shrub, clinging close to walls and then flattened. A dainty plant for porches and stone or brick.

20c ea.; \$1.75 per 10.



**Bougainvillea or Paper Flower.**

**F. villosa, HAIRY FIG.** A straggling clinging shrub; leaves thick and leathery. The whole plant is brown-hairy. Grows rapidly and is fine for walls. A true rubber plant. 20c ea.; \$1.75 per 10.

**GELSEMIUM sempervirens, CAROLINA YELLOW JESSAMINE.** A hardy native vine bearing fragrant yellow flowers. 20c ea.; \$1.75 per 10.

**GUILANDINA crista, GRAY NICKER.** A prickly climber that loves the seashore. Flowers yellow. Good in exposed situations. 20c each.

**HEDERA helix, ENGLISH IVY.** The well-known plant for covering walls and stonework. It is a sturdy climber. We offer only the large-leaved kind which we have found the best for Florida. 15c ea.; \$1.25 per 10. 20c ea.; \$1.75 per 10.

**IPOMEA bona-nox, MOONVINE.** An evergreen vine bearing pure white flowers opening at night, slightly fragrant. Pot grown, 20c ea.; \$1.75 per 10.

**I. bona-nox var. maxima, GIANT MOONVINE.** A very large flowering sort. 20c ea.; \$1.75 per 10.

**IPOMOEA horsfalliae var. briggsii, EVERGREEN MORNING GLORY.** The most pop-

ular Ipomoea for winter flowering. Bears hundreds of beautiful, rich crimson blossoms. Plant in a sheltered, sunny place. It comes from Tropical Asia.

Strong plants, \$1.00 each.

**JASMINUM gracillimum, STAR JESSAMINE, GRACEFUL JESSAMINE.** A hardy, climbing shrub, stems soft-hairy; dense heads of flowers, white and fragrant. Winter bloomer. 20c ea.; \$1.75 per 10.

Large, 40c ea.; \$3.50 per 10.

**J. grandiflorum, SPANISH JESSAMINE.** Nearly erect, branches drooping. Perhaps the best white-flowered species; fragrant. Nearly perpetual bloomer. Fine large plants. 20c and 40c each.

**J. Maid of Orleans.** A strong climber, flowers semi-double, very fragrant, white and numerous. Foliage large and dark-green, thick. 20c ea.; \$1.75 per 10.

**J. pubescens, STAR JESSAMINE.** Somewhat like *J. gracillimum*, but of denser, more shrubby habit and the flowers are larger and sweeter.

**J. sambac, ARABIAN JESSAMINE.** A fine scandent shrub with broad leaves and white, star-shaped, fragrant flowers. 20c ea.; \$1.75 per 10.



**KRAUNHIA chinensis, BLUE WISTARIA.** This well-known vine is a universal favorite throughout the South. It grows rapidly and bears large racemes of purplish-blue, fragrant flowers, in Spring. Strong plants, open ground, 20c ea.; \$1.75 per 10.

do. large clumps 40c ea.; \$3.50 per 10.  
**K. chinensis alba.** Like the above with pure white, fragrant flowers.

Open ground, 20c ea.; \$1.75 per 10.  
do. larger 40c ea.; \$3.50 per 10.

**LANTANA sellowiana, WEEPING LANTANA, TRAILING PURPLE LANTANA.** A delicate, scandent shrub, with slender stems and masses of lilac flowers; blooms almost all the time. Fine for low border and good subject for porch boxes and hanging baskets.

Strong plants 10c ea.; 85c per 10.  
Strong plants 20c ea.; \$1.75 per 10.

shaped like a pine cone; tastes like pineapple and banana. \$1.00 each.

**NINTOOA japonica, HALL'S JAPAN HONEYSUCKLE.** Hardy, with very dark-green, glossy leaves and white and yellow, richly fragrant flowers. Good on porches and pergolas. Open ground, strong clumps, 20c ea.; \$1.75 per 10.

Large, 40c ea.; \$3.50 per 10.

**PARTHENOCISSUS quinquefolia, VIRGINIA CREEPER.** The well-known plant for walls, pergolas, porches, etc. Has a very robust habit; foliage dense. Deciduous only a short time in Florida.

Open ground, 15c ea.; \$1.25 per 10.

**PASSIFLORA macrocarpa, PASSION FLOWER.** A rather quick-growing vine with large, rough leaves and queer, 3-an-



Our No. 2 Glass House—Plants all in Pots.

**LONICERA halleana, HALL'S HONEYSUCKLE.** A fine blooming vine, with rather hairy, gray-green leaves, and heavy masses of yellow and white flowers.

20c ea.; \$1.75 per 10.

**LONICERA sempervirens, CORAL HONEYSUCKLE.** A vigorous vine with masses of leaves and great quantities of coral red flowers produced all summer.

From open ground, strong clumps, 20c each.

**MANDEVILLA sauveolens, CHILEAN JASMINE.** A woody climber with large cordate leaves and masses white or bluish flowers. Rare. Strong plants in pots 40c each.

**MONSTERA deliciosa, CERIMAN.** A high climber from Guatemala with giant cut leaves. The fruit is fig-like in texture and

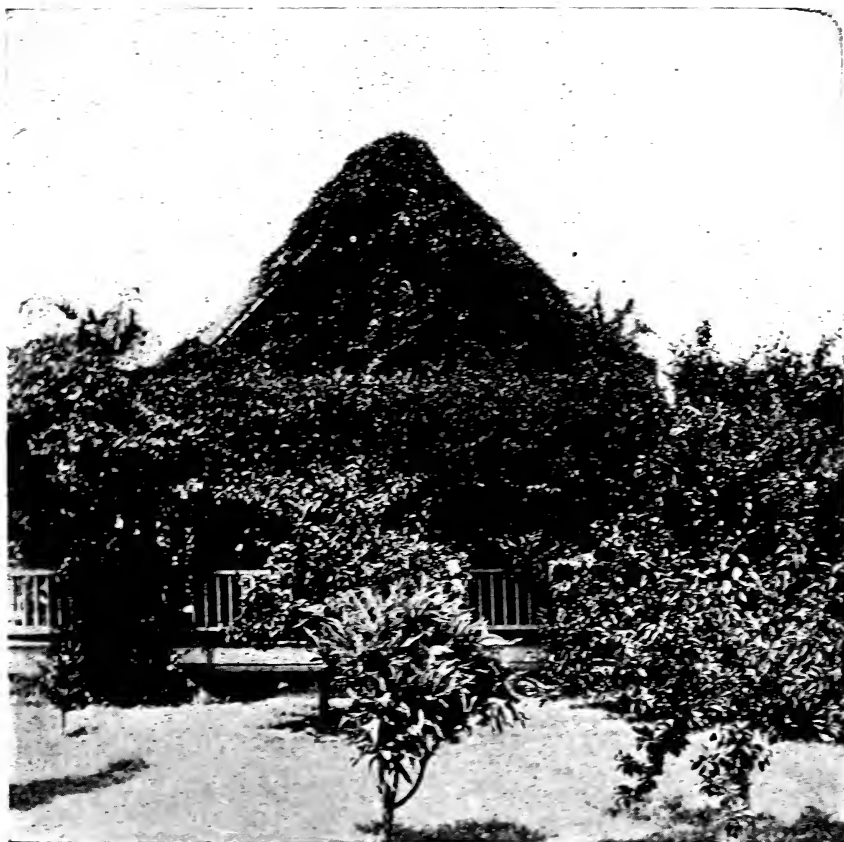
gled stems when young; flowers white. Introduced by us from South America. Plant in a sunny protected place.

20c ea.; \$1.75 per 10.

**PORANA paniculata, SNOW VINE.** A rank-growing evergreen vine from India, bearing a host of small white flowers in midwinter. It will quickly cover the tallest tree. A very fine and a very rare plant. A few only at \$1.00 each.

**POTHOS aureus, HUNTER'S ROBE.** A strong climber from the Solomon Islands. Evergreen and leaves beautifully variegated green and gold. Clings to a wall.

20c ea.; \$1.75 per 10.



Flame Vine.

**PYROSTEGIA venusta. FLAME VINE.** The best vine for Florida. Hardy, quick-growing, the leaves thick, dark-green. Likes a moist rich soil; but thrives almost everywhere. The lovely orange-red, tubular flowers are produced by thousands about Christmas Time and last for six weeks. There is no other like it, "or just as good." Fine plants 25c ea.: \$2.00 per 10.

**SOLANDRA grandiflora, GOLDEN CUP.** A beautiful vine resembling an allamanda. The rich fragrant golden yellow flowers are produced freely during most of the year. From pots, 50c each.

**SOLANUM seaforthianum, TOMATILLO.** A slender climber, with thick, tomato-like leaves and dense masses of mauve or azure blue flowers. The scarlet bunches of fruit are persistent. They resemble cherries. 20c ea.: \$1.75 per 10.

**S. wendlandii, PARADISE FLOWER.** A tender tropical vine with enormous cut leaves and thick cymes of lilac flowers. Grows from 30 to 40 feet a season. 20c ea.: \$1.75 per 10.

**TECOMA capensis, CAPE HONEY-SUCKLE.** A climbing shrub with rich, dark-green leaves and masses of orange-red tubular flowers, practically everblooming. One of the best evergreen, winter-flowering plants. Strong plants 20c each.

**T. grandiflora, CHINESE TRUMPET CREEPER.** Flowers scarlet and much

larger than in *T. radicans*, the native form. Deciduous a short time. 20c ea.: \$1.75 per 10.

**T. mckennii, AFRICAN HONEYSUCKLE.** A strong, scandent shrub, bearing light pink flowers, 2 inches across. Leaves evergreen. A fine plant and very floriferous. 20c ea.: \$1.75 per 10.

**T. radicans, TRUMPET CREEPER.** A high-climbing, native, deciduous vine with from 9 to 11 dark-green leaflets and many trumpet-shaped orange or scarlet flowers in Spring and Summer. Very hardy.

From open ground, 15c ea.: \$1.25 per 10.

**TETRASTIGMA harmandi, FILIPINO GRAPE.** A tall, woody vine, from the East Indies. Bears great quantities of fruit like Scuppernong grapes. Has proven hardy in St. Petersburg, New. A fast grower. 50c ea.: \$4.00 per 10.

**THUNBERGIA fragrans, ANGEL VINE.** A good evergreen vine with masses of pure white, fragrant flowers. 20c ea.: \$1.75 per 10.

**TRACHELOSPERMUM jasminoides, MALAY JESSAMINE.** A woody vine, quick-growing, high-climbing, with thick fleshy, very dark-green leaves and numerous, small, waxy-white, very fragrant flowers. A splendid vine. 20c ea.: \$1.75 per 10.

**OFFER**

7 vines, our choice,  
for \$1.00.



# Palms and Palm-Like Plants

**ACROCOMIA sciocarpa, GROO-GROO PALM.** A vigorous, armed palm from Trinidad, with lovely pinnate leaves. Rare.

Strong 1 yr. plants, \$1.00 each.

**CARLUDOVICA palmata, PANAMA HAT PLANT.** A palm-like plant; trunkless, reaches 8 ft. Immense fan-shaped, four-lobed, dark-green leaves. A useful and graceful tub plant. Panama hats are made from the leaves. From pots, 4 ft. \$1.50 each.

7 1-2 ft. \$10.00 each.

**CARYOTA urens, FISH TAIL PALM, TODDY PALM.** Attains a height of 50 feet; leaves 10 to 15 feet long, curiously cut. The effect indescribably rich. Tender. Strong plants,

20c ea.; \$1.75 per 10.

50c, \$1 and \$1.50 each.

**CHRYSALIDOCARPUS lutescens ARECA.** Has a smooth, ringed, yellowish trunk, leaves pinnatisect. Made-up plants in pots and tubs are splendid for the conservatory. A deservedly general favorite. Also called Areca in the trade.

20c ea.; \$1.75 per 10.

Fine plants, 75c ea.; about 2 ft., \$1.00;

2 1-2 to 3 ft. \$2.00; about 3 1-2 ft., \$3.00.

4 ft., \$5.00 each.

A few fine specimens in tubs, 6t. \$10.00 each.

9 ft. \$15.00 each.

**COCOS alphonsei.** A very hardy, medium-sized palm, with recurved fronds. Leaves pinnate and slightly grayish.

Fine specimens, 75c and \$1.00 each.

Open ground \$2.50 and \$5.00 each.

**C. australis, PINDO PALM.** A very hardy dwarf palm with pinnate leaves of grayish green, recurved. Seldom grows over six feet high.

Strong 1 yr plants, 20c ea.; \$1.75 per 10.

**C. datil.** Grows 30 ft. high, lovely pinnate leaves, 12 to 15 ft. long. Fruits yellow and edible.

Stock plants, 75c, \$1.00, \$2.50 and \$5.00 each.

**C. eriospatha.** The hardest Cocos. 15 ft. high, fronds pinnate, bluish; the fruit pulp is like apricots, edible.

Fine plants 75c, \$1.00, \$2.50 and \$5.00 each.

**C. nucifera, COCOANUT PALM.** A tall palm from the Tropics bearing the large fruits so well known as Cocoanuts. It thrives best on the seashore where it seems to revel, throwing roots out into the salt water. It seldom fruits inland. The leaf is like a giant, green feather and makes it worth trying in South Florida along the shore. Fine plants from pots,

50c ea.; \$4.50 per 10.; larger, 75c each.

**C. plumosa, PLUMED COCOS.** A lovely slender tree, reaching a height of 35 feet. Trunk smooth; leaves 8 to 12 ft. long, erect and spreading, recurved, looking like giant ostrich plumes; a splendid street palm and a quick grower when established. Hardy in South Florida

12 in. 30c ea.; \$2.60 per 10.

12-18 in. 50c ea.; \$4.00 per 10.

18-23 in. 75c ea.; \$6.00 per 10.

24-30 in. \$1.00 ea.; \$8.50 per 10.

30-36 in. \$2.00 ea.; \$18.00 per 10.

Prices by the 100 on application.

**C. weddelliana.** A delicately beautiful little palm. Suitable for pots and fern dishes. Only 4-5 ft. high at maturity. Likes shade.

25c each.

**CORDYLINE indivisa, DRAGON TREE.**

A very hardy, liliaceous tree, resembling the

*Sabal palmetto* slightly, reaching 20 ft. Leaves densely crowded at the top, several feet long, linear; white, fragrant flowers. Fine for urns and tubs, also good outdoors.

Strong plants, 20c ea.; \$1.75 per 10.

Larger, 40c ea.; \$3.50 per 10.

**C. terminalis var. rosea.** Leaves broad, green, margined pink, white or carmine. Beautiful plant for tub or vase. Rare.

A few fine plants, 25c, 50c, \$1 and \$1.50 each.

**C. terminalis var. scotti, DRACAENA PALM.** Leaves broad arching, deep-green, crimson-edged. From pots,

25c, 50c, \$1.00 and \$1.50 each.

**CYCAS revoluta, SAGO PALM.** A Cycad not a palm. Leaves delicate, pinnate and a very dark green. A survivor of a very ancient period. Hardy outdoors in Florida.

Fine plants, 20c ea.; \$1.75 per 10.

40c ea.; \$3.50 per 10.

Open ground, large, \$1.00, \$2.00, and \$3.00 ea.

**DICTYOSPERMA rubra, RED ARECA.** A fine decorative palm for the house. Hardy out-doors in South Florida. Resembles the Areca except that the young leaves are red.

Strong 2 yr. plants, 50c ea.; \$4.50 per 10.

Large 3 yr. plants \$1.00 ea.; \$9.00 per 10.

**DRACAENA fragrans, DRAGON TREE.**

A very decorative woody plant from Guinea. Leaves broad and green. Belongs to the lily family; but the genus contains the oldest plant in the world.

Strong plants in tubs,

50c, 75c, \$1.00 and \$1.50 each.

**D. fragrans var. massangeana.** Like the above except for a broad yellow stripe in the center of the leaf through the whole length.

Fine plants 50c, 75c, \$1.00 and \$1.50 each.

**ELAEIS guineensis, OIL PALM.** Trunk stout, coarsely ringed. 20-30 feet high; leaves 10-15 ft. long. From an early age it is one of the finest pinnate palms. Easy to grow.

40c ea.; \$3.50 per 10.

80c ea.; \$7.00 per 10.

**ERYTHEA armata, BLUE PALM.** A tall, slender palm, with narrow leaf stems and broad, somewhat bluish leaves. Hardy and beautiful. Likes plenty of water.

Fine 1 yr. plants, 20c ea.; \$1.75 per 10.

2 yr. plants, 40c ea.; \$3.50 per 10.

**E. brandegeei.** A very tall, slender, armed palm. Leaves bright and shining green. Grows very fast and is perfectly hardy in Florida.

20c ea.; \$1.75 per 10.

2 yr. 40c ea.; \$3.50 per 10.

**E. edulis, GUADALUPE PALM.** Stem 40 to 50 ft. high, and a foot and a half thick, with corky bark. Leaves sometimes 3 ft. wide, fibrous at margin. One of the hardest of palms. Grows very fast.

1 yr. plants, 20c ea.; \$1.75 per 10.

2 yr. plants, 40c ea.; \$3.50 per 10.

**HOWEA belmoreana, CURLY PALM.** One of the most popular palms, for the house. Carries a large number of leaves and is very graceful. Fine plants 40c each.

**HYDRIASTELE wendlandii.** A tall palm with long, pinnate leaves. One of the best plants for florists, as it thrives on little water and stands neglect better than most palms. Comes from Queensland. Specimens \$1.50 & \$2.00 each.



**HYOPHORBE amaricaulis.** A tall palm with a bottle-shaped swelling near the base. A good red-stemmed palm for florists. Rare. Keep dry.

Fine specimens, 1 yr. 25c ea.; \$2.00 per 10.

**H. verschaftelii.** Trunk about 25 ft. high, bulging about half-way up, yellow leaf stems. Strong plants 20c ea.; \$1.75 per 10.

2 yr. 40c ea.; \$3.50 per 10.

Large plants, \$2.00 each.

**LATANIA borbonica. CHINESE FAN PALM.** Hardy, grows slowly, the leaves are broad, fan-shaped. A good street tree in South Florida. Also splendid tub plant.

Strong 1 yr. plants, 15c ea.; \$1.25 per 10.

20c ea.; \$1.75 per 10.

About 2 ft. in tubs, stocky, \$2.50 ea.

3 ft. do. \$3.50 ea.

**MARTINEZIA caryotaefolia.** A caryota-like palm with spiny trunk and leaves, 3-6 ft. long. A very desirable tub palm as it stands inside conditions better than most.

Fine 1 yr. plants, 20c ea.; \$1.75 per 10.

2 yr. plants, 40c ea.; \$3.50 per 10.



Royal Palms.

**OREODOXA regia. ROYAL PALM.** One of the most attractive and largest pinnate palms. Occurs wild in the Everglades. The

thick, glossy, plummy leaves and enormous smooth, grayish trunk with immense swollen base, make it an everlasting delight to the eye. Tender when young. Large specimens stand some frost. Must have rich, moist soil to reach full height. Beautiful plants, commencing character, from pots,

About 1 ft. 19c ea.; \$5 per 10.

About 2 ft. 20c ea.; \$1.75 per 10.

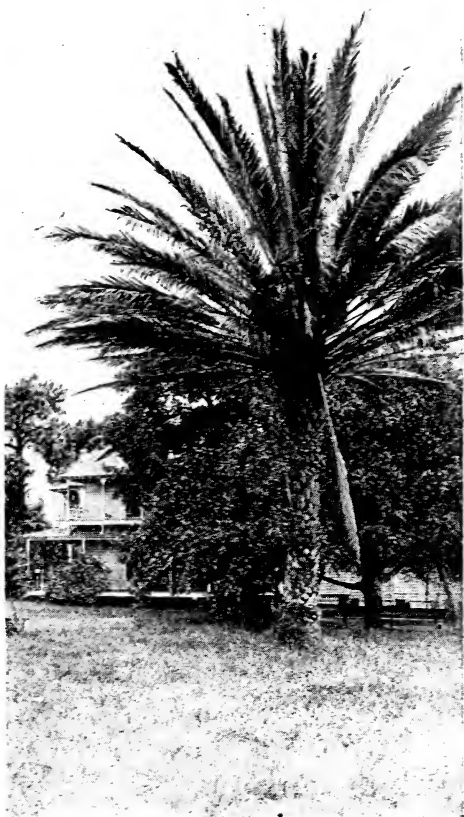
About 3 ft. 50c ea.; \$4.00 per 10.

**PACOURIA nunnezharia. SALAD PALM.** A tender palm from Guatemala, cultivated for the young male inflorescences, called Pacayas, which resemble green corn in the husk. 4 to 6 Pacayas are produced each year. They make an excellent raw salad. Try in a sunny, sheltered place. New.

Fine young plants, \$1.00 each.

#### DATE PALMS

The Phoenix is a hardy, pinnate-leaved palm, the petioles armed with stiff spines.



Date Palm.

They are nearly all perfectly hardy in Florida, some kinds do well in the lower Gulf States. The trunk is clothed with the leaf bases giving them a rich, distinctive, tropical appearance. They are the most generally planted palms in sub-tropical countries.

**PHOENIX canariensis. CANARY ISLAND DATE.** One of the finest and hardiest for outdoors. Leaves long, stiff, and heavy. A

very desirable street tree. Trunk several feet thick.

1 yr. 15c ea.; \$1.25 per 10.  
 2 yr. 25c ea.; \$2.00 per 10.  
 3 yr. 50c ea.; \$4.50 per 10.

Large open ground, \$1.00 ea.; \$8.50 per 10.  
 Fine stocky plants in 8 in. pots, \$1.00 each.  
 Open ground, very heavy, \$2.50 each.  
 Large, in tubs \$5.00 each.

**P. dactylifera. COMMERCIAL DATE PALM.** A tall palm with a stout trunk, and stiff, gray-green fronds. Does not ripen fruit in Florida. 1 yr. 20c ea.; \$1.75 per 10.  
 Large plants, 3 ft. \$1.00 each.

mous, plumy clump. One of the most attractive for lawn specimens.

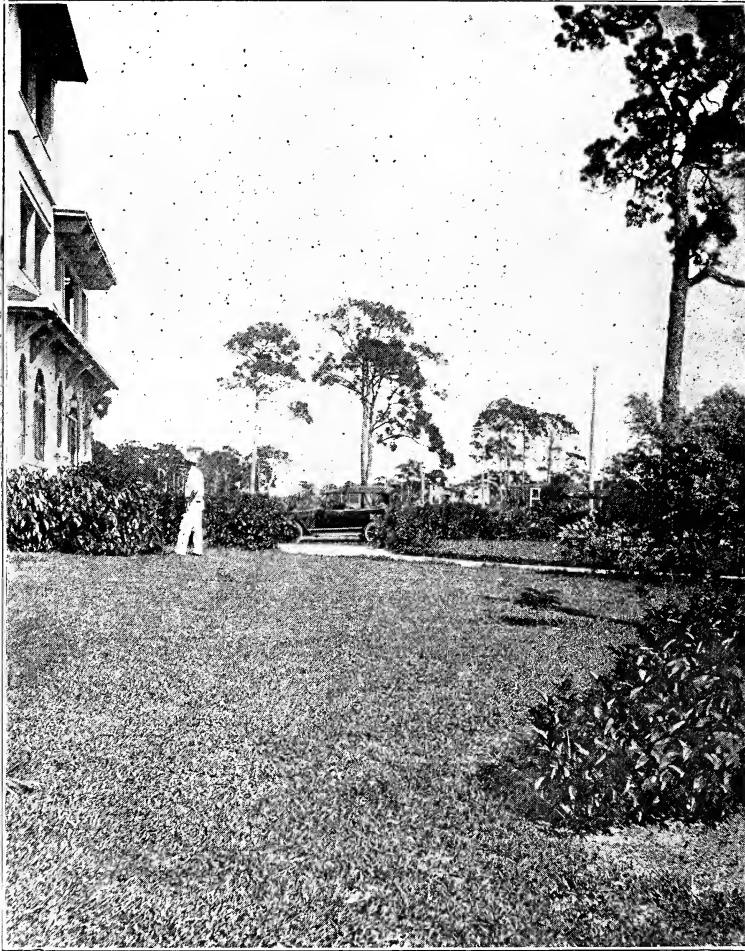
10c ea.; .85 per 10.  
 50c ea.; \$4.00 per 10.

Ornamental in tubs, \$1.00 ea.; \$7.50 per 10.  
 Open ground, \$2.50, \$3.50 and \$5.00 each.

**P. reclinata var. leonensis.** Habit like *reclinata*, stronger and larger stem, more spines. Does not sucker as freely.

Strong plants, 1 yr. 15c ea.; \$1.25 per 10.  
 Heavy plants in tubs, 2 1-2 ft. \$2.00 ea.; \$17.50 per 10.

**P. roebelenii.** A very dwarf palm with delicate, spiny leaves. Grows to three or



A Fine Planting, Showing Open Lawn.

**P. farinifera.** A rather dwarf sort, good outdoors and also a desirable tub plant. Foliage very spiny. \$1.50 & \$2.00 each.

**P. pumila.** Quick-growing slender, graceful. Leaves long and drooping. Hardy and good. Heavy plants in tubs, 2 ft. high, \$1.50, \$2.00, \$3.50 and \$5.00 each.

**P. reclinata.** A very hardy, vigorous and showy palm, low-growing, making numerous suckers from the base. Makes an enor-

four feet. Stocky and a lovely tub plant.

Fine 3 yr. plants \$1.00 each.  
 4 yr. plants \$1.50 each.

**P. rupicola.** Good for outdoors, suckers like *reclinata*. A good lawn palm and the spreading, reclining leaves make it a beauty in tubs. Fine plants 75c ea.; \$6.00 per 10.  
 Larger, \$1.00 ea.; \$8.50 per 10.

**P. rupicola X reclinata.** A rather dwarf delicate, dark-green-leaved form. Charac-



terizes very young and is hardy. An unusually good plant for pots or tubs.

**P. tenuis.** A good, hardy sort for outdoors. Resembles *P. dactylifera* but is slender and has more leaves.

1 yr. 20c ea.; \$1.75 per 10.

**P. zeylanica.** CEYLON DATE PALM. Reaches 20 ft., has a heavy trunk and the leaves a cold green.

Good plants, 1 yr. 20c ea.; \$1.75 per 10.

**PTYCHOSPERMA elegans.** SEAFORTHIA PALM. A most graceful, slender palm, the very best for the conservatory and for decorating. Hardy outdoors in South Florida. Leaves pinnate, dark-green, trunk smooth.

15c ea.; \$1.25 per 10

25c ea.; \$2.00 per 10

2 1-2 ft., 75c; 3 ft., \$1.00 each

Larger \$1.50, \$2.50 and \$3.00 each

Fine specimens in tubs, 5-6 ft. high, \$3.50 each.

**P. mcArthurii.** Finer than the preceding. Same uses. A few very good plants, heavy in pots. \$1.50 each

**PRITCHARDIA pacifica.** A fan palm from the South Sea Islands with giant leaves, 4-5 ft. across. Tender. A splendid decorative plant for the florist or the conservatory. Hardy in extreme South Florida.

Strong 1 yr. plants, 10c ea.; .85 per 10

Larger, 1 yr. plants, 20c ea.; \$1.75 per 10

2 yr. plants, 40c ea.; \$3.50 per 10

**RAPHIS flabelliformis.** GROUND RATTAN or BAMBOO PALM. A rare, dwarf palm from the Tropics, with very slender hairy stems and delicate fan leaves. It makes numerous suckers. It is much sought after on account of its rarity, dwarf habit and indoor hardiness. An ideal conservatory palm. 1 yr. 20c ea.; \$1.75 per 10.

Fine plants in tubs, 4-5 ft. \$10.00 ea.

5-7 ft. \$15.00 ea.

**ROSCHERIA melanochaetes.** An armed palm from Mauritius, 25 ft. high, very thorny when young; with air roots. Stem 4-8 in. through. It has spines at the leaf scar when young. Likes shade and rich soil. New. Fine plants. 75c each.

**SABAL blackburnianum.** A giant West Indian variety, 30 to 40 feet high, thickened at the middle. Leaf blades large, rigid, with threads. Hardy in Florida. An exceeding good type of the palmetto. Strong 1 yr. plants. 10c ea.; \$5c per 10.

**S. palmetto.** CABBAGE PALMETTO. A tall, very hardy native palm having broad, fan-shaped leaves; trunk is covered with the persistent leaf sheaths when young, becoming smooth with age. Will grow all over the lower South. Strong young plants.

1 yr. 10c ea.; \$5c per 10.

**THRINAX morrisii.** DWARF THATCH PALM. This lovely little palm is a native of Anguilla. It grows from 1 to 2 1-2 ft. high. The delicate leaves are glaucous. It is especially effective as a table plant. Rarely offered. 1 yr., 20c each.

**THRINAX parviflora.** THATCH PALM. A lovely palmate-leaved, dwarf palm. A delicate little pot plant. Stands indoor conditions well. Small plants, 10c ea.; \$5 per 10.

20c ea.; \$1.75 per 10.

2 ft., \$1.00 each

**TRACHYCARPUS excelsus.** CHUSAN PALM. A slender-growing, very hardy fan palm from Burmah. It is the hardiest palm known.

Strong 1 yr. plants 20c ea.; \$1.75 per 10.



A Hibiscus House Border.

**WASHINGTONIA robusta.** CALIFORNIA FAN PALM. A hardy, quick-growing fan palm, with enormous leaves and stout trunk. A great favorite in California for street and lawn. Open ground, stocky plants.

1 yr. 20c ea.; \$1.75 per 10.

2 yr. 40c ea.; \$3.50 per 10.

Heavy, open ground, 75c and \$1.00 each.

Large plants in tubs at \$1.00 per ft.

**OFFER** →

7 kinds of palms, 20c size, for \$1.00; our choice

## Bamboos and Grasses

**ARUNDINARIA falcata.** A light green bamboo from the Himalayas.

Clumps, 20c each.

**ARUNDO donax variegata.** GARDENER'S

**GARTER.** A tall plant, with fine, variegated leaves. White and green.

Clumps, 20c ea.; \$1.75 per 10.

**BAMBUSA argentea.** SILVER BAMBOO. Makes a great, plummy clump, 20 feet high

and 30 ft. in diameter, containing innumerable canes 1-2 in. through. One of the loveliest Bamboos known. Hardy.

Small clumps, 20c, 40c.  
Large clumps \$1.00, \$2.00 and \$3.00 each.

**B. argentea striata. SILVER-STRIPED BAMBOO.** Habit same as preceding, with beautifully striped green and silver leaves. Unexcelled for tropical effects.

Small clumps, 20c, 40c.  
Large clumps \$1.00, \$2.00 and \$3.00 each.

**B. nana var. Alphonse Karri.** A variegated form. Young stems striped white and pink, older stems yellow with broad green stripes. Grows in clumps, with hundreds of canes. 20c ea.; \$1.75 per 10.  
40c ea.; \$3.50 per 10.  
Clumps \$1.00, \$2.00 and \$3.00 ea.

**B. species.** A large and fine bamboo introduced from India. Grows 50 feet high with graceful recurved plumes and



A Mango Tree.

**B. arundinacea.** A majestic species growing 50 ft. high. Feathery foliage and numerous stems at first green and shining, then straight and golden in color. From India. Clumps 20c each.

**B. disticha. DWARF BAMBOO.** A beautiful dwarf sort with innumerable slender canes, green, tinged with light purple. The finest and most graceful small Bamboo in Florida. Small clumps 20c ea.: \$1.75 per 10.

Large, 40c ea.; \$3.50 per 10.  
Larger, 60c ea.; \$5.00 per 10.  
Large clumps, \$1.00, \$2.00, \$3.00, \$5.00 ea.

many canes. New and good. Will probably be hardy in South Florida.

Nice clumps 50c each.

**B. verticillata, STRIPED BAMBOO.** Leaves striped white, in whorls, stems orange-yellow. 10 to 20 feet high.

Strong plants 20c each.

**B. vulgaris, FEATHERY BAMBOO.** A giant kind reaching 80 ft. with stems four inches in diameter. Much arched. Hardy in Central and South Florida.

Strong clumps, 40c, 75c and \$1.00 each.



**CAREX morrowii.** A dwarf grass with stiff, slender pointed leaves, variegated with a white band near either margin. A very hardy plant. Good for borders and fern dishes. 15c ea.; \$1.25 per 10.

**CORTADERIA argentea.** **PAMPAS GRASS.** This fine grass makes a tall plume and is ornamental in border plantings. Well-known and much liked. Clumps 25c each.

**CYNODON dactylon.** **BERMUDA GRASS.** The well-known lawn grass of the South. It is hardy, thriving in the very driest and the very wettest soil. It makes a fine, soft lawn if given proper care and attention. Root cuttings, per. Bu. 30c.

**CYPERUS alternifolius.** **UMBRELLA GRASS.** A lovely sedge growing to about four feet in thick clumps, the tops tufted and spreading. Likes wet, rich soil; but does well nearly anywhere. Fine for the water garden. Clumps 20c ea.; \$1.75 per 10.

**C. papyrus.** **MOSES' BULRUSH.** **EGYPTIAN PAPER REED.** A sturdy plant with

yellowish stems, 1 in. thick, growing in water or wet, rich soil. It has a soft, spreading, terminal plume of delicate, hair-like texture. Strong clumps, 20c each.

**MISCANTHUS sinensis var. gracillimus.** **EULALIA.** A beautiful narrow-leaved grass, reaching 8 ft. Leaves green and spikelets white. 20c ea.; \$1.75 per 10.

**PANICUM palmifolium.** **PALM GRASS.** A broad-leaved, dark-green grass, resembling a young palm. Excellent with ferns in border or for masses in wet, rich soil.

Small clumps, 10c ea.; 35 per 10.

Larger, 20c ea.; \$1.75 per 10.

**STENOTAPHRUM americanum.** **ST. AUGUSTINE GRASS.** The best lawn grass for Florida. It has a creeping habit. Leaves broad and coarse. Propagated by root cuttings. About 800 cuttings to the bushel.

Per bu 30c

**OFFER** →

7 kinds of bamboo,  
20c size, for \$1.00;  
our choice.

## Ferns and Fern-Like Plants

**ADIANTUM hybridum.** **MAIDENHAIR FERN.** Leaflets wedge-shaped with rounded margins at the base. Wavy. Delicate, black, wiry stems. Splendid pot plant. 20c each.

**ALSOPIHILA australis.** **AUSTRALIAN TREE FERN.** Stems straw-colored, very hairy; giant leaves about four feet long and a foot wide. It makes a real trunk up to

six feet high. Magnificent tub plant. Thrives outdoors in protected places.

20c ea.; \$1.75 per 10.

Nice plants \$1.00 each.

**BLECHNUM serrulatum.** **SAW FERN.** A native fern reaching 3 ft.; does best in shady moist place. 15c ea.; \$1.25 per 10.

**CIBOTIUM barometz.** **LAMB OF TARTARY.** A trunkless tree-fern, scented bi-



A House Border of Hardy Ferns.

pinnate leaves of a soft, light-green. It reaches four feet and likes full sun, a rare thing among ferns. This peculiarity makes it a good plant for the house border.

Strong young plants, 20c ea.; \$1.75 per 10.

Larger, 40c ea.; \$3.50 per 10.

Extra large, 80c each.

**GYMNOGRAMA tartarica, SILVER FERN.** A slender, delicate fern, with long leaves, green above and covered with a lovely silver farina beneath, which comes off when touched. Requires very little water; the fronds should be kept dry. Tender.

1 yr. plants, 20c ea.; \$1.75 per 10.

**LYGODIUM scandens, JAPANESE CLIMBING FERN.** A real fern and a real vine. A very nice subject for the house or a protected place outdoors.

Strong plants 20c ea.; \$1.75 per 10.

**NEPHROLEPIS amerpohlii, LACE FERN.** Some of the pinnae are divided into miniature fronds. It is impossible to conceive the grace and delicate beauty of this fern without seeing it. 20c ea.; \$1.75 per 10.

**N. bostoniensis, BOSTON FERN, SWORD FERN.** The old favorite. Makes a good tub plant on account of the long arched and drooping fronds.

Small plants, 15c ea.; \$1.25 per 10.

Large plants, 40c ea.; \$3.50 per 10.

**N. cordata compacta.** A stocky and dwarf form, with dark-green fronds. Hardy to sun and cold and increases by runners. One of the very best border plants.

20c ea.; \$1.75 per 10.

**N. davallioides furcans, STAGHORN BOSTON FERN.** A fine sort with divided ends of fronds, like a fishtail or stag's horn. Dark-green, numerous leaves, growing to 3 or 4 ft. An extremely good tub plant for indoors. Strong plants, 20c ea.; \$1.75 per 10.

40c ea.; \$3.50 per 10.

Large, \$1.00 and \$1.50 each.

Very large in tubs, \$2.50 each.

**N. exaltata, SWORD FERN.** A good native fern, perfectly hardy. It has long, graceful, pinnate fronds and increases rapidly in rich, moist, shaded soil. Recommended for the hardy border.

Open ground, 10c ea.; 85c per 10.

From pots, 20c ea.; \$1.75 per 10.

**N. exaltata var. Rooseveltii, ROOSEVELT FERN.** A charming new form of Boston. It has many more fronds and is bushier, with a distinctive wavy effect.

15c ea.; \$1.25 per 10.

Large, 40c ea.; \$3.50 per 10.

**N. piersonii, GOLD MEDAL FERN.** Tall-growing with habit of bostoniensis. Splendid pot plant. 20c each.

**N. TEDDY JR.** A wavy-leaved, dwarf derived from *N. rooseveltii*.

Strong plants, 20c each.

**N. scottii, NEWPORT FERN, SCOTT'S COMPACT BOSTON FERN.** A very good compact type, rather dwarf; the fronds numerous, 2 to 3 ft. long. Splendid for indoors.

Strong plants, 20c ea.; \$1.75 per 10.

Larger, 40c ea.; \$3.50 per 10.

Big plants, \$1.00 ea.; \$8.00 per 10.

Very large in tubs, \$2.50 each.

**N. scholzelii, PLUMED SCOTT FERN.** A new, slightly dwarf kind with delicate, thick, light-green fronds. A real plummy beauty. 20c ea.; \$1.75 per 10.

Large, 40c ea.; \$3.50 per 10.

**N. splendida, "BIG FOUR."** A grand, new form combining the good qualities of four fine sorts. It has the grace of a Boston, the wavy effect of the Roosevelt, the fluffy effect of the Ostrich Plume and the uniqueness of the Fishtail. Some fronds will be straight Boston, others will be true Roosevelt, in some the ends of the pinnae will be true Ostrich Plume and in others Fishtail. Strong young plants 30c ea.; \$2.50 per 10.

**N. superbissima, FLUFFY RUFFLES.** The foliage is darker than any other; rigid and stands more mistreatment as a consequence. A beauty. 20c each.

**N. whitmanii, OSTRICH PLUME FERN.** A wonderfully divided kind. Very decorative. 20c each.

**POLYSTICHUM falcatum, HOLLY FERN.** A dark-green plant; fronds quite wide. Reaches a height of one foot. Splendid for pot or for fern dish. 10c and 20c each.

**P. lobatum, (Aspidium tsussimense).** A dwarf fern for fern dishes and small pots. Grows about 10 inches high.

Fine plants, 10c ea.; 85c per 10.

**PTERIS cretica albo-lineata.** A low, coarse-fronded, plant. Has peculiar white stripes or lines. 15c ea.; \$1.25 per 10.

**PTERIS tripartita.** A giant Hawaiian fern with fronds four feet long. Reaches 6 to 7 feet high. A quick grower in rich, moist, half-shaded places. Tender.

20c ea.; \$1.75 per 10.

Specimen plants, 40c each.

**PTERIS, assorted.** Fine assortment of small dish ferns in several varieties. Splendid little plants for filling fern dishes.

10c ea.; 85c per 10.

Wire baskets with different ferns, \$1.25 and \$1.50 each.

**OFFER**

5 kinds of ferns 50c;  
10 kinds of ferns at  
20c, \$1. Our choice.

## Tropical Fruits

**ABERIA caffra, KEI APPLE.** A spiny shrub grown for hedges; fruit acid, used in pickles and conserve. Strong plants,

35c each.

**ACHRAS sapota, SAPODILLA.** A bushy tree with thick, glossy, evergreen leaves. Fruit the size and color of a small russet apple, very sweet. Much prized in the tropics. Does well near the coast in South Florida. The chewing gum of commerce is made from the juice. 20c ea.; \$1.75 per 10.

**ANACARDIUM occidentale, CASHEW.** A large, spreading tree with rosy-tinted, fragrant flowers. The nut is kidney-shaped and edible. From the gum a varnish is made to protect woodwork.

20c ea.; \$1.75 per 10.

**ANANAS sativus, PINEAPPLE.** Smooth Cayenne has proven the best Pine on the market. We offer large plants at

15c ea.; \$1.25 per 10; \$8.00 per 100.



**ANNONA cherimola, CHERIMOYA.** A tree 15 to 25 ft. high, with velvety, evergreen leaves; the flowers are fragrant; the fruit heart-shaped, with a fine, white, sub-acid pulp. Comes from the Andes Mountains. 20c ea.; \$1.75 per 10.

**A. muricata, SOUR SOP.** An evergreen tree about the size of a peach tree; leaves leathery and glossy; the fruit is rough, heart-shaped and dark-green, sub-acid, of a delicious mango flavor. 20c ea.; \$1.75 per 10.  
30c ea.; \$2.50 per 10.

**A. purpurea, NEGRO-HEAD.** A tree 25 ft. high with large rounded leaves; fruit large, egg-shaped, 6 inches in diameter, pulp with mango flavor. Strong plants, 20c each.

**A. reticulata, BULLOCK'S HEART, CUSTARD APPLE.** A large rough sub-acid fruit. Strong plants 20c ea.; \$1.75 per 10.

**A. squamosa, SWEET SOP, SUGAR APPLE.** A small, deciduous tree, with a sweet, custard-like fruit, the size of an orange, heart-shaped and greenish-yellow. The pulp makes a delicious sherbet with the addition of lemon juice. 20c ea.; \$1.75 per 10.

**BROMELIA species, GRAVATA.** A pineapple-like plant from Brazil. Fruit a transparent, pale straw-color, 3 in. long, angular; the flesh crisp, juicy and acid. Spiny. Remove skin before eating. Plant in a protected, sunny place. 20c ea.; \$1.75 per 10.

**CARICA papaya, PAWPAW.** A quick-growing, small tree with a terminal crown of large, irregularly-cut leaves, bearing fruits like a luscious muskmelon, up to 12 ins. long. The Papain of commerce is made from the juice. It has commercial possibilities along the coast in South Florida. Likes a limy soil. 20c ea.; \$1.75 per 10.

**C. papaya.** A monoecious species from the Philippines. Fruit excellent and only one plant needed to get a crop. Pot grown plants, 20c ea.; \$1.75 per 10.

**CARISSA bispinosa, AMATUNGULU.** An Apocynaceae shrub from South Africa, with thick, evergreen leaves, branches slightly thorny. Much used for hedges. The flowers are large, white and fragrant, produced almost continually. The fruit is dark-red, acid, the size of a plum and makes a splendid jelly. This plant is a fine ornamental. Nice plants 20c ea.; \$1.75 per 10.  
\$15.00 per 100.

**C. grandiflora, NATAL PLUM.** A spiny shrub, leaves thick, dark green and white fragrant flowers; fruit red, resembling cranberry, ripens all the time. Finest hedge plant in S. Africa. 20c ea.; \$1.75 per 10.

**CERATONIA siliqua, ST. JOHN'S BREAD, CAROB.** A leguminous tree attaining a height of 40 feet, bearing pods filled with a sweetish pulp rich in nutriment. A staple article of food on the Mediterranean coast; also fed to stock. A U. S. report says one acre in Carobs will produce five times as much food value as an acre in any grain. Recommended for Florida. Strong 2 yr. plants, 20c each.

**EUGENIA uniflora, SURINAM CHERRY.** Attains a height of 15 feet; small, very glossy leaves. The fruit is ribbed and resembles a small tomato, edible raw and makes a clear jelly. It will fruit in pots.

Evergreen. A very useful and ornamental plant.

10c ea.; .85 per 10.

15c ea.; \$1.25 per 10.

20c ea.; \$1.75 per 10.

Large, 40c ea.; \$3.50 per 10.

**E. jambos, ROSE APPLE.** A beautiful evergreen tree bearing rose-scented, edible fruits. Strong plants, 20c ea.; \$1.75 per 10.  
40c ea.; \$3.50 per 10.

**JATROPHA curcas, BARBADOS NUT.** A large shrub or tree, with leaves somewhat like the Castor Oil plant. It bears large quantities of nuts which taste like chestnuts; but if eaten in large quantities act as a cathartic. Sometimes called the French Physic Nut.

Strong plants, 20c ea.; \$1.75 per 10.

**LUCUMA mammosa, MAMMEE SAPOTA.** Grows wild in South America. A tree about 30 ft. high, with long, large, rough leaves. The cream-colored flowers spring out of the bark. The fruit is 6 in. long, with one large seed. The pulp sweet and soft, yellow-red. Marmalade is made from it, hence the name, Marmalade Plum. 50c each.

**LUCUMA nervosa, TI-ES, EGG FRUIT.** A small tree to 25 ft. with spreading branches; fruit egg-shaped, yellow, with flavor like aromatic candied egg. Everyone should have a tree. Strong plants, 20c ea.; \$1.75 per 10.

**MACADAMIA ternifolia, QUEENSLAND NUT.** A tall tree from Australia with large oblong leaves. Bears an edible nut with flavor of an almond, in about seven years after planting. A few plants only. 50c each.

**MALPIGHIA glabra, BARBADOS CHER- RY.** A six-foot shrub, with rosy-red flowers, fruit size of a cherry, acid, scarlet, widely planted in the West Indies. Used for jam and preserves. 20c ea.; \$1.75 per 10.

**MAMMEA americana, MAMMEE AP- PLE.** A tropical tree with large oblong leaves. The flowers are white and fragrant, in Spring. Fruit about the size of a grapefruit with a peculiar, sweetish flavor and one large seed. Kin to the delicious Mangosteen. Strong plants 40c ea.; \$3.50 per 10.

#### MANGOS

The Mango is a large, quick-growing, spreading, symmetrical, evergreen tree, an exceedingly good shade tree and bearing large fruits of delicious, distinctive flavor, a faint turpentine taste. It is easy to acquire a liking for this fine fruit. It is especially useful in kidney troubles. Excellent table fruit. We offer the following varieties:

**MANGIFERA indica, CAMBODIANA.** A splendid East Indian sort, slender fruit, almost without fiber and of a delicate, peach-like flavor. Grafted, \$1.20 each.

**M. indica, MULGOBA.** A long-cultivated kind with large fruits with pleasant, sub-acid flavor. One of the best.

Fine seedlings, 50c ea.; \$4.50 per 10.

Grafted plants, \$1.20 each.

**M. indica, RED NO. 11.** A very prolific, hardy kind, with a moderate amount of fiber. Planted throughout South Florida.

Seedling plants in pots, 20c ea.; \$1.75 per 10; large plants in tubs, 50c and \$1.00 each.

**MANGO SEEDLINGS.** The very finest of the East Indian, fiberless sorts.

**BENNETT'S ALPHONSE,** fine strong plants, 50c ea.; \$4.50 per 10.

CAMBODIANA, flavor and texture like a peach. 50c ea.; \$4.50 per 10.

APPLE. A good hardy variety. 20c ea.; \$1.75 per 10.

MELIOCOCCUS bijugatus, GINEP, or SPANISH LIME. A small, evergreen tree with winged leaves. The fruit is sub-acid, and resembles plums in appearance. Hardy in South Florida. As it is dioecious several plants should be set close together for fertilization. Strong plants 20c ea.; \$1.75 per 10. 40c ea.; \$3.50 per 10.

MORINGA oleifera, HORSERADISH TREE. A small tree named for the pungent taste of the roots. The young fruits are also edible. 20c ea.; \$1.75 per 10.

PERESKIA aculeata, BARBADOS GOOSE-BERRY. A thorny-fruited vine. Fruit yellow, sub-acid, edible. A cactus that makes true leaves. Hardy and used as stock for tender cacti. Strong plants 20c ea.; \$1.75 per 10.

#### AVOCADO PEAR—ALLIGATOR PEAR.

The Avocado is a tall, evergreen tree bearing large fruits pear-shaped, green or purple, with one large seed. The pulp is marrow-like and relished by everyone as a salad fruit. An increasingly popular fruit.

PERSEA americana, POLLOCK. The fruit is very large, green-skinned and ripens from August to October. Budded plants, \$1.60 each.

P. americana, POLLOCK SEEDLINGS, 40c ea.; \$3.50 per 10.

P. americana, TRAPP. Fruit green, almost round, ripens late, from November to January. One of the most popular sorts. Budded plants, \$1.60 ea.; \$3.50 per 10.

P. americana, TRAPP SEEDLINGS, 40c ea.; \$3.50 per 10.

MEXICAN VARIETIES. These have proven hardiest, standing to ten degrees above without damage. For this reason they are extremely valuable. We offer Taylor & Taft, the best kinds, at \$3.00 each.

PHYLLANTHUS distichus, OTAHEITE GOOSEBERRY. A shrub; fruit fleshy, edible and very acid, made into preserve. Three ft., in pots, 40c ea.; \$3.50 per 10.

PSIDIUM cattleianum, CATTLEY GUAVA. A handsome, evergreen shrub with glossy, thick leaves and small reddish sub-acid fruits which make a fine jelly and

are also eaten with sugar and cream. A fine hardy plant for hedges.

10c ea.; 85c per 10; \$8.00 per 100.  
20c ea.; \$1.75 per 10; \$12.00 per 100.  
Large plants, 40c ea.; \$3.50 per 10.

P. cattleianum var. lucidum, YELLOW CATTLEY GUAVA, CHINESE GUAVA. Much like the preceding with small, very sweet, yellow fruits which make jelly. It often fruits in winter. Like the Red Cattley it makes fine hedges, either formal or wild. 10c ea.; 85c per 10; \$8.00 per 100.  
15c ea.; \$1.25 per 10; \$10.00 per 100.  
20c ea.; \$1.75 per 10.  
40c ea.; \$3.50 per 10.

PSIDIUM guaiava, LEMON GUAVA. A shrub with round, yellow fruit, somewhat astringent. Makes the best jelly. Fine plants. 10c ea.; .85 per 10; \$8.00 per 100.  
20c ea.; \$1.75 per 10; \$15.00 per 100.


PSIDIUM perico. A new kind with enormous, peach-like fruits. The flesh very thick, slightly acid. Fine for canning and jelly. We consider this the best of all guavas. Strong 1-yr. plants, 20c ea.; \$1.75 per 10.

P. pyriferum, COMMON GUAVA. A shrub with small, pear-shaped fruits with a yellow, sweet pulp. Fine for eating raw or for jelly with the addition of the acid kinds. 10c ea.; .85 per 10; \$8.00 per 100.  
20c ea.; \$1.75 per 10.

SPONDIAS cytherea, OTAHEITE APPLE. A large, tender, tropical tree bearing plum-like fruits, 3-in. long, of a peculiar flavor. 20c ea.; \$1.75 per 10.

TAMARINDUS indica, TAMARIND TREE. A spreading, evergreen tree, tall and beautiful with thick masses of small, pinnate leaves and pale yellow flowers, veined red. The fruit is a pod with a sub-acid pulp, used for making a pleasant acid drink. Recommended for a shade or street tree near the seashore in South Florida. One of the grandest shade trees in the tropics. Grows rapidly. Strong, 1-yr. plants, 20c ea.; \$1.75 per 10.

TERMINALIA catappa, TROPICAL ALMOND. A tall, deciduous tree, bearing large, obovate leaves and almond-shaped fruits 1-2 inches long, with a hard shell, containing an almond-like meat. Eaten raw or roasted. Plant in a sheltered, sunny place. Very strong, large plants, 20c ea.; \$1.75 per 10.  
40c ea.; \$3.50 per 10.

|   |  |
|---|--|
|  | 5 kinds of tropical fruits for 75c; 10 kinds for \$1.50; our choice. |
|---|--|

## Hardy and Half-Hardy Fruits

### FIGS

FICUS carica. No fruit is more valuable in the Southern Fruit-garden than the fig. They may be planted 10 feet apart and will yield heavy crops. The canning of figs is rapidly spreading over the South. One acre well-adapted to this fruit will produce several tons, and there is never enough to supply the demand for the preserved fruit. The fresh fig also is finding its way into the markets and will ship several hundred miles in good condition. Mulch the ground after planting. 2-3 ft. 20c ea.; \$1.75 per 10.

We list the following fine varieties:

BRUNSWICK. Fruit very large, pear-shaped, with short, rather slender stalk, dark brown in color, thick pulp, soft and of satisfactory quality. A very good sort.

CELESTE. A small, pear-shaped, ribbed kind, violet-colored, flesh whitish, rose-color at center, firm, juicy and sweet. One of the hardiest varieties of fig.

GREEN ISCHIA. Fruit of medium size, long, pulp rosy-red, soft, melting, rich and



sweet. A strong grower and should be in every fig collection.

**MAGNOLIA.** Fruit of large size, light-colored, vigorous grower, prolific, excellent for canning. A great favorite in Texas.

**SMYRNA.** Fruit very large, flattened, light color; greenish yellow, smooth; stem very short; flesh amber-colored. A strong grower.

#### GRAPEFRUIT.

**CITRUS grandis. POMELO.** On sour orange, grapefruit or rough lemon stock.

2-3 ft. 45c ea.; \$ 4.00 per 10; \$ 35.00 per 100  
 3-4 ft. 55c ea.; 5.00 per 10; 45.00 per 100  
 4-5 ft. 70c ea.; 6.50 per 10; 60.00 per 100  
 5-7 ft. 90c ea.; 8.00 per 10; 75.00 per 100  
 2 yr. \$1.50 ea.; 14.50 per 10; 135.00 per 100

**HALL'S SILVER CLUSTER.** A light colored, sweet fruit. Season February to March.

**MARSH SEEDLESS.** Large, slightly flattened, skin smooth; heavy, juicy, and of excellent quality. Practically seedless. One of the very best for late keeping.

**PERNAMBUCO.** A large fruit with smooth, light-colored skin; of fine flavor and handsome appearance. It ripens late and hangs on the tree well. Tree is a good bearer. Comes from Brazil.

**WALTERS.** One of the standard varieties, very like Silver Cluster. Right size for shipping. Smooth rind, season medium late.

#### GRAPES.

**VITIS rotundifolia.** The Muscadine grape does best in Florida. It is well-adapted to the soil and climate. The fruits are fewer than in the bunch grapes; but the latter usually do not thrive. The Muscadine is a healthy, vigorous, quick-growing variety and reaches great age. Plant them about 15 feet apart and run on a trellis, or fence. The usual practice is to omit pruning; but this is very necessary. To get sure crops a male vine should be planted as the fertilization from the native wild Muscadines is by no means certain, either because of none being close enough or through the different time of flowering. One male plant will fertilize several female plants.

We offer a fine assortment of the best improved kinds.

1 yr. 15c ea.; \$1.20 per 10.  
 2 yr. 20c ea.; \$1.75 per 10.

**FLOWERS.** Bunches of fifteen to twenty large purplish berries; sweet, vinous and of good quality. Most largely planted of the Muscadines. August and September.

**JAMES.** Very good. The largest of the Muscadines, berries often measuring 3-4 in. to 1 1/4 ins. across; black, juicy and a good bearer. A prize winner. Ripens from August to late in the fall.

**SCUPPERNONG.** Bunches composed of 3 to 10 very large berries, bronze-colored, when fully ripe; flesh pulpy, sweet, with peculiar, agreeable musky flavor. August and September.

**THOMAS.** One of the best of this class. Color reddish purple; pulp sweet, tender. August and September.

**MALE GRAPE** 40c each.

#### JAPAN PERSIMMON.

#### DIOSPYROS *kaki*.

2-3 ft. 90c \$1.50 per 10  
 3-4 ft. 95c \$2.00 per 10  
 4-5 ft. 90c \$2.50 per 10

Since its introduction this fine fruit has rapidly grown in favor. They are grown on the native persimmon stock, and can be raised in as wide a range as the native plant. They are vigorous, prolific and respond generously to care and cultivation. By selection fruit may be had from August to December or later. For marketing the fruit should be gathered when fully grown before the softening process sets in if intended for long-distance shipment. Pack for shipment in small crates.

We offer the following carefully selected kinds:

**HACHIYA.** Very large, oblong fruit, diam. 3 3/4 in. Skin a dark red; flesh deep yellow. Very fine when ripe. The largest and handsomest of all. Tree vigorous and shapely.

**HYAKUME.** Large roundish fruits; skin light buff-yellow, marked with rings and veins, flesh dark-brown, sweet and crisp, not astringent; good while still hard.

**TANE-NASHI.** Large to very large; skin light yellow, changing to bright red at maturity; flesh yellow and seedless; quality very fine; perhaps the most highly esteemed of the light-fleshed kinds. Tree vigorous and bears well. One of the most desirable market varieties.

#### KUMQUAT.

1 1/2 to 2 ft. 50c; \$4.50 per 10.  
 2-3 ft. 75c \$6.00 per 10  
 3-4 ft. \$1.00 \$8.00 per 10.

**CITRUS japonica.** The Kumquat is the smallest of the citrus fruits in cultivation in this country. They are called bushes; as they do not make trees. The bright green leaves and deep, golden-yellow fruits make a very pleasing combination of colors. Flowers are small, sweet-scented and appear in June. Fruit ripens in fall and winter. As an ornamental it is not surpassed by many.

**OBLONG.** The fruit is 1 1/2 to 2 in. in diameter and of a rich, golden-yellow. Rind sweet, pulp and juice of a delicate citrus flavor. Symmetrical shrub; very compact.

**ROUND.** Fruit round, about 1 in. in diameter; bright golden-yellow, with pleasant flavor and pulp and juice fine. Very symmetrical shape when quite young and retains shape.

#### LEMONS.

**CITRUS limonia.** The lemon is the most valuable of the acid citrus fruits and is used in more ways than any. The high prices brought have stimulated the planting of this splendid fruit in Florida. Not quite as hardy as the orange and grapefruit, it will stand in any good citrus soil in South Florida and will bear large crops. Has an interesting future commercially in Florida, and every one should have one or two lemon trees for home use.

We offer the following on sour orange and rough lemon stocks:

2-3 ft. 45c; \$4.00 per 10.  
 3-4 ft. 55c; \$5.00 per 10.  
 4-5 ft. 75c; \$8.50 per 10.  
 3-7 ft. \$5.00 \$7.50 per 10.  
 2 yr. \$1.25 ea.

**KENEDY.** This is a Lemon of good size and considered quite, or almost seedless; beautiful, smooth, with very thin rind and solid flesh.

**PONDEROSA.** An exceptionally large lemon, fruits weighing from 1-2 to 2-2 lbs.; very juicy, excellent quality, genuine lemon flavor. Rind thin for such a large fruit. Bears when quite young. Similar to other lemons in shape of tree and about as hardy. It is splendid for a home fruit or for the conservatory where it fruits when quite small.

**VILLA FRANCA.** Medium size; rind smooth, thin and sweet; juicy, acid, very strong and of fine quality; tree has but few thorns and is a vigorous grower, very prolific. Fruit is a good shipper. One of the very best; has taken first place in many competitive exhibits.

### LIMES.

**CITRUS aurantiifolia.** Limes can be put to all the uses for which the lemon is adapted. The flavor is different; but is highly liked by all. In the tropics they are more generally used than lemons. They grow vigorously and bloom and bear continuously all the year when the climate suits them. The keys and coast regions offer the best situation for the growth of this fine fruit.

On Sour Orange and Rough Lemon stocks:

Prices: 2-3 ft. 45c; \$4.00 per 10.  
3-4 ft. 55c; \$5.00 per 10.  
4-5 ft. 75c; \$6.50 per 10.  
5-7 ft. 85c; \$7.50 per 10.

**PERSIAN.** Large size, about the same as an ordinary lemon; smooth, very juicy, with strong, clear acid. Tree grows large and is a good bearer.

**TAHITI.** A large, lemon-shaped Lime, with smooth, thin rind, abundant juice and strong acid. Round-topped tree, 12 to 15 ft.

**MEXICAN.** A compact grower, without thorns; fruit small, like the Thornless Lime, of excellent quality.

### LOQUATS.

**ERIOBOTRYA japonica.**

10c ea.; 85c per 10.  
2-3 ft. 40c; \$3.50 per 10.  
3-4 ft. 45c; \$4.00 per 10.

The Loquat is a very handsome, large-leaved, evergreen tree suitable for the Gulf States and more tropical locations. The leaves are large, rough and a rich, dark-green; fruit the size of a wild-goose plum, bright yellow, sub-acid; has an agreeable flavor and is prized for cooking and for jelly. The white blossoms are borne in spikes during the winter.

### MULBERRY.

**MORUS alba.** While Mulberries are of little value for commercial purposes they are nevertheless fine food for poultry and swine and for tolling birds away from other things there is nothing as good. We offer a few of the best and newest kinds:

2-3 ft. 15c; \$1.20 per 10.  
3-4 ft. 20c; \$1.50 per 10.  
4-5 ft. 25c; \$2.00 per 10.

**HICKS.** Fruit sweet; grows rapidly and bears young; productive; should be grown by every farmer. Bears for four months.

**STUBBS.** Large, black; acid; excellent; very prolific. Fruit from 1-2 to 2 inches long, greatly superior to any of the other varieties. Tree vigorous and handsome.

**WHITE.** A white-fruited form, vigorous and prolific. Should be generally planted.

### ORANGES.

**CITRUS sinensis.** The orange is too well-known to need any argument for planting where the soil and climate permit. There are numerous varieties all of which have merit; but we have selected those that appear to have the call either on account of early or late fruiting, flavor, shipping ability, etc.

Budded on Grapefruit, Sour Orange and Rough Lemon.

Prices:

1-2 ft. .35; \$ 3.00 per 10; \$ 27.00 per 100.  
2-3 ft. .45; \$ 4.00 per 10; \$ 35.00 per 100.  
3-4 ft. .55; \$ 5.00 per 10; \$ 45.00 per 100.  
4-5 ft. .65; \$ 6.00 per 10; \$ 55.00 per 100.  
5-7 ft. .75; \$ 7.00 per 10; \$ 65.00 per 100.  
2 yr. .90; \$ 8.50 per 10; \$ 80.00 per 100.  
3 yr. \$1.15; \$11.00 per 10; \$100.00 per 100.

**HART.** Of medium size; round or oval, smooth, flesh firm; few seeds. Strong tree; vigorous grower, few thorns. Ripens in April; hangs on the tree until midsummer.

**KING.** Very large flattened fruits with loose rind and segments; color orange-red; fine aromatic flavor recommends it to every one; one of the most popular oranges for home use.

**PINEAPPLE.** A fine variety which has attained much prominence. Fruit medium-large, prolific. One of the best round oranges.

**TANGERINE, Dancy.** One of the well-known "kid-glove" oranges. Belongs to the Mandarin group. Flat, small size; skin separates freely from the flesh; juicy, aromatic, deep red. December, January and February.

**VALENCIA LATE.** A very late and prolific variety of good quality. Season May and June; but fruit sometimes hangs on until August or September. Fruit nice size, round, juicy and tender.

**LUE GIM GONG.** A new variety with fruit that hangs on all the year. Introduced by the Glen St. Mary Nurseries. Extremely valuable.

Prices: 2-3 ft. .70; \$ 6.50 per 10.  
3-4 ft. .90; \$ 8.00 per 10.  
4-5 ft. \$1.10; \$10.00 per 10.

### PEACHES.

**AMYGDALUS persica.** The choicest peaches now grown in Florida are the Chinese peaches and hybrids of it. They are best adapted to the semi-tropical conditions obtaining in South Florida and where the varieties that thrive in the North are worthless.

We offer the cream of the best varieties for Florida planting.

Prices: 2-3 ft. .15; \$1.20 per 10.  
3-4 ft. .18; \$1.50 per 10.  
4-6 ft. .25; \$2.00 per 10.

**ANGEL.** A large, rounded fruit, yellow washed with red, sweet, juicy; flesh white.

**BIDWELL'S EARLY.** A seedling of the Peen-to. Roundish, skin creamy white washed with carmine, sweet; cling.

**BIDWELL'S LATE.** Best of the Bidwell

varieties. Nearly round, large, yellowish-white; flesh fine-grained, sweet, juicy; cling.

**FLORIDA GEM.** A Honey seedling of large size, roundish-oblong. Flesh sweet, juicy, red at the stone; free. Valuable market variety.

**HALL'S YELLOW.** Large size, nearly round; yellow washed with red; flesh yellow, red at stone from which it parts freely. June.

**JEWEL.** Medium to large, rounded; red on sunny side; flesh yellow, red at the pit, sweet, freestone. The most valuable market sort for South Florida.

#### PEARS.

**PYRUS communis.** Pears sell well and the kinds that are blight-resistant are listed here.

Prices: 2-3 ft. .20; \$1.50 per 10.  
3-4 ft. .25; \$2.00 per 10.  
4-6 ft. .30; \$2.50 per 10.

**GARBER.** Fruit resembles the Keiffer in size, appearance and quality; but the tree is more open in growth. Comes in before the Keiffer. A seedling of the Chinese Sand Pear.

**KEIFFER.** Fruit large to very large, yellow, with bright vermilion cheek; very handsome; flesh very juicy; brittle, a little coarse but of good quality. September and October.

**LECONTE.** Fruit large; skin smooth, pale yellow, quality good when properly handled. July. A vigorous, regular bearer.

**MAGNOLIA.** Large; slightly pyriform; glossy, reddish brown; flavor sub-acid. Later than Keiffer and keeps well.

#### PECANS.

**HICORIA pecan.** The Pecan has recently become of great commercial importance and no other fruit fits so well into general farming. The land may be farmed almost as though nothing had been planted on it and the trees will not suffer from the cultivation. When it is once established it will continue to bear large crops for many years without diminution.

Prices 1-2 ft. .35; \$ 3.00 per 10.  
2-3 ft. .45; \$ 4.00 per 10.  
3-4 ft. .90; \$ 8.50 per 10.  
4-5 ft. \$1.10; \$10.00 per 10.

**DELMAS.** Large, ovate, dark-gray in color; cracking quality good; kernel bright yellow, sweet. Strong vigorous tree and the earliest bearer of all the Pecans.

**STUART.** Large nuts, 2 in. long; shell of medium thickness. Kernel full, plump; flavor rich and sweet. Heavy bearer. Tree a strong grower.

**SUCCESS.** Large oblong nuts; shell thin; kernel large; full, yellow, rich. Healthy tree.

**VAN DEMAN.** Large to very large nuts, rather slender, pointed at both ends. Flavor

sweet and good. Vigorous tree with large bright foliage.

#### PINEAPPLE GUAVA.

**FEIJOA sellowiana.** The Feijoa is a gray-leaved shrub bearing greenish, very fragrant fruits, 2 in. long. Hardy in South Florida. Fine for jelly making or eating fresh. From pots, 20c ea.; \$1.75 per 10.

#### PLUMS.

**PRUNUS.** In the Gulf States the Japanese plums have not been especially good; but the hybrid Japanese plum is good and is being planted everywhere in the South with excellent results. Plant in groups for fertilization.

Prices: 2-3 ft. .18; \$1.50 per 10.  
3-4 ft. .25; \$2.00 per 10.  
4-5 ft. .30; \$2.50 per 10.

**ABUNDANCE.** Round fruits, very large, pinkish red changing to purplish red; pit small, cling.

**BURBANK.** Very large fruit, rounded, dark red, flesh yellow and sweet. Very popular kind.

**MCREA.** Medium size, flattened, dull-red, juicy, sub-acid. Worthy of extensive planting.

**TERRELL.** A strong, healthy grower, color a reddish-yellow; flesh greenish-yellow, juicy, slightly sub-acid, pit small, cling. One of the finest for Florida and the Gulf Coast.

#### POMEGRANATES.

**PUNICA granatum.** The pomegranate is a very hardy, deciduous shrub which can be grown throughout the lower South. The brilliant scarlet flowers are produced in profusion and plants are very heavy bearers. Fruit is used in making jellies, marmalades and acid drinks. A coming commercial fruit. It has a fresh crispness and delicate flavor that is unique.

Prices: 1-2 ft. .25; \$2.00 per 10.  
2-3 ft. .30; \$2.50 per 10.  
3-4 ft. .40; \$3.50 per 10.

**PAPERSHELL.** A variety with very thin skin; juicy, very sweet and of excellent quality.

**RHODA.** Large fruit, rind thin but tough; juice cells large and of beautiful wine-color; crisp, sweet and of exquisite flavor.

**WONDERFUL.** A new, fine, late-ripening sort with large, highly colored fruit and delicate pulp.

#### WAMPEE.

**CLAUCENA lansium.** The Wampee is a low, spineless tree from China, kin to the orange. The leaves large and beautiful, green; flowers white and fragrant. Fruit the size of a gooseberry, hairy, of balsamic fragrance. Used as a condiment. May be grafted on grapefruit or other citrus trees. A promising addition to Florida fruits. Strong young plants, 50c each.

## Shade and Street Trees

**ALBIZZIA lebbek, WOMAN'S TONGUE TREE.** A spreading tree with pinnate leaves. Much used on lawns and streets in the American Tropics. Flowers greenish-yellow, fragrant. Slightly deciduous.

20c ea.; \$1.75 per 10.

**A. lapantha, CRESTED WATTLE.** Has graceful, feathery foliage. Yellow flowers produced in early Spring. Succeeds in the poorest soil. Used as street tree in Honolulu. Fine plants, 40c each.



**AMERIMNON** *sissoo*. A good-sized tree from India. Leaves pinnate; with numerous white flowers in panicles, scented like new-mown hay. A splendid timber tree.

Large plants, 35c each.

**BAUHINIA** *purpurea*, **MOUNTAIN EBONY**. A small tree with peculiar twin leaves, flowers borne at the end of the branch, fragrant, 3-4 in. long, orchid-like, varying from white to rich purple. A quick-growing tree; blooms in winter and early spring. Street tree.

10c ea.; .85 per 10.

20c ea.; \$1.75 per 10.

40c ea.; \$3.50 per 10.

**BISCHOFIA** *trifoliata*. A fine, spreading evergreen tree from Java. Leaves very broad, dark-green; flowers in panicles, white and small. Likes sandy soil; hardy in Florida. A few plants only, 50c each.

**BIXA** *orellana*. **ANNATO TREE**. Tropical tree from India. Leaves pinnate, quite

Tree, it produces large, pear-shaped pods with seeds surrounded by long silky fibers which are used for pillows and fine mattresses. Recommended for trial in Florida in protected situations.

Large healthy plants, 75c each.

**CINNAMOMUM** *camphora*, **CAMPHOR TREE**. A magnificent, dense shade or street tree with shining, thickly-borne leaves; flowers are small and yellow, in Spring. Hardy. Likes any soil. Furnishes camphor and is being planted commercially in Florida.

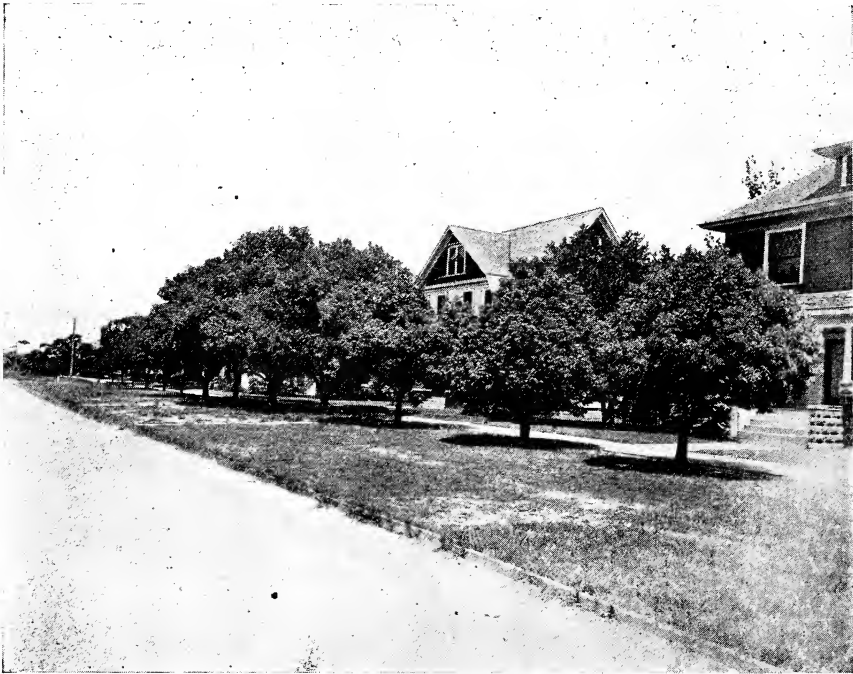
10c ea.; .85 per 10.

20c ea.; \$1.75 per 10.

40c ea.; \$3.50 per 10.

Large plants, bushy, 4-5 ft. high, 75c each.

**C. cassia**, **CASSIA BARK TREE**, **CHINESE CINNAMON TREE**. Handsome, small tree with denser habit than Camphor, which it resembles; the leaves are evergreen, stiff,



Camphor Trees.

large; flowers rose-colored, very showy. The seed pulp furnishes an orange-red dye.

20c ea.; \$1.75 per 10.

40c ea.; \$3.50 per 10.

**BURSERA** *simaruba*, **GUMBO LIMBO**, or **WEST INDIAN BIRCH**. A pretty, medium-sized tree, evergreen and spreading, found on the seashore in Florida. Fine shade or street tree.

Strong plants, 20c ea.; \$1.75 per 10.

Large plants, 40c ea.; \$3.50 per 10.

**CASSIA** *fistula*, **PUDDING PIPE TREE**. A tropical tree bearing woody pods. The flowers are in long yellow racemes. Likes full sun and a sheltered place. A quaint tree. The fruits are the Cassia Pods of commerce. 2 yr. plants, 20c each.

**CHORISIA** *sp.* **PAINA TREE**. A small, rapid-growing tree, bearing rose-colored flowers. Like its relative, the Silk Cotton

glossy. The flowers are borne in the spring, small, white and fragrant. It is the finest lawn tree for Florida. Likes a rich, moist soil; but does well on high ground.

Small plants, 10c ea.; .85 per 10.

4-5 ft. high 50c ea.; \$4.00 per 10.

5-6 ft. high, 75c ea.; \$6.00 per 10.

**DELONIX** *regia*, **ROYAL POINCIANA**. A splendid leguminous tree, with thick, bipinnate leaves and great trusses of flaming flowers, 3-4 in. across, bright scarlet, striped yellow. Pods over a foot long. One of the most gorgeous sights in the Tropics when in bloom. Deciduous a few weeks in Spring.

20c ea.; \$1.75 per 10.

Large, stocky, 30c ea.; \$2.00 per 10.

50c ea.; \$4.00 per 10.

**ENTELEA** *palmata*, **WHAU TREE**. A New Zealand tree with leaves like the Mulberry, 10 in. long; flowers 1 in. across in

drooping clusters; has a dark-brown fruit. The wood is only half the specific gravity of cork and it is recommended for life belts. Very promising commercially. New.

Fine plants, \$1.00 each.

**ENTEROLOBIUM cyclocarpum, DEVIL'S EAR.** A tall shade tree from Venezuela, with abundant pinnate foliage, and bears greenish white flowers with white stamens. The pod is bent back in a complete circle.

Strong plants, 35c ea.; \$3.00 per 10.

#### EUCALYPTS.

Very quick-growing evergreen trees, much used for street and shade trees and also for reforestation. We offer the varieties that have proven best in Florida after much experimentation. All grown in pots which insures them to grow and obviates the necessity for trimming, as with plants from open ground. Set 8 ft. apart each way for

**E. globulus, BLUE GUM.** An exceedingly tall tree with deciduous bark. The new leaves bluish-gray and clasping; becoming long-ovate like those of *E. robusta*, with age. It has a very straight trunk, grows rapidly and the wood is of great strength. Will flourish almost anywhere in frostless regions. Forty-two per cent of all the trees now planted in California are Blue Gums.

1 ft. 10c ea.; .85 per 10.  
2 ft. 20c ea.; \$1.75 per 10.  
3 ft. 30c ea.; \$2.50 per 10.

**E. maculata, SPOTTED GUM.** Handsome tree, 150 ft. Foliage near the top. Valuable for timber. Young plants 20c ea.; \$1.75 per 10.

**E. resinifera, RED MAHOGANY.** Symmetrical tree; leaves leathery and thick. Stands cold and drought. Requires a moist climate. Wood lasts well under ground.

Youngs plants 15c ea.; \$1.25 per 10.



*Ficus altissima.*

timber. They will thrive in almost any soil, but like rich, moist, well-drained location. They are said to keep away mosquitos. Probably grow faster than any trees in the world.

**EUCALYPTUS citriodora, LEMON-SCENTED GUM.** Tall, with lemon-scented leaves from which an oil is derived, used to perfume soap. 2-3 ft. 15c ea.; \$1.25 per 10.

**E. diversicolor, KARRI.** A very tall tree, bark smooth and white. Thrives near the coast. A rapid grower and profuse bloomer. A good bee tree and furnishes very hard and durable timber.

A few fine plants, 15c each.

**E. ficifolia, CRIMSON-FLOWERED EUCALYPT.** A handsome small tree, with dark bark and large clusters of crimson flowers. Lovely when in bloom. A drouth-resisting sort and a very good avenue tree. Rare.

1 yr. plants, 50c each.

**E. robusta, SWAMP MAHOGANY.** A tall rather spreading tree of exceedingly rapid growth. It has large shining dark-green leaves and thrives in any soil, wet or dry, and is preferred to any other Eucalyptus for Street and Shade in South Florida. It requires to be pollarded for best results.

Strong plants, 1 ft. 10c ea.; .85 per 10.  
2 ft. 15c ea.; \$1.25 per 10.  
3 ft. 20c ea.; \$1.75 per 10.  
4 ft. 25c ea.; \$2.00 per 10.

Prices by hundred and thousand on application.

**E. rostrata, RED GUM.** A tall slender kind with gray bark, very straight; resists drouth better than any. Timber is very durable above and below ground. It is used for ties, fence-posts, trolley posts, etc. The best species for reforestation. It also makes a good street tree if cut back at the top to make it spread. Strong plants, 5-6 ft. high. 25c ea.; \$2.25 per 10; \$20.00 per 100.

**E. rudis, DESERT GUM.** A quick-growing tree with roundish young leaves becoming longer with age. Successfully used as an avenue tree and for wind break at Fresno, Calif. Likes moist soil. Cut back the top when using for shade or street.

1 ft. 10c ea.; .35 per 10.  
 2 ft. 15c ea.; \$1.25 per 10.  
 3 ft. 20c. ea.; \$1.75 per 10.  
 4 ft. 25c ea.; \$2.00 per 10.

**FICUS altissima, TALL RUBBER TREE.** A tall, spreading, evergreen with large thick, leathery, shining leaves and lighter-colored midrib and veins. A very quick grower; rather hardy. Finer than *F. elastica*.

1 1-2-2 ft. .50 ea.; \$4.50 per 10.  
 2-3 ft. .75 ea.; \$6.00 per 10.  
 3-4 ft. \$1.00 ea.; \$7.50 per 10.  
 Large specimens, \$1.50 to \$2.50

Also an excellent street tree and is one of the best known house plants.

1 1-2-2 ft. 50c ea.; \$4.00 per 10.  
 2-3 ft. 75c ea.; \$6.00 per 10.  
 3-4 ft. \$1.00 ea.; \$7.50 per 10.

A few large specimens in tubs,  
 \$1.50 to \$2.50 each.

**F. elastica variegata.** Habit like the preceding with leaves beautifully variegated with cream, yellow and white. One of the loveliest tub plants.

Strong specimens \$1.00, \$1.50, and \$2.50 ea.

**F. Infectoria.** A low tree with all the parts smooth, slightly deciduous. One of the best shade trees; smaller leaves than *F. altissima* which they somewhat resemble.

Fine specimens in tubs, 5-6 ft. high,  
 \$1.00 each.



Indian Rubber Tree, 8 years old.

**F. aurea, STRANGLER FIG.** A tall, round-headed tree, branches smooth, with long leaves. A good evergreen, native shade or street tree.

Strong plants, 20c ea.; \$1.75 per 10.  
 40c ea.; \$3.50 per 10  
 75c ea.; \$6.00 per 10.

**F. benjamina.** Small-leaved species, from Australia. Its chief interest is the drooping habit.

20c ea.; \$1.75 per 10.  
 Large plants, \$1.00 each.

**F. elastica, INDIAN RUBBER PLANT.** A spreading evergreen tree, with aerial roots and large leathery, shining leaves. A very rapid grower, making a dense shade in a few years. One tree in St. Petersburg has spread 50 feet in the past 8 years. See cut.

**F. macrophylla, MORETON BAY FIG.** Much planted in Southern California. An avenue tree in Australia. Said to be the hardiest *Ficus*. Quick-growing and large.

Strong plants 40c and \$1.50 each.

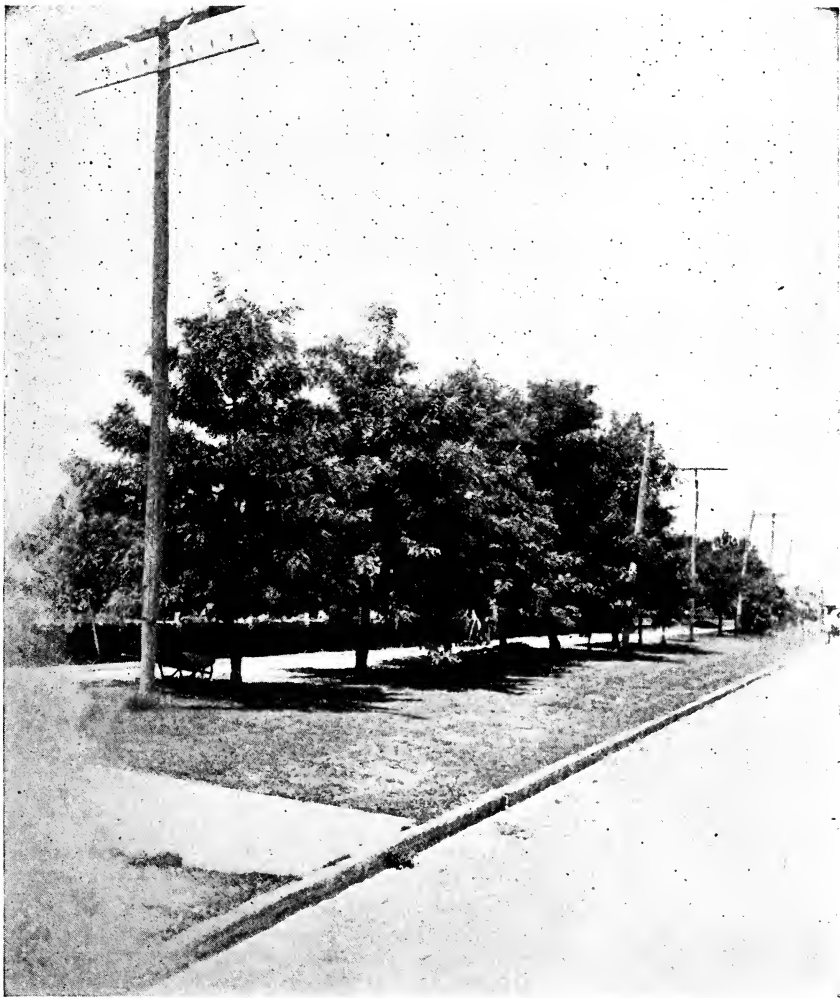
**F. retusa, SPANISH LAUREL.** A large evergreen tree with few air roots. Much used in Cuba as a street and shade tree. It is making many friends in Florida.

Fine plants, 5 in. pots, 40c each.

**F. pandurata, CHINESE FIG.** A strong tree with leaves more than a foot long, dark-green and glossy, shaped like a fiddle or banjo. Fine plants, \$2.50 each.

**F. utilis, FLAT-LEAVED RUBBER.** A splendid new sort, something like *F. altissima*, but the great leaves flattened and re-





Silk Oaks.

curved. One of the most beautiful pot plants. Apparently hardy here.

Strong plants \$2.50 each.

**GREVILLEA robusta, AUSTRALIAN SILK OAK.** A splendid, large, fern-leaved, hardy shade tree. Grows quickly in any soil and bears enormous quantities of yellow flowers in Spring. Good bee tree. For street or shade it is in a class by itself. When properly cut back at the top it makes a dense spreading head. The small plants are exquisite in pots. Perfectly hardy.

1ft. 10c ea.; .75 per 10; \$ 6.00 per 100.

2-3 ft. 20c ea.; \$1.75 per 10; \$14.00 per 100.

3-4 ft. 35c ea.; \$2.50 per 10; \$20.00 per 100.

**GUAIACUM officinale, LIGNUM VITAE.** A medium-sized tree found along the coast in South Florida, having roundish pinnate leaves and yellow stems. The flower is small and purple. Furnishes the Lignum vitae of trade, from which blocks, pulleys, etc., are made. Recommended for seashore situations. Fine 1 yr. plants,

20c ea.; \$1.75 per 10.

**G. sanctum, LIGNUM VITAE.** Habit about like the preceding; leaves are ob-

liquely lanceolate. Wood equally valuable. Found only near the sea.

20c ea.; \$1.75 per 10.

**HURA crepitans, SANDBOX TREE, MONKEY DINNER BELL.** A tall tree with armed trunk and limbs; the leaves are large and poplar-like. Flowers are small and reddish. The fruit capsules when ripe are explosive and throw the seed many feet, with a loud noise. Street trees.

Strong plants, 20c each.

**ILEX monticola, HOLLY.** A much-branched small tree, evergreen, with small leaves, faintly toothed. The red and yellow fruits hang on all winter. Native in North Florida.

Strong 1 yr. plants 20c ea.; \$1.75 per 10.

2 yr. plants 40c ea.; \$3.50 per 10.

**JACARANDA ovalifolia, PURPLE FERN TREE.** A large tree, with fern-like leaves, habit much like the preceding. It is one of the best flowering trees; flowers in Spring, of a rich mauve. It sometimes has 90 flowers in one cluster. Deciduous only a short time and recommended for a street tree. Stands trimming to standard form.

Strong young plants, 20c ea.; \$1.75 per 10.

2 yr. plants 40c ea.; \$3.50 per 10.

**LAUROCERASUS caroliniana, CAROLINA LAUREL CHERRY.** A small, round-headed, evergreen tree, with thick, dark-green, shining leaves and small white fragrant flowers in Spring. Can be used for hedges and for lawns. Slow grower; but makes a beautiful small street tree. Hardy all through Florida. 20c ea.; \$1.75 per 10.

**L. integrifolia, CATALINA CHERRY.** A small tree much like the preceding, leaves dark-green and the fruits larger, inedible. Found near the seashore only. A fine tub plant. A few nice 2 yr. plants, 20c each.

**MAGNOLIA grandiflora, BULL BAY.** The great magnolia of the South. Large evergreen tree, with immense, beautiful, thick, glossy leaves, brown beneath. Flowers in Spring are pure white, 7-8 in. across, very fragrant. A lovely and useful hardy shade or street tree. Likes rich, moist soil; but does well almost anywhere.

Open ground, 1-2 ft. 40c each.  
2-3 ft. 50c each.  
3-4 ft. 75c each.

**PARKIA timoriana, CUPANG.** A large,

leguminous, ornamental from the Philippines. Reaches 115 ft. Leaves are pinnate and the flowers are white and small in pear-shaped racemes. Pods 18 in. long. New. Strong plants, \$1.00 each.

**SCHINUS terebinthifolius, BRAZILIAN PEPPER TREE.** A tall, quick-growing, evergreen tree with broad, dark-green leaves. Apparently hardy in South Florida. Splendid shade and street tree.

Strong 1 yr plants, 15c ea.; \$1.25 per 10.  
2 ft. 20c ea.; \$1.75 per 10.

A few large plants, 4-6 ft., 50c each.

**SPATHODEA campanulata.** An evergreen tree reaching 50 ft.; the leaves resemble the black walnut; covered with long orange-colored flowers in clusters. A favorite street tree in Java. One of the showiest flowering trees in the Tropics. New.

Fine plants, \$1.00 each.

**SWIETENIA mahogani, MAHOGANY TREE.** A tall, pinnate tree growing near the coast in South Florida. Famous for the fine furniture made from the wood. Recommended for seashore in South Florida.

Fine large plants, 20c ea.; \$1.75 per 10.

## Conifers



Araucaria bidwillii No. 2, and  
Cocos australis No. 1.

**ARAUCARIA bidwillii, BUNYA-BUNYA PINE.** Fine symmetrical tree reaching a great height, with stiff, pointed leaves; branches also symmetrical and clothing the whole trunk. Hardy.

Fine plants, \$2.50 to \$5.00 each.

**ARAUCARIA excelsa, NORFOLK ISLAND PINE.** The most beautiful conifer for decorative use. The branches are arranged in symmetrical stages and the leaves are delicate and symmetrical. A very tall tree but is used everywhere for a pot or tub plant.

8-10 in. high, 75c ea.; 10-15 in. high \$1.50 ea.

**A. excelsa glauca.** Foliage silvery, sometimes bluish. Habit much like excelsa.

12-18 in. high, \$2.00 each.

**CALLITRIS robusta, CYPRESS PINE.** Ranging from 30 to 90 feet. Resembles Red Cedar and is useful for tall hedges and wind-breaks. Will become 12 ft. high in South Florida in five years.

Strong young plants, 1 yr., 20c ea.

**CASUARINA equisetifolia, AUSTRALIAN PINE.** A very tall tree with valuable wood. Branches pale and drooping. Resembles a cedar but is close to hickory and walnut. Likes the seacoast and thrives in a brackish soil.

Strong young plants, 20c ea.; \$1.75 per 10.

**C. stricta, SHE-OAK.** Likes coast, wood is the toughest of the species, used in making tool handles. Hardy.

1 yr. 20c ea.; \$1.75 per 10.

**CUPRESSUS arizonica, BLUE CYPRESS.** Reaches 50 feet, with pyramidal head. Hardy and stands drouth exceedingly well. New in Florida.

10c ea.; .85 per 10.

20c ea.; \$1.75 per 10.

**C. funebris, FUNERAL CYPRESS.** A weeping form, to 60 ft., light green.

20c ea.; \$1.75 per 10.

**C. goveniana, GOVEN'S CYPRESS.** Tree

to 50 ft. Branches spreading. A beautiful and hardy tree.

1 yr. plants, 10c ea.; .75 per 10.  
2 yr. plants 20c ea.; \$1.75 per 10.

**C. knighteana.** A fine conifer, hardy in Florida.

Fine young plants, 10c ea.; .85 per 10.  
2 yr. plants 20c ea.; \$1.75 per 10.

**C. lusitanica, CEDAR OF GOA.** A handsome spreading type from Portugal. Foliage bluish green. Hardy and quick grower.

10c ea.; .85 per 10.  
2 yr. plants 20c ea.; \$1.75 per 10.

**JUNIPERUS barbadensis, RED CEDAR.** A fine tree, spreading; foliage bluish-green. Does best near the seashore. Must have limy soil to do well.

Strong 2 yr. plants, 20c ea.; \$1.75 per 10.

**J. communis, ENGLISH JUNIPER.** The well-known English Juniper which is used for hedges, etc. We offer strong young plants about a foot high.

20c ea.; \$1.75 per 10.

**J. communis var. hibernica, IRISH JUNIPER.** A narrow columnar form, with upright branches, deep-green leaves, the tips of the branches erect.

1 ft. 20c ea.; \$1.75 per 10.

**PINUS canariensis, CANARY ISLAND PINE.** A tall tree, with slender branches

and round top. Leaves pendulous and light-green. Good.

2 yr. plants, 15c; \$1.25 per 10.

**THUYA aurea nana, GOLDEN DWARF ARBORVITAE.** A variety with compact, round head and greenish-golden foliage. Beautiful; fine for tubs. Hardy.

1-1 1/2-2 ft. 40c ea.; \$3.50 per 10.

2-3 ft. 75c ea.; \$6.00 per 10.

**T. occidentalis, AMERICAN ARBORVITAE.** A loosely-pyramidal native form fine for hedges. Hardy.

Strong young plants, 15c ea.; \$1.25 per 10.

**T. orientalis, CHINESE ARBORVITAE.** Slender, foliage flat, rather open, good hedge plant.

10c ea.; 85c per 10.

**T. orientalis compacta, CHINESE ARBORVITAE.** A compact form very symmetrical, with dense, dark-green foliage.

2-3 ft. .45; \$4.00 per 10.

3-4 ft. .85; \$7.00 per 10.

**THUYA, ROSEDALE HYBRID.** A dwarf, compact, symmetrical kind with a very dense head, foliage dark, bluish-green. Very handsome.

1-2 ft. .35; \$3.00 per 10.

2-3 ft. .45; \$4.00 per 10.

**OFFER**

5 kinds of conifers for  
75c; our choice.

## Tuberous, Bulbous and Bog Plants

**ALOCASIA odora, TREE ELEPHANT'S EAR.** A giant arrow-leaved plant, forming a trunk several feet high with age. Leaves reach 3 ft. long. Strong plants

20c and 40c each.

**ALPINIA nutans, SHELL FLOWER.** Reaches 8 feet, with long, bright leaves, of a broad sword-shape. Flowers like orchids, sweet-scented, yellow and pink in drooping spike. Likes wet, rich soil. Fine for foliage masses near the water.

Clumps from open ground, 20 and 40c each.

**AMARYLLIS formosissima, SCARLET MEXICAN LILY.** Flowers dark velvety scarlet shading to maroon, with a white stripe in each petal.

20c ea.; \$1.75 per 10.

A. hybrids by Mr. T. L. Meade. Some wonderful forms. Bulbs 1 1/2 lbs. each. 25c.

**A. vittata, WHITE AMARYLLIS.** A large white-flowered form originating in England. Nice young plants

20c ea.; \$1.75 per 10.

**AMOMUM cardamon, CARDAMON PLANT.** Grows four to five feet high, with thick, spicy flowers in a brownish spike. Produces the cardamon seed.

Nice clumps, open ground, 20c each.

### CANNAS.

The Canna is the queen of bedding plants and is used everywhere. It has banana-like leaves and great, beautifully colored flowers. Some resemble orchids.

**CANNA, ALEMANIA.** Leaves large; flowers saffron with crimson-red and golden specks.

10c ea.; 85c per 10.

**C. ATLANTA.** Medium-sized, green leaf; flowers gold and light crimson.

10c ea.; 85c per 10.

**C. BURBANK.** Small plant, flowers delicate.

10c ea.; 85c per 10.

**C. FLAMBEAU.** Leaves green and large; flame-colored flowers.

10c ea.; 85c per 10.

**C. GREENBACK.** Leaves green, flowers a rich red.

10c ea.; 85c per 10.

**C. KING HUMBERT.** Large copper-bronze leaf; very showy flowers, orchid-like, orange-scarlet, streaked with red.

15c ea.; \$1.25 per 10.

**C. LOUISIANA.** Four feet high, with green leaves, flowers a vivid scarlet, often 7 in. in diameter.

10c ea.; 85c per 10.

**C. MAJESTIC.** Leaves green, flowers red.

10c ea.; 85c per 10.

**C. MERCEDES.** Green-leaved kind; flower a pale yellow.

10c ea.; 85c per 10.

**C. MUSAFOLIA.** Great, banana-like leaves and rich yellow flowers.

10c ea.; 85c per 10.

**C. PATRIE.** Small leaf; flower white.

10c ea.; 85c per 10.

**C. PENNSYLVANIA.** Leaves green; immense flowers, 7 in. across. Deep red.

10c ea.; 85c per 10.

**C. PRINCE WIED.** Long leaf, attains four feet in height. Lovely crimson and gold flowers.

10c ea.; 85c per 10.

**C. WEST GROVE.** Leaf green of medium size and clear, pale yellow flower.

10c ea.; 85c per 10.

**C. WILLIAM SAUNDERS.** Large bronze leaf, four feet high; large red flower.

15c ea.; \$1.25 per 10.

**C. WYOMING.** Large bronze leaf, a fast grower. Large orange-scarlet flowers, with tints of red; orchid.

15c ea.; \$1.25 per 10.

### FANCY CALADIUMS.

Magnificent vari-colored leaves, large, broad, arrow-shaped. The delicacy, richness and variety of coloring surpasses anything known in plants. They require shade,



moisture and rich soil, with frequent applications of liquid manure. Massed with ferns in a shady spot they are dazzling and are also excellent pot plants. They die down during the winter; but come again the following spring. We offer a carefully selected list of the best kinds.

**GROUP A.** 20c ea.; 1.75 per 10.

**DUC DE RATIBOR.** Tender green, veins pink with light blotches.

**WIGHTII.** Shining green ground with numerous pure white and scarlet spots, small and thickly sown.

**GROUP B.** 30 cents each; \$2.75 per 10.

**BLANCHE WISE.** Glossy white center, with large red spots, a light gray zone, border green.

**GERUPEBA.** Cream-white center with large spots of crimson and moss-green.

**HERMIONE.** Intense rose and red with indistinct reflections.

**JOAO FERNANDEZ VIERA.** Vivid crimson center, wide green border becoming yellow.

**MRS. JENNIE S. PERKINS.** Green with dashes of crimson, mottled light crimson. A strong grower.

**PINTADO.** Creamy-white spots, center red, stems rose-pink.

**GROUP C.** 40c ea.; \$3.00 per 10.

**DIEGO FLORES.** Green midrib, veins and margin, with translucent white and pink ground. Very pretty.

**DON FRANCISCO DE SOUZA.** Leaves green, thickly covered with shining, irregular, white spots.

**SERGIPE.** Deep transparent rose ground, narrow green border, veins crimson.

**SOROCABA.** Transparent cream-white and pink, green ribs and veins.

**TOCATINS.** Wavy translucent rose, narrow green border.

**HOFGARTNER VETTER.** Red ground, border deep green with touches of pink.

**GROUP D.** 50c ea.; \$4.50 per 10.

**ELLA WHEELER WILCOX.** Leaves large, creamy-yellow and green.

**FRANCES M. LOUGHLIN.** Deep pink center, metallic border, very narrow.

**GERTRUDE JUDD SMITH.** Large green, changing to white, veins yellow-green. Young leaves thin and papery.

**MINNA HOFFMAN.** Ground cream with transparent rose spots, nerves and midrib yellowish.

**NEW LANCE HEAD HYBRID.** Very narrow leaves, greenish-yellow, fluted on margin and base, touches of chocolate and red. 20c each.

**HYBRIDS,** from T. L. Meade. Some lovely forms. 15c ea.; \$1.25 per 10.

**COLOCASIA antiquorum** var. *esculenta*, **ELEPHANT'S EAR.** The giant, heart-shaped leaf has endeared this plant to all. Nice plants, 20c and 40c each.

**C. species, DASHEEN.** A handsome, arrow-leaved plant, kin to caladium, having edible, starchy roots. They are cooked before eating. It is thought by many superior to the Irish potato and yields much

larger crops. Is easily grown in moist, rich ground. It is recommended by the government for the home garden in the South. Has long been a staple article of food in the Tropics.

5c ea.; 40c per 10.; \$3.00 per 1-2 bu.

**C. species, DASHEEN FROM TRINIDAD.** Similar to the above and has proven successful in Florida.

5c ea.; 40c per 10.

**CRINUM americanum, FLORIDA SWAMP LILY.** A fine native, swamp plant with leaves two to four feet long, curved. Flower on a stem 20-in. high, creamy-white. Blooms in summer; but sometimes also in winter. Requires a rich moist soil to do well.

10c ea.; 85c per 10.

**C. fimbriatum, NASSAU OR MILK & WINE LILY.** A fine plant with leaves 2-in. wide and 4 to 5 ft. long. Great white flowers with a red keel, and striped red. 20c ea.; \$1.75 per 10.

**C. zeylanicum, CEYLON LILY.** A fine flower, purplish red, striped white. 20c each.

**GLADIOLUS.** A nice line of named kinds in assorted colors. 10c ea.; .85 per 10.

**HEDYCHIUM coronarium, GINGER LILY.** A canna-like plant, growing to 5 feet high, with pure white flowers 3 to 4 in. across, very fragrant. Thrives in rich soil in or near the water. Blooms in winter.

10c ea.; 85c per 10.

20c ea.; \$1.75 per 10.

**HEMEROCALLIS flava, YELLOW DAY LILY.** Flowers yellow and fragrant appearing in the spring. Does well in any garden soil, likes part shade near ponds and moist places. 10c ea.; 85c per 10.

**HIPPEASTRUM reginae, QUEEN AMARYLLIS.** A vivid red flower with a white star in the center. Nice bulbs, open ground, 20c ea.; \$1.75 per 10.

**HYMENOCALLIS caribbaea, SPIDER LILY, SPANISH LILY.** A bulb of easy culture, having quantities of flowers, in succession of blooms all summer. Color pure white. 20c ea.; \$1.75 per 10.

**IRIS hexagona, BLUE FLAG.** A hardy native species, strong growing, bearing lovely lilac, yellow and blue flowers in Spring. Likes wet, rich soil, or in the water. 10c ea.; 85c per 10.

**I. kaempferi, JAP IRIS.** A good and hardy Iris, growing 2 to 3 ft. high, with slender leaves. We offer a wide range of colors, named kinds. It thrives in the water, or in very moist, rich, partly shaded places. 10c ea.; 85c per 10.

**LILIUM harrisii, EASTER LILY.** Lovely white blooms at Easter. Open ground. Strong bulbs, 20c ea.; \$1.75 per 10.

**LYCORIS radiata, JAPAN FIRE LILY.** Red flowers on scape in midwinter, leaves in summer and then die down. Leaves and flower never on plant at same time. Nice plants 20c ea.; \$1.75 per 10.

**MARANTA arundinacea, ARROW ROOT.** Has branched leaves, 4 ft. high, and clusters of white flowers. One of the sources of arrow root, often called Bermuda Arrow Root. Open ground 15c ea.; \$1.25 per 10.

**M. arundinacea variegata.** A green and yellow form of the preceding. Fine plants from open ground, 20c ea.; \$1.75 per 10.

**MORAEA iridioides, NATAL LILY.** Reaches two feet, with many sheathing

leaves in a fan-shaped rosette. Flowers 3 in. across, white with yellow and blue marks, like Iris.

Strong plants, open ground, 20c each.

**MUSA cavendishii, THE BANANA.** A dwarf, very tender plant, fruit rich and fine. Small plants from open ground, 10c ea.; 85c per 10; larger, 20c ea.; \$1.75 per 10.

**M. HART'S CHOICE, LADY FINGER.** One of the hardiest with excellent small fruits. Best kind for Florida planting. Small plants, open ground,

10c ea.; 85c per 10.

Larger, 20c ea.; \$1.75 per 10.

**M. orinoco, HORSE BANANA.** A large sort. Fruit edible but coarse. Eaten raw or cooked. A vigorous grower.

10c ea.; .85 per 10.

20c ea.; \$1.75 per 10.

**MYRIOPHYLLUM proserpinacoides, PARROT'S FEATHER.** A feathery water plant.

10c ea.; 85c per 10.

**NYMPHAEA odorata, POND LILY, WATER LILY.** The native pond lily grows in water in rich soil. Flowers white and slightly fragrant. Hardy and excellent for giving finish to the water in ponds, lakes and formal water gardens. Lives where the finer, tender kinds perish.

Strong plants, 20c ea.; \$1.75 per 10.

**PIAROPUS crassipes, WATER HYACINTH.** A good plant, with blue flowers. Of a creeping habit. Grows in water. Curious swollen stalks. Very easy to grow.

10c ea.; 85c per 10.

**P. martiana.** A good plant for a wet rich soil. Leaves somewhat Iris-like, flowers in a loose raceme, violet blue. Native of Florida.

10c ea.; 85c per 10.

**SAGGITARIA lancifolia.** An erect plant with leaves about a foot long, flower on a tall stalk, white in whorls. A true bog plant, growing only in rich moist soil or in water. Native.

10c ea.; 85c per 10.

**TYPHA latifolia, CATTAIL REED.** A hardy, native bog plant: long, slender, sword-shaped leaves and a long flower stalk crowned with a dense spike of flower of a soft, rich brown.

10c ea.; 85c per 10.

**XANTHOSOMA bataviensis.** Great, green leaves like the Caladium, arrow-shaped and many edible roots. Likes moist, rich place. Leaf stems purple. Strong plants from open ground,

20c ea.; \$1.75 per 10.

**X. maculatum.** New. Immense leaves, spotted with cream and yellow. Stems violet-tinted, very beautiful.

Open ground, 20c ea.; \$1.75 per 10.

**X. marshalli.** A rapid grower of medium size.

Open ground 20c ea.; \$1.75 per 10.

**X. saggitaeifolia.** Grown for food in Florida many years ago. Probably by Seminole Indians. Leaves, large, light-green: a vigorous grower.

Open ground, 20c ea.; \$1.75 per 10.

**X. species.** A large-leaved kind from the South Sea Islands. Leaf green, stems yellow.

Open ground, 20c ea.; \$1.75 per 10.

**X. violacea.** A magnificent, large plant with evergreen leaves and dark purple stems and nerves.

Strong plants from open ground,

20c ea.; \$1.75 per 10

 **OFFER** 

10 kinds of bulbous plants for \$1.50; our choice.

## Succulent Plants

**AGAVE americana variegata, CENTURY PLANT.** Leaves smooth, with outcurved ends, striped longitudinally with yellowish-white and green. Grows quite large.

15c ea.; \$1.25 per 10.

Larger, 35c ea.; \$2.75 per 10.

**A. sisalana, YAXCI or SISAL HEMP.** Nearly trunkless, with large, fleshy leaves, sometimes five feet long, pointed. The fiber is used in the manufacture of Sisal Hemp cordage. The flowers borne on a giant candelabra, often 20 ft. high. Grown commercially in frostless portions of Florida.

Open ground, 5c ea.; 40c per 10; \$3 per 100.

**BRYOPHYLLUM pinnatum, LANTERN PLANT.** Succulent plant with greenish-white flower. It has the property of producing new plants in the notches of the leaf and also sets seed. A very interesting plant botanically.

15c ea.; \$1.25 per 10.

**EPIPHYLLUM strictum, PADDLE CACTUS.** A long flat-leaved cactus; the white flower opens only at night. Strong plants,

20c ea.; \$1.75 per 10.

**EUPHORBIA splendens, CROWN OF THORNS.** A thorny cactus-like, Euphorbia, with a small coral red flower.

20c ea.; \$1.75 per 10.

**HYLOCEREUS tricostatus, STRAWBERRY PEAR.** Vine 20 to 40 ft., flower 1 ft. long; white; fruits red without, white within, edible.

20c ea.; \$1.75 per 10.

**OPUNTIA ficus-indica, INDIAN FIG CACTUS.** The best of the fruiting cacti, selected and developed by the U. S. Department of Agriculture. All practically spineless. We offer the following kinds:

**MALTA,** large white fruit.

**MALTA,** reddish and seedless fruit.

**TUNIS,** large purple-red fruit.

20c a slab, or \$1.75 per 10 slabs.

**PEDILANTHES tithymaloides, REDBIRD CACTUS.** A queer, cactus-like Euphorbiad, with green, fleshy branches, small leaves and brilliant red flowers, shaped like a shoe. Sometimes called Jew Bush.

Strong plants, 20c ea.; \$1.75 per 10.

**SANSEVIERA guineensis, AFRICAN BOWSTRING HEMP.** A beautiful, fleshy-leaved plant, dark-green, flat leaves, 1 to 3 ft. long, with lighter transverse markings. Likes moist rich soil, but will stand drought wonderfully well. Good pot plant and good border plant.

Open ground, 10c ea.; 85c per 10.

Large clumps, 20c ea.; \$1.75 per 10.

*S. zeylanica*. **ZEBRA PLANT**. Like the preceding but with beautiful light, zebra-like markings, crossways. Does well as pot plant in any room. Hardy outdoors.

10c ea.; 85c per 10.

Large clumps from open ground:

20c ea.; \$1.75 per 10.

**YUCCA species**. A new kind somewhat like filamentosa with a rosette of stiff leaves,

pointed and hairy and a tall spike of pure white flowers.

15c ea.; \$1.25 per 10.

**ZYGOCACTUS truncatus**, **CRAB'S CLAW CACTUS**. A small sort with delicate Cladophylls and soft red flowers at Christmas.

20c ea.; \$1.75 per 10.



5 succulents for 50c; our choice.

## Decorative Plants

**ARUM palaestium**, **SOLOMON'S LILY**. **BLACK CALLA**. Leaves 6 in. at base and about same length. Spathe about length of the leaves, greenish without and jet black within. Comes from Palestine. Superb pot plant.

With pot, 35c each.

**BEGONIA argentea guttata**. Leaves yellow-green, specked with white; flowers white tinged with rose.

20c each.

**COLEUS**, **CHRISTMAS GEM**. A magnificent form; leaves immense, pink, chocolate, green, yellow and purple. A lovely house plant.

20c each.

**C. ASSORTED VARIETIES**. A large assortment of Coleus for pots, baskets, bedding, etc.

10c ea.; 75c per 10.

**DRACAENA godseffiana**. A slender, woody plant belonging to the Lily family; leaves in whorls of three, green with numerous gold and white spots. A very beautiful pot plant.

Hardy, 20c each.

**EUCHARIS grandiflora**. **AMAZON LILY**. Leaves 2 to 4 to each stem. Bears an umbel of 3 to 6 large, very fragrant, star-like flowers. Blooms twice a year. An excellent decorative pot plant. Strong plants 40c each.

**FREESIA refracta var. alba**. They have well-shaped, tubular flowers, 5 to 7 in a bunch, fragrant and good cut flowers. Fine plants,

10c ea.; 75c per 10.

**GERANIUMS**. All colors, single and double flower, best of the new and old kinds. Ready to bloom.

10c ea.; 85c per 10.

**GERANIUMS, ROSE SCENTED**. The old favorite Rose geranium. The leaves have a rose-like fragrance.

10c ea.; 85c per 10.

**GYNURA aurantiaca**. **VELVET PLANT**. A tender, almost succulent plant with large, soft, green leaves covered with velvet hairs, the whole leaf overlaid with iridescent purple. Flowers orange yellow. The effect is like changeable silk. Strong plants, 20c each.

**HELICONIA lehmani variegata**. **BALISIER**, **WILD PLANTAIN**. Like a miniature banana, with striped leaves, yellow on a green ground and yellow stems. A lovely house plant. It grows rapidly and the purity of the coloring is unaffected by inside conditions. Likes rich soil and plenty of water in the shade.

Fine plants, 50c each.

Specimens, \$1.00 each.

**HOSTA subcordata grandiflora**, **PLANTAIN LILY**. Handsome, showy plants having beautiful, broad, ovate leaves and large lily-like, pure white, fragrant flowers. Hostas all make good plants. This is the best of its class. Strong plants,

25c each.

**IMPATIENS sultani**, **SULTAN'S BALSAM**. A good strong grower and free bloomer. Flowers red. Much used in boxes and pots.

20c ea.; \$1.75 per 10.

**KNIPHOFIA pfitzerii**. **REDHOT POKER**. The greatest bedding plant introduced since Cannas. Perfectly hardy in open ground all winter. 6 to 20 flower stalks about 4 ft. high, with flame-colored flowers. Flowers keep perfect for several weeks.

20c ea.; \$1.75 per 10.

**LEONOTIS leonurus**, **LION'S TAIL**. A fine, free blooming, orange-yellow flower, foliage soft.

20c ea.; \$1.75 per 10.

**MUEHLENBECKIA platyclada**, **FLAT ARM**. A queer plant without leaves, the flattened branches functioning as leaves. It is hardy outdoors in Central Florida and is worth a place.

20c ea.; \$1.75 per 10.

**PANDANUS baptistii**, **SCREW PINE**. Variegated in creamy yellow and the leaves without spines.

Nice plants 75c ea.; \$6.00 per 10.

**P. utilis**, **SCREW PINE**. A queer plant from Malaysia. Its roots rise out of the ground until the plant resembles a big spider. The leaves are arranged spirally (hence the name). They are yellowish, very spiny, sword-shaped. Hardy out-doors in South Florida. A favorite tub plant.

Strong plants, 20c, \$1.00 and \$5.00 each.

**P. veitchii**. A very thick matted plant with slender sword-shaped leaves, dark-green in center margined with broad bands of white. One of the best tub plants for house. Hardy in the lower part of Florida outdoors. Fine plants.

20c ea.; \$1.75 per 10.

40c ea.; \$3.50 per 10.

Large specimens, \$1.00, \$2.00 and \$5.00 ea.

**PILEA muscosa**, **ARTILLERY PLANT**. A tender, fern-like plant thriving best in full shade. The graceful, curving fronds of minute leaves are much prized for edgings for orchid houses and pot plants. Grows about 1 foot high. When sprinkled the flowers explode with a tiny noise. We have only the large kind, which is considered the best.

10c ea.; 85c per 10.

**RICHARDIA alba maculata**, **SPOTTED CALLA**. Beautiful spotted leaves; the spathe a rich, lustrous white shaded violet inside. Strong blooming plants, 40c each.

**R. aurata**, **LEMON CALLA**. New and fine. Flowers lemon-yellow, jet black center. Leaves large, deep green freely spotted white.

35c each.

**SALVIA splendens**, **SCARLET SAGE**. A fine assortment of this truly good winter-flowering plant. Flowers in intense scarlet, white and white and scarlet. Named kinds.

10c ea.; 85c per 10.

**SELAGINELLA emmeliana**, **CLUB MOSS**. A lace-like plant, small and suitable for fern dishes or small pot plant. Likes moist,





Lath House No. 1—Plants all in Pots.

rich soil and full shade. Every woman wants one when she sees it.

15c ea.; \$1.25 per 10.

**S. wildenovii, RAINBOW MOSS.** A half-climbing shrub, slender with flat stages of wonderfully iridescent leaves. Shade and rich, moist soil. Strong plants, 25c each.

**TILLANDSIA utriculata, AIR PLANT, WILD PINE.** A true air plant; the largest native species, flower stalk much branched. Easily established on a limb of a tree or a post. Very interesting. 20c ea.; \$1.75 per 10.

**TRADESCANTIA fluminensis, WANDERING JEW.** Leaves green, succulent. Fine plant for baskets and boxes.

Clumps 5c ea.; 40c per 10.

**T. reginae, SPIDERWORT.** Leaves purple beneath, silver and purple above. Habit like Wandering Jew.

Strong clump, 5c ea.; 40c per 10.

**VINCA major variegata.** A delicate, slender plant with leaves variegated green, yellow

and white. One of the best forms for vases, baskets and window boxes.

Fine plants, 20c each.

**VIOLA odorata, SWEET VIOLETS.** The well-loved violet. Leaves heart-shaped on long, slender stems, flowers bluish-purple, fragrant.

Strong young plants, 5c ea.; 40c per 10.

**VRESIA species, AIR PLANT.** A true air plant which will also live in the ground. Leaves resemble the Tillandsias in arrangement; the flower in a close raceme or spike, a translucent, soft red, the stamens tipped with rich purple. A splendid plant.

50c ea.; \$4.50 per 10.

**ZINGIBER officinale, GINGER PLANT.** Grows to four feet in the tropics. The root is the commercial ginger. The leaves are canna-like about a foot long, rather narrow. A good, interesting pot plant. Clumps from open ground,

20c ea.; \$1.75 per 10.

**OFFER** →

5 decorative plants for 50c; our choice.

# INDEX

|                                      |    |
|--------------------------------------|----|
| EVERGREEN FLOWERING SHRUBS.....      | 6  |
| ROSES.....                           | 14 |
| FOLIAGE PLANTS.....                  | 15 |
| VINES AND SCANDENT SHRUBS.....       | 18 |
| PALMS AND PALM-LIKE PLANTS.....      | 22 |
| BAMBOOS AND GRASSES.....             | 25 |
| FERNS AND FERN-LIKE PLANTS.....      | 27 |
| TROPICAL FRUITS.....                 | 28 |
| HARDY AND HALF-HARDY FRUITS.....     | 30 |
| SHADE AND STREET TREES.....          | 33 |
| CONIFERS.....                        | 38 |
| TUBEROUS,BULBOUS AND BCG PLANTS..... | 39 |
| SUCCULENT PLANTS.....                | 41 |
| DECORATIVE PLANTS.....               | 42 |

## A.

|  |    |  |       |  |       |
|--|----|--|-------|--|-------|
| Abelia.....                                  | 6  | Areca, see Chrysalidocarpus.....         | 22    | Black Calla, see Arum.....                 | 42    |
| Aberia.....                                  | 28 | Argyrea.....                             | 18    | Blechnum.....                              | 27    |
| Abrus.....                                   | 18 | Aristolochia.....                        | 18    | Bleeding Heart, see Clerodendron.....      | 18    |
| Acacia.....                                  | 6  | Arrowroot, see Maranta.....              | 40    | Bloodberry, see Rivina.....                | 13    |
| Acalypha.....                                | 15 | Artillery Plant, see Pilea.....          | 42    | Blue Cypress, see Cupressus.....           | 38    |
| Achras.....                                  | 28 | Artobotrys.....                          | 6     | Blue Flag, see Iris.....                   | 40    |
| Acrocomia.....                               | 22 | Arum.....                                | 42    | Blue Gum, see Eucalyptus.....              | 35    |
| Adiantum.....                                | 27 | Arundinaria.....                         | 25    | Blue Palm, see Erythea.....                | 22    |
| African Bowstring Hemp, see Sansevieria..... | 41 | Arundo.....                              | 25    | Blue Sage, see Daedalicanthus.....         | 7     |
| African Honeysuckle, see Tecoma.....         | 21 | Asparagus.....                           | 15    | Blue Wistaria, see Kraunhia.....           | 20    |
| Agave.....                                   | 41 | Asparagus Fern, see Asparagus.....       | 15    | Boston Fern, see Nephrolepis.....          | 28    |
| Air Plant, see Tillandsia & Vresia.....      | 43 | Aspidistra.....                          | 15    | Bougainvillea.....                         | 18    |
| Albizzia.....                                | 33 | Australian Pine, see Casuarina.....      | 38    | Bouvardia.....                             | 7     |
| Allamanda.....                               | 18 | Australian Silk Oak, see Grevillea.....  | 37    | Brazilian Pepper Tree, see Schinus.....    | 38    |
| Alligator Pear, see Persea.....              | 30 | Australian Tree Fern, see Alsophila..... | 27    | Brazilian Plume Plant, see Jacobinia.....  | 9     |
| Alocasia.....                                | 39 | Avocado, see Persea.....                 | 30    | Bromelia.....                              | 29    |
| Alpinia.....                                 | 39 | Azalea.....                              | 6     | Bryophyllum.....                           | 41    |
| Alsophila.....                               | 27 |  |       | Bull Bay, see Magnolia.....                | 38    |
| Alternanthera, see Telanthera.....           | 17 | <b>B.</b>                                |       | Bullock's Heart, see Annona.....           | 29    |
| Amaryllis.....                               | 39 | Baccharis.....                           | 7     | Bunya-Bunya Pine, see Araucaria.....       | 38    |
| Amatungulu, see Carissa.....                 | 29 | Balisier, see Heliconia.....             | 42    | Bursera.....                               | 34    |
| Amazon Lily, see Eucharis.....               | 42 | Bamboo, see Bambusa.....                 | 25-26 | Butterfly Pea, see Clitoria.....           | 18    |
| American Arborvitae, see Thuja.....          | 39 | Bamboo Palm, see Raphis.....             | 25    |  |       |
| Amerimnon.....                               | 34 | Bambusa.....                             | 25-26 | <b>C.</b>                                  |       |
| Amomum.....                                  | 39 | Banana, see Musa.....                    | 41    | Cabbage Palmetto, see Sabal.....           | 25    |
| Amygdalus.....                               | 32 | Banana Shrub, see Michelia.....          | 11    | Caesalpinia.....                           | 7     |
| Anacardium.....                              | 28 | Barbados Cherry, see Malpighia.....      | 29    | Caladium.....                              | 39-40 |
| Ananas.....                                  | 28 | Barbados Gooseberry, see Pereskia.....   | 30    | Calico Bush, see Phyllanthus.....          | 17    |
| Angel Trumpet, see Datura.....               | 7  | Barbados Nut, see Jatropha.....          | 29    | Calico Flower, see Aristolochia.....       | 18    |
| Angel Vine, see Thunbergia.....              | 21 | Bauhinia.....                            | 7-34  | California fan palm, see Washingtonia..... | 25    |
| Annatto Tree, see Bixa.....                  | 34 | Begonia.....                             | 15-42 | California Privet, see Ligustrum.....      | 16    |
| Anonna.....                                  | 29 | Bermuda, Grass, see Cyndon.....          | 27    | Calla Lily, see Richardia and Arum.....    | 42    |
| Antigonon.....                               | 18 | Big Four, see Nephrolepis.....           | 28    |  |       |
| Arabian Jessamine, see Jasminum.....         | 19 | Bignonia.....                            | 18    |  |       |
| Araucaria.....                               | 38 | Bischofia.....                           | 34    |  |       |
| Arborvitae, see Thuja.....                   | 39 | Bixa.....                                | 34    |  |       |

- Callitris, ..... 38  
 Camellia, ..... 7  
 Camphire of Solomon, see  
   Lawsonia, ..... 10  
 Camphor Tree, see Cin-  
   namomum, ..... 34  
 Canary Island Pine, see  
   Pinus, ..... 39  
 Canary Island Date, see  
   Phoenix ..... 23  
 Canna, ..... 39  
 Cape Honeysuckle, see  
   Tecoma ..... 21  
 Cape Jessamine, see Gar-  
   denia, ..... 7  
 Cardamon Plant, see  
   Amonum, ..... 39  
 Carex, ..... 27  
 Carica, ..... 29  
 Carissa, ..... 29  
 Carludovica ..... 22  
 Carob, see Ceratonia, .. 29  
 Carolina Laurel Cherry,  
   see Laurocerasus, ..... 38  
 Carolina Yellow Jessa-  
   mine, see Gelsemium, 19  
 Caryota, ..... 22  
 Cashew, see Anacardium, 28  
 Cassia, ..... 7-34  
 Cassia Bark Tree, see  
   Cinnamomum, ..... 34  
 Casuarina, ..... 38  
 Cat's Claw, see Bignonia, 18  
 Cattail Reed, see Typha, 41  
 Catalina Cherry, see Lau-  
   rocerasus, ..... 38  
 Cattley Guava, see Psid-  
   ium, ..... 30  
 Cedar of Goa, see Cupres-  
   sus, ..... 39  
 Century Plant, see Agave, 41  
 Ceratonia, ..... 29  
 Ceriman, see Monstera, 20  
 Cestrum, ..... 7  
 Ceylon Date, see Phoenix, 25  
 Ceylon Lily, see Crinum 40  
 Chalcas, ..... 7  
 Chenille Plant, see Acaly-  
   pha ..... 15  
 Cherimoya, see Annona 29  
 Chilean Jasmine, see  
   Mandevilla, ..... 20  
 Chinese Arborvitae, see  
   Thuja ..... 39  
 Chinese Cinnamon, see  
   Cinnamomum, ..... 34  
 Chinese Fan Palm, see  
   Latania, ..... 23  
 Chinese Fig, see Ficus, .. 36  
 Chinese Guava, see Psid-  
   ium, ..... 30  
 Chinese Hibiscus, see Hi-  
   biscus ..... 8  
 Chinese Rose, see Hi-  
   biscus ..... 8  
 Chinese Trumpet Creep-  
   er, see Tecoma ..... 21  
 Chorisia, ..... 34  
 Chusan Palm, see Trachy-  
   carpus ..... 25  
 Christmas Flower, see  
   Euphorbia, ..... 7  
 Chrysalidocarpus, ..... 22  
 Cibotium, ..... 27  
 Cigarette Plant, see Cu-  
   phea ..... 7  
 Cinnamomum, ..... 34  
 Citrus, ..... 31-32  
 Claucena, ..... 33  
 Clematis, ..... 18  
 Clerodendron, ..... 18  
 Clitoria, ..... 18  
 Club Moss, see Selagin-  
   ella, ..... 42  
 Coccoloba, ..... 7  
 Cock's Comb, see Aristo-  
   lochia, ..... 18  
 Coconut, see Cocos ..... 22  
 Cocos, ..... 22  
 Codiaemum, ..... 15-16  
 Coffea, ..... 7  
 Coffee, see Coffea, .... 7  
 Coleus, ..... 42  
 Colocasia, ..... 40  
 Commercial Coffee, see  
   Coffea ..... 7  
 Commercial Date, see  
   Phoenix, ..... 24  
 Common Guava, see Psid-  
   ium, ..... 30  
 Copper Leaf, see Acaly-  
   pha, ..... 15  
 Coral Hibiscus, see Hi-  
   biscus, ..... 9  
 Coral Honeysuckle, see  
   Lonicera ..... 20  
 Coral Plant, see Russelia 13  
 Coral Tree, see Erythrina, 7  
 Cordia, ..... 7  
 Cordyline, ..... 22  
 Cortaderia, ..... 27  
 Cotton Rose, see Hibiscus, 8  
 Crab's Eye Vine, see  
   Abrus, ..... 18  
 Crab's Claw Cactus, see  
   Zygocactus, ..... 42  
 Crape Jessamine, see  
   Tabernaemontana, .... 14  
 Crape Myrtle, see Lager-  
   stroemia, ..... 10  
 Creeping Fig, see Ficus 18  
 Crested Wattle, see Al-  
   bizzia, ..... 33  
 Crimson Eye, see Hibis-  
   cus ..... 8  
 Crimson-flowered Euca-  
   lypt, see Eucalyptus, .. 35  
 Crinum, ..... 40  
 Crotalaria, ..... 7  
 Croton, see Codiaemum, 15-16  
 Crown of Thorns, see  
   Euphorbia, ..... 41  
 Cryptostegia, ..... 18  
 Crystal Feather, see As-  
   paragus, ..... 15  
 Cuban Begonia, see Be-  
   gonia, ..... 15  
 Cupang, see Parkia ..... 38  
 Cuphea, ..... 7  
 Cupressus, ..... 38-39  
 Curly Palm, see Howea, 22  
 Custard Apple, see An-  
   nona, ..... 29  
 Cut-flower Acacia, see  
   Acacia, ..... 6  
 Cycas, ..... 22  
 Cynodon, ..... 27  
 Cyperus, ..... 27  
 Cypress, see Cupressus, 38  
 Cypress Pine, see Calli-  
   tris, ..... 38  
  

**D.**

 Daedalacanthus, ..... 7  
 Dasheen, see Colocasia, .. 40  
 Date Paim, see Phoenix, 23  
 Datura, ..... 7  
 Day-blooming Jessamine,  
   see Cestrum, ..... 7  
 Delonix, ..... 34  
 Derris, ..... 18  
 Desert Gum, see Euca-  
   lyptus, ..... 36  
 Devil's Ear, see Entero-  
   lobium, ..... 35  
 Dictyosperma, ..... 22  
 Diospyros, ..... 31  
 Dolichos, ..... 18  
 Dombeya, ..... 7  
 Dracaena, see Cordyline, 22  
 Dracaena Palm, see Cor-  
   dyline, ..... 22-42  
 Dragon Tree, see Dra-  
   caena and Cordyline .. 22  
 Duranta, ..... 7  
 Dutch Myrtle, see Myri-  
   ca, ..... 11  
 Dutchman's Pipe, see  
   Aristolochia, ..... 18  
 Dwarf Bamboo, see Bam-  
   busa, ..... 26  
 Dwarf Poinciana, see  
   Caesalpinia, ..... 7  
 Dwarf Thatch Palm, see  
   Thrinax, ..... 25  
  

**E.**

 Easter Lily, see Liliium, 40  
 Egg Fruit, see Lucuma, 29  
 Elaeis, ..... 22  
 Egyptian Paper Reed, see  
   Cyperus, ..... 27  
 Elephant's Ear, see Co-  
   locasia, ..... 40  
 English Ivy, see Hedera, 19  
 English Juniper, see Juni-  
   perus, ..... 38  
 Entelea, ..... 34  
 Enterolobium, ..... 35  
 Epiphyllum, ..... 41  
 Eriobotrya, ..... 32  
 Erythea, ..... 22  
 Erythrina, ..... 7  
 Eucalyptus, ..... 35-36  
 Eucharis, ..... 42  
 Eugenia ..... 29  
 Eulalia, see Miscanthus, 27



- Euonymus, ..... 16  
 Euphorbia ..... 7-41  
 Evergreen Morning Glory,  
   see Ipomoea, ..... 19  
 Fairy Cup, see Abelia, .. 6  
 Fairy Hibiscus, see  
   Grewia, ..... 8  
 False Ylang-Ylang, see  
   Artobotrys ..... 6  
 Fancy Caladium, see Ca-  
   ladium, ..... 39-40  
 Feathery Bamboo, see  
   Bambusa ..... 26  
 Feijoa, ..... 33  
 Ferns, ..... 27  
 Ficus, ..... 18-30-36  
 Fig, see Ficus and Car-  
   ica ..... 18-30  
 Filipino Grape, see Tet-  
   rastigma, ..... 21  
 Fire Dragon, see Acaly-  
   pha, ..... 15  
 Fishtail Palm, see Cary-  
   ota, ..... 22  
 Flame Vine, see Pyros-  
   tegia ..... 21  
 Flame-of-the-Woods, see  
   Ixora ..... 9  
 Flame Pea, see Sesbania, 13  
 Flat Arm, see Muehlen-  
   beckia, ..... 42  
 Flat-leaved Rubber, see  
   Ficus, ..... 36  
 Florida Swamp Lily, see  
   Crinum, ..... 40  
 Fluffy-ruffles, see Neph-  
   rolepis, ..... 28  
 Freesia, ..... 42  
 Funereal Cypress, see  
   Cupressus, ..... 38
- G.**
- Gardener's Garter, see  
   Arundo, ..... 25  
 Gardenia, ..... 7  
 Gelsemium, ..... 19  
 Genista, ..... 7  
 Geranium, ..... 42  
 Giant Moonvine, see  
   Ipomoea, ..... 19  
 Ginep, see Melicoccus, .. 30  
 Ginger, see Zingiber, .. 43  
 Ginger Lily, see Hedy-  
   chium, ..... 40  
 Gladiolus, ..... 40  
 Gold Medal Fern, see Ne-  
   phrolepis, ..... 28  
 Golden Cup, see Solandra 21  
 Golden Dewdrop, see  
   Duranta, ..... 7  
 Golden Dwarf Arborvitae,  
   see Thuya, ..... 39  
 Golden Trumpet, see Al-  
   lamanda, ..... 18  
 Gossypium, ..... 7  
 Goven's Cypress, see Cu-  
   pressus, ..... 38  
 Graceful Jessamine, see  
   Jasminum, ..... 19  
 Grapes, see Vitis, ..... 31
- Grapefruit, see Citrus, .. 31  
 Gravata, see Bromelia, .. 29  
 Gray Nicker, see Guil-  
   andina, ..... 19  
 Grevillea, ..... 37  
 Grewia, ..... 8  
 Groo-groo Palm, see Ac-  
   rocomia, ..... 22  
 Ground Rattan, see Ra-  
   phis, ..... 25  
 Groundsel Tree, see Bac-  
   charis, ..... 7  
 Guadalupe Palm, see Ery-  
   thea, ..... 22  
 Guava, see Psidium, ... 30  
 Guaiacum, ..... 37  
 Guilandina, ..... 19  
 Gumbo Limbo, see Bur-  
   sera, ..... 34  
 Gymnogramma, ..... 28  
 Gynura, ..... 42
- H.**
- Hairy Fig, see Ficus, .. 19  
 Hairy Myrtle, see Rhod-  
   omyrtus, ..... 13  
 Hall's Honeysuckle, see  
   Lonicera, ..... 20  
 Hall's Japan Honey-  
   suckle, see Nintooa .. 20  
 Hedera, ..... 19  
 Hedychium, ..... 40  
 Heliconia, ..... 42  
 Hemerocallis, ..... 40  
 Henna Bush, see Law-  
   sonia, ..... 10  
 Hibiscus, ..... 8-9  
 Hicoria, ..... 33  
 Hippeastrum, ..... 40  
 Holly, see Ilex, ..... 37  
 Holly Fern, see Polysti-  
   chum, ..... 28  
 Honeysuckle, see Nin-  
   tooa & Lonicera, ... 20  
 Horseradish Tree, see  
   Moringa, ..... 30  
 Hosta, ..... 42  
 Howea, ..... 22  
 Hunter's Robe, see Po-  
   thos, ..... 20  
 Hura, ..... 37  
 Hydrangea, ..... 9  
 Hydriastele, ..... 22  
 Hylocereus, ..... 41  
 Hymenocallis, ..... 40  
 Hyopporbe, ..... 23  
 Ilex, ..... 37  
 Impatiens, ..... 42  
 Indian Azalea, see Aza-  
   lea, ..... 6  
 Indian Fig Cactus, see  
   Opuntia, ..... 41  
 Indian Rubber Plant, see  
   Ficus, ..... 36  
 Ipomoea, ..... 19  
 Iris, ..... 40  
 Irish Juniper, see Juni-  
   perus, ..... 39  
 Ixora, ..... 9  
 Jacaranda, ..... 37
- Jacobinia ..... 9  
 Japanese Climbing Fern,  
   see Lygodium, ..... 28  
 Japan Fire Lily, see Ly-  
   coris, ..... 40  
 Japan Persimmon, see  
   Diospyros, ..... 31  
 Japan Iris, see Iris ..... 40  
 Jasmine, see Jasminum,  
   ... .. 9-19  
 Jasminum, ..... 9-19  
 Jatropha, see Jasminum 29  
 Jessamine, see Jasminum  
   and Trachelospermum 9-19  
 Jerusalem Cherry, see  
   Solanum, ..... 13  
 Jerusalem Thorn, see  
   Parkinsonia, ..... 13  
 Juniperus, ..... 39
- K.**
- Karri, see Eucalyptus, .. 35  
 Kei Apple, see Aberia, .. 28  
 Kentia, see Howea, .... 22  
 King's Mantle, see Thun-  
   bergia, ..... 14  
 Kniphofia, ..... 42  
 Kraunhia, ..... 20  
 Kumquat, see Citrus, .. 31
- L.**
- Lab-lab, see Dolichos, .. 18  
 Lace Fern, see Nephro-  
   lepis, ..... 28  
 Lagerstroemia, ..... 10  
 Lamb of Tartary, see  
   Cibotium, ..... 27  
 Lantana, ..... 10-20  
 Lantern Plant, see Bryo-  
   phyllum, ..... 41  
 Lantania, ..... 23  
 Laurocerasus, ..... 38  
 Lavender Vine, see Big-  
   nonia, ..... 18  
 Lawsonia, ..... 10  
 Leadwort, see Plumba-  
   go, ..... 13  
 Leather Breeches, see  
   Derris, ..... 18  
 Lemon, see Citrus, ..... 31  
 Lemon Calla, see Rich-  
   ardia, ..... 42  
 Lemon Guava, see Psid-  
   ium, ..... 35  
 Lemon-scented Gum, see  
   Eucalyptus, ..... 35  
 Leonotis, ..... 42  
 Leucaena, ..... 11  
 Liberian Coffee, see Cof-  
   fea, ..... 7  
 Lion's Tail, see Leonotis, 42  
 Lignum Vitae, see Guaia-  
   cum, ..... 37  
 Ligustrum, ..... 16  
 Lilium, ..... 40  
 Lime, see Citrus, ..... 32  
 Lonicera, ..... 20  
 Loquat, see Eriobotrya, .. 32  
 Lucuma, ..... 29  
 Lucky Seed, see Thevetia, 14

Lycoris, ..... 40  
Lygodium, ..... 28

M.

Macadamia, ..... 29  
Madagascar Periwinkle,  
see Vinca, ..... 14  
Magnolia, ..... 38  
Mahogany, see Swietenia, 38  
Maidenhair Fern, see  
Adiantum, ..... 27  
Malay Jessamine, see  
Trachelospermum, ..... 21  
Malpighia, ..... 29  
Malvaviscus, ..... 11  
Mammea, ..... 29  
Mammee Apple, see Mam-  
mea, ..... 29  
Mammee Sapota, see Lu-  
cuma, ..... 29  
Mandevilla, ..... 20  
Mangifera, ..... 29  
Mango, see Mangifera, .. 29  
Maranta, ..... 40  
Martinezia, ..... 23  
Melicoccus, ..... 30  
Michelia, ..... 11  
Milk & Wine Lily, see  
Crinum, ..... 40  
Miscanthus, ..... 27  
Monkey's Dinner Bell,  
see Hura, ..... 37  
Monstera, ..... 20  
Moonvine, see Ipomoea, 19  
Moraea, ..... 40  
Moreton Bay Fig, see Fi-  
cus ..... 36  
Moringa, ..... 30  
Morus, ..... 32  
Moses' Bulrush, see Cy-  
perus, ..... 27  
Mountain Ebony, see Bau-  
hinia, ..... 34  
Mountain Rose, see An-  
tigonon, ..... 18  
Muehlenbeckia, ..... 42  
Mulberry, see Morus, ... 32  
Musa, ..... 41  
Muscadine Grape, see  
Vitis, ..... 31  
Myrica, ..... 11  
Myriophyllum, ..... 41

N.

Nassau Lily, see Crinum, 40  
Natal Lily, see Moraea, .. 40  
Natal Plum, see Carissa, 29  
Negro Head, see Anonna, 29  
Nephrolepis, ..... 28  
Nerium, ..... 11-12-13  
Newport Fern, see Ne-  
phrolepis, ..... 28  
Night-blooming Jessa-  
mine, see Cestrum, ... 7  
Nintooa, see Cestrum, ... 20  
Norfolk Island Pine, see  
Araucaria, ..... 38  
Nymphaea, ..... 41

O.

Oil Palm, see Elaeis, .. 22  
Oleander, see Nerium,  
..... 11-12-13  
Opuntia, ..... 41  
Orange, see Citrus, .... 32  
Orange Jessamine, see  
Chalcas, ..... 7  
Oreodoxa, ..... 23  
Oriental Tree Cotton, see  
Gossypium, ..... 7  
Ostrich Plume Fern, see  
Nephrolepis, ..... 28  
Otaheite Apple, see Spon-  
dias, ..... 30  
Otaheite Gooseberry, see  
Phyllanthus, ..... 30

P.

Pacaya Palm, see Pa-  
couria, ..... 23  
Pacouria, ..... 23  
Paddle Cactus, see Epi-  
phyllum, ..... 41  
Paina Tree, see Chorisia, 34  
Palay, see Cryptostegia, 18  
Palmetto, see Sabal, .... 25  
Palm Grass, see Pani-  
curn, ..... 27  
Palo Estaca, see Caesal-  
pinia, ..... 7  
Pampas Grass, see Corta-  
deria, ..... 27  
Panama Hat Plant, see  
Carludovica, ..... 22  
Pandanus, ..... 42  
Panicum, ..... 27  
Paper Flower, see Bou-  
gainvillea, ..... 18  
Paradise Flower, see Aca-  
cia and Solanum, .... 6-21  
Parkia, ..... 38  
Parkinsonia, ..... 13  
Parrott's Feather, see  
Myriophyllum, ..... 41  
Parthenocissus, ..... 20  
Passiflora, ..... 20  
Passion Flower, see Pas-  
siflora, ..... 20  
Papaw, see Carica, ..... 29  
Peach, see Amygdalus, .. 32  
Pear, see Pyrus, ..... 33  
Pecan, see Hicoria, .... 33  
Pedilanthus ..... 41  
Pereskia, ..... 30  
Persea, ..... 30  
Persimmon, see Diospy-  
ros, ..... 31  
Phoenix, ..... 23-24-25  
Phyllanthus, ..... 17-30  
Piaropus, ..... 41  
Pilea, ..... 42  
Pindo Palm, see Cocos, .. 22  
Pineapple, see Ananas, .. 28  
Pineapple Guava, see Fei-  
joa, ..... 33  
Pink Ball, see Dombeya, 7  
Pinus, ..... 39  
Pittosporum, ..... 17  
Plantain Lily, see Hosta, 42  
Plum, see Prunus, ..... 33

Plumed Cocos, see Cocos, 22  
Plumed Scott Fern, see  
Nephrolepis, ..... 23  
Plumbago, ..... 13  
Poinciana, see Delonix  
and Caesalpinia, .... 7-34  
Poinsettia, see Euphorbia, 7  
Polystichum, ..... 23  
Pomegranate, see Punica, 33  
Pomelo, see Citrus, .... 31  
Pond Lily, see Nymphaea 41  
Popinac, see Acacia, .... 6  
Porana, ..... 20  
Pothos, ..... 20  
Pritchardia, ..... 25  
Prunus, ..... 33  
Psidium, ..... 30  
Pteris, ..... 23  
Ptychosperma, ..... 25  
Pudding Pipe Tree, see  
Cassia, ..... 34  
Punica, ..... 33  
Purple Allamanda, see  
Allamanda, ..... 18  
Purple Fern Tree, see Ja-  
caranda, ..... 37  
Purple Trailing Lantana,  
see Lantana, ..... 20  
Pyrostegia, ..... 21  
Pyrus, ..... 33

Q.

Queen Amaryllis, see Hip-  
peastrum, ..... 40  
Queen Crape Myrtle, see  
Lagerstroemia, ..... 10  
Queensland Nut, see Ma-  
cadamia, ..... 29  
Queensland Pittosporum,  
see Pittosporum, ..... 17

R.

Rainbow Moss, see Se-  
laginella, ..... 43  
Rainbow Plant, see Strob-  
ilanthes, ..... 14  
Raphiolepis, ..... 13  
Raphis, ..... 25  
Rattle Box, see Crotala-  
ria, ..... 7  
Red Areca, see Dictyos-  
perma, ..... 22  
Redbird Cactus, see Pedi-  
lanthus, ..... 41  
Redbranched Hydrangea,  
see Hydrangea, ..... 9  
Red Cedar, see Juniperus 39  
Red Gum, see Eucalyptus 35  
Red Mahogany, see Eu-  
calyptus, ..... 35  
Redhot Cat Tail, see  
Acalypha, ..... 15  
Redhot Poker, see Kniph-  
ofia, ..... 42  
Rhodomyrtus, ..... 13  
Richardia, ..... 42  
Rivina, ..... 13  
Roosevelt Fern, see Ne-  
phrolepis, ..... 28  
Rosa, ..... 14  
Roscheria, ..... 25

Rose, see Rosa, ..... 14  
 Rose Apple, see Eugenia, 29  
 Rose Bay, see Tabernaemontana, ..... 14  
 Rose Mallow, see Hibiscus, ..... 8  
 Rosedale Hybrid, see Thuya, ..... 39  
 Royal Palm, see Oreodoxa 23  
 Royal Poinciana, see Delonix, ..... 34  
 Rubber Tree, see Ficus, 36  
 Russelia, ..... 13

**S.**

Sabal, ..... 25  
 Sagittaria, ..... 41  
 Sago Palm, see Cycas, .. 22  
 Saint Augustine Grass, see Stenotaphrum, .... 27  
 St. John's Bread, see Ceratonia, ..... 29  
 Salad Palm, see Paccouria, ..... 23  
 Salvia, ..... 42  
 Sandbox Tree, see Hura, 37  
 Sansevieria, ..... 41  
 Sapodilla, see Achras, .. 28  
 Saw Fern, see Blechnum, 27  
 Scarlet Sage, see Salvia, 42  
 Scarlet Mexican Lily, see Amaryllis, ..... 39  
 Schinus, ..... 38  
 Scott's Compact Boston Fern, see Nephrolepis, 28  
 Screw Pine, see Pandanus 42  
 Seaforthia, see Ptychosperma, ..... 25  
 Seagrape, see Coccoloba, 7  
 Sebesten Plum, see Cordia 7  
 Selaginella, ..... 42  
 Sesbania, ..... 13  
 She-Oak, see Casuarina, 38  
 Shell-flower, see Alpinia, 39  
 Silk Oak, see Grevillea, .. 37  
 Silver Bamboo, see Bambusa, ..... 25  
 Silver-striped Bamboo, see Bambusa, ..... 26  
 Silver Fern, see Gymnogramma, ..... 28  
 Silver Vine, see Argyreia, 18  
 Sisal Hemp, see Agave, 41  
 Snow Vine, see Porana, .. 20  
 Solandra, ..... 21  
 Solanum, ..... 13-21  
 Solomon's Lily, see Arum, 42  
 Sour Sop, see Annona, .. 29  
 Spanish Jessamine, see Jasminum, ..... 19  
 Spanish Laurel, see Ficus, 36  
 Spanish Lily, see Hymenocallis, ..... 40  
 Spanish Lime, see Melicoccus, ..... 30  
 Spathodea, ..... 38  
 Spider Lily, see Hymenocallis, ..... 40  
 Spiderwort, see Tradescantia, ..... 43

Spindle Tree, see Euonymus, ..... 16  
 Spondias, ..... 30  
 Spotted Calla, see Richardia, ..... 42  
 Spotted Gum, see Eucalyptus, ..... 35  
 Staghorn Boston Fern, see Nephrolepis, ..... 28  
 Star Jessamine, see Jasminum, ..... 19  
 Stenolobium, ..... 14  
 Stenotaphrum, ..... 27  
 Strangler Fig, see Ficus, 36  
 Strawberry Pear, see Hyllocereus, ..... 41  
 Striped Bamboo, see Bambusa, ..... 26  
 Strobilanthus, ..... 14  
 Sugar Apple, see Annona, 29  
 Sultan's Balsam, see Impatiens, ..... 42  
 Sun Mallow, see Malva-viscus, ..... 11  
 Surinam Cherry, see Eugenia, ..... 29  
 Swamp Mahogany, see Eucalyptus, ..... 35  
 Sweet Sop, see Annona, 29  
 Sweet Violet, see Viola, 43  
 Swietenia, ..... 38  
 Sword Fern, see Nephrolepis, ..... 28

**T.**

Tabernaemontana, ..... 14  
 Tall Rubber Tree, see Ficus, ..... 36  
 Tamarind Tree, see Tamarindus, ..... 30  
 Tamarindus, ..... 30  
 Tecoma, ..... 21  
 Teddy Jr., see Nephrolepis, ..... 28  
 Telanthera, ..... 17  
 Terminalia, ..... 30  
 Tetrastigma, ..... 21  
 Texas Mimosa, see Acacia, ..... 6  
 Thatch Palm, see Thrinax 25  
 Thevetia, ..... 14  
 Thorny Twin, see Bauhinia, ..... 7  
 Thrinax, ..... 25  
 Thunbergia, ..... 14-21  
 Thuya, ..... 39  
 Ti-es, see Lucuma, .... 29  
 Tiger Apple, see Thevetia, ..... 14  
 Tillandsia, ..... 43  
 Toddy Palm, see Caryota 22  
 Tomatillo, see Solanum, 21  
 Trachelospermum, ..... 21  
 Trachycarpus, ..... 25  
 Tradescantia, ..... 43  
 Trailing Purple Lantana, see Lantana, ..... 20  
 Tree Elephant's Ear, see Alocasia, ..... 39  
 Tree Fern, see Alsophila,

and Cibotium, ..... 27  
 Triphasia, ..... 14  
 Tropical Almond, see Terminalia, ..... 30  
 Trumpet Creeper, see Tecoma, ..... 21  
 Turk's Cap, see Malva-viscus, ..... 11  
 Typha, ..... 41

**U.**

Umbrella Grass, see Cyperus, ..... 27

**V.**

Velvet Plant, see Gynura 42  
 Viola, ..... 43  
 Violet, see Viola, ..... 43  
 Virginia Creeper, see Parthenocissus, ..... 20  
 Vinca, ..... 14-43  
 Vitis, ..... 31  
 Vres'ia, ..... 43

**W.**

Wandering Jew, see Tradescantia ..... 43  
 Wampee, see Claucena, 33  
 Washingtonia, ..... 25  
 Water Hyacinth, see Piaropus, ..... 41  
 Water Lily, see Nymphaea, ..... 41  
 Wax Myrtle, see Myrica, 11  
 Weeping Lantana, see Lantana, ..... 20  
 West Indian Birch, see Bursera, ..... 34  
 Whau Tree, see Entelea, 34  
 White Amaryllis, see Amaryllis, ..... 39  
 White Popinac, see Leucaena, ..... 11  
 White Senna, see Cassia, 7  
 Wild Pine, see Tillandsia, ..... 43  
 Wild Plantain, see Heliconia, ..... 42  
 Wistaria, see Kraunhia, 20  
 Woman's Tongue Tree, see Albizzia, ..... 33

**X.**

Xanthosoma, ..... 41

**Y.**

Yaxci, see Agave, ..... 41  
 Yellow Elder, see Stenolobium, ..... 14  
 Yellow Cattley Guava, see Guava, ..... 30  
 Yellow Day Lily, see Hemerocallis, ..... 40  
 Yellow Shower, see Genista, ..... 7  
 Yellow Dwarf Poinciana, see Caesalpinia, ..... 7  
 Yucca, ..... 42

**Z.**

Zebra Plant, see Sansevieria, ..... 42  
 Zingiber, ..... 43  
 Zygocactus, ..... 42











