

## **Historic, Archive Document**

Do not assume content reflects current scientific knowledge, policies, or practices.



1919



*The* **ADAMS**  
**SEED CO.**  
DECORAH IOWA  
WORLD'S STANDARD OF  
PURITY & GERMINATION  
**PURITY BRAND**  
**TASCO BRAND**



# Just To Prove Our Responsibility

**Decorated Spinnaker**

To His Excellency, the Honorable Governor of the State of Iowa, Des Moines, Iowa.

Very respectfully submitted for your consideration, the undersigned, your obedient servant,

*E. J. Clarke*  
President

**Commercial Creditors Trust**

To His Excellency, the Honorable Governor of the State of Iowa, Des Moines, Iowa.

Very respectfully submitted for your consideration, the undersigned, your obedient servant,

*W. H. ...*  
President

**CITIZENS SAVINGS BANK**

To His Excellency, the Honorable Governor of the State of Iowa, Des Moines, Iowa.

Very respectfully submitted for your consideration, the undersigned, your obedient servant,

*E. J. Clarke*  
President

**The National Bank of Des Moines**

To His Excellency, the Honorable Governor of the State of Iowa, Des Moines, Iowa.

Very respectfully submitted for your consideration, the undersigned, your obedient servant,

*W. H. ...*  
President





## A Few Words from Our President



I wish that every reader of this catalogue could come to Decorah before seed-planting time. I would like to talk to you face to face, to get better acquainted with you, and give you a chance to get better acquainted with us. I would like to take you through our plant and show you the infinite pains we take in the selection, cleaning, grading, testing and storage of seeds. I would like to have you see for yourselves, with your own eyes, what lies back of our national reputation for furnishing seeds of the highest purity, quality, cleanness and germinating strength.

Since that is hardly possible, I will try to do the next best thing—to tell you in a straightforward, unexaggerated way about our standards, our equipment and our business record, and what we are doing to help the farmers and gardeners of this country raise the extra per cent crops that the United States expects of them as a patriotic duty in this great year of world reconstruction.

First of all—back of the Adams name are years of continuous dealing in seeds; supplying seeds of the highest quality to a yearly growing number of successful farmers and garden makers.

*Quality first* has always been our policy, and will be as long as I am connected with this business. And here quality means something more than a name—it means that nothing short of the best will satisfy us. Our quality standards are the result of a life-long study of seeds. We have perfected methods of cleaning and grading seeds that enable us to produce seeds of "world's standard" excellence. High as these standards were last year, they are higher this, for we are not content to rest on our oars. We are right now spending thousands of dollars in remodeling our cleaning plant and installing new cleaning and grading equipment—the best that expert skill can devise and good money can buy—all for the sake of giving you better seeds and better service.

Complete satisfaction must be given every customer before we are ourselves satisfied—and *real service in the fullest sense of the word*. We keenly realize the responsibility that rests upon us. We know that weak seed is slacker seed and foul seed is traitor seed, and we are doing everything that scientific knowledge and years of experience and the best of equipment can bring about to furnish our customers with seed that will grow the big crops for which a hungry world is clamoring.

In getting out this catalog I have insisted that every statement *ring true and be true*. It is the only Adams Salesman many of you will ever see. It represents our seeds and our ways of doing business and we've tried to make it show them as they are, without exaggeration or camouflage. We could have made it bigger by listing more varieties, putting in more pictures and indulging in more talk about ourselves, but we take it that common sense statements of fact are what really count with you.

The Government is asking every mail order house to conserve paper this year, too. That's another reason why this catalog isn't as thick as some others. But—the facts are there, the really worth-while varieties of proved worth are all described and we've printed enough catalogs so that all of your friends who wish one can be supplied if they write us or you send in their names.

I want your orders—now and in the years to come, and will see to it that the seed you get from the Adams Seed Co. lives up to our claims. I want you to plant Adams Seeds, because I honestly believe that by so doing you will get the *bigger crops* that means bigger profits, as well as helping you do your utmost in food production.

I hope that you will read this book from cover to cover, and will send us your order and find out by actual experience how completely Adams Seeds satisfy our customers.

—BURTON H. ADAMS, Pres.,



PRODUCERS AND DEALERS IN GUARANTEED SEEDS





## Our 1919 Seeds Will Come to You From a Completely Remodeled Plant

As this is written, building operations on our enlarged seed cleaning plant and office home are rapidly nearing completion. We had hoped to have all this done before our catalog was in the printer's hands, but—well, you know what the war did to the building situation.

Now, however, with all restrictions and handicaps removed, work is progressing rapidly and we shall soon be doing business in one of the best equipped seed plants in America.

We're sorry that we can't show pictures of this big new plant and its various departments in this catalog, but we can't delay the book longer and don't propose to resort to faking.

To give you some idea of what we are doing, we will, however, say that the new building will provide *additional storage* for 50,000 bushels more seed, seed grain and seed corn than our previous capacity, that our general offices and catalog department will be greatly enlarged and arranged for more efficient handling of orders and accounts, and that a large new seed testing laboratory will be equipped. For this building we have purchased thousands of dollars' worth of the best seed cleaning machinery that money can buy.

In all probability we will be using the new building by February 1, 1919. We certainly expect it to be a big help in handling this Spring's trade and in giving the sort of service that our very exacting standards demand. This heavy expenditure has been made for your interest as customers. It means that the exceptional care taken in preparing seeds for the market in former years will be exceeded this year. It means that **Adams "Quality First" Seeds** are going to be better, purer and higher in germination percentage than ever before. You will get better service.



How the New Building Looked in Mid-December



Scene in Our Retail Department



PRODUCERS AND DEALERS IN GUARANTEED SEEDS





# How Would You Like To Be a "Partner" In Our Business

I've reserved this page to tell you about two opportunities for co-operation with us which I feel it a real privilege to be able to extend to our friends and customers.

These opportunities are unusual—they are **real opportunities**, giving you a chance to become closely identified with the business of The Adams Seed Company and to share in its profits.

## FIRST: An Opportunity To Secure Stock In This Company.

On another page I told you something about our new building and improved seed-handling equipment. These improvements have not been made just to take care of business which we hoped to get "some day." They were rendered absolutely necessary by the rapid growth of our business—they had to be made to meet the tremendously increased demand for Adams Quality Seeds. Within three years our mailing list has grown from 15,000 to more than 40,000 names, and our car lot trade has gone ahead in a wonderful way. We are doing a much bigger business than ever before, and every indication points to 1919 going away ahead of all past records.

Our rebuilding operations are costing us thousands of dollars—our improved seed cleaning machinery is expensive—carrying the stocks of seeds we must have in order to handle our big increase in business and give our customers the right kind of service means the constant employment of a much larger capital than we have hitherto had. For this reason we have increased our capitalization and are selling a limited amount of 7 Per Cent Cumulative Preferred Stock in The Adams Seed Company. Several thousands of dollars of this stock has already been subscribed by people right here in Decorah and Winneshiek County, but the small remaining balance of it is still to be sold, and we believe that the people who buy seeds from us should have the first opportunity to secure this.

I am not going into an extended discussion of this stock here, for this is a seed catalog, not a stock prospectus, but do want to say that experienced investors pronounce it a **GOOD investment in every sense of the word**. To give full information about it, I have had a short history of our business printed, which we will be glad to send you, if you will check and return the postal card enclosed with this catalog.

This little book gets right down to facts and figures, shows what The Adams Seed Company has done in the past, what it proposes to do in the future, and answers the questions that you want to know about this investment. It's worth reading because it's **so different** from other books of its kind.

Incidentally, I want you to know that, while this stock pays 7 per cent dividends (interest) every year, that's only a part of the profits, advantages and privileges which its buyers may enjoy.

If you have some money which you would like to see earning from 8 per cent to 12 per cent, send back the card, and we will be glad to explain fully the plan on which you can become one of our money-making stockholder partners.

## SECOND: An Opportunity To Join The 1000 Club

When we sent out last year's catalog, we sent with it a letter explaining the purpose of The Adams 1000 Club, and inviting such of our customers as were eligible for membership to join. Many of them did so. This year I want to bring the membership up to full strength—1000 strong—every man boosting for and profiting by **better seeds, better crops and better prices**.

There isn't room enough left to go into details here about The Adams 1000 Club, but it's a real, live, co-operative booster organization, with a **BIG IDEA** back of it and a **BIG FUTURE** ahead of it. Membership is limited to **ONE** live farmer in every township—and membership carries with it important special advantages in both buying and selling seeds, as well as real help in making farming more productive and more profitable.

We've issued a special pamphlet on the 1000 Club in which we explain fully what its purpose is, what its benefits are, and how to become a member. If you are interested in promoting the agricultural interests of your township, and at the same time getting more money from your farm, check the 1000 Club part of the postcard and slip it into an early mail.

Yours for closer co-operation,

B. H. ADAMS, Pres.,  
The Adams Seed Company



PRODUCERS AND DEALERS IN GUARANTEED SEEDS





# How We Assure High Percentages of Purity, Germination and Growth



A Corner in Our Testing Laboratories

First of all, our seed is grown in territory where hardy, productive seed is raised year after year. But that's only the starting step—the first safeguard which we throw around the seeds which we offer you. Experts see to it that every ounce of Adams' seed is cleaned and graded with the most exacting care. Weed seeds are removed by our battery of big cleaning machines—so thoroughly removed that Adams' Seeds regularly show considerably higher percentages of Purity than the strictest state laws demand.

Scientific tests for germination and probable growth are made in Standard Seed Testers—the most accurate equipment ever devised for showing the vigor and planting value of seed corn, grass seeds, grain seed and vegetable seed. These testers not only show whether seeds will sprout but also show whether those that do sprout have sufficient vitality and the number of feed roots necessary to make big yields profitable. As operated in our testing laboratories they eliminate, as far as it is humanely possible to do so, the element of chance in planting. That's why Adams' Seeds grow bumper crops.

The results obtained from tests of Adams' Seeds made in U. S. Government laboratories and agricultural colleges bear out our claims for superior purity and germination. Every year quantities of Adams' Seeds are so tested with remarkably high reports. For example, in recent analysis of Adams' field seeds made by the Iowa Agricultural Experiment Station at Ames, Iowa, and the U. S. Bureau of Plant Industry at Columbus, Mo., forty-seven separate car lots taken at random showed an average of 99.65 per cent purity—2.65 per cent in excess of Iowa requirements.

By the terms of our guarantee all our seeds are sold subject to test at your State Agricultural Experiment Station.

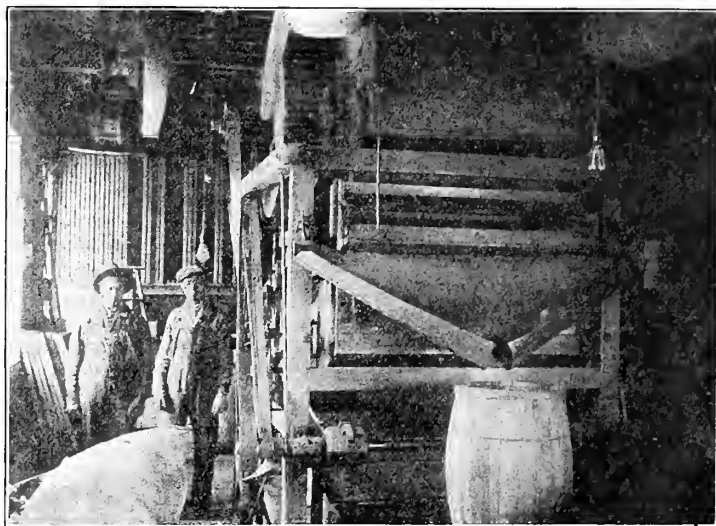
Why take chances on seeds of unknown or doubtful value when by ordering from this catalog you can secure from this big, long established seed house the protection which expert selection, cleaning, grading and testing gives you—backed by a nation-wide reputation for selling only pure, high-test, true-to-name seeds?

## Expert Advice on Farm Crops and Soils, Free

We don't stop with breeding choice seed and preparing it for the market by the best processes available. We maintain a special department headed by a graduate of the State Agricultural College at Ames, Iowa, to give you expert advice on farm crops and soils. Without charge or obligation, our farm expert will suggest the kind of crops best suited to different kinds of soils, the relative feed values of different crops you are thinking of planting, the varieties of seed best suited to your latitude and soil—the most effective way of getting rid of weeds, etc. Write us about your soil, location, previous cropping, etc., and he will tell you what kind of crops to plant and what variety of seed. He will also make free tests of your soil for acidity and advise you regarding the proper rotation of crops to avoid exhausting the fertility of your farm.

As a seed corn expert he will test your own corn free and suggest the varieties and methods of cultivation calculated to produce most possible bushels per acre in your latitude.

This advice, which may easily be worth hundreds of dollars to you this year, is free—given gladly because we want to be of the greatest possible service to our customers and to do everything in our power to make Adams' Seeds produce the biggest possible crops.



One of our Cleaning Machines. We are now installing several more of large capacity.



PRODUCERS AND DEALERS IN GUARANTEED SEEDS







## The Adams Guarantee

*We exercise great care in selecting, sorting, recleaning and testing our seeds and fully guarantee them to be as represented. They are sold to you under this Absolute Guarantee, with the understanding that after you receive them, we allow you 15 days to send a true sample to your State College for test and forward report to us. If this report shows shipment is not up to our representations, same may be returned to us, and we will promptly refund your money. While we give no warranty, express or implied, as to description, quality, productiveness or any other matter of any seeds, bulbs or plants, we send out, and will not be in any way responsible for the crop, we do not want any customer to keep any seeds that are not as represented. If any seeds are returned in accordance with the foregoing conditions, the money will be refunded.*

This guarantee goes on every tag we attach to our shipments—and every invoice we send out. Its clean-cut, straightforward, hedgeless evidence of fairness and reliability—safeguarding you in every way that an intelligent man or woman can ask. We purposely make it plain and simple. The provisions it contains are fair ones, without which no seed house could stay in business—and it is backed by our reputation and an intense desire to give full and abundant satisfaction to every customer.

We won't promise impossibilities. We cannot control soils, or weather, so cannot *guarantee crops*, but we *can, will and do guarantee our seeds* as shown above, and we stake our reputation and expectation of continuing in business for many long years to come on the way Adams Seeds make good our claims.

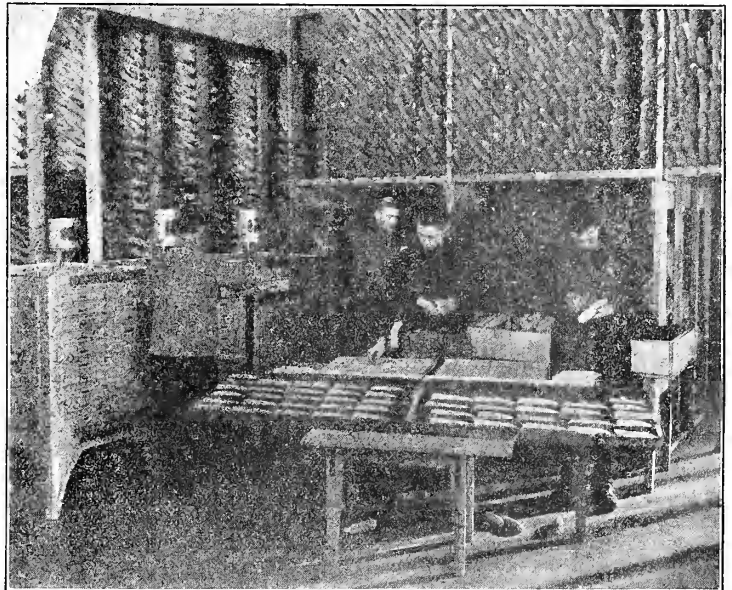
## Iowa Law Protects You When You Buy Seeds From Us

The State of Iowa protects you on every ounce of seed you buy from us. We are absolutely prohibited from selling—or even giving away—for seed, a single ounce of any field or garden seed that contains Quack Grass, Canada Thistle, Dodder, or any one of four other pest weeds.

This law, one of the wisest on the statute books of this great state—applies only to seed houses located in Iowa. It cannot reach outsiders. If you want protection you must buy your seeds inside this state.

Purity and Tasco Brand Seeds were pure seeds years before this law was ever advocated. They were sold then, as today, subject to the test of your State Agricultural College, and we agreed to take back any shipment found unsatisfactory, and to refund every penny of the purchase price. That was something no other seed dealers had ever done.

The Seed Law made necessary no change in our way of handling seeds. It did not make our famous brands any better—they met the provisions of the Law before it existed. It did, and does, however, give you assurance that Adams' Seeds are safe to plant.



Corn testers at work under the supervision of our agronomist. This scientific testing assures strong germination.



PRODUCERS AND DEALERS IN GUARANTEED SEEDS





Our Mr. W. C. Adams and Field of Alfalfa Grown at Decorah, Iowa

## We Specialize in Field Seeds—Grown in the Right Latitude to Produce Strong, Prolific Yields—You Know What That Means.

Our business started as a field seed business—for years before we began selling garden seeds we had an established reputation for selling the best and purest grass seed and seed grain that could be bought anywhere. The processes of cleaning and grading we developed enabled us to deliver seeds testing exceptionally high—in fact steadily going away beyond state and government requirements. Big, wholesale seed houses all over the country have for years bought Adams' Timothy in carlots as the most dependable that could be bought anywhere. In Seed Corn, through careful selection and breeding and testing by our superior equipment we have been able to establish and maintain standards far and away higher and better than those of the average seed house.

One of the biggest factors in making Adams' Seeds give exceptional satisfaction is found in their careful selection with reference to the climate in which they are to be planted.

When you buy seed from us we see to it that you get seed that is adapted to your latitude—not something that may produce enormous yields elsewhere but fail to mature crops in the locality where you live. Since we do a national business, we must offer kinds of seed suited to different latitudes—but we are careful in our descriptions to specify the origin of the seed and the latitude in which it can be expected to give first class results.

We specialize on Northern grown seed (Northern Iowa and Minnesota), because this has great hardiness and vitality and will

produce big, high-quality crops in latitudes much farther south than where it originates—whereas, owing to shorter growing seasons and more rigorous climate, planting seed in your latitude which was grown farther south is always a great deal of a gamble.

For the benefit of our corn growers we have indicated the latitude where grown on all Seed Corn listed in this catalog. For those of our customers who live in the latitude of Northern Iowa, the southern edge of Minnesota and corresponding territory in Wisconsin, etc., we recommend our Seed Corn grown in the latitude of Northern Iowa.

Our Central Minnesota grown Seed Corn is adapted to growers who are situated farther north, like Central Minnesota, Central Wisconsin, etc., for it is a well known fact that Seed Corn cannot be moved north and grown successfully, but must be raised in the latitude in which it is to be planted.

We offer no dent Seed Corn of any variety grown south of the latitude of Northern Iowa, except where stated.

Our Timothy, Clovers and other grass seeds and seed grains are all strictly Northern Grown, selected from the very choicest lots, mainly secured from the most favored growing sections of northern Iowa, Minnesota and Wisconsin. We are specialists in hardy, Northern Grown seeds—dependable seeds that are safe to sow and sure to satisfy.

For the Sake of Big Crops and Big Yields, Plant Adams' Seeds.



PRODUCERS AND DEALERS IN GUARANTEED SEEDS





# The Two Big Adams Brands of High Grade Field Seeds —Purity and Tasco



The reputation of Adams Field Seeds has been built up on two brands whose standards we maintain for your protection and our own.

Our *Purity Brand Seeds* are unexcelled anywhere in the world. They are as nearly 100 per cent perfect in purity as the most improved processes of cleaning can make them—carefully graded, even in color and appearance and uniformly high in germination percentage.

For quality they are absolute top-notchers, and the value that is in them makes them cheap at the prices we ask. If you want to give your land the best chance in the world to produce big yields and make you the biggest possible profits per acre, Purity Brand Seeds are your “best buy.”

*Tasco Brand Seeds* are nearly as pure and high in germination tests as the Purity Brand. They are not quite so fancy in appearance or uniform in color, but are superior to most other seeds on the market.

Those of you who are not so particular about appearance will find Tasco Brand very satisfactory and an excellent value.

Replying to your letter asking what success I had with Seed Corn, will say I got a splendid stand.

W. C. ANDERSON, Vinton, Ia.



Grading Machines at Work

## CAUTION

When you are offered any kind of seed for less than it will bring in the Chicago market, take care! No seedsman is in business for his health. Your own common sense will tell you that if it were all right the seed company wouldn't be offering it to you at so-called bargain prices when he could ship it to Chicago and get more money.

When you are offered seeds at lower prices than we quote, do this for your own self protection: Get samples of Adams' Seeds and the other seeds and send both to your state college for test. Then plant the ones that give you biggest value for your money. We'll stand by the results. We know that Adams' Seeds test consistently higher than others, grade for grade. Big yields of weed-free crops can only be secured by planting seeds of Adams quality and big yields are what you want, because they pay.



Sealing sacks after final inspection. Every such detail of service receives careful attention

Prices Subject to Market Changes. See Red Discount Sheet for Latest Prices



PRODUCERS AND DEALERS IN GUARANTEED SEEDS





# World's Standard Timothy

Hardy Northern Grown

The Finest Timothy Seed on the Market  
At Prices That Save You Money



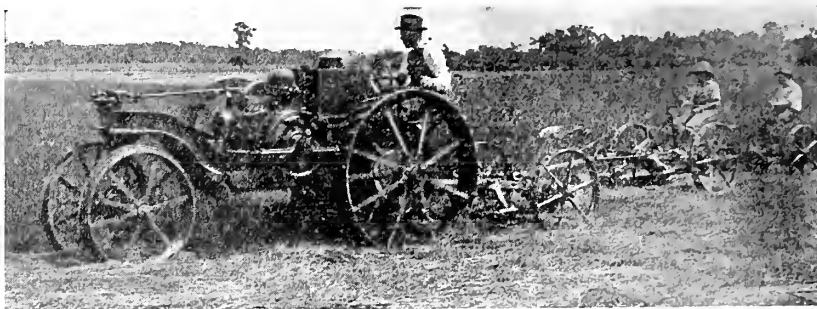
Adams' Purity Brand Timothy is the choicest the market offers in this great staple hay grass—selected seed grown in America's greatest Timothy Belt, and cleaned and graded with a thoroughness that makes it far and away superior to the sort of seed offered as "first quality" by other seed houses. Comparative tests of samples will show you that Adams' Timothy is your best buy.

We are the largest dealers in high-grade Timothy Seed in the country and have built up our market and reputation by the exclusive methods we employ in selecting, cleaning and testing. Adams Timothy seed is known all over the world. Our business in carload lots is enormous, large quantities being exported to Europe in addition to its immense sale in this country.

The extent of our Timothy business enables us to maintain unusually favorable connections for securing the very best seed raised and to quote you prices which, quality considered, mean a big saving to you.

You will get some idea of the high standards we maintain in Timothy when we tell you that in one recent season we shipped out more than 50 carloads testing 99½ per cent pure.

The seed we offer this season was all grown in 1918 on rich Northern Mississippi Valley soil, which consistently produces the choicest Timothy in the country. Our seed is clean, firm and hardy, and tests unusually high. In our many years of experience as Timothy Specialists we have never seen better. If you want seed that you can depend on for a big, high-grade hay crop, send us your order.



An Up-to-Date Harvesting Scene

## Orchard Grass

Valuable as a grass for pasture or meadow land, and, like Blue Grass, it is early and valuable for permanent pasture. Price—Postpaid, 1 lb., 35c; 3 lbs., \$1.00. See red discount sheet for quantity prices.

## Rye Grass

Valuable for pasture and also for hay. Does best on rich, moist land, where from two to four cuttings may be made in one season.

ENGLISH OR PERENNIAL—Price—Postpaid, 1 lb., 25c; 3 lbs, 60c. Subject to market change.

ITALIAN—Price—Postpaid, 1 lb., 30c; 3 lbs., 75c. Prices subject to market change. See red discount sheet for latest prices.

Prices Subject to Market Changes. See Red Discount Sheet for Latest Prices



PRODUCERS AND DEALERS IN GUARANTEED SEEDS





# Our Famous High Grade Alsyke and Timothy Mixture—Greatest Combination Known for Hay or Pasture

Of all the various combinations of different grass seeds that are known and recommended, Alsyke and Timothy is the best. For actual value—either as pasturage or for hay crop—there's nothing that equals a rightly proportioned mixture of these grasses. One perfectly supplements the other in feeding content, and the same soils and growing conditions serve both equally well.

You can't buy, at any price—or mix for yourself—any other combination of grass seeds that can be depended upon to produce as great quantities of equally satisfactory feed under ordinary conditions. Further, you can save from one-third to one-half on the cost of your seed by buying our ready-mixed Alsyke and Timothy. Our prices on the very finest of this seed produced in this country will enable you to sow a bigger acreage at less cost than you possibly could if you bought seed separately and mixed it yourself.

Alsyke and Timothy make an ideal combination, because both are perennials—both are adapted to the same soil—each aids the other in developing—both flower at the same time and are ready for cutting at the same time. They cure together much better than Timothy and Clover—produce a brighter, better-colored, more edible hay with a higher nutritive, or feed value. The two reach maximum production growing together—the Alsyke supplies nitrogen to the soil which the Timothy needs, and the Timothy supports and protects the Alsyke. Grown together, these grasses will not Winter-kill, and they do well on any land where either one will grow alone, or where any of the ordinary grasses and legumes flourish.

On low, wet land—such as recently drained fields—there is absolutely nothing as good as the Alsyke-Timothy combination, either for crop value or for reclaiming the land. This combination grows and flourishes on newly-drained land that is usually sour and may contain alkali. It will enrich this kind of soil by the addition of necessary humus, and put it in condition to grow big grain crops.

Alsyke and Timothy produce a permanent meadow or pasture that can be depended on until you want to break it up. You don't have to break and re-seed every year or two.

Now consider the saving that lies in buying Adams' Mixed Alsyke and Timothy. Our price on our great mixture is but a little higher than on pure Timothy seed, whereas the cost of pure Alsyke seed is approximately three times that of Timothy. As the Adams Mixture is about one-third Alsyke to two-thirds Timothy you effect a very considerable saving buying it in preference to buying the seeds separately and mixing them. You get the greatest hay and pasture combination at practically the Timothy seed price.

Our low price on our Alsyke-Timothy Mixture is made possible by the fact that these seeds are produced together and threshed together for us. Because the seeds are alike in size they cannot be separated, and consequently have not the full market value that they would have if grown separately. You benefit by that fact when you buy Adams' Alsyke and Timothy.

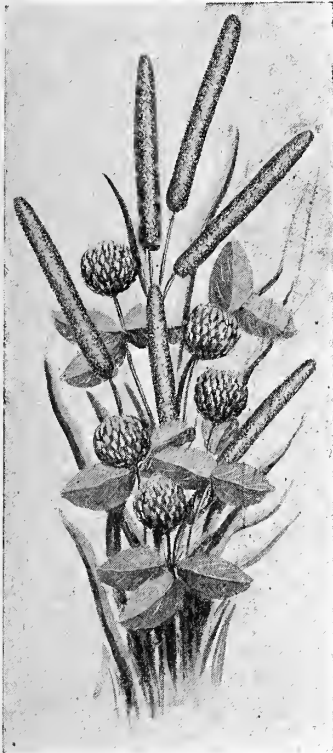
Sow this big money-making combination this year. Buy our carefully cleaned, high germination test, guaranteed mixture and have a heavy yielding, permanent pasture or meadow at minimum cost.

Price: Peck, \$2.00; ½ bu., \$3.50.

We also have two other grass seed mixtures that have proven very successful with our customers for a good many years.

MIXED ALSYKE, RED CLOVER AND TIMOTHY.

MIXED TIMOTHY AND RED CLOVER.



Alsyke and Timothy



Hay Crops Like This Pay Big Dividends

Prices Subject to Market Changes. See Red Discount Sheet for Latest Prices



PRODUCERS AND DEALERS IN GUARANTEED SEEDS





# Adams' Clovers



Clover Grown from Adams' "Purity" Brand Clover Seed

Clovers are of greatest value to Agriculture, not only for pasture and hay, but because they enrich the soil with nitrogen, thus restoring it when it is run down and making the soil once more fertile and rich. Without Clovers it would be impossible to get good results from any farm, as it is necessary to constantly build up the land. The nitrogen that Clover puts into the soil is needed by nearly all crops, and the amount of it that Clover stores in the ground is not made less when the Clover hay is harvested, as the nitrogen is stored in the roots, to be used by the next crop that follows. Our "Purity" brand Clover Seed is the highest quality sold anywhere.

## Medium Red Clover

JUNE

This is regarded as the most valuable of all the Clover family and is standard everywhere for hay and pasture. It is known as Common Red or June Clover. Our Northern grown Clovers are of strong vitality, vigorous plump seed, carefully cleaned and inspected for purity and germination. Every lot of seed we handle is examined under strong light and only the choicest lots are kept for our farm trade—the balance being shipped outside of the state. We send samples of these lots to the U. S. Department of Agriculture and to the Iowa Agriculture College to be tested. We also invite our customers to do the same. Our "PURITY BRAND" and "CHOICE" grades were sold subject to these inspections before there was an Iowa Seed Law, and we will always maintain the high standard of seeds that we have sold under these brands. Cheap Clover is in the end the highest priced that you can sow. On the other hand, there is no reason why even the best grades, such as we offer, should be sold at an exorbitant price, and we aim at all times to supply our customers at a reasonable figure. We make a specialty of Clover Seed and we challenge comparison, quality for quality and price for price, with the seed of any other house. Price—postpaid—1 lb., 50c; 3 lbs., \$1.25. Prices subject to market changes. See our red discount sheet for quantity prices.

## Mammoth Red Clover

(SAPLING)

This greatly resembles the Medium Red, but is much taller and of more vigorous growth. It produces an enormous yield and is of high feeding value, making splendid hog pasture. It has a quick, rank growth, more hardy than Medium, and is usually considered a permanent pasture grass, although it is not as desirable for hay as the Medium as it is too coarse. As a fertilizer, it is particularly valuable for plowing under, and the nitrogen deposited on the roots enriches the soil as well. Price—postpaid—1 lb., 50c; 3 lbs., \$1.25. Prices subject to market change. See discount sheet for quantity prices.

## White Dutch Clover

Very good to mix with other pasture grasses. It has a creeping habit and its thick roots make it very desirable for lawns. Price—postpaid—1 lb., 70c; 3 lbs., \$2.00; 1/4 lb., \$7.25; 1 bu., \$25.00. Prices subject to market change. See red discount sheet for quantity prices.

## Sweet Clover

(MELILOTUS ALBA)

Our business in White Blossom Sweet Clover is growing every year. Sweet Clover is getting to be very valuable to the farmers of the Northwest chiefly because it grows on almost any soil; it has the same sort of bacteria laden nodules as Alfalfa and is valuable in preparing a field for successful growing of that crop. Sweet Clover brings land up rapidly and fits it for crops of all kinds. It can be pastured while alfalfa cannot. Cattle, hogs and all farm animals acquire a taste for Sweet Clover and thrive on it. It makes a splendid hay crop if cut before it gets too large, while the second crop may be harvested for seed. 8 to 10 bushels seed per acre is a common yield and the seed brings big prices. Price—1 lb., 35c; 3 lbs., \$1.00. Prices subject to market change. See our red discount sheet for quantity prices.

UNHULLED WHITE BLOSSOM. Price—1 lb., 25c; 3 lbs., 60c. Price subject to market change. See our red discount sheet for quantity prices.

## Alsyke Clover

(SWEDISH)

The hardest of all Clovers. This variety is unequalled for the quality of hay produced. It will not winter kill and one sowing is generally good for a number of years. It not only does not winter kill, but will produce a splendid crop of sweet hay on low and wet land. It makes finer and better hay than Red Clover, and it is especially valuable for mixing with Timothy. Alsyke is being more and more largely sown by leading farmers of the Northwest and is every year coming into greater favor. The seed is very small and goes fully twice as far as other Clover. Many farmers mix a little Alsyke with the Medium they sow. Price—Postpaid, 1 lb., 35c; 3 lbs., \$1.00. Price subject to market changes. See our red discount sheet for quantity prices.

I have bought seeds of you for two years and have had splendid success. I want 1 1/2 bushel of Timothy and 3 pecks of Medium Clover. Send your catalog as soon as ready as there will be other seeds I want.

G. W. BALLOU,  
Wright Co., Iowa.

Clover seed received today in fine condition and is very satisfactory. Thanks for your promptness. I shall be pleased to show it to my farmer friends.

R. H. GURLEY,  
Chickasaw Co., Ia.

Prices Subject to Market Changes. See Red Discount Sheet for Latest Prices



PRODUCERS AND DEALERS IN GUARANTEED SEEDS





# Adams' Red Top Highest Grade Seed Get Our Samples

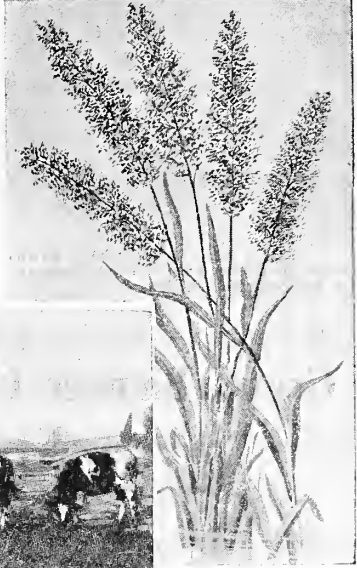
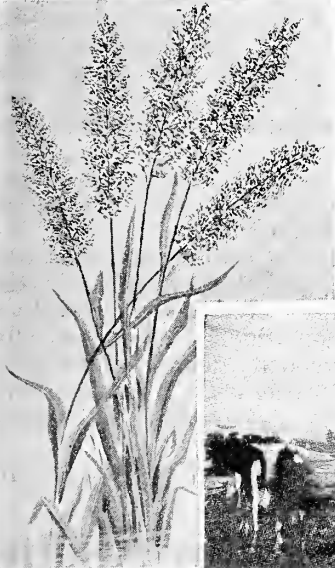
Red Top has come to be recognized as one of the most valuable of the hardy perennials. In some sections it is the most valuable forage grass grown, owing to its being naturally adapted to wet soils having a dense sub-soil. It will produce a big crop on soil too wet to grow anything else of value and grows well on heavy clay soils in various sections.

It makes an excellent combination with timothy or with timothy and clover. The sod is exceptionally heavy and a big field of hay can be secured. Red Top makes very fine hay, too. All animals eat it readily, and it has a high feed value. For pasture it is especially recommended and the sod will stand very close grazing. It should be kept grazed down close, as the young grass is more eagerly eaten by stock and has more value than if allowed to grow rank.

Red Top will produce a good stand of grass under conditions which cause practically all other grasses to fail. It will grow anywhere and will thrive under a wide range of climatic conditions. If you are having trouble getting a good meadow

or pasture started try Red Top. It will frequently grow without any cultivation or preparation, and can be utilized to put much unproductive, waste land in the profit column. There is nothing better than Red Top for stopping the wash in small gullies and reclaiming such areas.

We offer this season the very highest grade of hulled Red Top Seed—purity and high germination test guaranteed. The seed we offer comes from the section where the best Red Top produced in this country is grown. If you want dependable seed send us your order. Price—Postpaid, best fancy seed, 1 lb., 35c; 3 lbs., \$1.00. See Red Price List for quantity prices.



Red Top Has No Equal as a Forage Crop

## Kentucky Blue Grass—The Great Pasture Grass

Blue Grass is the most famous and most valuable of all grasses for permanent pasture. Every stock farm of any size should have its Blue Grass pasture, and there is no more important adjunct to stock raising than the splendid pasture this grass makes. It makes a highly palatable, rich and most nutritious feed—has a higher protein and other content than any other pasture grass. It is native of our own soil, and in addition to its value as a pasture grass is recognized as the

best lawn grass we have. Practically all advertised lawn mixtures are based on blue grass. Adams' Blue Grass Seed is the best that grows. In appearance, purity and germination quality it is unexcelled—you cannot buy better. We guarantee it for purity and germination, and further guarantee it to be all new stock—not carried over from last year. Price—By mail, postpaid, lb., 35c.

## Adams' Lawn Grass Mixtures

Nothing contributes so much to the beauty of the home and other grounds as a smooth, rich green, velvety lawn. It is the best investment a home owner can make. The following mixtures are varieties that are guaranteed to produce a beautiful, soft, velvety lawn which will keep green through the hot summer months until late in the fall. Seeds that enter into these mixtures are pure and of the best varieties.

**TASCO LAWN**—A perfect mixture. Blended from the choicest grasses. Produces a beautiful, velvety green lawn. Price—By mail, lb., 35c; 3 lbs., \$1.00.

**CHICAGO PARK**—For years a standard mixture. A combination of grasses that drives out weeds and establishes a permanent lawn. Price—By mail, lb., 30c; 3 lbs., 80c.

**TERRACE MIXTURE**—For sloping lawns or terraces. A combination of grasses that have long roots that will keep the earth from washing. Price—By mail, lb., 50c; 3 lbs., \$1.45.

**SHADY LAWN**—For use in shaded places, under trees, etc. Price—By mail, lb., 40c; 3 lbs., \$1.15.

**STANDARD LAWN**—A very good Lawn Mixture for general purposes. Price—Postpaid, 1 lb., 25c; 3 lbs., 70c.

**FANCY KENTUCKY BLUE GRASS**—Price, postpaid, 1 lb., 35c; 2 lbs., 65c; 3 lbs., \$1.00.

**WHITE CLOVER**—Price, postpaid, 1 lb., 65c; 2 lbs., \$1.25; 3 lbs., \$1.80.

Prices Subject to Market Changes. See Red Discount Sheet for Latest Prices on Larger Quantities.



PRODUCERS AND DEALERS IN GUARANTEED SEEDS





# GREAT 1919 ALFALFA OFFER

## Grow \$100 per Acre Hay from Our Tested Seed

Farmers all over the Northwest have been "going in" for Alfalfa extensively the past few years because of the wonderful crops which it produces.

It can be cut three or four times a season, each cutting yielding a big crop of sweet, nutritious forage highly relished by all kinds of stock.

It also enriches the soil for the roots penetrate far down into the earth and bring up a great deal of mineral fertilizer, and like the rest of the clover family, it is a great gatherer of nitrogen.

We are fortunate in being able to offer our customers exceptional values this year in hardy alfalfa seed, Northern grown.

Strong, vigorous seed that produces \$100 per acre hay crops for Northwestern farmers and adds another \$100 to the producing value of the land on which it is grown. The entire lot has been graded, cleaned and tested by our own superior processes. It is superfine seed—*Adams Quality Seed*—and we know you'll want to get in on it

Prices: 1 lb. 40c, 3 lbs. \$1.00, peck \$4.00.

## Genuine Grimm Alfalfa

Grimm Alfalfa has a greater root system than the common kind, and unusual stooling. It is claimed that it will withstand winter killing.

Prices: 1 lb. 75c, 3 lbs. \$2.00, peck \$8.50.

### THANKS FOR FAIR TREATMENT.

Received check today for claim of the 16 pounds of Mixed Timothy and Alsike, lost in shipment March 16th. I wish to thank you for your fair treatment in this and other transactions. Wishing you success and expecting to place another order for seed corn, I am,  
JOHN RIDDLE, Vermilion Co., Ill.

Your seed was fine. I could handle thousands of dollars' worth of seed for you, because your seeds are O. K. and I like to deal with square people. I bought from \_\_\_\_\_, but never again, as they are not reliable, and their seed has mustard seed, Russia thistle and noxious weeds, so that settled it with me, as I bought their highest brand. I am glad to deal with you.  
N. J. HOLSTER, Carnes, Ia.

March 21, 1918.



Alfalfa field at Decorah. Grown from "Purity" Brand Seed, the brand on which The Adams Seed Company has built up an extensive market and a national reputation.

## Grows Bumper Crops!

of Alfalfa, Clovers, Peas, Beans, Other Legumes



It will insure a catch; yield big crops



"Nitragin" Increases Yield, Makes Fertile Soil

The simplest, safest and surest system of soil inoculation for all legumes. Awarded gold medal, St. Louis, 1904. The lack of necessary bacteria in the soil is often the cause of failure to secure a "catch" of Alfalfa, Clover or other legumes. "Nitragin" is insurance. "Nitragin" is the original pure culture. Packed in a ventilated can. Include "Nitragin" with your seed order. Don't fail to use it on your Garden Peas, Beans and Sweet Peas.

### PRICES

- ½-acre size (shipping wt. 4 oz.).....\$0.50
  - 1-acre size (shipping wt. 8 oz.)..... 1.00
  - 2-acre size (shipping wt. 1 lb.)..... 1.80
  - 5-acre size (shipping wt. 2½ lbs.)..... 4.00
  - 10-acre size (shipping wt. 5 lbs.)..... 7.50
- Postage or express extra.

Be sure to state what crop the "NITRAGIN" is to be used for.  
You can also get special Garden "Nitragin," which is good for Peas, Beans and Sweet Peas, and large enough for the average garden, for 35c, postpaid. Simply order: GARDEN "NITRAGIN."



Prices Subject to Market Changes. See Red Discount Sheet for Latest Prices.



PRODUCERS AND DEALERS IN GUARANTEED SEEDS







### Sudan Grass

Authoritative reports by farmers and experiment stations on Sudan Grass lead us to commend it to our customers for 1919 planting.

Its yield per acre is enormous—double that of any of the common forage plants, two, three and sometimes four cuttings per season being secured. It grows 3 to 5 feet high and yields of 15 to 20 tons per acre are frequent. In years of drought it is the stock farmer's salvation for it stands protracted dry periods better than almost any other forage or hay crop. In fact a heavy growth is practically certain under all conditions.

It is a great forage crop and experiments indicate that it will prove wonderfully valuable as silage.

Sudan Grass is an annual and must be planted afresh every season, for it dies each year.

It may be planted in cultivated rows, close drills or sown broadcast, and can be cut with a mower and cured like any other hay crop. Should be sown about corn planting time. Ten to 15 pounds will seed an acre.

Price: 1 lb., 50c; 3 lbs., \$1.25; postpaid.

### Golden Millet

This variety, formerly known as German Millet, is the best of all Millets. It is greatly superior to common millet, both in quality and yield. Much of the Golden Millet sold on the market is not pure, but it mixed or common seed. Our seed is of the highest quality pure stock. Golden Millet yields 40 to 50 bushels seed per acre, but if hay is wanted it is best to cut it just as the heads are beginning to form and before it is in bloom. On good soil Golden Millet grows to a height of four or five feet and should yield from four to five tons of splendid hay per acre.

Price: 1 lb., 25c; 3 lbs., 60c; postpaid.

### Common Millet

Very early. Grows 3 to 4 feet high; has broad foliage. A widely known and popular forage crop.

Price: 1 lb., 20c; 3 lbs., 50c; postpaid.

### Japanese Millet

**BILLION DOLLAR GRASS**—This is entirely distinct from all other millets.

It is one of the most remarkable of forage plants. It has a marvelous, luxuriant growth, often reaching six feet in height. It produces an immense amount of hay of great feeding value, which is greatly relished by stock. A splendid silage may be made by mixing two parts Japanese with Sandvetch or Soja Beans, making a balanced ration for milch cows. This variety will also yield a heavy crop of seed which commands a good price.

Price: 1 lb., 30c; 3 lbs., 75c; postpaid.

### Siberian Millet

A new variety imported from Russia. This variety is earlier than the German, and it is sometimes claimed that it has more foliage, and for that reason and because of its earliness some people prefer it to German. Stalk grows from 2 to 4 feet high. Seeds are red.

Price: 1 lb., 20c; 3 lbs., 50c; postpaid.

### Milo Maize

A hay, fodder and ensilage plant that is much like Kafir corn, but rather better for forage and produces a somewhat larger grain. Grown and handled in much the same way as amber cane or Kafir. An excellent silage, either alone or cut up with corn.

Price: 1 lb., 20c; 3 lbs., 50c; postpaid.

### Kafir Corn

Worth planting by every farmer as insurance against failure of corn crop from drought. Produces the best kind of fodder and a grain crop often running 30 bushels to the acre, which makes valuable feed, especially for chickens. Cultivated same as common corn, taking about 5 pounds of seed to the acre.

Price: 1 lb., 20c; 3 lbs., 50c; postpaid.

### Feterita

Somewhat similar, but matures earlier than either Milo Maize or Kafir Corn. Grains are larger and softer. Said to yield 30 to 50 bushels per acre. Good feed for any kind of live stock. Adapted to dry or semi-arid regions.

Price: 1 lb., 20c; 3 lbs., 50c; postpaid.

### Forage Cane

Many leading farmers in the Northwest regard Cane or Sorghum as the best of all forage plants. It is sown broadcast or drilled at the rate of 50 to 100 pounds seed per acre, depending on conditions, and strength of your land. It can easily be grown on any good corn ground, and is eaten readily by cattle, horses and hogs. Yields immense crops of fodder and may also be used for pasture. Two varieties in demand are ORANGE and EARLY AMBER.

Price: 1 lb., 20c; 3 lbs., 50c; postpaid.

### Speltz or Emmer

Popular feeding grain. Resembles Rye, Wheat and Barley. Makes splendid feed and lots of it, and yields one-third more than Barley.

Price: 1 lb., 25c; 3 lbs., 60c; postpaid.

### Sunflower

The Mammoth Russian variety.

Price: 1 lb., 25c; 3 lbs., 65c; postpaid.

### Silver Hull Buckwheat

This is a thin shelled buckwheat of silvery gray color. It has a very solid, medium sized grain. It stays in bloom longer than the other varieties, thus producing a larger crop. The flour made from Silver Hull is light in color. This variety is most excellent for bees and is very popular.

Price: 1 lb., 35c; 3 lbs., 60c; postpaid.

### Japanese Buckwheat

This is a very popular variety of buckwheat. The plant is of stronger growth than common buckwheat and resists drouth and bight much better. The grains are a rich dark brown, has a thin hull and larger grain than Silver Hull. It ripens a week earlier than other varieties and is perhaps the best for light or sandy soils and for the dry climate of the western plains. Price: 1 lb., 25c; 3 lbs., 60c; postpaid.

### Fancy Seed Flax

Flax is one of the most profitable crops that can be grown. Flax may be sown once in six or seven years on the same ground without injuring it in any way, and there is nothing like it or pulverizing soil for growing corn.

Price: 1 lb., 20c; 3 lbs., 50c; postpaid.

### Primost Flax

MINNESOTA NO. 25—A new, pure-bred variety, very much superior to Common Flax.

Price: 1 lb., 25c; 3 lbs., 60c; postpaid.

Prices Subject to Market Changes. See Red Discount Sheet for Latest Prices



PRODUCERS AND DEALERS IN GUARANTEED SEEDS





## Adams Superior Dwarf Essex Rape

One of the most valuable forage plants known in this country and undoubtedly the most valuable second, or late season, crop produced. Unequalled as forage for sheep, and hogs pastured on Rape will "finish" better than when on any other pasturage. thrives on almost all soils in this country and Canada.

Rape can be sown at any time from early spring planting time until August, and depended upon to produce excellent forage. On an average it will be ready for feeding seven weeks after planting and will furnish splendid feed even after hard freezing which would destroy practically all other green forage. It is frequently sown in cornfields at the last plowing or "laying by," and will then grow to a height of 18 inches and furnish splendid feed.

Also sown with small grain—will not interfere with the growth of the grain and will make a rapid growth after the grain is cut.

We offer the purest Dwarf Essex Rape Seed obtainable anywhere. It is free from bird rape, mustard and such mixtures, and is sold under our regular Guarantee covering purity and germination quality. Order now for spring planting.

1 lb., 25c; 3 lbs., 65c; postpaid. By freight or express not prepaid, 10 lbs., \$1.50.

## Cow Peas

THE DOUBLE-PURPOSE CROP.  
PROVIDE FEED—ENRICH THE SOIL.

Cow Peas can be grown successfully anywhere from the corn belt south, and furnish a quick-growing crop of green feed and hay. At the same time the roots gather nitrogen for the enrichment of the land, like clover. No matter how thin or impoverished the soil is you can count on a good Cow Pea crop. We offer three different kinds of Cow Pea seed—each carefully graded and tested.

**WHIP-POOR-WILL**—A medium-early, very desirable for forage crop and rebuilding worn out land. Yields a good crop of both fodder and peas.

**ADAMS' VICTORY**—A new variety, somewhat smaller than the Whip-poor-will. Early and an extremely good grower.

**NEW ERA**—An old stand-by which makes splendid hay. Earliest variety—bushy and a quick grower.

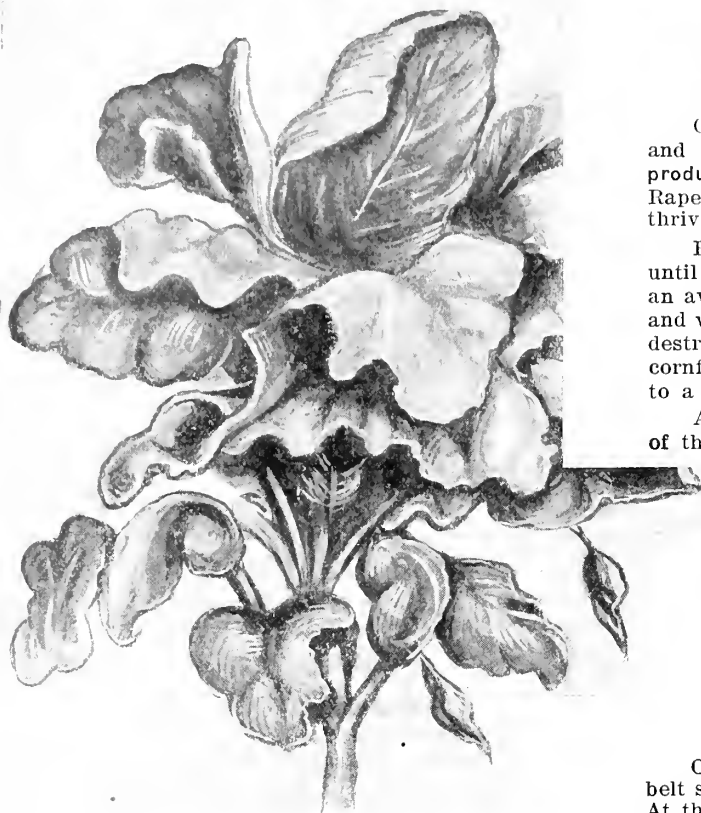
**Directions for Culture**—For hay and forage plant after ground is warm—in drills, using from a peck to a half bushel of seed per acre. For use as fertilizer, plant on grain fields right after harvest and plow the growing crop under in late fall.

1 lb., 25c; 3 lbs., 65c; postpaid. By freight or express, not prepaid, 10 lbs., \$1.00.

## Canada White Field Peas

One of the most profitable crops that farmers can raise. They are second cousins to Clover and enrich the soil in the same way. One of the best possible foods for horses, cattle, sheep and hogs. Get the United States Government book on Field Peas and learn of the profit there is to be made in growing them, both to your pocketbook and to your land.

1 lb., 25c; 3 lbs., 65c; postpaid. By freight or express, not prepaid, 10 lbs., \$1.00.



Dwarf Essex Rape

## Soy Beans

Soy Beans are rapidly growing popular for hay and silage as well as for bringing back impoverished soil. Can also be allowed to mature crop of beans which when ground are rich in oil meal.

Earlier, heavier and hardier than Cow Peas. The bushy plants sometimes reach a height of 4 feet and produce as high as 10 tons of feed to the acre.

We have been fortunate in securing some of the choicest Soy Beans grown last year for seed purposes—and offer them at prices which are exceptionally reasonable for high quality seed that will produce big crops of forage, hay or beans.

1 lb., 30c; 3 lbs., 60c; postpaid. By freight or express, not prepaid, 10 lbs., \$1.00.

## Vetch

A forage crop recommended by the U. S. Department of Agriculture. Grows well on sandy soil. Excellent for feeding with fall rye for winter and spring pasturage. Stays green all winter. Sow 60 pounds per acre in spring or fall.

1 lb., 40c; 3 lbs., \$1.00; postpaid. By freight or express, not prepaid, 10 lbs., \$3.00.

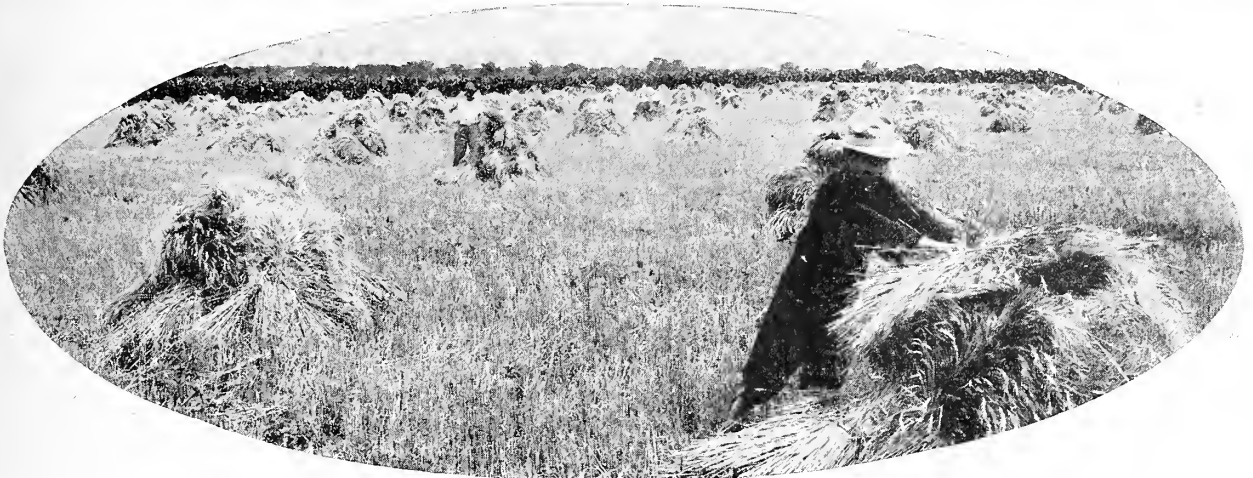
Prices Subject to Market Changes.

See Red Discount Sheet for Latest Prices



PRODUCERS AND DEALERS IN GUARANTEED SEEDS





A Field of Heavy Select Barley

## Extra Heavy Select Barley

This is a barley that we have specially selected for seed and have handled over a mill that we use for this purpose only. This removes all oats, weeds and weak barley and only the strongest and most virile seed remains. This seed produces a big crop of clean barley. It is selected with the one idea of getting big, heavy, even seed that will raise an enormous crop, free from weeds. For many years we have sold this kind of Barley under the name of HEAVY SELECT. A measured bushel weight 50 to 52 pounds. Per lb., 25c; 3 lbs., 60c; postpaid.

## 1919 Seed Wheat

With a hungry world clamoring for bread, wheat is bound to bring high prices for years to come. The U. S. Department of Agriculture is asking American farmers to plant bigger wheat crops than ever before. You can't do your part in feeding the world during the reconstruction period unless you plant the very best wheat obtainable—selected seed of big-yielding varieties, adapted to your soil and climate.

## Marquis Wheat

A thousand dollar prize wheat of Canadian origin.

Unquestionably the best all-around spring wheat grown. Has yielded as high as fifty bushels to the acre. Extremely early and productive as well as hardy. A favorite in Minnesota and is the best beardless wheat for Iowa farmers. Grows stiff, strong straw and is two weeks earlier than Blue Stem. Easy to handle at harvest, for it is free from beards. Millers praise it highly.

Per lb., 25c; 3 lbs., 60c; postpaid.

## Durum Wheat

Produces good stand and crop even on poor land. Grains are large, solid, plump and unusually free from smut or rust. In big demand for the manufacture of macaroni and spaghetti. Sow in early spring.

Per lb., 25c; 3 lbs., 60c; postpaid.

## Blue Stem Wheat

Per lb., 25c; 3 lbs., 60c; postpaid.

Prices Subject to Market Changes.

## Wisconsin Pedigreed Barley

The Greatest of All Six-Rowed Barley

This yields nearly twice as much per acre as common barley and has made millions of dollars for the farmers of America's barley raising districts.

Has plumper grain, stiffer straw and more vigorous growth than other barley and has more uniform heads, which are longer and better filled. Our seed is the Pedigreed No. 5 of Oderbrucker origin, which has won so many prizes.

Per lb., 25c; 3 lbs., 60c; postpaid.

## Manshury Barley

An early, 6-row standard bearded variety; grows vigorous and strong, bearing long, well-filled heads of plump grain. A very satisfactory and reliable yielder. Our seed is of extra choice quality.

Per lb., 25c; 3 lbs., 60c; postpaid.

## Oderbrucker or Wis. Barley No. 55

A standard bearded barley. Resists rust well and has a stiff straw. Has a protein content of 15 per cent, which makes it a very valuable feeding and malting barley. You will find Oderbrucker a paying crop.

Per lb., 25c; 3 lbs., 60c; postpaid.

## Improved White Hulless Barley

No beards or hulls. Yields 60 bushels per acre. Different from any other barley. Grain looks like wheat and is almost as heavy. Almost equal to wheat in feeding value and will yield nearly twice as much.

Per lb., 25c; 3 lbs., 60c; postpaid.

See Red Discount Sheet for Prices on Larger Quantities.



PRODUCERS AND DEALERS IN GUARANTEED SEEDS





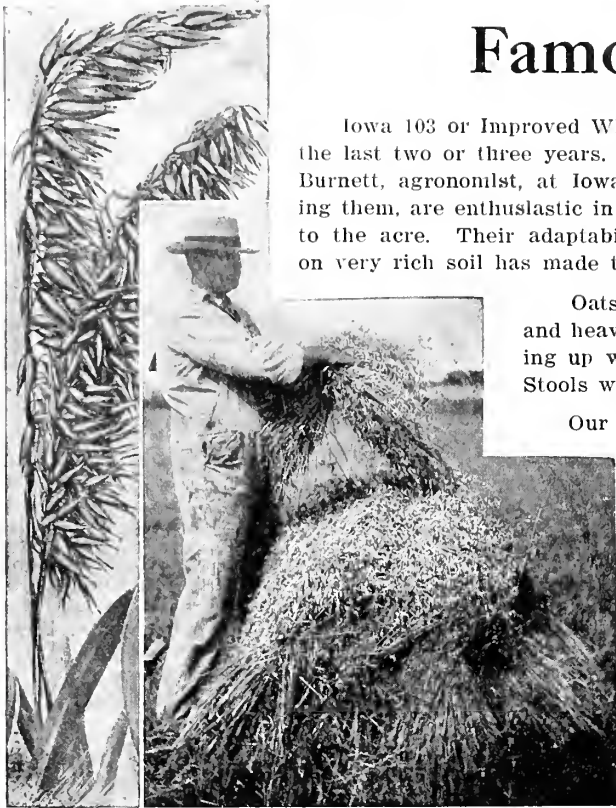
## Famous Iowa 103 Oats

Iowa 103 or Improved White Kherson Oats have come into great favor in this section within the last two or three years. This variety was bred from the yellow Kherson by Prof. L. C. Burnett, agronomist, at Iowa State College Experimental Station. Farmers, who have been growing them, are enthusiastic in their praise, and yields are reported as high as 85 to 104 bushels to the acre. Their adaptability to almost any soil, and the fact that they do especially well on very rich soil has made them a great favorite with farmers of this section.

Oats are even white in color, not so large as Silver Mine, but plump and heavy with very thin skin. Straw medium height and very stiff, standing up well on rich bottom land where other varieties would be a failure. Stools well and requires only  $2\frac{1}{2}$  to 3 bushels to the acre.

Our seed is exceptionally fine Pedigreed stock, free from smut, weed seeds and other grain, and weighs 36 pounds to the measured bushel. You cannot buy better stock at any price.

Price: 1 lb., 20c; 3 lbs., 50c; postpaid.



Famous Iowa 103 Oats

## Adams' Early English Oats

Sixteenth season since we introduced them in America. These oats have a remarkably thin hull and a very heavy berry. Ripens earliest of any heavy oats. The original seed weighed 45 pounds to the bushel. Very hardy; a strong virile sort. These oats have but one hull. They are plump like barley and have been found very profitable to raise. Straw is very heavy and they do not lodge easily. These oats are not adapted to heavy black soil, where we would recommend KHERSON, but for thinner soils there is nothing better than Adams' English Oats.

Price: 1 lb., 20c; 3 lbs., 50c; postpaid.

## Iowa 105 (Oats for Rich Land)

First sent out by Prof. L. C. Burnett of Iowa (Ames) College, Iowa's great plant breeder. Grains are medium size; light yellow color; plump and heavy; very strong straw and its greatest value is because it will stand up on bad conditions and upon rich land, where other Oats would lodge. 1 lb., 20c; 3 lbs., 50c, postpaid.

## Silver Mine Oats

An old favorite. Large, white, strong, straight straw. Very dependable variety. 1 lb., 20c; 3 lbs., 50c, postpaid.

## New Kherson Oats

**60-DAY OAT**—Will stand up on rich, black soil. Many farmers have given up raising oats, as they cannot find anything that will stand up satisfactorily. Here is an Oat that will give satisfaction under such conditions and at the same time yield a bountiful crop. The NEW KHERSON has a small grain, somewhat yellow in color. They are surprisingly heavy and great yielders and there is no better Oat for feeding purposes. They have a very thin hull and are practically all meat. They are also very early. 1 lb., 20c; 3 lbs., 50c, postpaid.

## Regenerated Swedish Select Oats

It is claimed for these oats that they yield heavily; have a fine appearance, strong, heavy stalk; are reasonably early and quite free from rust. Our experience with them has been that they are very satisfactory for soils not too black and the liability to lodge is not too great. Also known as Big Four. 1 lb., 20c; 3 lbs., 50c, postpaid.

## Mammoth Spring Rye

Splendid as catch crop. Can be sown later than other spring grasses. It does not grow quite as large straw as Winter Rye, but yields very well. Produces four times as much straw as oats and grows six to eight feet high. 1 lb., 25c; 3 lbs., 60c, postpaid.

## Winter Rye

Will furnish pasture until late in fall and early in spring before grasses have made growth. Sow from the middle of August to the middle of September. 1 lb., 20c; 3 lbs., 50c; postpaid.

I have received the seeds which you shipped March 29th, 1917. The seeds were good and in fine shape.

LOGAN J. FLINT, Otsego County, N. Y.

We have just received your corn today, so everything is all right. Thought we would write and let you know.

OREN SAWYER, LaSalle County, Ill.

Very pleased to receive the seeds which arrived last week and are fine.

OWEN ROBERTS, Macon County, Mo.

Enclosed please find my order for Flax and Seed Corn. The last Seed Corn I got of you was fine.

JOHN CASSADY, Meeker County, Minn.

The oats we bought of you some years ago were very satisfactory and I am still raising them.

GEO. E. LAPHAM,  
Floyd County, Iowa.

Received the grass and found it to be O. K.

ARNT HAGEN, Vernon County, Wis.

Prices Subject to Market Changes. See Red Discount Sheet for Quantity Prices.



PRODUCERS AND DEALERS IN GUARANTEED SEEDS





## A Straight-from-the-Shoulder Talk About Seed Corn

Every corn grower knows the conditions that surround the growing of corn. Weather is a big factor in the crop and when a protracted spell of cold, wet weather follows planting, or frosts come in August, blaming the seed or "cussing" the seed house is neither fair nor sensible.

So, regardless of what other seedsmen may do, we don't propose to claim that buying seed corn from us will insure you a 100 per cent crop in 1919, if the weather is unfavorable. You can readily see why.

But—we can give you corn that will produce big crops, if any corn planted this year will do it—and we can and will help you select the varieties best suited to your soil and latitude and to the purpose for which you wish to use the crop.

Here's the why and how of it: We select our seed from the best sources of supply and it's grown in the right latitudes to give the next year's crop every chance to ripen properly.

But that's only the beginning—our seed corn is grown for us under contract, picked before the frost, hung on special hangers and cured under heat and electric ventilation. Consequently it is unusually strong in vitality.

It is carefully graded, too, which insures a bumper crop of high grade ears, not nubbins.

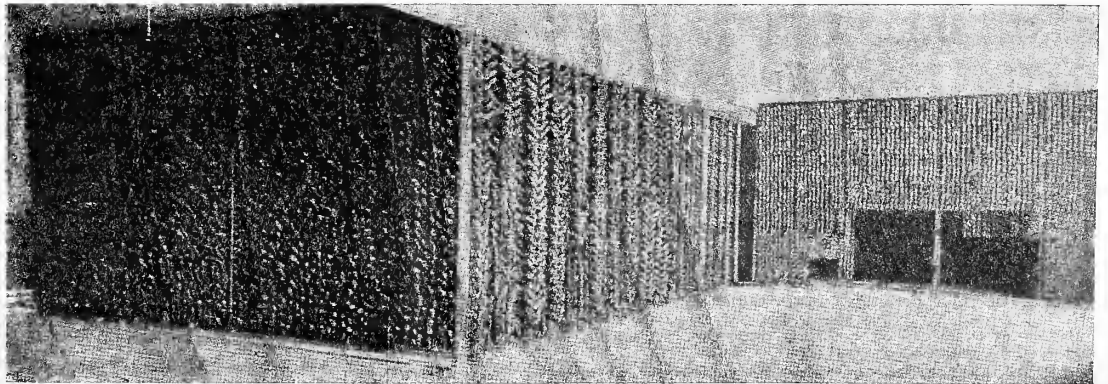
It is frequently tested for germination, so that whenever we fill an order for seed corn we know that it is right when it leaves our shipping room. A test, to satisfy us, must show a sufficient number of root sprouts to secure a strong stand and big yield.

Naturally we cannot be responsible for what happens to seed corn after it leaves our hands. If it gets damp or chilled its germination value may change over night. We do, however, stand back of it by allowing you to have immediate tests made by your State Agricultural College and will absolutely stand by our guarantee.

It stands to reason that corn scientifically bred up for big yields will far outyield your most carefully selected home grown corn and will pay out better. Our farm expert is constantly conducting breeding experiments for the benefit of our customers to determine the most profitable and best yielding variety for your location and conditions. The 1918 crop, from a strain we have developed for northern latitudes, yielded 92½ bushels per acre, planted three kernels to the hill, rows check-rowed three foot six.

Remember, it costs as much to plant poor, indifferent seed and to cultivate the ensuing crop as it does to plant Adams' Quality Seed Corn, which is the best the market affords.

To make sure of getting the right sort of corn for next season's planting, send your order at once, stating your planting and soil conditions—we'll hold the corn until you want it shipped—and send you corn tested right up to date, with test results plainly shown on shipping tag.



Seed Corn Drying in the Adams Seed Company's Curing House



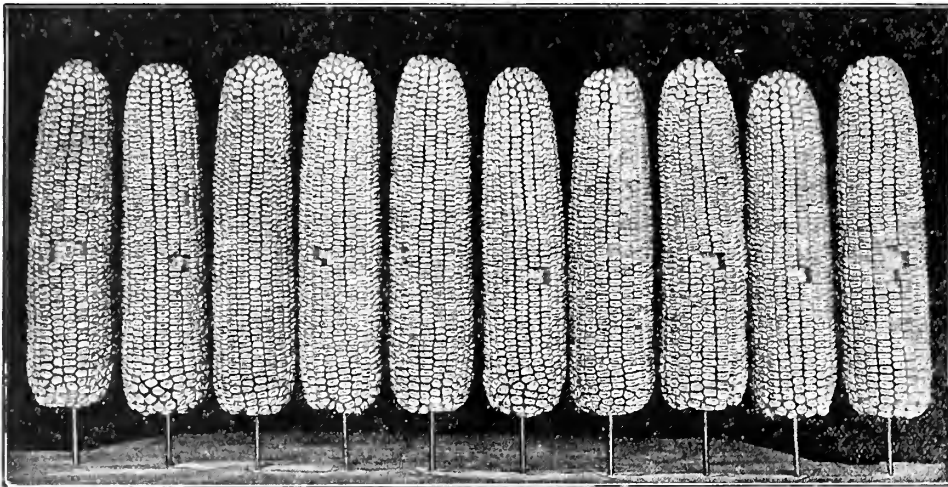
PRODUCERS AND DEALERS IN GUARANTEED SEEDS





# GODDARD'S SILVER KING

(Wisconsin No. 7)



Goddard's Silver King Corn

## The Best Corn for Northern Iowa Latitude

Goddard's Silver King is so well known to corn growers in Northern Iowa, Southern Minnesota and Wisconsin as to need little comment.

It is hardy, vigorous in growth and under ordinary climate and weather conditions can be depended upon to fully mature and yield big crops.

Goddard's Silver King is a white variety maturing in 95 to 100 days. The ears average about 8½ inches long and kernels are especially deep, and the cob unusually small. Ears have 16 rows of kernels and the kernels grow so compactly that the corn shelled off the cob will actually occupy more space than corn and cob before shelling.

High protein content of kernels makes it especially valuable for feed.

This wonderful Northern Grown Corn was developed by Messrs. H. J. and A. L. Goddard who have won national fame as corn growers and were the first men to introduce and grow Dent corn in Northern Iowa.

Starting way back in the early seventies, these progressive corn growers, through careful selection and culture, succeeded in producing a strain of White Dent Corn remarkably adapted to Northern climate conditions, with vigorous stalks, even ears, compact, deep kernels and uniformly classy appearance. This corn was introduced by them in Iowa, Wisconsin and several other states, as well as in far off China, under the name Goddard's Silver King.

Few, if any men in America have done as much for the corn industry as the Goddards, who are credited with growing the finest and best bred corn in cultivation.

By the introduction of Silver King corn in Wisconsin, the corn

crop of that state was increased 12½ bushels per acre for the state within a period of four years.

These veteran corn growers have been exhibitors of Silver King and Pride of the North corn at the big corn shows throughout the country for more than 30 years, drawing down highest honors in competition with hundreds of other exhibitors.

Goddard's Silver King outyields all other Northern varieties. If you are looking for a corn that can be depended upon to grow and mature in the latitude of Northern Iowa or Southern Minnesota, we strongly recommend Goddard's Silver King, which has signally proved its worth through many years and has been a continuous and dependable crop yielder and money maker for thousands of farmers. There is no other corn that will take its place in this latitude, and our facilities for securing the original and genuine Silver King make The Adams Seed Co. the sure and safe source from which to secure a supply for planting this season.

**For More Than 20 Years the Genuine Silver King Has Been Grown for Us by the Originators, Goddard Bros., in Winneshiek County, Iowa—Our Own Home County**

This announcement alone will, we believe bring us enormous orders from farmers who have learned by actual experience to make Silver King their standby. State Colleges and other seed houses are offering so-called "improved strains" of this corn under other names—but none of them can equal the genuine Goddard's Silver King for yields and feeding value.

Don't take chances but send us your order at once for we offer subject to unsold the original Goddard's Silver King grown from genuine Goddard seed and carefully tested and in every respect the highest grade of seed obtainable in this wonderful deep-grained corn.



H. J. Goddard

A. L. Goddard

Prices Subject to Market Changes. See Red Discount Sheet for Latest Prices



**PRODUCERS AND DEALERS IN GUARANTEED SEEDS**





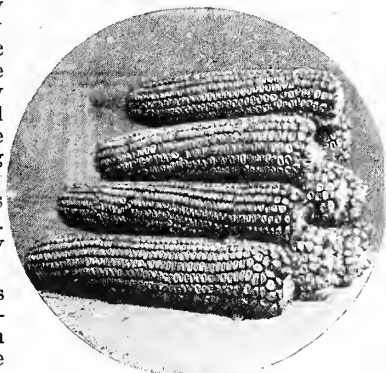
## The Wonder Corn of the North Minnesota No. 13

Farmers living in the latitude of Central Minnesota will find this variety superior in quality and productiveness to any other they can plant. It is rightly named—for the results that corn growers in the North and Northwest secure from it year after year are assuredly wonderful.

Minnesota No. 13 is an early maturing—80-day—yellow corn, famous for big yields and hardy adaptability to a great range of soils and climatic conditions. It is enormously productive and more dependable in most sections of the North than any other variety known, because of its big yields and early maturity. It can be planted as late as the second week of June and yet safely mature a big crop. It is more quickly acclimated than any other variety and will thrive and produce heavily on soils where the other less hardy varieties entirely fail. It is an excellent fodder corn, too—stalks frequently growing to 7 feet high.

This variety is one of the most successful ones ever developed by the Minnesota Agricultural College Experiment Station. Ears average 8 inches in length and usually grow two on a stalk. There are 16 to 20 rows of kernels growing compactly from butt to tip of each ear, and the color is a rich, bright yellow. Kernels are wedge shaped and the ears are almost invariably well-filled, and the individual kernels plump and well colored. No corn makes a better appearance or excels Minnesota No. 13 for quality.

We are offering the very highest quality of Minnesota No. 13 Seed Corn this season, and advise our customers to order early.



Minnesota No. 13

## Reid's Yellow Dent

One of the most largely grown yellow varieties throughout the corn belt, and one of the best varieties for Iowa, Illinois, Nebraska and other states in the same latitude. A splendid variety for farmers who sell seed corn on the ear, as the ears are so remarkably uniform in size, type and color. They are covered with 18 to 20 rows deep grain, no space lost between the rows, and are of light golden yellow color and about 9 to 11 inches long; the cob is very thin. It matures in about 90 to 100 days. Our stock is very choice. We offer this variety, subject to unsold, for immediate delivery.

## Pride of the North

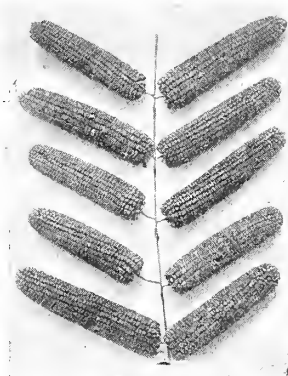
(Yellow, 85-day). Originated in this (Winneshek) County. A standard early variety. Small cob, 8-inch ear, deep kernel. We offer this variety, subject to unsold, for immediate delivery.

## Calico Corn

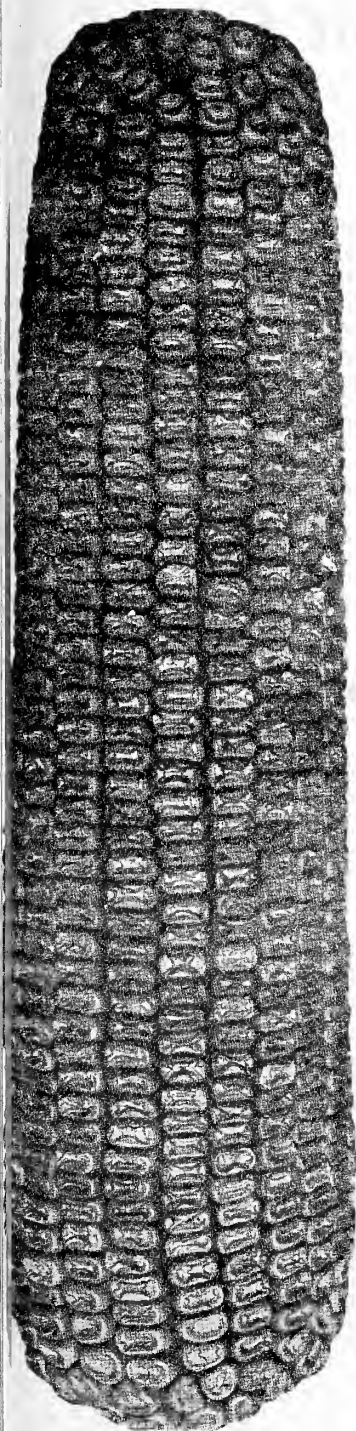
This variety of speckled corn has for many years been very popular because of its earliness. It is a large corn, very rough, deep kernels and small cob.

The corn we are offering is of the old type Calico, adapted to the Northern climate and of a very early type.

We offer this variety, subject to unsold, for immediate delivery.



Our Method of Hanging Corn



Reid's Yellow Dent

Prices Subject to Market Changes. See Red Discount Sheet for Latest Prices



PRODUCERS AND DEALERS IN GUARANTEED SEEDS





## Northwestern (Smoky) Dent Corn

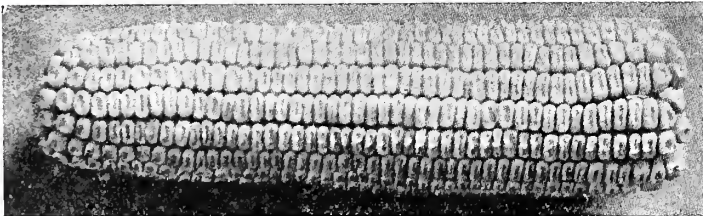


Northwestern Dent

Also called Model Dent and North Dakota Special. (Yellow Cap, Red De 75-day). This is the earliest Dent corn grown. It is a cross between Red Fl and Yellow Dent. It ripens easily in Northern Minnesota, North Dakota a Wisconsin, and is by far the best extra early sort. It also gives splendid yield and we would recommend it for main crop of Central Minnesota and Wisconsin and North Dakota planting. This corn yields from 75 to 85 bushels per acre. It is also an especially valuable variety in the latitude of Northern Iowa a Southern Minnesota for early hog feed. This variety often ripens in seven to five days, and it can be relied upon to fill your corn cribs with corn for early feeding weeks before the main corn crop has ripened. Among progressive farmers it is rapidly taking the place of Flint Corn, because it is practically early, and not only gives a bigger yield, but a very much better quality feed. We recommend this for a main crop in the North, but in latitude of Southern Minnesota and Northern Iowa you should not think of planting corn without putting in a few acres at least of Northwestern Dent for hog feed. Also especially valuable for replanting. We offer this variety, subject to unsold.

## Early White Dent Corn

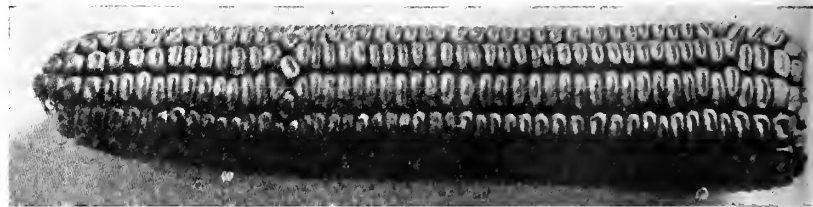
(80-day). This is a choice crop White Dent Corn. While not of our own growing it has been carefully selected and tested for germination. It has matured satisfactorily for many years. Early White Dent Corn is as fine quality as any white dent corn available. At this writing we have a fair stock of this corn on hand, but suggest you order promptly upon receipt of this catalog before our stock is exhausted. We offer this variety, subject to unsold, for immediate delivery.



Early White Dent

## Early Murdock

It is an enormous yielding Golden Dent variety, out-yielding most other sorts, having produced 90 bushels to the acre with ordinary cultivation. Although this variety is such a heavy yielder, it matures so early that it is well adapted for our Northern states. The Murdock has proven to be very adaptable to any soil and conditions, becoming acclimated to different sections the first season. The ears, which are medium length, have 16 rows of deep kernels, run very uniform. The Murdock is earlier by several weeks than Iowa Silver Mine, Legal Tender and Leaming, maturing but few days later than the Minnesota No. 13. We have a choice stock of this variety which we offer, subject to unsold, for immediate delivery.



Typical Ear of Early Murdock Corn

## Early Yellow Dent

(Yellow, 85-90-day). Probably the best known variety of Yellow Dent Corn. Early, medium ear and kernel. Makes good yields. A standard dependable sort. We offer some choice seed corn of this popular variety, subject to unsold. Get your order in to us early.

ADAMS' SEED CORN, EXCEPTIONAL IN QUALITY

Please find enclosed check for Sweet Clover I received a few days ago and very satisfactory. THOS WELCH, Iowa County, Iowa.

I am perfectly satisfied with that seed. Thank you for your answer. Very truly yours, FELIX ROZEK, Portage County, Wisconsin.

Prices Subject to Market Changes. See Red Discount Sheet for Latest Prices.



PRODUCERS AND DEALERS IN GUARANTEED SEEDS







# ADAMS' BIG BARGAIN COLLECTIONS

Just the seeds you want at combination prices that save you money! Look over these great collections and send along your order.

## Adams' Garden and Flower Seed Collection

Twenty Packets for 75c.

A standard collection of Adams' Quality Seeds.

If you are to save more food in 1919 you must have a larger and better garden. Here is your opportunity to buy tested garden and flower seeds of the best varieties at a big saving.

Varieties	Pkt.	Varieties	Pkt.
White Icicle Radish.....	1	New Stone Tomato.....	1
Big Boston Lettuce.....	1	Osage Muskmelon.....	1
Scarlet Globe Onion.....	1	Sweetheart Watermelon.....	1
Heart Carrot.....	1	Hollow Crown Parsnip.....	1
Country Gentleman Sweet Corn.....	1	Sweet or Sugar Pumpkin.....	1
Arlington White Spine Cucumber.....	1	<b>Flower Seed:</b>	
Champion Moss Curled Parsley.....	1	Sweet Peas (mixed).....	1
Detroit Dark Red Beet.....	1	Sweet Alyssum.....	1
Royal Purple Bean.....	1	Petunia.....	1
Emp. Strategem Pea.....	1	Morning Glories.....	1
		Daisy.....	1

## Adams' Midget Collection

BIG SELLER. A GREAT FAVORITE.

- 10 Packets Vegetable Seed .....40c
- 2 Packets Flower Seed .....FREE

We believe that a small home garden should not only contain vegetables, but also flowers. The children love flowers so we are giving them away with this garden seed collection.

	Pkt.		Pkt.
White Icicle Radish.....	1	Improved Strategem Pea.....	2
Half Long Danvers Carrot.....	1	Purple Top White Globe Turnip.....	2
Wethersfield or Large Red Onion.....	1	Royal Purple Wax Bean.....	2
Early White Vienna Kohlrabi.....	1	Hanson Head Lettuce.....	1

## \$1.50 New Breed Seed Corn and Garden Seed Offer \$1.50

LIMITED QUANTITY. ORDER EARLY.

This offer is to introduce a new Northern variety of yellow corn. We have been working with this corn for several years and the results with it are so satisfactory we wish to introduce it among our customers. Our supply is limited and wish to distribute to as many different farmers as possible to test it out in a number of localities. The corn this year averaged 70 bushels per acre. We are offering it as follows:

Eight pounds corn, enough to plant one acre, with ten 5c packets of any garden or flower seed listed in the catalog, only \$1.50 when sent with another order or by express, collect. Add 25c if wanted by prepaid parcel post.

## The Big \$1.60 Garden Seed Collection

You furnish the ground and the care; we will furnish 43 packets of highest quality seed for \$1.60. Our seeds are all tested; we know they will grow. Order early.

<b>BEANS</b>		<b>PEAS</b>	
	Pkt.		Pkt.
Davis White Wax.....	1	Alaska.....	1
Prolific Tree Navy.....	2	American Wonder.....	1
Henderson's Best Lima.....	1	Dwarf Telephone.....	1
<b>BEEETS</b>		<b>PARSNIPS</b>	
Detroit Dark Red.....	1	Hollow Crown Guernsey.....	1
Extra Early Egyptian.....	1	<b>POPCORN</b>	
<b>CABBAGE</b>		<b>PUMPKIN</b>	
Early Jersey Wakefield.....	1	New England Ple.....	1
Early Flat Dutch.....	1	<b>RADISH</b>	
Selected All Seasons.....	1	Icicle.....	1
<b>CARROTS</b>		Early White Turnip.....	1
Early Horn.....	1	Chartier.....	1
Oxheart.....	1	Rose China.....	1
<b>CORN</b>		<b>SQUASH</b>	
Golden Bantam.....	1	Long Milan.....	1
Early Minnesota.....	1	True Hubbard.....	1
<b>CUCUMBERS</b>		<b>TOMATO</b>	
Arlington.....	1	Dwarf Champion.....	1
<b>LETTUCE</b>		Earlana.....	1
Big Boston.....	1	Yellow Plum.....	1
Early Prize Head.....	1	<b>TURNIP</b>	
<b>MUSKMELONS</b>		Early White Milan.....	1
Extra Early Hackensack.....	1	Purple Top Strap Leafed.....	1
Rocky Ford.....	1	<b>WATERMELON</b>	
Emerald Gem.....	1	Kleckley's Sweet.....	1
<b>ONIONS</b>		Sweetheart.....	1
Scarlet Globe.....	1		
Golden Globe.....	1		
Mammoth Silver King.....	1		

All For Only \$1.60.

Received my order in perfect shape. Also expect them to grow to hardy, large yielding plants. My father is getting better and is thanking you for the samples of seed corn you sent him. I hope he will send you an order for some kind pretty soon.

WM. SISTEK, Cuyahoga Co., Ohio.

Four bags of seed were received in good condition and are first class. I am enclosing 84 cents for the bags which I forgot.

E. F. CHASE, Fillmore Co., Minn.

The seeds which I bought of you were very satisfactory and every one grew. I have never had as fine a stand from seeds I bought from anyone else.

CARL GOODRICH, Elaine Co., Okla.

My neighbor recommended your seeds to me and said you were the only company that puts out first-class seeds that he had bought from, and I wish to say that I also found them first-class in every way.

EARL PRATT, Van Buren Co., Ark.

The Goddard's Silver King you shipped me was excellent and recorded a test of 98 per cent STRONG, 2 per cent weak, and none dead. It is very fine seed and I am well pleased with it.

BEN G. RUSSELL, Denver Co., Colo.

I received my order all O. K. The seed is very nice and I am very much pleased with it. Will you send me your latest price list.

MILO C. ROGERS, Cass County, Mich.

Prices Subject to Market Changes. See Red Discount Sheet for Latest Prices.



PRODUCERS AND DEALERS IN GUARANTEED SEEDS





# Adams' Tested Garden Seeds

To save our customers from confusion we list in this department of our catalog, only the standard varieties of Garden Seeds which experience has proved to be trustworthy. Old standby varieties are very frequently listed under several different names, in order to give the appearance of larger stocks and also in order to secure an additional price for so-called "specialties" or "new varieties." In case you desire a variety which is not listed in this catalog, include it in your order anyway, and we will furnish it, if possible, or promptly return your money. All prices given under garden seeds are postage paid except where stated. When marked "Not prepaid" seeds are to be shipped by express or freight at your expense.

## Discounts

On Garden Seed orders we believe in Cash Discounts (not premiums). In spite of the enormous increase in the prices of seeds we will continue our practice of giving discounts on Garden Seed orders—the larger the order the bigger the discount. Our prices are as low as good seed can be sold for and we believe compare favorably with other reputable seedsmen. We invite comparison.

Our CASH DISCOUNT offers for 1919 are as follows:

Five per cent on orders for Packets and Ounces, amounting to from 50c to \$1.00.

Ten per cent on orders for Packets and Ounces, amounting to over \$1.00.

Ten per cent on orders for PACKETS ONLY, amounting to from 50c to \$1.00.

Fifteen per cent on orders for PACKETS ONLY, amounting to over \$1.00.

## Asparagus



Columbian Mammoth White

**Culture**—Asparagus is the first green delicacy of spring. Is very popular and needs but little care when once established. May be started from seed or roots, but the latter are the most frequently used. Packets contain about ¼ ounce of seed, enough for 15 feet of drill; 2 to 3 pounds of seed per acre. Planting roots is generally more successful than seed.

**COLUMBIAN MAMMOTH WHITE**—Choice variety; stocks white and of good quality. Pkt., 5c; oz., 15c; ¼ lb., 40c.

**CONOVER'S COLOSSAL**—The most approved and standard sort; large and tender. Pkt., 5c; oz., 15c; ¼ lb., 40c.

**ROOTS**—Two years old; by express or freight, not prepaid; \$1.00 per 100; \$8.00 per 1,000.

## Beans

Please note that we price Beans by weight. One pound is about 1 pint; 2 pounds about 1 quart; 15 pounds to the peck; 60 pounds to the bushel.

**SPECIAL NOTICE**—The extremely hot, dry weather condition during the growing season of 1918 practically ruined the Bean Crop, and as a result prices are high and stocks are very limited and will not last out the season. Safety First—Order early. Give 1st, 2nd and 3rd choice.

**Culture**—A light, rich, well-drained soil is best, especially if manured for the previous crop. If too rich plants will run too much to vine. Beans are very sensitive to cold and wet weather, so do not plant until the ground has become dry and warm. Best results from planting in drills two or three feet apart. Cover the seed about 1½ or 2 inches deep and thin out from 3 to 6 inches apart if in rows. If in hills place about 2 feet apart each way. For succession, plant one or two weeks apart until midsummer. Cultivate very shallow. Packets contain 1 ounce of seed, enough to plant about 5 or 10 feet or drill; 1 pound will plant 50 feet; 75 lbs., 1 acre.

Write for special prices on peck quantities or over. We will name you interesting figures.

### DWARF WAX PODDED

Ready for Use in 35 to 40 Days.

**DAVIS' WHITE WAX**—Very hardy, productive, long pods, handsome, rustless, fine shipper, best canner, in all points the best. Price—Pkt., 5c; ½ lb., 25c; 1 lb., 45c; 2 lbs., 85c.

**GERMAN BLACK WAX**—Has great merit, very tender and quality. Price—Pkt., 5c; ½ lb., 25c; 1 lb., 45c; 2 lbs., 85c.

**CURRIE'S RUST-PROOF WAX**—Vigorous and hardy; productive. Price—Pkt., 5c; ½ lb., 25c; 1 lb., 45c; 2 lbs., 85c.

**WARDWELL KIDNEY WAX**—Extra early, purely wax. Price—Pkt., 5c; ½ lb., 25c; 1 lb., 45c; 2 lbs., 85c.

**IMPROVED GOLDEN WAX**—Very early; round golden. Price—Pkt., 5c; ½ lb., 25c; 1 lb., 45c; 2 lbs., 85c.

**VALENTINE WAX**—One of the earliest; pods thick and fleshy, absolutely stringless. Price—Pkt., 5c; ½ lb., 25c; 1 lb., 45c; 2 lbs., 2 lbs., 75c.

**ROYAL PURPLE, WAX, ROUND POD**—Large plant; early; large medium green leaf. Pods very round and yellow, very brittle and absolutely stringless. Rustless and very prolific. Much in demand by market gardeners. Price—Pkt., 5c; ½ lb., 25c; 1 lb., 45c; 2 lbs., 85c.

Write for prices on peck quantities or over.

### DWARF LIMAS

Ready for Use in 50 to 75 Days.

**BURPEE'S BUSH LIMA**—Bush form of the large Pole Lima beans large and flat, very productive. Price—Pkt., 5c; ½ lb., 1 lb., 45c; 2 lbs., 85c.

**HENDERSON'S BUSH LIMA OR SIEVA**—Productive; very early bean. Price—Pkt., 5c; ½ lb., 25c; 1 lb., 45c; 2 lbs., 85c.

**DREEK'S BUSH**—Immensely productive; may be used as a snap or snap bean, broad, flat pods. Price—Pkt., 5c; ½ lb., 25c; 1 lb., 2 lbs., 85c.

### DWARF GREEN PODDED OR SNAP BEANS

Ready for Use in 50 to 40 Days.

**BURPEE'S STRINGLESS GREEN POD**—Produces a vine similar to Red Valentine, but develops pods to edible condition two or three days



Burpee's Bush Lima



PRODUCERS AND DEALERS IN GUARANTEED SEEDS





BEANS—Continued

earlier than Valentine. Pods are stringless—absolutely so—the pod breaking as short and free as pipe stems; enormously productive. Price—Pkt., 5c; ½ lb., 25c; 1 lb., 45c; 2 lbs., 85c.

**EXTRA EARLY RED VALENTINE**—Early strain of this popular round pod bean, nothing superior to this in Snaps among the green seeded sorts; many prefer it to Wax varieties. Price—Pkt., 5c; ½ lb., 25c; 1 lb., 45c; 2 lbs., 85c.

**REFUGEE**, or **1,000-to-1**—Medium to late; very productive and tender, largely grown for main crop; round pod. Price—Pkt., 5c; ½ lb., 25c; 1 lb., 45c; 2 lbs., 85c.

**PROLIFIC TREE (Navy)**—The most prolific bean known; bean not large, but fine shape; cooks easy. Price—Pkt., 5c; ½ lb., 25c; 1 lb., 45c; 2 lbs., 85c.

Write for prices on peck quantities or over.

POLE OR RUNNING LIMA BEANS

Ready for Use in 70 to 90 Days.

**LARGE WHITE LIMA**—Largely grown and highly esteemed. Price—Pkt., 5c; ½ lb., 25c; 1 lb., 45c; 2 lbs., 85c.

**CUT-SHORT or CORN HILL**—Used for planting among corn, one of the best. Price—Pkt., 5c; ½ lb., 25c; 1 lb., 45c; 2 lbs., 85c.

**DUTCH CASE KNIFE**—Pods long, green and flat; can be either snapped or shelled. Price—Pkt., 5c; ½ lb., 25c; 1 lb., 45c; 2 lbs., 85c.

**LAZY WIFE**—Great favorite; pod from four to six inches long; stringless, rich buttery flavor; beans are white and make a fine shell bean; pods remain green and tender long. Price—Pkt., 5c; ½ lb., 25c; 1 lb., 45c; 2 lbs., 85c.

Write for prices on peck quantities or over.

Beets

Ready for Table Use in 40 to 60 Days.



Crosby's Egyptian Beet

**Culture**—Sow as early in the spring as the ground can be worked, and every two weeks after for a succession up to the first weeks of July. For general crop sow about the middle of May. The soil should be light, sandy loam, well enriched with stable manure and plowed and harrowed until very fine. Sow in drills one foot to fifteen inches apart, and when well up thin to from four to six inches. The young beets pulled out of the rows are excellent used as Spinach. Packets contain ¼ ounce, enough to plant about fifteen feet of drill; four to five pounds for one acre.

**CROSBY'S EGYPTIAN**—An extra early dark blood, not flat. Price—Pkt., 5c; oz., 15c; ¼ lb., 55c.

**DETROIT DARK RED**—Very choice deep red; fine shaped beet. Price—Pkt., 5c; oz., 15c; ¼ lb., 55c.

**DEWING EARLY**—Of fine form, flavor and good for market. Price—Pkt., 5c; oz., 15c; ¼ lb., 55c.

**EARLY BLOOD TURNIP**—Dark red and of fine flavor; productive, standard sort. Price—Pkt., 5c; oz., 15c; ¼ lb., 55c.

**EDMUND BLOOD TURNIP**—A market gardener's strain of great regularity in shape; deep blood skin and very dark flesh of best quality. Price—Pkt., 5c; oz., 15c; ¼ lb., 55c.

**EXTRA EARLY EGYPTIAN**—Very early and dark blood color; rather flat. Price—Pkt., 5c; oz., 15c; ¼ lb., 55c.

**EXTRA EARLY ECLIPSE**—Very early; round rooted and dark red; one of the very best. Price—Pkt., 5c; oz., 15c; ¼ lb., 55c.

**SWISS CHARD or SLIVER**—Cultivated for its leaves; mid rib, stewed and served as asparagus; the rest served as spinach. Price—Pkt., 5c; oz., 15c; ¼ lb., 55c.

MANGEL-WURZEL, SUGAR BEETS, ETC.

**Culture**—As all Mangels require a deep soil in order to grow well, plow and sub-soil at least a foot to eighteen inches, and apply plenty of rich stable manure. Sow in May or June in rows eighteen inches to two feet apart, and thin to eighteen inches in rows. Young plants may be transplanted to fill up vacancies. Sow in addition, when the plants are three to four inches high, at the rate of 200 pounds. Complete manure, 200 pounds bone flour and 400 pounds salt per acre. As soon as frost occurs dig the crop. Packets contain half ounce of seed, enough for about 25 feet of drill; 5 pounds for one acre.

**MAMMOTH LONG RED MANGEL-WURZELS**—Very large, selected strain, the largest and finest roots. The standard. Price—Pkt., 5c; ¼ lb., 25c; lb., 75c. Not prepaid, lb., 65c; 5 lbs. or over 60c per lb.

Prices Subject to Market Changes. See

**GOLDEN TANKARD MANGEL-WURZEL**—A bright yellow; handsome and sweet and very productive, tops small, roots large. Price—Pkt., 5c; ¼ lb., 35c; lb., 75c. Not prepaid, lb., 65c; 5 lbs. or over, 60c per lb.

**WHITE SUGAR BEET**—Grows to a large size, and is useful for making sugar, as well as for stock feeding. Price—Pkt., 5c; ¼ lb., 35c; lb., 85c. Not prepaid, lb., 75c; 5 lbs. or over, 70c per lb.

**GIANT FEEDING SUGAR**—This unites the large size of the Mangel with the greater feeding value of the Sugar Beet. The roots are always regular and uniform, broad at the top, with a full and slightly tapering shoulder. Price—Pkt., 5c; ¼ lb., 35c; lb., 85c. Not prepaid, lb., 75c; 5 lbs. or over, 70c per lb.

Cabbage

Ready for Use in 75 to 110 Days.

**Culture**—Soil for Cabbage should be a rich and heavy loam, with good drainage. In a month the plants will be in condition to transplant to cold frames, where they are wintered, taking care, in planting, to set the young plants down to the first leaves. Transplant in spring as soon as the ground can be worked, setting the plants two feet apart one way and from twelve to fifteen inches the other, according to the variety. For late or winter crops the seed is sown in May, and the plants set out in July. In this case they are set in rows two by three feet, so as to work them with a horse and cultivator. To destroy the green worm that is so destructive to the leaves and heads of Cabbage and Cauliflower, an experienced grower says: "Take one ounce of saltpetre and dissolve it in twelve parts of water; then take a short-handled whisk broom, dip it in the solution and sprinkle the plants well. One application is sufficient unless the stuff is washed off by heavy rains. The liquid being perfectly clear, never colors the Cauliflower or Cabbage heads. To prevent the turnip flea from attacking the young plants sift fine air-slaked lime or tobacco dust over them as soon as they appear above the ground. Packets contain one-sixth ounce of seed, enough for about 500 plants; ¼ pounds for one acre.



Danish Ball Head Cabbage

**ALL HEAD**—The very best second early, fine flat heads, very hard, solid, one best all year sort. Price—Pkt., 5c; oz., 60c; ¼ lb., \$1.90.

**EARLY JERSEY WAKEFIELD**—Well-known and most valuable, very best early sort. Price—Pkt., 5c; oz., 60c; ¼ lb., \$1.90.

**EARLY WINNINGSTADT**—A standard second early variety; pointed heads. Price—Pkt., 5c; oz., 60c; ¼ lb., \$1.90.

**EARLY FLAT DUTCH**—A remarkably fine strain; a sure header; the head weighing from ten to twelve pounds; most valuable for market. Price—Pkt., 5c; oz., 60c; ¼ lb., \$1.90.

**HENDERSON'S EARLY SUMMER**—A superior second early sort; produces large and solid heads of fine quality. Price—Pkt., 5c; oz., 60c; ¼ lb., \$1.90.

**SELECTED ALL SEASON**—One of the finest for second-early or late, growing to a large size, quickly and surely; the true sure header. Price—Pkt., 5c; oz., 60c; ¼ lb., \$1.90.

**PREMIUM LATE FLAT DUTCH**—Also a valuable main crop. Price—Pkt., 5c; oz., 60c; ¼ lb., \$1.90.

**STONEMASON DRUMHEAD, or SUREHEAD**—A standard winter cabbage for main crop; a sure header. Price—Pkt., 5c; oz., 60c; ¼ lb., \$1.90.

**RED DUTCH**—For pickling, hard oblong heads; dark purple. Price—Pkt., 5c; oz., 60c; ¼ lb., \$1.90.

**HOLLANDER, or DANISH BALL HEAD**—One of the hardest in cultivation; quite a distinct variety; medium size, round, very solid, extra keeper; best of quality. Price—Pkt., 5c; oz., 60c; ¼ lb., \$1.90.

**MARBLEHEAD MAMMOTH DRUMHEAD**—The largest Cabbage known, weighing in some instances over fifty pounds; under good cultivation acres have been grown where the heads would average thirty pounds each. Price—Pkt., 5c; oz., 60c; ¼ lb., \$1.90.

Red Discount Sheet for Latest Prices



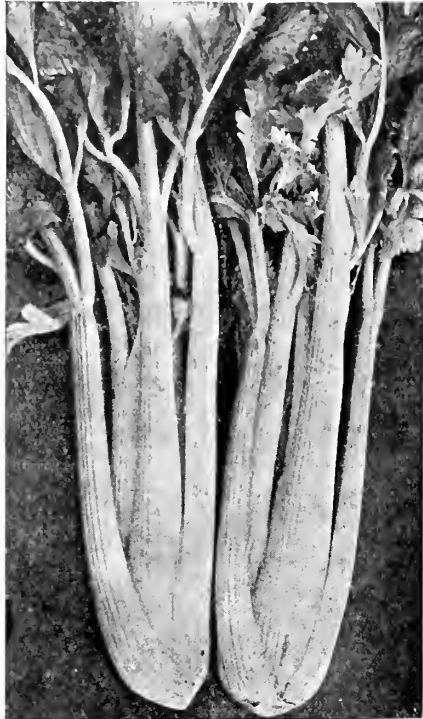
PRODUCERS AND DEALERS IN GUARANTEED SEEDS





**Celery**

**Culture**—Sow seed in a light, rich, dry border as early as the ground can be worked, in drills eight or ten inches apart, and cover seeds about a quarter of an inch deep, rolling or treading them in if the ground be dry. When fairly out of the seed leaf they may be transplanted to another bed, or may be thinned.



**Improved White Plume Celery**

best way to store is to dig trenches in a well-drained spot in the open ground one foot wide and of a depth a few inches less than the height of the celery. The plants are then lifted and set close together until whole quantity is stored. Edges of the trench should be made sloping from the tops of the plants. When severe cold weather comes on cover gradually with leaves, hay or straw and place boards on top. In such a trench the stalks will blanch perfectly, and may be taken out any time during the winter. Packet contains enough seed for about 1,000 plants; two ounces of seed for one acre.

**IMPROVED WHITE PLUME**—Naturally white or light foliage; requires but little banking up to blanch; very early and extensively grown for market. Price—Pkt., 5c; ½ oz., 20c; oz., 35c; ¼ lb., 75c.

**GOLDEN SELF-BLANCHING**—A grand solid variety, on the style of the White Plume, except that it is golden yellow where the White Plume is white. Price—Pkt., 10c; ½ oz., 30c; oz., 55c; ¼ lb., \$2.00.

**GIANT PASCAL**—An easily blanched and fine keeping large sort, of excellent flavor; superior for late use. Price—Pkt., 5c; ½ oz., 10c; oz., 15c; ¼ lb., 65c.

**CELERIAC, or LARGE SMOOTH PRAGUE**—An improved form of the rooted celery, roots smooth and round. Price—Pkt., 5c; oz., 15c; ¼ lb., 50c.

**CELERY FOR FLAVORING**—Nice, clean seed. Price—Oz., 10c; ¼ lb., 25c.

**Endive**

**Culture**—Sow in June, July and August; cover lightly; when up thin out to eight inches apart and water well afterward, if dry. When the leaves are six to eight inches long, blanch by gathering in the hand and tying together near the top with yarn or bast. This must be done when quite dry, or they will rot. At the approach of winter take up carefully, with a ball of earth to each plant, and place close together in frame or cellar for use. They must be kept dry and have plenty of air or they will rot. Packets contain enough seed for about 75 feet of drill; 4 pounds for 1 acre.

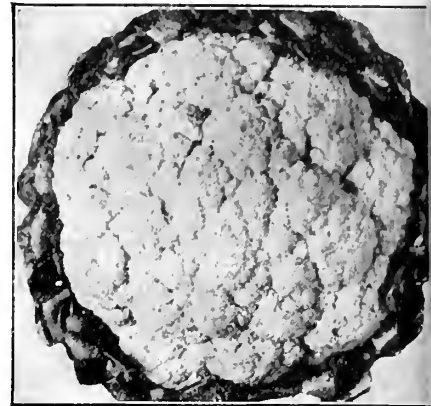
**GREEN CURLED WINTER**—Standard sort for fall and winter crop. Price—Pkt., 5c; oz., 10c; ¼ lb., 30c; lb., 90c.

Prices Subject to Market Changes. See Red Discount Sheet for Latest Prices.

**Cauliflower**

Ready for Use in 90 to 120 Days.

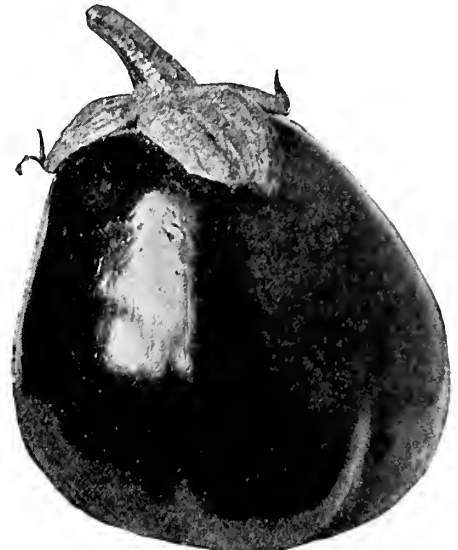
**Culture**—Same as for Cabbage, except that extra manure and plenty of water will pay. Early kinds should be strong enough to plant out not later than the middle of April; late kinds may be planted out same time as for Cabbage. To destroy the Cauliflower maggot take one ounce of sulphuretted potassium and dissolve in one gallon of water. Heat the liquid to about 100 degrees, take a large spoon, and pour against the stalk of the plant just above the ground. Packet contains enough seed for about 250 plants; 3 or 4 ounces of seed for 1 acre.



**Henderson's Early Snowball**

**EXTRA EARLY DWARF ERFURT**—Short stem; very fine. Price—Pkt., 5c; ¼ oz., 75c.

**HENDERSON'S EARLY SNOWBALL**—Without doubt the best Cauliflower; our seed is of the very finest strain. Price—Pkt., 5c; oz., 75c.



**Improved New York Purple**

**Egg Plant**

**Culture**—Sow in hot-beds, very early in the spring, and transplant when two inches high into a second bed or into small pots, that is not done thin to four inches apart. Do not plant out until the weather becomes perfectly settled and warm. Cool nights or weather will check them. Packets contain enough seed for about 1 to 150 plants; ¼ lb. for 1 acre. Price—Pkt., 5c; 1 oz., 50c; ¼ lb., \$1.90.

**IMPROVED NEW YORK PURPLE**—The best large oval, deep purple, grown more extensively than any other sort. Price—Pkt., 5c; oz., 50c; ¼ lb., \$1.90.

**Useful Gourds**

**NEST-EGG**—Resembles in color, form and size the eggs of hen. Do not crack, and are uninjured by cold or wet. They make the very best nest-eggs. Do not plant in very rich soil, or the fruits will grow too large. Price—Pkt., 5c; oz., 15c; ¼ lb., 45c.

**DISHCLOTH, or LUFFA**—A natural dishcloth is furnished by the peculiar lining of this fruit, which is sponge-like and durable. Price—Pkt., 5c; oz., 15c; ¼ lb., 45c.



PRODUCERS AND DEALERS IN GUARANTEED SEEDS





**Sweet or Sugar Corn**

Please note we price Sweet Corn by weight. Three-fourths pound out 1 pint; 1½ pounds about 1 quart; 11 pounds about 1 peck; 45 pounds to the bushel, except where noted.

Market gardeners and private planters will do well to consider that our Northern Grown Seed will give them earlier corn than will seed of the same variety grown farther south. Our seed is thoroughly tested before it leaves our hands.

**Culture**—Sweet Corn should not be planted deeper than one inch deep; most people plant two or three inches deep—almost sure to rot. Do not plant too early. The sweeter the variety of corn the tenderer it is. Plant in good, warm soil after all danger from frost is past, at intervals of two weeks, up to July. Packets contain 1½ ounces, enough for about 20 to 30 hills; 15 pounds (about 1 peck), will plant one acre hills.

**EXTRA EARLY VARIETIES**

From 55 to 65 Days.

**PEEP OF DAY (55-Day)**—This most valuable sort is of Minnesota origin, and is not only early, but one of the best. The stalks grow from three to four feet high. Ears average from five to six inches in length and are of perfect form. Price—Pkt., 5c; ½ lb., 20c; lb., 35c.

**WHITE MEXICAN (55-Day)**—Has the marvelous sweetness of the Black Mexican, but white in color. Superior in sweetness, a pure creamy white color, large as the Minnesota, earlier than the Cory. Ready for table use in about 55 days. We know of nothing its equal for the market gardener. If you want the finest market gardener's corn known plant White Mexican. Price—Pkt., 5c; ½ lb., 20c; lb., 35c.

**GOLDEN BANTAM (60-Day)**—Of extreme hardness; can be planted earlier than any other true sweet corn, and will then produce the earliest supply of ears for the table. Price—Pkt., 5c; ½ lb., 20c; lb., 35c.

**MAMMOTH EARLY WHITE CORY (65-Day)**—Resembles the ordinary Cory in size and earliness, but with white cobs; very much better quality. Price—Pkt., 5c; ½ lb., 20c; lb., 35c.

**SECOND EARLY OR INTERMEDIATE VARIETIES**

From 65 to 80 Days.

**EARLY MINNESOTA (65-Day)**—One of the best second early sorts. Ears about six feet high. Ears about eight inches long, with broad white kernels which shrink very little in drying. Price—Pkt., 5c; ½ lb., 20c; lb., 35c.

**BLACK MEXICAN (70-Day)**—Very sweet and of superior flavor; cobs black. Price—Pkt., 5c; ½ lb., 20c; lb., 35c.

**EARLY CROSBY (75-Day)**—Matures after the Minnesota; fair-sized ears of good quality. Price—Pkt., 5c; ½ lb., 20c; lb., 35c.

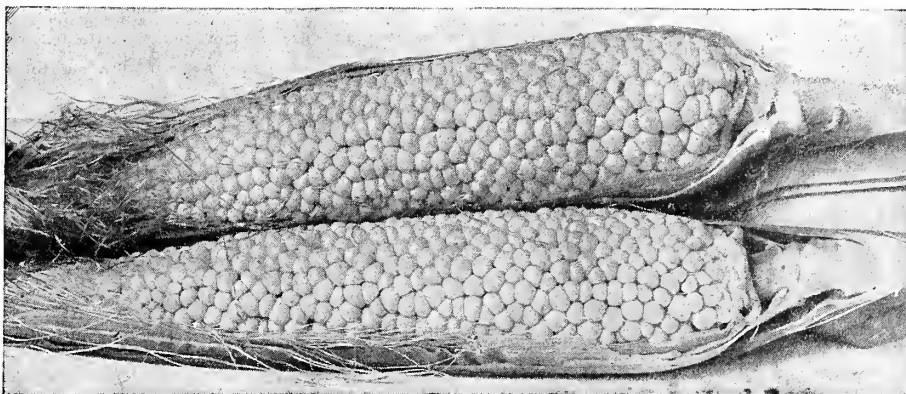
**GENERAL CROP OF LATE VARIETIES**

From 85 to 90 Days.

**COUNTRY GENTLEMAN (80-Day)**—Without question the sweetest, most delicious table corn grown. Has an ear about seven inches long, crowded with irregular kernels. Most popular with canners and market gardeners alike. The best of the late varieties. Price—Pkt., 5c; ½ lb., 20c; lb., 35c.

**STOWELL'S EVERGREEN (90-Day)**—Remains a long time, and is highly prized, one of the most popular varieties. Price—Pkt., 5c; ½ lb., 20c; lb., 35c.

**MAMMOTH LATE EVERGREEN (100-Day)**—A large variety of Evergreen, very popular where yield is most desired. Has a great growth of stalk and leaves and bears a large ear with deep grained, juicy kernels. Price—Pkt., 5c; ½ lb., 15c; lb., 25c. juicy kernels. Price—Pkt., 5c; ½ lb., 20c; lb., 35c.



Golden Bantam Sweet Corn

**Leek**

**Culture**—A member of the Onion family. It is a good fall and winter substitute for green onion. Sow early in the spring in drills 1 foot to 15 inches apart. Cover with not over ½ inch of fine soft pressed down firmly. Thin plants to 6 inches apart and draw the earth about them when cultivated. If very tender Leeks are wanted transplant when about 6 inches high, setting 4 inches apart in trenches 2 feet apart and gradually earth up like celery.

**LARGE AMERICAN FLAG**—Very desirable. Hardy and productive. A favorite with market gardeners and extensively grown in home gardens. Price—Pkt., 5c; oz., 20c.

**Cucumbers**

Ready for Use in 40 to 60 Days.

**Culture**—Adapted to any reasonably good soil. For largest yield soil should be well enriched with rotted manure. Plant seeds not over one inch deep in hills four to six feet apart each way, fifteen to twenty seeds in each hill. If plants begin to crowd and danger from striped beetles is past thin out to three plants in a hill. Give frequent but shallow cultivation. Take the fruit as soon as large enough and before it begins to ripen, as the vines will stop setting fruit as soon as the seed begin to mature. For pickles cut the stem instead of pulling fruit off, as cucumbers will not keep so well when the skin is torn or broken. Packets contain about ¼ ounce of seed, enough for about twenty hills; two pounds will plant one acre in hills.

**ARLINGTON, or IMPROVED WHITE SPINE**—A selection from the White Spine, being more pointed at each end, the young fruits are unusually crisp and tender, and are of very dark green color, so that the variety is considered by name to be the best for small pickles. Price—Pkt., 5c; oz., 10c; ¼ lb., 30c.

**THE DAVIS PERFECT, or LONG GREEN CUCUMBER**—An excellent cucumber for both outdoor use and forcing. It is carefully selected strain of the extra long White Spine type. Its valuable points are length, slimmness and its dark green color. It is a very vigorous sort and resists blight longer than most sorts. Price—Pkt., 5c; oz., 10c; ¼ lb., 30c.

**BOSTON, or CHICAGO PICKLING**—A favorite eastern sort of fine quality. Price—Pkt., 5c; oz., 10c; ¼ lb., 30c.

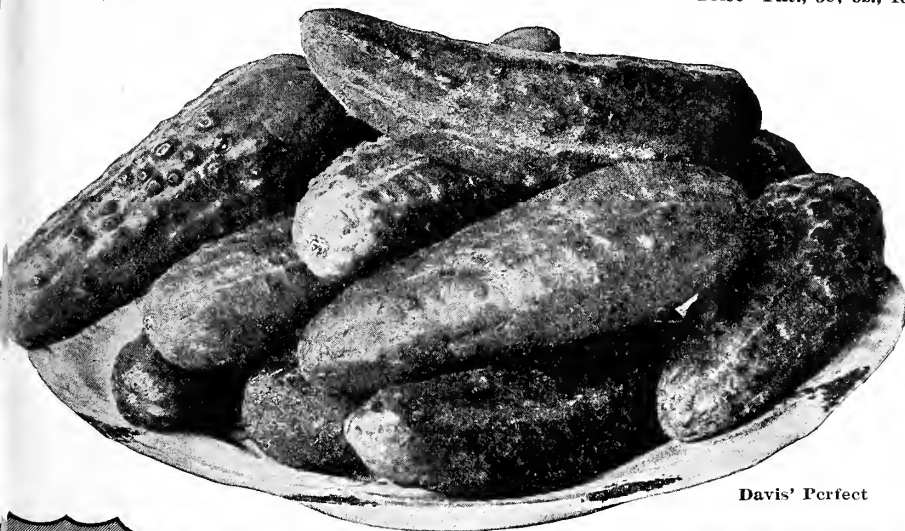
**EARLY SHORT GREEN (or Early Frame)**—Good for pickling, productive. Price—Pkt., 5c; oz., 10c; ¼ lb., 30c.

**GREEN PROLIFIC PICKLING**—One of the best for pickling, dark green, very productive and of uniform small size. Price—Pkt., 5c; oz., 10c; ¼ lb., 30c.

**SMALL GHERKIN**—Very small burr, used for pickles. Price—Pkt., 5c; oz., 10c; ¼ lb., 30c.

**LEMON CUCUMBER, or GARDEN LEMON**—Has the shape, color and size of a lemon. Grows on a vine and by many is highly prized as a pickling novelty. Price—Pkt., 5c; oz., 10c; ¼ lb., 30c.

Prices Subject to Market Changes. See Red Discount Sheet for Latest Prices.



Davis' Perfect



PRODUCERS AND DEALERS IN GUARANTEED SEEDS

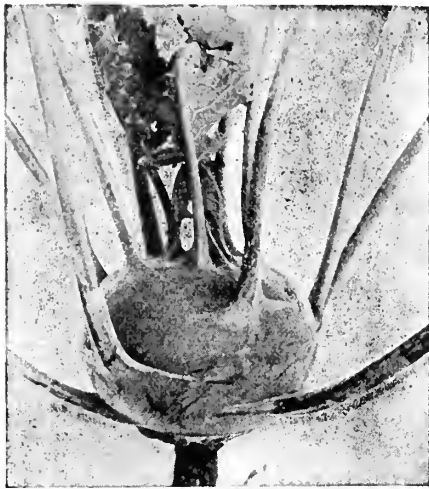




**Kale or Borecole**

**Culture**—Cultivated and grown exactly like cabbage. Sow early in the spring in a hot-bed and when from one to two inches high transplant into a bed or border that has been highly manured and deeply dug. The plants should stand two feet apart, in rows three feet apart. The soil should be kept mellow and free from weeds. Cover with litter or leaves during winter. Plants started and grown this way should be fit to blanch the following spring. The seed may also be sown early, in the open border, and transplanted in rows (as directed above), as soon as out of the seed leaf; but they will need to be a year older than the hot-bed plants before being fit to blanch. Packets contain enough seed for about 500 plants; 2 ounces for 1 acre.

**EXTRA CURLED DWARF GERMAN GREENS**—Very dwarf and spreading; best strain. Price—Pkt., 5c; oz., 15c; ¼ lb., 50c.



Kohlrabi—White Vienna

**EARLY WHITE VIENNA**—Handsome and delicate, white ball. Price—Pkt., 5c; oz., 20c; ¼ lb., 75c; lb., \$2.25.  
**EARLY PURPLE VIENNA**—Very good sort. Price—Pkt., 5c; oz., 20c; ¼ lb., 75c; lb., \$2.25.

**Kohlrabi**

**Culture**—This is an excellent vegetable and should be grown in every garden. Sow in the spring, in rows eighteen inches apart, afterwards thinning the plants to eight or ten inches. If the weather is suitable the thinnings may be planted, but it is considered difficult to transplant. Keep the weeds down and when the thickened stem above ground is two or three inches through they are fit to eat, and should be used at once, being tough when old. They are cooked the same as turnips, and when well grown and used at the proper stage, are tender and palatable. Packets contain enough seed for about 40 or 50 feet of drill; ¼ pound for 1 acre.

**Garden Carrots**

Ready for Table in 60 to 80 Days.  
 Half-Long Danver's Carrot

**Culture**—Sandy loam, heavily manured the previous year, is best for the carrot, but any good land deeply worked will be satisfactory. Sow as early in the spring as possible. Good crops may be grown from sowing as late as June 15th. For table use plant in drills about 1½ feet apart. Cover with about ½ inch of fine soil firmly packed down. As soon as plants appear thin to 2 to 6 inches apart, according to size of variety. For stock carrot sow in drills 1½ feet to 2 feet apart. Use from 1½ to 3 pounds seed per acre. Packet contains ¼ ounce of seed, enough for 25 feet of drill; 3 pounds for 1 acre.

**EARLY HORN**—Very early variety; small root; excellent flavor. Price—Pkt., 5c; oz., 15c; ¼ lb., 55c. Not prepaid, 10c per lb. less.  
**HALF LONG DANVERS**—Thick, of good quality and exceedingly productive. Price—Pkt., 5c; oz., 15c; ¼ lb., 55c. Not prepaid, 10c per lb. less.

**OXHEART OR HALF-LONG**

**GUERANDE**—This is one of the most valuable of recent introduction, either for family or market; most beautiful shape and rich orange color. Price—Pkt., 5c; oz., 15c; ¼ lb., 55c. Not prepaid, 10c per lb. less.

**LARGE WHITE BELGIAN**—Very large; excellent stock Carrot. Price—Pkt., 5c; oz., 15c; ¼ lb., 55c. Not prepaid, 10c per lb. less.  
**LARGE YELLOW BELGIAN**—Very large; excellent stock Carrot. Price—Pkt., 5c; oz., 15c; ¼ lb., 55c. Not prepaid, 10c per lb. less.

**Mushroom**

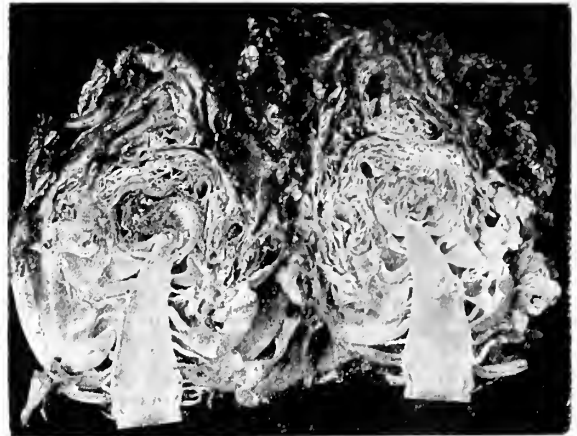
An edible fungus. The ordinary commercial variety is creamy white with loose gills which are pinkish red, changing to liver color. Produces "seed" or spores, called spawn, which is preserved in manure pressed in the form of bricks. Can be grown in cellar, sheds, hotbeds and sometimes outdoors. Culture directions are furnished in a published book, which we can supply for 35c.

**PURE CULTURE MUSHROOM SPAWN**—The most productive and best variety; large, vigorous and fine flavor. Price—Per brick, 50c; 3 bricks, not prepaid, \$1.25.

Prices Subject to Market Changes. See Red Discount Sheet for Latest Prices

**Lettuce**

**Culture**—For early crop plants should be started under glass from January to March and hardened off well before transplanting, which should be done as soon as weather permits. Lettuce should be grown very rapidly, consequently the soil should be rich and very well prepared. Sow in drills eighteen inches apart and thin the young plant of the loose leafed varieties to 4 inches apart. If they become too crowded thin out by using as wanted. For the cabbage or heading varieties thin out to ten or twelve inches. Packets contain 1-6 ounce seed, enough for fifty or sixty feet of drill; three pounds for one acre



Big Boston Lettuce

**CABBAGE OR HEADING VARIETIES**

**MAY KING**—The best extra heading variety. Good and solid of rich yellow color. Hardy, early and a quick grower. Price—Pkt., 5c; oz., 10c; ¼ lb., 25c.

**EARLY TENNIS BALL**—Popular extra early variety for forcing and early planting outdoors. Plants are large, with thick, bright green leaves. Price—Pkt., 5c; oz., 10c; ¼ lb., 35c.

**CALIFORNIA CREAM BUTTER**—Round, solid heads, medium green, good size. Compact and having a rich, buttery taste. Price—Pkt., 5c; oz., 10c; ¼ lb., 35c.

**IMPROVED HANSON**—Very large and solid. Almost white at center. Sweet, crisp and tender. Price—Pkt., 5c; oz., 10c; ¼ lb., 35c.

**BIG BOSTON**—Very popular for outdoor growing. Large, very hardy and vigorous. The best variety for cold, unfavorable weather. A sure header. Price—Pkt., 5c; oz., 10c; ¼ lb., 35c.

**LOOSE LEAF VARIETIES**

**GRAND RAPIDS**—The very best kind for forcing. A sure, quick grower, that will stand handling better than any other variety. Crisp, tender and delicious. Price—Pkt., 5c; oz., 10c; ¼ lb., 35c.

**EARLY CURLED SIMPSON, or SELESIA**—Very popular; leaves bright green. Slightly frilled and much blistered. Crisp and sweet. Sow thickly and use when young. Price—Pkt., 5c; oz., 10c; ¼ lb., 35c.

**BLACK SEEDED SIMPSON**—A good variety. Leaves are a lighter color than the Selesia, being a yellowish green. One of the best for growing outdoors. Leaves ruffled and blistered, even the outside ones very tender. Price—Pkt., 5c; oz., 10c; ¼ lb., 35c.

**EARLY PRIZE HEAD**—Excellent for home gardeners and easily grown. Leaves tinged with brownish red. Tender and crisp, but will not stand shipping. Price—Pkt., 5c; oz., 10c; ¼ lb., 35c. Price—Pkt., 5c; oz., 10c; ¼ lb., 25c.

**Mustard**

**Culture**—Should be sown as early as possible in drills about 18 inches apart, and covered with ½ inch of soil well pressed down. Water freely. For succession sow every two weeks until autumn. Seeds are used as a condiment and the leaves for salad or boiled like spinach. Packets contain ¼ ounce seed, enough for 25 feet of drill.

**BLACK OR BROWN**—The strongest and most pungent variety. Price—Pkt., 5c; oz., 10c; ¼ lb., 20c; lb., 60c.

**WHITE ENGLISH**—Splendid; much used for garnishing and salad. Price—Pkt., 5c; oz., 10c; ¼ lb., 20c; lb., 60c. Price—Pkt., 5c; oz., 10c; ¼ lb., 25c.

**Chinese Cabbage**

**CHINESE CABBAGE**—Resembles both Celery and Cos Lettuce and produces long heads—frequently 12 to 15 inches long and 5 inches in diameter. Heads are very firm and crisp and are easily blanched to a clear white. Can be cooked and eaten just like ordinary cabbage or used for greens and salads. Full directions for growing on each packet. Price—Pkt., 10c.



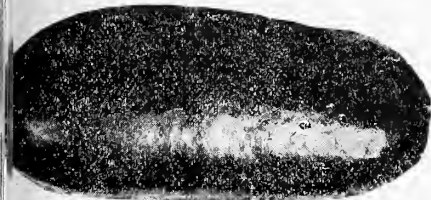
PRODUCERS AND DEALERS IN GUARANTEED SEEDS





## Watermelon—A Big Selection of the Best Varieties

**Culture**—Successful Watermelon growing depends largely on giving the young plants a good start. This can be done best by placing the hills about eight feet apart each way and working into the soil an abundance of old, well-rotted manure—chicken manure, domestic guano or other fertilizer rich in nitrogen is best. On this foundation put an inch or more of fresh earth and plant the seed in this, covering firmly with about one inch of soil. Don't plant until ground is warm and dry, as young watermelon plants are very sensitive to cold and wet. Put ten or twenty seeds in a hill. After the young plants have formed and first pair of rough leaves appear, thin out, leaving two or three of the strongest in each hill. Frequent watering with liquid manure will hasten the growth, thus lessening the danger from insects. If striped beetle appears use tobacco dust freely, but the best protection against blight and pests is a vigorous growth. Melons should always be changed about one year to year, as otherwise insect pests will be far worse. Packets contain 1-3 ounce seed, enough for about twelve to fifteen hills; three to five pounds for one acre.



Tom Watson

Shipping. Flesh is bright red and very sweet. Price—Pkt., 5c; oz., 10c; ¼ lb., 25c. Not prepaid, 10c per lb. less.

**PHINNEY'S EARLY**—A very early, good quality, hardy melon. Yields abundantly. Has medium-sized, oblong shape, with thin, smooth rind. Flesh is pink and tender. Price—Pkt., 5c; oz., 10c; ¼ lb., 25c. Not prepaid, 10c per lb. less.

**KLECKLEY'S SWEET**—Probably the finest medium early melon for home use. Rind is too thin and tender for shipment. Fruits are uniform, oblong, with rich, dark skin. Flesh is bright scarlet, very rich, sugary and melting. Price—Pkt., 5c; oz., 10c; ¼ lb., 25c. Not prepaid, 10c per lb. less.

**KOLB'S GEM**—Very large, slightly ovaled. Fruit striped with light and dark green. Rind is very hard and firm. Flesh bright red; mild coarse grain, but tender and sweet. Price—Pkt., 5c; oz., 10c; ¼ lb., 25c. Not prepaid, 10c per lb. less.

**ICE CREAM OR PEERLESS**—Thin rind, light mottled green. Flesh bright scarlet. Solid clear to the center. Sweet as honey. A great favorite. Price—Pkt., 5c; oz., 10c; ¼ lb., 25c. Not prepaid, 10c per lb. less.

**SWEETHEART**—One of the largest size, oval melon. Very hardy, with firm rind. Color is light green. Flesh is bright red; very firm and sweet. The fruit remains in good condition for a long time after opening. Price—Pkt., 5c; oz., 10c; ¼ lb., 25c. Not prepaid, 10c per lb. less.

**TOM WATSON**—A large, oblong melon, with dark skin, quite distinct from any other variety. It averages a foot and a half or two feet long and frequently weighs 50 pounds. Rind is thin, but tough. Flesh is bright, crisp and sweet. The heart is large, with no core. Very desirable for both home and market use. Price—Pkt., 5c; oz., 10c; ¼ lb., 25c. Not prepaid, 10c per lb. less.

**FLORIDA FAVORITE**—A splendid melon of very large size, and excellent quality. Fruits are long, dark green. Rind is thin and firm. Flesh very bright; it is red, very sweet and tender. Vigorous and productive. Price—Pkt., 5c; oz., 10c; ¼ lb., 25c. Not prepaid, 10c per lb. less.

**LIGHT ICING, or GRAY MONARCH**—Fruits are long, large, light green. Flesh is deep red of splendid quality. Price—Pkt., 5c; oz., 10c; ¼ lb., 25c.

**DIXIE**—Probably the best Watermelon known. Larger, earlier and more productive than "Kolb's Gem," which in many sections is considered the best shipper. Price—Pkt., 5c; oz., 10c; ¼ lb., 25c. Not prepaid, 10c per lb. less.

**CUBAN QUEEN**—Solid, heavy, smooth-skinned variety. Early and of excellent quality. Very sweet and melting. Fine for both home and market garden. Price—Pkt., 5c; oz., 10c; ¼ lb., 25c. Not prepaid, 10c per lb. less.

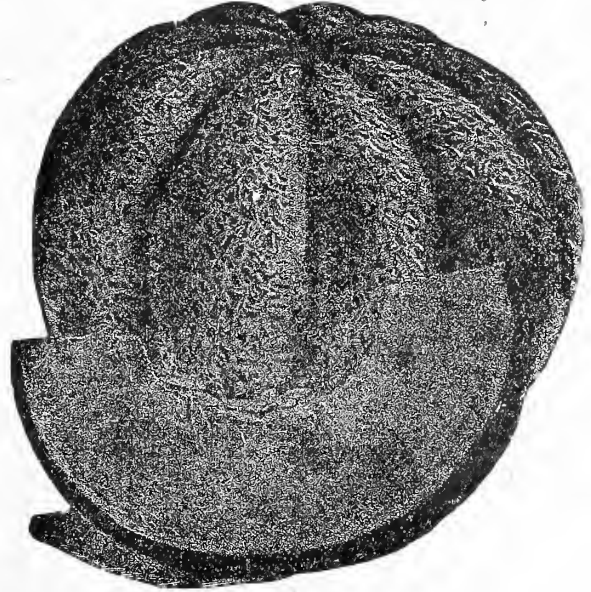
**CITRON**—Fruit of medium size, round and exclusively used for pickles. Color is dark green, flesh is white and solid, but not suitable for eating raw. Price—Pkt., 5c; oz., 10c; ¼ lb., 25c. Not prepaid, 10c per lb. less.

**COLE'S EARLY**—A fine extra early sort of medium size; almost round in shape. Mottled with various shades; very sweet, tender and delicious. Has proved to be very well adapted to this locality. Price—Pkt., 5c; oz., 10c; ¼ lb., 25c. Not prepaid, 10c per lb. less.

**FORDHOOK EARLY**—An extra early melon of quite large size. Has a tough rind, which makes it desirable for shipping. Price—Pkt., 5c; oz., 10c; ¼ lb., 25c. Not prepaid, 10c per lb. less.

## Muskmelon

**Culture**—Muskmelon should be planted in hills from four to six feet apart, after all danger from frost is past and the ground is warm and in good condition. Sandy loam is best. Plant ten or twelve seeds in a hill, covering with about an inch of fine soil, firmly pressed down. When danger from striped beetle is past and plants begin to crowd, thin out to four in a hill. Give frequent but shallow cultivation until runners are too long. Packets contain 1-5 ounce of seed, enough for about twelve or fifteen hills; two or three pounds for one acre in hills.



Netted Gem or Rocky Ford Muskmelon

**HONEY DEW MELON**—For absolute deliciousness and delicacy of flavor the Honey Dew is unsurpassed anywhere. It has keeping qualities, flavor, meatiness and appearance just rightly balanced to make it an ideal variety.

The Honey Dew is a green fleshed melon, nearly round in shape and running from 8 to 10 inches in diameter. It is without netting or ribbing, and the rind is thin but tough and firm—does not scratch or bruise easily. It stands handling and shipping as well as any variety.

This melon is a splendid producer, and the vines are hardy. It can be grown practically anywhere, and has become tremendously popular during the past two years. Price—Pkt., 5c; oz., 15c; ¼ lb., 35c.

**NETTED GEM, or ROCKY FORD**—One of the most popular small or crate melons. A medium early sort for home or market gardeners. Fruits are oval, slightly ribbed and covered with fine netting. Price—Pkt., 5c; oz., 15c; ¼ lb., 35c.

Enclosed please find check for seed I bought of you. It certainly fine.  
LEWIS J. SIMPSON,  
Chickasaw County, Iowa.

Please quote me prices on Seed Corn. I bought Seed Corn of you year ago last spring that was very satisfactory.  
F. L. COOPER, Wright County, Iowa.

I received the seed and am very well satisfied.  
ALBERT CARVION, Columbia County, Wis.

Find herein check for \$100.00 for Seed Oats shipped me. Same arrived O. K. and are sure good goods.  
P. B. DALEY,  
Jones County, Iowa.

Received the Grass Seed and it is fine. Will send another order early next fall.  
J. E. BROWN,  
Wilkes County, N. C.

I received my grass seed O. K. and it is fine.  
JOHN FORD, Carsonville, Mich.

Prices Subject to Market Changes. See Red Discount Sheet for Latest Prices



PRODUCERS AND DEALERS IN GUARANTEED SEEDS





MUSKMELONS—Continued  
GREEN FLESHED VARIETIES

**JENNY LIND**—Small, but very early and of good quality. Very sweet. Has a well-known fruit, flattened at the end. Ripens quite early and is suitable for home gardeners. Price—Pkt., 5c; oz., 15c; ¼ lb., 35c. Not prepaid, 10c per lb. less.

**EXTRA EARLY HACKENSACK**—A very early popular variety as a market melon; also extensively used in the home garden. Fruit about two weeks earlier than Old Hackensack, medium size, nearly round and deeply ribbed with very coarse netting. Greenish skin. Flesh a little coarse, but juicy and sweet. Price—Pkt., 5c; oz., 15c; ¼ lb., 35c. Not prepaid, 10c per lb. less.

**BAY VIEW**—A very hardy, late maturing variety, producing fruit of the largest size. Frequently weighs 70 pounds. It is ribbed and covered with coarse netting. Flesh is green, thick, and of good flavor. Price—Pkt., 5c; oz., 15c; ¼ lb., 35c. Not prepaid, 10c per lb. less.

ORANGE FLESHED VARIETIES

**EMERALD GEM**—Very early; of small, medium size. One of the very best for home gardens. Flesh deep salmon yellow and thick, ripening close to the rind. Juicy and very highly flavored. Price—Pkt., 5c; oz., 15c; ¼ lb., 35c. Not prepaid, 10c per lb. less.

**ORANGE, or MILLER'S CREAM**—An excellent main crop, medium sort. Fruit slightly oval, slightly ribbed with very shallow gray netting. Flesh rich orange-salmon, very thick and highly flavored. A favorite among growers for the late market and much used in the home garden. Price—Pkt., 5c; oz., 15c; ¼ lb., 35c. Not prepaid, 10c per lb. less.

**PAUL ROSE, or PETOSKY**—A well-known yellow flesh variety, suitable for either home or market. Fruits are oval; slightly ribbed, but densely netted. Looks much like Netted Gem, but larger. Flesh is orange-yellow, very sweet and highly flavored. Price—Pkt., 5c; oz., 15c; ¼ lb., 35c. Not prepaid, 10c per lb. less.

**FORDHOOK**—A new melon which equals Emerald Gem in flavor. It is firm, with thick, solid salmon colored flesh. Medium early. Melons are even in size and good shippers. Price—Pkt., 5c; oz., 15c; ¼ lb., 35c. Not prepaid, 10c per lb. less.

**BURRELL'S GEM, or ORANGE FLESH ROCKY FORD**—This new melon is without question unsurpassed either in quality or as a shipper. It has a thin, tough rind, with ribs closely set; averages about six inches in length. Dark orange flesh; very thick; fine grain and spicy, with a flavor unexcelled by any other melon. Price—Pkt., 5c; oz., 15c; ¼ lb., 35c. Not prepaid, 10c per lb. less.

Okra or Gumbo

**Culture**—After danger of frost is past plant in rows about 2½ feet apart, covering with about an inch of fine soil pressed down firmly. When three inches high thin out to 1 foot apart. Keep free from weeds. The young seed pods are used in soups, stews, etc. Pods are in best condition for use when from 1 to 3 inches long.

**WHITE VELVET**—Plants about 3½ feet high. Matures early; very productive; pods are white, long, smooth and tender. Price—Pkt., 5c; oz., 10c; ¼ lb., 30c.

Parsley

**Culture**—Parsley succeeds best in rich, mellow soil. The seed is even slower to germinate than Parsnip, and should be sowed as early in the spring as possible in drills 1 to 2 feet apart, and covered with not more than ½ inch of fine soil pressed down firmly. When the plants are well up, thin to 8 to 12 inches apart. When the curled varieties are about 3 inches high cut off all the leaves. They will then start a new growth, which will be brighter and better curled. If these turn dull or brown later then can again be cut, as every cutting will result in improvement. Packet contains seed enough to sow 25 feet of drill. Three pounds for one acre.

**CHAMPION MOSS CURLED**—The most popular variety for garnishing; finely cut, closely crisped, resembling moss. Deep green in color. Price—Pkt., 5c; oz., 15c; ¼ lb., 35c.

**HAMBURG, or TURNIP ROOTED**—The root is the edible portion and resembles small parsnips. Flesh is white and quite similar to celeriac. Can be dug late and stored. Much used for flavoring in soups and stews. Price—Pkt., 5c; oz., 15c; ¼ lb., 35c.

Onion Sets

Many prefer to grow Onions from sets as they are less trouble than when raised from seed. Our prices are made subject to unsold and market change. In case you wish a bushel or more, write for quotations.

If you wish sent by parcel post add 5c per pint; 10c per quart, as otherwise we will send by express, charges collect.

**WHITE BOTTOM SETS**—Price—Pt., 20c; qt., 35c; 4 qts., \$1.25.

**YELLOW BOTTOM SETS**—Price—Pt., 20c; qt., 30c; 4 qts., \$1.00.

**RED BOTTOM SETS**—Price—Pt., 20c; qt., 30c; 4 qts., \$1.00.

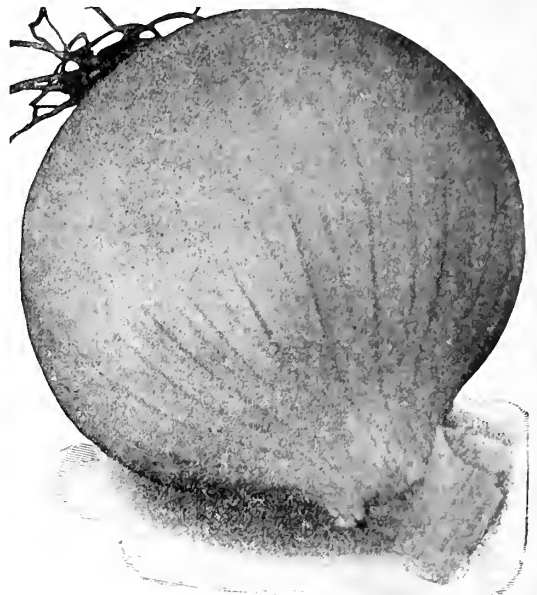
**EGYPTIAN OR PERENNIAL**—Ask for price.

Prices Subject to Market Changes. See Red Discount Sheet for Latest Prices.

Onion

For years onions have been the biggest money maker for farmer. While prices have varied considerably, 85c per bushel seed to be about the average, and the ordinary yield is 400 to 500 bush per acre.

**Culture**—Soil for onions should be rich in humus and plant food. Fresh manure and barnyard litter will not do. Manure from sheep or pig pens applied before the ground is plowed in the fall is one of the best fertilizers, because it is free from weeds. Best soil onion culture is old land that has been kept in a high state of fertility, fall plowed and thoroughly cultivated in the spring. Sow the seed at about one-fourth inch deep in rows twelve to fifteen inches apart. Greatest care should be given to securing high germinating variety in which case a great deal of labor will be saved in replanting unnecessary. The large varieties should be transplanted in order to allow the bulbs to reach full size. As soon as the plants break through go over them with a wheel cultivator which works both sides of row at once and throws a little soil away from the base of the plant. They should be weeded immediately after cultivating every two weeks throughout the summer, as it is much easier to handle the crop in fall when entirely free from weeds. Packets contain 1-12 oz. of seed enough seed to plant about ten feet of drill; five lbs. for 1 acre; 10 pounds or over at 5c per lb. less.



Silver Globe, or Southport White Globe

**SCARLET GLOBE, or SOUTHPORT RED GLOBE**—A heavy yielding, hardy and reliable, mild and tender. Purplish red; flesh coarse gray white, mild and tender. Hardy, a good keeper, very productive a one of the most desirable. Price—Pkt., 10c; oz., 40c; ¼ lb., 80c. Not prepaid, 10c per lb. less.

**SILVER GLOBE, or SOUTHPORT WHITE GLOBE**—Solid, heavy pure white flesh. Close and fine grain. A very handsome Onion, unexcelled for the family garden. Not the best winter keeper. Price—Pkt., 10c; oz., 40c; ¼ lb., 90c. Not prepaid, 10c per lb. less.

**GOLDEN GLOBE, or SOUTHPORT YELLOW GLOBE**—A heavy yielding, hardy and reliable. Color light yellow. Fine appearance, small, white flesh, firm, very mild and juicy. Probably the most satisfactory Onion for family or market use. Price—Pkt., 10c; oz., 40 ¼ lb., 75c. Not prepaid, 10c per lb. less.

**WETHERSFIELD, or LARGE RED**—A standard red Onion, stronger in flavor than the Red Globe. Price—Pkt., 10c; oz., 35c; ¼ lb., 85c. Not prepaid, 10c per lb. less.

**NEW QUEEN**—Very early. The best Onion for small pickling. Grows from 1 to 1½ inches in diameter. The top dies down, leaving a handsome white bulb suitable for pickling. Crop practically a failure. Price—Pkt., 5c; oz., 45c; ¼ lb., 90c. Not prepaid, 10c per lb. less.

**WHITE BARLETTA**—Earliest of all. Fine for pickles, but very small. Crop practically a failure. Price—Pkt., 10c; oz., 35c; ¼ lb., \$1.00; lb., \$3.50.

**MIXED SEED**—For those not particular as to variety. This good seed which will produce Red, Yellow and White Onions; part globe shape and part flat. Price—Oz., 30c; ¼ lb., 70c. Not prepaid 10c per lb. less.



PRODUCERS AND DEALERS IN GUARANTEED SEEDS





## Peas

Please note we price Peas by weight. One pound is about one pint; pounds about one quart; 7½ pounds about a half peck; 15 pounds about one peck; 60 pounds to the bushel for smooth Peas. Wrinkled s weigh four pounds less per bushel, which makes seven pounds about one-half peck; 14 pounds a peck, and 56 pounds to the bushel.

Aside from being strictly northern grown our peas were produced a high altitude, which makes them the hardest, earliest and most ductive obtainable anywhere, under any name or at any price. In addition to this we have been very careful to secure our stocks from the best localities where insect pests are practically unknown. We do not intend to be expert Pea growers, as this is a business by itself. But we do claim that our stock of peas were all grown by the foremost growers and beans growing concern in the northern United States, and we think it to be a fact that better quality cannot be purchased, regardless of price. The Peas which we offer were most carefully grown by experts of years' experience, are true to type, bright, beautiful, sound and of strongest germination. Those wishing to purchase large lots should write us for special prices, being sure to state varieties wanted and quantity of each. Below we list only the standard varieties which we know from experience should be grown in every home garden. Most of the "new varieties" are simply old sorts under new names. If you do not find the variety wanted in the list given below include it in your order and we will refund your money if we cannot supply it.

**Culture**—Light, dry soil is best suited for the early varieties, a heavier soil is better for the later or main crop varieties. Ground richly manured or very rich or wet must be avoided, as it will cause a rank growth of vine, besides lowering the quality and yield. Sow a few of the extra early varieties as early as possible in warm, quick soil, thoroughly prepared the fall before. Plant in double rows six to eight inches apart and about 2½ feet between the double rows. The main crop can be delayed until later if wanted, but the best success will be had from sowing all the varieties comparatively early, depending for succession upon the varieties maturing one after the other. Peas will ripen best if covered not over one inch deep. The largest pods will be secured if the seed is planted in trenches three to six inches deep and covered with an inch of soil. When the plants are five or six inches high fill the trenches level, which will result in deep rooting, prevent wind and prolong bearing. Seed should never stand in water, as they will not germinate or do well. The wrinkled varieties are more sensitive to cold, wet weather than the smooth, but are of better quality. The varieties growing over eighteen inches high should be staked up or trellised, but the dwarf varieties do not need it. If pods are allowed to ripen new pods will cease to form, and those partly advanced will stop growing. Peas should be hoed often to keep the ground clean and free from weeds. Packets contain 1½ ounces seed, enough for five or ten feet of row; one pound will plant seventy-five feet; 7½ lbs. to two bushels for one acre.

### EXTRA EARLY SMOOTH VARIETIES

**ALASKA, or EARLIEST OF ALL**—One of the very earliest blue peas. Quite productive. Much liked by canners. Pods 2½ inches long, and well filled. Height about 2½ feet. Price—Pkt., 5c; 1 lb., 40c; 2 lbs., 75c.

**FIRST AND BEST**—Early, vigorous and a good bearer. Pods about 2 or 2½ inches long, blunt at the end. Seeds of a creamy color and of good quality. Height about 2½ feet. Price—Pkt., 5c; 1 lb., 40c; 2 lbs., 75c.

### EXTRA EARLY WRINKLED VARIETIES

**AMERICAN WONDER**—The earliest wrinkled Pea in cultivation. Good quality. A cross between "Champion of England" and "Little Gem." Good yielder, but bears for only a short time. Well liked for a home garden. Pods 2½ inches long. Height about 10 inches. Price—Pkt., 5c; 1 lb., 40c; 2 lbs., 75c.

**NOTT'S EXCELSIOR**—Robust and vigorous. Probably the best extra wrinkled; very sweet and prolific. Resembles the old Carter's Premium Gem, but more uniform and a heavier yielder. Pods larger than American Wonder and vines more vigorous. Height about 14 inches. Price—Pkt., 5c; 1 lb., 40c; 2 lbs., 75c.

**MCLEAN'S LITTLE GEM**—Quite similar to Carter's Premium Gem, more stringent and pods not so well filled, although the Peas are sweet and of excellent quality. Has the advantage of remaining fit for longer than either American Wonder or Nott's Excelsior. Height about 18 inches. Price—Pkt., 5c; 1 lb., 40c; 2 lbs., 75c.

**CARTER'S PREMIUM GEM**—A very popular Pea. Very productive. Pods 2½ inches long. Good flavor, but ripens about one week later than American Wonder. Height 18 inches. Price—Pkt., 5c; 1 lb., 40c; 2 lbs., 75c.

**GRADUS, or PROSPERITY**—A large podded, prolific variety, yet very early. A great favorite with market gardeners. Vines are vigorous and bears pods nearly as large as "Telephone," being tender and of good quality. Very quick to germinate, matures early and is a fairly good cropper, but will not stand adverse weather. Pods about 4 inches long. Height about 3 feet. Price—Pkt., 5c; 1 lb., 40c; 2 lbs., 75c.

**HORSFORD'S MARKET GARDEN**—Resembles "Premium Gem" in quality, but pods are slightly larger, maturing ten days later. Very productive and requires no bushing. Pods borne in pairs. More used by canners than any other wrinkled variety. Height 24 inches. Price—Pkt., 1 lb., 40c; 2 lbs., 75c.

**BLISS ABUNDANCE**—A vigorous grower. Produces pods in great abundance, though of medium size, well filled and of good quality and quite similar to "Market Garden," but about a week later. Height 20 inches. Price—Pkt., 5c; 1 lb., 40c; 2 lbs., 75c.

### SECOND EARLY OR MEDIUM

**PRIDE OF THE MARKET**—A favorite with market gardeners. Seed nearly smooth. Pods 3½ inches long. Height about 20 inches. Price—Pkt., 5c; 1 lb., 40c; 2 lbs., 75c.

**IMPROVED STRATEGEM**—Heavy cropper of vigorous habit. Pods about 4½ inches long. Peas large and of superior quality. A splendid variety. Height about 20 inches. Price—Pkt., 5c; 1 lb., 40c; 2 lbs., 75c.

**DWARF TELEPHONE, or DAISY**—A cross between Strategem and Telephone. Pods about 4 inches long, well filled. The seed pale green, much wrinkled and of splendid quality. One of the best second early. Height about 20 inches. Price—Pkt., 5c; 1 lb., 40c; 2 lbs., 75c.

### MAIN CROP OR LATE

**CHAMPION OF ENGLAND**—For years considered one of the best main crop Peas. The sire of many of our best varieties. Vines vigorous and productive and Peas of delicious flavor and fine quality. Height about 4 feet. Price—Pkt., 5c; 1 lb., 40c; 2 lbs., 75c.

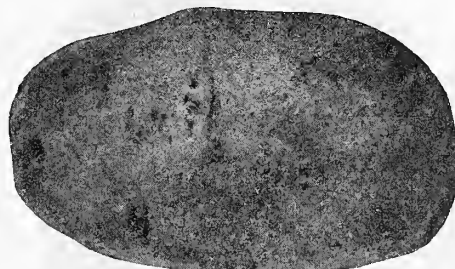
**MARROWFAT**—Hardy, strong, vigorous. Thick, leathery pods about 3 inches long. Not much used for table purposes. Straw from 3½ to 4 feet in height. Comes in two varieties, Black Eyed and White Eyed. State which when ordering. Price—Pkt., 5c; 1 lb., 40c; 2 lbs., 75c.

**GRAY, or MELTING SUGAR**—An old variety with edible pods and used only in that way. Seed a spotted, reddish brown. Pods broad, flat and crooked. Grows about 2½ feet. Price—5c; 1 lb., 40c; 2 lbs., 75c.

Write for prices on peck quantities or over.

## Seed Potatoes

For our early trade we have obtained a remarkable bargain in Northern Grown Seed Potatoes which will yield much more per acre than those grown farther south. Every potato in the lot is good, vigorous, hardy, smooth and of splendid quality. They are of early maturing varieties and solid under the Adams Guarantee. If you want something extra good for big yields, order at once as our stock is bound to be exhausted before the close of the season.



Early Ohio

**EXTRA EARLY OHIO**—The famous early maturing, long keeping variety. Good average size, smooth, free from scab and strictly pure. Mature ten days earlier than southern grown same variety. One of the most profitable varieties known. Price—Per pk., 85c; bu., \$2.75.

**IRISH COBBLER**—Another standard variety in big demand. Matures practically as soon as Early Ohio. Sells at advanced prices in the early market. Hardy and a big yielder. Price—Per pk., 85c; bu., \$2.75.

**RURAL NEW YORKER**—One of the best known big yielding varieties. Smooth and fine appearance—uniform size. Fairly late maturer and stands drouth well. Very hardy and will yield from 300 bushels per acre up to twice that. Price—Per pk., 75c; bu., \$2.50.

I am sending sample of the Marquis Seed Wheat I bought of you last spring which yielded 40 bushels per acre. I am very much pleased with it.

C. E. PEARSON,  
Whiteside County, Ill.

The Dill that I grew from your seed last year was a great yielder. It did just fine, and I have saved 25 pounds of seed.

MRS. R. W. PEPPER, Clear Lake, Ia.

I am well pleased with the Alsike and Timothy I received from you and I am enclosing draft for \$19.00 to pay for same.

WILL THOMPSON, Jesup, Ia.

Prices Subject to Market Changes. See Red Discount Sheet for Latest Prices.



## Parsnips

**Culture**—Sow as early as possible in drills 2½ feet apart. Cover ¼ inch deep and press down firmly. Give frequent cultivation, and thin the plants to 6 inches apart. Packets contain seed enough for 30 feet of drill; 5 pounds for 1 acre.

**HOLLOW CROWN, or GUERNSEY**—An excellent variety for the table. Roots are long, smooth, white and uniform. Tender and of good quality. This variety is easily distinguished by the leaves growing out from the depression on the top or crown of the root. The best all around variety. Price—Pkt., 5c; oz., 20c; ¼ lb., 45c.

**LONG SMOOTH WHITE**—A long, white, smooth root, with no side sprouts. Tender and of excellent flavor. Price—Pkt., 5c; oz., 20c; ¼ lb., 45c. Not prepaid, 2 lbs. or over, 10c per lb. less.

## Peppers

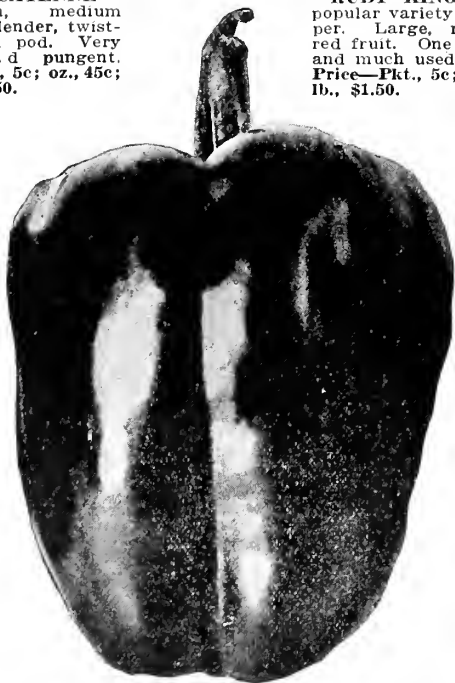
**Culture**—Sow early in hot-beds, or about the middle of spring in open ground in light, warm soil if possible. When three or four inches high transplant in rows 2 feet to 2½ feet apart and eighteen inches to 2 feet apart in the row. Cultivate frequently and keep free from weeds. Packets contain enough seed for about 200 plants; ¼ pound for one acre.

**BELL, or BULL NOSE**—Probably the best known Red Pepper. Early, prolific and a good yielder. Also sold as "Sweet Mountain." Plants are vigorous, compact and productive. Excellent for salads, etc. Fruit deep green when young, bright crimson when ripe. Price—Pkt., 5c; oz., 45c; ¼ lb., \$1.50.

**PIMENTO**—A new sort. Very productive and unusually smooth and glossy. Good size, medium length and beautiful in color. Flesh is very thick and solid, but very mild and extra fine flavor. This is a sort most largely used by canners; also for stuffing olives and in other contents. Height about 1½ feet. Price—Pkt., 5c; oz., 45c; ¼ lb., \$1.50.

**LONG CAYENNE**—Well-known, medium early. A slender, twisted, pointed pod. Very strong and pungent. Price—Pkt., 5c; oz., 45c; ¼ lb., \$1.50.

**RUBY KING**—The most popular variety of Red Pepper. Large, mild, bright red fruit. One of the best, and much used for pickles. Price—Pkt., 5c; oz., 45c; ¼ lb., \$1.50.



Ruby King Pepper

## Rhubarb or Pie Plant

**Culture**—The earliest spring vegetable; grown for its stalks, which are mainly used for pies and sauce. Succeeds best in deep, rich soil. Sow in drills an inch deep, and thin out the plants 6 inches apart. In the fall transplant to very rich and deeply stirred soil, setting 4 to 6 feet apart. Seed Price—Pkt., 5c; oz., 20c; ¼ lb., 75c.

**RHUBARB ROOTS**—Selected stock, 20c each; 3 for 55c; ½ doz., \$1.00. Special prices on quantities.

Prices Subject to Market Changes. See Red Discount Sheet for Latest Prices

## The Best Varieties of Pop Corn

**RICE**—A very productive variety. Ears short, kernels long and pointed. A splendid popping sort, and the most salable among the retail dealers. Price—Pkt., 5c; ¼ lb., 15c; lb., 25c. When not prepaid 15c per lb. Special prices on quantity for popping.

**TOM THUMB (Dwarf)**—A strain of the old reliable White RI Pop Corn. Grows about 5 feet tall and bears two or three ears per stalk. Dries out quickly, and ready for popping soon after husking. A new variety. Very popular because it is almost hullless with a hard center when popped. Packets contain about 1¼ ounces. Price—Pkt., 5c; ¼ lb., 15c; lb., 25c. When not prepaid, 25c per lb. Special prices on quantity for popping.



Connecticut Field

## Pumpkin

**Culture**—Can be planted any time from middle spring until middle summer. Much less sensitive to soil and climate conditions than melons and cucumbers. Should be cultivated the same, though on larger scale. Packets contain ¼ ounce seed, enough for 5 to 10 hills; 4 pounds for 1 acre with corn.

**SWEET SUGAR, or NEW ENGLAND PIE**—A small variety of excellent quality, used mainly for pies. Fruit deep orange 8 or 10 inches in diameter; round, smooth, flattened and slightly ribbed. Flesh rich, deep yellow, very sweet. Price—Pkt., 5c; oz., 15c; ¼ lb., 45c. Two pounds or over, 5c per lb. less.

**MAMMOTH POT IRONS, or TOURS**—Frequently grows to an enormous size. Specimens weighing 150 to 275 pounds have frequently been grown. Used mainly for exhibition purposes, but not very good quality. Price—Pkt., 5c; oz., 15c; ¼ lb., 45c. Two lbs. or over, 5c per lb. less.

**CONNECTICUT FIELD**—This pumpkin most largely used for stock feed, although frequently used by canners for pies. Medium large and varies in shape from nearly round to slightly flat. Flesh deep red color, fine grain and good flavor. The best field pumpkin. Price—Pkt., 5c; oz., 15c; ¼ lb., 45c. Not prepaid, 10c per lb. less. Special price on larger quantities. Two lbs. or over, 5c per lb. less.

60c; doz., \$1.00. Special prices on quantities.

## Salsify or Vegetable Oyster

**Culture**—Succeeds best in light, rich soil, which should be stirred very deep in order to give room for long roots. Coarse, fresh manure should not be used. Sow early and quite deep, giving the general culture same as for parsnips. Roots are very hardy and may remain out doors all winter, but should be dug early in the spring, as they deteriorate rapidly if allowed to start growing again. Packages contain ¼ ounce seed, enough for 10 to 15 feet of drill; 8 lbs. for 1 acre.

**MAMMOTH SANDWICH ISLAND**—Large roots of fine quality and flavor. Grows to nearly twice the size of any other variety. By far the best. Price—Pkt., 5c; oz., 20c; ¼ lb., 60c; lb., \$2.25.



PRODUCERS AND DEALERS IN GUARANTEED SEEDS





## Radish

**Culture**—Grow on light, quick soil where radishes, turnips or cabs were not grown the year before. Water plentifully. Sow the seed not over 1/2 inch deep in rows about one foot apart. For succession plant every ten days throughout the season. Keep the soil red up and free from weeds. After hot weather begins sow only late summer and winter varieties, as these do not become tough to their small tops. Price—Pkt., 5c; oz., 15c; 1/4 lb., 40c. Not prepaid, 10c per lb. less.

### EARLY OR FORCING VARIETIES

**EARLY SCARLET TURNIP, or NON PLUS ULTRA**—The earliest variety for forcing or open garden. Small, smooth, very deep red, crisp flesh, crisp, tender and mild. Can be planted very close together to their small tops. Price—Oz., 15c; 1/4 lb., 40c. Not prepaid, 10c per lb. less.

**EARLY FRENCH BREAKFAST**—A great favorite. Bright scarlet, white tip, oblong in shape. Makes rapid growth, is a fine table variety both on account of quality and appearance. Price—Pkt., 5c; 1/4 lb., 35c; lb., \$1.00. Not prepaid, 10c per lb. less.

**EARLY WHITE TURNIP**—An early radish. A little more flattened than "Scarlet Turnip." Used mostly for outdoor planting, but excellent for forcing under glass. Price—Pkt., 5c; oz., 15c; 1/4 lb., 40c. Not prepaid, 10c per lb. less.

**EARLY SCARLET WHITE TIP**—One of the best early radishes for the garden. A little later than "Early Scarlet Turnip." Roots nearly round; color very bright, with a distinct white tip. Flesh of the best quality. Price—Pkt., 5c; oz., 15c; 1/4 lb., 40c. Not prepaid, 10c per lb. less.

**CRIMSON GIANT**—A round radish of very large size, yet medium in weight. Roots nearly globe shape. Beautiful deep red. Often 1 1/2 to 2 inches in diameter. Does not ordinarily become pithy. Price—Pkt., 5c; oz., 15c; 1/4 lb., 40c. Not prepaid, 10c per lb. less.

**EARLY LONG SCARLET SHORT TOP, or WOOD'S EARLY SCARLET**—A standard splendid sort for home garden or market. Small, round roots. Roots are smooth, slender, very attractive. Bright red in color. They grow nearly one-third out of the ground and continue crisp till fully matured, when they are about 5 or 6 inches long. Price—Pkt., 5c; oz., 15c; 1/4 lb., 40c. Not prepaid, 10c per lb. less.

**WHITE ICICLE**—One of the best summer sorts. Of excellent quality, with long, pure white brittle roots. A little smaller, shorter and earlier than "Vienna." Roots average 5 or 6 inches in length and often 1 inch or more in diameter. Is not inclined to pith. Price—Pkt., 5c; oz., 15c; 1/4 lb., 40c. Not prepaid, 10c per lb. less.

### SUMMER VARIETIES

**CHARTER, or SHEPARD**—One of the best long radishes for early summer use. Roots are ready for the table when half an inch thick and good until 1 1/2 inches or more in diameter. Rather long, averaging 8 or 9 inches. A bright rose color, shading to white. Price—Pkt., 5c; oz., 15c; 1/4 lb., 40c. Not prepaid, 10c per lb. less.

**WHITE STRASBURG**—One of the best late summer radishes. Roots are thick at the shoulder, tapering a good deal. Remain in good condition for a long while. Price—Pkt., 5c; oz., 15c; 1/4 lb., 40c. Not prepaid, 10c per lb. less.

### WINTER VARIETIES

**SCARLET, or ROSE CHINA**—Cylindrical root. Sometimes largest at the bottom, but always blunt at both ends. Smooth skin, quite firm flesh, moderately large tops. Roots 4 or 5 inches long and 1 1/2 or 2 inches thick. A very desirable late maturing sort. Price—Pkt., 5c; oz., 15c; 1/4 lb., 40c. Not prepaid, 10c per lb. less.

**ROUND BLACK SPANISH**—Round roots, often 3 or 4 inches in diameter. Skin is almost black, but the flesh is white, very compact, with a strong odor, but good flavor. Good winter keeper. Price—Pkt., 5c; oz., 10c; 1/4 lb., 30c; lb., 95c. Not prepaid, 10c per lb. less.

**LONG BLACK SPANISH**—One of the latest and hardest, especially adapted for winter use. Roots are long, almost black, somewhat wrinkled, flesh is white with firm texture, fine flavor and spicy odor. When matured roots are 8 to 10 inches long and 2 or 3 inches in diameter. Price—Pkt., 5c; oz., 15c; 1/4 lb., 40c. Not prepaid, 10c per lb. less.

## Squash

**Culture**—Culture about the same as cucumber and melons, but squash is less sensitive to poor soil. Summer varieties should be planted four or five feet apart each way; winter varieties eight to eleven feet apart. Three plants are sufficient for a hill. In gathering winter sorts be careful not to bruise or break the stem, as the slightest injury will cause decay. Winter Squash should be stored in a moderately dry place, where the temperature is kept even. Packets contain one ounce seed, enough for about eight hills; two or three pounds will plant one acre.

### SUMMER VARIETIES

**EARLY WHITE BUSH SCALLOP**—Very well known, somewhat flattened, scalloped bush squash. Creamy white, with a comparatively smooth surface. Vines are vigorous and very productive. Also known as "Patty Pan" or "Cymbing." Price—Pkt., 5c; oz., 10c; 1/4 lb., 35c. Not prepaid, 10c per lb. less.

**EARLY YELLOW BUSH SCALLOP**—A flattened scalloped bush squash of large size. Skin is deep orange in color, but the flesh is yellow and very good flavor. This variety is extensively used in the home garden. Price—Pkt., 5c; oz., 10c; 1/4 lb., 35c. Not prepaid, 10c per lb. less.

**SUMMER CROOKNECK**—A well-known standard sort. Early and productive. When fully grown fruit is about 1 foot long, with crooked neck and densely warted surface. Color is bright yellow, shell is very hard when ripe. Price—Pkt., 5c; oz., 10c; 1/4 lb., 35c. Not prepaid, 10c per lb. less.

**TRUE WARTED HUBBARD**—One of the best of the winter squashes. Vines are vigorous and very productive. Fruits are large, heavy and warted, with a very hard shell. Skin is dark bronze green, flesh is bright orange yellow, of fine grain, thick, dry and rich in flavor. Can be kept in good condition until spring. By many is considered as good baked as Sweet Potato. Also called "Chicago." Price—Pkt., 5c; oz., 10c; 1/4 lb., 35c. Not prepaid, 10c per lb. less.



Summer Crook-neck Squash

### FALL AND WINTER VARIETIES

**BLUE HUBBARD, or MARBLE HEAD**—Also called "Delicious." Color a bluish green and of about the same size as the "Hubbard." Weight about 5 to 10 lbs. Has thick flesh, cooks dry and is of finest flavor. A good fall variety, but also a splendid winter keeper. Price—Pkt., 5c; oz., 10c; 1/4 lb., 35c. Not prepaid, 10c per lb. less.

**MAMMOTH CHILI**—The largest variety of Squash grown. Often attains a weight of 75 lbs., and specimens weighing over 100 lbs. have been raised. This variety is most used for exhibition purposes, but is especially desirable for stock feeding. In spite of its size its flesh is fine flavored and rich. When used for hog feed break squash open, but for feeding cows small pieces should be mixed with ground feed. Price—Pkt., 5c; oz., 10c; 1/4 lb., 35c. Not prepaid, 10c per lb. less.

## Spinach

**Culture**—Should be planted in very rich ground, the richer the better. Sow in drills 16 or 20 inches apart and thin to about 6 inches in the row when the leaves are an inch wide. For early spring use sow in the fall and protect with a light covering of leaves or straw. Packets contain 1/4 ounce seed, enough for about 50 feet of drill; 8 pounds for 1 acre.

**BLOOMSDALE, or SAVOY LEAVED**—Known also as "Norfolk." Very early variety, one of the best. Upright in growth, with thick, glossy, dark green leaves of medium size, pointed, but quite broad, crumpled and blistered like those of the Savoy Cabbage. Hardy, rapid grower, but quickly runs to seed in warm weather. This is especially suitable for home garden. Price—Pkt., 5c; oz., 15c; 1/4 lb., 45c. Not prepaid, 10c per lb. less. Two lbs. or over, 5c per lb. less.

**THICK LEAF, or VIROFLAY**—A medium early sort which grows rapidly from a cluster of large, slightly crumpled leaves. Quite extensively used as medium early. Price—Pkt., 5c; oz., 15c; 1/4 lb., 45c.

**NEW ZEALAND**—Entirely different from true Spinach, because it thrives in hot weather and seems to do well in any kind of soil, rich or poor. Shoots are of good quality and may be cut throughout the entire summer if plant is started early enough in the spring. Seeds should be soaked in quite warm water from 24 to 36 hours and then planted 3 to 4 in a hill 2 feet apart. Price—Pkt., 5c; oz., 15c; 1/4 lb., 45c.

## Tobacco Seed

**Culture**—Seed should be sown as early as possible after danger of frost is over. When the plants are 6 inches high, transplant in rows 4 or 5 feet apart each way. Cultivate thoroughly with plow and hoe. Packets contain enough seed for 1/4 acre; 1 ounce for 1 acre.

**COMSTOCK'S SPANISH**—The favorite variety grown in Wisconsin and the North. Price—Pkt., 10c; oz., 40c; 1/4 lb., \$1.50. Special prices on quantities.

**CONNECTICUT SEED LEAF**—A hardy variety well adapted for growing in the Middle or Northern states. Price—Pkt., 10c; oz., 40c; 1/4 lb., \$1.50. Special prices on quantities.

**WHITE BURLEY**—The strain of Tobacco that made Tennessee famous. Broad leaf; much used for wrappers and fillers. Price—Pkt., 10c; oz., 40c; 1/4 lb., \$1.50. Special prices on quantities.

## Swedish Turnip or Rutabaga

**AMERICAN PURPLE TOP**—A pure strain of "American" origin, selected because of a smaller top and shorter neck. The roots are little more round, but grow to a large size and are the finest quality. Unexcelled for table use and much grown for stock feeding. In our opinion this is the most satisfactory Rutabaga. Price—Pkt., 5c; oz., 20c; 1/4 lb., 75c.

**MONARCH OR TANKARD**—Yellow flesh sort. Have very large tankard shape roots with relatively small necks and tops. Purplish red above the ground, yellow beneath. Very solid and sweet. Also called "Elephant" or "Jumbo." Price—Pkt., 5c; oz., 20c; 1/4 lb., 75c.

**SWEET GERMAN**—One of the most productive sorts. Also good in quality. Flesh and skin are white. Usually a big yielder. Price—Pkt., 5c; oz., 20c; 1/4 lb., 75c.

Prices Subject to Market Changes.

See Red Discount Sheet for Latest Prices



PRODUCERS AND DEALERS IN GUARANTEED SEEDS





## Turnip

**Culture**—For summer use, sow early in the spring in light, rich soil, in rows eighteen inches to two feet apart. Cover with  $\frac{1}{2}$  inch of dirt pressed down firmly. Be sure to have the ground rich and freshly stirred. Thin out early and keep free from weeds so the young plants will not be choked in growth. Overcrowding causes roots to be weak. For main crop for fall sow turnip from the middle of June to the first of August in the same manner as for spring. Seed may be sown broadcast, but drilling gives best results. For winter, keep stored in cold cellar and cover with damp sand or turf. For main crop Rutabaga should be sown from the first of June to the middle of July. When the crop is full grown, they should be pulled, the tops cut off and stored in a pit or root cellar before ground is frozen. Packets contain one-fourth ounce seed, enough to sow about 50 feet of drill, one pound will sow an acre in drills. Two or three pounds for an acre broadcast.

**EARLY WHITE MILAN**—Tops very small, strap leaf, upright and compact. Roots are clear, white, very smooth, flat and of best quality when about 2 inches in diameter. Flesh is white, sweet and tender. Very desirable for early use. Price—Pkt., 5c; oz., 20c;  $\frac{1}{4}$  lb., 75c.

**WHITE EGG**—An early oval or egg-shape root, smooth, clear white, of medium size growing about half out of the ground. Flesh is firm, fine grained and sweet. Price—Pkt., 5c; oz., 20c;  $\frac{1}{4}$  lb., 75c.

**PURPLE TOP STRAP LEAVED**—A standard early, strap-leaved variety. Very extensively grown for market and table. Few leaves, upright and compact. Roots are flat, medium size, purple above ground



Purple Top Strap Leaf Turnip

and white below. Flesh is white, fine grained and tender. Best when about  $2\frac{1}{2}$  inches in diameter, although this variety can be grown much larger for feeding stock. Also known as "Early Red Top," "Ear Strap Leaved," etc. Price—Pkt., 5c; oz., 20c;  $\frac{1}{4}$  lb., 75c. Not prepa 10c per lb. less.

**PURPLE TOP WHITE GLOBE**—An excellent table variety, round in shape and of good size and beautiful appearance. Roots are large purple above ground and white below. Practically the same as "Purple Top Strap Leaved," except in shape. Also known as "Red Top White Globe." Price—Pkt., 5c; oz., 20c;  $\frac{1}{4}$  lb., 75c.

We will be glad to supply yellow flesh varieties on request, but if general garden use the varieties just named are far more popular.

## Tomatoes

**Culture**—Tomatoes do best on light, warm, medium rich soil, and success depends mainly on getting a rapid, vigorous and unchecked growth during the early part of the season. May be sown in hot-beds or shallow boxes in the house from six to eight weeks before they are set outdoors, which should not be done until danger of frost is past. When plants have four leaves transplant into shallow boxes four or five inches apart. Give plenty of air and endeavor to secure a vigorous, steady, healthy growth, so they will be strong and stalky at time of setting in open ground. Transplant carefully and cultivate well as long as vines will permit. Packets contain enough seed to produce about 100 plants; 3 ounces will plant one acre.

**ACME**—A well-known sort. Sold also as "Essex." Early, hybrid. Vines are large, hardy and productive. Ripen their first fruit very early, though not an extra early variety. Fruit round, smooth, medium size, free from cracks and stands shipment very well. Flesh is solid, of excellent flavor and much used for the home garden. Price—Pkt., 5c; oz., 30c;  $\frac{1}{4}$  lb., \$1.00.

**BEAUTY**—Large, vigorous vine. Fruit is large and a purplish pink. Especially smooth, very solid and fine quality. One of the best main crop for table use. Price—Pkt., 5c; oz., 30c;  $\frac{1}{4}$  lb., \$1.00.

**DWARF CHAMPION**—Also known as Tree Tomato. Is the second early or main crop. Especially desired where garden space is limited. Vines about 2 feet high; fruits of medium size, smooth and of very good quality. Price—Pkt., 5c; oz., 30c;  $\frac{1}{4}$  lb., \$1.00.

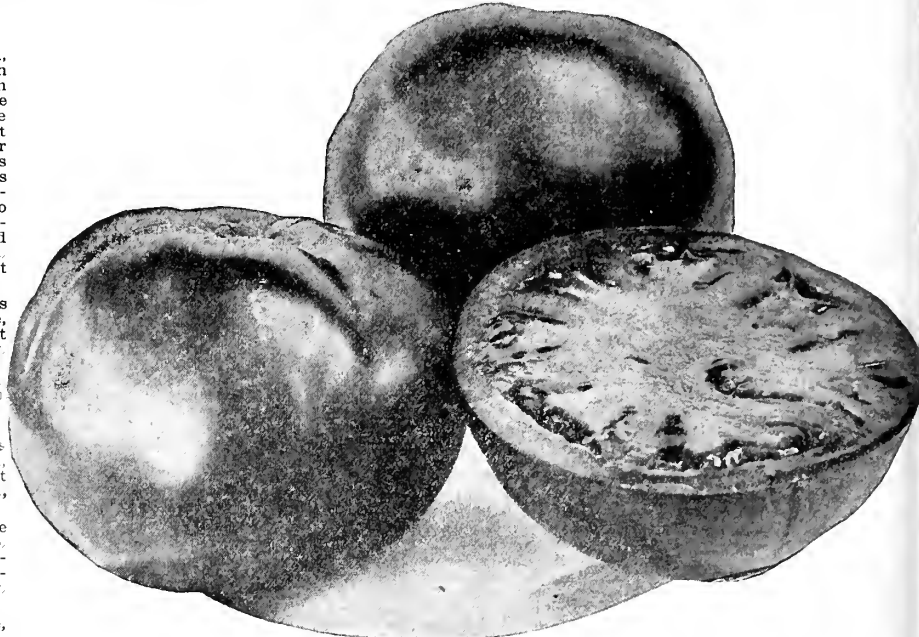
**EARLIANA**—An extremely early, large, smooth fruited variety. A very profitable Tomato for market gardeners and also splendid for home use. Vines are small, but vigorous and very productive. Fruits are bright red, of good size, nearly round and very smooth for so early a sort. Fruit is borne in clusters near the base of the plant and bulk of crop ripens early. Price—Pkt., 5c; oz.,  $\frac{1}{4}$  lb., \$1.00.

**FAVORITE**—A large, smooth, broad, red sort. Is early and ripens all over the vine at once. Very few seeds. Has almost no core. Price—Pkt., 5c; oz., 30c;  $\frac{1}{4}$  lb., \$1.00.

**STONE**—One of the largest and most solid main crop of late varieties. Bright red in color; nothing better for slicing and canning. Vines are large, vigorous and very productive. A splendid shipper; of very best quality. Price—Pkt., 5c; oz., 30c;  $\frac{1}{4}$  lb., \$1.00.

**TROPHY**—Very large mid-season variety, of dark red color and good quality. Fruit is very solid, smooth and uniform. A great favorite. Price—Pkt., 5c; oz., 30c;  $\frac{1}{4}$  lb., \$1.00.

**GOLDEN QUEEN**—Handsome yellow tomato, large size, smooth



Acme Tomato

skin and solid flesh. Price—Pkt., 5c; oz., 30c;  $\frac{1}{4}$  lb., \$1.00.

**PONDEROSA**—The largest fruit sort, but of fine quality for slicing. Fruits are oblong. Generally ribbed and very deep purplish color. They are solid and of fine flavor. When planted in extra good soil the Tomato frequently attains a weight of 1 pound or more. Price—Pkt., 5c; oz., 30c;  $\frac{1}{4}$  lb., \$1.00.

**GROUND CHERRY, or HUSK TOMATO**—Also called "Strawberry." Used as a preserve, but also make delicious pies, either when ripe or dried with sugar. Fruit half an inch in diameter. Very sweet and agreeable flavor. Fruit is a golden yellow and enclosed in a loose husk. Price—Pkt., 5c; oz., 30c;  $\frac{1}{4}$  lb., \$1.00.

**YELLOW PEAR, or YELLOW PLUM**—Largely used for preserve and for making "Tomato Flg." Fruit clear yellow, pear-shape and distinct variety. Price—Pkt., 5c; oz., 30c;  $\frac{1}{4}$  lb., \$1.00.

One pound of any variety at  $3\frac{1}{2}$  times the  $\frac{1}{4}$  lb. price.

Prices Subject to Market Changes. See Red Discount Sheet for Latest Prices.



PRODUCERS AND DEALERS IN GUARANTEED SEEDS





# Adams' Select Flower Seeds

We catalog here only a few of the varieties of Standard Flower Seeds, the very choicest and best, but can furnish any of the flowering seeds. In most cases the Flower Seeds we describe here are of the extra fine Mixed Colors. Send your order in at once.

**ALYSSUM (Sweet)**—The finest, sweetest of all pure-white blooming annuals. For borders, edgings, baskets, pots, rockwork or for cutting could be used liberally. In borders sow thickly so as to form masses. Sow very early in the spring. Cut back after the first flowers fade and new ones will come. No garden half completed without it. **Per packet, 5c.**

**ASTER**—One of the most popular and useful of all our annuals. Sow early flowers the seed may be sown in the house or greenhouse, in March or April, and transplanted in the open ground in May. However, the Aster is essentially a fall flower, and the late blossoms are the best, it is best to sow the seed in the bed thinly early in May and transplant when strong enough, setting the plants of the large varieties twelve inches apart and the dwarf ones six inches apart. **Per packet, 5c.**

**CALLIOPSIS GOLDEN RAY**—This quaint little annual has much to commend it, forming globular bushes not over eight inches high, and completely covered through a long season with its bright, brown and golden-yellow flowers, which resemble in miniature a single Cactus cholla; of the easiest culture, doing well in any sunny position. **Per packet, 5c.**

**CANTERBURY BELLS**—This is unquestionably the finest type of old-fashioned and much prized garden plant. They differ from the ordinary type in having an extra large calyx, which is of the same color as the flower, giving the appearance of a cup and saucer. They are effective either in the garden or grown in pots for conservatory or table decoration. **Per packet, 5c.**

**CARNATION**—The Carnation has always been one of the most esteemed of the florists' collection, and there is no flower more desirable for the garden. Sow under glass in greenhouse or hot-bed, and when of sufficient size transplant one foot apart each way. Half-hardy perennial, 1½ feet. **Per packet, 5c.**

**CLIANTHUS (Austrian Glory Pea)**—A beautiful, tender perennial shrub, bearing clusters of drooping, brilliant, rich scarlet, pea-shaped flowers, three inches in length, each flower picturesquely marked with a large black blotch in the center. **Per packet, 5c.**

**COREOPSIS GOLDEN FLEECE**—This new variety has rich, deep, golden-yellow flowers, three inches across, with from fourteen to sixteen lacinated petals and a row of narrow petals around the disc, marking an almost double flower. **Per packet, 5c.**

**COSMOS**—An autumn flowering plant of rapid growth, making large bushes five feet high and as much broad, which are a mass of elegant foliage. From September to November each plant is covered with hundreds of showy blossoms two to four inches in diameter. Half-hardy annuals. **Per packet, 5c.**

**DAISY (Bellis Perennis)**—A favorite spring blooming plant. Sow seed early in a hot-bed or house and transplant to a rich, cool, partially shaded situation; though they do quite well in open sunshine. Half-hardy perennial, ½ foot. **Per packet, 5c.**

**FOXGLOVE (Digitalis)**—Ornamental plants, producing immense spikes of flowers on stems three to five feet high. The blossoms are tubular-shaped, purple, white and spotted. Seed can be sown in spring or autumn. Hardy biennial mixed. **Per packet, 5c.**

**GLOBOSUS FISTULOSUS (Clove or Dahlia Sunflower)**—Flowers large, double, of a rich saffron color. **Per packet, 5c.**

**HIBISCUS (Crimson Eye)**—The flowers are immense in size. The color is pure white, with a large spot of deep crimson in the center. It is perfectly hardy; blooming the first year from seed sown in the open ground, if sown early. **Per packet, 5c.**

**HOLLYHOCK**—One of our grandest summer and autumn flowering plants. For a background to a flower garden perhaps no plant is so useful. The flowers are as double as a rose, of many shades of color, from deep yellow, red, purple, to pure white. Plant the seed in June or July in open ground, and when the plants have made five leaves, transplant to three feet apart; the following summer they will bloom. Hardy perennial; four to six feet. **Per packet, 5c.**

**LARKSPURS**—This is one of the best known of garden flowers. A vast improvement has been effected by careful selection and attentive cultivation, in size and color of the blossoms and the general habit of the plant. Hardy annuals. **Per packet, 5c.**

**MARGOLD**—The African and French Marigolds are old favorite fall flowering annuals of easy culture; both are extremely effective. The former have uniformly large yellow or orange colored flowers, and are well adapted for large beds or mixed borders; the latter are earlier in growth, with beautiful striped flowers, and better suited for bedding purposes or for pot culture; they succeed best in a light soil, with full exposure to the sun. **Per packet, 5c.**

The seed corn received and we are very much pleased with it. Our dealings with you have always been very satisfactory.

THOS. YOUNG, Chicago, Ill.

I received the clover seed I ordered in good condition and wish to thank you for your quick delivery.

SIVER EIKOS, Grand Rapids, Minn.

Prices Subject to Market Changes. See Red Discount Sheet for Latest Prices.

## Bargain Flower Seed Budget

Eleven 5c packages for 35c.

	Pkt.		Pkt.
Sweet Alyssum.....	1	Petunia .....	1
Aster .....	1	Portulaca .....	1
Carnation .....	1	Pansy (mixed) .....	1
Hollyhock .....	1	Phlox .....	1
Mignonette .....	1	Nasturtiums .....	1
		Sweet Peas (mixed).....	1

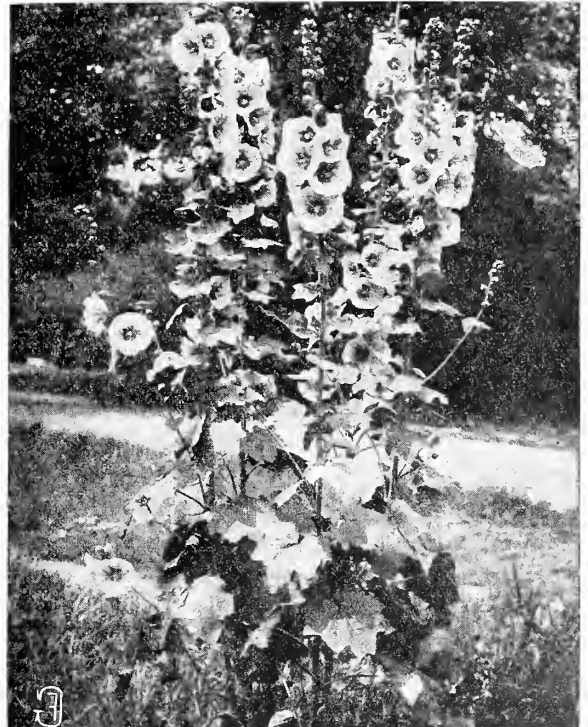
**All for only 35 cents.**

**MIGNONETTE**—A well known, delightfully fragrant, hardy annual, blooming throughout the entire season in the flower border; also fine for pot culture during winter and spring. **Per packet, 5c.**

**MIGNONETTE (Reseda)**—A well-known, fragrant favorite, and no garden is complete without a bed of Mignonette; sowings made in April and again in July will keep up a succession from early summer till frost; can also be grown in pots for winter and early spring flowering. **Per packet, 5c.**

**MORNING GLORIES, Japanese Giant**—A class of climbers that combine many good points; making a growth of twenty to twenty-five feet quite early in the season; with their large flowers, striped, spotted and margined in all shades from white to the deepest red, blue and purple. Many are fluted and fringed. Sow the seeds early in a warm, sunny place. **Per packet, 5c.**

**VIOLET (Single)**—Favorite hardy plants, six inches high. Prized for their fragrant single flowers. **Per packet, 5c.**



Single Hollyhocks



PRODUCERS AND DEALERS IN GUARANTEED SEEDS





Phlox

**ORNAMENTAL GRASSES**—The Ornamental Grasses serve the double purpose of rendering the mixed flower bed or border attractive during the summer, and for the use of the spikes or panicles in a dried state in winter bouquets. For large beds or groups on lawns nothing gives a finer effect, and they are now largely used in prominent positions in many of the finest public parks, etc. Per packet, 5c.

**PANSIES**—One of the most interesting classes of flowers grown. A bed of Pansies in bloom always has something new for you in variety of color and marking, every time you visit it. Although they are in bloom continuously from early spring until late in the fall, the flowers are much larger during the cool weather than through the heat of the summer. The seed may be sown in the hot-bed, in boxes in the house, or in the open ground. If sown in the spring, get them in as early as possible so they will come into bloom before the hot, dry weather comes. Per packet, 5c.

**PETUNIA**—For outdoor decoration or for house culture few plants are equal to this class. They commence flowering early and continue a mass of bloom throughout the whole season, until late in the fall; easily cultivated, requiring rich soil and a sunny situation. Per packet, 5c.

**PHLOX (Drummond Grandiflora)**—Large flowered section. These are decided improvements over the old class, with much larger flowers, a better range of colors and of more compact growth. Per packet, 5c.

**POPPLES, Annual**—This exceedingly showy and easily cultivated class of plants grows and blooms in any ordinary soil, and is among the showiest of all annuals. Sow the seeds where the plants are intended to be grown, as they do not bear transplanting well.

**SHIRLEY**—Fine for cutting; cut in the morning while the dew is on. The colors range from bluish white through many tints of bright crimson. Per packet, 5c.

**PORTULACA**—There is scarcely any flower in cultivation that makes such dazzling display of beauty as a bed of many-hued, brilliant-colored Portulacas. They thrive best on a rather rich, light loam or sandy soil, and an exposed, sunny situation. Double mixed, all colors; single mixed, all colors. Per packet, 5c.

**SWEET WILLIAM (Dianthus Barbatus)**—For display in the garden the Sweet William is unsurpassed. The seed can be planted very early in the spring, in open ground, and will blossom in autumn; or it can be sown in August and will make fine plants for spring. Young plants do better, so seed should be sown every year. Hardy biennials; two feet. Mixed double, perfectly double and a variety of colors. Per packet, 5c.

**VERBENA**—No plant excels the Verbena for low masses in beds. Half-hardy perennials, or treated as hardy annuals, they bloom freely the first season from seed, with beautiful self-colored, striped and variegated flowers; six inches. Per packet, 5c.

**NASTURTIUMS**

**DWARF, or TOM TUMB**—Well adapted to poor soil or even dry hot healthy. Unexcelled in beauty and thriftiness. The most popular Nasturtium. Solid colors and variegated. Dwarf mixed. Price—Pkt 5c; oz., 10c; ¼ lb., 25c; lb., 75c. Not prepaid, 10c per lb. less.

**TALL, or GIANT**—This variety suitable for porch front, trellis veranda. Grows tall, about twice the height of the Dwarf and is very attractive bearing beautiful, bright flowers. The best sorts selected for excellence. Tall Mixed. Price—Pkt., 5c; oz., 10c; ¼ lb., 25c; lb., 80c. Not prepaid, 10c per lb. less.

**CLIMBING**—A variety of Tall Nasturtiums which seems to do best when given an opportunity to climb over trellis or other suitable place. Flowers in profusion. Climbing Mixed. Price—Pkt., 5c; oz., 10c; lb., 25c; lb., 80c. Not prepaid, 10c per lb. less.

**SWEET PEAS**

The following varieties are selected with a view to pleasing the most critical, and we think will prove entirely satisfactory.

Prices of the following varieties—Pkt., 5c; oz., 15c; ¼ lb., 45c; lb. \$1.70. Not prepaid, 10c per lb. less.

**LIGHT SHADES OF PINK**

**KATHERINE TRACY**—The color is soft but brilliant pink, of the same shade in wings.

**PRIMA DONNA**—The stems bear three or four very large, perfect flowers, of soft shade of pink.

**VENUS**—Standard large, of fine form and substance; a brilliant but delicate shade of warm rose-pink and buff.

**DARKER SHADES OF PINK**

**APPLE BLOSSOM**—Standard rose pink, lighter at the edges; wings lighter than standard.

**SHADES OF RED**

**BLANCHE FERRY**—Standard medium-sized, but of fine form and bright pink color; wings large, rounded and nearly white.

**CLARET AND MAROON**

**SHAHZADA**—This has a very rich, dark maroon standard and deep violet wings; one of the finest dark sorts.

**BLUE AND PURPLE**

**BLACK KNIGHT**—The darkest variety.

**COUNTESS OF CADOGAN**—A variety having very long stems, each bearing three or four flowers.

**CAPTAIN OF THE BLUES**—Standard large, broad bright purple blue; wings expanded, lighter and brighter blue than standard.

**WHITE**

**BLANCHE BURPEE**—A splendid pure-white variety. While not profuse a bloomer or as hardy a plant as the Emily Henderson, the individual flowers are so fine as to make it a most desirable sort.

**EMILY HENDERSON**—A bold, well-formed, clear white flower. Wings broad and well-expanded. An early and wonderfully free and persistent bloomer.

**STRIPED AND VARIEGATED**

**MRS. JOSEPH CHAMBERLAIN**—Very large and perfect shaped flowers; white, striped with bright rose carmine.

**ECKFORD'S MIXTURE**—A choice strain of beautiful Sweet Peas, assorted colors and combinations far superior in quality to the average commercial Sweet Peas. We have used this mixture for years and have always found it highly satisfactory. Price—Pkt., 5c; oz., 10c; ¼ lb. 20c; lb., 70c. Not prepaid, 10c per lb. less.

**SPENCER'S MIXTURE**—An extra fancy hand pollinated strain consisting of varieties grown in separate beds and then mixed. Contains the newest and largest flowering kinds produced by Spencer, the Sweet Pea wizard. We have always found this mixture very thrifty bearing a great variety of extra large blossoms in all combinations of colors and variegations; very fancy quality which we heartily recommend. Price—Pkt., 5c; oz., 15c; ¼ lb., 45c; lb., \$1.60. Not prepaid, 10c per lb. less.

**70c Flower Seed Collection**

	Pkt.	Pb.
Canterbury Bells.....	1	Sweet Alyssum.....
Sweet Peas (mixed).....	1	Marigold .....
Cilanthus .....	1	Petunia .....
Portulaca .....	1	Morning Glories.....
Cosmos .....	1	Aster .....
Phlox .....	1	Poppies .....
Daisy .....	1	Hollyhock .....
Nasturtiums .....	1	Verbena .....
Hibiscus .....	1	Carnation .....
Mignonette .....	1	Violet .....
Larkspurs .....	1	Pansy (mixed) .....

Twenty-two 5c Packages for Only 70c.

Prices Subject to Market Changes. See Red Discount Sheet for Latest Prices



**PRODUCERS AND DEALERS IN GUARANTEED SEEDS**





# Some Suggestions and General Information About Ordering Adams Seeds

We want to make here just a few brief suggestions about ordering Seeds. Our old customers are familiar with our methods of handling orders, but our catalog goes each year to many new customers who have never bought of us before and are unacquainted with these methods. This page is prepared especially for them—to help them to order to best advantage and obtain our high quality seeds at the least possible expense.

### SAMPLES

We are always ready and willing to send samples of all grass and field seeds for your inspection. Don't hesitate to write and request samples in these lines at any time. We want you to know just what our seeds are before you buy and we will ship exactly the quality we furnish as sample.

### OUR PRICE LIST

Owing to unsettled conditions of seed markets we are not quoting quantity prices on grass and field seeds here. You will find these listed in the special red price list with the catalog. New price lists, quoting very lowest prices possible, will be issued as frequently as market conditions require, and mailed to you. Always order from the most recent red sheet you have, as it will quote current prices.

### ORDER EARLY

Don't put off ordering any seeds you need. Get your order in now—just as soon as you can make your selections. This is important—stocks of high quality seeds will be in big demand this season. Ordering early makes you safe—you're sure then of getting just what you want and we can give your orders more prompt attention. There's always a big spring rush on seeds—don't wait until it has commenced.

### USE ORDER SHEETS

The order sheets enclosed with the catalog are intended to facilitate the handling of orders. Please make use of them in ordering and fill them out completely, according to instructions printed on them. Our terms are always cash with order—the Adams guarantee protects you.

### THREE WAYS OF SHIPPING YOUR ORDER

You can order seeds by parcels post, express or freight. Quantity ordered and distance of haul govern the cost of delivery. If you are located anywhere within the first or second parcels post zone with us you can have fairly large shipments—up to 50 lbs.—made very cheaply by mail. For greater distances it will be cheaper to send by express at the present reduced rates. Comparing freight and express rates you will find express practically as cheap as freight up to about 40 lbs. On a larger order freight will save some money, and it will be economy to place orders aggregating 100 lbs. or more, as quantities under that will cost just as much. One hundred pounds is known as a minimum weight for shipment by freight.

### IMMEDIATE SHIPMENT

Every possible effort is made to insure prompt shipment of all orders. Under ordinary circumstances we get all orders received before the middle of the afternoon out on that same day. In rush seasons we cannot guarantee to do that, but we are in a position to have your goods on the way in a very short time. If you want seeds in a hurry, send us your order—we'll take care of you.

### SAFE ARRIVAL

We insure seeds reaching you in good shape and see to it that all our customers are protected against loss in transit. In case of any overcharge, or of shipment being received in bad order or lost, you need only send us the freight receipt. We will fully investigate and file claim for you—or refund your money or refill order if desired. You are absolutely safe when you order from us.

## Standard Weights in Iowa

Kind	Lbs. per bu.
Apples	48
Apples, dried	24
Alfalfa Seed, Clover	60
Barley	48
Barley, Malt	55
Beans, green, unshelled	56
Beans, dried, shelled	60
Beans, Lima	56
Beets	56
Blue Grass Seed, Kentucky	14
Bran	20
Bromus Inermis	14
Broom Corn Seed	50
Buckwheat	48
Canary Seed	60
Cane Seed	50
Carrots	50
Castor Beans, shelled	50
Charcoal	20
Cherries	40
Clover Seed	60
Coal	80
Coke	40
Corn (Field), in ear, dry	70
Corn (Field), shelled	56
Corn (Field), unhusked	75

Kind	Lbs. per bu.
Corn Meal	48
Corn (Sweet), shelled	42 to 45
Cranberries	48
Cucumbers	40
Emmer or Spelt	40
Flax Seed	56
Grapes, with stems	40
Hemp Seed	44
Hickory Nuts, shucked	50
Hungarian (Millet) Seed	50
Kafir Corn	56
Lime, unslaked	80
Millet Seed	50
Malt	35
Oats	32
Onions	52
Onion Sets, top	28
Onion Sets, bottom	32
Orchard Grass Seed	14
Parsnips	45
Peaches, fresh	48
Peaches, dried	35
Peanuts	45
Peas	45
Peas, green, unshelled	50
Peas, smooth, dried	60

Kind	Lbs. per bu.
Peas, wrinkled, dried	56
Peas, Cow	50
Plums, fresh	48
Popcorn, in ear	70
Popcorn, shelled	56
Potatoes, Irish	60
Potatoes, Sweet	50
Quinces	48
Rape Seed	50
Red Top Seed	14
Rutabaga (turnip)	60
Rye	56
Salt	80
Sand	130
Sorghum Seed	50
Sweet Corn, dry, shelled	42 to 45
Sweet Potatoes	50
Timothy Seed	45
Tomatoes	50
Turnips	55
Vetch, Spring	60
Vetch, hairy or sand	60
Walnuts, shucked	50
Wheat	60



PRODUCERS AND DEALERS IN GUARANTEED SEEDS





## VALUABLE TABLES

Quantity of Seed Requisite to Produce a Given Number of Plants and Sow an Acre

	Quantity per acre.		Quantity per acre.
Artichoke, 1 oz. to 500 plants.....	6 oz.	Grass, Red Top, fancy .....	8 to 10 lbs.
Asparagus, 1 oz. to 800 plants or 60 feet of drill.....	1 lb.	Grass, Orchard, Perennial Rye and Wood Meadow.....	2 bu.
Asparagus roots .....	5000 to 7250	Hemp .....	1/2 "
Barley .....	2 1/2 bu.	Horse Radish Roots .....	10,000 to 15,000
Beans, dwarf, 1 qt. to 100 feet of drill.....	1 "	Kale, 1 oz. to 5,000 plants, or 200 feet of drill.....	2 oz.
Beans, pole, 1 qt. to 150 hills.....	1 1/2 "	Kohl Rabi, 1 oz. to 100 feet of drill.....	4 lbs.
Beet, garden, 1 oz. to 50 feet of drill.....	7 lbs.	Lawn Grass, mixed, 1 lb. for each 400 square feet.....	100 "
Beet, Mangel, 1 oz. to 100 feet of drill.....	5 "	Leek, 1-3 oz. to 100 feet of drill.....	4 "
Broccoli, 1 oz. to 5,000 plants .....	2 oz.	Lettuce, 1 oz. to 3,000 plants or 400 feet of drill.....	3 "
Brussels Sprouts, 1 oz. to 5,000 plants.....	2 "	Melon, Musk, 1 oz. to 60 hills.....	1 to 3 "
Buckwheat .....	1 1/2 bu.	Melon, Water, 4 oz. to 120 hills.....	1/2 to 4 "
Cabbage, 1 oz. to 2,000 plants .....	2 oz.	Nasturtiums, 2 oz. to 100 feet of drill.....	15 "
Carrot, 1 oz. to 150 feet of drill .....	2 lbs.	Oats .....	2 1/2 to 3 bu.
Cauliflower, 1 oz. to 2,000 plants.....	2 1/2 oz.	Okra, 1 oz. to 40 feet of drill.....	8 "
Celery, 1 oz. to 12,000 plants .....	2 "	Onion Seed, 1 oz. to 100 feet of drill.....	4 to 5 "
Chicory .....	4 lbs.	Onion Seed, for sets .....	40 to 80 "
Clover, Alsike and White.....	6 to 10 "	Onion Seed Sets, 1 quart to 40 feet of drill.....	8 "
Clover, Alfalfa or Lucerne .....	15 to 25 "	Parsnips, 1 oz. to 260 feet of drill.....	5 lbs.
Clover, Crimson .....	10 to 15 "	Parsley, 1 oz. to 150 feet of drill.....	5 "
Clover, Mammoth and Medium .....	10 to 14 "	Peas, garden, 1 qt. to 100 feet of drill.....	1 to 3 bu.
Collard, 1 oz. to 5,000 plants .....	2 oz.	Peas, field .....	2 "
Corn, Field (shelled) checked .....	7 to 9 lbs.	Pepper, 1 oz. to 1,000 plants .....	5 oz.
Corn, Field (shelled) drilled .....	10 to 14 "	Pop Corn, rice (shelled) .....	3 to 4 qts.
Corn, Sweet, 1/2 pint to 100 hills.....	6 qts.	Pumpkin, 1-5 qt. to 100 hills .....	3 to 4 lbs.
Cowpea, in drills .....	1 bu.	Radish, 1 oz. to 150 feet of drill.....	10 to 12 "
Cress, 3/4 oz. to 100 feet of drill.....	12 lbs.	Rape, 5 lbs. drill, 20 lbs. broadcast .....	"
Cucumber, 1 oz. to 50 hills.....	1 to 3 "	Rutabaga .....	2 to 4 "
Dill, 1-3 oz. to 100 feet of drill.....	5 "	Rye .....	1 to 1 1/2 bu.
Egg Plant, 1 oz. to 2,000 plants or 200 feet of drill.....	4 oz.	Sage, in drills .....	4 to 5 lbs.
Endive, 1/4 oz. to 150 feet of drill.....	4 1/2 lbs.	Salsify, 1 oz. to 100 feet of drill.....	8 "
Flax, broadcast .....	1/2 to 3/4 bu.	Spinach, 1 oz. to 100 feet of drill.....	8 "
Flax, in drills .....	1/4 to 1/2 "	Summer Savory .....	3/4 "
Garlic, bulbs, 1 lb. to 10 feet of drill .....	"	Sunflower .....	8 "
Gourd, 2 oz. to 100 hills .....	"	Squash, summer, 4 oz. to 100 hills.....	8 "
Grass, Blue, Kentucky .....	2 "	Squash, winter, 8 oz. to 100 hills.....	2 "
Grass, Blue, English .....	1 "	Tomato, 1 oz. to 1,500 to 2,000 plants.....	2 oz.
Grass, Bromus Inermis .....	5 to 4 "	Tobacco, 1 oz. to 5,000 plants .....	2 "
Grass, Millet, Hungarian .....	1/2 to 1 "	Turnip, 1 oz. to 150 feet of drill.....	1 to 3 lbs.
Grass, Meadow Fescue .....	1 "	Vetch, Spring .....	1 1/2 to 2 bu.
Grass, Mixed Lawn, 1 lb. for each 400 square feet.....	100 lbs.	Vetch, Hairy or Sand.....	1/2 to 1 "
Grass, Red Top, unhulled .....	20 to 28 "	Wheat .....	2 "
Grass, Timothy .....	1/4 to 1-3 bu.		

## INDEX

Adams' Lawn Grass Mixtures.....	Page 11
Alfalfa .....	12
Alfalfa Bacteria .....	12
Alyske and Timothy .....	9
Barley .....	15
Bargain Collections .....	21
Buckwheat .....	13
<b>Corn—</b>	
Calico .....	19
Early White Dent .....	20
Early Yellow Dent .....	20
Early Murdock .....	20
Goddard's Silver King .....	18
Minnesota No. 15 .....	19
Northwestern (Smoky) .....	20
Reid's Yellow Dent .....	19
Pride of the North.....	19
Clover .....	10
Peterita .....	13
Flax .....	15
Flower Seeds .....	33-34
Forage Cane .....	13
Forage Crops .....	13
Garden Seeds .....	22-32
General Information.....	35
<b>Grasses—</b>	
Timothy .....	8
Kentucky Blue Grass.....	11
Orchard Grass .....	8
Rye Grass .....	8
Sudan Grass .....	13
Red Top .....	11
Guarantee .....	5
Kaffir Corn .....	13

Millet—	Page
Common .....	13
Golden .....	12
Japanese .....	13
Siberian .....	9
Milo Maize .....	15
<b>Oats—</b>	
Iowa 105 .....	16
Iowa 105 .....	16
Silver Mine .....	16
Swedish .....	16
Imp. White Kherson.....	16
Adams' Early English.....	16
Pop Corn .....	30
Purity and "Tasco" Brand Seeds.....	7
Rape .....	14
Rye .....	16
Speltz or Emmer .....	13
Sunflower .....	13
Timothy .....	8
Tobacco .....	31
Vetch .....	14
<b>Wheat—</b>	
Marquis Spring .....	15
Durum .....	15
Blue Stem .....	15

### VEGETABLES

Asparagus .....	22
Beans .....	22-23
Beets .....	23
Cabbage .....	23
Cabbage—Chinese .....	26
Canada White Field Peas.....	14
Carrots .....	26
Cauliflower .....	24

Celery .....	Page 24
Cow Peas .....	14
Cucumbers .....	25
Egg Plant .....	24
Endive .....	24
Gourds .....	24
Kale .....	26
Kohlrabi .....	26
Leek .....	25
Lettuce .....	26
Mangel Wurzel .....	23
Mustard .....	26
Mushroom .....	26
Mushmelons .....	27-28
Onions .....	28
Okra .....	28
Parsnips .....	30
Parsley .....	23
Peas .....	20
Peppers .....	30
Pumpkin .....	30
Potatoes .....	29
Radish .....	31
Rhubarb .....	30
Rutabagas .....	31
Salsify .....	30
Soy Beans .....	14
Spinach .....	31
Squash .....	31
Sugar Beets .....	23
Sweet Corn .....	25
Tomatoes .....	32
Turnip .....	32
Watermelons .....	27



PRODUCERS AND DEALERS IN GUARANTEED SEEDS





# Adams Seeds Make Good

## Read What a Few of Thousands of Satisfied Customers Say:

Received your shipments of grass seed ordered by me. Owing to a mistake of the agent, I think in giving the wrong telephone number, I did not get the seed till Saturday the 21st, hence the delay in sending you this check. I shall certainly, when occasion offers, recommend your company to my neighbors, both as to quality of your seeds and your courteous and gentlemanly dealings with your customers.

JOSEPH McCORMICK,  
Palo Alto County, Iowa.

I got a test on Wimple's Yellow Dent of 98 per cent, and Goddard's Silver King of 100 per cent.

MELBERT FOLSON,  
Clayton County, Iowa.

Replying to your favor regarding the missing bag, will say that it is here but a little later than the rest of the shipment. Thanking you for your good will and appreciating your business methods, I am, yours sincerely.

S. A. WORSTER,  
Humboldt County, Iowa.

Seed Oats received and look fine. Thank you for your promptness.

AUG. HIEDMAN,  
Blackhawk County, Iowa.

Seed received today. I find your seed is O. K.

S. STANGER,  
Wadena County, Minn.

Please send me 4½ bushels "Purity Brand" medium Red Clover. You need not send me any samples. I have always found your seed as represented. YOUR WORD IS GOOD WITH ME.

GEO. MILLER,  
Winona County, Minn.

The Seed Corn which was shipped May 10th arrived in good shape, for which accept our thanks.

CHRIS. GOPLERUD,  
Osage, Iowa.

Received the Clover seed. It is O. K.

HENRY KEHR,  
Allamakee County, Ia.

My last year's seed done fine, and I am thinking, or rather have the promise of one of my neighbors sending with me for seed.

F. G. MILLER,  
Nicollet County, Minn.

I bought Sudan Grass of you this spring, and it has made a fine stand. When shall I cut it for seed?

CHAS. WHITING,  
Sussex County, New York.

I got samples of Clover from you and two or three other seed houses, and I thought yours were the best.

EMIL DIRKSEN,  
Manchester, Iowa.

Please send me five bushels Early Yellow Dent like my neighbor, Mr. Likens, got. His seed is very fine and I want some just like it.

A. A. CLARNO,  
Stevenson County, Ill.

Please send sample of your Alsylke and Timothy Mixture and price of same. I got some extra fine seed of you last year and wonder if you can duplicate it this year for quality.

M. A. KALEN,  
Rudd, Iowa.

The Corn is very satisfactory. I have given it a very severe test, and find it grows 97 per cent.

ELMER IMLA,  
Lake Crystal, Minn.

I received the Clover Seed I ordered, and I am well pleased.

SIMON BURLAGE,  
Farley, Iowa.

I bought one bushel of Goddard's Silver King of you several years ago. I have grown it ever since, and it has made big yields every year.

W. T. RICHARDS,  
Clarion, Iowa.

Your Corn received and it tests very satisfactory. Please send me three more bushels of just as good germination.

HERMAN CARLSON,  
Wesley, Iowa.

The Alsylke and Timothy I bought from you turned out the finest hay on the farm.

CHAS. R. WHITING,  
Sparta, N. J.

Enclosed you will find P. O. money order to pay for the Rape seed. It has all come up, and the hog pasture looks fine and my Goddard's Silver King Seed Corn is coming strong. Your seeds are certainly all that you claim for them.

MRS. EMMA SHERMAN,  
Howard County, Ia.

My corn crop grown from the seed I bought of you is very fine.

R. L. THORSON,  
Emmet County, Iowa.

Received the seeds all right and in good shape and they are fine.

FRED GREISSE,  
Rock Rapids, Iowa.

I would like to know your price on ten bushels more of Wimple's Yellow Dent, 1918 seed corn. The four bushels I bought of you tested 92% and 98% strong, and I would like to get the same seed.

B. C. CHRISTIANCE,  
Cerro Gordo County, Ia.

Received the seed today, and all satisfactory. Thanks.

CARL LANDGREN,  
Blue Earth County, Minn.

Was well pleased with the corn purchased from you.

W. A. RICHMOND,  
Emmet County, Ia.

The seed corn I bought of you this year was O. K. and has done splendidly.

J. P. GRACE,  
Dubuque County, Iowa.

The seed was O. K.

F. W. DRAHN,  
Clayton County, Iowa.

I have ordered Grass Seed of you before and was well pleased.

WM. N. REED,  
Cleghorn, Iowa.

The Corn I got from you two years ago gave very good satisfaction.

HENRY FINNERUD,  
Preston, Minn.

I have received the seed. It certainly is fine. I will sow it today. Mrs. Gipp also thanks for the nice garden seed you sent her. I here send the 20 cents in stamps that I owe you. If you send us a price list after this, please have it by the 100 lbs., because that saves freight, but we cannot understand it that we only had to pay 49 cents freight on both sacks; we always had to pay 40 cents per cwt. I show the seed to all my friends and neighbors. They think it fine.

WILL GIPP,  
Bremer County, Iowa.

### GIVES GOOD SATISFACTION.

I am sending you a draft today for the Seed Corn I bought of you, which I am glad to say has given good satisfaction. A few got the corn planted too deep and lost, but they came back for more, saying it was not the fault of the corn. Thanking you for your fair dealing.

GEO. DORSEY,  
Jones County, Iowa.

### TESTED BETTER THAN CLAIMED.

I just finished testing the shipment of three varieties corn you shipped me, and all tested 3 to 5 per cent better than you claimed. I am mighty well pleased with this as well as other shipments received in other years as they are fully up to your representations.

ARTHUR E. MALLORY,  
Hampton, Iowa.

### ALWAYS RELIABLE.

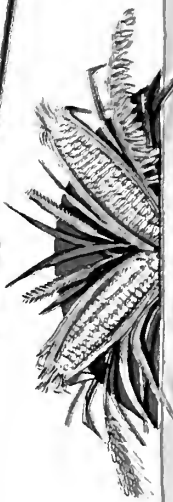
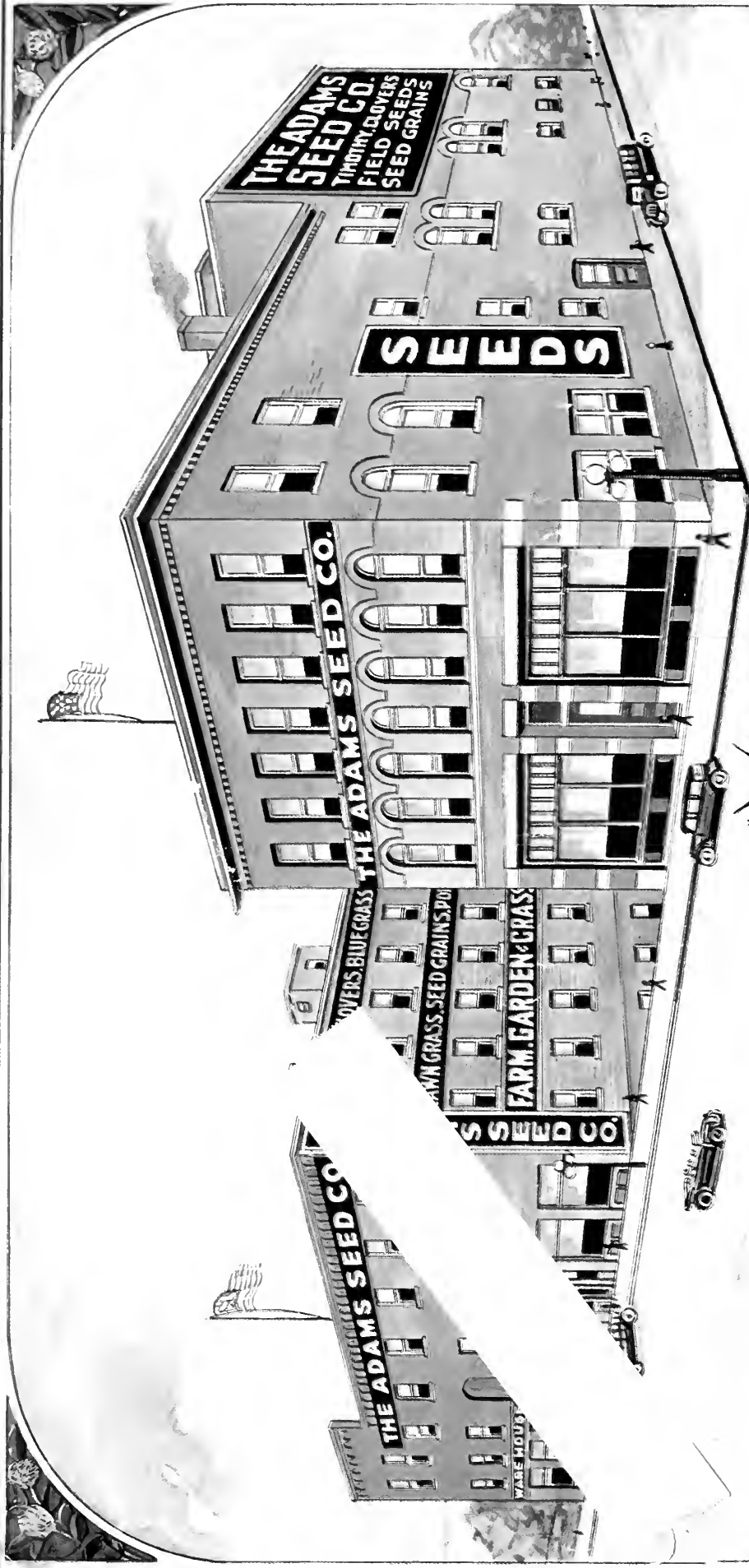
I will soon want some Alsylke Clover and other seeds. I have always thought well of your company and in fact I always recommend inquirers for seed to your house, as I have always found your seeds reliable and even better than represented.

A. H. HALL,  
Fillmore County, Minn.

### WRITTEN TO ONE OF OUR BANKERS.

When I was working with you in Winneshiek County, I remember there was a seed house with a dandy reputation located in Decorah, and I am not sure of the name of it, though I think it was The Adams Seed Company. I wish to secure about four bushels Seed Corn that will mature in ninety days for myself and neighbor, and I will appreciate it more than I can tell you if you will kindly call them and ask them to quote me price.

WILFORD W. UTERBACK,  
Keokuk County, Iowa.



THE HOME OF  
**PURITY BRAND AND TASCOCO BRAND**  
SEEDS