

Historic, Archive Document

Do not assume content reflects current scientific knowledge, policies, or practices.

1919
62177

**NORWAY
SPRUCE**

**Best of all
Trees for
Windbreaks**

**See Our
Wonderful
Bargain
WINDBREAK
OFFER**



EVERGREENS

Ornamental Trees
and FRUITS

Our Guarantee

We guarantee all our stock to be true to name and to be in every way just as represented or we will replace free of charge that proved not to be.

We guarantee that all stock purchased from us will reach the customer in a healthy growing condition or we will make satisfactory adjustment. All claims should be made immediately upon receipt of stock and be accompanied by purchaser's express receipt together with a statement from the agent indicating the damage. It is understood that this guarantee shall in no case make us responsible for more than the original purchase price of the stock.

Our guarantee is your protection.

EVERGREEN NURSERY CO.

EVERGREEN NURSERY CO.

EVERGREEN SPECIALISTS

ESTABLISHED 1864

STURGEON BAY,

WISCONSIN

WINDBREAKS

The protection which **EVERGREEN WINDBREAKS** afford will keep your house and barns warmer—reduce your fuel and feed bills—protect your orchard from wind and frost—increase the value of your farm by many times the cost of the trees—and climatically, move your farm two to three hundred miles farther south.

These are not idle boasts. Their truth is repeatedly confirmed by owners of Windbreaks, by every reliable agricultural paper, and by all the state agricultural experiment stations.

Read what Uncle Sam says:

WINDBREAKS are, in more ways than one, a farm asset. They tend to prevent the soil from drying out quickly and they protect grain and orchards from mechanical injury by wind. A belt of trees by the farm buildings protects them from extreme cold and summer heat, and makes the farm a pleasanter place in which to live. The windbreak may also be a source of wood supply for use on the farm or for sale. (Extract from U. S. Farmers' Bulletin 788.)

The best **WINDBREAK EVERGREENS** are: Norway Spruce, White Spruce, Scotch Pine, White Pine, Norway Pine and Douglas Fir.

BIG BARGAIN OFFER

(See enclosed price list for prices and sizes.)

250 Feet Evergreen Windbreak, 25 Trees

500 Feet Evergreen Windbreak, 50 Trees

1000 Feet Evergreen Windbreak, 100 Trees

Only the best varieties are selected for these collections.



Norway Spruce.

NORWAY SPRUCE

**The Best Windbreak
Evergreen.**

Without doubt, the Norway Spruce has no peer as a windbreak and shelter belt tree. It is perfectly hardy, is a rapid grower, retains its lowest branches, and is adapted to a wide variety of soils. As it stands shearing well, and is always green and compact, it makes a splendid hedge. Its use in windbreaks, shelter belts, hedges, screens, and ornamental plantings is universal throughout the East and Middle West. **The most popular and widely planted of all Evergreens.**

L. H. Bailey, the eminent American Horticulturist, says of the Norway Spruce: "It is of rapid growth and is a handsome tree with its graceful habit and dark green, dense foliage. It is one of the best conifers to plant for shelters and windbreaks."

**American
Arbor Vitae
Hedge**



Gentlemen:—
Last spring I bought two hundred Arbor Vitae hedge trees from you. They arrived in excellent condition, and I am glad to report that every one of the little trees lived and has grown nicely. My object in writing to you now is to ask if there is any especial care or attention which should be given them for this winter.
Very truly yours,
(Miss) Elsie Pepoon.

AMERICAN ARBOR VITAE

Most widely used hedge plant in America.

The American Arbor Vitae (which means, "tree of life") is the leader among all hardy hedge plants. It probably is the hardiest of all Evergreens, and in addition to this quality it is adapted to a great variety of soils. It endures any amount of trimming, retains its compact form, and possesses a rich green color, hence makes an ideal hedge.

Individual trees, when allowed to develop on the lawn, will grow into symmetrical, conical trees; or they may be sheared to any desired shape without injury. American Arbor Vitae is an excellent tree for grouping or for use as screens or windbreaks, and may be used either alone or in connection with other evergreens.

PYRAMIDAL ARBOR VITAE.—A unique form of Arbor Vitae whose foliage closely resembles the American, but whose form, as the name indicates, is pyramidal. A highly ornamental tree.

GLOBE ARBOR VITAE.—A dwarf globe shaped form with slender branches and beautiful, rich green foliage. Excellent for planting in groups, rockeries or on small lawns where space is limited.

SIBERIAN ARBOR VITAE.—A low pyramidal tree of dense habit. Foliage bright green. Perfectly hardy. A very desirable form.



**Globe
Arbor Vitae**

PACKING

All our Evergreens are packed in the best quality of Sphagnum moss—not straw or shavings. There is no better packing material in the world. The trees are put in strong boxes or bales and ample provision is made for air circulation about the tops to prevent heating in transit. Packed in this manner, we have for over fifty years, shipped Evergreens successfully, even thousands of miles. This is why our trees are in prime condition when they reach you.



Hedge of Hemlock.

HEMLOCK.—A graceful, hardy Evergreen that deserves more attention. As it stands shearing well and is not injured by shade it makes ideal hedges. Speaking of Hemlock, one authority says: "It would not be exaggeration to pronounce this the most beautiful Evergreen in cultivation."

BALSAM FIR.—The Balsam is noted for its fragrance and quite properly, for no other Evergreen can compare with it in this respect. It is the source of the Canada Balsam of commerce, of the fragrant balsam needles used in pillows, and of a large percentage of the very best Christmas trees. It is perfectly hardy and of moderately rapid growth. Balsam strongly resembles the spruces in its habit of growth. It is indeed a beautiful tree.

IRISH JUNIPER.—This tree, with its upright column-like growth, very formal habit, and dense, blue-green foliage, is decidedly one of the most beautiful Evergreens. It is very popular in formal gardens, cemeteries, etc., and because of its narrow upright growth, it requires but little space.

DOUGLAS FIR.—This native of the Western Rockies is a sturdy upright grower with remarkably soft, almost feather-like foliage. It is this species which furnishes most of the timber of the West. A very valuable ornamental tree, widely planted.

A Splendid Example of American Arbor Vitae Hedge and Sheared Specimens.



EVERY VARIETY OF TREE OR PLANT THAT WE LIST HAS BEEN TIME TRIED AND TESTED AND IS KNOWN TO BE RELIABLE. We offer no novelties or old varieties under new names. You can depend upon our 54 years of experience, service, and square dealing for your protection. Our guarantee goes with every plant we sell.

DWARF MOUNTAIN PINE.—A unique, dwarf, nearly globe-shaped pine, seldom reaching a height of more than eight feet. It is a native of Switzerland. We recommend its use in rockeries, group planting and wherever space is limited. There is no better dwarf ornamental Evergreen.

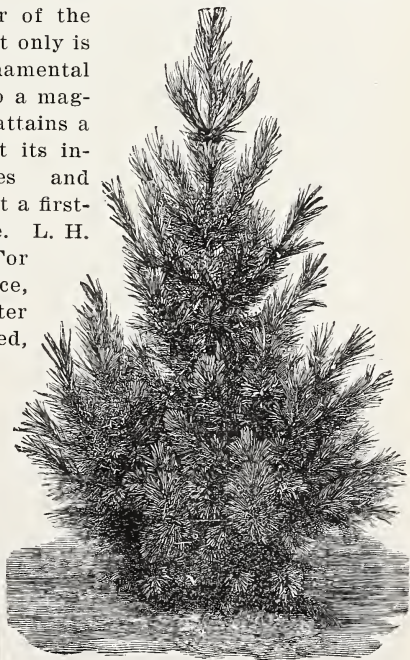
NORWAY or RED PINE.—Norway Pine has long, sharp, glossy green needles, a reddish tinged bark and an upright and compact habit of growth. In addition to being a splendid windbreak Evergreen, it is, among the Pines, one of the most handsome and ornamental.

SCOTCH PINE.—Scotch Pine grows more rapidly than any other evergreen. This quality alone is enough to recommend it for many purposes where quick results are desired. On account of its rapidity of growth, extreme hardiness, ability to grow on poor soil, and the ease with which it is transplanted, it is a very valuable windbreak tree for which purpose it is used extensively.

WHITE PINE.—White Pine is the leader among Pines. Its needles are soft and pliable and invariably occur in groups of five. This is the Pine that furnished the valuable lumber of the Northern states. Not only is it an excellent ornamental tree, which grows to a magnificent height and attains a mellow old age, but its interlocking branches and sturdy habits make it a first-class windbreak tree. L. H. Bailey says of it, "For grace and elegance, there is nothing better than our five leaved, silver lined White Pine."

"In the Lake States, the White Pine is recommended for wind breaks above all other species, because of its rapid growth and high timber value, which justify its planting in wide belts or groves."

—U. S. Dept. of Agriculture.



White Pine.



Y O U R FARM. You can add to its value, increase its production, and make it a more pleasant and comfortable place in which to live merely by planting one of our **EVERGREEN**

WINDBREAKS. That's what the windbreaks pictured here have done for their owners. Sounds almost too easy to be true, doesn't it? Yet it is a fact backed up by your own state experiment station, by your farm paper, by Uncle Sam, and by our own **EVERGREEN** experience of over fifty years.

WHITE SPRUCE.—A decorative tree of dense habit with light blue-green foliage. When young it has an oval shape which changes to a conical form as the tree grows older. This species has been used for ornamental plantings for hundreds of years, and although a native of North America, has been planted in England since 1700. It is much longer lived than the Norway Spruce, often reaching an age of 250 to 300 years. Due to its hardiness, compactness and longevity, it is widely used for windbreaks for which purpose it is rapidly gaining in popularity.



BLACK SPRUCE.—An uncommon Evergreen with slender, slightly drooping branches, glistening blue-black foliage, and beautiful purple cones. It grows in the shape of a tall narrow cone. With its dark color and odd shape it has an individuality quite different from that of any other spruce.

COLORADO BLUE SPRUCE.—We have never read a description that did full justice to the beauty of the Blue Spruce; it defies description. One of the most graphic is that of a woman who described it as it appeared in its native haunts among the Rocky Mountains: "It looks as if a soft blue powder had fallen upon its deep needles; or as if a bluish hoar frost, which must melt at noon was resting upon it."

Beautiful in color and outline, and hardy, it is a valuable acquisition.



Spruce.
Colorado Blue

New Ulm, Minn.

Evergreen Nursery Co.

Gentlemen: I was just considering if it would be possible to make the planting of **Evergreens** more popular. My 300 **Evergreens** bought of you are doing exceptionally well and they came out of the last winter in good shape although covered with four feet of snow. I have a bunch of White Spruce here, also one Balsam and one White Pine. There are some 12 inches in diameter and 30 feet high.

Will be pleased to show my trees to anybody interested. Yours truly,

FRANK WELLNER.

**THE MOST
LIBERAL
WIND-
BREAK OF-
FER** you
will find
anywhere
this season
is to be
found in the
accompanying
price list.

**A LOWER
PRICE**

per linear
foot and **BIGGER TREES** than you can get anywhere
else for the money. **NOW** is the time to order. Prices
will never be any lower.



BALLED AND BURLAPPED EVERGREENS

Where immediate results are desired, we recommend the
planting of our Balled and Burlapped
Evergreens.

These are specimen trees dug with
a ball of earth around the roots. To
hold the ball in place, it is tightly
bound in burlap. We have found this
to be the best method of handling
large Evergreens, the percentage of
loss being very small.

- | | |
|---------------|--------------|
| Balsam Fir | White Spruce |
| Black Spruce | White Pine |
| Norway Spruce | |



EUROPEAN LARCH.—An upright
conical grower with soft feathery
foliage. A very beautiful, hardy, and
valuable lawn tree. Although it is a

conifer, it is deciduous; and after its needles drop in the
fall, its delicate branches form a graceful tracery on
the winter sky.

EVERGREEN SEEDLINGS



The growing of Evergreen seedlings
has been a specialty with us ever since
our nursery was established over fifty
years ago. Our seed comes from many parts of the world
and it is planted here in our nurseries under ideal con-
ditions. We have published a little booklet, "The Care
and Culture of Evergreens," which we will gladly send
free, when requested, with every order for seedlings.

- | | |
|----------------------|----------------------|
| American Arbor Vitae | Scotch Pine |
| Balsam Fir | Colorado Blue Spruce |
| Douglas Fir | Norway Spruce |
| European Larch | White Spruce |
| Austrian Pine | |

SHADE TREE SEEDLINGS

For descriptions, see Shade Trees.

- | | |
|----------------------|---------------------------|
| American Beech | American Larch (Tamarack) |
| American White Birch | Sugar Maple |

"NO DISEASES HERE"

**STATE OF WISCONSIN—Department of Agriculture
NURSERY AND ORCHARD INSPECTION**

This certifies that the Nursery Premises of the EVERGREEN NURSERY COMPANY,
Sturgeon Bay, Wis., have been officially inspected and passed in accordance with Chapter
413, Laws of Wisconsin, 1915, and permission is hereby granted to the owners of the herein
named nursery to sell and ship nursery stock, which has been officially inspected for the
year ending October, 1919, provided a tag on which a copy of this certificate has been
printed, is attached to each package, bundle, bale, box or carload lot so shipped.

Issued at the State Capitol, Madison, Wis., October 1, 1918. E. D. BALL, Chief Inspector.



FRUIT TREES, SMALL FRUITS AND STRAWBERRIES

APPLES

✓ **DELICIOUS.**—There is no need to introduce this well known fruit, the best of all winter apples. Beautiful large red fruit; keeps well until late spring. No home orchard is complete without Delicious.

SUMMER APPLES

✓ **DUCHESS.**—Very hardy and early. Makes excellent pies and sauces—none better for cooking. Should be in every home orchard.

✓ **RED ASTRACHAN.**—Medium to large fruit, tinged with red and covered with a delicate bloom. Pleasing acid flavor. A fine dessert apple.

✓ **YELLOW TRANSPARENT.**—One of the earliest ripening apples. Trees are vigorous growers and produce large yellow, good flavored fruit.

FALL APPLES

✓ **WEALTHY.**—Best of all fall apples. Large fruit, Beautifully striped with red. Excellent quality. Very productive.

✓ **WOLF RIVER.**—An enormously large and exceedingly handsome apple. Very hardy and of fair quality.

WINTER APPLES

✓ **FAMEUSE.**—Snow Apple. Bright red color with tender juicy flesh. An excellent apple for eating out of hand. Productive and hardy.

✓ **JONATHAN.**—Has long been a standard apple. Showy red with crisp tender flesh. Rich acid flavor. Splendid dessert apple and equally suitable for market.

✓ **NORTHWESTERN GREENING.**—Large, firm, greenish yellow fruit. Good for both dessert and cooking. Excellent keeper and very hardy.

✓ **STAYMAN.**—Formerly known as Stayman's Winesap. The best of all Winesaps and a very important commercial variety. A large, handsome, red apple with a delicious flavor. Every orchard should have Staymans.

✓ **TOLMAN SWEET.**—A long keeping sweet winter apple. The trees are hardy and thrifty and bear early.

✓ **WAGENER.**—A thrifty upright grower. Bears very young and heavily. Beautiful red fruit with a mild, pleasing flavor.

CRAB APPLES

✓ **WHITNEY.**—There are few apples that have a better flavor than the Whitney. It is a large apple, with a smooth green skin, striped with deep red.

✓ **HYSLOP.**—One of the largest and most beautiful crabs. Deep crimson color. Fine for preserves and jelly.

CHERRIES

✓ **EARLY RICHMOND.**—A very early cherry of medium size and clear red color.

✓ **MONTMORENCY.**—The best commercial variety. It is a beautiful large red cherry, which ripens 10 or 12 days later than Early Richmond.

✓ **LAMBERT.**—Large, black, rich and juicy. One of the best sweet cherries.

PLUMS

✓ **BURBANK.**—A large red plum, mottled with yellow. Flesh firm, juicy and sweet. Very productive.

✓ **ABUNDANCE.**—A very hardy and productive plum; cherry red; firm sweet flesh. A good shipper.

✓ **LOMBARD.**—A favorite variety. Bears heavy crops of beautiful purple fruit.

PEARS

✓ **BARTLETT.**—A large golden-yellow pear. A general favorite. None better for dessert or canning. Summer.

✓ **ANJOU.**—Ripens in late fall. A good pear to follow Bartlett. Yellow tinged with red. Excellent quality.

✓ **KEIFFER.**—The most widely planted pear. Large golden-yellow fruit. A winter pear.

GRAPES

✓ **CONCORD—(Black).** There is no more popular grape than Concord. Very productive and hardy.

✓ **CAMPBELL'S EARLY—(Black).** Earlier and larger than Concord. A heavy bearer of excellent quality.

✓ **DELAWARE—(Red).** Small compact bunches of firm sweet berries. A general favorite for home use.

✓ **NIAGARA—(White).** The best of all white grapes. Large fruit of fine quality.

Evergreen Nursery Co.,

Madisonville, Ohio.

Dear Sirs: I received your shipment of Arbor Vitae in good shape this A. M., and am well pleased. If you have a catalogue or price list of other evergreens, please forward one to me that I may select some others for this fall planting.

Yours truly,

JOHN. H. LOUIS.

Farrans Point, Ont., Canada.

Evergreen Nursery Co.,

Gentlemen: Will you please send me your catalog and price list for 1919 as soon as issued? I have Norway Spruce grown from seedlings purchased from you, 15 inches in diameter, so we are hardly new acquaintances.

Yours truly,

H. E. HODGINS.

CURRENTS

PERFECTION.—A new currant of remarkable value. Large bright red berries of good quality.

LEE'S PROLIFIC—(Black). Berries and bunches are large and the plants are heavy bearers. Quality excellent. Fine for preserves.

WHITE GRAPE—(White). Very large. Sweet and mild flavor.

GOOSEBERRIES

HOUGHTON.—Medium sized, red colored fruit with tender skin and of excellent quality. Very profitable.

DOWNING.—Much larger than Houghton. Very thrifty and prolific. First-class quality.

RASPBERRIES

CUTHBERT—(Red). Midseason. Popular and of good quality.

CUMBERLAND—(Early Blackcap). Vigorous and productive.

ST. REGIS—(Everbearing). Produces large quantities of beautiful berries from midsummer until frost. Very hardy. Bears first season. No home garden is complete without St. Regis.

BLACKBERRIES

EARLY HARVEST.—Very early. An old favorite of good quality. Heavy producer.

SNYDER.—Later than Early Harvest. Very hardy and dependable.

STRAWBERRIES

PROGRESSIVE.—The best Everbearing Strawberry. It bears the first season and there is no Everbearer which is more productive. From July until frost nips the blossoms you need not be without fresh luscious strawberries if you grow our Progressive Everbearers.

WARFIELD—(Pistillate). The old standby. Very productive.

SENATOR DUNLAP—(Perfect). The most popular strawberry in the United States. Produces big crops of large sized fruit.

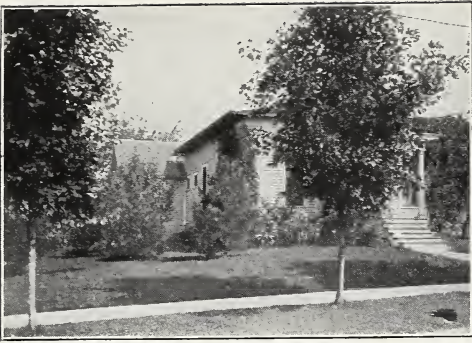
Bostic, N. C.

Evergreen Nursery Co.,

Gentlemen: The plants we had from you last September have succeeded very well. It is likely that we will want to use many more the coming September. We have thought to ask you what you will have in sizes and prices in quantities. Hoping that you are having a good season, we are,

Yours very truly,

G. W. JONES.



SHADE TREES

WHITE ASH.—A tall, rapid growing tree with glossy green, divided leaves and smooth bark. Suitable for street and park planting.

WHITE BIRCH.—Has red bark when young, changing to a beautiful white as the tree grows older. Makes effective contrast with Evergreen background.

WILD RED CHERRY.—A native American cherry which bears large quantities of small red fruit. Sometimes called the pin cherry. A useful ornamental tree.

BALM OF GILEAD.—This tree has a peculiar, though not unpleasant musky odor, which is particularly evident in the opening buds.

AMERICAN WHITE ELM.—A magnificent tree of great size. One of the most noble street and park trees.

NORWAY MAPLE.—A splendid street or lawn tree. Has the roundest and densest head and deepest green color of any of the maples. Very hardy and long-lived.

SUGAR MAPLE.—Also known as Hard or Rock Maple. A symmetrical tree of great proportions. It is the source of the much sought for maple sugar and syrup.

FLOWERING SHRUBS

BRIDAL WREATH.—The most popular shrub. Covered with a mass of snow white bloom in early spring.

DOGWOOD.—A hardy flowering shrub with slender bright red branches. Has large clusters of white flowers in early summer which later give way to waxen-white berries.

AMOR RIVER PRIVET.—One of the most hardy privets. Makes splendid hedges and borders. Stands shearing well.

FLOWERING RASPBERRY.—Has beautiful white flowers and large red, hollow berries.

FERNS

LADY-FERN.—Large, handsome, with finely divided lace-like leaves.

SILVERY-SPLEENWORT.—A beautiful fern, sometimes 5 feet high. The feathery fronds curving gracefully outward, give this plant the shape of an inverted bell. Hardy and grows rapidly. Fine for house culture.

MAIDEN HAIR.—The most delicate of all hardy ferns. The leaves are broad, very thin, and prettily curled at the tips.





PROTECT THE SONG BIRDS

Without the song birds all of our food crops would be destroyed by insects. They save millions of bushels of grain, fruit and vegetables every year. It is your duty to protect them and furnish them with safe homes in which to raise their young. You will be repaid a thousand fold for they will free your grounds and gardens from insect pests and gladden your heart with their beauty and song.

One man says a pair of Crested Flycatchers has nested in his pear tree for three years. Up to this time the tree had never been sprayed, yet he picked over eight bushels of pears from the tree with not a worm hole in one of them. The pair of flycatchers was certainly a cheaper and better investment than a spraying machine.

We carry the following bird houses in stock which we can furnish to the trade at wholesale at the following prices:

	Each	Dozen
Purple Martin House, twenty room,		
Cottage style	\$16.00	\$144.00
Colonial style	65.00	
Queen Anne style.....	45.00	
Wren House,		
No. 5021, small size.....	.60	6.00
No. 2051, medium size.....	.75	8.00
No. 1025, large size.....	1.00	10.00
Blue Bird Houses,		
Small size	2.00	20.00
Medium size	3.00	30.00
Large size	4.00	40.00
Woodpecker Houses.....	1.50	10.00
Great Crested Fly Catcher Houses,		
Small size	2.00	20.00
Medium size	3.00	30.00
Large size	4.00	40.00
White-bellied Swallow Houses.....	3.00	30.00
Sparrow Traps	7.00	70.00

WRITE US FOR SPECIAL PRICES ON
EVERGREEN SEEDLINGS
FOR SPRING 1919

Live Wire ADVERTISING

IT PAYS TO ADVERTISE. One of our brother nurserymen cleaned up between Twenty and Twenty-Five Thousand Dollars this last year and made every nickel of it advertising. This firm didn't have a salesman on the road.

Our Home Beautifying Folder is a business-getter. One firm writes us that it brought them a landscape job the second day. These folders are printed with your firm's name and address; they are just the thing for the education of your prospective buyers, customers and friends. They contain Seventeen of the finest photographs of landscape, porch, foundation, screen and corner plantings.

Prices: \$2.50 per 100; \$7.50 for 500; \$12.00 per 1000.

Photographic Landscape Sets

Each set consisting of twelve of the finest photographs of Landscape and foundation plantings.

Every one a perfect print Six by Eight inches.

Place a set of these prints with each one of your salesmen as they make the proper appeal to close a contract and put the final convincing touch to your salesman's argument.

They are just what your salesmen have been looking for, will increase his efficiency and pay for themselves the first day.

This is not theory for we have put this into practice and know.

Our prices barely cover the cost of production; your money back if not more than satisfied.

PRICE \$5.00 PER SET



EVERGREEN NURSERY CO.

EVERGREEN SPECIALISTS

Established 1864

STURGEON BAY,

WISCONSIN
