

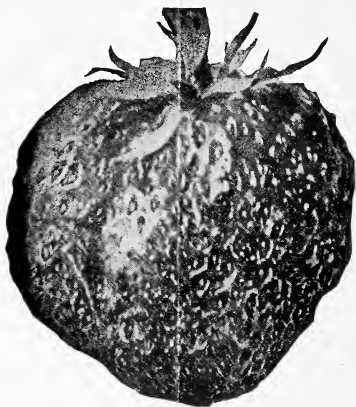
## **Historic, Archive Document**

Do not assume content reflects current scientific knowledge, policies, or practices.



2.13

70 45



EDMUND WILSON

## STRAWBERRY PLANTS

### For Autumn Planting

The War Gardens have taught the general public a great and lasting lesson. It has been a surprise to many how easily and in how small a garden area enough of the standard vegetables can be raised for the average size family.

Small Fruits are equally easy to raise, having to their advantage that they last from year to year, with very little care, rather than requiring annual renewal.

Berries are of high food value and very delicious.

Plan your garden so as to have an abundance of Small Fruits as well as space for vegetables.

Strawberries are among the easiest of the small fruits to grow in the garden, bear abundantly soon after planting and are certainly most delicious.

## STRAWBERRY PLANTS

Planted in the early Autumn produce a full crop the following Spring, especially if Pot-grown plants are used. Any well-drained and well-fertilized soil will grow Strawberries. They grow especially well when planted in the part of the garden where a Summer vegetable crop has just been harvested.

Plant this Autumn and enjoy a full crop of delicious Strawberries fresh from your own garden next Spring.

## CHOICE VARIETIES FOR THE GARDEN

### EVERBEARING

These new sorts have the merit of not only producing a full crop at the usual Spring season, but will, if kept in a vigorous state of growth by cultivation, fertilizing and sufficient moisture, produce a full crop of delicious berries in the late Summer and Fall. The quality of these everbearing varieties is the highest, very like the wild berries of the meadows.

## Woodmont Nurseries, Inc., New Haven, Conn.

---

**AMERICUS.** Produces a full crop in the Spring at the time other strawberries fruit, and will also bear full crops in the Summer and the Fall, provided they are well enriched, cultivated and kept in vigorous growth. Fine flavor and prolific.

**PROGRESSIVE.** The finest of the Rockhill varieties, and one that has attained wide popularity. The plants are of vigorous habit, with large, clean leaves, and they multiply better than many of the Fall bearing varieties do, and yields profusely, particularly in June. The berries are so smooth and uniform in size and shape they have the appearance of having been made in a mold, are deep crimson, glossy and of fairly good quality, but rather small. Abundant Fall bearer.

**SUPERB.** The best known and most largely planted of the Fall bearing varieties. The berries are nearly round and are larger than those of the Progressive. They are smooth, dark crimson, glossy, and of sweet, mild and delicious flavor. The plants grow well, with clean, dark green leaves. It yields so heavily and the berries are so fine, it is a profitable variety to grow for its June crop alone.

### STANDARD SORTS

**BELT (Early).** Luxuriant grower and very productive. Fruit often of enormous size. Richly colored, firm, of the best quality.

**BRANDYWINE (Mid-season).** Of immense size, firm, solid and shapely. Flesh red to the core and delicious.

**CHESAPEAKE (Mid-season).** Vigorous. Fruit uniformly large, firm, very prolific and of high quality.

**DUNLAP (Early).** Large, regular and attractive berry. Deep red. Excellent in quality. Early to mid-season.

**EDMUND WILSON (Mid-season).** Robust habit, large berries of high quality.

**GANDY (Late).** Very robust habit, large, firm and good quality. Splendid shipper.

**EARLY JERSEY (Early).** Best early variety, large, firm, fine quality.

**LATE JERSEY (Late).** Large, uniform size, fine flavor.

**McKINLEY (Mid-season).** Vigorous, healthy and great yielder, delicious fruit.

### PRICES

**POT-GROWN.** Ready about August 15th.

Per 10, \$1.00; per 100, \$6.00; per 1000, \$55.00.



**LAYERS, TRANSPLANTED.** Ready about October 1st.

Per 10, \$.35; per 100, \$3.00; per 1000, \$20.00.

Five at one-half the price of 10; 25 at one-quarter the price of 100; 250 at one-quarter the price of 1000.

**THE ELM CITY NURSERY CO.**  
**WOODMONT NURSERIES, INC.**

Sales nurseries and office:

**Edgewood**

Near new Yale Bowl

**New Haven, Conn.**

Get catalog of other Small Fruits, Trees, Shrubs, Vines, etc.  
Everything that's hardy.

