

Historic, Archive Document

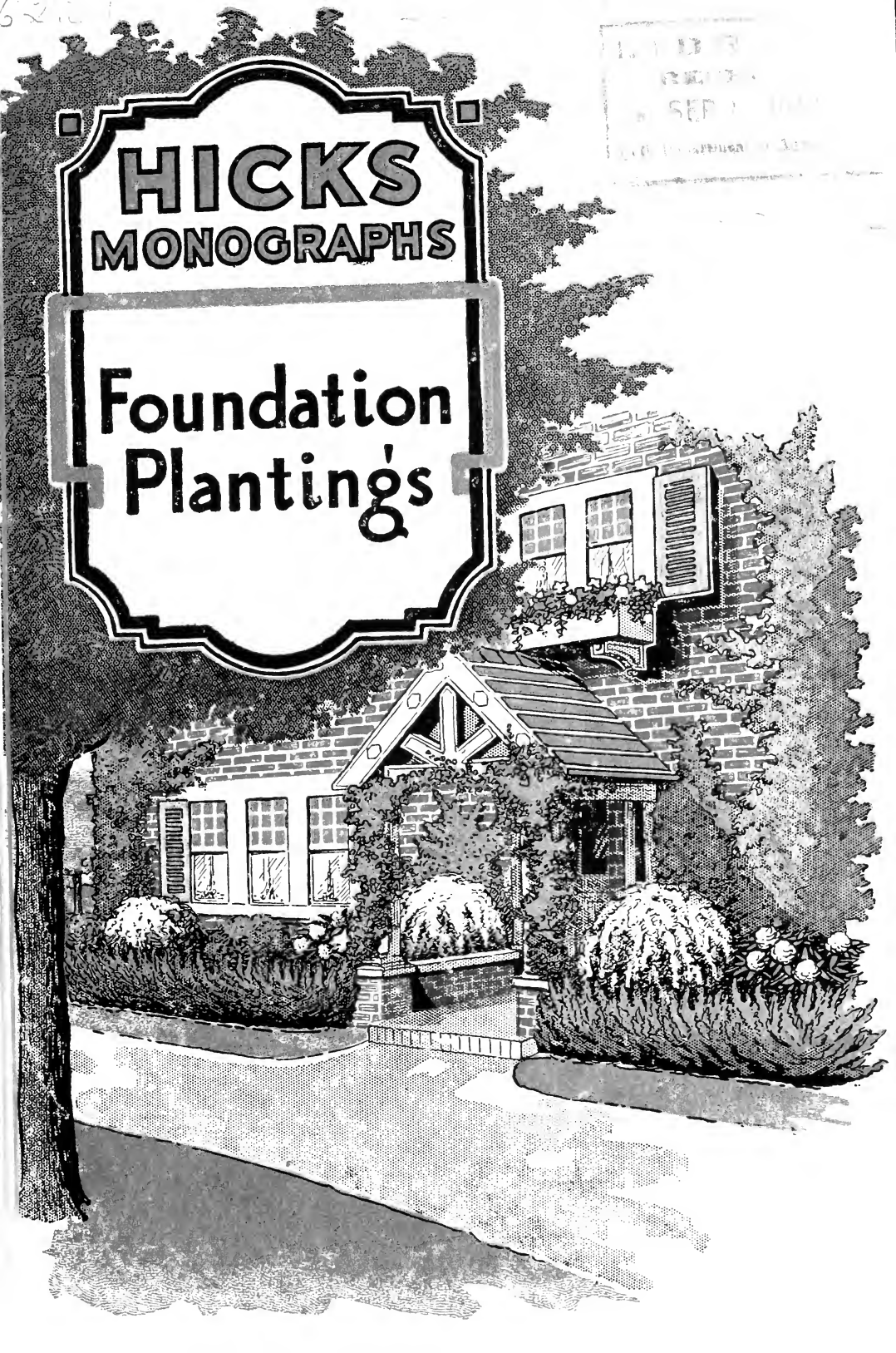
Do not assume content reflects current scientific knowledge, policies, or practices.



**HICKS
MONOGRAPHS**

**Foundation
Plantings**

LIBRARY
RECEIVED
SEP 7 1911
U. S. DEPARTMENT OF AGRICULTURE



Hicks *Monographs*

Foundation Plantings

Evergreen Trees and Shrubs

Flowering Trees and Shrubs

Shade and Lawn Trees

Fruits and Small Fruits

Hardy Garden Flowers

FOUNDATION PLANTINGS

ARCHITECTURAL
ADAPTATION
SHADY POSITIONS
SUNNY POSITIONS
SOIL REQUIREMENTS

HICKS NURSERIES

WESTBURY
LONG ISLAND, N. Y.

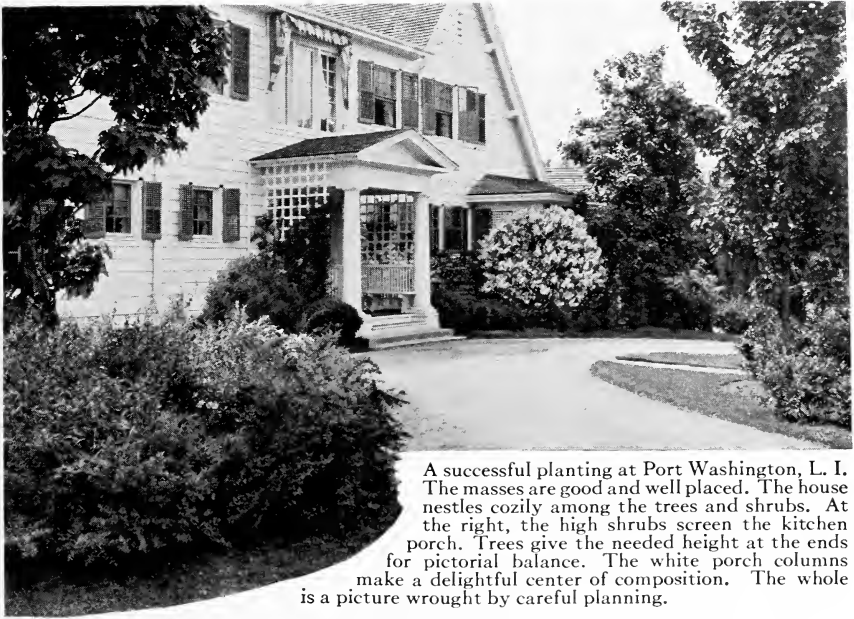




Foundation groups of Pine, Rhododendron, and Yew. A composition like this cannot fail to add a touch of refined beauty. It is an excellent example of harmony in plant material. Have you a large wall-surface such a group can relieve? Total cost: 5 Rhododendrons, 5 Yews, and 1 Pine, 6 ft., \$30

© CIA 527670

JUL 10 1919



A successful planting at Port Washington, L. I. The masses are good and well placed. The house nestles cozily among the trees and shrubs. At the right, the high shrubs screen the kitchen porch. Trees give the needed height at the ends for pictorial balance. The white porch columns make a delightful center of composition. The whole is a picture wrought by careful planning.

FOUNDATION PLANTINGS

BY THE term "Foundation Plantings" we refer to that part of the landscape whose function it is to connect the house with its surroundings. To do this properly may require masses of low-growing plants or it may require large trees. Sometimes vines will tie the house effectively to the grounds. Again, a formal flower-garden may be the most fitting connecting link. The style of architecture determines largely the landscape treatment, but whatever the treatment may be, it is the most intimate part of the landscape and therefore deserves the most profound study. Not only should beauty be discovered in the details seen at close range, but also in the masses or general proportions as viewed a hundred feet or more away, where details are lost and only outlines and large shadows remain.

The purpose of this booklet is to help you to have compositions that are more harmonious and of better taste than usual. If you need assistance with the details, see our suggestions on pages 8 and 9. Whether you are nearby or a thousand miles away, we shall be happy to coöperate. Everything purchased from us is guaranteed to grow or is replaced free.

HICKS NURSERIES



A bold mass indeed, but perfectly justified. Anything smaller would have been inadequate to either frame the house, screen the service wing, or conceal the clothes-yard, all of which this planting was required to do. The group of big White Pine is beautifully tapered down with Mountain Laurel, (see insert), which in turn nestles in a carpet of Pachysandra. The grove of tall Locusts adds charm and coziness and permits an unobstructed view of the landscape in every direction. It would seem as if nature herself had conspired to have such a perfect setting.

EVERGREENS

For the scope of this book, Evergreens fall into two classes. Large-growing trees for bulky masses, as illustrated above, and dwarf-growing trees for low masses, as illustrated on pages 8 and 11. We purposely make repeated use of the word "mass," for the better plantings are those where beauty is discovered in the group or mass rather than in individual trees. The secret of uniting individual trees lies largely, if not entirely, in the underplanting. Laurel ties together the trees shown above. On pages 8 and 14 Pachysandra gives a feeling of unity to the various components.

Pinus Strobus WHITE PINE

The illustration above shows how White Pine and other large-growing evergreens can be used acceptably. We have all sizes. Your requirements can be satisfied immediately.

	Each	10
4 ft., 2 to 3 ft. spr.....	\$3 50	\$30 00
5 ft., 2 to 4 ft. spr.....	5 50	50 00
6 ft., 3 to 4 ft. spr., 7 yrs..	8 00	70 00
7 ft., 4 to 6 ft. spr., 8 yrs..	12 00	110 00
8 ft., 4 to 6 ft. spr., 9 yrs..	18 00	170 00
9 ft., 7 ft. spr., 10 yrs..	20 00	190 00
10 ft., 6 to 7 ft. spr., 11 yrs..	30 00	275 00
12 ft., 8 to 10 ft. spr., 13 yrs..	40 00	375 00
14 ft., 8 to 10 ft. spr., 15 yrs..	60 00	550 00

Abies concolor WHITE FIR

A dense, large-growing tree that will succeed on the north or shady side of the house.

	Each	10
2 ft.....	\$4 00	\$37 50
3 ft.....	6 00	50 00
4 ft.....	10 00	90 00
5 ft.....	15 00	140 00
6 ft., 3 to 4 ft. spr.....	20 00	190 00
7 ft., 3 to 4 ft. spr.....	25 00	225 00
8 ft., 4 to 5 ft. spr.....	30 00	275 00

Pseudotsuga (Picea) Douglasii DOUGLAS SPRUCE

Possibly the best pointed-top evergreen, all things considered. Certainly a beautiful species for use in locations that call for tall-growing trees.

	Each	10
3 ft.....	\$3 00	\$25 00
4 ft., 3 ft. spr.....	5 00	45 00
5 ft., 3 ft. spr.....	7 00	65 00
6 ft., 4 ft. spr.....	10 00	90 00
10 ft., 4 to 6 ft. spr.....	40 00	350 00
12 ft., 6 to 8 ft. spr.....	50 00	450 00
14 ft., 8 to 10 ft. spr.....	75 00	650 00
16 ft., 8 to 10 ft. spr.....	100 00	900 00

Pinus sylvestris SCOTCH PINE

A rapid-growing Pine. Excellent for heavy, dense effects.

	Each	10
3 ft.....	\$3 00	\$25 00
4 ft.....	5 00	45 00
5 ft., 3 ft. spr.....	8 00	70 00
6 ft., 3 to 4 ft. spr.....	10 00	90 00

Juniperus virginiana RED CEDAR

These make narrow columns. Very pleasing and appropriate for houses where horizontal lines predominate. We shall be glad to quote any size up to 30 feet high.



Nothing exotic-looking about this house. How it and the landscape could be more in keeping one would hesitate to suggest. The landscape setting is mainly a heavy flanking mass of trees and shrubs so extended as to magnify the area and give the building a roomy setting, as befits a home of this character. The planting, tapering to the center as it does, gives the entrance the emphasis its dignity demands and justifies. The large trees are Maple, Linden and Oak.

TREES

A glance at the illustrations in this book shows how important trees are, to give balance, frame the structure, and lend dignity. (See pages 3 and 10.) They can rise from the shrubbery, as shown above, or stand out singly as those on page 4. A house looks cozy when nestling among trees, and the shade is always welcome. We mention only a few trees for this purpose, but many others are adapted and you can easily substitute those you may admire more.

Norway Maple

Height	Diam.	Spread	Each	10
12 ft.	2 in.	3 to 6 ft.	\$3 50	\$30 00
14 ft.	2½ in.	4 to 6 ft.	5 00	40 00
16 ft.	3 in.	5 to 6 ft.	10 00	90 00
24 to 28 ft.	7 in.	10 to 18 ft.	90 00	800 00
24 to 30 ft.	8 in.	14 to 18 ft.	115 00	1,000 00

Lindens

Height	Diam.	Spread	Each	10
10 ft.	1½ in.	\$3 50	\$30 00
10 ft.	2 in.	3 to 4 ft.	6 00	50 00
14 ft.	3 in.	5 to 8 ft.	15 00	140 00
16 to 20 ft.	4 in.	6 to 9 ft.	35 00	300 00

Pin Oak

Height	Diam.	Spread	Each	10
10 ft.	1½ in.	3 to 4 ft.	\$3 50	\$30 00
12 to 14 ft.	2 in.	4 to 6 ft.	5 00	45 00
12 to 14 ft.	2½ in.	4 to 6 ft.	8 00	70 00
14 to 18 ft.	3 in.	6 to 8 ft.	15 00	120 00
14 to 18 ft.	3½ in., with ball	30 00	250 00
18 to 20 ft.	5 in.	9 to 10 ft.	40 00	350 00

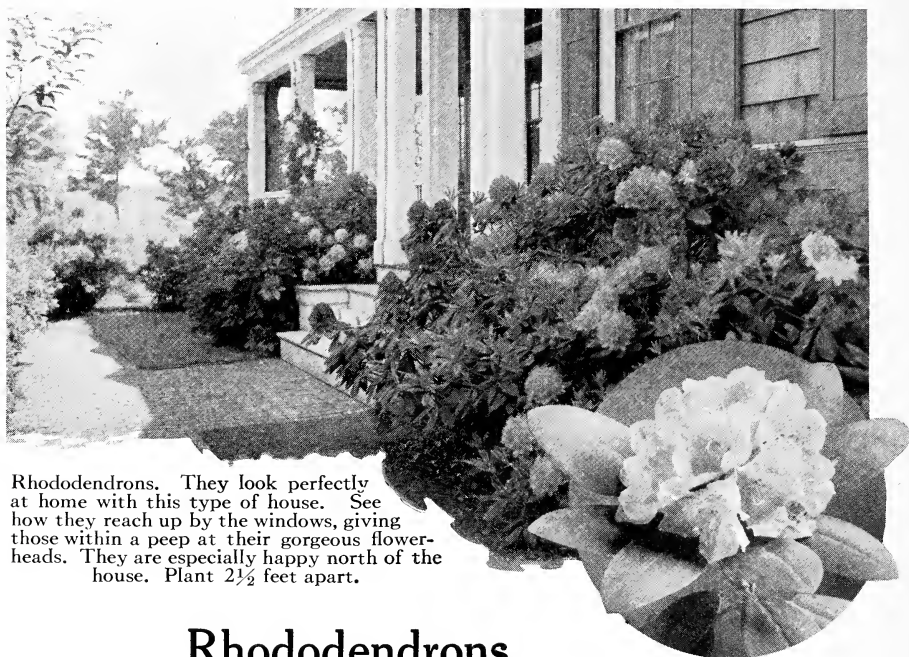
Ulmus americana

AMERICAN ELM

Height	Diam.	Spread	Each	10
12 ft.	1½ in.	4 to 6 ft.	\$3 50	\$30 00
14 ft.	2 in.	4 to 6 ft.	5 00	45 00
16 ft.	3 in.	5 to 7 ft.	10 00	90 00
18 ft.	3½ in.	5 to 8 ft.	20 00	180 00
20 ft.	4 in.	5 to 8 ft.	35 00	300 00
22 ft.	5 in.	7 to 10 ft.	55 00	450 00

ALL SUMMER PLANTING

If you want trees you can have them right in midsummer. We plant them in full leaf and guarantee success. They are handled like huge potted plants. A large ball of soil permits the roots to supply the needed moisture and the leaves do not even wilt. Our booklet "Shade and Lawn Trees" fully illustrates the operation. Copy mailed on request. Evergreens can also be transplanted all summer long. We have hardy flowers and roses in pots. These can be planted any time. In fact, 80 per cent of all the stock we grow can be planted all summer. This is an opportunity you may not have dreamed of.



Rhododendrons. They look perfectly at home with this type of house. See how they reach up by the windows, giving those within a peep at their gorgeous flower-heads. They are especially happy north of the house. Plant $2\frac{1}{2}$ feet apart.

Rhododendrons

These have become a favorite plant for the foundation because they have beautiful foliage all the year and because of their gorgeous bloom the last of May or first of June. Then, too, they thrive in the shade, such as north of the house or in woodland. Another merit which cannot be too strongly emphasized is the natural-looking masses into which they develop.

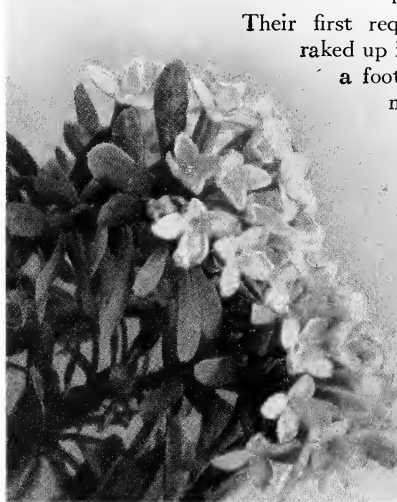
Rhododendrons convey a special sense of fitness of the house to the site, if they are not confined at the house but woven into the general planting so that their color effect is echoed here and there in the landscape.

Their first requirement is decaying leaves. These can be raked up in the fall or gathered from the woods. Dig in a foot of leaves before planting and add 8 inches more each fall. Their second requirement is wind protection. Water them thoroughly every two weeks the first summer. If there is lime in the soil, remove the soil to a depth of 2 or 3 feet and fill in with soil from the woods. These same conditions apply to Azalea, Laurel, and Leucothoë.

Daphne Cneorum

GARLAND FLOWER

One wonders how such a delightful little plant could ever have been thought of, for it is one of the sweetest flowers we know. Makes a pretty tuft 1 foot high, and it is almost a mistake not to tuck in one or more. \$1 each, \$9 for 10.



Daphne Cneorum

HICKS NURSERIES

Rhododendrons

ALBUM ELEGANS. A tall grower quickly becoming 6 to 8 feet high. Should always have lower-growing varieties in front. White when fully open, pink tint in bud. 2 ft. high, \$4 each, \$35 for 10.

CATAWBIENSE ALBUM. Pure white. A broad and vigorous grower. Blooms early. 1½ ft. high. \$3.50 ea., \$30 for 10.

DELICATISSIMA. White tinged with pink. Late bloomer. Handsome foliage. 1½ ft. high, \$3.50 each, \$30 for 10.

EVERESTIANUM. Rosy lilac flowers, beautifully fringed at the edges. A low grower; perfectly hardy. Plant only with white. 1 ft. high, \$3.50 each, \$30 for 10.

GEN. GRANT. One of the best dark crimson Rhododendrons. Worthy of extensive planting. 1 ft. high, \$3.50 each, \$30 for 10.

KETTLEDRUM. This blooms early. The best red of its season and the most attractive flower. It is harmonious planted with any of the foregoing except Everestianum. 1½ ft. high, \$3.50 each, \$30 for 10.



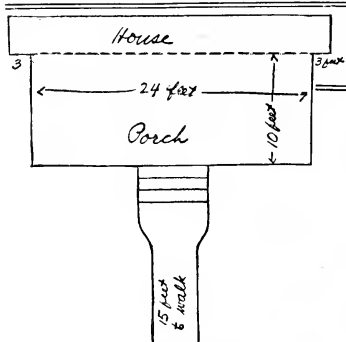
Rhododendrons. While they are delightful with either brick, stucco, or wood, they seem particularly pleasing with stone construction. The uneven outline of their masses softens the rigid lines so very noticeable in new masonry. Their deep shadows give a pleasing texture to flat surfaces which the architect often tries to achieve by deep-set joints and rough, wide shingles.



Rhododendron, Kettledrum

ROSEUM ELEGANS. Makes a big round, sturdy bush. One of the most hardy. Rose-lilac. Can be used with white or with Everestianum. 1½ ft. high, \$3.50 each, \$30 for 10.

MRS. C. S. SARGENT. Beautiful pink flowers with wavy edges. Makes a tall, broad, solid plant. For color, see page 2. 1½ ft. high, \$3 each, \$27.50 for 10.



Rough sketch sent
by owner

THE owner thought his home looked bare. The little photo he sent, and which we have inserted in the lower left corner, would indicate that his grounds were bare. This photo, with his rough sketch reproduced above, gave us all the data that is usually needed for this type of home. If you want a pretty foundation, and cannot come to the nursery, send us measurements and a photo, if you have one, and we will think out a pretty effect and send you a simple planting sketch that you can easily follow when the trees arrive.

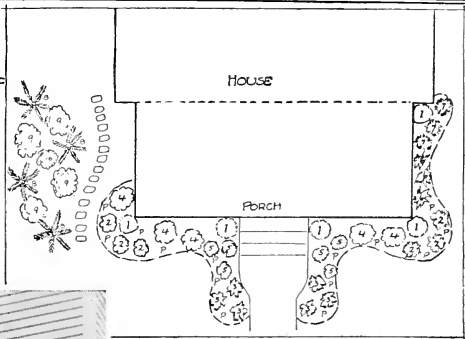
THESE illustrations show that even a small place by a little coöperation, we can help you secure most home here shown is typical of thousands of suburban houses were in close proximity. Plants were needed that with, and that would keep within bounds in their later development, a substantial backing to the foundation groups and, simultaneously, you arrange your trees so they will be both pictorial and



The owner sent us a rough with our suggestions. The condition, carefully labeled. tion you can determine for your illustrated in this booklet will be a convenience to you and other essential data.

WESTBURY LONG ISLAND

landscape possibilities. They also show how, by using landscaping effects *by correspondence*. The area was limited, and neighboring owners gave a fairly finished appearance to start with. The group of large evergreens gives a screen to the adjoining house. To help with our part of our service.



The sketch we submitted
to owner

Planting List Of Sketch Submitted

1. *Taxus cuspidata*. Yew.
2. *Taxus cuspidata*. Flat form.
3. *Juniperus*. Low-growing.
4. *Rhododendrons*.
5. *Leucothoë Catesbæi*.
6. *Juniperus*.
7. *Taxus brevifolia*.
8. *Pinus*. Pine.
9. *Viburnum dilatatum*.
10. White Birch.
- P. *Pachysandra*. Japanese Spurge.

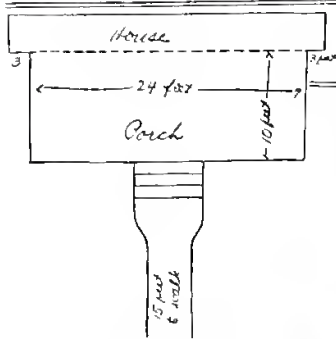


PACHYSANDRA

In the better plantings this is used freely. It makes a pretty green carpet between the trees and holds the different elements of the planting together. Grows about 8 inches high. Plant 1 foot apart. \$2 for 10, \$15 per 100.

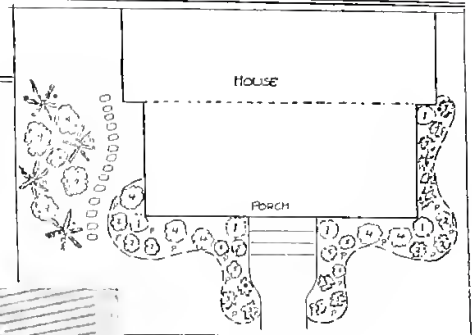


and photo. We sent the owner a simple sketch, which was placed. The plants were received in excellent condition and were planted by local men. The measure of satisfaction was great. Can we help you? If you want any of the effects shown, ask us for a sheet of cross-section paper which shows the planting dimensions, angles, points of the compass,



Rough sketch sent
by owner

THESE illustrations show that even a small place has landscape possibilities. They also show how, by a little coöperation, we can help you secure most pleasing landscape effects by correspondence. The home here shown is typical of thousands of suburban homes. The area was limited, and neighboring houses were in close proximity. Plants were needed that would give a fairly finished appearance to start with, and that would keep within bounds in their later developments. The group of large evergreens gives a substantial backing to the foundation groups and, simultaneously, screens the adjoining house. To help you arrange your trees so they will be both pictorial and useful is part of our service.



The sketch we submitted
to owner

THE owner thought his home looked bare. The little photo he sent, and which we have inserted in the lower left corner, would indicate that his grounds were bare. This photo, with his rough sketch reproduced above, gave us all the data that is usually needed for this type of home. If you want a pretty foundation, and cannot come to the nursery, send us measurements and a photo, if you have one, and we will think out a pretty effect and send you a simple planting sketch that you can easily follow when the trees arrive.



The owner sent us a rough sketch and photo. We sent the owner a simple sketch, with our suggestions. The order was placed. The plants were received in excellent condition, carefully labeled. They were planted by local men. The measure of satisfaction you can determine for yourself. Can we help you? If you want any of the effects illustrated in this booklet reproduced, ask us for a sheet of cross-section paper which will be a convenience to you in recording dimensions, angles, points of the compass, and other essential data.

Planting List Of Sketch Submitted

1. Taxus cuspidata. Yew.
 2. Taxus cuspidata. Flat form.
 3. Juniperus. Low-growing.
 4. Rhododendrons.
 5. Leucothoë Catesbaei.
 6. Juniperus.
 7. Taxus brevifolia.
 8. Pinus. Pine.
 9. Viburnum dilatatum.
 10. White Birch.
- P. Pachysandra. Japanese Spurge.

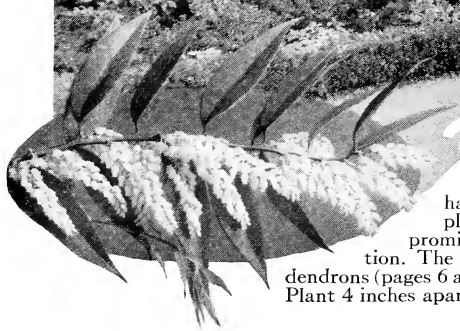


PACHYSANDRA

In the better plantings this is used freely. It makes a pretty green carpet between the trees and holds the different elements of the planting together. Grows about 8 inches high. Plant 1 foot apart. \$2 for 10, \$15 per 100.



Here is a 'delightful composition for a formal entrance. The material is in perfect harmony with the contrasty members usually found in this style of architecture. The horizontal mass of foliage balances the strong vertical lines incident to half-timber construction. Notice, too, how the plants blend. No one species stands out in glaring prominence, but all merge into one beautiful composition. The principal elements are Yew (page 11), and Rhododendrons (pages 6 and 7). The edging plant is Boxwood—\$20 per 100. Plant 4 inches apart. Flower in the insert is *Leucothoë* (see below).



Chamæcyparis (Retinispora) obtusa nana

A very dwarf evergreen tree with a most interesting disposition of foliage. (See illustration.) 1 ft. high, \$3 each, \$25 for 10.

Chamæcyparis (Retinispora) obtusa

Handsome, dark green foliage. It harmonizes in almost any evergreen planting. Use it where tall foliage is needed, as between windows.

	Each	10
1½ ft. high.....	\$3 00	\$25 00
2 ft. high.....	4 00	35 00

JUNIPER JUNIPER
Low-growing Forms

We have several varieties that make beautiful low masses, 1 foot, 3 feet, or 6 feet high. They are picturesque in character. They are not a series of globes, cones and pyramids. They need no shearing—just let them grow in their own natural way and they will make a happy composition, soft in texture and delightful in color. The trees can be planted about 2½ feet apart. You can state the height you wish the trees to develop and we will give you the proper varieties. Practically all have a gray-green foliage; and do well in dry sunny positions. (See page 9.) 1½ ft. wide, \$2 each, \$17.50 for 10.



Chamæcyparis obtusa nana

Ilex crenata
JAPANESE HOLLY

An evergreen shrub of uneven outline with boxwood-like foliage. It might grow up to 6 feet, but generally does not get over 3 feet on account of freezing back. You will enjoy it. Each 10

1½ ft. high.....	\$2 00	\$17 50
3 ft. high.....	3 50	30 00

Ilex opaca
AMERICAN HOLLY

You will be proud to have at least one tree in your evergreen plantings. It should be given a location where height will not be an objection. The tall, bright foliage at the left of the entrance shown above is Holly. Each 10

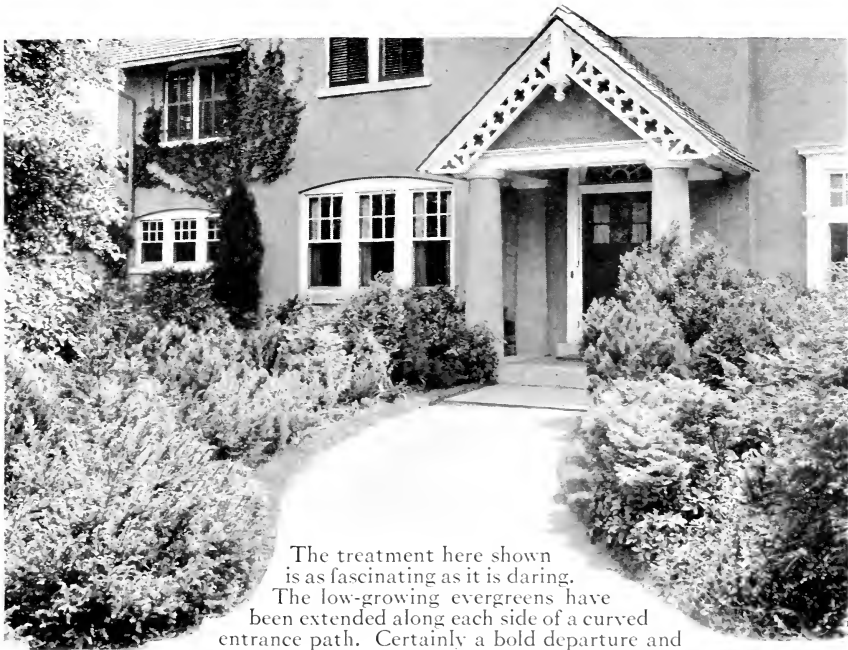
2 ft. high.....	\$3 00	\$25 00
3 ft. high.....	5 00	45 00

Kalmia latifolia
MOUNTAIN LAUREL

Harmonizes with Rhododendrons and other broad-leaved evergreens. See page 4, which shows how well it composes with large evergreens and holds the group together. 1½ ft. high, \$1.50 each, \$12.50 for 10.

Leucothoë Catesbæi

This is very decorative, with its long, graceful, arching branches. Foliage turns purple in winter. The flowers are clusters of white bells that come the last of May. It has been woven in the composition illustrated above. It grows low and should be kept near the edge. Dig in plenty of old leaves as recommended for Rhododendrons. Excellent for shady locations. 1 ft. high, \$1.50 each, \$10 for 10.



The treatment here shown is as fascinating as it is daring. The low-growing evergreens have been extended along each side of a curved entrance path. Certainly a bold departure and a decided relief from the stereotyped beds of

many-hued, vari-shaped evergreens so frequently seen on each side of the front steps. The unusually wide path is the product of careful study, avoiding any thought of congestion. There is a feeling of welcome about the whole scheme which is by no means common. The low evergreens are *Taxus*, *Pinus* and *Juniperus*. *Ampelopsis* (page 14) is rapidly softening the stucco wall surface.

Pinus montana Mughus

MUGHO PINE

If you have a place where beautiful, low, round cushions will look well, as at the foot of tall evergreens, or as specimens on each side of the entrance, this is sure to please you. 1½ ft. wide, \$3.50 each, \$30 for 10.

Taxus YEW

TAXUS CUSPIDATA. Japanese Yew. An upright-growing Yew. The taller foliage in the illustration on page 10 is this species. We would use it where foliage 6 feet high will look well. The tree grows much larger than this, but can be kept down to size by nipping back.

	Each	10
1 ft.....	\$1 50	\$12 50
1½ ft.....	3 00	25 00
2 ft.....	5 00	40 00
3 ft.....	8 00	70 00

TAXUS CUSPIDATA. Flat Form. Same as above, but makes a low, flat tree. Gives an effect similar to Spreading Yew but grows much faster.

	Each	10
1 ft. high, 1 ft. wide..	\$2 00	\$15 00
1½ ft. high, 1½ ft. wide..	3 50	30 00
2 ft. high, 2 ft. wide..	6 00	50 00
2½ ft. high, 2½ ft. wide..	9 00	80 00

TAXUS BREVIFOLIA. Dwarf Japanese Yew. Dark green and handsome as boxwood. A slow grower and, like most slow growers, develops a beautiful texture. Can be used as specimens or in evergreen plantings. (See page 2.)

	Each	10
8 in. high.....	\$1 50	\$12 50
1 ft. high.....	5 00	40 00

Vinca MYRTLE

Almost everybody knows the pretty blue flowers which come with the violets in early spring. Use as a ground-cover, planting 1 foot apart. A fine thing to border paths with, too, where shrubs might crowd over. Good for shade but not under maples. \$2 for 10, \$15 per 100.

Illustrated below in color are berries of Japanese Yew. Just one more attractive element of a tree that already seems to have more than its share of desirable points. They are highly decorative and compel admiration.



SHRUBS



Flower branch of Cotoneaster

Some grow low, therefore adapted where the planting space is limited. Others are more robust and give substantial effects both in flower and foliage, as illustrated on opposite page. They serve, too, as the connecting link between the large trees grouped at the ends of the house and the little plant gems one loves to have at the doorstep. See illustration below and on page 3. Tall-growing species as Cornus and Styx give a very pleasing effect as they rise above the general foliage level. See pages 8 and 9 if you need our help.

Berberis Thunbergii

JAPANESE BARBERRY

A low-growing shrub that always looks good. Scarlet berries add a cheerful tone all winter. Plant 2 feet apart for a solid mass. (See page 16.) 1½ ft. high, 35 cts. each, \$3 for 10, \$25 per 100.

Cornus

CORNUS MAS. Cornelian Cherry. Makes a beautiful round bush 10 feet high. A sight to behold in early April when the yellow flower clusters open. Decide first where you want foliage 10 feet high and then order this. 4 ft. high, \$1 each, \$8.50 for 10.

CORNUS FLORIDA. Dogwood. It will give height to your foliage masses. You are acquainted

Cornus, continued

with the showy flowers that open in May, and the brilliant foliage in the fall.

	Each
White—3 ft.....	\$0 50
4 ft.....	1 00
6 ft.....	1 75
8 ft.....	2 50
Red—3 ft.....	2 00
4 ft.....	3 00

CORNUS KOUSA. Japanese Dogwood. Same as preceding but a month later. We need not say more.

	Each
2 ft.....	\$0 60
3 ft.....	1 25
4 ft.....	2 00
5 ft.....	3 00



Dwarf evergreens, shrubs, and large trees all enter into the planting-scheme here. Big trees frame the house and cast a cooling shade over the end porch. Shrubs form the connecting link between the high and low foliage and simultaneously screen the porch, giving that delightful privacy so essential to the completeness of country life. The small evergreens near the entrance have a tendency to lengthen the perspective. The white pillars form a natural axis on which the landscape components arrange themselves in perfect balance.



This shows the same type of construction as illustrated on page 10, but a layout which called for an informal treatment. Here big, round masses of shrubs make a proper setting for the house, making it look as if it had grown naturally from the ground. The groupings are excellent—not a continuous mass, which so often looks suffocating and monotonous, but interrupted here and there, showing that the building actually rests on soil and not on foliage. Some of the groups are detached from the house altogether, permitting one to walk among them and get delightful glimpses of the distant landscape as he passes in and out. Most of the shrubs shown are *Viburnum*.

Cotoneaster

COTONEASTER DIELSIANA. An upright growing shrub that can be kept down to 6 or 7 feet. Very showy in flower, exceedingly showy in fruit, and most showy in fall foliage which is retained unusually late. The leaves are small and glossy. 1½ ft. high, \$1 each, \$7.50 for 10.

COTONEASTER DIVARICATA. A very handsome shrub growing 5 to 6 feet high. Foliage is bright and glossy—pretty as boxwood and about the same size. Very dainty white flowers. Abundant berries. Truly a delightful plant all the way through but especially attractive when studded with its bright red fruits. 1½ ft. high, \$1 each, \$7.50 for 10.

COTONEASTER MICROPHYLLA. Low, prostrate evergreen shrub. A real gem. Exquisite little white flowers in May, followed by bright red fruits that adhere most of the winter. Will grow about 2 feet high, so must be kept in the foreground. 1 ft. high, \$1 each, \$7.50 for 10.

COTONEASTER MOUPINENSIS. The most vigorous of all the Cotoneasters we offer. Pink flowers followed by black fruit displayed on long pendulous stems. Use this where you want foliage to reach up ten or more feet. 3 ft. high, \$2 each, \$15 for 10.

COTONEASTER SIMONSII. An all season delight. You will not only thoroughly enjoy the pretty white flowers and the glistening red fruits but you will be just as enthusiastic over the thrifty shining foliage, green in summer, dark crimson in the fall. It will grow 4 feet high. Incidentally a rare plant for hedges. 1½ ft. high, \$1 each, \$7.50 for 10.

COTONEASTER ZABELII. This grows about 3 feet high. The slender spreading branches make the plant exceedingly graceful. The young foliage has a gray aspect, developing into a rich green throughout the summer and turning to bright yellow in autumn. Pinkish flowers in June. Showy red berries in September and October. 2 ft. wide, \$2 each, \$17.50 for 10.

Deutzia gracilis

Pure white flowers fairly blanket the bush in May. It makes a compact plant 3 feet high. An excellent shrub for low growth. Plant 2 feet apart. 1 ft. high, 35 cts. each, \$3 for 10, \$25 per 100.

Deutzia scabra

PRIDE OF ROCHESTER

A large-growing shrub suitable for such treatments as illustrated above or where screens are wanted as shown on pages 3 and 12. Flowers in June. Plant 4 feet apart. 3 ft. high, 60 cts. each, \$5 for 10, \$40 per 100.

Exochorda PEARL BUSH

A large-growing bush with flowers similar to the mock orange. Will grow 10 feet high. 3 to 4 ft. high, 60 cts. each, \$5 for 10.

Forsythia GOLDEN BELL

This is charming just anywhere. Everyone loves the solid mass of yellow in April. Consider for positions where you need foliage 6 feet high.

	Each	10	100
3 ft.	\$0 40	\$3 50	\$30 00
4 ft.	50	4 50	40 00
5 ft.	75	6 00	50 00

Ligustrum Regelianum

REGEL'S PRIVET

These are excellent for dense effects 6 feet high. The horizontal growth is always pleasing. Needs no shearing. It constitutes the bulk of the shrub planting shown on page 5. 3 ft. high, 50 cts. each, \$4.50 for 10.

SHRUBS CONTINUED ON PAGE 16

VINES

To meet the purpose of this book, vines might be divided into two classes—those that cling to surfaces, as shown on page 11, and those that twine. It is surprising what transformation a discreet use of vines makes in the appearance of one's home. Bare wall surfaces are made charming—in fact anything bold about the structure can be quickly subdued. They always form an invaluable link between the house and grounds.

Wisteria

Everyone loves its exquisite festoons of purple or white flowers. It is especially delightful with a gray background, such as stucco or old weather-stained structures. Harsh lines are softened as it daintily twines around the porch columns, climbing gracefully over the porch hood, up the corner, along the cornice, never satisfied until it has ascended to the very top. 75c. each, \$6 for 10.

Ampelopsis

AMPELOPSIS QUINQUEFOLIA. Virginia Creeper. The Five-fingered Ivy that clings so successfully to wood, brick, stone, or stucco. 60 cts. each, \$5 for 10.

AMPELOPSIS TRICUSPIDATA. Boston Ivy. Possibly the most-used clinging-vine. 75 cts. each, \$6 for 10.



Here is one of those tantalizing angles which the lawn-mower does not reach and which ordinarily looks bare and shabby. Why not make all such odd corners just as cozy as the one illustrated? The vine on the wall is *Euonymus radicans*. *Pachysandra* forms the carpet in the foreground. The taller mass is a Japanese Barberry. This set of 15 plants, \$3.50 complete. If you want an all-evergreen composition, Yew or Juniper can be used in place of Barberry. Price, complete, \$5.

Celastrus scandens

BITTERSWEET

A fast grower and happy in either sun or shade. Requires something to climb on, as trellis or wire. Scarlet berries in winter, identical to the ones here illustrated. The foliage is not evergreen. 60 cts. each, \$5 for 10.

Clematis paniculata

Valuable for its dense growth and small, sweet-scented flowers in August. To cover the long trellises frequently built around clothes-yards, or for pergolas, which are often used to give balance. It is well to use other vines with it, as honeysuckle and climbing roses, and have flowers at different seasons. 50 cts. each, \$4 for 10.

Lonicera japonica Halliana

HONEYSUCKLE

To be used as the above or with it. The sweetest flowers of their season. July. 50 cts. each, \$4 for 10.

Climbing Roses

Everyone has their favorite. Usually for pink it is Dorothy Perkins; red, Excelsa. Among the newer varieties we have Dr. Van Fleet, silvery pink; Silver Moon, single white; Alberic Barbier, yellow, fading to cream. Some are in pots and can be planted all summer. \$1 each, \$7.50 for 10, \$60 per 100.

Euonymus radicans
vegetus

Euonymus radicans vegetus

EVERGREEN BITTERSWEET

The best evergreen vine. Never winter-kills. A most beautiful wall-covering, and where there is nothing to climb on, it pleasingly carpets the ground. The berries adhere all winter. For a solid covering, plant 1½ feet apart. Can be planted all summer. 35 cts. each, \$3 for 10, \$25 per 100.



An Italian house where an elaborate formal garden gives a most appropriate setting. The plants are low, so as not to detract from the architectural embellishments. Evergreens have been woven in as freely as flowers, so the fascination is perpetual. *Euonymus* clothes the retaining walls that support the different levels of the garden as it reaches out to merge with the general landscape. The use of water is entirely in keeping with this type of house and garden. If a formal flower-garden is the proper treatment for your house, we shall be glad to help you with the details. There are so many varieties that we will not attempt to list them here.

Send for Hicks Monograph devoted especially to Hardy Garden Flowers.



Possibly this planting is as happy as any shown in this booklet. Everything has been treated with loving attention, nothing is slighted, nothing overdone. A wisteria makes the cozy porch hood more cozy. Barberry has just the texture that flat brick surfaces can stand. A large tree has been located to frame the entrance from whichever way it may be approached.

Syringa vulgaris LILAC

You will insist on having this for its staunch friendship. Do you prefer white or purple or both?

	Each	10	
3 ft.....	\$0 70	\$6 00	
4 ft.....	90	8 00	
5 ft.....	1 25	10 00	

Lonicera tatarica BUSH HONEYSUCKLE

They make massive shrubs 8 feet high. Can be woven in at the foundation to screen the service wing or clothes-yard. Bright red berries in July.

	Each	10	100
3 ft.....	\$0 50	\$4 50	\$40 00
4 ft.....	75	6 00	50 00

Spiraea Van Houttei

A fountain of white in May. If shrubs are to be your material, you make no mistake in selecting this where foliage 5 feet high is needed.

	Each	10	
2 ft.....	\$0 50	\$4 50	
3 ft.....	75	6 00	

Styrax japonica

You will want one or more to rise out of shrubbery masses. The composition will be spared the monotony of which shrub groups are often guilty. Dainty white bells early in June.

	Each	10	
4 ft.....	\$1 00	\$9 00	
6 ft.....	2 00	17 50	

Not every type of house or every condition can be amply represented in a treatise of this sort. It will be apparent, however, that practically every home has individual possibilities. Our aim is to help you discover what these possibilities are, and to this end we urge your coöperation. Better results are generally achieved by the combination of an artistic client and a capable professional man. One bears in mind the practical and the other the pictorial, or each may have worthy ideas along both lines. It is for you to say how we can be of service. We would remind you again that everything purchased from us is guaranteed to grow satisfactorily or replaced free.

Philadelphus, Sweet Syringa MOCK ORANGE

One of the sweet old favorites that we all love. Grows 8 feet high. Blooms in June. About the only foundation planting one can find around old homesteads is a Syringa, Weigela, Lilac, Golden Bell, and Boxwood, and indeed, they are sufficient.

	Each	10	
3 ft.....	\$0 50	\$4 50	
4 ft.....	75	6 00	

Viburnum

VIBURNUM PLICATUM. Japanese Snowball. This is the large shrub with white flowers shown on page 12. The same picture also indicates where it can be used effectively. 3 to 4 ft. high, \$1 each, \$7.50 for 10.

VIBURNUM OPULUS. The common name is High-Bush Cranberry, so-called for the clusters of large red berries that look so cheerful all winter. Grows 8 feet high. 3 ft. high, 75 cts. each, \$6 for 10.

VIBURNUM DENTATUM. Arrow-wood. These make massive shrubs, such as are shown at the top of page 13. Cream-colored flowers in June; blue berries in August.

	Each	10	
2 ft.....	\$0 50	\$4 00	
3 ft.....	75	6 00	
4 ft.....	1 00	7 50	

Weigela

Another old favorite for which everyone finds a place. We have pink, red, and white. The pink is the most showy. 3 ft. high, 60 cts. each, \$5 for 10.

HICKS NURSERIES, Westbury, L. I., N. Y.

J. Horace McFarland Co., Printers, Harrisburg, Pa.

AUG 21 1919.

HICKS NURSERIES
WESTBURY · LONG ISLAND